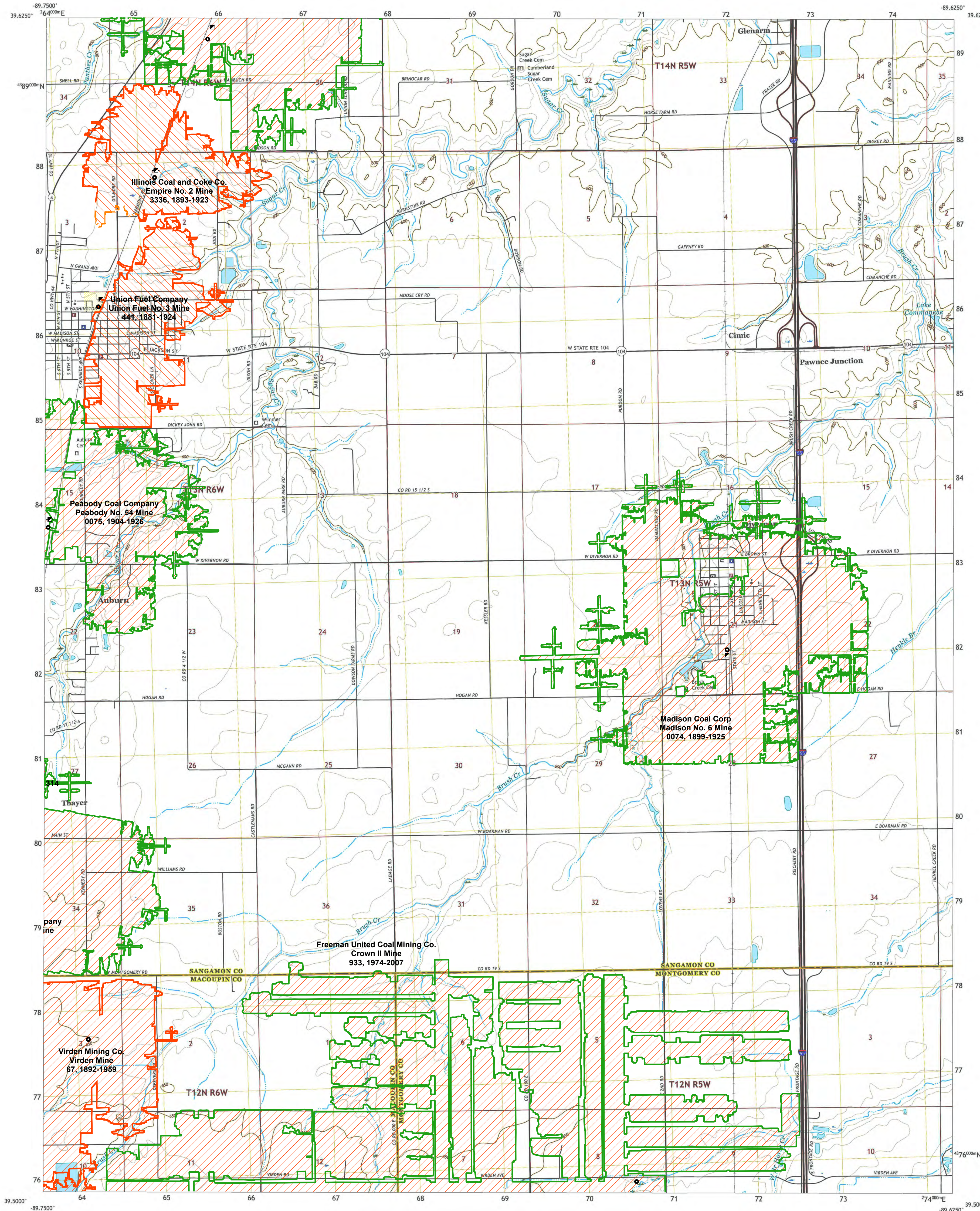


Accessibility Statement

This publication has gone through accessibility checking. However, technical constraints, including the highly detailed and visually complex nature of maps, limit the ability to make all aspects of the publication fully accessible in its existing format. If a user needs additional assistance with accessing this publication, please contact Illinois State Geological Survey at info@isgs.illinois.edu.

Coal Mines in Illinois Divernon Quadrangle

Sangamon, Macoupin & Montgomery Counties, Illinois



This map accompanies the Coal Mines Directory for the Divernon Quadrangle. Consult the directory for a complete explanation of the information shown on this map.

Mining Method

- Room & Pillar (RP)
- Room & Pillar Basic (RPB)
- Modified Room & Pillar (MRP)
- Room & Pillar Panel (RPP)
- Blind Room & Pillar (BRP)
- Checkerboard Room & Pillar (CRP)
- High Extraction Retreat (HER)
- Longwall (LW)
- Underground, Method Unknown
- Strip Mine
- Auger Mine

Other Areas Depicted

- General Area of Mining
- LiDAR Indicated Mining
- Non-Fuel Mines
- Sinkhole Areas *

* Source: <https://go.illinois.edu/illinois-sinkhole-areas>

Source of Mine Outline

- Final Mine Map
- Not Final Mine Map
- Undated Mine Map
- Incomplete Mine Map
- Secondary Source Map

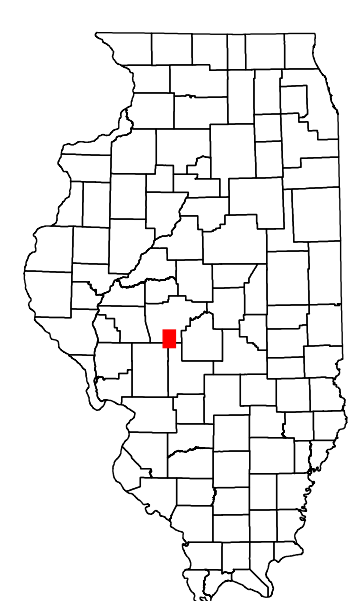
Tipple, Shaft, Slope, Drift Locations

- Strip Mine Tipple - Active
- Strip Mine Tipple - Abandoned
- Mine Shaft - Active
- Mine Shaft - Abandoned
- Mine Slope - Active
- Mine Slope - Abandoned
- Mine Drift - Active
- Mine Drift - Abandoned
- Air Shaft
- Uncertain Location
- Uncertain Type of Opening

Other Points Depicted

- Non-Fuel Mines

Location



Mine Annotation (space permitting)

Company
Mine Name
ISGS Index No., Years of Operation

Disclaimer

Please check the Bedrock Geology Section at the Illinois State Geological Survey's web site <https://go.illinois.edu/Quadrangle> for the most up-to-date version of these products.

Note that each quadrangle scale mined-out area map requires the use of the associated text directory for full explanation of map features and mine attributes. Also note that some quadrangles have multiple seams of mining and therefore more than one map may be available for a particular quadrangle. Please take care to check for multiple maps, as extensive mining may exist in the other seams.

The maps and digital files used for these studies were compiled from data obtained from a variety of public and private sources and have varying degrees of completeness and accuracy. This compilation map presents reasonable interpretation of the geology of the area and is based on available data. Locations of some mine features may be off by 500 feet or more due to errors in the original source maps, the compilation process, digitizing, or a combination of these factors. These data are not intended for use in site-specific screening or decision-making. Use of these documents does not eliminate the need for detailed studies to fully understand the geology of a specific site. The Illinois State Geological Survey, Prairie Research Institute, or the University of Illinois make no guarantee, expressed or implied, regarding the correctness of the interpretations presented in this data set and accept no liability for the consequences of decisions made by others on the basis of the information presented here.

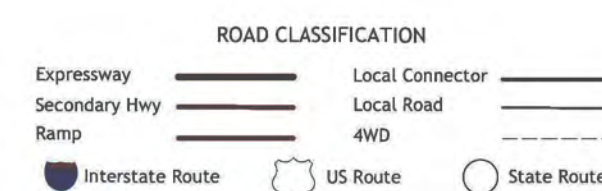
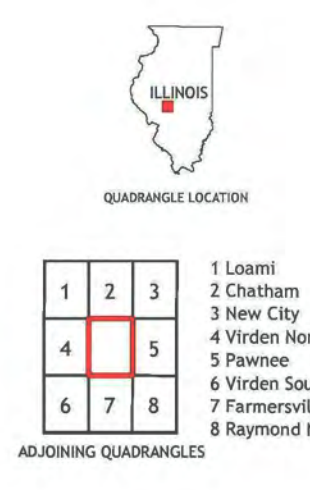
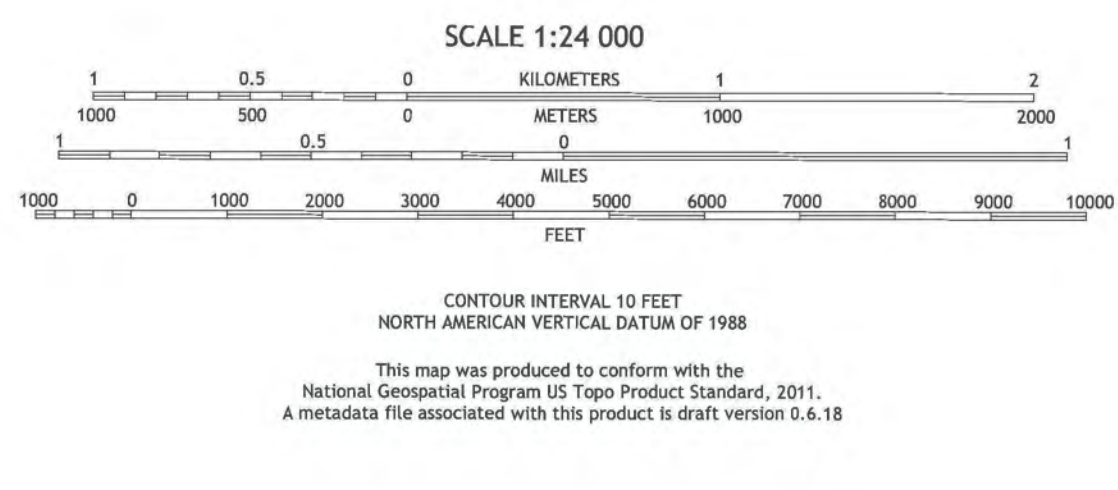
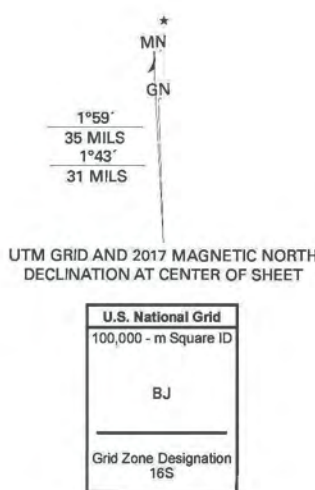
These maps were designed for use at 1:24,000. Enlarging the map may reduce accuracy, as the original scale of the source maps used to compile the outlines shown varies from 1:400 to 1:150,000, and some mine locations are known only from text descriptions. See the accompanying mine directory for the original scale of the source map used for a specific mine to check accuracy of a given portion of the map. Areas with no mines shown may still be undermined; see the unlocated mines list at the back of each mine directory.

The image of the U.S.G.S. topographic base map was projected from the original UTM to Lambert Conformal Conic.

The contents of this document reflect the view of the author(s) who is (are) responsible for the facts and the accuracy of the data presented herein. The contents do not necessarily reflect the official views or the policies of the Illinois Department of Transportation, Illinois Mine Subsidence Insurance Fund, or Illinois Department of Natural Resources.

Produced by the United States Geological Survey

North American Datum of 1983 (NAD83). Projection and World Geodetic System of 1984 (WGS84). Zone 16S
1:24,000-meter grid/Universal Transverse Mercator, Zone 16S
This map is not a legal document. Boundaries may be generalized for this map scale. Private lands within government reservations may not be shown. Obtain permission before entering private lands.
Imagery: NADIP, July 2015 - October 2015
Roads: U.S. Census, 2017
Names: U.S. Census, GNS, 1980 - 2017
Hydrography: National Hydrography Dataset, 2004 - 2015
Contours: National Elevation Dataset, 2008
Boundaries: Multiple sources; see metadata file 2014 - 2016
Public Land Survey System: BLM, 2017
Wetlands: FWS National Wetlands Inventory 1986



DIVERNON, IL
2018



Funding provided in whole or part by



Prairie Research Institute
Illinois State Geological Survey
615 E. Peabody Dr.
Champaign, IL 61820

Mine Outlines Compiled by
Jennifer M. Obrad

10-23-2008