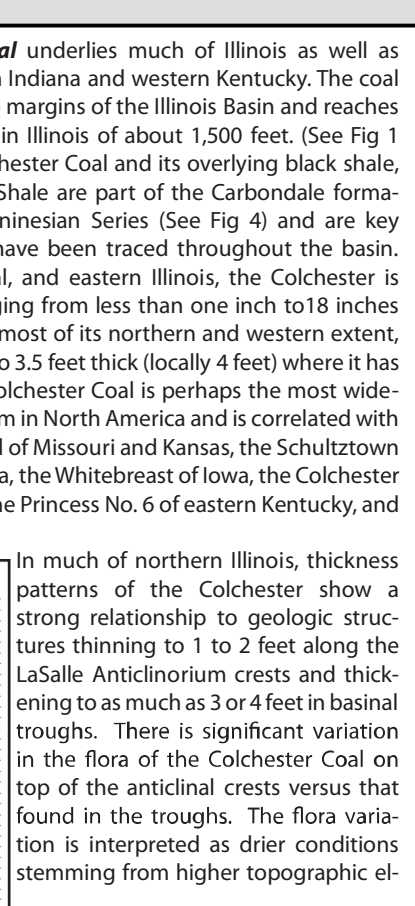
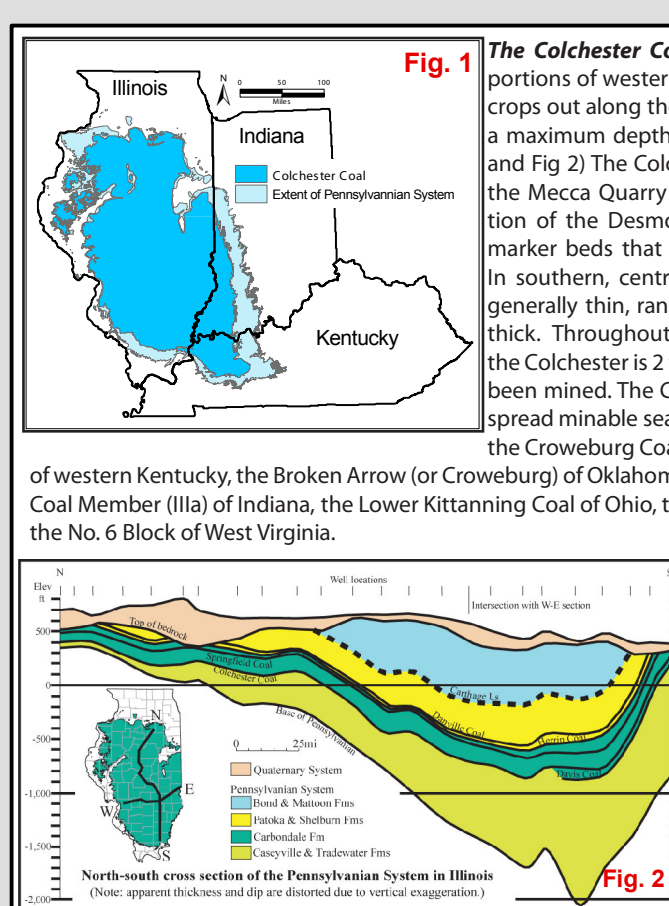
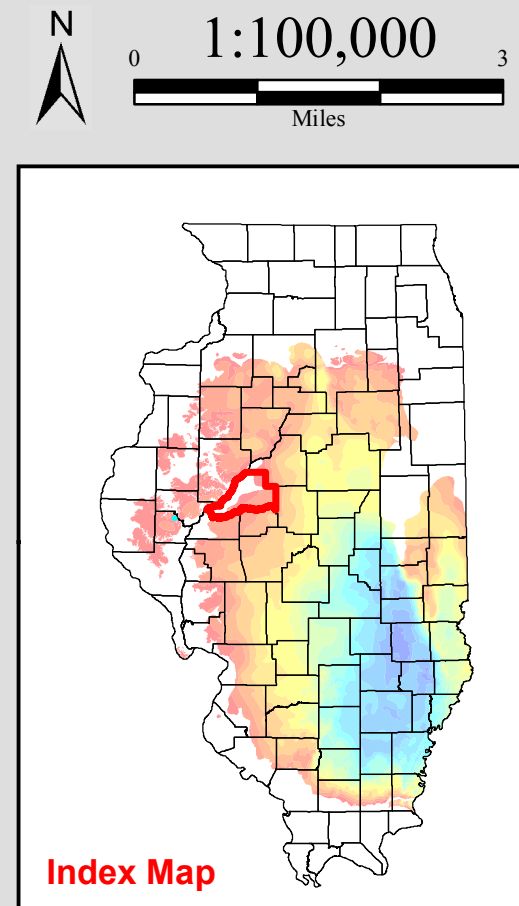
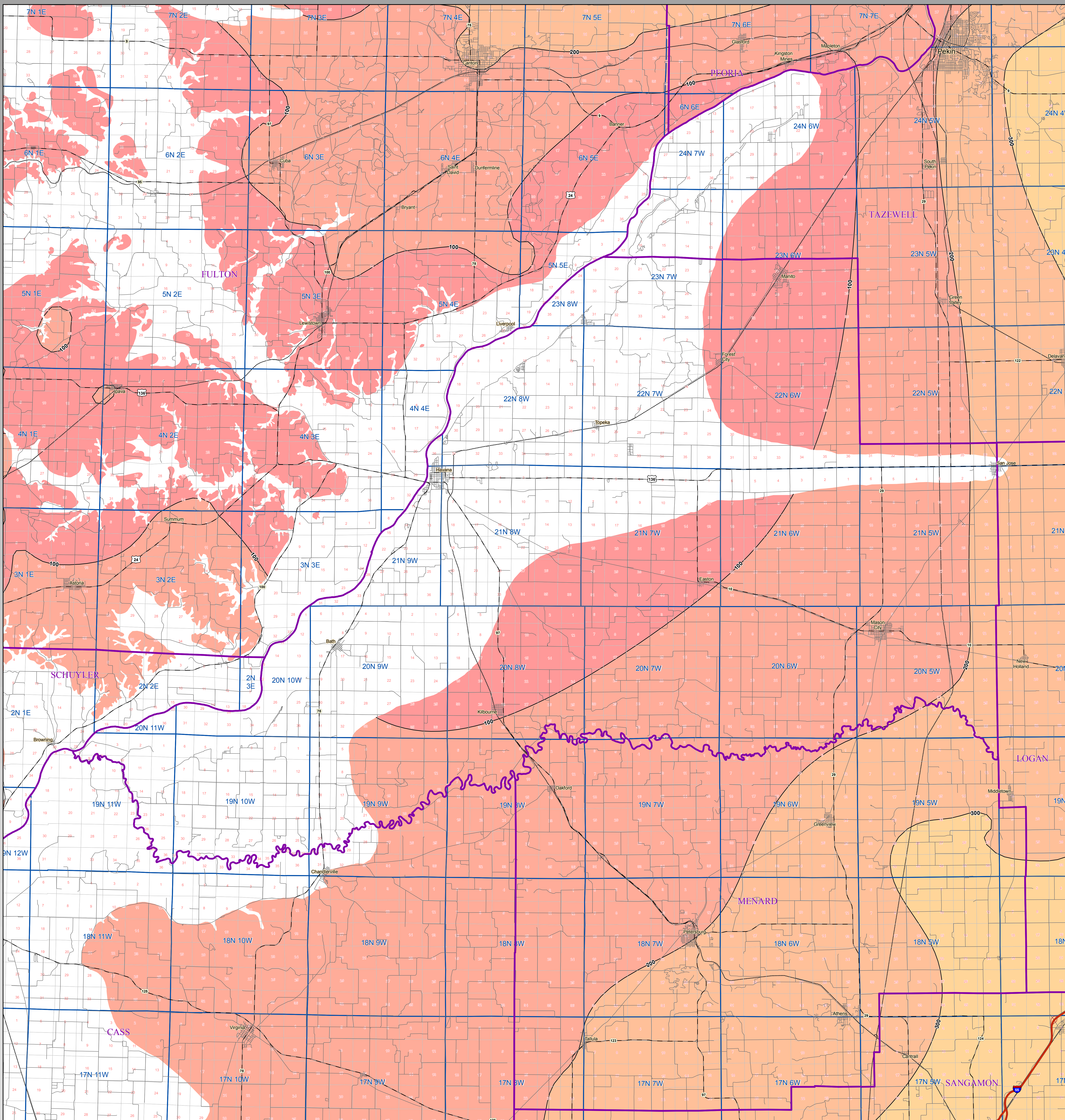


# Colchester Coal Depth

# MASON County



County	Original (billions of tons)	Mined	Remaining	Available
Jennings	18.6	0.2	18.4	4.5
Harris	3.6	0	3.6	0.9
Harris	88.5	9.4	79.0	51.0
Springfield	65.1	2.2	62.9	27.0
Colchester	19.0	0.5	18.5	7.8
Clay	6.0	0.1	5.9	0.1
Clay	9.6	0.1	9.5	4.7
Seelyville	9.7	0	9.7	6.7

(All numbers in Billions of Tons)

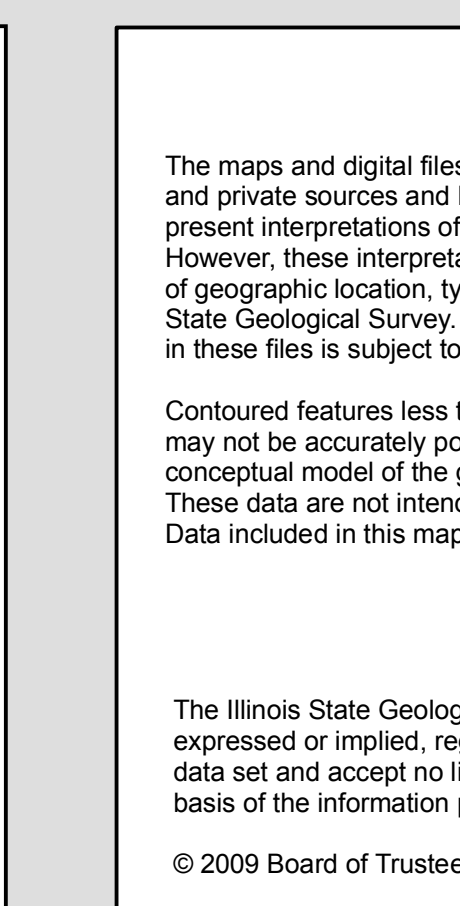
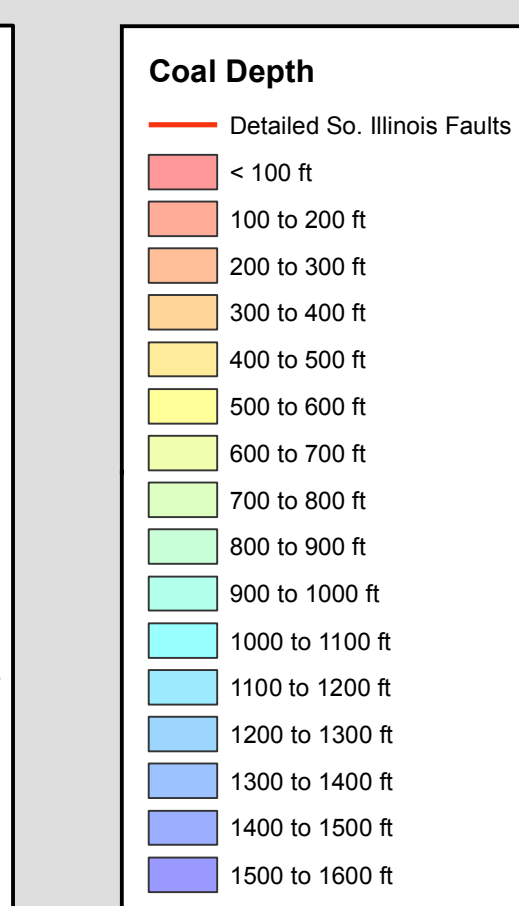
and flora (including many soft bodied organisms that are rarely preserved and known nowhere else, such as the Illinois State Fossil, the "Tully Monster", see below left) that give clues to the depositional environments of the Francis Creek.

The Mecca Quarry Shale (see Fig. 4) overlies the Francis Creek Shale and rests directly on the Colchester Coal where the Francis Creek is absent. It is a hard, fissile, black shale that locally reaches 4 feet in thickness but generally ranges from 1 to 2 feet thick. The Mecca Quarry is a transgressive marine deposit that is even more widespread than the Colchester, present throughout most of the basin and adjacent states and is a stratigraphic marker because of its distinctive low resistivity signature on electric logs and very high gamma-ray log readings.

The original resources of the Colchester coal in the State of Illinois totals 19 billion tons, 0.5 billion of which has been mined. Approximately 5% of the original resources, 0.5 billion tons, were considered available for mining (See Fig. 3).

(All text modified from ISGS Pub. IM 127, Korose, et al.)

References:  
- Christopher P. Korose, Scott D. Erick, and Russell J. Jacobson, 2003. Availability of the Colchester Coal for mining in Northern and Western Illinois. Illinois State Geological Survey Illinois Minerals 127, 21 p.



### Map Explanation

The maps and digital files of this study were compiled from data from a variety of public and private sources and have varying degrees of completeness and accuracy. They present interpretations of the geology of the area and are based on available data. However, these interpretations are based on data that may vary with respect to accuracy of geographic location, type, quantity, and reliability, as they were supplied to the Illinois State Geological Survey. Consequently, the accuracy of the interpreted features shown in these files is subject to the limitations of the data and varies from place to place.

Contoured features less than 7 million square feet (about 1/2 mile square) in area may not be accurately portrayed or resolved. This data set provides a large-scale conceptual model of the geology of the area on which to base further work. These data are not intended for use in site-specific screening or decision-making. Data included in this map are suitable for use at a scale of 1:100,000.

### Disclaimer

The Illinois State Geological Survey and the University of Illinois make no guarantee, expressed or implied, regarding the correctness of the interpretations presented in this data set and accept no liability for the consequences of decisions made by others on the basis of the information presented here.

© 2009 Board of Trustees of the University of Illinois. All rights reserved.