

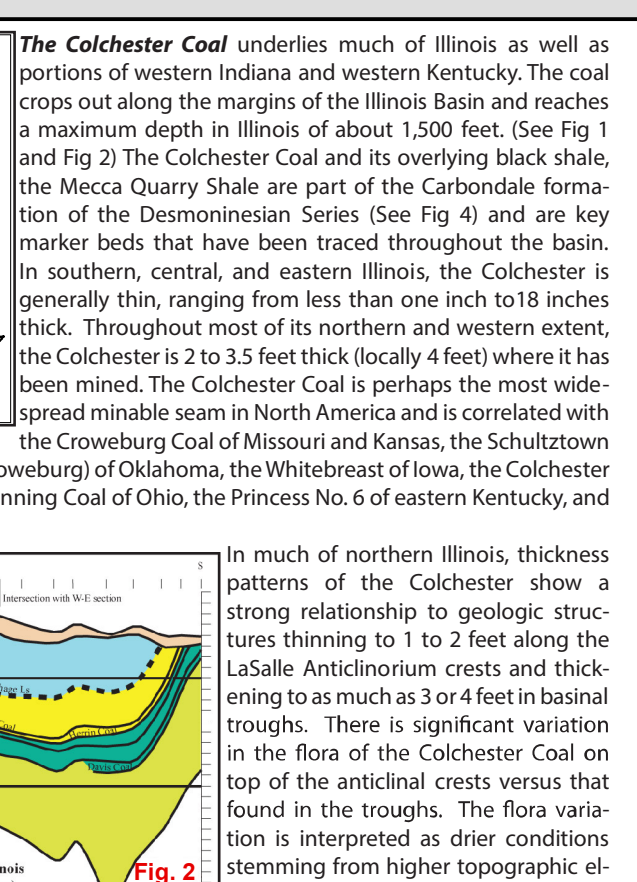
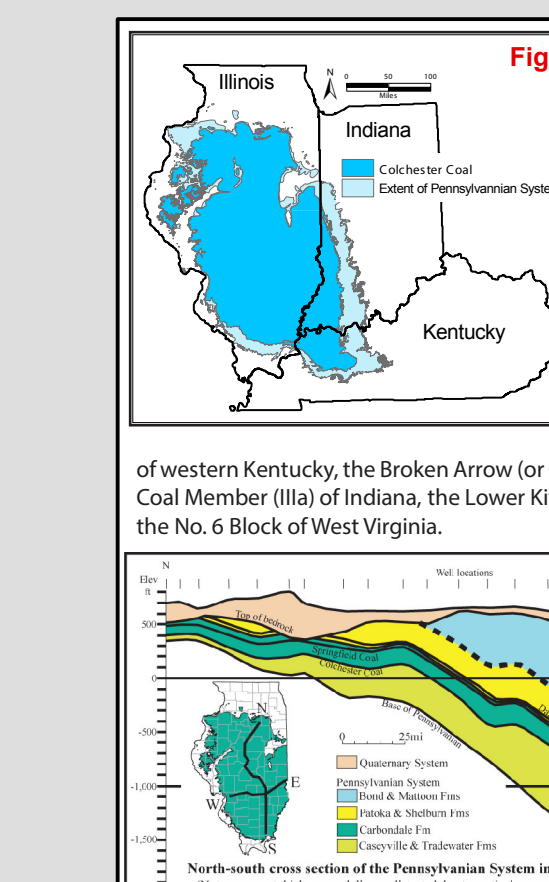
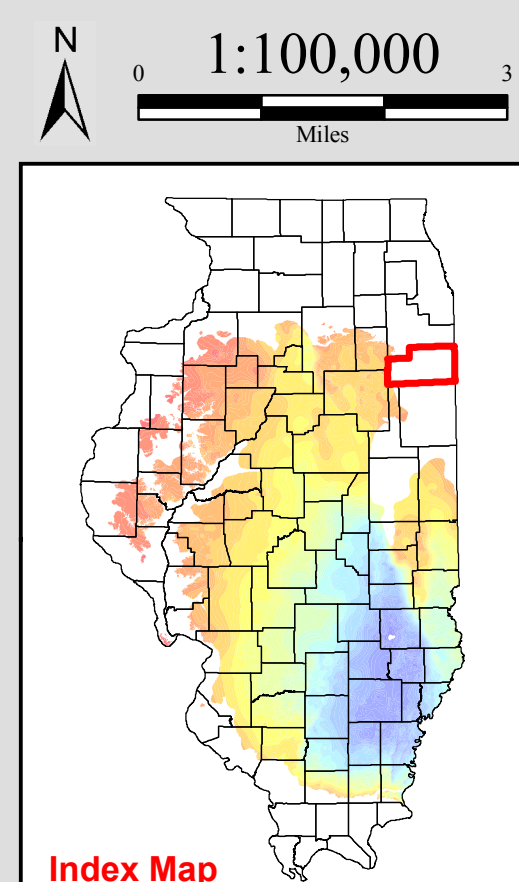
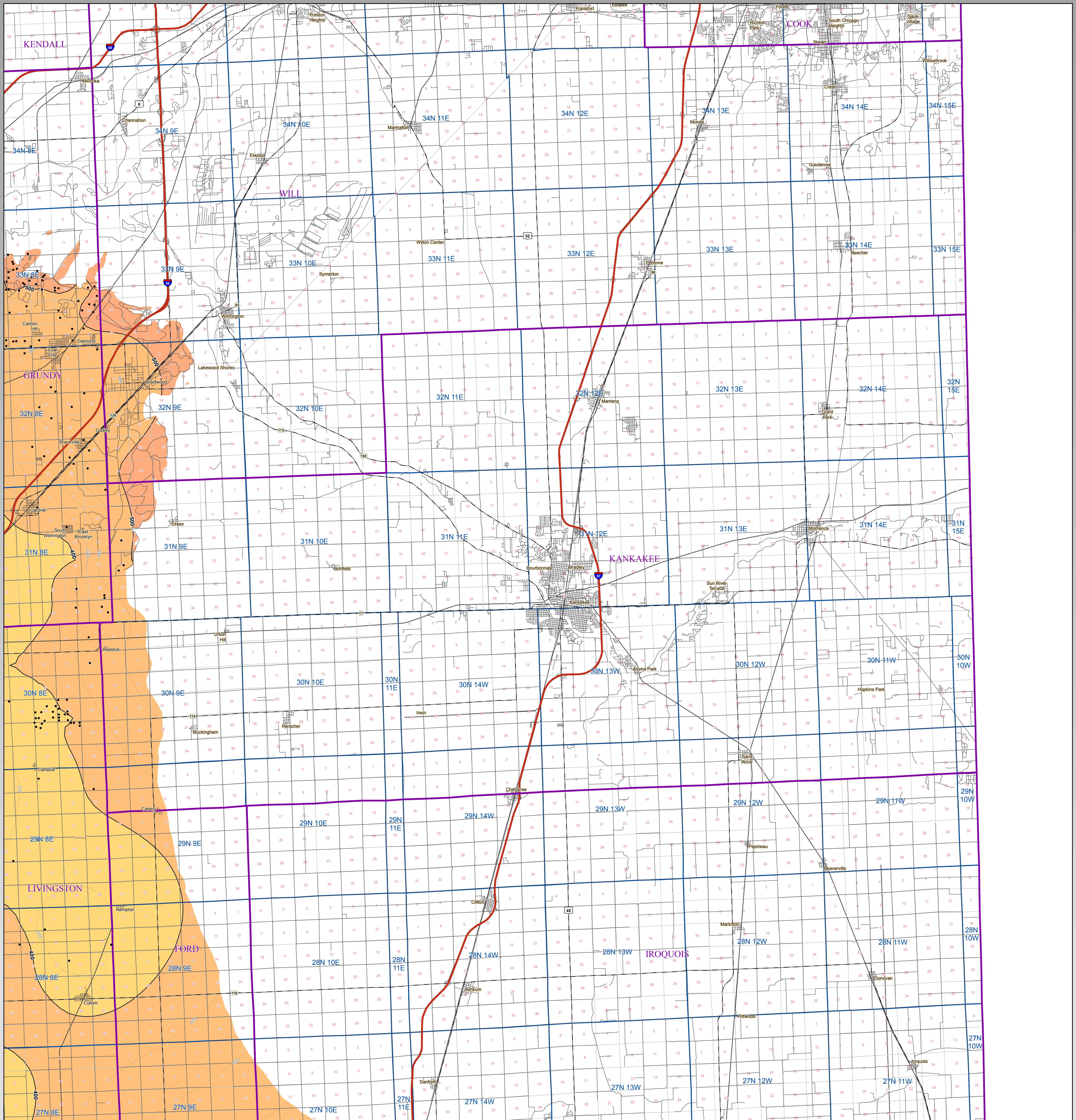
Colchester Coal Elevation

KANKAKEE County

For further information contact:
 Prairie Research Institute
 Illinois State Geological Survey
 University of Illinois at Urbana-Champaign
 615 East Peabody Drive
 Champaign, Illinois 61820-6964
 (217) 333-4747
 http://www.igs.illinois.edu

This product is under review and may not meet the standards of the Illinois State Geological Survey.

County coal maps and select quadrangle maps available as downloadable PDF files at:
<http://www.igs.illinois.edu>

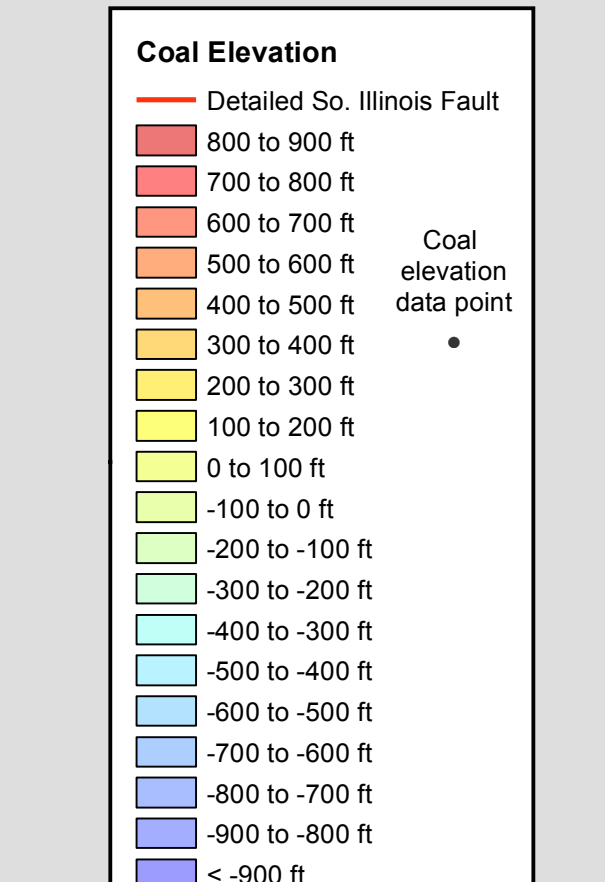


Member	Original	Mined	Remaining	Available
Jameson	19.6	0.2	19.4	4.5
Harris	3.6	0	3.6	0.9
Springfield	88.3	9.4	79.0	51.0
Colchester	61.1	2.3	58.8	37.0
Dekoven	6.0	0.1	5.9	0.3
Davis	9.6	0.1	9.5	4.7
Seelye	9.7	0	9.7	6.7
Total	221.1	12.3	208.8	96.1

(All numbers in Billions of Tons)

Fig. 3: Diagram illustrating the relationship between the Colchester coal field and the underlying geology. It shows the coal seam's thickness and its relationship to the underlying geology, including the Mecca Quarry Shale and the Carboniferous system.

Fig. 4: Pennsylvanian Stratigraphic Column. A detailed diagram showing the stratigraphic column for the Pennsylvanian period, including the Colchester coal field. The column is divided into subgroups and members, with the Colchester coal field highlighted in red.



Map Explanation

The maps and digital files of this study were compiled from data from a variety of public and private sources and have varying degrees of completeness and accuracy. They present interpretations of the geology of the area and are based on available data. However, these interpretations are based on data that may vary with respect to accuracy of geographic location, type, quantity, and reliability, as they were supplied to the Illinois State Geological Survey. Consequently, the accuracy of the interpreted features shown in these files is subject to the limitations of the data and varies from place to place.

Contoured features less than 7 million square feet (about 1/2 mile square) in area may not be accurately portrayed or resolved. This data set provides a large-scale conceptual model of the geology of the area on which to base further work. Data included are not intended for use in site-specific screening or decision-making. These data are in map form and are suitable for use at a scale of 1:100,000.

Disclaimer

The Illinois State Geological Survey and the University of Illinois make no guarantee, expressed or implied, regarding the correctness of the interpretations presented in this data set and accept no liability for the consequences of decisions made by others on the basis of the information presented here.

© 2015 Board of Trustees of the University of Illinois. All rights reserved.