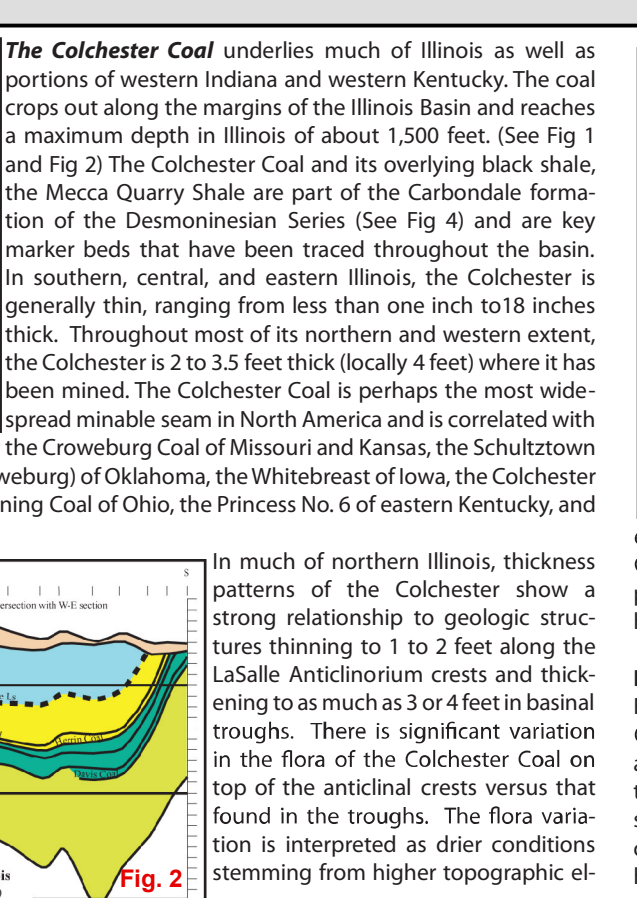
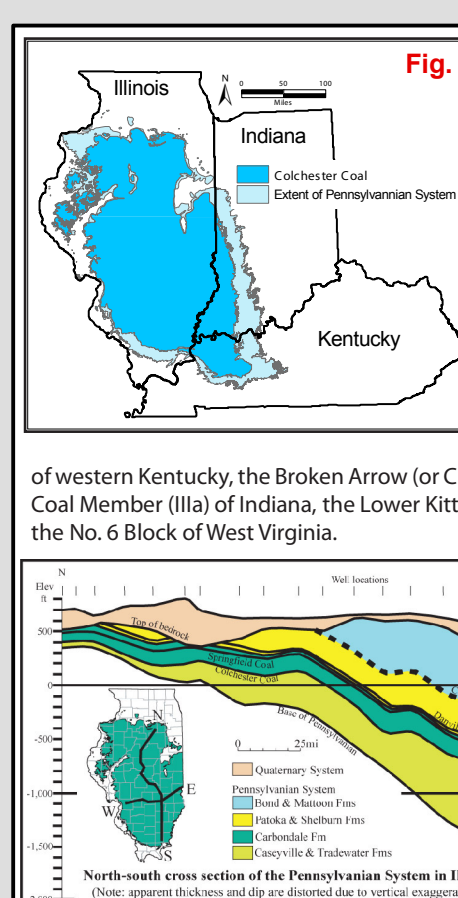
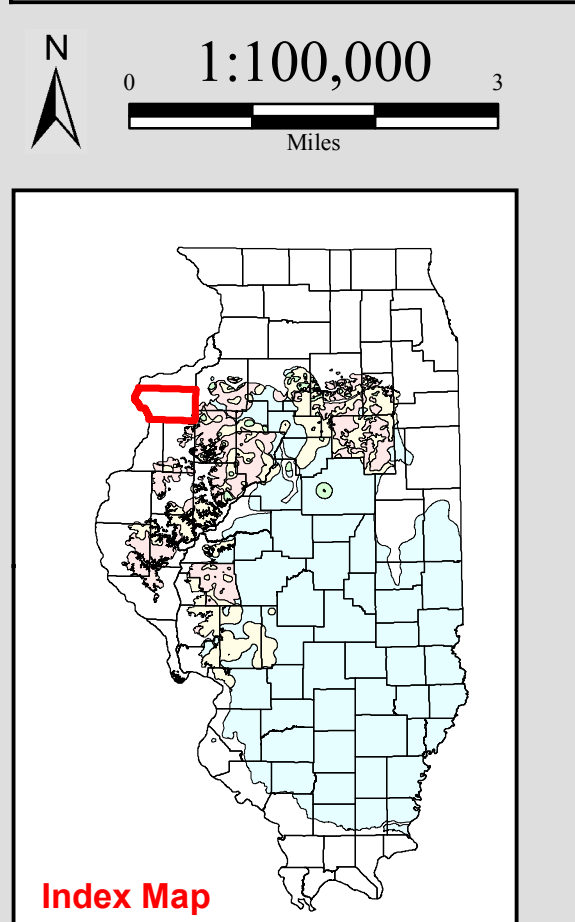
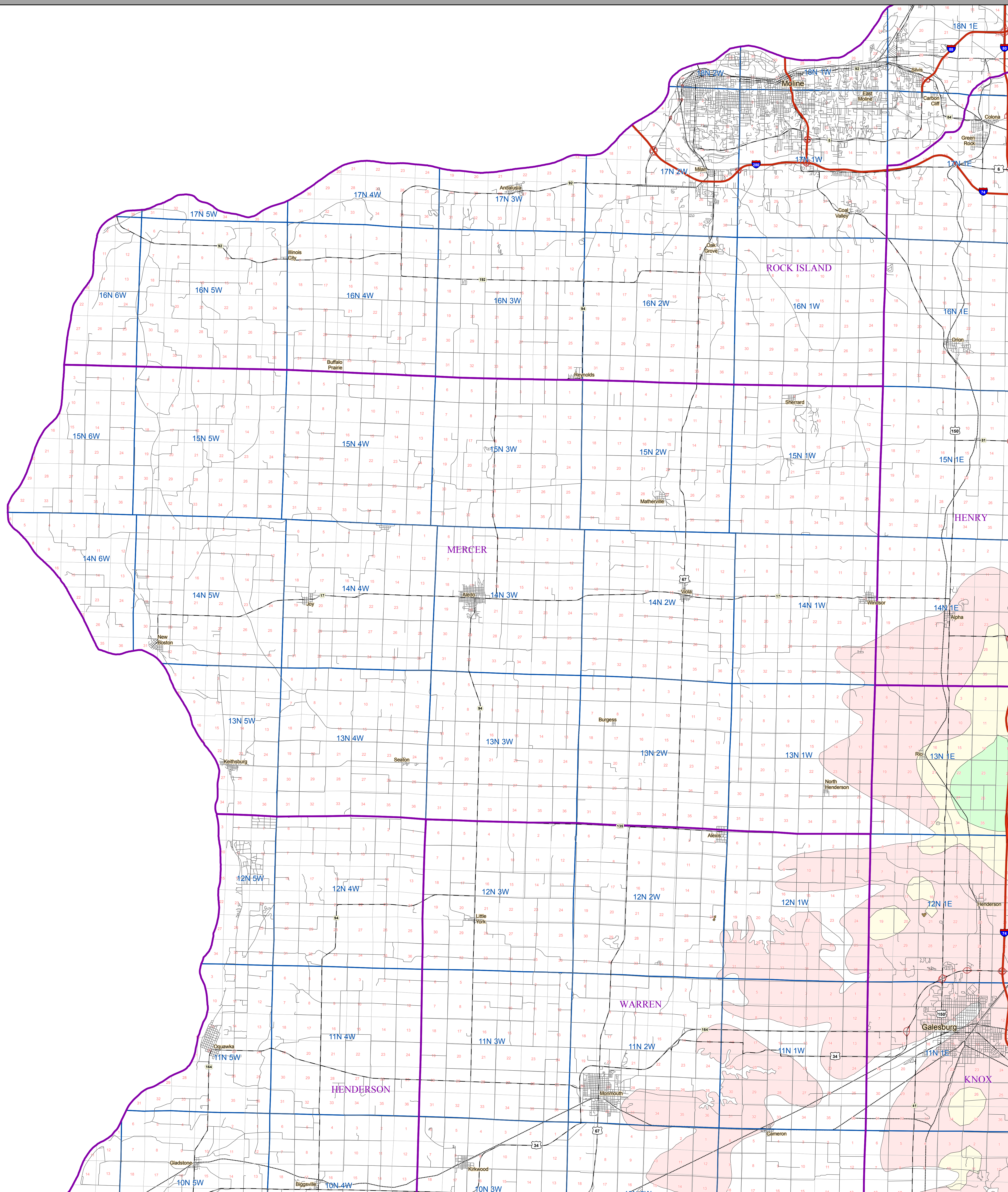


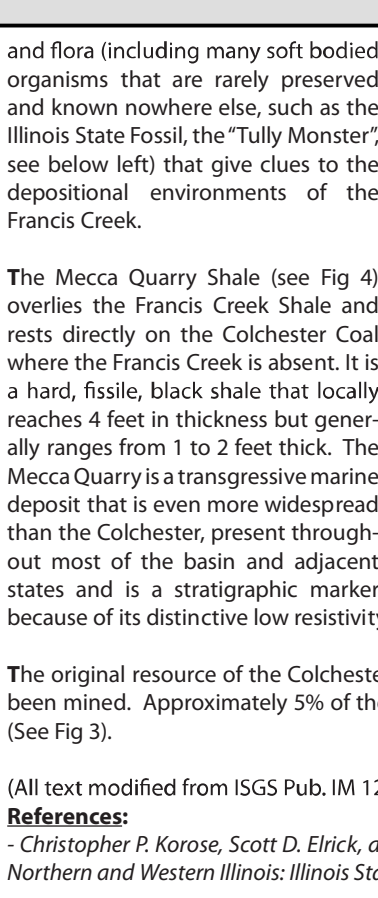
Colchester Coal Thickness

MERCER County

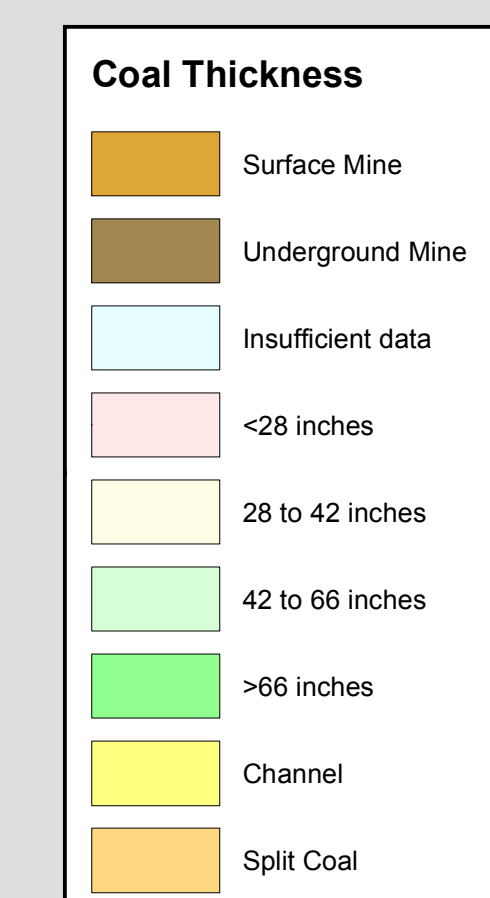


County	Original (billions of tons)	Mined (billions of tons)	Remaining (billions of tons)	Available (billions of tons)
Danville	196.02	184.45	11.57	11.57
Jennings	3.6	0	3.6	0.5
Heard	485.94	790	310	0
Springfield	651.22	630	21.22	0
Colchester	190.05	185	5.05	1.0
Clackson	6.0	0.1	5.9	0.1
Davis	9.6	0.1	9.5	4.7
Seelyville	9.7	0	9.7	6.7

(All numbers in Billions of Tons)



The Mecca Quarry shale (see Fig. 4) overlies the Francis Creek shale and rests directly on the Colchester coal where the Francis Creek is absent. It is a hard, fissile, black shale that locally reaches 4 feet in thickness but generally ranges from 1 to 2 feet thick. The Mecca Quarry is a transgressive marine deposit that is even more widespread than the Colchester, present throughout most of the basin and adjacent states and is a stratigraphic marker because of its distinctive low resistivity signature on electric logs and very high gamma-ray log readings.



Coal Thickness

- Surface Mine
- Underground Mine
- Insufficient data
- <28 inches
- 28 to 42 inches
- 42 to 66 inches
- >66 inches
- Channel
- Split Coal

Map Explanation

The maps and digital files of this study were compiled from data from a variety of public and private sources and have varying degrees of completeness and accuracy. They present interpretations of the geology of the area and are based on available data. However, these interpretations are based on data that may vary with respect to accuracy of geographic location, type, quantity, and reliability, as they were supplied to the Illinois State Geological Survey. Consequently, the accuracy of the interpreted features shown in these files is subject to the limitations of the data and varies from place to place.

Contoured features less than 7 million square feet (about 1/2 mile square) in area may not be accurately portrayed or resolved. This data set provides a large-scale conceptual model of the geology of the area on which to base further work. These data are not intended for use in site-specific screening or decision-making. Data included in this map are suitable for use at a scale of 1:100,000.

Disclaimer

The Illinois State Geological Survey and the University of Illinois make no guarantee, expressed or implied, regarding the correctness of the interpretations presented in this data set and accept no liability for the consequences of decisions made by others on the basis of the information presented here.

© 2009 Board of Trustees of the University of Illinois. All rights reserved.