

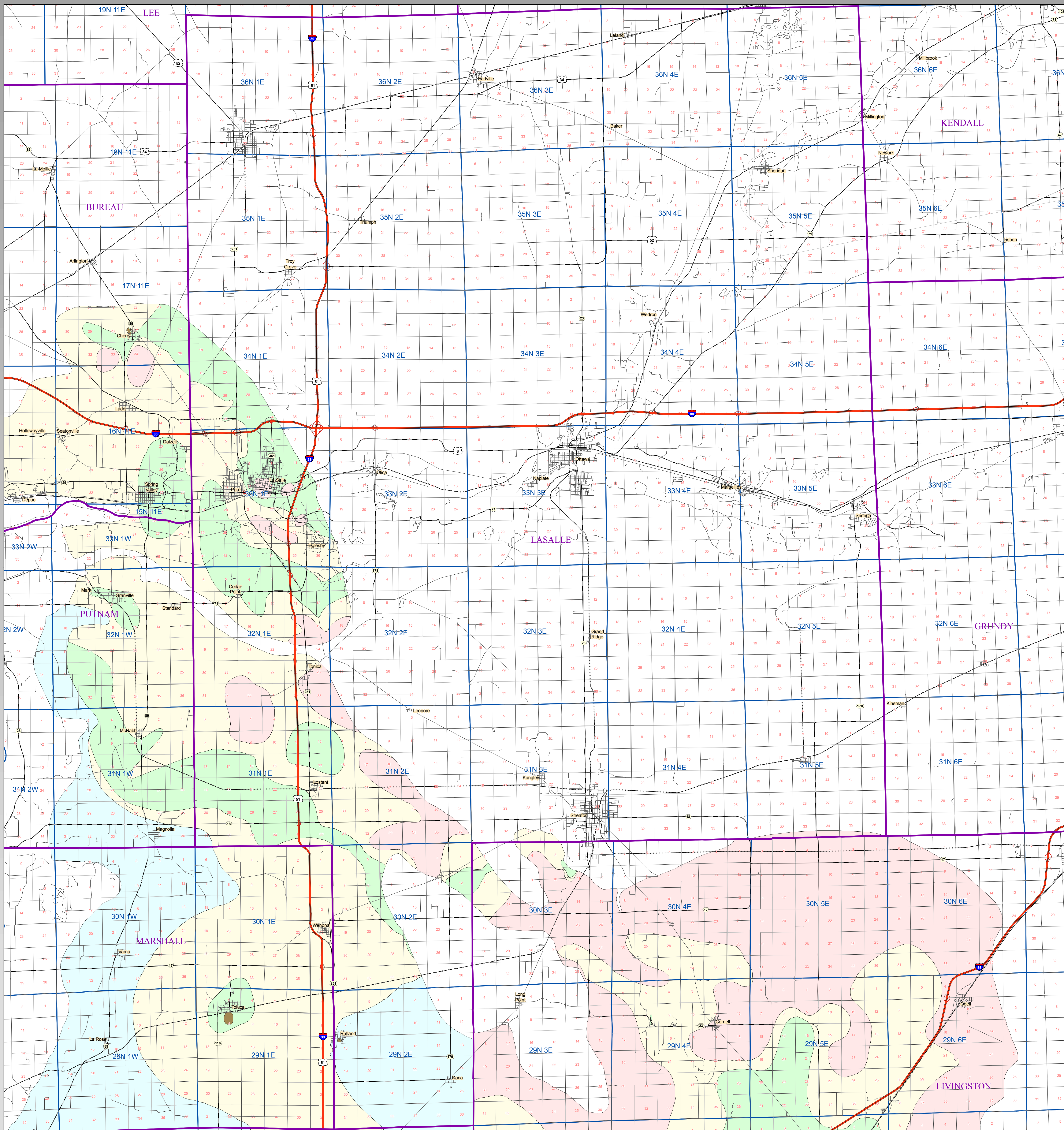
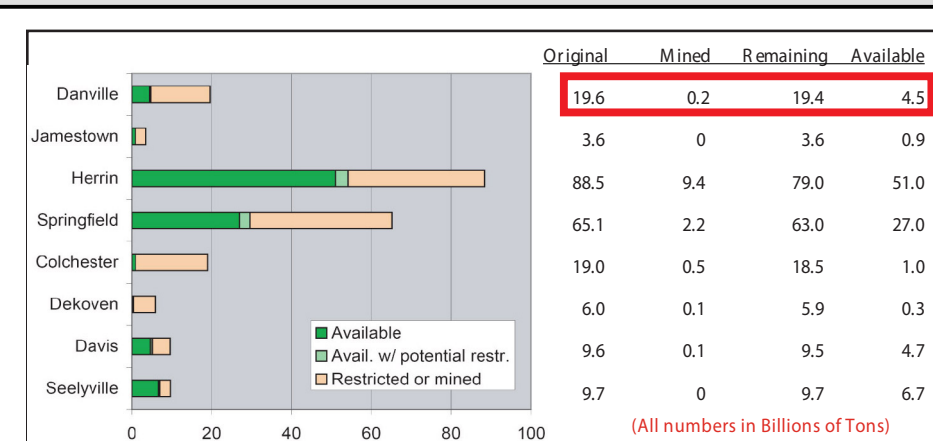
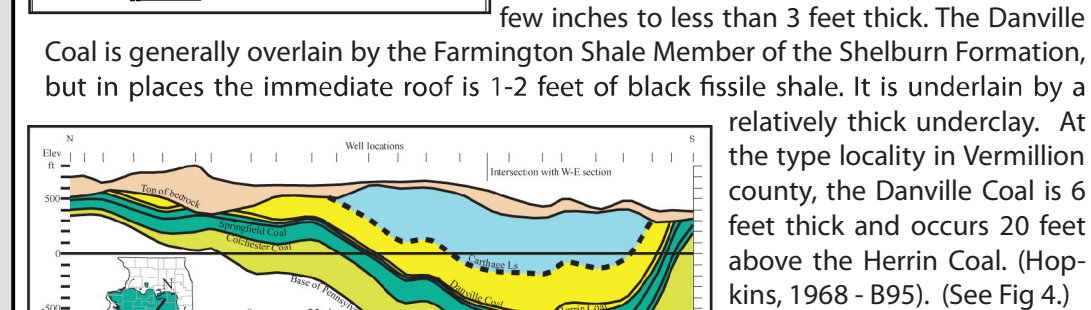
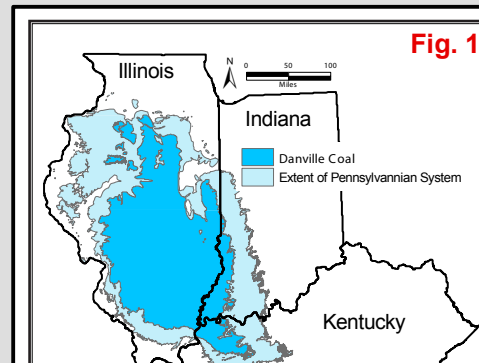
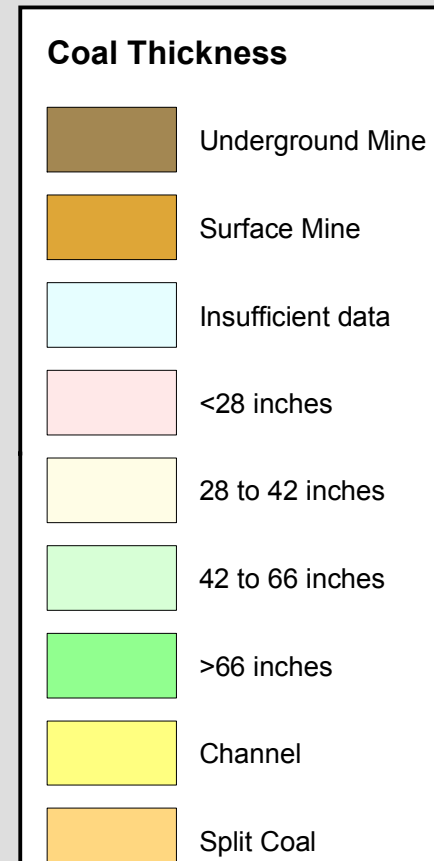
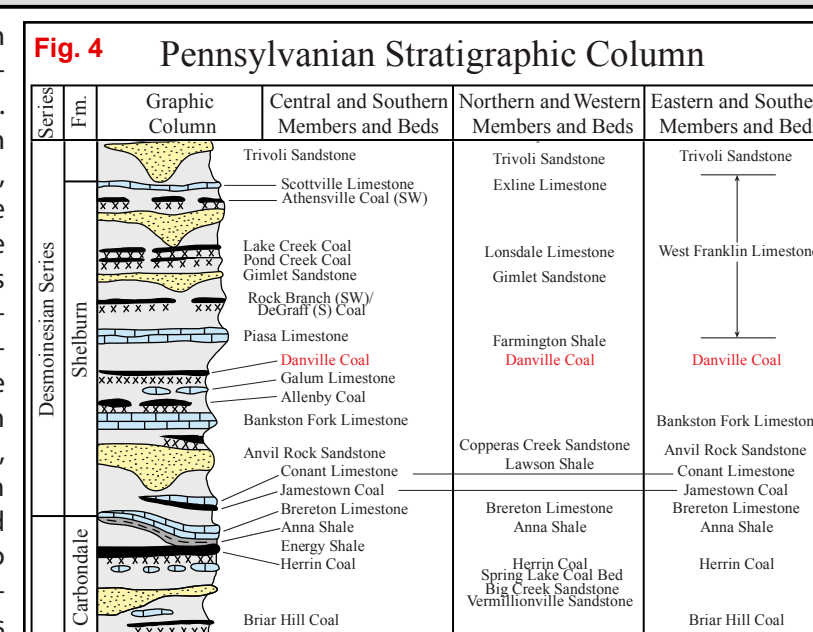
Danville Coal Thickness
LASALLE
CountyN
0 1:100,000 3
Miles

Fig. 3 The Danville Coal has been mined in Illinois for over 100 years, but only about 1% of the original resource has been depleted. The most extensive area of mining was in east-central Illinois near the city of Danville where the coal has

been mined by both surface and underground methods. Except for mines in east-central Illinois, the Danville Coal is the Shelburn formation which is part of the Desmoinesian Series. The Danville Coal has been mined in Livingston, McLean, La Salle, and Marshall Counties in addition to Vermilion County. In most of the remainder of the state it is a thin coal, generally a few inches to less than 3 feet thick. The Danville Coal is generally overlain by the Farmington Shale Member of the Shelburn Formation, but in places the immediate roof is 1-2 feet of black fissile shale. It is underlain by a relatively thick underclay. At the type locality in Vermilion County, the Danville Coal is 6 feet thick and occurs 20 feet above the Herrin Coal (Hopkins, 1968 - 1959). (See Fig. 4.)



Map Explanation

The maps and digital files of this study were compiled from data from a variety of public and private sources and have varying degrees of completeness and accuracy. They present interpretations of the geology of the area and are based on available data. However, these interpretations are based on data that may vary with respect to accuracy of geographic location, type, quantity, and reliability, as they were supplied to the Illinois State Geological Survey. Consequently, the accuracy of the interpreted features shown in these files is subject to the limitations of the data and varies from place to place.

Contoured features less than 7 million square feet (about 1/2 mile square) in area may not be accurately portrayed or resolved. This data set provides a large-scale conceptual model of the geology of the area on which to base further work. Data included in this map are not intended for use in site-specific screening or decision-making. Data included in this map are suitable for use at a scale of 1:100,000.

Disclaimer

The Illinois State Geological Survey and the University of Illinois make no guarantee, expressed or implied, regarding the correctness of the interpretations presented in this data set and accept no liability for the consequences of decisions made by others on the basis of the information presented here.

© 2009 Board of Trustees of the University of Illinois. All rights reserved.