

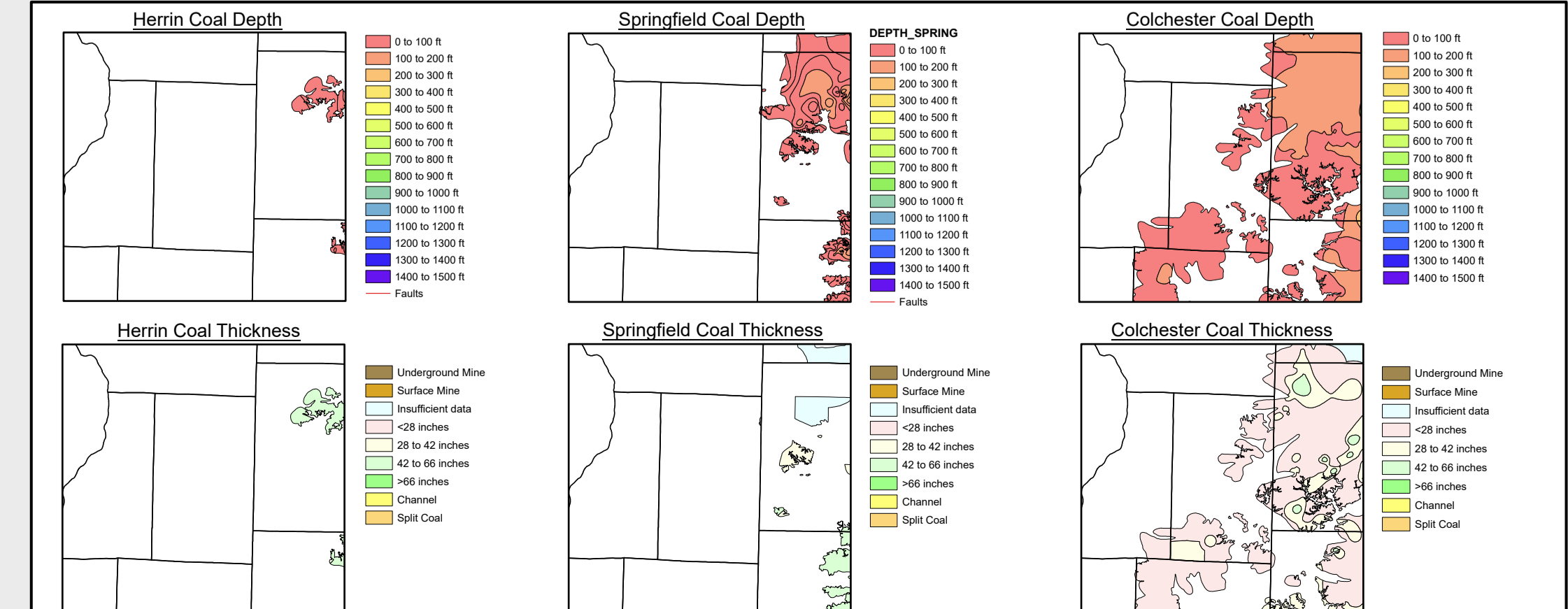
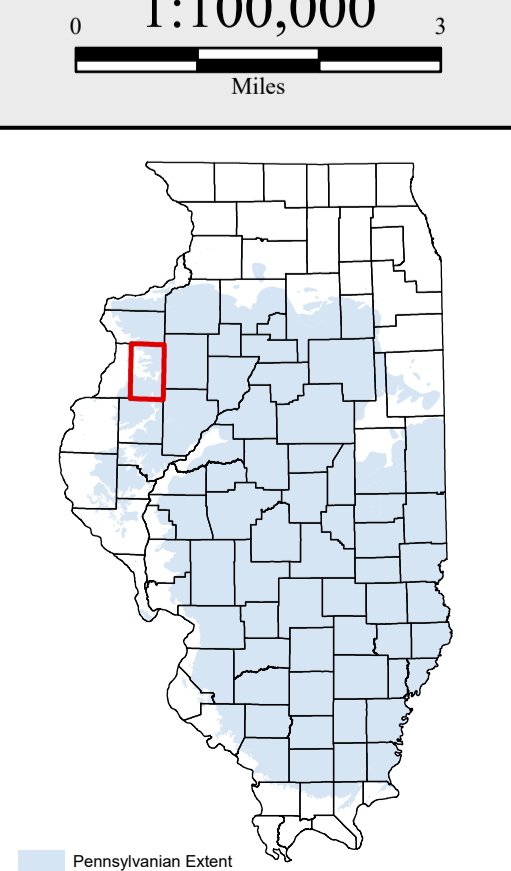
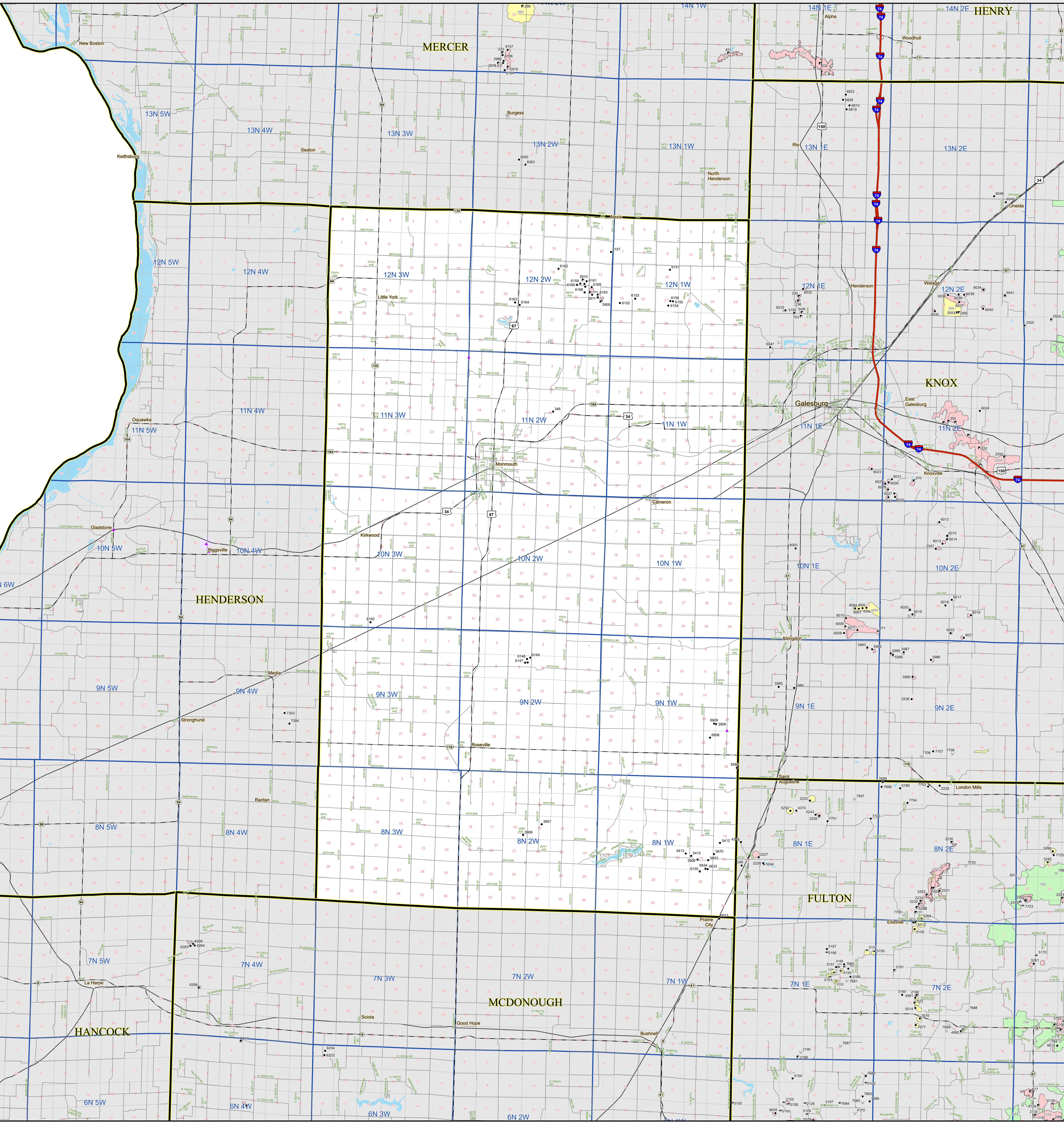
Coal and Nonfuel Mines

Warren County

For further information contact:
 Prairie Research Institute
 Illinois State Geological Survey
 University of Illinois at Urbana-Champaign
 615 East Peabody Drive
 Champaign, Illinois 61820-6964
 (217) 333-4747
<https://www.isgs.illinois.edu>



This product is under review and may not meet the standards of the Illinois State Geological Survey.



Map Explanation

This map accompanies the coal mines directory for this county. Please consult the directory for an explanation of the coal mine information shown on this map. Buffer regions for industrial mineral mines were incorporated into this map due to limited information regarding these mines. The size of the buffer region is dependent on the uncertainty or inaccuracy of the mine location. For more information regarding industrial mineral mines please contact the ISGS Industrial Minerals Section.

The maps and digital files used for this study were compiled from data obtained from a variety of public and private sources and have varying degrees of completeness and accuracy. They present reasonable interpretations of the geology of the area and are based on available data. These data were compiled and digitized at a scale of 1:82,500. Locations of some features may be offset by 500 feet or more due to errors in the original source maps, the compilation process, digitizing, or a combination of these factors.

These data are not intended for use in site-specific screening or decision-making. Data included in this map are suitable for use at a scale of 1:100,000.

Disclaimer

The Illinois State Geological Survey and the University of Illinois make no guarantee, expressed or implied, regarding the correctness of the interpretations presented in this data set and accept no liability for the consequences of decisions made by others on the basis of the information presented here.

© 2016 Board of Trustees of the University of Illinois. All rights reserved.