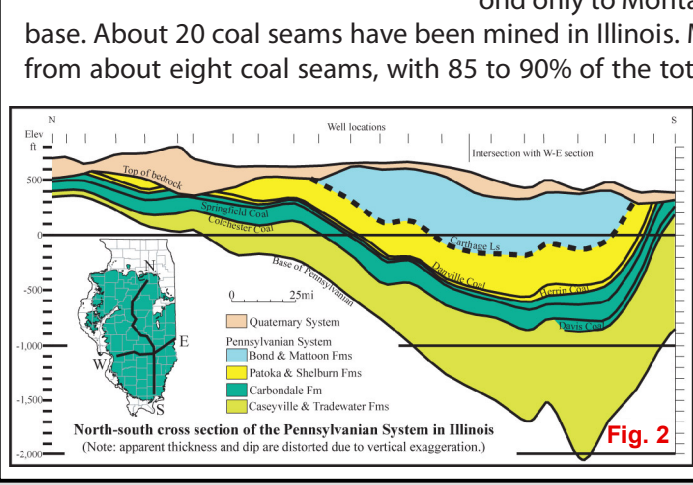
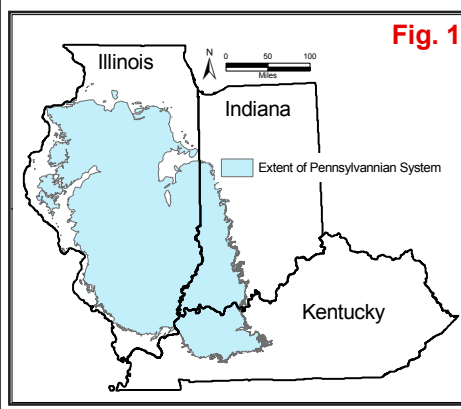
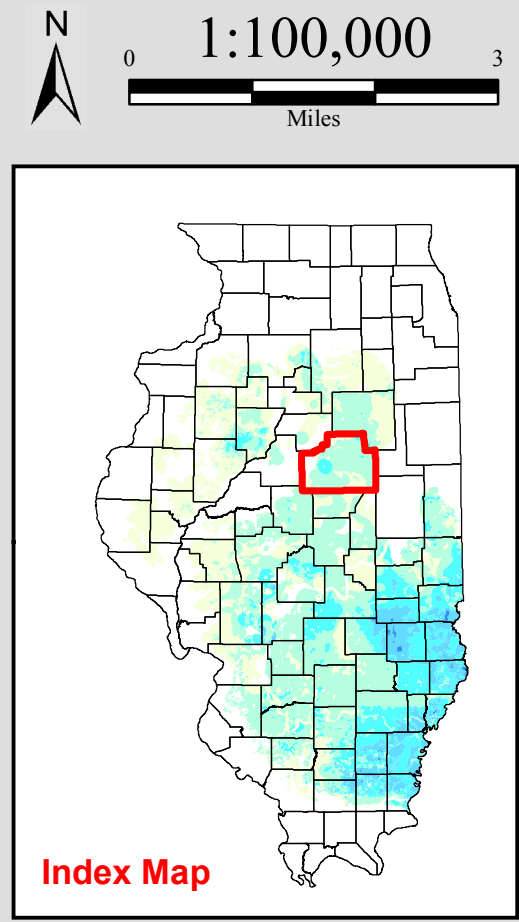
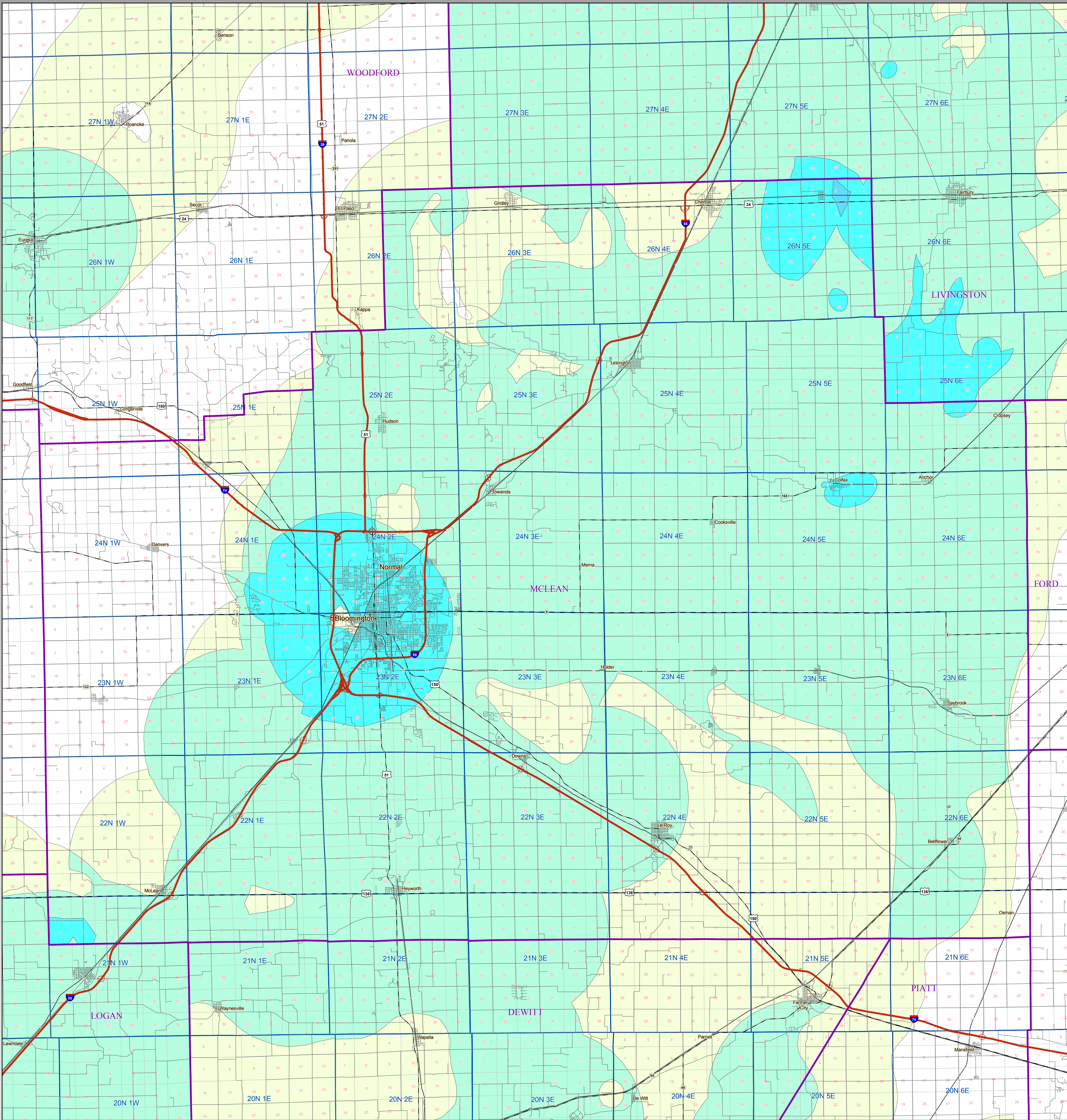


Net Coal Thickness

MCLEAN

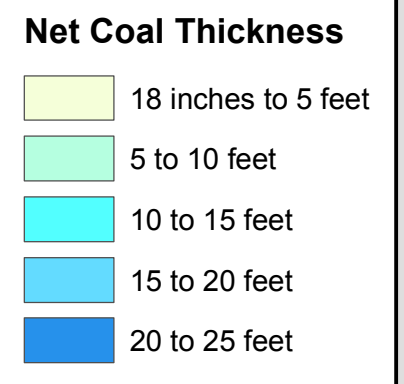
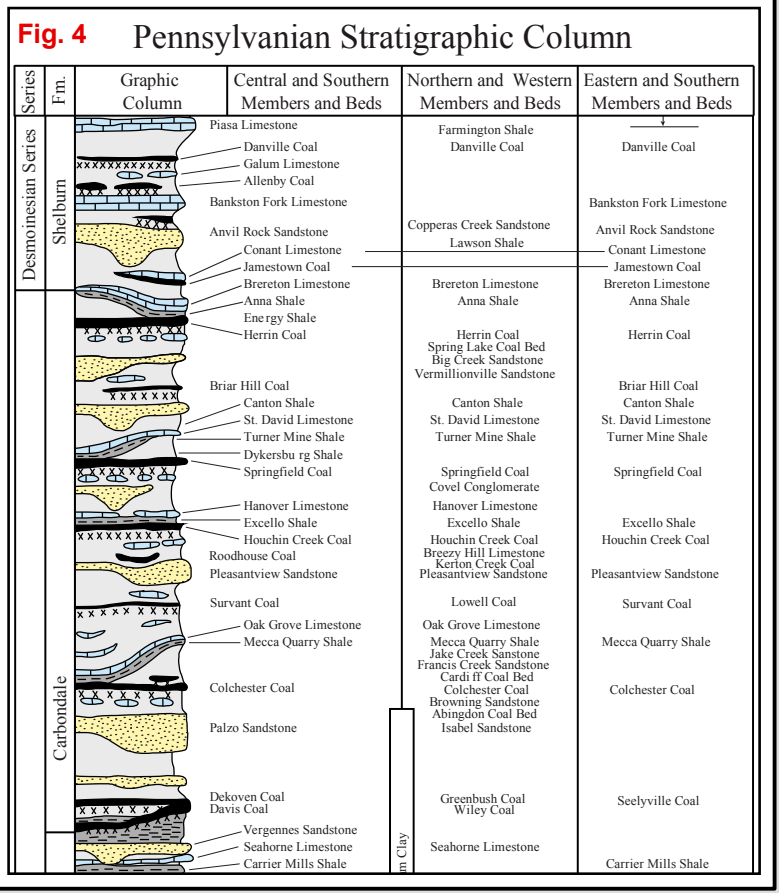
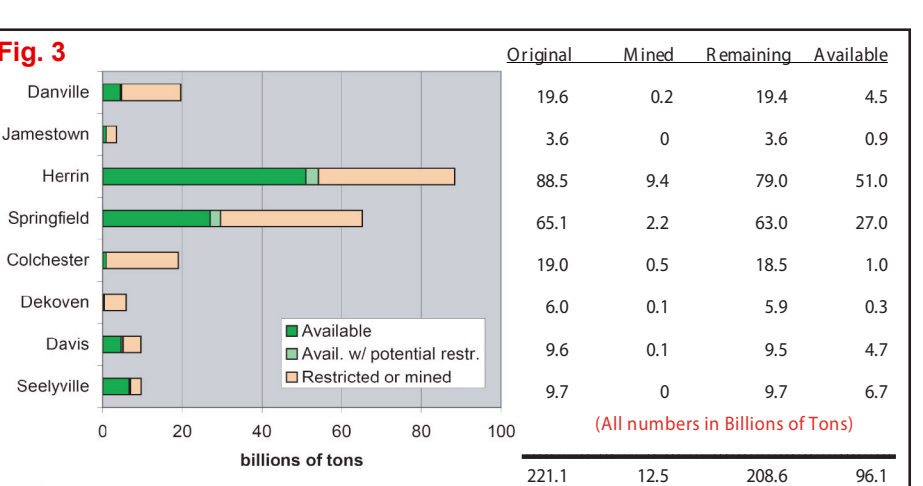
County



The combined original resources of the Danville, Jamestown, Herin, Springfield, Colchester, Davis, DeKoven, and Seelyville Coals in the State of Illinois totals 221.1 billion tons, of which 12.5 billion have been mined. Approximately 43% of these original coal resources, 96.1 billion tons, are considered available for

mining (See Fig. 3). Available means that the surface land-use and geologic conditions related to mining of the deposit (e.g. thickness, depth, in-place tonnage, stability of bed-rock overburden) are comparable to other coals currently being mined in the state.

Coal has been mined in Illinois for 200 years. The thickest cumulative resources of coals in Illinois are found in the southeastern part of the state along the Galatia Channel and near the deepest areas of the Illinois Basin in and around Jasper County. (See Index Map)



Map Explanation

The maps and digital files of this study were compiled from data from a variety of public and private sources and have varying degrees of completeness and accuracy. They present interpretations of the geology of the area and are based on available data. However, these interpretations are based on data that may vary with respect to accuracy of geographic location, type, quantity, and reliability, as they were supplied to the Illinois State Geological Survey. Consequently, the accuracy of the interpreted features shown in these files is subject to the limitations of the data and varies from place to place.

Contoured features less than 7 million square feet (about 1/2 mile square) in area may not be accurately portrayed or resolved. This data set provides a large-scale conceptual model of the geology of the area on which to base further work. These data are not intended for use in site-specific screening or decision-making. Data included in this map are suitable for use at a scale of 1:100,000.

Disclaimer

The Illinois State Geological Survey and the University of Illinois make no guarantee, expressed or implied, regarding the correctness of the interpretations presented in this data set and accept no liability for the consequences of decisions made by others on the basis of the information presented here.

© 2009 Board of Trustees of the University of Illinois. All rights reserved.