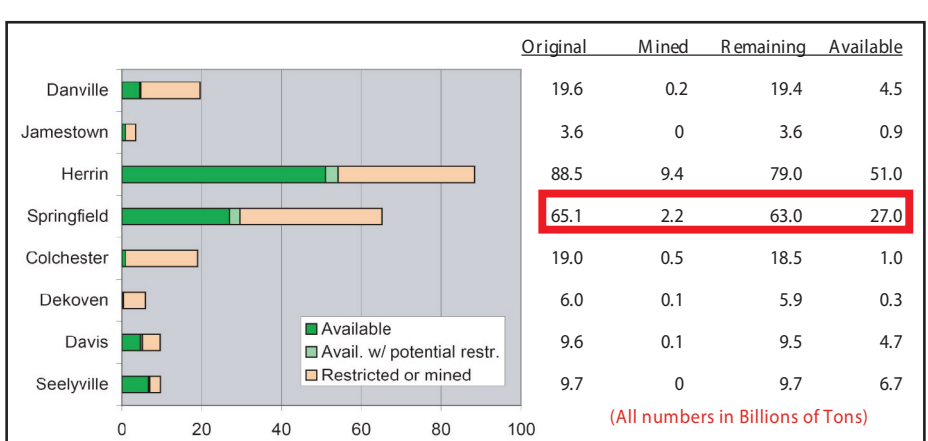
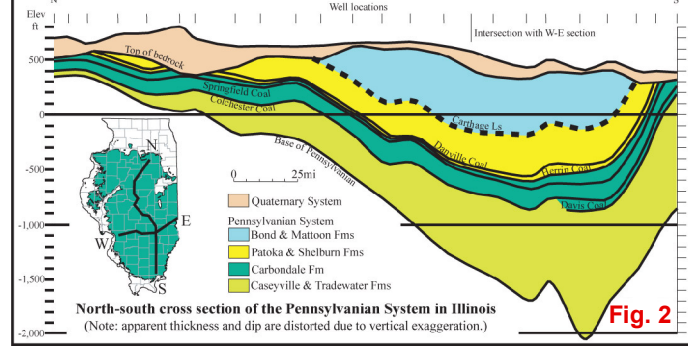
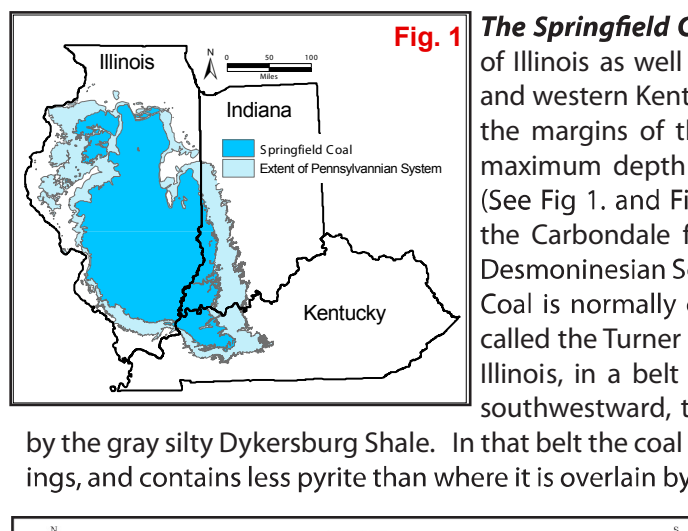
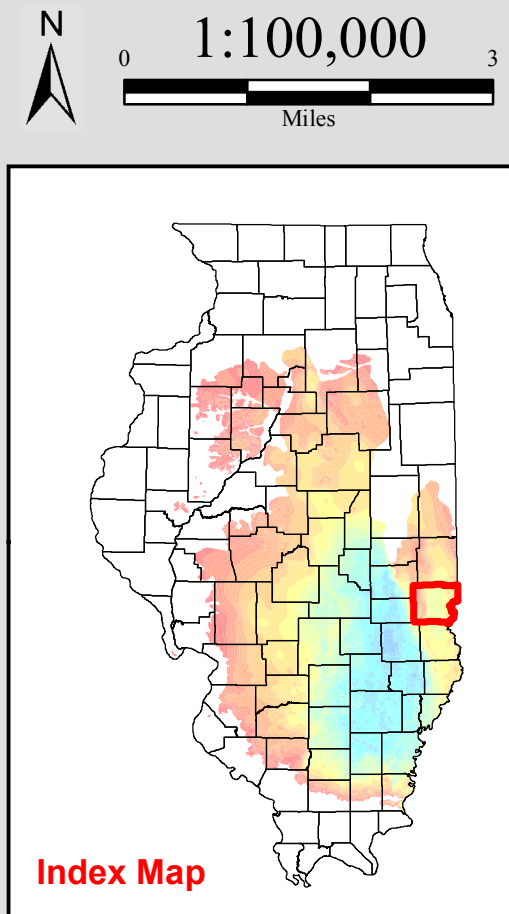
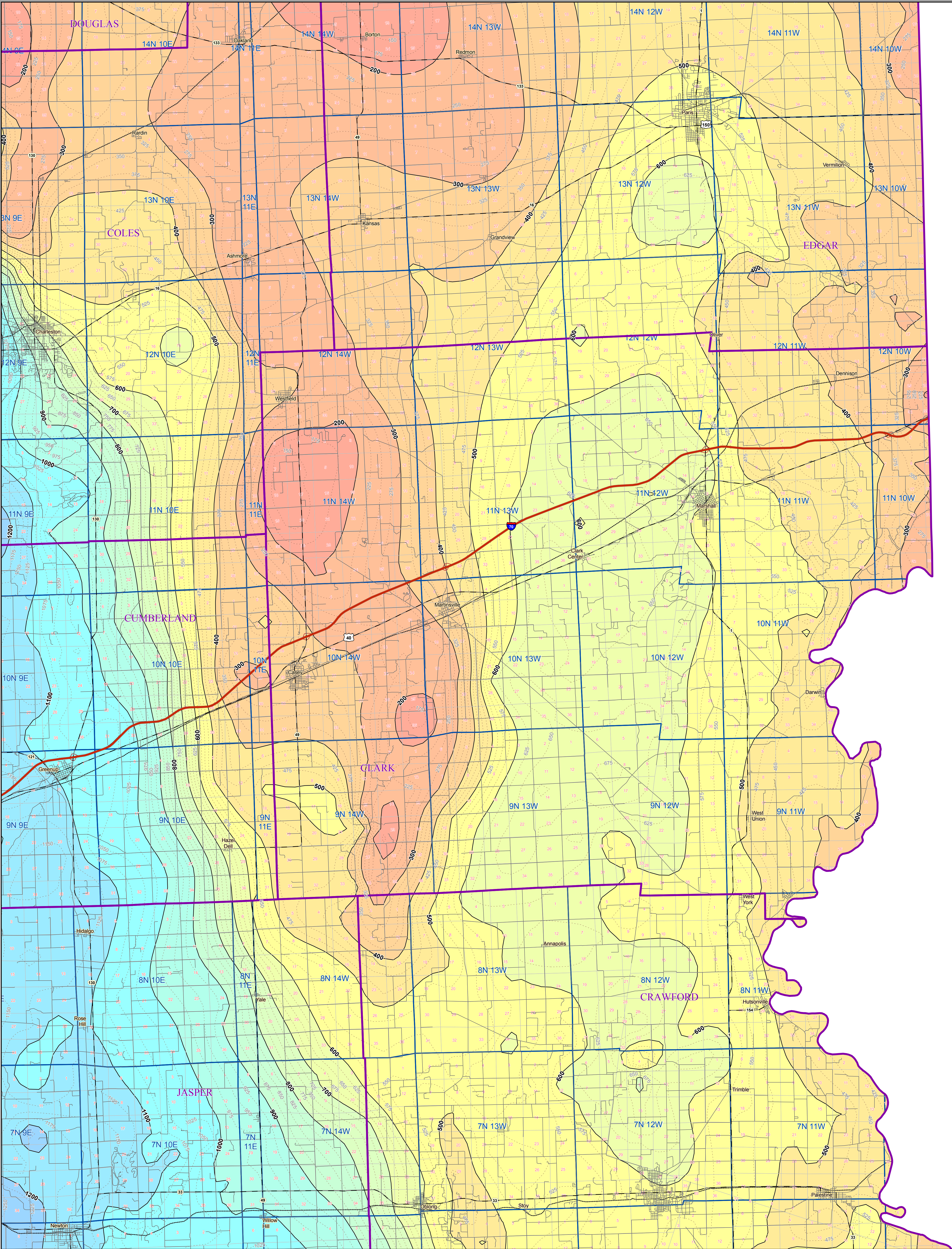


Springfield Coal Depth

CLARK

County



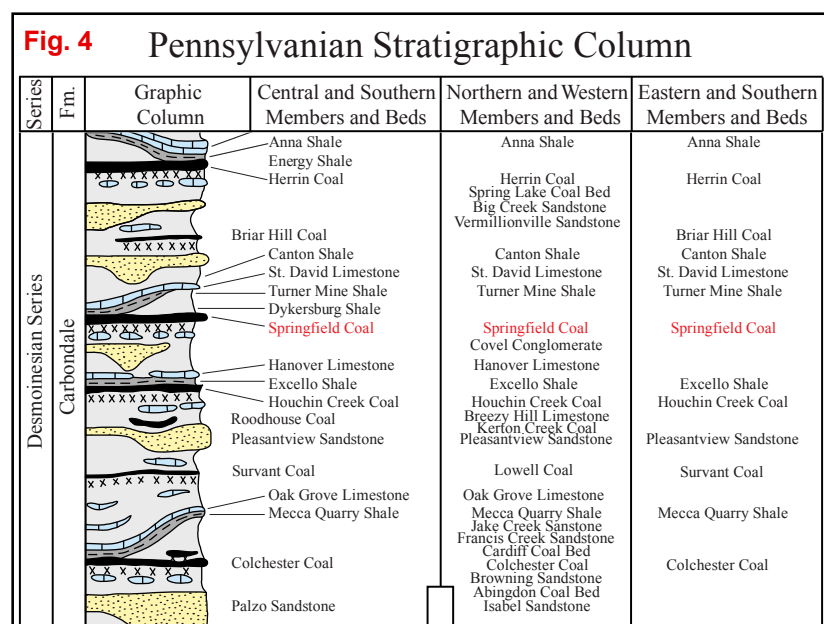
means that the surface land-use and geologic conditions related to mining of the deposit (e.g. thickness, depth, in-place tonnage, stability of bedrock overburden) are comparable to other coals currently being mined in the state. Of these resources, 23 billion tons occur in coal 42 to 66 inches thick and 4 billion tons occur in thicknesses greater than 66 inches thick.

The Springfield Coal has been mined in Illinois for well over 100 years. The thickest resources of Springfield Coal in Illinois are found in the central part of the state around the city of Springfield and in the southeastern part of the state along the Galatia Channel. Recent and historical mining of the coal has been concentrated in these areas and in shallow surface minable deposits west of

the Illinois River. The coal is thin or absent in the southwestern and extreme northern portions of the coal field. (Modified from ISGS Pub. IM 118, Treworgy, et al.)

References:

- Handbook of Illinois Stratigraphy, 1975, Illinois State Geological Survey Bulletin 95, 261 p.
- Treworgy, C.G., C.P. Korose, C.A. Chenoweth, and D.L. North, 1999a, Availability of the Springfield Coal for Mining in Illinois, Illinois State Geological Survey Illinois Minerals 118, 43 p.



Map Explanation

The maps and digital files of this survey were compiled from data from a variety of public and private sources and have varying degrees of completeness and accuracy. They present interpretations of the geology of the area and are based on available data. However, these interpretations are based on data that may vary with respect to accuracy of geographic location, type, quantity, and reliability, as they were supplied to the Illinois State Geological Survey. Consequently, the accuracy of the interpreted features shown in these files is subject to the limitations of the data and varies from place to place.

Contoured features less than 7 million square feet (about 1/2 mile square) in area may not be accurately portrayed or resolved. This data set provides a large-scale conceptual model of the geology of the area on which to base further work. These data are not intended for use in site-specific screening or decision-making. Data included in this map are suitable for use at a scale of 1:100,000.

Disclaimer

The Illinois State Geological Survey and the University of Illinois make no guarantee, expressed or implied, regarding the correctness of the interpretations presented in this data set and accept no liability for the consequences of decisions made by others on the basis of the information presented here.

© 2009 Board of Trustees of the University of Illinois. All rights reserved.