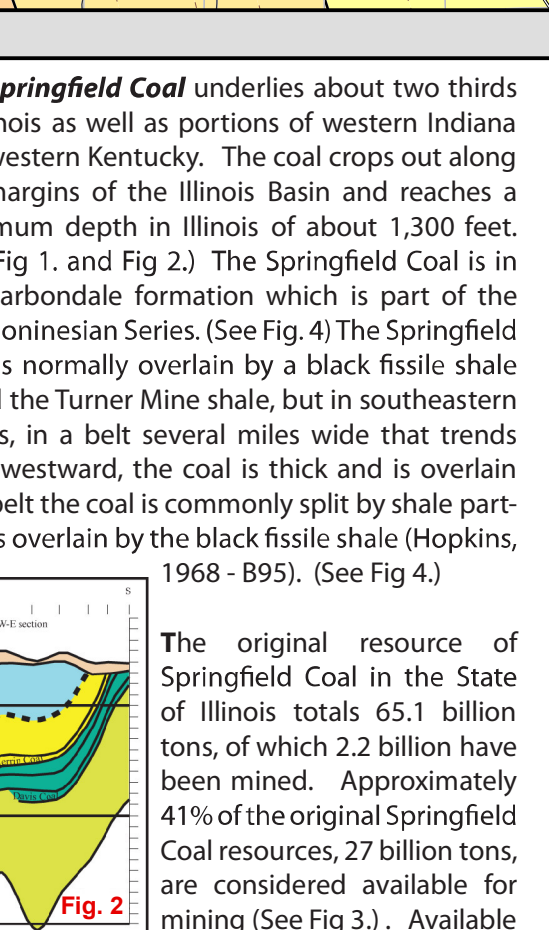
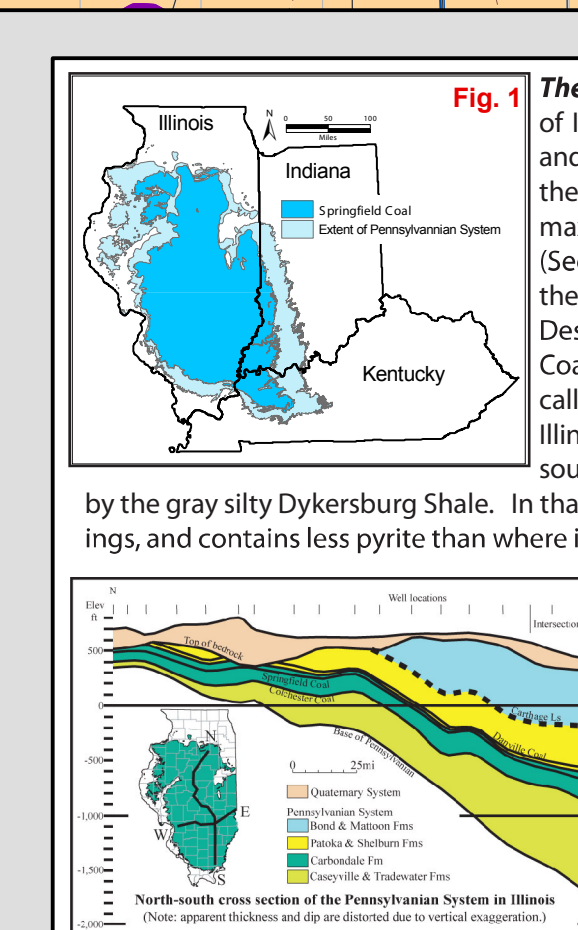
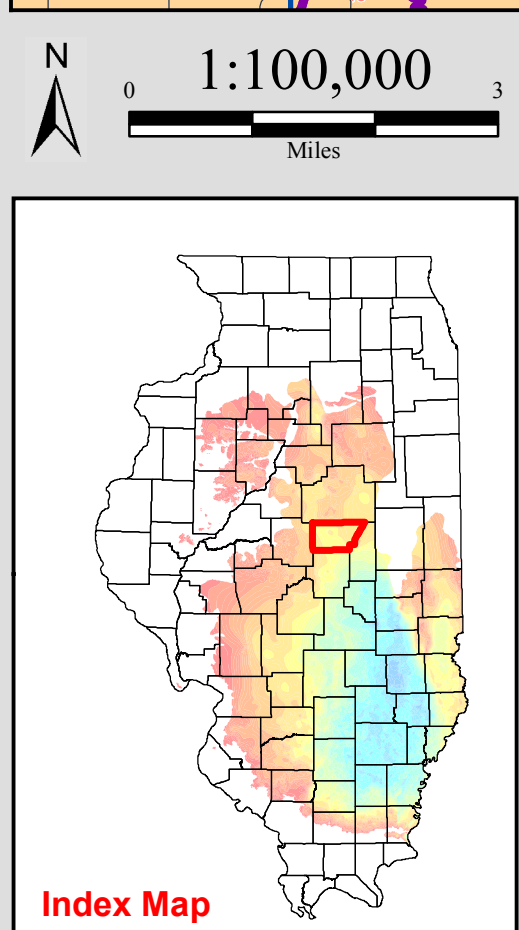
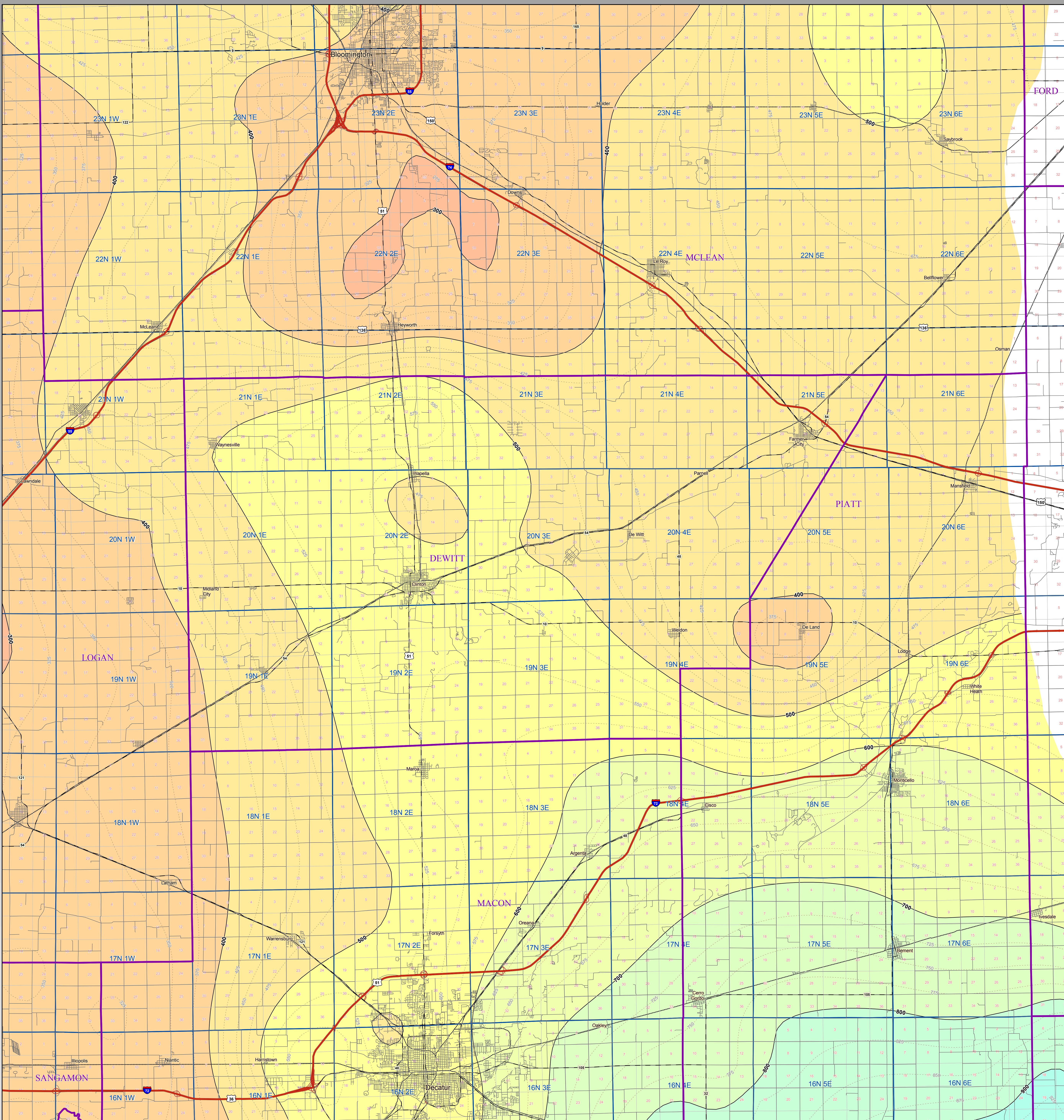


# Springfield Coal Depth

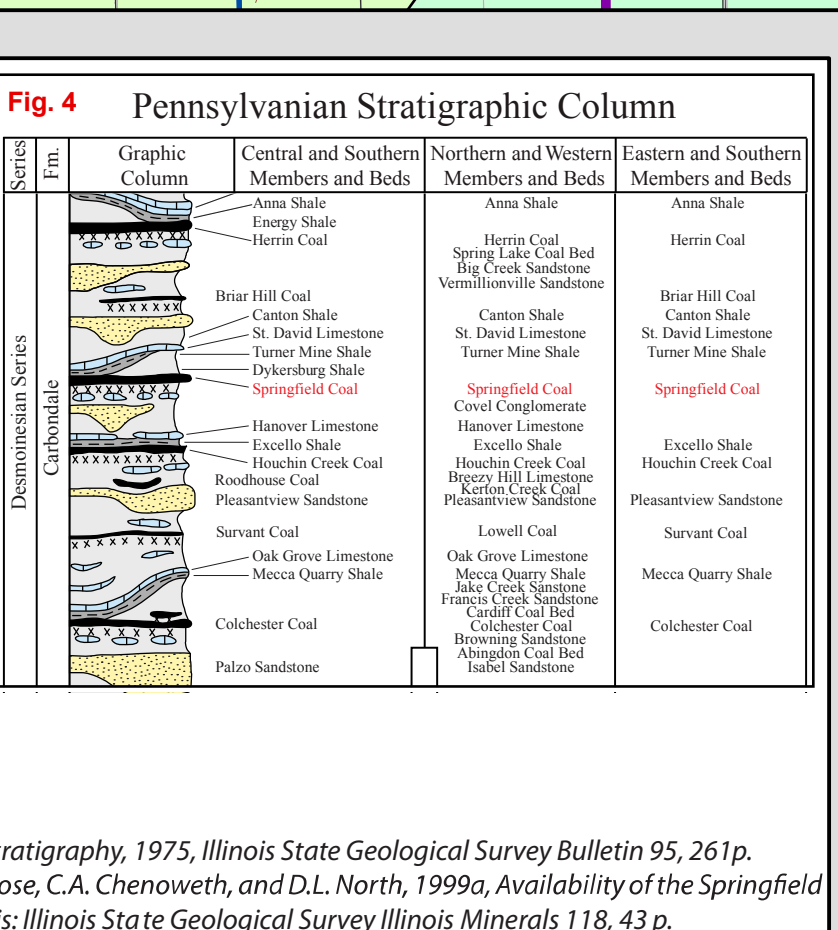
## DEWITT County



County	Original (billions of tons)	Mined (billions of tons)	Remaining (billions of tons)	Available (billions of tons)
Jacksonville	19.6	0.2	19.4	4.5
Henry	3.4	0	3.4	0.9
Springfield	65.1	22	43.0	22.0
Calhoun	19.0	0.5	18.5	1.9
Clinton	6.0	0.1	5.9	0.3
Greene	9.6	0.1	9.5	4.7
Seelyville	9.7	0	9.7	6.7

(All numbers in Billions of Tons)

Fig. 3 means that the surface land-use and geologic conditions related to mining of the deposit (e.g. thickness, depth, in-place tonnage, stability of bedrock overburden) are comparable to other coals currently being mined in the state. Of these resources, 23 billion tons occur in coal 42 to 66 inches thick and 4 billion tons occur in thicknesses greater than 66 inches thick.



Coal Depth	Color
< 100 ft	Red
100 to 200 ft	Orange
200 to 300 ft	Yellow
300 to 400 ft	Light Green
400 to 500 ft	Green
500 to 600 ft	Dark Green
600 to 700 ft	Light Blue
700 to 800 ft	Medium Blue
800 to 900 ft	Dark Blue
900 to 1000 ft	Purple
1000 to 1100 ft	Black

### Map Explanation

The maps and digital files of this study were compiled from data from a variety of public and private sources and have varying degrees of completeness and accuracy. They present interpretations of the geology of the area and are based on available data. However, these interpretations are based on data that may vary with respect to accuracy of geographic location, type, quantity, and reliability, as they were supplied to the Illinois State Geological Survey. Consequently, the accuracy of the interpreted features shown in these files is subject to the limitations of the data and varies from place to place.

Contoured features less than 7 million square feet (about 1/2 mile square) in area may not be accurately portrayed or resolved. This data set provides a large-scale conceptual model of the geology of the area on which to base further work. These data are not intended for use in site-specific screening or decision-making. Data included in this map are suitable for use at a scale of 1:100,000.

### Disclaimer

The Illinois State Geological Survey and the University of Illinois make no guarantee, expressed or implied, regarding the correctness of the interpretations presented in this data set and accept no liability for the consequences of decisions made by others on the basis of the information presented here.

© 2009 Board of Trustees of the University of Illinois. All rights reserved.