

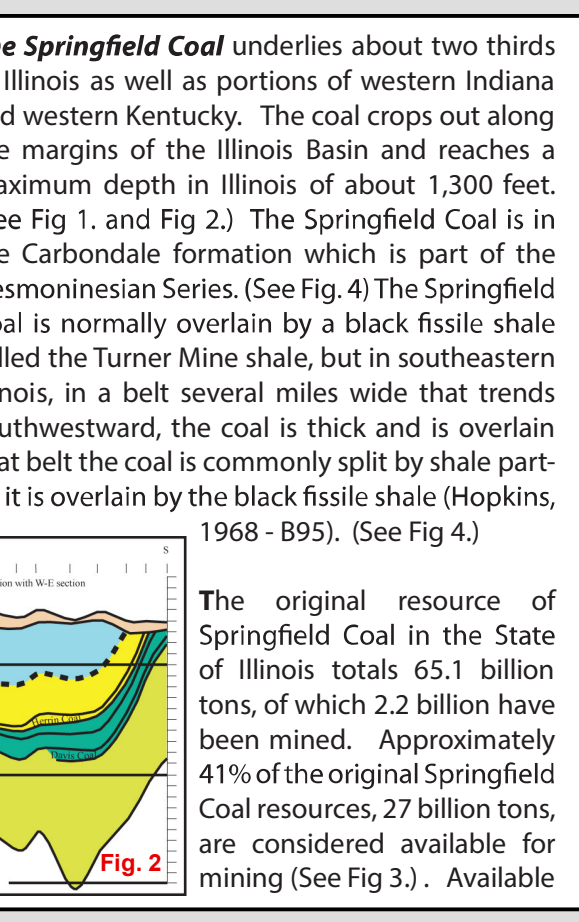
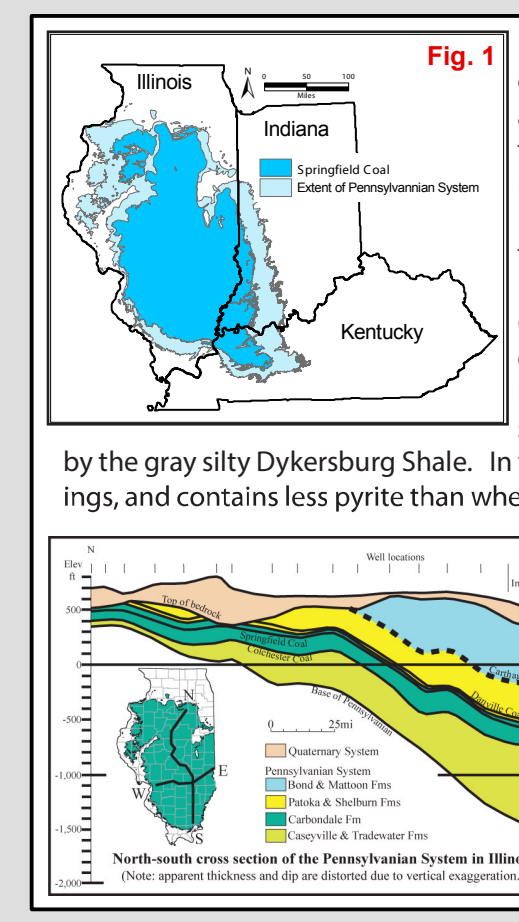
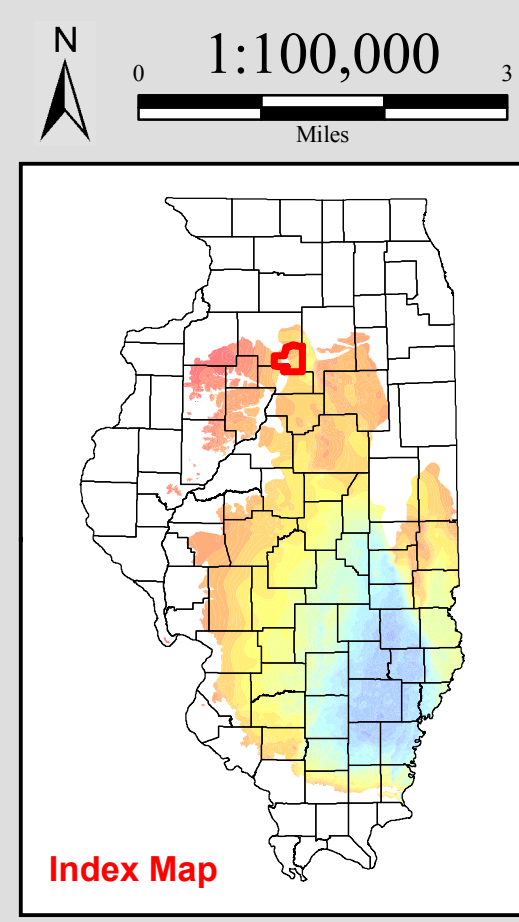
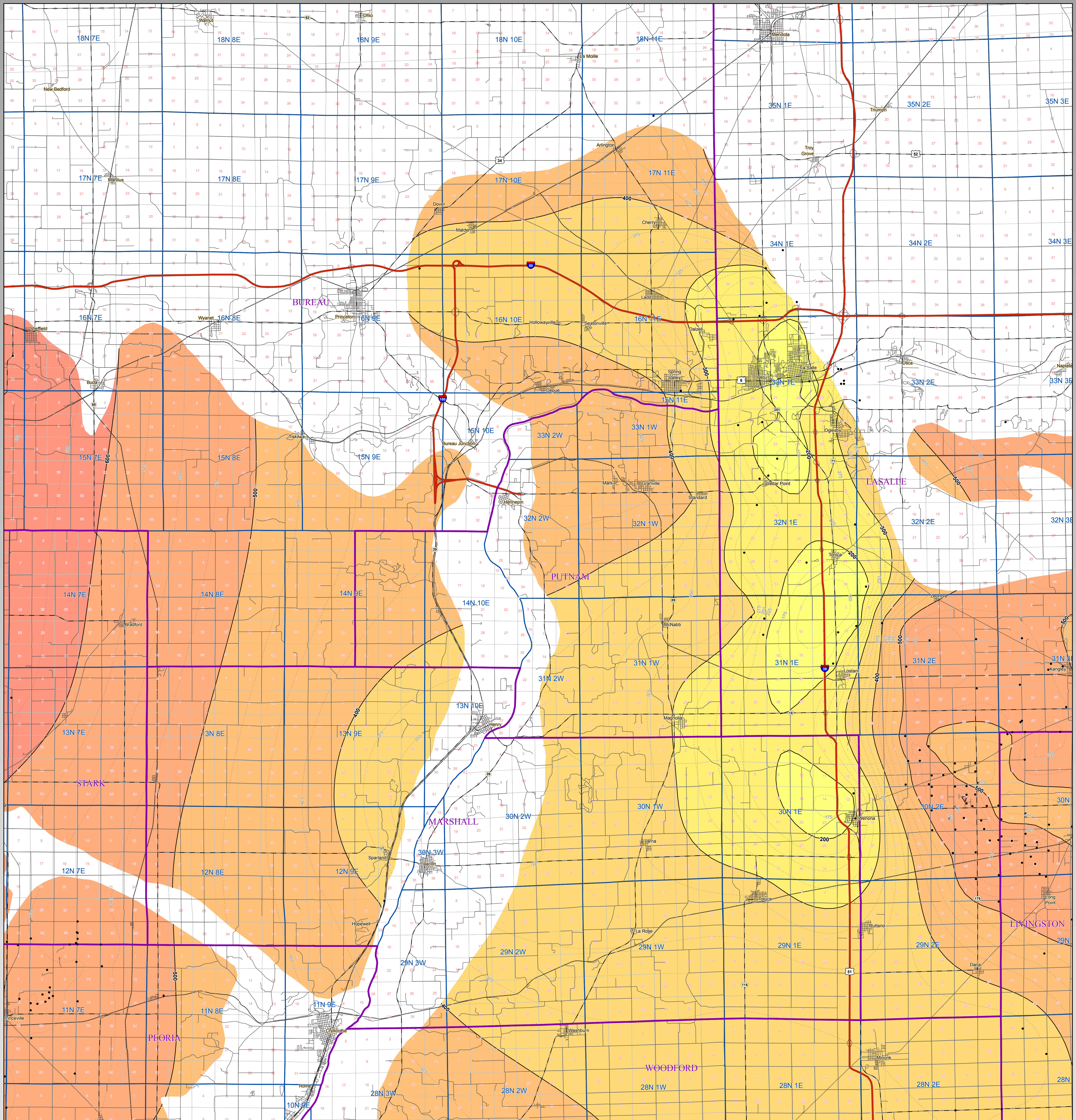
Springfield Coal Elevation

PUTNAM County

For further information contact:
 Prairie Research Institute
 Illinois State Geological Survey
 University of Illinois at Urbana-Champaign
 615 East Peabody Drive
 Champaign, Illinois 61820-6964
 (217) 333-4747
 http://www.isgs.illinois.edu

This product is under review and may not meet the standards of the Illinois State Geological Survey.

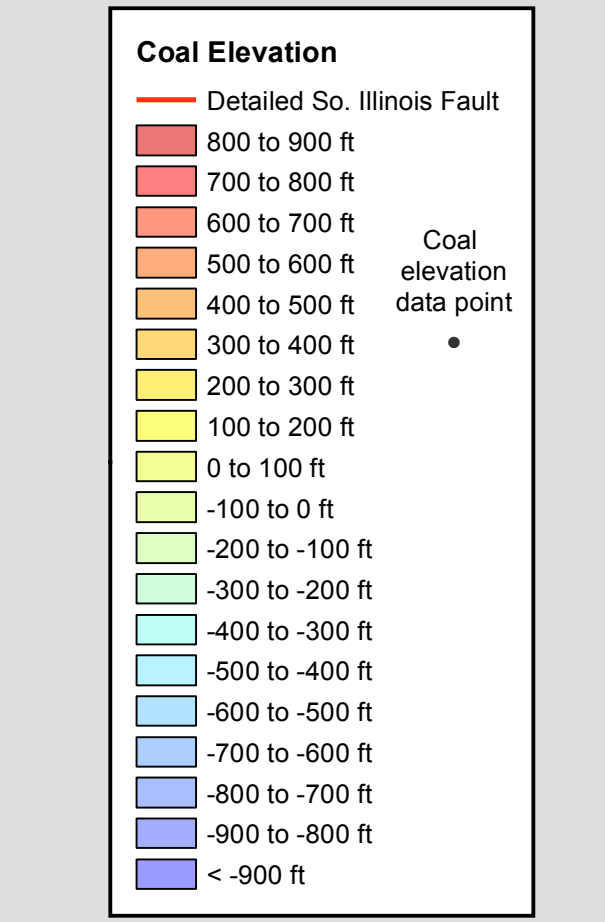
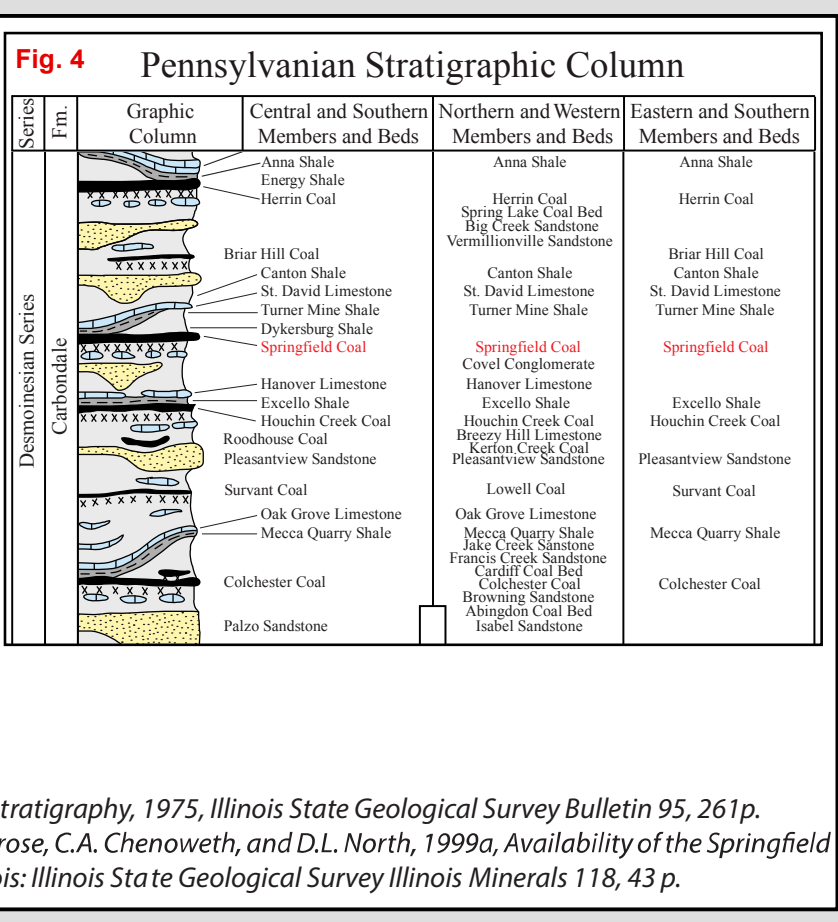
County coal maps and select quadrangle maps available as downloadable PDF files at: <http://www.isgs.illinois.edu>



Coal Field	Original (billions of tons)	Mined (billions of tons)	Remaining (billions of tons)	Available (billions of tons)
Danville	19.6	0.2	19.4	4.5
Jamestown	3.6	0	3.6	0.9
Heater	88.5	8.4	79.9	11.6
Springfield	65.1	22	43.0	22.0
Cockfield	19.0	0.5	18.5	1.8
Dalwood	6.0	0.1	5.9	0.3
David	9.4	0.1	9.3	4.7
Soledad	9.7	0	9.7	0.7
Total	221.1	12.5	208.6	96.1

(All numbers in Billions of Tons)

The Springfield Coal is normally overlain by a black fissile shale (Hopkins, 1968 - 1995). (See Fig. 4.)



Map Explanation

The maps and digital files of this study were compiled from data from a variety of public and private sources and have varying degrees of completeness and accuracy. They present interpretations of the geology of the area and are based on available data. However, these interpretations are based on data that may vary with respect to accuracy of geographic location, type, quantity, and reliability, as they were supplied to the Illinois State Geological Survey. Consequently, the accuracy of the interpreted features shown in these files is subject to the limitations of the data and varies from place to place.

Contoured features less than 7 million square feet (about 1/2 mile square) in area may not be accurately portrayed or resolved. This data set provides a large-scale conceptual model of the geology of the area on which to base further work. These data are not intended for use in site-specific screening or decision-making. Data included in this map are suitable for use at a scale of 1:100,000.

Disclaimer

The Illinois State Geological Survey and the University of Illinois make no guarantee, expressed or implied, regarding the correctness of the interpretations presented in this data set and accept no liability for the consequences of decisions made by others on the basis of the information presented here.

© 2015 Board of Trustees of the University of Illinois. All rights reserved.