

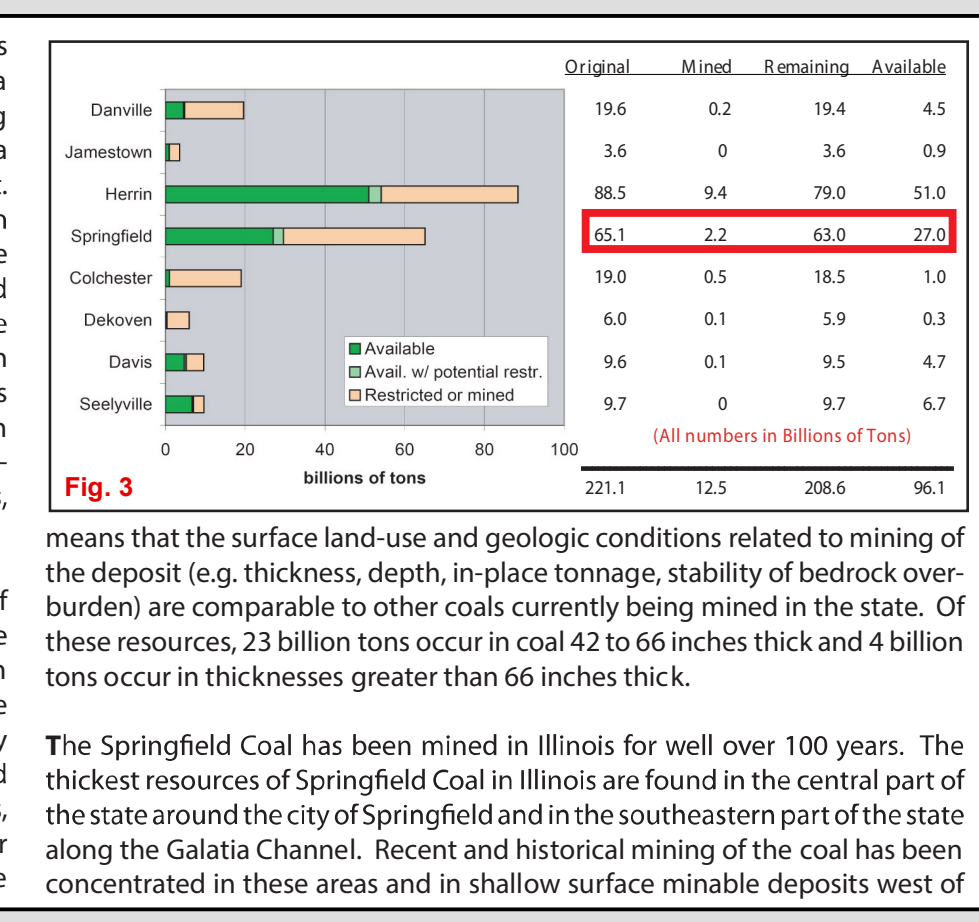
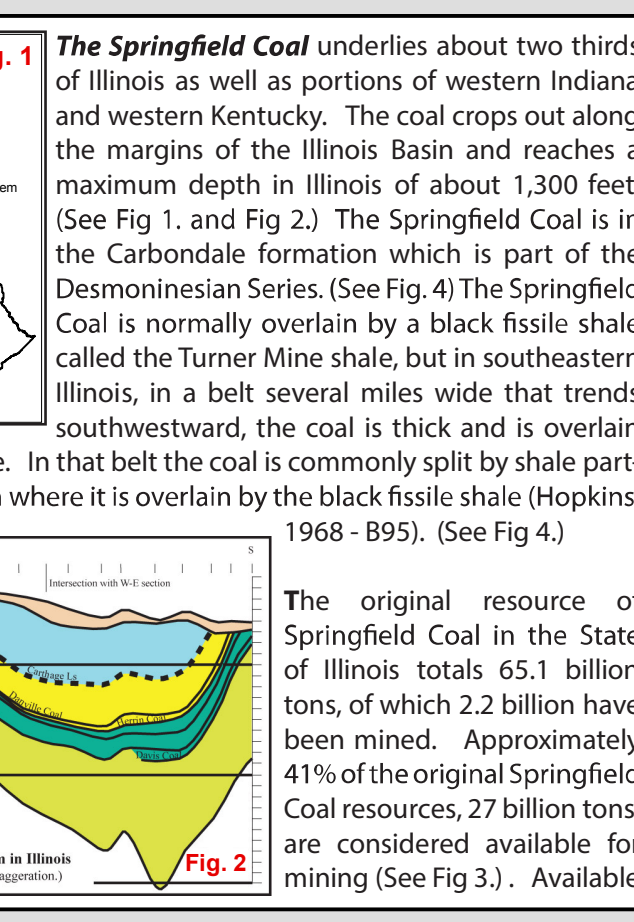
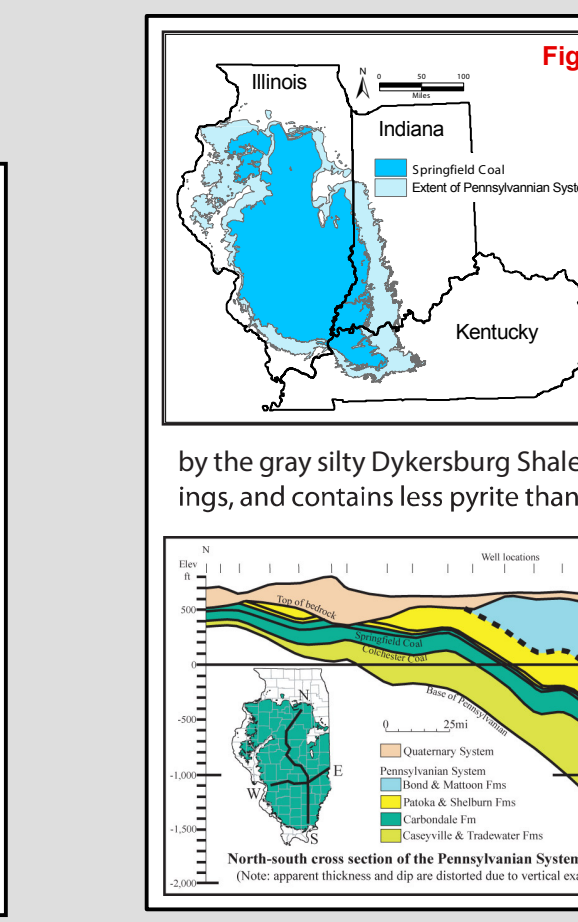
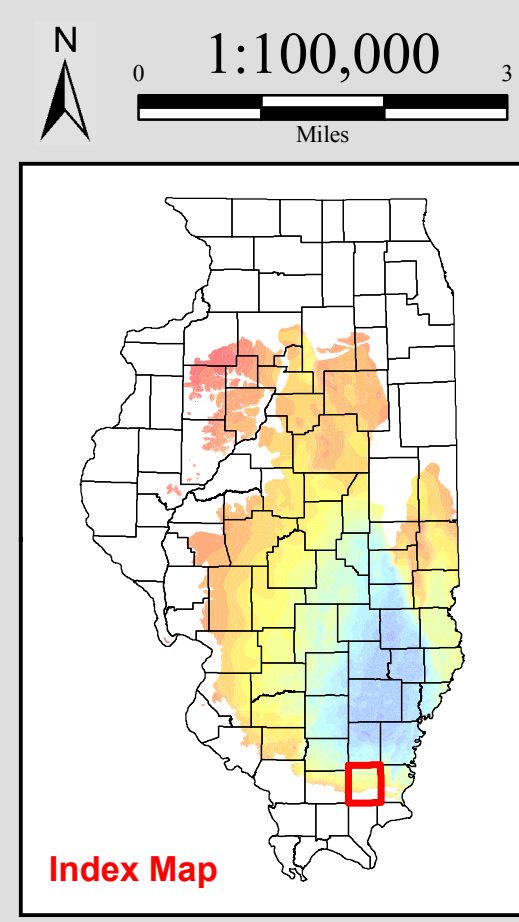
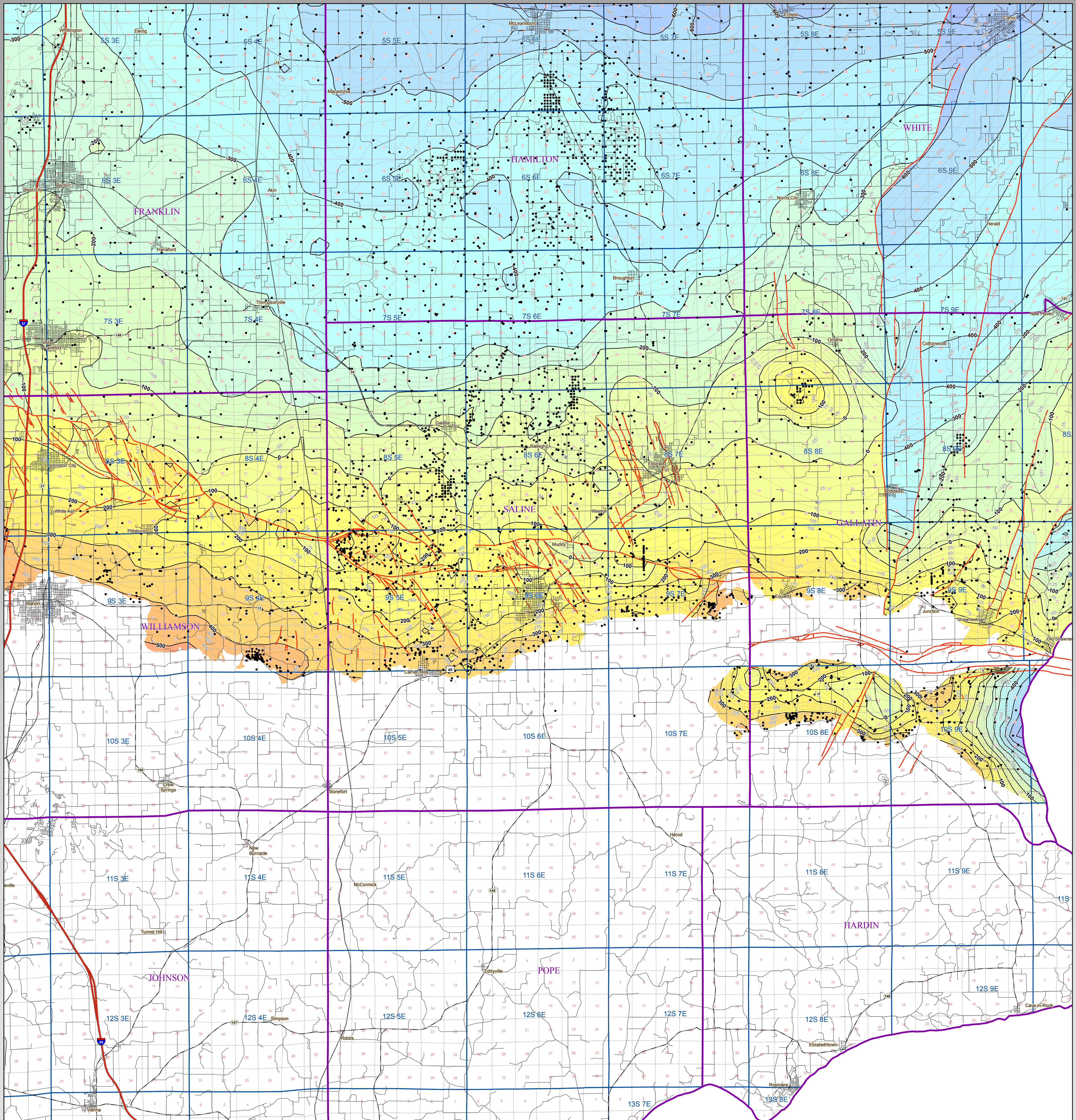
# Springfield Coal Elevation

## SALINE County

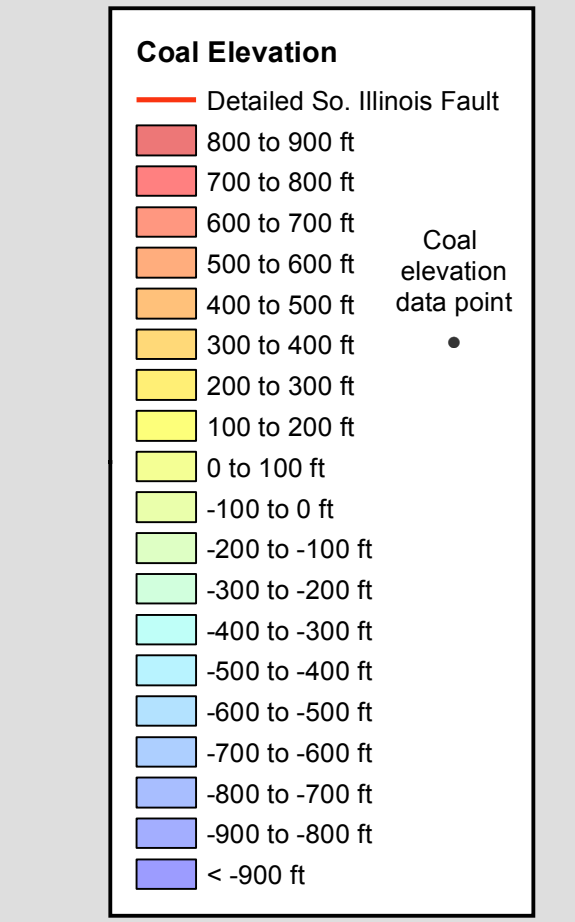
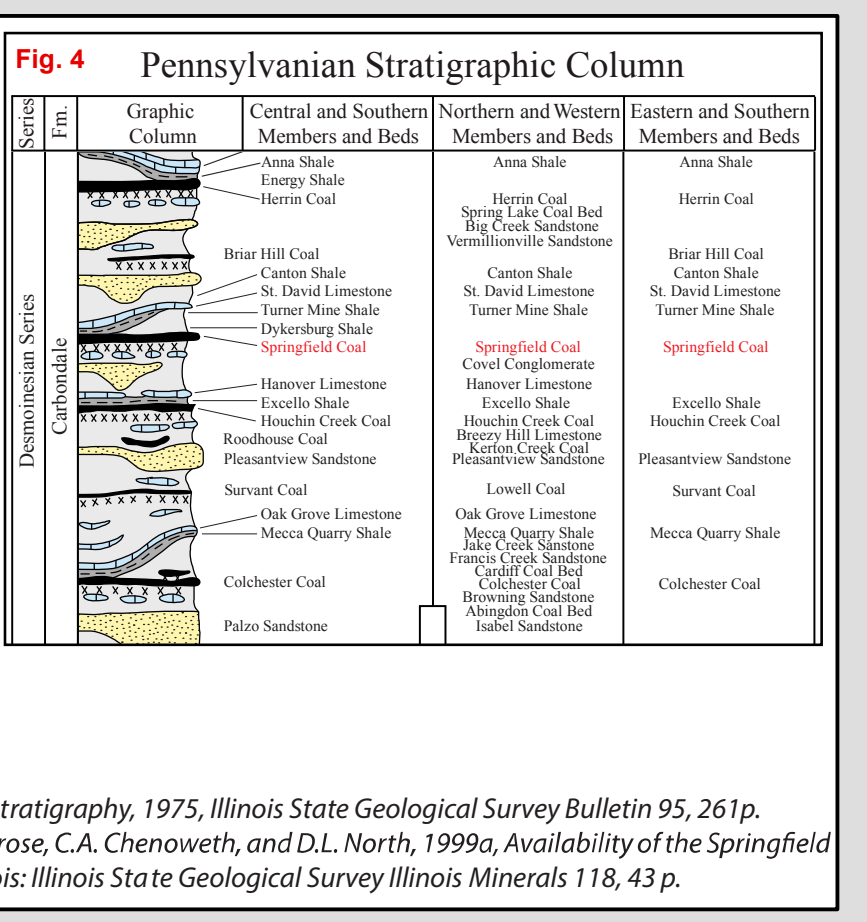
For further information contact:  
 Prairie Research Institute  
 Illinois State Geological Survey  
 University of Illinois at Urbana-Champaign  
 615 East Peabody Drive  
 Champaign, Illinois 61820-6964  
 (217) 333-4747  
 http://www.isgs.illinois.edu

This product is under review and may not meet the standards of the Illinois State Geological Survey.

County coal maps and select quadrangle maps available as downloadable PDF files at: <http://www.isgs.illinois.edu>



The Springfield Coal is normally overlain by a black fissile shale called the Turner Mine shale, but in southeastern Illinois, in a belt several miles wide that trends southwestward, the coal is thick and is overlain by the gray silty Dykersburg shale. In that belt the coal is commonly split by shale partings, and contains less pyrite than where it is overlain by the black fissile shale (Hopkins, 1968 - 1995). (See Fig. 4)



### Map Explanation

The maps and digital files of this study were compiled from data from a variety of public and private sources and have varying degrees of completeness and accuracy. They present interpretations of the geology of the area and are based on available data. However, these interpretations are based on data that may vary with respect to accuracy of geographic location, type, quantity, and reliability, as they were supplied to the Illinois State Geological Survey. Consequently, the accuracy of the interpreted features shown in these files is subject to the limitations of the data and varies from place to place.

Contoured features less than 7' million square feet (about 1/2 mile square) in area may not be accurately portrayed or resolved. This data set provides a large-scale conceptual model of the geology of the area on which to base further work. These data are not intended for use in site-specific screening or decision-making. Data included in this map are suitable for use at a scale of 1:100,000.

### Disclaimer

The Illinois State Geological Survey and the University of Illinois make no guarantee, expressed or implied, regarding the correctness of the interpretations presented in this data set and accept no liability for the consequences of decisions made by others on the basis of the information presented here.

© 2015 Board of Trustees of the University of Illinois. All rights reserved.