

Springfield Coal Sulfur

ST. CLAIR

County

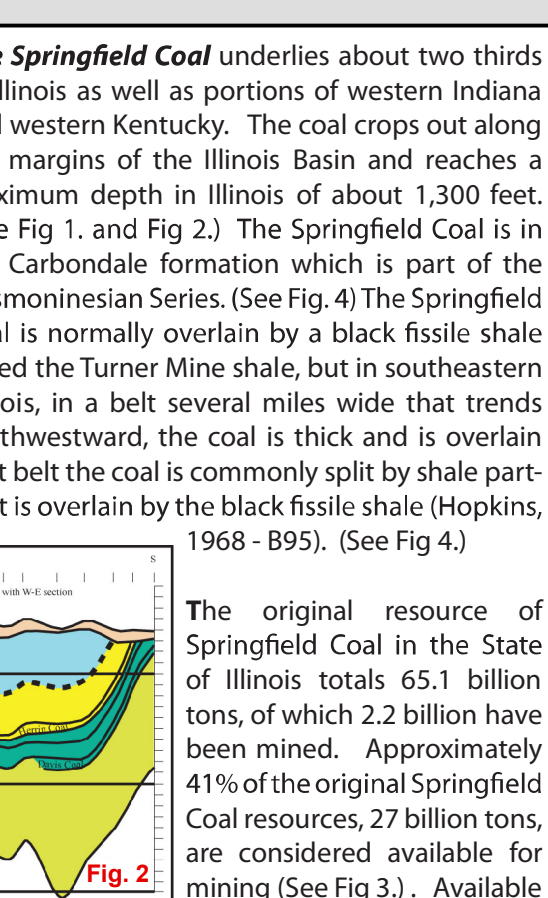
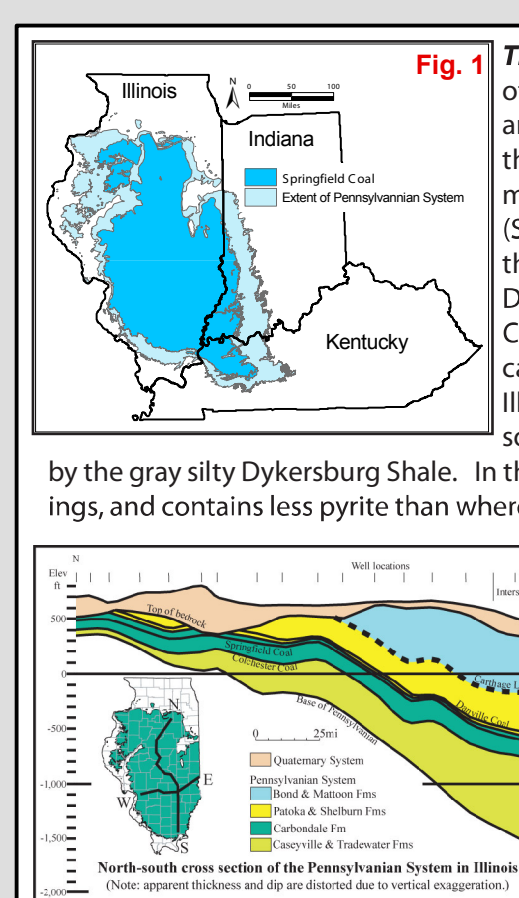
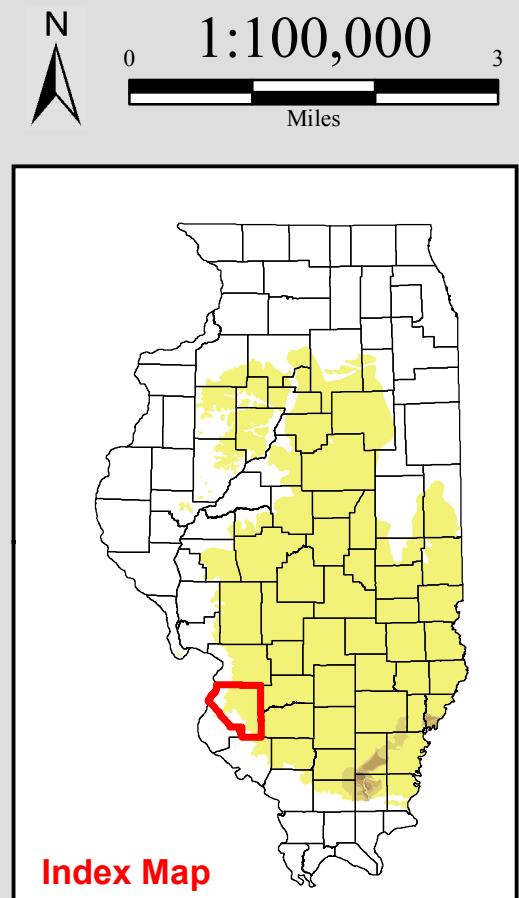
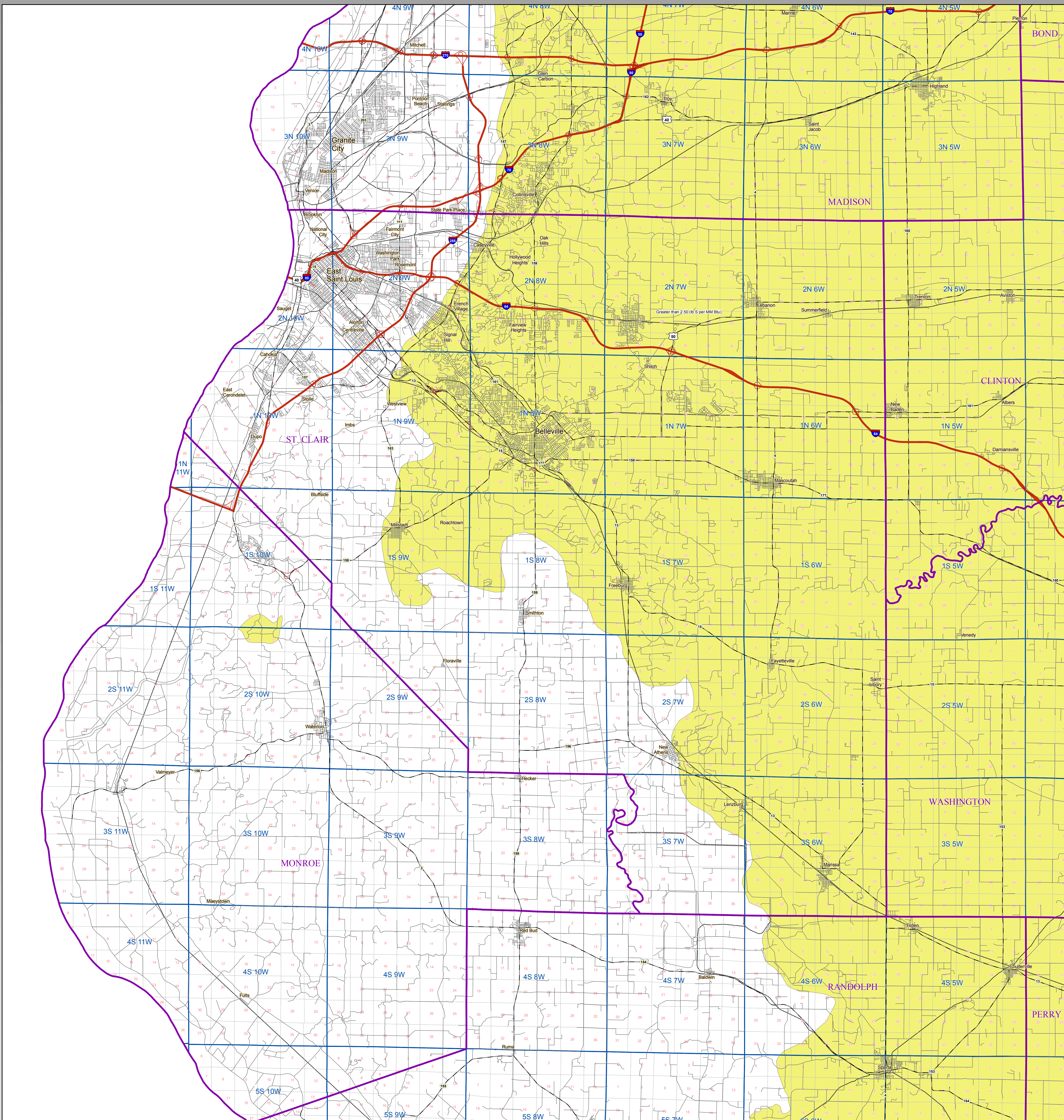
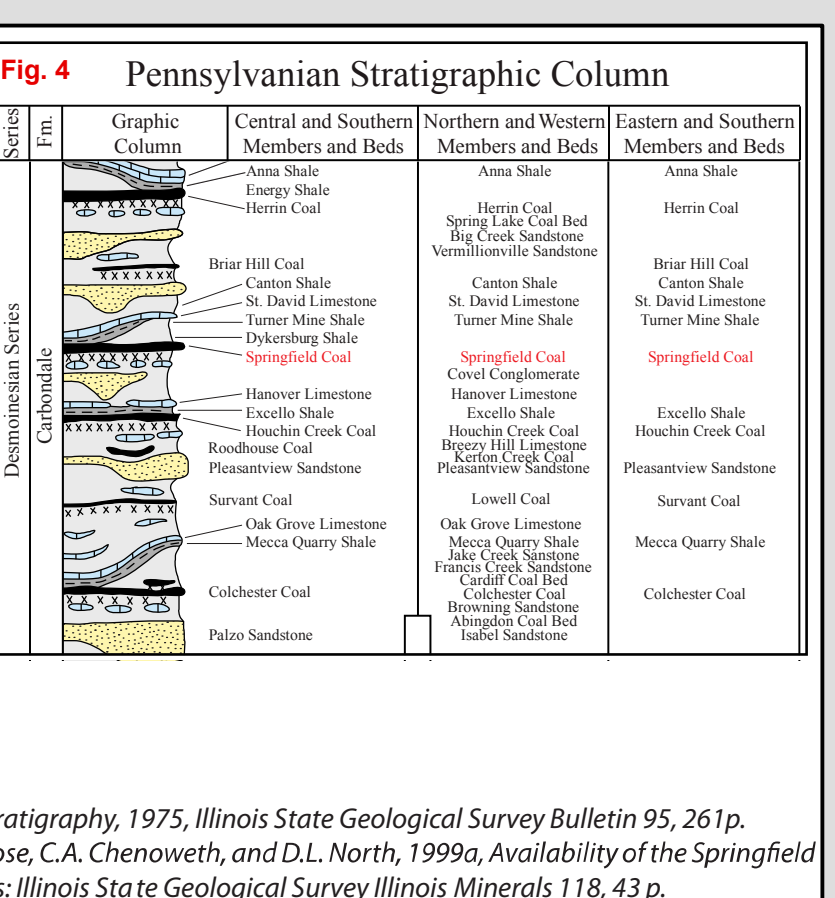


Fig. 3 means that the surface land-use and geologic conditions related to mining of the deposit (e.g. thickness, depth, in-place tonnage, stability of bedrock overburden) are comparable to other coals currently being mined in the state. Of these resources, 23 billion tons occur in coal 42 to 66 inches thick and 4 billion tons occur in thicknesses greater than 66 inches thick.

County	Original (billions of tons)	Mined (billions of tons)	Remaining (billions of tons)	Availability (billions of tons)
Jacksonville	198	0.2	198	4.5
Hopkins	36	0	36	0.9
Springfield	65.1	2.2	62.9	27.3
Clatsop	190	0.5	189.5	1.0
Clatsop	4.0	0.1	3.9	0.3
Clatsop	9.6	0.1	9.5	4.7
Saskatchewan	9.7	0	9.7	6.7

(All numbers in Billions of Tons)

the Illinois River. The coal is thin or absent in the southwestern and extreme northern portions of the coal field. (Modified from ISGS Pub. IM 118, Trewocky, et al)



Coal Sulfur

Less than or equal to 0.40 (lb S per MM Btu)
0.41 to 0.60 (lb S per MM Btu)
0.61 to 0.83 (lb S per MM Btu)
0.84 to 1.24 (lb S per MM Btu)
1.25 to 1.67 (lb S per MM Btu)
1.68 to 2.50 (lb S per MM Btu)
Greater than 2.50 (lb S per MM Btu)

Map Explanation

The maps and digital files of this study were compiled from data from a variety of public and private sources and have varying degrees of completeness and accuracy. They present interpretations of the geology of the area and are based on available data. However, these interpretations are based on data that may vary with respect to accuracy of geographic location, type, quantity, and reliability, as they were supplied to the Illinois State Geological Survey. Consequently, the accuracy of the interpreted features shown in these files is subject to the limitations of the data and varies from place to place.

Contoured features less than 7 million square feet (about 1/2 mile square) in area may not be accurately portrayed or resolved. This data set provides a large-scale conceptual model of the geology of the area on which to base further work. These data are not intended for use in site-specific screening or decision-making. Data included in this map are suitable for use at a scale of 1:100,000.

Disclaimer

The Illinois State Geological Survey and the University of Illinois make no guarantee, expressed or implied, regarding the correctness of the interpretations presented in this data set and accept no liability for the consequences of decisions made by others on the basis of the information presented here.

© 2009 Board of Trustees of the University of Illinois. All rights reserved.