

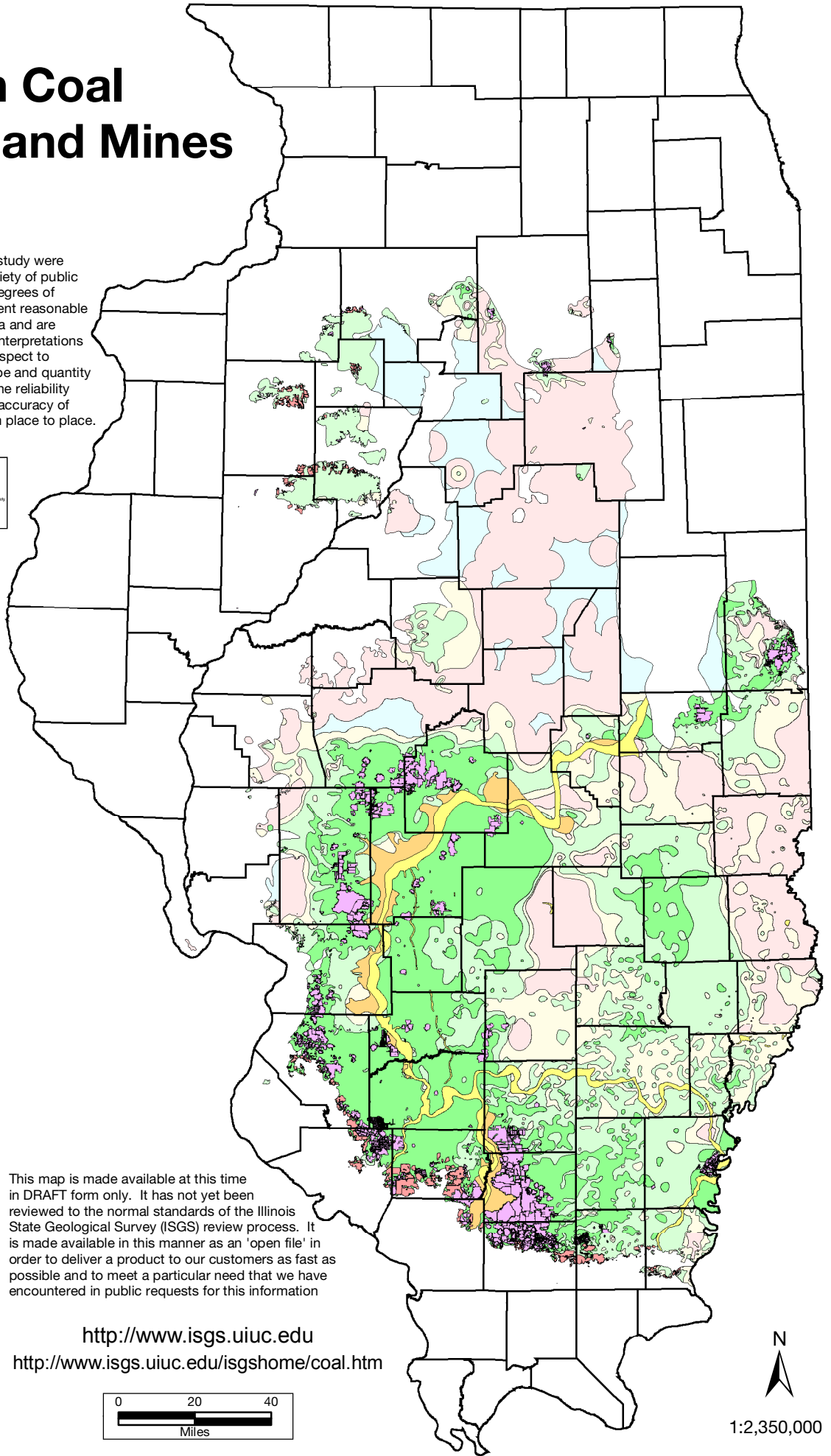
Herrin Coal Thickness and Mines

The digital files and maps used for this study were compiled from data obtained from a variety of public and private sources and have varying degrees of completeness and accuracy. They present reasonable interpretations of the geology of the area and are based on available data. However, the interpretations are based on data that may vary with respect to accuracy of geographic location, the type and quantity of data available at each location, and the reliability of the data sources. Consequently, the accuracy of features shown in these files varies from place to place.

Illinois State Geological Survey, Coal Section
SOURCES OF DATA AND LIMITATIONS OF MAPS / SPATIAL COVERAGES
 The maps and coverage used for this study were compiled from data obtained from a variety of public and private sources and have varying degrees of completeness and accuracy. They present reasonable interpretations of the geology of the area and are based on available data. However, the interpretations are based on data that may vary with respect to accuracy of geographic location, the type and quantity of data available at each location, and the reliability of the data sources. Consequently, the accuracy of features shown in these files varies from place to place.
 This digital data is given as-is, and is not to be shared by the user.
 (Revisions updated to 1995, major features updated to 1993, minor features updated to January, 1999.)



DRAFT



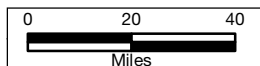
Legend

- Insufficient data
- <28"
- 28 to 42"
- 42 to 66"
- >66"
- Channel
- Split
- Underground
- Surface

This map is made available at this time in DRAFT form only. It has not yet been reviewed to the normal standards of the Illinois State Geological Survey (ISGS) review process. It is made available in this manner as an 'open file' in order to deliver a product to our customers as fast as possible and to meet a particular need that we have encountered in public requests for this information

<http://www.isgs.uiuc.edu>

<http://www.isgs.uiuc.edu/isgshome/coal.htm>



1:2,350,000