

# Coal Mines in Illinois Alsey Quadrangle

## Scott & Greene Counties, Illinois

### Colchester Coal

This map accompanies the Coal Mines Directory for Scott County. Consult the directory for a complete explanation of the information shown on this map.

**Mining Method**

- Room & Pillar (RP)
- Room & Pillar Basic (RPB)
- Modified Room & Pillar (MRP)
- Room & Pillar Panel (RPP)
- Blind Room & Pillar (BRP)
- Checkerboard Room & Pillar (CRP)
- High Extraction Retreat (HER)
- Longwall (LW)
- Underground, Method Unknown
- Strip Mine
- Auger Mine
- General Area of Mining

**Other Areas Depicted**

- Non-Coal Mines

**Source of Mine Outline**

- Final Mine Map
- Not Final Mine Map
- Undated Mine Map
- Incomplete Mine Map
- Secondary Source Map

**Tipple, Shaft, Slope, Drift Locations**

- Strip Mine Tipple - Active
- Strip Mine Tipple - Abandoned
- Mine Shaft - Active
- Mine Shaft - Abandoned
- Mine Slope - Active
- Mine Slope - Abandoned
- Mine Drift - Active
- Mine Drift - Abandoned
- Air Shaft
- Uncertain Location
- Uncertain Type of Opening

**Mine Annotation**  
(space permitting)  
Company  
Mine Name  
ISGS Index No., Years of Operation

**Disclaimer**  
Please check the Coal Section at the Illinois State Geological Survey's web site at <http://www.isgs.illinois.edu> for the most up-to-date version of these products.

Note that each quadrangle scale mined-out area map requires the use of the associated text directory for full explanation of map features and mine attributes. Also note that some quadrangles have multiple seams of mining and therefore more than one map may be available for a particular quadrangle. Please take care to check for multiple maps, as extensive mining may exist in the other seams.

The maps and digital files used for these studies were compiled from data obtained from a variety of public and private sources and have varying degrees of completeness and accuracy. This compilation map presents reasonable interpretation of the geology of the area and is based on available data. Locations of some mine features may be offset by 500 feet or more due to errors in the original source maps, the compilation process, digitizing, or a combination of these factors. These data are not intended for use in site-specific screening or decision-making. Use of these documents does not eliminate the need for detailed studies to fully understand the geology of a specific site. The Illinois State Geological Survey, Prairie Research Institute, or the University of Illinois make no guarantee, expressed or implied, regarding the correctness of the interpretations presented in this data set and accept no liability for the consequences of decisions made by others on the basis of the information presented here.

These maps were designed for use at 1:24,000. Enlarging the map may reduce accuracy, as the original scale of the source maps used to compile the outlines shown varies from 1:400 to 1:150,000, and some mine locations are known only from text descriptions. See the accompanying mine directory for the original scale of the source map used for a specific mine to check accuracy of a given portion of the map. Areas with no mines shown may still be undermined; see the unlocated mines list at the back of each mine directory.

The image of the U.S.G.S. topographic base map was projected from the original UTM to Lambert Conformal Conic.



Prairie Research Institute  
Illinois State Geological Survey  
615 E. Peabody Dr.  
Champaign, IL 61820

Mine Outlines Compiled by  
C. Chenoweth  
June 2017



# Coal Mines in Illinois

## Florence Quadrangle

### Scott & Pike Counties, Illinois

## Colchester Coal

This map accompanies the Coal Mines Directory for the Scott County. Consult the directory for a complete explanation of the information shown on this map.

**Mining Method**

- Room & Pillar (RP)
- Room & Pillar Basic (RPB)
- Modified Room & Pillar (MRP)
- Room & Pillar Panel (RPP)
- Blind Room & Pillar (BRP)
- Checkerboard Room & Pillar (CRP)
- High Extraction Retreat (HER)
- Longwall (LW)
- Underground, Method Unknown
- Strip Mine
- Auger Mine
- General Area of Mining

**Other Areas Depicted**

- Non-Coal Mines

**Source of Mine Outline**

- Final Mine Map
- Not Final Mine Map
- Undated Mine Map
- Incomplete Mine Map
- Secondary Source Map

**Tipple, Shaft, Slope, Drift Locations**

- Strip Mine Tipple - Active
- Strip Mine Tipple - Abandoned
- Mine Shaft - Active
- Mine Shaft - Abandoned
- Mine Slope - Active
- Mine Slope - Abandoned
- Mine Drift - Active
- Mine Drift - Abandoned
- Air Shaft
- Uncertain Location
- Uncertain Type of Opening

**Mine Annotation**  
(space permitting)

- Company
- Mine Name
- ISGS Index No., Years of Operation

**Disclaimer**  
Please check the Coal Section at the Illinois State Geological Survey's web site at <http://www.isgs.illinois.edu> for the most up-to-date version of these products.

Note that each quadrangle scale mined-out area map requires the use of the associated text directory for full explanation of map features and mine attributes. Also note that some quadrangles have multiple seams of mining and therefore more than one map may be available for a particular quadrangle. Please take care to check for multiple maps, as extensive mining may exist in the other seams.

The maps and digital files used for these studies were compiled from data obtained from a variety of public and private sources and have varying degrees of completeness and accuracy. This compilation map presents reasonable interpretation of the geology of the area and is based on available data. Locations of some mine features may be offset by 500 feet or more due to errors in the original source maps, the compilation process, digitizing, or a combination of these factors. These data are not intended for use in site-specific screening or decision-making. Use of these documents does not eliminate the need for detailed studies to fully understand the geology of a specific site. The Illinois State Geological Survey, Prairie Research Institute, or the University of Illinois make no guarantee, expressed or implied, regarding the correctness of the interpretations presented in this data set and accept no liability for the consequences of decisions made by others on the basis of the information presented here.

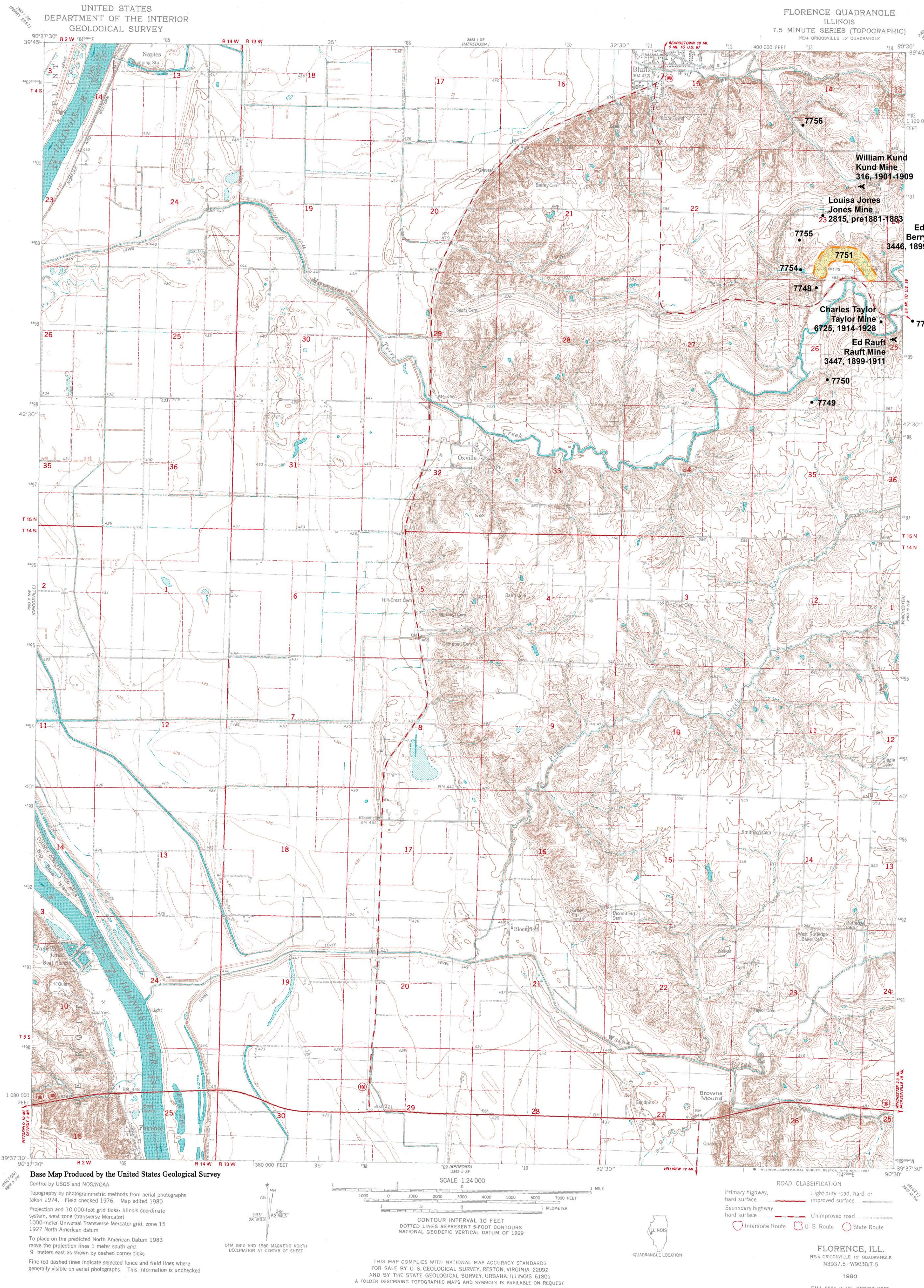
These maps were designed for use at 1:24,000. Enlarging the map may reduce accuracy, as the original scale of the source maps used to compile the outlines shown varies from 1:400 to 1:150,000, and some mine locations are known only from text descriptions. See the accompanying mine directory for the original scale of the source map used for a specific mine to check accuracy of a given portion of the map. Areas with no mines shown may still be undermined; see the unlocated mines list at the back of each mine directory.

The image of the U.S.G.S. topographic base map was projected from the original UTM to Lambert Conformal Conic.



Prairie Research Institute  
Illinois State Geological Survey  
615 E. Peabody Dr.  
Champaign, IL 61820

Mine Outlines Compiled by  
C. Chenoweth  
June 2017





Coal Mines in Illinois  
Winchester Quadrangle  
Scott County, Illinois

Colchester Coal

This map accompanies the Coal Mines Directory for the Scott County. Consult the directory for a complete explanation of the information shown on this map.

**Mining Method**

- Room & Pillar (RP)
- Room & Pillar Basic (RPB)
- Modified Room & Pillar (MRP)
- Room & Pillar Panel (RPP)
- Blind Room & Pillar (BRP)
- Checkerboard Room & Pillar (CRP)
- High Extraction Retreat (HER)
- Longwall (LW)
- Underground, Method Unknown
- Strip Mine
- Auger Mine
- General Area of Mining

**Other Areas Depicted**

- Non-Coal Mines

**Source of Mine Outline**

- Final Mine Map
- Not Final Mine Map
- Undated Mine Map
- Incomplete Mine Map
- Secondary Source Map

**Tipple, Shaft, Slope, Drift Locations**

- Strip Mine Tipple - Active
- Strip Mine Tipple - Abandoned
- Mine Shaft - Active
- Mine Shaft - Abandoned
- Mine Slope - Active
- Mine Slope - Abandoned
- Mine Drift - Active
- Mine Drift - Abandoned
- Air Shaft
- Uncertain Location
- Uncertain Type of Opening

**Mine Annotation**  
(space permitting)  
Company  
Mine Name  
ISGS Index No., Years of Operation

Other Points Depicted  
Non-Coal Mines



**Disclaimer**  
Please check the Coal Section at the Illinois State Geological Survey's web site at <http://www.isgs.illinois.edu> for the most up-to-date version of these products.

Note that each quadrangle scale mined-out area map requires the use of the associated text directory for full explanation of map features and mine attributes. Also note that some quadrangles have multiple seams of mining and therefore more than one map may be available for a particular quadrangle. Please take care to check for multiple maps, as extensive mining may exist in the other seams.

The maps and digital files used for these studies were compiled from data obtained from a variety of public and private sources and have varying degrees of completeness and accuracy. This compilation map presents reasonable interpretation of the geology of the area and is based on available data. Locations of some mine features may be offset by 500 feet or more due to errors in the original source maps, the compilation process, digitizing, or a combination of these factors. These data are not intended for use in site-specific screening or decision-making. Use of these documents does not eliminate the need for detailed studies to fully understand the geology of a specific site. The Illinois State Geological Survey, Prairie Research Institute, or the University of Illinois make no guarantee, expressed or implied, regarding the correctness of the interpretations presented in this data set and accept no liability for the consequences of decisions made by others on the basis of the information presented here.

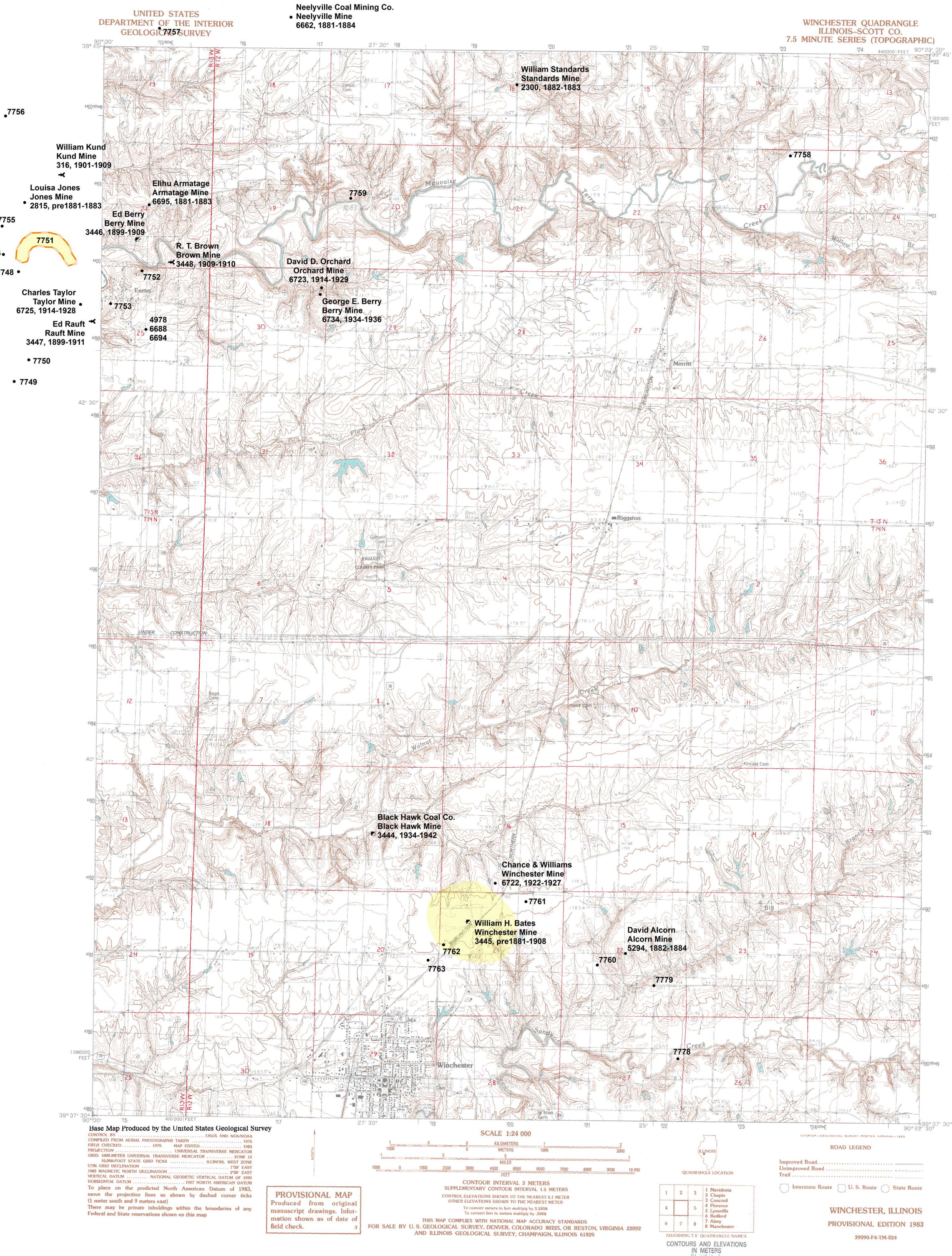
These maps were designed for use at 1:24,000. Enlarging the map may reduce accuracy, as the original scale of the source maps used to compile the outlines showing varies from 1:400 to 1:150,000, and some mine locations are known only from text descriptions. See the accompanying mine directory for the original scale of the source map used for a specific mine to check accuracy of a given portion of the map. Areas with no mines shown may still be undermined; see the unlocated mines list at the back of each mine directory.

The image of the U.S.G.S. topographic base map was projected from the original UTM to Lambert Conformal Conic.



Prairie Research Institute  
Illinois State Geological Survey  
615 E. Peabody Dr.  
Champaign, IL 61820

Mine Outlines Compiled by  
C. Chenoweth  
June 2017





# **DIRECTORY OF COAL MINES IN ILLINOIS**

## **7.5-MINUTE QUADRANGLE SERIES**

### **ALL QUADRANGLES**

### **SCOTT COUNTY**

C. Chenoweth



2017

Prairie Research Institute  
Mark Ryan, Executive Director  
**ILLINOIS STATE GEOLOGICAL SURVEY**  
Richard C. Berg, Director

Natural Resources Building  
615 East Peabody Drive  
Champaign, Illinois 61820

Phone 217-244-4610



This material is based upon work supported by the Illinois Department of Transportation. Any opinions, findings, and conclusions or recommendations expressed in this publication are those of the authors and do not necessarily reflect the views of the Illinois Department of Transportation.

**Cover photo** Track-mounted duckbill loading machine at a Peabody Coal Company mine, ca. 1915.

DISCLAIMER: The accuracy and completeness of mine maps and directories vary with the availability of reliable information. Maps and other information used to compile this mine map and directory were obtained from a variety of sources and the accuracy of some of the original information cannot be verified. Consequently, the Illinois State Geological Survey (ISGS) cannot guarantee the mine maps are free of errors and disclaims any responsibility for damages that may result from actions or decisions based on them.

The ISGS updates the maps and directories periodically, and welcomes any new information or corrections. Please contact the Coal Section of the ISGS at the address shown on the title page of this directory, or telephone (217) 244-4610.

© 2017 The Board of Trustees of the University of Illinois. All rights reserved.  
For permission information, contact the Illinois State Geological Survey.

# CONTENTS

INTRODUCTION .....	1
MINING IN SCOTT COUNTY .....	1
PART I EXPLANATION OF MAP AND MINE SUMMARY SHEET .....	2
INTERPRETING THE MAP .....	2
Mine Type and Mining Method .....	2
Source Maps .....	3
Points and Labels .....	3
INTERPRETING A MINE SUMMARY SHEET .....	6
REFERENCES .....	8
PART II DIRECTORY OF MINES IN SCOTT COUNTY .....	9
MINE SUMMARY SHEETS .....	9
Mine Index 316	
William Kund, Kund Mine .....	9
Mine Index 2193	
Charles Poole, Poole Mine .....	10
Mine Index 2300	
William Standards, Standards Mine .....	11
Mine Index 2815	
Louisa Jones, Jones Mine .....	12
Mine Index 3439	
Earl & Joe Gray, Gray Mine .....	13
Mine Index 3440	
Josh Hepworth, Hepworth Mine .....	14
Mine Index 3441	
Earl George & Ranson, Alsey Mine .....	15
Mine Index 3442	
McLaughlin Mining Company, Alsey Brick & Tile Mine .....	16
Mine Index 3443	
Coal Hollow Coal Company, Coal Hollow Mine .....	17
Mine Index 3444	
Black Hawk Coal Company, Black Hawk Mine .....	18
Mine Index 3445	
William H. Bates, Winchester Mine .....	19
Mine Index 3446	
Ed Berry, Berry Mine .....	20
Mine Index 3447	
Ed Raft, Raft Mine .....	21
Mine Index 3448	
R. T. Brown, Brown Mine .....	22
Mine Index 3946	
John Brady, Brady Mine .....	23
Mine Index 4978	
Charles Berry, Berry Mine .....	24
Mine Index 5187	
John Stewart, Stewart Mine .....	25
Mine Index 5294	
David Alcorn, Alcorn Mine .....	26
Mine Index 6619	
Hugh McGuire, McGuire Mine .....	27
Mine Index 6662	
Neelyville Coal Mining Company, Neelyville Mine .....	28
Mine Index 6688	
M. Six, Six Mine .....	29
Mine Index 6690	
George C. Marquette, Marquette Mine .....	30

Mine Index 6694	
J. F. Morris, Morris Mine	31
Mine Index 6695	
Elihu Armatage, Armatage Mine	32
Mine Index 6696	
John McGuire, McGuire Mine	33
Mine Index 6722	
Chance & Williams, Winchester Mine	34
Mine Index 6723	
David D. Orchard, Orchard Mine	35
Mine Index 6725	
Charles Taylor, Taylor Mine	36
Mine Index 6734	
George E. Berry, Berry Mine	37
OTHER MINES SHOWN IN SCOTT COUNTY	38
Mine Index 6721	38
Mine Index 7748	38
Mine Index 7749	38
Mine Index 7750	38
Mine Index 7751	38
Mine Index 7752	38
Mine Index 7753	38
Mine Index 7754	38
Mine Index 7755	38
Mine Index 7756	38
Mine Index 7757	38
Mine Index 7758, Gus Lakamp	38
Mine Index 7759	38
Mine Index 7760	38
Mine Index 7761	38
Mine Index 7762	38
Mine Index 7763	38
Mine Index 7764, Earl Grey	38
Mine Index 7765	38
Mine Index 7766	38
Mine Index 7767	38
Mine Index 7768	38
Mine Index 7769	38
Mine Index 7770	38
Mine Index 7771	38
Mine Index 7772	38
Mine Index 7773	38
Mine Index 7774	38
Mine Index 7775	38
Mine Index 7776	38
Mine Index 7777	38
Mine Index 7778, Tuft Mine	38
Mine Index 7779, Barker's Mine	38
MINES WHOSE LOCATIONS ARE NOT KNOWN, SCOTT COUNTY	39
INDEX OF MINES IN SCOTT COUNTY	43

## **INTRODUCTION**

Coal has been mined in 76 counties of Illinois. More than 7,400 coal mines have operated since commercial mining began in Illinois about 1810; fewer than 30 are currently active. To detail the extent and location of coal mining in Illinois, the Illinois State Geological Survey (ISGS) has compiled maps and directories of known coal mines. The ISGS offers maps at a scale of 1:100,000 and accompanying directories for each county in which coal mining is known to have occurred. Maps at a scale of 1:24,000 and accompanying directories, such as this, are available for selected quadrangles. Contact the ISGS for a list of these quadrangles.

These larger scale maps show the approximate positions of mines in relation to surface features such as roads and water bodies, and indicate the mining method used and the accuracy of the mine boundaries. The maps are useful for locating mine boundaries relative to specific properties and for assessing the potential for subsidence in an area. Mine boundaries compiled from final mine surveys are generally shown within 200 feet of their true position. As a result of poor cartographic quality and inaccuracies in the original mine surveys, boundaries of some older mines may be mislocated on the map by 500 feet or more. Original mine maps should be consulted in situations that require precise delineation of mine boundaries or internal workings of mined areas.

This directory serves as a key to the accompanying mine map and provides basic information on the coal mines in the quadrangle. The directory is composed of two parts. Part I explains the symbols and patterns used on the accompanying map and the summary data presented for each mine. Part II numerically lists the mines in the quadrangle and summarizes the geology and production history of each mine. Total production for the mine, not the portion in the quadrangle, is given.

## **MINING IN SCOTT COUNTY**

Mining began in Scott County before 1853, when Frost's mine already had a reputation as the best blacksmith coal in the area. Mr. Frost separated the coal from the upper part of the seam, which had less pyrite. The mine was later acquired by Mr. Moore, who operated the mine in 1868. The location of the mine is not known, other than being along Little Sandy Creek.

The Colchester Coal was mined here, and the coal was generally about 2.5 feet thick. Most of the mines were close to the surface and accessed through drifts, slopes, or shallow shafts. Where the coal was deeper, such as in plains areas between streams, the required depth of the shaft made the coal uneconomical to mine.



## PART I EXPLANATION OF MAP AND MINE SUMMARY SHEET

### INTERPRETING THE MAP

The map accompanying this directory shows the location of coal mines known to be present in the quadrangle. The map, corresponding to a U.S. Geological Survey (USGS) 7.5-minute quadrangle, covers an area bounded by lines of latitude and longitude 7.5-minutes apart. In Illinois, a quadrangle is approximately 6.5 miles east to west and 8.5 miles north to south, an area of about 56 square miles. The USGS generally offers one map of mines per quadrangle. In some areas where extensive mining occurred in two or more overlapping seams, separate maps are compiled for mines in each seam to maintain readability of the map.

#### Mine Type and Mining Method

The mine type is indicated on the map by pattern color: green represents surface mines; red and yellow represent underground mines. The red patterns are used for areas of underground mining that are documented by a primary or secondary source map. A yellow pattern is used for cases where no map of the mine workings is available, but a general area of mining can be inferred from property maps or production figures. The patterns indicate the main mining methods used in underground mines. The methods are (1) room and pillar and (2) high extraction. The method used gives some indication of the amount and pattern of coal extraction within each mined area, and has some influence on the timing and type of subsidence that can occur over a mine.

The following discussion and illustrations of mining methods are based on Guither et al. (1984).

In room-and-pillar mines, coal is removed from haulage-ways (entries) and selected areas called rooms. Pillars of unmined coal are left between the rooms to support the roof. Depending on the size of rooms and pillars, the amount of coal removed from the production areas will range from 40% to 70%.

**Room and Pillar** - mining is divided into six categories:

- room-and-pillar basic (RPB, fig. 1A), an early method that did not follow a preset mining plan and therefore resulted in very irregular designs;
- modified room and pillar (MRP, fig. 1B);
- room-and-pillar panel (RPP, fig. 1C);
- blind room and pillar (BRP, fig. 1D);
- checkerboard room and pillar (CRP, fig. 1E);
- room and pillar (RP), a classification used when the specific type of room-and-pillar mining is unknown.

Blind and checkerboard are the most common types of room-and-pillar mining used in Illinois today. The knowledge of room-and-pillar mining methods gives a trained engineer information on the nature of subsidence that may occur. A more extensive discussion of subsidence can be found in Bauer et al. (1993).

**High-extraction** These mining methods are subdivided into high-extraction retreat (HER, Fig 1F) and longwall (LW, Fig 1G, 1H). In these methods, much of the coal is removed within well defined areas of the mine. Subsidence of the surface above these areas occurs within weeks. Once the subsidence activity ceases, the potential for further movement over these areas is low; however, subsidence may continue for several years after mining.

High-extraction retreat mining is a form of room-and-pillar mining that extracts most of the coal. Rooms and pillars are developed in the panels, and the pillars are then systematically removed (fig. 1F).

In early (pre-1960) longwall mines, mining advanced in multiple directions from a central shaft (fig. 1G). Large pillars of coal were left around the shaft, but all coal was removed beyond these pillars. Miners placed rock and wooden props and cribs in the mined-out areas to support the mine roof. The overlying rock gradually settled onto these supports, thus producing subsidence at the surface. In post-1959 longwall mines, room-and-pillar methods have been used to develop the main entries of the mine and panel areas. Modern longwall methods extract 100 percent of the coal in the panel areas (fig. 1H).



## SOURCE MAPS

Mine outlines depicted on the map are, whenever possible, based on maps made from original mine surveys. The process of compiling and digitizing the quadrangle map may produce errors of less than 200 feet in the location of mine boundaries. Larger errors of 500 feet or more are possible for mines that have incomplete or inaccurate source maps.

Because of the extreme complexity of some mine maps, detailed features of mined areas have been omitted. The digitized mine boundary includes the exterior boundary of all rooms or entries that were at least 80 feet wide or protruded 500 feet from the main mining area. Unmined areas between mines are shown if they are at least 80 feet wide; unmined blocks of coal within mines are shown if they are at least 400 feet on each side. Original source maps should be consulted when precise information on mine boundaries or interior features is needed.

The mine summary sheet lists the source maps used to determine each mine outline. The completeness of map sources is indicated on the map by a line symbol at the mine boundary. Source maps are organized in five categories.

**Final mine map** The mine outline was digitized from an original map made from mine surveys conducted within a few months after production ceased. The date of the map and the last reported production are listed on the summary sheet.

**Not a final map** The mine is currently active or the mine outline was made from a map based on mine surveys conducted more than a few months before production ceased. This implies the actual mined-out area is probably larger than the outline on the map. The mine summary sheet indicated the dates of source maps and the last reported production, as well as the approximate tonnage mined between these two dates (if the mine is abandoned). The summary sheet also lists the approximate acreage mined since the date of the map and, in some cases, indicates the area where additional mining may have taken place. This latter information is determined by locating on the map the active faces relative to probable boundaries of the mine property.

**Undated map** The source map was undated, so it may or may not be based on a final mine survey. When sufficient data are available, the probable acreage of the mined area is estimated from reported production, average seam thickness and a recovery rate comparable to other mines in the area. This information is listed in the summary sheet for the mine.

**Incomplete map** The source map did not show the entire mine. The summary sheet indicates the missing part of the mine map and the acreage of the unmapped area, which is estimated from the amount of coal known to have been produced from the mine.

**Secondary source map** The original mine map was not found so the outline shown was determined from secondary sources (e.g., outlines from small-scale regional maps published in other reports). The summary sheet describes the secondary sources.

## POINTS AND LABELS

The locations of all known mine openings (shafts, slopes, and drifts) and surface mine tipples are plotted on the map. Tipples are areas where coal was cleaned, stockpiled, and loaded for shipping.

Only openings or tipples are plotted for mines without source maps. If the precise locations of these features are unknown, a special symbol is used to indicate the approximate location of the mine.

Each mine on the map is labeled with the names of the mine and operating company, ISGS mine index number, and years of operation (if known) if space permits. A seam designation is given on maps where more than one seam was mined. For a mine that operated under more than one name, only the most recent name is generally given. When a mine changed names or ownership shortly before closing, an earlier name is listed. All company and mine names are listed on the mine summary sheet in the directory, under the production history segment.





**Figure 1** Mining methods: (A) room-and-pillar basic (RPB), (B) modified room and pillar (MRP), (C) room-and-pillar panel (RPP), (D) blind room and pillar (BRP).





**Figure 1 (cont.)** Mining methods: (E) checkerboard room and pillar (CRP), (F) high extraction retreat (HER), (G) early (pre-1960) longwall, (H) post-1959 longwall





**Figure 2** Generalized stratigraphic section, showing approximate vertical relations of coals in Illinois.

## INTERPRETING A MINE SUMMARY SHEET

The mine summary sheet is arranged numerically by mine index number. Index numbers are shown on the map and in the mine listing. The mine summary sheet provides the following information (if available).

**Company and mine name** The last company or owner of the mine is used, unless no production was recorded for the last owner. In that case, the penultimate owner is listed. Mines often have no specific name; in these cases, the company name is also used as the mine name.

**Type** *Underground* denotes a subsurface mine in which the coal was reached through a shaft, slope, or a drift entry. *Surface* denotes a surface, open pit or strip mine.

**Total mined-out acreage shown** The total acreage of the mined area mapped, including any acreage mined on adjacent quadrangles, is calculated from the digitized outline of the mine. The acreage of large barrier pillars depicted on the map is excluded from the mined-out acreage. Small pillars not digitized are included in the acreage calculation. If the mine outline is not based on a final mine map, the acreage is followed by an estimate of additional acres that may have been mined. The estimate is determined from reported mine production, approximate thickness of the coal, and recovery rates calculated from nearby mines that used similar mining methods.

## SHAFT, SLOPE, DRIFT OR TIPPLE LOCATIONS

**Shaft, slope, drift, or tippie locations** Locations of all known former entry points to underground mines or the location of coal cleaning, tippie, and shipping equipment used by the mine's facility are listed. The location is described in terms of county, township and range (Twp-Rge), section, and location within the section by quarters. NE SW NW, for instance, would describe the location in the northeast quarter of the southwest quarter of the northwest quarter. When sections are irregular in size, the quarters remain the same size and are oriented (or "registered") from the southeast corner of the section. Approximate footage from the section lines (FEL = from east line, FNL = from north line, for example) is given when that information is known; this indicates a surveyed location and is not derived from maps. Entry points are also plotted on the map and coded for the type of entry or tippie. A mine opening may have had many purposes during the life of the mine. Old hoist shafts are often later used for air and escape shafts; this information is included in the directory when known. The tippie for underground mines was generally located near the main shaft or slope. At surface mines, coal was sometimes hauled to a central tippie several miles from the mine pit.

## GEOLOGY

**Seam(s) mined** The name of the coal seam(s) mined is listed, if known. If multiple seams were mined, they are all listed, although the mined-out area for each seam may be shown on separate maps. Figure 2 shows the stratigraphic section of the coal-bearing interval in Illinois, and the vertical relations among the coals.

**Depth** The depth to the top of the seam in the vicinity of the shaft is listed, if known. The depth is determined from notes made by geologists who visited the mine during its operation or from drill hole data in ISGS files. Depth generally varies little over the extent of a mine; however, reported depths for an individual mine may vary. Depth for surface-mined coals varies, and is usually represented as a range.



**Thickness** The approximate thickness of the mined seam is shown, if known. Thickness also comes from notes of geologists who visited the mine during its operation or from borehole data in ISGS files. Minimum, maximum, and average thicknesses are given when this information is available.

**Mining method** The principal mining method used at the mine (figs. 1A-H) is listed. See the mining methods section at the beginning of this directory for a discussion of this parameter.

**Geologic problems reported** Any known geologic problems, such as faults, water seepage, floor heaving, and unstable roof, encountered in the mine are reported. This information is from notes made by ISGS geologists who visited the mine, or from reports by mine inspectors published by the Illinois Department of Mines and Minerals, or from the source map(s). Geologic problems are not reported for active mines.

## PRODUCTION HISTORY

**Production history** Tons of coal produced from the mine by each mine owner are totaled. When the source map used for the mine outline is not a final mine map, the tonnage produced since the date of the map is identified. For mines that extend into adjacent quadrangles, the tonnage reported includes areas mined in adjacent quadrangles.

## SOURCE OF DATA

**Source map** This section lists information about the map(s) used to compile the mine outline and the locations of tipples and mine openings. In some cases more than one source map was used. For example, a map drawn before the mine closed may provide better information on original areas of the mine than a later map. When more than one map was used, the bibliography section explains what information was taken from each source.

**Date** The date of the most recent mine survey listed on the source map is reported.

**Original scale** The original scale of the source map is listed. Many maps are photo-reductions and are no longer at their original scale. The original scale gives some indication of the level of detail of the mine outline and the accuracy of the mine boundary relative to surface features. Generally, the larger the scale, the greater the accuracy and detail of the mine map. Mine outlines taken from source maps at scales smaller than 1:24,000 may be highly generalized and may well be inaccurately located with respect to surface features.

**Digitized scale** The scale of the digitized map is reported. The scale may be different from that of the original source map. In many cases the digitized map was made from a photo-reduction of the original source map, or the source map was not in a condition suitable for digitizing and the mine boundaries were transferred to another base map.

**Map type** Source maps are classified into five categories to indicate the probable completeness of the map. See discussion of source maps in the previous section.

**Annotated bibliography** Sources that provide information about the mine are listed, with the data taken from each source. Some commonly used sources are described below. Full bibliographic references are given for all other sources. Unless otherwise noted, all sources are available for public inspection at the ISGS.

**Coal Reports** Published since 1881, these reports contain tabular data on mine ownership, production, employment, and accidents. Some volumes include short descriptions made by mine inspectors of physical features and conditions in selected mines.

**Directory of Illinois Coal Mines** This source is a compilation of basic data about Illinois coal mines, originally gathered by ISGS staff in the early 1950s. Sources used for this directory are undocumented, but they are primarily Illinois Department of Mines and Minerals annual reports, ISGS mine notes, and coal company officials.

**ENR Document 85/01**, Guither, H. D., J. K. Hines, and R. A. Bauer, 1985 The Economic Effect of Underground Mining Upon Land Used for Illinois Agriculture: Illinois Department of Energy and Natural Resources Document 85/01, 185 p.

**Microfilm map** The U.S. Bureau of Mines maintains a microfilm archive of mine maps. A microfilm file for Illinois is available for public viewing at the ISGS.



*Mine notes* ISGS geologists have visited mines or contacted mine officials throughout the state since the early 1900s. Notes made during these visits range from brief descriptions of the mine location to long narratives (including sketches) of mining conditions and geology.

*Federal Land Bank of St. Louis, Preliminary Reports on Subsidence Investigations* Mining engineers working for the Federal Land Bank of St. Louis mapped areas of subsidence due to coal mining in the early 1930s. These reports often include county maps of mine properties with mined-out areas including shaft locations, as well as subsidence areas.

## **REFERENCES**

Bauer, R. A., B. A. Trent, and P. B. Dumontelle, 1993, Mine Subsidence in Illinois: Facts for the Homeowner Considering Insurance, Illinois State Geological Survey, Environmental Geology Note 144, 16p.

Guither, H. D., J. K. Hines, and R. A. Bauer, 1985, The Economic Effects of Underground Mining Upon Land Used for Illinois Agriculture, Illinois Department of Energy and Natural Resources Document 85/01, 185p.

Worthen, A. H., H. Engelmann, H. C. Freeman, and H. M. Bannister, 1868, Geology and Paleontology of Illinois, Volume III, State Journal Steam Press, Springfield, Illinois, 574p.



## PART II DIRECTORY OF MINES IN SCOTT COUNTY

### MINE SUMMARY SHEETS

A summary sheet on the geology and production history of each mine in Scott County is provided. These summary sheets are arranged numerically by mine index number. Consult Part I for a complete explanation of the data listed in the summary sheet.

#### Mine Index 316

#### William Kund, Kund Mine

Type: Underground    Total mined-out acreage shown: None; production indicates approximately 4 acres were mined.

### SHAFT, SLOPE, DRIFT or TIPPLE LOCATIONS

Type	County	Township-Range	Section	Quarters-Footage
Main drift	Scott	15N 13W	23	NE

### GEOLOGY

Seam(s) Mined	Depth (ft)	Thickness (ft)			Mining Method
		Min	Max	Avg	
Colchester	75-80	1.5	2.67	2.33	RP

Geologic Problems Reported: The roof was 4 feet of black fissile shale. A small fault or horseback was noted with 4 inches of displacement. The floor was 30 inches of soft gray clay-rich shale.

### PRODUCTION HISTORY

Company	Mine Name	Years	Production (tons)
William Kund	Kund	1901-1909	<u>7,638</u> 7,638

Last reported production: 1909

### SOURCES OF DATA

Source Map	Date	Original Scale	Digitized Scale	Map Type
Mine notes (Jon A. Udden)	11-18-1909	1:62500	1:62500	Secondary source

#### Annotated Bibliography (data source, brief description of information)

Coal Reports - Production, ownership, years of operation, depth.

Directory of Illinois Coal Mines (Scott County) - Mine names, mine index, ownership, years of operation.

Mine notes (Scott County) - Mine type, drift location, seam, thickness, mining method, geologic problems.



**Mine Index 2193**  
**Charles Poole, Poole Mine**

Type: Underground    Total mined-out acreage shown: None; production indicates approximately 1 acre was mined

**SHAFT, SLOPE, DRIFT or TIPPLE LOCATIONS**

Type	County	Township-Range	Section	Quarters-Footage
Main shaft	Scott	13N 12W	14	

**GEOLOGY**

Seam(s) Mined	Depth (ft)	Thickness (ft)			Mining Method
		Min	Max	Avg	
Colchester	30-40			2.5	RP

Geologic Problems Reported:

**PRODUCTION HISTORY**

Company	Mine Name	Years	Production (tons)
Charles Poole	Poole	1882-1890	<u>2,077</u> 2,077

Last reported production: 1890

**SOURCES OF DATA**

Source Map	Date	Original Scale	Digitized Scale	Map Type
Coal Report	1885	(text only)	1:24000 *	Secondary source

\* The mine location was plotted on a 1:24000 USGS topographic map from the mine location description and digitized.

Annotated Bibliography (data source, brief description of information)

Coal Reports - Production, ownership, years of operation, mine type, location, seam, depth, thickness, mining method.

Directory of Illinois Coal Mines (Scott County) - Mine names, mine index, ownership, years of operation.



**Mine Index 2300**  
**William Standards, Standards Mine**

Type: Underground    Total mined-out acreage shown: None; production indicates less than 1 acre was mined.

**SHAFT, SLOPE, DRIFT or TIPPLE LOCATIONS**

Type	County	Township-Range	Section	Quarters-Footage
Main shaft	Scott	15N 12W	16	

**GEOLOGY**

Seam(s) Mined	Depth (ft)	Thickness (ft)			Mining Method
		Min	Max	Avg	
Colchester				2.5	

Geologic Problems Reported:

**PRODUCTION HISTORY**

Company	Mine Name	Years	Production (tons)
William Standards	Standards	1882-1883	<u>100</u> 100

Last reported production: 1883

**SOURCES OF DATA**

Source Map	Date	Original Scale	Digitized Scale	Map Type
Coal Report	1885	(text only)	1:24000 *	Secondary source

\* The mine location was plotted on a 1:24000 USGS topographic map from the mine location description and digitized.

Annotated Bibliography (data source, brief description of information)

Coal Reports - Production, ownership, years of operation, mine type, location, seam, thickness.

Directory of Illinois Coal Mines (Scott County) - Mine names, mine index, ownership, years of operation.



**Mine Index 2815**  
**Louisa Jones, Jones Mine**

Type: Underground    Total mined-out acreage shown: None; production indicates less than 1 acre was mined.

**SHAFT, SLOPE, DRIFT or TIPPLe LOCATIONS**

Type	County	Township-Range	Section	Quarters-Footage
Main drift	Scott	15N 13W	23	

**GEOLOGY**

Seam(s) Mined	Depth (ft)	Thickness (ft)			Mining Method
		Min	Max	Avg	
Colchester	12-50			2.5	

Geologic Problems Reported:

**PRODUCTION HISTORY**

Company	Mine Name	Years	Production (tons)
Robert C. Jones	Jones	pre1881-1882	150
Louisa Jones	Jones	1882-1883	<u>40</u>
			190

Last reported production: 1883

**SOURCES OF DATA**

Source Map	Date	Original Scale	Digitized Scale	Map Type
Coal Report	1885	(text only)	1:24000 *	Secondary source

\* The mine location was plotted on a 1:24000 USGS topographic map from the mine location description and digitized.

Annotated Bibliography (data source, brief description of information)

Coal Reports - Production, ownership, years of operation, mine type, location, seam, depth, thickness.  
 Directory of Illinois Coal Mines (Scott County) - Mine names, mine index, ownership, years of operation.



**Mine Index 3439**  
**Earl & Joe Gray, Gray Mine**

Type: Underground    Total mined-out acreage shown: None; production indicates approximately 2 acres were mined.

**SHAFT, SLOPE, DRIFT or TIPPLE LOCATIONS**

Type	County	Township-Range	Section	Quarters-Footage
Main slope	Scott	13N 12W	13	SE SE NW

**GEOLOGY**

Seam(s) Mined	Depth (ft)	Thickness (ft)			Mining Method
		Min	Max	Avg	
Colchester	10			2.33	Underground

Geologic Problems Reported:

**PRODUCTION HISTORY**

Company	Mine Name	Years	Production (tons)
James A. Jones	Jones	1934-1937	2,209
Earl Gray	Gray	1938-1939	1,566
Earl & Joe Gray	Gray	1940-1940	93
			3,868

Last reported production: 1940

**SOURCES OF DATA**

Source Map	Date	Original Scale	Digitized Scale	Map Type
Mine notes	Undated	1:62500	1:62500	Secondary source

Annotated Bibliography (data source, brief description of information)

Coal Reports - Production, ownership, years of operation.

Directory of Illinois Coal Mines (Scott County) - Mine names, mine index, ownership, years of operation.

Mine notes (Scott County) - Mine type, slope location, seam, depth, thickness.



**Mine Index 3440**  
**Josh Hepworth, Hepworth Mine**

Type: Underground    Total mined-out acreage shown: None; production indicates less than 1 acre was mined.

**SHAFT, SLOPE, DRIFT or TIPPLE LOCATIONS**

Type	County	Township-Range	Section	Quarters-Footage
Main slope	Scott	13N 12W	15	NE SE SE

**GEOLOGY**

Seam(s) Mined	Depth (ft)	Thickness (ft)			Mining Method
		Min	Max	Avg	
Colchester	18			2.5	Underground

Geologic Problems Reported:

**PRODUCTION HISTORY**

Company	Mine Name	Years	Production (tons)
Josh Hepworth	Hepworth	1934-1942	<u>1,604</u> 1,604

Last reported production: 1942

**SOURCES OF DATA**

Source Map	Date	Original Scale	Digitized Scale	Map Type
Mine notes	Undated	1:62500	1:62500	Secondary source

Annotated Bibliography (data source, brief description of information)

Coal Reports - Production, ownership, years of operation.

Directory of Illinois Coal Mines (Scott County) - Mine names, mine index, ownership, years of operation.

Mine notes (Scott County) - Mine type, slope location, depth, thickness.



**Mine Index 3441****Earl George & Ranson, Alsey Mine**

Type: Surface    Total mined-out acreage shown: None; production indicates approximately 2 acres were mined.

**SHAFT, SLOPE, DRIFT or TIPPLE LOCATIONS**

Type	County	Township-Range	Section	Quarters-Footage
Pit	Scott	13N 12W	15	NE SW

**GEOLOGY**

Seam(s) Mined	Depth (ft)	Thickness (ft)			Mining Method
		Min	Max	Avg	
Colchester	8-20			2.5	Surface

Geologic Problems Reported:

**PRODUCTION HISTORY**

Company	Mine Name	Years	Production (tons)
W. G. Watt	Alsey	1939-1940	3,679
George & Franklin	Alsey	1940-1940	105
Earl George & Ranson	Alsey	1941-1941	6
			<u>3,790</u>

Last reported production: 1941

**SOURCES OF DATA**

Source Map	Date	Original Scale	Digitized Scale	Map Type
Mine notes	Undated	1:62500	1:62500	Secondary source

Annotated Bibliography (data source, brief description of information)

Coal Reports - Production, ownership, years of operation.

Directory of Illinois Coal Mines (Scott County) - Mine names, mine index, ownership, years of operation.

Mine notes (Scott County) - Mine type, mine location, depth, thickness.



**Mine Index 3442****McLaughlin Mining Company, Alsey Brick & Tile Mine**

Type: Underground    Total mined-out acreage shown: None; production indicates approximately 3 acres were mined.

**SHAFT, SLOPE, DRIFT or TIPPLE LOCATIONS**

Type	County	Township-Range	Section	Quarters-Footage
Main shaft	Scott	13N 12W	22	SW SW NW

**GEOLOGY**

Seam(s) Mined	Depth (ft)	Thickness (ft)			Mining Method
		Min	Max	Avg	
Colchester	70-100			2.33	Underground

Geologic Problems Reported:

**PRODUCTION HISTORY**

Company	Mine Name	Years	Production (tons)
McLaughlin Mining Company *	Alsey Brick & Tile	1906-1912	<u>5,694</u> 5,694

\* Alsey Brick & Tile Company was built in 1906, and made drain tile and building brick for the first six to eight years. The plant was acquired by McLaughlin in 1910, and around 1912 began producing firebrick (with stiff mud and dry press processes) that was used in steel works, smelters, glassworks and oil refineries. According to the mine notes, 3 to 8 feet of clay was mined below the coal and limestone via a shaft just northeast of the refractory.

Last reported production: 1912

**SOURCES OF DATA**

Source Map	Date	Original Scale	Digitized Scale	Map Type
ISGS field notes (A. H. Bell)	1927 & 1928	1:62500	1:62500	Secondary source

Annotated Bibliography (data source, brief description of information)

Directory of Illinois Coal Mines (Scott County) - Mine names, mine index, ownership, years of operation.

Mine notes (Scott County) - Mine type, shaft location, seam, depth, thickness.

ISGS field notes (Scott County) - Mine type, shaft location, depth, mine information.



**Mine Index 3443****Coal Hollow Coal Company, Coal Hollow Mine**

Type: Underground    Total mined-out acreage shown: None; production indicates less than 1 acre was mined.

**SHAFT, SLOPE, DRIFT or TIPPLE LOCATIONS**

Type	County	Township-Range	Section	Quarters-Footage
Main slope	Scott	13N 12W	23	NE NE NE

**GEOLOGY**

Seam(s) Mined	Depth (ft)	Thickness (ft)			Mining Method
		Min	Max	Avg	
Colchester	16			2.67	Underground

Geologic Problems Reported:

**PRODUCTION HISTORY**

Company	Mine Name	Years	Production (tons)
Coal Hollow Coal Company	Coal Hollow	1939-1940	<u>57</u> 57

Last reported production: 1940

**SOURCES OF DATA**

Source Map	Date	Original Scale	Digitized Scale	Map Type
Mine notes	Undated	1:62500	1:62500	Secondary source

Annotated Bibliography (data source, brief description of information)

Coal Reports - Production, ownership, years of operation.

Directory of Illinois Coal Mines (Scott County) - Mine names, mine index, ownership, years of operation.

Mine notes (Scott County) - Mine type, slope location, seam, depth, thickness.



**Mine Index 3444****Black Hawk Coal Company, Black Hawk Mine**

Type: Underground    Total mined-out acreage shown: None; production indicates approximately 4 acres were mined.

**SHAFT, SLOPE, DRIFT or TIPPLE LOCATIONS**

Type	County	Township-Range	Section	Quarters-Footage
Main shaft	Scott	14N 12W	17	NE NE SW

**GEOLOGY**

Seam(s) Mined	Depth (ft)	Thickness (ft)			Mining Method
		Min	Max	Avg	
Colchester	32-35			2.5	Underground

Geologic Problems Reported:

**PRODUCTION HISTORY**

Company	Mine Name	Years	Production (tons)
Hoskings Brothers Coal Company	Hoskings	1934-1941	7,910
John Whitehead	Black Hawk	1941-1941	218
Black Hawk Coal Company	Black Hawk	1942-1942	110
			8,048

Last reported production: 1942

**SOURCES OF DATA**

Source Map	Date	Original Scale	Digitized Scale	Map Type
ISGS field notes (E. T. Benson)	circa 1935	1:62500	1:62500	Secondary source

Annotated Bibliography (data source, brief description of information)

Coal Reports - Production, ownership, years of operation.

Directory of Illinois Coal Mines (Scott County) - Mine names, mine index, ownership, years of operation.

Mine notes (Scott County) - Mine type, shaft location, depth, thickness.

ISGS field notes (Scott County) - Mine location, depth, thickness.



**Mine Index 3445**  
**William H. Bates, Winchester Mine**

Type: Underground    Total mined-out acreage shown: 235    Production indicates approximately 190 acres were mined.

**SHAFT, SLOPE, DRIFT or TIPPLE LOCATIONS**

Type	County	Township-Range	Section	Quarters-Footage
Main shaft	Scott	14N 12W	21	NW *

\* According to the 1885 Coal Report (p. 546-547), the Bates Mine was one mile north of Winchester on the Chicago, Burlington, & Quincy RR; and the entries extended 1,800 feet. A general area of mining was added to the mine to depict the possible extent of the mine.

**GEOLOGY**

Seam(s) Mined	Depth (ft)	Thickness (ft)			Mining Method
		Min	Max	Avg	
Colchester	90-100			2.0-2.5	RP **

\*\* The 1908 Coal Report listed the mining method as LW.

Geologic Problems Reported:

**PRODUCTION HISTORY**

Company	Mine Name	Years	Production (tons)
William H. Bates ***	Winchester	pre1881-1908	<u>376,547</u> † 376,547

\*\*\* Also known as Winchester Coal Mining Company

† Years of operation prior to 1881 are not known. The 1882 Coal Report indicated 16 acres were mined.

Last reported production: 1908

**SOURCES OF DATA**

Source Map	Date	Original Scale	Digitized Scale	Map Type
Coal Report	1885	(text only)	1:24000 ††	Secondary source

†† The mine location was plotted on a 1:24000 USGS topographic map from the mine location description and digitized.

Annotated Bibliography (data source, brief description of information)

Coal Reports - Production, ownership, years of operation, mine location, mine type, seam, depth, thickness, mining method.

Directory of Illinois Coal Mines (Scott County) - Mine names, mine index, ownership, years of operation.



**Mine Index 3446**  
**Ed Berry, Berry Mine**

Type: Underground    Total mined-out acreage shown: None; production indicates approximately 2 acres were mined.

**SHAFT, SLOPE, DRIFT or TIPPLE LOCATIONS**

Type	County	Township-Range	Section	Quarters-Footage
Main drift	Scott	15N 13W	24	SE SE SW

**GEOLOGY**

Seam(s) Mined	Depth (ft)	Thickness (ft)			Mining Method
		Min	Max	Avg	
Colchester	25-60			2.5	RP

Geologic Problems Reported:

**PRODUCTION HISTORY**

Company	Mine Name	Years	Production (tons)
Ed Berry	Berry	1899-1903	480
Brockett & Berry	Brockett & Berry	1903-1904	810
Ed Berry	Berry	1904-1909	<u>2,720</u>
			4,010

Last reported production: 1909

**SOURCES OF DATA**

Source Map	Date	Original Scale	Digitized Scale	Map Type
Mine notes	Undated	1:96000	1:96000	Secondary source

Annotated Bibliography (data source, brief description of information)

Coal Reports - Production, ownership, years of operation, mine type, seam, depth, thickness, mining method.  
 Directory of Illinois Coal Mines (Scott County) - Mine names, mine index, ownership, years of operation.  
 Mine notes (Scott County) - Drift location.



**Mine Index 3447**  
**Ed Raft, Raft Mine**

Type: Underground    Total mined-out acreage shown: None; production indicates approximately 2 acres were mined.

**SHAFT, SLOPE, DRIFT or TIPPLE LOCATIONS**

Type	County	Township-Range	Section	Quarters-Footage
Main drift	Scott	15N 13W	25	SW NW NW

**GEOLOGY**

Seam(s) Mined	Depth (ft)	Thickness (ft)			Mining Method
		Min	Max	Avg	
Colchester	28-55	2.2	2.8	2.33-2.5	RP

Geologic Problems Reported: The immediate roof was 16 inches of soapstone. Pyrite was present as lenses and fracture facings.

**PRODUCTION HISTORY**

Company	Mine Name	Years	Production (tons)
Ed Raft *	Raft	1899-1911 **	4,145 4,145

\* A mine was shown in the mine notes at this location, but named Peak's Mine. As the location encompasses 10 acres, it is possible, even likely, that two different mines worked the same location. However, the mine notes are not dated, and no operator named Peak was listed in the Coal Reports, so the data from both operators are concatenated here.

\*\* Idle 1902

Last reported production: 1911

**SOURCES OF DATA**

Source Map	Date	Original Scale	Digitized Scale	Map Type
ISGS field notes (H. E. Culver)	5-15-1922	1:62500	1:62500	Secondary source

Annotated Bibliography (data source, brief description of information)

Coal Reports - Production, ownership, years of operation, mine type, depth, thickness, mining method.  
 Directory of Illinois Coal Mines (Scott County) - Mine names, mine index, ownership, years of operation.  
 Mine notes (Scott County) - Mine type, drift location, thickness, geologic problems.  
 ISGS field notes (Scott County) - Mine location.



**Mine Index 3448**  
**R. T. Brown, Brown Mine**

Type: Underground    Total mined-out acreage shown: None; production indicates less than 1 acre was mined.

**SHAFT, SLOPE, DRIFT or TIPPLE LOCATIONS**

Type	County	Township-Range	Section	Quarters-Footage
Main drift	Scott	15N 13W	25	NE NW NE

**GEOLOGY**

Seam(s) Mined	Depth (ft)	Thickness (ft)			Mining Method
		Min	Max	Avg	
Colchester	60			2.5	RP

Geologic Problems Reported:

**PRODUCTION HISTORY**

Company	Mine Name	Years	Production (tons)
R. T. Brown	Brown	1909-1910	<u>361</u> 361

Last reported production: 1910

**SOURCES OF DATA**

Source Map	Date	Original Scale	Digitized Scale	Map Type
Mine notes	Undated	1:96000	1:96000	Secondary source

Annotated Bibliography (data source, brief description of information)

Coal Reports - Production, ownership, years of operation, mine type, depth, thickness, mining method.  
Directory of Illinois Coal Mines (Scott County) - Mine names, mine index, ownership, years of operation.  
Mine notes (Scott County) - Drift location.



**Mine Index 3946**  
**John Brady, Brady Mine**

Type: Underground    Total mined-out acreage shown: None; production indicates approximately 1 acre was mined.

**SHAFT, SLOPE, DRIFT or TIPPLE LOCATIONS**

Type	County	Township-Range	Section	Quarters-Footage
Main drift	Scott	13N 12W	15	

**GEOLOGY**

Seam(s) Mined	Depth (ft)	Thickness (ft)			Mining Method
		Min	Max	Avg	
Colchester	47-100			2.5	RP

Geologic Problems Reported:

**PRODUCTION HISTORY**

Company	Mine Name	Years	Production (tons)
John Brady	Brady	1881-1890 *	<u>2,046</u> 2,046

\* Idle 1884 to 1889

Last reported production: 1890

**SOURCES OF DATA**

Source Map	Date	Original Scale	Digitized Scale	Map Type
Coal Report	1885	(text only)	1:24000 *	Secondary source

\* The mine location was plotted on a 1:24000 USGS topographic map from the mine location description and digitized.

Annotated Bibliography (data source, brief description of information)

Coal Reports - Production, ownership, years of operation, mine type, location, seam, depth, thickness, mining method.

Directory of Illinois Coal Mines (Scott County) - Mine names, mine index, ownership, years of operation.



**Mine Index 4978**  
**Charles Berry, Berry Mine**

Type: Underground    Total mined-out acreage shown: None; production indicates less than 1 acre was mined.

**SHAFT, SLOPE, DRIFT or TIPPLE LOCATIONS**

Type	County	Township-Range	Section	Quarters-Footage
Main drift	Scott	15N 13W	25	

**GEOLOGY**

Seam(s) Mined	Depth (ft)	Thickness (ft)			Mining Method
		Min	Max	Avg	
Colchester	6			2.5	

Geologic Problems Reported:

**PRODUCTION HISTORY**

Company	Mine Name	Years	Production (tons)
Charles Berry	Berry	1882-1883	<u>100</u> 100

Last reported production: 1883

**SOURCES OF DATA**

Source Map	Date	Original Scale	Digitized Scale	Map Type
Coal Report	1885	(text only)	1:24000 *	Secondary source

\* The mine location was plotted on a 1:24000 USGS topographic map from the mine location description and digitized.

Annotated Bibliography (data source, brief description of information)

Coal Reports - Production, ownership, years of operation, mine type, location, seam, depth, thickness.  
 Directory of Illinois Coal Mines (Scott County) - Mine names, mine index, ownership, years of operation.



**Mine Index 5187**  
**John Stewart, Stewart Mine**

Type: Underground    Total mined-out acreage shown: None; production indicates approximately 1 acre was mined.

**SHAFT, SLOPE, DRIFT or TIPPLE LOCATIONS**

Type	County	Township-Range	Section	Quarters-Footage
Main slope or drift	Scott	13N 12W	13	

**GEOLOGY**

Seam(s) Mined	Depth (ft)	Thickness (ft)			Mining Method
		Min	Max	Avg	
Colchester	10-35			2.5-2.67	RP

Geologic Problems Reported:

**PRODUCTION HISTORY**

Company	Mine Name	Years	Production (tons)
John Stewart	Stewart	1881-1887	<u>1,482</u> 1,482

Last reported production: 1887

**SOURCES OF DATA**

Source Map	Date	Original Scale	Digitized Scale	Map Type
Coal Report	1885	(text only)	1:24000 *	Secondary source

\* The mine location was plotted on a 1:24000 USGS topographic map from the mine location description and digitized.

Annotated Bibliography (data source, brief description of information)

Coal Reports - Production, ownership, years of operation, mine type, seam, depth, thickness, mining method.  
 Directory of Illinois Coal Mines (Scott County) - Mine names, mine index, ownership, years of operation.



**Mine Index 5294**  
**David Alcorn, Alcorn Mine**

Type: Underground    Total mined-out acreage shown: None; production indicates less than 1 acre was mined.

**SHAFT, SLOPE, DRIFT or TIPPLE LOCATIONS**

Type	County	Township-Range	Section	Quarters-Footage
Main shaft	Scott	14N 12W	22	

**GEOLOGY**

Seam(s) Mined	Depth (ft)	Thickness (ft)			Mining Method
		Min	Max	Avg	
Colchester	20			2.5	RP

Geologic Problems Reported:

**PRODUCTION HISTORY**

Company	Mine Name	Years	Production (tons)
David Alcorn	Alcorn	1882-1884	<u>470</u> 470

Last reported production: 1884

**SOURCES OF DATA**

Source Map	Date	Original Scale	Digitized Scale	Map Type
Coal Report	1885	(text only)	1:24000 *	Secondary source

\* The mine location was plotted on a 1:24000 USGS topographic map from the mine location description and digitized.

Annotated Bibliography (data source, brief description of information)

Coal Reports - Production, ownership, years of operation, mine type, location, seam, depth, thickness, mining method.

Directory of Illinois Coal Mines (Scott County) - Mine names, mine index, ownership, years of operation.



**Mine Index 6619**  
**Hugh McGuire, McGuire Mine**

Type: Underground    Total mined-out acreage shown: None; production indicates approximately 2 acres were mined.

**SHAFT, SLOPE, DRIFT or TIPPLE LOCATIONS**

Type	County	Township-Range	Section	Quarters-Footage
Main drift	Scott	13N 12W	14	SE SE NE

**GEOLOGY**

Seam(s) Mined	Depth (ft)	Thickness (ft)			Mining Method
		Min	Max	Avg	
Colchester	60			2.5	RP

Geologic Problems Reported:

**PRODUCTION HISTORY**

Company	Mine Name	Years	Production (tons)
Chester Robinson	Robinson	1882-1883	700
Robinson & McGuire	Robinson & McGuire	1883-1886	1,852
Hugh McGuire	McGuire	1886-1892	<u>2,830</u>
			5,382

Last reported production: 1892

**SOURCES OF DATA**

Source Map	Date	Original Scale	Digitized Scale	Map Type
ISGS field notes (A. H. Bell)	7-13-1928	1:62500	1:62500	Secondary source

Annotated Bibliography (data source, brief description of information)

Coal Reports - Production, ownership, years of operation, mine type, location, seam, depth, thickness, mining method.

Directory of Illinois Coal Mines (Scott County) - Mine names, mine index, ownership, years of operation.

ISGS field notes (Scott County) - Mine location, mine name.



**Mine Index 6662****Neelyville Coal Mining Company, Neelyville Mine**

Type: Underground    Total mined-out acreage shown: None; production indicates approximately 3 acres were mined.

**SHAFT, SLOPE, DRIFT or TIPPLe LOCATIONS**

Type	County	Township-Range	Section	Quarters-Footage
Main shaft	Morgan	15N 12W	7	N ½ SE SW

**GEOLOGY**

Seam(s) Mined	Depth (ft)	Thickness (ft)			Mining Method
		Min	Max	Avg	
Neelyville	90-96			3.5-4.0	

Geologic Problems Reported:

**PRODUCTION HISTORY**

Company	Mine Name	Years	Production (tons)
Neelyville Coal Mining Company	Neelyville (Scott County) *	1881-1883	10,500
Neelyville Coal Mining Company	Neelyville (Morgan County) *	1883-1884	<u>2,500</u>
			10,500

\* Most of the coal was mined in Scott County, but hoisted in Morgan County. The shaft was within the corporate limits of Neelyville on the Wabash, St. Louis & Pacific Railroad.

Last reported production: 1884

**SOURCES OF DATA**

Source Map	Date	Original Scale	Digitized Scale	Map Type
ISGS field notes (A. H. Bell)	10-10-1927	1:48000	1:48000	Secondary source

Annotated Bibliography (data source, brief description of information)

Coal Reports - Production, ownership, years of operation, mine location, mine type, seam, depth, thickness.

Directory of Illinois Coal Mines (Scott County) - Mine names, mine index, ownership, years of operation.

ISGS field notes (Morgan County) - Mine location.



**Mine Index 6688****M. Six, Six Mine**

Type: Underground    Total mined-out acreage shown: None; production indicates less than 1 acre was mined.

**SHAFT, SLOPE, DRIFT or TIPPLE LOCATIONS**

Type	County	Township-Range	Section	Quarters-Footage
Main drift	Scott	15N 13W	25	

**GEOLOGY**

Seam(s) Mined	Depth (ft)	Thickness (ft)			Mining Method
		Min	Max	Avg	
Colchester	25-32			2.5	RP

Geologic Problems Reported:

**PRODUCTION HISTORY**

Company	Mine Name	Years	Production (tons)
Manuel Six	Six	1899-1902	400
Six & Peake	Six & Peake	1902-1903	560
M. Six	Six	1903-1904	210
			1,170

Last reported production: 1904

**SOURCES OF DATA**

Source Map	Date	Original Scale	Digitized Scale	Map Type
Coal Report	1885	(text only)	1:24000 *	Secondary source

\* The mine location was plotted on a 1:24000 USGS topographic map from the mine location description and digitized.

Annotated Bibliography (data source, brief description of information)

Coal Reports - Production, ownership, years of operation, mine location, mine type, depth, thickness, mining method.

Directory of Illinois Coal Mines (Scott County) - Mine names, mine index, ownership, years of operation, seam.



**Mine Index 6690**  
**George C. Marquette, Marquette Mine**

Type: Underground    Total mined-out acreage shown: None; production indicates approximately 1 acre was mined.

**SHAFT, SLOPE, DRIFT or TIPPLE LOCATIONS**

Type	County	Township-Range	Section	Quarters-Footage
Main shaft	Scott	13N 12W	15	

**GEOLOGY**

Seam(s) Mined	Depth (ft)	Thickness (ft)			Mining Method
		Min	Max	Avg	
Colchester	12-30			2.5-2.67	RP

Geologic Problems Reported:

**PRODUCTION HISTORY**

Company	Mine Name	Years	Production (tons)
George C. Marquette	Marquette	1881-1885	<u>2,682</u> 2,682

Last reported production: 1885

**SOURCES OF DATA**

Source Map	Date	Original Scale	Digitized Scale	Map Type
Coal Report	1885	(text only)	1:24000 *	Secondary source

\* The mine location was plotted on a 1:24000 USGS topographic map from the mine location description and digitized.

Annotated Bibliography (data source, brief description of information)

Coal Reports - Production, ownership, years of operation, mine type, location, seam, depth, thickness, mining method.

Directory of Illinois Coal Mines (Scott County) - Mine names, mine index, ownership, years of operation.



**Mine Index 6694**  
**J. F. Morris, Morris Mine**

Type: Underground    Total mined-out acreage shown: None; production indicates less than 1 acre was mined.

**SHAFT, SLOPE, DRIFT or TIPPLE LOCATIONS**

Type	County	Township-Range	Section	Quarters-Footage
Main drift	Scott	15N 13W	25	

**GEOLOGY**

Seam(s) Mined	Depth (ft)	Thickness (ft)			Mining Method
		Min	Max	Avg	
Colchester	4-6			2.5	RP

Geologic Problems Reported:

**PRODUCTION HISTORY**

Company	Mine Name	Years	Production (tons)
J. F. Morris	Morris	1881-1883	<u>1,070</u> 1,070

Last reported production: 1883

**SOURCES OF DATA**

Source Map	Date	Original Scale	Digitized Scale	Map Type
Coal Report	1885	(text only)	1:24000 *	Secondary source

\* The mine location was plotted on a 1:24000 USGS topographic map from the mine location description and digitized.

Annotated Bibliography (data source, brief description of information)

Coal Reports - Production, ownership, years of operation, mine type, seam, depth, thickness, mining method.  
 Directory of Illinois Coal Mines (Scott County) - Mine names, mine index, ownership, years of operation.



**Mine Index 6695**  
**Elihu Armatage, Armatage Mine**

Type: Underground    Total mined-out acreage shown: None; production indicates less than 1 acre was mined.

**SHAFT, SLOPE, DRIFT or TIPPLE LOCATIONS**

Type	County	Township-Range	Section	Quarters-Footage
Main drift	Scott	15N 13W	24	

**GEOLOGY**

Seam(s) Mined	Depth (ft)	Thickness (ft)			Mining Method
		Min	Max	Avg	
Colchester	6-20			2.0-2.67	Underground

Geologic Problems Reported:

**PRODUCTION HISTORY**

Company	Mine Name	Years	Production (tons)
Elihu Armatage	Armatage	1881-1883	184
			184

Last reported production:

**SOURCES OF DATA**

Source Map	Date	Original Scale	Digitized Scale	Map Type
Coal Report	1885	(text only)	1:24000 *	Secondary source

\* The mine location was plotted on a 1:24000 USGS topographic map from the mine location description and digitized.

Annotated Bibliography (data source, brief description of information)

Coal Reports - Production, ownership, years of operation, mine location, mine type, thickness, depth.  
 Directory of Illinois Coal Mines (Scott County) - Mine names, mine index, ownership, years of operation.  
 Mine notes (Scott County) - Mine type, shaft location, seam, depth, thickness.



**Mine Index 6696**  
**John McGuire, McGuire Mine**

Type: Underground    Total mined-out acreage shown: None; production indicates approximately 2 acres were mined.

**SHAFT, SLOPE, DRIFT or TIPPLE LOCATIONS**

Type	County	Township-Range	Section	Quarters-Footage
Main drift	Scott	13N 12W	14	NE NW SW

**GEOLOGY**

Seam(s) Mined	Depth (ft)	Thickness (ft)			Mining Method
		Min	Max	Avg	
Colchester	17			2.0-2.5	

Geologic Problems Reported:

**PRODUCTION HISTORY**

Company	Mine Name	Years	Production (tons)
John McGuire	McGuire	1922-1927	2,514
McGuire & Nash	McGuire & Nash	1928-1928	825
			3,339

Last reported production: 1928

**SOURCES OF DATA**

Source Map	Date	Original Scale	Digitized Scale	Map Type
ISGS field notes (A. H. Bell)	9-10-1928	1:62500	1:62500	Secondary source

Annotated Bibliography (data source, brief description of information)

Coal Reports - Production, ownership, years of operation, mine type, depth, thickness, mining method.  
 Directory of Illinois Coal Mines (Scott County) - Mine names, mine index, ownership, years of operation, seam.  
 ISGS field notes (Scott County) - Drift location, seam, depth, thickness.



**Mine Index 6722****Chance & Williams, Winchester Mine**

Type: Underground    Total mined-out acreage shown: None; production indicates approximately 4 acres were mined.

**SHAFT, SLOPE, DRIFT or TIPPLE LOCATIONS**

Type	County	Township-Range	Section	Quarters-Footage
Main shaft	Scott	14N 12W	16	SE SE SW
Air shaft	Scott	14N 12W	16	SE SE SW

**GEOLOGY**

Seam(s) Mined	Depth (ft)	Thickness (ft)			Mining Method
		Min	Max	Avg	
Colchester	87			2.67	

Geologic Problems Reported: The roof was 4 ft of black shale overlain by 10 ft of dark gray shale and 10 ft of light gray shale. Pyrite is present as lenses and nodules that are difficult to separate from the coal.

**PRODUCTION HISTORY**

Company	Mine Name	Years	Production (tons)
Winchester Coal Company	Winchester	1922-1926	9,643
Chance & Williams	Winchester	1927-1927	296
			9,939

Last reported production: 1927

**SOURCES OF DATA**

Source Map	Date	Original Scale	Digitized Scale	Map Type
ISGS field notes (John S. Ivy)	10-10-1922	1:62500	1:62500	Secondary source

Annotated Bibliography (data source, brief description of information)

Coal Reports - Production, ownership, years of operation.

Directory of Illinois Coal Mines (Scott County) - Mine names, mine index, ownership, years of operation.

ISGS field notes (Scott County) - Mine type, shaft location, seam, depth, thickness.



**Mine Index 6723**  
**David D. Orchard, Orchard Mine**

Type: Underground    Total mined-out acreage shown: None; production indicates approximately 2 acres were mined.

**SHAFT, SLOPE, DRIFT or TIPPLE LOCATIONS**

Type	County	Township-Range	Section	Quarters-Footage
Main shaft (4 ft x 4 ft)	Scott	15N 12W	30	SE NE NE

**GEOLOGY**

Seam(s) Mined	Depth (ft)	Thickness (ft)			Mining Method
		Min	Max	Avg	
Colchester	25-45			2.17-2.5	RP

Geologic Problems Reported:

**PRODUCTION HISTORY**

Company	Mine Name	Years	Production (tons)
David D. Orchard	Orchard	1914-1919 *	1,254
Dug S. Orchard	Orchard	1919-1921	1,106
S. D. Orchard	Orchard	1922-1924 **	480
D. D. Orchard	Orchard	1924-1925	1,070
David D. Orchard	Orchard	1928-1929 ***	488
			4,398

\* Idle 1918

\*\* Idle 1924

\*\*\* Idle 1926 & 1927

Last reported production: 1929

**SOURCES OF DATA**

Source Map	Date	Original Scale	Digitized Scale	Map Type
ISGS field notes (A. H. Bell)	9-24-1928	1:62500	1:62500	Secondary source

Annotated Bibliography (data source, brief description of information)

Coal Reports - Production, ownership, years of operation, seam, depth, thickness, mining method.

Directory of Illinois Coal Mines (Scott County) - Mine names, mine index, ownership, years of operation.

ISGS field notes (Scott County) - Mine location, mine type, shaft size.



**Mine Index 6725**  
**Charles Taylor, Taylor Mine**

Type: Underground    Total mined-out acreage shown: None; production indicates approximately 2 acres were mined.

**SHAFT, SLOPE, DRIFT or TIPPLe LOCATIONS**

Type	County	Township-Range	Section	Quarters-Footage
Drift	Scott	15N 12W	26	NE SE NE

**GEOLOGY**

Seam(s) Mined	Depth (ft)	Thickness (ft)			Mining Method
		Min	Max	Avg	
Colchester	40-90			2.5	RP

Geologic Problems Reported:

**PRODUCTION HISTORY**

Company	Mine Name	Years	Production (tons)
Charles Taylor	Taylor	1914-1928	<u>4,930</u> 4,930

Last reported production: 1928

**SOURCES OF DATA**

Source Map	Date	Original Scale	Digitized Scale	Map Type
ISGS field notes (A. H. Bell)	9-13-1927	1:62500	1:62500	Secondary source

Annotated Bibliography (data source, brief description of information)

Coal Reports - Production, ownership, years of operation, mine type, seam, depth, thickness, mining method.  
 Directory of Illinois Coal Mines (Scott County) - Mine names, mine index, ownership, years of operation, seam.  
 ISGS field notes (Scott County) - Drift location.



**Mine Index 6734**  
**George E. Berry, Berry Mine**

Type: Underground    Total mined-out acreage shown: None; production indicates approximately 1 acre was mined.

**SHAFT, SLOPE, DRIFT or TIPPLE LOCATIONS**

Type	County	Township-Range	Section	Quarters-Footage
Main shaft	Scott	15N 12W	30	SE NE NE

**GEOLOGY**

Seam(s) Mined	Depth (ft)	Thickness (ft)			Mining Method
		Min	Max	Avg	
Colchester	20			2.5	Underground

Geologic Problems Reported:

**PRODUCTION HISTORY**

Company	Mine Name	Years	Production (tons)
George E. Berry	Berry	1934-1936	<u>1,876</u> 1,876

Last reported production: 1936

**SOURCES OF DATA**

Source Map	Date	Original Scale	Digitized Scale	Map Type
ISGS field notes (E. T. Benson)	circa 1935	1:62500	1:62500	Secondary source

Annotated Bibliography (data source, brief description of information)

Coal Reports - Production, ownership, years of operation.  
 Directory of Illinois Coal Mines (Scott County) - Mine names, mine index, ownership, years of operation, seam.  
 Mine notes (Scott County) - Mine type, shaft location, depth, thickness.  
 ISGS field notes (Scott County) - Mine type, shaft location, depth, thickness.



## OTHER MINES SHOWN IN SCOTT COUNTY

Mine Index 6721 NE SW SW 14-T13N-R12W, shaft source: ISGS field notes (K. W. Stott, 7-28-1928)

Mine Index 7748 NE NE NW 26-T15N-R13W, surface, very shaley and dirty, 1.0-1.5 feet thick  
source: ISGS field notes (E. T. Benson, circa 1935)

Mine Index 7749 SE SE SW 26-T15N-R13W, drift source: ISGS field notes (John Svatik, 7-13-1929)

Mine Index 7750 W ½ W ½ SE 26-T15N-R13W, mine source: ISGS field notes (K. W. Stott, 9-13-1927)

Mine Index 7751 S ½ S ½ SE 23-T15N-R13W, drifts along bluff source: ISGS field notes (John S. Ivy, 10-9-1922)

Mine Index 7752 NE NE NW 25-T15N-R13W, abandoned and caved in drifts source: ISGS field notes (E. T. Benson, circa 1935; K. W. Stott, 9-10-1927)

Mine Index 7753 NW SW NW 25-T15N-R13W, drift, 2.2-2.6 feet thick source: ISGS field notes (K. W. Stott & A. H. Bell, 8-4-1927)

Mine Index 7754 SW SE SW 23-T15N-R13W, surface, 1.5-4.0 feet thick source: ISGS field notes (A. H. Bell, 10-28-1927 & E. T. Benson, circa 1935)

Mine Index 7755 SW NE SW 23-T15N-R13W, shaft, 30 feet deep source: ISGS field notes (A. H. Bell, 10-28-1927)

Mine Index 7756 NW SE SW 14-T15N-R13W, surface, 2.5 feet thick source: ISGS field notes (A. H. Bell, 10-25-1927)

Mine Index 7757 NW NW NE 13-T15N-R13W, shaft source: ISGS field notes (J. Svatik, 7-31-1931 & A. H. Bell, 10-25-1927)

Mine Index 7758, Gus Lakamp NE NW NE 23-T15N-R12W, shaft, 80 feet deep, 3.2 feet thick source: ISGS field notes (A. H. Bell & K. W. Stott, 9-14-1927)

Mine Index 7759 SE SW NW 20-T15N-R12W, slope source: ISGS field notes (E. T. Benson, circa 1935)

Mine Index 7760 NW NE SW 22-T14N-R12W, shaft source: ISGS field notes (E. T. Benson, circa 1935)

Mine Index 7761 NE NW NE 21-T14N-R12W, surface, 2.2 feet thick source: ISGS field notes (E. T. Benson, circa 1935)

Mine Index 7762 SW SW NW 21-T14N-R12W, shaft, 2.67 feet thick source: ISGS field notes (H. E. Culver & John S. Ivy, 5-15-1922)

Mine Index 7763 NE NE SE 20-T14N-R12W, drift source: ISGS field notes (A. H. Bell, 9-26-1927)

Mine Index 7764, Earl Grey NE SW SE 34-T13N-R12W, slope, operated 1923 with no production source: ISGS field notes (A. H. Bell, 7-6-1928 & 10-18-1927)

Mine Index 7765 SE SW SE 34-T13N-R12W, shaft, 18 feet deep source: ISGS field notes (A. H. Bell, 7-6-1928)

Mine Index 7766 N ½ S ½ SW 15-T13N-R12W, shaft source: ISGS field notes (John S. Ivy, 1922)

Mine Index 7767 SE NW SW 14-T13N-R12W, surface source: ISGS field notes (K. W. Stott, 7-28-1928)

Mine Index 7768 SE SE NE 14-T13N-R12W, slope & drifts on both sides of creek 400 ft north source: ISGS field notes (A. H. Bell, 10-19-1927)

Mine Index 7769 SE SE NE 14-T13N-R12W, as many as 30 drifts, numerous old workings source: ISGS field notes (A. H. Bell, 10-19-1927)

Mine Index 7770 NW NE NE 14-T13N-R12W, drift, 2.7 feet thick source: ISGS field notes (H. E. Culver & John S. Ivy, 5-16-1922)

Mine Index 7771 NE NW NE 14-T13N-R12W, drift source: ISGS field notes (H. E. Culver, 1922; D. M. Collingwood, 1923)

Mine Index 7772 NW SW SW 14-T13N-R12W, drift source: ISGS field notes (John S. Ivy, 5-16-1922; E. T. Benson, circa 1935)

Mine Index 7773 SW SW NW 14-T13N-R12W, drift source: ISGS field notes (John S. Ivy, 5-16-1922)

Mine Index 7774 SW NE NE 14-T13N-R12W, drift source: ISGS field notes (D. M. Collingwood, 1923)

Mine Index 7775 NE SE NE 15-T13N-R12W, drift source: ISGS field notes (E. T. Benson, circa 1935)

Mine Index 7776 NE NW NW 23-T13N-R12W, drift source: ISGS field notes (E. T. Benson, circa 1935)

Mine Index 7777 SE NE NW 34-T13N-R11W, drift or strip source: ISGS field notes (A. H. Bell, 11-2-1927)

Mine Index 7778, Tuft Mine NE SE NE 27-T14N-R12W, 3 feet thick source: *Geology and Paleontology of Illinois, Volume III* (Worthen et al., 1868, page 136)

Mine Index 7779, Barker's Mine SE 22-T14N-R12W, 2.5 feet thick source: *Geology and Paleontology of Illinois, Volume III* (Worthen et al., 1868, page 142)



## MINES WHOSE LOCATIONS ARE NOT KNOWN, SCOTT COUNTY

The locations of the following mines are unknown, but the production tonnage, operating names, and nearest town were reported in the Annual Coal Reports. The operators listed below mined in Scott County. The information shown is similar to that presented on the summary sheets in the previous pages of this directory. The first item is the name the mine operated under as listed in the Coal Report, then the years the mine reported. If no physical data are available, the next item listed is the total tons produced by the mine. If physical data are available, the order of presentation is as follows: type of opening for the mine (drift, slope or shaft), depth of coal in feet, and thickness of coal in feet.

The total tons mined by these unlocated mines is 131,587 (123,791 underground and 7,796 mined by uncertain method), which would represent approximately 55 to 85 acres, depending on the recovery factor, mining method, and numerous other factors. (Note: 1 square mile = 640 acres)

### ALSEY

Stewart (James), 1893-1894, drift, —, —, 2.5, RP	400 tons	mine index 5187 b
Heyworth (John), 1908-1909, slope, Colchester, 12-60, 2.5, RP	41 tons	mine index 6677
Hempworth (Ben & Josh), 1909-1911	1,436 tons	
Hempworth (J. & J.), 1911-1912	920 tons	
Hepworth (Ben & Josh), 1912-1914	<u>1,384</u> tons	
	3,781 tons	
Northrop (George W.), 1910-1919, slope, Colchester, 55-90, 2.5, RP	9,398 tons	mine index 6679
McGuyre (H. & P.), 1881-1882, drift, Colchester, 40, 2.5	60 tons	mine index 6693
McGuire Brothers, 1885-1893, drift, —, 35-60, 2.5, RP	7,969 tons	mine index 6696 a
McGuire (Charles), 1893-1898	4,717 tons	
McGuire (John), 1898-1911	<u>11,955</u> tons	
	24,641 tons	
McGuire (Patrick), 1902-1913, drift, Colchester, 25-62, 2.5, RP	4,257 tons	mine index 6697
Miller (John), 1889-1891, shaft, Colchester, 30, 2.5, RP	725 tons	mine index 6698
Walsh (James), 1893-1894, drift, Colchester, —, 2.5	250 tons	mine index 6701
Murphy (M.), 1893-1897, shaft, Colchester, 40, 2.5, RP	950 tons	mine index 6703
Pohlman (Herman), 1901-1904, shaft, Colchester, 30, 2.5, RP	390 tons	mine index 6712
Hoots (Herman), 1919-1923, Colchester	965 tons	mine index 6724
Grey's Mine, 1936-1936, underground	200 tons	scott 01
Hepworth (John), 1940-1941, underground	127 tons	scott 02 / L-8
Hepworth (J.), 1941-1941, underground	36 tons	scott 03 / L-9

### BLUFFS

Meyer (H. H.), 1893-1895, drift, Colchester, —, 2.5, RP	400 tons	mine index 6707 a
Meier (H. H.), 1900-1901, drift, —, —, 2.5, RP	28 tons	mine index 6707 b
Myers (William), 1917-1921, Colchester	445 tons	mine index 6708
Priest (Charles), 1902-1903, drift, Colchester, —, 2.5, RP	245 tons	mine index 6714

Middendorg (William), 1924-1925, Colchester	56 tons	mine index 6719
Brown Mine, 1926-1926	<u>50 tons</u>	
	106 tons	
Hausenkamp (William), 1935-1935, Colchester, underground	37 tons	mine index 6739

## CHAPIN

Brockhouse (H. H.), 1900-1902, drift, Colchester, —, 2.5, RP	500 tons	mine index 6710
Brockhouse (Fred), 1902-1905	<u>1,476 tons</u>	
	1,976 tons	
Biggers (T. R.), 1900-1901, drift, Colchester, —, 2.5, RP	30 tons	mine index 6711
Middendorf (William), 1902-1905, shaft, Colchester, 40, 2.5, RP	782 tons	mine index 6718
Dickins (Roulland), 1924-1929, Colchester, underground	521 tons	mine index 6731

## EXETER

Funk (Clark), 1881-1882, drift, Colchester, 75, 2.5	50 tons	mine index 2860
Sutcliffe (Elihu), 1881-1882, drift, Colchester, 20, 2.5	50 tons	mine index 3741
Stewart (J. H.), 1889-1890	35 tons	mine index 5187 a
Arnold (Lafayette), 1881-1882, drift, Colchester, 75, 2.5	10 tons	mine index 5950
Ratigan (D.), 1914-1918, drift, Colchester, 40, 2.5, RP	980 tons	mine index 6152
Ratigan & Buchanan, 1896-1897, drift, —, —, 2.33, RP	720 tons	mine index 6152 a
Dunn (Clyde), 1910-1911, drift, Colchester, 60, 2.5, RP	900 tons	mine index 6676
Moore (Isaac), 1915-1916, drift, Colchester, 60, 2.5, RP	275 tons	mine index 6680
Berry (Pat), 1899-1901, drift, Colchester, 30, 2.5, RP	330 tons	mine index 6683
Brown (Robert L.), 1916-1919, slope, Colchester, 50, 2.5, RP	1,240 tons	mine index 6685
Brown (T. W.), 1917-1919, Colchester	1,000 tons	mine index 6686
Chance (John), 1917-1918, Colchester	549 tons	mine index 6689
Morris (James F.), 1889-1895, drift, —, 20, 2.5-2.67, RP	999 tons	mine index 6694 a
Morris (James T.), 1910-1911, drift, —, 60, 2.5, RP	750 tons	mine index 6694 b
Morris (James J.), 1914-1917, drift, Colchester, 30-45, 2.5, RP	3,610 tons	mine index 6694 c
Armitage (Elihu), 1889-1892, drift, —, 16, 2.5, RP	138 tons	mine index 6695 a
Armitage (W.), 1896-1898, drift, —, 30-45, 2.33-2.5, RP	840 tons	mine index 6695 b
Brown (James M.), 1899-1900	160 tons	
Brown (B.), 1902-1903	120 tons	
Armitage & Brown, 1903-1904	310 tons	
Armitage (Walter), 1904-1905	<u>320 tons</u>	
	1,750 tons	
Armitage (Walter), 1909-1911, drift, —, 60, 2.5, RP	880 tons	mine index 6695 c



Ruh (Charles), 1895-1897, shaft, Colchester, 18, 2.3, RP	760 tons	mine index 6706
Yarding (E.), 1902-1904, drift, Colchester, —, 2.5, RP	310 tons	mine index 6715
Clark (W. O.), 1918-1921, Colchester	438 tons	mine index 6727 a
Clark (William O.), 1926-1926	85 tons	mine index 6727 b
Clark (W. O.), 1927-1929	<u>350</u> tons 435 tons	
Clark (Farrel), 1934-1935, underground	515 tons	mine index 6727 c
Hickok (Claude), 1919-1921, Colchester	112 tons	mine index 6728
Haskins (D. S.), 1922-1923, Colchester	240 tons	mine index 6729
Korty (John), 1922-1923	200 tons	mine index 6730 a
Korty (John G.), 1934-1934, Colchester, underground	150 tons	mine index 6730 b
Korty & Collison, 1935-1935	<u>142</u> tons 292 tons	
Neat (C. L.), 1934-1934, Colchester, underground	250 tons	mine index 6735
Beckman (J. E.), 1934-1935, Colchester, underground	260 tons	mine index 6737
Morris (J. I. "Ike"), 1935-1936, Colchester, underground	418 tons	mine index 6738

#### NEELYVILLE

Meyers (Fred), 1902-1904, drift, Colchester, —, 2.5, RP	800 tons	mine index 6709
Meyer (J.), 1904-1905	<u>200</u> tons 1,000 tons	
Clark (A.), 1901-1902	160 tons	mine index 6713

#### WINCHESTER

McElwee (Charles), 1901-1908, drift, Colchester, 25-60, 2.33-2.5, RP	19,324 tons	mine index 317
Megginson (G. A.), 1881-1882, drift, Colchester, 20, 2.5	180 tons	mine index 3041
Stewart (John W.), 1922-1925	2,370 tons	mine index 5187 c
Ratigan (John), 1901-1902	40 tons	mine index 6152 b
Sellers (George), 1904-1921, drift, Colchester, 12-75, 2.5-2.67, RP	5,213 tons	mine index 6678
Jones (James A.), 1907-1932, drift, Colchester, 20-75, 2.5-2.67, RP	12,532 tons	mine index 6681
Parker (William G.), 1897-1903, drift, Colchester, 20, 2.5, RP	4,534 tons	mine index 6682
Carlton (Isaac), 1883-1885, drift, Colchester, —, 2.5, RP	550 tons	mine index 6691
Carlton (Isaac), 1889-1893, drift, Colchester, 26, 2.5, RP	803 tons	mine index 6691
McGuire Coal Company, 1934-1937, underground	2,932 tons	mine index 6696
O'Donnell (Ed), 1889-1890	121 tons	mine index 6699
Williams & Johnson, 1891-1892, slope, Colchester, 42, 2.5, RP	520 tons	mine index 6700

Johnson (James H.), 1892-1893, drift, Colchester, 30, 2.5, RP	320 tons	mine index 6700
Johnston (James), 1894-1895, shaft, Colchester, 24, 2.33, RP	280 tons	mine index 6700
Ryan (D.), 1893-1894, drift, Colchester, —, 2.5, RP	500 tons	mine index 6702
Cameron (Jesse), 1894-1896, drift, Colchester, —, 2.33, RP	500 tons	mine index 6704
Jones (J.), 1893-1894, drift, Colchester, 30-100, 2.3-2.5, RP	600 tons	mine index 6705
Jones & Robertson, 1894-1896	850 tons	
Jones (Jackson), 1896-1903	<u>3,702</u> tons	
	5,152 tons	
Jones (George R.), 1903-1904, shaft, —, 42, 2.5, RP	715 tons	mine index 6705 b
Benson Brothers, 1901-1902, shaft, Colchester, —, 2.5, RP	125 tons	mine index 6716
Benson (William), 1902-1903	<u>110</u> tons	
	235 tons	
Rayborn (J.), 1902-1903, shaft, Colchester, 40, 2.5, RP	80 tons	mine index 6717
Rayborn (George), 1903-1905	<u>1,552</u> tons	
	1,632 tons	
Gillis (Neil), 1904-1905, shaft, Colchester, 42, 2.5, RP	922 tons	mine index 6720
Winchester Mining Company, 1907-1908, shaft, Colchester, 75, 2.5, RP	40 tons	mine index 6722 a
Ezard & Benson, 1908-1909	<u>1,070</u> tons	
	1,110 tons	
Young (James S.), 1919-1921, Colchester	550 tons	mine index 6726
Rose (John), 1928-1928, Colchester	30 tons	mine index 6732
Fisher (Glenn H.), 1934-1934, Colchester, underground	116 tons	mine index 6736



## INDEX OF MINES IN SCOTT COUNTY

Alcorn (David) . . . . .	26
Alsey Brick & Tile Company . . . . .	16
Alsey Mine . . . . .	15
Armatage (Elihu) . . . . .	32
Armitage (Elihu) . . . . .	40
Armitage (W.) . . . . .	40
Armitage (Walter) . . . . .	40
Armitage & Brown . . . . .	40
Arnold (Lafayette) . . . . .	40
Barker's Mine . . . . .	38
Bates (William H.) . . . . .	19
Beckman (J. E.) . . . . .	41
Benson (Ezard & Benson) . . . . .	42
Benson (William) . . . . .	42
Benson Brothers . . . . .	42
Berry (Brockett & Berry) . . . . .	20
Berry (Charles) . . . . .	24
Berry (Ed) . . . . .	20
Berry (George E.) . . . . .	37
Berry (Pat) . . . . .	40
Biggers (T. R.) . . . . .	40
Black Hawk Coal Company . . . . .	18
Brady (John) . . . . .	23
Brockett & Berry . . . . .	20
Brockhouse (Fred) . . . . .	40
Brockhouse (H. H.) . . . . .	40
Brown (Armitage & Brown) . . . . .	40
Brown (B.) . . . . .	40
Brown (James M.) . . . . .	40
Brown (R. T.) . . . . .	22
Brown (Robert L.) . . . . .	40
Brown (T. W.) . . . . .	40
Brown Mine . . . . .	40
Buchanan (Ratigan & Buchanan) . . . . .	40
Cameron (Jesse) . . . . .	42
Carlton (Isaac) . . . . .	41
Chance (John) . . . . .	40
Chance & Williams . . . . .	34
Clark (A.) . . . . .	41
Clark (Farrel) . . . . .	41
Clark (W. O.) . . . . .	41
Clark (William O.) . . . . .	41
Coal Hollow Coal Company . . . . .	17
Collison (Korty & Collison) . . . . .	41
Dickins (Roulland) . . . . .	40
Dunn (Clyde) . . . . .	40
Ezard & Benson . . . . .	42
Fisher (Glenn H.) . . . . .	42
Franklin (George & Franklin) . . . . .	15
Funk (Clark) . . . . .	40
George (Earl) & Ranson . . . . .	15
George & Franklin . . . . .	15
Gillis (Neil) . . . . .	42
Gray (Earl & Joe) . . . . .	13
Gray (Earl) . . . . .	13
Grey (Earl) . . . . .	38
Grey's Mine . . . . .	39
Haskins (D. S.) . . . . .	41
Hausenkamp (William) . . . . .	40
Hempworth (Ben & Josh) . . . . .	39
Hempworth (J. & J.) . . . . .	39
Hepworth (Ben & Josh) . . . . .	39
Hepworth (J.) . . . . .	39

Hepworth (John) .....	39
Hepworth (Josh) .....	14
Heyworth (John) .....	39
Hickok (Claude) .....	41
Hoots (Herman) .....	39
Hoskings Brothers Coal Company .....	18
Johnson (James H.) .....	41
Johnson (Williams & Johnson) .....	41
Johnston (James) .....	42
Jones (George R.) .....	42
Jones (J.) .....	42
Jones (Jackson) .....	42
Jones (James A.) .....	13, 41
Jones (Louisa) .....	12
Jones (Robert C.) .....	12
Jones & Robertson .....	42
Korty (John G.) .....	41
Korty (John) .....	41
Korty & Collison .....	41
Kund (William) .....	9
Lakamp (Gus) .....	38
Marquette (George C.) .....	30
McElwee (Charles) .....	41
McGuire (Charles) .....	39
McGuire (Hugh) .....	27
McGuire (John) .....	39
McGuire (Patrick) .....	39
McGuire (Robinson & McGuire) .....	27
McGuire Brothers .....	39
McGuire Coal Company .....	41
McGuyre (H. & P.) .....	39
McLaughlin Mining Company .....	16
Meier (H. H.) .....	39
Meyer (H. H.) .....	39
Meyer (J.) .....	41
Meyers (Fred) .....	41
Middendorf (William) .....	40
Middendorg (William) .....	40
Miller (John) .....	39
Moore (Isaac) .....	40
Morris (J. F.) .....	31
Morris (J. I. "Ike") .....	41
Morris (James F.) .....	40
Morris (James J.) .....	40
Morris (James T.) .....	40
Murphy (M.) .....	39
Myers (William) .....	39
Neat (C. L.) .....	41
Neelyville Coal Mining Company .....	28
Northrop (George W.) .....	39
Orchard (D. D.) .....	35
Orchard (David D.) .....	35
Orchard (Dug S.) .....	35
Orchard (S. D.) .....	35
O'Donnell (Ed) .....	41
Parker (William G.) .....	41
Peake (Six & Peake) .....	29
Peak's Mine .....	21
Pohlman (Herman) .....	39
Poole (Charles) .....	10
Priest (Charles) .....	39
Ranson (George & Ranson) .....	15
Ratigan (D.) .....	40
Ratigan (John) .....	41
Ratigan & Buchanan .....	40



Rauft (Ed) .....	21
Rayborn (George) .....	42
Rayborn (J.) .....	42
Robertson (Jones & Robertson) .....	42
Robinson (Chester) .....	27
Robinson & McGuire .....	27
Rose (John) .....	42
Ruh (Charles) .....	40
Ryan (D.) .....	42
Sellers (George) .....	41
Six (M.) .....	29
Six (Manuel) .....	29
Six & Peake .....	29
Standards (William) .....	11
Stewart (J. H.) .....	40
Stewart (James) .....	39
Stewart (John W.) .....	41
Stewart (John) .....	25
Sutcliffe (Elihu) .....	40
Taylor (Charles) .....	36
Tuft Mine .....	38
Walsh (James) .....	39
Watt (W. G.) .....	15
Whitehead (John) .....	18
Williams (Chance & Williams) .....	34
Williams & Johnson .....	41
Winchester Coal Company .....	34
Winchester Coal Mining Company .....	19
Winchester Mine .....	19
Winchester Mining Company .....	42
Yarding (E.) .....	41
Young (James S.) .....	42

