

Coal Mines in Illinois Buda Quadrangle Bureau County, Illinois

Herrin Coal

This map accompanies the Coal Mines Directory for the Buda Quadrangle. Consult the directory for a complete explanation of the information shown on this map.

Mining Method

- Room & Pillar (RP)
- Room & Pillar Basic (RPB)
- Modified Room & Pillar (MRP)
- Room & Pillar Panel (RPP)
- Blind Room & Pillar (BRP)
- Checkerboard Room & Pillar (CRP)
- High Extraction Retreat (HER)
- Longwall (LW)
- Underground, Method Unknown
- Strip Mine
- Auger Mine
- General Area of Mining

Other Areas Depicted

- Non-Coal Mines

Source of Mine Outline

- Final Mine Map
- Not Final Mine Map
- Undated Mine Map
- Incomplete Mine Map
- Secondary Source Map

Tipple, Shaft, Slope, Drift Locations

- Strip Mine Tipple - Active
- Strip Mine Tipple - Abandoned
- Mine Shaft - Active
- Mine Shaft - Abandoned
- Mine Slope - Active
- Mine Slope - Abandoned
- Mine Drift - Active
- Mine Drift - Abandoned
- Air Shaft
- Uncertain Location
- Uncertain Type of Opening

Other Points Depicted

- Non-Coal Mines

Location



Mine Annotation (space permitting)

- Company
- Mine Name
- ISGS Index No., Years of Operation

Disclaimer

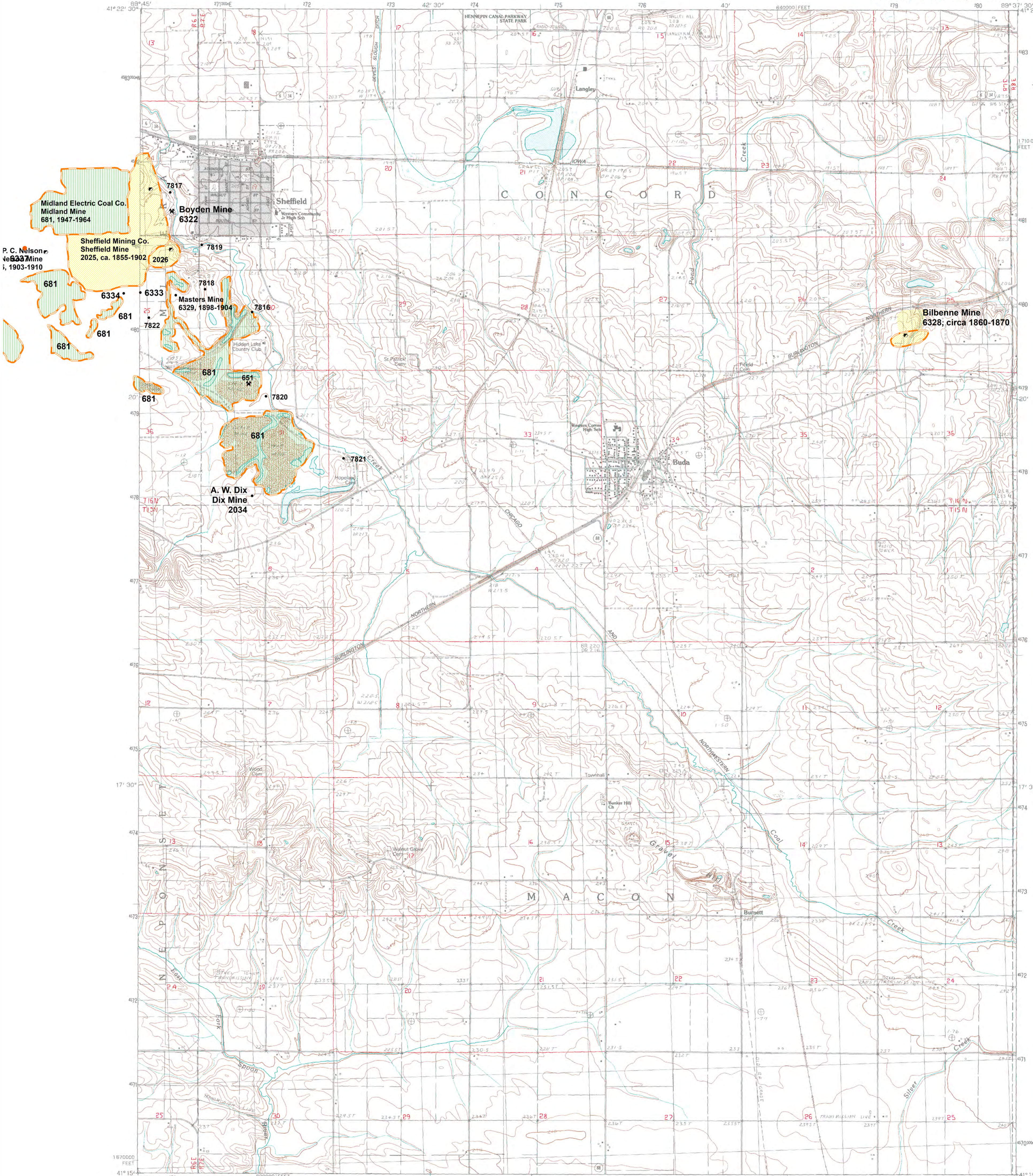
Please check the Coal Section at the Illinois State Geological Survey's web site at <http://www.isgs.illinois.edu> for the most up-to-date version of these products.

Note that each quadrangle scale mined-out area map requires the use of the associated text directory for full explanation of map features and mine attributes. Also note that some quadrangles have multiple seams of mining and therefore more than one map may be available for a particular quadrangle. Please take care to check for multiple maps, as extensive mining may exist in the other seams.

The maps and digital files used for these studies were compiled from data obtained from a variety of public and private sources and have varying degrees of completeness and accuracy. This compilation map presents reasonable interpretation of the geology of the area and is based on available data. Locations of some mine features may be offset by 500 feet or more due to errors in the original source maps, the compilation process, digitizing, or a combination of these factors. These data are not intended for use in site-specific screening or decision-making. Use of these documents does not eliminate the need for detailed studies to fully understand the geology of a specific site. The Illinois State Geological Survey, Prairie Research Institute, or the University of Illinois make no guarantee, expressed or implied, regarding the correctness of the interpretations presented in this data set and accept no liability for the consequences of decisions made by others on the basis of the information presented here.

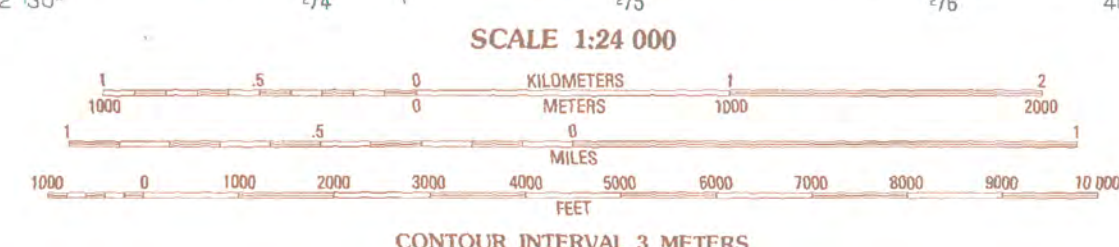
These maps were designed for use at 1:24,000. Enlarging the map may reduce accuracy, as the original scale of the source maps used to compile the outlines shown varies from 1:400 to 1:150,000, and some mine locations are known only from text descriptions. See the accompanying mine directory for the original scale of the source map used for a specific mine to check accuracy of a given portion of the map. Areas with no mines shown may still be undermined; see the unlocated mines list at the back of each mine directory.

The image of the U.S.G.S. topographic base map was projected from the original UTM to Lambert Conformal Conic.



PRODUCED BY THE UNITED STATES GEOLOGICAL SURVEY
CONTROL BY USGS AND NOS/NOAA
COMPILED FROM AERIAL PHOTOGRAPHS TAKEN
FIELD CHECKED 1980 MAP EDITED 1983
PROJECTION 1983
GRID 1000-METER UNIVERSAL TRANSVERSE MERCATOR
1000-FOOT STATE GRID TICKS ILLINOIS WEST ZONE
UTM GRID DECLINATION 1983
1983 MAGNETIC NORTH DECLINATION 1983
HORIZONTAL DATUM 1983
VERTICAL DATUM 1983
To place on the predicted North American Datum of 1983
move the projection lines as shown by dashed corner ticks
(2 meters north and 9 meters east)
There may be private inholdings within the boundaries of any
Federal and State reservations shown on this map
Gray tint indicates area in which selected buildings are shown

PROVISIONAL MAP
Produced from original
manuscript drawings. Infor-
mation shown as of date of
field check.



CONTOUR INTERVAL 3 METERS
CONTROL ELEVATIONS SHOWN TO THE NEAREST 0.1 METER
OTHER ELEVATIONS SHOWN TO THE NEAREST 0.5 METER
To convert meters to feet multiply by 3.2808
To convert feet to meters multiply by 0.3048
THIS MAP COMPLIES WITH NATIONAL MAP ACCURACY STANDARDS
FOR SALE BY U.S. GEOLOGICAL SURVEY, RESTON, VIRGINIA 22092
AND THE STATE GEOLOGICAL SURVEY, CHAMPAIGN, ILLINOIS 61820

1	2	3	1 Mineral
4	5	2 Buda NE	
6	7	3 Neponset	
		4 Wyanet	
		5 Ellettsville	
		6 Bradford	
		7 Winfield	

ROAD LEGEND
Improved Road
Unimproved Road
Trail
Interstate Route U. S. Route State Route

BUDA, ILLINOIS
PROVISIONAL EDITION 1983
41089-C6-TM-024

DIRECTORY OF COAL MINES IN ILLINOIS

7.5-MINUTE QUADRANGLE SERIES

BUDA QUADRANGLE

BUREAU COUNTY

C. Chenoweth



2019

Prairie Research Institute
Mark Ryan, Executive Director
ILLINOIS STATE GEOLOGICAL SURVEY
Richard C. Berg, Director

Natural Resources Building
615 East Peabody Drive
Champaign, Illinois 61820

Fax 217-333-2830



This material is based upon work supported by the Illinois Department of Transportation. Any opinions, findings, and conclusions or recommendations expressed in this publication are those of the authors and do not necessarily reflect the views of the Illinois Department of Transportation.

Cover photo Track-mounted duckbill loading machine at a Peabody Coal Company mine, ca. 1915.

DISCLAIMER: The accuracy and completeness of mine maps and directories vary with the availability of reliable information. Maps and other information used to compile this mine map and directory were obtained from a variety of sources and the accuracy of some of the original information cannot be verified. Consequently, the Illinois State Geological Survey (ISGS) cannot guarantee the mine maps are free of errors and disclaims any responsibility for damages that may result from actions or decisions based on them.

The ISGS updates the maps and directories periodically, and welcomes any new information or corrections. Please contact the Coal Section of the ISGS at the address shown on the title page of this directory.

© 2019 The Board of Trustees of the University of Illinois. All rights reserved.
For permission information, contact the Illinois State Geological Survey.

CONTENTS

INTRODUCTION	1
MINING IN THE BUDA QUADRANGLE	1
PART I EXPLANATION OF MAP AND MINE SUMMARY SHEET	2
INTERPRETING THE MAP	2
Mine Type and Mining Method	2
Source Maps	3
Points and Labels	3
INTERPRETING A MINE SUMMARY SHEET	6
REFERENCES	8
PART II DIRECTORY OF MINES IN THE BUDA QUADRANGLE	9
MINE SUMMARY SHEETS	9
Mine Index 651	
Coal Creek Coal Company, Coal Creek Mine	9
Mine Index 681	
Midland Electric Coal Corporation, Midland Mine	10
Mine Index 2025	
Sheffield Mining Company, Sheffield Mine	11
Mine Index 2026	
W. E. Jones, Jones Mine	12
Mine Index 2034	
A. W. Dix, Dix Mine	13
Mine Index 4164	
W. E. Trimble, Trimble Mine	14
Mine Index 6322	
C. W. & G. W. Boyden, Boyden Mine	15
Mine Index 6329	
William Masters & Son, Masters Mine	16
Mine Index 6333	
Gilbert Pollock, Pollock No. 2 Mine	17
OTHER MINES SHOWN ON BUDA QUADRANGLE	18
Mine Index 6328, Bilbenne Mine	18
Mine Index 7816, Leo DeMay	18
Mine Index 7817	18
Mine Index 7818	18
Mine Index 7819	18
Mine Index 7820	18
Mine Index 7821	18
Mine Index 7822	18
MINES WHOSE LOCATIONS ARE NOT KNOWN, BUDA QUADRANGLE	18
INDEX OF MINES IN THE BUDA QUADRANGLE	20

INTRODUCTION

Coal has been mined in 76 counties of Illinois. More than 7,400 coal mines have operated since commercial mining began in Illinois about 1810; fewer than 30 are currently active. To detail the extent and location of coal mining in Illinois, the Illinois State Geological Survey (ISGS) has compiled maps and directories of known coal mines. The ISGS offers maps at a scale of 1:100,000 and accompanying directories for each county in which coal mining is known to have occurred. Maps at a scale of 1:24,000 and accompanying directories, such as this, are available for selected quadrangles. Contact the ISGS for a list of these quadrangles.

These larger scale maps show the approximate positions of mines in relation to surface features such as roads and water bodies, and indicate the mining method used and the accuracy of the mine boundaries. The maps are useful for locating mine boundaries relative to specific properties and for assessing the potential for subsidence in an area. Mine boundaries compiled from final mine surveys are generally shown within 200 feet of their true position. As a result of poor cartographic quality and inaccuracies in the original mine surveys, boundaries of some older mines may be mislocated on the map by 500 feet or more. Original mine maps should be consulted in situations that require precise delineation of mine boundaries or internal workings of mined areas.

This directory serves as a key to the accompanying mine map and provides basic information on the coal mines in the quadrangle. The directory is composed of two parts. Part I explains the symbols and patterns used on the accompanying map and the summary data presented for each mine. Part II numerically lists the mines in the quadrangle and summarizes the geology and production history of each mine. Total production for the mine, not the portion in the quadrangle, is given.

MINING IN THE BUDA QUADRANGLE

The oldest mining took place near the eastern boundary of the quadrangle, between Buda and Wyand. The dates of mining are uncertain, but thought to be circa 1860-1870. Although no trace of a town exists now, apparently the settlement had a post office, school, (railroad) station, two stores, and a "considerable mining village". In the early 1930s, large mine dumps (refuse from mining) existed. It was reported that mining stopped because the railroad refused permission to mine under the tracks.

PART I EXPLANATION OF MAP AND MINE SUMMARY SHEET

INTERPRETING THE MAP

The map accompanying this directory shows the location of coal mines known to be present in the quadrangle. The map, corresponding to a U.S. Geological Survey (USGS) 7.5-minute quadrangle, covers an area bounded by lines of latitude and longitude 7.5-minutes apart. In Illinois, a quadrangle is approximately 6.5 miles east to west and 8.5 miles north to south, an area of about 56 square miles. The USGS generally offers one map of mines per quadrangle. In some areas where extensive mining occurred in two or more overlapping seams, separate maps are compiled for mines in each seam to maintain readability of the map.

Mine Type and Mining Method

The mine type is indicated on the map by pattern color: green represents surface mines; red and yellow represent underground mines. The red patterns are used for areas of underground mining that are documented by a primary or secondary source map. A yellow pattern is used for cases where no map of the mine workings is available, but a general area of mining can be inferred from property maps or production figures. The patterns indicate the main mining methods used in underground mines. The methods are (1) room and pillar and (2) high extraction. The method used gives some indication of the amount and pattern of coal extraction within each mined area, and has some influence on the timing and type of subsidence that can occur over a mine.

The following discussion and illustrations of mining methods are based on Guither et al. (1984).

In room-and-pillar mines, coal is removed from haulage-ways (entries) and selected areas called rooms. Pillars of unmined coal are left between the rooms to support the roof. Depending on the size of rooms and pillars, the amount of coal removed from the production areas will range from 40% to 70%.

Room and Pillar - mining is divided into six categories:

- room-and-pillar basic (RPB, fig. 1A), an early method that did not follow a preset mining plan and therefore resulted in very irregular designs;
- modified room and pillar (MRP, fig. 1B);
- room-and-pillar panel (RPP, fig. 1C);
- blind room and pillar (BRP, fig. 1D);
- checkerboard room and pillar (CRP, fig. 1E);
- room and pillar (RP), a classification used when the specific type of room-and-pillar mining is unknown.

Blind and checkerboard are the most common types of room-and-pillar mining used in Illinois today. The knowledge of room-and-pillar mining methods gives a trained engineer information on the nature of subsidence that may occur. A more extensive discussion of subsidence can be found in Bauer et al. (1993).

High-extraction These mining methods are subdivided into high-extraction retreat (HER, Fig 1F) and longwall (LW, Fig 1G, 1H). In these methods, much of the coal is removed within well defined areas of the mine. Subsidence of the surface above these areas occurs within weeks. Once the subsidence activity ceases, the potential for further movement over these areas is low; however, subsidence may continue for several years after mining.

High-extraction retreat mining is a form of room-and-pillar mining that extracts most of the coal. Rooms and pillars are developed in the panels, and the pillars are then systematically removed (fig. 1F).

In early (pre-1960) longwall mines, mining advanced in multiple directions from a central shaft (fig. 1G). Large pillars of coal were left around the shaft, but all coal was removed beyond these pillars. Miners placed rock and wooden props and cribs in the mined-out areas to support the mine roof. The overlying rock gradually settled onto these supports, thus producing subsidence at the surface. In post-1959 longwall mines, room-and-pillar methods have been used to develop the main entries of the mine and panel areas. Modern longwall methods extract 100 percent of the coal in the panel areas (fig. 1H).

SOURCE MAPS

Mine outlines depicted on the map are, whenever possible, based on maps made from original mine surveys. The process of compiling and digitizing the quadrangle map may produce errors of less than 200 feet in the location of mine boundaries. Larger errors of 500 feet or more are possible for mines that have incomplete or inaccurate source maps.

Because of the extreme complexity of some mine maps, detailed features of mined areas have been omitted. The digitized mine boundary includes the exterior boundary of all rooms or entries that were at least 80 feet wide or protruded 500 feet from the main mining area. Unmined areas between mines are shown if they are at least 80 feet wide; unmined blocks of coal within mines are shown if they are at least 400 feet on each side. Original source maps should be consulted when precise information on mine boundaries or interior features is needed.

The mine summary sheet lists the source maps used to determine each mine outline. The completeness of map sources is indicated on the map by a line symbol at the mine boundary. Source maps are organized in five categories.

Final mine map The mine outline was digitized from an original map made from mine surveys conducted within a few months after production ceased. The date of the map and the last reported production are listed on the summary sheet.

Not a final map The mine is currently active or the mine outline was made from a map based on mine surveys conducted more than a few months before production ceased. This implies the actual mined-out area is probably larger than the outline on the map. The mine summary sheet indicated the dates of source maps and the last reported production, as well as the approximate tonnage mined between these two dates (if the mine is abandoned). The summary sheet also lists the approximate acreage mined since the date of the map and, in some cases, indicates the area where additional mining may have taken place. This latter information is determined by locating on the map the active faces relative to probable boundaries of the mine property.

Undated map The source map was undated, so it may or may not be based on a final mine survey. When sufficient data are available, the probable acreage of the mined area is estimated from reported production, average seam thickness and a recovery rate comparable to other mines in the area. This information is listed in the summary sheet for the mine.

Incomplete map The source map did not show the entire mine. The summary sheet indicates the missing part of the mine map and the acreage of the unmapped area, which is estimated from the amount of coal known to have been produced from the mine.

Secondary source map The original mine map was not found so the outline shown was determined from secondary sources (e.g., outlines from small-scale regional maps published in other reports). The summary sheet describes the secondary sources.

POINTS AND LABELS

The locations of all known mine openings (shafts, slopes, and drifts) and surface mine tipples are plotted on the map. Tipples are areas where coal was cleaned, stockpiled, and loaded for shipping.

Only openings or tipples are plotted for mines without source maps. If the precise locations of these features are unknown, a special symbol is used to indicate the approximate location of the mine.

Each mine on the map is labeled with the names of the mine and operating company, ISGS mine index number, and years of operation (if known) if space permits. A seam designation is given on maps where more than one seam was mined. For a mine that operated under more than one name, only the most recent name is generally given. When a mine changed names or ownership shortly before closing, an earlier name is listed. All company and mine names are listed on the mine summary sheet in the directory, under the production history segment.



Figure 1 Mining methods: (A) room-and-pillar basic (RPB), (B) modified room and pillar (MRP), (C) room-and-pillar panel (RPP), (D) blind room and pillar (BRP).



Figure 1 (cont.) Mining methods: (E) checkerboard room and pillar (CRP), (F) high extraction retreat (HER), (G) early (pre-1960) longwall, (H) post-1959 longwall



Figure 2 Generalized stratigraphic section, showing approximate vertical relations of coals in Illinois.

INTERPRETING A MINE SUMMARY SHEET

The mine summary sheet is arranged numerically by mine index number. Index numbers are shown on the map and in the mine listing. The mine summary sheet provides the following information (if available).

Company and mine name The last company or owner of the mine is used, unless no production was recorded for the last owner. In that case, the penultimate owner is listed. Mines often have no specific name; in these cases, the company name is also used as the mine name.

Type *Underground* denotes a subsurface mine in which the coal was reached through a shaft, slope, or a drift entry. *Surface* denotes a surface, open pit or strip mine.

Total mined-out acreage shown The total acreage of the mined area mapped, including any acreage mined on adjacent quadrangles, is calculated from the digitized outline of the mine. The acreage of large barrier pillars depicted on the map is excluded from the mined-out acreage. Small pillars not digitized are included in the acreage calculation. If the mine outline is not based on a final mine map, the acreage is followed by an estimate of additional acres that may have been mined. The estimate is determined from reported mine production, approximate thickness of the coal, and recovery rates calculated from nearby mines that used similar mining methods.

SHAFT, SLOPE, DRIFT OR TIPPLE LOCATIONS

Shaft, slope, drift, or tippie locations Locations of all known former entry points to underground mines or the location of coal cleaning, tippie, and shipping equipment used by the mine's facility are listed. The location is described in terms of county, township and range (Twp-Rge), section, and location within the section by quarters. NE SW NW, for instance, would describe the location in the northeast quarter of the southwest quarter of the northwest quarter. When sections are irregular in size, the quarters remain the same size and are oriented (or "registered") from the southeast corner of the section. Approximate footage from the section lines (FEL = from east line, FNL = from north line, for example) is given when that information is known; this indicates a surveyed location and is not derived from maps. Entry points are also plotted on the map and coded for the type of entry or tippie. A mine opening may have had many purposes during the life of the mine. Old hoist shafts are often later used for air and escape shafts; this information is included in the directory when known. The tippie for underground mines was generally located near the main shaft or slope. At surface mines, coal was sometimes hauled to a central tippie several miles from the mine pit.

GEOLOGY

Seam(s) mined The name of the coal seam(s) mined is listed, if known. If multiple seams were mined, they are all listed, although the mined-out area for each seam may be shown on separate maps. Figure 2 shows the stratigraphic section of the coal-bearing interval in Illinois, and the vertical relations among the coals.

Depth The depth to the top of the seam in the vicinity of the shaft is listed, if known. The depth is determined from notes made by geologists who visited the mine during its operation or from drill hole data in ISGS files. Depth generally varies little over the extent of a mine; however, reported depths for an individual mine may vary. Depth for surface-mined coals varies, and is usually represented as a range.

Thickness The approximate thickness of the mined seam is shown, if known. Thickness also comes from notes of geologists who visited the mine during its operation or from borehole data in ISGS files. Minimum, maximum, and average thicknesses are given when this information is available.

Mining method The principal mining method used at the mine (figs. 1A-H) is listed. See the mining methods section at the beginning of this directory for a discussion of this parameter.

Geologic problems reported Any known geologic problems, such as faults, water seepage, floor heaving, and unstable roof, encountered in the mine are reported. This information is from notes made by ISGS geologists who visited the mine, or from reports by mine inspectors published by the Illinois Department of Mines and Minerals, or from the source map(s). Geologic problems are not reported for active mines.

PRODUCTION HISTORY

Production history Tons of coal produced from the mine by each mine owner are totaled. When the source map used for the mine outline is not a final mine map, the tonnage produced since the date of the map is identified. For mines that extend into adjacent quadrangles, the tonnage reported includes areas mined in adjacent quadrangles.

SOURCE OF DATA

Source map This section lists information about the map(s) used to compile the mine outline and the locations of tipples and mine openings. In some cases more than one source map was used. For example, a map drawn before the mine closed may provide better information on original areas of the mine than a later map. When more than one map was used, the bibliography section explains what information was taken from each source.

Date The date of the most recent mine survey listed on the source map is reported.

Original scale The original scale of the source map is listed. Many maps are photo-reductions and are no longer at their original scale. The original scale gives some indication of the level of detail of the mine outline and the accuracy of the mine boundary relative to surface features. Generally, the larger the scale, the greater the accuracy and detail of the mine map. Mine outlines taken from source maps at scales smaller than 1:24,000 may be highly generalized and may well be inaccurately located with respect to surface features.

Digitized scale The scale of the digitized map is reported. The scale may be different from that of the original source map. In many cases the digitized map was made from a photo-reduction of the original source map, or the source map was not in a condition suitable for digitizing and the mine boundaries were transferred to another base map.

Map type Source maps are classified into five categories to indicate the probable completeness of the map. See discussion of source maps in the previous section.

Annotated bibliography Sources that provide information about the mine are listed, with the data taken from each source. Some commonly used sources are described below. Full bibliographic references are given for all other sources. Unless otherwise noted, all sources are available for public inspection at the ISGS.

Coal Reports Published since 1881, these reports contain tabular data on mine ownership, production, employment, and accidents. Some volumes include short descriptions made by mine inspectors of physical features and conditions in selected mines.

Directory of Illinois Coal Mines This source is a compilation of basic data about Illinois coal mines, originally gathered by ISGS staff in the early 1950s. Sources used for this directory are undocumented, but they are primarily Illinois Department of Mines and Minerals annual reports, ISGS mine notes, and coal company officials.

ENR Document 85/01, Guither, H. D., J. K. Hines, and R. A. Bauer, 1985 The Economic Effect of Underground Mining Upon Land Used for Illinois Agriculture: Illinois Department of Energy and Natural Resources Document 85/01, 185 p.

Microfilm map The U.S. Bureau of Mines maintains a microfilm archive of mine maps. A microfilm file for Illinois is available for public viewing at the ISGS.

Mine notes ISGS geologists have visited mines or contacted mine officials throughout the state since the early 1900s. Notes made during these visits range from brief descriptions of the mine location to long narratives (including sketches) of mining conditions and geology.

Federal Land Bank of St. Louis, Preliminary Reports on Subsidence Investigations Mining engineers working for the Federal Land Bank of St. Louis mapped areas of subsidence due to coal mining in the early 1930s. These reports often include county maps of mine properties with mined-out areas including shaft locations, as well as subsidence areas.

REFERENCES

Bauer, R. A., B. A. Trent, and P. B. Dumontelle, 1993, Mine Subsidence in Illinois: Facts for the Homeowner Considering Insurance, Illinois State Geological Survey, Environmental Geology Note 144, 16p.

Guither, H. D., J. K. Hines, and R. A. Bauer, 1985, The Economic Effects of Underground Mining Upon Land Used for Illinois Agriculture, Illinois Department of Energy and Natural Resources Document 85/01, 185p.

PART II DIRECTORY OF MINES IN THE BUDA QUADRANGLE

MINE SUMMARY SHEETS

A summary sheet on the geology and production history of each mine in the Buda Quadrangle is provided. These summary sheets are arranged numerically by mine index number. Consult Part I for a complete explanation of the data listed in the summary sheet.

Mine Index 651

Coal Creek Coal Company, Coal Creek Mine

Type: Surface Total mined-out acreage shown: None; production indicates less than 1 acre was mined. The pit was later engulfed in the workings of Midland Mine (mine index 681).

SHAFT, SLOPE, DRIFT or TIPPLE LOCATIONS

Type	County	Township-Range	Section	Quarters-Footage
Pit	Bureau	16N 7E	31	NE NE NW

GEOLOGY

Seam(s) Mined	Depth (ft)	Thickness (ft)			Mining Method
		Min	Max	Avg	
Herrin	18			4.5	Surface

Geologic Problems Reported: The roof was gray shale. The seam contained pyrite in streaks and lenses up to 1 inch thick. After stripping the overburden, the coal was mined as two benches. A layer of "miner's clod" about 2 inches thick was removed with hand shovels before stripping the lower 20 inches of coal.

PRODUCTION HISTORY

Company	Mine Name	Years	Production (tons)
Sheffield Mining Company	Sheffield	1938-1938	3,325
Coal Creek Coal Company	Coal Creek	1938-1939	<u>1,839</u>
			5,164

Last reported production: 1939

SOURCES OF DATA

Source Map	Date	Original Scale	Digitized Scale	Map Type
Mine notes (C. C. Boley)	1-23-1939	1:62500	1:62500	Secondary source

Annotated Bibliography (data source, brief description of information)

Coal Reports - Production, ownership, years of operation.

Directory of Illinois Coal Mines (Bureau County) - Mine names, mine index, ownership, years of operation.

Mine notes (Bureau County) - Mine type, mine location, seam, depth, thickness, geologic problems.

Mine Index 681
Midland Electric Coal Corporation, Midland Mine

Type: Surface Total mined-out acreage shown: 905

SHAFT, SLOPE, DRIFT or TIPPLE LOCATIONS

Type	County	Township-Range	Section	Quarters-Footage
Tipple	Bureau	16N 6E	22	SE SE NW

GEOLOGY

Seam(s) Mined	Depth (ft)	Thickness (ft)			Mining Method
		Min	Max	Avg	
Herrin	35-106			3.5-4.9	Surface

Geologic Problems Reported:

PRODUCTION HISTORY

Company	Mine Name	Years	Production (tons)
Midland Electric Coal Corporation	Midland	1947-1964 *	6,297,886
			6,297,886

* The mine was not listed from 1948 to 1953. The mine may have been producing from reserves in Henry County during those years.

Last reported production: July 1964

SOURCES OF DATA

Source Map	Date	Original Scale	Digitized Scale	Map Type
Neponset Quadrangle	1983	1:24000	1:24000	Secondary source
Buda Quadrangle	1983	1:24000	1:24000	Secondary source

Annotated Bibliography (data source, brief description of information)

Coal Reports - Production, ownership, years of operation, depth, mining method.
 Directory of Illinois Coal Mines (Bureau County) - Mine names, mine index, ownership, years of operation.
 Mine notes (Bureau County) - Mine type, tipple location, seam, depth, thickness.
 USGS (7.5') topographic maps, Neponset & Buda (Provisional, 1983) Quadrangles - Mine outline.
 ISGS map library, 4102 i5.1-124, property map, 1959 - General pit locations.

Mine Index 2025
Sheffield Mining Company, Sheffield Mine

Type: Underground Total mined-out acreage shown: 240 Sheffield Mine was later partially surface mined by Midland Mine (mine index 681).

SHAFT, SLOPE, DRIFT or TIPPLE LOCATIONS

Type	County	Township-Range	Section	Quarters-Footage
Main slope	Bureau	16N 6E	24	NE SE SW
Shaft	Bureau	16N 6E	24	SE NW SE

GEOLOGY

Seam(s) Mined	Depth (ft)	Thickness (ft)			Mining Method
		Min	Max	Avg	
Herrin	40-45			4.5	RP

Geologic Problems Reported: Numerous clay slips were present so that the usual room-and-pillar mining was altered to accommodate the problem. Entries were driven around a square block of coal and the rooms were driven in the best side of the block. The mine was abandoned because the distance from the working face to the shaft was too far for mule haulage (not because the reserves were exhausted).

PRODUCTION HISTORY

Company	Mine Name	Years	Production (tons)
Sheffield Mining Company *	Sheffield	ca. 1855-1902 *	393,766 *
			393,766

* The company was also known as Sheffield Mining & Transportation Company. Production and years of operation before 1881 are unknown, but *History of Bureau County* (1885) stated the mine opened more than 30 years before. The 1882 Coal Report indicates 80 acres were mined.

Last reported production: 1902

SOURCES OF DATA

Source Map	Date	Original Scale	Digitized Scale	Map Type
Federal Land Bank Report	6-1935	1:126720	1:126720	Secondary source

Annotated Bibliography (data source, brief description of information)

Coal Reports - Production, ownership, years of operation, mine type, seam, depth, thickness, mining method, geologic problems.

Directory of Illinois Coal Mines (Bureau County) - Mine names, mine index, ownership, years of operation.

Mine notes (Bureau County) - Mine type, slope location.

ISGS field notes (Bureau County) - Mine type, slope location.

History of Bureau County, 1885 - Years of operation.

Federal Land Bank Report (Bureau County) - Slope & shaft locations, mine outline.

Mine Index 2026
W. E. Jones, Jones Mine

Type: Underground Total mined-out acreage shown: 20

SHAFT, SLOPE, DRIFT or TIPPLE LOCATIONS

Type	County	Township-Range	Section	Quarters-Footage
Main shaft	Bureau	16N 6E	25	NW NE NE

GEOLOGY

Seam(s) Mined	Depth (ft)	Thickness (ft)			Mining Method
		Min	Max	Avg	
Herrin	60			4.5	RP

Geologic Problems Reported:

PRODUCTION HISTORY

Company	Mine Name	Years	Production (tons)
Edward Donahue	Donahue	1902-1905	12,982
Donahue & Moran	Donahue & Moran	1905-1906	7,940
Ed Donahue	Donahue	1906-1907	9,400
Donahue & Jones	Donahue & Jones	1907-1913	49,467
W. E. Jones	Jones	1913-1915	<u>9,573</u>
			89,362

Last reported production: 1915

SOURCES OF DATA

Source Map	Date	Original Scale	Digitized Scale	Map Type
Federal Land Bank Report	6-1935	1:126720	1:126720	Secondary source

Annotated Bibliography (data source, brief description of information)

Coal Reports - Production, ownership, years of operation, seam, mining method.
 Directory of Illinois Coal Mines (Bureau County) - Mine names, mine index, ownership, years of operation.
 Mine notes (Bureau County) - Shaft location, depth, thickness.
 Federal Land Bank Report (Bureau County) - Shaft location, mine outline.

Mine Index 2034
A. W. Dix, Dix Mine

Type: Underground Total mined-out acreage shown: None

SHAFT, SLOPE, DRIFT or TIPPLE LOCATIONS

Type	County	Township-Range	Section	Quarters-Footage
Mine	Bureau	16N 7E	31	SE SE SW

GEOLOGY

Seam(s) Mined	Depth (ft)	Thickness (ft)			Mining Method
		Min	Max	Avg	
Herrin	47			4.5	Underground

Geologic Problems Reported:

PRODUCTION HISTORY

Company	Mine Name	Years	Production (tons)
A. W. Dix	Dix	before 1935	Not reported

Last reported production:

SOURCES OF DATA

Source Map	Date	Original Scale	Digitized Scale	Map Type
Federal Land Bank Report	6-1935	1:126720	1:126720	Secondary source
Coal Section files (Buda Quadrangle)	Undated	1:62500	1:62500	Secondary source

Annotated Bibliography (data source, brief description of information)

Directory of Illinois Coal Mines (Bureau County) - Mine names, mine index, ownership, years of operation.
 Mine notes (Bureau County) - Depth, thickness.
 Federal Land Bank Report (Bureau County) - Mine location, mine ownership.
 Coal Section files, undated work map on USGS topographic map, Buda (15') Quadrangle, 1923 - Mine location.

Mine Index 4164**W. E. Trimble, Trimble Mine**

Type: Underground Total mined-out acreage shown: None; production indicates less than 1 acre was mined. Not shown on accompanying map due to later surface mining by Midland Mine (mine index 681).

SHAFT, SLOPE, DRIFT or TIPPLE LOCATIONS

Type	County	Township-Range	Section	Quarters-Footage
Shaft	Bureau	16N 7E	31	SE SE NW

GEOLOGY

Seam(s) Mined	Depth (ft)	Thickness (ft)			Mining Method
		Min	Max	Avg	
Herrin	35			4.5	Underground

Geologic Problems Reported: Abandoned due to flood water from Coal Creek.

PRODUCTION HISTORY

Company	Mine Name	Years	Production (tons)
W. E. Trimble	Trimble	1919-1920	<u>200</u> 200

Last reported production: 1920

SOURCES OF DATA

Source Map	Date	Original Scale	Digitized Scale	Map Type
Federal Land Bank Report	6-1935	1:126720	1:126720	Secondary source

Annotated Bibliography (data source, brief description of information)

Coal Reports - Production, ownership, years of operation.

Directory of Illinois Coal Mines (Bureau County) - Mine names, mine index, ownership, years of operation.

ISGS field notes (Bureau County) - Mine location, depth, thickness, geologic problems.

Federal Land Bank Report - Mine location, mine ownership, mine type.

Mine Index 6322**C. W. & G. W. Boyden, Boyden Mine**

Type: Surface Total mined-out acreage shown: None

SHAFT, SLOPE, DRIFT or TIPPLE LOCATIONS

Type	County	Township-Range	Section	Quarters-Footage
Pit	Bureau	16N 6E	24	NW SE SE

GEOLOGY

Seam(s) Mined	Depth (ft)	Thickness (ft)			Mining Method
		Min	Max	Avg	
Herrin					Surface

Geologic Problems Reported:

PRODUCTION HISTORY

Company	Mine Name	Years	Production (tons)
C. W. & G. W. Boyden	Boyden	Unknown	Not reported

Last reported production:

SOURCES OF DATA

Source Map	Date	Original Scale	Digitized Scale	Map Type
Federal Land Bank Report	6-1935	1:126720	1:126720	Secondary source

Annotated Bibliography (data source, brief description of information)

Directory of Illinois Coal Mines (Bureau County) - Mine names, mine index, ownership, years of operation.

ISGS field notes (Bureau County) - Mine type, mine location.

Federal Land Bank Report (Bureau County) - Pit location, mine ownership.

Mine Index 6329**William Masters & Son, Masters Mine**

Type: Underground Total mined-out acreage shown: None; production indicates approximately 3 acres were mined.

SHAFT, SLOPE, DRIFT or TIPPLE LOCATIONS

Type	County	Township-Range	Section	Quarters-Footage
Main shaft	Bureau	16N 6E	25	SW SE NE

GEOLOGY

Seam(s) Mined	Depth (ft)	Thickness (ft)			Mining Method
		Min	Max	Avg	
Herrin	25-50			4.5	RP

Geologic Problems Reported:

PRODUCTION HISTORY

Company	Mine Name	Years	Production (tons)
A. J. Higby	Higby	1898-1899	827
W. G. Thomas & Company	Thomas	1899-1901	2,694
William Masters & Son	Masters	1901-1904	9,949
			<u>13,470</u>

Last reported production: None

SOURCES OF DATA

Source Map	Date	Original Scale	Digitized Scale	Map Type
Federal Land Bank Report	6-1935	1:126720	1:126720	Secondary source

Annotated Bibliography (data source, brief description of information)

Coal Reports - Production, ownership, years of operation, mine type, seam, depth, thickness, mining method.
 Directory of Illinois Coal Mines (Bureau County) - Mine names, mine index, ownership, years of operation.
 Federal Land Bank Report (Bureau County) - Shaft location.

Mine Index 6333
Gilbert Pollock, Pollock No. 2 Mine

Type: Underground Total mined-out acreage shown: None; production indicates approximately 2 acres were mined.

SHAFT, SLOPE, DRIFT or TIPPLE LOCATIONS

Type	County	Township-Range	Section	Quarters-Footage
Main shaft	Bureau	16N 6E	25	SW SW NE

GEOLOGY

Seam(s) Mined	Depth (ft)	Thickness (ft)			Mining Method
		Min	Max	Avg	
Herrin	54			4.67	Underground

Geologic Problems Reported:

PRODUCTION HISTORY

Company	Mine Name	Years	Production (tons)
Gilbert Pollock	Pollock No. 2	1935-1941	<u>8,238</u> 8,238

Last reported production: 1941

SOURCES OF DATA

Source Map	Date	Original Scale	Digitized Scale	Map Type
ISGS field notes, C. G. Ball	8-14-1935	1:62500	1:24000	Secondary source

Annotated Bibliography (data source, brief description of information)

Coal Reports - Production, ownership, years of operation.
 Directory of Illinois Coal Mines (Bureau County) - Mine names, mine index, ownership, years of operation.
 Mine notes (Bureau County) - Seam.
 ISGS field notes (Bureau County) - Mine type, depth, thickness, mine location.

OTHER MINES SHOWN ON BUDA QUADRANGLE

Mine Index 6328, Bilbenne Mine SE NW SW 25-T16N-R7E, shaft, 115 ft deep, 4.5 ft thick, circa 1860
 source: Federal Land Bank Report (6-1935), ISGS field notes (G. H. Cady, 1931 & L. C. McCabe, 6-17-1931, P. MacClintock, 1922)

Mine Index 7816, Leo DeMay NE NE SW 30-T16N-R7E, shaft, Herrin Coal source: Federal Land Bank Report (6-1935)

Mine Index 7817 SW NE SE 24-T16N-R6E, slope, Herrin Coal source: ISGS field notes (L. C. McCabe, 6-9-1931)

Mine Index 7818 SW SW NW 30-T16N-R7E source: Federal Land Bank Report (6-1935)

Mine Index 7819 NW NW NW 31-T16N-R7E source: Federal Land Bank Report (6-1935)

Mine Index 7820 SW NW NE 31-T16N-R7E source: Federal Land Bank Report (6-1935)

Mine Index 7821 NW SW 32-T16N-R7E source: Federal Land Bank Report (6-1935)

Mine Index 7822 NW SE 25-T16N-R6E, shaft, 64-65 ft deep, 4.5 ft thick source: ISGS field notes (unknown, 6-29-1928 & J. M. Weller, 1927)

MINES WHOSE LOCATIONS ARE NOT KNOWN, BUDA QUADRANGLE

The locations of the following mines are unknown, but the production tonnage, operating names, and nearest town were reported in the Annual Coal Reports. The operators listed below mined in or near the Buda Quadrangle. The information shown is similar to that presented on the summary sheets in the previous pages of this directory. The first item is the name the mine operated under as listed in the Coal Report, then the years the mine reported. If no physical data are available, the next item listed is the total tons produced by the mine. If physical data are available, the order of presentation is as follows: type of opening for the mine (drift, slope or shaft), depth of coal in feet, and thickness of coal in feet.

The total tons mined by these unlocated mines is 14,237 (all underground), which would represent approximately 3 to 5 acres, depending on the recovery factor, mining method, and numerous other factors. (Note: 1 square mile = 640 acres)

BUDA

Wood (James M.), 1881-1884, shaft, Herrin, 40-47, 4.5, RP	4,437 tons	90110006
Beadle (Elisha), 1884-1887, shaft, Herrin, 90, 4.5, RP	4,247 tons	90110018
Brandt & West, 1887-1888	1,443 tons	
Brandt (William), 1888-1890	2,910 tons	
Lamoreant (P. G.), 1890-1891	<u>1,200</u> tons	
	9,800 tons	

SHEFFIELD

Wictom & Fleming, pre1881-1884, slope, Herrin, 80-100, 4.5, RP	5,041 tons	90110001 a
Fleming (Joseph), 1884-1887	<u>4,789</u> tons	
	9,830 tons	
Fleming (Joseph), 1890-1894, shaft or slope, Herrin, 25-40, 4.5, RP	1,717 tons	90110001b
Fleming & Kildow, 1894-1895	841 tons	
Hansen & Olsen, 1895-1896	1,588 tons	
Olsen & Nelson, 1896-1897	<u>1,000</u> tons	
	5,146 tons	
Sprague (James B.), 1881-1889, slope, Herrin, 40-100, 4.5, RP	10,814 tons	90110002
Lyford (A.), pre1881-1883, shaft, Herrin, 28-40, 4.5, RP	1,223 tons	90110003
Lloyd & Higby, 1883-1886	5,030 tons	
Higby (John), 1886-1887	<u>1,500</u> tons	
	7,753 tons	

The 1882 Coal Report indicated 10 acres were mined.

Duncan (Peter), 1881-1900, shaft & slope, Herrin, 20-48, 4.5-4.67, RP	22,804 tons	90110004
Duncan (Matthew), 1900-1904	<u>7,796 tons</u>	
	30,600 tons	
Lloyd & Hauswell, 1882-1884, slope, Herrin, 30-40, 4.5, RP	2,276 tons	90110005
Lloyd (Silas), 1884-1885	1,092 tons	
Lloyd (H. W.), 1885-1893	<u>19,795 tons</u>	
	23,163 tons	
Churchill & Hodgett, 1889-1890, slope, Herrin, 30-85, 4.5, RP	1,080 tons	90110022
Hodgett Brothers, 1890-1894	14,200 tons	
Hodgett & Williams, 1894-1895	4,600 tons	
Williamson (Z. E.), 1895-1899	<u>6,437 tons</u>	
	26,317 tons	
Duncan (John V.), 1891-1906, shaft, Herrin, 15-40, 4.5, RP	12,867 tons	90110026
Sprague (James), 1894-1895, shaft, Herrin, 24, 4.5, RP	800 tons	90110027
Strand & Norien, 1903-1904, shaft, Herrin, 48-50, 4.5, RP	1,896 tons	90110038a
Norien (A. G.), 1904-1905	<u>2,442 tons</u>	
	4,338 tons	
Gotheridge (Charles), 1903-1906, shaft, Herrin, 46-50, 4.0-4.5, RP	740 tons	90110040
Nelson (J. P.), 1904-1905, —, Herrin, 42-50, 3.5-4.83, RP	720 tons	90110042
Neave (James), 1905-1912	20,280 tons	
Fleming & Wilkinson, 1912-1913	1,462 tons	
Wilkinson (T. H.), 1913-1918	<u>8,357 tons</u>	
	30,819 tons	
Goldsmith (F. B.), 1904-1905, shaft, Herrin, 50, 4.5, RP	408 tons	90110043
Masters (William) & Brother, 1909-1912, shaft, Herrin, 45, 4.5, RP	3,880 tons	90110046
Masters (William J.), 1916-1918, shaft, Herrin, 50, 4.5, RP	1,800 tons	90110049
Masters (Frank), 1918-1919	<u>884 tons</u>	
	2,684 tons	
Mapes (A. M.), 1916-1917, shaft, Herrin, 60, 4.5, RP	24 tons	90110050
Maples, Burckart & Hotkiss, 1922-1924	600 tons	90110055a
Maples & Kleckner, 1924-1925	1,032 tons	
Mapes & Company, 1926-1926	<u>250 tons</u>	
	1,882 tons	
Pearson (John), 1927-1928, underground	622 tons	90110058
Lamb & Pollock, No. 2 Mine, 1934-1936, underground	1,394 tons	90110059
Hotchkiss (Charles) & Son, 1934-1935, underground	381 tons	90110063
Pilson & Inch, 1934-1934	201 tons	90110064
Pilson (Peter), 1935-1935	<u>170 tons</u>	
	371 tons	
Thomas (W. G.) & Sons, 1934-1936, underground	555 tons	90110065

INDEX OF MINES IN THE BUDA QUADRANGLE

Beadle (Elisha)	18
Bilbenne Mine	18
Boyden (C. W. & G. W.)	15
Brandt (William)	18
Brandt & West	18
Burckart (Maples, Burckart & Hotkiss)	19
Churchill & Hodgett	19
Coal Creek Coal Company	9
DeMay (Leo)	18
Dix (A. W.)	13
Donahue (Ed)	12
Donahue (Edward)	12
Donahue & Jones	12
Donahue & Moran	12
Duncan (John V.)	19
Duncan (Matthew)	19
Duncan (Peter)	19
Fleming (Joseph)	18
Fleming (Wictom & Fleming)	18
Fleming & Kildow	18
Fleming & Wilkinson	19
Goldsmith (F. B.)	19
Gotheridge (Charles)	19
Hansen & Olsen	18
Hauswell (Lloyd & Hauswell)	19
Higby (A. J.)	16
Higby (John)	18
Higby (Lloyd & Higby)	18
Hodgett (Churchill & Hodgett)	19
Hodgett & Williams	19
Hodgett Brothers	19
Hotchkiss (Charles) & Son	19
Hotkiss (Maples, Burckart & Hotkiss)	19
Inch (Pilson & Inch)	19
Jones (Donahue & Jones)	12
Jones (W. E.)	12
Kildow (Fleming & Kildow)	18
Kleckner (Maples & Kleckner)	19
Lamb & Pollock, No. 2 Mine	19
Lamoreant (P. G.)	18
Lloyd (H. W.)	19
Lloyd (Silas)	19
Lloyd & Hauswell	19
Lloyd & Higby	18
Lyford (A.)	18
Mapes (A. M.)	19
Mapes & Company	19
Mapes & Kleckner	19
Maples, Burckart & Hotkiss	19
Masters (Frank)	19
Masters (William J.)	19
Masters (William) & Brother	19
Masters (William) & Son	16
Midland Electric Coal Corporation	10
Moran (Donahue & Moran)	12
Neave (James)	19
Nelson (J. P.)	19
Nelson (Olsen & Nelson)	18
Norien (A. G.)	19
Norien (Strand & Norien)	19
Olsen (Hansen & Olsen)	18
Olsen & Nelson	18
Pearson (John)	19

Pilson (Peter)	19
Pilson & Inch	19
Pollock (Gilbert), No. 2 Mine	17
Pollock (Lamb & Pollock No. 2 Mine).	19
Sheffield Mining & Transportation Company	11
Sheffield Mining Company	9, 11
Sprague (James B.)	18
Sprague (James)	19
Strand & Norien	19
Thomas (W. G.) & Company	16
Thomas (W. G.) & Sons.	19
Trimble (W. E.)	14
West (Brandt & West)	18
Wictom & Fleming	18
Wilkinson (Fleming & Wilkinson)	19
Wilkinson (T. H.)	19
Williams (Hodgett & Williams)	19
Williamson (Z. E.)	19
Wood (James M.)	18

