

Coal Mines in Illinois Coal Valley Quadrangle

Rock Island & Henry Counties, Illinois

This map accompanies the Coal Mines Directory for the Coal Valley Quadrangle. Consult the directory for a complete explanation of the information shown on this map.

Mining Method

- Room & Pillar (RP)
- Room & Pillar Basic (RPB)
- Modified Room & Pillar (MRP)
- Room & Pillar Panel (RPP)
- Blind Room & Pillar (BRP)
- Checkerboard Room & Pillar (CRP)
- High Extraction Retreat (HER)
- Longwall (LW)
- Underground, Method Unknown
- Strip Mine
- Auger Mine
- General Area of Mining

Other Areas Depicted

- Non-Coal Mines

Source of Mine Outline

- Final Mine Map
- Not Final Mine Map
- Undated Mine Map
- Incomplete Mine Map
- Secondary Source Map

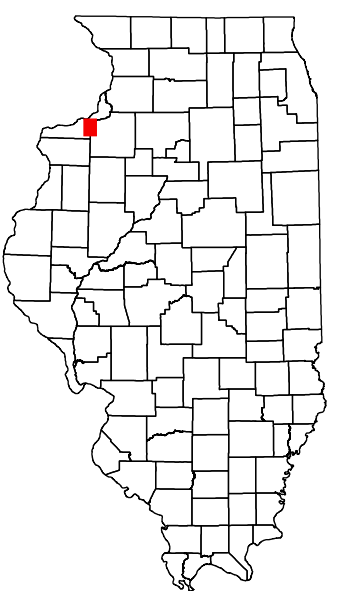
Tipple, Shaft, Slope, Drift Locations

- Strip Mine Tipple - Active
- Strip Mine Tipple - Abandoned
- Mine Shaft - Active
- Mine Shaft - Abandoned
- Mine Slope - Active
- Mine Slope - Abandoned
- Mine Drift - Active
- Mine Drift - Abandoned
- Air Shaft
- Uncertain Location
- Uncertain Type of Opening

Other Points Depicted

- Non-Coal Mines

Location



Mine Annotation

(space permitting)

Company

Mine Name

ISGS Index No., Years of Operation

Disclaimer

Please check the Coal Section at the Illinois State Geological Survey's web site at <https://www.isgs.illinois.edu> for the most up-to-date version of these products.

Note that each quadrangle scale mined-out area map requires the use of the associated text directory for full explanation of map features and mine attributes. Also note that some quadrangles have multiple seams of mining and therefore more than one map may be available for a particular quadrangle. Please take care to check for multiple maps, as extensive mining may exist in the other seams.

The maps and digital files used for these studies were compiled from data obtained from a variety of public and private sources and have varying degrees of completeness and accuracy. This compilation map presents reasonable interpretation of the geology of the area and is based on available data. Locations of some mine features may be offset by 500 feet or more due to errors in the original source maps, the compilation process, digitizing, or a combination of these factors. These data are not intended for use in site-specific screening or decision-making. Use of these documents does not eliminate the need for detailed studies to fully understand the geology of a specific site. The Illinois State Geological Survey, Prairie Research Institute, or the University of Illinois make no guarantee, expressed or implied, regarding the correctness of the interpretations presented in this data set and accept no liability for the consequences of decisions made by others on the basis of the information presented here.

These maps were designed for use at 1:24,000. Enlarging the map may reduce accuracy, as the original scale of the source maps used to compile the outlines shown varies from 1:400 to 1:150,000, and some mine locations are known only from text descriptions. See the accompanying mine directory for the original scale of the source map used for a specific mine to check accuracy of a given portion of the map. Areas with no mines shown may still be undermined; see the unlocated mines list at the back of each mine directory.

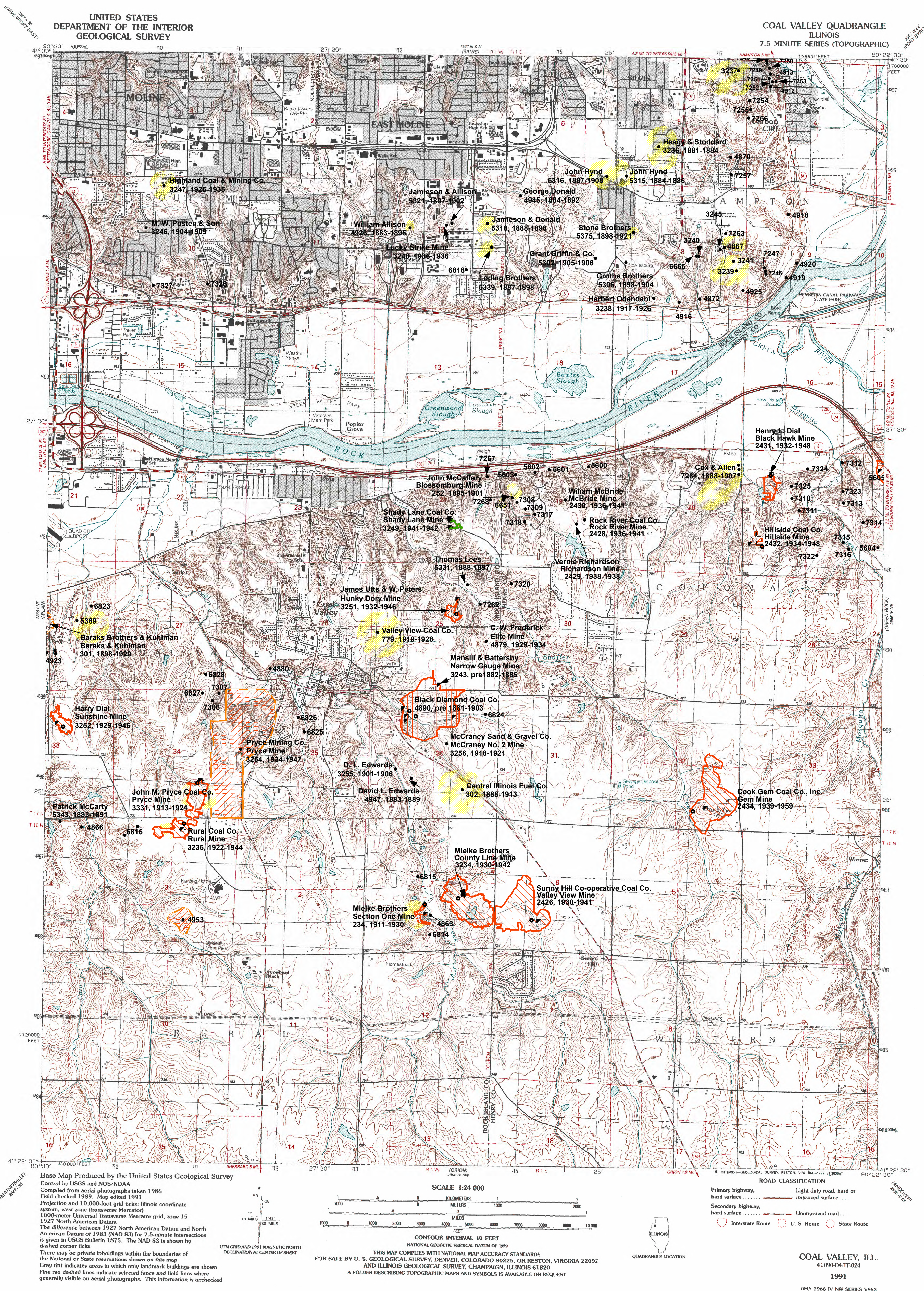
The image of the U.S.G.S. topographic base map was projected from the original UTM to Lambert Conformal Conic.

ILLINOIS
Illinois State Geological Survey
PRAIRIE RESEARCH INSTITUTE

Prairie Research Institute
Illinois State Geological Survey
615 E. Peabody Dr.
Champaign, IL 61820

Mine Outlines Compiled by
Jennifer M. Obrad

December 17, 2008
Revised December 5, 2012 & January 24, 2023



DIRECTORY OF COAL MINES IN ILLINOIS 7.5-MINUTE QUADRANGLE SERIES COAL VALLEY QUADRANGLE ROCK ISLAND & HENRY COUNTIES

Jennifer M. Obrad & C. Chenoweth



Department of Natural Resources
ILLINOIS STATE GEOLOGICAL SURVEY
2008
REVISED 2009, 2023

**DIRECTORY OF COAL MINES IN ILLINOIS
7.5-MINUTE QUADRANGLE SERIES
COAL VALLEY QUADRANGLE
ROCK ISLAND & HENRY COUNTIES**

2008
REVISED 2009, 2023

ILLINOIS STATE GEOLOGICAL SURVEY
William Shilts, Chief

Natural Resources Building
615 East Peabody Drive
Champaign, Illinois 61820

Phone 1-217-244-4610
Fax 1-217-333-2830

Cover photo Track-mounted duckbill loading machine at a Peabody Coal Company mine, ca. 1915.

DISCLAIMER: The accuracy and completeness of mine maps and directories vary with the availability of reliable information. Maps and other information used to compile this mine map and directory were obtained from a variety of sources and the accuracy of some of the original information cannot be verified. Consequently, the Illinois State Geological Survey (ISGS) cannot guarantee the mine maps are free of errors and disclaims any responsibility for damages that may result from actions or decisions based on them.

The ISGS updates the maps and directories periodically, and welcomes any new information or corrections. Please contact the Coal Section of the ISGS at the address shown on the title page of this directory, or telephone (217) 244-4610.

Printed by authority of the State of Illinois/2008

CONTENTS

INTRODUCTION	1
MINING IN THE COAL VALLEY QUADRANGLE	1
PART I EXPLANATION OF MAP AND MINE SUMMARY SHEET	2
INTERPRETING THE MAP	2
Mine Type and Mining Method	2
SOURCE MAPS	3
POINTS AND LABELS	3
INTERPRETING A MINE SUMMARY SHEET	6
REFERENCES	8
PART II DIRECTORY OF MINES IN THE COAL VALLEY QUADRANGLE	9
MINE SUMMARY SHEETS	9
Mine Index 234	
Mielke Brothers, Section One Mine	9
Mine Index 252	
John McCaffrey, Blossomburg Mine	10
Mine Index 301	
Baraks Brothers & Kuhlman, Baraks & Kuhlman Mine	11
Mine Index 302	
Central Illinois Fuel Company, Central Illinois Fuel Mine	12
Mine Index 779	
Valley View Coal Company, Valley View Mine	13
Mine Index 2426	
Sunny Hill Co-operative Coal Company, Valley View Mine	14
Mine Index 2428	
Rock River Coal Company, Rock River Mine	15
Mine Index 2429	
Vernie Richardson, Richardson Mine	16
Mine Index 2430	
William McBride, McBride Mine	17
Mine Index 2431	
Henry L. Dial, Black Hawk No. 2 Mine	18
Mine Index 2432	
Hillside Coal Company, Hillside Mine	19
Mine Index 2434	
Cook Gem Coal Company, Inc., Gem Mine	20
Mine Index 3234	
Mielke Brothers, County Line Mine	21
Mine Index 3235	
Rural Coal Company, Rural Mine	22
Mine Index 3236	
Heagy & Stoddard, Heagy & Stoddard Mine	23
Mine Index 3237	
T. S. Silvis, Silvis Mine	24
Mine Index 3238	
Herbert Odendahl, Odendahl Mine	25
Mine Index 3239	
T. S. Silvis, Silvis No. 2 Mine	26
Mine Index 3240	
Stoehr & Schadt, Stoehr & Schadt No. 2 Mine	27
Mine Index 3241	
Edward Stoehr, Blue Eagle No. 1 Mine	28
Mine Index 3243	
Mansill & Battersby, Narrow Gauge Mine	29
Mine Index 3245	
Blue Eagle Coal Company, Blue Eagle No. 2 Mine	30

Mine Index 3246	
M. W. Posten & Son, Posten Mine	31
Mine Index 3247	
Highland Coal & Mining Company, Highland Mine	32
Mine Index 3248	
Lucky Strike Mine	33
Mine Index 3249	
Shady Lane Coal Company, Shady Lane Mine	34
Mine Index 3251	
James Utts & W. Peters, Hunky Dory Mine	35
Mine Index 3252	
Harry Dial, Sunshine Mine	36
Mine Index 3254	
Pryce Mining Company, Pryce Mine	37
Mine Index 3255	
D. L. Edwards, Edwards Mine	38
Mine Index 3256	
McCraney Sand & Gravel Company, McCraney No. 2 Mine	39
Mine Index 3331	
John M. Pryce Coal Company, Pryce Mine	40
Mine Index 4867	
Stoehr Mining Company, Stoehr No. 3 Mine	41
Mine Index 4879	
C. W. Frederick, Elite Mine	42
Mine Index 4890	
Black Diamond Coal Company, Black Diamond Mine	43
Mine Index 4916	
Len Smith, Smith Mine	44
Mine Index 4918	
Edward Stoehr, Stoehr Mine	45
Mine Index 4925	
Christensen Mining Company, Christensen Mine	46
Mine Index 4926	
William Allison, Allison Mine	47
Mine Index 4945	
George Donald, Donald Mine	48
Mine Index 4947	
David L. Edwards, Edwards Mine	49
Mine Index 5302	
Grant Griffin & Company, Griffin Mine	50
Mine Index 5306	
Grothe Brothers, Grothe Mine	51
Mine Index 5315	
John Hynd, Hynd Mine	52
Mine Index 5316	
John Hynd, Hynd Mine	53
Mine Index 5318	
Jamieson & Donald, Jamieson & Donald Mine	54
Mine Index 5321	
Jamieson & Allison, Jamieson & Allison Mine	55
Mine Index 5331	
Thomas Lees, Lees Mine	56
Mine Index 5339	
Loding Brothers, Loding Mine	57
Mine Index 5343	
Patrick McCarty, McCarty Mine	58
Mine Index 5369	
Sackville Brothers, Sackville Mine	59
Mine Index 5375	
Stone Brothers, Stone Mine	60
Mine Index 5605	
Perry & Company, Perry Mine	61

Mine Index 6651	
J. L. Donahoo Coal Company, Donahoo Mine	62
Mine Index 6665	
Progressive Coal Company, Progressive Mine	63
Mine Index 7264	
Briar Bluff Coal Company, Briar Bluff Mine	64
Mine Index 7318	
Park & Hillier, Park & Hillier Mine	65
OTHER MINES SHOWN ON COAL VALLEY QUADRANGLE	66
Mine Index 4863	66
Mine Index 4866	66
Mine Index 4870	66
Mine Index 4872	66
Mine Index 4880	66
Mine Index 4912	66
Mine Index 4913	66
Mine Index 4919	66
Mine Index 4920	66
Mine Index 4923	66
Mine Index 4953, Old Pryce Mine	66
Mine Index 5600	66
Mine Index 5601	66
Mine Index 5602	66
Mine Index 5603	66
Mine Index 5604	66
Mine Index 6814	66
Mine Index 6815	66
Mine Index 6816	66
Mine Index 6818	66
Mine Index 6823	66
Mine Index 6824	66
Mine Index 6825	66
Mine Index 6826	66
Mine Index 6827	66
Mine Index 6828	66
Mine Index 7246	66
Mine Index 7247	66
Mine Index 7248	66
Mine Index 7249	66
Mine Index 7250	66
Mine Index 7251	66
Mine Index 7252	66
Mine Index 7253	66
Mine Index 7254	66
Mine Index 7255	66
Mine Index 7256	66
Mine Index 7257	66
Mine Index 7262	66
Mine Index 7263	66
Mine Index 7267	66
Mine Index 7268, Wildcat Mine	66
Mine Index 7306	66
Mine Index 7307	66
Mine Index 7308	66
Mine Index 7309	66
Mine Index 7310	66
Mine Index 7311	66
Mine Index 7312	66
Mine Index 7313	66
Mine Index 7314	66
Mine Index 7315	66

Mine Index 7316	66
Mine Index 7317	66
Mine Index 7320	66
Mine Index 7322	66
Mine Index 7323	67
Mine Index 7324	67
Mine Index 7325	67
Mine Index 7326	67
Mine Index 7327	67
MINES WHOSE LOCATIONS ARE NOT KNOWN, COAL VALLEY QUADRANGLE	68
INDEX OF MINES IN THE COAL VALLEY QUADRANGLE	73

INTRODUCTION

Coal has been mined in 76 counties of Illinois. More than 7,400 coal mines have operated since commercial mining began in Illinois about 1810; fewer than 30 are currently active. To detail the extent and location of coal mining in Illinois, the Illinois State Geological Survey (ISGS) has compiled maps and directories of known coal mines. The ISGS offers maps at a scale of 1:100,000 and accompanying directories for each county in which coal mining is known to have occurred. Maps at a scale of 1:24,000 and accompanying directories, such as this, are available for selected quadrangles. Contact the ISGS for a list of these quadrangles.

These larger scale maps show the approximate positions of mines in relation to surface features such as roads and water bodies, and indicate the mining method used and the accuracy of the mine boundaries. The maps are useful for locating mine boundaries relative to specific properties and for assessing the potential for subsidence in an area. Mine boundaries compiled from final mine surveys are generally shown within 200 feet of their true position. As a result of poor cartographic quality and inaccuracies in the original mine surveys, boundaries of some older mines may be mislocated on the map by 500 feet or more. Original mine maps should be consulted in situations that require precise delineation of mine boundaries or internal workings of mined areas.

This directory serves as a key to the accompanying mine map and provides basic information on the coal mines in the quadrangle. The directory is composed of two parts. Part I explains the symbols and patterns used on the accompanying map and the summary data presented for each mine. Part II numerically lists the mines in the quadrangle and summarizes the geology and production history of each mine. Total production for the mine, not the portion in the quadrangle, is given.

MINING IN THE COAL VALLEY QUADRANGLE

The earliest record of coal mining in Rock Island County is 1867, when 68,000 tons were mined (indicating that mining started considerably before that year), although production records were not reported until 1882. An 1877 History of Rock Island County states that 46 mines operated in the previous year, producing almost 300,000 tons. All the mines in the Coal Valley Quadrangle mined underground using the room and pillar method. The longwall method was tried prior to 1885 by the Eureka Coal Company (mine index 4949, in the unlocated mines at the back of the report), but that attempt failed due to geologic conditions in the area. The coal was near the surface, often accessed directly from the outcrop at the surface into the hillside. Shafts were rarely 80 feet deep, more commonly 30 to 40 feet.

The only seam mined was the Rock Island Coal. However, the lenticular and discontinuous coal, known locally as the Caseyville Coal (stratigraphically below the Rock Island Coal), may have been the seam mined in some cases, especially by low-volume short term local mines. Both coals undulate and vary considerably in thickness, thickening and thinning from both the top and the bottom of the seam. Coal balls were common in some mines, ranging in size from 1 to 8 inches in diameter. The roof in most mines was reasonably good, although in some mines clay slips would make blocks of roof material prone to failure. Usually the roof material was a hard black shale, sometimes with a competent limestone above the shale. The coal ranged from 1.7 to 6 feet thick, and averaged 3.5 feet.

PART I EXPLANATION OF MAP AND MINE SUMMARY SHEET

INTERPRETING THE MAP

The map accompanying this directory shows the location of coal mines known to be present in the quadrangle. The map, corresponding to a U.S. Geological Survey (USGS) 7.5-minute quadrangle, covers an area bounded by lines of latitude and longitude 7.5-minutes apart. In Illinois, a quadrangle is approximately 6.5 miles east to west and 8.5 miles north to south, an area of about 56 square miles. The USGS generally offers one map of mines per quadrangle. In some areas where extensive mining occurred in two or more overlapping seams, separate maps are compiled for mines in each seam to maintain readability of the map.

Mine Type and Mining Method

The mine type is indicated on the map by pattern color: green represents surface mines; red and yellow represent underground mines. The red patterns are used for areas of underground mining that are documented by a primary or secondary source map. A yellow pattern is used for cases where no map of the mine workings is available, but a general area of mining can be inferred from property maps or production figures. The patterns indicate the main mining methods used in underground mines. The methods are (1) room and pillar and (2) high extraction. The method used gives some indication of the amount and pattern of coal extraction within each mined area, and has some influence on the timing and type of subsidence that can occur over a mine.

The following discussion and illustrations of mining methods are based on Guither et al. (1984).

In room-and-pillar mines, coal is removed from haulage-ways (entries) and selected areas called rooms. Pillars of unmined coal are left between the rooms to support the roof. Depending on the size of rooms and pillars, the amount of coal removed from the production areas will range from 40% to 70%.

Room and Pillar - mining is divided into six categories:

- room-and-pillar basic (RPB, fig. 1A), an early method that did not follow a preset mining plan and therefore resulted in very irregular designs;
- modified room and pillar (MRP, fig. 1B);
- room-and-pillar panel (RPP, fig. 1C);
- blind room and pillar (BRP, fig. 1D);
- checkerboard room and pillar (CRP, fig. 1E);
- room and pillar (RP), a classification used when the specific type of room-and-pillar mining is unknown.

Blind and checkerboard are the most common types of room-and-pillar mining used in Illinois today. The knowledge of room-and-pillar mining methods gives a trained engineer information on the nature of subsidence that may occur. A more extensive discussion of subsidence can be found in Bauer et al. (1993).

High-extraction These mining methods are subdivided into high-extraction retreat (HER, Fig 1F) and longwall (LW, Fig 1G, 1H). In these methods, much of the coal is removed within well defined areas of the mine. Subsidence of the surface above these areas occurs within weeks. Once the subsidence activity ceases, the potential for further movement over these areas is low; however, subsidence may continue for several years after mining.

High-extraction retreat mining is a form of room-and-pillar mining that extracts most of the coal. Rooms and pillars are developed in the panels, and the pillars are then systematically removed (fig. 1F).

In early (pre-1960) longwall mines, mining advanced in multiple directions from a central shaft (fig. 1G). Large pillars of coal were left around the shaft, but all coal was removed beyond these pillars. Miners placed rock and wooden props and cribs in the mined-out areas to support the mine roof. The overlying rock gradually settled onto these supports, thus producing subsidence at the surface. In post-1959 longwall mines, room-and-pillar methods have been used to develop the main entries of the mine and panel areas. Modern longwall methods extract 100 percent of the coal in the panel areas (fig. 1H).

SOURCE MAPS

Mine outlines depicted on the map are, whenever possible, based on maps made from original mine surveys. The process of compiling and digitizing the quadrangle map may produce errors of less than 200 feet in the location of mine boundaries. Larger errors of 500 feet or more are possible for mines that have incomplete or inaccurate source maps.

Because of the extreme complexity of some mine maps, detailed features of mined areas have been omitted. The digitized mine boundary includes the exterior boundary of all rooms or entries that were at least 80 feet wide or protruded 500 feet from the main mining area. Unmined areas between mines are shown if they are at least 80 feet wide; unmined blocks of coal within mines are shown if they are at least 400 feet on each side. Original source maps should be consulted when precise information on mine boundaries or interior features is needed.

The mine summary sheet lists the source maps used to determine each mine outline. The completeness of map sources is indicated on the map by a line symbol at the mine boundary. Source maps are organized in five categories.

Final mine map The mine outline was digitized from an original map made from mine surveys conducted within a few months after production ceased. The date of the map and the last reported production are listed on the summary sheet.

Not a final map The mine is currently active or the mine outline was made from a map based on mine surveys conducted more than a few months before production ceased. This implies the actual mined-out area is probably larger than the outline on the map. The mine summary sheet indicated the dates of source maps and the last reported production, as well as the approximate tonnage mined between these two dates (if the mine is abandoned). The summary sheet also lists the approximate acreage mined since the date of the map and, in some cases, indicates the area where additional mining may have taken place. This latter information is determined by locating on the map the active faces relative to probable boundaries of the mine property.

Undated map The source map was undated, so it may or may not be based on a final mine survey. When sufficient data are available, the probable acreage of the mined area is estimated from reported production, average seam thickness and a recovery rate comparable to other mines in the area. This information is listed in the summary sheet for the mine.

Incomplete map The source map did not show the entire mine. The summary sheet indicates the missing part of the mine map and the acreage of the unmapped area, which is estimated from the amount of coal known to have been produced from the mine.

Secondary source map The original mine map was not found so the outline shown was determined from secondary sources (e.g., outlines from small-scale regional maps published in other reports). The summary sheet describes the secondary sources.

POINTS AND LABELS

The locations of all known mine openings (shafts, slopes, and drifts) and surface mine tipples are plotted on the map. Tipples are areas where coal was cleaned, stockpiled, and loaded for shipping.

Only openings or tipples are plotted for mines without source maps. If the precise locations of these features are unknown, a special symbol is used to indicate the approximate location of the mine.

Each mine on the map is labeled with the names of the mine and operating company, ISGS mine index number, and years of operation (if known) if space permits. A seam designation is given on maps where more than one seam was mined. For a mine that operated under more than one name, only the most recent name is generally given. When a mine changed names or ownership shortly before closing, an earlier name is listed. All company and mine names are listed on the mine summary sheet in the directory, under the production history segment.



Figure 1 Mining methods: (A) room-and-pillar basic (RPB), (B) modified room and pillar (MRP), (C) room-and-pillar panel (RPP), (D) blind room and pillar (BRP).



Figure 1 (cont.) Mining methods: (E) checkerboard room and pillar (CRP), (F) high extraction retreat (HER), (G) early (pre-1960) longwall, (H) post-1959 longwall



Figure 2 Generalized stratigraphic section, showing approximate vertical relations of coals in Illinois.

INTERPRETING A MINE SUMMARY SHEET

The mine summary sheet is arranged numerically by mine index number. Index numbers are shown on the map and in the mine listing. The mine summary sheet provides the following information (if available).

Company and mine name The last company or owner of the mine is used, unless no production was recorded for the last owner. In that case, the penultimate owner is listed. Mines often have no specific name; in these cases, the company name is also used as the mine name.

Type *Underground* denotes a subsurface mine in which the coal was reached through a shaft, slope, or a drift entry. *Surface* denotes a surface, open pit or strip mine.

Total mined-out acreage shown The total acreage of the mined area mapped, including any acreage mined on adjacent quadrangles, is calculated from the digitized outline of the mine. The acreage of large barrier pillars depicted on the map is excluded from the mined-out acreage. Small pillars not digitized are included in the acreage calculation. If the mine outline is not based on a final mine map, the acreage is followed by an estimate of additional acres that may have been mined. The estimate is determined from reported mine production, approximate thickness of the coal, and recovery rates calculated from nearby mines that used similar mining methods.

SHAFT, SLOPE, DRIFT OR TIPPLE LOCATIONS

Shaft, slope, drift, or tippie locations Locations of all known former entry points to underground mines or the location of coal cleaning, tippie, and shipping equipment used by the mine's facility are listed. The location is described in terms of county, township and range (Twp-Rge), section, and location within the section by quarters. NE SW NW, for instance, would describe the location in the northeast quarter of the southwest quarter of the northwest quarter. When sections are irregular in size, the quarters remain the same size and are oriented (or "registered") from the southeast corner of the section. Approximate footage from the section lines (FEL = from east line, FNL = from north line, for example) is given when that information is known; this indicates a surveyed location and is not derived from maps. Entry points are also plotted on the map and coded for the type of entry or tippie. A mine opening may have had many purposes during the life of the mine. Old hoist shafts are often later used for air and escape shafts; this information is included in the directory when known. The tippie for underground mines was generally located near the main shaft or slope. At surface mines, coal was sometimes hauled to a central tippie several miles from the mine pit.

GEOLOGY

Seam(s) mined The name of the coal seam(s) mined is listed, if known. If multiple seams were mined, they are all listed, although the mined-out area for each seam may be shown on separate maps. Figure 2 shows the stratigraphic section of the coal-bearing interval in Illinois, and the vertical relations among the coals.

Depth The depth to the top of the seam in the vicinity of the shaft is listed, if known. The depth is determined from notes made by geologists who visited the mine during its operation or from drill hole data in ISGS files. Depth generally varies little over the extent of a mine; however, reported depths for an individual mine may vary. Depth for surface-mined coals varies, and is usually represented as a range.

Thickness The approximate thickness of the mined seam is shown, if known. Thickness also comes from notes of geologists who visited the mine during its operation or from borehole data in ISGS files. Minimum, maximum, and average thicknesses are given when this information is available.

Mining method The principal mining method used at the mine (figs. 1A-H) is listed. See the mining methods section at the beginning of this directory for a discussion of this parameter.

Geologic problems reported Any known geologic problems, such as faults, water seepage, floor heaving, and unstable roof, encountered in the mine are reported. This information is from notes made by ISGS geologists who visited the mine, or from reports by mine inspectors published by the Illinois Department of Mines and Minerals, or from the source map(s). Geologic problems are not reported for active mines.

PRODUCTION HISTORY

Production history Tons of coal produced from the mine by each mine owner are totaled. When the source map used for the mine outline is not a final mine map, the tonnage produced since the date of the map is identified. For mines that extend into adjacent quadrangles, the tonnage reported includes areas mined in adjacent quadrangles.

SOURCE OF DATA

Source map This section lists information about the map(s) used to compile the mine outline and the locations of tipples and mine openings. In some cases more than one source map was used. For example, a map drawn before the mine closed may provide better information on original areas of the mine than a later map. When more than one map was used, the bibliography section explains what information was taken from each source.

Date The date of the most recent mine survey listed on the source map is reported.

Original scale The original scale of the source map is listed. Many maps are photo-reductions and are no longer at their original scale. The original scale gives some indication of the level of detail of the mine outline and the accuracy of the mine boundary relative to surface features. Generally, the larger the scale, the greater the accuracy and detail of the mine map. Mine outlines taken from source maps at scales smaller than 1:24,000 may be highly generalized and may well be inaccurately located with respect to surface features.

Digitized scale The scale of the digitized map is reported. The scale may be different from that of the original source map. In many cases the digitized map was made from a photo-reduction of the original source map, or the source map was not in a condition suitable for digitizing and the mine boundaries were transferred to another base map.

Map type Source maps are classified into five categories to indicate the probable completeness of the map. See discussion of source maps in the previous section.

Annotated bibliography Sources that provide information about the mine are listed, with the data taken from each source. Some commonly used sources are described below. Full bibliographic references are given for all other sources. Unless otherwise noted, all sources are available for public inspection at the ISGS.

Coal Reports Published since 1881, these reports contain tabular data on mine ownership, production, employment, and accidents. Some volumes include short descriptions made by mine inspectors of physical features and conditions in selected mines.

Directory of Illinois Coal Mines This source is a compilation of basic data about Illinois coal mines, originally gathered by ISGS staff in the early 1950s. Sources used for this directory are undocumented, but they are primarily Illinois Department of Mines and Minerals annual reports, ISGS mine notes, and coal company officials.

ENR Document 85/01, Guither, H. D., J. K. Hines, and R. A. Bauer, 1985 The Economic Effect of Underground Mining Upon Land Used for Illinois Agriculture: Illinois Department of Energy and Natural Resources Document 85/01, 185 p.

Microfilm map The U.S. Bureau of Mines maintains a microfilm archive of mine maps. A microfilm file for Illinois is available for public viewing at the ISGS.

Mine notes ISGS geologists have visited mines or contacted mine officials throughout the state since the early 1900s. Notes made during these visits range from brief descriptions of the mine location to long narratives (including sketches) of mining conditions and geology.

Federal Land Bank of St. Louis, Preliminary Reports on Subsidence Investigations Mining engineers working for the Federal Land Bank of St. Louis mapped areas of subsidence due to coal mining in the early 1930s. These reports often include county maps of mine properties with mined-out areas including shaft locations, as well as subsidence areas.

REFERENCES

Bauer, R. A., B. A. Trent, and P. B. Dumontelle, 1993, Mine Subsidence in Illinois: Facts for the Homeowner Considering Insurance, Illinois State Geological Survey, Environmental Geology Note 144, 16p.

Guither, H. D., J. K. Hines, and R. A. Bauer, 1985, The Economic Effects of Underground Mining Upon Land Used for Illinois Agriculture, Illinois Department of Energy and Natural Resources Document 85/01, 185p.

Iowa Publishing Company, 1905, Atlas of Rock Island County, Illinois, printed by the Iowa Publishing Company, Davenport, Iowa, 184p.

Kett & Co. (publishers), 1877, The Past and Present of Rock Island County, Illinois, published by H. F. Kett & Company, Chicago, Illinois, 112p.

North West Publishing Company, 1894, Plat Book of Rock Island County, Illinois, Engraved by Balliet & Volk, printed by F. Bourquin, 74p.

Worthen, A. H., 1873, Economical Geology of Illinois, Volume 5, Illinois State Geological Survey, 619p.

PART II DIRECTORY OF MINES IN THE COAL VALLEY QUADRANGLE

MINE SUMMARY SHEETS

A summary sheet on the geology and production history of each mine in the Coal Valley Quadrangle is provided. These summary sheets are arranged numerically by mine index number. Consult Part I for a complete explanation of the data listed in the summary sheet.

Mine Index 234

Mielke Brothers, Section One Mine

Type: Underground Total mined-out acreage shown: 3 Production indicates 16 acres were mined.

SHAFT, SLOPE, DRIFT or TIPPLE LOCATIONS

Type	County	Township-Range	Section	Quarters-Footage
Main slope	Rock Island	16N 1W	1	SE NE SW
Air shaft	Rock Island	16N 1W	1	SE NE SW

GEOLOGY

Seam(s) Mined	Depth (ft)	Thickness (ft)			Mining Method
		Min	Max	Avg	
Rock Island	60-80			3.67-4.0	RP

Geologic Problems Reported: Rolls and horsebacks were noted in the mine. Some pyrite lenses were seen in the coal.

PRODUCTION HISTORY

Company	Mine Name	Years	Production (tons)
Frederick & Gramenz	Section One	1911-1920 *	19,110
F. W. Sauerrman	Section One	1920-1921	1,092
Mielke Brothers	Section One	1923-1930	34,661
			54,863

* Idle 1920

Last reported production: 1930

SOURCES OF DATA

Source Map	Date	Original Scale	Digitized Scale	Map Type
Mine notes, traced company map	3-3-1921	1:600	1:600	Not final
Mine notes, sketch	7-20-1921	1:24000	1:24000	Secondary source

Annotated Bibliography (data source, brief description of information)

Coal Reports - Production, ownership, years of operation.

Directory of Illinois Coal Mines (Rock Island County) - Mine names, mine index, ownership, years of operation.

Mine notes (Rock Island County) - Slope location, depth, thickness, outline, mining method, geologic problems.

Mine Index 252
John McCaffrey, Blossomburg Mine

Type: Underground Total mined-out acreage shown: None; production indicates approximately 14 acres were mined.

SHAFT, SLOPE, DRIFT or TIPPLE LOCATIONS

Type	County	Township-Range	Section	Quarters-Footage
Main slope or drift	Henry	17N 1E	19	SE SW NW

GEOLOGY

Seam(s) Mined	Depth (ft)	Thickness (ft)			Mining Method
		Min	Max	Avg	
Rock Island	45-60			4.33-5.83	RP

Geologic Problems Reported:

PRODUCTION HISTORY

Company	Mine Name	Years	Production (tons)
Stoddard & Bair	Blossomburg	1895-1896	idle
Blossomburg Coal Company	Blossomburg	1896-1897	6,503
John McCaffrey	Blossomburg	1897-1898	25,000
Stoddard & Summerson	Blossomburg	1898-1899	9,250
John McCaffrey	Blossomburg	1899-1901	16,700
			57,453

Last reported production: 1901

SOURCES OF DATA

Source Map	Date	Original Scale	Digitized Scale	Map Type
Mine notes	Undated	(text only)	1:24000 *	Secondary source

* The mine location was plotted on a 1:24000 USGS topographic map from the mine location description and digitized.

Annotated Bibliography (data source, brief description of information)

Coal Reports - Production, ownership, years of operation, mine type, seam, depth, thickness, mining method.
 Directory of Illinois Coal Mines (Henry County) - Mine names, mine index, ownership, years of operation.
 Mine notes (Henry County) - Mine location, thickness.

Mine Index 301**Baraks Brothers & Kuhlman, Baraks & Kuhlman Mine**

Type: Underground Total mined-out acreage shown: 15 Production indicates 94 acres were mined. The sketch in the mine notes may be of a not-final outline, or some of the Pryce production may not be at this location. (The documentation of the various Pryce mines in Rock Island County is very poor.)

SHAFT, SLOPE, DRIFT or TIPPLE LOCATIONS

Type	County	Township-Range	Section	Quarters-Footage
Main slope	Rock Island	17N 1W	28	SE SE NW
Shaft	Rock Island	17N 1W	28	NE NE SW

GEOLOGY

Seam(s) Mined	Depth (ft)	Thickness (ft)			Mining Method
		Min	Max	Avg	
Rock Island	60	3.8	4.7	4.0	RP

Geologic Problems Reported: The roof consisted of about 1 foot of black shale with limestone above. Pyrite was present in the coal as irregular lenses.

PRODUCTION HISTORY

Company	Mine Name	Years	Production (tons)
John J. Pryce & Son	New Mine, Pryce No. 2	1898-1912	283,685
Otto Kuhlman	Kuhlman	1912-1913	13,770
Baraks Brothers & Kuhlman	Baraks & Kuhlman	1913-1920	38,821
			336,276

Last reported production: 1920

SOURCES OF DATA

Source Map	Date	Original Scale	Digitized Scale	Map Type
Mine notes (sketch)	Undated	1:24000	1:24000	Secondary source

Annotated Bibliography (data source, brief description of information)

Coal Reports - Production, ownership, years of operation, mine type, seam, depth, thickness, mining method.
 Directory of Illinois Coal Mines (Rock Island County) - Mine names, mine index, ownership, years of operation.
 Mine notes (Rock Island County) - Mine type, shaft & slope locations, seam, depth, thickness, geologic problems mine outline.
 Microfilm map, document 351511, reel 03136, frame 264 - Mining method.

Mine Index 302
Central Illinois Fuel Company, Central Illinois Fuel Mine

Type: Underground Total mined-out acreage shown: None; production indicates 35 acres were mined.

SHAFT, SLOPE, DRIFT or TIPPLE LOCATIONS

Type	County	Township-Range	Section	Quarters-Footage
Main shaft	Rock Island	17N 1W	36	NE SW SE

GEOLOGY

Seam(s) Mined	Depth (ft)	Thickness (ft)			Mining Method
		Min	Max	Avg	
Rock Island	64			3.75	RP, HER *

* Pillars were drawn in the winter.

Geologic Problems Reported: The main south entry had a 20-degree dip in the distance of 100 to 150 feet, while the remainder of the entry was level. The immediate roof was 6 inches of draw slate that adhered to the top coal. The seam contained pyrite balls, but no regular bands of pyrite were observed. The floor was 4 feet of fire clay that did not heave even when moist.

PRODUCTION HISTORY

Company	Mine Name	Years	Production (tons)
Robert Summerson	Summerson	1888-1899	12,485
John Summerson	Summerson	1899-1903 **	1,342
Volunteer Coal Company ***	Volunteer	1903-1911	78,329
Central Illinois Fuel Company	Central Illinois Fuel	1911-1913	22,308
			117,925

** Idle 1902

*** George Somerson was the president of Volunteer Coal Company

Last reported production: 1913

SOURCES OF DATA

Source Map	Date	Original Scale	Digitized Scale	Map Type
Mine notes	Undated	(text only)	1:24000 †	Secondary source

† The mine location was plotted on a 1:24000 USGS topographic map from the mine location description and digitized.

Annotated Bibliography (data source, brief description of information)

Coal Reports - Production, ownership, years of operation, mine type, seam, thickness, mining method.
 Directory of Illinois Coal Mines (Rock Island County) - Mine names, mine index, ownership, years of operation.
 Mine notes (Rock Island County) - Mine type, shaft location, depth, mining method, geologic problems.

Mine Index 779**Valley View Coal Company, Valley View Mine**

Type: Underground Total mined-out acreage shown: None; production indicates approximately 46 acres were mined.

SHAFT, SLOPE, DRIFT or TIPPLE LOCATIONS

Type	County	Township-Range	Section	Quarters-Footage
Main shaft	Rock Island	17N 1W	25	NW NW SW

GEOLOGY

Seam(s) Mined	Depth (ft)	Thickness (ft)			Mining Method
		Min	Max	Avg	
Rock Island	89	3.8	5.0	4.5	

Geologic Problems Reported: Clay slips were common in the caprock. This cut the roof into blocks that fell readily and required heavy timbering. The roof changed over to a massive black shale at some distance from the shaft. The shale made a good roof. In some areas of the mine, coal balls were present, but they did not tend to fall. Little timbering was necessary in either the shale roof or the coal ball areas.

PRODUCTION HISTORY

Company	Mine Name	Years	Production (tons)
Valley View Coal Company *	Valley View	1919-1928	<u>186,729</u> 186,729

* The company was listed in the Coal Reports 11 times. In six of those listings, the company name was given as Valley View Coal Company, and in five listings, the company name was shown as Valley Vein Coal Company. Sackville & Wynn were the owners or operators of the Valley View Coal Company.

Last reported production: 1928

SOURCES OF DATA

Source Map	Date	Original Scale	Digitized Scale	Map Type
Mine notes	Undated	(text only)	1:24000 **	Secondary source

** The mine location was plotted on a 1:24000 USGS topographic map from the mine location description and digitized.

Annotated Bibliography (data source, brief description of information)

Coal Reports - Production, ownership, years of operation.

Directory of Illinois Coal Mines (Rock Island County) - Mine names, mine index, ownership, years of operation.

Mine notes (Rock Island County) - Mine type, shaft location, seam, depth, thickness, geologic problems.

Mine Index 2426**Sunny Hill Co-operative Coal Company, Valley View Mine**

Type: Underground Total mined-out acreage shown: 67 Production indicates approximately 8 acres were mined after the map date.

SHAFT, SLOPE, DRIFT or TIPPLE LOCATIONS

Type	County	Township-Range	Section	Quarters-Footage
Main shaft	Henry	16N 1E	6	NE SE SW
Air shaft	Henry	16N 1E	6	NW SE SW

GEOLOGY

Seam(s) Mined	Depth (ft)	Thickness (ft)			Mining Method
		Min	Max	Avg	
Rock Island	140			4.17-5.25	MRP

Geologic Problems Reported: The coal was present in this area as pods of 100 to 200 acres. At this mine, the coal was not present 600 feet east and 750 feet south of the shaft. The source map showed an area of bad roof west of the shafts, near the center of the mine.

PRODUCTION HISTORY

Company	Mine Name	Years	Production (tons)
Valley View Coal Company	Valley View	1930-1938	259,711
Valley View Coal Company	Valley View	1938-1940	28,238 *
Sunny Hill Co-operative Coal Company	Valley View	1941-1941	4,224 *
			292,173

* Production after map date

Last reported production: 1941

SOURCES OF DATA

Source Map	Date	Original Scale	Digitized Scale	Map Type
Microfilm, document 351513	10-1-1938	1:1728	1:2621	Not final

Annotated Bibliography (data source, brief description of information)

Coal Reports - Production, ownership, years of operation.

Directory of Illinois Coal Mines (Henry County) - Mine names, mine index, ownership, years of operation.

ENR Document 85/01 - Mining method.

Mine notes (Henry County) - Mine type, shaft location, seam, depth, geologic problems.

ISGS field notes (Henry County) - Thickness.

Microfilm map, document 351513, reel 03136, frame 266 - Shaft locations, mine outline, mining method.

Mine Index 2428**Rock River Coal Company, Rock River Mine**

Type: Underground Total mined-out acreage shown: None; production indicates less than 1 acre was mined.

SHAFT, SLOPE, DRIFT or TIPPLe LOCATIONS

Type	County	Township-Range	Section	Quarters-Footage
Main slope	Henry	17N 1E	19	SW NE SE

GEOLOGY

Seam(s) Mined	Depth (ft)	Thickness (ft)			Mining Method
		Min	Max	Avg	
Rock Island				4.67	Underground

Geologic Problems Reported:

PRODUCTION HISTORY

Company	Mine Name	Years	Production (tons)
Hilltop Coal Company	Hilltop	1936-1936	280
Rock River Coal Company *	Rock River	1937-1941	<u>2,290</u> 2,570

* Operated by James P. Otis

Last reported production: 1941

SOURCES OF DATA

Source Map	Date	Original Scale	Digitized Scale	Map Type
Mine notes	Undated	(text only)	1:24000 **	Secondary source

** The mine location was plotted on a 1:24000 USGS topographic map from the mine location description and digitized.

Annotated Bibliography (data source, brief description of information)

Coal Reports - Production, ownership, years of operation.

Directory of Illinois Coal Mines (Henry County) - Mine names, mine index, ownership, years of operation.

Mine notes (Henry County) - Mine type, slope location, seam, thickness.

Mine Index 2429**Vernie Richardson, Richardson Mine**

Type: Underground Total mined-out acreage shown: None; production indicates less than 1 acre was mined.

SHAFT, SLOPE, DRIFT or TIPPLE LOCATIONS

Type	County	Township-Range	Section	Quarters-Footage
Main drift	Henry	17N 1E	19	SE NW SE

GEOLOGY

Seam(s) Mined	Depth (ft)	Thickness (ft)			Mining Method
		Min	Max	Avg	
Rock Island	40			3.5	Underground

Geologic Problems Reported:

PRODUCTION HISTORY

Company	Mine Name	Years	Production (tons)
Vernie Richardson	Richardson	1938-1938	<u>10</u> 10

Last reported production: 1938

SOURCES OF DATA

Source Map	Date	Original Scale	Digitized Scale	Map Type
Mine notes	Undated	(text only)	1:24000 *	Secondary source

* The mine location was plotted on a 1:24000 USGS topographic map from the mine location description and digitized.

Annotated Bibliography (data source, brief description of information)

Coal Reports - Production, ownership, years of operation.

Directory of Illinois Coal Mines (Henry County) - Mine names, mine index, ownership, years of operation.

Mine notes (Henry County) - Mine type, drift location, seam, depth, thickness.

Mine Index 2430
William McBride, McBride Mine

Type: Underground Total mined-out acreage shown: None; production indicates less than 1 acre was mined.

SHAFT, SLOPE, DRIFT or TIPPLE LOCATIONS

Type	County	Township-Range	Section	Quarters-Footage
Main slope	Henry	17N 1E	19	SW SW NE

GEOLOGY

Seam(s) Mined	Depth (ft)	Thickness (ft)			Mining Method
		Min	Max	Avg	
Rock Island	20-40			4.0	Underground

Geologic Problems Reported:

PRODUCTION HISTORY

Company	Mine Name	Years	Production (tons)
John D. Richards	Richards	1936-1936	110
Rock River View Coal Company	Rock River View	1937-1937	182
Peiser	Peiser	1938-1938	134
William McBride	McBride	1939-1941	178
			604

Last reported production: 1941

SOURCES OF DATA

Source Map	Date	Original Scale	Digitized Scale	Map Type
Mine notes	Undated	(text only)	1:24000 *	Secondary source

* The mine location was plotted on a 1:24000 USGS topographic map from the mine location description and digitized.

Annotated Bibliography (data source, brief description of information)

Coal Reports - Production, ownership, years of operation.
 Directory of Illinois Coal Mines (Henry County) - Mine names, mine index, ownership, years of operation.
 Mine notes (Henry County) - Mine type, slope location, seam, depth, thickness.

Mine Index 2431**Henry L. Dial, Black Hawk No. 2 Mine**

Type: Underground Total mined-out acreage shown: 9 Production indicates approximately 22 acres were mined after the map date.

SHAFT, SLOPE, DRIFT or TIPPLE LOCATIONS

Type	County	Township-Range	Section	Quarters-Footage
Main slope	Henry	17N 1E	21	SE NW NW
Air shaftft	Henry	17N 1E	21	SE NW NW

GEOLOGY

Seam(s) Mined	Depth (ft)	Thickness (ft)			Mining Method
		Min	Max	Avg	
Rock Island	50-100			4.16	MRP

Geologic Problems Reported: The roof was of two types, either a hard shale or a limestone up to 2 feet thick. The coal dipped to the south, about 15 feet in 1/4 mile. The floor was 4 feet of fire clay.

PRODUCTION HISTORY

Company	Mine Name	Years	Production (tons)
Black Hawk Coal Company	Black Hawk No. 2 *	1932-1934	28,496
Black Hawk Coal Company	Black Hawk No. 2	1935-1946	71,247 **
Henry L. Dial	Black Hawk No. 2	1947-1948	646 **
			100,389

* According to the field notes, the mine at this location was also known as the Wildcat Mine.

** Production after map date

Last reported production: 1948

SOURCES OF DATA

Source Map	Date	Original Scale	Digitized Scale	Map Type
USGS topographic map, Orion	1932	1:48000	1:48000	Secondary source
Microfilm, document 351525 ***	12-1-1934	1:600	1:703	Not final

*** The microfilm map had no surface features to register the mine workings to the land surface. The USGS had included the slope location, and put the mine name on the topographic map. The microfilm was then scaled correctly and aligned with the slope location. Generally, the preferred method is to have two or more surface features to align the mine map for georegistration, not the use of a secondary source for alignment.

Annotated Bibliography (data source, brief description of information)

Coal Reports - Production, ownership, years of operation.

Directory of Illinois Coal Mines (Henry County) - Mine names, mine index, ownership, years of operation.

Mine notes (Henry County) - Mine type, slope location, seam, depth, thickness.

ISGS field notes, C. G. Ball, undated (Henry County) - Mine name, location, geologic problems.

Microfilm map, document 351525, reel 03136, frame 284 - Slope & shaft locations, mine type, mine outline, mining method.

USGS 15-minute topographic map, Orion Quadrangle, 1932 - Slope location.

Mine Index 2432
Hillside Coal Company, Hillside Mine

Type: Underground Total mined-out acreage shown: 4

SHAFT, SLOPE, DRIFT or TIPPLE LOCATIONS

Type	County	Township-Range	Section	Quarters-Footage
Main shaft	Henry	17N 1E	21	SW NW SW
Air shaft	Henry	17N 1E	21	NE SW SW

GEOLOGY

Seam(s) Mined	Depth (ft)	Thickness (ft)			Mining Method
		Min	Max	Avg	
Rock Island	100			2.5-3.5	RPP

Geologic Problems Reported:

PRODUCTION HISTORY

Company	Mine Name	Years	Production (tons)
Crescent Coal & Mining Company	Briar Bluff	1934-1940	13,649
Hillside Coal Company	Hillside	1948-1948 *	325
			13,974

* Re-opened abandoned mine

Last reported production: 1948

SOURCES OF DATA

Source Map	Date	Original Scale	Digitized Scale	Map Type
Microfilm, document 351510	Undated	1:600	1:786	Undated **

** The mine outline is the approximate size expected for the reported production. This suggests that the mine outline is complete.

Annotated Bibliography (data source, brief description of information)

Coal Reports - Production, ownership, years of operation.
 Directory of Illinois Coal Mines (Henry County) - Mine names, mine index, ownership, years of operation.
 ENR Document 85/01 - Mining method.
 Mine notes (Henry County) - Mine type, shaft location, seam, depth, thickness.
 Microfilm map, document 351510, reel 03136, frame 263 - Shaft locations, mine outline, mining method.

Mine Index 2434**Cook Gem Coal Company, Inc., Gem Mine**

Type: Underground Total mined-out acreage shown: 67 Production indicates approximately 5 acres were mined after the map date.

SHAFT, SLOPE, DRIFT or TIPPLE LOCATIONS

Type	County	Township-Range	Section	Quarters-Footage
Main shaft	Henry	17N 1E	32	NE SW SE
Air shaft	Henry	17N 1E	32	NE SW SE

GEOLOGY

Seam(s) Mined	Depth (ft)	Thickness (ft)			Mining Method
		Min	Max	Avg	
Rock Island	130-140			4.17-4.5	MRP

Geologic Problems Reported: The source map indicates that the southern part of the mine had thin coal which halted mine expansion. The source map showed caved workings in rooms on the northernmost part of the mine and a roof fall just south of the air shaft. Expansion was halted on the west side of the northern part of the mine because the coal was eroded (or never deposited).

PRODUCTION HISTORY

Company	Mine Name	Years	Production (tons)
Mielke Brothers	Gem No. 2	1939-1946	112,498
John Mielke	Gem	1947-1952	55,083
Jim Mine, Inc.	Gem	1952-1955	13,559
Jim Mine, Inc.	Gem	1955-1956	3,145 *
Cook Gem Coal Company, Inc.	Gem	1956-1959	9,603 *
			193,888

* Production after map date

Last reported production: April 1959

SOURCES OF DATA

Source Map	Date	Original Scale	Digitized Scale	Map Type
Microfilm, document 351501	10-4-1955	1:1200	1:2317	Not final

Annotated Bibliography (data source, brief description of information)

Coal Reports - Production, ownership, years of operation.

Directory of Illinois Coal Mines (Henry County) - Mine names, mine index, ownership, years of operation.

ENR Document 85/01 - Mining method.

Mine notes (Henry County) - Mine type, shaft location, seam, depth, thickness.

Microfilm map, document 351501, reel 03136, frame 254 - Shaft locations, mine outline, mining method, geologic problems.

Mine Index 3234
Mielke Brothers, County Line Mine

Type: Underground Total mined-out acreage shown: 55 Production indicates approximately 8 acres were mined after the map date.

SHAFT, SLOPE, DRIFT or TIPPLE LOCATIONS

Type	County	Township-Range	Section	Quarters-Footage
Main shaft	Rock Island	16N 1W	1	NW NE SE
Air shaft	Rock Island	16N 1W	1	NE NW SE

GEOLOGY

Seam(s) Mined	Depth (ft)	Thickness (ft)			Mining Method
		Min	Max	Avg	
Rock Island	140	3.67	5.3	4.0	MRP

Geologic Problems Reported:

PRODUCTION HISTORY

Company	Mine Name	Years	Production (tons)
Mielke Brothers	County Line	1930-1938	285,007
Mielke Brothers	County Line	1938-1942	40,773 *
			325,780

* Production after map date

Last reported production: 1942

SOURCES OF DATA

Source Map	Date	Original Scale	Digitized Scale	Map Type
Microfilm, document 352747	11-26-1938	1:600	1:1324	Not final

Annotated Bibliography (data source, brief description of information)

Coal Reports - Production, ownership, years of operation.
 Directory of Illinois Coal Mines (Rock Island County) - Mine names, mine index, ownership, years of operation.
 Mine notes (Rock Island County) - Mine type, shaft location, seam, depth, thickness.
 Microfilm map, document 352747, reel 03140, frames 245 & 246 - Shaft locations, mine outline, mining method.

Mine Index 3235
Rural Coal Company, Rural Mine

Type: Underground Total mined-out acreage shown: 14 Production indicates approximately 2 acres were mined after the map date.

SHAFT, SLOPE, DRIFT or TIPPLE LOCATIONS

Type	County	Township-Range	Section	Quarters-Footage
Main shaft	Rock Island	16N 1W	3	NW NW NE
Air shaft	Rock Island	16N 1W	3	NW NW NE

GEOLOGY

Seam(s) Mined	Depth (ft)	Thickness (ft)			Mining Method
		Min	Max	Avg	
Rock Island	96-100	3.5	6	4.0	MRP *

* Some pillars had been pulled.

Geologic Problems Reported: Sag subsidence occurred near the shaft of this mine. This subsidence was rectified. The source map shows roof falls in rooms in the southwestern part of the mine. The northern part of the western side of the mine had some areas with pulled pillars and two rooms with roof falls.

PRODUCTION HISTORY

Company	Mine Name	Years	Production (tons)
Rural Coal Company **	Rural	1922-1939	47,595 ***
Rural Coal Company`	Rural	1939-1944	<u>7,734</u> †
			55,329

** M. W. Preston was the owner of the Rural Coal Company. The source map showed the operator to be B. Posten. A mine was shown at (or near) this location in the 1905 Atlas of Rock Island County, indicating that some earlier mining probably occurred nearby.

*** Production was not listed in the Coal Report from 1930 to 1933 for mines producing less than 1,000 tons per year.

† Production after map date

Last reported production: 1944

SOURCES OF DATA

Source Map	Date	Original Scale	Digitized Scale	Map Type
Microfilm, document 352749	1-1-1939	1:600	1:1324	Not final

Annotated Bibliography (data source, brief description of information)

Coal Reports - Production, ownership, years of operation.

Directory of Illinois Coal Mines (Rock Island County) - Mine names, mine index, ownership, years of operation.

ENR Document 85/01 - Mining method.

Mine notes (Rock Island County) - Mine type, shaft location, seam, depth, thickness.

Microfilm map, document 352749, reel 03140, frame 248 - Shaft locations, mine outline, mining method, geologic problems.

Atlas of Rock Island County, 1905, Iowa Publishing Company, 184p. - Years of operation.

Mine Index 3236**Heagy & Stoddard, Heagy & Stoddard Mine**

Type: Underground Total mined-out acreage shown: None; production indicates approximately 17 acres were mined.

SHAFT, SLOPE, DRIFT or TIPPLE LOCATIONS

Type	County	Township-Range	Section	Quarters-Footage
Main shaft	Rock Island	17N 1E	5	SW NE SW

GEOLOGY

Seam(s) Mined	Depth (ft)	Thickness (ft)			Mining Method
		Min	Max	Avg	
Rock Island	63-80			3.5-4.0	RP

Geologic Problems Reported:

PRODUCTION HISTORY

Company	Mine Name	Years	Production (tons)
Heagy & Stoddard	Heagy & Stoddard	1881-1884	57,700
			57,700

Last reported production: 1884

SOURCES OF DATA

Source Map	Date	Original Scale	Digitized Scale	Map Type
Coal Section mine database	Undated	(text only)	1:24000 *	Secondary source

* The mine location was plotted on a 1:24000 USGS topographic map from the mine location description and digitized.

Annotated Bibliography (data source, brief description of information)

Coal Reports - Production, ownership, years of operation, mine type, seam, depth, thickness, mining method.
 Directory of Illinois Coal Mines (Rock Island County) - Mine names, mine index, ownership, years of operation.

Mine Index 3237
T. S. Silvis, Silvis Mine

Type: Underground Total mined-out acreage shown: None; production indicates 33 acres were mined. With the addition of the 12 acres mined before production was reported, the Silvis Mine worked approximately 45 acres.

SHAFT, SLOPE, DRIFT or TIPPLE LOCATIONS

Type	County	Township-Range	Section	Quarters-Footage
Main slope	Rock Island	17N 1E	5	NE NE NE

GEOLOGY

Seam(s) Mined	Depth (ft)	Thickness (ft)			Mining Method
		Min	Max	Avg	
Rock Island	15-80			3.0-4.0	RP

Geologic Problems Reported:

PRODUCTION HISTORY

Company	Mine Name	Years	Production (tons)
Porter & Silvis	Porter & Silvis	pre1881-1883 *	9,240
Silvis Brothers	Silvis	1883-1892	50,556
Silvis & Silvis	Silvis	1892-1898	29,440
Sharp Silvis	Silvis	1898-1900	10,990
T. S. Silvis	Silvis	1900-1901	4,414
			104,640

* Production and years of operation before 1881 are not known. The 1882 Coal Report indicated 12 acres were mined.

Last reported production: 1901

SOURCES OF DATA

Source Map	Date	Original Scale	Digitized Scale	Map Type
Coal Section mine database	Undated	(text only)	1:24000 **	Secondary source

** The mine location was plotted on a 1:24000 USGS topographic map from the mine location description and digitized.

Annotated Bibliography (data source, brief description of information)

Coal Reports - Production, ownership, years of operation, mine type, seam, depth, thickness, mining method.
 Directory of Illinois Coal Mines (Rock Island County) - Mine names, mine index, ownership, years of operation.

Mine Index 3238
Herbert Odendahl, Odendahl Mine

Type: Underground Total mined-out acreage shown: None; production indicates less than 2 acres were mined.

SHAFT, SLOPE, DRIFT or TIPPLe LOCATIONS

Type	County	Township-Range	Section	Quarters-Footage
Main slope	Rock Island	17N 1E	8	NW SE SW

GEOLOGY

Seam(s) Mined	Depth (ft)	Thickness (ft)			Mining Method
		Min	Max	Avg	
Rock Island				3.8	RP

Geologic Problems Reported:

PRODUCTION HISTORY

Company	Mine Name	Years	Production (tons)
Joseph Griffin Coal Company	Griffin	1917-1919	275
Griffin Brothers	Griffin	1919-1920	60
Nelson & Goffin	Nelson & Goffin	1920-1922 *	350
Griffin & Odendahl	Griffin & Odendahl	1922-1924	2,450
Herbert Odendahl	Odendahl	1924-1926	1,600
			4,735

* Production was not reported in 1922 for mines producing less than 10,000 tons.

Last reported production: 1926

SOURCES OF DATA

Source Map	Date	Original Scale	Digitized Scale	Map Type
ISGS field notes (H. E. Culver)	9-14-1923	(text only)	1:24000 **	Secondary source

** The mine location was plotted on a 1:24000 USGS topographic map from the mine location description and digitized.

Annotated Bibliography (data source, brief description of information)

Coal Reports - Production, ownership, years of operation.
 Directory of Illinois Coal Mines (Rock Island County) - Mine names, mine index, ownership, years of operation.
 Mine notes (Rock Island County) - Mine type, slope location, seam, thickness.
 ISGS field notes (Rock Island County) - Slope location.

Mine Index 3239**T. S. Silvis, Silvis No. 2 Mine**

Type: Underground Total mined-out acreage shown: None; production indicates approximately 38 acres were mined.

SHAFT, SLOPE, DRIFT or TIPPLe LOCATIONS

Type	County	Township-Range	Section	Quarters-Footage
Main shaft	Rock Island	17N 1E	8	NE NE SE

GEOLOGY

Seam(s) Mined	Depth (ft)	Thickness (ft)			Mining Method
		Min	Max	Avg	
Rock Island	90-94			3.5-4.0	RP

Geologic Problems Reported:

PRODUCTION HISTORY

Company	Mine Name	Years	Production (tons)
T. S. Silvis	Silvis No. 2	1900-1907	<u>128,120</u> 128,120

Last reported production: 1907

SOURCES OF DATA

Source Map	Date	Original Scale	Digitized Scale	Map Type
Atlas of Rock Island County	1905	1:31680	1:31680	Secondary source

Annotated Bibliography (data source, brief description of information)

Coal Reports - Production, ownership, years of operation, mine type, seam, depth, thickness, mining method.
Directory of Illinois Coal Mines (Rock Island County) - Mine names, mine index, ownership, years of operation.
Mine notes (Rock Island County) - Mine location.
Atlas of Rock Island County, 1905, Iowa Publishing Company, 184p. - Shaft location.

Mine Index 3240**Stoehr & Schadt, Stoehr & Schadt No. 2 Mine**

Type: Underground Total mined-out acreage shown: None; production indicates approximately 4 acres were mined.

SHAFT, SLOPE, DRIFT or TIPPLE LOCATIONS

Type	County	Township-Range	Section	Quarters-Footage
Main shaft	Rock Island	17N 1E	8	NW NW SE

GEOLOGY

Seam(s) Mined	Depth (ft)	Thickness (ft)			Mining Method
		Min	Max	Avg	
Rock Island	56-63			3.33-4.0	RP

Geologic Problems Reported:

PRODUCTION HISTORY

Company	Mine Name	Years	Production (tons)
Stoehr & Schadt	Stoehr & Schadt No. 2	1905-1909	11,099
			11,099

Last reported production: 1909

SOURCES OF DATA

Source Map	Date	Original Scale	Digitized Scale	Map Type
Mine notes	Undated	(text only)	1:24000 *	Secondary source

* The mine location was plotted on a 1:24000 USGS topographic map from the mine location description and digitized.

Annotated Bibliography (data source, brief description of information)

Coal Reports - Production, ownership, years of operation, mine type, seam, depth, thickness, mining method.
Directory of Illinois Coal Mines (Rock Island County) - Mine names, mine index, ownership, years of operation.
Mine notes (Rock Island County) - Shaft location.

Mine Index 3241**Edward Stoehr, Blue Eagle No. 1 Mine**

Type: Underground Total mined-out acreage shown: None; production indicates approximately 3 acres were mined.

SHAFT, SLOPE, DRIFT or TIPPLE LOCATIONS

Type	County	Township-Range	Section	Quarters-Footage
Main shaft	Rock Island	17N 1E	8	NE NE SE

GEOLOGY

Seam(s) Mined	Depth (ft)	Thickness (ft)			Mining Method
		Min	Max	Avg	
Rock Island					Underground

Geologic Problems Reported:

PRODUCTION HISTORY

Company	Mine Name	Years	Production (tons)
Edward Stoehr	Blue Eagle No. 1	1924-1936	8,999
			8,999

* Idle 1929; mines producing less than 1,000 tons per year were not listed in the Coal Report from 1931 to 1933.

Last reported production: 1936

SOURCES OF DATA

Source Map	Date	Original Scale	Digitized Scale	Map Type
ISGS field notes (H. E. Culver)	1921-1924	1:15840	1:15840	Secondary source

Annotated Bibliography (data source, brief description of information)

Coal Reports - Production, ownership, years of operation.

Directory of Illinois Coal Mines (Rock Island County) - Mine names, mine index, ownership, years of operation.

ISGS field notes (Rock Island County) - Shaft location, mine type.

Mine Index 3243
Mansill & Battersby, Narrow Gauge Mine

Type: Underground Total mined-out acreage shown: None; the area is included with the outline for the Black Diamond Mine (mine index 4890). The boundaries between the mines could not be distinguished. The reported production indicates approximately 5 acres were mined.

SHAFT, SLOPE, DRIFT or TIPPLE LOCATIONS

Type	County	Township-Range	Section	Quarters-Footage
Main shaft *	Rock Island	17N 1W	25	SW SW SE

* Connected underground to the Black Diamond Mine (mine index 4890)

GEOLOGY

Seam(s) Mined	Depth (ft)	Thickness (ft)			Mining Method
		Min	Max	Avg	
Rock Island	80			3.5	RPB

Geologic Problems Reported:

PRODUCTION HISTORY

Company	Mine Name	Years	Production (tons)
Mansil, Battersby & Seville	Narrow Gauge	pre1882-1884 **	8,226 **
Mansill & Battersby	Narrow Gauge	1884-1885	6,118
			14,344

** Production before July 1883 was recorded under the Black Diamond Mine (mine index 4890).

Last reported production: 1885

SOURCES OF DATA

Source Map	Date	Original Scale	Digitized Scale	Map Type
Company ***	Undated	1:1152	1:1152	Undated

*** A copy of the mine map was present in the Robert Howard Public Library (Coal Valley) and was traced in 1999.

Annotated Bibliography (data source, brief description of information)

Coal Reports - Production, ownership, years of operation, mine type, seam, depth, thickness.
 Directory of Illinois Coal Mines (Rock Island County) - Mine names, mine index, ownership, years of operation.
 Company map, courtesy Robert E. Jones Public Library - Shaft location, mine outline, mining method.

Mine Index 3245**Blue Eagle Coal Company, Blue Eagle No. 2 Mine**

Type: Underground Total mined-out acreage shown: None; production indicates approximately 3 acres were mined.

SHAFT, SLOPE, DRIFT or TIPPLE LOCATIONS

Type	County	Township-Range	Section	Quarters-Footage
Main shaft	Rock Island	17N 1E	8	SW SE NE

GEOLOGY

Seam(s) Mined	Depth (ft)	Thickness (ft)			Mining Method
		Min	Max	Avg	
Rock Island	53			3.5	

Geologic Problems Reported: The lower part of the black shale roof came down. In the coal, rolls came up from the bottom, which made it expensive to mine. Pyrite lenses and stringers were found throughout the coal, as were calcite facings. The floor was a lightly gray clay that only heaved where rooms were mined too wide.

PRODUCTION HISTORY

Company	Mine Name	Years	Production (tons)
Blue Eagle Coal Company	Blue Eagle No. 2	1936-1937	3,744
Edward Stoehr & Sons	Blue Eagle No. 2	1938-1939	3,030
Blue Eagle Coal Company	Blue Eagle No. 2	1940-1943	1,085
			7,859

Last reported production: 1943

SOURCES OF DATA

Source Map	Date	Original Scale	Digitized Scale	Map Type
Mine notes	Undated	1:24000	1:24000	Secondary source

Annotated Bibliography (data source, brief description of information)

Coal Reports - Production, ownership, years of operation.

Directory of Illinois Coal Mines (Rock Island County) - Mine names, mine index, ownership, years of operation.

Mine notes (Rock Island County) - Mine type, shaft location, seam, depth, thickness, geologic problems.

Mine Index 3246**M. W. Posten & Son, Posten Mine**

Type: Underground Total mined-out acreage shown: None; production indicates approximately 2 acres were mined.

SHAFT, SLOPE, DRIFT or TIPPLE LOCATIONS

Type	County	Township-Range	Section	Quarters-Footage
Main shaft	Rock Island	17N 1W	10	SE SW NW

GEOLOGY

Seam(s) Mined	Depth (ft)	Thickness (ft)			Mining Method
		Min	Max	Avg	
Rock Island	80			3.0-4.0	RP

Geologic Problems Reported:

PRODUCTION HISTORY

Company	Mine Name	Years	Production (tons)
Zeigler Brothers	Zeigler	1904-1906	2,872
Fred Zeigler	Zeigler	1906-1907	940
M. W. Posten & Son	Posten	1907-1909	<u>2,330</u>
			6,142

Last reported production: 1909

SOURCES OF DATA

Source Map	Date	Original Scale	Digitized Scale	Map Type
Mine notes	Undated	(text only)	1:24000 *	Secondary source

* The mine location was plotted on a 1:24000 USGS topographic map from the mine location description and digitized.

Annotated Bibliography (data source, brief description of information)

Coal Reports - Production, ownership, years of operation, mine type, seam, depth, thickness, mining method.
 Directory of Illinois Coal Mines (Rock Island County) - Mine names, mine index, ownership, years of operation.
 Mine notes (Rock Island County) - Mine location.

Mine Index 3247**Highland Coal & Mining Company, Highland Mine**

Type: Underground Total mined-out acreage shown: None; production indicates approximately 24 acres were mined.

SHAFT, SLOPE, DRIFT or TIPPLE LOCATIONS

Type	County	Township-Range	Section	Quarters-Footage
Main shaft	Rock Island	17N 1W	10	NW NE NW

GEOLOGY

Seam(s) Mined	Depth (ft)	Thickness (ft)			Mining Method
		Min	Max	Avg	
Rock Island					Underground

Geologic Problems Reported:

PRODUCTION HISTORY

Company	Mine Name	Years	Production (tons)
Highland Coal & Mining Company	Highland	1925-1935	<u>76,088</u> 76,088

Last reported production: 1935

SOURCES OF DATA

Source Map	Date	Original Scale	Digitized Scale	Map Type
Mine notes	Undated	(text only)	1:24000 *	Secondary source

* The mine location was plotted on a 1:24000 USGS topographic map from the mine location description and digitized.

Annotated Bibliography (data source, brief description of information)

Coal Reports - Production, ownership, years of operation.

Directory of Illinois Coal Mines (Rock Island County) - Mine names, mine index, ownership, years of operation.

Mine notes (Rock Island County) - Mine location.

Mine Index 3248
Lucky Strike Mine

Type: Underground Total mined-out acreage shown: None; production indicates less than 1 acre was mined.

SHAFT, SLOPE, DRIFT or TIPPLE LOCATIONS

Type	County	Township-Range	Section	Quarters-Footage
Mine	Rock Island	17N 1W	12	NW SW NE

GEOLOGY

Seam(s) Mined	Depth (ft)	Thickness (ft)			Mining Method
		Min	Max	Avg	
Rock Island					RP

Geologic Problems Reported:

PRODUCTION HISTORY

Company	Mine Name	Years	Production (tons)
Lucky Strike	Lucky Strike	1936-1936	$\frac{8}{8}$

Last reported production: 1936

SOURCES OF DATA

Source Map	Date	Original Scale	Digitized Scale	Map Type
Mine notes	Undated	(text only)	1:24000 *	Secondary source

* The mine location was plotted on a 1:24000 USGS topographic map from the mine location description and digitized.

Annotated Bibliography (data source, brief description of information)

Coal Reports - Production, ownership, years of operation.
 Directory of Illinois Coal Mines (Rock Island County) - Mine names, mine index, ownership, years of operation.
 ENR Document 85/01 - Mining method.
 Mine notes (Rock Island County) - Mine location.

Mine Index 3249**Shady Lane Coal Company, Shady Lane Mine**

Type: Underground Total mined-out acreage shown: Less than 1

SHAFT, SLOPE, DRIFT or TIPPLE LOCATIONS

Type	County	Township-Range	Section	Quarters-Footage
Main slope	Rock Island	17N 1W	24	SW NW SE
Air slope	Rock Island	17N 1W	24	SW NW SE
Old slope	Rock Island	17N 1W	24	SW NW SE

GEOLOGY

Seam(s) Mined	Depth (ft)	Thickness (ft)			Mining Method
		Min	Max	Avg	
Rock Island					MRP

Geologic Problems Reported:

PRODUCTION HISTORY

Company	Mine Name	Years	Production (tons)
Shady Lane Coal Company *	Shady Lane	1941-1942 **	<u>725</u> 725

* Operated by James P. Utts

** The production was reported from Henry County. The slopes are all in Rock Island County, and the workings on the source map are in Rock Island County.

Last reported production: 1942

SOURCES OF DATA

Source Map	Date	Original Scale	Digitized Scale	Map Type
Microfilm, document 351514	8-1-1942	1:600	1:910	Final

Annotated Bibliography (data source, brief description of information)

Coal Reports - Production, ownership, years of operation.

Directory of Illinois Coal Mines (Rock Island County) - Mine names, mine index, ownership, years of operation.

ENR Document 85/01 - Mining method.

Microfilm map, document 351514, reel 03136, frame 267 - Slope locations, mine outline, mining method.

Mine Index 3251**James Utts & W. Peters, Hunky Dory Mine**

Type: Underground Total mined-out acreage shown: 6 Production indicates approximately 6 acres were mined after the map date.

SHAFT, SLOPE, DRIFT or TIPPLE LOCATIONS

Type	County	Township-Range	Section	Quarters-Footage
Main slope	Rock Island	17N 1W	25	NE SW NE
Air shaft	Rock Island	17N 1W	25	SE SW NE

GEOLOGY

Seam(s) Mined	Depth (ft)	Thickness (ft)			Mining Method
		Min	Max	Avg	
Rock Island	40	3.67	4.5	4.0	MRP, HER

Geologic Problems Reported: The roof was irregular, and said to be chert. The coal pinched out to three inches in thickness in some areas.

PRODUCTION HISTORY

Company	Mine Name	Years	Production (tons)
Wooley, Peters & Wilson	Hunky Dory	1932-1935 *	6,136
Wooley, Peters & Lawson	Hunky Dory	1936-1939	11,466
Wooley, Peters & Lawson	Hunky Dory	1939-1941	9,940 **
Peters & Lawson	Hunky Dory	1942-1942	1,754 **
James Utts & W. Peters	Hunky Dory	1942-1946	<u>6,232</u> **
			35,528

* Mines producing less than 1,000 tons per year were not reported in 1932 & 1933.

** Production after map date

Last reported production: 1946

SOURCES OF DATA

Source Map	Date	Original Scale	Digitized Scale	Map Type
Microfilm, document 352745	2-21-1939	1:600	1:993	Not final

Annotated Bibliography (data source, brief description of information)

Coal Reports - Production, ownership, years of operation.

Directory of Illinois Coal Mines (Rock Island County) - Mine names, mine index, ownership, years of operation.

Mine notes (Rock Island County) - Mine type, slope location, seam, depth, thickness.

ISGS field notes (Rock Island County) - Mine type, geologic problems.

Microfilm map, document 352745, reel 03140, frame 243 - Slope & shaft locations, mine outline, mining method.

Mine Index 3252
Harry Dial, Sunshine Mine

Type: Underground Total mined-out acreage shown: 10 Production indicates approximately 2 acres were mined after the map date.

SHAFT, SLOPE, DRIFT or TIPPLe LOCATIONS

Type	County	Township-Range	Section	Quarters-Footage
Main shaft	Rock Island	17N 1W	33	NW SW NE
Air shaft	Rock Island	17N 1W	33	NW SW NE

GEOLOGY

Seam(s) Mined	Depth (ft)	Thickness (ft)			Mining Method
		Min	Max	Avg	
Rock Island	65	3.0	4.0	3.67	MRP, some HER *

* Some areas have had the pillars pulled. The location and extent of drawn pillars is not known

Geologic Problems Reported: The source map showed faults, trending NW-SE, along the northeastern part of the mine. These may be areas of eroded coal and not true structural faults. Roof falls were common in the southern part of the mine. Northward extension of the mine appears to have halted because of bad roof conditions. Extension to the southeast also halted because of bad roof, and the source map states that coal "rises" in that direction. An area between the hoist and air shafts caved after the pillars were pulled.

PRODUCTION HISTORY

Company	Mine Name	Years	Production (tons)
McKeag Brothers	McKeag	1929-1932	22,630
Thomas McKeag	McKeag	1933-1936	17,314
Eithel Richardson	Sunshine	1936-1937	1,084 **
Banfield Brothers	Sunshine	1937-1937	1,030 **
James Utts	Sunshine	1938-1939	3,063 **
George Andrews	Sunshine	1940-1941	520 **
Harry Dial	Sunshine	1941-1946 ***	568 **
			46,209

** Production after map date

*** Idle 1943-1945

Last reported production: 1946

SOURCES OF DATA

Source Map	Date	Original Scale	Digitized Scale	Map Type
Microfilm, document 352744	9-15-1936	1:600	1:993	Not final

Annotated Bibliography (data source, brief description of information)

Coal Reports - Production, ownership, years of operation.

Directory of Illinois Coal Mines (Rock Island County) - Mine names, mine index, ownership, years of operation.

ENR Document 85/01 - Mining method.

Mine notes (Rock Island County) - Mine type, shaft location, seam, depth, thickness.

Microfilm map, document 352744, reel 03140, frames 241 & 242 - Shaft locations, mine outline, mining method, geologic problems.

Mine Index 3254
Pryce Mining Company, Pryce Mine

Type: Underground Total mined-out acreage shown: 208 The sketched map in the mine notes is much larger than expected for the reported production. Production indicates approximately 3 acres were mined. The sketched map may be inaccurate, or other operators may have worked in this area (see the unlocated mines at the back of this report), or the sketch map may be a general property outline that does not designate the mined area.

SHAFT, SLOPE, DRIFT or TIPPLE LOCATIONS

Type	County	Township-Range	Section	Quarters-Footage
Main shaft	Rock Island	17N 1W	34	SE SE NE

GEOLOGY

Seam(s) Mined	Depth (ft)	Thickness (ft)			Mining Method
		Min	Max	Avg	
Rock Island	87	3.0	4.67	4.0-4.3	Underground

Geologic Problems Reported: The coal had a good roof, with 6 feet of shale over 3 feet of cap rock.

PRODUCTION HISTORY

Company	Mine Name	Years	Production (tons)
Pryce Mining Company	Pryce	1934-1947	<u>11,841</u> 11,841

Last reported production: 1947

SOURCES OF DATA

Source Map	Date	Original Scale	Digitized Scale	Map Type
Mine notes, sketched map	Undated	1:24000	1:24000	Secondary source

Annotated Bibliography (data source, brief description of information)

Coal Reports - Production, ownership, years of operation.
 Directory of Illinois Coal Mines (Rock Island County) - Mine names, mine index, ownership, years of operation.
 ENR Document 85/01 - Mining method.
 Mine notes (Rock Island County) - Mine location, seam, depth, thickness.
 ISGS field notes (Rock Island County) - Depth, thickness, geologic problems.

Mine Index 3255**D. L. Edwards, Edwards Mine**

Type: Underground Total mined-out acreage shown: None; production indicates less than 1 acre was mined.

SHAFT, SLOPE, DRIFT or TIPPLE LOCATIONS

Type	County	Township-Range	Section	Quarters-Footage
Main slope	Rock Island	17N 1W	36	NE NW SW

GEOLOGY

Seam(s) Mined	Depth (ft)	Thickness (ft)			Mining Method
		Min	Max	Avg	
Rock Island	16-35			2.5-3.5	RP

Geologic Problems Reported:

PRODUCTION HISTORY

Company	Mine Name	Years	Production (tons)
D. L. Edwards	Edwards	1901-1906	<u>1,090</u> 1,090

Last reported production: 1906

SOURCES OF DATA

Source Map	Date	Original Scale	Digitized Scale	Map Type
Atlas of Rock Island County	1905	1:31680	1:31680	Secondary source

Annotated Bibliography (data source, brief description of information)

Coal Reports - Production, ownership, years of operation, seam, depth, thickness, mining method.
Directory of Illinois Coal Mines (Rock Island County) - Mine names, mine index, ownership, years of operation.
ENR Document 85/01 - Mining method.
Mine notes (Rock Island County) - Mine location.
Atlas of Rock Island County, 1905, Iowa Publishing Company, 184p. - Mine location.

Mine Index 3256**McCraney Sand & Gravel Company, McCraney No. 2 Mine**

Type: Underground Total mined-out acreage shown: None; production indicates approximately 5 acres were mined.

SHAFT, SLOPE, DRIFT or TIPPLE LOCATIONS

Type	County	Township-Range	Section	Quarters-Footage
Main shaft	Rock Island	17N 1W	36	SW SW NE

GEOLOGY

Seam(s) Mined	Depth (ft)	Thickness (ft)			Mining Method
		Min	Max	Avg	
Rock Island	40			3.0	RP

Geologic Problems Reported:

PRODUCTION HISTORY

Company	Mine Name	Years	Production (tons)
McCraney Sand & Gravel Company	McCraney No. 2 *	1918-1921	14,221
			14,221

* McCraney No. 1 Mine is in Mercer County.

Last reported production: 1921

SOURCES OF DATA

Source Map	Date	Original Scale	Digitized Scale	Map Type
Mine notes	Undated	(text only)	1:24000 **	Secondary source

** The mine location was plotted on a 1:24000 USGS topographic map from the mine location description and digitized.

Annotated Bibliography (data source, brief description of information)

Coal Reports - Production, ownership, years of operation, mine type, seam, depth, thickness, mining method.
Directory of Illinois Coal Mines (Rock Island County) - Mine names, mine index, ownership, years of operation.
Mine notes (Rock Island County) - Mine location.

Mine Index 3331**John M. Pryce Coal Company, Pryce Mine**

Type: Underground Total mined-out acreage shown: 20 Production indicates approximately 32 acres were mined after the map date.

SHAFT, SLOPE, DRIFT or TIPPLE LOCATIONS

Type	County	Township-Range	Section	Quarters-Footage
Main shaft	Rock Island	17N 1W	34	SE NW SE
Escape shaft	Rock Island	17N 1W	34	SE NW SE

GEOLOGY

Seam(s) Mined	Depth (ft)	Thickness (ft)			Mining Method
		Min	Max	Avg	
Rock Island	122			4.0	MRP

Geologic Problems Reported:

PRODUCTION HISTORY

Company	Mine Name	Years	Production (tons)
Pryce Coal Company	Pryce	1913-1917	60,750
Pryce-Sievers Coal Company	Pryce	1917-1918	42,141
Pryce Coal Company	Pryce	1918-1920	51,302 *
Pryce & Sievers	Pryce	1920-1922	63,625 *
John M. Pryce Coal Company	Pryce	1922-1924	19,988 *
			237,806

* Production after map date

Last reported production: 1924

SOURCES OF DATA

Source Map	Date	Original Scale	Digitized Scale	Map Type
Microfilm, document 352746	9-14-1918	1:1200	1:1490	Not final
WPA, T17N-R1W	circa 1934	1:12000	1:67584	Secondary source

Annotated Bibliography (data source, brief description of information)

Coal Reports - Production, ownership, years of operation, seam, depth, thickness.

Directory of Illinois Coal Mines (Rock Island County) - Mine names, mine index, ownership, years of operation.

ENR Document 85/01 - Mining method.

Microfilm map, document 352746, reel 03140, frames 158, 159 - Shaft locations, mine outline, mining method.

WPA, T17N-R1W - Section (used to georegister microfilm map).

Mine Index 4867
Stoehr Mining Company, Stoehr No. 3 Mine

Type: Underground Total mined-out acreage shown: None; production indicates approximately 14 acres were mined.

SHAFT, SLOPE, DRIFT or TIPPLE LOCATIONS

Type	County	Township-Range	Section	Quarters-Footage
Main shaft	Rock Island	17N 1E	8	SW SE NE

GEOLOGY

Seam(s) Mined	Depth (ft)	Thickness (ft)			Mining Method
		Min	Max	Avg	
Rock Island	70	3.33	4.0	3.67	RP

Geologic Problems Reported: The roof was a limestone caprock for a 40-foot radius from the shaft. This limestone lensed out and the roof over the remainder of the mine was shale. Rolls came up from the bottom and made the coal expensive to mine. Pyrite was present as lenses and stringers throughout the seam, and calcite filled the fractures. The floor was 4 feet of underclay that only heaved when rooms were too wide.

PRODUCTION HISTORY

Company	Mine Name	Years	Production (tons)
Stoehr & Schadt	Stoehr & Schadt No. 3	1908-1917	31,269
Stoehr Mining Company	Stoehr No. 3	1917-1924	15,436
			46,705

Last reported production: 1924

SOURCES OF DATA

Source Map	Date	Original Scale	Digitized Scale	Map Type
ISGS field notes (H. E. Culver)	1921-1924	1:15840	1:15840	Secondary source

Annotated Bibliography (data source, brief description of information)

Coal Reports - Production, ownership, years of operation, seam.
 Directory of Illinois Coal Mines (Rock Island County) - Mine names, mine index, ownership, years of operation.
 Mine notes (Rock Island County) - Mine type, shaft location, seam, depth, thickness, geologic problems.
 ISGS field notes (Rock Island County) - Shaft location.

Mine Index 4879**C. W. Frederick, Elite Mine**

Type: Underground Total mined-out acreage shown: None; production indicates approximately 2 acres were mined.

SHAFT, SLOPE, DRIFT or TIPPLE LOCATIONS

Type	County	Township-Range	Section	Quarters-Footage
Mine	Rock Island	17N 1W	25	NE NE SE

GEOLOGY

Seam(s) Mined	Depth (ft)	Thickness (ft)			Mining Method
		Min	Max	Avg	
Rock Island					Underground

Geologic Problems Reported:

PRODUCTION HISTORY

Company	Mine Name	Years	Production (tons)
August Frederick	Elite	1929-1929	40
Frederick Brothers	Elite	1930-1931 *	1,140
C. W. Frederick	Elite	1932-1934	<u>4,215</u>
			5,395

* Production was not reported in 1931, less than 1,000 tons

Last reported production: 1934

SOURCES OF DATA

Source Map	Date	Original Scale	Digitized Scale	Map Type
USGS topographic map	1932	1:62500	1:62500	Secondary source

Annotated Bibliography (data source, brief description of information)

Coal Reports - Production, ownership, years of operation.

Directory of Illinois Coal Mines (Rock Island County) - Mine names, mine index, ownership, years of operation.

USGS 15-minute topographic map, Orion Quadrangle, 1932 - Mine location.

Mine Index 4890
Black Diamond Coal Company, Black Diamond Mine

Type: Underground Total mined-out acreage shown: 99

SHAFT, SLOPE, DRIFT or TIPPLe LOCATIONS

Type	County	Township-Range	Section	Quarters-Footage
Main shaft *	Rock Island	17N 1W	36	SW NE NW
Shaft	Rock Island	17N 1W	36	SW NE NW
Slope	Rock Island	17N 1W	36	SW NE NW
Air shaft	Rock Island	17N 1W	36	SW NE NW
Shaft	Rock Island	17N 1W	36	SW NE NW
Shaft	Rock Island	17N 1W	36	SE NW NE

* Connected underground to the Narrow Gauge Mine (mine index 3243).

GEOLOGY

Seam(s) Mined	Depth (ft)	Thickness (ft)			Mining Method
		Min	Max	Avg	
Rock Island	36-50			3.5	RPB, HER **

** The 1885 Coal Report indicated the main work in the summer was drawing pillars. The extent of this practice is not known.

Geologic Problems Reported:

PRODUCTION HISTORY

Company	Mine Name	Years	Production (tons)
Mansil, Battersby & Seville	Black Diamond	pre1881-1884 ***	100,302 ***
Black Diamond Coal Company	Black Diamond	1884-1889	29,011
Twomley & Lewis	Black Diamond	1889-1891	7,683
Edwin Twomley	Black Diamond	1891-1893	8,777
Black Diamond Coal Company	Black Diamond	1893-1903	33,156
			178,929

*** Production and years of operation before 1881 are not known. The 1882 Coal Report indicates 40 acres were mined. This outline also includes the Narrow Gauge Mine (mine index 4890), run by the same operators as Black Diamond Mine.

Last reported production: 1903

SOURCES OF DATA

Source Map	Date	Original Scale	Digitized Scale	Map Type
Company	Undated	1:1152	1:1152	Undated †

† The mined area shown on the accompanying map is the approximate size expected for the reported production. This suggests that the mine outline is complete.

Annotated Bibliography (data source, brief description of information)

Coal Reports - Production, ownership, years of operation, mine type, seam, depth, thickness.
 Directory of Illinois Coal Mines (Rock Island County) - Mine names, mine index, ownership, years of operation.
 Company map, courtesy Robert E. Jones Public Library - Shaft & slope locations, mine outline, mining method.

Mine Index 4916
Len Smith, Smith Mine

Type: Underground Total mined-out acreage shown: None

SHAFT, SLOPE, DRIFT or TIPPLE LOCATIONS

Type	County	Township-Range	Section	Quarters-Footage
Main drift	Rock Island	17N 1E	8	SE SE SW

GEOLOGY

Seam(s) Mined	Depth (ft)	Thickness (ft)			Mining Method
		Min	Max	Avg	
Rock Island				3.5	RP

Geologic Problems Reported: Sharp erosional channels filled with sand and gravel, locally called "faults", apparently halted expansion of this mine in the 1860s. The roof was a black, slightly fissile shale. Above the shale was 2 to 4 feet of limestone.

PRODUCTION HISTORY

Company	Mine Name	Years	Production (tons)
Len Smith	Smith	circa 1921 *	Unknown **

* Smith re-opened a mine that reputedly operated for a few years in the 1860s.

** Mines producing less than 10,000 tons were not reported in 1921. Production for the earlier mining is not known because production was not reported until 1882.

Last reported production:

SOURCES OF DATA

Source Map	Date	Original Scale	Digitized Scale	Map Type
ISGS field notes (H. E. Culver)	10-7-1921	1:15840	1:15840	Secondary source

Annotated Bibliography (data source, brief description of information)

Coal Reports - Production, ownership, years of operation.

Directory of Illinois Coal Mines (Rock Island County) - Mine names, mine index, ownership, years of operation.

ISGS field notes (Rock Island County) - Drift location, mine name, mine history, thickness, geologic problems.

Mine Index 4918**Edward Stoehr, Stoehr Mine**

Type: Underground Total mined-out acreage shown: None; production indicates less than 1 acre was mined.

SHAFT, SLOPE, DRIFT or TIPPLE LOCATIONS

Type	County	Township-Range	Section	Quarters-Footage
Mine	Rock Island	17N 1E	9	SW NE NW

GEOLOGY

Seam(s) Mined	Depth (ft)	Thickness (ft)			Mining Method
		Min	Max	Avg	
Rock Island	73			3.5	Underground

Geologic Problems Reported:

PRODUCTION HISTORY

Company	Mine Name	Years	Production (tons)
Edward Stoehr	Stoehr	1919-1920	<u>2,000</u> 2,000

Last reported production: 1920

SOURCES OF DATA

Source Map	Date	Original Scale	Digitized Scale	Map Type
ISGS field notes (H. E. Culver)	11-1-1923	(text only)	1:24000 *	Secondary source

* The mine location was plotted on a 1:24000 USGS topographic map from the mine location description and digitized.

Annotated Bibliography (data source, brief description of information)

Coal Reports - Production, ownership, years of operation.

Directory of Illinois Coal Mines (Rock Island County) - Mine names, mine index, ownership, years of operation.

ISGS field notes (Rock Island County) - Depth, thickness, mine location.

Mine Index 4925**Christensen Mining Company, Christensen Mine**

Type: Underground Total mined-out acreage shown: None; production indicates approximately 1 acre was mined.

SHAFT, SLOPE, DRIFT or TIPPLE LOCATIONS

Type	County	Township-Range	Section	Quarters-Footage
Mine	Rock Island	17N 1E	8	NE SE SE

GEOLOGY

Seam(s) Mined	Depth (ft)	Thickness (ft)			Mining Method
		Min	Max	Avg	
Rock Island					

Geologic Problems Reported:

PRODUCTION HISTORY

Company	Mine Name	Years	Production (tons)
Christensen Mining Company	Christensen	1922-1926	<u>3,800</u> 3,800

Last reported production: 1926

SOURCES OF DATA

Source Map	Date	Original Scale	Digitized Scale	Map Type
ISGS field notes (H. E. Culver)	1921-1924	1:15840	1:15840	Secondary source

Annotated Bibliography (data source, brief description of information)

Coal Reports - Production, ownership, years of operation.

Directory of Illinois Coal Mines (Rock Island County) - Mine names, mine index, ownership, years of operation.

ISGS field notes (Rock Island County) - Mine location.

Mine Index 4926**William Allison, Allison Mine**

Type: Underground Total mined-out acreage shown: None; production indicates approximately 7 acres were mined.

SHAFT, SLOPE, DRIFT or TIPPLE LOCATIONS

Type	County	Township-Range	Section	Quarters-Footage
Main slope	Rock Island	17N 1W	12	NE SE NW

GEOLOGY

Seam(s) Mined	Depth (ft)	Thickness (ft)			Mining Method
		Min	Max	Avg	
Rock Island	30-60			2.5-3.5	RP

Geologic Problems Reported:

PRODUCTION HISTORY

Company	Mine Name	Years	Production (tons)
William Allison	Allison	1883-1895	<u>17,880</u> 17,880

Last reported production: 1895

SOURCES OF DATA

Source Map	Date	Original Scale	Digitized Scale	Map Type
Plat Book of Rock Island County	1894	1:15840	1:15840	Secondary source

Annotated Bibliography (data source, brief description of information)

Coal Reports - Production, ownership, years of operation, mine type, seam, depth, thickness, mining method.
Directory of Illinois Coal Mines (Rock Island County) - Mine names, mine index, ownership, years of operation.
Plat Book of Rock Island County, 1894, printed by F. Bourquin, 74p. - Shaft location.

Mine Index 4945
George Donald, Donald Mine

Type: Underground Total mined-out acreage shown: None; production indicates approximately 5 acres were mined.

SHAFT, SLOPE, DRIFT or TIPPLE LOCATIONS

Type	County	Township-Range	Section	Quarters-Footage
Main slope	Rock Island	17N 1E	7	NW NW NW

GEOLOGY

Seam(s) Mined	Depth (ft)	Thickness (ft)			Mining Method
		Min	Max	Avg	
Rock Island	20-40			3.5	RP

Geologic Problems Reported:

PRODUCTION HISTORY

Company	Mine Name	Years	Production (tons)
George Donald	Donald	1884-1892	<u>16,063</u> 16,063

Last reported production: 1892

SOURCES OF DATA

Source Map	Date	Original Scale	Digitized Scale	Map Type
Plat Book of Rock Island County	1894	1:31680	1:31680	Secondary source

Annotated Bibliography (data source, brief description of information)

Coal Reports - Production, ownership, years of operation, mine type, seam, depth, thickness, mining method.
 Directory of Illinois Coal Mines (Rock Island County) - Mine names, mine index, ownership, years of operation.
 Plat Book of Rock Island County, 1894, printed by F. Bourquin, 74p. - Slope location.

Mine Index 4947
David L. Edwards, Edwards Mine

Type: Underground Total mined-out acreage shown: None; production indicates less than 1 acre was mined.

SHAFT, SLOPE, DRIFT or TIPPLE LOCATIONS

Type	County	Township-Range	Section	Quarters-Footage
Main drift	Rock Island	17N 1W	36	SW NE SW

GEOLOGY

Seam(s) Mined	Depth (ft)	Thickness (ft)			Mining Method
		Min	Max	Avg	
Rock Island	30			3.5	RP

Geologic Problems Reported:

PRODUCTION HISTORY

Company	Mine Name	Years	Production (tons)
David L. Edwards	Edwards	1883-1889	<u>1,865</u> 1,865

Last reported production: 1889

SOURCES OF DATA

Source Map	Date	Original Scale	Digitized Scale	Map Type
Atlas of Rock Island County	1876	1:158400	1:158400	Secondary source

Annotated Bibliography (data source, brief description of information)

Coal Reports - Production, ownership, years of operation, mine type, seam, depth, thickness, mining method.
 Directory of Illinois Coal Mines (Rock Island County) - Mine names, mine index, ownership, years of operation.
 Atlas of Rock Island County, 1876 - Drift location.

Mine Index 5302**Grant Griffin & Company, Griffin Mine**

Type: Underground Total mined-out acreage shown: None; production indicates less than 1 acre was mined.

SHAFT, SLOPE, DRIFT or TIPPLE LOCATIONS

Type	County	Township-Range	Section	Quarters-Footage
Main shaft	Rock Island	17N 1E	7	NW NE SE

GEOLOGY

Seam(s) Mined	Depth (ft)	Thickness (ft)			Mining Method
		Min	Max	Avg	
Rock Island	50			3.5	RP

Geologic Problems Reported:

PRODUCTION HISTORY

Company	Mine Name	Years	Production (tons)
Grant Griffin & Company	Griffin	1905-1906	<u>168</u> 168

Last reported production: 1906

SOURCES OF DATA

Source Map	Date	Original Scale	Digitized Scale	Map Type
Atlas of Rock Island County	1905	1:31680	1:31680	Secondary source

Annotated Bibliography (data source, brief description of information)

Coal Reports - Production, ownership, years of operation, mine type, seam, depth, thickness, mining method.
Directory of Illinois Coal Mines (Rock Island County) - Mine names, mine index, ownership, years of operation.
Atlas of Rock Island County, 1905, printed by Iowa Publishing Company, 184p. - Shaft location.

Mine Index 5306
Grothe Brothers, Grothe Mine

Type: Underground Total mined-out acreage shown: None; production indicates approximately 1 acre was mined.

SHAFT, SLOPE, DRIFT or TIPPLE LOCATIONS

Type	County	Township-Range	Section	Quarters-Footage
Main drift	Rock Island	17N 1E	8	NW NW SW

GEOLOGY

Seam(s) Mined	Depth (ft)	Thickness (ft)			Mining Method
		Min	Max	Avg	
Rock Island				3.0	RP

Geologic Problems Reported:

PRODUCTION HISTORY

Company	Mine Name	Years	Production (tons)
Grothe Brothers	Grothe	1898-1904	<u>2,372</u> 2,372

Last reported production: 1904

SOURCES OF DATA

Source Map	Date	Original Scale	Digitized Scale	Map Type
Atlas of Rock Island County	1905	1:31680	1:31680	Secondary source

Annotated Bibliography (data source, brief description of information)

Coal Reports - Production, ownership, years of operation, mine type, seam, thickness, mining method.
 Directory of Illinois Coal Mines (Rock Island County) - Mine names, mine index, ownership, years of operation.
 Atlas of Rock Island County, 1905, printed by Iowa Publishing Company, 184p. - Drift location.

Mine Index 5315
John Hynd, Hynd Mine

Type: Underground Total mined-out acreage shown: None; production indicates less than 1 acre was mined.

SHAFT, SLOPE, DRIFT or TIPPLe LOCATIONS

Type	County	Township-Range	Section	Quarters-Footage
Main drift	Rock Island	17N 1E	5	SW SW SW

GEOLOGY

Seam(s) Mined	Depth (ft)	Thickness (ft)			Mining Method
		Min	Max	Avg	
Rock Island	20			4.0	RP

Geologic Problems Reported:

PRODUCTION HISTORY

Company	Mine Name	Years	Production (tons)
John Hynd	Hynd	1884-1886	<u>2,705</u> 2,705

Last reported production: 1886

SOURCES OF DATA

Source Map	Date	Original Scale	Digitized Scale	Map Type
Personal communication *	6-1999 & 4-2005	(text only)	1:24000 **	Secondary source

* Layne McGeehee, a retired attorney, had local information that a mine was in SE 6-T17N-R1E and notified the ISGS June 3, 1999. Valerie Chambers, P. E., of McClure Engineering Associates, Inc. of East Moline notified the ISGS of the possibility of SW 5-T17N-R1E as the location of the Hynd Mine because of the former land ownership of that area by John Hynd, as shown on old plat maps. Although the plat maps did not show a coal mine at that location, many mines operated in the interval between plat map updates, and were commonly not shown. The location was reasonable geologically, and an uncertain location point symbol on the accompanying map indicates the lack of certitude of the actual mine location.

** The mine location was plotted on a 1:24000 USGS topographic map from the mine location description and digitized.

Annotated Bibliography (data source, brief description of information)

Coal Reports - Production, ownership, years of operation, mine type, seam, depth, thickness, mining method.
 Directory of Illinois Coal Mines (Rock Island County) - Mine names, mine index, ownership, years of operation.

Mine Index 5316
John Hynd, Hynd Mine

Type: Underground Total mined-out acreage shown: None; production indicates approximately 32 acres were mined.

SHAFT, SLOPE, DRIFT or TIPPLe LOCATIONS

Type	County	Township-Range	Section	Quarters-Footage
Main shaft	Rock Island	17N 1E	6	SE SE SE

GEOLOGY

Seam(s) Mined	Depth (ft)	Thickness (ft)			Mining Method
		Min	Max	Avg	
Rock Island	50-60			3.0-4.0	RP

Geologic Problems Reported:

PRODUCTION HISTORY

Company	Mine Name	Years	Production (tons)
John Hynd	Hynd	1887-1908	99,742
			99,742

Last reported production: 1908

SOURCES OF DATA

Source Map	Date	Original Scale	Digitized Scale	Map Type
Personal communication *	6-1999 & 4-2005	(text only)	1:24000 **	Secondary source

* Layne McGeehee, a retired attorney, had local information that a mine was in SE 6-T17N-R1E and notified the ISGS June 3, 1999. Valerie Chambers, P. E., of McClure Engineering Associates, Inc. of East Moline notified the ISGS of the possibility of SW 5-T17N-R1E as the location of the Hynd Mine because of the former land ownership of that area by John Hynd, as shown on old plat maps. Although the plat maps did not show a coal mine in these locations, many mines operated in the interval between plat map updates, and were commonly not shown. The location was reasonable geologically, and an uncertain location point symbol on the accompanying map indicates the lack of certitude of the actual mine location.

** The mine location was plotted on a 1:24000 USGS topographic map from the mine location description and digitized.

Annotated Bibliography (data source, brief description of information)

Coal Reports - Production, ownership, years of operation, mine type, seam, depth, thickness, mining method.
 Directory of Illinois Coal Mines (Rock Island County) - Mine names, mine index, ownership, years of operation.

Mine Index 5318**Jamieson & Donald, Jamieson & Donald Mine**

Type: Underground Total mined-out acreage shown: None; production indicates approximately 10 acres were mined.

SHAFT, SLOPE, DRIFT or TIPPLE LOCATIONS

Type	County	Township-Range	Section	Quarters-Footage
Main shaft	Rock Island	17N 1W	12	NW SE NE

GEOLOGY

Seam(s) Mined	Depth (ft)	Thickness (ft)			Mining Method
		Min	Max	Avg	
Rock Island	20-25			3.5	RP

Geologic Problems Reported:

PRODUCTION HISTORY

Company	Mine Name	Years	Production (tons)
E. C. Jamieson	Jamieson	1888-1890	4,210
Donald & Jamieson	Donald & Jamieson	1890-1893	2,927
Jamieson Coal Company	Jamieson	1893-1897	20,816
Jamieson & Donald	Jamieson & Donald	1897-1898	<u>2,892</u>
			30,845

Last reported production: 1898

SOURCES OF DATA

Source Map	Date	Original Scale	Digitized Scale	Map Type
Plat Book of Rock Island County	1894	1:15840	1:15840	Secondary source

Annotated Bibliography (data source, brief description of information)

Coal Reports - Production, ownership, years of operation, mine type, seam, depth, thickness, mining method.
 Directory of Illinois Coal Mines (Rock Island County) - Mine names, mine index, ownership, years of operation.
 Plat Book of Rock Island County, 1894, printed by F. Bourquin, 74p. - Shaft location.

Mine Index 5321**Jamieson & Allison, Jamieson & Allison Mine**

Type: Underground Total mined-out acreage shown: None; production indicates approximately 4 acres were mined.

SHAFT, SLOPE, DRIFT or TIPPLE LOCATIONS

Type	County	Township-Range	Section	Quarters-Footage
Main shaft	Rock Island	17N 1W	12	NW SW NE

GEOLOGY

Seam(s) Mined	Depth (ft)	Thickness (ft)			Mining Method
		Min	Max	Avg	
Rock Island	40			3.5	RP

Geologic Problems Reported:

PRODUCTION HISTORY

Company	Mine Name	Years	Production (tons)
Jamieson & Allison	Jamieson & Allison	1897-1902	<u>13,514</u> 13,514

Last reported production: 1902

SOURCES OF DATA

Source Map	Date	Original Scale	Digitized Scale	Map Type
Plat Book of Rock Island County	1894	1:15840	1:10924	Secondary source

Annotated Bibliography (data source, brief description of information)

Coal Reports - Production, ownership, years of operation, mine type, seam, depth, thickness, mining method.
Directory of Illinois Coal Mines (Rock Island County) - Mine names, mine index, ownership, years of operation.
Plat Book of Rock Island County, 1894, printed by F. Bourquin, 74p. - Shaft location.

Mine Index 5331
Thomas Lees, Lees Mine

Type: Underground Total mined-out acreage shown: None; production indicates less than 2 acres were mined.

SHAFT, SLOPE, DRIFT or TIPPLE LOCATIONS

Type	County	Township-Range	Section	Quarters-Footage
Main drift	Rock Island	17N 1W	25	SE NW NE

GEOLOGY

Seam(s) Mined	Depth (ft)	Thickness (ft)			Mining Method
		Min	Max	Avg	
Rock Island	15-20			3.0-3.5	RP

Geologic Problems Reported:

PRODUCTION HISTORY

Company	Mine Name	Years	Production (tons)
Thomas Lees	Lees	1888-1895	3,468
Bardsley & Lees	Bardsley & Lees	1895-1896	200
Thomas Lees	Lees	1896-1897	200
			<u>3,868</u>

Last reported production: 1897

SOURCES OF DATA

Source Map	Date	Original Scale	Digitized Scale	Map Type
Plat Book of Rock Island County	1894	1:31680	1:23909	Secondary source

Annotated Bibliography (data source, brief description of information)

Coal Reports - Production, ownership, years of operation, mine type, seam, depth, thickness, mining method.
 Directory of Illinois Coal Mines (Rock Island County) - Mine names, mine index, ownership, years of operation.
 Plat Book of Rock Island County, 1894, printed by F. Bourquin, 74p. - Drift location.

Mine Index 5339
Loding Brothers, Loding Mine

Type: Underground Total mined-out acreage shown: None; production indicates approximately 11 acres were mined.

SHAFT, SLOPE, DRIFT or TIPPLE LOCATIONS

Type	County	Township-Range	Section	Quarters-Footage
Main slope	Rock Island	17N 1W	12	NE NE SE

GEOLOGY

Seam(s) Mined	Depth (ft)	Thickness (ft)			Mining Method
		Min	Max	Avg	
Rock Island	20-30			3.5	RP

Geologic Problems Reported:

PRODUCTION HISTORY

Company	Mine Name	Years	Production (tons)
John Loding	Loding	1887-1894	22,237
Mrs. John Loding	Loding	1894-1897	9,460
Loding Brothers	Loding	1897-1898	1,954
			33,651

Last reported production: 1898

SOURCES OF DATA

Source Map	Date	Original Scale	Digitized Scale	Map Type
Plat Book of Rock Island County	1894	1:15840	1:15840	Secondary source

Annotated Bibliography (data source, brief description of information)

Coal Reports - Production, ownership, years of operation, mine type, seam, depth, thickness, mining method..
 Directory of Illinois Coal Mines (Rock Island County) - Mine names, mine index, ownership, years of operation.
 Plat Book of Rock Island County, 1894, printed by F. Bourquin, 74p. - Slope location.

Mine Index 5343
Patrick McCarty, McCarty Mine

Type: Underground Total mined-out acreage shown: None; production indicates less than 1 acre was mined.

SHAFT, SLOPE, DRIFT or TIPPLE LOCATIONS

Type	County	Township-Range	Section	Quarters-Footage
Main drift	Rock Island	16N 1W	4	NE NW NE

GEOLOGY

Seam(s) Mined	Depth (ft)	Thickness (ft)			Mining Method
		Min	Max	Avg	
Rock Island	30			2.0-2.5	RP

Geologic Problems Reported:

PRODUCTION HISTORY

Company	Mine Name	Years	Production (tons)
Patrick McCarty	McCarty	1883-1891	<u>1,324</u> 1,324

Last reported production: 1891

SOURCES OF DATA

Source Map	Date	Original Scale	Digitized Scale	Map Type
Plat Book of Rock Island County	1894	1:31680	1:20114	Secondary source

Annotated Bibliography (data source, brief description of information)

Coal Reports - Production, ownership, years of operation, mine type, seam, depth, thickness, mining method.
 Directory of Illinois Coal Mines (Rock Island County) - Mine names, mine index, ownership, years of operation.
 Plat Book of Rock Island County, 1894, printed by F. Bourquin, 74p. - Drift location

Mine Index 5369
Sackville Brothers, Sackville Mine

Type: Underground Total mined-out acreage shown: None; production indicates approximately 25 acres were mined.

SHAFT, SLOPE, DRIFT or TIPPLe LOCATIONS

Type	County	Township-Range	Section	Quarters-Footage
Main shaft	Rock Island	17N 1W	28	SE SW NE

GEOLOGY

Seam(s) Mined	Depth (ft)	Thickness (ft)			Mining Method
		Min	Max	Avg	
Rock Island	50-56			3.5-4.5	RP

Geologic Problems Reported:

PRODUCTION HISTORY

Company	Mine Name	Years	Production (tons)
Sackville Brothers	Sackville	1900-1908	<u>78,738</u> 78,738

Last reported production: 1908

SOURCES OF DATA

Source Map	Date	Original Scale	Digitized Scale	Map Type
Atlas of Rock Island County	1905	1:31680	1:31680	Secondary source

Annotated Bibliography (data source, brief description of information)

Coal Reports - Production, ownership, years of operation, seam depth, thickness, mining method.
 Directory of Illinois Coal Mines (Rock Island County) - Mine names, mine index, ownership, years of operation.
 Atlas of Rock Island County, 1905, printed by Iowa Publishing Company, 184p. - Shaft location.

Mine Index 5375
Stone Brothers, Stone Mine

Type: Underground Total mined-out acreage shown: None; production indicates approximately 6 acres were mined.

SHAFT, SLOPE, DRIFT or TIPPLE LOCATIONS

Type	County	Township-Range	Section	Quarters-Footage
Main shaft *	Rock Island	17N 1E	8	NW SW NW

* Production after 1915 may have been from a nearby drift into the same reserves.

GEOLOGY

Seam(s) Mined	Depth (ft)	Thickness (ft)			Mining Method
		Min	Max	Avg	
Rock Island	50-61			3.0-4.0	RP

Geologic Problems Reported:

PRODUCTION HISTORY

Company	Mine Name	Years	Production (tons)
Stone Brothers	Stone	1898-1921 **	<u>19,006</u> 19,006

** Idle 1915

Last reported production: 1921

SOURCES OF DATA

Source Map	Date	Original Scale	Digitized Scale	Map Type
Atlas of Rock Island County	1905	1:31680	1:31680	Secondary source

Annotated Bibliography (data source, brief description of information)

Coal Reports - Production, ownership, years of operation, mine type, seam, depth, thickness, mining method.
 Directory of Illinois Coal Mines (Rock Island County) - Mine names, mine index, ownership, years of operation.
 Atlas of Rock Island County, 1905, printed by Iowa Publishing Company, 184p. - Shaft location.

Mine Index 5605
Perry & Company, Perry Mine

Type: Underground Total mined-out acreage shown: 36 Production indicates approximately 34 acres were mined after the map date.

SHAFT, SLOPE, DRIFT or TIPPLE LOCATIONS

Type	County	Township-Range	Section	Quarters-Footage
Main drift	Henry	17N 1E	22	SW NE NW
Air shaft	Henry	17N 1E	22	SE NW NW
Shaft	Henry	17N 1E	22	SW NE NW
Shaft	Henry	17N 1E	22	SE NW NW
Shaft	Henry	17N 1E	22	SW NW NW
Slope	Henry	17N 1E	22	NE SW NW

GEOLOGY

Seam(s) Mined	Depth (ft)	Thickness (ft)			Mining Method
		Min	Max	Avg	
Rock Island	36-75			4.0	RP

Geologic Problems Reported: The source map shows an east-west trending fault north of the main drift entrance to the mine. Horsebacks and basins filled with a conglomerate of clay and pyrite nodules were common, some several yards wide.

PRODUCTION HISTORY

Company	Mine Name	Years	Production (tons)
Perry & Company *	Perry	pre1875-1884 **	<u>122,400</u> ***
			122,400

* The source map showed an area on the western side of the mine labeled "Old Minersville Works". Whether that is a separate mine or an older name for Perry's mine is not known.

** The 1884 Coal Report indicated 20 acres were mined. The mine was closed because of a depression in the coal trade. Production and years of operation before 1881 are not known.

*** Production after map date

Last reported production: 1884

SOURCES OF DATA

Source Map	Date	Original Scale	Digitized Scale	Map Type
Atlas of Henry County	1875	1:31680	1:31680	Secondary source
Company, IL_1979_01	3-1879	1:600	1:600	Not final
ISGS field notes (H. E. Culver)	1922-1924	1:15840	1:15840	Secondary source

Annotated Bibliography (data source, brief description of information)

Coal Reports - Production, ownership, years of operation, mine type, seam, depth, thickness, mining method.

Directory of Illinois Coal Mines (Henry County) - Mine names, mine index, ownership, years of operation.

Mine notes (Henry County) - Mine type, shaft location, seam, depth, thickness.

Company map, Coal Section files, IL_1979_01, digital map from State Archives, courtesy of Robert Gibson, DNR

- Drift & shaft locations, mine outline, mining method, geologic problems.

ISGS field notes (Henry County) - Slope location.

Worthen, A. H., 1882, Economical Geology of Illinois, Volume III - Geologic problems.

Mine Index 6651**J. L. Donahoo Coal Company, Donahoo Mine**

Type: Underground Total mined-out acreage shown: None; production indicates approximately 5 acres were mined.

SHAFT, SLOPE, DRIFT or TIPPLE LOCATIONS

Type	County	Township-Range	Section	Quarters-Footage
Main slope	Henry	17N 1E	19	SE SW NW *
Air / escape shaft	Rock Island	17N 1W	24	NE NE SE **

* This is an irregular section. The section grid is aligned to the southeast corner to report quarter-quarter-quarter section location. The slope is very near the western section line, which is the county boundary as well.

** Not shown on accompanying map, because the source map did not have enough features to tie the map features to land surface features.

GEOLOGY

Seam(s) Mined	Depth (ft)	Thickness (ft)			Mining Method
		Min	Max	Avg	
Rock Island	15-50			3.0-5.0	MRP

Geologic Problems Reported:

PRODUCTION HISTORY

Company	Mine Name	Years	Production (tons)
John Witherspoon	Witherspoon	1906-1907	500
D. L. Edwards	Edwards	1907-1908	2,000
James L. Donahoo	Donahoo (Henry County)	1908-1914	12,925
J. L. Donahoo Coal Company	Donahoo (Rock Island County)	1914-1917	3,118
J. Donahoo	Donahoo (Henry County)	1917-1918	2,400
			<u>20,993</u>

Last reported production: 1917

SOURCES OF DATA

Source Map	Date	Original Scale	Digitized Scale	Map Type
Microfilm, document 351512	6-1-1918	1:1200	1:1200	Final

Annotated Bibliography (data source, brief description of information)

Coal Reports - Production, ownership, years of operation, mine type, seam, depth, thickness, mining method.

Directory of Illinois Coal Mines (Rock Island County) - Mine names, mine index, ownership, years of operation.

Microfilm map, document 351512, reel 03136, frame 265 - Slope & shaft locations, mine outline, mining method.

Mine Index 6665**Progressive Coal Company, Progressive Mine**

Type: Underground Total mined-out acreage shown: None; no size is estimated for this mine because they re-worked an abandoned mine.

SHAFT, SLOPE, DRIFT or TIPPLE LOCATIONS

Type	County	Township-Range	Section	Quarters-Footage
Main shaft	Rock Island	17N 1E	8	NW NW SE

GEOLOGY

Seam(s) Mined	Depth (ft)	Thickness (ft)			Mining Method
		Min	Max	Avg	
Rock Island	56-63			3.33-4.0	HER *

* This mine reworked and pulled pillars from the Stoehr & Shadt Mine (mine index 3240).

Geologic Problems Reported:**PRODUCTION HISTORY**

Company	Mine Name	Years	Production (tons)
Progressive Coal Company	Progressive	1933-1936	<u>3,814</u> 3,814

Last reported production: 1936

SOURCES OF DATA

Source Map	Date	Original Scale	Digitized Scale	Map Type
Mine notes	Undated	(text only)	1:24000 **	Secondary source

** The mine location was plotted on a 1:24000 USGS topographic map from the mine location description and digitized.

Annotated Bibliography (data source, brief description of information)

Coal Reports - Production, ownership, years of operation.

Directory of Illinois Coal Mines (Rock Island County) - Mine names, mine index, ownership, years of operation.

Mine notes (Rock Island County) - Mine type, mine location, mining method.

Mine Index 7264**Briar Bluff Coal Company, Briar Bluff Mine**

Type: Underground Total mined-out acreage shown: None; production indicates approximately 42 acres were mined.

SHAFT, SLOPE, DRIFT or TIPPLE LOCATIONS

Type	County	Township-Range	Section	Quarters-Footage
Drift	Henry	17N 1E	20	SE NE NE
Drift	Henry	17N 1E	20	SE NE NE
Drift	Henry	17N 1E	20	SE NE NE

GEOLOGY

Seam(s) Mined	Depth (ft)	Thickness (ft)			Mining Method
		Min	Max	Avg	
Rock Island	25-30			3.0-4.0	RP

Geologic Problems Reported:

PRODUCTION HISTORY

Company	Mine Name	Years	Production (tons)
Jeff Glenn	Glenn	1888-1889 *	336
Briar Bluff Coal Company	Briar Bluff	1889-1893	113,019
Hershaw & O'Day	Hershaw & O'Day	1893-1895 **	800
James Kershaw	Kershaw	1895-1898 ***	1,080
Jeff Glenn	Glenn	1898-1902 †	2,890
Briar Bluff Coal Company	Briar Bluff	1902-1906	11,196
Cox & Allen	Cox & Allen	1906-1907	1,700
			<u>131,021</u>

* The source used for the mine location is dated 1875. It is likely that mining occurred on the Glenn land much longer than this reported production indicates. See the unlocated mines at the back of the report.

** Idle 1894

*** Idle (or operated under another name; see the unlocated mines at the back of this report) 1896 & 1897

† Idle 1901

Last reported production: 1907

SOURCES OF DATA

Source Map	Date	Original Scale	Digitized Scale	Map Type
Atlas of Henry County	1875	1:31680	1:31680	Secondary source

Annotated Bibliography (data source, brief description of information)

Coal Reports - Production, ownership, years of operation, mine type, seam, depth, thickness, mining method.
 Directory of Illinois Coal Mines (Henry County) - Mine names, mine index, ownership, years of operation.
 Atlas of Henry County, 1875 - Drift locations.

Mine Index 7318
Park & Hillier, Park & Hillier Mine

Type: Underground Total mined-out acreage shown: None Production indicates approximately 1 acre was mined, but the mined area is most likely larger because 12 years of possible mining before the production history was reported.

SHAFT, SLOPE, DRIFT or TIPPLE LOCATIONS

Type	County	Township-Range	Section	Quarters-Footage
Drift	Henry	17N 1E	19	SW *

* The point was placed in the center of the southwest quarter of section 19, but this mine may be located anywhere within the southwest part of section 19.

GEOLOGY

Seam(s) Mined	Depth (ft)	Thickness (ft)			Mining Method
		Min	Max	Avg	
Rock Island	20-23			3.5-4.5	RP

Geologic Problems Reported:

PRODUCTION HISTORY

Company	Mine Name	Years	Production (tons)
Andrew H. Park	Park	1884-1886 **	300
John Parks	Parks	1886-1887	800
Park & Hillier	Park & Hillier	1887-1894	2,400
			3,500

** Idle 1886. This mine was noted in an 1873 report, and probably opened at least a year before the reports publication. Production before 1884 is not known.

Last reported production: 1894

SOURCES OF DATA

Source Map	Date	Original Scale	Digitized Scale	Map Type
Economical Geology of Illinois	1873	(text only)	1:24000 ***	Secondary source

*** The mine location was plotted on a 1:24000 USGS topographic map from the mine location description and digitized.

Annotated Bibliography (data source, brief description of information)

Coal Reports - Production, ownership, years of operation, seam, depth, thickness, mining method.
 Directory of Illinois Coal Mines (Henry County) - Mine names, mine index, ownership, years of operation.
 Worthen, A. H., 1873, Geological Survey of Illinois, Volume 5, 619 pgs. - General mine location.

OTHER MINES SHOWN ON COAL VALLEY QUADRANGLE

Mine Index 4863 SW NW SE 1-T16N-R1W source: ISGS field notes (D. M. Moody, 1958)

Mine Index 4866 NW NE NE 4-T16N-R1W source: Coal Section files, Orion Quadrangle (15-minute) field map

Mine Index 4870 NE SE SE 5-T17N-R1E source: Atlas of Rock Island County, 1905

Mine Index 4872 NE SW SE 8-T17N-R1E, drift source: ISGS field notes (H. E. Culver, 1921-1924)

Mine Index 4880 NE SW SW 26-T17N-R1W, "old dog hole" source: ISGS field notes (D. M. Moody, 1958)

Mine Index 4912 SE NW NW 4-T17N-R1E, drift source: ISGS field notes (H. E. Culver, 10-31-1923)

Mine Index 4913 NE NW NW 4-T17N-R1E, drift source: ISGS field notes (H. E. Culver, 10-31-1923)

Mine Index 4919 SW NE SW 9-T17N-R1E, slope source: ISGS field notes (H. E. Culver, 1921-1924)

Mine Index 4920 NE NE SW 9-T17N-R1E, drift source: ISGS field notes (D. M. Moody, 1958)

Mine Index 4923 SW NW SE 28-T17N-R1W, two shafts and SE NE SW 28-T17N-R1W source: Atlas of Rock Island County (1905)

Mine Index 4953, Old Pryce Mine SW NW SE 3-T16N-R1W source: Mine notes (1924)

Mine Index 5600 SW NE NE 19-T17N-R1E source: Orion Quadrangle, USGS (15-minute) field map (1930)

Mine Index 5601 SE NE NW 19-T17N-R1E source: Orion Quadrangle, USGS (15-minute) field map; Atlas of Henry County, 1893; Atlas of Henry County, 1875

Mine Index 5602 NW SE NW 19-T17N-R1E source: Orion Quadrangle, USGS (15-minute) field map; Atlas of Henry County, 1893; Atlas of Henry County, 1875

Mine Index 5603 NE SW NW 19-T17N-R1E source: Coal Section files, Orion Quadrangle (15-minute) field map

Mine Index 5604 SW NW SW 22-T17N-R1E source: Coal Section files, Orion Quadrangle (15-minute) field map

Mine Index 6814 SW SW SE 1-T16N-R1W source: Atlas of Rock Island County, 1905

Mine Index 6815 SE SE NW 1-T16N-R1W source: Atlas of Rock Island County, 1894

Mine Index 6816 NE NW NW 3-T16N-R1W, two shafts source: Atlas of Rock Island County, 1894

Mine Index 6818 SE NW SE 12-T17N-R1W source: Atlas of Rock Island County, 1905

Mine Index 6823 NW SE NE 28-T17N-R1W source: Atlas of Rock Island County, 1905

Mine Index 6824 SE NE NE 36-T17N-R1W source: Atlas of Rock Island County, 1894

Mine Index 6825 NE SE NW 35-T17N-R1W, shaft source: Atlas of Rock Island County, 1894

Mine Index 6826 SE NE NW 35-T17N-R1W, shaft source: Atlas of Rock Island County, 1894

Mine Index 6827 NE NW NE 34-T17N-R1W, shaft source: Atlas of Rock Island County, 1894

Mine Index 6828 SE SW SE 27-T17N-R1W, shaft source: Atlas of Rock Island County, 1894

Mine Index 7246 SE NW SW 9-T17N-R1E, two drift mines source: ISGS field notes (H. E. Culver, 1921-1924)

Mine Index 7247 NE NW SW 9-T17N-R1E source: ISGS field notes (H. E. Culver, 1921-1924)

Mine Index 7248 NE NW NW 4-T17N-R1E, drift source: ISGS field notes (H. E. Culver, 10-31-1923)

Mine Index 7249 NE NW NW 4-T17N-R1E, drift source: ISGS field notes (H. E. Culver, 10-31-1923)

Mine Index 7250 NE NW NW 4-T17N-R1E, drift source: ISGS field notes (H. E. Culver, 10-31-1923)

Mine Index 7251 SE NW NW 4-T17N-R1E, drift source: ISGS field notes (H. E. Culver, 10-31-1923)

Mine Index 7252 SE NW NW 4-T17N-R1E, drift source: ISGS field notes (H. E. Culver, 10-31-1923)

Mine Index 7253 SE NW NW 4-T17N-R1E, drift source: ISGS field notes (H. E. Culver, 10-31-1923)

Mine Index 7254 NW SW NW 4-T17N-R1E, shaft source: ISGS field notes (H. E. Culver, 10-31-1923)

Mine Index 7255 SW SW NW 4-T17N-R1E, drift source: ISGS field notes (H. E. Culver, 10-31-1923)

Mine Index 7256 SW SW NW 4-T17N-R1E, drift source: ISGS field notes (H. E. Culver, 10-31-1923)

Mine Index 7257 SE SE SE 5-T17N-R1E, slope, 2 ft thick source: ISGS field notes (H. E. Culver, 10-31-1923)

Mine Index 7262 NW SE SE 25-T17N-R1W, old drift, 2 ft thick source: ISGS field notes (H. R. Wanless, 7-28-1930)

Mine Index 7263 NW SE NE 8-T17N-R1E, drift source: Coal Section files, Orion Quadrangle (15-minute) field map

Mine Index 7267 NE SE NE 24-T17N-R1W source: Coal Section files, Orion Quadrangle (15-minute) field map

Mine Index 7268, Wildcat Mine SE SE NE 24-T17N-R1W source: Orion Quadrangle, USGS 15-minute topographic map (1930)

Mine Index 7306 NW NE NE 34-T17N-R1W source: Coal Section files, Orion Quadrangle (15-minute) field map

Mine Index 7307 NW NE NE 34-T17N-R1W source: Coal Section files, Orion Quadrangle (15-minute) field map

Mine Index 7308 SE SW NW 19-T17N-R1E source: Coal Section files, Orion Quadrangle (15-minute) field map

Mine Index 7309 NW NE SW 19-T17N-R1E source: Coal Section files, Orion Quadrangle (15-minute) field map

Mine Index 7310 SW SE NW 21-T17N-R1E source: Coal Section files, Orion Quadrangle (15-minute) field map

Mine Index 7311 SE SE NW 21-T17N-R1E source: Coal Section files, Orion Quadrangle (15-minute) field map; ISGS field notes (H. E. Culver & S. E. Ekblaw, 7-30-1930)

Mine Index 7312 NW NE NE 21-T17N-R1E source: Coal Section files, Orion Quadrangle (15-minute) field map; ISGS field notes (H. E. Culver & S. E. Ekblaw, 7-30-1930)

Mine Index 7313 SW SE NE 21-T17N-R1E source: Coal Section files, Orion Quadrangle (15-minute) field map

Mine Index 7314 NE NE SE 21-T17N-R1E source: Coal Section files, Orion Quadrangle (15-minute) field map

Mine Index 7315 SW NE SE 21-T17N-R1E source: Coal Section files, Orion Quadrangle (15-minute) field map

Mine Index 7316 NW SE SE 21-T17N-R1E source: Coal Section files, Orion Quadrangle (15-minute) field map

Mine Index 7317 NW NE SW 19-T17N-R1E source: Coal Section files, Orion Quadrangle (15-minute) field map

Mine Index 7320 SE NW NW 30-T17N-R1E, drift source: ISGS field notes (S. E. Ekblaw, 7-28-1930)

Mine Index 7322 NW SW SE 21-T17N-R1E, drift source: ISGS field notes (S. E. Ekblaw, 6-25-1930)
Mine Index 7323 NW SE NE 21-T17N-R1E, drift source: ISGS field notes (H. E. Culver, 9-1923)
Mine Index 7324 SE NE NW 21-T17N-R1E source: ISGS field notes (H. R. Wanless & S. E. Ekblaw, 7-30-1930)
Mine Index 7325 NW SE NW 21-T17N-R1E source: ISGS field notes (H. R. Wanless & S. E. Ekblaw, 7-30-1930)
Mine Index 7326 NE SW SE 10-T17N-R1W, slope source: ISGS field notes (H. E. Culver, 9-14-1923)
Mine Index 7327 NW SE SW 10-T17N-R1W, prospect pits source: ISGS field notes (H. E. Culver, 9-14-2009)

MINES WHOSE LOCATIONS ARE NOT KNOWN, COAL VALLEY QUADRANGLE

The locations of the following mines are unknown, but the production tonnage, operating names, and nearest town were reported in the Annual Coal Reports. The operators listed below mined in or near the Coal Valley Quadrangle. The information shown is similar to that presented on the summary sheets in the previous pages of this directory. The first item is the name the mine operated under as listed in the Coal Report, then the years the mine reported. If no physical data are available, the next item listed is the total tons produced by the mine. If physical data are available, the order of presentation is as follows: type of opening for the mine (drift, slope or shaft), depth of coal in feet, and thickness of coal in feet.

The total tons mined by these unlocated mines is 448,636 (416,373 underground and 32,263 of uncertain mining method), which would represent approximately 102 to 170 acres, depending on the recovery factor, mining method, and numerous other factors. (Note: 1 square mile = 640 acres)

BLOSSOMBURG, Henry County

Peise & O'Mealie, 1922-1923	1,320 tons
Peiser (Christian), 1923-1924	15 tons
Pernell Coal Company, 1924-1925	400 tons
Peiser (C.), 1925-1925	<u>200 tons</u>
	1,935 tons

BOWLESBURG, later known as BOWLING, Rock Island County

Clarkson (John), 1881-1883, drift	1,986 tons	mine index 4934
Croft & Briggs, 1881-1883, drift	2,375 tons	mine index 4939
Lloyd (J.), 1881-1883, drift	2,185 tons	mine index 5337
Wetherspoon (A.), 1881-1883, drift	1,475 tons	mine index 5394
Bowles & Witherspoon, 1883-1885, slope, Rock Island, 40-50, 3.5, RP	7,943 tons	mine index 5395
Bowles (Samuel), 1885-1886	2,948 tons	
Donald (Joseph), 1886-1887	<u>2,820 tons</u>	
	13,711 tons	

BRIAR BLUFF, Henry County

Storz, O'Neil & Norton, pre1879-1880, shaft, Rock Island, 30-75, 4.0, RP	idle
Henry County Coal Company, 1880-1882	12,600 tons
Marley (Richard), 1894-1898, slope, Colchester, 20-45, 3.0, RP	6,304 tons
Kershaw (James), 1899-1903, drift, Rock Island, 12, 3.0-4.0, RP	5,430 tons
Wells (Ed), 1903-1907	<u>5,568 tons</u>
	10,998 tons
Downing (Timothy), 1897-1901, slope or drift, Colchester, 30, 3.0, RP	1,430 tons
Posten (W. W.), 1901-1902	<u>666 tons</u>
	2,096 tons
Donald & Flynn, 1898-1900, drift, Rock Island, —, 3.0-3.5, RP	1,950 tons
Cadigan (Maurice), 1900-1902	<u>450 tons</u>
	2,400 tons
Kay (Robert), 1901-1904, drift, Rock Island, —, 3.5, RP	3,440 tons
Kincaid (J.), 1904-1905	<u>1,200 tons</u>

	4,640 tons	
Griffin & Kershaw, 1904-1905, drift, Rock Island, —, 3.5, RP	400 tons	
Kincaid (John), 1907-1912, drift, Rock Island, —, 3.0-4.5, RP	2,222 tons	
Kay (Robert), 1906-1911, drift, Rock Island, 75, 3.0-3.5, RP	1,480 tons	
Kershaw & Kay, 1911-1912	89 tons	
Kay (Robert), 1912-1914	<u>310 tons</u>	
	1,879 tons	
Williams (A. L.), 1909-1910, drift, Rock Island, 22, 3.0-3.5, RP	160 tons	
Williams (C. L.), 1910-1911	640 tons	
Marke (Rudolph), 1911-1914	<u>623 tons</u>	
	1,423 tons	
Wells (G.), 1911-1912, drift, Rock Island, —, 4.0, RP	70 tons	
Kershaw (Fred), 1911-1913, drift, Rock Island, —, 3.0-4.0, RP	429 tons	

CARBON CLIFF, Rock Island County

Hunter & Lander, 1918-1920	350 tons	mine index 5312
Irwin (James), 1917-1918	105 tons	mine index 5317
Patterson (George), 1910-1911, shaft, Rock Island, 75, 3.25, RP	178 tons	mine index 5355
Rosemond & Gainey, 1905-1906, slope, Rock Island, 12, 2.5, RP	240 tons	mine index 5364
Roseman (Charles), 1907-1912, slope, Rock Island, 40-75, 3.0-4.0, RP	7,890 tons	mine index 5365
Sackville (James), 1917-1918	905 tons	mine index 5368
Woodbury (John), 1884-1886, slope, Rock Island, 15, 3.5, RP	2,700 tons	mine index 5401
Woodbury (David) & Son, 1886-1887	<u>1,700 tons</u>	
	4,400 tons	

CARBON CLIFF, Henry County

Black Fox Coal Company, 1934-1934, underground	50 tons	
Diggett (Denver N.), 1941-1941, underground	47 tons	

COAL VALLEY, Rock Island County

Rawalt Coal Company, 1933-1935, underground	27,287 tons	mine index 3250
Beardsley (Joseph), 1884-1886, drift, Rock Island, 20, 3.5, RP	670 tons	mine index 4928
Bennett & Kershaw, 1924-1925	1,583 tons	mine index 4929
Carlson (John), 1898-1899, slope, Rock Island, 30, 3.5	260 tons	mine index 4932
Stoddard & Summerson, 1900-1903, slope, Rock Island, 20-30, 3.5-4.0, RP	4,869 tons	mine index 4933
Moore & Mahlstrom, 1903-1904	2,270 tons	
Carlson (Alfred), 1904-1905	2,200 tons	
Link (Axel E.), 1905-1911	<u>13,591 tons</u>	
	22,930 tons	

Curry (Michael), 1888-1892, slope, Rock Island, 15, 3.75, RP	6,363 tons	mine index 4940
Deardon (John), 1896-1897, drift, —, —, 3.0, RP	180 tons	mine index 4942
Edwards (David), 1896-1897, drift, —, —, 3.0, RP	480 tons	mine index 4948
Pryce (J. J.) & Son, No. 3 Mine, 1908-1909	1,830 tons	mine index 4950
Eureka Coal Company, 1909-1911	26,010 tons	
Pryce & Sievers Coal Company, 1911-1912	16,898 tons	
Pryce (J. J.) & Company, 1912-1913	<u>14,053 tons</u>	
shaft or slope, Rock Island, 120-125, 4.0-4.83, RP	58,791 tons	
Garland (Joseph), 1883-1890, drift, Rock Island, 25, 3.0-4.5, RP	1,062 tons	mine index 4954
Cook (William), 1890-1892	170 tons	
Lewis (Ben), 1892-1893	<u>670 tons</u>	
	1,902 tons	
This mine pulled the pillars of the Coal Valley Coal Company, which operated before 1883.		
Gregg (Douglas), 1898-1899, slope, Rock Island, 30, 3.5, RP	440 tons	mine index 4956
Johnson (William), 1884-1887, drift, Rock Island, 30, 4.0, RP	1,184 tons	mine index 5324
Lewis (Benjamin K.), 1896-1897, shaft or drift, Rock Island, 17, 3.0, RP	336 tons	mine index 5332
Lindloff (Fred), 1892-1893, drift, Rock Island, —, 3.5, RP	140 tons	mine index 5333
Linsley (Jonathan), 1898-1899, shaft, Rock Island, 50, 4.0	160 tons	mine index 5335
Linn (Frank), 1897-1898, slope, Rock Island, 30, 3.5, RP	412 tons	mine index 5336
Lyons Brothers, 1899-1900, —, Rock Island, —, 4.0, RP	200 tons	mine index 5341
Moros (John), 1886-1888, drift, Rock Island, —, 4.0, RP	640 tons	mine index 5347
Moss (William), 1883-1888, drift, Rock Island, 30, 4.0, RP	920 tons	mine index 5348
Murphy (Thomas), 1883-1886, slope, Rock Island, 15, 4.0, RP	128 tons	mine index 5349
This mine pulled the pillars of the Coal Valley Coal Company, which operated before 1883.		
Patterson (John T.), 1897-1899, —, Rock Island, 35, 3.5-4.0	840 tons	mine index 5357
Poston & Wynn, 1918-1919	300 tons	mine index 5362
Roberts (George), Little Smoke Mine, 1934-1934, underground	4 tons	mine index 5363
Sackville (Joseph), 1883-1888, drift, Rock Island, 60, 2.0, RP	560 tons	mine index 5366
Sackville (William), 1890-1893, drift, Rock Island, —, 2.0, RP	200 tons	mine index 5367
Smith (Charles F.), 1926-1927	2,367 tons	mine index 5371
Stoddard & Summerson, 1904-1909, slope, Rock Island, 30-40, 3.5-4.5, RP	32,694 tons	mine index 5374
Summerson & Sievers, 1913-1918, —, Rock Island, 24-28, 3.33-3.67, RP	11,908 tons	mine index 5377
Wilkinson & Summerson, 1895-1897, shaft, Rock Island, 24-25, 3.67-4.0, RP	1,100 tons	mine index 5378
Wilkinson (Joseph) & Company, 1897-1898	<u>2,145 tons</u>	
	3,245 tons	
Summerson (Robert), 1922-1924	700 tons	mine index 5384
Wilson (George), 1884-1889, drift, Rock Island, 20, 3.5, RP	1,530 tons	mine index 5400
Wooley (Joseph), 1922-1924	80 tons	mine index 5403

Wooly (Thomas), 1889-1890, drift, Rock Island, —, 3.0, RP	130 tons	mine index 5404
Pomperine (William), 1890-1891	<u>200 tons</u>	
	330 tons	
Wooley (William), 1901-1904, slope or drift, Rock Island, 15, 3.0, RP	502 tons	mine index 5405
Wynn (Zadoc), 1895-1896, shaft, Rock Island, 45, 2.5-3.0, RP	1,020 tons	mine index 5406
Wynn (William E.), 1896-1901	4,160 tons	
Wynn (Z. H.), 1901-1903	<u>1,220 tons</u>	
	6,400 tons	
Stephens (John), 1886-1887, drift, Rock Island, —, 4.0, RP	560 tons	mine index 5463

COAL VALLEY, Henry County

Hilliard (George), 1886-1887, drift, Rock Island, —, 3.5, RP	40 tons	
Vonach (Fred), 1890-1891, drift, Rock Island, —, 4.0, RP	502 tons	
Summerson (John), 1895-1902, drift, Rock Island, 60, 4.0-4.5, RP	8,494 tons	
Summerson (John), 1903-1904, drift, Rock Island, 43, 3.0-4.0, RP	320 tons	
Posten (M. W.), 1904-1905	254 tons	
Summerson (John), 1905-1912	2,334 tons	
Summerson & Fude, 1912-1913	<u>600 tons</u>	
	3,508 tons	
Summerson (Robert), 1913-1915, slope, Herrin, 25, 4.0-6.0, RP	30 tons	
Summerson (R. & J), 1917-1925	2,400 tons	
Coon Brothers, 1919-1920	976 tons	
Rodemsky (William), 1920-1921	450 tons	
Tracy (E. F.), 1920-1921	1,500 tons	
Kersham (Charles), 1922-1924	11,462 tons	
Kersham & Bennett, 1924-1925	<u>487 tons</u>	
	11,959 tons	
Wooley (William), 1923-1927	4,253 tons	
Pony Coal Company, 1934-1934, underground	600 tons	
Walter (Mart), 1935-1935	<u>15 tons</u>	
	615 tons	
Sunnyside Coal Company, No. 1 Mine, 1934-1934, underground	45 tons	
Sunnyside Coal Company, No. 2 Mine, 1934-1934, underground	240 tons	
Hamilton (Caleb), 1935-1935	<u>182 tons</u>	
	422 tons	
B. & H. Coal Company, 1938-1940, underground	1,846 tons	

EAST MOLINE, Rock Island County

Van Closter (Leopold), 1922-1923	35 tons	mine index 5391
Miracle Coal Mining Company, 1940-1940, underground	247 tons	mine index 5414

Black Diamond Coal Company, 1935-1935, underground	40 tons	mine index 5446
--	---------	-----------------

LODING, Rock Island County

Fox (Henry), 1893-1895, drift, Rock Island, 25, 3.0, RP	961 tons	mine index 4952
Griffin (George), 1893-1895, drift, Rock Island, 15, 3.5, RP	1,385 tons	mine index 5300
Gribben & Fields, 1902-1903, shaft, Rock Island, 50, 3.0, RP	300 tons	mine index 5301
Jamieson (E. G.), 1898-1900, drift, Rock Island, —, 3.5, RP	2,280 tons	mine index 5322
Loding Brothers, 1898-1904, shaft, Rock Island, 67-75, 4.0, RP	18,915 tons	mine index 5340

MOLINE, Rock Island County

Griffin (G. W.), 1889-1890, drift, Rock Island, —, 3.0-3.5, RP	1,441 tons	mine index 3244
Porter & Anderson, 1890-1893	<u>1,725 tons</u> 3,166 tons	
Bustard (Henry), 1890-1891, drift, Rock Island, —, 3.0, RP	360 tons	mine index 4931
Eureka Coal Company, 1884-1887, shaft, Rock Island, 56, 3.5, RP	14,858 tons	mine index 4949
In the 1884-1885 fiscal year, longwall mining was attempted but the results were unsuccessful and room and pillar mining was resumed.		
Groth Brothers, 1890-1893, drift, Rock Island, —, 3.0, RP	1,540 tons	mine index 5305
Hunter (M. B.), 1904-1905, drift, Rock Island, —, 3.5, RP	510 tons	mine index 5313
Hunter (Merrit), 1907-1908, slope or drift, Rock Island, 20, 3.0, RP	140 tons	mine index 5314
Hunter Brothers, 1908-1909	<u>450 tons</u> 590 tons	
Jamieson & Irwin, 1907-1916, shaft, Rock Island, 58-65, 3.0-4.0, RP	12,082 tons	mine index 5323
Lair & Schroder, 1915-1916, shaft, Rock Island, 46, 3.5, RP	350 tons	mine index 5328
Last Dollar Coal Company, 1934-1935, underground	180 tons	mine index 5329
Loding (Charles A.), 1904-1908, shaft, Rock Island, 25-30, 3.0-3.5, RP	2,068 tons	mine index 5338
Moline Coal Mining Company, 1908-1914, shaft, Rock Island, 60, 3.0-3.67	45,635 tons	mine index 5345
Poston & Stocks, 1914-1915	7,195 tons	
Poston & Stoehr, 1915-1916	4,685 tons	
Moline Coal Mining Company, 1916-1918	1,491 tons	
Poston & Son, 1918-1920	<u>1,325 tons</u> 60,331 tons	
Odendahl, Smith & Sill, 1934-1935, underground	464 tons	mine index 5351
Odendahl (Hubert), 1936-1936	<u>70 tons</u> 534 tons	
Porterville Coal Company, 1903-1904, shaft, Rock Island, 55, 3.5, RP	260 tons	mine index 5360
Witherspoon Brothers, 1934-1935, underground	2,730 tons	mine index 5396

ROCK ISLAND, Henry County

Thompson (T. C.), 1930-1931, underground	10,230 tons
--	-------------

INDEX OF MINES IN THE COAL VALLEY QUADRANGLE

Allen (Cox & Allen)	64
Allison (Jamieson & Allison)	55
Allison (William)	47
Anderson (Porter & Anderson)	72
Andrews (George)	36
B. & H. Coal Company	71
Bair (Stoddard & Bair)	10
Banfield Brothers	36
Baraks Brothers & Kuhlman	11
Bardsley & Lees	56
Battersby (Mansil, Battersby & Seville)	43
Battersby (Mansil, Battersby & Seville), Narrow Gauge Mine	29
Battersby (Mansill & Battersby), Narrow Gauge Mine	29
Beardsley (Joseph)	69
Bennett (Kersham & Bennett)	71
Bennett & Kershaw	69
Black Diamond Coal Company	43, 71
Black Fox Coal Company	69
Black Hawk Coal Company, No. 2 Mine	18
Blossomburg Coal Company	10
Blue Eagle Coal Company	30
Blue Eagle No. 1 Mine	28
Blue Eagle No. 2 Mine	30
Bowles (Samuel)	68
Bowles & Witherspoon	68
Briar Bluff Coal Company	64
Briar Bluff Mine	19
Briggs (Croft & Briggs)	68
Bustard (Henry)	72
Cadigan (Maurice)	68
Carlson (Alfred)	69
Carlson (John)	69
Central Illinois Fuel Company	12
Christensen Mining Company	46
Clarkson (John)	68
Coal Valley Coal Company	70
Cook (William)	70
Cook Gem Coal Company, Inc.	20
Coon Brothers	71
County Line Mine	21
Cox & Allen	64
Crescent Coal & Mining Company	19
Croft & Briggs	68
Curry (Michael)	69
Deardon (John)	70
Dial (Henry L.)	18
Dial (Henry)	36
Diggett (Denver N.)	69
Donahoo (J. L.) Coal Company	62
Donahoo (J.)	62
Donahoo (James L.)	62
Donald (George)	48
Donald (Jamieson & Donald)	54
Donald (Joseph)	68
Donald & Flynn	68
Donald & Jamieson	54
Downing (Timothy)	68
Edwards (D. L.)	38, 62
Edwards (David L.)	49
Edwards (David)	70
Elite Mine	42
Eureka Coal Company	70, 72
Fields (Gribben & Fields)	72

Flynn (Donald & Flynn)	68
Fox (Henry)	72
Frederick (August)	42
Frederick (C. W.)	42
Frederick & Gramenz	9
Frederick Brothers	42
Fude (Summerson & Fude)	71
Gainey (Rosemond & Gainey)	69
Garland (Joseph)	70
Gem Mine	20
Glenn (Jeff)	64
Goffin (Nelson & Goffin)	25
Gramenz (Frederick & Gramenz)	9
Gregg (Douglas)	70
Gribben & Fields	72
Griffin (G. W.)	72
Griffin (George)	72
Griffin (Grant) & Company	50
Griffin (Joseph) Coal Company	25
Griffin & Kershaw	69
Griffin & Odendahl	25
Griffin Brothers	25
Groth Brothers	72
Grothe Brothers	51
Hamilton (Caleb)	71
Heagy & Stoddard	23
Henry County Coal Company	68
Hershaw & O'Day	64
Highland Coal & Mining Company	32
Hilliard (George)	71
Hillier (Park & Hillier)	65
Hillside Coal Company	19
Hilltop Coal Company	15
Hunky Dory Mine	35
Hunter (M. B.)	72
Hunter (Merrit)	72
Hunter & Lander	69
Hunter Brothers	72
Hynd (John)	52, 53
Irwin (James)	69
Irwin (Jamieson & Irwin)	72
Jamieson (E. C.)	54
Jamieson (E. G.)	72
Jamieson & Allison	55
Jamieson & Donald	54
Jamieson & Irwin	72
Jamieson Coal Company	54
Jim Mine, Inc.	20
Johnson (William)	70
Kay (Kershaw & Kay)	69
Kay (Robert)	68, 69
Kershaw (Charles)	71
Kershaw & Bennett	71
Kershaw (Bennett & Kershaw)	69
Kershaw (Fred)	69
Kershaw (Griffin & Kershaw)	69
Kershaw (James)	64, 68
Kershaw & Kay	69
Kincaid (J.)	68
Kincaid (John)	69
Kuhlman (Baraks Brothers & Kuhlman)	11
Kuhlman (Otto)	11
Lair & Schroder	72
Lander (Hunter & Lander)	69
Last Dollar Coal Company	72

Lawson (Peters & Lawson)	35
Lawson (Wooley, Peters & Lawson)	35
Lees (Bardsley & Lees)	56
Lees (Thomas)	56
Lewis (Ben)	70
Lewis (Benjamin K.)	70
Lewis (Twomley & Lewis)	43
Lindloff (Fred)	70
Link (Axel E.)	69
Linn (Frank)	70
Linsley (Jonathan)	70
Little Smoke Mine	70
Lloyd (J.)	68
Loding (Charles A.)	72
Loding (John)	57
Loding (Mrs. John)	57
Loding Brothers	57, 72
Lucky Strike Mine	33
Lyons Brothers	70
Mahlstrom (Moore & Mahlstrom)	69
Mansil, Battersby & Seville	29, 43
Mansill & Battersby	29
Mansill & Battersby, Narrow Gauge Mine	29
Marke (Rudolph)	69
Marley (Richard)	68
McBride (William)	17
McCaffrey (John)	10
McCarty (Patrick)	58
McCraney Sand & Gravel Company	39
McKeag (Thomas)	36
McKeag Brothers	36
Mielke (John)	20
Mielke Brothers, County Line Mine	21
Mielke Brothers, Gem No. 2 Mine	20
Mielke Brothers, Section One Mine	9
Miracle Coal Mining Company	71
Moline Coal Mining Company	72
Moore & Mahlstrom	69
Moros (John)	70
Moss (William)	70
Murphy (Thomas)	70
Narrow Gauge Mine	29
Narrow Gauge Mine	43
Nelson & Goffin	25
New Mine	11
Norton (Storz, O'Neil & Norton)	68
Odendahl (Griffin & Odendahl)	25
Odendahl (Herbert)	25
Odendahl (Hubert)	72
Odendahl, Smith & Sill	72
Old Minersville Works	61
Old Pryce Mine	66
Otis (James P.)	15
O'Day (Hershaw & O'Day)	64
O'Mealie (Peise & O'Mealie)	68
O'Neil (Storz, O'Neil & Norton)	68
Park (Andrew H.)	65
Park & Hillier	65
Parks (John)	65
Patterson (George)	69
Patterson (John T.)	70
Peise & O'Mealie	68
Peiser (C.)	68
Peiser (Christian)	68
Peiser Mine	17

Pernell Coal Company	68
Perry & Company	61
Peters (James Utts & W. Peters)	35
Peters (Wooley, Peters & Lawson)	35
Peters (Wooley, Peters & Wilson)	35
Peters & Lawson	35
Pomperine (William)	70
Pony Coal Company	71
Porter & Anderson	72
Porter & Silvis	24
Porterville Coal Company	72
Posten (B.)	22
Posten (M. W.)	71
Posten (M. W.) & Son	31
Posten (W. W.)	68
Poston & Son	72
Poston & Stocks	72
Poston & Stoehr	72
Poston & Wynn	70
Preston (M. W.)	22
Progressive Coal Company	63
Pryce (J. J.) & Company	70
Pryce (J. J.) & Son, No. 3 Mine	70
Pryce (John J.) & Son, No. 2 Mine	11
Pryce (John M.) Coal Company	40
Pryce & Sievers	40
Pryce & Sievers Coal Company	70
Pryce Coal Company	40
Pryce Mining Company	37
Pryce-Sievers Coal Company	40
Rawalt Coal Company	69
Richards (John D.)	17
Richardson (Eithel)	36
Richardson (Vernie)	16
Roberts (George)	70
Rock River Coal Company	15
Rock River View Coal Company	17
Rodemsky (William)	71
Roseman (Charles)	69
Rosemond & Gainey	69
Rural Coal Company	22
Sackville (James)	69
Sackville (Joseph)	70
Sackville (William)	70
Sackville & Wynn	13
Sackville Brothers	59
Sauerrman (F. W.)	9
Schadt (Stoehr & Schadt, No. 2 Mine)	27
Schadt (Stoehr & Schadt, No. 3 Mine)	41
Schroder (Lair & Schroder)	72
Section One Mine	9
Seville (Mansil, Battersby & Seville)	43
Seville (Mansil, Battersby & Seville), Narrow Gauge Mine	29
Shady Lane Coal Company	34
Sievers (Pryce & Sievers Coal Company)	70
Sievers (Pryce & Sievers)	40
Sievers (Pryce-Sievers Coal Company)	40
Sievers (Summerson & Sievers)	70
Sill (Odendahl, Smith & Sill)	72
Silvis (Porter & Silvis)	24
Silvis (Sharp)	24
Silvis (T. S.)	24
Silvis (T. S.), No. 2 Mine	26
Silvis & Silvis	24
Silvis Brothers	24

Smith (Charles F.)	70
Smith (Len)	44
Smith (Odendahl, Smith & Sill)	72
Somerson (George)	12
Stephens (John)	71
Stocks (Poston & Stocks)	72
Stoddard (Heagy & Stoddard)	23
Stoddard & Bair	10
Stoddard & Summerson	10, 69, 70
Stoehr (Edward)	45
Stoehr (Edward) & Sons, Blue Eagle No. 2 Mine	30
Stoehr (Edward), Blue Eagle No. 1 Mine	28
Stoehr (Poston & Stoehr)	72
Stoehr & Schadt, No. 2 Mine	27
Stoehr & Schadt, No. 3 Mine	41
Stoehr Mining Company, No. 3 Mine	41
Stone Brothers	60
Storz, O'Neil & Norton	68
Summerson (John)	12, 71
Summerson (R. & J)	71
Summerson (Robert)	12, 70, 71
Summerson (Stoddard & Summerson)	10, 69, 70
Summerson (Wilkinson & Summerson)	70
Summerson & Fude	71
Summerson & Sievers	70
Sunny Hill Co-operative Coal Company	14
Sunnyside Coal Company, No. 1 Mine	71
Sunnyside Coal Company, No. 2 Mine	71
Sunshine Mine	36
Thompson (T. C.)	72
Tracy (E. F.)	71
Twomley (Edwin)	43
Twomley & Lewis	43
Utts (James P.)	34
Utts (James)	36
Utts (James) & Peters (W.)	35
Valley Vein Coal Company	13
Valley View Coal Company	13, 14
Van Closter (Leopold)	71
Volunteer Coal Company	12
Vonach (Fred)	71
Walter (Mart)	71
Wells (Ed)	68
Wells (G.)	69
Wetherspoon (A.)	68
Wildcat Mine	18, 66
Wilkinson (Joseph) & Company	70
Wilkinson & Summerson	70
Williams (A. L.)	69
Williams (C. L.)	69
Wilson (George)	70
Wilson (Wooley, Peters & Wilson)	35
Witherspoon (Bowles & Witherspoon)	68
Witherspoon (John)	62
Witherspoon Brothers	72
Woodbury (David) & Son	69
Woodbury (John)	69
Wooley (Joseph)	70
Wooley (William)	71
Wooley, Peters & Lawson	35
Wooley, Peters & Wilson	35
Wooly (Thomas)	70
Wynn (Poston & Wynn)	70
Wynn (Sackville & Wynn)	13
Wynn (William E.)	71

Wynn (Z. H.)	71
Wynn (Zadoc)	71
Zeigler (Fred)	31
Zeigler Brothers	31

Funding for this project was supplied by the Illinois Department of Transportation.