

Coal Mines in Illinois  
Collinsville Quadrangle

## St. Clair &amp; Madison Counties, Illinois

This map accompanies the Coal Mines Directory for the Collinsville Quadrangle. Consult the directory for a complete explanation of the information shown on this map.

## Mining Method

- Room & Pillar (RP)
- Room & Pillar Basic (RPB)
- Modified Room & Pillar (MRP)
- Room & Pillar Panel (RPP)
- Blind Room & Pillar (BRP)
- Checkerboard Room & Pillar (CRP)
- High Extraction Retreat (HER)
- Longwall (LW)
- Underground, Method Unknown
- Strip Mine
- Auger Mine
- General Area of Mining

## Other Areas Depicted

- Non-Coal Mines

## Source of Mine Outline

- Final Mine Map
- Not Final Mine Map
- Undated Mine Map
- Incomplete Mine Map
- Secondary Source Map

## Tipple, Shaft, Slope, Drift Locations

- Strip Mine Tipple - Active
- Strip Mine Tipple - Abandoned
- Mine Shaft - Active
- Mine Shaft - Abandoned
- Mine Slope - Active
- Mine Slope - Abandoned
- Mine Drift - Active
- Mine Drift - Abandoned
- Air Shaft
- Uncertain Location
- Uncertain Type of Opening

## Other Points Depicted

- Non-Coal Mines

Mine Annotation  
(space permitting)

Company  
Mine Name  
ISGS Index No., Years of Operation

## Disclaimer

Please check the Coal Section at the Illinois State Geological Survey's web site at <https://www.isgs.illinois.edu> for the most up-to-date version of these products.

Note that each quadrangle scale mined-out area map requires the use of the associated text directory for full explanation of map features and mine attributes. Also note that some quadrangles have multiple seams of mining and therefore more than one map may be available for a particular quadrangle. Please take care to check for multiple maps, as extensive mining may exist in the other seams.

The maps and digital files used for these studies were compiled from data obtained from a variety of public and private sources and have varying degrees of completeness and accuracy. This compilation map presents reasonable interpretation of the geology of the area and is based on available data. Locations of some mine features may be offset by 500 feet or more due to errors in the original source maps, the compilation process, digitizing, or a combination of these factors. These data are not intended for use in site-specific screening or decision-making. Use of these documents does not eliminate the need for detailed studies to fully understand the geology of a specific site. The Illinois State Geological Survey, Prairie Research Institute, or the University of Illinois make no guarantee, expressed or implied, regarding the correctness of the interpretations presented in this data set and accept no liability for the consequences of decisions made by others on the basis of the information presented here.

These maps were designed for use at 1:24,000. Enlarging the map may reduce accuracy, as the original scale of the source maps used to compile the outlines shown varies from 1:400 to 1:150,000, and some mine locations are known only from text descriptions. See the accompanying mine directory for the original scale of the source map used for a specific mine to check accuracy of a given portion of the map. Areas with no mines shown may still be undermined; see the unlocated mines list at the back of each mine directory.

The image of the U.S.G.S. topographic base map was projected from the original UTM to Lambert Conformal Conic.

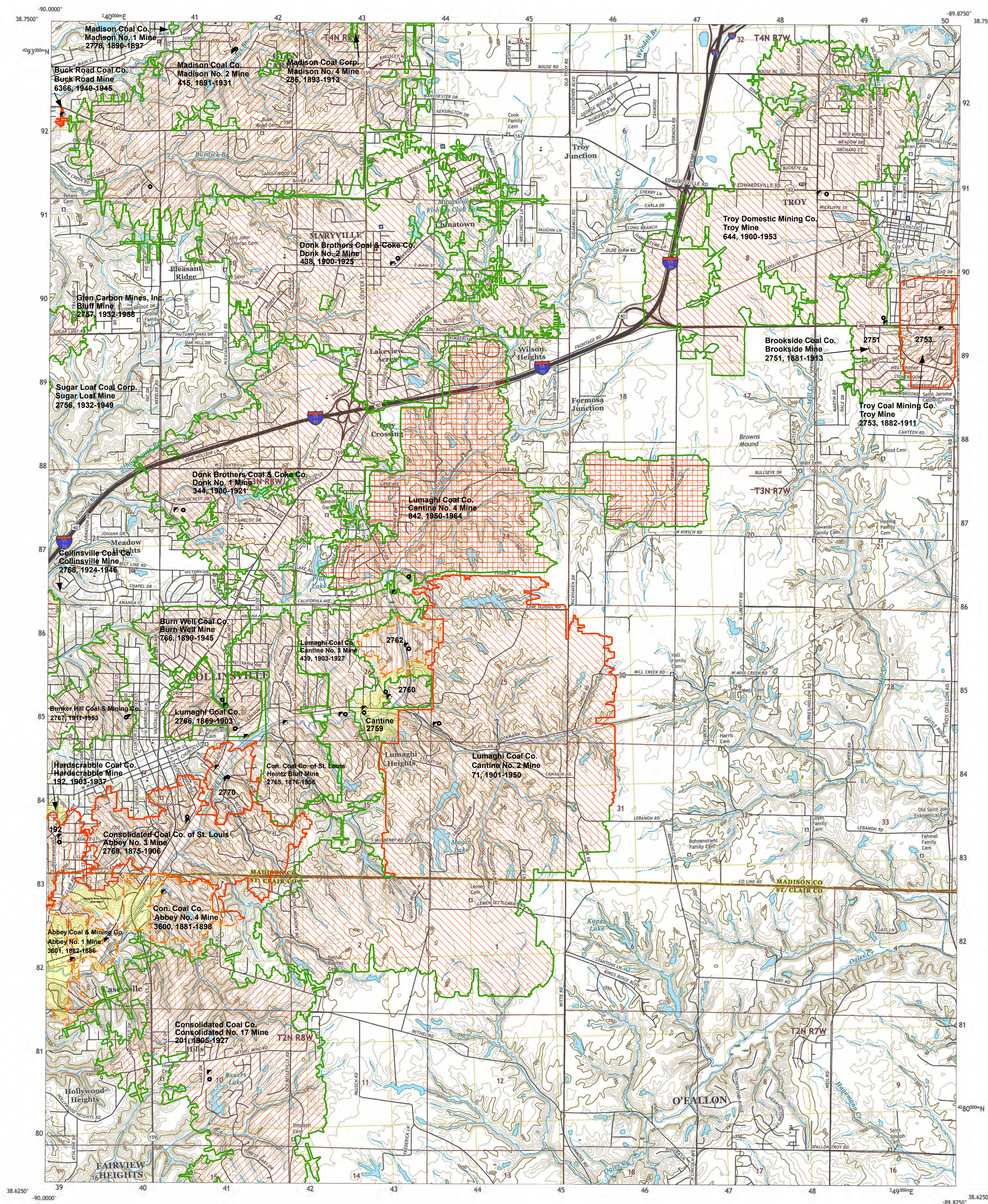
**ILLINOIS**  
Illinois State Geological Survey  
PRAIRIE RESEARCH INSTITUTE

Prairie Research Institute  
Illinois State Geological Survey  
615 E. Peabody Dr.  
Champaign, IL 61820

Mine Outlines Compiled by  
Scott D. Elrick

2001

Revised:  
2005 & 2020  
Alan R. Myers 06-04-2024



Produced by the United States Geological Survey  
North American Datum of 1983 (NAD83)  
World Geodetic System of 1984 (WGS84). Projection and  
1000-meter grid/Universal Transverse Mercator, Zone 15S1165  
This map is not a legal document. Boundaries may be  
generalized for this map scale. Private lands within government  
reservations may not be shown. Obtain permission before  
entering private lands.

Imagery.....NAP, August 2015 - October 2015  
Roads.....U.S. Census Bureau, 2017  
Names.....U.S. Census Bureau, 2017  
Hydrography.....National Hydrography Dataset, 2002 - 2014  
Contours.....National Elevation Dataset, 2003 - 2014  
Boundaries.....Multiple sources; see metadata file 2014 - 2016  
Public Land Survey System.....BLM, 2017  
Wetlands.....FWS National Wetlands Inventory 1981 - 1985

UTM GRID AND 2017 MAGNETIC NORTH  
DECLINATION AT CENTER OF SHEET

100,000 - m Square ID

BM

Grid Zone Designation  
15S

SCALE 1:24 000

1 0.5 0 0.5 1 2  
1000 500 0 500 1000 2000  
METERS

1 0.5 0 0.5 1 2  
1000 500 0 500 1000 2000  
FEET

CONTOUR INTERVAL 10 FEET  
NORTH AMERICAN VERTICAL DATUM OF 1988

This map was produced to conform with the  
National Geospatial Program US Topo Product Standard, 2011.  
A metadata file associated with this product is draft, version 0.6.18

ROAD CLASSIFICATION

Expressway  
Secondary Hwy  
Ramp

Local Connector  
Local Road  
4WD

Interstate Route  
US Route  
State Route

QUADRANGLE LOCATION

1 Wood River  
2 Edwardsville  
3 Marine  
4 Menk's Mound  
5 Saint Jacob  
6 French Village  
7 O'Fallon  
8 Lebanon

ADJACENT QUADRANGLES

1 2 3  
4 5 6  
7 8

COLLINSVILLE, IL  
2018





# **DIRECTORY OF COAL MINES IN ILLINOIS 7.5-MINUTE QUADRANGLE SERIES COLLINSVILLE QUADRANGLE MADISON & ST. CLAIR COUNTIES**

Cheri Chenoweth, Scott D. Elrick, Melony E. Barrett



Department of Natural Resources  
ILLINOIS STATE GEOLOGICAL SURVEY  
2000  
REVISED 2005, 2024



**DIRECTORY OF COAL MINES IN ILLINOIS  
7.5-MINUTE QUADRANGLE SERIES  
COLLINSVILLE QUADRANGLE  
MADISON & ST. CLAIR COUNTIES**

2000  
REVISED 2005, 2024

ILLINOIS STATE GEOLOGICAL SURVEY  
William Shilts, Chief

Natural Resources Building  
615 East Peabody Drive  
Champaign, Illinois 61820

Phone 1-217-244-4610  
Fax 1-217-333-2830

**Cover photo** Track-mounted duckbill loading machine at a Peabody Coal Company mine, ca. 1915.

DISCLAIMER: The accuracy and completeness of mine maps and directories vary with the availability of reliable information. Maps and other information used to compile this mine map and directory were obtained from a variety of sources and the accuracy of some of the original information cannot be verified. Consequently, the Illinois State Geological Survey (ISGS) cannot guarantee the mine maps are free of errors and disclaims any responsibility for damages that may result from actions or decisions based on them.

The ISGS updates the maps and directories periodically, and welcomes any new information or corrections. Please contact the Coal Section of the ISGS at the address shown on the title page of this directory, or telephone (217) 244-4610.

*Printed by authority of the State of Illinois/2005*

# CONTENTS

INTRODUCTION .....	1
MINING IN THE COLLINSVILLE QUADRANGLE .....	1
PART I EXPLANATION OF MAP AND MINE SUMMARY SHEET .....	2
INTERPRETING THE MAP .....	2
Mine Type and Mining Method .....	2
Source Maps .....	3
Points and Labels .....	3
INTERPRETING A MINE SUMMARY SHEET .....	6
REFERENCES .....	8
PART II DIRECTORY OF MINES IN COLLINSVILLE QUADRANGLE .....	9
MINE SUMMARY SHEETS .....	9
Mine Index 71	
Lumaghi Coal Company, Cantine No. 2 .....	9
Mine Index 192	
Hardscrabble Coal Company, Hardscrabble Mine .....	10
Mine Index 201	
Consolidated Coal Company, Consolidated No. 17 Mine .....	11
Mine Index 285	
Madison Coal Corporation, Madison No. 4 Mine .....	12
Mine Index 344	
Donk Brothers Coal & Coke Company, Donk No. 1 Mine .....	13
Mine Index 415	
Madison Coal Company, Madison No. 2 Mine .....	14
Mine Index 438	
Donk Brothers Coal & Coke Company, Donk No. 2 Mine .....	15
Mine Index 439	
Lumaghi Coal Company, Cantine No. 3 Mine .....	16
Mine Index 644	
Troy Domestic Mining Company, Troy Mine .....	17
Mine Index 766	
Burn Well Coal Company, Burn Well Mine .....	18
Mine Index 842	
Lumaghi Coal Company, Cantine No. 4 Mine .....	19
Mine Index 2751	
Brookside Coal Company, Brookside Mine .....	20
Mine Index 2753	
Troy Cooperative Coal Mining Company, Troy Cooperative Mine .....	21
Mine Index 2756	
Sugar Loaf Coal Company, Sugar Loaf Mine .....	22
Mine Index 2757	
Glen Carbon Mines, Inc., Glen Carbon No. 1 Mine .....	23
Mine Index 2759	
Consolidated Coal Company of St. Louis, Cantine Mine .....	24
Mine Index 2760	
Buxton Coal Company, Buxton Mine .....	25
Mine Index 2762	
Consolidated Coal Company of St. Louis, Confidence Mine .....	26
Mine Index 2765	
Consolidated Coal Company of St. Louis, Heinz Bluff Mine .....	27
Mine Index 2766	
Lumaghi Coal Company, Lumaghi No. 1 Mine .....	28
Mine Index 2767	
Bunker Hill Coal & Mining Company, Bunker Hill Mine .....	29
Mine Index 2768	
Collinsville Coal Company, Collinsville Mine .....	30

Mine Index 2769	
Consolidated Coal Company of St. Louis, Abbey No. 3 Mine. . . . .	31
Mine Index 2770	
Consolidated Coal Company of St. Louis, Collinsville Mine . . . . .	32
Mine Index 2778	
Madison Coal Company, Madison No. 1 Mine . . . . .	33
Mine Index 3600	
Consolidated Coal Company of St. Louis, Abbey No. 4 Mine. . . . .	34
Mine Index 3601	
Abbey Coal & Mining Company, Abbey No. 1 Mine . . . . .	35
Mine Index 6366	
Buck Road Coal Company, Buck Road Mine. . . . .	36
MINES WHOSE LOCATIONS ARE NOT KNOWN, COLLINSVILLE QUADRANGLE . . . . .	37
INDEX OF MINES IN THE COLLINSVILLE QUADRANGLE. . . . .	38



## **INTRODUCTION**

Coal has been mined in 76 counties of Illinois. More than 7,400 coal mines have operated since commercial mining began in Illinois about 1810; fewer than 30 are currently active. To detail the extent and location of coal mining in Illinois, the Illinois State Geological Survey (ISGS) has compiled maps and directories of known coal mines. The ISGS offers maps at a scale of 1:100,000 and accompanying directories for each county in which coal mining is known to have occurred. Maps at a scale of 1:24,000 and accompanying directories such as this are available for selected quadrangles. Contact the ISGS for a list of these quadrangles.

These larger scale maps show the approximate positions of mines in relation to surface features such as roads and water bodies, and indicate the mining method used and the accuracy of the mine boundaries. The maps are useful for locating mine boundaries relative to specific properties and for assessing the potential for subsidence in an area. Mine boundaries compiled from final mine surveys are generally shown within 200 feet of their true position. As a result of poor cartographic quality and inaccuracies in the original mine surveys, boundaries of some older mines may be mislocated on the map by 500 feet or more. Original mine maps should be consulted in situations that require precise delineation of mine boundaries or internal workings of mined areas.

The directory serves as a key to the accompanying mine map and provides basic information on the coal mines. The directory is composed of two parts. Part I explains the symbols and patterns used on the accompanying map and the summary data presented for each mine. Part II numerically lists the mines in the quadrangle and summarizes the geology and production history of each mine.

## **MINING IN THE COLLINSVILLE QUADRANGLE**

According to the History of Madison County, Collinsville had only gradual growth until the Vandalia Railroad went through town in 1868. The earliest known mine was sunk in 1862, the Collinsville Coal & Mining Company (mine index 2770). The most recent mine in the Collinsville quadrangle is the Lumaghi No. 4 Mine (mine index 842), just east of Collinsville, which operated until 1964. Six of the mines in this area operated 39 years or more; the Troy Mine (mine index 644) was in operation for 53 years.

Glen Carbon, a town on the north border of the Collinsville quadrangle, was developed by the Madison Coal Company as Madison No. 2 (mine index 415) sank its hoisting and escapement shafts in 1891. New houses and boarding houses had been constructed over the year, and shade trees planted along the streets. Donk No. 1 Mine (mine index 344) may have been the first mine in the state to erect an underground hospital, in 1911-12. That year also saw the establishment of on-site mine rescue and first aid stations at Madison No. 2 Mine (mine index 415, this quadrangle) and Madison No. 4 (mine index 285, Edwardsville quadrangle).

The Herrin Coal was the only coal mined here, ranging from 3.0 to 10.0 feet thick and 54 to 298 feet deep. A number of mines reported problems with the mine floor "heaving" or "squeezing". These problems typically occur in wet conditions such as this where the bedrock cover above the coal is relatively thin. In this area, these conditions will generally apply in topographic valleys. Several mines reported difficulty supporting the roof. A coal availability study (OFS 1996-2, see References) included the Collinsville quadrangle, and the findings of that study indicated that many of the instabilities were caused by an Energy Shale roof that was less than 20 feet thick. Where the Energy Shale is greater than 20 feet thick, it is more massive and doesn't come down as easily. Generally this mining condition did not greatly hinder mining, but it did require more timbering and made mining a bit more expensive. The thick coal in this area appears to have compensated for the expense caused by the roof problems, as evidenced by the long operating spans and the large areal extent of the mines.



## PART I EXPLANATION OF MAP AND MINE SUMMARY SHEET

### INTERPRETING THE MAP

The map accompanying this directory shows the location of coal mines known to be present in the quadrangle. The map, corresponding to a U.S. Geological Survey (USGS) 7.5-minute quadrangle, covers an area bounded by lines of latitude and longitude 7.5-minutes apart. In Illinois, a quadrangle is approximately 6.5 miles east to west and 8.5 miles north to south, an area of about 56 square miles. The USGS generally offers one map of mines per quadrangle. In some areas where extensive mining occurred in two or more overlapping seams, separate maps are compiled for mines in each seam to maintain readability of the map.

#### Mine Type and Mining Method

The mine type is indicated on the map by pattern color: green represents surface mines; red and yellow represent underground mines. The red patterns are used for areas of underground mining that are documented by a primary or secondary source map. A yellow pattern is used for cases where no map of the mine workings is available, but a general area of mining can be inferred from property maps or production figures. The patterns indicate the main mining methods used in underground mines. The methods are (1) room and pillar and (2) high extraction. The method used gives some indication of the amount and pattern of coal extraction within each mined area, and has some influence on the timing and type of subsidence that can occur over a mine.

The following discussion and illustrations of mining methods are based on Guither et al. (1984).

In room-and-pillar mines, coal is removed from haulage-ways (entries) and selected areas called rooms. Pillars of unmined coal are left between the rooms to support the roof. Depending on the size of rooms and pillars, the amount of coal removed from the production areas will range from 40% to 70%.

**Room and Pillar** - mining is divided into six categories:

- room-and-pillar basic (RPB, fig. 1A), an early method that did not follow a preset mining plan and therefore resulted in very irregular designs;
- modified room and pillar (MRP, fig. 1B);
- room-and-pillar panel (RPP, fig. 1C);
- blind room and pillar (BRP, fig. 1D);
- checkerboard room and pillar (CRP, fig. 1E);
- room and pillar (RP), a classification used when the specific type of room-and-pillar mining is unknown.

Blind and checkerboard are the most common types of room-and-pillar mining used in Illinois today. The knowledge of room-and-pillar mining methods gives a trained engineer information on the nature of subsidence that may occur. A more extensive discussion of subsidence can be found in Bauer et al. (1993).

**High-extraction** These mining methods are subdivided into high-extraction retreat (HER, Fig 1F) and longwall (LW, Fig 1G, 1H). In these methods, much of the coal is removed within well defined areas of the mine. Subsidence of the surface above these areas occurs within weeks. Once the subsidence activity ceases, the potential for further movement over these areas is low; however, subsidence may continue for several years after mining.

High-extraction retreat mining is a form of room-and-pillar mining that extracts most of the coal. Rooms and pillars are developed in the panels, and the pillars are then systematically removed (fig. 1F).

In early (pre-1960) longwall mines, mining advanced in multiple directions from a central shaft (fig. 1G). Large pillars of coal were left around the shaft, but all coal was removed beyond these pillars. Miners placed rock and wooden props and cribs in the mined-out areas to support the mine roof. The overlying rock gradually settled onto these supports, thus producing subsidence at the surface. In post-1959 longwall mines, room-and-pillar methods have been used to develop the main entries of the mine and panel areas. Modern longwall methods extract 100 percent of the coal in the panel areas (fig. 1H).



## SOURCE MAPS

Mine outlines depicted on the map are, whenever possible, based on maps made from original mine surveys. The process of compiling and digitizing the quadrangle map may produce errors of less than 200 feet in the location of mine boundaries. Larger errors of 500 feet or more are possible for mines that have incomplete or inaccurate source maps.

Because of the extreme complexity of some mine maps, detailed features of mined areas have been omitted. The digitized mine boundary includes the exterior boundary of all rooms or entries that were at least 80 feet wide or protruded 500 feet from the main mining area. Unmined areas between mines are shown if they are at least 80 feet wide; unmined blocks of coal within mines are shown if they are at least 400 feet on each side. Original source maps should be consulted when precise information on mine boundaries or interior features is needed.

The mine summary sheet lists the source maps used to determine each mine outline. The completeness of map sources is indicated on the map by a line symbol at the mine boundary. Source maps are organized in five categories.

**Final mine map** The mine outline was digitized from an original map made from mine surveys conducted within a few months after production ceased. The date of the map and the last reported production are listed on the summary sheet.

**Not a final map** The mine is currently active or the mine outline was made from a map based on mine surveys conducted more than a few months before production ceased. This implies the actual mined-out area is probably larger than the outline on the map. The mine summary sheet indicated the dates of source maps and the last reported production, as well as the approximate tonnage mined between these two dates (if the mine is abandoned). The summary sheet also lists the approximate acreage mined since the date of the map and, in some cases, indicates the area where additional mining may have taken place. This latter information is determined by locating on the map the active faces relative to probable boundaries of the mine property.

**Undated map** The source map was undated, so it may or may not be based on a final mine survey. When sufficient data are available, the probable acreage of the mined area is estimated from reported production, average seam thickness and a recovery rate comparable to other mines in the area. This information is listed in the summary sheet for the mine.

**Incomplete map** The source map did not show the entire mine. The summary sheet indicates the missing part of the mine map and the acreage of the unmapped area, which is estimated from the amount of coal known to have been produced from the mine.

**Secondary source map** The original mine map was not found so the outline shown was determined from secondary sources (e.g., outlines from small-scale regional maps published in other reports). The summary sheet describes the secondary sources.

## POINTS AND LABELS

The locations of all known mine openings (shafts, slopes, and drifts) and surface mine tipples are plotted on the map. Tipples are areas where coal was cleaned, stockpiled, and loaded for shipping.

Only openings or tipples are plotted for mines without source maps. If the precise locations of these features are unknown, a special symbol is used to indicate the approximate location of the mine.

Each mine on the map is labeled with the names of the mine and operating company, ISGS mine index number, and years of operation (if known) if space permits. A seam designation is given on maps where more than one seam was mined. For a mine that operated under more than one name, only the most recent name is generally given. When a mine changed names or ownership shortly before closing, an earlier name is listed. All company and mine names are listed on the mine summary sheet in the directory, under the production history segment.





**Figure 1** Mining methods: (A) room-and-pillar basic (RPB), (B) modified room and pillar (MRP), (C) room-and-pillar panel (RPP), (D) blind room and pillar (BRP).





**Figure 1 (cont.)** Mining methods: (E) checkerboard room and pillar (CRP), (F) high extraction retreat (HER), (G) early (pre-1960) longwall, (H) post-1959 longwall





**Figure 2** Generalized stratigraphic section, showing approximate vertical relations of coals in Illinois.

## INTERPRETING A MINE SUMMARY SHEET

The mine summary sheet is arranged numerically by mine index number. Index numbers are shown on the map and in the mine listing. The mine summary sheet provides the following information (if available).

**Company and mine name** The last company or owner of the mine is used, unless no production was recorded for the last owner. In that case, the penultimate owner is listed. Mines often have no specific name; in these cases, the company name is also used as the mine name.

**Type** *Underground* denotes a subsurface mine in which the coal was reached through a shaft, slope, or a drift entry. *Surface* denotes a surface, open pit or strip mine.

**Total mined-out acreage shown** The total acreage of the mined area mapped, including any acreage mined on adjacent quadrangles, is calculated from the digitized outline of the mine. The acreage of large barrier pillars depicted on the map is excluded from the mined-out acreage. Small pillars not digitized are included in the acreage calculation. If the mine outline is not based on a final mine map, the acreage is followed by an estimate of additional acres that may have been mined. The estimate is determined from reported mine production, approximate thickness of the coal, and recovery rates calculated from nearby mines that used similar mining methods.

## SHAFT, SLOPE, DRIFT OR TIPPLE LOCATIONS

**Shaft, slope, drift, or tippie locations** Locations of all known former entry points to underground mines or the location of coal cleaning, tippie, and shipping equipment used by the mine's facility are listed. The location is described in terms of county, township and range (Twp-Rge), section, and location within the section by quarters. NE SW NW, for instance, would describe the location in the northeast quarter of the southwest quarter of the northwest quarter. When sections are irregular in size, the quarters remain the same size and are oriented (or "registered") from the southeast corner of the section. Approximate footage from the section lines (FEL = from east line, FNL = from north line, for example) is given when that information is known; this indicates a surveyed location and is not derived from maps. Entry points are also plotted on the map and coded for the type of entry or tippie. A mine opening may have had many purposes during the life of the mine. Old hoist shafts are often later used for air and escape shafts; this information is included in the directory when known. The tippie for underground mines was generally located near the main shaft or slope. At surface mines, coal was sometimes hauled to a central tippie several miles from the mine pit.

## GEOLOGY

**Seam(s) mined** The name of the coal seam(s) mined is listed, if known. If multiple seams were mined, they are all listed, although the mined-out area for each seam may be shown on separate maps. Figure 2 shows the stratigraphic section of the coal-bearing interval in Illinois, and the vertical relations among the coals.

**Depth** The depth to the top of the seam in the vicinity of the shaft is listed, if known. The depth is determined from notes made by geologists who visited the mine during its operation or from drill hole data in ISGS files. Depth generally varies little over the extent of a mine; however, reported depths for an individual mine may vary. Depth for surface-mined coals varies, and is usually represented as a range.



**Thickness** The approximate thickness of the mined seam is shown, if known. Thickness also comes from notes of geologists who visited the mine during its operation or from borehole data in ISGS files. Minimum, maximum, and average thicknesses are given when this information is available.

**Mining method** The principal mining method used at the mine (figs. 1A-H) is listed. See the mining methods section at the beginning of this directory for a discussion of this parameter.

**Geologic problems reported** Any known geologic problems, such as faults, water seepage, floor heaving, and unstable roof, encountered in the mine are reported. This information is from notes made by ISGS geologists who visited the mine, or from reports by mine inspectors published by the Illinois Department of Mines and Minerals, or from the source map(s). Geologic problems are not reported for active mines.

## PRODUCTION HISTORY

**Production history** Tons of coal produced from the mine by each mine owner are totaled. When the source map used for the mine outline is not a final mine map, the tonnage produced since the date of the map is identified. For mines that extend into adjacent quadrangles, the tonnage reported includes areas mined in adjacent quadrangles.

## SOURCE OF DATA

**Source map** This section lists information about the map(s) used to compile the mine outline and the locations of tipples and mine openings. In some cases more than one source map was used. For example, a map drawn before the mine closed may provide better information on original areas of the mine than a later map. When more than one map was used, the bibliography section explains what information was taken from each source.

**Date** The date of the most recent mine survey listed on the source map is reported.

**Original scale** The original scale of the source map is listed. Many maps are photo-reductions and are no longer at their original scale. The original scale gives some indication of the level of detail of the mine outline and the accuracy of the mine boundary relative to surface features. Generally, the larger the scale, the greater the accuracy and detail of the mine map. Mine outlines taken from source maps at scales smaller than 1:24,000 may be highly generalized and may well be inaccurately located with respect to surface features.

**Digitized scale** The scale of the digitized map is reported. The scale may be different from that of the original source map. In many cases the digitized map was made from a photo-reduction of the original source map, or the source map was not in a condition suitable for digitizing and the mine boundaries were transferred to another base map.

**Map type** Source maps are classified into five categories to indicate the probable completeness of the map. See discussion of source maps in the previous section.

**Annotated bibliography** Sources that provide information about the mine are listed, with the data taken from each source. Some commonly used sources are described below. Full bibliographic references are given for all other sources. Unless otherwise noted, all sources are available for public inspection at the ISGS.

**Coal Reports** Published since 1881, these reports contain tabular data on mine ownership, production, employment, and accidents. Some volumes include short descriptions made by mine inspectors of physical features and conditions in selected mines.

**Directory of Illinois Coal Mines** This source is a compilation of basic data about Illinois coal mines, originally gathered by ISGS staff in the early 1950s. Sources used for this directory are undocumented, but they are primarily Illinois Department of Mines and Minerals annual reports, ISGS mine notes, and coal company officials.

**ENR Document 85/01**, Guither, H. D., J. K. Hines, and R. A. Bauer, 1985 The Economic Effect of Underground Mining Upon Land Used for Illinois Agriculture: Illinois Department of Energy and Natural Resources Document 85/01, 185 p.

**Microfilm map** The U.S. Bureau of Mines maintains a microfilm archive of mine maps. A microfilm file for Illinois is available for public viewing at the ISGS.



*Mine notes* ISGS geologists have visited mines or contacted mine officials throughout the state since the early 1900s. Notes made during these visits range from brief descriptions of the mine location to long narratives (including sketches) of mining conditions and geology.

*Federal Land Bank of St. Louis, Preliminary Reports on Subsidence Investigations* Mining engineers working for the Federal Land Bank of St. Louis mapped areas of subsidence due to coal mining in the early 1930s. These reports often include county maps of mine properties with mined-out areas including shaft locations, as well as subsidence areas.

## REFERENCES

Bauer, R. A., B. A. Trent, and P. B. Dumontelle, 1993, Mine Subsidence in Illinois: Facts for the Homeowner Considering Insurance: Illinois State Geological Survey, Environmental Geology Note 144, 16p.

Guither, H. D., J. K. Hines, and R. A. Bauer, 1985, The Economic Effects of Underground Mining Upon Land Used for Illinois Agriculture: Illinois Department of Energy and Natural Resources Document 85/01, 185p.

Treworgy, C. G., C. A. Chenoweth, and M. A. Justice, 1996, Availability of Coal Resources for Mining in Illinois, Atwater, Collinsville, and Nokomis Quadrangles, Christian, Macoupin, Madison, Montgomery, and St. Clair Counties: Illinois State Geological Survey, Open File Series 1996-2, 33 p.



## PART II DIRECTORY OF MINES IN COLLINSVILLE QUADRANGLE

### MINE SUMMARY SHEETS

A summary sheet on the geology and production history of each mine in the Collinsville Quadrangle is provided. These summary sheets are arranged numerically by mine index number. Consult Part I for a complete explanation of the data listed in the summary sheet.

#### Mine Index 71

#### Lumaghi Coal Company, Cantine No. 2

Type: Underground    Total mined-out acreage shown: 3,035

### SHAFT, SLOPE, DRIFT or TIPPLE LOCATIONS

Type	County	Twp	Section	Quarters-Footage
Main shaft	Madison	3N 8W	25	NW SW SW
Air shaft	Madison	3N 8W	25	NW SW SW

### GEOLOGY

Seam(s) Mined	Depth (ft)	Thickness (ft)			Mining Method
		Min	Max	Ave	
Herrin	185-198		10.0	7.0-8.5	MRP

Geologic Problems Reported: Concretions were present in limited areas.

### PRODUCTION HISTORY

Company	Mine Name	Years	Production (tons)
Lumaghi Coal Company	Cantine No. 2, Lumaghi No. 2	1901-1950	<u>19,680,282</u> 19,680,282

Last reported production: May 20, 1950

### SOURCES OF DATA

Source Map	Date	Original Scale	Digitized Scale	Map Type
ISGS map library, 4102 i5.1-12	6-29-1942	1:2400	1:2400	Not final
Microfilm, document 352395	5-20-1950	1:2400	1:4800	Final

#### Annotated Bibliography (data source, brief description of information)

Coal Reports - Production, ownership, years of operation, thickness.

Directory of Illinois Coal Mines (Madison County) - Mine names, mine index, ownership, years of operation.

Mine notes (Madison County) - Mine type, shaft locations, seam, depth, thickness, geologic problems.

ISGS map library, 4102 i5.1-12 - Mine outline (northern, central), shaft locations, mining method.

Microfilm map, document 352395, reel 03139, frames 42-45 - Mine outline (southern), abandonment date.



## Mine Index 192

### Hardscrabble Coal Company, Hardscrabble Mine

Type: Underground    Total mined-out acreage shown: 168    Approximately 8 acres were mined after the map date.

#### SHAFT, SLOPE, DRIFT or TIPPLE LOCATIONS

Type	County	Twp	Section	Quarters-Footage
Main shaft	Madison	3N 8W	33	SW NE SW
Air shaft	Madison	3N 8W	33	NW SE SW

#### GEOLOGY

Seam(s) Mined	Depth (ft)	Thickness (ft)			Mining Method
		Min	Max	Ave	
Herrin	195	3.0	7.0	6.5	RPB

Geologic Problems Reported:

#### PRODUCTION HISTORY

Company	Mine Name	Years	Production (tons)
Abbey Coal Corporation	Abbey No. 1	1903-1932 *	1,236,928
Hardscrabble Coal Company	Hardscrabble	1933-1936	86,033
Hardscrabble Coal Company	Hardscrabble	1936-1937	46,912 **
			1,369,873

\* Idle 1931-1932

\*\* Production after map date

Last reported production: 1937

#### SOURCES OF DATA

Source Map	Date	Original Scale	Digitized Scale	Map Type
Microfilm, document 352364	1-1936	1:1200	1:1490	Not final ***
State archive, IL_1090_03	6-1926	1:1200	1:1200	Not final

\*\*\* The mine outline is incomplete as well as not final. A general area of mining has been added to the northern boundary of the mine. A paper version of this source map shows handwritten notes and additional rooms mined out in this area -- personal communication with Robert Gibson (of the Abandoned Mined Lands Reclamation Division of the Department of Natural Resources).

#### Annotated Bibliography (data source, brief description of information)

Coal Reports - Production, ownership, years of operation.

Directory of Illinois Coal Mines (Madison County) - Mine names, mine index, ownership, years of operation.

Mine notes (Madison County) - Mine type, shaft location, seam, depth, thickness.

Microfilm map, document 352364, reel 03138, frame 484 - Shaft locations, mine outline (northeastern).

State archive, IL\_1090\_03 - Mine outline (southern, western).



**Mine Index 201**  
**Consolidated Coal Company, Consolidated No. 17 Mine**

Type: Underground    Total mined-out acreage shown: 1,343

**SHAFT, SLOPE, DRIFT or TIPPLE LOCATIONS**

Type	County	Twp	Section	Quarters-Footage
Main shaft	St. Clair	2N 8W	10	SE SE NW
Air shaft	St. Clair	2N 8W	10	SE SE NW

**GEOLOGY**

Seam(s) Mined	Depth (ft)	Thickness (ft)			Mining Method
		Min	Max	Ave	
Herrin	210-228	6.5	8.0	6.5	RPP

Geologic Problems Reported: The black shale roof (½ inch to 4 feet thick) required timbering, but was thin in the northern part of the mine. Some slips were present in some areas in the coal, making it unminable. The floor clay heaved badly in one location, but generally gave no problem.

**PRODUCTION HISTORY**

Company	Mine Name	Years	Production (tons)
Consolidated Coal Company	Consolidated No. 17	1905-1927 *	<u>7,575,728</u> 7,575,728

\* Idle July 1924 to November 1926

Last reported production: May 1927

**SOURCES OF DATA**

Source Map	Date	Original Scale	Digitized Scale	Map Type
Company	1927	1:2400	1:2400	Final

Annotated Bibliography (data source, brief description of information)

Coal Reports - Production, ownership, years of operation.  
 Directory of Illinois Coal Mines (St. Clair County) - Mine names, mine index, ownership, years of operation.  
 Mine notes (St. Clair County) - Shaft locations, mine type, seam, depth, thickness, geologic problems.  
 Company map - Shaft locations, mine outline, mining method.  
 Federal Land Bank Report (St. Clair County) - Depth.



**Mine Index 285****Madison Coal Corporation, Madison No. 4 Mine**

Type: Underground    Total mined-out acreage shown: 651

**SHAFT, SLOPE, DRIFT or TIPPLE LOCATIONS**

Type	County	Twp	Section	Quarters-Footage
Main shaft	Madison	4N 8W	26	SW SE SW
Air shaft	Madison	4N 8W	26	SW SE SW

**GEOLOGY**

Seam(s) Mined	Depth (ft)	Thickness (ft)			Mining Method
		Min	Max	Ave	
Herrin	174-180	3.0	7.5	6.0	RPP

Geologic Problems Reported: The source map shows many unmined areas within the mine. These areas indicate geologic problems of some kind, usually roof instability.

**PRODUCTION HISTORY**

Company	Mine Name	Years	Production (tons)
Madison Coal Company	Madison No. 4	1893-1905	2,040,130
Madison Coal Corporation	Madison No. 4	1905-1913	<u>1,537,863</u>
			3,577,993

Last reported production: 1913

**SOURCES OF DATA**

Source Map	Date	Original Scale	Digitized Scale	Map Type
Microfilm, document 352319	2-1-1914	1:2400	1:4634	Final
Microfilm, document 352351	5-1931	1:2400	1:4634	Final *

\* This source map was used only to clarify the boundary between this mine and Madison Coal Corporation, Mine No. 2 (mine index 415).

Annotated Bibliography (data source, brief description of information)

Coal Reports - Production, ownership, years of operation.

Directory of Illinois Coal Mines (Madison County) - Mine names, mine index, ownership, years of operation.

Microfilm map, document 352319, reel 03138, frames 394, 395 - Shaft locations, mine outline, mining method, geologic problems.

Microfilm map, document 352351, reel 03138, frames 460, 461, map of Madison No. 4 (mine index 415) - Boundary between mines.

Mine notes (Madison County) - Mine type, shaft location, seam, depth, thickness.

**Mine Index 344****Donk Brothers Coal & Coke Company, Donk No. 1 Mine**

Type: Underground    Total mined-out acreage shown: 1,221

**SHAFT, SLOPE, DRIFT or TIPPLE LOCATIONS**

Type	County	Twp	Section	Quarters-Footage
Main shaft	Madison	3N 8W	22	NW SW NW
Air shaft	Madison	3N 8W	22	NE SW NW

**GEOLOGY**

Seam(s) Mined	Depth (ft)	Thickness (ft)			Mining Method
		Min	Max	Ave	
Herrin	133			6.0-7.0	MRP

Geologic Problems Reported:

**PRODUCTION HISTORY**

Company	Mine Name	Years	Production (tons)
Donk Brothers Coal & Coke Company	Donk No. 1	1900-1921	6,679,560 6,679,560

Last reported production: January 31, 1921; Abandoned April 27, 1922

**SOURCES OF DATA**

Source Map	Date	Original Scale	Digitized Scale	Map Type
Microfilm, document 352377	5-1921	1:2400	1:5131	Final

Annotated Bibliography (data source, brief description of information)

Coal Reports - Production, ownership, years of operation.

Directory of Illinois Coal Mines (Madison County) - Mine names, mine index, ownership, years of operation.

Microfilm map, document 352377, reel 03139, frames 1-3 - Shaft locations, mine outline, mining method, abandonment date.

Mine notes (Madison County) - Mine type, shaft location, seam, depth, thickness.



**Mine Index 415**  
**Madison Coal Company, Madison No. 2 Mine**

Type: Underground    Total mined-out acreage shown: 1,853

**SHAFT, SLOPE, DRIFT or TIPPLE LOCATIONS**

Type	County	Twp	Section	Quarters-Footage
Main shaft	Madison	4N 8W	34	SW SW SE
Escape shaft *	Madison	4N 8W	34	SW SW SE
Air shaft	Madison	4N 8W	34	NW SW SE
Air shaft	Madison	3N 8W	4	SE SE SE

\* This shaft was shown as an air shaft on a 1902 map. On a 1906 map it was labeled as an escape shaft and remained this way on a 1925 map, the last time it was shown on a map.

**GEOLOGY**

Seam(s) Mined	Depth (ft)	Thickness (ft)			Mining Method
		Min	Max	Ave	
Herrin	85-93			6.5-7.0	RPP

Geologic Problems Reported:

**PRODUCTION HISTORY**

Company	Mine Name	Years	Production (tons)
Madison Coal Company	Madison No. 2	1891-1906	3,129,030
Madison Coal Corporation	Madison No. 2	1906-1931 **	8,883,065
			12,012,095

\*\* Reported idle 1932-1939, but never re-opened

Last reported production: April 1931

**SOURCES OF DATA**

Source Map	Date	Original Scale	Digitized Scale	Map Type
State archive, IL_02_01	5-1931	1:2400	1:2400	Final
State archive, IL_1162_01	5-31-1918	1:2400	1:2400	Not final

Annotated Bibliography (data source, brief description of information)

Coal Reports - Production, ownership, years of operation, mine type.  
 Directory of Illinois Coal Mines (Madison County) - Mine names, mine index, ownership, years of operation.  
 Mine notes (Madison County) - Shaft location, seam, depth, thickness.  
 State archive, IL\_02\_01 - Shaft locations, mine outline, mining method.  
 State archive, IL\_1162\_01 - Escape shaft location.  
 Madison County plat, 1906 - Shaft locations.

**Mine Index 438****Donk Brothers Coal & Coke Company, Donk No. 2 Mine**

Type: Underground    Total mined-out acreage shown: 1,753

**SHAFT, SLOPE, DRIFT or TIPPLE LOCATIONS**

Type	County	Twp	Section	Quarters-Footage
Main shaft	Madison	3N 8W	11	SE SW NE
Air shaft	Madison	3N 8W	11	SE SW NE

**GEOLOGY**

Seam(s) Mined	Depth (ft)	Thickness (ft)			Mining Method
		Min	Max	Ave	
Herrin	238			6.0-7.0	MRP, some RPP

Geologic Problems Reported:

**PRODUCTION HISTORY**

Company	Mine Name	Years	Production (tons)
Donk Brothers Coal & Coke Company	Donk No. 2	1900-1925	10,491,129 10,491,129

Last reported production: February 1925

**SOURCES OF DATA**

Source Map	Date	Original Scale	Digitized Scale	Map Type
Microfilm, document 352378	12-31-1925	1:2400	1:4800	Final
Microfilm, document 352377	5-1921	1:2400	1:5131	Final

Annotated Bibliography (data source, brief description of information)

Coal Reports - Production, ownership, years of operation.

Directory of Illinois Coal Mines (Madison County) - Mine names, mine index, ownership, years of operation.

Mine notes (Madison County) - Mine type, shaft location, seam, depth, thickness

Microfilm map, document 352378, reel 03139, frames 4-7 - Shaft locations, mine outline, mining methods.

Microfilm map, document 352377, reel 03139, frames 1-3, map of Donk No. 1 Mine (mine index 344) - Mine outline (southwestern corner).



**Mine Index 439****Lumaghi Coal Company, Cantine No. 3 Mine**

Type: Underground    Total mined-out acreage shown: 396

**SHAFT, SLOPE, DRIFT or TIPPLE LOCATIONS**

Type	County	Twp	Section	Quarters-Footage
Main shaft	Madison	3N 8W	26	NW SE SW
Air shaft	Madison	3N 8W	26	NW SE SW

**GEOLOGY**

Seam(s) Mined	Depth (ft)	Thickness (ft)			Mining Method
		Min	Max	Ave	
Herrin	166-192	7.0	9.5	7.0	MRP

Geologic Problems Reported: Occasional concretions occurred in the roof.

**PRODUCTION HISTORY**

Company	Mine Name	Years	Production (tons)
Lumaghi Coal Company	Lumaghi No. 3	1903-1927 *	<u>2,330,988</u> 2,330,988

\* Idle 1925

Last reported production: June 30, 1927

**SOURCES OF DATA**

Source Map	Date	Original Scale	Digitized Scale	Map Type
Microfilm, document 352370	7-1944	1:2400	1:5297	Final
Microfilm, document 352369	6-30-1927	1:2400	1:5131	Final

Annotated Bibliography (data source, brief description of information)

Coal Reports - Production, ownership, years of operation.

Directory of Illinois Coal Mines (Madison County) - Mine names, mine index, ownership, years of operation.

Mine notes (Madison County) - Mine type, shaft location, seam, depth, thickness, geologic problems.

Microfilm map, document 352370, reel 03138, frames 492 & 493 - Shaft locations, mine outline, mining method.

Microfilm map, document 352369, reel 03138, frame 491 - Closing date.

**Mine Index 644****Troy Domestic Mining Company, Troy Mine**

Type: Underground    Total mined-out acreage shown: 1,679

**SHAFT, SLOPE, DRIFT or TIPPLE LOCATIONS**

Type	County	Twp	Section	Quarters-Footage
Shaft	Madison	3N 7W	9	130 FNL, 30 FWL
Air shaft	Madison	3N 7W	9	NW NW NW

**GEOLOGY**

Seam(s) Mined	Depth (ft)	Thickness (ft)			Mining Method
		Min	Max	Ave	
Herrin	273-287			5.0-5.5	RPP, MRP

Geologic Problems Reported: Some small slips and some jointing occurred in this mine. In some places, concretions in the roof were directly on top of the coal.

**PRODUCTION HISTORY**

Company	Mine Name	Years	Production (tons)
Donk Brothers Coal & Coke Company	Donk No. 3	1900-1922	4,713,304
Troy Coal Company	Troy No. 1	1922-1931	953,907
Chicopee Coal Company	Chicopee No. 1	1931-1941	596,781
Troy Domestic Mining Company	Troy Domestic	1941-1953	554,229
			6,818,221

Last reported production: February 1953

**SOURCES OF DATA**

Source Map	Date	Original Scale	Digitized Scale	Map Type
Microfilm, document 352380	11-14-1953	1:2400	1:4469	Final

Annotated Bibliography (data source, brief description of information)

Coal Reports - Production, ownership, years of operation.  
 Directory of Illinois Coal Mines (Madison County) - Mine names, mine index, ownership, years of operation.  
 Mine notes (Madison County) - Mine type, shaft location, depth, thickness, geologic problems.  
 Microfilm map, document 352380, reel 03139, frames 9-12 - Shaft locations, mine outline, mining methods.  
 Mine notes (Madison County) - Mine type, shaft location, depth, thickness, geologic problems.



**Mine Index 766**  
**Burn Well Coal Company, Burn Well Mine**

Type: Underground    Total mined-out acreage shown: 210

**SHAFT, SLOPE, DRIFT or TIPPLE LOCATIONS**

Type	County	Twp	Section	Quarters-Footage
Main shaft	Madison	3N 8W	27	SE NE SW
Air shaft	Madison	3N 8W	27	SE NE SW

**GEOLOGY**

Seam(s) Mined	Depth (ft)	Thickness (ft)			Mining Method
		Min	Max	Ave	
Herrin	163-165			6.0-7.0	MRP

Geologic Problems Reported:

**PRODUCTION HISTORY**

Company	Mine Name	Years	Production (tons)
Bullock Brothers	Bullock	1899-1918	108,377
Bullock Mining Company	Bullock	1918-1938	875,331
Burn Well Coal Company	Burn Well	1938-1945	178,702
			<u>1,162,410</u>

Last reported production: March 1945

**SOURCES OF DATA**

Source Map	Date	Original Scale	Digitized Scale	Map Type
Microfilm, document 352362	5-19-1945	1:1200	1:2400	Final

Annotated Bibliography (data source, brief description of information)

Coal Reports - Production, ownership, years of operation.  
 Directory of Illinois Coal Mines (Madison County) - Mine names, mine index, ownership, years of operation.  
 Microfilm map, document 352362, reel 03138, frames 480, 481 - Shaft locations, mine outline, mining method.  
 Mine notes (Madison County) - Mine type, seam, depth, thickness.

**Mine Index 842**  
**Lumaghi Coal Company, Cantine No. 4 Mine**

Type: Underground    Total mined-out acreage shown: 1,301

**SHAFT, SLOPE, DRIFT or TIPPLe LOCATIONS**

Type	County	Twp	Section	Quarters-Footage
Main slope	Madison	3N 8W	23	SE SW SE
Air shaft	Madison	3N 8W	23	SE SE SE

**GEOLOGY**

Seam(s) Mined	Depth (ft)	Thickness (ft)			Mining Method
		Min	Max	Ave	
Herrin	196			6.0-8.0	CRP

Geologic Problems Reported: A large roll interfered with mining in one area, closing the entry. The underclay heaved badly in one location.

**PRODUCTION HISTORY**

Company	Mine Name	Years	Production (tons)
Lumaghi Coal Company	Cantine No. 4	1950-1964	<u>7,285,118</u> 7,285,118

Last reported production: March 1964

**SOURCES OF DATA**

Source Map	Date	Original Scale	Digitized Scale	Map Type
Microfilm, document 352381	3-11-1964	1:2400	1:4965	Final

Annotated Bibliography (data source, brief description of information)

Coal Reports - Production, ownership, years of operation, depth, thickness.  
 Directory of Illinois Coal Mines (Madison County) - Mine names, mine index, ownership, years of operation.  
 Microfilm map, document 352381, reel 03139, frames 13-18 - Shaft locations, mine outline, mining method.  
 Mine notes (Madison County) - Mine type, seam, geologic problems.



**Mine Index 2751**  
**Brookside Coal Company, Brookside Mine**

Type: Underground    Total mined-out acreage shown: 195

**SHAFT, SLOPE, DRIFT or TIPPLE LOCATIONS**

Type	County	Twp	Section	Quarters-Footage
Main shaft	Madison	3N 7W	9	SE SE SW
Air shaft	Madison	3N 7W	9	SE SE SW

**GEOLOGY**

Seam(s) Mined	Depth (ft)	Thickness (ft)			Mining Method
		Min	Max	Ave	
Herrin	290-298			5.0-5.5	MRP

Geologic Problems Reported:

**PRODUCTION HISTORY**

Company	Mine Name	Years	Production (tons)
Brookside Coal Company	Brookside	pre1881-1887	276,312
Consolidated Coal Company of St. Louis	Brookside	1887-1896	315,510
Joseph Hardin	Brookside	1896-1897	38,220
Consolidated Coal Company of St. Louis	Brookside	1897-1906	319,414
Brookside Coal Company	Brookside	1906-1912	166,019
			1,115,475

Last reported production: November 1912

**SOURCES OF DATA**

Source Map	Date	Original Scale	Digitized Scale	Map Type
Microfilm, document 352345	6-22-1911	1:1200	1:2234	Not final
State archive, IL_987	4-14-1914	1:1200	1:1200	Final

Annotated Bibliography (data source, brief description of information)

Coal Reports - Production, ownership, years of operation.  
 Directory of Illinois Coal Mines (Madison County) - Mine names, mine index, ownership, years of operation.  
 Mine notes (Madison County) - Mine type, shaft location, seam, depth, thickness.  
 Microfilm map, document 352345, reel 03138, frames 452, 453 - Shaft locations, mine outline, mining method.  
 State archive, IL\_987 - Shaft locations, mine outline, mining method..

**Mine Index 2753****Troy Cooperative Coal Mining Company, Troy Cooperative Mine**

Type: Underground    Total mined-out acreage shown: 199    Production indicates less than 1 additional acre was mined after the map date.

**SHAFT, SLOPE, DRIFT or TIPPLe LOCATIONS**

Type	County	Twp	Section	Quarters-Footage
Main shaft	Madison	3N 7W	9	SE SE SE

**GEOLOGY**

Seam(s) Mined	Depth (ft)	Thickness (ft)			Mining Method
		Min	Max	Ave	
Herrin	278-280			5.0-6.0	RP

Geologic Problems Reported:

**PRODUCTION HISTORY**

Company	Mine Name	Years	Production (tons)
Troy Coal & Mining Company *	Troy	1882-1886	100,298
Consolidated Coal Company of St. Louis	Troy	1886-1896	600,972
James Wilde / Thomas Miller **	Troy	1896-1897	32,406
Consolidated Coal Company of St. Louis	Troy	1897-1910 ***	95,324
Troy Cooperative Coal & Mining Company	Troy	1910-1911	5,600 ****
			834,600

\* Managed by Donk Brothers

\*\* James Wilde, lessee, died as a result of mining accident (5-3-1897). The lessee at the time of reporting was Thomas Miller.

\*\*\* Idle 1902 to 1910

\*\*\*\* Production after map date

Last reported production: 1911

**SOURCES OF DATA**

Source Map	Date	Original Scale	Digitized Scale	Map Type
Microfilm, document 352391	12-1903	1:12000	1:13241	Not final

Annotated Bibliography (data source, brief description of information)

Coal Reports - Production, ownership, years of operation, seam, depth, thickness, mining method.

Directory of Illinois Coal Mines (Madison County) - Mine names, mine index, ownership, years of operation.

Microfilm map, document 352391, reel 03139, frame 32 - Shaft locations, mine outline.



**Mine Index 2756****Sugar Loaf Coal Company, Sugar Loaf Mine**

Type: Underground    Total mined-out acreage shown: 139

**SHAFT, SLOPE, DRIFT or TIPPLe LOCATIONS**

Type	County	Twp-Rge	Section	Quarters-Footage
Main slope	Madison	3N 8W	17	NW NW SE
Air shaft	Madison	3N 8W	17	NW NW SE

**GEOLOGY**

Seam(s) Mined	Depth (ft)	Thickness (ft)			Mining Method
		Min	Max	Ave	
Herrin	54			5.6-6.0	MRP

Geologic Problems Reported:**PRODUCTION HISTORY**

Company	Mine Name	Years	Production (tons)
Sugar Loaf Coal Corporation	Sugar Loaf	1932-1949	747,184
			747,184

Last reported production: 1949

**SOURCES OF DATA**

Source Map	Date	Original Scale	Digitized Scale	Map Type
Company, 4103.M35 i5.1-1	2-13-1949	1:1200	1:1200	Final

Annotated Bibliography (data source, brief description of information)

Coal Reports - Production, ownership, years of operation, seam.

Directory of Illinois Coal Mines (Madison County) - Mine names, mine index, ownership, years of operation.

Company map, ISGS map library, 4103.M35 i5.1-1 - Shaft locations, mine outline, mining method.

Mine notes (Madison County) - Mine type, depth, thickness.

**Mine Index 2757****Glen Carbon Mines, Inc., Glen Carbon No. 1 Mine**

Type: Underground    Total mined-out acreage shown: 181

**SHAFT, SLOPE, DRIFT or TIPPLE LOCATIONS**

Type	County	Twp	Section	Quarters-Footage
Main shaft	Madison	3N 8W	17	NE NW NE
Air shaft	Madison	3N 8W	17	NE NW NE

**GEOLOGY**

Seam(s) Mined	Depth (ft)	Thickness (ft)			Mining Method
		Min	Max	Ave	
Herrin	54-60			6.0-6.8	RPP

Geologic Problems Reported: Advancement was halted in the northeasternmost portion of the mine due to water in the entries and roof problems ("caved" noted on the source map).

**PRODUCTION HISTORY**

Company	Mine Name	Years	Production (tons)
Glen Carbon Coal Company, Inc.	Glen Carbon	1932-1943	432,900
Chapman Coal Company	Chapman No. 1	1944-1951	388,499
Bluff Coal Company	Bluff No. 1	1952-1955	27,714
Glen Carbon Mines, Inc.	Glen Carbon No. 1	1956-1958	<u>52,957</u>
			902,070

Last reported production: August 1958

**SOURCES OF DATA**

Source Map	Date	Original Scale	Digitized Scale	Map Type
Microfilm, document 352384	12-12-1955	1:2400	1:4303	Not final
Company map	8-20-1958	1:2400	1:2400	Final

Annotated Bibliography (data source, brief description of information)

Coal Reports - Production, ownership, years of operation.

Directory of Illinois Coal Mines (Madison County) - Mine names, mine index, ownership, years of operation.

Mine notes (Madison County) - Mine type, shaft location, seam, depth, thickness.

Microfilm map, document 352384, reel 03139, frame 21 - Shaft locations, mine outline, mining method.

Company map, loan courtesy of Marissa Historical & Genealogical Society - Mine outline (northeastern), geologic problems.



**Mine Index 2759****Consolidated Coal Company of St. Louis, Cantine Mine**

Type: Underground Total mined-out acreage shown: 51 No source maps of the mine outline were found. A general area of mining the approximate size expected from the tonnage produced was constructed around the shafts. The Cantine Mine is surrounded on all sides by later mines.

**SHAFT, SLOPE, DRIFT or TIPPLe LOCATIONS**

Type	County	Twp	Section	Quarters-Footage
Main shaft	Madison	3N 8W	26	SE NW SE
Air shaft	Madison	3N 8W	26	NW SW SE

**GEOLOGY**

Seam(s) Mined	Depth (ft)	Thickness (ft)			Mining Method
		Min	Max	Ave	
Herrin	182-190			6.3-7.5	RP

Geologic Problems Reported:

**PRODUCTION HISTORY**

Company	Mine Name	Years	Production (tons)
Ambrosius (C. A.) & Morrison	Cantine	1873-1883	112,750 *
Cantine Coal & Mining Company **	Cantine	1883-1886	162,860
Consolidated Coal Company of St. Louis	Cantine	1886-1887	<u>11,020</u>
			286,630

\* Production prior to June 1878 and July 1879 to June 1881 is unknown

\*\* Cantine is sometimes spelled "Canteen"; the correct spelling is unknown, usage in this directory is from the most common spelling in the Coal Reports.

Last reported production: 1887

**SOURCES OF DATA**

Source Map	Date	Original Scale	Digitized Scale	Map Type
Microfilm, document 352369 ***	6-30-1927	1:2400	1:5131	Secondary source

\*\*\* Only the shafts are shown.

Annotated Bibliography (data source, brief description of information)

Coal Reports - Production, ownership, years of operation, location, thickness, mining method.

Directory of Illinois Coal Mines (Madison County) - Mine names, mine index, ownership, years of operation.

Mine notes (Madison County) - Depth, thickness.

Microfilm map, document 352369, reel 03138, frames 490, 491, map of Cantine No. 3 Mine (mine index 493) - Shaft locations.

History of Madison County, W. R. Brink & Co., Edwardsville, Illinois (publishers), 1882 - Mine ownership, years of operation, depth.

**Mine Index 2760**  
**Buxton Coal Company, Buxton Mine**

Type: Underground    Total mined-out acreage shown: 63

**SHAFT, SLOPE, DRIFT or TIPPLE LOCATIONS**

Type	County	Twp	Section	Quarters-Footage
Main shaft	Madison	3N 8W	26	SE NW SE
Air shaft	Madison	3N 8W	26	SE NW SE

**GEOLOGY**

Seam(s) Mined	Depth (ft)	Thickness (ft)			Mining Method
		Min	Max	Ave	
Herrin	180			7.5-7.6	MRP, RPB

Geologic Problems Reported:

**PRODUCTION HISTORY**

Company	Mine Name	Years	Production (tons)
Independent Coal Company	Independent	1898-1901	159,637
Illinois Hydraulic Press Brick Company	Illinois Hydraulic Press Brick	1907-1908	120
Independent Coal Company	Independent	1908-1911	55,395
Hydraulic Press Brick Company	Hydraulic Press Brick	1911-1913	34,443
Independent Coal Company	Independent	1913-1914	16,062
Hydraulic Press Brick Company	Hydraulic Press Brick	1914-1917	24,943
Independent Coal Company	Independent	1917-1920 *	8,524
Hydraulic Press Brick Company	Hydraulic Press Brick	1920-1930	60,103
Buxton Coal Company	Buxton	1934-1937	<u>65,057</u>
			424,294

\* Idle 1918-1919

Last reported production: January 1937

**SOURCES OF DATA**

Source Map	Date	Original Scale	Digitized Scale	Map Type
Microfilm, document 352359	2-2-1937	1:1200	1:1655	Final

Annotated Bibliography (data source, brief description of information)

Coal Reports - Production, ownership, years of operation.  
 Directory of Illinois Coal Mines (Madison County) - Mine names, mine index, ownership, years of operation.  
 Microfilm map, document 352359, reel 03138, frame 474 - Shaft locations, mine outline, mining method.  
 Mine notes (Madison County) - Mine type, shaft location, seam, depth, thickness.

**Mine Index 2762**  
**Consolidated Coal Company of St. Louis, Confidence Mine**

Type: Underground    Total mined-out acreage shown: 92

**SHAFT, SLOPE, DRIFT or TIPPLE LOCATIONS**

Type	County	Twp	Section	Quarters-Footage
Main shaft	Madison	3N 8W	26	NW SE NE
Air shaft	Madison	3N 8W	26	NW SE NE

**GEOLOGY**

Seam(s) Mined	Depth (ft)	Thickness (ft)			Mining Method
		Min	Max	Ave	
Herrin	216-226			6.0-7.5	RPB

Geologic Problems Reported:

**PRODUCTION HISTORY**

Company	Mine Name	Years	Production (tons)
Wilborn Mining Company	Wilborn	1870-1874	unknown *
Bartlett Coal & Mining Company	Bartlett	1874-1878	unknown *
Seibt & Bandileer	Confidence	1878-1881	37,906 **
Confidence Coal & Mining Company	Confidence	1881-1886	240,512
Consolidated Coal Company of St. Louis	Confidence	1886-1887	9,018
			<u>287,436</u>

\* Production prior to 1878 unknown. According to the History of Madison County (published by W. R. Brink & Co., Edwardsville, Illinois, 1882), the shaft was sunk in the spring of 1870 by Seybt, Bandelier & Company, and leased to Bartlett Coal & Mining Company in the fall of that year.

\*\* Production July 1879 to June 1881 unknown

Last reported production: 1887

**SOURCES OF DATA**

Source Map	Date	Original Scale	Digitized Scale	Map Type
Microfilm, document 352374	5-20-1950	1:2400	1:4634	Secondary source

Annotated Bibliography (data source, brief description of information)

Coal Reports - Production, ownership, years of operation, seam, depth, thickness.

Directory of Illinois Coal Mines (Madison County) - Mine names, mine index, ownership, years of operation.

Microfilm map, document 352374, reel 03138, frames 497-500 - Shaft locations, mine outline, mining method.



**Mine Index 2765**  
**Consolidated Coal Company of St. Louis, Heinz Bluff Mine**

Type: Underground    Total mined-out acreage shown: 416 \*

**SHAFT, SLOPE, DRIFT or TIPPLE LOCATIONS**

Type	County	Twp	Section	Quarters-Footage
Main shaft	Madison	3N 8W	27	NE SE SE *

\* Some of the area included in the polygon for this mine on the accompanying map may have been mined by the Collinsville Mine (mine index 2770), connected underground on the western side. Heintz Bluff was also connected underground to Abbey No. 3 (mine index 2769) to the south. The Heintz Bluff source map does not show an air shaft. It was relatively common for some of these older mines to use these underground connections for additional ventilation and escapement routes.

**GEOLOGY**

Seam(s) Mined	Depth (ft)	Thickness (ft)			Mining Method
		Min	Max	Ave	
Herrin	162			7.0	MRP

Geologic Problems Reported:

**PRODUCTION HISTORY**

Company	Mine Name	Years	Production (tons)
Heintz Bluff Coal & Mining Company **	Heintz Bluff	1876-1886	299,272 ***
Consolidated Coal Company of St. Louis	Heintz Bluff	1886-1896	1,456,892
J. F. Fletcher	Heintz Bluff	1896-1897	97,412
Consolidated Coal Company of St. Louis	Heintz Bluff	1897-1906	<u>1,170,629</u>
			3,024,205

\*\* Owned and operated by J. L. Heintz from 1876 to July 1<sup>st</sup>, 1882, when the mine was sold to Joseph Wickliffe (J. L. Heintz continued as superintendent for the mine).

\*\*\* Production prior to June 1878 and from July 1879 to June 1881 unknown.

Last reported production: 1906

**SOURCES OF DATA**

Source Map	Date	Original Scale	Digitized Scale	Map Type
Microfilm, document 352371	3-31-1906	1:2400	1:4966	Final

Annotated Bibliography (data source, brief description of information)

Coal Reports - Production, ownership, years of operation, seam, depth, thickness, method.  
 Directory of Illinois Coal Mines (Madison County) - Mine names, mine index, ownership, years of operation.  
 Mine notes (Madison County) - Mine type, shaft location, seam, depth, thickness.  
 Microfilm map, document 352371, reel 03138, frame 494 - Shaft locations, mine outline, mining method.  
 Microfilm map, document 352368, reel 03138, frame 489 - Mine ownership (Wickliffe).

**Mine Index 2766****Lumaghi Coal Company, Lumaghi No. 1 Mine**

Type: Underground    Total mined-out acreage shown: 169

**SHAFT, SLOPE, DRIFT or TIPPLE LOCATIONS**

Type	County	Twp	Section	Quarters-Footage
Main shaft	Madison	3N 8W	27	SE SW SE
Air shaft	Madison	3N 8W	27	SW SW SE

**GEOLOGY**

Seam(s) Mined	Depth (ft)	Thickness (ft)			Mining Method
		Min	Max	Ave	
Herrin	160-165			6.5-7.5	RP

Geologic Problems Reported:

**PRODUCTION HISTORY**

Company	Mine Name	Years	Production (tons)
Dr. Octavius Lumaghi	Lumaghi	1869-1886	151,931 *
Consolidated Coal Company of St. Louis	Lumaghi	1886-1888	7,220 **
O. Lumaghi Colliery	Lumaghi	1888-1894	342,187
Lumaghi Brothers	Lumaghi	1894-1895	66,278
Lumaghi Coal Company	Lumaghi No. 1	1895-1903	715,115
			1,282,731

\* Production prior to July 1878 and from July 1879 to June 1881 unknown.

\*\* Idle 1888

Last reported production: Abandoned March 17, 1903

**SOURCES OF DATA**

Source Map	Date	Original Scale	Digitized Scale	Map Type
Microfilm, document 352360	3-1903	1:1200	1:2152	Final

Annotated Bibliography (data source, brief description of information)

Coal Reports - Production, ownership, years of operation, mining method.

Directory of Illinois Coal Mines (Madison County) - Mine names, mine index, ownership, years of operation.

Mine notes (Madison County) - Mine type, seam, depth, thickness.

Microfilm map, document 352360, reel 03138, frames 477, 478 - Shaft locations, mine outline, mining method, abandonment date.

History of Madison County, W. R. Brink & Co., Edwardsville, Illinois (publishers), 1882 - Years of operation.

**Mine Index 2767**  
**Bunker Hill Coal & Mining Company, Bunker Hill Mine**

Type: Underground    Total mined-out acreage shown: 228

**SHAFT, SLOPE, DRIFT or TIPPLE LOCATIONS**

Type	County	Twp	Section	Quarters-Footage
Main shaft	Madison	3N 8W	28	NW SE SE
Air shaft	Madison	3N 8W	28	NE SW SE

**GEOLOGY**

Seam(s) Mined	Depth (ft)	Thickness (ft)			Mining Method
		Min	Max	Ave	
Herrin	190			6.0-6.5	MRP

Geologic Problems Reported:

**PRODUCTION HISTORY**

Company	Mine Name	Years	Production (tons)
Williams & Neuman	Williams & Neuman	1911-1912	7,000
Bunker Hill Coal Company	Bunker Hill	1912-1918	40,631
Williams & Sager	Williams & Sager	1918-1920	20,190
Bunker Hill Coal & Mining Company	Bunker Hill	1920-1953	<u>1,325,558</u>
			1,393,379

Last reported production: March 1953

**SOURCES OF DATA**

Source Map	Date	Original Scale	Digitized Scale	Map Type
Microfilm, document 352366	2-1953	1:2400	1:4469	Final

Annotated Bibliography (data source, brief description of information)

Coal Reports - Production, ownership, years of operation, seam.  
 Directory of Illinois Coal Mines (Madison County) - Mine names, mine index, ownership, years of operation.  
 Mine notes (Madison County) - Shaft location, depth, thickness.  
 Microfilm map, document 352366, reel 03138, frame 487 - Shaft locations, mine outline, mining method.



**Mine Index 2768**  
**Collinsville Coal Company, Collinsville Mine**

Type: Underground    Total mined-out acreage shown: 218

**SHAFT, SLOPE, DRIFT or TIPPLE LOCATIONS**

Type	County	Twp	Section	Quarters-Footage
Main shaft	Madison	3N 8W	28	SW NW NW
Air shaft	Madison	3N 8W	28	SW NW NW

**GEOLOGY**

Seam(s) Mined	Depth (ft)	Thickness (ft)			Mining Method
		Min	Max	Ave	
Herrin	94-96			5.75-6.0	MRP

Geologic Problems Reported:

**PRODUCTION HISTORY**

Company	Mine Name	Years	Production (tons)
Collinsville Coal Company	Collinsville	1924-1946	1,182,608 1,182,608

Last reported production: 1946

**SOURCES OF DATA**

Source Map	Date	Original Scale	Digitized Scale	Map Type
Microfilm, document 352361	8-1946	1:2400	1:3972	Final

Annotated Bibliography (data source, brief description of information)

Coal Reports - Production, ownership, years of operation.  
 Directory of Illinois Coal Mines (Madison County) - Mine names, mine index, ownership, years of operation.  
 Mine notes (Madison County) - Mine type, shaft location, seam, depth, thickness.  
 Microfilm map, document 352361, reel 03138, frame 479 - Shaft locations, mine outline, mining method.

**Mine Index 2769****Consolidated Coal Company of St. Louis, Abbey No. 3 Mine**

Type: Underground    Total mined-out acreage shown: 541

**SHAFT, SLOPE, DRIFT or TIPPLE LOCATIONS**

Type	County	Twp	Section	Quarters-Footage
Main shaft	Madison	3N 8W	34	NE NW SW
Air shaft	Madison	3N 8W	34	NE NW SW

**GEOLOGY**

Seam(s) Mined	Depth (ft)	Thickness (ft)			Mining Method
		Min	Max	Ave	
Herrin	135			6.5	MRP

Geologic Problems Reported:**PRODUCTION HISTORY**

Company	Mine Name	Years	Production (tons)
Abbey Coal & Mining Company	Abbey No. 3	1875-1886	490,576 *
Consolidated Coal Company of St. Louis	Abbey No. 3	1886-1896	1,530,320
T. F. Jolly	Abbey No. 3	1896-1897	133,912
Consolidated Coal Company of St. Louis	Abbey No. 3	1897-1906	1,246,216
			3,401,024

\* Production prior to July 1878 and from July 1879 to June 1881 is unknown. Shaft sunk by Reid & Strain in 1875, leased to Abbey Coal & Mining in 1876.

Last reported production: Abandoned March 31, 1906

**SOURCES OF DATA**

Source Map	Date	Original Scale	Digitized Scale	Map Type
ISGS map library, 4103.M35 i5.1-29	3-10-1906	1:2400	1:2400	Not final
Microfilm, document 352395	5-20-1950	1:2400	1:4800	Secondary source

Annotated Bibliography (data source, brief description of information)

Coal Reports - Production, ownership, years of operation.

Directory of Illinois Coal Mines (Madison County) - Mine names, mine index, ownership, years of operation.

Mine notes (Madison County) - Mine type, shaft location, seam, depth, thickness.

ISGS map library, 4103.M35 i5.1-29 - Shaft location, mine outline, mining method, abandonment date.

Microfilm map, document 352395, reel 03139, frame 42, map of Cantine No. 2 (mine index 71) - Mine outline (NW SW NE 3-T2N-R8W).

History of Madison County, published by W. R. Brink &amp; Co., Edwardsville, Illinois, 1882 - Mine ownership, years of operation.

**Mine Index 2770****Consolidated Coal Company of St. Louis, Collinsville Mine**

Type: Underground    Total mined-out acreage shown: 104    Production indicates approximately 5 acres were mined after the map date.

**SHAFT, SLOPE, DRIFT or TIPPLE LOCATIONS**

Type	County	Twp	Section	Quarters-Footage
Main shaft	Madison	3N 8W	34	NE SE NW *
Air shaft	Madison	3N 8W	34	SE NE NW
Old shaft	Madison	3N 8W	34	NW SW NE **

\* This shaft was sunk in 1873 (History of Madison County, 1882)

\*\* Heintz Bluff Mine (mine index 2765) used this for their air shaft.

**GEOLOGY**

Seam(s) Mined	Depth (ft)	Thickness (ft)		Mining Method
		Min	Max	
Herrin	150		6.0-7.5	MRP

Geologic Problems Reported:

**PRODUCTION HISTORY**

Company	Mine Name	Years	Production (tons)
Collinsville Coal & Mining Company ***	Collinsville	1862-1886	330,208 †
Consolidated Coal Company of St. Louis	Collinsville	1886-1887	<u>30,802</u> ††
			361,010

\*\*\* Operated in 1882 by Wonderly & Wonderly; shaft sunk by Peter Wonderly in 1862 (the first mine sunk in Collinsville).

† Production prior to June 1881 unknown

†† Production after map date

Last reported production: 1887

**SOURCES OF DATA**

Source Map	Date	Original Scale	Digitized Scale	Map Type
Microfilm, document 352367	3-1886	1:1200	1:2400	Not final
Microfilm, document 352371	3-31-1906	1:2400	1:4966	Final

Annotated Bibliography (data source, brief description of information)

Coal Reports - Production, ownership, years of operation.

Directory of Illinois Coal Mines (Madison County) - Mine names, mine index, ownership, years of operation.

History of Madison County, W. R. Brink & Co., Edwardsville, Illinois (publishers), 1882 - Mine ownership, years of operation.

Microfilm map, document 352367, reel 03138, frame 488 - Shaft locations, mine outline, mining method.

Microfilm map, document 352371, reel 03138, frame 494, map of Heintz Bluff Mine (mine index 2765) - Air shaft location.

Microfilm map, document 352368, reel 03138, frame 489 - Operator name (Wonderly & Wonderly).

Mine notes (Madison County) - Mine type, shaft location, seam, depth, thickness.



**Mine Index 2778**  
**Madison Coal Company, Madison No. 1 Mine**

Type: Underground    Total mined-out acreage shown: 122

**SHAFT, SLOPE, DRIFT or TIPPLE LOCATIONS**

Type	County	Twp	Section	Quarters-Footage
Main shaft	Madison	4N 8W	34	NW NW SW
Air shaft	Madison	4N 8W	34	NW NW SW

**GEOLOGY**

Seam(s) Mined	Depth (ft)	Thickness (ft)			Mining Method
		Min	Max	Ave	
Herrin	83			7.0	MRP

Geologic Problems Reported:

**PRODUCTION HISTORY**

Company	Mine Name	Years	Production (tons)
Madison Coal Company	Madison No. 1	1890-1897	605,029 605,029

Last reported production: 1897

**SOURCES OF DATA**

Source Map	Date	Original Scale	Digitized Scale	Map Type
Microfilm, document 352356	undated	1:4800	1:6952	Final *

\* The map is undated, but states "Final survey", and that the shaft was closed in 1897.

Annotated Bibliography (data source, brief description of information)

Coal Reports - Production, ownership, years of operation.  
 Directory of Illinois Coal Mines (Madison County) - Mine names, mine index, ownership, years of operation.  
 Mine notes (Madison County) - Mine type, shaft location, seam, depth, thickness.  
 Microfilm map, document 352356, reel 03138, frame 470 - Shaft locations, mine outline, mining method.

**Mine Index 3600****Consolidated Coal Company of St. Louis, Abbey No. 4 Mine**

Type: Underground    Total mined-out acreage shown: 137    This area is insufficient for the tons mined.  
 A 50-acre general area of mining was added to the west to accommodate the additional tons.

**SHAFT, SLOPE, DRIFT or TIPPLE LOCATIONS**

Type	County	Twp	Section	Quarters-Footage
Main shaft	St. Clair	2N 8W	3	NW NW NW

**GEOLOGY**

Seam(s) Mined	Depth (ft)	Thickness (ft)			Mining Method
		Min	Max	Ave	
Herrin	97-140			6.5-7.0	MRP

Geologic Problems Reported: The shale forming the roof was thick and required much timbering.

**PRODUCTION HISTORY**

Company	Mine Name	Years	Production (tons)
Abbey Coal Company	Abbey No. 4, Lawrence No. 4	1881-1885	138,966 *
Consolidated Coal Company of St. Louis	Abbey No. 4	1886-1896 **	973,723
William Whitaker	Abbey No. 4	1896-1897	43,506
Consolidated Coal Company of St. Louis	Abbey No. 4	1897-1898	19,104
			<u>1,175,299</u>

\* Production prior to 1882 unknown. The Coal Report of 1882 indicates 1 acre mined.

\*\* Idle July 1885 to June 1886.

Last reported production: 1898

**SOURCES OF DATA**

Source Map	Date	Original Scale	Digitized Scale	Map Type
Company map of mine index 201	1927	1:2400	1:2400	Secondary source
Microfilm, document 352395	1-2-1950	1:2400	1:4800	Secondary source
ISGS map library, 4103.M35 i5.1-29	3-10-1906	1:2400	1:2400	Secondary source

**Annotated Bibliography (data source, brief description of information)**

Coal Reports - Production, ownership, years of operation.

Directory of Illinois Coal Mines (St. Clair County) - Mine names, mine index, ownership, years of operation.

Mine notes (St. Clair County) - Mine type, seam, depth, thickness.

Company mine map of Consolidated Coal Company No. 17 (mine index 201) - Shaft locations, mine outline (eastern, southeastern, western), mining method.

Microfilm map, document 352395, reel 03139, frames 42-45, map of Lumaghi No. 2 (mine index 71) - Mine outline (eastern), mining method.

ISGS map library, 4103.M35 i5.1-29, map of Abbey No. 3 (mine index 2769) - Mine outline (northern).

History of Madison County, W. R. Brink & Co., Edwardsville, Illinois (publishers), 1882 - Mine name.

**Mine Index 3601****Abbey Coal & Mining Company, Abbey No. 1 Mine**

Type: Underground    Total mined-out acreage shown: 83, with 160-acre general area of mining

**SHAFT, SLOPE, DRIFT or TIPPLE LOCATIONS**

Type	County	Twp	Section	Quarters-Footage
Springwell No. 1 shaft	St. Clair	2N 8W	4	NE NE SW
Bartlett shaft	St. Clair	2N 8W	4	SE SW NE
Springwell No. 2 shaft	St. Clair	2N 8W	4	SW NW SW

**GEOLOGY**

Seam(s) Mined	Depth (ft)	Thickness (ft)			Mining Method
		Min	Max	Ave	
Herrin	97-140			6.0-7.0	MRP

Geologic Problems Reported:

**PRODUCTION HISTORY**

Company	Mine Name	Years	Production (tons)
Abbey Coal & Mining Company	Abbey No. 1	pre1882-1886	<u>218,763</u> * 218,763

\* Production and ownership prior to 1882 unknown. The source map refers to one shaft as the "Bartlett shaft", indicating that Bartlett Coal Company may have been a previous owner. The Coal Report of 1882 indicates 43 acres mined.

Last reported production: 1886

**SOURCES OF DATA**

Source Map	Date	Original Scale	Digitized Scale	Map Type
Company map	4-11-1924	1:2400	1:2400	Secondary source
Federal Land Bank Report	6-1934	1:126720	1:126720	Secondary source **

\*\* The Federal Land Bank Report also indicated that the area north of Abbey No. 1, west of Abbey No. 4 (mine index 3600) and south of Abbey No. 3 (mine index 2769) was mined. This area is shown as a general area of mining on the accompanying map.

Annotated Bibliography (data source, brief description of information)

Coal Reports - Production, ownership, years of operation.

Directory of Illinois Coal Mines (St. Clair County) - Mine names, mine index, ownership, years of operation.

Old Ben archive collection, map of Consolidated Coal Company Mine No. 17 (mine index 201) - Mine outline (northern, eastern and southern), shaft locations, mining method.

Federal Land Bank Report - Mine outline (western), shaft location (Springwell No. 2).



**Mine Index 6366****Buck Road Coal Company, Buck Road Mine**

Type: Underground    Total mined-out acreage shown: 2    Production indicates approximately 2 acres were mined after the map date.

**SHAFT, SLOPE, DRIFT or TIPPLE LOCATIONS**

Type	County	Twp	Section	Quarters-Footage
Main shaft	Madison	3N 8W	4	NW SE NW

**GEOLOGY**

Seam(s) Mined	Depth (ft)	Thickness (ft)			Mining Method
		Min	Max	Ave	
Herrin					MRP

Geologic Problems Reported: The source map shows several areas where the roof came down.

**PRODUCTION HISTORY**

Company	Mine Name	Years	Production (tons)
Buck Road Coal Company	Buck Road	1940-1943	11,664
Buck Road Coal Company	Buck Road	1943-1945	12,311 *
			23,975

\* Production after map date

Last reported production: 1945

**SOURCES OF DATA**

Source Map	Date	Original Scale	Digitized Scale	Map Type
State archive, IL_42 **	2-1943	1:720	1:720	Not final

\*\* Microfilm, document 352387 was the source previously used, an inferior copy of the same map. Both source maps have the date "1944" handwritten below the title block, but without a month or surveyor's signature, and it is not added to the map segment with the surveyor's seal. This is thought to be the date the map was received, and not the date of the mine extent.

Annotated Bibliography (data source, brief description of information)

Coal Reports - Production, ownership, years of operation.

Directory of Illinois Coal Mines (Madison County) - Mine names, mine index, ownership, years of operation.

State archive, IL\_42 - Shaft location, mine outline, mining method.

Microfilm map, document 352387, reel 03139, frame 27 - Shaft location, mine outline, mining method.

## MINES WHOSE LOCATIONS ARE NOT KNOWN, COLLINSVILLE QUADRANGLE

The locations of the following mines are unknown, but the production tonnage, operating names, and nearest town were reported in the Annual Coal Reports. The mines listed below mined in or near the Collinsville Quadrangle. The information is similar to that presented on the summary sheets in the previous pages of this directory. The first item is the name the mine operated under as listed in the Coal Report, then the years the mine reported. If no physical data are available, the next item listed is the total tons produced by the mine. If physical data are available, the order of presentation is as follows: type of opening for the mine (drift, slope or shaft), depth of coal in feet, and thickness of coal in feet.

The total tons mined by these unlocated mines is 34,548, which would represent approximately 8 to 10 acres, depending on the recovery factor, mining method, and numerous other factors. (Note: 1 square mile = 640 acres)

Williams (Lew) Coal & Mining Company, 1950-1951	1,851 tons	Mine Index 6590
---	------------	-----------------

Bartlett Coal Company, pre1882-1882, shaft, 100 deep, 6.5 thick	27,000 tons
Production prior to 1882 is unknown. The Coal Report of 1882 indicates 45 acres were mined.	

Bartlett Coal Company, pre1882-1882, shaft, 180 deep, 6.5 thick	300 tons
---	----------

Note: These Bartlett mines operated simultaneously with the reported Confidence Mine (mine index 2762) and Abbey No. 1 (mine index 3601). The map of Consolidated Coal Company, Mine No. 17 (mine index 201) labeled the east shaft of Abbey No. 1 "Bartlett shaft". The ISGS Coal Section mine notes associated the Bartlett Coal Company with the Confidence Mine.

Burton Coal Company, 1933-1933	5,397 tons
--------------------------------	------------

## INDEX OF MINES IN THE COLLINSVILLE QUADRANGLE

Abbey Coal & Mining Company, Abbey No. 1 Mine . . . . .	35
Abbey Coal & Mining Company, Abbey No. 3 Mine . . . . .	31
Abbey Coal Company, Abbey No. 4 Mine . . . . .	34
Abbey Coal Corporation, Abbey No. 1 Mine . . . . .	10
Ambrosius (C. A.) & Morrison . . . . .	24
Bandileer (Seibt & Bandileer). . . . .	26
Bartlett Coal & Mining Company . . . . .	26
Bartlett Coal Company. . . . .	37
Bartlett shaft . . . . .	35
Bluff Coal Company. . . . .	23
Brookside Coal Company . . . . .	20
Buck Road Coal Company. . . . .	36
Bullock Brothers. . . . .	18
Bullock Mining Company . . . . .	18
Bunker Hill Coal & Mining Company . . . . .	29
Burn Well Coal Company. . . . .	18
Burton Coal Company . . . . .	37
Buxton Coal Company. . . . .	25
Cantine Coal & Mining Company . . . . .	24
Cantine No. 2 Mine . . . . .	9
Cantine No. 4 Mine . . . . .	19
Chapman Coal Company. . . . .	23
Chicopee Coal Company . . . . .	17
Collinsville Coal & Mining Company . . . . .	32
Collinsville Coal Company . . . . .	30
Confidence Coal & Mining Company . . . . .	26
Consolidated Coal Company of St. Louis	
Abbey No. 3 Mine . . . . .	31
Abbey No. 4 Mine . . . . .	34
Brookside Mine . . . . .	20
Cantine Mine . . . . .	24
Collinsville Mine. . . . .	32
Confidence Mine . . . . .	26
Heinz Bluff Mine . . . . .	27
Lumaghi Mine . . . . .	28
Troy Mine . . . . .	21
Consolidated Coal Company, No. 17 Mine . . . . .	11
Donk Brothers . . . . .	21
Donk Brothers Coal & Coke Company	
Donk No. 1 Mine . . . . .	13
Donk No. 2 Mine . . . . .	15
Donk No. 3 Mine . . . . .	17
Fletcher (J. F.) . . . . .	27
Glen Carbon Coal Company, Inc. . . . .	23
Hardin (Joseph) . . . . .	20
Hardscrabble Coal Company. . . . .	10
Heintz (J. L.) . . . . .	27
Heintz Bluff Coal & Mining Company. . . . .	27
Hydraulic Press Brick Company . . . . .	25
Illinois Hydraulic Press Brick Company . . . . .	25
Independent Coal Company . . . . .	25
Jolly (T. F.) . . . . .	31
Lumaghi (Dr. Octavius) . . . . .	28
Lumaghi Brothers . . . . .	28
Lumaghi Coal Company	
Cantine No. 2 Mine . . . . .	9
No. 1 Mine. . . . .	28
No. 3 Mine. . . . .	16
No. 4 Mine. . . . .	19
Lumaghi Colliery . . . . .	28
Madison Coal Company, Madison No. 1 Mine. . . . .	33
Madison Coal Company, Madison No. 2 Mine. . . . .	14
Madison Coal Company, Madison No. 4 Mine. . . . .	12

Madison Coal Corporation, Madison No. 2 Mine . . . . .	14
Madison Coal Corporation, Madison No. 4 Mine . . . . .	12
Miller (Thomas) . . . . .	21
Morrison (Ambrosius & Morrison) . . . . .	24
Neuman (Williams & Neuman). . . . .	29
Reid & Strain . . . . .	31
Sager (Williams & Sager) . . . . .	29
Seibt & Bandileer. . . . .	26
Springwell shaft . . . . .	35
Strain (Reid & Strain). . . . .	31
Sugar Loaf Coal Corporation . . . . .	22
Troy Coal & Mining Company . . . . .	21
Troy Coal Company, No. 1 Mine . . . . .	17
Troy Cooperative Coal & Mining Company . . . . .	21
Troy Domestic Mining Company . . . . .	17
Whitaker (William) . . . . .	34
Wickliffe (Joseph) . . . . .	27
Wilborn Mining Company. . . . .	26
Wilde (James) . . . . .	21
Williams (Lew) Coal & Mining Company . . . . .	37
Williams & Neuman . . . . .	29
Williams & Sager . . . . .	29
Wonderly . . . . .	32
Wonderly (Peter) . . . . .	32





Funding for this project was supplied by the Illinois Mine Subsidence Insurance Fund.