

# Coal Mines in Illinois Danville NW Quadrangle

## Vermilion County, Illinois

This map accompanies the Coal Mines Directory for the Danville NW Quadrangle. Consult the directory for a complete explanation of the information shown on this map.

### Mining Method

- Room & Pillar (RP)
- Room & Pillar Basic (RPB)
- Modified Room & Pillar (MRP)
- Room & Pillar Panel (RPP)
- Blind Room & Pillar (BRP)
- Checkerboard Room & Pillar (CRP)
- High Extraction Retreat (HER)
- Longwall (LW)
- Underground, Method Unknown
- Strip Mine
- Auger Mine
- General Area of Mining

### Other Areas Depicted

- Non-Coal Mines

### Source of Mine Outline

- Final Mine Map
- Not Final Mine Map
- Undated Mine Map
- Incomplete Mine Map
- Secondary Source Map

### Tipple, Shaft, Slope, Drift Locations

- Strip Mine Tipple - Active
- Strip Mine Tipple - Abandoned
- Mine Shaft - Active
- Mine Shaft - Abandoned
- Mine Slope - Active
- Mine Slope - Abandoned
- Mine Drift - Active
- Mine Drift - Abandoned
- Air Shaft
- Uncertain Location
- Uncertain Type of Opening

### Other Points Depicted

- Non-Coal Mines

### Location



### Mine Annotation

(space permitting)

Company

Mine Name

ISGS Index No., Years of Operation

### Disclaimer

Please check the Coal Section at the Illinois State Geological Survey's web site at <https://www.isgs.illinois.edu> for the most up-to-date version of these products.

Note that each quadrangle scale mined-out area map requires the use of the associated text directory for full explanation of map features and mine attributes. Also note that some quadrangles have multiple seams of mining and therefore more than one map may be available for a particular quadrangle. Please take care to check for multiple maps, as extensive mining may exist in the other seams.

The maps and digital files used for these studies were compiled from data obtained from a variety of public and private sources and have varying degrees of completeness and accuracy. This compilation map presents reasonable interpretation of the geology of the area and is based on available data. Locations of some mine features may be offset by 500 feet or more due to errors in the original source maps, the compilation process, digitizing, or a combination of these factors. These data are not intended for use in site-specific screening or decision-making. Use of these documents does not eliminate the need for detailed studies to fully understand the geology of a specific site. The Illinois State Geological Survey, Prairie Research Institute, or the University of Illinois make no guarantee, expressed or implied, regarding the correctness of the interpretations presented in this data set and accept no liability for the consequences of decisions made by others on the basis of the information presented here.

These maps were designed for use at 1:24,000. Enlarging the map may reduce accuracy, as the original scale of the source maps used to compile the outlines shown varies from 1:400 to 1:150,000, and some mine locations are known only from text descriptions. See the accompanying mine directory for the original scale of the source map used for a specific mine to check accuracy of a given portion of the map. Areas with no mines shown may still be undermined; see the unlocated mines list at the back of each mine directory.

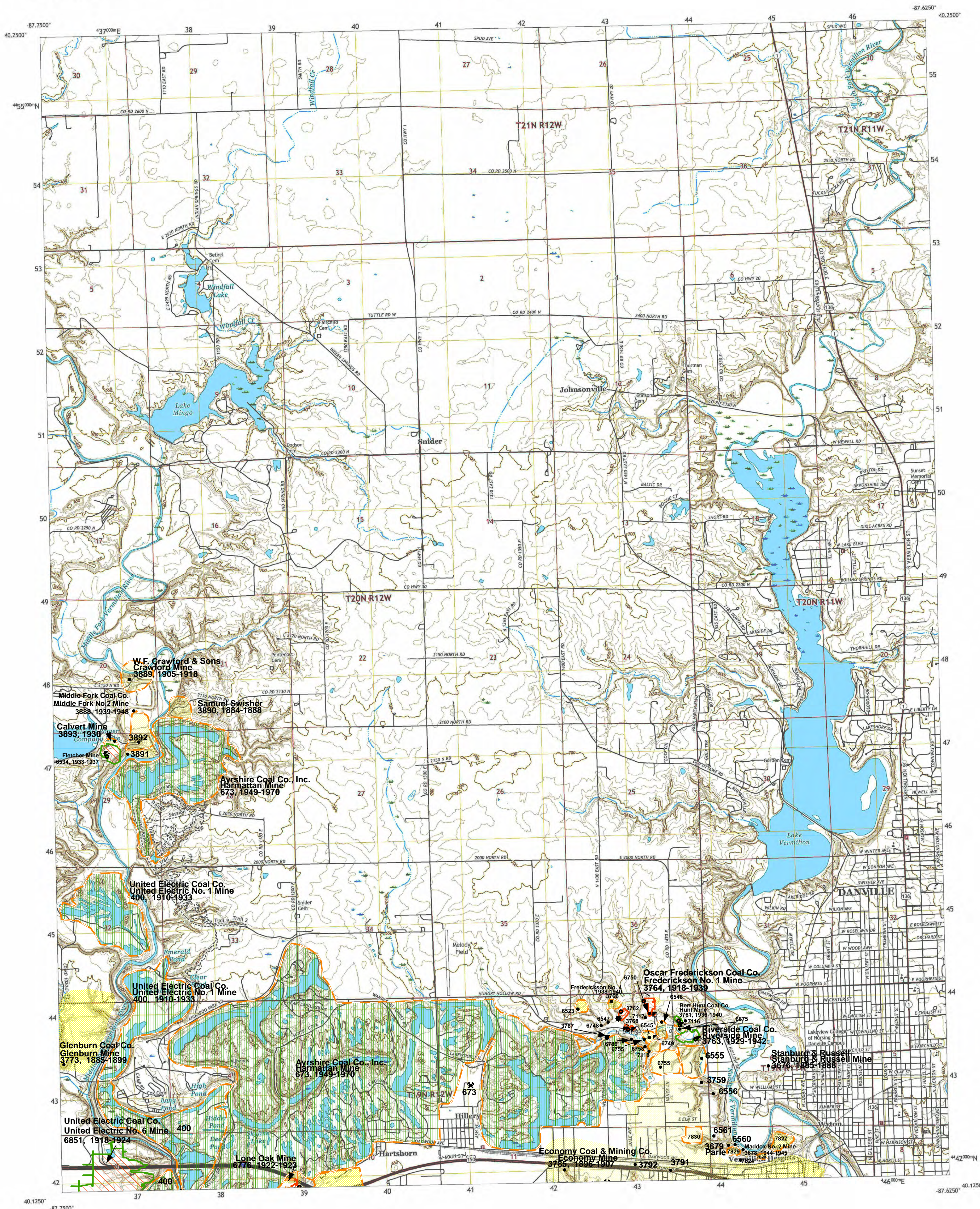
The image of the U.S.G.S. topographic base map was projected from the original UTM to Lambert Conformal Conic.

**ILLINOIS**  
Illinois State Geological Survey  
PRAIRIE RESEARCH INSTITUTE

Prairie Research Institute  
Illinois State Geological Survey  
615 E. Peabody Dr.  
Champaign, IL 61820

Mine Outlines Compiled by  
Alan R. Myers & Melissa L. Borino  
January 15, 2003

Revised:  
October 4, 2007  
Alan R. Myers 02-26-2024



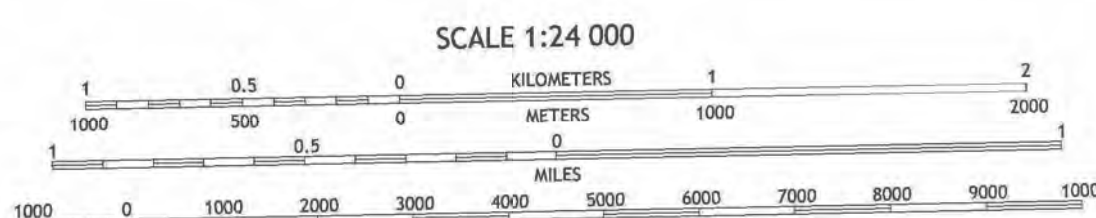
Produced by the United States Geological Survey

North American Datum of 1983 (NAD83)  
World Geodetic System of 1984 (WGS84). Projection and  
1 600-meter grid/Universal Transverse Mercator, Zone 16T.  
This map is not a legal document. Boundaries may be  
generalized for this map scale. Private lands without government  
reservations may not be shown. Obtain permission before  
entering private lands.

Imagery.....NAP, August 2015 - October 2015  
Roads.....U.S. Census Bureau, 2017  
Names.....U.S. Census Bureau, 2017  
Hydrography.....National Hydrography Dataset, 2007 - 2015  
Contours.....National Elevation Dataset, 2017  
Boundaries.....Multiple sources; see metadata file 2014 - 2016  
Public Land Survey System.....BLM, 2017  
Wetlands.....FWS National Wetlands Inventory 1981 - 1983

UTM GRID AND 2011 MAGNETIC NORTH  
DECLINATION AT CENTER OF SHEET

U.S. National Grid  
100,000 - m Square ID  
OK  
Grid Zone Designation  
18T

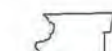


SCALE 1:24 000

1 0.5 0.5 1 2  
KILOMETERS  
1000 500 0 1000 2000  
METERS  
1000 0 1000 2000 3000 4000 5000 6000 7000 8000 9000 10000  
FEET

CONTOUR INTERVAL 10 FEET  
NORTH AMERICAN VERTICAL DATUM OF 1988

This map was produced to conform with the  
National Geospatial Program US Topo Product Standard, 2011.  
A metadata file associated with this product is draft version 0.6.18

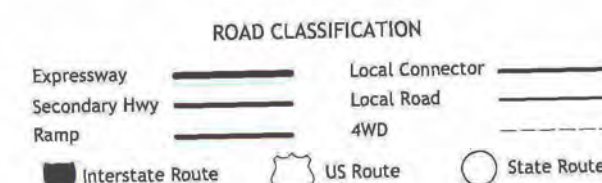


QUADRANGLE LOCATION

|   |   |   |
|---|---|---|
| 1 | 2 | 3 |
| 4 | 5 | 6 |
| 7 | 8 | 9 |

ADJOINING QUADRANGLES

1 Potomac  
2 Herring  
3 Blomack  
4 Callison  
5 Danville NE  
6 Oakwood  
7 Danville SW  
8 Danville SE



ROAD CLASSIFICATION  
Expressway  
Secondary Hwy  
Ramp  
Interstate Route  
Local Connector  
Local Road  
4WD  
US Route  
State Route

DANVILLE NW, IL  
2018





# **DIRECTORY OF COAL MINES IN ILLINOIS 7.5-MINUTE QUADRANGLE SERIES DANVILLE NORTHWEST QUADRANGLE VERMILION COUNTY**

Melisa L. Borino and Alan R. Myers



Department of Natural Resources  
ILLINOIS STATE GEOLOGICAL SURVEY  
2003  
REVISED 2007, 2021



**DIRECTORY OF COAL MINES IN ILLINOIS  
7.5-MINUTE QUADRANGLE SERIES  
DANVILLE NORTHWEST QUADRANGLE  
VERMILION COUNTY**

2003  
REVISED 2007

ILLINOIS STATE GEOLOGICAL SURVEY  
William Shilts, Chief

Natural Resources Building  
615 East Peabody Drive  
Champaign, Illinois 61820

Phone 1-217-244-4610  
Fax 1-217-333-2830

**Cover photo** Track-mounted duckbill loading machine at a Peabody Coal Company mine, ca. 1915.

DISCLAIMER: The accuracy and completeness of mine maps and directories vary with the availability of reliable information. Maps and other information used to compile this mine map and directory were obtained from a variety of sources and the accuracy of some of the original information cannot be verified. Consequently, the Illinois State Geological Survey (ISGS) cannot guarantee the mine maps are free of errors and disclaims any responsibility for damages that may result from actions or decisions based on them.

The ISGS updates the maps and directories periodically, and welcomes any new information or corrections. Please contact the Coal Section of the ISGS at the address shown on the title page of this directory, or telephone (217) 244-4610.

*Printed by authority of the State of Illinois/2003*

## CONTENTS

|   |    |
|---|----|
| INTRODUCTION .....  | 1  |
| MINING IN THE DANVILLE NORTHWEST QUADRANGLE .....                   | 2  |
| PART I EXPLANATION OF MAP AND MINE SUMMARY SHEET .....              | 3  |
| INTERPRETING THE MAP .....  | 3  |
| Mine Type and Mining Method .....                                   | 3  |
| SOURCE MAPS .....   | 4  |
| POINTS AND LABELS .....   | 4  |
| INTERPRETING A MINE SUMMARY SHEET .....                             | 7  |
| REFERENCES .....  | 9  |
| PART II DIRECTORY OF MINES IN DANVILLE NORTHWEST QUADRANGLE .....   | 10 |
| MINE SUMMARY SHEETS .....   | 10 |
| Mine Index 94   |    |
| Electric Coal Company, Electric Mine .....                          | 10 |
| Mine Index 400  |    |
| United Electric Coal Company, United Electric No. 1 Mine .....      | 11 |
| Mine Index 673  |    |
| Ayrshire Coal Company, Inc., Division of AMAX, Harmattan Mine ..... | 12 |
| Mine Index 3676   |    |
| Stanburg & Russell, Stanburg & Russell Mine .....                   | 13 |
| Mine Index 3678   |    |
| Maddox Coal Company, Maddox No. 2 Mine .....                        | 14 |
| Mine Index 3679   |    |
| J. H. Parle, Parle Mine .....                                       | 15 |
| Mine Index 3760   |    |
| Pierce Coal Company, Pierce Mine .....                              | 16 |
| Mine Index 3761   |    |
| Bert Hunt Coal Company, Hunt Mine .....                             | 17 |
| Mine Index 3762   |    |
| Frederickson Coal Company, Frederickson No. 1 Mine .....            | 18 |
| Mine Index 3763   |    |
| Riverside Coal Company, Riverside Mine .....                        | 19 |
| Mine Index 3764   |    |
| Oscar R. Frederickson Coal Company, Frederickson Mine .....         | 20 |
| Mine Index 3765   |    |
| Lind Coal Company, Lind No. 2 Mine .....                            | 21 |
| Mine Index 3766   |    |
| Frederickson Coal Company, Frederickson No. 4 Mine .....            | 22 |
| Mine Index 3767   |    |
| Square Deal Coal Company, Square Deal Mine .....                    | 23 |
| Mine Index 3768   |    |
| Frederickson Coal Company, Frederickson No. 2 Mine .....            | 24 |
| Mine Index 3769   |    |
| Kelly Branch Coal Company, Kelly Branch No. 2 Mine .....            | 25 |
| Mine Index 3770   |    |
| Moorehouse Coal Company, Moorehouse Mine .....                      | 26 |
| Mine Index 3771   |    |
| Black Diamond Coal Company, Black Diamond Mine .....                | 27 |
| Mine Index 3772   |    |
| Big Diamond Coal Company, Big Diamond Mine .....                    | 28 |
| Mine Index 3773   |    |
| Glenburn Coal Coal Company, Glenburn Mine .....                     | 29 |
| Mine Index 3785   |    |
| Economy Coal & Mining Company, Economy Mine .....                   | 30 |
| Mine Index 3791   |    |
| Contract Mining Company, Western Brick Mine .....                   | 31 |

|  |    |
|--|----|
| Mine Index 3792  |    |
| Diamond Coal Company, Old Diamond Mine . . . . .                             | 32 |
| Mine Index 3888  |    |
| Middle Fork Coal Company, Middle Fork No. 2 Mine . . . . .                   | 33 |
| Mine Index 3889  |    |
| W. F. Crawford & Sons, Crawford Mine . . . . .                               | 34 |
| Mine Index 3890  |    |
| Samuel Swisher, Pilot Mine . . . . .   | 35 |
| Mine Index 3891  |    |
| Alex H. Bonnett, Bonnett Mine . . . . .                                      | 36 |
| Mine Index 3892  |    |
| Samuel Swisher, Swisher Mine . . . . .                                       | 37 |
| Mine Index 3893  |    |
| Calvert Coal Company, Calvert Mine . . . . .                                 | 38 |
| Mine Index 6534  |    |
| Fletcher Brothers Coal Company, Homer Fletcher Mine . . . . .                | 39 |
| Mine Index 6675  |    |
| Charles E. Lind & Son Coal Company, Lind No. 1 Mine . . . . .                | 40 |
| Mine Index 6748  |    |
| George Watts, Watts Mine . . . . .   | 41 |
| Mine Index 6749  |    |
| John Lewis, Lewis Mine . . . . .   | 42 |
| Mine Index 6750  |    |
| C. J. Dobbins, Dobbins Mine . . . . .  | 43 |
| Mine Index 6755  |    |
| Stansbury & Watkins Coal Company, Stansbury & Watkins Mine . . . . .         | 44 |
| Mine Index 6758  |    |
| Lind Coal Company, Lind Mine . . . . .                                       | 45 |
| Mine Index 6776  |    |
| Lone Oak Coal Company, Lone Oak Mine . . . . .                               | 46 |
| Mine Index 6786  |    |
| Eureka Coal Company, Eureka Mine . . . . .                                   | 47 |
| Mine Index 6790  |    |
| Perry Bales Coal Company, Bales Mine . . . . .                               | 48 |
| Mine Index 6791  |    |
| Bales & McFarland, Bales & McFarland Mine . . . . .                          | 49 |
| Mine Index 6851  |    |
| United Electric Coal Company, United Electric No. 6 Mine . . . . .           | 50 |
| OTHER MINES SHOWN ON DANVILLE NORTHWEST QUADRANGLE . . . . .                 | 51 |
| Mine Index 3759 . . . . .  | 51 |
| Mine Index 6523 . . . . .  | 51 |
| Mine Index 6545 . . . . .  | 51 |
| Mine Index 6546 . . . . .  | 51 |
| Mine Index 6547 . . . . .  | 51 |
| Mine Index 6555 . . . . .  | 51 |
| Mine Index 6556 . . . . .  | 51 |
| Mine Index 6560 . . . . .  | 51 |
| Mine Index 6561 . . . . .  | 51 |
| Mine Index 7116 . . . . .  | 51 |
| Mine Index 7117 . . . . .  | 51 |
| Mine Index 7118 . . . . .  | 51 |
| Mine Index 7119 . . . . .  | 51 |
| Mine Index 7120 . . . . .  | 51 |
| Mine Index 7121 . . . . .  | 51 |
| Mine Index 7824 . . . . .  | 51 |
| Mine Index 7827 . . . . .  | 51 |
| Mine Index 7828 . . . . .  | 51 |
| Mine Index 7829 . . . . .  | 51 |
| Mine Index 7830 . . . . .  | 51 |
| MINES WHOSE LOCATIONS ARE NOT KNOWN, DANVILLE NORTHWEST QUADRANGLE . . . . . | 51 |



## INTRODUCTION

Coal has been mined in 76 counties of Illinois. More than 7,400 coal mines have operated since commercial mining began in Illinois about 1810; fewer than 30 are currently active. To detail the extent and location of coal mining in Illinois, the Illinois State Geological Survey (ISGS) has compiled maps and directories of known coal mines. The ISGS offers maps at a scale of 1:100,000 and accompanying directories for each county in which coal mining is known to have occurred. Maps at a scale of 1:24,000 and accompanying directories such as this are available for selected quadrangles. Contact the ISGS for a list of these quadrangles.

These larger scale maps show the approximate positions of mines in relation to surface features such as roads and water bodies, and indicate the mining method used and the accuracy of the mine boundaries. The maps are useful for locating mine boundaries relative to specific properties and for assessing the potential for subsidence in an area. Mine boundaries compiled from final mine surveys are generally shown within 200 feet of their true position. As a result of poor cartographic quality and inaccuracies in the original mine surveys, boundaries of some older mines may be mislocated on the map by 500 feet or more. Original mine maps should be consulted in situations that require precise delineation of mine boundaries or internal workings of mined areas.

The directory serves as a key to the accompanying mine map and provides basic information on the coal mines. The directory is composed of two parts. Part I explains the symbols and patterns used on the accompanying map and the summary data presented for each mine. Part II numerically lists the mines in the quadrangle and summarizes the geology and production history of each mine.

## MINING IN THE DANVILLE NORTHWEST QUADRANGLE

The Danville Coal was the only seam mined in the Danville Northwest Quadrangle. This location is at the edge of the Illinois Basin and the coal was minable with both surface and underground methods.

The Danville Coal ranged from 4.75 to over 6 feet thick (thinner where eroded). The depth ranged from very little cover to over 100 feet. The Danville Coal had some geologic problems for mining. Generally, it was closer to the surface, and sometimes water came into the mine. This was aggravated in some circumstances due to channel systems that were contemporaneous with deposition of the upper part of the coal and the roof shales. The channels sometimes cut down into the coal. Horsebacks and rolls were common in the area, but little information is available for the mines in this quadrangle.

Mining was an important part of the history of Danville since the coal was shallow. The Hungry Hollow area was the location of numerous small mines. Most of the early mines were quite small, the more extensive mines not beginning until around 1860. Michael Kelly began surface mining in 1868 along the North Fork but soon moved to Grape Creek and established several mines in that area. The earliest documented underground mine in the Danville Northwest Quadrangle is the Old Diamond Mine, which began operation about 1870.



## PART I EXPLANATION OF MAP AND MINE SUMMARY SHEET

### INTERPRETING THE MAP

The map accompanying this directory shows the location of coal mines known to be present in the quadrangle. The map, corresponding to a U.S. Geological Survey (USGS) 7.5-minute quadrangle, covers an area bounded by lines of latitude and longitude 7.5-minutes apart. In Illinois, a quadrangle is approximately 6.5 miles east to west and 8.5 miles north to south, an area of about 56 square miles. The USGS generally offers one map of mines per quadrangle. In some areas where extensive mining occurred in two or more overlapping seams, separate maps are compiled for mines in each seam to maintain readability of the map.

#### Mine Type and Mining Method

The mine type is indicated on the map by pattern color: green represents surface mines; red and yellow represent underground mines. The red patterns are used for areas of underground mining that are documented by a primary or secondary source map. A yellow pattern is used for cases where no map of the mine workings is available, but a general area of mining can be inferred from property maps or production figures. The patterns indicate the main mining methods used in underground mines. The methods are (1) room and pillar and (2) high extraction. The method used gives some indication of the amount and pattern of coal extraction within each mined area, and has some influence on the timing and type of subsidence that can occur over a mine.

The following discussion and illustrations of mining methods are based on Guither et al. (1984).

In room-and-pillar mines, coal is removed from haulage-ways (entries) and selected areas called rooms. Pillars of unmined coal are left between the rooms to support the roof. Depending on the size of rooms and pillars, the amount of coal removed from the production areas will range from 40% to 70%.

**Room and Pillar** - mining is divided into six categories:

- room-and-pillar basic (RPB, fig. 1A), an early method that did not follow a preset mining plan and therefore resulted in very irregular designs;
- modified room and pillar (MRP, fig. 1B);
- room-and-pillar panel (RPP, fig. 1C);
- blind room and pillar (BRP, fig. 1D);
- checkerboard room and pillar (CRP, fig. 1E);
- room and pillar (RP), a classification used when the specific type of room-and-pillar mining is unknown.

Blind and checkerboard are the most common types of room-and-pillar mining used in Illinois today. The knowledge of room-and-pillar mining methods gives a trained engineer information on the nature of subsidence that may occur. A more extensive discussion of subsidence can be found in Bauer et al. (1993).

**High-extraction** These mining methods are subdivided into high-extraction retreat (HER, Fig 1F) and longwall (LW, Fig 1G, 1H). In these methods, much of the coal is removed within well defined areas of the mine. Subsidence of the surface above these areas occurs within weeks. Once the subsidence activity ceases, the potential for further movement over these areas is low; however, subsidence may continue for several years after mining.

High-extraction retreat mining is a form of room-and-pillar mining that extracts most of the coal. Rooms and pillars are developed in the panels, and the pillars are then systematically removed (fig. 1F).

In early (pre-1960) longwall mines, mining advanced in multiple directions from a central shaft (fig. 1G). Large pillars of coal were left around the shaft, but all coal was removed beyond these pillars. Miners placed rock and wooden props and cribs in the mined-out areas to support the mine roof. The overlying rock gradually settled onto these supports, thus producing subsidence at the surface. In post-1959 longwall mines, room-and-pillar methods have been used to develop the main entries of the mine and panel areas. Modern longwall methods extract 100 percent of the coal in the panel areas (fig. 1H).



## SOURCE MAPS

Mine outlines depicted on the map are, whenever possible, based on maps made from original mine surveys. The process of compiling and digitizing the quadrangle map may produce errors of less than 200 feet in the location of mine boundaries. Larger errors of 500 feet or more are possible for mines that have incomplete or inaccurate source maps.

Because of the extreme complexity of some mine maps, detailed features of mined areas have been omitted. The digitized mine boundary includes the exterior boundary of all rooms or entries that were at least 80 feet wide or protruded 500 feet from the main mining area. Unmined areas between mines are shown if they are at least 80 feet wide; unmined blocks of coal within mines are shown if they are at least 400 feet on each side. Original source maps should be consulted when precise information on mine boundaries or interior features is needed.

The mine summary sheet lists the source maps used to determine each mine outline. The completeness of map sources is indicated on the map by a line symbol at the mine boundary. Source maps are organized in five categories.

**Final mine map** The mine outline was digitized from an original map made from mine surveys conducted within a few months after production ceased. The date of the map and the last reported production are listed on the summary sheet.

**Not a final map** The mine is currently active or the mine outline was made from a map based on mine surveys conducted more than a few months before production ceased. This implies the actual mined-out area is probably larger than the outline on the map. The mine summary sheet indicated the dates of source maps and the last reported production, as well as the approximate tonnage mined between these two dates (if the mine is abandoned). The summary sheet also lists the approximate acreage mined since the date of the map and, in some cases, indicates the area where additional mining may have taken place. This latter information is determined by locating on the map the active faces relative to probable boundaries of the mine property.

**Undated map** The source map was undated, so it may or may not be based on a final mine survey. When sufficient data are available, the probable acreage of the mined area is estimated from reported production, average seam thickness and a recovery rate comparable to other mines in the area. This information is listed in the summary sheet for the mine.

**Incomplete map** The source map did not show the entire mine. The summary sheet indicates the missing part of the mine map and the acreage of the unmapped area, which is estimated from the amount of coal known to have been produced from the mine.

**Secondary source map** The original mine map was not found so the outline shown was determined from secondary sources (e.g., outlines from small-scale regional maps published in other reports). The summary sheet describes the secondary sources.

## POINTS AND LABELS

The locations of all known mine openings (shafts, slopes, and drifts) and surface mine tipples are plotted on the map. Tipples are areas where coal was cleaned, stockpiled, and loaded for shipping.

Only openings or tipples are plotted for mines without source maps. If the precise locations of these features are unknown, a special symbol is used to indicate the approximate location of the mine.

Each mine on the map is labeled with the names of the mine and operating company, ISGS mine index number, and years of operation (if known) if space permits. A seam designation is given on maps where more than one seam was mined. For a mine that operated under more than one name, only the most recent name is generally given. When a mine changed names or ownership shortly before closing, an earlier name is listed. All company and mine names are listed on the mine summary sheet in the directory, under the production history segment.





**Figure 1** Mining methods: (A) room-and-pillar basic (RPB), (B) modified room and pillar (MRP), (C) room-and-pillar panel (RPP), (D) blind room and pillar (BRP).





**Figure 1 (cont.)** Mining methods: (E) checkerboard room and pillar (CRP), (F) high extraction retreat (HER), (G) early (pre-1960) longwall, (H) post-1959 longwall





**Figure 2** Generalized stratigraphic section, showing approximate vertical relations of coals in Illinois.

## INTERPRETING A MINE SUMMARY SHEET

The mine summary sheet is arranged numerically by mine index number. Index numbers are shown on the map and in the mine listing. The mine summary sheet provides the following information (if available).

**Company and mine name** The last company or owner of the mine is used, unless no production was recorded for the last owner. In that case, the penultimate owner is listed. Mines often have no specific name; in these cases, the company name is also used as the mine name.

**Type** *Underground* denotes a subsurface mine in which the coal was reached through a shaft, slope, or a drift entry. *Surface* denotes a surface, open pit or strip mine.

**Total mined-out acreage shown** The total acreage of the mined area mapped, including any acreage mined on adjacent quadrangles, is calculated from the digitized outline of the mine. The acreage of large barrier pillars depicted on the map is excluded from the mined-out acreage. Small pillars not digitized are included in the acreage calculation. If the mine outline is not based on a final mine map, the acreage is followed by an estimate of additional acres that may have been mined. The estimate is determined from reported mine production, approximate thickness of the coal, and recovery rates calculated from nearby mines that used similar mining methods.

## SHAFT, SLOPE, DRIFT OR TIPPLE LOCATIONS

**Shaft, slope, drift, or tippie locations** Locations of all known former entry points to underground mines or the location of coal cleaning, tippie, and shipping equipment used by the mine's facility are listed. The location is described in terms of county, township and range (Twp-Rge), section, and location within the section by quarters. NE SW NW, for instance, would describe the location in the northeast quarter of the southwest quarter of the northwest quarter. When sections are irregular in size, the quarters remain the same size and are oriented (or "registered") from the southeast corner of the section. Approximate footage from the section lines (FEL = from east line, FNL = from north line, for example) is given when that information is known; this indicates a surveyed location and is not derived from maps. Entry points are also plotted on the map and coded for the type of entry or tippie. A mine opening may have had many purposes during the life of the mine. Old hoist shafts are often later used for air and escape shafts; this information is included in the directory when known. The tippie for underground mines was generally located near the main shaft or slope. At surface mines, coal was sometimes hauled to a central tippie several miles from the mine pit.

## GEOLOGY

**Seam(s) mined** The name of the coal seam(s) mined is listed, if known. If multiple seams were mined, they are all listed, although the mined-out area for each seam may be shown on separate maps. Figure 2 shows the stratigraphic section of the coal-bearing interval in Illinois, and the vertical relations among the coals.

**Depth** The depth to the top of the seam in the vicinity of the shaft is listed, if known. The depth is determined from notes made by geologists who visited the mine during its operation or from drill hole data in ISGS files. Depth generally varies little over the extent of a mine; however, reported depths for an individual mine may vary. Depth for surface-mined coals varies, and is usually represented as a range.



**Thickness** The approximate thickness of the mined seam is shown, if known. Thickness also comes from notes of geologists who visited the mine during its operation or from borehole data in ISGS files. Minimum, maximum, and average thicknesses are given when this information is available.

**Mining method** The principal mining method used at the mine (figs. 1A-H) is listed. See the mining methods section at the beginning of this directory for a discussion of this parameter.

**Geologic problems reported** Any known geologic problems, such as faults, water seepage, floor heaving, and unstable roof, encountered in the mine are reported. This information is from notes made by ISGS geologists who visited the mine, or from reports by mine inspectors published by the Illinois Department of Mines and Minerals, or from the source map(s). Geologic problems are not reported for active mines.

## PRODUCTION HISTORY

**Production history** Tons of coal produced from the mine by each mine owner are totaled. When the source map used for the mine outline is not a final mine map, the tonnage produced since the date of the map is identified. For mines that extend into adjacent quadrangles, the tonnage reported includes areas mined in adjacent quadrangles.

## SOURCE OF DATA

**Source map** This section lists information about the map(s) used to compile the mine outline and the locations of tipples and mine openings. In some cases more than one source map was used. For example, a map drawn before the mine closed may provide better information on original areas of the mine than a later map. When more than one map was used, the bibliography section explains what information was taken from each source.

**Date** The date of the most recent mine survey listed on the source map is reported.

**Original scale** The original scale of the source map is listed. Many maps are photo-reductions and are no longer at their original scale. The original scale gives some indication of the level of detail of the mine outline and the accuracy of the mine boundary relative to surface features. Generally, the larger the scale, the greater the accuracy and detail of the mine map. Mine outlines taken from source maps at scales smaller than 1:24,000 may be highly generalized and may well be inaccurately located with respect to surface features.

**Digitized scale** The scale of the digitized map is reported. The scale may be different from that of the original source map. In many cases the digitized map was made from a photo-reduction of the original source map, or the source map was not in a condition suitable for digitizing and the mine boundaries were transferred to another base map.

**Map type** Source maps are classified into five categories to indicate the probable completeness of the map. See discussion of source maps in the previous section.

**Annotated bibliography** Sources that provide information about the mine are listed, with the data taken from each source. Some commonly used sources are described below. Full bibliographic references are given for all other sources. Unless otherwise noted, all sources are available for public inspection at the ISGS.

**Coal Reports** Published since 1881, these reports contain tabular data on mine ownership, production, employment, and accidents. Some volumes include short descriptions made by mine inspectors of physical features and conditions in selected mines.

**Directory of Illinois Coal Mines** This source is a compilation of basic data about Illinois coal mines, originally gathered by ISGS staff in the early 1950s. Sources used for this directory are undocumented, but they are primarily Illinois Department of Mines and Minerals annual reports, ISGS mine notes, and coal company officials.

**ENR Document 85/01**, Guither, H. D., J. K. Hines, and R. A. Bauer, 1985 The Economic Effect of Underground Mining Upon Land Used for Illinois Agriculture: Illinois Department of Energy and Natural Resources Document 85/01, 185 p.

**Microfilm map** The U.S. Bureau of Mines maintains a microfilm archive of mine maps. A microfilm file for Illinois is available for public viewing at the ISGS.



*Mine notes* ISGS geologists have visited mines or contacted mine officials throughout the state since the early 1900s. Notes made during these visits range from brief descriptions of the mine location to long narratives (including sketches) of mining conditions and geology.

*Federal Land Bank of St. Louis, Preliminary Reports on Subsidence Investigations* Mining engineers working for the Federal Land Bank of St. Louis mapped areas of subsidence due to coal mining in the early 1930s. These reports often include county maps of mine properties with mined-out areas including shaft locations, as well as subsidence areas.

## REFERENCES

Bauer, R. A., B. A. Trent, and P. B. Dumontelle, 1993, Mine Subsidence in Illinois: Facts for the Homeowner Considering Insurance: Illinois State Geological Survey, Environmental Geology Note 144, 16p.

Guither, H. D., J. K. Hines, and R. A. Bauer, 1985, The Economic Effects of Underground Mining Upon Land Used for Illinois Agriculture: Illinois Department of Energy and Natural Resources Document 85/01, 185 p.

## PART II DIRECTORY OF MINES IN DANVILLE NORTHWEST QUADRANGLE

### MINE SUMMARY SHEETS

A summary sheet on the geology and production history of each mine in the Danville Northwest Quadrangle is provided. These summary sheets are arranged numerically by mine index number. Consult Part I for a complete explanation of the data listed in the summary sheet.

#### Mine Index 94

#### Electric Coal Company, Electric Mine

Type: Underground Total mined-out acreage shown: None Production indicates that an area ranging from 221 to 352 acres were mined, probably closer to 285 acres. A general area of mining has been added to the accompanying map to show the approximate size of the mine. The mine may have been partially surface mined at a later date by Ayrshire Coal Company, Inc. (mine index 673).

### SHAFT, SLOPE, DRIFT or TIPPLE LOCATIONS

| Type       | County    | Township-Range | Section | Quarters-Footage |
|------------|-----------|----------------|---------|------------------|
| Main shaft | Vermilion | 19N 12W        | 10      | NW SE NW         |
| Air shaft  | Vermilion | 19N 12W        | 10      | SE SW            |

### GEOLOGY

| Seam(s) Mined | Depth (ft) | Thickness (ft) |     |         | Mining Method |
|---------------|------------|----------------|-----|---------|---------------|
|               |            | Min            | Max | Ave     |               |
| Danville      | 96-108     | 4.0-5.0        | 7.0 | 5.5-6.0 | RP, HER *     |

\* According to the mine notes, some pillars were drawn where the roof permitted.

Geologic Problems Reported: The roof was 0 to 3 feet of black shale that slaked readily on contact with air, and which was overlain by 40 to 50 feet of gray shale. A former stream channel cut down to within 10 feet of the coal. Where the rooms struck this roof, the roof fell and let in sand and a great deal of water. Gas was occasionally found in pockets in the coal. Numerous horsebacks, rolls, and sulfur balls were present in the roof. The seam contained a persistent clay band 6 to 10 inches above the floor. The clay band varied from a knife-edge to 2 inches thick, and contained considerable sulfur. The top 6 inches of underclay heaved considerably.

### PRODUCTION HISTORY

| Company                  | Mine Name                 | Years     | Production (tons)             |
|--------------------------|---------------------------|-----------|-------------------------------|
| Electric Coal Company ** | Electric or Hillery No. 1 | 1903-1914 | <u>1,408,684</u><br>1,408,684 |

\*\* The mine manager in 1908 was W. B. Reid.

Last reported production: April 1914

### SOURCES OF DATA

| Source Map                        | Date    | Original Scale | Digitized Scale | Map Type         |
|-----------------------------------|---------|----------------|-----------------|------------------|
| ISGS composite map, Danville Coal | Undated | 1:62500        | 1:62500         | Secondary source |
| ISGS mine notes                   | Undated | (text only)    | 1:24000 ***     | Secondary source |

\*\*\* The shaft locations were plotted on a 1:24,000 USGS topographic map and digitized.

### Annotated Bibliography (data source, brief description of information)

Coal Reports - Production, ownership, years of operation, mining method.

Directory of Illinois Coal Mines (Vermilion County) - Mine names, mine index, ownership, years of operation.

ISGS composite map, Danville Coal, Coal Section files (1-24-31-i), Thickness of the Danville Coal - general area of mining, main shaft location.

Mine notes (Vermilion County) - Mine type, shaft locations, seam, depth, thickness, geologic problems.



**Mine Index 400**  
**United Electric Coal Company, United Electric No. 1 Mine**

Type: Surface    Total mined-out acreage shown: 479

**SHAFT, SLOPE, DRIFT or TIPPLE LOCATIONS**

| Type   | County    | Township-Range | Section | Quarters-Footage |
|--------|-----------|----------------|---------|------------------|
| Tipple | Vermilion | 19N 12W        | 8       | SW NE SW         |
| Tipple | Vermilion | 19N 12W        | 16      | NW NW NW         |

Surface mine pits were in sections 5, 8 & 10 of T19N-R12W and 20-T20N-R12W.

**GEOLOGY**

| Seam(s) Mined | Depth (ft) | Thickness (ft) |      |      | Mining Method |
|---------------|------------|----------------|------|------|---------------|
|               |            | Min            | Max  | Ave  |               |
| Danville      | 18-30      | 4.5            | 6.08 | 5.67 | Surface       |

Geologic Problems Reported: The roof was 30 feet of gray shale. The impurities in the seam were fairly abundant, and consisted of pyrite in lenses (2 inches by 8 inches maximum), sheets and balls, joint fillings and facings of calcite and gypsum up to 1/16th inch thick (apparently an important ash constituent of the bed), and a persistent clay band 8 to 10 inches above the floor. At least one horseback or roll was encountered.

**PRODUCTION HISTORY**

| Company                      | Mine Name             | Years     | Production (tons) |
|------------------------------|-----------------------|-----------|-------------------|
| Mission Mining Company       | Mission No. 1         | 1910-1915 | 384,737           |
| Two Rivers Coal Company      | Two Rivers No. 4      | 1915-1918 | 464,234           |
| Mission Mining Company       | Mission No. 1         | 1918-1918 | 73,931            |
| Electric Coal Company        | Electric No. 1        | 1918-1921 | 510,061           |
| United Electric Coal Company | United Electric No. 1 | 1921-1933 | <u>3,738,070</u>  |
|                              |                       |           | 5,171,033         |

Last reported production: October 1933

**SOURCES OF DATA**

| Source Map                        | Date    | Original Scale | Digitized Scale | Map Type         |
|-----------------------------------|---------|----------------|-----------------|------------------|
| USGS topographic map              | PR 1978 | 1:24000        | 1:24000         | Secondary source |
| ISGS composite map, Danville Coal | Undated | 1:62500        | 1:62500         | Secondary source |

Annotated Bibliography (data source, brief description of information)

Coal Reports - Production, ownership, years of operation, depth.  
 Directory of Illinois Coal Mines (Vermilion County) - Mine names, mine index, ownership, years of operation.  
 ENR Document 85/01 - Mining method.  
 Mine notes (Vermilion County) - Mine type, pit & tipple locations, seam, thickness, geologic problems.  
 USGS topographic map, 1966, Photorevised 1978 - Mine outline, mining method.  
 ISGS composite map, Coal Section files (1-24-31-i), thickness of the Danville Coal - Mine outline.

**Mine Index 673****Ayrshire Coal Company, Inc., Division of AMAX, Harmattan Mine**

Type: Surface Total mined-out acreage shown: 2,288 Production indicates that the area shown on the accompanying map is too large by about 600 acres. Apparently the Harmattan Mine enlarged surface mining pits opened by other operators.

**SHAFT, SLOPE, DRIFT or TIPPLE LOCATIONS**

| Type   | County    | Township-Range | Section                | Quarters-Footage |
|--------|-----------|----------------|------------------------|------------------|
| Tipple | Vermilion | 19N 12W        | 2                      | SE NW SW         |
| Pits   | Vermilion | 19N 12W        | 1, 2, 3, 4, 9, 10, 11  |                  |
| Pits   | Vermilion | 20N 12W        | 21, 28, 29, 32, 33, 34 |                  |

**GEOLOGY**

| Seam(s) Mined | Depth (ft) | Thickness (ft) |     |          | Mining Method |
|---------------|------------|----------------|-----|----------|---------------|
|               |            | Min            | Max | Ave      |               |
| Danville      | 70-102     |                |     | 5.5-6.92 | Surface       |

Geologic Problems Reported:

**PRODUCTION HISTORY**

| Company                                   | Mine Name | Years     | Production (tons) |
|---|-----------|-----------|-------------------|
| Fairview Collieries Corporation           | Harmattan | 1949-1965 | 12,269,936        |
| Meadowlark Farms, Inc.                    | Harmattan | 1966-1966 | 419,849           |
| Ayrshire Collieries Corporation           | Harmattan | 1966-1968 | 1,711,683         |
| Ayrshire Coal Company, Inc., Div. of AMAX | Harmattan | 1969-1970 | 814,970           |
|   |           |           | 15,216,438        |

Last reported production: April 1970

**SOURCES OF DATA**

| Source Map           | Date      | Original Scale | Digitized Scale | Map Type         |
|----------------------|-----------|----------------|-----------------|------------------|
| Company map          | 4-27-1953 | 1:6000         | 1:6000          | Not final        |
| USGS topographic map | PR 1978   | 1:24000        | 1:24000         | Secondary source |

Annotated Bibliography (data source, brief description of information)

Coal Reports - Production, ownership, years of operation, depth, thickness.  
 Directory of Illinois Coal Mines (Vermilion County) - Mine names, mine index, ownership, years of operation.  
 Mine notes (Vermilion County) - Mine type, tipple & pit locations, seam, thickness.  
 Company map, Coal Section files (6-8, 6-9, 6-9B2) - Mine location, mining method.  
 USGS topographic map, 1966, Photorevised 1978 - Mine outline, mining method.



**Mine Index 3676****Stanburg & Russell, Stanburg & Russell Mine**

Type: Underground    Total mined-out acreage shown: None    Production indicates approximately 1 acre was mined.

**SHAFT, SLOPE, DRIFT or TIPPLE LOCATIONS**

| Type       | County    | Township-Range | Section | Quarters-Footage |
|------------|-----------|----------------|---------|------------------|
| Main slope | Vermilion | 19N 11W        | 6       | NE NE SW         |

**GEOLOGY**

| Seam(s) Mined | Depth (ft) | Thickness (ft) |     |      | Mining Method |
|---------------|------------|----------------|-----|------|---------------|
|               |            | Min            | Max | Ave  |               |
| Danville      | 49         |                |     | 5.67 | RP            |

Geologic Problems Reported:

**PRODUCTION HISTORY**

| Company            | Mine Name          | Years     | Production (tons)     |
|--------------------|--------------------|-----------|-----------------------|
| Stanburg & Russell | Stanburg & Russell | 1885-1888 | <u>6,646</u><br>6,646 |

Last reported production: 1888

**SOURCES OF DATA**

| Source Map      | Date    | Original Scale | Digitized Scale | Map Type         |
|-----------------|---------|----------------|-----------------|------------------|
| ISGS mine notes | Undated | (text only)    | 1:24000 *       | Secondary source |

\* The mine location was plotted on a 1:24,000 USGS topographic map from the mine location description and digitized.

**Annotated Bibliography (data source, brief description of information)**

Coal Reports - Production, ownership, years of operation, mining method.

Directory of Illinois Coal Mines (Vermilion County) - Mine names, mine index, ownership, years of operation.

Mine notes (Vermilion County) - Mine type, slope location, seam, depth, thickness.

**Mine Index 3678****Maddox Coal Company, Maddox No. 2 Mine**

Type: Surface    Total mined-out acreage shown: None    Production indicates 1 acre was mined.

**SHAFT, SLOPE, DRIFT or TIPPLE LOCATIONS**

| Type   | County    | Township-Range | Section | Quarters-Footage |
|--------|-----------|----------------|---------|------------------|
| Tipple | Vermilion | 19N 11W        | 7       | SW NE NW         |

**GEOLOGY**

| Seam(s) Mined | Depth (ft) | Thickness (ft) |     |         | Mining Method |
|---------------|------------|----------------|-----|---------|---------------|
|               |            | Min            | Max | Ave     |               |
| Danville      | 35         |                |     | 5.5-6.0 | Surface       |

Geologic Problems Reported:

**PRODUCTION HISTORY**

| Company             | Mine Name    | Years     | Production (tons)     |
|---------------------|--------------|-----------|-----------------------|
| Maddox Coal Company | Maddox No. 2 | 1944-1945 | <u>6,218</u><br>6,218 |

Last reported production: April 1, 1945

**SOURCES OF DATA**

| Source Map      | Date    | Original Scale | Digitized Scale | Map Type         |
|-----------------|---------|----------------|-----------------|------------------|
| ISGS mine notes | Undated | (text only)    | 1:24000 *       | Secondary source |

\* The mine location was plotted on a 1:24,000 USGS topographic map and digitized.

Annotated Bibliography (data source, brief description of information)

Coal Reports - Production, ownership, years of operation, mining method.

Directory of Illinois Coal Mines (Vermilion County) - Mine names, mine index, ownership, years of operation.

Mine notes (Vermilion County) - Mine type, tipple location, seam, depth, thickness.



**Mine Index 3679**  
**J. H. Parle, Parle Mine**

Type: Surface    Total mined-out acreage shown: None    Production indicates less than 1 acre was mined.

**SHAFT, SLOPE, DRIFT or TIPPLE LOCATIONS**

| Type   | County    | Township-Range | Section | Quarters-Footage |
|--------|-----------|----------------|---------|------------------|
| Tipple | Vermilion | 19N 11W        | 7       | SE NW NW         |

**GEOLOGY**

| Seam(s) Mined | Depth (ft) | Thickness (ft) |     |     | Mining Method |
|---------------|------------|----------------|-----|-----|---------------|
|               |            | Min            | Max | Ave |               |
| Danville      |            |                |     |     | Surface       |

Geologic Problems Reported:

**PRODUCTION HISTORY**

| Company     | Mine Name | Years     | Production (tons) |
|-------------|-----------|-----------|-------------------|
| Dick Parle  | Parle     | 1922-1923 | 200               |
| J. H. Parle | Parle     | 1923-1924 | <u>1,000</u>      |
|             |           |           | 1,200             |

Last reported production: 1924

**SOURCES OF DATA**

| Source Map      | Date    | Original Scale | Digitized Scale | Map Type         |
|-----------------|---------|----------------|-----------------|------------------|
| ISGS mine notes | Undated | (text only)    | 1:24000 *       | Secondary source |

\* The mine location was plotted on a 1:24,000 USGS topographic map from the mine location description and digitized.

Annotated Bibliography (data source, brief description of information)

Coal Reports - Production, ownership, years of operation.  
 Directory of Illinois Coal Mines (Vermilion County) - Mine names, mine index, ownership, years of operation.  
 Mine notes (Vermilion County) - Mine type, tipple location, seam.

**Mine Index 3760**  
**Pierce Coal Company, Pierce Mine**

Type: Underground    Total mined-out acreage shown: None    Production indicates less than 1 acre was mined and less than 1 acre was mined after the map date. This area was later surface mined by Ayrshire Coal Company, Inc. (mine index 673) and so this mine is not shown on the accompanying map.

**SHAFT, SLOPE, DRIFT or TIPPLE LOCATIONS**

| Type       | County    | Township-Range | Section | Quarters-Footage |
|------------|-----------|----------------|---------|------------------|
| Main slope | Vermilion | 19N 12W        | 1       | NE NE SW         |
| Air shaft  | Vermilion | 19N 12W        | 1       | NE NE SW         |

**GEOLOGY**

| Seam(s) Mined | Depth (ft) | Thickness (ft) |     |     | Mining Method |
|---------------|------------|----------------|-----|-----|---------------|
|               |            | Min            | Max | Ave |               |
| Danville      | 20         |                |     | 6.0 | RP            |

Geologic Problems Reported:

**PRODUCTION HISTORY**

| Company             | Mine Name    | Years     | Production (tons) |
|---------------------|--------------|-----------|-------------------|
| Lind Coal Company * | Lind No. 3   | 1939-1941 | 818               |
| Ritter Coal Company | Ritter No. 3 | 1941-1941 | 20                |
| Pierce Coal Company | Pierce       | 1941-1942 | 905 **            |
|                     |              |           | 1,743             |

\* Operated by Clifford Ritter in 1940

\*\* Production after map date

Last reported production: 1942

**SOURCES OF DATA**

| Source Map                 | Date      | Original Scale | Digitized Scale | Map Type  |
|----------------------------|-----------|----------------|-----------------|-----------|
| Microfilm, document 352921 | 9-23-1941 | 1:1200         | 1:1242          | Not Final |

Annotated Bibliography (data source, brief description of information)

Coal Reports - Production, ownership, years of operation.

Directory of Illinois Coal Mines (Vermilion County) - Mine names, mine index, ownership, years of operation.

Mine notes (Vermilion County) - Mine type, shaft location, seam, depth, thickness.

Microfilm map, document 352921, reel 03141, frame 59 - Slope & shaft locations, mine outline, mining method.



**Mine Index 3761****Bert Hunt Coal Company, Hunt Mine**

Type: Underground    Total mined-out acreage shown: 1

**SHAFT, SLOPE, DRIFT or TIPPLE LOCATIONS**

| Type       | County    | Township-Range | Section | Quarters-Footage |
|------------|-----------|----------------|---------|------------------|
| Main slope | Vermilion | 19N 12W        | 1       | SW NE NE         |
| Air shaft  | Vermilion | 19N 12W        | 1       | SW NE NE         |
| Air shaft  | Vermilion | 19N 12W        | 1       | SW NE NE         |

**GEOLOGY**

| Seam(s) Mined | Depth (ft) | Thickness (ft) |     |     | Mining Method |
|---------------|------------|----------------|-----|-----|---------------|
|               |            | Min            | Max | Ave |               |
| Danville      | 20-35      |                |     | 6.0 | RP, HER       |

Geologic Problems Reported:**PRODUCTION HISTORY**

| Company                  | Mine Name | Years     | Production (tons)     |
|--------------------------|-----------|-----------|-----------------------|
| Haun & Sons Coal Company | Haun      | 1936-1936 | 260                   |
| Bert Hunt Coal Company   | Hunt      | 1937-1940 | <u>3,154</u><br>3,414 |

Last reported production: 1940

**SOURCES OF DATA**

| Source Map               | Date     | Original Scale | Digitized Scale | Map Type |
|--------------------------|----------|----------------|-----------------|----------|
| Company, 4103.V4 i5.1-22 | 4-1-1941 | 1:1200         | 1:1200          | Final    |

Annotated Bibliography (data source, brief description of information)

Coal Reports - Production, ownership, years of operation.

Directory of Illinois Coal Mines (Vermilion County) - Mine names, mine index, ownership, years of operation.

Mine notes (Vermilion County) - Mine type, shaft location, seam, depth, thickness.

Company map, ISGS map library, 4103.V4 i5.1-22 - Slope &amp; shaft locations, mine outline, mining method.

**Mine Index 3762****Frederickson Coal Company, Frederickson No. 1 Mine**

Type: Underground    Total mined-out acreage shown: 2    Production indicates less than 1 acre was mined after the map date.

**SHAFT, SLOPE, DRIFT or TIPPLE LOCATIONS**

| Type       | County    | Township-Range | Section | Quarters-Footage |
|------------|-----------|----------------|---------|------------------|
| Main slope | Vermilion | 19N 12W        | 1       | SW NE NW         |
| Air slope  | Vermilion | 19N 12W        | 1       | SW NE NW         |
| Air shaft  | Vermilion | 19N 12W        | 1       | SW NE NW         |

**GEOLOGY**

| Seam(s) Mined | Depth (ft) | Thickness (ft) |     |          | Mining Method |
|---------------|------------|----------------|-----|----------|---------------|
|               |            | Min            | Max | Ave      |               |
| Danville      | 57         |                |     | 4.5-5.83 | RP            |

Geologic Problems Reported:

**PRODUCTION HISTORY**

| Company                   | Mine Name          | Years     | Production (tons) |
|---------------------------|--------------------|-----------|-------------------|
| Frederickson Coal Company | Frederickson No. 1 | 1946-1950 | 6,398             |
| Frederickson Coal Company | Frederickson No. 1 | 1950-1951 | 627 *             |
|                           |                    |           | 7,025             |

\* Production after map date

Last reported production: March 1951

**SOURCES OF DATA**

| Source Map                 | Date         | Original Scale | Digitized Scale | Map Type  |
|----------------------------|--------------|----------------|-----------------|-----------|
| Microfilm, document 352989 | 3-31-1954 ** | 1:1200         | 1:1076          | Not Final |

\*\* The latest survey of the No. 1 Mine was 9-10-1950.

Annotated Bibliography (data source, brief description of information)

Coal Reports - Production, ownership, years of operation.

Directory of Illinois Coal Mines (Vermilion County) - Mine names, mine index, ownership, years of operation.

Mine notes (Vermilion County) - Mine type, shaft location, seam, depth, thickness.

Microfilm map, document 352989, reel 03141, frame 132 - Slope & shaft locations, mine outline, mining method.



**Mine Index 3763****Riverside Coal Company, Riverside Mine**

Type: Underground    Total mined-out acreage shown: 7    Production indicates that the area should be about 2 acres. A previous operator is indicated. See the mines with unknown locations at the back of this report.

**SHAFT, SLOPE, DRIFT or TIPPLE LOCATIONS**

| Type       | County    | Township-Range | Section | Quarters-Footage |
|------------|-----------|----------------|---------|------------------|
| Main slope | Vermilion | 19N 12W        | 1       | NE SE NE         |
| Air shaft  | Vermilion | 19N 12W        | 1       | NE SE NE         |

**GEOLOGY**

| Seam(s) Mined | Depth (ft) | Thickness (ft) |     |     | Mining Method |
|---------------|------------|----------------|-----|-----|---------------|
|               |            | Min            | Max | Ave |               |
| Danville      | 70-75      |                |     | 6.0 | RPP           |

Geologic Problems Reported: According to the company map, the northeast portion of the mine had an area of sand and gravel roof bounded by faults, the southwest portion of the mine had a mud and gravel roof, and the northwest portion had a faulty roof. A horseback was present in the southeast part of the mine.

**PRODUCTION HISTORY**

| Company                  | Mine Name | Years       | Production (tons) |
|--------------------------|-----------|-------------|-------------------|
| Riverside Coal Company * | Riverside | 1929-1940** | 9,872             |
| Herbert J. Wyatt         | Riverside | 1941-1941   | 1,500             |
| Riverside Coal Company   | Riverside | 1942-1942   | 470               |
|                          |           |             | 11,842            |

\* Operated by Herbert J. Wyatt in 1940

\*\* Opened in July 1929 according to the ISGS mine notes. Production was not listed in the Coal Reports 1929-1933 for mines producing less than 1,000 tons per year. This mine was not included in the production listings 1929 through 1932.

Last reported production: 1942

**SOURCES OF DATA**

| Source Map                | Date     | Original Scale | Digitized Scale | Map Type |
|---------------------------|----------|----------------|-----------------|----------|
| Company, 4103.V4 i5.1-127 | 4-1-1942 | 1:1200         | 1:1200          | Final    |

Annotated Bibliography (data source, brief description of information)

Coal Reports - Production, ownership, years of operation.

Directory of Illinois Coal Mines (Vermilion County) - Mine names, mine index, ownership, years of operation.

ENR Document 85/01 - Mining method.

Mine notes (Vermilion County) - Mine type, slope location, seam, depth, thickness.

Company map, ISGS map library, 4103.V4 i5.1-127 - Slope & shaft locations, mine outline, mining method.

**Mine Index 3764****Oscar R. Frederickson Coal Company, Frederickson Mine**

Type: Underground    Total mined-out acreage shown: 4    The reported production is insufficient to account for the extent of mining as shown; a previous owner of this mine is indicated. (The reported production would account for about 2 acres.) Production indicates that approximately 2 acres were mined after the map date.

**SHAFT, SLOPE, DRIFT or TIPPLE LOCATIONS**

| Type       | County    | Township-Range | Section | Quarters-Footage |
|------------|-----------|----------------|---------|------------------|
| Main slope | Vermilion | 19N 12W        | 1       | SW NW NE         |
| Air shaft  | Vermilion | 19N 12W        | 1       | NW NW NE         |

**GEOLOGY**

| Seam(s) Mined | Depth (ft) | Thickness (ft) |     |     | Mining Method |
|---------------|------------|----------------|-----|-----|---------------|
|               |            | Min            | Max | Ave |               |
| Danville      | 60         |                |     | 6.0 | MRP           |

Geologic Problems Reported:

**PRODUCTION HISTORY**

| Company                            | Mine Name    | Years     | Production (tons) |
|------------------------------------|--------------|-----------|-------------------|
| Oscar R. Frederickson Coal Company | Frederickson | 1918-1926 | 11,255 *          |
| Oscar R. Frederickson Coal Company | Frederickson | 1926-1939 | 13,715 **         |
|                                    |              |           | 24,970            |

\* Production not reported 1922 for mines producing less than 10,000 tons

\*\* Production after map date

Last reported production: March 1939

**SOURCES OF DATA**

| Source Map                 | Date      | Original Scale | Digitized Scale | Map Type  |
|----------------------------|-----------|----------------|-----------------|-----------|
| Microfilm, document 353012 | 8-16-1926 | 1:1200         | 1:1200          | Not Final |

Annotated Bibliography (data source, brief description of information)

Coal Reports - Production, ownership, years of operation.

Directory of Illinois Coal Mines (Vermilion County) - Mine names, mine index, ownership, years of operation.

Mine notes (Vermilion County) - Mine type, slope location, seam, depth, thickness.

Microfilm map, document 353012, reel 03141, frame 158 - Shaft locations, mine outline, mining method.

**Mine Index 3765****Lind Coal Company, Lind No. 2 Mine**

Type: Underground    Total mined-out acreage shown: None    This mine is not shown on the accompanying map. This area was later surface mined by Ayrshire Coal Company, Inc. (mine index 673).

**SHAFT, SLOPE, DRIFT or TIPPLE LOCATIONS**

| Type         | County    | Township-Range | Section | Quarters-Footage |
|--------------|-----------|----------------|---------|------------------|
| Main slope   | Vermilion | 19N 12W        | 1       | NW SE NW         |
| Air shaft    | Vermilion | 19N 12W        | 1       | NW SE NW         |
| Second entry | Vermilion | 19N 12W        | 1       | NW SE NW         |

**GEOLOGY**

| Seam(s) Mined | Depth (ft) | Thickness (ft) |     |          | Mining Method |
|---------------|------------|----------------|-----|----------|---------------|
|               |            | Min            | Max | Ave      |               |
| Danville      | 45-65      |                |     | 5.83-6.0 | RPB           |

Geologic Problems Reported:

**PRODUCTION HISTORY**

| Company           | Mine Name       | Years     | Production (tons) |
|-------------------|-----------------|-----------|-------------------|
| Martin & Howard   | Martin & Howard | 1930-1932 | 1,100 *           |
| Martin & Bowen    | Martin & Bowen  | 1933-1936 | 4,775             |
| Lind Coal Company | Lind No. 2      | 1937-1941 | 2,707             |
| Lind Coal Company | Lind No. 2      | 1941-1947 | 2,652 **          |
|                   |                 |           | 11,234            |

\* Production was not reported 1930-1933 for mines producing less than 1,000 tons per year; this mine did not report 1931 and 1932.

\*\* Production after map date

Last reported production: 1947

**SOURCES OF DATA**

| Source Map                 | Date      | Original Scale | Digitized Scale | Map Type  |
|----------------------------|-----------|----------------|-----------------|-----------|
| Microfilm, document 353012 | 9-23-1941 | 1:1200         | 1:1242          | Not Final |

Annotated Bibliography (data source, brief description of information)

Coal Reports - Production, ownership, years of operation.

Directory of Illinois Coal Mines (Vermilion County) - Mine names, mine index, ownership, years of operation.

ENR Document 85/01 - Mining method.

Mine notes (Vermilion County) - Mine type, shaft location, seam, depth, thickness.

Microfilm map, document 353012, reel 0341, frame 107 - Slope & shaft locations, mine outline, mining method.



**Mine Index 3766****Frederickson Coal Company, Frederickson No. 4 Mine**

Type: Underground    Total mined-out acreage shown: None    Production indicates less than 1 acre was mined. The Federal Land Bank of St. Louis Report shows a 4 acre general area of mining in this location.

**SHAFT, SLOPE, DRIFT or TIPPLE LOCATIONS**

| Type       | County    | Township-Range | Section | Quarters-Footage |
|------------|-----------|----------------|---------|------------------|
| Main slope | Vermilion | 19N 12W        | 1       | NW NE NW         |

**GEOLOGY**

| Seam(s) Mined | Depth (ft) | Thickness (ft) |     |      | Mining Method |
|---------------|------------|----------------|-----|------|---------------|
|               |            | Min            | Max | Ave  |               |
| Danville      | 12-20      |                |     | 5.83 | RP            |

Geologic Problems Reported:

**PRODUCTION HISTORY**

| Company                     | Mine Name          | Years     | Production (tons) |
|-----------------------------|--------------------|-----------|-------------------|
| Lamb-Singleton Coal Company | Lamb-Singleton     | 1938-1939 | 325               |
| Frederickson Coal Company   | Frederickson No. 4 | 1939-1940 | 790               |
|                             |                    |           | 1,115             |

Last reported production: 1940

**SOURCES OF DATA**

| Source Map               | Date    | Original Scale | Digitized Scale | Map Type         |
|--------------------------|---------|----------------|-----------------|------------------|
| ISGS mine notes          | Undated | (text only)    | 1:24000 *       | Secondary source |
| Federal Land Bank Report | 1-1934  | 1:105000       | 1:105000        | Secondary source |

\* The mine location was plotted on a 1:24,000 USGS topographic map from the mine location description and digitized.

Annotated Bibliography (data source, brief description of information)

Coal Reports - Production, ownership, years of operation, mining method.

Directory of Illinois Coal Mines (Vermilion County) - Mine names, mine index, ownership, years of operation.

ENR Document 85/01 - Mining method.

Mine notes (Vermilion County) - Mine type, slope location, seam, depth, thickness.

Federal Land Bank of St. Louis Report - General area of mining.

**Mine Index 3767****Square Deal Coal Company, Square Deal Mine**

Type: Underground    Total mined-out acreage shown: 2    Most of this mine was later surface-mined by Harmattan Mine (mine index 673); the only portion remaining and shown on the accompanying map are the shafts.

**SHAFT, SLOPE, DRIFT or TIPPLE LOCATIONS**

| Type       | County    | Township-Range | Section | Quarters-Footage |
|------------|-----------|----------------|---------|------------------|
| Main shaft | Vermilion | 19N 12W        | 1       | NW SE NW         |
| Air shaft  | Vermilion | 19N 12W        | 1       | NW SE NW         |

**GEOLOGY**

| Seam(s) Mined | Depth (ft) | Thickness (ft) |     |      | Mining Method |
|---------------|------------|----------------|-----|------|---------------|
|               |            | Min            | Max | Ave  |               |
| Danville      | 65         |                |     | 5.12 | RP            |

Geologic Problems Reported:

**PRODUCTION HISTORY**

| Company                     | Mine Name   | Years       | Production (tons) |
|-----------------------------|-------------|-------------|-------------------|
| Square Deal Coal Company    | Square Deal | 1924-1926 * | 1,179             |
| Elliot Brothers **          | Elliot      | 1927-1935   | 4,553 ***         |
| Square Deal Coal Company ** | Square Deal | 1935-1937   | 857               |
|                             |             |             | 6,584             |

\* Idle 1925

\*\* The source map indicates the Smith Brothers and Charles E. Bowman may have operated this mine.

\*\*\* Production was not reported 1930-1933 for mines producing less than 1,000 tons per year.

Last reported production: 1937

**SOURCES OF DATA**

| Source Map                 | Date      | Original Scale | Digitized Scale | Map Type |
|----------------------------|-----------|----------------|-----------------|----------|
| Microfilm, document 352952 | 5-24-1937 | 1:1200         | 1:1080          | Final    |

Annotated Bibliography (data source, brief description of information)

Coal Reports - Production, ownership, years of operation, mining method.

Directory of Illinois Coal Mines (Vermilion County) - Mine names, mine index, ownership, years of operation.

Mine notes (Vermilion County) - Mine type, shaft location, seam, depth, thickness.

Microfilm map, document 352952, reel 03141, frame 94 - Shaft locations, mine outline, mining method, mine ownership, years of operation.

**Mine Index 3768****Frederickson Coal Company, Frederickson No. 2 Mine**

Type: Underground    Total mined-out acreage shown: 1    Production indicates less than 1 acre was mined after the map date.

**SHAFT, SLOPE, DRIFT or TIPPLE LOCATIONS**

| Type         | County    | Township-Range | Section | Quarters-Footage |
|--------------|-----------|----------------|---------|------------------|
| Main slope   | Vermilion | 19N 12W        | 1       | NE SE NW         |
| Air shaft    | Vermilion | 19N 12W        | 1       | NE SE NW         |
| Escape shaft | Vermilion | 19N 12W        | 1       | NE SE NW         |

**GEOLOGY**

| Seam(s) Mined | Depth (ft) | Thickness (ft) |     |      | Mining Method |
|---------------|------------|----------------|-----|------|---------------|
|               |            | Min            | Max | Ave  |               |
| Danville      |            |                |     | 5.83 | MRP           |

Geologic Problems Reported:

**PRODUCTION HISTORY**

| Company                   | Mine Name          | Years     | Production (tons) |
|---------------------------|--------------------|-----------|-------------------|
| Frederickson Coal Company | Frederickson No. 2 | 1951-1954 | 2,539             |
| Frederickson Coal Company | Frederickson No. 2 | 1954-1955 | 1,083 *           |
|                           |                    |           | 3,622             |

\* Production after map date

Last reported production: September 1955

**SOURCES OF DATA**

| Source Map                 | Date      | Original Scale | Digitized Scale | Map Type  |
|----------------------------|-----------|----------------|-----------------|-----------|
| Microfilm, document 352989 | 3-31-1954 | 1:1200         | 1:1076          | Not final |

Annotated Bibliography (data source, brief description of information)

Coal Reports - Production, ownership, years of operation.

Directory of Illinois Coal Mines (Vermilion County) - Mine names, mine index, ownership, years of operation.

Mine notes (Vermilion County) - Mine type, slope location, seam, depth, thickness.

Microfilm map, document 352989, reel 03141, frame 132 - Slope & shaft locations, mine outline, mining method.



**Mine Index 3769****Kelly Branch Coal Company, Kelly Branch No. 2 Mine**

Type: Underground    Total mined-out acreage shown: None    Not shown on accompanying map due to later surface mining by Ayrshire Coal Company, Inc. (mine index 673). Production indicates approximately 1 acre was mined.

**SHAFT, SLOPE, DRIFT or TIPPLe LOCATIONS**

| Type       | County    | Township-Range | Section | Quarters-Footage |
|------------|-----------|----------------|---------|------------------|
| Main slope | Vermilion | 19N 12W        | 1       | NE NE SE         |
| Air shaft  | Vermilion | 19N 12W        | 1       | NE NE SE         |

**GEOLOGY**

| Seam(s) Mined | Depth (ft) | Thickness (ft) |     |     | Mining Method |
|---------------|------------|----------------|-----|-----|---------------|
|               |            | Min            | Max | Ave |               |
| Danville      |            |                |     |     | RP            |

Geologic Problems Reported:

**PRODUCTION HISTORY**

| Company                     | Mine Name          | Years     | Production (tons)     |
|-----------------------------|--------------------|-----------|-----------------------|
| Kelly Branch Coal Company * | Kelly Branch No. 2 | 1933-1937 | <u>7,772</u><br>7,772 |

\* Owned or operated by Perry Bales (from source map)

Last reported production: 1937

**SOURCES OF DATA**

| Source Map                 | Date      | Original Scale | Digitized Scale | Map Type |
|----------------------------|-----------|----------------|-----------------|----------|
| Microfilm, document 352945 | 5-21-1937 | 1:1200         | 1:933           | Final    |

Annotated Bibliography (data source, brief description of information)

Coal Reports - Production, ownership, years of operation.

Directory of Illinois Coal Mines (Vermilion County) - Mine names, mine index, ownership, years of operation.

Mine notes (Vermilion County) - Mine type, shaft location, seam, depth, thickness.

Microfilm map, document 352945, reel 03141, frame 87 - Slope location, mine outline, mining method.

**Mine Index 3770****Moorehouse Coal Company, Moorehouse Mine**

Type: Underground    Total mined-out acreage shown: None    Not shown on accompanying map due to later surface mining by Ayrshire Coal Company, Inc. (mine index 673).

**SHAFT, SLOPE, DRIFT or TIPPLE LOCATIONS**

| Type       | County    | Township-Range | Section | Quarters-Footage |
|------------|-----------|----------------|---------|------------------|
| Main slope | Vermilion | 19N 12W        | 4       | NE NW SE         |

**GEOLOGY**

| Seam(s) Mined | Depth (ft) | Thickness (ft) |     |     | Mining Method |
|---------------|------------|----------------|-----|-----|---------------|
|               |            | Min            | Max | Ave |               |
| Danville      | 40         |                |     |     | RP            |

Geologic Problems Reported:

**PRODUCTION HISTORY**

| Company                   | Mine Name  | Years | Production (tons) |
|---------------------------|------------|-------|-------------------|
| Moorehouse Coal Company * | Moorehouse |       |                   |

\* No production was recorded under this name; years of operation and production unknown

Last reported production:

**SOURCES OF DATA**

| Source Map      | Date    | Original Scale | Digitized Scale | Map Type         |
|-----------------|---------|----------------|-----------------|------------------|
| ISGS mine notes | Undated | (text only)    | 1:24000 **      | Secondary source |

\*\* The mine location was plotted on a 1:24,000 USGS topographic map from the mine location description and digitized.

Annotated Bibliography (data source, brief description of information)

Coal Reports - Production, ownership, years of operation.

Directory of Illinois Coal Mines (Vermilion County) - Mine names, mine index, ownership, years of operation.

Mine notes (Vermilion County) - Mine type, slope location, seam, depth.

**Mine Index 3771****Black Diamond Coal Company, Black Diamond Mine**

Type: Underground    Total mined-out acreage shown: None    Production indicates less than 1 acre was mined. Not shown on accompanying map due to later surface mining by Ayrshire Coal Company, Inc. (mine index 673).

**SHAFT, SLOPE, DRIFT or TIPPLE LOCATIONS**

| Type       | County    | Township-Range | Section | Quarters-Footage |
|------------|-----------|----------------|---------|------------------|
| Main shaft | Vermilion | 19N 12W        | 4       | SW SE NE         |

**GEOLOGY**

| Seam(s) Mined | Depth (ft) | Thickness (ft) |     |     | Mining Method |
|---------------|------------|----------------|-----|-----|---------------|
|               |            | Min            | Max | Ave |               |
| Danville      |            |                |     |     | RP            |

Geologic Problems Reported:

**PRODUCTION HISTORY**

| Company                    | Mine Name     | Years     | Production (tons)     |
|----------------------------|---------------|-----------|-----------------------|
| Black Diamond Coal Company | Black Diamond | 1934-1937 | <u>1,883</u><br>1,883 |

Last reported production: 1937

**SOURCES OF DATA**

| Source Map      | Date    | Original Scale | Digitized Scale | Map Type         |
|-----------------|---------|----------------|-----------------|------------------|
| ISGS mine notes | Undated | (text only)    | 1:24000 *       | Secondary source |

\* The mine location was plotted on a 1:24,000 USGS topographic map from the mine location description and digitized.

Annotated Bibliography (data source, brief description of information)

Coal Reports - Production, ownership, years of operation, mining method.

Directory of Illinois Coal Mines (Vermilion County) - Mine names, mine index, ownership, years of operation.

Mine notes (Vermilion County) - Mine type, shaft location, seam.



**Mine Index 3772****Big Diamond Coal Company, Big Diamond Mine**

Type: Underground    Total mined-out acreage shown: None    Production indicates approximately 2 acres were mined. Not shown on accompanying map due to later surface mining by Ayrshire Coal Company, Inc. (mine index 673).

**SHAFT, SLOPE, DRIFT or TIPPLE LOCATIONS**

| Type       | County    | Township-Range | Section | Quarters-Footage |
|------------|-----------|----------------|---------|------------------|
| Main slope | Vermilion | 19N 12W        | 4       | NE SW NE         |

**GEOLOGY**

| Seam(s) Mined | Depth (ft) | Thickness (ft) |     |     | Mining Method |
|---------------|------------|----------------|-----|-----|---------------|
|               |            | Min            | Max | Ave |               |
| Danville      | 40         |                |     | 5.5 | RP            |

Geologic Problems Reported:

**PRODUCTION HISTORY**

| Company                  | Mine Name   | Years     | Production (tons)     |
|--------------------------|-------------|-----------|-----------------------|
| Big Diamond Coal Company | Big Diamond | 1933-1936 | <u>8,102</u><br>8,102 |

Last reported production: 1936

**SOURCES OF DATA**

| Source Map      | Date    | Original Scale | Digitized Scale | Map Type         |
|-----------------|---------|----------------|-----------------|------------------|
| ISGS mine notes | Undated | (text only)    | 1:24000 *       | Secondary source |

\* The mine location was plotted on a 1:24,000 USGS topographic map from the mine location description and digitized.

Annotated Bibliography (data source, brief description of information)

Coal Reports - Production, ownership, years of operation, mining method.

Directory of Illinois Coal Mines (Vermilion County) - Mine names, mine index, ownership, years of operation.

Mine notes (Vermilion County) - Mine type, slope location, seam, depth, thickness.

**Mine Index 3773****Glenburn Coal Coal Company, Glenburn Mine**

Type: Underground    Total mined-out acreage shown: None    Production indicates approximately 150 acres were mined. This is shown on the accompanying map by a general area of mining.

**SHAFT, SLOPE, DRIFT or TIPPLE LOCATIONS**

| Type       | County    | Township-Range | Section | Quarters-Footage |
|------------|-----------|----------------|---------|------------------|
| Main shaft | Vermilion | 19N 12W        | 5       | SE SW NW         |

**GEOLOGY**

| Seam(s) Mined | Depth (ft) | Thickness (ft) |     |          | Mining Method |
|---------------|------------|----------------|-----|----------|---------------|
|               |            | Min            | Max | Ave      |               |
| Danville      | 120-150    |                |     | 5.33-6.0 | RP            |

Geologic Problems Reported:

**PRODUCTION HISTORY**

| Company               | Mine Name | Years     | Production (tons) |
|-----------------------|-----------|-----------|-------------------|
| S. H. Swallow         | Glenburn  | 1885-1887 | 4,000             |
| C. M. Swallow         | Glenburn  | 1887-1890 | 15,600            |
| Glenburn Coal Company | Glenburn  | 1890-1897 | 536,913           |
| J. W. Ellsworth       | Glenburn  | 1897-1898 | 41,727            |
| Glenburn Coal Company | Glenburn  | 1898-1899 | 124,048           |
|                       |           |           | 722,288           |

Last reported production: 1899

**SOURCES OF DATA**

| Source Map      | Date    | Original Scale | Digitized Scale | Map Type         |
|-----------------|---------|----------------|-----------------|------------------|
| ISGS mine notes | Undated | (text only)    | 1:24000 *       | Secondary source |

\* The mine location was plotted on a 1:24,000 USGS topographic map from the mine location description and digitized.

Annotated Bibliography (data source, brief description of information)

Coal Reports - Production, ownership, years of operation, , depth, thickness, mining method.

Directory of Illinois Coal Mines (Vermilion County) - Mine names, mine index, ownership, years of operation.

Mine notes (Vermilion County) - Mine type, shaft location, seam.

**Mine Index 3785**  
**Economy Coal & Mining Company, Economy Mine**

Type: Underground Total mined-out acreage shown: None Production indicates approximately 184 acres were mined. This is shown on the accompanying map by a general area of mining, which is contiguous to the general area of mining for the Old Diamond Mine (mine index 3792).

**SHAFT, SLOPE, DRIFT or TIPPLE LOCATIONS**

| Type       | County    | Township-Range | Section | Quarters-Footage |
|------------|-----------|----------------|---------|------------------|
| Main shaft | Vermilion | 19N 12W        | 11      | NE SE NE         |

**GEOLOGY**

| Seam(s) Mined | Depth (ft) | Thickness (ft) |     |         | Mining Method |
|---------------|------------|----------------|-----|---------|---------------|
|               |            | Min            | Max | Ave     |               |
| Danville      | 85-91      |                |     | 5.5-6.0 | RP            |

Geologic Problems Reported:

**PRODUCTION HISTORY**

| Company                       | Mine Name | Years     | Production (tons)           |
|-------------------------------|-----------|-----------|-----------------------------|
| Economy Coal & Mining Company | Economy   | 1896-1907 | <u>908,743</u> *<br>908,743 |

\* No map has been found for this mine, or any source for the outline. The general area of mining has been drawn to specifications reported in the ISGS mine notes by a resident of the area and miner who reportedly worked in this mine, Pichon, that the mine extended south to the river, west to a line designated by the schoolhouse, east to the brickyards, and 80 rods north to Gun Club Road. (Gun Club Road cannot be found, so our general area of mining is the approximate size calculated from production and in the correct general area.) Pichon also reported that the Economy Mine may have hit the Old Diamond Mine (mine index 3792).

Last reported production: March 1, 1907

**SOURCES OF DATA**

| Source Map      | Date    | Original Scale | Digitized Scale | Map Type         |
|-----------------|---------|----------------|-----------------|------------------|
| ISGS mine notes | Undated | (text only)    | 1:24000 **      | Secondary source |

\*\* The mine location was plotted on a 1:24,000 USGS topographic map from the mine location description and digitized.

Annotated Bibliography (data source, brief description of information)

Coal Reports - Production, ownership, years of operation, depth, mining method.  
 Directory of Illinois Coal Mines (Vermilion County) - Mine names, mine index, ownership, years of operation.  
 Mine notes (Vermilion County) - Mine type, shaft location, seam, depth, thickness, general area of mining.



## Mine Index 3791

### Contract Mining Company, Western Brick Mine

Type: Underground Total mined-out acreage shown: None The Western Brick Property mines show a total of 188 acres surface-mined and 205 acres underground-mined on Danville Southeast and Danville Southwest Quadrangles. These pits are named 3788 on the Danville Southwest Quadrangle and 3710 on the Danville Southeast Quadrangle. The production of the mines is not recorded so that tonnage can be reliably split between surface and underground mines to correspond to the area shown, thus the area shown is larger than would be expected for the tonnage recorded. Western Brick Company leased their coal lands to other operators, and some of the unlocated mines at the back of this report probably mined Western Brick lands.

### SHAFT, SLOPE, DRIFT or TIPPLE LOCATIONS

| Type       | County    | Township-Range | Section | Quarters-Footage |
|------------|-----------|----------------|---------|------------------|
| Main drift | Vermilion | 19N 12W        | 12      | NE SW NE         |

### GEOLOGY

| Seam(s) Mined | Depth (ft) | Thickness (ft) |     |          | Mining Method |
|---------------|------------|----------------|-----|----------|---------------|
|               |            | Min            | Max | Ave      |               |
| Danville      | 10-95      |                |     | 5.5-6.67 | RP & surface  |

Geologic Problems Reported:

### PRODUCTION HISTORY

| Company                 | Mine Name                    | Years         | Production (tons) |
|-------------------------|------------------------------|---------------|-------------------|
| Reilly & Daugherty      | Western Brick No. 2          | 1907-1910     | 158,386           |
| Contract Mining Company | Contract No. 1 (underground) | 1910-1926 **  | 935,688           |
| Contract Coal Company   | Contract No. 1 (surface)     | 1927-1930 *** | 86,139            |
| Contract Coal Company   | Contract No. 2 (underground) | 1924-1929     | 298,226           |
| Contract Coal Company   | Contract No. 4 (surface)     | 1926-1929 †   | 12,932            |
|                         |                              |               | 1,491,371         |

\*\* Idle 1920

\*\*\* Idle 1929

† Idle 1928

Last reported production: 1929

### SOURCES OF DATA

| Source Map      | Date    | Original Scale | Digitized Scale | Map Type         |
|-----------------|---------|----------------|-----------------|------------------|
| ISGS mine notes | Undated | (text only)    | 1:24,000 ††     | Secondary source |

†† The mine location was plotted on a 1:24,000 USGS topographic map from the mine location description and digitized.

### Annotated Bibliography (data source, brief description of information)

Coal Reports - Production, ownership, years of operation.

Directory of Illinois Coal Mines (Vermilion County) - Mine names, mine index, ownership, years of operation.

Mine notes (Vermilion County) - Mine type, drift location, seam.

**Mine Index 3792****Diamond Coal Company, Old Diamond Mine**

Type: Underground    Total mined-out acreage shown: A general area of mining of the shape described below under production was constructed to indicate the area undermined. This general area of mining is contiguous to the area shown for mine index 3791 (Contract Mine on Western Brick lands) and the Economy Mine (mine index 3785).

**SHAFT, SLOPE, DRIFT or TIPPLE LOCATIONS**

| Type  | County    | Township-Range | Section | Quarters-Footage |
|-------|-----------|----------------|---------|------------------|
| Shaft | Vermilion | 19N 12W        | 12      | NE SE NW         |

**GEOLOGY**

| Seam(s) Mined | Depth (ft) | Thickness (ft) |     |     | Mining Method |
|---------------|------------|----------------|-----|-----|---------------|
|               |            | Min            | Max | Ave |               |
| Danville      | 91-100     |                |     | 5.5 | RP            |

Geologic Problems Reported:

**PRODUCTION HISTORY**

| Company                             | Mine Name | Years     | Production (tons) |
|-------------------------------------|-----------|-----------|-------------------|
| John Short                          | Moss Bank | 1870-1873 |                   |
| Paris & Danville Railroad Company * | Moss Bank | 1873- ?   |                   |
| Diamond Coal Company *              | Diamond   | ? - 1879  | 50,000 **         |

\* Operated by General Carnahan

\*\* Production unknown prior to fiscal year 1878-1879; for this reason, no total production is given for this mine. A local resident (Pichon) is recorded in the mine notes as indicating that the mine extended about a mile north [from the shaft?], to the river south, west to a brickyard and about a mile east to the hill just before 7<sup>th</sup> Street. This large general area of mining is also coded for the Economy Mine (mine index 3785), where Pichon is reported to have worked as a miner, and mine index 3791, one of the underground Contract mines.

Last reported production: 1879

**SOURCES OF DATA**

| Source Map      | Date    | Original Scale | Digitized Scale | Map Type         |
|-----------------|---------|----------------|-----------------|------------------|
| ISGS mine notes | Undated | (text only)    | 124000 ***      | Secondary source |

\*\*\* The mine location was plotted on a 1:24,000 USGS topographic map from the mine location description and digitized.

Annotated Bibliography (data source, brief description of information)

Coal Reports - Production, ownership, years of operation, mining method.

Directory of Illinois Coal Mines (Vermilion County) - Mine names, mine index, ownership, years of operation.

Mine notes (Vermilion County) - Mine location, seam, depth, thickness.

History of Vermilion County, Lottie E. Jones - Mine ownership, years of operation, mine type.

**Mine Index 3888****Middle Fork Coal Company, Middle Fork No. 2 Mine**

Type: Underground    Total mined-out acreage shown: None    Production indicates approximately 1 to 2 acres were mined. This mine is contiguous to a much larger (23-acre) general area of mining from the Federal Land Bank Report for Vermilion County.

**SHAFT, SLOPE, DRIFT or TIPPLE LOCATIONS**

| Type       | County    | Township-Range | Section | Quarters-Footage |
|------------|-----------|----------------|---------|------------------|
| Main slope | Vermilion | 20N 12W        | 20      | NW SE SE         |

**GEOLOGY**

| Seam(s) Mined | Depth (ft) | Thickness (ft) |     |     | Mining Method |
|---------------|------------|----------------|-----|-----|---------------|
|               |            | Min            | Max | Ave |               |
| Danville      | 82         |                |     | 6.0 | RP            |

Geologic Problems Reported:

**PRODUCTION HISTORY**

| Company                  | Mine Name           | Years     | Production (tons)     |
|--------------------------|---------------------|-----------|-----------------------|
| Middle Fork Coal Company | Middle Fork No. 2 * | 1939-1948 | <u>7,633</u><br>7,633 |

\* Also known as Fletcher's Middle Fork Mine.

Last reported production: 1948

**SOURCES OF DATA**

| Source Map                     | Date | Original Scale | Digitized Scale | Map Type         |
|--------------------------------|------|----------------|-----------------|------------------|
| ISGS mine notes (G. M. Wilson) | 1945 | (text only)    | 1:24000 **      | Secondary source |

\*\* The mine location was plotted on a 1:24,000 USGS topographic map from the mine location description and digitized.

Annotated Bibliography (data source, brief description of information)

Coal Reports - Production, ownership, years of operation, mining method.

Directory of Illinois Coal Mines (Vermilion County) - Mine names, mine index, ownership, years of operation.

Mine notes (Vermilion County) - Mine type, slope location, seam, depth, thickness.

**Mine Index 3889****W. F. Crawford & Sons, Crawford Mine**

Type: Underground    Total mined-out acreage shown: None    Production indicates approximately 13 acres were mined. This is shown on the accompanying map as a 27 acre general area of mining from the Federal Land Bank Report.

**SHAFT, SLOPE, DRIFT or TIPPLE LOCATIONS**

| Type       | County    | Township-Range | Section | Quarters-Footage |
|------------|-----------|----------------|---------|------------------|
| Main shaft | Vermilion | 20N 12W        | 20      | NW NE SE         |

**GEOLOGY**

| Seam(s) Mined | Depth (ft) | Thickness (ft) |     |         | Mining Method |
|---------------|------------|----------------|-----|---------|---------------|
|               |            | Min            | Max | Ave     |               |
| Danville      | 106        |                |     | 5.5-6.0 | RPB           |

Geologic Problems Reported:

**PRODUCTION HISTORY**

| Company               | Mine Name | Years     | Production (tons) |
|-----------------------|-----------|-----------|-------------------|
| W. F. Crawford & Sons | Crawford  | 1905-1918 | 63,065            |
|                       |           |           | 63,065            |

Last reported production: 1918

**SOURCES OF DATA**

| Source Map               | Date    | Original Scale | Digitized Scale | Map Type         |
|--------------------------|---------|----------------|-----------------|------------------|
| ISGS mine notes          | Undated | (text only)    | 1:24000 *       | Secondary source |
| Federal Land Bank Report | 1-1934  | 1:105000       | 1:105000        | Secondary source |

\* The mine location was plotted on a 1:24,000 USGS topographic map from the mine location description and digitized.

Annotated Bibliography (data source, brief description of information)

Coal Reports - Production, ownership, years of operation.

Directory of Illinois Coal Mines (Vermilion County) - Mine names, mine index, ownership, years of operation.

ENR Document 85/01 - Mining method.

Mine notes (Vermilion County) - Mine type, shaft location, seam, depth, thickness.

Federal Land Bank Report (Vermilion County) - Mine outline (general area of mining).



**Mine Index 3890**  
**Samuel Swisher, Pilot Mine**

Type: Underground    Total mined-out acreage shown: None    Production indicates approximately 2 acres were mined. This area was surface mined by United Electric No. 1 Mine (mine index 400); however, the Federal Land Bank Report shows an underground-mined area in this vicinity. Other mining probably occurred here; see the unlocated mines at the back of this report.

**SHAFT, SLOPE, DRIFT or TIPPLE LOCATIONS**

| Type       | County    | Township-Range | Section | Quarters-Footage |
|------------|-----------|----------------|---------|------------------|
| Main shaft | Vermilion | 20N 12W        | 21      | SW SW SW *       |

\* Not shown on accompanying map due to later surface mining in the area.

**GEOLOGY**

| Seam(s) Mined | Depth (ft) | Thickness (ft) |     |         | Mining Method |
|---------------|------------|----------------|-----|---------|---------------|
|               |            | Min            | Max | Ave     |               |
| Danville      | 89-95      |                |     | 5.5-6.0 | RP            |

Geologic Problems Reported:

**PRODUCTION HISTORY**

| Company        | Mine Name | Years     | Production (tons)     |
|----------------|-----------|-----------|-----------------------|
| Samuel Swisher | Pilot     | 1884-1888 | <u>8,010</u><br>8,010 |

Last reported production: 1888

**SOURCES OF DATA**

| Source Map               | Date    | Original Scale | Digitized Scale | Map Type         |
|--------------------------|---------|----------------|-----------------|------------------|
| ISGS mine notes          | Undated | (text only)    | 1:24000 **      | Secondary source |
| Federal Land Bank Report | 1-1934  | 1:105000       | 1:105000        | Secondary source |

\* The mine location was plotted on a 1:24,000 USGS topographic map from the mine location description and digitized.

Annotated Bibliography (data source, brief description of information)

Coal Reports - Production, ownership, years of operation, mining method.  
 Directory of Illinois Coal Mines (Vermilion County) - Mine names, mine index, ownership, years of operation.  
 Mine notes (Vermilion County) - Mine type, shaft location, seam, depth, thickness.  
 Federal Land Bank Report (Vermilion County) - Mine outline (general area of mining).

**Mine Index 3891**  
**Alex H. Bonnett, Bonnett Mine**

Type: Underground    Total mined-out acreage shown: None    Production indicates approximately 12 acres were mined. This is shown on the accompanying map as a general area of mining.

**SHAFT, SLOPE, DRIFT or TIPPLE LOCATIONS**

| Type       | County    | Township-Range | Section | Quarters-Footage |
|------------|-----------|----------------|---------|------------------|
| Main shaft | Vermilion | 20N 12W        | 29      | SW NE NE         |

**GEOLOGY**

| Seam(s) Mined | Depth (ft) | Thickness (ft) |     |          | Mining Method |
|---------------|------------|----------------|-----|----------|---------------|
|               |            | Min            | Max | Ave      |               |
| Danville      | 86-100     |                |     | 5.33-6.0 | RP            |

Geologic Problems Reported:

**PRODUCTION HISTORY**

| Company               | Mine Name   | Years       | Production (tons) |
|-----------------------|-------------|-------------|-------------------|
| William J. Moore      | Moore No. 1 | 1888-1891   | 5,600             |
| Glenburn Coal Company | Glenburn    | 1891-1892   | 1,350             |
| Alex H. Bonnett       | Bonnett     | 1892-1907 * | 49,400            |
|                       |             |             | 56,350            |

\* Idle 1901

Last reported production: 1907

**SOURCES OF DATA**

| Source Map      | Date    | Original Scale | Digitized Scale | Map Type         |
|-----------------|---------|----------------|-----------------|------------------|
| ISGS mine notes | Undated | (text only)    | 1:24000 *       | Secondary source |

\* The mine location was plotted on a 1:24,000 USGS topographic map from the mine location description and digitized.

Annotated Bibliography (data source, brief description of information)

Coal Reports - Production, ownership, years of operation, mining method.  
 Directory of Illinois Coal Mines (Vermilion County) - Mine names, mine index, ownership, years of operation.  
 Mine notes (Vermilion County) - Mine type, shaft location, seam, depth, thickness.

**Mine Index 3892**  
**Samuel Swisher, Swisher Mine**

Type: Underground    Total mined-out acreage shown: None    Production indicates less than 1 acre was mined. The mine is located within a 25-acre general area of mining from the Federal Land Bank Report; this indicates that other mining may have occurred near here. See the unlocated mines at the back of this report.

**SHAFT, SLOPE, DRIFT or TIPPLE LOCATIONS**

| Type       | County    | Township-Range | Section | Quarters-Footage |
|------------|-----------|----------------|---------|------------------|
| Main drift | Vermilion | 20N 12W        | 29      | NW NE NE         |

**GEOLOGY**

| Seam(s) Mined | Depth (ft) | Thickness (ft) |     |     | Mining Method |
|---------------|------------|----------------|-----|-----|---------------|
|               |            | Min            | Max | Ave |               |
| Danville      | 25-60      |                |     | 6.0 | RP            |

Geologic Problems Reported:

**PRODUCTION HISTORY**

| Company        | Mine Name | Years     | Production (tons) |
|----------------|-----------|-----------|-------------------|
| Samuel Swisher | Swisher   | 1906-1908 | <u>800</u><br>800 |

Last reported production: 1908

**SOURCES OF DATA**

| Source Map               | Date    | Original Scale | Digitized Scale | Map Type         |
|--------------------------|---------|----------------|-----------------|------------------|
| ISGS mine notes          | Undated | (text only)    | 1:24000 *       | Secondary source |
| Federal Land Bank Report | 1-1934  | 1:105000       | 1:105000        | Secondary source |

\* The mine location was plotted on a 1:24,000 USGS topographic map from the mine location description and digitized.

Annotated Bibliography (data source, brief description of information)

Coal Reports - Production, ownership, years of operation, seam, depth, thickness, mining method.  
 Directory of Illinois Coal Mines (Vermilion County) - Mine names, mine index, ownership, years of operation.  
 Mine notes (Vermilion County) - Mine type, drift location.  
 Federal Land Bank Report (Vermilion County) - Mine outline (general area of mining).

**Mine Index 3893****Calvert Coal Company, Calvert Mine**

Type: Underground    Total mined-out acreage shown: None    This mine is shown as part of a general area of mining from the Federal Land Bank Report (although that outline may have been meant to designate the Fletcher Mine, mine index 6534).

**SHAFT, SLOPE, DRIFT or TIPPLE LOCATIONS**

| Type       | County    | Township-Range | Section | Quarters-Footage |
|------------|-----------|----------------|---------|------------------|
| Main slope | Vermilion | 20N 12W        | 29      | NE NW NE         |

**GEOLOGY**

| Seam(s) Mined | Depth (ft) | Thickness (ft) |     |     | Mining Method |
|---------------|------------|----------------|-----|-----|---------------|
|               |            | Min            | Max | Ave |               |
| Danville      | 70         |                |     | 6.0 |               |

Geologic Problems Reported:

**PRODUCTION HISTORY**

| Company                | Mine Name | Years    | Production (tons) |
|------------------------|-----------|----------|-------------------|
| Calvert Coal Company * | Calvert   | ca. 1930 | unknown *         |

\* No production reported under this name; production unknown. Reputedly operated in 1930, when mines producing less than 1,000 tons were not reported.

Last reported production:

**SOURCES OF DATA**

| Source Map      | Date    | Original Scale | Digitized Scale | Map Type         |
|-----------------|---------|----------------|-----------------|------------------|
| ISGS mine notes | Undated | (text only)    | 1:24000 **      | Secondary source |

\*\* The mine location was plotted on a 1:24,000 USGS topographic map from the mine location description and digitized.

**Annotated Bibliography (data source, brief description of information)**

Directory of Illinois Coal Mines (Vermilion County) - Mine names, mine index, ownership, years of operation.  
Mine notes (Vermilion County) - Mine type, shaft location, seam, depth, thickness.



**Mine Index 6534****Fletcher Brothers Coal Company, Homer Fletcher Mine**

Type: Underground    Total mined-out acreage shown: 10    The reported production is insufficient to account for the extent of mining as shown; a previous owner of this mine is indicated. (The reported tons would account for approximately 3 acres.) See the unlocated mines at the back of this report.

**SHAFT, SLOPE, DRIFT or TIPPLE LOCATIONS**

| Type       | County    | Township-Range | Section | Quarters-Footage |
|------------|-----------|----------------|---------|------------------|
| Main slope | Vermilion | 20N 12W        | 29      | SW NW NE         |
| Air shaft  | Vermilion | 20N 12W        | 29      | SW NW NE         |

**GEOLOGY**

| Seam(s) Mined | Depth (ft) | Thickness (ft) |     |     | Mining Method |
|---------------|------------|----------------|-----|-----|---------------|
|               |            | Min            | Max | Ave |               |
| Danville      |            |                |     |     | RP            |

Geologic Problems Reported:

**PRODUCTION HISTORY**

| Company                        | Mine Name      | Years     | Production (tons) |
|--------------------------------|----------------|-----------|-------------------|
| Middle Fork Coal Company       | Middlefork     | 1933-1936 | 13,087            |
| Fletcher Brothers Coal Company | Homer Fletcher | 1937-1937 | 1,060             |
|                                |                |           | 14,147            |

Last reported production: 1937

**SOURCES OF DATA**

| Source Map                 | Date      | Original Scale | Digitized Scale | Map Type |
|----------------------------|-----------|----------------|-----------------|----------|
| Microfilm, document 352875 | 3-12-1937 | 1:1200         | 1:1490          | Final    |

Annotated Bibliography (data source, brief description of information)

Coal Reports - Production, ownership, years of operation.

Directory of Illinois Coal Mines (Vermilion County) - Mine names, mine index, ownership, years of operation.

Microfilm map, document 352875, reel 03140, frame 505 - Slope & shaft locations, mine outline, mining method.

**Mine Index 6675****Charles E. Lind & Son Coal Company, Lind No. 1 Mine**

Type: Underground    Total mined-out acreage shown: None    Production indicates approximately 6 acres were mined. A general area of mining from the Federal Land Bank Report shows the approximate area of mining.

**SHAFT, SLOPE, DRIFT or TIPPLE LOCATIONS**

| Type       | County    | Township-Range | Section | Quarters-Footage |
|------------|-----------|----------------|---------|------------------|
| Main drift | Vermilion | 19N 12W        | 1       | NW SE NE         |

**GEOLOGY**

| Seam(s) Mined | Depth (ft) | Thickness (ft) |     |         | Mining Method |
|---------------|------------|----------------|-----|---------|---------------|
|               |            | Min            | Max | Ave     |               |
| Danville      | 20         |                |     | 5.5-6.0 | RP            |

Geologic Problems Reported: The roof was a soft slabby clod that required 6 to 8 inches of top coal left to support it. At least one clay slip was noted, which extended down into the coal more than 12 inches. The upper 26 inches of the coal contained very little sulfur. The next layer contained a more highly polished, higher-sulfur coal, referred to as "blacksmith's coal." The sulfur was present in flat lenses that ranged from ½ to 5 inches thick and separated easily from the coal. The floor consisted of clay containing rock in some places and was underlain by 4 inches of coal, 1.25 to 1.5 feet of shale, then 8 to 12 inches of coal and "blackjack." Both of these lower seams were reported to contain higher ash and were not mined.

**PRODUCTION HISTORY**

| Company                            | Mine Name  | Years     | Production (tons) |
|------------------------------------|------------|-----------|-------------------|
| Charles E. Lind Coal Company       | Lind       | 1923-1926 | 12,500 *          |
| August Lind                        | Lind       | 1927-1928 | 1,650             |
| Lind Coal Company                  | Lind       | 1929-1936 | 16,065            |
| Charles E. Lind & Son Coal Company | Lind No. 1 | 1937-1939 | <u>2,351</u>      |
|                                    |            |           | 32,566            |

\* May have operated in 1922 when mines producing less than 10,000 tons were not reported.

Last reported production: 1939

**SOURCES OF DATA**

| Source Map               | Date       | Original Scale | Digitized Scale | Map Type         |
|--------------------------|------------|----------------|-----------------|------------------|
| ISGS mine notes          | Undated ** | (text only)    | 1:24000 **      | Secondary source |
| Federal Land Bank Report | 1-1934     | 1:105000       | 1:105000        | Secondary source |

\*\* Report by M. Brawner containing geologic problems was dated 4-1-1940. The mine location was plotted on a 1:24000 USGS topographic map and digitized.

Annotated Bibliography (data source, brief description of information)

Coal Reports - Production, ownership, years of operation.

Directory of Illinois Coal Mines (Vermilion County) - Mine names, mine index, ownership, years of operation.

Mine notes (Vermilion County) - Mine type, drift location, seam, depth, thickness, geologic problems.

Federal Land Bank Report (Vermilion County) - Mine outline (general area of mining).

**Mine Index 6748**  
**George Watts, Watts Mine**

Type: Underground    Total mined-out acreage shown: None    Production indicates less than 1 acre was mined.

**SHAFT, SLOPE, DRIFT or TIPPLE LOCATIONS**

| Type       | County    | Township-Range | Section | Quarters-Footage |
|------------|-----------|----------------|---------|------------------|
| Main slope | Vermilion | 19N 12W        | 1       | SE NW NW         |

**GEOLOGY**

| Seam(s) Mined | Depth (ft) | Thickness (ft) |     |         | Mining Method |
|---------------|------------|----------------|-----|---------|---------------|
|               |            | Min            | Max | Ave     |               |
| Danville      | 40-65      |                |     | 5.0-6.0 | RP            |

Geologic Problems Reported:

**PRODUCTION HISTORY**

| Company      | Mine Name | Years     | Production (tons)     |
|--------------|-----------|-----------|-----------------------|
| George Watts | Watts     | 1893-1896 | <u>4,190</u><br>4,190 |

Last reported production: April 1924

**SOURCES OF DATA**

| Source Map                         | Date | Original Scale | Digitized Scale | Map Type         |
|------------------------------------|------|----------------|-----------------|------------------|
| Standard Atlas of Vermilion County | 1895 | 1:2400         | 1:2963          | Secondary source |

Annotated Bibliography (data source, brief description of information)

Coal Reports - Production, ownership, years of operation, depth, thickness.  
 Directory of Illinois Coal Mines (Vermilion County) - Mine names, mine index, ownership, years of operation.  
 Mine notes (Vermilion County) - Mine type, slope location, seam.  
 Standard Atlas of Vermilion County, Illinois, published by Geo. A. Ogle & Co., Chicago, 1895 - Slope location.

**Mine Index 6749**  
**John Lewis, Lewis Mine**

Type: Underground    Total mined-out acreage shown: None    Production indicates less than 1 acre was mined.

**SHAFT, SLOPE, DRIFT or TIPPLE LOCATIONS**

| Type       | County    | Township-Range | Section | Quarters-Footage |
|------------|-----------|----------------|---------|------------------|
| Main slope | Vermilion | 19N 12W        | 1       | NW SW NE         |

**GEOLOGY**

| Seam(s) Mined | Depth (ft) | Thickness (ft) |     |     | Mining Method |
|---------------|------------|----------------|-----|-----|---------------|
|               |            | Min            | Max | Ave |               |
| Danville      | 65         |                |     | 5.5 | RP            |

Geologic Problems Reported:

**PRODUCTION HISTORY**

| Company    | Mine Name | Years     | Production (tons)     |
|------------|-----------|-----------|-----------------------|
| John Lewis | Lewis     | 1888-1891 | <u>1,485</u><br>1,485 |

Last reported production: April 1924

**SOURCES OF DATA**

| Source Map                         | Date   | Original Scale | Digitized Scale | Map Type         |
|------------------------------------|--------|----------------|-----------------|------------------|
| Standard Atlas of Vermilion County | 1895   | 1:2400         | 1:2963          | Secondary source |
| Federal Land Bank Report           | 1-1934 | 1:105000       | 1:105000        | Secondary source |

Annotated Bibliography (data source, brief description of information)

Coal Reports - Production, ownership, years of operation, mine type, seam, depth, thickness, mining method.  
 Directory of Illinois Coal Mines (Vermilion County) - Mine names, mine index, ownership, years of operation.  
 Mine notes - Mine type, slope location.  
 Standard Atlas of Vermilion County, Illinois, published by Geo. A. Ogle & Co., Chicago, 1895 - Slope location.  
 Federal Land Bank Report (Vermilion County) - Mine outline (general area of mining).



**Mine Index 6750****C. J. Dobbins, Dobbins Mine**

Type: Surface    Total mined-out acreage shown: None    Production indicates 2 or 3 acres were mined.

**SHAFT, SLOPE, DRIFT or TIPPLE LOCATIONS**

| Type     | County    | Township-Range | Section | Quarters-Footage |
|----------|-----------|----------------|---------|------------------|
| Main pit | Vermilion | 19N 12W        | 1       | SE NW NE         |

**GEOLOGY**

| Seam(s) Mined | Depth (ft) | Thickness (ft) |     |         | Mining Method |
|---------------|------------|----------------|-----|---------|---------------|
|               |            | Min            | Max | Ave     |               |
| Danville      | 8-30       |                |     | 5.5-6.0 | Surface       |

Geologic Problems Reported:

**PRODUCTION HISTORY**

| Company         | Mine Name | Years       | Production (tons) |
|-----------------|-----------|-------------|-------------------|
| C. J. Dobbins   | Dobbins   | 1888-1890 * | 560               |
| John Dobbins    | Dobbins   | 1890-1891   | 600               |
| Charles Dobbins | Dobbins   | 1891-1892   | 4,260             |
| George Watts    | Watts     | 1892-1893   | 3,060             |
| William Dobbins | Dobbins   | 1893-1895   | 4,300             |
| C. J. Dobbins   | Dobbins   | 1895-1898   | 8,500             |
|                 |           |             | 21,280            |

\* Idle 1890

Last reported production: 1898

**SOURCES OF DATA**

| Source Map                         | Date | Original Scale | Digitized Scale | Map Type         |
|------------------------------------|------|----------------|-----------------|------------------|
| Standard Atlas of Vermilion County | 1895 | 1:2400         | 1:2963          | Secondary source |

Annotated Bibliography (data source, brief description of information)

Coal Reports - Production, ownership, years of operation, seam, depth, thickness, mining method.  
 Directory of Illinois Coal Mines (Vermilion County) - Mine names, mine index, ownership, years of operation.  
 Mine notes (Vermilion County) - Mine type, mine location.  
 Standard Atlas of Vermilion County, Illinois, published by Geo. A. Ogle & Co., Chicago, 1895 - Mine location.

**Mine Index 6755****Stansbury & Watkins Coal Company, Stansbury & Watkins Mine**

Type: Underground    Total mined-out acreage shown: None    Production indicates 22 acres were mined. This is shown on the accompanying map by a general area of mining.

**SHAFT, SLOPE, DRIFT or TIPPLE LOCATIONS**

| Type       | County    | Township-Range | Section | Quarters-Footage |
|------------|-----------|----------------|---------|------------------|
| Main drift | Vermilion | 19N 12W        | 1       | NE NW SE         |

**GEOLOGY**

| Seam(s) Mined | Depth (ft) | Thickness (ft) |     |         | Mining Method |
|---------------|------------|----------------|-----|---------|---------------|
|               |            | Min            | Max | Ave     |               |
| Danville      | 40-80      |                |     | 5.5-6.0 | RP            |

Geologic Problems Reported:

**PRODUCTION HISTORY**

| Company                          | Mine Name           | Years     | Production (tons)         |
|----------------------------------|---------------------|-----------|---------------------------|
| Stansbury & Watkins Coal Company | Stansbury & Watkins | 1888-1907 | <u>107,005</u><br>107,005 |

Last reported production: 1907

**SOURCES OF DATA**

| Source Map                         | Date    | Original Scale | Digitized Scale | Map Type         |
|------------------------------------|---------|----------------|-----------------|------------------|
| ISGS mine notes                    | Undated | (text only)    | 1:24000 *       | Secondary source |
| Standard Atlas of Vermilion County | 1895    | 1:2400         | 1:2963          | Secondary source |
| Federal Land Bank Report           | 1-1934  | 1:105000       | 1:105000        | Secondary source |

\* The mine location was plotted on a 1:24,000 USGS topographic map and digitized.

Annotated Bibliography (data source, brief description of information)

Coal Reports - Production, ownership, years of operation, thickness, mining method.  
 Directory of Illinois Coal Mines (Vermilion County) - Mine names, mine index, ownership, years of operation.  
 Mine notes (Vermilion County) - Mine type, drift location, seam.  
 Standard Atlas of Vermilion County, Illinois, published by Geo. A. Ogle & Co., Chicago, 1895 - Drift location.  
 Federal Land Bank Report (Vermilion County) - Mine outline (general area of mining).

**Mine Index 6758**  
**Lind Coal Company, Lind Mine**

Type: Underground    Total mined-out acreage shown: None    Production indicates less than 1 acre was mined.

**SHAFT, SLOPE, DRIFT or TIPPLE LOCATIONS**

| Type       | County    | Township-Range | Section | Quarters-Footage |
|------------|-----------|----------------|---------|------------------|
| Main slope | Vermilion | 19N 12W        | 1       | SW SW NE         |

**GEOLOGY**

| Seam(s) Mined | Depth (ft) | Thickness (ft) |     |     | Mining Method |
|---------------|------------|----------------|-----|-----|---------------|
|               |            | Min            | Max | Ave |               |
| Danville      | 10         |                |     | 6.0 | RP            |

Geologic Problems Reported:

**PRODUCTION HISTORY**

| Company           | Mine Name | Years     | Production (tons) |
|-------------------|-----------|-----------|-------------------|
| Lind Coal Company | Lind      | 1947-1947 | <u>49</u><br>49   |

Last reported production: 1947

**SOURCES OF DATA**

| Source Map      | Date    | Original Scale | Digitized Scale | Map Type         |
|-----------------|---------|----------------|-----------------|------------------|
| ISGS mine notes | Undated | (text only)    | 1:24000 *       | Secondary source |

\* The mine location was plotted on a 1:24,000 USGS topographic map and digitized.

Annotated Bibliography (data source, brief description of information)

Coal Reports - Production, ownership, years of operation, mining method.  
 Directory of Illinois Coal Mines (Vermilion County) - Mine names, mine index, ownership, years of operation.  
 Mine notes (Vermilion County) - Mine type, slope location, seam, depth, thickness.

**Mine Index 6776****Lone Oak Coal Company, Lone Oak Mine**

Type: Underground    Total mined-out acreage shown: 3    Production indicates approximately 10 acres were mined. The northernmost extensions of the mine were later surface-mined by the Harmattan Mine (mine index 673).

**SHAFT, SLOPE, DRIFT or TIPPLE LOCATIONS**

| Type       | County    | Township-Range | Section | Quarters-Footage |
|------------|-----------|----------------|---------|------------------|
| Main shaft | Vermilion | 19N 12W        | 9       | SE SE NE         |
| Air shaft  | Vermilion | 19N 12W        | 9       | SE SE NE         |

**GEOLOGY**

| Seam(s) Mined | Depth (ft) | Thickness (ft) |     |         | Mining Method |
|---------------|------------|----------------|-----|---------|---------------|
|               |            | Min            | Max | Ave     |               |
| Danville      |            |                |     | 5.5-6.0 | MRP           |

Geologic Problems Reported:

**PRODUCTION HISTORY**

| Company               | Mine Name | Years     | Production (tons) |
|-----------------------|-----------|-----------|-------------------|
| Lone Oak Coal Company | Lone Oak  | 1922-1922 | 1,826             |
| Lone Oak Coal Company | Lone Oak  | 1922-1923 | 51,743 *          |
|                       |           |           | 53,569            |

\* Production after map date

Last reported production: 1923

**SOURCES OF DATA**

| Source Map                 | Date      | Original Scale | Digitized Scale | Map Type         |
|----------------------------|-----------|----------------|-----------------|------------------|
| Microfilm, document 352994 | 4-19-1922 | 1:1200         | 1:2317          | Not final        |
| ISGS Coal Section files    | 4-27-1953 | 1:6000         | 1:6000          | Secondary source |

Annotated Bibliography (data source, brief description of information)

Coal Reports - Production, ownership, years of operation, seam, thickness.  
 Directory of Illinois Coal Mines (Vermilion County) - Mine names, mine index, ownership, years of operation.  
 Microfilm map, document 352994, reel 03141, frames 85-86 - Shaft locations, mine outline, mining method.  
 ISGS Coal Section confidential files, 6-8, 6-9, and 6-9-B2 - Mine outline (northern extensions).



**Mine Index 6786**  
**Eureka Coal Company, Eureka Mine**

Type: Underground    Total mined-out acreage shown: None    Production indicates less than 1 acre was mined.

**SHAFT, SLOPE, DRIFT or TIPPLE LOCATIONS**

| Type       | County    | Township-Range | Section | Quarters-Footage |
|------------|-----------|----------------|---------|------------------|
| Main slope | Vermilion | 19N 12W        | 1       | NE SE NW         |

**GEOLOGY**

| Seam(s) Mined | Depth (ft) | Thickness (ft) |     |      | Mining Method |
|---------------|------------|----------------|-----|------|---------------|
|               |            | Min            | Max | Ave  |               |
| Danville      | 45         |                |     | 5.67 | RP            |

Geologic Problems Reported:

**PRODUCTION HISTORY**

| Company             | Mine Name | Years     | Production (tons) |
|---------------------|-----------|-----------|-------------------|
| Carbon Coal Company | Carbon    | 1934-1937 | 3,411             |
| Eureka Coal Company | Eureka    | 1937-1938 | <u>1,390</u>      |
|                     |           |           | 4,801             |

Last reported production: 1938

**SOURCES OF DATA**

| Source Map      | Date    | Original Scale | Digitized Scale | Map Type         |
|-----------------|---------|----------------|-----------------|------------------|
| ISGS mine notes | Undated | (text only)    | 1:24000 *       | Secondary source |

\* The mine location was plotted on a 1:24,000 USGS topographic map and digitized.

Annotated Bibliography (data source, brief description of information)

Coal Reports - Production, ownership, years of operation.  
 Directory of Illinois Coal Mines (Vermilion County) - Mine names, mine index, ownership, years of operation.  
 Mine notes (Vermilion County) - Mine type, slope location, seam, depth, thickness.

**Mine Index 6790****Perry Bales Coal Company, Bales Mine**

Type: Underground    Total mined-out acreage shown: None    Production indicates approximately 3 acres were mined. This area was later surface mined by Ayrshire Coal Company, Inc. (mine index 673), and therefore the shafts and mine outline are not included on the accompanying map.

**SHAFT, SLOPE, DRIFT or TIPPLE LOCATIONS**

| Type       | County    | Township-Range | Section | Quarters-Footage |
|------------|-----------|----------------|---------|------------------|
| Main shaft | Vermilion | 19N 12W        | 1       | SE SW NW         |
| Air shaft  | Vermilion | 19N 12W        | 1       | SE SW NW         |

**GEOLOGY**

| Seam(s) Mined | Depth (ft) | Thickness (ft) |     |     | Mining Method |
|---------------|------------|----------------|-----|-----|---------------|
|               |            | Min            | Max | Ave |               |
| Danville      |            |                |     |     | MRP           |

Geologic Problems Reported:

**PRODUCTION HISTORY**

| Company                  | Mine Name | Years     | Production (tons) |
|--------------------------|-----------|-----------|-------------------|
| Joe Bales & Son          | Bales     | 1922-1923 | 2,500             |
| Henry Bales              | Bales     | 1923-1924 | 500               |
| Perry Bales Coal Company | Bales     | 1924-1926 | 3,957             |
| Perry Bales Coal Company | Bales     | 1926-1932 | 14,280 *          |
|                          |           |           | 21,237            |

\* Production after map date

Last reported production: 1932

**SOURCES OF DATA**

| Source Map               | Date     | Original Scale | Digitized Scale | Map Type  |
|--------------------------|----------|----------------|-----------------|-----------|
| Company, 4103.V4 i5.1-46 | 5-1-1926 | 1:2400         | 1:2400          | Not Final |

Annotated Bibliography (data source, brief description of information)

Coal Reports - Production, ownership, years of operation, seam, thickness.

Directory of Illinois Coal Mines (Vermilion County) - Mine names, mine index, ownership, years of operation.

Mine notes (Vermilion County) - Mine type, shaft location, seam, depth, thickness.

Company map, ISGS map library, 4103.V4 i5.1-46 - Shaft locations, mine outline, mining method.

**Mine Index 6791****Bales & McFarland, Bales & McFarland Mine**

Type: Underground Total mined-out acreage shown: None Production indicates approximately 3 acres were mined. This area was later surface mined by Ayrshire Coal Company, Inc. (mine index 673), and therefore the shafts and mine outline are not included on the accompanying map.

**SHAFT, SLOPE, DRIFT or TIPPLE LOCATIONS**

| Type       | County    | Township-Range | Section | Quarters-Footage |
|------------|-----------|----------------|---------|------------------|
| Main slope | Vermilion | 19N 12W        | 1       | SE SW NW         |
| Air shaft  | Vermilion | 19N 12W        | 1       | SE SW NW         |

**GEOLOGY**

| Seam(s) Mined | Depth (ft) | Thickness (ft) |     |     | Mining Method |
|---------------|------------|----------------|-----|-----|---------------|
|               |            | Min            | Max | Ave |               |
| Danville      |            |                |     |     | MRP           |

Geologic Problems Reported:

**PRODUCTION HISTORY**

| Company           | Mine Name         | Years       | Production (tons) |
|-------------------|-------------------|-------------|-------------------|
| Bales & Armstrong | Bales & Armstrong | 1922-1924 * | 1,797             |
| Bales & McFarland | Bales & McFarland | 1925-1926   | 3,836             |
| Bales & McFarland | Bales & McFarland | 1926-1929   | <u>2,603</u> **   |
|                   |                   |             | 8,236             |

\* Idle 1924

\*\* Production after map date

Last reported production: 1929 (may have operated later; production not reported 1930-1930-1933 for mines producing less than 1,000 tons per year)

**SOURCES OF DATA**

| Source Map                | Date     | Original Scale | Digitized Scale | Map Type  |
|---------------------------|----------|----------------|-----------------|-----------|
| Company, 4103.V4 i5.1-131 | 6-1-1926 | 1:600          | 1:600           | Not Final |

Annotated Bibliography (data source, brief description of information)

Coal Reports - Production, ownership, years of operation, seam, thickness.

Directory of Illinois Coal Mines (Vermilion County) - Mine names, mine index, ownership, years of operation.

Mine notes (Vermilion County) - Mine type, shaft location, seam, depth, thickness.

Company map, ISGS map library, 4103.V4 i5.1-131 - Shaft locations, mine outline, mining method.

**Mine Index 6851**  
**United Electric Coal Company, United Electric No. 6 Mine**

Type: Underground    Total mined-out acreage shown: 149

**SHAFT, SLOPE, DRIFT or TIPPLE LOCATIONS**

| Type       | County    | Township-Range | Section | Quarters-Footage |
|------------|-----------|----------------|---------|------------------|
| Main slope | Vermilion | 19N 12W        | 8       | NW SE SW         |
| Air Shaft  | Vermilion | 19N 12W        | 8       | NW SE SW         |

**GEOLOGY**

| Seam(s) Mined | Depth (ft) | Thickness (ft) |     |          | Mining Method |
|---------------|------------|----------------|-----|----------|---------------|
|               |            | Min            | Max | Ave      |               |
| Danville      |            |                |     | 5.5-5.58 | MRP           |

Geologic Problems Reported:

**PRODUCTION HISTORY**

| Company                      | Mine Name             | Years     | Production (tons) |
|------------------------------|-----------------------|-----------|-------------------|
| Electric Coal Company        | Electric No. 6        | 1918-1921 | 305,074           |
| United Electric Coal Company | United Electric No. 6 | 1921-1924 | 527,551           |
|                              |                       |           | 832,625           |

Last reported production: April 1924

**SOURCES OF DATA**

| Source Map  | Date     | Original Scale | Digitized Scale | Map Type |
|-------------|----------|----------------|-----------------|----------|
| Company map | 7-1-1924 | 1:600          | 1:600           | Final    |

Annotated Bibliography (data source, brief description of information)

Coal Reports - Production, ownership, years of operation, thickness, mining method.  
 Directory of Illinois Coal Mines (Vermilion County) - Mine names, mine index, ownership, years of operation.  
 Mine notes (Vermilion County) - Mine type, slope location, seam.  
 Company map, copy from Vermilion County Recorder's Office - Slope & shaft locations, mine outline, mining method.

## OTHER MINES SHOWN ON DANVILLE NORTHWEST QUADRANGLE

Mine Index 3759 SE NE SE 1-19N-12W, Norin Strip Pit, surface, Danville, —, 4.5-6.0 source: ISGS mine notes  
 Mine Index 6523 NW NW NW 1-T19N-R12W source: Federal Land Bank Report  
 Mine Index 6545 NW SW NE 1-T19N-R12W, ca. 1900 source: ISGS map library, Folio 67 & Fed. Land Bank Rpt.  
 Mine Index 6546 SE NW NE 1-T19N-R12W source: Federal Land Bank Report  
 Mine Index 6547 SW NE NW 1-T19N-R12W, ca. 1900 source: ISGS map library, Folio 67  
 Mine Index 6555 SE SE NE 1-T19N-R12W, ca. 1900 source: ISGS map library, Folio 67  
 Mine Index 6556 SW NW SW 6-T19N-R11W, ca. 1900 source: ISGS map library, Folio 67  
 Mine Index 6560 NE NW NW 7-T19N-R11W, ca. 1900 source: ISGS map library, Folio 67  
 Mine Index 6561 NW NW NW 7-T19N-R11W, ca. 1900 source: ISGS map library, Folio 67  
 Mine Index 7116 SW NE NE 1-T19N-R12W source: Atlas of Vermilion County (1875)  
 Mine Index 7117 SW NW NE 1-T19N-R12W source: Atlas of Vermilion County (1875)  
 Mine Index 7118 SW SW NE 1-T19N-R12W source: Atlas of Vermilion County (1875)  
 Mine Index 7119 \* NW NW SW 1-T19N-R12W source: Atlas of Vermilion County (1875)  
 Mine Index 7120 \* NW NW SE 2-T19N-R12W source: Atlas of Vermilion County (1875)  
 Mine Index 7121 \* NE NW SE 2-T19N-R12W source: Atlas of Vermilion County (1875)  
 Mine Index 7824 NE SW NW 7-T19N-R11W, Danville Coal source: Atlas of Vermilion County (1895)  
 Mine Index 7827 NE NE NW 7-T19N-R11W, Danville Coal source: LiDAR (2021)  
 Mine Index 7828 SW NE NW 7-T19N-R11W, Danville Coal source: LiDAR (2021)  
 Mine Index 7829 S 1/2 NW NW 7-T19N-R11W, Danville Coal source: LiDAR (2021)  
 Mine Index 7830 NE NE 12-T19N-R12W, Danville Coal source: LiDAR (2021)

\* Not shown on accompanying map because of later surface mining

## MINES WHOSE LOCATIONS ARE NOT KNOWN, DANVILLE NORTHWEST QUADRANGLE

The locations of the following mines are unknown, but the production tonnage, operating names, and nearest town were reported in the Annual Coal Reports. The operators listed below mined in or near the Danville Northwest Quadrangle. The information shown is similar to that presented on the summary sheets in the previous pages of this directory. The first item is the name the mine operated under as listed in the Coal Report, then the years the mine reported. If no physical data are available, the next item listed is the total tons produced by the mine. If physical data are available, the order of presentation is as follows: type of opening for the mine (drift, slope or shaft), seam mined, depth of coal in feet, and thickness of coal in feet.

The total tons mined by these unlocated mines is 2,344,649 (1,768,356 underground-mined, 255,785 surface mined, and 320,508 mined by unspecified method), which would represent approximately 330 to 545 acres, depending on the recovery factor, mining method, and numerous other factors. (Note: 1 square mile = 640 acres) These listings are duplicated on the Danville Southwest and Danville Southeast quadrangles and are not in addition to those listed in those quadrangles; in most cases it is not possible to discern the more likely location.

### BLOUNT

|  |                   |
|--|-------------------|
| Phillip & Tucker, 1883-1886, shaft, Danville, 106-125, 5.5-6.0, RP | 6,500 tons        |
| Phillips (T.), 1886-1887   | 3,000 tons        |
| Phillips (K.), 1887-1888   | 2,000 tons        |
| Moore (William J.), No. 2 Mine, 1888-1891                          | <u>7,570 tons</u> |
|  | 19,070 tons       |

### DANVILLE

|   |                   |                 |
|---|-------------------|-----------------|
| Jones & Hible, 1917-1921                                      | 5,418 tons        | mine index 3736 |
| Cole (W. A.), 1912-1912, slope, Danville, 12-60, 5.83-6.0, RP | 631 tons          | mine index 3768 |
| Cole (Fanny), 1912-1915                                       | 10,235 tons       |                 |
| Cole (Mrs. W. A.), 1915-1916                                  | <u>3,663 tons</u> |                 |

|   |                   |                 |
|---|-------------------|-----------------|
|   | 14,529 tons       |                 |
| I Wonder Coal Company, 1934-1935, underground   | 212 tons          | mine index 4221 |
| Moore (W. J.), 1881-1883, shaft, 118, 5.0   | 4,033 tons        |                 |
| Kelly (William), 1878-1883, surface, Danville, 10-30, 6.0-6.5   | 54,084 tons       |                 |
| Kelly (John), 1883-1884   | 4,500 tons        |                 |
| Kelly (William), 1884-1887  | 2,870 tons        |                 |
| Kelly (John), 1887-1890   | 3,440 tons        |                 |
| Kelly (William), 1891-1892  | <u>800 tons</u>   |                 |
|   | 65,694 tons       |                 |
| Lloyd (John E.), 1879-1892, drift, Danville, 50-70, 5.5-6.0   | 34,843 tons       |                 |
| Davis (John E.), 1878-1889, shaft, Danville, 40-50, 5.5-6.0   | 14,803 tons       |                 |
| Davis (William), 1879-1884, drift, 40, 5.5-6.0  | 1,950 tons        |                 |
| Dobbins (C. J.), 1879-1882, shaft & surface, 10-60, 5.5-6.0   | 800 tons          |                 |
| Jenkins (Alvin), 1878-1890, --, Danville, 30-70, 5.5-6.0, RP  | 16,615 tons       |                 |
| Benson (George W.), 1890-1892   | <u>2,650 tons</u> |                 |
|   | 19,265 tons       |                 |
| Bensil (Balser), 1879-1879, drift, Danville, 60, 6.0, RP  | 1,000 tons        |                 |
| According to <i>History of Vermilion County</i> by Lottie E. Jones, this mine was along the bluffs of the North Fork. |                   |                 |
| Bensel (B.), 1883-1888, drift, Danville, 30-40, 5.5, RP   | 7,260 tons        |                 |
| Bensil (B.), 1891-1892, drift, Danville, 40-65, 5.0-6.0, RP   | 944 tons          |                 |
| Bensil (George), 1892-1893  | 1,640 tons        |                 |
| Aldridge (W. R.), 1893-1894   | 2,100 tons        |                 |
| Hodge (Benjamin), 1894-1895   | 650 tons          |                 |
| Widner (Albert), 1895-1897  | 2,300 tons        |                 |
| Leveridge (Otto), 1897-1899   | <u>1,030 tons</u> |                 |
|   | 8,664 tons        |                 |
| Beddo (George), 1878-1879, surface, 60, 6.0   | 5,000 tons        |                 |
| Wolf (George), 1878-1879, surface, 60, 6.0  | 10,000 tons       |                 |
| Breen (J.), 1879-1879, surface, 60, 6.0   | 100 tons          |                 |
| Veach (Louis), 1878-1879, shaft, 65   | 365 tons          |                 |
| Loyd (Eliza), Star Mines, pre1878-1886, drift, 30-60, 5.5-6.0   | 8,150 tons        |                 |
| Moore (William), Inwood Mine, 1878-1879, shaft, 118, 5.5  | 2,500 tons        |                 |
| France (Dan), 1878-1879, shaft, 50, 6.0   | 1,500 tons        |                 |
| <i>see Dan France, Catlin</i>   |                   |                 |
| Fisher (John), 1878-1879, slope and drift, 15, 6.0  | 10,000 tons       |                 |
| Holton (George), 1878-1883, drift, Danville, 35-50, 5.5-6.0   | 20,000 tons       |                 |
| Franze (Thomas), 1879-1879, drift, 70, 6.0  | 800 tons          |                 |
| Jones (Henry), 1878-1879, drift, 60, 6.0  | 1,200 tons        |                 |
| Wagner (P.), 1878-1879, drift, 60, 6.0  | 380 tons          |                 |
| Price (James), 1878-1879, drift, 60, 6.0  | 1,000 tons        |                 |



|  |                    |
|--|--------------------|
| Williams (S. A.), 1878-1879, drift, Danville, 60, 6.0                | 800 tons           |
| Williams (A. S.), 1883-1888, surface, Danville, 10, 6.0-6.5          | 18,968 tons        |
| Williams (A. S.), 1890-1891, drift, Danville, 35-50, 5.5-6.0         | 846 tons           |
| Sketler (J.), 1891-1892  | 680 tons           |
| Taylor (William), 1892-1896 (idle 1894)                              | <u>4,049</u> tons  |
|  | 5,575 tons         |
| Reily (William), 1878-1879, drift, 60, 6.0                           | 500 tons           |
| Riley (W. J.), 1885-1887, surface, Danville, 7, 6.0                  | 3,750 tons         |
| Cotton (J. G.), 1882-1884, drift, Danville, 30, 5.5-6.0              | 1,900 tons         |
| Ray (William), 1883-1888, drift, Danville, 50-60, 5.5, RP            | 13,430 tons        |
| Lewis (David), 1883-1885, drift, Danville, 30-40, 5.5-5.67           | 1,320 tons         |
| Lewis (William), 1885-1887   | <u>701</u> tons    |
|  | 2,021 tons         |
| Fairchild (Perry), 1884-1888, drift, Danville, 65-70, 5.33-6.0, RP   | 10,900 tons        |
| Wright (Mason), 1884, surface  | none               |
| Daniels (Mat), 1883-1886, surface                                    | 886 tons           |
| Pricket (James), 1883-1884, surface                                  | 400 tons           |
| Swank (John), 1883-1884, surface                                     | 4,000 tons         |
| Frazey (T. D.), 1885-1885, drift, Danville, 50, 5.5                  | 200 tons           |
| Anderson (Olof), 1884-1885, drift, Danville, 60, 6.0                 | 1,600 tons         |
| Sullivan & Braceville, 1884-1885, drift, 50-70, 5.5-6.33, RP         | 750 tons           |
| Braceville (Isaac), 1885-1887  | <u>12,050</u> tons |
|  | 12,800 tons        |
| Lindsley (C.), 1884-1885, surface                                    | 500 tons           |
| Coon (John), 1885-1885, surface                                      | 150 tons           |
| Child (William), 1884-1888, drift, Danville, 40, 5.83, RP            | 1,610 tons         |
| Jenkins (William H.), 1885-1891, slope, Danville, 30-80, 5.0-6.0, RP | 12,700 tons        |
| Jenkins Brothers, 1891-1895  | 24,964 tons        |
| Jenkins (W. H.), 1895-1897   | 8,400 tons         |
| Earle (Ed), 1897-1899  | <u>9,000</u> tons  |
|  | 55,064 tons        |
| Bolton & Ray, 1885-1890, drift, Danville, 40-50, 5.0-6.0, RP         | 8,060 tons         |
| Ray & Bolton, 1890-1892  | 4,120 tons         |
| Ray (William), 1892-1902   | <u>9,350</u> tons  |
|  | 21,530 tons        |
| Lomax (Alfred), 1885-1887, drift, Danville, 40, 5.0-5.33, RP         | 1,555 tons         |
| Beado & Lane, 1885-1886, drift, 60 deep, 5.5, RP                     | 350 tons           |
| Morbaker (John), 1885-1888, drift, Danville, 60-70, 5.33, RP         | 1,100 tons         |
| Hatfield (James), 1885-1886, drift, Danville, 40, 5.5, RP            | 400 tons           |
| Lloyd & Rodda, 1885-1888, drift, Danville, 50, 5.33-5.5, RP          | 3,438 tons         |

|   |                    |
|---|--------------------|
| Rose & McKernon, 1885-1887, shaft, Danville, 40, 6.0, RP                    | 1,862 tons         |
| Hall (Albert), 1887-1891, slope, Danville, 80, 6.0, RP                      | 6,792 tons         |
| Ellison (Elmer), 1887-1890, drift, Danville, 50, 6.0, RP                    | 10,820 tons        |
| Llewellyn & Son, 1890-1892  | <u>2,790 tons</u>  |
|   | 13,610 tons        |
| Murray (D. H.), 1888-1888   | 275 tons           |
| Galvin (J.), 1887-1888, surface   | 1,400 tons         |
| Lloyd (John E.), No. 2 Mine, 1888-1889, slope, Danville, 60-80, 5.0-6.0, RP | 55,249 tons        |
| Lloyd (Ben F.), 1899-1901   | <u>3,700 tons</u>  |
|   | 58,949 tons        |
| Covey (James L.), 1888-1891, drift, Danville, 30-70, 5.0-6.0, RP            | 2,575 tons         |
| Ellison (Elmer), 1891-1896  | 6,380 tons         |
| Ellison (J. A.), 1896-1899  | 1,900 tons         |
| Ellison (Elmer), 1899-1900  | 2,662 tons         |
| Ellison (J. E.), 1900-1901  | <u>1,855 tons</u>  |
|   | 15,372 tons        |
| Frazee (Thomas D.), 1888-1893, drift, Danville, 60-80, 6.0-6.5, RP          | 11,450 tons        |
| Bracewell & Myers, 1888-1890, drift, Danville, 28-30, 6.0, RP               | 2,800 tons         |
| Bracewell (I. K.), 1890-1892  | <u>4,840 tons</u>  |
|   | 7,640 tons         |
| Lewarren (George), 1888-1890, drift, Danville, 30-90, 5.5-7.0, RP           | 2,130 tons         |
| Lewarren Brothers, 1890-1891  | 800 tons           |
| Aldridge Brothers, 1891-1893  | 6,280 tons         |
| Aldridge (John R.), 1893-1897   | 7,100 tons         |
| Boyd (J. W.), 1897-1898   | 1,200 tons         |
| Aldridge (John), 1898-1901  | <u>6,100 tons</u>  |
|   | 23,610 tons        |
| Morin (J.) & Sons, 1888-1890, Danville, 30-100, 5.0-6.0, RP                 | 1,506 tons         |
| Gray (E. F.) & Company, 1890-1891   | 1,950 tons         |
| Morin & Son, 1891-1892  | 4,000 tons         |
| Gray (John), 1892-1895  | 13,040 tons        |
| Gray (E. S.), No. 1 & 2 Mines, 1895-1902                                    | 87,175 tons        |
| Gray (E. S.), No. 3 Mine, 1902-1905   | <u>97,200 tons</u> |
|   | 204,871 tons       |
| Bracewell & Russell, 1888-1890, underground                                 | 1,600 tons         |
| Harrington (David), 1888-1889, drift, Danville, 50, 5.5-6.0, RP             | 1,320 tons         |
| Swanson (John), 1890-1891   | 1,760 tons         |
| Day (C. W.), 1891-1892  | 1,250 tons         |
| Cross & Wilkinson, 1892-1893  | <u>525 tons</u>    |
|   | 4,855 tons         |
| Mauck (John), 1888-1890, shaft, Danville, 85, 6.0, RP                       | 2,582 tons         |
| Mauck Brothers, 1890-1892   | <u>4,920 tons</u>  |
|   | 7,502 tons         |
| Leonard (Peter A.), 1888-1889, surface                                      | 2,167 tons         |
| Spickard Brothers, 1888-1889, surface, Danville, 8-12, 6.0-6.5              | 3,100 tons         |
| Spickard (Benjamin), 1889-1890  | 160 tons           |
| Gray (E.) & Company, 1890-1892  | 6,980 tons         |
| Burton (John), 1892-1893  | <u>3,200 tons</u>  |
|   | 13,440 tons        |

|  |                    |
|--|--------------------|
| King & Ray, 1888-1889  | 310 tons           |
| Schafer (William), 1889-1891, drift, Danville, 74, 6.0, RP                 | 910 tons           |
| Lee (William), 1888-1890, surface  | 230 tons           |
| Pickett (George E.), 1890-1890, drift, Danville, 30-90, 5.5-6.0, RP        | 120 tons           |
| Milner (John), 1890-1892   | 3,280 tons         |
| Beddow (Benjamin), 1892-1895   | 2,545 tons         |
| Kelly (Joseph), 1895-1898  | <u>1,174</u> tons  |
|  | 7,119 tons         |
| McGinsie (Michael), 1890-1893, drift, Danville, 40-55, 5.5-6.0             | 2,336 tons         |
| Dillon (Peter), 1890-1891, surface, Danville, 9-12, 6.0                    | 630 tons           |
| Smith (William), 1892-1893   | <u>1,680</u> tons  |
|  | 2,310 tons         |
| Toph (J. H.), 1890-1892, drift, Danville, 28-60, 6.0, RP                   | 1,104 tons         |
| Kuhn (Henry), 1892-1893  | <u>280</u> tons    |
|  | 1,384 tons         |
| Dittman (Henry), 1890-1893, drift, Danville, 30-45, 5.5-6.0, RP            | 3,516 tons         |
| Parle (Sylvester), No. 1 Mine, 1892-1902, slope, Danville, 35-110, 5.0-6.0 | 47,450 tons        |
| Parle (Sylvester), No.s 1 & 2 Mines, 1902-1903                             | 12,000 tons        |
| Parle (Sylvester), No. 2 Mine, 1903-1904                                   | <u>12,000</u> tons |
|  | 71,450 tons        |
| Jenkins Brothers, 1892-1893, surface, Danville, 8, 6.0                     | 1,560 tons         |
| Humes (A.), 1897-1899, drift, Herrin, 45, 6.0-6.5, RP                      | 2,200 tons         |
| Daniels (Orion), 1893-1894, surface, Danville, 10, 6.0                     | 750 tons           |
| Beard (John), 1894-1894, surface, Danville, 12, 6.0                        | 550 tons           |
| Hodgen (George), 1893-1894, shaft, Herrin, 45, 5.0, RP                     | 780 tons           |
| Bolton (Abraham), 1893-1894, drift, Danville, 50, 5.0-6.0, RP              | 1,860 tons         |
| Holycross (Grant), 1894-1895   | 1,600 tons         |
| Ashman Brothers, 1895-1897   | <u>2,148</u> tons  |
|  | 5,608 tons         |
| Pichon (Louis), 1893-1898, --, Danville, 60-100, 5.0-6.0, RP               | 9,877 tons         |
| Swanson (John), 1894-1904, slope, Danville, 40-85, 5.5-7.0, RP             | 12,533 tons        |
| Mobecker (John), 1894-1897, slope or drift, Danville, 30-65, 5.0-6.0       | 3,482 tons         |
| Miller (George), 1894-1895, slope, Danville, 75, 6.0, RP                   | 360 tons           |
| Miller & Spangler, 1897-1907, Batestown shaft, Danville, 100, 6.0, RP      | 32,348 tons        |
| Beatty (D. P.), 1894-1896, Danville, 40-50, 6.0, RP                        | 1,197 tons         |
| Hatfield (Charles), 1894-1895, Danville, 40-60, 5.5-6.0, RP                | 800 tons           |
| Orr (Samuel), 1895-1897  | 1,400 tons         |
| Beddow (B.), 1897-1898   | <u>850</u> tons    |
|  | 3,050 tons         |
| Danville Brick & Tile Company, 1895-1898, surface, Danville, 12-14         | 18,100 tons        |
| Danville Brick & Tile Company, 1898-1905, slope, Danville, 40-60, 5.5-6.0  | 45,879 tons        |

|  |                    |
|--|--------------------|
| Aldridge (William R.), 1896-1900, Danville, 30-80, 5.5-6.0, RP       | 10,300 tons        |
| Bales (Joseph), 1900-1905  | <u>6,725 tons</u>  |
|  | 17,025 tons        |
| Jones & Kline, 1895-1896, drift, 50, 6.0                             | 600 tons           |
| Hodges (Benjamin), 1896-1897, --, Danville, 40-175, 5.5-6.0, RP      | 750 tons           |
| Hodges (Bert), 1897-1898   | 1,400 tons         |
| Hodges (S. M.), 1898-1923  | <u>54,075 tons</u> |
|  | 56,225 tons        |
| Ogle (Samuel), 1896-1897, drift, 30, 5.0, RP                         | 400 tons           |
| Lloyd & Carrol, 1896-1897, drift, 30, 5.0, RP                        | 500 tons           |
| Olson (John), 1896-1897, drift, 40, 5.0, RP                          | 360 tons           |
| Cunningham & Company, 1897-1900, slope, Danville, 40-48, 5.0-6.0, RP | 3,350 tons         |
| Beddows (B.), 1900-1901  | <u>539 tons</u>    |
|  | 3,889 tons         |
| Quick & Ritter, 1899-1900, surface, Danville, 20-26, 5.5-6.0         | 350 tons           |
| Dobbins (C. J.), 1900-1902   | <u>2,000 tons</u>  |
|  | 2,350 tons         |
| Meeker (H.), 1900-1900, --, 38, 5.5, RP                              | 300 tons           |
| Harrington (D.), 1899-1901, slope, Danville, 56-60, 6.0, RP          | 1,700 tons         |
| Morin & Pickett, 1900-1900, drift, Danville, 45-90, 5.5-6.5, RP      | 897 tons           |
| Morin (D. P.), 1900-1901   | 3,620 tons         |
| Morin & Mobaker, 1901-1904   | <u>8,619 tons</u>  |
|  | 13,136 tons        |
| Cannon (J. C.), 1899-1901, Danville, 20-85, 6.0, RP & Surface        | 2,200 tons         |
| Shean & Company, 1899-1900, shaft, Danville, 60, 6.0, RP             | 6,000 tons         |
| Daniel (A. D.), 1900-1901  | <u>490 tons</u>    |
|  | 6,490 tons         |
| Wilson (A.), 1899-1900, drift, Danville, 40-45, 6.0, RP              | 400 tons           |
| Morton (T. J.), 1900-1901  | 800 tons           |
| Molton (William), 1901-1902  | <u>200 tons</u>    |
|  | 1,400 tons         |
| Carter Brothers, 1899-1907, Danville, 50-90, 6.0, RP                 | 24,400 tons        |
| Hodges (B. A.), 1901-1902  | 535 tons           |
| Frost (Milt), 1901-1902  | 600 tons           |
| Kelly (William), 1902-1902   | 500 tons           |
| Fredrickson (A.), 1901-1903, shaft, Danville, 50, 6.0, RP            | 1,743 tons         |
| Fredrickson (M. A.), 1903-1904, surface, Danville, 10, 6.0           | 800 tons           |
| Fredrickson (Henry), 1904-1906, drift, Danville, 60-70, 6.0, RP      | 645 tons           |
| Fredrickson (Andrew) & Son, 1906-1909                                | <u>4,806 tons</u>  |
|  | 5,451 tons         |
| Dettman (Henry), 1902-1903, slope, Danville, 50, 6.0                 | 5,300 tons         |
| Dettman (Henry), 1903-1905, surface, Danville, 10-30, 6.0            | 1,460 tons         |

|   |                    |
|---|--------------------|
| Kistler & Bookman, 1902-1903, shaft, Danville, 60, 6.0              | 1,205 tons         |
| Hurd & Webster, 1903-1904   | <u>1,026</u> tons  |
|   | 2,231 tons         |
| Webster Brothers, 1904-1906, drift, Danville, 125, 6.0              | 10,568 tons        |
| Webster (T. J.), 1906-1907  | <u>600</u> tons    |
|   | 11,168 tons        |
| Llewellyn & Company, 1902-1903, shaft, Danville, 70, 6.0, RP        | 600 tons           |
| Brennerman (Fred L.), 1902-1907, drift, Danville, 60, 6.0, RP       | 2,625 tons         |
| Hume (J. A.), 1902-1904, Danville, 60, 6.0, RP                      | 4,700 tons         |
| Alldredge (John), 1903-1904   | 1,400 tons         |
| Aldredge & Wolf, 1904-1906  | 7,000 tons         |
| Alldridge (John), 1906-1913   | <u>38,000</u> tons |
|   | 46,400 tons        |
| Fenwick (George W.), 1903-1905, slope, 80-100, 6.0, RP              | 2,700 tons         |
| Cantrall & Beeler, 1903-1904, drift, Danville, 60-90, 5.5-6.0, RP   | 1,300 tons         |
| Cantrall Brothers, 1904-1907  | <u>8,000</u> tons  |
|   | 9,300 tons         |
| Erikson (John), 1904-1905, drift, Danville, 60, 6.0, RP             | 301 tons           |
| Aylar (Charles E.), 1904-1905, drift, Danville, 80, 6.0, RP         | 400 tons           |
| Long (Edward) & Company, 1904-1907, drift, Danville, 60, 6.0, RP    | 700 tons           |
| Beddow (Ben R.), 1904-1906, drift, Danville, 60-80, 6.0, RP         | 1,401 tons         |
| Polhemus (A. L.), 1906-1909   | <u>3,558</u> tons  |
|   | 4,959 tons         |
| Downing & Murkenson, 1904-1905, drift, Danville, 60, 6.0, RP        | 1,133 tons         |
| Willey (Hiram), 1904-1905, slope, Danville, 41, 6.0, RP             | 1,200 tons         |
| Lind (August), 1904-1906, slope, Danville, 43-70, 6.0, RP           | 7,126 tons         |
| Lind (Charles), 1906-1907   | <u>5,964</u> tons  |
|   | 13,090 tons        |
| Spangler (B. H.), 1905-1908, slope, Danville, 75, 6.0, RP           | 4,300 tons         |
| Van Horn (W.), 1905-1906, drift, Danville, 10, 6.0, RP              | 3,000 tons         |
| Jones & Spangler, 1905-1906, drift, Danville, 90, 6.0, RP           | 3,056 tons         |
| Reily & Daughy, 1906-1910, surface, Danville, —, 6.0                | 59,526 tons        |
| Contract Mining, 1910-1911  | <u>25,696</u> tons |
|   | 85,222 tons        |
| Moulton (C. C.), 1910-1913, underground, Danville, 28, 5.83-6.0, RP | 7,600 tons         |
| Ogden (P.), 1911-1918, drift, Danville, 35-100, 5.67-6.0, RP        | 10,935 tons        |
| Ellis (Oscar), 1911-1912, drift, Danville, —, 6.0, RP               | 600 tons           |
| House & Ritter, 1911-1912, drift, Danville, —, 6.0, RP              | 500 tons           |
| Lewis (Ed), 1912-1912, shaft, Danville, 30, 6.0, RP                 | 500 tons           |
| High (Charles), 1911-1912, drift, Danville, —, 6.0, RP              | 500 tons           |

|  |                   |
|--|-------------------|
| Wilson (Anthony), 1911-1915, drift, Danville, 50-150, 5.5-6.0, RP  | 2,250 tons        |
| Westfall Coal Company, 1915-1916                                   | <u>650 tons</u>   |
|  | 2,900 tons        |
| Morin & Tolbert, 1912-1915, drift, Herrin, —, 6.0, RP              | 5,040 tons        |
| Spangler (B. E.), 1912-1913, drift, Danville, —, 5.5, RP           | 6,200 tons        |
| Lind (Charles E.), 1912-1916, slope, Danville, 60-70, 6.0-6.17, RP | 21,300 tons       |
| Jones Brothers, 1915-1917, slope, Danville, 40, 6.0, RP            | 2,950 tons        |
| Jones & Compton, 1917-1918   | <u>625 tons</u>   |
| Jones & Devold, 1918-1919  | <u>300 tons</u>   |
|  | 3,875 tons        |
| Cunningham & Cunningham, 1916-1916, slope, Danville, 40, 6.0, RP   | 100 tons          |
| Cunningham (J. A.), 1918-1918                                      | 300 tons          |
| Brannaman (Fred L.), 1916-1923                                     | 3,525 tons        |
| Brannaman & Proctor (Sy), 1923-1924                                | <u>150 tons</u>   |
|  | 3,675 tons        |
| Parson (William J.), 1917-1921                                     | 2,129 tons        |
| Vermilion Heights Coal Company, 1917-1918                          | 6,000 tons        |
| Spangler & Hume, 1917-1918   | 6,755 tons        |
| Spangler & Cessna, 1918-1922                                       | 20,625 tons       |
| Spangler Brothers, 1923-1925                                       | <u>5,539 tons</u> |
|  | 32,919 tons       |
| Larven (Bert), 1917-1918   | 4,000 tons        |
| Morin & Larren, 1919-1920  | 1,820 tons        |
| Morin & Lawrie, 1920-1921  | <u>900 tons</u>   |
| Morin (D. D.), 1923-1924   | <u>600 tons</u>   |
|  | 7,320 tons        |
| Kilgore (W. D.), 1917-1918   | 2,000 tons        |
| Capitol Coal Company, 1917-1921                                    | 8,000 tons        |
| Meeker (B. F.), 1917-1918  | 1,500 tons        |
| Meeker (O. F. & E.), 1918-1919                                     | 2,600 tons        |
| Meeks (B.), 1919-1922  | 3,900 tons        |
| Morgan & Meeker, 1922-1923   | <u>2,000 tons</u> |
|  | 10,000 tons       |
| Bracewell (Sam), 1917-1918   | 1,303 tons        |
| Wyatt (R. S.), 1917-1918   | 1,250 tons        |
| Wyatt (Marion), 1918-1919  | <u>1,400 tons</u> |
|  | 2,650 tons        |
| Kist (Everett), 1917-1918  | 1,250 tons        |
| Reader (George), 1917-1918   | 1,188 tons        |
| Smith (Guy H.), 1917-1918  | 1,100 tons        |
| Bales & Brothers, 1917-1918  | 1,040 tons        |
| Bales (Arthur L.), 1918-1919                                       | 1,664 tons        |
| Bales Brothers (A. L. & P. W.), 1919-1924                          | 7,323 tons        |
| Bales (A. L.), 1924-1925   | <u>1,312 tons</u> |
|  | 11,339 tons       |



|  |                   |
|--|-------------------|
| Martin (Presley), 1918-1918                        | 600 tons          |
| Standard Coal Company, 1918-1921 (idle 1919, 1920) | 5,500 tons        |
| Boyce (S. P. & A.), 1917-1918                      | 400 tons          |
| Davidson (H. M.), 1917-1919                        | 650 tons          |
| Hodges (Ben), 1917-1918                            | 280 tons          |
| Shaw (James), 1918-1918                            | 250 tons          |
| George (Van), 1918-1924 (South Danville)           | 3,439 tons        |
| Swanson (John), 1918-1918                          | 244 tons          |
| Burris (James), 1918-1919                          | 4,070 tons        |
| Dubois & Middleton Coal Company, 1918-1919         | 2,832 tons        |
| Middleton (James), 1919-1921                       | <u>4,216</u> tons |
|  | 7,048 tons        |
| Cramer & Schramm, 1918-1921                        | 6,384 tons        |
| Thomas (James M.), 1918-1923                       | 7,500 tons        |
| O'Connell (John), 1918-1919                        | 1,155 tons        |
| Del Valley (A.) & Son, 1919-1920                   | 3,000 tons        |
| Holycross & Son, 1918-1919                         | 350 tons          |
| Gause & English, 1919-1920                         | 1,800 tons        |
| Gause (O. A.), 1920-1921                           | <u>3,700</u> tons |
|  | 5,500 tons        |
| Evans (Ed), 1918-1923                              | 1,330 tons        |
| Songer (George), 1918-1926                         | 1,505 tons        |
| Rites & Lewis, 1918-1919                           | 260 tons          |
| Ritter & Hunt, 1919-1920                           | 300 tons          |
| Rites & Son, 1920-1922                             | 300 tons          |
| Ritter (Noah), 1922-1925                           | 1,835 tons        |
| Hunt & Ritter, 1927-1927                           | 1,500 tons        |
| Rasol & Ritter, 1928-1929                          | 300 tons          |
| Riggle (R. A.) & Ridge (W. A.), 1930-1931          | 4,639 tons        |
| Ritter & Son, 1932-1932                            | 1,200 tons        |
| Ritter (H.), 1934-1934                             | <u>240</u> tons   |
|  | 10,574 tons       |
| Mobaker (John), 1918-1919                          | 250 tons          |
| Hunt & Hunt, 1918-1919                             | 200 tons          |
| Hunt (Joe), 1920-1921                              | <u>200</u> tons   |
|  | 400 tons          |
| Phillips (Archie) & Son, 1919-1920                 | 1,778 tons        |
| Farmen (William), 1919-1919                        | 100 tons          |
| Mauck (L. T.), 1919-1920                           | 1,500 tons        |
| Frederickson (Edwin), 1919-1921                    | 3,831 tons        |

|   |                   |
|---|-------------------|
| Hible & Miller, 1919-1920                 | 1,400 tons        |
| Hible (Ed), 1920-1925                     | 1,425 tons        |
| Hible & Miller, 1926-1926                 | 40 tons           |
| Hible (Ed), 1927-1927                     | 900 tons          |
| Hibble & Haun, 1928-1928                  | <u>1,000</u> tons |
|   | 4,765 tons        |
| Bowker & Stueble, 1919-1920               | 1,000 tons        |
| Ritter (Noah), 1919-1920                  | 800 tons          |
| Hatfield (Charles), 1919-1920             | 400 tons          |
| Barker (John C.), 1919-1921               | 700 tons          |
| Hinton (George C.), 1919-1923             | 725 tons          |
| Proctor (Sy), 1919-1923                   | 1,100 tons        |
| Proctor (George), 1923-1924               | <u>125</u> tons   |
|   | 1,225 tons        |
| Jones (Ted), 1919-1920                    | 200 tons          |
| Jones (William M.), 1920-1921             | <u>200</u> tons   |
|   | 400 tons          |
| Aldredge (William), 1920-1921             | 300 tons          |
| Miller & Wayne, 1921-1921                 | 100 tons          |
| Roye (P. H.), 1921-1921                   | 100 tons          |
| Cableway Coal Company, 1922-1923          | 8,000 tons        |
| Ogan & Son, 1922-1926                     | 7,200 tons        |
| Willer & Son, 1922-1923                   | 1,500 tons        |
| Hembry (Charles), 1922-1924               | 2,336 tons        |
| Carroll & Johnson, 1925-1929, underground | 556 tons          |
| Wyatt (R. S.), 1922-1927                  | 2,250 tons        |
| Gandry (Arthur), 1922-1923                | 500 tons          |
| Trimby (H. A.), 1923-1923                 | 500 tons          |
| Orr Brothers, 1922-1923                   | 425 tons          |
| Stuart (W. M.), 1922-1923                 | 400 tons          |
| Whelchel (W. C.), 1922-1923               | 300 tons          |
| Smith, Waugh & Frost, 1922-1923           | 267 tons          |
| Green (Homer), 1922-1923                  | 200 tons          |
| Bracewell & Gleason, 1922-1924            | 100 tons          |
| King & Gleason, 1925-1925                 | 168 tons          |
| Gleason & Bracewell, 1926-1926            | <u>815</u> tons   |
|   | 1,083 tons        |
| Martin (William A.), 1923-1925            | 10,549 tons       |
| Martin (Charles), 1925-1925               | <u>280</u> tons   |
|   | 10,829 tons       |

|  |                 |
|--|-----------------|
| K. & B. Coal Company, 1923-1925        | 10,993 tons     |
| Cloyd (D. R.), 1924-1924               | 3,200 tons      |
| Taylor (Art), 1926-1927                | 260 tons        |
| Shull (Charles), 1923-1929             | 1,199 tons      |
| Carroll (George), 1924-1924            | 100 tons        |
| Harrier & Ervin, 1924-1924             | 63 tons         |
| Grimes (Fred), 1925-1929               | 1,265 tons      |
| Charelini Coal Company, 1925-1925      | 1,150 tons      |
| Jenkins (Charles) & Son, 1925-1925     | 850 tons        |
| White Brothers Coal Company, 1925-1926 | 890 tons        |
| Jones & Gleason, 1925-1925             | 582 tons        |
| Jenkins & Gleason, 1926-1926           | <u>640 tons</u> |
|  | 1,222 tons      |
| McMahon & Hass, 1925-1925              | 550 tons        |
| Hume (N. E.) & Watson (J.), 1925-1925  | 475 tons        |
| Hume (N. E.), 1926-1926                | <u>310 tons</u> |
|  | 785 tons        |
| Stevens & Cunningham, 1925-1925        | 350 tons        |
| Jones & Cunningham, 1927-1927          | 75 tons         |
| Jones & Seright, 1928-1928, surface    | <u>200 tons</u> |
|  | 275 tons        |
| Lane (Vance) Coal Company, 1925-1926   | 458 tons        |
| Stevens & Follis, 1925-1925            | 175 tons        |
| Meeker & Meeker, 1925-1925             | 125 tons        |
| Meeker Brothers, 1926-1926             | <u>160 tons</u> |
|  | 285 tons        |
| Aldridge (William) & Son, 1926-1926    | 342 tons        |
| Shedlack (Andrew), 1926-1926           | 300 tons        |
| Hill Coal Company, 1926-1926           | 250 tons        |
| McClure & Sullivan, 1927-1927          | 350 tons        |
| Heath Brothers, 1926-1926              | 75 tons         |
| Jones Brothers, 1926-1926              | 52 tons         |
| Beaver & Beaver, 1926-1926             | 38 tons         |
| Woolwine Coal Company, 1926-1927       | 182 tons        |
| Glaspie (Charles), 1926-1927           | 90 tons         |
| Wilson (A.), 1927-1927                 | 300 tons        |
| Kadis Coal Company, 1927-1927          | 47 tons         |

|  |                             |
|--|-----------------------------|
| Trudicker (O. R.), 1927-1927                               | 1,800 tons                  |
| Lunor (Sam H.), 1927-1927                                  | 1,200 tons                  |
| Coubert Brothers, 1927-1927                                | 201 tons                    |
| York & Taylor, 1927-1927                                   | 97 tons                     |
| Smith Brothers, 1927-1928, underground                     | 2,637 tons                  |
| Smith Coal Company, 1934-1934, underground                 | 75 tons                     |
| Proctor (Syrus), 1927-1927                                 | 50 tons                     |
| Chandler & McCool, 1928-1929, surface                      | 1,025 tons                  |
| Farris (Harry), 1928-1928, underground                     | 600 tons                    |
| Lanam & Ferry, 1929-1931, surface                          | 12,169 tons                 |
| Rhodes (J.), 1928-1928, underground                        | 400 tons                    |
| Boen (Ira) Coal Company, 1928-1929, underground            | 1,540 tons                  |
| Spicer (Jacob), 1928-1931, underground                     | 12,200 tons                 |
| Buford (J.), 1928-1929, surface                            | 235 tons                    |
| Sholtz & Son, 1928-1928, underground                       | 100 tons                    |
| Buford (J.), 1928-1928, surface                            | 100 tons                    |
| Rodgers & Johnson, 1928-1928, underground                  | 40 tons                     |
| Rodgers (Ed), 1929-1929                                    | <u>150</u> tons<br>190 tons |
| L. & O. Coal Company, 1929-1929, underground               | 1,400 tons                  |
| Muker Brothers, No. 1 Mine, 1929-1929, underground         | 1,176 tons                  |
| Muker Brothers, No. 2 Mine, 1929-1929, underground         | 340 tons                    |
| Indian Hill Coal Company, 1929-1931, underground           | 3,654 tons                  |
| Atterbury (Frank), 1929-1929, underground                  | 760 tons                    |
| Gibbs & Wilburn, 1929-1929, underground                    | 350 tons                    |
| Edward Coal Company, 1929-1929, underground                | 250 tons                    |
| Hunt Brothers, 1929-1929, underground                      | 180 tons                    |
| Commercial Coal Company, 1930-1930, underground            | 1,070 tons                  |
| Lind Brothers Coal Company, 1931-1935, underground         | 9,860 tons                  |
| Lind Brothers Coal Company, 1935-1935, underground         | 300 tons                    |
| Jones (C. O.), 1931-1931, underground                      | 2,040 tons                  |
| Sporcich (Steve) & Yonkus (George), 1931-1932, underground | 2,925 tons                  |
| Hunt (Henry), 1931-1931, underground                       | 1,050 tons                  |
| Hunt (Bert) & O'Sullivan (Dale), 1932-1932, underground    | 1,000 tons                  |

|   |             |
|---|-------------|
| Blue (J. W.), 1931-1932, underground                          | 3,000 tons  |
| Michael (G. R.), 1932-1932, underground                       | 4,050 tons  |
| Jacob, Dubois & Johnson, 1932-1932, underground               | 3,000 tons  |
| Palmer (C. W.), 1932-1932, underground                        | 1,000 tons  |
| Vallett (Felix), 1932-1932, underground                       | 1,000 tons  |
| Wastings (Charles), 1932-1932, underground                    | 1,000 tons  |
| Danville Community Mine, 1933-1933                            | 9,694 tons  |
| Pilkington Coal Company, 1933-1935, underground               | 2,790 tons  |
| Singleton Coal Company, 1933-1934, underground                | 1,450 tons  |
| Fredrickson Coal Company, No. 2 Mine, 1934-1935, underground  | 282 tons    |
| Dale Coal Company, 1933-1933, underground                     | 1,500 tons  |
| Sullivan (Dale), 1934-1934, underground                       | 800 tons    |
| Shady Valley Coal Company, No. 1 Mine, 1934-1936, underground | 6,100 tons  |
| Shady Valley Coal Company, No. 3 Mine, 1935-1936, underground | 3,924 tons  |
| Shady Valley Coal Company, 1941-1943                          | 18,251 tons |
| Miller & Rohrer Coal Company, 1934-1936, underground          | 7,858 tons  |
| Miller Coal Company, 1935-1935, underground                   | 1,623 tons  |
| Rohrer & Jenkins Coal Company, 1935-1935, underground         | 175 tons    |
| Rohrer & Jenkins Coal Company, 1935-1935, underground         | 800 tons    |
| O. K. Coal Company, 1934-1936, underground                    | 3,028 tons  |
| Miller Coal Company, 1934-1936, underground                   | 3,301 tons  |
| White Coal Company, 1934-1935, underground                    | 1,167 tons  |
| Mt. Pleasant Coal Company, 1934-1935, underground             | 964 tons    |
| Christenson Coal Company, 1934-1934, underground              | 476 tons    |
| Arctic Coal Company, 1934-1935, underground                   | 600 tons    |
| Anderson (Dave) Coal Company, 1934-1935, underground          | 362 tons    |
| K. O. H. L. Coal Company, 1934-1934, underground              | 200 tons    |
| Willis (Abe) & Burkhead (P.), 1934-1934, underground          | 100 tons    |
| King & Wilson, 1934-1934, underground                         | 90 tons     |
| Lewis (Tom), 1934-1934, underground                           | 45 tons     |
| Gibbs (B. O.) Coal Company, 1934-1935, underground            | 75 tons     |
| H. B. Coal Company, 1934-1934, underground                    | 22 tons     |
| Haskins Coal Company, 1934-1935, underground                  | 40 tons     |

|  |            |
|--|------------|
| Murphy & Addams, 1935-1935, underground            | 1,194 tons |
| Glaspy Coal Company, 1935-1936, underground        | 459 tons   |
| Brewer Coal Company, 1935-1936, underground        | 375 tons   |
| Brown Stripping Company, 1935-1936, surface        | 2,194 tons |
| Niccum Coal Company, 1935-1935, underground        | 73 tons    |
| Schmidt Coal Company, 1941-1942, underground       | 738 tons   |
| Shuman & Sons Coal Company, 1934-1938, underground | 1,930 tons |

#### **FOSTERBURG**

|                              |          |
|------------------------------|----------|
| Hope Coal Company, 1922-1923 | 640 tons |
|------------------------------|----------|

#### **HILLERY**

|  |                   |
|--|-------------------|
| Spangler (Thomas) & Co., 1886-1889, shaft, Danville, 36-50, 5.67-6.0, RP | 996 tons          |
| Casteel (Z. Taylor), 1889-1892   | 2,470 tons        |
| Benson (George W.), 1892-1894  | <u>2,120</u> tons |
|  | 5,586 tons        |
| Holycross (C.) Coal Company, 1934-1935, underground                      | 350 tons          |

#### **VERMILION HEIGHTS**

|                             |          |
|-----------------------------|----------|
| Swisher Brothers, 1926-1926 | 600 tons |
|-----------------------------|----------|

## INDEX OF MINES IN THE DANVILLE NORTHWEST QUADRANGLE

|   |        |
|---|--------|
| Addams (Murphy & Addams) . . . . .                  | 63     |
| Aldredge (William) . . . . .                        | 60     |
| Aldredge & Wolf . . . . .                           | 57     |
| Aldridge (John R.) . . . . .                        | 54     |
| Aldridge (John) . . . . .                           | 54     |
| Aldridge (W. R.) . . . . .                          | 52     |
| Aldridge (William R.) . . . . .                     | 55     |
| Aldridge (William) & Son . . . . .                  | 61     |
| Aldridge Brothers . . . . .                         | 54     |
| Alldredge (John) . . . . .                          | 57     |
| Alldridge (John) . . . . .                          | 57     |
| Anderson (Dave) Coal Company . . . . .              | 63     |
| Anderson (Olof) . . . . .                           | 53     |
| Arctic Coal Company . . . . .                       | 63     |
| Armstrong (Bales & Armstrong) . . . . .             | 49     |
| Ashman Brothers . . . . .                           | 55     |
| Atterbury (Frank) . . . . .                         | 62     |
| Aylar (Charles E.) . . . . .                        | 57     |
| Ayrshire Coal Company, Inc., Div. of AMAX . . . . . | 12     |
| Ayrshire Collieries Corporation . . . . .           | 12     |
| Bales (A. L.) . . . . .                             | 58     |
| Bales (Arthur L.) . . . . .                         | 58     |
| Bales (Henry) . . . . .                             | 48     |
| Bales (Joe) & Son . . . . .                         | 48     |
| Bales (Joseph) . . . . .                            | 55     |
| Bales (Perry) . . . . .                             | 25     |
| Bales (Perry) Coal Company . . . . .                | 48     |
| Bales & Armstrong . . . . .                         | 49     |
| Bales & Brothers . . . . .                          | 58     |
| Bales & McFarland . . . . .                         | 49     |
| Bales Brothers (A. L. & P. W.) . . . . .            | 58     |
| Barker (John C.) . . . . .                          | 60     |
| Batestown shaft . . . . .                           | 55     |
| Beado & Lane . . . . .                              | 53     |
| Beard (John) . . . . .                              | 55     |
| Beatty (D. P.) . . . . .                            | 55     |
| Beaver & Beaver . . . . .                           | 61     |
| Beddo (George) . . . . .                            | 52     |
| Beddow (B.) . . . . .                               | 55     |
| Beddow (Ben R.) . . . . .                           | 57     |
| Beddow (Benjamin) . . . . .                         | 55     |
| Beddows (B.) . . . . .                              | 56     |
| Beeler (Cantrall & Beeler) . . . . .                | 57     |
| Bensel (B.) . . . . .                               | 52     |
| Bensil (B.) . . . . .                               | 52     |
| Bensil (Balser) . . . . .                           | 52     |
| Bensil (George) . . . . .                           | 52     |
| Benson (George W.) . . . . .                        | 52, 64 |
| Big Diamond Coal Company . . . . .                  | 28     |
| Black Diamond Coal Company . . . . .                | 27     |
| Blue (J. W.) . . . . .                              | 62     |
| Boen (Ira) Coal Company . . . . .                   | 62     |
| Bolton (Abraham) . . . . .                          | 55     |
| Bolton & Ray . . . . .                              | 53     |
| Bonnett (Alex H.) . . . . .                         | 36     |
| Bookman (Kistler & Bookman) . . . . .               | 56     |
| Bowen (Martin & Bowen) . . . . .                    | 21     |
| Bowker & Stueble . . . . .                          | 59     |
| Bowman (Charles E.) . . . . .                       | 23     |
| Boyce (S. P. & A.) . . . . .                        | 58     |
| Boyd (J. W.) . . . . .                              | 54     |
| Braceville (Isaac) . . . . .                        | 53     |
| Braceville (Sullivan & Braceville) . . . . .        | 53     |



|                                   |    |
|-----------------------------------|----|
| Bracewell (I. K.)                 | 54 |
| Bracewell (Sam)                   | 58 |
| Bracewell & Gleason               | 60 |
| Bracewell & Myers                 | 54 |
| Bracewell & Russell               | 54 |
| Brannaman (Fred L.)               | 58 |
| Brannaman & Proctor               | 58 |
| Breen (J.)                        | 52 |
| Brennerman (Fred L.)              | 57 |
| Brewer Coal Company               | 63 |
| Brown Stripping Company           | 63 |
| Buford (J.)                       | 62 |
| Burkhead (Willis & Burkhead)      | 63 |
| Burris (James)                    | 59 |
| Burton (John)                     | 54 |
| Cableway Coal Company             | 60 |
| Calvert Coal Company              | 38 |
| Cannon (J. C.)                    | 56 |
| Cantrall & Beeler                 | 57 |
| Cantrall Brothers                 | 57 |
| Capitol Coal Company              | 58 |
| Carbon Coal Company               | 47 |
| Carnahan (General)                | 32 |
| Carrol (Lloyd & Carrol)           | 56 |
| Carroll (George)                  | 60 |
| Carroll & Johnson                 | 60 |
| Carter Brothers                   | 56 |
| Casteel (Z. Taylor)               | 64 |
| Cessna (Spangler & Cessna)        | 58 |
| Chandler & McCool                 | 62 |
| Charelini Coal Company            | 61 |
| Child (William)                   | 53 |
| Christenson Coal Company          | 63 |
| Cloyd (D. R.)                     | 60 |
| Cole (Fanny)                      | 51 |
| Cole (Mrs. W. A.)                 | 51 |
| Cole (W. A.)                      | 51 |
| Commercial Coal Company           | 62 |
| Compton (Jones & Compton)         | 58 |
| Contract Coal Company, No. 1 Mine | 31 |
| Contract Coal Company, No. 2 Mine | 31 |
| Contract Coal Company, No. 4 Mine | 31 |
| Contract Mining                   | 57 |
| Contract Mining Company           | 31 |
| Coon (John)                       | 53 |
| Cotton (J. G.)                    | 53 |
| Coubert Brothers                  | 61 |
| Covey (James L.)                  | 54 |
| Cramer & Schramm                  | 59 |
| Crawford (W. F.) & Sons           | 34 |
| Cross & Wilkinson                 | 54 |
| Cunningham (J. A.)                | 58 |
| Cunningham (Jones & Cunningham)   | 61 |
| Cunningham (Stevens & Cunningham) | 61 |
| Cunningham & Company              | 56 |
| Cunningham & Cunningham           | 58 |
| Dale Coal Company                 | 63 |
| Daniel (A. D.)                    | 56 |
| Daniels (Mat)                     | 53 |
| Daniels (Orion)                   | 55 |
| Danville Brick & Tile Company     | 55 |
| Danville Community Mine           | 63 |
| Daugherty (Reilly & Daugherty)    | 31 |
| Daugherty (Reilly & Daugherty)    | 57 |
| Davidson (H. M.)                  | 58 |

|                                       |            |
|---------------------------------------|------------|
| Davis (John E.)                       | 52         |
| Davis (William)                       | 52         |
| Day (C. W.)                           | 54         |
| Del Valley (A.)                       | 59         |
| Dettman (Henry)                       | 56         |
| Devold (Jones & Devold)               | 58         |
| Diamond Coal Company                  | 32         |
| Dillon (Peter)                        | 55         |
| Dittman (Henry)                       | 55         |
| Dobbins (C. J.)                       | 43, 52, 56 |
| Dobbins (Charles)                     | 43         |
| Dobbins (John)                        | 43         |
| Dobbins (William)                     | 43         |
| Downing & Murkenson                   | 57         |
| Dubois (Jacob, Dubois & Johnson)      | 62         |
| Dubois & Middleton Coal Company       | 59         |
| Earle (Ed)                            | 53         |
| Economy Coal & Mining Company         | 30         |
| Edward Coal Company                   | 62         |
| Electric Coal Company                 | 10         |
| Electric Coal Company, No. 1 Mine     | 11         |
| Electric Coal Company, No. 6 Mine     | 50         |
| Elliot Brothers                       | 23         |
| Ellis (Oscar)                         | 57         |
| Ellison (Elmer)                       | 53, 54     |
| Ellison (J. A.)                       | 54         |
| Ellison (J. E.)                       | 54         |
| Ellsworth (J. W.)                     | 29         |
| English (Gause & English)             | 59         |
| Erikson (John)                        | 57         |
| Ervin (Harrier & Ervin)               | 60         |
| Eureka Coal Company                   | 47         |
| Evans (Ed)                            | 59         |
| Fairchild (Perry)                     | 53         |
| Fairview Collieries Corporation       | 12         |
| Farmen (William)                      | 59         |
| Farris (Harry)                        | 62         |
| Fenwick (George W.)                   | 57         |
| Ferry (Lanam & Ferry)                 | 62         |
| Fisher (John)                         | 52         |
| Fletcher Brothers Coal Company        | 39         |
| Fletcher's Middle Fork Mine           | 33         |
| Follis (Stevens & Follis)             | 61         |
| France (Dan)                          | 52         |
| Franze (Thomas)                       | 52         |
| Frazee (Thomas D.)                    | 54         |
| Frazey (T. D.)                        | 53         |
| Frederickson (Edwin)                  | 59         |
| Frederickson (Oscar R.) Coal Company  | 20         |
| Frederickson Coal Company, No. 1 Mine | 18         |
| Frederickson Coal Company, No. 2 Mine | 24         |
| Frederickson Coal Company, No. 4 Mine | 22         |
| Fredrickson (A.)                      | 56         |
| Fredrickson (Andrew)                  | 56         |
| Fredrickson (Henry)                   | 56         |
| Fredrickson (M. A.)                   | 56         |
| Fredrickson Coal Company              | 63         |
| Frost (Milt)                          | 56         |
| Frost (Smith, Waugh & Frost)          | 60         |
| Galvin (J.)                           | 54         |
| Gandry (Arthur)                       | 60         |
| Gause (O. A.)                         | 59         |
| Gause & English                       | 59         |
| George (Van)                          | 59         |
| Gibbs (B. O.) Coal Company            | 63         |

|   |        |
|---|--------|
| Gibbs & Wilburn . . . . .                 | 62     |
| Glaspie (Charles) . . . . .               | 61     |
| Glaspy Coal Company . . . . .             | 63     |
| Gleason (Jenkins & Gleason) . . . . .     | 61     |
| Gleason (Jones & Gleason) . . . . .       | 61     |
| Gleason (King & Gleason) . . . . .        | 60     |
| Gleason & Bracewell . . . . .             | 60     |
| Glenburn Coal Company . . . . .           | 29, 36 |
| Gray (E. F.) & Company . . . . .          | 54     |
| Gray (E. S.), No. 1 & 2 Mines . . . . .   | 54     |
| Gray (E. S.), No. 3 Mine . . . . .        | 54     |
| Gray (E.) & Company . . . . .             | 54     |
| Gray (John) . . . . .                     | 54     |
| Green (Homer) . . . . .                   | 60     |
| Grimes (Fred) . . . . .                   | 61     |
| H. B. Coal Company . . . . .              | 63     |
| Hall (Albert) . . . . .                   | 53     |
| Harmattan Mine . . . . .                  | 12     |
| Harrier & Ervin . . . . .                 | 60     |
| Harrington (D.) . . . . .                 | 56     |
| Harrington (David) . . . . .              | 54     |
| Haskins Coal Company . . . . .            | 63     |
| Hass (McMahon & Hass) . . . . .           | 61     |
| Hatfield (Charles) . . . . .              | 55, 60 |
| Hatfield (James) . . . . .                | 53     |
| Haun (Hibble & Haun) . . . . .            | 59     |
| Haun & Sons Coal Company . . . . .        | 17     |
| Heath Brothers . . . . .                  | 61     |
| Hembry (Charles) . . . . .                | 60     |
| Hibble & Haun . . . . .                   | 59     |
| Hible (Ed) . . . . .                      | 59     |
| Hible (Jones & Hible) . . . . .           | 51     |
| Hible & Miller . . . . .                  | 59     |
| High (Charles) . . . . .                  | 57     |
| Hill Coal Company . . . . .               | 61     |
| Hillery No. 1 Mine . . . . .              | 10     |
| Hinton (George C.) . . . . .              | 60     |
| Hodge (Benjamin) . . . . .                | 52     |
| Hodgen (George) . . . . .                 | 55     |
| Hodges (B. A.) . . . . .                  | 56     |
| Hodges (Ben) . . . . .                    | 58     |
| Hodges (Benjamin) . . . . .               | 55     |
| Hodges (Bert) . . . . .                   | 56     |
| Hodges (S. M.) . . . . .                  | 56     |
| Holton (George) . . . . .                 | 52     |
| Holycross (C.) Coal Company . . . . .     | 64     |
| Holycross (Grant) . . . . .               | 55     |
| Holycross & Son . . . . .                 | 59     |
| Hope Coal Company . . . . .               | 64     |
| House & Ritter . . . . .                  | 57     |
| Howard (Martin & Howard) . . . . .        | 21     |
| Hume (J. A.) . . . . .                    | 57     |
| Hume (N. E.) . . . . .                    | 61     |
| Hume (N. E.) & Watson (J.) . . . . .      | 61     |
| Hume (Spangler & Hume) . . . . .          | 58     |
| Humes (A.) . . . . .                      | 55     |
| Hunt (Bert) & O'Sullivan (Dale) . . . . . | 62     |
| Hunt (Bert) Coal Company . . . . .        | 17     |
| Hunt (Henry) . . . . .                    | 62     |
| Hunt (Joe) . . . . .                      | 59     |
| Hunt & Hunt . . . . .                     | 59     |
| Hunt & Ritter . . . . .                   | 59     |
| Hunt Brothers . . . . .                   | 62     |
| Hurd & Webster . . . . .                  | 56     |
| I Wonder Coal Company . . . . .           | 52     |

|   |        |
|---|--------|
| Indian Hill Coal Company . . . . .                | 62     |
| Inwood Mine . . . . .                             | 52     |
| Jacob, Dubois & Johnson . . . . .                 | 62     |
| Jenkins (Alvin) . . . . .                         | 52     |
| Jenkins (Charles) & Son . . . . .                 | 61     |
| Jenkins (Rohrer & Jenkins Coal Company) . . . . . | 63     |
| Jenkins (W. H.) . . . . .                         | 53     |
| Jenkins (William H.) . . . . .                    | 53     |
| Jenkins & Gleason . . . . .                       | 61     |
| Jenkins Brothers . . . . .                        | 53, 55 |
| Johnson (Carroll & Johnson) . . . . .             | 60     |
| Johnson (Jacob, Dubois & Johnson) . . . . .       | 62     |
| Johnson (Rodgers & Johnson) . . . . .             | 62     |
| Jones (C. O.) . . . . .                           | 62     |
| Jones (Henry) . . . . .                           | 52     |
| Jones (Ted) . . . . .                             | 60     |
| Jones (William M.) . . . . .                      | 60     |
| Jones & Compton . . . . .                         | 58     |
| Jones & Cunningham . . . . .                      | 61     |
| Jones & Devold . . . . .                          | 58     |
| Jones & Gleason . . . . .                         | 61     |
| Jones & Hible . . . . .                           | 51     |
| Jones & Kline . . . . .                           | 55     |
| Jones & Seright . . . . .                         | 61     |
| Jones & Spangler . . . . .                        | 57     |
| Jones Brothers . . . . .                          | 58, 61 |
| K. & B. Coal Company . . . . .                    | 60     |
| K. O. H. L. Coal Company . . . . .                | 63     |
| Kadis Coal Company . . . . .                      | 61     |
| Kelly (John) . . . . .                            | 52     |
| Kelly (Joseph) . . . . .                          | 55     |
| Kelly (William) . . . . .                         | 52, 56 |
| Kelly Branch Coal Company, No. 2 Mine . . . . .   | 25     |
| Kilgore (W. D.) . . . . .                         | 58     |
| King & Gleason . . . . .                          | 60     |
| King & Ray . . . . .                              | 54     |
| King & Wilson . . . . .                           | 63     |
| Kist (Everett) . . . . .                          | 58     |
| Kistler & Bookman . . . . .                       | 56     |
| Kline (Jones & Kline) . . . . .                   | 55     |
| Kuhn (Henry) . . . . .                            | 55     |
| L. & O. Coal Company . . . . .                    | 62     |
| Lamb-Singleton Coal Company . . . . .             | 22     |
| Lanam & Ferry . . . . .                           | 62     |
| Lane (Beado & Lane) . . . . .                     | 53     |
| Lane (Vance) Coal Company . . . . .               | 61     |
| Larren (Morin & Larrin) . . . . .                 | 58     |
| Larven (Bert) . . . . .                           | 58     |
| Lawrie (Morin & Lawrie) . . . . .                 | 58     |
| Lee (William) . . . . .                           | 54     |
| Leonard (Peter A.) . . . . .                      | 54     |
| Leveridge (Otto) . . . . .                        | 52     |
| Lewarren (George) . . . . .                       | 54     |
| Lewarren Brothers . . . . .                       | 54     |
| Lewis (David) . . . . .                           | 53     |
| Lewis (Ed) . . . . .                              | 57     |
| Lewis (John) . . . . .                            | 42     |
| Lewis (Rites & Lewis) . . . . .                   | 59     |
| Lewis (Tom) . . . . .                             | 63     |
| Lewis (William) . . . . .                         | 53     |
| Lind (August) . . . . .                           | 40, 57 |
| Lind (Charles E.) . . . . .                       | 57     |
| Lind (Charles E.) & Son Coal Company . . . . .    | 40     |
| Lind (Charles E.) Coal Company . . . . .          | 40     |
| Lind (Charles) . . . . .                          | 57     |

|   |        |
|---|--------|
| Lind Brothers Coal Company . . . . .                  | 62     |
| Lind Coal Company . . . . .                           | 40, 45 |
| Lind Coal Company, No. 2 Mine . . . . .               | 21     |
| Lind Coal Company, No. 3 Mine . . . . .               | 16     |
| Lindsley (C.) . . . . .                               | 53     |
| Llewellyn & Company . . . . .                         | 57     |
| Llewellyn & Son . . . . .                             | 54     |
| Lloyd (Ben F.) . . . . .                              | 54     |
| Lloyd (John E.) . . . . .                             | 52     |
| Lloyd (John E.), No. 2 Mine . . . . .                 | 54     |
| Lloyd & Carrol . . . . .                              | 56     |
| Lloyd & Rodda . . . . .                               | 53     |
| Lomax (Alfred) . . . . .                              | 53     |
| Lone Oak Coal Company . . . . .                       | 46     |
| Long (Edward) & Company . . . . .                     | 57     |
| Loyd (Eliza) . . . . .                                | 52     |
| Lunor (Sam H.) . . . . .                              | 61     |
| Maddox Coal Company, No. 2 Mine . . . . .             | 14     |
| Martin (Charles) . . . . .                            | 60     |
| Martin (Presley) . . . . .                            | 58     |
| Martin (William A.) . . . . .                         | 60     |
| Martin & Bowen . . . . .                              | 21     |
| Martin & Howard . . . . .                             | 21     |
| Mauck (John) . . . . .                                | 54     |
| Mauck (L. T.) . . . . .                               | 59     |
| Mauck Brothers . . . . .                              | 54     |
| McClure & Sullivan . . . . .                          | 61     |
| McCool (Chandler & McCool) . . . . .                  | 62     |
| McFarland (Bales & McFarland) . . . . .               | 49     |
| McGinsie (Michael) . . . . .                          | 55     |
| McKernon (Rose & McKernon) . . . . .                  | 53     |
| McMahon & Hass . . . . .                              | 61     |
| Meadowlark Farms, Inc. . . . .                        | 12     |
| Meeker (B. F.) . . . . .                              | 58     |
| Meeker (H.) . . . . .                                 | 56     |
| Meeker (Morgan & Meeker) . . . . .                    | 58     |
| Meeker (O. F. & E.) . . . . .                         | 58     |
| Meeker & Meeker . . . . .                             | 61     |
| Meeker Brothers . . . . .                             | 61     |
| Meeks (B.) . . . . .                                  | 58     |
| Michael (G. R.) . . . . .                             | 62     |
| Middle Fork Coal Company . . . . .                    | 39     |
| Middle Fork Coal Company, No. 2 Mine . . . . .        | 33     |
| Middleton (Dubois & Middleton Coal Company) . . . . . | 59     |
| Middleton (James) . . . . .                           | 59     |
| Miller (George) . . . . .                             | 55     |
| Miller (Hible & Miller) . . . . .                     | 59     |
| Miller & Rohrer Coal Company . . . . .                | 63     |
| Miller & Spangler . . . . .                           | 55     |
| Miller & Wayne . . . . .                              | 60     |
| Miller Coal Company . . . . .                         | 63     |
| Milner (John) . . . . .                               | 55     |
| Mission Mining Company, No. 1 Mine . . . . .          | 11     |
| Mobaker (John) . . . . .                              | 59     |
| Mobaker (Morin & Mobaker) . . . . .                   | 56     |
| Mobecker (John) . . . . .                             | 55     |
| Molton (William) . . . . .                            | 56     |
| Moore (W. J.) . . . . .                               | 52     |
| Moore (William J.), No. 1 Mine . . . . .              | 36     |
| Moore (William J.), No. 2 Mine . . . . .              | 51     |
| Moore (William) . . . . .                             | 52     |
| Moorehouse Coal Company . . . . .                     | 26     |
| Morbaker (John) . . . . .                             | 53     |
| Morgan & Meeker . . . . .                             | 58     |
| Morin (D. D.) . . . . .                               | 58     |

|                                     |    |
|-------------------------------------|----|
| Morin (D. P.)                       | 56 |
| Morin (J.) & Sons                   | 54 |
| Morin & Larren                      | 58 |
| Morin & Lawrie                      | 58 |
| Morin & Mobaker                     | 56 |
| Morin & Pickett                     | 56 |
| Morin & Son                         | 54 |
| Morin & Tolbert                     | 57 |
| Morton (T. J.)                      | 56 |
| Moss Bank Mine                      | 32 |
| Moulton (C. C.)                     | 57 |
| Mt. Pleasant Coal Company           | 63 |
| Muker Brothers, No. 1 Mine          | 62 |
| Muker Brothers, No. 2 Mine          | 62 |
| Murkenson (Downing & Murkenson)     | 57 |
| Murphy & Addams                     | 63 |
| Murray (D. H.)                      | 54 |
| Myers (Bracewell & Myers)           | 54 |
| Niccum Coal Company                 | 63 |
| Norin Strip Pit                     | 51 |
| O. K. Coal Company                  | 63 |
| Ogan & Son                          | 60 |
| Ogden (P.)                          | 57 |
| Ogle (Samuel)                       | 56 |
| Olson (John)                        | 56 |
| Orr (Samuel)                        | 55 |
| Orr Brothers                        | 60 |
| O'Connell (John)                    | 59 |
| O'Sullivan (Hunt & O'Sullivan)      | 62 |
| Palmer (C. W.)                      | 62 |
| Paris & Danville Railroad Company   | 32 |
| Parle (Dick)                        | 15 |
| Parle (J. H.)                       | 15 |
| Parle (Sylvester), No. 1 Mine       | 55 |
| Parle (Sylvester), No. 2 Mine       | 55 |
| Parle (Sylvester), No.s 1 & 2 Mines | 55 |
| Parson (William J.)                 | 58 |
| Phillip & Tucker                    | 51 |
| Phillips (Archie)                   | 59 |
| Phillips (K.)                       | 51 |
| Phillips (T.)                       | 51 |
| Pichon (Louis)                      | 55 |
| Pickett (George E.)                 | 55 |
| Pickett (Morin & Pickett)           | 56 |
| Pierce Coal Company                 | 16 |
| Pilkington Coal Company             | 63 |
| Pilot Mine                          | 35 |
| Polhemus (A. L.)                    | 57 |
| Price (James)                       | 52 |
| Pricket (James)                     | 53 |
| Proctor (George)                    | 60 |
| Proctor (Sy)                        | 60 |
| Proctor (Sy), (Brannaman & Proctor) | 58 |
| Proctor (Syrus)                     | 62 |
| Quick & Ritter                      | 56 |
| Rasol & Ritter                      | 59 |
| Ray (King & Ray)                    | 54 |
| Ray (William)                       | 53 |
| Ray & Bolton                        | 53 |
| Reader (George)                     | 58 |
| Reid (W. B.)                        | 10 |
| Reilly & Daugherty                  | 31 |
| Reily (William)                     | 53 |
| Reily & Daughy                      | 57 |
| Rhodes (J.)                         | 62 |

|   |        |
|---|--------|
| Ridge (Riggle & Ridge)                  | 59     |
| Riggle (R. A.) & Ridge (W. A.)          | 59     |
| Riley (W. J.)                           | 53     |
| Rites & Lewis                           | 59     |
| Rites & Son                             | 59     |
| Ritter (Clifford)                       | 16     |
| Ritter (H.)                             | 59     |
| Ritter (House & Ritter)                 | 57     |
| Ritter (Noah)                           | 59     |
| Ritter (Quick & Ritter)                 | 56     |
| Ritter (Rasol & Ritter)                 | 59     |
| Ritter & Hunt                           | 59     |
| Ritter & Son                            | 59     |
| Ritter Coal Company, No. 3 Mine         | 16     |
| Riverside Coal Company                  | 19     |
| Rodda (Lloyd & Rodda)                   | 53     |
| Rodgers (Ed)                            | 62     |
| Rodgers & Johnson                       | 62     |
| Rohrer (Miller & Rohrer Coal Company)   | 63     |
| Rohrer & Jenkins Coal Company           | 63     |
| Rose & McKernon                         | 53     |
| Roye (P. H.)                            | 60     |
| Russell (Bracewell & Russell)           | 54     |
| Russell (Stanburg & Russell)            | 13     |
| Schafer (William)                       | 54     |
| Schmidt Coal Company                    | 63     |
| Schramm (Cramer & Schramm)              | 59     |
| Seright (Jones & Seright)               | 61     |
| Shady Valley Coal Company               | 63     |
| Shady Valley Coal Company, No. 1 Mine   | 63     |
| Shady Valley Coal Company, No. 3 Mine   | 63     |
| Shaw (James)                            | 59     |
| Shean & Company                         | 56     |
| Shedlack (Andrew)                       | 61     |
| Sholtz & Son                            | 62     |
| Short (John)                            | 32     |
| Shull (Charles)                         | 60     |
| Shuman & Sons Coal Company              | 64     |
| Singleton (Lamb-Singleton Coal Company) | 22     |
| Singleton Coal Company                  | 63     |
| Sketler (J.)                            | 53     |
| Smith (Guy H.)                          | 58     |
| Smith (William)                         | 55     |
| Smith Brothers                          | 23, 61 |
| Smith Coal Company                      | 61     |
| Smith, Waugh & Frost                    | 60     |
| Songer (George)                         | 59     |
| Spangler (B. E.)                        | 57     |
| Spangler (B. H.)                        | 57     |
| Spangler (Jones & Spangler)             | 57     |
| Spangler (Miller & Spangler)            | 55     |
| Spangler (Thomas) & Company             | 64     |
| Spangler & Cessna                       | 58     |
| Spangler & Hume                         | 58     |
| Spangler Brothers                       | 58     |
| Spicer (Jacob)                          | 62     |
| Spickard (Benjamin)                     | 54     |
| Spickard Brothers                       | 54     |
| Sporcich (Steve) & Yonkus (George)      | 62     |
| Square Deal Coal Company                | 23     |
| Stanburg & Russell                      | 13     |
| Standard Coal Company                   | 58     |
| Stansbury & Watkins Coal Company        | 44     |
| Star Mines                              | 52     |
| Stevens & Cunningham                    | 61     |



|  |            |
|--|------------|
| Stevens & Follis . . . . .                           | 61         |
| Stuart (W. M.) . . . . .                             | 60         |
| Stueble (Bowker & Stueble) . . . . .                 | 59         |
| Sullivan (Dale) . . . . .                            | 63         |
| Sullivan (McClure & Sullivan) . . . . .              | 61         |
| Sullivan & Braceville . . . . .                      | 53         |
| Swallow (C. M.) . . . . .                            | 29         |
| Swallow (S. H.) . . . . .                            | 29         |
| Swank (John) . . . . .                               | 53         |
| Swanson (John) . . . . .                             | 54, 55, 59 |
| Swisher (Samuel) . . . . .                           | 35, 37     |
| Swisher Brothers . . . . .                           | 64         |
| Taylor (Art) . . . . .                               | 60         |
| Taylor (William) . . . . .                           | 53         |
| Taylor (York & Taylor) . . . . .                     | 61         |
| Thomas (James M.) . . . . .                          | 59         |
| Tolbert (Morin & Tolbert) . . . . .                  | 57         |
| Toph (J. H.) . . . . .                               | 55         |
| Trimby (H. A.) . . . . .                             | 60         |
| Trudicker (O. R.) . . . . .                          | 61         |
| Tucker (Phillip & Tucker) . . . . .                  | 51         |
| Two Rivers Coal Company, No. 4 Mine . . . . .        | 11         |
| United Electric Coal Company, No. 1 Mine . . . . .   | 11         |
| United Electric Coal Company, No. 6 Mine . . . . .   | 50         |
| Vallett (Felix) . . . . .                            | 62         |
| Van Horn (W.) . . . . .                              | 57         |
| Veach (Louis) . . . . .                              | 52         |
| Vermilion Heights Coal Company . . . . .             | 58         |
| Wagner (P.) . . . . .                                | 52         |
| Wastings (Charles) . . . . .                         | 62         |
| Watkins (Stansbury & Watkins Coal Company) . . . . . | 44         |
| Watson (Hume & Watson) . . . . .                     | 61         |
| Watts (George) . . . . .                             | 41, 43     |
| Waugh (Smith, Waugh & Frost) . . . . .               | 60         |
| Wayne (Miller & Wayne) . . . . .                     | 60         |
| Webster (Hurd & Webster) . . . . .                   | 56         |
| Webster (T. J.) . . . . .                            | 56         |
| Webster Brothers . . . . .                           | 56         |
| Western Brick No. 2 Mine . . . . .                   | 31         |
| Westfall Coal Company . . . . .                      | 57         |
| Whelchel (W. C.) . . . . .                           | 60         |
| White Brothers Coal Company . . . . .                | 61         |
| White Coal Company . . . . .                         | 63         |
| Widner (Albert) . . . . .                            | 52         |
| Wilburn (Gibbs & Wilburn) . . . . .                  | 62         |
| Wilkinson (Cross & Wilkinson) . . . . .              | 54         |
| Willer & Son . . . . .                               | 60         |
| Willey (Hiram) . . . . .                             | 57         |
| Williams (A. S.) . . . . .                           | 52, 53     |
| Williams (S. A.) . . . . .                           | 52         |
| Willis (Abe) & Burkhead (P.) . . . . .               | 63         |
| Wilson (A.) . . . . .                                | 56, 61     |
| Wilson (Anthony) . . . . .                           | 57         |
| Wilson (King & Wilson) . . . . .                     | 63         |
| Wolf (Aldredge & Wolf) . . . . .                     | 57         |
| Wolf (George) . . . . .                              | 52         |
| Woolwine Coal Company . . . . .                      | 61         |
| Wright (Mason) . . . . .                             | 53         |
| Wyatt (Herbert J.) . . . . .                         | 19         |
| Wyatt (Marion) . . . . .                             | 58         |
| Wyatt (R. S.) . . . . .                              | 58, 60     |
| Yonkus (Sporcich & Yonkus) . . . . .                 | 62         |
| York & Taylor . . . . .                              | 61         |

Funding for this project was supplied by the Illinois Department of Transportation.