

Coal Mines in Illinois De Soto Quadrangle Jackson, Williamson & Franklin Counties, Illinois

Herrin Coal

This map accompanies the Coal Mines Directory for the De Soto Quadrangle and map of mines in the Springfield and Other Coals, De Soto Quadrangle. Consult the directory for a complete explanation of the information shown on this map.

Mining Method

- Room & Pillar (RP)
- Room & Pillar Basic (RPB)
- Modified Room & Pillar (MRP)
- Room & Pillar Panel (RPP)
- Blind Room & Pillar (BRP)
- Checkerboard Room & Pillar (CRP)
- High Extraction Retreat (HER)
- Longwall (LW)
- Underground, Method Unknown
- Strip Mine
- Auger Mine
- General Area of Mining

Other Areas Depicted

- Non-Coal Mines

Source of Mine Outline

- Final Mine Map
- Not Final Mine Map
- Undated Mine Map
- Incomplete Mine Map
- Secondary Source Map

Tipple, Shaft, Slope, Drift Locations

- Strip Mine Tipple - Active
- Strip Mine Tipple - Abandoned
- Mine Shaft - Active
- Mine Shaft - Abandoned
- Mine Slope - Active
- Mine Slope - Abandoned
- Mine Drift - Active
- Mine Drift - Abandoned
- Air Shaft
- Uncertain Location
- Uncertain Type of Opening

Other Points Depicted

- Non-Coal Mines

Location



Mine Annotation (space permitting)

Company
Mine Name
ISGS Index No., Years of Operation

Disclaimer

Please check the Coal Section at the Illinois State Geological Survey's web site at <https://www.isgs.illinois.edu> for the most up-to-date version of these products.

Note that each quadrangle scale mined-out area map requires the use of the associated text directory for full explanation of map features and mine attributes. Also note that some quadrangles have multiple seams of mining and therefore more than one map may be available for a particular quadrangle. Please take care to check for multiple maps, as extensive mining may exist in the other seams.

The maps and digital files used for these studies were compiled from data obtained from a variety of public and private sources and have varying degrees of completeness and accuracy. This compilation map presents reasonable interpretation of the geology of the area and is based on available data. Locations of some mine features may be offset by 500 feet or more due to errors in the original source maps, the compilation process, digitizing, or a combination of these factors. These data are not intended for use in site-specific screening or decision-making. Use of these documents does not eliminate the need for detailed studies to fully understand the geology of a specific site. The Illinois State Geological Survey, Prairie Research Institute, or the University of Illinois make no guarantee, expressed or implied, regarding the correctness of the interpretations presented in this data set and accept no liability for the consequences of decisions made by others on the basis of the information presented here.

These maps were designed for use at 1:24,000. Enlarging the map may reduce accuracy, as the original scale of the source maps used to compile the outlines shown varies from 1:400 to 1:150,000, and some mine locations are known only from text descriptions. See the accompanying mine directory for the original scale of the source map used for a specific mine to check accuracy of a given portion of the map. Areas with no mines shown may still be undermined; see the unlocated mines list at the back of each mine directory.

The image of the U.S.G.S. topographic base map was projected from the original UTM to Lambert Conformal Conic.

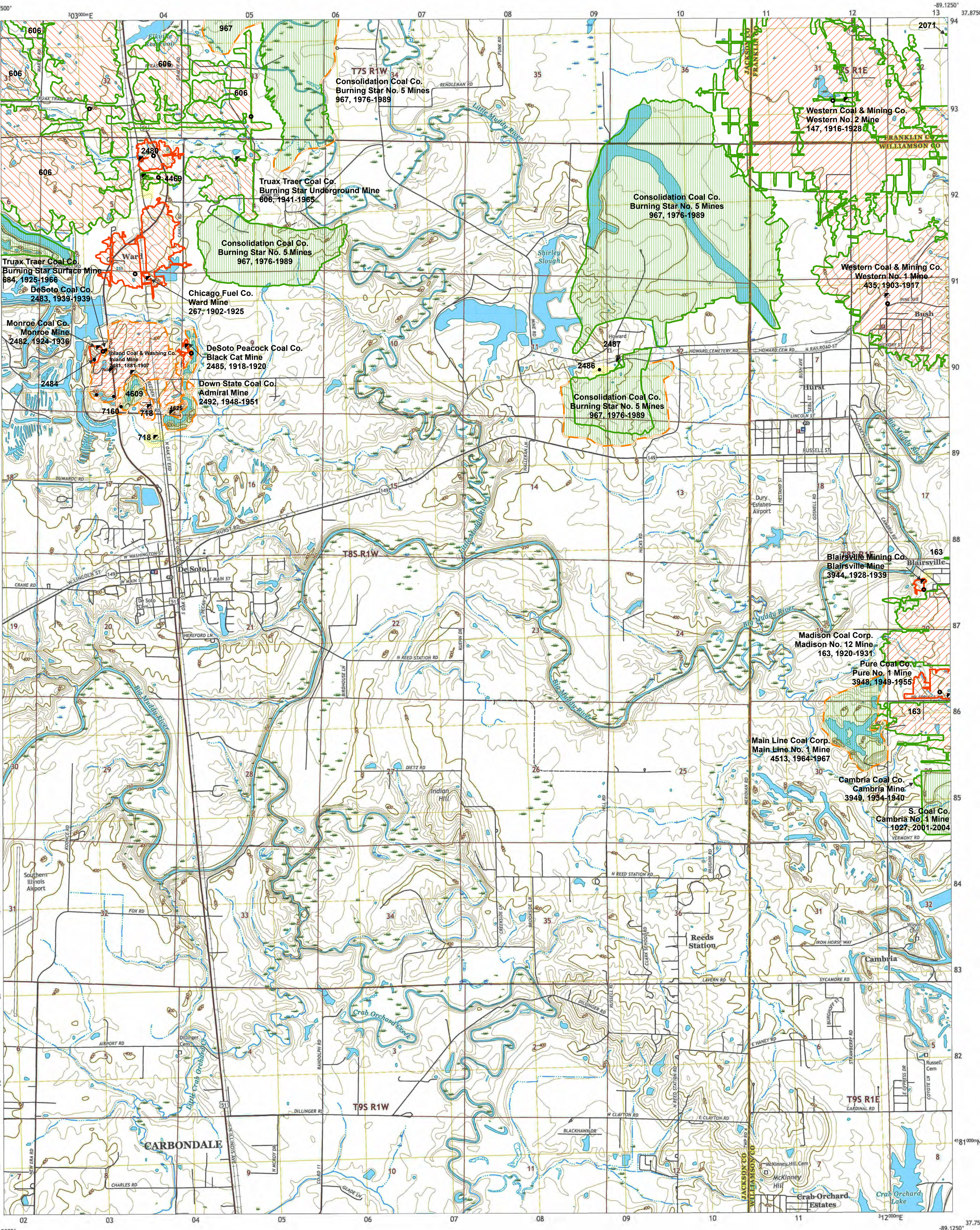
ILLINOIS
Illinois State Geological Survey
PRAIRIE RESEARCH INSTITUTE

Prairie Research Institute
Illinois State Geological Survey
615 E. Peabody Dr.
Champaign, IL 61820

Mine Outlines Compiled by
Jennifer M. Obrad

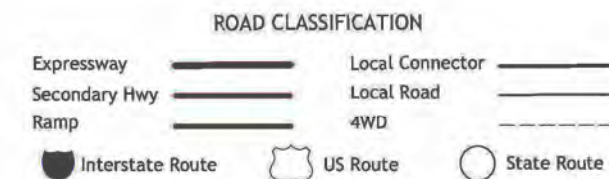
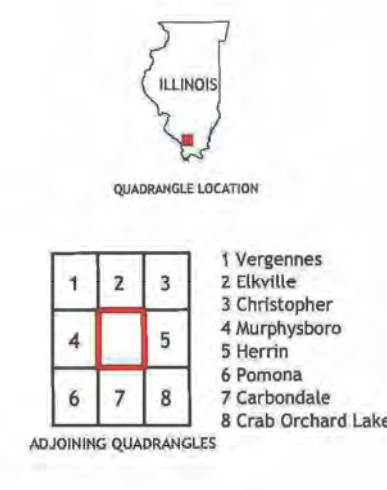
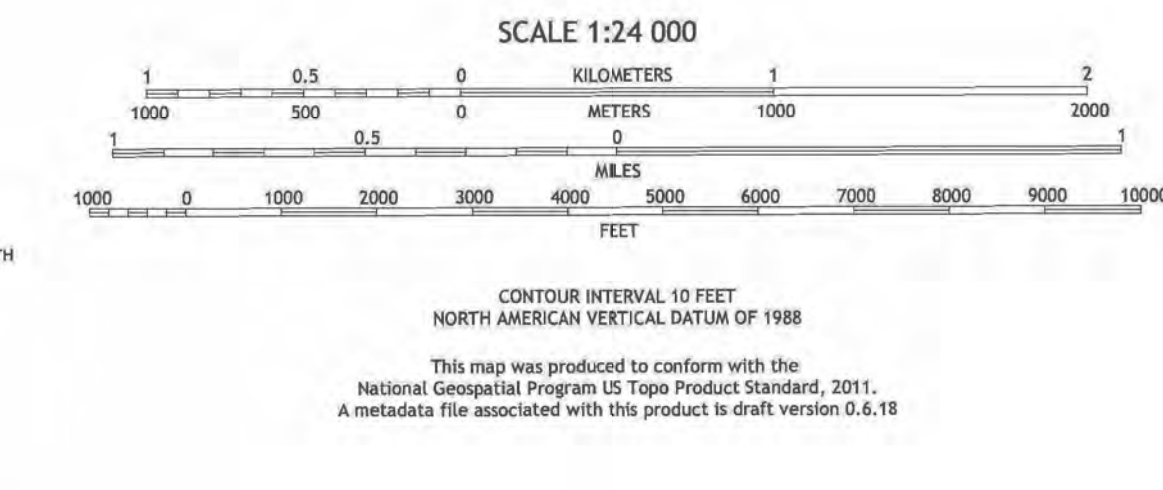
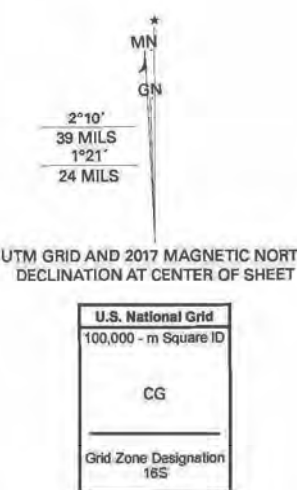
Revised:
Alan R. Myers 05-14-2025

June 3, 2008

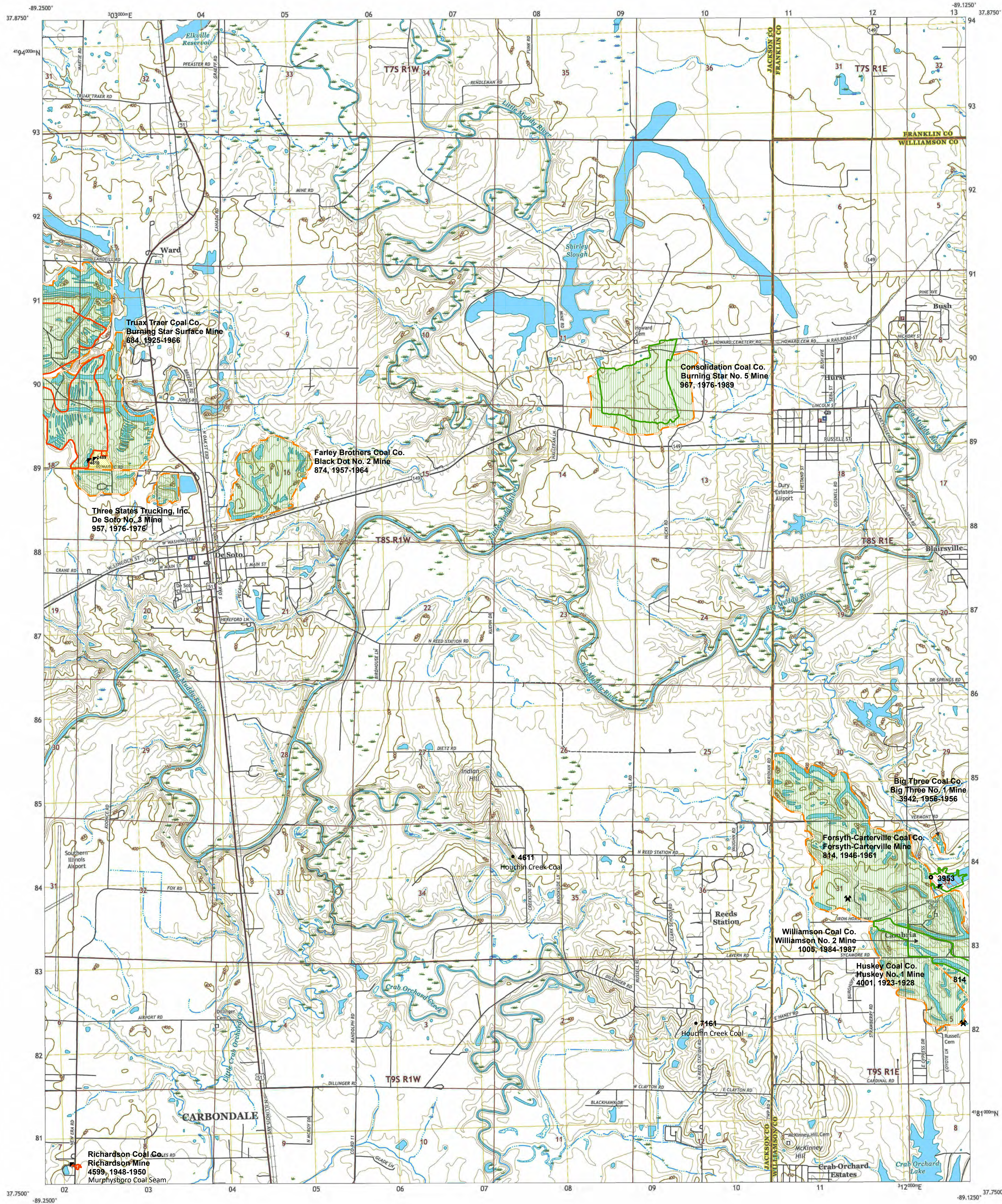


Produced by the United States Geological Survey
North American Datum of 1983 (NAD83)
World Geodetic System of 1984 (WGS84). Projection and
1 000-meter grid/Universal Transverse Mercator, Zone 16S
This map is not a legal document. Boundaries may be
generalized for this map scale. Private lands within government
reservations may not be shown. Obtain permission before
entering private lands.

Imagery: NAIP, August 2015 - October 2015
Roads: U.S. Census Bureau, 2017
Names: U.S. Census Bureau, 2017
Hydrography: National Hydrography Dataset, 2002 - 2011
Contours: National Elevation Dataset, 2008 - 2014
Boundaries: Multiple sources; see metadata file 2014 - 2016
Public Land Survey System: BLM, 2017
Wetlands: National Wetlands Inventory, 1982



DE SOTO, IL
2018



Coal Mines in Illinois De Soto Quadrangle Jackson, Williamson & Franklin Counties, Illinois

Springfield & Other Coals

This map accompanies the Coal Mines Directory for the De Soto Quadrangle and map of mines in the Herrin Coal, De Soto Quadrangle. Consult the directory for a complete explanation of the information shown on this map.

Mining Method

- Room & Pillar (RP)
- Room & Pillar Basic (RPB)
- Modified Room & Pillar (MRP)
- Room & Pillar Panel (RPP)
- Blind Room & Pillar (BRP)
- Checkerboard Room & Pillar (CRP)
- High Extraction Retreat (HER)
- Longwall (LW)
- Underground, Method Unknown
- Strip Mine
- Auger Mine
- General Area of Mining

Other Areas Depicted

- Non-Coal Mines

Source of Mine Outline

- Final Mine Map
- Not Final Mine Map
- Undated Mine Map
- Incomplete Mine Map
- Secondary Source Map

Tipple, Shaft, Slope, Drift Locations

- Strip Mine Tipple - Active
- Strip Mine Tipple - Abandoned
- Mine Shaft - Active
- Mine Shaft - Abandoned
- Mine Slope - Active
- Mine Slope - Abandoned
- Mine Drift - Active
- Mine Drift - Abandoned
- Air Shaft
- Uncertain Location
- Uncertain Type of Opening

Other Points Depicted

- Non-Coal Mines

Location



Mine Annotation (space permitting)

Company
Mine Name
ISGS Index No., Years of Operation

Disclaimer

Please check the Coal Section at the Illinois State Geological Survey's web site at <https://www.isgs.illinois.edu> for the most up-to-date version of these products.

Note that each quadrangle scale mined-out area map requires the use of the associated text directory for full explanation of map features and mine attributes. Also note that some quadrangles have multiple seams of mining and therefore more than one map may be available for a particular quadrangle. Please take care to check for multiple maps, as extensive mining may exist in the other seams.

The maps and digital files used for these studies were compiled from data obtained from a variety of public and private sources and have varying degrees of completeness and accuracy. This compilation map presents reasonable interpretation of the geology of the area and is based on available data. Locations of some mine features may be offset by 500 feet or more due to errors in the original source maps, the compilation process, digitizing, or a combination of these factors. These data are not intended for use in site-specific screening or decision-making. Use of these documents does not eliminate the need for detailed studies to fully understand the geology of a specific site. The Illinois State Geological Survey, Prairie Research Institute, or the University of Illinois make no guarantee, expressed or implied, regarding the correctness of the interpretations presented in this data set and accept no liability for the consequences of decisions made by others on the basis of the information presented here.

These maps were designed for use at 1:24,000. Enlarging the map may reduce accuracy, as the original scale of the source maps used to compile the outlines shown varies from 1:400 to 1:150,000, and some mine locations are known only from text descriptions. See the accompanying mine directory for the original scale of the source map used for a specific mine to check accuracy of a given portion of the map. Areas with no mines shown may still be undermined; see the unlocated mines list at the back of each mine directory.

The image of the U.S.G.S. topographic base map was projected from the original UTM to Lambert Conformal Conic.

ILLINOIS
Illinois State Geological Survey
PRAIRIE RESEARCH INSTITUTE

Prairie Research Institute
Illinois State Geological Survey
615 E. Peabody Dr.
Champaign, IL 61820

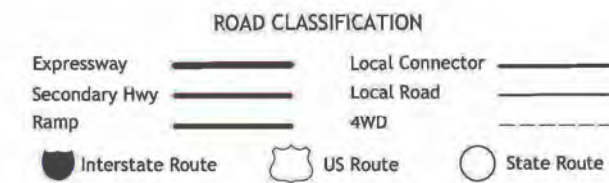
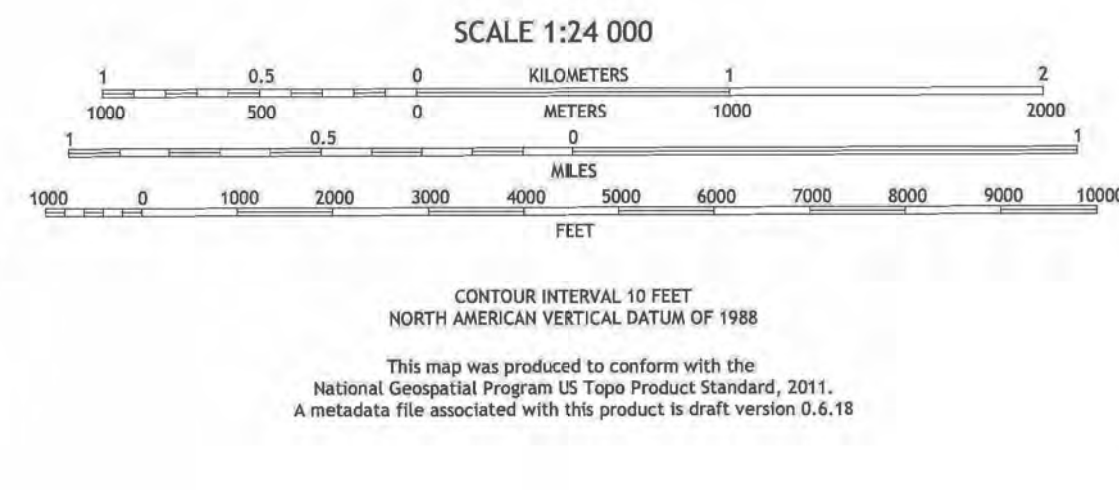
Mine Outlines Compiled by
Jennifer M. Obrad

Revised:
Alan R. Myers 05-14-2025

June 3, 2008

Produced by the United States Geological Survey
North American Datum of 1983 (NAD83)
World Geodetic System of 1984 (WGS84). Projection and
1 000-meter grid/Universal Transverse Mercator, Zone 16S
This map is not a legal document. Boundaries may be
generalized for this map scale. Private lands within government
reservations may not be shown. Obtain permission before
entering private lands.

Imagery:.....NAIP, August 2015 - October 2015
Roads:.....U.S. Census Bureau, 2017
Names:.....USGS, 1980 - 2017
Hydrography:.....National Hydrography Dataset, 2002 - 2011
Contours:.....National Elevation Dataset, 2008 - 2014
Boundaries:.....Multiple sources; see metadata file 2014 - 2016
Public Land Survey System:.....BLM, 2017
Wetlands:.....FWS National Wetlands Inventory, 1982



DE SOTO, IL
2018

DIRECTORY OF COAL MINES IN ILLINOIS 7.5-MINUTE QUADRANGLE SERIES DE SOTO QUADRANGLE JACKSON, WILLIAMSON & FRANKLIN COUNTIES

Jennifer M. Obrad & C. Chenoweth



Department of Natural Resources
ILLINOIS STATE GEOLOGICAL SURVEY
2008
Revised 2025

**DIRECTORY OF COAL MINES IN ILLINOIS
7.5-MINUTE QUADRANGLE SERIES
DE SOTO QUADRANGLE
JACKSON, WILLIAMSON & FRANKLIN COUNTIES**

2008
Revised 2025

ILLINOIS STATE GEOLOGICAL SURVEY
William Shilts, Chief

Natural Resources Building
615 East Peabody Drive
Champaign, Illinois 61820

Phone 1-217-244-4610
Fax 1-217-333-2830

Cover photo Track-mounted duckbill loading machine at a Peabody Coal Company mine, ca. 1915.

DISCLAIMER: The accuracy and completeness of mine maps and directories vary with the availability of reliable information. Maps and other information used to compile this mine map and directory were obtained from a variety of sources and the accuracy of some of the original information cannot be verified. Consequently, the Illinois State Geological Survey (ISGS) cannot guarantee the mine maps are free of errors and disclaims any responsibility for damages that may result from actions or decisions based on them.

The ISGS updates the maps and directories periodically, and welcomes any new information or corrections. Please contact the Coal Section of the ISGS at the address shown on the title page of this directory, or telephone (217) 244-4610.

Printed by authority of the State of Illinois/2008

CONTENTS

INTRODUCTION	1
MINING IN THE DE SOTO QUADRANGLE	1
PART I EXPLANATION OF MAP AND MINE SUMMARY SHEET	2
INTERPRETING THE MAP	2
Mine Type and Mining Method	2
SOURCE MAPS	3
POINTS AND LABELS	3
INTERPRETING A MINE SUMMARY SHEET	6
REFERENCES	8
PART II DIRECTORY OF MINES IN THE DE SOTO QUADRANGLE	9
MINE SUMMARY SHEETS	9
Mine Index 147	
Western Coal & Mining Company, Western No. 2 Mine	9
Mine Index 163	
Madison Coal Corporation, Madison No. 12 Mine	10
Mine Index 267	
Chicago Fuel Company, Ward Mine	11
Mine Index 435	
Western Coal & Mining Company, Western No. 1 Mine or Bush Mine	12
Mine Index 606	
Truax Traer Coal Company, Burning Star Underground Mine	13
Mine Index 684	
Truax Traer Coal Company, Burning Star Surface Mine	14
Mine Index 718	
Peacock Coal Company, Peacock Mine	15
Mine Index 814	
Forsyth-Carterville Coal Company, Forsyth-Carterville Mine	16
Mine Index 874	
Farley Brothers Coal Company, Black Dot No. 2 Mine	17
Mine Index 957	
Three States Trucking, Inc., De Soto No. 3 Mine	18
Mine Index 967	
Consolidation Coal Company, Burning Star No. 5 Mine	19
Mine Index 1005	
Williamson Coal Company, Williamson No. 2 Mine	20
Mine Index 1027	
S. Coal Company, Cambria No. 1 Mine	21
Mine Index 2071	
Franklin Coal & Coke Company, Mitchell No. 1 Mine	22
Mine Index 2480	
M. & E. Coal Company, M. & E. Mine	23
Mine Index 2481	
Inland Coal & Washing Company, Inland Mine	24
Mine Index 2482	
Monroe Coal Company, Monroe Mine	25
Mine Index 2483	
De Soto Coal Company, De Soto Mine	26
Mine Index 2484	
William Eddington, Eddington Mine	27
Mine Index 2485	
De Soto Peacock Coal Company, Black Cat Mine	28
Mine Index 2486	
Little Muddy Coal Company, Little Muddy No. 1 Mine	29
Mine Index 2487	
Peacock Coal Company, Peacock Mine	30

Mine Index 2489	
New Muddy Valley Coal Company, New Muddy Valley Mine	31
Mine Index 2492	
Down State Coal Company, Admiral Mine	32
Mine Index 3942	
Big Three Coal Company, Big Three No. 1 Mine	33
Mine Index 3943	
Pure Coal Company, Pure No. 1 Mine	34
Mine Index 3944	
Blairsville Mining Company, Blairsville Mine.	35
Mine Index 3949	
Cambria Coal Company, Cambria Mine.	36
Mine Index 3950	
Henry E. Layman, Patrick Mine	37
Mine Index 3953	
Ogmore Coal Company, Ogmore Mine	39
Mine Index 4001	
Huskey Coal Company, Huskey No. 1 Mine.	40
Mine Index 4469	
Johns Coal Company, Johns Mine	41
Mine Index 4513	
Main Line Coal Corporation, Main Line No. 1 Mine	42
Mine Index 4599	
Richardson Coal Company, Richardson Mine	43
Mine Index 4610	
Joe Kimmel, Kimmel Mine	44
Mine Index 4625	
De Soto Coal & Mining Company, Pee Wee Mine	45
OTHER MINES SHOWN ON DE SOTO QUADRANGLE	46
Mine Index 3952, Gentry Mine	46
Mine Index 4609	46
Mine Index 4611	46
Mine Index 7160, Inland Coal Company	46
Mine Index 7161	46
MINES WHOSE LOCATIONS ARE NOT KNOWN, DE SOTO QUADRANGLE	46
INDEX OF MINES IN THE DE SOTO QUADRANGLE	50

INTRODUCTION

Coal has been mined in 76 counties of Illinois. More than 7,400 coal mines have operated since commercial mining began in Illinois about 1810; fewer than 30 are currently active. To detail the extent and location of coal mining in Illinois, the Illinois State Geological Survey (ISGS) has compiled maps and directories of known coal mines. The ISGS offers maps at a scale of 1:100,000 and accompanying directories for each county in which coal mining is known to have occurred. Maps at a scale of 1:24,000 and accompanying directories, such as this, are available for selected quadrangles. Contact the ISGS for a list of these quadrangles.

These larger scale maps show the approximate positions of mines in relation to surface features such as roads and water bodies, and indicate the mining method used and the accuracy of the mine boundaries. The maps are useful for locating mine boundaries relative to specific properties and for assessing the potential for subsidence in an area. Mine boundaries compiled from final mine surveys are generally shown within 200 feet of their true position. As a result of poor cartographic quality and inaccuracies in the original mine surveys, boundaries of some older mines may be mislocated on the map by 500 feet or more. Original mine maps should be consulted in situations that require precise delineation of mine boundaries or internal workings of mined areas.

This directory serves as a key to the accompanying mine map and provides basic information on the coal mines in the quadrangle. The directory is composed of two parts. Part I explains the symbols and patterns used on the accompanying map and the summary data presented for each mine. Part II numerically lists the mines in the quadrangle and summarizes the geology and production history of each mine. Total production for the mine, not the portion in the quadrangle, is given.

MINING IN THE DE SOTO QUADRANGLE

Mining in the De Soto Quadrangle began in 1881 with the opening of the Inland Mine (mine index 2481) and ended when the Cambria Mine (mine index 1027) closed in 2004. The Herrin Coal was the most commonly mined seam, because it was thick, ranging up to 14 feet thick in places, and shallow, sometimes as little as 25 feet beneath the surface. The Herrin Coal was commonly 8 to 10 feet thick, allowing mines with poor roof conditions to leave up to 2 feet of top coal to support the roof. In some cases, areas of the mines had poor quality coal, so that the thicker coal was not all minable. In parts of the Ward Mine (mine index 267), the top coal was poor quality, and the blue band was 11 to 13 inches of dirty coal (high ash content), so that only the middle 4.5 to 5 feet of the total 8 to 9 feet thick seam was mined. Some surface mines took advantage of the small interval between the Herrin and Springfield Coals (often as little as 25 to 30 feet) to mine both seams. The Springfield Coal was thinner than the Herrin Coal, generally 3.5 to 4 feet thick. Because the Springfield Coal was usually less than 5 feet thick, it was more often surface-mined than developed in underground mines. The Murphysboro Coal was also mined, exclusively in the southern half of the quadrangle.

PART I EXPLANATION OF MAP AND MINE SUMMARY SHEET

INTERPRETING THE MAP

The map accompanying this directory shows the location of coal mines known to be present in the quadrangle. The map, corresponding to a U.S. Geological Survey (USGS) 7.5-minute quadrangle, covers an area bounded by lines of latitude and longitude 7.5-minutes apart. In Illinois, a quadrangle is approximately 6.5 miles east to west and 8.5 miles north to south, an area of about 56 square miles. The USGS generally offers one map of mines per quadrangle. In some areas where extensive mining occurred in two or more overlapping seams, separate maps are compiled for mines in each seam to maintain readability of the map.

Mine Type and Mining Method

The mine type is indicated on the map by pattern color: green represents surface mines; red and yellow represent underground mines. The red patterns are used for areas of underground mining that are documented by a primary or secondary source map. A yellow pattern is used for cases where no map of the mine workings is available, but a general area of mining can be inferred from property maps or production figures. The patterns indicate the main mining methods used in underground mines. The methods are (1) room and pillar and (2) high extraction. The method used gives some indication of the amount and pattern of coal extraction within each mined area, and has some influence on the timing and type of subsidence that can occur over a mine.

The following discussion and illustrations of mining methods are based on Guither et al. (1984).

In room-and-pillar mines, coal is removed from haulage-ways (entries) and selected areas called rooms. Pillars of unmined coal are left between the rooms to support the roof. Depending on the size of rooms and pillars, the amount of coal removed from the production areas will range from 40% to 70%.

Room and Pillar - mining is divided into six categories:

- room-and-pillar basic (RPB, fig. 1A), an early method that did not follow a preset mining plan and therefore resulted in very irregular designs;
- modified room and pillar (MRP, fig. 1B);
- room-and-pillar panel (RPP, fig. 1C);
- blind room and pillar (BRP, fig. 1D);
- checkerboard room and pillar (CRP, fig. 1E);
- room and pillar (RP), a classification used when the specific type of room-and-pillar mining is unknown.

Blind and checkerboard are the most common types of room-and-pillar mining used in Illinois today. The knowledge of room-and-pillar mining methods gives a trained engineer information on the nature of subsidence that may occur. A more extensive discussion of subsidence can be found in Bauer et al. (1993).

High-extraction These mining methods are subdivided into high-extraction retreat (HER, Fig 1F) and longwall (LW, Fig 1G, 1H). In these methods, much of the coal is removed within well defined areas of the mine. Subsidence of the surface above these areas occurs within weeks. Once the subsidence activity ceases, the potential for further movement over these areas is low; however, subsidence may continue for several years after mining.

High-extraction retreat mining is a form of room-and-pillar mining that extracts most of the coal. Rooms and pillars are developed in the panels, and the pillars are then systematically removed (fig. 1F).

In early (pre-1960) longwall mines, mining advanced in multiple directions from a central shaft (fig. 1G). Large pillars of coal were left around the shaft, but all coal was removed beyond these pillars. Miners placed rock and wooden props and cribs in the mined-out areas to support the mine roof. The overlying rock gradually settled onto these supports, thus producing subsidence at the surface. In post-1959 longwall mines, room-and-pillar methods have been used to develop the main entries of the mine and panel areas. Modern longwall methods extract 100 percent of the coal in the panel areas (fig. 1H).

SOURCE MAPS

Mine outlines depicted on the map are, whenever possible, based on maps made from original mine surveys. The process of compiling and digitizing the quadrangle map may produce errors of less than 200 feet in the location of mine boundaries. Larger errors of 500 feet or more are possible for mines that have incomplete or inaccurate source maps.

Because of the extreme complexity of some mine maps, detailed features of mined areas have been omitted. The digitized mine boundary includes the exterior boundary of all rooms or entries that were at least 80 feet wide or protruded 500 feet from the main mining area. Unmined areas between mines are shown if they are at least 80 feet wide; unmined blocks of coal within mines are shown if they are at least 400 feet on each side. Original source maps should be consulted when precise information on mine boundaries or interior features is needed.

The mine summary sheet lists the source maps used to determine each mine outline. The completeness of map sources is indicated on the map by a line symbol at the mine boundary. Source maps are organized in five categories.

Final mine map The mine outline was digitized from an original map made from mine surveys conducted within a few months after production ceased. The date of the map and the last reported production are listed on the summary sheet.

Not a final map The mine is currently active or the mine outline was made from a map based on mine surveys conducted more than a few months before production ceased. This implies the actual mined-out area is probably larger than the outline on the map. The mine summary sheet indicated the dates of source maps and the last reported production, as well as the approximate tonnage mined between these two dates (if the mine is abandoned). The summary sheet also lists the approximate acreage mined since the date of the map and, in some cases, indicates the area where additional mining may have taken place. This latter information is determined by locating on the map the active faces relative to probable boundaries of the mine property.

Undated map The source map was undated, so it may or may not be based on a final mine survey. When sufficient data are available, the probable acreage of the mined area is estimated from reported production, average seam thickness and a recovery rate comparable to other mines in the area. This information is listed in the summary sheet for the mine.

Incomplete map The source map did not show the entire mine. The summary sheet indicates the missing part of the mine map and the acreage of the unmapped area, which is estimated from the amount of coal known to have been produced from the mine.

Secondary source map The original mine map was not found so the outline shown was determined from secondary sources (e.g., outlines from small-scale regional maps published in other reports). The summary sheet describes the secondary sources.

POINTS AND LABELS

The locations of all known mine openings (shafts, slopes, and drifts) and surface mine tipples are plotted on the map. Tipples are areas where coal was cleaned, stockpiled, and loaded for shipping.

Only openings or tipples are plotted for mines without source maps. If the precise locations of these features are unknown, a special symbol is used to indicate the approximate location of the mine.

Each mine on the map is labeled with the names of the mine and operating company, ISGS mine index number, and years of operation (if known) if space permits. A seam designation is given on maps where more than one seam was mined. For a mine that operated under more than one name, only the most recent name is generally given. When a mine changed names or ownership shortly before closing, an earlier name is listed. All company and mine names are listed on the mine summary sheet in the directory, under the production history segment.



Figure 1 Mining methods: (A) room-and-pillar basic (RPB), (B) modified room and pillar (MRP), (C) room-and-pillar panel (RPP), (D) blind room and pillar (BRP).



Figure 1 (cont.) Mining methods: (E) checkerboard room and pillar (CRP), (F) high extraction retreat (HER), (G) early (pre-1960) longwall, (H) post-1959 longwall



Figure 2 Generalized stratigraphic section, showing approximate vertical relations of coals in Illinois.

INTERPRETING A MINE SUMMARY SHEET

The mine summary sheet is arranged numerically by mine index number. Index numbers are shown on the map and in the mine listing. The mine summary sheet provides the following information (if available).

Company and mine name The last company or owner of the mine is used, unless no production was recorded for the last owner. In that case, the penultimate owner is listed. Mines often have no specific name; in these cases, the company name is also used as the mine name.

Type *Underground* denotes a subsurface mine in which the coal was reached through a shaft, slope, or a drift entry. *Surface* denotes a surface, open pit or strip mine.

Total mined-out acreage shown The total acreage of the mined area mapped, including any acreage mined on adjacent quadrangles, is calculated from the digitized outline of the mine. The acreage of large barrier pillars depicted on the map is excluded from the mined-out acreage. Small pillars not digitized are included in the acreage calculation. If the mine outline is not based on a final mine map, the acreage is followed by an estimate of additional acres that may have been mined. The estimate is determined from reported mine production, approximate thickness of the coal, and recovery rates calculated from nearby mines that used similar mining methods.

SHAFT, SLOPE, DRIFT OR TIPPLE LOCATIONS

Shaft, slope, drift, or tippie locations Locations of all known former entry points to underground mines or the location of coal cleaning, tippie, and shipping equipment used by the mine's facility are listed. The location is described in terms of county, township and range (Twp-Rge), section, and location within the section by quarters. NE SW NW, for instance, would describe the location in the northeast quarter of the southwest quarter of the northwest quarter. When sections are irregular in size, the quarters remain the same size and are oriented (or "registered") from the southeast corner of the section. Approximate footage from the section lines (FEL = from east line, FNL = from north line, for example) is given when that information is known; this indicates a surveyed location and is not derived from maps. Entry points are also plotted on the map and coded for the type of entry or tippie. A mine opening may have had many purposes during the life of the mine. Old hoist shafts are often later used for air and escape shafts; this information is included in the directory when known. The tippie for underground mines was generally located near the main shaft or slope. At surface mines, coal was sometimes hauled to a central tippie several miles from the mine pit.

GEOLOGY

Seam(s) mined The name of the coal seam(s) mined is listed, if known. If multiple seams were mined, they are all listed, although the mined-out area for each seam may be shown on separate maps. Figure 2 shows the stratigraphic section of the coal-bearing interval in Illinois, and the vertical relations among the coals.

Depth The depth to the top of the seam in the vicinity of the shaft is listed, if known. The depth is determined from notes made by geologists who visited the mine during its operation or from drill hole data in ISGS files. Depth generally varies little over the extent of a mine; however, reported depths for an individual mine may vary. Depth for surface-mined coals varies, and is usually represented as a range.

Thickness The approximate thickness of the mined seam is shown, if known. Thickness also comes from notes of geologists who visited the mine during its operation or from borehole data in ISGS files. Minimum, maximum, and average thicknesses are given when this information is available.

Mining method The principal mining method used at the mine (figs. 1A-H) is listed. See the mining methods section at the beginning of this directory for a discussion of this parameter.

Geologic problems reported Any known geologic problems, such as faults, water seepage, floor heaving, and unstable roof, encountered in the mine are reported. This information is from notes made by ISGS geologists who visited the mine, or from reports by mine inspectors published by the Illinois Department of Mines and Minerals, or from the source map(s). Geologic problems are not reported for active mines.

PRODUCTION HISTORY

Production history Tons of coal produced from the mine by each mine owner are totaled. When the source map used for the mine outline is not a final mine map, the tonnage produced since the date of the map is identified. For mines that extend into adjacent quadrangles, the tonnage reported includes areas mined in adjacent quadrangles.

SOURCE OF DATA

Source map This section lists information about the map(s) used to compile the mine outline and the locations of tipples and mine openings. In some cases more than one source map was used. For example, a map drawn before the mine closed may provide better information on original areas of the mine than a later map. When more than one map was used, the bibliography section explains what information was taken from each source.

Date The date of the most recent mine survey listed on the source map is reported.

Original scale The original scale of the source map is listed. Many maps are photo-reductions and are no longer at their original scale. The original scale gives some indication of the level of detail of the mine outline and the accuracy of the mine boundary relative to surface features. Generally, the larger the scale, the greater the accuracy and detail of the mine map. Mine outlines taken from source maps at scales smaller than 1:24,000 may be highly generalized and may well be inaccurately located with respect to surface features.

Digitized scale The scale of the digitized map is reported. The scale may be different from that of the original source map. In many cases the digitized map was made from a photo-reduction of the original source map, or the source map was not in a condition suitable for digitizing and the mine boundaries were transferred to another base map.

Map type Source maps are classified into five categories to indicate the probable completeness of the map. See discussion of source maps in the previous section.

Annotated bibliography Sources that provide information about the mine are listed, with the data taken from each source. Some commonly used sources are described below. Full bibliographic references are given for all other sources. Unless otherwise noted, all sources are available for public inspection at the ISGS.

Coal Reports Published since 1881, these reports contain tabular data on mine ownership, production, employment, and accidents. Some volumes include short descriptions made by mine inspectors of physical features and conditions in selected mines.

Directory of Illinois Coal Mines This source is a compilation of basic data about Illinois coal mines, originally gathered by ISGS staff in the early 1950s. Sources used for this directory are undocumented, but they are primarily Illinois Department of Mines and Minerals annual reports, ISGS mine notes, and coal company officials.

ENR Document 85/01, Guither, H. D., J. K. Hines, and R. A. Bauer, 1985 The Economic Effect of Underground Mining Upon Land Used for Illinois Agriculture: Illinois Department of Energy and Natural Resources Document 85/01, 185 p.

Microfilm map The U.S. Bureau of Mines maintains a microfilm archive of mine maps. A microfilm file for Illinois is available for public viewing at the ISGS.

Mine notes ISGS geologists have visited mines or contacted mine officials throughout the state since the early 1900s. Notes made during these visits range from brief descriptions of the mine location to long narratives (including sketches) of mining conditions and geology.

Federal Land Bank of St. Louis, Preliminary Reports on Subsidence Investigations Mining engineers working for the Federal Land Bank of St. Louis mapped areas of subsidence due to coal mining in the early 1930s. These reports often include county maps of mine properties with mined-out areas including shaft locations, as well as subsidence areas.

REFERENCES

Bauer, R. A., B. A. Trent, and P. B. Dumontelle, 1993, Mine Subsidence in Illinois: Facts for the Homeowner Considering Insurance, Illinois State Geological Survey, Environmental Geology Note 144, 16p.

Guither, H. D., J. K. Hines, and R. A. Bauer, 1985, The Economic Effects of Underground Mining Upon Land Used for Illinois Agriculture, Illinois Department of Energy and Natural Resources Document 85/01, 185p.

Lamar, J. E., 1925, Geology and Mineral Resources of the Carbondale Quadrangle, Illinois State Geological Survey, Bulletin 48, 172p.

PART II DIRECTORY OF MINES IN THE DE SOTO QUADRANGLE

MINE SUMMARY SHEETS

A summary sheet on the geology and production history of each mine in the De Soto Quadrangle is provided. These summary sheets are arranged numerically by mine index number. Consult Part I for a complete explanation of the data listed in the summary sheet.

Mine Index 147

Western Coal & Mining Company, Western No. 2 Mine

Type: Underground Total mined-out acreage shown: 1,045 Approximately 2 acres on the western and southwestern side of the mine were later surface mined by Burning Star No. 5 Mine (mine index 967).

SHAFT, SLOPE, DRIFT or TIPPLE LOCATIONS

Type	County	Township-Range	Section	Quarters-Footage
Main shaft (10'x15')	Franklin	7S 1E	31	SE NW SE
Air shaft (10'x15')	Franklin	7S 1E	31	SW NW SE

GEOLOGY

Seam(s) Mined	Depth (ft)	Thickness (ft)			Mining Method
		Min	Max	Avg	
Herrin	152	6.5	12.0	7.0-10.5	RPP

Geologic Problems Reported: Water-bearing gravels in the glacial materials above the mine discharged water that had to be pumped out of the mine. A northwest-southeast trending fault with 6 to 8 feet upthrown on the northeastern side ran through this mine, crossing the main north just off the bottom, 200 feet from the shaft. The northeastern side was thrust over the opposite side, thickening the coal up to about 15 feet. Many northwest-southeast-trending faults that disrupted the mining pattern are shown on the source maps. Bad top was noted on a source map in the extreme northeastern part and the south part of the mine. These areas of bad top appear to have halted mining in those rooms. The roof varied from black fissile shale to gray shale; generally the gray shale was 18 feet thick. The most conspicuous impurity was the pyrite, especially common as facings running vertically through layers of the seam. Lenses of solid pyrite were not uncommon, especially in the upper part of the seam.

PRODUCTION HISTORY

Company	Mine Name	Years	Production (tons)
Western Coal & Mining Company	Western No. 2	1916-1928	<u>7,146,997</u> 7,146,997

Last reported production: March 1928

SOURCES OF DATA

Source Map	Date	Original Scale	Digitized Scale	Map Type
State archive, MSHA_1593_04	4-1-1928	1:2400	1:2400	Final

Annotated Bibliography (data source, brief description of information)

Coal Reports - Production, ownership, years of operation, shaft sizes, depth, thickness.
Directory of Illinois Coal Mines (Franklin County) - Mine names, mine index, ownership, years of operation.
Mine notes (Franklin County) - Mine type, shaft location, seam, thickness, geologic problems.
State archive, MSHA_1593_04 - Shaft locations, mine outline, mining method, geologic problems.

Mine Index 163**Madison Coal Corporation, Madison No. 12 Mine**

Type: Underground Total mined-out acreage shown: 748 This mine connects underground to Madison No. 9 Mine (mine index 0164). Six acres were later surface mine by Main Line No. 1 Mine (mine index 4513).

SHAFT, SLOPE, DRIFT or TIPPLE LOCATIONS

Type	County	Township-Range	Section	Quarters-Footage
Main shaft	Williamson	8S 1E	20	NE SW SE
Air shaft	Williamson	8S 1E	20	NE SW SE

GEOLOGY

Seam(s) Mined	Depth (ft)	Thickness (ft)			Mining Method
		Min	Max	Avg	
Herrin	100-104			6.5-8.0	RPP

Geologic Problems Reported: The source map showed bad top in SE SE 16-T8S-R1E. Pyrite was present in facings and small lenses.

PRODUCTION HISTORY

Company	Mine Name	Years	Production (tons)
Madison Coal Corporation	Madison No. 12	1920-1931	<u>5,705,151</u> 5,705,151

Last reported production: April 1931

SOURCES OF DATA

Source Map	Date	Original Scale	Digitized Scale	Map Type
State archive, IL_1674	5-1931	1:2400	1:2400	Final

Annotated Bibliography (data source, brief description of information)

Coal Reports - Production, ownership, years of operation, seam, depth, thickness.

Directory of Illinois Coal Mines (Williamson County) - Mine names, mine index, ownership, years of operation.

Mine notes (Williamson County) - Mine type, shaft location, mining method, depth, geologic problems.

State archive IL_1674 - Shaft locations, mine outline, mining method, geologic problems.

Mine Index 267
Chicago Fuel Company, Ward Mine

Type: Underground Total mined-out acreage shown: 120 Production indicates approximately 43 acres were mined after the map date.

SHAFT, SLOPE, DRIFT or TIPPLe LOCATIONS

Type	County	Township-Range	Section	Quarters-Footage
Main shaft	Jackson	8S 1W	8	NW NE NE
Air shaft	Jackson	8S 1W	8	NE NW NE

GEOLOGY

Seam(s) Mined	Depth (ft)	Thickness (ft)			Mining Method
		Min	Max	Avg	
Herrin	83-87	7.0	14.0	6.0-7.0 *	MRP

* Two feet of top coal was left to support the roof, and often 1 ft of bottom coal was not mined because of poor quality. The average thickness was reported as 8.0 to 9.0 ft.

Geologic Problems Reported: An abandoned mine filled with water was encountered. Pumping of 3,000 gallons per minute went on for 3 months before they could resume mining. The roof was black shale, ranging from 6 to 12 ft thick. The blue band was present in this mine as an 11 to 13 inch thick band of dirt and bone coal, at a height of 18 to 24 inches above the floor. Since this was difficult to separate from the coal and lowered the quality, the plan at one time was to mine only 4.5 to 5 ft of coal, above the blue band and dirt band and taking only 6 inches of the top coal (leaving the rest to support the roof; the top 2 ft was said to be poor quality). Other notes indicate the bottom coal (below the blue band) was mined over at least part of the mine, and that the quality varied. Pyrite was present in steaks and "sprangles" (apparently this term referred to patches of "leaf sulphur", or pyrite that accumulated as a very thin coating on a small surface of coal), but no solid pyrite bands or nodules were seen. In places, knolls of limestone protruded up from the floor, cutting out nearly all the lower bench (below the blue band) of coal.

PRODUCTION HISTORY

Company	Mine Name	Years	Production (tons)
Chicago & Carbondale Coal Company	Elk Ridge	1902-1911	305,153
J. B. Kreikemeier Coal Company	Little Hope	1911-1917 **	68,462
Peacock Coal Mining Company	Ward	1917-1919	197,087
Midway Coal Mining Company	Ward	1919-1919	30,397
Midway Coal Mining Company	Ward	1919-1922	123,015 ***
Chicago Fuel Company	Ward	1922-1925	107,081 ***
			831,195

** Idle 1914-1917

*** Production after map date

Last reported production: 1925

SOURCES OF DATA

Source Map	Date	Original Scale	Digitized Scale	Map Type
State archive, IL_2046_01	11-1919	1:2400	1:2400	Not final

Annotated Bibliography (data source, brief description of information)

Coal Reports - Production, ownership, years of operation.
 Directory of Illinois Coal Mines (Jackson County) - Mine names, mine index, ownership, years of operation.
 Mine notes (Jackson County) - Mine type, shaft location, seam, depth, thickness, geologic problems.
 State archive, IL_2046_01 - Shaft locations, mine outline, mining method.

Mine Index 435**Western Coal & Mining Company, Western No. 1 Mine or Bush Mine**

Type: Underground Total mined-out acreage shown: 561

SHAFT, SLOPE, DRIFT or TIPPLE LOCATIONS

Type	County	Township-Range	Section	Quarters-Footage
Main shaft (9.5'x19.5')	Williamson	8S 1E	8	NW NW NW
Air shaft	Williamson	8S 1E	8	SW NW NW

GEOLOGY

Seam(s) Mined	Depth (ft)	Thickness (ft)			Mining Method
		Min	Max	Avg	
Herrin	118-185			6.5-9.0	RPP

Geologic Problems Reported: The roof was poor, a shale that slaked off after exposure. Bad top and water were noted on the source map in 8-T8S-R1E. Generally, 1.5 to 2 feet of top coal was left to support the roof.

PRODUCTION HISTORY

Company	Mine Name	Years	Production (tons)
Western Coal & Mining Company	Bush, Western No. 1	1903-1917	<u>3,389,204</u> 3,389,204

Last reported production: June 1917

SOURCES OF DATA

Source Map	Date	Original Scale	Digitized Scale	Map Type
State archive, IL_1006_01	9-10-1917	1:2400	1:2400	Final

Annotated Bibliography (data source, brief description of information)

Coal Reports - Production, ownership, years of operation, mining method, depth, thickness.

Directory of Illinois Coal Mines (Williamson County) - Mine names, mine index, ownership, years of operation.

Mine notes (Williamson County) - Mine type, shaft location, seam, geologic problems.

State archive, IL_1006_01 - Shaft locations, mine outline, mining method, geologic problems.

Mine Index 606**Truax Traer Coal Company, Burning Star Underground Mine**

Type: Underground Total mined-out acreage shown: 1,868

SHAFT, SLOPE, DRIFT or TIPPLE LOCATIONS

Type	County	Township-Range	Section	Quarters-Footage
Slope	Jackson	8S 1W	4	SW NE NW
Drift	Jackson	8S 1W	6	NE NW NW (2 drifts)
Air drift	Jackson	8S 1W	6	NE NW NW
Drift	Jackson	7S 2W	36	NE SE NE
Air drift	Jackson	7S 2W	36	NE NE NE
Drift	Jackson	7S 2W	25	SE SE NE (5 drifts)
Air drift	Jackson	7S 2W	25	SE SE NE
Drift	Jackson	7S 2W	25	NE NE SE
Air shaft	Jackson	7S 1W	33	NE SE SW
Air shaft	Jackson	7S 1W	32	NW SE SW
Air shaft	Jackson	7S 1W	31	SW SW SE

GEOLOGY

Seam(s) Mined	Depth (ft)	Thickness (ft)			Mining Method
		Min	Max	Avg	
Herrin	40-130			6.0-7.0	MRP

Geologic Problems Reported: The roof was difficult to keep up near the slope and to the south, which may have been related to the split coal area. The drift entrance accessed coal with a normal marine roof (black slaty shale, sometimes underlain by gray shale, with a limestone caprock). Most of the Burning Star slope had a gray shale roof, with the associated low sulfur content of the "Quality Circle" coal. A large fault runs from the northwest to the southeast through the center of the mine.

PRODUCTION HISTORY

Company	Mine Name	Years	Production (tons)
Truax Traer Coal Company	Burning Star Underground	1941-1965 *	<u>11,760,884</u> 11,760,884

* Idle 1962 & 1963

Last reported production: October 1965

SOURCES OF DATA

Source Map	Date	Original Scale	Digitized Scale	Map Type
State archive, IL_1999_04	10-9-1965	1:2400	1:2400	Final

Annotated Bibliography (data source, brief description of information)

Coal Reports - Production, ownership, years of operation, seam, depth, thickness.

Directory of Illinois Coal Mines (Jackson County) - Mine names, mine index, ownership, years of operation.

Mine notes (Jackson County) - Mine type, slope location, geologic problems.

State archive, IL_1999_04 - Shaft, drift & slope locations, mine outline, mining method, geologic problems.

Mine Index 684**Truax Traer Coal Company, Burning Star Surface Mine**

Type: Surface Total mined-out acreage shown: 2,242 (984 in Herrin Coal and 1,258 in Springfield Coal)

SHAFT, SLOPE, DRIFT or TITTLE LOCATIONS

Type	County	Township-Range	Section	Quarters-Footage
Tittle	Jackson	7S 2W	36	SW SE SW
Pit	Jackson	8S 1W	17, 18	
Pit	Jackson	7S 2W	36	SE SW

GEOLOGY

Seam(s) Mined	Depth (ft)	Thickness (ft)			Mining Method
		Min	Max	Avg	
Herrin	17-38			5.0-7.0	Surface
Springfield	50-70			3.0-3.5	Surface

Geologic Problems Reported: The Herrin Coal contained pyrite nodules up to 0.5 inches thick. Calcite & pyrite were abundant on vertical fractures.

PRODUCTION HISTORY

Company	Mine Name	Years	Production (tons)
Forsyth Coal Company	Forsyth	1925-1927	635,229
Truax Traer Coal Company	Burning Star Surface	1928-1966	21,989,013
			22,624,242

Last reported production: June 1966

SOURCES OF DATA

Source Map	Date	Original Scale	Digitized Scale	Map Type
Company, 4103.J31 i5.1-15	7-24-1950	1:4800	1:4800	Final / not final *
ISGS map library, 4103.J31 i5.1-34	1966	1:57600	1:57600	Secondary source
USGS topographic map	PR 1978	1:24000	1:24000	Secondary source
USGS topographic map	PR 1978	1:24000	1:24000	Secondary source
USGS topographic map	1968	1:24000	1:24000	Secondary source
NAIP digital ortho-photo quadrangle	2015	1:6000	1:6000	Secondary source

* The source map was final for the pits in the Herrin Coal seam, in the northeastern part of the mine. The map was not final for the pits in the Springfield Coal seam, in the southern part of the mine. The secondary source maps were used for the final outline.

Annotated Bibliography (data source, brief description of information)

Coal Reports - Production, ownership, years of operation.
 Directory of Illinois Coal Mines (Jackson County) - Mine names, mine index, ownership, years of operation.
 Mine notes (Jackson County) - Mine type, pit locations, seam, geologic problems.
 Company map, ISGS map library, 4103.J31 i5.1-15 - Tittle location, mine outline, mining method, seam.
 ISGS map library, 4103.J31 i5.1-34 - General pit outline, seam.
 Company map, Coal Section files, 6-253b - General pit outline (western), seam.
 De Soto Quadrangle, USGS 7.5-minute topographic map, 1968, photorevised 1978 - Partial mine outline.
 Murphysboro Quadrangle, USGS 7.5-minute topographic map, 1968, photorevised 1978 - Partial mine outline.
 Vergennes Quadrangle, USGS 7.5-minute topographic map, 1968 - Partial mine outline.
 National Agriculture Imagery Program map, digital ortho-photo quadrangle map - Mine outline (Herrin Coal).

Mine Index 718
Peacock Coal Company, Peacock Mine

Type: Underground Total mined-out acreage shown: 9

SHAFT, SLOPE, DRIFT or TIPPLE LOCATIONS

Type	County	Township-Range	Section	Quarters-Footage
Shaft *	Jackson	8S 1W	8	SW SE SE
Shaft *	Jackson	8S 1W	17	SW NE NE

* Much confusion is associated with all the mines that include "Peacock" in their company name (mine index numbers 267, 2485, 4625 and 718). With no company map to provide more concrete evidence, both shaft locations are retained, although it is likely only one shaft was used for the production shown below for index 718.

GEOLOGY

Seam(s) Mined	Depth (ft)	Thickness (ft)			Mining Method
		Min	Max	Avg	
Herrin	40-52	8.0	14.0	9.0-10.0	RP

Geologic Problems Reported: No gas was reported at this mine. There was a slight dip overall to the northeast. A few slight faults were said to be present. The floor was a soft clay underlain by sandstone.

PRODUCTION HISTORY

Company	Mine Name	Years	Production (tons)
J. L. Culley	Culley	1904-1905	1,000
Peacock Coal Company	Peacock	1905-1908 **	10,400
Montgomery Brothers	Montgomery	1908-1909	3,111
Peacock Coal Company	Peacock	1909-1911	<u>39,154</u>
			53,665

** Idle 1907

Last reported production: 1911

SOURCES OF DATA

Source Map	Date	Original Scale	Digitized Scale	Map Type
ISGS map library, 4103.J31 i5.1-37	ca. 1934	1:31680	1:31680	Secondary source
ISGS map library, 4107 d5-28	1908	1:48738	1:48738	Secondary source

Annotated Bibliography (data source, brief description of information)

Coal Reports - Production, ownership, years of operation, mining method.
 Directory of Illinois Coal Mines (Jackson County) - Mine names, mine index, ownership, years of operation.
 Mine notes (Jackson County) - Mine type, seam, depth, thickness, geologic problems.
 ISGS field notes (Jackson County) - Ownership, mine location.
 ISGS map library, 4103.J31 i5.1-37 sheet 1 - Shaft location, mine outline.
 ISGS map library, 4107 d5-28, T. E. Savage field map - Shaft location.

Mine Index 814
Forsyth-Carterville Coal Company, Forsyth-Carterville Mine

Type: Surface Total mined-out acreage shown: 663

SHAFT, SLOPE, DRIFT or TIPPLE LOCATIONS

Type	County	Township-Range	Section	Quarters-Footage
Tipple / pit *	Williamson	9S 1E	4	NW NW SE
Tipple *	Williamson	8S 1E	31	NW NW SE

* Surface mining for this mine took place in Sections 30, 31 & 32 of T8S-R1E and Section 5 of T9S-R1E.

GEOLOGY

Seam(s) Mined	Depth (ft)	Thickness (ft)			Mining Method
		Min	Max	Avg	
Springfield	40 (20-55)			3.33 (3.17-3.5)	Surface

Geologic Problems Reported:

PRODUCTION HISTORY

Company	Mine Name	Years	Production (tons)
Forsyth-Williamson Coal Company	Forsyth-Williamson	1946-1953	1,285,210
Forsyth-Carterville Coal Company	Forsyth-Carterville	1954-1961 **	1,418,796
			2,704,006

** Merged with Peabody Energy to become Forsyth Energy Company, No. 5 Mine, and thereafter reported under mine index 882.

Last reported production: August 1961

SOURCES OF DATA

Source Map	Date	Original Scale	Digitized Scale	Map Type
Department of Mines & Minerals	Undated			Secondary source

Annotated Bibliography (data source, brief description of information)

Coal Reports - Production, ownership, years of operation, seam, depth, thickness.
 Directory of Illinois Coal Mines (Williamson County) - Mine names, mine index, ownership, years of operation.
 Mine notes (Williamson County) - Mine type, tipple location, mining method, seam, depth, thickness.
 Department of Mines & Minerals, 7a-02-22, aerial photograph base map with surface mines identified - Mine outline, mining method.

Mine Index 874**Farley Brothers Coal Company, Black Dot No. 2 Mine**

Type: Surface Total mined-out acreage shown: 163 Production indicates approximately 43 acres were mined. The area shown is too large for the reported production and may include areas mined by others (see the back of this report) and expanded by the Black Dot No. 2.

SHAFT, SLOPE, DRIFT or TIPPLE LOCATIONS

Type	County	Township-Range	Section	Quarters-Footage
Pit / tipple	Jackson	8S 1W	16	NW

GEOLOGY

Seam(s) Mined	Depth (ft)	Thickness (ft)			Mining Method
		Min	Max	Avg	
Springfield	24-40			4.25	Surface

Geologic Problems Reported:

PRODUCTION HISTORY

Company	Mine Name	Years	Production (tons)
Farley Brothers Coal Company	Black Dot No. 2	1957-1964	299,213
			299,213

Last reported production: July 1964

SOURCES OF DATA

Source Map	Date	Original Scale	Digitized Scale	Map Type
USGS topographic map	PR 1978	1:24000	1:24000	Secondary source
Department of Mines & Minerals	Undated			Secondary source

Annotated Bibliography (data source, brief description of information)

Coal Reports - Production, ownership, years of operation.

Directory of Illinois Coal Mines (Jackson County) - Mine names, mine index, ownership, years of operation.

Mine notes (Jackson County) - Mine type, location, seam, depth, thickness.

De Soto Quadrangle, USGS 7.5-minute topographic map, 1968, photorevised 1978 - Mine outline.

Department of Mines & Minerals, 7a-01-05, aerial photograph base map with surface mines identified - Pit identification.

Mine Index 957**Three States Trucking, Inc., De Soto No. 3 Mine**

Type: Surface Total mined-out acreage shown: 25 Production indicates less than 1 acre was mined.
 The mine notes stated that area had previously been surface mined, although the other operators were not identified.

SHAFT, SLOPE, DRIFT or TIPPLE LOCATIONS

Type	County	Township-Range	Section	Quarters-Footage
Pit / tipple	Jackson	8S 1W	17	NW SE

GEOLOGY

Seam(s) Mined	Depth (ft)	Thickness (ft)			Mining Method
		Min	Max	Avg	
Springfield					Surface

Geologic Problems Reported:

PRODUCTION HISTORY

Company	Mine Name	Years	Production (tons)
Three States Trucking, Inc. *	De Soto No. 3	1976-1976	8,693
			8,693

The mine may have later been purchased by SIMCO, but no production was reported under that name.

Last reported production: July 1976

SOURCES OF DATA

Source Map	Date	Original Scale	Digitized Scale	Map Type
USGS topographic map	PR 1978	1:24000	1:24000	Secondary source
Department of Mines & Minerals	7-6-1977	1:7920	1:7920	Secondary source

Annotated Bibliography (data source, brief description of information)

Coal Reports - Production, ownership, years of operation.
 Directory of Illinois Coal Mines (Jackson County) - Mine names, mine index, ownership, years of operation.
 Mine notes (Jackson County) - Mine location.
 De Soto Quadrangle, USGS 7.5-minute topographic map, 1968, photorevised 1978 - Mine outline.
 Department of Mines & Minerals Air photos, R-2193-1647 - Pit identification.

Mine Index 967
Consolidation Coal Company, Burning Star No. 5 Mine

Type: Surface Total mined-out acreage shown: 2,379

SHAFT, SLOPE, DRIFT or TIPPLE LOCATIONS

Type	County	Township-Range	Section	Quarters-Footage
Pit	Jackson	8S 1E	6	NW
Pit	Jackson	8S 1W	1, 11 & 12	
Pit	Jackson	7S 1W	21, 22, 24, 28, 33, 34	

GEOLOGY

Seam(s) Mined	Depth (ft)	Thickness (ft)			Mining Method
		Min	Max	Avg	
Herrin	50	5.0	10.0	9.5	Surface
Springfield (1978 & 1979)	75-80			3.5	Surface

Geologic Problems Reported: The east-west pit (11 & 12-T8S-R1W) north of the De Soto-Hurst blacktop (state route 149) mined only the Herrin Coal, which had no splits. The plan was to open a new pit south of that blacktop when the dragline was completed (expected Feb/Mar 1978), to mine both Herrin & Springfield Coals. That coal was projected to be mined out by Aug/Dec 1979, then the big dragline was to move west of the prep plant where the Herrin Coal was split into several benches. The pit in 11 & 12-T8S-R1W had an erosional channel (up to 25 feet thick or more) filled with sandstone above the coal through a part of the pit. This sandstone discharged some water into the pit. These were Walshville Channel sediments, sometimes replacing the upper part of the coal and sometimes eroding part of the coal. Another part of that pit showed the strongly undulating coal surface. Methane gas bubbled out of the coal into the water in the pit. The shale above the coal in this pit was gray or dark gray. Pyrite was present as fracture facings, but no bands were noted. The Herrin Coal was present in both low sulfur and high sulfur qualities, depending on the depositional history of the area of the pit. Calcite veins and pyrite veins were present near a fault in the Herrin Coal (SE 2-T8S-R1W). (Displacement on the fault was not noted, and may have been small.) In the eastern pits, the Herrin Coal was split into two benches. The Energy Shale was 12 to 15 feet thick over 1 to 1.5 feet of coal in the upper bench. The interburden was 12 to 15 feet of gray silty shale above the 6 feet thick lower bench of the Herrin Coal.

PRODUCTION HISTORY

Company	Mine Name	Years	Production (tons)
Consolidation Coal Company	Burning Star No. 5	1976-1989	<u>30,081,746</u> 30,081,746

Last reported production: 1989

SOURCES OF DATA

Source Map	Date	Original Scale	Digitized Scale	Map Type
Company, 4103.J31 i5.1-38	12-31-1990	1:12000	1:12000	Final

Annotated Bibliography (data source, brief description of information)

Coal Reports - Production, ownership, years of operation, thickness.
 Directory of Illinois Coal Mines (Jackson County) - Mine names, mine index, ownership, years of operation.
 Mine notes (Jackson County) - Mine type, seams, depth, thickness, geologic problems.
 Company map, ISGS map library, 4103.J31 i5.1-38 - Mine outline, mining method.

Mine Index 1005**Williamson Coal Company, Williamson No. 2 Mine**

Type: Surface Total mined-out acreage shown: 223

SHAFT, SLOPE, DRIFT or TIPPLE LOCATIONS

Type	County	Township-Range	Section	Quarters-Footage
Pit	Williamson	9S 1E	5	SW NE NE

GEOLOGY

Seam(s) Mined	Depth (ft)	Thickness (ft)			Mining Method
		Min	Max	Avg	
Herrin	28-32			8	Surface
Springfield	45-50			3.5	Surface

Geologic Problems Reported:

PRODUCTION HISTORY

Company	Mine Name	Years	Production (tons)
Williamson Coal Company	Williamson No. 2	1984-1987	800,468 800,468

Last reported production: April 1987

SOURCES OF DATA

Source Map	Date	Original Scale	Digitized Scale	Map Type
Company map, DNR digital files	5-26-2005	unknown *	1:24000	Final

* The web site <http://dnrgis.state.il.us/website/Mpermit/viewr.htm> information was downloaded to a tif image and mapped on the USGS topographic map base.

Annotated Bibliography (data source, brief description of information)

Coal Reports - Production, ownership, years of operation, mining method, seam, depth, thickness.
 Directory of Illinois Coal Mines (Williamson County) - Mine names, mine index, ownership, years of operation.
 DNR digital files, Office of Mines & Minerals - Mine outline, mining method.

Mine Index 1027**S. Coal Company, Cambria No. 1 Mine**

Type: Surface Total mined-out acreage shown: 113

SHAFT, SLOPE, DRIFT or TIPPLE LOCATIONS

Type	County	Township-Range	Section	Quarters-Footage
Pit (S. Mine)	Williamson	8S 1E	29	S ½
Pit (Williamson No. 2)	Williamson	9S 1E	5	

GEOLOGY

Seam(s) Mined	Depth (ft)	Thickness (ft)			Mining Method
		Min	Max	Avg	
Herrin				8.0	Surface
Springfield				4.0	Surface

Geologic Problems Reported:

PRODUCTION HISTORY

Company	Mine Name	Years	Production (tons)
Williamson Coal Company	Williamson No. 2	2001-2001	not reported
S. Coal Company	Cambria No. 1	2001-2004	719,814
			719,814

Last reported production: 2004

SOURCES OF DATA

Source Map	Date	Original Scale	Digitized Scale	Map Type
Company map, DNR digital files	5-26-2005	unknown **	1:24000	Final

** The web site <http://dnrgis.state.il.us/website/Mpermit/viewr.htm> information was downloaded to a tif image and mapped on the USGS topographic map base.

Annotated Bibliography (data source, brief description of information)

Coal Reports - Production, ownership, years of operation, seam, thickness, mining method..
 Directory of Illinois Coal Mines (Williamson County) - Mine location, mine index.
 DNR digital files, Office of Mines & Minerals - Mine outline, mining method.

Mine Index 2071**Franklin Coal & Coke Company, Mitchell No. 1 Mine**

Type: Underground Total mined-out acreage shown: 131 Recorded production indicates approximately 700 acres were mined, but source map is final. Production from mine index 57 (Franklin County No. 7 Mine, just east and north of mine index 2071) may have been shipped through the Franklin No. 11 Mine tipple.

SHAFT, SLOPE, DRIFT or TIPPLE LOCATIONS

Type	County	Township-Range	Section	Quarters-Footage
Main shaft	Franklin	7S 1E	33	NW NW SW
Air shaft	Franklin	7S 1E	32	NE NE SE

GEOLOGY

Seam(s) Mined	Depth (ft)	Thickness (ft)			Mining Method
		Min	Max	Avg	
Herrin	214			8.9-10.33	MRP

Geologic Problems Reported: The mine had gas, and an explosion in 1914 killed 52 men.

PRODUCTION HISTORY

Company	Mine Name	Years	Production (tons)
Big Muddy & Carterville Coal Company	Big Muddy & Carterville	pre1907-1910 *	(none)
Franklin Coal & Coke Company	Mitchell No. 1	1910-1923	6,136,556
Franklin County Coal Company	Franklin No. 11 **	1925-1925	(none)
			6,136,556

* No production was reported under this name; this company may have only dug the shaft.

** No production was reported under this name, the company and mine name are from Coal Section mine notes.

Last reported production: June 1923

SOURCES OF DATA

Source Map	Date	Original Scale	Digitized Scale	Map Type
State archive, IL_1009_03	10-8-1951	1:2400	1:2400	Final

Annotated Bibliography (data source, brief description of information)

Coal Reports - Production, ownership, years of operation, thickness, geologic problems.

Directory of Illinois Coal Mines (Franklin County) - Mine names, mine index, ownership, years of operation.

Mine notes (Franklin County) - Mine type, shaft locations, seam, depth, thickness, ownership.

State archive, IL_1009_03 - Shaft locations, mine outline, mining method.

Mine Index 2480**M. & E. Coal Company, M. & E. Mine**

Type: Underground Total mined-out acreage shown: 29 Production indicates approximately 3 acres were mined after the map date.

SHAFT, SLOPE, DRIFT or TIPPLE LOCATIONS

Type	County	Township-Range	Section	Quarters-Footage
Main slope	Jackson	8S 1W	5	SE NW NE
Air shaft	Jackson	8S 1W	5	SW NE NE

GEOLOGY

Seam(s) Mined	Depth (ft)	Thickness (ft)			Mining Method
		Min	Max	Avg	
Herrin	87-95			7.5-11.0	MRP

Geologic Problems Reported:

PRODUCTION HISTORY

Company	Mine Name	Years	Production (tons)
M. & M. Coal Company	M. & M.	1935-1936	8,343
M. & E. Coal Company	M. & E.	1936-1950	192,508
M. & E. Coal Company	M. & E.	1950-1953	19,627 *
			<u>220,478</u>

* Production after map date

Last reported production: 1953

SOURCES OF DATA

Source Map	Date	Original Scale	Digitized Scale	Map Type
State archive, IL_2086_01	1-21-1950	1:2400	1:2400	Not final

Annotated Bibliography (data source, brief description of information)

Coal Reports - Production, ownership, years of operation.

Directory of Illinois Coal Mines (Jackson County) - Mine names, mine index, ownership, years of operation.

Mine notes (Jackson County) - Mine type, shaft location, seam, depth, thickness.

ISGS field notes (Jackson County) - Thickness.

State archive, IL_2086_01 - Slope & shaft locations, mine outline, mining method.

Mine Index 2481**Inland Coal & Washing Company, Inland Mine**

Type: Underground Total mined-out acreage shown: 181

SHAFT, SLOPE, DRIFT or TIPPLE LOCATIONS

Type	County	Township-Range	Section	Quarters-Footage
Shaft No. 1	Jackson	8S 1W	8	SE NE SW *
Shaft No. 2	Jackson	8S 1W	8	SE NW SE
Shaft	Jackson	8S 1W	8	SW SW SE
Shaft	Jackson	8S 1W	8	SE SE SW

* A shaft was shown in this location (or nearby) on the 1876 atlas. However, the 1882 Coal Report specifically stated that the Big Muddy Coal & Coke Company was new and the mine was new (page 31). No map of the workings have been found for this part of the mine (only a few eastern entries are sketched on the mine map of Black Cat Mine, mine index 2485). This mine is connected underground to Black Cat Mine (mine index 2485). The outline shown may include an older mine.

GEOLOGY

Seam(s) Mined	Depth (ft)	Thickness (ft)			Mining Method
		Min	Max	Avg	
Herrin	63	3.5	10.0	8.5-9.0	RP

Geologic Problems Reported: The roof caved in the eastern part of the mine.

PRODUCTION HISTORY

Company	Mine Name	Years	Production (tons)
Big Muddy Coal & Coke Company	Big Muddy No. 1 & Big Muddy No. 2	1881-1899	597,195
Big Muddy Coal & Washing Company	Big Muddy	1899-1901	122,437
De Soto Coal & Washing Company	De Soto	1901-1904 **	33,000
Inland Coal & Washing Company	Inland	1904-1907	<u>224,172</u>
			976,804

** Idle 1904

Last reported production: 1907

SOURCES OF DATA

Source Map	Date	Original Scale	Digitized Scale	Map Type
State archive, IL_2089_01	3-1923	1:1200	1:1200	Secondary source
ISGS map library, 4103.J31 i5.1-37	ca. 1934	1:31680	1:31680	Secondary source
ISGS field notes (E. T. Benson)	8-23-1934	(text only)	1:24000 ***	Secondary source

***The shaft locations were plotted on a 1:24000 USGS topographic map from the shaft location descriptions and digitized.

Annotated Bibliography (data source, brief description of information)

Coal Reports - Production, ownership, years of operation, mining method.

Directory of Illinois Coal Mines (Jackson County) - Mine names, mine index, ownership, years of operation.

Mine notes (Jackson County) - Shaft location, seam, depth, thickness.

State archive, IL_2089_01 (mine index 2485) - Mine outline (eastern part), mining method, geologic problems.

ISGS map library, 4103.J31 i5.1-37 sheet 1, composite mined-out area map for Federal Land Bank Report - Shaft locations, mine outline.

ISGS field notes (Jackson County) - Shaft locations.

Mine Index 2482
Monroe Coal Company, Monroe Mine

Type: Underground Total mined-out acreage shown: 5 Production indicates approximately 4 acres were mined after the map date, yet the area shown is the approximate size expected for the reported total production of this mine. Other operators may have mined in this location.

SHAFT, SLOPE, DRIFT or TIPPLE LOCATIONS

Type	County	Township-Range	Section	Quarters-Footage
Main slope	Jackson	8S 1W	8	NE NE SW
Air shaft	Jackson	8S 1W	8	NE NE SW

GEOLOGY

Seam(s) Mined	Depth (ft)	Thickness (ft)			Mining Method
		Min	Max	Avg	
Herrin	35-60			8.0-10.0	Underground

Geologic Problems Reported: Top coal (generally 18 inches) was left to support the roof.

PRODUCTION HISTORY

Company	Mine Name	Years	Production (tons)
Home Fires Coal Company	Home Fires	1924-1927	4,430
C. E. Ballor	Ballor	1928-1929 *	1,440
Home Fires Coal Company	Home Fires	1930-1930	2,396
Home Fires Coal Company	Home Fires	1930-1930	2,831 **
Hugh Norris & Company	Norris	1931-1931	3,387 **
Monroe & Hendricks Coal Company	Monroe & Hendricks	1932-1933 ***	4,839 **
Monroe Coal Company	Monroe	1934-1936	10,430 **
			29,753

* Idle 1929

** Production after map date

*** Idle 1932 or produced less than 1,000 tons. Production not reported 1930-1933 for mines producing less than 1,000 tons per year.

Last reported production: 1936

SOURCES OF DATA

Source Map	Date	Original Scale	Digitized Scale	Map Type
State archive, IL_2077_01	6-17-1930	1:1200	1:1200	Not final

Annotated Bibliography (data source, brief description of information)

Coal Reports - Production, ownership, years of operation.

Directory of Illinois Coal Mines (Jackson County) - Mine names, mine index, ownership, years of operation.

Mine notes (Jackson County) - Mine type, slope location, seam, depth, thickness.

ISGS field notes (Jackson County) - Mine type, shaft location, seam, depth, thickness, geologic problems.

State archive, IL_2077_01 - Slope & shaft locations, mine outline, mining method.

Mine Index 2483**De Soto Coal Company, De Soto Mine**

Type: Surface Total mined-out acreage shown: None; production indicates less than 1 acre was mined.

SHAFT, SLOPE, DRIFT or TIPPLE LOCATIONS

Type	County	Township-Range	Section	Quarters-Footage
Pit or tippie	Jackson	8S 1W	8	NE NE SW

GEOLOGY

Seam(s) Mined	Depth (ft)	Thickness (ft)			Mining Method
		Min	Max	Avg	
Herrin	25			6.5	Surface

Geologic Problems Reported:

PRODUCTION HISTORY

Company	Mine Name	Years	Production (tons)
De Soto Coal Company *	De Soto	1939-1939	<u>75</u> 75

* This mine may have been operated by Guy Martin.

Last reported production: 1939

SOURCES OF DATA

Source Map	Date	Original Scale	Digitized Scale	Map Type
ISGS mine notes	Undated	(text only)	1:24000 **	Secondary source

** The mine location was plotted on a 1:24,000 USGS topographic map from the mine location description and digitized.

Annotated Bibliography (data source, brief description of information)

Coal Reports - Production, ownership, years of operation.

Directory of Illinois Coal Mines (Jackson County) - Mine names, mine index, ownership, years of operation.

Mine notes (Jackson County) - Mine type, location, seam, depth, thickness, mine name and operator.

Mine Index 2484
William Eddington, Eddington Mine

Type: Underground Total mined-out acreage shown: None; production indicates approximately 1 acre was mined.

SHAFT, SLOPE, DRIFT or TIPPLE LOCATIONS

Type	County	Township-Range	Section	Quarters-Footage
Main shaft	Jackson	8S 1W	8	NE SW

GEOLOGY

Seam(s) Mined	Depth (ft)	Thickness (ft)			Mining Method
		Min	Max	Avg	
Herrin	30-60			7.0-9.0	RP

Geologic Problems Reported:

PRODUCTION HISTORY

Company	Mine Name	Years	Production (tons)
William Bullar	Bullar	1910-1912	2,600
Thomas Harris	Harris	1912-1913	3,400
William Eddington	Eddington	1913-1914	<u>2,000</u>
			8,000

Last reported production: 1914

SOURCES OF DATA

Source Map	Date	Original Scale	Digitized Scale	Map Type
------------	------	----------------	-----------------	----------

Annotated Bibliography (data source, brief description of information)

Coal Reports - Production, ownership, years of operation, mining method, seam, depth, thickness.
 Directory of Illinois Coal Mines (Jackson County) - Mine names, mine index, ownership, years of operation.
 Jackson County Historical Society - Mine location.

Mine Index 2485**De Soto Peacock Coal Company, Black Cat Mine**

Type: Underground Total mined-out acreage shown: 5 Production indicates approximately 7 acres were mined after the map date. This mine is connected underground to Inland Mine (mine index 2481). The east side of the mine was later partially surface-mined by Admiral Mine (mine index 2492).

SHAFT, SLOPE, DRIFT or TIPPLE LOCATIONS

Type	County	Township-Range	Section	Quarters-Footage
Main slope	Jackson	8S 1W	9	NW NW SW
Air shaft	Jackson	8S 1W	9	NW NW SW

GEOLOGY

Seam(s) Mined	Depth (ft)	Thickness (ft)			Mining Method
		Min	Max	Avg	
Herrin	26-40			8.0-10.0	RP

Geologic Problems Reported: A north-south trending fault was encountered in the east entry off the main north. This fault may have been an eroded roll. The western part of the mine had a limestone roof that was 4 to 7 ft thick. In the eastern and southern part of the mine, the roof was shale. In this part of the mine, 2 ft of top coal was left to support the roof. The blue band was 20 inches above the base of the coal and was 8 to 12 inches thick. In the area where this mine connected underground to Inland Mine (mine index 2481) there was a small area marked caved.

PRODUCTION HISTORY

Company	Mine Name	Years	Production (tons)
Benton Big Muddy Coal Company	Black Cat	1918-1920 *	200
Jackson Peacock Coal Company	Black Cat	1920-1922	10,695
De Soto Peacock Coal Company	Black Cat	1922-1923	5,664
De Soto Peacock Coal Company	Black Cat	1923-1926	<u>27,760</u> **
			44,319

* Idle 1920

** Production after map date

Last reported production: December 1926

SOURCES OF DATA

Source Map	Date	Original Scale	Digitized Scale	Map Type
State archive, IL_2089_01	3-1923	1:1200	1:1200	Not final

Annotated Bibliography (data source, brief description of information)

Coal Reports - Production, ownership, years of operation, mining method.
 Directory of Illinois Coal Mines (Jackson County) - Mine names, mine index, ownership, years of operation.
 Mine notes (Jackson County) - Mine type, slope location, seam, depth, thickness, geologic problems.
 ISGS field notes (Jackson County) - Mine name, ownership.
 State archive, IL_2089_01- Slope & shaft locations, mine outline, mining method, geologic problems.

Mine Index 2486**Little Muddy Coal Company, Little Muddy No. 1 Mine**

Type: Underground Total mined-out acreage shown: None; production indicates approximately 2 acres were mined. The area enclosed by the extent of the mine as reported in the mine notes is approximately 7 acres.

SHAFT, SLOPE, DRIFT or TIPPLE LOCATIONS

Type	County	Township-Range	Section	Quarters-Footage
Main slope	Jackson	8S 1W	11	SE NE SE *
Air shaft	Jackson	8S 1W	11	SE NE SE *

* No map of the Little Muddy No. 1 Mine has been found. According to the mine notes, the mine extended (from the slope bottom) 600 ft east and 200 ft south, with old works extending 300 ft west and 100 ft north. The air shaft is not shown on the accompanying map because of later surface mining by Burning Star No. 5 Mine (mine index 967).

GEOLOGY

Seam(s) Mined	Depth (ft)	Thickness (ft)			Mining Method
		Min	Max	Avg	
Herrin	87	4.0	8.5	7.0	RP

Geologic Problems Reported: No faults were reported, but a few east-west trending rolls were noted. The blue band was present here as a 4 to 6 inch dirt parting, 2.5 to 3 ft above the base of the seam.

PRODUCTION HISTORY

Company	Mine Name	Years	Production (tons)
Supreme Coal Company	Supreme	1921-1922	none reported **
Bradbury Scullin Coal Company	Bradbury Scullin	1922-1923	5,830
Little Muddy Coal Company	Little Muddy No. 1	1932-1934 ***	<u>5,774</u>
			11,604

** Production not reported in 1922 for mines producing less than 10,000 tons.

*** Gaps in years of production may represent production by mines listed as unlocated at the back of this report. This would increase the production for this mine and total area mined. See the Wilkerson mine listings that reported at De Soto at the back of this report for possible production related to this mine. The extent of the mine reported in the mine notes compared to the reported production for Little Muddy No. 1 Mine also support the likelihood of additional operators.

Last reported production: 1934

SOURCES OF DATA

Source Map	Date	Original Scale	Digitized Scale	Map Type
Mine notes	Undated	(text only)	1:24000 †	Secondary source
State archive, IL_1010_01	1-20-1936	1:1200	1:1200	Secondary source

† The mine location was plotted on a 1:24000 USGS topographic map from the mine location description and digitized.

Annotated Bibliography (data source, brief description of information)

Coal Reports - Production, ownership, years of operation, mining method.

Directory of Illinois Coal Mines (Jackson County) - Mine names, mine index, ownership, years of operation.

Mine notes (Jackson County) - Extent of mining, mine type, slope & shaft locations, seam, depth, thickness, geologic problems.

State archive, IL_1010_01, map of Peacock Mine (mine index 2487) - Air shaft location, partial mine outline, mining method.

Mine Index 2487**Peacock Coal Company, Peacock Mine**

Type: Underground Total mined-out acreage shown: 5 Most of the mine is not shown on the accompanying map because of later surface mining by Burning Star No. 5 Mine (mine index 967).

SHAFT, SLOPE, DRIFT or TIPPLE LOCATIONS

Type	County	Township-Range	Section	Quarters-Footage
Main slope *	Jackson	8S 1W	12	NW NW SW

* No air shaft was shown on the source map. However, the mine workings holed into Little Muddy No. 1 Mine (mine index 2486), and their air shaft was shown on the source map for Peacock Mine.

GEOLOGY

Seam(s) Mined	Depth (ft)	Thickness (ft)			Mining Method
		Min	Max	Avg	
Herrin				5.5-6.0	RP

Geologic Problems Reported: The eastern, western and southern extents of the mine are shown as caved on the source map. Poor roof conditions may have been the cause.

PRODUCTION HISTORY

Company	Mine Name	Years	Production (tons)
Peacock Coal Company	Peacock	1933-1935	14,854
			14,854

Last reported production: December 1935

SOURCES OF DATA

Source Map	Date	Original Scale	Digitized Scale	Map Type
State archive, IL1010_01	1-20-1936	1:1200	1:1200	Final

Annotated Bibliography (data source, brief description of information)

Coal Reports - Production, ownership, years of operation, thickness, mining method.

Directory of Illinois Coal Mines (Jackson County) - Mine names, mine index, ownership, years of operation.

Mine notes (Jackson County) - Mine type, slope location, seam.

State archive, IL_1010_01 - Slope location, mine outline, mining method, geologic problems.

Mine Index 2489**New Muddy Valley Coal Company, New Muddy Valley Mine**

Type: Underground Total mined-out acreage shown: 5 Production indicates approximately 1 acre was mined after the map date. This mine was later partially surface mined by Burning Star Surface Mine (mine index 684).

SHAFT, SLOPE, DRIFT or TIPPLE LOCATIONS

Type	County	Township-Range	Section	Quarters-Footage
Main shaft	Jackson	8S 1W	17	NE SW NW *
Air shaft	Jackson	8S 1W	17	NE SW NW *
Shaft	Jackson	8S 1W	17	SW SW NW

* Not shown on accompanying map because of later surface mining.

GEOLOGY

Seam(s) Mined	Depth (ft)	Thickness (ft)			Mining Method
		Min	Max	Avg	
Springfield	46-75			3.5-4.0	MRP

Geologic Problems Reported: A few rolls were present in the mine. One roll was very large.

PRODUCTION HISTORY

Company	Mine Name	Years	Production (tons)
John Parrish	Parrish	1922-1926	10,550
idle		1927-1930 **	
Smith & Finney	Smith & Finney	1931-1931	1,000
Smith & Sisne	Smith & Sisne	1932-1932	1,720
New Muddy Valley Coal Company	New Muddy Valley	1933-1934	3,206
New Muddy Valley Coal Company	New Muddy Valley	1934-1936	3,973 ***
			20,449

** This mine may have operated in 1930, but production was not reported 1930-1933 for mines producing less than 1,000 tons per year. The mine may have been idle 1927-1929 or may have operated under another name (see the unlocated mines at the back of this report).

*** Production after map date.

Last reported production: 1936

SOURCES OF DATA

Source Map	Date	Original Scale	Digitized Scale	Map Type
State archive, IL_2065_01	11-6-1934	1:1200	1:1200	Not final

Annotated Bibliography (data source, brief description of information)

Coal Reports - Production, ownership, years of operation.

Directory of Illinois Coal Mines (Jackson County) - Mine names, mine index, ownership, years of operation.

Mine notes (Jackson County) - Mine type, shaft location, seam, depth, thickness, geologic problems.

ISGS field notes (Jackson County) - Depth, thickness.

State archive, IL_2065_01 - Shaft locations, mine outline, mining method.

Mine Index 2492**Down State Coal Company, Admiral Mine**

Type: Surface Total mined-out acreage shown: 31 The area shown is too large for the reported production. Production indicates approximately 10 acres were mined. The Admiral Mine did mine pillars of previous underground mines, and the mine outline may include some disturbed land that was not mined.

SHAFT, SLOPE, DRIFT or TIPPLE LOCATIONS

Type	County	Township-Range	Section	Quarters-Footage
Pit / tipple	Jackson	8S 1W	17	NE NE NE

GEOLOGY

Seam(s) Mined	Depth (ft)	Thickness (ft)			Mining Method
		Min	Max	Avg	
Herrin	40-54			8.0-10.0	Surface

Geologic Problems Reported:

PRODUCTION HISTORY

Company	Mine Name	Years	Production (tons)
Down State Coal Company	Admiral	1948-1951	137,464
			137,464

Last reported production: 1951

SOURCES OF DATA

Source Map	Date	Original Scale	Digitized Scale	Map Type
USGS topographic map	PR 1978	1:24000	1:24000	Secondary source

Annotated Bibliography (data source, brief description of information)

Coal Reports - Production, ownership, years of operation.

Directory of Illinois Coal Mines (Jackson County) - Mine names, mine index, ownership, years of operation.

Mine notes (Jackson County) - Mine location, seam, depth, thickness.

De Soto Quadrangle, USGS 7.5-minute topographic map, 1968, photorevised 1978 - Mine outline.

Mine Index 3942**Big Three Coal Company, Big Three No. 1 Mine**

Type: Surface Total mined-out acreage shown: 4 Production indicates less than 1 acre was mined. The area shown is too large for the reported production. Big Three No. 1 Mine may have enlarged an existing pit or later operators may have expanded the Big Three pit. (See the unlocated mines at the back of this report.)

SHAFT, SLOPE, DRIFT or TIPPLE LOCATIONS

Type	County	Township-Range	Section	Quarters-Footage
Tipple / pit	Williamson	8S 1E	32	SE NW NW

GEOLOGY

Seam(s) Mined	Depth (ft)	Thickness (ft)			Mining Method
		Min	Max	Ave	
Springfield	20			4	Surface

Geologic Problems Reported:

PRODUCTION HISTORY

Company	Mine Name	Years	Production (tons)
Big Three Coal Company	Big Three No. 1	1956-1956	<u>2,800</u> 2,800

Last reported production: May 1956

SOURCES OF DATA

Source Map	Date	Original Scale	Digitized Scale	Map Type
USGS topographic map	PR 1978	1:24000	1:24000	Secondary source

Annotated Bibliography (data source, brief description of information)

Coal Reports - Production, ownership, years of operation.

Directory of Illinois Coal Mines (Williamson County) - Mine names, mine index, ownership, years of operation, mine location.

Mine notes (Williamson County) - Seam, depth, thickness, general location.

De Soto Quadrangle, USGS 7.5-minute topographic map, 1968, photorevised 1978 - Mine outline.

Mine Index 3943**Pure Coal Company, Pure No. 1 Mine**

Type: Underground Total mined-out acreage shown: 35 Production indicates approximately 2 acres were mined after the map date.

SHAFT, SLOPE, DRIFT or TIPPLE LOCATIONS

Type	County	Township-Range	Section	Quarters-Footage
Main slope	Williamson	8S 1E	20	SE SE SW
Air shaft	Williamson	8S 1E	20	SW SE SW

GEOLOGY

Seam(s) Mined	Depth (ft)	Thickness (ft)			Mining Method
		Min	Max	Avg	
Herrin	72-74			7.33-8.0	RPP

Geologic Problems Reported:

PRODUCTION HISTORY

Company	Mine Name	Years	Production (tons)
Pure Coal Company	Pure No. 1	1949-1955	213,086
Pure Coal Company	Pure No. 1	1955-1955	<u>14,880</u> *
			227,966

* Production after map date

Last reported production: September 1955

SOURCES OF DATA

Source Map	Date	Original Scale	Digitized Scale	Map Type
State archive, IL_1378_01	1-10-1955	1:1200	1:1200	Not final

Annotated Bibliography (data source, brief description of information)

Coal Reports - Production, ownership, years of operation, depth, thickness.

Directory of Illinois Coal Mines (Williamson County) - Mine names, mine index, ownership, years of operation.

Mine notes (Williamson County) - Mine type, slope location, seam.

State archive, IL_1378_01 - Slope & shaft locations, mine outline, mining method.

Mine Index 3944

Blairsville Mining Company, Blairsville Mine

Type: Underground Total mined-out acreage shown: 4 Production indicates less than 1 acre was mined after the map date. An area of old works was shown on source maps, northeast of the Blairsville Mine shaft, and possibly including the northeastern portion of the mine. On early source maps, this area was labeled "Mined prior to the year 1900". See the back of this report, Williamson County listings, for possible operators.

SHAFT, SLOPE, DRIFT or TIPPLE LOCATIONS

Type	County	Township-Range	Section	Quarters-Footage
Main shaft	Williamson	8S 1E	20	SE NW NW
Air shaft	Williamson	8S 1E	20	SE NW NW

GEOLOGY

Seam(s) Mined	Depth (ft)	Thickness (ft)			Mining Method
		Min	Max	Ave	
Herrin	80			9	MRP

Geologic Problems Reported: There was a parting in the coal 20-21 inches from the top of the coal vein and a blue band 1-2 inches thick two feet above the base on the coal.

PRODUCTION HISTORY

Company	Mine Name	Years	Production (tons)
I. D. Gosnell	Blairsville	1928-1937	17,981
New Carbondale Coal Company	New Carbondale	1937-1937	1,000
New Muddy Valley Coal Company	New Muddy Valley	1938-1939	1,043 *
Blairsville Mining Company	Blairsville	1939-1939	200 *
			20,224

* Production after map date

Last reported production: 1939

SOURCES OF DATA

Source Map	Date	Original Scale	Digitized Scale	Map Type
State archive, IL_1385_01	7-22-1938	1:1200	1:1200	Not final
State archive, IL_1386_01	3-13-1936	1:1200	1:1200	Not final

Annotated Bibliography (data source, brief description of information)

Coal Reports - Production, ownership, years of operation.

Directory of Illinois Coal Mines (Williamson County) - Mine names, mine index, ownership, years of operation.

Mine notes (Williamson County) - Mine type, shaft locations, seam, depth, thickness, geologic problems.

State archive, IL_1385_01 - Shaft locations, mine outline, mining method.

State archive, IL_1386_01 - Old works identified.

Mine Index 3949**Cambria Coal Company, Cambria Mine**

Type: Underground Total mined-out acreage shown: 3 A portion of the east side of the mine was later surface-mined by Cambria No. 1 Mine (mine index 1027).

SHAFT, SLOPE, DRIFT or TIPPLe LOCATIONS

Type	County	Township-Range	Section	Quarters-Footage
Main slope	Williamson	8S 1E	29	NW NE SW *
Air shaft	Williamson	8S 1E	29	NW NE SW *

* Not shown on the accompanying map because of later surface mining. The mine location on source maps for the Cambria Mine were incorrect, and the same surveyor gave two different locations (E ½ NE SW 29-T8S-R1E and SE NW 29-T8S-R1E). A secondary source (map of Number Six Coal Company) was used to locate the mine, because there weren't enough features (section corners, streams or railroads) to deduce the correct location from the Cambria Mine (mine index 3949) source maps.

GEOLOGY

Seam(s) Mined	Depth (ft)	Thickness (ft)			Mining Method
		Min	Max	Ave	
Herrin **	71			9	MRP

** A note on the source map says this mine may have also worked in the Springfield Coal, but no map has been found for this.

Geologic Problems Reported:

PRODUCTION HISTORY

Company	Mine Name	Years	Production (tons)
Cambria Coal Company	Cambria	1934-1940	<u>21,153</u> 21,153

Last reported production: 1940

SOURCES OF DATA

Source Map	Date	Original Scale	Digitized Scale	Map Type
State archive, IL_1496_01	4-19-1940	1:1200	1:1200	Final
State archive, MSHA_483_01	4-4-1947	1:2400	1:2400	Secondary source

Annotated Bibliography (data source, brief description of information)

Coal Reports - Production, ownership, years of operation.

Directory of Illinois Coal Mines (Williamson County) - Mine names, mine index, ownership, years of operation.

Mine notes (Williamson County) - Mine type, slope location, seam, depth, thickness.

State archive, IL_1496_01 - Slope & shaft locations, mine outline, mining method.

State archive, MSHA_483_01, map of Number Six Coal Company (mine index 3948) - Mine location.

Mine Index 3950
Henry E. Layman, Patrick Mine

Type: Underground Total mined-out acreage shown: 7 The Patrick Mine is not shown on the accompanying map because of later surface mining by the Forsythe-Carterville Mine (mine index 814).

SHAFT, SLOPE, DRIFT or TIPPLE LOCATIONS

Type	County	Township-Range	Section	Quarters-Footage
Main slope	Williamson	8S 1E	31	NE NE SE
Air shaft	Williamson	8S 1E	31	NE NE SE

GEOLOGY

Seam(s) Mined	Depth (ft)	Thickness (ft)			Mining Method
		Min	Max	Ave	
Springfield	7.5	3	4	3.5	MRP

Geologic Problems Reported:

PRODUCTION HISTORY

Company	Mine Name	Years	Production (tons)
Phillips-Vaughn-Snyder	Phillips-Vaughn-Snyder	1938-1942 *	2,306
Prosperity Coal Company	Prosperity	1943-1944	2,579
Butcher-Yates	New Cambria	1944-1944	500
Patrick & Phillips Coal Company	Patrick	1945-1947	7,300
Henry E. Layman	Patrick	1948-1948	1,242
			<u>13,927</u>

* Idle 1941 & 1942

Last reported production: 1948

SOURCES OF DATA

Source Map	Date	Original Scale	Digitized Scale	Map Type
State archive, IL_1396_01	7-4-1948	1:1200	1:1200	Final

Annotated Bibliography (data source, brief description of information)

Coal Reports - Production, ownership, years of operation.

Directory of Illinois Coal Mines (Williamson County) - Mine names, mine index, ownership, years of operation.

Mine notes (Williamson County) - Mine type, slope location, seam, depth, thickness.

State archive, IL_1396_01 - Slope & shaft locations, mine outline, mining method, seam.

Mine Index 3951
Albert Singley & Son, Singley Mine

Type: Underground Total mined-out acreage shown: 6 Production indicates approximately 1 acre was mined, and one acre was mined after the map date. See the back of this report for unlocated mines that may have operated the Singley Mine before 1933. The Singley Mine is not shown on the accompanying map because of later surface mining by Forsyth-Carterville Mine (mine index 814).

SHAFT, SLOPE, DRIFT or TIPPLE LOCATIONS

Type	County	Township-Range	Section	Quarters-Footage
Main slope	Williamson	8S 1E	31	NE SE NE
Air shaft	Williamson	8S 1E	31	NE SE NE

GEOLOGY

Seam(s) Mined	Depth (ft)	Thickness (ft)			Mining Method
		Min	Max	Ave	
Springfield	33	3.5	4	3.75	RPB

Geologic Problems Reported: Roof falls were noted in the northern part of the mine.

PRODUCTION HISTORY

Company	Mine Name	Years	Production (tons)
Albert Singley & Son	Singley	1933-1939	4,071
Albert Singley & Son	Singley	1940-1942	905 *
			4,976

* Production after map date

Last reported production: 1942

SOURCES OF DATA

Source Map	Date	Original Scale	Digitized Scale	Map Type
State archive, IL_1433_01	1-1-1940	1:1200	1:1200	Not final

Annotated Bibliography (data source, brief description of information)

Coal Reports - Production, ownership, years of operation.
 Directory of Illinois Coal Mines (Williamson County) - Mine names, mine index, ownership, years of operation.
 Mine notes (Williamson County) - Mine type, slope location, seam, depth, thickness.
 State archive, IL_1433_01 - Slope/shaft locations, mine outline, mining method, geologic problems.

Mine Index 3953**Ogmore Coal Company, Ogmore Mine**

Type: Underground Total mined-out acreage shown: 19 The mine was later partially surface-mined by Forsyth-Carterville Mine (mine index 814).

SHAFT, SLOPE, DRIFT or TIPPLE LOCATIONS

Type	County	Township-Range	Section	Quarters-Footage
Main slope	Williamson	8S 1E	32	SE SW NW
Air shaft	Williamson	8S 1E	32	SE SW NW

GEOLOGY

Seam(s) Mined	Depth (ft)	Thickness (ft)			Mining Method
		Min	Max	Ave	
Springfield	50-60			4.0-5.0	MRP

Geologic Problems Reported:

PRODUCTION HISTORY

Company	Mine Name	Years	Production (tons)
Ogmore Coal Company *	Ogmore	1934-1942	<u>51,084</u> 51,084

* Operated by W. E. Elkins

Last reported production: 1942

SOURCES OF DATA

Source Map	Date	Original Scale	Digitized Scale	Map Type
State archive, IL_1392_01	1-10-1943	1:1200	1:1200	Final

Annotated Bibliography (data source, brief description of information)

Coal Reports - Production, ownership, years of operation.

Directory of Illinois Coal Mines (Williamson County) - Mine names, mine index, ownership, years of operation.

Mine notes (Williamson County) - Mine type, slope location, seam, depth, thickness.

State archive, IL_1392_01 - Slope & shaft locations, mine outline, mining method.

Mine Index 4001
Huskey Coal Company, Huskey No. 1 Mine

Type: Surface Total mined-out acreage shown: 157

SHAFT, SLOPE, DRIFT or TIPPLE LOCATIONS

Type	County	Township-Range	Section	Quarters-Footage
Tipple *	Williamson	9S 1E	5	NE NE SW

* Pits were located in N ½ Section 5 and NE NE Section 6, T9S-R1E and SE SE Section 31, T8S-R1E.

GEOLOGY

Seam(s) Mined	Depth (ft)	Thickness (ft)			Mining Method
		Min	Max	Avg	
Springfield	22-25			3.25-4.25	Surface

Geologic Problems Reported:

PRODUCTION HISTORY

Company	Mine Name	Years	Production (tons)
Quaker Mining Company	Quaker No. 1	1923-1924	105,000
Worth-Huskey Coal Company	Worth-Huskey No. 1	1924-1925	153,606
Huskey Coal Company	Huskey No. 1	1926-1928	384,457
			643,063

Last reported production: January 1928

SOURCES OF DATA

Source Map	Date	Original Scale	Digitized Scale	Map Type
USGS topographic map	PR 1978	1:24000	1:24000	Secondary source
ISGS map library, 4103.W52 i5.1-189	8-11-1934	1:63360	1:63360	Secondary source

Annotated Bibliography (data source, brief description of information)

Coal Reports - Production, ownership, years of operation, seam, depth, thickness.
 Directory of Illinois Coal Mines (Williamson County) - Mine names, mine index, ownership, years of operation.
 Mine notes (Williamson County) - Mine type, tipple / pit location, seam, depth.
 De Soto Quadrangle, USGS 7.5-minute topographic map, 1968, photorevised 1978 - Mine outline.
 ISGS map library, 4103.W52 i5.1-189, work map for Federal Land Bank Report map - Mine location.

Mine Index 4469**Johns Coal Company, Johns Mine**

Type: Underground Total mined-out acreage shown: 13 Production indicates approximately 8 acres were mined. Earlier operators may have opened a mine at this location that was later extended by the operators listed here. See the back of this report for possible earlier operators.

SHAFT, SLOPE, DRIFT or TIPPLE LOCATIONS

Type	County	Township-Range	Section	Quarters-Footage
Main slope	Jackson	8S 1W	5	NE SW NE
Air shaft	Jackson	8S 1W	5	NW SE NE

GEOLOGY

Seam(s) Mined	Depth (ft)	Thickness (ft)			Mining Method
		Min	Max	Avg	
Herrin	166			6.75-9.0	RP

Geologic Problems Reported:

PRODUCTION HISTORY

Company	Mine Name	Years	Production (tons)
Johns Coal Company	Johns	1948-1953	42,206
Co-op Coal Company	Co-op	1954-1955	6,924
Sun Ray Coal Company	Sun Ray	1955-1955	1,805
Johns Coal Company	Johns	1956-1957	1,741
			52,676

Last reported production: 1957

SOURCES OF DATA

Source Map	Date	Original Scale	Digitized Scale	Map Type
State archive, IL_2048_01	4-1-1957	1:2400	1:2400	Final
State archive, IL_1999_04	10-9-1965	1:2400	1:2400	Secondary source

Annotated Bibliography (data source, brief description of information)

Coal Reports - Production, ownership, years of operation, thickness, mining method.

Directory of Illinois Coal Mines (Jackson County) - Mine names, mine index, ownership, years of operation.

Mine notes (Jackson County) - Mine type, seam, depth, thickness.

State archive, IL_2048_01 - Slope & shaft locations, mine outline, mining method, seam.

State archive, IL_1999_04, map of Burning Star Mine (mine index 606) - General area of mining.

Mine Index 4513**Main Line Coal Corporation, Main Line No. 1 Mine**

Type: Surface Total mined-out acreage shown: 136 Production indicates 51 to 80 acres were mined.
The outline shown is larger than expected, and likely includes disturbed ground.

SHAFT, SLOPE, DRIFT or TIPPLE LOCATIONS

Type	County	Township-Range	Section	Quarters-Footage
Tipple / pit	Williamson	8S 1E	30	N ½ of section

GEOLOGY

Seam(s) Mined	Depth (ft)	Thickness (ft)			Mining Method
		Min	Max	Ave	
Herrin	50-60			9.0-10.0	Surface

Geologic Problems Reported:

PRODUCTION HISTORY

Company	Mine Name	Years	Production (tons)
Big Muddy Coal Company	Big Muddy No. 1	1964-1966	564,852
Main Line Coal Corporation	Main Line No. 1	1966-1967	359,946
			924,798

Last reported production: July 1967

SOURCES OF DATA

Source Map	Date	Original Scale	Digitized Scale	Map Type
Department of Mines & Minerals	Undated			Secondary source
LiDAR	2021			Secondary source

Annotated Bibliography (data source, brief description of information)

Coal Reports - Production, ownership, years of operation, seam depth, thickness.

Directory of Illinois Coal Mines (Williamson County) - Mine names, mine index, ownership, years of operation.

Mine notes (Williamson County) - Mine type, tipple / pit location, seam, depth, thickness..

Department of Mines & Minerals, 7a-02-22, aerial photograph base with surface mines identified - Mine outline.

LiDAR Digital Terrain Model, Williamson County - Indications of mining.

Mine Index 4599**Richardson Coal Company, Richardson Mine**

Type: Underground Total mined-out acreage shown: Less than 1 Production indicates less than 1 acre was mined after the map date.

SHAFT, SLOPE, DRIFT or TIPPLE LOCATIONS

Type	County	Township-Range	Section	Quarters-Footage
Main slope	Jackson	9S 1W	7	NE NE SE

GEOLOGY

Seam(s) Mined	Depth (ft)	Thickness (ft)			Mining Method
		Min	Max	Avg	
Murphysboro	97			4.5	RPB

Geologic Problems Reported:

PRODUCTION HISTORY

Company	Mine Name	Years	Production (tons)
Richardson Coal Company	Richardson	1948-1949	1,998
Richardson Coal Company	Richardson	1949-1950	940 *
			2,938

* Production after map date

Last reported production: 1950

SOURCES OF DATA

Source Map	Date	Original Scale	Digitized Scale	Map Type
State archive, IL_2074_01	10-2-1949	1:1200	1:1200	Not final

Annotated Bibliography (data source, brief description of information)

Coal Reports - Production, ownership, years of operation.

Directory of Illinois Coal Mines (Jackson County) - Mine names, mine index, ownership, years of operation.

Mine notes (Jackson County) - Mine type, depth, thickness.

State archive, IL_2074_01 - Slope location, mine outline, mining method, seam.

Mine Index 4610**Joe Kimmel, Kimmel Mine**

Type: Underground Total mined-out acreage shown: 12, as general area of mining This mine would have been at least partially later surface mined by Burning Star Surface Mine (mine index 684).

SHAFT, SLOPE, DRIFT or TIPPLe LOCATIONS

Type	County	Township-Range	Section	Quarters-Footage
Shaft	Jackson	8S 1W	17	SW SW NW

GEOLOGY

Seam(s) Mined	Depth (ft)	Thickness (ft)			Mining Method
		Min	Max	Avg	
Springfield	40			6.0	Longwall

Geologic Problems Reported:

PRODUCTION HISTORY

Company	Mine Name	Years	Production (tons)
Joe Kimmel	Kimmel	before 1908	Unknown *

* No production was reported under this name. See the back of this report for unlocated mines that may have been the reporting company in the Coal Reports.

Last reported production:

SOURCES OF DATA

Source Map	Date	Original Scale	Digitized Scale	Map Type
State archive, IL_2065_01	11-6-1934	1:1200	1:1200	Secondary source
ISGS field notes (T. E. Savage)	1908	(text only)	1:24000 **	Secondary source
ISGS field notes (E. T. Benson)	8-23-1934	(text only)	1:24000 **	Secondary source

** The shaft location was plotted on a 1:24000 USGS topographic map from the mine location description and digitized.

Annotated Bibliography (data source, brief description of information)

Directory of Illinois Coal Mines (Jackson County) - Mine names, mine index, ownership, years of operation.
 State archive, IL_2065_01, map of New Muddy Valley Mine (mine index 2489) - Shaft location, general area of mining.
 ISGS field notes (Jackson County) - Mine type, shaft location, seam, depth, thickness, mining method.

Mine Index 4625**De Soto Coal & Mining Company, Pee Wee Mine**

Type: Underground Total mined-out acreage shown: 15 The mine was later partially surface-mined by Admiral Mine (mine index 2492).

SHAFT, SLOPE, DRIFT or TIPPLE LOCATIONS

Type	County	Township-Range	Section	Quarters-Footage
Main shaft	Jackson	8S 1W	17	NE NE NE

GEOLOGY

Seam(s) Mined	Depth (ft)	Thickness (ft)			Mining Method
		Min	Max	Avg	
Herrin	40-54			8.0-10.0	RP

Geologic Problems Reported:

PRODUCTION HISTORY

Company	Mine Name	Years	Production (tons)
De Soto Peacock Coal Company *	Pee Wee	1912-1917	64,616
De Soto Coal & Mining Company **	Pee Wee	1917-1919	41,520
			106,136

* Operated by Charles Hart

** Operated by Mr. McClearey, and later sold to the Grand Rapids Furniture Company, which closed the mine soon after because it was worked out.

Last reported production: 1919

SOURCES OF DATA

Source Map	Date	Original Scale	Digitized Scale	Map Type
ISGS map library, 4103.J31 i5.1-37	ca. 1934	1:31680	1:31680	Secondary source
ISGS field notes (E. T. Benson)	1934	(text only)	1:24000 ***	Secondary source

*** The shaft location was plotted on a 1:24000 USGS topographic map from the shaft location description and digitized.

Annotated Bibliography (data source, brief description of information)

Coal Reports - Production, ownership, years of operation, mining method.

Directory of Illinois Coal Mines (Jackson County) - Mine names, mine index, ownership, years of operation.

Mine notes (Jackson County) - Mine type, shaft location, seam, depth, thickness.

ISGS field notes (Jackson County) - Mine name, mine type, shaft location, seam, depth, thickness

ISGS map library, 4103.J31 i5.1-37 sheet 1 - Mine outline.

OTHER MINES SHOWN ON DE SOTO QUADRANGLE

Mine Index 3952, Gentry Mine * SE SE SW 32-T8S-R1E, underground, Springfield Coal source: ISGS mine notes
 Mine Index 4609 SW SE 8-T8S-R1W, surface, Herrin Coal source: USGS De Soto Quadrangle, 1968 PR 1978
 Mine Index 4611 NE SW NW 35-T8S-R1W, drift, Houchin Creek Coal, 18 ft deep, 1.9 ft thick
 source: ISGS field notes (T. E. Savage, 1908 & H. R. Wanless, 1931)
 Mine Index 7160, Inland Coal Company SW SW SE 8-T8S-R1W, shaft, Herrin Coal, 63 ft deep, 10.0-11.0 ft thick
 source: ISGS map library, 4103.J31 i5.1-37 sheet 1; ISGS field notes (T. E. Savage, 1908)
 Mine Index 7161 NE NE SW 1-T9S-R1W, surface, Houchin Creek Coal, 1.8 ft thick source: ISGS map library,
 4107 d5-28; ISGS field notes (H. R. Wanless, 1931)

* Not shown on the accompanying map because of later surface mining

MINES WHOSE LOCATIONS ARE NOT KNOWN, DE SOTO QUADRANGLE

The locations of the following mines are unknown, but the production tonnage, operating names, and nearest town were reported in the Annual Coal Reports. The operators listed below mined in or near the De Soto Quadrangle. The information shown is similar to that presented on the summary sheets in the previous pages of this directory. The first item is the name the mine operated under as listed in the Coal Report, then the years the mine reported. If no physical data are available, the next item listed is the total tons produced by the mine. If physical data are available, the order of presentation is as follows: type of opening for the mine (drift, slope or shaft), depth of coal in feet, and thickness of coal in feet.

The total tons mined by these unlocated mines is 1,314,044 (975,700 underground, 251,939 surface mined and 86,405 mined by uncertain method), which would represent approximately 149 to 501 acres, depending on the recovery factor, mining method, and numerous other factors. However, most of the unlocated production is from Williamson County, and is most likely east of this quadrangle. The Jackson County unlocated production is 32,380 tons, representing 5 to 12 acres. (Note: 1 square mile = 640 acres)

MINE INFORMATION	PRODUCTION	MINE INDEX
CAMBRIA (Williamson County)		
Phillips (George A.), 1913-1915, slope, Herrin, 20, 8.5-9.0, RP	685 tons	91990073
Sunrise Coal Company, 1917-1918, slope/shaft, Herrin, 130, 6.0-9.0, RP	20,158 tons	91990084
John (W. H.), 1918-1919	16,624 tons	
Sunrise Coal Company, 1919-1923	113,698 tons	
Quaker Coal Company, Sunrise Mine, 1923-1924	<u>27,579 tons</u>	
	178,059 tons	
Leah Coal Company, 1920-1922, shaft, Springfield, -, 3.83, RP	29,122 tons	91990094
Pleasant (Raymond), 1923-1927	2,674 tons	91990120
Waterloo Coal Company, 1924-1925	1,169 tons	91990125
Hagler (Harry), 1926-1928, underground	6,146 tons	91990143
Elkins & Sizemore, 1926-1927, underground	3,285 tons	91990145
Elkins & Jones, 1928-1929	2,138 tons	
Elkins & Johns, 1930-1931	4,999 tons	
Johns (W. H.), 1932-1932	<u>1,760 tons</u>	
	12,182 tons	
Poston (I. N.), 1933-1933, underground	4,446 tons	91990190
Elkins & Richy, 1934-1934, underground	350 tons	91990206

CARBONDALE (Williamson County)

Fought-Boren-Shackelford, 1927-1927, underground	110 tons	91990155
Clark (Carl) & Company, 1928-1928	1,500 tons	
Waldo & Clark, 1929-1929	1,200 tons	
Waldo Coal Company, 1930-1930	<u>1,500 tons</u>	
	4,310 tons	
Ferrell (R. S.), 1932-1932, underground	1,310 tons	91990188

CARTERVILLE (Williamson County)

Wright (George), 1883-1884, drift, —, —, 2.0, RP	not reported	
1884 Coal Report, p. 587, 2 miles west of Carterville, opened & abandoned, production not reported		
Reynolds (Seth), 1885-1889, shaft, Danville, 18, 9.5, RP	1,262 tons	91990003
Winning & McMath, 1888-1889, shaft, Danville or Springfield, 45, 3.0, RP	4,782 tons	91990007
McMath (George), 1889-1892	<u>18,996 tons</u>	
	23,778 tons	
Walker (J. M.), 1890-1890	200 tons	91990008
Griffin & Nickles, 1887-1890, shaft, Herrin, 50, 8.5, RP	850 tons	91990008 a
Sprague & Nichels, 1890-1891	<u>1,500 tons</u>	
	2,350 tons	
Lansom (T. J.), 1892-1895, shaft, Danville, 30, 6.0-9.0, RP	5,113 tons	91990013
Talby & Lawson, 1895-1896	<u>3,000 tons</u>	
	8,113 tons	
Walden (David, Sr.), 1892-1893, shaft, Danville, 30, 9.0-9.5, RP	1,810 tons	91990014
Waldron (David) & Company, 1893-1894	1,725 tons	
Belce Brothers, 1894-1895	1,725 tons	
Liddle & Warren, 1895-1896	<u>2,000 tons</u>	
	7,260 tons	
Scott-Wilson Coal Company, No. 2 Mine, 1897-1900		
shaft, Danville, 65-74, 7.0-9.0, RP	217,750 tons	91990029
New Ohio Washed Coal Company, No. 2 Mine, 1900-1903	<u>251,973 tons</u>	
	469,723 tons	
Carterville Diamond Mining Company, 1903-1905		
shaft, Danville, 20-80, 7.0, RP	1,920 tons	91990038
Powel (W. J.), shaft, Danville, 30, 9.0, RP	600 tons	91990041
Rice (Reese) & Crain, 1904-1905, shaft or slope, Herrin, 20-40, 7.0, RP	1,650 tons	91990042
Phillips (George A.), 1905-1908, slope, Danville / Herrin, 58-80, 8.0-9.0, RP	3,012 tons	91990044
Lewis (T. E.), 1912-1913, slope, Herrin, 80, 9.0, RP	1,875 tons	91990070
Connett (W. E.), 1912-1913, slope, Herrin, 13-14, 4.0-5.5, RP	200 tons	91990071
Motsinger (Arthur), 1913-1916	<u>1,825 tons</u>	
	2,025 tons	
Crain (H. P.), 1913-1916, slope, Herrin or Springfield, 20-30, 4.0-6.0, RP	8,020 tons	91990072
Lewis Coal Company, 1916-1917	9,000 tons	91990078
Lewis (Thomas), 1917-1918	<u>5,000 tons</u>	
	14,000 tons	

Lewis (Thomas E.), 1916-1918	1,075 tons	91990081a
Lewis (Thomas E.), 1917-1918	475 tons	91990081 b
Hurricane Coal Company, 1917-1918	150 tons	91990085
Clarida (Moody), 1919-1920, surface	2,058 tons	91990090
Hampton Coal Company, 1920-1922	<u>15,065</u> tons 17,123 tons	
Block Coal Company, No. 1 Mine, 1920-1921	11,500 tons	91990093
Carterville Fuel Company, No. 1 Mine, 1922-1923, surface, Herrin, —, 7.0	32,975 tons	91990106
Bradley (Bradbury) & Scullin, No.2, 1922-1924, slope, Herrin, —, 7.0, RP (also listed as New Prosperity Mine in 1923, and Doran Mine in 1924)	16,316 tons	91990109
Donaly Coal Company, 1922-1927	20,506 tons	91990110
Congler Brothers & Company, 1922-1923, underground	1,500 tons	91990114
Caughler & Clarida Coal Company, 1923-1924 (idle or reported under another name, 1925-1926)	8,000 tons	
Cagle & Clarida, 1927-1927	1,103 tons	
Gogle & Islander, 1928-1928 (believed to be typographic error, "Cagle")	3,100 tons	
Cagle (John), 1939-1930	<u>5,500</u> tons 19,203 tons	
Phillips (John R.), 1925-1925	476 tons	91990134
McLaren Coal Company, No. 1, 1926-1929, slope, Herrin, 40, 7.0-9.0, RP	111,962 tons	91990140
Tripp & Rushing, 1933-1934, underground	2,500 tons	91990150
Tripp Coal Company, 1935-1936	<u>1,500</u> tons 4,000 tons	
Young Brothers, No. 2 Mine, 1927-1927	775 tons	91990153
McEwan (J. & R.), 1927-1927	500 tons	91990153
Tregoning Coal Company, 1928-1929, slope, Herrin, 60, 8.5, RP	10,025 tons	91990156
Williamson (George), 1928-1929, underground	3,700 tons	91990159 a
Williamson (Nolia), 1934-1936	1,187 tons	91990159 b
Carterville Coal & Mining Company, No. 1, 1931-1933, surface, —, 7.5-8.0 Herrin Coal	5,487 tons	91990174
Carterville-Peacock Coal Company, 1932-1934, surface, Herrin, 6.25-8.5	177,867 tons	91990181
Lee (Clyde M.), 1932-1932, underground	1,512 tons	91990187
Phillips Coal Company, 1934-1934, underground	750 tons	91990202
Humphrey (D. M.), 1934-1934, surface	301 tons	91990208
Patrick (Charles), 1935-1935, surface	65 tons	91990218
Black Diamond Coal Company, No. 2 Mine, 1935-1935, underground	700 tons	91990222
Carterville Coal Corporation, Black Diamond Mine, 1917-1920	26,968 tons	91990233
Block Coal Company, No. 2 Mine, 1920-1921	<u>18,419</u> tons 45,387 tons	
Vulcan Coal Company, No. 1 Mine, 1942-1943, underground	1,510 tons	91990236

Lee Coal Company, 1949-1949, surface	650 tons	91990240
Liberty Coal Company, No. 5 Mine, 1967-1967, surface, Herrin, 40, 8.0	10,415 tons	91990261

DE SOTO (Jackson County)

Zimmerman Mine, 1879-1880, shaft, —, 35, 6.0	400 tons	90770006
Wisley & Dyer, 1898-1900, shaft, —, 30, 7.0, RP	780 tons	90770041
Wilkinson (William), 1907-1910, slope, Danville, 30-90, 6.5-9.0, RP	1,745 tons	90770060
Boden (A.) & Craig (J.), 1911-1912, shaft, —, 38, 8.5, RP	1,100 tons	90770070
Bane & Ellace, 1911-1912, shaft, Herrin, 54, 10.0, RP	150 tons	90770071
Bowlen (A. C.), 1914-1915, shaft, Herrin, 40, 8.0-8.5, RP	3,000 tons	90770074
Bowlen Brothers, 1915-1916	<u>670</u> tons 3,670 tons	
Wilkerson & Brown, 1920-1921	1,500 tons	90770093
Wilkerson & Endsley, 1924-1925, underground	1,150 tons	90770103 b
Wilkerson & Sills, 1926-1927	2,230 tons	
Wilkinson Brothers, 1928-1930	<u>2,034</u> tons 5,414 tons	
De Soto Mine, 1944-1944, surface	1,700 tons	90770116

HERRIN (Jackson County)

Doran Coal Company, 1920-1922, slope, —, —, 4.0, RP	8,312 tons	90770086
---	------------	----------

MARION (Jackson County)

Helm Coal Company, No. 3 Mine, 1941-1941, underground	2,253 tons	90770115
---	------------	----------

INDEX OF MINES IN THE DE SOTO QUADRANGLE

Admiral Mine	32
Ballor (C. E.)	25
Bane & Ellace	49
Belce Brothers	47
Benton Big Muddy Coal Company	28
Big Muddy & Carterville Coal Company	22
Big Muddy Coal & Coke Company	24
Big Muddy Coal & Washing Company	24
Big Muddy Coal Company	42
Big Muddy No. 1 Mine	24
Big Muddy No. 2 Mine	24
Big Three Coal Company	33
Black Cat Mine	28
Black Diamond Coal Company, No. 2 Mine	48
Black Dot No. 2 Mine	17
Blairsville Mining Company	35
Block Coal Company, No. 1 Mine	48
Block Coal Company, No. 2 Mine	48
Boden (A.) & Craig (J.)	49
Boren (Fought-Boren-Shackelford)	47
Bowlen (A. C.)	49
Bowlen Brothers	49
Bradbury Scullin Coal Company	29
Bradley (Bradbury) & Scullin, No.2 Mine	48
Brown (Wilkerson & Brown)	49
Bullar (William)	27
Burning Star No. 5 Mine	19
Burning Star Surface Mine	14
Burning Star Underground Mine	13
Bush Mine	12
Butcher-Yates	37
Cagle (John)	48
Cagle & Clarida	48
Cambria Coal Company	36
Cambria No. 1 Mine	21
Carterville Coal & Mining Company, No. 1 Mine	48
Carterville Coal Corporation, Black Diamond Mine	48
Carterville Diamond Mining Company	47
Carterville Fuel Company, No. 1 Mine	48
Carterville-Peacock Coal Company	48
Caughler & Clarida Coal Company	48
Chicago & Carbondale Coal Company	11
Chicago Fuel Company	11
Clarida (Cagle & Clarida)	48
Clarida (Caughler & Clarida)	48
Clarida (Moody)	48
Clark (Carl) & Company	47
Clark (Waldo & Clark)	47
Co-op Coal Company	41
Congler Brothers & Company	48
Consolidation Coal Company	19
Craig (Boden & Craig)	49
Crain (H. P.)	47
Crain (Reese Rice & Crain)	47
Culley (J. L.)	15
De Soto Coal & Mining Company	45
De Soto Coal & Washing Company	24
De Soto Coal Company	26
De Soto Mine	49
De Soto No. 3 Mine	18
De Soto Peacock Coal Company	28, 45
Donaly Coal Company	48
Doran Coal Company	49

Doran Mine	48
Down State Coal Company	32
Dyer (Wisley & Dyer)	49
Eddington (William)	27
Elk Ridge Mine	11
Elkins (W. E.)	39
Elkins & Johns	46
Elkins & Jones	46
Elkins & Richy	46
Elkins & Sizemore	46
Ellace (Bane & Ellace)	49
Endsley (Wilkerson & Endsley)	49
Farley Brothers Coal Company	17
Ferrell (R. S.)	47
Finney (Smith & Finney)	31
Forsyth Coal Company	14
Forsyth-Carterville Coal Company	16
Forsyth-Williamson Coal Company	16
Fought-Boren-Shackelford	47
Franklin Coal & Coke Company, Mitchell No. 1 Mine	22
Franklin County Coal Company, No. 11 Mine	22
Gentry Mine	46
Gogle & Islander	48
Gosnell (I. D.)	35
Grand Rapids Furniture Company	45
Griffin & Nickles	47
Hagler (Harry)	46
Hampton Coal Company	48
Harris (Thomas)	27
Hart (Charles)	45
Helm Coal Company	49
Hendricks (Monroe & Hendricks Coal Company)	25
Home Fires Coal Company	25
Humphrey (D. M.)	48
Hurricane Coal Company	48
Huskey Coal Company, No. 1 Mine	40
Inland Coal & Washing Company	24
Inland Coal Company	46
Islander (Gogle & Islander)	48
Jackson Peacock Coal Company	28
John (W. H.)	46
Johns (Elkins & Johns)	46
Johns (W. H.)	46
Johns Coal Company	41
Jones (Elkins & Jones)	46
Kimmel (Joe)	44
Kreikemeier (J. B.) Coal Company	11
Lansom (T. J.)	47
Lawson (Talby & Lawson)	47
Layman (Henry E.)	37
Leah Coal Company	46
Lee (Clyde M.)	48
Lee Coal Company	49
Lewis (T. E.)	47
Lewis (Thomas E.)	48
Lewis (Thomas)	47
Lewis Coal Company	47
Liberty Coal Company, No. 5 Mine	49
Liddle & Warren	47
Little Hope Mine	11
Little Muddy Coal Company	29
M. & E. Coal Company	23
M. & M. Coal Company	23
Madison Coal Corporation, No. 12 Mine	10
Main Line Coal Corporation	42

Martin (Guy)	26
McClearey (Mr.)	45
McEwan (J. & R.)	48
McLaren Coal Company, No. 1 Mine	48
McMath (George)	47
McMath (Winning & McMath)	47
Midway Coal Mining Company	11
Mitchell No. 1 Mine	22
Monroe & Hendricks Coal Company	25
Monroe Coal Company	25
Montgomery Brothers	15
Motsinger (Arthur)	47
New Cambria Mine	37
New Carbondale Coal Company	35
New Muddy Valley Coal Company	31, 35
New Ohio Washed Coal Company, No. 2 Mine	47
New Prosperity Mine	48
Nichels (Sprague & Nichels)	47
Nickles (Griffin & Nickles)	47
Norris (Hugh) & Company	25
Ogmore Coal Company	39
Parrish (John)	31
Patrick (Charles)	48
Patrick & Phillips Coal Company	37
Peacock Coal Company	30
Peacock Coal Company, Black Cat Mine	15
Peacock Coal Mining Company	11
Pee Wee Mine	45
Phillips (George A.)	46, 47
Phillips (John R.)	48
Phillips (Patrick & Phillips Coal Company)	37
Phillips Coal Company	48
Phillips-Vaughn-Snyder	37
Pleasant (Raymond)	46
Poston (I. N.)	46
Powel (W. J.)	47
Prosperity Coal Company	37
Pure Coal Company	34
Quaker Coal Company, Sunrise Mine	46
Quaker Mining Company, No. 1 Mine	40
Reynolds (Seth)	47
Rice (Reese) & Crain	47
Richardson Coal Company	43
Richy (Elkins & Richy)	46
Rushing (Tripp & Rushing)	48
S. Coal Company	21
Scott-Wilson Coal Company, No. 2 Mine	47
Scullin (Bradley or Bradbury & Scullin, No. 2 Mine)	48
Shackelford (Fought-Boren-Shackelford)	47
Sills (Wilkerson & Sills)	49
SIMCO	18
Singley (Albert) & Son	38
Sisne (Smith & Sisne)	31
Sizemore (Elkins & Sizemore)	46
Smith & Finney	31
Smith & Sisne	31
Snyder (Phillips-Vaughn-Snyder)	37
Sprague & Nichels	47
Sun Ray Coal Company	41
Sunrise Coal Company	46
Supreme Coal Company	29
Talby & Lawson	47
Three States Trucking, Inc., De Soto No. 3 Mine	18
Tregoning Coal Company	48
Tripp & Rushing	48

Tripp Coal Company	48
Truax Traer Coal Company, Burning Star Surface Mine	14
Truax Traer Coal Company, Burning Star Underground Mine	13
Vaughn (Phillips-Vaughn-Snyder)	37
Vulcan Coal Company, No. 1 Mine	48
Walden (David, Sr.)	47
Waldo & Clark	47
Waldo Coal Company	47
Waldron (David) & Company	47
Walker (J. M.)	47
Ward Mine	11
Warren (Liddle & Warren)	47
Waterloo Coal Company	46
Western Coal & Mining Company, No. 1 Mine.	12
Western Coal & Mining Company, No. 2 Mine.	9
Wilkerson & Brown	49
Wilkerson & Endsley	49
Wilkerson & Sills	49
Wilkinson (William)	49
Wilkinson Brothers.	49
Williamson (George)	48
Williamson (Nolia)	48
Williamson Coal Company, No. 2 Mine	20, 21
Wilson (Scott-Wilson No. 2 Mine)	47
Winning & McMath.	47
Wisley & Dyer	49
Worth-Huskey Coal Company, No. 1 Mine	40
Wright (George).	47
Yates (Butcher-Yates)	37
Young Brothers, No. 2 Mine.	48
Zimmerman Mine.	49

Funding for this project was supplied by the Illinois Department of Transportation.