

Coal Mines in Illinois
Du Quoin QuadranglePerry, Franklin & Jefferson Counties,
Illinois

This map accompanies the Coal Mines Directory for the Du Quoin Quadrangle. Consult the directory for a complete explanation of the information shown on this map.

Mining Method

- Room & Pillar (RP)
- Room & Pillar Basic (RPB)
- Modified Room & Pillar (MRP)
- Room & Pillar Panel (RPP)
- Blind Room & Pillar (BRP)
- Checkerboard Room & Pillar (CRP)
- High Extraction Retreat (HER)
- Longwall (LW)
- Underground, Method Unknown
- Strip Mine
- Auger Mine
- General Area of Mining

Other Areas Depicted

- Non-Coal Mines

Source of Mine Outline

- Final Mine Map
- Not Final Mine Map
- Undated Mine Map
- Incomplete Mine Map
- Secondary Source Map

Tipple, Shaft, Slope, Drift Locations

- Strip Mine Tipple - Active
- Strip Mine Tipple - Abandoned
- Mine Shaft - Active
- Mine Shaft - Abandoned
- Mine Slope - Active
- Mine Slope - Abandoned
- Mine Drift - Active
- Mine Drift - Abandoned
- Air Shaft
- Uncertain Location
- Uncertain Type of Opening

Mine Annotation
(space permitting)

Company
Mine Name
ISGS Index No., Years of Operation

Disclaimer

Please check the Coal Section at the Illinois State Geological Survey's web site at <https://www.isgs.illinois.edu> for the most up-to-date version of these products.

Note that each quadrangle scale mined-out area map requires the use of the associated text directory for full explanation of map features and mine attributes. Also note that some quadrangles have multiple seams of mining and therefore more than one map may be available for a particular quadrangle. Please take care to check for multiple maps, as extensive mining may exist in the other seams.

The maps and digital files used for these studies were compiled from data obtained from a variety of public and private sources and have varying degrees of completeness and accuracy. This compilation map presents reasonable interpretation of the geology of the area and is based on available data. Locations of some mine features may be offset by 500 feet or more due to errors in the original source maps, the compilation process, digitizing, or a combination of these factors. These data are not intended for use in site-specific screening or decision-making. Use of these documents does not eliminate the need for detailed studies to fully understand the geology of a specific site. The Illinois State Geological Survey, Prairie Research Institute, or the University of Illinois make no guarantee, expressed or implied, regarding the correctness of the interpretations presented in this data set and accept no liability for the consequences of decisions made by others on the basis of the information presented here.

These maps were designed for use at 1:24,000. Enlarging the map may reduce accuracy, as the original scale of the source maps used to compile the outlines shown varies from 1:400 to 1:150,000, and some mine locations are known only from text descriptions. See the accompanying mine directory for the original scale of the source map used for a specific mine to check accuracy of a given portion of the map. Areas with no mines shown may still be undermined; see the unlocated mines list at the back of each mine directory.

The image of the U.S.G.S. topographic base map was projected from the original UTM to Lambert Conformal Conic.

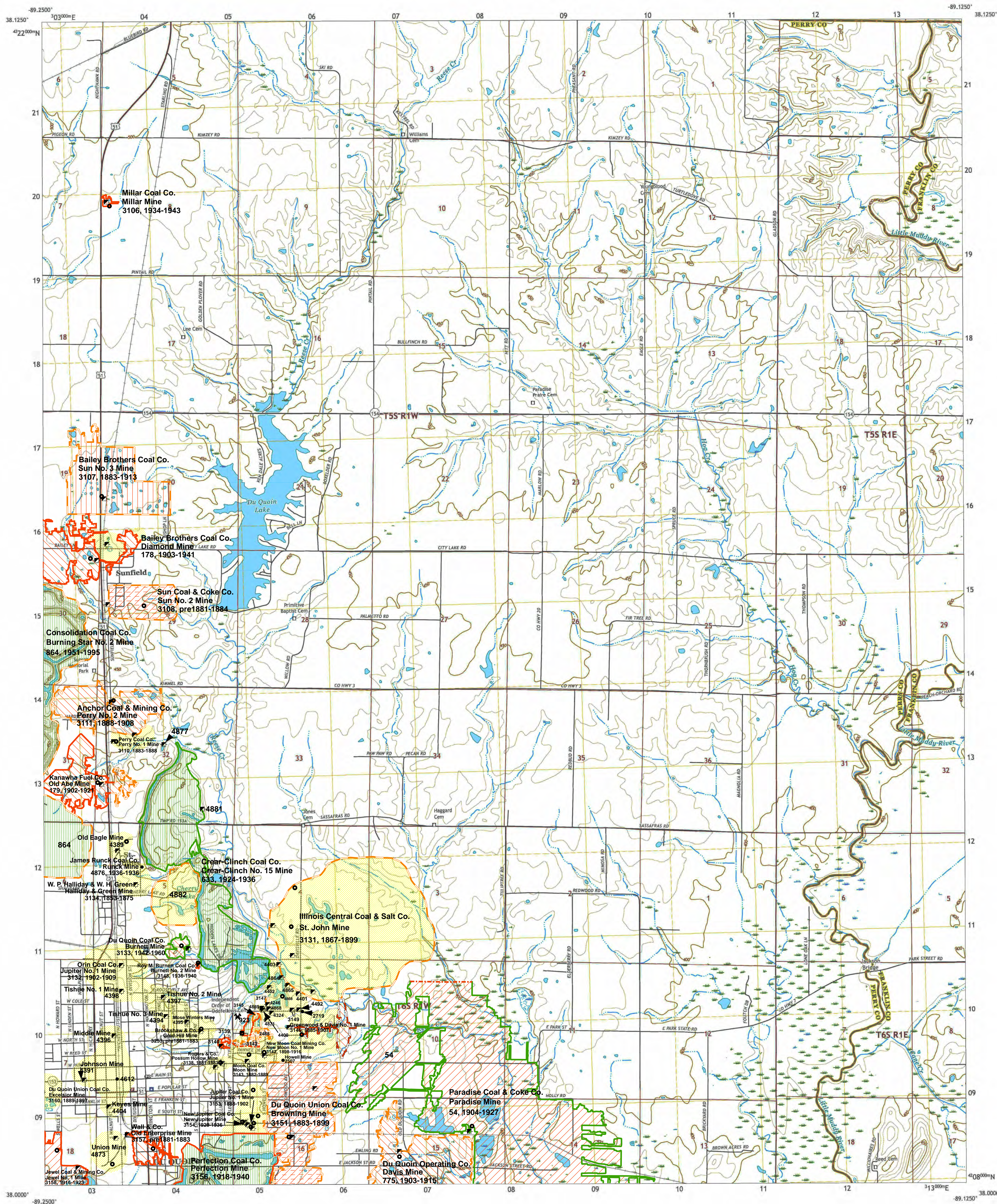
ILLINOIS
Illinois State Geological Survey
PRAIRIE RESEARCH INSTITUTE

Prairie Research Institute
Illinois State Geological Survey
615 E. Peabody Dr.
Champaign, IL 61820

Mine Outlines Compiled by
Jennifer M. Obrad

December 14, 2009

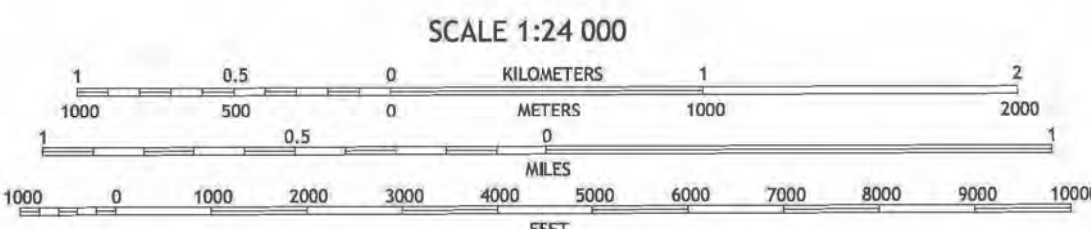
Revised:
March 15, 2010
Alan R. Myers 03-22-2024



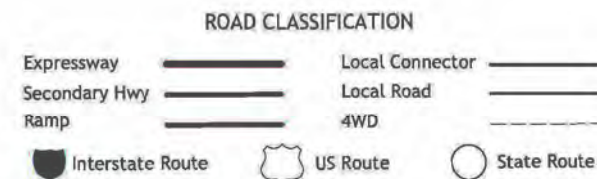
Produced by the United States Geological Survey
North American Datum of 1983 (NAD83)
World Geodetic System of 1984 (WGS84). Projection and
1 000-meter grid/Universal Transverse Mercator, Zone 16S
This map is not a legal document. Boundaries may be
generalized for this map scale. Private lands within government
reservations may not be shown. Obtain permission before
entering private lands.

Imagery.....NAIP, July 2015 - October 2015
Roads.....U.S. Census Bureau, 2017
Names.....GNIS, 1980 - 2017
Hydrography.....National Hydrography Dataset, 2002 - 2015
Contours.....National Elevation Dataset, 2008 - 2018
Boundaries.....Multiple sources; see metadata file 2014 - 2016
Public Land Survey System.....BLM, 2017
Wetlands.....FWS, National Wetlands Inventory, 1992

UTM GRID AND 2017 MAGNETIC NORTH
DECLINATION AT CENTER OF SHEET



CONTOUR INTERVAL 10 FEET
NORTH AMERICAN DATUM OF 1983
This map was produced to conform with the
National Geospatial Program US Topo Product Standard, 2011.
A metadata file associated with this product is draft version 0.6.18.



DU QUOIN, IL
2018

DIRECTORY OF COAL MINES IN ILLINOIS 7.5-MINUTE QUADRANGLE SERIES DU QUOIN QUADRANGLE PERRY, FRANKLIN & JEFFERSON COUNTIES

Jennifer M. Ograd & C. Chenoweth



2009
REVISED 2010

Institute of Natural Resource Sustainability
William W. Shilts, Executive Director
ILLINOIS STATE GEOLOGICAL SURVEY
E. Donald McKay III, Interim Director

Natural Resources Building
615 East Peabody Drive
Champaign, Illinois 61820

Phone 217-244-4610
Fax 217-333-2830



This material is based upon work supported by the Illinois Mine Subsidence Insurance Fund. Any opinions, findings, and conclusions or recommendations expressed in this publication are those of the authors and do not necessarily reflect the views of the Illinois Mine Subsidence Insurance Fund.

Cover photo Track-mounted duckbill loading machine at a Peabody Coal Company mine, ca. 1915.

DISCLAIMER: The accuracy and completeness of mine maps and directories vary with the availability of reliable information. Maps and other information used to compile this mine map and directory were obtained from a variety of sources and the accuracy of some of the original information cannot be verified. Consequently, the Illinois State Geological Survey (ISGS) cannot guarantee the mine maps are free of errors and disclaims any responsibility for damages that may result from actions or decisions based on them.

The ISGS updates the maps and directories periodically, and welcomes any new information or corrections. Please contact the Coal Section of the ISGS at the address shown on the title page of this directory, or telephone (217) 244-4610.

© 2009 The Board of Trustees of the University of Illinois. All rights reserved.
For permission information, contact the Illinois State Geological Survey.

CONTENTS

INTRODUCTION	1
MINING IN THE DU QUOIN QUADRANGLE	1
PART I EXPLANATION OF MAP AND MINE SUMMARY SHEET	2
INTERPRETING THE MAP	2
Mine Type and Mining Method	2
Source Maps	3
Points and Labels	3
INTERPRETING A MINE SUMMARY SHEET	6
REFERENCES	8
PART II DIRECTORY OF MINES IN THE DU QUOIN QUADRANGLE	9
MINE SUMMARY SHEETS	9
Mine Index 54	
Paradise Coal & Coke Company, Paradise Mine	9
Mine Index 178	
Bailey Brothers Coal Company, Diamond Mine	10
Mine Index 179	
Kanawha Fuel Company, Old Abe Mine	11
Mine Index 633	
Crear-Clinch Coal Company, Crear-Clinch No. 15 Mine	12
Mine Index 775	
Du Quoin Operating Company, Davis Mine	13
Mine Index 864	
Consolidation Coal Company, Burning Star No. 2 Mine	14
Mine Index 923	
Ritter Coal & Quarry, Red Fox Mine	15
Mine Index 2488	
New Moon Coal Mining Company, New Moon No. 3 Mine	16
Mine Index 2719	
S. Davis, Davis Mine	17
Mine Index 3106	
Millar Coal Company, Millar Mine	18
Mine Index 3107	
Bailey Brothers Coal Company, Sun No. 3 Mine	19
Mine Index 3108	
Sun Coal & Coke Company, Sun No. 2 Mine	20
Mine Index 3110	
Perry Coal Company, Perry No. 1 Mine	21
Mine Index 3111	
Anchor Coal & Mining Company, Perry No. 2 Mine	22
Mine Index 3131	
Illinois Central Coal & Salt Company, St. John Mine	23
Mine Index 3132	
Orin Coal Company, Jupiter No. 1 Mine	24
Mine Index 3133	
Du Quoin Coal Company, Burnett Mine	25
Mine Index 3134	
William Parker Halliday & William H. Green, Halliday & Green Mine	26
Mine Index 3138	
Rogers & Company, Possum Hollow Mine	27
Mine Index 3139	
Morgan & Dorcine, New Moon Mine	28
Mine Index 3140	
Energy Coal & Supply Company, Black Bear Mine	29
Mine Index 3142	
New Moon Coal Mining Company, New Moon No. 1 Mine	30

Mine Index 3143	
Moon Coal Company, Old Moon Mine	31
Mine Index 3145	
Roberts Coal Company, Old Possum Mine	32
Mine Index 3146	
Greenwood & Davis Coal Company, Greenwood & Davis (No. 1) Mine.	33
Mine Index 3147	
Greenwood & Davis Coal Company, Greenwood & Davis (No. 2) Mine.	34
Mine Index 3148	
Roy M. Burnett Coal Company, Burnett No. 2 Mine	35
Mine Index 3149	
Richard Baillie, Baillie No. 1 Mine.	36
Mine Index 3151	
Du Quoin Union Coal Company, Browning Mine	37
Mine Index 3153	
Jupiter Coal Company, Eaton Mine (Jupiter No. 1 Mine)	38
Mine Index 3154	
New Jupiter Coal Company, New Jupiter Mine	39
Mine Index 3156	
Perfection Coal Company, Perfection Mine	40
Mine Index 3157	
Wall & Company, Old Enterprise Mine	41
Mine Index 3158	
Jewel Coal & Mining Company, Jewel No. 1 Mine	42
Mine Index 3160	
Du Quoin Union Coal Company, Excelsior Mine	43
Mine Index 3253	
Brookshaw & Company, Gold Hill Mine	44
Mine Index 4246	
William Greenwood, Greenwood No. 1 Mine	45
Mine Index 4324	
William Greenwood, Greenwood No. 2 Mine	46
Mine Index 4389	
Old Eagle Mine.	47
Mine Index 4492	
Richard Baillie, Baillie No. 2 Mine	48
Mine Index 4875	
Lake Superior Coal Company, Williams Mine	49
Mine Index 4876	
James Runck Coal Company, Runck Mine	50
OTHER MINES SHOWN ON DU QUOIN QUADRANGLE	51
Mine Index 2507, Howell (E. J.)	51
Mine Index 4390	51
Mine Index 4391, Johnson Mine	51
Mine Index 4394, Tishue No. 3 Mine	51
Mine Index 4395, Winters (Mose) Mine.	51
Mine Index 4396, Middle Mine	51
Mine Index 4397, Tishue No. 2 Mine	51
Mine Index 4398, Tishue No. 1 Mine	51
Mine Index 4400	51
Mine Index 4401	51
Mine Index 4402, Carol (Jack) Mine	51
Mine Index 4403	51
Mine Index 4404, Keyes Mine.	51
Mine Index 4612, Enterprise Mine	51
Mine Index 4619	51
Mine Index 4864, Croessman Mine.	51
Mine Index 4865, Mud Mine	51
Mine Index 4868, Mifflin & Pope Mine.	51
Mine Index 4869, Bushong Mine.	51
Mine Index 4871, Davison Mine	51

Mine Index 4873, Union Mine	51
Mine Index 4874	51
Mine Index 4877	51
Mine Index 4878	51
Mine Index 4881	51
Mine Index 4882	51
MINES WHOSE LOCATIONS ARE NOT KNOWN, DU QUOIN QUADRANGLE	52
INDEX OF MINES IN THE DU QUOIN QUADRANGLE	54

INTRODUCTION

Coal has been mined in 76 counties of Illinois. More than 7,400 coal mines have operated since commercial mining began in Illinois about 1810; fewer than 30 are currently active. To detail the extent and location of coal mining in Illinois, the Illinois State Geological Survey (ISGS) has compiled maps and directories of known coal mines. The ISGS offers maps at a scale of 1:100,000 and accompanying directories for each county in which coal mining is known to have occurred. Maps at a scale of 1:24,000 and accompanying directories, such as this, are available for selected quadrangles. Contact the ISGS for a list of these quadrangles.

These larger scale maps show the approximate positions of mines in relation to surface features such as roads and water bodies, and indicate the mining method used and the accuracy of the mine boundaries. The maps are useful for locating mine boundaries relative to specific properties and for assessing the potential for subsidence in an area. Mine boundaries compiled from final mine surveys are generally shown within 200 feet of their true position. As a result of poor cartographic quality and inaccuracies in the original mine surveys, boundaries of some older mines may be mislocated on the map by 500 feet or more. Original mine maps should be consulted in situations that require precise delineation of mine boundaries or internal workings of mined areas.

This directory serves as a key to the accompanying mine map and provides basic information on the coal mines in the quadrangle. The directory is composed of two parts. Part I explains the symbols and patterns used on the accompanying map and the summary data presented for each mine. Part II numerically lists the mines in the quadrangle and summarizes the geology and production history of each mine. Total production for the mine, not the portion in the quadrangle, is given.

MINING IN THE DU QUOIN QUADRANGLE

The earliest known mining took place northeast of Du Quoin in 1853. Cornelius & J. C. Storm opened a mine (mine index 3134) near the railroad tracks. More early mining occurred near the town now known as Sunfield. The town was platted in 1864, and named Diamond Town. The Black Diamond Coal Mining Company was organized in 1865, and presumably mining began shortly thereafter. The exact outline of this mine is not known, but has been inferred from the outline of Eaton Fuel Company's Black Diamond Mine (mine index 178), which opened in 1903 and closed in 1941. Old Paradise Mine (mine index 3131) opened in 1867 near St. John, north of Du Quoin. According to an 1868 publication, mines near Du Quoin included the Du Quoin Central Mine, Du Quoin Mine, Mill Shaft, and Tijou Shaft (likely one of the Tishue mines included in mine index numbers 4394, 4397 and 4398).

The Herrin Coal was mined in the vicinity of Du Quoin, commonly having a thickness over 7 feet. The roof material was often problematical, with pods or lenses of white top that came down readily, associated with slips and rolls that further contributed to poor roof conditions. Energy Shale was also present in some areas, a gray sandy gray shale that is also known for providing a roof that falls readily. In most areas, a competent limestone was present above the shale, and in some cases, was the immediate roof over the coal. Pyrite was often present in bands, lenses and nodules, but most reported cases indicated the pyrite was easily removed, which was helpful to the coal quality in the time of hand loading. (Hand loading was prevalent before 1930, and common in some mines through the 1940s.)

PART I EXPLANATION OF MAP AND MINE SUMMARY SHEET

INTERPRETING THE MAP

The map accompanying this directory shows the location of coal mines known to be present in the quadrangle. The map, corresponding to a U.S. Geological Survey (USGS) 7.5-minute quadrangle, covers an area bounded by lines of latitude and longitude 7.5-minutes apart. In Illinois, a quadrangle is approximately 6.5 miles east to west and 8.5 miles north to south, an area of about 56 square miles. The USGS generally offers one map of mines per quadrangle. In some areas where extensive mining occurred in two or more overlapping seams, separate maps are compiled for mines in each seam to maintain readability of the map.

Mine Type and Mining Method

The mine type is indicated on the map by pattern color: green represents surface mines; red and yellow represent underground mines. The red patterns are used for areas of underground mining that are documented by a primary or secondary source map. A yellow pattern is used for cases where no map of the mine workings is available, but a general area of mining can be inferred from property maps or production figures. The patterns indicate the main mining methods used in underground mines. The methods are (1) room and pillar and (2) high extraction. The method used gives some indication of the amount and pattern of coal extraction within each mined area, and has some influence on the timing and type of subsidence that can occur over a mine.

The following discussion and illustrations of mining methods are based on Guither et al. (1984).

In room-and-pillar mines, coal is removed from haulage-ways (entries) and selected areas called rooms. Pillars of unmined coal are left between the rooms to support the roof. Depending on the size of rooms and pillars, the amount of coal removed from the production areas will range from 40% to 70%.

Room and Pillar - mining is divided into six categories:

- room-and-pillar basic (RPB, fig. 1A), an early method that did not follow a preset mining plan and therefore resulted in very irregular designs;
- modified room and pillar (MRP, fig. 1B);
- room-and-pillar panel (RPP, fig. 1C);
- blind room and pillar (BRP, fig. 1D);
- checkerboard room and pillar (CRP, fig. 1E);
- room and pillar (RP), a classification used when the specific type of room-and-pillar mining is unknown.

Blind and checkerboard are the most common types of room-and-pillar mining used in Illinois today. The knowledge of room-and-pillar mining methods gives a trained engineer information on the nature of subsidence that may occur. A more extensive discussion of subsidence can be found in Bauer et al. (1993).

High-extraction These mining methods are subdivided into high-extraction retreat (HER, Fig 1F) and longwall (LW, Fig 1G, 1H). In these methods, much of the coal is removed within well defined areas of the mine. Subsidence of the surface above these areas occurs within weeks. Once the subsidence activity ceases, the potential for further movement over these areas is low; however, subsidence may continue for several years after mining.

High-extraction retreat mining is a form of room-and-pillar mining that extracts most of the coal. Rooms and pillars are developed in the panels, and the pillars are then systematically removed (fig. 1F).

In early (pre-1960) longwall mines, mining advanced in multiple directions from a central shaft (fig. 1G). Large pillars of coal were left around the shaft, but all coal was removed beyond these pillars. Miners placed rock and wooden props and cribs in the mined-out areas to support the mine roof. The overlying rock gradually settled onto these supports, thus producing subsidence at the surface. In post-1959 longwall mines, room-and-pillar methods have been used to develop the main entries of the mine and panel areas. Modern longwall methods extract 100 percent of the coal in the panel areas (fig. 1H).

SOURCE MAPS

Mine outlines depicted on the map are, whenever possible, based on maps made from original mine surveys. The process of compiling and digitizing the quadrangle map may produce errors of less than 200 feet in the location of mine boundaries. Larger errors of 500 feet or more are possible for mines that have incomplete or inaccurate source maps.

Because of the extreme complexity of some mine maps, detailed features of mined areas have been omitted. The digitized mine boundary includes the exterior boundary of all rooms or entries that were at least 80 feet wide or protruded 500 feet from the main mining area. Unmined areas between mines are shown if they are at least 80 feet wide; unmined blocks of coal within mines are shown if they are at least 400 feet on each side. Original source maps should be consulted when precise information on mine boundaries or interior features is needed.

The mine summary sheet lists the source maps used to determine each mine outline. The completeness of map sources is indicated on the map by a line symbol at the mine boundary. Source maps are organized in five categories.

Final mine map The mine outline was digitized from an original map made from mine surveys conducted within a few months after production ceased. The date of the map and the last reported production are listed on the summary sheet.

Not a final map The mine is currently active or the mine outline was made from a map based on mine surveys conducted more than a few months before production ceased. This implies the actual mined-out area is probably larger than the outline on the map. The mine summary sheet indicated the dates of source maps and the last reported production, as well as the approximate tonnage mined between these two dates (if the mine is abandoned). The summary sheet also lists the approximate acreage mined since the date of the map and, in some cases, indicates the area where additional mining may have taken place. This latter information is determined by locating on the map the active faces relative to probable boundaries of the mine property.

Undated map The source map was undated, so it may or may not be based on a final mine survey. When sufficient data are available, the probable acreage of the mined area is estimated from reported production, average seam thickness and a recovery rate comparable to other mines in the area. This information is listed in the summary sheet for the mine.

Incomplete map The source map did not show the entire mine. The summary sheet indicates the missing part of the mine map and the acreage of the unmapped area, which is estimated from the amount of coal known to have been produced from the mine.

Secondary source map The original mine map was not found so the outline shown was determined from secondary sources (e.g., outlines from small-scale regional maps published in other reports). The summary sheet describes the secondary sources.

POINTS AND LABELS

The locations of all known mine openings (shafts, slopes, and drifts) and surface mine tipples are plotted on the map. Tipples are areas where coal was cleaned, stockpiled, and loaded for shipping.

Only openings or tipples are plotted for mines without source maps. If the precise locations of these features are unknown, a special symbol is used to indicate the approximate location of the mine.

Each mine on the map is labeled with the names of the mine and operating company, ISGS mine index number, and years of operation (if known) if space permits. A seam designation is given on maps where more than one seam was mined. For a mine that operated under more than one name, only the most recent name is generally given. When a mine changed names or ownership shortly before closing, an earlier name is listed. All company and mine names are listed on the mine summary sheet in the directory, under the production history segment.



Figure 1 Mining methods: (A) room-and-pillar basic (RPB), (B) modified room and pillar (MRP), (C) room-and-pillar panel (RPP), (D) blind room and pillar (BRP).



Figure 1 (cont.) Mining methods: (E) checkerboard room and pillar (CRP), (F) high extraction retreat (HER), (G) early (pre-1960) longwall, (H) post-1959 longwall



Figure 2 Generalized stratigraphic section, showing approximate vertical relations of coals in Illinois.

INTERPRETING A MINE SUMMARY SHEET

The mine summary sheet is arranged numerically by mine index number. Index numbers are shown on the map and in the mine listing. The mine summary sheet provides the following information (if available).

Company and mine name The last company or owner of the mine is used, unless no production was recorded for the last owner. In that case, the penultimate owner is listed. Mines often have no specific name; in these cases, the company name is also used as the mine name.

Type *Underground* denotes a subsurface mine in which the coal was reached through a shaft, slope, or a drift entry. *Surface* denotes a surface, open pit or strip mine.

Total mined-out acreage shown The total acreage of the mined area mapped, including any acreage mined on adjacent quadrangles, is calculated from the digitized outline of the mine. The acreage of large barrier pillars depicted on the map is excluded from the mined-out acreage. Small pillars not digitized are included in the acreage calculation. If the mine outline is not based on a final mine map, the acreage is followed by an estimate of additional acres that may have been mined. The estimate is determined from reported mine production, approximate thickness of the coal, and recovery rates calculated from nearby mines that used similar mining methods.

SHAFT, SLOPE, DRIFT OR TIPPLE LOCATIONS

Shaft, slope, drift, or tippie locations Locations of all known former entry points to underground mines or the location of coal cleaning, tippie, and shipping equipment used by the mine's facility are listed. The location is described in terms of county, township and range (Twp-Rge), section, and location within the section by quarters. NE SW NW, for instance, would describe the location in the northeast quarter of the southwest quarter of the northwest quarter. When sections are irregular in size, the quarters remain the same size and are oriented (or "registered") from the southeast corner of the section. Approximate footage from the section lines (FEL = from east line, FNL = from north line, for example) is given when that information is known; this indicates a surveyed location and is not derived from maps. Entry points are also plotted on the map and coded for the type of entry or tippie. A mine opening may have had many purposes during the life of the mine. Old hoist shafts are often later used for air and escape shafts; this information is included in the directory when known. The tippie for underground mines was generally located near the main shaft or slope. At surface mines, coal was sometimes hauled to a central tippie several miles from the mine pit.

GEOLOGY

Seam(s) mined The name of the coal seam(s) mined is listed, if known. If multiple seams were mined, they are all listed, although the mined-out area for each seam may be shown on separate maps. Figure 2 shows the stratigraphic section of the coal-bearing interval in Illinois, and the vertical relations among the coals.

Depth The depth to the top of the seam in the vicinity of the shaft is listed, if known. The depth is determined from notes made by geologists who visited the mine during its operation or from drill hole data in ISGS files. Depth generally varies little over the extent of a mine; however, reported depths for an individual mine may vary. Depth for surface-mined coals varies, and is usually represented as a range.

Thickness The approximate thickness of the mined seam is shown, if known. Thickness also comes from notes of geologists who visited the mine during its operation or from borehole data in ISGS files. Minimum, maximum, and average thicknesses are given when this information is available.

Mining method The principal mining method used at the mine (figs. 1A-H) is listed. See the mining methods section at the beginning of this directory for a discussion of this parameter.

Geologic problems reported Any known geologic problems, such as faults, water seepage, floor heaving, and unstable roof, encountered in the mine are reported. This information is from notes made by ISGS geologists who visited the mine, or from reports by mine inspectors published by the Illinois Department of Mines and Minerals, or from the source map(s). Geologic problems are not reported for active mines.

PRODUCTION HISTORY

Production history Tons of coal produced from the mine by each mine owner are totaled. When the source map used for the mine outline is not a final mine map, the tonnage produced since the date of the map is identified. For mines that extend into adjacent quadrangles, the tonnage reported includes areas mined in adjacent quadrangles.

SOURCE OF DATA

Source map This section lists information about the map(s) used to compile the mine outline and the locations of tipples and mine openings. In some cases more than one source map was used. For example, a map drawn before the mine closed may provide better information on original areas of the mine than a later map. When more than one map was used, the bibliography section explains what information was taken from each source.

Date The date of the most recent mine survey listed on the source map is reported.

Original scale The original scale of the source map is listed. Many maps are photo-reductions and are no longer at their original scale. The original scale gives some indication of the level of detail of the mine outline and the accuracy of the mine boundary relative to surface features. Generally, the larger the scale, the greater the accuracy and detail of the mine map. Mine outlines taken from source maps at scales smaller than 1:24,000 may be highly generalized and may well be inaccurately located with respect to surface features.

Digitized scale The scale of the digitized map is reported. The scale may be different from that of the original source map. In many cases the digitized map was made from a photo-reduction of the original source map, or the source map was not in a condition suitable for digitizing and the mine boundaries were transferred to another base map.

Map type Source maps are classified into five categories to indicate the probable completeness of the map. See discussion of source maps in the previous section.

Annotated bibliography Sources that provide information about the mine are listed, with the data taken from each source. Some commonly used sources are described below. Full bibliographic references are given for all other sources. Unless otherwise noted, all sources are available for public inspection at the ISGS.

Coal Reports Published since 1881, these reports contain tabular data on mine ownership, production, employment, and accidents. Some volumes include short descriptions made by mine inspectors of physical features and conditions in selected mines.

Directory of Illinois Coal Mines This source is a compilation of basic data about Illinois coal mines, originally gathered by ISGS staff in the early 1950s. Sources used for this directory are undocumented, but they are primarily Illinois Department of Mines and Minerals annual reports, ISGS mine notes, and coal company officials.

ENR Document 85/01, Guither, H. D., J. K. Hines, and R. A. Bauer, 1985 The Economic Effect of Underground Mining Upon Land Used for Illinois Agriculture: Illinois Department of Energy and Natural Resources Document 85/01, 185 p.

Microfilm map The U.S. Bureau of Mines maintains a microfilm archive of mine maps. A microfilm file for Illinois is available for public viewing at the ISGS.

Mine notes ISGS geologists have visited mines or contacted mine officials throughout the state since the early 1900s. Notes made during these visits range from brief descriptions of the mine location to long narratives (including sketches) of mining conditions and geology.

Federal Land Bank of St. Louis, Preliminary Reports on Subsidence Investigations Mining engineers working for the Federal Land Bank of St. Louis mapped areas of subsidence due to coal mining in the early 1930s. These reports often include county maps of mine properties with mined-out areas including shaft locations, as well as subsidence areas.

REFERENCES

Bauer, R. A., B. A. Trent, and P. B. Dumontelle, 1993, Mine Subsidence in Illinois: Facts for the Homeowner Considering Insurance, Illinois State Geological Survey, Environmental Geology Note 144, 16p.

Guither, H. D., J. K. Hines, and R. A. Bauer, 1985, The Economic Effects of Underground Mining Upon Land Used for Illinois Agriculture, Illinois Department of Energy and Natural Resources Document 85/01, 185p.

McDonough (J. L.) Company (publishers), 1883, History of Randolph, Monroe and Perry Counties, Illinois, Philadelphia, Pennsylvania.

PART II DIRECTORY OF MINES IN THE DU QUOIN QUADRANGLE

MINE SUMMARY SHEETS

A summary sheet on the geology and production history of each mine in the Du Quoin Quadrangle is provided. These summary sheets are arranged numerically by mine index number. Consult Part I for a complete explanation of the data listed in the summary sheet.

Mine Index 54

Paradise Coal & Coke Company, Paradise Mine

Type: Underground Total mined-out acreage shown: 997

SHAFT, SLOPE, DRIFT or TIPPLE LOCATIONS

Type	County	Township-Range	Section	Quarters-Footage
Main shaft	Perry	6S 1W	15	SE NW NE
Air shaft	Perry	6S 1W	15	SW NE NE

GEOLOGY

Seam(s) Mined	Depth (ft)	Thickness (ft)			Mining Method
		Min	Max	Avg	
Herrin	371	8.0	12.0	9.0	RPP *

* A 1908 mine note states that all the pillars were drawn and the top coal was removed as areas were completed. The method may be HER in many areas of the mine.

Geologic Problems Reported: Two faults were noted, one in the main west entry and one at the face. Both faults extended into the Davis Mine (mine index 3146). The faults emitted gas when first encountered, and moderate amounts of water. The cap rock was a limestone about 20 feet above the coal. Gray sandy shale was the immediate roof above the coal. It fell in slabby layers, sometimes as high as 20 feet. Rolls cut into the seam from the roof and floor. Top coal was left to support the roof, generally 26 to 30 inches. The blue band was present in two layers. Other impurities included pyrite-bearing clay bands. These generally separated easily from the coal. The floor heaved badly.

PRODUCTION HISTORY

Company	Mine Name	Years	Production (tons)
Forester Coal & Coke Company	Forester	1904-1905	18,884
Paradise Coal & Coke Company	Paradise	1905-1927	6,710,991
			6,729,875

Last reported production: March 1927

SOURCES OF DATA

Source Map	Date	Original Scale	Digitized Scale	Map Type
Microfilm, document 352117	3-1927	1:2400	1:4138	Final

Annotated Bibliography (data source, brief description of information)

Coal Reports - Production, ownership, years of operation.

Directory of Illinois Coal Mines (Perry County) - Mine names, mine index, ownership, years of operation.

Mine notes (Perry County) - Mine type, shaft location, seam, depth, thickness, geologic problems.

Microfilm map, document 352117, reel 03138, frames 115-118 - Shaft locations, mine outline, mining method.

Microfilm map, document 352143, reel 03138, frames 160-163 - Identification of air shaft location.

Mine Index 178

Bailey Brothers Coal Company, Diamond Mine

Type: Underground Total mined-out acreage shown: 115 Production indicates less than 1 acre was mined after the map date. The mine is smaller than expected for the reported production. At the reported average thickness, the mine should be approximately 140 acres. Additionally, the source maps show many un-mined areas, more than would be accounted for by the average recovery factor. It is likely that the western side of the mine is not final, and may be 25 to 50 acres larger than shown on the accompanying map. Old workings were encountered on the eastern side as well.

SHAFT, SLOPE, DRIFT or TIPPLE LOCATIONS

Type	County	Township-Range	Section	Quarters-Footage
Main shaft (Bailey)	Perry	5S 1W	30	NE NE NE
Air shaft	Perry	5S 1W	30	NE NE NE
Old shaft *	Perry	5S 1W	20	SW SW SW

* The old shaft shown on the source map is believed to be from the Black Diamond Coal Mining Company. The old Black Diamond area is designated on the accompanying map with the yellow general area of mining, but is not included in the measured area at the top of this page, because the production that produced the general area of mining is not known.

GEOLOGY

Seam(s) Mined	Depth (ft)	Thickness (ft)			Mining Method
		Min	Max	Avg	
Herrin	80	4.75	5.0	4.8	MRP

Geologic Problems Reported: Some small faults were observed, with 15 inches of displacement. Some fractures and slickensides were seen in the roof near these faults. Some slips extended down into the coal. The roof consisted of gray shale and black shale, with up to 10 feet of limestone above. The black shale varied from ½ inch to over 30 inches thick. A limestone roof was present over considerable areas of this mine, and the rooms were driven wider in those areas. Lenses of pyrite were found in the mine. The pyrite was easily removed from the coal as it was mined. The blue band was 6 to 8 inches above the floor and not well developed.

PRODUCTION HISTORY

Company	Mine Name	Years	Production (tons)
Black Diamond Coal Mining Company	Black Diamond	ca. 1865-pre1881	Unknown **
Eaton Fuel Company	Black Diamond	1903-1905	55,919
Diamond Fuel Company	Diamond	1905-1910	93,841
Bailey Brothers Coal Company	Diamond	1910-1939	465,376
Bailey Brothers Coal Company	Diamond	1939-1941	1,833 ***
			616,969

** Diamond Town, shown on the accompanying map as Sunfield (NW 29-T5S-R1W), was platted in 1864 by James Dick, and the Black Diamond Coal Mining Company was organized in 1865. By the time *History of Randolph, Monroe and Perry Counties, Illinois* was written (1883), only a few old buildings remained of the mine. That would indicate that mining may have ended several years before. Production before 1881 is not known.

*** Production after map date
Last reported production: 1941

SOURCES OF DATA

Source Map	Date	Original Scale	Digitized Scale	Map Type
Microfilm, document 352099	2-1926	1:1200	1:2234	Not final
Company, 4103.P42 i5.1-23	9-24-1939	1:1200	1:1200	Not final

Annotated Bibliography (data source, brief description of information)

Coal Reports - Production, ownership, years of operation.

Directory of Illinois Coal Mines (Perry County) - Mine names, mine index, ownership, years of operation.

Mine notes (Perry County) - Mine type, shaft location, seam, depth, thickness, geologic problems.

Microfilm map, document 352099, reel 03138, frames 83 & 84 - Shaft locations, mine outline, mining method.

Company map, ISGS map library, 4103.P42 i5.1-23 - Mine outline (eastern part).

McDonough Company (publishers), 1883, *History of Randolph, Monroe and Perry Counties, Illinois* - Mine history.

Mine Index 179**Kanawha Fuel Company, Old Abe Mine**

Type: Underground Total mined-out acreage shown: 98

SHAFT, SLOPE, DRIFT or TIPPLE LOCATIONS

Type	County	Township-Range	Section	Quarters-Footage
Main shaft	Perry	5S 1W	32	SW NW SW
Air shaft	Perry	5S 1W	32	SW NW SW

GEOLOGY

Seam(s) Mined	Depth (ft)	Thickness (ft)			Mining Method
		Min	Max	Avg	
Herrin	53-75			5.4	MRP

Geologic Problems Reported: Water came through at a few places where faults in the roof permitted. White top, from 1 to 3 feet thick, made up the roof immediately above the coal over most of the mine. Small rolls occurred occasionally. A layer of impurities was near the bottom of the seam, including 2 inches of pyrite, clay and blue band. The floor was over 14 feet of fire clay, but very little heaving was noted in the mine.

PRODUCTION HISTORY

Company	Mine Name	Years	Production (tons)
Weaver Coal Company	Jupiter No. 2	1902-1903	4,092
Manufacturers Coal Company	Jupiter No. 2	1903-1905	94,466
Imperial Coal & Mining Company	Imperial No. 2	1905-1911 *	160,656
Joe Morris Coal Company	Imperial No. 2	1911-1912	11,983
Greenwood - Davis Coal Company	Greenwood No. 2	1912-1917 **	15,627
Kanawha Fuel Company	Old Abe	1917-1921	<u>239,456</u>
			526,280

* Idle 1910

** Idle 1915-1917

Last reported production: March 1921

SOURCES OF DATA

Source Map	Date	Original Scale	Digitized Scale	Map Type
Microfilm, document 352494	12-14-1918	1:2400	1:9600	Not final ***
Microfilm, document 352102	1-1921	1:2400	1:4966	Not final ***
ISGS map library, 4103.P42 i5.1-16	7-2-1936	1:2400	1:2400	Secondary source

*** The outline shown on the accompanying map is the expected size from the reported production. This suggests that the outline is complete.

Annotated Bibliography (data source, brief description of information)

Coal Reports - Production, ownership, years of operation.

Directory of Illinois Coal Mines (Perry County) - Mine names, mine index, ownership, years of operation.

Mine notes (Perry County) - Mine type, shaft location, seam, depth, thickness, geologic problems.

Microfilm map, document 352494, reel 03112, frame 207 - Shaft locations, mine outline, mining method.

Microfilm map, document 352102, reel 03138, frame 87 - Mine outline (northern & western).

ISGS map library, 4103.P42 i5.1-16, map of Gayle Mine (mine index 633) - Mine outline (eastern).

Mine Index 633
Crear-Clinch Coal Company, Crear-Clinch No. 15 Mine

Type: Surface Total mined-out acreage shown: 339

SHAFT, SLOPE, DRIFT or TIPPLE LOCATIONS

Type	County	Township-Range	Section	Quarters-Footage
Pit or tipple	Perry	5S 1W	32	NE NW SE & SW SW NE

GEOLOGY

Seam(s) Mined	Depth (ft)	Thickness (ft)			Mining Method
		Min	Max	Avg	
Herrin	20-38			5.0-5.5	Surface

Geologic Problems Reported: No horsebacks or rolls were encountered (before a mine note taken in 1931) and the coal was loaded directly from the pit. Coal balls were found in some of the overlying black shale. A 3 foot layer of limestone was often found over the coal, and in some places, sandstone was the immediate roof to the coal. Pyrite was present as bands and lenses. Much of this separated easily from the coal and was not loaded.

PRODUCTION HISTORY

Company	Mine Name	Years	Production (tons)
Gayle Coal Company	Gayle	1924-1930	2,018,955
Crear-Clinch Coal Company	Crear-Clinch No. 15	1931-1936	681,387
Peabody Coal Company	Peabody No. 15	1936-1936	None *
			2,700,342

* Production was not reported under the Peabody name.

Last reported production: March 1936

SOURCES OF DATA

Source Map	Date	Original Scale	Digitized Scale	Map Type
Company, 4103.P42 i5.1-16	7-2-1936	1:2400	1:2400	Final

Annotated Bibliography (data source, brief description of information)

Coal Reports - Production, ownership, years of operation.
 Directory of Illinois Coal Mines (Perry County) - Mine names, mine index, ownership, years of operation.
 Mine notes (Perry County) - Mine type, mine location, seam, depth, thickness, geologic problems.
 Company map, ISGS map library 4103.P42 i5.1-16 - Pit locations, mine outline, mining method.

Mine Index 775**Du Quoin Operating Company, Davis Mine**

Type: Underground Total mined-out acreage shown: 273

SHAFT, SLOPE, DRIFT or TIPPLE LOCATIONS

Type	County	Township-Range	Section	Quarters-Footage
Main shaft	Perry	6S 1W	15	SE SW NW
Air shaft	Perry	6S 1W	15	SE SW NW

GEOLOGY

Seam(s) Mined	Depth (ft)	Thickness (ft)			Mining Method
		Min	Max	Avg	
Herrin	306			6.0	MRP

Geologic Problems Reported: A large northeast-southwest trending fault was identified on the company map. The fault was in the western part of the mine, but east of the shaft.

PRODUCTION HISTORY

Company	Mine Name	Years	Production (tons)
Queen City Coal Company	Queen	1903-1905	96,800
Du Quoin Operating Company	Davis	1905-1915	<u>1,613,665</u>
			1,710,465

Last reported production: May 1915

SOURCES OF DATA

Source Map	Date	Original Scale	Digitized Scale	Map Type
Microfilm, document 352117	3-1927	1:2400	1:4138	Secondary source
Microfilm, document 352105	2-25-1954	1:12000	1:2400	Secondary source

Annotated Bibliography (data source, brief description of information)

Coal Reports - Production, ownership, years of operation, mining method.
 Directory of Illinois Coal Mines (Perry County) - Mine names, mine index, ownership, years of operation.
 Mine notes (Perry County) - Mine type, shaft location, seam, depth, thickness.
 Microfilm map, document 352117, reel 03138, frames 115-118, map of Paradise Mine (mine index 54) - Shaft locations, mine outline (northern), mining method.
 Microfilm map, document 352105, reel 03138, frames 94, 95, map of Peabody No. 14 Mine (mine index 180) - Mine outline (southern).
 Company map, ISGS map library, 4103.P42 i5.1-42, sheets 1 & 2 - Air shaft location identification, geologic problems (map not georegistered, dated 1913).

Mine Index 864**Consolidation Coal Company, Burning Star No. 2 Mine**

Type: Surface Total mined-out acreage shown: 8,293

SHAFT, SLOPE, DRIFT or TIPPLE LOCATIONS

Type	County	Township-Range	Section	Quarters-Footage
Tipple	Perry	5S 2W	22	
Auger	Perry	5S 2W	21	

GEOLOGY

Seam(s) Mined	Depth (ft)	Thickness (ft)			Mining Method
		Min	Max	Avg	
Herrin	42-113			5.17-6.7	Surface

Geologic Problems Reported: The roof was generally Brereton Limestone or Anna Shale. Lenses or pods of Energy Shale were sometimes present over the coal, up to 10 feet wide and 1 foot thick. Calcite and pyrite were often seen on vertical fracture faces.

PRODUCTION HISTORY

Company	Mine Name	Years	Production (tons)
Truax-Traer Coal Company	Burning Star No. 2	1951-1970	23,866,695
Consolidation Coal Company	Burning Star No. 2	1971-1995	32,075,819
			55,942,514

Last reported production: 1995

SOURCES OF DATA

Source Map	Date	Original Scale	Digitized Scale	Map Type
Company, 4103.P42 i5.1-73	5-15-1995	1:4800	1:4800	Final
Company, 4102 i5.1-25	12-1951	1:4800	1:4800	Not final
Company, 6-253C	1959	1:62500	1:62500	Not final
ISGS map library, 4103.P42 i5.1-65	2-17-1970	1:62500	1:62500	Secondary source

Annotated Bibliography (data source, brief description of information)

Coal Reports - Production, ownership, years of operation, depth, thickness.
 Directory of Illinois Coal Mines (Perry County) - Mine names, mine index, ownership, years of operation.
 Mine notes (Perry County) - Mine type, mine location, seam, geologic problems.
 Company map, ISGS map library, 4103.P42 i5.1-73 - Mine outline (auger mining, surface mining, in T5S-R2W).
 Company map, ISGS map library, 4102 i5.1-25 - Mine outline (near Du Quoin).
 Company map, Coal Section files, 6-253C - Mine outline (1950-1959).
 ISGS map library, 4103.P42 i5.1-65, compilation map by Coal Section - Mine outline.

Mine Index 923
Ritter Coal & Quarry, Red Fox Mine

Type: Surface Total mined-out acreage shown: 9 Production indicates a total of 15 acres were mined. The source map shows old works, which are shown on the accompanying map by a general area of mining on the southeast side of this mine.

SHAFT, SLOPE, DRIFT or TIPPLE LOCATIONS

Type	County	Township-Range	Section	Quarters-Footage
Pit or tipple	Perry	6S 1W	9	SW SW NW

GEOLOGY

Seam(s) Mined	Depth (ft)	Thickness (ft)			Mining Method
		Min	Max	Avg	
Herrin	15-20			6.75	Surface

Geologic Problems Reported: No limestone was reported above the coal.

PRODUCTION HISTORY

Company	Mine Name	Years	Production (tons)
Ritter Coal Company *	Red Fox	1937-1938	21,236
Leo J. Ritter	Red Fox	1939-1940	30,619
Ritter & Ritter Coal Company	Red Fox	1941-1941	20,931
Ritter Coal Company	Red Fox	1942-1943	58,742
Ritter & Ritter	Red Fox	1944-1946	28,869
Ritter Coal & Quarry	Red Fox	1947-1947	11,534
			171,931

* The source map indicates this mine was also known as C. & R. Coal Company.

Last reported production: 1947

SOURCES OF DATA

Source Map	Date	Original Scale	Digitized Scale	Map Type
Company, 4103.P42 i5.1-6	6-12-1939	1:1200	1:1200	Not final
Company, 4103.P42 i5.1-19	10-20-1937	1:1200	1:1200	Not final
USGS topographic map, Du Quoin	1975	1:24000	1:24000	Secondary source

Annotated Bibliography (data source, brief description of information)

Coal Reports - Production, ownership, years of operation.
 Directory of Illinois Coal Mines (Perry County) - Mine names, mine index, ownership, years of operation.
 Mine notes (Perry County) - Mine type, mine location, seam, depth, thickness, geologic problems.
 Company map, ISGS map library, 4103.P42 i5.1-6 - Pit & tipple locations, mine outline, mining method.
 Company map, ISGS map library, 4103.P42 i5.1-19 - Ownership, location of old works.
 USGS 7.5-minute topographic map, Du Quoin Quadrangle, 1975 - Mine outline.

Mine Index 2488**New Moon Coal Mining Company, New Moon No. 3 Mine**

Type: Underground Total mined-out acreage shown: 4 The western portion of New Moon No. 3 Mine was later surface-mined by Red Fox Mine (mine index 923). This mine was connected underground to the Moon Mine (mine index 3143) and the New Moon Mine No. 1 Mine (mine index 3142).

SHAFT, SLOPE, DRIFT or TIPPLE LOCATIONS

Type	County	Township-Range	Section	Quarters-Footage
Main slope	Perry	6S 1W	9	NW NW SW
Air shaft	Perry	6S 1W	9	NW NW SW

GEOLOGY

Seam(s) Mined	Depth (ft)	Thickness (ft)			Mining Method
		Min	Max	Avg	
Herrin					MRP

Geologic Problems Reported:

PRODUCTION HISTORY

Company	Mine Name	Years	Production (tons)
New Moon Coal Mining Company	New Moon No. 3	1924-1928	<u>8,606</u> 8,606

Last reported production: 1928

SOURCES OF DATA

Source Map	Date	Original Scale	Digitized Scale	Map Type
ISGS map library, 4103.P42 i5.1-19	10-20-1937	1:1200	1:1200	Secondary source
WPA, T6S-R1W	1940	1:12000	1:55096	Secondary source

Annotated Bibliography (data source, brief description of information)

Coal Reports - Production, ownership, years of operation.

Directory of Illinois Coal Mines (Perry County) - Mine names, mine index, ownership, years of operation.

ISGS map library, 4103.P42 i5.1-19, map of Red Fox Mine (mine index 923) - Mine outline, mining method.

WPA map, T6S-R1W - Slope & shaft locations.

Mine Index 2719
S. Davis, Davis Mine

Type: Underground Total mined-out acreage shown: None

SHAFT, SLOPE, DRIFT or TIPPLE LOCATIONS

Type	County	Township-Range	Section	Quarters-Footage
Mine	Perry	6S 1W	9	NW SW NE

GEOLOGY

Seam(s) Mined	Depth (ft)	Thickness (ft)			Mining Method
		Min	Max	Avg	
Herrin					

Geologic Problems Reported:

PRODUCTION HISTORY

Company	Mine Name	Years	Production (tons)
S. Davis	Davis	1881-1883 *	Not reported *

* The mine was listed in the 1882 and 1883 Coal Reports, with a note indicating it was abandoned. The worked-out acreage was not reported, and no production was reported in either year. The years of operation are not known.

Last reported production:

SOURCES OF DATA

Source Map	Date	Original Scale	Digitized Scale	Map Type
WPA, T6S-R1W	1940	1:12000	1:55096	Secondary source

Annotated Bibliography (data source, brief description of information)

Coal Reports - Production, ownership, years of operation.

Directory of Illinois Coal Mines (Perry County) - Mine names, mine index, ownership, years of operation.

WPA, T6S-R1W - Mine location.

Mine Index 3106
Millar Coal Company, Millar Mine

Type: Underground Total mined-out acreage shown: 3 Production indicates approximately 5 acres were mined after the map date.

SHAFT, SLOPE, DRIFT or TIPPLE LOCATIONS

Type	County	Township-Range	Section	Quarters-Footage
Main shaft	Perry	5S 1W	8	SW SW NW
Air shaft	Perry	5S 1W	8	SW SW NW

GEOLOGY

Seam(s) Mined	Depth (ft)	Thickness (ft)			Mining Method
		Min	Max	Avg	
Herrin	130			5.0	RPB

Geologic Problems Reported:

PRODUCTION HISTORY

Company	Mine Name	Years	Production (tons)
Square Deal Coal Company	Square Deal	1934-1936	4,636
Weldon & Lemmons Coal Company	Weldon & Lemmons	1937-1938	2,843
George Andrews Coal Company	Andrews	1938-1938	162
Paradise Coal Company	Paradise	1939-1939	1,761 *
Sam Lemmon	Lemmon	1940-1940	3,255 *
Richard Clark & Tom Lemon	Clark & Lemon	1941-1941	1,347 *
Lemmon Coal Company	Lemmon	1942-1942	439 *
Weldon & Lemon	Weldon & Lemon	1942-1943	8,000 *
Millar Coal Company	Millar	1943-1943	1,959 *
			24,402

* Production after map date

Last reported production: 1943

SOURCES OF DATA

Source Map	Date	Original Scale	Digitized Scale	Map Type
Company, 4103.P42 i5.1-5	12-28-1938	1:1200	1:1200	Not final

Annotated Bibliography (data source, brief description of information)

Coal Reports - Production, ownership, years of operation.
 Directory of Illinois Coal Mines (Perry County) - Mine names, mine index, ownership, years of operation.
 Mine notes (Perry County) - Mine type, shaft location, seam, depth, thickness.
 Company map, ISGS map library, 4103.P42 i5.1-5 - Shaft locations, mine outline, mining method.

Mine Index 3107**Bailey Brothers Coal Company, Sun No. 3 Mine**

Type: Underground Total mined-out acreage shown: 206

SHAFT, SLOPE, DRIFT or TIPPLE LOCATIONS

Type	County	Township-Range	Section	Quarters-Footage
Main shaft	Perry	5S 1W	20	SW NW SW
Air shaft	Perry	5S 1W	20	NW NW SW

GEOLOGY

Seam(s) Mined	Depth (ft)	Thickness (ft)			Mining Method
		Min	Max	Avg	
Herrin	85			5.0	RPB

Geologic Problems Reported:**PRODUCTION HISTORY**

Company	Mine Name	Years	Production (tons)
Sun Coal & Coke Company	Sun No. 3	1883-1891	176,575
Sunfield Coal & Coke Company	Sun No. 3	1891-1892	27,791
Sun Coal & Coke Company	Sun No. 3	1892-1900	225,033
Bailey Brothers Coal Company	Sun No. 3	1900-1913 *	305,244
			734,643

* Idle 1904

Last reported production: 1913

SOURCES OF DATA

Source Map	Date	Original Scale	Digitized Scale	Map Type
WPA, T5S-R1W	8-15-1913 **	1:12000	1:55096	Secondary source

** The date is the survey date of the outline. The WPA map was produced circa 1935-1940.

Annotated Bibliography (data source, brief description of information)

Coal Reports - Production, ownership, years of operation.

Directory of Illinois Coal Mines (Perry County) - Mine names, mine index, ownership, years of operation.

Mine notes (Perry County) - Mine type, shaft location, seam, depth, thickness.

WPA map, T5S-R1W - Shaft locations, mine outline.

Mine Index 3108**Sun Coal & Coke Company, Sun No. 2 Mine**

Type: Underground Total mined-out acreage shown: 80 The mine is larger than expected for the reported production plus the area mined before production was reported. The area shown on the accompanying map may be a general area of mining that is 30 acres larger than expected.

SHAFT, SLOPE, DRIFT or TIPPLE LOCATIONS

Type	County	Township-Range	Section	Quarters-Footage
Main shaft	Perry	5S 1W	29	SW SW NW
Air shaft	Perry	5S 1W	29	SW SE NW

GEOLOGY

Seam(s) Mined	Depth (ft)	Thickness (ft)			Mining Method
		Min	Max	Avg	
Herrin	72-80			5.0	RPB

Geologic Problems Reported:

PRODUCTION HISTORY

Company	Mine Name	Years	Production (tons)
Sun Mining Company *	Sun No. 2	pre1881-1883 **	74,740
Sun Coal & Coke Company	Sun No. 2	1883-1884	<u>3,894</u>
			78,634

* Reported under John Buck, Superintendent. The mine was named Black Diamond Coal Company on the Federal Land Bank Report map. The town of Sunfield was previously known as Diamond, and it is likely that the town and mines in the area were all named for the coal that was so prevalent here.

** Production and years of operation before 1882 are not known. The 1882 Coal Report indicated 30 acres were mined.

Last reported production: 1884

SOURCES OF DATA

Source Map	Date	Original Scale	Digitized Scale	Map Type
WPA, T5S-R1W	1940	1:12000	1:55096	Secondary source
ISGS map library, 4103.P42 i5.1-70	10-1934	1:63360	1:63360	Secondary source

Annotated Bibliography (data source, brief description of information)

Coal Reports - Production, ownership, years of operation, mine type, seam, depth, thickness.

Directory of Illinois Coal Mines (Perry County) - Mine names, mine index, ownership, years of operation.

Mine notes (Perry County) - Shaft location.

WPA map, T5S-R1W - Shaft locations, mine outline.

ISGS map library, 4103.P42 i5.1-70, work map of John C. Quade for Federal Land Bank Report - Mine outline.

Mine Index 3110**Perry Coal Company, Perry No. 1 Mine**

Type: Underground Total mined-out acreage shown: 25, as a general area of mining

SHAFT, SLOPE, DRIFT or TIPPLE LOCATIONS

Type	County	Township-Range	Section	Quarters-Footage
Main shaft	Perry	5S 1W	32	SW SW NW
Air shaft	Perry	5S 1W	32	SW SW NW

GEOLOGY

Seam(s) Mined	Depth (ft)	Thickness (ft)			Mining Method
		Min	Max	Avg	
Herrin	65			5.5-6.0	RPB

Geologic Problems Reported:

PRODUCTION HISTORY

Company	Mine Name	Years	Production (tons)
Perry County Coal Mining Company	Perry No. 1	1883-1887	56,722
Perry Coal Company	Perry No. 1	1887-1888	<u>34,992</u>
			91,714

Last reported production: 1888

SOURCES OF DATA

Source Map	Date	Original Scale	Digitized Scale	Map Type
WPA, T5S-R1W	1940	1:12000	1:55096	Secondary source

Annotated Bibliography (data source, brief description of information)

Coal Reports - Production, ownership, years of operation, mine type, thickness.

Directory of Illinois Coal Mines (Perry County) - Mine names, mine index, ownership, years of operation.

Mine notes (Perry County) - Shaft location, seam, depth, thickness.

WPA map, T5S-R1W - Shaft locations.

Mine Index 3111**Anchor Coal & Mining Company, Perry No. 2 Mine**

Type: Underground Total mined-out acreage shown: 125

SHAFT, SLOPE, DRIFT or TIPPLE LOCATIONS

Type	County	Township-Range	Section	Quarters-Footage
Main shaft	Perry	5S 1W	32	NW NW NW
Air shaft	Perry	5S 1W	32	NW NW NW
Air shaft	Perry	5S 1W	32	NW SE NW

GEOLOGY

Seam(s) Mined	Depth (ft)	Thickness (ft)			Mining Method
		Min	Max	Avg	
Herrin	77			5.4	MRP

Geologic Problems Reported:**PRODUCTION HISTORY**

Company	Mine Name	Years	Production (tons)
Perry County Coal Mining Company	Perry No. 2	1888-1897	201,730
Morris Brothers	Perry No. 2	1897-1900	73,500
Perry County Coal Company	Perry No. 2	1900-1901	31,270
Morris Brothers	Perry No. 2	1901-1903	61,113
Perry County Coal Company	Perry No. 2	1903-1904	30,234
Morris Brothers	Perry No. 2	1904-1905	24,512
Perry County Coal Company	Perry No. 2	1905-1907	38,425
Anchor Coal & Mining Company	Perry No. 2	1907-1908	<u>13,831</u>
			474,615

Last reported production: 1908

SOURCES OF DATA

Source Map	Date	Original Scale	Digitized Scale	Map Type
ISGS map library, 4103.P42 i5.1-16	7-2-1936	1:2400	1:2400	Secondary source
WPA, T5S-R1W	1940	1:12000	1:55096	Secondary source

Annotated Bibliography (data source, brief description of information)

Coal Reports - Production, ownership, years of operation, mine type, seam.

Directory of Illinois Coal Mines (Perry County) - Mine names, mine index, ownership, years of operation.

Mine notes (Perry County) - Shaft location, depth, thickness.

ISGS map library, 4103.P42 i5.1-16, map of Gayle Mine (mine index 633) - Shaft locations, mine outline (eastern), mining method.

WPA map, T5S-R1W - Mine outline (western).

Mine Index 3131**Illinois Central Coal & Salt Company, St. John Mine**

Type: Underground Total mined-out acreage shown: 602 The mine is larger than expected for the reported production plus the area mined before production was reported. The area shown on the accompanying map may be a general area of mining that is 200 acres larger than expected. It is likely that the outline contains other old mines that operated before 1880, and some of the air shafts may be hoist shafts for those old mines that were converted to air and escape shafts when the workings were connected underground.

SHAFT, SLOPE, DRIFT or TIPPLE LOCATIONS

Type	County	Township-Range	Section	Quarters-Footage
Main shaft	Perry	6S 1W	4	SW NE SW
Air shaft	Perry	6S 1W	4	NE SE SW
Air shaft	Perry	6S 1W	4	SE SE NW
Shaft	Perry	6S 1W	4	SE SE SW
Shaft	Perry	6S 1W	9	SW NW NE

GEOLOGY

Seam(s) Mined	Depth (ft)	Thickness (ft)			Mining Method
		Min	Max	Avg	
Herrin	44			6.0-9.0	RP

Geologic Problems Reported:

PRODUCTION HISTORY

Company	Mine Name	Years	Production (tons)
Halliday & Company	Old Paradise	1867-1875	Unknown
Illinois Central Coal & Salt Works	Old Paradise	1875-1880	Unknown
Halliday & Company	Paradise No. 2	1880-1883	202,543 *
Illinois Central Iron & Coal Company	St. John	1883-1886	295,037
Illinois Central Coal & Salt Company	St. John	1886-1899	<u>1,124,798</u>
			1,622,378

* Production before 1882 is not known. The 1882 Coal Report indicates 60 acres were mined.

Last reported production: 1899

SOURCES OF DATA

Source Map	Date	Original Scale	Digitized Scale	Map Type
ISGS map library, 4103.P42 i5.1-70	10-1934	1:63360	1:63360	Secondary source
ISGS map library, 4103.P42 i5.1-16	7-2-1936	1:2400	1:2400	Secondary source

Annotated Bibliography (data source, brief description of information)

Coal Reports - Production, ownership, years of operation, thickness, mining method.

Directory of Illinois Coal Mines (Perry County) - Mine names, mine index, ownership, years of operation.

Mine notes (Perry County) - Mine type, shaft location, seam, depth.

ISGS map library, 4103.P42 i5.1-70, work map for Federal Land Bank Report - Shaft locations (southernmost two), mine outline.

ISGS map library, 4103.P42 i5.1-16, map of Gayle Mine (mine index 633) - Mine outline, shaft locations.

Mine Index 3132**Orin Coal Company, Jupiter No. 1 Mine**

Type: Underground Total mined-out acreage shown: None Production indicates approximately 80 acres were mined.

SHAFT, SLOPE, DRIFT or TIPPLE LOCATIONS

Type	County	Township-Range	Section	Quarters-Footage
Main shaft	Perry	6S 1W	8	NE NW NW

GEOLOGY

Seam(s) Mined	Depth (ft)	Thickness (ft)			Mining Method
		Min	Max	Avg	
Herrin	54			6.0	RP

Geologic Problems Reported: The roof was 2.5 feet of black shale below 2 to 8 feet of limestone. White top was abundant above the coal, and ranged up to 10 feet thick. Slips and rolls were common where the white top made the immediate roof, and these areas required heavy timbering. Most of the pyrite was in the lower half of the seam.

PRODUCTION HISTORY

Company	Mine Name	Years	Production (tons)
Weaver Coal & Coke Company	Weaver No. 1	1902-1903	87,096
Manufacturers Fuel Company	Jupiter No. 1	1903-1905	188,409
Jupiter Coal & Mining Company	Jupiter No. 1	1905-1908	112,110
Orin Coal Company	Jupiter No. 1	1908-1909	<u>26,863</u>
			414,478

Last reported production: 1909

SOURCES OF DATA

Source Map	Date	Original Scale	Digitized Scale	Map Type
WPA, T6S-R1W	1940	1:12000	1:12000	Secondary source

Annotated Bibliography (data source, brief description of information)

Coal Reports - Production, ownership, years of operation, mining method.

Directory of Illinois Coal Mines (Perry County) - Mine names, mine index, ownership, years of operation.

Mine notes (Perry County) - Shaft location, seam, depth, thickness, geologic problems.

WPA map, T6S-R1W - Shaft location.

Mine Index 3133**Du Quoin Coal Company, Burnett Mine**

Type: Underground Total mined-out acreage shown: 12

SHAFT, SLOPE, DRIFT or TIPPLE LOCATIONS

Type	County	Township-Range	Section	Quarters-Footage
Main slope	Perry	6S 1W	5	SE SW SE
Air shaft	Perry	6S 1W	5	SW SW SE

GEOLOGY

Seam(s) Mined	Depth (ft)	Thickness (ft)			Mining Method
		Min	Max	Avg	
Herrin	50-54			6.0-6.5	MRP

Geologic Problems Reported:

PRODUCTION HISTORY

Company	Mine Name	Years	Production (tons)
Roy M. Burnett Coal Company	Burnett	1942-1949	32,890
Du Quoin Coal Company	Burnett	1950-1960 *	6,838
			39,728

* Idle 1953

Last reported production: 1960

SOURCES OF DATA

Source Map	Date	Original Scale	Digitized Scale	Map Type
Microfilm, document 352137	10-17-1961	1:1200	1:1200	Final

Annotated Bibliography (data source, brief description of information)

Coal Reports - Production, ownership, years of operation.

Directory of Illinois Coal Mines (Perry County) - Mine names, mine index, ownership, years of operation.

Mine notes (Perry County) - Mine type, slope location, seam, depth, thickness.

Microfilm map, document 352137, reel 03138, frame 147 - Slope & shaft locations, mine outline, mining method.

Mine Index 3134**William Parker Halliday & William H. Green, Halliday & Green Mine**

Type: Underground Total mined-out acreage shown: None

SHAFT, SLOPE, DRIFT or TIPPLE LOCATIONS

Type	County	Township-Range	Section	Quarters-Footage
Main slope *	Perry	6S 1W	5	SW SE NW

* The surface works for this slope were later used as the tippie for St. John Mine (mine index 3131) to load their product onto rail cars.

GEOLOGY

Seam(s) Mined	Depth (ft)	Thickness (ft)			Mining Method
		Min	Max	Avg	
Herrin					

Geologic Problems Reported:

PRODUCTION HISTORY

Company	Mine Name	Years	Production (tons)
J. C. & Cornelius Storm	Storm **	1853-1857	Unknown
Illinois Central Iron & Coal Mining Company	Illinois Central **	1857-1867	Unknown
William Parker Halliday & William H. Green	Halliday & Green **	1867-1875 ***	Unknown

** May have also been known as the St. John No. 1 Mine or Old Paradise No. 1 Mine.

*** The mine was said to have closed in March 1875, when production moved to Halliday's Paradise No. 2 Mine (mine index 3131).

Last reported production:

SOURCES OF DATA

Source Map	Date	Original Scale	Digitized Scale	Map Type
Coal Section files (E. T. Benson)	circa 1934	1:48000	1:48000	Secondary source
WPA, T6S-R1W	1940	1:12000	1:12000	Secondary source

Annotated Bibliography (data source, brief description of information)

Directory of Illinois Coal Mines (Perry County) - Mine names, mine index, ownership, years of operation.

Mine notes (Perry County) - Shaft location, years of operation.

Coal Section files, work map of E. T. Benson's field notes - Shaft location.

WPA map, T6S-R1W - Mine location, mine identification.

Austin, David. (1984, November-December). The Salt Center: Halliday's St. John, Illinois Magazine, pg. 28-31 - Ownership, years of operation.

Mine Index 3138
Rogers & Company, Possum Hollow Mine

Type: Underground Total mined-out acreage shown: None; production indicates approximately 10 acres were mined.

SHAFT, SLOPE, DRIFT or TIPPLE LOCATIONS

Type	County	Township-Range	Section	Quarters-Footage
Main shaft	Perry	6S 1W	8	SE NE SE
Shaft	Perry	6S 1W	8	NW SE SE
Air shaft	Perry	6S 1W	8	SE NE SE

GEOLOGY

Seam(s) Mined	Depth (ft)	Thickness (ft)			Mining Method
		Min	Max	Avg	
Herrin	40			5.0	Underground

Geologic Problems Reported:

PRODUCTION HISTORY

Company	Mine Name	Years	Production (tons)
Rogers & Company	Possum Hollow	1881-1883	<u>45,295</u> 45,295

Last reported production: 1883

SOURCES OF DATA

Source Map	Date	Original Scale	Digitized Scale	Map Type
WPA, T6S-R1W	1940	1:12000	1:12000	Secondary source

Annotated Bibliography (data source, brief description of information)

Coal Reports - Production, ownership, years of operation, mine type.
 Directory of Illinois Coal Mines (Perry County) - Mine names, mine index, ownership, years of operation.
 Mine notes (Perry County) - Shaft location, seam, depth, thickness.
 WPA map, T6S-R1W - Shaft locations.

Mine Index 3139
Morgan & Dorcine, New Moon Mine

Type: Underground Total mined-out acreage shown: 4 Production indicates approximately 1 acre was mined after the map date.

SHAFT, SLOPE, DRIFT or TIPPLE LOCATIONS

Type	County	Township-Range	Section	Quarters-Footage
Main slope *	Perry	6S 1W	8	SE NE SE

* The presence of an air slope immediately southeast of the haulage slope can be deduced from the source map. Other airways were also present from 1938 to 1941 from the surface mine northwest of the slope entrance to the mine. The mine is so small on the accompanying map that the addition of the air slope symbol would obscure the main slope symbol, and the airway symbol has not been added.

GEOLOGY

Seam(s) Mined	Depth (ft)	Thickness (ft)			Mining Method
		Min	Max	Avg	
Herrin	9-24			6.0	RPB

Geologic Problems Reported: The slope was sunk into a hill on the east side of a small surface mine. They ran into old workings that nearby residents had no idea who operated it. People in the proximity of the mine did know of a nearby mine that operated around 1882, so the old workings were possibly much older. Very little pyrite was visible. The blue band was almost invisible here.

PRODUCTION HISTORY

Company	Mine Name	Years	Production (tons)
F. J. Howell	New Moon	1916-1918	2,786
T. J. Howell	New Moon	1918-1930 **	11,559
F. J. Howell	New Moon	1931-1931	1,055
T. J. Howell	New Moon	1932-1936	6,869
T. J. Howell	New Moon	1936-1940 ***	2,935 †
Morgan & Dorcine	New Moon	1941-1941	1,913 †
			27,117

** Mines producing less than 10,000 tons in 1922 were not reported; idle 1925-1928; mines producing less than 1,000 tons were not reported in 1930

*** Idle 1939 & 1940

† Production after map date

Last reported production: 1941

SOURCES OF DATA

Source Map	Date	Original Scale	Digitized Scale	Map Type
ISGS map library, 4103.P42 i5.1-18	2-8-1939	1:1200	1:1200	Secondary source
Microfilm, document 352083	3-13-1936	1:1200	1:993	Not final
Microfilm, document 352120	2-8-1938	1:1200	1:993	Secondary source

Annotated Bibliography (data source, brief description of information)

Coal Reports - Production, ownership, years of operation.
 Directory of Illinois Coal Mines (Perry County) - Mine names, mine index, ownership, years of operation.
 Mine notes (Perry County) - Mine type, slope location, seam, depth, thickness.
 ISGS field notes (Perry County), E. T. Benson, 8-26-1934 - Geologic problems.
 ISGS map library, 4103.P42 i5.1-18, map of Energy Mine (mine index 3140) - Mine outline, mining method.
 Microfilm map, document 352083, reel 03138, frame 63 - Air slope location.
 Microfilm map, document 352120, reel 03138, frame 124, map of Energy Mine (mine index 3140) - Slope location.

Mine Index 3140
Energy Coal & Supply Company, Black Bear Mine

Type: Surface Total mined-out acreage shown: Less than 1; production indicates less than 1 acre was mined after the map date.

SHAFT, SLOPE, DRIFT or TIPPLE LOCATIONS

Type	County	Township-Range	Section	Quarters-Footage
Pit or tippie	Perry	6S 1W	8	NE NE SE

GEOLOGY

Seam(s) Mined	Depth (ft)	Thickness (ft)			Mining Method
		Min	Max	Avg	
Herrin	20			5.5	Surface

Geologic Problems Reported:

PRODUCTION HISTORY

Company	Mine Name	Years	Production (tons)
Energy Coal & Supply Company	Black Bear	1938-1938	1,501
Energy Coal & Supply Company	Black Bear	1939-1940	2,636 *
			4,137

* Production after map date

Last reported production: 1940

SOURCES OF DATA

Source Map	Date	Original Scale	Digitized Scale	Map Type
Company, 4103.P42 i5.1-18	2-8-1939	1:1200	1:1200	Not final

Annotated Bibliography (data source, brief description of information)

Coal Reports - Production, ownership, years of operation.

Directory of Illinois Coal Mines (Perry County) - Mine names, mine index, ownership, years of operation.

Mine notes (Perry County) - Mine name, mine type, mine location, seam, depth, thickness.

Company map, ISGS map library, 4103.P42 i5.1-18 - Mine outline, mining method.

Microfilm map, document 352120, reel 03138, frame 124 - Georegistration information for the paper map.

Mine Index 3142**New Moon Coal Mining Company, New Moon No. 1 Mine**

Type: Underground Total mined-out acreage shown: 5 Production indicates approximately 30 acres were mined. This mine was connected underground to the Moon Mine (mine index 3143) and New Moon No. 3 Mine (mine index 2488).

SHAFT, SLOPE, DRIFT or TIPPLE LOCATIONS

Type	County	Township-Range	Section	Quarters-Footage
Main slope	Perry	6S 1W	9	SE NW SW
Air shaft	Perry	6S 1W	9	SE NW SW

GEOLOGY

Seam(s) Mined	Depth (ft)	Thickness (ft)			Mining Method
		Min	Max	Avg	
Herrin	44-52			5.5-6.5	MRP

Geologic Problems Reported: The mine began as a surface mine, then moved underground when the depth was too great to remove the overburden. The roof was said to be "fairly good", with 3 to 4 inches of draw slate, 3 to 40 feet of white top, with bastard limestone above. (Note: Top coal may have been left to support the roof, because none of the described strata of the roof makes a competent roof.) A shale band occurred near the middle of the coal seam. The floor was 4 to 5 feet of underclay.

PRODUCTION HISTORY

Company	Mine Name	Years	Production (tons)
City Coal Company *	City	1898-1900	6,100
New Moon Coal Mining Company	New Moon No. 1	1900-1916 **	143,487
			149,587

* According to the 1890 Sanborn Insurance Maps, the mine was also known as the Greenwood & Winn Mine.

** Idle 1904

Last reported production: 1916

SOURCES OF DATA

Source Map	Date	Original Scale	Digitized Scale	Map Type
WPA, T6S-R1W	1940	1:12000	1:55096	Secondary source
ISGS map library, 4103.P42 i5.1-19	10-20-1937	1:1200	1:1200	Secondary source

Annotated Bibliography (data source, brief description of information)

Coal Reports - Production, ownership, years of operation, thickness.

Directory of Illinois Coal Mines (Perry County) - Mine names, mine index, ownership, years of operation.

Mine notes (Perry County) - Mine type, slope location, seam, depth, thickness, geologic problems.

ISGS field notes (Perry County) - Depth, thickness.

WPA map, T6S-R1W - Slope & shaft locations.

ISGS map library, 4103.P42 i5.1-19, map of Red Fox Mine (mine index 923) - Partial mine outline, mining method.

Mine Index 3143
Moon Coal Company, Old Moon Mine

Type: Underground Total mined-out acreage shown: None; production indicates approximately 10 acres were mined. This mine was likely connected underground to New Moon No. 1 Mine (mine index 3142) and New Moon No. 3 Mine (mine index 2488).

SHAFT, SLOPE, DRIFT or TIPPLE LOCATIONS

Type	County	Township-Range	Section	Quarters-Footage
Main shaft	Perry	6S 1W	9	SW NW SW
Air shaft	Perry	6S 1W	9	SW NW SW

GEOLOGY

Seam(s) Mined	Depth (ft)	Thickness (ft)			Mining Method
		Min	Max	Avg	
Herrin	50			6.0	RP

Geologic Problems Reported:

PRODUCTION HISTORY

Company	Mine Name	Years	Production (tons)
Jones & Mecklin	Jones & Mecklin	1882-1885 *	21,000 *
Moon Co-operative Coal Company	Moon (Old Moon Mine)	1885-1887	6,500
Moore Coal Company	Moore	1887-1888	11,143
Moon Coal Company	Moon	1888-1889	<u>9,802</u>
			48,445

* Production and years of operation before 1882 are not known. The 1882 Coal Report indicated 5 acres were mined. Idle 1884.

Last reported production: 1889

SOURCES OF DATA

Source Map	Date	Original Scale	Digitized Scale	Map Type
WPA, T6S-R1W	1940	1:12000	1:55096	Secondary source

Annotated Bibliography (data source, brief description of information)

Coal Reports - Production, ownership, years of operation, mine type, mining method.
 Directory of Illinois Coal Mines (Perry County) - Mine names, mine index, ownership, years of operation.
 Mine notes (Perry County) - Shaft location, seam, depth, thickness.
 WPA map, T6S-R1W - Shaft locations.

Mine Index 3145**Roberts Coal Company, Old Possum Mine**

Type: Surface Total mined-out acreage shown: Less than 1; later incorporated into a larger surface-mined area excavated by Red Fox No. 2 Mine (mine index 923).

SHAFT, SLOPE, DRIFT or TIPPLE LOCATIONS

Type	County	Township-Range	Section	Quarters-Footage
Pit	Perry	6S 1W	9	SE SW NW

GEOLOGY

Seam(s) Mined	Depth (ft)	Thickness (ft)			Mining Method
		Min	Max	Avg	
Herrin	10			6.0	Surface

Geologic Problems Reported:

PRODUCTION HISTORY

Company	Mine Name	Years	Production (tons)
Roberts Coal Company	Old Possum	1922-1924	<u>5,566</u> 5,566

Last reported production: 1924

SOURCES OF DATA

Source Map	Date	Original Scale	Digitized Scale	Map Type
ISGS map library, 4103.P42 i5.1-19	10-20-1937	1:1200	1:1200	Secondary source

Annotated Bibliography (data source, brief description of information)

Coal Reports - Production, ownership, years of operation.

Directory of Illinois Coal Mines (Perry County) - Mine names, mine index, ownership, years of operation.

Mine notes (Perry County) - Depth, thickness.

ISGS map library, 4103.P42 i5.1-19, map of C. & R. Mine (mine index 923) - Mine outline, mining method.

Mine Index 3146**Greenwood & Davis Coal Company, Greenwood & Davis (No. 1) Mine**

Type: Underground Total mined-out acreage shown: 23 Production indicates approximately 110 acres were mined in total.

SHAFT, SLOPE, DRIFT or TIPPLe LOCATIONS

Type	County	Township-Range	Section	Quarters-Footage
Main shaft	Perry	6S 1W	9	SE SE NW
Air shaft	Perry	6S 1W	9	NW NW SE

GEOLOGY

Seam(s) Mined	Depth (ft)	Thickness (ft)			Mining Method
		Min	Max	Avg	
Herrin	45-47			6.0-7.0	MRP

Geologic Problems Reported:

PRODUCTION HISTORY

Company	Mine Name	Years	Production (tons)
Greenwood & Davis Coal Company	Greenwood & Davis (No. 1)	1895-1907	646,410 646,410

Last reported production: March 16, 1907

SOURCES OF DATA

Source Map	Date	Original Scale	Digitized Scale	Map Type
Microfilm	undated	1:1200	1:31680	Not final
WPA, T6S-R1W	1940	1:12000	1:55096	Secondary source

Annotated Bibliography (data source, brief description of information)

Coal Reports - Production, ownership, years of operation, mine type, mining method.

Directory of Illinois Coal Mines (Perry County) - Mine names, mine index, ownership, years of operation.

Mine notes (Perry County) - Shaft location, seam, depth, thickness.

Microfilm map, Coal Section files - Mine outline, mining method.

WPA map, T6S-R1W - Shaft locations.

Mine Index 3147**Greenwood & Davis Coal Company, Greenwood & Davis (No. 2) Mine**

Type: Surface Total mined-out acreage shown: Less than 1

SHAFT, SLOPE, DRIFT or TIPPLE LOCATIONS

Type	County	Township-Range	Section	Quarters-Footage
Pit or tippie	Perry	6S 1W	9	NE SW NW

GEOLOGY

Seam(s) Mined	Depth (ft)	Thickness (ft)			Mining Method
		Min	Max	Avg	
Herrin	10-60			6.0-9.0	Surface

Geologic Problems Reported:**PRODUCTION HISTORY**

Company	Mine Name	Years	Production (tons)
Greenwood & Davis Coal Company	Greenwood & Davis (No. 2)	1912-1916	<u>5,905</u> 5,905

Last reported production: 1916

SOURCES OF DATA

Source Map	Date	Original Scale	Digitized Scale	Map Type
ISGS map library, 4103.P42 i5.1-16	7-2-1936	1:2400	1:2400	Secondary source

Annotated Bibliography (data source, brief description of information)

Coal Reports - Production, ownership, years of operation, mine type, seam, depth, thickness.

Directory of Illinois Coal Mines (Perry County) - Mine names, mine index, ownership, years of operation.

Mine notes (Perry County) - Depth, thickness.

ISGS map library, 4103.P42 i5.1-16, map of Gayle Mine (mine index 633) - Mine outline, mining method.

Mine Index 3148**Roy M. Burnett Coal Company, Burnett No. 2 Mine**

Type: Underground Total mined-out acreage shown: Less than 1; production indicates less than 1 acre was mined after the map date.

SHAFT, SLOPE, DRIFT or TIPPLE LOCATIONS

Type	County	Township-Range	Section	Quarters-Footage
Main slope	Perry	6S 1W	8	NE NW NE
Air shaft	Perry	6S 1W	8	NE NW NE

GEOLOGY

Seam(s) Mined	Depth (ft)	Thickness (ft)			Mining Method
		Min	Max	Avg	
Herrin					RP

Geologic Problems Reported:

PRODUCTION HISTORY

Company	Mine Name	Years	Production (tons)
Roy M. Burnett Coal Company	Burnett No. 2	1936-1937	1,151
Roy M. Burnett Coal Company	Burnett No. 2	1937-1940	<u>3,403</u> *
			4,554

* Production after map date

Last reported production: 1940

SOURCES OF DATA

Source Map	Date	Original Scale	Digitized Scale	Map Type
Microfilm, document 352133	1937	1:600	1:600	Not final

Annotated Bibliography (data source, brief description of information)

Coal Reports - Production, ownership, years of operation.

Directory of Illinois Coal Mines (Perry County) - Mine names, mine index, ownership, years of operation, seam.

Microfilm map, document 352133, reel 03138, frame 143 - Shaft locations, mine outline, mining method.

Mine Index 3149**Richard Baillie, Baillie No. 1 Mine**

Type: Underground Total mined-out acreage shown: None; production indicates approximately 5 acres were mined.

SHAFT, SLOPE, DRIFT or TIPPLE LOCATIONS

Type	County	Township-Range	Section	Quarters-Footage
Main shaft	Perry	6S 1W	9	NE SE NW

GEOLOGY

Seam(s) Mined	Depth (ft)	Thickness (ft)			Mining Method
		Min	Max	Avg	
Herrin	32-50			6.0	RP

Geologic Problems Reported:

PRODUCTION HISTORY

Company	Mine Name	Years	Production (tons)
Richard Baillie	Baillie No. 1	1883-1889	<u>27,371</u> 27,371

Last reported production: 1889

SOURCES OF DATA

Source Map	Date	Original Scale	Digitized Scale	Map Type
WPA, T6S-R1W	1940	1:12000	1:55096	Secondary source

Annotated Bibliography (data source, brief description of information)

Coal Reports - Production, ownership, years of operation, seam, depth, thickness, mining method.

Directory of Illinois Coal Mines (Perry County) - Mine names, mine index, ownership, years of operation.

Mine notes (Perry County) - Seam, depth, thickness.

WPA map, T6S-R1W - Shaft location.

Mine Index 3151**Du Quoin Union Coal Company, Browning Mine**

Type: Underground Total mined-out acreage shown: 252

SHAFT, SLOPE, DRIFT or TIPPLE LOCATIONS

Type	County	Township-Range	Section	Quarters-Footage
Main shaft	Perry	6S 1W	16	NE SE NW
Air shaft	Perry	6S 1W	16	NE SE NW
Pump shaft	Perry	6S 1W	9	SW SW SE

GEOLOGY

Seam(s) Mined	Depth (ft)	Thickness (ft)			Mining Method
		Min	Max	Avg	
Herrin	45			6.0	RP

Geologic Problems Reported: The mine probably had water problems. The shallow 45-foot depth of the mine, combined with a specific pump shaft (pump holes are common on mine maps), indicates water problems may have been more severe than other mines in the region. The 1884 Coal Report indicated they abandoned a shaft and developed the property near the railroad track so that they would not have to haul their coal 1 mile. The pump shaft was probably the original shaft for the mine, and workings were extended so that the pump shaft could also be used for escapement. The roof was bad near the pump shaft.

PRODUCTION HISTORY

Company	Mine Name	Years	Production (tons)
Du Quoin Coal Mining Company	Browning	1883-1893	851,700
Du Quoin Union Coal Company	Browning	1893-1899	514,000
			1,365,700

Last reported production: 1899

SOURCES OF DATA

Source Map	Date	Original Scale	Digitized Scale	Map Type
WPA, T6S-R1W	1940	1:12000	1:55096	Secondary source
Microfilm, document 352117	3-1927	1:1400	1:4138	Secondary source

Annotated Bibliography (data source, brief description of information)

Coal Reports - Production, ownership, years of operation, mining method, geologic problems.

Directory of Illinois Coal Mines (Perry County) - Mine names, mine index, ownership, years of operation.

Mine notes (Perry County) - Seam, depth, thickness.

WPA map, T6S-R1W - Shaft locations, mine outline, geologic problems.

Microfilm, document 352117, reel 03138, frames 115-118, map of Paradise Mine (mine index 54) - Mine outline (northeastern part).

Mine Index 3153**Jupiter Coal Company, Eaton Mine (Jupiter No. 1 Mine)**

Type: Underground Total mined-out acreage shown: None; production indicates approximately 120 acres were mined

SHAFT, SLOPE, DRIFT or TIPPLE LOCATIONS

Type	County	Township-Range	Section	Quarters-Footage
Main shaft	Perry	6S 1W	16	SE NW NW
Air shaft	Perry	6S 1W	16	SE NW NW
Air shaft	Perry	6S 1W	16	SE NW NW
Slope *	Perry	6S 1W	16	SW NW NW
Air shaft *	Perry	6S 1W	16	SW NW NW
Pump shaft **	Perry	6S 1W	9	SE SW SW

* Identified on the source map as Jupiter No. 2 Mine (not to be confused with Jupiter No. 2 Mine, mine index 179 in 32-T5S-R1W).

** Coded as an air shaft on the accompanying map

GEOLOGY

Seam(s) Mined	Depth (ft)	Thickness (ft)			Mining Method
		Min	Max	Avg	
Herrin	35			6.5	RP

Geologic Problems Reported:

PRODUCTION HISTORY

Company	Mine Name	Years	Production (tons)
Jupiter Coal Company	Eaton, Jupiter No. 1 ***	1888-1902 †	<u>707,680</u> 707,680

*** Identified on the source map as Old Jupiter Mine

† Idle 1900

Last reported production: 1902

SOURCES OF DATA

Source Map	Date	Original Scale	Digitized Scale	Map Type
WPA, T6S-R1W	1940	1:12000	1:55096	Secondary source

Annotated Bibliography (data source, brief description of information)

Coal Reports - Production, ownership, years of operation, mine type, mining method.

Directory of Illinois Coal Mines (Perry County) - Mine names, mine index, ownership, years of operation.

Mine notes (Perry County) - Shaft location, seam, depth, thickness.

WPA map, T6S-R1W - Shaft locations.

Mine Index 3154**New Jupiter Coal Company, New Jupiter Mine**

Type: Underground Total mined-out acreage shown: None; production indicates approximately 2 acres were mined.

SHAFT, SLOPE, DRIFT or TIPPLE LOCATIONS

Type	County	Township-Range	Section	Quarters-Footage
Main shaft	Perry	6S 1W	16	SW NW NW
Air shaft	Perry	6S 1W	16	SW NW NW

GEOLOGY

Seam(s) Mined	Depth (ft)	Thickness (ft)			Mining Method
		Min	Max	Avg	
Herrin	32			6.5	Underground

Geologic Problems Reported: Top coal (1.5 feet) was left to support the roof. This operation had 7 acres of unworked coal ground surrounded by old works. They holed into the Jupiter Mine (mine index 3153) so that the drainage water from New Jupiter would flow into the old works.

PRODUCTION HISTORY

Company	Mine Name	Years	Production (tons)
New Jupiter Coal Company *	New Jupiter	1920-1936 **	9,239 **
			9,239

* The mine notes indicate Ray Campbell owned or operated New Jupiter Coal Company.

** Mines producing less than 10,000 tons were not reported in 1922. Idle 1928 & 1929. Mines producing less than 1,000 tons per year were not reported 1930-1932.

Last reported production: 1936

SOURCES OF DATA

Source Map	Date	Original Scale	Digitized Scale	Map Type
WPA, T6S-R1W	1940	1:12000	1:55096	Secondary source

Annotated Bibliography (data source, brief description of information)

Coal Reports - Production, ownership, years of operation.

Directory of Illinois Coal Mines (Perry County) - Mine names, mine index, ownership, years of operation.

Mine notes (Perry County) - Mine type, shaft location, seam, depth, thickness, geologic problems.

WPA, T6S-R1W - Shaft locations.

Mine Index 3156
Perfection Coal Company, Perfection Mine

Type: Surface Total mined-out acreage shown: 381 Production indicates approximately 12 acres were mined after the map date. The outline on the accompanying map is larger than expected for the reported production. The coal may have been thinner than reported, and older surface-mined areas may have been expanded by the Perfection Mine. The reported production indicates approximately 250 acres were mined.

SHAFT, SLOPE, DRIFT or TIPPLE LOCATIONS

Type	County	Township-Range	Section	Quarters-Footage
Pit or tippie	Perry	6S 1W	17	NE SW NE

GEOLOGY

Seam(s) Mined	Depth (ft)	Thickness (ft)			Mining Method
		Min	Max	Avg	
Herrin	40-50	5.0	6.0	5.5	Surface

Geologic Problems Reported: A small fault was found in SW 16-T6S-R1W. This fault zone was reported to have widened to the southeast. Some erosional areas in the 1923 pit showed no coal at all. The overburden was 10 to 20 feet of fine-grained glacial material with a base of boulders that persisted throughout the pit. Below the glacial deposits was 3 to 16 feet of shale that was easily removed. The coal was reported to contain few impurities. Some old works were encountered, and the pillars were mined.

PRODUCTION HISTORY

Company	Mine Name	Years	Production (tons)
Scott Smith & Company	Smith	1918-1924	540,497
Perfection Coal Company	Perfection	1924-1937	1,643,433
Perfection Coal Company	Perfection	1937-1940	<u>109,094 *</u>
			2,293,024

* Production after map date

Last reported production: April 1940

SOURCES OF DATA

Source Map	Date	Original Scale	Digitized Scale	Map Type
State archive, MSHA_48_01	11-25-1937	1:2400	1:2400	Not final
USGS topographic map, Elkhville	PR 1978	1:24000	1:24000	Secondary source

Annotated Bibliography (data source, brief description of information)

Coal Reports - Production, ownership, years of operation.
 Directory of Illinois Coal Mines (Perry County) - Mine names, mine index, ownership, years of operation.
 Mine notes (Perry County) - Mine type, mine location, seam, depth, thickness, geologic problems.
 State archive, MSHA_48_01 - Mine outline, mining method.
 USGS 7.5-minute topographic map, Elkhville Quadrangle, 1968 PR 1978 - Mine outline (southwestern part).

Mine Index 3157
Wall & Company, Old Enterprise Mine

Type: Underground Total mined-out acreage shown: 25

SHAFT, SLOPE, DRIFT or TIPPLE LOCATIONS

Type	County	Township-Range	Section	Quarters-Footage
Main shaft	Perry	6S 1W	17	NE SW NW
Air shaft	Perry	6S 1W	17	NE SE NW

GEOLOGY

Seam(s) Mined	Depth (ft)	Thickness (ft)			Mining Method
		Min	Max	Avg	
Herrin	65			7.0	MRP

Geologic Problems Reported:

PRODUCTION HISTORY

Company	Mine Name	Years	Production (tons)
Wall & Company	Enterprise No. 1	pre1881-1882 *	Not reported *
Wall & Company	Old Enterprise	1882-1883	<u>Not reported</u> 11,942

* Production and years of operation before 1882 are not known. The 1882 Coal Report indicated 40 acres were mined, and the mine was designated abandoned with no reported production.

Last reported production:

SOURCES OF DATA

Source Map	Date	Original Scale	Digitized Scale	Map Type
Microfilm, document 352155	1-1-1876	1:1200	1:1572	Not final
WPA, T6S-R1W	1940	1:12000	1:55096	Secondary source

Annotated Bibliography (data source, brief description of information)

Coal Reports - Production, ownership, years of operation, mining method.
 Directory of Illinois Coal Mines (Perry County) - Mine names, mine index, ownership, years of operation.
 Mine notes (Perry County) - Mine type, shaft location, seam, depth, thickness.
 Microfilm map, document 351452, reel 03136, frames 158, 159 - Shaft locations, mine outline, mining method.
 WPA map, T6S-R1W - Shaft locations, mine outline.

Mine Index 3158**Jewel Coal & Mining Company, Jewel No. 1 Mine**

Type: Underground Total mined-out acreage shown: 62 Production indicates 62 acres were mined after the map date.

SHAFT, SLOPE, DRIFT or TIPPLE LOCATIONS

Type	County	Township-Range	Section	Quarters-Footage
Main shaft	Perry	6S 1W	18	NW NE SE
Air shaft	Perry	6S 1W	18	SE SW NE

GEOLOGY

Seam(s) Mined	Depth (ft)	Thickness (ft)			Mining Method
		Min	Max	Avg	
Herrin	75			6.5	RPP

Geologic Problems Reported:

PRODUCTION HISTORY

Company	Mine Name	Years	Production (tons)
Harvey & Company	Harvey	1916-1917	959
Jewel Coal & Mining Company	Jewel No. 1	1917-1921	383,947
Jewel Coal & Mining Company	Jewel No. 1	1921-1923	378,346 *
			<u>763,252</u>

* Production after map date

Last reported production: October 1923

SOURCES OF DATA

Source Map	Date	Original Scale	Digitized Scale	Map Type
Microfilm, document 352078	2-1921	1:2400	1:4469	Not final

Annotated Bibliography (data source, brief description of information)

Coal Reports - Production, ownership, years of operation.

Directory of Illinois Coal Mines (Perry County) - Mine names, mine index, ownership, years of operation.

Mine notes (Perry County) - Shaft location, seam, depth, thickness.

Microfilm map, document 352078, reel 03138, frame 57 - Shaft locations, mine outline, mining method.

Mine Index 3160**Du Quoin Union Coal Company, Excelsior Mine**

Type: Underground Total mined-out acreage shown: 37, as a general area of mining

SHAFT, SLOPE, DRIFT or TIPPLE LOCATIONS

Type	County	Township-Range	Section	Quarters-Footage
Main shaft	Perry	6S 1W	7	SW SW SE

GEOLOGY

Seam(s) Mined	Depth (ft)	Thickness (ft)			Mining Method
		Min	Max	Avg	
Herrin	65			6.5	RP

Geologic Problems Reported:

PRODUCTION HISTORY

Company	Mine Name	Years	Production (tons)
Excelsior Coal Mining Company	Excelsior	1889-1894	219,920
Du Quoin Union Coal Company	Excelsior	1894-1897	<u>22,340</u>
			242,260

Last reported production: 1897

SOURCES OF DATA

Source Map	Date	Original Scale	Digitized Scale	Map Type
WPA, T6S-R1W	1940	1:12000	1:55096	Secondary source

Annotated Bibliography (data source, brief description of information)

Coal Reports - Production, ownership, years of operation, mine type, mining method.

Directory of Illinois Coal Mines (Perry County) - Mine names, mine index, ownership, years of operation.

Mine notes (Perry County) - Shaft location, seam, depth, thickness.

WPA, T6S-R1W - Shaft location.

Mine Index 3253**Brookshaw & Company, Gold Hill Mine**

Type: Underground Total mined-out acreage shown: None; production indicates approximately 6 acres were mined, in addition to the 2 acres mined before production was reported in 1882.

SHAFT, SLOPE, DRIFT or TIPPLe LOCATIONS

Type	County	Township-Range	Section	Quarters-Footage
Main shaft	Perry	6S 1W	8	NW NE SE
Air shaft	Perry	6S 1W	8	NW NE SE

GEOLOGY

Seam(s) Mined	Depth (ft)	Thickness (ft)			Mining Method
		Min	Max	Avg	
Herrin	35-50			6.0	RP

Geologic Problems Reported:

PRODUCTION HISTORY

Company	Mine Name	Years	Production (tons)
Brookshaw & Company	Gold Hill	pre1881-1883 *	<u>31,210</u> 31,210

* Production and years of operation before 1882 are not known. The 1882 Coal Report states that 2 acres were mined.

Last reported production: 1883

SOURCES OF DATA

Source Map	Date	Original Scale	Digitized Scale	Map Type
WPA, T6S-R1W	1940	1:12000	1:55096	Secondary source

Annotated Bibliography (data source, brief description of information)

Coal Reports - Production, ownership, years of operation, mine type, seam, depth, thickness, mining method.
 Directory of Illinois Coal Mines (Perry County) - Mine names, mine index, ownership, years of operation.
 Mine notes (Perry County) - Mine type, shaft location, seam, depth, thickness.
 WPA map, T6S-R1W - Shaft locations.

Mine Index 4246**William Greenwood, Greenwood No. 1 Mine**

Type: Underground Total mined-out acreage shown: None; production indicates approximately 3 acres were mined.

SHAFT, SLOPE, DRIFT or TIPPLE LOCATIONS

Type	County	Township-Range	Section	Quarters-Footage
Main slope	Perry	6S 1W	9	NW SE NW

GEOLOGY

Seam(s) Mined	Depth (ft)	Thickness (ft)			Mining Method
		Min	Max	Avg	
Herrin	45			6.0	RP

Geologic Problems Reported:

PRODUCTION HISTORY

Company	Mine Name	Years	Production (tons)
William Greenwood	Greenwood No. 1	1885-1889	<u>15,740</u> 15,740

Last reported production: 1889

SOURCES OF DATA

Source Map	Date	Original Scale	Digitized Scale	Map Type
WPA, T6S-R1W	1940	1:12000	1:55096	Secondary source

Annotated Bibliography (data source, brief description of information)

Coal Reports - Production, ownership, years of operation, seam, depth, thickness, mining method.

Directory of Illinois Coal Mines (Perry County) - Mine names, mine index, ownership, years of operation.

WPA map, T6s-R1W - Slope location, mine type.

Mine Index 4324**William Greenwood, Greenwood No. 2 Mine**

Type: Underground Total mined-out acreage shown: None; production indicates approximately 27 acres were mined.

SHAFT, SLOPE, DRIFT or TIPPLE LOCATIONS

Type	County	Township-Range	Section	Quarters-Footage
Main shaft	Perry	6S 1W	9	NW SE NW

GEOLOGY

Seam(s) Mined	Depth (ft)	Thickness (ft)			Mining Method
		Min	Max	Avg	
Herrin	50			6.0	RP

Geologic Problems Reported:

PRODUCTION HISTORY

Company	Mine Name	Years	Production (tons)
William Greenwood	Greenwood No. 2	1888-1895	<u>145,276</u> 145,276

Last reported production: 1895

SOURCES OF DATA

Source Map	Date	Original Scale	Digitized Scale	Map Type
WPA, T6S-R1W	1940	1:12000	1:55096	Secondary source

Annotated Bibliography (data source, brief description of information)

Coal Reports - Production, ownership, years of operation, seam, depth, thickness, mining method.
Directory of Illinois Coal Mines (Perry County) - Mine names, mine index, ownership, years of operation.
WPA, T6S-R1W - Shaft location.

Mine Index 4389
Old Eagle Mine

Type: Underground Total mined-out acreage shown: None

SHAFT, SLOPE, DRIFT or TIPPLE LOCATIONS

Type	County	Township-Range	Section	Quarters-Footage
Shaft	Perry	6S 1W	5	SE NW NW
Air shaft	Perry	6S 1W	5	SE NW NW

GEOLOGY

Seam(s) Mined	Depth (ft)	Thickness (ft)			Mining Method
		Min	Max	Avg	
Herrin					Underground

Geologic Problems Reported:

PRODUCTION HISTORY

Company	Mine Name	Years	Production (tons)
	Old Eagle *		

* The operator, production, and years of operation are not known. See the unlocated mines at the back of this report.

Last reported production:

SOURCES OF DATA

Source Map	Date	Original Scale	Digitized Scale	Map Type
WPA, T6S-R1W	1940	1:12000	1:55096	Secondary source

Annotated Bibliography (data source, brief description of information)

Directory of Illinois Coal Mines (Perry County) - Mine names, mine index, ownership, years of operation.
WPA, T6S-R1W - Shaft locations, mine name.

Mine Index 4492
Richard Bailie, Bailie No. 2 Mine

Type: Underground Total mined-out acreage shown: None; production indicates approximately 3 acres were mined.

SHAFT, SLOPE, DRIFT or TIPPLE LOCATIONS

Type	County	Township-Range	Section	Quarters-Footage
Main shaft	Perry	6S 1W	9	NE SE NW

GEOLOGY

Seam(s) Mined	Depth (ft)	Thickness (ft)			Mining Method
		Min	Max	Avg	
Herrin	50			6.0	RP

Geologic Problems Reported:

PRODUCTION HISTORY

Company	Mine Name	Years	Production (tons)
Richard Bailie	Bailie No. 2	1888-1892	<u>15,700</u> 15,700

Last reported production: 1892

SOURCES OF DATA

Source Map	Date	Original Scale	Digitized Scale	Map Type
WPA, T6S-R1W	1940	1:12000	1:55096	Secondary source

Annotated Bibliography (data source, brief description of information)

Coal Reports - Production, ownership, years of operation.
 Directory of Illinois Coal Mines (Perry County) - Mine names, mine index, ownership, years of operation.
 Mine notes (Perry County) - Mine type, shaft location, seam, depth, thickness.
 WPA map, T6S-R1W - Shaft location.

Mine Index 4875**Lake Superior Coal Company, Williams Mine**

Type: Underground Total mined-out acreage shown: 2 The Williams Mine is not shown on the accompanying map because of later surface mining by Peabody No. 15 Mine (mine index 633).

SHAFT, SLOPE, DRIFT or TIPPLE LOCATIONS

Type	County	Township-Range	Section	Quarters-Footage
Shaft	Perry	6S 1W	5	NW NW NE
Shaft	Perry	5S 1W	32	SW SW SE

GEOLOGY

Seam(s) Mined	Depth (ft)	Thickness (ft)			Mining Method
		Min	Max	Avg	
Herrin	30			5.5	RP

Geologic Problems Reported:

PRODUCTION HISTORY

Company	Mine Name	Years	Production (tons)
Fred Freeman	Freeman	1899-1900	2,000
William Williams	Williams	1900-1902	2,950
Lake Superior Coal Company	Williams	1902-1903	3,750
			8,700

Last reported production: 1903

SOURCES OF DATA

Source Map	Date	Original Scale	Digitized Scale	Map Type
ISGS map library, 4103.P42 i5.1-16	7-2-1936	1:2400	1:2400	Secondary source

Annotated Bibliography (data source, brief description of information)

Coal Reports - Production, ownership, years of operation, seam depth, thickness, mining method.

Directory of Illinois Coal Mines (Perry County) - Mine names, mine index, ownership, years of operation.

ISGS map library, 4103.P42 i5.1-16, map of Gayle Mine (mine index 633) - Shaft locations, mine outline, mining method.

Mine Index 4876**James Runck Coal Company, Runck Mine**

Type: Underground Total mined-out acreage shown: None; production indicates less than 1 acre was mined.

SHAFT, SLOPE, DRIFT or TIPPLE LOCATIONS

Type	County	Township-Range	Section	Quarters-Footage
Mine	Perry	6S 1W	5	NW SE NW

GEOLOGY

Seam(s) Mined	Depth (ft)	Thickness (ft)			Mining Method
		Min	Max	Avg	
Herrin					Underground

Geologic Problems Reported:

PRODUCTION HISTORY

Company	Mine Name	Years	Production (tons)
James Runck Coal Company	Runck	1936-1936	<u>250</u> 250

Last reported production: 1936

SOURCES OF DATA

Source Map	Date	Original Scale	Digitized Scale	Map Type
Mine notes	Undated	1:62500	1:62500 *	Secondary source

* The mine description was plotted on a 1:24000 USGS topographic map from the mine location description and digitized.

Annotated Bibliography (data source, brief description of information)

Coal Reports - Production, ownership, years of operation, mining method.

Directory of Illinois Coal Mines (Perry County) - Mine names, mine index, ownership, years of operation.

Mine notes (Perry County) - Mine location.

OTHER MINES SHOWN ON DU QUOIN QUADRANGLE

Mine Index 2507, Howell (E. J.) SW NE SW 9-T6S-R1W, surface source: ISGS map library, 4103.P42 i5.1-41

Mine Index 4390 * NE NE NW 5-T6S-R1W, slope source: ISGS map library, 4103.P42 i5.1-16, map of Gayle Mine (mine index 633)

Mine Index 4391, Johnson Mine SE SE SE 7-T6S-R1W, shaft source: WPA map (1940)

Mine Index 4394, Tishue No. 3 Mine SW SW NE 8-T6S-R1W source: WPA map (1940)

Mine Index 4395, Winters (Mose) Mine SE SW NE 8-T6S-R1W, shaft source: WPA map (1940)

Mine Index 4396, Middle Mine NE NW SW 8-T6S-R1W, shaft source: WPA map (1940)

Mine Index 4397, Tishue No. 2 Mine NE SE NW 8-T6S-R1W, slope source: WPA map (1940)

Mine Index 4398, Tishue No. 1 Mine SE NW NW 8-T6S-R1W, shaft source: WPA map (1940)

Mine Index 4400 NE SW NW 9-T6S-R1W, shaft source: Mine notes, and ISGS map library, 4103.P42 i5.1-16, map of Gayle Mine (mine index 633)

Mine Index 4401 SE NE NW 9-T6S-R1W, shaft source: ISGS map library, 4103.P42 i5.1-16, map of Gayle Mine (mine index 633)

Mine Index 4402, Carol (Jack) Mine SW NE NW 9-T6S-R1W, shaft source: WPA map (1940), and ISGS map library, 4103.P42 i5.1-16, map of Gayle Mine (mine index 633)

Mine Index 4403 NW NE NW 9-T6S-R1W, shaft source: ISGS map library, 4103.P42 i5.1-16, map of Gayle Mine (mine index 633)

Mine Index 4404, Keyes Mine NW NW NW 17-T6S-R1W, shaft source: WPA map (1940)

Mine Index 4612, Enterprise Mine (possible) NE SW SW 8-T6S-R1W, shaft source: Coal Section files (E. T. Benson, 1934) Note: The information on the Enterprise Mines are incomplete and sometimes contradictory. There may be a mine at this location, or this location may be a tipple for the Enterprise Mines.

Mine Index 4619 * SE SW NW 9-T6S-R1W, slope source: ISGS map library, 4103.P42 i5.1-19, map of C. & R. Mine (mine index 923)

Mine Index 4864, Croessman Mine NW NE NW 9-T6S-R1W, shaft source: WPA map (1940)

Mine Index 4865, Mud Mine SE NE NW 9-T6S-R1W, shaft source: WPA map (1940)

Mine Index 4868, Mifflin & Pope Mine (possible) NW SE NW 9-T6S-R1W, and NW SE NW 9-T6S-R1W, air shaft source: WPA map (1940) Note: The mine name may be incorrect. The more well-known Mifflin & Pope Mine operated from 1894 to 1907 in NW 2-T6S-R2W.

Mine Index 4869, Bushong Mine NE SW NW 9-T6S-R1W, shaft source: WPA map (1940)

Mine Index 4871, Davison Mine SE SW NW 9-T6S-R1W, shaft source: WPA map (1940)

Mine Index 4873, Union Mine NE SW NW 17-T6S-R1W, shaft and SW SW NW 17-T6S-R1W, air shaft source: WPA map (1940)

Mine Index 4874 * NW SW NW 16-T6S-R1W, shaft source: ISGS field notes (E. T. Benson, 8-28-1934), and State archive MSHA_48_01, map of Perfection Mine (mine index 3156)

Mine Index 4877 SE SE NW 32-T5S-R1W, shaft source: ISGS map library, 4103.P42 i5.1-16, map of Gayle Mine (mine index 633)

Mine Index 4878 * NW NW SE 32-T5S-R1W, shaft source: ISGS map library, 4103.P42 i5.1-16, map of Gayle Mine (mine index 633)

Mine Index 4881 SW SE SE 32-T5S-R1W, slope source: ISGS map library, 4103.P42 i5.1-16, map of Gayle Mine (mine index 633)

Mine Index 4882 SW NE & NW SE 5-T6S-R1W source: ISGS map library, 4103.P42 i5.1-16, map of Gayle Mine (mine index 633)

* Not shown on accompanying map because of later surface mining

MINES WHOSE LOCATIONS ARE NOT KNOWN, DU QUOIN QUADRANGLE

The locations of the following mines are unknown, but the production tonnage, operating names, and nearest town were reported in the Annual Coal Reports. The operators listed below mined in or near the Du Quoin Quadrangle. The information shown is similar to that presented on the summary sheets in the previous pages of this directory. The first item is the name the mine operated under as listed in the Coal Report, then the years the mine reported. If no physical data are available, the next item listed is the total tons produced by the mine. If physical data are available, the order of presentation is as follows: type of opening for the mine (drift, slope or shaft), depth of coal in feet, and thickness of coal in feet.

The total tons mined by these unlocated mines is 141,331 (115,137 underground, 4,990 surface mined, and 21,204 mined by uncertain method), which would represent approximately 20 to 35 acres, depending on the recovery factor, mining method, and numerous other factors. (Note: 1 square mile = 640 acres)

DU QUOIN

Winn (George), 1882-1883, shaft, Herrin, 41, 6.0	2,545 tons
Frizzell Coal Mining Company, 1883-1889, shaft, —, 30, 5.75-6.0, RP	33,417 tons
Johnson (Thomas), 1894-1895, shaft, Herrin, 71, 6.0, RP	200 tons
Jones & Howell, 1894-1895, slope, Herrin, 25-72, 6.0, RP	1,225 tons
Howell (Thomas J.), 1895-1900	<u>15,409</u> tons
	16,634 tons
Snofford & Pyles, 1901-1902, shaft, Herrin, 24, 6.0, RP	200 tons
Pyles (Dan), Sunshine Mine, 1902-1903	<u>800</u> tons
	1,000 tons
Greenwood (Thomas), 1904-1905, shaft, Herrin, 26, 6.0, RP	140 tons
Hummel (J. A.) & Davis (C.), 1905-1906, slope, Herrin, 15, 6.0-9.0, RP	3,600 tons
Conroy & Bailey, 1906-1907	2,924 tons
Presswood (Charles), 1907-1908	<u>500</u> tons
	7,024 tons
Coffel (James A.), 1908-1909, shaft, Herrin, 21-48, 6.0, RP	3,120 tons
Cook (B. O.), 1909-1912	<u>9,313</u> tons
	12,433 tons
Dynamic Coal Mining Company, No. 3 Mine, 1912-1914, shaft, Herrin, 80, 6	6,318 tons
Morgan & Williams, 1914-1915, slope, Herrin, 15, 6.0-6.57, RP	800 tons
Legrand & Son, 1916-1917	<u>340</u> tons
	1,140 tons
Dry & Revelle, 1915-1917, shaft, Herrin, 24-30, 5.83-6.0, RP	389 tons
Schmidtgal Coal Company, 1919-1923	1,350 tons
Possum Hollow Coal Company, 1923-1927	<u>6,264</u> tons
	7,614 tons
Diamond Coal Company, 1920-1922	1,135 tons
Du Quoin Coal Company, Diamond Mine, 1922-1926	<u>2,785</u> tons
	3,920 tons
Schneider (Marion) Coal Company, 1922-1927	1,382 tons
Seronce (Morris), 1922-1924	1,038 tons
New Moon Mining Company, 1924-1928, underground	8,606 tons

Good Will Coal Company, 1924-1925	1,595 tons
Manuel & Sons, 1924-1925	2,035 tons
East Side Coal Company, 1926-1927	3,040 tons
Blue Bell Coal Company, 1926-1926	580 tons
Clayton (Dick), 1928-1928, surface	750 tons
Clayton (J. M.), 1929-1929, underground	138 tons
Talbot Coalery Company, 1934-1935, surface, Herrin, —, 6.0	4,142 tons
Blue Ribbon Coal Company, 1934-1934, underground	184 tons
Bard (Charles) Coal Company, 1936-1936, underground	800 tons

ST. JOHN

Plumlee (William), 1890-1891, shaft, Herrin, 36, 5.5-6.0, RP	60 tons
Hall (Isaac), 1891-1892	<u>48 tons</u>
	108 tons
Howell (J. N.), 1894-1898, shaft, Herrin, 28, 6.5, RP	1,460 tons
Harvey (M. F.), 1898-1899	<u>400 tons</u>
	1,860 tons
Lyler (John), 1899-1900, —, —, 30, 5.5, RP	3,000 tons
House (C. A.) & Company, 1909-1912, shaft, Herrin, 12-30, 5.9-6.17, RP	161 tons
Clark (Rolla), 1912-1915	582 tons
House (Charles), 1915-1916	360 tons
House Brothers Coal Company, 1916-1917	<u>200 tons</u>
	1,303 tons
New Eagle Coal Company, 1922-1923	98 tons
Archibald, Betz & Moro, 1928-1928, underground	283 tons
Domes (Fred J.), 1929-1929	<u>1,463 tons</u>
	1,746 tons

This mine is the most likely production for an undated microfilm map, document 352157, reel 03138, frame 187. However, the map has no land surface features to locate the mine outline, and can not be used to plot this mine on the accompanying map. The map legend indicates the correct name is Dorries Coal Company.

TAMAROA

Old Kentucky Coal Company, 1901-1903, shaft, Herrin, 200, 5.5, RP	40,714 tons
Miller (Aaron) Coal Company, 1944-1944, underground	1,018 tons

INDEX OF MINES IN THE DU QUOIN QUADRANGLE

Anchor Coal & Mining Company	22
Andrews (George) Coal Company	18
Archibald, Betz & Moro	53
Bailey (Conroy & Bailey)	52
Bailey Brothers Coal Company, Diamond Mine	10
Bailey Brothers Coal Company, Sun No. 3 Mine	19
Bailie (Richard), No. 2 Mine	48
Baillie (Richard), No. 1 Mine	36
Bard (Charles) Coal Company	53
Betz (Archibald, Betz & Moro)	53
Black Bear Mine	29
Black Diamond Coal Company	20
Black Diamond Coal Mining Company	10
Black Diamond Mine	10
Blue Bell Coal Company	53
Blue Ribbon Coal Company	53
Brookshaw & Company	44
Browning Mine	37
Buck (John)	20
Burnett (Roy M.) Coal Company	25
Burnett (Roy M.) Coal Company, No. 2 Mine	35
Burning Star No. 2 Mine	14
Bushong Mine	51
C. & R. Coal Company	15
Campbell (Ray)	39
Carol (Jack) Mine	51
City Coal Company	30
Clark (Richard) & Lemon (Tom)	18
Clark (Rolla)	53
Clayton (Dick)	53
Clayton (J. M.)	53
Coffel (James A.)	52
Conroy & Bailey	52
Consolidation Coal Company, Burning Star No. 2 Mine	14
Cook (B. O.)	52
Crear-Clinch Coal Company, No. 15 Mine	12
Croessman Mine	51
Davis (Greenwood - Davis Coal Company)	11
Davis (Greenwood & Davis Coal Company)	33, 34
Davis (Hummel & Davis)	52
Davis (S.)	17
Davis Mine	13
Davison Mine	51
Diamond Coal Company	52
Diamond Fuel Company	10
Dick (James)	10
Domes (Fred J.)	53
Dorcine (Morgan & Dorcine)	28
Dorries Coal Company	53
Dry & Revelle	52
Du Quoin Central Mine	1
Du Quoin Coal Company, Burnett Mine	25
Du Quoin Coal Company, Diamond Mine	52
Du Quoin Coal Mining Company, Browning Mine	37
Du Quoin Mine	1
Du Quoin Operating Company	13
Du Quoin Union Coal Company, Browning Mine	37
Du Quoin Union Coal Company, Excelsior Mine	43
Dynamic Coal Mining Company	52
East Side Coal Company	53
Eaton Fuel Company	10
Eaton Mine	38
Energy Coal & Supply Company	29

Enterprise Mine	51
Enterprise No. 1 Mine	41
Excelsior Coal Mining Company	43
Forester Coal & Coke Company	9
Freeman (Fred)	49
Frizzell Coal Mining Company	52
Gayle Coal Company	12
Gold Hill Mine	44
Good Will Coal Company	53
Green (Halliday & Green)	26
Greenwood (Thomas)	52
Greenwood (William), No. 1 Mine	45
Greenwood (William), No. 2 Mine	46
Greenwood - Davis Coal Company	11
Greenwood & Davis Coal Company, No. 1 Mine	33
Greenwood & Davis Coal Company, No. 2 Mine	34
Greenwood & Winn Mine	30
Hall (Isaac)	53
Halliday (W. P.) & Green (W. H.)	26
Halliday & Company	23
Harvey (M. F.)	53
Harvey & Company	42
House (C. A.) & Company	53
House (Charles)	53
House Brothers Coal Company	53
Howell (E. J.)	51
Howell (F. J.)	28
Howell (J. N.)	53
Howell (Jones & Howell)	52
Howell (T. J.)	28
Howell (Thomas J.)	52
Hummel (J. A.) & Davis (C.)	52
Illinois Central Coal & Salt Company	23
Illinois Central Coal & Salt Works	23
Illinois Central Iron & Coal Company	23
Illinois Central Iron & Coal Mining Company	26
Imperial Coal & Mining Company	11
Jewel Coal & Mining Company, No. 1 Mine	42
Johnson (Thomas)	52
Johnson Mine	51
Jones & Howell	52
Jones & Mecklin	31
Jupiter Coal & Mining Company, No. 1 Mine	24
Jupiter Coal Company, No. 1 Mine	38
Jupiter No. 1 Mine	24
Jupiter No. 2 Mine	11
Jupiter No. 2 Mine	38
Kanawha Fuel Company	11
Keyes Mine	51
Lake Superior Coal Company	49
Legrand & Son	52
Lemmon (Sam)	18
Lemmon Coal Company	18
Lemmons (Weldon & Lemmons Coal Company)	18
Lemon (Clark & Lemon)	18
Lemon (Weldon & Lemon)	18
Lyler (John)	53
Manuel & Sons	53
Manufacturers Coal Company, Jupiter No. 2 Mine	11
Manufacturers Fuel Company, Jupiter No. 1 Mine	24
Mecklin (Jones & Mecklin)	31
Middle Mine	51
Mifflin & Pope Mine	51
Mill Shaft	1
Millar Coal Company	18

Miller (Aaron) Coal Company	53
Moon Co-operative Coal Company	31
Moon Coal Company	31
Moore Coal Company	31
Morgan & Dorcine	28
Morgan & Williams	52
Moro (Archibald, Betz & Moro).	53
Morris (Joe) Coal Company	11
Morris Brothers	22
Mud Mine	51
New Eagle Coal Company	53
New Jupiter Coal Company	39
New Moon Coal Mining Company	
No. 1 Mine	30
No. 3 Mine	16
New Moon Mine	28
New Moon Mining Company	52
Old Abe Mine	11
Old Eagle Mine	47
Old Enterprise Mine	41
Old Jupiter Mine	38
Old Kentucky Coal Company	53
Old Moon Mine	31
Old Paradise Mine	23
Old Paradise No. 1 Mine	26
Old Possum Mine	32
Orin Coal Company, Jupiter No. 1 Mine	24
Paradise Coal & Coke Company	9
Paradise Coal Company	18
Paradise No. 2 Mine	23
Peabody Coal Company, No. 15 Mine	12
Perfection Coal Company	40
Perry Coal Company, No. 1 Mine	21
Perry County Coal Company, No. 2 Mine	22
Perry County Coal Mining Company, No. 1 Mine	21
Perry County Coal Mining Company, No. 2 Mine	22
Plumlee (William).	53
Pope (Mifflin & Pope Mine)	51
Possum Hollow Coal Company	52
Possum Hollow Mine	27
Presswood (Charles)	52
Pyles (Dan)	52
Pyles (Snofford & Pyles)	52
Queen City Coal Company	13
Red Fox Mine	15
Revelle (Dry & Revelle)	52
Ritter (Leo J.)	15
Ritter & Ritter Coal Company	15
Ritter Coal & Quarry	15
Ritter Coal Company	15
Roberts Coal Company	32
Rogers & Company	27
Runck (James) Coal Company	50
Schmidt Gall Coal Company	52
Schneider (Marion) Coal Company	52
Seronce (Morris)	52
Smith (Scott) & Company	40
Snofford & Pyles	52
Square Deal Coal Company	18
St. John Mine	23
St. John No. 1 Mine	26
Storm (J. C. & Cornelius).	26
Sun Coal & Coke Company, No. 2 Mine	20
Sun Coal & Coke Company, No. 3 Mine	19
Sun Mining Company	20

Sunfield Coal & Coke Company	19
Sunshine Mine.....	52
Talbot Coalery Company	53
Tijou Shaft	1
Tishue No. 1 Mine	51
Tishue No. 2 Mine	51
Tishue No. 3 Mine	51
Truax-Traer Coal Company, Burning Star No. 2 Mine.....	14
Union Mine	51
Wall & Company, Enterprise No. 1 Mine	41
Wall & Company, Old Enterprise Mine.....	41
Weaver Coal & Coke Company, No. 1 Mine	24
Weaver Coal Company, No. 2 Mine	11
Weldon & Lemmons Coal Company	18
Weldon & Lemon	18
Williams (Morgan & Williams)	52
Williams (William)	49
Winn (George).....	52
Winn (Greenwood & Winn Mine)	30
Winters (Mose)	51

