

Coal Mines in Illinois  
Edwardsville Quadrangle

## Madison County, Illinois

This map accompanies the Coal Mines Directory for the Edwardsville Quadrangle. Consult the directory for a complete explanation of the information shown on this map.

## Mining Method

- Room & Pillar (RP)
- Room & Pillar Basic (RPB)
- Modified Room & Pillar (MRP)
- Room & Pillar Panel (RPP)
- Blind Room & Pillar (BRP)
- Checkerboard Room & Pillar (CRP)
- High Extraction Retreat (HER)
- Longwall (LW)
- Underground, Method Unknown
- Strip Mine
- Auger Mine
- General Area of Mining

## Other Areas Depicted

- Non-Coal Mines

## Source of Mine Outline

- Final Mine Map
- Not Final Mine Map
- Undated Mine Map
- Incomplete Mine Map
- Secondary Source Map

## Tipple, Shaft, Slope, Drift Locations

- Strip Mine Tipple - Active
- Strip Mine Tipple - Abandoned
- Mine Shaft - Active
- Mine Shaft - Abandoned
- Mine Slope - Active
- Mine Slope - Abandoned
- Mine Drift - Active
- Mine Drift - Abandoned
- Air Shaft
- Uncertain Location
- Uncertain Type of Opening

## Other Points Depicted

- Non-Coal Mines

Mine Annotation  
(space permitting)

Company  
Mine Name  
ISGS Index No., Years of Operation

## Disclaimer

Please check the Coal Section at the Illinois State Geological Survey's web site at <https://www.isgs.illinois.edu> for the most up-to-date version of these products.

Note that each quadrangle scale mined-out area map requires the use of the associated text directory for full explanation of map features and mine attributes. Also note that some quadrangles have multiple seams of mining and therefore more than one map may be available for a particular quadrangle. Please take care to check for multiple maps, as extensive mining may exist in the other seams.

The maps and digital files used for these studies were compiled from data obtained from a variety of public and private sources and have varying degrees of completeness and accuracy. This compilation map presents reasonable interpretation of the geology of the area and is based on available data. Locations of some mine features may be offset by 500 feet or more due to errors in the original source maps, the compilation process, digitizing, or a combination of these factors. These data are not intended for use in site-specific screening or decision-making. Use of these documents does not eliminate the need for detailed studies to fully understand the geology of a specific site. The Illinois State Geological Survey, Prairie Research Institute, or the University of Illinois make no guarantee, expressed or implied, regarding the correctness of the interpretations presented in this data set and accept no liability for the consequences of decisions made by others on the basis of the information presented here.

These maps were designed for use at 1:24,000. Enlarging the map may reduce accuracy, as the original scale of the source maps used to compile the outlines shown varies from 1:400 to 1:150,000, and some mine locations are known only from text descriptions. See the accompanying mine directory for the original scale of the source map used for a specific mine to check accuracy of a given portion of the map. Areas with no mines shown may still be undermined; see the unlocated mines list at the back of each mine directory.

The image of the U.S.G.S. topographic base map was projected from the original UTM to Lambert Conformal Conic.

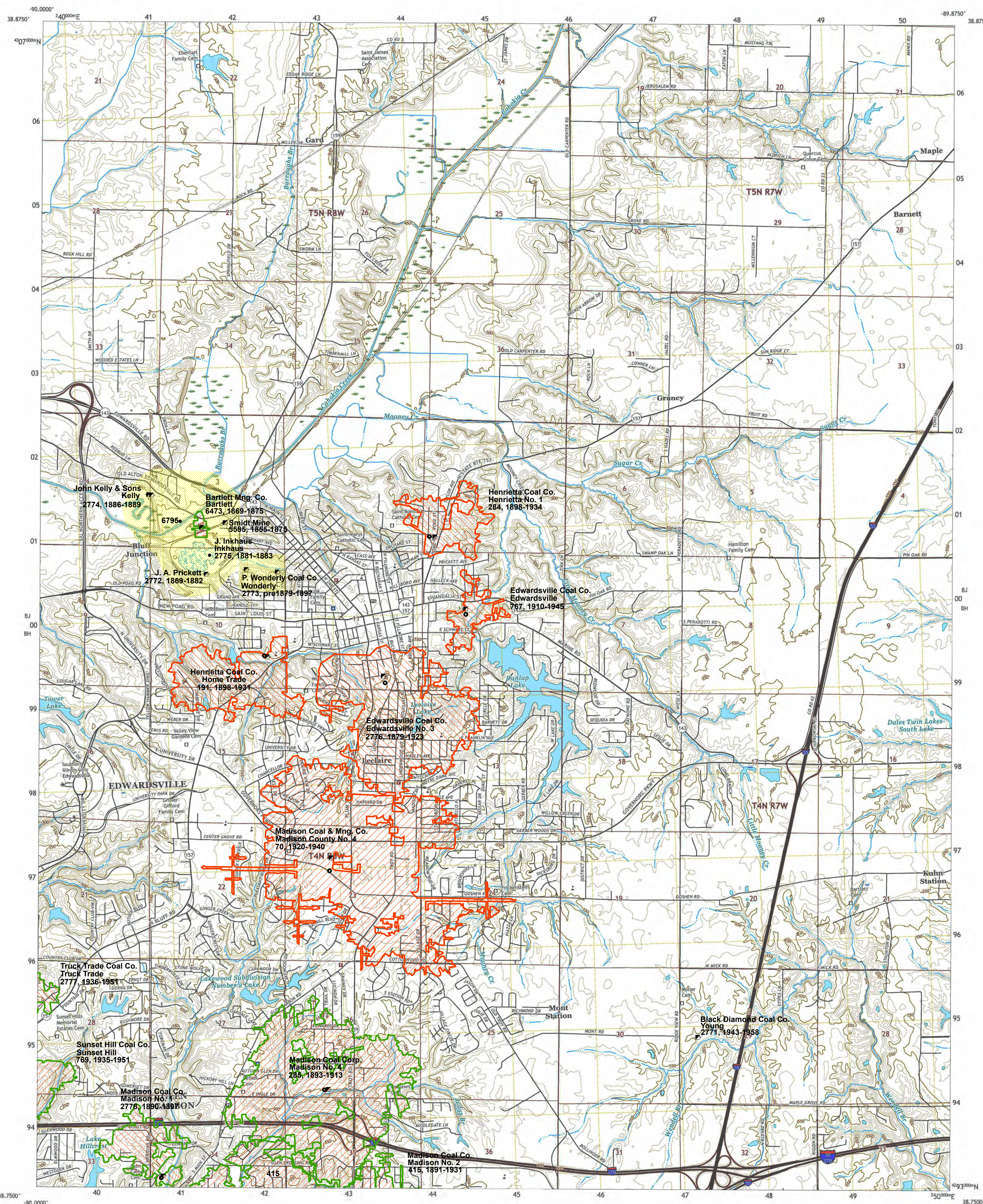
**ILLINOIS**  
Illinois State Geological Survey  
PRAIRIE RESEARCH INSTITUTE

Prairie Research Institute  
Illinois State Geological Survey  
615 E. Peabody Dr.  
Champaign, IL 61820

Mine Outlines Compiled by  
Melony E. Barrett

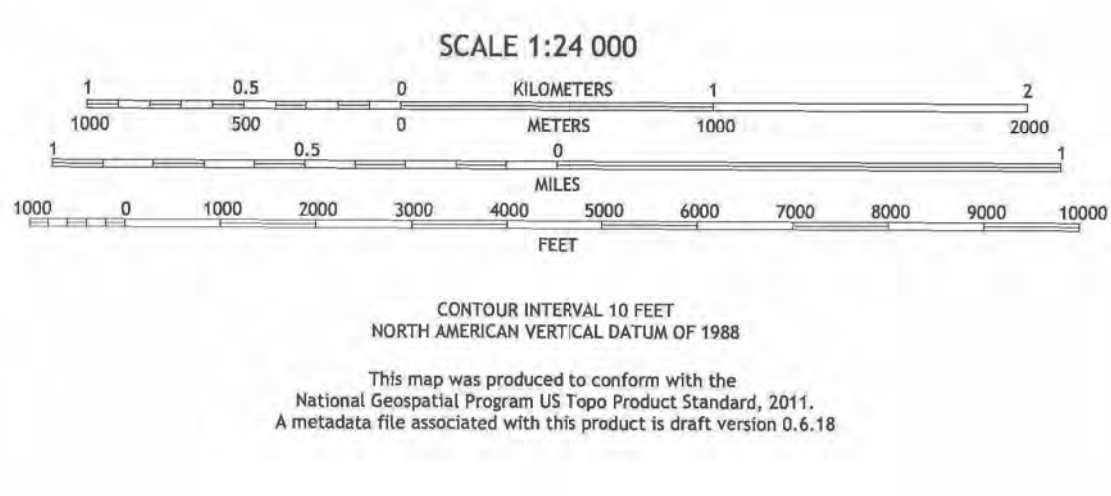
June 22, 2001

Revised:  
May 5, 2003  
Alan R. Myers 06-04-2024



Produced by the United States Geological Survey  
North American Datum of 1983 (NAD83)  
World Geodetic System of 1984 (WGS84). Projection and  
1:000-meter grid/Universal Transverse Mercator, Zone 15S1165  
This map is not a legal document. Boundaries may be  
generalized for this map scale. Private lands within government  
reservations may not be shown. Obtain permission before  
entering private lands.

Imagery.....NAP, August 2015 - October 2015  
Roads.....U.S. Census Bureau, 2017  
Names.....U.S. Census Bureau, 1980 - 2016  
Hydrography.....National Hydrography Dataset, 2016  
Boundaries.....National, Elevation Dataset, 2016  
Public Land Survey System, see metadata file 2014 - 2016  
Wetlands.....FWS National Wetlands Inventory 1981 - 1985



EDWARDSVILLE, IL  
2018





# **DIRECTORY OF COAL MINES IN ILLINOIS 7.5-MINUTE QUADRANGLE SERIES EDWARDSVILLE QUADRANGLE MADISON COUNTY**

Cheri Chenoweth & Melony E. Barrett



Department of Natural Resources  
ILLINOIS STATE GEOLOGICAL SURVEY  
2001  
REVISED 2004, 2024



**DIRECTORY OF COAL MINES IN ILLINOIS  
7.5-MINUTE QUADRANGLE SERIES  
EDWARDSVILLE QUADRANGLE  
MADISON COUNTY**

2001  
REVISED 2004, 2024

ILLINOIS STATE GEOLOGICAL SURVEY  
William Shilts, Chief

Natural Resources Building  
615 East Peabody Drive  
Champaign, Illinois 61820

Phone 1-217-244-2420  
Fax 1-217-333-2830

**Cover photo** Track-mounted duckbill loading machine at a Peabody Coal Company mine, ca. 1915.

DISCLAIMER: The accuracy and completeness of mine maps and directories vary with the availability of reliable information. Maps and other information used to compile this mine map and directory were obtained from a variety of sources and the accuracy of some of the original information cannot be verified. Consequently, the Illinois State Geological Survey (ISGS) cannot guarantee the mine maps are free of errors and disclaims any responsibility for damages that may result from actions or decisions based on them.

The ISGS updates the maps and directories periodically, and welcomes any new information or corrections. Please contact the Coal Section of the ISGS at the address shown on the title page of this directory, or telephone (217) 244-4610.

*Printed by authority of the State of Illinois/2001*

## CONTENTS

INTRODUCTION .....	1
MINING IN THE EDWARDSVILLE QUADRANGLE .....	1
PART I EXPLANATION OF MAP AND MINE SUMMARY SHEET .....	2
INTERPRETING THE MAP .....	2
Mine Type and Mining Method .....	2
SOURCE MAPS .....	3
POINTS AND LABELS .....	3
INTERPRETING A MINE SUMMARY SHEET .....	6
REFERENCES .....	8
PART II DIRECTORY OF MINES IN EDWARDSVILLE QUADRANGLE .....	9
MINE SUMMARY SHEETS .....	9
Mine Index 70	
Madison County Coal & Mining Company, Madison County No. 4 .....	9
Mine Index 191	
Henrietta Coal Company, Home Trade Mine .....	10
Mine Index 284	
Henrietta Coal Company, Henrietta No. 1 Mine .....	11
Mine Index 285	
Madison Coal Corporation, Madison No. 4 Mine .....	12
Mine Index 415	
Madison Coal Company, Madison No. 2 Mine .....	13
Mine Index 767	
Edwardsville Coal Company, Edwardsville Mine .....	14
Mine Index 769	
Sunset Hill Coal Company, Sunset Hill Mine .....	15
Mine Index 2771	
Black Diamond Coal Company, Young Mine .....	16
Mine Index 2772	
J. A. Prickett, Prickett Mine .....	17
Mine Index 2773	
P. Wonderly Coal Company, Wonderly Mine .....	18
Mine Index 2774	
John Kelly & Sons, Kelly Mine .....	19
Mine Index 2775	
J. Inkhaus, Inkhaus Mine .....	20
Mine Index 2776	
Edwardsville Coal Company, Edwardsville No. 3 Mine .....	21
Mine Index 2777	
Truck Trade Coal Company, Truck Trade Mine .....	22
Mine Index 2778	
Madison Coal Company, Madison No. 1 Mine .....	23
Mine Index 5585	
Mrs. Smidt's Mine .....	24
Mine Index 6473	
Bartlett Mining Company, Bartlett Mine .....	25
OTHER MINES SHOWN ON THE EDWARDSVILLE QUADRANGLE .....	26
Mine Index 6795 .....	26
MINES WHOSE LOCATIONS ARE NOT KNOWN, EDWARDSVILLE QUADRANGLE .....	26
INDEX OF MINES IN THE EDWARDSVILLE QUADRANGLE .....	27





## **INTRODUCTION**

Coal has been mined in 73 counties of Illinois. More than 4,500 coal mines have operated since commercial mining began in Illinois about 1810; fewer than 30 are currently active. To detail the extent and location of coal mining in Illinois, the Illinois State Geological Survey (ISGS) has compiled maps and directories of known coal mines. The ISGS offers maps at a scale of 1:100,000 and accompanying directories for each county in which coal mining is known to have occurred. Maps at a scale of 1:24,000 and accompanying directories such as this are available for selected quadrangles. Contact the ISGS for a list of these quadrangles.

These larger scale maps show the approximate positions of mines in relation to surface features such as roads and water bodies, and indicate the mining method used and the accuracy of the mine boundaries. The maps are useful for locating mine boundaries relative to specific properties and for assessing the potential for subsidence in an area. Mine boundaries compiled from final mine surveys are generally shown within 200 feet of their true position. As a result of poor cartographic quality and inaccuracies in the original mine surveys, boundaries of some older mines may be mislocated on the map by 500 feet or more. Original mine maps should be consulted in situations that require precise delineation of mine boundaries or internal workings of mined areas.

The directory serves as a key to the accompanying mine map and provides basic information on the coal mines. The directory is composed of two parts. Part I explains the symbols and patterns used on the accompanying map and the summary data presented for each mine. Part II numerically lists the mines in the quadrangle and summarizes the geology and production history of each mine.

## **MINING IN THE EDWARDSVILLE QUADRANGLE**

Mining in this quadrangle began at least as early as 1857, with Henry Ritter's shaft (mine index 5585) near the Wabash, St. Louis & Pacific Depot and continued until 1951. The most recent mine in the Edwardsville quadrangle is the Black Diamond Mine (mine index 2771), which operated for a very brief period in 1958. Only one of the mines in this area operated for 40 years, Madison Coal Corporation's No. 2 Mine (mine index 415).

Glen Carbon, a town on the south border of the Edwardsville quadrangle, was developed by the Madison Coal Company as Madison No. 2 (mine index 415) sank its hoisting and escapement shafts in 1891. New houses and boarding houses had been constructed over the year, and shade trees planted along the streets. The establishment in 1911-1912 of on-site mine rescue and first aid stations and a mine rescue team at Madison No. 2 Mine (mine index 415) and Madison No. 4 (mine index 285) was an indication of the importance of the safety of the miners.

The Herrin Coal was the only coal mined here, ranging from 3.5 to 7.5 feet thick and 60 to 216 feet deep. In general, mining conditions were good, although some mines had roof problems. These problems did not greatly hinder mining, but more timbering was required and this made mining somewhat more expensive.



## PART I EXPLANATION OF MAP AND MINE SUMMARY SHEET

### INTERPRETING THE MAP

The map accompanying this directory shows the location of coal mines known to be present in the quadrangle. The map, corresponding to a U.S. Geological Survey (USGS) 7.5-minute quadrangle, covers an area bounded by lines of latitude and longitude 7.5-minutes apart. In Illinois, a quadrangle is approximately 6.5 miles east to west and 8.5 miles north to south, an area of about 56 square miles. The USGS generally offers one map of mines per quadrangle. In some areas where extensive mining occurred in two or more overlapping seams, separate maps are compiled for mines in each seam to maintain readability of the map.

#### Mine Type and Mining Method

The mine type is indicated on the map by pattern color: green represents surface mines; red and yellow represent underground mines. The red patterns are used for areas of underground mining that are documented by a primary or secondary source map. A yellow pattern is used for cases where no map of the mine workings is available, but a general area of mining can be inferred from property maps or production figures. The patterns indicate the main mining methods used in underground mines. The methods are (1) room and pillar and (2) high extraction. The method used gives some indication of the amount and pattern of coal extraction within each mined area, and has some influence on the timing and type of subsidence that can occur over a mine.

The following discussion and illustrations of mining methods are based on Guither et al. (1984).

In room-and-pillar mines, coal is removed from haulage-ways (entries) and selected areas called rooms. Pillars of unmined coal are left between the rooms to support the roof. Depending on the size of rooms and pillars, the amount of coal removed from the production areas will range from 40% to 70%.

**Room and Pillar** - mining is divided into six categories:

- room-and-pillar basic (RPB, fig. 1A), an early method that did not follow a preset mining plan and therefore resulted in very irregular designs;
- modified room and pillar (MRP, fig. 1B);
- room-and-pillar panel (RPP, fig. 1C);
- blind room and pillar (BRP, fig. 1D);
- checkerboard room and pillar (CRP, fig. 1E);
- room and pillar (RP), a classification used when the specific type of room-and-pillar mining is unknown.

Blind and checkerboard are the most common types of room-and-pillar mining used in Illinois today. The knowledge of room-and-pillar mining methods gives a trained engineer information on the nature of subsidence that may occur. A more extensive discussion of subsidence can be found in Bauer et al. (1993).

**High-extraction** These mining methods are subdivided into high-extraction retreat (HER, Fig 1F) and longwall (LW, Fig 1G, 1H). In these methods, much of the coal is removed within well defined areas of the mine. Subsidence of the surface above these areas occurs within weeks. Once the subsidence activity ceases, the potential for further movement over these areas is low; however, subsidence may continue for several years after mining.

High-extraction retreat mining is a form of room-and-pillar mining that extracts most of the coal. Rooms and pillars are developed in the panels, and the pillars are then systematically removed (fig. 1F).

In early (pre-1960) longwall mines, mining advanced in multiple directions from a central shaft (fig. 1G). Large pillars of coal were left around the shaft, but all coal was removed beyond these pillars. Miners placed rock and wooden props and cribs in the mined-out areas to support the mine roof. The overlying rock gradually settled onto these supports, thus producing subsidence at the surface. In post-1959 longwall mines, room-and-pillar methods have been used to develop the main entries of the mine and panel areas. Modern longwall methods extract 100 percent of the coal in the panel areas (fig. 1H).



## SOURCE MAPS

Mine outlines depicted on the map are, whenever possible, based on maps made from original mine surveys. The process of compiling and digitizing the quadrangle map may produce errors of less than 200 feet in the location of mine boundaries. Larger errors of 500 feet or more are possible for mines that have incomplete or inaccurate source maps.

Because of the extreme complexity of some mine maps, detailed features of mined areas have been omitted. The digitized mine boundary includes the exterior boundary of all rooms or entries that were at least 80 feet wide or protruded 500 feet from the main mining area. Unmined areas between mines are shown if they are at least 80 feet wide; unmined blocks of coal within mines are shown if they are at least 400 feet on each side. Original source maps should be consulted when precise information on mine boundaries or interior features is needed.

The mine summary sheet lists the source maps used to determine each mine outline. The completeness of map sources is indicated on the map by a line symbol at the mine boundary. Source maps are organized in five categories.

**Final mine map** The mine outline was digitized from an original map made from mine surveys conducted within a few months after production ceased. The date of the map and the last reported production are listed on the summary sheet.

**Not a final map** The mine is currently active or the mine outline was made from a map based on mine surveys conducted more than a few months before production ceased. This implies the actual mined-out area is probably larger than the outline on the map. The mine summary sheet indicated the dates of source maps and the last reported production, as well as the approximate tonnage mined between these two dates (if the mine is abandoned). The summary sheet also lists the approximate acreage mined since the date of the map and, in some cases, indicates the area where additional mining may have taken place. This latter information is determined by locating on the map the active faces relative to probable boundaries of the mine property.

**Undated map** The source map was undated, so it may or may not be based on a final mine survey. When sufficient data are available, the probable acreage of the mined area is estimated from reported production, average seam thickness and a recovery rate comparable to other mines in the area. This information is listed in the summary sheet for the mine.

**Incomplete map** The source map did not show the entire mine. The summary sheet indicates the missing part of the mine map and the acreage of the unmapped area, which is estimated from the amount of coal known to have been produced from the mine.

**Secondary source map** The original mine map was not found so the outline shown was determined from secondary sources (e.g., outlines from small-scale regional maps published in other reports). The summary sheet describes the secondary sources.

## POINTS AND LABELS

The locations of all known mine openings (shafts, slopes, and drifts) and surface mine tipples are plotted on the map. Tipples are areas where coal was cleaned, stockpiled, and loaded for shipping.

Only openings or tipples are plotted for mines without source maps. If the precise locations of these features are unknown, a special symbol is used to indicate the approximate location of the mine.

Each mine on the map is labeled with the names of the mine and operating company, ISGS mine index number, and years of operation (if known) if space permits. A seam designation is given on maps where more than one seam was mined. For a mine that operated under more than one name, only the most recent name is generally given. When a mine changed names or ownership shortly before closing, an earlier name is listed. All company and mine names are listed on the mine summary sheet in the directory, under the production history segment.





**Figure 1** Mining methods: (A) room-and-pillar basic (RPB), (B) modified room and pillar (MRP), (C) room-and-pillar panel (RPP), (D) blind room and pillar (BRP).





**Figure 1 (cont.)** Mining methods: (E) checkerboard room and pillar (CRP), (F) high extraction retreat (HER), (G) early (pre-1960) longwall, (H) post-1959 longwall





**Figure 2** Generalized stratigraphic section, showing approximate vertical relations of coals in Illinois.

## INTERPRETING A MINE SUMMARY SHEET

The mine summary sheet is arranged numerically by mine index number. Index numbers are shown on the map and in the mine listing. The mine summary sheet provides the following information (if available).

**Company and mine name** The last company or owner of the mine is used, unless no production was recorded for the last owner. In that case, the penultimate owner is listed. Mines often have no specific name; in these cases, the company name is also used as the mine name.

**Type** *Underground* denotes a subsurface mine in which the coal was reached through a shaft, slope, or a drift entry. *Surface* denotes a surface, open pit or strip mine.

**Total mined-out acreage shown** The total acreage of the mined area mapped, including any acreage mined on adjacent quadrangles, is calculated from the digitized outline of the mine. The acreage of large barrier pillars depicted on the map is excluded from the mined-out acreage. Small pillars not digitized are included in the acreage calculation. If the mine outline is not based on a final mine map, the acreage is followed by an estimate of additional acres that may have been mined. The estimate is determined from reported mine production, approximate thickness of the coal, and recovery rates calculated from nearby mines that used similar mining methods.

## SHAFT, SLOPE, DRIFT OR TIPPLE LOCATIONS

**Shaft, slope, drift, or tippie locations** Locations of all known former entry points to underground mines or the location of coal cleaning, tippie, and shipping equipment used by the mine's facility are listed. The location is described in terms of county, township and range (Twp-Rge), section, and location within the section by quarters. NE SW NW, for instance, would describe the location in the northeast quarter of the southwest quarter of the northwest quarter. When sections are irregular in size, the quarters remain the same size and are oriented (or "registered") from the southeast corner of the section. Approximate footage from the section lines (FEL = from east line, FNL = from north line, for example) is given when that information is known; this indicates a surveyed location and is not derived from maps. Entry points are also plotted on the map and coded for the type of entry or tippie. A mine opening may have had many purposes during the life of the mine. Old hoist shafts are often later used for air and escape shafts; this information is included in the directory when known. The tippie for underground mines was generally located near the main shaft or slope. At surface mines, coal was sometimes hauled to a central tippie several miles from the mine pit.

## GEOLOGY

**Seam(s) mined** The name of the coal seam(s) mined is listed, if known. If multiple seams were mined, they are all listed, although the mined-out area for each seam may be shown on separate maps. Figure 2 shows the stratigraphic section of the coal-bearing interval in Illinois, and the vertical relations among the coals.

**Depth** The depth to the top of the seam in the vicinity of the shaft is listed, if known. The depth is determined from notes made by geologists who visited the mine during its operation or from drill hole data in ISGS files. Depth generally varies little over the extent of a mine; however, reported depths for an individual mine may vary. Depth for surface-mined coals varies, and is usually represented as a range.



**Thickness** The approximate thickness of the mined seam is shown, if known. Thickness also comes from notes of geologists who visited the mine during its operation or from borehole data in ISGS files. Minimum, maximum, and average thicknesses are given when this information is available.

**Mining method** The principal mining method used at the mine (figs. 1A-H) is listed. See the mining methods section at the beginning of this directory for a discussion of this parameter.

**Geologic problems reported** Any known geologic problems, such as faults, water seepage, floor heaving, and unstable roof, encountered in the mine are reported. This information is from notes made by ISGS geologists who visited the mine, or from reports by mine inspectors published by the Illinois Department of Mines and Minerals, or from the source map(s). Geologic problems are not reported for active mines.

## PRODUCTION HISTORY

**Production history** Tons of coal produced from the mine by each mine owner are totaled. When the source map used for the mine outline is not a final mine map, the tonnage produced since the date of the map is identified. For mines that extend into adjacent quadrangles, the tonnage reported includes areas mined in adjacent quadrangles.

## SOURCE OF DATA

**Source map** This section lists information about the map(s) used to compile the mine outline and the locations of tipples and mine openings. In some cases more than one source map was used. For example, a map drawn before the mine closed may provide better information on original areas of the mine than a later map. When more than one map was used, the bibliography section explains what information was taken from each source.

**Date** The date of the most recent mine survey listed on the source map is reported.

**Original scale** The original scale of the source map is listed. Many maps are photo-reductions and are no longer at their original scale. The original scale gives some indication of the level of detail of the mine outline and the accuracy of the mine boundary relative to surface features. Generally, the larger the scale, the greater the accuracy and detail of the mine map. Mine outlines taken from source maps at scales smaller than 1:24,000 may be highly generalized and may well be inaccurately located with respect to surface features.

**Digitized scale** The scale of the digitized map is reported. The scale may be different from that of the original source map. In many cases the digitized map was made from a photo-reduction of the original source map, or the source map was not in a condition suitable for digitizing and the mine boundaries were transferred to another base map.

**Map type** Source maps are classified into five categories to indicate the probable completeness of the map. See discussion of source maps in the previous section.

**Annotated bibliography** Sources that provide information about the mine are listed, with the data taken from each source. Some commonly used sources are described below. Full bibliographic references are given for all other sources. Unless otherwise noted, all sources are available for public inspection at the ISGS.

**Coal Reports** Published since 1881, these reports contain tabular data on mine ownership, production, employment, and accidents. Some volumes include short descriptions made by mine inspectors of physical features and conditions in selected mines.

**Directory of Illinois Coal Mines** This source is a compilation of basic data about Illinois coal mines, originally gathered by ISGS staff in the early 1950s. Sources used for this directory are undocumented, but they are primarily Illinois Department of Mines and Minerals annual reports, ISGS mine notes, and coal company officials.

**ENR Document 85/01**, Guither, H. D., J. K. Hines, and R. A. Bauer, 1985 The Economic Effect of Underground Mining Upon Land Used for Illinois Agriculture: Illinois Department of Energy and Natural Resources Document 85/01, 185 p.

**Microfilm map** The U.S. Bureau of Mines maintains a microfilm archive of mine maps. A microfilm file for Illinois is available for public viewing at the ISGS.



*Mine notes* ISGS geologists have visited mines or contacted mine officials throughout the state since the early 1900s. Notes made during these visits range from brief descriptions of the mine location to long narratives (including sketches) of mining conditions and geology.

*Federal Land Bank of St. Louis, Preliminary Reports on Subsidence Investigations* Mining engineers working for the Federal Land Bank of St. Louis mapped areas of subsidence due to coal mining in the early 1930s. These reports often include county maps of mine properties with mined-out areas including shaft locations, as well as subsidence areas.

## **REFERENCES**

Bauer, R. A., B. A. Trent, and P. B. Dumontelle, 1993, Mine Subsidence in Illinois: Facts for the Homeowner Considering Insurance: Illinois State Geological Survey, Environmental Geology Note 144, 16p.

Guither, H. D., J. K. Hines, and R. A. Bauer, 1985, The Economic Effects of Underground Mining Upon Land Used for Illinois Agriculture: Illinois Department of Energy and Natural Resources Document 85/01, 185 p.



## PART II DIRECTORY OF MINES IN EDWARDSVILLE QUADRANGLE

### MINE SUMMARY SHEETS

A summary sheet on the geology and production history of each mine in the Edwardsville Quadrangle is provided. The summary is arranged numerically by mine index number, which is shown on the map and in the mine listing. Consult Part I for a complete explanation of the data listed in the summary sheet.

#### Mine Index 70

#### Madison County Coal & Mining Company, Madison County No. 4

Type: Underground    Total mined-out acreage shown: 921    Production indicates an additional 91 acres was mined after the map date.

#### SHAFT, SLOPE, DRIFT or TIPPLE LOCATIONS

Type	County	Twp-Rge	Section	Quarters-Footage
Main shaft	Madison	4N 8W	23	SW NE NW
Air shaft	Madison	4N 8W	23	NW SE NW

#### GEOLOGY

Seam(s) Mined	Depth (ft)	Thickness (ft)			Mining Method
		Min	Max	Ave	
Herrin	204		8.0	5.0-6.0	RPP

Geologic Problems Reported: Coal balls occurred in limited areas.

#### PRODUCTION HISTORY

Company	Mine Name	Years	Production (tons)
Donk Brothers Coal & Coke Company	Donk No. 4, Thermal	1920-1927	2,723,968
Peabody Coal Company	Peabody No. 17	1927-1931 *	686,643
Madison County Coal & Mining Company	Madison County No. 4, Thermal	1931-1938	670,106
Madison County Coal & Mining Company	Madison County No. 4, Thermal	1938-1940	409,597 **
			4,490,314

\* Idle 1931

\*\* Production after map date

Last reported production: March 1940

#### SOURCES OF DATA

Source Map	Date	Original Scale	Digitized Scale	Map Type
Microfilm, document 352376	4-20-1938	1:2400	1:4634	Not final

#### Annotated Bibliography (data source, brief description of information)

Coal Reports - Production, ownership, years of operation.

Directory of Illinois Coal Mines (Madison County) - Mine index, ownership, mine names, years of operation.

ENR Document 85/01 - Mining method.

Microfilm map, document 352376, reel 03138, frames 501-505 - Shaft location, mine outline, mining method.

Mine notes (Madison County) - Mine type, shaft location, seam, depth, thickness, geologic problems.



**Mine Index 191****Henrietta Coal Company, Home Trade Mine**

Type: Underground Total mined-out acreage shown: 229 Production indicates an additional 5 acres were mined after the map date.

**SHAFT, SLOPE, DRIFT or TIPPLe LOCATIONS**

Type	County	Twp-Rge	Section	Quarters-Footage
Main shaft	Madison	4N 8W	10	NW SE SE
Air shaft	Madison	4N 8W	10	NW SE SE

**GEOLOGY**

Seam(s) Mined	Depth (ft)	Thickness (ft)			Mining Method
		Min	Max	Ave	
Herrin	135	4.5	6.5	5.0-5.3	MRP

Geologic Problems Reported: The east portion of the mine has a light gray shale roof that is soft and massive, and tends to come down easily. There are also some infrequent slips, which don't affect the coal but require timbering.

**PRODUCTION HISTORY**

Company	Mine Name	Years	Production (tons)
Home Trade Coal Company	Home Trade	1898-1902	30,401
Edwardsville Home Trade Coal Company	Home Trade	1902-1904	20,340
Home Trade Coal Company	Home Trade	1904-1909	74,010
Edwardsville Home Trade Coal Company	Home Trade	1909-1916	206,264
Madison County Mining Company	Home Trade	1916-1925	592,737
O. L. Winkel	Home Trade	1926-1928	83,850
Henrietta Coal Company	Home Trade	1928-1930	10,574
Henrietta Coal Company	Home Trade	1930-1931 *	23,277 **
			1,041,453

\* Reported idle to 1939

\*\* Production after map date

Last reported production: July 1931

**SOURCES OF DATA**

Source Map	Date	Original Scale	Digitized Scale	Map Type
Microfilm, document 352353	5-1930	1:2400	1:4303	Not final
Microfilm, document 352336	12-1909	1:1200	1:1655	Not final

Annotated Bibliography (data source, brief description of information)

Coal Reports - Production, ownership, years of operation.

Directory of Illinois Coal Mines (Madison County) - Mine names, mine index, ownership, years of operation.

ENR Document 85/01 - Mining method.

Microfilm map, document 352353, reel 03138, frames 466, 467 - Shaft location, mine outline, mining method.

Microfilm map, document 352336, reel 03138, frame 443 - Air shaft location.

Mine notes (Madison County) - Mine type, shaft location, seam, depth, thickness, geologic problems.

**Mine Index 284****Henrietta Coal Company, Henrietta No. 1 Mine**

Type: Underground    Total mined-out acreage shown: 112    Production indicates an additional 14 acres were mined after the map date.

**SHAFT, SLOPE, DRIFT or TIPPLE LOCATIONS**

Type	County	Twp-Rge	Section	Quarters-Footage
Main shaft	Madison	4N 8W	1	660 FSL, 330 FWL
Air shaft	Madison	4N 8W	1	NW SW SW

**GEOLOGY**

Seam(s) Mined	Depth (ft)	Thickness (ft)			Mining Method
		Min	Max	Ave	
Herrin	169-174			5.5-6.3	MRP

Geologic Problems Reported: Gas at the working face and in old workings. Small faults with up to 18 inches of displacement. The roof is "soapstone", ranging from 6 inches to 2 feet thick, which is very brittle and requires props at the working face.

**PRODUCTION HISTORY**

Company	Mine Name	Years	Production (tons)
Henrietta Coal Company *	Henrietta No. 1	1898-1909 **	434,285
St. Louis & Illinois Coal Company	St. Louis & Illinois No. 1	1909-1911	62,218
W. S. Walker	Henrietta	1911-1914 ***	78,100
Cowan & Ottearea	Henrietta	1914-1916	(none) †
Beck-White Coal Company	Henrietta No. 1	1916-1920 ††	103,091
New Castle Coal Company	New Castle	1920-1925	106,554
Henrietta Coal Company	Henrietta No. 1	1926-1929	31,484
Henrietta Coal Company	Henrietta No. 1	1929-1934 †††	95,510 ‡
			911,242

\* also known as Penny Coal Company (Coal Report of 1899, page 123; no production reported under this name)

\*\* Idle 1901

\*\*\* Idle March 1913

† No production under this name

†† Idle 1920

††† Reported idle to 1937

‡ Production after map date

Last reported production: 1934

**SOURCES OF DATA**

Source Map	Date	Original Scale	Digitized Scale	Map Type
Microfilm, document 352357	2-2-1929	1:2400	1:3972	Not final

Annotated Bibliography (data source, brief description of information)

Coal Reports - Production, ownership, years of operation, thickness, geologic problems.

Directory of Illinois Coal Mines (Madison County) - Mine names, mine index, ownership, years of operation.

ENR Document 85/01 - Mining method.

Microfilm map, document 352357, reel 03138, frames 471, 472 - Shaft locations, mine outline, mining method.

Mine notes (Madison County) - Mine type, shaft location, seam, depth, thickness, geologic problems.



**Mine Index 285****Madison Coal Corporation, Madison No. 4 Mine**

Type: Underground    Total mined-out acreage shown: 651

**SHAFT, SLOPE, DRIFT or TIPPLe LOCATIONS**

Type	County	Twp-Rge	Section	Quarters-Footage
Main shaft	Madison	4N 8W	26	SW SE SW
Air shaft	Madison	4N 8W	26	SW SE SW

**GEOLOGY**

Seam(s) Mined	Depth (ft)	Thickness (ft)			Mining Method
		Min	Max	Ave	
Herrin	174-180	3.0	7.5	6.0	RPP

Geologic Problems Reported: The source map shows many unmined areas with the mine. These areas indicate geologic problems of some kind, usually roof instability.

**PRODUCTION HISTORY**

Company	Mine Name	Years	Production (tons)
Madison Coal Company	Madison No. 4	1893-1905	2,040,130
Madison Coal Corporation	Madison No. 4	1905-1913	1,537,863
			3,577,993

Last reported production: 1913

**SOURCES OF DATA**

Source Map	Date	Original Scale	Digitized Scale	Map Type
Microfilm, document 352319	2-1-1914	1:2400	1:4634	Final
Microfilm, document 352351	5-1931	1:2400	1:4634	Final *

\* Map was used only to clarify the boundary between this mine and Madison Coal Corporation, Mine No. 2 (mine index 415).

Annotated Bibliography (data source, brief description of information)

Coal Reports - Production, ownership, years of operation.

Directory of Illinois Coal Mines (Madison County) - Mine names, mine index, ownership, years of operation.

ENR Document 85/01 - Mining method.

Microfilm map, document 352319, reel 03138, frames 394, 395 - Shaft locations, mine outline, mining method.

Microfilm map, document 352351, reel 03138, frames 460, 461, map of Madison No. 2 (mine index 415) - Boundary between mines.

Mine notes (Madison County) - Mine type, shaft location, seam, depth, thickness.

**Mine Index 415****Madison Coal Company, Madison No. 2 Mine**

Type: Underground    Total mined-out acreage shown: 1,853

**SHAFT, SLOPE, DRIFT or TIPPLE LOCATIONS**

Type	County	Twp	Section	Quarters-Footage
Main shaft	Madison	4N 8W	34	SW SW SE
Escape shaft *	Madison	4N 8W	34	SW SW SE
Air shaft	Madison	4N 8W	34	NW SW SE
Air shaft	Madison	3N 8W	4	SE SE SE

\* This shaft was shown as an air shaft on a 1902 map. On a 1906 map it was labeled as an escape shaft and remained this way on a 1925 map, the last time it was shown on a map.

**GEOLOGY**

Seam(s) Mined	Depth (ft)	Thickness (ft)			Mining Method
		Min	Max	Ave	
Herrin	85-93			6.5-7.0	RPP

Geologic Problems Reported:

**PRODUCTION HISTORY**

Company	Mine Name	Years	Production (tons)
Madison Coal Company	Madison No. 2	1891-1906	3,129,030
Madison Coal Corporation	Madison No. 2	1906-1931 **	8,883,065
			12,012,095

\*\* Reported idle 1932-1939, but never re-opened

Last reported production: April 1931

**SOURCES OF DATA**

Source Map	Date	Original Scale	Digitized Scale	Map Type
State archive, IL_02_01	5-1931	1:2400	1:2400	Final
State archive, IL_1162_01	5-31-1918	1:2400	1:2400	Not final

Annotated Bibliography (data source, brief description of information)

Coal Reports - Production, ownership, years of operation, mine type.  
 Directory of Illinois Coal Mines (Madison County) - Mine names, mine index, ownership, years of operation.  
 Mine notes (Madison County) - Shaft location, seam, depth, thickness.  
 State archive, IL\_02\_01 - Shaft locations, mine outline, mining method.  
 State archive, IL\_1162\_01 - Escape shaft location.  
 Madison County plat, 1906 - Shaft locations.



**Mine Index 767****Edwardsville Coal Company, Edwardsville Mine**

Type: Underground    Total mined-out acreage shown: 58    Production indicates an additional 13 acres were mined after the map date.

**SHAFT, SLOPE, DRIFT or TIPPLE LOCATIONS**

Type	County	Twp-Rge	Section	Quarters-Footage
Main shaft	Madison	4N 8W	12	SW SE NW
Air shaft	Madison	4N 8W	12	SW SE NW

**GEOLOGY**

Seam(s) Mined	Depth (ft)	Thickness (ft)			Mining Method
		Min	Max	Ave	
Herrin	140			5.5-7.0	MRP *

\* The majority of the mine is MRP, but some areas are RPB. The map is coded MRP.

Geologic Problems Reported:**PRODUCTION HISTORY**

Company	Mine Name	Years	Production (tons)
East Side Coal Company	East Side	1910-1937 **	337,929
East Side Coal Company	East Side	1937-1940	22,810 ***
Edwardsville Coal Company, Inc.	Edwardsville	1940-1945	55,855 ***
			416,594

\*\* Idle 1930

\*\*\* Production after map date

Last reported production: 1945

**SOURCES OF DATA**

Source Map	Date	Original Scale	Digitized Scale	Map Type
Microfilm, document 352393	8-28-1937	1:2400	1:3310	Not final

Annotated Bibliography (data source, brief description of information)

Coal Reports - Production, ownership, years of operation, thickness.

Directory of Illinois Coal Mines (Madison County) - Mine names, mine index, ownership, years of operation.

Microfilm map, document 352393, reel 03139, frame 35 - Shaft locations, mine outline, mining method.

Mine notes (Madison County) - Mine type, shaft location, seam, depth, thickness.

**Mine Index 769****Sunset Hill Coal Company, Sunset Hill Mine**

Type: Underground    Total mined-out acreage shown: 172

**SHAFT, SLOPE, DRIFT or TIPPLe LOCATIONS**

Type	County	Twp-Rge	Section	Quarters-Footage
Main shaft	Madison	4N 8W	29	SE SW SE
Air shaft	Madison	4N 8W	29	SE SW SE

**GEOLOGY**

Seam(s) Mined	Depth (ft)	Thickness (ft)			Mining Method
		Min	Max	Ave	
Herrin	82			6.0	RPP

Geologic Problems Reported: Occasional coal balls occur in the roof.

**PRODUCTION HISTORY**

Company	Mine Name	Years	Production (tons)
Sunset Hill Coal Company	Sunset Hill	1935-1951	837,396
			837,396

Last reported production: 1951

**SOURCES OF DATA**

Source Map	Date	Original Scale	Digitized Scale	Map Type
Microfilm, document 352379	4-8-1951	1:2400	1:3972	Final

Annotated Bibliography (data source, brief description of information)

Coal Reports - Production, ownership, years of operation.

Directory of Illinois Coal Mines (Madison County) - Mine names, mine index, ownership, years of operation.

Microfilm map, document 352379, reel 03139, frame 8 - Shaft locations, mine outline, mining method.

Mine notes (Madison County) - Mine type, shaft location, seam, depth, thickness, geologic problems.



**Mine Index 2771**  
**Black Diamond Coal Company, Young Mine**

Type: Underground    Total mined-out acreage shown: none    Production indicates less than 1 acre was mined.

**SHAFT, SLOPE, DRIFT or TIPPLE LOCATIONS**

Type	County	Twp-Rge	Section	Quarters-Footage
Shaft	Madison	4N 7W	29	NW corner NE NW SW

**GEOLOGY**

Seam(s) Mined	Depth (ft)	Thickness (ft)			Mining Method
		Min	Max	Ave	
Herrin	210			5.6-6.0	

Geologic Problems Reported:

**PRODUCTION HISTORY**

Company	Mine Name	Years	Production (tons)
Black Diamond Coal Company	Young	1943	(none) *
Forsythe-Carterville Coal Company	Forsythe-Carterville	1958	(none) **

\* The shaft was sunk in 1943, but no production was reported. This does not appear to be the same Black Diamond Coal Company mine that operated in 1931, listed in the back of this report under "Mines Whose Locations Are Not Known, Edwardsville Quadrangle".

\*\* pumped out shaft in 7 hours in November 1958, started an eastbound entry to get 4 to 5 ton sample for pilot scale coke test by ISGS (about 8 feet length). No record of mining from Coal Reports. Channel samples taken in two sites along this entry.

Last reported production: (no reported production)

**SOURCES OF DATA**

Source Map	Date	Original Scale	Digitized Scale	Map Type
ISGS mine notes	Undated	(text only)	1:24000 ***	Undated

\*\*\* Point plotted onto 1:24,000 USGS quadrangle and digitized.

Annotated Bibliography (data source, brief description of information)

Directory of Illinois Coal Mines (Madison County) - Mine names, mine index, ownership, years of operation.  
 Mine notes (Madison County) - Mine type, shaft location, depth, thickness, geologic problems.

**Mine Index 2772****J. A. Prickett, Prickett Mine**

Type: Underground    Total mined-out acreage shown: None.    Production indicates about 3 acres were mined, but production prior to 1881 is unknown and the area is probably larger than 3 acres.

**SHAFT, SLOPE, DRIFT or TIPPLE LOCATIONS**

Type	County	Twp-Rge	Section	Quarters-Footage
Main shaft	Madison	4N 8W	10	SE NE NW

**GEOLOGY**

Seam(s) Mined	Depth (ft)	Thickness (ft)			Mining Method
		Min	Max	Ave	
Herrin	125-136			5.0-7.0	

Geologic Problems Reported:

**PRODUCTION HISTORY**

Company	Mine Name	Years	Production (tons)
Tunstall & Holmes	Tunstall & Holmes	1869-1879	unknown *
J. A. Prickett **	Prickett	1879-1882	<u>16,000</u> *
			16,000

\* Production prior to 1881 unknown.

\*\* The History of Madison County reports that Prickett purchased the mine and leased it in the fall of 1881 to the St. Louis & Edwardsville Coal Company for the term of 20 years. Production was never reported under that name.

Last reported production: 1882

**SOURCES OF DATA**

Source Map	Date	Original Scale	Digitized Scale	Map Type
History of Madison County	Undated	(text only)	1:24000 ***	Undated

\*\*\* Point plotted onto 1:24,000 USGS quadrangle and digitized.

Annotated Bibliography (data source, brief description of information)

Coal Reports - Production, ownership, years of operation.

Directory of Illinois Coal Mines (Madison County) - Mine names, mine index, ownership, years of operation.

Mine notes (Madison County) - Mine type, seam, depth, thickness, ownership.

History of Madison County, Illinois; Published by W. R. Brink & Co., Edwardsville, Illinois, 1882 - General mine location, ownership.



## Mine Index 2773

### P. Wonderly Coal Company, Wonderly Mine

Type: Underground    Total mined-out acreage shown: None.    Production indicates over 65 acres were mined.

#### SHAFT, SLOPE, DRIFT or TIPPLE LOCATIONS

Type	County	Twp-Rge	Section	Quarters-Footage
Main shaft	Madison	4N 8W	10	NE NW NE *
Escape (old hoist) shaft	Madison	4N 8W	10	SE SE NE *

\* No map has been found of the workings for this mine. The locations are from Robert Gibson of Abandoned Mine Lands, Office of Mines & Minerals (AML-OMM), Department of Natural Resources, with global positioning system apparatus.

#### GEOLOGY

Seam(s) Mined	Depth (ft)	Thickness (ft)			Mining Method
		Min	Max	Ave	
Herrin	148 (65 - 160)			5.0-6.5	RP

#### PRODUCTION HISTORY

Company	Mine Name	Years	Production (tons)
Frank Shrameck **	Wabash	1879-1886	114,058 ***
P. Wonderly Coal Company	Wonderly	1886-1897 †	<u>206,088</u>
			320,146

\*\* The new hoist shaft, constructed in 1884-1885, was equipped with engines and boiler from the Gaffney mine, whose location and dates of operation are unknown.

\*\*\* Production from July 1879 to June 1882 unknown

† The mine was abandoned due to flooding, reported in the Edwardsville Intelligencer, 10-26-1897, 10-29-1897, and 11-23-1897. Apparently the old Shrameck workings were filled with water and when a hole was drilled for powder, the drilling broke into the old works. After a month of pumping, the attempt to restore the Wonderly mine to production was deemed ineffective, and the mine abandoned. Schrameck's main shaft used for the air shaft of the Wonderly mine. This strongly implies that portions of the older mine were part of the Wonderly mine, but a plat of the older workings were not available to the mine in 1897, which caused the water break-through. The newspaper articles stated that the last owner of the mine was G. H. Donnewald, although the company name remained P. Wonderly Coal Company.

Last reported production: October 1897

#### SOURCES OF DATA

Source Map	Date	Original Scale	Digitized Scale	Map Type
Robert Gibson, AML-OMM	circa 4-2003	1:1	1:24000 ††	Secondary source

†† UTM GPS coordinates converted to Lambert Conformable Conic projection for plotting onto 1:24,000 USGS quadrangle .

#### Annotated Bibliography (data source, brief description of information)

Coal Reports - Production, ownership, years of operation, depth, thickness, mining method.

Robert Gibson (AML-OMM), personal communication 4-24-2003 - Shaft locations.

Mine notes (Madison County) - Mine type, seam, depth, thickness, abandonment date.

Edwardsville Intelligencer, provided by Robert Gibson (AML-OMM) - Mine ownership, abandonment date, depth.

History of Madison County, Illinois; Published by W. R. Brink & Co., Edwardsville, Illinois, 1882 - Mine location, opening year, ownership.

Atlas of Madison County, 1892 - Shaft locations.

**Mine Index 2774****John Kelly & Sons, Kelly Mine**

Type: Underground    Total mined-out acreage shown: None.    Production indicates that approximately 2 acres were mined.

**SHAFT, SLOPE, DRIFT or TIPPLE LOCATIONS**

Type	County	Twp-Rge	Section	Quarters-Footage
Shaft	Madison	4N 8W	4	NE NE SE
Shaft	Madison	4N 8W	4	NE NE SE

**GEOLOGY**

Seam(s) Mined	Depth (ft)	Thickness (ft)			Mining Method
		Min	Max	Ave	
Herrin	110			5.5	RP

Geologic Problems Reported:

**PRODUCTION HISTORY**

Company	Mine Name	Years	Production (tons)
John Kelly & Sons	Kelly	1886-1889	<u>11,820</u>
			11,820

Last reported production: 1889

**SOURCES OF DATA**

Source Map	Date	Original Scale	Digitized Scale	Map Type
Robert Gibson, AML-OMM	circa 4-2003	1:1	1:24000 *	Secondary source
Land Bank report	6-1934	1:126720	1:126720	Secondary source

\* UTM GPS coordinates converted to Lambert Conformable Conic projection for plotting onto 1:24,000 USGS quadrangle .

Annotated Bibliography (data source, brief description of information)

Coal Reports - Production, ownership, years of operation, mining method.

Directory of Illinois Coal Mines (Madison County) - Mine names, mine index, ownership, years of operation.

Mine notes (Madison County) - Mine type, seam, depth, thickness.

Land Bank report - General area of mining for this and other mines in section 3, T4N-R8W.

Robert Gibson (AML-OMM), personal communication 4-24-2003 - Shaft locations.



**Mine Index 2775****J. Inkhaus, Inkhaus Mine**

Type: Underground    Total mined-out acreage shown: None.    Production indicates that approximately 3 acres were mined.

**SHAFT, SLOPE, DRIFT or TIPPLE LOCATIONS**

Type	County	Twp-Rge	Section	Quarters-Footage
Main shaft	Madison	4N 8W	10	NE NE NW

**GEOLOGY**

Seam(s) Mined	Depth (ft)	Thickness (ft)			Mining Method
		Min	Max	Ave	
Herrin	60-65			4.5-6.0	RP

Geologic Problems Reported:

**PRODUCTION HISTORY**

Company	Mine Name	Years	Production (tons)
J. Inkhaus	Inkhaus	1881-1883	<u>15,000</u> 15,000

Last reported production: 1883

**SOURCES OF DATA**

Source Map	Date	Original Scale	Digitized Scale	Map Type
ISGS mine notes	Undated	(text only)	1:24000	Undated
Land Bank report	6-1934	1:126720	1:126720	Secondary source

\* Point plotted onto 1:24,000 USGS quadrangle and digitized.

Annotated Bibliography (data source, brief description of information)

Coal Reports - Production, ownership, years of operation, depth, thickness, mining method.

Directory of Illinois Coal Mines (Madison County) - Mine names, mine index, ownership, years of operation.

Mine notes (Madison County) - Shaft location, seam, thickness.

Land Bank report - General area of mining.

**Mine Index 2776****Edwardsville Coal Company, Edwardsville No. 3 Mine**

Type: Underground    Total mined-out acreage shown: 508    Production indicates an additional 50 acres were mined after the map date.

**SHAFT, SLOPE, DRIFT or TIPPLE LOCATIONS**

Type	County	Twp-Rge	Section	Quarters-Footage
Main shaft	Madison	4N 8W	11	SE SW SE
Air shaft	Madison	4N 8W	11	SE SW SE

**GEOLOGY**

Seam(s) Mined	Depth (ft)	Thickness (ft)			Mining Method
		Min	Max	Ave	
Herrin	216-217			3.5-7.0	MRP

Geologic Problems Reported:

**PRODUCTION HISTORY**

Company	Mine Name	Years	Production (tons)
Wolf Brothers Coal & Mining Company	Wolf Brothers	1879-1891	576,332 *
Madison Coal Company	Madison No. 3	1891-1904	893,917
Edwardsville Coal Company	Edwardsville No. 3	1904-1910	380,734
City Coal Company **	City No. 3	1910-1917	216,445
Edwardsville Coal Company	Edwardsville No. 3	1917-1920	151,280
Edwardsville Coal Company	Edwardsville No. 3	1920-1923	215,336 ***
			2,434,044

\* Production unknown 1879-1881

\*\* Operated by Herzogg-Gears & Company in 1912 (and perhaps later; continued to report production under the name of City Coal Company).

\*\*\* Production after map date

Last reported production: April 1923

**SOURCES OF DATA**

Source Map	Date	Original Scale	Digitized Scale	Map Type
Microfilm, document 352354	2-1920	1:2400	1:4966	Not final
WPA, T4N-R8W	10-1-1920 †	1:1200	1:41143	Secondary source

† Date of outline (mine survey) shown on WPA map. The WPA map was produced in the 1930s and was undated.

Annotated Bibliography (data source, brief description of information)

Coal Reports - Production, ownership, years of operation.

Directory of Illinois Coal Mines (Madison County) - Mine names, mine index, ownership, years of operation.

ENR Document 85/01 - Mining method.

Microfilm map, document 352354, reel 03138, frame 468 - Shaft location, mine outline, mining method.

WPA map, T4N-R8W - Air shaft location.

Mine notes (Madison County) - Mine type, shaft location, seam, depth, thickness.

History of Madison County, Illinois; Published by W. R. Brink & Co., Edwardsville, Illinois, 1882 - Opening year, depth.



**Mine Index 2777****Truck Trade Coal Company, Truck Trade Mine**

Type: Underground    Total mined-out acreage shown: 183

**SHAFT, SLOPE, DRIFT or TIPPLE LOCATIONS**

Type	County	Twp-Rge	Section	Quarters-Footage
Main shaft	Madison	4N 8W	29	NW SE NE
Air shaft	Madison	4N 8W	29	SW NE NE

**GEOLOGY**

Seam(s) Mined	Depth (ft)	Thickness (ft)			Mining Method
		Min	Max	Ave	
Herrin	108			5.5-6.0	MRP *

\* The east half of the mine is CRP; the west half of the mine is not as regular and is classified as MRP.

Geologic Problems Reported:**PRODUCTION HISTORY**

Company	Mine Name	Years	Production (tons)
Truck Trade Coal Company	Truck Trade	1936-1951	<u>876,470</u> 876,470

Last reported production: December 1951

**SOURCES OF DATA**

Source Map	Date	Original Scale	Digitized Scale	Map Type
Microfilm, document 352355	1-1952	1:2400	1:4138	Final

Annotated Bibliography (data source, brief description of information)

Coal Reports - Production, ownership, years of operation, location, thickness.

Directory of Illinois Coal Mines (Madison County) - Mine names, mine index, ownership, years of operation.

ENR Document 85/01 - Mining method.

Microfilm map, document 352355, reel 03138, frame 469 - Shaft locations.

Mine notes (Madison County) - Mine type, shaft location, seam, depth, thickness.

**Mine Index 2778****Madison Coal Company, Madison No. 1 Mine**

Type: Underground    Total mined-out acreage shown: 113

**SHAFT, SLOPE, DRIFT or TIPPLE LOCATIONS**

Type	County	Twp-Rge	Section	Quarters-Footage
Main shaft	Madison	4N 8W	34	NW NW SW
Air shaft	Madison	4N 8W	34	NW NW SW

**GEOLOGY**

Seam(s) Mined	Depth (ft)	Thickness (ft)			Mining Method
		Min	Max	Ave	
Herrin	83			7.0	MRP

Geologic Problems Reported:

**PRODUCTION HISTORY**

Company	Mine Name	Years	Production (tons)
Madison Coal Company	Madison No. 1	1890-1897	<u>605,029</u> 605,029

Last reported production: 1897

**SOURCES OF DATA**

Source Map	Date	Original Scale	Digitized Scale	Map Type
Microfilm, document 352356	undated	1:4800	1:6952	Final *

\* Map is undated, but states "Final map", and that the shaft was closed in 1897.

Annotated Bibliography (data source, brief description of information)

Coal Reports - Production, ownership, years of operation.

Directory of Illinois Coal Mines (Madison County) - Mine names, mine index, ownership, years of operation.

ENR Document 85/01 - Mining method.

Microfilm map, document 352356, reel 03138, frame 470 - Shaft locations, mine outline, mining method.

Mine notes (Madison County) - Mine type, shaft location, seam, depth, thickness.

**Mine Index 5585**  
**Mrs. Smidt's Mine**

Type: Underground    Total mined-out acreage shown: None.

**SHAFT, SLOPE, DRIFT or TIPPLE LOCATIONS**

Type	County	Twp-Rge	Section	Quarters-Footage
Main shaft	Madison	4N 8W	3	NW SW SE *

\* 718 feet east and 190 feet north of Bartlett Mine shaft (mine index 6473). The shaft was 25 feet in diameter. Information from Robert Gibson (AML-OMM), personal communication, 4-24-2003.

**GEOLOGY**

Seam(s) Mined	Depth (ft)	Thickness (ft)		Mining Method
		Min	Max Ave	
Herrin	96		5.0	

Geologic Problems Reported:

**PRODUCTION HISTORY**

Company	Mine Name	Years	Production (tons)
Henry Ritter	Ritter	1855-1870	unknown **
Mrs. Smidt	Mrs. Smidt	1870-1875	unknown **

\*\* Production prior to 1881 unknown; no production reported in 1882 under this name. May be the same as the mine of unknown location listed at the back of this report under "R. Smith".

Last reported production: 1882

**SOURCES OF DATA**

Source Map	Date	Original Scale	Digitized Scale	Map Type
History of Madison County	1882	(text only)	1:24000 ***	Secondary source

\*\*\* Point plotted onto 1:24,000 USGS quadrangle and digitized.

Annotated Bibliography (data source, brief description of information)

Directory of Illinois Coal Mines (Madison County) - Mine names, mine index, ownership, years of operation.  
History of Madison County, Illinois; Published by W. R. Brink & Co., Edwardsville, Illinois, 1882 - Mine location (general), ownership.  
Robert Gibson, personal communication, 3-10-2003 & 4-24-2003 - Shaft location (GPS), dates of operation from Edwardsville Intelligencer, 12-22-1870 edition.



**Mine Index 6473****Bartlett Mining Company, Bartlett Mine**

Type: Underground    Total mined-out acreage shown: 9

**SHAFT, SLOPE, DRIFT or TIPPLE LOCATIONS**

Type	County	Twp-Rge	Section	Quarters-Footage
Main shaft	Madison	4N 8W	3	NE SE SW

**GEOLOGY**

Seam(s) Mined	Depth (ft)	Thickness (ft)			Mining Method
		Min	Max	Ave	
Herrin	80				RP

Geologic Problems Reported: The shale forming the roof is thick and requires much timbering.

**PRODUCTION HISTORY**

Company	Mine Name	Years	Production (tons)
Bartlett Mining Company	Bartlett	1869-1875 *	unknown

\* Opening year and approximate depth of mine reported in The Edwardsville Intelligencer, Thursday, December 8, 1870; abandoned year reported on microfilm document.

Last reported production: 1875

**SOURCES OF DATA**

Source Map	Date	Original Scale	Digitized Scale	Map Type
Microfilm, document 352352	1875	1:1200	1:2234	Final
WPA, T4N-R8W	5-1-1931	1:1200	1:41143	Secondary source

Annotated Bibliography (data source, brief description of information)

Directory of Illinois Coal Mines (St. Clair County) - Mine names, mine index, ownership.  
Microfilm map, document 352352, reel 03138, frame 465 - Shaft location, mine outline.  
WPA map, T4N-R8W - Shaft location, mine outline, aid in georegistering microfilm.

## OTHER MINES SHOWN ON THE EDWARDSVILLE QUADRANGLE

**Mine Index 6795** T4N R8W section 3, NE SW SW source: Land Bank Report

## MINES WHOSE LOCATIONS ARE NOT KNOWN, EDWARDSVILLE QUADRANGLE

The locations of the following mines are unknown, but the production tonnage, operating names, and nearest town were reported in the Annual Coal Reports. The mines listed below mined in or near the Edwardsville Quadrangle. The information is similar to that presented on the summary sheets in the previous pages of this directory. The first item is the name the mine operated under as listed in the Coal Report, then the years the mine reported. If no physical data are available, the next item listed is the total tons produced by the mine. If physical data are available, the order of presentation is as follows: type of opening for the mine (drift, slope or shaft), depth of coal in feet, and thickness of coal in feet.

The total tons mined by these unlocated mines is 11,665, which would represent approximately 2 to 3 acres, depending on the recovery factor, mining method, and numerous other factors. (Note: 1 square mile = 640 acres)

R. Smith, 1879, shaft, 98, 5.5 (may be the same as mine index 5585, Mrs. Smidt's Mine)	1,600 tons
Terminal Coal Company, 1901-1903, shaft, 120, 4.5	9,065 tons
Black Diamond Coal Company, 1931-1931	1,000 tons

## INDEX OF MINES IN THE EDWARDSVILLE QUADRANGLE

Bartlett Mining Company . . . . .	25
Beck-White Coal Company . . . . .	11
Black Diamond Coal Company . . . . .	16, 26
City Coal Company . . . . .	21
Cowan & Ottearea . . . . .	11
Donk Brothers Coal & Coke Company, No. 4 Mine . . . . .	9
Donnewald (G. H.) . . . . .	18
East Side Coal Company . . . . .	14
Edwardsville Coal Company, Inc. . . . .	14
Edwardsville Coal Company, No. 3 Mine . . . . .	21
Edwardsville Home Trade Coal Company . . . . .	10
Forsythe-Carterville Coal Company . . . . .	16
Gaffney Mine . . . . .	18
Gears (Herzog-Gears & Company) . . . . .	21
Henrietta Coal Company, Home Trade Mine . . . . .	10
Henrietta Coal Company, No. 1 Mine . . . . .	11
Herzog-Gears & Company . . . . .	21
Holmes (Tunstall & Holmes) . . . . .	17
Home Trade Coal Company . . . . .	10
Inkhaus (J.) . . . . .	20
Kelly (John) & Sons . . . . .	19
Madison Coal Company . . . . .	
No. 1 Mine . . . . .	23
No. 3 Mine . . . . .	21
No. 4 Mine . . . . .	12
Madison Coal Company, Madison No. 2 Mine . . . . .	13
Madison Coal Corporation, Madison No. 2 Mine . . . . .	13
Madison Coal Corporation, No. 4 Mine . . . . .	12
Madison County Coal & Mining Company, No. 4 Mine . . . . .	9
Madison County Mining Company, Home Trade Mine . . . . .	10
New Castle Coal Company . . . . .	11
Peabody Coal Company, No. 17 Mine . . . . .	9
Penny Coal Company . . . . .	11
Prickett (J. A.) . . . . .	17
Ritter (Henry) . . . . .	24
Shrameck (Frank) . . . . .	18
Smidt (Mrs.) . . . . .	24
Smith (R.) . . . . .	26
St. Louis & Edwardsville Coal Company . . . . .	17
St. Louis & Illinois Coal Company . . . . .	11
Sunset Hill Coal Company . . . . .	15
Terminal Coal Company . . . . .	26
Thermal Mine . . . . .	9
Truck Trade Coal Company . . . . .	22
Tunstall & Holmes . . . . .	17
Wabash Mine . . . . .	18
Walker (W. S.) . . . . .	11
White (Beck-White Coal Company) . . . . .	11
Winkel (O. L.) . . . . .	10
Wolf Brothers Coal & Mining Company . . . . .	21
Wonderly (P.) Coal Company . . . . .	18
Young Mine . . . . .	16