

Coal Mines in Illinois  
Eldorado Quadrangle  
Saline County, Illinois

## Herrin Coal

This map accompanies the Coal Mines Directory for the Eldorado Quadrangle and the maps of mines in the Springfield & Briar Hill Coals, Eldorado Quadrangle. Consult the directory for a complete explanation of the information shown on this map.

## Mining Method

- Room & Pillar (RP)
- Room & Pillar Basic (RPB)
- Modified Room & Pillar (MRP)
- Room & Pillar Panel (RPP)
- Blind Room & Pillar (BRP)
- Checkerboard Room & Pillar (CRP)
- High Extraction Retreat (HER)
- Longwall (LW)
- Underground, Method Unknown
- Strip Mine
- Auger Mine
- General Area of Mining

## Other Areas Depicted

- Non-Coal Mines

## Source of Mine Outline

- Final Mine Map
- Not Final Mine Map
- Undated Mine Map
- Incomplete Mine Map
- Secondary Source Map

## Tipple, Shaft, Slope, Drift Locations

- Strip Mine Tipple - Active
- Strip Mine Tipple - Abandoned
- Mine Shaft - Active
- Mine Shaft - Abandoned
- Mine Slope - Active
- Mine Slope - Abandoned
- Mine Drift - Active
- Mine Drift - Abandoned
- Air Shaft
- Uncertain Location
- Uncertain Type of Opening

## Other Points Depicted

- Non-Coal Mines

## Location

Mine Annotation  
(space permitting)

Company  
Mine Name  
ISGS Index No., Years of Operation

## Disclaimer

Please check the Coal Section at the Illinois State Geological Survey's web site at <https://www.isgs.illinois.edu> for the most up-to-date version of these products.

Note that each quadrangle scale mined-out area map requires the use of the associated text directory for full explanation of map features and mine attributes. Also note that some quadrangles have multiple seams of mining and therefore more than one map may be available for a particular quadrangle. Please take care to check for multiple maps, as extensive mining may exist in the other seams.

The maps and digital files used for these studies were compiled from data obtained from a variety of public and private sources and have varying degrees of completeness and accuracy. This compilation map presents reasonable interpretation of the geology of the area and is based on available data. Locations of some mine features may be offset by 500 feet or more due to errors in the original source maps, the compilation process, digitizing, or a combination of these factors. These data are not intended for use in site-specific screening or decision-making. Use of these documents does not eliminate the need for detailed studies to fully understand the geology of a specific site. The Illinois State Geological Survey, Prairie Research Institute, or the University of Illinois make no guarantee, expressed or implied, regarding the correctness of the interpretations presented in this data set and accept no liability for the consequences of decisions made by others on the basis of the information presented here.

These maps were designed for use at 1:24,000. Enlarging the map may reduce accuracy, as the original scale of the source maps used to compile the outlines shown varies from 1:400 to 1:150,000, and some mine locations are known only from text descriptions. See the accompanying mine directory for the original scale of the source map used for a specific mine to check accuracy of a given portion of the map. Areas with no mines shown may still be undermined; see the unlocated mines list at the back of each mine directory.

The image of the U.S.G.S. topographic base map was projected from the original UTM to Lambert Conformal Conic.

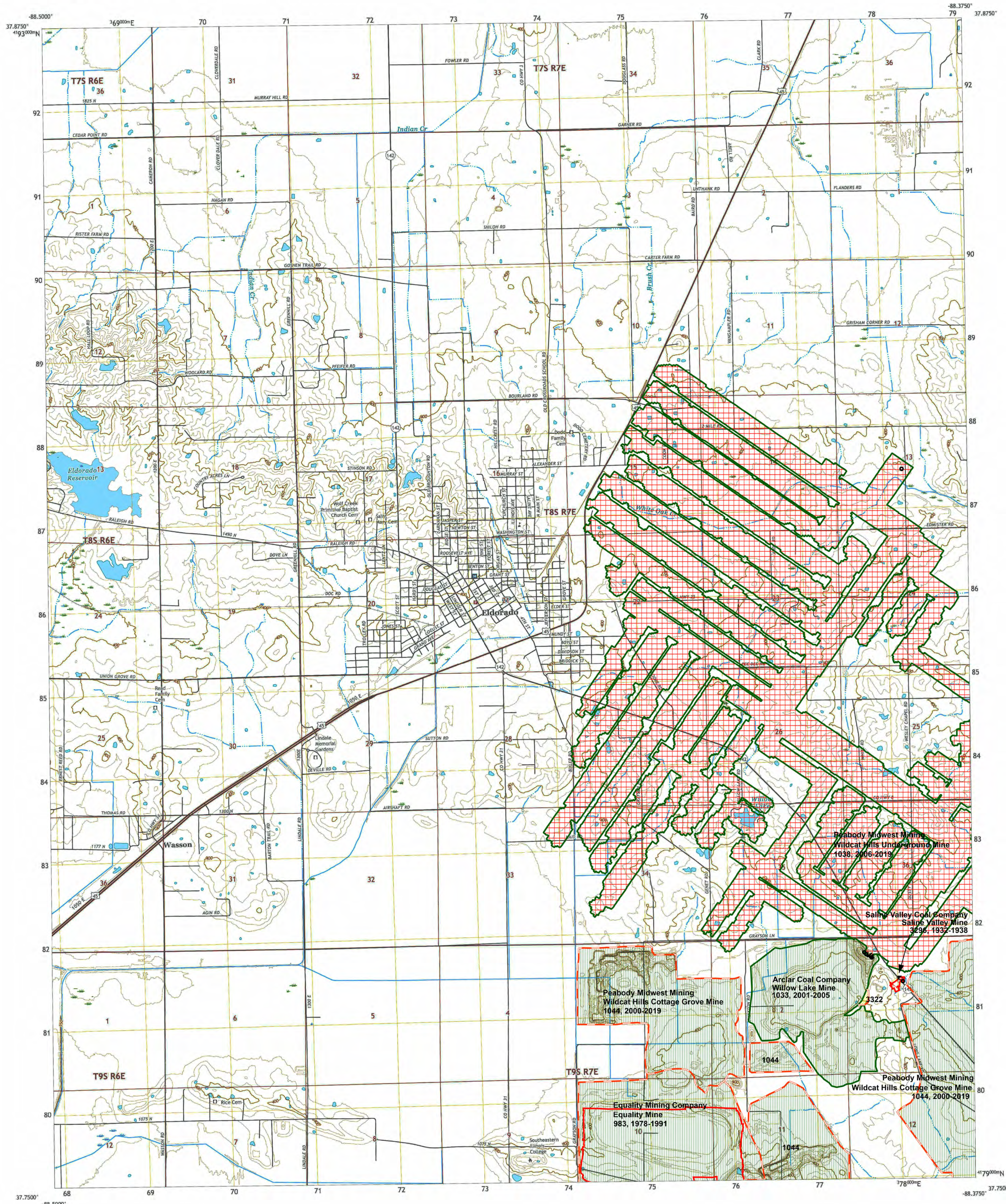
**ILLINOIS**  
Illinois State Geological Survey  
PRAIRIE RESEARCH INSTITUTE

Prairie Research Institute  
Illinois State Geological Survey  
615 E. Peabody Dr.  
Champaign, IL 61820

Mine Outlines Compiled by  
Jennifer M. Obrad

June 2004

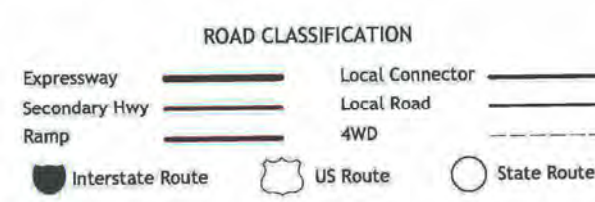
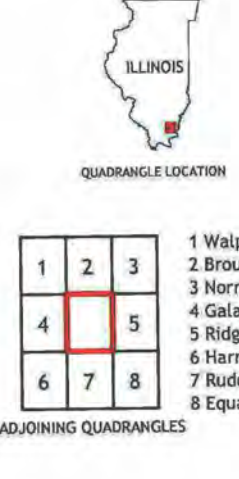
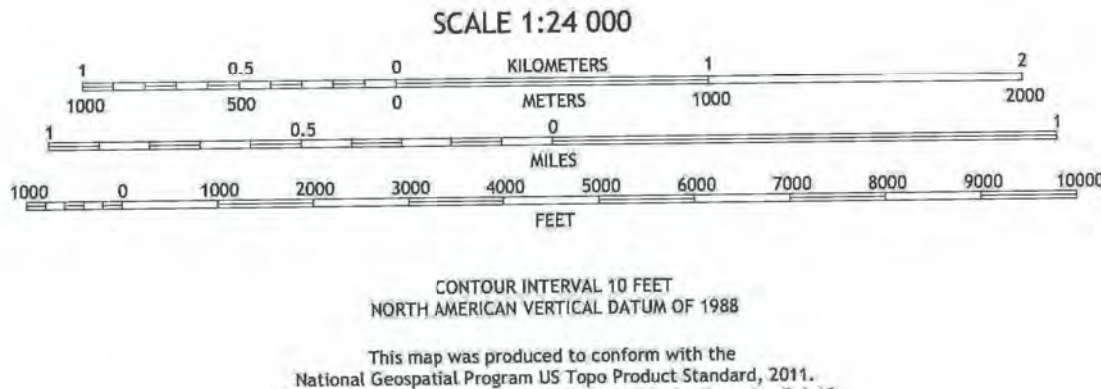
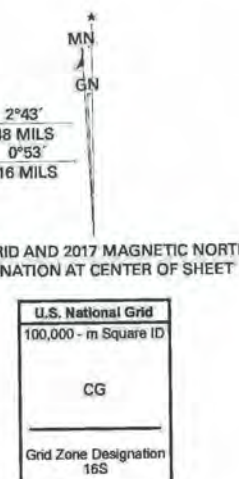
Revised:  
2012  
Alan R. Myers 01-31-2024



Produced by the United States Geological Survey  
North American Datum of 1983 (NAD83)

World Geodetic System of 1984 (WGS84) Projection and  
1,000-meter grid/Universal Transverse Mercator, Zone 16S  
This map is not a legal document. Boundaries may be  
generated for this map scale. Private lands within government  
reservations may not be shown. Obtain permission before  
entering private lands.

Imagery: NAD, August 2015 - October 2015  
U.S. Census Bureau, 2017  
Roads: GIS, 1980 - 2017  
Hydrography: National Hydrography Dataset, 2002 - 2016  
Contours: National Elevation Dataset, 2014  
Boundaries: Multiple sources; see metadata file 2014 - 2016  
Public Land Survey System: BLM, 2017  
Wetlands: FWS National Wetlands Inventory, 1983



ELDORADO, IL  
2018

# Coal Mines in Illinois Eldorado Quadrangle Saline County, Illinois

## Springfield & Briar Hill Coals

This map accompanies the Coal Mines Directory for the Eldorado Quadrangle and the maps of mines in the Herrin Coal, Eldorado Quadrangle. Consult the directory for a complete explanation of the information shown on this map.

### Mining Method

- Room & Pillar (RP)
- Room & Pillar Basic (RPB)
- Modified Room & Pillar (MRP)
- Room & Pillar Panel (RPP)
- Blind Room & Pillar (BRP)
- Checkerboard Room & Pillar (CRP)
- High Extraction Retreat (HER)
- Longwall (LW)
- Underground, Method Unknown
- Strip Mine
- Auger Mine
- General Area of Mining

### Other Areas Depicted

- Non-Coal Mines

### Source of Mine Outline

- Final Mine Map
- Not Final Mine Map
- Undated Mine Map
- Incomplete Mine Map
- Secondary Source Map

### Tipple, Shaft, Slope, Drift Locations

- Strip Mine Tipple - Active
- Strip Mine Tipple - Abandoned
- Mine Shaft - Active
- Mine Shaft - Abandoned
- Mine Slope - Active
- Mine Slope - Abandoned
- Mine Drift - Active
- Mine Drift - Abandoned
- Air Shaft
- Uncertain Location
- Uncertain Type of Opening

### Other Points Depicted

- Non-Coal Mines

### Location



### Mine Annotation (space permitting)

Company  
Mine Name  
ISGS Index No., Years of Operation

### Disclaimer

Please check the Coal Section at the Illinois State Geological Survey's web site at <https://www.isgs.illinois.edu> for the most up-to-date version of these products.

Note that each quadrangle scale mined-out area map requires the use of the associated text directory for full explanation of map features and mine attributes. Also note that some quadrangles have multiple seams of mining and therefore more than one map may be available for a particular quadrangle. Please take care to check for multiple maps, as extensive mining may exist in the other seams.

The maps and digital files used for these studies were compiled from data obtained from a variety of public and private sources and have varying degrees of completeness and accuracy. This compilation map presents reasonable interpretation of the geology of the area and is based on available data. Locations of some mine features may be offset by 500 feet or more due to errors in the original source maps, the compilation process, digitizing, or a combination of these factors. These data are not intended for use in site-specific screening or decision-making. Use of these documents does not eliminate the need for detailed studies to fully understand the geology of a specific site. The Illinois State Geological Survey, Prairie Research Institute, or the University of Illinois make no guarantee, expressed or implied, regarding the correctness of the interpretations presented in this data set and accept no liability for the consequences of decisions made by others on the basis of the information presented here.

These maps were designed for use at 1:24,000. Enlarging the map may reduce accuracy, as the original scale of the source maps used to compile the outlines shown varies from 1:400 to 1:150,000, and some mine locations are known only from text descriptions. See the accompanying mine directory for the original scale of the source map used for a specific mine to check accuracy of a given portion of the map. Areas with no mines shown may still be undermined; see the unlocated mines list at the back of each mine directory.

The image of the U.S.G.S. topographic base map was projected from the original UTM to Lambert Conformal Conic.

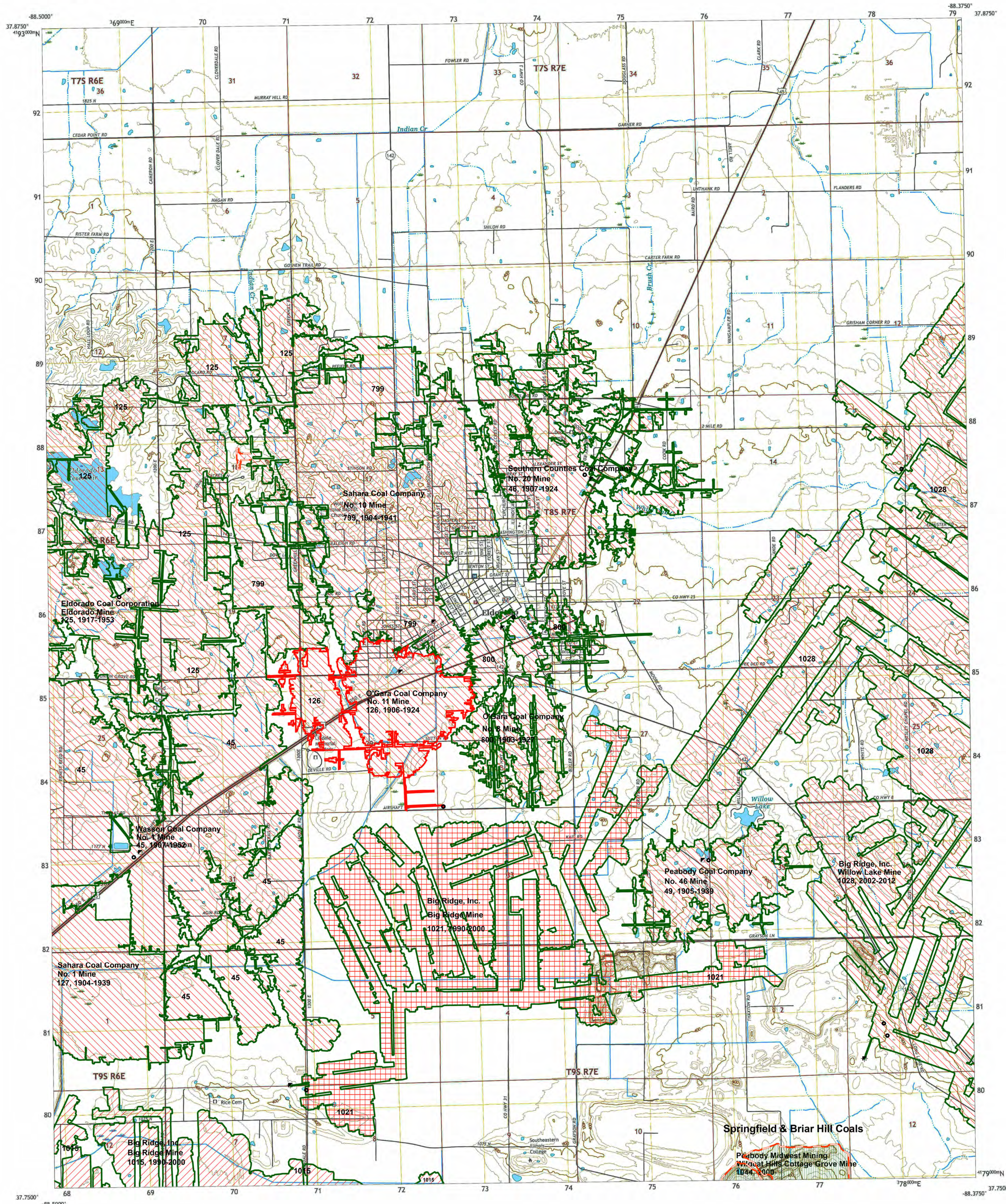
**ILLINOIS**  
Illinois State Geological Survey  
PRAIRIE RESEARCH INSTITUTE

Prairie Research Institute  
Illinois State Geological Survey  
615 E. Peabody Dr.  
Champaign, IL 61820

Mine Outlines Compiled by  
Jennifer M. Obrad

June 2004

Revised:  
2012  
Alan R. Myers 01-31-2024



Produced by the United States Geological Survey  
North American Datum of 1983 (NAD83)  
World Geodetic System of 1984 (WGS84). Projection and  
1,000-meter grid/Universal Transverse Mercator, Zone 16S  
This map is not a legal document. Boundaries may be  
generated for this map scale. Private lands within government  
reservations may not be shown. Obtain permission before  
entering private lands.

Imagery: N.A.P., August 2015 - October 2015  
U.S. Census Bureau, 2017  
Roads: CHS, 1980 - 2017  
Hydrography: National Hydrography Dataset, 2002 - 2016  
Contours: National Elevation Dataset, 2014  
Boundaries: Multiple sources; see metadata file 2014 - 2016  
Public Land Survey System: BLM, 2017  
Wetlands: FWS National Wetlands Inventory 1983

SCALE 1:24 000  
1 0.5 1 2  
1000 500 0 500 1000 2000  
METERS  
1 0.5 1 2  
1000 500 0 500 1000 2000  
FEET  
CONTOUR INTERVAL 10 FEET  
NORTH AMERICAN DATUM OF 1983  
This map was produced to conform with the  
National Geospatial Program US Topo Product Standard, 2011.  
A metadata file associated with this product is draft version 0.6-18

ILLINOIS  
QUADRANGLE LOCATION  
1 Walpole  
2 Broughton  
3 Norris City  
4 Galatia  
5 Ridgway  
6 Harrisburg  
7 Raderman  
8 Equality

ELDORADO, IL  
2018

# **DIRECTORY OF COAL MINES IN ILLINOIS 7.5-MINUTE QUADRANGLE SERIES ELDORADO QUADRANGLE SALINE COUNTY**

Jennifer M. Obrad and Cheri Chenoweth



Department of Natural Resources  
ILLINOIS STATE GEOLOGICAL SURVEY  
2004  
REVISED 2009, 2024



**DIRECTORY OF COAL MINES IN ILLINOIS  
7.5-MINUTE QUADRANGLE SERIES  
ELDORADO QUADRANGLE  
SALINE COUNTY**

2004  
REVISED 2009, 2024

ILLINOIS STATE GEOLOGICAL SURVEY  
William Shilts, Chief

Natural Resources Building  
615 East Peabody Drive  
Champaign, Illinois 61820

Phone 1-217-244-4610  
Fax 1-217-333-2830

**Cover photo** Track-mounted duckbill loading machine at a Peabody Coal Company mine, ca. 1915.

DISCLAIMER: The accuracy and completeness of mine maps and directories vary with the availability of reliable information. Maps and other information used to compile this mine map and directory were obtained from a variety of sources and the accuracy of some of the original information cannot be verified. Consequently, the Illinois State Geological Survey (ISGS) cannot guarantee the mine maps are free of errors and disclaims any responsibility for damages that may result from actions or decisions based on them.

The ISGS updates the maps and directories periodically, and welcomes any new information or corrections. Please contact the Coal Section of the ISGS at the address shown on the title page of this directory, or telephone (217) 244-4610.

*Printed by authority of the State of Illinois/2004*

## CONTENTS

INTRODUCTION .....	1
MINING IN THE ELDORADO QUADRANGLE .....	1
PART I EXPLANATION OF MAP AND MINE SUMMARY SHEET .....	2
INTERPRETING THE MAP .....	2
Mine Type and Mining Method .....	2
SOURCE MAPS .....	3
POINTS AND LABELS .....	3
INTERPRETING A MINE SUMMARY SHEET .....	6
REFERENCES .....	8
PART II DIRECTORY OF MINES IN THE ELDORADO QUADRANGLE .....	9
MINE SUMMARY SHEETS .....	9
Mine Index 45	
Wasson Coal Company, Wasson No. 1 Mine .....	9
Mine Index 46	
Southern Counties Coal Company, Southern Counties No. 20 Mine .....	10
Mine Index 49	
Peabody Coal Company, Peabody No. 46 Mine .....	11
Mine Index 125	
Eldorado Coal Corporation, Eldorado Mine .....	12
Mine Index 126	
O'Gara Coal Company, O'Gara No. 11 Mine .....	13
Mine Index 127	
Sahara Coal Company, Sahara No. 1 Mine .....	14
Mine Index 799	
Sahara Coal Company, Sahara No. 10 Mine .....	15
Mine Index 800	
O'Gara Coal Company, O'Gara No. 8 Mine .....	16
Mine Index 803	
J. E. Dobyns, Dobyns Mine .....	17
Mine Index 983	
Equality Mining Company, Equality Mine .....	18
Mine Index 1015	
Big Ridge, Inc., Big Ridge Portal No. 1 Mine .....	19
Mine Index 1021	
Big Ridge, Inc., Big Ridge Portal No. 2 Mine .....	20
Mine Index 1022	
Black Beauty Mining Company, Wildcat Hills Eagle Valley Mine .....	21
Mine Index 1028	
Big Ridge, Inc., Willow Lake Mine .....	22
Mine Index 1033	
Arclar Coal Company, Willow Lake Surface Mine .....	23
Mine Index 1038	
Peabody Midwest Mining, Wildcat Hills Underground Mine .....	24
Mine Index 1044	
Peabody Midwest Mining, Wildcat Hills Cottage Grove Mine .....	25
Mine Index 3296	
Saline Valley Coal Company, Saline Valley Mine .....	26
Mine Index 4702	
Lanham Coal Company, Lanham No. 2 Mine .....	27
OTHER MINES SHOWN ON THE ELDORADO QUADRANGLE .....	28
Mine Index 3272 .....	28
Mine Index 3322 .....	28
Mine Index 3693 .....	28

MINES WHOSE LOCATIONS ARE NOT KNOWN ON THE ELDORADO QUADRANGLE .....	28
INDEX OF MINES IN THE ELDORADO QUADRANGLE .....	32

## **INTRODUCTION**

Coal has been mined in 76 counties of Illinois. More than 7,400 coal mines have operated since commercial mining began in Illinois about 1810; fewer than 30 are currently active. To detail the extent and location of coal mining in Illinois, the Illinois State Geological Survey (ISGS) has compiled maps and directories of known coal mines. The ISGS offers maps at a scale of 1:100,000 and accompanying directories for each county in which coal mining is known to have occurred. Maps at a scale of 1:24,000 and accompanying directories such as this are available for selected quadrangles. Contact the ISGS for a list of these quadrangles.

These larger scale maps show the approximate positions of mines in relation to surface features such as roads and water bodies, and indicate the mining method used and the accuracy of the mine boundaries. The maps are useful for locating mine boundaries relative to specific properties and for assessing the potential for subsidence in an area. Mine boundaries compiled from final mine surveys are generally shown within 200 feet of their true position. As a result of poor cartographic quality and inaccuracies in the original mine surveys, boundaries of some older mines may be mislocated on the map by 500 feet or more. Original mine maps should be consulted in situations that require precise delineation of mine boundaries or internal workings of mined areas.

The directory serves as a key to the accompanying mine map and provides basic information on the coal mines. The directory is composed of two parts. Part I explains the symbols and patterns used on the accompanying map and the summary data presented for each mine. Part II numerically lists the mines in the quadrangle and summarizes the geology and production history of each mine.

## **MINING IN THE ELDORADO QUADRANGLE**

The master fault of the Cottage Grove Fault System runs through the southwestern corner of this quadrangle. Subsidiary faults and igneous dikes were encountered in most of the mines in this area. The faults displaced the coal more than 10 feet in several locations. The dikes were over 20 feet wide in some areas, with naturally coked coal on either side. For more information on this fault system, see *The Cottage Grove Fault System in Southern Illinois* (ISGS Circular 522, 1981).

The earliest known mining in the Eldorado Quadrangle was in the early 1900s. Most of the mines operated in the Springfield Coal, which ranged from 4.5 to over 6 feet thick. The Herrin Coal was mined in the southeastern part of the quadrangle, generally by small underground mines and, more recently, by surface mines.

## PART I EXPLANATION OF MAP AND MINE SUMMARY SHEET

### INTERPRETING THE MAP

The map accompanying this directory shows the location of coal mines known to be present in the quadrangle. The map, corresponding to a U.S. Geological Survey (USGS) 7.5-minute quadrangle, covers an area bounded by lines of latitude and longitude 7.5-minutes apart. In Illinois, a quadrangle is approximately 6.5 miles east to west and 8.5 miles north to south, an area of about 56 square miles. The USGS generally offers one map of mines per quadrangle. In some areas where extensive mining occurred in two or more overlapping seams, separate maps are compiled for mines in each seam to maintain readability of the map.

#### Mine Type and Mining Method

The mine type is indicated on the map by pattern color: green represents surface mines; red and yellow represent underground mines. The red patterns are used for areas of underground mining that are documented by a primary or secondary source map. A yellow pattern is used for cases where no map of the mine workings is available, but a general area of mining can be inferred from property maps or production figures. The patterns indicate the main mining methods used in underground mines. The methods are (1) room and pillar and (2) high extraction. The method used gives some indication of the amount and pattern of coal extraction within each mined area, and has some influence on the timing and type of subsidence that can occur over a mine.

The following discussion and illustrations of mining methods are based on Guither et al. (1984).

In room-and-pillar mines, coal is removed from haulage-ways (entries) and selected areas called rooms. Pillars of unmined coal are left between the rooms to support the roof. Depending on the size of rooms and pillars, the amount of coal removed from the production areas will range from 40% to 70%.

**Room and Pillar** - mining is divided into six categories:

- room-and-pillar basic (RPB, fig. 1A), an early method that did not follow a preset mining plan and therefore resulted in very irregular designs;
- modified room and pillar (MRP, fig. 1B);
- room-and-pillar panel (RPP, fig. 1C);
- blind room and pillar (BRP, fig. 1D);
- checkerboard room and pillar (CRP, fig. 1E);
- room and pillar (RP), a classification used when the specific type of room-and-pillar mining is unknown.

Blind and checkerboard are the most common types of room-and-pillar mining used in Illinois today. The knowledge of room-and-pillar mining methods gives a trained engineer information on the nature of subsidence that may occur. A more extensive discussion of subsidence can be found in Bauer et al. (1993).

**High-extraction** These mining methods are subdivided into high-extraction retreat (HER, Fig 1F) and longwall (LW, Fig 1G, 1H). In these methods, much of the coal is removed within well defined areas of the mine. Subsidence of the surface above these areas occurs within weeks. Once the subsidence activity ceases, the potential for further movement over these areas is low; however, subsidence may continue for several years after mining.

High-extraction retreat mining is a form of room-and-pillar mining that extracts most of the coal. Rooms and pillars are developed in the panels, and the pillars are then systematically removed (fig. 1F).

In early (pre-1960) longwall mines, mining advanced in multiple directions from a central shaft (fig. 1G). Large pillars of coal were left around the shaft, but all coal was removed beyond these pillars. Miners placed rock and wooden props and cribs in the mined-out areas to support the mine roof. The overlying rock gradually settled onto these supports, thus producing subsidence at the surface. In post-1959 longwall mines, room-and-pillar methods have been used to develop the main entries of the mine and panel areas. Modern longwall methods extract 100 percent of the coal in the panel areas (fig. 1H).

## SOURCE MAPS

Mine outlines depicted on the map are, whenever possible, based on maps made from original mine surveys. The process of compiling and digitizing the quadrangle map may produce errors of less than 200 feet in the location of mine boundaries. Larger errors of 500 feet or more are possible for mines that have incomplete or inaccurate source maps.

Because of the extreme complexity of some mine maps, detailed features of mined areas have been omitted. The digitized mine boundary includes the exterior boundary of all rooms or entries that were at least 80 feet wide or protruded 500 feet from the main mining area. Unmined areas between mines are shown if they are at least 80 feet wide; unmined blocks of coal within mines are shown if they are at least 400 feet on each side. Original source maps should be consulted when precise information on mine boundaries or interior features is needed.

The mine summary sheet lists the source maps used to determine each mine outline. The completeness of map sources is indicated on the map by a line symbol at the mine boundary. Source maps are organized in five categories.

**Final mine map** The mine outline was digitized from an original map made from mine surveys conducted within a few months after production ceased. The date of the map and the last reported production are listed on the summary sheet.

**Not a final map** The mine is currently active or the mine outline was made from a map based on mine surveys conducted more than a few months before production ceased. This implies the actual mined-out area is probably larger than the outline on the map. The mine summary sheet indicated the dates of source maps and the last reported production, as well as the approximate tonnage mined between these two dates (if the mine is abandoned). The summary sheet also lists the approximate acreage mined since the date of the map and, in some cases, indicates the area where additional mining may have taken place. This latter information is determined by locating on the map the active faces relative to probable boundaries of the mine property.

**Undated map** The source map was undated, so it may or may not be based on a final mine survey. When sufficient data are available, the probable acreage of the mined area is estimated from reported production, average seam thickness and a recovery rate comparable to other mines in the area. This information is listed in the summary sheet for the mine.

**Incomplete map** The source map did not show the entire mine. The summary sheet indicates the missing part of the mine map and the acreage of the unmapped area, which is estimated from the amount of coal known to have been produced from the mine.

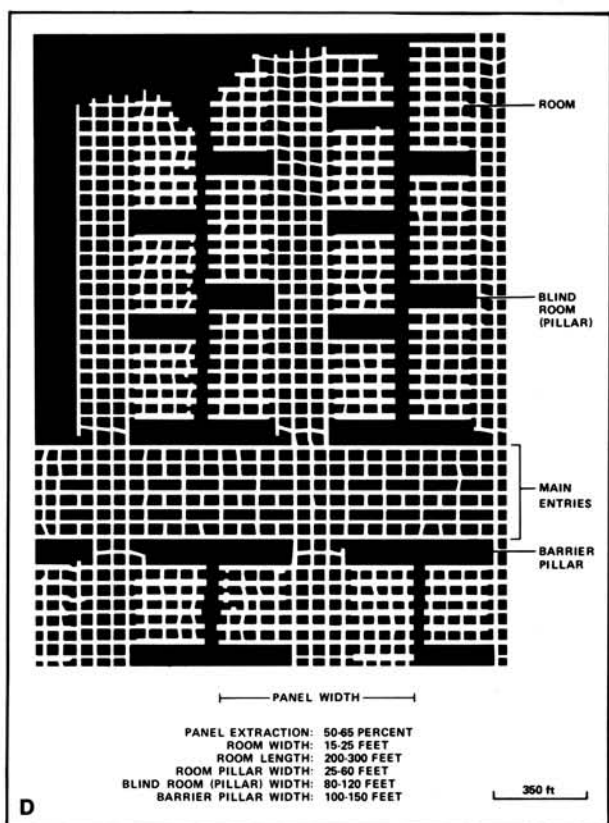
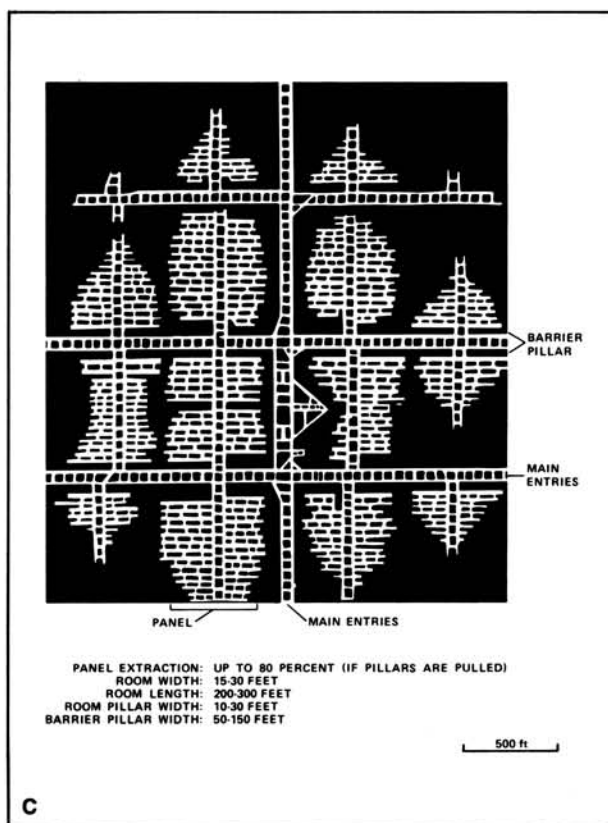
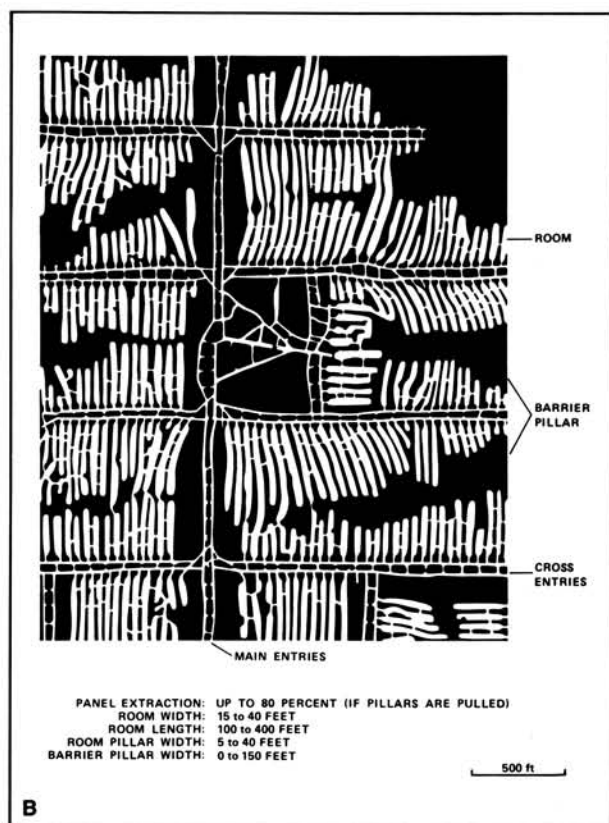
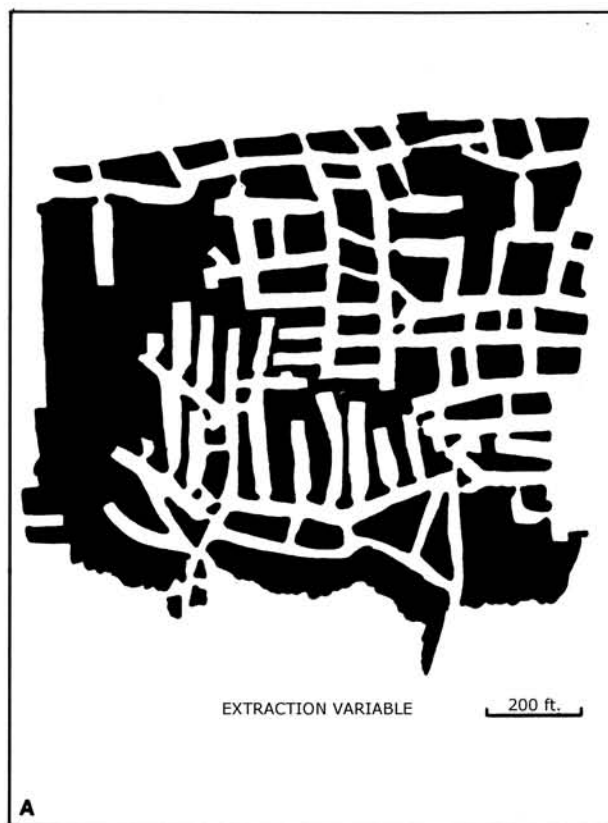
**Secondary source map** The original mine map was not found so the outline shown was determined from secondary sources (e.g., outlines from small-scale regional maps published in other reports). The summary sheet describes the secondary sources.

## POINTS AND LABELS

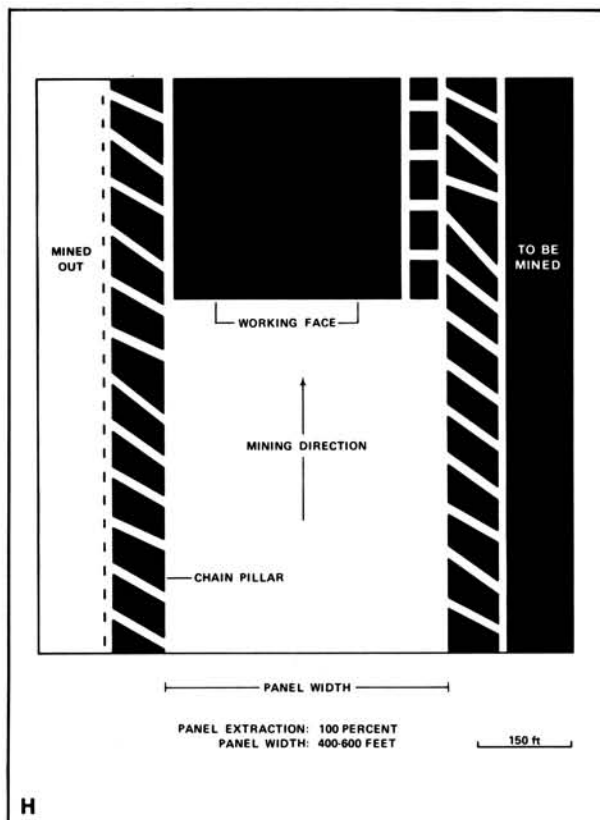
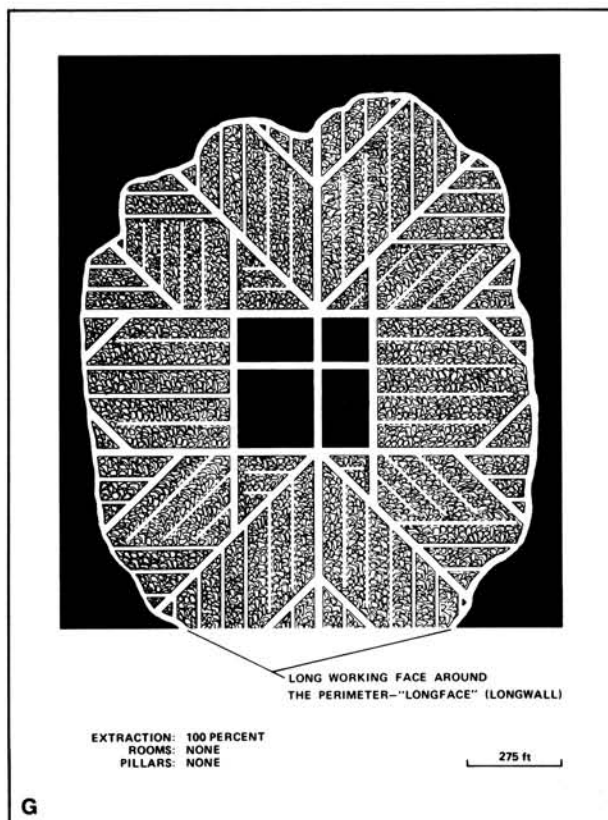
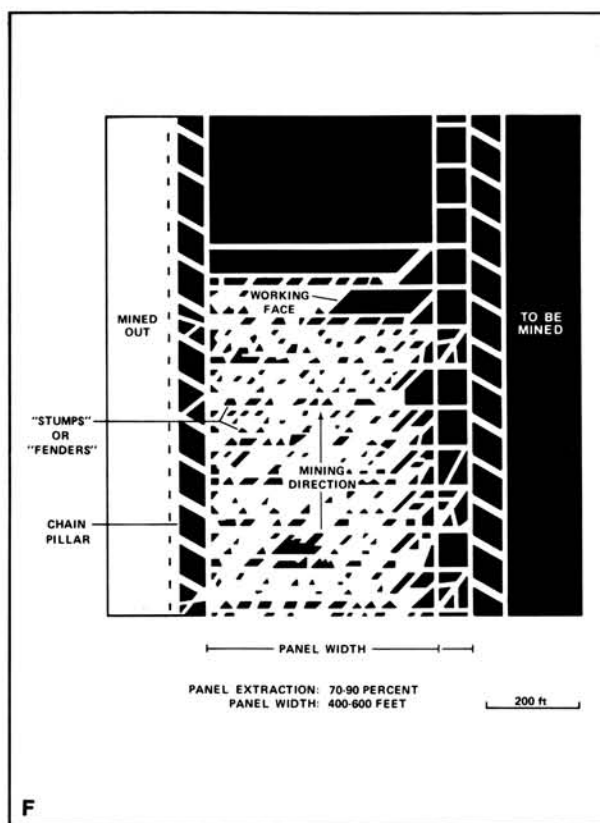
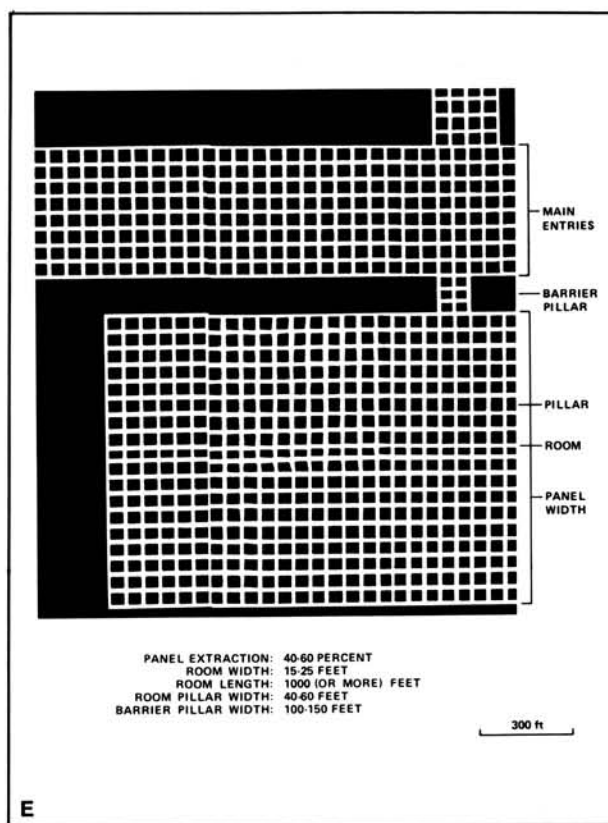
The locations of all known mine openings (shafts, slopes, and drifts) and surface mine tipples are plotted on the map. Tipples are areas where coal was cleaned, stockpiled, and loaded for shipping.

Only openings or tipples are plotted for mines without source maps. If the precise locations of these features are unknown, a special symbol is used to indicate the approximate location of the mine.

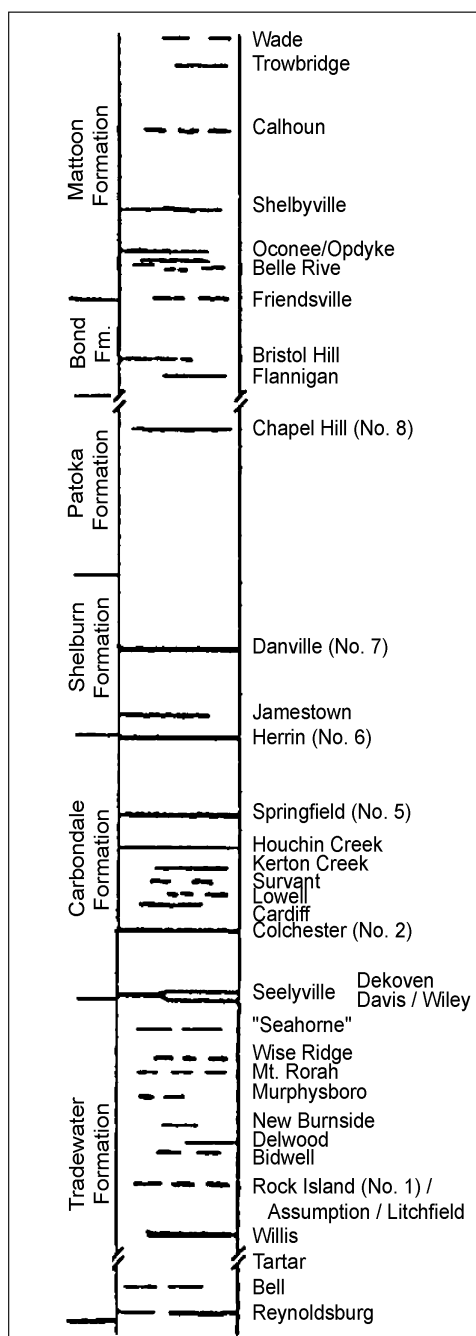
Each mine on the map is labeled with the names of the mine and operating company, ISGS mine index number, and years of operation (if known) if space permits. A seam designation is given on maps where more than one seam was mined. For a mine that operated under more than one name, only the most recent name is generally given. When a mine changed names or ownership shortly before closing, an earlier name is listed. All company and mine names are listed on the mine summary sheet in the directory, under the production history segment.



**Figure 1** Mining methods: (A) room-and-pillar basic (RPB), (B) modified room and pillar (MRP), (C) room-and-pillar panel (RPP), (D) blind room and pillar (BRP).



**Figure 1 (cont.)** Mining methods: (E) checkerboard room and pillar (CRP), (F) high extraction retreat (HER), (G) early (pre-1960) longwall, (H) post-1959 longwall



**Figure 2** Generalized stratigraphic section, showing approximate vertical relations of coals in Illinois.

## INTERPRETING A MINE SUMMARY SHEET

The mine summary sheet is arranged numerically by mine index number. Index numbers are shown on the map and in the mine listing. The mine summary sheet provides the following information (if available).

**Company and mine name** The last company or owner of the mine is used, unless no production was recorded for the last owner. In that case, the penultimate owner is listed. Mines often have no specific name; in these cases, the company name is also used as the mine name.

**Type** *Underground* denotes a subsurface mine in which the coal was reached through a shaft, slope, or a drift entry. *Surface* denotes a surface, open pit or strip mine.

**Total mined-out acreage shown** The total acreage of the mined area mapped, including any acreage mined on adjacent quadrangles, is calculated from the digitized outline of the mine. The acreage of large barrier pillars depicted on the map is excluded from the mined-out acreage. Small pillars not digitized are included in the acreage calculation. If the mine outline is not based on a final mine map, the acreage is followed by an estimate of additional acres that may have been mined. The estimate is determined from reported mine production, approximate thickness of the coal, and recovery rates calculated from nearby mines that used similar mining methods.

## SHAFT, SLOPE, DRIFT OR TIPPLE LOCATIONS

**Shaft, slope, drift, or tippie locations** Locations of all known former entry points to underground mines or the location of coal cleaning, tippie, and shipping equipment used by the mine's facility are listed. The location is described in terms of county, township and range (Twp-Rge), section, and location within the section by quarters. NE SW NW, for instance, would describe the location in the northeast quarter of the southwest quarter of the northwest quarter. When sections are irregular in size, the quarters remain the same size and are oriented (or "registered") from the southeast corner of the section. Approximate footage from the section lines (FEL = from east line, FNL = from north line, for example) is given when that information is known; this indicates a surveyed location and is not derived from maps. Entry points are also plotted on the map and coded for the type of entry or tippie. A mine opening may have had many purposes during the life of the mine. Old hoist shafts are often later used for air and escape shafts; this information is included in the directory when known. The tippie for underground mines was generally located near the main shaft or slope. At surface mines, coal was sometimes hauled to a central tippie several miles from the mine pit.

## GEOLOGY

**Seam(s) mined** The name of the coal seam(s) mined is listed, if known. If multiple seams were mined, they are all listed, although the mined-out area for each seam may be shown on separate maps. Figure 2 shows the stratigraphic section of the coal-bearing interval in Illinois, and the vertical relations among the coals.

**Depth** The depth to the top of the seam in the vicinity of the shaft is listed, if known. The depth is determined from notes made by geologists who visited the mine during its operation or from drill hole data in ISGS files. Depth generally varies little over the extent of a mine; however, reported depths for an individual mine may vary. Depth for surface-mined coals varies, and is usually represented as a range.

**Thickness** The approximate thickness of the mined seam is shown, if known. Thickness also comes from notes of geologists who visited the mine during its operation or from borehole data in ISGS files. Minimum, maximum, and average thicknesses are given when this information is available.

**Mining method** The principal mining method used at the mine (figs. 1A-H) is listed. See the mining methods section at the beginning of this directory for a discussion of this parameter.

**Geologic problems reported** Any known geologic problems, such as faults, water seepage, floor heaving, and unstable roof, encountered in the mine are reported. This information is from notes made by ISGS geologists who visited the mine, or from reports by mine inspectors published by the Illinois Department of Mines and Minerals, or from the source map(s). Geologic problems are not reported for active mines.

## PRODUCTION HISTORY

**Production history** Tons of coal produced from the mine by each mine owner are totaled. When the source map used for the mine outline is not a final mine map, the tonnage produced since the date of the map is identified. For mines that extend into adjacent quadrangles, the tonnage reported includes areas mined in adjacent quadrangles.

## SOURCE OF DATA

**Source map** This section lists information about the map(s) used to compile the mine outline and the locations of tipples and mine openings. In some cases more than one source map was used. For example, a map drawn before the mine closed may provide better information on original areas of the mine than a later map. When more than one map was used, the bibliography section explains what information was taken from each source.

**Date** The date of the most recent mine survey listed on the source map is reported.

**Original scale** The original scale of the source map is listed. Many maps are photo-reductions and are no longer at their original scale. The original scale gives some indication of the level of detail of the mine outline and the accuracy of the mine boundary relative to surface features. Generally, the larger the scale, the greater the accuracy and detail of the mine map. Mine outlines taken from source maps at scales smaller than 1:24,000 may be highly generalized and may well be inaccurately located with respect to surface features.

**Digitized scale** The scale of the digitized map is reported. The scale may be different from that of the original source map. In many cases the digitized map was made from a photo-reduction of the original source map, or the source map was not in a condition suitable for digitizing and the mine boundaries were transferred to another base map.

**Map type** Source maps are classified into five categories to indicate the probable completeness of the map. See discussion of source maps in the previous section.

**Annotated bibliography** Sources that provide information about the mine are listed, with the data taken from each source. Some commonly used sources are described below. Full bibliographic references are given for all other sources. Unless otherwise noted, all sources are available for public inspection at the ISGS.

**Coal Reports** Published since 1881, these reports contain tabular data on mine ownership, production, employment, and accidents. Some volumes include short descriptions made by mine inspectors of physical features and conditions in selected mines.

**Directory of Illinois Coal Mines** This source is a compilation of basic data about Illinois coal mines, originally gathered by ISGS staff in the early 1950s. Sources used for this directory are undocumented, but they are primarily Illinois Department of Mines and Minerals annual reports, ISGS mine notes, and coal company officials.

**ENR Document 85/01**, Guither, H. D., J. K. Hines, and R. A. Bauer, 1985 The Economic Effect of Underground Mining Upon Land Used for Illinois Agriculture: Illinois Department of Energy and Natural Resources Document 85/01, 185 p.

**Microfilm map** The U.S. Bureau of Mines maintains a microfilm archive of mine maps. A microfilm file for Illinois is available for public viewing at the ISGS.

*Mine notes* ISGS geologists have visited mines or contacted mine officials throughout the state since the early 1900s. Notes made during these visits range from brief descriptions of the mine location to long narratives (including sketches) of mining conditions and geology.

*Federal Land Bank of St. Louis, Preliminary Reports on Subsidence Investigations* Mining engineers working for the Federal Land Bank of St. Louis mapped areas of subsidence due to coal mining in the early 1930s. These reports often include county maps of mine properties with mined-out areas including shaft locations, as well as subsidence areas.

## **REFERENCES**

Bauer, R. A., B. A. Trent, and P. B. Dumontelle, 1993, Mine Subsidence in Illinois: Facts for the Homeowner Considering Insurance, Illinois State Geological Survey, Environmental Geology Note 144, 16p.

Guither, H. D., J. K. Hines, and R. A. Bauer, 1985, The Economic Effects of Underground Mining Upon Land Used for Illinois Agriculture, Illinois Department of Energy and Natural Resources Document 85/01, 185p.

Nelson, W. J., and H.-F. Krausse, 1981, The Cottage Grove Fault System in Southern Illinois, Illinois State Geological Survey, Circular 522, 65p.

## PART II DIRECTORY OF MINES IN THE ELDORADO QUADRANGLE

### MINE SUMMARY SHEETS

A summary sheet on the geology and production history of each mine in the Eldorado Quadrangle is provided. These summary sheets are arranged numerically by mine index number. Consult Part I for a complete explanation of the data listed in the summary sheet.

#### Mine Index 45

#### Wasson Coal Company, Wasson No. 1 Mine

Type: Underground    Total mined-out acreage shown: 2,895

#### SHAFT, SLOPE, DRIFT or TIPPLE LOCATIONS

Type	County	Township-Range	Section	Quarters-Footage
Main shaft (9x14)	Saline	8S 6E	36	NW SE NE
Air shaft (9x12)	Saline	8S 6E	36	NW SE NE

#### GEOLOGY

Seam(s) Mined	Depth (ft)	Thickness (ft)			Mining Method
		Min	Max	Ave	
Springfield	318	4.33	6.5	5.0	MRP

Geologic Problems Reported: One man was killed as the result of a 1911 gas explosion; a 1912 gas explosion killed 2 men. Little timbering was required in this mine. Faults having throws of up to 30 feet were found, with most of the displacement being vertical. At least one steep grade in the mine necessitated the purchase of a special slope hoist. The source map shows that the faults trended northwest-southeast, with subsidiary faults roughly perpendicular. These faults show clearly on the accompanying map in the interruption of the mining pattern. One 25 to 30-foot wide igneous dike was found to cut through the coal along the west section line (30-T8S-R7E). It did not displace the coal but did naturally coke the coal for about 40 feet. Some calcite and pyrite veins and nodules were found throughout the coal, but they were not persistent.

#### PRODUCTION HISTORY

Company	Mine Name	Years	Production (tons)
Wasson Coal Company	Wasson No. 1	1907-1952	16,641,583
			16,641,583

Last reported production: March 1952

#### SOURCES OF DATA

Source Map	Date	Original Scale	Digitized Scale	Map Type
Microfilm, document 352843	3-17-1952	1:2400	1:5297	Final

#### Annotated Bibliography (data source, brief description of information)

Coal Reports - Production, ownership, years of operation.

Directory of Illinois Coal Mines (Saline County) - Mine names, mine index, ownership, years of operation.

ENR Document 85/01 - Mining method.

Mine notes (Saline County) - Mine type, shaft location, seam, depth, thickness, geologic problems.

Field notes (Saline County) - Geologic problems.

Microfilm map, document 352843, reel 03140, frames 452-457 -Shaft locations, mine outline, mining method.

**Mine Index 46****Southern Counties Coal Company, Southern Counties No. 20 Mine**

Type: Underground    Total mined-out acreage shown: 780

**SHAFT, SLOPE, DRIFT or TIPPLE LOCATIONS**

Type	County	Township-Range	Section	Quarters-Footage
Main shaft (9x14)	Saline	8S 7E	15	NE NW SW
Air shaft (9x13)	Saline	8S 7E	15	NE NW SW

**GEOLOGY**

Seam(s) Mined	Depth (ft)	Thickness (ft)			Mining Method
		Min	Max	Ave	
Springfield	445 (400-465)	4.0	5.33	4.67 (4.0-5.6)	MRP

**Geologic Problems Reported:** A gas explosion in 1913 killed 4 men. A dike was found, but its location was not shown on the source map. Faults were shown in the SE 9-T8S-R7E, 16-T8S-R7E, and SW 15-T8S-R7E. These faults trended north-northwest to south-southeast. The roof was weak near the shaft. The roof consisted of 2 feet of hard black shale, but about 2 inches of "draw slate" came down with the coal. There were some minor slips in the coal. Few impurities were found in the coal, except for some pyrite streaks. The floor was a dark gray shale that did not weather or heave.

**PRODUCTION HISTORY**

Company	Mine Name	Years	Production (tons)
Eldorado Coal & Mining Company	Eldorado No. 1	1907-1916	1,716,794
Dering Coal Company	Dering No. 3	1916-1920	1,247,740
Southern Counties Coal Company	Southern Counties No. 20	1920-1924	1,052,714
Peabody Coal Company	Peabody No. 20	1927-1927	none
			4,017,248

Last reported production: February 1924

**SOURCES OF DATA**

Source Map	Date	Original Scale	Digitized Scale	Map Type
Microfilm, document 352830	3-1-1924 *	1:2400	1:4634	Final

\* The map title block shows the Peabody Coal Company ownership and the date 9-1-1927, but no extension of mining had taken place.

**Annotated Bibliography (data source, brief description of information)**

Coal Reports - Production, ownership, years of operation, depth, thickness.

Directory of Illinois Coal Mines (Saline County) - Mine names, mine index, ownership, years of operation.

ENR Document 85/01 - Mining method.

Mine notes (Saline County) - Mine type, shaft location, seam, depth, thickness, geologic problems.

Microfilm map, document 352830, reel 03140, frames 396-399 - Shaft locations, mine outline, mining method, geologic problems.

**Mine Index 49****Peabody Coal Company, Peabody No. 46 Mine**

Type: Underground    Total mined-out acreage shown: 399

**SHAFT, SLOPE, DRIFT or TIPPLE LOCATIONS**

Type	County	Township-Range	Section	Quarters-Footage
Main shaft (13x9)	Saline	8S 7E	34	SE SE NE
Escape/air shaft (10x10)	Saline	8S 7E	34	SE SE NE

**GEOLOGY**

Seam(s) Mined	Depth (ft)	Thickness (ft)			Mining Method
		Min	Max	Ave	
Springfield	260-339	4.5	6.2	5.5	MRP

**Geologic Problems Reported:** The 1909 Coal Report stated that the mine made considerable gas. Two explosions, one in 1909 and one in 1917, killed a total of 6 men. A southeast-northwest trending igneous dike was cut through the coal 800 feet east of the shaft. A northwest-southeast trending fault, shown on the source map, halted eastward expansion. The roof was 10 feet of black shale that contained numerous coal balls (some ranging up to 4 feet in diameter). In some limited areas, the roof was lenticular gray shale pods up to 2 feet thick. The boundary between the coal and the roof was irregular. The coal was very hard and this made for difficulties in shooting off the solid. Coal balls were also present in the seam, and the floor contained pyrite concretions. The floor tended to heave when wet.

**PRODUCTION HISTORY**

Company	Mine Name	Years	Production (tons)
National Mining Company	National No. 1	1905-1907	37,735
Harrisburg Southern Coal Company	Harrisburg Southern No. 1	1907-1912	502,259 *
Big Creek Collieries Company	Big Creek No. 1	1912-1913	143,331
Saline County Coal Company	Saline County No. 6, Grayson	1913-1919	1,120,224
Big Creek Coal Company	Big Creek No. 6	1919-1921	233,619
Big Creek Coals, Inc.	Big Creek No. 6	1921-1923 **	187,028
Saline County Coal Corporation	Saline County No. 6	1923-1927	85,448
Saline County Coal Corporation	Saline County No. 46	1928-1928 ***	none
Peabody Coal Company	Peabody No. 46	1929-1939 ***	none
			<u>2,309,644</u>

\* Production was not reported in 1910. Two deaths were reported in July, another in September, and two more deaths occurred in November of 1909, indicating that mining occurred throughout the fiscal year.

\*\* Idle 1922

\*\*\* Reported idle 1928 through 1939

Last reported production: January 1927

**SOURCES OF DATA**

Source Map	Date	Original Scale	Digitized Scale	Map Type
Microfilm, document 352844	4-1-1929	1:2400	1:4634	Final

**Annotated Bibliography (data source, brief description of information)**

Coal Reports - Production, ownership, years of operation, shaft sizes, depth, geologic problems.

Directory of Illinois Coal Mines (Saline County) - Mine names, mine index, ownership, years of operation.

Mine notes (Saline County) - Mine type, shaft location, seam, thickness, geologic problems.

Microfilm map, document 352844, reel 03140, frames 458, 459 - Shaft locations, mine outline, mining method, geologic problems.

**Mine Index 125**  
**Eldorado Coal Corporation, Eldorado Mine**

Type: Underground    Total mined-out acreage shown: 2,076

**SHAFT, SLOPE, DRIFT or TIPPLE LOCATIONS**

Type	County	Township-Range	Section	Quarters-Footage
Main shaft (11.33x17)	Saline	8S 6E	24	NW SE NE
Air shaft (11.33x18)	Saline	8S 6E	24	SE SW NE

**GEOLOGY**

Seam(s) Mined	Depth (ft)	Thickness (ft)			Mining Method
		Min	Max	Ave	
Springfield	465 (456-465)	5.0	6.5	5.42-6.5	MRP

Geologic Problems Reported: The mine outline shown on the accompanying map indicates the presence of many faults and dikes throughout the mine. Most trend northwest-southeast. The most bothersome dike cut diagonally through 13 and 24-T8S-R6E, and was 25 feet wide in the entry northwest of the hoist shaft, flanked by a total of 12 feet of naturally coked coal. At least two more dikes were noted, both in the northeastern part of the mine. One southwest-northeast trending fault, that had 35 feet of displacement, was noted south of the air shaft. The roof contained many slips, which caused many roof falls. One large area in the northern part of the mine (13-T8S-R6E and 18-T8S-R7E) was unmined because the coal was split. The source map indicates the upper split was 4.0 to 4.5 feet thick, with 1 foot or less of coal in the lower split below 2 feet of rock. Pyrite lenses were common in the coal. The floor had many slips, but no heaving was reported.

**PRODUCTION HISTORY**

Company	Mine Name	Years	Production (tons)
J. K. Dering Coal Company	Dering No. 2	1917-1929	2,830,130
Franklin County Coal Company	Franklin County No. 10	1930-1930	178,712
Rex Coal Company	Rex No. 2	1931-1939	3,000,500
Dering Coal Company	Dering No. 2	1940-1951	5,015,490
Eldorado Coal Corporation	Eldorado	1952-1953	85,171
			11,110,003

Last reported production: April 1953

**SOURCES OF DATA**

Source Map	Date	Original Scale	Digitized Scale	Map Type
Microfilm, document 352805	4-18-1953	1:2400	1:5959	Final

Annotated Bibliography (data source, brief description of information)

Coal Reports - Production, ownership, years of operation.  
 Directory of Illinois Coal Mines (Saline County) - Mine names, mine index, ownership, years of operation.  
 Mine notes (Saline County) - Mine type, shaft location, seam, depth, thickness, geologic problems.  
 Microfilm map, document 352805, reel 03140, frames 352-357 - Shaft locations, mine outline, mining method, geologic problems.  
 Company map, ISGS map library, 4103.S32 d5.2-1 - Geologic problems (handwritten on map by G. H. Cady, 1919).

**Mine Index 126****O'Gara Coal Company, O'Gara No. 11 Mine**

Type: Underground    Total mined-out acreage shown: 543

**SHAFT, SLOPE, DRIFT or TIPPLE LOCATIONS**

Type	County	Township-Range	Section	Quarters-Footage
Main shaft	Saline	8S 7E	20	SE SW SE
Air shaft	Saline	8S 7E	28	SW SW SW

**GEOLOGY**

Seam(s) Mined	Depth (ft)	Thickness (ft)			Mining Method
		Min	Max	Ave	
Springfield	398	4.33	6.17	5.5	MRP

**Geologic Problems Reported:** A large fault with a displacement of 21 feet was encountered in the eastern part of the mine. A dike was encountered in the mine, but its location was not shown on the source map. The coal was very hilly, with grades of 4% very common and slopes in all directions. The hills caused many accidents, with at least 5 drivers killed in the mine on account of the steep grades. The coal contained pyrite lenses. Calcite and gypsum were present along cleats.

**PRODUCTION HISTORY**

Company	Mine Name	Years	Production (tons)
O'Gara Coal Company	O'Gara No. 11	1906-1924 *	2,667,487 2,667,487

\* Idle 1915

Last reported production: May 1924

**SOURCES OF DATA**

Source Map	Date	Original Scale	Digitized Scale	Map Type
Microfilm, document 352832	1-2-1923	1:2400	1:5697	Not final
Federal Land Bank Report	1-12-1934	1:90510	1:90510	Secondary source

Annotated Bibliography (data source, brief description of information)

Coal Reports - Production, ownership, years of operation.

Directory of Illinois Coal Mines (Saline County) - Mine names, mine index, ownership, years of operation.

ENR Document 85/01 - Mining method.

Mine notes (Saline County) - Mine type, shaft location, seam, depth, thickness, geologic problems.

Microfilm map, document 352832, reel 03140, frames 402-403 - Shaft locations, mine outline, mining method.

Federal Land Bank Report (Saline County) - Air shaft location.

**Mine Index 127****Sahara Coal Company, Sahara No. 1 Mine**

Type: Underground    Total mined-out acreage shown: 2,213

**SHAFT, SLOPE, DRIFT or TIPPLE LOCATIONS**

Type	County	Township-Range	Section	Quarters-Footage
Main shaft	Saline	9S 6E	2	SE NW NE
Air shaft	Saline	9S 6E	2	SE NW NE

**GEOLOGY**

Seam(s) Mined	Depth (ft)	Thickness (ft)			Mining Method
		Min	Max	Ave	
Springfield	311	4.5	6.5	4.67-5.25	MRP

Geologic Problems Reported: A 1907 gas explosion killed a mine examiner. Two northwest-southeast trending faults cut through the mine. These are subsidiary faults of the Cottage Grove Fault System. The main east-west fault of the system limited southern expansion of the mine. The shale roof was generally good, with little timbering needed. Although in isolated parts of the mine, the roof fell easily when the coal was removed. Pyrite lenses were present in the seam. The underclay heaved when wet, causing squeezes in the mine.

**PRODUCTION HISTORY**

Company	Mine Name	Years	Production (tons)
Diamond Coal Company	Diamond	1904-1905	6,937
O'Gara Coal Company	O'Gara No. 1	1905-1932	9,794,962
Sahara Coal Company	Sahara No. 1	1933-1939	<u>2,334,302</u>
			12,136,201

Last reported production: May 1939

**SOURCES OF DATA**

Source Map	Date	Original Scale	Digitized Scale	Map Type
Microfilm, document 352836	5-19-1939	1:2400	1:4634	Final
Company, 4103.S32 i5.1-27	5-19-1939	1:2400	1:2400	Final
Company, 4103.S32 i5.1-71	7-1-1913	1:2400	1:2400	Not final

Annotated Bibliography (data source, brief description of information)

Coal Reports - Production, ownership, years of operation, geologic problems.

Directory of Illinois Coal Mines (Saline County) - Mine names, mine index, ownership, years of operation.

ENR Document 85/01 - Mining method.

Mine notes (Saline County) - Mine type, shaft location, seam, depth, thickness, geologic problems.

Microfilm map, document 352836, reel 03140, frames 412-415 - Mine outline (south half), mining method.

Company map, ISGS map library, 4103.S32 i5.1-27 - Mine outline (north half), mining method.

Company map, ISGS map library, 4103.S32 i5.1-71 (sheet 3) - Shaft locations.

**Mine Index 799****Sahara Coal Company, Sahara No. 10 Mine**

Type: Underground    Total mined-out acreage shown: 1,951

**SHAFT, SLOPE, DRIFT or TIPPLE LOCATIONS**

Type	County	Township-Range	Section	Quarters-Footage
Main shaft (9x13)	Saline	8S 7E	20	NE NE SE
Air/escapement shaft	Saline	8S 7E	20 *	

\* According to the 1904 Coal Report (page 340), the air and escapement shaft construction was to begin after the hoist shaft was completed in mid-October of 1904, and this shaft was to be 8 feet by 13 feet. No shaft other than the hoist shaft could be discerned on the source maps. This shaft is not shown on the accompanying map, but all mines were legally required to have another place of egress for the miners' safety, and presumably another shaft did exist.

**GEOLOGY**

Seam(s) Mined	Depth (ft)	Thickness (ft)		Mining Method
		Min	Max Ave	
Springfield	407		4.83	MRP

Geologic Problems Reported: A 1918 gas explosion killed two men. Northwest-southeast trending faults were persistent, although the amount of offset was not recorded on the source maps.

**PRODUCTION HISTORY**

Company	Mine Name	Years	Production (tons)
Harrisburg - Big Muddy Coal Company	Harrisburg - Big Muddy	1904-1905	none reported **
O'Gara Coal Company	O'Gara No. 10	1905-1932	6,944,854
Sahara Coal Company	Sahara No. 10	1933-1941	<u>2,477,954</u> 9,422,808

\*\* The mine was under construction in June 1904. The hoist was projected to be completed in October, when the air/escape shaft would be started. No production was recorded under this name.

Last reported production: March 1941

**SOURCES OF DATA**

Source Map	Date	Original Scale	Digitized Scale	Map Type
Microfilm, document 352794	3-28-1941	1:2400	1:4303	Final
Microfilm, document 352805	3-18-1953	1:2400	1:5959	Secondary source

Annotated Bibliography (data source, brief description of information)

Coal Reports - Production, ownership, years of operation, geologic problems.

Directory of Illinois Coal Mines (Saline County) - Mine names, mine index, ownership, years of operation.

Mine notes (Saline County) - Mine type, shaft location, seam, depth, thickness.

Microfilm map, document 352794, reel 03140, frames 333-336 - Shaft location, mine outline, mining method, geologic problems.

Microfilm map, document 352805, reel 03140, frames 352-357 - Mine outline (small portion in NW).

**Mine Index 800****O'Gara Coal Company, O'Gara No. 8 Mine**

Type: Underground    Total mined-out acreage shown: 468

**SHAFT, SLOPE, DRIFT or TIPPLE LOCATIONS**

Type	County	Township-Range	Section	Quarters-Footage
Main shaft	Saline	8S 7E	21	SE NE SW
Air shaft	Saline	8S 7E	21	NW NW SE

**GEOLOGY**

Seam(s) Mined	Depth (ft)	Thickness (ft)			Mining Method
		Min	Max	Ave	
Springfield	403 (393-425)			3.5-5.0	MRP

Geologic Problems Reported: Some gas was reported in 1908. Three men were killed in a 1921 gas explosion. Parts of the mine were affected by faults, but some of these areas were made accessible by installation of some improved haulage equipment. Near some of the faults, gas and considerable water were recorded. A mica-peridotite dike present in this mine was 6 to 8 feet across. The roof was good, but draw slate came down with the coal.

**PRODUCTION HISTORY**

Company	Mine Name	Years	Production (tons)
Eldorado Coal & Coke Company	Eldorado Coal & Coke No. 1	1903-1905	26,521
O'Gara Coal Company	O'Gara No. 8	1905-1927 *	2,652,332
			2,678,853

\* Idle 1925

Last reported production: 1927

**SOURCES OF DATA**

Source Map	Date	Original Scale	Digitized Scale	Map Type
Microfilm, document 352834	3-31-1927	1:2400	1:4138	Final

Annotated Bibliography (data source, brief description of information)

Coal Reports - Production, ownership, years of operation, seam, depth, thickness.

Directory of Illinois Coal Mines (Saline County) - Mine names, mine index, ownership, years of operation.

Mine notes (Saline County) - Mine type, shaft location, depth, geologic problems.

Microfilm map, document 352834, reel 03140, frames 406-409 - Shaft locations, mine outline, mining method.

**Mine Index 803****J. E. Dobyns, Dobyns Mine**

Type: Underground Total mined-out acreage shown: None Production indicates less than 1 acre was mined. Not shown on the accompanying map due to later surface mining by the Wildcat Hills Cottage Grove Mine (mine index 1044).

**SHAFT, SLOPE, DRIFT or TIPPLE LOCATIONS**

Type	County	Township-Range	Section	Quarters-Footage
Main slope	Saline	9S 7E	1 *	

\* An accurate location for this mine is not known. Although it is plotted near the center of the section, the mine may be anywhere in Section 1-T9S-R7E.

**GEOLOGY**

Seam(s) Mined	Depth (ft)	Thickness (ft)			Mining Method
		Min	Max	Ave	
Herrin	48-58			4.0	RP

Geologic Problems Reported:

**PRODUCTION HISTORY**

Company	Mine Name	Years	Production (tons)
J. E. Dobyns	Dobyns	1905-1907	<u>1,584</u> 1,584

Last reported production: 1907

**SOURCES OF DATA**

Source Map	Date	Original Scale	Digitized Scale	Map Type
ISGS mine notes	Undated	(text only)	1:24000 **	Secondary source

\*\* The mine location was plotted on a 1:24000 USGS topographic map from the mine location description and digitized.

Annotated Bibliography (data source, brief description of information)

Coal Reports - Production, ownership, years of operation, depth, thickness, mining method.

Directory of Illinois Coal Mines (Saline County) - Mine names, mine index, ownership, years of operation.

Mine notes (Saline County) - Mine type, mine location, seam.

**Mine Index 983**  
**Equality Mining Company, Equality Mine**

Type: Surface Total mined-out acreage shown: 765

**SHAFT, SLOPE, DRIFT or TIPPLE LOCATIONS**

Type	County	Township-Range	Section	Quarters-Footage
Pit	Saline	9S 7E	10	

**GEOLOGY**

Seam(s) Mined	Depth (ft)	Thickness (ft)			Mining Method
		Min	Max	Ave	
Herrin	25-75			4.11	Surface

Geologic Problems Reported: There was a peridotite sill present in a portion of the mine. Some minor faults were also reported. The source map shows some of this faulting, trending north-northwest to south-southeast. These faults were in NE 10-T9S-R7E.

**PRODUCTION HISTORY**

Company	Mine Name	Years	Production (tons)
Equality Mining Company	Equality	1978-1991	5,041,753
			5,041,753

Last reported production: 1991

**SOURCES OF DATA**

Source Map	Date	Original Scale	Digitized Scale	Map Type
Company, 4103.S32 i5.1-95	7-1-1989	1:4800	1:4800	Not final *
Company, ISGS active mine file	1-31-2002	1:4800	1:4800	Secondary source *

\* The mined area shown on the accompanying map is the approximate size expected for the reported production. This suggests that the mine outline is complete.

Annotated Bibliography (data source, brief description of information)

Coal Reports - Production, ownership, years of operation, depth.  
 Directory of Illinois Coal Mines (Saline County) - Mine names, mine index, ownership, years of operation.  
 Mine notes (Saline County) - Mine type, pit location, seam, geologic problems.  
 Company map, ISGS map library, 4103.S32 i5.1-95 - Mine outline, mining method.  
 Coal Section files (active mines), map of Big Ridge Portal No. 2 Mine (mine index 1021) - Mine outline (north).

**Mine Index 1015****Big Ridge, Inc., Big Ridge Portal No. 1 Mine**

Type: Underground    Total mined-out acreage shown: 2,509

**SHAFT, SLOPE, DRIFT or TIPPLE LOCATIONS**

Type	County	Township-Range	Section	Quarters-Footage
Main slope	Saline	9S 7E	20	NW NW SW
Air shaft	Saline	9S 7E	20	NW SW NW

**GEOLOGY**

Seam(s) Mined	Depth (ft)	Thickness (ft)			Mining Method
		Min	Max	Ave	
Springfield	150	4.3	6.0	4.5	RPP

Geologic Problems Reported: Northwest-southeast trending faults that parallel the Cottage Grove Fault System run through the mine.

**PRODUCTION HISTORY**

Company	Mine Name	Years	Production (tons)
Arclar Company	Big Ridge Portal No. 1	1990-1997	9,249,080 *
Big Ridge, Inc.	Big Ridge Portal No. 1	1998-1998	384,466 *
			9,633,546

\* The production for Portal No. 1 and Portal No. 2 (mine index 1021) was not listed separately in the Coal Reports. The reported production for 1997 and 1998 has been split into an estimate for each of the two mines.

Last reported production: 1998 (Text on the source map stated that the bottom was sealed 8-13-1998.)

**SOURCES OF DATA**

Source Map	Date	Original Scale	Digitized Scale	Map Type
Company, 4103.S32 i5.1-96	2-16-1999	1:4800	1:4800	Final

Annotated Bibliography (data source, brief description of information)

Coal Reports - Production, ownership, years of operation, depth, thickness.

Directory of Illinois Coal Mines (Saline County) - Mine names, mine index, ownership, years of operation.

Mine notes (Saline County) - Mine type, slope location, seam, thickness.

Company map, ISGS map library, 4103.S32 i5.1-96 - Slope & shaft locations, mine outline, mining method, geologic problems.

**Mine Index 1021****Big Ridge, Inc., Big Ridge Portal No. 2 Mine**

Type: Underground    Total mined-out acreage shown: 1,889

**SHAFT, SLOPE, DRIFT or TIPPLE LOCATIONS**

Type	County	Township-Range	Section	Quarters-Footage
Slope	Saline	9S 7E	6	SW SE SE
Air shaft	Saline	9S 7E	7	NE NE NE

**GEOLOGY**

Seam(s) Mined	Depth (ft)	Thickness (ft)			Mining Method
		Min	Max	Ave	
Springfield	150	4.3	4.67	4.5	CRP

Geologic Problems Reported: A fault zone was present at the bottom of the slope. Roof falls occurred throughout, several months after mining took place. Faults related to the Cottage Grove fault system were present throughout.

**PRODUCTION HISTORY**

Company	Mine Name	Years	Production (tons)
Arclar Company	Big Ridge Portal No. 2	1997-1997	716,913 *
Big Ridge, Inc.	Big Ridge Portal No. 2	1998-2001	6,717,825 *
Arclar Company	Big Ridge Portal No. 2	2002-2002	<u>117,000</u>
			7,551,738

\* The production for Portal No. 1 and Portal No. 2 (mine index 1021) was not listed separately in the Coal Reports. The reported production for 1997 and 1998 has been split into an estimate for each of the two mines. In addition, some of the tonnage reported in 2001 may have been mined from the Willow Lake Surface Mine (mine index 1033).

Last reported production: 2002 (The mine was closed after an explosion on 2-1-2002.)

**SOURCES OF DATA**

Source Map	Date	Original Scale	Digitized Scale	Map Type
Company, Coal Section files	1-31-2002	1:4800	1:4800	Final

Annotated Bibliography (data source, brief description of information)

Coal Reports - Production, ownership, years of operation.

Directory of Illinois Coal Mines (Saline County) - Mine names, mine index, ownership, years of operation.

Mine notes (Saline County) - Mine type, seam, thickness, geologic problems.

Company map, Coal Section files (active mines) - Slope & shaft locations, mine outline, mining method.

**Mine Index 1022****Black Beauty Mining Company, Wildcat Hills Eagle Valley Mine**

Type: Surface Total mined-out acreage shown: 942 This mine is not shown on the accompanying map, but its production includes part of the production for Wildcat Hill Cottage Grove Mine (mine index 1044).

**SHAFT, SLOPE, DRIFT or TIPPLE LOCATIONS**

Type	County	Township-Range	Section	Quarters-Footage
Tipple	Gallatin	10S 8E	17	NE SW
Pit	Gallatin	10S 8E	5	
Pit	Gallatin	10S 8E	6	

**GEOLOGY**

Seam(s) Mined	Depth (ft)	Thickness (ft)			Mining Method
		Min	Max	Ave	
Herrin	65-85			3.8-4.0	Surface
Springfield	35				Surface

Geologic Problems Reported:

**PRODUCTION HISTORY**

Company	Mine Name	Years	Production (tons)
Black Beauty Mining Company	Wildcat Hills	1998-2001	5,988,417 *
Arclar Company	Wildcat Hills	2002-2004	7,855,678 *
Black Beauty Mining Company	Wildcat Hills Eagle Valley	2005-2007	<u>6,586,992</u> *
			20,431,087

\* Production from 2000-2005 also includes Wildcat Hills Cottage Grove Mine (mine index 1044).

Last reported production: 2007

**SOURCES OF DATA**

Source Map	Date	Original Scale	Digitized Scale	Map Type
Company, Coal Section digital files	2008	unknown	1:24000	Final

Annotated Bibliography (data source, brief description of information)

Coal Reports - Production, ownership, years of operation, seam, depth, thickness.

Directory of Illinois Coal Mines (Gallatin County) - Mine names, mine index, ownership, years of operation.

Mine notes (Gallatin County) - Mine type, mine location, seam, depth, mining method.

Company digital map, Coal Section files - Mine outline, mining method.

**Mine Index 1028**  
**Big Ridge, Inc., Willow Lake Mine**

Type: Underground    Total mined-out acreage shown: 9,226

**SHAFT, SLOPE, DRIFT or TIPPLE LOCATIONS**

Type	County	Township-Range	Section	Quarters-Footage
Main slope	Saline	9S 7E	1	NE SW SW
Air shaft	Saline	9S 7E	1	SW NE SW
Air shaft	Saline	9S 7E	1	SW NE SW
Air shaft	Saline	8S 8E	20	NW SE NW

**GEOLOGY**

Seam(s) Mined	Depth (ft)	Thickness (ft)			Mining Method
		Min	Max	Ave	
Springfield					MRP

Geologic Problems Reported:

**PRODUCTION HISTORY**

Company	Mine Name	Years	Production (tons)
Arclar Coal Company	Willow Lake	2002-2009	26,187,759
Big Ridge, Inc.	Willow Lake	2010-2012	<u>7,236,212</u> *
			33,423,971

\* This production includes tonnage from the Willow Lake surface mine (mine index 1033).

Last reported production: November 17, 2012

**SOURCES OF DATA**

Source Map	Date	Original Scale	Digitized Scale	Map Type
Company, Coal Section files	2-29-2012	1:4800	1:4800	Not final
Company, digital outline	2014	1:24000	1:24000	Final

Annotated Bibliography (data source, brief description of information)

Coal Reports - Production, ownership, years of operation.  
 Directory of Illinois Coal Mines (Saline County) - Mine names, mine index, ownership, years of operation.  
 Mine notes (Saline County) - Mine type, shaft location, seam, depth, thickness.  
 Company map, Coal Section digital files (2012 active mines) - Slope & shaft locations, mine outline, mining method.  
 Company map, digital outline supplied to Illinois Department of Mines & Minerals - Mine outline.

**Mine Index 1033**  
**Arclar Coal Company, Willow Lake Surface Mine**

Type: Surface    Total mined-out acreage shown: 485

**SHAFT, SLOPE, DRIFT or TIPPLE LOCATIONS**

Type	County	Township-Range	Section	Quarters-Footage
Pit	Saline	9S 7E	1	SW

**GEOLOGY**

Seam(s) Mined	Depth (ft)	Thickness (ft)			Mining Method
		Min	Max	Ave	
Herrin					Surface

Geologic Problems Reported:

**PRODUCTION HISTORY**

Company	Mine Name	Years	Production (tons)
Arclar Coal Company *	Willow Lake	2001-2005	

\* Production for this mine was not reported separately in the Coal Reports. The tonnage is probably included in the production for the Willow Lake Mine (mine index 1028) and the earlier production was probably included with Big Ridge Portal No. 2 Mine (mine index 1021).

Last reported production: May 2005

**SOURCES OF DATA**

Source Map	Date	Original Scale	Digitized Scale	Map Type
Company map, Coal Section files	2008	Unknown	Unknown	Final
NAIP digital ortho-photo quadrangle	2015	1:6000	1:6000	Secondary source

Annotated Bibliography (data source, brief description of information)

Coal Reports - Production, ownership, years of operation.  
 Directory of Illinois Coal Mines (Saline County) - Mine names, mine index, ownership, years of operation.  
 Company map, Coal Section files (digital file) - Mine outline.  
 National Agriculture Imagery Program map, digital ortho-photo quadrangle map - Mine outline.

**Mine Index 1038**  
**Peabody Midwest Mining, Wildcat Hills Underground Mine**

Type: Underground    Total mined-out acreage shown: 5,077

**SHAFT, SLOPE, DRIFT or TIPPLE LOCATIONS**

Type	County	Township-Range	Section	Quarters-Footage
Main drift	Saline	9S 7E	1	SE NW NW
Air drift	Saline	9S 7E	1	SE NW NW
Air drift	Saline	9S 7E	1	SE NW NW
Air drift	Saline	9S 7E	1	SE NW NW

**GEOLOGY**

Seam(s) Mined	Depth (ft)	Thickness (ft)			Mining Method
		Min	Max	Ave	
Herrin	110			4.5-5.0	CRP

Geologic Problems Reported:

**PRODUCTION HISTORY**

Company	Mine Name	Years	Production (tons)
Black Beauty Coal Company	Wildcat Hills Underground	2006-2009	2,763,409
Peabody Midwest Mining	Wildcat Hills Underground	2010-2019	<u>14,236,572</u>
			16,999,572

Last reported production: 2019

**SOURCES OF DATA**

Source Map	Date	Original Scale	Digitized Scale	Map Type
Company, 6-379N	3-27-2020	1:4800	1:4800	Final *

\* Map is not marked final, but from the map date it has been coded final.

Annotated Bibliography (data source, brief description of information)

Coal Reports - Production, ownership, years of operation.  
 Directory of Illinois Coal Mines (Saline County) - Mine names, mine index, ownership, years of operation.  
 Company map, Coal Section files, 6-379N - Drift locations, mine outline, mining method.

**Mine Index 1044****Peabody Midwest Mining, Wildcat Hills Cottage Grove Mine**

Type: Surface Total mined-out acreage shown: 4,042 in Herrin Coal, 317 in Briar Hill Coal, 487 in Springfield Coal.

**SHAFT, SLOPE, DRIFT or TIPPLE LOCATIONS**

Type	County	Township-Range	Section	Quarters-Footage
Pit (Herrin)	Gallatin	9S 7E	1, 2, 3, 10, 11, 12, 14	
Pit (Herrin)	Gallatin	9S 8E	4, 5, 6, 7, 8, 9, 17	
Pit (Briar Hill)	Gallatin	9S 7E	11, 14	
Pit (Springfield)	Gallatin	9S 7E	11, 14, 15, 22, 23	

**GEOLOGY**

Seam(s) Mined	Depth (ft)	Thickness (ft)			Mining Method
		Min	Max	Ave	
Danville *				1.5-2.0	Surface
Allenby *				1.0-2.0	Surface
Herrin				3.7-4.6	Surface
Briar Hill				1.7-2.0	Surface
Springfield *				4.2-5.0	Surface

\* The Danville Coal is mined only in the northern portions of the northernmost pits. The Allenby Coal was said to have been mined in 2003, and again 2006-2011. The Allenby Coal is commonly found in channel deposits, so it is unclear which pits this coal was mined in. The Springfield Coal is mined in the southernmost pit, and in portions of the northern pits, south of the underground mines in the Springfield Coal. Depth to the coals is 40-155 feet, but it is not easily split out by seam.

Geologic Problems Reported:**PRODUCTION HISTORY**

Company	Mine Name	Years	Production (tons)
Black Beauty Coal Company	Wildcat Hills Cottage Grove	2000-2009	4,347,151 **
Peabody Midwest Mining	Wildcat Hills Cottage Grove	2010-2019	12,250,083
			16,597,234

\*\* The 2000-2005 production is included in the totals for Wildcat Hills Eagle Valley mine (mine index 1022).

Last reported production: 2019

**SOURCES OF DATA**

Source Map	Date	Original Scale	Digitized Scale	Map Type
NAIP digital ortho-photo quadrangle	2019	1:6000	1:6000	Secondary source

Annotated Bibliography (data source, brief description of information)

Coal Reports - Production, ownership, years of operation.

Directory of Illinois Coal Mines (Saline County) - Mine names, mine index, ownership, years of operation.

National Agriculture Imagery Program map, digital ortho-photo quadrangle map - Mine outline, mining method.

**Mine Index 3296****Saline Valley Coal Company, Saline Valley Mine**

Type: Underground    Total mined-out acreage shown: 3    Production indicates less than 1 acre was mined after the map date.

**SHAFT, SLOPE, DRIFT or TIPPLE LOCATIONS**

Type	County	Township-Range	Section	Quarters-Footage
Main shaft	Saline	9S 7E	1	NE SE NW
Air shaft	Saline	9S 7E	1	NE SE NW

**GEOLOGY**

Seam(s) Mined	Depth (ft)	Thickness (ft)			Mining Method
		Min	Max	Ave	
Herrin					MRP

Geologic Problems Reported:

**PRODUCTION HISTORY**

Company	Mine Name	Years	Production (tons)
Saline Valley Coal Company	Saline Valley	1932-1936	5,020
Saline Valley Coal Company	Saline Valley	1935-1936	1,650 *
Lanham & Bennett	Lanham & Bennett	1937-1937	800 *
Saline Valley Coal Company	Saline Valley	1938-1938	292 *
			<u>7,762</u>

\* Production after map date

Last reported production: 1938

**SOURCES OF DATA**

Source Map	Date	Original Scale	Digitized Scale	Map Type
Company, 4103.S32 i5.1-22	11-6-1935	1:1200	1:1200	Not final

Annotated Bibliography (data source, brief description of information)

Coal Reports - Production, ownership, years of operation.

Directory of Illinois Coal Mines (Saline County) - Mine names, mine index, ownership, years of operation.

ENR Document 85/01 - Mining method.

Mine notes (Saline County) - Mine type, shaft location, seam.

Company map, ISGS map library, 4103.S32 i5.1-22 - Shaft locations, mine outline, mining method.

**Mine Index 4702****Lanham Coal Company, Lanham No. 2 Mine**

Type: Underground Total mined-out acreage shown: Less than 1 acre Production indicates less than 1 acre was mined after the map date. This mine is shown in a general area of mining depicted on the 1934 Federal Land Bank Report map. Previous mining nearby is indicated. Not shown on the accompanying map due to later surface mining by Willow Lake Mine (mine index 1033).

**SHAFT, SLOPE, DRIFT or TIPPLe LOCATIONS**

Type	County	Township-Range	Section	Quarters-Footage
Main slope *	Saline	9S 7E	1	SW SW NW

\* The location of a proposed air shaft was shown on the source map, but the mine closed before the workings extended to the air shaft location. Since the Lanham No. 2 Mine only operated 53 days in 1950, and the air shaft was only "proposed" on the February source map, construction of the air shaft was probably minimal and is not shown on the accompanying map.

**GEOLOGY**

Seam(s) Mined	Depth (ft)	Thickness (ft)			Mining Method
		Min	Max	Ave	
Herrin					RP

Geologic Problems Reported:

**PRODUCTION HISTORY**

Company	Mine Name	Years	Production (tons)
Ingram Coal Company	Ingram	1949-1949	72
Lanham Coal Company	Lanham No. 2	1950-1950	1,339
Lanham Coal Company	Lanham No. 2	1950-1950	<u>1,339</u> **
			2,750

\*\* Production after map date

Last reported production: 1950

**SOURCES OF DATA**

Source Map	Date	Original Scale	Digitized Scale	Map Type
Microfilm, document 352804	2-26-1950	1:2400	1:3641	Not final

Annotated Bibliography (data source, brief description of information)

Coal Reports - Production, ownership, years of operation, mining method.

Directory of Illinois Coal Mines (Saline County) - Mine names, mine index, ownership, years of operation.

Microfilm map, document 352804, reel 03140, frame 351 - Slope & shaft locations, mine outline, mining method.

## OTHER MINES SHOWN ON THE ELDORADO QUADRANGLE

Mine Index 3272 NE NW SE 1-T9S-R7E, Herrin Coal, shaft source: ISGS field notes (L. C. McCabe)  
Not shown on accompanying map due to later surface mining.

Mine Index 3322 SW SW NW 1-T9S-R7E, Herrin Coal, underground mine source: Federal Land Bank Report & ISGS field notes (L. C. McCabe) Mine is mostly stripped out due to later surface mining.

Mine Index 3693 NE NW SE 2-T9S-R7E, Herrin Coal, underground mine source: Federal Land Bank Report  
Not shown on accompanying map due to later surface mining.

## MINES WHOSE LOCATIONS ARE NOT KNOWN ON THE ELDORADO QUADRANGLE

The locations of the following mines are unknown, but the production tonnage, operating names, and nearest town were reported in the annual Coal Reports. The operators listed below mined in or near the Eldorado Quadrangle. The information shown is similar to that presented on the summary sheets in the previous pages of this directory. The first item is the name the mine operated under as listed in the Coal Report, then the years the mine reported. If no physical data are available, the next item listed is the total tons produced by the mine. If physical data are available, the order of presentation is as follows: type of opening for the mine (drift, slope or shaft), depth of coal in feet, and thickness of coal in feet.

The total tons mined by these unlocated mines is 463,501 (438,272 underground, 10,696 surface mined and 14,542 by uncertain method), which would represent approximately 93 to 143 acres, depending on the recovery factor, mining method, and numerous other factors. (Note: 1 square mile = 640 acres)

### ELDORADO

Eldorado Coal Company, 1884-1887, slope, Herrin, 25, 4.5-4.67, RP	10,136 tons
Musgrove (J. H.), 1887-1893	30,427 tons
Eldorado Coal Company, 1895-1896	<u>480 tons</u>
	41,043 tons
Evans & Lloyd, 1901-1903, shaft, 40, 3.5, RP	3,700 tons
Lloyd (J. R.), 1903-1904	<u>150 tons</u>
	3,850 tons
Cook & Blockley, 1900-1901, shaft, Herrin, 50, 4.0, RP	1,252 tons
Leeper (C. M.), Diamond No. 1 Mine, 1900-1903, shaft, —, 40-50, 3.5-4.0, RP	4,393 tons
Casaway Brothers, Diamond Joe Mine, 1903-1904	<u>2,200 tons</u>
	6,593 tons
Robinson (Standford) Coal Company, 1948-1949, underground	580 tons
Greeley Coal Company, 1950-1952, underground	255 tons
Tarlton Coal Company, No. 1 Mine, 1953-1956	<u>489 tons</u>
	744 tons

### ELIZABETHTOWN

Adams Coal Company, 1957-1957, surface	4,172 tons
--	------------

### EQUALITY

Equality Coal & Coke Company, 1881-1884, —, —, 10-80, 4.5-4.875, RP	238,000 tons
Equality Coal Company, 1884-1887	<u>73,880 tons</u>
	311,880 tons
Equality Coal & Coke Company was connected with (owned or operated by) Cassel & Temple Salt Works	
Donahue (John), 1884-1886, shaft or drift, Herrin, 30-35, 4.5, RP	2,287 tons

Reily & Hall, 1895-1896, drift, —, 35, 4.5, RP	200 tons
Moore (S. J.), 1903-1910, drift, —, 10-80, 4.0-4.5, RP	945 tons
Moore & Robinson, 1910-1911	572 tons
Moore (S. J.), 1911-1920	<u>7,535</u> tons
	9,052 tons
Moore (Sam), 1924-1925	1,000 tons
Tanner (W.), 1927-1928	<u>3,100</u> tons
	4,100 tons
Moore (S.), 1934-1934, underground	785 tons
Yates (John), 1907-1910, drift, Springfield, 20-30, 4.0-5.0, RP	1,132 tons
Hazel & Houston, 1910-1911	616 tons
Hazel & Steele, 1911-1912	600 tons
Syers Brothers, 1912-1913	1,194 tons
Hazel (Sam), 1913-1914	1,200 tons
Yates (John), 1914-1918	<u>1,350</u> tons
	6,092 tons
Osborn (Thomas), 1908-1920, drift, Springfield, 10-20, 4.0-5.0, RP	3,440 tons
Osborn (Thomas), 1934-1935, underground	72 tons
Imboden (J. W.) & Son, 1909-1910, drift, Springfield, 12-50, 4.0-4.67, RP	173 tons
Dunn (Amos), 1910-1911	412 tons
Ollison & Edwards, 1911-1912	50 tons
Edwards (James), 1912-1913	50 tons
McDaniel (Herman), 1913-1914	150 tons
Allen (Jessie), 1914-1918	<u>5,231</u> tons
	6,066 tons
Reynolds (John), 1909-1911, drift, —, 10-20, 4.0-4.67, RP	30 tons
Yates & Reynolds, 1911-1912	100 tons
Yates & Land, 1912-1913	240 tons
Yates (James), 1913-1915	765 tons
Yates (John), 1915-1916	630 tons
Yates (James), 1916-1920	<u>1,435</u> tons
	3,200 tons
Hart (Maggie), 1901-1910, slope, Herrin, 20, 4.0, RP	32 tons
Hart (Mag), 1912-1913, drift, Springfield, 3-10, 4.0-4.67, RP	200 tons
Sisk (Mag), 1913-1916	1,097 tons
Reynolds (John), 1916-1918	<u>1,732</u> tons
	3,029 tons
Raulston (J. F.), 1914-1915, drift, Springfield, 6, 4.0, RP	62 tons
Colbert (Thomas), 1934-1935, underground	115 tons
Imboden (T. J.), 1918-1920	1,016 tons
Cummings (Robert), 1918-1919	320 tons
Durfee (Frank), 1919-1920	<u>500</u> tons
	820 tons
Carlton (A.), 1919-1920	240 tons
Karns (E. D.), 1923-1924	1,250 tons
Chinn (W. R.), 1923-1924, underground	500 tons
Kelly & McAllister, 1924-1925	400 tons
Kelly (Jack), 1925-1928	910 tons

Strobel (A. O.), 1929-1936	<u>11,164</u> tons 12,974 tons
Forrester (Logan), 1924-1925	537 tons
Tronsdale (A. P.), 1924-1925	425 tons
Pyles (Isaac), 1924-1926	850 tons
Caraway (Wayne), 1924-1925	108 tons
Yeates (Herbert), 1925-1925, underground	40 tons
Cummins (Bob), 1926-1926	20 tons
Collier (J. A.), 1927-1927	40 tons
Commins (Robert), 1928-1928	<u>250</u> tons 350 tons
Hobbs (Joe), 1927-1927	400 tons
Duncan (O. C.), 1928-1929, underground	4,250 tons
Co-operative Coal Company, 1930-1932	<u>3,796</u> tons 8,046 tons
White (Isaac), 1928-1934, underground	7,015 tons
Kingston (Ben), 1928-1928, underground	50 tons
Bishop (Albert), 1928-1928, underground	50 tons
C. & H. Coal Company, 1931-1932, underground	2,692 tons
H. & H. Coal Company, 1933-1935	<u>4,960</u> tons 7,652 tons
Hewston (James), 1932-1932, underground	1,000 tons
Littlefield (J. G.), 1934-1936, underground	867 tons
Mosman (Fred) Coal Company, No. 1 Mine, 1934-1935, underground	210 tons
Mosman (Fred) Coal Company, No. 2 Mine, 1934-1935, underground	275 tons
Lands (James), 1934-1935, underground	55 tons
Finney (Walter), 1934-1934, underground	25 tons
Brugg (Kenneth), No. 1 Mine, 1936-1936, underground	400 tons
Vinyard Coal Company, No. 3 Mine, 1957-1957, surface	2,000 tons

## **SOUTH AMERICA**

Curtner (John), 1889-1891, surface, Herrin, 10, 5.0	730 tons
Curtner (Daniel), 1891-1893	<u>852</u> tons 1,582 tons
Speare (Philip), 1889-1891, surface, Herrin, —, 5.0	1,000 tons
Harris (W. W.), 1889-1890, surface, Herrin, —, 5.33	320 tons
Harris & Motsinger, 1890-1891	<u>560</u> tons 880 tons
Rush (W. V.), 1889-1890, surface, Herrin, —, 5.0	600 tons
Rush & Shanks, 1890-1891	<u>2,206</u> tons 2,806 tons

Thompson (Bryant), 1890-1891, surface, Herrin, —, 5.0	256 tons
Stiff (Noah), 1895-1899, drift, Herrin, 10-15, 5.0, RP	695 tons

## INDEX OF MINES IN THE ELDORADO QUADRANGLE

Adams Coal Company . . . . .	28
Allen (Jessie) . . . . .	29
Arclar Coal Company, Willow Lake Mine . . . . .	22
Arclar Coal Company, Willow Lake Surface Mine . . . . .	23
Arclar Company, Big Ridge Mine . . . . .	20
Arclar Company, Big Ridge Portal No. 1 Mine . . . . .	19
Arclar Company, Wildcat Hills Mine . . . . .	21
Bennett (Lanham & Bennett) . . . . .	26
Big Creek Coal Company . . . . .	11
Big Creek Coals, Inc. . . . .	11
Big Creek Collieries Company . . . . .	11
Big Muddy (Harrisburg - Big Muddy Coal Company) . . . . .	15
Big Ridge, Inc. . . . .	20, 22
Big Ridge, Inc., Portal No. 1 Mine . . . . .	19
Bishop (Albert) . . . . .	30
Black Beauty Coal Company, Wildcat Hills Cottage Grove Mine . . . . .	25
Black Beauty Coal Company, Wildcat Hills Underground Mine . . . . .	24
Black Beauty Mining Company, Wildcat Hills Eagle Valley Mine . . . . .	21
Blockley (Cook & Blockley) . . . . .	28
Brugg (Kenneth) . . . . .	30
C. & H. Coal Company . . . . .	30
Caraway (Wayne) . . . . .	30
Carlton (A.) . . . . .	29
Casaway Brothers . . . . .	28
Cassel & Temple Salt Works . . . . .	28
Chinn (W. R.) . . . . .	29
Co-operative Coal Company . . . . .	30
Colbert (Thomas) . . . . .	29
Collier (J. A.) . . . . .	30
Commins (Robert) . . . . .	30
Cook & Blockley . . . . .	28
Cummings (Robert) . . . . .	29
Cummins (Bob) . . . . .	30
Curtner (Daniel) . . . . .	30
Curtner (John) . . . . .	30
Dering (J. K.) Coal Company . . . . .	12
Dering Coal Company, No. 02 Mine . . . . .	12
Dering Coal Company, No. 03 Mine . . . . .	10
Diamond Coal Company . . . . .	14
Diamond Joe Mine . . . . .	28
Diamond No. 1 Mine . . . . .	28
Dobyns (J. E.) . . . . .	17
Donahue (John) . . . . .	28
Duncan (O. C.) . . . . .	30
Dunn (Amos) . . . . .	29
Durfee (Frank) . . . . .	29
Edwards (James) . . . . .	29
Edwards (Ollison & Edwards) . . . . .	29
Eldorado Coal & Mining Company . . . . .	10
Eldorado Coal Company . . . . .	28
Eldorado Coal Corporation . . . . .	12
Equality Coal & Coke Company . . . . .	28
Equality Coal Company . . . . .	28
Equality Mining Company . . . . .	18
Evans & Lloyd . . . . .	28
Finney (Walter) . . . . .	30
Forrester (Logan) . . . . .	30
Franklin County Coal Company . . . . .	12
Grayson Mine . . . . .	11
Greeley Coal Company . . . . .	28
H. & H. Coal Company . . . . .	30
Hall (Reily & Hall) . . . . .	29
Harris (W. W.) . . . . .	30

Harris & Motsinger . . . . .	30
Harrisburg - Big Muddy Coal Company . . . . .	15
Harrisburg Southern Coal Company . . . . .	11
Hart (Mag) . . . . .	29
Hart (Maggie) . . . . .	29
Hazel (Sam) . . . . .	29
Hazel & Houston . . . . .	29
Hazel & Steele . . . . .	29
Hewston (James) . . . . .	30
Hobbs (Joe) . . . . .	30
Houston (Hazel & Houston) . . . . .	29
Imboden (J. W.) & Son . . . . .	29
Imboden (T. J.) . . . . .	29
Ingram Coal Company . . . . .	27
Karns (E. D.) . . . . .	29
Kelly (Jack) . . . . .	29
Kelly & McAllister . . . . .	29
Kingston (Ben) . . . . .	30
Land (Yates & Land) . . . . .	29
Lands (James) . . . . .	30
Lanham & Bennett . . . . .	26
Lanham Coal Company . . . . .	27
Leeper (C. M.) . . . . .	28
Littlefield (J. G.) . . . . .	30
Lloyd (Evans & Lloyd) . . . . .	28
Lloyd (J. R.) . . . . .	28
McAllister (Kelly & McAllister) . . . . .	29
McDaniel (Herman) . . . . .	29
Moore (S. J.) . . . . .	29
Moore (S.) . . . . .	29
Moore (Sam) . . . . .	29
Moore & Robinson . . . . .	29
Mosman (Fred) Coal Company, No. 1 Mine . . . . .	30
Mosman (Fred) Coal Company, No. 2 Mine . . . . .	30
Motsinger (Harris & Motsinger) . . . . .	30
Musgrove (J. H.) . . . . .	28
National Mining Company . . . . .	11
Ollison & Edwards . . . . .	29
Osborn (Thomas) . . . . .	29
O'Gara Coal Company, No. 01 Mine . . . . .	14
O'Gara Coal Company, No. 08 Mine . . . . .	16
O'Gara Coal Company, No. 10 Mine . . . . .	15
O'Gara Coal Company, No. 11 Mine . . . . .	13
Peabody Coal Company . . . . .	11
Peabody Midwest Mining, Wildcat Hills Cottage Grove Mine . . . . .	25
Peabody Midwest Mining, Wildcat Hills Underground . . . . .	24
Pyles (Isaac) . . . . .	30
Raulston (J. F.) . . . . .	29
Reily & Hall . . . . .	29
Rex Coal Company . . . . .	12
Reynolds (John) . . . . .	29
Reynolds (Yates & Reynolds) . . . . .	29
Robinson (Moore & Robinson) . . . . .	29
Robinson (Standford) Coal Company . . . . .	28
Rush (W. V.) . . . . .	30
Rush & Shanks . . . . .	30
Sahara Coal Company, No. 01 Mine . . . . .	14
Sahara Coal Company, No. 10 Mine . . . . .	15
Saline County Coal Company . . . . .	11
Saline County Coal Corporation, No. 06 Mine . . . . .	11
Saline County Coal Corporation, No. 46 Mine . . . . .	11
Saline Valley Coal Company . . . . .	26
Shanks (Rush & Shanks) . . . . .	30
Sisk (Mag) . . . . .	29
Southern Counties Coal Company . . . . .	10

Speare (Philip) . . . . .	30
Steele (Hazel & Steele) . . . . .	29
Stiff (Noah) . . . . .	31
Strobel (A. O.) . . . . .	30
Syers Brothers . . . . .	29
Tanner (W.) . . . . .	29
Tarlton Coal Company . . . . .	28
Temple (Cassel & Temple Salt Works) . . . . .	28
Thompson (Bryant) . . . . .	31
Tronsdale (A. P.) . . . . .	30
Vinyard Coal Company, No. 3 Mine . . . . .	30
Wasson Coal Company . . . . .	9
White (Isaac) . . . . .	30
Wildcat Hills Cottage Grove Mine . . . . .	25
Wildcat Hills Eagle Valley Mine . . . . .	21
Wildcat Hills Underground Mine . . . . .	24
Yates (James) . . . . .	29
Yates (John) . . . . .	29
Yates & Land . . . . .	29
Yates & Reynolds . . . . .	29
Yeates (Herbert) . . . . .	30

Funding for this project was supplied by the Illinois Department of Transportation.