

Coal Mines in Illinois Elkville Quadrangle Jackson, Perry & Franklin Counties, Illinois

Springfield & Danville Coals

This map accompanies the Coal Mines Directory for the Elkville Quadrangle and map of mines in the Herrin Coal, Elkville Quadrangle. Consult the directory for a complete explanation of the information shown on this map.

Mining Method

- Room & Pillar (RP)
- Room & Pillar Basic (RPB)
- Modified Room & Pillar (MRP)
- Room & Pillar Panel (RPP)
- Blind Room & Pillar (BRP)
- Checkerboard Room & Pillar (CRP)
- High Extraction Retreat (HER)
- Longwall (LW)
- Underground, Method Unknown
- Strip Mine
- Auger Mine
- General Area of Mining

Other Areas Depicted

- Non-Coal Mines

Source of Mine Outline

- Final Mine Map
- Not Final Mine Map
- Undated Mine Map
- Incomplete Mine Map
- Secondary Source Map

Tipple, Shaft, Slope, Drift Locations

- Strip Mine Tipple - Active
- Strip Mine Tipple - Abandoned
- Mine Shaft - Active
- Mine Shaft - Abandoned
- Mine Slope - Active
- Mine Slope - Abandoned
- Mine Drift - Active
- Mine Drift - Abandoned
- Air Shaft
- Uncertain Location
- Uncertain Type of Opening

Other Points Depicted

- Non-Coal Mines

Location



Mine Annotation (space permitting)

Company
Mine Name
ISGS Index No., Years of Operation

Disclaimer

Please check the Coal Section at the Illinois State Geological Survey's web site at <https://www.isgs.illinois.edu> for the most up-to-date version of these products.

Note that each quadrangle scale mined-out area map requires the use of the associated text directory for full explanation of map features and their attributes. Also note that some quadrangles have multiple seams of mining and therefore more than one map may be available for a particular quadrangle. Please take care to check for multiple maps, as extensive mining may exist in the other seams.

The maps and digital files used for these studies were compiled from data obtained from a variety of public and private sources and have varying degrees of completeness and accuracy. This compilation map presents reasonable interpretation of the geology of the area and is based on available data. Locations of some mine features may be offset by 500 feet or more due to errors in the original source maps, the compilation process, digitizing, or a combination of these factors. These data are not intended for use in site-specific screening or decision-making. Use of these documents does not eliminate the need for detailed studies to fully understand the geology of a specific site. The Illinois State Geological Survey, Prairie Research Institute, or the University of Illinois make no guarantee, expressed or implied, regarding the correctness of the interpretations presented in this data set and accept no liability for the consequences of decisions made by others on the basis of the information presented here.

These maps were designed for use at 1:24,000. Enlarging the map may reduce accuracy, as the original scale of the source maps used to compile the outlines shown varies from 1:400 to 1:150,000, and some mine locations are known only from text descriptions. See the accompanying mine directory for the original scale of the source map used for a specific mine to check accuracy of a given portion of the map. Areas with no mines shown may still be undermined; see the unlocated mines list at the back of each mine directory.

The image of the U.S.G.S. topographic base map was projected from the original UTM to Lambert Conformal Conic.

ILLINOIS
Illinois State Geological Survey
PRAIRIE RESEARCH INSTITUTE

Prairie Research Institute
Illinois State Geological Survey
615 E. Peabody Dr.
Champaign, IL 61820

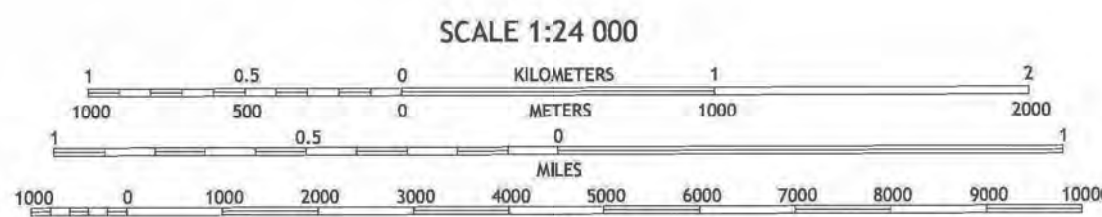
Mine Outlines Compiled by
Jennifer M. Obrad

Revised:
July 12, 2012

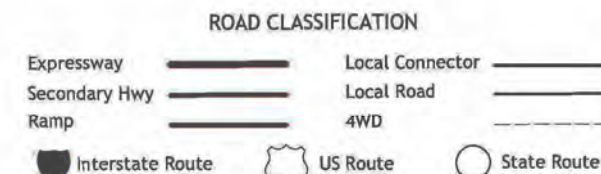
June 12, 2009

Produced by the United States Geological Survey
North American Datum of 1983 (NAD83)
World Geodetic System of 1984 (WGS84), Projection and
1 000-meter grid/Universal Transverse Mercator, Zone 16S
This map is not a legal document. Boundaries may be
generalized for this map scale. Private lands within government
reservations may not be shown. Obtain permission before
entering private lands.

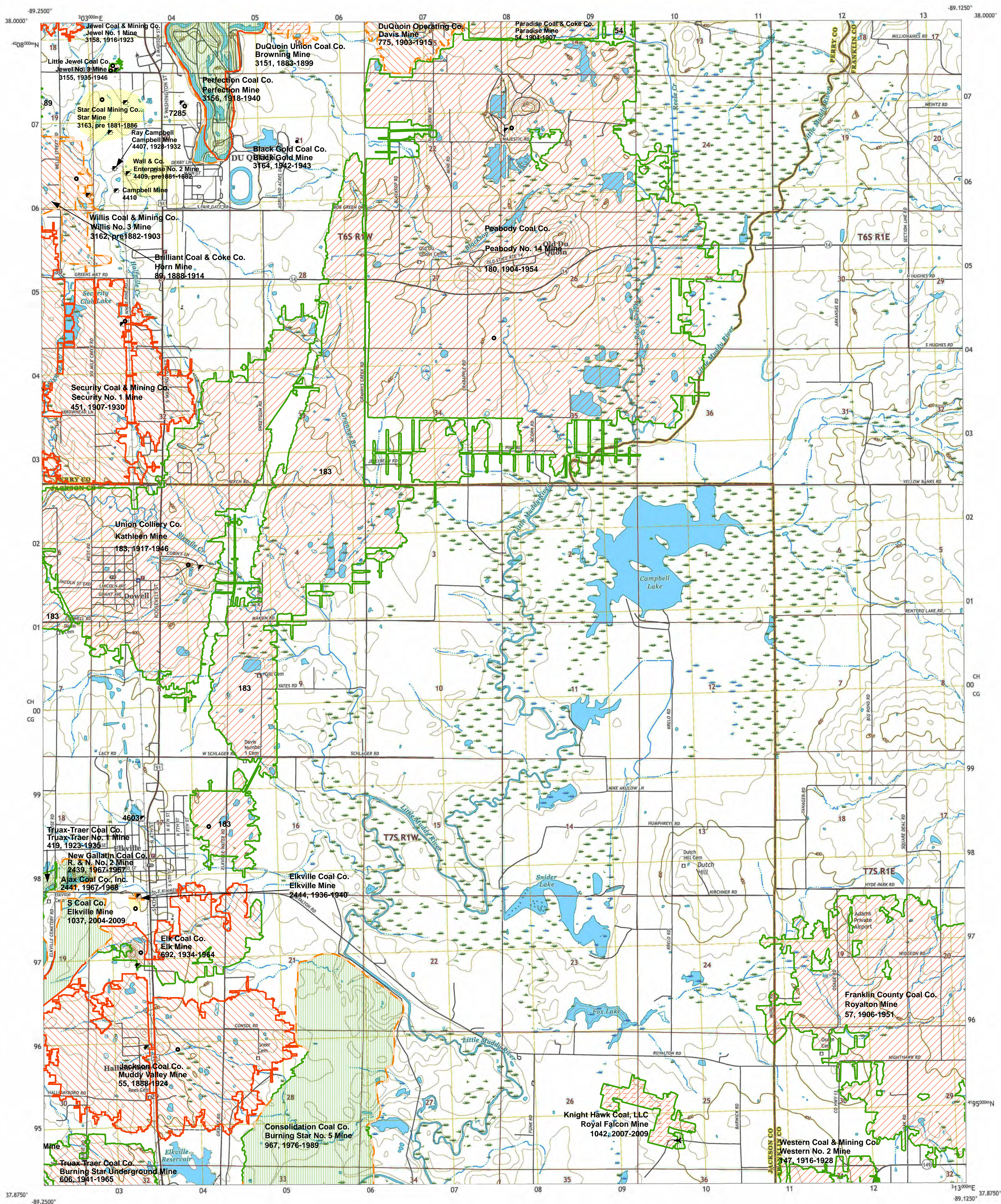
Imagery: NAIP, August 2015 - October 2015
Roads: U.S. Census Bureau, 2017
Names: GNS, 1980 - 2017
Hydrography: National Hydrography Dataset, 2002 - 2015
Contours: National Elevation Dataset, 2008 - 2012
Boundaries: Multiple sources; see metadata file 2014 - 2016
Public Land Survey System: BLM, 2017
Wetlands: FWS, National Wetlands Inventory, 1982



CONTOUR INTERVAL 10 FEET
NORTH AMERICAN DATUM OF 1983
This map was produced to conform with the
National Geospatial Program US Topo Product Standard, 2011.
A metadata file associated with this product is draft version 0.6.18



ELKVILLE, IL
2018



Coal Mines in Illinois Elkville Quadrangle Jackson, Perry & Franklin Counties, Illinois

Herrin Coal

This map accompanies the Coal Mines Directory for the Elkville Quadrangle and map of mines in the Springfield & Danville Coals, Elkville Quadrangle. Consult the directory for a complete explanation of the information shown on this map.

Mining Method

- Room & Pillar (RP)
- Room & Pillar Basic (RPB)
- Modified Room & Pillar (MRP)
- Room & Pillar Panel (RPP)
- Blind Room & Pillar (BRP)
- Checkerboard Room & Pillar (CRP)
- High Extraction Retreat (HER)
- Longwall (LW)
- Underground, Method Unknown
- Strip Mine
- Auger Mine
- General Area of Mining

Source of Mine Outline

- Final Mine Map
- Not Final Mine Map
- Undated Mine Map
- Incomplete Mine Map
- Secondary Source Map

Tipple, Shaft, Slope, Drift Locations

- Strip Mine Tipple - Active
- Strip Mine Tipple - Abandoned
- Mine Shaft - Active
- Mine Shaft - Abandoned
- Mine Slope - Active
- Mine Slope - Abandoned
- Mine Drift - Active
- Mine Drift - Abandoned
- Air Shaft
- Uncertain Location
- Uncertain Type of Opening

Mine Annotation

(space permitting)

Company

Mine Name

ISGS Index No., Years of Operation

Disclaimer

Please check the Coal Section at the Illinois State Geological Survey's web site at <https://www.isgs.illinois.edu> for the most up-to-date version of these products.

Note that each quadrangle scale mined-out area map requires the use of the associated text directory for full explanation of map features and their attributes. Also note that some quadrangles have multiple seams of mining and therefore more than one map may be available for a particular quadrangle. Please take care to check for multiple maps, as extensive mining may exist in the other seams.

The maps and digital files used for these studies were compiled from data obtained from a variety of public and private sources and have varying degrees of completeness and accuracy. This compilation map presents reasonable interpretation of the geology of the area and is based on available data. Locations of some mine features may be offset by 500 feet or more due to errors in the original source maps, the compilation process, digitizing, or a combination of these factors. These data are not intended for use in site-specific screening or decision-making. Use of these documents does not eliminate the need for detailed studies to fully understand the geology of a specific site. The Illinois State Geological Survey, Prairie Research Institute, or the University of Illinois make no guarantee, expressed or implied, regarding the correctness of the interpretations presented in this data set and accept no liability for the consequences of decisions made by others on the basis of the information presented here.

These maps were designed for use at 1:24,000. Enlarging the map may reduce accuracy, as the original scale of the source maps used to compile the outlines shown varies from 1:400 to 1:150,000, and some mine locations are known only from text descriptions. See the accompanying mine directory for the original scale of the source map used for a specific mine to check accuracy of a given portion of the map. Areas with no mines shown may still be undermined; see the unlocated mines list at the back of each mine directory.

The image of the U.S.G.S. topographic base map was projected from the original UTM to Lambert Conformal Conic.

ILLINOIS
Illinois State Geological Survey
PRAIRIE RESEARCH INSTITUTE

Prairie Research Institute
Illinois State Geological Survey
615 E. Peabody Dr.
Champaign, IL 61820

Mine Outlines Compiled by
Jennifer M. Obrad

June 12, 2009

Revised:
July 12, 2012
Alan R. Myers 03-22-2024

Produced by the United States Geological Survey
North American Datum of 1983 (NAD83)
World Geodetic System of 1984 (WGS84). Projection and
1 000-meter grid/Universal Transverse Mercator, Zone 16S
This map is not a legal document. Boundaries may be
generalized for this map scale. Private lands within government
reservations may not be shown. Obtain permission before
entering private lands.

Imagery: NAIP, August 2015 - October 2015
Roads: U.S. Census Bureau, 2017
Names: GNS, 1980 - 2017
Hydrography: National Hydrography Dataset, 2002 - 2015
Contours: National Elevation Dataset, 2002 - 2012
Boundaries: Multiple sources; see metadata file 2014 - 2016
Public Land Survey System: National Wetlands Inventory, 2017
Wetlands: FWS, National Wetlands Inventory, 1982

UTM GRID AND 2017 MAGNETIC NORTH
DECLINATION AT CENTER OF SHEET

UTM Zone 16S
Magnetic North
Declination 1982

SCALE 1:24 000

1 000 0 1000 2000 3000 4000 5000 6000 7000 8000 9000 10000

1 000 0 1000 2000 3000 4000 5000 6000 7000 8000 9000 10000

1 000 0 1000 2000 3000 4000 5000 6000 7000 8000 9000 10000

CONTOUR INTERVAL 10 FEET
NORTH AMERICAN DATUM OF 1983

This map was produced to conform with the
National Geospatial Program US Topo Product Standard, 2011.
A metadata file associated with this product is draft version 0.6.18

ILLINOIS
QUADRANGLE LOCATION

1 2 3 4 5 6 7 8

1 Pyatts
2 Du Quoin
3 Sesser
4 Vergennes
5 Christopher
6 Murphysboro
7 De Soto
8 Herrin

ELKVILLE, IL
2018

DIRECTORY OF COAL MINES IN ILLINOIS

7.5-MINUTE QUADRANGLE SERIES

ELKVILLE QUADRANGLE

JACKSON, PERRY & FRANKLIN COUNTIES

Jennifer M. Obrad & C. Chenoweth



2009

Institute of Natural Resource Sustainability
William W. Shilts, Executive Director
ILLINOIS STATE GEOLOGICAL SURVEY
E. Donald McKay III, Interim Director

Natural Resources Building
615 East Peabody Drive
Champaign, Illinois 61820

Phone 217-244-4610
Fax 217-333-2830



This material is based upon work supported by the Illinois Department of Transportation. Any opinions, findings, and conclusions or recommendations expressed in this publication are those of the authors and do not necessarily reflect the views of the Illinois Department of Transportation.

Cover photo Track-mounted duckbill loading machine at a Peabody Coal Company mine, ca. 1915.

DISCLAIMER: The accuracy and completeness of mine maps and directories vary with the availability of reliable information. Maps and other information used to compile this mine map and directory were obtained from a variety of sources and the accuracy of some of the original information cannot be verified. Consequently, the Illinois State Geological Survey (ISGS) cannot guarantee the mine maps are free of errors and disclaims any responsibility for damages that may result from actions or decisions based on them.

The ISGS updates the maps and directories periodically, and welcomes any new information or corrections. Please contact the Coal Section of the ISGS at the address shown on the title page of this directory, or telephone (217) 244-4610.

© 2009 The Board of Trustees of the University of Illinois. All rights reserved.
For permission information, contact the Illinois State Geological Survey.

CONTENTS

INTRODUCTION	1
MINING IN THE ELKVILLE QUADRANGLE	1
PART I EXPLANATION OF MAP AND MINE SUMMARY SHEET	2
INTERPRETING THE MAP	2
Mine Type and Mining Method	2
Source Maps	3
Points and Labels	3
INTERPRETING A MINE SUMMARY SHEET	6
REFERENCES	8
PART II DIRECTORY OF MINES IN THE ELKVILLE QUADRANGLE	9
MINE SUMMARY SHEETS	9
Mine Index 54	
Paradise Coal & Coke Company, Paradise Mine	9
Mine Index 55	
Jackson Coal Company, Muddy Valley Mine	10
Mine Index 57	
Franklin County Coal Company, Royalton Mine or Franklin County No. 7 Mine	11
Mine Index 89	
Brilliant Coal & Coke Company, Horn Mine	12
Mine Index 147	
Western Coal & Mining Company, Western No. 2 Mine	13
Mine Index 180	
Peabody Coal Company, Peabody No. 14 Mine	14
Mine Index 183	
Union Colliery Company, Kathleen Mine	15
Mine Index 419	
Truax-Traer Coal Company, Truax-Traer No. 1 Mine	16
Mine Index 451	
Security Coal & Mining Company, Security No. 1 Mine	17
Mine Index 606	
Truax Traer Coal Company, Burning Star Underground Mine	18
Mine Index 692	
Elk Coal Company, Elk Mine	19
Mine Index 775	
DuQuoin Operating Company, Davis Mine	20
Mine Index 892	
Royal Mining Company, Royal Mine	21
Mine Index 942	
Central States Mining Company, Elk Mine	22
Mine Index 967	
Consolidation Coal Company, Burning Star No. 5 Mine	23
Mine Index 1037	
S Coal Company, Elksville Mine	24
Mine Index 1042	
Knight Hawk Coal LLC, Royal Falcon Mine	25
Mine Index 2439	
New Gallatin Coal Company, Inc., R & N No. 2 Mine	26
Mine Index 2441	
Ajax Coal Company, Inc., Ajax Mine	27
Mine Index 2442	
Main Line Coal Corporation, Main Line No. 2 Mine	28
Mine Index 2443	
Floyd Chaney & Earl Grisham, Monarch Mine	29
Mine Index 2444	
Elksville Coal Company, Elksville Mine	30

Mine Index 3151	
DuQuoin Union Coal Company, Browning Mine	31
Mine Index 3155	
Little Jewel Coal Company, Jewel No. 3 Mine	32
Mine Index 3156	
Perfection Coal Company, Perfection Mine	33
Mine Index 3158	
Jewel Coal & Mining Company, Jewel No. 1 Mine	34
Mine Index 3162	
Willis Coal & Mining Company, Willis No. 3 Mine	35
Mine Index 3163	
Star Coal Mining Company, Star Mine	36
Mine Index 3164	
Black Gold Coal Company, Black Gold Mine	37
Mine Index 4407	
Ray Campbell, Campbell Mine	38
Mine Index 4409	
Wall & Company, Enterprise No. 2 Mine	39
Mine Index 7285	
Norris & Son, Norris & Short Mine	40
OTHER MINES SHOWN ON ELKVILLE QUADRANGLE	41
Mine Index 4410, Campbell Mine	41
Mine Index 4603	41
Mine Index 7284, White Brothers	41
MINES WHOSE LOCATIONS ARE NOT KNOWN, ELKVILLE QUADRANGLE	41
INDEX OF MINES IN THE ELKVILLE QUADRANGLE	43

INTRODUCTION

Coal has been mined in 76 counties of Illinois. More than 7,400 coal mines have operated since commercial mining began in Illinois about 1810; fewer than 30 are currently active. To detail the extent and location of coal mining in Illinois, the Illinois State Geological Survey (ISGS) has compiled maps and directories of known coal mines. The ISGS offers maps at a scale of 1:100,000 and accompanying directories for each county in which coal mining is known to have occurred. Maps at a scale of 1:24,000 and accompanying directories, such as this, are available for selected quadrangles. Contact the ISGS for a list of these quadrangles.

These larger scale maps show the approximate positions of mines in relation to surface features such as roads and water bodies, and indicate the mining method used and the accuracy of the mine boundaries. The maps are useful for locating mine boundaries relative to specific properties and for assessing the potential for subsidence in an area. Mine boundaries compiled from final mine surveys are generally shown within 200 feet of their true position. As a result of poor cartographic quality and inaccuracies in the original mine surveys, boundaries of some older mines may be mislocated on the map by 500 feet or more. Original mine maps should be consulted in situations that require precise delineation of mine boundaries or internal workings of mined areas.

This directory serves as a key to the accompanying mine map and provides basic information on the coal mines in the quadrangle. The directory is composed of two parts. Part I explains the symbols and patterns used on the accompanying map and the summary data presented for each mine. Part II numerically lists the mines in the quadrangle and summarizes the geology and production history of each mine. Total production for the mine, not the portion in the quadrangle, is given.

MINING IN THE ELKVILLE QUADRANGLE

Two structural features impact the mining of the Herrin Coal in the Elkhville Quadrangle: the Dowell Fault Zone and the Vergennes Anticline. The Dowell Fault Zone is most readily seen in the Kathleen Mine (mine index 183), where the eastern portion of the mine is entirely separated from the western portion. This series of high-angle normal faults is on the east-dipping limb of the Du Quoin Monocline, and the western side is downthrown. The maximum displacement is reported to be 40 feet. The Vergennes Anticline extends in the Elkhville Quadrangle from the west (Vergennes Quadrangle), and strikes west-northwest, parallel to the Cottage Grove Fault System. The Vergennes Anticline location is south and southwest of the Kathleen Mine.

Most of the mines produced from the Herrin Coal. In many mines, the roof was a gray sandy shale that came down easily. Some of the mines had areas of black shale roof. The coal was thick, up to 10 feet, and generally averaging over 6 feet thick. Pyrite was a common impurity.

The Springfield Coal was mined just north of Elkhville, in surface pits. None of these mines were extensive.

PART I EXPLANATION OF MAP AND MINE SUMMARY SHEET

INTERPRETING THE MAP

The map accompanying this directory shows the location of coal mines known to be present in the quadrangle. The map, corresponding to a U.S. Geological Survey (USGS) 7.5-minute quadrangle, covers an area bounded by lines of latitude and longitude 7.5-minutes apart. In Illinois, a quadrangle is approximately 6.5 miles east to west and 8.5 miles north to south, an area of about 56 square miles. The USGS generally offers one map of mines per quadrangle. In some areas where extensive mining occurred in two or more overlapping seams, separate maps are compiled for mines in each seam to maintain readability of the map.

Mine Type and Mining Method

The mine type is indicated on the map by pattern color: green represents surface mines; red and yellow represent underground mines. The red patterns are used for areas of underground mining that are documented by a primary or secondary source map. A yellow pattern is used for cases where no map of the mine workings is available, but a general area of mining can be inferred from property maps or production figures. The patterns indicate the main mining methods used in underground mines. The methods are (1) room and pillar and (2) high extraction. The method used gives some indication of the amount and pattern of coal extraction within each mined area, and has some influence on the timing and type of subsidence that can occur over a mine.

The following discussion and illustrations of mining methods are based on Guither et al. (1984).

In room-and-pillar mines, coal is removed from haulage-ways (entries) and selected areas called rooms. Pillars of unmined coal are left between the rooms to support the roof. Depending on the size of rooms and pillars, the amount of coal removed from the production areas will range from 40% to 70%.

Room and Pillar - mining is divided into six categories:

- room-and-pillar basic (RPB, fig. 1A), an early method that did not follow a preset mining plan and therefore resulted in very irregular designs;
- modified room and pillar (MRP, fig. 1B);
- room-and-pillar panel (RPP, fig. 1C);
- blind room and pillar (BRP, fig. 1D);
- checkerboard room and pillar (CRP, fig. 1E);
- room and pillar (RP), a classification used when the specific type of room-and-pillar mining is unknown.

Blind and checkerboard are the most common types of room-and-pillar mining used in Illinois today. The knowledge of room-and-pillar mining methods gives a trained engineer information on the nature of subsidence that may occur. A more extensive discussion of subsidence can be found in Bauer et al. (1993).

High-extraction These mining methods are subdivided into high-extraction retreat (HER, Fig 1F) and longwall (LW, Fig 1G, 1H). In these methods, much of the coal is removed within well defined areas of the mine. Subsidence of the surface above these areas occurs within weeks. Once the subsidence activity ceases, the potential for further movement over these areas is low; however, subsidence may continue for several years after mining.

High-extraction retreat mining is a form of room-and-pillar mining that extracts most of the coal. Rooms and pillars are developed in the panels, and the pillars are then systematically removed (fig. 1F).

In early (pre-1960) longwall mines, mining advanced in multiple directions from a central shaft (fig. 1G). Large pillars of coal were left around the shaft, but all coal was removed beyond these pillars. Miners placed rock and wooden props and cribs in the mined-out areas to support the mine roof. The overlying rock gradually settled onto these supports, thus producing subsidence at the surface. In post-1959 longwall mines, room-and-pillar methods have been used to develop the main entries of the mine and panel areas. Modern longwall methods extract 100 percent of the coal in the panel areas (fig. 1H).

SOURCE MAPS

Mine outlines depicted on the map are, whenever possible, based on maps made from original mine surveys. The process of compiling and digitizing the quadrangle map may produce errors of less than 200 feet in the location of mine boundaries. Larger errors of 500 feet or more are possible for mines that have incomplete or inaccurate source maps.

Because of the extreme complexity of some mine maps, detailed features of mined areas have been omitted. The digitized mine boundary includes the exterior boundary of all rooms or entries that were at least 80 feet wide or protruded 500 feet from the main mining area. Unmined areas between mines are shown if they are at least 80 feet wide; unmined blocks of coal within mines are shown if they are at least 400 feet on each side. Original source maps should be consulted when precise information on mine boundaries or interior features is needed.

The mine summary sheet lists the source maps used to determine each mine outline. The completeness of map sources is indicated on the map by a line symbol at the mine boundary. Source maps are organized in five categories.

Final mine map The mine outline was digitized from an original map made from mine surveys conducted within a few months after production ceased. The date of the map and the last reported production are listed on the summary sheet.

Not a final map The mine is currently active or the mine outline was made from a map based on mine surveys conducted more than a few months before production ceased. This implies the actual mined-out area is probably larger than the outline on the map. The mine summary sheet indicated the dates of source maps and the last reported production, as well as the approximate tonnage mined between these two dates (if the mine is abandoned). The summary sheet also lists the approximate acreage mined since the date of the map and, in some cases, indicates the area where additional mining may have taken place. This latter information is determined by locating on the map the active faces relative to probable boundaries of the mine property.

Undated map The source map was undated, so it may or may not be based on a final mine survey. When sufficient data are available, the probable acreage of the mined area is estimated from reported production, average seam thickness and a recovery rate comparable to other mines in the area. This information is listed in the summary sheet for the mine.

Incomplete map The source map did not show the entire mine. The summary sheet indicates the missing part of the mine map and the acreage of the unmapped area, which is estimated from the amount of coal known to have been produced from the mine.

Secondary source map The original mine map was not found so the outline shown was determined from secondary sources (e.g., outlines from small-scale regional maps published in other reports). The summary sheet describes the secondary sources.

POINTS AND LABELS

The locations of all known mine openings (shafts, slopes, and drifts) and surface mine tipples are plotted on the map. Tipples are areas where coal was cleaned, stockpiled, and loaded for shipping.

Only openings or tipples are plotted for mines without source maps. If the precise locations of these features are unknown, a special symbol is used to indicate the approximate location of the mine.

Each mine on the map is labeled with the names of the mine and operating company, ISGS mine index number, and years of operation (if known) if space permits. A seam designation is given on maps where more than one seam was mined. For a mine that operated under more than one name, only the most recent name is generally given. When a mine changed names or ownership shortly before closing, an earlier name is listed. All company and mine names are listed on the mine summary sheet in the directory, under the production history segment.



Figure 1 Mining methods: (A) room-and-pillar basic (RPB), (B) modified room and pillar (MRP), (C) room-and-pillar panel (RPP), (D) blind room and pillar (BRP).



Figure 1 (cont.) Mining methods: (E) checkerboard room and pillar (CRP), (F) high extraction retreat (HER), (G) early (pre-1960) longwall, (H) post-1959 longwall



Figure 2 Generalized stratigraphic section, showing approximate vertical relations of coals in Illinois.

INTERPRETING A MINE SUMMARY SHEET

The mine summary sheet is arranged numerically by mine index number. Index numbers are shown on the map and in the mine listing. The mine summary sheet provides the following information (if available).

Company and mine name The last company or owner of the mine is used, unless no production was recorded for the last owner. In that case, the penultimate owner is listed. Mines often have no specific name; in these cases, the company name is also used as the mine name.

Type *Underground* denotes a subsurface mine in which the coal was reached through a shaft, slope, or a drift entry. *Surface* denotes a surface, open pit or strip mine.

Total mined-out acreage shown The total acreage of the mined area mapped, including any acreage mined on adjacent quadrangles, is calculated from the digitized outline of the mine. The acreage of large barrier pillars depicted on the map is excluded from the mined-out acreage. Small pillars not digitized are included in the acreage calculation. If the mine outline is not based on a final mine map, the acreage is followed by an estimate of additional acres that may have been mined. The estimate is determined from reported mine production, approximate thickness of the coal, and recovery rates calculated from nearby mines that used similar mining methods.

SHAFT, SLOPE, DRIFT OR TIPPLE LOCATIONS

Shaft, slope, drift, or tippie locations Locations of all known former entry points to underground mines or the location of coal cleaning, tippie, and shipping equipment used by the mine's facility are listed. The location is described in terms of county, township and range (Twp-Rge), section, and location within the section by quarters. NE SW NW, for instance, would describe the location in the northeast quarter of the southwest quarter of the northwest quarter. When sections are irregular in size, the quarters remain the same size and are oriented (or "registered") from the southeast corner of the section. Approximate footage from the section lines (FEL = from east line, FNL = from north line, for example) is given when that information is known; this indicates a surveyed location and is not derived from maps. Entry points are also plotted on the map and coded for the type of entry or tippie. A mine opening may have had many purposes during the life of the mine. Old hoist shafts are often later used for air and escape shafts; this information is included in the directory when known. The tippie for underground mines was generally located near the main shaft or slope. At surface mines, coal was sometimes hauled to a central tippie several miles from the mine pit.

GEOLOGY

Seam(s) mined The name of the coal seam(s) mined is listed, if known. If multiple seams were mined, they are all listed, although the mined-out area for each seam may be shown on separate maps. Figure 2 shows the stratigraphic section of the coal-bearing interval in Illinois, and the vertical relations among the coals.

Depth The depth to the top of the seam in the vicinity of the shaft is listed, if known. The depth is determined from notes made by geologists who visited the mine during its operation or from drill hole data in ISGS files. Depth generally varies little over the extent of a mine; however, reported depths for an individual mine may vary. Depth for surface-mined coals varies, and is usually represented as a range.

Thickness The approximate thickness of the mined seam is shown, if known. Thickness also comes from notes of geologists who visited the mine during its operation or from borehole data in ISGS files. Minimum, maximum, and average thicknesses are given when this information is available.

Mining method The principal mining method used at the mine (figs. 1A-H) is listed. See the mining methods section at the beginning of this directory for a discussion of this parameter.

Geologic problems reported Any known geologic problems, such as faults, water seepage, floor heaving, and unstable roof, encountered in the mine are reported. This information is from notes made by ISGS geologists who visited the mine, or from reports by mine inspectors published by the Illinois Department of Mines and Minerals, or from the source map(s). Geologic problems are not reported for active mines.

PRODUCTION HISTORY

Production history Tons of coal produced from the mine by each mine owner are totaled. When the source map used for the mine outline is not a final mine map, the tonnage produced since the date of the map is identified. For mines that extend into adjacent quadrangles, the tonnage reported includes areas mined in adjacent quadrangles.

SOURCE OF DATA

Source map This section lists information about the map(s) used to compile the mine outline and the locations of tipples and mine openings. In some cases more than one source map was used. For example, a map drawn before the mine closed may provide better information on original areas of the mine than a later map. When more than one map was used, the bibliography section explains what information was taken from each source.

Date The date of the most recent mine survey listed on the source map is reported.

Original scale The original scale of the source map is listed. Many maps are photo-reductions and are no longer at their original scale. The original scale gives some indication of the level of detail of the mine outline and the accuracy of the mine boundary relative to surface features. Generally, the larger the scale, the greater the accuracy and detail of the mine map. Mine outlines taken from source maps at scales smaller than 1:24,000 may be highly generalized and may well be inaccurately located with respect to surface features.

Digitized scale The scale of the digitized map is reported. The scale may be different from that of the original source map. In many cases the digitized map was made from a photo-reduction of the original source map, or the source map was not in a condition suitable for digitizing and the mine boundaries were transferred to another base map.

Map type Source maps are classified into five categories to indicate the probable completeness of the map. See discussion of source maps in the previous section.

Annotated bibliography Sources that provide information about the mine are listed, with the data taken from each source. Some commonly used sources are described below. Full bibliographic references are given for all other sources. Unless otherwise noted, all sources are available for public inspection at the ISGS.

Coal Reports Published since 1881, these reports contain tabular data on mine ownership, production, employment, and accidents. Some volumes include short descriptions made by mine inspectors of physical features and conditions in selected mines.

Directory of Illinois Coal Mines This source is a compilation of basic data about Illinois coal mines, originally gathered by ISGS staff in the early 1950s. Sources used for this directory are undocumented, but they are primarily Illinois Department of Mines and Minerals annual reports, ISGS mine notes, and coal company officials.

ENR Document 85/01, Guither, H. D., J. K. Hines, and R. A. Bauer, 1985 The Economic Effect of Underground Mining Upon Land Used for Illinois Agriculture: Illinois Department of Energy and Natural Resources Document 85/01, 185 p.

Microfilm map The U.S. Bureau of Mines maintains a microfilm archive of mine maps. A microfilm file for Illinois is available for public viewing at the ISGS.

Mine notes ISGS geologists have visited mines or contacted mine officials throughout the state since the early 1900s. Notes made during these visits range from brief descriptions of the mine location to long narratives (including sketches) of mining conditions and geology.

Federal Land Bank of St. Louis, Preliminary Reports on Subsidence Investigations Mining engineers working for the Federal Land Bank of St. Louis mapped areas of subsidence due to coal mining in the early 1930s. These reports often include county maps of mine properties with mined-out areas including shaft locations, as well as subsidence areas.

REFERENCES

Bauer, R. A., B. A. Trent, and P. B. Dumontelle, 1993, Mine Subsidence in Illinois: Facts for the Homeowner Considering Insurance, Illinois State Geological Survey, Environmental Geology Note 144, 16p.

Guither, H. D., J. K. Hines, and R. A. Bauer, 1985, The Economic Effects of Underground Mining Upon Land Used for Illinois Agriculture, Illinois Department of Energy and Natural Resources Document 85/01, 185p.

Nelson, W. J., 1995, Structural Features in Illinois, Illinois State Geological Survey, Bulletin 100, 144p.

PART II DIRECTORY OF MINES IN THE ELKVILLE QUADRANGLE

MINE SUMMARY SHEETS

A summary sheet on the geology and production history of each mine in the Elkhville Quadrangle is provided. These summary sheets are arranged numerically by mine index number. Consult Part I for a complete explanation of the data listed in the summary sheet.

Mine Index 54

Paradise Coal & Coke Company, Paradise Mine

Type: Underground Total mined-out acreage shown: 997

SHAFT, SLOPE, DRIFT or TIPPLe LOCATIONS

Type	County	Township-Range	Section	Quarters-Footage
Main shaft	Perry	6S 1W	15	SE NW NE
Air shaft	Perry	6S 1W	15	SE NW NE

GEOLOGY

Seam(s) Mined	Depth (ft)	Thickness (ft)			Mining Method
		Min	Max	Avg	
Herrin	371	8.0	12.0	9.0	RPP *

* A 1908 mine note states that all the pillars were drawn and the top coal was removed as areas were completed. The method may be HER in many areas of the mine.

Geologic Problems Reported: Two faults were noted, one in the main west entry and one at the face. Both faults extended into the Davis Mine (mine index 3146). The faults emitted gas when first encountered, and moderate amounts of water. The cap rock was a limestone about 20 feet above the coal. Gray sandy shale was the immediate roof above the coal. It fell in slabby layers, sometimes as high as 20 feet. Rolls cut into the seam from the roof and floor. Top coal was left to support the roof, generally 26 to 30 inches. The blue band was in two layers. Other impurities included pyrite-bearing clay bands. These generally separated easily from the coal. The floor heaved badly.

PRODUCTION HISTORY

Company	Mine Name	Years	Production (tons)
Forester Coal & Coke Company	Forester	1904-1905	18,884
Paradise Coal & Coke Company	Paradise	1905-1927	6,710,991
			6,729,875

Last reported production: March 1927

SOURCES OF DATA

Source Map	Date	Original Scale	Digitized Scale	Map Type
Microfilm, document 352117	3-1927	1:2400	1:4138	Final

Annotated Bibliography (data source, brief description of information)

Coal Reports - Production, ownership, years of operation.

Directory of Illinois Coal Mines (Perry County) - Mine names, mine index, ownership, years of operation.

Mine notes (Perry County) - Mine type, shaft location, seam, depth, thickness, geologic problems.

Microfilm map, document 352117, reel 03138, frames 115-118 - Shaft locations, mine outline, mining method.

Microfilm map, document 352143, reel 03138, frames 160-163 - Identification of air shaft location.

Mine Index 55

Jackson Coal Company, Muddy Valley Mine

Type: Underground Total mined-out acreage shown: 947 Production indicates approximately 15 acres were mined after the map date.

SHAFT, SLOPE, DRIFT or TIPPLE LOCATIONS

Type	County	Township-Range	Section	Quarters-Footage
Main shaft	Jackson	7S 1W	29	SE NE NW
Air shaft	Jackson	7S 1W	29	SE NW NE

GEOLOGY

Seam(s) Mined	Depth (ft)	Thickness (ft)			Mining Method
		Min	Max	Avg	
Herrin	161	6.0	11.0	8.0 *	MRP

* The coal averaged 7.0 ft thick on the western side and 10.0 on the eastern side of the mine.

Geologic Problems Reported: An extensive NW-SE trending fault was encountered in the main and south entries. These and subsidiary faults perpendicular to the main fault system were shown on the source map. Mining was restricted by the faulting in some areas. The coal was displaced 27 to over 40 feet, with displacement increasing northward. Gas emitted from the fault, especially when it was first encountered. Parallel faults were also noted, with less displacement. The west side of the mine had a soft, sandy gray shale roof that weathered and fell in large slabs when exposed to air. Top coal, generally 2 to 3 feet, was left to support the roof. The coal under black shale roof was 1 to 2 feet thinner than that under gray shale roof. The blue band was generally 4 to 6 inches thick. On the west side of the mine, the blue band was 1.5 inches thick, but on the east side of the mine, the blue band with an associated dirt and bone layer thickened to 7 to 10 inches. The underclay ranged from 3 inches to over 3 feet, averaging 2.5 feet. Heaving did occur in the mine.

PRODUCTION HISTORY

Company	Mine Name	Years	Production (tons)
Muddy Valley Mining & Mfg. Company **	Hallidayboro	1888-1914	4,520,394
Jackson Coal Company	Muddy Valley	1914-1923	2,152,822
Jackson Coal Company	Muddy Valley	1923-1924	106,785 ***
			6,780,001

** The shaft was sunk by Halliday Brothers. Equipment for this mine (engines on the surface and mining machines) were bought from the Mattoon Shaft in Coles County.

*** Production after map date

Last reported production: April 1924

SOURCES OF DATA

Source Map	Date	Original Scale	Digitized Scale	Map Type
Company, 4103.J31 i5.1-22	10-1921	1:2400	1:2400	Not final
Microfilm, document 352498	8-1923	1:2400	1:5297	Not final

Annotated Bibliography (data source, brief description of information)

Coal Reports - Production, ownership, years of operation.

Directory of Illinois Coal Mines (Jackson County) - Mine names, mine index, ownership, years of operation.

ENR Document 85/01 - Mining method.

Mine notes (Jackson County) - Mine type, shaft location, seam, depth, thickness, geologic problems.

Company map, ISGS map library, 4103.J31 i5.1-22 - Mine outline, shaft locations, mining method, geologic problems.

Microfilm map, document 352498, reel 03139, frames 1933 & 194 - Mine outline (western & northeastern).

Mine Index 57**Franklin County Coal Company, Royalton Mine or Franklin County No. 7 Mine**

Type: Underground Total mined-out acreage shown: 3,915

SHAFT, SLOPE, DRIFT or TIPPLE LOCATIONS

Type	County	Township-Range	Section	Quarters-Footage
Main shaft (10'x16')	Franklin	7S 1E	28	SW SW NW
Air shaft (9'x8')	Franklin	7S 1E	28	SW SW NW

GEOLOGY

Seam(s) Mined	Depth (ft)	Thickness (ft)			Mining Method
		Min	Max	Avg	
Herrin	210-320		10.5	9.83 (8.75-10.0)	RPP

Geologic Problems Reported: A major fault was present, with a 200-400 foot gouge zone and 35 feet of throw. The roof consisted of a dense sandy gray shale that tended to fall in irregular masses. Generally 24 to 36 inches of top coal was left to support and protect the roof. Considerable gas seeped out of the face. The coal seam in this mine did not have the flexure noted in other Franklin County mines, just a gentle undulation with no steep grades to hinder haulage. The coal contained a very small number of slips. A few pyrite balls and streaks were present in the lower bench. The underclay did not heave.

PRODUCTION HISTORY

Company	Mine Name	Years	Production (tons)
Big Muddy & Carterville Mining Company	Big Muddy & Carterville	1906-1914 *	448,352
Franklin Coal & Coke Company	Franklin No. 2	1914-1923 **	555,109
Franklin County Coal Company	Royalton, Franklin County No. 7	1923-1951	20,666,363
			21,669,824

* Idle 1913

** Idle 1922

Last reported production: September 1951

SOURCES OF DATA

Source Map	Date	Original Scale	Digitized Scale	Map Type
Microfilm, document 351432	10-8-1951	1:2400	1:3476	Final

Annotated Bibliography (data source, brief description of information)

Coal Reports - Production, ownership, years of operation, shaft sizes, depth, thickness.

Directory of Illinois Coal Mines (Franklin County) - Mine names, mine index, ownership, years of operation.

ENR Document 85/01 - Mining method.

Mine notes (Franklin County) - Mine type, shaft locations, seam, thickness, geologic problems.

Microfilm map, document 351432, reel 03136, frames 95-98 - Shaft locations, mine outline, mining method.

Mine Index 89
Brilliant Coal & Coke Company, Horn Mine

Type: Underground Total mined-out acreage shown: 338

SHAFT, SLOPE, DRIFT or TIPPLE LOCATIONS

Type	County	Township-Range	Section	Quarters-Footage
Main shaft	Perry	6S 1W	19	SW SW NE
Air shaft	Perry	6S 1W	19	SW SW NE

GEOLOGY

Seam(s) Mined	Depth (ft)	Thickness (ft)			Mining Method
		Min	Max	Avg	
Herrin	75	5.5	9.0	7.5	MRP

Geologic Problems Reported: The roof was over 2 feet of light gray shale. Generally 18 inches of top coal was left to support the roof. Small areas had a black shale roof. No limestone cap rock was present over the mine. Some erosional stream channels affected the character of the roof. Rolls were also present and occasional coal stringers were seen, which made areas of bad roof. The rock sometimes broke all the way up to the glacial debris. Subsidence pits 20 feet across and 4 to 5 feet deep were noted over the mine. Pyrite nodules were reported in some areas, usually in the top and bottom of the seam. The floor was 4 feet of fire clay, but varied and was sometimes as thin as 10 inches. The underclay heaved badly.

PRODUCTION HISTORY

Company	Mine Name	Years	Production (tons)
Henry Horn Colliery Company	Horn	1888-1904	1,337,291
DuQuoin-Pittsburgh Coal & Coke Company	Horn	1904-1905	17,992
Brilliant Coal & Coke Company	Horn	1905-1914	465,099
			1,820,382

Last reported production: March 1914

SOURCES OF DATA

Source Map	Date	Original Scale	Digitized Scale	Map Type
Microfilm, document 352089	4-18-1914	1:2400	1:5131	Final
WPA, T6S-R1W	1940	1:12000	1:55096	Secondary source

Annotated Bibliography (data source, brief description of information)

Coal Reports - Production, ownership, years of operation.
 Directory of Illinois Coal Mines (Perry County) - Mine names, mine index, ownership, years of operation.
 Mine notes (Perry County) - Mine type, shaft location, seam, depth, thickness, geologic problems.
 Microfilm map, document 352089, reel 03138, frame 70 - Shaft location, mine outline, mining method.
 WPA map, T6S-R1W - Mine outline (southeastern), air shaft location.

Mine Index 147**Western Coal & Mining Company, Western No. 2 Mine**

Type: Underground Total mined-out acreage shown: 1,046 Approximately 2 acres on the western and southwestern side of the mine were later surface mined by Burning Star No. 5 Mine (mine index 967).

SHAFT, SLOPE, DRIFT or TIPPLe LOCATIONS

Type	County	Township-Range	Section	Quarters-Footage
Main shaft (10'x15')	Franklin	7S 1E	31	SE NW SE
Air shaft (10'x15')	Franklin	7S 1E	31	SW NW SE

GEOLOGY

Seam(s) Mined	Depth (ft)	Thickness (ft)			Mining Method
		Min	Max	Avg	
Herrin	152	6.5	12.0	7.0-10.5	RPP

Geologic Problems Reported: Water-bearing gravels in the glacial materials above the mine discharged water that had to be pumped out of the mine. A northwest-southeast trending fault with 6 to 8 feet upthrown on the northeastern side ran through this mine, crossing the main north just off the bottom, 200 feet from the shaft. The northeastern side was thrust over the opposite side, thickening the coal up to about 15 feet. Many northwest-southeast-trending faults that disrupted the mining pattern are shown on the source maps. Bad top was noted on a source map in the extreme northeastern part and the south part of the mine. These areas of bad top appear to have halted mining in those rooms. The roof varied from black fissile shale to gray shale; generally the gray shale was 18 feet thick. The most conspicuous impurity was the pyrite, especially common as facings running vertically through layers of the seam. Lenses of solid pyrite were not uncommon, especially in the upper part of the seam.

PRODUCTION HISTORY

Company	Mine Name	Years	Production (tons)
Western Coal & Mining Company	Western No. 2	1916-1928	<u>7,146,997</u> 7,146,997

Last reported production: March 1928

SOURCES OF DATA

Source Map	Date	Original Scale	Digitized Scale	Map Type
ISGS map library, 4102 i5.1-64	11-14-1929	1:2400	1:2400	Final
Microfilm, document 351420	11-14-1929	1:2400	1:4800	Final

Annotated Bibliography (data source, brief description of information)

Coal Reports - Production, ownership, years of operation, shaft sizes, depth, thickness.

Directory of Illinois Coal Mines (Franklin County) - Mine names, mine index, ownership, years of operation.

ENR Document 85/01 - Mining method.

Mine notes (Franklin County) - Mine type, shaft location, seam, thickness, geologic problems.

ISGS map library, 4102 i5.1-64 - Mine outline (western part).

Microfilm map, document 351420, reel 03136, frames 63 & 64 - Mine outline (eastern part), shaft locations, geologic problems.

Mine Index 180**Peabody Coal Company, Peabody No. 14 Mine**

Type: Underground Total mined-out acreage shown: 4,093

SHAFT, SLOPE, DRIFT or TIPPLE LOCATIONS

Type	County	Township-Range	Section	Quarters-Footage
Main shaft	Perry	6S 1W	23	SW SW NW
Air shaft	Perry	6S 1W	23	SW SW NW
Air shaft	Perry	6S 1W	27	SE SE SE

GEOLOGY

Seam(s) Mined	Depth (ft)	Thickness (ft)			Mining Method
		Min	Max	Avg	
Herrin	403		13.0	8.5	RPP

Geologic Problems Reported: Faults and slips were noted at the mine. The slips required timbering. The faults had irregular displacement, sometimes only 12 inches. Top coal (2 to 4 feet) was left to support the roof, but this was pulled when the rooms were worked out. The roof was a light gray sandy shale that was 20 to 60 feet thick. As machine mining took over, usually only 6.33 feet of coal was mined. The blue band ranged from 1/4 to 3 inches thick. The seam had an irregular bottom surface. The floor was 6 feet of fire clay.

PRODUCTION HISTORY

Company	Mine Name	Years	Production (tons)
Equitable Coal Company	Majestic	1904-1905	44,402
Majestic Coal & Coke Company	Majestic	1905-1917	4,069,686
Equitable Coal & Coke Company	Majestic	1917-1923	2,592,895
Crear - Clinch Coal Company	Majestic No. 14	1923-1937	6,350,906
Peabody Coal Company	Peabody No. 14	1937-1954	<u>14,048,015</u>
			27,105,904

Last reported production: February 1954

SOURCES OF DATA

Source Map	Date	Original Scale	Digitized Scale	Map Type
State archive, msha_112	2-25-1954	1:12000	1:12000	Final

Annotated Bibliography (data source, brief description of information)

Coal Reports - Production, ownership, years of operation.

Directory of Illinois Coal Mines (Perry County) - Mine names, mine index, ownership, years of operation.

Mine notes (Perry County) - Mine type, shaft location, seam, depth, thickness, geologic problems.

State archive, msha_112 - Shaft locations, mine outline, mining method.

Mine Index 183
Union Colliery Company, Kathleen Mine

Type: Underground Total mined-out acreage shown: 3,923

SHAFT, SLOPE, DRIFT or TIPPLE LOCATIONS

Type	County	Township-Range	Section	Quarters-Footage
Main shaft (12.5 X 26.25)	Jackson	7S 1W	5	NW NE SE
Air shaft	Jackson	7S 1W	5	NE NW SE
Air shaft	Jackson	7S 1W	17	NW NE SE

GEOLOGY

Seam(s) Mined	Depth (ft)	Thickness (ft)			Mining Method
		Min	Max	Avg	
Herrin	252-260	6.0	11.0	7.5	RPP

Geologic Problems Reported: Incidents in 1931, 1936 and 1940 resulted in fatalities from gas and gas explosions. A N-S trending fault, downthrown to the east, lowered the coal 40 feet (Dowell Fault Zone). Two small faults, the reverse of the main fault, were also present in the western part of the mine. Some slips were encountered in the mine, one 1300 feet from the shaft on the Main South that displaced the coal 7 feet upthrown to the east. A 'white top' (soft gray) shale was present throughout the mine, requiring 1.5 to 2 feet of top coal left to support the roof. The blue band was 0.75 to 1.5 inches of shale. A dirt band was also present in the seam 4 feet from the bottom of the coal. The dirt band contained angular coal fragments in a matrix of soft carbonaceous dirt. Some pyrite lenses (0.5 by 2-3 inches) were encountered in the top coal and just above the blue band. Undercutting took place about 3 inches above the bottom of the seam, and some of bottom coal was later loaded. The floor was 2 to 4 feet of fire clay that contained many small slips. Very little heaving occurred in the mine.

PRODUCTION HISTORY

Company	Mine Name	Years	Production (tons)
Union Colliery Company	Kathleen	1917-1946 *	24,037,474
			24,037,474

* Idle 1928

Last reported production: 1946

SOURCES OF DATA

Source Map	Date	Original Scale	Digitized Scale	Map Type
Company, 4102 i5.1-10, sheets 1-5	11-26-1946	1:2400	1:2400	Final

Annotated Bibliography (data source, brief description of information)

Coal Reports - Production, ownership, years of operation, mining method.
 Directory of Illinois Coal Mines (Jackson County) - Mine names, mine index, ownership, years of operation.
 ENR Document 85/01 - Mining method.
 Mine notes (Jackson County) - Mine type, shaft location, seam, depth, thickness, geologic problems.
 Company map, ISGS map library, 4102 i5.1-10, sheets 1-5, copy 1 - Shaft locations, mine outline, mining method, geologic problems.

Mine Index 419**Truax-Traer Coal Company, Truax-Traer No. 1 Mine**

Type: Surface Total mined-out acreage shown: 2,176 The area mined is much larger than expected for the reported production. The reported production would account for approximately 600 acres. The area shown on the accompanying maps for the Truax-Traer No. 1 Mine may have been mined by Burning Star Surface Mine (mine index 684).

SHAFT, SLOPE, DRIFT or TITTLE LOCATIONS

Type	County	Township-Range	Section	Quarters-Footage
Tipple	Jackson	7S 1W	18	SW NE SW
Herrin Coal pit	Jackson	7S 1W	18	SE NW SW (1923-1927)
Springfield Coal pit	Jackson	8S 1W	7	SE NW SW (1928-1936)
Herrin Coal pit	Jackson	7S 2W	13	
Springfield Coal pit	Jackson	7S 2W	23 & 35	

GEOLOGY

Seam(s) Mined	Depth (ft)	Thickness (ft)			Mining Method
		Min	Max	Avg	
Herrin (1923-1927)	27	6.5	6.8	6.6	Surface
Springfield					

Geologic Problems Reported: The overburden was about 15 feet of surficial materials, underlain by 3 to 6 feet of limestone, with 1 to 8 feet of soft gray shale directly over the coal. Some minor faults were seen, with only slight displacement of the beds. Impurities in the seam included clay lenses, bony coal bands, and pyrite bands. A few of the pyrite bands were more or less continuous, and some were up to 0.5 inches thick. Vertical fractures were filled with calcite facings. The blue band and its underside had pyrite lenses in bands or as laminations. Pyrite was more common as a filling of networks of vertical veinlets. These networks sometimes occurred as commonly as every 2 feet in horizontal spacing across an area of the pit. Clay bands were seen, but were not common in the pits.

PRODUCTION HISTORY

Company	Mine Name	Years	Production (tons)
Black Servant Coal Company	Black Servant	1923-1927	1,612,069
Truax-Traer Coal Company	Truax-Traer No. 1	1928-1935	<u>2,911,281</u>
			4,523,350

Last reported production: June 1935

SOURCES OF DATA

Source Map	Date	Original Scale	Digitized Scale	Map Type
ISGS map library, 4103.J31 i5.1-15	7-24-1950	1:4800	1:4800	Final
ISGS map library, 4103.J31 i5.1-34	1966	1:57600	1:57600	Secondary source
Company, 1-32-18	2-16-1926	Unknown	Unknown *	Not final
USGS topographic map, Vergennes	1968	1:24000	1:24000	Secondary source

* The 1926 company map was used to locate the tittle on the 1950 company map. Consequently, the 1926 company map was not scanned and georegistered.

Annotated Bibliography (data source, brief description of information)

Coal Reports - Production, ownership, years of operation.
 Directory of Illinois Coal Mines (Jackson County) - Mine names, mine index, ownership, years of operation.
 Mine notes (Jackson County) - Mine type, mine location, seam, depth, thickness, geologic problems.
 ISGS map library, 4103.J31 i5.1-15, map of Burning Star Mine (mine index 684) - Mine outline, mining method.
 ISGS map library, 4103.J31 i5.1-34, compilation mined-out area map - Mine outline (13-T7S-R2W), seams.
 Company map, Coal Section files, 1-32-18 - Tittle location.
 USGS 7.5-minute topographic map, Vergennes Quadrangle, 1968 - Mine outline (northern & western pits).

Mine Index 451**Security Coal & Mining Company, Security No. 1 Mine**

Type: Underground Total mined-out acreage shown: 1,089 Production indicates approximately 18 acres were mined after the map date.

SHAFT, SLOPE, DRIFT or TIPPLE LOCATIONS

Type	County	Township-Range	Section	Quarters-Footage
Main shaft	Perry	6S 1W	29	NE SW SW
Air shaft	Perry	6S 1W	29	NE SW SW

GEOLOGY

Seam(s) Mined	Depth (ft)	Thickness (ft)			Mining Method
		Min	Max	Avg	
Herrin	90	7.0	12.0	8.0	MRP

Geologic Problems Reported: A company mine map noted that Six Mile Creek broke through a north-south entry in March 1923 and flooded the mine or a portion of the mine. The source map used for the mine outline on the accompanying map shows areas under the creek and the pond that were not mined because of the potential for water damage. The roof was gray shale. Top coal was left to support the roof.

PRODUCTION HISTORY

Company	Mine Name	Years	Production (tons)
White Ash Coal Company	White Ash	1907-1910 *	None
Security Coal & Mining Company	Security No. 1	1910-1930	6,428,052
Security Coal & Mining Company	Security No. 1	1930-1930	<u>104,198</u> **
			6,532,250

* Idle 1908-1910

** Production after map date

Last reported production: September 1930

SOURCES OF DATA

Source Map	Date	Original Scale	Digitized Scale	Map Type
Microfilm, document 352118	3-1930	1:2400	1:4303	Not final

Annotated Bibliography (data source, brief description of information)

Coal Reports - Production, ownership, years of operation.

Directory of Illinois Coal Mines (Perry County) - Mine names, mine index, ownership, years of operation.

Mine notes (Perry County) - Mine type, shaft location, seam, depth, thickness, geologic problems.

Microfilm map, document 352118, reel 03138, frames 119-122 - Shaft locations, mine outline, mining method.

Company map, ISGS map library, 4103.P42 i5.1-50 - Geologic problems.

WPA, T6S-R1W - Air shaft location.

Mine Index 606**Truax Traer Coal Company, Burning Star Underground Mine**

Type: Underground Total mined-out acreage shown: 1,837

SHAFT, SLOPE, DRIFT or TIPPLE LOCATIONS

Type	County	Township-Range	Section	Quarters-Footage
Slope	Jackson	8S 1W	4	SW NE NW
Drift	Jackson	8S 1W	6	NE NW NW (2 drifts)
Air drift	Jackson	8S 1W	6	NE NW NW
Drift	Jackson	7S 2W	36	NE SE NE
Air drift	Jackson	7S 2W	36	NE NE NE
Drift	Jackson	7S 2W	25	SE NE SE (5 drifts)
Drift	Jackson	7S 2W	25	NE SE SE
Air shaft	Jackson	7S 1W	33	NE SE SW
Air shaft	Jackson	7S 1W	32	NW SE SW
Air shaft	Jackson	7S 1W	31	SW SW SE

GEOLOGY

Seam(s) Mined	Depth (ft)	Thickness (ft)			Mining Method
		Min	Max	Avg	
Herrin	40-130			6.0-7.0	MRP

Geologic Problems Reported: The roof was difficult to keep up near the slope and to the south, which may have been related to the split coal area. The drift entrance accessed coal with a normal marine roof (black slaty shale, sometimes underlain by gray shale, with a limestone caprock). Most of the Burning Star slope had a gray shale roof, with the associated low sulfur content of the "Quality Circle" coal. A large fault runs from the northwest to the southeast through the center of the mine.

PRODUCTION HISTORY

Company	Mine Name	Years	Production (tons)
Truax Traer Coal Company	Burning Star Underground	1941-1965 *	<u>11,760,884</u> 11,760,884

* Idle 1962 & 1963

Last reported production: October 1965

SOURCES OF DATA

Source Map	Date	Original Scale	Digitized Scale	Map Type
Microfilm, document 352518	10-9-1965	11:2400	1:5297	Final

Annotated Bibliography (data source, brief description of information)

Coal Reports - Production, ownership, years of operation, seam, depth, thickness.

Directory of Illinois Coal Mines (Jackson County) - Mine names, mine index, ownership, years of operation.

ENR Document 85/01 - Mining method.

Mine notes (Jackson County) - Mine type, slope location, geologic problems.

Microfilm map, document 352518, reel 03139, frames 232-237 - Shaft, drift & slope locations, mine outline, mining method, geologic problems.

Mine Index 692
Elk Coal Company, Elk Mine

Type: Underground Total mined-out acreage shown: 292 Production indicates less than 1 acre was mined after the map date.

SHAFT, SLOPE, DRIFT or TIPPLE LOCATIONS

Type	County	Township-Range	Section	Quarters-Footage
Main shaft	Jackson	7S 1W	20	NW NE SW
Air shaft	Jackson	7S 1W	20	SE SE NW

GEOLOGY

Seam(s) Mined	Depth (ft)	Thickness (ft)			Mining Method
		Min	Max	Avg	
Herrin	128			8.0-8.5	RPP

Geologic Problems Reported: The mine extended to within 17 feet of the Old Halliday Mine workings, but had no water intrusion. The coal dipped to the south, and in the northern part of the mine, loaded cars required spragging to keep them from rolling.

PRODUCTION HISTORY

Company	Mine Name	Years	Production (tons)
Halliday Coal Company	Halliday	1934-1935 *	49
Patrick & McCormick Coal Company	Patrick & McCormick	1936-1939	5,757
Hallidayboro Coal Company	Hallidayboro	1939-1950	391,093
Joliana Mining Company	Joliana	1950-1954	394,322
Elk Coal Company	Elk	1954-1964	757,013
Elk Coal Company	Elk	1964-1964	1,515 **
			1,549,749

* Idle 1935

** Production after map date

Last reported production: June 1964

SOURCES OF DATA

Source Map	Date	Original Scale	Digitized Scale	Map Type
Microfilm, document 352522	5-1-1964	1:2400	1:4800	Not final

Annotated Bibliography (data source, brief description of information)

Coal Reports - Production, ownership, years of operation.

Directory of Illinois Coal Mines (Jackson County) - Mine names, mine index, ownership, years of operation.

ENR Document 85/01 - Mining method.

Mine notes (Jackson County) - Mine type, shaft location, seam, depth, thickness, geologic problems.

Microfilm map, document 352522, reel 03139, frames 241 & 242 - Shaft locations, mine outline, mining method.

Mine Index 775**DuQuoin Operating Company, Davis Mine**

Type: Underground Total mined-out acreage shown: 273

SHAFT, SLOPE, DRIFT or TIPPLE LOCATIONS

Type	County	Township-Range	Section	Quarters-Footage
Main shaft	Perry	6S 1W	15	SE SW NW
Air shaft	Perry	6S 1W	15	SE SW NW

GEOLOGY

Seam(s) Mined	Depth (ft)	Thickness (ft)			Mining Method
		Min	Max	Avg	
Herrin	306			6.0	MRP

Geologic Problems Reported: A large northeast-southwest trending fault was identified on the company map. The fault was in the western part of the mine, but east of the shaft.

PRODUCTION HISTORY

Company	Mine Name	Years	Production (tons)
Queen City Coal Company	Queen	1903-1905	96,800
DuQuoin Operating Company	Davis	1905-1915	<u>1,613,665</u>
			1,710,465

Last reported production: May 1915

SOURCES OF DATA

Source Map	Date	Original Scale	Digitized Scale	Map Type
Microfilm, document 352117	3-1927	1:2400	1:4138	Secondary source
Microfilm, document 352105	2-25-1954	1:12000	1:2400	Secondary source

Annotated Bibliography (data source, brief description of information)

Coal Reports - Production, ownership, years of operation, mining method.

Directory of Illinois Coal Mines (Perry County) - Mine names, mine index, ownership, years of operation.

Mine notes (Perry County) - Mine type, shaft location, seam, depth, thickness.

Microfilm map, document 352117, reel 03138, frames 115-118, map of Paradise Mine (mine index 54) - Shaft locations, mine outline (northern), mining method.

Microfilm map, document 352105, reel 03138, frames 94, 95, map of Peabody No. 14 Mine (mine index 180) - Mine outline (southern).

Company map, ISGS map library, 4103.P42 i5.1-42, sheets 1 & 2 - Air shaft location identification, geologic problems (map not georegistered, dated 1913).

Mine Index 892
Royal Mining Company, Royal Mine

Type: Surface Total mined-out acreage shown: 12

SHAFT, SLOPE, DRIFT or TIPPLE LOCATIONS

Type	County	Township-Range	Section	Quarters-Footage
Pit / tippie	Jackson	7S 1W	8	S ½ SW NW

GEOLOGY

Seam(s) Mined	Depth (ft)	Thickness (ft)			Mining Method
		Min	Max	Avg	
Springfield	20-40			6.0-7.0	Surface

Geologic Problems Reported:

PRODUCTION HISTORY

Company	Mine Name	Years	Production (tons)
Royal Mining Company	Royal	1969-1971	<u>68,782</u> 68,782

Last reported production: May 1971

SOURCES OF DATA

Source Map	Date	Original Scale	Digitized Scale	Map Type
Coal Section files, strip mine updates	7-7-1976	1:7920	1:7920	Secondary source

Annotated Bibliography (data source, brief description of information)

Coal Reports - Production, ownership, years of operation, depth, thickness.
 Directory of Illinois Coal Mines (Jackson County) - Mine names, mine index, ownership, years of operation.
 Mine notes (Jackson County) - Mine location.
 Coal Section files, strip mine updates - Mine outline, mining method.

Mine Index 942
Central States Mining Company, Elk Mine

Type: Surface Total mined-out acreage shown: 5 The area shown on the accompanying map is smaller than expected for the reported production. Production indicates approximately 26 acres were mined. The Elk Mine probably included some of the area shown on the accompanying map as Main Line No. 2 Mine (mine index 2442).

SHAFT, SLOPE, DRIFT or TIPPLE LOCATIONS

Type	County	Township-Range	Section	Quarters-Footage
Pit / tippie	Jackson	7S 1W	8	SW

GEOLOGY

Seam(s) Mined	Depth (ft)	Thickness (ft)			Mining Method
		Min	Max	Avg	
Springfield	30			4.2-5.0	Surface

Geologic Problems Reported: The coal was overlain by 5 to 6 feet of Dykersburg Shale. In the northern part of the pit, only a black shale was present directly over the coal. Some slip fractures were present in the seam. Pyrite was abundant in the cleats. The Herrin Coal was mined in a few places where it was not eroded under the glacial drift.

PRODUCTION HISTORY

Company	Mine Name	Years	Production (tons)
Elk Coal Company	Elk	1972-1973	29,948
Central States Mining Company	Elk	1974-1977	174,592
			204,540

Last reported production: November 1977

SOURCES OF DATA

Source Map	Date	Original Scale	Digitized Scale	Map Type
Coal Section files, strip mine updates	7-7-1976	1:7920	1:7920	Secondary source

Annotated Bibliography (data source, brief description of information)

Coal Reports - Production, ownership, years of operation.
 Directory of Illinois Coal Mines (Jackson County) - Mine names, mine index, ownership, years of operation.
 Mine notes (Jackson County) - Mine type, pit location, seam, depth, thickness, geologic problems.
 Coal Section files, strip mine updates - Mine outline, mining method.

Mine Index 967
Consolidation Coal Company, Burning Star No. 5 Mine

Type: Surface Total mined-out acreage shown: 2,379

SHAFT, SLOPE, DRIFT or TIPPLE LOCATIONS

Type	County	Township-Range	Section	Quarters-Footage
Pit	Jackson	8S 1E	6	NW
Pit	Jackson	8S 1W	1, 11 & 12	
Pit	Jackson	7S 1W	21, 22, 24, 28, 33, 34	

GEOLOGY

Seam(s) Mined	Depth (ft)	Thickness (ft)			Mining Method
		Min	Max	Avg	
Herrin	50	5.0	10.0	9.5	Surface
Springfield (1978 & 1979)	75-80			3.5	Surface

Geologic Problems Reported: The east-west pit (11 & 12-T8S-R1W) north of the De Soto-Hurst blacktop (state route 149) mined only the Herrin Coal, which had no splits. The plan was to open a new pit south of that blacktop when the dragline was completed (expected Feb/Mar 1978), to mine both Herrin & Springfield Coals. That coal was projected to be mined out by Aug/Dec 1979, then the big dragline was to move west of the prep plant where the Herrin Coal was split into several benches. The pit in 11 & 12-T8S-R1W had an erosional channel (up to 25 feet thick or more) filled with sandstone above the coal through a part of the pit. This sandstone discharged some water into the pit. These were Walshville Channel sediments, sometimes replacing the upper part of the coal and sometimes eroding part of the coal. Another part of that pit showed the strongly undulating coal surface. Methane gas bubbled out of the coal into the water in the pit. The shale above the coal in this pit was gray or dark gray. Pyrite was present as fracture facings, but no bands were noted. The Herrin Coal was present in both low sulfur and high sulfur qualities, depending on the depositional history of the area of the pit. Calcite veins and pyrite veins were present near a fault in the Herrin Coal (SE 2-T8S-R1W). (Displacement on the fault was not noted, and may have been small.) In the eastern pits, the Herrin Coal was split into two benches. The Energy Shale was 12 to 15 feet thick over 1 to 1.5 feet of coal in the upper bench. The interburden was 12 to 15 feet of gray silty shale above the 6 feet thick lower bench of the Herrin Coal.

PRODUCTION HISTORY

Company	Mine Name	Years	Production (tons)
Consolidation Coal Company	Burning Star No. 5	1976-1989	<u>30,081,746</u> 30,081,746

Last reported production: 1989

SOURCES OF DATA

Source Map	Date	Original Scale	Digitized Scale	Map Type
Company, 4103.J31 i5.1-38	12-31-1990	1:12000	1:12000	Final

Annotated Bibliography (data source, brief description of information)

Coal Reports - Production, ownership, years of operation, thickness.
 Directory of Illinois Coal Mines (Jackson County) - Mine names, mine index, ownership, years of operation.
 Mine notes (Jackson County) - Mine type, seams, depth, thickness, geologic problems.
 Company map, ISGS map library, 4103.J31 i5.1-38 - Mine outline, mining method.

Mine Index 1037
S Coal Company, Elkhville Mine

Type: Surface Total mined-out acreage shown: 91

SHAFT, SLOPE, DRIFT or TIPPLE LOCATIONS

Type	County	Township-Range	Section	Quarters-Footage
Pit	Jackson	7S 1W	19	E ½ NE

GEOLOGY

Seam(s) Mined	Depth (ft)	Thickness (ft)			Mining Method
		Min	Max	Avg	
Herrin	70			6.0	Surface
Springfield					

Geologic Problems Reported: Geologic problems are not reported for active mines.

PRODUCTION HISTORY

Company	Mine Name	Years	Production (tons)
S Coal Company	Elkhville	2004-2009	1,883,144
			1,883,144

Last reported production: 2009

SOURCES OF DATA

Source Map	Date	Original Scale	Digitized Scale	Map Type
Coal Section files, digital map	2009	Not known *	1:24000	Not final

Annotated Bibliography (data source, brief description of information)

Coal Reports - Production, ownership, years of operation, seams, depth, thickness.
 Directory of Illinois Coal Mines (Jackson County) - Mine names, mine index, ownership, years of operation.
 Coal Section files, digital map - Mine outline, mining method.

Mine Index 1042**Knight Hawk Coal LLC, Royal Falcon Mine**

Type: Surface & Underground Total mined-out acreage shown: 4 surface and 83 underground

SHAFT, SLOPE, DRIFT or TIPPLE LOCATIONS

Type	County	Township-Range	Section	Quarters-Footage
Drift	Jackson	7S 1W	25	NW SE SW

GEOLOGY

Seam(s) Mined	Depth (ft)	Thickness (ft)			Mining Method
		Min	Max	Avg	
Herrin					Surface
Herrin					Underground

Geologic Problems Reported: The Cottage Grove fault system runs east-west north of this mine, and the Walshville Channel runs north-south west of this mine.

PRODUCTION HISTORY

Company	Mine Name	Years	Production (tons)
Knight Hawk Coal LLC	Royal Falcon	2007-2009	<u>984,460</u> 984,460

Last reported production: November 2009

SOURCES OF DATA

Source Map	Date	Original Scale	Digitized Scale	Map Type
Coal Section files, digital map	3-2-2010	1:3600	1:3600	Final

Annotated Bibliography (data source, brief description of information)

Coal Reports - Production, ownership, years of operation, seams, depth, thickness.

Directory of Illinois Coal Mines (Jackson County) - Mine names, mine index, ownership, years of operation.

Coal Section files, digital map - Drift location, mine outline, mining method.

Mine Index 2439**New Gallatin Coal Company, Inc., R & N No. 2 Mine**

Type: Surface Total mined-out acreage shown: 35, which includes the area for Ajax Mine (mine index 2441). Ajax Mine is the southern portion and R. & N. No. 2 Mine is the northern portion. The outline shown on the accompanying map is larger than expected for the reported production. Production indicates approximately 26 acres were mined. Ajax and R. & N. No. 2 may have enlarged an earlier surface mine, or the area shown as mined may include disturbed, but not mined, land.

SHAFT, SLOPE, DRIFT or TIPPLE LOCATIONS

Type	County	Township-Range	Section	Quarters-Footage
Pit / tippie	Jackson	7S 1W	18	NW SE SE

GEOLOGY

Seam(s) Mined	Depth (ft)	Thickness (ft)			Mining Method
		Min	Max	Avg	
Herrin	40			5.0	Surface

Geologic Problems Reported:

PRODUCTION HISTORY

Company	Mine Name	Years	Production (tons)
New Gallatin Coal Company	R. & N. No. 2	1967-1967	<u>12,141</u> 12,141

Last reported production: March 1968

SOURCES OF DATA

Source Map	Date	Original Scale	Digitized Scale	Map Type
Coal Section files, strip mine updates	1969-1971	1:7920	1:7920	Secondary source
USGS topographic map, Elkhville	1978	1:24000	1:24000	Secondary source

Annotated Bibliography (data source, brief description of information)

Coal Reports - Production, ownership, years of operation, mine type, seam, depth, thickness.
 Directory of Illinois Coal Mines (Jackson County) - Mine names, mine index, ownership, years of operation.
 Coal Section files, strip mine updates - Mine outline, mining method.
 USGS 7.5-minute topographic map, Elkhville Quadrangle, 1968, PR 1978 - Mine outline.

Mine Index 2441
Ajax Coal Company, Inc., Ajax Mine

Type: Surface Total mined-out acreage shown: 35, which includes the area for R. & N. No. 2 Mine (mine index 2439). The northern part of the pit is R. & N. No. 2 Mine and the southern portion of the pit is Ajax Mine. The outline shown on the accompanying map is larger than expected for the reported production. Production indicates approximately 26 acres were mined. Ajax and R. & N. No. 2 may have enlarged an earlier surface mine, or the area shown as mined may include disturbed, but not mined, land.

SHAFT, SLOPE, DRIFT or TIPPLe LOCATIONS

Type	County	Township-Range	Section	Quarters-Footage
Pit / tippLe	Jackson	7S 1W	18	NW SE SE

GEOLOGY

Seam(s) Mined	Depth (ft)	Thickness (ft)			Mining Method
		Min	Max	Avg	
Herrin	40			7.0	Surface

Geologic Problems Reported:

PRODUCTION HISTORY

Company	Mine Name	Years	Production (tons)
Ajax Coal Company, Inc.	Ajax	1967-1968	<u>199,629</u> 199,629

Last reported production: March 1968

SOURCES OF DATA

Source Map	Date	Original Scale	Digitized Scale	Map Type
Coal Section files, strip mine updates	1969-1971	1:7920	1:7920	Secondary source
USGS topographic map, Elkhville	1978	1:24000	1:24000	Secondary source

Annotated Bibliography (data source, brief description of information)

Coal Reports - Production, ownership, years of operation, mine type, seam, depth, thickness.
 Directory of Illinois Coal Mines (Jackson County) - Mine names, mine index, ownership, years of operation.
 Coal Section files, strip mine updates - Mine outline, mining method.
 USGS 7.5-minute topographic map, Elkhville Quadrangle, 1968, PR 1978 - Mine outline.

Mine Index 2442**Main Line Coal Corporation, Main Line No. 2 Mine**

Type: Surface Total mined-out acreage shown: 77 Some of the area shown on the accompanying map was probably mined by Elk Mine (mine index 942).

SHAFT, SLOPE, DRIFT or TIPPLE LOCATIONS

Type	County	Township-Range	Section	Quarters-Footage
Pit / tippie	Jackson	7S 1W	8	SE NW SW

GEOLOGY

Seam(s) Mined	Depth (ft)	Thickness (ft)			Mining Method
		Min	Max	Avg	
Springfield	30			4.5	Surface

Geologic Problems Reported:

PRODUCTION HISTORY

Company	Mine Name	Years	Production (tons)
Big Muddy Coal Company	Big Muddy No. 2	1966-1966	30,935
Main Line Coal Corporation	Main Line No. 2	1966-1968	454,767
Katler Coal Company	Katler No. 2	1968-1968	none
			485,702

Last reported production: July 1968

SOURCES OF DATA

Source Map	Date	Original Scale	Digitized Scale	Map Type
Coal Section files, strip mine updates	1976	1:7920	1:7920	Secondary source

Annotated Bibliography (data source, brief description of information)

Coal Reports - Production, ownership, years of operation, seam, depth, thickness.

Directory of Illinois Coal Mines (Jackson County) - Mine names, mine index, ownership, years of operation.

Mine notes (Jackson County) - Mine type.

Coal Section files, strip mine updates - Mine outline, mining method.

Mine Index 2443**Floyd Chaney & Earl Grisham, Monarch Mine**

Type: Underground Total mined-out acreage shown: Less than 1; production indicates less than 1 acre was mined after the map date.

SHAFT, SLOPE, DRIFT or TIPPLE LOCATIONS

Type	County	Township-Range	Section	Quarters-Footage
Main slope	Jackson	7S 1W	17	NW NE NW

GEOLOGY

Seam(s) Mined	Depth (ft)	Thickness (ft)			Mining Method
		Min	Max	Avg	
Springfield	56-60			4.5-4.67	Underground

Geologic Problems Reported:

PRODUCTION HISTORY

Company	Mine Name	Years	Production (tons)
Monroe Coal Company	Monroe No. 1	1936-1937	1,377
Monarch Coal Company	Monarch	1938-1938	367
Charles J. Bruce	Monarch	1939-1940	292
Floyd Chaney & Earl Grisham	Monarch	1940-1940	714
Floyd Chaney & Earl Grisham	Monarch	1940-1941	1,840 *
			4,590

* Production after map date

Last reported production: 1941

SOURCES OF DATA

Source Map	Date	Original Scale	Digitized Scale	Map Type
Company, document 352506	7-15-1940	1:1200	1:1324	Not final

Annotated Bibliography (data source, brief description of information)

Coal Reports - Production, ownership, years of operation.

Directory of Illinois Coal Mines (Jackson County) - Mine names, mine index, ownership, years of operation.

Mine notes (Jackson County) - Mine type, slope location, seam, depth, thickness.

Microfilm map, document 352506, reel 03139, frame 211 - Slope location, mine outline, mining method.

Mine Index 2444**Elkville Coal Company, Elkville Mine**

Type: Underground Total mined-out acreage shown: 2

SHAFT, SLOPE, DRIFT or TIPPLe LOCATIONS

Type	County	Township-Range	Section	Quarters-Footage
Main shaft	Jackson	7S 1W	20	NW NE NW
Air shaft	Jackson	7S 1W	20	NW NE NW

GEOLOGY

Seam(s) Mined	Depth (ft)	Thickness (ft)			Mining Method
		Min	Max	Avg	
Herrin	60			3.5	MRP

Geologic Problems Reported:

PRODUCTION HISTORY

Company	Mine Name	Years	Production (tons)
Elkville Coal Company	Elkville	1936-1940	5,986 5,986

Last reported production: 1940

SOURCES OF DATA

Source Map	Date	Original Scale	Digitized Scale	Map Type
Microfilm, document 352522	5-1-1964	1:2400	1:4800	Secondary source

Annotated Bibliography (data source, brief description of information)

Coal Reports - Production, ownership, years of operation.

Directory of Illinois Coal Mines (Jackson County) - Mine names, mine index, ownership, years of operation.

ENR Document 85/01 - Mining method.

Mine notes (Jackson County) - Mine type, shaft location, seam, depth, thickness.

Microfilm map, document 352522, reel 03139, frames 241 & 242, map of Elk Mine (mine index 692) - Shaft locations, mine outline, mining method.

Microfilm map, document 352481, reel 03139, frame 172 - Mine identity *.

* This map was not used as the primary source map because the surface coordinates shown are not on the topographic map, and georegistration process would have resulted in more inaccuracy than using a secondary source for the mine outline.

Mine Index 3151
DuQuoin Union Coal Company, Browning Mine

Type: Underground Total mined-out acreage shown: 252

SHAFT, SLOPE, DRIFT or TIPPLE LOCATIONS

Type	County	Township-Range	Section	Quarters-Footage
Main shaft	Perry	6S 1W	16	NE SE NW
Air shaft	Perry	6S 1W	16	NE SE NW
Pump shaft	Perry	6S 1W	9	SW SW SE

GEOLOGY

Seam(s) Mined	Depth (ft)	Thickness (ft)			Mining Method
		Min	Max	Avg	
Herrin	45			6.0	RP

Geologic Problems Reported: The mine probably had water problems. The shallow 45-ft depth of the mine, combined with a specific pump shaft (pump holes are common on mine maps, a drill hole large enough for a hose of some kind), indicates water problems may have been more severe than other mines in the region. The 1884 Coal Report indicated they abandoned a shaft and developed the property near the railroad track so that they would not have to haul their coal 1 mile. The pump shaft was probably the original shaft for the mine, and workings were extended so that the pump shaft could also be used for escapement. The roof was bad near the pump shaft.

PRODUCTION HISTORY

Company	Mine Name	Years	Production (tons)
DuQuoin Coal Mining Company	Browning	1883-1893	851,700
DuQuoin Union Coal Company	Browning	1893-1899	514,000
			1,365,700

Last reported production: 1899

SOURCES OF DATA

Source Map	Date	Original Scale	Digitized Scale	Map Type
WPA, T6S-R1W	1940	1:12000	1:55096	Secondary source
Microfilm, document 352117	3-1927	1:1400	1:4138	Secondary source

Annotated Bibliography (data source, brief description of information)

Coal Reports - Production, ownership, years of operation, mining method, geologic problems.
 Directory of Illinois Coal Mines (Perry County) - Mine names, mine index, ownership, years of operation.
 Mine notes (Perry County) - Seam, depth, thickness.
 WPA map, T6S-R1W - Shaft locations, mine outline, geologic problems.
 Microfilm, document 352117, reel 03138, frames 115-118, map of Paradise Mine (mine index 54) - Mine outline (northeastern part).

Mine Index 3155**Little Jewel Coal Company, Jewel No. 3 Mine**

Type: Underground Total mined-out acreage shown: 3

SHAFT, SLOPE, DRIFT or TIPPLE LOCATIONS

Type	County	Township-Range	Section	Quarters-Footage
Main slope	Perry	6S 1W	17	SE SW SW
Air shaft	Perry	6S 1W	17	SE SW SW
Air shaft	Perry	6S 1W	17	SE SW SW

GEOLOGY

Seam(s) Mined	Depth (ft)	Thickness (ft)			Mining Method
		Min	Max	Avg	
Herrin					MRP

Geologic Problems Reported:**PRODUCTION HISTORY**

Company	Mine Name	Years	Production (tons)
Jewel Coal Company	Jewel No. 3	1935-1935	763
New Jewel Coal Company	Jewel No. 3	1936-1936	800
Jewel Coal Company	Jewel No. 3	1937-1937	860
New Jewel Coal Company	Jewel No. 3	1938-1940	1,946
Little Jewel Coal Company	Jewel No. 3	1940-1941	1,903
Jewel Coal Company	Jewel No. 3	1942-1942	2,371
Little Jewel Coal Company	Jewel No. 3	1943-1946	13,483
			22,126

Last reported production: 1946

SOURCES OF DATA

Source Map	Date	Original Scale	Digitized Scale	Map Type
Microfilm, document 352079	4-30-1948	1:720	1:1092	Final

Annotated Bibliography (data source, brief description of information)

Coal Reports - Production, ownership, years of operation.

Directory of Illinois Coal Mines (Perry County) - Mine names, mine index, ownership, years of operation.

Mine notes (Perry County) - Mine type, slope location, seam.

Microfilm map, document 352079, reel 03138, frame 58 - Slope & shaft locations, mine outline, mining method.

Mine Index 3156
Perfection Coal Company, Perfection Mine

Type: Surface Total mined-out acreage shown: 381 Production indicates approximately 12 acres were mined after the map date. The outline on the accompanying map is larger than expected for the reported production. The coal may have been thinner than reported, and older surface-mined areas may have been expanded by the Perfection Mine. The reported production indicates approximately 250 acres were mined.

SHAFT, SLOPE, DRIFT or TIPPLE LOCATIONS

Type	County	Township-Range	Section	Quarters-Footage
Pit or tippie	Perry	6S 1W	17	NE SW NE

GEOLOGY

Seam(s) Mined	Depth (ft)	Thickness (ft)			Mining Method
		Min	Max	Avg	
Herrin	40-50	5.0	6.0	5.5	Surface

Geologic Problems Reported: A small fault was found in SW 16-T6S-R1W. This fault zone was reported to have widened to the southeast. Some erosional areas in the 1923 pit showed no coal at all. The overburden was 10 to 20 feet of fine-grained glacial material with a base of boulders that persisted throughout the pit. Below the glacial deposits was 3 to 16 feet of shale that was easily removed. The coal was reported to contain few impurities. Some old works were encountered, and the pillars were mined.

PRODUCTION HISTORY

Company	Mine Name	Years	Production (tons)
Scott Smith & Company	Smith	1918-1924	540,497
Perfection Coal Company	Perfection	1924-1937	1,643,433
Perfection Coal Company	Perfection	1937-1940	<u>109,094 *</u>
			2,293,024

* Production after map date

Last reported production: April 1940

SOURCES OF DATA

Source Map	Date	Original Scale	Digitized Scale	Map Type
State archive, MSHA_48_01	11-25-1937	1:2400	1:2400	Not final
USGS topographic map, Elkhville	PR 1978	1:24000	1:24000	Secondary source

Annotated Bibliography (data source, brief description of information)

Coal Reports - Production, ownership, years of operation.
 Directory of Illinois Coal Mines (Perry County) - Mine names, mine index, ownership, years of operation.
 Mine notes (Perry County) - Mine type, mine location, seam, depth, thickness, geologic problems.
 State archive, MSHA_48_01 - Mine outline, mining method.
 USGS 7.5-minute topographic map, Elkhville Quadrangle, 1968 PR 1978 - Mine outline (southwestern part).

Mine Index 3158**Jewel Coal & Mining Company, Jewel No. 1 Mine**

Type: Underground Total mined-out acreage shown: 62 Production indicates 62 acres were mined after the map date.

SHAFT, SLOPE, DRIFT or TIPPLE LOCATIONS

Type	County	Township-Range	Section	Quarters-Footage
Main shaft	Perry	6S 1W	18	NW NE SE
Air shaft	Perry	6S 1W	18	SE SW NE

GEOLOGY

Seam(s) Mined	Depth (ft)	Thickness (ft)			Mining Method
		Min	Max	Avg	
Herrin	75			6.5	RPP

Geologic Problems Reported:

PRODUCTION HISTORY

Company	Mine Name	Years	Production (tons)
Harvey & Company	Harvey	1916-1917	959
Jewel Coal & Mining Company	Jewel No. 1	1917-1921	383,947
Jewel Coal & Mining Company	Jewel No. 1	1921-1923	378,346 *
			<u>763,252</u>

* Production after map date

Last reported production: October 1923

SOURCES OF DATA

Source Map	Date	Original Scale	Digitized Scale	Map Type
Microfilm, document 352078	2-1921	1:2400	1:4469	Not final

Annotated Bibliography (data source, brief description of information)

Coal Reports - Production, ownership, years of operation.

Directory of Illinois Coal Mines (Perry County) - Mine names, mine index, ownership, years of operation.

Mine notes (Perry County) - Shaft location, seam, depth, thickness.

Microfilm map, document 352078, reel 03138, frame 57 - Shaft locations, mine outline, mining method.

Mine Index 3162**Willis Coal & Mining Company, Willis No. 3 Mine**

Type: Underground Total mined-out acreage shown: 118 The mine is smaller than expected for the reported production. Production indicates approximately 200 acres were mined.

SHAFT, SLOPE, DRIFT or TIPPLE LOCATIONS

Type	County	Township-Range	Section	Quarters-Footage
Main shaft	Perry	6S 1W	19	SE SE SE
Air shaft	Perry	6S 1W	19	NW SE SE

GEOLOGY

Seam(s) Mined	Depth (ft)	Thickness (ft)			Mining Method
		Min	Max	Avg	
Herrin	68			6.0	MRP

Geologic Problems Reported:

PRODUCTION HISTORY

Company	Mine Name	Years	Production (tons)
Enterprise Coal & Coke Company	Enterprise No. 3	pre1882-1893 *	456,672 *
DuQuoin Union Coal Company	Enterprise No. 3	1893-1899	457,000
Vulcan Coal Company	Enterprise No. 3	1899-1901	57,700
Willis Coal & Mining Company	Willis No. 3	1901-1903	97,581
			<u>1,068,953</u>

* Production and years of operation before 1882 are not known. The 1882 Coal Report indicates 13 acres were mined.

Last reported production: 1903

SOURCES OF DATA

Source Map	Date	Original Scale	Digitized Scale	Map Type
Microfilm, document 352118	3-1930	1:2400	1:4303	Secondary source
WPA, T6S-R1W	1940 **	1:12000	1:55096	Secondary source

** The mine outline was dated 1898, and would be a "not final" boundary.

Annotated Bibliography (data source, brief description of information)

Coal Reports - Production, ownership, years of operation, mine type.

Directory of Illinois Coal Mines (Perry County) - Mine names, mine index, ownership, years of operation.

Mine notes (Perry County) - Shaft location, seam, depth, thickness.

Microfilm map, document 352118, reel 03136, frames 119-122, map of Security Mine (mine index 451) - Mine outline (southern half), mining method.

WPA map, T6S-R1W - Shaft locations, mine outline (southern half).

Mine Index 3163
Star Coal Mining Company, Star Mine

Type: Underground Total mined-out acreage shown: None; production indicates approximately 22 acres were mined, and another 20 acres were reportedly mined before 1882.

SHAFT, SLOPE, DRIFT or TIPPLE LOCATIONS

Type	County	Township-Range	Section	Quarters-Footage
New shaft	Perry	6S 1W	20	SW SW NW
Old shaft	Perry	6S 1W	20	SE NW NW
Air shaft	Perry	6S 1W	20	SW NW NW

GEOLOGY

Seam(s) Mined	Depth (ft)	Thickness (ft)			Mining Method
		Min	Max	Avg	
Herrin	80			6.0	RP

Geologic Problems Reported: The mine was abandoned because of bad roof in the mine, and a poor market for coal.

PRODUCTION HISTORY

Company	Mine Name	Years	Production (tons)
Horn & Company	Star	pre1881-1884 *	94,160 *
Star Coal Mining Company	Star	1884-1886	26,800
			120,960

* Years and production before 1881 are not known. The 1882 Coal Report indicated 20 acres were mined.

Last reported production: 1886

SOURCES OF DATA

Source Map	Date	Original Scale	Digitized Scale	Map Type
WPA, T6S-R1W	1940	1:12000	1:55095	Secondary source
ISGS map library, 4103.P42 i5.1-70	10-1934	1:63360	1:63360	Secondary source

Annotated Bibliography (data source, brief description of information)

Coal Reports - Production, ownership, years of operation, geologic problems.
 Directory of Illinois Coal Mines (Perry County) - Mine names, mine index, ownership, years of operation.
 Mine notes (Perry County) - Seam, depth, thickness.
 WPA map, T6S-R1W - Shaft locations, mining method.
 ISGS map library, 4103.P42 i5.1-70 - Mine name, shaft locations.

Mine Index 3164**Black Gold Coal Company, Black Gold Mine**

Type: Underground Total mined-out acreage shown: None; production indicates approximately 8 acres were mined.

SHAFT, SLOPE, DRIFT or TIPPLE LOCATIONS

Type	County	Township-Range	Section	Quarters-Footage
Main slope	Perry	6S 1W	21	

GEOLOGY

Seam(s) Mined	Depth (ft)	Thickness (ft)			Mining Method
		Min	Max	Avg	
Herrin	65			6.17	RP

Geologic Problems Reported:

PRODUCTION HISTORY

Company	Mine Name	Years	Production (tons)
Black Gold Coal Company	Black Gold	1942-1943	<u>44,124</u> 44,124

Last reported production: October 1943

SOURCES OF DATA

Source Map	Date	Original Scale	Digitized Scale	Map Type
Mine notes	Undated	(text only)	1:24000 *	Secondary source

* The mine location was plotted on a 1:24000 USGS topographic map from the mine location description and digitized.

Annotated Bibliography (data source, brief description of information)

Coal Reports - Production, ownership, years of operation, depth, thickness.

Directory of Illinois Coal Mines (Perry County) - Mine names, mine index, ownership, years of operation.

Mine notes (Perry County) - Mine type, slope location, seam.

Mine Index 4407
Ray Campbell, Campbell Mine

Type: Underground Total mined-out acreage shown: None; production indicates approximately 1 acre was mined.

SHAFT, SLOPE, DRIFT or TIPPLE LOCATIONS

Type	County	Township-Range	Section	Quarters-Footage
Main slope	Perry	6S 1W	20	SE NW SW

GEOLOGY

Seam(s) Mined	Depth (ft)	Thickness (ft)			Mining Method
		Min	Max	Avg	
Herrin					Underground

Geologic Problems Reported:

PRODUCTION HISTORY

Company	Mine Name	Years	Production (tons)
Ray Campbell	Campbell	1928-1932 *	<u>5,201</u> 5,201

* Production was not reported in 1930 for mines producing less than 1,000 tons. (This mine produced more than 1,000 tons in 1931 & 1932.)

Last reported production: 1932

SOURCES OF DATA

Source Map	Date	Original Scale	Digitized Scale	Map Type
WPA, T6S-R1W	1940	1:12000	1:55095	Secondary source

Annotated Bibliography (data source, brief description of information)

Coal Reports - Production, ownership, years of operation.

Directory of Illinois Coal Mines (Perry County) - Mine names, mine index, ownership, years of operation.

WPA, T6S-R1W - Slope location, mine type, mining method.

Mine Index 4409**Wall & Company, Enterprise No. 2 Mine**

Type: Underground Total mined-out acreage shown: None; production indicates approximately 2 acres were mined.

SHAFT, SLOPE, DRIFT or TIPPLE LOCATIONS

Type	County	Township-Range	Section	Quarters-Footage
Main shaft	Perry	6S 1W	20	SW NE SW

GEOLOGY

Seam(s) Mined	Depth (ft)	Thickness (ft)			Mining Method
		Min	Max	Avg	
Herrin	180			6.0	Underground

Geologic Problems Reported:

PRODUCTION HISTORY

Company	Mine Name	Years	Production (tons)
Wall & Company	Enterprise No. 2	pre1881-1882 *	11,942 *
			11,942

* Production and years of operation before 1882 are not known. The 1882 Coal Report indicated 1 acre was mined.

Last reported production: 1882

SOURCES OF DATA

Source Map	Date	Original Scale	Digitized Scale	Map Type
WPA, T6S-R1W	1940	1:12000	1:55095	Secondary source

Annotated Bibliography (data source, brief description of information)

Coal Reports - Production, ownership, years of operation.

Directory of Illinois Coal Mines (Perry County) - Mine names, mine index, ownership, years of operation.

WPA map, T6S-R1W - Shaft location, mining method.

Mine Index 7285
Norris & Son, Norris & Short Mine

Type: Underground Total mined-out acreage shown: None; production indicates less than 1 acre was mined. The mine probably had earlier operators and a larger production than shown here. The 55-ton production listed here is hardly sufficient to connect the shaft and air shaft shown on the source map. See the unlocated mines at the back of the report.

SHAFT, SLOPE, DRIFT or TIPPLE LOCATIONS

Type	County	Township-Range	Section	Quarters-Footage
Main slope	Perry	6S 1W	20	SE NW NE
Air shaft	Perry	6S 1W	20	SE NW NE

GEOLOGY

Seam(s) Mined	Depth (ft)	Thickness (ft)			Mining Method
		Min	Max	Avg	
Herrin	60			6.0	RP

Geologic Problems Reported:

PRODUCTION HISTORY

Company	Mine Name	Years	Production (tons)
Norris & Son	Norris & Short	1916-1917	<u>55</u> 55

Last reported production: 1917

SOURCES OF DATA

Source Map	Date	Original Scale	Digitized Scale	Map Type
Microfilm, document 352142	11-25-1937	1:2400	1:4303	Secondary source

Annotated Bibliography (data source, brief description of information)

Coal Reports - Production, ownership, years of operation.

Directory of Illinois Coal Mines (Franklin County) - Mine names, mine index, ownership, years of operation.

Mine notes (Franklin County) - Mine type, shaft location, seam, depth, thickness.

Microfilm map, document 352142, reel 03138, frames 158 & 159, map of the Perfection Mine (mine index 3156) - Shaft locations.

WPA map, T6S-R1W - Mine ownership.

OTHER MINES SHOWN ON ELKVILLE QUADRANGLE

Mine Index 4410, Campbell Mine NE SW SW 20-T6S-R1W source: WPA, T6S-R1W
 Mine Index 4603 SW SE NW 17-T7S-R1W, shaft, 20 ft deep, 8 ft thick source: ISGS field notes (T. E. Savage, 1908), ISGS map library, 4107 d5-28 (T. E. Savage work map)
 Mine Index 7284, White Brothers NW NW 17-T7S-R1W, surface, Springfield Coal source: Coal Section strip mine updates (1976)

MINES WHOSE LOCATIONS ARE NOT KNOWN, ELKVILLE QUADRANGLE

The locations of the following mines are unknown, but the production tonnage, operating names, and nearest town were reported in the Annual Coal Reports. The operators listed below mined in or near the Elkhville Quadrangle. The information shown is similar to that presented on the summary sheets in the previous pages of this directory. The first item is the name the mine operated under as listed in the Coal Report, then the years the mine reported. If no physical data are available, the next item listed is the total tons produced by the mine. If physical data are available, the order of presentation is as follows: type of opening for the mine (drift, slope or shaft), depth of coal in feet, and thickness of coal in feet.

The total tons mined by these unlocated mines is 91,984 (65,888 underground, 4,892 surface mined, and 21,204 mined by uncertain method), which would represent approximately 12 to 23 acres, depending on the recovery factor, mining method, and numerous other factors. (Note: 1 square mile = 640 acres)

DU QUOIN, Perry County

Winn (George), 1882-1883, shaft, Herrin, 41, 6.0	2,545 tons
Frizzell Coal Mining Company, 1883-1889, shaft, —, 30, 5.75-6.0, RP	33,417 tons
Johnson (Thomas), 1894-1895, shaft, Herrin, 71, 6.0, RP	200 tons
Snofford & Pyles, 1901-1902, shaft, Herrin, 24, 6.0, RP	200 tons
Pyles (Dan), Sunshine Mine, 1902-1903	800 tons
	1,000 tons
Greenwood (Thomas), 1904-1905, shaft, Herrin, 26, 6.0, RP	140 tons
Hummel (J. A.) & Davis (C.), 1905-1906, slope, Herrin, 15, 6.0-9.0, RP	3,600 tons
Conroy & Bailey, 1906-1907	2,924 tons
Presswood (Charles), 1907-1908	500 tons
	7,024 tons
Coffel (James A.), 1908-1909, shaft, Herrin, 21-48, 6.0, RP	3,120 tons
Cook (B. O.), 1909-1912	9,313 tons
	12,433 tons
Dynamic Coal Mining Company, No. 3 Mine, 1912-1914, shaft, Herrin, 80, 6	6,318 tons
Morgan & Williams, 1914-1915, slope, Herrin, 15, 6.0-6.57, RP	800 tons
Legrand & Son, 1916-1917	340 tons
	1,140 tons
Dry & Revelle, 1915-1917, shaft, Herrin, 24-30, 5.83-6.0, RP	389 tons
Schmidtgal Coal Company, 1919-1923	1,350 tons
Possum Hollow Coal Company, 1923-1927	6,264 tons
	7,614 tons
Diamond Coal Company, 1920-1922	1,135 tons
DuQuoin Coal Company, Diamond Mine, 1922-1926	2,785 tons

	3,920 tons
Schneider (Marion) Coal Company, 1922-1927	1,382 tons
Seronce (Morris), 1922-1924	1,038 tons
Good Will Coal Company, 1924-1925	1,595 tons
Manuel & Sons, 1924-1925	2,035 tons
East Side Coal Company, 1926-1927	3,040 tons
Blue Bell Coal Company, 1926-1926	580 tons
Clayton (Dick), 1928-1928, surface	750 tons
Clayton (J. M.), 1929-1929, underground	138 tons
Talbot Coalery Company, 1934-1935, surface, Herrin, —, 6.0	4,142 tons
Blue Ribbon Coal Company, 1934-1934, underground	184 tons
Bard (Charles) Coal Company, 1936-1936, underground	800 tons

ELKVILLE, Jackson County

Cox & Harris, 1890-1892, shaft, —, 29, 8.0, RP	500 tons
--	----------

INDEX OF MINES IN THE ELKVILLE QUADRANGLE

Ajax Coal Company, Inc.	27
Bailey (Conroy & Bailey)	41
Bard (Charles) Coal Company.	42
Big Muddy & Carterville Mining Company	11
Big Muddy Coal Company, No. 2 Mine	28
Big Muddy No. 2 Mine	28
Black Gold Coal Company.	37
Black Servant Coal Company	16
Blue Bell Coal Company	42
Blue Ribbon Coal Company.	42
Brilliant Coal & Coke Company	12
Browning Mine.	31
Bruce (Charles J.)	29
Burning Star No. 5 Mine	23
Burning Star Underground Mine	18
Campbell (Ray)	38
Campbell Mine	41
Central States Mining Company	22
Chaney (Floyd) & Grisham (Earl).	29
Clayton (Dick)	42
Clayton (J. M.)	42
Coffel (James A.)	41
Conroy & Bailey	41
Consolidation Coal Company	23
Cook (B. O.)	41
Cox & Harris	42
Crear - Clinch Coal Company	14
Davis (Hummel & Davis)	41
Davis Mine.	20
Diamond Coal Company	41
Dry & Revelle.	41
DuQuoin Coal Company, Diamond Mine	41
DuQuoin Coal Mining Company, Browning Mine	31
DuQuoin Operating Company	20
DuQuoin Union Coal Company, Browning Mine	31
DuQuoin Union Coal Company, Enterprise No. 3 Mine	35
DuQuoin-Pittsburgh Coal & Coke Company	12
Dynamic Coal Mining Company.	41
East Side Coal Company.	42
Elk Coal Company.	19, 22
Elkville Coal Company.	30
Elkville Mine.	24
Enterprise Coal & Coke Company, No. 3 Mine	35
Enterprise No. 2 Mine	39
Equitable Coal & Coke Company	14
Equitable Coal Company	14
Forester Coal & Coke Company	9
Franklin Coal & Coke Company, No. 2 Mine	11
Franklin County Coal Company, No. 7 Mine	11
Frizzell Coal Mining Company	41
Good Will Coal Company.	42
Greenwood (Thomas)	41
Grisham (Chaney & Grisham)	29
Halliday Brothers	10
Halliday Coal Company	19
Hallidayboro Coal Company	19
Hallidayboro Mine	10
Harris (Cox & Harris)	42
Harvey & Company	34
Horn (Henry) Colliery Company.	12
Horn & Company	36
Hummel (J. A.) & Davis (C.)	41
Jackson Coal Company	10

Jewel Coal & Mining Company, No. 1 Mine	34
Jewel Coal Company, No. 3 Mine	32
Johnson (Thomas)	41
Joliana Mining Company	19
Kathleen Mine	15
Katler Coal Company	28
Knight Hawk Coal LLC, Royal Falcon Mine	25
Legrand & Son	41
Little Jewel Coal Company	32
Main Line Coal Corporation	28
Majestic Coal & Coke Company	14
Manuel & Sons	42
McCormick (Patrick & McCormick Coal Company)	19
Monarch Coal Company	29
Monroe Coal Company, No. 1 Mine	29
Morgan & Williams	41
Muddy Valley Mine	10
Muddy Valley Mining & Manufacturing Company	10
New Gallatin Coal Company	26
New Jewel Coal Company	32
Norris & Son	40
Paradise Coal & Coke Company	9
Patrick & McCormick Coal Company	19
Peabody Coal Company, No. 14 Mine	14
Perfection Coal Company	33
Possum Hollow Coal Company	41
Presswood (Charles)	41
Pyles (Dan)	41
Pyles (Snofford & Pyles)	41
Queen City Coal Company	20
R. & N. No. 2 Mine	26
Revelle (Dry & Revelle)	41
Royal Falcon Mine	25
Royal Mining Company	21
Royalton Mine	11
S Coal Company	24
Schmidtgal Coal Company	41
Schneider (Marion) Coal Company	42
Security Coal & Mining Company	17
Seronce (Morris)	42
Short (Norris & Short Mine)	40
Smith (Scott) & Company	33
Snofford & Pyles	41
Star Coal Mining Company	36
Sunshine Mine	41
Talbot Coalery Company	42
Truax Traer Coal Company, Burning Star Underground Mine	18
Truax-Traer Coal Company, No. 1 Mine	16
Union Colliery Company	15
Vulcan Coal Company, Enterprise No. 3 Mine	35
Wall & Company	39
Western Coal & Mining Company, No. 2 Mine	13
White Ash Coal Company	17
White Brothers	41
Williams (Morgan & Williams)	41
Willis Coal & Mining Company, No. 3 Mine	35
Winn (George)	41

