

# Coal Mines in Illinois Equality Quadrangle Gallatin and Saline Counties, Illinois

## Herrin & Briar Hill Coals

This map accompanies the Coal Mines Directory for the Equality Quadrangle and maps of mines in the Springfield Coal and Davis/Dekoven & Willis Coals, Equality Quadrangle. Consult the directory for a complete explanation of the information shown on this map.

### Mining Method

- Room & Pillar (RP)
- Room & Pillar Basic (RPB)
- Modified Room & Pillar (MRP)
- Room & Pillar Panel (RPP)
- Blind Room & Pillar (BRP)
- Checkerboard Room & Pillar (CRP)
- High Extraction Retreat (HER)
- Longwall (LW)
- Underground, Method Unknown
- Strip Mine
- Auger Mine
- General Area of Mining

### Other Areas Depicted

- Non-Coal Mines

### Source of Mine Outline

- Final Mine Map
- Not Final Mine Map
- Undated Mine Map
- Incomplete Mine Map
- Secondary Source Map

### Tipple, Shaft, Slope, Drift Locations

- Strip Mine Tipple - Active
- Strip Mine Tipple - Abandoned
- Mine Shaft - Active
- Mine Shaft - Abandoned
- Mine Slope - Active
- Mine Slope - Abandoned
- Mine Drift - Active
- Mine Drift - Abandoned
- Air Shaft
- Uncertain Location
- Uncertain Type of Opening

### Other Points Depicted

- Non-Coal Mines

### Location



### Mine Annotation (space permitting)

Company  
Mine Name  
ISGS Index No., Years of Operation

### Disclaimer

Please check the Coal Section at the Illinois State Geological Survey's web site at <https://www.isgs.illinois.edu> for the most up-to-date version of these products.

Note that each quadrangle scale mined-out area map requires the use of the associated text directory for full explanation of map features and mine attributes. Also note that some quadrangles have multiple seams of mining and therefore more than one map may be available for a particular quadrangle. Please take care to check for multiple maps, as extensive mining may exist in the other seams.

The maps and digital files used for these studies were compiled from data obtained from a variety of public and private sources and have varying degrees of completeness and accuracy. This compilation map presents reasonable interpretation of the geology of the area and is based on available data. Locations of some mine features may be offset by 500 feet or more due to errors in the original source maps, the compilation process, digitizing, or a combination of these factors. These data are not intended for use in site-specific screening or decision-making. Use of these documents does not eliminate the need for detailed studies to fully understand the geology of a specific site. The Illinois State Geological Survey, Prairie Research Institute, or the University of Illinois make no guarantee, expressed or implied, regarding the correctness of the interpretations presented in this data set and accept no liability for the consequences of decisions made by others on the basis of the information presented here.

These maps were designed for use at 1:24,000. Enlarging the map may reduce accuracy, as the original scale of the source maps used to compile the outlines shown varies from 1:400 to 1:150,000, and some mine locations are known only from text descriptions. See the accompanying mine directory for the original scale of the source map used for a specific mine to check accuracy of a given portion of the map. Areas with no mines shown may still be undermined; see the unlocated mines list at the back of each mine directory.

The image of the U.S.G.S. topographic base map was projected from the original UTM to Lambert Conformal Conic.

Produced by the United States Geological Survey  
North American Datum of 1983 (NAD83)  
World Geodetic System of 1984 (WGS84). Projection and  
1 000-meter grid/Universal Transverse Mercator, Zone 16S  
This map is not a legal document. Boundaries may be  
generalized for this map scale. Private lands within government  
reservations may not be shown. Obtain permission before  
entering private lands.

Imagery: U.S. Census Bureau, 2017  
Roads: U.S. Forest Service, 2017  
Names: National Hydrography Dataset, 2002  
Contours: National Elevation Dataset, 2014  
Boundaries: National Wetlands Inventory, 2015  
Public Land Survey System: BLM, 2017  
Vegetation: National Wetlands Inventory, 1983

UTM GRID AND 2017 MAGNETIC NORTH  
DECLINATION AT CENTER OF SHEET

SCALE 1:24 000  
1 000 000 2000 4000 6000 8000 10000  
Kilometers  
1 000 2000 4000 6000 8000 10000  
Meters  
1 000 2000 4000 6000 8000 10000  
Feet

CONTOUR INTERVAL 20 FEET  
NORTH AMERICAN VERTICAL DATUM OF 1983  
This map was produced to conform with the  
National Geospatial Program US Topo Product Standard, 2011.  
A metadata file associated with this product is draft version 0.6.18

1 Eldorado  
2 Ridgway  
3 New Haven SW  
4 Rudement  
5 Shammetown  
6 Herod  
7 Karbers Ridge  
8 Saline Mines

ROAD CLASSIFICATION  
Expressway  
Secondary Hwy  
Ramp  
Interstate Route  
US Route  
PS Primary Route  
Local Connector  
Local Road  
ATV  
State Route  
PS Passenger Route  
PS High Clearance Route  
Check with local Forest Service unit  
for current travel conditions and restrictions.

EQUALITY, IL  
2018

**ILLINOIS**  
Illinois State Geological Survey  
PRAIRIE RESEARCH INSTITUTE

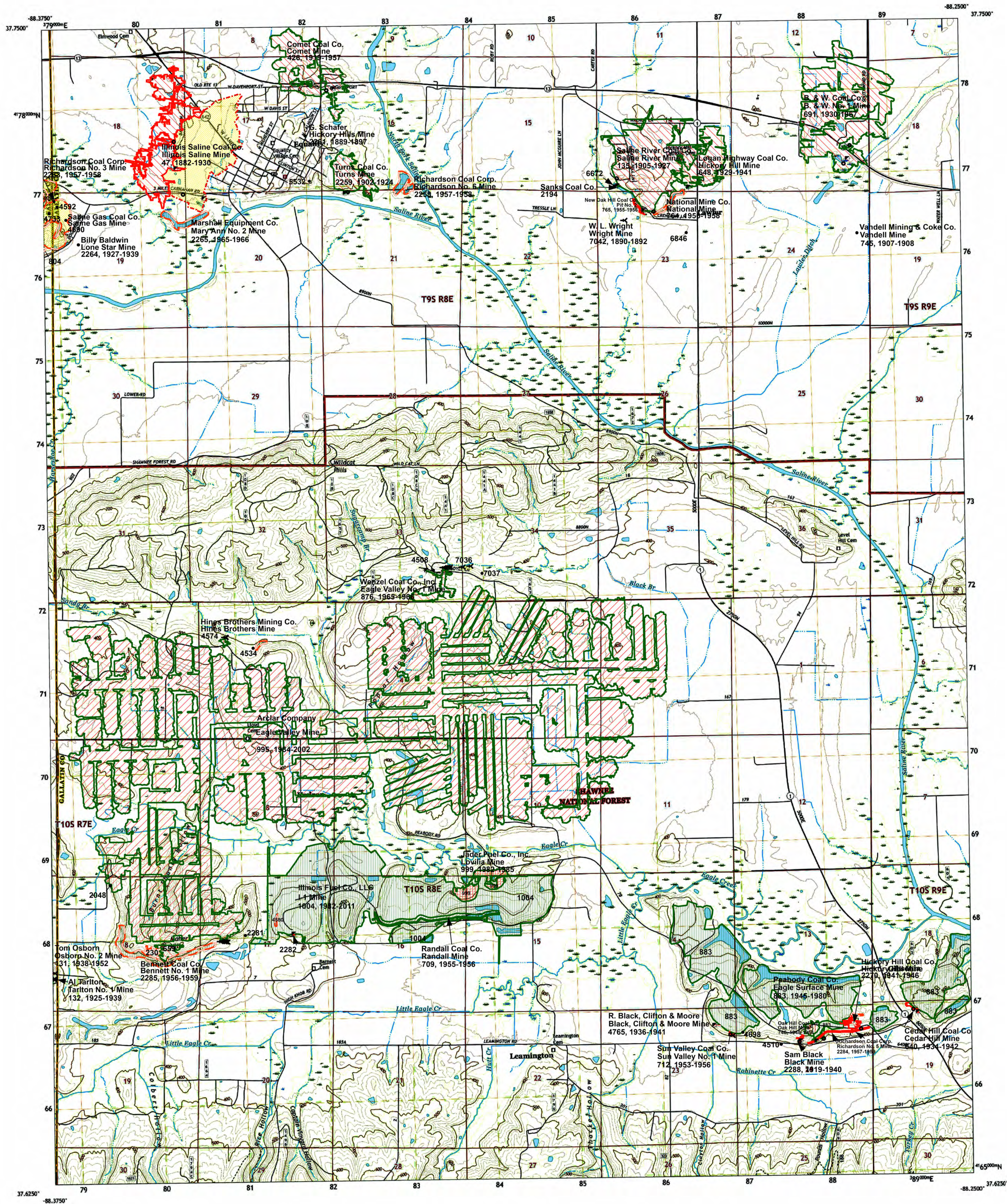
Prairie Research Institute  
Illinois State Geological Survey  
615 E. Peabody Dr.  
Champaign, IL 61820

Mine Outlines Compiled by  
Jennifer M. Obrad

September 27, 2005

Revised:  
July 23, 2009  
Alan R. Myers 01-12-2024





# Coal Mines in Illinois Equality Quadrangle Gallatin and Saline Counties, Illinois

## Springfield Coal

This map accompanies the Coal Mines Directory for the Equality Quadrangle and maps of mines in the Herrin & Briar Hill Coals and Davis/Dekoven & Willis Coals, Equality Quadrangle. Consult the directory for a complete explanation of the information shown on this map.

### Mining Method

- Room & Pillar (RP)
- Room & Pillar Basic (RPB)
- Modified Room & Pillar (MRP)
- Room & Pillar Panel (RPP)
- Blind Room & Pillar (BRP)
- Checkerboard Room & Pillar (CRP)
- High Extraction Retreat (HER)
- Longwall (LW)
- Underground, Method Unknown
- Strip Mine
- Auger Mine
- General Area of Mining

### Other Areas Depicted

- Non-Coal Mines

### Source of Mine Outline

- Final Mine Map
- Not Final Mine Map
- Undated Mine Map
- Incomplete Mine Map
- Secondary Source Map

### Tipple, Shaft, Slope, Drift Locations

- Strip Mine Tipple - Active
- Strip Mine Tipple - Abandoned
- Mine Shaft - Active
- Mine Shaft - Abandoned
- Mine Slope - Active
- Mine Slope - Abandoned
- Mine Drift - Active
- Mine Drift - Abandoned
- Air Shaft
- Uncertain Location
- Uncertain Type of Opening

### Other Points Depicted

- Non-Coal Mines

### Mine Annotation (space permitting)

Company  
Mine Name  
ISGS Index No., Years of Operation

### Location



### Disclaimer

Please check the Coal Section at the Illinois State Geological Survey's web site at <https://www.isgs.illinois.edu> for the most up-to-date version of these products.

Note that each quadrangle scale mined-out area map requires the use of the associated text directory for full explanation of map features and mine attributes. Also note that some quadrangles have multiple seams of mining and therefore more than one map may be available for a particular quadrangle. Please take care to check for multiple maps, as extensive mining may exist in the other seams.

The maps and digital files used for these studies were compiled from data obtained from a variety of public and private sources and have varying degrees of completeness and accuracy. This compilation map presents reasonable interpretation of the geology of the area and is based on available data. Locations of some mine features may be offset by 500 feet or more due to errors in the original source maps, the compilation process, digitizing, or a combination of these factors. These data are not intended for use in site-specific screening or decision-making. Use of these documents does not eliminate the need for detailed studies to fully understand the geology of a specific site. The Illinois State Geological Survey, Prairie Research Institute, or the University of Illinois make no guarantee, expressed or implied, regarding the correctness of the interpretations presented in this data set and accept no liability for the consequences of decisions made by others on the basis of the information presented here.

These maps were designed for use at 1:24,000. Enlarging the map may reduce accuracy, as the original scale of the source maps used to compile the outlines shown varies from 1:400 to 1:150,000, and some mine locations are known only from text descriptions. See the accompanying mine directory for the original scale of the source map used for a specific mine to check accuracy of a given portion of the map. Areas with no mines shown may still be undermined; see the unlocated mines list at the back of each mine directory.

The image of the U.S.G.S. topographic base map was projected from the original UTM to Lambert Conformal Conic.

Produced by the United States Geological Survey  
North American Datum of 1983 (NAD83)  
World Geodetic System of 1984 (WGS84). Projection and  
1 000-meter grid Universal Transverse Mercator, Zone 16S  
This map is not a legal document. Boundaries may be  
generalized for this map scale. Private lands within government  
reservations may not be shown. Obtain permission before  
entering private lands.

Imagery:.....NAP, August 2015 - October 2015  
U.S. Census Bureau, 2017  
Roads within US Forest Service land:.....2017  
with limited Forest Service updates, 2017  
Hydrography:.....National Hydrography Dataset, 2002 - 2017  
Contours:.....National Elevation Dataset, 2014  
Boundaries:.....Multiple sources, see metadata file, 2015  
Public Land Survey System:.....BLM, 2017  
Wetlands:.....PWS National Wetlands Inventory, 1983



EQUALITY, IL  
2018

**ILLINOIS**  
Illinois State Geological Survey  
PRAIRIE RESEARCH INSTITUTE

Prairie Research Institute  
Illinois State Geological Survey  
615 E. Peabody Dr.  
Champaign, IL 61820

Mine Outlines Compiled by  
Jennifer M. Obrad  
September 27, 2005

Revised:  
July 23, 2009  
Alan R. Myers 01-12-2024



# Coal Mines in Illinois Equality Quadrangle Gallatin and Saline Counties, Illinois

## Davis/Dekoven & Willis Coals

This map accompanies the Coal Mines Directory for the Equality Quadrangle and maps of mines in the Herrin & Willis Coals and Springfield Coal, Equality Quadrangle. Consult the directory for a complete explanation of the information shown on this map.

### Mining Method

- Room & Pillar (RP)
- Room & Pillar Basic (RPB)
- Modified Room & Pillar (MRP)
- Room & Pillar Panel (RPP)
- Blind Room & Pillar (BRP)
- Checkerboard Room & Pillar (CRP)
- High Extraction Retreat (HER)
- Longwall (LW)
- Underground, Method Unknown
- Strip Mine
- Auger Mine
- General Area of Mining

### Other Areas Depicted

- Non-Coal Mines

### Source of Mine Outline

- Final Mine Map
- Not Final Mine Map
- Undated Mine Map
- Incomplete Mine Map
- Secondary Source Map

### Tipple, Shaft, Slope, Drift Locations

- Strip Mine Tipple - Active
- Strip Mine Tipple - Abandoned
- Mine Shaft - Active
- Mine Shaft - Abandoned
- Mine Slope - Active
- Mine Slope - Abandoned
- Mine Drift - Active
- Mine Drift - Abandoned
- Air Shaft
- Uncertain Location
- Uncertain Type of Opening

### Other Points Depicted

- Non-Coal Mines

### Mine Annotation (space permitting)

Company  
Mine Name  
ISGS Index No., Years of Operation

### Disclaimer

Please check the Coal Section at the Illinois State Geological Survey's web site at <https://www.isgs.illinois.edu> for the most up-to-date version of these products.

Note that each quadrangle scale mined-out area map requires the use of the associated text directory for full explanation of map features and mine attributes. Also note that some quadrangles have multiple seams of mining and therefore more than one map may be available for a particular quadrangle. Please take care to check for multiple maps, as extensive mining may exist in the other seams.

The maps and digital files used for these studies were compiled from data obtained from a variety of public and private sources and have varying degrees of completeness and accuracy. This compilation map presents reasonable interpretation of the geology of the area and is based on available data. Locations of some mine features may be offset by 500 feet or more due to errors in the original source maps, the compilation process, digitizing, or a combination of these factors. These data are not intended for use in site-specific screening or decision-making. Use of these documents does not eliminate the need for detailed studies to fully understand the geology of a specific site. The Illinois State Geological Survey, Prairie Research Institute, or the University of Illinois make no guarantee, expressed or implied, regarding the correctness of the interpretations presented in this data set and accept no liability for the consequences of decisions made by others on the basis of the information presented here.

These maps were designed for use at 1:24,000. Enlarging the map may reduce accuracy, as the original scale of the source maps used to compile the outlines shown varies from 1:400 to 1:150,000, and some mine locations are known only from text descriptions. See the accompanying mine directory for the original scale of the source map used for a specific mine to check accuracy of a given portion of the map. Areas with no mines shown may still be undermined; see the unmined mines list at the back of each mine directory.

The image of the U.S.G.S. topographic base map was projected from the original UTM to Lambert Conformal Conic.

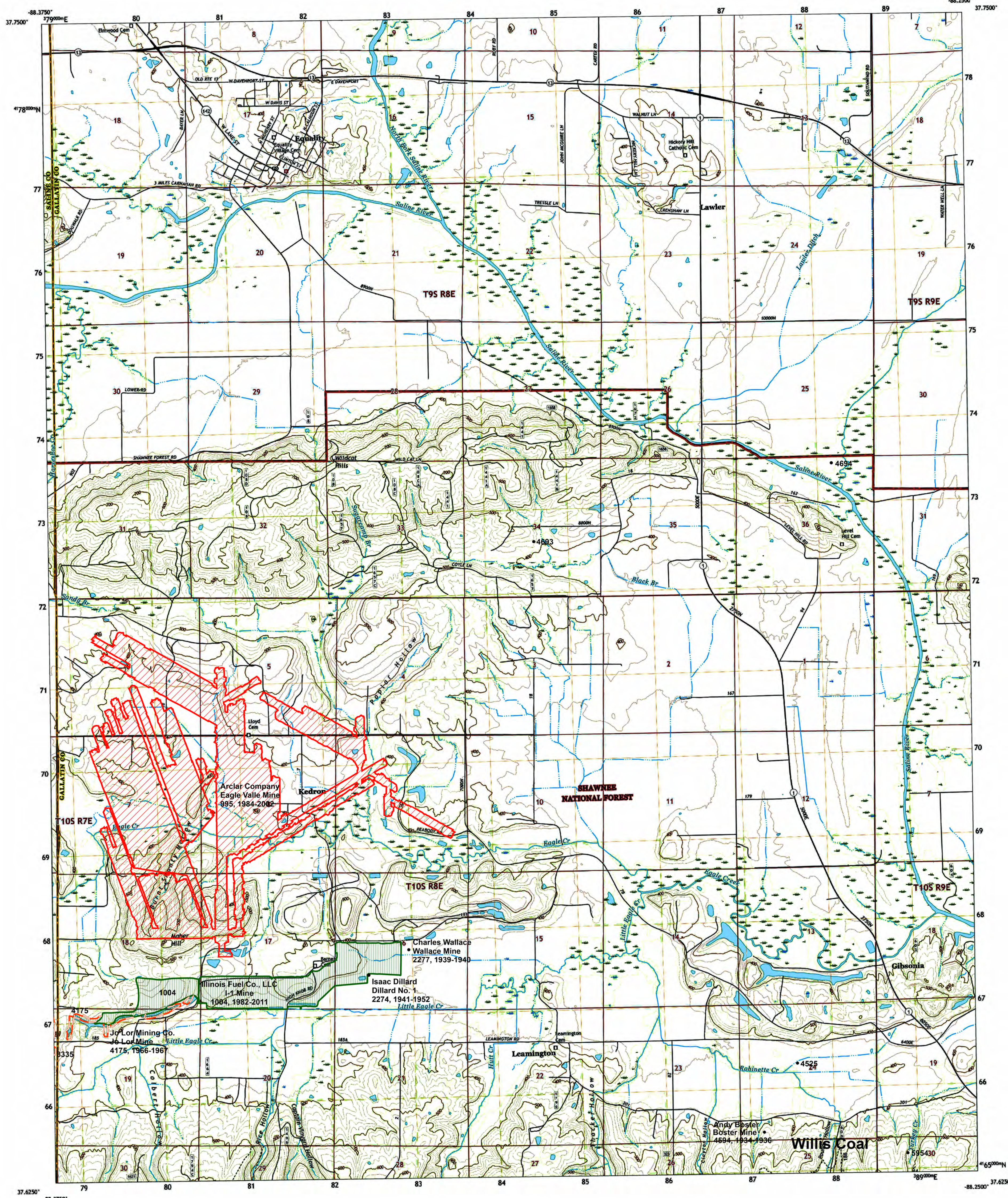
**ILLINOIS**  
Illinois State Geological Survey  
PRAIRIE RESEARCH INSTITUTE

Prairie Research Institute  
Illinois State Geological Survey  
615 E. Peabody Dr.  
Champaign, IL 61820

Mine Outlines Compiled by  
Jennifer M. Obrad

September 27, 2005

Revised:  
July 23, 2009  
Alan R. Myers 01-12-2024



Produced by the United States Geological Survey  
North American Datum of 1983 (NAD83)  
World Geodetic System of 1984 (WGS84). Projection and  
1 000-meter grid Universal Transverse Mercator, Zone 16S  
This map is not a legal document. Boundaries may be  
generalized for this map scale. Private lands within government  
reservations may not be shown. Obtain permission before  
entering private lands.

Imagery: U.S. Census Bureau, 2017  
Roads: U.S. Forest Service, 2017  
Data: U.S. Forest Service, 2017  
Names: National Hydrography Dataset, 2002 - 2017  
Contours: National Elevation Dataset, 2014  
Boundaries: Multiple sources, see metadata file, 2015  
Public Land Survey System: BLM, 2017  
Wetlands: National Wetlands Inventory, 1983

UTM GRID AND 2017 MAGNETIC NORTH  
DECLINATION AT CENTER OF SHEET

SCALE 1:24 000  
1 000 000 500 000 0 500 000 1 000 000  
KILOMETERS  
1 000 000 500 000 0 500 000 1 000 000  
METERS  
1 000 000 500 000 0 500 000 1 000 000  
FEET

CONTOUR INTERVAL 20 FEET  
NORTH AMERICAN VERTICAL DATUM OF 1988  
This map was produced to conform with the  
National Geospatial Program US Topo Product Standard, 2011.  
A metadata file associated with this product is draft version 0.6.18.

1 Eldorado  
2 Ridgway  
3 New Haven SW  
4 Rudement  
5 Shawneetown  
6 Herod  
7 Karbers Ridge  
8 Saline Mines

ROAD CLASSIFICATION  
Expressway  
Secondary Hwy  
Ramp  
Interstate Route  
US Route  
PS Primary Route  
Local Connector  
Local Road  
ATV  
State Route  
PS Passenger Route  
PS High Clearance Route  
Check with local Forest Service unit  
for current travel conditions and restrictions.

EQUALITY, IL  
2018





# **DIRECTORY OF COAL MINES IN ILLINOIS 7.5-MINUTE QUADRANGLE SERIES EQUALITY QUADRANGLE GALLATIN AND SALINE COUNTIES**

Jennifer M. Obrad & C. Chenoweth



Department of Natural Resources  
ILLINOIS STATE GEOLOGICAL SURVEY  
2005  
REVISED 2009, 2016, 2024

This material is based upon work supported by the Illinois Mine Subsidence Insurance Fund. Any opinions, findings, and conclusions or recommendations expressed in this publication are those of the authors and do not necessarily reflect the views of the Illinois Department of Transportation.

**Cover photo** Track-mounted duckbill loading machine at a Peabody Coal Company mine, ca. 1915.

---

**DISCLAIMER:** The accuracy and completeness of mine maps and directories vary with the availability of reliable information. Maps and other information used to compile this mine map and directory were obtained from a variety of sources and the accuracy of some of the original information cannot be verified. Consequently, the Illinois State Geological Survey (ISGS) cannot guarantee the mine maps are free of errors and disclaims any responsibility for damages that may result from actions or decisions based on them.

The ISGS updates the maps and directories periodically, and welcomes any new information or corrections. Please contact the Coal Section of the ISGS at the address shown on the title page of this directory.

© 2017 The Board of Trustees of the University of Illinois. All rights reserved.  
For permission information, contact the Illinois State Geological Survey.

## CONTENTS

INTRODUCTION .....	1
MINING IN THE EQUALITY QUADRANGLE .....	1
PART I EXPLANATION OF MAP AND MINE SUMMARY SHEET .....	2
INTERPRETING THE MAP .....	2
Mine Type and Mining Method .....	2
SOURCE MAPS .....	3
POINTS AND LABELS .....	3
INTERPRETING A MINE SUMMARY SHEET .....	6
REFERENCES .....	8
PART II DIRECTORY OF MINES IN THE EQUALITY QUADRANGLE .....	9
MINE SUMMARY SHEETS .....	9
Mine Index 47	
Illinois Saline Coal Company, Illinois Saline Mine .....	9
Mine Index 131	
Tom Osborn, Osborn No. 2 Mine .....	10
Mine Index 132	
Al Tarlton, Tarlton No. 1 Mine .....	11
Mine Index 135	
Saline River Coal Company, Saline River Mine .....	12
Mine Index 223	
Sam Black, Bentley Mine .....	13
Mine Index 230	
J. H. Booten, Booten Mine .....	14
Mine Index 254	
Richard Black, Black Mine .....	15
Mine Index 426	
Comet Coal Company, Comet Mine .....	16
Mine Index 640	
Cedar Hill Coal Company, Cedar Hill Mine .....	17
Mine Index 648	
Logan Highway Coal Company, Hickory Hill Mine .....	18
Mine Index 659	
Thurmond Coal Company, Colbert Mine .....	19
Mine Index 691	
B. & W. Coal Company, B. & W. No. 1 Mine .....	20
Mine Index 709	
Randall Coal Company, Randall Mine .....	21
Mine Index 712	
Acme Stone & Coal Company, Acme No. 2 Mine .....	22
Mine Index 745	
Vandell Mining & Coke Company, Vandell Mine .....	23
Mine Index 746	
Oak Hill Coal Company, Oak Hill Mine .....	24
Mine Index 764	
National Mining Company, National Mine .....	25
Mine Index 765	
New Oak Hill Coal Company, New Oak Hill Pit No. 2 .....	26
Mine Index 804	
Vinyard Coal Company, Vinyard No. 1 Mine .....	27
Mine Index 876	
Wenzel Coal Company, Inc., Eagle Valley No. 1 Mine .....	28
Mine Index 883	
Peabody Coal Company, Eagle Surface Mine .....	29
Mine Index 995	
Arclar Company, Eagle Valley Mine .....	30

Mine Index 999	
Jader Fuel Company, Inc., Lovilia Mine . . . . .	31
Mine Index 1003	
Jader Fuel Company, Inc., Federal Landscaping No. 1 Mine . . . . .	32
Mine Index 1004	
Illinois Fuel Company, LLC, I-1 Surface Mine . . . . .	33
Mine Index 1022	
Arclar Company, Wildcat Hills Eagle Valley Mine . . . . .	34
Mine Index 1044	
Peabody Midwest Mining, Wildcat Hills Cottage Grove Mine . . . . .	35
Mine Index 2194	
Sanks Coal Company, Sanks Mine . . . . .	36
Mine Index 2258	
Richardson Coal Corporation, Richardson No. 6 Mine . . . . .	37
Mine Index 2259	
Turns Coal Company, Turns Mine . . . . .	38
Mine Index 2260	
A. H. Sisk, Gold Nugget Mine . . . . .	39
Mine Index 2261	
G. Schafer, Hickory Hills Mine . . . . .	40
Mine Index 2262	
William H. McLain, McLain Mine . . . . .	41
Mine Index 2263	
Richardson Coal Corporation, Richardson No. 3 Mine . . . . .	42
Mine Index 2264	
Billy Baldwin, Lone Star Mine . . . . .	43
Mine Index 2265	
Marshall Equipment Company, Mary Ann No. 2 Mine . . . . .	44
Mine Index 2266	
Andrew Patton, Patton Mine . . . . .	45
Mine Index 2268	
Burnett & Love, Eagle Valley Mine . . . . .	46
Mine Index 2270	
Hickory Hill Coal Company, Hickory Hill Mine . . . . .	47
Mine Index 2271	
Leamington Coal Company, Leamington Mine . . . . .	48
Mine Index 2273	
Green Hill Coal Company, Green Hill Mine . . . . .	49
Mine Index 2274	
Isaac Dillard, Dillard No. 1 Mine . . . . .	50
Mine Index 2275	
Little Joe Coal Company, Little Joe Mine . . . . .	51
Mine Index 2276	
Dillard Coal Company, Dillard No. 2 Mine . . . . .	52
Mine Index 2277	
Charles Wallace, Wallace Mine . . . . .	53
Mine Index 2279	
John T. Barnett, Barnett Mine . . . . .	54
Mine Index 2280	
Peck & Price, Peck & Price Mine . . . . .	55
Mine Index 2281	
Milo Scarbrough, Scarbrough Mine . . . . .	56
Mine Index 2282	
Gilbert Milligan, Milligan Mine . . . . .	57
Mine Index 2283	
P. & C. Coal Company, P. & C. Mine . . . . .	58
Mine Index 2284	
Richardson Coal Corporation, Richardson No. 5 Mine . . . . .	59
Mine Index 2285	
Bennett Coal Company, Bennett No. 1 Mine . . . . .	60
Mine Index 2287	
Richardson Coal Corporation, Richardson No. 1 Mine . . . . .	61



Mine Index 2288	
Sam Black, Black Mine. . . . .	62
Mine Index 2295	
Walter Finnie, Finnie Mine . . . . .	63
Mine Index 3335	
Herod Mining Corporation, Herod No. 1 Mine . . . . .	64
Mine Index 4174	
Robert Pierson, Pierson Mine . . . . .	65
Mine Index 4175	
Jo Lor Mining Company, Jo Lor Mine. . . . .	66
Mine Index 4177	
K. & W. Coal Company, K. & W. No. 2 Mine . . . . .	67
Mine Index 4574	
Hines Brothers Mining Company, Hines Brothers Mine . . . . .	68
Mine Index 4576	
Charles O. Purcell, Purcell Mine . . . . .	69
Mine Index 4580	
Beecher-Williams Coal Company, Beecher-Williams No. 4 Mine. . . . .	70
Mine Index 4594	
Andy Boster, Boster Mine. . . . .	71
Mine Index 4690	
Saline Gas Coal Company, Saline Gas Mine. . . . .	72
Mine Index 4765	
Black, Clifton & Moore, Black, Clifton & Moore Mine . . . . .	73
Mine Index 4955	
Jesse Purcell, Purcell Mine . . . . .	74
Mine Index 6846	
Ginnville Mining Company, Ginnville Mine . . . . .	75
Mine Index 7041	
Frank Green, Green Mine . . . . .	76
Mine Index 7042	
W. L. Wright, Wright Mine . . . . .	77
OTHER MINES SHOWN ON EQUALITY QUADRANGLE . . . . .	78
Mine Index 2048 . . . . .	78
Mine Index 2880, Wenzel Coal Company. . . . .	78
Mine Index 2902 . . . . .	78
Mine Index 4508, Old Holly Mine . . . . .	78
Mine Index 4510 . . . . .	78
Mine Index 4525 . . . . .	78
Mine Index 4530 . . . . .	78
Mine Index 4534 . . . . .	78
Mine Index 4571 . . . . .	78
Mine Index 4573 . . . . .	78
Mine Index 4579 . . . . .	78
Mine Index 4584 . . . . .	78
Mine Index 4586 . . . . .	78
Mine Index 4587 . . . . .	78
Mine Index 4588 . . . . .	78
Mine Index 4592 . . . . .	78
Mine Index 4691 . . . . .	78
Mine Index 4692 . . . . .	78
Mine Index 4693 . . . . .	78
Mine Index 4694 . . . . .	78
Mine Index 4695 . . . . .	78
Mine Index 4696 . . . . .	78
Mine Index 4698 . . . . .	78
Mine Index 4733 . . . . .	78
Mine Index 4760 . . . . .	78
Mine Index 5080 . . . . .	78
Mine Index 5398 . . . . .	78
Mine Index 5498 . . . . .	78



Mine Index 5501 .....	78
Mine Index 5532 .....	78
Mine Index 5535 .....	78
Mine Index 5954 .....	78
Mine Index 6672 .....	78
Mine Index 6833 .....	78
Mine Index 7036 .....	78
Mine Index 7037 .....	78
Mine Index 7038 .....	78
MINES WHOSE LOCATIONS ARE NOT KNOWN, EQUALITY QUADRANGLE .....	79
INDEX OF MINES IN THE EQUALITY QUADRANGLE .....	83



## INTRODUCTION

Coal has been mined in 76 counties of Illinois. More than 7,400 coal mines have operated since commercial mining began in Illinois about 1810; fewer than 30 are currently active. To detail the extent and location of coal mining in Illinois, the Illinois State Geological Survey (ISGS) has compiled maps and directories of known coal mines. The ISGS offers maps at a scale of 1:100,000 and accompanying directories for each county in which coal mining is known to have occurred. Maps at a scale of 1:24,000 and accompanying directories such as this are available for selected quadrangles. Contact the ISGS for a list of these quadrangles.

These larger scale maps show the approximate positions of mines in relation to surface features such as roads and water bodies, and indicate the mining method used and the accuracy of the mine boundaries. The maps are useful for locating mine boundaries relative to specific properties and for assessing the potential for subsidence in an area. Mine boundaries compiled from final mine surveys are generally shown within 200 feet of their true position. As a result of poor cartographic quality and inaccuracies in the original mine surveys, boundaries of some older mines may be mislocated on the map by 500 feet or more. Original mine maps should be consulted in situations that require precise delineation of mine boundaries or internal workings of mined areas.

The directory serves as a key to the accompanying mine map and provides basic information on the coal mines. The directory is composed of two parts. Part I explains the symbols and patterns used on the accompanying map and the summary data presented for each mine. Part II numerically lists the mines in the quadrangle and summarizes the geology and production history of each mine.

## MINING IN THE EQUALITY QUADRANGLE

Mining in this area generally took place after 1890, with small underground mines in the Springfield Coal. A few underground mines operated in the Herrin and Davis Coals, but these coals are thinner, ranging up to just over 4 feet thick. Surface mining began in 1945. Thinner coals, such as the Dekoven (about 3 feet thick) and the Briar Hill (generally around 2.5 feet thick) Coals were taken as the large mines targeted the Herrin, Springfield and Davis Coals.

The West Side Mine of Gallatin Coal & Coke Company (mine index 47) flooded on April 6, 1913. This event received a substantial write-up in the 1913 Coal Report, which indicated that the citizens of Equality helped unstintingly in trying to construct levees around the mine shaft so that the mine would not be inundated by the record-breaking floods of that year. Heavy timber retaining walls and trenches to route water away from the mine were constructed in late March, but by April 1, the mine was surrounded by water and materials had to be brought in by boat. The currents under the water eroded the soil under the levees and the water broke into the shaft, rushing with such power as to wash pit cars and other machinery into the rapidly filling shaft. Since the extremities of the mine away from the shaft were at lower elevations, large bubbles of compressed air remained after the shaft was filled with water. Water continued to run in for five hours after the shaft was filled, further compressing the air in the mine, so that when the air rebounded that afternoon, the force of the "explosion" threw pit cars, engines, cages and concrete blocks to an estimated height of 500 feet, utterly destroying the top works of the mine. A second outburst of air occurred less than half an hour later, throwing water a height of approximately 150 feet. Each subsequent outburst was less extreme than the previous one, until all the air was out of the mine. Construction of a new shaft was begun in November 1913, but production was delayed until late 1915.

Portions of this quadrangle are within the Eagle Valley Syncline. The geology of the area is very complex, with many fault zones, including the Shawneetown Fault Zone, Cottage Grove Fault System, and Grindstaff Fault Zone. These structures are beyond the scope of this introduction, but more information can be found in the *Geologic map of Equality Quadrangle, Gallatin and Saline Counties, Illinois* (ISGS IGQ002) and *Structural Geology of Southeastern Illinois and Vicinity* (ISGS Circular 538).



*Mine notes* ISGS geologists have visited mines or contacted mine officials throughout the state since the early 1900s. Notes made during these visits range from brief descriptions of the mine location to long narratives (including sketches) of mining conditions and geology.

*Federal Land Bank of St. Louis, Preliminary Reports on Subsidence Investigations* Mining engineers working for the Federal Land Bank of St. Louis mapped areas of subsidence due to coal mining in the early 1930s. These reports often include county maps of mine properties with mined-out areas including shaft locations, as well as subsidence areas.

## REFERENCES

- Bauer, R. A., B. A. Trent, and P. B. Dumontelle, 1993, Mine Subsidence in Illinois: Facts for the Homeowner Considering Insurance, Illinois State Geological Survey, Environmental Geology Note 144, 16p.
- Butts, C., 1925, Geology & Mineral Resources of the Equality-Shawneetown Area, Illinois State Geological Survey Bulletin 47, 76p.
- DeWolf, F. W., 1908, Coal Investigations in the Saline-Gallatin field, Illinois and the adjoining area, in Yearbook for 1907, Illinois State Geological Survey Bulletin 8, 374p.
- Gallatin County Historical Society, 1988, History & Families of Gallatin County, Illinois, Volume I, Turner Publishing Company, Paducah, Kentucky, 440 pages.
- Guither, H. D., J. K. Hines, and R. A. Bauer, 1985, The Economic Effects of Underground Mining Upon Land Used for Illinois Agriculture, Illinois Department of Energy and Natural Resources Document 85/01, 185p.
- Nelson, W. J. and D. K. Lumm, Geology of Shawneetown Fault and Vicinity – Study performed for the U. S. Nuclear Regulatory Commission, Field Notes, Books 1 & 2, #918.
- Nelson, W. J. and D. K. Lumm, 1986, Geologic map of the Equality Quadrangle, Gallatin and Saline Counties, Illinois, Illinois State Geological Survey IGQ002.
- Nelson, W. J. and D. K. Lumm, 1987, Structural Geology of Southeastern Illinois and Vicinity, Illinois State Geological Survey Circular 538, 70p.



## PART II DIRECTORY OF MINES IN THE EQUALITY QUADRANGLE

### MINE SUMMARY SHEETS

A summary sheet on the geology and production history of each mine in the Equality Quadrangle is provided. These summary sheets are arranged numerically by mine index number. Consult Part I for a complete explanation of the data listed in the summary sheet.

#### Mine Index 47

#### Illinois Saline Coal Company, Illinois Saline Mine

Type: Underground Total mined-out acreage shown: 290 Production indicates less than 1 acre was mined after the map date.

#### SHAFT, SLOPE, DRIFT or TIPPLE LOCATIONS

Type	County	Township-Range	Section	Quarters-Footage
Main shaft	Gallatin	9S 8E	18	NE SE SE
Air shaft	Gallatin	9S 8E	18	SE NE SE
Old shaft (pre-flood)	Gallatin	9S 8E	20	NW NW NW
Old air shaft	Gallatin	9S 8E	19	NE NE NE

#### GEOLOGY

Seam(s) Mined	Depth (ft)	Thickness (ft)			Mining Method
		Min	Max	Ave	
Springfield	80(old), 90-98(new)			4.67	MRP

Geologic Problems Reported: The source map showed an east-west trending fault, part of the Cottage Grove Fault System, in the northern part of the mine, where the coal was down-thrown about 5 feet on the northern side. The coal dipped in all directions from the shaft, with the northeastern workings 48 feet deeper than the bottom of the old shaft. The mine flooded in the spring of 1913, destroying the old shaft and all the mine equipment. The irregular roof contained concretions, and draw slate came down with the coal. The floor was a fine clay which tended to heave when wet.

#### PRODUCTION HISTORY

Company	Mine Name	Years	Production (tons)
Equality Coal Company	Equality	1882-1883	not reported
Cassells, Temple & Company	Equality	1883-1887 *	30,000
Equality Coal Company	Equality	1887-1900	370,340
Hugh Murray	Equality	1900-1902	37,140
Gallatin Coal & Coke Company	Equality	1902-1916 **	553,146
Northern Coal Company	Northern No. 4	1916-1917	53,316
Gallatin Coal & Coke Company	West Side	1917-1925 ***	448,045
Equality Coal Company	West Side	1926-1926	9,663
Saline Gas Coal Company	Saline Gas No. 4	1927-1929	44,782
Illinois Saline Coal Company	Illinois Saline	1930-1930	2,350 †
			1,548,782

\* Idle 1885-1887

\*\* Idle 1914 & 1915 because of flooding and subsequent damage to the mine. A new shaft was constructed.

\*\*\* Idle 1922, 1924 & 1925

† Production after map date

Last reported production: December 1930

#### SOURCES OF DATA

Source Map	Date	Original Scale	Digitized Scale	Map Type
Microfilm, document 351531	1929	1:2400	1:8228	Not final
Microfilm, document 351530	6-17-1921	1:2400	1:8228	Not final

#### Annotated Bibliography (data source, brief description of information)

Coal Reports - Production, ownership, years of operation, mining method, geologic problems.

Mine notes (Gallatin County) - Mine type, shaft locations, seam, depth, thickness, geologic problems.

Microfilm map, document 351531, reel 03136, frames 292 & 293 - Shaft locations, mine outline, mining method geologic problems.

Microfilm map, document 351530, reel 03136, frames 290 & 291 - Mine outline (old works).



**Mine Index 131**  
**Tom Osborn, Osborn No. 2 Mine**

Type: Underground    Total mined-out acreage shown: 1

**SHAFT, SLOPE, DRIFT or TIPPLE LOCATIONS**

Type	County	Township-Range	Section	Quarters-Footage
Main drift	Saline	10S 7E	13	SE NE SE

**GEOLOGY**

Seam(s) Mined	Depth (ft)	Thickness (ft)			Mining Method
		Min	Max	Ave	
Springfield				4.67	RP

Geologic Problems Reported:

**PRODUCTION HISTORY**

Company	Mine Name	Years	Production (tons)
Tom Osborn	Osborn No. 2	1938-1938	160
William Angelly	Osborn No. 2	1939-1940	832
Tom Osborn	Osborn No. 2	1940-1952 *	<u>2,276</u> 3,268

\* Idle 1944-1946, 1948 & 1949

Last reported production: February 1952

**SOURCES OF DATA**

Source Map	Date	Original Scale	Digitized Scale	Map Type
Microfilm, document 352809	12-27-1955	1:1200	1:1324	Secondary source

Annotated Bibliography (data source, brief description of information)

Coal Reports - Production, ownership, years of operation, mining method.

Directory of Illinois Coal Mines (Saline County) - Mine names, mine index, ownership, years of operation.

Mine notes (Saline County) - Mine type, drift location, seam, thickness.

Microfilm map, document 352809, reel 03140, frame 361, map of Tarleton Mine (mine index 132) - Drift location, mine outline, mining method.



**Mine Index 132**  
**Al Tarlton, Tarlton No. 1 Mine**

Type: Underground    Total mined-out acreage shown: Less than 1

**SHAFT, SLOPE, DRIFT or TIPPLE LOCATIONS**

Type	County	Township-Range	Section	Quarters-Footage
Main drift	Saline	10S 7E	13	NE SE SE
Drift *	Saline	10S 7E	13	NE SE SE

\* This is labeled "old opening" on the source map, along with the fact that it had caved (suffered roof failure).

**GEOLOGY**

Seam(s) Mined	Depth (ft)	Thickness (ft)			Mining Method
		Min	Max	Ave	
Springfield	45			4.67	RPB

Geologic Problems Reported:

**PRODUCTION HISTORY**

Company	Mine Name	Years	Production (tons)
A. L. Tarlton	Tarlton	1925-1935	1,380
Al Tarlton **	Tarlton No. 1	1938-1939 ***	<u>360</u>
			1,740

\*\* Microfilm document 352809, dated 1956, shows this mine with a later owner, Greely Coal Company. No production was reported under this name.

\*\*\* Idle 1936, 1937

Last reported production: 1939

**SOURCES OF DATA**

Source Map	Date	Original Scale	Digitized Scale	Map Type
Microfilm, document 352810	12-27-1955	1:1200	1:1324	Final

Annotated Bibliography (data source, brief description of information)

Coal Reports - Production, ownership, years of operation.

Directory of Illinois Coal Mines (Saline County) - Mine names, mine index, ownership, years of operation.

Mine notes (Saline County) - Mine type, drift location, seam, depth, thickness.

Microfilm map, document 352810, reel 03140, frame 362 - Drift locations, mine outline, mining method.



**Mine Index 135**  
**Saline River Coal Company, Saline River Mine**

Type: Underground    Total mined-out acreage shown: 180

**SHAFT, SLOPE, DRIFT or TIPPLE LOCATIONS**

Type	County	Township-Range	Section	Quarters-Footage
Main slope *	Gallatin	9S 8E	23	SW NE NW
Air shaft	Gallatin	9S 8E	23	SE NE NW
Air shaft	Gallatin	9S 8E	14	SE SW SW

\* An additional slope was noted on the source map, an escape slope that was originally the main slope for Sanks Mine (mine index 2194).

**GEOLOGY**

Seam(s) Mined	Depth (ft)	Thickness (ft)			Mining Method
		Min	Max	Ave	
Springfield	40	4.17	4.83	4.67	MRP

Geologic Problems Reported: The source map indicated water was a problem in the westernmost part of the mine. The roof was mainly black slate with very little draw slate, but in some areas it was grey shale, which came down with the coal. The black slate also contained many concretions. There were some small slips in the roof that required some timbering. Pyrite stringers and lenses were found throughout the coal.

**PRODUCTION HISTORY**

Company	Mine Name	Years	Production (tons)
J. E. Dempsey	Dempsey	1905-1908 **	24,439
Hickory Hill Coal Company	Hickory Hill No. 1	1908-1924 ***	636,447
Saline Creek Coal Company	Saline Creek	1924-1925	54,611
Saline River Coal Company	Saline River	1926-1927	24,409
			739,906

\*\* Property title records indicate Dempsey Coal Company was operating as early as January 1893 at this location. No production or years of operation were listed in the Coal Reports under this name.

\*\*\* Idle 1924

Last reported production: March 1927

**SOURCES OF DATA**

Source Map	Date	Original Scale	Digitized Scale	Map Type
Company, 4103.G3 i5.1-7	4-1-1927	1:2400	1:2400	Final

Annotated Bibliography (data source, brief description of information)

Coal Reports - Production, ownership, years of operation, mining method.  
 Directory of Illinois Coal Mines (Gallatin County) - Mine names, mine index, ownership, years of operation.  
 Mine notes (Gallatin County) - Mine type, slope location, seam, depth, thickness, geologic problems.  
 Company map, ISGS map library, 4103.G3 i5.1-7 - Slope & shaft locations, mine outline, mining method, geologic problems.



**Mine Index 223**  
**Sam Black, Bentley Mine**

Type: Underground    Total mined-out acreage shown: Less than 1    This mine is not shown on the accompanying map because of later surface mining by the Eagle Surface Mine (mine index 883).

**SHAFT, SLOPE, DRIFT or TIPPLe LOCATIONS**

Type	County	Township-Range	Section	Quarters-Footage
Main slope	Gallatin	10S 8E	13	SE SW SE

**GEOLOGY**

Seam(s) Mined	Depth (ft)	Thickness (ft)			Mining Method
		Min	Max	Ave	
Herrin	50			3.75-4.0	RP

Geologic Problems Reported:

**PRODUCTION HISTORY**

Company	Mine Name	Years	Production (tons)
Sam Black	Bentley	1909-1910	520 520

Last reported production: 1910

**SOURCES OF DATA**

Source Map	Date	Original Scale	Digitized Scale	Map Type
ISGS map library, 4107 d5.1-209	1927	1:62500	1:62500	Secondary source
ISGS map library, 6-205	5-1-1977	1:1200	1:1200	Secondary source

Annotated Bibliography (data source, brief description of information)

Coal Reports - Production, ownership, years of operation, depth, mining method.  
 Directory of Illinois Coal Mines (Gallatin County) - Mine names, mine index, ownership, years of operation.  
 Mine notes (Gallatin County) - Mine type, slope location, seam, depth, thickness.  
 ISGS field notes (Gallatin County) - Slope location, seam, thickness.  
 ISGS map library, 4107 d5.1-209, map of G. H. Cady field notes - Slope location.  
 ISGS Coal Section files, 6-205, map of Eagle Mine (mine index 883) - Mine outline.



**Mine Index 230****J. H. Booten, Booten Mine**

Type: Underground    Total mined-out acreage shown: 5    This mine was later partially surface mined by the Bennett No. 1 Mine (mine index 2285).

**SHAFT, SLOPE, DRIFT or TIPPLE LOCATIONS**

Type	County	Township-Range	Section	Quarters-Footage
Main slope	Gallatin	10S 8E	18	NE NW SE

**GEOLOGY**

Seam(s) Mined	Depth (ft)	Thickness (ft)			Mining Method
		Min	Max	Ave	
Springfield				4.83	MRP

Geologic Problems Reported:

**PRODUCTION HISTORY**

Company	Mine Name	Years	Production (tons)
J. H. Booten	Booten	unknown *	not reported *

\* The production and years of operation are unknown. Booten was not listed in the Coal Reports, but the mine operated before 1925 (the publication date of Bulletin 47).

Last reported production:

**SOURCES OF DATA**

Source Map	Date	Original Scale	Digitized Scale	Map Type
Microfilm, document 351554	1-8-1953	1:1200	1:1656	Secondary source

Annotated Bibliography (data source, brief description of information)

Directory of Illinois Coal Mines (Gallatin County) - Mine names, mine index, ownership, years of operation.

Mine notes (Gallatin County) - Mine names, mine type, slope location, seam.

ISGS Bulletin 47, Geology & Mineral Resources of the Equality-Shawneetown Area - Mine name, seam, thickness.

Microfilm map, document 351554, reel 03136, frame 322, map of Colbert Mine (mine index 659) - Slope location, mine outline, mining method.



**Mine Index 254**  
**Richard Black, Black Mine**

Type: Underground    Total mined-out acreage shown: None    Production indicates less than 1 acre was mined. This mine is not shown on the accompanying map because of later surface mining by the Eagle Surface Mine (mine index 883).

**SHAFT, SLOPE, DRIFT or TIPPLE LOCATIONS**

Type	County	Township-Range	Section	Quarters-Footage
Main slope	Gallatin	10S 8E	23	NE NE NE

**GEOLOGY**

Seam(s) Mined	Depth (ft)	Thickness (ft)			Mining Method
		Min	Max	Ave	
Springfield	50			5.0	RP

Geologic Problems Reported:

**PRODUCTION HISTORY**

Company	Mine Name	Years	Production (tons)
Richard Black *	Black	1908-1909	<u>1,600</u> 1,600

\* May have been owned at one time by H. S. Clayton (or Clayton may have owned the surface)

Last reported production: 1909

**SOURCES OF DATA**

Source Map	Date	Original Scale	Digitized Scale	Map Type
ISGS mined-out area map, Area 32	1950	1:62500	1:62500	Secondary source

Annotated Bibliography (data source, brief description of information)

Coal Reports - Production, ownership, years of operation, depth, mining method.

Directory of Illinois Coal Mines (Gallatin County) - Mine names, mine index, ownership, years of operation.

Mine notes (Gallatin County) - Mine location, seam, thickness.

ISGS mined-out area map, Area 32 - Slope location.



**Mine Index 426**  
**Comet Coal Company, Comet Mine**

Type: Underground    Total mined-out acreage shown: 100    Production indicates 155 acres were mined.

**SHAFT, SLOPE, DRIFT or TIPPLe LOCATIONS**

Type	County	Township-Range	Section	Quarters-Footage
Main shaft	Gallatin	9S 8E	16	SW NW NW
Air shaft	Gallatin	9S 8E	16	NW SW NW

**GEOLOGY**

Seam(s) Mined	Depth (ft)	Thickness (ft)			Mining Method
		Min	Max	Ave	
Springfield	130-140	4.5	5.0	4.58	MRP

Geologic Problems Reported: The field notes indicate the coal dipped to the south (4 feet drop in 600 horizontal feet) and then rose again. Water problems were noted in the southernmost portion of the mine, and the roof had rolls or horsebacks at that location that may have been the source of the water. Mining advance was halted on the eastern side of the mine by a "rock wall" that may have been a sandstone channel, because water entered from the roof at this location. The roof was draw slate. There were coal balls present in the roof, and they were most common where the draw slate was absent. The coal thickness varied throughout the mine. Many pyrite lenses and veinlets existed in the coal, as well as calcite facings. Floor heaving was noted during mining, but may not have hindered mining to a great extent.

**PRODUCTION HISTORY**

Company	Mine Name	Years	Production (tons)
Pearce & Adkins	Pearce & Adkins	1919-1922 *	3,804
Showler A. Pearce	Pearce	1922-1923	4,272
Pekin Mining Company	Pekin	1923-1925	17,437
Pekin Coal Company	Pekin	1926-1927	24,361
Pekin Mining Company	Pekin	1928-1934	40,826
Pekin Coal Company	Pekin	1935-1956 **	521,990
Pekin Coal Company ***	Knickerbocker	1956-1957	6,400
Comet Coal Company	Comet	1957-1957	<u>24,445</u>
			643,535

\* Production was not reported in 1922 for mines producing less than 10,000 tons.

\*\* The mine changed management in 1935, but reported under the same name.

\*\*\* A microfilm map (document 351546, reel 03136, frames 313 & 314, dated May 1957) indicates the owners or managers are Oak Hill Coal Company. This production was not listed under this name in the Coal Report.

Last reported production: October 1957

**SOURCES OF DATA**

Source Map	Date	Original Scale	Digitized Scale	Map Type
Microfilm, document 351544	4-16-1958	1:1200	1:2152	Final

Annotated Bibliography (data source, brief description of information)

Coal Reports - Production, ownership, years of operation.

Directory of Illinois Coal Mines (Gallatin County) - Mine names, mine index, ownership, years of operation.

Mine notes (Gallatin County) - Mine type, shaft location, seam, depth, thickness, geologic problems.

ISGS field notes (Gallatin County) - Shaft location, depth, geologic problems.

Microfilm map, document 351544, reel 03136, frames 309 & 310 - Shaft locations, mine outline, mining method.



**Mine Index 640****Cedar Hill Coal Company, Cedar Hill Mine**

Type: Underground Total mined-out acreage shown: 4 Production indicates approximately 10 acres were mined after the map date. This mine was later partially surface mined by Eagle Strip Mine (mine index 883).

**SHAFT, SLOPE, DRIFT or TIPPLE LOCATIONS**

Type	County	Township-Range	Section	Quarters-Footage
Main slope	Gallatin	10S 9E	19	NW NE NW
Air shaft	Gallatin	10S 9E	19	NW NE NW

**GEOLOGY**

Seam(s) Mined	Depth (ft)	Thickness (ft)			Mining Method
		Min	Max	Ave	
Springfield				4.3-5.0	RPB

Geologic Problems Reported:

**PRODUCTION HISTORY**

Company	Mine Name	Years	Production (tons)
St. Thomas Coal Company	St. Thomas	1934-1935	3,489
Cedar Hill Coal Company	Cedar Hill	1936-1937	9,704
Cedar Hill Coal Company	Cedar Hill	1938-1941	34,564 *
Vancill, Dryden & Lindsay Company	Vancill, Dryden & Lindsay	1941-1941	4,863 *
Fred Lindsay	Cedar Hill	1942-1942	1,892 *
Duncan & Sons	Duncan	1942-1942	563 *
Cedar Hill Coal Company	Cedar Hill	1942-1942	3,205 *
			58,280

\* Production after map date

Last reported production: 1942

**SOURCES OF DATA**

Source Map	Date	Original Scale	Digitized Scale	Map Type
Microfilm, document 351536	1937	1:1200	1:1200	Not final

Annotated Bibliography (data source, brief description of information)

Coal Reports - Production, ownership, years of operation.

Directory of Illinois Coal Mines (Gallatin County) - Mine names, mine index, ownership, years of operation.

Mine notes (Gallatin County) - Mine type, slope location, seam, thickness.

Microfilm map, document 351536, reel 03136, frame 301 - Slope & shaft locations, mine outline, mining method.



**Mine Index 648****Logan Highway Coal Company, Hickory Hill Mine**

Type: Underground    Total mined-out acreage shown: 55

**SHAFT, SLOPE, DRIFT or TIPPLE LOCATIONS**

Type	County	Township-Range	Section	Quarters-Footage
Main slope *	Gallatin	9S 8E	14	SE SW SE

\* No air shaft was found on the source map. This mine connected underground to Old Hickory Hill Mine (mine index 135), and the slope and airway for that mine were probably used for ventilation and escapement for this mine.

**GEOLOGY**

Seam(s) Mined	Depth (ft)	Thickness (ft)			Mining Method
		Min	Max	Ave	
Springfield	47			4.5	MRP

Geologic Problems Reported: The coal dips to the northeast. Platy partings of calcite and kaolinite were found in the coal.

**PRODUCTION HISTORY**

Company	Mine Name	Years	Production (tons)
Logan Highway Coal Company	Hickory Hill	1929-1941	<u>224,872</u> 224,872

Last reported production: 1941

**SOURCES OF DATA**

Source Map	Date	Original Scale	Digitized Scale	Map Type
Microfilm, document 351534	4-18-1941	1:2400	1:3312	Final

Annotated Bibliography (data source, brief description of information)

Coal Reports - Production, ownership, years of operation.  
 Directory of Illinois Coal Mines (Gallatin County) - Mine names, mine index, ownership, years of operation.  
 Mine notes (Gallatin County) - Mine type, slope location, seam, depth, thickness, geologic problems, mine name.  
 ISGS field notes (Gallatin County) - Mine type, slope location, seam, depth, thickness, geologic problems.  
 Microfilm map, document 351534, reel 03136, frame 299 - Slope location, mine outline, mining method.



**Mine Index 659****Thurmond Coal Company, Colbert Mine**

Type: Underground    Total mined-out acreage shown: 9    This mine was later partially surface mined by the Bennett No. 1 Mine (mine index 2285).

**SHAFT, SLOPE, DRIFT or TIPPLE LOCATIONS**

Type	County	Township-Range	Section	Quarters-Footage
Main slope *	Gallatin	10S 8E	18	NW NE SE

\* No air shaft or slope was found for this mine, but it was connected underground to the Booten Mine (mine index 230), which was probably used for ventilation.

**GEOLOGY**

Seam(s) Mined	Depth (ft)	Thickness (ft)			Mining Method
		Min	Max	Ave	
Springfield	45			4.83	MRP

Geologic Problems Reported:

**PRODUCTION HISTORY**

Company	Mine Name	Years	Production (tons)
James T. Calbert	Calbert	1915-1916	200
James T. Calbert	Colbert	1916-1917	40
Thornton Calbert	Colbert	1917-1920	430
Idle		1921-1924	
Thornton Calbert	Colbert	1925-1942	6,759
Thurmond Coal Company	Colbert	1943-1950	<u>38,700</u>
			45,459

Last reported production: 1950

**SOURCES OF DATA**

Source Map	Date	Original Scale	Digitized Scale	Map Type
Microfilm, document 351554	1-8-1953	1:1200	1:1656	Final

Annotated Bibliography (data source, brief description of information)

Coal Reports - Production, ownership, years of operation.

Directory of Illinois Coal Mines (Gallatin County) - Mine names, mine index, ownership, years of operation.

Mine notes (Gallatin County) - Mine type, slope location, seam, depth, thickness.

Microfilm map, document 351554, reel 03136, frame 322 - Slope location, mine outline, mining method.



**Mine Index 691****B. & W. Coal Company, B. & W. No. 1 Mine**

Type: Underground    Total mined-out acreage shown: 246

**SHAFT, SLOPE, DRIFT or TIPPLE LOCATIONS**

Type	County	Township-Range	Section	Quarters-Footage
Main shaft	Gallatin	9S 8E	13	NW SE SE
Old air shaft	Gallatin	9S 8E	13	NW SE SE
Air shaft	Gallatin	9S 8E	13	SW NE SE

**GEOLOGY**

Seam(s) Mined	Depth (ft)	Thickness (ft)			Mining Method
		Min	Max	Ave	
Springfield	95	4.5	5.5	4.8	MRP

Geologic Problems Reported: The mine worked 1000 feet east into section 18 before encountering a dike, which had coked the coal. A short distance before the dike, a fault with 4 feet of displacement was crossed, probably a part of the Ridgway Fault. A portion of the mine had been under water. Coal balls were extremely persistent in the roof. The coal had frequent pyrite bands and stringers.

**PRODUCTION HISTORY**

Company	Mine Name	Years	Production (tons)
Mid City Coal Company	Mid City No. 1	1930-1940	91,707
Shawnee Coal Company	Shawnee	1940-1940	2,266
New Shawnee Coal Company	New Shawnee	1941-1942	34,306
Gallatin County Coal Company	Gallatin County	1943-1947	161,217
B. & W. Coal Company	B. & W. No. 1	1947-1965	946,334
Mid City Coal Company, Inc.	Mid City	1966-1967	<u>not reported</u> *
			1,235,830

\* According to the Coal Report, the mine operated from March 1966 to April 1967, but production, if any, was not listed.

Last reported production: 1965

**SOURCES OF DATA**

Source Map	Date	Original Scale	Digitized Scale	Map Type
Microfilm, document 351558	4-21-1967	1:1200	1:2484	Final

Annotated Bibliography (data source, brief description of information)

Coal Reports - Production, ownership, years of operation.

Directory of Illinois Coal Mines (Gallatin County) - Mine names, mine index, ownership, years of operation.

Mine notes (Gallatin County) - Mine type, shaft location, seam, depth, thickness, geologic problems.

ISGS field notes (Gallatin County) - Shaft location, seams, depth, thickness.

Microfilm map, document 351558, reel 03136, frames 326-328 - Shaft locations, mine outline, mining method.



**Mine Index 709****Randall Coal Company, Randall Mine**

Type: Surface Total mined-out acreage shown: 6 (18 with augered coal, which may have been mined by another company)

**SHAFT, SLOPE, DRIFT or TIPPLE LOCATIONS**

Type	County	Township-Range	Section	Quarters-Footage
Pit	Gallatin	10S 8E	16	N ½

**GEOLOGY**

Seam(s) Mined	Depth (ft)	Thickness (ft)			Mining Method
		Min	Max	Ave	
Springfield				4.42	Surface

Geologic Problems Reported: There were pyrite facings throughout the coal.

**PRODUCTION HISTORY**

Company	Mine Name	Years	Production (tons)
Randall Coal Company	Randall	1955-1956	59,739
			59,739

Last reported production: October 1956

**SOURCES OF DATA**

Source Map	Date	Original Scale	Digitized Scale	Map Type
Microfilm, document 351545	7-20-1956	1:1200	1:1656	Final *

\* The map has a handwritten note stating this is a final map, although the date indicates it is not final. If the note is not correct, an additional 2 acres could have been mined after the map date.

Annotated Bibliography (data source, brief description of information)

Coal Reports - Production, ownership, years of operation.

Directory of Illinois Coal Mines (Gallatin County) - Mine names, mine index, ownership, years of operation.

Mine notes (Gallatin County) - Mine type, mine location, seam, thickness, mining method, geologic problems..

Microfilm map, document 351545, reel 03136, frames 311, 312 - Mine location, mine outline, mining method.



**Mine Index 712****Acme Stone & Coal Company, Acme No. 2 Mine**

Type: Underground & Surface Total mined-out acreage shown: 2 Production indicates 3 acres were mined after the map date. This mine was later partially surface mined by the Eagle Surface Mine (mine index 883). The last owner surface mined the Herrin Coal and used the tipples to load the Herrin Coal and so is included in the same index number.

**SHAFT, SLOPE, DRIFT or TIPPLE LOCATIONS**

Type	County	Township-Range	Section	Quarters-Footage
Main drift	Gallatin	10S 8E	23	SE NE NE
Air shaft	Gallatin	10S 8E	23	SE NE NE

**GEOLOGY**

Seam(s) Mined	Depth (ft)	Thickness (ft)			Mining Method
		Min	Max	Ave	
Herrin					Surface
Springfield	28			5.0	MRP

Geologic Problems Reported: The black shale roof had large coal balls, with slickensides occurring nearby. The base of the coal contained a great deal of pyrite.

**PRODUCTION HISTORY**

Company	Mine Name	Years	Production (tons)
Sun Valley Coal Company	Sun Valley No. 1	1953-1954	9,099
Sun Valley Coal Company	Sun Valley No. 1	1954-1955	10,939 *
Acme Stone & Coal Company	Acme No. 2	1956-1956	<u>2,870</u> *, **
			22,908

\* Production after map date

\*\* This operator surface-mined in the vicinity, using the tipples of the underground mine.

Last reported production: December 1956

**SOURCES OF DATA**

Source Map	Date	Original Scale	Digitized Scale	Map Type
Microfilm, document 351549	11-7-1954	1:1200	1:2148	Not final
USGS topographic map	1959	1:24000	1:24000	Secondary source

Annotated Bibliography (data source, brief description of information)

Coal Reports - Production, ownership, years of operation.

Directory of Illinois Coal Mines (Gallatin County) - Mine names, mine index, ownership, years of operation.

Mine notes (Gallatin County) - Mine type, slope location, seam, depth, thickness, geologic problems.

Microfilm map, document 351549, reel 03136, frame 317 - Drift & shaft locations, mine outline, mining method.

USGS topographic map, Equality Quadrangle, 1959 - Mine outline.



**Mine Index 745****Vandell Mining & Coke Company, Vandell Mine**

Type: Underground    Total mined-out acreage shown: None

**SHAFT, SLOPE, DRIFT or TIPPLE LOCATIONS**

Type	County	Township-Range	Section	Quarters-Footage
Main shaft	Gallatin	9S 8E	24	NE SE NE

**GEOLOGY**

Seam(s) Mined	Depth (ft)	Thickness (ft)			Mining Method
		Min	Max	Ave	
Springfield					

Geologic Problems Reported: The shaft was not completed to the coal because of a water-saturated sand at a depth of 50 feet.

**PRODUCTION HISTORY**

Company	Mine Name	Years	Production (tons)
Vandell Mining & Coke Company	Vandell	1907-1908	not reported *

\* No production was listed in the Coal Reports for this name, and the field notes indicated the construction of the shaft was not completed. It is likely that there was no production for this mine.

Last reported production:

**SOURCES OF DATA**

Source Map	Date	Original Scale	Digitized Scale	Map Type
ISGS field notes (G. H. Cady)	4-9-1938	(text only)	1:24000 **	Secondary source
ISGS map library, 4107 d5.1-209	1927	1:62500	1:62500	Secondary source

\*\* The mine name and general location were taken from the field notes and plotted on a 1:24000 USGS topographic map, and this information identified a mine on Cady's field notes map.

Annotated Bibliography (data source, brief description of information)

Directory of Illinois Coal Mines (Gallatin County) - Mine names, mine index, ownership, years of operation.

Mine notes (Gallatin County) - Mine type, shaft location, geologic problems.

ISGS field notes (Gallatin County) - Shaft location.

ISGS map library, 4107 d5.1-209, map of G. H. Cady's field notes - Shaft location.



**Mine Index 746****Oak Hill Coal Company, Oak Hill Mine**

Type: Underground    Total mined-out acreage shown: 8    This mine was later partially surface mined by Richardson No. 5 Mine (mine index 2284).

**SHAFT, SLOPE, DRIFT or TIPPLE LOCATIONS**

Type	County	Township-Range	Section	Quarters-Footage
Main slope	Gallatin	10S 8E	24	NW SW NE
Air shaft	Gallatin	10S 8E	24	SE NW NE
Air shaft	Gallatin	10S 8E	24	SW NW NE

**GEOLOGY**

Seam(s) Mined	Depth (ft)	Thickness (ft)			Mining Method
		Min	Max	Ave	
Springfield	40			4.5	RPB

Geologic Problems Reported:

**PRODUCTION HISTORY**

Company	Mine Name	Years	Production (tons)
Martin & Brown	Oak Hill	1948-1948	136
Oak Hill Coal Company *	Oak Hill	1949-1954	<u>53,164</u>
			53,300

\* The mine changed ownership in 1952 from B. Miles to R. Knickerbocker, but operated under the same name.

Last reported production: May 1954

**SOURCES OF DATA**

Source Map	Date	Original Scale	Digitized Scale	Map Type
Microfilm, document 351541	7-2-1954	1:1200	1:2400	Final

Annotated Bibliography (data source, brief description of information)

Coal Reports - Production, ownership, years of operation.

Directory of Illinois Coal Mines (Gallatin County) - Mine names, mine index, ownership, years of operation.

Mine notes (Gallatin County) - Mine type, slope location, seam, depth, thickness.

Microfilm map, document 351541, reel 03136, frame 306 - Slope & shaft locations, mine outline, mining method.



**Mine Index 764****National Mining Company, National Mine**

Type: Surface    Total mined-out acreage shown: 3    Production indicates approximately 15 acres were mined.

**SHAFT, SLOPE, DRIFT or TIPPLe LOCATIONS**

Type	County	Township-Range	Section	Quarters-Footage
Tipple	Gallatin	9S 8E	23	NE NW

**GEOLOGY**

Seam(s) Mined	Depth (ft)	Thickness (ft)			Mining Method
		Min	Max	Ave	
Springfield				4.75	Surface

Geologic Problems Reported:

**PRODUCTION HISTORY**

Company	Mine Name	Years	Production (tons)
Carl Wenzel Construction Company	Wenzel Pit No. 1	1956-1956	924
Carl Wenzel Construction Company	Wenzel Pit No. 2	1956-1956	18,402
Carl Wenzel Construction Company	Wenzel Pit No. 3	1956-1956	22,664
Liberty Coal Company	Liberty No. 3	1957-1957	10,800
Carl Wenzel Construction Company	Wenzel No. 3	1957-1957	2,000
National Mining Company	National	1958-1958	<u>5,623</u>
			60,413

Last reported production: July 1958

**SOURCES OF DATA**

Source Map	Date	Original Scale	Digitized Scale	Map Type
ISGS map library, 4102 a-7, sheet 1	1983	1:24000	1:24000	Secondary source
USGS topographic map	PR 1990	1:24000	1:24000	Secondary source

Annotated Bibliography (data source, brief description of information)

Coal Reports - Production, ownership, years of operation.

Directory of Illinois Coal Mines (Gallatin County) - Mine names, mine index, ownership, years of operation.

Mine notes (Gallatin County) - Mine type, mine location, seam, thickness, mining method.

ISGS map library, 4102 a-7, sheet 1, work map for Equality Quadrangle Geologic Map - Mine location.

USGS topographic map, Equality Quadrangle, 1959, photorevised 1990 - Mine outline.



**Mine Index 765****New Oak Hill Coal Company, New Oak Hill Pit No. 2**

Type: Surface Total mined-out acreage shown: 1 Production indicates approximately 3 acres were mined after the map date.

**SHAFT, SLOPE, DRIFT or TIPPLE LOCATIONS**

Type	County	Township-Range	Section	Quarters-Footage
Pit	Gallatin	9S 8E	23	NE NW

**GEOLOGY**

Seam(s) Mined	Depth (ft)	Thickness (ft)			Mining Method
		Min	Max	Ave	
Springfield				4.5	Surface

Geologic Problems Reported:

**PRODUCTION HISTORY**

Company	Mine Name	Years	Production (tons)
Oak Hill Coal Company	Pit No. 1	1955-1955	10,244
New Oak Hill Coal Company	Pit No. 2	1956-1956	<u>22,657</u> *
			32,901

\* Production after map date

Last reported production: October 1956

**SOURCES OF DATA**

Source Map	Date	Original Scale	Digitized Scale	Map Type
Microfilm, document 351542	1-2-1956	1:1200	1:1656	Not final

Annotated Bibliography (data source, brief description of information)

Coal Reports - Production, ownership, years of operation.

Directory of Illinois Coal Mines (Gallatin County) - Mine names, mine index, ownership, years of operation.

Mine notes (Gallatin County) - Mine type, mine location, seam, thickness, mining method.

Microfilm map, document 351542, reel 03136, frame 307 - Mine outline, mining method.



**Mine Index 804****Vinyard Coal Company, Vinyard No. 1 Mine**

Type: Surface Total mined-out acreage shown: 36 Production indicates approximately 24 acres were mined. The size difference may be from poor source maps or the coal thickness may not have been as high as reported.

**SHAFT, SLOPE, DRIFT or TIPPLE LOCATIONS**

Type	County	Township-Range	Section	Quarters-Footage
Tipple / pit	Saline	9S 7E	13	NW SE SW

**GEOLOGY**

Seam(s) Mined	Depth (ft)	Thickness (ft)			Mining Method
		Min	Max	Ave	
Springfield	30			4.5-4.67	Surface

Geologic Problems Reported:

**PRODUCTION HISTORY**

Company	Mine Name	Years	Production (tons)
Vinyard Coal Company	Vinyard No. 1	1955-1957	132,437
Liberty Coal Company	Liberty No. 2	1957-1957	4,600
Vinyard Coal Company	Vinyard No. 1	1957-1957	40,000 *
			177,037

\* Some portion of this tonnage was mined by Vinyard Coal Company from January to June of 1957. Liberty Coal Company operated the mine during June and July of 1957 and then ownership was transferred back to Vinyard Coal Company in August. The Coal Report did not split the 1957 production listed for Vinyard Coal Company, and it is all listed for the August-October time period.

Last reported production: October 1957

**SOURCES OF DATA**

Source Map	Date	Original Scale	Digitized Scale	Map Type
ISGS map library, 4102 a-7, sheet 2	1981-1983	1:24000	1:24000	Secondary source
Digital ortho-photographic quadrangle	Unknown	1:24000	1:24000	Secondary source

Annotated Bibliography (data source, brief description of information)

Coal Reports - Production, ownership, years of operation.  
 Directory of Illinois Coal Mines (Saline County) - Mine names, mine index, ownership, years of operation.  
 Mine notes (Saline County) - Mine type, tipple / pit location, seam, depth, thickness.  
 ISGS map library, 4102 a-7, sheet 2, work map for Rudement Quadrangle Geologic Map - Mine outline.  
 Digital ortho-photographic map, Rudement 7.5-minute Quadrangle - Mine outline.



**Mine Index 876****Wenzel Coal Company, Inc., Eagle Valley No. 1 Mine**

Type: Underground    Total mined-out acreage shown: 14

**SHAFT, SLOPE, DRIFT or TIPPLE LOCATIONS**

Type	County	Township-Range	Section	Quarters-Footage
Main drift	Gallatin	9S 8E	33	NW SE SE
Air drift	Gallatin	9S 8E	33	NW SE SE
Air drift	Gallatin	9S 8E	33	NE SE SE
Air drift	Gallatin	9S 8E	33	NE SE SE
Escape slope	Gallatin	9S 8E	33	NE SW SE

**GEOLOGY**

Seam(s) Mined	Depth (ft)	Thickness (ft)			Mining Method
		Min	Max	Ave	
Springfield				4.42	MRP

Geologic Problems Reported: The roof was dark gray shale which contained scattered coal balls. The floor was a hard underclay.

**PRODUCTION HISTORY**

Company	Mine Name	Years	Production (tons)
Wenzel Coal Company, Inc. *	Eagle Valley No. 1	1965-1966	88,623 88,623

\* The source map indicates the mine may have been managed by Roger Knickerbocker.

Last reported production: August 1966

**SOURCES OF DATA**

Source Map	Date	Original Scale	Digitized Scale	Map Type
Company, 4103.G3 i5.1-11	8-31-1966	1:1200	1:1986	Final
ISGS map library, 4102 a-7, sheet 1	1981-1983	1:24000	1:24000	Secondary source

Annotated Bibliography (data source, brief description of information)

Coal Reports - Production, ownership, years of operation.

Directory of Illinois Coal Mines (Gallatin County) - Mine names, mine index, ownership, years of operation.

Mine notes (Gallatin County) - Mine type, slope location, seam, thickness, geologic problems.

Company map, ISGS map library, 4103.G3 i5.1-11 - Drift & slope locations, mine outline, mining method.

ISGS map library, 4102 a-7, sheet 1, work map for Equality Quadrangle Geologic Map - Georegistration aid.



**Mine Index 883****Peabody Coal Company, Eagle Surface Mine**

Type: Surface Total mined-out acreage shown: 1,336 This area encompasses several other small mines. Some were small underground mines whose pillars were retrieved by the Eagle Mine, some were small surface mines whose outlines are no longer relevant, and there is some evidence that a previously auger-mined area was surface-mined by the Eagle Mine.

**SHAFT, SLOPE, DRIFT or TIPPLE LOCATIONS**

Type	County	Township-Range	Section	Quarters-Footage
Tipple	Gallatin	10S 9E	8	NE NE NE

**GEOLOGY**

Seam(s) Mined	Depth (ft)	Thickness (ft)			Mining Method
		Min	Max	Ave	
Herrin	6-80			3.0-4.67	Surface
Briar Hill				2.5	Surface
Springfield	20-40			4.5	Surface
Dekoven				3.17	Surface
Davis				3.17	Surface

Geologic Problems Reported: This mine uncovered traces of several faults of the Shawneetown Fault Zone. Many thrust faults and some normal faults were seen. In one case, the Herrin Coal was triplicated in the section caused by large-scale thrusting. The south side of one thrust fault was up-thrown about 10 feet. The faulting caused displaced coal and made the coal elevation pitch and roll steeply, and caused instability of the highwall. In some pits, the Pleistocene material directly overlay the Herrin Coal and appeared to have cut down into the coal in some spots. The overburden over the Herrin Coal consisted of black Anna Shale (sometimes pods or not present at all), a thin layer (from a few inches thick up to 3 or 4 feet) of Brereton Limestone, gray Lawson Shale (from 2 to 15 feet thick), and Anvil Rock Sandstone. In some places the Anvil Rock Sandstone was present as a channel fill about 1,000 feet wide that had eroded down to within a few inches of the coal, and up to 50 feet thick in the channel phase. In two pits, concretions were commonly associated with the Herrin Coal. A few thin pyrite lenses were also present in the coal, as well as calcite and pyrite on cleat faces. At least one clay dike was seen in the Briar Hill Coal. The Dekoven Coal was overlain by 35 to 40 feet of hard gray silty shale with numerous thin beds of sandstone in the upper part.

**PRODUCTION HISTORY**

Company	Mine Name	Years	Production (tons)
Equality Coal Company	Equality	1945-1945	8,663
Idle		1946-1965	
Peabody Coal Company	Eagle Surface	1966-1980	6,475,653
			6,484,316

Last reported production: May 1980

**SOURCES OF DATA**

Source Map	Date	Original Scale	Digitized Scale	Map Type
Company, 10-6-12	7-18-1983	1:12000	1:12000	Final
Company, 4103.G3 i5.1-13	1-1-1979	1:12000	1:12000	Not final

Annotated Bibliography (data source, brief description of information)

Coal Reports - Production, ownership, years of operation.  
 Directory of Illinois Coal Mines (Gallatin County) - Mine names, mine index, ownership, years of operation.  
 Mine notes (Gallatin County) - Mine type, mine location, seam, depth, thickness, geologic problems.  
 Company map, ISGS Coal Section files, 10-6-12 - Mine outline, mining method.  
 Company map, ISGS map library, 4103.G3 i5.1-13 - Tipple location.



**Mine Index 995**  
**Arclar Company, Eagle Valley Mine**

Type: Underground Total mined-out acreage shown: 3,128 in the Springfield Coal and 1,194 in the Davis Coal. Production indicates an additional 60 acres were mined in the Davis Coal.

**SHAFT, SLOPE, DRIFT or TIPPLe LOCATIONS**

Type	County	Township-Range	Section	Quarters-Footage
Main drift	Gallatin	10S 8E	17	2620' FNL 960' FWL
Air drift	Gallatin	10S 8E	17	SE SW NW
Air drift	Gallatin	10S 8E	17	SE SW NW
Air drift	Gallatin	10S 8E	17	SE SW NW
Air drift	Gallatin	10S 8E	17	SE SW NW
Blind slope to Davis Coal	Gallatin	10S 8E	Unknown *	

\* A blind slope was used to take the coal up to the Springfield Coal haulage routes, but this slope was not depicted on the source map. (Blind slopes do not extend to the surface.)

**GEOLOGY**

Seam(s) Mined	Depth (ft)	Thickness (ft)			Mining Method
		Min	Max	Ave	
Springfield	250			4.5-5.0	RPP
Davis **	450			3.58	

\*\* The Davis Coal was mined beginning in July 1996 from a blind slope that descended from the Springfield Coal.

Geologic Problems Reported: An igneous dike was present in this mine that trended due north. The dike was bordered by a small rind of coked coal. The dike was found to coincide with a linear feature on the surface, indicating that the dike seen in the mine may extend to the surface. The roof was good, with very few falls occurring. The floor was a hard claystone that did not cause problems, even when wet. There were some water problems in this mine which required pumping at each face after mining. Some pyrite bands were found throughout the Davis seam, but most commonly the bands were near the top of the Davis seam.

**PRODUCTION HISTORY**

Company	Mine Name	Years	Production (tons)
A. & F. Coal Company ***	Arclar	1984-1986	488,300
Tek Bar Industries, Inc.	Arclar	1987-1988	619,346
Tek Bar Industries, Inc.	Eagle Valley	1989-1989	417,924
Coal Miners, Inc. ***	Eagle Valley	1990-2001	16,064,446
Arclar Company	Eagle Valley	2002-2002	209,250 †
			17,799,266

\*\*\* The operators as listed in the Coal Reports may not accurately depict the mine ownership. A. & F Coal Company may have been owned by Tek Bar Industries. Coal Miners, Inc. was a contract mining operation, and the mine was owned by Sugar Camp Coal Company.

† Production after map date

Last reported production: 2002

**SOURCES OF DATA**

Source Map	Date	Original Scale	Digitized Scale	Map Type
Company	1-1-2002	1:4800	1:4800	Not final

Annotated Bibliography (data source, brief description of information)

Coal Reports - Production, ownership, years of operation, depth.  
 Directory of Illinois Coal Mines (Gallatin County) - Mine names, mine index, ownership, years of operation.  
 Mine notes (Gallatin County) - Mine type, drift location, seam, thickness, mining method, geologic problems.  
 Company map, Coal Section files (digital) - Drift locations, mine outline, mining method.



**Mine Index 999**  
**Jader Fuel Company, Inc., Lovilia Mine**

Type: Underground Total mined-out acreage shown: 88 This mine was later partially surface mined by the I-1 Surface Mine (mine index 1004) and the drifts and most of the mine are not shown on the accompanying map.

**SHAFT, SLOPE, DRIFT or TIPPLE LOCATIONS**

Type	County	Township-Range	Section	Quarters-Footage
Main drift	Gallatin	10S 8E	15	NE SW NW
Air drift (intake)	Gallatin	10S 8E	15	NE SW NW
Air drift (return)	Gallatin	10S 8E	15	NE SW NW

**GEOLOGY**

Seam(s) Mined	Depth (ft)	Thickness (ft)			Mining Method
		Min	Max	Ave	
Springfield	150-175			5.0	BRP, some HER *

\* The mine notes indicated that some pillars were pulled on retreat, but the extent of this practice is not known.

Geologic Problems Reported: The coal dipped to the north. Coal balls and limestone concretions were present locally. Narrow zones of closely spaced fractures caused weakness in the roof and some roof falls resulted. An almost continuous zone of flattened pyrite nodules occurred at the roof/coal boundary. The coal contained some pyrite and calcite facings. Water seepage made the floor muddy.

**PRODUCTION HISTORY**

Company	Mine Name	Years	Production (tons)
Jader Fuel Company, Inc.	Lovilia	1982-1985	<u>450,223</u> 450,223

Last reported production: 1985

**SOURCES OF DATA**

Source Map	Date	Original Scale	Digitized Scale	Map Type
Company	6-7-1986	1:4800	1:4800	Final

Annotated Bibliography (data source, brief description of information)

Coal Reports - Production, ownership, years of operation, depth.  
 Directory of Illinois Coal Mines (Gallatin County) - Mine names, mine index, ownership, years of operation.  
 Mine notes (Gallatin County) - Mine type, drift location, seam, thickness, geologic problems.  
 ISGS field notes (Gallatin County) - Geologic problems.  
 Company map, Coal Section files - Drift locations, mine outline, mining method.



**Mine Index 1003****Jader Fuel Company, Inc., Federal Landscaping No. 1 Mine**

Type: Surface Total mined-out acreage shown: 45 Production indicates approximately 10 acres were mined. The area shown on the accompanying map may include affected acreage from activities associated with mining (haulage roads, areas cleared to maneuver machines, etc.) and the coal may not have been as thick as reported.

**SHAFT, SLOPE, DRIFT or TIPPLE LOCATIONS**

Type	County	Township-Range	Section	Quarters-Footage
Tipple / pit	Saline	10S 7E	12	SE SE

**GEOLOGY**

Seam(s) Mined	Depth (ft)	Thickness (ft)			Mining Method
		Min	Max	Ave	
Herrin	45 (20-60)			4.0	Surface

Geologic Problems Reported:

**PRODUCTION HISTORY**

Company	Mine Name	Years	Production (tons)
Federal Landscaping Company	Federal Landscaping	1980-1980	none reported
Jader Fuel Company, Inc.	Federal Landscaping No. 1	1980-1982	65,509 65,509

Last reported production: October 1982

**SOURCES OF DATA**

Source Map	Date	Original Scale	Digitized Scale	Map Type
Company, 6-281	6-15-1983	1:7920	1:7920	Final

Annotated Bibliography (data source, brief description of information)

Coal Reports - Production, ownership, years of operation, thickness.

Directory of Illinois Coal Mines (Saline County) - Mine names, mine index, ownership, years of operation.

Mine notes (Saline County) - Mine type, tipple / pit location, seam, depth, mining method.

Company map, ISGS Coal Section, 6-281 - Mine location, mine outline, mining method.



**Mine Index 1004****Illinois Fuel Company, LLC, I-1 Surface Mine**

Type: Surface Total mined-out acreage shown: 2,115 (179 in Herrin Coal, 746 in Springfield Coal and 1,190 in Davis/Dekoven Coal) Production indicates approximately 200 acres or more were mined after the map date in Saline County.

**SHAFT, SLOPE, DRIFT or TIPPLE LOCATIONS**

Type	County	Township-Range	Section	Quarters-Footage
Pit	Gallatin	10S 8E	16, 17, 18, 19	
Pit	Saline	10S 7E	11, 13, 14, 23, 24	

**GEOLOGY**

Seam(s) Mined	Depth (ft)	Thickness (ft)			Mining Method
		Min	Max	Ave	
Herrin	140 *			3.0-4.0	Surface
Briar Hill	90 *			2.0-2.5	Surface
Springfield	155 *			4.5-5.0	Surface
Dekoven	103-105 *			3.0	Surface
Davis	125-130 *			4.0	Surface

\* These depths were not measured at the same location, but in the locations where each coal was present and thick enough to mine.

Geologic Problems Reported:**PRODUCTION HISTORY**

Company	Mine Name	Years	Production (tons)
Jader Fuel Company, Inc.	Jader No. 4	1982-1996	5,517,954
Jader Fuel Company, Inc.	Jader No. 4 (Saline County)	1997-2000	4,178,422
Illinois Fuel Company, LLC	I-1 Surface	2001-2011 **	3,280,101
			12,976,477

\*\* Idle 2004-2007

Last reported production: 2011

**SOURCES OF DATA**

Source Map	Date	Original Scale	Digitized Scale	Map Type
Company (digital)	1-2012	1:2400	1:2400	Not final ***
Company (digital)	1-1-2001	1:24000	1:24000	Final, not final †
Company (paper)	1-1-2001	1:4896	1:4896	Final ††
Company (paper)	1-10-2000	1:4800	1:4800	Final ††
Company (paper), 1-42-27	4-18-1994	1:4800	1:4800	Final ††
Company (paper)	12-31-1994	1:4800	1:4800	Final ††
NAIP digital ortho-photo quadrangle	2015	1:6000	1:6000	Secondary source

\*\*\* The outline shown is of affected acres, which may not reflect actual mining.

† Final for Gallatin County pits, not final for Saline County pits

†† This map is final for the areas shown.

Annotated Bibliography (data source, brief description of information)

Coal Reports - Production, ownership, years of operation, depth.

Mine notes (Gallatin County) - Mine type, mine location, seam, thickness, mining method, geologic problems.

Company map, Coal Section files (digital) - Mine outline, mining method.

Company map, Coal Section files, not numbered and 1-42-27 - Mine outline, mining method.

National Agriculture Imagery Program map, digital ortho-photo quadrangle map - Mine outline.



**Mine Index 1022**  
**Arclar Company, Wildcat Hills Eagle Valley Mine**

Type: Surface    Total mined-out acreage shown: 942

**SHAFT, SLOPE, DRIFT or TIPPLE LOCATIONS**

Type	County	Township-Range	Section	Quarters-Footage
Tipple	Gallatin	10S 8E	17	NE SW
Pit	Gallatin	10S 8E	5	
Pit	Gallatin	10S 8E	6	

**GEOLOGY**

Seam(s) Mined	Depth (ft)	Thickness (ft)			Mining Method
		Min	Max	Ave	
Herrin	65-85			3.8-4.0	Surface
Springfield	35				Surface

Geologic Problems Reported:

**PRODUCTION HISTORY**

Company	Mine Name	Years	Production (tons)
Black Beauty Mining Company	Wildcat Hills	1998-2001	5,988,417 *
Arclar Company	Wildcat Hills	2002-2004	7,855,678 *
Black Beauty Mining Company	Wildcat Hills Eagle Valley	2005-2007	<u>6,586,992</u> *
			20,431,087

\* Production from 2000-2007 also includes Wildcat Hills Cottage Grove Mine (mine index 1044).

Last reported production: 2007

**SOURCES OF DATA**

Source Map	Date	Original Scale	Digitized Scale	Map Type
Company, Coal Section digital files	2008	unknown	1:24000	Final

Annotated Bibliography (data source, brief description of information)

Coal Reports - Production, ownership, years of operation, seam, depth, thickness.  
 Directory of Illinois Coal Mines (Gallatin County) - Mine names, mine index, ownership, years of operation.  
 Mine notes (Gallatin County) - Mine type, mine location, seam, depth, mining method.  
 Company digital map, Coal Section files - Mine outline, mining method.



**Mine Index 1044****Peabody Midwest Mining, Wildcat Hills Cottage Grove Mine**

Type: Surface Total mined-out acreage shown: 4,042 in Herrin Coal, 317 in Briar Hill Coal, 487 in Springfield Coal.

**SHAFT, SLOPE, DRIFT or TIPPLE LOCATIONS**

Type	County	Township-Range	Section	Quarters-Footage
Pit (Herrin)	Gallatin	9S 7E	1, 2, 3, 10, 11, 12, 14	
Pit (Herrin)	Gallatin	9S 8E	4, 5, 6, 7, 8, 9, 17	
Pit (Briar Hill)	Gallatin	9S 7E	11, 14	
Pit (Springfield)	Gallatin	9S 7E	11, 14, 15, 22, 23	

**GEOLOGY**

Seam(s) Mined	Depth (ft)	Thickness (ft)			Mining Method
		Min	Max	Ave	
Danville *				1.5-2.0	Surface
Allenby *				1.0-2.0	Surface
Herrin				3.7-4.6	Surface
Briar Hill				1.7-2.0	Surface
Springfield *				4.2-5.0	Surface

\* The Danville Coal is mined only in the northern portions of the northernmost pits. The Allenby Coal was said to have been mined in 2003, and again 2006-2011. The Allenby Coal is commonly found in channel deposits, so it is unclear which pits this coal was mined in. The Springfield Coal is mined in the southernmost pit, and in portions of the northern pits, south of the underground mines in the Springfield Coal. Depth to the coals is 40-155 feet, but it is not easily split out by seam.

Geologic Problems Reported:**PRODUCTION HISTORY**

Company	Mine Name	Years	Production (tons)
Black Beauty Coal Company	Wildcat Hills Cottage Grove	2000-2009	4,347,151 **
Peabody Midwest Mining	Wildcat Hills Cottage Grove	2010-2019	12,250,083
			16,597,234

\*\* The 2000-2005 production is included in the totals for Wildcat Hills Eagle Valley mine (mine index 1022).

Last reported production: 2019

**SOURCES OF DATA**

Source Map	Date	Original Scale	Digitized Scale	Map Type
NAIP digital ortho-photo quadrangle	2019	1:6000	1:6000	Secondary source

Annotated Bibliography (data source, brief description of information)

Coal Reports - Production, ownership, years of operation.

Directory of Illinois Coal Mines (Saline County) - Mine names, mine index, ownership, years of operation.

National Agriculture Imagery Program map, digital ortho-photo quadrangle map - Mine outline, mining method.



**Mine Index 2194**  
**Sanks Coal Company, Sanks Mine**

Type: Underground    Total mined-out acreage shown: None

**SHAFT, SLOPE, DRIFT or TIPPLE LOCATIONS**

Type	County	Township-Range	Section	Quarters-Footage
Main slope *	Gallatin	9S 8E	14	SE SW SW

\* This slope was later used as an escape slope for the Hickory Hill Mine (mine index 135).

**GEOLOGY**

Seam(s) Mined	Depth (ft)	Thickness (ft)			Mining Method
		Min	Max	Ave	
Springfield	24			4.33	

Geologic Problems Reported:

**PRODUCTION HISTORY**

Company	Mine Name	Years	Production (tons)
Sanks & Hargrave	Sanks & Hargrave	1908-1908 **	
Sanks Coal Company	Sanks	1908-1909 **	

\*\* These years are derived from ISGS Bulletin 8, published in 1908, where this mine is listed as Sanks Coal Company. No production was listed in the Coal Reports for this mine.

Last reported production: 1909

**SOURCES OF DATA**

Source Map	Date	Original Scale	Digitized Scale	Map Type
ISGS map library, 4103.G3 i5.1-7	4-1-1927	1:2400	1:2400	Secondary source

Annotated Bibliography (data source, brief description of information)

Directory of Illinois Coal Mines (Gallatin County) - Mine names, mine index, ownership, years of operation.

Mine notes (Gallatin County) - Mine location, seam, depth, thickness.

ISGS map library, 4103.G3 i5.1-7, map of Hickory Hill Mine (mine index 135) - Slope location.



**Mine Index 2258**  
**Richardson Coal Corporation, Richardson No. 6 Mine**

Type: Surface    Total mined-out acreage shown: 5

**SHAFT, SLOPE, DRIFT or TIPPLE LOCATIONS**

Type	County	Township-Range	Section	Quarters-Footage
Tipple	Gallatin	9S 8E	21	NW NE
Pit	Gallatin	9S 8E	21	NW NE
Pit	Gallatin	9S 8E	16	SW SW SE

**GEOLOGY**

Seam(s) Mined	Depth (ft)	Thickness (ft)			Mining Method
		Min	Max	Ave	
Springfield					Surface

Geologic Problems Reported:

**PRODUCTION HISTORY**

Company	Mine Name	Years	Production (tons)
Vinyard Coal Company	Vinyard No. 5	1957-1958	6,556
Richardson Coal Corporation	Richardson No. 6	1958-1958	<u>33,625</u>
			40,181

Last reported production: October 1958

**SOURCES OF DATA**

Source Map	Date	Original Scale	Digitized Scale	Map Type
USGS topographic map	PR 1990	1:24000	1:24000	Secondary source

Annotated Bibliography (data source, brief description of information)

Coal Reports - Production, ownership, years of operation.  
 Directory of Illinois Coal Mines (Gallatin County) - Mine names, mine index, ownership, years of operation.  
 Mine notes (Gallatin County) - Mine type, mine location, seam, mining method.  
 USGS topographic map, Equality Quadrangle, 1959, photorevised 1990 - Mine outline.



**Mine Index 2259****Turns Coal Company, Turns Mine**

Type: Underground    Total mined-out acreage shown: 39

**SHAFT, SLOPE, DRIFT or TIPPLE LOCATIONS**

Type	County	Township-Range	Section	Quarters-Footage
Main shaft	Gallatin	9S 8E	21	NE NW NW
Air shaft	Gallatin	9S 8E	21	NE NW NW

**GEOLOGY**

Seam(s) Mined	Depth (ft)	Thickness (ft)			Mining Method
		Min	Max	Ave	
Springfield	30-40			4.58	MRP

Geologic Problems Reported:**PRODUCTION HISTORY**

Company	Mine Name	Years	Production (tons)
East Side Coal Company	East Side	1902-1904	2,126
Brown Coal Company	East Side	1904-1906	14,642
Vandell Mining & Coke Company	East Side	1906-1910 *	1,145
Crescent Coal Company	East Side, Crescent	1910-1917 **	77,113
Evans Coal & Mining Company	Evans	1917-1919	38,005
Turns Coal Company	Turns	1919-1924	<u>67,022</u>
			200,053

\* Idle 1908-1910

\*\* Idle 1916-1917

Last reported production: April 1924

**SOURCES OF DATA**

Source Map	Date	Original Scale	Digitized Scale	Map Type
Company, 2-2-30G	3-4-1924	1:2400	1:2400	Final ***

\*\*\* The company only operated 30 days in 1924 and mined approximately 1 acre. The mined area shown on the accompanying map is the approximate size expected for the reported production. This suggests that the mine outline is complete.

Annotated Bibliography (data source, brief description of information)

Coal Reports - Production, ownership, years of operation, depth, mining method.

Directory of Illinois Coal Mines (Gallatin County) - Mine names, mine index, ownership, years of operation.

Mine notes (Gallatin County) - Mine location, seam, thickness.

ISGS field notes (Gallatin County) - Depth.

Company map, Coal Section files, 2-2-30G - Shaft locations, mine outline, mining method.



**Mine Index 2260****A. H. Sisk, Gold Nugget Mine**

Type: Underground    Total mined-out acreage shown: None    Production indicates approximately 9 acres were mined.

**SHAFT, SLOPE, DRIFT or TIPPLE LOCATIONS**

Type	County	Township-Range	Section	Quarters-Footage
Main shaft	Gallatin	9S 8E	16	SW SW SW

**GEOLOGY**

Seam(s) Mined	Depth (ft)	Thickness (ft)			Mining Method
		Min	Max	Ave	
Herrin	20-55			4.0-4.83	RP

Geologic Problems Reported:

**PRODUCTION HISTORY**

Company	Mine Name	Years	Production (tons)
Baldwin & Turner	Baldwin & Turner	1905-1906	472
J. O. Baldwin	Golden Nugget	1906-1912	15,210
Dempsey & Walthen	Dempsey & Walthen	1912-1913	2,985
William A. Wather	Wather	1913-1914	2,450
Williams & Lessak	Sunnyside	1914-1915	8,500
Harrison Brothers	Harrison	1915-1916	4,000
Sisk, Flanders & White	Gold Nugget	1916-1917	700
A. H. Sisk	Gold Nugget	1917-1918	650
			34,967

Last reported production: 1918

**SOURCES OF DATA**

Source Map	Date	Original Scale	Digitized Scale	Map Type
ISGS mined-out area map, area 32	1950	1:62500	1:62500	Secondary source

Annotated Bibliography (data source, brief description of information)

Coal Reports - Production, ownership, years of operation, seam, depth, thickness, mining method.  
 Directory of Illinois Coal Mines (Gallatin County) - Mine names, mine index, ownership, years of operation.  
 Mine notes (Gallatin County) - Mine type, shaft location, seam.  
 ISGS mined-out area map, area 32 - Shaft location.



**Mine Index 2261****G. Schafer, Hickory Hills Mine**

Type: Underground    Total mined-out acreage shown: None    Production indicates approximately 5 acres were mined.

**SHAFT, SLOPE, DRIFT or TIPPLe LOCATIONS**

Type	County	Township-Range	Section	Quarters-Footage
Main drift	Gallatin	9S 8E	17	NE NE SE

**GEOLOGY**

Seam(s) Mined	Depth (ft)	Thickness (ft)			Mining Method
		Min	Max	Ave	
Springfield	30			4.0-4.5	RP

Geologic Problems Reported:

**PRODUCTION HISTORY**

Company	Mine Name	Years	Production (tons)
Peter Brightner	Brightner	1889-1890	600
Brightner & Baldwin	Brightner & Baldwin	1890-1894 *	12,946
Lloyd & Jeris	Lloyd & Jeris	1894-1895	1,180
G. Schafer	Hickory Hills	1895-1897	<u>4,600</u>
			19,326

\* Idle 1894 (reported abandoned)

Last reported production: 1897

**SOURCES OF DATA**

Source Map	Date	Original Scale	Digitized Scale	Map Type
ISGS mined-out area map, area 32	1950	1:62500	1:62500	Secondary source

Annotated Bibliography (data source, brief description of information)

Coal Reports - Production, ownership, years of operation, mine type, seam, depth, thickness, mining method.  
 Directory of Illinois Coal Mines (Gallatin County) - Mine names, mine index, ownership, years of operation.  
 Mine notes (Gallatin County) - Mine location.  
 ISGS field notes (Gallatin County) - Depth, thickness.  
 ISGS mined-out area map, area 32 - Drift location.



**Mine Index 2262**  
**William H. McLain, McLain Mine**

Type: Underground    Total mined-out acreage shown: None    Production indicates approximately 6 acres were mined.

**SHAFT, SLOPE, DRIFT or TIPPLe LOCATIONS**

Type	County	Township-Range	Section	Quarters-Footage
Main drift	Gallatin	9S 8E	17	NE SE NE

**GEOLOGY**

Seam(s) Mined	Depth (ft)	Thickness (ft)			Mining Method
		Min	Max	Ave	
Herrin	18-40			4.0-5.13	RP

Geologic Problems Reported:

**PRODUCTION HISTORY**

Company	Mine Name	Years	Production (tons)
William H. McLain	McLain	1897-1909	<u>23,505</u> 23,505

Last reported production: 1909

**SOURCES OF DATA**

Source Map	Date	Original Scale	Digitized Scale	Map Type
ISGS Bulletin 8, Plate 9	1908	1:84480	1:84480	Secondary source

Annotated Bibliography (data source, brief description of information)

Coal Reports - Production, ownership, years of operation, depth, thickness, mining method.  
 Directory of Illinois Coal Mines (Gallatin County) - Mine names, mine index, ownership, years of operation.  
 Mine notes (Gallatin County) - Mine type, drift location, seam, thickness.  
 ISGS Bulletin 8, Plate 9 - Drift location.

**Mine Index 2263****Richardson Coal Corporation, Richardson No. 3 Mine**

Type: Surface    Total mined-out acreage shown: None    Production indicates approximately 5 acres were mined.

**SHAFT, SLOPE, DRIFT or TIPPLE LOCATIONS**

Type	County	Township-Range	Section	Quarters-Footage
Tipple	Gallatin	9S 8E	19	NW NW NW

**GEOLOGY**

Seam(s) Mined	Depth (ft)	Thickness (ft)			Mining Method
		Min	Max	Ave	
Springfield					Surface

Geologic Problems Reported:

**PRODUCTION HISTORY**

Company	Mine Name	Years	Production (tons)
Richardson Coal Corporation	Richardson No. 3	1957-1958	<u>37,998</u> 37,998

Last reported production: March 1958

**SOURCES OF DATA**

Source Map	Date	Original Scale	Digitized Scale	Map Type
ISGS mined-out area map, area 32	1950	1:62500	1:62500	Secondary source

Annotated Bibliography (data source, brief description of information)

Coal Reports - Production, ownership, years of operation.

Directory of Illinois Coal Mines (Gallatin County) - Mine names, mine index, ownership, years of operation.

Mine notes (Gallatin County) - Seam.

ISGS mined-out area map, area 32 - Mine location.



**Mine Index 2264**  
**Billy Baldwin, Lone Star Mine**

Type: Underground    Total mined-out acreage shown: None    Production indicates less than 1 acre was mined.

**SHAFT, SLOPE, DRIFT or TIPPLe LOCATIONS**

Type	County	Township-Range	Section	Quarters-Footage
Main drift	Gallatin	9S 8E	19	NE SW NW

**GEOLOGY**

Seam(s) Mined	Depth (ft)	Thickness (ft)			Mining Method
		Min	Max	Ave	
Springfield	60			4.5	

Geologic Problems Reported:

**PRODUCTION HISTORY**

Company	Mine Name	Years	Production (tons)
John O. Baldwin	Baldwin	1927-1928 *	616
Charles E. Baldwin	Baldwin	1929-1930 **	444
John O. Baldwin	Baldwin	1931-1936 ***	1,442
Billy Baldwin	Lone Star	1937-1939 †	117
			2,619

\* Idle 1928

\*\* Idle, or produced less than 1,000 tons, in 1930

\*\*\* Idle, or produced less than 1,000 tons per year, in 1932 & 1933

† Idle 1938

Last reported production: 1939

**SOURCES OF DATA**

Source Map	Date	Original Scale	Digitized Scale	Map Type
ISGS mined-out area map, area 32	1950	1:62500	1:62500	Secondary source

Annotated Bibliography (data source, brief description of information)

Coal Reports - Production, ownership, years of operation.

Directory of Illinois Coal Mines (Gallatin County) - Mine names, mine index, ownership, years of operation.

Mine notes (Gallatin County) - Mine type, drift location, seam, depth, thickness.

ISGS mined-out area map, area 32 - Drift location.

**Mine Index 2265**  
**Marshall Equipment Company, Mary Ann No. 2 Mine**

Type: Surface    Total mined-out acreage shown: 7

**SHAFT, SLOPE, DRIFT or TIPPLE LOCATIONS**

Type	County	Township-Range	Section	Quarters-Footage
Pit	Gallatin	9S 8E	20	NW

**GEOLOGY**

Seam(s) Mined	Depth (ft)	Thickness (ft)			Mining Method
		Min	Max	Ave	
Briar Hill *					Surface
Springfield	60			5.33	Surface

\* The Briar Hill Coal pits are shown on the accompanying Springfield Coal map.

Geologic Problems Reported:

**PRODUCTION HISTORY**

Company	Mine Name	Years	Production (tons)
Marshall Equipment Company	Mary Ann No. 2	1965-1966	<u>70,039</u> 70,039

Last reported production: 1966

**SOURCES OF DATA**

Source Map	Date	Original Scale	Digitized Scale	Map Type
ISGS map library, 4102 a-7, sheet 1	4-14-1983	1:24000	1:24000	Secondary source
USGS topographic map	PR 1990	1:24000	1:24000	Secondary source

Annotated Bibliography (data source, brief description of information)

Coal Reports - Production, ownership, years of operation, depth, thickness.  
 Directory of Illinois Coal Mines (Gallatin County) - Mine names, mine index, ownership, years of operation.  
 Mine notes (Gallatin County) - Mine type, mine location, seam, mining method.  
 ISGS map library, 4102 a-7, sheet 1, work map for Equality Quadrangle Geologic Map - Mine outline.  
 USGS topographic map, Equality Quadrangle, 1959, photorevised 1990 - Mine outline.



**Mine Index 2266**  
**Andrew Patton, Patton Mine**

Type: Underground    Total mined-out acreage shown: None    Production indicates less than 1 acre was mined. This mine is not shown on the accompanying map because of later surface mining by the I-1 Mine (mine index 1004).

**SHAFT, SLOPE, DRIFT or TIPPLE LOCATIONS**

Type	County	Township-Range	Section	Quarters-Footage
Main drift	Gallatin	10S 8E	17	SW SW NE

**GEOLOGY**

Seam(s) Mined	Depth (ft)	Thickness (ft)			Mining Method
		Min	Max	Ave	
Springfield	40			5.0	RP

Geologic Problems Reported:

**PRODUCTION HISTORY**

Company	Mine Name	Years	Production (tons)
Bratcher Patton	Patton	1928-1933 *	40
James A. Patton	Patton	1934-1934	450
Andrew Patton	Patton	1935-1938	<u>1,569</u>
			2,059

\* Idle 1929; produced less than 1,000 tons per year 1930-1933 and not reported

Last reported production: 1938

**SOURCES OF DATA**

Source Map	Date	Original Scale	Digitized Scale	Map Type
Mine notes	Undated	(text only)	1:24000 **	Secondary source

\*\* The mine location was plotted on a 1:24000 USGS topographic map from the mine location description and digitized.

Annotated Bibliography (data source, brief description of information)

Coal Reports - Production, ownership, years of operation, mining method.  
 Directory of Illinois Coal Mines (Gallatin County) - Mine names, mine index, ownership, years of operation.  
 Mine notes (Gallatin County) - Mine type, drift location, seam, depth, thickness.

**Mine Index 2268**  
**Burnett & Love, Eagle Valley Mine**

Type: Underground    Total mined-out acreage shown: Less than 1    This mine is not shown on the accompanying map because of later surface mining by the Eagle Surface Mine (mine index 883).

**SHAFT, SLOPE, DRIFT or TIPPLE LOCATIONS**

Type	County	Township-Range	Section	Quarters-Footage
Main slope	Gallatin	10S 8E	13	SW SE SW

**GEOLOGY**

Seam(s) Mined	Depth (ft)	Thickness (ft)			Mining Method
		Min	Max	Ave	
Springfield	35			5.0	RP

Geologic Problems Reported:

**PRODUCTION HISTORY**

Company	Mine Name	Years	Production (tons)
C. E. Burnett	Burnett No. 1	1937-1937	40
Brooks & Barnett	Brooks & Barnett	1937-1938 *	130
Eagle Valley Coal Company **	Eagle Valley	1939-1940	657
Burnett & Love	Eagle Valley	1941-1941	150
			<u>977</u>

\* Idle 1938

\*\* Owned by Brooks & Barnett

Last reported production: 1941

**SOURCES OF DATA**

Source Map	Date	Original Scale	Digitized Scale	Map Type
Microfilm, document 351550	8-9-1941	1:1200	1:1324	Final

Annotated Bibliography (data source, brief description of information)

Coal Reports - Production, ownership, years of operation, mining method.

Directory of Illinois Coal Mines (Gallatin County) - Mine names, mine index, ownership, years of operation.

Mine notes (Gallatin County) - Mine type, slope location, seam, depth, thickness.

Microfilm map, document 351550, reel 03136, frame 318 - Slope location, mine outline.



**Mine Index 2270****Hickory Hill Coal Company, Hickory Hill Mine**

Type: Underground Total mined-out acreage shown: 5 This mine was later partially surface mined by the Eagle Surface Mine (mine index 883) and the Richardson No. 5 Mine (mine index 2284).

**SHAFT, SLOPE, DRIFT or TIPPLE LOCATIONS**

Type	County	Township-Range	Section	Quarters-Footage
Main slope	Gallatin	10S 8E	24	SW NE NE
Air shaft	Gallatin	10S 8E	24	SE NE NE

**GEOLOGY**

Seam(s) Mined	Depth (ft)	Thickness (ft)			Mining Method
		Min	Max	Ave	
Springfield					MRP

Geologic Problems Reported:

**PRODUCTION HISTORY**

Company	Mine Name	Years	Production (tons)
Hickory Hill Coal Company	Hickory Hill *	1941-1942	14,902
Hickory Hill Coal Company	Hickory Hill	1942-1946 **	<u>19,012</u> ***
			33,914

\* Some ISGS maps have designated this mine "New Hickory Hill Mine" to distinguish this mine from Logan Highway Coal Company's Hickory Hill Mine (mine index 648), which closed in 1941.

\*\* The mine changed ownership in 1943 but continued to operate under the same name.

\*\*\* Production after map date

Last reported production: 1946

**SOURCES OF DATA**

Source Map	Date	Original Scale	Digitized Scale	Map Type
Microfilm, document 351533	9-19-1942	1:1200	1:2152	Not final
Coal Section files, 6-205	5-1-1977	1:1200	1:1200	Secondary source †

† The mined area shown on the accompanying map is the approximate size expected for the reported production. This suggests that the mine outline is complete.

**Annotated Bibliography (data source, brief description of information)**

Coal Reports - Production, ownership, years of operation.

Directory of Illinois Coal Mines (Gallatin County) - Mine names, mine index, ownership, years of operation.

Mine notes (Gallatin County) - Mine type, slope location, seam.

Microfilm map, document 351533, reel 03136, frame 298 - Slope & shaft locations, mine outline, mining method.

Coal Section files, 6-205, map of the Eagle Surface Mine (mine index 883) - Mine outline.

**Mine Index 2271****Leamington Coal Company, Leamington Mine**

Type: Surface Total mined-out acreage shown: 10 Production indicates approximately 1 acre was mined. This mine is included within the Eagle Surface Mine (mine index 883) outline and is not shown separately on the accompanying map.

**SHAFT, SLOPE, DRIFT or TIPPLE LOCATIONS**

Type	County	Township-Range	Section	Quarters-Footage
Tipple	Gallatin	10S 8E	14	NE NE SE

**GEOLOGY**

Seam(s) Mined	Depth (ft)	Thickness (ft)			Mining Method
		Min	Max	Ave	
Herrin					Surface

Geologic Problems Reported:

**PRODUCTION HISTORY**

Company	Mine Name	Years	Production (tons)
Leamington Coal Company	Leamington	1964-1964	<u>6,087</u> 6,087

Last reported production: 1964

**SOURCES OF DATA**

Source Map	Date	Original Scale	Digitized Scale	Map Type
Coal Section files, 6-205	5-1-1977	1:1200	1:1200	Secondary source
Coal Section files, strip mine updates	Undated	1:6600	1:6600	Secondary source

Annotated Bibliography (data source, brief description of information)

Coal Reports - Production, ownership, years of operation.

Directory of Illinois Coal Mines (Gallatin County) - Mine names, mine index, ownership, years of operation.

Mine notes (Gallatin County) - Mine location, mining method.

Coal Section files, 6-205, map of the Eagle Surface Mine (mine index 883) - Mine outline.

Coal Section files, strip mine updates - Mine location, mine identification.



**Mine Index 2273****Green Hill Coal Company, Green Hill Mine**

Type: Underground    Total mined-out acreage shown: 7    This mine is not shown on the accompanying map because of later surface mining by the I-1 Surface Mine (mine index 1004).

**SHAFT, SLOPE, DRIFT or TIPPLe LOCATIONS**

Type	County	Township-Range	Section	Quarters-Footage
Main slope	Gallatin	10S 8E	15	NW SE NW
Air shaft	Gallatin	10S 8E	15	NW SE NW

**GEOLOGY**

Seam(s) Mined	Depth (ft)	Thickness (ft)			Mining Method
		Min	Max	Ave	
Springfield	12			4.83	RPB

Geologic Problems Reported:

**PRODUCTION HISTORY**

Company	Mine Name	Years	Production (tons)
W. B. Dickson	Dickson	1920-1939	5,422 *
Roy Bybee & Son	Bybee	1940-1940	414
Arthur Bybee	Green	1941-1941	601
Frank Green	Green	1942-1942	1,208
Harrison-Allen Coal Company	Harrison-Allen	1943-1946 **	123
Green Hill Coal Company	Green Hill	1947-1952	<u>17,922</u>
			25,690

\* Idle 1921, idle or produced less than 10,000 tons in 1922, and production not reported 1930-1933 for mines producing less than 1,000 tons per year.

\*\* Idle 1944-1946

Last reported production: September 1952

**SOURCES OF DATA**

Source Map	Date	Original Scale	Digitized Scale	Map Type
Microfilm, document 351538	2-28-1953	1:1200	1:993	Final
Coal Section files	6-7-1986	1:4800	1:4800	Secondary source

Annotated Bibliography (data source, brief description of information)

Coal Reports - Production, ownership, years of operation.

Directory of Illinois Coal Mines (Gallatin County) - Mine names, mine index, ownership, years of operation.

Mine notes (Gallatin County) - Mine type, slope location, seam, depth, thickness.

Microfilm map, document 351538, reel 03136, frame 303 - Slope & shaft locations, mine outline, mining method.

Coal Section files, map of Lovilia Mine (mine index 999) - Georegistration aid.

**Mine Index 2274****Isaac Dillard, Dillard No. 1 Mine**

Type: Underground Total mined-out acreage shown: None Production indicates approximately 2 acres were mined. The mine's location as given in the mine notes is not specific, merely listing the quarter-section. Traditionally, such mines are plotted near the center of the smallest section segment known. This mine may have been later surface mined by the I-1 Surface Mine (mine index 1004).

**SHAFT, SLOPE, DRIFT or TIPPLE LOCATIONS**

Type	County	Township-Range	Section	Quarters-Footage
Main slope	Gallatin	10S 8E	16	SW

**GEOLOGY**

Seam(s) Mined	Depth (ft)	Thickness (ft)			Mining Method
		Min	Max	Ave	
Davis	40			4.5	RP

Geologic Problems Reported:

**PRODUCTION HISTORY**

Company	Mine Name	Years	Production (tons)
Isaac Dillert	Jennings	1941-1941	437
Harrison-Allen	Harrison-Allen	1942-1942	1,125
Isaac Dillard	Dillard No. 1	1943-1952 *	<u>5,078</u>
			6,640

\* Idle 1950

Last reported production: 1952

**SOURCES OF DATA**

Source Map	Date	Original Scale	Digitized Scale	Map Type
Mine notes	Undated	(text only)	1:24000 **	Secondary source

\*\* The mine location was plotted on a 1:24000 USGS topographic map from the mine location description and digitized.

Annotated Bibliography (data source, brief description of information)

Coal Reports - Production, ownership, years of operation, mining method.

Directory of Illinois Coal Mines (Gallatin County) - Mine names, mine index, ownership, years of operation.

Mine notes (Gallatin County) - Mine type, mine location, seam, depth, thickness.



**Mine Index 2275****Little Joe Coal Company, Little Joe Mine**

Type: Underground Total mined-out acreage shown: 6 This mine is not shown on the accompanying map because of later surface mining by the I-1 Surface Mine (mine index 1004).

**SHAFT, SLOPE, DRIFT or TIPPLE LOCATIONS**

Type	County	Township-Range	Section	Quarters-Footage
Main drift	Gallatin	10S 8E	16	NW SE NE
Air drift	Gallatin	10S 8E	16	NW SE NE

**GEOLOGY**

Seam(s) Mined	Depth (ft)	Thickness (ft)			Mining Method
		Min	Max	Ave	
Springfield				4.67	MRP

Geologic Problems Reported:

**PRODUCTION HISTORY**

Company	Mine Name	Years	Production (tons)
James Patton	Patton No. 2	1938-1938	32
James Potter	Potter No. 1	1939-1939	501
Joe Scarbrough & Company	Scarbrough	1940-1940	515
Hiram Elliott	Pather	1941-1941	514
James Potter	Potter	1942-1947	2,623
Pulliam & Certain	Pulliam & Certain	1948-1948	1,216
Berkel Brothers	Little Joe	1948-1948	1,180
Frank & W. E. Berkel Coal Company	Berkel	1949-1949	10,200
Little Joe Coal Company	Little Joe	1950-1950	1,181
			17,962

Last reported production: 1950

**SOURCES OF DATA**

Source Map	Date	Original Scale	Digitized Scale	Map Type
Microfilm, document 351540	4-2-1950	1:1200	1:1324	Final

Annotated Bibliography (data source, brief description of information)

Coal Reports - Production, ownership, years of operation.

Directory of Illinois Coal Mines (Gallatin County) - Mine names, mine index, ownership, years of operation.

Mine notes (Gallatin County) - Mine type, drift location, seam, thickness.

Microfilm map, document 351540, reel 03136, frame 305 - Drift locations, mine outline, mining method.

**Mine Index 2276****Dillard Coal Company, Dillard No. 2 Mine**

Type: Underground    Total mined-out acreage shown: Less than 1    Production indicates less than 1 acre was mined after the map date. This mine is not shown on the accompanying map because of later surface mining by the I-1 Surface Mine (mine index 1004).

**SHAFT, SLOPE, DRIFT or TIPPLE LOCATIONS**

Type	County	Township-Range	Section	Quarters-Footage
Main slope	Gallatin	10S 8E	16	NW SE NW

**GEOLOGY**

Seam(s) Mined	Depth (ft)	Thickness (ft)			Mining Method
		Min	Max	Ave	
Springfield	15			5.0	RPB

Geologic Problems Reported:

**PRODUCTION HISTORY**

Company	Mine Name	Years	Production (tons)
Horace Barnett	Barnett	1938-1938	197
Clyde McClusky	McClusky	1939-1940 *	83
Jamie Austin & W. B. Dixon	Austin	1941-1947 **	367
Sisk & Millspaugh	Austin	1948-1952 ***	500
Dillard Coal Company	Dillard No. 2	1953-1953	1,575
Dillard Coal Company	Dillard No. 2	1953-1954	825 †
			3,547

\* Idle 1940

\*\* Idle 1943-1947

\*\*\* Idle 1949-1952

† Production after map date

Last reported production: May 1954

**SOURCES OF DATA**

Source Map	Date	Original Scale	Digitized Scale	Map Type
Microfilm, document 351548	11-23-1953	1:1200	1:1200	Not final

Annotated Bibliography (data source, brief description of information)

Coal Reports - Production, ownership, years of operation.

Directory of Illinois Coal Mines (Gallatin County) - Mine names, mine index, ownership, years of operation.

Mine notes (Gallatin County) - Mine type, slope location, seam, depth, thickness.

Microfilm map, document 351548, reel 03136, frame 316 - Slope location, mine outline, mining method.



**Mine Index 2277**  
**Charles Wallace, Wallace Mine**

Type: Underground    Total mined-out acreage shown: None    Production indicates less than 1 acre was mined.

**SHAFT, SLOPE, DRIFT or TIPPLE LOCATIONS**

Type	County	Township-Range	Section	Quarters-Footage
Main drift	Gallatin	10S 8E	16	NW NW SE

**GEOLOGY**

Seam(s) Mined	Depth (ft)	Thickness (ft)			Mining Method
		Min	Max	Ave	
Davis				4.67	RP

Geologic Problems Reported:

**PRODUCTION HISTORY**

Company	Mine Name	Years	Production (tons)
Wallace-Jennings	Wallace-Jennings No. 1	1939-1939	40
Charles Wallace	Wallace	1940-1940	<u>42</u> 82

Last reported production: 1940

**SOURCES OF DATA**

Source Map	Date	Original Scale	Digitized Scale	Map Type
Mine notes	Undated	(text only)	1:24000 *	Secondary source

\* The mine location was plotted on a 1:24000 USGS topographic map from the mine location description and digitized.

Annotated Bibliography (data source, brief description of information)

Coal Reports - Production, ownership, years of operation, mining method.  
 Directory of Illinois Coal Mines (Gallatin County) - Mine names, mine index, ownership, years of operation.  
 Mine notes (Gallatin County) - Mine type, mine location, seam, thickness.

**Mine Index 2279****John T. Barnett, Barnett Mine**

Type: Underground    Total mined-out acreage shown: None    Production indicates less than 1 acre was mined. This mine not shown on the accompanying map because of later surface mining by the I-1 Surface Mine (mine index 1004).

**SHAFT, SLOPE, DRIFT or TIPPLE LOCATIONS**

Type	County	Township-Range	Section	Quarters-Footage
Main slope	Gallatin	10S 8E	17	SE SW SE

**GEOLOGY**

Seam(s) Mined	Depth (ft)	Thickness (ft)			Mining Method
		Min	Max	Ave	
Davis	10			4.0	RP

Geologic Problems Reported:

**PRODUCTION HISTORY**

Company	Mine Name	Years	Production (tons)
John T. Barnett	Barnett	1938-1938	<u>107</u> 107

Last reported production: 1938

**SOURCES OF DATA**

Source Map	Date	Original Scale	Digitized Scale	Map Type
ISGS mined-out area map, area 32	1950	1:62500	1:62500	Secondary source

Annotated Bibliography (data source, brief description of information)

Coal Reports - Production, ownership, years of operation.

Directory of Illinois Coal Mines (Gallatin County) - Mine names, mine index, ownership, years of operation.

Mine notes (Gallatin County) - Mine type, slope location, seam, depth, thickness.

ISGS mined-out area map, area 32 - Slope location.



**Mine Index 2280****Peck & Price, Peck & Price Mine**

Type: Underground Total mined-out acreage shown: None Production indicates less than 1 acre was mined. This mine is not shown on the accompanying map because of later surface mining by the I-1 Surface Mine (mine index 1004).

**SHAFT, SLOPE, DRIFT or TIPPLE LOCATIONS**

Type	County	Township-Range	Section	Quarters-Footage
Main slope	Gallatin	10S 8E	17	SW SW NE

**GEOLOGY**

Seam(s) Mined	Depth (ft)	Thickness (ft)			Mining Method
		Min	Max	Ave	
Springfield					RP

Geologic Problems Reported:

**PRODUCTION HISTORY**

Company	Mine Name	Years	Production (tons)
Frank Patton	Patton	1937-1937	112
Peck & Price	Peck & Price	1938-1938	<u>35</u>
			147

Last reported production: 1938

**SOURCES OF DATA**

Source Map	Date	Original Scale	Digitized Scale	Map Type
Mine notes	Undated	(text only)	1:24000 *	Secondary source

\* The mine location was plotted on a 1:24000 USGS topographic map from the mine location description and digitized.

Annotated Bibliography (data source, brief description of information)

Coal Reports - Production, ownership, years of operation.

Directory of Illinois Coal Mines (Gallatin County) - Mine names, mine index, ownership, years of operation.

Mine notes (Gallatin County) - Mine type, slope location, seam.

**Mine Index 2281**  
**Milo Scarbrough, Scarbrough Mine**

Type: Underground    Total mined-out acreage shown: None    Production indicates less than 1 acre was mined.

**SHAFT, SLOPE, DRIFT or TIPPLE LOCATIONS**

Type	County	Township-Range	Section	Quarters-Footage
Main slope	Gallatin	10S 8E	17	SW SE NW

**GEOLOGY**

Seam(s) Mined	Depth (ft)	Thickness (ft)			Mining Method
		Min	Max	Ave	
Springfield					RP

Geologic Problems Reported:

**PRODUCTION HISTORY**

Company	Mine Name	Years	Production (tons)
Cox & Scarbrough	Cox & Scarbrough	1926-1926	260
Scarbrough & Monroe	Scarbrough & Monroe	1927-1928	835
Joe Scarbrough	Scarbrough	1929-1933 *	208
William Monroe	Monroe	1934-1935	201
Harry Yates	Yates	1936-1938	614
T. B. Hambrice	Hambrice	1939-1939	65
Milo Scarbrough	Scarbrough	1939-1939	40
			<u>2,223</u>

\* Production was not reported 1930-1933 for mines producing less than 1,000 tons per year.

Last reported production: 1939

**SOURCES OF DATA**

Source Map	Date	Original Scale	Digitized Scale	Map Type
ISGS mined-out area map, area 32	1950	1:62500	1:62500	Secondary source

Annotated Bibliography (data source, brief description of information)

Coal Reports - Production, ownership, years of operation, mining method.  
 Directory of Illinois Coal Mines (Gallatin County) - Mine names, mine index, ownership, years of operation.  
 Mine notes (Gallatin County) - Mine type, slope location, seam.  
 ISGS mined-out area map, area 32 - Slope location.



**Mine Index 2282**  
**Gilbert Milligan, Milligan Mine**

Type: Underground Total mined-out acreage shown: 1 Production indicates less than 1 acre was mined after the map date. Most of this mine was later surface mined by the I-1 Surface Mine (mine index 1004).

**SHAFT, SLOPE, DRIFT or TIPPLE LOCATIONS**

Type	County	Township-Range	Section	Quarters-Footage
Main slope	Gallatin	10S 8E	17	SE SW NE

**GEOLOGY**

Seam(s) Mined	Depth (ft)	Thickness (ft)			Mining Method
		Min	Max	Ave	
Springfield	30			4.67	

Geologic Problems Reported: The source map indicates that the northern part of the mine and some rooms on the eastern side are old works and they had caved.

**PRODUCTION HISTORY**

Company	Mine Name	Years	Production (tons)
Frank McDonald	McDonald	1938-1939 *	478
W. H. McDonald	McDonald No. 2	1940-1945 **	833
Gilbert Millikin	Millikin	1945-1945	32
W. H. McDonald	McDonald	1946-1947	1,300
Gilbert Milligan	Milligan	1948-1948	794
Gilbert Miligan	Miligan	1948-1950	<u>1,944</u> ***
			5,381

\* Idle 1939

\*\* Idle 1941 & 1943

\*\*\* Production after map date

Last reported production: 1950

**SOURCES OF DATA**

Source Map	Date	Original Scale	Digitized Scale	Map Type
Microfilm, document 351551	10-8-1948	1:1200	1:1200	Not final

Annotated Bibliography (data source, brief description of information)

Coal Reports - Production, ownership, years of operation.

Directory of Illinois Coal Mines (Gallatin County) - Mine names, mine index, ownership, years of operation.

Mine notes (Gallatin County) - Mine type, seam, depth, thickness.

Microfilm map, document 351551, reel 03136, frame 319 - Slope location, mine outline, mining method, geologic problems.

**Mine Index 2283****P. & C. Coal Company, P. & C. Mine**

Type: Underground    Total mined-out acreage shown: None    Production indicates less than 1 acre was mined. This mine is not shown on the accompanying map because of later surface mining by the I-1 Surface Mine (mine index 1004).

**SHAFT, SLOPE, DRIFT or TIPPLE LOCATIONS**

Type	County	Township-Range	Section	Quarters-Footage
Main slope	Gallatin	10S 8E	17	NW SE NE

**GEOLOGY**

Seam(s) Mined	Depth (ft)	Thickness (ft)			Mining Method
		Min	Max	Ave	
Springfield					

Geologic Problems Reported:

**PRODUCTION HISTORY**

Company	Mine Name	Years	Production (tons)
P. & C. Coal Company *	P. & C.	1950-1953	<u>2,617</u> 2,617

\* A note in the Coal Report indicates this is Pulliam & Certain.

Last reported production: June 1953

**SOURCES OF DATA**

Source Map	Date	Original Scale	Digitized Scale	Map Type
ISGS mined-out area map, area 32	1950	1:62500	1:62500	Secondary source

Annotated Bibliography (data source, brief description of information)

Coal Reports - Production, ownership, years of operation.

Directory of Illinois Coal Mines (Gallatin County) - Mine names, mine index, ownership, years of operation.

Mine notes (Gallatin County) - Mine type, slope location.

ISGS mined-out area map, area 32 - Slope location.



**Mine Index 2284****Richardson Coal Corporation, Richardson No. 5 Mine**

Type: Surface Total mined-out acreage shown: 3 All of the production reported is after the map date. Richardson may have augered along the highwall of an existing mine, or Richardson may have enlarged an existing surface mine.

**SHAFT, SLOPE, DRIFT or TIPPLE LOCATIONS**

Type	County	Township-Range	Section	Quarters-Footage
Pit	Gallatin	10S 8E	24	NE

**GEOLOGY**

Seam(s) Mined	Depth (ft)	Thickness (ft)			Mining Method
		Min	Max	Ave	
Springfield					Surface

Geologic Problems Reported:

**PRODUCTION HISTORY**

Company	Mine Name	Years	Production (tons)
Richardson Coal Corporation	Richardson No. 5	1957-1959 *	16,150 **
			16,150

\* The mine opened November 1957, but no production was reported for that year.

\*\* Production after map date

Last reported production: October 1959

**SOURCES OF DATA**

Source Map	Date	Original Scale	Digitized Scale	Map Type
Microfilm, document 351529	2-25-1956	1:2400	1:2648	Not final

Annotated Bibliography (data source, brief description of information)

Coal Reports - Production, ownership, years of operation.

Directory of Illinois Coal Mines (Gallatin County) - Mine names, mine index, ownership, years of operation.

Mine notes (Gallatin County) - Mine location, mining method.

Microfilm map, document 351529, reel 03136, frame 289 - Mine outline, mining method.

**Mine Index 2285****Bennett Coal Company, Bennett No. 1 Mine**

Type: Surface Total mined-out acreage shown: 22 Production indicates approximately 5 acres were mined. This field notes indicate older surface mining was present in this area, and that a drift mine predated the surface mining. The area shown includes mining done by other operators.

**SHAFT, SLOPE, DRIFT or TIPPLE LOCATIONS**

Type	County	Township-Range	Section	Quarters-Footage
Tipple	Gallatin	10S 8E	18	NE SE

**GEOLOGY**

Seam(s) Mined	Depth (ft)	Thickness (ft)			Mining Method
		Min	Max	Ave	
Springfield	2			5.0	Surface

Geologic Problems Reported:

**PRODUCTION HISTORY**

Company	Mine Name	Years	Production (tons)
Eagle Valley Coal Corporation	Eagle Valley	1956-1956	4,000
Beecher-Williams Coal Company	Beecher-Williams No. 5	1957-1957	20,642
Barbie Dee Mines, Inc.	Barbie Dee No. 2	1958-1958	10,477
Bennett Coal Company	Bennett No. 1	1959-1959	8,713
			43,832

Last reported production: December 1959

**SOURCES OF DATA**

Source Map	Date	Original Scale	Digitized Scale	Map Type
ISGS map library, 4102 a-7, sheet 1	1981-1983	1:24000	1:24000	Secondary source
Microfilm, document 351554	9-7-1956	1:1200	1:1656	Secondary source

Annotated Bibliography (data source, brief description of information)

Coal Reports - Production, ownership, years of operation.

Directory of Illinois Coal Mines (Gallatin County) - Mine names, mine index, ownership, years of operation.

Mine notes (Gallatin County) - Mine type, mine location, seam, depth, thickness, mining method.

ISGS map library, 4102 a-7, sheet 1, work map for Equality Quadrangle Geologic Map - Mine outline.

Microfilm map, document 351554, reel 03136, frame 322, map of Colbert Mine (mine index 659) - Mine outline.



**Mine Index 2287**  
**Richardson Coal Corporation, Richardson No. 1 Mine**

Type: Surface    Total mined-out acreage shown: 7

**SHAFT, SLOPE, DRIFT or TIPPLE LOCATIONS**

Type	County	Township-Range	Section	Quarters-Footage
Tipple	Gallatin	10S 8E	24	SE NW NE
Pit	Gallatin	10S 8E	24	NW NW NE

**GEOLOGY**

Seam(s) Mined	Depth (ft)	Thickness (ft)			Mining Method
		Min	Max	Ave	
Herrin	17			3.83	Surface

Geologic Problems Reported:

**PRODUCTION HISTORY**

Company	Mine Name	Years	Production (tons)
Richardson Coal Corporation	Richardson No. 1	1955-1959 *	112,036 112,036

\* Idle 1957 & 1958

Last reported production: November 1959

**SOURCES OF DATA**

Source Map	Date	Original Scale	Digitized Scale	Map Type
USGS topographic map	1959 **	1:24000	1:24000	Secondary source
Mine notes	8-7-1956	(text only)	1:24000 **	Secondary source

\*\* This surface-mined area was later expanded by the Eagle Surface Mine (mine index 883) and the area mined by Richardson No. 1 is better shown on the 1959 version of the Equality Quadrangle. The mine location was taken from the mine notes to identify the surface-mined area of the Richardson No. 1 Mine shown on the topographic map.

Annotated Bibliography (data source, brief description of information)

Coal Reports - Production, ownership, years of operation.  
 Directory of Illinois Coal Mines (Gallatin County) - Mine names, mine index, ownership, years of operation.  
 Mine notes (Gallatin County) - Mine type, mine location, seam, depth, thickness, mining method.  
 USGS topographic map, Equality Quadrangle, 1959 - Mine outline.

**Mine Index 2288**  
**Sam Black, Black Mine**

Type: Underground    Total mined-out acreage shown: Less than 1    Production indicates less than 1 acre was mined after the map date.

**SHAFT, SLOPE, DRIFT or TIPPLE LOCATIONS**

Type	County	Township-Range	Section	Quarters-Footage
Main slope	Gallatin	10S 8E	24	NE SE NW
Air slope	Gallatin	10S 8E	24	NE SE NW

**GEOLOGY**

Seam(s) Mined	Depth (ft)	Thickness (ft)			Mining Method
		Min	Max	Ave	
Springfield					RPB

Geologic Problems Reported:

**PRODUCTION HISTORY**

Company	Mine Name	Years	Production (tons)
Sam Black	Black	1919-1929	11,955 *
Sam Black	Black	1929-1940 **	330 **
			12,285

\* Production not reported in 1922 for mines producing less than 10,000 tons, and idle 1926

\*\* Production after map date; production not reported 1930-1933 for mines producing less than 1,000 tons per year.

Last reported production: 1940

**SOURCES OF DATA**

Source Map	Date	Original Scale	Digitized Scale	Map Type
Microfilm, document 351552	4-30-1929	1:1200	1:1324	Not final

Annotated Bibliography (data source, brief description of information)

Coal Reports - Production, ownership, years of operation.

Directory of Illinois Coal Mines (Gallatin County) - Mine names, mine index, ownership, years of operation.

Mine notes (Gallatin County) - Mine type, seam.

Microfilm map, document 351552, reel 03136, frame 320 - Slope locations, mine outline, mining method.



**Mine Index 2295****Walter Finnie, Finnie Mine**

Type: Underground    Total mined-out acreage shown: None    Production indicates less than 1 acre was mined. This mine is not shown on the accompanying maps. The location as shown is south of the coal outcrops. The Finnie Mine is probably further north than stated in the mine notes and later surface mined by the Eagle Surface Mine (mine index 883).

**SHAFT, SLOPE, DRIFT or TIPPLE LOCATIONS**

Type	County	Township-Range	Section	Quarters-Footage
Main slope	Gallatin	10S 9E	19	NW SE NW

**GEOLOGY**

Seam(s) Mined	Depth (ft)	Thickness (ft)			Mining Method
		Min	Max	Ave	
Springfield					RP

Geologic Problems Reported:

**PRODUCTION HISTORY**

Company	Mine Name	Years	Production (tons)
Walter Finnie	Finnie	1938-1938	87 87

Last reported production: 1938

**SOURCES OF DATA**

Source Map	Date	Original Scale	Digitized Scale	Map Type
Mine notes	Undated	(text only)	1:24000 *	Secondary source

\* The mine location was plotted on a 1:24000 USGS topographic map from the mine location description and digitized.

Annotated Bibliography (data source, brief description of information)

Coal Reports - Production, ownership, years of operation, mining method.  
 Directory of Illinois Coal Mines (Gallatin County) - Mine names, mine index, ownership, years of operation.  
 Mine notes (Gallatin County) - Mine type, slope location, seam.

**Mine Index 3335****Herod Mining Corporation, Herod No. 1 Mine**

Type: Surface    Total mined-out acreage shown: 13    Production indicates between 30 and 50 acres were mined.

**SHAFT, SLOPE, DRIFT or TIPPLE LOCATIONS**

Type	County	Township-Range	Section	Quarters-Footage
Tipple / pit	Saline	10S 7E	24	NE SE NE

**GEOLOGY**

Seam(s) Mined	Depth (ft)	Thickness (ft)			Mining Method
		Min	Max	Ave	
Dekoven					Surface
Davis				3.29	Surface

Geologic Problems Reported:

**PRODUCTION HISTORY**

Company	Mine Name	Years	Production (tons)
Herod Mining Corporation	Herod No. 1	1961-1964	336,949
			336,949

Last reported production: September 1964

**SOURCES OF DATA**

Source Map	Date	Original Scale	Digitized Scale	Map Type
ISGS map library, 4102 a-7, sheet 2	1981-1983	1:24000	1:24000	Secondary source

Annotated Bibliography (data source, brief description of information)

Coal Reports - Production, ownership, years of operation.

Directory of Illinois Coal Mines (Saline County) - Mine names, mine index, ownership, years of operation.

Mine notes (Saline County) - Tipple / pit location, seam.

ISGS field notes (Saline County) - Mining method, tipple / pit location, seam, thickness.

ISGS map library, 4102 a-7, sheet 2, work map for Rudement Quadrangle Geologic Map - Mine outline.



**Mine Index 4174**  
**Robert Pierson, Pierson Mine**

Type: Underground    Total mined-out acreage shown: None    Production indicates less than 1 acre was mined.

**SHAFT, SLOPE, DRIFT or TIPPLE LOCATIONS**

Type	County	Township-Range	Section	Quarters-Footage
Main shaft	Gallatin	9S 8E	16	SW NW NW

**GEOLOGY**

Seam(s) Mined	Depth (ft)	Thickness (ft)			Mining Method
		Min	Max	Ave	
Herrin	50			4.0	RP

Geologic Problems Reported:

**PRODUCTION HISTORY**

Company	Mine Name	Years	Production (tons)
Robert Pierson	Pierson	1899-1900	<u>200</u> 200

Last reported production: 1900

**SOURCES OF DATA**

Source Map	Date	Original Scale	Digitized Scale	Map Type
Mine notes	Undated	(text only)	1:24000 *	Secondary source

\* The mine location was plotted on a 1:24000 USGS topographic map from the mine location description and digitized.

Annotated Bibliography (data source, brief description of information)

Coal Reports - Production, ownership, years of operation, depth, thickness, mining method.

Directory of Illinois Coal Mines (Gallatin County) - Mine names, mine index, ownership, years of operation, mine type, shaft location, seam.

Mine notes (Gallatin County) - Mine location.

**Mine Index 4175**  
**Jo Lor Mining Company, Jo Lor Mine**

Type: Surface    Total mined-out acreage shown: 20

**SHAFT, SLOPE, DRIFT or TIPPLE LOCATIONS**

Type	County	Township-Range	Section	Quarters-Footage
Tipple	Gallatin	10S 8E	19	NE NW NW

**GEOLOGY**

Seam(s) Mined	Depth (ft)	Thickness (ft)			Mining Method
		Min	Max	Ave	
Dekoven					Surface

Geologic Problems Reported:

**PRODUCTION HISTORY**

Company	Mine Name	Years	Production (tons)
Jo Lor Mining Company	Jo Lor	1966-1967	<u>128,299</u> 128,299

Last reported production: September 1967

**SOURCES OF DATA**

Source Map	Date	Original Scale	Digitized Scale	Map Type
ISGS map library, 4102 a-7, sheet 1	1981-1983	1:24000	1:24000	Secondary source

Annotated Bibliography (data source, brief description of information)

Coal Reports - Production, ownership, years of operation.  
 Directory of Illinois Coal Mines (Gallatin County) - Mine names, mine index, ownership, years of operation.  
 Mine notes (Gallatin County) - Mine type, mine location, seam, mining method.  
 ISGS map library, 4102 a-7, sheet 1, work map for Equality Quadrangle Geologic Map - Mine outline.

**Mine Index 4177****K. & W. Coal Company, K. & W. No. 2 Mine**

Type: Surface    Total mined-out acreage shown: 17    Production indicates approximately 5 acres were mined.

**SHAFT, SLOPE, DRIFT or TIPPLE LOCATIONS**

Type	County	Township-Range	Section	Quarters-Footage
Pit	Gallatin	10S 8E	14	SE

**GEOLOGY**

Seam(s) Mined	Depth (ft)	Thickness (ft)			Mining Method
		Min	Max	Ave	
Herrin					Surface

Geologic Problems Reported:

**PRODUCTION HISTORY**

Company	Mine Name	Years	Production (tons)
K. & W. Coal Company	K. & W. No. 2	1958-1959	<u>37,328</u> 37,328

Last reported production: May 1959

**SOURCES OF DATA**

Source Map	Date	Original Scale	Digitized Scale	Map Type
Coal Section files, 6-205	5-1-1977	1:1200	1:1200	Secondary source

Annotated Bibliography (data source, brief description of information)

Coal Reports - Production, ownership, years of operation.

Directory of Illinois Coal Mines (Gallatin County) - Mine names, mine index, ownership, years of operation.

Mine notes (Gallatin County) - Mine type, mine location, seam, mining method.

Coal Section files, 6-205, map of Eagle Surface Mine (mine index 883) - Mine outline.



**Mine Index 4574****Hines Brothers Mining Company, Hines Brothers Mine**

Type: Underground    Total mined-out acreage shown: 1

**SHAFT, SLOPE, DRIFT or TIPPLE LOCATIONS**

Type	County	Township-Range	Section	Quarters-Footage
Main drift	Gallatin	10S 8E	5	NE SW NW
Air shaft	Gallatin	10S 8E	5	NE SW NW

**GEOLOGY**

Seam(s) Mined	Depth (ft)	Thickness (ft)			Mining Method
		Min	Max	Ave	
Springfield					RPB

Geologic Problems Reported:

**PRODUCTION HISTORY**

Company	Mine Name	Years	Production (tons)
William Johnson	Johnson	1938-1938	50
Hines Brothers Mining Company	Hines Brothers	1951-1951	<u>4,518</u>
			4,568

Last reported production: 1951

**SOURCES OF DATA**

Source Map	Date	Original Scale	Digitized Scale	Map Type
Microfilm, document 351537	12-1-1951	1:600	1:910	Final

Annotated Bibliography (data source, brief description of information)

Directory of Illinois Coal Mines (Gallatin County) - Mine names, mine index, ownership, years of operation, mine location, seam, mining method.

Microfilm map, document 351537, reel 03136, frame 302 - Mine outline, mine location, mining method.

**Mine Index 4576**  
**Charles O. Purcell, Purcell Mine**

Type: Underground    Total mined-out acreage shown: None    Production indicates less than 1 acre was mined.

**SHAFT, SLOPE, DRIFT or TIPPLE LOCATIONS**

Type	County	Township-Range	Section	Quarters-Footage
Mine	Gallatin	10S 8E	10	SW SW SW

**GEOLOGY**

Seam(s) Mined	Depth (ft)	Thickness (ft)			Mining Method
		Min	Max	Ave	
Herrin				3.5-6.42	

Geologic Problems Reported: The coal had 3 or more clay lenses and bands. The upper 2 feet of coal was left to support the roof, and the lower 4 feet was mined.

**PRODUCTION HISTORY**

Company	Mine Name	Years	Production (tons)
Charles O. Purcell	Purcell	1917-1920	<u>700</u> 700

Last reported production: 1920

**SOURCES OF DATA**

Source Map	Date	Original Scale	Digitized Scale	Map Type
ISGS mined-out area map, area 32	1950	1:62500	1:62500	Secondary source

Annotated Bibliography (data source, brief description of information)

Coal Reports - Production, ownership, years of operation.  
 Directory of Illinois Coal Mines (Gallatin County) - Mine names, mine index, ownership, years of operation.  
 ISGS field notes (Gallatin County) - Mine location, seam, thickness, geologic problems.  
 ISGS mined-out area map, area 32 - Mine location.

**Mine Index 4580****Beecher-Williams Coal Company, Beecher-Williams No. 4 Mine**

Type: Surface    Total mined-out acreage shown: Less than 1    Production indicates approximately 2 acres were mined.

**SHAFT, SLOPE, DRIFT or TIPPLE LOCATIONS**

Type	County	Township-Range	Section	Quarters-Footage
Pit	Gallatin	10S 8E	17	SW NE

**GEOLOGY**

Seam(s) Mined	Depth (ft)	Thickness (ft)			Mining Method
		Min	Max	Ave	
Springfield	25			4.5	Surface

Geologic Problems Reported:

**PRODUCTION HISTORY**

Company	Mine Name	Years	Production (tons)
Beecher-Williams Coal Company	Beecher-Williams No. 4	1956-1957	<u>17,766</u> 17,766

Last reported production: June 1957

**SOURCES OF DATA**

Source Map	Date	Original Scale	Digitized Scale	Map Type
USGS topographic map	PR 1990	1:24000	1:24000	Secondary source

Annotated Bibliography (data source, brief description of information)

Coal Reports - Production, ownership, years of operation.

Directory of Illinois Coal Mines (Gallatin County) - Mine names, mine index, ownership, years of operation.

Mine notes (Gallatin County) - Mine type, mine location, seam, depth, thickness.

USGS topographic map, Equality Quadrangle, 1959, photorevised 1990 - Mine outline.



**Mine Index 4594****Andy Boster, Boster Mine**

Type: Underground    Total mined-out acreage shown: None    Production indicates less than 1 acre was mined.

**SHAFT, SLOPE, DRIFT or TIPPLE LOCATIONS**

Type	County	Township-Range	Section	Quarters-Footage
Mine	Gallatin	10S 8E	24	SE SW SW

**GEOLOGY**

Seam(s) Mined	Depth (ft)	Thickness (ft)			Mining Method
		Min	Max	Ave	
Willis					

Geologic Problems Reported:

**PRODUCTION HISTORY**

Company	Mine Name	Years	Production (tons)
Andy Boster	Boster	1934-1936	126
			126

Last reported production:

**SOURCES OF DATA**

Source Map	Date	Original Scale	Digitized Scale	Map Type
ISGS mined-out area map, area 32	1950	1:62500	1:62500	Secondary source

Annotated Bibliography (data source, brief description of information)

Directory of Illinois Coal Mines (Gallatin County) - Mine names, mine index, ownership.

Mine notes (Gallatin County) - Mine location.

ISGS mined-out area map, area 32 - Mine location.

**Mine Index 4690****Saline Gas Coal Company, Saline Gas Mine**

Type: Underground    Total mined-out acreage shown: None

**SHAFT, SLOPE, DRIFT or TIPPLE LOCATIONS**

Type	County	Township-Range	Section	Quarters-Footage
Mine	Gallatin	9S 8E	19	SW NW NW

**GEOLOGY**

Seam(s) Mined	Depth (ft)	Thickness (ft)			Mining Method
		Min	Max	Ave	
Springfield					

Geologic Problems Reported:

**PRODUCTION HISTORY**

Company	Mine Name	Years	Production (tons)
Saline Gas Coal Company	Saline Gas	before 1950 *	

\* This company was not listed in the Coal Reports for Gallatin County. The production may have been reported in Saline County. Saline Gas Company mined near Harrisburg, with their No. 1 Mine operating 1917-1924 (mine index 3292) and the No. 3 Mine remaining unlocated near Harrisburg, and operating in 1927.

Last reported production:

**SOURCES OF DATA**

Source Map	Date	Original Scale	Digitized Scale	Map Type
ISGS mined-out area map, area 32	1950	1:62500	1:62500	Secondary source

Annotated Bibliography (data source, brief description of information)

Directory of Illinois Coal Mines (Gallatin County) - Mine names, mine index, ownership.  
ISGS mined-out area map, area 32 - Mine location.

**Mine Index 4765****Black, Clifton & Moore, Black, Clifton & Moore Mine**

Type: Underground    Total mined-out acreage shown: Less than 1    This mine was later partially surface mined by the Eagle Surface Mine (mine index 883).

**SHAFT, SLOPE, DRIFT or TIPPLE LOCATIONS**

Type	County	Township-Range	Section	Quarters-Footage
Main slope	Gallatin	10S 8E	23	NW NE NE

**GEOLOGY**

Seam(s) Mined	Depth (ft)	Thickness (ft)			Mining Method
		Min	Max	Ave	
Springfield	28			5.0	RP

Geologic Problems Reported:

**PRODUCTION HISTORY**

Company	Mine Name	Years	Production (tons)
John E. Vaught	Vaught	1936-1937	336
Clifford Moore	Moore	1937-1938	342
Moore & Miles Coal Company	Moore & Miles	1939-1939	266
C. Moore & R. A. Black	Moore & Black	1940-1940	429
R. Black, Clifton & Moore	Black, Clifton & Moore	1941-1941	239
			1,612

Last reported production: 1941

**SOURCES OF DATA**

Source Map	Date	Original Scale	Digitized Scale	Map Type
Microfilm, document 351549	11-7-1954	1:1200	1:2148	Secondary source

Annotated Bibliography (data source, brief description of information)

Coal Reports - Production, ownership, years of operation.

Directory of Illinois Coal Mines (Gallatin County) - Mine names, mine index, ownership, years of operation.

Mine notes (Gallatin County) - Mine type, slope location, seam, depth, thickness, geologic problems.

Microfilm map, document 351549, reel 03136, frame 317, map of Sun Valley Mine (mine index 712) - Slope location, mine outline, mining method.



**Mine Index 4955**  
**Jesse Purcell, Purcell Mine**

Type: Underground    Total mined-out acreage shown: None    Production indicates less than 1 acre was mined.

**SHAFT, SLOPE, DRIFT or TIPPLe LOCATIONS**

Type	County	Township-Range	Section	Quarters-Footage
Main drift	Gallatin	9S 8E	16	SW NW NW

**GEOLOGY**

Seam(s) Mined	Depth (ft)	Thickness (ft)			Mining Method
		Min	Max	Ave	
Herrin				4.17	

Geologic Problems Reported:

**PRODUCTION HISTORY**

Company	Mine Name	Years	Production (tons)
Jesse Purcell	Purcell	1889-1890	<u>320</u> 320

Last reported production: 1890

**SOURCES OF DATA**

Source Map	Date	Original Scale	Digitized Scale	Map Type
ISGS map library, 4107 d5.1-209	1927	1:62500	1:62500	Secondary source

Annotated Bibliography (data source, brief description of information)

Coal Reports - Production, ownership, years of operation.  
 Directory of Illinois Coal Mines (Gallatin County) - Mine names, mine index, ownership, years of operation.  
 ISGS field notes (Gallatin County) - Mine type, drift location, seam.  
 ISGS map library, 4107 d5.1-209, map of G. H. Cady field notes - Mine type, drift location, seam.  
 ISGS Bulletin 8, Plate 9 - Thickness.

**Mine Index 6846**  
**Ginniville Mining Company, Ginniville Mine**

Type: Underground    Total mined-out acreage shown: None    Production for this mine is unknown.

**SHAFT, SLOPE, DRIFT or TIPPLE LOCATIONS**

Type	County	Township-Range	Section	Quarters-Footage
Slope	Gallatin	9S 8E	23	NE SW NE *

\* This location is very uncertain. The location is based on a written description which says that this mine is located near the intersection of the L & N Railroad and Route 13.

**GEOLOGY**

Seam(s) Mined	Depth (ft)	Thickness (ft)			Mining Method
		Min	Max	Ave	
Springfield					

Geologic Problems Reported:

**PRODUCTION HISTORY**

Company	Mine Name	Years	Production (tons)
Ginniville Mining Company **	Ginniville	-1929	unknown ***

\*\* No other information is known about this mine. This mine may have reported under another name. The mine was said to be owned by Samuel Hall Sisk.

\*\*\* No production was listed in the Coal Reports under this name.

Last reported production: 1920

**SOURCES OF DATA**

Source Map	Date	Original Scale	Digitized Scale	Map Type
History & Families of Gallatin Co.	1988	(text only)	1:24000 *	Secondary source

\* The mine location was plotted on a 1:24000 USGS topographic map from the mine location description and digitized.

Annotated Bibliography (data source, brief description of information)

Directory of Illinois Coal Mines (Gallatin County) - Mine name, mine index, ownership, years of operation.  
 History & Families of Gallatin County, Illinois, Volume I, 1988, page 16 - Ownership, mine type, slope location.

**Mine Index 7041**  
**Frank Green, Green Mine**

Type: Underground    Total mined-out acreage shown: None    Production indicates less than 1 acre was mined.

**SHAFT, SLOPE, DRIFT or TIPPLE LOCATIONS**

Type	County	Township-Range	Section	Quarters-Footage
Mine	Gallatin	9S 8E	15	NW NE

**GEOLOGY**

Seam(s) Mined	Depth (ft)	Thickness (ft)			Mining Method
		Min	Max	Ave	
Herrin				3.5	

Geologic Problems Reported:

**PRODUCTION HISTORY**

Company	Mine Name	Years	Production (tons)
Frank Green	Green	1919-1920	<u>20</u> 20

Last reported production: 1920

**SOURCES OF DATA**

Source Map	Date	Original Scale	Digitized Scale	Map Type
ISGS Bulletin 47, Plate 3	1925	(text only)	1:24000 *	Secondary source

\* The mine location was plotted on a 1:24000 USGS topographic map from the mine location description and digitized.

Annotated Bibliography (data source, brief description of information)

Coal Reports - Production, ownership, years of operation.  
 Directory of Illinois Coal Mines (Gallatin County) - Mine name, mine index, ownership, years of operation.  
 ISGS Bulletin 47, Plate 3 - Mine location, seam, thickness.



**Mine Index 7042****W. L. Wright, Wright Mine**

Type: Underground    Total mined-out acreage shown: None    Production indicates less than 1 acre was mined.

**SHAFT, SLOPE, DRIFT or TIPPLE LOCATIONS**

Type	County	Township-Range	Section	Quarters-Footage
Main drift	Gallatin	9S 8E	23	SE NW NW

**GEOLOGY**

Seam(s) Mined	Depth (ft)	Thickness (ft)			Mining Method
		Min	Max	Ave	
Springfield				4.25-4.5	RP

Geologic Problems Reported:

**PRODUCTION HISTORY**

Company	Mine Name	Years	Production (tons)
William Hargraves	Hargraves	1890-1891	368
W. L. Wright	Wright	1891-1892	600 968

Last reported production: 1892

**SOURCES OF DATA**

Source Map	Date	Original Scale	Digitized Scale	Map Type
ISGS Bulletin 8, Plate 9	1908	1:84480	1:84480	Secondary source

Annotated Bibliography (data source, brief description of information)

Coal Reports - Production, ownership, years of operation, seam, thickness, mining method.

Directory of Illinois Coal Mines (Gallatin County) - Mine names, mine index, ownership, years of operation.

ISGS Bulletin 8, Plate 9 - Drift location.

## OTHER MINES SHOWN ON EQUALITY QUADRANGLE

Mine Index 2048 NW NE NW 18-T10S-R8E, Springfield Coal, drift source: ISGS map library, 4102 a-7, sheet 1

Mine Index 2880, Wenzel Coal Company 33-T9S-R8E, Herrin Coal, surface surface: ISGS map library, 4102 a-7, sheet 1, Coal Section strip mine updates (1971-1973); partially included within the outline of the larger, more recent Wildcat Hills Eagle Valley Mine (mine index 1022).

Mine Index 2902 SW NW NE 6-T10S-R8E, Herrin Coal, surface source: Mine notes, ISGS field notes (H. B. Stonehouse, 1954)

Mine Index 4508, Old Holly Mine NW SE SE 33-T9S-R8E, Springfield Coal source: ISGS mined-out area map, area 32

Mine Index 4510 NW SE NW 24-T10S-R8E, Springfield Coal source: ISGS 1950 mined-out area map, area 32

Mine Index 4525 SE SE NW 24-T10S-R8E, Willis Coal source: ISGS 1950 mined-out area map, area 32

Mine Index 4530 \* SE NW SE 18-T10S-R8E, Briar Hill Coal, underground source: ISGS 1950 mined-out area map, area 32 This mine is shown on the accompanying Springfield Coal map.

Mine Index 4534 NE SE NW 5-T10S-R8E, Springfield Coal, surface source: USGS topographic map

Mine Index 4571 NW SW SW 18-T10S-R9E, Herrin Coal source: USGS topographic map, Equality Quadrangle, 1959, PR 1990

Mine Index 4573 NW NE SW 5-T10S-R8E, Herrin Coal, surface source: ISGS mine notes, ISGS field notes (H. B. Stonehouse, 1954) Not shown on accompanying map; included within outline of the larger, more recent Wildcat Hills Eagle Valley Mine (mine index 1022).

Mine Index 4579 \* NW NW NE 15-T10S-R8E, Springfield Coal source: ISGS 1950 mined-out area, area 32

Mine Index 4584 \* NW SW NE 16-T10S-R8E, Springfield Coal source: ISGS 1950 mined-out area, area 32

Mine Index 4586 \* SE SW SE 17-T10S-R8E, Davis Coal source: ISGS 1950 mined-out area, area 32

Mine Index 4587 \* SW SE SE 17-T10S-R8E, Davis Coal source: ISGS 1950 mined-out area, area 32

Mine Index 4588 \* SW NE SE 17-T10S-R8E, Davis Coal source: ISGS 1950 mined-out area, area 32

Mine Index 4592 NW NW NW 19-T9S-R8E, Springfield Coal, drift source: ISGS map library 4107 d5 1-209

Mine Index 4691 SE NW 5-T10S-R8E, Herrin Coal, underground source: ISGS Bulletin 47, Plate 3 (1925)

Mine Index 4692 SW 16-T9S-R8E, Herrin Coal, underground source: ISGS Bulletin 47, Plate 3 (1925)

Mine Index 4693 NW NW SE 34-T9S-R8E, Dekoven Coal, drift source: ISGS map library, 4107 d5.1-195, sheet 26 (1933)

Mine Index 4694 NE NW NE 36-T9S-R8E, Dekoven Coal, drift source: ISGS mine notes, ISGS field notes (L. G. Henbest, 1927, Smith & Reinertsen, 1959), ISGS map library, 4107 d5.1-209

Mine Index 4695 \* NE SW NE 16-T10S-R8E, Springfield Coal source: Microfilm, document 351545, map of Randell Mine (mine index 709)

Mine Index 4696 SE SE SE 13-T10S-R8E, Herrin Coal, underground source: ISGS map library, 4107 d5.1-209

Mine Index 4698 SW NW NW 24-T10S-R8E, Springfield Coal source: ISGS 1950 mined-out area map, area 32

Mine Index 4733 SE NE NE 24-T9S-R7E, Springfield Coal source: ISGS 1950 mined-out area, area 32

Mine Index 4760 SW NE SE 13-T10S-R7E, Willis Coal, surface source: ISGS map library, 4102 a-7, sheet 2

Mine Index 5080 NW NW NW 16-T9S-R8E, Herrin Coal, drift source: ISGS map library, 4107 d5.1-209

Mine Index 5398 NW NW NW 16-T9S-R8E, Herrin Coal, drift source: ISGS field notes (L. G. Henbest, 1927)

Mine Index 5498 SE NW NW 16-T9S-R8E, Herrin Coal, drift source: ISGS field notes (L. G. Henbest, 1927)

Mine Index 5501 SE NE NE 17-T9S-R8E, Herrin Coal, drift source: ISGS map library, 4107 d5.1-209, ISGS field notes (L. G. Henbest)

Mine Index 5532 SE SE SE 17-T9S-R8E, Springfield Coal, shaft source: ISGS map library, 4107 d5.1-209

Mine Index 5535\* NE NE SE 5-T10S-R8E, Herrin Coal, drift source: ISGS map library, 4107 d5 1-209 (map of G. H. Cady field notes, 1927)

Mine Index 5954 NE NW NW 30-T10S-R9E, Willis Coal, drift source: ISGS map library, 4107 d5.1-195, sheet 26

Mine Index 6672 SE SW SW 14-T9S-R8E, Springfield Coal, surface source: ISGS map library, 4107 a-7, sheet 1

Mine Index 6833 SW 16-T9S-R8E, Herrin Coal, surface source: ISGS map library, 4102 a-7, sheet 1

Mine Index 7036 SW NW SW 34-T9S-R8E, Springfield Coal, two drifts source: ISGS map library, 4102 a-7, sheet 1

Mine Index 7037 NE SW SW 34-T9S-R8E, Briar Hill Coal, underground source: ISGS map library, 4102 a-7, sheet 1 This mine is shown on the accompanying Springfield Coal map.

Mine Index 7038 \* SE SE SW 33-T9S-R8E, Herrin Coal, drift source: ISGS map library, 4102 a-7, sheet 1

\* Not shown on accompanying map because of later surface mining

## MINES WHOSE LOCATIONS ARE NOT KNOWN, EQUALITY QUADRANGLE

The locations of the following mines are unknown, but the production tonnage, operating names, and nearest town were reported in the Annual Coal Reports. The operators listed below mined in or near the Equality Quadrangle. The information shown is similar to that presented on the summary sheets in the previous pages of this directory. The first item is the name the mine operated under as listed in the Coal Report, then the years the mine reported. If no physical data are available, the next item listed is the total tons produced by the mine. If physical data are available, the order of presentation is as follows: type of opening for the mine (drift, slope or shaft), depth of coal in feet, and thickness of coal in feet.

The total tons mined by these unlocated mines is 162,304 (119,220 underground, 17,017 surface mined and 26,947 by uncertain method), which would represent approximately 29 to 48 acres, depending on the recovery factor, mining method, and numerous other factors. (Note: 1 square mile = 640 acres)

### COTTAGE GROVE

Burks (William), 1908-1909, slope, Herrin, 60, 4.0, RP	160 tons
--	----------

### EQUALITY

Bybee (Roy), 1922-1924	880 tons	M. I. 2256
------------------------	----------	------------

Donahoe (John), 1883-1884, drift, Herrin, 5, 4.5, RP	400 tons
--	----------

Hawes (William L.), 1894-1895, slope, —, 30, 4.0-4.5, RP	1,200 tons
Stader & Millsbaugh, 1895-1897	4,000 tons
Stader (William), 1897-1901	12,200 tons
Anderson & Demser, 1901-1902	3,600 tons
Anderson (John), 1902-1903	<u>2,000 tons</u>
	23,000 tons

Freels (B.), 1895-1896, drift, —, 21, 4.0, RP	500 tons
---	----------

Dunksey & Glover, 1895-1897, drift, —, 20, 4.0-4.33, RP	700 tons
Underwood (John), 1897-1901	<u>2,170 tons</u>
	2,870 tons

Rutler & Smith, 1898-1899, drift, Herrin, 25-50, 4.5, RP	1,220 tons
Rutler (James), 1899-1900	1,800 tons
Rutley & Godsley, 1900-1901	800 tons
Ratley (J. E.), 1901-1903	<u>3,600 tons</u>
	7,420 tons

Flanders & Brown, 1899-1900, drift, Herrin, 20, 4.0, RP	500 tons
Weedman (F. W.), 1900-1901	<u>290 tons</u>
	790 tons

Harper (Scott), 1904-1905	150 tons
---------------------------	----------

Anderson (Josh A.), 1905-1910, slope, Herrin, 26-41, 4.0-4.5, RP	17,200 tons
Anderson (E. A.), 1910-1912	<u>2,050 tons</u>
	19,250 tons

Spitzner (Jacob), 1908-1909, slope, Herrin, 45, 4.0, RP	808 tons
---	----------

Burrell (William), 1908-1909, slope, Herrin, 30, —, RP	491 tons
--	----------

Guard (Charles), 1910-1911, slope, Herrin, 30, 4.0, RP	672 tons
--	----------

Sisk & McLean, 1911-1912, drift, Herrin, —, 4.0, RP	1,245 tons
---	------------



McLain (W. H.), 1913-1915, shaft, —, 20-30, 4.0-4.25, RP	3,735 tons
Harrelson (H. C.), 1915-1916	4,000 tons
Genor (Frank) & Son, 1916-1917	<u>3,883 tons</u>
	11,618 tons
Spitzner (Jacob), 1915-1916, drift, Springfield, 14, 4.0, RP	625 tons
Spitzner & James, 1916-1917	21 tons
Spitzner (Jake), 1917-1919	<u>683 tons</u>
	1,329 tons
Brinkley (George), 1915-1916, drift, Springfield, 350, 4.67, RP	120 tons
Dempsey (J. E.), 1917-1918	900 tons
Patton (Andrew), 1917-1921	1,580 tons
Casey (Frank), 1917-1919	141 tons
Seddon (Robert), 1919-1920	400 tons
Glover (Frank), 1919-1921	172 tons
Imboden (F. J.), 1920-1921	800 tons
Hemitt (A. J.), 1922-1923	2,000 tons
Seaville & Stite, 1922-1923	200 tons
Hogan (R. L.), 1923-1925	520 tons
Jennings (Jim), 1923-1927	1,026 tons
Trousdale & Chandler, 1923-1924	91 tons
Maple (William), 1923-1924	80 tons
Big Dip Coal Company, 1923-1924	548 tons
Brinkley (G. E.) & Company, 1923-1924	480 tons
Stewart (Wake), 1923-1924	300 tons
Potter (James), 1924-1925	320 tons
Barrowman (George S.), 1923-1924	400 tons
Kirk, Dye & Rich, 1923-1924	70 tons
Shaver (Everett) & Sons, 1925-1927	13,669 tons
Dempsey, Newman & Kinkade, 1925-1926	507 tons
Wanlen & Stoke, 1925-1925	260 tons
Wanles (Tom), 1926-1926	<u>146 tons</u>
	406 tons
Pasway (Wave), 1925-1925	100 tons
Wathen (C. C.), 1927-1927	36 tons
McConnell (Clarence), 1928-1928, underground	160 tons
Lauds & Hasselton, 1928-1928, underground	76 tons
Berkel & Cardwell, 1928-1928, underground	30 tons

Dorris (George W.), 1929-1929, underground	200 tons
North Side Coal Company, 1934-1935, underground	1,622 tons
County Line Coal Company, 1934-1934, underground	211 tons
White (James) & Son, 1934-1936, underground	486 tons
Dillar & Dixon, 1940-1940, underground	182 tons
Baldwin (John), 1941-1941, underground	250 tons
Producers Coal Company, 1945-1945, surface, Springfield, 20, 3.0	14,256 tons
Elliott (Hiram), No. 1 Mine, 1949-1950, underground	300 tons
New Gallatin Coal Company, 1957-1957, surface	1,697 tons
Wenzel Brothers, No. 1 Mine, December 1963 - February 1964	production not reported
Vinyard Coal Company, No. 2 Mine, 1957-1957, surface	1,000 tons

### **GIBSONIA**

Brinkley (Marion), 1908-1909, slope, Herrin, 30-35, 4.0, RP	165 tons
---	----------

### **HORSESHOE**

Dossey (Charles), 1908-1909, slope, Herrin, 60, 4.0, RP	105 tons
---	----------

### **JUNCTION**

Dempsey (J. E.), 1911-1912, slope, —, 18, 4.33, RP	1,660 tons
Chinn (W. R.), 1912-1921	<u>27,650</u> tons
	29,310 tons
Siddons (Lee), 1915-1917, slope, Springfield, 30, 5.0-5.5, RP	1,515 tons
Elliott Brothers, 1916-1917, slope, Springfield, 25, 4.5, RP	150 tons
Jones & Martin, 1916-1917, slope, Springfield, 20, 5.0, RP	420 tons
Jones (Sam), 1917-1918	780 tons
Wallace, Martin & Jones, 1918-1919	800 tons
Wallace & Martin, 1919-1923	780 tons
Martin & Jones, 1923-1924	425 tons
Wallace & Martin, 1924-1927	1,880 tons
Martin (J. C.), 1928-1928	<u>650</u> tons
Idle 1922, 1923, 1927	5,735 tons
Dobbs (S. D.), 1917-1918	512 tons
Boatright (H.) & Tite (B.), 1922-1923, underground	100 tons
Tite & Leavell, 1923-1924	190 tons
Tite (Ed), 1924-1929	<u>1,947</u> tons
	2,237 tons
Dobbs & Willshire, 1923-1924	90 tons
Dodd (E. H.), 1924-1925	<u>375</u> tons
	465 tons
Potter (Luther), 1923-1926, underground	515 tons
Potter (George), 1927-1928	<u>92</u> tons

	607 tons
Bostnagle (John & Henry), 1923-1924	194 tons
Black (Isaac), 1934-1935, underground	243 tons
Barnett & Beeler, 1940-1940, underground	134 tons

#### **KEDRON**

Brinkley (John S.), 1889-1893, drift, Herrin, 40, 3.67-4.0, RP	720 tons
Boston (Henry), 1910-1911, slope, Herrin, —, 4.0, RP	84 tons

#### **LEAMINGTON**

Brinkley (Marion), 1895-1898, drift/slope, Herrin, 25, 4.5-4.67, RP	2,105 tons
Thompson (Wilburn), 1895-1898, slope/drift, Herrin, 25, 4.5-4.67, RP	1,920 tons

#### **MARION**

Stubblefield (R. P.) Coal Company, 1951-1951, surface	1,761 tons
---	------------



## INDEX OF MINES IN THE EQUALITY QUADRANGLE

A. & F. Coal Company . . . . .	30
Acme Stone & Coal Company . . . . .	22
Adkins (Pearce & Adkins) . . . . .	16
Allen (Harrison-Allen Coal Company) . . . . .	49
Allen (Harrison-Allen) . . . . .	50
Anderson (E. A.) . . . . .	79
Anderson (John) . . . . .	79
Anderson (Josh A.) . . . . .	79
Anderson & Demser . . . . .	79
Angelly (William) . . . . .	10
Arclar Company, Eagle Valley Mine . . . . .	30
Arclar Company, Wildcat Hills Mine . . . . .	34
Austin (Jamie) & Dixon (W. B.) . . . . .	52
B. & W. Coal Company, No. 1 Mine . . . . .	20
Baldwin (Billy) . . . . .	43
Baldwin (Brightner & Baldwin) . . . . .	40
Baldwin (Charles E.) . . . . .	43
Baldwin (J. O.) . . . . .	39
Baldwin (John O.) . . . . .	43
Baldwin (John) . . . . .	81
Baldwin & Turner . . . . .	39
Barbie Dee Mines, Inc. . . . .	60
Barnett (Brooks & Barnett) . . . . .	46
Barnett (Horace) . . . . .	52
Barnett (John T.) . . . . .	54
Barnett & Beeler . . . . .	82
Barrowman (George S.) . . . . .	80
Beecher-Williams Coal Company, No. 4 Mine . . . . .	70
Beecher-Williams Coal Company, No. 5 Mine . . . . .	60
Beeler (Barnett & Beeler) . . . . .	82
Bennett Coal Company, No. 1 Mine . . . . .	60
Bentley Mine . . . . .	13
Berkel (Frank & W. E.) Coal Company . . . . .	51
Berkel & Cardwell . . . . .	80
Berkel Brothers . . . . .	51
Big Dip Coal Company . . . . .	80
Black (Isaac) . . . . .	82
Black (Moore & Black) . . . . .	73
Black (Richard) . . . . .	15
Black (Sam) . . . . .	13, 62
Black Beauty Coal Company, Wildcat Hills Cottage Grove Mine . . . . .	35
Black Beauty Mining Company . . . . .	34
Black, Clifton & Moore . . . . .	73
Boatright (H.) & Tite (B.) . . . . .	81
Booten (J. H.) . . . . .	14
Boster (Andy) . . . . .	71
Bostnagle (John & Henry) . . . . .	82
Boston (Henry) . . . . .	82
Brightner (Peter) . . . . .	40
Brightner & Baldwin . . . . .	40
Brinkley (G. E.) & Company . . . . .	80
Brinkley (George) . . . . .	80
Brinkley (John S.) . . . . .	82
Brinkley (Marion) . . . . .	81, 82
Brooks & Barnett . . . . .	46
Brown (Flanders & Brown) . . . . .	79
Brown (Martin & Brown) . . . . .	24
Brown Coal Company . . . . .	38
Burks (William) . . . . .	79
Burnett (C. E.) . . . . .	46
Burnett & Love . . . . .	46
Burrell (William) . . . . .	79
Bybee (Arthur) . . . . .	49

Bybee (Roy) . . . . .	79
Bybee (Roy) & Son . . . . .	49
Calbert (James T.) . . . . .	19
Cardwell (Berkel & Cardwell) . . . . .	80
Casey (Frank) . . . . .	80
Cassells, Temple & Company . . . . .	9
Cedar Hill Coal Company . . . . .	17
Certain (Pulliam & Certain) . . . . .	51, 58
Chandler (Trousdale & Chandler) . . . . .	80
Chinn (W. R.) . . . . .	81
Clayton (H. S) . . . . .	15
Clifton (Black, Clifton & Moore) . . . . .	73
Coal Miners, Inc. . . . .	30
Colbert (James T.) . . . . .	19
Colbert (Thornton) . . . . .	19
Comet Coal Company . . . . .	16
County Line Coal Company . . . . .	81
Cox & Scarbrough . . . . .	56
Crescent Coal Company . . . . .	38
Dempsey (J. E.) . . . . .	12, 80, 81
Dempsey & Walthen . . . . .	39
Dempsey Coal Company . . . . .	12
Dempsey, Newman & Kinkade . . . . .	80
Demser (Anderson & Demser) . . . . .	79
Dickson (W. B.) . . . . .	49
Dillar & Dixon . . . . .	81
Dillard (Isaac) . . . . .	50
Dillard Coal Company, No. 2 Mine . . . . .	52
Dillert (Isaac) . . . . .	50
Dixon (Austin & Dixon) . . . . .	52
Dixon (Dillar & Dixon) . . . . .	81
Dobbs (S. D.) . . . . .	81
Dobbs & Willshire . . . . .	81
Dodd (E. H.) . . . . .	81
Donahoe (John) . . . . .	79
Dorris (George W.) . . . . .	81
Dossey (Charles) . . . . .	81
Dryden (Vancill, Dryden & Lindsay Company) . . . . .	17
Duncan & Sons . . . . .	17
Dunksey & Glover . . . . .	79
Dye (Kirk, Dye & Rich) . . . . .	80
Eagle Surface Mine . . . . .	29
Eagle Valley Coal Company . . . . .	46
Eagle Valley Coal Corporation . . . . .	60
Eagle Valley Mine . . . . .	30
Eagle Valley No. 1 Mine . . . . .	28
East Side Coal Company . . . . .	38
Elliott (Hiram) . . . . .	51, 81
Elliott Brothers . . . . .	81
Equality Coal Company . . . . .	9, 29
Evans Coal & Mining Company . . . . .	38
Federal Landscaping Company . . . . .	32
Finnie (Walter) . . . . .	63
Flanders (Sisk, Flanders & White) . . . . .	39
Flanders & Brown . . . . .	79
Freels (B.) . . . . .	79
Gallatin Coal & Coke Company . . . . .	9
Gallatin County Coal Company . . . . .	20
Genor (Frank) & Son . . . . .	80
Ginnville Mining Company . . . . .	75
Glover (Dunksey & Glover) . . . . .	79
Glover (Frank) . . . . .	80
Godsley (Rutley & Godsley) . . . . .	79
Gold Nugget Mine . . . . .	39
Greely Coal Company . . . . .	11

Green (Frank) . . . . .	49, 76
Green Hill Coal Company . . . . .	49
Guard (Charles) . . . . .	79
Hambrice (T. B.) . . . . .	56
Hargrave (Sanks & Hargrave) . . . . .	36
Hargraves (William) . . . . .	77
Harper (Scott) . . . . .	79
Harrelson (H. C.) . . . . .	80
Harrison Brothers . . . . .	39
Harrison-Allen . . . . .	50
Harrison-Allen Coal Company . . . . .	49
Hasselton (Lauds & Hasselton) . . . . .	80
Hawes (William L.) . . . . .	79
Hemitt (A. J.) . . . . .	80
Herod Mining Corporation . . . . .	64
Hickory Hill Coal Company . . . . .	12, 47
Hickory Hill Mine . . . . .	18
Hickory Hills Mine . . . . .	40
Hines Brothers Mining Company . . . . .	68
Hogan (R. L.) . . . . .	80
I-1 Surface Mine . . . . .	33
Illinois Fuel Company, LLC . . . . .	33
Illinois Saline Coal Company . . . . .	9
Imboden (F. J.) . . . . .	80
Jader Fuel Company, Inc. . . . .	32
Jader Fuel Company, Inc., Lovilia Mine . . . . .	31
Jader Fuel Company, Inc., No. 4 Mine . . . . .	33
James (Spitzner & James) . . . . .	80
Jennings (Jim) . . . . .	80
Jennings (Wallace-Jennings) . . . . .	53
Jennings Mine . . . . .	50
Jeris (Lloyd & Jeris) . . . . .	40
Jo Lor Mining Company . . . . .	66
Johnson (William) . . . . .	68
Jones (Martin & Jones) . . . . .	81
Jones (Sam) . . . . .	81
Jones (Wallace, Martin & Jones) . . . . .	81
Jones & Martin . . . . .	81
K. & W. Coal Company . . . . .	67
Kinkade (Dempsey, Newman & Kinkade) . . . . .	80
Kirk, Dye & Rich . . . . .	80
Knickerbocker (R.) . . . . .	24
Knickerbocker (Roger) . . . . .	28
Knickerbocker Mine . . . . .	16
Lauds & Hasselton . . . . .	80
Leamington Coal Company . . . . .	48
Leavell (Tite & Leavell) . . . . .	81
Lessak (Williams & Lessak) . . . . .	39
Liberty Coal Company . . . . .	25
Liberty Coal Company, No. 2 Mine . . . . .	27
Lindsay (Fred) . . . . .	17
Lindsay (Vancill, Dryden & Lindsay Company) . . . . .	17
Little Joe Coal Company . . . . .	51
Lloyd & Jeris . . . . .	40
Logan Highway Coal Company . . . . .	18
Lone Star Mine . . . . .	43
Love (Burnett & Love) . . . . .	46
Lovilia Mine . . . . .	31
Maple (William) . . . . .	80
Marshall Equipment Company . . . . .	44
Martin (J. C.) . . . . .	81
Martin (Jones & Martin) . . . . .	81
Martin (Wallace & Martin) . . . . .	81
Martin (Wallace, Martin & Jones) . . . . .	81
Martin & Brown . . . . .	24



Martin & Jones . . . . .	81
Mary Ann No. 2 Mine . . . . .	44
McClusky (Clyde) . . . . .	52
McConnell (Clarence) . . . . .	80
McDonald (Frank) . . . . .	57
McDonald (W. H.) . . . . .	57
McLain (W. H.) . . . . .	80
McLain (William H.) . . . . .	41
McLean (Sisk & McLean) . . . . .	79
Mid City Coal Company . . . . .	20
Miles (B.) . . . . .	24
Miles (Moore & Miles Coal Company) . . . . .	73
Milligan (Gilbert) . . . . .	57
Millikin (Gilbert) . . . . .	57
Millspaugh (Sisk & Millspaugh) . . . . .	52
Millspaugh (Stader & Millspaugh) . . . . .	79
Monroe (Scarbrough & Monroe) . . . . .	56
Monroe (William) . . . . .	56
Moore (Black, Clifton & Moore) . . . . .	73
Moore (C.) & Black (R. A.) . . . . .	73
Moore (Clifford) . . . . .	73
Moore & Miles Coal Company . . . . .	73
Murray (Hugh) . . . . .	9
National Mining Company . . . . .	25
New Gallatin Coal Company . . . . .	81
New Hickory Hill Mine . . . . .	47
New Oak Hill Coal Company . . . . .	26
New Shawnee Coal Company . . . . .	20
Newman (Dempsey, Newman & Kinkade) . . . . .	80
North Side Coal Company . . . . .	81
Northern Coal Company . . . . .	9
Oak Hill Coal Company . . . . .	16, 24
Oak Hill Coal Company, Pit No. 1 . . . . .	26
Old Holly Mine . . . . .	78
Osborn (Tom), No. 2 Mine . . . . .	10
P. & C. Coal Company . . . . .	58
Pasway (Wave) . . . . .	80
Patther Mine . . . . .	51
Patton (Andrew) . . . . .	45, 80
Patton (Bratcher) . . . . .	45
Patton (Frank) . . . . .	55
Patton (James A.) . . . . .	45
Patton (James) . . . . .	51
Peabody Coal Company, Eagle Surface Mine . . . . .	29
Peabody Midwest Mining, Wildcat Hills Cottage Grove Mine . . . . .	35
Pearce (Showler A.) . . . . .	16
Pearce & Adkins . . . . .	16
Peek & Price . . . . .	55
Pekin Coal Company . . . . .	16
Pekin Mining Company . . . . .	16
Pierson (Robert) . . . . .	65
Potter (George) . . . . .	81
Potter (James) . . . . .	51, 80
Potter (Luther) . . . . .	81
Price (Peek & Price) . . . . .	55
Producers Coal Company . . . . .	81
Pulliam & Certain . . . . .	51, 58
Purcell (Charles O.) . . . . .	69
Purcell (Jesse) . . . . .	74
Randall Coal Company . . . . .	21
Ratley (J. E.) . . . . .	79
Rich (Kirk, Dye & Rich) . . . . .	80
Richardson Coal Corporation, No. 1 Mine . . . . .	61
Richardson Coal Corporation, No. 3 Mine . . . . .	42
Richardson Coal Corporation, No. 5 Mine . . . . .	59

Richardson Coal Corporation, No. 6 Mine . . . . .	37
Rutler (James) . . . . .	79
Rutler & Smith . . . . .	79
Rutley & Godsley . . . . .	79
Saline Creek Coal Company . . . . .	12
Saline Gas Coal Company . . . . .	9, 72
Saline River Coal Company . . . . .	12
Sanks & Hargrave . . . . .	36
Sanks Coal Company . . . . .	36
Scarbrough (Cox & Scarbrough) . . . . .	56
Scarbrough (Joe) . . . . .	56
Scarbrough (Joe) & Company . . . . .	51
Scarbrough (Milo) . . . . .	56
Scarbrough & Monroe . . . . .	56
Schafer (G.) . . . . .	40
Seaville & Stite . . . . .	80
Seddon (Robert) . . . . .	80
Shaver (Everett) & Sons . . . . .	80
Shawnee Coal Company . . . . .	20
Siddons (Lee) . . . . .	81
Sisk (A. H.) . . . . .	39
Sisk (Samuel Hall) . . . . .	75
Sisk & McLean . . . . .	79
Sisk & Millspaugh . . . . .	52
Sisk, Flanders & White . . . . .	39
Smith (Rutler & Smith) . . . . .	79
Spitzner (Jacob) . . . . .	79, 80
Spitzner (Jake) . . . . .	80
Spitzner & James . . . . .	80
St. Thomas Coal Company . . . . .	17
Stader (William) . . . . .	79
Stader & Millspaugh . . . . .	79
Stewart (Wake) . . . . .	80
Stite (Seaville & Stite) . . . . .	80
Stoke (Wanlen & Stoke) . . . . .	80
Stubblefield (R. P.) Coal Company . . . . .	82
Sugar Camp Coal Company . . . . .	30
Sun Valley Coal Company . . . . .	22
Sunnyside Mine . . . . .	39
Tarlton (A. L.) . . . . .	11
Tarlton (Al) . . . . .	11
Tek Bar Industries, Inc. . . . .	30
Temple (Cassells, Temple & Company) . . . . .	9
Thompson (Wilburn) . . . . .	82
Thurmond Coal Company . . . . .	19
Tite (Boatright & Tite) . . . . .	81
Tite (Ed) . . . . .	81
Tite & Leavell . . . . .	81
Trousdale & Chandler . . . . .	80
Turner (Baldwin & Turner) . . . . .	39
Turns Coal Company . . . . .	38
Underwood (John) . . . . .	79
Vancill, Dryden & Lindsay Company . . . . .	17
Vandell Mining & Coke Company . . . . .	23, 38
Vaught (John E.) . . . . .	73
Vinyard Coal Company, No. 1 Mine . . . . .	27
Vinyard Coal Company, No. 2 Mine . . . . .	81
Vinyard Coal Company, No. 5 Mine . . . . .	37
Wallace (Charles) . . . . .	53
Wallace & Martin . . . . .	81
Wallace, Martin & Jones . . . . .	81
Wallace-Jennings . . . . .	53
Walthen (Dempsey & Walthen) . . . . .	39
Wanlen & Stoke . . . . .	80
Wanles (Tom) . . . . .	80

Wathen (C. C.) . . . . .	80
Wather (William A.) . . . . .	39
Weedman (F. W.) . . . . .	79
Wenzel (Carl) Construction Company, Pit No. 1 . . . . .	25
Wenzel (Carl) Construction Company, Pit No. 2 . . . . .	25
Wenzel (Carl) Construction Company, Pit No. 3 . . . . .	25
Wenzel Brothers, No. 1 Mine . . . . .	81
Wenzel Coal Company . . . . .	78
Wenzel Coal Company, Inc., Eagle Valley No. 1 Mine . . . . .	28
Wenzel Construction Company, No. 3 Mine . . . . .	25
West Side Mine . . . . .	9
White (James) & Son . . . . .	81
White (Sisk, Flanders & White) . . . . .	39
Wildcat Hills Cottage Grove Mine . . . . .	35
Wildcat Hills Eagle Valley Mine . . . . .	34
Wildcat Hills Mine . . . . .	34
Williams (Beecher-Williams No. 4 Mine) . . . . .	70
Williams (Beecher-Williams No. 5 Mine) . . . . .	60
Williams & Lessak . . . . .	39
Willshire (Dobbs & Willshire) . . . . .	81
Wright (W. L.) . . . . .	77
Yates (Harry) . . . . .	56



