

Coal Mines in Illinois Fairview Quadrangle Fulton & Knox Counties, Illinois

Herrin & Other Coals

This map accompanies the Coal Mines Directory for the Fairview Quadrangle and the maps of mines in the Springfield Coal, Fairview Quadrangle. Consult the directory for a complete explanation of the information shown on this map.

Mining Method

- Room & Pillar (RP)
- Room & Pillar Basic (RPB)
- Modified Room & Pillar (MRP)
- Room & Pillar Panel (RPP)
- Blind Room & Pillar (BRP)
- Checkerboard Room & Pillar (CRP)
- High Extraction Retreat (HER)
- Longwall (LW)
- Underground, Method Unknown
- Strip Mine
- Auger Mine
- General Area of Mining

Other Areas Depicted

- Non-Coal Mines

Source of Mine Outline

- Final Mine Map
- Not Final Mine Map
- Undated Mine Map
- Incomplete Mine Map
- Secondary Source Map

Tipple, Shaft, Slope, Drift Locations

- Strip Mine Tipple - Active
- Strip Mine Tipple - Abandoned
- Mine Shaft - Active
- Mine Shaft - Abandoned
- Mine Slope - Active
- Mine Slope - Abandoned
- Mine Drift - Active
- Mine Drift - Abandoned
- Air Shaft
- Uncertain Location
- Uncertain Type of Opening

Mine Annotation
(space permitting)

- Company
- Mine Name
- ISGS Index No., Years of Operation

Disclaimer
Please check the Coal Section at the Illinois State Geological Survey's web site at <http://www.isgs.illinois.edu> for the most up-to-date version of these products.

Note that each quadrangle scale mined-out area map requires the use of the associated text directory for full explanation of map features and mine attributes. Also note that some quadrangles have multiple seams of mining and therefore more than one map may be available for a particular quadrangle. Please take care to check for multiple maps, as extensive mining may exist in the other seams.

The maps and digital files used for these studies were compiled from data obtained from a variety of public and private sources and have varying degrees of completeness and accuracy. This compilation map presents reasonable interpretation of the geology of the area and is based on available data. Locations of some mine features may be offset by 500 feet or more due to errors in the original source maps, the compilation process, digitizing, or a combination of these factors. These data are not intended for use in site-specific screening or decision-making. Use of these documents does not eliminate the need for detailed studies to fully understand the geology of a specific site. The Illinois State Geological Survey, Prairie Research Institute, or the University of Illinois make no guarantee, expressed or implied, regarding the correctness of the interpretations presented in this data set and accept no liability for the consequences of decisions made by others on the basis of the information presented here.

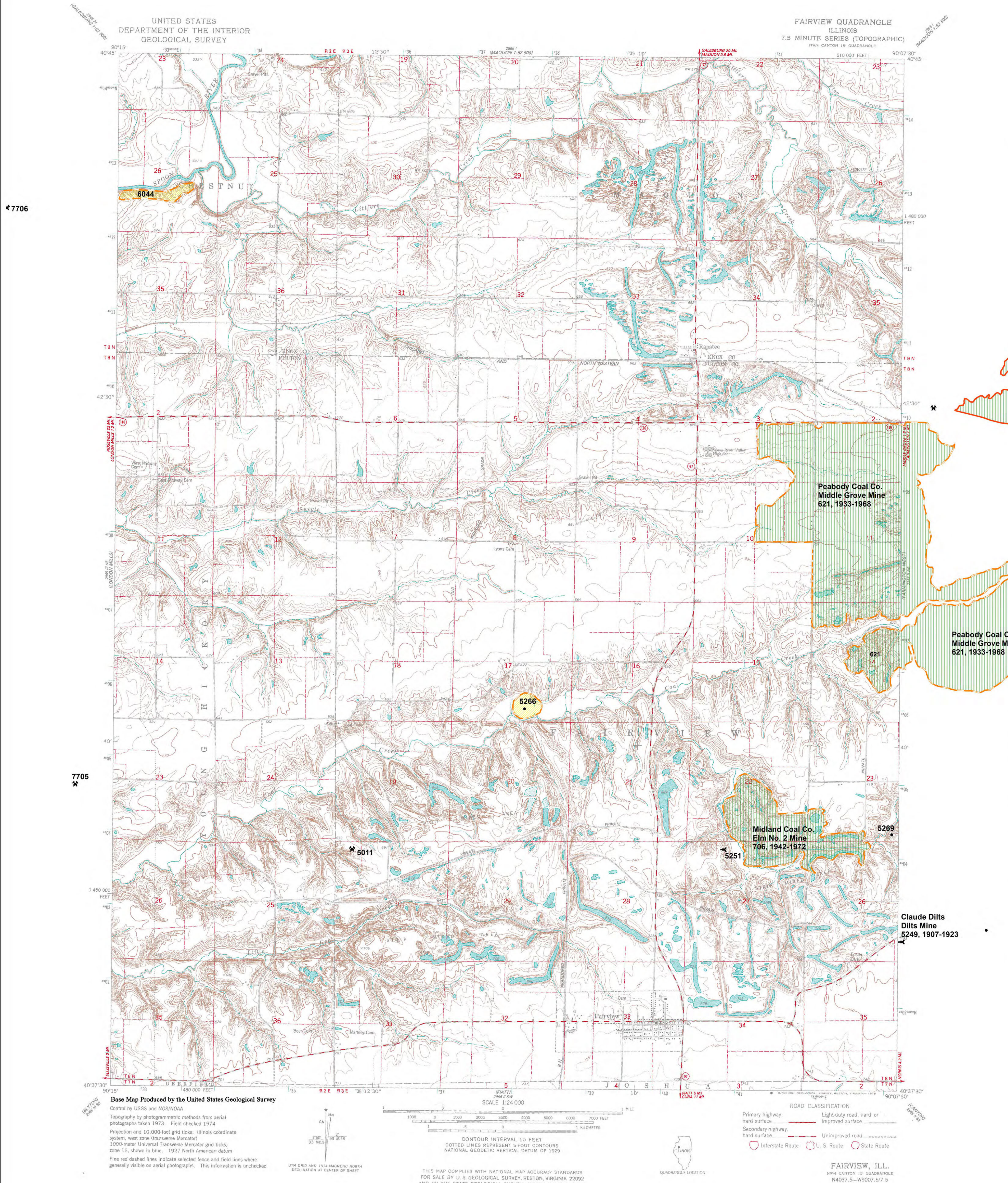
These maps were designed for use at 1:24,000. Enlarging the map may reduce accuracy, as the original scale of the source maps used to compile the outlines shown varies from 1:400 to 1:150,000, and some mine locations are known only from text descriptions. See the accompanying mine directory for the original scale of the source map used for a specific mine to check accuracy of a given portion of the map. Areas with no mines shown may still be undermined; see the unlocated mines list at the back of each mine directory.

The image of the U.S.G.S. topographic base map was projected from the original UTM to Lambert Conformal Conic.



Prairie Research Institute
Illinois State Geological Survey
615 E. Peabody Dr.
Champaign, IL 61820

Mine Outlines Compiled by
C. Chenoweth
June 2016



Coal Mines in Illinois Fairview Quadrangle

Fulton & Knox Counties, Illinois

Springfield Coal

This map accompanies the Coal Mines Directory for the Fairview Quadrangle and the maps of mines in the Herrin & Other Coals, Fairview Quadrangle. Consult the directory for a complete explanation of the information shown on this map.

Mining Method

- Room & Pillar (RP)
- Room & Pillar Basic (RPB)
- Modified Room & Pillar (MRP)
- Room & Pillar Panel (RPP)
- Blind Room & Pillar (BRP)
- Checkerboard Room & Pillar (CRP)
- High Extraction Retreat (HER)
- Longwall (LW)
- Underground, Method Unknown
- Strip Mine
- Auger Mine
- General Area of Mining

Other Areas Depicted

- Non-Coal Mines

Source of Mine Outline

- Final Mine Map
- Not Final Mine Map
- Undated Mine Map
- Incomplete Mine Map
- Secondary Source Map

Tipple, Shaft, Slope, Drift Locations

- Strip Mine Tipple - Active
- Strip Mine Tipple - Abandoned
- Mine Shaft - Active
- Mine Shaft - Abandoned
- Mine Slope - Active
- Mine Slope - Abandoned
- Mine Drift - Active
- Mine Drift - Abandoned
- Air Shaft
- Uncertain Location
- Uncertain Type of Opening

Mine Annotation
(space permitting)

- Company
- Mine Name
- ISGS Index No., Years of Operation

Disclaimer
Please check the Coal Section at the Illinois State Geological Survey's web site at <http://www.isgs.illinois.edu> for the most up-to-date version of these products.

Note that each quadrangle scale mined-out area map requires the use of the associated text directory for full explanation of map features and mine attributes. Also note that some quadrangles have multiple seams of mining and therefore more than one map may be available for a particular quadrangle. Please take care to check for multiple maps, as extensive mining may exist in the other seams.

The maps and digital files used for these studies were compiled from data obtained from a variety of public and private sources and have varying degrees of completeness and accuracy. This compilation map presents reasonable interpretation of the geology of the area and is based on available data. Locations of some mine features may be offset by 500 feet or more due to errors in the original source maps, the compilation process, digitizing, or a combination of these factors. These data are not intended for use in site-specific screening or decision-making. Use of these documents does not eliminate the need for detailed studies to fully understand the geology of a specific site. The Illinois State Geological Survey, Prairie Research Institute, or the University of Illinois make no guarantee, expressed or implied, regarding the correctness of the interpretations presented in this data set and accept no liability for the consequences of decisions made by others on the basis of the information presented here.

These maps were designed for use at 1:24,000. Enlarging the map may reduce accuracy, as the original scale of the source maps used to compile the outlines shown varies from 1:400 to 1:150,000, and some mine locations are known only from text descriptions. See the accompanying mine directory for the original scale of the source map used for a specific mine to check accuracy of a given portion of the map. Areas with no mines shown may still be undermined; see the unlocated mines list at the back of each mine directory.

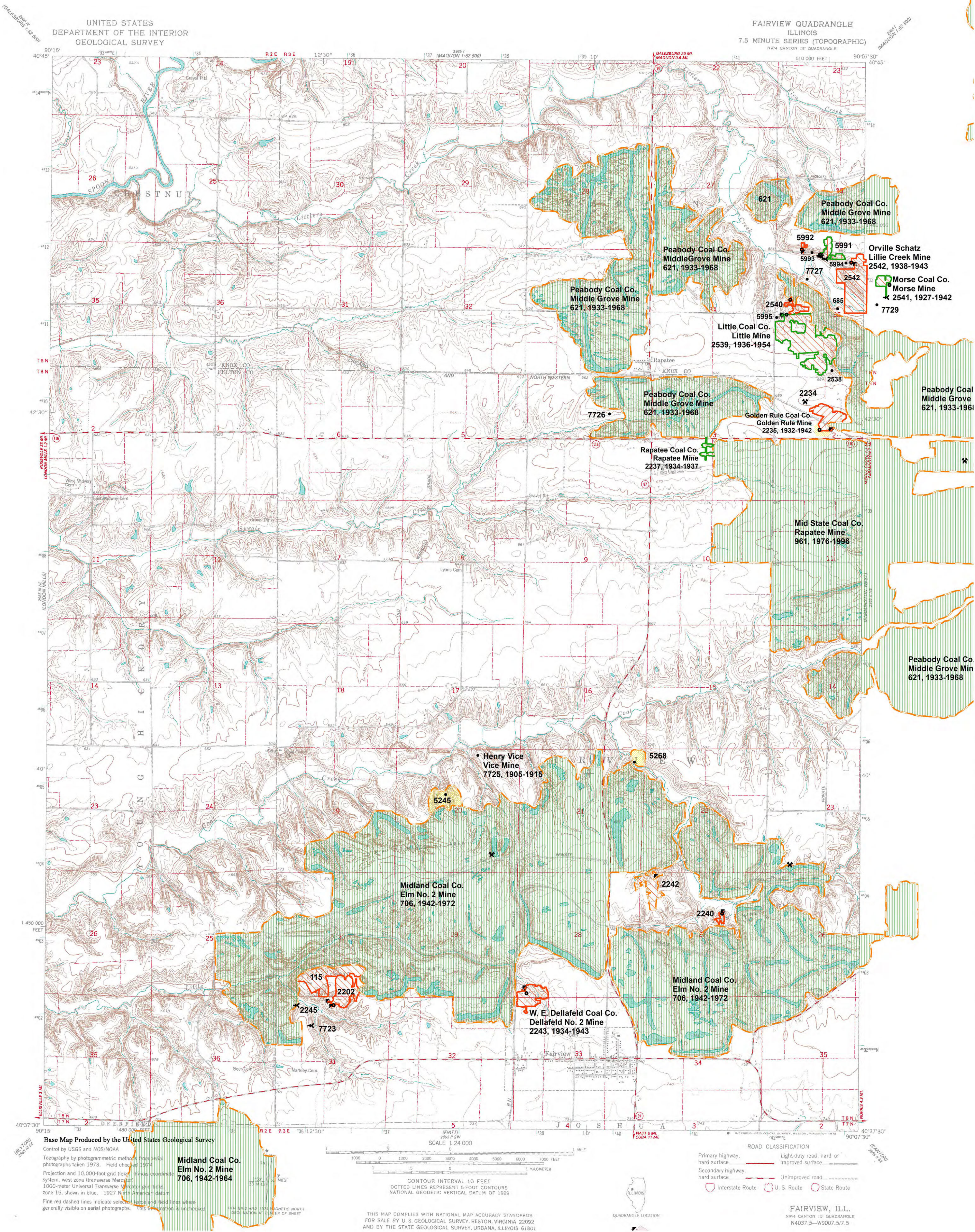
The image of the U.S.G.S. topographic base map was projected from the original UTM to Lambert Conformal Conic.

Location



Prairie Research Institute
Illinois State Geological Survey
615 E. Peabody Dr.
Champaign, IL 61820

Mine Outlines Compiled by
C. Chenoweth
June 2016



Base Map Produced by the United States Geological Survey

Control by USGS and NOS/NOAA
Topography by photogrammetric methods from aerial photographs taken 1973. Field checked 1974.
Projection and 10,000-foot grid ticks: Illinois coordinate system, west zone (transverse Mercator).
1000-meter Universal Transverse Mercator grid ticks, zone 15, shown in blue. 1927 North American datum.
Fine red dashed lines indicate section lines and field lines where generally visible on aerial photographs. 1:100,000 scale is unchanged.

Midland Coal Co.
Elm No. 2 Mine
706, 1942-1964

CONTOUR INTERVAL 10 FEET
DOTTED LINES REPRESENT 5-FOOT CONTOURS
NATIONAL GEOGRAPHIC VERTICAL DATUM OF 1929

THIS MAP COMPLIES WITH NATIONAL MAP ACCURACY STANDARDS
FOR SALE BY U.S. GEOLOGICAL SURVEY, RESTON, VIRGINIA 22092
AND BY THE STATE GEOLOGICAL SURVEY, URBANA, ILLINOIS 61801

FAIRVIEW, ILL.
NW/4 CANTON 15' QUADRANGLE
N4037.5--W9007.5/7.5

DIRECTORY OF COAL MINES IN ILLINOIS

7.5-MINUTE QUADRANGLE SERIES

FAIRVIEW QUADRANGLE

FULTON & KNOX COUNTIES

C. Chenoweth



2016

Prairie Research Institute
Mark Ryan, Executive Director
ILLINOIS STATE GEOLOGICAL SURVEY
Richard C. Berg, Director

Natural Resources Building
615 East Peabody Drive
Champaign, Illinois 61820

Phone 217-244-4610
Fax 217-333-2830



This material is based upon work supported by the Illinois Department of Transportation. Any opinions, findings, and conclusions or recommendations expressed in this publication are those of the authors and do not necessarily reflect the views of the Illinois Department of Transportation.

Cover photo Track-mounted duckbill loading machine at a Peabody Coal Company mine, ca. 1915.

DISCLAIMER: The accuracy and completeness of mine maps and directories vary with the availability of reliable information. Maps and other information used to compile this mine map and directory were obtained from a variety of sources and the accuracy of some of the original information cannot be verified. Consequently, the Illinois State Geological Survey (ISGS) cannot guarantee the mine maps are free of errors and disclaims any responsibility for damages that may result from actions or decisions based on them.

The ISGS updates the maps and directories periodically, and welcomes any new information or corrections. Please contact the Coal Section of the ISGS at the address shown on the title page of this directory, or telephone (217) 244-4610.

© 2016 The Board of Trustees of the University of Illinois. All rights reserved.
For permission information, contact the Illinois State Geological Survey.

CONTENTS

INTRODUCTION	1
MINING IN THE FAIRVIEW QUADRANGLE	1
PART I EXPLANATION OF MAP AND MINE SUMMARY SHEET	2
INTERPRETING THE MAP	2
Mine Type and Mining Method	2
Source Maps	3
Points and Labels	3
INTERPRETING A MINE SUMMARY SHEET	6
REFERENCES	8
PART II DIRECTORY OF MINES IN THE FAIRVIEW QUADRANGLE	9
MINE SUMMARY SHEETS	9
Mine Index 115	
Frankovich Brothers Coal Company, Parrville Mine	9
Mine Index 621	
Peabody Coal Company, Middle Grove Mine	10
Mine Index 685	
Sixth Vein Coal Company, Morse Mine	11
Mine Index 706	
Midland Coal Company, Elm No. 2 or Bright Star Mine	12
Mine Index 961	
Mid State Coal Company, Rapatee Mine	13
Mine Index 2202	
Shuler & Long Coal Company, Shuler & Long Mine	14
Mine Index 2234	
Lingenfelter Coal Company, Lingenfelter No. 4 Mine	15
Mine Index 2235	
Golden Rule Coal Company, Golden Rule Mine	16
Mine Index 2237	
Rapatee Coal Company, Rapatee Mine	17
Mine Index 2238	
Premier White Ash Coal Company, White Ash Mine	18
Mine Index 2239	
Joe Dufour, Clean Mine	19
Mine Index 2240	
Pheasant & Myers, White Ash Mine	20
Mine Index 2241	
George Street, Street Mine	21
Mine Index 2242	
Long & Stevenour Coal Company, Long & Stevenour Mine	22
Mine Index 2243	
W. E. Dellafeld Coal Company, Dellafeld No. 2 Mine	23
Mine Index 2244	
E. F. Frederick, Frederick Mine	24
Mine Index 2245	
Big Six Coal Company, Big Six Mine	25
Mine Index 2538	
Harley T. Mundwiler, Mundwiler Mine	26
Mine Index 2539	
Little Coal Company, Little Mine	27
Mine Index 2540	
William Mertz, Mertz Mine	28
Mine Index 2542	
Orville Schatz, Lillie Creek Mine	29
Mine Index 4173	
Joe DuFour, DuFour Mine	30

Mine Index 5246	
L. M. Turner, Turner Mine	31
Mine Index 5248	
William E. Hornbeck, Hornbeck Mine	32
Mine Index 5250	
Richard Henning, Henning Mine	33
Mine Index 5251	
George Edgerly, Edgerly Mine	34
Mine Index 5252	
M. J. Stout, Stout Mine	35
Mine Index 5253	
A. J. Gunnett, Gunnett Mine	36
Mine Index 5273	
P. Weaver, Weaver Mine	37
Mine Index 5991	
Dewitt Smith Mine	38
Mine Index 5992	
Sorence Foster, Foster Mine	39
Mine Index 5994	
John Paul, Paul Mine	40
Mine Index 5995	
Gavin Graham, Graham Mine	41
Mine Index 7725	
Henry Vice, Vice Mine	42
Mine Index 7727	
Daniel Pearson, Pearson Mine	43
OTHER MINES SHOWN ON FAIRVIEW QUADRANGLE	44
Mine Index 743, Surrotz Mine	44
Mine Index 5010	44
Mine Index 5011	44
Mine Index 5245	44
Mine Index 5247	44
Mine Index 5254	44
Mine Index 5265	44
Mine Index 5266	44
Mine Index 5268	44
Mine Index 5269	44
Mine Index 5271	44
Mine Index 5274	44
Mine Index 5993	44
Mine Index 6044	44
Mine Index 7723	44
Mine Index 7724, William Sheets	44
Mine Index 7726	44
Mine Index 7728, Cope Mine	44
MINES WHOSE LOCATIONS ARE NOT KNOWN, FAIRVIEW QUADRANGLE	45
INDEX OF MINES IN THE FAIRVIEW QUADRANGLE	53

INTRODUCTION

Coal has been mined in 76 counties of Illinois. More than 7,400 coal mines have operated since commercial mining began in Illinois about 1810; fewer than 30 are currently active. To detail the extent and location of coal mining in Illinois, the Illinois State Geological Survey (ISGS) has compiled maps and directories of known coal mines. The ISGS offers maps at a scale of 1:100,000 and accompanying directories for each county in which coal mining is known to have occurred. Maps at a scale of 1:24,000 and accompanying directories, such as this, are available for selected quadrangles. Contact the ISGS for a list of these quadrangles.

These larger scale maps show the approximate positions of mines in relation to surface features such as roads and water bodies, and indicate the mining method used and the accuracy of the mine boundaries. The maps are useful for locating mine boundaries relative to specific properties and for assessing the potential for subsidence in an area. Mine boundaries compiled from final mine surveys are generally shown within 200 feet of their true position. As a result of poor cartographic quality and inaccuracies in the original mine surveys, boundaries of some older mines may be mislocated on the map by 500 feet or more. Original mine maps should be consulted in situations that require precise delineation of mine boundaries or internal workings of mined areas.

This directory serves as a key to the accompanying mine map and provides basic information on the coal mines in the quadrangle. The directory is composed of two parts. Part I explains the symbols and patterns used on the accompanying map and the summary data presented for each mine. Part II numerically lists the mines in the quadrangle and summarizes the geology and production history of each mine. Total production for the mine, not the portion in the quadrangle, is given.

MINING IN THE FAIRVIEW QUADRANGLE

The Herrin and Springfield Coals were mined in the eastern part of the Fairview Quadrangle. Both seams cropped out along the streams. Many drift mines were driven into the hillsides to access the coal in the first half of the twentieth century. In later years, larger surface-mining machines were developed that could dig deeper and strip both veins, making the small drift mines unprofitable in comparison. The Springfield Coal was characterized by horsebacks and clay veins.

In the northwestern part of the quadrangle, beyond the outcrop of the Springfield Coal, the Colchester and Rock Island Coals were present, but deeper than they were further west (in the London Mills Quadrangle), and only a few mines worked these seams.

PART I EXPLANATION OF MAP AND MINE SUMMARY SHEET

INTERPRETING THE MAP

The map accompanying this directory shows the location of coal mines known to be present in the quadrangle. The map, corresponding to a U.S. Geological Survey (USGS) 7.5-minute quadrangle, covers an area bounded by lines of latitude and longitude 7.5-minutes apart. In Illinois, a quadrangle is approximately 6.5 miles east to west and 8.5 miles north to south, an area of about 56 square miles. The USGS generally offers one map of mines per quadrangle. In some areas where extensive mining occurred in two or more overlapping seams, separate maps are compiled for mines in each seam to maintain readability of the map.

Mine Type and Mining Method

The mine type is indicated on the map by pattern color: green represents surface mines; red and yellow represent underground mines. The red patterns are used for areas of underground mining that are documented by a primary or secondary source map. A yellow pattern is used for cases where no map of the mine workings is available, but a general area of mining can be inferred from property maps or production figures. The patterns indicate the main mining methods used in underground mines. The methods are (1) room and pillar and (2) high extraction. The method used gives some indication of the amount and pattern of coal extraction within each mined area, and has some influence on the timing and type of subsidence that can occur over a mine.

The following discussion and illustrations of mining methods are based on Guither et al. (1984).

In room-and-pillar mines, coal is removed from haulage-ways (entries) and selected areas called rooms. Pillars of unmined coal are left between the rooms to support the roof. Depending on the size of rooms and pillars, the amount of coal removed from the production areas will range from 40% to 70%.

Room and Pillar - mining is divided into six categories:

- room-and-pillar basic (RPB, fig. 1A), an early method that did not follow a preset mining plan and therefore resulted in very irregular designs;
- modified room and pillar (MRP, fig. 1B);
- room-and-pillar panel (RPP, fig. 1C);
- blind room and pillar (BRP, fig. 1D);
- checkerboard room and pillar (CRP, fig. 1E);
- room and pillar (RP), a classification used when the specific type of room-and-pillar mining is unknown.

Blind and checkerboard are the most common types of room-and-pillar mining used in Illinois today. The knowledge of room-and-pillar mining methods gives a trained engineer information on the nature of subsidence that may occur. A more extensive discussion of subsidence can be found in Bauer et al. (1993).

High-extraction These mining methods are subdivided into high-extraction retreat (HER, Fig 1F) and longwall (LW, Fig 1G, 1H). In these methods, much of the coal is removed within well defined areas of the mine. Subsidence of the surface above these areas occurs within weeks. Once the subsidence activity ceases, the potential for further movement over these areas is low; however, subsidence may continue for several years after mining.

High-extraction retreat mining is a form of room-and-pillar mining that extracts most of the coal. Rooms and pillars are developed in the panels, and the pillars are then systematically removed (fig. 1F).

In early (pre-1960) longwall mines, mining advanced in multiple directions from a central shaft (fig. 1G). Large pillars of coal were left around the shaft, but all coal was removed beyond these pillars. Miners placed rock and wooden props and cribs in the mined-out areas to support the mine roof. The overlying rock gradually settled onto these supports, thus producing subsidence at the surface. In post-1959 longwall mines, room-and-pillar methods have been used to develop the main entries of the mine and panel areas. Modern longwall methods extract 100 percent of the coal in the panel areas (fig. 1H).

SOURCE MAPS

Mine outlines depicted on the map are, whenever possible, based on maps made from original mine surveys. The process of compiling and digitizing the quadrangle map may produce errors of less than 200 feet in the location of mine boundaries. Larger errors of 500 feet or more are possible for mines that have incomplete or inaccurate source maps.

Because of the extreme complexity of some mine maps, detailed features of mined areas have been omitted. The digitized mine boundary includes the exterior boundary of all rooms or entries that were at least 80 feet wide or protruded 500 feet from the main mining area. Unmined areas between mines are shown if they are at least 80 feet wide; unmined blocks of coal within mines are shown if they are at least 400 feet on each side. Original source maps should be consulted when precise information on mine boundaries or interior features is needed.

The mine summary sheet lists the source maps used to determine each mine outline. The completeness of map sources is indicated on the map by a line symbol at the mine boundary. Source maps are organized in five categories.

Final mine map The mine outline was digitized from an original map made from mine surveys conducted within a few months after production ceased. The date of the map and the last reported production are listed on the summary sheet.

Not a final map The mine is currently active or the mine outline was made from a map based on mine surveys conducted more than a few months before production ceased. This implies the actual mined-out area is probably larger than the outline on the map. The mine summary sheet indicated the dates of source maps and the last reported production, as well as the approximate tonnage mined between these two dates (if the mine is abandoned). The summary sheet also lists the approximate acreage mined since the date of the map and, in some cases, indicates the area where additional mining may have taken place. This latter information is determined by locating on the map the active faces relative to probable boundaries of the mine property.

Undated map The source map was undated, so it may or may not be based on a final mine survey. When sufficient data are available, the probable acreage of the mined area is estimated from reported production, average seam thickness and a recovery rate comparable to other mines in the area. This information is listed in the summary sheet for the mine.

Incomplete map The source map did not show the entire mine. The summary sheet indicates the missing part of the mine map and the acreage of the unmapped area, which is estimated from the amount of coal known to have been produced from the mine.

Secondary source map The original mine map was not found so the outline shown was determined from secondary sources (e.g., outlines from small-scale regional maps published in other reports). The summary sheet describes the secondary sources.

POINTS AND LABELS

The locations of all known mine openings (shafts, slopes, and drifts) and surface mine tipples are plotted on the map. Tipples are areas where coal was cleaned, stockpiled, and loaded for shipping.

Only openings or tipples are plotted for mines without source maps. If the precise locations of these features are unknown, a special symbol is used to indicate the approximate location of the mine.

Each mine on the map is labeled with the names of the mine and operating company, ISGS mine index number, and years of operation (if known) if space permits. A seam designation is given on maps where more than one seam was mined. For a mine that operated under more than one name, only the most recent name is generally given. When a mine changed names or ownership shortly before closing, an earlier name is listed. All company and mine names are listed on the mine summary sheet in the directory, under the production history segment.

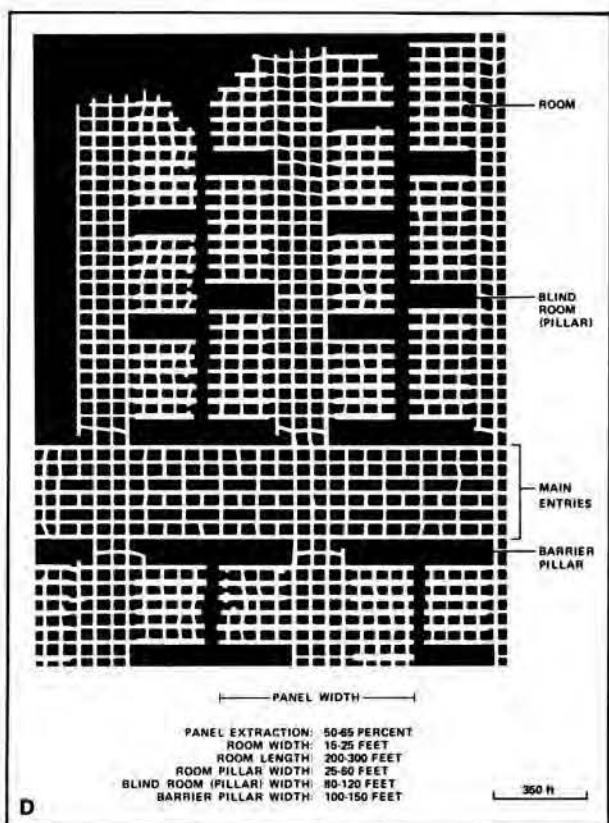
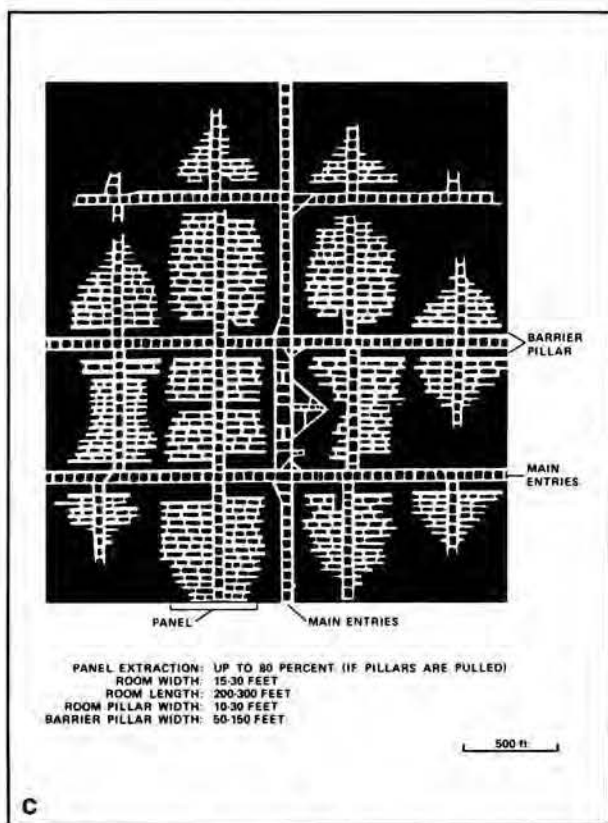
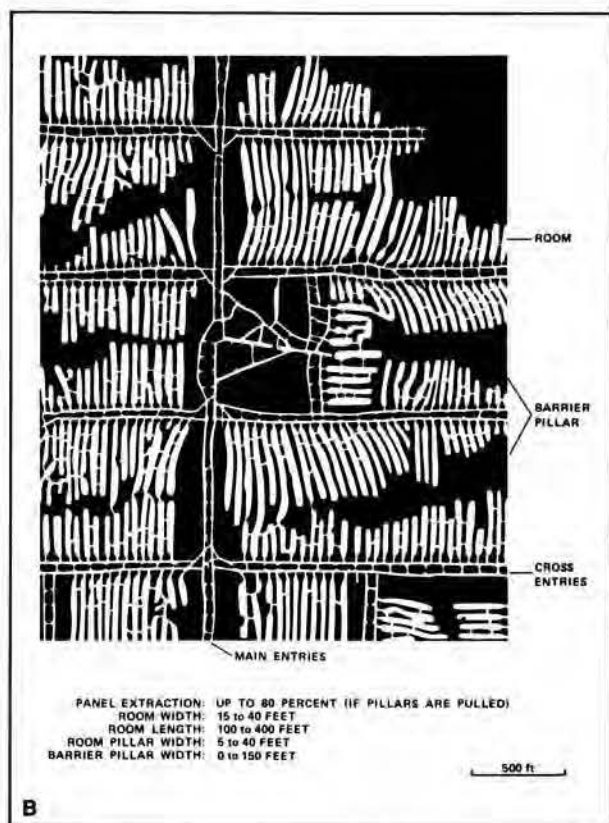
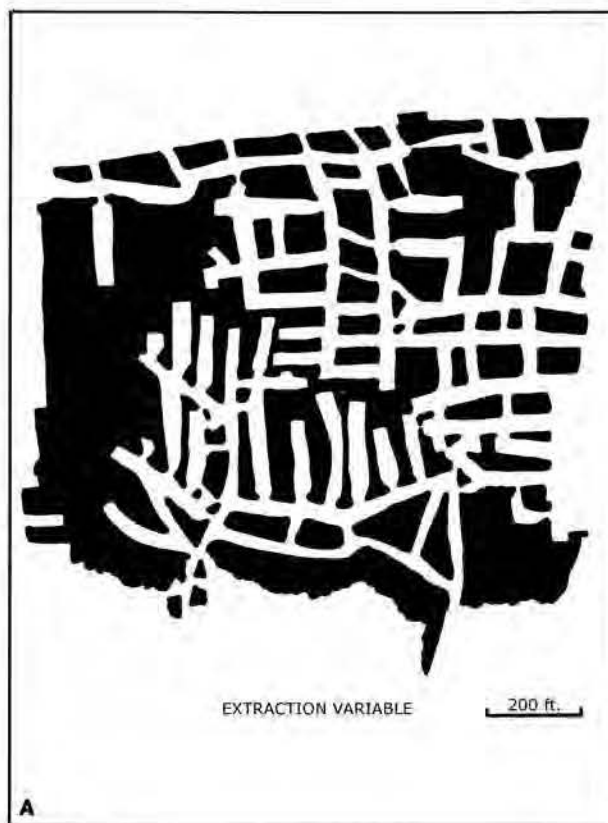


Figure 1 Mining methods: (A) room-and-pillar basic (RPB), (B) modified room and pillar (MRP), (C) room-and-pillar panel (RPP), (D) blind room and pillar (BRP).

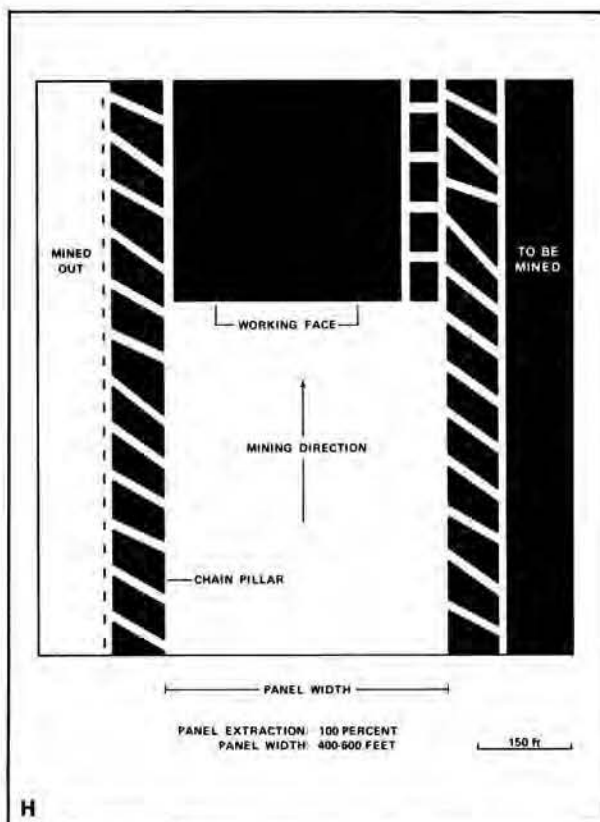
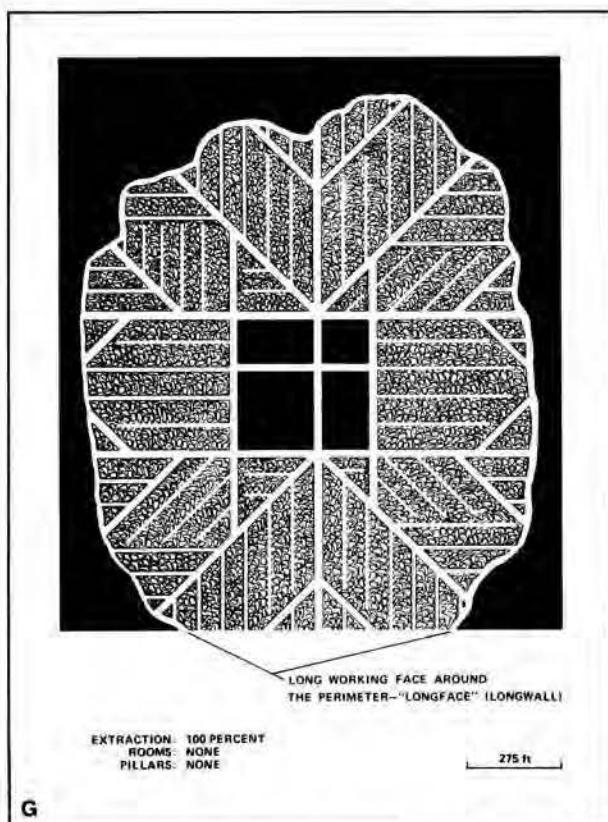
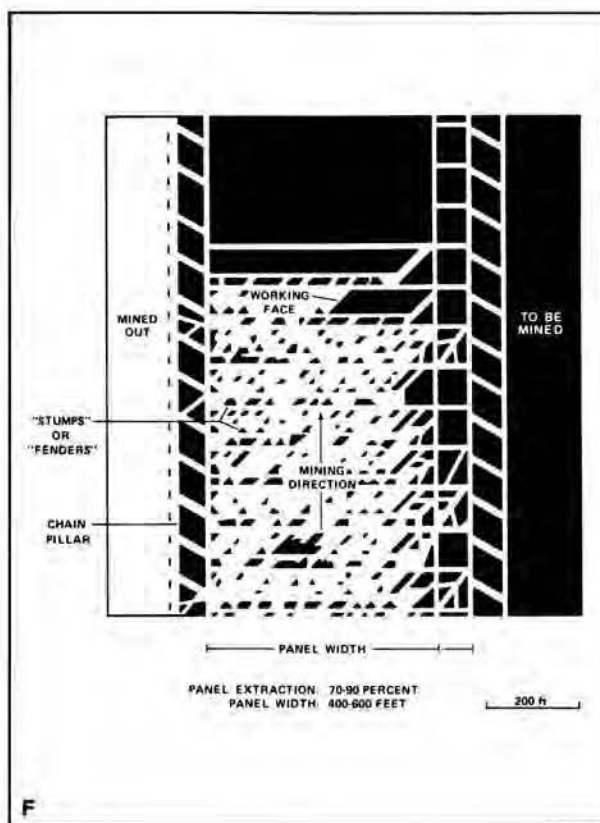
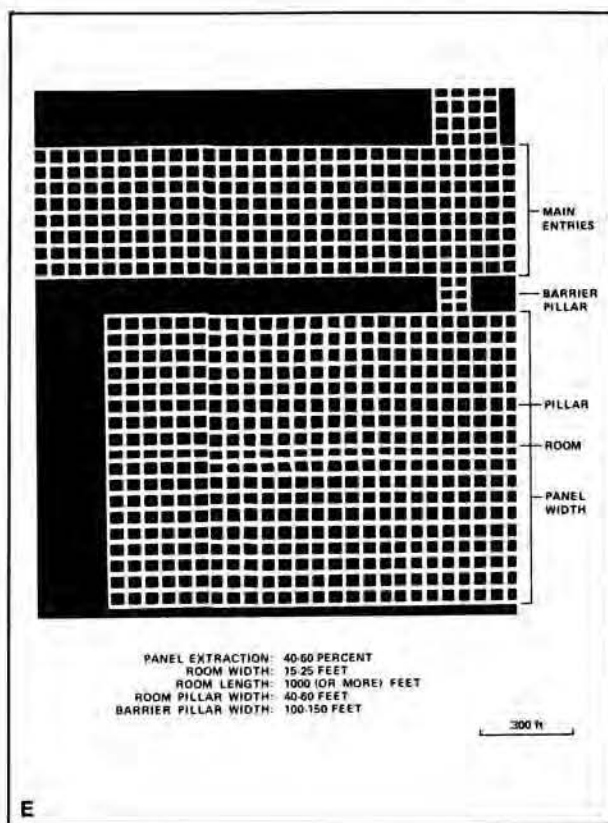


Figure 1 (cont.) Mining methods: (E) checkerboard room and pillar (CRP), (F) high extraction retreat (HER), (G) early (pre-1960) longwall, (H) post-1959 longwall



Figure 2 Generalized stratigraphic section, showing approximate vertical relations of coals in Illinois.

INTERPRETING A MINE SUMMARY SHEET

The mine summary sheet is arranged numerically by mine index number. Index numbers are shown on the map and in the mine listing. The mine summary sheet provides the following information (if available).

Company and mine name The last company or owner of the mine is used, unless no production was recorded for the last owner. In that case, the penultimate owner is listed. Mines often have no specific name; in these cases, the company name is also used as the mine name.

Type *Underground* denotes a subsurface mine in which the coal was reached through a shaft, slope, or a drift entry. *Surface* denotes a surface, open pit or strip mine.

Total mined-out acreage shown The total acreage of the mined area mapped, including any acreage mined on adjacent quadrangles, is calculated from the digitized outline of the mine. The acreage of large barrier pillars depicted on the map is excluded from the mined-out acreage. Small pillars not digitized are included in the acreage calculation. If the mine outline is not based on a final mine map, the acreage is followed by an estimate of additional acres that may have been mined. The estimate is determined from reported mine production, approximate thickness of the coal, and recovery rates calculated from nearby mines that used similar mining methods.

SHAFT, SLOPE, DRIFT OR TIPPLE LOCATIONS

Shaft, slope, drift, or tippie locations Locations of all known former entry points to underground mines or the location of coal cleaning, tippie, and shipping equipment used by the mine's facility are listed. The location is described in terms of county, township and range (Twp-Rge), section, and location within the section by quarters. NE SW NW, for instance, would describe the location in the northeast quarter of the southwest quarter of the northwest quarter. When sections are irregular in size, the quarters remain the same size and are oriented (or "registered") from the southeast corner of the section. Approximate footage from the section lines (FEL = from east line, FNL = from north line, for example) is given when that information is known; this indicates a surveyed location and is not derived from maps. Entry points are also plotted on the map and coded for the type of entry or tippie. A mine opening may have had many purposes during the life of the mine. Old hoist shafts are often later used for air and escape shafts; this information is included in the directory when known. The tippie for underground mines was generally located near the main shaft or slope. At surface mines, coal was sometimes hauled to a central tippie several miles from the mine pit.

GEOLOGY

Seam(s) mined The name of the coal seam(s) mined is listed, if known. If multiple seams were mined, they are all listed, although the mined-out area for each seam may be shown on separate maps. Figure 2 shows the stratigraphic section of the coal-bearing interval in Illinois, and the vertical relations among the coals.

Depth The depth to the top of the seam in the vicinity of the shaft is listed, if known. The depth is determined from notes made by geologists who visited the mine during its operation or from drill hole data in ISGS files. Depth generally varies little over the extent of a mine; however, reported depths for an individual mine may vary. Depth for surface-mined coals varies, and is usually represented as a range.

Thickness The approximate thickness of the mined seam is shown, if known. Thickness also comes from notes of geologists who visited the mine during its operation or from borehole data in ISGS files. Minimum, maximum, and average thicknesses are given when this information is available.

Mining method The principal mining method used at the mine (figs. 1A-H) is listed. See the mining methods section at the beginning of this directory for a discussion of this parameter.

Geologic problems reported Any known geologic problems, such as faults, water seepage, floor heaving, and unstable roof, encountered in the mine are reported. This information is from notes made by ISGS geologists who visited the mine, or from reports by mine inspectors published by the Illinois Department of Mines and Minerals, or from the source map(s). Geologic problems are not reported for active mines.

PRODUCTION HISTORY

Production history Tons of coal produced from the mine by each mine owner are totaled. When the source map used for the mine outline is not a final mine map, the tonnage produced since the date of the map is identified. For mines that extend into adjacent quadrangles, the tonnage reported includes areas mined in adjacent quadrangles.

SOURCE OF DATA

Source map This section lists information about the map(s) used to compile the mine outline and the locations of tipples and mine openings. In some cases more than one source map was used. For example, a map drawn before the mine closed may provide better information on original areas of the mine than a later map. When more than one map was used, the bibliography section explains what information was taken from each source.

Date The date of the most recent mine survey listed on the source map is reported.

Original scale The original scale of the source map is listed. Many maps are photo-reductions and are no longer at their original scale. The original scale gives some indication of the level of detail of the mine outline and the accuracy of the mine boundary relative to surface features. Generally, the larger the scale, the greater the accuracy and detail of the mine map. Mine outlines taken from source maps at scales smaller than 1:24,000 may be highly generalized and may well be inaccurately located with respect to surface features.

Digitized scale The scale of the digitized map is reported. The scale may be different from that of the original source map. In many cases the digitized map was made from a photo-reduction of the original source map, or the source map was not in a condition suitable for digitizing and the mine boundaries were transferred to another base map.

Map type Source maps are classified into five categories to indicate the probable completeness of the map. See discussion of source maps in the previous section.

Annotated bibliography Sources that provide information about the mine are listed, with the data taken from each source. Some commonly used sources are described below. Full bibliographic references are given for all other sources. Unless otherwise noted, all sources are available for public inspection at the ISGS.

Coal Reports Published since 1881, these reports contain tabular data on mine ownership, production, employment, and accidents. Some volumes include short descriptions made by mine inspectors of physical features and conditions in selected mines.

Directory of Illinois Coal Mines This source is a compilation of basic data about Illinois coal mines, originally gathered by ISGS staff in the early 1950s. Sources used for this directory are undocumented, but they are primarily Illinois Department of Mines and Minerals annual reports, ISGS mine notes, and coal company officials.

ENR Document 85/01, Guither, H. D., J. K. Hines, and R. A. Bauer, 1985 The Economic Effect of Underground Mining Upon Land Used for Illinois Agriculture: Illinois Department of Energy and Natural Resources Document 85/01, 185 p.

Microfilm map The U.S. Bureau of Mines maintains a microfilm archive of mine maps. A microfilm file for Illinois is available for public viewing at the ISGS.

Mine notes ISGS geologists have visited mines or contacted mine officials throughout the state since the early 1900s. Notes made during these visits range from brief descriptions of the mine location to long narratives (including sketches) of mining conditions and geology.

Federal Land Bank of St. Louis, Preliminary Reports on Subsidence Investigations Mining engineers working for the Federal Land Bank of St. Louis mapped areas of subsidence due to coal mining in the early 1930s. These reports often include county maps of mine properties with mined-out areas including shaft locations, as well as subsidence areas.

REFERENCES

Bauer, R. A., B. A. Trent, and P. B. Dumontelle, 1993, Mine Subsidence in Illinois: Facts for the Homeowner Considering Insurance, Illinois State Geological Survey, Environmental Geology Note 144, 16p.

Guither, H. D., J. K. Hines, and R. A. Bauer, 1985, The Economic Effects of Underground Mining Upon Land Used for Illinois Agriculture, Illinois Department of Energy and Natural Resources Document 85/01, 185p.

PART II DIRECTORY OF MINES IN THE FAIRVIEW QUADRANGLE

MINE SUMMARY SHEETS

A summary sheet on the geology and production history of each mine in the Fairview Quadrangle is provided. These summary sheets are arranged numerically by mine index number. Consult Part I for a complete explanation of the data listed in the summary sheet.

Mine Index 115

Frankovich Brothers Coal Company, Parrville Mine

Type: Underground Total mined-out acreage shown: 40 Production indicates approximately 5 acres were mined after the map date. The mine is smaller than expected for the reported production. Production indicates approximately 130 acres were mined. It is likely that mine index 5010 (not shown on accompanying because of later surface mining), shown as an old abandoned mine on the source map, was the earliest workings for the Parrville Mine, as they both used the same tipple.

SHAFT, SLOPE, DRIFT or TIPPLE LOCATIONS

Type	County	Township-Range	Section	Quarters-Footage
Main drift	Fulton	8N 3E	30	NE SW SW
Air drift	Fulton	8N 3E	30	NE SW SW

GEOLOGY

Seam(s) Mined	Depth (ft)	Thickness (ft)			Mining Method
		Min	Max	Avg	
Springfield		4.0	5.0	4.4	MRP

Geologic Problems Reported: The cap rock was 2 to 6 inches of limestone, which made a good roof except where it was thin. Horsebacks were seen in the coal, consisting of a stringer of clay cutting through the coal from the roof to the floor. The horsebacks generally averaged 12 inches wide, but ranged up to 36 inches wide. The mine as a whole was very wet and muddy.

PRODUCTION HISTORY

Company	Mine Name	Years	Production (tons)
William Nicholson	Nicholson	1886-1896	67,203
Nicholson & Taylor	Nicholson & Taylor	1896-1897	10,028 *
Taylor & Peck	Taylor & Peck No. 1	1897-1902 **	48,550
Essex & Fritz	Essex & Fritz No. 1, Parrville	1902-1908	44,266
Coal Creek Mining Company	Parrville	1908-1922	293,743
Frankovich Brothers Coal Company	Parrville	1922-1924	30,702
Frankovich Brothers Coal Company	Parrville	1924-1925	17,968 ***
			512,460

* The 1896 production values were incorrect in the Coal Report, and have not been used in tabulating mine production in Fulton County.

** Idle 1902

*** Production after map date

Last reported production: February 1925

SOURCES OF DATA

Source Map	Date	Original Scale	Digitized Scale	Map Type
Microfilm, document 351465	9-3-1924	1:2400	1:3310	Not final

Annotated Bibliography (data source, brief description of information)

Coal Reports - Production, ownership, years of operation.

Mine notes (Fulton County) - Mine type, drift location, seam, depth, thickness.

Microfilm map, document 351465, reel 03136, frame 205 - Drift locations, mine outline, mining method.

Mine Index 621

Peabody Coal Company, Middle Grove Mine

Type: Surface Total mined-out acreage shown: 16,152 (7,733 in the Herrin Coal and 8,419 in the Springfield Coal) The area shown is larger than expected for the reported production. Production indicates approximately 5,500 acres were mined. It is likely that production was not recorded, such as years when production was reported for only Fulton County or only Knox County.

SHAFT, SLOPE, DRIFT or TIPPLE LOCATIONS

Type	County	Township-Range	Section	Quarters-Footage
Tipple	Fulton	8N 3E	2	SE SE NE

GEOLOGY

Seam(s) Mined	Depth (ft)	Thickness (ft)			Mining Method
		Min	Max	Avg	
Herrin	15-48			3.07-4.07	Surface
Springfield	56-75			3.0-3.83	Surface

Geologic Problems Reported: The Herrin Coal sometimes had up to 4 inches of bone coal at the bottom of the seam. The Springfield Coal included horsebacks that reduced production.

PRODUCTION HISTORY

Company	Mine Name	Years	Production (tons)
Midland Electric Coal Corporation	Middle Grove No. 2	1933-1963	20,970,266 *
Midland Electric Coal Corporation	Middle Grove No. 3, Rapatee No. 2	1942-1963	14,333,136 **
Midland Electric Coal Corporation	Middle Grove No. 085	1963-1967	6,162,061
Peabody Coal Company	Middle Grove	1968-1968	<u>561,763</u>
			42,027,226

* Production, although listed in Fulton County, may include some Knox County production. All production from 1954 to 1962 was listed in Knox County, although mining did take place in Fulton County in that time period. The mine notes indicate that as many as 25 pits were operating at the same time.

** Knox County production; idle 1947

Last reported production: May 1968

SOURCES OF DATA

Source Map	Date	Original Scale	Digitized Scale	Map Type
Company, 10-9-7	3-1978	1:12000	1:12000	Not final
NAIP digital ortho-photo quadrangles	2004	1:6000	1:6000	Secondary source

Annotated Bibliography (data source, brief description of information)

Coal Reports - Production, ownership, years of operation.

Directory of Illinois Coal Mines (Fulton County) - Mine names, mine index, ownership, years of operation.

Mine notes (Fulton County) - Mine type, mine location, seam, depth, geologic problems.

Company map, Coal Section files, 10-9-7 - Mine outline.

National Agriculture Imagery Program map, digital ortho-photo quadrangle map, 2004 - Mine outline.

ISGS map library, 4102 i5.1-122 (8-1959) - Pit identification.

Mine Index 685
Sixth Vein Coal Company, Morse Mine

Type: Underground Total mined-out acreage shown: None; production indicates approximately 1 acre was mined.

SHAFT, SLOPE, DRIFT or TIPPLE LOCATIONS

Type	County	Township-Range	Section	Quarters-Footage
Mine	Knox	9N 3E	35 *	

* The mine's location within the section is not known. By convention, a point was placed in the center of the section. However, the mine may have been later surface-mined by Middle Grove Mine (mine index 621), and may no longer exist.

GEOLOGY

Seam(s) Mined	Depth (ft)	Thickness (ft)			Mining Method
		Min	Max	Avg	
Springfield					Underground

Geologic Problems Reported:

PRODUCTION HISTORY

Company	Mine Name	Years	Production (tons)
J. L. Morse	Morse	1928-1932	160 **
Raymond L. Morse	Morse	1933-1933	1,000
J. F. Morse	Morse	1934-1937 ***	2,877
Sixth Vein Coal Company	Morse	1938-1939	160
			<u>4,197</u>

** Idle 1929; production was not listed from 1930 to 1933 for mines producing less than 1,000 tons per year

*** Idle 1936 & 1937

Last reported production: 1939

SOURCES OF DATA

Source Map	Date	Original Scale	Digitized Scale	Map Type
Coal Section mine database	Undated	(text only)	1:24000 †	Secondary source

† The mine location was plotted on a 1:24000 USGS topographic map from the mine location description and digitized.

Annotated Bibliography (data source, brief description of information)

Coal Reports - Production, ownership, years of operation.

Directory of Illinois Coal Mines (Knox County) - Mine names, mine index, ownership, years of operation.

Mine Index 706**Midland Coal Company, Elm No. 2 or Bright Star Mine**

Type: Surface Total mined-out acreage shown: 4,556 The area shown on the accompanying map is larger than expected for the reported production. Production indicates approximately 2,575 acres were mined.

SHAFT, SLOPE, DRIFT or TIPPLE LOCATIONS

Type	County	Township-Range	Section	Quarters-Footage
Tipple	Fulton	8N 3E	20	NW SE SE
Tipple	Fulton	8N 3E	23	SE SW SW *

* More recent tipple, after mining to the west had ceased.

GEOLOGY

Seam(s) Mined	Depth (ft)	Thickness (ft)			Mining Method
		Min	Max	Avg	
Herrin	40-49			3.5-4.25	Surface
Springfield	47-87	3.83	4.75	4.25	Surface

Geologic Problems Reported: Clay dikes were noted cutting through the seam, some up to 16 inches wide.

PRODUCTION HISTORY

Company	Mine Name	Years	Production (tons)
Fairview Collieries Company	Flamingo	1942-1964	14,370,398
Peabody Coal Company	Bright Star	1964-1970	3,034,796
Midland Coal Company	Elm No. 2, Bright Star	1970-1972	439,483
			17,844,677

Last reported production: April 1972

SOURCES OF DATA

Source Map	Date	Original Scale	Digitized Scale	Map Type
NAIP digital ortho-photo quadrangles	2004	1:6000	1:6000	Secondary source

Annotated Bibliography (data source, brief description of information)

Coal Reports - Production, ownership, years of operation.

Directory of Illinois Coal Mines (Fulton County) - Mine names, mine index, ownership, years of operation.

Mine notes (Fulton County) - Mine type, mine location, seam, geologic problems.

National Agriculture Imagery Program map, digital ortho-photo quadrangle map, 2004 - Mine outline.

ISGS map library, 4103.F8 i5.1-75 - Pit identification, thickness.

Mine Index 961
Mid State Coal Company, Rapatee Mine

Type: Surface Total mined-out acreage shown: 1,629

SHAFT, SLOPE, DRIFT or TIPPLE LOCATIONS

Type	County	Township-Range	Section	Quarters-Footage
Pit or tippie	Fulton	8N 3E	1	SE

GEOLOGY

Seam(s) Mined	Depth (ft)	Thickness (ft)			Mining Method
		Min	Max	Avg	
Herrin	50-70			3.43-4.07	Surface
Springfield	10-100			3.5-4.0	Surface

Geologic Problems Reported: The Springfield Coal had a plethora of clay dikes, with up to 10 clay dikes observed along a 500-foot stretch of highwall. The high sulphur content contributed to the mine closing.

PRODUCTION HISTORY

Company	Mine Name	Years	Production (tons)
Midland Coal Company	Rapatee	1976-1988	6,595,328
Mid State Coal Company	Rapatee	1989-1996	3,456,896
			10,052,224

Last reported production: August 1996

SOURCES OF DATA

Source Map	Date	Original Scale	Digitized Scale	Map Type
NAIP digital ortho-photo quadrangles	2004	1:6000	1:6000	Secondary source

Annotated Bibliography (data source, brief description of information)

Coal Reports - Production, ownership, years of operation.
 Directory of Illinois Coal Mines (Fulton County) - Mine names, mine index, ownership, years of operation.
 Mine notes (Fulton County) - Mine type, pit location, seam, depth, geologic problems.
 National Agriculture Imagery Program map, digital ortho-photo quadrangle map, 2004 - Mine outline.
 Coal Section files, 6-392 (1985) - Pit identification.

Mine Index 2202
Shuler & Long Coal Company, Shuler & Long Mine

Type: Underground Total mined-out acreage shown: 24 Production indicates approximately 37 acres were mined after the map date, but the later mining most likely was later surface-mined by the Elm Mine (mine index 706).

SHAFT, SLOPE, DRIFT or TIPPLE LOCATIONS

Type	County	Township-Range	Section	Quarters-Footage
Slope	Fulton	8N 3E	31	NW NW NE
Slope	Fulton	8N 3E	31	NW NW NE
Air shaft	Fulton	8N 3E	31	NW NW NE

GEOLOGY

Seam(s) Mined	Depth (ft)	Thickness (ft)			Mining Method
		Min	Max	Avg	
Springfield				4.43	MRP

Geologic Problems Reported:

PRODUCTION HISTORY

Company	Mine Name	Years	Production (tons)
G. Wenzelman Coal Company	Wenzelman	1917-1919	8,359
Shuler & Long Coal Company	Shuler & Long	1919-1923	56,001
Shuler & Long Coal Company	Shuler & Long	1923-1926	117,403 *
			181,763

* Production after map date

Last reported production: May 1926

SOURCES OF DATA

Source Map	Date	Original Scale	Digitized Scale	Map Type
State archives, IL_796	1-30-1923	1:2400	1:2400	Not final

Annotated Bibliography (data source, brief description of information)

Coal Reports - Production, ownership, years of operation, mine type, seam, thickness, mining method.
 Directory of Illinois Coal Mines (Fulton County) - Mine names, mine index, ownership, years of operation.
 State archives, courtesy of Robert Gibson, DNR, IL_796 - Slope & shaft locations, mine outline, mining method.

Mine Index 2234**Lingenfelter Coal Company, Lingenfelter No. 4 Mine**

Type: Surface Total mined-out acreage shown: None; production indicates less than 1 acre was mined.

SHAFT, SLOPE, DRIFT or TIPPLE LOCATIONS

Type	County	Township-Range	Section	Quarters-Footage
Pit or tippie	Fulton	8N 3E	2	NW

GEOLOGY

Seam(s) Mined	Depth (ft)	Thickness (ft)			Mining Method
		Min	Max	Avg	
Springfield	20			4.5	Surface

Geologic Problems Reported:

PRODUCTION HISTORY

Company	Mine Name	Years	Production (tons)
Lingenfelter Coal Company	Lingenfelter No. 4	1956-1957	<u>650</u> 650

Last reported production: 1957

SOURCES OF DATA

Source Map	Date	Original Scale	Digitized Scale	Map Type
Mine notes	Undated	1:62500	1:62500	Secondary source

Annotated Bibliography (data source, brief description of information)

Coal Reports - Production, ownership, years of operation.

Directory of Illinois Coal Mines (Fulton County) - Mine names, mine index, ownership, years of operation.

Mine notes (Fulton County) - Mine type, mine location, seam, depth, thickness.

Mine Index 2235**Golden Rule Coal Company, Golden Rule Mine**

Type: Underground Total mined-out acreage shown: 21 Production indicates approximately 30 acres were mined after the map date.

SHAFT, SLOPE, DRIFT or TIPPLE LOCATIONS

Type	County	Township-Range	Section	Quarters-Footage
Main shaft	Fulton	8N 3E	2	SE SE NW
Air shaft	Fulton	8N 3E	2	SW SE NW

GEOLOGY

Seam(s) Mined	Depth (ft)	Thickness (ft)			Mining Method
		Min	Max	Avg	
Springfield	79-80			3.83-4.17	RPP

Geologic Problems Reported:

PRODUCTION HISTORY

Company	Mine Name	Years	Production (tons)
Golden Rule Coal Company	Golden Rule	1932-1932	3,911
Chadwick & Foster	Chadwick & Foster	1933-1933	7,843
Golden Rule Coal Company	Golden Rule	1934-1937	52,811
Golden Rule Coal Company	Golden Rule	1934-1942	90,476 *
			155,041

* Production after map date

Last reported production: March 1942

SOURCES OF DATA

Source Map	Date	Original Scale	Digitized Scale	Map Type
Microfilm, document 351599	10-15-1937	1:2400	1:2483	Not final

Annotated Bibliography (data source, brief description of information)

Coal Reports - Production, ownership, years of operation.

Directory of Illinois Coal Mines (Fulton County) - Mine names, mine index, ownership, years of operation.

Mine notes (Fulton County) - Mine type, shaft location, seam, depth, thickness.

Microfilm map, document 351599, reel 03136, frame 399 - Shaft locations, mine outline, mining method.

Mine Index 2237**Rapatee Coal Company, Rapatee Mine**

Type: Underground Total mined-out acreage shown: 4 The northern part of the mine, including the shaft and air shaft vicinity, were later surface-mined by Middle Grove Mine (mine index 621)

SHAFT, SLOPE, DRIFT or TIPPLe LOCATIONS

Type	County	Township-Range	Section	Quarters-Footage
Main shaft	Fulton	8N 3E	3	SE SE NW
Air shaft	Fulton	8N 3E	3	SE SE NW

GEOLOGY

Seam(s) Mined	Depth (ft)	Thickness (ft)			Mining Method
		Min	Max	Avg	
Springfield	40-47			3.9-4.0	MRP

Geologic Problems Reported: The mine was abandoned because there were too many horsebacks. The source map indicated westward expansion was limited by a "fault" that was likely the subcrop of the Springfield Coal.

PRODUCTION HISTORY

Company	Mine Name	Years	Production (tons)
Rapatee Coal Company	Rapatee	1934-1937	<u>16,821</u> 16,821

Last reported production: April 1937

SOURCES OF DATA

Source Map	Date	Original Scale	Digitized Scale	Map Type
Microfilm, document 351594	7-16-1937	1:1200	1:1075	Final

Annotated Bibliography (data source, brief description of information)

Coal Reports - Production, ownership, years of operation.

Directory of Illinois Coal Mines (Fulton County) - Mine names, mine index, ownership, years of operation.

Mine notes (Fulton County) - Mine type, shaft location, seam, depth, thickness.

Microfilm map, document 351594, reel 03136, frame 393 - Shaft locations, mine outline, mining method, geologic problems.

Mine Index 2238**Premier White Ash Coal Company, White Ash Mine**

Type: Underground Total mined-out acreage shown: None; production indicates approximately 3 acres were mined. Not shown on accompanying map due to later surface mining by Elm No. 2 Mine (mine index 706).

SHAFT, SLOPE, DRIFT or TIPPLE LOCATIONS

Type	County	Township-Range	Section	Quarters-Footage
Main drift	Fulton	8N 3E	22	SW SW SW

GEOLOGY

Seam(s) Mined	Depth (ft)	Thickness (ft)			Mining Method
		Min	Max	Avg	
Springfield	30			4.33-5.0	RP

Geologic Problems Reported:

PRODUCTION HISTORY

Company	Mine Name	Years	Production (tons)
White Ash Coal Company	White Ash	1934-1935	5,306
Premier Coal Company	White Ash	1936-1936	150
Premier White Ash Coal Company	White Ash	1937-1941	4,875
White Ash Coal Company	White Ash	1942-1942	563
Premier White Ash Coal Company	White Ash	1943-1943	200
			11,094

Last reported production: 1943

SOURCES OF DATA

Source Map	Date	Original Scale	Digitized Scale	Map Type
Mine notes	Undated	1:62500	1:62500	Secondary source

Annotated Bibliography (data source, brief description of information)

Coal Reports - Production, ownership, years of operation.

Directory of Illinois Coal Mines (Fulton County) - Mine names, mine index, ownership, years of operation.

Mine notes (Fulton County) - Mine type, drift location, seam, depth, thickness.

Mine Index 2239**Joe Dufour, Clean Mine**

Type: Underground Total mined-out acreage shown: 2 Production indicates approximately 3 acres were mined after the map date. Not shown on accompanying map due to later surface mining by Elm No. 2 Mine (mine index 706).

SHAFT, SLOPE, DRIFT or TIPPLE LOCATIONS

Type	County	Township-Range	Section	Quarters-Footage
Main slope	Fulton	8N 3E	27	SW NE SE
Air shaft	Fulton	8N 3E	27	SW NE SE

GEOLOGY

Seam(s) Mined	Depth (ft)	Thickness (ft)			Mining Method
		Min	Max	Avg	
Springfield	100			4.5	MRP

Geologic Problems Reported:

PRODUCTION HISTORY

Company	Mine Name	Years	Production (tons)
Clean Coal Company	Clean	1936-1938	9,994
Clean Coal Company	Clean	1938-1941	12,215 *
Dallefeld & Elias	Clean	1941-1941	981 *
Joe Dufour	Clean	1941-1941	260 *
			23,450

* Production after map date

Last reported production: 1941

SOURCES OF DATA

Source Map	Date	Original Scale	Digitized Scale	Map Type
Microfilm, document 351612	5-23-1938	1:2400	1:2648	Not final

Annotated Bibliography (data source, brief description of information)

Coal Reports - Production, ownership, years of operation.

Directory of Illinois Coal Mines (Fulton County) - Mine names, mine index, ownership, years of operation.

Mine notes (Fulton County) - Mine type, slope location, seam, depth, thickness.

Microfilm map, document 351612, reel 03136, frame 416 - Slope & shaft locations, mine outline, mining method.

Mine Index 2240
Pheasant & Myers, White Ash Mine

Type: Underground Total mined-out acreage shown: 2 Production indicates approximately 2 acres were mined after the map date.

SHAFT, SLOPE, DRIFT or TIPPLe LOCATIONS

Type	County	Township-Range	Section	Quarters-Footage
Main slope	Fulton	8N 3E	27	NE SW NE
Air shaft	Fulton	8N 3E	27	NE SW NE

GEOLOGY

Seam(s) Mined	Depth (ft)	Thickness (ft)			Mining Method
		Min	Max	Avg	
Springfield				4.5	MRP

Geologic Problems Reported:

PRODUCTION HISTORY

Company	Mine Name	Years	Production (tons)
Pheasant & E. Roth	White Ash	1934-1934	461
Pheasant Brothers	White Ash	1935-1937	2,084
Pheasant Brothers	White Ash	1937-1942	5,078 *
Pheasant & Myers	White Ash	1942-1942	185 *
			7,808

* Production after map date

Last reported production: 1942

SOURCES OF DATA

Source Map	Date	Original Scale	Digitized Scale	Map Type
Microfilm, document 351677	9-21-1939	1:1200	1:1406	Not final

Annotated Bibliography (data source, brief description of information)

Coal Reports - Production, ownership, years of operation.
 Directory of Illinois Coal Mines (Fulton County) - Mine names, mine index, ownership, years of operation.
 Mine notes (Fulton County) - Mine type, seam, thickness.
 Microfilm map, document 351677, reel 03137, frame 41 - Slope & shaft locations, mine outline, mining method.

Mine Index 2241
George Street, Street Mine

Type: Underground Total mined-out acreage shown: None; production indicates approximately 4 acres were mined. Not shown on accompanying map due to later surface mining by Elm No. 2 Mine (mine index 706).

SHAFT, SLOPE, DRIFT or TIPPLE LOCATIONS

Type	County	Township-Range	Section	Quarters-Footage
Main drift	Fulton	8N 3E	27	SW NW NE

GEOLOGY

Seam(s) Mined	Depth (ft)	Thickness (ft)			Mining Method
		Min	Max	Avg	
Springfield				4.0-4.5	RP

Geologic Problems Reported:

PRODUCTION HISTORY

Company	Mine Name	Years	Production (tons)
George Street	Street No. 1	1934-1941	9,297
Pierson & Moran	Street No. 1	1941-1942	3,350
H. W. Pearson	Pearson	1943-1944	<u>2,662</u>
			15,309

Last reported production: 1944

SOURCES OF DATA

Source Map	Date	Original Scale	Digitized Scale	Map Type
Mine notes	Undated	1:62500	1:62500	Secondary source

Annotated Bibliography (data source, brief description of information)

Coal Reports - Production, ownership, years of operation, mining method.

Directory of Illinois Coal Mines (Fulton County) - Mine names, mine index, ownership, years of operation.

Mine notes (Fulton County) - Mine type, drift location, seam, thickness.

Mine Index 2242
Long & Stevenour Coal Company, Long & Stevenour Mine

Type: Underground Total mined-out acreage shown: 20

SHAFT, SLOPE, DRIFT or TIPPLE LOCATIONS

Type	County	Township-Range	Section	Quarters-Footage
Main shaft	Fulton	8N 3E	27	NE NW NW

GEOLOGY

Seam(s) Mined	Depth (ft)	Thickness (ft)			Mining Method
		Min	Max	Avg	
Springfield	40			4.5-4.67	MRP

Geologic Problems Reported:

PRODUCTION HISTORY

Company	Mine Name	Years	Production (tons)
L. & S. Coal Company	L. & S.	1938-1939	6,948
Long & Stevenour	Long & Stevenour	1940-1941	20,534
L. & S. Coal Company	L. & S.	1942-1942	17,386
Long & Stevenour Coal Company	Long & Stevenour	1943-1945	<u>22,209</u>
			67,077

Last reported production: 1945

SOURCES OF DATA

Source Map	Date	Original Scale	Digitized Scale	Map Type
ISGS map library, 4103.F8 i5.1-82	1972	1:4800	1:4800	Secondary source

Annotated Bibliography (data source, brief description of information)

Coal Reports - Production, ownership, years of operation.
 Directory of Illinois Coal Mines (Fulton County) - Mine names, mine index, ownership, years of operation.
 Mine notes (Fulton County) - Mine type, shaft location, seam, depth, thickness.
 ISGS map library, 4103.F8 i5.1-82, map of Elm No. 2 Mine (mine index 706 - Shaft location, mine outline.

Mine Index 2243**W. E. Dellafeld Coal Company, Dellafeld No. 2 Mine**

Type: Underground Total mined-out acreage shown: 21 Production indicates approximately 20 acres were mined after the map date.

SHAFT, SLOPE, DRIFT or TIPPLE LOCATIONS

Type	County	Township-Range	Section	Quarters-Footage
Main slope	Fulton	8N 3E	28	SW SW SW
Air shaft	Fulton	8N 3E	28	SW SW SW

GEOLOGY

Seam(s) Mined	Depth (ft)	Thickness (ft)			Mining Method
		Min	Max	Avg	
Springfield	85-210	4.0	6.0	5.0	MRP

Geologic Problems Reported:

PRODUCTION HISTORY

Company	Mine Name	Years	Production (tons)
Joe Elias & Company	Elias	1934-1934	279
Elias Brothers	Elias	1935-1937	14,138
Fairview Coal Company	Fairview	1937-1938	5,051
Peaco Coal Company	Peaco	1938-1940	59,776
Peaco Coal Company	Peaco	1940-1942	66,120 *
W. E. Dellafeld Coal Company	Dellafeld No. 2	1942-1943	<u>10,088</u> *
			155,452

* Production after map date

Last reported production: 1943

SOURCES OF DATA

Source Map	Date	Original Scale	Digitized Scale	Map Type
Microfilm, document 351638	6-5-1940	1:840	1:1101	Not final

Annotated Bibliography (data source, brief description of information)

Coal Reports - Production, ownership, years of operation.

Directory of Illinois Coal Mines (Fulton County) - Mine names, mine index, ownership, years of operation.

Mine notes (Fulton County) - Mine type, slope location, seam, depth, thickness.

Microfilm map, document 351638, reel 03136, frame 457 - Slope & shaft locations, mine outline, mining method.

Mine Index 2244**E. F. Frederick, Frederick Mine**

Type: Underground Total mined-out acreage shown: None; production indicates less than 1 acre was mined. Not shown on the accompanying map due to later surface mining by Elm No. 2 Mine (mine index 706).

SHAFT, SLOPE, DRIFT or TIPPLE LOCATIONS

Type	County	Township-Range	Section	Quarters-Footage
Main drift	Fulton	8N 3E	30	SW

GEOLOGY

Seam(s) Mined	Depth (ft)	Thickness (ft)			Mining Method
		Min	Max	Avg	
Springfield				4.5	RP

Geologic Problems Reported:

PRODUCTION HISTORY

Company	Mine Name	Years	Production (tons)
E. F. Frederick	Frederick	1937-1937	<u>608</u> 608

Last reported production: 1937

SOURCES OF DATA

Source Map	Date	Original Scale	Digitized Scale	Map Type
Mine notes	Undated	1:62500	1:62500	Secondary source

Annotated Bibliography (data source, brief description of information)

Coal Reports - Production, ownership, years of operation.

Directory of Illinois Coal Mines (Fulton County) - Mine names, mine index, ownership, years of operation.

Mine notes (Fulton County) - Mine type, drift location, seam, thickness.

Mine Index 2245**Big Six Coal Company, Big Six Mine**

Type: Underground Total mined-out acreage shown: None; production indicates approximately 9 acres were mined.

SHAFT, SLOPE, DRIFT or TIPPLE LOCATIONS

Type	County	Township-Range	Section	Quarters-Footage
Main drift	Fulton	8N 3E	31	NW NE NW

GEOLOGY

Seam(s) Mined	Depth (ft)	Thickness (ft)			Mining Method
		Min	Max	Avg	
Springfield				4.5-5.0	RP

Geologic Problems Reported:

PRODUCTION HISTORY

Company	Mine Name	Years	Production (tons)
Big Six Coal Company	Big Six	1917-1924 *	35,397
			35,397

* Idle 1921

Last reported production: May 1924

SOURCES OF DATA

Source Map	Date	Original Scale	Digitized Scale	Map Type
Mine notes	3-20-1918	1:62500	1:62500	Secondary source

Annotated Bibliography (data source, brief description of information)

Coal Reports - Production, ownership, years of operation, mine type, seam, thickness, mining method.

Directory of Illinois Coal Mines (Fulton County) - Mine names, mine index, ownership, years of operation.

Mine notes (Fulton County) - Drift location.

Mine Index 2538**Harley T. Mundwiler, Mundwiler Mine**

Type: Underground Total mined-out acreage shown: None; production indicates less than 1 acre was mined.

SHAFT, SLOPE, DRIFT or TIPPLE LOCATIONS

Type	County	Township-Range	Section	Quarters-Footage
Main drift	Knox	9N 3E	35	SE SE SW

GEOLOGY

Seam(s) Mined	Depth (ft)	Thickness (ft)			Mining Method
		Min	Max	Avg	
Springfield				3.67	Underground

Geologic Problems Reported:

PRODUCTION HISTORY

Company	Mine Name	Years	Production (tons)
Frank Kling	Kling	1938-1938	215
Harley T. Mundwiler	Mundwiler	1939-1940	<u>105</u> 320

Last reported production: 1940

SOURCES OF DATA

Source Map	Date	Original Scale	Digitized Scale	Map Type
Mine notes	Undated	1:62500	1:62500	Secondary source

Annotated Bibliography (data source, brief description of information)

Coal Reports - Production, ownership, years of operation.

Directory of Illinois Coal Mines (Knox County) - Mine names, mine index, ownership, years of operation.

Mine notes (Knox County) - Mine type, drift location, seam, thickness.

Mine Index 2539
Little Coal Company, Little Mine

Type: Underground Total mined-out acreage shown: 78 A portion of the northeastern part of the mine was later surface-mined by Middle Grove Mine (mine index 621).

SHAFT, SLOPE, DRIFT or TIPPLE LOCATIONS

Type	County	Township-Range	Section	Quarters-Footage
Main slope	Knox	9N 3E	35	NW NW SW
Air shaft	Knox	9N 3E	35	NW NW SW

GEOLOGY

Seam(s) Mined	Depth (ft)	Thickness (ft)			Mining Method
		Min	Max	Avg	
Springfield	135			3.67	MRP

Geologic Problems Reported:

PRODUCTION HISTORY

Company	Mine Name	Years	Production (tons)
Little Coal Company	Little	1936-1954	285,046 285,046

Last reported production: June 1954

SOURCES OF DATA

Source Map	Date	Original Scale	Digitized Scale	Map Type
Microfilm, document 352452	5-18-1954	1:2400	1:2814	Final

Annotated Bibliography (data source, brief description of information)

Coal Reports - Production, ownership, years of operation.

Directory of Illinois Coal Mines (Knox County) - Mine names, mine index, ownership, years of operation.

Mine notes (Knox County) - Mine type, slope location, seam, depth, thickness.

Microfilm map, document 352452, reel 03139, frame 128 - Slope & shaft locations, mine outline, mining method.

Mine Index 2540**William Mertz, Mertz Mine**

Type: Underground Total mined-out acreage shown: 6 Production indicates less than 1 acre was mined after the map date. The slope entry and the northern and eastern parts of the mine were later surface-mined by Middle Grove Mine (mine index 621).

SHAFT, SLOPE, DRIFT or TIPPLe LOCATIONS

Type	County	Township-Range	Section	Quarters-Footage
Main slope	Knox	9N 3E	35	NE SW NW
Air shaft	Knox	9N 3E	35	SE SW NW

GEOLOGY

Seam(s) Mined	Depth (ft)	Thickness (ft)			Mining Method
		Min	Max	Avg	
Springfield	80-90			3.83	MRP

Geologic Problems Reported:

PRODUCTION HISTORY

Company	Mine Name	Years	Production (tons)
William Mertz	Mertz	1919-1920	1,422
William Meetz & Bates	Meetz & Bates	1920-1922	2,200 *
William Mertz	Mertz	1922-1929	28,648 **
William Mertz	Mertz	1929-1945	1,886 ***
			34,156

* Production was not reported for mines producing less 10,000 tons in 1922.

** Production was not reported in 1931 for mines producing less than 1,000 tons.

*** Production after map date

Last reported production: 1945

SOURCES OF DATA

Source Map	Date	Original Scale	Digitized Scale	Map Type
Microfilm, document 352442	10-10-1929	1:1200	1:993	Not final
Microfilm, document 352453	6-28-1942	1:1200	1:1076	Not final

Annotated Bibliography (data source, brief description of information)

Coal Reports - Production, ownership, years of operation.

Directory of Illinois Coal Mines (Knox County) - Mine names, mine index, ownership, years of operation.

Mine notes (Knox County) - Seam, depth, thickness.

Microfilm map, document 352442, reel 03139, frame 118 - Slope & shaft locations, mine outline, mining method.

Microfilm map, document 352453, reel 03139, frame 130 - Mine outline (west).

Mine Index 2542
Orville Schatz, Lillie Creek Mine

Type: Underground Total mined-out acreage shown: 51 Production indicates approximately 2 acres were mined after the map date. The area shown is larger than expected for the reported production. Production indicates about 12 acres were mined. The mine workings were not shown on the source map; it is likely that large un-mined areas exist within the mine outline.

SHAFT, SLOPE, DRIFT or TIPPLE LOCATIONS

Type	County	Township-Range	Section	Quarters-Footage
Main slope	Knox	9N 3E	35	NE NW NE
Air shaft	Knox	9N 3E	35	NW NW NE

GEOLOGY

Seam(s) Mined	Depth (ft)	Thickness (ft)			Mining Method
		Min	Max	Avg	
Springfield	72			3.83	MRP

Geologic Problems Reported:

PRODUCTION HISTORY

Company	Mine Name	Years	Production (tons)
Lillie Creek Coal Company	Lillie Creek	1938-1940	23,499
Orville Schatz	Lillie Creek	1941-1942	16,609
Orville Schatz	Lillie Creek	1942-1943	<u>6,347 *</u>
			46,455

* Production after map date

Last reported production: 1943

SOURCES OF DATA

Source Map	Date	Original Scale	Digitized Scale	Map Type
Microfilm, document 352455	8-1-1942	1:1200	1:1986	Not final

Annotated Bibliography (data source, brief description of information)

Coal Reports - Production, ownership, years of operation.

Directory of Illinois Coal Mines (Knox County) - Mine names, mine index, ownership, years of operation.

Mine notes (Knox County) - Mine type, slope location, seam, depth, thickness.

Microfilm map, document 352455, reel 03139, frame 133 - Slope & shaft locations, mine outline, mining method.

Mine Index 4173**Joe DuFour, DuFour Mine**

Type: Underground Total mined-out acreage shown: None; production indicates less than 1 acre was mined. Not shown on accompanying map due to later surface mining by Elm No. 2 Mine (mine index 706).

SHAFT, SLOPE, DRIFT or TIPPLE LOCATIONS

Type	County	Township-Range	Section	Quarters-Footage
Main drift	Fulton	8N 3E	27	NW SE SE

GEOLOGY

Seam(s) Mined	Depth (ft)	Thickness (ft)			Mining Method
		Min	Max	Avg	
Springfield				4.0	RP

Geologic Problems Reported:

PRODUCTION HISTORY

Company	Mine Name	Years	Production (tons)
Joe DuFour	DuFour	1926-1936	2,687 *
			2,687

* Production was not reported from 1930 to 1933 for mines producing less than 1,000 tons per year.

Last reported production: 1936

SOURCES OF DATA

Source Map	Date	Original Scale	Digitized Scale	Map Type
Mine notes	Undated	1:62500	1:62500	Secondary source

Annotated Bibliography (data source, brief description of information)

Coal Reports - Production, ownership, years of operation, seam.

Directory of Illinois Coal Mines (Fulton County) - Mine names, mine index, ownership, years of operation.

Mine notes (Fulton County) - Mine type, drift location.

Mine Inspector's reports, courtesy of Joe Pelc, IDNR - Mine type, drift location, thickness, mining method.

Mine Index 5246**L. M. Turner, Turner Mine**

Type: Underground Total mined-out acreage shown: None; production indicates less than 1 acre was mined. The mine is not shown on the accompanying map due to later surface mining by Elm Mine (mine index 706).

SHAFT, SLOPE, DRIFT or TIPPLe LOCATIONS

Type	County	Township-Range	Section	Quarters-Footage
Main drift	Fulton	8N 3E	21	NW NE SW

GEOLOGY

Seam(s) Mined	Depth (ft)	Thickness (ft)			Mining Method
		Min	Max	Avg	
Springfield	25-30			4.0-5.0	RP

Geologic Problems Reported:

PRODUCTION HISTORY

Company	Mine Name	Years	Production (tons)
L. M. Turner	Turner	1906-1911	<u>520</u> 520

Last reported production: 1911

SOURCES OF DATA

Source Map	Date	Original Scale	Digitized Scale	Map Type
ISGS field notes (T. E. Savage)	Undated	1:62500	1:62500	Secondary source

Annotated Bibliography (data source, brief description of information)

Coal Reports - Production, ownership, years of operation, mine type, seam, depth, thickness, mining method.
Directory of Illinois Coal Mines (Fulton County) - Mine names, mine index, ownership, years of operation.
ISGS field notes (Fulton County) - Mine type, drift location.

Mine Index 5248**William E. Hornbeck, Hornbeck Mine**

Type: Underground Total mined-out acreage shown: None; production indicates less than 1 acre was mined. Not shown on accompanying map due to later surface mining by Elm Mine (mine index 706).

SHAFT, SLOPE, DRIFT or TIPPLE LOCATIONS

Type	County	Township-Range	Section	Quarters-Footage
Main drift	Fulton	8N 3E	22	SE SE SE

GEOLOGY

Seam(s) Mined	Depth (ft)	Thickness (ft)			Mining Method
		Min	Max	Avg	
Springfield	9-75			3.67-5.0	RP

Geologic Problems Reported:

PRODUCTION HISTORY

Company	Mine Name	Years	Production (tons)
William E. Hornbeck	Hornbeck	1909-1916	<u>2,824</u> 2,824

Last reported production: 1916

SOURCES OF DATA

Source Map	Date	Original Scale	Digitized Scale	Map Type
ISGS field notes (T. E. Savage)	1911	1:62500	1:62500	Secondary source

Annotated Bibliography (data source, brief description of information)

Coal Reports - Production, ownership, years of operation, mine type, seam, depth, thickness, mining method.
Directory of Illinois Coal Mines (Fulton County) - Mine names, mine index, ownership, years of operation.
ISGS field notes (Fulton County) - Mine type, drift location.

Mine Index 5250
Richard Henning, Henning Mine

Type: Underground Total mined-out acreage shown: None; production indicates approximately 2 acres were mined. Not shown on accompanying map due to later surface mining by Elm No. 2 Mine (mine index 706).

SHAFT, SLOPE, DRIFT or TIPPLE LOCATIONS

Type	County	Township-Range	Section	Quarters-Footage
Main drift	Fulton	8N 3E	27	NW NW SE

GEOLOGY

Seam(s) Mined	Depth (ft)	Thickness (ft)			Mining Method
		Min	Max	Avg	
Herrin	40-65			4.0-5.0	RP

Geologic Problems Reported:

PRODUCTION HISTORY

Company	Mine Name	Years	Production (tons)
Elmer DeLong	DeLong	1908-1909	664
DeLong Brothers	DeLong	1909-1910	716
Elmer DeLong	DeLong	1910-1913	3,640
Thomas Morecraft	Morecraft	1913-1914	225
Richard Henning	Henning	1914-1915	<u>1,475</u>
			6,720

Last reported production: 1915

SOURCES OF DATA

Source Map	Date	Original Scale	Digitized Scale	Map Type
ISGS field notes (T. E. Savage)	Undated	1:62500	1:62500	Secondary source

Annotated Bibliography (data source, brief description of information)

Coal Reports - Production, ownership, years of operation, mine type, seam, depth, thickness, mining method.
 Directory of Illinois Coal Mines (Fulton County) - Mine names, mine index, ownership, years of operation.
 ISGS field notes (Fulton County) - Mine type, drift location, seam.

Mine Index 5251
George Edgerly, Edgerly Mine

Type: Underground Total mined-out acreage shown: None; production indicates approximately 2 acres were mined.

SHAFT, SLOPE, DRIFT or TIPPLE LOCATIONS

Type	County	Township-Range	Section	Quarters-Footage
Main drift	Fulton	8N 3E	27	NW NE NW

GEOLOGY

Seam(s) Mined	Depth (ft)	Thickness (ft)			Mining Method
		Min	Max	Avg	
Herrin	40-80			4.0-4.5	RP

Geologic Problems Reported:

PRODUCTION HISTORY

Company	Mine Name	Years	Production (tons)
Edwin Clarkson	Clarkson	1907-1913	3,720
George Edgerly	Edgerly	1913-1929 *	5,103
			8,823

* Production was not reported for mines producing less than 10,000 tons in 1922; idle 1923

Last reported production: 1929

SOURCES OF DATA

Source Map	Date	Original Scale	Digitized Scale	Map Type
ISGS field notes (T. E. Savage)	Undated	1:62500	1:62500	Secondary source

Annotated Bibliography (data source, brief description of information)

Coal Reports - Production, ownership, years of operation, mine type, depth, thickness, mining method.
 Directory of Illinois Coal Mines (Fulton County) - Mine names, mine index, ownership, years of operation.
 ISGS field notes (Fulton County) - Mine type, drift location, seam.

Mine Index 5252
M. J. Stout, Stout Mine

Type: Underground Total mined-out acreage shown: None; production indicates less than 1 acre was mined. Not shown on accompanying map due to later surface mining by Elm No. 2 Mine (mine index 706)

SHAFT, SLOPE, DRIFT or TIPPLE LOCATIONS

Type	County	Township-Range	Section	Quarters-Footage
Main drift	Fulton	8N 3E	28	NW NW NW

GEOLOGY

Seam(s) Mined	Depth (ft)	Thickness (ft)			Mining Method
		Min	Max	Avg	
Springfield				4.0	RP

Geologic Problems Reported: A horseback was noted.

PRODUCTION HISTORY

Company	Mine Name	Years	Production (tons)
M. J. Stout	Stout	1909-1910	<u>120</u> 120

Last reported production: 1910

SOURCES OF DATA

Source Map	Date	Original Scale	Digitized Scale	Map Type
ISGS field notes (T. E. Savage)	Undated	1:62500	1:62500	Secondary source

Annotated Bibliography (data source, brief description of information)

Coal Reports - Production, ownership, years of operation, mine type, thickness, mining method.
 Directory of Illinois Coal Mines (Fulton County) - Mine names, mine index, ownership, years of operation.
 ISGS field notes (Fulton County) - Mine type, drift location, seam, geologic problems.

Mine Index 5253**A. J. Gunnett, Gunnett Mine**

Type: Underground Total mined-out acreage shown: None; production indicates approximately 8 acres were mined. Not shown on accompanying map due to later surface mining by Elm No. 2 Mine (mine index 706)

SHAFT, SLOPE, DRIFT or TIPPLE LOCATIONS

Type	County	Township-Range	Section	Quarters-Footage
Main drift	Fulton	8N 3E	29	SE NE SW

GEOLOGY

Seam(s) Mined	Depth (ft)	Thickness (ft)			Mining Method
		Min	Max	Avg	
Springfield	12-65			4.0-5.0	RP

Geologic Problems Reported: Horsebacks were common.

PRODUCTION HISTORY

Company	Mine Name	Years	Production (tons)
A. J. Gunnett	Gunnett	1899-1918	<u>33,967</u> 33,967

Last reported production: 1918

SOURCES OF DATA

Source Map	Date	Original Scale	Digitized Scale	Map Type
ISGS field notes (T. E. Savage)	Undated	1:62500	1:62500	Secondary source

Annotated Bibliography (data source, brief description of information)

Coal Reports - Production, ownership, years of operation, mine type, seam, depth, thickness, mining method.
Directory of Illinois Coal Mines (Fulton County) - Mine names, mine index, ownership, years of operation.
ISGS field notes (Fulton County) - Mine type, drift location, ownership, geologic problems.

Mine Index 5273**P. Weaver, Weaver Mine**

Type: Underground Total mined-out acreage shown: None; production indicates less than 1 acre was mined. Weaver Mine is not shown on the accompanying map due to later surface mining by the Elm No. 2 Mine (mine index 706).

SHAFT, SLOPE, DRIFT or TIPPLE LOCATIONS

Type	County	Township-Range	Section	Quarters-Footage
Main drift	Fulton	8N 3E	30	NE SW SW

GEOLOGY

Seam(s) Mined	Depth (ft)	Thickness (ft)			Mining Method
		Min	Max	Avg	
Springfield	0			4.0	RP

Geologic Problems Reported:

PRODUCTION HISTORY

Company	Mine Name	Years	Production (tons)
P. Weaver	Weaver	1909-1910	<u>275</u> 275

Last reported production: 1910

SOURCES OF DATA

Source Map	Date	Original Scale	Digitized Scale	Map Type
ISGS field notes (T. E. Savage)	Undated	1:62500	1:62500	Secondary source

Annotated Bibliography (data source, brief description of information)

Coal Reports - Production, ownership, years of operation, mine type, seam, thickness, mining method.
Directory of Illinois Coal Mines (Fulton County) - Mine names, mine index, ownership, years of operation.
ISGS field notes (Fulton County) - Mine type, drift location, mine ownership.

Mine Index 5991
Dewitt Smith Mine

Type: Underground Total mined-out acreage shown: 9

SHAFT, SLOPE, DRIFT or TIPPLE LOCATIONS

Type	County	Township-Range	Section	Quarters-Footage
No. 1 drift	Knox	9N 3E	35	NW NE NW
No. 2 drift	Knox	9N 3E	35	NE NE NW
No. 3 drift	Knox	9N 3E	35	NW NE NW
Air drift	Knox	9N 3E	35	NW NE NW

GEOLOGY

Seam(s) Mined	Depth (ft)	Thickness (ft)			Mining Method
		Min	Max	Avg	
Springfield					RPB

Geologic Problems Reported:

PRODUCTION HISTORY

Company	Mine Name	Years	Production (tons)
	Dewitt Smith *		

* The property was owned by Dewitt Smith, but the operator is not known. The map was generated in 1919 with extensions and updates in 1938 and "work is abandoned June 26, 1942" labeling the eastern extension. It is likely that at least two operators mined here. The early work prior to July 1919 with room-and-pillar basic mining method, then later work in 1938 by a different operator who accessed the eastern part of the reserves through the No. 2 drift with modified room-and-pillar mining method. The operator is likely listed in the unlocated mines at the back of this directory.

Last reported production:

SOURCES OF DATA

Source Map	Date	Original Scale	Digitized Scale	Map Type
Microfilm, document 352450	6-26-1942	1:1200	1:1407	Final

Annotated Bibliography (data source, brief description of information)

Directory of Illinois Coal Mines (Knox County) - Mine names, mine index, ownership, years of operation.
Microfilm map, document 352450, reel 03139, frame 126 - Drift locations, mine outline, mining method.

Mine Index 5992
Sorence Foster, Foster Mine

Type: Underground Total mined-out acreage shown: 1 Production indicates less than 1 acre was mined after the map date.

SHAFT, SLOPE, DRIFT or TIPPLE LOCATIONS

Type	County	Township-Range	Section	Quarters-Footage
Main slope	Knox	9N 3E	35	NE NW NW
Air shaft	Knox	9N 3E	26	SE SW SW

GEOLOGY

Seam(s) Mined	Depth (ft)	Thickness (ft)			Mining Method
		Min	Max	Avg	
Springfield					MRP

Geologic Problems Reported:

PRODUCTION HISTORY

Company	Mine Name	Years	Production (tons)
D. Foster	Foster	1917-1919	2,674
Lawrence L. Foster	Foster	1919-1925	4,821 *
L. L. Foster & Halford	Foster & Halford	1925-1925	601
L. L. Foster	Foster	1926-1926	237 **
Sorence Foster	Foster	1927-1929	<u>3,330</u> **
			11,663

* Production was not listed in 1922 for mines producing less than 10,000 tons.

** Production after map date

Last reported production: 1929

SOURCES OF DATA

Source Map	Date	Original Scale	Digitized Scale	Map Type
Microfilm, document 352453	6-8-1926	1:240	1:215	Not final

Annotated Bibliography (data source, brief description of information)

Coal Reports - Production, ownership, years of operation.

Directory of Illinois Coal Mines (Knox County) - Mine names, mine index, ownership, years of operation.

Mine notes (Knox County) - Mine type, shaft location, seam, depth, thickness.

Microfilm map, document 352453, reel 03139, frame 129 - Slope & shaft locations, mine outline, mining method.

Mine Index 5994
John Paul, Paul Mine

Type: Underground Total mined-out acreage shown: None; production indicates approximately 1 acre was mined.

SHAFT, SLOPE, DRIFT or TIPPLE LOCATIONS

Type	County	Township-Range	Section	Quarters-Footage
Main drift	Knox	9N 3E	35	NW NW NE

GEOLOGY

Seam(s) Mined	Depth (ft)	Thickness (ft)			Mining Method
		Min	Max	Avg	
Springfield				3.67	RP

Geologic Problems Reported:

PRODUCTION HISTORY

Company	Mine Name	Years	Production (tons)
Bybie & Paul	Bybie & Paul	1909-1911	2,350
John Paul	Paul	1911-1912	400
			<u>2,750</u>

Last reported production: 1912

SOURCES OF DATA

Source Map	Date	Original Scale	Digitized Scale	Map Type
ISGS field notes (T. E. Savage)	Undated	1:62500	1:62500	Secondary source

Annotated Bibliography (data source, brief description of information)

Coal Reports - Production, ownership, years of operation, mine type, seam, thickness, mining method.
 Directory of Illinois Coal Mines (Knox County) - Mine names, mine index, ownership, years of operation.
 ISGS field notes (Knox County) - Mine type, drift location, seam.

Mine Index 5995
Gavin Graham, Graham Mine

Type: Underground Total mined-out acreage shown: None; production indicates less than 1 acre was mined.

SHAFT, SLOPE, DRIFT or TIPPLE LOCATIONS

Type	County	Township-Range	Section	Quarters-Footage
Mine	Knox	9N 3E	35	NW NW SW

GEOLOGY

Seam(s) Mined	Depth (ft)	Thickness (ft)			Mining Method
		Min	Max	Avg	
Springfield					Underground

Geologic Problems Reported:

PRODUCTION HISTORY

Company	Mine Name	Years	Production (tons)
Gavin Graham	Graham	1934-1936	<u>3,476</u> 3,476

Last reported production: 1936

SOURCES OF DATA

Source Map	Date	Original Scale	Digitized Scale	Map Type
Coal Section files, Canton Quadrangle	Undated	1:62500	1:62500	Secondary source

Annotated Bibliography (data source, brief description of information)

Coal Reports - Production, ownership, years of operation.
 Directory of Illinois Coal Mines (Fulton County) - Mine names, mine index, ownership, years of operation.
 Coal Section files, undated work map on USGS topographic map, 15-minute Canton Quadrangle - Mine location.

Mine Index 7725
Henry Vice, Vice Mine

Type: Underground Total mined-out acreage shown: None; production indicates approximately 2 acres were mined.

SHAFT, SLOPE, DRIFT or TIPPLE LOCATIONS

Type	County	Township-Range	Section	Quarters-Footage
Main drift	Fulton	8N 3E	20	NE NW NE

GEOLOGY

Seam(s) Mined	Depth (ft)	Thickness (ft)			Mining Method
		Min	Max	Avg	
Springfield	35-75			4.0-5.0	RP

Geologic Problems Reported:

PRODUCTION HISTORY

Company	Mine Name	Years	Production (tons)
Henry Vice	Vice	1905-1915	<u>9,302</u> 9,302

Last reported production: 1915

SOURCES OF DATA

Source Map	Date	Original Scale	Digitized Scale	Map Type
ISGS field notes (T. E. Savage)	Undated	1:62500	1:62500	Secondary source

Annotated Bibliography (data source, brief description of information)

Coal Reports - Production, ownership, years of operation, mine type, seam, depth, thickness, mining method.
 Directory of Illinois Coal Mines (Fulton County) - Mine names, mine index, ownership, years of operation.
 ISGS field notes (Fulton County) - Mine type, drift location, seam.

Mine Index 7727
Daniel Pearson, Pearson Mine

Type: Underground Total mined-out acreage shown: None; production indicates approximately 6 acres were mined.

SHAFT, SLOPE, DRIFT or TIPPLE LOCATIONS

Type	County	Township-Range	Section	Quarters-Footage
Main drift	Knox	9N 3E	35	NW *

* The location described in the field notes was SE NW NW, but the topographic knob where the drift mine was located on the 1:62,500 (15-minute) topographic map is further east on the 1:24,000 topographic map. Rather than change the stated location, the specific location is not listed above.

GEOLOGY

Seam(s) Mined	Depth (ft)	Thickness (ft)			Mining Method
		Min	Max	Avg	
Springfield	40			3.67	RP

Geologic Problems Reported:

PRODUCTION HISTORY

Company	Mine Name	Years	Production (tons)
Jesse Hillier	Hillier	1904-1913	13,048
Daniel Pearson	Pearson	1913-1916	4,000
Jesse Hillier	Hillier	1916-1918	2,684
Daniel Pearson	Pearson	1918-1919	<u>1,200</u>
			20,932

Last reported production: 1919

SOURCES OF DATA

Source Map	Date	Original Scale	Digitized Scale	Map Type
ISGS field notes (T. E. Savage)	Undated	1:62500	1:62500	Secondary source

Annotated Bibliography (data source, brief description of information)

Coal Reports - Production, ownership, years of operation, depth, mining method.

Directory of Illinois Coal Mines (Knox County) - Mine names, mine index, ownership, years of operation.

ISGS field notes (Knox County) - Mine type, drift location, seam, thickness.

OTHER MINES SHOWN ON FAIRVIEW QUADRANGLE

Mine Index 743, Surrotz Mine * SE NW SE 20-T8N-R3E, drift, Springfield Coal source: ISGS field notes (L. C. McCabe, 7-12-1928)

Mine Index 5010 * SE NW SW 30-T8N-R3E, drift, Springfield Coal, likely the early workings of the Parrville Mine source: Microfilm, document 351465, map of Parrville Mine (mine index 115, 9-3-1924)

Mine Index 5011 NE NW NW 30-T8N-R3E, surface source: Coal Section files, Canton (15-minute) Quadrangle (undated)

Mine Index 5245 SE SE NW 20-T8N-R3E, drift, Springfield Coal source: ISGS field notes (L. C. McCabe, 7-10-1928) and Federal Land Bank Report (4-20-1933)

Mine Index 5247 * NW SW SW 22-T8N-R3E, drift, Springfield Coal source: ISGS field notes (T. E. Savage, undated)

Mine Index 5254 * SE SE SE 29-T8N-R3E, slope, Springfield Coal source: ISGS field notes (L. C. McCabe, 1928)

Mine Index 5265 * SE SE SE 25-T8N-R2E, drift, Springfield Coal source: Federal Land Bank Report (4-20-1933)

Mine Index 5266 S ½ SW SE 17-T8N-R3E, shaft, seam not known source: Federal Land Bank Report (4-20-1933)

Mine Index 5268 NE NE NE 21-T8N-R3E, drift, Springfield Coal source: Federal Land Bank Report (4-20-1933)

Mine Index 5269 SE SW SE 23-T8N-R3E, drift, Herrin Coal source: ISGS field notes (T. E. Savage, undated)

Mine Index 5271 * SW SW NW 29-T8N-R3E, drift, Springfield Coal source: Federal Land Bank Report (4-20-1933)

Mine Index 5274 * SE NW NW 31-T8N-R3E, drift, Springfield Coal source: Federal Land Bank Report (4-20-1933)

Mine Index 5993 NW NE NW 35-T9N-R3E, drift, Springfield Coal, 4.17 feet thick source: ISGS field notes (C. G. Ball, undated)

Mine Index 6044 S ½ 26-T9N-R2E, drifts, Colchester Coal source: ISGS field notes (H. R. Wanless, 7-22-1929)

Mine Index 7723 SE NE NW 31-T8N-R3E, drift, Springfield Coal source: Federal Land Bank Report (4-20-1933)

Mine Index 7724, William Sheets * NW SE SW 19-T8N-R3E, drifts, Springfield Coal source: ISGS field notes (T. E. Savage, undated)

Mine Index 7726 NE SW NE 4-T8N-R3E, drift, Springfield Coal, 4 feet thick source: ISGS field notes (T. E. Savage, undated & H. R. Wanless, 7-17-1930)

Mine Index 7728, Cope Mine * SE NE NW 34-T9N-R3E, drift, Springfield Coal source: ISGS field notes (T. E. Savage, undated)

* Not shown on accompanying map due to later surface mining

MINES WHOSE LOCATIONS ARE NOT KNOWN, FAIRVIEW QUADRANGLE

The locations of the following mines are unknown, but the production tonnage, operating names, and nearest town were reported in the Annual Coal Reports. The operators listed below mined in or near the Fairview Quadrangle. The information shown is similar to that presented on the summary sheets in the previous pages of this directory. The first item is the name the mine operated under as listed in the Coal Report, then the years the mine reported. If no physical data are available, the next item listed is the total tons produced by the mine. If physical data are available, the order of presentation is as follows: type of opening for the mine (drift, slope or shaft), depth of coal in feet, and thickness of coal in feet.

The total tons mined by these unlocated mines is 422,987 (319,666 underground; 29,415 surface mined; 73,906 mined by uncertain method), which would represent approximately 75 to 150 acres, depending on the recovery factor, mining method, and numerous other factors. (Note: 1 square mile = 640 acres)

FAIRVIEW (Fulton County)

Craigsmiles Coal Company, 1950-1950, surface	160 tons	mine index 4983
Hilbert (H. E. D.), 1885-1886, drift, Herrin, 40, 4.0-4.5, RP	1,000 tons	
Heibbard (James E. G.), 1886-1888	<u>646</u> tons	
	1,646 tons	
Hamilton (John H.), 1885-1887, drift, Herrin, 20, 4.0-4.5, RP	765 tons	
Stout (John), 1885-1886, drift, Herrin, 45, 4.0-4.5, RP	420 tons	
Stout (M. J.), 1886-1888	<u>692</u> tons	
	1,112 tons	
Parr (M.), 1885-1886, drift, Herrin, 25-55, 4.0-4.5, RP	500 tons	
Parr (Samuel), 1886-1900	<u>4,763</u> tons	
	5,263 tons	
Gould (Richard E.) & Company, 1886-1906, drift, Herrin, 45-75, 4.0-5.0, RP	19,847 tons	
Pumyea (Theodore), 1886-1897, drift, Herrin, 25-60, 4.0-4.5, RP	7,185 tons	
Root (John), 1886-1893, drift, Herrin, 36-50, 4.33-4.5, RP	1,630 tons	
Melick (B. T.), 1893-1895	<u>980</u> tons	
	2,610 tons	
Thorp (William), 1886-1890, drift, Herrin, 30-50, 4.33-4.5, RP	845 tons	
Stout (M. J.), 1890-1892	610 tons	
Stout (Jefferson M.), 1892-1895	<u>645</u> tons	
	2,100 tons	
Sprinkler (Jacob), 1886-1888, drift, Herrin, 30, 4.5, RP	1,854 tons	
Karr (Josiah), 1886-1892, drift, Herrin, 30-50, 4.33-4.5, RP	1,630 tons	
Davis (L. W.), 1892-1893	250 tons	
Dray (S. A.), 1893-1896	<u>1,660</u> tons	
	3,540 tons	
Abbdusky (John), 1886-1902, drift, —, 25-60, 4.0-5.0, RP	6,914 tons	
Packer (John), 1886-1889, slope, Herrin, 55, 4.5, RP	805 tons	
Dray (S. A.), 1886-1889, drift, Herrin, 25-60, 4.17-4.5, RP	9,030 tons	
Bateman (S. H.), 1889-1892	10,566 tons	
Eagle Coal Company, 1892-1893	4,700 tons	
Nicholson (N. W.), 1893-1894	1,420 tons	
Nicholson (William), 1894-1895	458 tons	
Tompkins (H.), 1895-1896	<u>Unknown</u>	

	26,174 tons
Melick (B. T.), 1890-1892, drift, —, 15-55, 4.0-5.0, RP	330 tons
Brown (William), 1892-1896	730 tons
Williams (Daniel), 1896-1899	<u>900 tons</u>
	1,960 tons
Clair (Peter), 1893-1896, drift, Herrin, 25-50, 4.0-4.33, RP the name may be Peter Cleary	1,180 tons
Marvell (D.), 1893-1896, drift, Herrin, 25, 4.0-4.5, RP	790 tons
Anderson (A.), 1896-1897, drift, —, 50, 4.0, RP	640 tons
Anderson (A.), 1899-1904, drift, —, 20-60, 4.0-4.5, RP	3,439 tons
Harto (V.), 1893-1895, drift, Herrin, 30, 4.5, RP	775 tons
Kitchen (John), 1894-1895, drift, Herrin, 25, 4.5, RP	160 tons
Overcash (George), 1898-1900, drift, Springfield, 55, 4.5-5.0, RP	500 tons
Maple (W. A.), 1898-1899, drift, Herrin, 50, 4.0	1,670 tons
Knickerbocker (E.), 1899-1900, —, —, 55, 4.5, RP	200 tons
Essex (George), 1900-1902, drift, Springfield, 60, 4.5, RP	3,670 tons
Detmars (E.), 1900-1902, drift, Springfield, 50, 4.5, RP	1,396 tons
James (W. H.), 1902-1905, drift, Springfield, 21-50, 4.5-5.0, RP	208 tons
Prowl (George), 1902-1905, drift, Springfield, 30-50, 4.5-5.0, RP	310 tons
Travis (T. H.), 1902-1905, drift, Springfield, 20-50, 4.5-5.0, RP	810 tons
Davis (L. W.), 1902-1906, drift, Springfield, 18-50, 4.5-5.0, RP	1,010 tons
Cleary (Jacob), 1902-1905, drift, Springfield, 30-50, 4.5-5.0, RP	1,900 tons
Knickerbocker (Edwin R.), 1905-1910, drift, Springfield, 30-60, 4.0-5.0, RP	4,000 tons
Whittle (W.), 1905-1907, drift, Springfield, 30-40, 4.5-5.0, RP	920 tons
Stout (Jeff), 1905-1906, slope, Springfield, 40, 2.33, RP	80 tons
Parr (Sam), 1907-1911, drift, Springfield, 40, 4.0-5.0, RP	2,200 tons
Travers (Thomas), 1907-1909, drift, Herrin, 40, 4.0-5.0, RP	1,600 tons
DeWitt Brothers, 1907-1909, drift, Herrin, 40, 4.0-4.5, RP	560 tons
Miller & Hand, 1907-1908, drift, —, 40, 4.0-4.5, RP	250 tons
Miller (Charles), 1908-1909	<u>158 tons</u>
	398 tons
Sweet & Memmen, 1918-1924, underground	7,021 tons
Newman & Sweet, 1924-1925	500 tons
Memmen (R. H.), 1925-1926	500 tons
Memmen & Street, 1927-1927	200 tons
Memmen (R. A.), 1928-1928	<u>160 tons</u>
	8,381 tons
Davis (P. W.), 1909-1910, drift, Herrin, —, 4.0, RP	200 tons

World (R.), 1909-1910, drift, Herrin, —, 4.0, RP	120 tons
Muir (Hunter H.), 1910-1912, drift, Springfield, 60, 4.5-5.0, RP	800 tons
Wheatcraft & Son, 1912-1914	<u>2,200</u> tons
	3,000 tons
Smear (George), 1910-1912, drift, Springfield, 60, 4.5-4.9, RP	700 tons
McBride (W. F.), 1912-1913, slope or drift, Springfield, 60, 5.0, RP	650 tons
Simms (Robert), 1913-1915	<u>1,500</u> tons
	2,150 tons
Wheeler (Dan), 1913-1914, drift, Springfield, 60, 4.17, RP	90 tons
Henning (Richard), 1914-1915, drift, Springfield, —, 4.17, RP	903 tons
Williams (Charles), 1915-1916, drift, Springfield, 70, 4.5, RP	875 tons
Baxter (H. G.), 1916-1918, drift, Springfield, 45, 4.0, RP	2,634 tons
Ratcliff (L. A.), 1916-1923, slope, Springfield, —, 4.67, RP	8,541 tons
Radcliff Brothers, 1923-1924	250 tons
Ratcliff (T. A.), 1924-1925	383 tons
Ratcliff (L. A.), 1926-1926	400 tons
Ratcliff Brothers, 1927-1927	502 tons
Radcliff (L. A.), 1928-1929	<u>243</u> tons
	10,319 tons
Sheets (W. A.), 1916-1919, drift, Herrin, —, 4.5, RP	2,295 tons
Stanley (Ed), 1916-1918, drift, Herrin, —, 4.0, RP	724 tons
Rinkenbaure (Ed), 1916-1917, drift, Springfield, —, 4.43, RP	200 tons
Murphy (Jack J.), 1917-1926	3,424 tons
Adams (Leonard), 1917-1918	260 tons
Adams (C. L.), 1918-1919	<u>252</u> tons
	512 tons
Simmons (John) & Brother, 1918-1919	475 tons
Williams (Dan), 1919-1920	1,010 tons
Williams (Charles), 1919-1921	2,900 tons
Adams (C. L.), 1919-1922	1,016 tons
Ahem (William), 1922-1923	<u>65</u> tons
	1,081 tons
Ford (Snowden), 1924-1925	378 tons
Ford (Wesley) & Brother, 1926-1926	337 tons
Ford (Snowden), 1927-1927	<u>185</u> tons
	900 tons
Ford (Wesley), 1927-1929, underground	3,138 tons
Bowden (William), 1919-1921	615 tons
Stowtes (Jeff), 1920-1922	669 tons
Stout (Jeff), 1922-1924	562 tons
Stout (John), 1924-1925	<u>881</u> tons
	2,112 tons
Baughman (Cliff H.), 1922-1924	2,610 tons

Barkley (Charles), 1922-1923	655 tons
Street (George), 1922-1925	1,860 tons
Street & Murphy, 1926-1926	<u>585 tons</u>
	2,445 tons
Finrock (Henry), 1922-1923	430 tons
Holister (Gale), 1922-1923	250 tons
Stought (Jesse), 1923-1925	1,600 tons
Lang (E.), 1924-1925	320 tons
Wilson (Ken K.), 1925-1925	80 tons
Moore & Cross, 1926-1926	400 tons
Baughman & Pasco, 1926-1926	78 tons
Baughman (C. H.), 1927-1927	<u>145 tons</u>
	223 tons
Creosotto & Dewitt, 1927-1927	125 tons
Hagel Coal Company, 1929-1929, underground	121 tons
Paul (Lewis), 1934-1934, underground	160 tons
M. & C. Coal Company, 1935-1937, underground	1,392 tons
Pointer (R. M.), 1935-1935, underground	110 tons

LONDON MILLS (Fulton County)

Cline (James), 1889-1893, shaft, —, 25-40, 3.0-3.5, RP	6,683 tons
Cline (J.) & Son, 1893-1897	<u>1,180 tons</u>
	7,863 tons
Emery (L. Y.), 1896-1897, drift, —, 40, 4.0, RP	300 tons
Parr (John), 1905-1906, drift, Springfield, 35, 4.5, RP	640 tons
Sheets (W. A.), 1905-1906, drift, Rock Island, 30, 2.33, RP	80 tons
Hocksworth (F.), 1909-1910, drift, Springfield, —, 4.5, RP	400 tons
Sheets (William A.), 1910-1917, drift, Springfield, 30-75, 4.33-5.0, RP	3,645 tons
Hagaman (Charles E.), 1917-1923	1,587 tons
Hagaman & Knickerbalker, 1923-1924	2,245 tons
Hagaman (C. E.), 1924-1926	5,036 tons
Hagaman & Groom, 1927-1928	730 tons
Hagerman & Broom, 1929-1929	<u>170 tons</u>
	9,768 tons
Simons (John), 1922-1923	1,450 tons
Butler (G. C.), 1923-1925	1,590 tons
Grove & Butler, 1927-1927	380 tons
Butler (Grover C.), 1924-1926	790 tons

LONDON MILLS (Knox County)

Irons (J. S.), 1884-1885, shaft, Houchin Creek, 42, 3.0, RP	240 tons
Sheets (William), 1908-1909, drift, Springfield, —, 3.0, RP	160 tons
McGuiness (John), 1928-1928, underground	118 tons
Downin Gravel Company, 1965-1967, surface	1,177 tons

MIDDLE GROVE (Fulton County)

Lance (E. R.), 1884-1885, drift, Herrin, 35-40, 4.0-4.5, RP	600 tons
Taylor (George), 1885-1887	540 tons
Walters & Company, 1887-1888	500 tons
Kerr (J. D.) & Company, 1888-1889	368 tons
Nicolany (Joseph) & Company, 1889-1890	<u>640 tons</u>
	2,648 tons
Eaton (James), 1885-1886, drift, Herrin, 18-35, 4.0-4.5, RP	480 tons
Zimmerman (M. C.), 1886-1893	<u>1,740 tons</u>
	2,220 tons
Harding (Jerome), 1890-1892, drift, Herrin, 25-35, 4.0-4.5, RP	1,586 tons
Fulmer (Philip), 1892-1893	420 tons
Fulmer (John), 1893-1896	<u>1,110 tons</u>
	3,116 tons
Hilliard (Jesse), 1890-1892, drift, Herrin, 25-40, 4.0-4.33, RP	1,125 tons
Morton (Edward), 1892-1893	<u>140 tons</u>
	1,265 tons
Kerr (James D.), 1891-1896, shaft, Springfield, 65-75, 3.5-3.67, RP	980 tons
Menemuth (Charles), 1894-1895, drift, —, 35-50, 4.0-4.5, RP	900 tons
Loopman (Lewis), 1895-1898	<u>870 tons</u>
	1,770 tons
Scudor (James), 1894-1895, drift, —, 35-55, 3.83-4.5, RP	400 tons
Allen (William), 1895-1898	<u>1,025 tons</u>
	1,425 tons
Bowser (John), 1895-1896, drift, —, 35-40, 3.83-4.0, RP	Unknown
Lance (Thomas), 1896-1897	250 tons
McCoy (Dennis), 1895-1897, drift, —, 35-50, 3.83-4.0, RP	400 tons
Dewitt (Abe), 1895-1896, drift, Springfield, 35-45, 3.83-4.0, RP	Unknown
Morse (Melvin), 1896-1898	688 tons
Morse (Menzo), 1896-1898, drift, Springfield, 50, 4.0, RP	730 tons
Morse (Anclie), 1896-1897, drift, —, 40, 4.0, RP	350 tons
Fennel (William), 1897-1898, drift, Herrin, 45, 4.0	200 tons
Fennel (William), 1907-1909, slope, Herrin, 30, 4.0-4.5, RP	564 tons
Dewitt (A.), 1909-1910, drift, Springfield, —, 3.67, RP	163 tons
Clerry (Peter), 1912-1914, drift, Herrin, 40-45, 5.0-5.83, RP	1,200 tons

Dilts (Claude), 1917-1918	360 tons
Morse (F. W.), 1917-1918	450 tons
Smizer (E. F.), 1918-1923	1,225 tons
Hubble (Jacob), 1923-1926	401 tons
Fitzpatrick (Clyde), 1926-1928	650 tons
Fitzpatrick Brothers, 1929-1929	<u>300</u> tons 950 tons
Graham (Garin), 1933-1933, underground	1,099 tons

MIDDLE GROVE (Knox County)

Allen (William), 1898-1899, drift, Springfield, 40, 4.0	600 tons
Morse (Anslo), 1898-1899, drift, Springfield, 40, 4.0	160 tons
Dewit (Able), 1898-1899, drift, Herrin, 40, 4.0	480 tons
Lopeman (L.), 1898-1902, drift, Springfield, 40, 4.0, RP	1,656 tons
Morse (Melvin), 1898-1899, drift, Springfield, 40, 4.0	360 tons
Morse (Menzo), 1904-1908, drift, Springfield, 12, 3.5-4.0, RP	920 tons
Morse (F. H.), 1908-1914	9,830 tons
Moore & Douglas, 1914-1915	344 tons
Morse (Clyde), 1915-1916	400 tons
Morse (Franklin Homer), 1916-1919	4,764 tons
Morse (James), 1919-1920	1,680 tons
Morse (John), 1920-1925	<u>2,787</u> tons 20,725 tons
Lindsey Brothers, 1905-1906, drift, Springfield, —, 3.67, RP	920 tons
Lindsey (P. A.), 1906-1910	<u>3,200</u> tons 4,120 tons
Buffington (Frank), 1907-1909, drift, Springfield, —, 3.67, RP	468 tons
Anderson (Newton), 1911-1914, drift, Springfield, 206, 3.83-4.0, RP	4,850 tons
Folkenroth (Charles), 1914-1917	<u>5,319</u> tons 10,169 tons
Fennell & Wilkie, 1915-1917, drift, Springfield, —, 3.58	1,987 tons
Clary (Peter), 1915-1916, drift, Springfield, —, 4.0, RP	25 tons
Stokes (Edward W.), 1917-1921	4,407 tons
Anderson (Salem S.), 1917-1923	1,630 tons
Anderson (Salem), 1927-1927	670 tons
Anderson (Salem S.), 1930-1934, underground	8,304 tons
Wilcoxon (Grover), 1917-1920	1,096 tons
Emery (E.), 1917-1918	200 tons
Morse (James), 1920-1923	732 tons

Anderson (Guy), 1922-1925	731 tons
Anderson & Amo (Jim), 1924-1925	280 tons
Bohlander Coal Company, 1922-1923	1,030 tons
Taylor (A. C.), 1922-1924	975 tons
Stoughton (A.), 1922-1926, underground	7,320 tons
Stoughton & Hughbanks, 1927-1927	1,720 tons
Stoughton (A.), 1928-1931	<u>6,497 tons</u>
	15,537 tons
Walker (Clyde), 1923-1924	149 tons
Dalton (H.), 1923-1924	77 tons
Conrad (Mart), 1925-1925	365 tons
Pancake (William), 1925-1926	705 tons
Miller (L. H.), 1925-1925	98 tons
Hamm & McBride, 1926-1926, underground	360 tons
Hughbank (L. B.), 1927-1927	559 tons
Hughbanks (C. R.), 1928-1928	1,345 tons
Wright Coal Company, 1929-1929	1,479 tons
Wright (Leonard), 1930-1930	<u>1,030 tons</u>
	4,773 tons
Fitzpatrick & Anderson, 1934-1934, underground	496 tons
PARRVILLE (Fulton County)	
Galesburg Union Supply, Tates Mine, 1905-1909 —, Springfield, 40-50, 4.0-5.0, RP	14,936 tons
Cole (George), 1918-1919	380 tons
Ford (Snowden), 1919-1920	435 tons
RAPATEE (Fulton County)	
Davis (Frank), 1896-1897, drift, —, 40, 4.0, RP	360 tons
Williams (Daniel), 1905-1909, drift, Herrin & Springfield, 40-60, 4.0-5.0, RP	3,880 tons
Italian Cooperative Coal Company, 1920-1921	657 tons
Thompson (John), 1924-1925	800 tons
Thompson & Planque, 1926-1926	<u>748 tons</u>
	1,548 tons
RAPATEE (Knox County)	
Foster (D. J.), 1898-1899, drift, Springfield, 40, 4.0	320 tons
Morse (T.), 1898-1899, drift, Springfield, 40, 4.0	240 tons

Foster (P. I.), 1904-1914, drift, Springfield, —, 3.5-4.0, RP	6,660 tons
Lopeman (Charles), 1912-1915, drift, Springfield, —, 3.5-3.83, RP	3,070 tons
Stokes (Clyde), 1923-1925	2,000 tons
Collins (William), 1917-1918	800 tons
Smith (V. H.), 1917-1918	645 tons
Bates (Joe), 1922-1923	40 tons
Jennings (Henry), 1919-1920	919 tons
Jennings (Henry) & Brother, 1920-1921	<u>748 tons</u>
	1,667 tons
Smallenberger (Walter), 1922-1923	4,737 tons
Smith (Victor), 1922-1929, underground	5,962 tons
Moore (John F.), 1922-1923	110 tons
Morse (John A.), 1923-1924	<u>45 tons</u>
	155 tons
Elliott (C.), 1922-1923, underground	75 tons
Elliott (George), 1923-1924	600 tons
Walker & Elliott, 1924-1925	6,000 tons
Little Creek Coal Company, 1925-1928	<u>9,310 tons</u>
	15,985 tons
Root (George), 1923-1924	1,834 tons
Freet (Elmer), 1923-1924	40 tons
Buffington (Floyd), 1924-1927	5,827 tons
Holford (Len), 1924-1931, underground	8,632 tons
Davison (Aaron), 1926-1926	84 tons
Corbett (Earl), 1927-1928, underground	1,019 tons
Lake Charles Coal Company, 1932-1933, surface	28,238 tons

INDEX OF MINES IN THE FAIRVIEW QUADRANGLE

Abbdusky (John)	45
Adams (C. L.)	47
Adams (Leonard)	47
Ahem (William)	47
Allen (William)	49, 50
Amo (Anderson & Amo)	50
Anderson (A.)	46
Anderson (Fitzpatrick & Anderson)	51
Anderson (Guy)	50
Anderson (Newton)	50
Anderson (Salem S.)	50
Anderson (Salem)	50
Anderson & Amo	50
Barkley (Charles)	47
Bateman (S. H.)	45
Bates (Joe)	52
Bates (Meetz & Bates)	28
Baughman (C. H.)	48
Baughman (Cliff H.)	47
Baughman & Pasco	48
Baxter (H. G.)	47
Big Six Coal Company	25
Bohlender Coal Company	50
Bowden (William)	47
Bowser (John)	49
Bright Star Mine	12
Broom (Hagerman & Broom)	48
Brown (William)	46
Buffington (Floyd)	52
Buffington (Frank)	50
Butler (G. C.)	48
Butler (Grove & Butler)	48
Butler (Grover C.)	48
Bybie & Paul	40
Chadwick & Foster	16
Clair (Peter)	46
Clarkson (Edwin)	34
Clary (Peter)	50
Clean Coal Company	19
Cleary (Jacob)	46
Cleary (Peter)	46
Clerry (Peter)	49
Cline (J.) & Son	48
Cline (James)	48
Coal Creek Mining Company	9
Cole (George)	51
Collins (William)	51
Conrad (Mart)	51
Cope Mine	44
Corbett (Earl)	52
Craigsmiles Coal Company	45
Creosotto & Dewitt	48
Cross (Moore & Cross)	48
Dallefeld & Elias	19
Dalton (H.)	51
Davis (Frank)	51
Davis (L. W.)	45, 46
Davis (P. W.)	46
Davison (Aaron)	52
Dellafeld (W. E.) Coal Company, No. 2 Mine	23
Delong (Elmer)	33
Delong Brothers	33
Detmars (E.)	46

Dewitt (Able)	50
Dewitt (A.)	49
Dewitt (Abe)	49
Dewitt (Creosotto & Dewitt)	48
DeWitt Brothers	46
Dilts (Claude)	49
Douglas (Moore & Douglas)	50
Downin Gravel Company	49
Dray (S. A.)	45
DuFour (Joe)	19, 30
Eagle Coal Company	45
Eaton (James)	49
Edgerly (George)	34
Elias (Dallefeld & Elias)	19
Elias (Joe) & Company	23
Elias Brothers	23
Elliott (C.)	52
Elliott (George)	52
Elliott (Walker & Elliott)	52
Elm No. 2 Mine	12
Emery (E.)	50
Emery (L. Y.)	48
Essex (George)	46
Essex & Fritz, No. 1 Mine	9
Fairview Coal Company	23
Fairview Collieries Company	12
Fennel (William)	49
Fennel & Wilkie	50
Finrock (Henry)	48
Fitzpatrick (Clyde)	50
Fitzpatrick & Anderson	51
Fitzpatrick Brothers	50
Flamingo Mine	12
Folkenroth (Charles)	50
Ford (Snowden)	47, 51
Ford (Wesley)	47
Ford (Wesley) & Brother	47
Foster (Chadwick & Foster)	16
Foster (D. J.)	51
Foster (D.)	39
Foster (L. L.)	39
Foster (L. L.) & Halford	39
Foster (Lawrence L.)	39
Foster (P. I.)	51
Foster (Sorence)	39
Frankovich Brothers Coal Company	9
Frederick (E. F.)	24
Freet (Elmer)	52
Fritz (Essex & Fritz, No. 1 Mine)	9
Fulmer (John)	49
Fulmer (Philip)	49
Galesburg Union Supply	51
Golden Rule Coal Company	16
Gould (Richard E.) & Company	45
Graham (Garin)	50
Graham (Gavin)	41
Groom (Hagaman & Groom)	48
Grove & Butler	48
Gunnnett (A. J.)	36
Hagaman (C. E.)	48
Hagaman (Charles E.)	48
Hagaman & Groom	48
Hagaman & Knickerbalker	48
Hagel Coal Company	48
Hagerman & Broom	48

Halford (Foster & Halford)	39
Hamilton (John H.)	45
Hamm & McBride	51
Hand (Miller & Hand)	46
Harding (Jerome)	49
Harto (V.)	46
Heibbard (James E. G.)	45
Henning (Richard)	33, 47
Hilbert (H. E. D.)	45
Hilliard (Jesse)	49
Hillier (Jesse)	43
Hocksworth (F.)	48
Holford (Len)	52
Holister (Gale)	48
Hornbeck (William E.)	32
Hubble (Jacob)	50
Hughbank (L. B.)	51
Hughbanks (C. R.)	51
Hughbanks (Stoughton & Hughbanks)	51
Irons (J. S.)	49
Italian Cooperative Coal Company	51
James (W. H.)	46
Jennings (Henry)	52
Jennings (Henry) & Brother	52
Karr (Josiah)	45
Kerr (J. D.) & Company	49
Kerr (James D.)	49
Kitchen (John)	46
Kling (Frank)	26
Knickerbalker (Hagman & Knickerbalker)	48
Knickerbocker (E.)	46
Knickerbocker (Edwin R.)	46
L. & S. Coal Company	22
Lake Charles Coal Company	52
Lance (E. R.)	49
Lance (Thomas)	49
Lang (E.)	48
Lillie Creek Coal Company	29
Lindsey (P. A.)	50
Lindsey Brothers	50
Lingenfelter Coal Company, No. 4 Mine	15
Little Coal Company	27
Little Creek Coal Company	52
Long (Shuler & Long Coal Company)	14
Long & Stevenour Coal Company	22
Loopman (Lewis)	49
Lopeman (Charles)	51
Lopeman (L.)	50
M. & C. Coal Company	48
Maple (W. A.)	46
Marvell (D.)	46
McBride (Hamm & McBride)	51
McBride (W. F.)	47
McCoy (Dennis)	49
McGuinness (John)	49
Meetz (William) & Bates	28
Melick (B. T.)	45, 46
Memmen (R. A.)	46
Memmen (R. H.)	46
Memmen (Sweet & Memmen)	46
Memmen & Street	46
Menemuth (Charles)	49
Mertz (William)	28
Mid State Coal Company	13
Middle Grove Mine	10

Midland Coal Company, Elm No. 2 Mine	12
Midland Coal Company, Rapatee Mine	13
Midland Electric Coal Corporation, Middle Grove No. 085 Mine	10
Midland Electric Coal Corporation, Middle Grove No. 2 Mine	10
Midland Electric Coal Corporation, Middle Grove No. 3 Mine	10
Midland Electric Coal Corporation, Rapatee No. 2 Mine	10
Miller (Charles)	46
Miller (L. H.)	51
Miller & Hand	46
Moore (John F.)	52
Moore & Cross	48
Moore & Douglas	50
Moran (Pierson & Moran)	21
Morecraft (Thomas)	33
Morse (Ancl)	49
Morse (Anslo)	50
Morse (Clyde)	50
Morse (F. H.)	50
Morse (F. W.)	49
Morse (Franklin Homer)	50
Morse (J. F.)	11
Morse (J. L.)	11
Morse (James)	50
Morse (John A.)	52
Morse (John)	50
Morse (Melvin)	49, 50
Morse (Menzo)	49, 50
Morse (Raymond L.)	11
Morse (T.)	51
Morton (Edward)	49
Muir (Hunter H.)	46
Mundwiler (Harley T.)	26
Murphy (Jack J.)	47
Murphy (Street & Murphy)	48
Myers (Pheasant & Myers)	20
Newman & Sweet	46
Nicholson (N. W.)	45
Nicholson (William)	9, 45
Nicholson & Taylor	9
Nicolany (Joseph) & Company	49
Overcash (George)	46
Packer (John)	45
Pancake (William)	51
Parr (John)	48
Parr (M.)	45
Parr (Sam)	46
Parr (Samuel)	45
Parrville Mine	9, 44
Pasco (Baughman & Pasco)	48
Paul (Bybie & Paul)	40
Paul (John)	40
Paul (Lewis)	48
Peabody Coal Company, Bright Star Mine	12
Peabody Coal Company, Middle Grove Mine	10
Peaco Coal Company	23
Pearson (Daniel)	43
Pearson (H. W.)	21
Peck (Taylor & Peck, No. 1 Mine)	9
Pheasant & E. Roth	20
Pheasant & Myers	20
Pheasant Brothers	20
Pierson & Moran	21
Planque (Thompson & Planque)	51
Pointer (R. M.)	48
Premier Coal Company	18

Premier White Ash Coal Company	18
Prowl (George)	46
Pumyea (Theodore)	45
Radcliff (L. A.)	47
Radcliff Brothers	47
Rapatee Coal Company	17
Rapatee Mine	13
Rapatee No. 2 Mine	10
Ratcliff (L. A.)	47
Ratcliff (T. A.)	47
Ratcliff Brothers	47
Rinkenbaure (Ed)	47
Root (George)	52
Root (John)	45
Roth (Pheasant & Roth)	20
Schatz (Orville)	29
Scudor (James)	49
Sheets (W. A.)	47, 48
Sheets (William A.)	48
Sheets (William)	44, 49
Shuler & Long Coal Company	14
Simmons (John) & Brother	47
Simms (Robert)	47
Simons (John)	48
Sixth Vein Coal Company	11
Smallenberger (Walter)	52
Smear (George)	47
Smith (Dewitt)	38
Smith (V. H.)	52
Smith (Victor)	52
Smizer (E. F.)	50
Sprinkler (Jacob)	45
Stanley (Ed)	47
Stevenour (Long & Stevenour Coal Company)	22
Stokes (Clyde)	51
Stokes (Edward W.)	50
Stought (Jesse)	48
Stoughton (A.)	51
Stoughton & Hughbanks	51
Stout (Jeff)	46, 47
Stout (Jefferson M.)	45
Stout (John)	45, 47
Stout (M. J.)	35, 45
Stowtes (Jeff)	47
Street (George)	47
Street (George), No. 1 Mine	21
Street (Memmen & Street)	46
Street & Murphy	48
Surrotz Mine	44
Sweet (Newman & Sweet)	46
Sweet & Memmen	46
Tates Mine	51
Taylor (A. C.)	51
Taylor (George)	49
Taylor (Nicholson & Taylor)	9
Taylor & Peck, No. 1 Mine	9
Thompson (John)	51
Thompson & Planque	51
Thorp (William)	45
Tompkins (H.)	45
Travers (Thomas)	46
Travis (T. H.)	46
Turner (L. M.)	31
Vice (Henry)	42
Walker (Clyde)	51

Walker & Elliott	52
Walters & Company	49
Weaver (P.)	37
Wenzelman (G.) Coal Company	14
Wheatcraft & Son	47
Wheeler (Dan)	47
White Ash Coal Company	18
White Ash Mine	18, 20
Whittle (W.)	46
Wilcoxon (Grover)	50
Wilkie (Fennell & Wilkie)	50
Williams (Charles)	47
Williams (Dan)	47
Williams (Daniel)	46, 51
Wilson (Ken K.)	48
World (R.)	46
Wright (Leonard)	51
Wright Coal Company	51
Zimmerman (M. C.)	49

