

Coal Mines in Illinois  
Farmersville QuadrangleMontgomery & Macoupin Counties,  
Illinois

This map accompanies the Coal Mines Directory for the Farmersville Quadrangle. Consult the directory for a complete explanation of the information shown on this map.

## Mining Method

- Room & Pillar (RP)
- Room & Pillar Basic (RPB)
- Modified Room & Pillar (MRP)
- Room & Pillar Panel (RPP)
- Blind Room & Pillar (BRP)
- Checkerboard Room & Pillar (CRP)
- High Extraction Retreat (HER)
- Longwall (LW)
- Underground, Method Unknown
- Strip Mine
- Auger Mine
- General Area of Mining

## Other Areas Depicted

- Non-Coal Mines

## Source of Mine Outline

- Final Mine Map
- Not Final Mine Map
- Undated Mine Map
- Incomplete Mine Map
- Secondary Source Map

## Tipple, Shaft, Slope, Drift Locations

- Strip Mine Tipple - Active
- Strip Mine Tipple - Abandoned
- Mine Shaft - Active
- Mine Shaft - Abandoned
- Mine Slope - Active
- Mine Slope - Abandoned
- Mine Drift - Active
- Mine Drift - Abandoned
- Air Shaft
- Uncertain Location
- Uncertain Type of Opening

## Other Points Depicted

- Non-Coal Mines

Mine Annotation  
(space permitting)

Company  
Mine Name  
ISGS Index No., Years of Operation

## Disclaimer

Please check the Coal Section at the Illinois State Geological Survey's web site at <https://www.isgs.illinois.edu> for the most up-to-date version of these products.

Note that each quadrangle scale mined-out area map requires the use of the associated text directory for full explanation of map features and mine attributes. Also note that some quadrangles have multiple seams of mining and therefore more than one map may be available for a particular quadrangle. Please take care to check for multiple maps, as extensive mining may exist in the other seams.

The maps and digital files used for these studies were compiled from data obtained from a variety of public and private sources and have varying degrees of completeness and accuracy. This compilation map presents reasonable interpretation of the geology of the area and is based on available data. Locations of some mine features may be offset by 500 feet or more due to errors in the original source maps, the compilation process, digitizing, or a combination of these factors. These data are not intended for use in site-specific screening or decision-making. Use of these documents does not eliminate the need for detailed studies to fully understand the geology of a specific site. The Illinois State Geological Survey, Prairie Research Institute, or the University of Illinois make no guarantee, expressed or implied, regarding the correctness of the interpretations presented in this data set and accept no liability for the consequences of decisions made by others on the basis of the information presented here.

These maps were designed for use at 1:24,000. Enlarging the map may reduce accuracy, as the original scale of the source maps used to compile the outlines shown varies from 1:400 to 1:150,000, and some mine locations are known only from text descriptions. See the accompanying mine directory for the original scale of the source map used for a specific mine to check accuracy of a given portion of the map. Areas with no mines shown may still be undermined; see the unlocated mines list at the back of each mine directory.

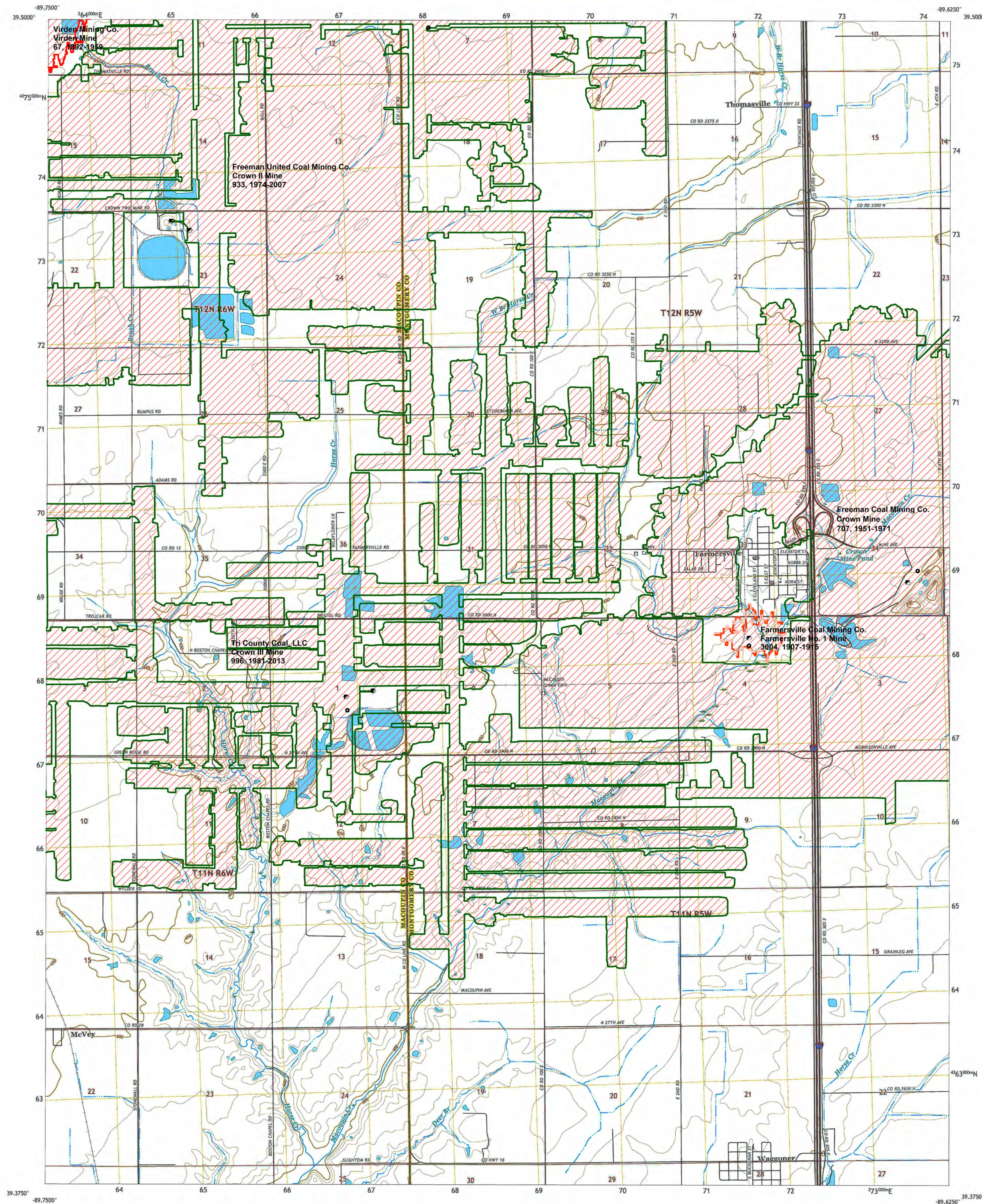
The image of the U.S.G.S. topographic base map was projected from the original UTM to Lambert Conformal Conic.

**ILLINOIS**  
Illinois State Geological Survey  
PRAIRIE RESEARCH INSTITUTE

Prairie Research Institute  
Illinois State Geological Survey  
615 E. Peabody Dr.  
Champaign, IL 61820

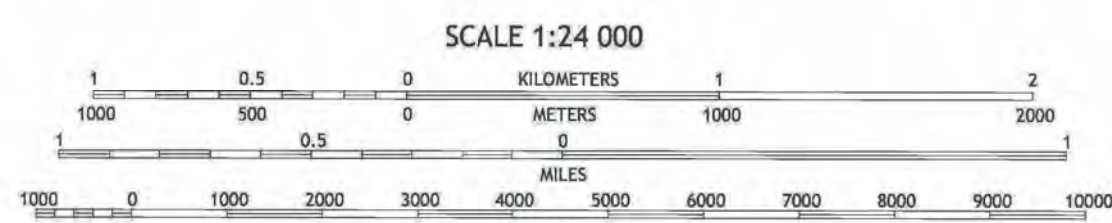
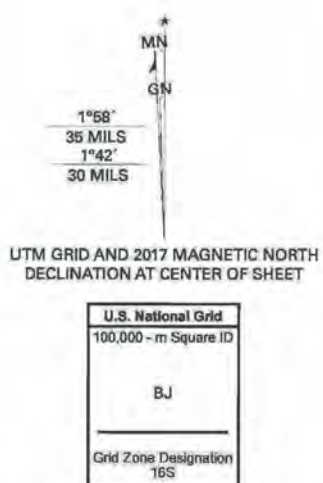
Mine Outlines Compiled by  
Jennifer M. Obrad

2010; revised 2012; updated 2016, 2023



Produced by the United States Geological Survey  
North American Datum of 1983 (NAD83)  
World Geodetic System of 1984 (WGS84). Projection and  
1:100,000-meter grid/Universal Transverse Mercator, Zone 16S  
This map is not a legal document. Boundaries may be  
generalized for this map scale. Private lands within government  
reservations may not be shown. Obtain permission before  
entering private lands.

Imagery.....NAP, July 2015 - October 2015  
Roads.....U.S. Census Bureau, 2017  
Names.....GNIS, 1980 - 2017  
Hydrography.....National Hydrography Dataset, 2004 - 2016  
Contourlines.....National Elevation Dataset, 2008  
Boundaries.....Multiple sources; see metadata file 2014 - 2016  
Public Land Survey System.....B.L.A., 2017  
Wetlands.....FWS National Wetlands Inventory, 1986



CONTOUR INTERVAL 10 FEET  
NORTH AMERICAN VERTICAL DATUM OF 1988  
This map was produced to conform with the  
National Geospatial Program US Top Product Standard, 2011.  
A metadata file associated with this product is draft version 0.6.18



FARMERSVILLE, IL  
2018





# **DIRECTORY OF COAL MINES IN ILLINOIS 7.5-MINUTE QUADRANGLE SERIES FARMERSVILLE QUADRANGLE MONTGOMERY & MACOUPIN COUNTIES**

Jennifer M. OBrad & C. Chenoweth



2010, Revised 2023

Institute of Natural Resource Sustainability  
William W. Shilts, Executive Director  
**ILLINOIS STATE GEOLOGICAL SURVEY**  
E. Donald McKay III, Director



Natural Resources Building  
615 East Peabody Drive  
Champaign, Illinois 61820

Phone 217-244-4610  
Fax 217-333-2830

This material is based upon work supported by the Illinois Mine Subsidence Insurance Fund. Any opinions, findings, and conclusions or recommendations expressed in this publication are those of the authors and do not necessarily reflect the views of the Illinois Mine Subsidence Insurance Fund.

**Cover photo** Track-mounted duckbill loading machine at a Peabody Coal Company mine, ca. 1915.

DISCLAIMER: The accuracy and completeness of mine maps and directories vary with the availability of reliable information. Maps and other information used to compile this mine map and directory were obtained from a variety of sources and the accuracy of some of the original information cannot be verified. Consequently, the Illinois State Geological Survey (ISGS) cannot guarantee the mine maps are free of errors and disclaims any responsibility for damages that may result from actions or decisions based on them.

The ISGS updates the maps and directories periodically, and welcomes any new information or corrections. Please contact the Coal Section of the ISGS at the address shown on the title page of this directory, or telephone (217) 244-4610.

© 2010 The Board of Trustees of the University of Illinois. All rights reserved.  
For permission information, contact the Illinois State Geological Survey.

## CONTENTS

INTRODUCTION .....	1
MINING IN THE FARMERSVILLE QUADRANGLE .....	1
PART I EXPLANATION OF MAP AND MINE SUMMARY SHEET .....	2
INTERPRETING THE MAP .....	2
Mine Type and Mining Method .....	2
Source Maps .....	3
Points and Labels .....	3
INTERPRETING A MINE SUMMARY SHEET .....	6
REFERENCES .....	8
PART II DIRECTORY OF MINES IN THE FARMERSVILLE QUADRANGLE .....	9
MINE SUMMARY SHEETS .....	9
Mine Index 67	
Virden Mining Company, Virden Mine .....	9
Mine Index 707	
Freeman Coal Mining Corporation, Crown Mine .....	11
Mine Index 933	
Freeman United Coal Mining Company, Crown II Mine .....	12
Mine Index 996	
Springfield Coal Company, LLC, Crown III Mine .....	13
Mine Index 933	
Freeman United Coal Mining Company, Crown II Mine .....	14
INDEX OF MINES IN THE FARMERSVILLE QUADRANGLE .....	15



## **INTRODUCTION**

Coal has been mined in 76 counties of Illinois. More than 7,400 coal mines have operated since commercial mining began in Illinois about 1810; fewer than 30 are currently active. To detail the extent and location of coal mining in Illinois, the Illinois State Geological Survey (ISGS) has compiled maps and directories of known coal mines. The ISGS offers maps at a scale of 1:100,000 and accompanying directories for each county in which coal mining is known to have occurred. Maps at a scale of 1:24,000 and accompanying directories, such as this, are available for selected quadrangles. Contact the ISGS for a list of these quadrangles.

These larger scale maps show the approximate positions of mines in relation to surface features such as roads and water bodies, and indicate the mining method used and the accuracy of the mine boundaries. The maps are useful for locating mine boundaries relative to specific properties and for assessing the potential for subsidence in an area. Mine boundaries compiled from final mine surveys are generally shown within 200 feet of their true position. As a result of poor cartographic quality and inaccuracies in the original mine surveys, boundaries of some older mines may be mislocated on the map by 500 feet or more. Original mine maps should be consulted in situations that require precise delineation of mine boundaries or internal workings of mined areas.

This directory serves as a key to the accompanying mine map and provides basic information on the coal mines in the quadrangle. The directory is composed of two parts. Part I explains the symbols and patterns used on the accompanying map and the summary data presented for each mine. Part II numerically lists the mines in the quadrangle and summarizes the geology and production history of each mine. Total production for the mine, not the portion in the quadrangle, is given.

## **MINING IN THE FARMERSVILLE QUADRANGLE**

A great deal of mining by the Freeman Coal Company (later Freeman United Coal Mining Company) took place in the Farmersville Quadrangle. The Herrin Coal was thicker here than in the Virden South Quadrangle to the west. The Freeman mines, Crown No. 1 (mine index 707), Crown II Mine (mine index 933), and Crown III Mine (mine index 996) operated after 1974, and were more prepared to deal with the issues that occur in thick coal in deep mines.

The Farmersville No. 1 Mine (mine index 3004) had thick coal, and was located near town. It is likely that the short operating span (only 8 years, from 1907 to 1915) was due to the lack of railroad connections and an inability to expand their market, with larger mines in Belleville, Collinsville and Mt. Olive to the south and well-established mines in the vicinity of Springfield to the north.

Some fractures and faulting were noted in the Herrin Coal, with displacement of up to 2 feet. A sandstone channel was present in Crown No. 1 Mine (mine index 707) and between Crown No. 1 Mine and Crown III Mine (mine index 996).

## PART I EXPLANATION OF MAP AND MINE SUMMARY SHEET

### INTERPRETING THE MAP

The map accompanying this directory shows the location of coal mines known to be present in the quadrangle. The map, corresponding to a U.S. Geological Survey (USGS) 7.5-minute quadrangle, covers an area bounded by lines of latitude and longitude 7.5-minutes apart. In Illinois, a quadrangle is approximately 6.5 miles east to west and 8.5 miles north to south, an area of about 56 square miles. The USGS generally offers one map of mines per quadrangle. In some areas where extensive mining occurred in two or more overlapping seams, separate maps are compiled for mines in each seam to maintain readability of the map.

#### Mine Type and Mining Method

The mine type is indicated on the map by pattern color: green represents surface mines; red and yellow represent underground mines. The red patterns are used for areas of underground mining that are documented by a primary or secondary source map. A yellow pattern is used for cases where no map of the mine workings is available, but a general area of mining can be inferred from property maps or production figures. The patterns indicate the main mining methods used in underground mines. The methods are (1) room and pillar and (2) high extraction. The method used gives some indication of the amount and pattern of coal extraction within each mined area, and has some influence on the timing and type of subsidence that can occur over a mine.

The following discussion and illustrations of mining methods are based on Guither et al. (1984).

In room-and-pillar mines, coal is removed from haulage-ways (entries) and selected areas called rooms. Pillars of unmined coal are left between the rooms to support the roof. Depending on the size of rooms and pillars, the amount of coal removed from the production areas will range from 40% to 70%.

**Room and Pillar** - mining is divided into six categories:

- room-and-pillar basic (RPB, fig. 1A), an early method that did not follow a preset mining plan and therefore resulted in very irregular designs;
- modified room and pillar (MRP, fig. 1B);
- room-and-pillar panel (RPP, fig. 1C);
- blind room and pillar (BRP, fig. 1D);
- checkerboard room and pillar (CRP, fig. 1E);
- room and pillar (RP), a classification used when the specific type of room-and-pillar mining is unknown.

Blind and checkerboard are the most common types of room-and-pillar mining used in Illinois today. The knowledge of room-and-pillar mining methods gives a trained engineer information on the nature of subsidence that may occur. A more extensive discussion of subsidence can be found in Bauer et al. (1993).

**High-extraction** These mining methods are subdivided into high-extraction retreat (HER, Fig 1F) and longwall (LW, Fig 1G, 1H). In these methods, much of the coal is removed within well defined areas of the mine. Subsidence of the surface above these areas occurs within weeks. Once the subsidence activity ceases, the potential for further movement over these areas is low; however, subsidence may continue for several years after mining.

High-extraction retreat mining is a form of room-and-pillar mining that extracts most of the coal. Rooms and pillars are developed in the panels, and the pillars are then systematically removed (fig. 1F).

In early (pre-1960) longwall mines, mining advanced in multiple directions from a central shaft (fig. 1G). Large pillars of coal were left around the shaft, but all coal was removed beyond these pillars. Miners placed rock and wooden props and cribs in the mined-out areas to support the mine roof. The overlying rock gradually settled onto these supports, thus producing subsidence at the surface. In post-1959 longwall mines, room-and-pillar methods have been used to develop the main entries of the mine and panel areas. Modern longwall methods extract 100 percent of the coal in the panel areas (fig. 1H).



## SOURCE MAPS

Mine outlines depicted on the map are, whenever possible, based on maps made from original mine surveys. The process of compiling and digitizing the quadrangle map may produce errors of less than 200 feet in the location of mine boundaries. Larger errors of 500 feet or more are possible for mines that have incomplete or inaccurate source maps.

Because of the extreme complexity of some mine maps, detailed features of mined areas have been omitted. The digitized mine boundary includes the exterior boundary of all rooms or entries that were at least 80 feet wide or protruded 500 feet from the main mining area. Unmined areas between mines are shown if they are at least 80 feet wide; unmined blocks of coal within mines are shown if they are at least 400 feet on each side. Original source maps should be consulted when precise information on mine boundaries or interior features is needed.

The mine summary sheet lists the source maps used to determine each mine outline. The completeness of map sources is indicated on the map by a line symbol at the mine boundary. Source maps are organized in five categories.

**Final mine map** The mine outline was digitized from an original map made from mine surveys conducted within a few months after production ceased. The date of the map and the last reported production are listed on the summary sheet.

**Not a final map** The mine is currently active or the mine outline was made from a map based on mine surveys conducted more than a few months before production ceased. This implies the actual mined-out area is probably larger than the outline on the map. The mine summary sheet indicated the dates of source maps and the last reported production, as well as the approximate tonnage mined between these two dates (if the mine is abandoned). The summary sheet also lists the approximate acreage mined since the date of the map and, in some cases, indicates the area where additional mining may have taken place. This latter information is determined by locating on the map the active faces relative to probable boundaries of the mine property.

**Undated map** The source map was undated, so it may or may not be based on a final mine survey. When sufficient data are available, the probable acreage of the mined area is estimated from reported production, average seam thickness and a recovery rate comparable to other mines in the area. This information is listed in the summary sheet for the mine.

**Incomplete map** The source map did not show the entire mine. The summary sheet indicates the missing part of the mine map and the acreage of the unmapped area, which is estimated from the amount of coal known to have been produced from the mine.

**Secondary source map** The original mine map was not found so the outline shown was determined from secondary sources (e.g., outlines from small-scale regional maps published in other reports). The summary sheet describes the secondary sources.

## POINTS AND LABELS

The locations of all known mine openings (shafts, slopes, and drifts) and surface mine tipples are plotted on the map. Tipples are areas where coal was cleaned, stockpiled, and loaded for shipping.

Only openings or tipples are plotted for mines without source maps. If the precise locations of these features are unknown, a special symbol is used to indicate the approximate location of the mine.

Each mine on the map is labeled with the names of the mine and operating company, ISGS mine index number, and years of operation (if known) if space permits. A seam designation is given on maps where more than one seam was mined. For a mine that operated under more than one name, only the most recent name is generally given. When a mine changed names or ownership shortly before closing, an earlier name is listed. All company and mine names are listed on the mine summary sheet in the directory, under the production history segment.





**Figure 1** Mining methods: (A) room-and-pillar basic (RPB), (B) modified room and pillar (MRP), (C) room-and-pillar panel (RPP), (D) blind room and pillar (BRP).





**Figure 1 (cont.)** Mining methods: (E) checkerboard room and pillar (CRP), (F) high extraction retreat (HER), (G) early (pre-1960) longwall, (H) post-1959 longwall





**Figure 2** Generalized stratigraphic section, showing approximate vertical relations of coals in Illinois.

## INTERPRETING A MINE SUMMARY SHEET

The mine summary sheet is arranged numerically by mine index number. Index numbers are shown on the map and in the mine listing. The mine summary sheet provides the following information (if available).

**Company and mine name** The last company or owner of the mine is used, unless no production was recorded for the last owner. In that case, the penultimate owner is listed. Mines often have no specific name; in these cases, the company name is also used as the mine name.

**Type** *Underground* denotes a subsurface mine in which the coal was reached through a shaft, slope, or a drift entry. *Surface* denotes a surface, open pit or strip mine.

**Total mined-out acreage shown** The total acreage of the mined area mapped, including any acreage mined on adjacent quadrangles, is calculated from the digitized outline of the mine. The acreage of large barrier pillars depicted on the map is excluded from the mined-out acreage. Small pillars not digitized are included in the acreage calculation. If the mine outline is not based on a final mine map, the acreage is followed by an estimate of additional acres that may have been mined. The estimate is determined from reported mine production, approximate thickness of the coal, and recovery rates calculated from nearby mines that used similar mining methods.

## SHAFT, SLOPE, DRIFT OR TIPPLE LOCATIONS

**Shaft, slope, drift, or tippie locations** Locations of all known former entry points to underground mines or the location of coal cleaning, tippie, and shipping equipment used by the mine's facility are listed. The location is described in terms of county, township and range (Twp-Rge), section, and location within the section by quarters. NE SW NW, for instance, would describe the location in the northeast quarter of the southwest quarter of the northwest quarter. When sections are irregular in size, the quarters remain the same size and are oriented (or "registered") from the southeast corner of the section. Approximate footage from the section lines (FEL = from east line, FNL = from north line, for example) is given when that information is known; this indicates a surveyed location and is not derived from maps. Entry points are also plotted on the map and coded for the type of entry or tippie. A mine opening may have had many purposes during the life of the mine. Old hoist shafts are often later used for air and escape shafts; this information is included in the directory when known. The tippie for underground mines was generally located near the main shaft or slope. At surface mines, coal was sometimes hauled to a central tippie several miles from the mine pit.

## GEOLOGY

**Seam(s) mined** The name of the coal seam(s) mined is listed, if known. If multiple seams were mined, they are all listed, although the mined-out area for each seam may be shown on separate maps. Figure 2 shows the stratigraphic section of the coal-bearing interval in Illinois, and the vertical relations among the coals.

**Depth** The depth to the top of the seam in the vicinity of the shaft is listed, if known. The depth is determined from notes made by geologists who visited the mine during its operation or from drill hole data in ISGS files. Depth generally varies little over the extent of a mine; however, reported depths for an individual mine may vary. Depth for surface-mined coals varies, and is usually represented as a range.



**Thickness** The approximate thickness of the mined seam is shown, if known. Thickness also comes from notes of geologists who visited the mine during its operation or from borehole data in ISGS files. Minimum, maximum, and average thicknesses are given when this information is available.

**Mining method** The principal mining method used at the mine (figs. 1A-H) is listed. See the mining methods section at the beginning of this directory for a discussion of this parameter.

**Geologic problems reported** Any known geologic problems, such as faults, water seepage, floor heaving, and unstable roof, encountered in the mine are reported. This information is from notes made by ISGS geologists who visited the mine, or from reports by mine inspectors published by the Illinois Department of Mines and Minerals, or from the source map(s). Geologic problems are not reported for active mines.

## PRODUCTION HISTORY

**Production history** Tons of coal produced from the mine by each mine owner are totaled. When the source map used for the mine outline is not a final mine map, the tonnage produced since the date of the map is identified. For mines that extend into adjacent quadrangles, the tonnage reported includes areas mined in adjacent quadrangles.

## SOURCE OF DATA

**Source map** This section lists information about the map(s) used to compile the mine outline and the locations of tipples and mine openings. In some cases more than one source map was used. For example, a map drawn before the mine closed may provide better information on original areas of the mine than a later map. When more than one map was used, the bibliography section explains what information was taken from each source.

**Date** The date of the most recent mine survey listed on the source map is reported.

**Original scale** The original scale of the source map is listed. Many maps are photo-reductions and are no longer at their original scale. The original scale gives some indication of the level of detail of the mine outline and the accuracy of the mine boundary relative to surface features. Generally, the larger the scale, the greater the accuracy and detail of the mine map. Mine outlines taken from source maps at scales smaller than 1:24,000 may be highly generalized and may well be inaccurately located with respect to surface features.

**Digitized scale** The scale of the digitized map is reported. The scale may be different from that of the original source map. In many cases the digitized map was made from a photo-reduction of the original source map, or the source map was not in a condition suitable for digitizing and the mine boundaries were transferred to another base map.

**Map type** Source maps are classified into five categories to indicate the probable completeness of the map. See discussion of source maps in the previous section.

**Annotated bibliography** Sources that provide information about the mine are listed, with the data taken from each source. Some commonly used sources are described below. Full bibliographic references are given for all other sources. Unless otherwise noted, all sources are available for public inspection at the ISGS.

**Coal Reports** Published since 1881, these reports contain tabular data on mine ownership, production, employment, and accidents. Some volumes include short descriptions made by mine inspectors of physical features and conditions in selected mines.

**Directory of Illinois Coal Mines** This source is a compilation of basic data about Illinois coal mines, originally gathered by ISGS staff in the early 1950s. Sources used for this directory are undocumented, but they are primarily Illinois Department of Mines and Minerals annual reports, ISGS mine notes, and coal company officials.

**ENR Document 85/01**, Guither, H. D., J. K. Hines, and R. A. Bauer, 1985 The Economic Effect of Underground Mining Upon Land Used for Illinois Agriculture: Illinois Department of Energy and Natural Resources Document 85/01, 185 p.

**Microfilm map** The U.S. Bureau of Mines maintains a microfilm archive of mine maps. A microfilm file for Illinois is available for public viewing at the ISGS.



*Mine notes* ISGS geologists have visited mines or contacted mine officials throughout the state since the early 1900s. Notes made during these visits range from brief descriptions of the mine location to long narratives (including sketches) of mining conditions and geology.

*Federal Land Bank of St. Louis, Preliminary Reports on Subsidence Investigations* Mining engineers working for the Federal Land Bank of St. Louis mapped areas of subsidence due to coal mining in the early 1930s. These reports often include county maps of mine properties with mined-out areas including shaft locations, as well as subsidence areas.

## **REFERENCES**

Bauer, R. A., B. A. Trent, and P. B. Dumontelle, 1993, Mine Subsidence in Illinois: Facts for the Homeowner Considering Insurance, Illinois State Geological Survey, Environmental Geology Note 144, 16p.

Guither, H. D., J. K. Hines, and R. A. Bauer, 1985, The Economic Effects of Underground Mining Upon Land Used for Illinois Agriculture, Illinois Department of Energy and Natural Resources Document 85/01, 185p.



## PART II DIRECTORY OF MINES IN THE FARMERSVILLE QUADRANGLE

### MINE SUMMARY SHEETS

A summary sheet on the geology and production history of each mine in the Farmersville Quadrangle is provided. These summary sheets are arranged numerically by mine index number. Consult Part I for a complete explanation of the data listed in the summary sheet.

#### Mine Index 67

#### Virден Mining Company, Virден Mine

Type: Underground Total mined-out acreage shown: 1,866 Production indicates approximately 6 acres were mined after the map date.

### SHAFT, SLOPE, DRIFT or TIPPLe LOCATIONS

Type	County	Township-Range	Section	Quarters-Footage
Main shaft	Macoupin	12N 6W	9	NE NW NE
Air shaft	Macoupin	12N 6W	4	SE SW SE
"New" air shaft	Macoupin	12N 6W	3	SE SW NE

### GEOLOGY

Seam(s) Mined	Depth (ft)	Thickness (ft)			Mining Method
		Min	Max	Ave	
Herrin	320-330	4.0	8.0	6.0-7.0	RPP

Geologic Problems Reported: Top coal (15 to 18 inches) was left to support the roof because of the clod between the coal and the limestone caprock. The northern part of the mine had a sandstone roof, which resulted in some wet areas. Rolls were present on the western side of the mine, which curtailed development in that direction. Pyrite bands and lenses were present throughout the seam and the mine. The floor heaved in some areas.

### PRODUCTION HISTORY

Company	Mine Name	Years	Production (tons)
Chicago-Virден Coal Company	Chicago-Virден No. 1	1892-1904	2,796,067
Illinois Collieries Company	Illinois Collieries No. 1	1904-1909 *	1,141,110
Glenridge Coal Company	Glenridge No. 1	1909-1913	664,732
Montour Coal Company	Montour No. 402	1913-1918 **	646,361
Pittsburg Coal Company	Pittsburg No. 402	1918-1920	384,787
Illinois Coal & Coke Corporation	Illinois Coal & Coke No. 3	1920-1923	861,467
Illinois Coal Corporation	Empire No. 3	1923-1932 ***	569,768
Virден Coal Company	Virден	1932-1937	309,008
Lincoln Liquidating Company	Lincoln Liquidating	1937-1939	129,606
Virден Mining Company	Virден	1939-1959	2,879,381
Virден Mining Company	Virден	1959-1959	28,833 †
			10,411,120

\* Idle 1909

\*\* Idle 1916

\*\*\* Idle 1926-1931

† Production after map date

Last reported production: July 1960



## SOURCES OF DATA

Source Map	Date	Original Scale	Digitized Scale	Map Type
Microfilm, document 352558	4-1959	1:2400	1:4966	Not final
Microfilm, document 352541	2-28-1938	1:2400	1:4138	Not final
State archive, IL_1131_03	7-1-1923	1:2400	1:2400	Secondary source
Federal Land Bank Report	4-1934	1:126720	1:126720	Secondary source

### Annotated Bibliography (data source, brief description of information)

Coal Reports - Production, ownership, years of operation, depth.

Mine notes (Macoupin County) - Mine type, shaft location, seam, depth, thickness, geologic problems.

Microfilm map, document 352558, reel 03139, frames 307-314 - Shaft locations, mine outline, mining method.

Microfilm map, document 352541, reel 03139, frames 272-274 - Partial mine outline (west side).

State archive, IL\_1103\_03, map of Royal Colliery Mine (mine index 185) - Partial mine outline (southwest part of mine).

Federal Land Bank Report (Macoupin County) - General area of mining.

ISGS map library, 4103.M34 i5.1-1 - Geologic problems.



**Mine Index 707****Freeman Coal Mining Corporation, Crown Mine**

Type: Underground    Total mined-out acreage shown: 7,314

**SHAFT, SLOPE, DRIFT or TIPPLE LOCATIONS**

Type	County	Township-Range	Section	Quarters-Footage
Main shaft	Montgomery	12N 5W	34	NE SW SE
Air shaft	Montgomery	12N 5W	34	SW NE SE

**GEOLOGY**

Seam(s) Mined	Depth (ft)	Thickness (ft)			Mining Method
		Min	Max	Ave	
Herrin	354			7.0	RPP

Geologic Problems Reported: All areas except the southeast portion of the mine were affected by fractures. The fractures trended northwest-southeast, and displacement ranged from a few inches to about 2 feet. These fractures were interpreted as faulting rather than compactional slips. Coal was eroded in the area of a sandstone channel in the western part of the mine. The channel halted expansion northward in westernmost part of the mine, but in the northern part of the mine, an entry was driven through the channel. In the southern part, the Crown III Mine (mine index 996) worked eastward to the channel.

**PRODUCTION HISTORY**

Company	Mine Name	Years	Production (tons)
Freeman Coal Mining Company	Crown	1951-1971	<u>36,419,077</u> 36,419,077

Last reported production: November 1971

**SOURCES OF DATA**

Source Map	Date	Original Scale	Digitized Scale	Map Type
State archive, PC_02_01	11-24-1971	1:12000	1:12000	Final

Annotated Bibliography (data source, brief description of information)

Coal Reports - Production, ownership, years of operation, seam, depth, thickness.

Directory of Illinois Coal Mines (Montgomery County) - Mine names, mine index, ownership, years of operation.

Mine notes (Montgomery County) - Mine type, geologic problems.

State archive, PC\_02\_01 - Shaft locations, mine outline, mining method, geologic problems.



**Mine Index 933**  
**Freeman United Coal Mining Company, Crown II Mine**

Type: Underground    Total mined-out acreage shown: 8,244

**SHAFT, SLOPE, DRIFT or TIPPLE LOCATIONS**

Type	County	Township-Range	Section	Quarters-Footage
Shaft	Macoupin	12N 6W	23	NW NE NW
Slope	Macoupin	12N 6W	23	SE NE NW
Air shaft	Macoupin	12N 5W	8	NW NE SE

**GEOLOGY**

Seam(s) Mined	Depth (ft)	Thickness (ft)			Mining Method
		Min	Max	Ave	
Herrin	330			6.0-6.67	RPP

Geologic Problems Reported: This mine had a variety of problems. There were numerous slickensides, clay dikes, faults and channels throughout the mine. These features, along with a shale roof that lacked competency and allowed for water seepage, created roof problems. Roof falls were reported.

**PRODUCTION HISTORY**

Company	Mine Name	Years	Production (tons)
Freeman United Coal Mining Company	Crown II	1974-2007	41,644,282
			41,644,282

Last reported production: August 2007

**SOURCES OF DATA**

Source Map	Date	Original Scale	Digitized Scale	Map Type
Company, Coal Section digital files	12-18-2007	1:12000	1:12000	Final
Company, Coal Section files, 6-246	1-1-1977	1:4800	1:4800	Not final

Annotated Bibliography (data source, brief description of information)

Coal Reports - Production, ownership, years of operation, depth, thickness.  
 Directory of Illinois Coal Mines (Macoupin County) - Mine names, mine index, ownership, years of operation.  
 Mine notes (Macoupin County) - Mine type, shaft location, seam, mining method, geologic problems.  
 Company map, Coal Section digital files - Air shaft location, mine outline, mining method.  
 Company map, Coal Section files, 6-246 - Slope and shaft locations.

**Mine Index 996**  
**Springfield Coal Company, LLC, Crown III Mine**

Type: Underground    Total mined-out acreage shown: 7,024

**SHAFT, SLOPE, DRIFT or TIPPLE LOCATIONS**

Type	County	Township-Range	Section	Quarters-Footage
Slope	Macoupin	11N 6W	1	NW NE SE
Man / material shaft	Macoupin	11N 6W	1	NW NW SE
Air shaft	Macoupin	11N 6W	1	SW NW SE

**GEOLOGY**

Seam(s) Mined	Depth (ft)	Thickness (ft)			Mining Method
		Min	Max	Ave	
Herrin	366			6.0-7.5	RPP

Geologic Problems Reported: This mine had an irregular roof that lead to a variety of problems. There were numerous slickensides, limestone "bosses" and faults throughout the mine. A channel that ranged from several hundred feet to 1000 feet wide extended throughout the mine, which greatly affected mining. Concretions were found at the top of the Herrin Coal in some areas. These features, along with a shale roof that lacked competency and allowed for water seepage, created roof problems. Roof falls were reported.

**PRODUCTION HISTORY**

Company	Mine Name	Years	Production (tons)
Freeman United Coal Mining Company	Crown III	1981-2007 *, **	29,367,673
Springfield Coal Company, LLC	Crown III	2007-2008 **	1,407,552
Tri County Coal, LLC	Crown III	2009-2013	5,330,670
			36,105,895

\* Mining began in 1978, but no production was reported until 1981. Idle May 1982 to January 1985, and 1988 through 1990.

\*\* The mine was closed August 30, 2007 and re-opened September 4, 2008 under new ownership. However, the 2007 Coal Report listed all 2007 production under the old ownership.

Last reported production: 2013

**SOURCES OF DATA**

Source Map	Date	Original Scale	Digitized Scale	Map Type
Company, 6-381L	1-2-2014	1:9600	1:9600	Final

Annotated Bibliography (data source, brief description of information)

Coal Reports - Production, ownership, years of operation.

Directory of Illinois Coal Mines (Macoupin County) - Mine names, mine index, ownership, years of operation.

Mine notes (Macoupin County) - Mine type, shaft location, seam, depth, thickness, geologic problems.

Company map, Coal Section files, 6-381L - Slope & shaft locations, mine outline, mining method, geologic problems.



**Mine Index 933**  
**Freeman United Coal Mining Company, Crown II Mine**

Type: Underground    Total mined-out acreage shown: 8,244

**SHAFT, SLOPE, DRIFT or TIPPLE LOCATIONS**

Type	County	Township-Range	Section	Quarters-Footage
Shaft	Macoupin	12N 6W	23	NW NE NW
Slope	Macoupin	12N 6W	23	SE NE NW
Air shaft	Macoupin	12N 5W	8	NW NE SE

**GEOLOGY**

Seam(s) Mined	Depth (ft)	Thickness (ft)			Mining Method
		Min	Max	Ave	
Herrin	330			6.0-6.67	RPP

Geologic Problems Reported: This mine had a variety of problems. There were numerous slickensides, clay dikes, faults and channels throughout the mine. These features, along with a shale roof that lacked competency and allowed for water seepage, created roof problems. Roof falls were reported.

**PRODUCTION HISTORY**

Company	Mine Name	Years	Production (tons)
Freeman United Coal Mining Company	Crown II	1974-2007	41,644,282 *
			41,644,282

Last reported production: August 2007

**SOURCES OF DATA**

Source Map	Date	Original Scale	Digitized Scale	Map Type
Company, Coal Section digital files	9-4-2007	1:12000	1:12000	Final

Annotated Bibliography (data source, brief description of information)

Coal Reports - Production, ownership, years of operation, depth, thickness.  
 Directory of Illinois Coal Mines (Macoupin County) - Mine names, mine index, ownership, years of operation.  
 Mine notes (Macoupin County) - Mine type, shaft location, seam, mining method, geologic problems.  
 Company map, Coal Section digital files, 6-380\_final - Slope and shaft locations, mine outline, mining method.

## INDEX OF MINES IN THE FARMERSVILLE QUADRANGLE

Chicago-Virden Coal Company . . . . .	9
Crown II Mine. . . . .	12, 14
Crown III Mine . . . . .	13
Crown Mine . . . . .	11
Empire No. 3 Mine. . . . .	9
Freeman Coal Mining Company . . . . .	11
Freeman United Coal Mining Company, Crown II Mine. . . . .	12, 14
Freeman United Coal Mining Company, Crown III Mine . . . . .	13
Glenridge Coal Company. . . . .	9
Illinois Coal & Coke Corporation, No. 3 Mine. . . . .	9
Illinois Coal Corporation. . . . .	9
Illinois Collieries Company, No. 1 Mine . . . . .	9
Lincoln Liquidating Company. . . . .	9
Montour Coal Company, No. 402 Mine . . . . .	9
Pittsburg Coal Company, No. 402 Mine. . . . .	9
Springfield Coal Company, LLC. . . . .	13
Tri County Coal, LLC . . . . .	13
Virden Coal Company . . . . .	9
Virden Mining Company. . . . .	9



