

Coal Mines in Illinois Freeburg Quadrangle St. Clair County, Illinois

Herrin Coal

This map accompanies the Coal Mines Directory for the Freeburg Quadrangle. Consult the directory for a complete explanation of the information shown on this map.

Mining Method

- Room & Pillar (RP)
- Room & Pillar Basic (RPB)
- Modified Room & Pillar (MRP)
- Room & Pillar Panel (RPP)
- Blind Room & Pillar (BRP)
- Checkerboard Room & Pillar (CRP)
- High Extraction Retreat (HER)
- Longwall (LW)
- Underground, Method Unknown
- Strip Mine
- Auger Mine
- General Area of Mining

Other Areas Depicted

- Non-Coal Mines

Source of Mine Outline

- Final Mine Map
- Not Final Mine Map
- Undated Mine Map
- Incomplete Mine Map
- Secondary Source Map

Tipple, Shaft, Slope, Drift Locations

- Strip Mine Tipple - Active
- Strip Mine Tipple - Abandoned
- Mine Shaft - Active
- Mine Shaft - Abandoned
- Mine Slope - Active
- Mine Slope - Abandoned
- Mine Drift - Active
- Mine Drift - Abandoned
- Air Shaft
- Uncertain Location
- Uncertain Type of Opening

Other Points Depicted

- Non-Coal Mines

Mine Annotation (space permitting)

- Company
- Mine Name
- ISGS Index No., Years of Operation

Disclaimer

Please check the Coal Section at the Illinois State Geological Survey's web site at <http://www.isgs.illinois.edu> for the most up-to-date version of these products.

Note that each quadrangle scale mined-out area map requires the use of the associated text directory for full explanation of map features and mine attributes. Also note that some quadrangles have multiple seams of mining and therefore more than one map may be available for a particular quadrangle. Please take care to check for multiple maps, as extensive mining may exist in the other seams.

The maps and digital files used for these studies were compiled from data obtained from a variety of public and private sources and have varying degrees of completeness and accuracy. This compilation map presents reasonable interpretation of the geology of the area and is based on available data. Locations of some mine features may be offset by 500 feet or more due to errors in the original source maps, the compilation process, digitizing, or a combination of these factors. These data are not intended for use in site-specific screening or decision-making. Use of these documents does not eliminate the need for detailed studies to fully understand the geology of a specific site. The Illinois State Geological Survey, Prairie Research Institute, or the University of Illinois make no guarantee, expressed or implied, regarding the correctness of the interpretations presented in this data set and accept no liability for the consequences of decisions made by others on the basis of the information presented here.

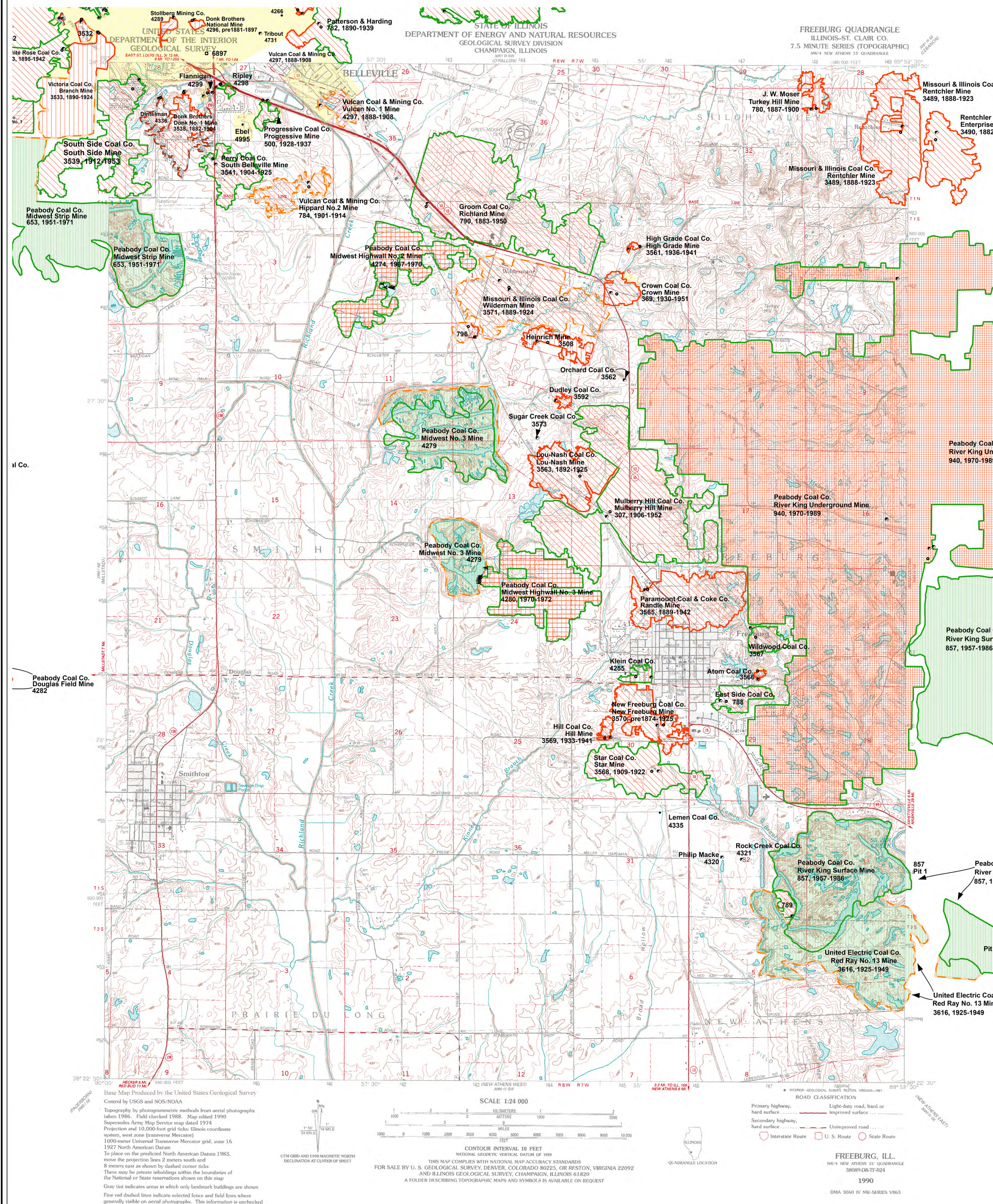
These maps were designed for use at 1:24,000. Enlarging the map may reduce accuracy, as the original scale of the source maps used to compile the outlines shown varies from 1:400 to 1:150,000, and some mine locations are known only from text descriptions. See the accompanying mine directory for the original scale of the source map used for a specific mine to check accuracy of a given portion of the map. Areas with no mines shown may still be undetermined; see the unlocated mines list at the back of each mine directory.

The image of the U.S.G.S. topographic base map was projected from the original UTM to Lambert Conformal Conic.



Prairie Research Institute
Illinois State Geological Survey
615 E. Peabody Dr.
Champaign, IL 61820

Mine Outlines Compiled by
Melony E. Barrett
2000
Revised 2004 & 2021



DIRECTORY OF COAL MINES IN ILLINOIS 7.5-MINUTE QUADRANGLE SERIES FREEBURG QUADRANGLE ST. CLAIR COUNTY

Cheri Chenoweth, Melony E. Barrett, Scott D. Elrick



Department of Natural Resources
ILLINOIS STATE GEOLOGICAL SURVEY
2000
REVISED 2004, 2021

**DIRECTORY OF COAL MINES IN ILLINOIS
7.5-MINUTE QUADRANGLE SERIES
FREEBURG QUADRANGLE
ST. CLAIR COUNTY**

2000
REVISED 2004, 2021

ILLINOIS STATE GEOLOGICAL SURVEY
William Shilts, Chief

Natural Resources Building
615 East Peabody Drive
Champaign, Illinois 61820

Phone 1-217-244-4610
Fax 1-217-333-2830

Cover photo Track-mounted duckbill loading machine at a Peabody Coal Company mine, ca. 1915.

DISCLAIMER: The accuracy and completeness of mine maps and directories vary with the availability of reliable information. Maps and other information used to compile this mine map and directory were obtained from a variety of sources and the accuracy of some of the original information cannot be verified. Consequently, the Illinois State Geological Survey (ISGS) cannot guarantee the mine maps are free of errors and disclaims any responsibility for damages that may result from actions or decisions based on them.

The ISGS updates the maps and directories periodically, and welcomes any new information or corrections. Please contact the Coal Section of the ISGS at the address shown on the title page of this directory, or telephone (217) 244-4610.

Printed by authority of the State of Illinois/2004

CONTENTS

INTRODUCTION	1
MINING IN THE FREEBURG QUADRANGLE	1
PART I EXPLANATION OF MAP AND MINE SUMMARY SHEET	2
INTERPRETING THE MAP	2
Mine Type and Mining Method	2
Source Maps	3
Points and Labels	3
INTERPRETING A MINE SUMMARY SHEET	6
REFERENCES	8
PART II DIRECTORY OF MINES IN FREEBURG QUADRANGLE	9
MINE SUMMARY SHEETS	9
Mine Index 307	
Mulberry Hill Coal Company, Mulberry Hill Mine	9
Mine Index 369	
Crown Coal Company, Crown Mine	10
Mine Index 500	
Progressive Coal Mining Company, Progressive Mine	11
Mine Index 653	
Peabody Coal Company, Midwest Strip Mine	12
Mine Index 780	
J. W. Moser, Turkey Hill Mine	13
Mine Index 784	
Vulcan Coal & Mining Company, Hippard No. 2 Mine	14
Mine Index 788	
East Side Coal Company, East Side Mine	15
Mine Index 789	
Reinheimer, Reinheimer Slope Mine	16
Mine Index 790	
Groom Coal Company, Richland Mine	17
Mine Index 791	
Ace High Coal Company, Ace High Mine	18
Mine Index 796	
Midway Coal Company, Midway Mine	19
Mine Index 857	
Peabody Coal Company, River King Surface Mine	20
Mine Index 940	
Peabody Coal Company, River King Underground Mine	21
Mine Index 3489	
Missouri & Illinois Coal Company, Rentchler Mine	22
Mine Index 3508	
Consolidated Coal Company of St. Louis, Heinrich Mine	23
Mine Index 3533	
Victoria Coal Company, Branch Mine (aka Victoria No. 1)	24
Mine Index 3538	
Donk Brothers Coal Company, Donk No. 1 Mine	25
Mine Index 3539	
South Side Coal Company, South Side Mine	26
Mine Index 3541	
Perry Coal Company, South Belleville Mine	27
Mine Index 3561	
High Grade Coal Company, High Grade Mine	28
Mine Index 3562	
Orchard Coal Company, Orchard Mine	29
Mine Index 3563	
Lou-Nash Coal Company, Lou-Nash Mine	30

Mine Index 3565	
Paramount Coal & Coke Company, Randle Mine	31
Mine Index 3566	
Atom Coal Company, Atom Mine	32
Mine Index 3567	
Wildwood Coal Company, Wildwood Mine	33
Mine Index 3568	
Star Coal Company, Star Mine.	34
Mine Index 3569	
Hill Coal Company, Hill Mine	35
Mine Index 3570	
New Freeburg Coal Company, New Freeburg Mine.	36
Mine Index 3571	
Missouri & Illinois Coal Company, Wilderman Mine	37
Mine Index 3573	
Sugar Creek Coal Company, Sugar Creek Mine	38
Mine Index 3592	
Dudley Coal Company, Dudley Mine	39
Mine Index 3616	
United Electric Coal Company, Red Ray No. 13 Mine	40
Mine Index 4255	
Klein Coal Company, Klein Mine	41
Mine Index 4274	
Peabody Coal Company, Midwest Highwall No. 2 Mine.	42
Mine Index 4279	
Peabody Coal Company, Midwest Mine No. 3	43
Mine Index 4280	
Peabody Coal Company, Midwest Highwall No. 3 Mine.	44
Mine Index 4297	
Vulcan Coal & Mining Company, Vulcan Mine No. 1	45
Mine Index 4298	
Ripley, Ripley Mine.	46
Mine Index 4299	
Flannigan & Company, Flannigan Mine	47
Mine Index 4320	
Philip Macke, Macke Mine	48
Mine Index 4321	
Rock Creek Coal Company, Rock Creek Mine.	49
Mine Index 4336	
Dintelman Coal Company, National Mine.	50
Mine Index 4995	
August Ebel, Ebel Mine	51
OTHER MINES SHOWN ON THE FREEBURG QUADRANGLE	52
Mine Index 4335, Lemen Coal Company	52
MINES WHOSE LOCATIONS ARE NOT KNOWN, FREEBURG QUADRANGLE	52
INDEX OF MINES IN THE FREEBURG QUADRANGLE	55

INTRODUCTION

Coal has been mined in 76 counties of Illinois. More than 7,400 coal mines have operated since commercial mining began in Illinois about 1810; fewer than 30 are currently active. To detail the extent and location of coal mining in Illinois, the Illinois State Geological Survey (ISGS) has compiled maps and directories of known coal mines. The ISGS offers maps at a scale of 1:100,000 and accompanying directories for each county in which coal mining is known to have occurred. Maps at a scale of 1:24,000 and accompanying directories such as this are available for selected quadrangles. Contact the ISGS for a list of these quadrangles.

These larger scale maps show the approximate positions of mines in relation to surface features such as roads and water bodies, and indicate the mining method used and the accuracy of the mine boundaries. The maps are useful for locating mine boundaries relative to specific properties and for assessing the potential for subsidence in an area. Mine boundaries compiled from final mine surveys are generally shown within 200 feet of their true position. As a result of poor cartographic quality and inaccuracies in the original mine surveys, boundaries of some older mines may be mislocated on the map by 500 feet or more. Original mine maps should be consulted in situations that require precise delineation of mine boundaries or internal workings of mined areas.

The directory serves as a key to the accompanying mine map and provides basic information on the coal mines. The directory is composed of two parts. Part I explains the symbols and patterns used on the accompanying map and the summary data presented for each mine. Part II numerically lists the mines in the quadrangle and summarizes the geology and production history of each mine.

MINING IN THE FREEBURG QUADRANGLE

Mining in this quadrangle began prior to 1874, and continued until 1989. The date of the earliest mining is not known; the 1874 Atlas of St. Clair County shows mines in the Belleville and Rentchler areas. The most recent (and largest) mine in the Freeburg quadrangle is the River King Underground Mine (mine index 940), just east of Freeburg. Three of the mines in this area operated for long periods; the Richland Mine (mine index 790) operated for 68 years, the Randle Mine (mine index 3565) operated for 53 years, and the Reinheimer Slope Mine (mine index 789) operated for 51 years.

The Herrin Coal was the only coal mined here, ranging from 5.0 to 11.5 feet thick and 8 to 267 feet deep. Several mines reported water, and a number of mines reported problems with the mine floor "heaving" or "squeezing". These problems typically occur in wet conditions such as this where the bedrock cover above the coal is relatively thin.

PART I EXPLANATION OF MAP AND MINE SUMMARY SHEET

INTERPRETING THE MAP

The map accompanying this directory shows the location of coal mines known to be present in the quadrangle. The map, corresponding to a U.S. Geological Survey (USGS) 7.5-minute quadrangle, covers an area bounded by lines of latitude and longitude 7.5-minutes apart. In Illinois, a quadrangle is approximately 6.5 miles east to west and 8.5 miles north to south, an area of about 56 square miles. The USGS generally offers one map of mines per quadrangle. In some areas where extensive mining occurred in two or more overlapping seams, separate maps are compiled for mines in each seam to maintain readability of the map.

Mine Type and Mining Method

The mine type is indicated on the map by pattern color: green represents surface mines; red and yellow represent underground mines. The red patterns are used for areas of underground mining that are documented by a primary or secondary source map. A yellow pattern is used for cases where no map of the mine workings is available, but a general area of mining can be inferred from property maps or production figures. The patterns indicate the main mining methods used in underground mines. The methods are (1) room and pillar and (2) high extraction. The method used gives some indication of the amount and pattern of coal extraction within each mined area, and has some influence on the timing and type of subsidence that can occur over a mine.

The following discussion and illustrations of mining methods are based on Guither et al. (1984).

In room-and-pillar mines, coal is removed from haulage-ways (entries) and selected areas called rooms. Pillars of unmined coal are left between the rooms to support the roof. Depending on the size of rooms and pillars, the amount of coal removed from the production areas will range from 40% to 70%.

Room and Pillar - mining is divided into six categories:

- room-and-pillar basic (RPB, fig. 1A), an early method that did not follow a preset mining plan and therefore resulted in very irregular designs;
- modified room and pillar (MRP, fig. 1B);
- room-and-pillar panel (RPP, fig. 1C);
- blind room and pillar (BRP, fig. 1D);
- checkerboard room and pillar (CRP, fig. 1E);
- room and pillar (RP), a classification used when the specific type of room-and-pillar mining is unknown.

Blind and checkerboard are the most common types of room-and-pillar mining used in Illinois today. The knowledge of room-and-pillar mining methods gives a trained engineer information on the nature of subsidence that may occur. A more extensive discussion of subsidence can be found in Bauer et al. (1993).

High-extraction These mining methods are subdivided into high-extraction retreat (HER, Fig 1F) and longwall (LW, Fig 1G, 1H). In these methods, much of the coal is removed within well defined areas of the mine. Subsidence of the surface above these areas occurs within weeks. Once the subsidence activity ceases, the potential for further movement over these areas is low; however, subsidence may continue for several years after mining.

High-extraction retreat mining is a form of room-and-pillar mining that extracts most of the coal. Rooms and pillars are developed in the panels, and the pillars are then systematically removed (fig. 1F).

In early (pre-1960) longwall mines, mining advanced in multiple directions from a central shaft (fig. 1G). Large pillars of coal were left around the shaft, but all coal was removed beyond these pillars. Miners placed rock and wooden props and cribs in the mined-out areas to support the mine roof. The overlying rock gradually settled onto these supports, thus producing subsidence at the surface. In post-1959 longwall mines, room-and-pillar methods have been used to develop the main entries of the mine and panel areas. Modern longwall methods extract 100 percent of the coal in the panel areas (fig. 1H).

SOURCE MAPS

Mine outlines depicted on the map are, whenever possible, based on maps made from original mine surveys. The process of compiling and digitizing the quadrangle map may produce errors of less than 200 feet in the location of mine boundaries. Larger errors of 500 feet or more are possible for mines that have incomplete or inaccurate source maps.

Because of the extreme complexity of some mine maps, detailed features of mined areas have been omitted. The digitized mine boundary includes the exterior boundary of all rooms or entries that were at least 80 feet wide or protruded 500 feet from the main mining area. Unmined areas between mines are shown if they are at least 80 feet wide; unmined blocks of coal within mines are shown if they are at least 400 feet on each side. Original source maps should be consulted when precise information on mine boundaries or interior features is needed.

The mine summary sheet lists the source maps used to determine each mine outline. The completeness of map sources is indicated on the map by a line symbol at the mine boundary. Source maps are organized in five categories.

Final mine map The mine outline was digitized from an original map made from mine surveys conducted within a few months after production ceased. The date of the map and the last reported production are listed on the summary sheet.

Not a final map The mine is currently active or the mine outline was made from a map based on mine surveys conducted more than a few months before production ceased. This implies the actual mined-out area is probably larger than the outline on the map. The mine summary sheet indicated the dates of source maps and the last reported production, as well as the approximate tonnage mined between these two dates (if the mine is abandoned). The summary sheet also lists the approximate acreage mined since the date of the map and, in some cases, indicates the area where additional mining may have taken place. This latter information is determined by locating on the map the active faces relative to probable boundaries of the mine property.

Undated map The source map was undated, so it may or may not be based on a final mine survey. When sufficient data are available, the probable acreage of the mined area is estimated from reported production, average seam thickness and a recovery rate comparable to other mines in the area. This information is listed in the summary sheet for the mine.

Incomplete map The source map did not show the entire mine. The summary sheet indicates the missing part of the mine map and the acreage of the unmapped area, which is estimated from the amount of coal known to have been produced from the mine.

Secondary source map The original mine map was not found so the outline shown was determined from secondary sources (e.g., outlines from small-scale regional maps published in other reports). The summary sheet describes the secondary sources.

POINTS AND LABELS

The locations of all known mine openings (shafts, slopes, and drifts) and surface mine tipples are plotted on the map. Tipples are areas where coal was cleaned, stockpiled, and loaded for shipping.

Only openings or tipples are plotted for mines without source maps. If the precise locations of these features are unknown, a special symbol is used to indicate the approximate location of the mine.

Each mine on the map is labeled with the names of the mine and operating company, ISGS mine index number, and years of operation (if known) if space permits. A seam designation is given on maps where more than one seam was mined. For a mine that operated under more than one name, only the most recent name is generally given. When a mine changed names or ownership shortly before closing, an earlier name is listed. All company and mine names are listed on the mine summary sheet in the directory, under the production history segment.



Figure 1 Mining methods: (A) room-and-pillar basic (RPB), (B) modified room and pillar (MRP), (C) room-and-pillar panel (RPP), (D) blind room and pillar (BRP).



Figure 1 (cont.) Mining methods: (E) checkerboard room and pillar (CRP), (F) high extraction retreat (HER), (G) early (pre-1960) longwall, (H) post-1959 longwall



Figure 2 Generalized stratigraphic section, showing approximate vertical relations of coals in Illinois.

INTERPRETING A MINE SUMMARY SHEET

The mine summary sheet is arranged numerically by mine index number. Index numbers are shown on the map and in the mine listing. The mine summary sheet provides the following information (if available).

Company and mine name The last company or owner of the mine is used, unless no production was recorded for the last owner. In that case, the penultimate owner is listed. Mines often have no specific name; in these cases, the company name is also used as the mine name.

Type *Underground* denotes a subsurface mine in which the coal was reached through a shaft, slope, or a drift entry. *Surface* denotes a surface, open pit or strip mine.

Total mined-out acreage shown The total acreage of the mined area mapped, including any acreage mined on adjacent quadrangles, is calculated from the digitized outline of the mine. The acreage of large barrier pillars depicted on the map is excluded from the mined-out acreage. Small pillars not digitized are included in the acreage calculation. If the mine outline is not based on a final mine map, the acreage is followed by an estimate of additional acres that may have been mined. The estimate is determined from reported mine production, approximate thickness of the coal, and recovery rates calculated from nearby mines that used similar mining methods.

SHAFT, SLOPE, DRIFT OR TIPPLE LOCATIONS

Shaft, slope, drift, or tippie locations Locations of all known former entry points to underground mines or the location of coal cleaning, tippie, and shipping equipment used by the mine's facility are listed. The location is described in terms of county, township and range (Twp-Rge), section, and location within the section by quarters. NE SW NW, for instance, would describe the location in the northeast quarter of the southwest quarter of the northwest quarter. When sections are irregular in size, the quarters remain the same size and are oriented (or "registered") from the southeast corner of the section. Approximate footage from the section lines (FEL = from east line, FNL = from north line, for example) is given when that information is known; this indicates a surveyed location and is not derived from maps. Entry points are also plotted on the map and coded for the type of entry or tippie. A mine opening may have had many purposes during the life of the mine. Old hoist shafts are often later used for air and escape shafts; this information is included in the directory when known. The tippie for underground mines was generally located near the main shaft or slope. At surface mines, coal was sometimes hauled to a central tippie several miles from the mine pit.

GEOLOGY

Seam(s) mined The name of the coal seam(s) mined is listed, if known. If multiple seams were mined, they are all listed, although the mined-out area for each seam may be shown on separate maps. Figure 2 shows the stratigraphic section of the coal-bearing interval in Illinois, and the vertical relations among the coals.

Depth The depth to the top of the seam in the vicinity of the shaft is listed, if known. The depth is determined from notes made by geologists who visited the mine during its operation or from drill hole data in ISGS files. Depth generally varies little over the extent of a mine; however, reported depths for an individual mine may vary. Depth for surface-mined coals varies, and is usually represented as a range.

Thickness The approximate thickness of the mined seam is shown, if known. Thickness also comes from notes of geologists who visited the mine during its operation or from borehole data in ISGS files. Minimum, maximum, and average thicknesses are given when this information is available.

Mining method The principal mining method used at the mine (figs. 1A-H) is listed. See the mining methods section at the beginning of this directory for a discussion of this parameter.

Geologic problems reported Any known geologic problems, such as faults, water seepage, floor heaving, and unstable roof, encountered in the mine are reported. This information is from notes made by ISGS geologists who visited the mine, or from reports by mine inspectors published by the Illinois Department of Mines and Minerals, or from the source map(s). Geologic problems are not reported for active mines.

PRODUCTION HISTORY

Production history Tons of coal produced from the mine by each mine owner are totaled. When the source map used for the mine outline is not a final mine map, the tonnage produced since the date of the map is identified. For mines that extend into adjacent quadrangles, the tonnage reported includes areas mined in adjacent quadrangles.

SOURCE OF DATA

Source map This section lists information about the map(s) used to compile the mine outline and the locations of tipples and mine openings. In some cases more than one source map was used. For example, a map drawn before the mine closed may provide better information on original areas of the mine than a later map. When more than one map was used, the bibliography section explains what information was taken from each source.

Date The date of the most recent mine survey listed on the source map is reported.

Original scale The original scale of the source map is listed. Many maps are photo-reductions and are no longer at their original scale. The original scale gives some indication of the level of detail of the mine outline and the accuracy of the mine boundary relative to surface features. Generally, the larger the scale, the greater the accuracy and detail of the mine map. Mine outlines taken from source maps at scales smaller than 1:24,000 may be highly generalized and may well be inaccurately located with respect to surface features.

Digitized scale The scale of the digitized map is reported. The scale may be different from that of the original source map. In many cases the digitized map was made from a photo-reduction of the original source map, or the source map was not in a condition suitable for digitizing and the mine boundaries were transferred to another base map.

Map type Source maps are classified into five categories to indicate the probable completeness of the map. See discussion of source maps in the previous section.

Annotated bibliography Sources that provide information about the mine are listed, with the data taken from each source. Some commonly used sources are described below. Full bibliographic references are given for all other sources. Unless otherwise noted, all sources are available for public inspection at the ISGS.

Coal Reports Published since 1881, these reports contain tabular data on mine ownership, production, employment, and accidents. Some volumes include short descriptions made by mine inspectors of physical features and conditions in selected mines.

Directory of Illinois Coal Mines This source is a compilation of basic data about Illinois coal mines, originally gathered by ISGS staff in the early 1950s. Sources used for this directory are undocumented, but they are primarily Illinois Department of Mines and Minerals annual reports, ISGS mine notes, and coal company officials.

ENR Document 85/01, Guither, H. D., J. K. Hines, and R. A. Bauer, 1985 The Economic Effect of Underground Mining Upon Land Used for Illinois Agriculture: Illinois Department of Energy and Natural Resources Document 85/01, 185 p.

Microfilm map The U.S. Bureau of Mines maintains a microfilm archive of mine maps. A microfilm file for Illinois is available for public viewing at the ISGS.

Mine notes ISGS geologists have visited mines or contacted mine officials throughout the state since the early 1900s. Notes made during these visits range from brief descriptions of the mine location to long narratives (including sketches) of mining conditions and geology.

Federal Land Bank of St. Louis, Preliminary Reports on Subsidence Investigations Mining engineers working for the Federal Land Bank of St. Louis mapped areas of subsidence due to coal mining in the early 1930s. These reports often include county maps of mine properties with mined-out areas including shaft locations, as well as subsidence areas.

REFERENCES

Bauer, R. A., B. A. Trent, and P. B. Dumontelle, 1993, Mine Subsidence in Illinois: Facts for the Homeowner Considering Insurance: Illinois State Geological Survey, Environmental Geology Note 144, 16p.

Guither, H. D., J. K. Hines, and R. A. Bauer, 1985, The Economic Effects of Underground Mining Upon Land Used for Illinois Agriculture: Illinois Department of Energy and Natural Resources Document 85/01, 185p.

Warner & Beers, publishers, 1874, Atlas of St. Clair County, reproduced by the Marissa Historical and Genealogical Society, Marissa, Illinois.

PART II DIRECTORY OF MINES IN FREEBURG QUADRANGLE

MINE SUMMARY SHEETS

A summary sheet on the geology and production history of each mine in the Freeburg Quadrangle is provided. These summary sheets are arranged numerically by mine index number. Consult Part I for a complete explanation of the data listed in the summary sheet.

Mine Index 307

Mulberry Hill Coal Company, Mulberry Hill Mine

Type: Underground Total mined-out acreage shown: 633

SHAFT, SLOPE, DRIFT or TIPPLE LOCATIONS

Type	County	Twp	Section	Quarters-Footage
Main shaft (8.5' x 14')	St. Clair	1S 7W	18	NW NE SW
Air shaft	St. Clair	1S 7W	18	NW NE SW

GEOLOGY

Seam(s) Mined	Depth (ft)	Thickness (ft)			Mining Method
		Min	Max	Ave	
Herrin	144	6.0	10.5	6.5-6.7	MRP

Geologic Problems Reported: Concretions were common throughout the mine. Roof rolls were common. Horseback-type features were present, with up to one foot of displacement. The source map shows water in the northwestern portion of the mine (1939, 1940).

PRODUCTION HISTORY

Company	Mine Name	Years	Production (tons)
Mulberry Hill Coal Company	Mulberry Hill	1906-1952 *	<u>3,877,966</u> 3,877,966

* Idle last half of 1925

Last reported production: March 1952

SOURCES OF DATA

Source Map	Date	Original Scale	Digitized Scale	Map Type
Microfilm, document 351167	1-8-1956	1:2400	1:5297	Final

Annotated Bibliography (data source, brief description of information)

Coal Reports - Production, ownership, years of operation.

Directory of Illinois Coal Mines (St. Clair County) - Mine names, mine index, ownership, years of operation.

Mine notes (St. Clair County) - Mine type, shaft location and size, seam, depth, thickness, geologic problems.

Microfilm map, document 351167, reel 03134, frames 312, 313 - Shaft locations, mine outline, mining method, geologic problems.

Mine Index 369
Crown Coal Company, Crown Mine

Type: Underground Total mined-out acreage shown: 40 This area shown is smaller than expected for the tonnage mined. A 6-acre general area of mining was added to the map to indicate the expected extent of the mine. Less than one additional acre was mined after the map date.

SHAFT, SLOPE, DRIFT or TIPPLe LOCATIONS

Type	County	Twp	Section	Quarters-Footage
Main shaft & air shaft	St. Clair	1S 7W	6	SW NE SW
Air shaft	St. Clair	1S 7W	6	SE NE SW

GEOLOGY

Seam(s) Mined	Depth (ft)	Thickness (ft)			Mining Method
		Min	Max	Ave	
Herrin	140	6.0	7.5	6.5-7.0	MRP

Geologic Problems Reported:

PRODUCTION HISTORY

Company	Mine Name	Years	Production (tons)
Crown Coal Company	Crown	1930-1950	295,252
Crown Coal Company	Crown	1950-1951	<u>1,418 *</u>
			296,670

* Production after map date

Last reported production: 1951

SOURCES OF DATA

Source Map	Date	Original Scale	Digitized Scale	Map Type
Microfilm, document 351127	12-23-1950	1:2400	1:4138	Not final

Annotated Bibliography (data source, brief description of information)

Coal Reports - Production, ownership, years of operation.
 Directory of Illinois Coal Mines (St. Clair County) - Mine names, mine index, ownership, years of operation.
 Mine notes (St. Clair County) - Mine type, seam, depth, thickness.
 Microfilm map, document 351127, reel 03134, frame 262 - Shaft locations, mine outline, mining method.

Mine Index 500

Progressive Coal Mining Company, Progressive Mine

Type: Underground Total mined-out acreage shown: 16 The area shown is smaller than expected for the tonnage produced. Two general areas of mining have been added to the accompanying map, in the areas shown on the source map as inaccessible due to water in the mine.

SHAFT, SLOPE, DRIFT or TIPPLE LOCATIONS

Type	County	Twp	Section	Quarters-Footage
Slope	St. Clair	1N 8W	34	SE NE NW
Air shaft	St. Clair	1N 8W	34	SE NE NW

GEOLOGY

Seam(s) Mined	Depth (ft)	Thickness (ft)		Mining Method
		Min	Max Ave	
Herrin	45-48		5.5-6.0	MRP

Geologic Problems Reported: The source map shows areas in the south and southwest labeled "Caved". Areas in the western and eastern parts of the mine were inaccessible due to water.

PRODUCTION HISTORY

Company	Mine Name	Years	Production (tons)
Beese Coal Company	Beese	1918-1921	8,855
Breese Coal Company	Breese	1921-1928	38,655 *
Safety Coal Company	Safety	1928-1930	21,514
Safety First Coal Company	Safety First	1930-1936 **	42,422
Progressive Coal Mining Company	Progressive	1936-1937	8,288
			119,734

* Production not reported 1922 (Mines producing less than 10,000 tons were not included.)

** Idle 1935

Last reported production: 1937 (Mine notes say that the mine was idle and filled with water by June 9, 1937)

SOURCES OF DATA

Source Map	Date	Original Scale	Digitized Scale	Map Type
Microfilm, document 351034	4-22-1937	1:2400	1:2400	Final

Annotated Bibliography (data source, brief description of information)

Coal Reports - Production, ownership, years of operation.

Directory of Illinois Coal Mines (St. Clair County) - Mine names, mine index, ownership, years of operation.

Microfilm map, document 351034, reel 03134, frame 119 - Shaft and slope locations, mine outline, mining method, geologic problems.

Mine notes (St. Clair County) - Slope location, mine type, seam, depth, thickness, abandonment date.

Mine Index 653**Peabody Coal Company, Midwest Strip Mine**

Type: Surface Total mined-out acreage shown: 1,103 Production indicates an additional 115 acres were mined after the map date. The area shown is too small for the reported production; production reported for this mine almost certainly includes the production for Midwest Mine No. 3 (mine index 4279) as well as some production for Midwest Radiant No. 1 Mine (mine index 682).

SHAFT, SLOPE, DRIFT or TIPPLE LOCATIONS

Type	County	Twp	Section	Quarters-Footage
Tipple	St. Clair	1N 9W	34	NE SW *

* The tipple for Midwest Radiant Fuel Company (mine index 682) was used by Peabody Midwest Mine.

GEOLOGY

Seam(s) Mined	Depth (ft)	Thickness (ft)			Mining Method
		Min	Max	Ave	
Herrin	30			6.0	Surface

Geologic Problems Reported:

PRODUCTION HISTORY

Company	Mine Name	Years	Production (tons)
Midwest Radiant Corporation	Midwest Radiant No. 1	1951-1956	3,538,584
Peabody Coal Company	Midwest Strip	1957-1969	9,748,821
Peabody Coal Company	Midwest Strip	1957-1971	1,241,547 **
			14,528,952

** Production after map date

Last reported production: January 1971

SOURCES OF DATA

Source Map	Date	Original Scale	Digitized Scale	Map Type
ISGS map library, 4103.S31 i5.1-61	3-14-1969	1:12000	1:12000	Not final ***

*** The pit shown on the Freeburg Quadrangle is final; pits on the Millstadt quadrangle were not final.

Annotated Bibliography (data source, brief description of information)

Coal Reports - Production, ownership, years of operation, mine type, seam, depth, thickness.
 Directory of Illinois Coal Mines (St. Clair County) - Mine names, mine index, ownership, years of operation.
 ISGS map library, 4103.S31 i5.1-61 - Mine outline.

Mine Index 780**J. W. Moser, Turkey Hill Mine**

Type: Underground Total mined-out acreage shown: 25 An additional 27 acres were mined after the map date.

SHAFT, SLOPE, DRIFT or TIPPLe LOCATIONS

Type	County	Twp	Section	Quarters-Footage
Main shaft	St. Clair	1N 7W	33	SW NW NW
Air shaft	St. Clair	1N 7W	33	SE NW NW

GEOLOGY

Seam(s) Mined	Depth (ft)	Thickness (ft)			Mining Method
		Min	Max	Ave	
Herrin	103			6.0	MRP, some RPB

Geologic Problems Reported:

PRODUCTION HISTORY

Company	Mine Name	Years	Production (tons)
Turkey Hill Mining Company	Turkey Hill	1887-1887	41,000 *
Turkey Hill Mining Company	Turkey Hill	1887-1890	102,660 **
J. W. Moser	Turkey Hill	1890-1893	54,990 **
Mathews Case Coal Company	Turkey Hill	1893-1894	20,000 **
Turkey Hill Mining Company	Turkey Hill	1894-1895	20,000 **
J. W. Moser	Turkey Hill	1895-1900	64,754 **
			303,404

* The reported production accounts for only 5 of the 25 acres shown on the accompanying map. Mining occurred under a previous owner who is unknown (see Mines Whose Locations Are Not Known, mines near Rentchler, p. 52, this directory). The 1874 Atlas of St. Clair County showed a mine at this location, indicating that mining may have occurred 13 years prior to this recorded history.

** Production after map date

Last reported production: 1900

SOURCES OF DATA

Source Map Type	Date	Original Scale	Digitized Scale	Map
Microfilm, document 351046	12-16-1887	1:1200	1:2069	Not final

Annotated Bibliography (data source, brief description of information)

Coal Reports - Production, ownership, years of operation.

Directory of Illinois Coal Mines (St. Clair County) - Mine names, mine index, ownership, years of operation.

Mine notes (St. Clair County) - Mine type, shaft location, seam, depth, thickness.

Microfilm map, document 351046, reel 03134, frame 141 - Shaft locations, mine outline, mining method.

Atlas of St. Clair County, 1874 - Years of operation.

Mine Index 784**Vulcan Coal & Mining Company, Hippard No. 2 Mine**

Type: Underground Total mined-out acreage shown: 69

SHAFT, SLOPE, DRIFT or TIPPLE LOCATIONS

Type	County	Twp	Section	Quarters-Footage
Main shaft	St. Clair	1N 8W	34	NW SE SE
Air shaft	St. Clair	1N 8W	34	SW SE SE

GEOLOGY

Seam(s) Mined	Depth (ft)	Thickness (ft)			Mining Method
		Min	Max	Ave	
Herrin	94			6.5	MRP

Geologic Problems Reported:

PRODUCTION HISTORY

Company	Mine Name	Years	Production (tons)
George Hippard Coal Company	Hippard No. 2, Walnut Valley	1901-1907	263,129
Vulcan Coal & Mining Company	Vulcan No. 2, Hippard	1907-1914	<u>178,732</u>
			441,861

Last reported production: February 1914

SOURCES OF DATA

Source Map	Date	Original Scale	Digitized Scale	Map Type
State archive, PB_168	undated *	unknown	1:24000	Secondary source

* The map was undated, but was final for Vulcan No. 2 Mine (text states "Abandoned August 23, 1916")

Annotated Bibliography (data source, brief description of information)

Coal Reports - Production, ownership, years of operation.

Directory of Illinois Coal Mines (St. Clair County) - Mine names, mine index, ownership, years of operation.

Mine notes (St. Clair County) - Mine type, seam, depth, thickness.

State archive, PB_168, compilation map of mines in the area - Mine outline, shaft locations, mining method.

Mine Index 788**East Side Coal Company, East Side Mine**

Type: Underground Total mined-out acreage shown: 48

SHAFT, SLOPE, DRIFT or TIPPLe LOCATIONS

Type	County	Twp	Section	Quarters-Footage
Main shaft	St. Clair	1S 7W	29	SW NE NW
Air shaft	St. Clair	1S 7W	29	SW NE NW

GEOLOGY

Seam(s) Mined	Depth (ft)	Thickness (ft)			Mining Method
		Min	Max	Ave	
Herrin	127			6.5	MRP

Geologic Problems Reported:

PRODUCTION HISTORY

Company	Mine Name	Years	Production (tons)
East Side Coal Company	East Side	1924-1960	<u>268,825</u> 268,825

Last reported production: March 1960

SOURCES OF DATA

Source Map	Date	Original Scale	Digitized Scale	Map Type
Microfilm, document 351159	4-11-1960	1:1200	1:2400	Final

Annotated Bibliography (data source, brief description of information)

Coal Reports - Production, ownership, years of operation.

Directory of Illinois Coal Mines (St. Clair County) - Mine names, mine index, ownership, years of operation.

Mine notes (St. Clair County) - Mine type, shaft location, seam, depth, thickness.

Microfilm map, document 351159, reel 03134, frame 299 - Shaft locations, mine outline, mining method.

Mine Index 789
Reinheimer, Reinheimer Slope Mine

Type: Underground Total mined-out acreage shown: 21 Partially stripped by River King Surface Mine (mine index 857)

SHAFT, SLOPE, DRIFT or TIPPLe LOCATIONS

Type	County	Twp	Section	Quarters-Footage
Main slope	St. Clair	1S 7W	32	SE SE SE
Air shaft	St. Clair	1S 7W	32	SE SE SE *

* Not shown on accompanying map due to later surface mining

GEOLOGY

Seam(s) Mined	Depth (ft)	Thickness (ft)		Mining Method
		Min	Max	
Herrin	14-42		5.5-6.5	MRP

Geologic Problems Reported:

PRODUCTION HISTORY

Company	Mine Name	Years	Production (tons)
Henry Reinheimer	Reinheimer	1905-1906	1,200
Thomas McBride	McBride	1906-1910	1,897
Henry Hoffman	Hoffman	1910-1911	1,120
Charles Arona	Arona	1911-1912	1,200
Lerth & Walters	Lerth & Walters	1912-1913	1,422
Thomas J. Deer	Deer	1913-1915	1,836
August C. Stahlheber	Stahlheber	1915-1918	7,381
Bloom Coal Company	Bloom	1918-1919	3,140
August C. Stahlheber	Stahlheber	1919-1924	11,782 *
Arthur Reinheimer	Reinheimer	1924-1928	15,007
Herman, Herman & Stahlhele	Herman, Herman & Stahlhele	1929-1929	4,587
Herman, Meng & Stahlheber	Herman, Meng & Stahlheber	1930-1931	6,625
Reinheimer	Slope	1932-1940	31,240
Philip Zink Coal Company	Zink	1940-1944	3,021
Reinheimer	Slope	1944-1954	6,534
Zink Coal Company	Zink	1954-1955	416
Reinheimer	Slope	1955-1956	550
			98,958

* Tonnage not reported in 1922

Last reported production: 1956

SOURCES OF DATA

Source Map	Date	Original Scale	Digitized Scale	Map Type
Microfilm, document 351161	1-12-1957	1:2400	1:2400	Final

Annotated Bibliography (data source, brief description of information)

Coal Reports - Production, ownership, years of operation.

Directory of Illinois Coal Mines (St. Clair County) - Mine names, mine index, ownership, years of operation.

Mine notes (St. Clair County) - Mine type, slope locations, seam, thickness.

Microfilm map, document 351161, reel 03134, frame 301 - Slope and shaft locations, mine outline, mining method.

Mine Index 790**Groom Coal Company, Richland Mine**

Type: Underground Total mined-out acreage shown: 613

SHAFT, SLOPE, DRIFT or TIPPLE LOCATIONS

Type	County	Twp	Section	Quarters-Footage
Main shaft	St. Clair	1S 8W	2	NW NE NE
Air shaft	St. Clair	1S 8W	2	NW NE NE

GEOLOGY

Seam(s) Mined	Depth (ft)	Thickness (ft)			Mining Method
		Min	Max	Ave	
Herrin	100		11.5	6.5-7.0	MRP

Geologic Problems Reported:

PRODUCTION HISTORY

Company	Mine Name	Years	Production (tons)
Dutch Hollow Coal Company	Richland	1883-1886	76,282
Consolidated Coal Company of St. Louis	Richland	1886-1896	613,636
Richard Schramm	Richland	1896-1897	24,785
Consolidated Coal Company	Richland	1897-1904	192,012
Herman Pfuhl, lessee	Richland	1904-1909	104,267
Richland Coal Company	Richland	1909-1910	12,150
Groom Coal Company	Richland	1910-1950	<u>2,806,455</u>
			3,829,587

Last reported production: December 1950

SOURCES OF DATA

Source Map	Date	Original Scale	Digitized Scale	Map Type
Microfilm, document 351116	12-22-1951	1:2400	1:4303	Final

Annotated Bibliography (data source, brief description of information)

Coal Reports - Production, ownership, years of operation, thickness.

Directory of Illinois Coal Mines (St. Clair County) - Mine names, mine index, ownership, years of operation.

Mine notes (St. Clair County) - Mine type, shaft location, seam, depth, thickness.

Microfilm map, document 351116, reel 03134, frames 244, 245 - Shaft locations, mine outline, mining method.

Mine Index 791**Ace High Coal Company, Ace High Mine**

Type: Underground Total mined-out acreage shown: 3 Not shown on accompanying map due to later surface mining by River King Surface Mine (mine index 857)

SHAFT, SLOPE, DRIFT or TIPPLE LOCATIONS

Type	County	Twp	Section	Quarters-Footage
Main slope	St. Clair	2S 7W	5	NW NE NE
Air shaft	St. Clair	2S 7W	5	NW NE NE

GEOLOGY

Seam(s) Mined	Depth (ft)	Thickness (ft)			Mining Method
		Min	Max	Ave	
Herrin		7.0	7.5	7.25	MRP

Geologic Problems Reported:

PRODUCTION HISTORY

Company	Mine Name	Years	Production (tons)
Ace High Coal Company	Ace High	1936-1940	<u>12,390</u> 12,390

Last reported production: 1940

SOURCES OF DATA

Source Map	Date	Original Scale	Digitized Scale	Map Type
Microfilm, document 351089	1-17-1940	1:1200	1:1200	Final

Annotated Bibliography (data source, brief description of information)

Coal Reports - Production, ownership, years of operation.

Directory of Illinois Coal Mines (St. Clair County) - Mine names, mine index, ownership, years of operation.

Mine notes (St. Clair County) - Mine type, slope location, seam, depth, thickness.

Microfilm map, document 351089, reel 03134, frame 200 - Slope and shaft locations, mine outline, mining method.

Mine Index 796**Midway Coal Company, Midway Mine**

Type: Underground Total mined-out acreage shown: 17 The mined area shown on the accompanying map is the approximate size expected for the reported production. This suggests that the mine outline is complete.

SHAFT, SLOPE, DRIFT or TIPPLe LOCATIONS

Type	County	Twp	Section	Quarters-Footage
Main shaft	St. Clair	1S 8W	12	NE NW NW
Air shaft	St. Clair	1S 8W	12	NE NW NW
Air shaft	St. Clair	1S 8W	12	NE NW NW

GEOLOGY

Seam(s) Mined	Depth (ft)	Thickness (ft)		Mining Method
		Min	Max	
Herrin	63-75, 85 at air shaft			MRP

Geologic Problems Reported:

PRODUCTION HISTORY

Company	Mine Name	Years	Production (tons)
Midway Coal Company	Midway	1934-1942	72,808
Midway Coal Company	Midway	1951-1951*	150
			72,958

* Idle 1943-1950

Last reported production: March 1951

SOURCES OF DATA

Source Map	Date	Original Scale	Digitized Scale	Map Type
Microfilm, document 351134	9-15-1937	1:1200	1:2234	Not final
ISGS map library, 4103.S31 i5.1-59	6-1-1970	1:2400	1:2400	Secondary source

Annotated Bibliography (data source, brief description of information)

Coal Reports - Production, ownership, years of operation.

Directory of Illinois Coal Mines (St. Clair County) - Mine names, mine index, ownership, years of operation.

Mine notes (St. Clair County) - Mine type, shaft location, seam, depth, thickness.

Microfilm map, document 351134, reel 03134, frames 270, 271 - Shaft locations, mine outline (eastern), mining method.

ISGS map library, 4103.S31 i5.1-59, map of Midwest Highwall No. 2 Mine (mine index 4274) - Mine outline (western).

Mine Index 857

Peabody Coal Company, River King Surface Mine

Type: Surface Total mined-out acreage shown: 1722 (Pit No.s 1, 2, & 4); 1784 (Pit No. 3) The area shown on the accompanying map, combined with that shown on Mascoutah and New Athens East Quadrangles, is much smaller than expected from the reported production. The area shown for River King Pit No. 6 Mine (mine index 934) on the Tilden, Baldwin, and New Athens East Quadrangles is much larger than expected for the reported production. If both index numbers are combined for all of the River King Surface mines, the area shown on the quadrangle maps is in line with the reported production. The total area mined was 13,164 acres for a total of 104,187,734 tons.

SHAFT, SLOPE, DRIFT or TIPPLE LOCATIONS

Type	County	Twp	Section	Quarters-Footage
Tipple	St. Clair	1S 7W	15	280 FSL, 180 FWL, NE SW
Pit 1 (1957-1965) St. Clair		2S 7W	33 (Freeburg quadrangle)	
Pit 2 (1957-1965) St. Clair		1S 7W	22 (Mascoutah quadrangle)	
Pit 3 (1965-1986) St. Clair		2S 7W	26 (New Athens East quadrangle)	
Pit 4 (1957-1965) St. Clair		2S 7W	3 (Mascoutah quadrangle)	

GEOLOGY

Seam(s) Mined	Depth (ft)	Thickness (ft)			Mining Method
		Min	Max	Ave	
Herrin	58-78 other			6.2-7.0	Surface

Geologic Problems Reported: The upper 6 inches of the Herrin Coal contained flat coal balls in one area. Some difficulties encountered in surface mining Pit No. 3 included shooting the hard limestones (Piasa & Brereton) and in drilling the shot holes in the soft sand above the bedrock, which required continuous casing.

PRODUCTION HISTORY

Company	Mine Name	Years	Production (tons)
Peabody Coal Company	River King Surface, Pits 1-4	1957-1975	70,303,672
Peabody Coal Company	River King Surface, Pit No. 3	1976-1986	<u>6,728,122</u>
			77,031,794

Last reported production: February 1986

SOURCES OF DATA

Source Map	Date	Original Scale	Digitized Scale	Map Type
Company, 4103.S31 i5.1-62	3-14-1969	1:12000	1:12000	Final *
Company map	3-8-1989	1:12000	1:12000	Final **
USGS topographic map	1991	1:24000	1:24000	Secondary source

* Final for Pits 1, 2 (Mascoutah quadrangle), and 4. Not final for Pit 3 (New Athens East quadrangle).

** Final for Pit No. 3

Annotated Bibliography (data source, brief description of information)

Coal Reports - Production, ownership, years of operation, seam, depth, thickness, mining method.
Directory of Illinois Coal Mines (St. Clair County) - Mine names, mine index, ownership, years of operation.
Company map, ISGS map library, 4103.S31 i5.1-62 - Mine outline.
Company map, Coal Section files - Mine outline, mining method.
USGS Topographic map, New Athens East 7.5 minute quadrangle, 1991 - East extension of Pit No. 3

Mine Index 940**Peabody Coal Company, River King Underground Mine**

Type: Underground Total mined-out acreage shown: 6474

SHAFT, SLOPE, DRIFT or TIPPLe LOCATIONS

Type	County	Twp	Section	Quarters-Footage
Main slope	St. Clair	1S 7W	15	NW SW SW
Air shaft	St. Clair	1S 7W	4	NW NE SE
Air shaft (exhaust)	St. Clair	1S 7W	16	NE NW SE
Air shaft (intake)	St. Clair	1S 7W	15	SW SW SW
Shaft	St. Clair	1S 7W	15	SW SW SW

GEOLOGY

Seam(s) Mined	Depth (ft)	Thickness (ft)			Mining Method
		Min	Max	Ave	
Herrin	110-135			5.5-6.5	BRP

Geologic Problems Reported: Roof falls frequently occurred where the Energy Shale formed the roof. Slips, small faults, and irregular discontinuous layering also caused many roof falls.

PRODUCTION HISTORY

Company	Mine Name	Years	Production (tons)
Peabody Coal Company	River King Underground	1970-1989	28,696,174
			28,696,174

Last reported production: December 1989

SOURCES OF DATA

Source Map	Date	Original Scale	Digitized Scale	Map Type
Company map	1-2-1990	1:12000	1:12000	Final

Annotated Bibliography (data source, brief description of information)

Coal Reports - Production, ownership, years of operation, mine type, seam, depth, thickness.
 Directory of Illinois Coal Mines (St. Clair County) - Mine names, mine index, ownership, years of operation.
 Company map - Slope and shaft locations, mine outline, mining method.
 Mine notes (St. Clair County) - Seam, geologic problems.

Mine Index 3489**Missouri & Illinois Coal Company, Rentchler Mine**

Type: Underground Total mined-out acreage shown: 235 An additional 12 acres were mined after the map date.

SHAFT, SLOPE, DRIFT or TIPPLE LOCATIONS

Type	County	Twp	Section	Quarters-Footage
Main shaft (7'x16')	St. Clair	1N 7W	33	NW SE NE
Air shaft	St. Clair	1N 7W	33	NW SE NW

GEOLOGY

Seam(s) Mined	Depth (ft)	Thickness (ft)			Mining Method
		Min	Max	Ave	
Herrin	107			6.0-7.0	MRP

Geologic Problems Reported: The source map shows areas in the southeastern portion of the mine with "faulty coal", and areas where the coal was not present.

PRODUCTION HISTORY

Company	Mine Name	Years	Production (tons)
J. Siberts	Siberts	1888-1889	5,798
Rentchler Coal Company	Rentchler	1890-1893 *	127,641
Missouri & Illinois Coal Company	Rentchler	1893-1916 **	1,014,298
White-Sergeant Coal Company	Rentchler	1916-1919	177,571
Missouri & Illinois Coal Company	Rentchler	1919-1923	70,535 ***
			1,395,843

* Idle 1889-1890

** Idle 1909, 1914, 1915

*** Production since map date

Last reported production: April 1923

SOURCES OF DATA

Source Map	Date	Original Scale	Digitized Scale	Map Type
Microfilm, document 351093	7-14-1920	1:1800	1:3848	Not final

Annotated Bibliography (data source, brief description of information)

Coal Reports - Production, ownership, years of operation.

Directory of Illinois Coal Mines (St. Clair County) - Mine names, mine index, ownership, years of operation.

Mine notes (St. Clair County) - Mine type, seam, depth, thickness.

Microfilm map, document 351093, reel 03134, frames 205 - Shaft locations, mine outline, mining method, geologic problems.

Mine Index 3508**Consolidated Coal Company of St. Louis, Heinrich Mine**

Type: Underground Total mined-out acreage shown: 45 An additional 6 acres were mined after the map date.

SHAFT, SLOPE, DRIFT or TIPPLe LOCATIONS

Type	County	Twp	Section	Quarters-Footage
Main shaft	St. Clair	1S 8W	12	SE NW NE
Air shaft	St. Clair	1S 8W	12	SW NE NE

GEOLOGY

Seam(s) Mined	Depth (ft)	Thickness (ft)			Mining Method
		Min	Max	Ave	
Herrin	95-100			6.0-6.5	RPB

Geologic Problems Reported:

PRODUCTION HISTORY

Company	Mine Name	Years	Production (tons)
Heinrich Brothers	Heinrich	pre1874-1885	102,719 *
Heinrich Brothers	Heinrich	1885-1886	20,258 **
Consolidated Coal Company of St. Louis	Heinrich	1886-1887	11,897 **
Heinrich (lessee)	Heinrich	1887-1888	5,640 **
			140,514

* Production and ownership prior to 1882 are unknown. The mine was included in the 1874 Atlas of St. Clair County. The Coal Report of 1882 indicates 30 acres were mined.

** Production since map date

Last reported production: 1888

SOURCES OF DATA

Source Map	Date	Original Scale	Digitized Scale	Map Type
Microfilm, document 351007, frame 80	6-13-1885	1:960	1:1721	Not final
Microfilm, document 351007, frame 81	undated	1:2400	1:3476	Undated

Annotated Bibliography (data source, brief description of information)

Coal Reports - Production, ownership, years of operation.

Directory of Illinois Coal Mines (St. Clair County) - Mine names, mine index, ownership, years of operation, depth thickness.

Microfilm, document 351007, reel 03134, frame 80 - Shaft locations, mine outline, mining method.

Microfilm, document 351007, reel 03134, frame 81 - Shaft locations, mine placement.

Mine notes (St. Clair County) - Mine type.

Federal Land Bank Report - Depth, thickness.

Atlas of St. Clair County, 1874, Warner & Beers - Years of operation.

Mine Index 3533**Victoria Coal Company, Branch Mine (aka Victoria No. 1)**

Type: Underground Total mined-out acreage shown: 207 Production indicates an additional 50 acres were mined that are not accounted for by the acres added by the adjacent mine. Connected underground to White Rose Mine (mine index 783) in SE 29-T1N-R8W and NE 32-T1N-R8W.

SHAFT, SLOPE, DRIFT or TIPPLE LOCATIONS

Type	County	Twp	Section	Quarters-Footage
Main shaft	St. Clair	1N 8W	28	NW NW SW
Shaft	St. Clair	1N 8W	28	NW NW SW

GEOLOGY

Seam(s) Mined	Depth (ft)	Thickness (ft)		Mining Method
		Min	Max	
Herrin	54		6.0	RPB

Geologic Problems Reported:

PRODUCTION HISTORY

Company	Mine Name	Years	Production (tons)
Jacob Krantz	Krantz	1890-1899	160,491
Reeb Coal Company	Branch	1899-1902	64,696
Lake Superior Coal Company	Branch	1902-1905	84,202
L. Senior	Branch	1905-1910	98,583
L. Senior	Branch	1910-1913	94,158 *
Victoria Coal Company	Branch, Victoria No. 1	1913-1924	981,658 *
			1,483,788

* Production since map date

Last reported production: May 1924

SOURCES OF DATA

Source Map	Date	Original Scale	Digitized Scale	Map Type
Microfilm, document 351039	1910	1:1200	1:2317	Not final
ISGS map library, 4103.S31 i5.1-22	12-14-1942	1:2400	1:2400	Secondary source

Annotated Bibliography (data source, brief description of information)

Coal Reports - Production, ownership, years of operation.

Directory of Illinois Coal Mines (St. Clair County) - Mine names, mine index, ownership, years of operation.

Microfilm map, document 351039, reel 03134, frame 127 - Shaft locations, mine outline, mining method.

ISGS map library, 4103.S31 i5.1-22, map of White Rose Mine (mine index 783) - Mine outline (western, southern).

Mine notes (St. Clair County) - Thickness, depth, seam, mine type, shaft location.

Mine Index 3538**Donk Brothers Coal Company, Donk No. 1 Mine**

Type: Underground Total mined-out acreage shown: 103 Approximately 50 acres were mined after the undated map. The mine is connected underground in three places to National Mine (mine index 4336).

SHAFT, SLOPE, DRIFT or TIPPLE LOCATIONS

Type	County	Twp	Section	Quarters-Footage
Main slope	St. Clair	1N 8W	33	NW NE NE
Air shaft	St. Clair	1N 8W	33	NW NE NE

GEOLOGY

Seam(s) Mined	Depth (ft)	Thickness (ft)		Mining Method
		Min	Max	
Herrin	56-100		6.0-8.0	MRP, some HER *

* see Geologic Problems (below)

Geologic Problems Reported: The Coal Report of 1884 indicates the roof was difficult to hold up (page 576). The Coal Report of 1902 stated that "the pillars had been robbed to such an extent that a general squeeze was induced, resulting in a cave-in under a small creek", allowing a large quantity of water into the mine. The mine was abandoned two years later, when the remaining coal was in an area of thinning bedrock and the unconsolidated sediments rested directly on the coal.

PRODUCTION HISTORY

Company	Mine Name	Years	Production (tons)
John Maule	Maule	1882-1883	9,650 **
John Maule	Main Guy	1883-1890	188,104
John Maule	Main	1890-1892	61,917
John Maule	Main	1892-1895	225,083 ***
John Maule	Maule No. 1	1895-1896	37,836 ***
Donk Brothers	Donk No. 1	1896-1904	<u>390,250</u> ***
			912,840

** Production prior to 1882 is not known. The Coal Report of 1882 indicates 16 acres had been mined.

*** Production since map date

Last reported production: 1904

SOURCES OF DATA

Source Map	Date	Original Scale	Digitized Scale	Map Type
Microfilm, document 350983	1-25-1892	1:960	1:1721	Not final
State archive, PB_168	Undated	Unknown	1:24000	Undated

Annotated Bibliography (data source, brief description of information)

Coal Reports - Production, ownership, years of operation, seam, depth, thickness, geologic problems.

Directory of Illinois Coal Mines (St. Clair County) - Mine names, mine index, ownership, years of operation.

Microfilm map, document 350983, reel 03134, frame 49 - Slope and shaft locations, mine outline, mining method.

State archive, PB_168, compilation of mines in this area - Mine outline (southern).

Mine Index 3539**South Side Coal Company, South Side Mine**

Type: Underground Total mined-out acreage shown: 266

SHAFT, SLOPE, DRIFT or TIPPLE LOCATIONS

Type	County	Twp	Section	Quarters-Footage
Main shaft	St. Clair	1N 8W	33	NW NE NW
Air shaft	St. Clair	1N 8W	33	NW NE NW

GEOLOGY

Seam(s) Mined	Depth (ft)	Thickness (ft)			Mining Method
		Min	Max	Ave	
Herrin	40-75			5.6-7	MRP

Geologic Problems Reported:

PRODUCTION HISTORY

Company	Mine Name	Years	Production (tons)
New National Coal & Mining Company	New National	1912-1953	1,808,251
South Side Coal Company	South Side	1953-1953	468
			<u>1,808,719</u>

Last reported production: March 1953

SOURCES OF DATA

Source Map	Date	Original Scale	Digitized Scale	Map Type
Microfilm, document 351176	3-12-1953	1:1200	1:2400	Final

Annotated Bibliography (data source, brief description of information)

Coal Reports - Production, ownership, years of operation, thickness.

Directory of Illinois Coal Mines (St. Clair County) - Mine names, mine index, ownership, years of operation.

Mine notes (St. Clair County) - Mine type, shaft location, seam, depth, thickness.

Microfilm map, document 351176, reel 03134, frames 324-326 - Shaft locations, mine outline, mining method.

Mine Index 3541
Perry Coal Company, South Belleville Mine

Type: Underground Total mined-out acreage shown: 87

SHAFT, SLOPE, DRIFT or TIPPLE LOCATIONS

Type	County	Twp	Section	Quarters-Footage
Main shaft	St. Clair	1N 8W	34	1525 FSL, 55 FWL
Air shaft	St. Clair	1N 8W	33	SE NE SE

GEOLOGY

Seam(s) Mined	Depth (ft)	Thickness (ft)			Mining Method
		Min	Max	Ave	
Herrin	60			6.0-6.5	MRP

Geologic Problems Reported:

PRODUCTION HISTORY

Company	Mine Name	Years	Production (tons)
Sebastian Kronerberger	Kronerberger	1884-1887	5,380 *
Sebastin & Kronerberger	Sebastin & Kronerberger	1887-1889	775
William Lattman	Lattman	1904-1911	97,062
Belleville Colliery Company	Lattman	1911-1913	37,490
William Lattman	Lattman	1913-1917	62,328
Lattman-Reeb Coal Company	Lattman-Reeb	1917-1918	24,520
South Belleville Coal Company	Lattman	1918-1921	87,598
Perry Coal Company	South Belleville	1921-1925	<u>109,858</u>
			425,011

* Idle 1886

Last reported production: May 1925

SOURCES OF DATA

Source Map	Date	Original Scale	Digitized Scale	Map Type
Microfilm, document 351033 **	8-11-1931	1:2400	1:3145	Final
Microfilm, document 351005	7-1888	1:960	1:861	Not final

** This source map shows an area designated "Old Works of Homeier Mine", indicating there was a previous owner to this mine.

Annotated Bibliography (data source, brief description of information)

Coal Reports - Production, ownership, years of operation, seam, depth, thickness.
 Directory of Illinois Coal Mines (St. Clair County) - Mine names, mine index, ownership, years of operation.
 Mine notes (St. Clair County) - Mine type, shaft location.
 Microfilm map, document 351033, reel 03134, frame 118 - Shaft locations, mine outline, mining method.
 Microfilm map, document 351005, reel 03134, frame 78 - Mine ownership (connects 1884-1888 mining to Lattman Mine).

Mine Index 3561**High Grade Coal Company, High Grade Mine**

Type: Underground Total mined-out acreage shown: 3 An additional 4 acres were mined after the map date.

SHAFT, SLOPE, DRIFT or TIPPLe LOCATIONS

Type	County	Twp	Section	Quarters-Footage
Main shaft	St. Clair	1S 7W	6	NW SW NE
Air shaft	St. Clair	1S 7W	6	NW SW NE

GEOLOGY

Seam(s) Mined	Depth (ft)	Thickness (ft)			Mining Method
		Min	Max	Ave	
Herrin	152	5.0	7.0	6.0	MRP

Geologic Problems Reported:

PRODUCTION HISTORY

Company	Mine Name	Years	Production (tons)
Turkey Hill Coal Company	Turkey Hill	1936-1938	8,144
Turkey Hill Coal Company	Turkey Hill	1938-1941	22,005 *
High Grade Coal Company	High Grade	1941-1941	463 *
			30,612

* Production since map date

Last reported production: 1941

SOURCES OF DATA

Source Map	Date	Original Scale	Digitized Scale	Map Type
Microfilm, document 351047	2-1938	1:1200	1:1490	Not final

Annotated Bibliography (data source, brief description of information)

Coal Reports - Production, ownership, years of operation.

Directory of Illinois Coal Mines (St. Clair County) - Mine names, mine index, ownership, years of operation.

Mine notes (St. Clair County) - Mine type, shaft location, seam, depth, thickness.

Microfilm map, document 351047, reel 03134, frame 142 - Shaft locations, mine outline, mining method.

Mine Index 3562**Orchard Coal Company, Orchard Mine**

Type: Underground Total mined-out acreage shown: None; production indicates approximately one acre was mined.

SHAFT, SLOPE, DRIFT or TIPPLE LOCATIONS

Type	County	Twp	Section	Quarters-Footage
Main shaft	St. Clair	1S 7W	7	SE SE NW

GEOLOGY

Seam(s) Mined	Depth (ft)	Thickness (ft)			Mining Method
		Min	Max	Ave	
Herrin	200			7.0	

Geologic Problems Reported:

PRODUCTION HISTORY

Company	Mine Name	Years	Production (tons)
Wilson Coal Company	Wilson	1936-1936	7,601
Orchard Mine	Orchard	1937-1937	360
			7,961

Last reported production: 1937

SOURCES OF DATA

Source Map	Date	Original Scale	Digitized Scale	Map Type
Mined-Out Area 27	1950	1:62500	1:24000	Secondary source

Annotated Bibliography (data source, brief description of information)

Coal Reports - Production, ownership, years of operation, seam, thickness, depth.
 Directory of Illinois Coal Mines (St. Clair County) - Mine names, mine index, ownership, years of operation.
 Mine notes (St. Clair County) - Mine type, shaft location, seam, depth, thickness.
 ISGS compilation map, Mined-Out Area 27, 1950 - Shaft location.

Mine Index 3563**Lou-Nash Coal Company, Lou-Nash Mine**

Type: Underground Total mined-out acreage shown: 162 Approximately 5 acres were mined after the map date.

SHAFT, SLOPE, DRIFT or TIPPLE LOCATIONS

Type	County	Twp	Section	Quarters-Footage
Main shaft (7'x14')	St. Clair	1S 7W	18	SW NW NW
Air shaft	St. Clair	1S 7W	18	SW NW NW

GEOLOGY

Seam(s) Mined	Depth (ft)	Thickness (ft)			Mining Method
		Min	Max	Ave	
Herrin	100-130			5.5-6.5	MRP

Geologic Problems Reported:

PRODUCTION HISTORY

Company	Mine Name	Years	Production (tons)
St. Clair Coal Company	St. Clair	1892-1893	26,791
Missouri & Illinois Coal Company	St. Clair, Freeburg	1893-1912	715,569
St. Clair Coal Company	St. Clair	1912-1913	19,323
Missouri & Illinois Coal Company	St. Clair	1913-1916 *	11,465
Jack Run Coal Company	St. Clair	1916-1920	170,307
General Coal & Mining Company	St. Clair	1920-1922	75,819
Free Bell Coal Company	Free Bell	1922-1924	13,214
Free Bell Coal Company	Free Bell	1923-1924	24,910 **
Lou-Nash Coal Company	Lou-Nash	1924-1925	4,021 **
			1,061,419

* Idle 1915-1916

** Production after map date

Last reported production: May 1925

SOURCES OF DATA

Source Map	Date	Original Scale	Digitized Scale	Map Type
State archive, PB_408	4-4-1923	1:2400	1:2400	Not final
Microfilm, document 350987	1910	1:1200	1:2648	Not final

Annotated Bibliography (data source, brief description of information)

Coal Reports - Production, ownership, years of operation, seam, depth, thickness.

Directory of Illinois Coal Mines (St. Clair County) - Mine names, mine index, ownership, years of operation.

Mine notes (St. Clair County) - Mine type, shaft location and size, seam, depth, thickness.

State archive, PB_408 - Shaft locations, mine outline.

Microfilm map, document 350987, reel 03134, frame 54 - Mining method.

Mine Index 3565**Paramount Coal & Coke Company, Randle Mine**

Type: Underground Total mined-out acreage shown: 239 An additional 3 acres were mined after the map date.

SHAFT, SLOPE, DRIFT or TIPPLE LOCATIONS

Type	County	Twp	Section	Quarters-Footage
Main shaft (6' x 12')	St. Clair	1S 7W	19	SW NW NE
Air shaft	St. Clair	1S 7W	19	SE NW NE

GEOLOGY

Seam(s) Mined	Depth (ft)	Thickness (ft)			Mining Method
		Min	Max	Ave	
Herrin	143-150			6.0-7.5	MRP

Geologic Problems Reported: The source map shows an area caved in the eastern part of the mine.

PRODUCTION HISTORY

Company	Mine Name	Years	Production (tons)
Randle Coal Company	Randle	1889-1891	27,680
Edward Avery	Randle	1891-1893	51,046
Dutch Hollow Coal Company	Randle	1893-1904	367,663
Avery Coal & Mining Company	Randle	1904-1912	336,457
Mulberry Hill Coal Company	Mulberry Hill No. 2	1912-1916 *	11,800
Glendale Coal & Mining Company	Randle	1916-1925 **	336,892
Reichert Coal Company	Randle	1926-1930	218,920
Power Coal Company	Randle	1930-1933	79,314
Freeburg Coal Company	Randle	1933-1938	171,747
Freeburg Coal Company	Randle	1938-1939	4,403 ***
Paramount Coal & Coke Company	Randle	1940-1942	15,012 ***
			1,620,934

* Idle 1914 to 1916

** Idle 1924 and 1925

*** Production since map date

Last reported production: 1942

SOURCES OF DATA

Source Map	Date	Original Scale	Digitized Scale	Map Type
Microfilm, document 351087	11-7-1938	1:1200	1:2317	Not final

Annotated Bibliography (data source, brief description of information)

Coal Reports - Production, ownership, years of operation.

Directory of Illinois Coal Mines (St. Clair County) - Mine names, mine index, ownership, years of operation.

Mine notes (St. Clair County) - Mine type, shaft location and size, seam, depth, thickness.

Microfilm map, document 351087, reel 03134, frame 197, 198 - Shaft locations, mine outline, mining method, geologic problems.

Mine Index 3566**Atom Coal Company, Atom Mine**

Type: Underground Total mined-out acreage shown: 3 Less than 1 additional acre was mined after the map date.

SHAFT, SLOPE, DRIFT or TIPPLe LOCATIONS

Type	County	Twp	Section	Quarters-Footage
Main slope	St. Clair	1S 7W	20	SW SW SE
Air shaft	St. Clair	1S 7W	20	SE SW SE

GEOLOGY

Seam(s) Mined	Depth (ft)	Thickness (ft)			Mining Method
		Min	Max	Ave	
Herrin	267			6.5	MRP

Geologic Problems Reported:

PRODUCTION HISTORY

Company	Mine Name	Years	Production (tons)
Neuwirth Coal Company	Neuwirth	1938-1948 *	33,018
Zephyr Coal Company	Zephyr	1948-1949	78
Atom Coal Company, Inc.	Atom	1949-1950	6,273
Atom Coal Company, Inc.	Atom	1950-1951	<u>1,421</u> **
			40,790

* Idle 1946 and 1947

** Production since map date

Last reported production: 1951

SOURCES OF DATA

Source Map	Date	Original Scale	Digitized Scale	Map Type
Microfilm, document 351131	11-22-1950	1:720	1:1092	Not final

Annotated Bibliography (data source, brief description of information)

Coal Reports - Production, ownership, years of operation.

Directory of Illinois Coal Mines (St. Clair County) - Mine names, mine index, ownership, years of operation.

Mine notes (St. Clair County) - Mine type, seam, depth, thickness.

Microfilm map, document 351131, reel 03134, frame 267 - Slope & shaft locations, mine outline, mining method.

Mine Index 3567**Wildwood Coal Company, Wildwood Mine**

Type: Underground Total mined-out acreage shown: 37

SHAFT, SLOPE, DRIFT or TIPPLE LOCATIONS

Type	County	Twp	Section	Quarters-Footage
Main slope	St. Clair	1S 7W	20	NW NW SE
Airway slope	St. Clair	1S 7W	20	NW NW SE

GEOLOGY

Seam(s) Mined	Depth (ft)	Thickness (ft)			Mining Method
		Min	Max	Ave	
Herrin	90	5.5	8.0	6.75	MRP

Geologic Problems Reported:

PRODUCTION HISTORY

Company	Mine Name	Years	Production (tons)
Wildwood Coal Company	Wildwood	1933-1954	<u>212,725</u> 212,725

Last reported production: February 1953

SOURCES OF DATA

Source Map	Date	Original Scale	Digitized Scale	Map Type
Microfilm, document 351132	11-6-1954	1:1200	1:1324	Final

Annotated Bibliography (data source, brief description of information)

Coal Reports - Production, ownership, years of operation, depth, seam, thickness.

Directory of Illinois Coal Mines (St. Clair County) - Mine names, mine index, ownership, years of operation.

Mine notes (St. Clair County) - Mine type, slope location, seam, depth, thickness.

Microfilm map, document 351132, reel 03134, frame 268 - Slope locations, mine outline, mining method.

Mine Index 3568
Star Coal Company, Star Mine

Type: Underground Total mined-out acreage shown: 177

SHAFT, SLOPE, DRIFT or TIPPLE LOCATIONS

Type	County	Twp	Section	Quarters-Footage
Main shaft	St. Clair	1S 7W	30	NE SW SE
Air shaft	St. Clair	1S 7W	30	NE SW SE

GEOLOGY

Seam(s) Mined	Depth (ft)	Thickness (ft)			Mining Method
		Min	Max	Ave	
Herrin	77	6.5	10.3	6.5-7.3	MRP

Geologic Problems Reported: Slips similar to horsebacks were common in this mine. The black shale above the coal was up to 10 feet thick over the thickest coal, and contained many coal balls. Where the black shale was thick, rolls and other offsets were present in the coal, often with cracks up to 12 inches filled with gouge material. The underclay floor heaved a little in some places.

PRODUCTION HISTORY

Company	Mine Name	Years	Production (tons)
Star Coal Company	Star	1909-1922	<u>995,121</u> 995,121

Last reported production: March 1922

SOURCES OF DATA

Source Map	Date	Original Scale	Digitized Scale	Map Type
Company map	6-6-1926	1:2400	1:2400	Final

Annotated Bibliography (data source, brief description of information)

Coal Reports - Production, ownership, years of operation.
 Directory of Illinois Coal Mines (St. Clair County) - Mine names, mine index, ownership, years of operation.
 Mine notes (St. Clair County) - Depth, thickness, geologic problems.
 Company map - Shaft locations, mine outline, mining method.

Mine Index 3569
Hill Coal Company, Hill Mine

Type: Underground Total mined-out acreage shown: 10 Production indicates less than 1 acre was mined after the map date.

SHAFT, SLOPE, DRIFT or TIPPLE LOCATIONS

Type	County	Twp	Section	Quarters-Footage
Main slope	St. Clair	1S 7W	30	SW SE NW
Air shaft	St. Clair	1S 7W	30	SW SE NW

GEOLOGY

Seam(s) Mined	Depth (ft)	Thickness (ft)			Mining Method
		Min	Max	Ave	
Herrin	60			7.0	MRP

Geologic Problems Reported:

PRODUCTION HISTORY

Company	Mine Name	Years	Production (tons)
Hill Coal Company	Hill	1933-1939	58,816
Hill Coal Company	Hill	1940-1941	<u>3,808</u> *
			62,624

* Production since map date

Last reported production: 1941

SOURCES OF DATA

Source Map	Date	Original Scale	Digitized Scale	Map Type
Microfilm, document 351045	1-7-1940	1:1200	1:1820	Not final
Microfilm, document 351045	8-10-1935	1:1200	1:2317	Not final

Annotated Bibliography (data source, brief description of information)

Coal Reports - Production, ownership, years of operation, thickness, seam, depth.
 Directory of Illinois Coal Mines (St. Clair County) - Mine names, mine index, ownership, years of operation.
 Mine notes (St. Clair County) - Mine type, seam, depth, thickness.
 Microfilm map, document 351045, reel 03134, frame 139 - Slope and shaft locations, mine outline, mining method.
 Microfilm map, document 351045, reel 03134, frame 140 - Georegistration aid.

Mine Index 3570**New Freeburg Coal Company, New Freeburg Mine**

Type: Underground Total mined-out acreage shown: 107 An additional 12 acres were mined after the map date.

SHAFT, SLOPE, DRIFT or TIPPLe LOCATIONS

Type	County	Twp	Section	Quarters-Footage
Main shaft (5.5' x 12')	St. Clair	1S 7W	30	SW SE NE
Air shaft	St. Clair	1S 7W	30	SW SE NE

GEOLOGY

Seam(s) Mined	Depth (ft)	Thickness (ft)			Mining Method
		Min	Max	Ave	
Herrin	122			6.0-7.0	MRP

Geologic Problems Reported: Several small faults were encountered in the mine, with offsets of 0.5 to 2 feet. The roof shale contained concretions. The largest of these concretions was 10 inches by 3 inches by 2 inches.

PRODUCTION HISTORY

Company	Mine Name	Years	Production (tons)
Freeburg Coal Company	Freeburg	pre1874-1886	47,550 *
Consolidated Coal Company of St. Louis	Freeburg	1886-1887	9,596
Freeburg Coal Company	Freeburg	1887-1891	43,800
Charles Becker	Freeburg	1891-1896	77,680
Freeburg Mining Company	Freeburg	1896-1901	109,079
Sunlight Coal Company	Becker, Sunlight No. 1	1901-1905	148,483
Johnson Coal Company	Sunlight	1905-1909	130,922
Sunlight Coal Company	Freeburg	1909-1913 **	58,378
Victoria Coal Company	New Freeburg	1913-1915	44,372
New Freeburg Coal Company	Famous	1915-1917	41,434
Columbia Colliery Company	New Freeburg, Famous	1917-1920	82,789
Columbia Colliery Company	New Freeburg, Famous	1920-1924 ***	61,011 †
New Freeburg Coal Company	New Freeburg	1924-1925	14,583 †
			869,677

* Production and ownership prior to 1882 are unknown. The Coal Report of 1882 indicates 17 acres mined. The mine was included in the 1874 Atlas of St. Clair County. Idle 1886.

** Idle 1913

*** Idle 1924

† Production after map date

Last reported production: March 1925

SOURCES OF DATA

Source Map	Date	Original Scale	Digitized Scale	Map Type
State archive, IL_178	6-26-1920	1:1200	1:1986	Not final

Annotated Bibliography (data source, brief description of information)

Coal Reports - Production, ownership, years of operation.

Directory of Illinois Coal Mines (St. Clair County) - Mine names, mine index, ownership, years of operation.

Mine notes (St. Clair County) - Mine type, seam, depth, thickness, geologic problems.

State archive, IL_178 - Shaft locations, outline, mining method.

1874 Atlas of St. Clair County - Years of operation.

Mine Index 3571**Missouri & Illinois Coal Company, Wilderman Mine**

Type: Underground Total mined-out acreage shown: 350 This area is too large for the reported production. (The reported tonnage would account for approximately 240 acres.) A former unknown owner is very likely. A shaft was shown at this location in the 1874 Atlas of St. Clair County.

SHAFT, SLOPE, DRIFT or TIPPLe LOCATIONS

Type	County	Twp	Section	Quarters-Footage
Shaft (7' x 14')	St. Clair	1S 8W	1	SW NW SE
Air shaft	St. Clair	1S 8W	1	SW NW SE
Shaft (1874)	St. Clair	1S 8W	1	NE NE SW

GEOLOGY

Seam(s) Mined	Depth (ft)	Thickness (ft)			Mining Method
		Min	Max	Ave	
Herrin	100			6.5	MRP

Geologic Problems Reported:

PRODUCTION HISTORY

Company	Mine Name	Years	Production (tons)
T. & H. Mining Company	T. & H.	pre1874-1893 *	337,552
Missouri & Illinois Coal Company	Wilderman	1893-1917 **	846,385
W. L. Scott Coal Company	Wilderman	1917-1923 ***	133,800
Missouri & Illinois Coal Company	Wilderman	1923-1923	66,251
			1,383,988

* A mine was shown at this location in the 1874 Atlas of St. Clair County. The ownership and years of operation are unknown. The production from this location is probably higher than shown here.

** Idle 1913 to 1917

*** Idle 1922

Last reported production: September 1923

SOURCES OF DATA

Source Map	Date	Original Scale	Digitized Scale	Map Type
ISGS map library, 4103.S31 i5.1-59	6-1-1970	1:2400	1:2400	Secondary source
WPA	4-30-1925	1:12000	1:57143	Secondary source

Annotated Bibliography (data source, brief description of information)

Coal Reports - Production, ownership, years of operation, seam, depth, thickness.

Directory of Illinois Coal Mines (St. Clair County) - Mine names, mine index, ownership, years of operation.

Mine notes (St. Clair County) - Mine type, shaft location, seam, depth, thickness.

ISGS map library, 4103.S31 i5.1-59, map of Midwest Highwall No. 2 (mine index 4274) - Mine location, mine outline (western), mining method.

WPA map - Mine outline, shaft locations.

Microfilm map, document 351123, reel 03134, frame 257 (dated 10-31-1910) - Mining method.

1874 Atlas of St. Clair County - Years of operation.

Mine Index 3573**Sugar Creek Coal Company, Sugar Creek Mine**

Type: Underground Total mined-out acreage shown: None; production indicates less than one acre was mined.

SHAFT, SLOPE, DRIFT or TIPPLE LOCATIONS

Type	County	Twp	Section	Quarters-Footage
Main slope	St. Clair	1S 8W	12	SE SW SE

GEOLOGY

Seam(s) Mined	Depth (ft)	Thickness (ft)			Mining Method
		Min	Max	Ave	
Herrin	150			8.75-10.0	

Geologic Problems Reported:

PRODUCTION HISTORY

Company	Mine Name	Years	Production (tons)
Sugar Creek Coal Company	Sugar Creek	1936-1940	<u>5,824</u> 5,824

Last reported production: 1940

SOURCES OF DATA

Source Map	Date	Original Scale	Digitized Scale	Map Type
Mine notes	Undated	1:62500	1:62500	Secondary source
Coal Section file, 6-26	9-1956	1:24000	1:24000	Secondary source

Annotated Bibliography (data source, brief description of information)

Coal Reports - Production, ownership, years of operation.

Directory of Illinois Coal Mines (St. Clair County) - Mine names, mine index, ownership, years of operation.

Mine notes (St. Clair County) - Mine type, slope location, seam, depth, thickness.

Coal Section files, 6-26, Peabody Coal Company, drill hole map - Slope location.

Mine Index 3592**Dudley Coal Company, Dudley Mine**

Type: Underground Total mined-out acreage shown: 6 Less than one additional acre was mined after the map date.

SHAFT, SLOPE, DRIFT or TIPPLE LOCATIONS

Type	County	Twp	Section	Quarters-Footage
Main shaft	St. Clair	1S 8W	12	NE NE SE

GEOLOGY

Seam(s) Mined	Depth (ft)	Thickness (ft)			Mining Method
		Min	Max	Ave	
Herrin	108-110			6.0	RPB

Geologic Problems Reported:

PRODUCTION HISTORY

Company	Mine Name	Years	Production (tons)
Dudley	Dudley	1874-1885 *	<u>5,200</u> **
			5,200

* Idle 1884. Production prior to 1883 is unknown; the Coal Report of 1883 indicates 8 acres were mined. The source map is dated January 1, 1882, indicating that mining took place in 1881. A mine was shown at this location in the 1874 Atlas of St. Clair County.

** Production since map date

Last reported production: 1885

SOURCES OF DATA

Source Map	Date	Original Scale	Digitized Scale	Map Type
Microfilm, document 351250	1-1-1882	1:960	1:1787	Not final

Annotated Bibliography (data source, brief description of information)

Coal Reports - Production, ownership, years of operation, mine type, seam, depth, thickness.
Directory of Illinois Coal Mines (St. Clair County) - Mine names, mine index, ownership, years of operation.
Microfilm map, document 351250, reel 03134, frame 503 - Shaft location, mine outline, mining method.
Atlas of St. Clair County, 1874, Warner & Beers - Years of operation.

Mine Index 3616**United Electric Coal Company, Red Ray No. 13 Mine**

Type: Surface Total mined-out acreage shown: 459 An additional 27 acres may have been mined since the map date.

SHAFT, SLOPE, DRIFT or TIPPLE LOCATIONS

Type	County	Twp	Section	Quarters-Footage
Pit	St. Clair	2S 7W	5	SE SW NW

GEOLOGY

Seam(s) Mined	Depth (ft)	Thickness (ft)			Mining Method
		Min	Max	Ave	
Herrin	8-40			6.0	Surface

Geologic Problems Reported:

PRODUCTION HISTORY

Company	Mine Name	Years	Production (tons)
Solar Coal Company	Solar	1925-1927	230,445
United Electric Coal Company	Red Ray, United Electric No. 13	1927-1947	4,466,678
United Electric Coal Company	Red Ray, United Electric No. 13	1947-1949	294,275 *
			4,991,398

* Production since map date

Last reported production: March 1949

SOURCES OF DATA

Source Map	Date	Original Scale	Digitized Scale	Map Type
ISGS map library, 4103.S31 i5.1-62	8-1-1947 *	1:12000	1:12000	Secondary source

* The Peabody map is dated 3-14-1969, but indicates the survey date of United Electric No. 13 is 1947.

Annotated Bibliography (data source, brief description of information)

Coal Reports - Production, ownership, years of operation, thickness, depth, seam.

Directory of Illinois Coal Mines (St. Clair County) - Mine names, mine index, ownership, years of operation.

ISGS map library, 4103.S31. i5.1-62, map of River King Surface Mine (mine index 857) - Mine outline, mining method.

Mine Index 4255
Klein Coal Company, Klein Mine

Type: Underground Total mined-out acreage shown: 16

SHAFT, SLOPE, DRIFT or TIPPLE LOCATIONS

Type	County	Twp	Section	Quarters-Footage
Main shaft	St. Clair	1S 7W	19	SE SW SE
Air shaft	St. Clair	1S 7W	19	SW SW SE

GEOLOGY

Seam(s) Mined	Depth (ft)	Thickness (ft)			Mining Method
		Min	Max	Ave	
Herrin					RPB

Geologic Problems Reported:

PRODUCTION HISTORY

Company	Mine Name	Years	Production (tons)
Klein	Klein	1874-1889 *	

* The years of operation are deduced from the map sources (microfilm map and 1874 Atlas of St. Clair County). The mine may have operated before and after the years shown. No production was listed under this name in the annual Coal Reports.

Last reported production:

SOURCES OF DATA

Source Map	Date	Original Scale	Digitized Scale	Map Type
Microfilm, document 351011	9-25-1889	1:960	1:1589	Final

Annotated Bibliography (data source, brief description of information)

Coal Reports - Production, ownership, years of operation.
 Directory of Illinois Coal Mines (St. Clair County) - Mine names, mine index, ownership, years of operation.
 Microfilm map, document 351011, reel 03134, frame 85 - Shaft locations, mine outline, mining method.
 1874 Atlas of St. Clair County - Years of operation.

Mine Index 4274**Peabody Coal Company, Midwest Highwall No. 2 Mine**

Type: Underground Total mined-out acreage shown: 235

SHAFT, SLOPE, DRIFT or TIPPLE LOCATIONS

Type	County	Twp	Section	Quarters-Footage
Main drift	St. Clair	1S 8W	2	SE NE SW
Haulage drift	St. Clair	1S 8W	2	SE NE SW
Air drift	St. Clair	1S 8W	2	SE NE SW
Escape drift	St. Clair	1S 8W	2	SW NW SE
Drift	St. Clair	1S 8W	2	SW NW SE

GEOLOGY

Seam(s) Mined	Depth (ft)	Thickness (ft)			Mining Method
		Min	Max	Ave	
Herrin	80			6.5-7.5	CRP

Geologic Problems Reported:

PRODUCTION HISTORY

Company	Mine Name	Years	Production (tons)
Peabody Coal Company	Midwest Highwall No. 2	1967-1970	<u>1,392,586</u> 1,392,586

Last reported production: May 1970

SOURCES OF DATA

Source Map	Date	Original Scale	Digitized Scale	Map Type
Company, 4103.S31 i5.1-59	6-1-1970	1:2400	1:2400	Final

Annotated Bibliography (data source, brief description of information)

Coal Reports - Production, ownership, years of operation, seam, thickness, depth.

Directory of Illinois Coal Mines (St. Clair County) - Mine names, mine index, ownership, years of operation.

Company map, ISGS map library, 4103.S31 i5.1-59 - Drift locations, mine outline, mining method.

Mine Index 4279**Peabody Coal Company, Midwest Mine No. 3**

Type: Surface Total mined-out acreage shown: 427

SHAFT, SLOPE, DRIFT or TIPPLE LOCATIONS

Type	County	Twp	Section	Quarters-Footage
Surface (north pit)	St. Clair	1S 8W	11,12,13,14	
Surface (south pit)	St. Clair	1S 8W	13,14,23,24	

GEOLOGY

Seam(s) Mined	Depth (ft)	Thickness (ft)			Mining Method
		Min	Max	Ave	
Herrin					Surface

Geologic Problems Reported:

PRODUCTION HISTORY

Company	Mine Name	Years	Production (tons)
Peabody Coal Company	Midwest Mine No. 3 *		

* Production was not reported under this name. Production was likely reported under Midwest Mine (mine index 653).

Last reported production:

SOURCES OF DATA

Source Map	Date	Original Scale	Digitized Scale	Map Type
Company, 4103.S31 i5.1-61	3-14-1969	1:12000	1:12000	Final
Microfilm, document 351115	12-1-1972	1:1200	1:1572	Incomplete *
USGS topographic map	1990	1:24000	1:24000	Secondary source

* Source map is primarily of the highwall mine that went in off the final cut of the surface mine.

Annotated Bibliography (data source, brief description of information)

Coal Reports - Production, ownership, years of operation.
 Directory of Illinois Coal Mines (St. Clair County) - Mine names, mine index, ownership, years of operation.
 Company map, ISGS map library, 4103.S31 i5.1-61 - Mine outline (north pit).
 Microfilm map, document 351115, reel 03134, frame 241, map of Midwest Highwall No. 3 (mine index 4280) -
 Mine outline (east and southeast extent, south pit).
 USGS (7.5') topographic map, Freeburg Quadrangle, 1990 - Mine outline (north and west extent, south pit).

Mine Index 4280**Peabody Coal Company, Midwest Highwall No. 3 Mine**

Type: Underground Total mined-out acreage shown: 262

SHAFT, SLOPE, DRIFT or TIPPLE LOCATIONS

Type	County	Twp	Section	Quarters-Footage
Main drift	St. Clair	1S 8W	24	SW NW NW
Air drift	St. Clair	1S 8W	24	SE NW NW
Drift	St. Clair	1S 8W	24	SE NW NW
Drift	St. Clair	1S 8W	24	SE NW NW
Drift	St. Clair	1S 8W	24	NW NE NW

GEOLOGY

Seam(s) Mined	Depth (ft)	Thickness (ft)			Mining Method
		Min	Max	Ave	
Herrin	80			6.5	CRP

Geologic Problems Reported:

PRODUCTION HISTORY

Company	Mine Name	Years	Production (tons)
Peabody Coal Company	Midwest Highwall No. 3	1970-1972	<u>1,476,389</u> 1,476,389

Last reported production: Mine closed November 30, 1972

SOURCES OF DATA

Source Map	Date	Original Scale	Digitized Scale	Map Type
Microfilm, document 351115	12-1-1972	1:1200	1:1572	Final

Annotated Bibliography (data source, brief description of information)

Coal Reports - Production, ownership, years of operation, seam, thickness, depth, mine type.

Directory of Illinois Coal Mines (St. Clair County) - Mine names, mine index, ownership, years of operation.

Microfilm map, document 351115, reel 03134, frames 238-241 - Drift locations, mine outline, mining method, mine closing date.

Mine Index 4297**Vulcan Coal & Mining Company, Vulcan Mine No. 1**

Type: Underground Total mined-out acreage shown: 45, with an additional 109-acre general area of mining. The mine extends northward onto the O'Fallon Quadrangle, as shown on the map for the Patterson-Harding Mine (mine index 782). The area shown represents the approximate size needed to account for the tonnage produced.

SHAFT, SLOPE, DRIFT or TIPPLE LOCATIONS

Type	County	Twp	Section	Quarters-Footage
Main shaft	St. Clair	1N 8W	34	SE NE NE

GEOLOGY

Seam(s) Mined	Depth (ft)	Thickness (ft)			Mining Method
		Min	Max	Ave	
Herrin	70-75			6.5-7.0	RPB

Geologic Problems Reported:

PRODUCTION HISTORY

Company	Mine Name	Years	Production (tons)
Marsh & Son	Marsh & Son	1888-1889	34,763
Walnut Valley Coal Company	Walnut Valley	1889-1890	25,856
Marsh & Son	Marsh & Son	1890-1892	34,784
Walnut Valley	Walnut Valley	1892-1893	2,000
George Hippard	Walnut Valley	1895-1897 *	70,258
Hippard Coal Company	Hippard No. 1	1897-1907	564,545
Vulcan Coal & Mining Company	Vulcan No. 1	1907-1908	<u>42,572</u>
			774,778

* Idle 1894-1895

Last reported production: 1908

SOURCES OF DATA

Source Map	Date	Original Scale	Digitized Scale	Map Type
Microfilm, Recorder of Deeds	3-23-1928	1:1200	1:2483	Secondary source
Microfilm, document 351022	5-15-1912	1:12000	1:24828	Secondary source

Annotated Bibliography (data source, brief description of information)

Coal Reports - Production, ownership, years of operation.

Directory of Illinois Coal Mines (St. Clair County) - Mine names, mine index, ownership, years of operation.

Mine notes (St. Clair County) - Mine type, shaft locations, seam, depth, thickness.

Microfilm map from Recorder of Deeds, St. Clair County, map of Patterson-Harding Mine (mine index 782) - Mine extent into O'Fallon Quadrangle.

Microfilm map (WPA), document 351022, reel 03134, frame 100 - Mine outline.

Mine Index 4298
Ripley, Ripley Mine

Type: Underground Total mined-out acreage shown: 4

SHAFT, SLOPE, DRIFT or TIPPLE LOCATIONS

Type	County	Twp	Section	Quarters-Footage
Main shaft	St. Clair	1N 8W	34	NW NW NW
Air shaft	St. Clair	1N 8W	34	NW NW NW
Air shaft	St. Clair	1N 8W	34	NW NW NW

GEOLOGY

Seam(s) Mined	Depth (ft)	Thickness (ft)			Mining Method
		Min	Max	Ave	
Herrin					

Geologic Problems Reported: The mine was abandoned February 21, 1889 on "account of creek breaking into workings".

PRODUCTION HISTORY

Company	Mine Name	Years	Production (tons)
Ripley	Ripley	-1889	

Last reported production:

SOURCES OF DATA

Source Map	Date	Original Scale	Digitized Scale	Map Type
Microfilm, document 350986	2-21-1889	1:960	1:960	Final

Annotated Bibliography (data source, brief description of information)

Coal Reports - Production, ownership, years of operation, seam, depth, thickness.
 Directory of Illinois Coal Mines (St. Clair County) - Mine names, mine index, ownership, years of operation.
 Microfilm map, document 350986, reel 03134, frame 53 - Shaft locations, mine outline, mining method.
 State archive, PB_168, compilation of mine maps in the area - Geologic problems, closing date.

Mine Index 4299**Flannigan & Company, Flannigan Mine**

Type: Underground Total mined-out acreage shown: 2

SHAFT, SLOPE, DRIFT or TIPPLe LOCATIONS

Type	County	Twp	Section	Quarters-Footage
Main shaft	St. Clair	1N 8W	33	NE NE NE
Air shaft	St. Clair	1N 8W	33	NE NE NE
Old shaft	St. Clair	1N 8W	33	NE NE NE

GEOLOGY

Seam(s) Mined	Depth (ft)	Thickness (ft)			Mining Method
		Min	Max	Ave	
Herrin	60			6.5	RPB

Geologic Problems Reported:

PRODUCTION HISTORY

Company	Mine Name	Years	Production (tons)
Flannigan & Company	Flannigan	pre1874-1882	2,000 *
			2,000

* Production prior to 1882 unknown. The Coal Report of 1882 indicates 10 acres mined. This mine is shown on the 1874 Atlas of St. Clair County, indicating that mining was taking place at this location then.

Last reported production: 1882

SOURCES OF DATA

Source Map	Date	Original Scale	Digitized Scale	Map Type
Microfilm, document 350998	undated	1:720	1:720	Undated

Annotated Bibliography (data source, brief description of information)

Coal Reports - Production, ownership, years of operation, seam, depth, thickness.
 Directory of Illinois Coal Mines (St. Clair County) - Mine names, mine index, ownership, years of operation.
 Atlas of St. Clair County, 1874, Atlas of St. Clair County, Warner & Beers - Years of operation.
 Microfilm map, document 350998, reel 03134, frame 68 - Shaft locations, mine outline, mining method.

Mine Index 4320
Philip Macke, Macke Mine

Type: Underground Total mined-out acreage shown: None. The reported production indicates less than one acre was mined.

SHAFT, SLOPE, DRIFT or TIPPLE LOCATIONS

Type	County	Twp	Section	Quarters-Footage
Main shaft	St. Clair	1S 7W	32	SE NW

GEOLOGY

Seam(s) Mined	Depth (ft)	Thickness (ft)			Mining Method
		Min	Max	Ave	
Herrin					

Geologic Problems Reported:

PRODUCTION HISTORY

Company	Mine Name	Years	Production (tons)
Philip Macke	Macke	1935-1935	<u>309</u> 309

Last reported production: 1935

SOURCES OF DATA

Source Map	Date	Original Scale	Digitized Scale	Map Type
None *				

* No source map of the mine was found. The mine location was hand-plotted and named on a Coal Section file copy of a USGS topographic map.

Annotated Bibliography (data source, brief description of information)

Coal Reports - Production, ownership, years of operation.
 Directory of Illinois Coal Mines (St. Clair County) - Mine names, mine index, ownership, years of operation.

Mine Index 4321**Rock Creek Coal Company, Rock Creek Mine**

Type: Underground Total mined-out acreage shown: None. The reported production indicates less than one acre was mined.

SHAFT, SLOPE, DRIFT or TIPPLE LOCATIONS

Type	County	Twp	Section	Quarters-Footage
Main shaft	St. Clair	1S 7W	32	SE NW

GEOLOGY

Seam(s) Mined	Depth (ft)	Thickness (ft)			Mining Method
		Min	Max	Ave	
Herrin					

Geologic Problems Reported:

PRODUCTION HISTORY

Company	Mine Name	Years	Production (tons)
Rock Creek Coal Company	Rock Creek	1934-1935	<u>1,307</u> 1,307

Last reported production: 1935

SOURCES OF DATA

Source Map	Date	Original Scale	Digitized Scale	Map Type
None *				

* No source map of the mine was found. The mine location was hand-plotted and named on a Coal Section file copy of a USGS topographic map.

Annotated Bibliography (data source, brief description of information)

Coal Reports - Production, ownership, years of operation.

Directory of Illinois Coal Mines (St. Clair County) - Mine names, mine index, ownership, years of operation.

Mine Index 4336
Dintelman Coal Company, National Mine

Type: Underground Total mined-out acreage shown: 21 The mine is connected underground in three places to Donk No. 1 Mine (mine index 3538).

SHAFT, SLOPE, DRIFT or TIPPLe LOCATIONS

Type	County	Twp	Section	Quarters-Footage
Main shaft	St. Clair	1N 8W	33	SW NW NE
Air shaft	St. Clair	1N 8W	33	SW NW NE

GEOLOGY

Seam(s) Mined	Depth (ft)	Thickness (ft)			Mining Method
		Min	Max	Ave	
Herrin					MRP

Geologic Problems Reported:

PRODUCTION HISTORY

Company	Mine Name	Years	Production (tons)
Goalby Brothers *	Goalby		
Dintelman Coal Company *	National		

* No production was recorded under either name.

Last reported production:

SOURCES OF DATA

Source Map	Date	Original Scale	Digitized Scale	Map Type
Microfilm, document 351256	Undated	1:1200	1:1986	Undated
State archive, PB_168	Undated	Unknown	1:24000	Undated

Annotated Bibliography (data source, brief description of information)

Coal Reports - Production, ownership, years of operation.

Directory of Illinois Coal Mines (St. Clair County) - Mine names, mine index, ownership, years of operation.

Microfilm map, document 351256, reel 03134, frame 509 - Shaft locations, mine outline, mining method.

State archive, PB_168, compilation of mine maps of the area - Mine outline (southern), connections to Donk No 1 Mine (mine index 3538).

Microfilm, document 351022, reel 03134, frame 509 - Mine ownership (Goalby Brothers).

Mine Index 4995
August Ebel, Ebel Mine

Type: Underground Total mined-out acreage shown: 22 A general area of mining was added to the accompanying map to indicate the approximate size of the mine.

SHAFT, SLOPE, DRIFT or TIPPLE LOCATIONS

Type	County	Twp	Section	Quarters-Footage
Main shaft	St. Clair	1N 8W	34	NW *

* The location of the shaft is unknown. The shaft has been placed in the center of the general area of mining that designates the mine's approximate size and location.

GEOLOGY

Seam(s) Mined	Depth (ft)	Thickness (ft)			Mining Method
		Min	Max	Ave	
Herrin	40-50			6.0-6.5	RP

Geologic Problems Reported:

PRODUCTION HISTORY

Company	Mine Name	Years	Production (tons)
Ebel Brothers	Ebel	1892-1896	15,600
August Ebel	Ebel	1896-1897	4,320
Ebel Brothers	Ebel	1897-1899	11,300
August Ebel	Ebel	1899-1902	25,781
Ebel Brothers	Ebel	1902-1903	9,000
August Ebel	Ebel	1903-1908	55,125
			<u>121,126</u>

Last reported production: 1908

SOURCES OF DATA

Source Map	Date	Original Scale	Digitized Scale	Map Type
Microfilm, document 351034	4-22-1937	1:2400	1:2400	Secondary source **

** The source map only shows the eastward extent of an entry.

Annotated Bibliography (data source, brief description of information)

Coal Reports - Production, ownership, years of operation, mine type, seam, depth, thickness, mining method.
 Directory of Illinois Coal Mines (St. Clair County) - Mine names, mine index, ownership, years of operation.
 Microfilm map, document 351034, reel 03134, frame 119, map of Safety First Mine (mine index 500) - Mine location.

OTHER MINES SHOWN ON THE FREEBURG QUADRANGLE

Mine Index 4335, Lemen Coal Company SW NE NE 31-T1S-R7W, shaft source: Atlas of St. Clair County (1874)

MINES WHOSE LOCATIONS ARE NOT KNOWN, FREEBURG QUADRANGLE

The locations of the following mines are unknown, but the production tonnage, operating names, and nearest town were reported in the Annual Coal Reports. The mines listed below mined in or near the Freeburg Quadrangle. The information is similar to that presented on the summary sheets in the previous pages of this directory. The first item is the name the mine operated under as listed in the Coal Report, then the years the mine reported. If no physical data are available, the next item listed is the total tons produced by the mine. If physical data are available, the order of presentation is as follows: type of opening for the mine (drift, slope or shaft), depth of coal in feet, and thickness of coal in feet.

The total tons mined by these unlocated mines is 1,294,952 (1,275,117 underground mined, 672 surface mined, and 19,163 mined by uncertain method), which would represent approximately 220 to 325 acres, depending on the recovery factor, mining method, and numerous other factors. (Note: 1 square mile = 640 acres)

BELLEVILLE

Taylor (Henry), pre1881-1882, shaft, Herrin, 90, 6.5	10,000 tons
Smith (G. F.), pre1881-1883, shaft, Herrin, 120-130, 6.5	17,168 tons
Grantz & Company, pre1881-1882, shaft, Herrin, 90, 6.5	5,084 tons
Hazard, Wilson & Company, pre1882-1883, shaft, Herrin, 100-140, 6.5-8.5, RP	30,075 tons
Enterprise Coal Mining Company, 1883-1886	27,130 tons
Consolidated Coal Company of St. Louis, Enterprise Mine, 1886-1888	20,534 tons
Enterprise Coal Company, 1889-1892	18,284 tons
Gast (Joseph), 1892-1893	<u>5,168 tons</u>
	101,191 tons
Philips & Weber leased the Enterprise Mine from 1886 to 1888.	
Gellwicks & Richards, 1882-1883, shaft, Herrin, 40-60, 6.0-6.5, RP	7,000 tons
Gelwicks (G. B.), 1883-1886	14,536 tons
Gelwicks & Herlback, 1886-1887	3,400 tons
Gelwick (George), 1887-1889	<u>6,215 tons</u>
	31,151 tons
Sertel (John), pre1881-1882, shaft, Herrin, 80, 6.5	500 tons
Padfield & Company, pre1881-1883, shaft, Herrin, 55-90, 6.0	1,400 tons
Taylor (Henry), pre1881-1883, shaft, Herrin, 80-100, 6.0-6.5	13,000 tons
Taylor (John), pre1881-1883, shaft, Herrin, 90, 6.0	5,000 tons
Hoard (John), pre1881-1883, slope, Herrin, 50, 7.0	5,350 tons
Reiher (George), 1882-1883, —, Herrin, 86, 6.0	4,000 tons
Winder (John) & Company, pre1882-1883, shaft, Herrin, 40, 6.0	300 tons
Knous & Company, 1883-1884, slope, Herrin, 35-120, 6.0, RP	200 tons
Knous (Joseph) & Brother, 1884-1885	12,680 tons
Knous Brothers, 1885-1886	<u>14,980 tons</u>
	27,860 tons

Reeb (Peter), 1883-1884, slope, Herrin, 40-110, 2.5-7.0	1,182 tons
Simeson & Company, 1882-1883, slope, Herrin, 100, 7.0	200 tons
Seib & Company, pre1882-1883, shaft, Herrin, 120, 6.0	7,100 tons
Liehl (John), 1882-1883, shaft, Herrin, 60, 6.0	800 tons
Seiberd (George), 1882-1883, drift, Herrin, —, 6.0	300 tons
Rubble (William), 1883-1886, shaft, Herrin, 90, 6.0, HER The tonnage was produced by pulling pillars of an older mine.	17,160 tons
Harst (John), 1884-1886, shaft, Herrin, 55, 6.5-7.5, RP	5,220 tons
Drexel & Johnson, 1886-1887	3,000 tons
Hurst (Thomas), 1887-1889	2,750 tons
Harst (John), 1889-1906	<u>67,583</u> tons
	78,553 tons
Lill (Jacob), 1884-1885, shaft, Herrin, 45, 6.0, RP	860 tons
Bee (John H.), shaft, Herrin, 130, 6.5, RP	960 tons
Maddox & Son, 1888-1889	4,730 tons
Dickinson & Jones, 1888-1889	518 tons
Lill & Schinider, 1887-1889	2,200 tons
Taylor (Henry), 1888-1889	1,000 tons
Betts, Richard & Company, 1888-1889	900 tons
Pittsburg Mining Company, 1887-1891, shaft, Herrin, 132, 6.5, RP	47,480 tons
Macke (Christ C.), 1889-1890	800 tons
Abend No. 2 Mine, 1889-1890, shaft, Herrin, 60-90, 6.0-8.0, RP	1,600 tons
Groom Brothers, No. 2 Mine, 1890-1891	5,150 tons
Brosius Brothers (John & Charles), 1891-1896	<u>14,400</u> tons
	21,150 tons
Rebel Mine, 1889-1890, shaft, Herrin, 60-66, 6.0-6.5, RP	1,440 tons
Weiss (Nicholas), 1890-1901	<u>23,006</u> tons
	24,446 tons
St. George Coal Mining Company, 1890-1891, shaft, Herrin, 70-120, 6.0-6.5, RP	280 tons
Branch (George H.), 1891-1893	<u>5,461</u> tons
	5,741 tons
Crown Coal & Tow Company, No. 3 Mine, 1894-1895	Not reported
Crown Coal & Tow Company, No. 4 Mine, 1895-1896 shaft, Herrin, 125-150, 6.0-7.0, RP	236,997 tons
Massie Coal Company, No. 2 Mine, 1895-1898, shaft, Herrin, 90, 6.0, RP	69,827 tons
Georgetown Road Coal Company, 1901-1904, shaft, Herrin, 66, 6.0, RP	7,000 tons
Branch (John), 1905-1906, drift, Herrin, 50, 6.0, RP	1,000 tons
Schramm (Richard) & Son, 1910-1925, shaft, Herrin, 51, 6.0, RP	264,148 tons
Bosanko (Alfred), 1915-1917, slope, Herrin, 40, 6.0, RP	1,775 tons

Grimming (Wendel), 1924-1925	348 tons
Dahm (Alfred), 1935-1935, underground	2,030 tons
Pannier (L.) & Son, 1935-1935, surface	50 tons

FREEBURG

Reinhart (Joseph), pre1881-1882, shaft, Herrin, 120-160, 4.0-8.0, RP	7,000 tons	
Richards (Joseph), 1882-1883	6,400 tons	
Becker & Mack, 1883-1884	6,000 tons	
Reihart (Joseph), 1884-1886	<u>18,730</u> tons	
	38,130 tons	
Consolidated Coal Company of St. Louis, W. Ogden (lessee)	7,403 tons	
Maddox (William), 1890-1891, surface, Herrin, —, 6.0	550 tons	
Dutch Hollow Coal & Mining Co., 1893-1895, shaft, Herrin, 150, 6.0, RP	41,994 tons	mine index 3560
Dietrich Coal Company, 1896-1899, shaft, Herrin, 60, 7.0-7.5, RP	3,550 tons	
Dietrich Brothers, 1899-1905	8,079 tons	
Dietrich (Philip), 1905-1910	<u>7,851</u> tons	
	19,480 tons	
Augustine Coal Company, 1935-1935, underground	72 tons	

RENTCHLER

Rentchler (D. H.), pre1881-1883, shaft, Herrin, 110-120, 6.0-6.5	24,460 tons
Ogden (Adam), pre1881-1883, shaft, Herrin, 100, 6.0-6.5	7,000 tons
Dish (Philip), pre1881-1882, shaft, Herrin, 100, 6.0	5,000 tons
Dish (Frederick), 1882-1883	<u>1,280</u> tons
	6,280 tons
Crowson (William) & Sons, 1883-1888, shaft, Herrin, 110-120, 6.0, RP	74,850 tons
Rentchler Mining Company, 1883-1884, shaft, Herrin, 114-120, 6.0-6.5, RP	7,000 tons
Lloyd (Abraham) & Son, 1884-1890	<u>61,728</u> tons
	68,728 tons

SMITHTON

Johnson (Benjamin), 1883-1891, —, Herrin, 30-70, 6.0-6.5, RP	4,545 tons
Frazier (George), 1891-1892	1,500 tons
Johnson (Benjamin), 1892-1905	15,353 tons
Johnson (Berry), 1905-1906	986 tons
Johnson (Arthur), 1906-1908	<u>2,290</u> tons
	24,674 tons
Hepp (Ed), 1926-1926	496 tons
Quirin (Fred) Coal Company, 1926-1926	768 tons
Cross (Gilbert), 1928-1928, underground	802 tons

INDEX OF MINES IN THE FREEBURG QUADRANGLE

Abend No. 2 Mine	53
Ace High Coal Company	18
Arona (Charles)	16
Atom Coal Company, Inc.	32
Augustine Coal Company	54
Avery (Edward), Randle Mine	31
Becker (Charles)	36
Becker & Mack.	54
Bee (John H.).	53
Beese Coal Company	11
Belleville Colliery Company	27
Betts, Richard & Company.	53
Bloom Coal Company	16
Bosanko (Alfred)	53
Branch (George H.)	53
Branch (John)	53
Branch Mine.	24
Breese Coal Company.	11
Brosius Brothers (John & Charles)	53
Columbia Colliery Company	36
Consolidated Coal Company of St. Louis	54
Freeburg Mine	36
Heinrich Mine	23
Richland Mine	17
Consolidated Coal Company of St. Louis, Enterprise Mine	52
Cross (Gilbert)	54
Crown Coal & Tow Company, No. 3 Mine	53
Crown Coal & Tow Company, No. 4 Mine	53
Crown Coal Company	10
Crowson (William) & Sons	54
Dahm (Alfred)	54
Deer (Thomas J.).	16
Dickinson & Jones	53
Dietrich (Philip)	54
Dietrich Brothers	54
Dietrich Coal Company	54
Dintelman Coal Company	50
Dish (Frederick)	54
Dish (Philip)	54
Donk Brothers, No. 1 Mine	25
Drexel & Johnson	53
Dudley Mine.	39
Dutch Hollow Coal & Mining Company	54
Dutch Hollow Coal Company, Randle Mine.	31
Dutch Hollow Coal Company, Richland Mine.	17
East Side Coal Company.	15
Ebel (August).	51
Ebel Brothers.	51
Enterprise Coal Company	52
Enterprise Coal Mining Company	52
Famous Mine.	36
Flannigan & Company	47
Frazier (George)	54
Free Bell Coal Company	30
Freeburg Coal Company	36
Freeburg Coal Company, Randle Mine	31
Freeburg Mining Company, Freeburg Mine	36
Gast (Joseph)	52
Gellwicks & Richards.	52
Gelwick (George).	52
Gelwicks (G. B.).	52

Gelwicks & Herlback	52
General Coal & Mining Company	30
Georgetown Road Coal Company	53
Glendale Coal & Mining Company	31
Goalby Brothers	50
Grantz & Company	52
Grimming (Wendel)	54
Groom Brothers, No. 2 Mine	53
Groom Coal Company	17
Harst (John)	53
Hazard, Wilson & Company	52
Heinrich Brothers	23
Hepp (Ed)	54
Herlback (Gelwicks & Herlback)	52
Herman, Herman & Stahlhele	16
Herman, Meng & Stahlheber	16
High Grade Coal Company	28
Hill Coal Company	35
Hippard (George)	45
Hippard (George) Coal Company, No. 2 Mine	14
Hippard Coal Company, No. 1 Mine	45
Hoard (John)	52
Hoffman (Henry)	16
Homeier Mine	27
Hurst (Thomas)	53
Jack Run Coal Company	30
Johnson (Arthur)	54
Johnson (Benjamin)	54
Johnson (Berry)	54
Johnson (Drexel & Johnson)	53
Johnson Coal Company	36
Jones (Dickinson & Jones)	53
Klein Mine	41
Knous (Joseph) & Brother	52
Knous & Company	52
Knous Brothers	52
Krantz (Jacob)	24
Kronerberger (Sebastian)	27
Kronerberger (Sebastin & Kronerberger)	27
Lake Superior Coal Company, Branch Mine	24
Lattman (William)	27
Lattman-Reeb Coal Company	27
Lemen Coal Company	52
Lerth & Walters	16
Liehl (John)	53
Lill (Jacob)	53
Lill & Schinider	53
Lloyd (Abraham) & Son	54
Lou-Nash Coal Company	30
Mack (Becker & Mack)	54
Macke (Christ C.)	53
Macke (Philip)	48
Maddox (William)	54
Maddox & Son	53
Main Guy Mine	25
Main Mine	25
Marsh & Son	45
Massie Coal Company, No. 2 Mine	53
Mathews Case Coal Company	13
Maule (John)	25
McBride (Thomas)	16
Meng (Herman, Meng & Stahlheber)	16
Midway Coal Company	19

Midwest Radiant Corporation	12
Missouri & Illinois Coal Company	
Rentchler Mine	22
St. Clair Mine	30
Wilderman Mine	37
Moser (J. W.)	13
Mulberry Hill Coal Company	9
Mulberry Hill Coal Company, No. 2 Mine	31
Nash (Lou-Nash Coal Company)	30
National Mine	50
Neuwirth Coal Company	32
New Freeburg Coal Company	36
New National Coal & Mining Company	26
Ogden (Adam)	54
Ogden (W.)	54
Orchard Mine	29
Padfield & Company	52
Pannier (L.) & Son	54
Paramount Coal & Coke Company	31
Peabody Coal Company	
Midwest Highwall No. 2	42
Midwest Highwall No. 3	44
Midwest Strip	12
River King Surface Mine	20
River King Underground	21
Perry Coal Company	27
Pfuhl (Herman)	17
Philips & Weber	52
Pittsburg Mining Company	53
Power Coal Company	31
Progressive Coal Mining Company	11
Quirin (Fred) Coal Company	54
Randle Coal Company	31
Rebel Mine	53
Red Ray Mine	40
Reeb (Lattman-Reeb Coal Company)	27
Reeb (Peter)	53
Reeb Coal Company, Branch Mine	24
Reichert Coal Company	31
Reihart (Joseph)	54
Reiher (George)	52
Reinhart (Joseph)	54
Reinheimer (Arthur)	16
Reinheimer (Henry)	16
Reinheimer, Slope Mine	16
Rentchler (D. H.)	54
Rentchler Coal Company	22
Rentchler Mining Company	54
Richard (Betts, Richard & Company)	53
Richards (Gellwicks & Richards)	52
Richards (Joseph)	54
Richland Coal Company	17
Ripley Mine	46
Rock Creek Coal Company	49
Rubble (William)	53
Safety Coal Company	11
Safety First Coal Company	11
Schinider (Lill & Schinider)	53
Schramm (Richard)	17
Schramm (Richard) & Son	53
Scott (W. L.) Coal Company	37
Sebastin & Kronerberger	27
Seib & Company	53

Seiberd (George)	53
Senior (L.), Branch Mine	24
Sergent (White-Sergent Coal Company)	22
Sertel (John)	52
Siberts (J.)	22
Simeson & Company	53
Smith (G. F.)	52
Solar Coal Company	40
South Belleville Coal Company	27
South Side Coal Company	26
St. Clair Coal Company	30
St. George Coal Mining Company	53
Stahlheber (August)	16
Stahlheber (Herman, Meng & Stahlheber)	16
Stahlhele (Herman, Herman & Stahlhele)	16
Star Coal Company	34
Sugar Creek Coal Company	38
Sunlight Coal Company	36
T. & H. Mining Company	37
Taylor (Henry)	52, 53
Taylor (John)	52
Turkey Hill Coal Company	28
Turkey Hill Mining Company	13
United Electric Coal Company, No. 13 Mine	40
Victoria Coal Company, New Freeburg Mine	36
Victoria Coal Company, No. 1 or Branch Mine	24
Vulcan Coal & Mining Company, No. 1 Mine	45
Vulcan Coal & Mining Company, No. 2 Mine	14
Walnut Valley Coal Company	45
Walnut Valley Mine	14, 45
Walters (Lerth & Walters)	16
Weber (Philips & Weber)	52
Weiss (Nicholas)	53
White-Sergent Coal Company	22
Wilderman Mine	37
Wildwood Coal Company	33
Wilson (Hazard, Wilson & Company)	52
Wilson Coal Company	29
Winder (John) & Company	52
Zephyr Coal Company	32
Zink (Philip) Coal Company	16

