

Coal Mines in Illinois
French Village Quadrangle

St. Clair County, Illinois

This map accompanies the Coal Mines Directory for the French Village Quadrangle. Consult the directory for a complete explanation of the information shown on this map.

Mining Method

- Room & Pillar (RP)
- Room & Pillar Basic (RPB)
- Modified Room & Pillar (MRP)
- Room & Pillar Panel (RPP)
- Blind Room & Pillar (BRP)
- Checkerboard Room & Pillar (CRP)
- High Extraction Retreat (HER)
- Longwall (LW)
- Underground, Method Unknown
- Strip Mine
- Auger Mine
- General Area of Mining

Other Areas Depicted

- Non-Coal Mines

Source of Mine Outline

- Final Mine Map
- Not Final Mine Map
- Undated Mine Map
- Incomplete Mine Map
- Secondary Source Map

Tipple, Shaft, Slope, Drift Locations

- Strip Mine Tipple - Active
- Strip Mine Tipple - Abandoned
- Mine Shaft - Active
- Mine Shaft - Abandoned
- Mine Slope - Active
- Mine Slope - Abandoned
- Mine Drift - Active
- Mine Drift - Abandoned
- Air Shaft
- Uncertain Location
- Uncertain Type of Opening

Other Points Depicted

- Non-Coal Mines

Mine Annotation
(space permitting)

Company
Mine Name
ISGS Index No., Years of Operation

Disclaimer

Please check the Coal Section at the Illinois State Geological Survey's web site at <https://www.isgs.illinois.edu> for the most up-to-date version of these products.

Note that each quadrangle scale mined-out area map requires the use of the associated text directory for full explanation of map features and mine attributes. Also note that some quadrangles have multiple seams of mining and therefore more than one map may be available for a particular quadrangle. Please take care to check for multiple maps, as extensive mining may exist in the other seams.

The maps and digital files used for these studies were compiled from data obtained from a variety of public and private sources and have varying degrees of completeness and accuracy. This compilation map presents reasonable interpretation of the geology of the area and is based on available data. Locations of some mine features may be offset by 500 feet or more due to errors in the original source maps, the compilation process, digitizing, or a combination of these factors. These data are not intended for use in site-specific screening or decision-making. Use of these documents does not eliminate the need for detailed studies to fully understand the geology of a specific site. The Illinois State Geological Survey, Prairie Research Institute, or the University of Illinois make no guarantee, expressed or implied, regarding the correctness of the interpretations presented in this data set and accept no liability for the consequences of decisions made by others on the basis of the information presented here.

These maps were designed for use at 1:24,000. Enlarging the map may reduce accuracy, as the original scale of the source maps used to compile the outlines shown varies from 1:400 to 1:150,000, and some mine locations are known only from text descriptions. See the accompanying mine directory for the original scale of the source map used for a specific mine to check accuracy of a given portion of the map. Areas with no mines shown may still be undermined; see the unmined mines list at the back of each mine directory.

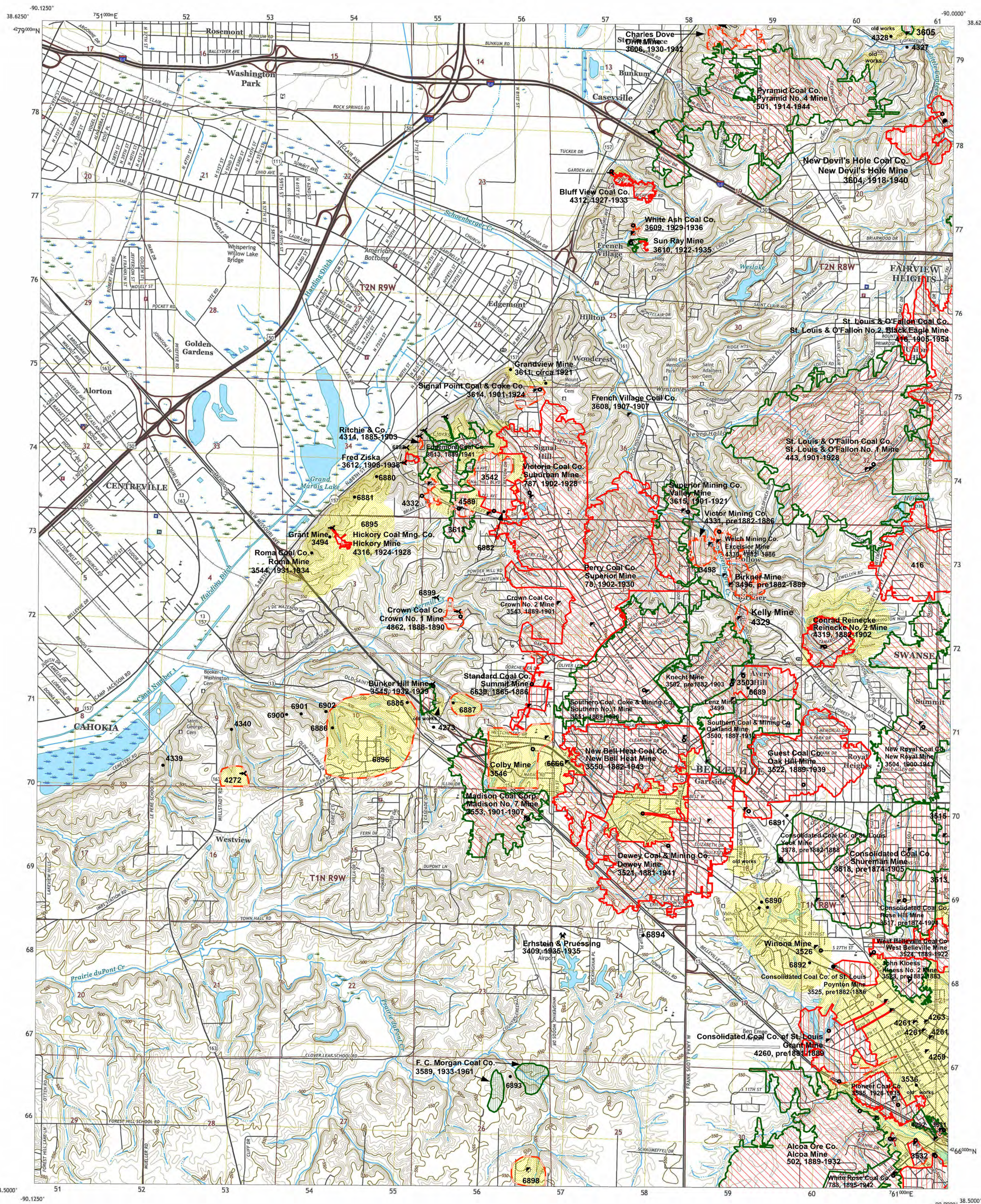
The image of the U.S.G.S. topographic base map was projected from the original UTM to Lambert Conformal Conic.

ILLINOIS
Illinois State Geological Survey
PRAIRIE RESEARCH INSTITUTE

Prairie Research Institute
Illinois State Geological Survey
615 E. Peabody Dr.
Champaign, IL 61820

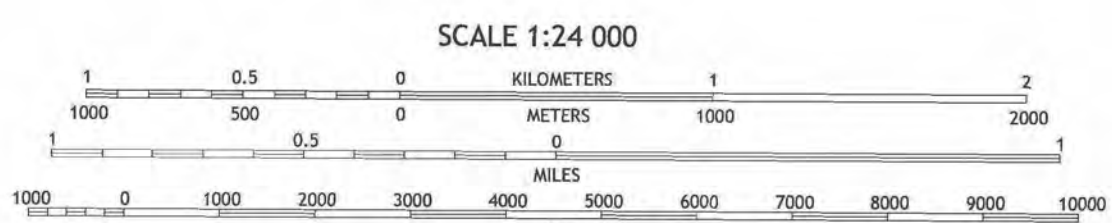
Mine Outlines Compiled by
Scott D. Elrick

August 1, 2000
Revised 2004, 2019 & January 10, 2024



Produced by the United States Geological Survey
North American Datum of 1983 (NAD83)
World Geodetic System of 1984 (WGS84). Projection and
100-meter grid/Universal Transverse Mercator, Zone 15S
This map is not a legal document. Boundaries may be
generalized for this map scale. Private lands within government
reservations may not be shown. Obtain permission before
entering private lands.

Imagery:.....NAP, August 2015 - October 2015
Roads:.....U.S. Census Bureau, 2017
Names:.....GNS, 1980 - 2016
Hydrography:.....National Hydrography Dataset, 2002 - 2016
Contours:.....National Elevation Dataset, 2002 - 2008
Boundaries:.....Multiple sources; see metadata file 2014 - 2016
Public Land Survey System:.....BLM, 2016
Wetlands:.....FWS National Wetlands Inventory 1981 - 1988

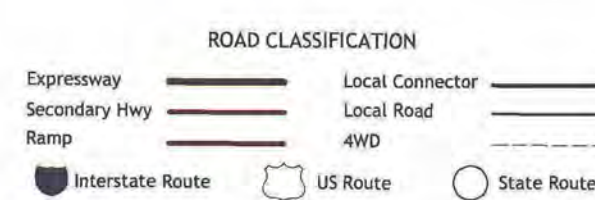


CONTOUR INTERVAL 10 FEET
NORTH AMERICAN VERTICAL DATUM OF 1988
This map was produced to conform with the
National Geospatial Program US Topo Product Standard, 2011.
A metadata file associated with this product is draft version 0.6.18



1 Granite City
2 Monks Mound
3 Collinsville
4 Cahokia
5 O'Fallon
6 Columbia
7 Millstadt
8 Freeburg

FRENCH VILLAGE, IL
2018



DIRECTORY OF COAL MINES IN ILLINOIS 7.5-MINUTE QUADRANGLE SERIES FRENCH VILLAGE QUADRANGLE ST. CLAIR COUNTY

Cheri Chenoweth, Scott D. Elrick, Melony E. Barrett



Department of Natural Resources
ILLINOIS STATE GEOLOGICAL SURVEY
2000
REVISED 2004, 2020, 2024

**DIRECTORY OF COAL MINES IN ILLINOIS
7.5-MINUTE QUADRANGLE SERIES
FRENCH VILLAGE QUADRANGLE
ST. CLAIR COUNTY**

2000
REVISED 2004, 2020, 2024

ILLINOIS STATE GEOLOGICAL SURVEY
William Shilts, Chief

Natural Resources Building
615 East Peabody Drive
Champaign, Illinois 61820

Phone 1-217-244-4610
Fax 1-217-333-2830

Cover photo Track-mounted duckbill loading machine at a Peabody Coal Company mine, ca. 1915.

DISCLAIMER: The accuracy and completeness of mine maps and directories vary with the availability of reliable information. Maps and other information used to compile this mine map and directory were obtained from a variety of sources and the accuracy of some of the original information cannot be verified. Consequently, the Illinois State Geological Survey (ISGS) cannot guarantee the mine maps are free of errors and disclaims any responsibility for damages that may result from actions or decisions based on them.

The ISGS updates the maps and directories periodically, and welcomes any new information or corrections. Please contact the Coal Section of the ISGS at the address shown on the title page of this directory, or telephone (217) 244-4610.

Printed by authority of the State of Illinois/2000

CONTENTS

INTRODUCTION	1
MINING IN FRENCH VILLAGE QUADRANGLE	1
PART I EXPLANATION OF MAP AND MINE SUMMARY SHEET	2
INTERPRETING THE MAP	2
Mine Type and Mining Method	2
Source Maps	3
Points and Labels	3
INTERPRETING A MINE SUMMARY SHEET	6
REFERENCES	8
PART II DIRECTORY OF MINES IN FRENCH VILLAGE QUADRANGLE	9
MINE SUMMARY SHEETS	9
Mine Index 78	
Perry Coal Company, Superior Mine	9
Mine Index 305	
Howard E. Miller, Ruby Mine	10
Mine Index 416	
St. Louis & O'Fallon Coal Company, St. Louis & O'Fallon No. 2, Black Eagle Mine	11
Mine Index 443	
St. Louis & O'Fallon Coal Company, St. Louis & O'Fallon No. 1 Mine	12
Mine Index 501	
Pyramid Coal Company, Pyramid No. 4 Mine	13
Mine Index 502	
Alcoa Ore Company, Alcoa Mine	14
Mine Index 783	
White Rose Coal Company, White Rose Mine	15
Mine Index 787	
Victoria Coal Company, Suburban Mine	16
Mine Index 3378	
Consolidated Coal Company of St. Louis, Yock Mine	17
Mine Index 3409	
Erhstein & Pruessing, Erhstein & Pruessing Mine	18
Mine Index 3494	
Grant Mine	19
Mine Index 3496	
Dutch Hollow Coal Company, Birkner Mine	20
Mine Index 3498	
William Izatt, Pollock Mine	21
Mine Index 3499	
Consolidated Coal Company of St. Louis, Lenz Mine	22
Mine Index 3500	
Southern Coal & Mining Company, Oakland Mine or Southern Mine No. 3	23
Mine Index 3502	
Consolidated Coal Company of St. Louis, Knecht Mine	24
Mine Index 3503	
Consolidated Coal Company of St. Louis, Dutch Hollow Mine	25
Mine Index 3504	
New Royal Coal Company, New Royal Mine	26
Mine Index 3513	
Consolidated Coal Company, Green Mount Mine	27
Mine Index 3515	
Northwestern Coal Company, Northwestern Mine	28
Mine Index 3517	
Consolidated Coal Company, Rose Hill Mine	29
Mine Index 3518	
Consolidated Coal Company, Schureman Mine	30

Mine Index 3521	
Dewey Coal & Mining Company, Dewey Mine	31
Mine Index 3522	
Guest Coal Company, Oak Hill Mine	32
Mine Index 3523	
John Kloess, Kloess No. 2 Mine.	33
Mine Index 3524	
West Belleville Coal Company, West Belleville Mine	34
Mine Index 3525	
Consolidated Coal Company of St. Louis, Poynton Mine	35
Mine Index 3526	
Winona Mine	36
Mine Index 3531	
Frank Murphy, Murphy (No. 1) Mine.	37
Mine Index 3532	
Consolidated Coal Company of St. Louis, Concordia Mine	38
Mine Index 3533	
Victoria Coal Company, Branch Mine (aka Victoria No. 1).	39
Mine Index 3535	
Pioneer Coal Company, Pioneer Mine	40
Mine Index 3536	
Andrew Brandenberger, Brandenberger No. 1 Mine	41
Mine Index 3542	
Lake Coal Company, Johnson Mine.	42
Mine Index 3543	
Crown Coal Company, Crown No. 2 Mine	43
Mine Index 3544	
Roma Coal Company, Roma Mine.	44
Mine Index 3545	
Bunker Hill Coal Company, Bunker Hill Mine	45
Mine Index 3546	
Colby Mine.	46
Mine Index 3550	
New Bell Heat Coal Company, New Bell Heat Mine (formerly Harmony Mine)	47
Mine Index 3551	
Southern Coal, Coke & Mining Company, Southern Mine No. 1	48
Mine Index 3553	
Madison Coal Corporation, Madison No. 7 Mine	49
Mine Index 3589	
F. C. Morgan Coal Company, Morgan Mine.	50
Mine Index 3604	
New Devil's Hole Coal Company, New Devil's Hole Mine	52
Mine Index 3605	
New St. Clair Coal Company, New St. Clair Mine	53
Mine Index 3606	
Charles C. Dove, Dove Mine	54
Mine Index 3608	
French Village Coal Company, French Village Mine	55
Mine Index 3609	
White Ash Coal Company, White Ash Mine	56
Mine Index 3610	
Sun Ray Mine.	57
Mine Index 3612	
Fred J. Ziska, Ziska Mine	58
Mine Index 3613	
Edgemont Coal Company, Edgemont Mine	59
Mine Index 3614	
Signal Point Coal & Coke Company, Signal Point Mine	60
Mine Index 3615	
Superior Mining Company, Valley Mine	61
Mine Index 4260	
Consolidated Coal Company of St. Louis, Grant Mine	62

Mine Index 4261	
William Brandenberger, Brandenberger Mine	63
Mine Index 4292	
James Taylor, Taylor Mine	64
Mine Index 4312	
Bluff View Coal Company, Bluff View Mine	65
Mine Index 4314	
Ritchie & Company, Ritchie Mine	66
Mine Index 4316	
Hickory Coal Mining Company, Hickory Mine.	67
Mine Index 4319	
Conrad Reinecke, Reinecke No. 2 Mine	68
Mine Index 4329	
Kelly Mine.	69
Mine Index 4330	
Welch Mining Company, Excelsior Mine	70
Mine Index 4331	
Welch Mining Company, Victor Mine	71
Mine Index 4332	
Union Coal Company, Union Mine No. 1	72
Mine Index 4589	
Briar Hill Coal Company, Briar Hill Mine.	73
Mine Index 4862	
Crown Coal Company, Crown No. 1 Mine	74
Mine Index 6639	
Standard Coal Company, Summit Mine	75
OTHER MINES SHOWN ON THE FRENCH VILLAGE QUADRANGLE MAP	76
Mine Index 3611, Grandview Mine	76
Mine Index 4259, Smith Mine	76
Mine Index 4263, Middle Coal Company	76
Mine Index 4272	76
Mine Index 4273	76
Mine Index 4327	76
Mine Index 4328	76
Mine Index 4339	76
Mine Index 4340	76
Mine Index 6666	76
Mine Index 6880	76
Mine Index 6881	76
Mine Index 6882	76
Mine Index 6883	76
Mine Index 6885	76
Mine Index 6886	76
Mine Index 6887	76
Mine Index 6889	76
Mine Index 6890	76
Mine Index 6891	76
Mine Index 6892	76
Mine Index 6893	76
Mine Index 6894	76
Mine Index 6895	76
Mine Index 6896	76
Mine Index 6898	76
Mine Index 6899	76
Mine Index 6900	76
Mine Index 6901	76
Mine Index 6902	76
MINES WHOSE LOCATIONS ARE NOT KNOWN, FRENCH VILLAGE QUADRANGLE	77
INDEX TO MINES IN THE FRENCH VILLAGE QUADRANGLE	82

INTRODUCTION

Coal has been mined in 76 counties of Illinois. More than 7,400 coal mines have operated since commercial mining began in Illinois about 1810; fewer than 30 are currently active. To detail the extent and location of coal mining in Illinois, the Illinois State Geological Survey (ISGS) has compiled maps and directories of known coal mines. The ISGS offers maps at a scale of 1:100,000 and accompanying directories for each county in which coal mining is known to have occurred. Maps at a scale of 1:24,000 and accompanying directories such as this are available for selected quadrangles. Contact the ISGS for a list of these quadrangles.

These larger scale maps show the approximate positions of mines in relation to surface features such as roads and water bodies, and indicate the mining method used and the accuracy of the mine boundaries. The maps are useful for locating mine boundaries relative to specific properties and for assessing the potential for subsidence in an area. Mine boundaries compiled from final mine surveys are generally shown within 200 feet of their true position. As a result of poor cartographic quality and inaccuracies in the original mine surveys, boundaries of some older mines may be mislocated on the map by 500 feet or more. Original mine maps should be consulted in situations that require precise delineation of mine boundaries or internal workings of mined areas.

The directory serves as a key to the accompanying mine map and provides basic information on the coal mines. The directory is composed of two parts. Part I explains the symbols and patterns used on the accompanying map and the summary data presented for each mine. Part II numerically lists the mines in the quadrangle and summarizes the geology and production history of each mine.

MINING IN FRENCH VILLAGE QUADRANGLE

Mining began quite early in this area. According to the ISGS field notes, mining was taking place in the French Village Quadrangle near Edgemont in 1810. By 1874, there were several mines large enough to justify railroad spurs to their tipples. This is in large part due to the accessibility of the coal, which outcrops in the bluffs on the northwest quarter of the quadrangle, and the proximity to St. Louis where the coal could be marketed. The longest-operating mine in the area, the B. B. Mine (mine index 3550), celebrated its 50th anniversary in May 1928 (implying the opening year was 1878) and continued operation until 1943.

Mining occurred almost exclusively in the Herrin Coal. A very few mines attempted mining the Springfield Coal as well, but the Springfield seam is much thinner and those mines did not stay in operation very long. Geologic problems associated with the Herrin Coal in this area include large and numerous coal balls in the roof rock, some slips and offsets in the coal, and areas where the shale roof came down easily. Some mines noted heaves and squeezes from the floor clay, especially when wet.

Note that a number of mines that are known to have operated in this area could not be located. Any area east of the bluffs may contain minable coal and is potentially undermined.

PART I EXPLANATION OF MAP AND MINE SUMMARY SHEET

INTERPRETING THE MAP

The map accompanying this directory shows the location of coal mines known to be present in the quadrangle. The map, corresponding to a U.S. Geological Survey (USGS) 7.5-minute quadrangle, covers an area bounded by lines of latitude and longitude 7.5-minutes apart. In Illinois, a quadrangle is approximately 6.5 miles east to west and 8.5 miles north to south, an area of about 56 square miles. The USGS generally offers one map of mines per quadrangle. In some areas where extensive mining occurred in two or more overlapping seams, separate maps are compiled for mines in each seam to maintain readability of the map.

Mine Type and Mining Method

The mine type is indicated on the map by pattern color: green represents surface mines; red and yellow represent underground mines. The red patterns are used for areas of underground mining that are documented by a primary or secondary source map. A yellow pattern is used for cases where no map of the mine workings is available, but a general area of mining can be inferred from property maps or production figures. The patterns indicate the main mining methods used in underground mines. The methods are (1) room and pillar and (2) high extraction. The method used gives some indication of the amount and pattern of coal extraction within each mined area, and has some influence on the timing and type of subsidence that can occur over a mine.

The following discussion and illustrations of mining methods are based on Guither et al. (1984).

In room-and-pillar mines, coal is removed from haulage-ways (entries) and selected areas called rooms. Pillars of unmined coal are left between the rooms to support the roof. Depending on the size of rooms and pillars, the amount of coal removed from the production areas will range from 40% to 70%.

Room and Pillar - mining is divided into six categories:

- room-and-pillar basic (RPB, fig. 1A), an early method that did not follow a preset mining plan and therefore resulted in very irregular designs;
- modified room and pillar (MRP, fig. 1B);
- room-and-pillar panel (RPP, fig. 1C);
- blind room and pillar (BRP, fig. 1D);
- checkerboard room and pillar (CRP, fig. 1E);
- room and pillar (RP), a classification used when the specific type of room-and-pillar mining is unknown.

Blind and checkerboard are the most common types of room-and-pillar mining used in Illinois today. The knowledge of room-and-pillar mining methods gives a trained engineer information on the nature of subsidence that may occur. A more extensive discussion of subsidence can be found in Bauer et al. (1993).

High-extraction These mining methods are subdivided into high-extraction retreat (HER, Fig 1F) and longwall (LW, Fig 1G, 1H). In these methods, much of the coal is removed within well defined areas of the mine. Subsidence of the surface above these areas occurs within weeks. Once the subsidence activity ceases, the potential for further movement over these areas is low; however, subsidence may continue for several years after mining.

High-extraction retreat mining is a form of room-and-pillar mining that extracts most of the coal. Rooms and pillars are developed in the panels, and the pillars are then systematically removed (fig. 1F).

In early (pre-1960) longwall mines, mining advanced in multiple directions from a central shaft (fig. 1G). Large pillars of coal were left around the shaft, but all coal was removed beyond these pillars. Miners placed rock and wooden props and cribs in the mined-out areas to support the mine roof. The overlying rock gradually settled onto these supports, thus producing subsidence at the surface. In post-1959 longwall mines, room-and-pillar methods have been used to develop the main entries of the mine and panel areas. Modern longwall methods extract 100 percent of the coal in the panel areas (fig. 1H).

SOURCE MAPS

Mine outlines depicted on the map are, whenever possible, based on maps made from original mine surveys. The process of compiling and digitizing the quadrangle map may produce errors of less than 200 feet in the location of mine boundaries. Larger errors of 500 feet or more are possible for mines that have incomplete or inaccurate source maps.

Because of the extreme complexity of some mine maps, detailed features of mined areas have been omitted. The digitized mine boundary includes the exterior boundary of all rooms or entries that were at least 80 feet wide or protruded 500 feet from the main mining area. Unmined areas between mines are shown if they are at least 80 feet wide; unmined blocks of coal within mines are shown if they are at least 400 feet on each side. Original source maps should be consulted when precise information on mine boundaries or interior features is needed.

The mine summary sheet lists the source maps used to determine each mine outline. The completeness of map sources is indicated on the map by a line symbol at the mine boundary. Source maps are organized in five categories.

Final mine map The mine outline was digitized from an original map made from mine surveys conducted within a few months after production ceased. The date of the map and the last reported production are listed on the summary sheet.

Not a final map The mine is currently active or the mine outline was made from a map based on mine surveys conducted more than a few months before production ceased. This implies the actual mined-out area is probably larger than the outline on the map. The mine summary sheet indicated the dates of source maps and the last reported production, as well as the approximate tonnage mined between these two dates (if the mine is abandoned). The summary sheet also lists the approximate acreage mined since the date of the map and, in some cases, indicates the area where additional mining may have taken place. This latter information is determined by locating on the map the active faces relative to probable boundaries of the mine property.

Undated map The source map was undated, so it may or may not be based on a final mine survey. When sufficient data are available, the probable acreage of the mined area is estimated from reported production, average seam thickness and a recovery rate comparable to other mines in the area. This information is listed in the summary sheet for the mine.

Incomplete map The source map did not show the entire mine. The summary sheet indicates the missing part of the mine map and the acreage of the unmapped area, which is estimated from the amount of coal known to have been produced from the mine.

Secondary source map The original mine map was not found so the outline shown was determined from secondary sources (e.g., outlines from small-scale regional maps published in other reports). The summary sheet describes the secondary sources.

POINTS AND LABELS

The locations of all known mine openings (shafts, slopes, and drifts) and surface mine tipples are plotted on the map. Tipples are areas where coal was cleaned, stockpiled, and loaded for shipping.

Only openings or tipples are plotted for mines without source maps. If the precise locations of these features are unknown, a special symbol is used to indicate the approximate location of the mine.

Each mine on the map is labeled with the names of the mine and operating company, ISGS mine index number, and years of operation (if known) if space permits. A seam designation is given on maps where more than one seam was mined. For a mine that operated under more than one name, only the most recent name is generally given. When a mine changed names or ownership shortly before closing, an earlier name is listed. All company and mine names are listed on the mine summary sheet in the directory, under the production history segment.



Figure 1 Mining methods: (A) room-and-pillar basic (RPB), (B) modified room and pillar (MRP), (C) room-and-pillar panel (RPP), (D) blind room and pillar (BRP).



Figure 1 (cont.) Mining methods: (E) checkerboard room and pillar (CRP), (F) high extraction retreat (HER), (G) early (pre-1960) longwall, (H) post-1959 longwall



Figure 2 Generalized stratigraphic section, showing approximate vertical relations of coals in Illinois.

INTERPRETING A MINE SUMMARY SHEET

The mine summary sheet is arranged numerically by mine index number. Index numbers are shown on the map and in the mine listing. The mine summary sheet provides the following information (if available).

Company and mine name The last company or owner of the mine is used, unless no production was recorded for the last owner. In that case, the penultimate owner is listed. Mines often have no specific name; in these cases, the company name is also used as the mine name.

Type *Underground* denotes a subsurface mine in which the coal was reached through a shaft, slope, or a drift entry. *Surface* denotes a surface, open pit or strip mine.

Total mined-out acreage shown The total acreage of the mined area mapped, including any acreage mined on adjacent quadrangles, is calculated from the digitized outline of the mine. The acreage of large barrier pillars depicted on the map is excluded from the mined-out acreage. Small pillars not digitized are included in the acreage calculation. If the mine outline is not based on a final mine map, the acreage is followed by an estimate of additional acres that may have been mined. The estimate is determined from reported mine production, approximate thickness of the coal, and recovery rates calculated from nearby mines that used similar mining methods.

SHAFT, SLOPE, DRIFT OR TIPPLE LOCATIONS

Shaft, slope, drift, or tippie locations Locations of all known former entry points to underground mines or the location of coal cleaning, tippie, and shipping equipment used by the mine's facility are listed. The location is described in terms of county, township and range (Twp-Rge), section, and location within the section by quarters. NE SW NW, for instance, would describe the location in the northeast quarter of the southwest quarter of the northwest quarter. When sections are irregular in size, the quarters remain the same size and are oriented (or "registered") from the southeast corner of the section. Approximate footage from the section lines (FEL = from east line, FNL = from north line, for example) is given when that information is known; this indicates a surveyed location and is not derived from maps. Entry points are also plotted on the map and coded for the type of entry or tippie. A mine opening may have had many purposes during the life of the mine. Old hoist shafts are often later used for air and escape shafts; this information is included in the directory when known. The tippie for underground mines was generally located near the main shaft or slope. At surface mines, coal was sometimes hauled to a central tippie several miles from the mine pit.

GEOLOGY

Seam(s) mined The name of the coal seam(s) mined is listed, if known. If multiple seams were mined, they are all listed, although the mined-out area for each seam may be shown on separate maps. Figure 2 shows the stratigraphic section of the coal-bearing interval in Illinois, and the vertical relations among the coals.

Depth The depth to the top of the seam in the vicinity of the shaft is listed, if known. The depth is determined from notes made by geologists who visited the mine during its operation or from drill hole data in ISGS files. Depth generally varies little over the extent of a mine; however, reported depths for an individual mine may vary. Depth for surface-mined coals varies, and is usually represented as a range.

Thickness The approximate thickness of the mined seam is shown, if known. Thickness also comes from notes of geologists who visited the mine during its operation or from borehole data in ISGS files. Minimum, maximum, and average thicknesses are given when this information is available.

Mining method The principal mining method used at the mine (figs. 1A-H) is listed. See the mining methods section at the beginning of this directory for a discussion of this parameter.

Geologic problems reported Any known geologic problems, such as faults, water seepage, floor heaving, and unstable roof, encountered in the mine are reported. This information is from notes made by ISGS geologists who visited the mine, or from reports by mine inspectors published by the Illinois Department of Mines and Minerals, or from the source map(s). Geologic problems are not reported for active mines.

PRODUCTION HISTORY

Production history Tons of coal produced from the mine by each mine owner are totaled. When the source map used for the mine outline is not a final mine map, the tonnage produced since the date of the map is identified. For mines that extend into adjacent quadrangles, the tonnage reported includes areas mined in adjacent quadrangles.

SOURCE OF DATA

Source map This section lists information about the map(s) used to compile the mine outline and the locations of tipples and mine openings. In some cases more than one source map was used. For example, a map drawn before the mine closed may provide better information on original areas of the mine than a later map. When more than one map was used, the bibliography section explains what information was taken from each source.

Date The date of the most recent mine survey listed on the source map is reported.

Original scale The original scale of the source map is listed. Many maps are photo-reductions and are no longer at their original scale. The original scale gives some indication of the level of detail of the mine outline and the accuracy of the mine boundary relative to surface features. Generally, the larger the scale, the greater the accuracy and detail of the mine map. Mine outlines taken from source maps at scales smaller than 1:24,000 may be highly generalized and may well be inaccurately located with respect to surface features.

Digitized scale The scale of the digitized map is reported. The scale may be different from that of the original source map. In many cases the digitized map was made from a photo-reduction of the original source map, or the source map was not in a condition suitable for digitizing and the mine boundaries were transferred to another base map.

Map type Source maps are classified into five categories to indicate the probable completeness of the map. See discussion of source maps in the previous section.

Annotated bibliography Sources that provide information about the mine are listed, with the data taken from each source. Some commonly used sources are described below. Full bibliographic references are given for all other sources. Unless otherwise noted, all sources are available for public inspection at the ISGS.

Coal Reports Published since 1881, these reports contain tabular data on mine ownership, production, employment, and accidents. Some volumes include short descriptions made by mine inspectors of physical features and conditions in selected mines.

Directory of Illinois Coal Mines This source is a compilation of basic data about Illinois coal mines, originally gathered by ISGS staff in the early 1950s. Sources used for this directory are undocumented, but they are primarily Illinois Department of Mines and Minerals annual reports, ISGS mine notes, and coal company officials.

ENR Document 85/01, Guither, H. D., J. K. Hines, and R. A. Bauer, 1985 The Economic Effect of Underground Mining Upon Land Used for Illinois Agriculture: Illinois Department of Energy and Natural Resources Document 85/01, 185 p.

Microfilm map The U.S. Bureau of Mines maintains a microfilm archive of mine maps. A microfilm file for Illinois is available for public viewing at the ISGS.

Mine notes ISGS geologists have visited mines or contacted mine officials throughout the state since the early 1900s. Notes made during these visits range from brief descriptions of the mine location to long narratives (including sketches) of mining conditions and geology.

Federal Land Bank of St. Louis, Preliminary Reports on Subsidence Investigations Mining engineers working for the Federal Land Bank of St. Louis mapped areas of subsidence due to coal mining in the early 1930s. These reports often include county maps of mine properties with mined-out areas including shaft locations, as well as subsidence areas.

REFERENCES

Bauer, R. A., B. A. Trent, and P. B. Dumontelle, 1993, Mine Subsidence in Illinois: Facts for the Homeowner Considering Insurance: Illinois State Geological Survey, Environmental Geology Note 144, 16p.

Guither, H. D., J. K. Hines, and R. A. Bauer, 1985, The Economic Effects of Underground Mining Upon Land Used for Illinois Agriculture: Illinois Department of Energy and Natural Resources Document 85/01, 185p.

PART II DIRECTORY OF MINES IN FRENCH VILLAGE QUADRANGLE

MINE SUMMARY SHEETS

A summary sheet on the geology and production history of each mine in the French Village Quadrangle is provided. These summary sheets are arranged numerically by mine index number. Consult Part I for a complete explanation of the data listed in the summary sheet.

Mine Index 78

Perry Coal Company, Superior Mine

Type: Underground Total mined-out acreage shown: 470 Production indicates that an additional 45 acres were mined after the map date.

SHAFT, SLOPE, DRIFT or TIPPLE LOCATIONS

Type	County	Twp	Section	Quarters-Footage
Main shaft	St. Clair	1N 9W	1	NW SE SW *

* Ventilation was provided by underground connection with Crown No. 2 Mine (mine index 3543).

GEOLOGY

Seam(s) Mined	Depth (ft)	Thickness (ft)			Mining Method
		Min	Max	Ave	
Herrin	153-160	5.0	8.0	6.6-7.0	MRP

Geologic Problems Reported: The roof consisted of black shale, which contained concretions in the lowest 6 inches. Irregular clay veins and minor faults were present in this mine, causing poor roof conditions over small areas. Some faults had 2-foot offsets; a 4-foot offset was noted in one instance. In the western workings, old channels eroded the limestone roof, leaving glacial till directly above the coal. Those areas were unminable. A squeeze was noted in SE SW SE 36-T2N-R9W. Areas of thin rock above the coal were noted in the northern parts of the mine.

PRODUCTION HISTORY

Company	Mine Name	Years	Production (tons)
Superior Coal & Mining Company	Superior	1902-1921	2,653,068
Perry Coal Company	Superior	1921-1923	120,423
Perry Coal Company	Superior	1923-1930 *	261,724 **
			3,035,215

* Idle 1925

** Production since map date. Production from Valley Mine (mine index 3615) was hoisted via Superior Mine's shaft.

Last reported production: 1930

SOURCES OF DATA

Source Map	Date	Original Scale	Digitized Scale	Map Type
State archive, PB_96	9-15-1923	1:2400	1:2400	Not final
State archive, IL_221	2-2-1930	1:2400	1:2400	Final

Annotated Bibliography (data source, brief description of information)

Coal Reports - Production, ownership, years of operation.

Directory of Illinois Coal Mines (St. Clair County) - Mine names, mine index, ownership, years of operation.

Mine notes (St. Clair County) - Thickness, depth, seam, mine type, geologic problems.

State archive, PB_96 - Shaft location, mine outline, mining method, geologic problems.

State archive, IL_221 - Mine outline (easternmost portion).

Mine Index 305**Howard E. Miller, Ruby Mine**

Type: Underground Total mined-out acreage shown: 161

SHAFT, SLOPE, DRIFT or TIPPLE LOCATIONS

Type	County	Twp	Section	Quarters-Footage
Main shaft	St. Clair	2N 8W	21	SW NW SE
Air shaft	St. Clair	2N 8W	21	SW NW SE

GEOLOGY

Seam(s) Mined	Depth (ft)	Thickness (ft)			Mining Method
		Min	Max	Ave	
Herrin	173			6.0	RPB

Geologic Problems Reported:

PRODUCTION HISTORY

Company	Mine Name	Years	Production (tons)
Consumer's Coal Company	Consumer's No. 1, Ruby	1888-1896	316,551
Adams Coal & Tow Company	Ruby	1896-1897	unknown*
St. Louis & O'Fallon Coal Company	Ruby	1897-1897	5,966
Ratican, Joyce & Grieve	Ruby	1897-1899	52,512
Ruby Mining Company	Ruby	1899-1903	234,726
William Ratican	Ruby	1903-1907 **	45,700
Cluly-Miller Coal Company	Ruby	1907-1915	287,796
Howard E. Miller	Ruby	1915-1935 ***	329,482
			<u>1,273,733</u>

* Production, if any, unknown, or may be included in later St. Louis & O'Fallon listing

** Idle last half of 1904 and all of 1905 and 1906

*** Idle 1922, 1928, 1929 and 1930

Last reported production: 1935

SOURCES OF DATA

Source Map	Date	Original Scale	Digitized Scale	Map Type
Microfilm, document 351073	11-9-1940	1:2400	1:3642	Final

Annotated Bibliography (data source, brief description of information)

Coal Reports - Production, ownership, years of operation.

Directory of Illinois Coal Mines (St. Clair County) - Mine names, mine index, ownership, years of operation.

Microfilm map, document 351073, reel 03134, frame 176 - Shaft locations, mine outline, method.

Mine notes (St. Clair County) - Thickness, depth, seam, mine type, shaft location.

Mine Index 416**St. Louis & O'Fallon Coal Company, St. Louis & O'Fallon No. 2, Black Eagle Mine**

Type: Underground Total mined-out acreage shown: 3,564 Production indicates an additional 52 acres were mined since the map date.

SHAFT, SLOPE, DRIFT or TIPPLE LOCATIONS

Type	County	Twp	Section	Quarters-Footage
Main shaft & air shaft	St. Clair	2N 8W	33	NW NW SE
Air shaft	St. Clair	2N 8W	33	NW NW SE
Air shaft	St. Clair	1N 8W	4	NW SE NW
Air shaft	St. Clair	2N 8W	28	SW NW NE

GEOLOGY

Seam(s) Mined	Depth (ft)	Thickness (ft)			Mining Method
		Min	Max	Ave	
Herrin	193-212	5.8	7.2	6.5	MRP

Geologic Problems Reported: The roof shale commonly contained concretions. The upper half of the coal seam contained some very large (10-800 pounds) pyrite balls or lenses, and small pyrite concretions occurred throughout the mine. A few clay veins and slips were present, but generally did not hinder mining. The floor clay heaved to some extent, generally after a long period of exposure.

PRODUCTION HISTORY

Company	Mine Name	Years	Production (tons)
St. Louis & O'Fallon Coal Company	No. 2, Black Eagle	1905-1953	23,585,410
St. Louis & O'Fallon Coal Company	No. 2, Black Eagle	1953-1954	344,296 *
			23,929,706

* Production since map date

Last reported production: June 1954

SOURCES OF DATA

Source Map	Date	Original Scale	Digitized Scale	Map Type
State archive, IL_22	6-25-1953	1:2400	1:2400	Not final
State archive, MSHA_1718	6-1929	1:2400	1:2400	Secondary source

Annotated Bibliography (data source, brief description of information)

Coal Reports - Production, ownership, years of operation.
 Directory of Illinois Coal Mines (St. Clair County) - Mine names, mine index, ownership, years of operation.
 Mine notes (St. Clair County) - Shaft location, mine type, seam, depth, thickness, geologic problems.
 State archive, IL_22 - Shaft locations, mine outline, mining method.
 State archive, MSHA_1718, map of St. Louis & O'Fallon No. 1 Mine (mine index 443) - Mine outline (western).
 Federal Land Bank Report (St. Clair County) - Depth.

Mine Index 443**St. Louis & O'Fallon Coal Company, St. Louis & O'Fallon No. 1 Mine**

Type: Underground Total mined-out acreage shown: 809

SHAFT, SLOPE, DRIFT or TIPPLE LOCATIONS

Type	County	Twp	Section	Quarters-Footage
Main shaft	St. Clair	2N 8W	32	NW NW SE
Air shaft	St. Clair	2N 8W	32	NW NW SE
Escape shaft	St. Clair	2N 8W	32	NW NW SE

GEOLOGY

Seam(s) Mined	Depth (ft)	Thickness (ft)			Mining Method
		Min	Max	Ave	
Herrin	127			6.2	RPP

Geologic Problems Reported:

PRODUCTION HISTORY

Company	Mine Name	Years	Production (tons)
St. Louis & O'Fallon Coal Company	St. Louis & O'Fallon No. 1	1901-1928 *	4,789,138 4,789,138

* Idle 1914-1916, 1925

Last reported production: October 1928

SOURCES OF DATA

Source Map	Date	Original Scale	Digitized Scale	Map Type
State archive, MSHA_1718	6-1929	1:2400	1:4464	Final

Annotated Bibliography (data source, brief description of information)

Coal Reports - Production, ownership, years of operation.

Directory of Illinois Coal Mines (St. Clair County) - Mine names, mine index, ownership, years of operation.

State archive, MSHA_1718 - Shaft locations, mine outline, mining method.

Mine notes (St. Clair County) - Thickness, depth, seam, mine type.

Mine Index 501**Pyramid Coal Company, Pyramid No. 4 Mine**

Type: Underground Total mined-out acreage shown: 535 Connected underground to Dove Mine (mine index 3606).

SHAFT, SLOPE, DRIFT or TIPPLE LOCATIONS

Type	County	Twp	Section	Quarters-Footage
Drift	St. Clair	2N 9W	24	NW NE NE
(Air) drift	St. Clair	2N 9W	24	NW NE NE

GEOLOGY

Seam(s) Mined	Depth (ft)	Thickness (ft)			Mining Method
		Min	Max	Ave	
Herrin				6.0	MRP

Geologic Problems Reported:

PRODUCTION HISTORY

Company	Mine Name	Years	Production (tons)
Aloys Gundlach Coal Company	Gundlach	1914-1942	2,334,718
Pyramid Coal Company	Pyramid No. 4	1942-1944	<u>247,429</u>
			2,582,147

Last reported production: March 3, 1944

SOURCES OF DATA

Source Map	Date	Original Scale	Digitized Scale	Map Type
Microfilm, document 351024	3-3-1944	1:2400	1:4966	Final

Annotated Bibliography (data source, brief description of information)

Coal Reports - Production, ownership, years of operation.
 Directory of Illinois Coal Mines (St. Clair County) - Mine names, mine index, ownership, years of operation.
 Microfilm map, document 351024, reel 03134, frames 103,104 - Drift locations, mine outline, mining method.
 Mine notes (St. Clair County) - Thickness, seam, mine type, drift location.

Mine Index 502
Alcoa Ore Company, Alcoa Mine

Type: Underground Total mined-out acreage shown: 552

SHAFT, SLOPE, DRIFT or TIPPLE LOCATIONS

Type	County	Twp	Section	Quarters-Footage
Main shaft	St. Clair	1N 8W	29	NW SW NE
Air shaft	St. Clair	1N 8W	29	NE SE NW
Murphy No. 2 shaft	St. Clair	1N 8W	29	NE NW SE
Air shaft	St. Clair	1N 8W	29	NE NW SE

GEOLOGY

Seam(s) Mined	Depth (ft)	Thickness (ft)			Mining Method
		Min	Max	Ave	
Herrin	51			6.0	MRP

Geologic Problems Reported: The roof shale had numerous coal balls, which ranged up to 18 inches in diameter. Some areas of the mine had many slips.

PRODUCTION HISTORY

Company	Mine Name	Years	Production (tons)
Frank Murphy	Murphy No. 2	1889-1896	13,900
Frederick Murphy	Branch	1896-1909	177,970
Reeb Coal Company	Murphy	1909-1916	91,944
Radium Coal Company	Radium	1916-1920	326,949
Aluminum Ore Company	Aluminum Ore	1920-1929	1,715,689
Alcoa Ore Company	Alcoa	1929-1932 *	680,585
			3,007,037

* Mine listed "idle" until 1938.

Last reported production: March 1932

SOURCES OF DATA

Source Map	Date	Original Scale	Digitized Scale	Map Type
Microfilm, document 351041	3-3-1938	1:2400	1:4634	Final
Microfilm, document 351101	Undated	1:1200	1:1490	Undated

Annotated Bibliography (data source, brief description of information)

Coal Reports - Production, ownership, years of operation.
 Directory of Illinois Coal Mines (St. Clair County) - Mine names, mine index, ownership, years of operation.
 Microfilm map, document 351041, reel 03134, frames 130-132 - Shaft locations, mine outline, mining method.
 Mine notes (St. Clair County) - Thickness, depth, seam, mine type, shaft location, geologic problems.
 Microfilm, document 351101, reel 03134, frame 216 - Mine outline, shaft locations (Murphy Mine).

Mine Index 783**White Rose Coal Company, White Rose Mine**

Type: Underground Total mined-out acreage shown: 119

SHAFT, SLOPE, DRIFT or TIPPLE LOCATIONS

Type	County	Twp	Section	Quarters-Footage
Main shaft	St. Clair	1N 8W	29	NE SW SE
Air shaft	St. Clair	1N 8W	29	NE SW SE

GEOLOGY

Seam(s) Mined	Depth (ft)	Thickness (ft)			Mining Method
		Min	Max	Ave	
Herrin	97-110			6.0-6.5	MRP

Geologic Problems Reported:

PRODUCTION HISTORY

Company	Mine Name	Years	Production (tons)
Conrad Reeb	Reeb	1895-1901	26,488
Reeb Brothers	Reeb	1901-1905 *	7,000
Conrad Reeb	Reeb	1905-1906	400
Bretz & Schilling	White Rose	1906-1919	191,859
White Rose Mining Company	White Rose	1919-1924	93,572
Bretz & Schilling	White Rose	1924-1928	67,182
White Rose Coal Company	White Rose	1928-1929	11,351
East Bell Coal Company	White Rose	1929-1937	239,341
White Rose Coal Company	White Rose	1937-1942	94,334
			<u>731,527</u>

* Idle 1904 and 1905

Last reported production: 1942

SOURCES OF DATA

Source Map	Date	Original Scale	Digitized Scale	Map Type
Company, 4103.S31 i5.1-22	12-14-1942	1:2400	1:2400	Final
Microfilm, document 351041	3-3-1938	1:2400	1:4634	Secondary source

Annotated Bibliography (data source, brief description of information)

Coal Reports - Production, ownership, years of operation.

Directory of Illinois Coal Mines (St. Clair County) - Mine names, mine index, ownership, years of operation.

Company map, ISGS map library, 4103.S31 i5.1-22 - Shaft locations, mine outline, mining method.

Mine notes (St. Clair County) - Thickness, depth, seam, mine type, shaft location.

Microfilm map, document 351041, reel 03134, frames 130-132, map of Radium Mine (mine index 502) - Mine outline (northwestern).

Mine Index 787**Victoria Coal Company, Suburban Mine**

Type: Underground Total mined-out acreage shown: 370 Production indicates an additional 40 acres were mined since the map date.

SHAFT, SLOPE, DRIFT or TIPPLe LOCATIONS

Type	County	Twp	Section	Quarters-Footage
Main shaft	St. Clair	2N 9W	35	NW SE SE
Air shaft	St. Clair	2N 9W	35	NW SE SE

GEOLOGY

Seam(s) Mined	Depth (ft)	Thickness (ft)			Mining Method
		Min	Max	Ave	
Herrin	160-180			7.0	MRP

Geologic Problems Reported:

PRODUCTION HISTORY

Company	Mine Name	Years	Production (tons)
Suburban Coal Company	Suburban	1902-1903	19,707
Joseph Guest & Sons	Suburban	1903-1904	48,758
Suburban Coal & Mining Company	Suburban	1904-1919	2,007,317
Suburban & Superior Mining Company	Suburban	1922-1923	53,659 *
Victoria Coal Company	Suburban	1923-1928 **	173,652 *
			2,303,093

* Production after map date

** Idle 1925

Last reported production: 1928

SOURCES OF DATA

Source Map	Date	Original Scale	Digitized Scale	Map Type
Company, 1-40-2	9-26-1922	1:2400	1:2909	Not final

Annotated Bibliography (data source, brief description of information)

Coal Reports - Production, ownership, years of operation, depth.

Directory of Illinois Coal Mines (St. Clair County) - Mine names, mine index, ownership, years of operation.

Company map, Coal Section files, 1-40-2, print obtained from AMLRC archives (PB_439) - Shaft locations, mine outline, mining method.

Mine notes (St. Clair County) - Thickness, seam, mine type, shaft location.

Mine Index 3378**Consolidated Coal Company of St. Louis, Yock Mine**

Type: Underground Total mined-out acreage shown: 99

SHAFT, SLOPE, DRIFT or TIPPLE LOCATIONS

Type	County	Twp	Section	Quarters-Footage
Main shaft	St. Clair	1N 8W	18	SW SE NE
Air shaft	St. Clair	1N 8W	18	SW SE NE

GEOLOGY

Seam(s) Mined	Depth (ft)	Thickness (ft)			Mining Method
		Min	Max	Ave	
Herrin	140-160			5.75-6.5	RPB

Geologic Problems Reported:

PRODUCTION HISTORY

Company	Mine Name	Years	Production (tons)
Joseph Yock & Brother	Yock	pre1882-1884	35,000 *
Yock Brothers	Yock	1884-1885	108,000
Joseph Yock & Brothers	Yock	1885-1886	60,000
Consolidated Coal Company of St. Louis	Yock	1886-1888	<u>95,183</u>
			298,183

* Ownership & production prior to 1882 unknown. The Coal Report of 1882 indicates 34 acres were mined.

Last reported production: 1888

SOURCES OF DATA

Source Map	Date	Original Scale	Digitized Scale	Map Type
Microfilm, document 350962	3-1910	1:2400	1:5297	Final

Annotated Bibliography (data source, brief description of information)

Coal Reports - Production, ownership, years of operation, depth, thickness.

Directory of Illinois Coal Mines (St. Clair County) - Mine names, mine index, ownership, years of operation.

Microfilm map, document 350962, reel 03134, frames 4 - Shaft locations, mine outline, method.

Mine Index 3409**Erhstein & Pruessing, Erhstein & Pruessing Mine**

Type: Surface Total mined-out acreage shown: None. Production indicates less than one acre was mined.

SHAFT, SLOPE, DRIFT or TIPPLE LOCATIONS

Type	County	Twp	Section	Quarters-Footage
Pit	St. Clair	1N 9W	24	NW NW NW

GEOLOGY

Seam(s) Mined	Depth (ft)	Thickness (ft)			Mining Method
		Min	Max	Ave	
Herrin					Surface

Geologic Problems Reported:

PRODUCTION HISTORY

Company	Mine Name	Years	Production (tons)
Erhstein & Pruessing	Erhstein & Pruessing	1935-1935	<u>80</u> 80

Last reported production: 1935

SOURCES OF DATA

Source Map	Date	Original Scale	Digitized Scale	Map Type
Topographic map *	after 1945	1:24000	1:24000	Secondary source

* This mine was hand-drawn on a USGS topographic map in ISGS Coal Section files. The 7.5-minute quadrangle map was the edition of 1945, the field work was noted as 7-18-1941.

Annotated Bibliography (data source, brief description of information)

Coal Reports - Production, ownership, years of operation, mine type.

Directory of Illinois Coal Mines (St. Clair County) - Mine names, mine index, ownership, years of operation.

Coal Section files, work map on French Village (7.5-minute) Quadrangle - Mine location.

Mine Index 3494
Grant Mine

Type: Underground Total mined-out acreage shown: None

SHAFT, SLOPE, DRIFT or TIPPLE LOCATIONS

Type	County	Twp	Section	Quarters-Footage
Main drift	St. Clair	1N 9W	3	NW NE NW

GEOLOGY

Seam(s) Mined	Depth (ft)	Thickness (ft)			Mining Method
		Min	Max	Ave	
Herrin	6			6.0	Underground
Springfield	32			3.0	Underground

Geologic Problems Reported:

PRODUCTION HISTORY

Company	Mine Name	Years	Production (tons)
Grant Mine	Grant	*	*

* Production and years operated at this location are unknown.

Last reported production:

SOURCES OF DATA

Source Map	Date	Original Scale	Digitized Scale	Map Type
Mine notes	Undated	1:62500	1:62500	Secondary source

Annotated Bibliography (data source, brief description of information)

Directory of Illinois Coal Mines (St. Clair County) - Mine names, mine index, ownership, years of operation.
 Mine notes (St. Clair County) - Thickness, depth, seams, mine type, drift location, mine name.

Mine Index 3496**Dutch Hollow Coal Company, Birkner Mine**

Type: Underground Total mined-out acreage shown: 30 The Birkner Mine was connected underground to the Excelsior Mine (mine index 4330).

SHAFT, SLOPE, DRIFT or TIPPLe LOCATIONS

Type	County	Twp	Section	Quarters-Footage
Main shaft	St. Clair	1N 8W	6	SE SE NW

GEOLOGY

Seam(s) Mined	Depth (ft)	Thickness (ft)			Mining Method
		Min	Max	Ave	
Herrin	130-135			6.0-7.0	RPB

Geologic Problems Reported:

PRODUCTION HISTORY

Company	Mine Name	Years	Production (tons)
Edward Avery & Company	Birkner	pre1874-1883 *	25,260
Dutch Hollow Coal Company	Birkner	1883-1884	12,000
Consolidated Coal Company of St. Louis	Birkner	1884-1889	<u>none **</u>
			37,260

* Production prior to 1882 is unknown. The Coal Report of 1882 indicates 21 acres mined. The 1874 Atlas of St. Clair County shows a shaft at this location, indicating that mining was taking place in the early 1870s.

** The Coal Report of 1889 indicates this mine was abandoned, owned by Consolidated Coal Company of St. Louis. No production reported under this name.

Last reported production: 1889

SOURCES OF DATA

Source Map	Date	Original Scale	Digitized Scale	Map Type
State archive, IL_221	2-2-1930	1:2400	1:2400	Secondary source
Atlas of St. Clair County, Illinois	1874	1:36205	1:36205	Secondary source

Annotated Bibliography (data source, brief description of information)

Coal Reports - Production, ownership, years of operation, seam, depth, thickness.

Directory of Illinois Coal Mines (St. Clair County) - Mine names, mine index, ownership, years of operation.

State archive, IL_221, map of Valley Mine (mine index 3615) - Shaft locations, mine outline, mining method.

Atlas of St. Clair County, Illinois, 1874, Warner & Beers, Chicago, Illinois - Years of operation.

Mine Index 3498**William Izatt, Pollock Mine**

Type: Underground Total mined-out acreage shown: None. The reported production indicates about one acre was mined. Pollock Mine was connected underground for the ventilation of Victor Mine (mine index 4331). Pollock Mine may have operated before the earliest Coal Reports (1882).

SHAFT, SLOPE, DRIFT or TIPPLe LOCATIONS

Type	County	Twp	Section	Quarters-Footage
Main shaft	St. Clair	1N 8W	6	NE SE NW

GEOLOGY

Seam(s) Mined	Depth (ft)	Thickness (ft)			Mining Method
		Min	Max	Ave	
Herrin	125			7.0	RP

Geologic Problems Reported:

PRODUCTION HISTORY

Company	Mine Name	Years	Production (tons)
William Izatt	Pollock	pre-1874-1884 *	<u>5,800</u> *
			5,800

* Production prior to 1882 are not known.

Last reported production: 1884

SOURCES OF DATA

Source Map	Date	Original Scale	Digitized Scale	Map Type
State archive, IL_221	2-2-1930	1:2400	1:3972	Secondary source
Atlas of St. Clair County	1874	1:36205	1:36205	Secondary source

Annotated Bibliography (data source, brief description of information)

Coal Reports - Production, ownership, years of operation, seam, depth, thickness.

Directory of Illinois Coal Mines (St. Clair County) - Mine names, mine index, ownership, years of operation.

State archive, IL_221, map of Valley Mine (mine index 3615) - Shaft location, mine type.

Atlas of St. Clair County, Illinois, 1874, Warner & Beers, Chicago, Illinois - Years of operation.

Mine Index 3499**Consolidated Coal Company of St. Louis, Lenz Mine**

Type: Underground Total mined-out acreage shown: 20 Connected underground to Knecht Mine (mine index 3502) and Oakland Mine (mine index 3500).

SHAFT, SLOPE, DRIFT or TIPPLe LOCATIONS

Type	County	Twp	Section	Quarters-Footage
Main shaft	St. Clair	1N 8W	7	SE NE NW

GEOLOGY

Seam(s) Mined	Depth (ft)	Thickness (ft)			Mining Method
		Min	Max	Ave	
Herrin	125-140			6.0-7.0	MRP

Geologic Problems Reported:

PRODUCTION HISTORY

Company	Mine Name	Years	Production (tons)
St. Clair Co-operative Mining & Supply Co.	Lenz	1883-1884	3,020 *
Consolidated Coal Company of St. Louis	Lenz	1886-1887 **	3,956
			6,976

* Idle. Ownership and production prior to 1884 unknown. The Coal Report of 1883 indicates 19 acres were mined. (The tonnage reported above represents about 1 acre.)

** Idle July 1884 to June 1885.

Last reported production: 1887

SOURCES OF DATA

Source Map	Date	Original Scale	Digitized Scale	Map Type
ISGS map library 4103.S31 i5.1-49	1903	1:2400	1:4966	Secondary source
Microfilm, document 350974	4-4-1913	1:2400	1:2232	Secondary source

Annotated Bibliography (data source, brief description of information)

Coal Reports - Production, ownership, years of operation.

Directory of Illinois Coal Mines (St. Clair County) - Mine names, mine index, ownership, years of operation.

ISGS map library, 4103.S31 i5.1-49, map of Knecht Mine (mine index 3502) - Shaft location, mine outline (northern), mining method.

Microfilm map, document 350974, reel 03134, frames 34,35, map of Oakland Mine (mine index 3500) - mine outline (southern).

Mine notes (St. Clair County) - Thickness, depth, seam, mine type, shaft location.

Mine Index 3500**Southern Coal & Mining Company, Oakland Mine or Southern Mine No. 3**

Type: Underground Total mined-out acreage shown: 162 Oakland Mine connects underground to Oak Hill Mine (mine index 3522), Lenz Mine (mine index 3499) and possibly to Dutch Hollow Mine (mine index 3503).

SHAFT, SLOPE, DRIFT or TIPPLE LOCATIONS

Type	County	Twp	Section	Quarters-Footage
Main shaft *	St. Clair	1N 8W	7	SW NE SW

* Connected underground to Oak Hill Mine (mine index 3522) for escapement. No other air or escapement shafts were found on the source map.

GEOLOGY

Seam(s) Mined	Depth (ft)	Thickness (ft)			Mining Method
		Min	Max	Ave	
Herrin	170			6.0-6.5	RPB

Geologic Problems Reported:

PRODUCTION HISTORY

Company	Mine Name	Years	Production (tons)
Oakland Coal Company	Oakland	1887-1903	641,101
Dutch Hollow Coal Company	Oakland	1903-1904	87,428
Avery Coal & Mining Company	Oakland	1904-1905	78,718
Southern Coal & Mining Company	Oakland, Southern No. 3	1905-1912 *	282,386
			1,089,633

* Idle 1909

Last reported production: 1912

SOURCES OF DATA

Source Map	Date	Original Scale	Digitized Scale	Map Type
Microfilm, document 350974	4-4-1913	1:2400	1:2232	Final

Annotated Bibliography (data source, brief description of information)

Coal Reports - Production, ownership, years of operation, seam depth, thickness.

Directory of Illinois Coal Mines (St. Clair County) - Mine names, mine index, ownership, years of operation.

Microfilm map, document 350974, reel 03134, frames 34,35 - Shaft locations, mine outline, mining method.

Mine Index 3502**Consolidated Coal Company of St. Louis, Knecht Mine**

Type: Underground Total mined-out acreage shown: 136

SHAFT, SLOPE, DRIFT or TIPPLE LOCATIONS

Type	County	Twp	Section	Quarters-Footage
Main shaft	St. Clair	1N 8W	7	NE NE NW
Air shaft	St. Clair	1N 8W	7	SE NE NW

GEOLOGY

Seam(s) Mined	Depth (ft)	Thickness (ft)			Mining Method
		Min	Max	Ave	
Herrin	120-140			6.0-7.0	MRP

Geologic Problems Reported:**PRODUCTION HISTORY**

Company	Mine Name	Years	Production (tons)
Daniel Knecht	Knecht	pre1874-1885	137,430 *
Devoy & Feuerborn	Knecht	1885-1886	40,237
Consolidated Coal Company of St. Louis	Knecht	1886-1896	450,537
Fred Sauer	Knecht	1896-1897	18,073
Idle		1897-1901	
M. Whitmore	Knecht	1901-1902	14,932
Consolidated Coal Company of St. Louis	Knecht	1902-1903	8,900
			670,109

* Ownership and production prior to 1882 unknown. The Coal Report of 1882 indicates 34 acres were mined. The 1874 Atlas of St. Clair County shows a shaft at this location, and the landowner is Knecht. Mining probably occurred at this location in the early 1870s.

Last reported production: March 21, 1903

SOURCES OF DATA

Source Map	Date	Original Scale	Digitized Scale	Map Type
Company, 4103.S31 i5.1-49	3-21-1903	1:2400	1:4966	Final

Annotated Bibliography (data source, brief description of information)

Coal Reports - Production, ownership, years of operation.
 Directory of Illinois Coal Mines (St. Clair County) - Mine names, mine index, ownership, years of operation.
 Mine notes (St. Clair County) - Thickness, depth, seam, mine type, shaft location.
 Company map, ISGS map library, 4103.S31 i5.1-49 - Mine outline, shaft location, mining method.
 Atlas of St. Clair County, Illinois, 1874, Warner & Beers, Chicago, Illinois - Years of operation.

Mine Index 3503

Consolidated Coal Company of St. Louis, Dutch Hollow Mine

Type: Underground Total mined-out acreage shown: 66 Connected underground to Knecht Mine (mine index 3502) and Oakland Mine (mine index 3500). Production indicates approximately 24 acres were mined after the map date.

SHAFT, SLOPE, DRIFT or TIPPLe LOCATIONS

Type	County	Twp	Section	Quarters-Footage
Main shaft	St. Clair	1N 8W	7	NW NW NE
Air shaft	St. Clair	1N 8W	7	NW NW NE

GEOLOGY

Seam(s) Mined	Depth (ft)	Thickness (ft)		Mining Method
		Min	Max	
Herrin	120-142		5.5-7.0	RPB

Geologic Problems Reported:

PRODUCTION HISTORY

Company	Mine Name	Years	Production (tons)
Dutch Hollow Coal Company	Dutch Hollow	pre1874-1885	62,644 *
Dutch Hollow Coal Company	Dutch Hollow	1885-1886	19,812 **
Consolidated Coal Company of St. Louis	Dutch Hollow	1886-1895	<u>110,360</u> **
			192,816

* The production prior to 1882 is not known.

** Production after map date

Last reported production: 1895

SOURCES OF DATA

Source Map	Date	Original Scale	Digitized Scale	Map Type
Microfilm, document 350977	5-30-1885	1:960	1:1721	Not final
ISGS map library, 4103.S31 i5.1-49	3-21-1903	1:2400	1:4966	Secondary source

Annotated Bibliography (data source, brief description of information)

Coal Reports - Production, ownership, years of operation.

Directory of Illinois Coal Mines (St. Clair County) - Mine names, mine index, ownership, years of operation.

Microfilm map, document 350977, reel 03134, frame 40 - Shaft locations, mine outline, mining method.

ISGS map library, 4103.S31 i5.1-49, map of Knecht Mine (mine index 3502) - Mine boundary (western).

Microfilm map, document 350974, reel 03134, frames 34 & 35, map of Oakland Mine (mine index 3500) - Mine outline (southern).

Mine notes (St. Clair County) - Thickness, depth, seam, mine type, shaft location.

Atlas of St. Clair County, Illinois, 1874, Warner & Beers, Chicago, Illinois - Years of operation.

Mine Index 3504**New Royal Coal Company, New Royal Mine**

Type: Underground Total mined-out acreage shown: 350

SHAFT, SLOPE, DRIFT or TIPPLE LOCATIONS

Type	County	Twp	Section	Quarters-Footage
Main shaft	St. Clair	1N 8W	8	SE SE NE
Air shaft	St. Clair	1N 8W	8	SE SE NE

GEOLOGY

Seam(s) Mined	Depth (ft)	Thickness (ft)			Mining Method
		Min	Max	Ave	
Herrin	198			7.0	MRP

Geologic Problems Reported:

PRODUCTION HISTORY

Company	Mine Name	Years	Production (tons)
Beck-Walker Coal Company	Royal	1900-1902	129,107
Royal Coal Company	Royal	1902-1915 *	1,403,513
Columbia Collieries Company	Royal	1915-1923	735,657
G & E Coal Company	G & E	1935-1939 **	90,151
New Royal Coal Company	New Royal	1939-1943	64,315
			<u>2,422,743</u>

* Idle 1913 to 1915

** Idle 1923 to 1935

Last reported production: 1943

SOURCES OF DATA

Source Map	Date	Original Scale	Digitized Scale	Map Type
Company, 4103.S31 i5.1-13	8-27-1943	1:2400	1:2400	Final

Annotated Bibliography (data source, brief description of information)

Coal Reports - Production, ownership, years of operation.

Directory of Illinois Coal Mines (St. Clair County) - Mine names, mine index, ownership, years of operation.

Company map, ISGS map library, 4103.S31 i5.1-13 - Shaft locations, mine outline, mining method.

Mine notes (St. Clair County) - Thickness, depth, seam, mine type.

Mine Index 3513**Consolidated Coal Company, Green Mount Mine**

Type: Underground Total mined-out acreage shown: 516 *

* The source map for the Consolidated Coal Company of St. Louis mines in this area is very poor, and the boundaries between the separate mines could not be distinguished. The acreage reported is the total for mine index numbers 3513, 3515, 3517 and 3518.

SHAFT, SLOPE, DRIFT or TIPPLE LOCATIONS

Type	County	Twp	Section	Quarters-Footage
Main shaft	St. Clair	1N 8W	16	NE NW SW
Air shaft	St. Clair	1N 8W	16	NE NW SW

GEOLOGY

Seam(s) Mined	Depth (ft)	Thickness (ft)		Mining Method
		Min	Max	
Herrin	160		6.0	RPB

Geologic Problems Reported:

PRODUCTION HISTORY

Company	Mine Name	Years	Production (tons)
Green Mound Coal Company	Green Mound	pre1874-1885	18,350 **
Green Mount Coal & Mining Company	Green Mount	1885-1886	12,000
Consolidated Coal Company of St. Louis ***	Green Mount	1886-1896	214,523
John Groom	Green Mount	1896-1897	53,020
Consolidated Coal Company	Green Mount	1897-1910	800,837
			1,098,730

** Production prior to 1882 is not known. The Coal Report of 1882 indicates 18 acres were mined. Idle 1883 & 1884 while under repair following flooding of the mine.

*** Groom & Allen, lessees 1888 and 1889. May have leased other years; reporting inconsistent.

Last reported production: 1910

SOURCES OF DATA

Source Map	Date	Original Scale	Digitized Scale	Map Type
Microfilm, document 350961	3-30-1910	1:2400	1:5296	Final
Atlas of St. Clair County	1874	1:36205	1:36205	Secondary source

Annotated Bibliography (data source, brief description of information)

Coal Reports - Production, ownership, years of operation.

Directory of Illinois Coal Mines (St. Clair County) - Mine names, mine index, ownership, years of operation.

Microfilm map, document 350961, reel 03134, frame 4 - Shaft locations, mine outline, method.

Mine notes (St. Clair County) - Thickness, depth, seam, mine type, shaft location.

Atlas of St. Clair County, Illinois, 1874, Warner & Beers, Chicago, Illinois - Years of operation.

Mine Index 3515**Northwestern Coal Company, Northwestern Mine**

Type: Underground Total mined-out acreage shown: 516 *

* The source map for the Consolidated Coal Company of St. Louis mines in this area is very poor, and the boundaries between the separate mines could not be distinguished. The acreage reported is the total for mine index numbers 3513, 3515, 3517 and 3518.

SHAFT, SLOPE, DRIFT or TIPPLE LOCATIONS

Type	County	Twp	Section	Quarters-Footage
Main shaft	St. Clair	1N 8W	16	SW NW NW

GEOLOGY

Seam(s) Mined	Depth (ft)	Thickness (ft)		Mining Method
		Min	Max	
Herrin	100-185		6.0-7.0	RPB

Geologic Problems Reported:

PRODUCTION HISTORY

Company	Mine Name	Years	Production (tons)
Northwestern Coal Mining Company	Northwestern	pre1874-1886	79,416 **
Consolidated Coal Company of St. Louis ***	Northwestern	1886-1889	36,100
Northwestern Coal Company	Northwestern	1889-1892	<u>17,950</u>
			133,466

** Production prior to 1882 is not known. The Coal Report of 1882 indicates 12 acres were mined.

*** F. Kerchner, lessee 1887-1889

Last reported production: 1892

SOURCES OF DATA

Source Map	Date	Original Scale	Digitized Scale	Map Type
Microfilm, document 350961	3-30-1910	1:2400	1:5297	Final
Atlas of St. Clair County	1874	1:36205	1:36205	Secondary source

Annotated Bibliography (data source, brief description of information)

Coal Reports - Production, ownership, years of operation, seam, depth, thickness, mine type.

Directory of Illinois Coal Mines (St. Clair County) - Mine names, mine index, ownership, years of operation.

Microfilm map, document 350961, reel 03134, frame 4 - Shaft locations, mine outline, method.

Atlas of St. Clair County, Illinois, 1874, Warner & Beers, Chicago, Illinois - Shaft location, years of operation.

Mine Index 3517
Consolidated Coal Company, Rose Hill Mine

Type: Underground Total mined-out acreage shown: 516 *

* The source map for the Consolidated Coal Company of St. Louis mines in this area is very poor, and the boundaries between the separate mines could not be distinguished. The acreage reported is the total for mine index numbers 3513, 3515, 3517 and 3518.

SHAFT, SLOPE, DRIFT or TIPPLE LOCATIONS

Type	County	Twp	Section	Quarters-Footage
Main shaft	St. Clair	1N 8W	17	SE NW SE
Air shaft	St. Clair	1N 8W	17	SW NE SE

GEOLOGY

Seam(s) Mined	Depth (ft)	Thickness (ft)		Mining Method
		Min	Max	
Herrin	90-132		6.0-7.0	RPB

Geologic Problems Reported:

PRODUCTION HISTORY

Company	Mine Name	Years	Production (tons)
Hazard, Wilson & Company	Hazard & Wilson	pre1874-1882	25,000 **
Rose Hill Mining Company	Rose Hill	1883-1887	76,110.5
Consolidated Coal Company of St. Louis ***	Rose Hill	1887-1889	23,455
Consolidated Coal Company of St. Louis	Rose Hill	1889-1896	71,190 †
John Groom	Rose Hill	1896-1897	35,753
Consolidated Coal Company	Rose Hill	1897-1904	<u>163,168</u>
			394,676.5

** Production and ownership prior to 1882 are unknown. The Coal Report of 1882 indicates 24 acres were mined.

*** Lessees Rose Hill Mining Company, Phillips & Weber

† Idle 1890, 1891, 1895

Last reported production: 1904

SOURCES OF DATA

Source Map	Date	Original Scale	Digitized Scale	Map Type
Microfilm, document 350961	3-30-1910	1:2400	1:5296	Final
Atlas of St. Clair County	1874	1:36205	1:36205	Secondary source

Annotated Bibliography (data source, brief description of information)

Coal Reports - Production, ownership, years of operation, seam, thickness, depth, mine type.

Directory of Illinois Coal Mines (St. Clair County) - Mine names, mine index, ownership, years of operation.

Microfilm map, document 350961, reel 03134, frame 4 - Shaft locations, mine outline, method.

Atlas of St. Clair County, Illinois, 1874, Warner & Beers, Chicago, Illinois - Shaft location, years of operation.

Mine Index 3518
Consolidated Coal Company, Schureman Mine

Type: Underground Total mined-out acreage shown: 516 *

* The source map for the Consolidated Coal Company of St. Louis mines in this area is very poor, and the boundaries between the separate mines could not be distinguished. The acreage reported is the total for mine index numbers 3513, 3515, 3517 and 3518.

SHAFT, SLOPE, DRIFT or TIPPLe LOCATIONS

Type	County	Twp	Section	Quarters-Footage
Main shaft	St. Clair	1N 8W	17	SE NW SW
Skellet shaft	St. Clair	1N 8W	17	NW SE NE
Shaft	St. Clair	1N 8W	17	SW NE SW
Shaft	St. Clair	1N 8W	17	NW SE SW

GEOLOGY

Seam(s) Mined	Depth (ft)	Thickness (ft)		Mining Method
		Min	Max	
Herrin	125-150		6.0-6.5	RPB

Geologic Problems Reported:

PRODUCTION HISTORY

Company	Mine Name	Years	Production (tons)
William Skellett	Skellett	pre1874-1886	121,359 **
Consolidated Coal Company of St. Louis	Skellett	1886-1887	9,519 **
Schureman Brothers	Schureman	pre1874-1886	159,766 ***
Consolidated Coal Company of St. Louis	Schureman	1886-1896	543,893
T. Westwood, lessee	Schureman	1896-1897	48,647
Consolidated Coal Company	Schureman	1897-1905	348,836
			1,232,020

** Production and ownership prior to 1882 unknown. The Coal Report of 1882 indicates 120 acres mined. The Coal Report of 1884 stated that the Skellett Mine was adjacent to and operated co-jointly with the Schureman mine. Because the source maps of this area are poor and the boundary between the two mines cannot be distinguished, the Skellett mine was not given a separate index number.

*** Production and ownership prior to 1882 are unknown. The Coal Report of 1882 indicates 30 acres were mined.

Last reported production: 1905

SOURCES OF DATA

Source Map	Date	Original Scale	Digitized Scale	Map Type
Microfilm, document 350961	3-30-1910	1:2400	1:5297	Final
Atlas of St. Clair County	1874	1:36205	1:36205	Secondary source
ISGS field notes (G. H. Cady)	Undated	1:62500	1:62500	Secondary source

Annotated Bibliography (data source, brief description of information)

Coal Reports - Production, ownership, years of operation.

Directory of Illinois Coal Mines (St. Clair County) - Mine names, mine index, ownership, years of operation.

Microfilm map, document 350961, reel 03134, frame 4 - Shaft locations, mine outline, mining method.

Mine notes (St. Clair County) - Thickness, depth, seam, mine type, shaft location.

Atlas of St. Clair County, Illinois, 1874, Warner & Beers, Chicago, Illinois - Skellett shaft location, years of operation; years of operation of Schureman shaft.

ISGS field notes (St. Clair County) - Shaft locations (SW NE SW and NW SE SW).

Mine Index 3521**Dewey Coal & Mining Company, Dewey Mine**

Type: Underground Total mined-out acreage shown: 392

SHAFT, SLOPE, DRIFT or TIPPLE LOCATIONS

Type	County	Twp	Section	Quarters-Footage
Main shaft	St. Clair	1N 8W	18	SW NE NW
Air shaft	St. Clair	1N 9W	13	SE NW NE
No. 3 air shaft *	St. Clair	1N 9W	13	NW SE NE

* Previously hoist shaft of Gartside No. 3

GEOLOGY

Seam(s) Mined	Depth (ft)	Thickness (ft)			Mining Method
		Min	Max	Ave	
Herrin	180			6.0-7.5	MRP

Geologic Problems Reported: The map shows lines with one side labeled "Dry" and the other "Flooded". The wet areas are on the western and southern sides of the mine.

PRODUCTION HISTORY

Company	Mine Name	Years	Production (tons)
Gartside Coal Company	Gartside No. 3	pre1881-1886	32,775
Gartside Coal Company	Gartside No. 2, Branch	pre1882-1886	152,131 **
Consolidated Coal Company of St. Louis	Gartside No. 4	1886-1896	469,079
Sam Daniels	Gartside No. 4	1896-1897	60,667
Consolidated Coal Company	Gartside No. 4	1897-1905	354,124
Johnson Coal Company, lessee	Gartside No. 4	1905-1907	34,048
Dewey Coal Company	Gartside No. 4	1907-1912	155,050
Quality Coal & Mining Company	Quality No. 1	1919-1938 ***	1,077,069
Dewey Coal & Mining Company	Dewey	1938-1941	44,876
			2,379,819

** Ownership & production prior to 1881 unknown. The Coal Report of 1882 indicates 5 acres mined.

*** Mine closed 1913-1919

Last reported production: 1941

SOURCES OF DATA

Source Map	Date	Original Scale	Digitized Scale	Map Type
Company, 4103.S31 i5.1-89	1-16,17-1940	1:2400	1:4800	Final †

† The map designated "Old Works" of an abandoned mine on the east side and west side. These workings are designated near the center of 18-T1N R8W and NW NE 13-T1N R9W. The extent and ownership of these old works are unknown.

Annotated Bibliography (data source, brief description of information)

Coal Reports - Production, ownership, years of operation.

Directory of Illinois Coal Mines (St. Clair County) - Mine names, mine index, ownership, years of operation.

Company map, ISGS map library, 4103.S31 i5.1-89 - Shaft locations, mine outline.

Mine notes (St. Clair County) - Thickness, depth, seam, mine type, shaft locations.

Mine Index 3522**Guest Coal Company, Oak Hill Mine**

Type: Underground Total mined-out acreage shown: 274 Production indicates an additional 8 acres were mined since the map date.

SHAFT, SLOPE, DRIFT or TIPPLE LOCATIONS

Type	County	Twp	Section	Quarters-Footage
Main shaft	St. Clair	1N 8W	18	291 FNL, 2295 FEL
Air shaft	St. Clair	1N 8W	18	364 FNL, 2020 FEL
Air shaft	St. Clair	1N 8W	8	SW SW SW

GEOLOGY

Seam(s) Mined	Depth (ft)	Thickness (ft)		Mining Method
		Min	Max	
Herrin	180-205			MRP

Geologic Problems Reported:

PRODUCTION HISTORY

Company	Mine Name	Years	Production (tons)
Yock Coal & Mining Company	Yock	1889-1892	66,838
Oak Hill Coal Company	Oak Hill	1892-1905	505,948
Southern Coal & Mining Company	Southern No. 4, Oak Hill	1905-1916 *	198,280
Guest Coal Company	Oak Hill	1916-1936	975,355
Guest Coal Company	Oak Hill	1936-1939	52,676 **
			1,799,097

* Idle 1909, 1913-1916

** Production after map date

Last reported production: 1939

SOURCES OF DATA

Source Map	Date	Original Scale	Digitized Scale	Map Type
Microfilm, document 350975	12-8-1936	1:1800	1:3103	Not final

Annotated Bibliography (data source, brief description of information)

Coal Reports - Production, ownership, years of operation.

Directory of Illinois Coal Mines (St. Clair County) - Mine names, mine index, ownership, years of operation.

Microfilm map, document 350975, reel 03134, frames 36,37 - Shaft locations, mine outline, mining method.

Mine notes (St. Clair County) - Thickness, depth, seam, mine type, shaft locations.

Mine Index 3523**John Kloess, Kloess No. 2 Mine**

Type: Underground Total mined-out acreage shown: 47

SHAFT, SLOPE, DRIFT or TIPPLe LOCATIONS

Type	County	Twp	Section	Quarters-Footage
Main shaft	St. Clair	1N 8W	20	NW SE NE
Air shaft	St. Clair	1N 8W	20	NW SE NE

GEOLOGY

Seam(s) Mined	Depth (ft)	Thickness (ft)			Mining Method
		Min	Max	Ave	
Herrin	85			6.0	RPB

Geologic Problems Reported:

PRODUCTION HISTORY

Company	Mine Name	Years	Production (tons)
John Kloess	Kloess No. 2	pre1882-1883	<u>15,000</u> *
			15,000

* Production, years of operation, and ownership prior to 1883 are not known. The Coal Report of 1883 indicates 40 acres were mined.

Last reported production: 1883

SOURCES OF DATA

Source Map	Date	Original Scale	Digitized Scale	Map Type
Microfilm, document 351001	12-8-1891	1:1200	1:2151	Final

Annotated Bibliography (data source, brief description of information)

Coal Reports - Production, ownership, years of operation.

Directory of Illinois Coal Mines (St. Clair County) - Mine names, mine index, ownership, years of operation.

Microfilm map, document 351001, reel 03134, frame 72 - Shaft locations, mine outline, mining method.

Mine notes (St. Clair County) - Thickness, depth, seam, mine type.

Mine Index 3524**West Belleville Coal Company, West Belleville Mine**

Type: Underground Total mined-out acreage shown: 68 Production indicates an additional 14 acres were mined since the date of the map.

SHAFT, SLOPE, DRIFT or TIPPLE LOCATIONS

Type	County	Twp	Section	Quarters-Footage
Main shaft	St. Clair	1N 8W	20	SW NW NE
Air shaft	St. Clair	1N 8W	20	NW NW NE

GEOLOGY

Seam(s) Mined	Depth (ft)	Thickness (ft)		Mining Method
		Min	Max	
Herrin	115-130		6.0-7.0	MRP

Geologic Problems Reported: The source map had two areas labeled "squeeze" in the eastern portion of the mine. One area was at the northern extent of the northeastern part of the mine (NW SW SW 16-T1N-R8W), the other was near the haulage route south of the first area (SW SW SW 16-T1N-R8W).

PRODUCTION HISTORY

Company	Mine Name	Years	Production (tons)
West End Coal Company	West End	1889-1898	133,316
Glendale Coal & Mining Company	Glendale No. 2	1898-1905	192,619
Southern Coal & Mining Company	Southern No. 5, Glendale	1905-1915	165,850
Southern Coal & Mining Company	Southern No. 5, Glendale	1915-1919	34,972 *
West Belleville Coal Company	West Belleville	1919-1922	<u>66,402 *</u>
			593,159

* Production after map date

Last reported production: 1922

SOURCES OF DATA

Source Map	Date	Original Scale	Digitized Scale	Map Type
Microfilm, document 351026	3-25-1915	1:1200	1:2317	Not final
Microfilm, document 350995	undated	1:1200	1:1821	Not final

Annotated Bibliography (data source, brief description of information)

Coal Reports - Production, ownership, years of operation, seam, thickness, depth.

Directory of Illinois Coal Mines (St. Clair County) - Mine names, mine index, ownership, years of operation.

Microfilm map, document 351026, reel 03134, frame 107 - Shaft locations, mine outline, mining method.

Microfilm map, document 350995, reel 03134, frame 65 - Ownership, mine outline (western).

Mine Index 3525**Consolidated Coal Company of St. Louis, Poynton Mine**

Type: Underground Total mined-out acreage shown: 25 Production indicates an additional 3 acres were mined since the map date.

SHAFT, SLOPE, DRIFT or TIPPLe LOCATIONS

Type	County	Twp	Section	Quarters-Footage
Main shaft	St. Clair	1N 8W	20	SE NW NW
Air shaft	St. Clair	1N 8W	20	SE NW NW

GEOLOGY

Seam(s) Mined	Depth (ft)	Thickness (ft)			Mining Method
		Min	Max	Ave	
Herrin	150			6.0-6.5	RPB

Geologic Problems Reported:

PRODUCTION HISTORY

Company	Mine Name	Years	Production (tons)
George Poynton Mining Company	Poynton	pre1882-1885	19,655 *
George Poynton Mining Company	Poynton	1885-1886	12,927 **
Consolidated Coal Company of St. Louis	Poynton	1886-1886	<u>5,423</u> **
			38,005

* Production, ownership and years of operation prior to 1882 are not known. The Coal Report of 1882 indicates 60 acres were mined.

** Production since the map date.

Last reported production: 1886

SOURCES OF DATA

Source Map	Date	Original Scale	Digitized Scale	Map Type
State archive, IL_543	1-12-1885	1:1200	1:1200	Not final

Annotated Bibliography (data source, brief description of information)

Coal Reports - Production, ownership, years of operation, depth, thickness, seam.

Directory of Illinois Coal Mines (St. Clair County) - Mine names, mine index, ownership, years of operation.

Company map, state archive, IL_543 - Shaft locations, mine outline, mining method.

Mine Index 3526
Winona Mine

Type: Underground Total mined-out acreage shown: None

SHAFT, SLOPE, DRIFT or TIPPLE LOCATIONS

Type	County	Twp	Section	Quarters-Footage
Main shaft	St. Clair	1N 8W	20	NW NW NW
Air shaft	St. Clair	1N 8W	20	NE NW NW

GEOLOGY

Seam(s) Mined	Depth (ft)	Thickness (ft)			Mining Method
		Min	Max	Ave	
Herrin					Underground

Geologic Problems Reported:

PRODUCTION HISTORY

Company	Mine Name	Years	Production (tons)
Winona Mine	Winona	circa 1874	none *

* The 1874 Atlas of St. Clair County shows a mine at this location, indicating that mining was taking place in the early 1870s.

Last reported production:

SOURCES OF DATA

Source Map	Date	Original Scale	Digitized Scale	Map Type
Microfilm, document 351097	undated	1:2400	1:1986	Undated
Atlas of St. Clair County, Illinois	1874	1:36205	1:36205	Secondary source

Annotated Bibliography (data source, brief description of information)

Directory of Illinois Coal Mines (St. Clair County) - Mine name, mine index.
Microfilm map, document 351097, reel 03134, frame 211 - Shaft locations.
Atlas of St. Clair County, Illinois, 1874, Warner & Beers, Chicago, Illinois - Years of operation.

Mine Index 3531**Frank Murphy, Murphy (No. 1) Mine**

Type: Underground Total mined-out acreage shown: 5

SHAFT, SLOPE, DRIFT or TIPPLE LOCATIONS

Type	County	Twp	Section	Quarters-Footage
Main shaft	St. Clair	1N 8W	28	SW SW NW
Air shaft	St. Clair	1N 8W	28	SW SW NW

GEOLOGY

Seam(s) Mined	Depth (ft)	Thickness (ft)			Mining Method
		Min	Max	Ave	
Herrin	45			6.0	RP

Geologic Problems Reported:

PRODUCTION HISTORY

Company	Mine Name	Years	Production (tons)
Fred Murphy	Murphy No. 1	1888-1890	18,312
Frank Murphy	Murphy	1890-1895	<u>3,000</u>
			21,312

Last reported production: 1895

SOURCES OF DATA

Source Map	Date	Original Scale	Digitized Scale	Map Type
Microfilm, document 351101	1-31-1895	1:960	1:960	Final
Microfilm, document 351160	2-10-1908	1:1200	1:1655	Secondary source

Annotated Bibliography (data source, brief description of information)

Coal Reports - Production, ownership, years of operation, seam, depth, thickness, mining method.

Directory of Illinois Coal Mines (St. Clair County) - Mine names, mine index, ownership, years of operation.

Microfilm map, document 351101, reel 03134, frame 215 - Shaft locations, mine outline.

Microfilm map, document 351160, reel 03134, frame 300, map of Taylor Mine (mine index 4292) - Mine outline (southwestern).

Mine Index 3532**Consolidated Coal Company of St. Louis, Concordia Mine**

Type: Underground Total mined-out acreage shown: 12 A general area of mining was added to the north part of this mine outline to indicate the probable extent of mining.

SHAFT, SLOPE, DRIFT or TIPPLe LOCATIONS

Type	County	Twp	Section	Quarters-Footage
Main shaft	St. Clair	1N 8W	29	NW NE SE
Air shaft	St. Clair	1N 8W	29	SW SE NE

GEOLOGY

Seam(s) Mined	Depth (ft)	Thickness (ft)		Mining Method
		Min	Max	
Herrin	60		Ave	RPB

Geologic Problems Reported:

PRODUCTION HISTORY

Company	Mine Name	Years	Production (tons)
Concordia Mining Company	Concordia	1883-1886	23,650
Consolidated Coal Company of St. Louis	Concordia	1886-1890	<u>57,983</u>
			81,633

Last reported production: 1890

SOURCES OF DATA

Source Map	Date	Original Scale	Digitized Scale	Map Type
Microfilm, document 351039	1910	1:1200	1:2317	Secondary source
Microfilm, document 350987	1886	1:1200	1:2648	Not final

Annotated Bibliography (data source, brief description of information)

Coal Reports - Production, ownership, years of operation, seam, thickness, depth.

Directory of Illinois Coal Mines (St. Clair County) - Mine names, mine index, ownership, years of operation.

Microfilm map, document 351039, reel 03134, frame 127, map of Victoria Coal Company, No. 1 Mine (mine index 3533) - Shaft locations, mine outline (east and south), mining method.

Microfilm map, document 350987, reel 03134, frame 55 - Shaft locations, western and northern mine outline (most of the workings on this map appear to be "proposed" entries, a mine plan, not actual workings).

Mine Index 3533**Victoria Coal Company, Branch Mine (aka Victoria No. 1)**

Type: Underground Total mined-out acreage shown: 207 Production indicates an additional 50 acres were mined that are not accounted for by the acres added by the adjacent mine. Connected underground to White Rose Mine (mine index 783) in SE 29-T1N-R8W and NE 32-T1N-R8W.

SHAFT, SLOPE, DRIFT or TIPPLE LOCATIONS

Type	County	Twp	Section	Quarters-Footage
Main shaft	St. Clair	1N 8W	28	NW NW SW
Air shaft	St. Clair	1N 8W	28	NW NW SW

GEOLOGY

Seam(s) Mined	Depth (ft)	Thickness (ft)		Mining Method
		Min	Max Ave	
Herrin	54		6.0	RPB

Geologic Problems Reported:

PRODUCTION HISTORY

Company	Mine Name	Years	Production (tons)
Jacob Krantz	Krantz	1890-1899	160,491
Reeb Coal Company	Branch	1899-1902	64,696
Lake Superior Coal Company	Branch	1902-1905	84,202
L. Senior	Branch	1905-1910	98,583
L. Senior	Branch	1910-1913	94,158 *
Victoria Coal Company	Branch, Victoria No. 1	1913-1924	981,658 *
			1,483,788

* Production after map date

Last reported production: May 1924

SOURCES OF DATA

Source Map	Date	Original Scale	Digitized Scale	Map Type
Microfilm, document 351039	1910	1:1200	1:2317	Not final
ISGS map library, 4103.S31 i5.1-22	12-14-1942	1:2400	1:2400	Secondary source

Annotated Bibliography (data source, brief description of information)

Coal Reports - Production, ownership, years of operation.

Directory of Illinois Coal Mines (St. Clair County) - Mine names, mine index, ownership, years of operation.

Microfilm map, document 351039, reel 03134, frame 127 - Shaft locations, mine outline, method.

ISGS map library, 4103.S31 i5.1-22, map of White Rose Mine (mine index 783) - Mine outline (western, southern).

Mine notes (St. Clair County) - Thickness, depth, seam, mine type, shaft locations.

Mine Index 3535**Pioneer Coal Company, Pioneer Mine**

Type: Underground Total mined-out acreage shown: 62 Production indicates an additional 4 acres were mined since the date of the map. The reported production is insufficient to account for the extent of mining as shown; a previous owner of this mine is indicated.

SHAFT, SLOPE, DRIFT or TIPPLE LOCATIONS

Type	County	Twp	Section	Quarters-Footage
Main shaft	St. Clair	1N 8W	29	SE NW NE
Air shaft	St. Clair	1N 8W	29	SE NW NE

GEOLOGY

Seam(s) Mined	Depth (ft)	Thickness (ft)		Mining Method
		Min	Max Ave	
Herrin	51		6.0	RPB

Geologic Problems Reported: An area in the eastern portion of the mine was labeled "caved" on the source map. Several areas in the southern portion of the mine were labeled "inaccessible", though whether due to roof falls or water or simply being sealed off is not known.

PRODUCTION HISTORY

Company	Mine Name	Years	Production (tons)
Richard Schramm & Sons *	Pioneer	1910-1925	264,148
Pioneer Coal Company	Pioneer	1926-1933	97,778 **
Pioneer Coal Company	Pioneer	1933-1935	21,516 ***
			383,442

* An article in the December 30, 1922 Daily Advocate newspaper (1898-1935) stated that Richard Schramm & Sons, owners of Pioneer Mine, lead in coal output for the city of Belleville for that year.

** Idle 1928

*** Production after map date

Last reported production: 1935

SOURCES OF DATA

Source Map	Date	Original Scale	Digitized Scale	Map Type
Microfilm, document 351054	9-19-1933	1:1200	1:2069	Not final

Annotated Bibliography (data source, brief description of information)

Coal Reports - Production, ownership, years of operation.

Directory of Illinois Coal Mines (St. Clair County) - Mine names, mine index, ownership, years of operation.

Microfilm map, document 351054, reel 03134, frame 152 - Shaft locations, mine outline, mining method, geologic problems.

Mine notes (St. Clair County) - Thickness, depth, seam, mine type.

Mine Index 3536**Andrew Brandenberger, Brandenberger No. 1 Mine**

Type: Underground Total mined-out acreage shown: None; production indicates approximately 42 acres were mined in addition to the 85 acres reported mined before 1882.

SHAFT, SLOPE, DRIFT or TIPPLE LOCATIONS

Type	County	Twp	Section	Quarters-Footage
Main shaft	St. Clair	1N 8W	29	NE NE

GEOLOGY

Seam(s) Mined	Depth (ft)	Thickness (ft)			Mining Method
		Min	Max	Ave	
Herrin	90-120			7.0	RP

Geologic Problems Reported:

PRODUCTION HISTORY

Company	Mine Name	Years	Production (tons)
Andrew Brandenberger	Brandenberger No. 1	pre1882-1888	<u>232,617</u> *
			232,617

* Production prior to 1882 unknown. The Coal Report of 1882 indicates 85 acres mined.

Last reported production: 1888

SOURCES OF DATA

Source Map	Date	Original Scale	Digitized Scale	Map Type
Microfilm, document 351054	9-19-1933	1:1200	1:1200	Secondary source **

** Map of Pioneer Mine (mine index 3535) designates "Abandoned Mine, (water) Danger" to the east. This is assumed to be the Brandenberger mine, because ISGS databases indicated Brandenberger was located in section 29 of T1N, R8W. A general area of mining was drawn to indicate the location and some of the extent of the Brandenberger Mine.

Annotated Bibliography (data source, brief description of information)

Coal Reports - Production, ownership, years of operation, seam, thickness, depth.

Directory of Illinois Coal Mines (St. Clair County) - Mine names, mine index, ownership, years of operation.

Microfilm map, document 351054, reel 03134, frame 152 - Mine location.

Mine Index 3542**Lake Coal Company, Johnson Mine**

Type: Underground Total mined-out acreage shown: 70 The reported production is not sufficient to account for the mine as shown. The mine may have operated under another name prior to 1896. The reported production indicates approximately 30 acres were mined.

SHAFT, SLOPE, DRIFT or TIPPLe LOCATIONS

Type	County	Twp	Section	Quarters-Footage
Main shaft	St. Clair	2N 9W	35	SW SW SE
Air shaft	St. Clair	2N 9W	35	SW SW SE

GEOLOGY

Seam(s) Mined	Depth (ft)	Thickness (ft)			Mining Method
		Min	Max	Ave	
Herrin	75			6.0	RPB

Geologic Problems Reported:

PRODUCTION HISTORY

Company	Mine Name	Years	Production (tons)
Briar Hill Coal Company	Briar Hill	1896-1897	11,673
Johnson Coal Company	Briar Hill	1897-1899	54,800
Lake Coal Company	Johnson	1899-1902	<u>91,359</u>
			157,832

Last reported production: 1902

SOURCES OF DATA

Source Map	Date	Original Scale	Digitized Scale	Map Type
State archive, IL_393_03	2-7-1942	1:1200	1:1200	Secondary source
Microfilm, document 351003	3-5-1901	1:1200	1:1820	Not final

Annotated Bibliography (data source, brief description of information)

Coal Reports - Production, ownership, years of operation, seam, thickness, depth.

Directory of Illinois Coal Mines (St. Clair County) - Mine names, mine index, ownership, years of operation.

State archive, IL_393_03, map of Edgemont Mine (mine index 3613) - Shaft location, mine outline (northern), mining method.

Microfilm map, document 351003, reel 03134, frame 75 - Shaft locations, mine outline (southern).

Mine Index 3543**Crown Coal Company, Crown No. 2 Mine**

Type: Underground Total mined-out acreage shown: 75

SHAFT, SLOPE, DRIFT or TIPPLE LOCATIONS

Type	County	Twp	Section	Quarters-Footage
Main shaft	St. Clair	1N 9W	1	NW NW SW

GEOLOGY

Seam(s) Mined	Depth (ft)	Thickness (ft)			Mining Method
		Min	Max	Ave	
Herrin	148-185			6.0-7.0	MRP

Geologic Problems Reported:

PRODUCTION HISTORY

Company	Mine Name	Years	Production (tons)
Crown Coal Company	Crown No. 2	1889-1892	139,295
Crown Coal & Tow Company	Crown No. 2	1892-1900	353,642
Crown Coal & Iron Company	Crown No. 2	1900-1901	<u>102,946</u>
			595,883

Last reported production: 1901

SOURCES OF DATA

Source Map	Date	Original Scale	Digitized Scale	Map Type
State archive, PB_96	9-15-1923	1:2400	1:2400	Secondary source

Annotated Bibliography (data source, brief description of information)

Coal Reports - Production, ownership, years of operation, seam, thickness, depth.

Directory of Illinois Coal Mines (St. Clair County) - Mine names, mine index, ownership, years of operation.

Company map, state archive, PB_96, map of Superior Mine (mine index 78) - Shaft locations, mine outline, mining method.

Mine Index 3544**Roma Coal Company, Roma Mine**

Type: Underground Total mined-out acreage shown: None. Production indicates less than one acre was mined.

SHAFT, SLOPE, DRIFT or TIPPLe LOCATIONS

Type	County	Twp	Section	Quarters-Footage
Main slope	St. Clair	1N 9W	3	SE NW NW

GEOLOGY

Seam(s) Mined	Depth (ft)	Thickness (ft)			Mining Method
		Min	Max	Ave	
Herrin				6.0	Underground
Springfield	(24 below Herrin)			2.2-3	Underground

Geologic Problems Reported:

PRODUCTION HISTORY

Company	Mine Name	Years	Production (tons)
Roma Coal Company	Roma	1931-1931	1,000
Martin Piana	Roma	1932-1933	2,967
Roma Coal Company	Roma	1934-1934	<u>1,050</u>
			5,017

Last reported production: 1934

SOURCES OF DATA

Source Map	Date	Original Scale	Digitized Scale	Map Type
Mine notes (W. B. Roe)	Undated	1:62500	1:62500	Secondary source

Annotated Bibliography (data source, brief description of information)

Coal Reports - Production, ownership, years of operation.

Directory of Illinois Coal Mines (St. Clair County) - Mine names, mine index, ownership, years of operation.

Mine notes (St. Clair County) - Seams, depth information, thickness, mine type, slope location.

Mine Index 3545**Bunker Hill Coal Company, Bunker Hill Mine**

Type: Underground Total mined-out acreage shown: 11

SHAFT, SLOPE, DRIFT or TIPPLE LOCATIONS

Type	County	Twp	Section	Quarters-Footage
Main drift	St. Clair	1N 9W	11	SW NW NW
Air shaft	St. Clair	1N 9W	11	SW NW NW

GEOLOGY

Seam(s) Mined	Depth (ft)	Thickness (ft)			Mining Method
		Min	Max	Ave	
Herrin					RPB

Geologic Problems Reported:

PRODUCTION HISTORY

Company	Mine Name	Years	Production (tons)
William Travis	Travis	1932-1939	63,643
Bunker Hill Coal Company	Bunker Hill	1939-1939	<u>4,076</u>
			67,719

Last reported production: 1939

SOURCES OF DATA

Source Map	Date	Original Scale	Digitized Scale	Map Type
Microfilm, document 351064	11-13-1939	1:1200	1:1407	Final

Annotated Bibliography (data source, brief description of information)

Coal Reports - Production, ownership, years of operation.

Directory of Illinois Coal Mines (St. Clair County) - Mine names, mine index, ownership, years of operation.

Microfilm map, document 351064, reel 03134, frame 162 - Drift location, mine outline, method.

Mine notes (St. Clair County) - Seam, mine type, drift location.

Mine Index 3546
Colby Mine

Type: Underground Total mined-out acreage shown: 112

SHAFT, SLOPE, DRIFT or TIPPLe LOCATIONS

Type	County	Twp	Section	Quarters-Footage
Main shaft	St. Clair	1N 9W	11	NE NE SE
Air shaft	St. Clair	1N 9W	11	SW NE SE

GEOLOGY

Seam(s) Mined	Depth (ft)	Thickness (ft)			Mining Method
		Min	Max	Ave	
Herrin	160				RP

Geologic Problems Reported:

PRODUCTION HISTORY

Company	Mine Name	Years	Production (tons)
Colby Mine *		pre1874-?	Unknown

* No production was reported under this name. Most of the production may have been prior to 1882, when the first Coal Report was released.

Last reported production:

SOURCES OF DATA

Source Map	Date	Original Scale	Digitized Scale	Map Type
Federal Land Bank Report	5-1934	1:124320	1:124320	Secondary source
WPA, T1N-R9W	circa 1934	1:12000	1:63360	Secondary source

Annotated Bibliography (data source, brief description of information)

Directory of Illinois Coal Mines (St. Clair County) - Mine names, mine index, ownership, years of operation.
 Mine notes (St. Clair County) - Depth, seam, mine type, shaft location.
 Federal Land Bank Report (St. Clair County) - Mine outline.
 WPA map, T1N-R9W - Shaft locations.
 Atlas of St. Clair County, Illinois, 1874, Warner & Beers, Chicago, Illinois - Years of operation.

Mine Index 3550**New Bell Heat Coal Company, New Bell Heat Mine (formerly Harmony Mine)**

Type: Underground Total mined-out acreage shown: 320 Production indicates an additional 5 acres were mined after the map date.

SHAFT, SLOPE, DRIFT or TIPPLE LOCATIONS

Type	County	Twp	Section	Quarters-Footage
Main shaft	St. Clair	1N 9W	12	NE NE SE
Air shaft	St. Clair	1N 9W	12	NE NE SE

GEOLOGY

Seam(s) Mined	Depth (ft)	Thickness (ft)			Mining Method
		Min	Max	Ave	
Herrin	173			6.3-7.0	MRP (some RPB)

Geologic Problems Reported: A source map designated some rooms in NW NW 13-T1N-R9W and NW NE NW 13-T1N-R9W as "caved". Old works were encountered in NW 13-T1N-R9W and SW NW SW 12-T1N-R9W.

PRODUCTION HISTORY

Company	Mine Name	Years	Production (tons)
Sebastian Weisenborn	Harmony, Twelve Apostles	pre1882-1884	64,507 *
Harris Brothers	Harmony	1884-1892 **	110,361
Crown Coal & Tow Company	Crown No. 1	1892-1897 ***	120,859
Lenz Coal & Mining Company	Harmony	1899-1905 †	253,361
Southern Coal & Mining Company	Southern No. 2	1905-1907 †	22,549
Harmony Coal Company	Harmony	1907-1910	42,827
Maule Coal & Mining Company	Harmony	1911-1913	48,767
Idle		1914-1918	
B. B. Coal Company ††	B. B.	1918-1928	653,374
Bell Heat Coal Company †††	Bell Heat	1929-1939	287,241
New Bell Heat Coal Company	New Bell Heat	1939-1941	27,326
New Bell Heat Coal Company	New Bell Heat	1941-1943	30,832 ‡
			1,662,004

* Production and ownership prior to 1882 unknown. The Coal Report of 1882 indicates 30 acres mined.

** No production reported July 1885 to June 1886; idle

*** Idle May 27, 1896 to June 1897; top works destroyed by tornado and not rebuilt.

† Fire underground; mine idled for most of the period from July 1903 to June 1905, and July 1906 to June 1907.

†† Microfilm source map, document 350971, indicates Victoria Coal Company owned this company in 1927.

††† The Daily Advocate reported August 13, 1929 this mine was sold to Sam Winter for \$7,000.

‡ Production after map date

Last reported production: 1943

SOURCES OF DATA

Source Map	Date	Original Scale	Digitized Scale	Map Type
Microfilm, document 350981	3-1941	1:1200	1:2152	Not final
Microfilm, document 350979	4-11-1894	1:1200	1:1821	Not final
Microfilm, document 350971	3-30-1935	1:1200	1:2152	Not final

Annotated Bibliography (data source, brief description of information)

Coal Reports - Production, ownership, years of operation.

Directory of Illinois Coal Mines (St. Clair County) - Mine names, mine index, ownership, years of operation.

Microfilm map, document 350981, reel 03134, frames 45,46 - Shaft locations, mine outline (north), mining method.

Microfilm map, document 350979, reel 03134, frame 42 - Mine outline (east, extent of old works), mining method.

Microfilm map, document 350971, reel 03134, frames 30,31 - Mine ownership, mine outline (south), mining method.

Mine notes (St. Clair County) - Thickness, depth, seam, mine type, shaft location.

Mine Index 3551**Southern Coal, Coke & Mining Company, Southern Mine No. 1**

Type: Underground Total mined-out acreage shown: 346

SHAFT, SLOPE, DRIFT or TIPPLE LOCATIONS

Type	County	Twp	Section	Quarters-Footage
Main shaft	St. Clair	1N 9W	12	SE NW NE
Air shaft	St. Clair	1N 9W	12	SE NW NE

GEOLOGY

Seam(s) Mined	Depth (ft)	Thickness (ft)			Mining Method
		Min	Max	Ave	
Herrin	160-200	6.42	8.0	7.0	MRP

Geologic Problems Reported: The roof consisted of 1 to 8 inches of clod that comes down with the coal or up to 4 feet of black shale, which was full of slips and "practically impossible to hold". The black shale was not a serious mining problem, because the condition was understood and they did not try to hold the shale up.

PRODUCTION HISTORY

Company	Mine Name	Years	Production (tons)
Avery & Randle	Avery & Randle	1889-1892	57,366
Walnut Hill Coal Company	Avery	1892-1905	827,452
Southern Coal & Mining Company	Avery, Southern No. 1	1905-1916 *	331,625
Southern Coal, Coke & Mining Company	Southern No. 1	1916-1936 **	<u>1,249,000</u> 2,465,443

* Idle 1909, 1914-1916

** Idle from the last half of 1925 to the last half of 1929

Last reported production: March 1936

SOURCES OF DATA

Source Map	Date	Original Scale	Digitized Scale	Map Type
Microfilm, document 350963	4-2-1936	1:2400	1:5462	Final

Annotated Bibliography (data source, brief description of information)

Coal Reports - Production, ownership, years of operation.

Directory of Illinois Coal Mines (St. Clair County) - Mine names, mine index, ownership, years of operation.

Microfilm map, document 350963, reel 03134, frame 7 - Shaft locations, mine outline, method.

Mine notes (St. Clair County) - Thickness, depth, seam, mine type, shaft location, geologic problems.

Mine Index 3553**Madison Coal Corporation, Madison No. 7 Mine**

Type: Underground Total mined-out acreage shown: 172

SHAFT, SLOPE, DRIFT or TIPPLE LOCATIONS

Type	County	Twp	Section	Quarters-Footage
Main shaft	St. Clair	1N 9W	14	SW NE NE
Air shaft	St. Clair	1N 9W	14	SW NE NE

GEOLOGY

Seam(s) Mined	Depth (ft)	Thickness (ft)			Mining Method
		Min	Max	Ave	
Herrin	178-185			7.0	MRP

Geologic Problems Reported:

PRODUCTION HISTORY

Company	Mine Name	Years	Production (tons)
Madison Coal Company	Crown	1901-1902	107,222
Madison Coal Company	Madison No. 7	1902-1904	204,764
Crown Coal & Iron Company	Crown No. 4	1904-1905	113,370
Madison Coal Corporation	Madison No. 7	1905-1907	<u>115,342</u>
			540,698

Last reported production: March 1, 1907

SOURCES OF DATA

Source Map	Date	Original Scale	Digitized Scale	Map Type
Microfilm, document 351186	3-4-1907	1:2400	1:4634	Final

Annotated Bibliography (data source, brief description of information)

Coal Reports - Production, ownership, years of operation.

Directory of Illinois Coal Mines (St. Clair County) - Mine names, mine index, ownership, years of operation.

Microfilm map, document 351186, reel 03134, frame 344 - Shaft locations, mine outline, mining method.

Mine notes (St. Clair County) - Thickness, depth, seam, mine type, shaft location.

Federal Land Bank Report (St. Clair County) - Depth.

Mine Index 3589**F. C. Morgan Coal Company, Morgan Mine**

Type: Surface Total mined-out acreage shown: 678

SHAFT, SLOPE, DRIFT or TIPPLE LOCATIONS

Type	County	Township-Range	Section	Quarters-Footage
Tipple	St. Clair	1S 9W	10	SE SW SW *

* Several other tipples were probably used, but their locations are unknown.

GEOLOGY

Seam(s) Mined	Depth (ft)	Thickness (ft)			Mining Method
		Min	Max	Ave	
Herrin	38-50	5.0	7.0	6.0	Surface

Geologic Problems Reported:

PRODUCTION HISTORY

Company	Mine Name	Years	Production (tons)
F. C. Morgan Coal Company	Morgan	1933-1961	4,762,825 **

** Fred C. Morgan's surface mining operations in St. Clair County took place between 1933 and 1961. Yearly production figures were collected from the tipple, not individual pits. The production was identified in the annual Coal Reports as L-1, L-2, L-5, L-30, L-80, L-83, L-84, L-89, L-91 and L-92, but these production figures cannot be linked to a mined location. Evidence indicates that most pits were mined for one or two years and then new pits were opened elsewhere, still reporting under one identity number (such as L-89). The ISGS formerly gave these pits eight different index numbers based on location, but since production cannot be tied to the location, all Morgan production and pits will be called mine index 3589 and the other index numbers will be re-assigned to previously unknown mines.

Last reported production: 1961

SOURCES OF DATA

Source Map	Date	Original Scale	Digitized Scale	Map Type
Microfilm, document 351165	6-2-1954	1:2400	1:1986	Not final
Microfilm, document 351169	5-8-1952	1:1200	1:1324	Final
Microfilm, document 351170	5-8-1952	1:1200	1:1200	Final
Microfilm, document 351171	4-7-1953	1:2400	1:2152	Not final
Microfilm, document 351172	5-8-1953	1:1200	1:1200	Not final
Microfilm, document 350982	5-9-1950	1:2400	1:2400	Final
Company, 6-271	7-1959	1:42240	1:42240	Not final
Company, 6-271	7-1959	1:42240	1:42240	Not final
Company, 6-271	7-1959	1:42240	1:42240	Final
Company, 6-271 (tracing)	Undated	1:12068	1:12068	Undated
ISGS mined-out area compilation	1950	1:62500	1:62500	Secondary source

Annotated Bibliography (data source, brief description of information)

Coal Reports - Production, ownership, years of operation, mining method.
 Directory of Illinois Coal Mines (St. Clair County) - Mine names, mine index, ownership, years of operation.
 Mine notes (St. Clair County) - Mine type, seam, depth, thickness.

Microfilm map, document 351165, reel 03134, frame 308 - Mine outline (pit, SE SE 12-T1S-R9W).

Microfilm map, document 351169, reel 03134, frame 315 - Mine outline (SE NE 27-T1S-R9W; final, worked out 9-1951).

Microfilm map, document 351170, reel 03134, frame 316 - Mine outline (NE 22-T1S-R9W; final, worked out 11-1951).

Microfilm map, document 351171, reel 03134, frame 317 - Mine outline (N ½ NE 18-T1S-R8W).

Microfilm map, document 351172, reel 03134, frame 318 - Mine outline (SW 10-T1S-R9W).

Microfilm map, document 350982, reel 03134, frame 47 - Mine outline (SE 14-T1S-R9W & NE 22-T1S-R9W).

Company map (sketches), Coal Section files, 6-271 - Mine outlines.

- 1959 sketch maps - 10 (SW), 12 (SE), 16 (NW & NE), T1S-R9W
- 1959 sketch map - 30-T1S-R8W
- 1959 sketch map - NE 26-T1N-R9W

Undated map - Extensions of outlines in NW 18-T1S-R8W; 14, 15 (NW), 19 (SW), 24 (E ½) - T1S-R9W

ISGS mined-out area map, 1950 - Mine outline (NW 34-T1N-R9W).

Mine Index 3604**New Devil's Hole Coal Company, New Devil's Hole Mine**

Type: Underground Total mined-out acreage shown: 84 Production indicates about 3 acres were mined after map date.

SHAFT, SLOPE, DRIFT or TIPPLe LOCATIONS

Type	County	Twp	Section	Quarters-Footage
Main shaft	St. Clair	2N 8W	16	SE SW SW
Air shaft	St. Clair	2N 8W	16	SE SW SW
New air shaft	St. Clair	2N 8W	16	SW SW SW

GEOLOGY

Seam(s) Mined	Depth (ft)	Thickness (ft)			Mining Method
		Min	Max	Ave	
Herrin	120-141			5.5-6.3	RPB

Geologic Problems Reported: Two areas of squeeze were noted on the source map in the southern part of the mine (SE NE NE 20-T2N-R8W and NW SW NW 21-T2N-R8W). The entries south of the shaft were labeled "caved" (NW NW NW 21-T2N-R8W).

PRODUCTION HISTORY

Company	Mine Name	Years	Production (tons)
Quick Mining Company	Union	pre1874-1884	3,200 *
Idle		1884-1918	
People's Coal Company	People's No. 1	1918-1926 **	241,054
Mowe & Chapple	Mowe & Chapple	1926-1928	25,120
Caseyville Coal Company	Caseyville	1928-1932 ***	4,692
Sargent Coal Company	Sargent	1932-1933	9,413
Devil's Hole Coal Company	Devil's Hole	1933-1934	6,421
Hippard Coal Company	Hippard No. 2	1934-1937	30,901
White Ash Coal Company	White Ash	1937-1939	970
New Devil's Hole Coal Company	New Devil's Hole	1939-1939	2,183
New Devil's Hole Coal Company	New Devil's Hole	1939-1940	12,130 ****
			335,114

* Shown on 1874 atlas; ownership and production prior to 1883 are not known.

** Idle 1925

*** Idle 1929-1932

**** Production after map date

Last reported production: 1940

SOURCES OF DATA

Source Map	Date	Original Scale	Digitized Scale	Map Type
Microfilm, document 351072	2-18-1939	1:1200	1:2317	Not final

Annotated Bibliography (data source, brief description of information)

Coal Reports - Production, ownership, years of operation.

Directory of Illinois Coal Mines (St. Clair County) - Mine names, mine index, ownership, years of operation.

Microfilm map, document 351072, reel 03134, frames 174,175 - Shaft locations, mine outline, method.

Mine notes (St. Clair County) - Shaft location, mine type, seam, depth, thickness.

State archive, IL_316 and PB_126 - Mine ownership (Quick Mining Company), years of operation.

Atlas of St. Clair County, Illinois, 1874, Warner & Beers, Chicago, Illinois - Years of operation.

Mine Index 3605**New St. Clair Coal Company, New St. Clair Mine**

Type: Underground Total mined-out acreage shown: 36

SHAFT, SLOPE, DRIFT or TIPPLE LOCATIONS

Type	County	Twp	Section	Quarters-Footage
Main shaft	St. Clair	2N 8W	17	NW SE NE

GEOLOGY

Seam(s) Mined	Depth (ft)	Thickness (ft)			Mining Method
		Min	Max	Ave	
Herrin	95			5.75	RPB

Geologic Problems Reported: "Squeeze" is noted on the source map in the northern and western parts of the mine. The "very old works" are also designated as filled with water in the southwestern part of the mine.

PRODUCTION HISTORY

Company	Mine Name	Years	Production (tons)
New St. Clair Coal Company	New St. Clair	1928-1939	<u>146,828</u> *
			146,828

* The source map for this mine shows an area labeled "very old works", indicating that mining took place at this location prior to 1928. The extent of these old works is unknown. Text was added to the accompanying map to show the location of the old works.

Last reported production: 1939

SOURCES OF DATA

Source Map	Date	Original Scale	Digitized Scale	Map Type
Microfilm, document 351019	7-1939	1:1200	1:2317	Final

Annotated Bibliography (data source, brief description of information)

Coal Reports - Production, ownership, years of operation.
 Directory of Illinois Coal Mines (St. Clair County) - Mine names, mine index, ownership, years of operation.
 Microfilm map, document 351019, reel 03134, frame 96 - Shaft locations, mine outline, method.
 Mine notes (St. Clair County) - Thickness, depth, seam, mine type, shaft location.

Mine Index 3606
Charles C. Dove, Dove Mine

Type: Underground Total mined-out acreage shown: 27 The mine is larger than expected from the reported production. Production indicates approximately 9 acres were mined. It is likely other operators worked this site.

SHAFT, SLOPE, DRIFT or TIPPLe LOCATIONS

Type	County	Twp	Section	Quarters-Footage
Main drift	St. Clair	2N 8W	18	NE SE NW
Air drift	St. Clair	2N 8W	18	NE SE NW
Escapement	St. Clair	2N 8W	18	NE SE NW

GEOLOGY

Seam(s) Mined	Depth (ft)	Thickness (ft)			Mining Method
		Min	Max	Ave	
Herrin	20			6.0	MRP

Geologic Problems Reported:

PRODUCTION HISTORY

Company	Mine Name	Years	Production (tons)
Drift Coal Company	Drift	1930-1935 *	31,507
Woodland Coal Company	Woodland	1935-1942	13,518
Charles C. Dove	Dove	1942-1942	<u>642</u>
			45,667

* Idle 1932 and 1933

Last reported production: 1942

SOURCES OF DATA

Source Map	Date	Original Scale	Digitized Scale	Map Type
Microfilm, document 351024	3-3-1944	1:2400	1:4966	Secondary source

Annotated Bibliography (data source, brief description of information)

Coal Reports - Production, ownership, years of operation.

Directory of Illinois Coal Mines (St. Clair County) - Mine names, mine index, ownership, years of operation.

ISGS field notes (St. Clair County) - Depth, thickness.

Microfilm map, document 352356, reel 03138, frame 470, map of Pyramid No. 4 Mine (mine index 501) - Drift locations, mine outline, mining method.

Mine notes (St. Clair County) - Mine type, shaft location, seam, depth, thickness.

Mine Index 3608**French Village Coal Company, French Village Mine**

Type: Underground Total mined-out acreage shown: None. Production indicates less than one acre was mined.

SHAFT, SLOPE, DRIFT or TIPPLE LOCATIONS

Type	County	Twp	Section	Quarters-Footage
Main shaft	St. Clair	2N 9W	36	SW NW NE

GEOLOGY

Seam(s) Mined	Depth (ft)	Thickness (ft)			Mining Method
		Min	Max	Ave	
Herrin	50			6.0	RP

Geologic Problems Reported:

PRODUCTION HISTORY

Company	Mine Name	Years	Production (tons)
French Village Coal Company	French Village	1907-1907	204 *
			204

* The Daily Advocate newspaper archives noted the incorporation of the French Village Coal Company on 4-5-1889. However, no production was reported until 1907.

Last reported production: 1907

SOURCES OF DATA

Source Map	Date	Original Scale	Digitized Scale	Map Type
ISGS mined-out area	1950	1:62500	1:62500	Secondary source

Annotated Bibliography (data source, brief description of information)

Coal Reports - Production, ownership, years of operation, depth, thickness, seam, method.

Directory of Illinois Coal Mines (St. Clair County) - Mine names, mine index, ownership, years of operation.

ISGS 1950 Mined-out Area Map, Area 27 - Shaft location.

Mine Index 3609**White Ash Coal Company, White Ash Mine**

Type: Underground Total mined-out acreage shown: 2 Production indicates this mine should be less than one acre. Production reported under another name is likely.

SHAFT, SLOPE, DRIFT or TIPPLE LOCATIONS

Type	County	Twp	Section	Quarters-Footage
Main shaft	St. Clair	2N 9W	24	NW SW SE
Air shaft	St. Clair	2N 9W	24	NW SW SE

GEOLOGY

Seam(s) Mined	Depth (ft)	Thickness (ft)			Mining Method
		Min	Max	Ave	
Herrin	48			7.0	UG

Geologic Problems Reported:

PRODUCTION HISTORY

Company	Mine Name	Years	Production (tons)
B. Kaplar	Kaplar	1929-1929 *	1,550
White Ash Coal Company **	White Ash	1936-1936	<u>1,951</u>
			3,501

* Idle, or reported under a different name, 1930 to 1935

** Owner Barney Coppler (due to inconsistent spelling, may be same person as 'B. Kaplar')

Last reported production: 1936

SOURCES OF DATA

Source Map	Date	Original Scale	Digitized Scale	Map Type
WPA	circa 1934 ***	1:12000	1:55380	Secondary source

*** The survey extent is dated 4-23-32, which would not be a final outline.

Annotated Bibliography (data source, brief description of information)

Coal Reports - Production, ownership, years of operation.

Directory of Illinois Coal Mines (St. Clair County) - Mine names, mine index, ownership, years of operation.

WPA map, T2N-R9W - Shaft locations, mine outline.

Mine notes (St. Clair County) - Thickness, depth, seam, mine type, shaft location.

Mine Index 3610
Sun Ray Mine

Type: Underground Total mined-out acreage shown: 3

SHAFT, SLOPE, DRIFT or TIPPLE LOCATIONS

Type	County	Twp	Section	Quarters-Footage
Main shaft	St. Clair	2N 9W	24	SW SW SE
Air shaft	St. Clair	2N 9W	24	SW SW SE

GEOLOGY

Seam(s) Mined	Depth (ft)	Thickness (ft)			Mining Method
		Min	Max	Ave	
Herrin	48				MRP

Geologic Problems Reported:

PRODUCTION HISTORY

Company	Mine Name	Years	Production (tons)
Prospect Park Coal Company	Prospect Park	1922-1923	5,609
Seven Partners Coal Company	Seven Partners	1923-1924	1,005
Prospect Park Coal Company	Prospect Park	1924-1926	7,678
New Prospect Park Coal Company	New Prospect Park	1934-1934 *	700
Sun Ray Mine	Sun Ray	1935-1935	394
			15,386

* Idle, or reported under a different name, 1927 to 1933

Last reported production: 1935

SOURCES OF DATA

Source Map	Date	Original Scale	Digitized Scale	Map Type
Microfilm, document 351080	3-30-1935	1:480	1:931	Final
Microfilm, document 351257	6-7-1933	1:1200	1:993	Not final

Annotated Bibliography (data source, brief description of information)

Coal Reports - Production, ownership, years of operation.
 Directory of Illinois Coal Mines (St. Clair County) - Mine names, mine index, ownership, years of operation.
 Microfilm map, document 351080, reel 03134, frame 184 - Shaft locations, depth, mine outline, ownership, method.
 Microfilm map, document 351257, reel 03134, frame 510 - Mine outline (southeastern).
 WPA map, T2N-R9W - Mine location.

Mine Index 3612
Fred J. Ziska, Ziska Mine

Type: Underground Total mined-out acreage shown: 3 Less than one additional acre was mined after the map date.

SHAFT, SLOPE, DRIFT or TIPPLE LOCATIONS

Type	County	Twp	Section	Quarters-Footage
Main drift	St. Clair	2N 9W	34	NE NE SE
Old drift	St. Clair	2N 9W	34	SE SE NE

GEOLOGY

Seam(s) Mined	Depth (ft)	Thickness (ft)			Mining Method
		Min	Max	Ave	
Herrin	25-60			7.0	RPB

Geologic Problems Reported: The source map showed an old drift mine north of Ziska's mine (mine index 6883). The ownership, extent, and years of operation are not known. As no air shaft was shown on the source map, it is possible that the two mines were connected underground for ventilation.

PRODUCTION HISTORY

Company	Mine Name	Years	Production (tons)
Fred J. Ziska	Ziska	1908-1932 *	27,026
Fred J. Ziska	Ziska	1932-1938	<u>1,284</u> **
			28,310

* Idle 1918, 1922 and 1930

** Production after map date

Last reported production: 1938

SOURCES OF DATA

Source Map	Date	Original Scale	Digitized Scale	Map Type
Microfilm, document 351128	12-6-1932	1:1200	1:1655	Not final

Annotated Bibliography (data source, brief description of information)

Coal Reports - Production, ownership, years of operation.

Directory of Illinois Coal Mines (St. Clair County) - Mine names, mine index, ownership, years of operation.

Microfilm map, document 351128, reel 03134, frames 263 - Drift locations, mine outline, method.

Mine notes (St. Clair County) - Thickness, seam, mine type, drift location.

Mine Index 3613**Edgemont Coal Company, Edgemont Mine**

Type: Underground Total mined-out acreage shown: 88

SHAFT, SLOPE, DRIFT or TIPPLE LOCATIONS

Type	County	Twp	Section	Quarters-Footage
Buxton/Charleton drift	St. Clair	2N 9W	35	NW SW NW
"Ziska" drift	St. Clair	2N 9W	35	SE NW NW

GEOLOGY

Seam(s) Mined	Depth (ft)	Thickness (ft)		Mining Method
		Min	Max	
Herrin	50-80		5.0-6.0	MRP

Geologic Problems Reported:

PRODUCTION HISTORY

Company	Mine Name	Years	Production (tons)
James Charleton	Charleton No. 2	1889-1899	19,353 *
Mueller & Buxton	Mueller & Buxton	1914-1916	2,332
John Buxton	Buxton Drift	1916-1917	2,280
L. Senior	Senior	1917-1919	7,034
Barton-Senior Coal Company	Barton-Senior	1919-1922	29,117 **
Victoria Coal Company	Victoria, Buxton Drift	1922-1928	156,091
Edgemont Coal Company	Edgemont	1928-1941	<u>304,478</u>
			520,685

* Operation between 1899 and 1914 unknown (may have been idled or abandoned)

** Production not reported in 1922.

Last reported production: 1941

SOURCES OF DATA

Source Map	Date	Original Scale	Digitized Scale	Map Type
State archive, IL_393_03	2-7-1942	1:1200	1:1200	Final

Annotated Bibliography (data source, brief description of information)

Coal Reports - Production, ownership, years of operation.

Directory of Illinois Coal Mines (St. Clair County) - Mine names, mine index, ownership, years of operation.

Company map, state archive, IL_393_03 - Drift locations, mine outline, mining method.

Microfilm map, document 351081, reel 03134, frame 185 - Mine ownership (Charleton).

Mine notes (St. Clair County) - Thickness, depth, seam, mine type, shaft location.

Mine Index 3614**Signal Point Coal & Coke Company, Signal Point Mine**

Type: Underground Total mined-out acreage shown: 13 The source map may be incomplete.
 Production indicates the mine should be between 19 and 23 acres.

SHAFT, SLOPE, DRIFT or TIPPLE LOCATIONS

Type	County	Twp	Section	Quarters-Footage
Main shaft	St. Clair	2N 9W	35	NW NE NE
Air shaft	St. Clair	2N 9W	35	NE NE NE

GEOLOGY

Seam(s) Mined	Depth (ft)	Thickness (ft)			Mining Method
		Min	Max	Ave	
Herrin	81				RP

Geologic Problems Reported:

PRODUCTION HISTORY

Company	Mine Name	Years	Production (tons)
I. E. Young	Young	1901-1902	1,000
Davis & Company	Davis	1902-1903	500
J. E. Young	Young	1903-1904	6,000
George Penn	Penn	1904-1907	5,854
Edgemont Coal Company	Edgemont	1907-1915	18,316
Signal Hill Coal Company	Signal Hill	1917-1922 *	67,019
Signal Point Coal & Coke Company	Signal Point	1922-1924	24,100
			<u>122,789</u>

* Idle, temporarily abandoned, or reported under another name, 1915 to 1917

Last reported production: 1924

SOURCES OF DATA

Source Map	Date	Original Scale	Digitized Scale	Map Type
WPA, T2N-R9W	8-23-1918	1:12000	1:55380	Secondary source

Annotated Bibliography (data source, brief description of information)

Coal Reports - Production, ownership, years of operation, mining method.
 Directory of Illinois Coal Mines (St. Clair County) - Mine names, mine index, ownership, years of operation.
 WPA map, T2N-R9W - Shaft locations, mine outline.
 Mine notes (St. Clair County) - Depth, seam, mine type, shaft location.

Mine Index 3615**Superior Mining Company, Valley Mine**

Type: Underground Total mined-out acreage shown: 104 Valley Mine was connected underground to Superior Mine (mine index 78) for haulage, Pollock Mine (mine index 3498) for ventilation, and Victor Mine (mine index 4331). Victor Mine was additionally connected underground to Excelsior Mine (mine index 4330) and Birkner Mine (mine index 3496).

SHAFT, SLOPE, DRIFT or TIPPLe LOCATIONS

Type	County	Twp	Section	Quarters-Footage
Main shaft	St. Clair	2N 9W	36	SE SE SE
Air shaft	St. Clair	2N 9W	36	SE SE SE

GEOLOGY

Seam(s) Mined	Depth (ft)	Thickness (ft)		Mining Method
		Min	Max	
Herrin	85		6.0-7.0	RPB

Geologic Problems Reported:

PRODUCTION HISTORY

Company	Mine Name	Years	Production (tons)
Valley Coal & Mining Company	Valley	1901-1907	362,196
Kolb Coal Company	Valley	1907-1915 *	110,198
White Coal Company	Valley	1915-1917	69,180
Beck & White Coal Company	Valley	1917-1918	85,768
Superior Mining Company **	Valley	1918-1921	<u>102,570</u>
			729,912

* Idle 1909, 1914, 1915.

** The 1930 map's title block lists the operator as West Virginia Coal Company of Missouri. Production was not listed in the Coal Reports under that name.

Last reported production: January 1921

SOURCES OF DATA

Source Map	Date	Original Scale	Digitized Scale	Map Type
State archive, IL_221	2-2-1930	1:2400	1:3972	Final

Annotated Bibliography (data source, brief description of information)

Coal Reports - Production, ownership, years of operation.

Directory of Illinois Coal Mines (St. Clair County) - Mine names, mine index, ownership, years of operation.

State archive, IL_221 - Shaft locations, mine outline, mining method.

Mine notes (St. Clair County) - Depth, seam, mine type, shaft location.

Mine Index 4260
Consolidated Coal Company of St. Louis, Grant Mine

Type: Underground Total mined-out acreage shown: 124

SHAFT, SLOPE, DRIFT or TIPPLE LOCATIONS

Type	County	Twp	Section	Quarters-Footage
"Grant" shaft	St. Clair	1N 8W	20	NE SW SW
"Chester" shaft/air shaft	St. Clair	1N 8W	29	NW NE NW
Escape shaft	St. Clair	1N 8W	20	SE SW NE
Air shaft	St. Clair	1N 8W	20	SE NW SW
Air shaft	St. Clair	1N 8W	20	NE NW SE

GEOLOGY

Seam(s) Mined	Depth (ft)	Thickness (ft)			Mining Method
		Min	Max	Ave	
Herrin	65-140 *			6.0-7.0	RPB

* Depth of No. 1 shaft ranged from 65-70, No. 2 shaft ranged from 130-140.

Geologic Problems Reported:

PRODUCTION HISTORY

Company	Mine Name	Years	Production (tons)
Hazard, Wilson & Company	Chester	pre1881-1882	37,000 **
Harzard Coal Company	Harzard No. 1	1882-1883	36,400
Harding, Emery & Company	Harding & Emery No. 1	1883-1886	55,155
Hazard, Wilson & Company	Hazard & Wilson	pre1881-1882	5,000 ***
Harzard Coal Company	Harzard No. 2	1882-1883	5,140
Harding, Emery & Company	Harding & Emery No. 2	1883-1886	39,951
Consolidated Coal Company of St. Louis †	Grant	1886-1889	<u>71,444</u>
			250,090

** Production & ownership prior to 1882 unknown. The Coal Report of 1882 indicates 20 acres mined.

*** Production & ownership prior to 1882 unknown. The Coal Report of 1882 indicates 65 acres mined.

† Map sources indicate Grant Mine includes workings of Harding & Emery No. 1 and No. 2. The Daily Advocate newspaper stated on February 4, 1887 that Consolidated Coal Company controlled Harding Coal Company. The November 12, 1904 issue stated that Consolidated Coal Company sold Grant Coal Company to J. Reinman, but no production was listed after 1889 under either name.

Last reported production: 1889

SOURCES OF DATA

Source Map	Date	Original Scale	Digitized Scale	Map Type
Microfilm, document 350990	2-14-1886	1:2400	1:2152	Not final
Microfilm, document 351041	3-3-1938	1:2400	1:4634	Secondary source

Annotated Bibliography (data source, brief description of information)

Coal Reports - Production, ownership, years of operation, seam, depth, thickness.

Directory of Illinois Coal Mines (St. Clair County) - Mine names, mine index, ownership, years of operation.

Microfilm map, document 350990, reel 03134, frames 58,59 - Shaft locations, mine outline, mining method.

Microfilm map, document 351041, reel 03134, frame 130, map of Alcoa Mine (mine index 502) - Mine outline (southern), shaft identification.

Mine Index 4261**William Brandenberger, Brandenberger Mine**

Type: Underground Total mined-out acreage shown: 95 (The reported production represents about 16 acres mined. The Coal Report of 1883 indicated 70 acres were previously mined.)

SHAFT, SLOPE, DRIFT or TIPPLE LOCATIONS

Type	County	Twp	Section	Quarters-Footage
Shaft No. 1 *	St. Clair	1N 8W	20	NW NE SE
Shaft No. 2 **	St. Clair	1N 8W	20	SE NE SE
Shaft No. 3 ***	St. Clair	1N 8W	20	SE NE SE

* Designated Washington Mine on 1950 mined-out area map.

** Designated Baird & Beatty on 1950 mined-out area map. The 1874 Atlas of St. Clair County shows Baird & Beatty in section 21, T1N, R8W. (see mine index 6642, O'Fallon Quadrangle)

*** Designated Reed Mine on 1950 mined-out area map.

GEOLOGY

Seam(s) Mined	Depth (ft)	Thickness (ft)			Mining Method
		Min	Max	Ave	
Herrin	110-127			6.5-7.0	RP

Geologic Problems Reported:

PRODUCTION HISTORY

Company	Mine Name	Years	Production (tons)
William Brandenberger	Brandenberger	pre1882-1886	96,482 † 96,482

† Production prior to 1882 unknown. The Coal Report of 1883 indicates 70 acres were mined. The 1874 Atlas of St. Clair county shows the shaft locations, indicating that mining was taking place in the early 1870s.

Last reported production: 1886

SOURCES OF DATA

Source Map	Date	Original Scale	Digitized Scale	Map Type
ISGS mined-out area, Area 27	1950	1:62500	1:62500	Secondary source
Atlas of St. Clair County	1874	1:3840	1:3840	Secondary source

Annotated Bibliography (data source, brief description of information)

Coal Reports - Production, ownership, years of operation, depth, thickness, seam, mine type, mining method.

Directory of Illinois Coal Mines (St. Clair County) - Mine names, mine index, ownership, years of operation.

ISGS mined-out area, Area 27 - Mine locations.

Atlas of St. Clair County, Illinois, 1874, Warner & Beers, Chicago, Illinois - Shaft identifications.

Mine Index 4292**James Taylor, Taylor Mine**

Type: Underground Total mined-out acreage shown: 9

SHAFT, SLOPE, DRIFT or TIPPLE LOCATIONS

Type	County	Twp	Section	Quarters-Footage
Main shaft	St. Clair	1N 8W	29	NE NE SE

GEOLOGY

Seam(s) Mined	Depth (ft)	Thickness (ft)			Mining Method
		Min	Max	Ave	
Herrin	35			6.0	RPB

Geologic Problems Reported:

PRODUCTION HISTORY

Company	Mine Name	Years	Production (tons)
Taylor Brothers	Taylor	1897-1901	20,869
James Taylor	Taylor	1901-1902	6,600
Taylor Brothers	Taylor	1902-1903	5,000
James Taylor	Taylor	1903-1908	<u>27,720</u>
			60,189

Last reported production: 1908

SOURCES OF DATA

Source Map	Date	Original Scale	Digitized Scale	Map Type
Microfilm, document 351160	2-10-1908	1:1200	1:1655	Final *

* The map extended to 1908 from information given by Mr. Taylor. The mine was abandoned and filled with water at the time. The most recent previous survey was 12-23-1904.

Annotated Bibliography (data source, brief description of information)

Coal Reports - Production, ownership, years of operation.

Directory of Illinois Coal Mines (St. Clair County) - Mine names, mine index, ownership, years of operation.

Company map, from St. Clair County Recorder of Deeds - Shaft locations, mine outline, method.

Microfilm map, document 351160, reel 03134, frame 300 - Shaft location, mine outline, mining method.

Mine notes (St. Clair County) - Thickness, depth, seam, mine type, shaft location.

Mine Index 4312**Bluff View Coal Company, Bluff View Mine**

Type: Underground Total mined-out acreage shown: 17 Production indicates between 2 and 3 acres were mined since the map date.

SHAFT, SLOPE, DRIFT or TIPPLE LOCATIONS

Type	County	Twp	Section	Quarters-Footage
Main drift	St. Clair	2N 9W	24	SE SE NW
Air shaft	St. Clair	2N 9W	24	SE SE NW

GEOLOGY

Seam(s) Mined	Depth (ft)	Thickness (ft)			Mining Method
		Min	Max	Ave	
Herrin	7				MRP & RPB

Geologic Problems Reported: Old works were noted on the northwestern side of the map.

PRODUCTION HISTORY

Company	Mine Name	Years	Production (tons)
Bluff View Coal Company	Bluff View	1927-1932	94,337
Bluff View Coal Company	Bluff View	1932-1933	14,004 *
			108,341

* Production after map date

Last reported production: 1933

SOURCES OF DATA

Source Map	Date	Original Scale	Digitized Scale	Map Type
Microfilm, document 351077	10-15-1932	1:1200	1:2648	Not final

Annotated Bibliography (data source, brief description of information)

Coal Reports - Production, ownership, years of operation.

Directory of Illinois Coal Mines (St. Clair County) - Mine names, mine index, ownership, years of operation.

Microfilm map, document 351077, reel 03134, frames 181 - Drift & shaft locations, mine outline, mining method, geologic problems.

Mine notes (St. Clair County) - Depth, seam, mine type.

Mine Index 4314**Ritchie & Company, Ritchie Mine**

Type: Underground Total mined-out acreage shown: 1 The source map may show an incomplete outline. Production indicates this mine should be between 4 and 5 acres.

SHAFT, SLOPE, DRIFT or TIPPLe LOCATIONS

Type	County	Twp	Section	Quarters-Footage
Main drift	St. Clair	2N 9W	35	SW SW NW

GEOLOGY

Seam(s) Mined	Depth (ft)	Thickness (ft)			Mining Method
		Min	Max	Ave	
Herrin	50-80			7.0-8.0	RPB

Geologic Problems Reported:

PRODUCTION HISTORY

Company	Mine Name	Years	Production (tons)
Conrad Strawbinger	Strawbinger	1885-1900	29,605
Ritchie & Company	Ritchie	1900-1903	<u>4,500</u>
			34,105

Last reported production: 1903

SOURCES OF DATA

Source Map	Date	Original Scale	Digitized Scale	Map Type
Microfilm, document 351083	2-7-1942	1:1200	1:2400	Secondary source

Annotated Bibliography (data source, brief description of information)

Coal Reports - Production, ownership, years of operation, seam, thickness, depth.

Directory of Illinois Coal Mines (St. Clair County) - Mine names, mine index, ownership, years of operation.

Microfilm map, document 351083, reel 03134, frames 188-190, map of Edgemont Mine (mine index 3613) - Drift location, mine outline, mining method.

Mine Index 4316**Hickory Coal Mining Company, Hickory Mine**

Type: Underground Total mined-out acreage shown: 3 Less than one additional acre was mined after the map date.

SHAFT, SLOPE, DRIFT or TIPPLE LOCATIONS

Type	County	Twp	Section	Quarters-Footage
Drift	St. Clair	1N 9W	3	NW NE NW

GEOLOGY

Seam(s) Mined	Depth (ft)	Thickness (ft)			Mining Method
		Min	Max	Ave	
Herrin				6.5	RPB

Geologic Problems Reported: The map shows 5 southwest entries "caved".

PRODUCTION HISTORY

Company	Mine Name	Years	Production (tons)
Hickory Coal Mining Company	Hickory	1924-1927	8,223
Hickory Coal Mining Company	Hickory	1927-1928	3,378 *
			11,601

* Production after map date.

Last reported production: 1928

SOURCES OF DATA

Source Map	Date	Original Scale	Digitized Scale	Map Type
Microfilm, document 351133	3-4-1927	1:1200	1:1821	Not final
ISGS field notes (H. R. Wanless)	8-14-1931	1:62500	1:62500	Secondary source

Annotated Bibliography (data source, brief description of information)

Coal Reports - Production, ownership, years of operation.

Directory of Illinois Coal Mines (St. Clair County) - Mine names, mine index, ownership, years of operation.

Microfilm map, document 351133, reel 03134, frame 269 - Mine outline, geologic problems, mining method.

ISGS field notes (St. Clair County) - Mine type, drift location, thickness.

Mine Index 4319**Conrad Reinecke, Reinecke No. 2 Mine**

Type: Underground Total mined-out acreage shown: 61 Production indicates an additional 140 acres were mined after the map date. The approximate size of the mine is shown by a general area of mining.

SHAFT, SLOPE, DRIFT or TIPPLE LOCATIONS

Type	County	Twp	Section	Quarters-Footage
Main shaft	St. Clair	1N 8W	5	NE SW SW
Air shaft	St. Clair	1N 8W	5	NE SW SW

GEOLOGY

Seam(s) Mined	Depth (ft)	Thickness (ft)			Mining Method
		Min	Max	Ave	
Herrin	110-130			6.0-7.0	MRP

Geologic Problems Reported:

PRODUCTION HISTORY

Company	Mine Name	Years	Production (tons)
Conrad Reinecke	Reinecke No. 2	pre1882-1886	91,468 *
Conrad Reinecke	Reinecke No. 2	1886-1897 **	507,532 ***
Consolidated Coal Co. of St. Louis	Reinecke No. 2	1897-1899	130,814 ***
Conrad Reinecke	Reinecke No. 2	1899-1902	185,541 ***
			915,355

* Production prior to 1882 unknown. The Coal Report of 1882 indicates 9 acres were mined.

** Idle 1888.

*** Production after map date

Last reported production: 1902

SOURCES OF DATA

Source Map	Date	Original Scale	Digitized Scale	Map Type
Microfilm, document 350980	6-17-1886	1:1440	1:2086	Not final

Annotated Bibliography (data source, brief description of information)

Coal Reports - Production, ownership, years of operation.

Directory of Illinois Coal Mines (St. Clair County) - Mine names, mine index, ownership, years of operation.

Microfilm map, document 350980, reel 03134, frame 44 - Shaft location, mine outline, mining method.

Mine notes (St. Clair County) - Thickness, depth, seam, mine type, shaft location.

Mine Index 4329
Kelly Mine

Type: Underground Total mined-out acreage shown: 9

SHAFT, SLOPE, DRIFT or TIPPLE LOCATIONS

Type	County	Twp	Section	Quarters-Footage
Main shaft	St. Clair	1N 8W	6	SW NW SE

GEOLOGY

Seam(s) Mined	Depth (ft)	Thickness (ft)			Mining Method
		Min	Max	Ave	
Herrin	108			5.83	MRP

Geologic Problems Reported:

PRODUCTION HISTORY

Company	Mine Name	Years	Production (tons)
Kelly Mine	Kelly	circa 1874	none *

* No production reported under this name. Map sources indicated the Kelly Mine was abandoned prior to 1903. The 1874 Atlas of St. Clair County shows a shaft at this location, indicating that mining was taking place in the early 1870s.

Last reported production: unknown

SOURCES OF DATA

Source Map	Date	Original Scale	Digitized Scale	Map Type
Map library, 4103.S31 i5.1-49	3-21-1903	1:2400	1:4966	Secondary source

Annotated Bibliography (data source, brief description of information)

Coal Reports - Production, ownership, years of operation.

Directory of Illinois Coal Mines (St. Clair County) - Mine names, mine index, ownership, years of operation.

ISGS map library, 4103.S31 i5.1-49, map of Knecht Mine (mine index 3502) - Shaft locations, mine outline, mining method.

Mine notes (St. Clair County) - Thickness, depth, seam, mine type, shaft location.

Atlas of St. Clair County, Illinois, 1874, Warner & Beers, Chicago, Illinois - Years of operation.

Mine Index 4330**Welch Mining Company, Excelsior Mine**

Type: Underground Total mined-out acreage shown: 19 Excelsior Mine is connected underground to Victor Mine (mine index 4331) on the western side, and Birkner Mine (mine index 3496) on the southern side.

SHAFT, SLOPE, DRIFT or TIPPLe LOCATIONS

Type	County	Twp	Section	Quarters-Footage
Main shaft	St. Clair	1N 8W	6	NW NE NW
Air shaft	St. Clair	1N 8W	6	NW NE NW

GEOLOGY

Seam(s) Mined	Depth (ft)	Thickness (ft)		Mining Method
		Min	Max Ave	
Herrin	110-120		6.0-7.0	RPB

Geologic Problems Reported:

PRODUCTION HISTORY

Company	Mine Name	Years	Production (tons)
Evan W. Harris	Harris	pre1882-1883	21,760 *
Welch Mining Company	Excelsior	1883-1886	<u>22,500</u> 44,260

* Production prior to 1882 unknown. The Coal Report of 1882 indicates 12 acres mined.

Last reported production: 1886

SOURCES OF DATA

Source Map	Date	Original Scale	Digitized Scale	Map Type
State archive, IL_221	2-2-1930	1:2400	1:3972	Secondary source

Annotated Bibliography (data source, brief description of information)

Coal Reports - Production, ownership, years of operation, seam, thickness, depth.

Directory of Illinois Coal Mines (St. Clair County) - Mine names, mine index, ownership, years of operation.

State archive, IL_221, map Valley Mine (mine index 3615) - Shaft locations, mine outline, mining method.

Mine Index 4331**Welch Mining Company, Victor Mine**

Type: Underground Total mined-out acreage shown: 21 Victor Mine is connected underground to Valley Mine (mine index 78) on the western side, Excelsior Mine (mine index 4330) on the eastern side, and Pollock Mine (mine index 3498) on the southern side.

SHAFT, SLOPE, DRIFT or TIPPLE LOCATIONS

Type	County	Twp	Section	Quarters-Footage
Main shaft *	St. Clair	1N 8W	6	NW NE NW

* Connected underground to Pollock Mine (mine index 3498) for air course.

GEOLOGY

Seam(s) Mined	Depth (ft)	Thickness (ft)		Mining Method
		Min	Max	
Herrin	110-120		6.0	RPB

Geologic Problems Reported:

PRODUCTION HISTORY

Company	Mine Name	Years	Production (tons)
Evan W. Harris	Harris	pre1882-1884	29,290 **
Welch Mining Company	Victor	1884-1886 ***	<u>16,000</u>
			45,290

** Production prior to 1882 unknown. The Coal Report of 1882 indicates 16 acres were mined.

*** Idle July 1883 to June 1884

Last reported production: 1886

SOURCES OF DATA

Source Map	Date	Original Scale	Digitized Scale	Map Type
State archive, IL_221	2-2-1930	1:2400	1:3972	Secondary source

Annotated Bibliography (data source, brief description of information)

Coal Reports - Production, ownership, years of operation, seam, thickness, depth.

Directory of Illinois Coal Mines (St. Clair County) - Mine names, mine index, ownership, years of operation.

State archive, IL_221, map Valley Mine (mine index 3615) - Shaft locations, mine outline, mining method.

Mine Index 4332**Union Coal Company, Union Mine No. 1**

Type: Underground Total mined-out acreage shown: 7

SHAFT, SLOPE, DRIFT or TIPPLE LOCATIONS

Type	County	Twp	Section	Quarters-Footage
Main shaft	St. Clair	2N 9W	35	SW NW SW
Air shaft	St. Clair	2N 9W	35	NW SW SW

GEOLOGY

Seam(s) Mined	Depth (ft)	Thickness (ft)			Mining Method
		Min	Max	Ave	
Herrin	101			4.5-6.0	RPB

Geologic Problems Reported:

PRODUCTION HISTORY

Company	Mine Name	Years	Production (tons)
Union Mining Company	Union	1884-1885	9,120
Jones & Hughes	Union	1887-1889 **	13,717
Union Coal Company	Union (No. 1)	1889-1892	<u>17,681</u> ***
			40,518

** Abandoned and re-opened

*** Includes production for Union No. 2 Mine (mine index 4589)

Last reported production: 1892

SOURCES OF DATA

Source Map	Date	Original Scale	Digitized Scale	Map Type
Microfilm, document 351083	2-7-1942	1:1200	1:2400	Secondary source

Annotated Bibliography (data source, brief description of information)

Coal Reports - Production, ownership, years of operation, seam, thickness, depth.

Directory of Illinois Coal Mines (St. Clair County) - Mine names, mine index, ownership, years of operation.

Microfilm map, document 351083, reel 03134, frames 188-190, map of Edgemont Mine (mine index 3613) -
Shaft locations, mine outline, method.

Mine Index 4589**Briar Hill Coal Company, Briar Hill Mine**

Type: Underground Total mined-out acreage shown: 9 Connected underground to Edgemont Mine (mine index 3613) in several places.

SHAFT, SLOPE, DRIFT or TIPPLE LOCATIONS

Type	County	Twp	Section	Quarters-Footage
Main shaft	St. Clair	2N 9W	35	SW SE SW
Air shaft	St. Clair	2N 9W	35	SW SE SW

GEOLOGY

Seam(s) Mined	Depth (ft)	Thickness (ft)			Mining Method
		Min	Max	Ave	
Herrin					RPB

Geologic Problems Reported:

PRODUCTION HISTORY

Company	Mine Name	Years	Production (tons)
Union Coal Company	Union No. 2	before 1874	none *
Briar Hill Coal Company	Briar Hill		none *

* No production reported under these names; production was probably reported under mine index 4332, Union No. 1. The 1874 Atlas of St. Clair County shows a shaft at this location, indicating that mining took place in the early 1870s; production before 1882 is not known.

Last reported production: unknown

SOURCES OF DATA

Source Map	Date	Original Scale	Digitized Scale	Map Type
State archive, IL_393_03	2-7-1942	1:1200	1:1200	Secondary source

Annotated Bibliography (data source, brief description of information)

Directory of Illinois Coal Mines (St. Clair County) - Mine names, mine index, ownership, years of operation.
State archive, IL_393_03, map of Edgemont Mine (mine index 3613) - Shaft locations, mine outline, mining method.

Mine Index 4862**Crown Coal Company, Crown No. 1 Mine**

Type: Underground Total mined-out acreage shown: 13

SHAFT, SLOPE, DRIFT or TIPPLE LOCATIONS

Type	County	Twp	Section	Quarters-Footage
Drift	St. Clair	1N 9W	2	300 FSL, 100 FWL NE SW
Air shaft	St. Clair	1N 9W	2	SW NE SW

The location is from mine notes attached to Crown No. 2 Mine (mine index 3543), indicating a map was seen in the Belleville courthouse (G. H. Cady, 11-9-1937). This is presumably the source of the mine outline, which is more detailed than the WPA or Federal Land Bank Report mine compilations.

GEOLOGY

Seam(s) Mined	Depth (ft)	Thickness (ft)			Mining Method
		Min	Max	Ave	
Herrin					Underground

Geologic Problems Reported:

PRODUCTION HISTORY

Company	Mine Name	Years	Production (tons)
Crown Coal Company	Crown No. 1	1888-1890	<u>57,693</u> 57,693

Last reported production: 1890

SOURCES OF DATA

Source Map	Date	Original Scale	Digitized Scale	Map Type
ISGS mined-out area	1950	1:62500	1:62500	Secondary source
WPA, T1N-R9W	circa 1934	1:12000	1:63360	Secondary source

Annotated Bibliography (data source, brief description of information)

Coal Reports - Production, ownership, years of operation.
Directory of Illinois Coal Mines (St. Clair County) - Mine names, mine index, ownership, years of operation.
ISGS 1950 mined-out area map, Area 27 - Mine outline.
Mine notes (St. Clair County) - Drift location.
WPA, T1N-R9W - Drift and air shaft locations, mine type.

Mine Index 6639**Standard Coal Company, Summit Mine**

Type: Underground Total mined-out acreage shown: 27 Production indicates less than two additional acres were mined. Most of the area shown was mined prior to production reports.

SHAFT, SLOPE, DRIFT or TIPPLe LOCATIONS

Type	County	Twp	Section	Quarters-Footage
Main shaft	St. Clair	1N 9W	11	NW SE NE
Air shaft	St. Clair	1N 9W	11	SW NE NE

GEOLOGY

Seam(s) Mined	Depth (ft)	Thickness (ft)			Mining Method
		Min	Max	Ave	
Herrin	175			5.0-6.0	RPB

Geologic Problems Reported:

PRODUCTION HISTORY

Company	Mine Name	Years	Production (tons)
Summit Mining Company	Summit	1865-1884	14,347 *
Standard Coal Company	Summit	1884-1885	18,653
Standard Coal Company	Summit	1885-1886	<u>8,500</u> **
			41,500

* Production prior to 1884 unknown

** Production after map date

Last reported production: 1886

SOURCES OF DATA

Source Map	Date	Original Scale	Digitized Scale	Map Type
Microfilm, document 351017	11-5-1885	1:1200	1:1821	Not final
State archive, PB_96	9-15-1923	1:2400	1:2400	Secondary source

Annotated Bibliography (data source, brief description of information)

Coal Reports - Production, ownership, years of operation.

Directory of Illinois Coal Mines (St. Clair County) - Mine names, mine index, ownership, years of operation.

Microfilm map, document 351017, reel 03134, frame 92 - Shaft locations, mine outline, mining method.

Mine notes (St. Clair County) - Thickness, depth, seam, mine type, shaft locations.

State archive, PB_96, map of Superior Mine (mine index 78) - Mine outline (northern portion).

OTHER MINES SHOWN ON THE FRENCH VILLAGE QUADRANGLE MAP

For these mines, generally a location is known, while the operating names, dates of operation and production totals are not known.

Mine Index 3611, Grandview Mine NE SW SE 26-T2N-R9W, drift or shaft, 6.5 ft thick source: ISGS field notes (H. E. Culver, 1921); mine notes (F. H. Monroe, 5-4-1921)

Mine Index 4259, Smith Mine NE SE SE 20-T1N-R8W source: ISGS mined-out area map (Area 27, 1950)

Mine Index 4263, Middle Coal Company NE NE SE 20-T1N-R8W source: ISGS mined-out area map (Area 27, 1950), and Atlas of St. Clair County, Illinois (1874)

Mine Index 4272 SE SW SE 9-T1N-R9W, drift source: Federal Land Bank Report (St. Clair County) & ISGS field notes (G. H. Cady, 12-1929)

Mine Index 4273 NW NE SW 11-T1N-R9W source: Mine notes

Mine Index 4327 SW SE NE 17-T2N-R8W, shaft source: ISGS field notes (G. H. Cady, 10-26-1929), Atlas of St. Clair County, Illinois (1874)

Mine Index 4328 NE SW NE 17-T2NR8W, shaft source: ISGS field notes (G. H. Cady, 10-26-1929), Atlas of St. Clair County (1874)

Mine Index 4339 N 1/2 SW SW 9-T1N-R9W source: ISGS field notes (G. H. Cady)

Mine Index 4340 NW NW SE 9-T1N-R9W source: ISGS field notes (G. H. Cady)

Mine Index 6666 NW SW SW 12-T1N-R9W source: microfilm map, document 350981, reel 03134, frame 45, map of New Bell Heat Coal Company (mine index 3550)

Mine Index 6880 SE NW SE 34-T2N-R9W source: Atlas of St. Clair County, Illinois (1874)

Mine Index 6881 NW SW SE 34-T2N-R9W source: Atlas of St. Clair County, Illinois (1874)

Mine Index 6882 SE SW SE 35-T2N-R9W source: Atlas of St. Clair County, Illinois (1874)

Mine Index 6883 SE SE NE 34-T2N-R9W, drift source: Microfilm map, document 351128, map of Ziska Mine (mine index 3612)

Mine Index 6885 NE SE NE 10-T1N-R9W source: Atlas of St. Clair County, Illinois (1874)

Mine Index 6886 NW NE SW 10-T1N-R9W source: Atlas of St. Clair County, Illinois (1874)

Mine Index 6887 NW SE NW 11-T1N-R9W source: Atlas of St. Clair County (1874) & Federal Land Bank Report

Mine Index 6889 SW NW NE 7-T1N-R8W source: Atlas of St. Clair County, Illinois (1874)

Mine Index 6890 NE SW SE 18-T1N-R8W, 3 shafts source: Atlas of St. Clair County, Illinois (1874)

Mine Index 6891 NE NE NE 18-T1N-R8W source: Atlas of St. Clair County, Illinois (1874)

Mine Index 6892 SW NW NW 20-T1N-R8W source: Atlas of St. Clair County, Illinois (1874)

Mine Index 6893 NE NW NE 26-T1N-R9W source: ISGS field notes (G. H. Cady, undated)

Mine Index 6894 NE NW NE 24-T1N-R9W source: ISGS field notes (G. H. Cady, undated)

Mine Index 6895 NW 3-T1N-R9W source: Federal Land Bank Report (9-1934)

Mine Index 6896 SE 10-T1N-R9W source: Federal Land Bank Report (9-1934)

Mine Index 6898 NW SE SE 26-T1N-R9W source: Federal Land Bank Report (9-1934)

Mine Index 6899 NW NW SW 2-T1N-R9W, drift mine source: ISGS 1950 mined-out area map (Area 27, 1950)

Mine Index 6900 SW SW NW 10-T1N-R9W, slope, 6 ft thick source: ISGS field notes (G. H. Cady, undated)

Mine Index 6901 SE SW NW 10-T1N-R9W source: ISGS field notes (C. G. Ball, 10-24-1929)

Mine Index 6902 SW SE NW 10-T1N-R9W, slope source: ISGS field notes (G. H. Cady, 12-29-1928)

MINES WHOSE LOCATIONS ARE NOT KNOWN, FRENCH VILLAGE QUADRANGLE

The locations of the following mines are unknown, but the production tonnage, operating names, and nearest town were reported in the Annual Coal Reports. The mines listed below mined in or near the French Village Quadrangle. The information is similar to that presented on the summary sheets in the previous pages of this directory. The first item is the name the mine operated under as listed in the Coal Report, then the years the mine reported. If no physical data are available, the next item listed is the total tons produced by the mine. If physical data are available, the order of presentation is as follows: type of opening for the mine (drift, slope or shaft), depth of coal in feet, and thickness of coal in feet.

The total tons mined by these unlocated mines is 1,235,846 (1,177,054 underground mined, 50 surface mined, and 58,742 mined by uncertain method), which would represent approximately 190 to 310 acres, depending on the recovery factor, mining method, and numerous other factors. The Coal Reports indicate that an additional 422 acres were mined prior to 1882. (Note: 1 square mile = 640 acres)

BELLEVILLE

Taylor (Henry), pre1881-1882, shaft, Herrin, 90, 6.5	10,000 tons
Smith (G. F.), pre1881-1883, shaft, Herrin, 120-130, 6.5	17,168 tons
Grantz & Company, pre1881-1882, shaft, Herrin, 90, 6.5	5,084 tons
Hazard, Wilson & Company, pre1882-1883, shaft, Herrin, 100-140, 6.5-8.5, RP	30,075 tons
Enterprise Coal Mining Company, 1883-1886	27,130 tons
Consolidated Coal Company of St. Louis, Enterprise Mine, 1886-1888	20,534 tons
Enterprise Coal Company, 1889-1892	18,284 tons
Gast (Joseph), 1892-1893	<u>5,168 tons</u>
	101,191 tons
Philips & Weber leased the Enterprise Mine from 1886 to 1888.	
Gellwicks & Richards, 1882-1883, shaft, Herrin, 40-60, 6.0-6.5, RP	7,000 tons
Gelwicks (G. B.), 1883-1886	14,536 tons
Gelwicks & Herlback, 1886-1887	3,400 tons
Gelwick (George), 1887-1889	<u>6,215 tons</u>
	31,151 tons
Sertel (John), pre1881-1882, shaft, Herrin, 80, 6.5	500 tons
Padfield & Company, pre1881-1883, shaft, Herrin, 55-90, 6.0	1,400 tons
Taylor (Henry), pre1881-1883, shaft, Herrin, 80-100, 6.0-6.5	13,000 tons
Taylor (John), pre1881-1883, shaft, Herrin, 90, 6.0	5,000 tons
Hoard (John), pre1881-1883, slope, Herrin, 50, 7.0	5,350 tons
Reiher (George), 1882-1883, —, Herrin, 86, 6.0	4,000 tons
Winder (John) & Company, pre1882-1883, shaft, Herrin, 40, 6.0	300 tons
Knous & Company, 1883-1884, slope, Herrin, 35-120, 6.0, RP	200 tons
Knous (Joseph) & Brother, 1884-1885	12,680 tons
Knous Brothers, 1885-1886	<u>14,980 tons</u>
	27,860 tons
Reeb (Peter), 1883-1884, slope, Herrin, 40-110, 2.5-7.0	1,182 tons
Simeson & Company, 1882-1883, slope, Herrin, 100, 7.0	200 tons
Seib & Company, pre1882-1883, shaft, Herrin, 120, 6.0	7,100 tons
Liehl (John), 1882-1883, shaft, Herrin, 60, 6.0	800 tons
Seiberd (George), 1882-1883, drift, Herrin, —, 6.0	300 tons

Rubble (William), 1883-1886, shaft, Herrin, 90, 6.0, HER The tonnage was produced by pulling pillars of an older mine.	17,160 tons
Harst (John), 1884-1886, shaft, Herrin, 55, 6.5-7.5, RP	5,220 tons
Drexel & Johnson, 1886-1887	3,000 tons
Hurst (Thomas), 1887-1889	2,750 tons
Harst (John), 1889-1906	<u>67,583</u> tons
	78,553 tons
Lill (Jacob), 1884-1885, shaft, Herrin, 45, 6.0, RP	860 tons
Bee (John H.), shaft, Herrin, 130, 6.5, RP	960 tons
Maddox & Son, 1888-1889	4,730 tons
Dickinson & Jones, 1888-1889	518 tons
Lill & Schinider, 1887-1889	2,200 tons
Taylor (Henry), 1888-1889	1,000 tons
Betts, Richard & Company, 1888-1889	900 tons
Pittsburg Mining Company, 1887-1891, shaft, Herrin, 132, 6.5, RP	47,480 tons
Macke (Christ C.), 1889-1890	800 tons
Abend No. 2 Mine, 1889-1890, shaft, Herrin, 60-90, 6.0-8.0, RP	1,600 tons
Groom Brothers, No. 2 Mine, 1890-1891	5,150 tons
Brosius Brothers (John & Charles), 1891-1896	<u>14,400</u> tons
	21,150 tons
Rebel Mine, 1889-1890, shaft, Herrin, 60-66, 6.0-6.5, RP	1,440 tons
Weiss (Nicholas), 1890-1901	<u>23,006</u> tons
	24,446 tons
St. George Coal Mining Company, 1890-1891, shaft, Herrin, 70-120, 6.0-6.5, RP	280 tons
Branch (George H.), 1891-1893	<u>5,461</u> tons
	5,741 tons
Crown Coal & Tow Company, No. 3 Mine, 1894-1895	Not reported
Crown Coal & Tow Company, No. 4 Mine, 1895-1896 shaft, Herrin, 125-150, 6.0-7.0, RP	236,997 tons
Massie Coal Company, No. 2 Mine, 1895-1898, shaft, Herrin, 90, 6.0, RP	69,827 tons
Georgetown Road Coal Company, 1901-1904, shaft, Herrin, 66, 6.0, RP	7,000 tons
Branch (John), 1905-1906, drift, Herrin, 50, 6.0, RP	1,000 tons
Bosanko (Alfred), 1915-1917, slope, Herrin, 40, 6.0, RP	1,775 tons
Grimming (Wendel), 1924-1925	348 tons
Dahm (Alfred), 1935-1935, underground	2,030 tons
Pannier (L.) & Son, 1935-1935, surface	50 tons
BIRKNER	
Knechte (Daniel), pre1881-1882, shaft, Herrin, 140, 7.0	6,430 tons

Winslow Coal Company, pre1881-1883, shaft, Herrin, 115-120, 6.0-6.5	12,030 tons
Keable Brothers, pre1881-1882, shaft, 115-120 deep, 6.5-7.0 thick Avery Coal Company, 1882-1883	Not reported 5,000 tons
Daniels & Marsh, 1884-1885, shaft, 135 deep, 6.0 thick Marsh & Son, 1885-1887	5,286 tons <u>11,820</u> tons 17,106 tons
Randall (J.) & Company, 1884-1886, shaft, Herrin, 135, 6.0-7.0, RP Consolidated Coal Company of St. Louis, Randall Mine, 1886-1887	25,300 tons <u>3,466</u> tons 28,766 tons
Johnson & Avery, 1887-1888	14,155 tons

CASEYVILLE

Providence Coal Company, 1881-1884, shaft, Herrin, 90-98, 6.0	21,468 tons
Maelh (John), pre1881-1882, drift, Herrin, 35, 5.5	500 tons
Haig & Doyle, 1886-1887, drift, Herrin, 60, 6.0, RP Doyle (James), No. 1 Mine, 1887-1889	1,000 tons <u>784</u> tons 1,784 tons
Brennan (Robert), 1888-1890, drift	620 tons
Doyle (James), No. 2 Mine, 1888-1889	35 tons
Marshall (John), 1902-1904, drift, Herrin, —, 6.0, RP Elliott & Company, 1905-1906	2,500 tons <u>4,320</u> tons 6,820 tons
Griffith & Warner, 1898-1901, drift, Herrin, —, 6.0, RP Griffith (M.), 1901-1902	2,470 tons <u>1,000</u> tons 3,470 tons
Marshall (John C.), 1899-1902, drift, Herrin, —, 6.0, RP	3,300 tons
Buhl (William) & West (John & Fred), 1932-1933, underground	24,104 tons
Nolte (George), 1935-1935, underground	110 tons
Brennan & Company, Brennan Mine, drift, Herrin, —, 6.0, RP	800 tons

CENTERVILLE

Feierhan Mine, 1882-1883, shaft, Herrin, 50, 6.0	8,000 tons
Groasman Mine, 1882-1883, drift, Herrin, —, 6.0	560 tons
Lamont (James), No. 2 Mine, 1888-1889, drift, Herrin, 42-60, 6.0, RP Sliment (James) & Son, 1889-1898 Fleming & Son, 1898-1900 Slement (James) & Son, 1900-1902	730 tons 9,625 tons 2,500 tons <u>3,000</u> tons 15,855 tons
Lamont (James), No. 1 Mine, 1887-1889	634 tons
Sliment (James) & Son, 1905-1909, drift, Herrin, 20-40, 6.0, RP	12,390 tons

DUTCH HOLLOW

East St. Louis Mercantile & Mining Company, 1900-1901, shaft	1,800 tons
--	------------

EAST ST. LOUIS

Boyce Brothers, 1929-1929, underground	357 tons
--	----------

Fults (Scott), 1931-1931, underground	3,550 tons
---------------------------------------	------------

Van Hoose (C. C.), 1933-1933, underground	1,500 tons
---	------------

EDGEMONT

Lerner Coal Company, 1917-1918, drift, 5 deep, 5.5-6.0 thick	2,400 tons
--	------------

Tiolard (Albert), 1919-1922	3,246 tons
-----------------------------	------------

May & Tennant, 1920-1921	1,740 tons
--------------------------	------------

May Coal Company, 1922-1924	<u>4,162 tons</u>
	5,902 tons

Van & Van Coal Company, 1929-1929, underground	1,149 tons
--	------------

FRENCH VILLAGE

Silk, Lee & Company, pre1881-1882, drift, Herrin, 35, 5.5	2,000 tons
---	------------

Davis (William), pre1881-1882, drift, Herrin, 40, 7.0	1,000 tons
---	------------

Charleton (James), No. 1 Mine, 1884-1890, drift, Herrin, 100, 5.5-7.0, RP	3,100 tons
---	------------

Ferber (Lawrence), 1884-1892, slope or drift, Herrin, 100, 5.5-7.0, RP	2,440 tons
--	------------

Davis & Steel, 1888-1889	60 tons
--------------------------	---------

Miller & Company, 1905-1906, drift, Herrin, 52, 6.0	1,100 tons
---	------------

ST. LOUIS

Donk Brothers, pre1881-1882, shaft, 100 deep, 6.5 thick	6,250 tons
---	------------

Savitz (George F.), pre1881-1882, shaft, Herrin, 80, 6.5	11,000 tons
--	-------------

Savitz (George F.), pre1881-1882, shaft, Herrin, 90, 6.5	300 tons
--	----------

Savitz (George F.), pre1881-1882, shaft, Herrin, 160, 6.5	33,000 tons
---	-------------

Herring & Donenwald, pre1881-1882, shaft, Herrin, 140, 5.5	16,000 tons
--	-------------

Kennedy Coal Company, pre1881-1882, shaft, Herrin, 100, 6.5	10,000 tons
---	-------------

Donk Brothers, pre1881-1883, slope, Herrin, 40, 6.5	52,000 tons
---	-------------

Yoch (Joseph), 1882-1883, shaft, Herrin, 150, 5.0	4,500 tons
---	------------

WEST BELLEVILLE

Roes (John), pre1881-1882, shaft, Herrin, 110, 7.0	5,000 tons
Roes (John), pre1881-1882, shaft, Herrin, 100, 7.0	10,000 tons
Baird (John), No. 2 Mine, pre1881-1883, shaft, Herrin, 110-130, 5.0	14,500 tons
Baird (John), No. 1 Mine, pre1881-1883, shaft, Herrin, 110-120, 5.5-6.0	15,000 tons
Yoch (Joseph) & Brother, pre1881-1883, shaft, Herrin, 100-110, 5.5-6.0	13,100 tons
Johnson (J.) Coal Company, 1883-1889, shaft, Herrin, 120, 5.5-6.0	51,814 tons
Northwestern Coal Company, 1885-1886, shaft, Herrin, 180, 5.5	8,000 tons
Laurel Hill Coal Company, 1885-1886, shaft, Herrin, 140, 5.0	7,600 tons

INDEX TO MINES IN THE FRENCH VILLAGE QUADRANGLE

Abend No. 2 Mine	78
Adams Coal & Tow Company, Ruby Mine.	10
Alcoa Ore Company	14
Aluminum Ore Company	14
Avery (Johnson & Avery)	79
Avery & Company, Birkner Mine	20
Avery & Randle	48
Avery Coal & Mining Company, Oakland Mine	23
Avery Coal Company	79
B. B. Coal Company	47
Baird (John), No. 1 Mine	81
Baird (John), No. 2 Mine	81
Baird & Beatty	63
Barton-Senior Coal Company	59
Beck & White Coal Company.	61
Beck-Walker Coal Company	26
Bee (John H.).	78
Bell Heat Coal Company	47
Betts, Richard & Company.	78
Birkner Mine.	20
Black Eagle Mine.	11
Bluff View Coal Company	65
Bosanko (Alfred)	78
Boyce Brothers	80
Branch (George H.)	78
Branch (John)	78
Branch Mine.	14, 39
Brandenberger (Andrew)	41
Brandenberger (William)	63
Brennan (Robert).	79
Brennan & Company	79
Bretz & Schilling.	15
Briar Hill Coal Company.	42, 73
Brosius Brothers (John & Charles)	78
Buhl (William) & West (John & Fred)	79
Bunker Hill Coal Company.	45
Buxton (John)	59
Buxton (Mueller & Buxton).	59
Caseyville Coal Company	52
Chapple (Mowe & Chapple).	52
Charleton (James), No. 1 Mine	80
Charleton (James), No. 2.	59
Chester shaft.	62
Cluly-Miller Coal Company, Ruby Mine	10
Colby Mine.	46
Columbia Collieries Company	26
Concordia Mining Company.	38
Consolidated Coal Company of St. Louis	
Birkner Mine	20
Concordia Mine	38
Dutch Hollow Mine.	25
Gartside No. 4 Mine.	31
Grant Mine.	62
Green Mount Mine.	27
Knecht Mine	24
Lenz Mine	22
Northwestern Mine	28
Poynton Mine	35
Reinecke No. 2 Mine.	68
Rose Hill Mine	29
Schureman Mine	30
Skellett Mine	30
Yock Mine	17

Consolidated Coal Company of St. Louis, Enterprise Mine	77
Consolidated Coal Company of St. Louis, Randall Mine	79
Consumer's Coal Company, Ruby Mine	10
Crown Coal & Iron Company, No. 2.	43
Crown Coal & Iron Company, No. 4.	49
Crown Coal & Tow Company, No. 1	47
Crown Coal & Tow Company, No. 2	43
Crown Coal & Tow Company, No. 3 Mine	78
Crown Coal & Tow Company, No. 4 Mine	78
Crown Coal Company, No. 1	74
Crown Coal Company, No. 2	43
Dahm (Alfred)	78
Daniels (Sam), Gartside No. 4.	31
Daniels & Marsh	79
Davis (William).	80
Davis & Company	60
Davis & Steel.	80
Devil's Hole Coal Company	52
Devoy & Feuerborn, Knecht Mine	24
Dewey Coal & Mining Company	31
Dickinson & Jones	78
Donenwald (Herring & Donenwald)	80
Donk Brothers	80
Dove (Charles C.)	54
Doyle (Haig & Doyle)	79
Doyle (James), No. 1 Mine	79
Doyle (James), No. 2 Mine	79
Drexel & Johnson	78
Drift Coal Company	54
Dutch Hollow Coal Company	
Birkner Mine	20
Dutch Hollow Mine.	25
Oakland Mine	23
East Bell Coal Company	15
East St. Louis Mercantile & Mining Company	80
Edgemont Coal Company	59, 60
Elliott & Company	79
Emery (Harding, Emery & Company).	62
Enterprise Coal Company	77
Enterprise Coal Mining Company	77
Erhstein & Pruessing	18
Excelsior Mine	70
Feierhan Mine	79
Feuerborn (Devoy & Feuerborn)	24
Fleming & Son.	79
French Village Coal Company	55
Fufts (Scott)	80
G & E Coal Company	26
Gartside Coal Company	
Branch Mine	31
No. 2	31
No. 3	31
No. 4	31
Gast (Joseph)	77
Gellwicks & Richards	77
Gelwick (George).	77
Gelwicks (G. B.).	77
Gelwicks & Herlback	77
Georgetown Road Coal Company	78
Glendale Coal & Mining Company, No. 2	34
Grandview Mine	76
Grant Mine.	19, 62
Grantz & Company	77
Green Mound Coal Company	27
Green Mount Coal & Mining Company	27

Grieve (Ratican, Joyce & Grieve)	10
Griffith (M.)	79
Griffith & Warner	79
Grimming (Wendel)	78
Groasman Mine	79
Groom (John), Green Mount Mine	27
Groom (John), Rose Hill Mine	29
Groom Brothers, No. 2 Mine	78
Guest (Joseph) & Sons, Suburban Mine	16
Guest Coal Company	32
Gundlach Coal Company	13
Haig & Doyle	79
Harding, Emery & Company, No. 1	62
Harding, Emery & Company, No. 2	62
Harmony Coal Company	47
Harris (Evan)	70, 71
Harris Brothers	47
Harst (John)	78
Harzard Coal Company, No. 1	62
Hazard, Wilson & Company	29, 62, 77
Herlback (Gelwicks & Herlback)	77
Herring & Donenwald	80
Hickory Coal Mining Company	67
Hippard Coal Company, No. 2	52
Hoard (John)	77
Hughes (Jones & Hughes)	72
Hurst (Thomas)	78
Izatt (William), Pollock Mine	21
Johnson (Drexel & Johnson)	78
Johnson (J.)	81
Johnson & Avery	79
Johnson Coal Company, Briar Hill Mine	42
Johnson Coal Company, Gartside No. 4	31
Jones (Dickinson & Jones)	78
Jones & Hughes	72
Joyce (Ratican, Joyce & Grieve)	10
Kaplar (B.)	56
Keable Brothers	79
Kelly Mine	69
Kennedy Coal Company	80
Kerchner (F.), Northwestern Mine	28
Kloess (John), No. 2	33
Knecht (Daniel)	24
Knechte (Daniel)	78
Knous (Joseph) & Brother	77
Knous & Company	77
Knous Brothers	77
Kolb Coal Company, Valley Mine	61
Krantz (Jacob)	39
Lake Coal Company	42
Lake Superior Coal Company, Branch Mine	39
Lamont (James), No. 1 Mine	79
Lamont (James), No. 2 Mine	79
Laurel Hill Coal Company	81
Lee (Silk, Lee & Comany)	80
Lenz Coal & Mining Company	47
Lenz Mine	22
Lerner Coal Company	80
Liehl (John)	77
Lill (Jacob)	78
Lill & Schinider	78
Macke (Christ C.)	78
Maddox & Son	78
Madison Coal Company, No. 7	49
Madison Coal Corporation, No. 7	49

Maelh (John)	79
Marsh (Daniels & Marsh)	79
Marsh & Son	79
Marshall (John C.)	79
Marshall (John)	79
Massie Coal Company, No. 2 Mine	78
Maule Coal & Mining Company, Harmony Mine	47
May & Tennant	80
May Coal Company	80
Middle Coal Company	76
Miller (Cluly-Miller Coal Company).	10
Miller (Howard E.), Ruby Mine	10
Miller & Company	80
Morgan (F. C.) Coal Company.	50
Mowe & Chapple	52
Mueller & Buxton	59
Murphy (Frank)	37
Murphy (Frank), No. 2	14
Murphy (Fred), No. 1	37
Murphy (Frederick), Branch Mine	14
New Bell Heat Coal Company	47
New Devil's Hole Coal Company	52
New Prospect Park Coal Company	57
New Royal Coal Company.	26
New St. Clair Coal Company	53
Nolte (George).	79
Northwestern Coal Company.	28, 81
Oak Hill Coal Company	32
Oakland Coal Company.	23
Padfield & Company	77
Pannier (L.) & Son	78
Penn (George).	60
People's Coal Company	52
Perry Coal Company, Superior Mine	9
Philips & Weber	77
Phillips & Weber, Rose Hill Mine	29
Piana (Martin)	44
Pioneer Coal Company	40
Pittsburg Mining Company.	78
Pollock Mine	21
Poynton Mining Company	35
Prospect Park Coal Company	57
Providence Coal Company	79
Pruessing (Erhstein & Pruessing)	18
Pyramid Coal Company, No. 4 Mine	13
Quality Coal & Mining Company	31
Quick Mining Company	52
Radium Coal Company	14
Randall (J.) & Company.	79
Randle (Avery & Randle)	48
Ratican (William), Ruby Mine.	10
Ratican, Joyce & Grieve	10
Rebel Mine.	78
Reeb (Conrad).	15
Reeb (Peter)	77
Reeb Brothers	15
Reeb Coal Company, Branch Mine	39
Reeb Coal Company, Murphy Mine.	14
Reed Mine	63
Reiher (George).	77
Reinecke (Conrad), No. 2 Mine	68
Richard (Betts, Richard & Company).	78
Richards (Gellwicks & Richards)	77
Ritchie & Company	66
Roes (John).	81

Roma Coal Company	44
Rose Hill Mining Company	29
Royal Coal Company	26
Rubble (William)	78
Ruby Mining Company	10
Sargent Coal Company	52
Sauer (Fred), Knecht Mine	24
Savitz (George F.)	80
Schilling (Bretz & Schilling)	15
Schinider (Lill & Schinider)	78
Schramm (Richard)	40
Schureman Brothers	30
Seib & Company	77
Seiberd (George)	77
Senior (L.)	59
Senior (L.), Branch Mine	39
Sertel (John)	77
Seven Partners Coal Company	57
Signal Hill Coal Company	60
Signal Point Coal & Coke Company	60
Silk, Lee & Company	80
Simeson & Company	77
Skellett (William)	30
Slement (James) & Son	79
Sliment (James) & Son	79
Smith (G. F.)	77
Smith Mine	76
Southern Coal & Mining Company	
No. 1, Avery Mine	48
No. 2, Harmony Mine	47
No. 3, Oakland Mine	23
No. 4, Oak Hill Mine	32
No. 5, Glendale Mine	34
Southern Coal, Coke & Mining Company, No. 1	48
St. Clair Co operative Mining & Supply Co.	22
St. George Coal Mining Company	78
St. Louis & O'Fallon Coal Company	
No. 1	12
No. 2, Black Eagle Mine	11
Ruby Mine	10
Standard Coal Company	75
Steel (Davis & Steel)	80
Strawbinger (Conrad)	66
Suburban & Superior Mining Company, Suburban Mine	16
Suburban Coal & Mining Company	16
Suburban Coal Company	16
Summit Mining Company	75
Sun Ray Mine	57
Superior Coal & Mining Company, Superior Mine	9
Superior Mining Company, Valley Mine	61
Taylor (Henry)	77, 78
Taylor (James)	64
Taylor (John)	77
Taylor Brothers	64
Tennant (May & Tennant)	80
Tiolar (Albert)	80
Travis (William)	45
Twelve Apostles Mine	47
Union Coal Company, No. 1	72
Union Coal Company, No. 2	73
Union Mine	52
Valley Coal & Mining Company	61, 63
Van & Van Coal Company	80
Van Hoose (C. C.)	80
Victor Mine	71

Victoria Coal Company	
B. B. Mine	47
Buxton Drift	59
No. 1 or Branch Mine	39
Suburban Mine	16
Walker (Beck-Walker Coal Company)	26
Walnut Hill Coal Company	48
Warner (Griffith & Warner)	79
Washington Mine	63
Weber (Philips & Weber)	77
Weisenborn (Sebastian)	47
Weiss (Nicholas)	78
Welch Mining Company, Excelsior Mine	70
Welch Mining Company, Victor Mine	71
West (Buhl & West)	79
West Belleville Coal Company	34
West End Coal Company	34
Westwood (T.), Schureman Mine	30
White (Beck & White Coal Company)	61
White Ash Coal Company	52, 56
White Coal Company, Valley Mine	61
White Rose Coal Company	15
White Rose Mining Company	15
Whitmore (M.), Knecht Mine	24
Wilson (Hazard, Wilson & Company)	29, 62, 77
Winder (John) & Company	77
Winona Mine	36
Winslow Coal Company	78
Winter (Sam)	47
Woodland Coal Company	54
Yoch (Joseph)	17, 80
Yoch (Joseph) & Brother	81
Yock (Joseph)	17
Yock Brothers	17
Yock Coal & Mining Company	32
Young (I. E. or J. E.)	60
Ziska (Fred)	58

