

## Springfield Coal

Mining Method	
	Room & Pillar (RP)
	Room & Pillar Basic (RPB)
	Modified Room & Pillar (MRP)
	Room & Pillar Panel (RPP)
	Blind Room & Pillar (BRP)
	Checkerboard Room & Pillar (CRP)
	High Extraction Retreat (HER)
	Longwall (LW)
	Underground, Method Unknown
	Strip Mine
	Auger Mine
	General Area of Mining

**Other Areas Depicted**  
 Non-Coal Mines

- Final Mine Map
- Not Final Mine Map
- Undated Mine Map
- - - Incomplete Mine Map
- Secondary Source Map

Strip Mine Tipple - Active  
Strip Mine Tipple - Abandoned  
Mine Shaft - Active  
Mine Shaft - Abandoned  
Mine Slope - Active  
Mine Slope - Abandoned  
Mine Drift - Active  
Mine Drift - Abandoned  
Air Shaft  
Uncertain Location  
Uncertain Type of Opening

### Other Points Depicted

#### Non-Coal Mines

**Mine Annotation**  
(space permitting)  
Company  
Mine Name  
ISGS Index No., Years of Operation

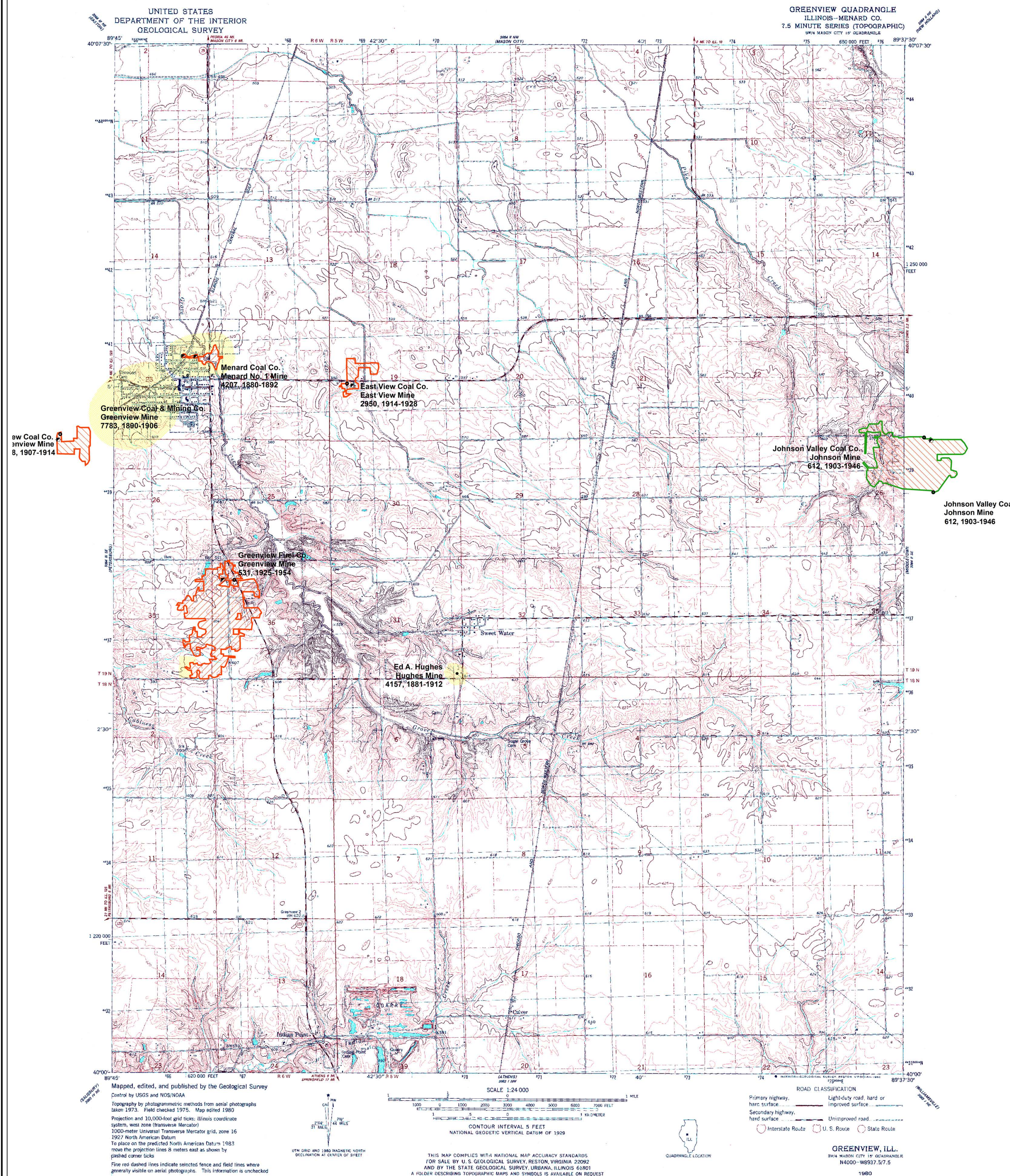
**Disclaimer**  
Please check the Coal Section at the Illinois State Geological Survey's web site at <http://www.isgs.illinois.edu> for the most up-to-date version of these products

Note that each quadrangle scale mined-out area map requires the use of the associated text directory for full explanation of map features and mine attributes. Also note that some quadrangles have multiple seams of mining and therefore more than one map may be available for a particular quadrangle. Please take care to check for multiple maps, as extensive mining may exist in the other seams.

The maps and digital files used for these studies were compiled from data obtained from a variety of public and private sources and have varying degrees of completeness and accuracy. This compilation map presents reasonable interpretation of the geology of the area and is based on available data. Locations of some mine features may be offset by 500 feet or more due to errors in the original source maps, the compilation process, digitizing, or a combination of these factors. These data are not intended for use in site-specific screening or decision-making. Use of these documents does not eliminate the need for detailed studies to fully understand the geology of a specific site. The State of Montana makes no warranty, expressed or implied, regarding the correctness of the interpretations presented in this data set and accept no liability for the consequences of decisions made by others on the basis of the information presented here.

These maps were designed for use at 1:24,000. Enlarging the map may reduce accuracy, as the original scale of the source maps used to compile the outlines shown varies from 1:400 to 1:150,000, and some mine locations are known only from text descriptions. See the accompanying mine directory for the original scale of the source map used for a specific mine to check accuracy at a given portion of the map. Areas with no mines shown may still be undetermined; see the unlocated mines list at the back of each mine directory.

The image of the U.S.G.S. topographic base map was projected from the original UTM to Lambert Conformal Conic.







# **DIRECTORY OF COAL MINES IN ILLINOIS 7.5-MINUTE QUADRANGLE SERIES GREENVIEW QUADRANGLE MENARD COUNTY**

Alan R. Myers & C. Chenoweth



2009

Institute of Natural Resource Sustainability  
William W. Shilts, Executive Director  
**ILLINOIS STATE GEOLOGICAL SURVEY**  
E. Donald McKay III, Interim Director

Natural Resources Building  
615 East Peabody Drive  
Champaign, Illinois 61820

Phone 217-244-4610  
Fax 217-333-2830



This material is based upon work supported by the Illinois Mine Subsidence Insurance Fund. Any opinions, findings, and conclusions or recommendations expressed in this publication are those of the authors and do not necessarily reflect the views of the Illinois Mine Subsidence Insurance Fund.

**Cover photo** Track-mounted duckbill loading machine at a Peabody Coal Company mine, ca. 1915.

DISCLAIMER: The accuracy and completeness of mine maps and directories vary with the availability of reliable information. Maps and other information used to compile this mine map and directory were obtained from a variety of sources and the accuracy of some of the original information cannot be verified. Consequently, the Illinois State Geological Survey (ISGS) cannot guarantee the mine maps are free of errors and disclaims any responsibility for damages that may result from actions or decisions based on them.

The ISGS updates the maps and directories periodically, and welcomes any new information or corrections. Please contact the Coal Section of the ISGS at the address shown on the title page of this directory, or telephone (217) 244-4610.

© 2009 The Board of Trustees of the University of Illinois. All rights reserved.  
For permission information, contact the Illinois State Geological Survey.

## CONTENTS

INTRODUCTION .....	1
MINING IN THE GREENVIEW QUADRANGLE .....	1
PART I EXPLANATION OF MAP AND MINE SUMMARY SHEET .....	2
INTERPRETING THE MAP .....	2
Mine Type and Mining Method .....	2
Source Maps .....	3
Points and Labels .....	3
INTERPRETING A MINE SUMMARY SHEET .....	6
REFERENCES .....	8
PART II DIRECTORY OF MINES IN THE GREENVIEW QUADRANGLE .....	9
MINE SUMMARY SHEETS .....	9
Mine Index 531	
Greenview Fuel Company, Greenview Mine .....	9
Mine Index 612	
Johnson Valley Coal Company, Johnson Mine .....	10
Mine Index 2950	
East View Coal Company, East View Mine .....	11
Mine Index 4157	
Ed A. Hughes, Hughes Mine .....	12
Mine Index 4207	
Menard Coal Company, Menard No. 1 Mine .....	13
Mine Index 7783	
Greenview Coal & Mining Company, Greenview Mine .....	14
INDEX OF MINES IN THE GREENVIEW QUADRANGLE .....	15



## **INTRODUCTION**

Coal has been mined in 76 counties of Illinois. More than 7,400 coal mines have operated since commercial mining began in Illinois about 1810; fewer than 30 are currently active. To detail the extent and location of coal mining in Illinois, the Illinois State Geological Survey (ISGS) has compiled maps and directories of known coal mines. The ISGS offers maps at a scale of 1:100,000 and accompanying directories for each county in which coal mining is known to have occurred. Maps at a scale of 1:24,000 and accompanying directories, such as this, are available for selected quadrangles. Contact the ISGS for a list of these quadrangles.

These larger scale maps show the approximate positions of mines in relation to surface features such as roads and water bodies, and indicate the mining method used and the accuracy of the mine boundaries. The maps are useful for locating mine boundaries relative to specific properties and for assessing the potential for subsidence in an area. Mine boundaries compiled from final mine surveys are generally shown within 200 feet of their true position. As a result of poor cartographic quality and inaccuracies in the original mine surveys, boundaries of some older mines may be mislocated on the map by 500 feet or more. Original mine maps should be consulted in situations that require precise delineation of mine boundaries or internal workings of mined areas.

This directory serves as a key to the accompanying mine map and provides basic information on the coal mines in the quadrangle. The directory is composed of two parts. Part I explains the symbols and patterns used on the accompanying map and the summary data presented for each mine. Part II numerically lists the mines in the quadrangle and summarizes the geology and production history of each mine. Total production for the mine, not the portion in the quadrangle, is given.

## **MINING IN THE GREENVIEW QUADRANGLE**

The first mining that took place in the Greenview Quadrangle was in 1880, when the Greenview Coal Company sank their shaft (mine index 4207). The mine was about 100 feet deep and located next to the Chicago & Alton Railroad. During the next year, Ed Hughes opened his mine near Sweetwater (mine index 4157, in SE 31-T9N-R5W). The other mines were all considerably deeper than the first mine, ranging from 122 to 185 feet deep. All worked in the Springfield Coal, and presumably had similar geologic problems as the mine in Sangamon County to the southeast (horsebacks, clay dikes, etc.), but little is known of the operating difficulties of the Menard County mines.

## PART I EXPLANATION OF MAP AND MINE SUMMARY SHEET

### INTERPRETING THE MAP

The map accompanying this directory shows the location of coal mines known to be present in the quadrangle. The map, corresponding to a U.S. Geological Survey (USGS) 7.5-minute quadrangle, covers an area bounded by lines of latitude and longitude 7.5-minutes apart. In Illinois, a quadrangle is approximately 6.5 miles east to west and 8.5 miles north to south, an area of about 56 square miles. The USGS generally offers one map of mines per quadrangle. In some areas where extensive mining occurred in two or more overlapping seams, separate maps are compiled for mines in each seam to maintain readability of the map.

#### Mine Type and Mining Method

The mine type is indicated on the map by pattern color: green represents surface mines; red and yellow represent underground mines. The red patterns are used for areas of underground mining that are documented by a primary or secondary source map. A yellow pattern is used for cases where no map of the mine workings is available, but a general area of mining can be inferred from property maps or production figures. The patterns indicate the main mining methods used in underground mines. The methods are (1) room and pillar and (2) high extraction. The method used gives some indication of the amount and pattern of coal extraction within each mined area, and has some influence on the timing and type of subsidence that can occur over a mine.

The following discussion and illustrations of mining methods are based on Guither et al. (1984).

In room-and-pillar mines, coal is removed from haulage-ways (entries) and selected areas called rooms. Pillars of unmined coal are left between the rooms to support the roof. Depending on the size of rooms and pillars, the amount of coal removed from the production areas will range from 40% to 70%.

**Room and Pillar** - mining is divided into six categories:

- room-and-pillar basic (RPB, fig. 1A), an early method that did not follow a preset mining plan and therefore resulted in very irregular designs;
- modified room and pillar (MRP, fig. 1B);
- room-and-pillar panel (RPP, fig. 1C);
- blind room and pillar (BRP, fig. 1D);
- checkerboard room and pillar (CRP, fig. 1E);
- room and pillar (RP), a classification used when the specific type of room-and-pillar mining is unknown.

Blind and checkerboard are the most common types of room-and-pillar mining used in Illinois today. The knowledge of room-and-pillar mining methods gives a trained engineer information on the nature of subsidence that may occur. A more extensive discussion of subsidence can be found in Bauer et al. (1993).

**High-extraction** These mining methods are subdivided into high-extraction retreat (HER, Fig 1F) and longwall (LW, Fig 1G, 1H). In these methods, much of the coal is removed within well defined areas of the mine. Subsidence of the surface above these areas occurs within weeks. Once the subsidence activity ceases, the potential for further movement over these areas is low; however, subsidence may continue for several years after mining.

High-extraction retreat mining is a form of room-and-pillar mining that extracts most of the coal. Rooms and pillars are developed in the panels, and the pillars are then systematically removed (fig. 1F).

In early (pre-1960) longwall mines, mining advanced in multiple directions from a central shaft (fig. 1G). Large pillars of coal were left around the shaft, but all coal was removed beyond these pillars. Miners placed rock and wooden props and cribs in the mined-out areas to support the mine roof. The overlying rock gradually settled onto these supports, thus producing subsidence at the surface. In post-1959 longwall mines, room-and-pillar methods have been used to develop the main entries of the mine and panel areas. Modern longwall methods extract 100 percent of the coal in the panel areas (fig. 1H).



## SOURCE MAPS

Mine outlines depicted on the map are, whenever possible, based on maps made from original mine surveys. The process of compiling and digitizing the quadrangle map may produce errors of less than 200 feet in the location of mine boundaries. Larger errors of 500 feet or more are possible for mines that have incomplete or inaccurate source maps.

Because of the extreme complexity of some mine maps, detailed features of mined areas have been omitted. The digitized mine boundary includes the exterior boundary of all rooms or entries that were at least 80 feet wide or protruded 500 feet from the main mining area. Unmined areas between mines are shown if they are at least 80 feet wide; unmined blocks of coal within mines are shown if they are at least 400 feet on each side. Original source maps should be consulted when precise information on mine boundaries or interior features is needed.

The mine summary sheet lists the source maps used to determine each mine outline. The completeness of map sources is indicated on the map by a line symbol at the mine boundary. Source maps are organized in five categories.

**Final mine map** The mine outline was digitized from an original map made from mine surveys conducted within a few months after production ceased. The date of the map and the last reported production are listed on the summary sheet.

**Not a final map** The mine is currently active or the mine outline was made from a map based on mine surveys conducted more than a few months before production ceased. This implies the actual mined-out area is probably larger than the outline on the map. The mine summary sheet indicated the dates of source maps and the last reported production, as well as the approximate tonnage mined between these two dates (if the mine is abandoned). The summary sheet also lists the approximate acreage mined since the date of the map and, in some cases, indicates the area where additional mining may have taken place. This latter information is determined by locating on the map the active faces relative to probable boundaries of the mine property.

**Undated map** The source map was undated, so it may or may not be based on a final mine survey. When sufficient data are available, the probable acreage of the mined area is estimated from reported production, average seam thickness and a recovery rate comparable to other mines in the area. This information is listed in the summary sheet for the mine.

**Incomplete map** The source map did not show the entire mine. The summary sheet indicates the missing part of the mine map and the acreage of the unmapped area, which is estimated from the amount of coal known to have been produced from the mine.

**Secondary source map** The original mine map was not found so the outline shown was determined from secondary sources (e.g., outlines from small-scale regional maps published in other reports). The summary sheet describes the secondary sources.

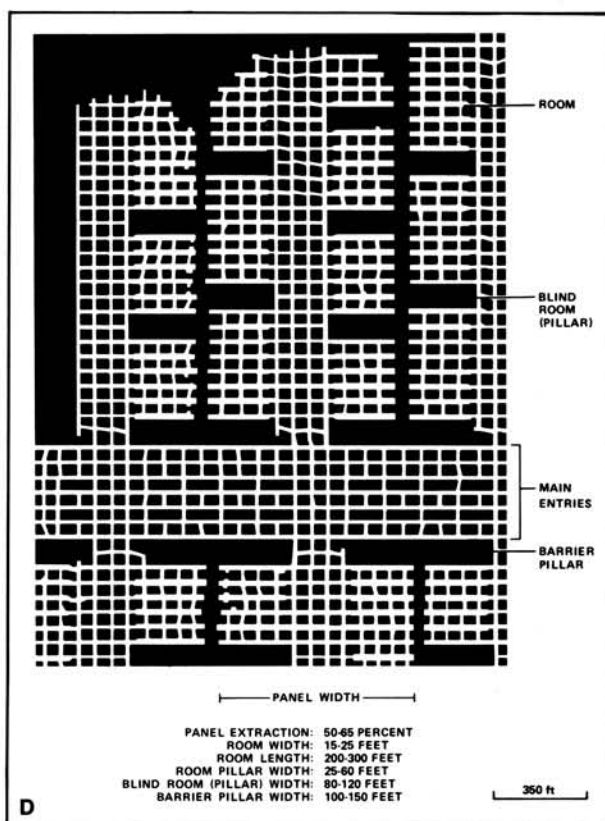
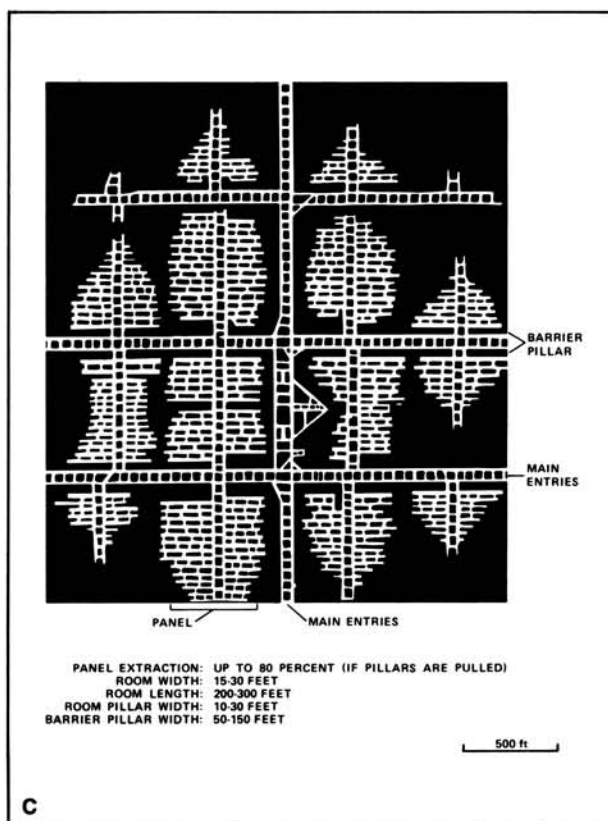
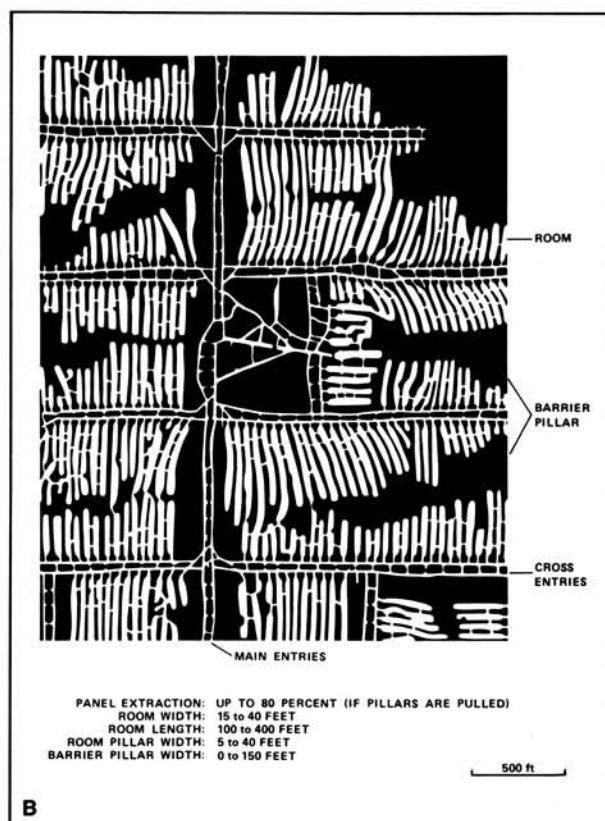
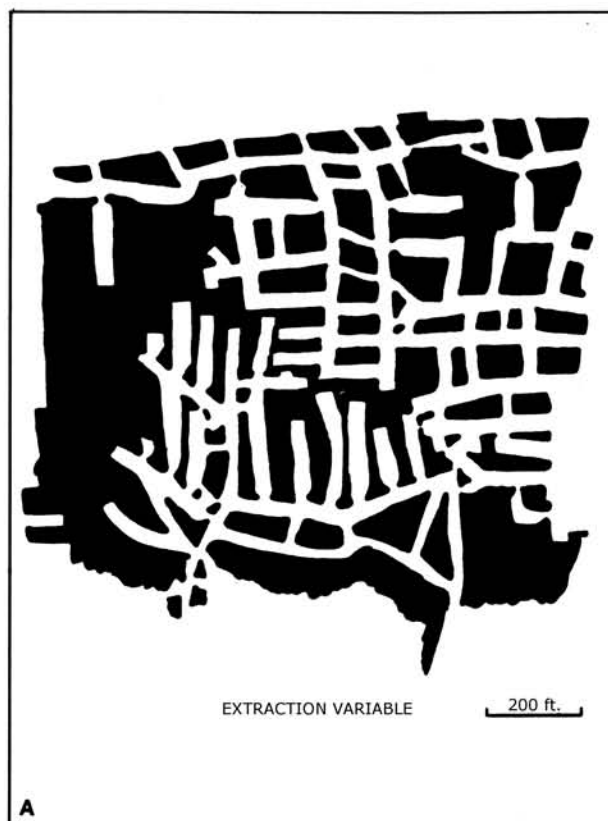
## POINTS AND LABELS

The locations of all known mine openings (shafts, slopes, and drifts) and surface mine tipples are plotted on the map. Tipples are areas where coal was cleaned, stockpiled, and loaded for shipping.

Only openings or tipples are plotted for mines without source maps. If the precise locations of these features are unknown, a special symbol is used to indicate the approximate location of the mine.

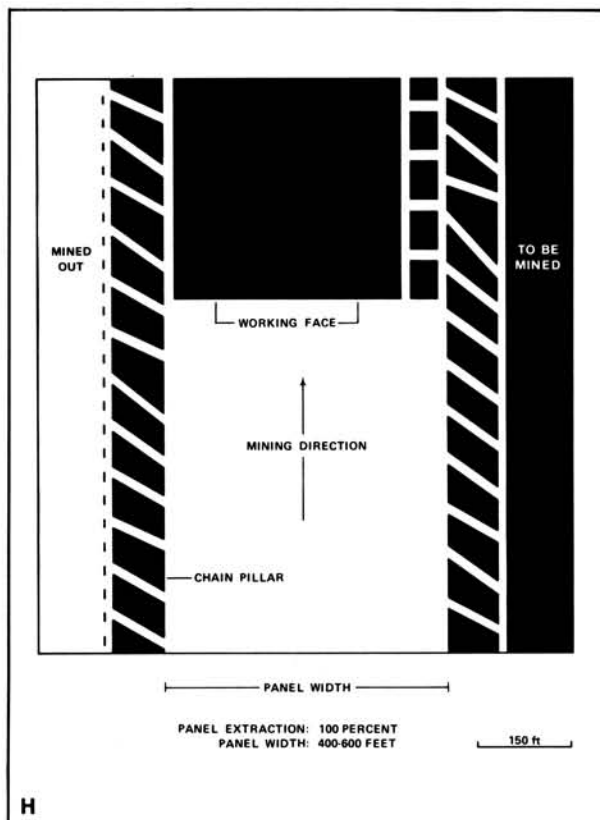
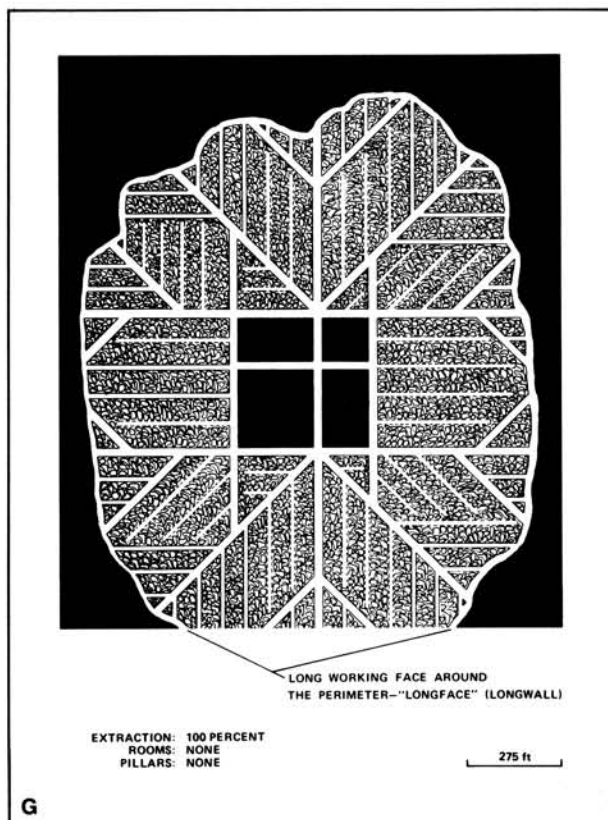
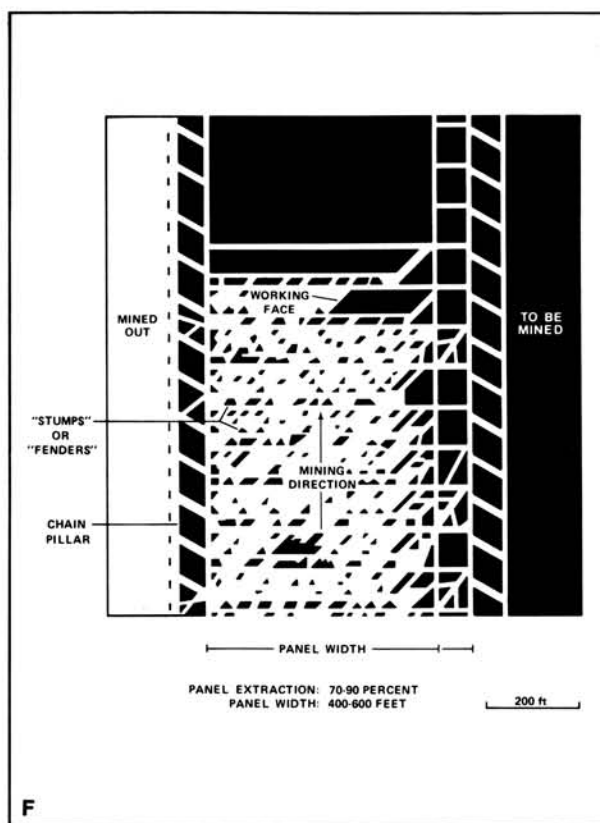
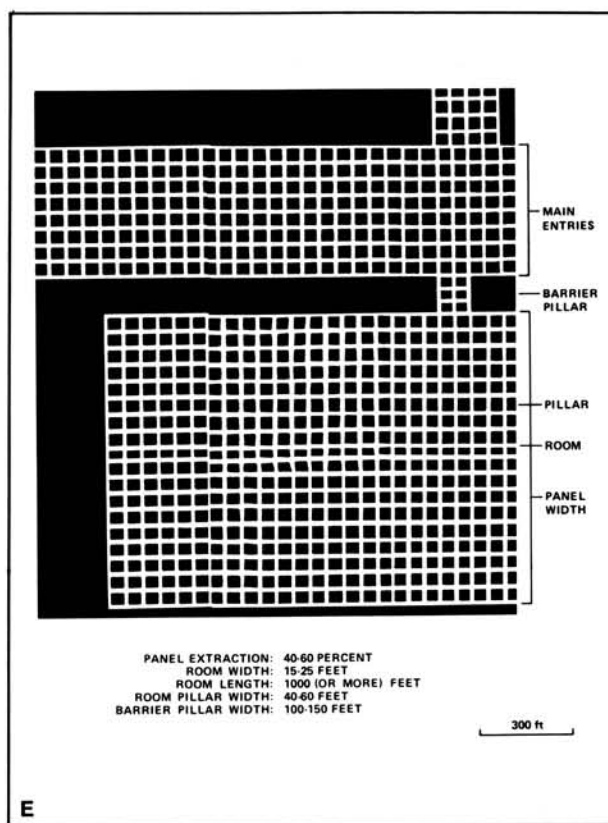
Each mine on the map is labeled with the names of the mine and operating company, ISGS mine index number, and years of operation (if known) if space permits. A seam designation is given on maps where more than one seam was mined. For a mine that operated under more than one name, only the most recent name is generally given. When a mine changed names or ownership shortly before closing, an earlier name is listed. All company and mine names are listed on the mine summary sheet in the directory, under the production history segment.





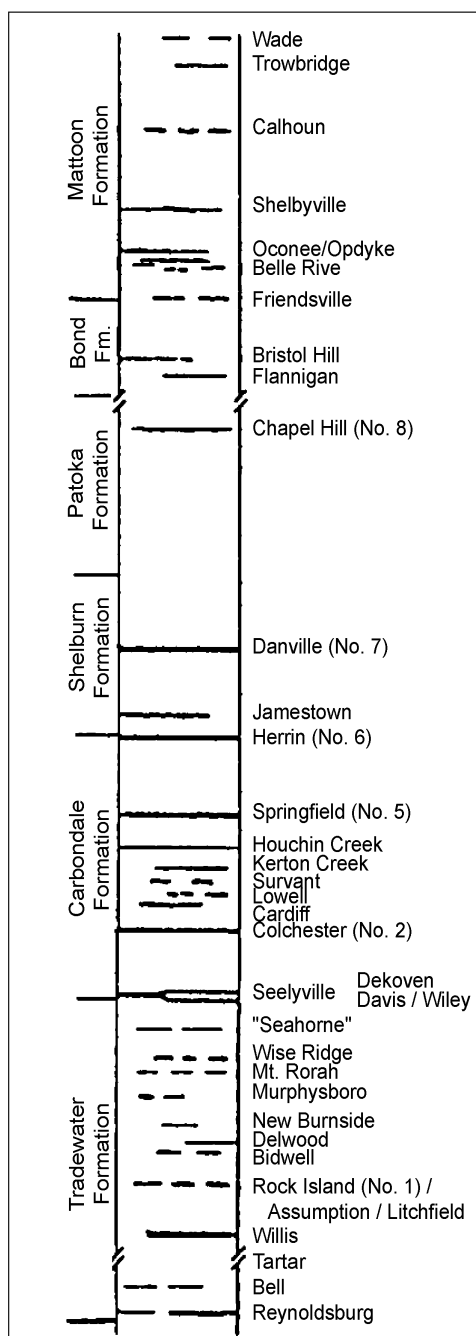
**Figure 1** Mining methods: (A) room-and-pillar basic (RPB), (B) modified room and pillar (MRP), (C) room-and-pillar panel (RPP), (D) blind room and pillar (BRP).





**Figure 1 (cont.)** Mining methods: (E) checkerboard room and pillar (CRP), (F) high extraction retreat (HER), (G) early (pre-1960) longwall, (H) post-1959 longwall





**Figure 2** Generalized stratigraphic section, showing approximate vertical relations of coals in Illinois.

## INTERPRETING A MINE SUMMARY SHEET

The mine summary sheet is arranged numerically by mine index number. Index numbers are shown on the map and in the mine listing. The mine summary sheet provides the following information (if available).

**Company and mine name** The last company or owner of the mine is used, unless no production was recorded for the last owner. In that case, the penultimate owner is listed. Mines often have no specific name; in these cases, the company name is also used as the mine name.

**Type** *Underground* denotes a subsurface mine in which the coal was reached through a shaft, slope, or a drift entry. *Surface* denotes a surface, open pit or strip mine.

**Total mined-out acreage shown** The total acreage of the mined area mapped, including any acreage mined on adjacent quadrangles, is calculated from the digitized outline of the mine. The acreage of large barrier pillars depicted on the map is excluded from the mined-out acreage. Small pillars not digitized are included in the acreage calculation. If the mine outline is not based on a final mine map, the acreage is followed by an estimate of additional acres that may have been mined. The estimate is determined from reported mine production, approximate thickness of the coal, and recovery rates calculated from nearby mines that used similar mining methods.

## SHAFT, SLOPE, DRIFT OR TIPPLE LOCATIONS

**Shaft, slope, drift, or tippie locations** Locations of all known former entry points to underground mines or the location of coal cleaning, tippie, and shipping equipment used by the mine's facility are listed. The location is described in terms of county, township and range (Twp-Rge), section, and location within the section by quarters. NE SW NW, for instance, would describe the location in the northeast quarter of the southwest quarter of the northwest quarter. When sections are irregular in size, the quarters remain the same size and are oriented (or "registered") from the southeast corner of the section. Approximate footage from the section lines (FEL = from east line, FNL = from north line, for example) is given when that information is known; this indicates a surveyed location and is not derived from maps. Entry points are also plotted on the map and coded for the type of entry or tippie. A mine opening may have had many purposes during the life of the mine. Old hoist shafts are often later used for air and escape shafts; this information is included in the directory when known. The tippie for underground mines was generally located near the main shaft or slope. At surface mines, coal was sometimes hauled to a central tippie several miles from the mine pit.

## GEOLOGY

**Seam(s) mined** The name of the coal seam(s) mined is listed, if known. If multiple seams were mined, they are all listed, although the mined-out area for each seam may be shown on separate maps. Figure 2 shows the stratigraphic section of the coal-bearing interval in Illinois, and the vertical relations among the coals.

**Depth** The depth to the top of the seam in the vicinity of the shaft is listed, if known. The depth is determined from notes made by geologists who visited the mine during its operation or from drill hole data in ISGS files. Depth generally varies little over the extent of a mine; however, reported depths for an individual mine may vary. Depth for surface-mined coals varies, and is usually represented as a range.



**Thickness** The approximate thickness of the mined seam is shown, if known. Thickness also comes from notes of geologists who visited the mine during its operation or from borehole data in ISGS files. Minimum, maximum, and average thicknesses are given when this information is available.

**Mining method** The principal mining method used at the mine (figs. 1A-H) is listed. See the mining methods section at the beginning of this directory for a discussion of this parameter.

**Geologic problems reported** Any known geologic problems, such as faults, water seepage, floor heaving, and unstable roof, encountered in the mine are reported. This information is from notes made by ISGS geologists who visited the mine, or from reports by mine inspectors published by the Illinois Department of Mines and Minerals, or from the source map(s). Geologic problems are not reported for active mines.

## PRODUCTION HISTORY

**Production history** Tons of coal produced from the mine by each mine owner are totaled. When the source map used for the mine outline is not a final mine map, the tonnage produced since the date of the map is identified. For mines that extend into adjacent quadrangles, the tonnage reported includes areas mined in adjacent quadrangles.

## SOURCE OF DATA

**Source map** This section lists information about the map(s) used to compile the mine outline and the locations of tipples and mine openings. In some cases more than one source map was used. For example, a map drawn before the mine closed may provide better information on original areas of the mine than a later map. When more than one map was used, the bibliography section explains what information was taken from each source.

**Date** The date of the most recent mine survey listed on the source map is reported.

**Original scale** The original scale of the source map is listed. Many maps are photo-reductions and are no longer at their original scale. The original scale gives some indication of the level of detail of the mine outline and the accuracy of the mine boundary relative to surface features. Generally, the larger the scale, the greater the accuracy and detail of the mine map. Mine outlines taken from source maps at scales smaller than 1:24,000 may be highly generalized and may well be inaccurately located with respect to surface features.

**Digitized scale** The scale of the digitized map is reported. The scale may be different from that of the original source map. In many cases the digitized map was made from a photo-reduction of the original source map, or the source map was not in a condition suitable for digitizing and the mine boundaries were transferred to another base map.

**Map type** Source maps are classified into five categories to indicate the probable completeness of the map. See discussion of source maps in the previous section.

**Annotated bibliography** Sources that provide information about the mine are listed, with the data taken from each source. Some commonly used sources are described below. Full bibliographic references are given for all other sources. Unless otherwise noted, all sources are available for public inspection at the ISGS.

**Coal Reports** Published since 1881, these reports contain tabular data on mine ownership, production, employment, and accidents. Some volumes include short descriptions made by mine inspectors of physical features and conditions in selected mines.

**Directory of Illinois Coal Mines** This source is a compilation of basic data about Illinois coal mines, originally gathered by ISGS staff in the early 1950s. Sources used for this directory are undocumented, but they are primarily Illinois Department of Mines and Minerals annual reports, ISGS mine notes, and coal company officials.

**ENR Document 85/01**, Guither, H. D., J. K. Hines, and R. A. Bauer, 1985 The Economic Effect of Underground Mining Upon Land Used for Illinois Agriculture: Illinois Department of Energy and Natural Resources Document 85/01, 185 p.

**Microfilm map** The U.S. Bureau of Mines maintains a microfilm archive of mine maps. A microfilm file for Illinois is available for public viewing at the ISGS.



*Mine notes* ISGS geologists have visited mines or contacted mine officials throughout the state since the early 1900s. Notes made during these visits range from brief descriptions of the mine location to long narratives (including sketches) of mining conditions and geology.

*Federal Land Bank of St. Louis, Preliminary Reports on Subsidence Investigations* Mining engineers working for the Federal Land Bank of St. Louis mapped areas of subsidence due to coal mining in the early 1930s. These reports often include county maps of mine properties with mined-out areas including shaft locations, as well as subsidence areas.

## **REFERENCES**

Bauer, R. A., B. A. Trent, and P. B. Dumontelle, 1993, Mine Subsidence in Illinois: Facts for the Homeowner Considering Insurance, Illinois State Geological Survey, Environmental Geology Note 144, 16p.

Guither, H. D., J. K. Hines, and R. A. Bauer, 1985, The Economic Effects of Underground Mining Upon Land Used for Illinois Agriculture, Illinois Department of Energy and Natural Resources Document 85/01, 185p.



## PART II DIRECTORY OF MINES IN THE GREENVIEW QUADRANGLE

### MINE SUMMARY SHEETS

A summary sheet on the geology and production history of each mine in the Greenview Quadrangle is provided. These summary sheets are arranged numerically by mine index number. Consult Part I for a complete explanation of the data listed in the summary sheet.

#### Mine Index 531

#### Greenview Fuel Company, Greenview Mine

Type: Underground    Total mined-out acreage shown: 226    Production indicates approximately 1 acre was mined after the map date.

### SHAFT, SLOPE, DRIFT or TIPPLE LOCATIONS

Type	County	Township-Range	Section	Quarters-Footage
Main shaft	Menard	19N 6W	36	SW NW NW
Air shaft	Menard	19N 6W	36	SE NW NW

### GEOLOGY

Seam(s) Mined	Depth (ft)	Thickness (ft)			Mining Method
		Min	Max	Ave	
Springfield	178				RPP

Geologic Problems Reported: The seam contained horizontal lenses of pyrite as well as calcite and pyrite as vertical fracture fillings.

### PRODUCTION HISTORY

Company	Mine Name	Years	Production (tons)
Greenview Mining Company	Greenview	1925-1944	683,855
Greenview Fuel Company	Greenview	1944-1952	97,521
Greenview Fuel Company	Greenview	1952-1954	3,842 *
			785,218

\* Production after map date

Last reported production: February 1954

### SOURCES OF DATA

Source Map	Date	Original Scale	Digitized Scale	Map Type
Microfilm, document 352218	12-1-1952	1:2400	1:5131	Not final

#### Annotated Bibliography (data source, brief description of information)

Coal Reports - Production, ownership, years of operation.

Directory of Illinois Coal Mines (Menard County) - Mine names, mine index, ownership, years of operation.

Mine notes (Menard County) - Mine type, shaft location, seam, depth, geologic problems.

Microfilm map, document 352218, reel 03138, frame 276 - Shaft locations, mine outline, mining method.



**Mine Index 612****Johnson Valley Coal Company, Johnson Mine**

Type: Underground    Total mined-out acreage shown: 173

**SHAFT, SLOPE, DRIFT or TIPPLe LOCATIONS**

Type	County	Township-Range	Section	Quarters-Footage
Main shaft	Menard	19N 5W	26	NE NE NE
Air shaft	Menard	19N 5W	26	NE NE NE
Air shaft	Menard	19N 5W	26	SE SE NE

**GEOLOGY**

Seam(s) Mined	Depth (ft)	Thickness (ft)			Mining Method
		Min	Max	Ave	
Springfield	164			5.6	RPP

Geologic Problems Reported: Faults, clastic dikes and poor roof conditions were found north and east of the shaft. Horsebacks were noted. The seam contained thin fusain and pyrite partings as well as calcite and pyrite facings. The floor was a soft underclay.

**PRODUCTION HISTORY**

Company	Mine Name	Years	Production (tons)
C. F. Johnson	Johnson	1902-1910	34,686
Johnson Valley Coal Company	Johnson	1910-1912	13,033
Johnson Brothers Coal Company	Johnson	1912-1913	6,650
Johnson Valley Coal Company	Johnson	1913-1918	32,585
Johnson Brothers Coal Company	Johnson	1918-1921	37,700
Johnson Valley Coal Company	Johnson	1921-1934	229,819
Johnson Brothers Coal Company	Johnson	1935-1936	60,000
Johnson Valley Coal Company	Johnson	1937-1946	288,183
			<u>702,656</u>

Last reported production: 1946

**SOURCES OF DATA**

Source Map	Date	Original Scale	Digitized Scale	Map Type
Microfilm, document 352210	5-4-1946	1:2400	1:3806	Final

Annotated Bibliography (data source, brief description of information)

Coal Reports - Production, ownership, years of operation.

Directory of Illinois Coal Mines (Menard County) - Mine names, mine index, ownership, years of operation.

Mine notes (Menard County) - Mine type, shaft locations, seam, depth, thickness, geologic problems.

Microfilm map, document 352210, reel 03138, frame 264 - Shaft locations, mine outline.



**Mine Index 2950**  
**East View Coal Company, East View Mine**

Type: Underground    Total mined-out acreage shown: 23

**SHAFT, SLOPE, DRIFT or TIPPLE LOCATIONS**

Type	County	Township-Range	Section	Quarters-Footage
Main shaft	Menard	19N 5W	19	NE NW SW
Air shaft	Menard	19N 5W	19	NE NW SW

**GEOLOGY**

Seam(s) Mined	Depth (ft)	Thickness (ft)			Mining Method
		Min	Max	Ave	
Springfield	122			5.0-6.0	MRP

Geologic Problems Reported:

**PRODUCTION HISTORY**

Company	Mine Name	Years	Production (tons)
East View Coal Company	East View	1914-1928	121,235
			121,235

Last reported production: 1928

**SOURCES OF DATA**

Source Map	Date	Original Scale	Digitized Scale	Map Type
Microfilm, document 352219	6-1924	1:1200	1:2317	Final

Annotated Bibliography (data source, brief description of information)

Coal Reports - Production, ownership, years of operation, mine type, seam, depth, thickness.  
 Directory of Illinois Coal Mines (Menard County) - Mine names, mine index, ownership, years of operation.  
 Microfilm map, document 352219, reel 03138, frame 277 - Shaft locations, mine outline, mining method.



**Mine Index 4157**  
**Ed A. Hughes, Hughes Mine**

Type: Underground    Total mined-out acreage shown: None; production indicates about 18 acres were mined.

**SHAFT, SLOPE, DRIFT or TIPPLE LOCATIONS**

Type	County	Township-Range	Section	Quarters-Footage
Main shaft	Menard	19N 5W	31	SE SE SE *

\* The Menard County Historical Society found evidence that this mine was south of the old school building (SE 31-T19N-R5W) and that most of the mining had taken place on the west side of the road.

**GEOLOGY**

Seam(s) Mined	Depth (ft)	Thickness (ft)			Mining Method
		Min	Max	Ave	
Springfield	165-180			5.17-6.0	RP

Geologic Problems Reported:

**PRODUCTION HISTORY**

Company	Mine Name	Years	Production (tons)
Deal & Parker	Deal & Parker	1881-1882	2,800
Sweetwater Coal Company	Sweetwater	1882-1884	3,700
William Parkin	Parkin	1884-1902	51,330
Arthur Wainwright	Wainwright	1902-1910	22,951
Ed A. Hughes	Hughes	1910-1912	6,980
			87,761

Last reported production: 1912

**SOURCES OF DATA**

Source Map	Date	Original Scale	Digitized Scale	Map Type
History of Menard County	1988	(text only)	1:24000	Secondary source

Annotated Bibliography (data source, brief description of information)

Coal Reports - Production, ownership, years of operation, mine type, seam, depth, thickness, mining method.  
*Menard County, Illinois, History*, Menard County Historical Society, 1988, 382p - Mine location.

**Mine Index 4207****Menard Coal Company, Menard No. 1 Mine**

Type: Underground Total mined-out acreage shown: 12 The reported production up to the map date indicates approximately 96 acres were mined, with approximately 28 acres mined after the map date.

**SHAFT, SLOPE, DRIFT or TIPPLe LOCATIONS**

Type	County	Township-Range	Section	Quarters-Footage
Menard shaft (newer)	Menard	19N 6W	23	NE SE NE
Greenview shaft (older)	Menard	19N 6W	23	NW SE NE

**GEOLOGY**

Seam(s) Mined	Depth (ft)	Thickness (ft)			Mining Method
		Min	Max	Avg	
Springfield	100-104			5.67-5.83	RPP & MRP

Geologic Problems Reported:

**PRODUCTION HISTORY**

Company	Mine Name	Years	Production (tons)
Foster & Company	Greenview	1880-1882	2,000
Greenview Coal Company	Greenview	1882-1890	406,734
Menard County Coal Company	Menard	1886-1888 *	68,861
Menard Coal Company	Menard	1888-1889	34,660 **
Menard County Coal Company	Menard	1889-1890	55,854 **
Menard Coal Company	Menard No. 1	1890-1892	48,160 **
			616,269

\* Greenview Coal Company and Menard County Coal Company were separate companies, but the map shows the mine workings connected underground. The map is dated shortly after the opening of Menard County Coal Company, and implies that the older workings were on the west side of the railroad tracks.

\*\* Production after map date

Last reported production: 1892

**SOURCES OF DATA**

Source Map	Date	Original Scale	Digitized Scale	Map Type
Microfilm, document 352226	1888	1:960	1:1920	Not final

Annotated Bibliography (data source, brief description of information)

Coal Reports - Production, ownership, years of operation, depth, thickness.

Directory of Illinois Coal Mines (Menard County) - Mine names, mine index, ownership, years of operation.

Mine notes (Menard County) - Mine type, shaft location, seam.

Bradley, Nancy, 1940, Greenview Scrap Book, History of Greenview, Illinois, 1815-1940, published by Schnepf & Barnes, Springfield, Illinois - Mine history.

Microfilm map, document 352226, reel 03138, frame 284 - Shaft locations, mine outline, mining method.



**Mine Index 7783**  
**Greenview Coal & Mining Company, Greenview Mine**

Type: Underground Total mined-out acreage shown: A 275-acre general area of mining has been added to the accompanying map. Production indicates 224 to 310 acres were mined. Those acres may be east of the adjacent Menard No. 1 Mine (mine index 4207), rather than west (as shown on the accompanying map).

**SHAFT, SLOPE, DRIFT or TIPPLE LOCATIONS**

Type	County	Township-Range	Section	Quarters-Footage
Main shaft	Menard	19N 6W	23	NE SE NE *

\* The shaft was originally constructed and used for Menard No. 1 Mine (mine index 4207).

**GEOLOGY**

Seam(s) Mined	Depth (ft)	Thickness (ft)			Mining Method
		Min	Max	Ave	
Springfield	100-109			5.67-6.0	RP

Geologic Problems Reported:

**PRODUCTION HISTORY**

Company	Mine Name	Years	Production (tons)
Menard Coal Company	Menard No. 2	1890-1895	279,156
Greenview Coal & Mining Company	Greenview	1895-1906	<u>1,083,258</u>
			1,362,414

Last reported production: 1906

**SOURCES OF DATA**

Source Map	Date	Original Scale	Digitized Scale	Map Type
Sanborn Fire Insurance Map **	1901	Unknown	1:24000	Secondary source

\*\* The insurance map shows that the newer shaft of Menard No. 1 Mine (mine index 4207) was used by the Greenview Mine. The general area of mining shown on the accompanying map was constructed to show the approximate size of the mine based on the reported production, but the location of the general area of mining is uncertain. In the 1895 Coal Report (page 54), improvements included a statement that 2,000 feet of airway was constructed on the south side of the mine. The 1900 Coal Report noted the Greenview Coal & Mining Company had put in an electric haulage system with roadways over 5,000 feet in length, and that all the coal was on one side of the shaft. Whether the coal was east or west of the shaft is not known.

Annotated Bibliography (data source, brief description of information)

Coal Reports - Production, ownership, years of operation, seam, depth, thickness, mining method.  
 Directory of Illinois Coal Mines (Menard County) - Mine names, mine index, ownership, years of operation.  
 Sanborn-Perris Map Company - Shaft location.

## INDEX OF MINES IN THE GREENVIEW QUADRANGLE

Deal & Parker .....	12
East View Coal Company .....	11
Foster & Company .....	13
Greenview Coal & Mining Company .....	14
Greenview Coal Company .....	13
Greenview Fuel Company .....	9
Greenview Mining Company .....	9
Hughes (Ed A.) .....	12
Johnson (C. F.) .....	10
Johnson Brothers Coal Company .....	10
Johnson Valley Coal Company .....	10
Menard Coal Company, No. 1 Mine .....	13
Menard Coal Company, No. 2 Mine .....	14
Menard County Coal Company .....	13
Parker (Deal & Parker) .....	12
Parkin (William) .....	12
Sweetwater Coal Company .....	12
Wainwright (Arthur) .....	12