

Coal Mines in Illinois Hanna City Quadrangle Peoria County, Illinois

Herrin, Danville, & Chapel Coals

This map accompanies the Coal Mines Directory for the Hanna City Quadrangle and map of mines in the Springfield Coal, Hanna City Quadrangle. Consult the directory for a complete explanation of the information shown on this map.

Mining Method

- Room & Pillar (RP)
- Room & Pillar Basic (RPB)
- Modified Room & Pillar (MRP)
- Room & Pillar Panel (RPP)
- Blind Room & Pillar (BRP)
- Checkerboard Room & Pillar (CRP)
- High Extraction Retreat (HER)
- Longwall (LW)
- Underground, Method Unknown
- Strip Mine
- Auger Mine
- General Area of Mining

Other Areas Depicted

- Non-Coal Mines

Source of Mine Outline

- Final Mine Map
- Not Final Mine Map
- Undated Mine Map
- Incomplete Mine Map
- Secondary Source Map

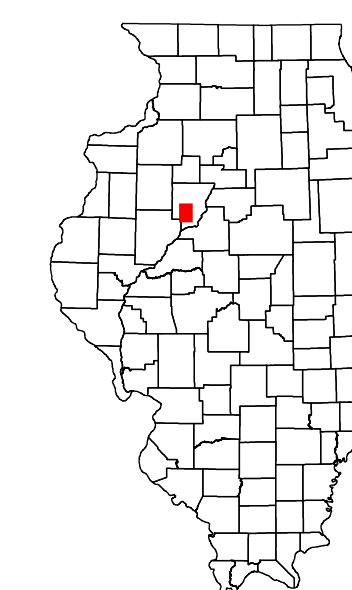
Tipple, Shaft, Slope, Drift Locations

- Strip Mine Tipple - Active
- Strip Mine Tipple - Abandoned
- Mine Shaft - Active
- Mine Shaft - Abandoned
- Mine Slope - Active
- Mine Slope - Abandoned
- Mine Drift - Active
- Mine Drift - Abandoned
- Air Shaft
- Uncertain Location
- Uncertain Type of Opening

Other Points Depicted

- Non-Coal Mines

Location



Mine Annotation (space permitting)

Company
Mine Name
ISGS Index No., Years of Operation

Disclaimer

Please check the Coal Section at the Illinois State Geological Survey's web site at <https://www.isgs.illinois.edu> for the most up-to-date version of these products.

Note that each quadrangle scale mined-out area map requires the use of the associated text directory for full explanation of map features and mine attributes. Also note that some quadrangles have multiple seams of mining and therefore more than one map may be available for a particular quadrangle. Please take care to check for multiple maps, as extensive mining may exist in the other seams.

The maps and digital files used for these studies were compiled from data obtained from a variety of public and private sources and have varying degrees of completeness and accuracy. This compilation map presents reasonable interpretation of the geology of the area and is based on available data. Locations of some mine features may be offset by 500 feet or more due to errors in the original source maps, the compilation process, digitizing, or a combination of these factors. These data are not intended for use in site-specific screening or decision-making. Use of these documents does not eliminate the need for detailed studies to fully understand the geology of a specific site. The Illinois State Geological Survey, Prairie Research Institute, or the University of Illinois make no guarantee, expressed or implied, regarding the correctness of the interpretations presented in this data set and accept no liability for the consequences of decisions made by others on the basis of the information presented here.

These maps were designed for use at 1:24,000. Enlarging the map may reduce accuracy, as the original scale of the source maps used to compile the outlines shown varies from 1:400 to 1:150,000, and some mine locations are known only from text descriptions. See the accompanying mine directory for the original scale of the source map used for a specific mine to check accuracy of a given portion of the map. Areas with no mines shown may still be undermined; see the unlocated mines list at the back of each mine directory.

The image of the U.S.G.S. topographic base map was projected from the original UTM to Lambert Conformal Conic.

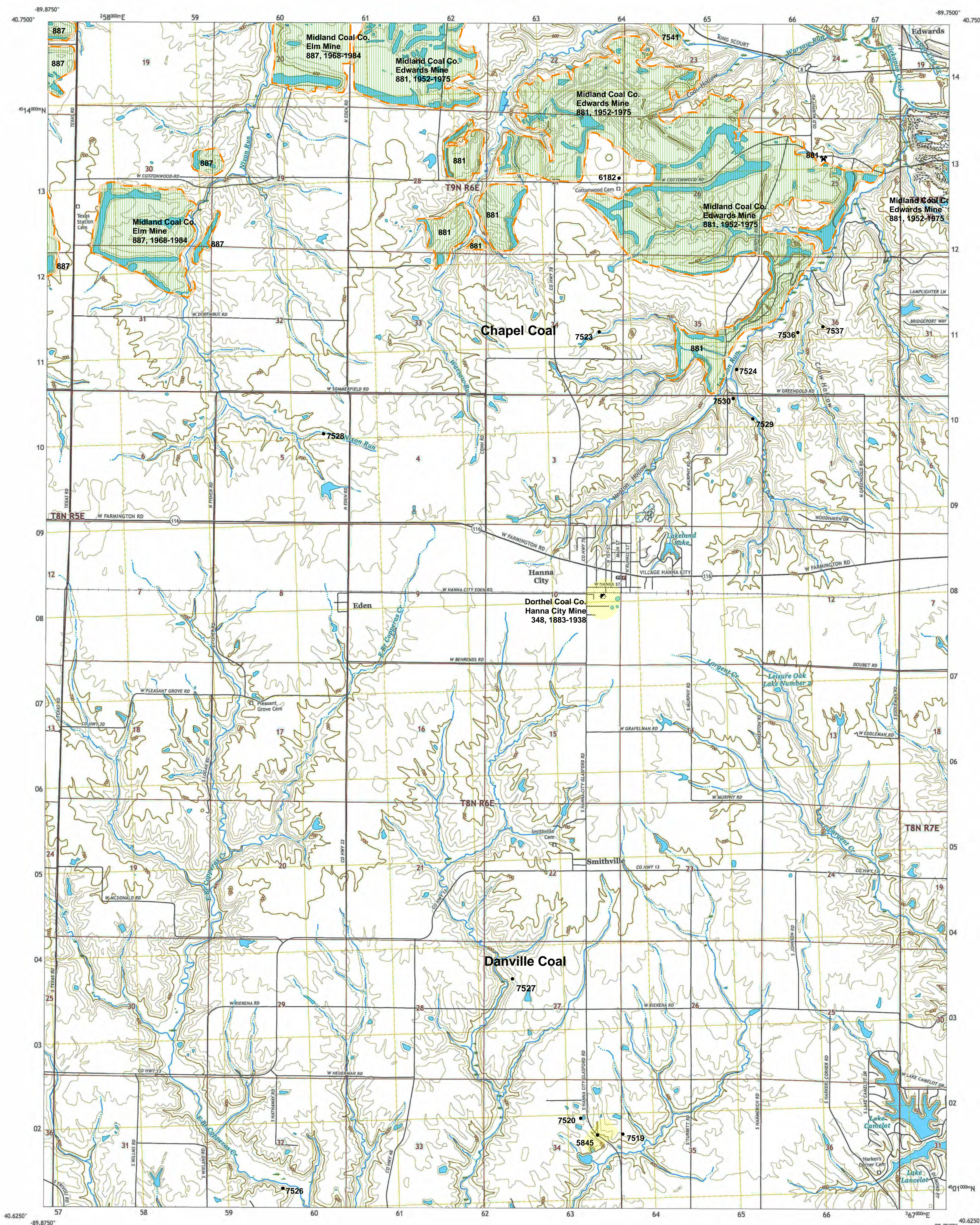
ILLINOIS
Illinois State Geological Survey
PRAIRIE RESEARCH INSTITUTE

Prairie Research Institute
Illinois State Geological Survey
615 E. Peabody Dr.
Champaign, IL 61820

Mine Outlines Compiled by
Alan Myers

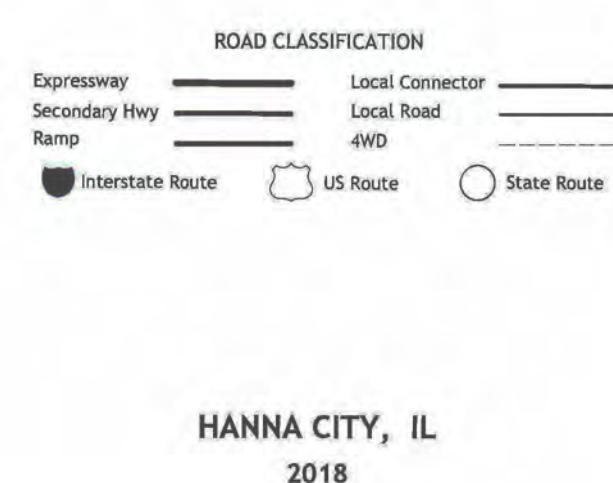
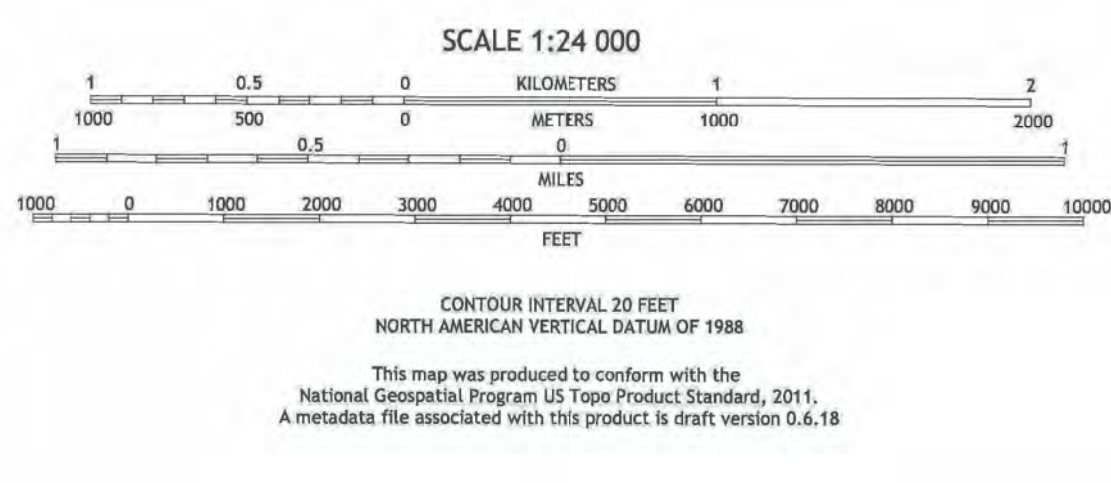
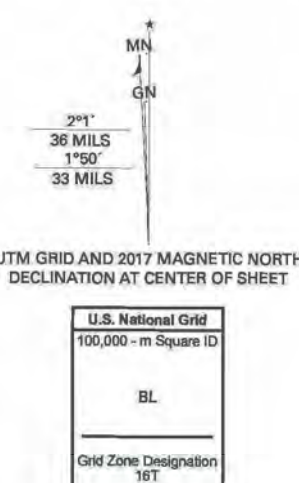
Revised:
Alan R. Myers 02-28-2024

October 29, 2012



Produced by the United States Geological Survey
North American Datum of 1983 (NAD83). Projection and
World Geodetic System of 1984 (WGS84). Zone 16T
100-meter grid/Universal Transverse Mercator, Zone 16T
This map is not a legal document. Boundaries may be
generalized for this map scale. Private lands within government
reservations may not be shown. Obtain permission before
entering private lands.

Imagery.....NAP, July 2015 - October 2015
Roads.....U.S. Census Bureau, 2017
Names.....GNS, 1980 - 2017
Hydrography.....National Hydrography Dataset, 2006 - 2015
Contours.....National Elevation Dataset, 2015
Boundaries.....Multiple sources; see metadata file 2014 - 2016
Public Land Survey System.....BLM, 2017
Wetlands.....FWS National Wetlands Inventory 1983 - 1996



HANNA CITY, IL
2018

HANNA CITY, IL
2018

DIRECTORY OF COAL MINES IN ILLINOIS

7.5-MINUTE QUADRANGLE SERIES

HANNA CITY QUADRANGLE

PEORIA COUNTY

Alan R. Myers & C. Chenoweth



2012
Updated 2024

Prairie Research Institute
William W. Shilts, Executive Director
ILLINOIS STATE GEOLOGICAL SURVEY
E. Donald McKay III, Director

Natural Resources Building
615 East Peabody Drive
Champaign, Illinois 61820

Phone 217-244-4610
Fax 217-333-2830



This material is based upon work supported by the Illinois Mine Subsidence Insurance Fund. Any opinions, findings, and conclusions or recommendations expressed in this publication are those of the authors and do not necessarily reflect the views of the Illinois Mine Subsidence Insurance Fund.

Cover photo Track-mounted duckbill loading machine at a Peabody Coal Company mine, ca. 1915.

DISCLAIMER: The accuracy and completeness of mine maps and directories vary with the availability of reliable information. Maps and other information used to compile this mine map and directory were obtained from a variety of sources and the accuracy of some of the original information cannot be verified. Consequently, the Illinois State Geological Survey (ISGS) cannot guarantee the mine maps are free of errors and disclaims any responsibility for damages that may result from actions or decisions based on them.

The ISGS updates the maps and directories periodically, and welcomes any new information or corrections. Please contact the Coal Section of the ISGS at the address shown on the title page of this directory, or telephone (217) 244-4610.

© 2012 The Board of Trustees of the University of Illinois. All rights reserved.
For permission information, contact the Illinois State Geological Survey.

CONTENTS

INTRODUCTION	1
MINING IN THE HANNA CITY QUADRANGLE	1
PART I EXPLANATION OF MAP AND MINE SUMMARY SHEET	2
INTERPRETING THE MAP	2
Mine Type and Mining Method	2
Source Maps	3
Points and Labels	3
INTERPRETING A MINE SUMMARY SHEET	6
REFERENCES	8
PART II DIRECTORY OF MINES IN THE HANNA CITY QUADRANGLE	9
MINE SUMMARY SHEETS	9
Mine Index 348	
Dorthel Coal Company, Hanna City Mine	9
Mine Index 601	
Crescent Mining Company, Lamarsh No. 6 Mine	10
Mine Index 827	
Central West Coal Company, Glenwood Mine	11
Mine Index 881	
Midland Coal Company, Edwards Mine	12
Mine Index 887	
Midland Coal Company, Elm Mine	13
Mine Index 3048	
Whip-Poor-Will Coal Company, Whip-Poor-Will Mine	14
Mine Index 3056	
George Manull & J. Jruljok, Manull & Jruljok Mine	15
Mine Index 3057	
Bennett Coal Company, Bennett Mine	16
Mine Index 3058	
Peter D. Hoffman, Kickapoo Valley Mine	17
Mine Index 3059	
Big 4 Coal Company, Big 4 Mine	18
Mine Index 3060	
Hoffman Coal Company, Hoffman No. 2 Mine	19
Mine Index 3061	
Howarth & Taylor, Howarth & Taylor Mine	20
Mine Index 3062	
Banner Block Coal Company, Banner Block Mine	21
Mine Index 3063	
Marteness Mining Company, Marteness Mine	22
Mine Index 3064	
Harry Becker, Becker Mine	23
Mine Index 3077	
Russell Delong Coal Company, Delong Mine	24
Mine Index 4256	
Pleasant Hill Coal Company, Pleasant Hill Mine	25
Mine Index 5885	
Silver Creek Coal Company, Silver Creek No. 2 Mine	26
Mine Index 7517	
Black Jewel Coal Company, Black Jewel Mine	27
Mine Index 7518	
Black Jewel Coal Company, Black Jewel No. 2 Mine	28
Mine Index 7521	
Henry Penn, Penn Mine	29
OTHER MINES SHOWN ON HANNA CITY QUADRANGLE	30

Mine Index 4257, Burns Brothers	30
Mine Index 5845	30
Mine Index 5874	30
Mine Index 5875	30
Mine Index 5876	30
Mine Index 6181	30
Mine Index 6182	30
Mine Index 7519	30
Mine Index 7520	30
Mine Index 7522	30
Mine Index 7523	30
Mine Index 7524	30
Mine Index 7525	30
Mine Index 7526	30
Mine Index 7527	30
Mine Index 7528	30
Mine Index 7529	30
Mine Index 7530	30
Mine Index 7531	30
Mine Index 7532	30
Mine Index 7533	30
Mine Index 7534	30
Mine Index 7535	30
Mine Index 7536	30
Mine Index 7537	30
Mine Index 7538	30
Mine Index 7539	30
Mine Index 7540	30
Mine Index 7541	30
 MINES WHOSE LOCATIONS ARE NOT KNOWN, HANNA CITY QUADRANGLE	 31
 INDEX OF MINES IN THE HANNA CITY QUADRANGLE	 38

INTRODUCTION

Coal has been mined in 76 counties of Illinois. More than 7,400 coal mines have operated since commercial mining began in Illinois about 1810; fewer than 30 are currently active. To detail the extent and location of coal mining in Illinois, the Illinois State Geological Survey (ISGS) has compiled maps and directories of known coal mines. The ISGS offers maps at a scale of 1:100,000 and accompanying directories for each county in which coal mining is known to have occurred. Maps at a scale of 1:24,000 and accompanying directories, such as this, are available for selected quadrangles. Contact the ISGS for a list of these quadrangles.

These larger scale maps show the approximate positions of mines in relation to surface features such as roads and water bodies, and indicate the mining method used and the accuracy of the mine boundaries. The maps are useful for locating mine boundaries relative to specific properties and for assessing the potential for subsidence in an area. Mine boundaries compiled from final mine surveys are generally shown within 200 feet of their true position. As a result of poor cartographic quality and inaccuracies in the original mine surveys, boundaries of some older mines may be mislocated on the map by 500 feet or more. Original mine maps should be consulted in situations that require precise delineation of mine boundaries or internal workings of mined areas.

This directory serves as a key to the accompanying mine map and provides basic information on the coal mines in the quadrangle. The directory is composed of two parts. Part I explains the symbols and patterns used on the accompanying map and the summary data presented for each mine. Part II numerically lists the mines in the quadrangle and summarizes the geology and production history of each mine. Total production for the mine, not the portion in the quadrangle, is given.

MINING IN THE HANNA CITY QUADRANGLE

The first recorded mining in the Hanna City Quadrangle took place at Edwards Station in the northeastern corner of the accompanying map. Jacob Darst began surface mining coal in 1849, and Frederick Ruprecht and John Woolenscraft opened a drift mine. In 1851, Ruprecht bought out his partner and operated for two years, when he sold out to Auderson Grimes and Judge Bryant, who in turn sold out to Samuel Potts. (The Potts Mine may be on the adjoining quadrangles.) The 1873 Atlas of Peoria County shows several mines in the northern third of the quadrangle, and one in the very southern part of the quadrangle. The Hanna City Mine (mine index 348) opened in 1883 and operated until 1938. Modern surface mining began in the 1950s and continued until 1984, with the Elm (mine index 887) and Edwards (mine index 881) Mines. In short, coal mining has been a constant and important presence in the area from shortly after settlement to the very recent past, employing many and providing heat to homes and businesses of the area.

PART I EXPLANATION OF MAP AND MINE SUMMARY SHEET

INTERPRETING THE MAP

The map accompanying this directory shows the location of coal mines known to be present in the quadrangle. The map, corresponding to a U.S. Geological Survey (USGS) 7.5-minute quadrangle, covers an area bounded by lines of latitude and longitude 7.5-minutes apart. In Illinois, a quadrangle is approximately 6.5 miles east to west and 8.5 miles north to south, an area of about 56 square miles. The USGS generally offers one map of mines per quadrangle. In some areas where extensive mining occurred in two or more overlapping seams, separate maps are compiled for mines in each seam to maintain readability of the map.

Mine Type and Mining Method

The mine type is indicated on the map by pattern color: green represents surface mines; red and yellow represent underground mines. The red patterns are used for areas of underground mining that are documented by a primary or secondary source map. A yellow pattern is used for cases where no map of the mine workings is available, but a general area of mining can be inferred from property maps or production figures. The patterns indicate the main mining methods used in underground mines. The methods are (1) room and pillar and (2) high extraction. The method used gives some indication of the amount and pattern of coal extraction within each mined area, and has some influence on the timing and type of subsidence that can occur over a mine.

The following discussion and illustrations of mining methods are based on Guither et al. (1984).

In room-and-pillar mines, coal is removed from haulage-ways (entries) and selected areas called rooms. Pillars of unmined coal are left between the rooms to support the roof. Depending on the size of rooms and pillars, the amount of coal removed from the production areas will range from 40% to 70%.

Room and Pillar - mining is divided into six categories:

- room-and-pillar basic (RPB, fig. 1A), an early method that did not follow a preset mining plan and therefore resulted in very irregular designs;
- modified room and pillar (MRP, fig. 1B);
- room-and-pillar panel (RPP, fig. 1C);
- blind room and pillar (BRP, fig. 1D);
- checkerboard room and pillar (CRP, fig. 1E);
- room and pillar (RP), a classification used when the specific type of room-and-pillar mining is unknown.

Blind and checkerboard are the most common types of room-and-pillar mining used in Illinois today. The knowledge of room-and-pillar mining methods gives a trained engineer information on the nature of subsidence that may occur. A more extensive discussion of subsidence can be found in Bauer et al. (1993).

High-extraction These mining methods are subdivided into high-extraction retreat (HER, Fig 1F) and longwall (LW, Fig 1G, 1H). In these methods, much of the coal is removed within well defined areas of the mine. Subsidence of the surface above these areas occurs within weeks. Once the subsidence activity ceases, the potential for further movement over these areas is low; however, subsidence may continue for several years after mining.

High-extraction retreat mining is a form of room-and-pillar mining that extracts most of the coal. Rooms and pillars are developed in the panels, and the pillars are then systematically removed (fig. 1F).

In early (pre-1960) longwall mines, mining advanced in multiple directions from a central shaft (fig. 1G). Large pillars of coal were left around the shaft, but all coal was removed beyond these pillars. Miners placed rock and wooden props and cribs in the mined-out areas to support the mine roof. The overlying rock gradually settled onto these supports, thus producing subsidence at the surface. In post-1959 longwall mines, room-and-pillar methods have been used to develop the main entries of the mine and panel areas. Modern longwall methods extract 100 percent of the coal in the panel areas (fig. 1H).

SOURCE MAPS

Mine outlines depicted on the map are, whenever possible, based on maps made from original mine surveys. The process of compiling and digitizing the quadrangle map may produce errors of less than 200 feet in the location of mine boundaries. Larger errors of 500 feet or more are possible for mines that have incomplete or inaccurate source maps.

Because of the extreme complexity of some mine maps, detailed features of mined areas have been omitted. The digitized mine boundary includes the exterior boundary of all rooms or entries that were at least 80 feet wide or protruded 500 feet from the main mining area. Unmined areas between mines are shown if they are at least 80 feet wide; unmined blocks of coal within mines are shown if they are at least 400 feet on each side. Original source maps should be consulted when precise information on mine boundaries or interior features is needed.

The mine summary sheet lists the source maps used to determine each mine outline. The completeness of map sources is indicated on the map by a line symbol at the mine boundary. Source maps are organized in five categories.

Final mine map The mine outline was digitized from an original map made from mine surveys conducted within a few months after production ceased. The date of the map and the last reported production are listed on the summary sheet.

Not a final map The mine is currently active or the mine outline was made from a map based on mine surveys conducted more than a few months before production ceased. This implies the actual mined-out area is probably larger than the outline on the map. The mine summary sheet indicated the dates of source maps and the last reported production, as well as the approximate tonnage mined between these two dates (if the mine is abandoned). The summary sheet also lists the approximate acreage mined since the date of the map and, in some cases, indicates the area where additional mining may have taken place. This latter information is determined by locating on the map the active faces relative to probable boundaries of the mine property.

Undated map The source map was undated, so it may or may not be based on a final mine survey. When sufficient data are available, the probable acreage of the mined area is estimated from reported production, average seam thickness and a recovery rate comparable to other mines in the area. This information is listed in the summary sheet for the mine.

Incomplete map The source map did not show the entire mine. The summary sheet indicates the missing part of the mine map and the acreage of the unmapped area, which is estimated from the amount of coal known to have been produced from the mine.

Secondary source map The original mine map was not found so the outline shown was determined from secondary sources (e.g., outlines from small-scale regional maps published in other reports). The summary sheet describes the secondary sources.

POINTS AND LABELS

The locations of all known mine openings (shafts, slopes, and drifts) and surface mine tipples are plotted on the map. Tipples are areas where coal was cleaned, stockpiled, and loaded for shipping.

Only openings or tipples are plotted for mines without source maps. If the precise locations of these features are unknown, a special symbol is used to indicate the approximate location of the mine.

Each mine on the map is labeled with the names of the mine and operating company, ISGS mine index number, and years of operation (if known) if space permits. A seam designation is given on maps where more than one seam was mined. For a mine that operated under more than one name, only the most recent name is generally given. When a mine changed names or ownership shortly before closing, an earlier name is listed. All company and mine names are listed on the mine summary sheet in the directory, under the production history segment.



Figure 1 Mining methods: (A) room-and-pillar basic (RPB), (B) modified room and pillar (MRP), (C) room-and-pillar panel (RPP), (D) blind room and pillar (BRP).



Figure 1 (cont.) Mining methods: (E) checkerboard room and pillar (CRP), (F) high extraction retreat (HER), (G) early (pre-1960) longwall, (H) post-1959 longwall



Figure 2 Generalized stratigraphic section, showing approximate vertical relations of coals in Illinois.

INTERPRETING A MINE SUMMARY SHEET

The mine summary sheet is arranged numerically by mine index number. Index numbers are shown on the map and in the mine listing. The mine summary sheet provides the following information (if available).

Company and mine name The last company or owner of the mine is used, unless no production was recorded for the last owner. In that case, the penultimate owner is listed. Mines often have no specific name; in these cases, the company name is also used as the mine name.

Type *Underground* denotes a subsurface mine in which the coal was reached through a shaft, slope, or a drift entry. *Surface* denotes a surface, open pit or strip mine.

Total mined-out acreage shown The total acreage of the mined area mapped, including any acreage mined on adjacent quadrangles, is calculated from the digitized outline of the mine. The acreage of large barrier pillars depicted on the map is excluded from the mined-out acreage. Small pillars not digitized are included in the acreage calculation. If the mine outline is not based on a final mine map, the acreage is followed by an estimate of additional acres that may have been mined. The estimate is determined from reported mine production, approximate thickness of the coal, and recovery rates calculated from nearby mines that used similar mining methods.

SHAFT, SLOPE, DRIFT OR TIPPLE LOCATIONS

Shaft, slope, drift, or tippie locations Locations of all known former entry points to underground mines or the location of coal cleaning, tippie, and shipping equipment used by the mine's facility are listed. The location is described in terms of county, township and range (Twp-Rge), section, and location within the section by quarters. NE SW NW, for instance, would describe the location in the northeast quarter of the southwest quarter of the northwest quarter. When sections are irregular in size, the quarters remain the same size and are oriented (or "registered") from the southeast corner of the section. Approximate footage from the section lines (FEL = from east line, FNL = from north line, for example) is given when that information is known; this indicates a surveyed location and is not derived from maps. Entry points are also plotted on the map and coded for the type of entry or tippie. A mine opening may have had many purposes during the life of the mine. Old hoist shafts are often later used for air and escape shafts; this information is included in the directory when known. The tippie for underground mines was generally located near the main shaft or slope. At surface mines, coal was sometimes hauled to a central tippie several miles from the mine pit.

GEOLOGY

Seam(s) mined The name of the coal seam(s) mined is listed, if known. If multiple seams were mined, they are all listed, although the mined-out area for each seam may be shown on separate maps. Figure 2 shows the stratigraphic section of the coal-bearing interval in Illinois, and the vertical relations among the coals.

Depth The depth to the top of the seam in the vicinity of the shaft is listed, if known. The depth is determined from notes made by geologists who visited the mine during its operation or from drill hole data in ISGS files. Depth generally varies little over the extent of a mine; however, reported depths for an individual mine may vary. Depth for surface-mined coals varies, and is usually represented as a range.

Thickness The approximate thickness of the mined seam is shown, if known. Thickness also comes from notes of geologists who visited the mine during its operation or from borehole data in ISGS files. Minimum, maximum, and average thicknesses are given when this information is available.

Mining method The principal mining method used at the mine (figs. 1A-H) is listed. See the mining methods section at the beginning of this directory for a discussion of this parameter.

Geologic problems reported Any known geologic problems, such as faults, water seepage, floor heaving, and unstable roof, encountered in the mine are reported. This information is from notes made by ISGS geologists who visited the mine, or from reports by mine inspectors published by the Illinois Department of Mines and Minerals, or from the source map(s). Geologic problems are not reported for active mines.

PRODUCTION HISTORY

Production history Tons of coal produced from the mine by each mine owner are totaled. When the source map used for the mine outline is not a final mine map, the tonnage produced since the date of the map is identified. For mines that extend into adjacent quadrangles, the tonnage reported includes areas mined in adjacent quadrangles.

SOURCE OF DATA

Source map This section lists information about the map(s) used to compile the mine outline and the locations of tipples and mine openings. In some cases more than one source map was used. For example, a map drawn before the mine closed may provide better information on original areas of the mine than a later map. When more than one map was used, the bibliography section explains what information was taken from each source.

Date The date of the most recent mine survey listed on the source map is reported.

Original scale The original scale of the source map is listed. Many maps are photo-reductions and are no longer at their original scale. The original scale gives some indication of the level of detail of the mine outline and the accuracy of the mine boundary relative to surface features. Generally, the larger the scale, the greater the accuracy and detail of the mine map. Mine outlines taken from source maps at scales smaller than 1:24,000 may be highly generalized and may well be inaccurately located with respect to surface features.

Digitized scale The scale of the digitized map is reported. The scale may be different from that of the original source map. In many cases the digitized map was made from a photo-reduction of the original source map, or the source map was not in a condition suitable for digitizing and the mine boundaries were transferred to another base map.

Map type Source maps are classified into five categories to indicate the probable completeness of the map. See discussion of source maps in the previous section.

Annotated bibliography Sources that provide information about the mine are listed, with the data taken from each source. Some commonly used sources are described below. Full bibliographic references are given for all other sources. Unless otherwise noted, all sources are available for public inspection at the ISGS.

Coal Reports Published since 1881, these reports contain tabular data on mine ownership, production, employment, and accidents. Some volumes include short descriptions made by mine inspectors of physical features and conditions in selected mines.

Directory of Illinois Coal Mines This source is a compilation of basic data about Illinois coal mines, originally gathered by ISGS staff in the early 1950s. Sources used for this directory are undocumented, but they are primarily Illinois Department of Mines and Minerals annual reports, ISGS mine notes, and coal company officials.

ENR Document 85/01, Guither, H. D., J. K. Hines, and R. A. Bauer, 1985 The Economic Effect of Underground Mining Upon Land Used for Illinois Agriculture: Illinois Department of Energy and Natural Resources Document 85/01, 185 p.

Microfilm map The U.S. Bureau of Mines maintains a microfilm archive of mine maps. A microfilm file for Illinois is available for public viewing at the ISGS.

Mine notes ISGS geologists have visited mines or contacted mine officials throughout the state since the early 1900s. Notes made during these visits range from brief descriptions of the mine location to long narratives (including sketches) of mining conditions and geology.

Federal Land Bank of St. Louis, Preliminary Reports on Subsidence Investigations Mining engineers working for the Federal Land Bank of St. Louis mapped areas of subsidence due to coal mining in the early 1930s. These reports often include county maps of mine properties with mined-out areas including shaft locations, as well as subsidence areas.

REFERENCES

Andreas, A. T., 1873, Atlas Map of Peoria County, Illinois, Chicago, Illinois, 196p.

Bauer, R. A., B. A. Trent, and P. B. Dumontelle, 1993, Mine Subsidence in Illinois: Facts for the Homeowner Considering Insurance, Illinois State Geological Survey, Environmental Geology Note 144, 16p.

Guither, H. D., J. K. Hines, and R. A. Bauer, 1985, The Economic Effects of Underground Mining Upon Land Used for Illinois Agriculture, Illinois Department of Energy and Natural Resources Document 85/01, 185p.

Johnson & Company (publishers), 1880, The History of Peoria County, Illinois, Chicago, Illinois, 851p.

PART II DIRECTORY OF MINES IN THE HANNA CITY QUADRANGLE

MINE SUMMARY SHEETS

A summary sheet on the geology and production history of each mine in the Hanna City Quadrangle is provided. These summary sheets are arranged numerically by mine index number. Consult Part I for a complete explanation of the data listed in the summary sheet.

Mine Index 348

Dorthel Coal Company, Hanna City Mine

Type: Underground Total mined-out acreage shown: 882 No source maps showed the area where the Herrin Coal was mined, and a general area of mining is shown on the accompanying map to indicate the approximate size of the mined area.

SHAFT, SLOPE, DRIFT or TIPPLE LOCATIONS

Type	County	Township-Range	Section	Quarters-Footage
Main shaft	Peoria	8N 6E	10	NW NE SE
Air shaft	Peoria	8N 6E	10	NE NE NE

GEOLOGY

Seam(s) Mined	Depth (ft)	Thickness (ft)			Mining Method
		Min	Max	Avg	
Herrin	170			4.5	RP
Springfield	210-250	3.83	4.25	4.0	RPP

Geologic Problems Reported: The roof for the Herrin Coal was limestone and gray shale. The blue band averaged 1 inch thick, but ranged up to 3 inches in some places. The roof to the Springfield Coal was 6 to 12 inches of limestone cap rock that was about 4 feet above the coal. The interval between the limestone and the shale was mostly black shale with 4 to 6 inches of draw slate. Horsebacks were observed in the mine. The seam contained clay partings, generally 1/8 inch thick or less. The floor was a hard gray underclay.

PRODUCTION HISTORY

Company	Mine Name	Years	Production (tons)
Hanna City Coal Company	Hanna City	1883-1888	49,320
Chapman & Company	Chapman	1888-1889	7,064
Illinois Coal & Coke Company	Hanna City	1889-1891	27,298
Hanna Coal Company *	Hanna City	1891-1894	56,563
Hanna City Coal Company **	Hanna City	1894-1897	15,894
Newsam Brothers	Hanna City	1897-1906	279,567
Applegate & Lewis Coal Company	Hanna City	1906-1912	214,061
Logan Coal Company	Hanna City	1912-1923	1,081,084
Hanna City Mining Company	Hanna City	1923-1926	592,559
Dorthel Coal Company	Hanna City	1927-1938	1,338,551
			3,661,961

* Operated by Newsam Brothers

** Operated by McCullough

Last reported production: February 1938

SOURCES OF DATA

Source Map	Date	Original Scale	Digitized Scale	Map Type
Microfilm, document 352280	5-24-1938	1:2400	1:4137	Final

Annotated Bibliography (data source, brief description of information)

Coal Reports - Production, ownership, years of operation, depth.

Directory of Illinois Coal Mines (Peoria County) - Mine names, mine index, ownership, years of operation.

Mine notes (Peoria County) - Mine type, shaft location, seams, thickness, geologic problems.

Microfilm map, document 352280, reel 03138, frames 346-349 - Shaft locations, mine outline, mining method.

Mine Index 601**Crescent Mining Company, Lamarsh No. 6 Mine**

Type: Underground Total mined-out acreage shown: 1,771 The area shown on the accompanying map represents the area undermined by Lamarsh No. 6 Mine and Lamarsh No. 2 Mine (mine index 5837).

SHAFT, SLOPE, DRIFT or TIPPLE LOCATIONS

Type	County	Township-Range	Section	Quarters-Footage
Main slope	Peoria	7N 7E	8	SW NW NW
Slope	Peoria	7N 7E	8	SW NW NW
Slope	Peoria	7N 7E	7	SE NE NE
Air shaft	Peoria	7N 7E	7	SW NW NW
Air shaft	Peoria	7N 7E	18	NW NW NE
Air shaft	Peoria	7N 8E	12	NW SE NW

GEOLOGY

Seam(s) Mined	Depth (ft)	Thickness (ft)			Mining Method
		Min	Max	Avg	
Springfield	58			4.16-4.33	RPP

Geologic Problems Reported: The immediate roof was 2 to 3 feet of black shale with sandstone above.

PRODUCTION HISTORY

Company	Mine Name	Years	Production (tons)
Newsam Brothers Coal Company	Newsam No. 6	1922-1923	84,701
Crescent Mining Company	Lamarsh No. 6	1923-1940	<u>7,287,878</u>
			7,372,579

Last reported production: February 1940

SOURCES OF DATA

Source Map	Date	Original Scale	Digitized Scale	Map Type
Microfilm, document 352193	6-27-1951	1:2400	1:5131	Final

Annotated Bibliography (data source, brief description of information)

Coal Reports - Production, ownership, years of operation.

Directory of Illinois Coal Mines (Peoria County) - Mine names, mine index, ownership, years of operation.

Mine notes (Peoria County) - Slope location, seam, depth, thickness, geologic problems.

Microfilm map, document 352193, reel 03138, frames 231-251 - Slope & shaft locations, mine outline, mining method.

Mine Index 827**Central West Coal Company, Glenwood Mine**

Type: Underground Total mined-out acreage shown: 138 Production after the map date indicates approximately 300 additional acres were mined, which is shown on the accompanying map as a general area of mining, and some of the northeastern portion of Banner Block Mine (mine index 3062) was mined by the Glenwood Mine before 1923.

SHAFT, SLOPE, DRIFT or TIPPLE LOCATIONS

Type	County	Township-Range	Section	Quarters-Footage
Slope	Peoria	9N 6E	24	SW SE NW
Slope	Peoria	9N 6E	24	SE SE NW
Slope	Peoria	9N 6E	24	SE NW SW
Air slope	Peoria	9N 6E	24	NE SW SW
Air slope	Peoria	9N 6E	25	NE NW SW

GEOLOGY

Seam(s) Mined	Depth (ft)	Thickness (ft)			Mining Method
		Min	Max	Avg	
Springfield	80-115 (57 at air shaft)			4.0	MRP

Geologic Problems Reported: A faulted area was shown on the source map in the northern part of the mine. The faults may have been eroded coal or a contemporaneous channel, but resulted in the driving of a single entry to access the northern reserves. The shape of the mine outlines indicates another geologic problem in the southern third of the mine. The roof consisted of 9 inches of draw slate overlain by 4 inches of black shale and 18 inches of gray shale. No horsebacks were found in this mine before 1918, which is rare in this area. A very few lenses of pyrite were encountered and none of those seen were continuous.

PRODUCTION HISTORY

Company	Mine Name	Years	Production (tons)
Warsaw Coal Company	Warsaw No. 4, A, Edwards	1906-1917	384,879
Warsaw Coal Company	Edwards	1917-1920	246,397 *
Central West Coal Company	Warsaw No. 4	1920-1932	527,603 *
Glenwood Mining Company	Glenwood	1933-1936	192,324 *
Central West Coal Company	Glenwood	1937-1937	8,638 *
			1,359,841

* Production after map date

Last reported production: February 1937

SOURCES OF DATA

Source Map	Date	Original Scale	Digitized Scale	Map Type
Company, 4103.P41 i5.1-6	3-1-1923	1:1200	1:1200	Not final
Microfilm, document 352278	6-1-1917	1:2400	1:4800	Not final
Field notes (A. C. Bevan & D. L. Carrol)	9-27-1929	(text only)	1:24000 **	Secondary source
WPA, T9N-R6E	circa 1934	1:12000	1:70392	Secondary source
Federal Land Bank Report	4-1934	1:142560	1:142560	Secondary source

** The air shaft location was plotted on a 1:24000 USGS topographic map from the shaft location description and digitized.

Annotated Bibliography (data source, brief description of information)

Coal Reports - Production, ownership, years of operation, seam, mining method.

Directory of Illinois Coal Mines (Peoria County) - Mine names, mine index, ownership, years of operation.

Mine notes (Peoria County) - Mine type, slope location, seam, depth, thickness, geologic problems.

ISGS field notes (Peoria County) - Air shaft location (25-T9N-R6E).

ISGS map library, 4103.P41 i5.1-6 - Slope locations, mine outline.

Microfilm map, document 352278, reel 03138, frame 344 - Slope locations, mining method, geologic problems.

WPA map, T9N-R6E - Mine outline (southeastern part).

Federal Land Bank Report (Peoria County) - General area of mining.

Mine Index 881**Midland Coal Company, Edwards Mine**

Type: Surface Total mined-out acreage shown: 2,525

SHAFT, SLOPE, DRIFT or TIPPLE LOCATIONS

Type	County	Township-Range	Section	Quarters-Footage
Tipple	Peoria	9N 6E	25	NE SE NW

GEOLOGY

Seam(s) Mined	Depth (ft)	Thickness (ft)			Mining Method
		Min	Max	Avg	
Herrin	34-60			3.67-4.75	Surface

Geologic Problems Reported: Some old workings were encountered while excavating some of the pits. The Brereton Limestone above the Herrin Coal was up to 5 feet thick in some places, absent in some places, and was sometimes lenticular. In some places the upper part of the limestone was nodular. Sandstone was present 5 to 10 feet above the coal. Clay dikes were common in some pits. The blue band in this area was about 9 inches from the top of the seam.

PRODUCTION HISTORY

Company	Mine Name	Years	Production (tons)
Morgan Coal Company	Edwards	1952-1963	1,796,340
Peabody Coal Company	Edwards	1963-1970	3,617,743
Midland Coal Company	Edwards	1970-1975	<u>1,844,226</u>
			7,258,309

Last reported production: September 1975

SOURCES OF DATA

Source Map	Date	Original Scale	Digitized Scale	Map Type
USGS topographic map	1996	1:24000	1:24000	Secondary source
USGS topographic map	1971, PR 1979	1:24000	1:24000	Secondary source
NAIP digital ortho-photo quadrangles	2004	1:6000	1:6000	Secondary source
Company, 6-110 (a-c)	Undated	1:15840	1:15840	Not final
Company, 6-113	Undated	1:3600	1:3600	Not final
Company, 6-189	1969	1:62500	1:62500	Not final

Annotated Bibliography (data source, brief description of information)

Coal Reports - Production, ownership, years of operation, depth, mining method.

Directory of Illinois Coal Mines (Peoria County) - Mine names, mine index, ownership, years of operation.

Mine notes (Peoria County) - Mine location, seam, thickness.

USGS topographic map, Peoria West Quadrangle, 1996 - Mine outline, mining method.

USGS topographic map, Hanna City Quadrangle, 1971, Photorevised 1979 - Mine outline.

National Agriculture Imagery Program map, digital ortho-photo quadrangle map, Hanna City Quadrangle, 2004 - Mine outline.

National Agriculture Imagery Program map, digital ortho-photo quadrangle map, Farmington East Quadrangle, 2004 - Mine outline.

Company map, Coal Section files, 6-110 (a-c) - Pit identification.

Company map, Coal Section files, 6-113 - Pit identification.

Company map, Coal Section files, 6-189 - Pit identification.

Mine Index 887
Midland Coal Company, Elm Mine

Type: Surface Total mined-out acreage shown: 3,519 The area shown on the accompanying map is larger than expected from the reported production and likely includes some areas that were unmined, but were impossible to identify as unmined on the photographic maps.

SHAFT, SLOPE, DRIFT or TIPPLE LOCATIONS

Type	County	Township-Range	Section	Quarters-Footage
Tipple	Peoria	9N 5E	24	SW NE SW

GEOLOGY

Seam(s) Mined	Depth (ft)	Thickness (ft)			Mining Method
		Min	Max	Avg	
Herrin	55-78			2.67-4.25	Surface

Geologic Problems Reported: The roof for the Herrin Coal was sometimes the Brereton Limestone, which was generally 1 to 2 feet thick but locally up to 4 feet thick. In 36-T9N-R5E, the Herrin Coal was heavily affected by "white top", a light gray clay material, and the thickness was highly variable. The white top material infiltrated the upper portion of the seam. This problem decreased downward in the coal, but made a very dirty product. Slip planes and cracks in the coal were observed, as well as clay dikes. The top of the seam was irregular. The blue band was about 2 inches thick in this area. Pyrite lenses up to 1.5 inches were noted, as were pyrite nodules.

PRODUCTION HISTORY

Company	Mine Name	Years	Production (tons)
Peabody Coal Company	Elm No. 1 & Bright Star No. 2	1968-1970	2,943,493
Midland Coal Company	Elm	1970-1984	<u>10,339,741</u>
			13,283,234

Last reported production: July 1984

SOURCES OF DATA

Source Map	Date	Original Scale	Digitized Scale	Map Type
Company, 6-393	1-1-1987	1:12000	1:12000	Final
Company, 10-9-7	3-1978	1:12000	1:12000	Not final
Company, 10-6-11	1-1-1979	1:12000	1:12000	Not final
NAIP digital ortho-photo quadrangles	2004	1:6000	1:6000	Secondary source

Annotated Bibliography (data source, brief description of information)

Coal Reports - Production, ownership, years of operation, seam, depth, thickness, mining method.
 Directory of Illinois Coal Mines (Peoria County) - Mine names, mine index, ownership, years of operation.
 Mine notes (Peoria County) - Mine type, seam, mining method, geologic problems.
 Company map, Coal Section files, 6-393 - Mine outline, mining method.
 Company map, Coal Section files, 10-9-7 - Mine outline.
 Company map, Coal Section files, 10-6-11 - Mine outline.
 National Agriculture Imagery Program map, digital ortho-photo quadrangle map, Hanna City Quadrangle, 2004 - Mine outline.
 National Agriculture Imagery Program map, digital ortho-photo quadrangle map, Farmington East Quadrangle, 2004 - Mine outline.
 USGS topographic map, Hanna City Quadrangle, 1971, Photorevised 1979 - Mine outline.
 National Agriculture Imagery Program map, digital ortho-photo quadrangle map, Hanna City Quadrangle, 2004 - Mine outline.
 National Agriculture Imagery Program map, digital ortho-photo quadrangle map, Farmington East Quadrangle, 2004 - Mine outline.

Mine Index 3048**Whip-Poor-Will Coal Company, Whip-Poor-Will Mine**

Type: Underground Total mined-out acreage shown: 4 The area shown is larger than expected for the reported production. Much of the area depicted as mined on the accompanying map was marked "old works, mined out" on the source map. Production indicates approximately 2 acres were mined and less than 1 acre was mined after the map date.

SHAFT, SLOPE, DRIFT or TIPPLE LOCATIONS

Type	County	Township-Range	Section	Quarters-Footage
Slope	Peoria	9N 6E	22	NE NW SE
Slope	Peoria	9N 6E	22	NW NE SE
Air shaft	Peoria	9N 6E	22	NW NE SE

GEOLOGY

Seam(s) Mined	Depth (ft)	Thickness (ft)			Mining Method
		Min	Max	Avg	
Springfield	150			4.0	Underground

Geologic Problems Reported:

PRODUCTION HISTORY

Company	Mine Name	Years	Production (tons)
James Pankey	Pankey	1934-1935 *	150
Whip-Poor-Will Coal Company	Whip-Poor-Will	1936-1939	3,895
James Pankey	Pankey	1940-1942	1,676
James Pankey	Pankey	1941-1942	850 **
William Richard Ford	Ford	1942-1942	140 **
Whip-Poor-Will Coal Company	Whip-Poor-Will	1943-1944	262 **
			6,973

* Idle 1935

** Production after map date

Last reported production: 1944

SOURCES OF DATA

Source Map	Date	Original Scale	Digitized Scale	Map Type
Microfilm, document 352281	9-25-1941	1:360	1:819	Not final

Annotated Bibliography (data source, brief description of information)

Coal Reports - Production, ownership, years of operation.

Directory of Illinois Coal Mines (Peoria County) - Mine names, mine index, ownership, years of operation.

Mine notes (Peoria County) - Mine type, drift location, seam, depth, thickness.

Microfilm map, document 352281, reel 03138, frame 350 - Slope & shaft locations, mine outline.

Mine Index 3056**George Manull & J. Jruljok, Manull & Jruljok Mine**

Type: Underground Total mined-out acreage shown: 5 Production indicates less than 1 acre was mined after the map date.

SHAFT, SLOPE, DRIFT or TIPPLE LOCATIONS

Type	County	Township-Range	Section	Quarters-Footage
Main slope	Peoria	9N 6E	22	SW NE SW
Air shaft	Peoria	9N 6E	22	SW NE SW
Slope	Peoria	9N 6E	22	SE NW SW

GEOLOGY

Seam(s) Mined	Depth (ft)	Thickness (ft)			Mining Method
		Min	Max	Avg	
Springfield	14-40			4.0	MRP

Geologic Problems Reported:

PRODUCTION HISTORY

Company	Mine Name	Years	Production (tons)
Jay Bird Coal Company	Jay Bird	1933-1937	15,138
Lester Johnson	Johnson	1937-1937	466
Lester Johnson	Johnson	1937-1937	465 *
John Price	Price	1938-1939	685 *
Messersmith & Johnson	Messersmith & Johnson	1939-1939	72 *
George Manull & J. Jruljok	Manull & Jruljok	1940-1940	744 *
			17,570

* Production after map date

Last reported production: 1940

SOURCES OF DATA

Source Map	Date	Original Scale	Digitized Scale	Map Type
Microfilm, document 352176	5-1-1937	1:600	1:744	Not final
Microfilm, document 352293	6-23-1935	1:576	1:576	Not final

Annotated Bibliography (data source, brief description of information)

Coal Reports - Production, ownership, years of operation.

Directory of Illinois Coal Mines (Peoria County) - Mine names, mine index, ownership, years of operation.

Mine notes (Peoria County) - Mine type, slope location, seam, depth, thickness.

Microfilm map, document 352176, reel 03138, frame 211 - Slope & shaft locations, mine outline, mining method.

Microfilm map, document 352293, reel 03138, frame 364 - Escape / air shaft location, mine outline.

WPA map, T9N-R6E - Mine location.

Mine Index 3057
Bennett Coal Company, Bennett Mine

Type: Underground Total mined-out acreage shown: 5 Production indicates less than 2 acres were mined after the map date.

SHAFT, SLOPE, DRIFT or TIPPLE LOCATIONS

Type	County	Township-Range	Section	Quarters-Footage
Main slope	Peoria	9N 6E	22	SE NW SW
Air shaft	Peoria	9N 6E	23	SE NW SW

GEOLOGY

Seam(s) Mined	Depth (ft)	Thickness (ft)			Mining Method
		Min	Max	Avg	
Springfield	15			4.0	MRP

Geologic Problems Reported:

PRODUCTION HISTORY

Company	Mine Name	Years	Production (tons)
Peter Hoffman	Hoffman	1940-1940	4,576
Jay Bird Coal Company *	Jay Bird No. 2	1941-1944	5,262
Elmer Streitmatter	Streitmatter	1944-1944	225
Schneider Coal Company	Schneider	1945-1949	6,573
Schneider Coal Company	Schneider	1949-1950	1,535 **
Dawson & Johnson Coal Company	Dawson & Johnson	1950-1950	300 **
Dawson & Smith Coal Company	Dawson & Smith	1950-1950	1,500 **
Blankenship Coal Company	Jay Bird	1950-1951	778 **
W. H. Simpson Coal Company	Simpson	1951-1952	566 **
Bennett Coal Company	Bennett	1952-1952	179 **
			21,494

* The mine ownership transferred from Richard Price to Max Wyman in 1942, but the mine continued to operate as Jay Bird Coal Company.

** Production after map date

Last reported production: 1952

SOURCES OF DATA

Source Map	Date	Original Scale	Digitized Scale	Map Type
Microfilm, document 352255	1-9-1949	1:2400	1:2400	Not final

Annotated Bibliography (data source, brief description of information)

Coal Reports - Production, ownership, years of operation.

Directory of Illinois Coal Mines (Peoria County) - Mine names, mine index, ownership, years of operation.

Mine notes (Peoria County) - Mine type, slope location, seam, depth, thickness.

Microfilm map, document 352255, reel 03138, frame 321 - Slope & shaft locations, mine outline, mining method.

Mine Index 3058**Peter D. Hoffman, Kickapoo Valley Mine**

Type: Underground Total mined-out acreage shown: 10 The area shown on the accompanying map is included in the outline for Banner Block Mine (mine index 3062), whose northwestern portion is the same as the Kickapoo Valley Mine. The two mines operated concurrently, and the workings can not be differentiated.

SHAFT, SLOPE, DRIFT or TIPPLE LOCATIONS

Type	County	Township-Range	Section	Quarters-Footage
Main slope	Peoria	9N 6E	23	SE NW SE
Air shaft	Peoria	9N 6E	23	NE SW SE

GEOLOGY

Seam(s) Mined	Depth (ft)	Thickness (ft)			Mining Method
		Min	Max	Avg	
Springfield				4.0	MRP

Geologic Problems Reported:

PRODUCTION HISTORY

Company	Mine Name	Years	Production (tons)
Kickapoo Valley Coal Company *	Kickapoo Valley	1933-1940	26,429
Peter D. Hoffman	Kickapoo Valley	1941-1942	8,410
			34,839

* The mine changed management or ownership in 1939, but continued to operate under the same name.

Last reported production: 1942

SOURCES OF DATA

Source Map	Date	Original Scale	Digitized Scale	Map Type
Microfilm, document 352275	2-2-1942	1:2400	1:2482	Secondary source
Microfilm, document 352269	6-1951	1:2400	1:3806	Secondary source

Annotated Bibliography (data source, brief description of information)

Coal Reports - Production, ownership, years of operation.

Directory of Illinois Coal Mines (Peoria County) - Mine names, mine index, ownership, years of operation.

Mine notes (Peoria County) - Mine type, drift location, seam, thickness.

Microfilm map, document 352275, reel 03138, frame 341, map of Black Jewel Mine (mine index 7517) - Slope and shaft locations, mine outline (northern), mining method.

Microfilm map, document 352269, reel 03138, frame 335, map of Banner Block Mine (mine index 3062) - Mine outline (southern and eastern).

Mine Index 3059
Big 4 Coal Company, Big 4 Mine

Type: Underground Total mined-out acreage shown: None; production indicates less than 1 acre was mined.

SHAFT, SLOPE, DRIFT or TIPPLE LOCATIONS

Type	County	Township-Range	Section	Quarters-Footage
Main drift	Peoria	9N 6E	23	NW NE SE

GEOLOGY

Seam(s) Mined	Depth (ft)	Thickness (ft)			Mining Method
		Min	Max	Avg	
Springfield				3.83	Underground

Geologic Problems Reported:

PRODUCTION HISTORY

Company	Mine Name	Years	Production (tons)
Big 4 Coal Company	Big 4	1937-1939	<u>2,625</u> 2,625

Last reported production: 1939

SOURCES OF DATA

Source Map	Date	Original Scale	Digitized Scale	Map Type
Mine notes	Undated	(text only)	1:24000 *	Secondary source

* The mine location was plotted on a 1:24000 USGS topographic map from the mine location description and digitized.

Annotated Bibliography (data source, brief description of information)

Coal Reports - Production, ownership, years of operation.
 Directory of Illinois Coal Mines (Peoria County) - Mine names, mine index, ownership, years of operation.
 Mine notes (Peoria County) - Mine type, drift location, seam, thickness.

Mine Index 3060**Hoffman Coal Company, Hoffman No. 2 Mine**

Type: Underground Total mined-out acreage shown: 16

SHAFT, SLOPE, DRIFT or TIPPLE LOCATIONS

Type	County	Township-Range	Section	Quarters-Footage
Main slope	Peoria	9N 6E	23	SW SW NW
Air shaft	Peoria	9N 6E	23	SW SW NW

GEOLOGY

Seam(s) Mined	Depth (ft)	Thickness (ft)			Mining Method
		Min	Max	Avg	
Springfield	80			4.08	RPP

Geologic Problems Reported:**PRODUCTION HISTORY**

Company	Mine Name	Years	Production (tons)
Fred Snider	Snider	1932-1935	7,415
Snider Brothers	Snider	1936-1936	3,163
Snider Coal Company	Snider	1937-1941	27,367
Fred Snider	Snider	1942-1942	4,274
Snider Coal Company	Snider	1943-1943	1,058
Hoffman Coal Company	Hoffman No. 2	1943-1946	<u>21,686</u>
			64,963

Last reported production: 1946

SOURCES OF DATA

Source Map	Date	Original Scale	Digitized Scale	Map Type
Microfilm, document 352188	8-5-1946	1:2400	1:3972	Final

Annotated Bibliography (data source, brief description of information)

Coal Reports - Production, ownership, years of operation.

Directory of Illinois Coal Mines (Peoria County) - Mine names, mine index, ownership, years of operation.

Mine notes (Peoria County) - Slope location, seam, depth, thickness.

Microfilm map, document 352188, reel 03138, frame 226 - Slope & shaft locations, mine outline, mining method.

Mine Index 3061**Howarth & Taylor, Howarth & Taylor Mine**

Type: Underground Total mined-out acreage shown: None; production indicates approximately 170 acres were mined. A general area of mining is shown on the accompanying map to indicate the approximate size and a possible location for the mine.

SHAFT, SLOPE, DRIFT or TIPPLE LOCATIONS

Type	County	Township-Range	Section	Quarters-Footage
Main drift	Peoria	9N 6E	24	

GEOLOGY

Seam(s) Mined	Depth (ft)	Thickness (ft)			Mining Method
		Min	Max	Avg	
Springfield	70-120			4.0	RP

Geologic Problems Reported:

PRODUCTION HISTORY

Company	Mine Name	Years	Production (tons)
Howarth & Taylor	Howarth & Taylor	1889-1908 *	605,181 605,181

* Idle 1895

Last reported production: 1908

SOURCES OF DATA

Source Map	Date	Original Scale	Digitized Scale	Map Type
Federal Land Bank Report	4-1934	1:142560	1:142560	Secondary source

Annotated Bibliography (data source, brief description of information)

Coal Reports - Production, ownership, years of operation, seam, depth, mining method.

Directory of Illinois Coal Mines (Peoria County) - Mine names, mine index, ownership, years of operation.

Mine notes (Peoria County) - Mine type, drift location, thickness.

Federal Land Bank Report (Peoria County) - General area of mining.

Mine Index 3062**Banner Block Coal Company, Banner Block Mine**

Type: Underground Total mined-out acreage shown: 74 Production indicates approximately 60 acres were mined. The general area of mining in the northeastern part of the mine, the escape shaft, and a portion of the southeastern workings are shown on a 1923 source map of another mine, which indicates earlier ownership than shown below. The WPA map also indicates the Glenwood Mine (mine index 827) also mined from the slope for the Banner Block Mine prior to 1923, and may been the initial operator of the Banner Block Mine.

SHAFT, SLOPE, DRIFT or TIPPLe LOCATIONS

Type	County	Township-Range	Section	Quarters-Footage
Main slope	Peoria	9N 6E	24	SW NW SW
Air slope	Peoria	9N 6E	24	SW NW SW
Escape shaft	Peoria	9N 6E	23	SE SE SE

GEOLOGY

Seam(s) Mined	Depth (ft)	Thickness (ft)			Mining Method
		Min	Max	Avg	
Springfield	100-115			4.0	Underground

Geologic Problems Reported:

PRODUCTION HISTORY

Company	Mine Name	Years	Production (tons)
Kupel Coal Company	Kupel	1936-1938 *	60
Banner Block Coal Company **	Banner Block	1939-1951	<u>217,674</u> 217,734

* Idle 1937 & 1938

** Owned by Seghi Brothers

Last reported production: 1951

SOURCES OF DATA

Source Map	Date	Original Scale	Digitized Scale	Map Type
Microfilm, document 352269	6-1951	1:2400	1:3806	Final
ISGS map library, 4103.P41 i5.1-6	3-1-1923	1:1200	1:1200	Secondary source
WPA, T9N-R6E	circa 1934	1:12000	1:70392	Secondary source

Annotated Bibliography (data source, brief description of information)

Coal Reports - Production, ownership, years of operation.

Directory of Illinois Coal Mines (Peoria County) - Mine names, mine index, ownership, years of operation.

Mine notes (Peoria County) - Mine type, drift location, seam, depth, thickness.

Microfilm map, document 352269, reel 03138, frame 335 - Slope locations, mine outline, mining method.

ISGS map library, 4103.P41 i5.1-6, map of Central West Mine (mine index 827) - General area of mining, escape shaft, mining method

WPA, T9N-R6E - Slope location, general area of mining, years of operation.

Mine Index 3063**Marteness Mining Company, Marteness Mine**

Type: Underground Total mined-out acreage shown: 10 Production indicates less than 1 acre was mined after the map date.

SHAFT, SLOPE, DRIFT or TIPPLE LOCATIONS

Type	County	Township-Range	Section	Quarters-Footage
Main slope	Peoria	9N 6E	25	SW SE NE
Air shaft	Peoria	9N 6E	25	SW SE NE

GEOLOGY

Seam(s) Mined	Depth (ft)	Thickness (ft)			Mining Method
		Min	Max	Avg	
Springfield	8			4.0	MRP

Geologic Problems Reported:

PRODUCTION HISTORY

Company	Mine Name	Years	Production (tons)
George Swords	Swords	1936-1937 *	1,500
Marteness Mining Company	Marteness	1938-1943	27,701
Marteness Mining Company	Marteness	1943-1944	<u>2,140</u> **
			31,341

* Idle 1937

** Production after map date

Last reported production: 1944

SOURCES OF DATA

Source Map	Date	Original Scale	Digitized Scale	Map Type
Microfilm, document 352271	6-25-1943	1:1200	1:1489	Not final

Annotated Bibliography (data source, brief description of information)

Coal Reports - Production, ownership, years of operation.

Directory of Illinois Coal Mines (Peoria County) - Mine names, mine index, ownership, years of operation.

Mine notes (Peoria County) - Mine type, slope location, seam, depth, thickness.

Microfilm map, document 352271, reel 03138, frame 337 - Slope & shaft locations, mine outline, mining method.

Mine Index 3064
Harry Becker, Becker Mine

Type: Underground Total mined-out acreage shown: 9

SHAFT, SLOPE, DRIFT or TIPPLE LOCATIONS

Type	County	Township-Range	Section	Quarters-Footage
Main slope	Peoria	9N 6E	25	NW SW SW
Air shaft	Peoria	9N 6E	25	NW SW SW

GEOLOGY

Seam(s) Mined	Depth (ft)	Thickness (ft)			Mining Method
		Min	Max	Avg	
Springfield	30			4.0	MRP

Geologic Problems Reported:

PRODUCTION HISTORY

Company	Mine Name	Years	Production (tons)
Harry Becker	Becker	1935-1943	48,278 48,278

Last reported production: 1943

SOURCES OF DATA

Source Map	Date	Original Scale	Digitized Scale	Map Type
Microfilm, document 352254	9-1947	1:1200	1:1406	Final

Annotated Bibliography (data source, brief description of information)

Coal Reports - Production, ownership, years of operation.
 Directory of Illinois Coal Mines (Peoria County) - Mine names, mine index, ownership, years of operation.
 Mine notes (Peoria County) - Mine type, seam, depth, thickness.
 Microfilm map, document 352254, reel 03138, frame 320 - Slope & shaft locations, mine outline, mining method.

Mine Index 3077**Russell Delong Coal Company, Delong Mine**

Type: Underground Total mined-out acreage shown: 2 Production indicates less than 1 acre was mined after the map date.

SHAFT, SLOPE, DRIFT or TIPPLE LOCATIONS

Type	County	Township-Range	Section	Quarters-Footage
Main slope	Peoria	9N 7E	30	S ½ NW NW
Air slope	Peoria	9N 7E	30	S ½ NW NW

GEOLOGY

Seam(s) Mined	Depth (ft)	Thickness (ft)			Mining Method
		Min	Max	Avg	
Springfield	60			4.0	MRP

Geologic Problems Reported:

PRODUCTION HISTORY

Company	Mine Name	Years	Production (tons)
Thomas Hunt	Hunt	1922-1939	5,864 *
August Reents	Reents	1939-1940	588
Thomas Hunt, Sr.	Hunt	1940-1941	386
Dare & Delong	Dare & Delong	1941-1942	391
Frank Dare	Dare	1942-1942	67
Russel Delong Coal Company	Delong	1942-1943	1,554
Russel Delong Coal Company	Delong	1944-1945	408 **
			<u>9,258</u>

* Production was not reported 1930-1933 for mines producing less than 1,000 tons per year.

** Production after map date (the source map was said to be circa 1943).

Last reported production: 1945

SOURCES OF DATA

Source Map	Date	Original Scale	Digitized Scale	Map Type
Microfilm, document 352286	Undated	1:1044	1:1728	Undated

Annotated Bibliography (data source, brief description of information)

Coal Reports - Production, ownership, years of operation.

Directory of Illinois Coal Mines (Peoria County) - Mine names, mine index, ownership, years of operation.

Mine notes (Peoria County) - Mine type, drift location, seam, depth, thickness.

Microfilm map, document 352286, reel 03138, frame 356 - Slope locations, mine outline, mining method.

Mine Index 4256**Pleasant Hill Coal Company, Pleasant Hill Mine**

Type: Underground Total mined-out acreage shown: 1 Production indicates approximately 13 acres were mined after the map date.

SHAFT, SLOPE, DRIFT or TIPPLE LOCATIONS

Type	County	Township-Range	Section	Quarters-Footage
Main slope	Peoria	9N 7E	30	NW NW SW
Air shaft	Peoria	9N 7E	30	NW NW SW

GEOLOGY

Seam(s) Mined	Depth (ft)	Thickness (ft)			Mining Method
		Min	Max	Avg	
Springfield	17			3.67	MRP

Geologic Problems Reported:

PRODUCTION HISTORY

Company	Mine Name	Years	Production (tons)
Pleasant Hill Coal Company	Pleasant Hill	1933-1933	14,525
Pleasant Hill Coal Company	Pleasant Hill	1933-1935	21,706 *
Theodore Zahner	Pleasant Hill	1936-1936	3,500 *
Pleasant Hill Coal Company	Pleasant Hill	1937-1940	5,588 *
			45,319

* Production after map date

Last reported production: 1940

SOURCES OF DATA

Source Map	Date	Original Scale	Digitized Scale	Map Type
Microfilm, document 352185	9-10-1933	1:1200	1:993	Not final

Annotated Bibliography (data source, brief description of information)

Coal Reports - Production, ownership, years of operation.

Directory of Illinois Coal Mines (Peoria County) - Mine names, mine index, ownership, years of operation.

Mine notes (Peoria County) - Mine type, depth, thickness.

Microfilm map, document 352185, reel 03138, frame 233 - Slope locations, mine outline, mining method.

Mine Index 5885**Silver Creek Coal Company, Silver Creek No. 2 Mine**

Type: Underground Total mined-out acreage shown: 198 The mined area is larger than expected for the reported production. The reported production indicates approximately 100 acres were mined. It is likely that other operators mined within the boundaries of the mined area shown on the accompanying map (see the unlocated maps in the back of this report), as well as the Black Diamond Mine (mine index 5886) shown within the mine boundary for Silver Creek No. 2 Mine.

SHAFT, SLOPE, DRIFT or TIPPLE LOCATIONS

Type	County	Township-Range	Section	Quarters-Footage
Slope (two)	Peoria	9N 7E	30	NW NW NE
Slope	Peoria	9N 7E	19	SE SE SW
Slope	Peoria	9N 7E	19	SE SE SW
Air shaft	Peoria	9N 7E	30	SW SW NW

GEOLOGY

Seam(s) Mined	Depth (ft)	Thickness (ft)			Mining Method
		Min	Max	Avg	
Springfield	50-117			4.0	MRP

Geologic Problems Reported:

PRODUCTION HISTORY

Company	Mine Name	Years	Production (tons)
Olympia Coal Mining Company	Olympia	1909-1913	127,186
Idle / abandoned		1914-1920	
Silver Creek Coal Company	Silver Creek No. 2	1921-1926	<u>231,924</u> 359,110

Last reported production: 1926

SOURCES OF DATA

Source Map	Date	Original Scale	Digitized Scale	Map Type
Microfilm, document 352175	10-3-1925	1:2400	1:4303	Not final

Annotated Bibliography (data source, brief description of information)

Coal Reports - Production, ownership, years of operation, seam, depth.

Directory of Illinois Coal Mines (Peoria County) - Mine names, mine index, ownership, years of operation.

Mine notes (Peoria County) - Thickness.

Microfilm map, document 352175, reel 03138, frame 210 - Slope & shaft locations, mine outline, mining method.

Microfilm map, document 352461, reel 03138, frame 142 - Ownership.

Mine Index 7517**Black Jewel Coal Company, Black Jewel Mine**

Type: Underground Total mined-out acreage shown: 8

SHAFT, SLOPE, DRIFT or TIPPLE LOCATIONS

Type	County	Township-Range	Section	Quarters-Footage
Slope	Peoria	9N 6E	23	NE NW SE
Slope	Peoria	9N 6E	23	SW NW SE
Air slope	Peoria	9N 6E	23	SE NW SE

GEOLOGY

Seam(s) Mined	Depth (ft)	Thickness (ft)			Mining Method
		Min	Max	Avg	
Springfield					MRP

Geologic Problems Reported:

PRODUCTION HISTORY

Company	Mine Name	Years	Production (tons)
Black Jewel Coal Company	Black Jewel	1933-1941 *	<u>29,861</u> 29,861

* Idle 1940

Last reported production: 1941

SOURCES OF DATA

Source Map	Date	Original Scale	Digitized Scale	Map Type
Microfilm, document 352275	2-2-1942	1:2400	1:2482	Final

Annotated Bibliography (data source, brief description of information)

Coal Reports - Production, ownership, years of operation.

Directory of Illinois Coal Mines (Peoria County) - Mine names, mine index, ownership, years of operation.

Microfilm map, document 352275, reel 03138, frame 341 - Slope locations, mine outline, mining method.

Mine Index 7518**Black Jewel Coal Company, Black Jewel No. 2 Mine**

Type: Surface, Underground Total mined-out acreage shown: None Production indicates approximately 5 acres were mined. This mine was later surface mined by Midland Coal Company, Edwards Mine (mine index 881).

SHAFT, SLOPE, DRIFT or TIPPLE LOCATIONS

Type	County	Township-Range	Section	Quarters-Footage
Main slope	Peoria	9N 6E	23	SE NW SW
Air shaft	Peoria	9N 6E	23	SE NW SW

GEOLOGY

Seam(s) Mined	Depth (ft)	Thickness (ft)			Mining Method
		Min	Max	Avg	
Herrin					Surface, MRP *

* The Coal Reports indicated this mine operated as a surface mine 1934-1936. It then operated as an underground mine from 1937 to close. The source map shows underground mining coming off of a highwall, which may also indicate that this mine operated as both a surface and then later an underground mine.

Geologic Problems Reported:

PRODUCTION HISTORY

Company	Mine Name	Years	Production (tons)
Arthur Stenstrom	Stenstrom	1934-1935	4,300
E. H. Stenstrom	Stenstrom	1936-1940 **	6,705
Carl F. Goetz	Black Jewel No. 2	1941-1942	7,680
Black Jewel Coal Company	Black Jewel No. 2	1943-1943	200
			18,885

** Idle 1940

Last reported production: 1943

SOURCES OF DATA

Source Map	Date	Original Scale	Digitized Scale	Map Type
State archive, IL_2490_01	1-10-1938	1:2400	1:2400	Not final
Federal Land Bank Report	4-1934	1:142560	1:142560	Secondary source

Annotated Bibliography (data source, brief description of information)

Coal Reports - Production, ownership, years of operation, mining method.
 Directory of Illinois Coal Mines (Peoria County) - Mine names, mine index, ownership, years of operation.
 State archive, IL_2490_01 - Slope & shaft locations, mine outline, mining method.
 Federal Land Bank Report (Peoria County) - General area of mining.

Mine Index 7521
Henry Penn, Penn Mine

Type: Underground Total mined-out acreage shown: None; production indicates less than 2 acres were mined. The mine is not shown on the accompanying map because of later surface mining.

SHAFT, SLOPE, DRIFT or TIPPLe LOCATIONS

Type	County	Township-Range	Section	Quarters-Footage
Main shaft	Peoria	9N 6E	27	SW NW NE

GEOLOGY

Seam(s) Mined	Depth (ft)	Thickness (ft)			Mining Method
		Min	Max	Avg	
Herrin	26-35			4.0-4.83	RP

Geologic Problems Reported:

PRODUCTION HISTORY

Company	Mine Name	Years	Production (tons)
R. E. Zimmerman	Zimmerman	1909-1910	520
Henry Penn	Penn	1910-1916	6,045
			6,565

Last reported production: 1916

SOURCES OF DATA

Source Map	Date	Original Scale	Digitized Scale	Map Type
ISGS field notes (A. Bevan & D. Carroll)	9-25-1929	(text only)	1:24000 *	Secondary source

* The mine location was plotted on a 1:24000 USGS topographic map from the mine location description and digitized.

Annotated Bibliography (data source, brief description of information)

Coal Reports - Production, ownership, years of operation, mine type, depth, thickness, mining method.
 Directory of Illinois Coal Mines (Peoria County) - Mine names, mine index, ownership, years of operation.
 ISGS field notes (Peoria County) - Shaft location.

OTHER MINES SHOWN ON HANNA CITY QUADRANGLE

Mine Index 4257, Burns Brothers NE NW NW 30-T9N-R7E, Springfield Coal source: Microfilm map, document 352175, map of Silver Creek No. 2 Mine (mine index 5885, 10-3-1925)

Mine Index 5845 SW SE NE 34-T8N-R6E, Herrin Coal source: ISGS field notes (A. C. Bevan, 8-21-1928) and Federal Land Bank Report (4-1934)

Mine Index 5874 W ½ NE SE 28-T9N-R6E, Springfield Coal source: Federal Land Bank Report

Mine Index 5875 SW NE SW 26-T9N-R6E, drift, Springfield Coal source: ISGS field notes (D. L. Carroll, 10-1-1929) and Federal Land Bank Report (4-1934) and Glasford Quadrangle (USGS 15-minute topographic map, 1930)

Mine Index 5876 * SW SW SE 35-T9N-R6E, Herrin Coal source: Federal Land Bank Report (4-1934)

Mine Index 6181 * SW SW NW 26-T9N-R6E, Herrin Coal source: ISGS mine database

Mine Index 6182 SE SE NE 27-T9N-R6E, Herrin Coal source: ISGS mine database

Mine Index 7519 SW SW NW 35-T8N-R6E, "small coal mine", Herrin Coal source: ISGS map library, 4103.P41 i5.1-35

Mine Index 7520 NE SW NE 34-T8N-R6E, circa 1870-1873, Herrin Coal source: Atlas Map of Peoria County (1873)

Mine Index 7522 * NW SE NE 31-T9N-R6E, drift, Herrin Coal source: ISGS field notes (D. L. Carroll, 10-2-1929)

Mine Index 7523 NW NE SE 34-T9N-R6E, surface, Chapel Coal, 1.5 feet thick source: ISGS field notes (A. C. Bevan, 10-1-1929)

Mine Index 7524 NW SE SE 35-T9N-R6E, drift, Herrin Coal source: ISGS field notes (D. L. Carroll, 10-1-1929)

Mine Index 7525 NE NE SW 22-T9N-R6E, drift, Springfield Coal source: ISGS field notes (A. C. Bevan & D. L. Carroll, 9-26-1929) and Federal Land Bank Report (4-1934)

Mine Index 7526 NW SW SE 32-T8N-R6E, drift, Herrin Coal source: ISGS field notes (A. C. Bevan, 7-26-1928)

Mine Index 7527 NE SW NW 27-T8N-R6E, mine, Danville Coal, 1.2 feet thick source: ISGS field notes (S. E. Ekblaw, 7-26-1928)

Mine Index 7528 NW SE NE 5-T8N-R6E, drift, Herrin Coal source: ISGS field notes (A. C. Bevan, 7-26-1928)

Mine Index 7529 SE NE NE 2-T8N-R6E, two drifts, Herrin Coal source: ISGS field notes (A. C. Bevan, 1929)

Mine Index 7530 NW NE NE 2-T8N-R6E, drift, Herrin Coal source: ISGS field notes (H. R. Wanless, 1929)

Mine Index 7531 NE SE NE 24-T9N-R6E, Springfield Coal source: Atlas Map of Peoria County (1873)

Mine Index 7532 SW SE NE 25-T9N-R6E, Springfield Coal source: Atlas Map of Peoria County (1873)

Mine Index 7533 SE SE NE 25-T9N-R6E, Springfield Coal source: Atlas Map of Peoria County (1873) and microfilm, document 352175, map of Silver Creek No. 2 Mine (mine index 5885, 10-3-1925)

Mine Index 7534 SW NE SE 25-T9N-R6E, Springfield Coal source: Atlas Map of Peoria County (1873)

Mine Index 7535 NE NW SW 23-T9N-R6E, Springfield Coal source: Atlas Map of Peoria County (1873) and Federal Land Bank Report (4-1934)

Mine Index 7536 NW NE SW 36-T9N-R6E, drift, Herrin Coal source: ISGS field notes (D. L. Carroll, 1929)

Mine Index 7537 NE NE SW 36-T9N-R6E, drift, Herrin Coal source: ISGS field notes (D. L. Carroll, 1929)

Mine Index 7538 NE SE SW 22-T9N-R6E, underground, Springfield Coal source: Federal Land Bank Report (4-1934)

Mine Index 7539 NE NW NW 26-T9N-R6E, Springfield Coal source: Atlas Map of Peoria County (1873)

Mine Index 7540 NW NW SW 24-T9N-R6E, slope (air slope at SW SW SW), Springfield Coal source: microfilm, document 352278, map of Glenwood Mine (mine index 827, 6-1-1917)

Mine Index 7541 NW 23-T9N-R6E, surface, Herrin Coal source: ISGS field notes (R. C. Anderson, 1964) and Federal Land Bank Report (4-1934)

* Not shown on accompanying map because of later surface mining

MINES WHOSE LOCATIONS ARE NOT KNOWN, HANNA CITY QUADRANGLE

The locations of the following mines are unknown, but the production tonnage, operating names, and nearest town were reported in the Annual Coal Reports. The operators listed below mined in or near the Hanna City Quadrangle. The information shown is similar to that presented on the summary sheets in the previous pages of this directory. The first item is the name the mine operated under as listed in the Coal Report, then the years the mine reported. If no physical data are available, the next item listed is the total tons produced by the mine. If physical data are available, the order of presentation is as follows: type of opening for the mine (drift, slope or shaft), depth of coal in feet, and thickness of coal in feet.

The total tons mined by these unlocated mines is 3,056,453 (2,784,860 underground, 75,909 surface mined, and 195,684 mined by unspecified method), which would represent approximately 280 to 450 acres, depending on the recovery factor, mining method, and numerous other factors. (Note: 1 square mile = 640 acres)

EDWARDS STATION

Wilkinson (J. H.) & Kramm (E.), 1883-1884, drift, Springfield, 60, 4.5, RP	4,000 tons
Slain (S.), 1884-1885, slope, Springfield, 60, 4.17, RP	300 tons
Harper (William), 1884-1893, drift, Herrin, 30-75, 4.0-4.5, RP	5,041 tons
Lonsdale (William), 1884-1893, drift, Herrin, 30-60, 4.0-4.5, RP	3,544 tons
Buckley (A.), 1884-1886, drift, Herrin, 60, 4.5, RP	80 tons
Pillman (Richard), 1884-1887, drift, Herrin, 60, 4.5, RP	460 tons
Lonsdale (R.), 1884-1890, drift, Herrin, 40-50, 4.0-4.5, RP	2,488 tons
Kingsley (Charles), 1885-1891, drift, —, 30-70, 4.5, RP	3,050 tons
Hanning (F.), 1885-1886, drift, Springfield, 82, 4.33, RP	220 tons
Edwards Coal Company, 1888-1891, drift, Springfield, 40-100, 3.67-4.5, RP	12,660 tons
Patten (W. H.), 1891-1892	15,400 tons
Edwards (Charles), 1892-1893	4,665 tons
Cusack & Edwards, 1893-1895	6,200 tons
Cusack (Mike), 1895-1899	10,250 tons
Cusack & Anderson, 1899-1900	3,025 tons
Cusack & Edwards, 1900-1902	11,350 tons
Gigby, Cusack & Edwards, 1902-1903	6,890 tons
Cusack & Edwards, 1903-1905	10,400 tons
Edwards Mining Company, 1905-1907	<u>10,340</u> tons
	91,180 tons
Pillman (Richard), 1889-1891, drift, Springfield, 30, 4.5, RP	1,050 tons
Thayer & Clarkson, 1899-1900, drift, Springfield, 30-85, 2.5-4.5, RP	400 tons
Clarkson (William), 1900-1904	1,740 tons
Clarkson (R.), 1904-1906	460 tons
Clarkson (Lorenzo), 1906-1910	1,769 tons
Clarkson & Henning, 1910-1917	12,697 tons
Clarkson (William), 1917-1921	<u>7,796</u> tons
	24,862 tons
Snyder (E. C.), 1900-1903, drift, Springfield, 80, 4.0, RP	830 tons
Kingsley (Charles), 1900-1903, drift, Springfield, 80, 4.33-4.5, RP	910 tons
Schott & Witheral, 1904-1906, —, —, 40-60, 4.25-5.0, RP	690 tons
Schotte & Withell, 1909-1910, drift, Springfield, 35, 4.0, RP	684 tons

Kickapoo Coal Company, 1907-1909, shaft, —, 30-32, 4.0-4.5, RP	1,541 tons
King & Wilson, 1908-1909, drift, Springfield, —, 4.0, RP	1,000 tons
Stout (O. M.), 1908-1909, drift, Springfield, —, 4.0, RP	500 tons
Stout & Henning, 1909-1910	<u>598 tons</u>
	1,098 tons
Cramer (William), 1908-1919, drift or slope, —, 12-60, 4.0-4.5, RP	2,102 tons
Kirkman & Ames, 1909-1910, shaft or drift, Springfield, 85, 4.0-4.67, RP	630 tons
Lonsdale (T. H.), 1910-1911	800 tons
Appleby & Taylor, 1911-1912	540 tons
Andrews (James), 1912-1916	2,409 tons
Aman (George M., Jr.), 1916-1921	<u>17,666 tons</u>
	22,045 tons
Farrell (James), 1911-1912, drift, —, 50, 4.5, RP	320 tons
Farrell Brothers, 1912-1913	<u>122 tons</u>
	442 tons
Snider (Edward), 1911-1912, drift, Springfield, —, 4.0-4.5, RP	200 tons
Snider (Enoch), 1912-1913	285 tons
Dawson & May, 1913-1914	625 tons
Dawson (Charles), 1914-1915	<u>120 tons</u>
	1,230 tons
Snider (Enoch, Jr.), 1914-1915, drift, Springfield, 70, 3.83-4.33, RP	290 tons
Snider (Fred), 1915-1921	<u>2,950 tons</u>
	3,240 tons
Pratt (Charles E.), 1914-1916, slope or drift, —, 60, 4.5-4.67, RP	1,056 tons
Appleby (Fred), 1914-1915, drift, Springfield, —, 3.83-4.0, RP	400 tons
Edwards Coal Company, 1915-1916	<u>175 tons</u>
	575 tons
Stear (Thomas), 1915-1916, drift, Springfield, —, 4.0, RP	380 tons
Lemasters Brothers, 1916-1917	<u>150 tons</u>
	530 tons
Slone (Harry), 1926-1926	300 tons
Barr (Harry), 1916-1917, slope, Springfield, 70, 4.0, RP	40 tons
Asbell (Albert), 1919-1921	550 tons
Sluth & Howe, 1920-1922	1,000 tons
Howe (Elijah), 1922-1927	<u>2,705 tons</u>
	3,705 tons
Zeinie & Sents, 1920-1921	97 tons
Tuttle & Bidleman Coal Company, 1922-1925	35,050 tons
Bateman (Everett), 1922-1923	850 tons
Battman (E.) & Martin, 1923-1924	11,000 tons
Procter (C. H.), 1924-1925	25,000 tons
Bateman Coal Company, 1925-1925	<u>321 tons</u>
	37,171 tons
Forbes (William), 1924-1925	1,654 tons
Cutler (C. C.), 1925-1925	400 tons

Bowen Brothers, 1925-1926	200 tons
Heintz Coal Company, 1927-1927	300 tons
Burns (James), 1927-1927, underground	40 tons
Burns (Edward), 1928-1928	<u>200</u> tons
	240 tons
West Point Coal Company, 1929-1939, underground	1,363 tons
Grenko (Vinko), 1931-1932, underground	2,696 tons
Coogan Gravel Company, 1932-1932, surface	1,667 tons
Hickory Grove Coal Company, 1934-1934, underground	104 tons
Hoffman (Peter D.), 1934-1938, underground	2,170 tons
Big Five Coal Company, 1936-1936, surface	420 tons
Manen & Buhl, 1937-1937, underground	57 tons
Buhl (Noah), 1941-1941, underground	50 tons
Pioneer Coal Company, 1949-1949	2,801 tons
Kimsey Coal Company, No. 2 Mine, 1952-1953, surface, Herrin, —, —	1,211 tons

HANNA CITY

Cox (Edward), 1888-1890	755 tons
Henning (Fred), 1895-1897, drift, —, 60, 4.33-4.75, RP	244 tons
Johnson (William), 1900-1903, drift, —, 20-75, 4.0-5.0, RP	1,370 tons
Johnson (Ash), 1903-1911	1,620 tons
Wood (M. H.), 1911-1912	20 tons
Moody (M. H.), 1912-1916	<u>590</u> tons
	3,600 tons
Green (J.), 1904-1906, slope or drift, —, 48-400, 4.0-5.0, RP	455 tons
Green (Harry J.), 1906-1917	<u>6,590</u> tons
	7,045 tons
Dawson (T.), 1904-1906, slope or drift, Herrin, 30-51, 4.4-4.5-RP	270 tons
Harris (D.) & Son, 1904-1906, shaft or drift, Herrin, 50-60, 4.4-4.5, RP	230 tons
Bohannon (Thomas), 1904-1906, drift, Herrin, 50-51, 4.5, RP	130 tons
Wolford (Ben), 1904-1909, shaft or drift, —, 30-52, 4.0-5.0, RP	843 tons
Armfield (R.), 1904-1906, drift, Herrin, 25-41, 4.4-4.5, RP	64 tons
Harper (S.), 1904-1906, drift, Herrin, 30-48, 4.4-4.5, RP	62 tons
Cruse & Baldi, 1907-1908, shaft, Springfield, 30, 4.0-5.0, RP	200 tons
Kruse (Peter), 1908-1909	<u>560</u> tons
	760 tons
Largent (W. H.), 1908-1909, drift, Herrin, —, 4.5, RP	240 tons
Largent (Ernest), 1913-1915, drift, —, 60-80, 4.5, RP	286 tons

Johnson (William), 1913-1915, drift, Springfield, 200, 4.5, RP	329 tons
Lonsdale (Abe), 1914-1915, slope or drift, Springfield, 150-300, 4.0-4.5, RP	370 tons
Warner (Albert), 1915-1917	905 tons
Lonsdale (W.), 1917-1918	<u>50 tons</u>
	1,325 tons
Harding & Doubet, 1914-1916, drift, —, 150, 4.33-5.5, RP	185 tons
Doubett (John), 1916-1917	225 tons
Doubet (Ed), 1917-1918	<u>50 tons</u>
	460 tons
Cox (James), 1916-1917, drift, Herrin, —, 4.5, RP	25 tons
Dawson (Bryan), 1917-1918	84 tons
Kirkman (William), 1920-1921	438 tons
McNickle (Fred), 1923-1925	592 tons
Falletti (A. L.), 1924-1925	2,000 tons
Smith Coal Company, 1924-1925	160 tons
Wasson (Frank), 1925-1926	180 tons
Perkins (E. B.), 1925-1928	4,332 tons
Fohsnauch (Charles), 1928-1928, underground	1,650 tons
Daubert (Ed), 1928-1928, underground	50 tons
Cottonwood Coal Company, 1934-1936, drift, —, —, 4.5	732 tons
Three C Coal Company, 1937-1938	72 tons
Kupel Coal Company, 1939-1940	<u>111 tons</u>
	915 tons
Wolford (Henry), 1934-1936, underground	400 tons
Catherwood Coal Company, 1935-1935, underground	3,500 tons
Cottonwood Coal Company, 1940-1940, shaft, Springfield, 85, 4.17	123 tons
Cottonwood Coal Company, 1941-1941, underground	25 tons
Polich & White, 1941-1941, underground	246 tons
Johnson (Ash) Coal Company, 1942-1942	<u>149 tons</u>
	395 tons

HARKERS CORNER

Homan (T. W.), 1890-1893, drift, Springfield, 25, 4.0-4.5, RP	720 tons
Clark (James), 1894-1895, drift, Springfield, 70, 4.5, RP	1,200 tons

KRAMM STATION

Kramm (Edward) & Company, 1878-1884	432,000 tons
Purtscher (A.), 1885-1890	87,140 tons
Shaw (Nathan), 1890-1898	65,110 tons
Reents (Siebold), 1898-1902	39,436 tons

Reents Brothers, 1902-1909	128,770 tons
Reents (August), 1909-1910	<u>29,470 tons</u>
	781,926 tons

at Kramm Station on C., B. & Q RR; drift, Springfield, 50-100, 3.5-4.5, RP

OAK HILL

Slane (Ed), 1904-1911, drift, —, 40-61, 4.0-4.5, RP	500 tons
Clark (William), 1900-1902, drift, Springfield, 80, 4.0, RP	560 tons
Wolford & Cling, 1900-1902, drift, Springfield, 70, 4.0, RP	870 tons
Bemont (H. A.), 1904-1906, drift, Herrin, 30-61, 3.67-4.5, RP	460 tons
Curran (D. H.), 1904-1906, shaft or drift, Herrin, 50-65, 3.67-4.5, RP	374 tons
Seigel (Edward), 1904-1909, drift, Springfield, 50-60, 4.0-4.5, RP	1,080 tons
Scott (J.), 1904-1906, drift, Herrin, 40-41, 4.4-4.5, RP	60 tons
Scott (Robert J.), 1907-1913, drift, Springfield, 80-125, 3.33-4.0, RP	3,160 tons
White (George), 1913-1914	810 tons
Willey & McKinley, 1914-1915	<u>1,600 tons</u>
	5,570 tons
Notzke (August), 1907-1909, shaft or drift, Springfield, —, 4.0, RP	660 tons
Snider (M.), 1907-1909, drift, Springfield, —, 4.0-4.5, RP	170 tons
May (Ed), 1908-1909, drift, Springfield, —, 4.0, RP	600 tons
Wickwire (H. H.), 1908-1912, drift, Springfield, —, 4.0, RP	975 tons
Jubilee College Coal Company, 1910-1912, drift, Springfield, —, 3.0-4.5, RP	300 tons
Scott (R. J.), 1914-1919, drift, Springfield, —, 3.58-4.0, RP	2,308 tons
Slane (Edward), 1915-1920, drift, Springfield, 300, 3.83-4.0, RP	3,096 tons
Slane (Walter), 1920-1923	<u>150 tons</u>
	3,246 tons
Slane (Walter), 1934-1934, underground	85 tons
Slane (Edward), 1922-1923	160 tons
Slone (Ed), 1928-1929, underground	450 tons
Daley (Barney), 1916-1917, drift, Springfield, 100, 4.0, RP	89 tons
Barr (Burl), 1918-1919	200 tons
Seigel (E.) Coal Company, 1917-1919	4,467 tons
Siegel (Edward), 1923-1932, underground	13,566 tons
Price (John), 1917-1925	1,323 tons
Nodski (W.), 1917-1920	107 tons
Dawson (George), 1919-1920	1,240 tons
Hancock (William), 1920-1921	583 tons

Blane (Lee A.), 1920-1921	164 tons
Snider (Fred), 1924-1925	850 tons
May (Walter), 1926-1931, underground	7,432 tons
Birgeton Coal Company, 1926-1926	300 tons
Turner (E. H.), 1926-1927	250 tons
Judd Coal Company, 1927-1927	120 tons
Dawson & Myers, 1928-1929, underground	1,120 tons
Keefer (Glen A.), 1929-1929, underground	14,000 tons
Oak Grove Coal Company, 1933-1935, underground	2,602 tons
Kirkman (William) Coal Company, 1936-1940, underground	2,631 tons
Andrews (James), 1941-1942	<u>857 tons</u>
	3,488 tons
Oak Hill Coal Company, 1936-1937, slope, Springfield, —, 4.0	290 tons
Price (Frank), 1937-1941	4,590 tons
Bowen (James), 1941-1942	240 tons
Keagel Brothers Coal Company, 1942-1943	<u>372 tons</u>
	5,492 tons
Vogt & Staley Coal Company, 1951-1951, surface	350 tons
Knuppel (D. H.) Coal Company, 1951-1951	<u>1,150 tons</u>
	1,500 tons

SMITHVILLE

Downing (R. P.), 1884-1890, slope, Herrin, 50, 4.5, RP	3,711 tons
Black (William), 1900-1903, drift, Springfield, 65-75, 4..5, RP	1,260 tons
Black Brothers, 1903-1906, drift, Herrin, 60, 4.5, RP	<u>960 tons</u>
	2,220 tons

TRIVOLI

Ramshaw (Joseph), 1883-1884, shaft, Springfield, 40, 4.5, RP	400 tons
Tyler (Ebenezer), 1889-1893, drift, Herrin, 20, 4.0-4.33, RP	1,245 tons
Goss (Robert H.), 1893-1895	<u>340 tons</u>
	1,585 tons
Jordan (John), 1897-1900, shaft, Herrin, 40, 4.25-4.5, RP	1,940 tons
Pautz & Spinney, 1914-1916, shaft, —, 26-36, 4.5-4.67, RP	1,548 tons
Ferris & Petty, 1920-1922	8,000 tons
Travis & Petty, 1922-1923	1,112 tons
Petty (F.) & Clark (J. E.), 1923-1925	<u>1,838 tons</u>
	10,950 tons
Traynor (W.), 1925-1925	368 tons
Traynor Brothers, 1926-1926	251 tons
Traynor (W.), 1927-1927	<u>500 tons</u>
	1,119 tons

Boyle & Wiegand, 1949-1949, surface
Wiegand (Edward Ralph), 1950-1950

959 tons
12,440 tons
13,399 tons

INDEX OF MINES IN THE HANNA CITY QUADRANGLE

A Mine	11
Aman (George M., Jr.)	32
Ames (Kirkman & Ames)	32
Anderson (Cusack & Anderson)	31
Andrews (James)	32, 36
Appleby (Fred)	32
Appleby & Taylor	32
Applegate & Lewis Coal Company	9
Armfield (R.)	33
Asbell (Albert)	32
Baldi (Cruse & Baldi)	33
Banner Block Coal Company	21
Barr (Burl)	35
Barr (Harry)	32
Bateman (Everett)	32
Bateman Coal Company	32
Battman (E.) & Martin	32
Becker (Harry)	23
Bemont (H. A.)	35
Bennett Coal Company	16
Bidleman (Tuttle & Bidleman Coal Company)	32
Big 4 Coal Company	18
Big Five Coal Company	33
Birgeton Coal Company	36
Black (William)	36
Black Brothers	36
Black Jewel Coal Company	27
Black Jewel Coal Company, No. 2 Mine	28
Blane (Lee A.)	36
Blankenship Coal Company	16
Bohannon (Thomas)	33
Bowen (James)	36
Bowen Brothers	33
Boyle & Wiegand	37
Bright Star No. 2 Mine	13
Bryant (Judge)	1
Buckley (A.)	31
Buhl (Manen & Buhl)	33
Buhl (Noah)	33
Burns (Edward)	33
Burns (James)	33
Burns Brothers	30
Catherwood Coal Company	34
Central West Coal Company	11
Chapman & Company	9
Clark (James)	34
Clark (Petty & Clark)	36
Clark (William)	35
Clarkson (Lorenzo)	31
Clarkson (R.)	31
Clarkson (Thayer & Clarkson)	31
Clarkson (William)	31
Clarkson & Henning	31
Cling (Wolford & Cling)	35
Coogan Gravel Company	33
Cottonwood Coal Company	34
Cox (Edward)	33
Cox (James)	34
Cramer (William)	32
Crescent Mining Company, Lamarsh No. 6 Mine	10
Cruse & Baldi	33
Curran (D. H.)	35
Cusack (Gigby, Cusack & Edwards)	31

Cusack (Mike)	31
Cusack & Anderson	31
Cusack & Edwards	31
Cutler (C. C.)	32
Daley (Barney)	35
Dare (Frank)	24
Dare & Delong	24
Darst (Jacob)	1
Daubert (Ed)	34
Dawson (Bryan)	34
Dawson (Charles)	32
Dawson (George)	35
Dawson (T.)	33
Dawson & Johnson Coal Company	16
Dawson & May	32
Dawson & Myers	36
Dawson & Smith Coal Company	16
DeLong (Dare & DeLong)	24
DeLong (Russell) Coal Company	24
Dorthel Coal Company	9
Doubet (Ed)	34
Doubet (Harding & Doubet)	34
Doubett (John)	34
Downing (R. P.)	36
Edwards (Charles)	31
Edwards (Cusack & Edwards)	31
Edwards (Gigby, Cusack & Edwards)	31
Edwards Coal Company	31, 32
Edwards Mine	11, 12
Edwards Mining Company	31
Elm Mine	13
Falletti (A. L.)	34
Farrell (James)	32
Farrell Brothers	32
Ferris & Petty	36
Fohsnauch (Charles)	34
Forbes (William)	32
Ford (William Richard)	14
Gigby, Cusack & Edwards	31
Glenwood Mining Company	11
Goetz (Carl F.)	28
Goss (Robert H.)	36
Green (Harry J.)	33
Green (J.)	33
Grenko (Vinko)	33
Grimes (Auderson)	1
Hancock (William)	35
Hanna City Coal Company	9
Hanna City Mining Company	9
Hanna Coal Company	9
Hanning (F.)	31
Harding & Doubet	34
Harper (S.)	33
Harper (William)	31
Harris (D.) & Son	33
Heintz Coal Company	33
Henning (Clarkson & Henning)	31
Henning (Fred)	33
Henning (Stout & Henning)	32
Hickory Grove Coal Company	33
Hoffman (Peter D.)	33
Hoffman (Peter D.), Kickapoo Valley Mine	17
Hoffman (Peter)	16
Hoffman Coal Company, No. 2 Mine	19
Homan (T. W.)	34

Howarth & Taylor	20
Howe (Elijah)	32
Howe (Sluth & Howe).	32
Hunt (Thomas, Sr.)	24
Hunt (Thomas).	24
Illinois Coal & Coke Company, Hanna City Mine	9
Jay Bird Coal Company, No. 1 Mine	15
Jay Bird Coal Company, No. 2 Mine	16
Johnson (Ash)	33
Johnson (Ash) Coal Company	34
Johnson (Dawson & Johnson Coal Company)	16
Johnson (Lester)	15
Johnson (Messersmith & Johnson)	15
Johnson (William)	33, 34
Jordan (John).	36
Jruljok (Manull & Jruljok)	15
Jubilee College Coal Company	35
Judd Coal Company	36
Keagel Brothers Coal Company	36
Keefer (Glen A.)	36
Kickapoo Coal Company	32
Kickapoo Valley Coal Company	17
Kimsey Coal Company, No. 2 Mine	33
King & Wilson	32
Kingsley (Charles)	31
Kirkman (William).	34
Kirkman (William) Coal Company	36
Kirkman & Ames	32
Knuppel (D. H.) Coal Company	36
Kramm (Edward) & Company	34
Kramm (Wilkinson & Kramm).	31
Kruse (Peter)	33
Kupel Coal Company	21, 34
Lamarsh No. 6 Mine	10
Largent (Ernest).	33
Largent (W. H.)	33
Lemasters Brothers	32
Lewis (Applegate & Lewis Coal Company)	9
Logan Coal Company	9
Lonsdale (Abe)	34
Lonsdale (R.)	31
Lonsdale (T. H.)	32
Lonsdale (W.)	34
Lonsdale (William)	31
Manen & Buhl	33
Manull (George) & Jruljok (J.)	15
Marteness Mining Company	22
Martin (Battman & Martin)	32
May (Dawson & May).	32
May (Ed)	35
May (Walter)	36
McCullough, Hanna City Mine	9
McKinley (Willey & McKinley)	35
McNickle (Fred)	34
Messersmith & Johnson	15
Midland Coal Company	13
Midland Coal Company, Edwards Mine	12
Moody (M. H.)	33
Morgan Coal Company	12
Myers (Dawson & Myers).	36
Newsam Brothers	
Hanna City.	9
Newsam Brothers Coal Company	
No. 6 Mine	10
Nodski (W.)	35

Notzke (August)	35
Oak Grove Coal Company	36
Oak Hill Coal Company	36
Olympia Coal Mining Company	26
Pankey (James)	14
Patten (W. H.)	31
Pautz & Spinney	36
Peabody Coal Company, Edwards Mine	12
Peabody Coal Company, Elm Mine	13
Penn (Henry)	29
Perkins (E. B.)	34
Petty (F.) & Clark (J. E.)	36
Petty (Ferris & Petty)	36
Petty (Travis & Petty)	36
Pillman (Richard)	31
Pioneer Coal Company	33
Pleasant Hill Coal Company	25
Polich & White	34
Potts (Samuel)	1
Pratt (Charles E.)	32
Price (Frank)	36
Price (John)	15, 35
Price (Richard)	16
Procter (C. H.)	32
Purtscher (A.)	34
Ramshaw (Joseph)	36
Reents (August)	24, 35
Reents (Siebold)	34
Reents Brothers	35
Ruprecht (Frederick)	1
Schneider Coal Company	16
Schott & Witheral	31
Schotte & Withell	31
Scott (J.)	35
Scott (R. J.)	35
Scott (Robert J.)	35
Seghi Brothers	21
Seigel (E.) Coal Company	35
Seigel (Edward)	35
Sents (Zeinie & Sents)	32
Shaw (Nathan)	34
Siegel (Edward)	35
Silver Creek Coal Company	26
Simpson (W. H.) Coal Company	16
Slain (S.)	31
Slane (Ed)	35
Slane (Edward)	35
Slane (Walter)	35
Slone (Ed)	35
Slone (Harry)	32
Sluth & Howe	32
Smith (Dawson & Smith Coal Company)	16
Smith Coal Company	34
Snider (Edward)	32
Snider (Enoch, Jr.)	32
Snider (Enoch)	32
Snider (Fred)	19, 32, 36
Snider (M.)	35
Snider Brothers	19
Snider Coal Company	19
Snyder (E. C.)	31
Spinney (Pautz & Spinney)	36
Staley (Vogt & Staley Coal Company)	36
Stear (Thomas)	32
Stenstrom (Arthur)	28

Stenstrom (E. H.)	28
Stout (O. M.)	32
Stout & Henning	32
Streitmatter (Elmer)	16
Swords (George)	22
Taylor (Appleby & Taylor)	32
Taylor (Howarth & Taylor)	20
Thayer & Clarkson	31
Three C Coal Company	34
Travis & Petty	36
Traynor (W.)	36
Traynor Brothers	36
Turner (E. H.)	36
Tuttle & Bidleman Coal Company	32
Tyler (Ebenezer)	36
Vogt & Staley Coal Company	36
Warner (Albert)	34
Warsaw Coal Company	11
Wasson (Frank)	34
West Point Coal Company	33
Whip-Poor-Will Coal Company	14
White (George)	35
White (Polich & White)	34
Wickwire (H. H.)	35
Wiegand (Boyle & Wiegand)	37
Wiegand (Edward Ralph)	37
Wilkinson (J. H.) & Kramm (E.)	31
Willey & McKinley	35
Wilson (King & Wilson)	32
Withell (Schotte & Withell)	31
Witheral (Schott & Witheral)	31
Wolford (Ben)	33
Wolford (Henry)	34
Wolford & Cling	35
Wood (M. H.)	33
Woolenscraft (John)	1
Wyman (Max)	16
Zahner (Theodore)	25
Zeinie & Sents	32
Zimmerman (R. E.)	29

