

# Coal Mines in Illinois Harrisburg Quadrangle Saline County, Illinois

## Herrin Coal

This map accompanies the Coal Mines Directory for the Harrisburg Quadrangle and maps of mines in the Springfield and Davis/Dekoven Coals, Harrisburg Quadrangle. Consult the directory for a complete explanation of the information shown on this map.

### Mining Method

- Room & Pillar (RP)
- Room & Pillar Basic (RPB)
- Modified Room & Pillar (MRP)
- Room & Pillar Panel (RPP)
- Blind Room & Pillar (BRP)
- Checkerboard Room & Pillar (CRP)
- High Extraction Retreat (HER)
- Longwall (LW)
- Underground, Method Unknown
- Strip Mine
- Auger Mine
- General Area of Mining

### Other Areas Depicted

- Non-Coal Mines

### Source of Mine Outline

- Final Mine Map
- Not Final Mine Map
- Undated Mine Map
- Incomplete Mine Map
- Secondary Source Map

### Tipple, Shaft, Slope, Drift Locations

- Strip Mine Tipple - Active
- Strip Mine Tipple - Abandoned
- Mine Shaft - Active
- Mine Shaft - Abandoned
- Mine Slope - Active
- Mine Slope - Abandoned
- Mine Drift - Active
- Mine Drift - Abandoned
- Air Shaft
- Uncertain Location
- Uncertain Type of Opening

### Other Points Depicted

- Non-Coal Mines

### Mine Annotation

(space permitting)

Company

Mine Name

ISGS Index No., Years of Operation

### Disclaimer

Please check the Coal Section at the Illinois State Geological Survey's web site at <https://www.isgs.illinois.edu> for the most up-to-date version of these products.

Note that each quadrangle scale mined-out area map requires the use of the associated text directory for full explanation of map features and mine attributes. Also note that some quadrangles have multiple seams of mining and therefore more than one map may be available for a particular quadrangle. Please take care to check for multiple maps, as extensive mining may exist in the other seams.

The maps and digital files used for these studies were compiled from data obtained from a variety of public and private sources and have varying degrees of completeness and accuracy. This compilation map presents reasonable interpretation of the geology of the area and is based on available data. Locations of some mine features may be offset by 500 feet or more due to errors in the original source maps, the compilation process, digitizing, or a combination of these factors. These data are not intended for use in site-specific screening or decision-making. Use of these documents does not eliminate the need for detailed studies to fully understand the geology of a specific site. The Illinois State Geological Survey, Prairie Research Institute, or the University of Illinois make no guarantee, expressed or implied, regarding the correctness of the interpretations presented in this data set and accept no liability for the consequences of decisions made by others on the basis of the information presented here.

These maps were designed for use at 1:24,000. Enlarging the map may reduce accuracy, as the original scale of the source maps used to compile the outlines shown varies from 1:400 to 1:150,000, and some mine locations are known only from text descriptions. See the accompanying mine directory for the original scale of the source map used for a specific mine to check accuracy of a given portion of the map. Areas with no mines shown may still be undermined; see the unmined mines list at the back of each mine directory.

The image of the U.S.G.S. topographic base map was projected from the original UTM to Lambert Conformal Conic.

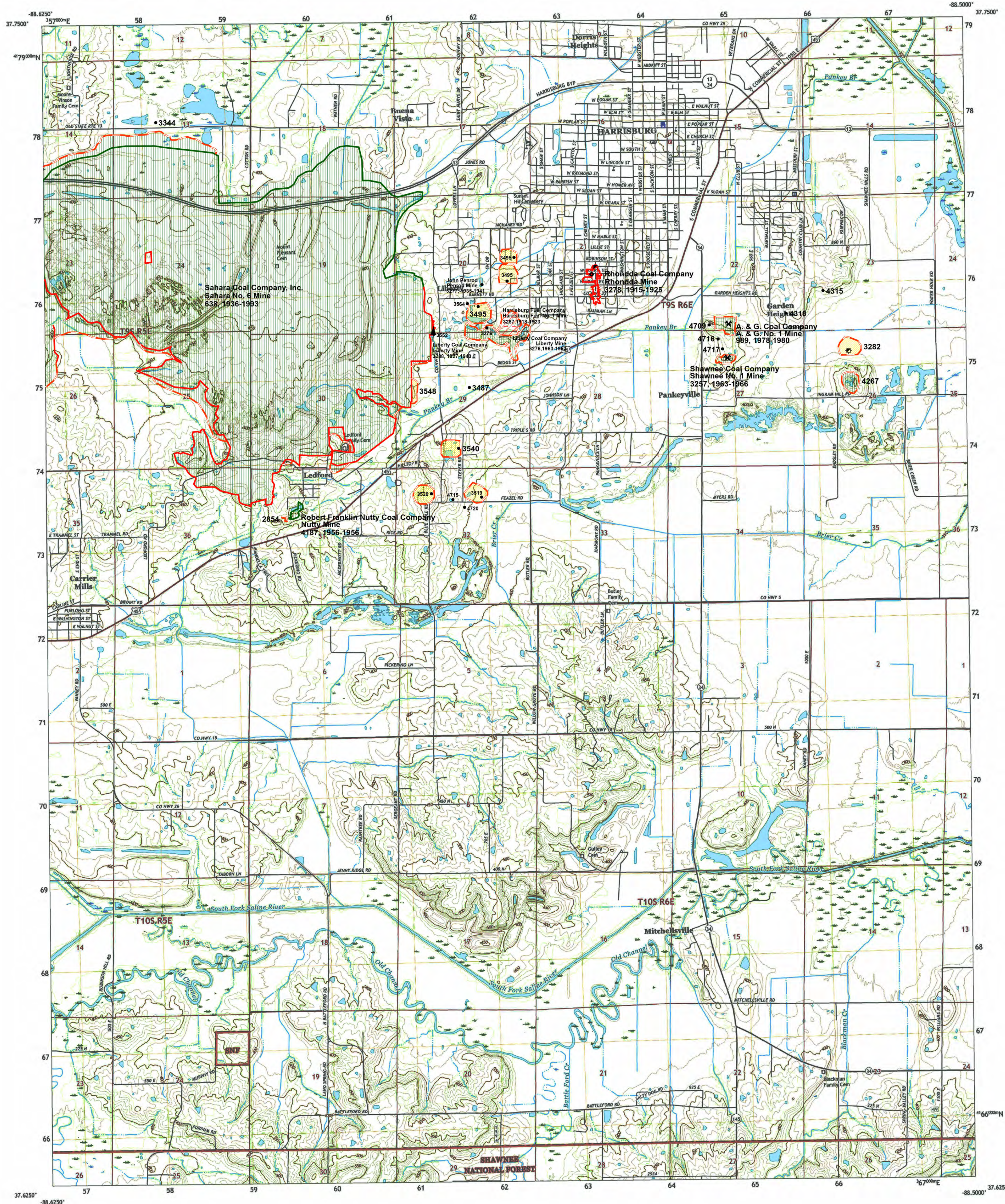
**ILLINOIS**  
Illinois State Geological Survey  
PRAIRIE RESEARCH INSTITUTE

Prairie Research Institute  
Illinois State Geological Survey  
615 E. Peabody Dr.  
Champaign, IL 61820

Mine Outlines Compiled by  
Jennifer M. Obrad

September 29, 2003

Revised:  
October 26, 2004  
Alan R. Myers 02-22-2024



Produced by the United States Geological Survey  
North American Datum of 1983 (NAD83)  
World Geodetic System of 1984 (WGS84). Projection and  
1000-meter grid/Universal Transverse Mercator, Zone 16S  
This map is not a legal document. Boundaries may be  
generalized for this map scale. Private lands within government  
reservations may not be shown. Obtain permission before  
entering private lands.

Imagery.....NAIP, August 2015 - October 2015  
Roads.....U.S. Census Bureau, 2017  
Roads within US Forest Service Lands.....USFS, 2017  
Names.....Hydrography.....National Hydrography Dataset, 2002 - 2017  
Contours.....National Elevation Dataset, 2014  
Boundaries.....Boulder.....file  
Public Land Survey System.....BLM, 2017  
Wetlands.....FWS National Wetlands Inventory 1983

UTM GRID AND 2017 MAGNETIC NORTH  
DECLINATION AT CENTER OF SHEET

SCALE 1:24,000  
1 0.5 0 0.5 1 2  
1000 500 0 500 1000 2000  
KILOMETERS  
1 0.5 0 0.5 1 2  
1000 500 0 500 1000 2000  
METERS  
1 0.5 0 0.5 1 2  
1000 500 0 500 1000 2000  
FEET

CONTOUR INTERVAL 10 FEET  
NORTH AMERICAN VERTICAL DATUM OF 1988  
This map was produced to conform with the  
National Geospatial Program US Topo Product Standard, 2011.  
A metadata file associated with this product is draft version 0.6.18



ADJACENT QUADRANGLES  
1 Harco  
2 Galena  
3 Eldorado  
4 Center Mills  
5 Rudement  
6 Shenandoah  
7 Edenburg  
8 Herod

ROAD CLASSIFICATION  
Expressway  
Secondary Hwy  
Ramp  
Interstate Route  
US Route  
PS Passenger Route  
Local Connector  
Local Road  
4WD  
State Route  
PS High Clearance Route

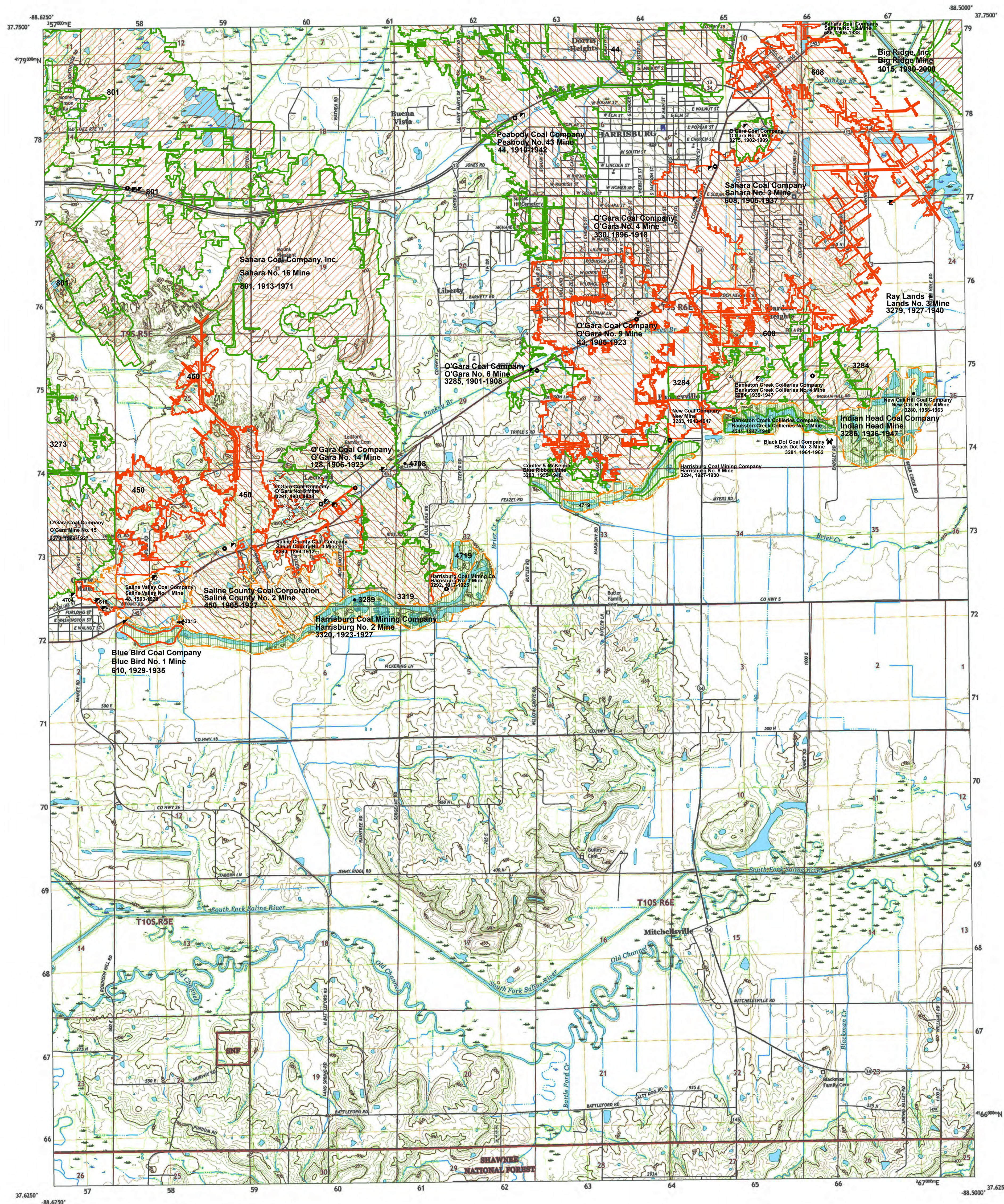
HARRISBURG, IL  
2018



# Coal Mines in Illinois Harrisburg Quadrangle Saline County, Illinois

## Springfield Coal

This map accompanies the Coal Mines Directory for the Harrisburg Quadrangle and maps of mines in the Herrin and Davis/Dekoven Coals, Harrisburg Quadrangle. Consult the directory for a complete explanation of the information shown on this map.



### Mining Method

- |  |                                  |
|--|----------------------------------|
|  | Room & Pillar (RP)               |
|  | Room & Pillar Basic (RPB)        |
|  | Modified Room & Pillar (MRP)     |
|  | Room & Pillar Panel (RPP)        |
|  | Blind Room & Pillar (BRP)        |
|  | Checkerboard Room & Pillar (CRP) |
|  | High Extraction Retreat (HER)    |
|  | Longwall (LW)                    |
|  | Underground, Method Unknown      |
|  | Strip Mine                       |
|  | Auger Mine                       |
|  | General Area of Mining           |

### Other Areas Depicted

- 
- Non-Coal Mines

### Source of Mine Outline

-  Final Mine Map
-  Not Final Mine Map
-  Undated Mine Map
-  Incomplete Mine Map
-  Secondary Source Map

### Tipple, Shaft, Slope, Drift Locations

- ✱ Strip Mine Tipple - Active
- ✱ Strip Mine Tipple - Abandoned
- ☑ Mine Shaft - Active
- ☒ Mine Shaft - Abandoned
- ☑ Mine Slope - Active
- ☒ Mine Slope - Abandoned
- ⚡ Mine Drift - Active
- ⚡ Mine Drift - Abandoned
- Air Shaft
- Uncertain Location
- Uncertain Type of Opening

### Other Points Depicted

- Non-Coal Mines

## Location



## Mine Annotation

(space permitting)

Company

Mine Name  
ISGS Index No., Years of Operation

## Disclaimer

Please check the Coal Section at the Illinois State Geological Survey's web site at <https://www.isgs.illinois.edu> for the most up-to-date version of these products.

Note that each quadrangle scale mined-out area map requires the use of the associated text directory for full explanation of map features and mine attributes. Also note that some quadrangles have multiple seams of mining and therefore more than one map may be available for a particular quadrangle. Please take care to check for multiple maps, as extensive mining may exist in the other seams.

The maps and digital files used for these studies were compiled from data obtained from a variety of public and private sources and have varying degrees of completeness and accuracy. This compilation map presents reasonable interpretation of the geology of the area and is based on available data. Locations of some mine features may be offset by 500 feet or more due to errors in the original source maps, the compilation process, digitizing, or a combination of these factors. These data are not intended for use in site-specific screening or decision-making. Use of these documents does not eliminate the need for detailed studies to fully understand the geology of a specific site. The title of the Geologic Survey, by itself, does not constitute an endorsement or approval by the state, nor does it imply, regarding the correctness of the interpretations presented in this data set and accept no liability for the consequences of decisions made by others on the basis of the information presented here.

These maps were designed for use at 1:24,000. Enlarging the map may reduce accuracy, as the original scale of the source maps used to compile the outlines shown varies from 1:400 to 1:150,000, and some mine locations are known only from text descriptions. See the accompanying mine directory for the original scale of the source map used for a specific mine to check accuracy of a given portion of the map. Areas with no mines shown may still be undermined; see the unlocated mines list at the back of each mine directory.

The image of the U.S.G.S. topographic base map was projected from the original UTM to Lambert Conformal Conic.

**Produced by the United States Geological Survey**  
 North American Datum of 1983 (NAD83)  
 World Geodetic System of 1984 (WGS84). Projection and  
 1,000-meter grid (National Transverse Mercator, Zone 16S  
 This map is not a legal document. Boundaries may be  
 generalized for this map scale. Private lands within government  
 reservations may not be shown. Obtain permission before  
 entering private lands.

Imagery.....NAP, August  
 Roads.....U.S. Census  
 Roads within US Forest Service Lands.....  
 Names.....  
 Hydrography.....National Hydrography Data  
 Contours.....National Elevation  
 Boundaries.....Multiple sources; see metadata  
 Public Survey System.....  
 Wetlands.....FWS National Wetlands

Diagram illustrating the relationship between Magnetic North (MN) and Grid North (GN). The angle between MN and GN is 2°30'. The distance from MN to GN is 47 MILS. The distance from GN to the center of the sheet is 0°57' and 17 MILS.

SCALE 1:24 000

1 0.5 0 KILOMETERS 1 2

1000 500 0 METERS 1000 2000

1 0.5 0 MILES 1000 2000 3000 4000 5000 6000 7000 8000 9000 10000

CONTOUR INTERVAL TO FEET

NORTH AMERICAN DATUM OF 1988

This map was produced to conform with the  
National Geospatial Program US Topo Product Standard, 2011.  
A metadata file associated with this product is draft version 0.1.18



ILLINOIS

QUADRANGLE LOCATION

1	2	3
4		5
6	7	8

**ROAD CLASSIFICATION**

Expressway		Local Connector	
Secondary Hwy		Local Road	
Ramp		4WD	
 Interstate Route	 US Route	 State Route	
 FS Primary Route	 FS Passenger Route	 FS High Clearance Route	

Check with local Forest Service unit for current travel conditions and restrictions.

HARRISBURG, IL  
2018

**I ILLINOIS**  
Illinois State Geological Survey  
**PRAIRIE RESEARCH INSTITUTE**

**Prairie Research Institute  
Illinois State Geological Survey  
615 E. Peabody Dr.  
Champaign, IL 61820**

**Mine Outlines Compiled by  
Jennifer M. Obrad**

**September 29, 2003**

Revised:  
October 26, 2004  
Alan R. Myers 06-11-2024



# Coal Mines in Illinois Harrisburg Quadrangle Saline County, Illinois


## Davis & Dekoven Coals

This map accompanies the Coal Mines Directory for the Harrisburg Quadrangle and maps of mines in the Springfield and Herrin Coals, Harrisburg Quadrangle. Consult the directory for a complete explanation of the information shown on this map.

## Mining Method

- |  |                                  |
|--|----------------------------------|
|  | Room & Pillar (RP)               |
|  | Room & Pillar Basic (RPB)        |
|  | Modified Room & Pillar (MRP)     |
|  | Room & Pillar Panel (RPP)        |
|  | Blind Room & Pillar (BRP)        |
|  | Checkerboard Room & Pillar (CRP) |
|  | High Extraction Retreat (HER)    |
|  | Longwall (LW)                    |
|  | Underground, Method Unknown      |
|  | Strip Mine                       |
|  | Auger Mine                       |
|  | General Area of Mining           |

### Other Areas Depicted

- 
- Non-Coal Mines

### Source of Mine Outline

- Final Mine Map
- Not Final Mine Map
- Undated Mine Map
- - - Incomplete Mine Map
- - - Secondary Source Map

### Tipple, Shaft, Slope, Drift Locations

- ✱ Strip Mine Tipple - Active
- ✱ Strip Mine Tipple - Abandoned
- ✱ Mine Shaft - Active
- ✱ Mine Shaft - Abandoned
- ✱ Mine Slope - Active
- ✱ Mine Slope - Abandoned
- ✱ Mine Drift - Active
- ✱ Mine Drift - Abandoned
- Air Shaft
- Uncertain Location
- Uncertain Type of Opening

### Other Points Depicted

- Non-Coal Mines

### Location



### Mine Annotation

(space permitting)

Company

Mine Name  
ISGS Index No., Years of Operation

## Disclaimer

Please check the Coal Section at the Illinois State Geological Survey's web site at <https://www.isgs.illinois.edu> for the most up-to-date version of these products.

Note that each quadrangle scale mined-out area map requires the use of the associated text directory for full explanation of map features and mine attributes. Also note that some quadrangles have multiple seams of mining and therefore more than one map may be available for a particular quadrangle. Please take care to check for multiple maps, as extensive mining may exist in the other seams.

The maps and digital files used for these studies were compiled from data obtained from a variety of public and private sources and have varying degrees of completeness and accuracy. This compilation map presents reasonable interpretation of the geology of the area and is based on available data. Locations of some mine features may be offset by 500 feet or more due to errors in the original source maps, the compilation process, digitizing, or a combination of these factors. These data are not intended for use in site-specific screening or decision-making. Use of these data does not eliminate the need for detailed studies to fully understand the geology of a specific site. The Illinois State Geological Survey, Prairie Research Institute, or the University of Illinois makes no warranties, expressed or implied, regarding the correctness of the interpretations presented in this data set and accept no liability for the consequences of decisions made by others on the basis of the information presented here.

These maps were designed for use at 1:24,000. Enlarging the map may reduce accuracy, as the original scale of the source maps used to compile the outlines shown varies from 1:400 to 1:150,000, and some mine locations are known only from text descriptions. See the accompanying mine directory for the original scale of the source map used for a specific mine to check accuracy of a given portion of the map. Areas with no mines shown may still be undetermined; see the unlocated mines list at the back of each mine directory.

The image of the U.S.G.S. topographic base map was projected from the original UTM to Lambert Conformal Conic.

**I ILLINOIS**  
Illinois State Geological Survey

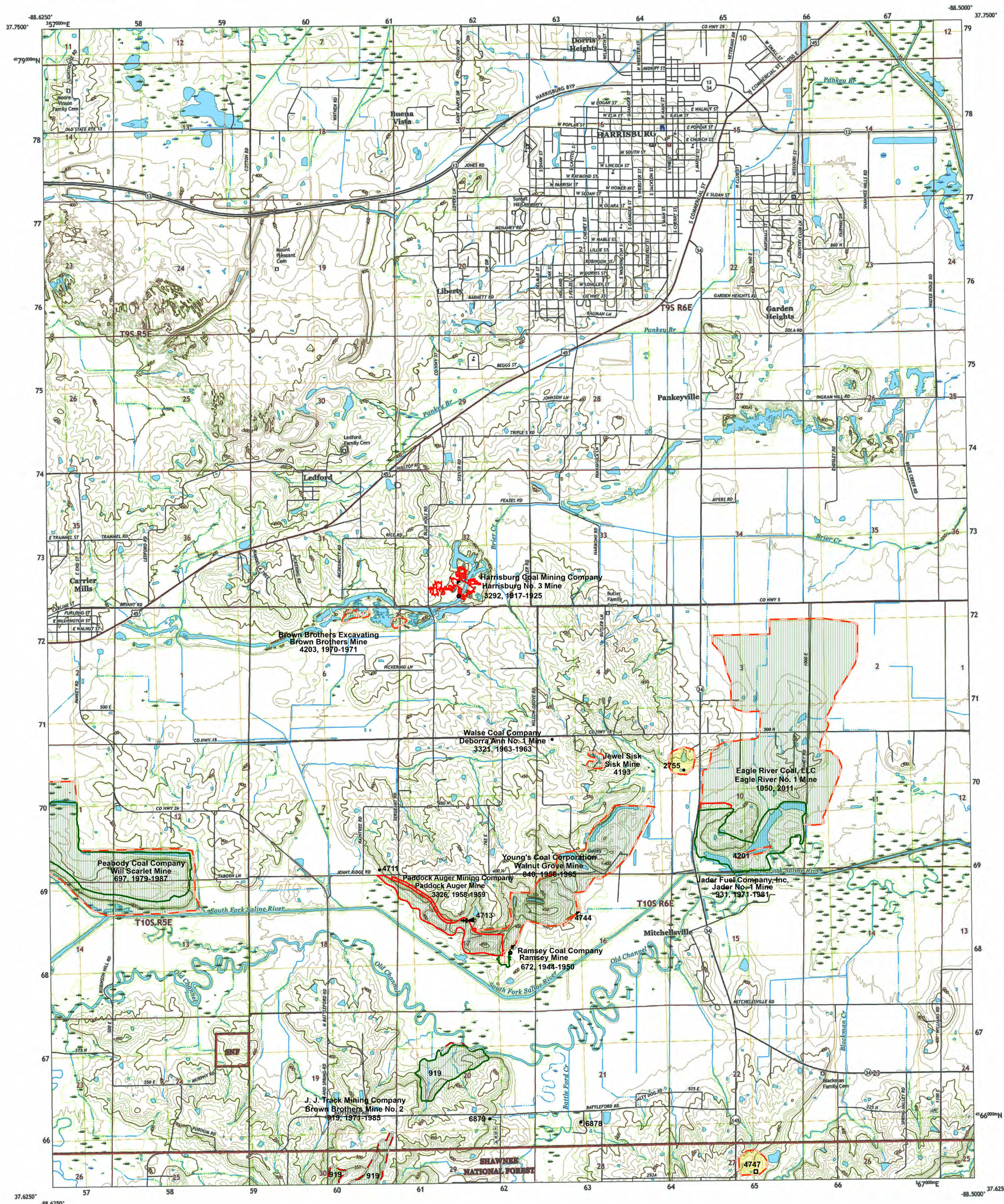
**PRAIRIE RESEARCH INSTITUTE**

**Prairie Research Institute  
Illinois State Geological Survey  
615 E. Peabody Dr.  
Champaign, IL 61820**

**Mine Outlines Compiled by  
Jennifer M. Obrad**

September 29, 2003

Revised:  
October 26, 2004  
Alan R. Myers 02-22-2024



**Produced by the United States Geological Survey**  
 North American Datum of 1983 (NAD83)  
 World Geodetic System of 1984 (WGS84). Projection and  
 UTM-easier and International Transverse Mercator, Zone 16S  
 This map is not a legal document. Boundaries may be  
 generalized for this map scale. Private lands within government  
 reservations may not be shown. Obtain permission before  
 entering private lands.

Imagery.....NAIP, August  
 Roads.....U.S. Census  
 Roads within US Forest Service Lands.....  
 Names.....  
 Hydrography.....National Hydrography Data  
 Contours.....National Elevation  
 Multiple.....Multiple sources; see metadata  
 Rural.....Survey System  
 Wetlands.....FWS National Wetlands

SCALE 1:24 000

The graphic scale bar is divided into three horizontal sections. The top section is labeled 'KILOMETERS' and has markings for 0, 0.5, 1, and 2. The middle section is labeled 'METERS' and has markings for 0, 500, 1000, 1500, and 2000. The bottom section is labeled 'MILES' and has markings for 0, 1000, 2000, 3000, 4000, 5000, 6000, 7000, 8000, 9000, and 10000. The scale is 1:24,000.

CONTOUR INTERVAL 10 FEET  
NORTH AMERICAN VERTICAL DATUM OF 1988

This map was produced to conform with the  
National Geospatial Program US Topo Product Standard, 2011.  
A metadata file associated with this product is draft version 0.6.10

1	2	3
4		5
6	7	8

- Harco
- Galatia
- Eldorado
- Carrier Mills
- Rudement
- Stonefort
- Eddyville
- Herod

### ROAD CLASSIFICATION

Expressway		Local Connector	
Secondary Hwy		Local Road	
Ramp		4WD	

Interstate Route	US Route	State Route
FS Primary Route	FS Passenger Route	FS High Clearance Route

Check with local Forest Service unit for current travel conditions and restrictions.

HARRISBURG, IL  
2018







# **DIRECTORY OF COAL MINES IN ILLINOIS 7.5-MINUTE QUADRANGLE SERIES HARRISBURG QUADRANGLE SALINE COUNTY**

Jennifer M. Obrad & Cheri Chenoweth



Department of Natural Resources  
ILLINOIS STATE GEOLOGICAL SURVEY  
2003  
REVISED 2005, 2016, 2024



**Cover photo** Track-mounted duckbill loading machine at a Peabody Coal Company mine, ca. 1915.

---

DISCLAIMER: The accuracy and completeness of mine maps and directories vary with the availability of reliable information. Maps and other information used to compile this mine map and directory were obtained from a variety of sources and the accuracy of some of the original information cannot be verified. Consequently, the Illinois State Geological Survey (ISGS) cannot guarantee the mine maps are free of errors and disclaims any responsibility for damages that may result from actions or decisions based on them.

The ISGS updates the maps and directories periodically, and welcomes any new information or corrections. Please contact the Coal Section of the ISGS at the address shown on the title page of this directory, or telephone (217) 244-4610.

*Printed by authority of the State of Illinois/2005*



## CONTENTS

INTRODUCTION .....	1
MINING IN THE HARRISBURG QUADRANGLE .....	1
PART I EXPLANATION OF MAP AND MINE SUMMARY SHEET .....	2
INTERPRETING THE MAP .....	2
Mine Type and Mining Method .....	2
SOURCE MAPS .....	3
POINTS AND LABELS .....	3
INTERPRETING A MINE SUMMARY SHEET .....	6
REFERENCES .....	8
PART II DIRECTORY OF MINES IN THE HARRISBURG QUADRANGLE .....	9
MINE SUMMARY SHEETS .....	9
Mine Index 43	
O’Gara Coal Company, O’Gara No. 9 Mine .....	9
Mine Index 44	
Peabody Coal Company, Peabody No. 43 Mine .....	10
Mine Index 48	
Saline Valley Coal Company, Saline Valley No. 1 Mine .....	11
Mine Index 128	
O’Gara Coal Company, O’Gara No. 14 Mine .....	12
Mine Index 330	
O’Gara Coal Company, O’Gara No. 4 Mine .....	13
Mine Index 450	
Saline County Coal Corporation, Saline County No. 2 Mine .....	14
Mine Index 535	
Sahara Coal Company, Inc., Sahara No. 12 Mine .....	15
Mine Index 608	
Sahara Coal Company, Sahara No. 3 Mine .....	16
Mine Index 610	
Blue Bird Coal Company, Blue Bird No. 1 Mine .....	17
Mine Index 638	
Sahara Coal Company, Inc., Sahara No. 6 Mine .....	18
Mine Index 672	
Ramsey Coal Company, Ramsey Mine .....	19
Mine Index 697	
Peabody Coal Company, Will Scarlet Mine .....	20
Mine Index 801	
Sahara Coal Company, Inc., Sahara No. 16 Mine .....	21
Mine Index 840	
Young’s Coal Corporation, Walnut Grove Mine .....	22
Mine Index 919	
J. J. Track Mining Company, Brown Brothers No. 2 Mine .....	23
Mine Index 931	
Jader Fuel Company, Inc., Jader No. 1 Mine .....	24
Mine Index 989	
A. & G. Coal Company, A. & G. No. 1 Mine .....	25
Mine Index 1015	
Big Ridge, Inc., Big Ridge Portal No. 1 Mine .....	26
Mine Index 1050	
Eagle River Coal, LLC, Eagle River No. 1 Mine .....	27
Mine Index 3257	
Shawnee Coal Company, Shawnee No. 1 Mine .....	28
Mine Index 3273	
O’Gara Coal Company, O’Gara No. 15 Mine .....	29
Mine Index 3275	
O’Gara Coal Company, O’Gara No. 2 Mine .....	30



Mine Index 3276	
Liberty Coal Company, Liberty Mine . . . . .	31
Mine Index 3277	
John Penrod, Penrod Mine. . . . .	32
Mine Index 3278	
Rhondda Coal Company, Rhondda Mine. . . . .	33
Mine Index 3279	
Ray Lands, Lands No. 3 Mine . . . . .	34
Mine Index 3280	
New Oak Hill Coal Company, New Oak Hill No. 4 Mine . . . . .	35
Mine Index 3281	
Black Dot Coal Company, Black Dot No. 3 Mine . . . . .	36
Mine Index 3283	
New Coal Company, New Mine . . . . .	37
Mine Index 3284	
Bankston Creek Collieries Company, Bankston Creek No. 4 Mine . . . . .	38
Mine Index 3285	
O'Gara Coal Company, O'Gara No. 6 Mine . . . . .	39
Mine Index 3286	
Indian Head Coal Company, Indian Head Mine . . . . .	40
Mine Index 3287	
Harrisburg Fuel Company, Harrisburg Fuel No. 1 Mine . . . . .	41
Mine Index 3288	
Liberty Coal Company, Liberty Mine . . . . .	42
Mine Index 3289	
New Oak Hill Coal Company, New Oak Hill No. 3 Mine . . . . .	43
Mine Index 3290	
Saline County Coal Company, Saline County No. 1 Mine . . . . .	44
Mine Index 3291	
O'Gara Coal Company, O'Gara No. 5 Mine . . . . .	45
Mine Index 3292	
Harrisburg Coal Mining Company, Harrisburg No. 3 Mine . . . . .	46
Mine Index 3293	
Coulter & McKenna, Blue Ribbon Mine . . . . .	47
Mine Index 3294	
Harrisburg Coal Mining Company, Harrisburg No. 8 Mine . . . . .	48
Mine Index 3315	
James W. Clark, Clark Mine. . . . .	49
Mine Index 3319	
Harrisburg Coal Mining Company, Harrisburg No. 4 Mine . . . . .	50
Mine Index 3320	
Harrisburg Coal Mining Company, Harrisburg No. 2 Mine . . . . .	51
Mine Index 3321	
Walse Coal Company, Deborra Ann No. 1 Mine . . . . .	52
Mine Index 3323	
Evert Ward, Ward No. 2 Mine . . . . .	53
Mine Index 3324	
Hart & Duncan, Hart & Duncan Mine . . . . .	54
Mine Index 3325	
Hobert Tolbert, Tolbert No. 1 Mine. . . . .	55
Mine Index 3326	
Paddock Auger Mining Company, Paddock Auger Mine . . . . .	56
Mine Index 4187	
Robert Franklin Nutty Coal Company, Nutty Mine . . . . .	57
Mine Index 4193	
Jewel Sisk, Sisk Mine. . . . .	58
Mine Index 4194	
Willis Henson, Henson Mine . . . . .	59
Mine Index 4200	
R. & F. Coal Company, R. & F. No. 3 Mine . . . . .	60
Mine Index 4201	
R. & F. Coal Company, R. & F. No. 2 Mine . . . . .	61



Mine Index 4203	
Brown Brothers Excavating Company, Brown Brothers Mine . . . . .	62
Mine Index 4241	
Bankston Creek Collieries Company, Bankston Creek No. 2 Mine . . . . .	63
Mine Index 4705	
Howell & McCreary, Clifton Mine . . . . .	64
Mine Index 4718	
Heato Coal Company, Heato Mine . . . . .	65
Mine Index 4745	
R. L. Clements, Clements Mine . . . . .	66
OTHER MINES SHOWN ON THE HARRISBURG QUADRANGLE . . . . .	67
Mine Index 2755 . . . . .	67
Mine Index 2854 . . . . .	67
Mine Index 3282 . . . . .	67
Mine Index 3344 . . . . .	67
Mine Index 3487 . . . . .	67
Mine Index 3495 . . . . .	67
Mine Index 3519 . . . . .	67
Mine Index 3520 . . . . .	67
Mine Index 3540 . . . . .	67
Mine Index 3548 . . . . .	67
Mine Index 3552 . . . . .	67
Mine Index 3564 . . . . .	67
Mine Index 4267 . . . . .	67
Mine Index 4315 . . . . .	67
Mine Index 4318 . . . . .	67
Mine Index 4704, Carrier Mills Mine . . . . .	67
Mine Index 4708, Raum & Vial . . . . .	67
Mine Index 4709 . . . . .	67
Mine Index 4710 . . . . .	67
Mine Index 4711 . . . . .	67
Mine Index 4713 . . . . .	67
Mine Index 4715 . . . . .	67
Mine Index 4716 . . . . .	67
Mine Index 4717, Norman (John) Mine . . . . .	67
Mine Index 4719, New Gallatin Coal Co. . . . .	67
Mine Index 4720 . . . . .	67
Mine Index 4736 . . . . .	67
Mine Index 4744 . . . . .	67
Mine Index 4746 . . . . .	67
Mine Index 4747 . . . . .	67
Mine Index 6878 . . . . .	67
Mine Index 6879 . . . . .	67
MINES WHOSE LOCATIONS ARE NOT KNOWN, HARRISBURG QUADRANGLE . . . . .	68
INDEX OF MINES IN THE HARRISBURG QUADRANGLE . . . . .	72







## **INTRODUCTION**

Coal has been mined in 76 counties of Illinois. More than 7,400 coal mines have operated since commercial mining began in Illinois about 1810; fewer than 30 are currently active. To detail the extent and location of coal mining in Illinois, the Illinois State Geological Survey (ISGS) has compiled maps and directories of known coal mines. The ISGS offers maps at a scale of 1:100,000 and accompanying directories for each county in which coal mining is known to have occurred. Maps at a scale of 1:24,000 and accompanying directories such as this are available for selected quadrangles. Contact the ISGS for a list of these quadrangles.

These larger scale maps show the approximate positions of mines in relation to surface features such as roads and water bodies, and indicate the mining method used and the accuracy of the mine boundaries. The maps are useful for locating mine boundaries relative to specific properties and for assessing the potential for subsidence in an area. Mine boundaries compiled from final mine surveys are generally shown within 200 feet of their true position. As a result of poor cartographic quality and inaccuracies in the original mine surveys, boundaries of some older mines may be mislocated on the map by 500 feet or more. Original mine maps should be consulted in situations that require precise delineation of mine boundaries or internal workings of mined areas.

The directory serves as a key to the accompanying mine map and provides basic information on the coal mines. The directory is composed of two parts. Part I explains the symbols and patterns used on the accompanying map and the summary data presented for each mine. Part II numerically lists the mines in the quadrangle and summarizes the geology and production history of each mine.

## **MINING IN THE HARRISBURG QUADRANGLE**

The earliest mining in Saline County was just south of Harrisburg, by John Riben Norman (mine index 4717), who operated a small drift mine from as early as 1856 until the late 1870s. This mine was leased by John Davenport. David Ingram operated a drift mine two miles east of Norman's just a few years later. No production was reported after 1882 under the name David Ingram, but several Ingram mines operated through the years (see the unlocated mines at the back of this report). The precise location of this early mine is not known, but it may have been in the NW  $\frac{1}{4}$  of Section 26, T9S-R6E, where Ingram Hill Church is still shown on the USGS 7.5-minute topographic map. This area was later surface-mined (see mine index 4267). The first shipping mine opened in 1873, a slope mine about 3 miles southwest of Harrisburg, near Ledford (shown on the accompanying map as mine index 4708, located from an 1876 atlas). W. H. Howell and John Davenport also opened mines near Ledford in 1880 (see the unlocated mines at the back of this report).

Four seams have been mined in this quadrangle, and all have been mined from the surface as well as underground. Most of the mining took place in the Springfield Coal, which crops out just south of Harrisburg. The Springfield Coal generally ranges from 4.5 to 8.0 feet thick and averages about 5 feet thick over the area. The Springfield Coal was not deposited or is split into two or more seams by shale in the area west of Harrisburg. This is near the Galatia Channel, which was contemporaneous with the deposition of the Springfield Coal. The Dykersburg Shale overlies the seam in this area, generally making a good roof.

The Herrin Coal was also mined, especially west of Harrisburg, in the vicinity of the Galatia Channel. The Herrin Coal is not as thick as the Springfield Coal in this area, generally less than 5 feet thick.

The Dekoven and Davis Coals were mined in the southern part of the quadrangle. They are thinner than the Springfield Coal, generally ranging from less than 3 to about 4 feet thick. These seams were more commonly surface mined where both seams could be mined, such as in Peabody Coal Company's Will Scarlet Mine (mine index 697).

The Cottage Grove Fault System runs through the area, and locally interfered with the mining pattern or prevented expansion in some directions. These faults made mining more expensive in some locations, but did not prevent mining of the areas in which they occur.



## PART I EXPLANATION OF MAP AND MINE SUMMARY SHEET

### INTERPRETING THE MAP

The map accompanying this directory shows the location of coal mines known to be present in the quadrangle. The map, corresponding to a U.S. Geological Survey (USGS) 7.5-minute quadrangle, covers an area bounded by lines of latitude and longitude 7.5-minutes apart. In Illinois, a quadrangle is approximately 6.5 miles east to west and 8.5 miles north to south, an area of about 56 square miles. The USGS generally offers one map of mines per quadrangle. In some areas where extensive mining occurred in two or more overlapping seams, separate maps are compiled for mines in each seam to maintain readability of the map.

#### Mine Type and Mining Method

The mine type is indicated on the map by pattern color: green represents surface mines; red and yellow represent underground mines. The red patterns are used for areas of underground mining that are documented by a primary or secondary source map. A yellow pattern is used for cases where no map of the mine workings is available, but a general area of mining can be inferred from property maps or production figures. The patterns indicate the main mining methods used in underground mines. The methods are (1) room and pillar and (2) high extraction. The method used gives some indication of the amount and pattern of coal extraction within each mined area, and has some influence on the timing and type of subsidence that can occur over a mine.

The following discussion and illustrations of mining methods are based on Guither et al. (1984).

In room-and-pillar mines, coal is removed from haulage-ways (entries) and selected areas called rooms. Pillars of unmined coal are left between the rooms to support the roof. Depending on the size of rooms and pillars, the amount of coal removed from the production areas will range from 40% to 70%.

**Room and Pillar** - mining is divided into six categories:

- room-and-pillar basic (RPB, fig. 1A), an early method that did not follow a preset mining plan and therefore resulted in very irregular designs;
- modified room and pillar (MRP, fig. 1B);
- room-and-pillar panel (RPP, fig. 1C);
- blind room and pillar (BRP, fig. 1D);
- checkerboard room and pillar (CRP, fig. 1E);
- room and pillar (RP), a classification used when the specific type of room-and-pillar mining is unknown.

Blind and checkerboard are the most common types of room-and-pillar mining used in Illinois today. The knowledge of room-and-pillar mining methods gives a trained engineer information on the nature of subsidence that may occur. A more extensive discussion of subsidence can be found in Bauer et al. (1993).

**High-extraction** These mining methods are subdivided into high-extraction retreat (HER, Fig 1F) and longwall (LW, Fig 1G, 1H). In these methods, much of the coal is removed within well defined areas of the mine. Subsidence of the surface above these areas occurs within weeks. Once the subsidence activity ceases, the potential for further movement over these areas is low; however, subsidence may continue for several years after mining.

High-extraction retreat mining is a form of room-and-pillar mining that extracts most of the coal. Rooms and pillars are developed in the panels, and the pillars are then systematically removed (fig. 1F).

In early (pre-1960) longwall mines, mining advanced in multiple directions from a central shaft (fig. 1G). Large pillars of coal were left around the shaft, but all coal was removed beyond these pillars. Miners placed rock and wooden props and cribs in the mined-out areas to support the mine roof. The overlying rock gradually settled onto these supports, thus producing subsidence at the surface. In post-1959 longwall mines, room-and-pillar methods have been used to develop the main entries of the mine and panel areas. Modern longwall methods extract 100 percent of the coal in the panel areas (fig. 1H).



## SOURCE MAPS

Mine outlines depicted on the map are, whenever possible, based on maps made from original mine surveys. The process of compiling and digitizing the quadrangle map may produce errors of less than 200 feet in the location of mine boundaries. Larger errors of 500 feet or more are possible for mines that have incomplete or inaccurate source maps.

Because of the extreme complexity of some mine maps, detailed features of mined areas have been omitted. The digitized mine boundary includes the exterior boundary of all rooms or entries that were at least 80 feet wide or protruded 500 feet from the main mining area. Unmined areas between mines are shown if they are at least 80 feet wide; unmined blocks of coal within mines are shown if they are at least 400 feet on each side. Original source maps should be consulted when precise information on mine boundaries or interior features is needed.

The mine summary sheet lists the source maps used to determine each mine outline. The completeness of map sources is indicated on the map by a line symbol at the mine boundary. Source maps are organized in five categories.

**Final mine map** The mine outline was digitized from an original map made from mine surveys conducted within a few months after production ceased. The date of the map and the last reported production are listed on the summary sheet.

**Not a final map** The mine is currently active or the mine outline was made from a map based on mine surveys conducted more than a few months before production ceased. This implies the actual mined-out area is probably larger than the outline on the map. The mine summary sheet indicated the dates of source maps and the last reported production, as well as the approximate tonnage mined between these two dates (if the mine is abandoned). The summary sheet also lists the approximate acreage mined since the date of the map and, in some cases, indicates the area where additional mining may have taken place. This latter information is determined by locating on the map the active faces relative to probable boundaries of the mine property.

**Undated map** The source map was undated, so it may or may not be based on a final mine survey. When sufficient data are available, the probable acreage of the mined area is estimated from reported production, average seam thickness and a recovery rate comparable to other mines in the area. This information is listed in the summary sheet for the mine.

**Incomplete map** The source map did not show the entire mine. The summary sheet indicates the missing part of the mine map and the acreage of the unmapped area, which is estimated from the amount of coal known to have been produced from the mine.

**Secondary source map** The original mine map was not found so the outline shown was determined from secondary sources (e.g., outlines from small-scale regional maps published in other reports). The summary sheet describes the secondary sources.

## POINTS AND LABELS

The locations of all known mine openings (shafts, slopes, and drifts) and surface mine tipples are plotted on the map. Tipples are areas where coal was cleaned, stockpiled, and loaded for shipping.

Only openings or tipples are plotted for mines without source maps. If the precise locations of these features are unknown, a special symbol is used to indicate the approximate location of the mine.

Each mine on the map is labeled with the names of the mine and operating company, ISGS mine index number, and years of operation (if known) if space permits. A seam designation is given on maps where more than one seam was mined. For a mine that operated under more than one name, only the most recent name is generally given. When a mine changed names or ownership shortly before closing, an earlier name is listed. All company and mine names are listed on the mine summary sheet in the directory, under the production history segment.





**Figure 1** Mining methods: (A) room-and-pillar basic (RPB), (B) modified room and pillar (MRP), (C) room-and-pillar panel (RPP), (D) blind room and pillar (BRP).





**Figure 1 (cont.)** Mining methods: (E) checkerboard room and pillar (CRP), (F) high extraction retreat (HER), (G) early (pre-1960) longwall, (H) post-1959 longwall





**Figure 2** Generalized stratigraphic section, showing approximate vertical relations of coals in Illinois.

## INTERPRETING A MINE SUMMARY SHEET

The mine summary sheet is arranged numerically by mine index number. Index numbers are shown on the map and in the mine listing. The mine summary sheet provides the following information (if available).

**Company and mine name** The last company or owner of the mine is used, unless no production was recorded for the last owner. In that case, the penultimate owner is listed. Mines often have no specific name; in these cases, the company name is also used as the mine name.

**Type** *Underground* denotes a subsurface mine in which the coal was reached through a shaft, slope, or a drift entry. *Surface* denotes a surface, open pit or strip mine.

**Total mined-out acreage shown** The total acreage of the mined area mapped, including any acreage mined on adjacent quadrangles, is calculated from the digitized outline of the mine. The acreage of large barrier pillars depicted on the map is excluded from the mined-out acreage. Small pillars not digitized are included in the acreage calculation. If the mine outline is not based on a final mine map, the acreage is followed by an estimate of additional acres that may have been mined. The estimate is determined from reported mine production, approximate thickness of the coal, and recovery rates calculated from nearby mines that used similar mining methods.

## SHAFT, SLOPE, DRIFT OR TIPPLE LOCATIONS

**Shaft, slope, drift, or tippie locations** Locations of all known former entry points to underground mines or the location of coal cleaning, tippie, and shipping equipment used by the mine's facility are listed. The location is described in terms of county, township and range (Twp-Rge), section, and location within the section by quarters. NE SW NW, for instance, would describe the location in the northeast quarter of the southwest quarter of the northwest quarter. When sections are irregular in size, the quarters remain the same size and are oriented (or "registered") from the southeast corner of the section. Approximate footage from the section lines (FEL = from east line, FNL = from north line, for example) is given when that information is known; this indicates a surveyed location and is not derived from maps. Entry points are also plotted on the map and coded for the type of entry or tippie. A mine opening may have had many purposes during the life of the mine. Old hoist shafts are often later used for air and escape shafts; this information is included in the directory when known. The tippie for underground mines was generally located near the main shaft or slope. At surface mines, coal was sometimes hauled to a central tippie several miles from the mine pit.

## GEOLOGY

**Seam(s) mined** The name of the coal seam(s) mined is listed, if known. If multiple seams were mined, they are all listed, although the mined-out area for each seam may be shown on separate maps. Figure 2 shows the stratigraphic section of the coal-bearing interval in Illinois, and the vertical relations among the coals.

**Depth** The depth to the top of the seam in the vicinity of the shaft is listed, if known. The depth is determined from notes made by geologists who visited the mine during its operation or from drill hole data in ISGS files. Depth generally varies little over the extent of a mine; however, reported depths for an individual mine may vary. Depth for surface-mined coals varies, and is usually represented as a range.



**Thickness** The approximate thickness of the mined seam is shown, if known. Thickness also comes from notes of geologists who visited the mine during its operation or from borehole data in ISGS files. Minimum, maximum, and average thicknesses are given when this information is available.

**Mining method** The principal mining method used at the mine (figs. 1A-H) is listed. See the mining methods section at the beginning of this directory for a discussion of this parameter.

**Geologic problems reported** Any known geologic problems, such as faults, water seepage, floor heaving, and unstable roof, encountered in the mine are reported. This information is from notes made by ISGS geologists who visited the mine, or from reports by mine inspectors published by the Illinois Department of Mines and Minerals, or from the source map(s). Geologic problems are not reported for active mines.

## PRODUCTION HISTORY

**Production history** Tons of coal produced from the mine by each mine owner are totaled. When the source map used for the mine outline is not a final mine map, the tonnage produced since the date of the map is identified. For mines that extend into adjacent quadrangles, the tonnage reported includes areas mined in adjacent quadrangles.

## SOURCE OF DATA

**Source map** This section lists information about the map(s) used to compile the mine outline and the locations of tipples and mine openings. In some cases more than one source map was used. For example, a map drawn before the mine closed may provide better information on original areas of the mine than a later map. When more than one map was used, the bibliography section explains what information was taken from each source.

**Date** The date of the most recent mine survey listed on the source map is reported.

**Original scale** The original scale of the source map is listed. Many maps are photo-reductions and are no longer at their original scale. The original scale gives some indication of the level of detail of the mine outline and the accuracy of the mine boundary relative to surface features. Generally, the larger the scale, the greater the accuracy and detail of the mine map. Mine outlines taken from source maps at scales smaller than 1:24,000 may be highly generalized and may well be inaccurately located with respect to surface features.

**Digitized scale** The scale of the digitized map is reported. The scale may be different from that of the original source map. In many cases the digitized map was made from a photo-reduction of the original source map, or the source map was not in a condition suitable for digitizing and the mine boundaries were transferred to another base map.

**Map type** Source maps are classified into five categories to indicate the probable completeness of the map. See discussion of source maps in the previous section.

**Annotated bibliography** Sources that provide information about the mine are listed, with the data taken from each source. Some commonly used sources are described below. Full bibliographic references are given for all other sources. Unless otherwise noted, all sources are available for public inspection at the ISGS.

**Coal Reports** Published since 1881, these reports contain tabular data on mine ownership, production, employment, and accidents. Some volumes include short descriptions made by mine inspectors of physical features and conditions in selected mines.

**Directory of Illinois Coal Mines** This source is a compilation of basic data about Illinois coal mines, originally gathered by ISGS staff in the early 1950s. Sources used for this directory are undocumented, but they are primarily Illinois Department of Mines and Minerals annual reports, ISGS mine notes, and coal company officials.

**ENR Document 85/01**, Guither, H. D., J. K. Hines, and R. A. Bauer, 1985 The Economic Effect of Underground Mining Upon Land Used for Illinois Agriculture: Illinois Department of Energy and Natural Resources Document 85/01, 185 p.

**Microfilm map** The U.S. Bureau of Mines maintains a microfilm archive of mine maps. A microfilm file for Illinois is available for public viewing at the ISGS.



*Mine notes* ISGS geologists have visited mines or contacted mine officials throughout the state since the early 1900s. Notes made during these visits range from brief descriptions of the mine location to long narratives (including sketches) of mining conditions and geology.

*Federal Land Bank of St. Louis, Preliminary Reports on Subsidence Investigations* Mining engineers working for the Federal Land Bank of St. Louis mapped areas of subsidence due to coal mining in the early 1930s. These reports often include county maps of mine properties with mined-out areas including shaft locations, as well as subsidence areas.

## REFERENCES

- Bauer, R. A., B. A. Trent, and P. B. Dumontelle, 1993, Mine Subsidence in Illinois: Facts for the Homeowner Considering Insurance: Illinois State Geological Survey, Environmental Geology Note 144, 16p.
- Guither, H. D., J. K. Hines, and R. A. Bauer, 1985, The Economic Effects of Underground Mining Upon Land Used for Illinois Agriculture: Illinois Department of Energy and Natural Resources Document 85/01, 185p.
- Lindsay, M. N., 1947, Coal Mines in Saline County, from Saline County, A Century of History, 1847-1947.
- Nelson, W. J., and H.-F. Krausse, 1981, The Cottage Grove Fault System in Southern Illinois, Illinois State Geological Survey, Circular 522, 65p.
- Saline County Historical Society, 1947, A Century of History, Register Publishing Company, Inc., Harrisburg, Illinois.
- Treworgy, C. G., C. P. Korose, C. A. Chenoweth, and D. L. North, 1999, Availability of the Springfield Coal for Mining in Illinois, Illinois State Geological Survey, Illinois Minerals 118, 43p.



## PART II DIRECTORY OF MINES IN THE HARRISBURG QUADRANGLE

### MINE SUMMARY SHEETS

A summary sheet on the geology and production history of each mine in the Harrisburg Quadrangle is provided. These summary sheets are arranged numerically by mine index number. Consult Part I for a complete explanation of the data listed in the summary sheet.

#### Mine Index 43

#### O'Gara Coal Company, O'Gara No. 9 Mine

Type: Underground    Total mined-out acreage shown: 972

#### SHAFT, SLOPE, DRIFT or TIPPLE LOCATIONS

Type	County	Township-Range	Section	Quarters-Footage
Main shaft	Saline	9S 6E	21	NW SE SE
Air shaft	Saline	9S 6E	21	SW SE SE

#### GEOLOGY

Seam(s) Mined	Depth (ft)	Thickness (ft)			Mining Method
		Min	Max	Ave	
Springfield	152			5.8-8.0	MRP

Geologic Problems Reported: A 1911 gas explosion near the sealed connection to the O'Gara No. 4 Mine resulted in the suffocation of eight men. Several faults, trending northwest-southeast, cut through the northeast portion of the mine. The roof in the center part of the mine was 1.5 feet of crumbly shale that tended to come down, overlain by a good roof of hard gray shale. The western part of the mine had poorer roof conditions, with boney coal and carbonaceous shale that contained partings and horizontal slip planes. The northern and southern parts of the mine had many slip planes in the roof that made for dangerous conditions. The coal contained pyrite balls and streaks; the lower half of the coal was cleaner than the upper portion.

#### PRODUCTION HISTORY

Company	Mine Name	Years	Production (tons)
Eldorado Coal Company	Eldorado	1905-1906	47,414
O'Gara Coal Company	O'Gara No. 9	1906-1923 *	6,598,483
			6,645,897

\* Idle 1922

Last reported production: April 1923

#### SOURCES OF DATA

Source Map	Date	Original Scale	Digitized Scale	Map Type
Microfilm, document 352793	9-1923 **	1:2400	1:4138	Not final
Company, 4103.S32 i5.1-37	2-1-1931	1:2400	1:2400	Final
WPA, T9S-R6E	circa 1934	1:12000	1:53,900	Secondary source

\*\* The legend on this source map stated that the map was prepared in September 1923 and the last extensions were surveyed January 10, 1923. However, several entries have the date "4-14-1923" inscribed on the furthest extensions, implying that this map is final or very nearly so, but this outline is not consistent with the final outline shown on the 1931 map, which shows approximately 15 additional acres. The mined area shown on the accompanying map is the approximate size expected for the production reported. This suggests that the mine outline is complete.

#### Annotated Bibliography (data source, brief description of information)

Coal Reports - Production, ownership, years of operation, thickness, geologic problems.

Mine notes (Saline County) - Mine type, shaft location, seam, depth, geologic problems.

Microfilm map, document 352793, reel 03140, frames 329-332 - Mine outline, mining method, geologic problems.

Company map, ISGS map library, 4103.S32 i5.1-37 - Mine outline (south).

WPA map, T9S-R6E - Shaft locations.



**Mine Index 44****Peabody Coal Company, Peabody No. 43 Mine**

Type: Underground    Total mined-out acreage shown: 2,067

**SHAFT, SLOPE, DRIFT or TIPPLE LOCATIONS**

Type	County	Township-Range	Section	Quarters-Footage
Main shaft (10x20)	Saline	9S 6E	17	SE SE NE
Air shaft (10x14)	Saline	9S 6E	17	SE SE NE

**GEOLOGY**

Seam(s) Mined	Depth (ft)	Thickness (ft)			Mining Method
		Min	Max	Ave	
Springfield	267-274	4.67	7.0-8.0	6.25-7.25	MRP

Geologic Problems Reported: A gas explosion occurred in 1923, killing one man. The east-west-trending Cottage Grove Fault System bisects the mine. Subsidiary northwest-southeast trending faults were present throughout the mine. In some places, faulting interfered with the mining plan, causing several blocks of coal to be left unmined. Pillar and roof failure noted on the source map indicated faulted zones. At least one fault had 3 feet of displacement, another 6 feet. Dikes were also present, following the same trend as the faults. The roof was composed of 65 feet of gray shale, some of which came down in small, irregular lenticular pieces. Pyrite concretions in the roof occurred only in parts of the mine. Slips were present in the roof and the coal, generally parallel to the faults. The coal contained pyrite in bands, lenses and concretions scattered throughout the seam. The coal bed lay in hills and swags; the hills were like knolls and the coal dipped from the crest in all directions. The floor was fireclay at least 2 feet thick, but no heaving was reported.

**PRODUCTION HISTORY**

Company	Mine Name	Years	Production (tons)
Saline County Coal Company	Saline County No. 3	1910-1919	4,069,469
Big Creek Coal Company	Big Creek No. 3	1919-1921	1,014,310
Big Creek Coals, Inc.	Big Creek No. 3	1921-1923	980,206
Saline County Coal Corporation	Saline County No. 3	1923-1927	2,968,449
Saline County Coal Corporation	Saline County No. 43	1928-1928	206,634
Peabody Coal Company	Peabody No. 43	1929-1942 *	3,924,433
			13,163,501

\* Idle 1934 &amp; 1935

Last reported production: February 1942

**SOURCES OF DATA**

Source Map	Date	Original Scale	Digitized Scale	Map Type
Company, 4103.S32 i5.1-62	3-3-1942	1:2400	1:2400	Final

Annotated Bibliography (data source, brief description of information)

Coal Reports - Production, ownership, years of operation, shaft sizes, geologic problems.

Directory of Illinois Coal Mines (Saline County) - Mine names, mine index, ownership, years of operation.

Mine notes (Saline County) - Mine type, shaft location, seam, depth, thickness, geologic problems.

Company map, ISGS map library, 4103.S32 i5.1-62 - Shaft locations, mine outline, mining method, geologic problems.



**Mine Index 48**  
**Saline Valley Coal Company, Saline Valley No. 1 Mine**

Type: Underground    Total mined-out acreage shown: 151

**SHAFT, SLOPE, DRIFT or TIPPLE LOCATIONS**

Type	County	Township-Range	Section	Quarters-Footage
Main shaft	Saline	9S 5E	36	NW SE SW
Slope	Saline	9S 5E	35	SW SE SE *
Escapement shaft	Saline	10S 5E	2	NE NE NE *

\* These entrances to the mine were from the later operations. No air shaft for the earlier operations was designated on the source maps. The southernmost extension of the mine was made in 1929, when Bluebird No. 1 Mine (mine index 610) worked underground before changing over to surface-mining the coal between the outcrop and the underground mine.

**GEOLOGY**

Seam(s) Mined	Depth (ft)	Thickness (ft)			Mining Method
		Min	Max	Ave	
Springfield	83 (70-125)	5.0	7.5	6.25	MRP

Geologic Problems Reported: Small faults with 2-foot offsets were seen in the mine. The coal contained some pyrite. Mining was halted in the southwest due to dirty gray shale lenses in the coal.

**PRODUCTION HISTORY**

Company	Mine Name	Years	Production (tons)
Morris Coal Company	Green Gravel	1903-1905 **	9,410
O'Gara Coal Company	O'Gara No. 7	1905-1914	821,956
Idle		1914-1921	
Heato Coal Company	Heato	1921-1923	29,976
Saline Valley Coal Company	Saline Valley No. 1	1923-1928	<u>92,371</u>
			953,713

\*\* Idle 1905

Last reported production: 1928

**SOURCES OF DATA**

Source Map	Date	Original Scale	Digitized Scale	Map Type
Microfilm, document 352769	7-1-1931	1:2400	1:4468	Secondary source
WPA, T9S-R5E	circa 1934	1:12000	1:53900	Secondary source

Annotated Bibliography (data source, brief description of information)

Coal Reports - Production, ownership, years of operation, depth.  
 Directory of Illinois Coal Mines (Saline County) - Mine names, mine index, ownership, years of operation.  
 Mine notes (Saline County) - Mine type, shaft location, seam, depth, thickness, geologic problems.  
 Microfilm map, document 352769, reel 03140, frame 291, map of Blue Bird Mine (mine index 610) - Slope & shaft locations, mine outline, mining method.  
 WPA map, T9S-R5E - Shaft location.



**Mine Index 128****O'Gara Coal Company, O'Gara No. 14 Mine**

Type: Underground Total mined-out acreage shown: 531 The boundary between O'Gara No. 14 Mine and Harrisburg No. 4 Mine (mine index 3319) could not be distinguished, and the acreage shown is for both mines. Harrisburg No. 4 Mine also mined some pillars in O'Gara No. 14, and Harrisburg No. 2 Mine (mine index 3320) surface-mined the southern part of the underground works.

**SHAFT, SLOPE, DRIFT or TIPPLE LOCATIONS**

Type	County	Township-Range	Section	Quarters-Footage
Main shaft	Saline	9S 6E	30	SE SE SE
Air / escape shaft *	Saline	9S 6E	31	NE NW NE *
Air shaft	Saline	9S 6E	32	SE SW SW **

\* This shaft appears to be shared with Saline County Coal Company No. 1 (mine index 3290).

\*\* Later surface-mined by various companies; not shown on accompanying map.

**GEOLOGY**

Seam(s) Mined	Depth (ft)	Thickness (ft)			Mining Method
		Min	Max	Ave	
Springfield	137-150	4.67	8.0	5.42-7.0	MRP

Geologic Problems Reported: Rolls and faults were present throughout the mine, and some interfered with mining. A large fault prevented westward expansion of the mine. The roof was generally good, with a 4-inch layer of "draw slate". The coal contained pyrite lenses in the upper portion, and calcite or gypsum fracture fillings throughout the seam. The thicker coal was in the southern part of the mine. The source map also shows that the coal was split by a shale band on the western side of the northern part of the mine (NE SW 30-T9S-R6E).

**PRODUCTION HISTORY**

Company	Mine Name	Years	Production (tons)
O'Gara Coal Company	O'Gara No. 14	1906-1908	246,743
Harrisburg-Big Muddy Coal Company	Harrisburg-Big Muddy No. 14	1908-1909	193,614
O'Gara Coal Company	O'Gara No. 14	1909-1910	220,182
Harrisburg-Big Muddy Coal Company	Harrisburg-Big Muddy No. 14	1910-1911	166,692
O'Gara Coal Company	O'Gara No. 14	1911-1914	701,910
Harrisburg-Big Muddy Coal Company	Harrisburg-Big Muddy No. 14	1914-1919	731,493
O'Gara Coal Company	O'Gara No. 14	1919-1923 ***	398,751
			2,659,385

\*\*\* Idle 1922

Last reported production: February 1923

**SOURCES OF DATA**

Source Map	Date	Original Scale	Digitized Scale	Map Type
Company, 4103.S32 i5.1-85	2-14-1923	1:2400	1:2400	Final
Company, 4103.S32 i5.1-93	8-2-1973	1:600	1:7200	Final

Annotated Bibliography (data source, brief description of information)

Coal Reports - Production, ownership, years of operation, depth.

Directory of Illinois Coal Mines (Saline County) - Mine names, mine index, ownership, years of operation.

Mine notes (Saline County) - Mine type, shaft location, seam, thickness, geologic problems.

Company map, ISGS map library, 4103.S32 i5.1-85 - Shaft locations, mine outline, mining method, geologic problems.

Company map, ISGS map library, 4103.S32 i5.1-93 - Mine outline (separation between this mine and O'Gara No. 5 Mine, mine index 3291).



**Mine Index 330****O'Gara Coal Company, O'Gara No. 4 Mine**

Type: Underground    Total mined-out acreage shown: 441

**SHAFT, SLOPE, DRIFT or TIPPLE LOCATIONS**

Type	County	Township-Range	Section	Quarters-Footage
Main shaft (7.33x19.33)	Saline	9S 6E	22	NE NW NW

**GEOLOGY**

Seam(s) Mined	Depth (ft)	Thickness (ft)			Mining Method
		Min	Max	Ave	
Springfield	213			4.75-8.0	MRP

Geologic Problems Reported: The mine had some problems with gas; one death was caused by a gas explosion. A dike was present in the mine, as well as faults that trended northwest. The roof was competent shale.

**PRODUCTION HISTORY**

Company	Mine Name	Years	Production (tons)
Harrisburg Mining & Coal Company	Harrisburg, Poppycrat	1896-1898	4,280
Harrisburg Coal Company	Harrisburg	1898-1903	249,521
Jobe S. Ingram	Ingram	1903-1905	2,100
O'Gara Coal Company	O'Gara No. 4	1905-1918	2,546,096
			2,801,997

Last reported production: June 1918

**SOURCES OF DATA**

Source Map	Date	Original Scale	Digitized Scale	Map Type
Company, 4103.S32 i5.1-1	7-1-1950	1:31680	1:31680	Final

Annotated Bibliography (data source, brief description of information)

Coal Reports - Production, ownership, years of operation, shaft size, thickness, geologic problems.

Directory of Illinois Coal Mines (Saline County) - Mine names, mine index, ownership, years of operation.

Mine notes (Saline County) - Mine type, shaft location, seam, depth, geologic problems.

Company map, ISGS map library, 4103.S32 i5.1-1 - Mine outline (generalized) \*, shaft location.

\* A generalized mine outline is shown on the accompanying map because numerous map sources from the surrounding mines showed portions of the mine outline, but the sources did not fit well together and various portions of the outline were missing entirely. This source map shows the entire outline, but could not be used with the more detailed outlines from the surrounding mines, which mined very close to the workings of this mine.



**Mine Index 450**  
**Saline County Coal Corporation, Saline County No. 2 Mine**

Type: Underground    Total mined-out acreage shown: 821

**SHAFT, SLOPE, DRIFT or TIPPLE LOCATIONS**

Type	County	Township-Range	Section	Quarters-Footage
Main shaft (9.5x15.5)	Saline	9S 5E	36	NW NE SE
Air shaft (9.5x15.5)	Saline	9S 5E	36	NW NE SE

**GEOLOGY**

Seam(s) Mined	Depth (ft)	Thickness (ft)			Mining Method
		Min	Max	Ave	
Springfield	103	5.5	8.0	7.0	MRP, some HER

Geologic Problems Reported: A 1927 gas explosion killed 8 men. A dike and several faults, which lay parallel to the dike, ran through the mine trending northwest-southeast. The roof was good, except where there were water problems (particularly under a valley on the surface). The coal dipped away from the shaft, making haulage difficult.

**PRODUCTION HISTORY**

Company	Mine Name	Years	Production (tons)
Davenport Coal Company	B, Steel Tipple	1905-1906	not reported
Saline County Coal Corporation	Saline County No. 2	1906-1919	4,473,630
Big Creek Coal Company	Big Creek No. 2	1919-1923	928,401
Saline County Coal Corporation *	Saline County No. 2	1923-1927	<u>635,057</u>
			6,037,088

\* On one map source, this mine was labeled Peabody Coal Company, No. 42 Mine. No production was reported under that name.

Last reported production: 1927

**SOURCES OF DATA**

Source Map	Date	Original Scale	Digitized Scale	Map Type
Company, 4103.S32 i5.1-11	4-1-1927	1:2400	1:2400	Not final
ISGS map library, 4103.S32 i5.1-93	8-2-1973 **	1:7200	1:7200	Secondary source

\*\* The outline of the northern portion of this mine is as shown on the 1927 source map. The mined area shown on the accompanying map is the approximate size expected for the production reported. This suggests that the mine outline is complete.

Annotated Bibliography (data source, brief description of information)

Coal Reports - Production, ownership, years of operation, shaft size, seam, geologic problems.  
 Directory of Illinois Coal Mines (Saline County) - Mine names, mine index, ownership, years of operation.  
 Mine notes (Saline County) - Mine type, depth, thickness, geologic problems.  
 Company map, ISGS map library, 4103.S32 i5.1-11 - Shaft locations, mine outline, mining method.  
 ISGS map library, 4103.S32 i5.1-93, basemap from Sahara Coal Company - Mine outline (south).  
 Microfilm map, document 352777, reel 03140, frames 299-301, map of Harrisburg No. 2 surface mine (mine index 3320) - Mining method (high-extraction retreat in southern part of mine).



**Mine Index 535****Sahara Coal Company, Inc., Sahara No. 12 Mine**

Type: Underground    Total mined-out acreage shown: 1,000

**SHAFT, SLOPE, DRIFT or TIPPLE LOCATIONS**

Type	County	Township-Range	Section	Quarters-Footage
Main shaft	Saline	9S 6E	2	SE NW SW
Air shaft	Saline	9S 6E	2	SE NW SW

**GEOLOGY**

Seam(s) Mined	Depth (ft)	Thickness (ft)			Mining Method
		Min	Max	Ave	
Springfield	415			5.33 (4.5-8.0)	MRP

Geologic Problems Reported: Gas was abundant in places. Northwest-southeast trending faults were present in the eastern and western parts of the mine. The roof was good, except for two layers of "draw slate". The first layer was taken down with the coal, and the second layer came down after a few months. The coal contained a pyrite layer near the top of the seam.

**PRODUCTION HISTORY**

Company	Mine Name	Years	Production (tons)
Harrisburg-Big Muddy Coal Company	Illinois	1905-1906	11,245
O'Gara Coal Company	O'Gara No. 12	1906-1910 *	242,086
Harrisburg-Big Muddy Coal Company	Harrisburg-Big Muddy No. 12	1910-1911	41,380
O'Gara Coal Company	O'Gara No. 12	1911-1914	276,453
Harrisburg-Big Muddy Coal Company	Harrisburg-Big Muddy No. 12	1914-1920 **	890,145
O'Gara Coal Company	O'Gara No. 12	1920-1932 ***	1,950,291
Sahara Coal Company, Inc.	Sahara No. 12	1933-1938 †	<u>1,310,616</u>
			4,722,216

\* Idle 1909

\*\* Idle 1920

\*\*\* Idle 1932

† Idle 1933

Last reported production: March 1938

**SOURCES OF DATA**

Source Map	Date	Original Scale	Digitized Scale	Map Type
Microfilm, document 352792	3-11-1938	1:2400	1:5131	Final

Annotated Bibliography (data source, brief description of information)

Coal Reports - Production, ownership, years of operation, thickness.

Directory of Illinois Coal Mines (Saline County) - Mine names, mine index, ownership, years of operation.

Mine notes (Saline County) - Mine type, shaft location, seam, depth, thickness, geologic problems.

Microfilm map, document 352792, reel 03140, frames 327 &amp; 328 - Shaft locations, mine outline, mining method, geologic problems.



**Mine Index 608****Sahara Coal Company, Sahara No. 3 Mine**

Type: Underground    Total mined-out acreage shown: 1,372    Production indicates approximately 7 acres were mined after the map date.

**SHAFT, SLOPE, DRIFT or TIPPLe LOCATIONS**

Type	County	Township-Range	Section	Quarters-Footage
Main shaft	Saline	9S 6E	15	NW SE SW
Air / escape shaft	Saline	9S 6E	15	NW SE SW
Slope	Saline	9S 6E	23	NE NW NE

**GEOLOGY**

Seam(s) Mined	Depth (ft)	Thickness (ft)			Mining Method
		Min	Max	Ave	
Springfield	245			5.0-7.0	RPP

Geologic Problems Reported: A 1910 gas explosion killed a mine examiner. A series of northwest-southeast trending faults were present throughout the mine.

**PRODUCTION HISTORY**

Company	Mine Name	Years	Production (tons)
Egyptian Coal Company	Egyptian No. 2	1905-1906	not reported
O'Gara Coal Company	O'Gara No. 3	1906-1932 *	6,847,713
Sahara Coal Company, Inc.	Sahara No. 3	1933-1937	1,118,762
Sahara Coal Company	Sahara No. 3	1937-1937	36,128 **
			8,002,603

\* Idle 1915

\*\* Production after map date

Last reported production: January 1937

**SOURCES OF DATA**

Source Map	Date	Original Scale	Digitized Scale	Map Type
Company, R4103.S32 i5.1-89	1-1-1937	1:2400	1:2400	Not final

Annotated Bibliography (data source, brief description of information)

Coal Reports - Production, ownership, years of operation, thickness, geologic problems.

Directory of Illinois Coal Mines (Saline County) - Mine names, mine index, ownership, years of operation.

Mine notes (Saline County) - Mine type, shaft location, seam, depth, thickness.

Company map, ISGS map library, R4103.S32 i5.1-89 - Shaft / slope locations, mine outline, mining method, geologic problems.



**Mine Index 610****Blue Bird Coal Company, Blue Bird No. 1 Mine**

Type: Surface Total mined-out acreage shown: 250 This area includes approximately 13 acres mined by New Oak Hill No. 3 Mine (mine index 3289), 160 acres mined by Blue Bird No. 1 Mine (mine index 610) and 77 acres mined by Harrisburg No. 2 Mine (mine index 3320).

**SHAFT, SLOPE, DRIFT or TIPPLE LOCATIONS**

Type	County	Township-Range	Section	Quarters-Footage
Slope *	Saline	10S 5E	1	NW NW NW
Escapement shaft *	Saline	10S 5E	2	NE NE NE
Tipple / pit *	Saline	10S 5E	1	N ½

\* The mine operated as a slope for the first year, mining the southern portion of Saline Valley No. 1 Mine (mine index 48), and then changed to surface-mining.

**GEOLOGY**

Seam(s) Mined	Depth (ft)	Thickness (ft)			Mining Method
		Min	Max	Ave	
Springfield	45			4.33-6.5	Surface

Geologic Problems Reported:

**PRODUCTION HISTORY**

Company	Mine Name	Years	Production (tons)
Blue Bird Coal Company	Blue Bird No. 1	1929-1935	<u>1,453,176</u> 1,453,176

Last reported production: 1935

**SOURCES OF DATA**

Source Map	Date	Original Scale	Digitized Scale	Map Type
Microfilm, document 352769	7-1-1931	1:2400	1:4468	Not final
USGS topographic map	PR 1990	1:24000	1:24000	Secondary source

Annotated Bibliography (data source, brief description of information)

Coal Reports - Production, ownership, years of operation, depth, thickness.

Directory of Illinois Coal Mines (Saline County) - Mine names, mine index, ownership, years of operation.

Mine notes (Saline County) - Mine type, mine location, seam.

ISGS field notes (Saline County) - Mining method, seam.

Microfilm map, document 352769, reel 03140, frame 291 - Slope & shaft locations, mine outlines, mining methods.

USGS topographic map, Harrisburg, 1961, photorevised 1990 - Mine outline, mining method.



**Mine Index 638****Sahara Coal Company, Inc., Sahara No. 6 Mine**

Type: Surface Total mined-out acreage shown: 5,178

**SHAFT, SLOPE, DRIFT or TIPPLE LOCATIONS**

Type	County	Township-Range	Section	Quarters-Footage
Tipple	Saline	9S 5E	29	SW SE NW

**GEOLOGY**

Seam(s) Mined	Depth (ft)	Thickness (ft)			Mining Method
		Min	Max	Ave	
Herrin	25-115			4.5-5.0	Surface

Geologic Problems Reported: Coal balls were present and locally abundant.**PRODUCTION HISTORY**

Company	Mine Name	Years	Production (tons)
Bankston Creek Collieries Company, Inc.	Bankston Creek No. 6	1936-1950	8,396,736
Sahara Coal Company, Inc.	Sahara No. 6	1951-1993	28,623,916
			37,020,652

Last reported production: June 1993

**SOURCES OF DATA**

Source Map	Date	Original Scale	Digitized Scale	Map Type
Company, 6-207	12-17-1978	1:4800	1:4800	Not final
Microfilm, document 352758	5-31-1950	1:2400	1:4634	Not final
Company, 6-316	12-1993	1:4800	1:4800	Final
Company, 6-318	1-1-1991	1:2400	1:2400	Final *
Department of Mines & Minerals	Undated			Secondary source
USGS topographic map	PR 1990	1:24000	1:24000	Secondary source

\* This map is final for the pit shown.

Annotated Bibliography (data source, brief description of information)

Coal Reports - Production, ownership, years of operation, depth, thickness.  
 Directory of Illinois Coal Mines (Saline County) - Mine names, mine index, ownership, years of operation.  
 Mine notes (Saline County) - Mine type, mine location, seam, geologic problems.  
 ISGS field notes (Saline County) - Mining method.  
 Company map, ISGS Coal Section files, 6-207 - Mine location, mine outline, mining method.  
 Microfilm map, document 352758, reel 03140, frames 274-277 - Mine outline.  
 Company map, ISGS Coal Section files, 6-316 - Mine outline (north).  
 Company map, ISGS Coal Section files, 6-318 - Mine outline (eastern pit, north half).  
 Department of Mines & Minerals, 7a-01-37, aerial photographic base with surface mines identified - Mine outline.  
 USGS topographic map, Carrier Mills 7.5', 1961, photorevised 1990 - Mine outline.



**Mine Index 672**  
**Ramsey Coal Company, Ramsey Mine**

Type: Underground    Total mined-out acreage shown: 9    This mine was partially surface-mined later by the Walnut Grove Mine (mine index 840).

**SHAFT, SLOPE, DRIFT or TIPPLe LOCATIONS**

Type	County	Township-Range	Section	Quarters-Footage
Main slope	Saline	10S 6E	17	NW NE SE
Air shaft	Saline	10S 6E	17	NW NE SE

**GEOLOGY**

Seam(s) Mined	Depth (ft)	Thickness (ft)			Mining Method
		Min	Max	Ave	
Davis	95			4.0	RPB

Geologic Problems Reported:

**PRODUCTION HISTORY**

Company	Mine Name	Years	Production (tons)
Hart & Ward*	Hart & Ward No. 2	1944-1946	5,851
Bert Ward *	Ward	1947-1947	2,456
Ramsey Coal Company **	Ramsey	1948-1950	<u>12,824</u>
			21,131

\* Changed management in 1946 & 1947, but reported under the same name.

\*\* Operated by Charles & C. F. Ramsey

Last reported production: 1950

**SOURCES OF DATA**

Source Map	Date	Original Scale	Digitized Scale	Map Type
Microfilm, document 352802	5-3-1950	1:1200	1:1200	Final

Annotated Bibliography (data source, brief description of information)

Coal Reports - Production, ownership, years of operation.

Directory of Illinois Coal Mines (Saline County) - Mine names, mine index, ownership, years of operation.

Mine notes (Saline County) - Mine type, slope location, seam, depth, thickness.

Microfilm map, document 352802, reel 03140, frame 349 - Slope & shaft locations, mine outline, mining method.



**Mine Index 697****Peabody Coal Company, Will Scarlet Mine**

Type: Surface Total mined-out acreage shown: 4,474 This area includes many other pits elsewhere in Saline and Williamson Counties

**SHAFT, SLOPE, DRIFT or TIPPLE LOCATIONS**

Type	County	Township-Range	Section	Quarters-Footage
Tipple	Williamson	10S 4E	24	SE NE NW

**GEOLOGY**

Seam(s) Mined	Depth (ft)	Thickness (ft)			Mining Method
		Min	Max	Ave	
Dekoven	25-35			3.17-3.46	Surface
Davis	42-76			3.42	Surface
Houchin Creek				2.0	Surface

Geologic Problems Reported: An igneous dike was present 500 feet south of the north section line of sections 13 and 14. This dike was 15 feet wide. About 10 feet southwest of the main dike, a smaller dike cut through the Davis Coal. Another smaller (2 to 3 feet wide) dike was present about 500 to 600 feet southwest of the main dike. These dikes were near a 100-foot wide graben. The overburden was mainly sandstone and shale, which was fractured in some locations. This made the highwall expensive to maintain and dangerous to work near. Calcite was present in the coal as fracture fillings. Pyrite was present in lenses and fracture fillings. Some of the seams had high sulfur and ash content (as well as high Btu values) and were not mined at all locations.

**PRODUCTION HISTORY**

Company	Mine Name	Years	Production (tons)
Stonefort Corporation	Will Scarlet	1953-1959	4,242,962 *
Stonefort Coal Mining Corporation	Will Scarlet	1960-1967	6,811,916 *
Peabody Coal Company	Will Scarlet	1968-1978	8,797,151 *
Peabody Coal Company	Will Scarlet	1979-1987	6,208,992 *
			26,061,021

\* Production from 1953-1978 was reported in Williamson County, and production from 1979-1987 was reported in Saline County.

Last reported production: 1987

**SOURCES OF DATA**

Source Map	Date	Original Scale	Digitized Scale	Map Type
Company, Coal Section files	1-1-1989	1:12000	1:12000	Final
Microfilm, document 353298	7-16-1959	1:12000	1:24000	Not final
Department of Mines & Minerals	Undated			Secondary source
USGS topographic map	1961, PR 1990	1:24000	1:24000	Secondary source
USGS topographic map	1965, PR 1990	1:24000	1:24000	Secondary source
USGS topographic map	1961, PR 1990	1:24000	1:24000	Secondary source

Annotated Bibliography (data source, brief description of information)

Coal Reports - Production, ownership, years of operation, seams, depth, thickness, mining method.  
 Directory of Illinois Coal Mines (Williamson County) - Mine names, mine index, ownership, years of operation.  
 Mine notes (Williamson County) - Mine type, mine location, seam, geologic problems.  
 Company map, Coal Section files - Mine outline, mining method.  
 Microfilm map, document 353298, reel 03142, frame 257 - Mine location, mine outline (T10S-R4E-13,14,15).  
 Department of Mines & Minerals, 7a-01-38, aerial photographic base with surface mines identified - Mine identification (pit 13).  
 USGS topographic map, Carrier Mills 7.5-minute Quadrangle, 1961, Photorevised 1990 - Mine outline.  
 USGS topographic map, Crab Orchard 7.5-minute Quadrangle, 1965, Photorevised 1990 - Mine outline.  
 USGS topographic map, Harrisburg 7.5-minute Quadrangle, 1961, Photorevised 1990 - Mine outline..



**Mine Index 801****Sahara Coal Company, Inc., Sahara No. 16 Mine**

Type: Underground    Total mined-out acreage shown: 2,861

**SHAFT, SLOPE, DRIFT or TIPPLE LOCATIONS**

Type	County	Township-Range	Section	Quarters-Footage
Main slope	Saline	9S 5E	13	SE SW SW
Air shaft *	Saline	9S 5E	13	SW SW SW
Escape (old air) shaft	Saline	9S 5E	13	SE SW SW

\* The old shaft was converted to an air shaft in 1941, when the new slope was constructed.

**GEOLOGY**

Seam(s) Mined	Depth (ft)	Thickness (ft)			Mining Method
		Min	Max	Ave	
Springfield	189-200	5.0	7.0	6.5	RPP

Geologic Problems Reported: The mine had many faults, trending northwest-southeast. These faults controlled the mine plan to some extent, specifically in the southeastern part of the mine, where a large block was left unmined. The roof was not good, the seam "hilly", and the floor heaved slightly.

**PRODUCTION HISTORY**

Company	Mine Name	Years	Production (tons)
Elder & Bixler Coal Company	Elder & Bixler	1913-1920	41,322
Harrisburg Coal Mining Company	Blue Bird	1920-1924	598,492
Harrisburg Coal Mining Company	Harrisburg No. 1	1924-1927	285,917
Idle		1927-1941	
Bankston Creek Collieries Company	Bankston Creek No. 16	1941-1950	4,359,557
Sahara Coal Company, Inc.	Sahara No. 16	1951-1971	<u>12,115,092</u>
			17,400,380

Last reported production: 1971

**SOURCES OF DATA**

Source Map	Date	Original Scale	Digitized Scale	Map Type
State archive, IL_356_06	12-23-1971	1:2400	1:2400	Final

Annotated Bibliography (data source, brief description of information)

Coal Reports - Production, ownership, years of operation, depth.

Directory of Illinois Coal Mines (Saline County) - Mine names, mine index, ownership, years of operation.

Mine notes (Saline County) - Mine type, slope location, seam, depth, thickness, geologic problems.

State archive, IL\_356\_06 - Slope & shaft locations, mine outline, mining method, geologic problems.



**Mine Index 840****Young's Coal Corporation, Walnut Grove Mine**

Type: Surface Total mined-out acreage shown: 593 Production indicates approximately 120 acres were mined after the map date.

**SHAFT, SLOPE, DRIFT or TIPPLE LOCATIONS**

Type	County	Township-Range	Section	Quarters-Footage
Tipple / pit *	Saline	10S 6E	9	SW SE SW

\* Other pits are in 9-T10S-R7E, on the Rudement Quadrangle.

**GEOLOGY**

Seam(s) Mined	Depth (ft)	Thickness (ft)			Mining Method
		Min	Max	Ave	
Dekoven	30-60			3.83-4.0	Surface
Davis	90-115			2.83-3.0	Surface

Geologic Problems Reported: Faults were observed in the pits. The coal reputedly had high ash and moisture content.

**PRODUCTION HISTORY**

Company	Mine Name	Years	Production (tons)
Saxton Coal Corporation	Walnut Grove	1956-1962	3,931,518
Young's Coal Corporation	Walnut Grove **	1963-1963	369,137
Young's Coal Corporation	Walnut Grove **	1963-1965	<u>1,209,019</u> ***
			5,509,674

\*\* Also known as Somerset Mine

\*\*\* Production after map date

Last reported production: June 1965

**SOURCES OF DATA**

Source Map	Date	Original Scale	Digitized Scale	Map Type
Company, 1-29-8	8-1-1963	1:74541	1:74541	Not final
USGS topographic map	PR 1990	1:24000	1:24000	Secondary source

Annotated Bibliography (data source, brief description of information)

Coal Reports - Production, ownership, years of operation, seam, depth, thickness.

Directory of Illinois Coal Mines (Saline County) - Mine names, mine index, ownership, years of operation.

Mine notes (Saline County) - Mine type, mine location, seam, geologic problems.

ISGS field notes (Saline County) - Sketch map of mine outline, seam, geologic problems.

Company map, ISGS Coal Section files, 1-29-8 - Mine location.

USGS topographic map, photorevised 1990 - Mine outline.



**Mine Index 919****J. J. Track Mining Company, Brown Brothers No. 2 Mine**

Type: Surface    Total mined-out acreage shown: 125

**SHAFT, SLOPE, DRIFT or TIPPLE LOCATIONS**

Type	County	Township-Range	Section	Quarters-Footage
Pit	Saline	10S 6E	30	NE *
Pit	Saline	10S 6E	20	NW

\* This pit also mined out several old drift mines. ISGS field notes indicate these mines had been abandoned prior to 1916 and 1925.

**GEOLOGY**

Seam(s) Mined	Depth (ft)	Thickness (ft)		Mining Method
		Min	Max	
Dekoven	30-45			Surface
Davis	60			Surface

Geologic Problems Reported: Faulting was present, some with displacements over 50 feet. This halted the advance of mining in some pits.

**PRODUCTION HISTORY**

Company	Mine Name	Years	Production (tons)
Brown Brothers Excavating Company	Brown Brothers No. 2	1971-1977	387,774
J. J. Track Mining Company	Brown Brothers No. 2	1978-1985	<u>259,624</u>
			647,398

Last reported production: February 1985

**SOURCES OF DATA**

Source Map	Date	Original Scale	Digitized Scale	Map Type
Company	6-30-1985	1:4800	1:4800	Final
Coal Section files	Undated	1:7633	1:7633	Secondary source
Coal Section files	1976	1:7854	1:7854	Secondary source

Annotated Bibliography (data source, brief description of information)

Coal Reports - Production, ownership, years of operation, depth, thickness.

Directory of Illinois Coal Mines (Saline County) - Mine names, mine index, ownership, years of operation.

Mine notes (Saline County) - Mine type, mine location, seam, geologic problems.

ISGS field notes (Saline County) - Seam, mining method, old drift mine locations.

Company, ISGS Coal Section files - Mine location, mine outline, mining method.

ISGS Coal Section files, strip mine updates - Mine outline & location.



**Mine Index 931****Jader Fuel Company, Inc., Jader No. 1 Mine**

Type: Surface Total mined-out acreage shown: 193 This area is too large for the production shown. The area may have been mined by others previously (R. & F. No. 3, mine index 4200, was one such) and expanded by Jader Fuel, or the coal was much thinner than shown. Production indicates approximately 60 acres were mined, with both seams at the thickness shown. However, the field notes indicate that the Dekoven Coal was not present (eroded) over some of the pits.

**SHAFT, SLOPE, DRIFT or TIPPLE LOCATIONS**

Type	County	Township-Range	Section	Quarters-Footage
Tipple / pit	Saline	10S 6E	10	SE

**GEOLOGY**

Seam(s) Mined	Depth (ft)	Thickness (ft)			Mining Method
		Min	Max	Ave	
Dekoven	35-50			3.0	Surface
Davis				4.25-4.5	Surface

Geologic Problems Reported: Faults were noted throughout the pits.

**PRODUCTION HISTORY**

Company	Mine Name	Years	Production (tons)
Jader Fuel Company, Inc. *	Jader No. 1	1971-1981	<u>699,737</u> 699,737

\* G. H. Cady noted a drift mine in July 1925 in this vicinity that was probably later surface-mined by this operator.

Last reported production: September 1981

**SOURCES OF DATA**

Source Map	Date	Original Scale	Digitized Scale	Map Type
Company	6-15-1983	1:7920	1:7920	Final
Company	Undated	1:7920	1:7920	Undated

Annotated Bibliography (data source, brief description of information)

Coal Reports - Production, ownership, years of operation, depth, thickness.

Directory of Illinois Coal Mines (Saline County) - Mine names, mine index, ownership, years of operation.

Mine notes (Saline County) - Mine type, mine location, seam, mining method, geologic problems.

ISGS field notes (Saline County) - Mine location, seam, thickness, drift mine (general location).

Company maps, ISGS Coal Section files - Mine location, mine outline, mining method.



**Mine Index 989****A. & G. Coal Company, A. & G. No. 1 Mine**

Type: Surface    Total mined-out acreage shown: 11    Production indicates approximately 3 acres were mined.

**SHAFT, SLOPE, DRIFT or TIPPLe LOCATIONS**

Type	County	Township-Range	Section	Quarters-Footage
Tipple / pit	Saline	9S 6E	22	SE SE SW

**GEOLOGY**

Seam(s) Mined	Depth (ft)	Thickness (ft)			Mining Method
		Min	Max	Ave	
Herrin	25-35			4.5-4.83	Surface

Geologic Problems Reported: Coal balls were present. The coal contained numerous lenses of pyrite.

**PRODUCTION HISTORY**

Company	Mine Name	Years	Production (tons)
A. & G. Coal Company	A. & G. No. 1	1978-1980	25,006
			25,006

Last reported production: August 1980

**SOURCES OF DATA**

Source Map	Date	Original Scale	Digitized Scale	Map Type
Department of Mines & Minerals	Undated	1:7454	1:7454	Secondary source
LiDAR	2020			Secondary source

Annotated Bibliography (data source, brief description of information)

Coal Reports - Production, ownership, years of operation, depth, thickness, geologic problems.

Directory of Illinois Coal Mines (Saline County) - Mine names, mine index, ownership, years of operation.

Mine notes (Saline County) - Mine type, mine location, seam.

Department of Mines & Minerals, aerial photograph base map with surface mines identified - Mine identification.

LiDAR Digital Terrain Model, Saline County - Indications of mining.



**Mine Index 1015****Big Ridge, Inc., Big Ridge Portal No. 1 Mine**

Type: Underground    Total mined-out acreage shown: 2,509

**SHAFT, SLOPE, DRIFT or TIPPLE LOCATIONS**

Type	County	Township-Range	Section	Quarters-Footage
Main slope	Saline	9S 7E	20	NW NW SW
Air shaft	Saline	9S 7E	20	NW SW NW

**GEOLOGY**

Seam(s) Mined	Depth (ft)	Thickness (ft)			Mining Method
		Min	Max	Ave	
Springfield	150	4.3	6.0	4.5	RPP

Geologic Problems Reported: Northwest-southeast trending faults that parallel the Cottage Grove Fault System run through the mine.

**PRODUCTION HISTORY**

Company	Mine Name	Years	Production (tons)
Arclar Company	Big Ridge Portal No. 1	1990-1997	9,249,080 *
Big Ridge, Inc.	Big Ridge Portal No. 1	1998-1998	384,466 *
			9,633,546

\* The production for Portal No. 1 and Portal No. 2 (mine index 1021) was not listed separately in the Coal Reports. The reported production for 1997 and 1998 has been split into an estimate for each of the two mines.

Last reported production: 1998 (Text on the source map stated that the bottom was sealed 8-13-1998.)

**SOURCES OF DATA**

Source Map	Date	Original Scale	Digitized Scale	Map Type
Company, 4103.S32 i5.1-96	2-16-1999	1:4800	1:4800	Final

Annotated Bibliography (data source, brief description of information)

Coal Reports - Production, ownership, years of operation, depth, thickness.

Directory of Illinois Coal Mines (Saline County) - Mine names, mine index, ownership, years of operation.

Mine notes (Saline County) - Mine type, slope location, seam, thickness.

Company map, ISGS map library, 4103.S32 i5.1-96 - Slope & shaft locations, mine outline, mining method, geologic problems.



**Mine Index 1050****Eagle River Coal, LLC, Eagle River No. 1 Mine**

Type: Surface Total mined-out acreage shown: 779

**SHAFT, SLOPE, DRIFT or TIPPLE LOCATIONS**

Type	County	Township-Range	Section	Quarters-Footage
Tipple	Saline	10S 6E	10	SW

**GEOLOGY**

Seam(s) Mined	Depth (ft)	Thickness (ft)			Mining Method
		Min	Max	Ave	
Dekoven	120			3.0	Surface
Davis	140			4.0	Surface

Geologic Problems Reported: Geologic Problems are not reported for active mines**PRODUCTION HISTORY**

Company	Mine Name	Years	Production (tons)
Eagle River Coal LLC	Eagle River No. 1	2011- *	7,273,717 *
			7,273,717

\* Production includes 2022, the most recent available Coal Report. Idle 2021-2022.

Last reported production:

**SOURCES OF DATA**

Source Map	Date	Original Scale	Digitized Scale	Map Type
NAIP digital ortho-photo quadrangle	6-22-2021	1:6000	1:6000	Secondary source

Annotated Bibliography (data source, brief description of information)

Coal Reports - Production, ownership, years of operation, seam, depth, thickness.

Directory of Illinois Coal Mines (Saline County) - Mine names, mine index, ownership, years of operation.

Mine notes (Saline County) - Mine type, mine location.

ISGS field notes (Saline County) - Sketch map of mine outline, seam, geologic problems.

National Agriculture Imagery Program map, digital ortho-photo quadrangle map - Mine outline.



**Mine Index 3257****Shawnee Coal Company, Shawnee No. 1 Mine**

Type: Surface    Total mined-out acreage shown: 5    Production indicates approximately 3 acres were mined.

**SHAFT, SLOPE, DRIFT or TIPPLe LOCATIONS**

Type	County	Township-Range	Section	Quarters-Footage
Tipple / pit	Saline	9S 6E	27	SE NE NW

**GEOLOGY**

Seam(s) Mined	Depth (ft)	Thickness (ft)			Mining Method
		Min	Max	Ave	
Herrin	20			4.83	Surface

Geologic Problems Reported:

**PRODUCTION HISTORY**

Company	Mine Name	Years	Production (tons)
Shawnee Coal Company	Shawnee No. 1	1963-1966	24,297
			24,297

Last reported production: August 1966

**SOURCES OF DATA**

Source Map	Date	Original Scale	Digitized Scale	Map Type
Department of Mines & Minerals	Undated	1:7454	1:7454	Secondary source
LiDAR	2020			Secondary source

Annotated Bibliography (data source, brief description of information)

Coal Reports - Production, ownership, years of operation, seam, depth, thickness, mining method.

Directory of Illinois Coal Mines (Saline County) - Mine names, mine index, ownership, years of operation.

Mine notes (Saline County) - Mine type, mine location.

Department of Mines & Minerals, aerial photograph base map with surface mines identified - Mine identification.

LiDAR Digital Terrain Model, Saline County - Indications of mining.



**Mine Index 3273****O'Gara Coal Company, O'Gara No. 15 Mine**

Type: Underground    Total mined-out acreage shown: 708

**SHAFT, SLOPE, DRIFT or TIPPLE LOCATIONS**

Type	County	Township-Range	Section	Quarters-Footage
Main shaft	Saline	9S 5E	35	SE NW NW
Air shaft	Saline	9S 5E	35	SE NW NW

**GEOLOGY**

Seam(s) Mined	Depth (ft)	Thickness (ft)			Mining Method
		Min	Max	Ave	
Springfield	60			4.0-5.5	MRP

Geologic Problems Reported: The source map showed several faults trending northeast-southwest. Faulting appears to have halted westward expansion in the southern half of the mine.

**PRODUCTION HISTORY**

Company	Mine Name	Years	Production (tons)
O'Gara Coal Company	O'Gara No. 15	1909-1910	53,529
Harrisburg-Saline Coal Company	Harrisburg-Saline No. 15	1910-1911	167,916
O'Gara Coal Company	O'Gara No. 15	1911-1914	688,607
Harrisburg-Saline Coal Company	Harrisburg-Saline No. 15	1914-1919	1,125,925
O'Gara Coal Company	O'Gara No. 15	1919-1927	<u>1,776,238</u>
			3,812,215

Last reported production: December 1927

**SOURCES OF DATA**

Source Map	Date	Original Scale	Digitized Scale	Map Type
State archive, IL_2584	3-31-1928	1:2400	1:2400	Final

Annotated Bibliography (data source, brief description of information)

Coal Reports - Production, ownership, years of operation, thickness.

Directory of Illinois Coal Mines (Saline County) - Mine names, mine index, ownership, years of operation.

Mine notes (Saline County) - Mine type, shaft location, seam, depth, thickness.

State archive, IL\_2584 - Shaft locations, mine outline, mining method, geologic problems.



**Mine Index 3275****O'Gara Coal Company, O'Gara No. 2 Mine**

Type: Underground    Total mined-out acreage shown: 38

**SHAFT, SLOPE, DRIFT or TIPPLE LOCATIONS**

Type	County	Township-Range	Section	Quarters-Footage
Main shaft *	Saline	9S 6E	15	SW SW NE

\* Connected underground with O'Gara No. 3 Mine (mine index 608), and that mine probably provided ventilation so that an air shaft was not required.

**GEOLOGY**

Seam(s) Mined	Depth (ft)	Thickness (ft)			Mining Method
		Min	Max	Ave	
Springfield	150-245			6.0 (5.5-7.0)	MRP

Geologic Problems Reported:

**PRODUCTION HISTORY**

Company	Mine Name	Years	Production (tons)
New Coal Company (Charles G. New)	Pennsylvania	1902-1903	8,007
Egyptian Coal & Coke Company	Egyptian No. 1	1903-1905 **	305
O'Gara Coal Company	O'Gara No. 2	1905-1909	<u>252,967</u>
			261,279

\*\* Idle 1905

Last reported production: 1909

**SOURCES OF DATA**

Source Map	Date	Original Scale	Digitized Scale	Map Type
Company, R4103.S32 i5.1-89	1-1-1937	1:2400	1:2400	Final

Annotated Bibliography (data source, brief description of information)

Coal Reports - Production, ownership, years of operation, seam, depth, thickness.

Directory of Illinois Coal Mines (Saline County) - Mine names, mine index, ownership, years of operation.

Mine notes (Saline County) - Mine type, shaft location, depth, thickness.

Company map, ISGS map library, R4103.S32 i5.1-89, map of Sahara No. 3 Mine (mine index 608) - Shaft location, mine outline, mining method.



**Mine Index 3276****Liberty Coal Company, Liberty Mine**

Type: Surface Total mined-out acreage shown: 29 Production indicates approximately 10 acres were mined. The area was mined by various operators and the specific portion mined by Liberty Coal Company could not be distinguished.

**SHAFT, SLOPE, DRIFT or TIPPLE LOCATIONS**

Type	County	Township-Range	Section	Quarters-Footage
Pit	Saline	9S 6E	29	NE NE
Pit	Saline	9S 6E	20	SE

**GEOLOGY**

Seam(s) Mined	Depth (ft)	Thickness (ft)			Mining Method
		Min	Max	Ave	
Herrin	45			4.5	Surface

Geologic Problems Reported:

**PRODUCTION HISTORY**

Company	Mine Name	Years	Production (tons)
Chamness Drainage Company	Chamness No. 1	1963-1963	none reported *
Liberty Coal Company	Liberty	1963-1963	<u>70,368</u> 70,368

\* All production was reported under Liberty Coal Company.

Last reported production: 1963

**SOURCES OF DATA**

Source Map	Date	Original Scale	Digitized Scale	Map Type
Mine notes	Undated	(text only)	1:24000 **	Secondary source
USGS topographic map	PR 1990	1:24000	1:24000	Secondary source

\*\* Point plotted onto 1:24,000 USGS quadrangle and digitized.

Annotated Bibliography (data source, brief description of information)

Coal Reports - Production, ownership, years of operation, depth, thickness, mining method.  
 Directory of Illinois Coal Mines (Saline County) - Mine names, mine index, ownership, years of operation.  
 Mine notes (Saline County) - Mine type, mine location, seam.  
 USGS topographic map, Harrisburg, 1961, photorevised 1990 - Mine outline.



**Mine Index 3277**  
**John Penrod, Penrod Mine**

Type: Underground    Total mined-out acreage shown: None    Production indicates approximately 1 acre was mined.

**SHAFT, SLOPE, DRIFT or TIPPLE LOCATIONS**

Type	County	Township-Range	Section	Quarters-Footage
Main shaft	Saline	9S 6E	20	SE NW SE

**GEOLOGY**

Seam(s) Mined	Depth (ft)	Thickness (ft)			Mining Method
		Min	Max	Ave	
Herrin	30			4.17	RP

Geologic Problems Reported:

**PRODUCTION HISTORY**

Company	Mine Name	Years	Production (tons)
Gulley & Penrod	Gulley & Penrod	1935-1935	300
John Penrod	Penrod	1936-1936	574
Gulley & Penrod	Gulley & Penrod	1937-1938	1,284
John Penrod	Penrod	1939-1941	<u>1,652</u>
			3,810

Last reported production: 1941

**SOURCES OF DATA**

Source Map	Date	Original Scale	Digitized Scale	Map Type
Mine notes	Undated	(text only)	1:24000 *	Secondary source

\* Point plotted onto 1:24,000 USGS quadrangle and digitized.

Annotated Bibliography (data source, brief description of information)

Coal Reports - Production, ownership, years of operation, mining method.  
 Directory of Illinois Coal Mines (Saline County) - Mine names, mine index, ownership, years of operation.  
 Mine notes (Saline County) - Mine type, shaft location, seam.



**Mine Index 3278**  
**Rhondda Coal Company, Rhondda Mine**

Type: Underground    Total mined-out acreage shown: 10    Production indicates approximately 9 acres were mined after the map date.

**SHAFT, SLOPE, DRIFT or TIPPLE LOCATIONS**

Type	County	Township-Range	Section	Quarters-Footage
Main shaft	Saline	9S 6E	21	NE NE SW
Air shaft	Saline	9S 6E	21	NE NE SW

**GEOLOGY**

Seam(s) Mined	Depth (ft)	Thickness (ft)			Mining Method
		Min	Max	Ave	
Herrin	42-60			4.0-5.0	RPB

Geologic Problems Reported:

**PRODUCTION HISTORY**

Company	Mine Name	Years	Production (tons)
Dorris Coal Company	Dorris	1915-1916	2,050
Dorrisville Coal Company	Dorrisville	1916-1919	12,036
Ruben Williams	Black Diamond	1919-1922 *	10,931
Rhondda Coal Company	Rhondda	1922-1925	36,626 **
			61,643

\* Produced less than 10,000 tons in 1922

\*\* Production after map date

Last reported production: 1925

**SOURCES OF DATA**

Source Map	Date	Original Scale	Digitized Scale	Map Type
Microfilm, document 352766	7-1-1921	1:2400	1:2482	Not final

Annotated Bibliography (data source, brief description of information)

Coal Reports - Production, ownership, years of operation, depth, thickness.

Directory of Illinois Coal Mines (Saline County) - Mine names, mine index, ownership, years of operation.

Mine notes (Saline County) - Mine type, shaft location.

Microfilm map, document 352766, reel 03140, frame 287 - Shaft locations, mine outline, mining method.

ISGS Coal Section files - Seam.



**Mine Index 3279**  
**Ray Lands, Lands No. 3 Mine**

Type: Underground    Total mined-out acreage shown: None    Production indicates that less than 1 acre was mined.

**SHAFT, SLOPE, DRIFT or TIPPLE LOCATIONS**

Type	County	Township-Range	Section	Quarters-Footage
Main drift	Saline	9S 6E	23	SE NE SE *

\* The location given in the mine notes is unclear and contradictory. The mine may be as shown, or in the S ½ SE, or in T7E.

**GEOLOGY**

Seam(s) Mined	Depth (ft)	Thickness (ft)			Mining Method
		Min	Max	Ave	
Springfield					RP

Geologic Problems Reported:

**PRODUCTION HISTORY**

Company	Mine Name	Years	Production (tons)
Oscar Sand	Sand	1927-1928	650
John Sands	Sands	1929-1929	200
Oscar Lands	Lands No. 1	1930-1936	1,170 **
William Karnes	Karnes	1937-1937	80
Oscar Lands	Lands No. 1	1938-1938	194
Wilson & Lane	Wilson & Lane	1939-1939	32
Ray Lands	Lands No. 3	1940-1940	102
			2,428

\*\* Production not reported 1930-1933 for mines producing less than 1,000 tons per year

Last reported production: 1940

**SOURCES OF DATA**

Source Map	Date	Original Scale	Digitized Scale	Map Type
Mine notes	Undated	(text only)	1:24000 ***	Secondary source

\*\*\* Point plotted onto 1:24,000 USGS quadrangle and digitized.

Annotated Bibliography (data source, brief description of information)

Coal Reports - Production, ownership, years of operation, mining method.  
 Directory of Illinois Coal Mines (Saline County) - Mine names, mine index, ownership, years of operation.  
 Mine notes (Saline County) - Mine type, drift location, seam.



**Mine Index 3280****New Oak Hill Coal Company, New Oak Hill No. 4 Mine**

Type: Surface Total mined-out acreage shown: None Production indicates approximately 80 acres were mined. The point on the accompanying map is within a larger surface-mined area.

**SHAFT, SLOPE, DRIFT or TIPPLe LOCATIONS**

Type	County	Township-Range	Section	Quarters-Footage
Pit	Saline	9S 6E	26	SW SE NE

**GEOLOGY**

Seam(s) Mined	Depth (ft)	Thickness (ft)			Mining Method
		Min	Max	Ave	
Springfield	30-45			4.5-5.0	Surface

Geologic Problems Reported:

**PRODUCTION HISTORY**

Company	Mine Name	Years	Production (tons)
New Oak Hill Coal Company	New Oak Hill No. 4	1958-1963	636,448
			636,448

Last reported production: November 1963

**SOURCES OF DATA**

Source Map	Date	Original Scale	Digitized Scale	Map Type
Mine notes	Undated	(text only)	1:24000 *	Secondary source

\* Point plotted onto 1:24,000 USGS quadrangle and digitized.

Annotated Bibliography (data source, brief description of information)

Coal Reports - Production, ownership, years of operation, depth, thickness, mining method.

Directory of Illinois Coal Mines (Saline County) - Mine names, mine index, ownership, years of operation.

Mine notes (Saline County) - Mine type, mine location (general), seam.



**Mine Index 3281****Black Dot Coal Company, Black Dot No. 3 Mine**

Type: Surface    Total mined-out acreage shown: None    Production indicates less than 1 acre was mined.

**SHAFT, SLOPE, DRIFT or TIPPLE LOCATIONS**

Type	County	Township-Range	Section	Quarters-Footage
Tipple / pit	Saline	9S 6E	26	NE SW SW

**GEOLOGY**

Seam(s) Mined	Depth (ft)	Thickness (ft)			Mining Method
		Min	Max	Ave	
Springfield					Surface

Geologic Problems Reported:

**PRODUCTION HISTORY**

Company	Mine Name	Years	Production (tons)
Marshall Equipment Company	Mary Ann No. 2	1961-1961	none reported *
Marshall Equipment Company	Tick Hill No. 2	1961-1961	none reported *
Black Dot Coal Company	Black Dot No. 3	1961-1962	<u>2,991</u> 2,991

\* All production was recorded under Black Dot Coal Company.

Last reported production: June 1962

**SOURCES OF DATA**

Source Map	Date	Original Scale	Digitized Scale	Map Type
Mine notes	Undated	(text only)	1:24000 **	Secondary source

\*\* Point plotted onto 1:24,000 USGS quadrangle and digitized.

Annotated Bibliography (data source, brief description of information)

Coal Reports - Production, ownership, years of operation, mining method.

Directory of Illinois Coal Mines (Saline County) - Mine names, mine index, ownership, years of operation.

Mine notes (Saline County) - Mine type, mine location, seam.



**Mine Index 3283**  
**New Coal Company, New Mine**

Type: Underground Total mined-out acreage shown: 52 Production indicates approximately 9 acres were mined after the map date. Much of the eastern portion of the mine was later surface-mined by Bankston Creek No. 2 (mine index 4241).

**SHAFT, SLOPE, DRIFT or TIPPLE LOCATIONS**

Type	County	Township-Range	Section	Quarters-Footage
Main slope	Saline	9S 6E	27	NW SW SW *
Air shaft	Saline	9S 6E	27	NW SW SW

\* Not shown on accompanying map because of later surface mining. This slope was east of the air shaft.

**GEOLOGY**

Seam(s) Mined	Depth (ft)	Thickness (ft)			Mining Method
		Min	Max	Ave	
Springfield	50-75			6.0	MRP

Geologic Problems Reported: The source map shows an area of bad top in the southwestern part of the mine.

**PRODUCTION HISTORY**

Company	Mine Name	Years	Production (tons)
New Coal Company	New	1943-1947	331,806
New Coal Company	New	1947-1947	49,673 **
			381,479

\*\* Production after map date

Last reported production: August 1947

**SOURCES OF DATA**

Source Map	Date	Original Scale	Digitized Scale	Map Type
Microfilm, document 352822	1-27-1947	1:2400	1:3475	Not final

Annotated Bibliography (data source, brief description of information)

Coal Reports - Production, ownership, years of operation, depth, thickness.  
 Directory of Illinois Coal Mines (Saline County) - Mine names, mine index, ownership, years of operation.  
 Mine notes (Saline County) - Mine type, slope location, seam.  
 Microfilm map, document 352822, reel 03140, frame 384 - Slope & shaft locations, mine outline, mining method, geologic problems.

**Mine Index 3284****Bankston Creek Collieries Company, Bankston Creek No. 4 Mine**

Type: Underground    Total mined-out acreage shown: 449    The southern part of this mine was later surface-mined by Bankston Creek No. 2 Mine (mine index 4241).

**SHAFT, SLOPE, DRIFT or TIPPLe LOCATIONS**

Type	County	Township-Range	Section	Quarters-Footage
Main slope	Saline	9S 6E	27	NE SW NE
Air / escape shaft	Saline	9S 6E	26	NW SW NW

**GEOLOGY**

Seam(s) Mined	Depth (ft)	Thickness (ft)			Mining Method
		Min	Max	Ave	
Springfield	75			5.17-5.33	RPP

Geologic Problems Reported: Several northwest-southeast trending faults were present in the mine.

**PRODUCTION HISTORY**

Company	Mine Name	Years	Production (tons)
Bankston Creek Collieries Company	Bankston Creek No. 4	1939-1947	2,388,845 2,388,845

Last reported production: January 1947

**SOURCES OF DATA**

Source Map	Date	Original Scale	Digitized Scale	Map Type
Microfilm, document 352800	1-13-1947	1:2400	1:3972	Final

Annotated Bibliography (data source, brief description of information)

Coal Reports - Production, ownership, years of operation, depth, thickness.

Directory of Illinois Coal Mines (Saline County) - Mine names, mine index, ownership, years of operation.

Mine notes (Saline County) - Mine type, slope location, seam.

Microfilm map, document 352800, reel 03140, frames 346 & 347 - Slope & shaft locations, mine outline, mining method, geologic problems.



**Mine Index 3285****O'Gara Coal Company, O'Gara No. 6 Mine**

Type: Underground    Total mined-out acreage shown: 70

**SHAFT, SLOPE, DRIFT or TIPPLE LOCATIONS**

Type	County	Township-Range	Section	Quarters-Footage
Main shaft	Saline	9S 6E	28	NW SW NW
Air shaft	Saline	9S 6E	28	NW SW NW

**GEOLOGY**

Seam(s) Mined	Depth (ft)	Thickness (ft)			Mining Method
		Min	Max	Ave	
Springfield	119			6.0-7.0	MRP

Geologic Problems Reported: The source map shows one area where a cave-in extended to the surface.

**PRODUCTION HISTORY**

Company	Mine Name	Years	Production (tons)
Saline County Coal Company	Saline County, Pinhook	1901-1903	28,215
Gas Coal Company	White Ash, Gas No. 1	1903-1905	162,000
O'Gara Coal Company	O'Gara No. 6	1905-1908	<u>271,236</u>
			461,451

Last reported production: 1908

**SOURCES OF DATA**

Source Map	Date	Original Scale	Digitized Scale	Map Type
Microfilm, document 352793	9-1923	1:2400	1:4138	Final

Annotated Bibliography (data source, brief description of information)

Coal Reports - Production, ownership, years of operation, thickness, seam.

Directory of Illinois Coal Mines (Saline County) - Mine names, mine index, ownership, years of operation.

Mine notes (Saline County) - Mine type, shaft location, depth, thickness.

Microfilm map, document 352793, reel 03140, frames 329-332 - Shaft locations, mine outline, mining method, geologic problems.

**Mine Index 3286**  
**Indian Head Coal Company, Indian Head Mine**

Type: Surface    Total mined-out acreage shown: 140

**SHAFT, SLOPE, DRIFT or TIPPLE LOCATIONS**

Type	County	Township-Range	Section	Quarters-Footage
Tipple / pit	Saline	9S 6E	26	NE SW SW

**GEOLOGY**

Seam(s) Mined	Depth (ft)	Thickness (ft)			Mining Method
		Min	Max	Ave	
Springfield	25-40			4.0-5.0	Surface

Geologic Problems Reported:

**PRODUCTION HISTORY**

Company	Mine Name	Years	Production (tons)
John J. Pickford	Pickford	1936-1942 *	14,750
Indian Head Coal Company	Indian Head	1943-1947	542,579
			557,329

\* Idle 1942

Last reported production: May 1947

**SOURCES OF DATA**

Source Map	Date	Original Scale	Digitized Scale	Map Type
ISGS map library, 4103.S32 i5.1-49 s.1	4-20-1944	1:74541	1:74541	Secondary source
ISGS map library, 4103.S32 i5.1-49 s.2	6-30-1952	1:74541	1:74541	Secondary source

Annotated Bibliography (data source, brief description of information)

Coal Reports - Production, ownership, years of operation, depth, thickness.  
 Directory of Illinois Coal Mines (Saline County) - Mine names, mine index, ownership, years of operation.  
 Mine notes (Saline County) - Mine type, mine location, seam.  
 ISGS map library, 4103.S32 i5.1-49, sheets 1 & 2, map of Consolidate Coal Company & St. Louis Railroad -  
 Mine outline, mining method.



**Mine Index 3287****Harrisburg Fuel Company, Harrisburg Fuel No. 1 Mine**

Type: Underground    Total mined-out acreage shown: 24    The area was later surface-mined by Liberty Mine (mine index 3276) and other unknown mines (see unlocated mines at the back of this report).

**SHAFT, SLOPE, DRIFT or TIPPLE LOCATIONS**

Type	County	Township-Range	Section	Quarters-Footage
Main slope	Saline	9S 6E	29	NW NE NE *

\* Not shown on accompanying map because of later surface mining.

**GEOLOGY**

Seam(s) Mined	Depth (ft)	Thickness (ft)			Mining Method
		Min	Max	Ave	
Herrin	200			5.0	RP

Geologic Problems Reported:

**PRODUCTION HISTORY**

Company	Mine Name	Years	Production (tons)
Harrisburg Fuel Company	Harrisburg Fuel No. 1	1918-1923 **	<u>95,661</u> 95,661

\*\* Idle or produced less than 10,000 tons in 1922

Last reported production: February 1923

**SOURCES OF DATA**

Source Map	Date	Original Scale	Digitized Scale	Map Type
Federal Land Bank Report	1-12-1934	1:90514	1:90514	Secondary source
ISGS map library, 4103.S32 C3-1	6-1938	1:15625	1:15625	Secondary source

Annotated Bibliography (data source, brief description of information)

Coal Reports - Production, ownership, years of operation, depth, thickness, mining method.

Directory of Illinois Coal Mines (Saline County) - Mine names, mine index, ownership, years of operation.

Mine notes (Saline County) - Mine type, slope location, depth, thickness.

Federal Land Bank Report - Mine outline.

ISGS map library, 4103.S32 C3-1, plane table survey - Slope location.

**Mine Index 3288****Liberty Coal Company, Liberty Mine**

Type: Underground Total mined-out acreage shown: 3 Most of the mine was later surface-mined by Sahara No. 6 Mine (mine index 638). Production indicates approximately 1 acre was mined after the map date.

**SHAFT, SLOPE, DRIFT or TIPPLE LOCATIONS**

Type	County	Township-Range	Section	Quarters-Footage
Main slope	Saline	9S 6E	29	NE NW NW *
Air shaft	Saline	9S 6E	29	NE NW NW *

\* Not shown on accompanying map because of later surface mining.

**GEOLOGY**

Seam(s) Mined	Depth (ft)	Thickness (ft)			Mining Method
		Min	Max	Ave	
Herrin					RPB

Geologic Problems Reported:

**PRODUCTION HISTORY**

Company	Mine Name	Years	Production (tons)
R. D. Brown	Brown	1927-1928	10,551
Gabriel Coal Company	Gabriel	1929-1929	875
Hart Coal Corporation	Hart	1930-1931	7,525
Liberty Coal Company	Liberty	1932-1936	7,351
Willard Van Meter	Van Meter	1937-1937	600
Liberty Coal Company	Liberty	1938-1939	3,280
Liberty Coal Company **	Liberty	1939-1940	3,681 ***
			33,863

\*\* Operated by the Van Meter Brothers in 1940

\*\*\* Production after map date

Last reported production: 1940

**SOURCES OF DATA**

Source Map	Date	Original Scale	Digitized Scale	Map Type
Microfilm, document 352772	3-1939	1:1200	1:1406	Not final

Annotated Bibliography (data source, brief description of information)

Coal Reports - Production, ownership, years of operation.

Directory of Illinois Coal Mines (Saline County) - Mine names, mine index, ownership, years of operation.

Mine notes (Saline County) - Mine type, slope location.

Microfilm map, document 352772, reel 03140, frame 294 - Slope & shaft locations, mine outline, mining method.



**Mine Index 3289****New Oak Hill Coal Company, New Oak Hill No. 3 Mine**

Type: Surface Total mined-out acreage shown: None Production indicates approximately 13 acres were mined. This mine is shown within a larger surface-mined area.

**SHAFT, SLOPE, DRIFT or TIPPLE LOCATIONS**

Type	County	Township-Range	Section	Quarters-Footage
Tipple / pit	Saline	9S 6E	31	SE SW SE

**GEOLOGY**

Seam(s) Mined	Depth (ft)	Thickness (ft)			Mining Method
		Min	Max	Ave	
Springfield	25-33			4.33-6.0	Surface

Geologic Problems Reported:

**PRODUCTION HISTORY**

Company	Mine Name	Years	Production (tons)
New Oak Hill Coal Company	New Oak Hill No. 3	1956-1958	95,845
			95,845

Last reported production: August 1958

**SOURCES OF DATA**

Source Map	Date	Original Scale	Digitized Scale	Map Type
ISGS mine notes	Undated	(text only)	1:24000 *	Secondary source

\* Point plotted onto 1:24,000 USGS quadrangle and digitized.

Annotated Bibliography (data source, brief description of information)

Coal Reports - Production, ownership, years of operation, depth, thickness, mining method.  
 Directory of Illinois Coal Mines (Saline County) - Mine names, mine index, ownership, years of operation.  
 Mine notes (Saline County) - Mine type, mine location, seam.

**Mine Index 3290****Saline County Coal Company, Saline County No. 1 Mine**

Type: Underground Total mined-out acreage shown: 102 Production indicates approximately 11 acres were mined after the map date. Production also indicates this mine should encompass approximately 300 acres; the area shown on the accompanying map is too small for the reported production. It is likely that part of the outline shown on the accompanying map for Saline County No. 2 (mine index 450) should be included with this mine.

**SHAFT, SLOPE, DRIFT or TIPPLE LOCATIONS**

Type	County	Township-Range	Section	Quarters-Footage
Main shaft	Saline	9S 6E	31	SW NW NE
Air shaft	Saline	9S 6E	31	NE NW NE *

\* This mine appears to share an air shaft with O'Gara No. 14 Mine (mine index 128).

**GEOLOGY**

Seam(s) Mined	Depth (ft)	Thickness (ft)			Mining Method
		Min	Max	Ave	
Springfield	144-150		8.0	6.0	MRP

Geologic Problems Reported:

**PRODUCTION HISTORY**

Company	Mine Name	Years	Production (tons)
Davenport, Allsop & Company	Ledford	1894-1895	4,392
Davenport Coal Company	North Ledford, Davenport No. 1, A	1895-1906	1,017,654
Saline County Coal Company	Saline County No. 1	1906-1912	663,152
Saline County Coal Company	Saline County No. 1	1912-1912	49,438 **
			<u>1,744,636</u>

\*\* Production after map date

Last reported production: 1912

**SOURCES OF DATA**

Source Map	Date	Original Scale	Digitized Scale	Map Type
Microfilm, document 352831 ***	6-8-1912	1:2400	1:4469	Not final

\*\*\* This map source was difficult to georegister, since the east-west scale differed from the north-south scale by 800 to 1,000 feet, and did not match other features that were on both the USGS topographic map and source map (railroads, houses). When the north-south scale was used, the topographic features matched reasonably well, but the surrounding mines shown on the source map did not match well. The mine was shifted approximately 250 feet to make a "best fit" between the mines on either side.

Annotated Bibliography (data source, brief description of information)

Coal Reports - Production, ownership, years of operation, seam, depth, thickness.  
 Directory of Illinois Coal Mines (Saline County) - Mine names, mine index, ownership, years of operation.  
 Mine notes (Saline County) - Mine type, shaft location, depth, thickness.  
 Microfilm map, document 352831, reel 03140, frames 400 & 401 - Shaft locations, mine outline, mining method.



**Mine Index 3291****O'Gara Coal Company, O'Gara No. 5 Mine**

Type: Underground    Total mined-out acreage shown: 62

**SHAFT, SLOPE, DRIFT or TIPPLE LOCATIONS**

Type	County	Township-Range	Section	Quarters-Footage
Main shaft	Saline	9S 6E	31	SE NE NW
Air / escape shaft	Saline	9S 6E	31	SE NE NW

**GEOLOGY**

Seam(s) Mined	Depth (ft)	Thickness (ft)			Mining Method
		Min	Max	Ave	
Springfield	143		8.0	6.0	MRP

Geologic Problems Reported:**PRODUCTION HISTORY**

Company	Mine Name	Years	Production (tons)
Clifton Coal Company	Clifton	1901-1905	230,320
O'Gara Coal Company	O'Gara No. 5	1905-1908	<u>254,425</u>
			484,745

Last reported production: 1908

**SOURCES OF DATA**

Source Map	Date	Original Scale	Digitized Scale	Map Type
ISGS map library, 4103.S32 i5.1-93	8-2-1973	1:7200	1:7200	Secondary source
Microfilm, document 352829	Undated	1:2400	1:2400	Undated

Annotated Bibliography (data source, brief description of information)

Coal Reports - Production, ownership, years of operation, seam, thickness.

Directory of Illinois Coal Mines (Saline County) - Mine names, mine index, ownership, years of operation.

Mine notes (Saline County) - Mine type, shaft location, depth, thickness.

ISGS map library, 4103.S32 i5.1-93, map of Sahara Coal Company data - Mine outline (separation between No. 5 &amp; No. 14 Mines).

Microfilm map, document 352829, reel 03140, frame 395 - Mine outline (partial), shaft locations.

**Mine Index 3292****Harrisburg Coal Mining Company, Harrisburg No. 3 Mine**

Type: Underground Total mined-out acreage shown: 21 in Springfield Coal, 15 in Davis Coal  
 Portions of this mine were later surface-mined by the New Gallatin Mine (mine index 4719) and Harrisburg No. 2 Mine (mine index 3320).

**SHAFT, SLOPE, DRIFT or TIPPLE LOCATIONS**

Type	County	Township-Range	Section	Quarters-Footage
Main slope	Saline	9S 6E	32	NE SE SW *
Air shaft	Saline	9S 6E	32	SW SE SW
Shaft (Davis Coal)	Saline	9S 6E	32	NE SE SW

\* Not shown on accompanying map because of later surface mining.

**GEOLOGY**

Seam(s) Mined	Depth (ft)	Thickness (ft)			Mining Method
		Min	Max	Ave	
Springfield	286			3.25-5.0	MRP
Davis		3.33	3.67	3.5	RP

Geologic Problems Reported: Pyrite was present in balls and lenses throughout the coal, but especially 1 foot below the top of the seam. (Which seam was not designated.)

**PRODUCTION HISTORY**

Company	Mine Name	Years	Production (tons)
Saline Gas Coal Company	Saline Gas No. 1	1917-1924	315,884
Harrisburg Coal Mining Company	Harrisburg No. 3	1924-1925	15,414
Harrisburg Coal Mining Company	Harrisburg No. 3	1925-1925	15,414 **
			346,712

\*\* Production after map date

Last reported production: 1925

**SOURCES OF DATA**

Source Map	Date	Original Scale	Digitized Scale	Map Type
Microfilm, document 352767	7-1-1921	1:2400	1:3641	Not final
Microfilm, document 352785	6-25-1925	1:600	1:827	Not final

Annotated Bibliography (data source, brief description of information)

Coal Reports - Production, ownership, years of operation, thickness.

Directory of Illinois Coal Mines (Saline County) - Mine names, mine index, ownership, years of operation.

Mine notes (Saline County) - Mine type, shaft location, seam, depth, thickness, geologic problems.

Microfilm map, document 352767, reel 03140, frame 288 - Slope & shaft locations, mine outline (Springfield Coal).

Microfilm map, document 352785, reel 03140, frame 311 - Shaft locations, mine outline (Davis Coal).



**Mine Index 3293****Coulter & McKenna, Blue Ribbon Mine**

Type: Underground Total mined-out acreage shown: 48 Production indicates approximately 65 acres were mined. The area shown on the accompanying map is smaller than expected for the reported production. The southern portion of this mined was later surface-mined by Harrisburg No. 8 Mine (mine index 3294).

**SHAFT, SLOPE, DRIFT or TIPPLE LOCATIONS**

Type	County	Township-Range	Section	Quarters-Footage
Main slope *	Saline	9S 6E	33	NE SW NW

\* No air shaft was shown on the source map. Ventilation may have been provided by the double-entry slope (one side for haulage, the other for air), or an air shaft that is not shown on the source map.

**GEOLOGY**

Seam(s) Mined	Depth (ft)	Thickness (ft)			Mining Method
		Min	Max	Ave	
Springfield	40			6.0	MRP

Geologic Problems Reported: The source map shows an area labeled "bone coal" beyond the northwestern workings, indicating that coal quality may have limited expansion in that direction.

**PRODUCTION HISTORY**

Company	Mine Name	Years	Production (tons)
Blue Ribbon Coal Company	Blue Ribbon	1935-1936	1,925
Randle & Fyie	Randle & Fyie	1936-1936	2,981
Don Randall	Randall	1937-1939	16,323
Harvey Owen	Randall	1940-1940	2,555
James Clark	Blue Ribbon	1941-1942	5,124
C. S. Perry	Blue Ribbon	1942-1943	27,755
Blue Ribbon Coal Company	Blue Ribbon	1943-1943	2,551
Coulter & McKenna	Blue Ribbon, Briar Creek	1944-1948	<u>287,274</u>
			346,488

Last reported production: 1948

**SOURCES OF DATA**

Source Map	Date	Original Scale	Digitized Scale	Map Type
Microfilm, document 352799	1-5-1949	1:1200	1:2152	Final

Annotated Bibliography (data source, brief description of information)

Coal Reports - Production, ownership, years of operation, depth, thickness.

Directory of Illinois Coal Mines (Saline County) - Mine names, mine index, ownership, years of operation.

Mine notes (Saline County) - Mine type, slope location, seam, depth, thickness.

Microfilm map, document 352799, reel 03140, frame 345 - Slope location, mine outline, mining method.

**Mine Index 3294****Harrisburg Coal Mining Company, Harrisburg No. 8 Mine**

Type: Surface Total mined-out acreage shown: 70 Production indicates approximately 30 acres were mined. The area shown on the accompanying map is larger than expected for the reported production. Apparently other operators mined in this locale; see the unlocated mines at the back of this report.

**SHAFT, SLOPE, DRIFT or TIPPLE LOCATIONS**

Type	County	Township-Range	Section	Quarters-Footage
Tipple	Saline	9S 6E	33	NW NW NE

**GEOLOGY**

Seam(s) Mined	Depth (ft)	Thickness (ft)			Mining Method
		Min	Max	Ave	
Springfield				5.5-6.0	Surface

Geologic Problems Reported:

**PRODUCTION HISTORY**

Company	Mine Name	Years	Production (tons)
Harrisburg Coal Mining Company	Harrisburg No. 8	1927-1930	272,469 272,469

Last reported production: 1930

**SOURCES OF DATA**

Source Map	Date	Original Scale	Digitized Scale	Map Type
Company, 4103.S32 i5.1-37	2-1-1931	1:2400	1:2400	Final
USGS topographic map	PR 1990	1:24000	1:24000	Secondary source

Annotated Bibliography (data source, brief description of information)

Coal Reports - Production, ownership, years of operation, seam, thickness.

Directory of Illinois Coal Mines (Saline County) - Mine names, mine index, ownership, years of operation.

Mine notes (Saline County) - Mine type, mine location.

Company map, ISGS map library, 4103.S32 i5.1-37 - Mine location, mine outline, mining method.

USGS topographic map, Harrisburg, 1961, photorevised 1990 - Mine outline.



**Mine Index 3315**  
**James W. Clark, Clark Mine**

Type: Underground    Total mined-out acreage shown: None    Production indicates less than 1 acre was mined.

**SHAFT, SLOPE, DRIFT or TIPPLe LOCATIONS**

Type	County	Township-Range	Section	Quarters-Footage
Main drift	Saline	10S 5E	1	NE NE NW

**GEOLOGY**

Seam(s) Mined	Depth (ft)	Thickness (ft)			Mining Method
		Min	Max	Ave	
Springfield					RP

Geologic Problems Reported:

**PRODUCTION HISTORY**

Company	Mine Name	Years	Production (tons)
James W. Clark	Clark	1938-1939	<u>1,951</u> 1,951

Last reported production: 1939

**SOURCES OF DATA**

Source Map	Date	Original Scale	Digitized Scale	Map Type
Mine notes	Undated	(text only)	1:24000 *	Secondary source

\* Point plotted onto 1:24,000 USGS quadrangle and digitized.

Annotated Bibliography (data source, brief description of information)

Coal Reports - Production, ownership, years of operation, mining method.  
 Directory of Illinois Coal Mines (Saline County) - Mine names, mine index, ownership, years of operation.  
 Mine notes (Saline County) - Mine type, drift location, seam.

**Mine Index 3319**  
**Harrisburg Coal Mining Company, Harrisburg No. 4 Mine**

Type: Underground Total mined-out acreage shown: 531 The boundary between O'Gara No. 14 Mine (mine index 128) and Harrisburg No. 4 Mine could not be distinguished, and the acreage shown is for both mines. Harrisburg No. 4 Mine also mined some pillars in O'Gara No. 14, and Harrisburg No. 2 Mine (mine index 3320) surface-mined the southern part of the underground works.

**SHAFT, SLOPE, DRIFT or TIPPLE LOCATIONS**

Type	County	Township-Range	Section	Quarters-Footage
Main slope	Saline	10S 6E	6	NE NE NE *

\* Not shown on accompanying map because of later surface mining.

**GEOLOGY**

Seam(s) Mined	Depth (ft)	Thickness (ft)			Mining Method
		Min	Max	Ave	
Springfield		6.0	9.0	6.42-7.0	MRP, HER

Geologic Problems Reported:

**PRODUCTION HISTORY**

Company	Mine Name	Years	Production (tons)
Harrisburg Coal Mining Company	Harrisburg No. 4	1925-1927	<u>336,482</u> 336,482

Last reported production: 1927

**SOURCES OF DATA**

Source Map	Date	Original Scale	Digitized Scale	Map Type
Mine notes	Undated	(text only)	1:24000 **	Secondary source
Microfilm, document 352777	7-1-1927	1:1200	1:2483	Final

\*\* Point plotted onto 1:24,000 USGS quadrangle and digitized.

Annotated Bibliography (data source, brief description of information)

Coal Reports - Production, ownership, years of operation, mine type, seam, thickness.  
 Directory of Illinois Coal Mines (Saline County) - Mine names, mine index, ownership, years of operation.  
 Mine notes (Saline County) - Slope location, thickness.  
 Microfilm map, document 352777, reel 03140, frames 299-301 - Mine outline, mining method.



**Mine Index 3320****Harrisburg Coal Mining Company, Harrisburg No. 2 Mine**

Type: Surface Total mined-out acreage shown: 250 This area includes approximately 13 acres mined by New Oak Hill No. 3 Mine (mine index 3289), 160 acres mined by Blue Bird No. 1 Mine (mine index 610) and 77 acres mined by Harrisburg No. 2 Mine (mine index 3320).

**SHAFT, SLOPE, DRIFT or TIPPLE LOCATIONS**

Type	County	Township-Range	Section	Quarters-Footage
Tipple / pit	Saline	10S 6E	6	SW NE NE

**GEOLOGY**

Seam(s) Mined	Depth (ft)	Thickness (ft)			Mining Method
		Min	Max	Ave	
Springfield	50			6.0-6.58	Surface

Geologic Problems Reported: A northwest-southeast trending dike prevented mining for an approximately one-half-mile width.

**PRODUCTION HISTORY**

Company	Mine Name	Years	Production (tons)
Harrisburg Coal Mining Company	Harrisburg No. 2	1923-1927	848,123
			848,123

Last reported production: 1927

**SOURCES OF DATA**

Source Map	Date	Original Scale	Digitized Scale	Map Type
Microfilm, document 352777	7-1-1927	1:1200	1:2483	Final
USGS topographic map	PR 1990	1:24000	1:24000	Secondary source

Annotated Bibliography (data source, brief description of information)

Coal Reports - Production, ownership, years of operation, depth, thickness.

Directory of Illinois Coal Mines (Saline County) - Mine names, mine index, ownership, years of operation.

Mine notes (Saline County) - Mine location, seam.

ISGS field notes (Saline County) - Mining method, geologic problems.

Microfilm map, document 352777, reel 03140, frames 299-301 - Mine location, mine outline, mining method.

USGS topographic map, photorevised 1990 - Mine outline.

**Mine Index 3321****Walse Coal Company, Deborra Ann No. 1 Mine**

Type: Surface    Total mined-out acreage shown: None    Production indicates approximately 4 acres were mined.

**SHAFT, SLOPE, DRIFT or TIPPLE LOCATIONS**

Type	County	Township-Range	Section	Quarters-Footage
Tipple / pit	Saline	10S 6E	9	NW NW NW

**GEOLOGY**

Seam(s) Mined	Depth (ft)	Thickness (ft)			Mining Method
		Min	Max	Ave	
Davis	15			2.0	Surface

Geologic Problems Reported:

**PRODUCTION HISTORY**

Company	Mine Name	Years	Production (tons)
Walse Coal Company	Deborra Ann No. 1	1963-1963	<u>6,899</u> 6,899

Last reported production: 1963

**SOURCES OF DATA**

Source Map	Date	Original Scale	Digitized Scale	Map Type
Mine notes	Undated	(text only)	1:24000 *	Secondary source

\* Point plotted onto 1:24,000 USGS quadrangle and digitized.

Annotated Bibliography (data source, brief description of information)

Coal Reports - Production, ownership, years of operation, depth, thickness.

Directory of Illinois Coal Mines (Saline County) - Mine names, mine index, ownership, years of operation.

Mine notes (Saline County) - Mine type, mine location.



**Mine Index 3323**  
**Evert Ward, Ward No. 2 Mine**

Type: Underground Total mined-out acreage shown: None Production indicates less than 1 acre was mined. The area was later surface-mined by Walnut Grove Mine (mine index 840), so this mine is not shown on the accompanying map.

**SHAFT, SLOPE, DRIFT or TIPPLE LOCATIONS**

Type	County	Township-Range	Section	Quarters-Footage
Main slope	Saline	10S 6E	16	SW NW NW

**GEOLOGY**

Seam(s) Mined	Depth (ft)	Thickness (ft)			Mining Method
		Min	Max	Ave	
Dekoven	18			3.33-4.33	RP

Geologic Problems Reported:

**PRODUCTION HISTORY**

Company	Mine Name	Years	Production (tons)
Evert Ward	Ward	1934-1937 *	233
McKown & Sheldon	McKown & Sheldon	1938-1938	4
Evert Ward	Ward No. 2	1939-1939	180
			417

\* Idle 1937

Last reported production: 1939

**SOURCES OF DATA**

Source Map	Date	Original Scale	Digitized Scale	Map Type
ISGS field notes (G. H. Cady)	7-16-1925	(text only)	1:24000 **	Secondary source
Microfilm, document 352764	9-25-1942	1:1200	1:1241	Secondary source

\*\* Point plotted onto 1:24,000 USGS quadrangle and digitized.

Annotated Bibliography (data source, brief description of information)

Coal Reports - Production, ownership, years of operation.  
 Directory of Illinois Coal Mines (Saline County) - Mine names, mine index, ownership, years of operation.  
 Mine notes (Saline County) - Mine type, slope location, depth, thickness.  
 ISGS field notes (Saline County) - Mine type, slope location, thickness.  
 Microfilm map, document 352764, reel 03140, frame 285 - Mine location.

**Mine Index 3324****Hart & Duncan, Hart & Duncan Mine**

Type: Underground    Total mined-out acreage shown: 3    Not shown on accompanying map because of later surface mining by Walnut Grove Mine (mine index 840).

**SHAFT, SLOPE, DRIFT or TIPPLE LOCATIONS**

Type	County	Township-Range	Section	Quarters-Footage
Main slope	Saline	10S 6E	16	NE SW NW
Air shaft	Saline	19S 6E	16	NE SW NW

**GEOLOGY**

Seam(s) Mined	Depth (ft)	Thickness (ft)			Mining Method
		Min	Max	Ave	
Davis					RPB

Geologic Problems Reported:

**PRODUCTION HISTORY**

Company	Mine Name	Years	Production (tons)
Hart & Duncan	Hart & Duncan	1939-1942	<u>13,792</u> 13,792

Last reported production: 1942

**SOURCES OF DATA**

Source Map	Date	Original Scale	Digitized Scale	Map Type
Microfilm, document 352764	9-25-1942	1:1200	1:1241	Final

Annotated Bibliography (data source, brief description of information)

Coal Reports - Production, ownership, years of operation, mining method.

Directory of Illinois Coal Mines (Saline County) - Mine names, mine index, ownership, years of operation.

Mine notes (Saline County) - Mine type, slope location.

Microfilm map, document 352764, reel 03140, frame 285 - Slope & shaft locations, mine outline, mining method.



**Mine Index 3325****Hobert Tolbert, Tolbert No. 1 Mine**

Type: Underground Total mined-out acreage shown: None Production indicates that less than 1 acre was mined. This area was later surface-mined by Walnut Grove Mine (mine index 840), and this mine is not shown on the accompanying map.

**SHAFT, SLOPE, DRIFT or TIPPLE LOCATIONS**

Type	County	Township-Range	Section	Quarters-Footage
Main slope	Saline	10S 6E	17	SW NW NW

**GEOLOGY**

Seam(s) Mined	Depth (ft)	Thickness (ft)			Mining Method
		Min	Max	Ave	
Davis	17			3.5	RP

Geologic Problems Reported:

**PRODUCTION HISTORY**

Company	Mine Name	Years	Production (tons)
Hobert Tolbert	Tolbert No. 1	1938-1939	<u>261</u> 261

Last reported production: 1939

**SOURCES OF DATA**

Source Map	Date	Original Scale	Digitized Scale	Map Type
Mine notes	Undated	(text only)	1:24000 *	Secondary source

\* Point plotted onto 1:24,000 USGS quadrangle and digitized.

Annotated Bibliography (data source, brief description of information)

Coal Reports - Production, ownership, years of operation, mining method.

Directory of Illinois Coal Mines (Saline County) - Mine names, mine index, ownership, years of operation.

Mine notes (Saline County) - Mine type, slope location.

**Mine Index 3326****Paddock Auger Mining Company, Paddock Auger Mine**

Type: Surface    Total mined-out acreage shown: 7

**SHAFT, SLOPE, DRIFT or TIPPLe LOCATIONS**

Type	County	Township-Range	Section	Quarters-Footage
Mine	Saline	10S 6E	17	NW

**GEOLOGY**

Seam(s) Mined	Depth (ft)	Thickness (ft)			Mining Method
		Min	Max	Ave	
Davis	70-75			4.0	Surface (auger)

Geologic Problems Reported:**PRODUCTION HISTORY**

Company	Mine Name	Years	Production (tons)
Paddock Auger Mining Company	Paddock Auger	1958-1959	<u>27,197</u> 27,197

Last reported production: November 1959

**SOURCES OF DATA**

Source Map	Date	Original Scale	Digitized Scale	Map Type
Microfilm, document 352823	2-1-1958	1:1200	1:2152	Not final

Annotated Bibliography (data source, brief description of information)

Coal Reports - Production, ownership, years of operation, depth, thickness.

Directory of Illinois Coal Mines (Saline County) - Mine names, mine index, ownership, years of operation.

Mine notes (Saline County) - Mine type, seam.

Microfilm map, document 352823, reel 03140, frames 385, 386 - Mine location, mine outline, mining method.



**Mine Index 4187****Robert Franklin Nutty Coal Company, Nutty Mine**

Type: Surface    Total mined-out acreage shown: 3

**SHAFT, SLOPE, DRIFT or TIPPLE LOCATIONS**

Type	County	Township-Range	Section	Quarters-Footage
Pit	Saline	9S 6E	31	S ½ NW

**GEOLOGY**

Seam(s) Mined	Depth (ft)	Thickness (ft)			Mining Method
		Min	Max	Ave	
Herrin					Surface

Geologic Problems Reported:

**PRODUCTION HISTORY**

Company	Mine Name	Years	Production (tons)
Robert Franklin Nutty Coal Company	Nutty	1956-1956	<u>6,532</u> 6,532

Last reported production: 1956

**SOURCES OF DATA**

Source Map	Date	Original Scale	Digitized Scale	Map Type
Microfilm, document 352813	9-21-1956	1:2400	1:5378	Final

Annotated Bibliography (data source, brief description of information)

Coal Reports - Production, ownership, years of operation.

Directory of Illinois Coal Mines (Saline County) - Mine names, mine index, ownership, years of operation.

Microfilm map, document 352813, reel 03140, frame 365 - Mine location, mine outline, mining method.

**Mine Index 4193**  
**Jewel Sisk, Sisk Mine**

Type: Surface    Total mined-out acreage shown: 7

**SHAFT, SLOPE, DRIFT or TIPPLE LOCATIONS**

Type	County	Township-Range	Section	Quarters-Footage
Pit	Saline	10S 6E	9	SE NE NW

**GEOLOGY**

Seam(s) Mined	Depth (ft)	Thickness (ft)			Mining Method
		Min	Max	Ave	
Survant	14			2.67	Surface

Geologic Problems Reported:

**PRODUCTION HISTORY**

Company	Mine Name	Years	Production (tons)
Jewel Sisk *	Sisk	circa 1964	

\* Not listed in the annual Coal Reports; production unknown

Last reported production:

**SOURCES OF DATA**

Source Map	Date	Original Scale	Digitized Scale	Map Type
ISGS field notes (W. H. Smith)	2-4-1964	(text only)	1:24000 **	Secondary source
ISGS Coal Section files	1964	unknown	1:7542	Secondary source

\*\* Point plotted onto 1:24,000 USGS quadrangle and digitized.

Annotated Bibliography (data source, brief description of information)

Directory of Illinois Coal Mines (Saline County) - Mine names, mine index, ownership, years of operation.  
 Mine notes (Saline County) - Mine location, seam.  
 ISGS field notes (Saline County) - Mine type, seam, depth, thickness,. mining method.  
 ISGS Coal Section files, strip mine updates - Mine outline.



**Mine Index 4194****Willis Henson, Henson Mine**

Type: Underground    Total mined-out acreage shown: None    Production indicates less than 1 acre was mined. This mine is not shown on the accompanying map as it was later surface-mined by Walnut Grove Mine (mine index 840).

**SHAFT, SLOPE, DRIFT or TIPPLe LOCATIONS**

Type	County	Township-Range	Section	Quarters-Footage
Main drift or slope	Saline	10S 6E	17	SW NW NW

**GEOLOGY**

Seam(s) Mined	Depth (ft)	Thickness (ft)			Mining Method
		Min	Max	Ave	
Davis	14-20			3.5-4.0	RP

Geologic Problems Reported:

**PRODUCTION HISTORY**

Company	Mine Name	Years	Production (tons)
Willis Henson	Henson	1904-1917 *	603 603

\* Idle 1906-1909, 1911, 1912

Last reported production: 1917

**SOURCES OF DATA**

Source Map	Date	Original Scale	Digitized Scale	Map Type
ISGS field notes (G. H. Cady)	7-17-1925	(text only)	1:24000 **	Secondary source

\*\* Point plotted onto 1:24,000 USGS quadrangle and digitized.

Annotated Bibliography (data source, brief description of information)

Coal Reports - Production, ownership, years of operation, depth, thickness, mining method.  
 Directory of Illinois Coal Mines (Saline County) - Mine names, mine index, ownership, years of operation.  
 ISGS field notes (Saline County) - Mine type, drift location, seam.

**Mine Index 4200****R. & F. Coal Company, R. & F. No. 3 Mine**

Type: Surface Total mined-out acreage shown: None This pit was later enlarged by Jader No. 1 Mine (mine index 931) and is not shown on the accompanying map. Production indicates that R. & F. No. 3 Mine would have excavated approximately 3 acres.

**SHAFT, SLOPE, DRIFT or TIPPLE LOCATIONS**

Type	County	Township-Range	Section	Quarters-Footage
Tipple / pit	Saline	10S 6E	10	SW NE SW

**GEOLOGY**

Seam(s) Mined	Depth (ft)	Thickness (ft)			Mining Method
		Min	Max	Ave	
Davis	25			5.0	Surface

Geologic Problems Reported:

**PRODUCTION HISTORY**

Company	Mine Name	Years	Production (tons)
R. & F. Coal Company	R. & F. No. 3	1966-1966	<u>23,161</u> 23,161

Last reported production: December 1966

**SOURCES OF DATA**

Source Map	Date	Original Scale	Digitized Scale	Map Type
ISGS mine database	Undated	(text only)	1:24000 *	Secondary source

\* The mine location was plotted on a 1:24000 USGS topographic map from the mine location description and digitized.

Annotated Bibliography (data source, brief description of information)

Coal Reports - Production, ownership, years of operation, depth, thickness, mining method.  
 Directory of Illinois Coal Mines (Saline County) - Mine names, mine index, ownership, years of operation.  
 ISGS Coal Section files, strip mine updates - Mine location, mining method.



**Mine Index 4201****R. & F. Coal Company, R. & F. No. 2 Mine**

Type: Surface Total mined-out acreage shown: 5 The area shown is too large for the production reported, which is also included within the larger surface-mined area of Jader No. 1 Mine (mine index 931). Some of the area shown was probably mined by unknown operations.

**SHAFT, SLOPE, DRIFT or TIPPLE LOCATIONS**

Type	County	Township-Range	Section	Quarters-Footage
Tipple / pit	Saline	10S 6E	10	NE SW SE

**GEOLOGY**

Seam(s) Mined	Depth (ft)	Thickness (ft)			Mining Method
		Min	Max	Ave	
Davis				3.05	Surface

Geologic Problems Reported:

**PRODUCTION HISTORY**

Company	Mine Name	Years	Production (tons)
R. & F. Coal Company	R. & F. No. 2	1966-1966	<u>4,978</u> 4,978

Last reported production: April 1966

**SOURCES OF DATA**

Source Map	Date	Original Scale	Digitized Scale	Map Type
ISGS Coal Section files	Undated	unknown	1:7822	Secondary source

Annotated Bibliography (data source, brief description of information)

Coal Reports - Production, ownership, years of operation, thickness.

Directory of Illinois Coal Mines (Saline County) - Mine names, mine index, ownership, years of operation.

ISGS Coal Section files, strip mine updates - Mine location, mine outline, mining method.

**Mine Index 4203****Brown Brothers Excavating Company, Brown Brothers Mine**

Type: Surface Total mined-out acreage shown: 9 This company re-mined a previously surface-mined area, apparently deepening pits that had mined the Springfield Coal.

**SHAFT, SLOPE, DRIFT or TIPPLE LOCATIONS**

Type	County	Township-Range	Section	Quarters-Footage
Tipple / pit	Saline	10S 6E	6	NE

**GEOLOGY**

Seam(s) Mined	Depth (ft)	Thickness (ft)			Mining Method
		Min	Max	Ave	
Davis					Surface

Geologic Problems Reported:

**PRODUCTION HISTORY**

Company	Mine Name	Years	Production (tons)
Brown Brothers Excavating Company	Brown Brothers	1970-1971	not reported *

\* Opened October, 1970, closed April, 1971, but no production was reported. The field notes report that the company re-mined an area that was previously surface-mined.

Last reported production: April 1971

**SOURCES OF DATA**

Source Map	Date	Original Scale	Digitized Scale	Map Type
ISGS Coal Section files	Undated	unknown	1:7774	Secondary source

Annotated Bibliography (data source, brief description of information)

Coal Reports - Ownership, years of operation.

Directory of Illinois Coal Mines (Saline County) - Mine names, mine index, ownership, years of operation.

Mine notes (Saline County) - Mine type, mine location.

ISGS field notes (Saline County) - Mining method.

ISGS Coal Section files, strip mine updates - Mine outline.



**Mine Index 4241****Bankston Creek Collieries Company, Bankston Creek No. 2 Mine**

Type: Surface    Total mined-out acreage shown: 45

**SHAFT, SLOPE, DRIFT or TIPPLE LOCATIONS**

Type	County	Township-Range	Section	Quarters-Footage
Tipple	Saline	9S 6E	27	NE SW NE *

\* This mine apparently used the tipple of Bankston Creek No. 4 Mine (mine index 3284).

**GEOLOGY**

Seam(s) Mined	Depth (ft)	Thickness (ft)			Mining Method
		Min	Max	Ave	
Springfield				4.67	Surface

Geologic Problems Reported: The source map shows several northwest-southeast trending faults throughout the mine.

**PRODUCTION HISTORY**

Company	Mine Name	Years	Production (tons)
Bankston Creek Collieries Company	Bankston Creek No. 2	1947-1949	<u>282,066</u> 282,066

Last reported production: June 1949

**SOURCES OF DATA**

Source Map	Date	Original Scale	Digitized Scale	Map Type
Microfilm, document 352800	6-14-1949	1:2400	1:3972	Final

Annotated Bibliography (data source, brief description of information)

Coal Reports - Production, ownership, years of operation, thickness.

Directory of Illinois Coal Mines (Saline County) - Mine names, mine index, ownership, years of operation.

Mine notes (Saline County) - Mine type, mine location, seam, thickness.

Microfilm map, document 352800, reel 03140, frames 346 & 347 - Mine location, mine outline, mining method, geologic problems.

**Mine Index 4705**  
**Howell & McCreary, Clifton Mine**

Type: Underground Total mined-out acreage shown: None The area was later surface-mined by Sahara No. 6 Mine (mine index 638), and this mine is not shown on the accompanying map. Production indicates approximately 70 acres were mined.

**SHAFT, SLOPE, DRIFT or TIPPLE LOCATIONS**

Type	County	Township-Range	Section	Quarters-Footage
Main slope	Saline	9S 6E	30	SE
Escapement shaft	Saline	9S 6E	30	SE

**GEOLOGY**

Seam(s) Mined	Depth (ft)	Thickness (ft)			Mining Method
		Min	Max	Ave	
Herrin	40-60			4.5-5.0	RP

Geologic Problems Reported:

**PRODUCTION HISTORY**

Company	Mine Name	Years	Production (tons)
Clifton Coal Company	Clifton	1880-1881	unknown *
E. O. Roberts & Mary Howell	Clifton	1881-1885	249,328
Howell	Clifton	1885-1887 **	15,000
W. H. Howell	Clifton	1887-1888	10,919
Howell & McCreary	Clifton	1888-1892	<u>26,046</u>
			301,293

\* According to Mary Norman Lindsay in *Coal Mines in Saline County*, W. H. Howell, John Davenport, William Alsop and E. O. Roberts organized Clifton Coal Company and opened the mine in 1880. The slope was ½ mile northwest of the Ledford Slope (mine index 4708). Production prior to July 1882 is unknown.

\*\* Idle 1887

Last reported production: 1892

**SOURCES OF DATA**

Source Map	Date	Original Scale	Digitized Scale	Map Type
Coal Mines in Saline County	1947	(text only)	1:24000 ***	Secondary source

\*\*\* The mine location was plotted on a 1:24000 USGS topographic map from the mine location description and digitized.

Annotated Bibliography (data source, brief description of information)

Coal Reports - Production, ownership, years of operation, seam, depth, thickness, escape shaft completion, mining method.

Directory of Illinois Coal Mines (Saline County) - Mine names, mine index, ownership, years of operation.

Lindsay, Mary Norman, 1947, *Coal Mines in Saline County*, in *Saline County, A Century of History* - Slope & shaft locations (general).



**Mine Index 4718****Heato Coal Company, Heato Mine**

Type: Underground    Total mined-out acreage shown: 12    The area was later surface-mined by Sahara No. 6 Mine (mine index 638), and this mine is not shown on the accompanying map.

**SHAFT, SLOPE, DRIFT or TIPPLe LOCATIONS**

Type	County	Township-Range	Section	Quarters-Footage
Main slope	Saline	9S 6E	30	SE NE SE
Air shaft	Saline	9S 6E	30	SE NE SE

**GEOLOGY**

Seam(s) Mined	Depth (ft)	Thickness (ft)			Mining Method
		Min	Max	Ave	
Herrin	45			4.83	RPB

Geologic Problems Reported:

**PRODUCTION HISTORY**

Company	Mine Name	Years	Production (tons)
Heato Coal Company	Heato	1917-1921	<u>72,190</u> 72,190

Last reported production: 1921

**SOURCES OF DATA**

Source Map	Date	Original Scale	Digitized Scale	Map Type
Microfilm, document 352786	8-26-1921	1:1200	1:1986	Final

Annotated Bibliography (data source, brief description of information)

Coal Reports - Production, ownership, years of operation, seam, depth, thickness.

Directory of Illinois Coal Mines (Saline County) - Mine names, mine index, ownership, years of operation.

Microfilm map, document 352786, reel 03140, frame 312 - Slope & shaft locations, mine outline, mining method.

**Mine Index 4745****R. L. Clements, Clements Mine**

Type: Underground Total mined-out acreage shown: 1 Not shown on accompanying map because of later surface mining by Walnut Grove Mine (mine index 840).

**SHAFT, SLOPE, DRIFT or TIPPLE LOCATIONS**

Type	County	Township-Range	Section	Quarters-Footage
Slope	Saline	10S 6E	16	NE SW NW *

\* The mine was very small, and the opening would have been in this location. However, the secondary source map was incomplete and did not show the slope or the complete workings of the mine.

**GEOLOGY**

Seam(s) Mined	Depth (ft)	Thickness (ft)			Mining Method
		Min	Max	Ave	
Davis					RP

Geologic Problems Reported:

**PRODUCTION HISTORY**

Company	Mine Name	Years	Production (tons)
R. L. Clements	Clements	1928-1935 **	464
			464

\*\* Idle 1929; idle or produced less than 1,000 tons per year 1930-1933

Last reported production: 1935

**SOURCES OF DATA**

Source Map	Date	Original Scale	Digitized Scale	Map Type
Microfilm, document 352764	9-25-1942	1:1200	1:1241	Secondary source

Annotated Bibliography (data source, brief description of information)

Coal Reports - Production, ownership, years of operation, mining method.

Directory of Illinois Coal Mines (Saline County) - Mine names, mine index, ownership, years of operation.

Microfilm map, document 352764, reel 03140, frame 285, map of Hart-Duncan Mine (mine index 3324) - Mine location.



## OTHER MINES SHOWN ON THE HARRISBURG QUADRANGLE

Mine Index 2755 NW SW NW 10-T10S-R6E, drift, Davis Coal source: Federal Land Bank Report

Mine Index 2854 E ½ SW NW 31-T9S-R6E, surface mine, Herrin Coal source: Microfilm, document 352813, map of Nutty Mine (mine index 4187)

Mine Index 3282 SW NE NW 26-T9S-R6E, slope, Herrin Coal source: Federal Land Bank Report

Mine Index 3344 SW SE NW 13-T9S-R5E, Herrin Coal source: ISGS map library 4102 i5.1-98

Mine Index 3487 SW SW NE 29-T9S-R6E, Herrin Coal source: ISGS map library, 4102 i5.1-98

Mine Index 3495 SE SW SE, NW NE SE & SW SE NE 20-T9S-R6E, drifts, Herrin Coal source: Federal Land Bank Report

Mine Index 3519 SE NW NE 32-T9S-R6E, Herrin Coal source: Federal Land Bank Report

Mine Index 3520 SW NE NW 32-T9S-R6E, Herrin Coal source: Federal Land Bank Report

Mine Index 3540 NE SE SW 29-T9S-R6E, Herrin Coal source: Federal Land Bank Report

Mine Index 3548 SW SW NW 29-T9S-R6E, Herrin Coal source: Federal Land Bank Report; mostly stripped out by Sahara No. 6 Mine (mine index 638)

Mine Index 3552 NW NE NW 29-T9S-R6E, Herrin Coal source: ISGS Coal Section files, 1-17-5b

Mine Index 3564 NW SW SE 20-T9S-R6E, Herrin Coal source: ISGS Coal Section files, 1-17-5b

Mine Index 4267 SE NW 26-T9S-R6E, surface mine, Herrin Coal source: USGS topographic map, PR 1990

Mine Index 4315 SE NW SW 23-T9S-R6E, underground mine, Herrin Coal source: ISGS Coal Section files, 1-17-5b (sketched onto topographic map base)

Mine Index 4318 SE SE 22-T9S-R6E, slope, Herrin Coal source: ISGS field notes (L. G. Henbest, 1925)

Mine Index 4704, Carrier Mills Mine SE SW SE 35-T9S-R5E, shaft, Springfield Coal source: ISGS map library, 4013.S32 i5.1-2, map of O'Gara No. 15 Mine & others; on earlier (1907-1919 maps) the mine was labeled O'Gara Coal Company, No. 13 Mine. According to M. N. Lindsay, O'Gara Coal Company bought the mine and shut it down. No production was recorded under the Carrier Mills Coal Company name.

Mine Index 4708, Raum & Vial SW SW SW 29-T9S-R6E, slope, Springfield Coal source: 1876 Atlas of Illinois. According to M. N. Lindsay, this mine opened 1873.

Mine Index 4709 SW SE SW 22-T9S-R6E, Herrin Coal source: 1876 Atlas of Illinois. This may also be a mine of John Norman. His will left mines at both locations (see mine index 4717).

Mine Index 4710 \* NE SW NW 17-T10S-R6E, drift, Davis Coal source: ISGS Coal Section files, 6-27, map by Peabody Coal Company, dated 2-1953

Mine Index 4711 SW SE SE 7-T10S-R6E, drift, Davis Coal source: ISGS Coal Section files, 6-27, map by Peabody Coal Company, dated 2-1953

Mine Index 4713 NE SE NW 17-T10S-R6E, drift, Davis Coal source: ISGS Coal Section files, 6-27, map by Peabody Coal Company, dated 2-1953

Mine Index 4715 SE NE NW 32-T9S-R6E, slope, Herrin Coal, 4-5' source: ISGS Coal Section files, 1-17-5b & ISGS field notes (Henbest, 1925)

Mine Index 4716 NW NE NW 27-T9S-R6E, Herrin Coal source: USGS topographic map, 1925

Mine Index 4717, Norman (John) Mine SE NE NW 27-T9S-R6E, Herrin Coal source: ISGS mine database; operated as early as 1856, probably through the 1870s

Mine Index 4719, New Gallatin Coal Co. S ½ 32-T9S-R6E, Springfield Coal source: ISGS surface mine updates

Mine Index 4720 NW SW NE 32-T9S-R6E, Herrin Coal source: ISGS Coal Section files, 1-17-5b

Mine Index 4736 \* NW NE NE 14-T10S-R5E, Davis Coal source: Federal Land Bank Report, ISGS field notes (G. H. Cady, 1925)

Mine Index 4744 NW SE NW 16-T10S-R6E, slope, Davis Coal source: ISGS field notes (G. H. Cady, 1925)

Mine Index 4746 \* SW SW SE 9-T10S-R6E, surface, Davis Coal source: ISGS map library, 4103.S32 i5.1-49 ("old" in 1944, later enlarged by mine index 840, Walnut Grove Mine)

Mine Index 4747 SE NW NE 27-T10S-R6E, underground, Davis Coal source: Federal Land Bank Report & ISGS field notes (E. T. Benson, 1932)

Mine Index 6878 NW SE SW 21-T10S-R6E, drift, Davis Coal source: ISGS field notes (H. B. Stonehouse, 1954)

Mine Index 6879 NE SW SE 20-T10S-R6E, 2 drifts, Davis Coal source: ISGS field notes (H. B. Stonehouse, 1954)

\* Not shown on accompanying map because of later surface mining.

## MINES WHOSE LOCATIONS ARE NOT KNOWN, HARRISBURG QUADRANGLE

The locations of the following mines are unknown, but the production tonnage, operating names, and nearest town were reported in the Annual Coal Reports. The operators listed below mined in or near the Harrisburg Quadrangle. The information shown is similar to that presented on the summary sheets in the previous pages of this directory. The first item is the name the mine operated under as listed in the Coal Report, then the years the mine reported. If no physical data are available, the next item listed is the total tons produced by the mine. If physical data are available, the order of presentation is as follows: type of opening for the mine (drift, slope or shaft), depth of coal in feet, and thickness of coal in feet.

The total tons mined by these unlocated mines is 1,413,712 (1,311,040 underground, 51,301 surface-mined, and 51,371 from uncertain method), which would represent approximately 280 to 430 acres, depending on the recovery factor, mining method, and numerous other factors. (Note: 1 square mile = 640 acres)

### ELIZABETHTOWN

Adams Coal Company, 1957-1957, surface	4,172 tons
--	------------

### HARRISBURG

Godfrey (C. O.), pre1881-1882, slope, —, 10-60, 4.0-4.75, RP	162,320 tons
Illinois Iron & Coal Company, Ledford Mine, 1882-1883	25,000 tons
Godfrey (C. O.), Ledford Mine, 1883-1884	23,100 tons
Illinois Iron & Coal Company, Ledford Mine, 1884-1885	<u>23,556 tons</u>
	233,976 tons

Godfrey (C. O.), Bald Knob Mine, 1883-1884, shaft, —, 40-60, 4.0-4.5, RP	41,020 tons
Illinois Iron & Coal Company, Bald Knob Mine, 1884-1885	14,150 tons
McDonald (William), Bald Knob Mine, 1885-1886	<u>300 tons</u>
	55,470 tons

Strickland (Joseph P.), 1887-1890	2,211 tons
-----------------------------------	------------

Ingram (John), 1887-1889, drift, Herrin, —, 4.5, RP	1,433 tons
Ingram (Evans I.), 1889-1890	600 tons
Ingram (John), 1890-1891	<u>720 tons</u>
	2,753 tons

Ingram (Jacob), 1887-1890	909 tons
---------------------------	----------

Irwin & Pierson, 1889-1890, drift, Herrin, —, 4.5, RP	160 tons
Pierson (Sim), 1890-1891	<u>85 tons</u>
	245 tons

Sheffield (L. F.), 1889-1890	50 tons
------------------------------	---------

Slaten (James), 1889-1890	85 tons
---------------------------	---------

Moody (John A.), Minro Mine, 1895-1898, slope, Herrin, 13-21, 4.83, RP	4,485 tons
Blackman (J. B.), 1898-1899	1,140 tons
Moody (John A.), 1899-1900	<u>2,480 tons</u>
	8,105 tons

Ingram (J. W.), 1895-1897, slope, Herrin, 21-26, 4.83, RP	1,800 tons
Dorris & Evans, 1897-1899	3,080 tons
Stiff (Lawrence), 1899-1900	<u>2,000 tons</u>
	6,880 tons

Dixon (Sherman), 1903-1904, slope	64 tons
-----------------------------------	---------

Ingram (Jobe), 1905-1907, slope, Springfield, 12-100, 4.0-4.67, RP	6,260 tons
Ingram (G. A.), 1907-1909	10,000 tons
Ingram (Jobe), 1909-1910	3,200 tons
Ingram (John), 1910-1911	2,900 tons
Ingram (Jobe), 1911-1920	7,810 tons
Ingram & McDonald Brothers, 1920-1922	295 tons
Ingram (Jobe), 1922-1929	<u>6,166 tons</u>
	36,631 tons
Ingram (James), 1928-1929, underground	220 tons
Warfield & Ingram, 1906-1907	40 tons
Glass & Norman, 1909-1911, drift, Springfield, 25, 4.0, RP	5,766 tons
Russell (Almon) & Company, 1914-1916	1,212 tons
Davis & Hanald, 1916-1917	<u>160 tons</u>
shaft, Springfield, 40-44, 5.0-9.0, RP	1,372 tons
Baldwin & McDonald, 1924-1925	704 tons
Harrisburg Coal Mining Company, No. 9 Mine, 1927-1931 slope, Springfield, 50, 6.0, RP	508,536 tons
McAnnally (Oscar), 1927-1929, underground	1,400 tons
Moore (Silas), No. 2 Mine, 1934-1934, underground	117 tons
McDowell Brothers, 1934-1935, underground	1,200 tons
Black Hawk Coal Company, 1934-1934, underground	300 tons
McDonald Coal Company, 1935-1936, underground	9,104 tons
Simmon Ridge Coal Company, 1936-1936, underground	1,076 tons
Allen & Parkinson, 1944-1944, underground	1,150 tons
Robinson Coal Company, 1951-1951 operations suspended May 1951, opening date unknown, no production reported	not reported
Barbie Dee Mines, Inc., 1957-1958, surface	6,191 tons
New Oak Hill Coal Company, No. 5 Mine, 1960-1960, surface surface, Springfield Coal, 25, 5.0	25,940 tons

## LEDFORD

Heenan & Efferson, 1887-1889, drift, Herrin, 60, 4.67, RP	2,790 tons
Heenan (James), 1889-1894	4,162 tons
Heenan, Ledford & Company, 1894-1895	<u>150 tons</u>
	7,102 tons
Warfield & Reily, 1895-1897, slope, Herrin, 20, 4.67, RP	1,250 tons
Rilying (George), 1897-1899	<u>1,270 tons</u>
	2,520 tons
Hubbard (E. E.), 1895-1897, slope, Herrin, 20, 4.67, RP	1,320 tons
Odum (Wiley), 1897-1898	575 tons
Strickland Brothers, 1898-1899	<u>900 tons</u>
	2,795 tons
Southard & Lynch, 1910-1912, drift, Springfield, 25-27, 4.0-4.67, RP	1,250 tons



Macke Coal Company, 1912-1914	<u>1,234</u> tons 2,484 tons
McDonald (Finley), 1910-1911, shaft, Springfield, 150, 5.0, RP	85 tons
Saline Gas Coal Company, No. 3 Mine, 1927-1927 shaft, Davis, 280, 3.5, RP	16,248 tons

## MITCHELLSVILLE

Ward (John), 1899-1903, drift, Herrin, 24-25, 4.0, RP	1,513 tons
Rainey (S. G.), 1899-1900, —, —, 24, 4.0, RP	1,000 tons
Bybee (D. P.), 1899-1902, drift, Springfield, 24-30, 4.0-4.25, RP	1,700 tons
Shelton (Gill), 1902-1903	250 tons
Bybee (D. P.), 1930-1906	722 tons
Moore & Baker, 1906-1907	<u>1,200</u> tons 3,872 tons
Ward (John), 1908-1911, slope, Springfield, 30, 4.0, RP	290 tons
Ward (Everett), 1917-1921	549 tons
Clark (Evert), 1909-1910, shaft, Springfield, 30, 4.0, RP	60 tons
Thompson & Jenkins, 1910-1911, slope, Springfield, 10-30, 3.5-4.0, RP	1,350 tons
Thompson (T. S.), 1911-1912	3,000 tons
Clements (R. L.), 1912-1913	700 tons
Clements & Doolin, 1913-1914	650 tons
Clements (R. L.), 1914-1918	<u>2,960</u> tons 8,660 tons
Dorris Brothers, 1914-1915, drift, Springfield, 30-50, 4.0, RP	130 tons
Dorris Coal Company, 1915-1916	425 tons
Dorris (G. H.), 1916-1917	<u>248</u> tons 803 tons
Miller (Winnie), 1925-1925	20 tons
Price (Zack), 1926-1926	<u>225</u> tons 245 tons
Radium Coal Company, 1932-1934	5,316 tons

## NEW CASTLE

Davenport (John) & Company, 1883-1887, shaft, —, 25-62, 3.33-5.5, RP	33,000 tons
Davenport & White, 1887-1889	24,700 tons
Davenport & Company, 1889-1893	38,130 tons
Davenport, Allsopp & White, 1893-1894	11,002 tons
Davenport, Allsop & Company, Clifton Mine, 1894-1895	13,880 tons
Davenport Coal Company, 1895-1896	<u>7,957</u> tons 128,669 tons

This mine may have been in Sections 22 or 27 of T9S-R6E, near the Norman mine locations, or northwest and within the Harrisburg municipal limits. According to M. N. Lindsay in *Coal Mines in Saline County*, John Davenport either worked for John Norman or leased a mine from him in 1874. That mining may or may not be the same as John Davenport's mine of 10 years later. If the mine is in Harrisburg, it would have been known as the Blackhawk Mine. The production reported for Davenport from 1883 to 1896 would represent approximately 35 acres in the Herrin Coal.

Cogdill (Andrew), 1889-1891, drift, —, 20-40, 3.0-3.58, RP	320 tons
Hawkins (John), 1891-1900	<u>2,135</u> tons

2,455 tons

## **SOUTH AMERICA**

Curtner (John), 1889-1891, surface, Herrin, 10, 5.0	730 tons
Curtner (Daniel), 1891-1893	<u>852 tons</u>
	1,582 tons
 Speare (Philip), 1889-1891, surface, Herrin, —, 5.0	 1,000 tons
 Harris (W. W.), 1889-1890, surface, Herrin, —, 5.33	 320 tons
Harris & Motsinger, 1890-1891	<u>560 tons</u>
	880 tons
 Rush (W. V.), 1889-1890, surface, Herrin, —, 5.0	 600 tons
Rush & Shanks, 1890-1891	<u>2,206 tons</u>
	2,806 tons
 Thompson (Bryant), 1890-1891, surface, Herrin, —, 5.0	 256 tons
 Stiff (Noah), 1895-1899, drift, Herrin, 10-15, 5.0, RP	 695 tons

## INDEX OF MINES IN THE HARRISBURG QUADRANGLE

A Mine	44
A. & G. Coal Company	25
Adams Coal Company	68
Allen & Parkinson	69
Allsop (Davenport, Allsop & Co.)	70
Allsop (Davenport, Allsop & Company), Ledford Mine	44
Allsopp (Davenport, Allsopp & White)	70
Alsop (William)	64
Arclar Company, Big Ridge Portal No. 1 Mine	26
B Mine	14
Baker (Moore & Baker)	70
Bald Knob Mine	68
Baldwin & McDonald	69
Bankston Creek Collieries Company, No. 02 Mine	63
Bankston Creek Collieries Company, No. 04 Mine	38
Bankston Creek Collieries Company, No. 06 Mine	18
Bankston Creek Collieries Company, No. 16 Mine	21
Barbie Dee Mines, Inc.	69
Big Creek Coal Company, No. 2 Mine	14
Big Creek Coal Company, No. 3 Mine	10
Big Creek Coals, Inc., No. 3 Mine	10
Big Ridge, Inc., Portal No. 1 Mine	26
Bixler (Elder & Bixler Coal Company)	21
Black Diamond Mine	33
Black Dot Coal Company	36
Black Hawk Coal Company	69
Blackhawk Mine	70
Blackman (J. B.)	68
Blue Bird Coal Company, No. 1 Mine	17
Blue Bird Mine	21
Blue Ribbon Coal Company	47
Briar Creek Mine	47
Brown (R. D.)	42
Brown Brothers Excavating Company	62
Brown Brothers Excavating Company, No. 2 Mine	23
Bybee (D. P.)	70
Carrier Mills Mine	67
Chamness Drainage Company	31
Clark (Evert)	70
Clark (James W.)	49
Clark (James), Blue Ribbon Mine	47
Clements (R. L.)	66, 70
Clements & Doolin	70
Clifton Coal Company	45, 64
Clifton Mine	70
Cogdill (Andrew)	70
Coulter & McKenna	47
Curtner (Daniel)	71
Curtner (John)	71
Davenport (John)	64
Davenport (John) & Company	70
Davenport & Company	70
Davenport & White	70
Davenport Coal Company	70
Davenport Coal Company, A Mine	44
Davenport Coal Company, B Mine	14
Davenport, Allsop & Company	70
Davenport, Allsop & Company, Ledford Mine	44
Davenport, Allsopp & White	70
Davis & Hanald	69
Deborra Ann Mine	52
Dixon (Sherman)	68
Doolin (Clements & Doolin)	70



Dorris (G. H.)	70
Dorris & Evans	68
Dorris Brothers	70
Dorris Coal Company	33, 70
Dorrisville Coal Company	33
Duncan (Hart & Duncan)	54
Eagle River Coal LLC	27
Efferson (Heenan & Efferson)	69
Egyptian Coal & Coke Company, No. 1 Mine	30
Egyptian Coal Company, No. 2 Mine	16
Elder & Bixler Coal Company	21
Eldorado Coal Company	9
Evans (Dorris & Evans)	68
Fyie (Randle & Fyie)	47
Gabriel Coal Company	42
Gas Coal Company	39
Glass & Norman	69
Godfrey (C. O.), Bald Knob Mine	68
Godfrey (C. O.), Ledford Mine	68
Green Gravel Mine	11
Gulley & Penrod	32
Hanald (Davis & Hanald)	69
Harris (W. W.)	71
Harris & Motsinger	71
Harrisburg Coal Company	13
Harrisburg Coal Mining Company	
No. 2 Mine	51
No. 3 Mine	46
No. 4 Mine	50
No. 8 Mine	48
No. 9 Mine	69
Harrisburg Coal Mining Company, Blue Bird Mine	21
Harrisburg Coal Mining Company, No. 1 Mine	21
Harrisburg Fuel Company	41
Harrisburg Mining & Coal Company	13
Harrisburg-Big Muddy Coal Company, Illinois Mine	15
Harrisburg-Big Muddy Coal Company, No. 12 Mine	15
Harrisburg-Big Muddy Coal Company, No. 14 Mine	12
Harrisburg-Saline Coal Company, No. 15 Mine	29
Hart & Duncan	54
Hart & Ward	19
Hart Coal Corporation	42
Hawkins (John)	70
Heato Coal Company	11, 65
Heenan (James)	69
Heenan & Efferson	69
Heenan, Ledford & Company	69
Henson (Willis)	59
Howell (E. O. Roberts & Mary Howell)	64
Howell (W. H.)	64
Howell & McCreary	64
Hubbard (E. E.)	69
Illinois Iron & Coal Company, Bald Knob Mine	68
Illinois Iron & Coal Company, Ledford Mine	68
Illinois Mine	15
Indian Head Coal Company	40
Ingram (Evans I.)	68
Ingram (G. A.)	69
Ingram (J. W.)	68
Ingram (Jacob)	68
Ingram (James)	69
Ingram (Jobe S.)	13
Ingram (Jobe)	69
Ingram (John)	68, 69
Ingram (Warfield & Ingram)	69

Ingram & McDonald Brothers	69
Irwin & Pierson	68
Jader Fuel Company, Inc.	24
Jenkins (Thompson & Jenkins)	70
Karnes (William)	34
Lands (Oscar)	34
Lands (Ray)	34
Lane (Wilson & Lane)	34
Ledford (Heenan, Ledford & Company)	69
Ledford Mine	44, 68
Liberty Coal Company	31, 42
Lynch (Southard & Lynch)	69
Macke Coal Company	69
Marshall Equipment Company	36
Mary Ann No. 2 Mine	36
McAnnally (Oscar)	69
McCreary (Howell & McCreary)	64
McDonald (Baldwin & McDonald)	69
McDonald (Finley)	70
McDonald (William)	68
McDonald Brothers (Ingram & McDonald Brothers)	69
McDonald Coal Company	69
McDowell Brothers	69
McKenna (Coulter & McKenna)	47
McKown & Sheldon	53
Miller (Winnie)	70
Minro Mine	68
Moody (John A.)	68
Moore (Silas)	69
Moore & Baker	70
Morris Coal Company	11
Motsinger (Harris & Motsinger)	71
New (Charles G.)	30
New Coal Company	30, 37
New Gallatin Coal Company	67
New Oak Hill Coal Company, No. 3 Mine	43
New Oak Hill Coal Company, No. 4 Mine	35
New Oak Hill Coal Company, No. 5 Mine	69
Norman (Glass & Norman)	69
Norman (John)	67
North Ledford Mine	44
Nutty (Robert Franklin) Coal Company	57
Odum (Wiley)	69
Owen (Harvey)	47
O'Gara Coal Company	
No. 02 Mine	30
No. 03 Mine	16
No. 04 Mine	13
No. 05 Mine	45
No. 06 Mine	39
No. 07 Mine	11
No. 09 Mine	9
No. 12 Mine	15
No. 13 Mine	67
No. 14 Mine	12
No. 15 Mine	29
Paddock Auger Mining Company	56
Parkinson (Allen & Parkinson)	69
Peabody Coal Company, No. 42 Mine	14
Peabody Coal Company, No. 43 Mine	10
Peabody Coal Company, Will Scarlet Mine	20
Pennsylvania Mine	30
Penrod (Gulley & Penrod)	32
Penrod (John)	32
Perry (C. S.)	47

Pickford (John J.)	40
Pierson (Irwin & Pierson)	68
Pierson (Sim)	68
Pinhook Mine	39
Poppycrat Mine	13
Price (Zack)	70
R. & F. Coal Company, No. 2 Mine	61
R. & F. Coal Company, No. 3 Mine	60
Radium Coal Company	70
Rainey (S. G.)	70
Ramsey Coal Company	19
Randall (Don)	47
Randle & Fyie	47
Raum & Vial	67
Reily (Warfield & Reily)	69
Rhondda Coal Company	33
Rilying (George)	69
Roberts (E. O.)	64
Roberts (E. O.) & Howell (Mary)	64
Robinson Coal Company	69
Rush (W. V.)	71
Rush & Shanks	71
Russell (Almon) & Company	69
Sahara Coal Company, Inc.	
No. 03 Mine	16
No. 06 Mine	18
No. 12 Mine	15
No. 16 Mine	21
Saline County Coal Company	39
Saline County Coal Company, No. 01 Mine	44
Saline County Coal Company, No. 03 Mine	10
Saline County Coal Corporation, No. 02 Mine	14
Saline County Coal Corporation, No. 03 Mine	10
Saline County Coal Corporation, No. 43 Mine	10
Saline Gas Coal Company, No. 1 Mine	46
Saline Gas Coal Company, No. 3 Mine	70
Saline Valley Coal Company	11
Sand (Oscar)	34
Sands (John)	34
Saxton Coal Corporation, Walnut Grove Mine	22
Shanks (Rush & Shanks)	71
Shawnee Coal Company	28
Sheffield (L. F.)	68
Sheldon (McKown & Sheldon)	53
Shelton (Gill)	70
Simmon Ridge Coal Company	69
Sisk (Jewel)	58
Slaten (James)	68
Somerset Mine	22
Southard & Lynch	69
Speare (Philip)	71
Steel Tipple Mine	14
Stiff (Lawrence)	68
Stiff (Noah)	71
Stonefort Coal Mining Corporation	20
Stonefort Corporation	20
Strickland (Joseph P.)	68
Strickland Brothers	69
Thompson (Bryant)	71
Thompson (T. S.)	70
Thompson & Jenkins	70
Tick Hill No. 2 Mine	36
Tolbert (Hobert)	55
Track (J. J.) Mining Company	23
Van Meter (Willard)	42



Van Meter Brothers . . . . .	42
Vial (Raum & Vial) . . . . .	67
Walnut Grove Mine . . . . .	22
Walse Coal Company . . . . .	52
Ward (Bert) . . . . .	19
Ward (Everett) . . . . .	70
Ward (Evert) . . . . .	53
Ward (Evert), No. 2 Mine . . . . .	53
Ward (Hart & Ward) . . . . .	19
Ward (John) . . . . .	70
Warfield & Ingram . . . . .	69
Warfield & Reily . . . . .	69
White (Davenport & White) . . . . .	70
White (Davenport, Allsopp & White) . . . . .	70
White Ash Mine . . . . .	39
Will Scarlet Mine . . . . .	20
Williams (Ruben) . . . . .	33
Wilson & Lane . . . . .	34
Young's Coal Corporation . . . . .	22

Funding for this project was supplied by the Illinois Mine Subsidence Insurance Fund.