

Coal Mines in Illinois Ipava Quadrangle Fulton County, Illinois

Springfield Coal

This map accompanies the Coal Mines Directory for the Ipava Quadrangle and the maps of mines in the Colchester Coal, Ipava Quadrangle. Consult the directory for a complete explanation of the information shown on this map.

Mining Method

Room & Pillar (RP)

Room & Pillar Basic (RPB)

Modified Room & Pillar (MRP)

Room & Pillar Panel (RPP)

Blind Room & Pillar (BRP)

Checkerboard Room & Pillar (CRP)

High Extraction Retreat (HER)

Longwall (LW)

Underground, Method Unknown

Strip Mine

Auger Mine

General Area of Mining

Other Areas Depicted

Non-Coal Mines

Source of Mine Outline

Final Mine Map

Not Final Mine Map

Undated Mine Map

Incomplete Mine Map

Secondary Source Map

Tipple, Shaft, Slope, Drift Locations

Strip Mine Tipple - Active

Strip Mine Tipple - Abandoned

Mine Shaft - Active

Mine Shaft - Abandoned

Mine Slope - Active

Mine Slope - Abandoned

Mine Drift - Active

Mine Drift - Abandoned

Air Shaft

Uncertain Location

Uncertain Type of Opening

Mine Annotation
(space permitting)

Company

Mine Name

ISGS Index No., Years of Operation

Disclaimer
Please check the Coal Section at the Illinois State Geological Survey's web site at <http://www.isgs.illinois.edu> for the most up-to-date version of these products.

Note that each quadrangle scale mined-out area map requires the use of the associated text directory for full explanation of map features and mine attributes. Also note that some quadrangles have multiple seams of mining and therefore more than one map may be available for a particular quadrangle. Please take care to check for multiple maps, as extensive mining may exist in the other seams.

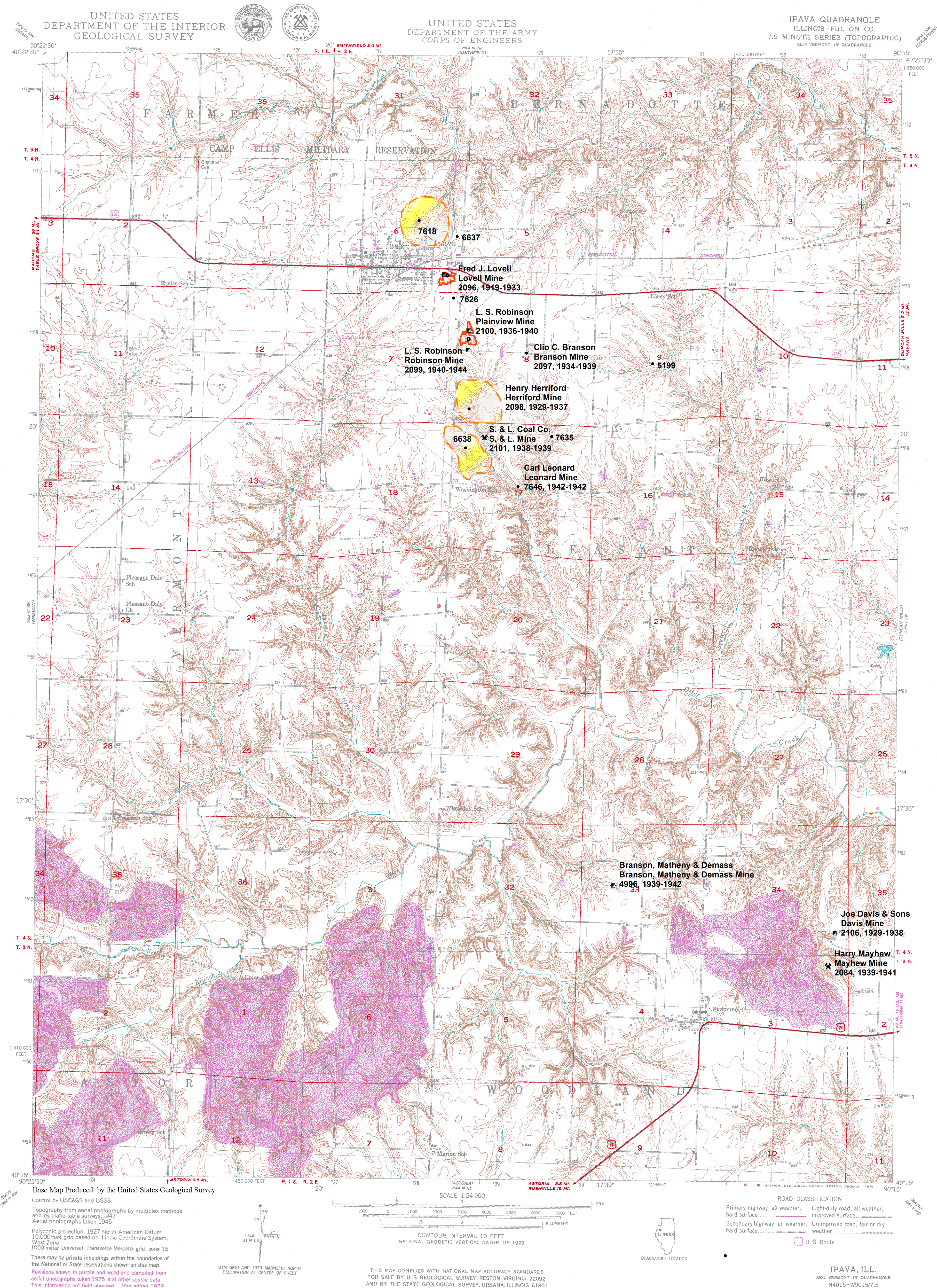
The maps and digital files used for these studies were compiled from data obtained from a variety of public and private sources and have varying degrees of completeness and accuracy. This compilation map presents reasonable interpretation of the geology of the area and is based on available data. Locations of some mine features may be offset by 500 feet or more due to errors in the original source maps, the compilation process, digitizing, or a combination of these factors. These data are not intended for use in site-specific screening or decision-making. Use of these documents does not eliminate the need for detailed studies to fully understand the geology of a specific site. The Illinois State Geological Survey, Prairie Research Institute, or the University of Illinois make no guarantee, expressed or implied, regarding the correctness of the interpretations presented in this data set and accept no liability for the consequences of decisions made by others on the basis of the information presented here.

These maps were designed for use at 1:24,000. Enlarging the map may reduce accuracy, as the original scale of the source maps used to compile the outlines shown varies from 1:400 to 1:150,000, and some mine locations are known only from text descriptions. See the accompanying mine directory for the original scale of the source map used for a specific mine to check accuracy of a given portion of the map. Areas with no mines shown may still be undetermined; see the unlocated mines list at the back of each mine directory.

The image of the U.S.G.S. topographic base map was projected from the original UTM to Lambert Conformal Conic.

Prairie Research Institute
Illinois State Geological Survey
615 E. Peabody Dr.
Champaign, IL 61820

Mine Outlines Compiled by
C. Chenoweth
December 2015



Coal Mines in Illinois
Ipava Quadrangle
Fulton County, Illinois

Colchester Coal

This map accompanies the Coal Mines Directory for the Ipava Quadrangle and the maps of mines in the Springfield Coal, Ipava Quadrangle. Consult the directory for a complete explanation of the information shown on this map.

Mining Method

Room & Pillar (RP)

Room & Pillar Basic (RPB)

Modified Room & Pillar (MRP)

Room & Pillar Panel (RPP)

Blind Room & Pillar (BRP)

Checkerboard Room & Pillar (CRP)

High Extraction Retreat (HER)

Longwall (LW)

Underground, Method Unknown

Strip Mine

Auger Mine

General Area of Mining

Other Areas Depicted

Non-Coal Mines

Source of Mine Outline

Final Mine Map

Not Final Mine Map

Undated Mine Map

Incomplete Mine Map

Secondary Source Map

Tipple, Shaft, Slope, Drift Locations

Strip Mine Tipple - Active

Strip Mine Tipple - Abandoned

Mine Shaft - Active

Mine Shaft - Abandoned

Mine Slope - Active

Mine Slope - Abandoned

Mine Drift - Active

Mine Drift - Abandoned

Air Shaft

Uncertain Location

Uncertain Type of Opening

Other Points Depicted

Non-Coal Mines



Mine Annotation

(space permitting)

Company

Mine Name

ISGS Index No., Years of Operation

Disclaimer
Please check the Coal Section at the Illinois State Geological Survey's web site at <http://www.isgs.illinois.edu> for the most up-to-date version of these products.

Note that each quadrangle scale mined-out area map requires the use of the associated text directory for full explanation of map features and mine attributes. Also note that some quadrangles have multiple seams of mining and therefore more than one map may be available for a particular quadrangle. Please take care to check for multiple maps, as extensive mining may exist in the other seams.

The maps and digital files used for these studies were compiled from data obtained from a variety of public and private sources and have varying degrees of completeness and accuracy. This compilation map presents reasonable interpretation of the geology of the area and is based on available data. Locations of some mine features may be offset by 500 feet or more due to errors in the original source maps, the compilation process, digitizing, or a combination of these factors. These data are not intended for use in site-specific screening or decision-making. Use of these documents does not eliminate the need for detailed studies to fully understand the geology of a specific site. The Illinois State Geological Survey, Prairie Research Institute, or the University of Illinois make no guarantee, expressed or implied, regarding the correctness of the interpretations presented in this data set and accept no liability for the consequences of decisions made by others on the basis of the information presented here.

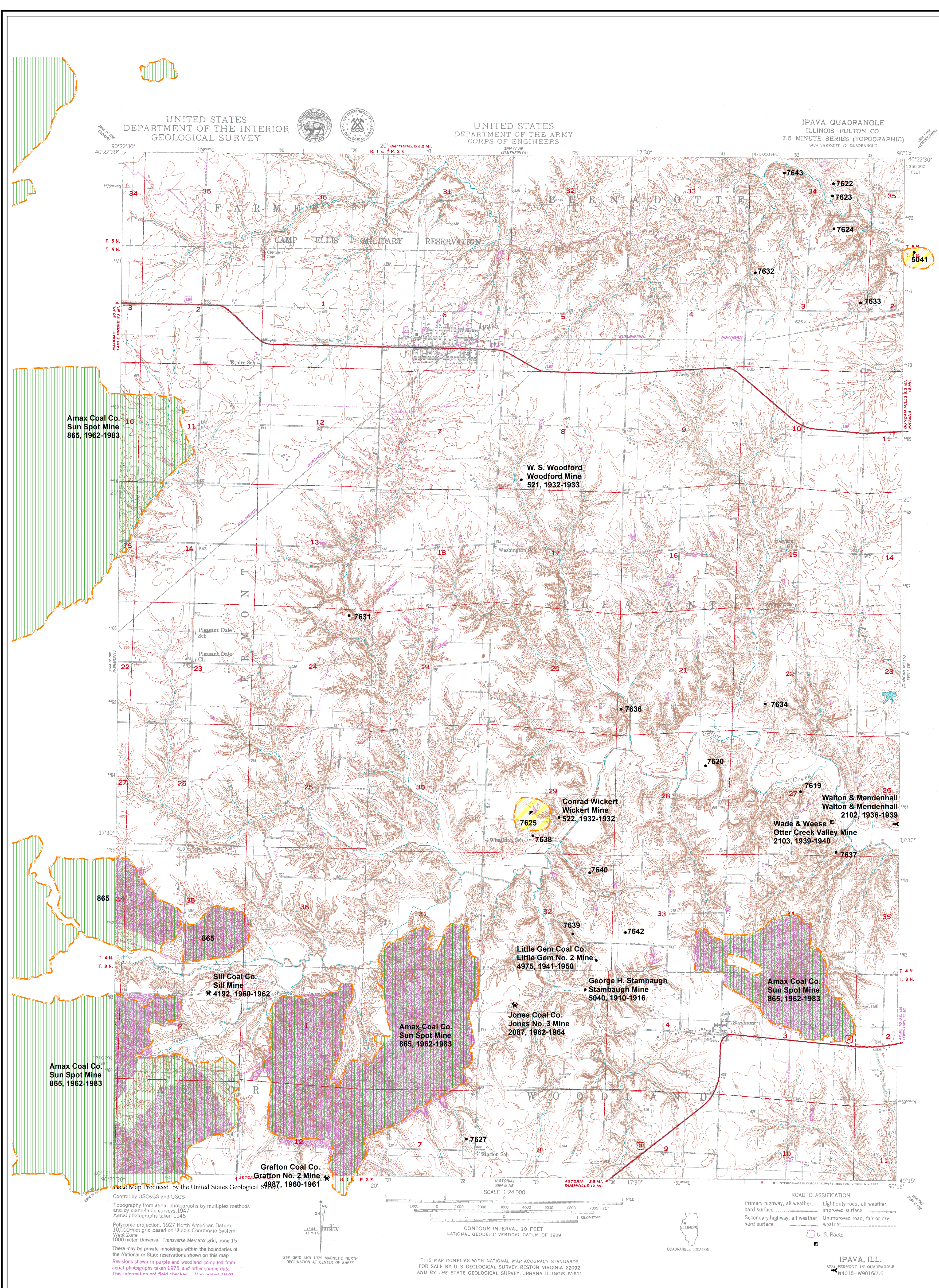
These maps were designed for use at 1:24,000. Enlarging the map may reduce accuracy, as the original scale of the source maps used to compile the outlines shown varies from 1:400 to 1:150,000, and some mine locations are known only from text descriptions. See the accompanying mine directory for the original scale of the source map used for a specific mine to check accuracy of a given portion of the map. Areas with no mines shown may still be undermined; see the unlocated mines list at the back of each mine directory.

The image of the U.S.G.S. topographic base map was projected from the original UTM to Lambert Conformal Conic.



Prairie Research Institute
Illinois State Geological Survey
615 E. Peabody Dr.
Champaign, IL 61820

Mine Outlines Compiled by
C. Chenoweth
December 2015



DIRECTORY OF COAL MINES IN ILLINOIS

7.5-MINUTE QUADRANGLE SERIES

IPA VA QUADRANGLE

FULTON COUNTY

C. Chenoweth



2015

Prairie Research Institute
Mark Ryan, Executive Director
ILLINOIS STATE GEOLOGICAL SURVEY
Richard C. Berg, Director

Natural Resources Building
615 East Peabody Drive
Champaign, Illinois 61820

Phone 217-244-4610



This material is based upon work supported by the Illinois Mine Subsidence Insurance Fund. Any opinions, findings, and conclusions or recommendations expressed in this publication are those of the authors and do not necessarily reflect the views of the Illinois Mine Subsidence Insurance Fund.

Cover photo Track-mounted duckbill loading machine at a Peabody Coal Company mine, ca. 1915.

DISCLAIMER: The accuracy and completeness of mine maps and directories vary with the availability of reliable information. Maps and other information used to compile this mine map and directory were obtained from a variety of sources and the accuracy of some of the original information cannot be verified. Consequently, the Illinois State Geological Survey (ISGS) cannot guarantee the mine maps are free of errors and disclaims any responsibility for damages that may result from actions or decisions based on them.

The ISGS updates the maps and directories periodically, and welcomes any new information or corrections. Please contact the Coal Section of the ISGS at the address shown on the title page of this directory, or telephone (217) 244-4610.

© 2015 The Board of Trustees of the University of Illinois. All rights reserved.
For permission information, contact the Illinois State Geological Survey.

CONTENTS

INTRODUCTION	1
MINING IN THE IPAQA QUADRANGLE	1
PART I EXPLANATION OF MAP AND MINE SUMMARY SHEET	2
INTERPRETING THE MAP	2
Mine Type and Mining Method	2
Source Maps	3
Points and Labels	3
INTERPRETING A MINE SUMMARY SHEET	6
REFERENCES	8
PART II DIRECTORY OF MINES IN THE IPAQA QUADRANGLE	9
MINE SUMMARY SHEETS	9
Mine Index 521	
W. S. Woodford, Woodford Mine	9
Mine Index 522	
Conrad Wickert, Wickert Mine	10
Mine Index 524	
George W. Deary, Deary Mine	11
Mine Index 838	
Robinson Coal Company, Robinson Mine	12
Mine Index 865	
Amax Coal Company, Sun Spot Mine	13
Mine Index 2072	
Hamblin Coal Company, Hamblin Mine	14
Mine Index 2073	
Hopkins Coal Company, Hopkins No. 3 Mine	15
Mine Index 2084	
Harry Mayhew, Mayhew Mine	16
Mine Index 2085	
Harold Hopkins Coal Company, Hopkins No. 2 Mine	17
Mine Index 2086	
Jones Coal Company, Jones No. 2 Mine	18
Mine Index 2087	
Jones Coal Company, Jones No. 2 & No. 3 Mine	19
Mine Index 2096	
Fred J. Lovell, Lovell Mine	20
Mine Index 2097	
Clio C. Branson, Branson Mine	21
Mine Index 2098	
Henry Herriford, Herriford Mine	22
Mine Index 2099	
L. S. Robinson, Robinson Mine	23
Mine Index 2100	
L. S. Robinson, Plainview Mine	24
Mine Index 2101	
S. & L. Coal Company, S. & L. Mine	25
Mine Index 2102	
Walton & Mendenhall, Walton & Mendenhall Mine	26
Mine Index 2103	
Wade & Weese, Otter Creek Valley Mine	27
Mine Index 2104	
Charles Rockell, Big Four Mine	28
Mine Index 2105	
George H. Stambaugh, Stambaugh Mine	29
Mine Index 2106	
Joe Davis & Sons, Davis Mine	30

Mine Index 4192	
Sill Coal Company, Sill Mine	31
Mine Index 4975	
Little Gem Coal Company, Little Gem No. 2 Mine	32
Mine Index 4987	
Grafton Coal Company, Grafton No. 2 Mine	33
Mine Index 4989	
Shaffer Brothers Coal Company, Shaffer Mine	34
Mine Index 4996	
Branson, Matheny & Demass, Branson, Matheny & Demass Mine	35
Mine Index 5040	
George H. Stambaugh, Stambaugh Mine	36
Mine Index 7646	
Carl Leonard, Leonard Mine.	37
OTHER MINES SHOWN ON IPA VA QUADRANGLE	38
Mine Index 5041, Harvey Mine	38
Mine Index 5199	38
Mine Index 6637	38
Mine Index 6638	38
Mine Index 6848	38
Mine Index 7618	38
Mine Index 7619	38
Mine Index 7620	38
Mine Index 7621	38
Mine index 7622	38
Mine Index 7623	38
Mine Index 7624	38
Mine Index 7625	38
Mine Index 7626	38
Mine Index 7627	38
Mine Index 7628	38
Mine Index 7629	38
Mine Index 7630	38
Mine Index 7631	38
Mine Index 7632	38
Mine Index 7633	38
Mine Index 7634	38
Mine Index 7635	38
Mine Index 7636	38
Mine Index 7637	38
Mine Index 7638	38
Mine Index 7639	38
Mine Index 7640	38
Mine Index 7641	38
Mine Index 7642	38
Mine Index 7643	38
Mine Index 7644	38
Mine Index 7645	38
MINES WHOSE LOCATIONS ARE NOT KNOWN, IPA VA QUADRANGLE	39
INDEX OF MINES IN THE IPA VA QUADRANGLE	45

INTRODUCTION

Coal has been mined in 76 counties of Illinois. More than 7,400 coal mines have operated since commercial mining began in Illinois about 1810; fewer than 30 are currently active. To detail the extent and location of coal mining in Illinois, the Illinois State Geological Survey (ISGS) has compiled maps and directories of known coal mines. The ISGS offers maps at a scale of 1:100,000 and accompanying directories for each county in which coal mining is known to have occurred. Maps at a scale of 1:24,000 and accompanying directories, such as this, are available for selected quadrangles. Contact the ISGS for a list of these quadrangles.

These larger scale maps show the approximate positions of mines in relation to surface features such as roads and water bodies, and indicate the mining method used and the accuracy of the mine boundaries. The maps are useful for locating mine boundaries relative to specific properties and for assessing the potential for subsidence in an area. Mine boundaries compiled from final mine surveys are generally shown within 200 feet of their true position. As a result of poor cartographic quality and inaccuracies in the original mine surveys, boundaries of some older mines may be mislocated on the map by 500 feet or more. Original mine maps should be consulted in situations that require precise delineation of mine boundaries or internal workings of mined areas.

This directory serves as a key to the accompanying mine map and provides basic information on the coal mines in the quadrangle. The directory is composed of two parts. Part I explains the symbols and patterns used on the accompanying map and the summary data presented for each mine. Part II numerically lists the mines in the quadrangle and summarizes the geology and production history of each mine. Total production for the mine, not the portion in the quadrangle, is given.

MINING IN THE IPAVA QUADRANGLE

Mining began in the Ipava area before 1871, as evidenced by the 1871 Atlas of Fulton County, Illinois. One mine was in the northeastern part of the quadrangle (mine index 7643 in 34-T5N-R2E), and the other two early mines were just northeast of Summum in 3-T3N-R2E (although they were later surface-mined and do not show on the accompanying maps). Almost all of the mining that took place in the Ipava Quadrangle consisted of small local mines that operated for a few years. Sun Spot Mine (mine index 865) is the only exception, operating from 1962 to 1983.

The Colchester Coal was available over most of the quadrangle, while the Springfield Coal was eroded away except for two large pod-shaped areas near Ipava and Summum.

PART I EXPLANATION OF MAP AND MINE SUMMARY SHEET

INTERPRETING THE MAP

The map accompanying this directory shows the location of coal mines known to be present in the quadrangle. The map, corresponding to a U.S. Geological Survey (USGS) 7.5-minute quadrangle, covers an area bounded by lines of latitude and longitude 7.5-minutes apart. In Illinois, a quadrangle is approximately 6.5 miles east to west and 8.5 miles north to south, an area of about 56 square miles. The USGS generally offers one map of mines per quadrangle. In some areas where extensive mining occurred in two or more overlapping seams, separate maps are compiled for mines in each seam to maintain readability of the map.

Mine Type and Mining Method

The mine type is indicated on the map by pattern color: green represents surface mines; red and yellow represent underground mines. The red patterns are used for areas of underground mining that are documented by a primary or secondary source map. A yellow pattern is used for cases where no map of the mine workings is available, but a general area of mining can be inferred from property maps or production figures. The patterns indicate the main mining methods used in underground mines. The methods are (1) room and pillar and (2) high extraction. The method used gives some indication of the amount and pattern of coal extraction within each mined area, and has some influence on the timing and type of subsidence that can occur over a mine.

The following discussion and illustrations of mining methods are based on Guither et al. (1984).

In room-and-pillar mines, coal is removed from haulage-ways (entries) and selected areas called rooms. Pillars of unmined coal are left between the rooms to support the roof. Depending on the size of rooms and pillars, the amount of coal removed from the production areas will range from 40% to 70%.

Room and Pillar - mining is divided into six categories:

- room-and-pillar basic (RPB, fig. 1A), an early method that did not follow a preset mining plan and therefore resulted in very irregular designs;
- modified room and pillar (MRP, fig. 1B);
- room-and-pillar panel (RPP, fig. 1C);
- blind room and pillar (BRP, fig. 1D);
- checkerboard room and pillar (CRP, fig. 1E);
- room and pillar (RP), a classification used when the specific type of room-and-pillar mining is unknown.

Blind and checkerboard are the most common types of room-and-pillar mining used in Illinois today. The knowledge of room-and-pillar mining methods gives a trained engineer information on the nature of subsidence that may occur. A more extensive discussion of subsidence can be found in Bauer et al. (1993).

High-extraction These mining methods are subdivided into high-extraction retreat (HER, Fig 1F) and longwall (LW, Fig 1G, 1H). In these methods, much of the coal is removed within well defined areas of the mine. Subsidence of the surface above these areas occurs within weeks. Once the subsidence activity ceases, the potential for further movement over these areas is low; however, subsidence may continue for several years after mining.

High-extraction retreat mining is a form of room-and-pillar mining that extracts most of the coal. Rooms and pillars are developed in the panels, and the pillars are then systematically removed (fig. 1F).

In early (pre-1960) longwall mines, mining advanced in multiple directions from a central shaft (fig. 1G). Large pillars of coal were left around the shaft, but all coal was removed beyond these pillars. Miners placed rock and wooden props and cribs in the mined-out areas to support the mine roof. The overlying rock gradually settled onto these supports, thus producing subsidence at the surface. In post-1959 longwall mines, room-and-pillar methods have been used to develop the main entries of the mine and panel areas. Modern longwall methods extract 100 percent of the coal in the panel areas (fig. 1H).

SOURCE MAPS

Mine outlines depicted on the map are, whenever possible, based on maps made from original mine surveys. The process of compiling and digitizing the quadrangle map may produce errors of less than 200 feet in the location of mine boundaries. Larger errors of 500 feet or more are possible for mines that have incomplete or inaccurate source maps.

Because of the extreme complexity of some mine maps, detailed features of mined areas have been omitted. The digitized mine boundary includes the exterior boundary of all rooms or entries that were at least 80 feet wide or protruded 500 feet from the main mining area. Unmined areas between mines are shown if they are at least 80 feet wide; unmined blocks of coal within mines are shown if they are at least 400 feet on each side. Original source maps should be consulted when precise information on mine boundaries or interior features is needed.

The mine summary sheet lists the source maps used to determine each mine outline. The completeness of map sources is indicated on the map by a line symbol at the mine boundary. Source maps are organized in five categories.

Final mine map The mine outline was digitized from an original map made from mine surveys conducted within a few months after production ceased. The date of the map and the last reported production are listed on the summary sheet.

Not a final map The mine is currently active or the mine outline was made from a map based on mine surveys conducted more than a few months before production ceased. This implies the actual mined-out area is probably larger than the outline on the map. The mine summary sheet indicated the dates of source maps and the last reported production, as well as the approximate tonnage mined between these two dates (if the mine is abandoned). The summary sheet also lists the approximate acreage mined since the date of the map and, in some cases, indicates the area where additional mining may have taken place. This latter information is determined by locating on the map the active faces relative to probable boundaries of the mine property.

Undated map The source map was undated, so it may or may not be based on a final mine survey. When sufficient data are available, the probable acreage of the mined area is estimated from reported production, average seam thickness and a recovery rate comparable to other mines in the area. This information is listed in the summary sheet for the mine.

Incomplete map The source map did not show the entire mine. The summary sheet indicates the missing part of the mine map and the acreage of the unmapped area, which is estimated from the amount of coal known to have been produced from the mine.

Secondary source map The original mine map was not found so the outline shown was determined from secondary sources (e.g., outlines from small-scale regional maps published in other reports). The summary sheet describes the secondary sources.

POINTS AND LABELS

The locations of all known mine openings (shafts, slopes, and drifts) and surface mine tipples are plotted on the map. Tipples are areas where coal was cleaned, stockpiled, and loaded for shipping.

Only openings or tipples are plotted for mines without source maps. If the precise locations of these features are unknown, a special symbol is used to indicate the approximate location of the mine.

Each mine on the map is labeled with the names of the mine and operating company, ISGS mine index number, and years of operation (if known) if space permits. A seam designation is given on maps where more than one seam was mined. For a mine that operated under more than one name, only the most recent name is generally given. When a mine changed names or ownership shortly before closing, an earlier name is listed. All company and mine names are listed on the mine summary sheet in the directory, under the production history segment.



Figure 1 Mining methods: (A) room-and-pillar basic (RPB), (B) modified room and pillar (MRP), (C) room-and-pillar panel (RPP), (D) blind room and pillar (BRP).



Figure 1 (cont.) Mining methods: (E) checkerboard room and pillar (CRP), (F) high extraction retreat (HER), (G) early (pre-1960) longwall, (H) post-1959 longwall



Figure 2 Generalized stratigraphic section, showing approximate vertical relations of coals in Illinois.

INTERPRETING A MINE SUMMARY SHEET

The mine summary sheet is arranged numerically by mine index number. Index numbers are shown on the map and in the mine listing. The mine summary sheet provides the following information (if available).

Company and mine name The last company or owner of the mine is used, unless no production was recorded for the last owner. In that case, the penultimate owner is listed. Mines often have no specific name; in these cases, the company name is also used as the mine name.

Type *Underground* denotes a subsurface mine in which the coal was reached through a shaft, slope, or a drift entry. *Surface* denotes a surface, open pit or strip mine.

Total mined-out acreage shown The total acreage of the mined area mapped, including any acreage mined on adjacent quadrangles, is calculated from the digitized outline of the mine. The acreage of large barrier pillars depicted on the map is excluded from the mined-out acreage. Small pillars not digitized are included in the acreage calculation. If the mine outline is not based on a final mine map, the acreage is followed by an estimate of additional acres that may have been mined. The estimate is determined from reported mine production, approximate thickness of the coal, and recovery rates calculated from nearby mines that used similar mining methods.

SHAFT, SLOPE, DRIFT OR TIPPLE LOCATIONS

Shaft, slope, drift, or tippie locations Locations of all known former entry points to underground mines or the location of coal cleaning, tippie, and shipping equipment used by the mine's facility are listed. The location is described in terms of county, township and range (Twp-Rge), section, and location within the section by quarters. NE SW NW, for instance, would describe the location in the northeast quarter of the southwest quarter of the northwest quarter. When sections are irregular in size, the quarters remain the same size and are oriented (or "registered") from the southeast corner of the section. Approximate footage from the section lines (FEL = from east line, FNL = from north line, for example) is given when that information is known; this indicates a surveyed location and is not derived from maps. Entry points are also plotted on the map and coded for the type of entry or tippie. A mine opening may have had many purposes during the life of the mine. Old hoist shafts are often later used for air and escape shafts; this information is included in the directory when known. The tippie for underground mines was generally located near the main shaft or slope. At surface mines, coal was sometimes hauled to a central tippie several miles from the mine pit.

GEOLOGY

Seam(s) mined The name of the coal seam(s) mined is listed, if known. If multiple seams were mined, they are all listed, although the mined-out area for each seam may be shown on separate maps. Figure 2 shows the stratigraphic section of the coal-bearing interval in Illinois, and the vertical relations among the coals.

Depth The depth to the top of the seam in the vicinity of the shaft is listed, if known. The depth is determined from notes made by geologists who visited the mine during its operation or from drill hole data in ISGS files. Depth generally varies little over the extent of a mine; however, reported depths for an individual mine may vary. Depth for surface-mined coals varies, and is usually represented as a range.

Thickness The approximate thickness of the mined seam is shown, if known. Thickness also comes from notes of geologists who visited the mine during its operation or from borehole data in ISGS files. Minimum, maximum, and average thicknesses are given when this information is available.

Mining method The principal mining method used at the mine (figs. 1A-H) is listed. See the mining methods section at the beginning of this directory for a discussion of this parameter.

Geologic problems reported Any known geologic problems, such as faults, water seepage, floor heaving, and unstable roof, encountered in the mine are reported. This information is from notes made by ISGS geologists who visited the mine, or from reports by mine inspectors published by the Illinois Department of Mines and Minerals, or from the source map(s). Geologic problems are not reported for active mines.

PRODUCTION HISTORY

Production history Tons of coal produced from the mine by each mine owner are totaled. When the source map used for the mine outline is not a final mine map, the tonnage produced since the date of the map is identified. For mines that extend into adjacent quadrangles, the tonnage reported includes areas mined in adjacent quadrangles.

SOURCE OF DATA

Source map This section lists information about the map(s) used to compile the mine outline and the locations of tipples and mine openings. In some cases more than one source map was used. For example, a map drawn before the mine closed may provide better information on original areas of the mine than a later map. When more than one map was used, the bibliography section explains what information was taken from each source.

Date The date of the most recent mine survey listed on the source map is reported.

Original scale The original scale of the source map is listed. Many maps are photo-reductions and are no longer at their original scale. The original scale gives some indication of the level of detail of the mine outline and the accuracy of the mine boundary relative to surface features. Generally, the larger the scale, the greater the accuracy and detail of the mine map. Mine outlines taken from source maps at scales smaller than 1:24,000 may be highly generalized and may well be inaccurately located with respect to surface features.

Digitized scale The scale of the digitized map is reported. The scale may be different from that of the original source map. In many cases the digitized map was made from a photo-reduction of the original source map, or the source map was not in a condition suitable for digitizing and the mine boundaries were transferred to another base map.

Map type Source maps are classified into five categories to indicate the probable completeness of the map. See discussion of source maps in the previous section.

Annotated bibliography Sources that provide information about the mine are listed, with the data taken from each source. Some commonly used sources are described below. Full bibliographic references are given for all other sources. Unless otherwise noted, all sources are available for public inspection at the ISGS.

Coal Reports Published since 1881, these reports contain tabular data on mine ownership, production, employment, and accidents. Some volumes include short descriptions made by mine inspectors of physical features and conditions in selected mines.

Directory of Illinois Coal Mines This source is a compilation of basic data about Illinois coal mines, originally gathered by ISGS staff in the early 1950s. Sources used for this directory are undocumented, but they are primarily Illinois Department of Mines and Minerals annual reports, ISGS mine notes, and coal company officials.

ENR Document 85/01, Guither, H. D., J. K. Hines, and R. A. Bauer, 1985 The Economic Effect of Underground Mining Upon Land Used for Illinois Agriculture: Illinois Department of Energy and Natural Resources Document 85/01, 185 p.

Microfilm map The U.S. Bureau of Mines maintains a microfilm archive of mine maps. A microfilm file for Illinois is available for public viewing at the ISGS.

Mine notes ISGS geologists have visited mines or contacted mine officials throughout the state since the early 1900s. Notes made during these visits range from brief descriptions of the mine location to long narratives (including sketches) of mining conditions and geology.

Federal Land Bank of St. Louis, Preliminary Reports on Subsidence Investigations Mining engineers working for the Federal Land Bank of St. Louis mapped areas of subsidence due to coal mining in the early 1930s. These reports often include county maps of mine properties with mined-out areas including shaft locations, as well as subsidence areas.

REFERENCES

Anreas, Lyter & Co., 1871, Atlas Map of Fulton County, Illinois, Davenport, Iowa.

Bauer, R. A., B. A. Trent, and P. B. Dumontelle, 1993, Mine Subsidence in Illinois: Facts for the Homeowner Considering Insurance, Illinois State Geological Survey, Environmental Geology Note 144, 16p.

Guither, H. D., J. K. Hines, and R. A. Bauer, 1985, The Economic Effects of Underground Mining Upon Land Used for Illinois Agriculture, Illinois Department of Energy and Natural Resources Document 85/01, 185p.

PART II DIRECTORY OF MINES IN THE IPAVA QUADRANGLE

MINE SUMMARY SHEETS

A summary sheet on the geology and production history of each mine in the Ipava Quadrangle is provided. These summary sheets are arranged numerically by mine index number. Consult Part I for a complete explanation of the data listed in the summary sheet.

Mine Index 521

W. S. Woodford, Woodford Mine

Type: Underground Total mined-out acreage shown: None

SHAFT, SLOPE, DRIFT or TIPPLE LOCATIONS

Type	County	Township-Range	Section	Quarters-Footage
Main shaft	Fulton	4N 2E	8	SE SW SW

GEOLOGY

Seam(s) Mined	Depth (ft)	Thickness (ft)			Mining Method
		Min	Max	Avg	
Colchester				4.33	RP

Geologic Problems Reported: The roof was black shale. The top 7 inches of the coal seam consisted of cannel coal.

PRODUCTION HISTORY

Company	Mine Name	Years	Production (tons)
W. S. Woodford	Woodford	1932-1933	Unknown *

* Mines producing less than 1,000 tons per year were not listed in the Coal Reports of 1932 and 1933.

Last reported production:

SOURCES OF DATA

Source Map	Date	Original Scale	Digitized Scale	Map Type
Mine notes (L. C. McCabe)	Undated	1:62500	1:62500	Secondary source

Annotated Bibliography (data source, brief description of information)

Directory of Illinois Coal Mines (Fulton County) - Mine names, mine index, ownership, years of operation.
Mine notes (Fulton County) - Mine type, shaft location, seam, thickness, geologic problems.

Mine Index 522
Conrad Wickert, Wickert Mine

Type: Underground Total mined-out acreage shown: None

SHAFT, SLOPE, DRIFT or TIPPLE LOCATIONS

Type	County	Township-Range	Section	Quarters-Footage
Main drift	Fulton	4N 2E	29	SW NW SE

GEOLOGY

Seam(s) Mined	Depth (ft)	Thickness (ft)			Mining Method
		Min	Max	Avg	
Colchester				2.2	RP

Geologic Problems Reported: The roof was sandstone. Entries were driven 90 feet into the northwestern side of the ravine.

PRODUCTION HISTORY

Company	Mine Name	Years	Production (tons)
Conrad Wickert	Wickert	1932-1932	Unknown *

* Mines producing less than 1,000 tons were not listed in the 1932 Coal Report.

Last reported production:

SOURCES OF DATA

Source Map	Date	Original Scale	Digitized Scale	Map Type
Mine notes	Undated	1:62500	1:62500	Secondary source

Annotated Bibliography (data source, brief description of information)

Directory of Illinois Coal Mines (Fulton County) - Mine names, mine index, ownership, years of operation.
 Mine notes (Fulton County) - Mine type, drift location, seam, depth, thickness, mining method, geologic problems.

Mine Index 524
George W. Deary, Deary Mine

Type: Underground Total mined-out acreage shown: None; production indicates less than 1 acre was mined. The Deary Mine is not shown on the accompanying map because of later surface mining by the Sunspot Mine (mine index 865).

SHAFT, SLOPE, DRIFT or TIPPLE LOCATIONS

Type	County	Township-Range	Section	Quarters-Footage
Main drift	Fulton	4N 2E	34	SE SE SW

GEOLOGY

Seam(s) Mined	Depth (ft)	Thickness (ft)			Mining Method
		Min	Max	Avg	
Colchester				5.2	RP

Geologic Problems Reported: The immediate roof was 7 feet of carbonaceous shale with large (8 feet long by 5 feet thick) clay-ironstone concretions. Above the shale was 6 inches of fossiliferous limestone, with light gray sandy shale above the limestone. The coal contained a ½ inch pyrite band that was generally persistent throughout the mine.

PRODUCTION HISTORY

Company	Mine Name	Years	Production (tons)
George W. Deary	Deary	1933-1934	<u>1,299</u> 1,299

Last reported production: 1934

SOURCES OF DATA

Source Map	Date	Original Scale	Digitized Scale	Map Type
Mine notes	Undated	1:62500	1:24000 *	Secondary source

* The mine location was plotted on a 1:24000 USGS topographic map from the mine location description and digitized.

Annotated Bibliography (data source, brief description of information)

Coal Reports - Production, ownership, years of operation.
 Directory of Illinois Coal Mines (Fulton County) - Mine names, mine index, ownership, years of operation.
 Mine notes (Fulton County) - Mine type, drift location, thickness, mining method, geologic problems.
 ISGS Field notes (Fulton County) - Geologic problems.

Mine Index 838**Robinson Coal Company, Robinson Mine**

Type: Surface Total mined-out acreage shown: None; production indicates approximately 1 acre was mined. The Robinson Mine is not shown on the accompanying map because of later surface mining by Sunspot Mine (mine index 865).

SHAFT, SLOPE, DRIFT or TIPPLE LOCATIONS

Type	County	Township-Range	Section	Quarters-Footage
Pit or tippie	Fulton	3N 1E	11	NW NW NE

GEOLOGY

Seam(s) Mined	Depth (ft)	Thickness (ft)			Mining Method
		Min	Max	Avg	
Colchester	18			2.33-2.5	Surface

Geologic Problems Reported: The roof was rather hard shale. The coal had vertical cleats filled with pyrite.

PRODUCTION HISTORY

Company	Mine Name	Years	Production (tons)
Harold H. Hopkins Coal Company	Hopkins	1952-1955	773
Robinson Coal Company	Robinson	1955-1960	<u>2,412</u> 3,185

Last reported production: December 1960

SOURCES OF DATA

Source Map	Date	Original Scale	Digitized Scale	Map Type
Mine notes	Undated	1:62500	1:62500	Secondary source

Annotated Bibliography (data source, brief description of information)

Coal Reports - Production, ownership, years of operation.

Directory of Illinois Coal Mines (Fulton County) - Mine names, mine index, ownership, years of operation.

Mine notes (Fulton County) - Mine type, mine location, seam, depth, thickness, geologic problems.

Mine Index 865**Amax Coal Company, Sun Spot Mine**

Type: Surface Total mined-out acreage shown: 8,883 The area shown on the accompanying map is larger than expected for the reported production. Production indicates approximately 4,700 acres were mined.

SHAFT, SLOPE, DRIFT or TIPPLE LOCATIONS

Type	County	Township-Range	Section	Quarters-Footage
Tipple	Fulton	3N 1E	4	SW NE NE

GEOLOGY

Seam(s) Mined	Depth (ft)	Thickness (ft)			Mining Method
		Min	Max	Avg	
Springfield	22			4.65	Surface
Colchester	40-70			2.0-2.43	Surface

Geologic Problems Reported: The Colchester Coal had occasional pyrite lenses and numerous nodules. The nodules were flattened ovals, up to 3 inches across. Pyrite and calcite were present on vertical facings. Clay dikes were present, some as small as 0.1 inch wide, while others were several inches to a foot wide.

PRODUCTION HISTORY

Company	Mine Name	Years	Production (tons)
Delta Coal Corporation	Sun Spot	1962-1962	40,979
Thunderbird Collieries Corporation	Sun Spot	1963-1966	2,875,877
Ayrshire Collieries Corporation	Sun Spot	1967-1971	4,191,689
Amax Coal Company	Sun Spot	1972-1983	<u>10,478,068</u>
			17,586,613

Last reported production: December 1983

SOURCES OF DATA

Source Map	Date	Original Scale	Digitized Scale	Map Type
NAIP digital ortho-photo quadrangle	2015	1:6000	1:6000	Secondary source

Annotated Bibliography (data source, brief description of information)

Coal Reports - Production, ownership, years of operation.

Directory of Illinois Coal Mines (Fulton County) - Mine names, mine index, ownership, years of operation.

Mine notes (Fulton County) - Mine type, mine location, seam, depth, thickness, geologic problems.

National Agriculture Imagery Program map, digital ortho-photo quadrangle map, Ipava Quadrangle, 2015 - Mine outlines.

Mine Index 2072

Hamblin Coal Company, Hamblin Mine

Type: Surface Total mined-out acreage shown: None; production indicates less than 1 acre was mined. The Hamblin Mine is not shown on the accompanying map because of later surface mining by the Sunspot Mine (mine index 865).

SHAFT, SLOPE, DRIFT or TIPPLE LOCATIONS

Type	County	Township-Range	Section	Quarters-Footage
Pit or tipple	Fulton	3N 1E	1	NW SE

GEOLOGY

Seam(s) Mined	Depth (ft)	Thickness (ft)			Mining Method
		Min	Max	Avg	
Colchester	12			2.67	Surface

Geologic Problems Reported:

PRODUCTION HISTORY

Company	Mine Name	Years	Production (tons)
Robert Jones Coal Company	Jones	1952-1957 *	968
Hamblin Coal Company	Hamblin	1958-1958	152
			1,120

Idle 1955 & 1956

Last reported production: November 1958

SOURCES OF DATA

Source Map	Date	Original Scale	Digitized Scale	Map Type
Mine notes	Undated	1:62500	1:62500	Secondary source

Annotated Bibliography (data source, brief description of information)

Coal Reports - Production, ownership, years of operation.

Directory of Illinois Coal Mines (Fulton County) - Mine names, mine index, ownership, years of operation.

Mine notes (Fulton County) - Mine type, mine location, seam, depth, thickness.

Mine Index 2073

Hopkins Coal Company, Hopkins No. 3 Mine

Type: Surface Total mined-out acreage shown: None; production indicates less than 1 acre was mined. The Hopkins No. 3 Mine is not shown on the accompanying map because of later surface mining by the Sunspot Mine (mine index 865).

SHAFT, SLOPE, DRIFT or TIPPLE LOCATIONS

Type	County	Township-Range	Section	Quarters-Footage
Pit or tipple	Fulton	3N 1E	1	SW SE NE

GEOLOGY

Seam(s) Mined	Depth (ft)	Thickness (ft)			Mining Method
		Min	Max	Avg	
Colchester	15-20			1.67-2.5	Surface

Geologic Problems Reported:

PRODUCTION HISTORY

Company	Mine Name	Years	Production (tons)
Hopkins Coal Company	Hopkins No. 3	1958-1962	809 809

Last reported production: June 1962

SOURCES OF DATA

Source Map	Date	Original Scale	Digitized Scale	Map Type
Mine notes	Undated	1:62500	1:24000 *	Secondary source

* The mine location was plotted on a 1:24000 USGS topographic map from the mine location description and digitized.

Annotated Bibliography (data source, brief description of information)

Coal Reports - Production, ownership, years of operation.

Directory of Illinois Coal Mines (Fulton County) - Mine names, mine index, ownership, years of operation, mine location.

Mine notes (Fulton County) - Mine type, seam, depth, thickness.

Mine Index 2084
Harry Mayhew, Mayhew Mine

Type: Surface Total mined-out acreage shown: None; production indicates less than 1 acre was mined.

SHAFT, SLOPE, DRIFT or TIPPLE LOCATIONS

Type	County	Township-Range	Section	Quarters-Footage
Pit or tippie	Fulton	3N 2E	3	NW NE NE

GEOLOGY

Seam(s) Mined	Depth (ft)	Thickness (ft)			Mining Method
		Min	Max	Avg	
Springfield	8-39			5.5	Surface

Geologic Problems Reported:

PRODUCTION HISTORY

Company	Mine Name	Years	Production (tons)
Mayhew & Cole	Mayhew & Cole	1939-1939	578
Harry Mayhew	Mayhew	1940-1941	2,345
			2,923

Last reported production: 1941

SOURCES OF DATA

Source Map	Date	Original Scale	Digitized Scale	Map Type
ISGS field notes (Cady & Park)	6-24-1941	1:62500	1:24,000 *	Secondary source

* The mine location was plotted on a 1:24000 USGS topographic map from the mine location description and digitized.

Annotated Bibliography (data source, brief description of information)

Coal Reports - Production, ownership, years of operation.
 Directory of Illinois Coal Mines (Fulton County) - Mine names, mine index, ownership, years of operation.
 Mine notes (Fulton County) - Mine type, mine location, seam, depth, thickness.
 Mine Inspector's reports, courtesy of Joe Pelc, IDNR - Mine type, depth, thickness.
 ISGS field notes (Fulton County) - Mine location, seam, depth.

Mine Index 2085

Harold Hopkins Coal Company, Hopkins No. 2 Mine

Type: Surface Total mined-out acreage shown: None; production indicates less than 1 acre was mined. The Hopkins No. 2 Mine was later engulfed by the Sunspot Mine (mine index 865) and is not shown on the accompanying map.

SHAFT, SLOPE, DRIFT or TIPPLE LOCATIONS

Type	County	Township-Range	Section	Quarters-Footage
Pit or tippie	Fulton	3N 2E	6	SE

GEOLOGY

Seam(s) Mined	Depth (ft)	Thickness (ft)			Mining Method
		Min	Max	Avg	
Colchester	15			2.2	Surface

Geologic Problems Reported:

PRODUCTION HISTORY

Company	Mine Name	Years	Production (tons)
Harold Hopkins Coal Company	Hopkins No. 2	1955-1958	<u>361</u> 361

Last reported production: April 1958

SOURCES OF DATA

Source Map	Date	Original Scale	Digitized Scale	Map Type
Mine Inspector's report	Undated	(text only)	1:24000 *	Secondary source

* The mine location was plotted on a 1:24000 USGS topographic map from the mine location description and digitized.

Annotated Bibliography (data source, brief description of information)

Coal Reports - Production, ownership, years of operation.

Directory of Illinois Coal Mines (Fulton County) - Mine names, mine index, ownership, years of operation.

Mine notes (Fulton County) - Mine type.

Mine Inspector's reports, courtesy of Joe Pelc, IDNR - Mine location, seam, depth, thickness.

Mine Index 2086**Jones Coal Company, Jones No. 2 Mine**

Type: Surface Total mined-out acreage shown: None; production indicates approximately 3 acres were mined. The Jones No. 2 Mine was engulfed by the Sunspot Mine (mine index 865) and is not shown on the accompanying map.

SHAFT, SLOPE, DRIFT or TIPPLE LOCATIONS

Type	County	Township-Range	Section	Quarters-Footage
Pit or tippie	Fulton	3N 2E	6	SE

GEOLOGY

Seam(s) Mined	Depth (ft)	Thickness (ft)			Mining Method
		Min	Max	Avg	
Colchester	15			2.5	Surface

Geologic Problems Reported:

PRODUCTION HISTORY

Company	Mine Name	Years	Production (tons)
Jones Coal Company	Jones No. 2	1958-1962	11,521 11,521

Last reported production: February 1962

SOURCES OF DATA

Source Map	Date	Original Scale	Digitized Scale	Map Type
Mine Inspector's report	Undated	(text only)	1:24000 *	Secondary source

* The mine location was plotted on a 1:24000 USGS topographic map from the mine location description and digitized.

Annotated Bibliography (data source, brief description of information)

Coal Reports - Production, ownership, years of operation.

Directory of Illinois Coal Mines (Fulton County) - Mine names, mine index, ownership, years of operation.

Mine Inspector's reports, courtesy of Joe Pelc, IDNR - Mine type, mine location, seam, depth, thickness.

Mine Index 2087**Jones Coal Company, Jones No. 2 & No. 3 Mine**

Type: Surface Total mined-out acreage shown: None; production indicates approximately 1 acre was mined.

SHAFT, SLOPE, DRIFT or TIPPLE LOCATIONS

Type	County	Township-Range	Section	Quarters-Footage
Pit or tippie	Fulton	3N 2E	5	NW

GEOLOGY

Seam(s) Mined	Depth (ft)	Thickness (ft)			Mining Method
		Min	Max	Avg	
Colchester	15-20			2.5	Surface

Geologic Problems Reported:

PRODUCTION HISTORY

Company	Mine Name	Years	Production (tons)
Jones Coal Company	Jones No. 2 & Jones No. 3	1962-1964	<u>4,427</u> 4,427

Last reported production: March 1964

SOURCES OF DATA

Source Map	Date	Original Scale	Digitized Scale	Map Type
Mine notes	Undated	(text only)	1:24000 *	Secondary source

* The mine location was plotted on a 1:24000 USGS topographic map from the mine location description and digitized.

Annotated Bibliography (data source, brief description of information)

Coal Reports - Production, ownership, years of operation.

Directory of Illinois Coal Mines (Fulton County) - Mine names, mine index, ownership, years of operation.

Mine notes (Fulton County) - Mine type, mine location, seam, depth.

Mine Inspector's reports, courtesy of Joe Pelc, IDNR - Mine type, mine location, seam, depth, thickness.

Mine Index 2096
Fred J. Lovell, Lovell Mine

Type: Underground Total mined-out acreage shown: 4 Production indicates approximately 6 acres were mined after the map date. The area shown on the accompanying map is smaller than expected for the reported production. Production indicates 9 acres were mined before the map date.

SHAFT, SLOPE, DRIFT or TIPPLE LOCATIONS

Type	County	Township-Range	Section	Quarters-Footage
Shaft	Fulton	4N 2E	6	NW SE SE
Air shaft	Fulton	4N 2E	6	NE SE SE

GEOLOGY

Seam(s) Mined	Depth (ft)	Thickness (ft)			Mining Method
		Min	Max	Avg	
Springfield	19-38			5.5-6.0	MRP

Geologic Problems Reported: The coal extended about 500 feet west, north to the highway, and about 3/8 of a mile to the south. The coal became unworkable in all directions on account of poor roof. The source map shows caved sections in northern and eastern entries.

PRODUCTION HISTORY

Company	Mine Name	Years	Production (tons)
Fred J. Lovell	Lovell	1919-1931	46,540
Fred J. Lovell	Lovell	1931-1933	27,815 *
			74,355

* Production after map date

Last reported production: 1933

SOURCES OF DATA

Source Map	Date	Original Scale	Digitized Scale	Map Type
Company, 4103.F8 i5.1-20	6-24-1931	1:600	1:600	Not final

Annotated Bibliography (data source, brief description of information)

Coal Reports - Production, ownership, years of operation.
 Directory of Illinois Coal Mines (Fulton County) - Mine names, mine index, ownership, years of operation.
 Mine notes (Fulton County) - Mine type, shaft location, seam, depth, thickness.
 ISGS field notes (Fulton County) - Mine type, shaft location.
 Company map, ISGS map library, 4103.F8 i5.1-20 - Shaft locations, mine outline, mining method, geologic problems.

Mine Index 2097**Clio C. Branson, Branson Mine**

Type: Underground Total mined-out acreage shown: None; production indicates less than 1 acre was mined.

SHAFT, SLOPE, DRIFT or TIPPLE LOCATIONS

Type	County	Township-Range	Section	Quarters-Footage
Main drift	Fulton	4N 2E	8	

GEOLOGY

Seam(s) Mined	Depth (ft)	Thickness (ft)			Mining Method
		Min	Max	Avg	
Springfield	30			4.0-6.0	RP

Geologic Problems Reported:

PRODUCTION HISTORY

Company	Mine Name	Years	Production (tons)
Elzie Wrestler	Wrestler	1934-1935	230
Harris Wrestler	Wrestler	1936-1937 *	86
Clio C. Branson	Branson	1938-1939	<u>239</u> **
			555

* Idle 1937

** The 1939 production was from pulling pillars.

Last reported production: April 1, 1939

SOURCES OF DATA

Source Map	Date	Original Scale	Digitized Scale	Map Type
Mine notes	Undated	1:62500	1:62500	Secondary source

Annotated Bibliography (data source, brief description of information)

Coal Reports - Production, ownership, years of operation.

Directory of Illinois Coal Mines (Fulton County) - Mine names, mine index, ownership, years of operation.

Mine notes (Fulton County) - Mine type, drift location, seam, depth, thickness.

Mine Inspector's reports, courtesy of Joe Pelc, IDNR - Mine type, seam, thickness, mining method.

Mine Index 2098
Henry Herriford, Herriford Mine

Type: Underground Total mined-out acreage shown: 62; the general area of mining is larger than indicated by reported production. Production indicates approximately 3 acres were mined.

SHAFT, SLOPE, DRIFT or TIPPLE LOCATIONS

Type	County	Township-Range	Section	Quarters-Footage
Main drift	Fulton	4N 2E	8	SW SW SW

GEOLOGY

Seam(s) Mined	Depth (ft)	Thickness (ft)			Mining Method
		Min	Max	Avg	
Springfield				3.5	RP

Geologic Problems Reported:

PRODUCTION HISTORY

Company	Mine Name	Years	Production (tons)
Henibud & Bronson	Henibud & Bronson	1929-1930 *	200
Heniford & Leonard	Haniford & Leonard	1931-1933 **	7,000
Henry Herriford	Herriford	1934-1937	<u>1,925</u>
			9,125

* Idle 1930

** Production was not reported for mines producing less than 1,000 tons in 1932 and 1933.

Last reported production: 1937

SOURCES OF DATA

Source Map	Date	Original Scale	Digitized Scale	Map Type
Federal Land Bank Report	4-1934	1:124800	1:124800	Secondary source

Annotated Bibliography (data source, brief description of information)

Coal Reports - Production, ownership, years of operation.

Directory of Illinois Coal Mines (Fulton County) - Mine names, mine index, ownership, years of operation.

Mine notes (Fulton County) - Mine type, shaft location, seam, depth, thickness.

Mine Inspector's reports, courtesy of Joe Pelc, IDNR - Mine type, thickness, mining method.

Federal Land Bank Report (Fulton County) - Mine location.

Mine Index 2099**L. S. Robinson, Robinson Mine**

Type: Underground Total mined-out acreage shown: None; production indicates approximately 3 acres were mined.

SHAFT, SLOPE, DRIFT or TIPPLE LOCATIONS

Type	County	Township-Range	Section	Quarters-Footage
Main shaft	Fulton	4N 2E	8	SW SW NW

GEOLOGY

Seam(s) Mined	Depth (ft)	Thickness (ft)			Mining Method
		Min	Max	Avg	
Springfield	30-48			5.67-6.0	RP

Geologic Problems Reported:

PRODUCTION HISTORY

Company	Mine Name	Years	Production (tons)
L. S. Robinson	Robinson	1940-1943	11,184
Herriford & Walton	Robinson	1943-1943	356
L. S. Robinson	Robinson	1944-1944	968
			12,508

Last reported production: 1944

SOURCES OF DATA

Source Map	Date	Original Scale	Digitized Scale	Map Type
ISGS field notes (Cady & Parks)	6-25-1941	1:62500	1:62500	Secondary source

Annotated Bibliography (data source, brief description of information)

Coal Reports - Production, ownership, years of operation.

Directory of Illinois Coal Mines (Fulton County) - Mine names, mine index, ownership, years of operation.

Mine notes (Fulton County) - Mine type, depth, thickness.

Mine Inspector's reports, courtesy of Joe Pelc, IDNR - Mine type, seam, depth, thickness.

ISGS field notes (Fulton County) - Mine location, depth.

Mine Index 2100**L. S. Robinson, Plainview Mine**

Type: Underground Total mined-out acreage shown: 7

SHAFT, SLOPE, DRIFT or TIPPLE LOCATIONS

Type	County	Township-Range	Section	Quarters-Footage
Main shaft	Fulton	4N 2E	8	NW SW NW
Air shaft	Fulton	4N 2E	8	NW SW NW

GEOLOGY

Seam(s) Mined	Depth (ft)	Thickness (ft)			Mining Method
		Min	Max	Avg	
Springfield	25-33			5.5-6.0	MRP

Geologic Problems Reported:

PRODUCTION HISTORY

Company	Mine Name	Years	Production (tons)
A. H. Thomas	Plainview	1936-1939 *	2,194
L. S. Robinson	Plainview	1939-1940	1,440
L. S. Robinson	Plainview	1940-1940	<u>637</u> **
			4,271

* The production shown is too small for the area shown on the source map. It is likely that the mine operated before 1936, perhaps under different ownership.

** Production after map date

Last reported production: 1940

SOURCES OF DATA

Source Map	Date	Original Scale	Digitized Scale	Map Type
ISGS map library, 4103.F8 i5.1-19	2-6-1940	1:1200	1:1200	Not final

Annotated Bibliography (data source, brief description of information)

Coal Reports - Production, ownership, years of operation.

Directory of Illinois Coal Mines (Fulton County) - Mine names, mine index, ownership, years of operation.

Mine notes (Fulton County) - Mine type, shaft location, seam, depth, thickness.

Mine Inspector's reports, courtesy of Joe Pelc, IDNR - Mine type, seam, thickness.

Company map, ISGS map library, 4103.F8 i5.1-19 - Shaft locations, mine outline, mining method.

Mine Index 2101**S. & L. Coal Company, S. & L. Mine**

Type: Surface Total mined-out acreage shown: None; production indicates less than 1 acre was mined.

SHAFT, SLOPE, DRIFT or TIPPLe LOCATIONS

Type	County	Township-Range	Section	Quarters-Footage
Pit or tippLe	Fulton	4N 2E	17	NE NW NW

GEOLOGY

Seam(s) Mined	Depth (ft)	Thickness (ft)			Mining Method
		Min	Max	Avg	
Springfield	20			4.0-5.0	Surface

Geologic Problems Reported:

PRODUCTION HISTORY

Company	Mine Name	Years	Production (tons)
S. & L. Coal Company *	S. & L.	1938-1939	808
			808

* The owners of S. & L. Coal Company were Louis Shaw and M. M. Little.

Last reported production: 1939

SOURCES OF DATA

Source Map	Date	Original Scale	Digitized Scale	Map Type
Mine notes	Undated	1:62500	1:24000 **	Secondary source

** The mine location was plotted on a 1:24000 USGS topographic map from the mine location description and digitized.

Annotated Bibliography (data source, brief description of information)

Coal Reports - Production, ownership, years of operation.

Directory of Illinois Coal Mines (Fulton County) - Mine names, mine index, ownership, years of operation.

Mine notes (Fulton County) - Mine type, mine location, seam, depth, thickness, mining method.

Mine Inspector's reports, courtesy of Joe Pelc, IDNR - Mine type, mine ownership, thickness, mining method.

Mine Index 2102**Walton & Mendenhall, Walton & Mendenhall Mine**

Type: Underground Total mined-out acreage shown: None; production indicates less than 1 acre was mined.

SHAFT, SLOPE, DRIFT or TIPPLE LOCATIONS

Type	County	Township-Range	Section	Quarters-Footage
Main drift	Fulton	4N 2E	26	SW NE SW

GEOLOGY

Seam(s) Mined	Depth (ft)	Thickness (ft)			Mining Method
		Min	Max	Avg	
Colchester	40-90			1.67-2.5	RP

Geologic Problems Reported:

PRODUCTION HISTORY

Company	Mine Name	Years	Production (tons)
William Pribble	Pribble	1936-1937 *	279
Walton & Mendenhall	Walton & Mendenhall	1938-1939	<u>285</u> 564

* Idle 1937

Last reported production: November 7, 1939

SOURCES OF DATA

Source Map	Date	Original Scale	Digitized Scale	Map Type
Mine notes	Undated	1:62500	1:24000 **	Secondary source

* The mine location was plotted on a 1:24000 USGS topographic map from the mine location description and digitized.

Annotated Bibliography (data source, brief description of information)

Coal Reports - Production, ownership, years of operation.

Directory of Illinois Coal Mines (Fulton County) - Mine names, mine index, ownership, years of operation.

Mine notes (Fulton County) - Mine type, drift location, seam, depth, thickness.

Mine Inspector's reports, courtesy of Joe Pelc, IDNR - Mine type, seam, depth, thickness, mining method, abandoned date.

Mine Index 2103**Wade & Weese, Otter Creek Valley Mine**

Type: Underground Total mined-out acreage shown: None; production indicates less than 1 acre was mined.

SHAFT, SLOPE, DRIFT or TIPPLE LOCATIONS

Type	County	Township-Range	Section	Quarters-Footage
Main slope	Fulton	4N 2E	27	SW NE SE

GEOLOGY

Seam(s) Mined	Depth (ft)	Thickness (ft)			Mining Method
		Min	Max	Avg	
Colchester	6			2.33-2.5	RP

Geologic Problems Reported:

PRODUCTION HISTORY

Company	Mine Name	Years	Production (tons)
Otter Creek Valley Coal Company *	Otter Creek Valley	1939-1939	203
Wade & Weese	Otter Creek Valley	1940-1940	35
			238

* Operated by Walton & Weese

Last reported production: 1940

SOURCES OF DATA

Source Map	Date	Original Scale	Digitized Scale	Map Type
Mine notes	Undated	1:62500	1:24000 **	Secondary source

** The mine location was plotted on a 1:24000 USGS topographic map from the mine location description and digitized.

Annotated Bibliography (data source, brief description of information)

Coal Reports - Production, ownership, years of operation.

Directory of Illinois Coal Mines (Fulton County) - Mine names, mine index, ownership, years of operation.

Mine notes (Fulton County) - Mine type, slope location, seam, depth, thickness.

Mine Inspector's reports, courtesy of Joe Pelc, IDNR - Mine ownership, thickness, mining method.

Mine Index 2104
Charles Rockell, Big Four Mine

Type: Underground Total mined-out acreage shown: None; production indicates approximately 5 acres were mined. The Big Four Mine is not shown on the accompanying map because of later surface-mining by Sunspot Mine (mine index 865).

SHAFT, SLOPE, DRIFT or TIPPLE LOCATIONS

Type	County	Township-Range	Section	Quarters-Footage
Main slope	Fulton	4N 2E	33	SE NE SE
Air shaft	Fulton	4N 2E	33	SE NE SE
Slope *	Fulton	4N 2E	33	NW SE SE
Air shaft *	Fulton	4N 2E	33	NE SE SE

* The western slope and air shaft belong to an unidentified abandoned mine.

GEOLOGY

Seam(s) Mined	Depth (ft)	Thickness (ft)			Mining Method
		Min	Max	Avg	
Springfield	10-50			5.83-6.0	MRP

Geologic Problems Reported:

PRODUCTION HISTORY

Company	Mine Name	Years	Production (tons)
Big 4 Coal Company	Big 4	1935-1936	4,570
Illinois Valley Coal Company	Big Four	1936-1936	3,238
L. A. Simons	Big Four	1937-1937	5,057
Parr Coal Company	Big Four	1938-1938	4,040
Illinois Valley Coal Company	Big Four	1938-1938	1,041
Joe Smith	Big Four	1939-1940	2,431
Carl Leonard	Big Four	1940-1941	1,003
Clair Leonard	Big Four	1941-1942	814
Ray McDonald	Big Four	1942-1942	657
Charles Rockell	Big Four	1943-1943	204
			23,055

Last reported production: 1943

SOURCES OF DATA

Source Map	Date	Original Scale	Digitized Scale	Map Type
State archive, MSHA_1238	1-13-1939	1:1200	1:1200	Not final

Annotated Bibliography (data source, brief description of information)

Coal Reports - Production, ownership, years of operation.
 Directory of Illinois Coal Mines (Fulton County) - Mine names, mine index, ownership, years of operation.
 Mine notes (Fulton County) - Mine type, slope location, seam, depth, thickness.
 Mine Inspector's reports, courtesy of Joe Pelc, IDNR - Mine location, seam, thickness.
 State Archive, MSHA_1238, courtesy of Robert Gibson, IDNR - Slope & shaft locations, mine outline, mining method.

Mine Index 2105**George H. Stambaugh, Stambaugh Mine**

Type: Underground Total mined-out acreage shown: None; production indicates approximately 13 acres were mined. The Stambaugh Mine was later surface mined by Sunspot Mine (mine index 865).

SHAFT, SLOPE, DRIFT or TIPPLE LOCATIONS

Type	County	Township-Range	Section	Quarters-Footage
Main shaft	Fulton	4N 2E	34	SW SW SW
Air shaft	Fulton	4N 2E	34	SW SW SW

GEOLOGY

Seam(s) Mined	Depth (ft)	Thickness (ft)			Mining Method
		Min	Max	Avg	
Springfield	54-75			5.75-6.0	MRP

Geologic Problems Reported: A squeeze occurred in the first north entry.

PRODUCTION HISTORY

Company	Mine Name	Years	Production (tons)
George H. Stambaugh	Stambaugh	1933-1944	67,200 67,200

Last reported production: 1944

SOURCES OF DATA

Source Map	Date	Original Scale	Digitized Scale	Map Type
Microfilm, document 351624	9-12-1939	1:1200	1:1821	Not final

Annotated Bibliography (data source, brief description of information)

Coal Reports - Production, ownership, years of operation.

Directory of Illinois Coal Mines (Fulton County) - Mine names, mine index, ownership, years of operation.

Mine notes (Fulton County) - Mine type, shaft location, seam, depth, thickness.

Mine Inspector's reports, courtesy of Joe Pelc, IDNR - Mine type, depth, thickness, mining method, geologic problems.

Microfilm map, document 351624, reel 03136, frame 438 - Shaft locations, mine outline, mining method.

Mine Index 2106
Joe Davis & Sons, Davis Mine

Type: Underground Total mined-out acreage shown: None; production indicates approximately 2 acres were mined.

SHAFT, SLOPE, DRIFT or TIPPLE LOCATIONS

Type	County	Township-Range	Section	Quarters-Footage
Main shaft	Fulton	4N 2E	34	NE SE SE

GEOLOGY

Seam(s) Mined	Depth (ft)	Thickness (ft)			Mining Method
		Min	Max	Avg	
Springfield	54			4.0-6.0	RP

Geologic Problems Reported:

PRODUCTION HISTORY

Company	Mine Name	Years	Production (tons)
Davis & Lomkany	Davis & Lomkany	1929-1929	450
Joe Davis & Brother	Davis	1930-1930	1,685
Davis Brothers	Davis	1931-1933	2,400 *
Joe Davis & Sons	Davis	1934-1938	3,855
			8,390

* The 1933 production was less than 1,000 tons and was not reported.

Last reported production: 1938

SOURCES OF DATA

Source Map	Date	Original Scale	Digitized Scale	Map Type
Mine notes	Undated	1:62500	1:24000 **	Secondary source

** The mine location was plotted on a 1:24000 USGS topographic map from the mine location description and digitized.

Annotated Bibliography (data source, brief description of information)

Coal Reports - Production, ownership, years of operation.
 Directory of Illinois Coal Mines (Fulton County) - Mine names, mine index, ownership, years of operation.
 Mine notes (Fulton County) - Mine type, shaft location, seam, depth, thickness.
 Mine Inspector's reports, courtesy of Joe Pelc, IDNR - Thickness, mining method.

Mine Index 4192
Sill Coal Company, Sill Mine

Type: Surface Total mined-out acreage shown: None; production indicates less than 1 acre was mined.

SHAFT, SLOPE, DRIFT or TIPPLE LOCATIONS

Type	County	Township-Range	Section	Quarters-Footage
Pit or tippie	Fulton	3N 1E	2	NE

GEOLOGY

Seam(s) Mined	Depth (ft)	Thickness (ft)			Mining Method
		Min	Max	Avg	
Colchester	15			2.5	Surface

Geologic Problems Reported:

PRODUCTION HISTORY

Company	Mine Name	Years	Production (tons)
Sill Coal Company	Sill	1960-1962	<u>1,118</u> 1,118

Last reported production: April 1962

SOURCES OF DATA

Source Map	Date	Original Scale	Digitized Scale	Map Type
Mine notes	Undated	1:62500	1:24000 *	Secondary source

Annotated Bibliography (data source, brief description of information)

Coal Reports - Production, ownership, years of operation.
 Directory of Illinois Coal Mines (Fulton County) - Mine names, mine index, ownership, years of operation.
 Mine notes (Fulton County) - Mine location.
 Mine Inspector's reports, courtesy of Joe Pelc, IDNR - Mine location, seam, depth, thickness, mining method.

Mine Index 4975**Little Gem Coal Company, Little Gem No. 2 Mine**

Type: Underground Total mined-out acreage shown: None; production indicates less than 1 acre was mined.

SHAFT, SLOPE, DRIFT or TIPPLE LOCATIONS

Type	County	Township-Range	Section	Quarters-Footage
Main drift	Fulton	4N 2E	32	SE SE

GEOLOGY

Seam(s) Mined	Depth (ft)	Thickness (ft)			Mining Method
		Min	Max	Avg	
Colchester	65			2.33	RP

Geologic Problems Reported:

PRODUCTION HISTORY

Company	Mine Name	Years	Production (tons)
Floyd Hamilton	Gem	1941-1941	74
Little Gem Coal Company	Little Gem No. 4	1942-1946 *	54
Lloyd Hamilton	Gem	1947-1947	34
Little Gem Coal Company	Little Gem No. 2	1948-1950 **	117
			279

* Idle 1944 to 1946

** Idle 1949

Last reported production: 1950

SOURCES OF DATA

Source Map	Date	Original Scale	Digitized Scale	Map Type
Mine notes	Undated	1:62500	1:24000 ***	Secondary source

*** The mine location was plotted on a 1:24000 USGS topographic map from the mine location description and digitized.

Annotated Bibliography (data source, brief description of information)

Coal Reports - Production, ownership, years of operation.

Directory of Illinois Coal Mines (Fulton County) - Mine names, mine index, ownership, years of operation.

Mine notes (Fulton County) - Mine type, drift location, seam, depth.

Mine Inspector's reports, courtesy of Joe Pelc, IDNR - Drift location, seam, thickness, mining method.

Mine Index 4987**Grafton Coal Company, Grafton No. 2 Mine**

Type: Surface Total mined-out acreage shown: None; production indicates less than 1 acre was mined.

SHAFT, SLOPE, DRIFT or TIPPLE LOCATIONS

Type	County	Township-Range	Section	Quarters-Footage
Pit or tippie	Fulton	3N 1E	12	SE

GEOLOGY

Seam(s) Mined	Depth (ft)	Thickness (ft)			Mining Method
		Min	Max	Avg	
Colchester	10			2.0-2.5	Surface

Geologic Problems Reported:

PRODUCTION HISTORY

Company	Mine Name	Years	Production (tons)
Grafton Coal Company	Grafton No. 2	1960-1961	<u>432</u> 432

Last reported production:

SOURCES OF DATA

Source Map	Date	Original Scale	Digitized Scale	Map Type
Mine notes	Undated	1:62500	1:24000 *	Secondary source

* The mine location was plotted on a 1:24000 USGS topographic map from the mine location description and digitized.

Annotated Bibliography (data source, brief description of information)

Coal Reports - Production, ownership, years of operation.

Directory of Illinois Coal Mines (Fulton County) - Mine names, mine index, ownership, years of operation.

Mine notes (Fulton County) - Mine type, mine location, seam, depth, thickness.

Mine Inspector's reports, courtesy of Joe Pelc, IDNR - Seam, depth, thickness, mining method.

Mine Index 4989**Shaffer Brothers Coal Company, Shaffer Mine**

Type: Underground Total mined-out acreage shown: None; production indicates approximately 1 acre was mined. The Shaffer Mine was later surface mined by Sunspot Mine (mine index 865).

SHAFT, SLOPE, DRIFT or TIPPLE LOCATIONS

Type	County	Township-Range	Section	Quarters-Footage
Main slope	Fulton	3N 2E	3	NW NE NW
Air shaft	Fulton	3N 2E	3	NW NE NW

GEOLOGY

Seam(s) Mined	Depth (ft)	Thickness (ft)			Mining Method
		Min	Max	Avg	
Springfield	60			5.0-6.0	MRP

Geologic Problems Reported:

PRODUCTION HISTORY

Company	Mine Name	Years	Production (tons)
Shaffer Brothers Coal Company *	Shaffer	1948-1950	<u>3,875</u> 3,875

* The mine was sold to Smith & Beck Coal Company on May 1, 1950 and abandoned on June 1, 1950.

Last reported production: 1950

SOURCES OF DATA

Source Map	Date	Original Scale	Digitized Scale	Map Type
State archive, MSHA_1216	10-10-1949	1:1200	1:1200	Not final

Annotated Bibliography (data source, brief description of information)

Coal Reports - Production, ownership, years of operation.

Directory of Illinois Coal Mines (Fulton County) - Mine names, mine index, ownership, years of operation.

Mine notes (Fulton County) - Mine type, slope location, depth, thickness.

Mine Inspector's reports, courtesy of Joe Pelc, IDNR - Mine location, seam, thickness, mining method.

State Archive, MSHA_1216, courtesy of Robert Gibson, IDNR - Slope & shaft locations, mine outline, mining method.

Mine Index 4996**Branson, Matheny & Demass, Branson, Matheny & Demass Mine**

Type: Underground Total mined-out acreage shown: None; production indicates less than 1 acre was mined.

SHAFT, SLOPE, DRIFT or TIPPLe LOCATIONS

Type	County	Township-Range	Section	Quarters-Footage
Main shaft	Fulton	4N 2E	33	SW SE NW

GEOLOGY

Seam(s) Mined	Depth (ft)	Thickness (ft)			Mining Method
		Min	Max	Avg	
Springfield	20-22			4.0-4.5	RP

Geologic Problems Reported:

PRODUCTION HISTORY

Company	Mine Name	Years	Production (tons)
Carl Leonard	Leonard	1939-1940	840
Branson Coal Company	Branson	1940-1940	516
Branson, Branson & Harriford	Branson, Branson & Harriford	1941-1941	783
Branson, Matheny & Demass	Branson, Matheny & Demass	1942-1942	290
			2,429

Last reported production: 1942

SOURCES OF DATA

Source Map	Date	Original Scale	Digitized Scale	Map Type
Mine notes	Undated	1:62500	1:24000 *	Secondary source

* The mine location was plotted on a 1:24000 USGS topographic map from the mine location description and digitized.

Annotated Bibliography (data source, brief description of information)

Coal Reports - Production, ownership, years of operation.

Directory of Illinois Coal Mines (Fulton County) - Mine names, mine index, ownership, years of operation.

Mine notes (Fulton County) - Mine type, shaft location, seam, depth, thickness.

Mine Inspector's reports, courtesy of Joe Pelc, IDNR - Seam, depth, thickness, mining method.

Mine Index 5040**George H. Stambaugh, Stambaugh Mine**

Type: Underground Total mined-out acreage shown: None; production indicates approximately 1 acre was mined.

SHAFT, SLOPE, DRIFT or TIPPLe LOCATIONS

Type	County	Township-Range	Section	Quarters-Footage
Main shaft	Fulton	3N 2E	5	SW NE NE

GEOLOGY

Seam(s) Mined	Depth (ft)	Thickness (ft)			Mining Method
		Min	Max	Avg	
Colchester	40-60			4.67-5.83	RP

Geologic Problems Reported:

PRODUCTION HISTORY

Company	Mine Name	Years	Production (tons)
George H. Stambaugh	Stambaugh	1910-1916	<u>5,370</u> 5,370

Last reported production: 1916

SOURCES OF DATA

Source Map	Date	Original Scale	Digitized Scale	Map Type
Coal Section mine database	Undated	(text only)	1:24000 *	Secondary source

* The mine location was plotted on a 1:24000 USGS topographic map from the mine location description and digitized.

Annotated Bibliography (data source, brief description of information)

Coal Reports - Production, ownership, years of operation, mine type, seam, depth, thickness, mining method.
 Directory of Illinois Coal Mines (Fulton County) - Mine names, mine index, ownership, years of operation.

Mine Index 7646
Carl Leonard, Leonard Mine

Type: Underground Total mined-out acreage shown: None; production indicates less than 1 acre was mined.

SHAFT, SLOPE, DRIFT or TIPPLE LOCATIONS

Type	County	Township-Range	Section	Quarters-Footage
Main shaft	Fulton	4N 2E	17	

GEOLOGY

Seam(s) Mined	Depth (ft)	Thickness (ft)			Mining Method
		Min	Max	Avg	
Springfield	12			5.0	RP

Geologic Problems Reported:

PRODUCTION HISTORY

Company	Mine Name	Years	Production (tons)
Carl Leonard	Leonard	1942-1942	368
			368

Last reported production: 1942

SOURCES OF DATA

Source Map	Date	Original Scale	Digitized Scale	Map Type
Mine Inspector's report	Undated	(text only)	1:24000 *	Secondary source

* The mine location was plotted on a 1:24000 USGS topographic map from the mine location description and digitized.

Annotated Bibliography (data source, brief description of information)

Coal Reports - Production, ownership, years of operation.
 Directory of Illinois Coal Mines (Fulton County) - Mine names, mine index, ownership, years of operation.
 Mine Inspector's reports, courtesy of Joe Pelc, IDNR - Mine type, seam, depth, thickness, mining method.

OTHER MINES SHOWN ON IPAVA QUADRANGLE

Mine Index 5041, Harvey Mine NE NE NW 2-T4N-R2E, Colchester Coal source: Federal Land Bank Report (4-1934)

Mine Index 5199 NE NE SW 9-T4N-R2E, shaft, Springfield Coal, 40 feet deep source: ISGS field notes (W. C. Krumbein, 7-13-1932)

Mine Index 6637 NE NE SE 6-T4N-R2E, underground, Springfield Coal source: ISGS field notes (G. H. Cady, undated) & Atlas of Fulton County (1871)

Mine Index 6638 SW NW NW 17-T4N-R2E, shaft, Springfield Coal source: Federal Land Bank Report (4-1934)

Mine Index 6848 * SW SW SE 34-T4N-R2E, drift, Springfield Coal source: Coal Section files (undated work map hand-drawn on a 1921 15-minute Vermont Quadrangle)

Mine Index 7618 SE SW NE 6-T4N-R2E, underground, Springfield Coal source: Federal Land Bank Report (4-1934)

Mine Index 7619 SW SW NE 27-T4N-R2E, underground, Colchester Coal source: ISGS field notes (R. McGehee, 6-26-1932)

Mine Index 7620 NE 28-T4N-R2E, underground, Colchester Coal source: ISGS field notes (H. R. Wanless, 8-9-1929)

Mine Index 7621 * SE SW SE 34-T4N-R2E, underground, Springfield Coal source: Federal Land Bank Report (4-1934) & ISGS field notes (R. McGehee, 1932)

Mine index 7622 SE SW NE 34-T5N-R2E, drift, Colchester Coal source: ISGS field notes (J. M. Weller, 7-15-1932)

Mine Index 7623 NE NW SE 34-T5N-R2E, drift, Colchester Coal source: ISGS field notes (J. M. Weller, 1932)

Mine Index 7624 NE SW SE 34-T5N-R2E, Colchester Coal, two old mines source: ISGS field notes (R. McGehee, 1932)

Mine Index 7625 SW NE SW 29-T4N-R2E, shaft, Colchester Coal source: Federal Land Bank Report (4-1934)

Mine Index 7626 NE NE NE 7-T4N-R2E, Springfield Coal source: Coal Section files (undated work map drawn on a 1921 15-minute Vermont Quadrangle)

Mine Index 7627 SE SE NE 7-T3N-R2E, Colchester Coal source: ISGS field notes (W. V. Searight, 7-15-1926)

Mine Index 7628 * SW SE NW 1-T3N-R1E, surface, Colchester Coal source: ISGS field notes (R. McGehee, 7-6-1932)

Mine Index 7629 * NE SW SW 2-T3N-R1E, drift, Colchester Coal source: ISGS field notes (R. McGehee, 1932)

Mine Index 7630 * SW NW NE 11-T3N-R1E, drift, Colchester Coal source: ISGS field notes (R. McGehee, 1932)

Mine Index 7631 NW NE NE 24-T4N-R1E, 3 drifts, Colchester Coal source: ISGS field notes (R. McGehee, 7-7-1932)

Mine Index 7632 SW NW NW 3-T4N-R2E, drift & strip, Colchester Coal source: ISGS field notes (H. R. Wanless, 8-6-1929)

Mine Index 7633 SE SE NE 3-T4N-R2E, drift, Colchester Coal source: ISGS field notes (G. H. Cady, 10-2-1935)

Mine Index 7634 SW 22-T4N-R2E, several small mines, Colchester Coal source: ISGS field notes (W. C. Krumbein, 1932)

Mine Index 7635 N ½ NE 17-T4N-R2E, numerous old mine dumps, Springfield Coal source: ISGS field notes (R. McGehee, 7-11-1932)

Mine Index 7636 NW SW SW 21-T4N-R2E, two old mine dumps, Colchester Coal source: ISGS field notes (R. McGehee, 7-12-1932)

Mine Index 7637 SW SE SE 27-T4N-R2E, Colchester Coal source: ISGS field notes (J. M. Weller, 6-25-1932)

Mine Index 7638 NW SE SW 29-T4N-R2E, slope, Colchester Coal source: ISGS field notes (R. McGehee, 7-11-1932)

Mine Index 7639 SE NW SE 32-T4N-R2E, Colchester Coal source: ISGS field notes (J. M. Weller, 7-10-1932)

Mine Index 7640 SW NE NE 32-T4N-R2E, Colchester Coal source: ISGS field notes (J. M. Weller, 7-10-1932)

Mine Index 7641 * NW SE SE 33-T4N-R2E, surface, Colchester Coal source: ISGS field notes (J. M. Weller, 6-25-1932)

Mine Index 7642 SE NW SW 33-T4N-R2E, Colchester Coal source: ISGS field notes (J. M. Weller, 1932)

Mine Index 7643 W ½ SE NW 34-T5N-R2E, Colchester Coal source: Atlas of Fulton County (1871)

Mine Index 7644 * NE NE NW 3-T3N-2E, Colchester Coal source: Atlas of Fulton County (1871)

Mine Index 7645 * NE NW NE 3-T3N-R2E, Colchester Coal source: Atlas of Fulton County (1871)

* Not shown on accompanying map due to later surface mining

MINES WHOSE LOCATIONS ARE NOT KNOWN, IPAVA QUADRANGLE

The locations of the following mines are unknown, but the production tonnage, operating names, and nearest town were reported in the Annual Coal Reports. The operators listed below mined in or near the Ipava Quadrangle. The information shown is similar to that presented on the summary sheets in the previous pages of this directory. The first item is the name the mine operated under as listed in the Coal Report, then the years the mine reported. If no physical data are available, the next item listed is the total tons produced by the mine. If physical data are available, the order of presentation is as follows: type of opening for the mine (drift, slope or shaft), depth of coal in feet, and thickness of coal in feet.

The total tons mined by these unlocated mines is 351,023 (264,902 underground and 4,391 surface mined and 81,730 mined by uncertain method), which would represent approximately 58 to 175 acres, depending on the recovery factor, mining method, and numerous other factors. (Note: 1 square mile = 640 acres)

ASTORIA

Danner (Clarence), 1934-1941, drift, underground	622 tons	mine index 4970
A. & M. Coal Company, 1953-1954, surface	706 tons	mine index 4984
Donna (Jacob), 1883-1885, slope or drift, Springfield, 35-60, 5.75-6.0, RP	192 tons	
Bottenberg & Engle, 1883-1884, —, Springfield, 35-50, 5.0-6.0, RP	2,034 tons	
Bectell & Choclate, 1884-1885	512 tons	
Choikly & Baghtol, 1885-1888	1,640 tons	
Wilson (Charles), 1888-1889	600 tons	
Battenburg (Joseph), 1889-1892	2,386 tons	
Diamond (James), 1892-1896	2,750 tons	
McClelland (Emery), 1896-1897	460 tons	
	<u>10,382 tons</u>	
Green Brothers, 1886-1890, shaft, Springfield, 35-40, 5.0-6.0, RP	4,633 tons	
Greene (Henry), 1890-1891	1,128 tons	
Millock (Wilson), 1891-1892	7,895 tons	
Miller (A. J.), 1892-1894	840 tons	
Willick (Wilson), 1894-1899	6,379 tons	
Rumble (K. A.), Eclipse Mine, 1899-1903	6,553 tons	
	<u>27,428 tons</u>	
Markham (Thomas A.), 1886-1887, shaft, Springfield, 20, 6.0, RP	400 tons	
Markham (A.), 1887-1888	850 tons	
	<u>1,250 tons</u>	
McClelland (Edward), 1888-1891, shaft, Springfield, 20, 6.0, RP	2,080 tons	
Stephenson (Stephen), 1888-1889	750 tons	
Hoppings (S. C.), 1889-1890	160 tons	
Hoops (Leonard), 1895-1899, drift, Cochester, 30-45, 2.0-2.5, RP	906 tons	
Mavall (D. S.), 1896-1897, drift, —, —, 2.5, RP	800 tons	
Perry (John), 1897-1899, drift, —, 30, --	520 tons	
Swing (Thomas), 1897-1898, shaft or pit, Springfield, 0, 5.0	250 tons	
Stevenson (Steve), 1898-1899, shaft, Springfield, 30, 5.0	100 tons	
Lannery (E. R.), 1900-1902, drift, Colchester, 40, 2.5, RP	360 tons	
Peters (William), 1900-1902, drift, Colchester, 60, 2.5, RP	560 tons	

Rockwell (A. J.), 1900-1902, drift, Colchester, 60, 2.5, RP	440 tons
Geiselman (Temple), 1902-1905, slope, —, 20, 2.5-5.17, RP	3,447 tons
Surprise Coal Company, 1902-1905, drift, Springfield, 21-25, 4.5-5.0, RP	1,500 tons
Ewing (D. T.), 1906-1907, shaft, Springfield, 30, 6.0, RP	1,040 tons
Bushnell (M.), 1909-1911, shaft & drift, Springfield, 28-48, 5.0-6.0, RP	2,500 tons
Falkenstein (Charles J.), 1911-1916	11,025 tons
Falkenstein (W. O.), 1916-1917	<u>3,600</u> tons
	17,125 tons
Furnace & Diamond, 1909-1910, drift, —, 60-100, 2.5-6.0, RP	350 tons
Richardson & Parr, 1910-1911	880 tons
Furnace & Diamond, 1911-1914	<u>1,073</u> tons
	2,303 tons
Reed (A.), 1909-1910, drift, Rock Island, —, 3.0, RP	272 tons
Bussie (Ray), 1909-1910, drift, Springfield, —, 4.5, RP	110 tons
Parr (Ross), 1911-1917, shaft, Springfield, 30-80, 5.0-6.0, RP	11, 015 tons
Parr Coal Company, 1917-1918	<u>4,100</u> tons
	15,115 tons
Foutch (Frank), 1911-1914, drift, Colchester, 60-70, 2.5-2.67, RP	925 tons
Ratcliff (John), 1911-1913, drift, Springfield, 15-45, 4.83-5.0, RP	275 tons
Hall (Charles), 1912-1913, drift, Springfield, 50, 4.83, RP	1,000 tons
Grove (L. J.), 1912-1913, drift, Colchester, 35, 3.33, RP	300 tons
James (Richard), 1912-1913, drift, Colchester, 40, 2.5, RP	125 tons
Rockwell (R. W.), 1913-1914, slope, Springfield, 70, 6.0, RP	465 tons
Diamond & Brook, 1914-1915, shaft, Springfield, 15-45, 6.0, RP	277 tons
Diamond & Brooker, 1915-1916	<u>375</u> tons
	652 tons
Wilson (T. E.), 1914-1915, slope, Springfield, 6, 2.69, RP	128 tons
Garrett (George E.), 1914-1919, drift, Springfield, 45, 3.33-5.0, RP	1,700 tons
McBride (J. R.), 1915-1916, drift, Colchester, 60, 2.67, RP	665 tons
Raster (Nelson W.), 1915-1916, drift, Colchester, 65, 2.67, RP	480 tons
Hendee (Isaac), 1915-1933, drift, —, 50-65, 2.5-2.67, RP	5,295 tons
Hendee Brothers, 1934-1935	480 tons
Hendee (L.), 1936-1936	<u>160</u> tons
	5,935 tons
Astoria Fuel Company, 1917-1920	11,438 tons
Keller (Charles N.), No. 1 Mine, 1920-1921	<u>6,000</u> tons
	17,438 tons
McPherson Coal Company, 1918-1920	4,475 tons
Keller (Charles), No. 2 Mine, 1920-1921	<u>2,873</u> tons
	7,348 tons
Valentine (Don), 1919-1921	1,067 tons

Batterton (John), 1919-1922	430 tons
Seagum & Batterton, 1922-1923	313 tons
Scrogum (Ben), 1923-1925	851 tons
Gilsom (John) & Scrogum, 1925-1925	895 tons
Scrogum (Ben), 1926-1927	<u>461 tons</u>
	2,950 tons
Carles (Clarence), 1919-1921	559 tons
Diamond (J. W.), 1920-1922	240 tons
Diamond (William) & Brother, 1922-1923	<u>595 tons</u>
	835 tons
Ashcroft (John), 1920-1921	85 tons
Hoole & Son, 1922-1923	2,594 tons
Hoopes (H. H.), 1923-1924	<u>200 tons</u>
	2,794 tons
Walick & Rasler, 1922-1923	340 tons
Worley & Morse, 1922-1923	520 tons
Worley & Cawless, 1925-1926	100 tons
Whaley (Henry), 1927-1927	<u>160 tons</u>
	780 tons
Batterton (C. E.), 1924-1925	120 tons
Caswell (J. W.), 1928-1928, underground	3,500 tons
Thompson (Russell), 1928-1929, underground	280 tons
Thompson (Deloss), 1930-1934	16,000 tons
Thompson & Shaffer, 1934-1935	<u>642 tons</u>
	16,922 tons
Cook (Sam), 1934-1936, underground	522 tons
Stremmel Coal Company, 1934-1935, surface	484 tons
Petefish (Lester), 1935-1935, underground	1,147 tons
Danner Brothers, 1936-1937, shaft, Springfield, 30, 6.0, RP	822 tons
Leonard (Carl & Clair), 1938-1938	<u>553 tons</u>
	1,375 tons
Gorey (Dean L.), 1937-1939, drift, Springfield, 30, —, RP also known as Litchfield Coal Company	860 tons
Diamond (John), 1939-1939, shaft, Springfield, 18, 6.0, RP	60 tons
Smith & Garrett, 1939-1939	<u>79 tons</u>
	139 tons

IPAVA

Budd (Ed), No. 2 Mine, 1936-1937, underground	358 tons	mine index 4965
Hamilton (Lloyd), Little Gem Mine, 1938-1940	<u>646 tons</u>	
	1,004 tons	
Shutter Coal Company, 1960-1960, surface	42 tons	mine index 4988
Scott (Ben), 1940-1940, drift, Colchester	240 tons	mine index 5006
Miles (Edward), Empire Mine, 1883-1885	1,056 tons	

Duffy (Francis), 1885-1887	<u>832</u> tons
shaft, Springfield, 25-40, 4.0-5.67, RP	1,888 tons
Roddis (Robert), 1884-1888, drift, Springfield, 20-40, 4.0-6.0, RP	5,244 tons
Roddis (C. & R.), 1888-1895	15,180 tons
Roddis (Robert), 1895-1900	3,880 tons
Roddis (Charles), 1900-1902	2,098 tons
Roddis (William), 1902-1906	<u>14,761</u> tons
	41,163 tons
Notman & Baghtol, 1886-1890, shaft, Springfield, 30, 5.0, RP	2,939 tons
Hines (John), 1893-1895, drift, Springfield, 30, 5.17-5.5, RP	560 tons
Cass (R.), 1893-1895, drift, Springfield, 35, 5.0, RP	510 tons
Brown & Murray, 1896-1898, slope / drift, Colchester, 30, 2.33, RP	530 tons
Scripps Coal Company, 1901-1902	12,000 tons
Mayall (D. S.), 1902-1905, slope, Springfield, 25-40, 4.5-5.0, RP	1,810 tons
Brozell (Horace), 1905-1906, drift, Rock Island, 45, 2.5, RP	800 tons
Gibboney (George), 1905-1907, drift, Springfield, 30, 6.0, RP	720 tons
Clemens (L.), 1905-1906, drift, Springfield, 25-40, 4.0-6.0, RP	400 tons
Clemens (Ell.), 1906-1910	<u>2,860</u> tons
	3,260 tons
Kinnamon (John), 1906-1910, —, Springfield, 12-60, 4.5-6.0, RP	9,901 tons
Conn (James), 1910-1915	<u>3,647</u> tons
	13,548 tons
Swope (George), 1907-1908, slope, Springfield, 35-60, 4.5-6.0, RP	132 tons
Swope & Lee, 1908-1909	991 tons
Lee (S. E.), 1909-1910	15,431 tons
Lee (William B.), 1910-1914	<u>4,121</u> tons
	20,675 tons
Crunan (H.), 1909-1910, drift, Springfield, —, 5.0, RP	105 tons
Kruzan (Frank), 1911-1915	1,585 tons
Kruzan (Henry), 1915-1916	350 tons
Kruzan (Ed), 1916-1918	<u>400</u> tons
	2,335 tons
drift, Springfield, 40, 3.0-5.0, RP and Colchester, 60-64, 2.5-2.83, RP	
Green (R. C.), 1911-1912, drift, Colchester, 40, 2.5, RP	350 tons
Carrison (George), 1911-1912, drift, Colchester, 45, 2.5, RP	300 tons
Weise (Dan), 1911-1912, drift, Springfield, 65, 4.5, RP	175 tons
Atherton (C. D.), 1913-1916, drift or slope, Springfield, 18-20, 5.33-6.0, RP	4,120 tons
Danner (Charles), 1914-1915, drift, Springfield, 60, 5.0, RP	575 tons
Baker (James W.), 1914-1916, slope, Springfield, 35-60, 5.25-5.33, RP	1,436 tons
David (C. O.), 1915-1916	80 tons
Gray (James) & Son, 1916-1928, slope, Springfield, 30, 6.0, RP	19,117 tons
Leonard (Carl), 1916-1924, drift, Colchester, —, 3.0, RP	5,920 tons

Leonard (C.), 1917-1918	200 tons	
Boozell (C. R.), 1917-1919	5,560 tons	
Bozell (J. E.), 1919-1921	<u>1,920</u> tons	
	7,480 tons	
Boozell (C. R.), 1917-1918	100 tons	
Smith (John A.), 1920-1924	1,650 tons	
Lovell (F.) & Smith, 1919-1920	283 tons	
Graham (Jesse), 1919-1921	1,075 tons	
McCanet (Joe), 1919-1921	350 tons	
Marshall (Carl), 1919-1921	345 tons	
Vaughn (John), 1920-1921	507 tons	
Vaughn (Harvey), 1923-1925	808 tons	
Marshall (Clara), 1920-1921	105 tons	
Cateron (Bruce), 1922-1924	2,135 tons	
Bates (S. L.), 1922-1924	640 tons	
Kriks (John), 1922-1924	1,060 tons	
Blagden (Arthur), 1922-1923	413 tons	
Kinz (H. R.), 1923-1924	640 tons	
Derry (Amos), 1923-1929, underground	1,400 tons	
Danner (Charles), 1924-1929, underground	6,545 tons	
Muzzy (Jake) & Finley (Charles), 1931-1931, surface	2,000 tons	
Rockwell (Ghlee), 1934-1936, shaft, Springfield, 30, 6.0, RP	8,322 tons	
Dawson (Fred), 1934-1934, underground	226 tons	
Pettit (Mike), 1935-1935, underground	44 tons	
Thompson (Deloss), 1935-1937, drift, Springfield, —, 4.5, RP	78 tons	
Orwig (Sindes), 1938-1941	<u>955</u> tons	
	1,033 tons	
Budd (Ed), No. 1 Mine, 1935-1936, underground	48 tons	
Ames (Robert), 1937-1938, drift, Colchester, —, 2.5, RP	215 tons	
SUMMUM		
Smithfield Coal Company, 1959-1960, surface	1,201 tons	mine index 4985
Shaffer (Solomon), 1889-1895, drift, Springfield, 40-43, 4.5-5.0, RP	1,760 tons	
Shaffer (Solomon), 1898-1900, drift, Springfield, 40, 6.0, RP	710 tons	

Bankert (John D.), 1889-1895, drift, Springfield, 40, 4.5, RP	735 tons
Valentine (Don), 1911-1915, drift or slope, Springfield, 15-60, 3.0-6.0, RP	1,570 tons
Valentine (Dan), 1915-1916	<u>450 tons</u>
	2,020 tons
Gilson (John), 1913-1916, drift, —, 40-50, 2.67-4.0, RP	1,283 tons
King (J. R.), 1919-1921	693 tons
Scrogum (Ben) & Shaffer, 1919-1921	991 tons
Raseler & Wallis, 1922-1923	980 tons
Rasler (Nelson), 1923-1924	<u>380 tons</u>
	1,360 tons
Barnsyndro & Rand, 1926-1926	740 tons
Gilson & Beckman, 1922-1923	800 tons
Gibson (John), 1923-1924	759 tons
Gilson & Beckham, 1924-1926	<u>3,340 tons</u>
	4,899 tons
Hubbs (R. R.), 1934-1935, underground	210 tons

INDEX OF MINES IN THE IPAVA QUADRANGLE

A. & M. Coal Company	39
Amax Coal Company	13
Ames (Robert)	43
Ashcroft (John)	41
Astoria Fuel Company	40
Atherton (C. D.)	42
Ayrshire Collieries Corporation	13
Baghtol (Choikly & Baghtol)	39
Baghtol (Notman & Baghtol)	42
Baker (James W.)	42
Bankert (John D.)	43
Barnsyndro & Rand	44
Bates (S. L.)	43
Battensburg (Joseph)	39
Batterton (C. E.)	41
Batterton (John)	40
Batterton (Seagum & Batterton)	41
Beck (Smith & Beck Coal Company)	34
Beckham (Gilson & Beckham)	44
Beckman (Gilson & Beckman)	44
Bectell & Choclate	39
Big 4 Coal Company	28
Big Four Mine	28
Blagden (Arthur)	43
Boozell (C. R.)	42, 43
Bottenberg & Engle	39
Bozell (J. E.)	43
Branson (Clio C.)	21
Branson Coal Company	35
Branson, Branson & Harriford	35
Branson, Matheny & Demass	35
Bronson (Henibud & Bronson)	22
Brook (Diamond & Brook)	40
Brooker (Diamond & Brooker)	40
Brown & Murray	42
Brozell (Horace)	42
Budd (Ed), No. 1 Mine	43
Budd (Ed), No. 2 Mine	41
Bushnell (M.)	40
Bussie (Ray)	40
Carles (Clarence)	41
Carrison (George)	42
Cass (R.)	42
Caswell (J. W.)	41
Cateron (Bruce)	43
Cawless (Worley & Cawless)	41
Choclate (Bectell & Choclate)	39
Choikly & Baghtol	39
Clemens (Ell.)	42
Clemens (L.)	42
Cole (Mayhew & Cole)	16
Conn (James)	42
Cook (Sam)	41
Crunan (H.)	42
Danner (Charles)	42, 43
Danner (Clarence)	39
Danner Brothers	41
David (C. O.)	42
Davis (Joe) & Brother	30
Davis (Joe) & Sons	30
Davis & Lomkany	30
Davis Brothers	30
Dawson (Fred)	43

Deary (George W.)	11
Delta Coal Corporation	13
Demass (Branson, Matheny & Demass)	35
Derry (Amos)	43
Diamond (Furnace & Diamond)	40
Diamond (J. W.)	41
Diamond (James)	39
Diamond (John)	41
Diamond (William) & Brother	41
Diamond & Brook	40
Diamond & Brooker	40
Donna (Jacob)	39
Duffy (Francis)	41
Eclipse Mine	39
Empire Mine	41
Engle (Bottenberg & Engle)	39
Ewing (D. T.)	40
Falkenstein (Charles J.)	40
Falkenstein (W. O.)	40
Finley (Muzzy & Finley)	43
Foutch (Frank)	40
Furnace & Diamond	40
Garrett (George E.)	40
Garrett (Smith & Garrett)	41
Geiselman (Temple)	40
Gem Mine	32
Gibboney (George)	42
Gibson (John)	44
Gilsom (John) & Scrogum	41
Gilson (John)	44
Gilson & Beckham	44
Gilson & Beckman	44
Gorey (Dean L.)	41
Grafton Coal Company, No. 2 Mine	33
Graham (Jesse)	43
Gray (James) & Son	42
Green (R. C.)	42
Green Brothers	39
Greene (Henry)	39
Grove (L. J.)	40
Hall (Charles)	40
Hamblin Coal Company	14
Hamilton (Floyd)	32
Hamilton (Lloyd)	32
Hamilton (Lloyd), Little Gem Mine	41
Harriford (Branson, Branson & Harriford)	35
Harvey Mine	38
Hendee (Isaac)	40
Hendee (L.)	40
Hendee Brothers	40
Henibud & Bronson	22
Heniford & Leonard	22
Herriford (Henry)	22
Herriford & Walton	23
Hines (John)	42
Hoole & Son	41
Hoopes (H. H.)	41
Hoops (Leonard)	39
Hopkins (Harold H.) Coal Company	12
Hopkins (Harold) Coal Company, No. 2 Mine	17
Hopkins Coal Company, No. 3 Mine	15
Hoppings (S. C.)	39
Hubbs (R. R.)	44
Illinois Valley Coal Company	28
James (Richard)	40

Jones (Robert) Coal Company	14
Jones Coal Company, No. 2 & No. 3 Mines.	19
Jones Coal Company, No. 2 Mine	18
Keller (Charles N.), No. 1 Mine	40
Keller (Charles), No. 2 Mine.	40
King (J. R.)	44
Kinnamon (John)	42
Kinz (H. R.)	43
Kriks (John)	43
Kruzan (Ed)	42
Kruzan (Frank)	42
Kruzan (Henry)	42
Lannery (E. R.)	39
Lee (S. E.)	42
Lee (Swope & Lee)	42
Lee (William B.)	42
Leonard (C.)	42
Leonard (Carl & Clair)	41
Leonard (Carl)	35, 37, 42
Leonard (Carl), Big Four Mine	28
Leonard (Clair), Big Four Mine.	28
Leonard (Heniford & Leonard)	22
Litchfield Coal Company	41
Little (Lois Shaw & M. M. Little)	25
Little Gem Coal Company, No. 2 Mine.	32
Little Gem Coal Company, No. 4 Mine.	32
Little Gem Mine	41
Lomkany (Davis & Lomkany)	30
Lovell (F.) & Smith	43
Lovell (Fred J.)	20
Markham (A.)	39
Markham (Thomas A.)	39
Marshall (Carl)	43
Marshall (Clara)	43
Matheny (Branson, Matheny & Demass)	35
Mavall (D. S.)	39
Mayall (D. S.)	42
Mayhew (Harry)	16
Mayhew & Cole	16
McBride (J. R.)	40
McCanet (Joe)	43
McClelland (Edward)	39
McClelland (Emery)	39
McDonald (Ray)	28
McPherson Coal Company	40
Mendenhall (Walton & Mendenhall)	26
Miles (Edward), Empire Mine.	41
Miller (A. J.)	39
Millock (Wilson)	39
Morse (Worley & Morse)	41
Murray (Brown & Murray)	42
Muzzy (Jake) & Finley (Charles)	43
Notman & Baghtol	42
Orwig (Sindes)	43
Otter Creek Valley Coal Company	27
Parr (Richardson & Parr)	40
Parr (Ross)	40
Parr Coal Company	28, 40
Perry (John)	39
Petefish (Lester)	41
Peters (William)	39
Pettit (Mike)	43
Plainview Mine.	24
Pribble (William)	26
Rand (Barnsydro & Rand)	44

Raseler & Wallis	44
Rasler (Nelson)	44
Rasler (Walick & Rasler)	41
Raster (Nelson W.)	40
Ratcliff (John)	40
Reed (A.)	40
Richardson & Parr	40
Robinson (L. S.)	23, 24
Robinson Coal Company	12
Rockell (Charles)	28
Rockwell (A. J.)	40
Rockwell (Ghlee)	43
Rockwell (R. W.)	40
Roddis (C. & R.)	42
Roddis (Charles)	42
Roddis (Robert)	42
Roddis (William)	42
Rumble (K. A.)	39
S. & L. Coal Company	25
Scott (Ben)	41
Scripps Coal Company	42
Scrogum (Ben)	41
Scrogum (Ben) & Shaffer	44
Scrogum (Gilsom & Scrogum)	41
Seagum & Batterton	41
Shaffer (Scrogum & Shaffer)	44
Shaffer (Solomon)	43
Shaffer (Thompson & Shaffer)	41
Shaffer Brothers Coal Company	34
Shaw (Louis) & Little (M. M.)	25
Shutter Coal Company	41
Sill Coal Company	31
Simons (L. A.)	28
Smith (Joe)	28
Smith (John A.)	43
Smith (Lovell & Smith)	43
Smith & Beck Coal Company	34
Smith & Garrett	41
Smithfield Coal Company	43
Stambaugh (George H.)	29, 36
Stephenson (Stephen)	39
Stevenson (Steve)	39
Stremmel Coal Company	41
Sun Spot Mine	13
Surprise Coal Company	40
Swing (Thomas)	39
Swope (George)	42
Swope & Lee	42
Thomas (A. H.)	24
Thompson (Deloss)	41, 43
Thompson (Russell)	41
Thompson & Shaffer	41
Thunderbird Collieries Corporation	13
Valentine (Dan)	43
Valentine (Don)	40, 43
Vaughn (Harvey)	43
Vaughn (John)	43
Wade & Weese	27
Walick & Rasler	41
Wallis (Raseler & Wallis)	44
Walton (Herriford & Walton)	23
Walton & Mendenhall	26
Walton & Weese	27
Weese (Wade & Weese)	27
Weese (Walton & Weese)	27

Weise (Dan)	42
Whaley (Henry)	41
Wickert (Conrad)	10
Willick (Wilson)	39
Wilson (Charles)	39
Wilson (T. E.)	40
Woodford (W. S.)	9
Worley & Cawless	41
Worley & Morse	41
Wrestler (Elzie)	21
Wrestler (Harris)	21

