

Williamson County, Illinois

This map accompanies the Coal Mines Directory for the Marion Quadrangle and maps of mines in the Springfield, Davis & Tarter Coals. Consult the directory for a complete explanation of the information shown on this map.



- Final Mine Map
- Not Final Mine Map
- Undated Mine Map
- - - Incomplete Mine Map
- Secondary Source Map

- ✱ Strip Mine Tipple - Active
- ✱ Strip Mine Tipple - Abandoned
- ☐ Mine Shaft - Active
- ☐ Mine Shaft - Abandoned
- ☐ Mine Slope - Active
- ☐ Mine Slope - Abandoned
- Mine Drift - Active
- Mine Drift - Abandoned
- Air Shaft
- Uncertain Location
- ☐ Uncertain Type of Opening

Company
Mine Name
ISGS Index No., Years of Operation

Please check the Coal Section at the Illinois State Geological Survey's web site at <https://www.isgs.illinois.edu> for the most up-to-date version of these products.

Note that each quadrangle scale mined-out area map requires the use of the associated text directory for full explanation of map features and mine attributes. Also note that some quadrangles have multiple seams of mining and therefore more than one map may be available for a particular quadrangle. Please take care to check for multiple maps, as extensive mining may exist in the other seams.

The maps and digital files used for these studies were compiled from data obtained from a variety of public and private sources and have varying degrees of completeness and accuracy. This compilation map presents reasonable interpretation of the geology of the area and is based on available data. Locations of some mine features may be offset by 500 feet or more due to errors in the original source maps, the compilation process, digitizing, or a combination of these factors. These data are not intended for use in site-specific screening or decision-making. Use of these documents does not eliminate the need for detailed studies to fully understand the geology of a specific site. The Illinois Geological Survey does not warrant, either explicitly or implicitly, any guarantee, expressed or implied, regarding the correctness of the interpretations presented in this data set and accept no liability for the consequences of decisions made by others on the basis of the information presented here.

These maps were designed for use at 1:24,000. Enlarging the map may reduce accuracy, as the original scale of the source maps used to compile the outlines shown varies from 1:400 to 1:150,000, and some mine locations are known only from text descriptions. See the accompanying mine directory for the original scale of the source map used for a specific mine to check accuracy of a given portion of the map. Areas with no mines shown may still be undetermined; see the unlocated mines list at the back of each mine directory.

The image of the U.S.G.S. topographic base map was projected from the original UTM to Lambert Conformal Conic.

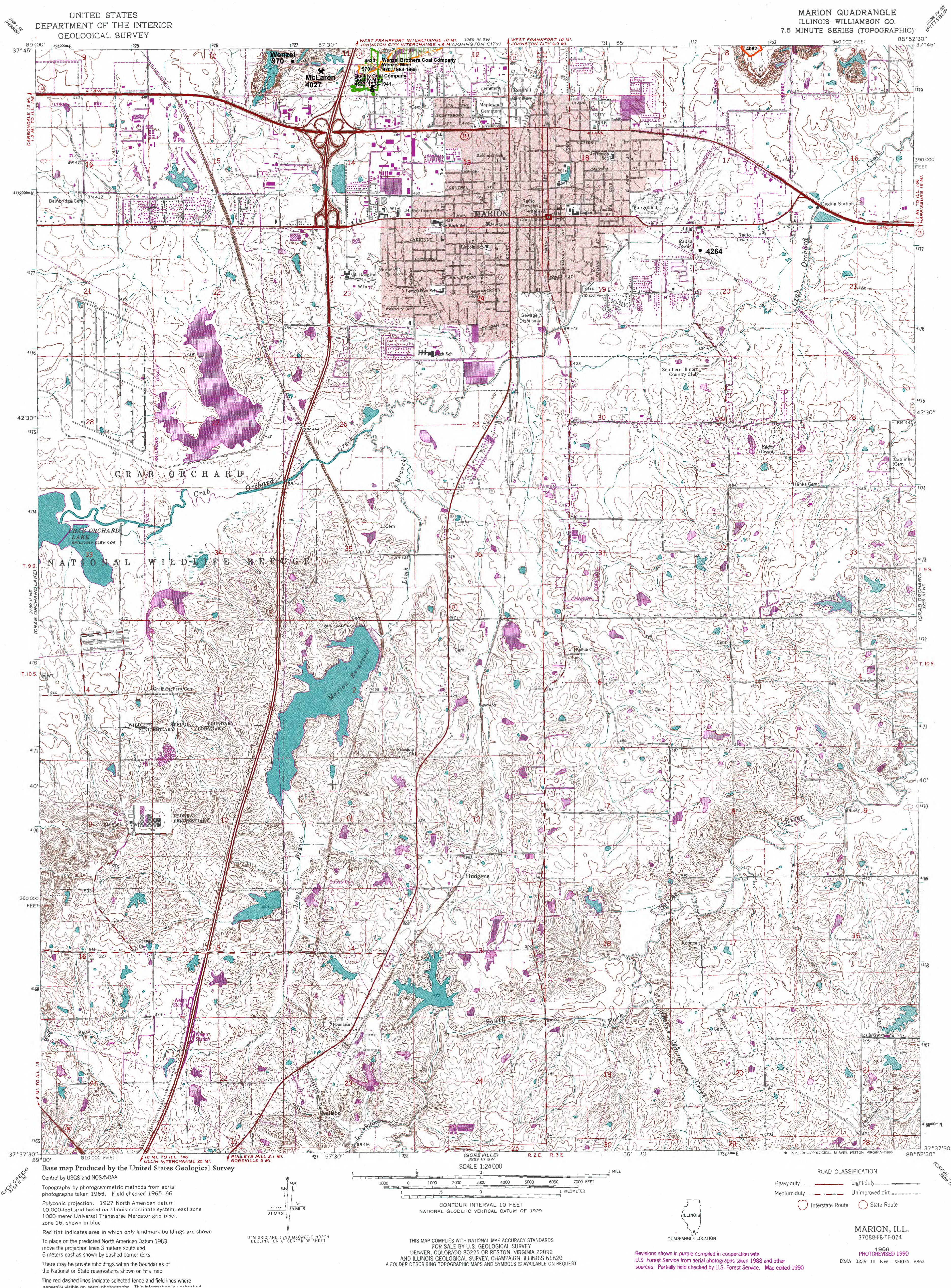
**Prairie Research Institute
Illinois State Geological Survey
615 E. Peabody Dr.
Champaign, IL 61820**

July 29, 2003
Revised May 24, 2005 & February 1, 2023

Williamson County, Illinois

Springfield Coal

This map accompanies the Coal Mines Directory for the Marion Quadrangle and maps of mines in the Herrin, Davis & Tarter Coals. Consult the directory for a complete explanation of the information shown on this map.



Mining Method

- | | |
|--|----------------------------------|
| | Room & Pillar (RP) |
| | Room & Pillar Basic (RPB) |
| | Modified Room & Pillar (MRP) |
| | Room & Pillar Panel (RPP) |
| | Blind Room & Pillar (BRP) |
| | Checkerboard Room & Pillar (CRP) |
| | High Extraction Retreat (HER) |
| | Longwall (LW) |
| | Underground, Method Unknown |
| | Strip Mine |
| | Auger Mine |
| | General Area of Mining |

Other Areas Depicted

- 
- Non-Coal Mines

Source of Mine Outline

- Final Mine Map
- Not Final Mine Map
- Undated Mine Map
- Incomplete Mine Map
- Secondary Source Map

Tipple, Shaft, Slope, Drift Locations

- * Strip Mine Tipple - Active
- * Strip Mine Tipple - Abandoned
- ☑ Mine Shaft - Active
- ☒ Mine Shaft - Abandoned
- ☑ Mine Slope - Active
- ☒ Mine Slope - Abandoned
- ☞ Mine Drift - Active
- ☒ Mine Drift - Abandoned
- Air Shaft
- Uncertain Location
- Uncertain Type of Opening

Other Points Depicted

- Non-Coal Mines

Location



Mine Annotation
(space permitting)

Company
Mine Name
ISGS Index No., Years of Operation

Disclaimer

Please check the Coal Section at the Illinois State Geological Survey's web site at <https://www.isgs.illinois.edu> for the most up-to-date version of these products.

Note that each quadrangle scale mined-out area map requires the use of the associated text directory for full explanation of map features and mine attributes. Also note that some quadrangles have multiple seams of mining and therefore more than one map may be available for a particular quadrangle. Please take care to check for multiple maps, as extensive mining may exist in the other seams.

The maps and digital files used for these studies were compiled from data obtained from a variety of public and private sources and have varying degrees of completeness and accuracy. This compilation map presents reasonable interpretation of the geology of the area and is based on available data. Locations of some mine features may be offset by 500 feet or more due to errors in the original source maps, the compilation process, digitizing, or a combination of these factors. These data are not intended for use in site-specific screening or decision-making. Use of these data for purposes not intended may result in the need for additional geologic data for a specific site. The Illinois State Geological Survey, Research Institute, or the University of Illinois make no warranties, expressed or implied, regarding the correctness of the interpretations presented in this data set and accept no liability for the consequences of decisions made by others on the basis of the information presented here.

These maps were designed for use at 1:24,000. Enlarging the map may reduce accuracy, as the original scale of the source maps used to compile the outlines shown varies from 1:400 to 1:150,000, and some mine locations are known only from text descriptions. See the accompanying mine directory for the original scale of the source map used for a specific mine to check accuracy of a given portion of the map. Areas with no mines shown may still be undetermined; see the unlocated mines list at the back of each mine directory.

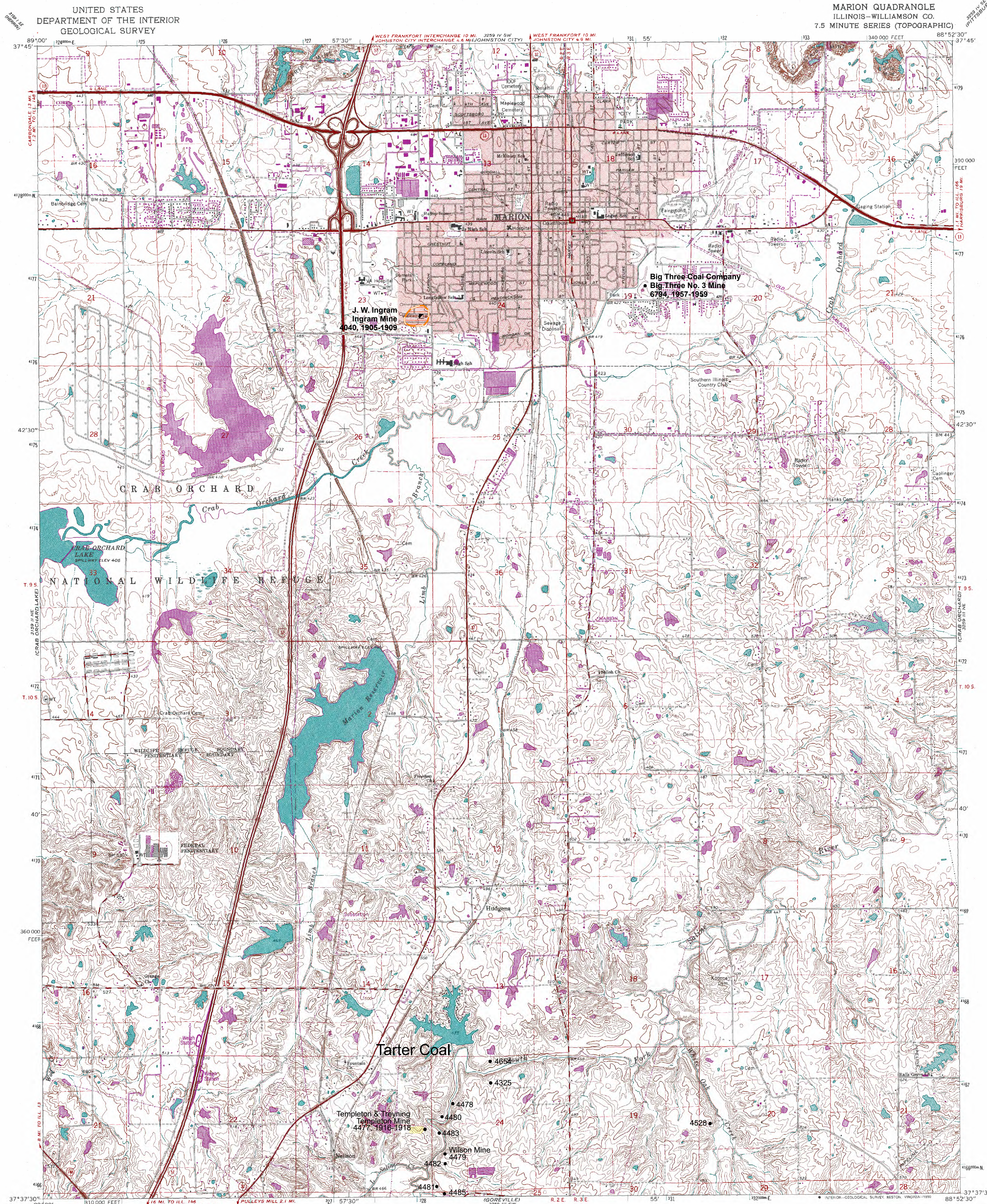
The image of the U.S.G.S. topographic base map was projected from the original UTM to Lambert Conformal Conic.

I ILLINOIS
Illinois State Geological Survey
PRAIRIE RESEARCH INSTITUTE

**Prairie Research Institute
Illinois State Geological Survey
615 E. Peabody Dr.
Champaign, IL 61820**

Mine Outlines Compiled by
Jennifer M. Obrad

July 29, 2003
Revised May 24, 2005 & February 1, 2023



Coal Mines in Illinois Marion Quadrangle

Williamson County, Illinois

Davis & Tarter Coals

This map accompanies the Coal Mines Directory for the Marion Quadrangle and maps of mines in the Springfield and Herrin Coals. Consult the directory for a complete explanation of the information shown on this map.

Mining Method

- Room & Pillar (RP)
- Room & Pillar Basic (RPB)
- Modified Room & Pillar (MRP)
- Room & Pillar Panel (RPP)
- Blind Room & Pillar (BRP)
- Checkerboard Room & Pillar (CRP)
- High Extraction Retreat (HER)
- Longwall (LW)
- Underground, Method Unknown
- Strip Mine
- Auger Mine
- General Area of Mining

Other Areas Depicted

- Non-Coal Mines

Source of Mine Outline

- Final Mine Map
- Not Final Mine Map
- Undated Mine Map
- Incomplete Mine Map
- Secondary Source Map

Tipple, Shaft, Slope, Drift Locations

- Strip Mine Tipple - Active
- Strip Mine Tipple - Abandoned
- Mine Shaft - Active
- Mine Shaft - Abandoned
- Mine Slope - Active
- Mine Slope - Abandoned
- Mine Drift - Active
- Mine Drift - Abandoned
- Air Shaft
- Uncertain Location
- Uncertain Type of Opening

Other Points Depicted

- Non-Coal Mines

Location



Mine Annotation (space permitting)

Company
Mine Name
ISGS Index No., Years of Operation

Disclaimer

Please check the Coal Section at the Illinois State Geological Survey's web site at <https://www.isgs.illinois.edu> for the most up-to-date version of these products.

Note that each quadrangle scale mined-out area map requires the use of the associated text directory for full explanation of map features and mine attributes. Also note that some quadrangles have multiple seams of mining and therefore more than one map may be available for a particular quadrangle. Please take care to check for multiple maps, as extensive mining may exist in the other seams.

The maps and digital files used for these studies were compiled from data obtained from a variety of public and private sources and have varying degrees of completeness and accuracy. This compilation map presents reasonable interpretation of the geology of the area and is based on available data. Locations of some mine features may be offset by 500 feet or more due to errors in the original source maps, the compilation process, digitizing, or a combination of these factors. These data are not intended for use in site-specific screening or decision-making. Use of these documents does not eliminate the need for detailed studies to fully understand the geology of a specific site. The Illinois State Geological Survey, Prairie Research Institute, or the University of Illinois make no guarantee, expressed or implied, regarding the correctness of the interpretations presented in this data set and accept no liability for the consequences of decisions made by others on the basis of the information presented here.

These maps were designed for use at 1:24,000. Enlarging the map may reduce accuracy, as the original scale of the source maps used to compile the outlines shown varies from 1:400 to 1:150,000, and some mine locations are known only from text descriptions. See the accompanying mine directory for the original scale of the source map used for a specific mine to check accuracy of a given portion of the map. Areas with no mines shown may still be undermined; see the unlocated mines list at the back of each mine directory.

The image of the U.S.G.S. topographic base map was projected from the original UTM to Lambert Conformal Conic.

ILLINOIS
Illinois State Geological Survey
PRAIRIE RESEARCH INSTITUTE

Prairie Research Institute
Illinois State Geological Survey
615 E. Peabody Dr.
Champaign, IL 61820

Mine Outlines Compiled by
Jennifer M. Obrad

July 29, 2003
Revised May 24, 2005 & February 1, 2023

DIRECTORY OF COAL MINES IN ILLINOIS 7.5-MINUTE QUADRANGLE SERIES MARION QUADRANGLE WILLIAMSON COUNTY

Jennifer M. Obrad & Cheri Chenoweth



Department of Natural Resources
ILLINOIS STATE GEOLOGICAL SURVEY
2003
REVISED 2005, 2022

**DIRECTORY OF COAL MINES IN ILLINOIS
7.5-MINUTE QUADRANGLE SERIES
MARION QUADRANGLE
WILLIAMSON COUNTY**

2003
REVISED 2005, 2022

ILLINOIS STATE GEOLOGICAL SURVEY
William Shilts, Chief

Natural Resources Building
615 East Peabody Drive
Champaign, Illinois 61820

Phone 1-217-244-4610
Fax 1-217-333-2830

Cover photo Track-mounted duckbill loading machine at a Peabody Coal Company mine, ca. 1915.

DISCLAIMER: The accuracy and completeness of mine maps and directories vary with the availability of reliable information. Maps and other information used to compile this mine map and directory were obtained from a variety of sources and the accuracy of some of the original information cannot be verified. Consequently, the Illinois State Geological Survey (ISGS) cannot guarantee the mine maps are free of errors and disclaims any responsibility for damages that may result from actions or decisions based on them.

The ISGS updates the maps and directories periodically, and welcomes any new information or corrections. Please contact the Coal Section of the ISGS at the address shown on the title page of this directory, or telephone (217) 244-4610.

Printed by authority of the State of Illinois/2005

CONTENTS

INTRODUCTION	1
MINING IN THE MARION QUADRANGLE	1
PART I EXPLANATION OF MAP AND MINE SUMMARY SHEET	2
INTERPRETING THE MAP	2
Mine Type and Mining Method	2
SOURCE MAPS	3
POINTS AND LABELS	3
INTERPRETING A MINE SUMMARY SHEET	6
REFERENCES	8
PART II DIRECTORY OF MINES IN THE MARION QUADRANGLE	9
MINE SUMMARY SHEETS	9
Mine Index 173	
Henderson & Wallace Coal Company, Henderson & Wallace No. 1 Mine	9
Mine Index 941	
Arrowhead Coal Company, Arrowhead No. 1 Mine	10
Mine Index 970	
Wenzel Brothers Coal Company, Wenzel Mine	11
Mine Index 3187	
Wenzel Coal Company, Wenzel Pit No. 5	12
Mine Index 3978	
Coal Stripping Company, Coal Stripping No. 1 Mine	13
Mine Index 4018	
Southern Jewel Coal Company, Southern Jewel Mine	14
Mine Index 4027	
McLaren Equipment Company, McLaren Mine	15
Mine Index 4028	
Peabody Coal Company, Peabody No. 2 Mine	16
Mine Index 4029	
W. A. Wilson, Wilson Mine	17
Mine Index 4040	
J. W. Ingram, Ingram Mine	18
Mine Index 4041	
Peabody Coal Company, Utility Mine	19
Mine Index 4062	
Gentry Coal Company, Gentry No. 7 Mine	20
Mine Index 4063	
Associated Coal Company, Inc., Associated No. 1 Mine	21
Mine Index 4442	
Scottsboro Coal Company, Scottsboro Mine	22
Mine Index 4477	
Templeton & Treyning, Templeton Mine	23
Mine Index 4479	
Wilson Mine	24
Mine Index 4533	
Quality Coal Company, Bradley Mine	25
Mine Index 6794	
Big Three Coal Company, Big Three No. 3 Mine	26
Mine Index 6799	
Davis Coal Company, Davis Mine	27
OTHER MINES SHOWN ON MARION QUADRANGLE	28
Mine Index 4264	28
Mine Index 4325	28
Mine Index 4478	28
Mine Index 4480	28

Mine Index 4481	28
Mine Index 4482	28
Mine Index 4483	28
Mine Index 4485	28
Mine Index 4528	28
Mine Index 4654	28
MINES WHOSE LOCATIONS ARE NOT KNOWN, MARION QUADRANGLE	28
INDEX OF MINES IN MARION QUADRANGLE	37

INTRODUCTION

Coal has been mined in 76 counties of Illinois. More than 7,400 coal mines have operated since commercial mining began in Illinois about 1810; fewer than 30 are currently active. To detail the extent and location of coal mining in Illinois, the Illinois State Geological Survey (ISGS) has compiled maps and directories of known coal mines. The ISGS offers maps at a scale of 1:100,000 and accompanying directories for each county in which coal mining is known to have occurred. Maps at a scale of 1:24,000 and accompanying directories such as this are available for selected quadrangles. Contact the ISGS for a list of these quadrangles.

These larger scale maps show the approximate positions of mines in relation to surface features such as roads and water bodies, and indicate the mining method used and the accuracy of the mine boundaries. The maps are useful for locating mine boundaries relative to specific properties and for assessing the potential for subsidence in an area. Mine boundaries compiled from final mine surveys are generally shown within 200 feet of their true position. As a result of poor cartographic quality and inaccuracies in the original mine surveys, boundaries of some older mines may be mislocated on the map by 500 feet or more. Original mine maps should be consulted in situations that require precise delineation of mine boundaries or internal workings of mined areas.

The directory serves as a key to the accompanying mine map and provides basic information on the coal mines. The directory is composed of two parts. Part I explains the symbols and patterns used on the accompanying map and the summary data presented for each mine. Part II numerically lists the mines in the quadrangle and summarizes the geology and production history of each mine.

MINING IN THE MARION QUADRANGLE

The outcrops of the Herrin and Springfield Coals are very close in the northern part of the Marion Quadrangle, which allowed both seams to be surface-mined. Since both coals were shallow, this enabled many small operators to mine one or both seams. The Herrin Coal is the thicker of the two, reportedly up to 9 feet thick, but more generally around 6 feet. The Springfield Coal ranged between 5 and 6 feet thick.

In the southern part of the Marion Quadrangle, a thin coal correlatable to the Tartar Coal of western Illinois (or Coal 4a of western Kentucky) was drift mined in the many gullies. The names and operating dates of few of these mines are known, but most were quite small in extent. This coal ranged between 3 and 4 feet thick.

PART I EXPLANATION OF MAP AND MINE SUMMARY SHEET

INTERPRETING THE MAP

The map accompanying this directory shows the location of coal mines known to be present in the quadrangle. The map, corresponding to a U.S. Geological Survey (USGS) 7.5-minute quadrangle, covers an area bounded by lines of latitude and longitude 7.5-minutes apart. In Illinois, a quadrangle is approximately 6.5 miles east to west and 8.5 miles north to south, an area of about 56 square miles. The USGS generally offers one map of mines per quadrangle. In some areas where extensive mining occurred in two or more overlapping seams, separate maps are compiled for mines in each seam to maintain readability of the map.

Mine Type and Mining Method

The mine type is indicated on the map by pattern color: green represents surface mines; red and yellow represent underground mines. The red patterns are used for areas of underground mining that are documented by a primary or secondary source map. A yellow pattern is used for cases where no map of the mine workings is available, but a general area of mining can be inferred from property maps or production figures. The patterns indicate the main mining methods used in underground mines. The methods are (1) room and pillar and (2) high extraction. The method used gives some indication of the amount and pattern of coal extraction within each mined area, and has some influence on the timing and type of subsidence that can occur over a mine.

The following discussion and illustrations of mining methods are based on Guither et al. (1984).

In room-and-pillar mines, coal is removed from haulage-ways (entries) and selected areas called rooms. Pillars of unmined coal are left between the rooms to support the roof. Depending on the size of rooms and pillars, the amount of coal removed from the production areas will range from 40% to 70%.

Room and Pillar - mining is divided into six categories:

- room-and-pillar basic (RPB, fig. 1A), an early method that did not follow a preset mining plan and therefore resulted in very irregular designs;
- modified room and pillar (MRP, fig. 1B);
- room-and-pillar panel (RPP, fig. 1C);
- blind room and pillar (BRP, fig. 1D);
- checkerboard room and pillar (CRP, fig. 1E);
- room and pillar (RP), a classification used when the specific type of room-and-pillar mining is unknown.

Blind and checkerboard are the most common types of room-and-pillar mining used in Illinois today. The knowledge of room-and-pillar mining methods gives a trained engineer information on the nature of subsidence that may occur. A more extensive discussion of subsidence can be found in Bauer et al. (1993).

High-extraction These mining methods are subdivided into high-extraction retreat (HER, Fig 1F) and longwall (LW, Fig 1G, 1H). In these methods, much of the coal is removed within well defined areas of the mine. Subsidence of the surface above these areas occurs within weeks. Once the subsidence activity ceases, the potential for further movement over these areas is low; however, subsidence may continue for several years after mining.

High-extraction retreat mining is a form of room-and-pillar mining that extracts most of the coal. Rooms and pillars are developed in the panels, and the pillars are then systematically removed (fig. 1F).

In early (pre-1960) longwall mines, mining advanced in multiple directions from a central shaft (fig. 1G). Large pillars of coal were left around the shaft, but all coal was removed beyond these pillars. Miners placed rock and wooden props and cribs in the mined-out areas to support the mine roof. The overlying rock gradually settled onto these supports, thus producing subsidence at the surface. In post-1959 longwall mines, room-and-pillar methods have been used to develop the main entries of the mine and panel areas. Modern longwall methods extract 100 percent of the coal in the panel areas (fig. 1H).

SOURCE MAPS

Mine outlines depicted on the map are, whenever possible, based on maps made from original mine surveys. The process of compiling and digitizing the quadrangle map may produce errors of less than 200 feet in the location of mine boundaries. Larger errors of 500 feet or more are possible for mines that have incomplete or inaccurate source maps.

Because of the extreme complexity of some mine maps, detailed features of mined areas have been omitted. The digitized mine boundary includes the exterior boundary of all rooms or entries that were at least 80 feet wide or protruded 500 feet from the main mining area. Unmined areas between mines are shown if they are at least 80 feet wide; unmined blocks of coal within mines are shown if they are at least 400 feet on each side. Original source maps should be consulted when precise information on mine boundaries or interior features is needed.

The mine summary sheet lists the source maps used to determine each mine outline. The completeness of map sources is indicated on the map by a line symbol at the mine boundary. Source maps are organized in five categories.

Final mine map The mine outline was digitized from an original map made from mine surveys conducted within a few months after production ceased. The date of the map and the last reported production are listed on the summary sheet.

Not a final map The mine is currently active or the mine outline was made from a map based on mine surveys conducted more than a few months before production ceased. This implies the actual mined-out area is probably larger than the outline on the map. The mine summary sheet indicated the dates of source maps and the last reported production, as well as the approximate tonnage mined between these two dates (if the mine is abandoned). The summary sheet also lists the approximate acreage mined since the date of the map and, in some cases, indicates the area where additional mining may have taken place. This latter information is determined by locating on the map the active faces relative to probable boundaries of the mine property.

Undated map The source map was undated, so it may or may not be based on a final mine survey. When sufficient data are available, the probable acreage of the mined area is estimated from reported production, average seam thickness and a recovery rate comparable to other mines in the area. This information is listed in the summary sheet for the mine.

Incomplete map The source map did not show the entire mine. The summary sheet indicates the missing part of the mine map and the acreage of the unmapped area, which is estimated from the amount of coal known to have been produced from the mine.

Secondary source map The original mine map was not found so the outline shown was determined from secondary sources (e.g., outlines from small-scale regional maps published in other reports). The summary sheet describes the secondary sources.

POINTS AND LABELS

The locations of all known mine openings (shafts, slopes, and drifts) and surface mine tipples are plotted on the map. Tipples are areas where coal was cleaned, stockpiled, and loaded for shipping.

Only openings or tipples are plotted for mines without source maps. If the precise locations of these features are unknown, a special symbol is used to indicate the approximate location of the mine.

Each mine on the map is labeled with the names of the mine and operating company, ISGS mine index number, and years of operation (if known) if space permits. A seam designation is given on maps where more than one seam was mined. For a mine that operated under more than one name, only the most recent name is generally given. When a mine changed names or ownership shortly before closing, an earlier name is listed. All company and mine names are listed on the mine summary sheet in the directory, under the production history segment.



Figure 1 Mining methods: (A) room-and-pillar basic (RPB), (B) modified room and pillar (MRP), (C) room-and-pillar panel (RPP), (D) blind room and pillar (BRP).



Figure 1 (cont.) Mining methods: (E) checkerboard room and pillar (CRP), (F) high extraction retreat (HER), (G) early (pre-1960) longwall, (H) post-1959 longwall



Figure 2 Generalized stratigraphic section, showing approximate vertical relations of coals in Illinois.

INTERPRETING A MINE SUMMARY SHEET

The mine summary sheet is arranged numerically by mine index number. Index numbers are shown on the map and in the mine listing. The mine summary sheet provides the following information (if available).

Company and mine name The last company or owner of the mine is used, unless no production was recorded for the last owner. In that case, the penultimate owner is listed. Mines often have no specific name; in these cases, the company name is also used as the mine name.

Type *Underground* denotes a subsurface mine in which the coal was reached through a shaft, slope, or a drift entry. *Surface* denotes a surface, open pit or strip mine.

Total mined-out acreage shown The total acreage of the mined area mapped, including any acreage mined on adjacent quadrangles, is calculated from the digitized outline of the mine. The acreage of large barrier pillars depicted on the map is excluded from the mined-out acreage. Small pillars not digitized are included in the acreage calculation. If the mine outline is not based on a final mine map, the acreage is followed by an estimate of additional acres that may have been mined. The estimate is determined from reported mine production, approximate thickness of the coal, and recovery rates calculated from nearby mines that used similar mining methods.

SHAFT, SLOPE, DRIFT OR TIPPLE LOCATIONS

Shaft, slope, drift, or tippie locations Locations of all known former entry points to underground mines or the location of coal cleaning, tippie, and shipping equipment used by the mine's facility are listed. The location is described in terms of county, township and range (Twp-Rge), section, and location within the section by quarters. NE SW NW, for instance, would describe the location in the northeast quarter of the southwest quarter of the northwest quarter. When sections are irregular in size, the quarters remain the same size and are oriented (or "registered") from the southeast corner of the section. Approximate footage from the section lines (FEL = from east line, FNL = from north line, for example) is given when that information is known; this indicates a surveyed location and is not derived from maps. Entry points are also plotted on the map and coded for the type of entry or tippie. A mine opening may have had many purposes during the life of the mine. Old hoist shafts are often later used for air and escape shafts; this information is included in the directory when known. The tippie for underground mines was generally located near the main shaft or slope. At surface mines, coal was sometimes hauled to a central tippie several miles from the mine pit.

GEOLOGY

Seam(s) mined The name of the coal seam(s) mined is listed, if known. If multiple seams were mined, they are all listed, although the mined-out area for each seam may be shown on separate maps. Figure 2 shows the stratigraphic section of the coal-bearing interval in Illinois, and the vertical relations among the coals.

Depth The depth to the top of the seam in the vicinity of the shaft is listed, if known. The depth is determined from notes made by geologists who visited the mine during its operation or from drill hole data in ISGS files. Depth generally varies little over the extent of a mine; however, reported depths for an individual mine may vary. Depth for surface-mined coals varies, and is usually represented as a range.

Thickness The approximate thickness of the mined seam is shown, if known. Thickness also comes from notes of geologists who visited the mine during its operation or from borehole data in ISGS files. Minimum, maximum, and average thicknesses are given when this information is available.

Mining method The principal mining method used at the mine (figs. 1A-H) is listed. See the mining methods section at the beginning of this directory for a discussion of this parameter.

Geologic problems reported Any known geologic problems, such as faults, water seepage, floor heaving, and unstable roof, encountered in the mine are reported. This information is from notes made by ISGS geologists who visited the mine, or from reports by mine inspectors published by the Illinois Department of Mines and Minerals, or from the source map(s). Geologic problems are not reported for active mines.

PRODUCTION HISTORY

Production history Tons of coal produced from the mine by each mine owner are totaled. When the source map used for the mine outline is not a final mine map, the tonnage produced since the date of the map is identified. For mines that extend into adjacent quadrangles, the tonnage reported includes areas mined in adjacent quadrangles.

SOURCE OF DATA

Source map This section lists information about the map(s) used to compile the mine outline and the locations of tipples and mine openings. In some cases more than one source map was used. For example, a map drawn before the mine closed may provide better information on original areas of the mine than a later map. When more than one map was used, the bibliography section explains what information was taken from each source.

Date The date of the most recent mine survey listed on the source map is reported.

Original scale The original scale of the source map is listed. Many maps are photo-reductions and are no longer at their original scale. The original scale gives some indication of the level of detail of the mine outline and the accuracy of the mine boundary relative to surface features. Generally, the larger the scale, the greater the accuracy and detail of the mine map. Mine outlines taken from source maps at scales smaller than 1:24,000 may be highly generalized and may well be inaccurately located with respect to surface features.

Digitized scale The scale of the digitized map is reported. The scale may be different from that of the original source map. In many cases the digitized map was made from a photo-reduction of the original source map, or the source map was not in a condition suitable for digitizing and the mine boundaries were transferred to another base map.

Map type Source maps are classified into five categories to indicate the probable completeness of the map. See discussion of source maps in the previous section.

Annotated bibliography Sources that provide information about the mine are listed, with the data taken from each source. Some commonly used sources are described below. Full bibliographic references are given for all other sources. Unless otherwise noted, all sources are available for public inspection at the ISGS.

Coal Reports Published since 1881, these reports contain tabular data on mine ownership, production, employment, and accidents. Some volumes include short descriptions made by mine inspectors of physical features and conditions in selected mines.

Directory of Illinois Coal Mines This source is a compilation of basic data about Illinois coal mines, originally gathered by ISGS staff in the early 1950s. Sources used for this directory are undocumented, but they are primarily Illinois Department of Mines and Minerals annual reports, ISGS mine notes, and coal company officials.

ENR Document 85/01, Guither, H. D., J. K. Hines, and R. A. Bauer, 1985 The Economic Effect of Underground Mining Upon Land Used for Illinois Agriculture: Illinois Department of Energy and Natural Resources Document 85/01, 185 p.

Microfilm map The U.S. Bureau of Mines maintains a microfilm archive of mine maps. A microfilm file for Illinois is available for public viewing at the ISGS.

Mine notes ISGS geologists have visited mines or contacted mine officials throughout the state since the early 1900s. Notes made during these visits range from brief descriptions of the mine location to long narratives (including sketches) of mining conditions and geology.

Federal Land Bank of St. Louis, Preliminary Reports on Subsidence Investigations Mining engineers working for the Federal Land Bank of St. Louis mapped areas of subsidence due to coal mining in the early 1930s. These reports often include county maps of mine properties with mined-out areas including shaft locations, as well as subsidence areas.

REFERENCES

Bauer, R. A., B. A. Trent, and P. B. Dumontelle, 1993, Mine Subsidence in Illinois: Facts for the Homeowner Considering Insurance: Illinois State Geological Survey, Environmental Geology Note 144, 16p.

Guither, H. D., J. K. Hines, and R. A. Bauer, 1985, The Economic Effects of Underground Mining Upon Land Used for Illinois Agriculture: Illinois Department of Energy and Natural Resources Document 85/01, 185p.

PART II DIRECTORY OF MINES IN THE MARION QUADRANGLE

MINE SUMMARY SHEETS

A summary sheet on the geology and production history of each mine in the Marion Quadrangle is provided. These summary sheets are arranged numerically by mine index number. Consult Part I for a complete explanation of the data listed in the summary sheet.

Mine Index 173

Henderson & Wallace Coal Company, Henderson & Wallace No. 1 Mine

Type: Underground Total mined-out acreage shown: 320 This includes the area for mine index 4061, Old Bruce Mine (formerly Henderson & Wallace No. 2 Mine).

SHAFT, SLOPE, DRIFT or TIPPLE LOCATIONS

Type	County	Township-Range	Section	Quarters-Footage
Main shaft	Williamson	9S 3E	8	SE SE NE

GEOLOGY

Seam(s) Mined	Depth (ft)	Thickness (ft)			Mining Method
		Min	Max	Ave	
Herrin	65-67	5.0	8.3 *	6.5	RP

* Maximum thickness not specifically stated, but samples were taken from areas where the total thickness ranged from 7.0 to 8.3 feet.

Geologic Problems Reported: The northern part of the mine had good limestone roof, but the floor was 4 to 5 feet of claystone that heaved a little. The roof over the rest of the mine was gray shale, and it tended to fall badly when it was thick. Even this poor roof thinned to the south, nearing the subcrop and this prevented further mine expansion southward. Water entered the mine from surface gravels. The center part of the seam contained many shaly partings. Some pyrite and calcite or gypsum was present in vertical streaks. Some small local faults occurred in the coal. A roll forced the coal down 3 feet. In one location, boulder concretions made mining impossible; the boulders appeared to be limestone and ranged from 1 to 3 feet in diameter.

PRODUCTION HISTORY

Company	Mine Name	Years	Production (tons)
Henderson & Wallace Coal Company	Henderson & Wallace No. 1	1917-1924	<u>1,102,890</u> 1,102,890

Last reported production: March 1924

SOURCES OF DATA

Source Map	Date	Original Scale	Digitized Scale	Map Type
ISGS map library, 4103.W52 i5.1-189	8-11-1934	1:63360	1:63360	Secondary source

Annotated Bibliography (data source, brief description of information)

Coal Reports - Production, ownership, years of operation.

Directory of Illinois Coal Mines (Williamson County) - Mine names, mine index, ownership, years of operation.

Mine notes (Williamson County) - Mine type, shaft location, seam, depth, thickness, geologic problems.

ISGS map library, 4103.W52 i5.1-189, work map for Federal Land Bank Report map - Shaft location, mine outline.

W.J. Nelson (ISGS), Catalog of Coal Mines in Williamson County, 2003 - Geologic problems.

Mine Index 941**Arrowhead Coal Company, Arrowhead No. 1 Mine**

Type: Surface Total mined-out acreage shown: 41 Production indicates less than 1 acre was mined. However, production was primarily from surface mining pillars from abandoned underground workings, and the size of the mine will be much larger. The pits are in the Johnston City Quadrangle to the north and are part of a larger surface-mined area that was mined by numerous small operations.

SHAFT, SLOPE, DRIFT or TIPPLE LOCATIONS

Type	County	Township-Range	Section	Quarters-Footage
Tipple	Williamson	9S 2E	11	SE NE SE
Pit	Williamson	9S 2E	11	NE NW SE & NW NE SE

GEOLOGY

Seam(s) Mined	Depth (ft)	Thickness (ft)			Mining Method
		Min	Max	Ave	
Herrin	20			8.0	Surface

Geologic Problems Reported: Most of the mining by this company was surface-mining through pillars left in abandoned underground mines.

PRODUCTION HISTORY

Company	Mine Name	Years	Production (tons)
Arrowhead Coal Company	Arrowhead No. 1	1978-1978	<u>5,307</u> 5,307

Last reported production: October 1978

SOURCES OF DATA

Source Map	Date	Original Scale	Digitized Scale	Map Type
Mine notes (W. J. Nelson)	11-17-1978	(text only)	1:24000 *	Secondary source
Department of Mines & Minerals	Undated			Secondary source

* The mine location was plotted onto a 1:24,000 USGS topographic map from the mine location description and digitized.

Annotated Bibliography (data source, brief description of information)

Coal Reports - Production, ownership, years of operation, depth, thickness, mining method.
 Directory of Illinois Coal Mines (Williamson County) - Mine names, mine index, ownership, years of operation.
 Mine notes (Williamson County) - Mine type, mine location, seam, mining method.
 Department of Mine & Minerals, aerial photographic base map with surface mines identified - Mine outline.

Mine Index 970**Wenzel Brothers Coal Company, Wenzel Mine**

Type: Surface Total mined-out acreage shown: 53 Production indicates approximately 4 acres were mined. The area shown is too large for the reported production. Others mines may have operated in this area, both surface and underground, resulting in the larger outline. See the back of this report for unlocated mines.

SHAFT, SLOPE, DRIFT or TIPPLE LOCATIONS

Type	County	Township-Range	Section	Quarters-Footage
Tipple	Williamson	9S 2E	11	SW
Pits	Williamson	9S 2E	11	NE SW SE & NE SE

GEOLOGY

Seam(s) Mined	Depth (ft)	Thickness (ft)			Mining Method
		Min	Max	Ave	
Springfield	25-30			4.0	Surface

Geologic Problems Reported:

PRODUCTION HISTORY

Company	Mine Name	Years	Production (tons)
Wenzel Brothers Coal Company	Wenzel	1964-1965	<u>27,520</u> 27,520

Last reported production: August 1965

SOURCES OF DATA

Source Map	Date	Original Scale	Digitized Scale	Map Type
Mine notes	undated	(text only)	1:24000 *	Secondary source
ISGS surface mine updates	1976	Unknown **	1:24,000	Secondary source

* The mine location was plotted onto a 1:24,000 USGS topographic map from the mine location description and digitized.

** Aerial photographs of surface mines were traced. The original photographs are no longer available.

Annotated Bibliography (data source, brief description of information)

Coal Reports - Production, ownership, years of operation, seam, depth, thickness, mining method.

Directory of Illinois Coal Mines (Williamson County) - Mine names, mine index, ownership, years of operation.

Mine notes (Williamson County) - Mine type, shaft locations, seam, mining method.

ISGS surface mine updates, tracing of air photo, ISGS Coal Section files - Mine outline.

Mine Index 3187**Wenzel Coal Company, Wenzel Pit No. 5**

Type: Surface Total mined-out acreage shown: None Part of larger area surface-mined by various companies. Production indicates less than 1 acre was mined for this pit.

SHAFT, SLOPE, DRIFT or TIPPLE LOCATIONS

Type	County	Township-Range	Section	Quarters-Footage
Tipple / pit	Williamson	9S 2E	11	

GEOLOGY

Seam(s) Mined	Depth (ft)	Thickness (ft)			Mining Method
		Min	Max	Ave	
Herrin	25-30			8.0	Surface

Geologic Problems Reported:

PRODUCTION HISTORY

Company	Mine Name	Years	Production (tons)
Wenzel Coal Company	Wenzel Pit No. 5	1959-1960	<u>1,885</u> 1,885

Last reported production: August 1960

SOURCES OF DATA

Source Map	Date	Original Scale	Digitized Scale	Map Type
Mine notes	Undated	(text only)	1:24000 *	Secondary source

* The mine location was plotted onto a 1:24,000 USGS topographic map from the mine location description and digitized.

Annotated Bibliography (data source, brief description of information)

Coal Reports - Production, ownership, years of operation, seam, depth, thickness, mining method.
Directory of Illinois Coal Mines (Williamson County) - Mine names, mine index, ownership, years of operation.
Mine notes (Williamson County) - Mine type, mine location.

Mine Index 3978**Coal Stripping Company, Coal Stripping No. 1 Mine**

Type: Surface Total mined-out acreage shown: This mine is part of a larger surface-mined area that was mined by various operators and extends into the Johnston City and Herrin Quadrangles. The tonnage shown below is for all the Coal Stripping pits (including those in the Herrin & Johnston City Quadrangles).

SHAFT, SLOPE, DRIFT or TIPPLE LOCATIONS

Type	County	Township-Range	Section	Quarters-Footage
Tipple / pit	Williamson	8S 2E	33	SW SW

GEOLOGY

Seam(s) Mined	Depth (ft)	Thickness (ft)			Mining Method
		Min	Max	Ave	
Herrin	20-40	6.0	8.5	7.5	Surface

Geologic Problems Reported: A channel cut out all of the Pennsylvanian rocks above the coal and part of the coal at the north end of one pit. Some variation in coal thickness was noted.

PRODUCTION HISTORY

Company	Mine Name	Years	Production (tons)
Pyramid Coal Company	Pyramid No. 1	1924-1927	920,480
Coal Stripping Company	Coal Stripping No. 1	1928-1931	511,416
			1,431,896

Last reported production: January 1931

SOURCES OF DATA

Source Map	Date	Original Scale	Digitized Scale	Map Type
ISGS map library, 4103.W52 i5.1-130	1931	1:4800	1:4800	Secondary source
USGS topographic map	PR 1990	1:24000	1:24000	Secondary source

Annotated Bibliography (data source, brief description of information)

Coal Reports - Production, ownership, years of operation, seam, depth.
 Directory of Illinois Coal Mines (Williamson County) - Mine names, mine index, ownership, years of operation.
 Mine notes (Williamson County) - Mine type, mine location, depth, thickness, geologic problems.
 ISGS map library, 4103.W52 i5.1-130 - Mine outline (ownership).
 USGS topographic map, Marion Quadrangle, photorevised 1990 - Mine outline (general area of mining).

Mine Index 4018
Southern Jewel Coal Company, Southern Jewel Mine

Type: Underground Total mined-out acreage shown: None Production indicates approximately 3 acres were mined. This mine was later surface mined by Wenzel Mine (mine index 970).

SHAFT, SLOPE, DRIFT or TIPPLE LOCATIONS

Type	County	Township-Range	Section	Quarters-Footage
Main slope	Williamson	9S 2E	12	SW NW SW
Air shaft	Williamson	9S 2E	12	SW NW SW
Air shaft	Williamson	9S 2E	12	NW NW SW

GEOLOGY

Seam(s) Mined	Depth (ft)	Thickness (ft)			Mining Method
		Min	Max	Ave	
Springfield	30-35			4.0	MRP

Geologic Problems Reported:

PRODUCTION HISTORY

Company	Mine Name	Years	Production (tons)
Southern Jewel Coal Company	Southern Jewel	1935-1939	8,329 8,329

Last reported production: 1939

SOURCES OF DATA

Source Map	Date	Original Scale	Digitized Scale	Map Type
State archive, MSHA_509_01	2-25-1939	1:1200	1:1200	Final

Annotated Bibliography (data source, brief description of information)

Coal Reports - Production, ownership, years of operation, depth, thickness.
 Directory of Illinois Coal Mines (Williamson County) - Mine names, mine index, ownership, years of operation.
 Mine notes (Williamson County) - Mine type, seam, depth, thickness.
 State archive, MSHA_509_01- Slope & shaft locations, mine outline, mining method.

Mine Index 4027**McLaren Equipment Company, McLaren Mine**

Type: Surface Total mined-out acreage shown: This area was also shown on mine maps for Coal Stripping Company (mine index 3978) and Scottsboro Mine (mine index 4442), as well as connecting northward to a larger surface-mined area in the Johnston City Quadrangle that was mined by numerous operators. The production indicates approximately 3 acres were mined in the Herrin Coal and 8 acres were mined in the Springfield Coal.

SHAFT, SLOPE, DRIFT or TIPPLE LOCATIONS

Type	County	Township-Range	Section	Quarters-Footage
Tipple / pit	Williamson	9S 2E	11	NW SE SW

GEOLOGY

Seam(s) Mined	Depth (ft)	Thickness (ft)			Mining Method
		Min	Max	Ave	
Herrin (1948-1949)	25-35			8.0	Surface
Springfield (1950-1955)				4.0-4.17	Surface

Geologic Problems Reported:

PRODUCTION HISTORY

Company	Mine Name	Years	Production (tons)
McLaren Mining Company	McLaren	1948-1948	19,166
McLaren Equipment Company	McLaren	1949-1955 *	79,447
			98,613

* Idle 1953 & 1954

Last reported production: October 1955

SOURCES OF DATA

Source Map	Date	Original Scale	Digitized Scale	Map Type
Mine notes	Undated	(text only)	1:24000 **	Secondary source
ISGS sketch on topographic maps	Undated	1:62500	1:62500	Secondary source

** The mine location was plotted onto a 1:24,000 USGS topographic map from the mine location description and digitized.

Annotated Bibliography (data source, brief description of information)

Coal Reports - Production, ownership, years of operation, depth, thickness.

Directory of Illinois Coal Mines (Williamson County) - Mine names, mine index, ownership, years of operation.

Mine notes (Williamson County) - Mine type, mine location, seam.

USGS topographic maps in Coal Section files - Tipple location, mine outline (sketched by Coal Section personnel).

Mine Index 4028**Peabody Coal Company, Peabody No. 2 Mine**

Type: Underground Total mined-out acreage shown: 2,019 with a 22-acre general area of mining (some of which has been truncated by later surface mining); connected underground to Peabody No. 1 (mine index 4026) and Peabody No. 3 (mine index 60). Boundaries between the mines could not be differentiated.

SHAFT, SLOPE, DRIFT or TIPPLE LOCATIONS

Type	County	Township-Range	Section	Quarters-Footage
Main slope	Williamson	9S 2E	11	SE NW NE

GEOLOGY

Seam(s) Mined	Depth (ft)	Thickness (ft)			Mining Method
		Min	Max	Ave	
Herrin	78-84			7.0-9.0	RP

Geologic Problems Reported:

PRODUCTION HISTORY

Company	Mine Name	Years	Production (tons)
Ohio & Mississippi Valley Coal & Mng. Co.	Ohio & Mississippi Valley No. 2	1897-1900	243,343
Southern Illinois Coal Mng. & Washing Co.	Southern Illinois No. 2	1900-1904	639,461
Peabody Coal Company	Peabody No. 2	1904-1916	<u>1,419,571</u>
			2,302,375

Last reported production: May 1916

SOURCES OF DATA

Source Map	Date	Original Scale	Digitized Scale	Map Type
Company, 4103.W52 i5.1-143	8-4-1932	1:2400	1:2400	Final

Annotated Bibliography (data source, brief description of information)

Coal Reports - Production, ownership, years of operation, depth, thickness.

Directory of Illinois Coal Mines (Williamson County) - Mine names, mine index, ownership, years of operation.

Mine notes (Williamson County) - Mine type, shaft location, seam.

Company map, ISGS map library, 4103.W52 i5.1-143 - Shaft & slope locations, mine outline, mining method.

Mine Index 4029**W. A. Wilson, Wilson Mine**

Type: Surface Total mined-out acreage shown: None Production indicates approximately 2 acres were mined.

SHAFT, SLOPE, DRIFT or TIPPLE LOCATIONS

Type	County	Township-Range	Section	Quarters-Footage
Pit	Williamson	9S 2E	11	NE SE

GEOLOGY

Seam(s) Mined	Depth (ft)	Thickness (ft)			Mining Method
		Min	Max	Ave	
Herrin					Surface

Geologic Problems Reported:

PRODUCTION HISTORY

Company	Mine Name	Years	Production (tons)
H. L. Wilson	Wilson	1923-1926	2,520
J. W. Wilson	Wilson	1927-1927	74
W. A. Wilson	Wilson	1928-1929	6,200
			8,794

Last reported production: 1929

SOURCES OF DATA

Source Map	Date	Original Scale	Digitized Scale	Map Type
Mine notes	Undated	(text only)	1:24000 *	Secondary source

* The mine location was plotted onto a 1:24000 USGS topographic map from the mine location description and digitized.

Annotated Bibliography (data source, brief description of information)

Coal Reports - Production, ownership, years of operation.

Directory of Illinois Coal Mines (Williamson County) - Mine names, mine index, ownership, years of operation.

Mine notes (Williamson County) - Mine location.

Mine Index 4040**J. W. Ingram, Ingram Mine**

Type: Underground Total mined-out acreage shown: 14 The outline shown is generalized.
 Production indicates about 3 acres were mined.

SHAFT, SLOPE, DRIFT or TIPPLe LOCATIONS

Type	County	Township-Range	Section	Quarters-Footage
Main shaft	Williamson	9S 2E	23	NE SE SE

GEOLOGY

Seam(s) Mined	Depth (ft)	Thickness (ft)			Mining Method
		Min	Max	Ave	
Davis	120-125			4.0-6.0	RP

Geologic Problems Reported: The coal sometimes contained a clay seam that was a fraction of an inch thick about 1 foot above the floor. There was little pyrite, occurring in narrow streaks.

PRODUCTION HISTORY

Company	Mine Name	Years	Production (tons)
J. W. Ingram	Ingram Mine	1905-1909	<u>14,313</u> 14,313

Last reported production: 1909

SOURCES OF DATA

Source Map	Date	Original Scale	Digitized Scale	Map Type
ISGS map library, 4103.W52 i5.1-189	8-11-1934	1:63360	1:63360	Secondary source

Annotated Bibliography (data source, brief description of information)

Coal Reports - Production, ownership, years of operation, depth, thickness, mining method.

Directory of Illinois Coal Mines (Williamson County) - Mine names, mine index, ownership, years of operation.

Mine notes (Williamson County) - Mine type, shaft location, seam.

Illinois Coal Mining Investigations, Bulletin 15, Coal Resources of District VI, G. H. Cady, 1916 - Geologic problems.

ISGS map library, 4103.W52 i5.1-189, work map for Federal Land Bank Report map - Shaft location, mine outline.

Mine Index 4041**Peabody Coal Company, Utility Mine**

Type: Surface Total mined-out acreage shown: 474 Production indicates approximately 200 acres were mined. The remainder of the area was mined by smaller unaffiliated mines.

SHAFT, SLOPE, DRIFT or TIPPLE LOCATIONS

Type	County	Township-Range	Section	Quarters-Footage
Tipple	Williamson	9S 3E	4	SE SW SE
Pits	Williamson	9S 3E	8,9,10,11, 12, 13, 14	

GEOLOGY

Seam(s) Mined	Depth (ft)	Thickness (ft)			Mining Method
		Min	Max	Ave	
Herrin	20-57			5.67-8.0	Surface
Springfield	40-65			3.58	Surface

Geologic Problems Reported:

PRODUCTION HISTORY

Company	Mine Name	Years	Production (tons)
Utility Coal Company	Utility	1958-1963	1,266,648
Peabody Coal Company	Utility	1963-1966	759,763
			<u>2,026,411</u>

Last reported production: February 1966

SOURCES OF DATA

Source Map	Date	Original Scale	Digitized Scale	Map Type
Company, 4103.W52 i5.1-178	8-29-1969	1:2400	1:2400	Final

Annotated Bibliography (data source, brief description of information)

Coal Reports - Production, ownership, years of operation.

Directory of Illinois Coal Mines (Williamson County) - Mine names, mine index, ownership, years of operation.

Mine notes (Williamson County) - Mine type, tipple location.

Company map, ISGS map library, 4103.W52 i5.1-178 - Mine outline

Mine Index 4062**Gentry Coal Company, Gentry No. 7 Mine**

Type: Underground Total mined-out acreage shown: 45 Production indicates approximately 75 acres were mined after the map date.

SHAFT, SLOPE, DRIFT or TIPPLE LOCATIONS

Type	County	Township-Range	Section	Quarters-Footage
Main slope	Williamson	9S 3E	8	SW SW NE
Air shaft	Williamson	9S 3E	8	NE NE SE

GEOLOGY

Seam(s) Mined	Depth (ft)	Thickness (ft)			Mining Method
		Min	Max	Ave	
Springfield	100			4.0-4.17	MRP

Geologic Problems Reported:

PRODUCTION HISTORY

Company	Mine Name	Years	Production (tons)
Diamond Star Coal Company	Diamond Star	1938-1942	15,458
Seymour Coal Mining Company	Seymour	1942-1942	771
New Black Diamond Coal Company	New Black Diamond No. 7	1943-1943	35,369
Gentry Coal Company	Gentry No. 7	1944-1945	101,102
Gentry Coal Company	Gentry No. 7	1945-1948	265,130 *
			417,830

* Production after map date

Last reported production: June 1948

SOURCES OF DATA

Source Map	Date	Original Scale	Digitized Scale	Map Type
Microfilm, document 353048	2-10-1945	1:1200	1:2317	Not final

Annotated Bibliography (data source, brief description of information)

Coal Reports - Production, ownership, years of operation, depth, thickness.

Directory of Illinois Coal Mines (Williamson County) - Mine names, mine index, ownership, years of operation.

Mine notes (Williamson County) - Mine type, slope location, seam.

Microfilm map, document 353048, reel 03141, frames 233-234 - Slope location, mine outline, mining method.

Mine Index 4063**Associated Coal Company, Inc., Associated No. 1 Mine**

Type: Surface Total mined-out acreage shown: 26 Production indicates approximately 1 acre was mined.

SHAFT, SLOPE, DRIFT or TIPPLE LOCATIONS

Type	County	Township-Range	Section	Quarters-Footage
Tipple / pit	Williamson	9S 3E	8	SE

GEOLOGY

Seam(s) Mined	Depth (ft)	Thickness (ft)			Mining Method
		Min	Max	Ave	
Herrin	50			6.33-7.5	Surface

Geologic Problems Reported:

PRODUCTION HISTORY

Company	Mine Name	Years	Production (tons)
Associated Coal Company, Inc.	Associated No. 1	1962-1963	11,529
			11,529

Last reported production: July 1963

SOURCES OF DATA

Source Map	Date	Original Scale	Digitized Scale	Map Type
Nelson, Catalog of Coal Mines	2003	(text only)	1:24000 *	Secondary source
Department of Mines & Minerals	Undated			Secondary source

* The mine location was plotted onto a 1:24,000 USGS topographic map from the mine location description and digitized.

Annotated Bibliography (data source, brief description of information)

Coal Reports - Production, ownership, years of operation, seam, thickness, depth.
 Directory of Illinois Coal Mines (Williamson County) - Mine names, mine index, ownership, years of operation.
 Mine notes (Williamson County) - Mine type, mine location, seam, depth, thickness.
 W.J. Nelson (ISGS), Catalog of Coal Mines in Williamson County, 2003 - Mine location.
 Department of Mines & Minerals, arial photograph base with surface mines identified - Mine outline.

Mine Index 4442**Scottsboro Coal Company, Scottsboro Mine**

Type: Surface Total mined-out acreage shown: 46 This area was also shown on mine maps for Coal Stripping Company (mine index 3978) and McLaren Mine (mine index 4027) and it appears that these companies extended the Scottsboro pit, as well as this surface-mined area connecting northward to a larger area in the Johnston City Quadrangle that was mined by numerous operators.

SHAFT, SLOPE, DRIFT or TIPPLE LOCATIONS

Type	County	Township-Range	Section	Quarters-Footage
Pit	Williamson	9S 2E	11	SW SW

GEOLOGY

Seam(s) Mined	Depth (ft)	Thickness (ft)			Mining Method
		Min	Max	Ave	
Herrin				6.5-7.0	Surface

Geologic Problems Reported:

PRODUCTION HISTORY

Company	Mine Name	Years	Production (tons)
Scottsboro Coal Company	Scottsboro	1928-1929	372,388
			372,388

Last reported production: December 1929

SOURCES OF DATA

Source Map	Date	Original Scale	Digitized Scale	Map Type
Company, 4103.W52 i5.1-170	4-1-1930	1:1200	1:1200	Incomplete
Company, 4103.W52 i5.1-130	1931	1:4800	1:4800	Secondary source

Annotated Bibliography (data source, brief description of information)

Coal Reports - Production, ownership, years of operation, seam, thickness.
 Directory of Illinois Coal Mines (Williamson County) - Mine names, mine index, ownership, years of operation.
 Mine notes (Williamson County) - Mine type, tipples location, thickness.
 Company map, ISGS map library, 4103.W52 i5.1-170 - Mine location, mine outline, mining method.
 Company map, ISGS map library, 4103.W52 i5.1-130 - Mine outline (west, general area of mining).

Mine Index 4477**Templeton & Treyning, Templeton Mine**

Type: Underground Total mined-out acreage shown: None Production indicates approximately 3 acres were mined.

SHAFT, SLOPE, DRIFT or TIPPLE LOCATIONS

Type	County	Township-Range	Section	Quarters-Footage
Slope or drift	Williamson	10S 2E	23	NE NE SE

GEOLOGY

Seam(s) Mined	Depth (ft)	Thickness (ft)			Mining Method
		Min	Max	Ave	
Tarter *	22			3.5-4.0 (est.)	RP

* The coal correlates to the Tarter Coal in western Illinois, and is approximately equivalent to the Lower Block Coal in Indiana and Coal 4a in western Kentucky.

Geologic Problems Reported: The mine was filled with water when the location was noted in 1932.

PRODUCTION HISTORY

Company	Mine Name	Years	Production (tons)
W. H. John	John	1916-1917	10,000
Templeton & Treyning **	Templeton	1917-1918	725
			10,725

** Treyning may be a typographic error for Tregoning

Last reported production: 1918

SOURCES OF DATA

Source Map	Date	Original Scale	Digitized Scale	Map Type
ISGS field notes (Cady & Benson)	7-10-1932	(text only)	1:24000 ***	Secondary source
Coal Section files, 1-17-13b	Undated	1:31250	1:31250	Secondary source

*** The mine location was plotted on a 1:24,000 USGS topographic map from the mine location description and digitized.

Annotated Bibliography (data source, brief description of information)

Coal Reports - Production, ownership, years of operation.

Directory of Illinois Coal Mines (Williamson County) - Mine names, mine index, ownership, years of operation.

ISGS field notes (Williamson County) - Mine type, slope or drift location, depth, thickness.

Russ Jacobson, personal communication - Seam.

W.J. Nelson (ISGS), Catalog of Coal Mines in Williamson County, 2003 - Seam.

Coal Section files, 1-17-13b - Mine location.

Mine Index 4479
Wilson Mine

Type: Underground Total mined-out acreage shown: None

SHAFT, SLOPE, DRIFT or TIPPLE LOCATIONS

Type	County	Township-Range	Section	Quarters-Footage
Main slope	Williamson	10S 2E	24	SW NW SW

GEOLOGY

Seam(s) Mined	Depth (ft)	Thickness (ft)			Mining Method
		Min	Max	Ave	
Tarter *	30				

* The coal correlates to the Tarter Coal in western Illinois, and is approximately equivalent to the Lower Block Coal in Indiana and Coal 4a in western Kentucky.

Geologic Problems Reported:

PRODUCTION HISTORY

Company	Mine Name	Years	Production (tons)
Wilson **			

** This could be D. Wilson of Herrin, 1923-1924, produced 237 tons or Roy Wilson of Marion, 1925-1925, produced 3,000 tons.

Last reported production:

SOURCES OF DATA

Source Map	Date	Original Scale	Digitized Scale	Map Type
ISGS field notes (G. H. Cady)	7-10-1932	(text only)	1:24000 **	Secondary source
Coal Section files, 1-17-13b	Undated	1:31250	1:31250	Secondary source

** The mine location was plotted on a 1:24,000 USGS topographic map from the mine location description and digitized.

Annotated Bibliography (data source, brief description of information)

Coal Reports - Production, ownership, years of operation.
 Directory of Illinois Coal Mines (Williamson County) - Mine names, mine index.
 ISGS field notes (Williamson County) - Mine type, slope location.
 Russ Jacobson, personal communication - Seam.
 Coal Section files, 1-17-13b - Mine location.

Mine Index 4533**Quality Coal Company, Bradley Mine**

Type: Underground Total mined-out acreage shown: 18 Production indicates approximately 5 acres were mined. The 1938 company map showed approximately 15 acres mined to date; there was almost certainly mining prior to 1933. See the note under the production segment below.

SHAFT, SLOPE, DRIFT or TIPPLE LOCATIONS

Type	County	Township-Range	Section	Quarters-Footage
Main slope	Williamson	9S 2E	11	SE SW SE
Air slope	Williamson	9S 2E	11	SE SW SE

GEOLOGY

Seam(s) Mined	Depth (ft)	Thickness (ft)			Mining Method
		Min	Max	Ave	
Springfield	55			4.0-4.5	MRP

Geologic Problems Reported:

PRODUCTION HISTORY

Company	Mine Name	Years	Production (tons)
Quality Coal Company *	Bradley	1933-1941	28,176 28,176

* The name shown on the map source is Bradley Mine, presumably the owner/operator of Quality Coal Company. The dates of operation do not match any of the unlocated Bradley mines at the back of this report. The tonnage required to mine the approximate area shown by the map could be obtained from by including the Bradley & Scullin No. 1 Mine, which operated from 1922 to 1924 (shown in the unlocated mines at the back of this report). However, it seems unlikely that this mine was idled for more than 10 years before reopening as Quality Coal Company in 1933, and the intervening operators are unknown.

Last reported production: 1941

SOURCES OF DATA

Source Map	Date	Original Scale	Digitized Scale	Map Type
Company, 4103.W52 i5.1-19	6-1941	1:1200	1:1200	Final
State archive, IL_1575_01	5-26-1938	1:1200	1:1200	Not final

Annotated Bibliography (data source, brief description of information)

Coal Reports - Production, ownership, years of operation, mining method.
 Directory of Illinois Coal Mines (Williamson County) - Mine names, mine index, ownership, years of operation.
 Company map, ISGS map library 4103.W52 i5.1-19 - Mine location, mine outline (specifically, shows small extension in the southeast part of the mine), mining method, owner.
 State archive, IL_1575_01 - Mine outline, slope & shaft locations, seam, mining method.

Mine Index 6794**Big Three Coal Company, Big Three No. 3 Mine**

Type: Surface Total mined-out acreage shown: None Production indicates approximately 1 acre was mined.

SHAFT, SLOPE, DRIFT or TIPPLE LOCATIONS

Type	County	Township-Range	Section	Quarters-Footage
Pit	Williamson	9S 3E	19 *	

* This mine may be near Big Three No. 2 Mine (mine index 4119) in 30-T9S-R4E.

GEOLOGY

Seam(s) Mined	Depth (ft)	Thickness (ft)			Mining Method
		Min	Max	Ave	
Davis	20-23			2.75-7.0	Surface

Geologic Problems Reported:

PRODUCTION HISTORY

Company	Mine Name	Years	Production (tons)
Big Three Coal Company	Big Three No. 3	1957-1959	4,888 4,888

Last reported production: 1959

SOURCES OF DATA

Source Map	Date	Original Scale	Digitized Scale	Map Type
Mine notes (G. H. Cady)	Undated	(text only)	1:24000 **	Secondary source

** The mine location was plotted on a 1:24,000 USGS topographic map from the mine location description and digitized.

Annotated Bibliography (data source, brief description of information)

Coal Reports - Production, ownership, years of operation, depth, thickness, mining method.

Directory of Illinois Coal Mines (Williamson County) - Mine names, mine index, ownership, years of operation.

Mine notes (Williamson County) - Mine type, pit location.

Mine Index 6799
Davis Coal Company, Davis Mine

Type: Underground Total mined-out acreage shown: 9 Not shown on accompanying map due to later surface mining by various companies.

SHAFT, SLOPE, DRIFT or TIPPLE LOCATIONS

Type	County	Township-Range	Section	Quarters-Footage
Main slope	Williamson	9S 2E	11	SE NW SE

GEOLOGY

Seam(s) Mined	Depth (ft)	Thickness (ft)			Mining Method
		Min	Max	Ave	
Herrin	100			4.25-7.0	RP

Geologic Problems Reported:

PRODUCTION HISTORY

Company	Mine Name	Years	Production (tons)
Herrin & Big Muddy Coal Company	Herrin & Big Muddy	1918-1923	26,603
Davis Coal Company	Davis	1923-1925	<u>22,702</u>
			49,305

Last reported production: 1925

SOURCES OF DATA

Source Map	Date	Original Scale	Digitized Scale	Map Type
ISGS map library, 4103.W52 i5.1-189	8-11-1934	1:63360	1:63360	Secondary source

Annotated Bibliography (data source, brief description of information)

Coal Reports - Production, ownership, years of operation, seam, depth, thickness, mining method.
 Directory of Illinois Coal Mines (Williamson County) - Mine names, mine index, ownership, years of operation.
 ISGS map library, 4103.W52 i5.1-189, work map for Federal Land Bank Report map - Mine location, mine outline.

OTHER MINES SHOWN ON MARION QUADRANGLE

Mine Index 4264 SW NE NW 20-T9S-R3E source: ISGS Coal Section files, plotted on topographic maps
 Mine Index 4325 SE NE NW 24-T10S-R2E source: Coal Section files map, undated
 Mine Index 4478 NE SW NW 24-T10S-R2E, two slopes source: ISGS field notes (G. H. Cady, 1932)
 Mine Index 4480 SW SW NW 24-T10S-R2E, slope source: ISGS field notes (E. T. Benson, 1932)
 Mine Index 4481 SW SW SW 24-T10S-R2E, drift source: ISGS field notes (Wanless & Fuller, 1932)
 Mine Index 4482 NW SW SW 24-T10S-R2E, drift source: ISGS field notes (Wanless & Fuller, 1932)
 Mine Index 4483 NW NW SW 24-T10S-R2E source: ISGS field notes (G. H. Cady, 1932)
 Mine Index 4485 NW NW NW 25-T10S-R2E source: ISGS mine database
 Mine Index 4528 NE NW SW 20-T10S-R3E, surface mine, 1.25-1.5 thick source: ISGS field notes (H. R. Wanless, 1932)
 Mine Index 4654 NE NE NW 24-T10S-R2E, 3.0 thick source: ISGS mine notes (J. Hughes, 1926)

MINES WHOSE LOCATIONS ARE NOT KNOWN, MARION QUADRANGLE

The locations of the following mines are unknown, but the production tonnage, operating names, and nearest town were reported in the Annual Coal Reports. The operators listed below probably mined somewhere in or near the Marion Quadrangle. The information shown is similar to that presented on the summary sheets in the previous pages of this directory. The first item is the name the mine operated under as listed in the Coal Report, then the years the mine reported. If no physical data are available, the next item listed is the total tons produced by the mine. If physical data are available, the order of presentation is as follows: coal seam mined, type of opening for the mine (drift, slope or shaft), depth of coal in feet, and thickness of coal in feet. In Williamson County the Coal Reports list all mines prior to 1908 as mining the Danville Coal while all mines in 1908 were listed as mining the Herrin Coal; seam designations from early Coal Reports are unreliable.

The total tons mined by these unlocated mines is 1,565,348 (1,315,999 underground-mined, 131,283 surface mined, and 118,066 mined by unspecified method), which would represent approximately 180 to 420 acres, depending on the recovery factor, mining method, and numerous other factors. (Note: 1 square mile = 640 acres) Some listings may be duplicated on other Williamson County quadrangles and are not in addition to those listed in those quadrangles; in many cases it is not possible to reliably discern the exact quadrangle.

"Other strippings" within Williamson County, 1883-1887, surface	27,500 tons
D. D. J. L., No. 1 Mine, 1978-1978	not reported
Peacock Coal Company, No. 2 Mine, 1979-1979	not reported

ABSHER

Nealy (George), 1895-1896, drift, —, —, 5.0, RP	2,100 tons
Neally Brothers, 1897-1898, surface, Herrin, 10, 6.0	300 tons
Schreiyeir (Robert), 1896-1898, surface, Herrin, 7, 5.0	95 tons
Bauwick (William), 1895-1896, surface, Herrin, 7, 5.0	not reported
Read (William), 1896-1899, surface, Herrin, 7-9, 5.0-7.0	180 tons
Brush (G. G.), 1899-1901	600 tons 780 tons
Ritchie (Grant), 1896-1898, surface, Herrin, 7, 5.0-5.5	55 tons
Ritche (Len), 1896-1896, surface, Herrin, 8-10, 7.0-8.0	none reported
Ritchie (William), 1897-1900	1,830 tons
Dunsford (Charles), 1901-1903, drift, Herrin, 20, 5.5, RP	850 tons

Harris (Frank), 1903-1904	<u>500 tons</u> 1,350 tons
Snoddy Brothers, 1901-1902	26 tons
Asber (Albert), 1903-1904	700 tons

BLAIRSVILLE

Williams (W. H.), 1897-1898, shaft, Danville, 80, 7.0-8.83, RP	800 tons
Howells (S.), 1898-1900	<u>600 tons</u> 1,400 tons

CREAL SPRINGS

Russell & Deaton, 1928-1928, underground	127 tons
Hammers (Wesley), 1929-1929	<u>17 tons</u> 144 tons
Red Bird Coal Company, 1935-1935, underground	70 tons

DAHLGREN

McGinnis (T. D.), 1892-1893, surface, Herrin, —, 6.0	600 tons
--	----------

DONGOLA

Wilson (W. A.), 1934-1934, underground	395 tons
--	----------

ELDORADO

Jay & Kay Coal Company, 1958-1958, surface, Herrin, 18, 8.0	560 tons
---	----------

EQUALITY

Finks Auger Coal Mining Company, Pit 3, 1959-1959 surface, Herrin, 40, 6.0	150 tons
---	----------

FAIRFIELD

Rumberg (C. H.) Coal Company, 1950-1950, surface, Herrin, 14, 5.0	1,000 tons
---	------------

GIBSONIA

Brinkley (Marian), 1905-1907, drift, Herrin, 30, 5.0, RP	208 tons
--	----------

MARION or SPILLERTOWN

Warm Morning Coal Company, 1959-1959, surface, Herrin, 18, 5.0	1,670 tons	mine index 3941
Chamness (Bert) Construction Company, 1956-1957, surface, Springfield	2,013 tons	mine index 4224
Stilley Coal Company, No. 6 Mine, 1958-1958	<u>1,604 tons</u> 3,617 tons	
McCluskie (Alex), No. 1 Mine, 1932-1935, surface	4,540 tons	mine index 4265
Lewis Coal Company, 1922-1923	3,000 tons	
Corder (Charles), 1933-1933, underground	4,643 tons	
Williford (J. B.), 1879-1886, drift, —, 20-30, 6.0-8.0, RP	15,100 tons	
Tippet (William), 1886-1891	<u>8,891 tons</u> 23,991 tons	
Williford (J. B.), 1888-1889	1,400 tons	
Reid (William M.), 1885-1894, Danville, 20-30, 6.5-9.0, RP	15,020 tons	
Smith & Reid, 1894-1895	1,639 tons	
Ohio Valley Coal & Coke Company, 1896-1900	215,100 tons	
Southern Illinois Coal Mining & Washing Company, No. 4 Mine, 1900-1903	<u>260,347 tons</u> 492,106 tons	
Willoughby, 1886-1889, drift, Danville, 18-20, 6.5-9.0, RP	6,120 tons	
Allen (William P.), 1889-1894	<u>3,394 tons</u> 9,514 tons	
Allen (William P.), 1895-1903, surface, Danville, 8-10, 7.0-9.0	10,300 tons	
Rex (William M.), 1890-1893, surface,—, —, 8.0-9.0	1,980 tons	
Rex (William M.), 1893-1894, slope, Danville, 18-20, 9.0, RP	8,000 tons	
Campbell (S. A.), 1894-1896	<u>12,091 tons</u> 20,091 tons	
Crab Orchard Coal Company, Goodall Mine, 1896-1901		
shaft, Danville, 40-49, 7.0-9.0, RP	156,677 tons	
Marion Coal Company, Goodall Mine 1901-1903	<u>98,971 tons</u> 255,648 tons	
Read (Jasper), 1896-1897, surface, —, 8-10, 8.0	300 tons	
Wilson (George), 1903-1904, slope, Danville, 10-20, 9.0, RP	700 tons	
Henson (T. H.) & Sons, 1904-1905	110 tons	
Henson (J. T.) & Sons, 1905-1906	100 tons	
Spiller (B. P.), 1906-1907	<u>264 tons</u> 1,174 tons	
Binkley & Miles, 1906-1911, shaft, Herrin, 20, 9.0, RP	34,500 tons	
Motsinger (William), 1908-1909, slope, Herrin, 12, 4.0, RP	400 tons	
Reese-Doty & Company, 1908-1909, shaft, Herrin, 35, 9.0, RP	3,112 tons	
Reese-Taylor & Company, 1909-1910	<u>2,400 tons</u> 5,512 tons	
Reese-Taylor & Company, 1909-1910, shaft, Herrin, 38, 9.0, RP	7,000 tons	
Reese-Taylor, 1911-1912, surface, Herrin, 20, 7.0-8.0	8,017 tons	
Reese (Henry), 1912-1913	<u>3,800 tons</u> 11,817 tons	

Porden (Joe), 1909-1910, shaft, Herrin, 17, 4.0, RP	100 tons
Ghent (H. M.) Coal Company, 1910-1916, shaft, Herrin, 50-85, 9.0-14.0, RP	7,099 tons
Black Diamond Coal Co., 1911-1912, shaft, Springfield or Herrin, 70-75, 4.0, RP	41 tons
Rankin & Scott, 1912-1913	<u>400 tons</u>
	441 tons
Harris (John W.), 1914-1923, drift, Herrin, 13-14, 4.0-4.67, RP	5,880 tons
Handkins (W. R.), 1914-1916, slope or drift, Herrin, 10, 4.0-4.67, RP	780 tons
Handkins & Sims, 1916-1917	<u>600 tons</u>
	1,380 tons
Gabriel Brothers, 1931-1934, surface	2,450 tons
Lewis (E.), 1917-1918	4,800 tons
Brinkley Brothers, 1918-1920	12,493 tons
Comet Coal Company, 1920-1922	4,500 tons
Connett (Vernon), 1922-1925	<u>2,350 tons</u>
	19,343 tons
Herrin & Big Muddy Coal Company, 1918-1923, —, 10, 4.25-7.0, RP	26,603 tons
Davis Coal Company, 1923-1925	<u>22,702 tons</u>
	49,305 tons
Davis Coal Company, 1923-1926	1,654 tons
Sirles & Davis, 1927-1927	<u>650 tons</u>
	2,304 tons
Davis Coal Company, 1930-1931, surface	1,560 tons
Equality Coal Company, 1932-1932, slope, Herrin, —, 4.0, RP	700 tons
Waters (Thomas) Coal Company, No. 1 Mine, 1918-1920	26,128 tons
Hodden (W. H.), 1919-1920	5,200 tons
Rosenberg (C. F.), 1919-1920	1,000 tons
Corder & Hankins, No. 1 Mine, 1920-1921, surface	1,750 tons
Handkins (Roy), 1923-1924	5,280 tons
Hawkins (Roy), 1924-1925	<u>4,180 tons</u>
	11,210 tons
Corder & Hankins, No. 2 Mine, 1920-1921	1,480 tons
Marion Coal Company, 1920-1923	4,400 tons
New Marion Coal Company, 1926-1928, underground	3,650 tons
Polinski (Tony), 1920-1925, surface	4,362 tons
Polinski (Charles), 1926-1927	5,223 tons
Polinski (Tony), 1928-1932	17,277 tons
Polinski Coal Company, 1933-1933	1,000 tons
Polinski (Tony), 1934-1934	1,000 tons
Polinski Coal Company, 1935-1935	<u>500 tons</u>
	29,362 tons
Odum Coal Company, 1920-1922	400 tons
Odum (E. D.), 1922-1923	600 tons
Odum & Byers, 1923-1924	3,760 tons
Odum & Miller, 1924-1925	<u>2,368 tons</u>
	7,128 tons

Byers & Alexander, 1926-1927	1,250 tons
Wilkerson Brothers, 1920-1921	134 tons
Bradley (Bradbury) & Scullin, No. 1, 1922-1924, drift, Herrin, —, 7.5, RP (also listed as Lady Luck Mine)	34,473 tons
Wells (Oscar), 1923-1924	1,700 tons
Wells (Oscar & Lester), 1924-1925	<u>2,575</u> tons 4,275 tons
Gosnell Brothers, 1922-1923	200 tons
Miller Coal Company, 1923-1925	6,066 tons
Godelski (Joe), 1923-1925	1,100 tons
Hoddy (C. C.), 1923-1924	400 tons
Cravens (Joe), 1923-1924	250 tons
Ferger (Ed), 1924-1925	1,100 tons
Ferger (Ed), 1929-1931, underground	2,805 tons
Oliver (M.), 1924-1925	975 tons
Issler (John), 1924-1933, surface	4,385 tons
Issler (Herman), 1934-1934	1,500 tons
Issler (John), 1935-1935	<u>500</u> tons 6,385 tons
Standacher (A. L.), 1924-1925	725 tons
Smith (George L.), 1924-1925	50 tons
Wilson (Roy), 1925-1925	3,000 tons
Clyde (J. L.), 1925-1925	650 tons
Drury & Burris, 1925-1925	400 tons
Williams & Jeffrey, 1925-1925	360 tons
Swofford (George), 1925-1925	85 tons
Sims (Grant), 1925-1925	80 tons
Lewis Coal Company, No. 1 Mine, 1926-1928, surface	5,600 tons
Lewis Coal Company, No. 2 Mine, 1926-1926	1,800 tons
Rushing Coal Company, 1926-1930, underground	6,000 tons
Roberts (Duff), 1926-1926	1,050 tons
McAllister Coal Company, 1926-1926	400 tons
Marlo & Marlo, 1926-1926	74 tons
Prospect Coal Company, 1927-1931, underground	6,040 tons
Sabba (John) & Company, 1927-1928, underground	602 tons
McCluskey & Pendley, 1928-1929	5,020 tons

McCluskey, Pendley & Wilkinson, 1930-1930	4,550 tons
McClusky, Pendley & Wilkinson, 1931-1931	984 tons
Pendley & Wilkinson, No. 1 Mine, 1932-1933	3,400 tons
Staudacher & Penley, 1934-1934	<u>2,423 tons</u>
	16,377 tons
Hudgens Coal Company, 1928-1928, underground	400 tons
Enner (Woolen P.), 1928-1928, underground	150 tons
Shadowens (James), 1929-1929, surface	550 tons
Richmon (Aubrey), 1929-1929, underground	400 tons
Long (Josh), 1929-1929, surface	215 tons
Casey (Ivan), 1930-1930, underground	8,000 tons
Grant (F. E.) Coal Company, 1930-1933, underground	3,680 tons
Grant & Odum, 1934-1934	225 tons
Grant (Charles), 1935-1935	<u>140 tons</u>
	4,045 tons
Arnold, Rodd & Bolds, 1930-1931, underground	1,183 tons
Arnold (J. H.) & Company, 1932-1932	<u>6,190 tons</u>
	7,373 tons
Red Rose Coal Company, 1931-1931, underground	1,760 tons
Anderson (Dewie), 1931-1932, underground	5,664 tons
Anderson & Boyd, 1933-1933	<u>5,875 tons</u>
	11,539 tons
Anderson & Boyd, 1936-1936, underground	2,000 tons
Jeter (Rosco), 1931-1931, underground	1,228 tons
Hughes (George H.), 1932-1932, underground	5,816 tons
Hughes Coal Company, 1933-1933, surface	1,200 tons
Hughes (Charles M.), 1934-1934	575 tons
Hughes Coal Company, 1935-1935	<u>500 tons</u>
	2,275 tons
McConkey (George), 1932-1932, underground	2,674 tons
Beasley & Dallas, 1933-1933, underground	2,150 tons
Radford (M. H.), 1933-1934, surface, Herrin, —, 5.75	3,732 tons
Brush & Edwards, 1933-1933, underground	1,500 tons
Tanner (Hosia), 1933-1934, underground	1,500 tons
Big Saline Coal Company, 1933-1933, underground	1,050 tons
Marshall (Floyd) & Smith (James), 1934-1934, underground	4,400 tons
Smith (W. L.), 1935-1935	<u>107 tons</u>
	4,507 tons
Rentfro (Evan), 1934-1934	2,310 tons
Hemlock Coal Company, 1934-1934, surface	705 tons
Sobczyk (Tony), 1934-1935, underground	462 tons

Sobczyk (Frank), 1934-1934, underground	35 tons
Threlkeld (Everett), 1934-1934, underground	86 tons
Nolen (Ed), 1934-1934, underground	54 tons
Wilkins Coal Company, 1934-1934, underground	30 tons
Freels (Ed), 1934-1936, underground	100 tons
Carolan (W. P.) & Company, Inc., 1935-1935, surface, Springfield, —, 4.17	9,845 tons
Boswell Brothers, 1935-1935, underground	2,000 tons
DeLosch Coal Company, 1935-1935, surface	500 tons
Meredith & Newton, 1935-1935, underground	400 tons
LaMaster Coal Company, 1935-1935, underground	380 tons
Angel & McNeil, 1935-1935, underground	260 tons
Helm Coal Company, No. 2 Mine, 1936-1936, underground	647 tons
Wade (Walter) Coal Company, 1941-1941, underground	584 tons
McCracken & Rodney, 1941-1941, underground	908 tons
Rodney Coal Company, 1942-1942	<u>123 tons</u>
	1,031 tons
Coy (John), 1944-1945, surface, Herrin, 25, 5.33	500 tons
Red Ring Coal Company, No. 2 Mine, 1946-1946	<u>3,554 tons</u>
	4,054 tons
Hill Top Coal Company, 1944-1944, underground	200 tons
Marion Strip Mining Company, 1946-1946, surface	1,000 tons
Wilkins Fuel Company, No. 1 Mine, 1950-1950, surface, Herrin, 35, 8.0	1,443 tons
Polinski Coal Company, 1953-1954, surface	1,500 tons
Spillertown Coal Company, 1954-1954, surface	150 tons
Houston Brothers Coal Company, 1955-1955, surface, Herrin, 16, 6.0	1,781 tons
Stilley Coal Company, No. 2 Mine, 1957-1957, surface	784 tons
Stilley Coal Company, No. 4 Mine, 1958-1958	<u>524 tons</u>
Herrin, 20-31, 5.0-6.0	1,308 tons
Easley Coal Company, No. 1 Mine, 1957-1957, surface	283 tons
Easley (L. E.) Coal Company, No. 2 Mine, 1957-1957, surface	119 tons
Little Egypt Coal Company, No. 1 Mine, 1957-1958	<u>2,008 tons</u>
Herrin, 18, 7.0	2,127 tons
Stilley Construction Company, No. 5 Mine, 1958-1958	1,038 tons
surface, Herrin, 20, 6.5	
Wenzel Coal Company, No. 4 Mine, 1958-1959, surface	2,965 tons
Herrin, 22-28, 7.0-7.67	
Yearack Coal Company, No. 2 Mine, 1957-1957, surface	211 tons
Stilley Construction Company, No. 7 Mine, 1959-1959, surface	1,170 tons

Marshall (R. W.) Coal Company, Pit No. 2, 1959-1959	450 tons
Finks Coal Company, Pit No. 4, 1959-1959	<u>not reported</u>
Herrin, 22-30, 6.33-7.5	1,620 tons
(Finks Coal Company was an auger operation.)	
Stilley Coal Company, Pit No. 8, 1959-1959, surface, Herrin, 20, 6.33	2,005 tons
Binkley & Miles, 1914-1915, slope, Herrin, 20-75, 6.0-10.0, RP	13,000 tons
McClanahan (E.), 1915-1917	6,955 tons
McClanahan (John), 1917-1918	4,177 tons
McClanahan Brothers, 1918-1919	7,210 tons
McClanahan (J.) & Company, 1919-1920	1,888 tons
McClanahan Brothers, 1920-1925	7,550 tons
McClanahan (John), 1926-1926	<u>900 tons</u>
	41,680 tons
Fifth Vein Coal Company, 1920-1921, slope, —, —, 3.83-6.0, RP	83,251 tons
Binkley Coal Company, 1921-1923	<u>154,035 tons</u>
	237,286 tons

NEW BURNSIDE

Chester Coal Company, 1920-1921	300 tons
Heaton (William), 1929-1929, surface	260 tons

PITTSBURG

Freels (B.), 1925-1925	50 tons
Charity Coal Company, 1932-1932, underground	2,900 tons
Kelton (Walter) Coal Company, 1934-1935, underground	1,270 tons

PULLEY'S MILL

Hudgins (J. B. & R. L.), 1889-1890, drift, Colchester, —, 3.12, RP	675 tons
Pritchard (T. P.), 1890-1891	<u>400 tons</u>
	1,075 tons
Allen (W. P.), 1890-1891, drift, Colchester, —, 3.12, RP	140 tons
Ward (J. D.), 1898-1899, slope or drift, Colchester, 30, 2.67-3.0, RP	1,800 tons
Pritchett & Ward, 1899-1900	785 tons
Reeves (John) & Company, 1900-1902	825 tons
Pritchett (J.), 1902-1903	<u>200 tons</u>
	3,610 tons

STONEFORT

Sittig (H. P.), 1909-1910, slope, Herrin, 10, 4.0, RP	246 tons
Roberson (C. D.), 1909-1910, drift, Herrin, —, 4.0, RP	115 tons
Reynolds (Jack), 1919-1920	226 tons
Wilhelm (Leo), 1920-1921	1,600 tons

Tramel Brothers, 1920-1921	450 tons
Dreaton (George), 1920-1921	400 tons
Cowsert (John), 1922-1923	120 tons
Bearsley & Holmes, 1925-1925	3,150 tons
Neely (Guinn), 1928-1928, underground	50 tons
Ledford (Seigel), 1934-1934, underground	2,000 tons
Parton (Evert), 1934-1934, underground	330 tons

WEST FRANKFORT

Wilson (J. R.), 1934-1934, underground	300 tons
--	----------

INDEX OF MINES IN MARION QUADRANGLE

Alexander (Byers & Alexander)	31
Allen (W. P.)	35
Allen (William P.)	30
Anderson (Dewie)	33
Anderson & Boyd	33
Angel & McNeil	34
Arnold (J. H.) & Company	33
Arnold, Rodd & Bolds	33
Arrowhead Coal Company	10
Asber (Albert)	29
Associated Coal Company, Inc.	21
Bauwick (William)	28
Bearsley & Holmes	35
Beasley & Dallas	33
Big Saline Coal Company	33
Big Three Coal Company	26
Binkley & Miles	30, 35
Binkley Coal Company	35
Black Diamond Coal Co.	31
Bolds (Arnold, Rodd & Bolds)	33
Boswell Brothers	34
Boyd (Anderson & Boyd)	33
Bradley (Bradbury) & Scullin, No. 1 Mine	32
Bradley Mine	25
Brinkley (Marian)	29
Brinkley Brothers	31
Brush (G. G.)	28
Brush & Edwards	33
Burris (Drury & Burris)	32
Byers (Odum & Byers)	31
Byers & Alexander	31
Campbell (S. A.)	30
Carolan (W. P.) & Company, Inc.	34
Casey (Ivan)	33
Chamness (Bert) Construction Company	30
Charity Coal Company	35
Chester Coal Company	35
Clyde (J. L.)	32
Coal Stripping Company	13
Comet Coal Company	31
Connett (Vernon)	31
Corder (Charles)	30
Corder & Hankins, No. 1 Mine	31
Corder & Hankins, No. 2 Mine	31
Cowsert (John)	35
Coy (John)	34
Crab Orchard Coal Company, Goodall Mine	30
Cravens (Joe)	32
D. D. J. L., No. 1 Mine	28
Dallas (Beasley & Dallas)	33
Davis (Sirles & Davis)	31
Davis Coal Company	27, 31
Deaton (Russell & Deaton)	29
DeLosch Coal Company	34
Diamond Star Coal Company	20
Doty (Reese-Doty & Company)	30
Dreton (George)	35
Drury & Burris	32
Dunsford (Charles)	28
Easley (L. E.) Coal Company, No. 2 Mine	34
Easley Coal Company, No. 1 Mine	34
Edwards (Brush & Edwards)	33
Enner (Woolen P.)	33

Equality Coal Company	31
Ferger (Ed)	32
Fifth Vein Coal Company	35
Finks Auger Coal Mining Company, Pit 3	29
Finks Coal Company, Pit No. 4	34
Freels (B.)	35
Freels (Ed)	34
Gabriel Brothers	31
Gentry Coal Company, No. 7 Mine	20
Ghent (H. M.) Coal Company	30
Godelski (Joe)	32
Goodall Mine	30
Gosnell Brothers	32
Grant (Charles)	33
Grant (F. E.) Coal Company	33
Grant & Odum	33
Hammers (Wesley)	29
Handkins (Roy)	31
Handkins (W. R.)	31
Handkins & Sims	31
Hankins (Corder & Hankins)	31
Harris (Frank)	29
Harris (John W.)	31
Hawkins (Roy)	31
Heaton (William)	35
Helm Coal Company, No. 2 Mine	34
Hemlock Coal Company	33
Henderson & Wallace Coal Company, No. 1 Mine	9
Henson (J. T.) & Sons	30
Henson (T. H.) & Sons	30
Herrin & Big Muddy Coal Company	27, 31
Hill Top Coal Company	34
Hodden (W. H.)	31
Hoddy (C. C.)	32
Holmes (Bearsley & Holmes)	35
Houston Brothers Coal Company	34
Howells (S.)	29
Hudgens Coal Company	33
Hudgins (J. B. & R. L.)	35
Hughes (Charles M.)	33
Hughes (George H.)	33
Hughes Coal Company	33
Ingram (J. W.)	18
Issler (Herman)	32
Issler (John)	32
Jay & Kay Coal Company	29
Jeffrey (Williams & Jeffrey)	32
Jeter (Rosco)	33
John (W. H.)	23
Kelton (Walter) Coal Company	35
Lady Luck Mine	32
LaMaster Coal Company	34
Ledford (Seigel)	36
Lewis (E.)	31
Lewis Coal Company	30
Lewis Coal Company, No. 1 Mine	32
Lewis Coal Company, No. 2 Mine	32
Little Egypt Coal Company, No. 1 Mine	34
Long (Josh)	33
Marion Coal Company	31
Marion Coal Company, Goodall Mine	30
Marion Strip Mining Company	34
Marlo & Marlo	32
Marshall (Floyd) & Smith (James)	33
Marshall (R. W.) Coal Company, Pit No. 2	34

McAllister Coal Company	32
McClanahan (E.)	35
McClanahan (J.) & Company	35
McClanahan (John)	35
McClanahan Brothers	35
McCluskey & Pendley	32
McCluskey, Pendley & Wilkinson	32
McCluskie (Alex), No. 1 Mine	30
McConkey (George)	33
McCracken & Rodney	34
McGinnis (T. D.)	29
McLaren Equipment Company	15
McLaren Mining Company	15
McNeil (Angel & McNeil)	34
Meredith & Newton	34
Miles (Binkley & Miles)	30
Miller (Odum & Miller)	31
Miller Coal Company	32
Motsinger (William)	30
Neally Brothers	28
Nealy (George)	28
Neely (Guinn)	35
New Black Diamond Coal Company, No. 7 Mine	20
New Marion Coal Company	31
Newton (Meredith & Newton)	34
Nolen (Ed)	33
Odum (E. D.)	31
Odum (Grant & Odum)	33
Odum & Byers	31
Odum & Miller	31
Odum Coal Company	31
Ohio & Mississippi Valley Coal & Mining Company, No. 2 Mine	16
Ohio Valley Coal & Coke Company	30
Oliver (M.)	32
Parton (Evert)	36
Peabody Coal Company, No. 02 Mine	16
Peabody Coal Company, Utility Mine	19
Peacock Coal Company, No. 2 Mine	28
Pendley (McCluskey & Pendley)	32
Pendley (McCluskey, Pendley & Wilkinson)	32
Pendley & Wilkinson, No. 1 Mine	32
Penley (Staudacher & Penley; see also Pendley)	32
Polinski (Charles)	31
Polinski (Tony)	31
Polinski Coal Company	31, 34
Porden (Joe)	30
Pritchard (T. P.)	35
Pritchett (J.)	35
Pritchett & Ward	35
Prospect Coal Company	32
Pyramid Coal Company	13
Quality Coal Company	25
Radford (M. H.)	33
Rankin & Scott	31
Read (Jasper)	30
Read (William)	28
Red Bird Coal Company	29
Red Ring Coal Company, No. 2 Mine	34
Red Rose Coal Company	33
Reese (Henry)	30
Reese-Doty & Company	30
Reese-Taylor	30
Reese-Taylor & Company	30
Reeves (John) & Company	35
Reid (Smith & Reid)	30

Reid (William M.)	30
Rentfro (Evan)	33
Rex (William M.)	30
Reynolds (Jack)	35
Richmon (Aubrey)	33
Ritche (Len)	28
Ritchie (Grant)	28
Ritchie (William)	28
Roberson (C. D.)	35
Roberts (Duff)	32
Rodd (Arnold, Rodd & Bolds)	33
Rodney (McCracken & Rodney)	34
Rodney Coal Company	34
Rosenberg (C. F.)	31
Rumberg (C. H.) Coal Company	29
Rushing Coal Company	32
Russell & Deaton	29
Sabba (John) & Company	32
Schreiwer (Robert)	28
Scott (Rankin & Scott)	31
Scottsboro Coal Company	22
Scullin (Bradley or Bradbury & Scullin)	32
Seymour Coal Mining Company	20
Shadowens (James)	33
Sims (Grant)	32
Sims (Handkins & Sims)	31
Sirles & Davis	31
Sittig (H. P.)	35
Smith (George L.)	32
Smith (James)	33
Smith (W. L.)	33
Smith & Reid	30
Snoddy Brothers	29
Sobczyk (Frank)	33
Sobczyk (Tony)	33
Southern Illinois Coal Mining & Washing Company, No. 2 Mine	16
Southern Illinois Coal Mining & Washing Company, No. 4 Mine	30
Southern Jewel Coal Company	14
Spiller (B. P.)	30
Spillertown Coal Company	34
Standacher (A. L.)	32
Staudacher (see also Standacher)	32
Staudacher & Penley	32
Stilley Coal Company, No. 2 Mine	34
Stilley Coal Company, No. 4 Mine	34
Stilley Coal Company, No. 6 Mine	30
Stilley Coal Company, Pit No. 8	34
Stilley Construction Company, No. 5 Mine	34
Stilley Construction Company, No. 7 Mine	34
Swofford (George)	32
Tanner (Hosia)	33
Taylor (Reese-Taylor & Company)	30
Taylor (Reese-Taylor & Company)	30
Templeton & Treyning	23
Threlkeld (Everett)	33
Tippet (William)	30
Tramel Brothers	35
Utility Coal Company	19
Wade (Walter) Coal Company	34
Ward (J. D.)	35
Ward (Pritchett & Ward)	35
Warm Morning Coal Company	30
Waters (Thomas) Coal Company, No. 1 Mine	31
Wells (Oscar & Lester)	32
Wells (Oscar)	32

Wenzel Brothers Coal Company	11
Wenzel Coal Company, No. 4 Mine	34
Wenzel Coal Company, Pit No. 5	12
Wilhelm (Leo)	35
Wilkerson Brothers	31
Wilkins Coal Company	34
Wilkins Fuel Company, No. 1 Mine	34
Wilkinson (McCluskey, Pendley & Wilkinson)	32
Williams (W. H.)	29
Williams & Jeffrey	32
Williford (J. B.)	30
Willoughby	30
Wilson	24
Wilson (George)	30
Wilson (H. L.)	17
Wilson (J. R.)	36
Wilson (J. W.)	17
Wilson (Roy)	32
Wilson (W. A.)	17, 29
Yearack Coal Company, No. 2 Mine	34

Funding for this project was supplied by the Illinois Mine Subsidence Insurance Fund.