

Coal Mines in Illinois

Matherville Quadrangle

Mercer & Rock Island Counties, Illinois

Rock Island Coal

This map accompanies the Coal Mines Directory for the Matherville Quadrangle. Consult the directory for a complete explanation of the information shown on this map.

Mining Method

- Room & Pillar (RP)
- Room & Pillar Basic (RPB)
- Modified Room & Pillar (MRP)
- Room & Pillar Panel (RPP)
- Blind Room & Pillar (BRP)
- Checkerboard Room & Pillar (CRP)
- High Extraction Retreat (HER)
- Longwall (LW)
- Underground, Method Unknown
- Strip Mine
- Auger Mine
- General Area of Mining

Other Areas Depicted

- Non-Coal Mines

Source of Mine Outline

- Final Mine Map
- Not Final Mine Map
- Undated Mine Map
- Incomplete Mine Map
- Secondary Source Map

Tipple, Shaft, Slope, Drift Locations

- Strip Mine Tipple - Active
- Strip Mine Tipple - Abandoned
- Mine Shaft - Active
- Mine Shaft - Abandoned
- Mine Slope - Active
- Mine Slope - Abandoned
- Mine Drift - Active
- Mine Drift - Abandoned
- Air Shaft
- Uncertain Location
- Uncertain Type of Opening

Mine Annotation
(space permitting)

- Company
- Mine Name
- ISGS Index No., Years of Operation

Disclaimer
Please check the Coal Section at the Illinois State Geological Survey's web site at <http://www.isgs.illinois.edu> for the most up-to-date version of these products.

Note that each quadrangle scale mined-out area map requires the use of the associated text directory for full explanation of map features and mine attributes. Also note that some quadrangles have multiple seams of mining and therefore more than one map may be available for a particular quadrangle. Please take care to check for multiple maps, as extensive mining may exist in the other seams.

The maps and digital files used for these studies were compiled from data obtained from a variety of public and private sources and have varying degrees of completeness and accuracy. This compilation map presents reasonable interpretation of the geology of the area and is based on available data. Locations of some mine features may be offset by 500 feet or more due to errors in the original source maps, the compilation process, digitizing, or a combination of these factors. These data are not intended for use in site-specific screening or decision-making. Use of these documents does not eliminate the need for detailed studies to fully understand the geology of a specific site. The Illinois State Geological Survey, Prairie Research Institute, or the University of Illinois make no guarantee, expressed or implied, regarding the correctness of the interpretations presented in this data set and accept no liability for the consequences of decisions made by others on the basis of the information presented here.

These maps were designed for use at 1:24,000. Enlarging the map may reduce accuracy, as the original scale of the source maps used to compile the outlines shown varies from 1:400 to 1:150,000, and some mine locations are known only from text descriptions. See the accompanying mine directory for the original scale of the source map used for a specific mine to check accuracy of a given portion of the map. Areas with no mines shown may still be undetermined; see the unlocated mines list at the back of each mine directory.

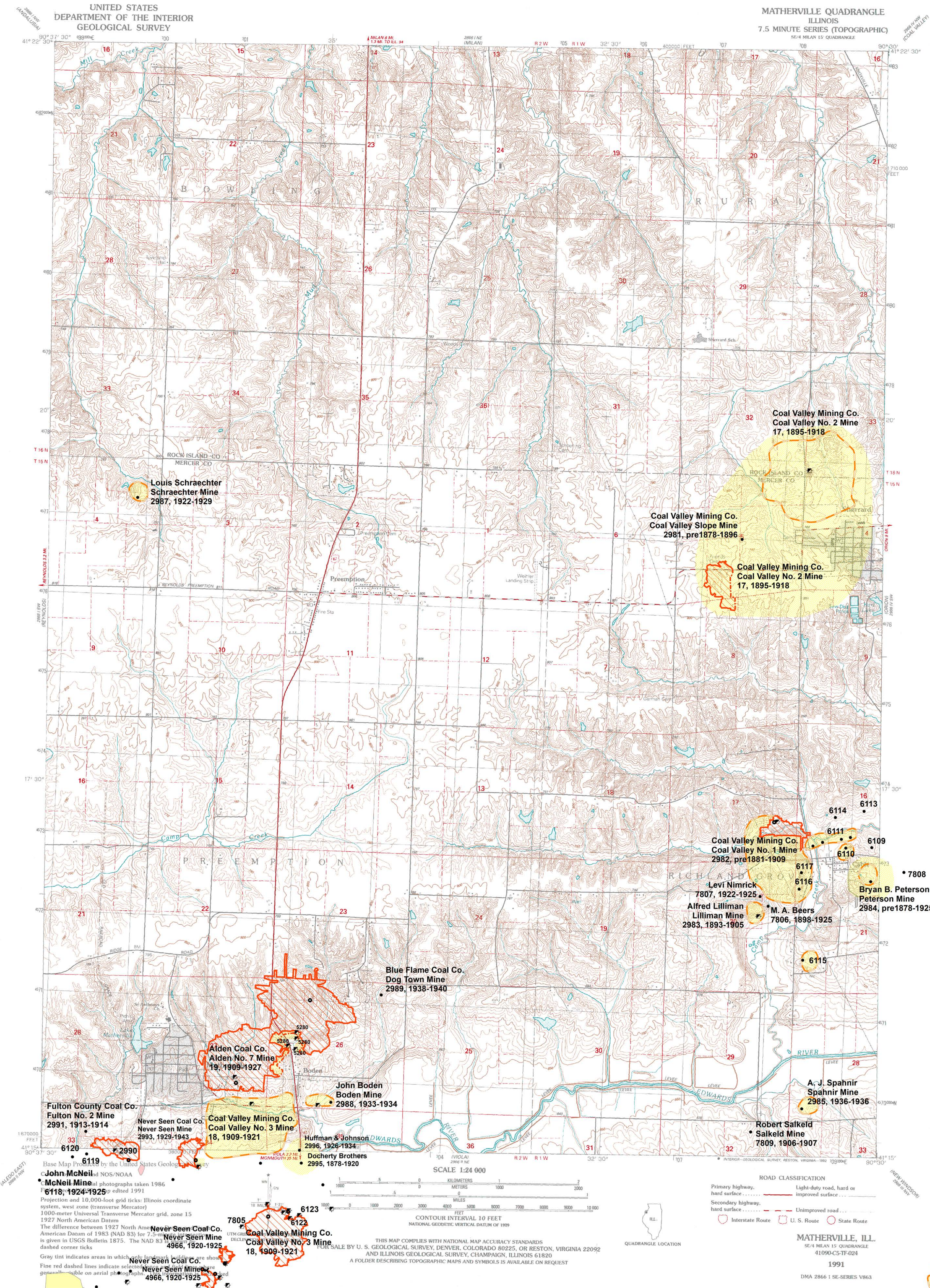
The image of the U.S.G.S. topographic base map was projected from the original UTM to Lambert Conformal Conic.

Location



Prairie Research Institute
Illinois State Geological Survey
615 E. Peabody Dr.
Champaign, IL 61820

Mine Outlines Compiled by
C. Chenoweth
June 2018



DIRECTORY OF COAL MINES IN ILLINOIS

7.5-MINUTE QUADRANGLE SERIES

MATHERVILLE QUADRANGLE

MERCER & ROCK ISLAND COUNTIES

C. Chenoweth



2018

Prairie Research Institute
Mark Ryan, Executive Director
ILLINOIS STATE GEOLOGICAL SURVEY
Richard C. Berg, Director

Natural Resources Building
615 East Peabody Drive
Champaign, Illinois 61820

Phone 217-244-4610

I ILLINOIS

Illinois State Geological Survey
PRAIRIE RESEARCH INSTITUTE

Funding provided in whole or in part by the Illinois Department of Transportation. The contents of this document reflect the view of the author who is responsible for the facts and the accuracy of the data presented herein. The contents do not necessarily reflect the official views or the policies of the Illinois Department of Transportation.

Cover photo Track-mounted duckbill loading machine at a Peabody Coal Company mine, ca. 1915.

DISCLAIMER: The accuracy and completeness of mine maps and directories vary with the availability of reliable information. Maps and other information used to compile this mine map and directory were obtained from a variety of sources and the accuracy of some of the original information cannot be verified. Consequently, the Illinois State Geological Survey (ISGS) cannot guarantee the mine maps are free of errors and disclaims any responsibility for damages that may result from actions or decisions based on them.

The ISGS updates the maps and directories periodically, and welcomes any new information or corrections. Please contact the Coal Section of the ISGS at the address shown on the title page of this directory, or telephone (217) 244-4610.

© 2018 The Board of Trustees of the University of Illinois. All rights reserved.
For permission information, contact the Illinois State Geological Survey.

CONTENTS

INTRODUCTION	1
MINING IN THE MATHERVILLE QUADRANGLE	1
PART I EXPLANATION OF MAP AND MINE SUMMARY SHEET	2
INTERPRETING THE MAP	2
Mine Type and Mining Method	2
Source Maps	3
Points and Labels	3
INTERPRETING A MINE SUMMARY SHEET	6
REFERENCES	8
PART II DIRECTORY OF MINES IN THE MATHERVILLE QUADRANGLE	9
MINE SUMMARY SHEETS	9
Mine Index 17	
Coal Valley Mining Company, Coal Valley No. 2 Mine	9
Mine Index 18	
Coal Valley Mining Company, Coal Valley No. 3 Mine	10
Mine Index 19	
Alden Coal Company, Alden No. 7 Mine	11
Mine Index 2981	
Coal Valley Mining Company, Coal Valley Slope Mine	12
Mine Index 2982	
Coal Valley Mining Company, Coal Valley No. 1 Mine	13
Mine Index 2983	
Alfred Lilliman, Lilliman Mine	14
Mine Index 2984	
Bryan B. Peterson, Peterson Mine	15
Mine Index 2985	
A. J. Spahnir, Spahnir Mine	16
Mine Index 2987	
Louis Schraechter, Schraechter Mine	17
Mine Index 2988	
John Boden, Boden Mine	18
Mine Index 2989	
Blue Flame Coal Company, Dog Town Mine	19
Mine Index 2990	
McCraney Sand & Gravel, McCraney Mine	20
Mine Index 2991	
Fulton County Coal Company, Fulton No. 2 Mine	21
Mine Index 2993	
Never Seen Coal Company, Never Seen Mine	22
Mine Index 2996	
Huffman & Johnson, Huffman & Johnson Mine	23
Mine Index 7806	
M. A. Beers, Beers Mine	24
Mine Index 7807	
Levi Nimrick, Nimrick Mine	25
Mine Index 7809	
Robert Salkeld, Salkeld Mine	26
OTHER MINES SHOWN ON MATHERVILLE QUADRANGLE	27
Mine Index 5280	27
Mine Index 6109	27
Mine Index 6110	27
Mine Index 6111	27
Mine Index 6113	27
Mine Index 6114	27

Mine Index 6115	27
Mine Index 6116	27
Mine Index 6117	27
MINES WHOSE LOCATIONS ARE NOT KNOWN, MATHERVILLE QUADRANGLE.	27
INDEX OF MINES IN THE MATHERVILLE QUADRANGLE.	29

INTRODUCTION

Coal has been mined in 76 counties of Illinois. More than 7,400 coal mines have operated since commercial mining began in Illinois about 1810; fewer than 30 are currently active. To detail the extent and location of coal mining in Illinois, the Illinois State Geological Survey (ISGS) has compiled maps and directories of known coal mines. The ISGS offers maps at a scale of 1:100,000 and accompanying directories for each county in which coal mining is known to have occurred. Maps at a scale of 1:24,000 and accompanying directories, such as this, are available for selected quadrangles. Contact the ISGS for a list of these quadrangles.

These larger scale maps show the approximate positions of mines in relation to surface features such as roads and water bodies, and indicate the mining method used and the accuracy of the mine boundaries. The maps are useful for locating mine boundaries relative to specific properties and for assessing the potential for subsidence in an area. Mine boundaries compiled from final mine surveys are generally shown within 200 feet of their true position. As a result of poor cartographic quality and inaccuracies in the original mine surveys, boundaries of some older mines may be mislocated on the map by 500 feet or more. Original mine maps should be consulted in situations that require precise delineation of mine boundaries or internal workings of mined areas.

This directory serves as a key to the accompanying mine map and provides basic information on the coal mines in the quadrangle. The directory is composed of two parts. Part I explains the symbols and patterns used on the accompanying map and the summary data presented for each mine. Part II numerically lists the mines in the quadrangle and summarizes the geology and production history of each mine. Total production for the mine, not the portion in the quadrangle, is given.

MINING IN THE MATHERVILLE QUADRANGLE

According to A. H. Worthen, mines were active in sections 16, 20, and 21 of T15N-R1W near the town of Cable. The locations were not specific and may be represented on the accompanying map by mines on the slopes adjacent to Camp Creek and its tributaries. Mining continued in this area until 1925.

According to the 1910 Coal Report (p. 238), the town of Matherville was established as a mining town for the Coal Valley Mining Company (mine index 18) and Alden No. 7 Mine (mine index 19). Mining ceased in this vicinity in 1943.

PART I EXPLANATION OF MAP AND MINE SUMMARY SHEET

INTERPRETING THE MAP

The map accompanying this directory shows the location of coal mines known to be present in the quadrangle. The map, corresponding to a U.S. Geological Survey (USGS) 7.5-minute quadrangle, covers an area bounded by lines of latitude and longitude 7.5-minutes apart. In Illinois, a quadrangle is approximately 6.5 miles east to west and 8.5 miles north to south, an area of about 56 square miles. The USGS generally offers one map of mines per quadrangle. In some areas where extensive mining occurred in two or more overlapping seams, separate maps are compiled for mines in each seam to maintain readability of the map.

Mine Type and Mining Method

The mine type is indicated on the map by pattern color: green represents surface mines; red and yellow represent underground mines. The red patterns are used for areas of underground mining that are documented by a primary or secondary source map. A yellow pattern is used for cases where no map of the mine workings is available, but a general area of mining can be inferred from property maps or production figures. The patterns indicate the main mining methods used in underground mines. The methods are (1) room and pillar and (2) high extraction. The method used gives some indication of the amount and pattern of coal extraction within each mined area, and has some influence on the timing and type of subsidence that can occur over a mine.

The following discussion and illustrations of mining methods are based on Guither et al. (1984).

In room-and-pillar mines, coal is removed from haulage-ways (entries) and selected areas called rooms. Pillars of unmined coal are left between the rooms to support the roof. Depending on the size of rooms and pillars, the amount of coal removed from the production areas will range from 40% to 70%.

Room and Pillar - mining is divided into six categories:

- room-and-pillar basic (RPB, fig. 1A), an early method that did not follow a preset mining plan and therefore resulted in very irregular designs;
- modified room and pillar (MRP, fig. 1B);
- room-and-pillar panel (RPP, fig. 1C);
- blind room and pillar (BRP, fig. 1D);
- checkerboard room and pillar (CRP, fig. 1E);
- room and pillar (RP), a classification used when the specific type of room-and-pillar mining is unknown.

Blind and checkerboard are the most common types of room-and-pillar mining used in Illinois today. The knowledge of room-and-pillar mining methods gives a trained engineer information on the nature of subsidence that may occur. A more extensive discussion of subsidence can be found in Bauer et al. (1993).

High-extraction These mining methods are subdivided into high-extraction retreat (HER, Fig 1F) and longwall (LW, Fig 1G, 1H). In these methods, much of the coal is removed within well defined areas of the mine. Subsidence of the surface above these areas occurs within weeks. Once the subsidence activity ceases, the potential for further movement over these areas is low; however, subsidence may continue for several years after mining.

High-extraction retreat mining is a form of room-and-pillar mining that extracts most of the coal. Rooms and pillars are developed in the panels, and the pillars are then systematically removed (fig. 1F).

In early (pre-1960) longwall mines, mining advanced in multiple directions from a central shaft (fig. 1G). Large pillars of coal were left around the shaft, but all coal was removed beyond these pillars. Miners placed rock and wooden props and cribs in the mined-out areas to support the mine roof. The overlying rock gradually settled onto these supports, thus producing subsidence at the surface. In post-1959 longwall mines, room-and-pillar methods have been used to develop the main entries of the mine and panel areas. Modern longwall methods extract 100 percent of the coal in the panel areas (fig. 1H).

SOURCE MAPS

Mine outlines depicted on the map are, whenever possible, based on maps made from original mine surveys. The process of compiling and digitizing the quadrangle map may produce errors of less than 200 feet in the location of mine boundaries. Larger errors of 500 feet or more are possible for mines that have incomplete or inaccurate source maps.

Because of the extreme complexity of some mine maps, detailed features of mined areas have been omitted. The digitized mine boundary includes the exterior boundary of all rooms or entries that were at least 80 feet wide or protruded 500 feet from the main mining area. Unmined areas between mines are shown if they are at least 80 feet wide; unmined blocks of coal within mines are shown if they are at least 400 feet on each side. Original source maps should be consulted when precise information on mine boundaries or interior features is needed.

The mine summary sheet lists the source maps used to determine each mine outline. The completeness of map sources is indicated on the map by a line symbol at the mine boundary. Source maps are organized in five categories.

Final mine map The mine outline was digitized from an original map made from mine surveys conducted within a few months after production ceased. The date of the map and the last reported production are listed on the summary sheet.

Not a final map The mine is currently active or the mine outline was made from a map based on mine surveys conducted more than a few months before production ceased. This implies the actual mined-out area is probably larger than the outline on the map. The mine summary sheet indicated the dates of source maps and the last reported production, as well as the approximate tonnage mined between these two dates (if the mine is abandoned). The summary sheet also lists the approximate acreage mined since the date of the map and, in some cases, indicates the area where additional mining may have taken place. This latter information is determined by locating on the map the active faces relative to probable boundaries of the mine property.

Undated map The source map was undated, so it may or may not be based on a final mine survey. When sufficient data are available, the probable acreage of the mined area is estimated from reported production, average seam thickness and a recovery rate comparable to other mines in the area. This information is listed in the summary sheet for the mine.

Incomplete map The source map did not show the entire mine. The summary sheet indicates the missing part of the mine map and the acreage of the unmapped area, which is estimated from the amount of coal known to have been produced from the mine.

Secondary source map The original mine map was not found so the outline shown was determined from secondary sources (e.g., outlines from small-scale regional maps published in other reports). The summary sheet describes the secondary sources.

POINTS AND LABELS

The locations of all known mine openings (shafts, slopes, and drifts) and surface mine tipples are plotted on the map. Tipples are areas where coal was cleaned, stockpiled, and loaded for shipping.

Only openings or tipples are plotted for mines without source maps. If the precise locations of these features are unknown, a special symbol is used to indicate the approximate location of the mine.

Each mine on the map is labeled with the names of the mine and operating company, ISGS mine index number, and years of operation (if known) if space permits. A seam designation is given on maps where more than one seam was mined. For a mine that operated under more than one name, only the most recent name is generally given. When a mine changed names or ownership shortly before closing, an earlier name is listed. All company and mine names are listed on the mine summary sheet in the directory, under the production history segment.



Figure 1 Mining methods: (A) room-and-pillar basic (RPB), (B) modified room and pillar (MRP), (C) room-and-pillar panel (RPP), (D) blind room and pillar (BRP).



Figure 1 (cont.) Mining methods: (E) checkerboard room and pillar (CRP), (F) high extraction retreat (HER), (G) early (pre-1960) longwall, (H) post-1959 longwall



Figure 2 Generalized stratigraphic section, showing approximate vertical relations of coals in Illinois.

INTERPRETING A MINE SUMMARY SHEET

The mine summary sheet is arranged numerically by mine index number. Index numbers are shown on the map and in the mine listing. The mine summary sheet provides the following information (if available).

Company and mine name The last company or owner of the mine is used, unless no production was recorded for the last owner. In that case, the penultimate owner is listed. Mines often have no specific name; in these cases, the company name is also used as the mine name.

Type *Underground* denotes a subsurface mine in which the coal was reached through a shaft, slope, or a drift entry. *Surface* denotes a surface, open pit or strip mine.

Total mined-out acreage shown The total acreage of the mined area mapped, including any acreage mined on adjacent quadrangles, is calculated from the digitized outline of the mine. The acreage of large barrier pillars depicted on the map is excluded from the mined-out acreage. Small pillars not digitized are included in the acreage calculation. If the mine outline is not based on a final mine map, the acreage is followed by an estimate of additional acres that may have been mined. The estimate is determined from reported mine production, approximate thickness of the coal, and recovery rates calculated from nearby mines that used similar mining methods.

SHAFT, SLOPE, DRIFT OR TIPPLE LOCATIONS

Shaft, slope, drift, or tippie locations Locations of all known former entry points to underground mines or the location of coal cleaning, tippie, and shipping equipment used by the mine's facility are listed. The location is described in terms of county, township and range (Twp-Rge), section, and location within the section by quarters. NE SW NW, for instance, would describe the location in the northeast quarter of the southwest quarter of the northwest quarter. When sections are irregular in size, the quarters remain the same size and are oriented (or "registered") from the southeast corner of the section. Approximate footage from the section lines (FEL = from east line, FNL = from north line, for example) is given when that information is known; this indicates a surveyed location and is not derived from maps. Entry points are also plotted on the map and coded for the type of entry or tippie. A mine opening may have had many purposes during the life of the mine. Old hoist shafts are often later used for air and escape shafts; this information is included in the directory when known. The tippie for underground mines was generally located near the main shaft or slope. At surface mines, coal was sometimes hauled to a central tippie several miles from the mine pit.

GEOLOGY

Seam(s) mined The name of the coal seam(s) mined is listed, if known. If multiple seams were mined, they are all listed, although the mined-out area for each seam may be shown on separate maps. Figure 2 shows the stratigraphic section of the coal-bearing interval in Illinois, and the vertical relations among the coals.

Depth The depth to the top of the seam in the vicinity of the shaft is listed, if known. The depth is determined from notes made by geologists who visited the mine during its operation or from drill hole data in ISGS files. Depth generally varies little over the extent of a mine; however, reported depths for an individual mine may vary. Depth for surface-mined coals varies, and is usually represented as a range.

Thickness The approximate thickness of the mined seam is shown, if known. Thickness also comes from notes of geologists who visited the mine during its operation or from borehole data in ISGS files. Minimum, maximum, and average thicknesses are given when this information is available.

Mining method The principal mining method used at the mine (figs. 1A-H) is listed. See the mining methods section at the beginning of this directory for a discussion of this parameter.

Geologic problems reported Any known geologic problems, such as faults, water seepage, floor heaving, and unstable roof, encountered in the mine are reported. This information is from notes made by ISGS geologists who visited the mine, or from reports by mine inspectors published by the Illinois Department of Mines and Minerals, or from the source map(s). Geologic problems are not reported for active mines.

PRODUCTION HISTORY

Production history Tons of coal produced from the mine by each mine owner are totaled. When the source map used for the mine outline is not a final mine map, the tonnage produced since the date of the map is identified. For mines that extend into adjacent quadrangles, the tonnage reported includes areas mined in adjacent quadrangles.

SOURCE OF DATA

Source map This section lists information about the map(s) used to compile the mine outline and the locations of tipples and mine openings. In some cases more than one source map was used. For example, a map drawn before the mine closed may provide better information on original areas of the mine than a later map. When more than one map was used, the bibliography section explains what information was taken from each source.

Date The date of the most recent mine survey listed on the source map is reported.

Original scale The original scale of the source map is listed. Many maps are photo-reductions and are no longer at their original scale. The original scale gives some indication of the level of detail of the mine outline and the accuracy of the mine boundary relative to surface features. Generally, the larger the scale, the greater the accuracy and detail of the mine map. Mine outlines taken from source maps at scales smaller than 1:24,000 may be highly generalized and may well be inaccurately located with respect to surface features.

Digitized scale The scale of the digitized map is reported. The scale may be different from that of the original source map. In many cases the digitized map was made from a photo-reduction of the original source map, or the source map was not in a condition suitable for digitizing and the mine boundaries were transferred to another base map.

Map type Source maps are classified into five categories to indicate the probable completeness of the map. See discussion of source maps in the previous section.

Annotated bibliography Sources that provide information about the mine are listed, with the data taken from each source. Some commonly used sources are described below. Full bibliographic references are given for all other sources. Unless otherwise noted, all sources are available for public inspection at the ISGS.

Coal Reports Published since 1881, these reports contain tabular data on mine ownership, production, employment, and accidents. Some volumes include short descriptions made by mine inspectors of physical features and conditions in selected mines.

Directory of Illinois Coal Mines This source is a compilation of basic data about Illinois coal mines, originally gathered by ISGS staff in the early 1950s. Sources used for this directory are undocumented, but they are primarily Illinois Department of Mines and Minerals annual reports, ISGS mine notes, and coal company officials.

ENR Document 85/01, Guither, H. D., J. K. Hines, and R. A. Bauer, 1985 The Economic Effect of Underground Mining Upon Land Used for Illinois Agriculture: Illinois Department of Energy and Natural Resources Document 85/01, 185 p.

Microfilm map The U.S. Bureau of Mines maintains a microfilm archive of mine maps. A microfilm file for Illinois is available for public viewing at the ISGS.

Mine notes ISGS geologists have visited mines or contacted mine officials throughout the state since the early 1900s. Notes made during these visits range from brief descriptions of the mine location to long narratives (including sketches) of mining conditions and geology.

Federal Land Bank of St. Louis, Preliminary Reports on Subsidence Investigations Mining engineers working for the Federal Land Bank of St. Louis mapped areas of subsidence due to coal mining in the early 1930s. These reports often include county maps of mine properties with mined-out areas including shaft locations, as well as subsidence areas.

REFERENCES

Bauer, R. A., B. A. Trent, and P. B. Dumontelle, 1993, Mine Subsidence in Illinois: Facts for the Homeowner Considering Insurance, Illinois State Geological Survey, Environmental Geology Note 144, 16p.

Guither, H. D., J. K. Hines, and R. A. Bauer, 1985, The Economic Effects of Underground Mining Upon Land Used for Illinois Agriculture, Illinois Department of Energy and Natural Resources Document 85/01, 185p.

Worthen, A. H., H. M. Bannister, F. H. Bradley, & H. A. Green, 1870, Geology and Paleontology of Illinois, Volume IV, State Journal Steam Press, Springfield, Illinois, 508p.

PART II DIRECTORY OF MINES IN THE MATHERVILLE QUADRANGLE

MINE SUMMARY SHEETS

A summary sheet on the geology and production history of each mine in the Matherville Quadrangle is provided. These summary sheets are arranged numerically by mine index number. Consult Part I for a complete explanation of the data listed in the summary sheet.

Mine Index 17

Coal Valley Mining Company, Coal Valley No. 2 Mine

Type: Underground Total mined-out acreage shown: 282; production indicates approximately 910 acres were mined. A general area of mining has been added to the accompanying map to indicate the approximate size of the mine.

SHAFT, SLOPE, DRIFT or TIPPLE LOCATIONS

Type	County	Township-Range	Section	Quarters-Footage
Main shaft	Mercer	16N 1W	33	SW SW SW

GEOLOGY

Seam(s) Mined	Depth (ft)	Thickness (ft)			Mining Method
		Min	Max	Avg	
Rock Island	206	2.5	5.0	3.67	MRP

Geologic Problems Reported: An erosion channel approximately 75 feet wide ran E-W, crossing an entry about 2000 feet from the shaft. Some small faults with 3 to 4 feet of displacement were present, as well as slips and rolls. The roof was 0 to 10 feet of black shale overlain by bluish gray limestone. The coal sometimes had a 1.83 foot thick dirty layer just beneath the roof, underlain by a 0.25-inch layer with streaks of coal and pyrite, but usually the upper 10 inches was harder and brighter than the lower 38 inches. Roof falls caused 8 fatalities between 1899 and 1909. The seam locally had considerable dip while the general dip was 12 feet in 3 miles to the south. In 1909, Udden reported many pillars were pulled. Where bony coal was present, such as 500 to 600 feet from the shaft, heaving took place that no amount of timbering could halt. In some cases, heaving filled the entry. In some places, the floor was sandstone.

PRODUCTION HISTORY

Company	Mine Name	Years	Production (tons)
Coal Valley Mining Company	Coal Valley No. 2	1895-1918	<u>3,011,897</u> 3,011,897

Last reported production: May 1918

SOURCES OF DATA

Source Map	Date	Original Scale	Digitized Scale	Map Type
Microfilm, document 352451	5-4-1914	Unknown	1:24000	Not final *
Matherville Quadrangle	1953	1:24000	1:24000	Secondary source
Coal Section files (Milan Quadrangle)	1910	1:62500	1:62500	Secondary source

* Incomplete on the eastern side.

Annotated Bibliography (data source, brief description of information)

Coal Reports - Production, ownership, years of operation.

Directory of Illinois Coal Mines (Mercer County) - Mine names, mine index, ownership, years of operation.

Mine notes (Mercer County) - Mine type, shaft location, seam, depth, thickness, geologic problems.

Microfilm map, document 352451, reel 03139, frame 127 - Mine outline (western), mining method.

Matherville Quadrangle, 7.5 USGS topographic map - Shaft location.

Coal Section files, undated work map on USGS topographic map, 15' Milan Quadrangle - Mine outline (northern).

Mine Index 18
Coal Valley Mining Company, Coal Valley No. 3 Mine

Type: Underground Total mined-out acreage shown: 271 in two polygons (one north and one south of the Edwards River)

SHAFT, SLOPE, DRIFT or TIPPLE LOCATIONS

Type	County	Township-Range	Section	Quarters-Footage
Main shaft	Mercer	15N 2W	27	SE SE SE
Main slope	Mercer	15N 2W	34	SE NE SE
Air shaft	Mercer	15N 2W	34	NE SE SE

GEOLOGY

Seam(s) Mined	Depth (ft)	Thickness (ft)			Mining Method
		Min	Max	Avg	
Rock Island	61	3.67	5.0	4.0	MRP

Geologic Problems Reported: The mine was abandoned because of poor roof conditions. The roof was generally up to 8 feet of black shale under 1 to 3 feet of limestone. Clay veins, slips and rolls were noted in the seam. Swags were common in the coal.

PRODUCTION HISTORY

Company	Mine Name	Years	Production (tons)
Coal Valley Mining Company	Coal Valley No. 3	1909-1921	1,280,003
			1,280,003

Last reported production: August 1921

SOURCES OF DATA

Source Map	Date	Original Scale	Digitized Scale	Map Type
Microfilm, document 352246	9-15-1921	1:1200	1:2069	Final
Coal Section files (Milan Quadrangle)	undated	1:62500	1:62500	Secondary source

Annotated Bibliography (data source, brief description of information)

Coal Reports - Production, ownership, years of operation.
 Directory of Illinois Coal Mines (Mercer County) - Mine names, mine index, ownership, years of operation.
 Mine notes (Mercer County) - Mine type, shaft location, depth, thickness, geologic problems.
 Microfilm map, document 352246, reel 03138, frames 310 & 311 - Shaft & slope locations, mine outline (southern), mining method.
 Coal Section files, undated work map on USGS topographic map, 15-minute Milan Quadrangle - Mine outline (northern), shaft location.

Mine Index 19
Alden Coal Company, Alden No. 7 Mine

Type: Underground Total mined-out acreage shown: 320 Production indicates approximately 26 acres were mined after the map date.

SHAFT, SLOPE, DRIFT or TIPPLe LOCATIONS

Type	County	Township-Range	Section	Quarters-Footage
Main shaft	Mercer	15N 2W	27	NE SW SE
Air shaft	Mercer	15N 2W	27	NW SE SE
Air shaft	Mercer	15N 2W	26	SW NE NW

GEOLOGY

Seam(s) Mined	Depth (ft)	Thickness (ft)			Mining Method
		Min	Max	Avg	
Rock Island	70-95			4.0-5.0	MRP

Geologic Problems Reported: In 1916, a great deal of water entered the mine from an abandoned adjacent mine, whose workings were not mapped (abandoned workings of "many, many years standing"). The influx of water idled Alden No. 7 Mine for 2 months. A lenticular black shale of variable thickness was present between the coal the limestone roof. A roof fall caused a fatality in 1915. The coal was irregular in thickness and had a high pyrite content as well as a considerable amount of calcite. There was more calcite in the bottom of the seam while the pyrite was throughout the bed. If the pyrite was gobbled so that air did not circulate freely over the pyrite masses, they began to burn. Horsebacks, faults, clay veins and rolls were present in the mine. One swag was noted where the coal thickness increased to 5 feet. Mine notes indicate pillars were pulled. The source map shows many areas of squeeze, especially in the eastern portion.

PRODUCTION HISTORY

Company	Mine Name	Years	Production (tons)
Alden Coal Company	Alden No. 7	1909-1925	1,564,229
Alden Coal Company	Alden No. 7	1925-1927	127,658 *
			1,691,887

* Production after map date

Last reported production: March 1927

SOURCES OF DATA

Source Map	Date	Original Scale	Digitized Scale	Map Type
State archive, IL_2355	6-1-1925	1:2400	1:2400	Not final

Annotated Bibliography (data source, brief description of information)

Coal Reports - Production, ownership, years of operation, seam, depth, thickness, mining method.
 Directory of Illinois Coal Mines (Mercer County) - Mine names, mine index, ownership, years of operation.
 Mine notes (Mercer County) - Mine type, shaft location, geologic problems.
 State Archive, IL_2355, courtesy of Robert Gibson, IDNR - Shaft locations, mine outline, mining method, geologic problems.

Mine Index 2981**Coal Valley Mining Company, Coal Valley Slope Mine**

Type: Underground Total mined-out acreage shown: None; included in the general area of mining for Coal Valley No. 2 Mine (mine index 17). Production indicates approximately 105 acres were mined.

SHAFT, SLOPE, DRIFT or TIPPLe LOCATIONS

Type	County	Township-Range	Section	Quarters-Footage
Main slope	Mercer	15N 1W	5	

GEOLOGY

Seam(s) Mined	Depth (ft)	Thickness (ft)			Mining Method
		Min	Max	Avg	
Rock Island	40-100			3.5-4.0	RP

Geologic Problems Reported:

PRODUCTION HISTORY

Company	Mine Name	Years	Production (tons)
P. L. Cable	Cable Slope	pre1878-1879	12,521
Coal Valley Mining Company	Coal Valley Slope	1879-1896	<u>338,669</u> 351,190

Last reported production: 1896

SOURCES OF DATA

Source Map	Date	Original Scale	Digitized Scale	Map Type
Mine notes	Undated	1:62500	1:62500	Secondary source

Annotated Bibliography (data source, brief description of information)

Coal Reports - Production, ownership, years of operation, mine type, seam, depth, thickness, mining method.

Directory of Illinois Coal Mines (Mercer County) - Mine names, mine index, ownership, years of operation.

Mine notes - Slope location.

Mine Index 2982**Coal Valley Mining Company, Coal Valley No. 1 Mine**

Type: Underground Total mined-out acreage shown: 180 (including general area of mining)

Production indicates approximately 700 acres were mined.

SHAFT, SLOPE, DRIFT or TIPPLE LOCATIONS

Type	County	Township-Range	Section	Quarters-Footage
Main shaft	Mercer	15N 1W	17	SW NE SE
Air shaft	Mercer	15N 1W	17	SW NE SE

Note: In 1884, the mine dimensions were 2,278 ft north of the shaft and 1,820 ft south of the shaft. It is likely there are more shafts than shown on the accompanying map.

GEOLOGY

Seam(s) Mined	Depth (ft)	Thickness (ft)			Mining Method
		Min	Max	Avg	
Rock Island	56			3.9-4.5	MRP

Geologic Problems Reported: The workings were connected underground to the Ellis Slope Mine (unlocated mine at the back of this report), which caused flooding in January 1907, when Camp Creek overflowed its banks. A roof fall during pillar removal resulted in a fatality.

PRODUCTION HISTORY

Company	Mine Name	Years	Production (tons)
Coal Valley Mining Company	Coal Valley No. 1	pre1881-1909 *	<u>2,473,563</u> 2,473,563

* Production, ownership, and years of operation prior to 1881 are unknown. The 1882 Coal Report indicated 10 acres were mined.

Last reported production: 1909

SOURCES OF DATA

Source Map	Date	Original Scale	Digitized Scale	Map Type
Microfilm, document 352250	6-1-1908	1:1200	1:1986	Not final
Coal Section files, Milan Quadrangle	Undated	1:62500	1:62500	Secondary source

Annotated Bibliography (data source, brief description of information)

Coal Reports - Production, ownership, years of operation, mine type, seam, thickness, geologic problems.

Directory of Illinois Coal Mines (Mercer County) - Mine names, mine index, ownership, years of operation.

Mine notes (Mercer County) - Shaft location, depth, thickness.

Microfilm map, document 352250, reel 03138, frame 316 - Shaft locations, mine outline, mining method.

Coal Section files, undated work map on USGS topographic map, 15-minute Milan Quadrangle - Mine outline.

Mine Index 2983
Alfred Lilliman, Lilliman Mine

Type: Underground Total mined-out acreage shown: 11

SHAFT, SLOPE, DRIFT or TIPPLE LOCATIONS

Type	County	Township-Range	Section	Quarters-Footage
Main shaft	Mercer	15N 1W	20	SE SW NE

GEOLOGY

Seam(s) Mined	Depth (ft)	Thickness (ft)			Mining Method
		Min	Max	Avg	
Rock Island	37-50			3.0-4.0	RPB

Geologic Problems Reported:

PRODUCTION HISTORY

Company	Mine Name	Years	Production (tons)
Lilliman Brothers	Lilliman	1893-1901	12,560
Lilliman & Company	Lilliman	1901-1903	10,400
Alfred Lilliman	Lilliman	1903-1905	9,754
			32,714

Last reported production: 1905

SOURCES OF DATA

Source Map	Date	Original Scale	Digitized Scale	Map Type
Coal Section files, Milan Quadrangle	Undated	1:62500	1:62500	Secondary source

Annotated Bibliography (data source, brief description of information)

Coal Reports - Production, ownership, years of operation, mine type, seam, depth, thickness.
 Directory of Illinois Coal Mines (Mercer County) - Mine names, mine index, ownership, years of operation.
 Mine notes (Mercer County) - Shaft location.
 Coal Section files, undated work map on USGS topographic map, 15-minute Milan Quadrangle - Mine outline.

Mine Index 2984
Bryan B. Peterson, Peterson Mine

Type: Underground Total mined-out acreage shown: 12 Production indicates over 30 acres were mined.

SHAFT, SLOPE, DRIFT or TIPPLE LOCATIONS

Type	County	Township-Range	Section	Quarters-Footage
Main shaft	Mercer	15N 1W	21	SW NW NE

GEOLOGY

Seam(s) Mined	Depth (ft)	Thickness (ft)			Mining Method
		Min	Max	Avg	
Rock Island	21-65			2.5-4.0	RPB

Geologic Problems Reported:

PRODUCTION HISTORY

Company	Mine Name	Years	Production (tons)
Charles Peterson	Peterson	pre1878-1895 *	40,297
Bryan B. Peterson	Peterson	1895-1918	46,798
Axel Swanson & Nimrick	Swanson & Nimrick	1918-1920	5,606
Axel Swanson	Swanson	1920-1923	3,626 **
Peterson Coal Company	Peterson	1923-1924	360
Bryan B. Peterson	Peterson	1924-1925	<u>2,059</u>
			98,746

* Production, ownership, and years of operation before 1878 are unknown. The 1882 Coal Report indicated 4 acres were mined.

** The 1922 Coal Report did not list mines producing less than 10,000 tons.

Last reported production: 1925

SOURCES OF DATA

Source Map	Date	Original Scale	Digitized Scale	Map Type
Coal Section files, Milan Quadrangle	Undated	1:62500	1:62500	Secondary source

Annotated Bibliography (data source, brief description of information)

Coal Reports - Production, ownership, years of operation, mine type, seam, depth, thickness.

Directory of Illinois Coal Mines (Mercer County) - Mine names, mine index, ownership, years of operation.

Mine notes (Mercer County) - Mine location, depth.

Coal Section files, undated work map on USGS topographic map, 15-minute Milan Quadrangle - Mine outline.

Mine Index 2985**A. J. Spahnir, Spahnir Mine**

Type: Underground Total mined-out acreage shown: 10 as a general area of mining; production indicates less than 1 acre was mined.

SHAFT, SLOPE, DRIFT or TIPPLE LOCATIONS

Type	County	Township-Range	Section	Quarters-Footage
Drift	Mercer	15N 1W	28	SW SW SW

GEOLOGY

Seam(s) Mined	Depth (ft)	Thickness (ft)			Mining Method
		Min	Max	Avg	
Rock Island	25				Underground

Geologic Problems Reported:

PRODUCTION HISTORY

Company	Mine Name	Years	Production (tons)
A. J. Spahnir	Spahnir	1936-1936	<u>179</u> 179

Last reported production: 1936

SOURCES OF DATA

Source Map	Date	Original Scale	Digitized Scale	Map Type
Coal Section files, Milan Quadrangle	Undated	1:62500	1:62500	Secondary source

Annotated Bibliography (data source, brief description of information)

Coal Reports - Production, ownership, years of operation.
 Directory of Illinois Coal Mines (Mercer County) - Mine names, mine index, ownership, years of operation.
 Mine notes (Mercer County) - Mine location, seam, depth.
 Coal Section files, undated work map on USGS topographic map, 15-minute Milan Quadrangle - Mine outline.
 ISGS mined-out area map, Area 4, 1950 - Mine type, mine identification.

Mine Index 2987**Louis Schraechter, Schraechter Mine**

Type: Underground Total mined-out acreage shown: 11; production indicates less than 2 acres were mined.

SHAFT, SLOPE, DRIFT or TIPPLE LOCATIONS

Type	County	Township-Range	Section	Quarters-Footage
Drift	Mercer	15N 2W	4	NW SE NE

GEOLOGY

Seam(s) Mined	Depth (ft)	Thickness (ft)			Mining Method
		Min	Max	Avg	
Rock Island					Underground

Geologic Problems Reported:

PRODUCTION HISTORY

Company	Mine Name	Years	Production (tons)
Schaechter Brothers	Schaechter	1922-1925	1,600
Louis Schraechter	Schraechter	1926-1929	3,375
			4,975

Last reported production: 1929

SOURCES OF DATA

Source Map	Date	Original Scale	Digitized Scale	Map Type
Coal Section files, Milan Quadrangle	Undated	1:62500	1:62500	Secondary source

Annotated Bibliography (data source, brief description of information)

Coal Reports - Production, ownership, years of operation, mine type.

Directory of Illinois Coal Mines (Mercer County) - Mine names, mine index, ownership, years of operation.

Mine notes (Mercer County) - Mine location.

Coal Section files, undated work map on USGS topographic map, 15-minute Milan Quadrangle - Mine outline.

Mined-out area map, O'Neill plan map No. 4, 1950 - Mine type, mine identification.

Mine Index 2988
John Boden, Boden Mine

Type: Underground Total mined-out acreage shown: 11, as a general area of mining. Production indicates the Boden Mine worked less than 1 acre. However, the 1910 (15-minute) quadrangle map depicts a shaft within the general area of mining, and other mines may have operated within the general area of mining.

SHAFT, SLOPE, DRIFT or TIPPLE LOCATIONS

Type	County	Township-Range	Section	Quarters-Footage
Main drift	Mercer	15N 2W	26	SE SE SW
Old shaft	Mercer	15N 2W	26	SW SE SW

GEOLOGY

Seam(s) Mined	Depth (ft)	Thickness (ft)			Mining Method
		Min	Max	Avg	
Rock Island	35			3.6-4.0	Underground

Geologic Problems Reported:

PRODUCTION HISTORY

Company	Mine Name	Years	Production (tons)
John Boden *	Boden	1933-1934	<u>2,535</u> 2,535

* ISGS field notes written by J. A. Udden indicate that the Dog Town Mine operated by Docherty Brothers (mine index 2995) on 7-24-1911 worked at the shaft location shown for Boden Mine (SW SE SW 26-T15N-R2W). It is likely that the 35-T15N-R2W location was not the site for all of the production from 1878 to 1920.

Last reported production: 1934

SOURCES OF DATA

Source Map	Date	Original Scale	Digitized Scale	Map Type
Coal Section files, Milan Quadrangle	Undated	1:62500	1:62500	Secondary source
ISGS field notes (J. A. Udden)	7-24-1911	1:62500	1:62500	Secondary source

Annotated Bibliography (data source, brief description of information)

Coal Reports - Production, ownership, years of operation.
 Directory of Illinois Coal Mines (Mercer County) - Mine names, mine index, ownership, years of operation.
 Mine notes (Mercer County) - Mine type, drift location, seam, depth, thickness.
 ISGS field notes (Mercer County) - Shaft location, thickness.
 Coal Section files, undated work map on USGS topographic map, 15-minute Milan Quadrangle - Mine outline, drift location, shaft location (printed on 1910 topographic map).
 Mined-out area map, O'Neill plan map No. 4, 1950 - Mine type, mine identification.

Mine Index 2989**Blue Flame Coal Company, Dog Town Mine**

Type: Underground Total mined-out acreage shown: None; production indicates less than 1 acre was mined.

SHAFT, SLOPE, DRIFT or TIPPLE LOCATIONS

Type	County	Township-Range	Section	Quarters-Footage
Main slope	Mercer	15N 2W	26	NW NE NE

GEOLOGY

Seam(s) Mined	Depth (ft)	Thickness (ft)			Mining Method
		Min	Max	Avg	
Rock Island	50-100			3.0	Underground

Geologic Problems Reported:

PRODUCTION HISTORY

Company	Mine Name	Years	Production (tons)
James Docherty *	Dog Town	1938-1939	630
Blue Flame Coal Company	Dog Town	1939-1940	<u>253</u> 883

* The mine notes indicate the mine owned by Docherty was opened by Harris & Brown in 1937. The Coal Reports did not list production under that name.

Last reported production: 1940

SOURCES OF DATA

Source Map	Date	Original Scale	Digitized Scale	Map Type
Mine notes	Undated	1:62500	1:62500	Secondary source

Annotated Bibliography (data source, brief description of information)

Coal Reports - Production, ownership, years of operation.

Directory of Illinois Coal Mines (Mercer County) - Mine names, mine index, ownership, years of operation.

Mine notes (Mercer County) - Mine type, slope location, seam, depth, thickness, mine name.

Mine Index 2990**McCraney Sand & Gravel, McCraney Mine**

Type: Underground Total mined-out acreage shown: 25 Production indicates approximately 5 acres were mined after the map date.

SHAFT, SLOPE, DRIFT or TIPPLE LOCATIONS

Type	County	Township-Range	Section	Quarters-Footage
Main shaft	Mercer	15N 2W	33	NW SE NE
Air / escape slope	Mercer	15N 2W	33	SE SE NE

GEOLOGY

Seam(s) Mined	Depth (ft)	Thickness (ft)			Mining Method
		Min	Max	Avg	
Rock Island	40			3.0-4.0	MRP

Geologic Problems Reported: The source map showed areas of thin coal in limited areas on the southern and northern sides of the mine.

PRODUCTION HISTORY

Company	Mine Name	Years	Production (tons)
William H. Riddell	Riddell	1906-1912	32,700
Axel E. Link	Link	1912-1915	15,884
Lee & Hagman	Lee & Hagman	1915-1916	375
McCrame & Lee	McCrame & Lee	1916-1917	3,700
McCraney Sand & Gravel	McCraney	1917-1918	30,147
McCraney Sand & Gravel	McCraney	1918-1919	17,871 *
			100,677

* Production after map date

Last reported production: 1919

SOURCES OF DATA

Source Map	Date	Original Scale	Digitized Scale	Map Type
Microfilm, document 352248	9-12-1918	1:1200	1:1655	Not final

Annotated Bibliography (data source, brief description of information)

Coal Reports - Production, ownership, years of operation, mine type, seam, thickness, mining method.

Directory of Illinois Coal Mines (Mercer County) - Mine names, mine index, ownership, years of operation.

Mine notes (Mercer County) - Mine location, seam, depth.

Microfilm map, document 352248, reel 03138, frame 314 - Shaft & slope locations, mine outline, mining method, geologic problems.

Mine Index 2991**Fulton County Coal Company, Fulton No. 2 Mine**

Type: Underground Total mined-out acreage shown: None; production indicates approximately 7 acres were mined

SHAFT, SLOPE, DRIFT or TIPPLe LOCATIONS

Type	County	Township-Range	Section	Quarters-Footage
Main shaft or slope	Mercer	15N 2W	33	SW NW NE

GEOLOGY

Seam(s) Mined	Depth (ft)	Thickness (ft)			Mining Method
		Min	Max	Avg	
Rock Island	shaft, 50; slope, 10			3.5-3.67	RP

Geologic Problems Reported:

PRODUCTION HISTORY

Company	Mine Name	Years	Production (tons)
Fulton County Coal Company	Fulton No. 2	1913-1914	22,760 22,760

Last reported production: 1914

SOURCES OF DATA

Source Map	Date	Original Scale	Digitized Scale	Map Type
Coal Section files, Milan Quadrangle	Undated	1:62500	1:62500	Secondary source
ISGS field notes (D. M. Moody)	summer 1958	1:62500	1:62500	Secondary source

Annotated Bibliography (data source, brief description of information)

Coal Reports - Production, ownership, years of operation, mine type, seam, depth, thickness, mining method.

Directory of Illinois Coal Mines (Mercer County) - Mine names, mine index, ownership, years of operation.

ISGS field notes (Mercer County) - Mine location.

Coal Section files, undated work map on USGS topographic map, 15-minute Milan Quadrangle - Mine location.

Mine Index 2993**Never Seen Coal Company, Never Seen Mine**

Type: Underground Total mined-out acreage shown: 21 Production indicates less than 1 acre was mined after the map date.

SHAFT, SLOPE, DRIFT or TIPPLE LOCATIONS

Type	County	Township-Range	Section	Quarters-Footage
Main slope	Mercer	15N 2W	34	SE SE NW
Air shaft	Mercer	15N 2W	34	SE SE NW

GEOLOGY

Seam(s) Mined	Depth (ft)	Thickness (ft)			Mining Method
		Min	Max	Avg	
Rock Island	30				MRP

Geologic Problems Reported:

PRODUCTION HISTORY

Company	Mine Name	Years	Production (tons)
James O'Rourke & Mike Bugas	O'Rourke & Bugas	1929-1932	7,237
Never Seen Coal Company	Never Seen	1933-1937	22,720
O'Rourke & Bugas	O'Rourke & Bugas	1938-1938	3,174
Never Seen Coal Company	Never Seen	1939-1943	32,418
Never Seen Coal Company	Never Seen	1943-1943	<u>273</u> *
			65,822

* Production after map date

Last reported production: July 5, 1943

SOURCES OF DATA

Source Map	Date	Original Scale	Digitized Scale	Map Type
Microfilm, document 352245	6-20-1943	1:600	1:993	Not final

Annotated Bibliography (data source, brief description of information)

Coal Reports - Production, ownership, years of operation.

Directory of Illinois Coal Mines (Mercer County) - Mine names, mine index, ownership, years of operation.

Mine notes (Mercer County) - Mine type, slope location, seam, depth.

Microfilm map, document 352245, reel 03138, frame 309 - Slope & shaft locations, mine outline, mining method.

Mine Index 2996**Huffman & Johnson, Huffman & Johnson Mine**

Type: Underground Total mined-out acreage shown: None; production indicates approximately 10 acres were mined.

SHAFT, SLOPE, DRIFT or TIPPLE LOCATIONS

Type	County	Township-Range	Section	Quarters-Footage
Main slope	Mercer	15N 2W	35	NE SW NW

GEOLOGY

Seam(s) Mined	Depth (ft)	Thickness (ft)			Mining Method
		Min	Max	Avg	
Rock Island	40				Underground

Geologic Problems Reported:

PRODUCTION HISTORY

Company	Mine Name	Years	Production (tons)
Huffman & Johnson	Huffman & Johnson	1926-1927	5,100
Crescent Coal Company	Crescent	1927-1928	5,421
Hoffman & Johnson	Hoffman & Johnson	1929-1929	3,241
Huffman & Johnson	Huffman & Johnson	1930-1934	<u>21,280</u>
			35,042

Last reported production: 1934

SOURCES OF DATA

Source Map	Date	Original Scale	Digitized Scale	Map Type
Mine notes	Undated	1:62500	1:62500	Secondary source

Annotated Bibliography (data source, brief description of information)

Coal Reports - Production, ownership, years of operation.

Directory of Illinois Coal Mines (Mercer County) - Mine names, mine index, ownership, years of operation.

Mine notes (Mercer County) - Slope location, seam, depth.

Mine Index 7806
M. A. Beers, Beers Mine

Type: Underground Total mined-out acreage shown: None; production indicates approximately 16 acres were mined.

SHAFT, SLOPE, DRIFT or TIPPLE LOCATIONS

Type	County	Township-Range	Section	Quarters-Footage
Main slope	Mercer	15N 1W	20	NW SE NE

GEOLOGY

Seam(s) Mined	Depth (ft)	Thickness (ft)			Mining Method
		Min	Max	Avg	
Rock Island	7-20		3.5	2.0	RP

Geologic Problems Reported: The roof was a good limestone cap rock with no clod, but the top coal stuck to the roof and was difficult to get down. A few rolls were present in the coal.

PRODUCTION HISTORY

Company	Mine Name	Years	Production (tons)
Milton A. Beers	Beers	1898-1910	8,810
Andrew W. Wahlberg	Wahlberg	1910-1913	1,440
M. A. Beers	Beers	1913-1925 *	18,137
			28,387

* Idle 1916-1920, 1922, 1923

Last reported production: 1925

SOURCES OF DATA

Source Map	Date	Original Scale	Digitized Scale	Map Type
ISGS field notes (H. E. Culver)	9-15-1923	1:62500	1:62500	Secondary source

Annotated Bibliography (data source, brief description of information)

Coal Reports - Production, ownership, years of operation, mine type, seam, depth, thickness, mining method.
 Directory of Illinois Coal Mines (Mercer County) - Mine names, mine index, ownership, years of operation.
 ISGS field notes (Mercer County) - Slope location, thickness, geologic problems.

Mine Index 7807**Levi Nimrick, Nimrick Mine**

Type: Underground Total mined-out acreage shown: None; production indicates approximately 2 acres were mined.

SHAFT, SLOPE, DRIFT or TIPPLE LOCATIONS

Type	County	Township-Range	Section	Quarters-Footage
Main shaft	Mercer	15N 1W	20	CENTER NE

GEOLOGY

Seam(s) Mined	Depth (ft)	Thickness (ft)			Mining Method
		Min	Max	Avg	
Rock Island	35			3.0	Underground

Geologic Problems Reported:

PRODUCTION HISTORY

Company	Mine Name	Years	Production (tons)
Nimrick Brothers	Nimrick	1922-1923	2,227
Levi Nimrick	Nimrick	1923-1924	1,035
Nimrick Brothers	Nimrick	1924-1925	703
Levi Nimrick	Nimrick	1925-1925	223
			4,188

Last reported production: 1925

SOURCES OF DATA

Source Map	Date	Original Scale	Digitized Scale	Map Type
ISGS field notes (H. E. Culver)	9-15-1923	1:62500	1:62500	Secondary source

Annotated Bibliography (data source, brief description of information)

Coal Reports - Production, ownership, years of operation.

Directory of Illinois Coal Mines (Mercer County) - Mine names, mine index, ownership, years of operation.

ISGS field notes (Mercer County) - Shaft location, depth, thickness.

Mine Index 7809
Robert Salkeld, Salkeld Mine

Type: Underground Total mined-out acreage shown: None; production indicates less than 1 acre was mined.

SHAFT, SLOPE, DRIFT or TIPPLE LOCATIONS

Type	County	Township-Range	Section	Quarters-Footage
Main slope	Mercer	15N 1W	32	NE NW NE

GEOLOGY

Seam(s) Mined	Depth (ft)	Thickness (ft)			Mining Method
		Min	Max	Avg	
Rock Island	10			3.5-4.0	RP

Geologic Problems Reported:

PRODUCTION HISTORY

Company	Mine Name	Years	Production (tons)
Robert Salkeld	Salkeld	1906-1907	<u>600</u> 600

Last reported production: 1907

SOURCES OF DATA

Source Map	Date	Original Scale	Digitized Scale	Map Type
Coal Section files, Milan Quadrangle	9-15-1923	1:62500	1:62500	Secondary source

Annotated Bibliography (data source, brief description of information)

Coal Reports - Production, ownership, years of operation, mine type, seam, depth, thickness, mining method.
 Directory of Illinois Coal Mines (Mercer County) - Mine names, mine index, ownership, years of operation.
 Coal Section files, undated work map on USGS topographic map, 15-minute Milan Quadrangle - Slope location, thickness.

OTHER MINES SHOWN ON MATHERVILLE QUADRANGLE

Mine Index 5280 NE NW SW, NW NW SW, SE SW NW & SE SW NW 26-T15N-R2W, four shafts (northernmost is a water shaft), Rock Island Coal source: State Archive, IL_2355, map of Alden No. 7 Mine (mine index 19, 6-1-1925)

Mine Index 6109 SW SW SE 16-T15N-R1W source: Coal Section files, Milan (15-minute) Quadrangle work map

Mine Index 6110 SE SE SW 16-T15N-R1W, drift or slope source: Coal Section files, Milan (15-minute) Quadrangle work map

Mine Index 6111 SW 16-T15N-R1W, 4 drifts or slopes source: Coal Section files, Milan (15-minute) Quadrangle work map

Mine Index 6113 SW NW SE 16-T15N-R1W source: Coal Section files, Milan (15-minute) Quadrangle work map

Mine Index 6114 SW NE SW 16-T15N-R1W source: Coal Section files, Milan (15-minute) Quadrangle work map

Mine Index 6115 SW NW SW 21-T15N-R1W source: Coal Section files, Milan (15-minute) Quadrangle work map

Mine Index 6116 SW NW NW 21-T15N-R1W source: Coal Section files, Milan (15-minute) Quadrangle work map

Mine Index 6117 NW NW NW 21-T15N-R1W source: Coal Section files, Milan (15-minute) Quadrangle work map

MINES WHOSE LOCATIONS ARE NOT KNOWN, MATHERVILLE QUADRANGLE

The locations of the following mines are unknown, but the production tonnage, operating names, and nearest town were reported in the Annual Coal Reports. The operators listed below mined in or near the Matherville Quadrangle. The information shown is similar to that presented on the summary sheets in the previous pages of this directory. The first item is the name the mine operated under as listed in the Coal Report, then the years the mine reported. If no physical data are available, the next item listed is the total tons produced by the mine. If physical data are available, the order of presentation is as follows: type of opening for the mine (drift, slope or shaft), depth of coal in feet, and thickness of coal in feet.

The total tons mined by these unlocated mines is 305,933 (301,523 underground and 4,410 mined by uncertain method), which would represent approximately 80 to 200 acres, depending on the recovery factor, mining method, and numerous other factors. (Note: 1 square mile = 640 acres)

CABLE

Ellis (Richard B.), pre1878-1886, slope, Rock Island, 20-95, 2.5-4.0, RP	45,372 tons
Co-operative Tile Works, 1886-1890	16,079 tons
Swanson (Axel), 1890-1897	<u>14,020</u> tons
	75,471 tons

Ellis (Thomas B.), 1890-1893, slope, Rock Island, 15, 3.5-4.0, RP	660 tons
---	----------

Hill Brothers & Waters Coal Company, 1893-1895	33,000 tons
Camp Creek Coal Company, 1895-1898, shaft, Rock Island, 62-70, 3.5-4.25	<u>45,047</u> tons
	78,047 tons

Posten (Mack), 1909-1911, slope, Rock Island, 12, 3.5, RP	2,090 tons
---	------------

GRIFFIN

Griffin Brothers, pre1878-1895, shaft, Rock Island, 22-35, 2.5, RP	12,060 tons
Griffin (Frank A.) & Company, 1895-1897	4,600 tons
Griffin Clay Manufacturing Company, 1897-1900	7,595 tons
U. S. Clay Manufacturing Company, 1900-1903	<u>7,640</u> tons
	31,895 tons

MATHERVILLE

Taylor (John A.), 1919-1920	1,100 tons
Taylor & Bradford, 1920-1921	<u>2,150</u> tons
	3,250 tons
Thomas (Oscar), 1916-1919, slope, Rock Island, 100, —, RP	2,195 tons
Davis & Hagman, 1924-1925	200 tons
Davis (Grover), 1926-1928, underground	1,836 tons
Matazel Brothers, 1928-1928, underground	18 tons
Matazel (Martin & Samuel), 1929-1929	<u>131</u> tons
	149 tons
Hartman (S. C.), 1933-1934, underground	10,115 tons
McCloskey (W. E.), 1933-1935, underground	4,097 tons
Cable Coal Company, 1939-1940, underground	298 tons
Cable Coal Company, 1941-1942, underground	293 tons

PREEMPTION

Boden (E.) & Penman (William), 1878-1879, shaft, Rock Island, 38, 4.5, RP	811 tons
Ashby (Thomas), pre1878-1879, shaft, Rock Island, 33, 4.0	509 tons
Jones (Owen), 1882-1883, shaft, Rock Island, 61, 4.0	135 tons
Boden (Edward), No. 1 Mine, 1882-1895, slope, Rock Island, 20-35, 4.0-4.5	27,140 tons
Gettice & Taylor, 1883-1884, shaft, Rock Island, 61, 4.0, RP	600 tons
Clark (Edward), 1886-1887, shaft, Rock Island, 61, 4.0, RP	380 tons
Boden (Edward), No. 2 Mine, 1895-1902, shaft, Rock Island, 58-60, 4.0-4.5	17,722 tons
Penman, Boden & Company, No. 2 Mine, 1895-1896	1,500 tons
Penman (William), 1896-1905, shaft, Rock Island, 48, 4.0-4.5, RP	<u>19,220</u> tons
	20,720 tons
Williams (Joseph), 1899-1903, shaft, Rock Island, 35-42, 4.0-4.5, RP	5,280 tons
Williams (Alfred), 1903-1906	<u>4,188</u> tons
	9,468 tons
Liefendorfer (C. W.), 1904-1906, shaft, Rock Island, 30-40, 4.0, RP	5,200 tons
Liefendorfer & Kasenburg, 1906-1907	3,935 tons
Huffman & Hayburn, 1907-1909	<u>8,050</u> tons
	17,185 tons

SHERRARD

Bell & Lillinean, 1925-1926	460 tons
Bell (Henry M.), 1927-1927	<u>500</u> tons
	960 tons

INDEX OF MINES IN THE MATHERVILLE QUADRANGLE

Alden Coal Company, No. 7 Mine	11
Ashby (Thomas)	28
Beers (M. A.)	24
Beers (Milton A.)	24
Bell (Henry M.)	28
Bell & Lillinean	28
Blue Flame Coal Company	19
Boden (E.) & Penman (William)	28
Boden (Edward), No. 1 Mine	28
Boden (Edward), No. 2 Mine	28
Boden (John)	18
Boden (Penman, Boden & Company, No. 2 Mine)	28
Bradford (Taylor & Bradford)	28
Brown (Harris & Brown)	19
Bugas (O'Rourke & Bugas)	22
Cable (P. L.), Slope Mine	12
Cable Coal Company	28
Camp Creek Coal Company	27
Clark (Edward)	28
Co-operative Tile Works	27
Coal Valley Mining Company, No. 1 Mine	13
Coal Valley Mining Company, No. 2 Mine	9
Coal Valley Mining Company, No. 3 Mine	10
Coal Valley Mining Company, Slope Mine	12
Crescent Coal Company	23
Davis (Grover)	28
Davis & Hagman	28
Docherty (James)	19
Docherty Brothers	18
Dog Town Mine	18, 19
Ellis (Richard B.)	27
Ellis (Thomas B.)	27
Fulton County Coal Company, No. 2 Mine	21
Gettice & Taylor	28
Griffin (Frank A.) & Company	27
Griffin Brothers	27
Griffin Clay Manufacturing Company	27
Hagman (Davis & Hagman)	28
Hagman (Lee & Hagman)	20
Harris & Brown	19
Hartman (S. C.)	28
Hayburn (Huffman & Hayburn)	28
Hill Brothers & Waters Coal Company	27
Hoffman & Johnson	23
Huffman & Hayburn	28
Huffman & Johnson	23
Johnson (Hoffman & Johnson)	23
Johnson (Huffman & Johnson)	23
Jones (Owen)	28
Kasenburg (Liefendorfer & Kasenburg)	28
Lee (McCrame & Lee)	20
Lee & Hagman	20
Liefendorfer (C. W.)	28
Liefendorfer & Kasenburg	28
Lilliman (Alfred)	14
Lilliman & Company	14
Lilliman Brothers	14
Lillinean (Bell & Lillinean)	28
Link (Axel E.)	20
Matazel (Martin & Samuel)	28
Matazel Brothers	28
McCloskey (W. E.)	28
McCrame & Lee	20

McCraney Sand & Gravel	20
Never Seen Coal Company	22
Nimrick (Levi).	25
Nimrick (Swanson & Nimrick)	15
Nimrick Brothers	25
O'Rourke (James) & Bugas (Mike)	22
O'Rourke & Bugas	22
Penman (Boden & Penman)	28
Penman (William)	28
Penman, Boden & Company, No. 2 Mine	28
Peterson (Bryan B.)	15
Peterson (Charles).	15
Peterson Coal Company	15
Posten (Mack)	27
Riddell (William H.)	20
Salkeld (Robert)	26
Schaechter Brothers	17
Schraechter (Louis)	17
Spahnir (A. J.)	16
Swanson (Axel)	15, 27
Swanson (Axel) & Nimrick	15
Taylor (Gettice & Taylor)	28
Taylor (John A.)	27
Taylor & Bradford.	28
Thomas (Oscar).	28
U. S. Clay Manufacturing Company.	27
Wahlberg (Andrew W.).	24
Waters (Hill Brothers & Waters Coal Company)	27
Williams (Alfred).	28
Williams (Joseph)	28

