

Coal Mines in Illinois
New Athens East Quadrangle
St. Clair County, Illinois

Herrin Coal

This map accompanies the Coal Mines Directory for the New Athens East Quadrangle. Consult the directory for a complete explanation of the information shown on this map.

Mining Method

- Room & Pillar (RP)
- Room & Pillar Basic (RPB)
- Modified Room & Pillar (MRP)
- Room & Pillar Panel (RPP)
- Blind Room & Pillar (BRP)
- Checkerboard Room & Pillar (CRP)
- High Extraction Retreat (HER)
- Longwall (LW)
- Underground, Method Unknown
- Strip Mine
- Auger Mine
- General Area of Mining

Other Areas Depicted

- Non-Coal Mines

Source of Mine Outline

- Final Mine Map
- Not Final Mine Map
- Undated Mine Map
- Incomplete Mine Map
- Secondary Source Map

Tipple, Shaft, Slope, Drift Locations

- Strip Mine Tipple - Active
- Strip Mine Tipple - Abandoned
- Mine Shaft - Active
- Mine Shaft - Abandoned
- Mine Slope - Active
- Mine Slope - Abandoned
- Mine Drift - Active
- Mine Drift - Abandoned
- Air Shaft
- Uncertain Location
- Uncertain Type of Opening

Mine Annotation
(space permitting)
Company
Mine Name
ISGS Index No., Years of Operation

Disclaimer
Please check the Coal Section at the Illinois State Geological Survey's web site at <http://www.isgs.illinois.edu> for the most up-to-date version of these products.

Note that each quadrangle scale mined-out area map requires the use of the associated text directory for full explanation of map features and mine attributes. Also note that some quadrangles have multiple seams of mining and therefore more than one map may be available for a particular quadrangle. Please take care to check for multiple maps, as extensive mining may exist in the other seams.

The maps and digital files used for these studies were compiled from data obtained from a variety of public and private sources and have varying degrees of completeness and accuracy. This compilation map presents reasonable interpretation of the geology of the area and is based on available data. Locations of some mine features may be offset by 500 feet or more due to errors in the original source maps, the compilation process, digitizing, or a combination of these factors. These data are not intended for use in site-specific screening or decision-making. Use of these documents does not eliminate the need for detailed studies to fully understand the geology of a specific site. The Illinois State Geological Survey, Prairie Research Institute, or the University of Illinois make no guarantee, expressed or implied, regarding the correctness of the interpretations presented in this data set and accept no liability for the consequences of decisions made by others on the basis of the information presented here.

These maps were designed for use at 1:24,000. Enlarging the map may reduce accuracy, as the original scale of the source maps used to compile the outlines shown varies from 1:400 to 1:150,000, and some mine locations are known only from text descriptions. See the accompanying mine directory for the original scale of the source map used for a specific mine to check accuracy of a given portion of the map. Areas with no mines shown may still be undermined; see the unlocated mines list at the back of each mine directory.

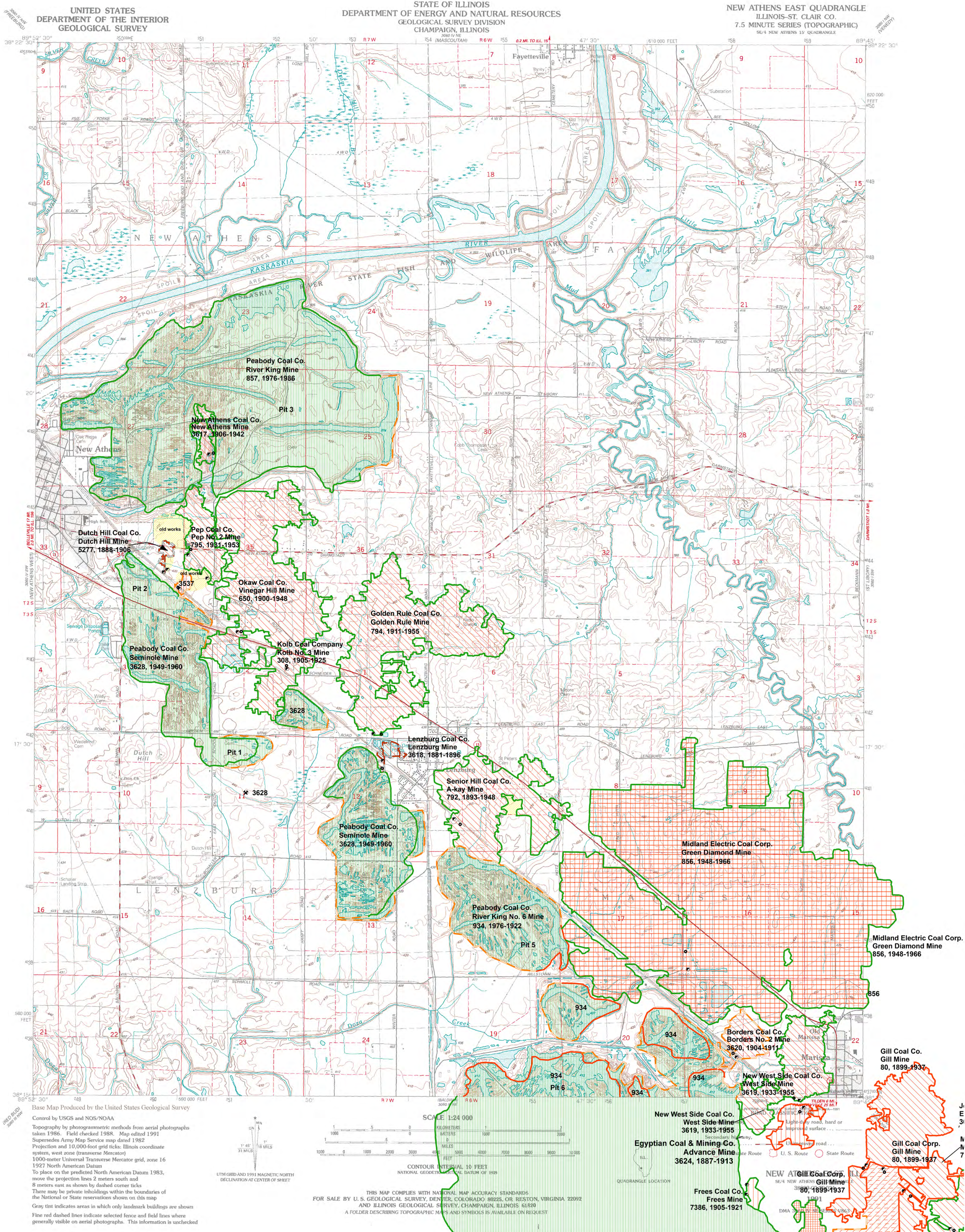
The image of the U.S.G.S. topographic base map was projected from the original UTM to Lambert Conformal Conic.

Location



Prairie Research Institute
Illinois State Geological Survey
615 E. Peabody Dr.
Champaign, IL 61820

Mine Outlines Compiled by
Melisa L. Borino
2001
Revised 2004 & 2021



DIRECTORY OF COAL MINES IN ILLINOIS 7.5-MINUTE QUADRANGLE SERIES NEW ATHENS EAST QUADRANGLE ST. CLAIR COUNTY

Cheri Chenoweth & Melisa L. Borino



Department of Natural Resources
ILLINOIS STATE GEOLOGICAL SURVEY
2001
REVISED 2004, 2021

**DIRECTORY OF COAL MINES IN ILLINOIS
7.5-MINUTE QUADRANGLE SERIES
NEW ATHENS EAST QUADRANGLE
ST. CLAIR COUNTY**

2001
REVISED 2004, 2021

ILLINOIS STATE GEOLOGICAL SURVEY
William Shilts, Chief

Natural Resources Building
615 East Peabody Drive
Champaign, Illinois 61820

Phone 1-217-244-4610
Fax 1-217-333-2830

Cover photo Track-mounted duckbill loading machine at a Peabody Coal Company mine, ca. 1915.

DISCLAIMER: The accuracy and completeness of mine maps and directories vary with the availability of reliable information. Maps and other information used to compile this mine map and directory were obtained from a variety of sources and the accuracy of some of the original information cannot be verified. Consequently, the Illinois State Geological Survey (ISGS) cannot guarantee the mine maps are free of errors and disclaims any responsibility for damages that may result from actions or decisions based on them.

The ISGS updates the maps and directories periodically, and welcomes any new information or corrections. Please contact the Coal Section of the ISGS at the address shown on the title page of this directory, or telephone (217) 244-4610.

Printed by authority of the State of Illinois/2001

CONTENTS

INTRODUCTION	1
MINING IN THE NEW ATHENS EAST QUADRANGLE	1
PART I EXPLANATION OF MAP AND MINE SUMMARY SHEET	2
INTERPRETING THE MAP	2
Mine Type and Mining Method	2
SOURCE MAPS	3
POINTS AND LABELS	3
INTERPRETING A MINE SUMMARY SHEET	6
REFERENCES	8
PART II DIRECTORY OF MINES IN NEW ATHENS EAST QUADRANGLE	9
MINE SUMMARY SHEETS	9
Mine Index 308	
Kolb Coal Company, Kolb No. 3 (Fairbanks) Mine	9
Mine Index 650	
Okaw Coal Company, Vinegar Hill Mine	10
Mine Index 792	
Senior Hill Coal Company, A-kay Mine	11
Mine Index 794	
Golden Rule Coal Company, Golden Rule Mine	12
Mine Index 795	
Pep Coal Company, Pep No. 2 Mine	13
Mine Index 856	
Midland Electric Coal Corporation, Green Diamond Mine	14
Mine Index 857	
Peabody Coal Company, River King Surface Mine	15
Mine Index 934	
Peabody Coal Company, River King No. 6 Surface Mine	16
Mine Index 3537	
New Athens Mine	17
Mine Index 3617	
New Athens Coal Company, New Athens Mine	18
Mine Index 3618	
Lenzburg Coal Company, Lenzburg Mine	19
Mine Index 3619	
New West Side Coal Company, West Side Mine	20
Mine Index 3620	
Borders Coal Company, No. 2 Mine	21
Mine Index 3628	
Peabody Coal Company, Seminole Mine	22
Mine Index 5277	
Dutch Hill Coal Company, Dutch Hill Mine	23
MINES WHOSE LOCATIONS ARE NOT KNOWN, NEW ATHENS EAST QUADRANGLE	24
INDEX OF MINES IN THE NEW ATHENS EAST QUADRANGLE	25

INTRODUCTION

Coal has been mined in 76 counties of Illinois. More than 7,400 coal mines have operated since commercial mining began in Illinois about 1810; fewer than 30 are currently active. To detail the extent and location of coal mining in Illinois, the Illinois State Geological Survey (ISGS) has compiled maps and directories of known coal mines. The ISGS offers maps at a scale of 1:100,000 and accompanying directories for each county in which coal mining is known to have occurred. Maps at a scale of 1:24,000 and accompanying directories such as this are available for selected quadrangles. Contact the ISGS for a list of these quadrangles.

These larger scale maps show the approximate positions of mines in relation to surface features such as roads and water bodies, and indicate the mining method used and the accuracy of the mine boundaries. The maps are useful for locating mine boundaries relative to specific properties and for assessing the potential for subsidence in an area. Mine boundaries compiled from final mine surveys are generally shown within 200 feet of their true position. As a result of poor cartographic quality and inaccuracies in the original mine surveys, boundaries of some older mines may be mislocated on the map by 500 feet or more. Original mine maps should be consulted in situations that require precise delineation of mine boundaries or internal workings of mined areas.

The directory serves as a key to the accompanying mine map and provides basic information on the coal mines. The directory is composed of two parts. Part I explains the symbols and patterns used on the accompanying map and the summary data presented for each mine. Part II numerically lists the mines in the quadrangle and summarizes the geology and production history of each mine.

MINING IN THE NEW ATHENS EAST QUADRANGLE

Mining in this quadrangle began prior to 1876, and continued until as late as 1992. The date of the earliest mining is not known; the 1876 mine outline (mine index 3537, New Athens Mine) indicates mining at least a couple of years prior to the map date. The most recent (and largest) mine contained within the New Athens East quadrangle is the River King Surface Mine, Pit No. 3 (mine index 857), northeast of New Athens. Three of the mines in this area operated for long periods; the Vinegar Hill Mine (mine index 650) operated for 48 years, the A-kay Mine (mine index 792) operated for 55 years, and the Golden Rule Mine (mine index 794) operated for 44 years.

The Herrin Coal was the major coal mined here, ranging from 6.0 to 7.0 feet thick and 28 to 100 feet deep. Several mines reported water, and a number of mines reported problems with the mine roof "caving". These problems typically occur in wet conditions such as this where the bedrock cover above the coal is relatively thin.

PART I EXPLANATION OF MAP AND MINE SUMMARY SHEET

INTERPRETING THE MAP

The map accompanying this directory shows the location of coal mines known to be present in the quadrangle. The map, corresponding to a U.S. Geological Survey (USGS) 7.5-minute quadrangle, covers an area bounded by lines of latitude and longitude 7.5-minutes apart. In Illinois, a quadrangle is approximately 6.5 miles east to west and 8.5 miles north to south, an area of about 56 square miles. The USGS generally offers one map of mines per quadrangle. In some areas where extensive mining occurred in two or more overlapping seams, separate maps are compiled for mines in each seam to maintain readability of the map.

Mine Type and Mining Method

The mine type is indicated on the map by pattern color: green represents surface mines; red and yellow represent underground mines. The red patterns are used for areas of underground mining that are documented by a primary or secondary source map. A yellow pattern is used for cases where no map of the mine workings is available, but a general area of mining can be inferred from property maps or production figures. The patterns indicate the main mining methods used in underground mines. The methods are (1) room and pillar and (2) high extraction. The method used gives some indication of the amount and pattern of coal extraction within each mined area, and has some influence on the timing and type of subsidence that can occur over a mine.

The following discussion and illustrations of mining methods are based on Guither et al. (1984).

In room-and-pillar mines, coal is removed from haulage-ways (entries) and selected areas called rooms. Pillars of unmined coal are left between the rooms to support the roof. Depending on the size of rooms and pillars, the amount of coal removed from the production areas will range from 40% to 70%.

Room and Pillar - mining is divided into six categories:

- room-and-pillar basic (RPB, fig. 1A), an early method that did not follow a preset mining plan and therefore resulted in very irregular designs;
- modified room and pillar (MRP, fig. 1B);
- room-and-pillar panel (RPP, fig. 1C);
- blind room and pillar (BRP, fig. 1D);
- checkerboard room and pillar (CRP, fig. 1E);
- room and pillar (RP), a classification used when the specific type of room-and-pillar mining is unknown.

Blind and checkerboard are the most common types of room-and-pillar mining used in Illinois today. The knowledge of room-and-pillar mining methods gives a trained engineer information on the nature of subsidence that may occur. A more extensive discussion of subsidence can be found in Bauer et al. (1993).

High-extraction These mining methods are subdivided into high-extraction retreat (HER, Fig 1F) and longwall (LW, Fig 1G, 1H). In these methods, much of the coal is removed within well defined areas of the mine. Subsidence of the surface above these areas occurs within weeks. Once the subsidence activity ceases, the potential for further movement over these areas is low; however, subsidence may continue for several years after mining.

High-extraction retreat mining is a form of room-and-pillar mining that extracts most of the coal. Rooms and pillars are developed in the panels, and the pillars are then systematically removed (fig. 1F).

In early (pre-1960) longwall mines, mining advanced in multiple directions from a central shaft (fig. 1G). Large pillars of coal were left around the shaft, but all coal was removed beyond these pillars. Miners placed rock and wooden props and cribs in the mined-out areas to support the mine roof. The overlying rock gradually settled onto these supports, thus producing subsidence at the surface. In post-1959 longwall mines, room-and-pillar methods have been used to develop the main entries of the mine and panel areas. Modern longwall methods extract 100 percent of the coal in the panel areas (fig. 1H).

SOURCE MAPS

Mine outlines depicted on the map are, whenever possible, based on maps made from original mine surveys. The process of compiling and digitizing the quadrangle map may produce errors of less than 200 feet in the location of mine boundaries. Larger errors of 500 feet or more are possible for mines that have incomplete or inaccurate source maps.

Because of the extreme complexity of some mine maps, detailed features of mined areas have been omitted. The digitized mine boundary includes the exterior boundary of all rooms or entries that were at least 80 feet wide or protruded 500 feet from the main mining area. Unmined areas between mines are shown if they are at least 80 feet wide; unmined blocks of coal within mines are shown if they are at least 400 feet on each side. Original source maps should be consulted when precise information on mine boundaries or interior features is needed.

The mine summary sheet lists the source maps used to determine each mine outline. The completeness of map sources is indicated on the map by a line symbol at the mine boundary. Source maps are organized in five categories.

Final mine map The mine outline was digitized from an original map made from mine surveys conducted within a few months after production ceased. The date of the map and the last reported production are listed on the summary sheet.

Not a final map The mine is currently active or the mine outline was made from a map based on mine surveys conducted more than a few months before production ceased. This implies the actual mined-out area is probably larger than the outline on the map. The mine summary sheet indicated the dates of source maps and the last reported production, as well as the approximate tonnage mined between these two dates (if the mine is abandoned). The summary sheet also lists the approximate acreage mined since the date of the map and, in some cases, indicates the area where additional mining may have taken place. This latter information is determined by locating on the map the active faces relative to probable boundaries of the mine property.

Undated map The source map was undated, so it may or may not be based on a final mine survey. When sufficient data are available, the probable acreage of the mined area is estimated from reported production, average seam thickness and a recovery rate comparable to other mines in the area. This information is listed in the summary sheet for the mine.

Incomplete map The source map did not show the entire mine. The summary sheet indicates the missing part of the mine map and the acreage of the unmapped area, which is estimated from the amount of coal known to have been produced from the mine.

Secondary source map The original mine map was not found so the outline shown was determined from secondary sources (e.g., outlines from small-scale regional maps published in other reports). The summary sheet describes the secondary sources.

POINTS AND LABELS

The locations of all known mine openings (shafts, slopes, and drifts) and surface mine tipples are plotted on the map. Tipples are areas where coal was cleaned, stockpiled, and loaded for shipping.

Only openings or tipples are plotted for mines without source maps. If the precise locations of these features are unknown, a special symbol is used to indicate the approximate location of the mine.

Each mine on the map is labeled with the names of the mine and operating company, ISGS mine index number, and years of operation (if known) if space permits. A seam designation is given on maps where more than one seam was mined. For a mine that operated under more than one name, only the most recent name is generally given. When a mine changed names or ownership shortly before closing, an earlier name is listed. All company and mine names are listed on the mine summary sheet in the directory, under the production history segment.



Figure 1 Mining methods: (A) room-and-pillar basic (RPB), (B) modified room and pillar (MRP), (C) room-and-pillar panel (RPP), (D) blind room and pillar (BRP).



Figure 1 (cont.) Mining methods: (E) checkerboard room and pillar (CRP), (F) high extraction retreat (HER), (G) early (pre-1960) longwall, (H) post-1959 longwall



Figure 2 Generalized stratigraphic section, showing approximate vertical relations of coals in Illinois.

INTERPRETING A MINE SUMMARY SHEET

The mine summary sheet is arranged numerically by mine index number. Index numbers are shown on the map and in the mine listing. The mine summary sheet provides the following information (if available).

Company and mine name The last company or owner of the mine is used, unless no production was recorded for the last owner. In that case, the penultimate owner is listed. Mines often have no specific name; in these cases, the company name is also used as the mine name.

Type *Underground* denotes a subsurface mine in which the coal was reached through a shaft, slope, or a drift entry. *Surface* denotes a surface, open pit or strip mine.

Total mined-out acreage shown The total acreage of the mined area mapped, including any acreage mined on adjacent quadrangles, is calculated from the digitized outline of the mine. The acreage of large barrier pillars depicted on the map is excluded from the mined-out acreage. Small pillars not digitized are included in the acreage calculation. If the mine outline is not based on a final mine map, the acreage is followed by an estimate of additional acres that may have been mined. The estimate is determined from reported mine production, approximate thickness of the coal, and recovery rates calculated from nearby mines that used similar mining methods.

SHAFT, SLOPE, DRIFT OR TIPPLE LOCATIONS

Shaft, slope, drift, or tippie locations Locations of all known former entry points to underground mines or the location of coal cleaning, tippie, and shipping equipment used by the mine's facility are listed. The location is described in terms of county, township and range (Twp-Rge), section, and location within the section by quarters. NE SW NW, for instance, would describe the location in the northeast quarter of the southwest quarter of the northwest quarter. When sections are irregular in size, the quarters remain the same size and are oriented (or "registered") from the southeast corner of the section. Approximate footage from the section lines (FEL = from east line, FNL = from north line, for example) is given when that information is known; this indicates a surveyed location and is not derived from maps. Entry points are also plotted on the map and coded for the type of entry or tippie. A mine opening may have had many purposes during the life of the mine. Old hoist shafts are often later used for air and escape shafts; this information is included in the directory when known. The tippie for underground mines was generally located near the main shaft or slope. At surface mines, coal was sometimes hauled to a central tippie several miles from the mine pit.

GEOLOGY

Seam(s) mined The name of the coal seam(s) mined is listed, if known. If multiple seams were mined, they are all listed, although the mined-out area for each seam may be shown on separate maps. Figure 2 shows the stratigraphic section of the coal-bearing interval in Illinois, and the vertical relations among the coals.

Depth The depth to the top of the seam in the vicinity of the shaft is listed, if known. The depth is determined from notes made by geologists who visited the mine during its operation or from drill hole data in ISGS files. Depth generally varies little over the extent of a mine; however, reported depths for an individual mine may vary. Depth for surface-mined coals varies, and is usually represented as a range.

Thickness The approximate thickness of the mined seam is shown, if known. Thickness also comes from notes of geologists who visited the mine during its operation or from borehole data in ISGS files. Minimum, maximum, and average thicknesses are given when this information is available.

Mining method The principal mining method used at the mine (figs. 1A-H) is listed. See the mining methods section at the beginning of this directory for a discussion of this parameter.

Geologic problems reported Any known geologic problems, such as faults, water seepage, floor heaving, and unstable roof, encountered in the mine are reported. This information is from notes made by ISGS geologists who visited the mine, or from reports by mine inspectors published by the Illinois Department of Mines and Minerals, or from the source map(s). Geologic problems are not reported for active mines.

PRODUCTION HISTORY

Production history Tons of coal produced from the mine by each mine owner are totaled. When the source map used for the mine outline is not a final mine map, the tonnage produced since the date of the map is identified. For mines that extend into adjacent quadrangles, the tonnage reported includes areas mined in adjacent quadrangles.

SOURCE OF DATA

Source map This section lists information about the map(s) used to compile the mine outline and the locations of tipples and mine openings. In some cases more than one source map was used. For example, a map drawn before the mine closed may provide better information on original areas of the mine than a later map. When more than one map was used, the bibliography section explains what information was taken from each source.

Date The date of the most recent mine survey listed on the source map is reported.

Original scale The original scale of the source map is listed. Many maps are photo-reductions and are no longer at their original scale. The original scale gives some indication of the level of detail of the mine outline and the accuracy of the mine boundary relative to surface features. Generally, the larger the scale, the greater the accuracy and detail of the mine map. Mine outlines taken from source maps at scales smaller than 1:24,000 may be highly generalized and may well be inaccurately located with respect to surface features.

Digitized scale The scale of the digitized map is reported. The scale may be different from that of the original source map. In many cases the digitized map was made from a photo-reduction of the original source map, or the source map was not in a condition suitable for digitizing and the mine boundaries were transferred to another base map.

Map type Source maps are classified into five categories to indicate the probable completeness of the map. See discussion of source maps in the previous section.

Annotated bibliography Sources that provide information about the mine are listed, with the data taken from each source. Some commonly used sources are described below. Full bibliographic references are given for all other sources. Unless otherwise noted, all sources are available for public inspection at the ISGS.

Coal Reports Published since 1881, these reports contain tabular data on mine ownership, production, employment, and accidents. Some volumes include short descriptions made by mine inspectors of physical features and conditions in selected mines.

Directory of Illinois Coal Mines This source is a compilation of basic data about Illinois coal mines, originally gathered by ISGS staff in the early 1950s. Sources used for this directory are undocumented, but they are primarily Illinois Department of Mines and Minerals annual reports, ISGS mine notes, and coal company officials.

ENR Document 85/01, Guither, H. D., J. K. Hines, and R. A. Bauer, 1985 The Economic Effect of Underground Mining Upon Land Used for Illinois Agriculture: Illinois Department of Energy and Natural Resources Document 85/01, 185 p.

Microfilm map The U.S. Bureau of Mines maintains a microfilm archive of mine maps. A microfilm file for Illinois is available for public viewing at the ISGS.

Mine notes ISGS geologists have visited mines or contacted mine officials throughout the state since the early 1900s. Notes made during these visits range from brief descriptions of the mine location to long narratives (including sketches) of mining conditions and geology.

Federal Land Bank of St. Louis, Preliminary Reports on Subsidence Investigations Mining engineers working for the Federal Land Bank of St. Louis mapped areas of subsidence due to coal mining in the early 1930s. These reports often include county maps of mine properties with mined-out areas including shaft locations, as well as subsidence areas.

REFERENCES

Bauer, R. A., B. A. Trent, and P. B. Dumontelle, 1993, Mine Subsidence in Illinois: Facts for the Homeowner Considering Insurance: Illinois State Geological Survey, Environmental Geology Note 144, 16p.

Guither, H. D., J. K. Hines, and R. A. Bauer, 1985, The Economic Effects of Underground Mining Upon Land Used for Illinois Agriculture: Illinois Department of Energy and Natural Resources Document 85/01, 185 p.

PART II DIRECTORY OF MINES IN NEW ATHENS EAST QUADRANGLE

MINE SUMMARY SHEETS

A summary sheet on the geology and production history of each mine in the New Athens East Quadrangle is provided. These summary sheets are arranged numerically by mine index number. Consult Part I for a complete explanation of the data listed in the summary sheet.

Mine Index 308

Kolb Coal Company, Kolb No. 3 (Fairbanks) Mine

Type: Underground Total mined-out acreage shown: 637 *

* The boundary between this mine and the Vinegar Hill Mine (mine index 650) could not be distinguished. The acreage reported is the total for both mines.

SHAFT, SLOPE, DRIFT or TIPPLE LOCATIONS

Type	County	Twp-Rge	Section	Quarters-Footage
Main shaft (7'x14')	St. Clair	3S 7W	2	SW SE NE
Air shaft	St. Clair	3S 7W	2	SW SE NE

GEOLOGY

Seam(s) Mined	Depth (ft)	Thickness (ft)		Mining Method
		Min	Max	
Herrin	96		6.0	MRP

Geologic Problems Reported:

PRODUCTION HISTORY

Company	Mine Name	Years	Production (tons)
Kolb Coal Company	Fairbanks, Kolb No. 3	1905-1925	<u>1,314,217</u> 1,314,217

Last reported production: September 1924

SOURCES OF DATA

Source Map	Date	Original Scale	Digitized Scale	Map Type
Microfilm, document 351066	2-15-1949	1:2400	1:4469	Final

Annotated Bibliography (data source, brief description of information)

Coal Reports - Production, ownership, years of operation.

Directory of Illinois Coal Mines (St. Clair County) - Mine names, mine index, ownership, years of operation.

Microfilm map, document 351066, reel 03134, frames 164-167 - Shaft locations, mine outline, mining method.

Mine notes (St. Clair County) - Mine type, shaft size, seam, depth, thickness.

Mine Index 650**Okaw Coal Company, Vinegar Hill Mine**

Type: Underground Total mined-out acreage shown: 637 *

* The boundary between this mine and the Fairbanks Mine (mine index 308) could not be distinguished. The acreage reported is the total for both mines.

SHAFT, SLOPE, DRIFT or TIPPLE LOCATIONS

Type	County	Twp-Rge	Section	Quarters-Footage
Main shaft (7.5'x14')	St. Clair	3S 7W	2	SE NE NW
Air shaft	St. Clair	3S 7W	2	SE NE NW

GEOLOGY

Seam(s) Mined	Depth (ft)	Thickness (ft)		Mining Method
		Min	Max	
Herrin	82-88		6.5	MRP

Geologic Problems Reported: The mine map shows the northeast and northwest areas of the mine labeled "inaccessible", the northeast portion due to caving.

PRODUCTION HISTORY

Company	Mine Name	Years	Production (tons)
Vinegar Hill Coal Company	Vinegar Hill	1900-1901	9,177
Kolb Coal Company	No. 2, Vinegar Hill	1901-1929 **	737,603
Vinegar Hill Coal Company	Vinegar Hill	1929-1946	1, 085,022
Okaw Coal Company	Vinegar Hill	1946-1948	117,575
			1,949,377

** Idle 1915-1917, 1924-1929

Last reported production: July 1948

SOURCES OF DATA

Source Map	Date	Original Scale	Digitized Scale	Map Type
Microfilm, document 351066	2-15-1949	1:2400	1:4469	Final

Annotated Bibliography (data source, brief description of information)

Coal Reports - Production, ownership, years of operation.

Directory of Illinois Coal Mines (St. Clair County) - Mine names, mine index, ownership, years of operation.

Microfilm map, document 351066, reel 03134, frames 164-167 - Shaft locations, mine outline, mining method, geologic problems.

Mine notes (St. Clair County) - Mine type, shaft location, shaft size, seam, depth, thickness.

Mine Index 792
Senior Hill Coal Company, A-kay Mine

Type: Underground Total mined-out acreage shown: 337 The southern part of the western side of the mine was later surface-mined by River King No. 6 Mine (mine index 934).

SHAFT, SLOPE, DRIFT or TIPPLE LOCATIONS

Type	County	Twp-Rge	Section	Quarters-Footage
Main shaft (6.5'x13')	St. Clair	3S 6W	7	SE NW SW
Air shaft	St. Clair	3S 6W	7	NE SW SW

GEOLOGY

Seam(s) Mined	Depth (ft)	Thickness (ft)		Mining Method
		Min	Max	
Herrin	98		Ave 6.0-7.0	MRP

Geologic Problems Reported: The west side of the southernmost extensions are labeled "caved" and some are designated with "water". Old works were encountered near the center of the mine, on the southern side between the east and west "wings" of mining. This area has been designated with a large general area of mining on the accompanying map. The old works may have been from the early years of this mine or a different operator (see the unlocated mines at the back of this report).

PRODUCTION HISTORY

Company	Mine Name	Years	Production (tons)
Tirre Coal & Mining Company	No. 1	1893-1907	525,296
Bessemer Washed Coal Company	Lenzburg	1907-1911	181,691
Tirre Coal & Mining Company	Tirre	1911-1916 *	63,766
Lenzburg Coal Company	Tirre	1916-1917	32,179
Columbia Collieries Company	New Lenzburg	1917-1930 **	232,389
Lenzburg Coal Company	Lenzburg	1930-1942	467,835
Smith Coal Company	A-kay No. 83	1942-1943	56,567
Smith Coal Company	A-kay No. 83	1943-1944	135,289 ***
A-kay Coal Company	A-kay	1945-1946	197,101 ***
Smith Coal Company	A-kay	1946-1947	47,938 ***
Senior Hill Coal Company	A-kay	1947-1948	102,068 ***
			<u>2,042,119</u>

* Idle 1915 and 1916

** Idle 1928 and 1929

*** Production since map date

Last reported production: August 1948

SOURCES OF DATA

Source Map	Date	Original Scale	Digitized Scale	Map Type
State archive, IL_117	2-24-1953	1:2400	1:2400	Final

Annotated Bibliography (data source, brief description of information)

Coal Reports - Production, ownership, years of operation.

Directory of Illinois Coal Mines (St. Clair County) - Mine names, mine index, ownership, years of operation.

Company map, state archive, IL_117 - Shaft locations, mine outline, mining method, geologic problems.

Mine notes (St. Clair County) - Mine type, shaft location, shaft size, seam, depth, thickness.

Mine Index 794**Golden Rule Coal Company, Golden Rule Mine**

Type: Underground Total mined-out acreage shown: 585

SHAFT, SLOPE, DRIFT or TIPPLE LOCATIONS

Type	County	Twp-Rge	Section	Quarters-Footage
Main shaft	St. Clair	3S 7W	1	SW SW SE
Air shaft	St. Clair	3S 7W	1	SE SW SE

GEOLOGY

Seam(s) Mined	Depth (ft)	Thickness (ft)			Mining Method
		Min	Max	Ave	
Herrin	47			6.0-6.8	MRP

Geologic Problems Reported:

PRODUCTION HISTORY

Company	Mine Name	Years	Production (tons)
Golden Rule Coal Company	Golden Rule	1911-1955	<u>2,820,398</u> 2,820,398

Last reported production: February 1954, abandoned August 1955

SOURCES OF DATA

Source Map	Date	Original Scale	Digitized Scale	Map Type
Microfilm, document 351164	4-12-1956	1:2400	1:4634	Final

Annotated Bibliography (data source, brief description of information)

Coal Reports - Production, ownership, years of operation, thickness.

Directory of Illinois Coal Mines (St. Clair County) - Mine names, mine index, ownership, years of operation.

Microfilm map, document 351164, reel 03134, frames 306-307 - Shaft locations, mine outline, mining method.

Mine notes (St. Clair County) - Mine type, shaft location, seam, depth, thickness.

Mine Index 795
Pep Coal Company, Pep No. 2 Mine

Type: Underground Total mined-out acreage shown: 103

SHAFT, SLOPE, DRIFT or TIPPLE LOCATIONS

Type	County	Twp-Rge	Section	Quarters-Footage
Main shaft	St. Clair	2S 7W	35	NW NW SW
Air shaft	St. Clair	2S 7W	35	NW NW SW

GEOLOGY

Seam(s) Mined	Depth (ft)	Thickness (ft)			Mining Method
		Min	Max	Ave	
Herrin	65			6.5	MRP

Geologic Problems Reported: The north part of the mine was labeled "Inaccessible" and the west part of the mine was designated with "water".

PRODUCTION HISTORY

Company	Mine Name	Years	Production (tons)
Pep Coal Company	Pep No. 2	1931-1953	528,814
			528,814

Last reported production: December 1953

SOURCES OF DATA

Source Map	Date	Original Scale	Digitized Scale	Map Type
Microfilm, document 351168	12-30-1953	1:2400	1:3972	Final

Annotated Bibliography (data source, brief description of information)

Coal Reports - Production, ownership, years of operation.
 Directory of Illinois Coal Mines (St. Clair County) - Mine names, mine index, ownership, years of operation.
 Microfilm map, document 351168, reel 03134, frame 314 - Shaft locations, mine outline, mining method, geologic problems.
 Mine notes (St. Clair County) - Mine type, shaft location, seam, depth, thickness.

Mine Index 856**Midland Electric Coal Corporation, Green Diamond Mine**

Type: Underground Total mined-out acreage shown: 2,429

SHAFT, SLOPE, DRIFT or TIPPLE LOCATIONS

Type	County	Twp-Rge	Section	Quarters-Footage
Main slope	St. Clair	3S 6W	16	SW SW SW
Air shaft	St. Clair	3S 6W	16	NW SW SW

GEOLOGY

Seam(s) Mined	Depth (ft)	Thickness (ft)			Mining Method
		Min	Max	Ave	
Herrin	77-100			7.0	CRP

Geologic Problems Reported: Rolls are present locally, and the contact between the coal and the roof shale is very irregular. The mine maps indicated bad top in several locations throughout the mine (central, south-central, northwest, and along the eastern perimeter).

PRODUCTION HISTORY

Company	Mine Name	Years	Production (tons)
Mid-Continent Coal Corporation	Green Diamond	1948-1961	8,906,464
Midland Electric Coal Company *	Green Diamond	1962-1966	<u>4,420,081</u>
			13,326,545

* Former ownership also includes Peabody Coal Company and Walter Bledsoe & Company (production not reported under these names).

Last reported production: March 1966

SOURCES OF DATA

Source Map	Date	Original Scale	Digitized Scale	Map Type
Company, state archive, pb_145_01	3-20-1966	1:2400	1:2400	Final

Annotated Bibliography (data source, brief description of information)

Coal Reports - Production, ownership, years of operation, depth, thickness.

Directory of Illinois Coal Mines (St. Clair County) - Mine names, mine index, ownership, years of operation.

Mine notes (St. Clair County) - Mine type, slope location, seam, geologic problems.

Company map, state archives, image courtesy Robert Gibson, DNR, digital file pb_145_01 - Mine outline, slope and shaft locations, mining method, geologic problems.

Mine Index 857

Peabody Coal Company, River King Surface Mine

Type: Surface Total mined-out acreage shown: 1722 (Pits 1, 2 & 4); 1853 (Pit 3) The area shown on the accompanying map, combined with that shown on Freeburg and Mascoutah Quadrangles, is much smaller than expected from the reported production. The area shown for River King Pit No. 6 Mine (mine index 934) on the Tilden, Baldwin, and New Athens East Quadrangles is much larger than expected for the reported production. If both index numbers are combined for all of the River King Surface mines, the area shown on the quadrangle maps is in line with the reported production. The total area mined was 13,164 acres for a total of 104,187,734 tons.

SHAFT, SLOPE, DRIFT or TIPPLE LOCATIONS

Type	County	Twp-Rge	Section	Quarters-Footage
Tipple	St. Clair	1S 7W	15	280 FSL, 180 FWL, NE SW
Pit 1 (1957-1965)	St. Clair	2S 7W	33 (Freeburg quadrangle)	
Pit 2 (1957-1965)	St. Clair	1S 7W	22 (Mascoutah quadrangle)	
Pit 3 (1965-1986)	St. Clair	2S 7W	26 (New Athens East quadrangle)	
Pit 4 (1957-1965)	St. Clair	2S 7W	3 (Mascoutah quadrangle)	

GEOLOGY

Seam(s) Mined	Depth (ft)	Thickness (ft)			Mining Method
		Min	Max	Ave	
Herrin	58-78			6.2-7.0	Surface

Geologic Problems Reported: The Herrin Coal contains flat coal balls in the top 6 inches in one area. Some difficulties encountered in surface mining Pit No. 3 included shooting the hard limestones (Piasa and Brereton) and in drilling the shot holes in the soft sand above the bedrock, which required continuous casing.

PRODUCTION HISTORY

Company	Mine Name	Years	Production (tons)
Peabody Coal Company	River King Surface, Pits 1-4	1957-1975	70,303,672
Peabody Coal Company	River King Surface, Pit No. 3	1976-1986	<u>6,728,122</u>
			77,031,794

Last reported production: February 1986

SOURCES OF DATA

Source Map	Date	Original Scale	Digitized Scale	Map Type
Company, 4103.S31 i5.1-62	3-14-1969	1:12000	1:12000	Final *
Company map	3-8-1989	1:12000	1:12000	Final **
USGS topographic map	1991	1:24000	1:24000	Secondary source

* Final for Pit No.s 1, 2 (Mascoutah quadrangle), and 4. Pit 3 (New Athens East quadrangle) not included.

** Final for Pit No. 3

Annotated Bibliography (data source, brief description of information)

Coal Reports - Production, ownership, years of operation, seam, depth, thickness, mining method.
Directory of Illinois Coal Mines (St. Clair County) - Mine names, mine index, ownership, years of operation.
Company map, ISGS map library, 4103.S31 i5.1-62 - Mine outline.
Company map, Coal Section files - Mine outline, mining method.
USGS topographic map, New Athens East 1991 - East extension of Pit 3.
Mine notes - Geologic problems.

Mine Index 934**Peabody Coal Company, River King No. 6 Surface Mine**

Type: Surface Total mined-out acreage shown: 9,589 The area shown on the accompanying map, combined with that shown on Baldwin and Tilden Quadrangles, is much larger than expected for the reported production. The area shown for River King Surface Mine (mine index 857) on the Freeburg, Mascoutah, and New Athens East Quadrangles is much smaller than indicated for the reported production. If both index numbers are combined for all of the River King Surface mines, the area shown on the quadrangle maps is in line with the reported production. The total area mined was 13,164 acres for a total 104,187,734 tons.

SHAFT, SLOPE, DRIFT or TIPPLE LOCATIONS

Type	County	Twp-Rge	Section	Quarters-Footage
Tipple	St. Clair	3S 6W	16	SW SW SW *
Main pit	Randolph	4S 6W	9	

* Tipple location at the slope of Midland Electric, Green Diamond Mine (mine index 856)

GEOLOGY

Seam(s) Mined	Depth (ft)	Thickness (ft)			Mining Method
		Min	Max	Ave	
Herrin	60-100			5.3-6.5	Surface
Springfield	78			3.0-4.1	Surface

Geologic Problems Reported:

PRODUCTION HISTORY

Company	Mine Name	Years	Production (tons)
Peabody Coal Company	River King No. 6 Surface	1976-1992 **	<u>27,155,940</u> 27,155,940

** River King surface mines began operation in 1957, but Pit No. 6 began reporting separately in 1976. Tonnage reported from Pit No. 6 includes production from Pit No. 5 in St. Clair County.

Last reported production: 1992

SOURCES OF DATA

Source Map	Date	Original Scale	Digitized Scale	Map Type
Company, 4103.S31 i5.1-63	3-14-1969	1:62500	1:62500	Not final
Company, 10-4-38	6-13-1979	1:4800	1:4800	Final (for pit)
Company, 6-311	7-1994	1:4800	1:4800	Final

Annotated Bibliography (data source, brief description of information)

Coal Reports - Production, ownership, years of operation, mine type, seam, depth, thickness.
 Directory of Illinois Coal Mines (St. Clair County) - Mine names, mine index, ownership, years of operation.
 Mine notes (Randolph County) - Seam.
 Company map, ISGS map library, 4103.S31 i5.1-63 - Mine outline, mining method.
 Company map, Coal Section files, 10-4-38 - Mine outline.
 Company map, Coal Section files, 6-311 - Mine outline.

Mine Index 3537
New Athens Mine

Type: Underground Total mined-out acreage shown: 9

SHAFT, SLOPE, DRIFT or TIPPLE LOCATIONS

Type	County	Twp-Rge	Section	Quarters-Footage
Main shaft	St. Clair	2S 7W	34	NE SE SE
Air shaft	St. Clair	2S 7W	34	NE SE SE
Morganthal shaft *	St. Clair	2S 7W	35	SE NW SW

* The Morganthal shaft may have opened into a separate mine, unconnected to New Athens Coal Company. Included in old workings southwest of Pep Mine No. 2 (mine index 795).

GEOLOGY

Seam(s) Mined	Depth (ft)	Thickness (ft)			Mining Method
		Min	Max	Ave	
Herrin					RPB

Geologic Problems Reported:

PRODUCTION HISTORY

Company	Mine Name	Years	Production (tons)
New Athens Coal Mine	New Athens	1876 **	

** Production unknown for mines operating prior to 1881. See "Mines Whose Locations Are Not Known, New Athens East Quadrangle" at the back of this report. This mine may be the same as the New Athens Coal Company operating in 1888.

Last reported production: Unknown

SOURCES OF DATA

Source Map	Date	Original Scale	Digitized Scale	Map Type
Microfilm, document 351168	12-30-1953 ***	1:2400	1:3972	Secondary source

*** The source map states the workings for the New Athens Mine were dated 8-4-1876.

Annotated Bibliography (data source, brief description of information)

Directory of Illinois Coal Mines (St. Clair County) - Mine location.
Microfilm map, document 351168, reel 03134, frame 314, map of Pep No. 2 Mine (mine index 795) - Shaft locations, mine outline, mining method.

Mine Index 3617**New Athens Coal Company, New Athens Mine**

Type: Underground Total mined-out acreage shown: 40 *

* Truncated area shown, post surface mining by Peabody Coal Company, River King Surface, Pit No. 3 (mine index 857).

SHAFT, SLOPE, DRIFT or TIPPLE LOCATIONS

Type	County	Twp-Rge	Section	Quarters-Footage
Main shaft	St. Clair	2S 7W	26	SE NW SW
Air shaft	St. Clair	2S 7W	26	SE NW SW

GEOLOGY

Seam(s) Mined	Depth (ft)	Thickness (ft)			Mining Method
		Min	Max	Ave	
Herrin	80-85	6.5	7.0	6.75	MRP

Geologic Problems Reported:

PRODUCTION HISTORY

Company	Mine Name	Years	Production (tons)
Cooperative Coal Company	Cooperative	1906-1915	67,269
William C. Fullmer	Fullmer	1915-1920	40,745
Pep Coal Company	Pep No. 1	1921-1930	87,846
Dorries-Voland	Dorries-Voland	1933-1934 **	1,785
New Athens Coal Company	New Athens	1934-1942	<u>32,942</u>
			230,587

** Abandoned mine re-opened

Last reported production: Abandoned April 14, 1942

SOURCES OF DATA

Source Map	Date	Original Scale	Digitized Scale	Map Type
Company, 4103.S31 i5.1-14	4-14-1942	1:1200	1:1200	Final

Annotated Bibliography (data source, brief description of information)

Coal Reports - Production, ownership, years of operation.

Directory of Illinois Coal Mines (St. Clair County) - Mine names, mine index, ownership, years of operation.

Company map, ISGS map library, 4103.S31 i5.1-14 - Shaft locations, mine outline, mining method.

Mine notes (St. Clair County) - Mine type, shaft location, seam, depth, thickness.

Mine Index 3618**Lenzburg Coal Company, Lenzburg Mine**

Type: Underground Total mined-out acreage shown: 14

SHAFT, SLOPE, DRIFT or TIPPLE LOCATIONS

Type	County	Twp-Rge	Section	Quarters-Footage
Main shaft	St. Clair	3S 7W	12	SE NW NE
Air shaft	St. Clair	3S 7W	12	SE NW NE

GEOLOGY

Seam(s) Mined	Depth (ft)	Thickness (ft)		Mining Method
		Min	Max	
Herrin	60-90		Ave	MRP

Geologic Problems Reported:

PRODUCTION HISTORY

Company	Mine Name	Years	Production (tons)
William Miller	Lenzburg	1881-1882	125
Lenzburg Coal Company	Lenzburg	1882-1883	12,100
H. J. Henicke & Miller	Lenzburg	1883-1884	36,000
H. J. Heinicke	Lenzburg	1884-1886	49,053
Consolidated Coal Company of St. Louis *	Lenzburg	1886-1889	37,571
David Haensel	Lenzburg	1889-1893	35,767
William Miller	Lenzburg	1893-1895 **	20,756
Lenzburg Coal Company	Lenzburg	1895-1896	1,200
			<u>192,572</u>

* Lessees H. J. Heinicke and D. Hainsel

** Idle 1895

Last reported production: 1896

SOURCES OF DATA

Source Map	Date	Original Scale	Digitized Scale	Map Type
State archive, PB_83	Undated	1:1200	1:1200	Undated

Annotated Bibliography (data source, brief description of information)

Coal Reports - Production, ownership, years of operation, mine type, seam, depth, thickness.
 Directory of Illinois Coal Mines (St. Clair County) - Mine name, mine index, years of operation.
 State archive, PB_83 - Shaft locations, mine outline, mining method.

Mine Index 3619**New West Side Coal Company, West Side Mine**

Type: Underground Total mined-out acreage shown: 215

SHAFT, SLOPE, DRIFT or TIPPLE LOCATIONS

Type	County	Twp-Rge	Section	Quarters-Footage
Main shaft	St. Clair	3S 6W	21	SE SE SE
Air shaft	St. Clair	3S 6W	21	SE SE SE

GEOLOGY

Seam(s) Mined	Depth (ft)	Thickness (ft)			Mining Method
		Min	Max	Ave	
Herrin	90			6.5	MRP

Geologic Problems Reported:

PRODUCTION HISTORY

Company	Mine Name	Years	Production (tons)
West Side Coal Company	West Side	1933-1938	75,009
Marissa West Side Coal Company	West Side	1938-1939	7,279
West Side Cooperative Coal Company	West Side	1939-1941	44,171
Prairie State Coal & Mining Company	Mary Kay	1941-1949	890,357
New West Side Coal Company, Inc.	West Side	1949-1955	208,182
			1,224,998

Last reported production: April 1955

SOURCES OF DATA

Source Map	Date	Original Scale	Digitized Scale	Map Type
Microfilm, document 351174	1-17-1956	1:2400	1:4634	Final

Annotated Bibliography (data source, brief description of information)

Coal Reports - Production, ownership, years of operation.

Directory of Illinois Coal Mines (St. Clair County) - Mine names, mine index, ownership, years of operation.

Microfilm map, document 351174, reel 03134, frame 320 - Shaft locations, mine outline, mining method.

Mine notes (St. Clair County) - Mine type, shaft location, seam, depth, thickness, abandonment date.

Mine Index 3620
Borders Coal Company, No. 2 Mine

Type: Underground Total mined-out acreage shown: 71

SHAFT, SLOPE, DRIFT or TIPPLE LOCATIONS

Type	County	Twp-Rge	Section	Quarters-Footage
Main shaft (7'x12')	St. Clair	3S 6W	21	NE NE SW
Air shaft	St. Clair	3S 6W	21	SE NE SW

GEOLOGY

Seam(s) Mined	Depth (ft)	Thickness (ft)			Mining Method
		Min	Max	Ave	
Herrin	50-61			6.0	MRP

Geologic Problems Reported: The roof was generally good, but some areas had a soapstone roof that was very slippery and full of rolls that go 1 to 1.5 feet into the coal. No horsebacks or clay veins were noted. The source map indicated subsidence sinkholes on the surface above the southeast part of the mine, and caving in the southwest part.

PRODUCTION HISTORY

Company	Mine Name	Years	Production (tons)
Borders Coal Company	Borders No. 2	1904-1911	<u>338,285</u> 338,285

Last reported production: 1911

SOURCES OF DATA

Source Map	Date	Original Scale	Digitized Scale	Map Type
Microfilm, document 351174	1-11-1956 *	1:2400	1:4634	Secondary source

* "Tracing of last map filed. 8-1-1915."

Annotated Bibliography (data source, brief description of information)

Coal Reports - Production, ownership, years of operation, thickness.
 Directory of Illinois Coal Mines (St. Clair County) - Mine names, mine index, ownership, years of operation.
 Microfilm map, document 351174, reel 03134, frame 320, map of West Side Mine (mine index 3619) - Shaft locations, mine outline, mining method, geologic problems.
 Mine notes (St. Clair County) - Mine type, shaft location, shaft size, seam, depth, thickness, geologic problems.

Mine Index 3628**Peabody Coal Company, Seminole Mine**

Type: Surface Total mined-out acreage shown: 1,003

SHAFT, SLOPE, DRIFT or TIPPLE LOCATIONS

Type	County	Twp-Rge	Section	Quarters-Footage
Tipple	St. Clair	3S 7W	11	SW SW NE

GEOLOGY

Seam(s) Mined	Depth (ft)	Thickness (ft)			Mining Method
		Min	Max	Ave	
Herrin	28-65			6.0-6.3	Surface

Geologic Problems Reported:

PRODUCTION HISTORY

Company	Mine Name	Years	Production (tons)
Seminole Coal Company	No. 17	1949-1957	5,695,484
Peabody Coal Company	Seminole	1957-1960	2,125,774
			7,821,258

Last reported production: May 1960

SOURCES OF DATA

Source Map	Date	Original Scale	Digitized Scale	Map Type
Microfilm, document 351166	6-1-1954	1:1200	1:5628	Final *
Company, 4103.S31 i5.1-63	3-14-1969	1:62500	1:62500	Final

* Final for Pit 2 (stated on map)

Annotated Bibliography (data source, brief description of information)

Coal Reports - Production, ownership, years of operation, seam, depth, thickness.

Directory of Illinois Coal Mines (St. Clair County) - Mine names, mine index, ownership, years of operation.

Microfilm map, document 351166, reel 03134, frames 309-311 - Mine outline, mining method.

Company map, ISGS map library, 4103.S31 i5.1-63 - Mine outline, mining method.

Mine notes (St. Clair County) - Mine location, seam.

Mine Index 5277**Dutch Hill Coal Company, Dutch Hill Mine**

Type: Underground Total mined-out acreage shown: 9 Production indicates that a total of approximately 14 to 21 acres were mined; the location of the additional acres is shown by the general area of mining shade on the accompanying map.

SHAFT, SLOPE, DRIFT or TIPPLe LOCATIONS

Type	County	Twp-Rge	Section	Quarters-Footage
Main shaft	St. Clair	2S 7W	34	SW NE SE
Shaft	St. Clair	2S 7W	34	SW NE SE

GEOLOGY

Seam(s) Mined	Depth (ft)	Thickness (ft)		Mining Method
		Min	Max	
Herrin	65-70		6.0-6.5	MRP

Geologic Problems Reported: Rooms on the southern and northern parts of the mine were labeled "Caved", and rooms in the northwestern and northern parts of the mine were labeled "Water".

PRODUCTION HISTORY

Company	Mine Name	Years	Production (tons)
New Athens Coal Company	New Athens	1888-1889 *	2,140
Dutch Hill Coal Company	Dutch Hill	1895-1906 **	<u>92,883</u> 95,023

* Idle or reported under another name 1890 to 1894

** Idle 1905

Last reported production: 1906

SOURCES OF DATA

Source Map	Date	Original Scale	Digitized Scale	Map Type
Sanborn Fire Insurance	1910	unknown	1:24,000 ***	Final
Company map	undated	1:1200	1:1200	Undated

*** The source map indicated a general location, which was located and digitized on the USGS New Athens East Quadrangle topographic map.

Annotated Bibliography (data source, brief description of information)

Coal Reports - Production, ownership, years of operation, seam, depth, thickness, method.

Directory of Illinois Coal Mines (St. Clair County) - Mine names, mine index, ownership, years of operation.

Company map, loan courtesy of Marissa Historical & Genealogical Society - Shaft locations, mine outline, mining method, geologic problems.

Sanborn Fire Insurance Map, New Athens, 1910 - General shaft location, depth, thickness.

MINES WHOSE LOCATIONS ARE NOT KNOWN, NEW ATHENS EAST QUADRANGLE

The locations of the following mines are unknown, but the production tonnage, operating names, and nearest town were reported in the Annual Coal Reports. The operators listed below mined in or near the New Athens East Quadrangle. The information shown is similar to that presented on the summary sheets in the previous pages of this directory. The first item is the name the mine operated under as listed in the Coal Report, then the years the mine reported. If no physical data are available, the next item listed is the total tons produced by the mine. If physical data are available, the order of presentation is as follows: type of opening for the mine (drift, slope or shaft), depth of coal in feet, and thickness of coal in feet.

The total tons mined by these unlocated mines is 7,130, which would represent 2 acres or less, depending on the recovery factor, mining method, and numerous other factors. (Note: 1 square mile = 640 acres)

LENZBURG

Miller, French & Ranch, Eastern Mine, 1887-1890

7,130 tons

INDEX OF MINES IN THE NEW ATHENS EAST QUADRANGLE

A-kay Coal Company	11
Bessemer Washed Coal Company	11
Bledsoe (Walter) & Company	14
Borders Coal Company, No. 2 Mine	21
Columbia Collieries Company	11
Consolidated Coal Company of St. Louis	19
Cooperative Coal Company	18
Dorries-Voland	18
Dutch Hill Coal Company	23
Eastern Mine	24
Fairbanks Mine	9
French (Miller, French & Ranch)	24
Fullmer (William C.)	18
Golden Rule Coal Company	12
Green Diamond Mine	14
Haensel (David)	19
Hainsel (D.)	19
Henicke (H. J.)	19
Henicke & Miller	19
Kolb Coal Company, No. 2 Mine	10
Kolb Coal Company, No. 3 Mine	9
Lenzburg Coal Company	11, 19
Marissa West Side Coal Company	20
Mary Kay Mine	20
Mid-Continent Coal Corporation	14
Midland Electric Coal Company	14
Miller (Henicke & Miller)	19
Miller (William)	19
Miller, French & Ranch	24
Morganthal	17
New Athens Coal Company	18, 23
New Athens Coal Mine	17
New Lenzburg Mine	11
New West Side Coal Company, Inc.	20
Okaw Coal Company	10
Peabody Coal Company	14
River King No. 6 Surface Mine	16
River King Surface, Pit No. 3	15
River King Surface, Pit No. 5	16
River King Surface, Pit No.s 1-4	15
Seminole Mine	22
Pep Coal Company, No. 1 Mine	18
Pep Coal Company, No. 2 Mine	13
Prairie State Coal & Mining Company	20
Ranch (Miller, French & Ranch)	24
River King No. 6 Surface	16
River King Surface	15
Seminole Coal Company	22
Senior Hill Coal Company	11
Smith Coal Company	11
Tirre Coal & Mining Company	11
Vinegar Hill Coal Company	10
Voland (Dorries-Voland)	18
West Side Coal Company	20
West Side Cooperative Coal Company	20

Funding for this study was provided by the Illinois Mine Subsidence Insurance Fund.