

Coal Mines in Illinois
Oak Hill Quadrangle
Peoria County, Illinois

Herrin Coal

This map accompanies the Coal Mines Directory for the Oak Hill Quadrangle and the maps of mines in the Springfield Coal, Oak Hill Quadrangle. Consult the directory for a complete explanation of the information shown on this map.

Mining Method

Other Areas Depicted

- Room & Pillar (RP)
- Room & Pillar Basic (RPB)
- Modified Room & Pillar (MRP)
- Room & Pillar Panel (RPP)
- Blind Room & Pillar (BRP)
- Checkerboard Room & Pillar (CRP)
- High Extraction Retreat (HER)
- Longwall (LW)
- Underground, Method Unknown
- Strip Mine
- Auger Mine
- General Area of Mining

- Source of Mine Outline
- Final Mine Map
 - Not Final Mine Map
 - Undated Mine Map
 - Incomplete Mine Map
 - Secondary Source Map

- Tipple, Shaft, Slope, Drift Locations
- Strip Mine Tipple - Active
 - Strip Mine Tipple - Abandoned
 - Mine Shaft - Active
 - Mine Shaft - Abandoned
 - Mine Slope - Active
 - Mine Slope - Abandoned
 - Mine Drift - Active
 - Mine Drift - Abandoned
 - Air Shaft
 - Uncertain Location
 - Uncertain Type of Opening

Mine Annotation
(space permitting)
Company
Mine Name
ISGS Index No., Years of Operation

Disclaimer
Please check the Coal Section at the Illinois State Geological Survey's web site at <http://www.isgs.illinois.edu> for the most up-to-date version of these products.

Note that each quadrangle scale mined-out area map requires the use of the associated text directory for full explanation of map features and mine attributes. Also note that some quadrangles have multiple seams of mining and therefore more than one map may be available for a particular quadrangle. Please take care to check for multiple maps, as extensive mining may exist in the other seams.

The maps and digital files used for these studies were compiled from data obtained from a variety of public and private sources and have varying degrees of completeness and accuracy. This compilation map presents reasonable interpretation of the geology of the area and is based on available data. Locations of some mine features may be offset by 500 feet or more due to errors in the original source maps, the compilation process, digitizing, or a combination of these factors. These data are not intended for use in site-specific screening or decision-making. Use of these documents does not eliminate the need for detailed studies to fully understand the geology of a specific site. The Illinois State Geological Survey, Prairie Research Institute, or the University of Illinois make no guarantee, expressed or implied, regarding the correctness of the interpretations presented in this data set and accept no liability for the consequences of decisions made by others on the basis of the information presented here.

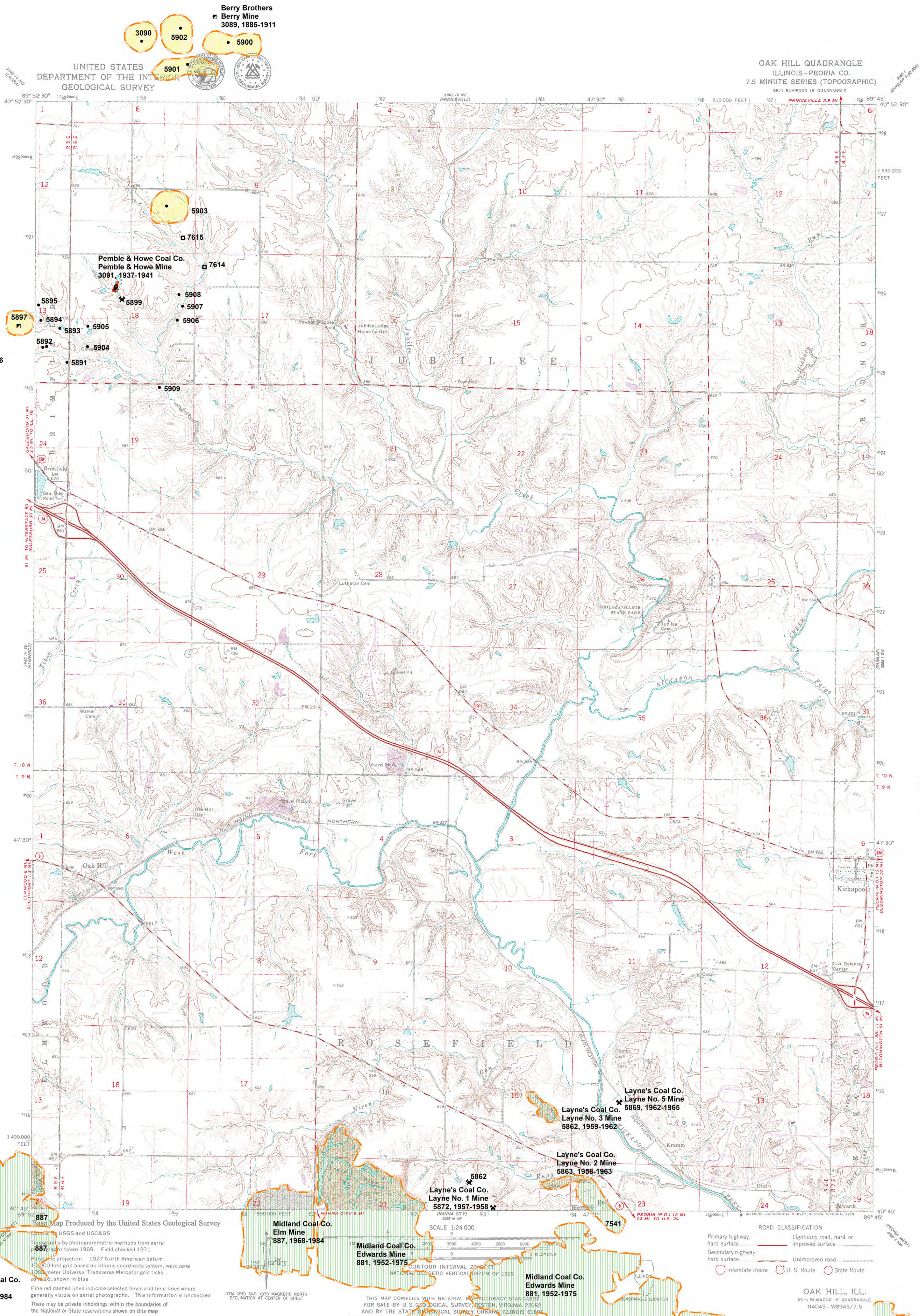
These maps were designed for use at 1:24,000. Enlarging the map may reduce accuracy, as the original scale of the source maps used to compile the outlines shown varies from 1:400 to 1:150,000, and some mine locations are known only from text descriptions. See the accompanying mine directory for the original scale of the source map used for a specific mine to check accuracy of a given portion of the map. Areas with no mines shown may still be undermined; see the unlocated mines list at the back of each mine directory.

The image of the U.S.G.S. topographic base map was projected from the original UTM to Lambert Conformal Conic.



Prairie Research Institute
Illinois State Geological Survey
615 E. Peabody Dr.
Champaign, IL 61820

Mine Outlines Compiled by
C. Chenoweth & Alan R. Myers
June 2015



Coal Mines in Illinois
Oak Hill Quadrangle
Peoria County, Illinois

Springfield Coal

This map accompanies the Coal Mines Directory for the Oak Hill Quadrangle and the maps of mines in the Herrin Coal, Oak Hill Quadrangle. Consult the directory for a complete explanation of the information shown on this map.

Mining Method

- Room & Pillar (RP)
- Room & Pillar Basic (RPB)
- Modified Room & Pillar (MRP)
- Room & Pillar Panel (RPP)
- Blind Room & Pillar (BRP)
- Checkerboard Room & Pillar (CRP)
- High Extraction Retreat (HER)
- Longwall (LW)
- Underground, Method Unknown
- Strip Mine
- Auger Mine
- General Area of Mining

Other Areas Depicted

- Non-Coal Mines

Source of Mine Outline

- Final Mine Map
- Not Final Mine Map
- Undated Mine Map
- Incomplete Mine Map
- Secondary Source Map

Tipple, Shaft, Slope, Drift Locations

- Strip Mine Tipple - Active
- Strip Mine Tipple - Abandoned
- Mine Shaft - Active
- Mine Shaft - Abandoned
- Mine Slope - Active
- Mine Slope - Abandoned
- Mine Drift - Active
- Mine Drift - Abandoned
- Air Shaft
- Uncertain Location
- Uncertain Type of Opening

Mine Annotation
(space permitting)
Company
Mine Name
ISGS Index No., Years of Operation

Disclaimer
Please check the Coal Section at the Illinois State Geological Survey's web site at <http://www.isgs.illinois.edu> for the most up-to-date version of these products.

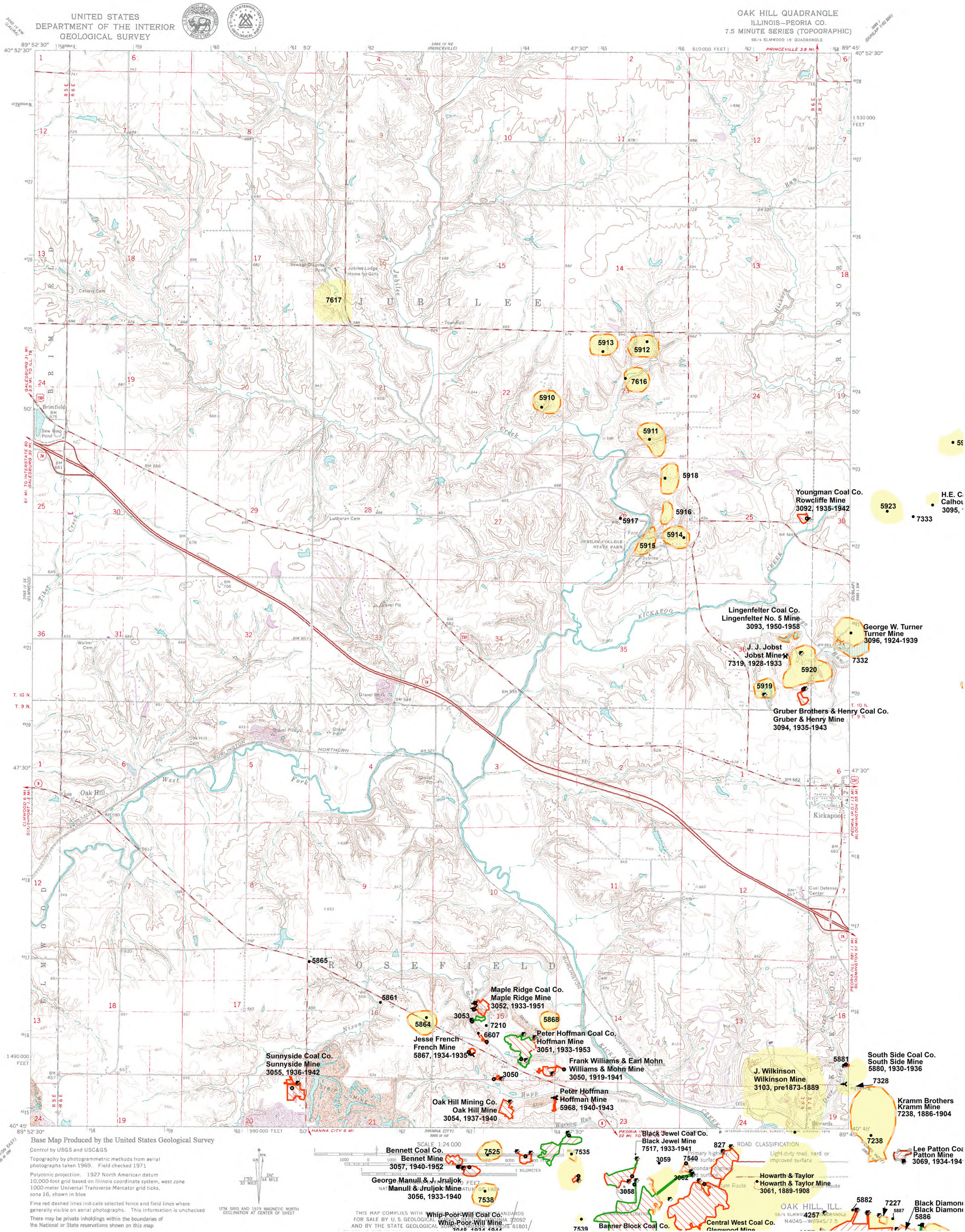
Note that each quadrangle scale mined-out area map requires the use of the associated text directory for full explanation of map features and mine attributes. Also note that some quadrangles have multiple seams of mining and therefore more than one map may be available for a particular quadrangle. Please take care to check for multiple maps, as extensive mining may exist in the other seams.

The maps and digital files used for these studies were compiled from data obtained from a variety of public and private sources and have varying degrees of completeness and accuracy. This compilation map presents reasonable interpretation of the geology of the area and is based on available data. Locations of some mine features may be offset by 500 feet or more due to errors in the original source maps, the compilation process, digitizing, or a combination of these factors. These data are not intended for use in site-specific screening or decision-making. Use of these documents does not eliminate the need for detailed studies to fully understand the geology of a specific site. The Illinois State Geological Survey, Prairie Research Institute, or the University of Illinois make no guarantee, expressed or implied, regarding the correctness of the interpretations presented in this data set and accept no liability for the consequences of decisions made by others on the basis of the information presented here.

These maps were designed for use at 1:24,000. Enlarging the map may reduce accuracy, as the original scale of the source maps used to compile the outlines shown varies from 1:400 to 1:150,000, and some mine locations are known only from text descriptions. See the accompanying mine directory for the original scale of the source map used for a specific mine to check accuracy of a given portion of the map. Areas with no mines shown may still be undermined; see the unlocated mines list at the back of each mine directory.

The image of the U.S.G.S. topographic base map was projected from the original UTM to Lambert Conformal Conic.

Location



Prairie Research Institute
Illinois State Geological Survey
615 E. Peabody Dr.
Champaign, IL 61820

Mine Outlines Compiled by
C. Chenoweth & Alan R. Myers
June 2015

DIRECTORY OF COAL MINES IN ILLINOIS

7.5-MINUTE QUADRANGLE SERIES

OAK HILL QUADRANGLE

PEORIA COUNTY

C. Chenoweth & Alan R. Myers



2015

Prairie Research Institute
Brian Anderson, Interim Executive Director
ILLINOIS STATE GEOLOGICAL SURVEY
Richard C. Berg, Interim Director



Natural Resources Building
615 East Peabody Drive
Champaign, Illinois 61820

Phone 217-244-4610

This material is based upon work supported by the Illinois Department of Transportation. Any opinions, findings, and conclusions or recommendations expressed in this publication are those of the authors and do not necessarily reflect the views of the Illinois Department of Transportation.

Cover photo Track-mounted duckbill loading machine at a Peabody Coal Company mine, ca. 1915.

DISCLAIMER: The accuracy and completeness of mine maps and directories vary with the availability of reliable information. Maps and other information used to compile this mine map and directory were obtained from a variety of sources and the accuracy of some of the original information cannot be verified. Consequently, the Illinois State Geological Survey (ISGS) cannot guarantee the mine maps are free of errors and disclaims any responsibility for damages that may result from actions or decisions based on them.

The ISGS updates the maps and directories periodically, and welcomes any new information or corrections. Please contact the Coal Section of the ISGS at the address shown on the title page of this directory, or telephone (217) 244-4610.

© 2015 The Board of Trustees of the University of Illinois. All rights reserved.
For permission information, contact the Illinois State Geological Survey.

CONTENTS

| | |
|---|----|
| INTRODUCTION | 1 |
| MINING IN THE OAK HILL QUADRANGLE | 1 |
| PART I EXPLANATION OF MAP AND MINE SUMMARY SHEET | 2 |
| INTERPRETING THE MAP | 2 |
| Mine Type and Mining Method | 2 |
| Source Maps | 3 |
| Points and Labels | 3 |
| INTERPRETING A MINE SUMMARY SHEET | 6 |
| REFERENCES | 8 |
| PART II DIRECTORY OF MINES IN THE OAK HILL QUADRANGLE | 9 |
| MINE SUMMARY SHEETS | 9 |
| Mine Index 887 | |
| Midland Coal Company, Elm Mine | 9 |
| Mine Index 3050 | |
| Frank Williams & Earl Mohn, Williams & Mohn Mine | 10 |
| Mine Index 3051 | |
| Peter D. Hoffman Coal Company, Hoffman Mine | 11 |
| Mine Index 3052 | |
| Maple Ridge Coal Company, Maple Ridge Mine | 12 |
| Mine Index 3053 | |
| Lawrence Dawson, Dawson Mine | 13 |
| Mine Index 3054 | |
| Oak Hill Mining Company, Oak Hill Mine | 14 |
| Mine Index 3055 | |
| Sunnyside Coal Company, Sunnyside Mine | 15 |
| Mine Index 3091 | |
| Pemble & Howe Coal Company, Pemble & Howe Mine | 16 |
| Mine Index 3092 | |
| Youngman Coal Company, Rowcliffe Mine | 17 |
| Mine Index 3093 | |
| Lingenfelter Coal Company, Lingenfelter No. 5 Mine | 18 |
| Mine Index 3094 | |
| Gruber Brothers & Henry Coal Company, Gruber & Henry Mine | 19 |
| Mine Index 3096 | |
| George W. Turner, Turner Mine | 20 |
| Mine Index 3103 | |
| J. Wilkinson, Wilkinson Mine | 21 |
| Mine Index 5861 | |
| William Vaughn, Vaughn Mine | 22 |
| Mine Index 5862 | |
| Layne's Coal Company, Layne No. 3 Mine | 23 |
| Mine Index 5863 | |
| Layne's Coal Company, Layne No. 2 Mine | 24 |
| Mine Index 5867 | |
| Jesse French, French Mine | 25 |
| Mine Index 5869 | |
| Layne's Coal Company, Layne No. 5 Mine | 26 |
| Mine Index 5872 | |
| Layne's Coal Company, Layne No. 1 Mine | 27 |
| Mine Index 5880 | |
| South Side Coal Company, South Side Mine | 28 |
| Mine Index 5881 | |
| John Wickham Coal Company, Wickham Mine | 29 |
| Mine Index 5899 | |
| Layne's Coal Company, Layne No. 4 Mine | 30 |

| | |
|--|----|
| Mine Index 5968 | |
| Peter D. Hoffman, Hoffman Mine | 31 |
| Mine Index 6607 | |
| Oak Grove Coal Company, Oak Grove Mine | 32 |
| Mine Index 7210 | |
| James Burns, Burns Mine | 33 |
| Mine Index 7319 | |
| J. J. Jobst, Jobst Mine | 34 |
| OTHER MINES SHOWN ON OAK HILL QUADRANGLE | 35 |
| Mine Index 5864 | 35 |
| Mine Index 5865 | 35 |
| Mine Index 5868 | 35 |
| Mine Index 5891 | 35 |
| Mine Index 5892 | 35 |
| Mine Index 5893 | 35 |
| Mine Index 5894 | 35 |
| Mine Index 5895 | 35 |
| Mine Index 5903 | 35 |
| Mine Index 5904 | 35 |
| Mine Index 5905 | 35 |
| Mine Index 5906 | 35 |
| Mine Index 5907 | 35 |
| Mine Index 5908 | 35 |
| Mine Index 5909 | 35 |
| Mine Index 5910 | 35 |
| Mine Index 5911 | 35 |
| Mine index 5912 | 35 |
| Mine Index 5913 | 35 |
| Mine Index 5914 | 35 |
| Mine Index 5915 | 35 |
| Mine Index 5916 | 35 |
| Mine Index 5917, William Williams, Jubilee Mine | 35 |
| Mine Index 5918 | 35 |
| Mine Index 5919 | 35 |
| Mine Index 5920 | 35 |
| Mine Index 7328, Turner Mine | 35 |
| Mine Index 7332 | 35 |
| Mine Index 7614 | 35 |
| Mine Index 7615 | 35 |
| Mine Index 7616 | 35 |
| MINES WHOSE LOCATIONS ARE NOT KNOWN, OAK HILL QUADRANGLE | 36 |
| INDEX OF MINES IN THE OAK HILL QUADRANGLE | 44 |

INTRODUCTION

Coal has been mined in 76 counties of Illinois. More than 7,400 coal mines have operated since commercial mining began in Illinois about 1810; fewer than 30 are currently active. To detail the extent and location of coal mining in Illinois, the Illinois State Geological Survey (ISGS) has compiled maps and directories of known coal mines. The ISGS offers maps at a scale of 1:100,000 and accompanying directories for each county in which coal mining is known to have occurred. Maps at a scale of 1:24,000 and accompanying directories, such as this, are available for selected quadrangles. Contact the ISGS for a list of these quadrangles.

These larger scale maps show the approximate positions of mines in relation to surface features such as roads and water bodies, and indicate the mining method used and the accuracy of the mine boundaries. The maps are useful for locating mine boundaries relative to specific properties and for assessing the potential for subsidence in an area. Mine boundaries compiled from final mine surveys are generally shown within 200 feet of their true position. As a result of poor cartographic quality and inaccuracies in the original mine surveys, boundaries of some older mines may be mislocated on the map by 500 feet or more. Original mine maps should be consulted in situations that require precise delineation of mine boundaries or internal workings of mined areas.

This directory serves as a key to the accompanying mine map and provides basic information on the coal mines in the quadrangle. The directory is composed of two parts. Part I explains the symbols and patterns used on the accompanying map and the summary data presented for each mine. Part II numerically lists the mines in the quadrangle and summarizes the geology and production history of each mine. Total production for the mine, not the portion in the quadrangle, is given.

MINING IN THE OAK HILL QUADRANGLE

Coal mining was taking place in the Oak Hill Quadrangle before 1873, as evidenced by several mines shown on the 1873 atlas of Peoria County in the southeastern corner of the quadrangle, near Kramm and Edwards Station (as it was known at that time).

Most of the mines accessed the Springfield Coal, particularly those mines in the southern and eastern parts of the quadrangle. The Springfield Coal was usually about 4 feet thick, and could be accessed by drift and shallow entries. Horsebacks were common. The mines further away from Edwards and Kramm were usually small, operated less than 20 years, and undermined only a few acres. The large surface mine in the southern part of the quadrangle (Elm Mine, mine index 887) only mined the Herrin Coal, which was also underground-mined in the western part of the quadrangle, especially in the ravines near Brimfield (in 18-T10N-R6E and 13-T10N-R5E).

PART I EXPLANATION OF MAP AND MINE SUMMARY SHEET

INTERPRETING THE MAP

The map accompanying this directory shows the location of coal mines known to be present in the quadrangle. The map, corresponding to a U.S. Geological Survey (USGS) 7.5-minute quadrangle, covers an area bounded by lines of latitude and longitude 7.5-minutes apart. In Illinois, a quadrangle is approximately 6.5 miles east to west and 8.5 miles north to south, an area of about 56 square miles. The USGS generally offers one map of mines per quadrangle. In some areas where extensive mining occurred in two or more overlapping seams, separate maps are compiled for mines in each seam to maintain readability of the map.

Mine Type and Mining Method

The mine type is indicated on the map by pattern color: green represents surface mines; red and yellow represent underground mines. The red patterns are used for areas of underground mining that are documented by a primary or secondary source map. A yellow pattern is used for cases where no map of the mine workings is available, but a general area of mining can be inferred from property maps or production figures. The patterns indicate the main mining methods used in underground mines. The methods are (1) room and pillar and (2) high extraction. The method used gives some indication of the amount and pattern of coal extraction within each mined area, and has some influence on the timing and type of subsidence that can occur over a mine.

The following discussion and illustrations of mining methods are based on Guither et al. (1984).

In room-and-pillar mines, coal is removed from haulage-ways (entries) and selected areas called rooms. Pillars of unmined coal are left between the rooms to support the roof. Depending on the size of rooms and pillars, the amount of coal removed from the production areas will range from 40% to 70%.

Room and Pillar - mining is divided into six categories:

- room-and-pillar basic (RPB, fig. 1A), an early method that did not follow a preset mining plan and therefore resulted in very irregular designs;
- modified room and pillar (MRP, fig. 1B);
- room-and-pillar panel (RPP, fig. 1C);
- blind room and pillar (BRP, fig. 1D);
- checkerboard room and pillar (CRP, fig. 1E);
- room and pillar (RP), a classification used when the specific type of room-and-pillar mining is unknown.

Blind and checkerboard are the most common types of room-and-pillar mining used in Illinois today. The knowledge of room-and-pillar mining methods gives a trained engineer information on the nature of subsidence that may occur. A more extensive discussion of subsidence can be found in Bauer et al. (1993).

High-extraction These mining methods are subdivided into high-extraction retreat (HER, Fig 1F) and longwall (LW, Fig 1G, 1H). In these methods, much of the coal is removed within well defined areas of the mine. Subsidence of the surface above these areas occurs within weeks. Once the subsidence activity ceases, the potential for further movement over these areas is low; however, subsidence may continue for several years after mining.

High-extraction retreat mining is a form of room-and-pillar mining that extracts most of the coal. Rooms and pillars are developed in the panels, and the pillars are then systematically removed (fig. 1F).

In early (pre-1960) longwall mines, mining advanced in multiple directions from a central shaft (fig. 1G). Large pillars of coal were left around the shaft, but all coal was removed beyond these pillars. Miners placed rock and wooden props and cribs in the mined-out areas to support the mine roof. The overlying rock gradually settled onto these supports, thus producing subsidence at the surface. In post-1959 longwall mines, room-and-pillar methods have been used to develop the main entries of the mine and panel areas. Modern longwall methods extract 100 percent of the coal in the panel areas (fig. 1H).

SOURCE MAPS

Mine outlines depicted on the map are, whenever possible, based on maps made from original mine surveys. The process of compiling and digitizing the quadrangle map may produce errors of less than 200 feet in the location of mine boundaries. Larger errors of 500 feet or more are possible for mines that have incomplete or inaccurate source maps.

Because of the extreme complexity of some mine maps, detailed features of mined areas have been omitted. The digitized mine boundary includes the exterior boundary of all rooms or entries that were at least 80 feet wide or protruded 500 feet from the main mining area. Unmined areas between mines are shown if they are at least 80 feet wide; unmined blocks of coal within mines are shown if they are at least 400 feet on each side. Original source maps should be consulted when precise information on mine boundaries or interior features is needed.

The mine summary sheet lists the source maps used to determine each mine outline. The completeness of map sources is indicated on the map by a line symbol at the mine boundary. Source maps are organized in five categories.

Final mine map The mine outline was digitized from an original map made from mine surveys conducted within a few months after production ceased. The date of the map and the last reported production are listed on the summary sheet.

Not a final map The mine is currently active or the mine outline was made from a map based on mine surveys conducted more than a few months before production ceased. This implies the actual mined-out area is probably larger than the outline on the map. The mine summary sheet indicated the dates of source maps and the last reported production, as well as the approximate tonnage mined between these two dates (if the mine is abandoned). The summary sheet also lists the approximate acreage mined since the date of the map and, in some cases, indicates the area where additional mining may have taken place. This latter information is determined by locating on the map the active faces relative to probable boundaries of the mine property.

Undated map The source map was undated, so it may or may not be based on a final mine survey. When sufficient data are available, the probable acreage of the mined area is estimated from reported production, average seam thickness and a recovery rate comparable to other mines in the area. This information is listed in the summary sheet for the mine.

Incomplete map The source map did not show the entire mine. The summary sheet indicates the missing part of the mine map and the acreage of the unmapped area, which is estimated from the amount of coal known to have been produced from the mine.

Secondary source map The original mine map was not found so the outline shown was determined from secondary sources (e.g., outlines from small-scale regional maps published in other reports). The summary sheet describes the secondary sources.

POINTS AND LABELS

The locations of all known mine openings (shafts, slopes, and drifts) and surface mine tipples are plotted on the map. Tipples are areas where coal was cleaned, stockpiled, and loaded for shipping.

Only openings or tipples are plotted for mines without source maps. If the precise locations of these features are unknown, a special symbol is used to indicate the approximate location of the mine.

Each mine on the map is labeled with the names of the mine and operating company, ISGS mine index number, and years of operation (if known) if space permits. A seam designation is given on maps where more than one seam was mined. For a mine that operated under more than one name, only the most recent name is generally given. When a mine changed names or ownership shortly before closing, an earlier name is listed. All company and mine names are listed on the mine summary sheet in the directory, under the production history segment.

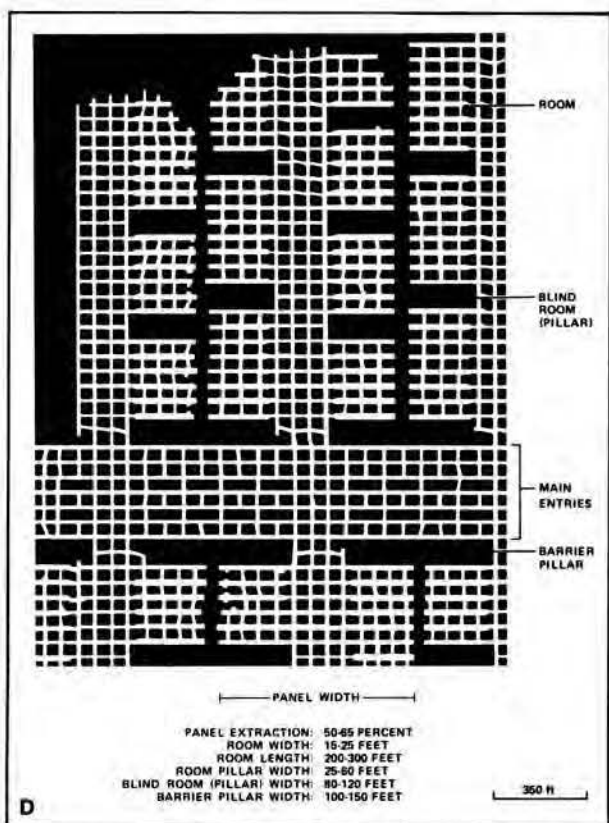
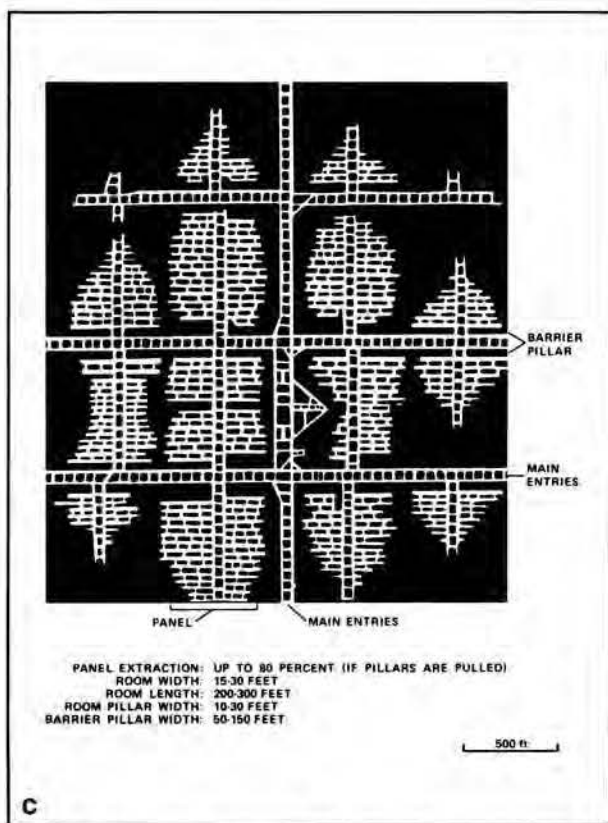
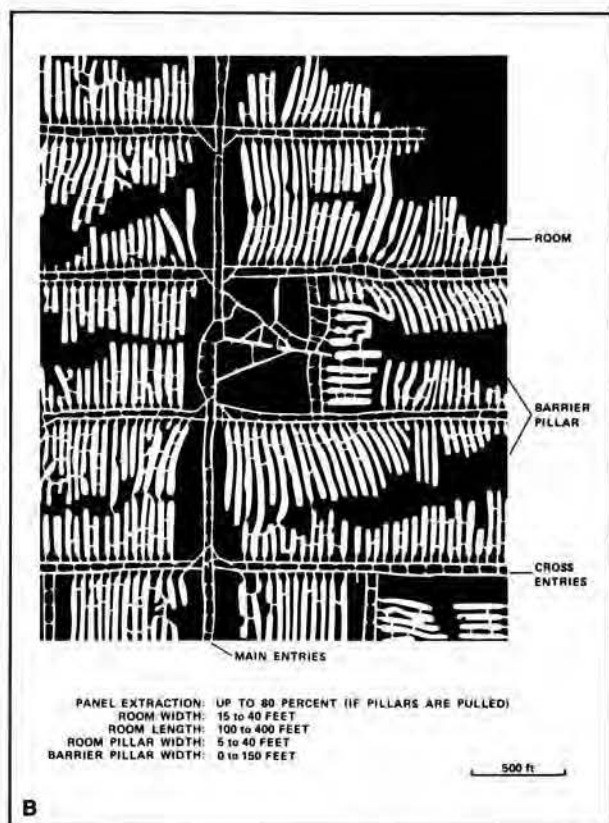
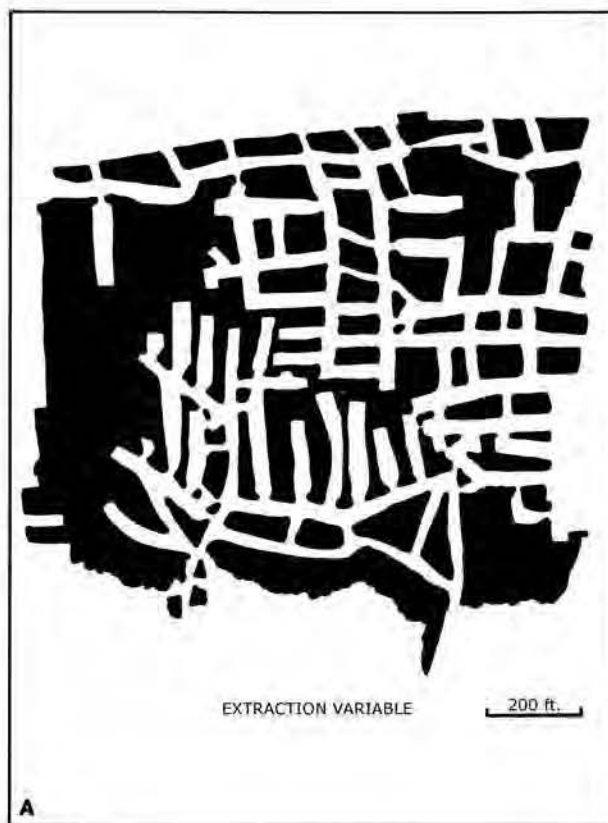


Figure 1 Mining methods: (A) room-and-pillar basic (RPB), (B) modified room and pillar (MRP), (C) room-and-pillar panel (RPP), (D) blind room and pillar (BRP).

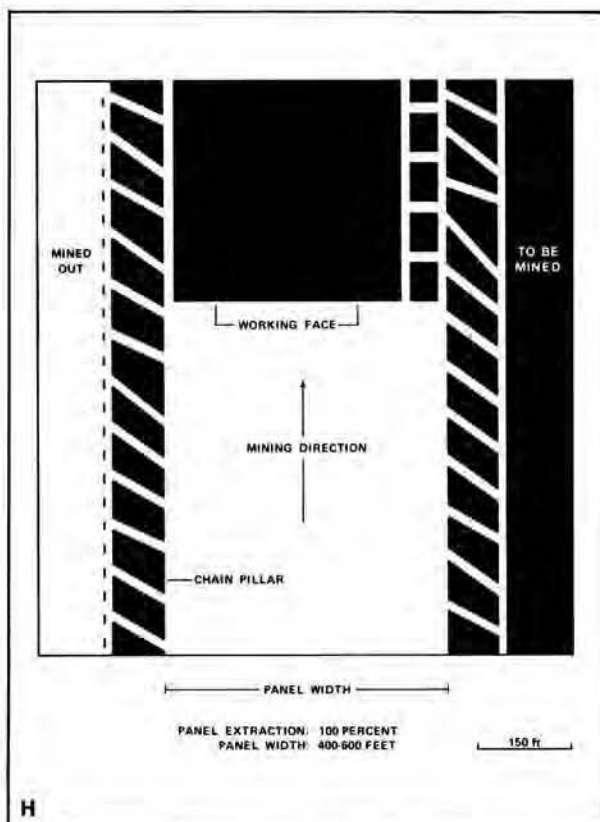
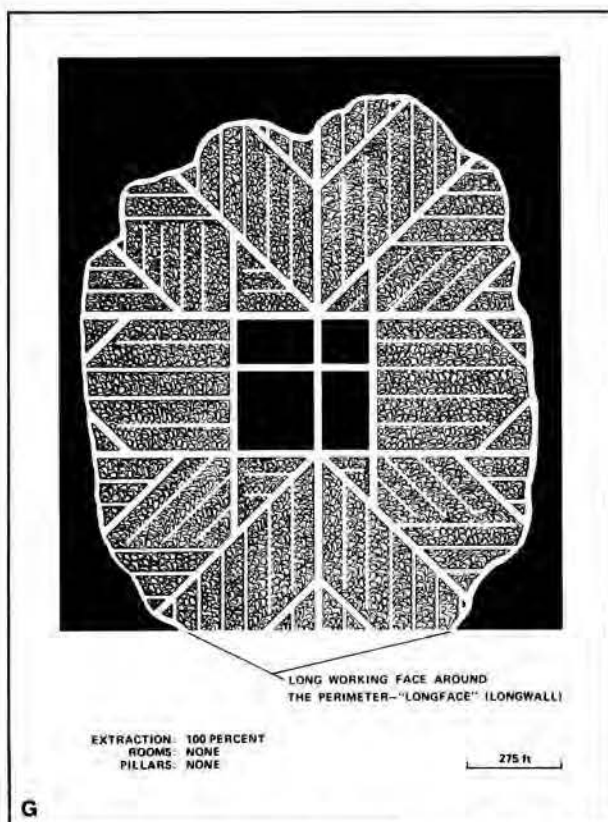
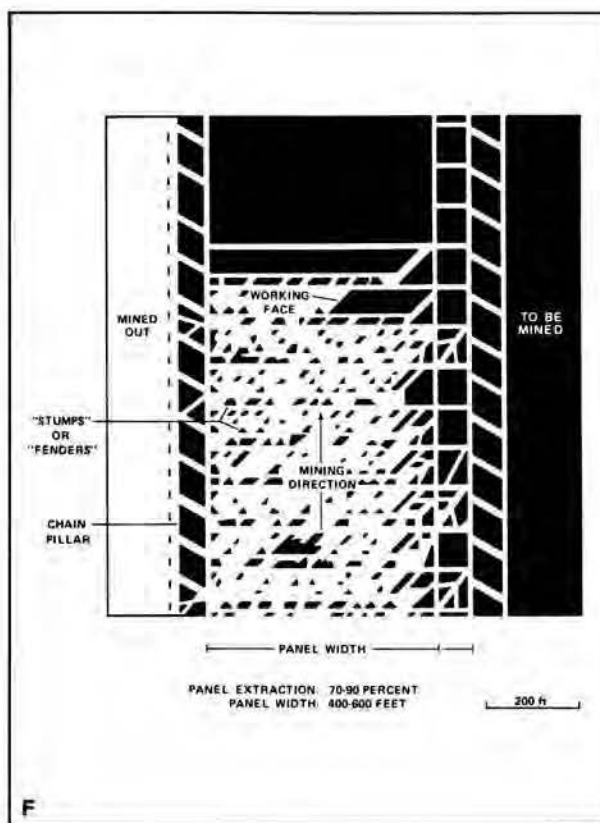
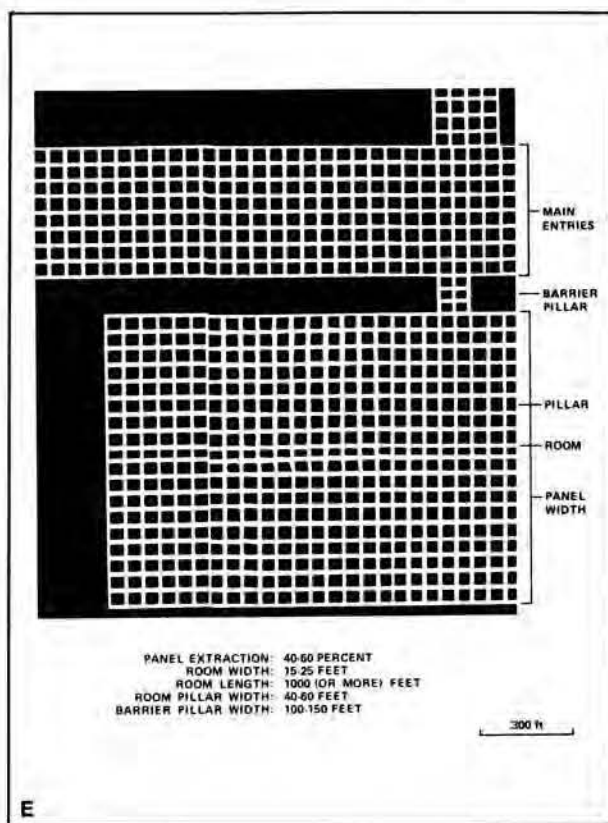


Figure 1 (cont.) Mining methods: (E) checkerboard room and pillar (CRP), (F) high extraction retreat (HER), (G) early (pre-1960) longwall, (H) post-1959 longwall

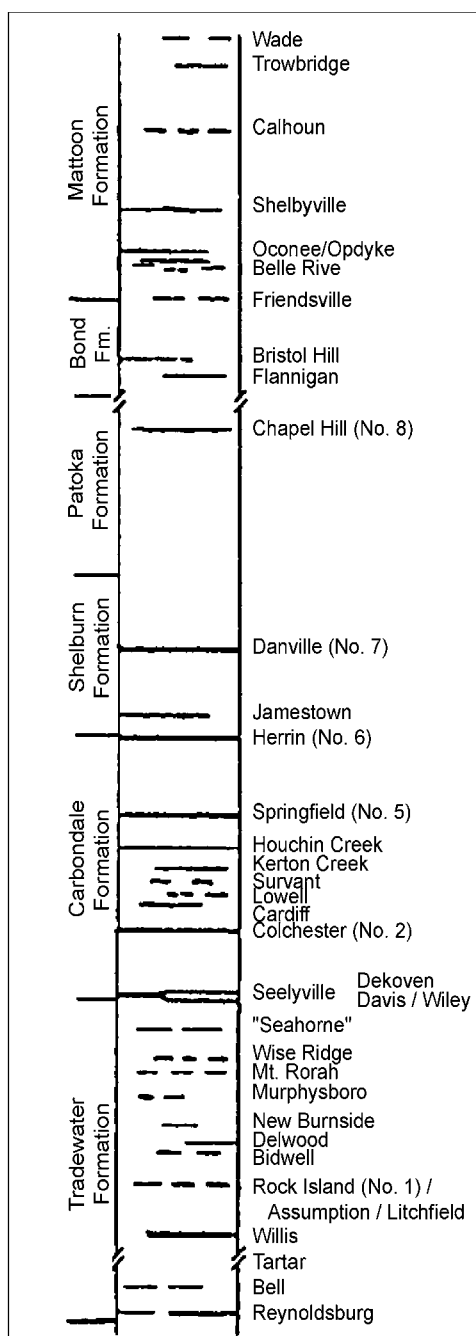


Figure 2 Generalized stratigraphic section, showing approximate vertical relations of coals in Illinois.

INTERPRETING A MINE SUMMARY SHEET

The mine summary sheet is arranged numerically by mine index number. Index numbers are shown on the map and in the mine listing. The mine summary sheet provides the following information (if available).

Company and mine name The last company or owner of the mine is used, unless no production was recorded for the last owner. In that case, the penultimate owner is listed. Mines often have no specific name; in these cases, the company name is also used as the mine name.

Type *Underground* denotes a subsurface mine in which the coal was reached through a shaft, slope, or a drift entry. *Surface* denotes a surface, open pit or strip mine.

Total mined-out acreage shown The total acreage of the mined area mapped, including any acreage mined on adjacent quadrangles, is calculated from the digitized outline of the mine. The acreage of large barrier pillars depicted on the map is excluded from the mined-out acreage. Small pillars not digitized are included in the acreage calculation. If the mine outline is not based on a final mine map, the acreage is followed by an estimate of additional acres that may have been mined. The estimate is determined from reported mine production, approximate thickness of the coal, and recovery rates calculated from nearby mines that used similar mining methods.

SHAFT, SLOPE, DRIFT OR TIPPLE LOCATIONS

Shaft, slope, drift, or tippie locations Locations of all known former entry points to underground mines or the location of coal cleaning, tippie, and shipping equipment used by the mine's facility are listed. The location is described in terms of county, township and range (Twp-Rge), section, and location within the section by quarters. NE SW NW, for instance, would describe the location in the northeast quarter of the southwest quarter of the northwest quarter. When sections are irregular in size, the quarters remain the same size and are oriented (or "registered") from the southeast corner of the section. Approximate footage from the section lines (FEL = from east line, FNL = from north line, for example) is given when that information is known; this indicates a surveyed location and is not derived from maps. Entry points are also plotted on the map and coded for the type of entry or tippie. A mine opening may have had many purposes during the life of the mine. Old hoist shafts are often later used for air and escape shafts; this information is included in the directory when known. The tippie for underground mines was generally located near the main shaft or slope. At surface mines, coal was sometimes hauled to a central tippie several miles from the mine pit.

GEOLOGY

Seam(s) mined The name of the coal seam(s) mined is listed, if known. If multiple seams were mined, they are all listed, although the mined-out area for each seam may be shown on separate maps. Figure 2 shows the stratigraphic section of the coal-bearing interval in Illinois, and the vertical relations among the coals.

Depth The depth to the top of the seam in the vicinity of the shaft is listed, if known. The depth is determined from notes made by geologists who visited the mine during its operation or from drill hole data in ISGS files. Depth generally varies little over the extent of a mine; however, reported depths for an individual mine may vary. Depth for surface-mined coals varies, and is usually represented as a range.

Thickness The approximate thickness of the mined seam is shown, if known. Thickness also comes from notes of geologists who visited the mine during its operation or from borehole data in ISGS files. Minimum, maximum, and average thicknesses are given when this information is available.

Mining method The principal mining method used at the mine (figs. 1A-H) is listed. See the mining methods section at the beginning of this directory for a discussion of this parameter.

Geologic problems reported Any known geologic problems, such as faults, water seepage, floor heaving, and unstable roof, encountered in the mine are reported. This information is from notes made by ISGS geologists who visited the mine, or from reports by mine inspectors published by the Illinois Department of Mines and Minerals, or from the source map(s). Geologic problems are not reported for active mines.

PRODUCTION HISTORY

Production history Tons of coal produced from the mine by each mine owner are totaled. When the source map used for the mine outline is not a final mine map, the tonnage produced since the date of the map is identified. For mines that extend into adjacent quadrangles, the tonnage reported includes areas mined in adjacent quadrangles.

SOURCE OF DATA

Source map This section lists information about the map(s) used to compile the mine outline and the locations of tipples and mine openings. In some cases more than one source map was used. For example, a map drawn before the mine closed may provide better information on original areas of the mine than a later map. When more than one map was used, the bibliography section explains what information was taken from each source.

Date The date of the most recent mine survey listed on the source map is reported.

Original scale The original scale of the source map is listed. Many maps are photo-reductions and are no longer at their original scale. The original scale gives some indication of the level of detail of the mine outline and the accuracy of the mine boundary relative to surface features. Generally, the larger the scale, the greater the accuracy and detail of the mine map. Mine outlines taken from source maps at scales smaller than 1:24,000 may be highly generalized and may well be inaccurately located with respect to surface features.

Digitized scale The scale of the digitized map is reported. The scale may be different from that of the original source map. In many cases the digitized map was made from a photo-reduction of the original source map, or the source map was not in a condition suitable for digitizing and the mine boundaries were transferred to another base map.

Map type Source maps are classified into five categories to indicate the probable completeness of the map. See discussion of source maps in the previous section.

Annotated bibliography Sources that provide information about the mine are listed, with the data taken from each source. Some commonly used sources are described below. Full bibliographic references are given for all other sources. Unless otherwise noted, all sources are available for public inspection at the ISGS.

Coal Reports Published since 1881, these reports contain tabular data on mine ownership, production, employment, and accidents. Some volumes include short descriptions made by mine inspectors of physical features and conditions in selected mines.

Directory of Illinois Coal Mines This source is a compilation of basic data about Illinois coal mines, originally gathered by ISGS staff in the early 1950s. Sources used for this directory are undocumented, but they are primarily Illinois Department of Mines and Minerals annual reports, ISGS mine notes, and coal company officials.

ENR Document 85/01, Guither, H. D., J. K. Hines, and R. A. Bauer, 1985 The Economic Effect of Underground Mining Upon Land Used for Illinois Agriculture: Illinois Department of Energy and Natural Resources Document 85/01, 185 p.

Microfilm map The U.S. Bureau of Mines maintains a microfilm archive of mine maps. A microfilm file for Illinois is available for public viewing at the ISGS.

Mine notes ISGS geologists have visited mines or contacted mine officials throughout the state since the early 1900s. Notes made during these visits range from brief descriptions of the mine location to long narratives (including sketches) of mining conditions and geology.

Federal Land Bank of St. Louis, Preliminary Reports on Subsidence Investigations Mining engineers working for the Federal Land Bank of St. Louis mapped areas of subsidence due to coal mining in the early 1930s. These reports often include county maps of mine properties with mined-out areas including shaft locations, as well as subsidence areas.

REFERENCES

Andreas, A. T., 1873, Atlas Map of Peoria County, Illinois, Lakeside Building, Clark & Adams Streets, Chicago, Illinois.

Bauer, R. A., B. A. Trent, and P. B. Dumontelle, 1993, Mine Subsidence in Illinois: Facts for the Homeowner Considering Insurance, Illinois State Geological Survey, Environmental Geology Note 144, 16p.

Guither, H. D., J. K. Hines, and R. A. Bauer, 1985, The Economic Effects of Underground Mining Upon Land Used for Illinois Agriculture, Illinois Department of Energy and Natural Resources Document 85/01, 185p.

Smith, W. H. and D. J. Berggren, 1963, Strippable Coal Reserves of Illinois, Part 5A - Fulton, Henry, Peoria, Stark, Tazewell, and parts of Bureau, Marshall, Mercer, and Warren Counties, Illinois State Geological Survey Circular 348, 59p., 4 pls.

PART II DIRECTORY OF MINES IN THE OAK HILL QUADRANGLE

MINE SUMMARY SHEETS

A summary sheet on the geology and production history of each mine in the Oak Hill Quadrangle is provided. These summary sheets are arranged numerically by mine index number. Consult Part I for a complete explanation of the data listed in the summary sheet.

Mine Index 887

Midland Coal Company, Elm Mine

Type: Surface Total mined-out acreage shown: 3,519 The area shown on the accompanying map is larger than expected from the reported production and likely includes some areas that were unmined, but were impossible to identify as unmined on the photographic maps.

SHAFT, SLOPE, DRIFT or TIPPLE LOCATIONS

| Type | County | Township-Range | Section | Quarters-Footage |
|--------|--------|----------------|---------|------------------|
| Tipple | Peoria | 9N 5E | 24 | NW SE SW |

GEOLOGY

| Seam(s) Mined | Depth (ft) | Thickness (ft) | | | Mining Method |
|---------------|------------|----------------|-----|-----------|---------------|
| | | Min | Max | Avg | |
| Herrin | 55-78 | | | 2.67-4.25 | Surface |

Geologic Problems Reported: The roof for the Herrin Coal was sometimes the Brereton Limestone, which was generally 1 to 2 feet thick but locally up to 4 feet thick. In 36-T9N-R5E, the Herrin Coal was heavily affected by "white top", a light gray clay material, and the thickness was highly variable. The white top material infiltrated the upper portion of the seam. This problem decreased downward in the coal, but made a very dirty product. Slip planes and cracks in the coal were observed, as well as clay dikes. The top of the seam was irregular. The blue band was about 2 inches thick in this area. Pyrite lenses up to 1.5 inches were noted, as were pyrite nodules.

PRODUCTION HISTORY

| Company | Mine Name | Years | Production (tons) |
|----------------------|-------------------------------|-----------|-------------------|
| Peabody Coal Company | Elm No. 1 & Bright Star No. 2 | 1968-1970 | 2,943,493 |
| Midland Coal Company | Elm | 1970-1984 | 10,339,741 |
| | | | 13,283,234 |

Last reported production: July 1984

SOURCES OF DATA

| Source Map | Date | Original Scale | Digitized Scale | Map Type |
|--------------------------------------|----------|----------------|-----------------|------------------|
| Company, 6-393 | 1-1-1987 | 1:12000 | 1:12000 | Final |
| Company, 10-9-7 | 3-1978 | 1:12000 | 1:12000 | Not final |
| Company, 10-6-11 | 1-1-1979 | 1:12000 | 1:12000 | Not final |
| NAIP digital ortho-photo quadrangles | 2004 | 1:6000 | 1:6000 | Secondary source |

Annotated Bibliography (data source, brief description of information)

Coal Reports - Production, ownership, years of operation, seam, depth, thickness, mining method.

Directory of Illinois Coal Mines (Peoria County) - Mine names, mine index, ownership, years of operation.

Mine notes (Peoria County) - Mine type, seam, mining method, tipple location, geologic problems.

Company map, Coal Section files, 6-393 - Mine outline, mining method.

Company map, Coal Section files, 10-9-7 - Mine outline.

Company map, Coal Section files, 10-6-11 - Mine outline.

National Agriculture Imagery Program map, digital ortho-photo quadrangle map, Hanna City and Farmington

Quadrangles, 2004 - Mine outline.

USGS topographic map, Hanna City Quadrangle, 1971, Photorevised 1979 - Mine outline.

Mine Index 3050**Frank Williams & Earl Mohn, Williams & Mohn Mine**

Type: Underground Total mined-out acreage shown: 5 Production indicates approximately 1 acre was mined after the map date.

SHAFT, SLOPE, DRIFT or TIPPLE LOCATIONS

| Type | County | Township-Range | Section | Quarters-Footage |
|---------------------|--------|----------------|---------|------------------|
| Slope (western) | Peoria | 9N 6E | 15 | SW SW SE |
| Air shaft (western) | Peoria | 9N 6E | 15 | SW SW SE |
| Slope (eastern) | Peoria | 9N 6E | 15 | SE SE SE |
| Air shaft (eastern) | Peoria | 9N 6E | 14 | SW SW SW |

GEOLOGY

| Seam(s) Mined | Depth (ft) | Thickness (ft) | | | Mining Method |
|---------------|------------|----------------|-----|-----|---------------|
| | | Min | Max | Avg | |
| Springfield | 40 | | | 4.1 | MRP |

Geologic Problems Reported:

PRODUCTION HISTORY

| Company | Mine Name | Years | Production (tons) |
|----------------------------|-------------------|-----------|-------------------|
| John C. Johnson | Johnson | 1919-1928 | 5,060 * |
| Johnson & Snider | Johnson & Snider | 1929-1931 | 600 ** |
| Peter Johnson | Johnson | 1932-1932 | 1,937 |
| Henry F. Johnson | Johnson | 1933-1937 | 13,388 |
| Johnson & Sargent | Johnson & Sargent | 1937-1937 | 228 |
| Henry F. Johnson | Johnson | 1938-1938 | 540 |
| Johnson & Sargent | Johnson & Sargent | 1939-1939 | 150 |
| Johnson & Sargent | Johnson & Sargent | 1939-1939 | 150 *** |
| Frank Williams & Earl Mohn | Williams & Mohn | 1940-1941 | 430 *** |
| | | | <u>22,483</u> |

* Production was not reported in 1922 for mines producing less than 10,000 tons.

** Production was not reported in 1930 and 1931 for mines producing less than 1,000 tons per year.

*** Production after map date

Last reported production: 1941

SOURCES OF DATA

| Source Map | Date | Original Scale | Digitized Scale | Map Type |
|----------------------------|-----------|----------------|-----------------|-------------|
| Microfilm, document 352177 | 2-6-1939 | 1:360 | 1:447 | Not final † |
| Microfilm, document 352296 | 8-29-1936 | 1:600 | 1:993 | Not final |

† Incomplete on southwestern part of mine

Annotated Bibliography (data source, brief description of information)

Coal Reports - Production, ownership, years of operation.

Directory of Illinois Coal Mines (Peoria County) - Mine names, mine index, ownership, years of operation.

Mine notes (Peoria County) - Mine type, slope location, seam, depth, thickness.

Microfilm map, document 352177, reel 03138, frame 212 - Slope & shaft locations, mine outline (western).

Microfilm map, document 352296, reel 03138, frame 367 - Slope location, mine outline (eastern).

Mine Index 3051**Peter D. Hoffman Coal Company, Hoffman Mine**

Type: Underground Total mined-out acreage shown: 21

SHAFT, SLOPE, DRIFT or TIPPLE LOCATIONS

| Type | County | Township-Range | Section | Quarters-Footage |
|--------------|--------|----------------|---------|------------------|
| Main slope | Peoria | 9N 6E | 15 | NW SE SE |
| Air shaft | Peoria | 9N 6E | 15 | NE SW SE |
| Escape shaft | Peoria | 9N 6E | 15 | SW NE SE |
| Escape slope | Peoria | 9N 6E | 15 | SW NE SE |

GEOLOGY

| Seam(s) Mined | Depth (ft) | Thickness (ft) | | | Mining Method |
|---------------|------------|----------------|-----|----------|---------------|
| | | Min | Max | Avg | |
| Springfield | 20-80 | | | 3.83-4.0 | MRP |

Geologic Problems Reported:**PRODUCTION HISTORY**

| Company | Mine Name | Years | Production (tons) |
|-------------------------------|-----------|-------------|-------------------|
| Joe Burdess | Burdess | 1933-1938 * | 2,760 |
| Patterson Coal Company | Patterson | 1939-1940 | 7,378 |
| Hi Way Coal Company | Hi Way | 1941-1946 | 22,401 |
| Peter D. Hoffman Coal Company | Hoffman | 1946-1953 | <u>29,595</u> |
| | | | 62,134 |

* Idle 1937 & 1938

Last reported production: March 1953

SOURCES OF DATA

| Source Map | Date | Original Scale | Digitized Scale | Map Type |
|----------------------------|----------|----------------|-----------------|-------------------|
| Microfilm, document 352284 | 3-2-1953 | 1:2400 | 1:3972 | Final, Incomplete |

Annotated Bibliography (data source, brief description of information)

Coal Reports - Production, ownership, years of operation.

Directory of Illinois Coal Mines (Peoria County) - Mine names, mine index, ownership, years of operation.

Mine notes (Peoria County) - Mine type, slope location, seam, depth, thickness.

Microfilm map, document 352284, reel 03138, frame 354 - Slope & shaft locations, mine outline, mining method.

Mine Index 3052
Maple Ridge Coal Company, Maple Ridge Mine

Type: Underground Total mined-out acreage shown: 6 Production indicates approximately 2 acres were mined. The area shown on the accompanying map is larger than expected for the reported production. Apparently other operators mined in this locale; see the unlocated mines at the back of this report. Less than 1 acre was mined after the map date.

SHAFT, SLOPE, DRIFT or TIPPLE LOCATIONS

| Type | County | Township-Range | Section | Quarters-Footage |
|------------|--------|----------------|---------|------------------|
| Main drift | Peoria | 9N 6E | 15 | SW SE NW |
| Air drift | Peoria | 9N 6E | 15 | SW SE NW |
| Drift | Peoria | 9N 6E | 15 | SW SE NW |
| Air shaft | Peoria | 9N 6E | 15 | SW SE NW |

GEOLOGY

| Seam(s) Mined | Depth (ft) | Thickness (ft) | | | Mining Method |
|---------------|------------|----------------|-----|-----|---------------|
| | | Min | Max | Avg | |
| Springfield | 90-100 | | | 4.0 | MRP |

Geologic Problems Reported:

PRODUCTION HISTORY

| Company | Mine Name | Years | Production (tons) |
|--------------------------|-------------|-------------|-------------------|
| Maple Ridge Coal Company | Maple Ridge | 1933-1940 | 5,203 |
| Maple Ridge Coal Company | Maple Ridge | 1940-1951 * | 852 ** |
| | | | 6,055 |

* Idle 1942-1950

** Production after map date

Last reported production: 1951

SOURCES OF DATA

| Source Map | Date | Original Scale | Digitized Scale | Map Type |
|----------------------------|-----------|----------------|-----------------|-----------|
| Microfilm, document 352279 | 8-20-1940 | 1:600 | 1:786 | Not final |

Annotated Bibliography (data source, brief description of information)

Coal Reports - Production, ownership, years of operation.

Directory of Illinois Coal Mines (Peoria County) - Mine names, mine index, ownership, years of operation.

Mine notes (Peoria County) - Mine type, seam, depth, thickness.

Microfilm map, document 352279, reel 03138, frame 345 - Drift & shaft locations, mine outline, mining method.

Mine Index 3053
Lawrence Dawson, Dawson Mine

Type: Underground Total mined-out acreage shown: 1

SHAFT, SLOPE, DRIFT or TIPPLE LOCATIONS

| Type | County | Township-Range | Section | Quarters-Footage |
|------------|--------|----------------|---------|------------------|
| Main slope | Peoria | 9N 6E | 15 | NW NE SW |
| Air slope | Peoria | 9N 6E | 15 | NW NE SW |

GEOLOGY

| Seam(s) Mined | Depth (ft) | Thickness (ft) | | | Mining Method |
|---------------|------------|----------------|-----|----------|---------------|
| | | Min | Max | Avg | |
| Springfield | 15-100 | | | 4.0-4.83 | MRP |

Geologic Problems Reported:

PRODUCTION HISTORY

| Company | Mine Name | Years | Production (tons) |
|-----------------------|-----------|-----------|-------------------|
| John Price | Price | 1936-1936 | 410 |
| Forrest French | French | 1937-1939 | 2,637 |
| Joe C. Turner | Turner | 1939-1939 | 455 |
| Red Bird Coal Company | Red Bird | 1940-1940 | 331 |
| Lawrence Dawson | Dawson | 1940-1941 | <u>913</u> |
| | | | 4,746 |

Last reported production: 1941

SOURCES OF DATA

| Source Map | Date | Original Scale | Digitized Scale | Map Type |
|----------------------------|------------|----------------|-----------------|----------|
| Microfilm, document 352249 | 10-12-1941 | 1:600 | 1:993 | Final |

Annotated Bibliography (data source, brief description of information)

Coal Reports - Production, ownership, years of operation.

Directory of Illinois Coal Mines (Peoria County) - Mine names, mine index, ownership, years of operation.

Mine notes (Peoria County) - Mine type, seam, depth, thickness.

Microfilm map, document 352249, reel 03138, frame 315 - Slope locations, mine outline, mining method.

Mine Index 3054**Oak Hill Mining Company, Oak Hill Mine**

Type: Underground Total mined-out acreage shown: 6 Production indicates less than 1 acre was mined. The area shown on the accompanying map is larger than expected for the reported production. Apparently other operators mined in this locale; see the unlocated mines at the back of this report. Less than 1 additional acre was mined after the map date.

SHAFT, SLOPE, DRIFT or TIPPLE LOCATIONS

| Type | County | Township-Range | Section | Quarters-Footage |
|------------|--------|----------------|---------|------------------|
| Main slope | Peoria | 9N 6E | 22 | SE NW NE |

GEOLOGY

| Seam(s) Mined | Depth (ft) | Thickness (ft) | | | Mining Method |
|---------------|------------|----------------|-----|-----|---------------|
| | | Min | Max | Avg | |
| Springfield | 12 | | | 4.0 | MRP |

Geologic Problems Reported:

PRODUCTION HISTORY

| Company | Mine Name | Years | Production (tons) |
|---------------------------|-----------|-----------|-------------------|
| Lawrence Dawson | Dawson | 1937-1938 | 1,568 |
| Nixon Run Coal Company | Nixon Run | 1939-1939 | 721 |
| Oak Hill Mining Company * | Oak Hill | 1940-1940 | 260 ** |
| | | | 2,549 |

* Operated by Frank Renner & John Collear

** Production after map date

Last reported production: 1940

SOURCES OF DATA

| Source Map | Date | Original Scale | Digitized Scale | Map Type |
|----------------------------|-----------|----------------|-----------------|-----------|
| Microfilm, document 352253 | 5-24-1939 | 1:1800 | 1:1986 | Not final |

Annotated Bibliography (data source, brief description of information)

Coal Reports - Production, ownership, years of operation.

Directory of Illinois Coal Mines (Peoria County) - Mine names, mine index, ownership, years of operation.

Mine notes (Peoria County) - Mine type, slope location, seam, depth, thickness.

Microfilm map, document 352253, reel 03138, frame 319 - Slope location, mine outline, mining method.

Mine Index 3055**Sunnyside Coal Company, Sunnyside Mine**

Type: Underground Total mined-out acreage shown: 10 Production indicates less than 1 acre was mined after the map date.

SHAFT, SLOPE, DRIFT or TIPPLE LOCATIONS

| Type | County | Township-Range | Section | Quarters-Footage |
|------------|--------|----------------|---------|------------------|
| Main slope | Peoria | 9N 6E | 20 | NE NE NE |
| Air shaft | Peoria | 9N 6E | 20 | NE NE NE |

GEOLOGY

| Seam(s) Mined | Depth (ft) | Thickness (ft) | | | Mining Method |
|---------------|------------|----------------|-----|-----|---------------|
| | | Min | Max | Avg | |
| Springfield | 104 | | | 4.0 | MRP |

Geologic Problems Reported:

PRODUCTION HISTORY

| Company | Mine Name | Years | Production (tons) |
|--------------------------|-----------|-----------|-------------------|
| Seghi Brothers | Sunnyside | 1936-1939 | 18,262 |
| Virgil Brown | Sunnyside | 1939-1939 | 845 |
| Sunnyside Coal Company * | Sunnyside | 1940-1942 | 4,573 |
| Sunnyside Coal Company | Sunnyside | 1942-1942 | <u>1,246</u> ** |
| | | | 24,926 |

* Ownership of the mine changed from W. D. Strickland to Henry Wolford and then to Lee Patton in 1941, but the mine continued to operate under the name of Sunnyside Coal Company.

** Production after map date

Last reported production: 1942

SOURCES OF DATA

| Source Map | Date | Original Scale | Digitized Scale | Map Type |
|----------------------------|----------|----------------|-----------------|-----------|
| Microfilm, document 352257 | 7-3-1942 | 1:1200 | 1:2152 | Not final |

Annotated Bibliography (data source, brief description of information)

Coal Reports - Production, ownership, years of operation.

Directory of Illinois Coal Mines (Peoria County) - Mine names, mine index, ownership, years of operation.

Mine notes (Peoria County) - Mine type, slope location, seam, thickness.

Microfilm map, document 352257, reel 03138, frame 323 - Slope & shaft locations, mine outline, mining method, depth.

Mine Index 3091**Pemle & Howe Coal Company, Pemle & Howe Mine**

Type: Underground Total mined-out acreage shown: Less than 1; production indicates less than 1 acre was mined after the map date.

SHAFT, SLOPE, DRIFT or TIPPLe LOCATIONS

| Type | County | Township-Range | Section | Quarters-Footage |
|------------|--------|----------------|---------|------------------|
| Main slope | Peoria | 10N 6E | 18 | E ½ NW |
| Air shaft | Peoria | 10N 6E | 18 | E ½ NW |

GEOLOGY

| Seam(s) Mined | Depth (ft) | Thickness (ft) | | | Mining Method |
|---------------|------------|----------------|-----|-----|---------------|
| | | Min | Max | Avg | |
| Herrin | 13 | | | 5.0 | RP |

Geologic Problems Reported:

PRODUCTION HISTORY

| Company | Mine Name | Years | Production (tons) |
|-----------------------------|--------------|-----------|-------------------|
| Pemle & Howe Coal Company * | Pemle & Howe | 1937-1940 | 972 |
| Pemle & Howe Coal Company | Pemle & Howe | 1940-1941 | 788 ** |
| | | | 1,760 |

* Also known as P. & H. Coal Company

** Production after map date

Last reported production: 1941

SOURCES OF DATA

| Source Map | Date | Original Scale | Digitized Scale | Map Type |
|----------------------------|-----------|----------------|-----------------|-----------|
| Microfilm, document 352252 | 2-11-1940 | 1:600 | 1:496 | Not final |

Annotated Bibliography (data source, brief description of information)

Coal Reports - Production, ownership, years of operation.

Directory of Illinois Coal Mines (Peoria County) - Mine names, mine index, ownership, years of operation.

Mine notes (Peoria County) - Mine type, slope location, seam, depth, thickness.

Microfilm map, document 352252, reel 03138, frame 318 - Slope & shaft locations, mine outline, mining method.

Mine Index 3092**Youngman Coal Company, Rowcliffe Mine**

Type: Underground Total mined-out acreage shown: 3 Production indicates less than 1 acre was mined after the map date.

SHAFT, SLOPE, DRIFT or TIPPLE LOCATIONS

| Type | County | Township-Range | Section | Quarters-Footage |
|------------|--------|----------------|---------|------------------|
| Main shaft | Peoria | 10N 6E | 25 | SE SE NE |
| Air shaft | Peoria | 10N 6E | 25 | SE SE NE |

GEOLOGY

| Seam(s) Mined | Depth (ft) | Thickness (ft) | | | Mining Method |
|---------------|------------|----------------|-----|------|---------------|
| | | Min | Max | Avg | |
| Springfield | 17 | | | 3.07 | MRP |

Geologic Problems Reported:

PRODUCTION HISTORY

| Company | Mine Name | Years | Production (tons) |
|---------------------------------|-----------|-----------|-------------------|
| Frank Murnan Coal Company | Murnan | 1935-1937 | 4,298 |
| James W. Rowcliffe Coal Company | Rowcliffe | 1937-1940 | 5,130 |
| L. Martin | Rowcliffe | 1941-1941 | 350 |
| Shaw Brothers | Rowcliffe | 1941-1941 | 138 * |
| Youngman Coal Company | Rowcliffe | 1942-1942 | 88 * |
| | | | 10,004 |

* Production after map date

Last reported production: 1942

SOURCES OF DATA

| Source Map | Date | Original Scale | Digitized Scale | Map Type |
|----------------------------|-----------|----------------|-----------------|-----------|
| Microfilm, document 352261 | 4-26-1941 | 1:600 | 1:662 | Not final |

Annotated Bibliography (data source, brief description of information)

Coal Reports - Production, ownership, years of operation.

Directory of Illinois Coal Mines (Peoria County) - Mine names, mine index, ownership, years of operation.

Mine notes (Peoria County) - Mine type, shaft location, seam, depth, thickness.

Microfilm map, document 352261, reel 03138, frame 327 - Shaft locations, mine outline, mining method.

Mine Index 3093**Lingenfelter Coal Company, Lingenfelter No. 5 Mine**

Type: Surface Total mined-out acreage shown: 4

SHAFT, SLOPE, DRIFT or TIPPLE LOCATIONS

| Type | County | Township-Range | Section | Quarters-Footage |
|------|--------|----------------|---------|------------------|
| Pit | Peoria | 10N 6E | 36 | SE NE |

GEOLOGY

| Seam(s) Mined | Depth (ft) | Thickness (ft) | | | Mining Method |
|---------------|------------|----------------|-----|-----|---------------|
| | | Min | Max | Avg | |
| Springfield | 20 | | | 3.5 | Surface |

Geologic Problems Reported:

PRODUCTION HISTORY

| Company | Mine Name | Years | Production (tons) |
|---------------------------|--------------------|-----------|-------------------|
| Robins Nest Coal Company | Robins Nest | 1950-1951 | 8,395 |
| Albrecht Coal Company | Albrecht No. 4 | 1956-1956 | 479 |
| Lingenfelter Coal Company | Lingenfelter No. 5 | 1957-1958 | <u>11,228</u> |
| | | | 20,102 |

Last reported production: February 1958

SOURCES OF DATA

| Source Map | Date | Original Scale | Digitized Scale | Map Type |
|--------------------------|--------|----------------|-----------------|------------------|
| Federal Land Bank Report | 5-1934 | 1:142560 | 1:142560 | Secondary source |
| USGS topographic map | 1971 | 1:24000 | 1:24000 | Secondary source |

Annotated Bibliography (data source, brief description of information)

Coal Reports - Production, ownership, years of operation.

Directory of Illinois Coal Mines (Peoria County) - Mine names, mine index, ownership, years of operation.

Mine notes (Peoria County) - Seam, depth, thickness.

Federal Land Bank Report (Peoria County) - Mine location.

USGS 7.5-minute topographic map, Oak Hill Quadrangle - Mine outline.

Mine Index 3094**Gruber Brothers & Henry Coal Company, Gruber & Henry Mine**

Type: Underground Total mined-out acreage shown: 3 Production indicates less than 1 acre was mined after the map date.

SHAFT, SLOPE, DRIFT or TIPPLE LOCATIONS

| Type | County | Township-Range | Section | Quarters-Footage |
|------------------------|--------|----------------|---------|------------------|
| Main slope | Peoria | 10N 6E | 36 | NE SE SE |
| Escapement (air) shaft | Peoria | 10N 6E | 36 | NE SE SE |

GEOLOGY

| Seam(s) Mined | Depth (ft) | Thickness (ft) | | | Mining Method |
|---------------|------------|----------------|-----|-----|---------------|
| | | Min | Max | Avg | |
| Springfield | 20 | | | 3.0 | MRP |

Geologic Problems Reported:

PRODUCTION HISTORY

| Company | Mine Name | Years | Production (tons) |
|--------------------------------------|----------------|-----------|-------------------|
| George Aman | Aman | 1935-1936 | 702 |
| Gruber Brothers | Gruber | 1937-1942 | 9,056 |
| Gruber Brothers | Gruber | 1942-1942 | 614 * |
| Gruber Brothers & Henry Coal Company | Gruber & Henry | 1943-1943 | 448 * |
| | | | 10,820 |

* Production after map date

Last reported production: 1943

SOURCES OF DATA

| Source Map | Date | Original Scale | Digitized Scale | Map Type |
|----------------------------|-----------|----------------|-----------------|-----------|
| Microfilm, document 352186 | 8-20-1942 | 1:600 | 1:869 | Not final |

Annotated Bibliography (data source, brief description of information)

Coal Reports - Production, ownership, years of operation.

Directory of Illinois Coal Mines (Peoria County) - Mine names, mine index, ownership, years of operation.

Mine notes (Peoria County) - Mine type, slope location, seam, depth, thickness.

Microfilm map, document 352186, reel 03138, frame 224 - Shaft locations, mine outline, mining method.

Mine Index 3096
George W. Turner, Turner Mine

Type: Underground Total mined-out acreage shown: A 27 acre general area of mining is shown on the accompanying map. Production indicates approximately 5 acres were mined.

SHAFT, SLOPE, DRIFT or TIPPLE LOCATIONS

| Type | County | Township-Range | Section | Quarters-Footage |
|------------|--------|----------------|---------|------------------|
| Main shaft | Peoria | 10N 7E | 31 | NW SE NW |
| Air shaft | Peoria | 10N 7E | 31 | SW SE NW * |

* Not shown on accompanying map

GEOLOGY

| Seam(s) Mined | Depth (ft) | Thickness (ft) | | | Mining Method |
|---------------|------------|----------------|-----|------|---------------|
| | | Min | Max | Avg | |
| Springfield | 30 | | | 3.17 | RP |

Geologic Problems Reported:

PRODUCTION HISTORY

| Company | Mine Name | Years | Production (tons) |
|------------------|-----------|-----------|-------------------|
| Turner & Son | Turner | 1924-1932 | 4,889 ** |
| George W. Turner | Turner | 1933-1939 | 9,389 |
| | | | 14,278 |

** Production was not reported in 1930 and 1931 for mines producing less than 1,000 tons per year.

Last reported production: 1939

SOURCES OF DATA

| Source Map | Date | Original Scale | Digitized Scale | Map Type |
|------------------------------|--------|----------------|-----------------|------------------|
| Federal Land Bank Report *** | 5-1934 | 1:142560 | 1:142560 | Secondary source |

*** A microfilm map exists (document 352290, reel 03138, frame 361), but the map could not be georegistered to the land surface and was not usable. That map was not final, extended to mining as of February 6, 1935.

Annotated Bibliography (data source, brief description of information)

Coal Reports - Production, ownership, years of operation.

Directory of Illinois Coal Mines (Peoria County) - Mine names, mine index, ownership, years of operation.

Mine notes (Peoria County) - Mine type, shaft location, seam, depth, thickness.

Microfilm map, document 352290, reel 03138, frame 361 - Mine type, mining method.

Federal Land Bank Report (Peoria County) - Mine outline, shaft location.

Mine Index 3103**J. Wilkinson, Wilkinson Mine**

Type: Underground Total mined-out acreage shown: 251, in a general area of mining. Production indicates approximately 100 acres were mined.

SHAFT, SLOPE, DRIFT or TIPPLE LOCATIONS

| Type | County | Township-Range | Section | Quarters-Footage |
|---------------------|--------|----------------|---------|------------------|
| Main drift or slope | Peoria | 9N 6E | 24 | NE SE NE |

GEOLOGY

| Seam(s) Mined | Depth (ft) | Thickness (ft) | | | Mining Method |
|---------------|------------|----------------|-----|---------|---------------|
| | | Min | Max | Avg | |
| Springfield | 60-82 | | | 4.0-4.5 | RP |

Geologic Problems Reported:

PRODUCTION HISTORY

| Company | Mine Name | Years | Production (tons) |
|-------------------------|----------------------|----------------|-------------------|
| Wilkinson & Wantling | Wilkinson & Wantling | pre1873-1882 * | 63,500 |
| J. H. Wilkinson | Wilkinson | 1882-1884 | 71,760 |
| Burlington Coal Company | Burlington | 1884-1887 | 100,207 |
| J. Wilkinson | Wilkinson | 1887-1889 | 39,181 |
| | | | <u>274,648</u> |

* Ownership, production and years of operation before 1878 are not known. The 1879 Coal Report indicates 30 acres were mined.

Last reported production: 1889

SOURCES OF DATA

| Source Map | Date | Original Scale | Digitized Scale | Map Type |
|------------------------|------|----------------|-----------------|------------------|
| Atlas of Peoria County | 1873 | 1:31680 | 1:31680 | Secondary source |

Annotated Bibliography (data source, brief description of information)

Coal Reports - Production, ownership, years of operation, mine type, seam, depth, thickness, mining method.
 Directory of Illinois Coal Mines (Peoria County) - Mine names, mine index, ownership, years of operation.
 Atlas of Peoria County, 1873 - General location of mine.

Mine Index 5861
William Vaughn, Vaughn Mine

Type: Underground Total mined-out acreage shown: None; production indicates less than 1 acre was mined.

SHAFT, SLOPE, DRIFT or TIPPLE LOCATIONS

| Type | County | Township-Range | Section | Quarters-Footage |
|------------|--------|----------------|---------|------------------|
| Main shaft | Peoria | 9N 6E | 16 | SW SW NE |

GEOLOGY

| Seam(s) Mined | Depth (ft) | Thickness (ft) | | | Mining Method |
|---------------|------------|----------------|-----|-----|---------------|
| | | Min | Max | Avg | |
| Springfield | 26 | | | 4.0 | Underground |

Geologic Problems Reported:

PRODUCTION HISTORY

| Company | Mine Name | Years | Production (tons) |
|-------------------|------------|-----------|-------------------|
| Gore Coal Company | Gore | 1935-1936 | 516 |
| William Vaughn | Pocahontas | 1940-1941 | <u>88</u> 604 |

Last reported production: 1941

SOURCES OF DATA

| Source Map | Date | Original Scale | Digitized Scale | Map Type |
|----------------------------|------|----------------|-----------------|------------------|
| ISGS Circular 548, Plate 2 | 1963 | 1:125000 | 1:125000 | Secondary source |

Annotated Bibliography (data source, brief description of information)

Coal Reports - Production, ownership, years of operation.

Directory of Illinois Coal Mines (Peoria County) - Mine names, mine index, ownership, years of operation.

Mine notes (Peoria County) - Mine name, mine type, shaft location, seam, depth, thickness.

Smith, W. H. & D. J. Berggren, Strippable Coal Reserves of Illinois, Part 5A, Plate 2, Springfield (No. 5) Coal - Mine location.

Mine Index 5862**Layne's Coal Company, Layne No. 3 Mine**

Type: Surface Total mined-out acreage shown: 17 Production indicates approximately 4 acres were mined. Other operators may have excavated at this location.

SHAFT, SLOPE, DRIFT or TIPPLe LOCATIONS

| Type | County | Township-Range | Section | Quarters-Footage |
|---------------|--------|----------------|---------|------------------|
| Tipple or pit | Peoria | 9N 6E | 22 | N ½ NW |
| Pit | Peoria | 9N 6E | 15 | N ½ SE |

GEOLOGY

| Seam(s) Mined | Depth (ft) | Thickness (ft) | | | Mining Method |
|---------------|------------|----------------|-----|-----|---------------|
| | | Min | Max | Avg | |
| Herrin | | | | | Surface |

Geologic Problems Reported:

PRODUCTION HISTORY

| Company | Mine Name | Years | Production (tons) |
|----------------------|-------------|-----------|-------------------------|
| Layne's Coal Company | Layne No. 3 | 1959-1962 | <u>25,785</u> 25,785 |

Last reported production: August 1962

SOURCES OF DATA

| Source Map | Date | Original Scale | Digitized Scale | Map Type |
|----------------------|---------|----------------|-----------------|------------------|
| Mine notes | Undated | (text only) | 1:24000 * | Secondary source |
| USGS topographic map | 1971 | 1:24000 | 1:24000 | Secondary source |

* The mine location was plotted on a 1:24000 USGS topographic map from the mine location description and digitized.

Annotated Bibliography (data source, brief description of information)

Coal Reports - Production, ownership, years of operation, mining method.

Directory of Illinois Coal Mines (Peoria County) - Mine names, mine index, ownership, years of operation.

Mine notes (Peoria County) - Mine location.

USGS 7.5-minute topographic map, Oak Hill Quadrangle - Mine outline.

Mine Index 5863**Layne's Coal Company, Layne No. 2 Mine**

Type: Surface Total mined-out acreage shown: 13

SHAFT, SLOPE, DRIFT or TIPPLE LOCATIONS

| Type | County | Township-Range | Section | Quarters-Footage |
|------|--------|----------------|---------|------------------|
| Pit | Peoria | 9N 6E | 22 | NE NE |

GEOLOGY

| Seam(s) Mined | Depth (ft) | Thickness (ft) | | | Mining Method |
|---------------|------------|----------------|-----|-----|---------------|
| | | Min | Max | Avg | |
| Herrin | 15-20 | | | 4.0 | Surface |

Geologic Problems Reported:**PRODUCTION HISTORY**

| Company | Mine Name | Years | Production (tons) |
|----------------------|-------------|-------------|-------------------------|
| Layne's Coal Company | Layne No. 2 | 1958-1963 * | <u>32,593</u> 32,593 |

* Idle 1961

Last reported production: February 1963

SOURCES OF DATA

| Source Map | Date | Original Scale | Digitized Scale | Map Type |
|----------------------|---------|----------------|-----------------|------------------|
| Mine notes | Undated | (text only) | 1:24000 * | Secondary source |
| USGS topographic map | 1971 | 1:24000 | 1:24000 | Secondary source |

* The mine location was plotted on a 1:24000 USGS topographic map from the mine location description and digitized.

Annotated Bibliography (data source, brief description of information)

Coal Reports - Production, ownership, years of operation, mining method.

Directory of Illinois Coal Mines (Peoria County) - Mine names, mine index, ownership, years of operation.

Mine notes (Peoria County) - Mine location, depth, thickness.

USGS 7.5-minute topographic map, Oak Hill Quadrangle - Mine outline.

Mine Index 5867
Jesse French, French Mine

Type: Underground Total mined-out acreage shown: 1 The acres mined after the map date are not known, as are the years and reporting name at the time the mine map was produced.

SHAFT, SLOPE, DRIFT or TIPPLE LOCATIONS

| Type | County | Township-Range | Section | Quarters-Footage |
|----------------|--------|----------------|---------|------------------|
| Drift or slope | Peoria | 9N 6E | 15 | NW SE SW |
| Air shaft | Peoria | 9N 6E | 15 | NW SE SW |

GEOLOGY

| Seam(s) Mined | Depth (ft) | Thickness (ft) | | | Mining Method |
|---------------|------------|----------------|-----|-----|---------------|
| | | Min | Max | Avg | |
| Springfield | | | | | MRP |

Geologic Problems Reported:

PRODUCTION HISTORY

| Company | Mine Name | Years | Production (tons) |
|--------------|-----------|-----------|-------------------|
| Jesse French | French | 1934-1935 | <u>300</u> 300 |

Last reported production: 1935

SOURCES OF DATA

| Source Map | Date | Original Scale | Digitized Scale | Map Type |
|----------------------------|----------|----------------|-----------------|-------------|
| Microfilm, document 352277 | 4-2-1938 | 1:600 | 1:497 | Not final * |

* The map date is 1938 while production was reported only in 1934 and 1935. It is possible that someone else operated the mine after Jesse French's reported production. (See the unlocated mines at the back of this report.)

Annotated Bibliography (data source, brief description of information)

Coal Reports - Production, ownership, years of operation.
 Directory of Illinois Coal Mines (Peoria County) - Mine names, mine index, ownership, years of operation.
 Microfilm map, document 352277, reel 03138, frame 343 - Drift & shaft locations, mine outline, mining method.

Mine Index 5869**Layne's Coal Company, Layne No. 5 Mine**

Type: Surface Total mined-out acreage shown: None; production indicates approximately 4 acres were mined.

SHAFT, SLOPE, DRIFT or TIPPLe LOCATIONS

| Type | County | Township-Range | Section | Quarters-Footage |
|------|--------|----------------|---------|------------------|
| Pit | Peoria | 9N 6E | 14 | E ½ W ½ |

GEOLOGY

| Seam(s) Mined | Depth (ft) | Thickness (ft) | | | Mining Method |
|---------------|------------|----------------|-----|-----|---------------|
| | | Min | Max | Avg | |
| Herrin | 30-50 | | | 4.0 | Surface |

Geologic Problems Reported:

PRODUCTION HISTORY

| Company | Mine Name | Years | Production (tons) |
|----------------------|-------------|-----------|-------------------|
| Layne's Coal Company | Layne No. 5 | 1962-1965 | 26,512 |
| | | | 26,512 |

Last reported production: April 1965

SOURCES OF DATA

| Source Map | Date | Original Scale | Digitized Scale | Map Type |
|------------|---------|----------------|-----------------|------------------|
| Mine notes | Undated | (text only) | 1:24000 * | Secondary source |

* The mine location was plotted on a 1:24000 USGS topographic map from the mine location description and digitized.

Annotated Bibliography (data source, brief description of information)

Coal Reports - Production, ownership, years of operation.

Directory of Illinois Coal Mines (Peoria County) - Mine names, mine index, ownership, years of operation.

Mine notes (Peoria County) - Mine location, depth, thickness.

Mine Index 5872**Layne's Coal Company, Layne No. 1 Mine**

Type: Surface Total mined-out acreage shown: None; production indicates approximately 2 acres were mined.

SHAFT, SLOPE, DRIFT or TIPPLE LOCATIONS

| Type | County | Township-Range | Section | Quarters-Footage |
|---------------|--------|----------------|---------|------------------|
| Tipple or pit | Peoria | 9N 6E | 22 | SE NW |

GEOLOGY

| Seam(s) Mined | Depth (ft) | Thickness (ft) | | | Mining Method |
|---------------|------------|----------------|-----|-----|---------------|
| | | Min | Max | Avg | |
| Herrin | | | | | Surface |

Geologic Problems Reported:

PRODUCTION HISTORY

| Company | Mine Name | Years | Production (tons) |
|----------------------|-------------|-----------|-----------------------|
| Layne's Coal Company | Layne No. 1 | 1957-1958 | <u>9,304</u> 9,304 |

Last reported production: May 1958

SOURCES OF DATA

| Source Map | Date | Original Scale | Digitized Scale | Map Type |
|----------------------------|---------|----------------|-----------------|------------------|
| Coal Section mine database | Undated | (text only) | 1:24000 * | Secondary source |

* The mine location was plotted on a 1:24000 USGS topographic map from the mine location description and digitized.

Annotated Bibliography (data source, brief description of information)

Coal Reports - Production, ownership, years of operation.

Directory of Illinois Coal Mines (Peoria County) - Mine names, mine index, ownership, years of operation.

Mine Index 5880**South Side Coal Company, South Side Mine**

Type: Underground Total mined-out acreage shown: None; production indicates approximately 3 acres were mined.

SHAFT, SLOPE, DRIFT or TIPPLE LOCATIONS

| Type | County | Township-Range | Section | Quarters-Footage |
|-----------|--------|----------------|---------|------------------|
| Slope | Peoria | 9N 7E | 18 | NW SE SW |
| Air slope | Peoria | 9N 7E | 18 | NW SE SW * |

* Not shown on the accompanying map. The map source used was very general (the mine map had no features to register to the land surface), and the slope location is general, so the air slope was not designated. The air slope is near the main slope in a southwestern direction.

GEOLOGY

| Seam(s) Mined | Depth (ft) | Thickness (ft) | | | Mining Method |
|---------------|------------|----------------|-----|-----|---------------|
| | | Min | Max | Avg | |
| Springfield | | | | | MRP |

Geologic Problems Reported:

PRODUCTION HISTORY

| Company | Mine Name | Years | Production (tons) |
|-------------------------|------------|-----------|-------------------------|
| South Side Coal Company | South Side | 1930-1936 | <u>10,320</u> 10,320 |

Last reported production: 1936

SOURCES OF DATA

| Source Map | Date | Original Scale | Digitized Scale | Map Type |
|--------------------------|--------|----------------|-----------------|------------------|
| Federal Land Bank Report | 5-1934 | 1:142560 | 1:142560 | Secondary source |

Annotated Bibliography (data source, brief description of information)

Coal Reports - Production, ownership, years of operation.

Directory of Illinois Coal Mines (Peoria County) - Mine names, mine index, ownership, years of operation.

Federal Land Bank Report (Peoria County) - Mine outline (general), slope location.

Microfilm map, document 352268, reel 03138, frame 334 - Mine type, mining method.

Mine Index 5881**John Wickham Coal Company, Wickham Mine**

Type: Underground Total mined-out acreage shown: Less than 1; production indicates less than 1 additional acre was mined after the map date.

SHAFT, SLOPE, DRIFT or TIPPLE LOCATIONS

| Type | County | Township-Range | Section | Quarters-Footage |
|-----------|--------|----------------|---------|------------------|
| Slope | Peoria | 9N 7E | 18 | NW SE SW |
| Air shaft | Peoria | 9N 7E | 18 | NW SE SW |

GEOLOGY

| Seam(s) Mined | Depth (ft) | Thickness (ft) | | | Mining Method |
|---------------|------------|----------------|-----|-----|---------------|
| | | Min | Max | Avg | |
| Springfield | | | | | MRP |

Geologic Problems Reported:

PRODUCTION HISTORY

| Company | Mine Name | Years | Production (tons) |
|---------------------------|-----------|-----------|-------------------|
| John Wickham Coal Company | Wickham | 1928-1929 | 1,100 |
| John Wickham Coal Company | Wickham | 1929-1929 | 500 * |
| | | | 1,600 |

* Production after map date

Last reported production: 1929

SOURCES OF DATA

| Source Map | Date | Original Scale | Digitized Scale | Map Type |
|----------------------------|----------|----------------|-----------------|-----------|
| Microfilm, document 352266 | 8-1-1929 | 1:1200 | 1:1324 | Not final |

Annotated Bibliography (data source, brief description of information)

Coal Reports - Production, ownership, years of operation.

Directory of Illinois Coal Mines (Peoria County) - Mine names, mine index, ownership, years of operation.

Microfilm map, document 352266, reel 03138, frame 332 - Slope & shaft locations, mine outline, mining method.

Mine Index 5899**Layne's Coal Company, Layne No. 4 Mine**

Type: Surface Total mined-out acreage shown: None; production indicates less than 1 acre was mined.

SHAFT, SLOPE, DRIFT or TIPPLE LOCATIONS

| Type | County | Township-Range | Section | Quarters-Footage |
|------|--------|----------------|---------|------------------|
| Pit | Peoria | 10N 6E | 18 | SE NW |

GEOLOGY

| Seam(s) Mined | Depth (ft) | Thickness (ft) | | | Mining Method |
|---------------|------------|----------------|-----|-----|---------------|
| | | Min | Max | Avg | |
| Herrin | | | | | Surface |

Geologic Problems Reported:

PRODUCTION HISTORY

| Company | Mine Name | Years | Production (tons) |
|----------------------|-------------|-----------|-----------------------|
| Layne's Coal Company | Layne No. 4 | 1960-1961 | <u>2,428</u> 2,428 |

Last reported production: March 1961

SOURCES OF DATA

| Source Map | Date | Original Scale | Digitized Scale | Map Type |
|------------|---------|----------------|-----------------|------------------|
| Mine notes | Undated | (text only) | 1:24000 * | Secondary source |

* The mine location was plotted on a 1:24000 USGS topographic map from the mine location description and digitized.

Annotated Bibliography (data source, brief description of information)

Coal Reports - Production, ownership, years of operation.

Directory of Illinois Coal Mines (Peoria County) - Mine names, mine index, ownership, years of operation.

Mine notes (Peoria County) - Mine location.

Mine Index 5968
Peter D. Hoffman, Hoffman Mine

Type: Underground Total mined-out acreage shown: Less than 1; production indicates approximately 2 acres were mined after the map date.

SHAFT, SLOPE, DRIFT or TIPPLE LOCATIONS

| Type | County | Township-Range | Section | Quarters-Footage |
|-----------|--------|----------------|---------|------------------|
| Drift | Peoria | 9N 6E | 22 | NE SE NE |
| Air drift | Peoria | 9N 6E | 22 | NE SE NE |

GEOLOGY

| Seam(s) Mined | Depth (ft) | Thickness (ft) | | | Mining Method |
|---------------|------------|----------------|-----|------|---------------|
| | | Min | Max | Avg | |
| Springfield | 50 | | | 3.67 | MRP |

Geologic Problems Reported:

PRODUCTION HISTORY

| Company | Mine Name | Years | Production (tons) |
|------------------|-----------|-----------|-------------------|
| Henry Knaggs | Knaggs | 1940-1940 | 806 |
| Roy Knaggs | Knaggs | 1941-1942 | 3,021 |
| Peter D. Hoffman | Hoffman | 1942-1943 | 11,580 * |
| | | | 15,407 |

* Production after map date

Last reported production: 1943

SOURCES OF DATA

| Source Map | Date | Original Scale | Digitized Scale | Map Type |
|----------------------------|------|----------------|-----------------|-----------|
| Microfilm, document 352263 | 1942 | 1:1200 | 1:1324 | Not final |

Annotated Bibliography (data source, brief description of information)

Coal Reports - Production, ownership, years of operation, seam.

Directory of Illinois Coal Mines (Peoria County) - Mine names, mine index, ownership, years of operation.

Mine notes (Peoria County) - Mine type, drift location, seam, depth, thickness.

Microfilm map, document 352263, reel 03138, frame 329 - Drift locations, mine outline, mining method.

Mine Index 6607**Oak Grove Coal Company, Oak Grove Mine**

Type: Underground Total mined-out acreage shown: Less than 1; production indicates less than 1 acre was mined after the map date.

SHAFT, SLOPE, DRIFT or TIPPLE LOCATIONS

| Type | County | Township-Range | Section | Quarters-Footage |
|------------|--------|----------------|---------|------------------|
| Main slope | Peoria | 9N 6E | 15 | NE SW |
| Air shaft | Peoria | 9N 6E | 15 | NE SW |

GEOLOGY

| Seam(s) Mined | Depth (ft) | Thickness (ft) | | | Mining Method |
|---------------|------------|----------------|-----|-----|---------------|
| | | Min | Max | Avg | |
| Springfield | | | | | MRP |

Geologic Problems Reported:

PRODUCTION HISTORY

| Company | Mine Name | Years | Production (tons) |
|------------------------|-----------|-----------|-------------------|
| Oak Grove Coal Company | Oak Grove | 1933-1933 | 722 |
| Oak Grove Coal Company | Oak Grove | 1933-1935 | 1,880 * |
| | | | 2,602 |

* Production after map date

Last reported production: 1935

SOURCES OF DATA

| Source Map | Date | Original Scale | Digitized Scale | Map Type |
|----------------------------|----------|----------------|-----------------|------------|
| Microfilm, document 352272 | 9-9-1933 | 1:600 | 1:745 | Incomplete |

Annotated Bibliography (data source, brief description of information)

Coal Reports - Production, ownership, years of operation.

Directory of Illinois Coal Mines (Peoria County) - Mine names, mine index, seam, ownership, years of operation.

Microfilm map, document 352272, reel 03138, frame 338 - Air shaft location, mine outline, mining method, general description of mine entrance location.

Mine Index 7210
James Burns, Burns Mine

Type: Underground Total mined-out acreage shown: None; production indicates less than 1 acre was mined.

SHAFT, SLOPE, DRIFT or TIPPLE LOCATIONS

| Type | County | Township-Range | Section | Quarters-Footage |
|------------|--------|----------------|---------|------------------|
| Main drift | Peoria | 9N 6E | 15 | NE NE SW |

GEOLOGY

| Seam(s) Mined | Depth (ft) | Thickness (ft) | | | Mining Method |
|---------------|------------|----------------|-----|----------|---------------|
| | | Min | Max | Avg | |
| Springfield | 15 | | | 3.17-4.0 | Underground |

Geologic Problems Reported:

PRODUCTION HISTORY

| Company | Mine Name | Years | Production (tons) |
|----------------|-----------|-------------|-------------------|
| Philip Krummel | Krummel | 1934-1938 * | 437 |
| James Andrews | Andrews | 1939-1940 | 1,367 |
| James Burns | Burns | 1940-1941 | 75 |
| | | | 1,879 |

* Idle 1937 & 1938

Last reported production: 1941

SOURCES OF DATA

| Source Map | Date | Original Scale | Digitized Scale | Map Type |
|------------|---------|----------------|-----------------|------------------|
| Mine notes | Undated | (text only) | 1:24000 ** | Secondary source |

** The mine location was plotted on a 1:24000 USGS topographic map from the mine location description and digitized.

Annotated Bibliography (data source, brief description of information)

Coal Reports - Production, ownership, years of operation.
 Directory of Illinois Coal Mines (Peoria County) - Mine names, mine index, ownership, years of operation.
 Mine notes (Peoria County) - Mine type, drift location, seam, depth, thickness.
 Microfilm map, document 351452, reel 03136, frames 158, 159 - Shaft locations, mine outline, mining method.

Mine Index 7319
J. J. Jobst, Jobst Mine

Type: Surface Total mined-out acreage shown: None; production indicates approximately 8 acres were mined.

SHAFT, SLOPE, DRIFT or TIPPLE LOCATIONS

| Type | County | Township-Range | Section | Quarters-Footage |
|--------------|--------|----------------|---------|------------------|
| Pit / tipple | Peoria | 10N 6E | 36 | NW NE SE |

GEOLOGY

| Seam(s) Mined | Depth (ft) | Thickness (ft) | | | Mining Method |
|---------------|------------|----------------|-----|-----|---------------|
| | | Min | Max | Avg | |
| Springfield | | | | 2.9 | Surface |

Geologic Problems Reported:

PRODUCTION HISTORY

| Company | Mine Name | Years | Production (tons) |
|-------------|-----------|-----------|-------------------|
| J. J. Jobst | Jobst | 1928-1933 | 40,231 40,231 |

Last reported production: 1933

SOURCES OF DATA

| Source Map | Date | Original Scale | Digitized Scale | Map Type |
|----------------------------------|-----------|----------------|-----------------|------------------|
| ISGS field notes (H. B. Willman) | 8-21-1930 | 1:62500 | 1:24000 * | Secondary source |

* The mine location in the field notes was sketched in the correct quarter-quarter-quarter. That location was plotted on a 1:24000 USGS topographic map from the mine location description and digitized.

Annotated Bibliography (data source, brief description of information)

Coal Reports - Production, ownership, years of operation.

Directory of Illinois Coal Mines (Peoria County) - Mine names, mine index, ownership, years of operation.

ISGS field notes (Peoria County) - Mine type, pit location, thickness.

OTHER MINES SHOWN ON OAK HILL QUADRANGLE

Mine Index 5864 NE NE SE 16-T9N-R6E, drift, Springfield Coal source: Federal Land Bank Report (5-1934)
Mine Index 5865 NW NW NW 16-T9N-R6E, Springfield Coal source: ISGS Circular 348, Plate 2 (1963)
Mine Index 5868 NE NE SE 15-T9N-R6E, Springfield Coal source: Federal Land Bank Report (5-1934)
Mine Index 5891 NE SE SE 13-T10N-R5E, drift, Herrin Coal, 3.9 ft thick source: ISGS field notes (H. R. Wanless, 7-10-1930)
Mine Index 5892 SW NE SE 13-T10N-R5E, two drifts, Herrin Coal source: ISGS field notes (H. R. Wanless, 7-10-1930)
Mine Index 5893 NE NE SE 13-T10N-R5E, Herrin Coal source: ISGS field notes (G. H. Cady, 8-13-1936)
Mine Index 5894 NW NE SE 13-T10N-R5E, Herrin Coal source: ISGS field notes (G. H. Cady, 8-13-1936)
Mine Index 5895 SW SE NE 13-T10N-R5E, Herrin Coal source: ISGS field notes (G. H. Cady, 8-13-1936)
Mine Index 5903 SW NE SE 7-T10N-R6E, Herrin Coal source: Federal Land Bank Report (5-1934)
Mine Index 5904 SE NW SW 18-T10N-R6E, Herrin Coal source: ISGS field notes (G. H. Cady, 8-13-1936)
Mine Index 5905 NE NW SW 18-T10N-R6E, Herrin Coal source: ISGS field notes (G. H. Cady, 8-13-1936)
Mine Index 5906 N ½ NE SE 18-T10N-R6E, Herrin Coal source: ISGS field notes (G. H. Cady, 8-13-1936)
Mine Index 5907 SE SE NE 18-T10N-R6E, Herrin Coal source: ISGS field notes (G. H. Cady, 8-13-1936)
Mine Index 5908 N ½ SE NE 18-T10N-R6E, Herrin Coal source: ISGS field notes (G. H. Cady, 8-13-1936)
Mine Index 5909 NE NW NE 19-T10N-R6E, Herrin Coal source: ISGS field notes (G. H. Cady, 8-13-1936)
Mine Index 5910 W ½ NE SE 22-T10N-R6E, slope, Springfield Coal source: Federal Land Bank Report (5-1934)
Mine Index 5911 NE SW SE 23-T10N-R6E, slope, Springfield Coal source: Federal Land Bank Report (5-1934)
Mine index 5912 NE NW NE 23-T10N-R6E, shaft, Springfield Coal source: Federal Land Bank Report (5-1934)
Mine Index 5913 SW NE NW 23-T10N-R6E, slope, Springfield Coal source: Federal Land Bank Report (5-1934)
Mine Index 5914 SE NE SE 26-T10N-R6E, slope, Springfield Coal source: Federal Land Bank Report (5-1934)
Mine Index 5915 NW SE 26-T10N-R6E, Springfield Coal source: Federal Land Bank Report (5-1934)
Mine Index 5916 SE NE 26-T10N-R6E, Springfield Coal source: Federal Land Bank Report (5-1934)
Mine Index 5917, William Williams, Jubilee Mine 26-T10N-R6E, drift, Springfield Coal source: Microfilm, document 352262, reel 03138, frame 328 (8-22-1942)
Mine Index 5918 SW NE NE 26-T10N-R6E, slope, Springfield Coal source: Federal Land Bank Report (5-1934)
Mine Index 5919 SW SE 36-T10N-R6E, slope, Springfield Coal source: Federal Land Bank Report (5-1934)
Mine Index 5920 NE NE SE 36-T10N-R6E, slope, Springfield Coal source: Federal Land Bank Report (5-1934)
Mine Index 7328, Turner Mine SW SE SW 18-9N-7E, drift, Springfield Coal source: Microfilm, document 352266, map of Wickham Mine (mine index 5881), general area of mining from Federal Land Bank Report (5-1934)
Mine Index 7332 N ½ NE SW 31-T10N-R7E, surface, Springfield Coal, 3.5-4.0 feet thick source: ISGS field notes (G. H. Cady, et al., undated)
Mine Index 7614 NW NW NW 17-T10N-R6E, Herrin Coal source: Atlas of Peoria County (1873)
Mine Index 7615 SE SE SE 7-T10N-R6E, Herrin Coal source: Atlas of Peoria County (1873)
Mine Index 7616 S ½ N ½ 23-T10N-R6E, Springfield Coal source: Federal Land Bank Report (5-1934)
Mine Index 7617 SW SW 16-T10N-R6E, Springfield Coal source: ISGS Circular 348, Plate 2 (1963) and Federal Land Bank Report (5-1934)

MINES WHOSE LOCATIONS ARE NOT KNOWN, OAK HILL QUADRANGLE

The locations of the following mines are unknown, but the production tonnage, operating names, and nearest town were reported in the Annual Coal Reports. The operators listed below mined in or near the Oak Hill Quadrangle. The information shown is similar to that presented on the summary sheets in the previous pages of this directory. The first item is the name the mine operated under as listed in the Coal Report, then the years the mine reported. If no physical data are available, the next item listed is the total tons produced by the mine. If physical data are available, the order of presentation is as follows: type of opening for the mine (drift, slope or shaft), depth of coal in feet, and thickness of coal in feet.

The total tons mined by these unlocated mines is 1,542,562 (1,429,229 underground; 8,070 surface mined; 105,263 mined by uncertain method), which would represent approximately 360 to 550 acres, depending on the recovery factor, mining method, and numerous other factors. (Note: 1 square mile = 640 acres)

BRIMFIELD

| | |
|--|-------------------|
| Langdon (W. H.) & Sons, pre1878-1882, shaft, Herrin, 30-80, 4.17-5.0, RP | 17,400 tons |
| Peoria Coal Company, 1882-1883 | Unknown |
| Langdon (George W.), 1883-1887 | 1,600 tons |
| Langdon (J.), 1887-1889 | 616 tons |
| Langdon (George W.), 1889-1894 | 6,190 tons |
| Rattleback (Joseph), 1894-1895 | 465 tons |
| Langdon (G. W.), 1895-1897 | 2,840 tons |
| Rattleback (William), 1897-1900 | 320 tons |
| Rattleback (George), 1900-1903 | 3,430 tons |
| Fisher Brothers, 1903-1904 | <u>1,600</u> tons |
| | 34,461 tons |
| Clark (J.), 1878-1879, shaft, Herrin, 75, 4.25 | 400 tons |
| Huli (William), pre1878-1879, drift, Herrin, —, 4.25 | 500 tons |
| Hays (Charles), pre1878-1879, slope, Herrin, 31, 4.25 | 700 tons |
| Ryan (John), 1878-1879, slope, Herrin, 30, 4.25 | 500 tons |
| Tully (John), 1878-1879, drift, Herrin, —, 4.25 | 400 tons |
| Johnson (Thomas), pre1882-1889, drift/shaft, Herrin, 30-75, 4.5, RP | 5,268 tons |
| Grimes (Thomas), 1881-1882, slope, Herrin, 100, 4.0 | 500 tons |
| Brooks (Cyrus), 1878-1879, shaft, Herrin, 40, 4.25 | 2,000 tons |
| Pemble (James), 1883-1885, shaft, Herrin, 18-62, 4.5, RP | 2,300 tons |
| Bennett & Pemble, 1885-1887 | <u>2,010</u> tons |
| | 4,310 tons |
| Smith (G. W.), 1883-1891, slope or drift, Herrin, 20-70, 4.0-5.0, RP | 3,776 tons |
| Heaton (John), 1891-1893 | <u>840</u> tons |
| | 4,616 tons |
| Killar, 1883-1884, —, Herrin, —, —, RP | 1,200 tons |
| Hindle (William), 1883-1890, drift, Herrin, 10-30, 4.0-4.5, RP | 1,765 tons |
| Slater (Joseph), 1890-1894 | <u>1,710</u> tons |
| | 3,475 tons |
| Wynn (H.), 1884-1885, shaft, Herrin, 50, 4.5, RP | 520 tons |
| Tulley (John), 1884-1885, shaft or drift, Herrin, 40-75, 4.0-5.0 | 400 tons |

| | |
|---|---------------------------|
| Tully & Johnson, No. 1 Mine, 1885-1886 | 1,130 tons |
| Tully (James), 1886-1888 | 1,880 tons |
| Tully (Phillip F.), 1888-1899 | <u>10,269 tons</u> |
| | 13,679 tons |
| Tully (Phillip), 1884-1885, slope, Herrin, 75, 4.5, RP | 1,079 tons |
| Tully & Johnson, No. 2 Mine, 1885-1886 | reported under No. 1 Mine |
| Hindle (David), 1885-1886, slope, Springfield, 60, 3.2, LW | 715 tons |
| Arnolds (William), 1885-1887, shaft, Herrin, 50, 4.5, RP | 1,685 tons |
| Shane (Frank), 1885-1886, —, Herrin, 50-60, 4.5, RP | 620 tons |
| Shane (George), 1886-1887 | <u>476 tons</u> |
| | 1,096 tons |
| Duffy (John), 1886-1889, slope or drift, Herrin, 20-45, 4.0-4.5, RP | 3,012 tons |
| Duffy (James), 1889-1891 | 1,040 tons |
| Saylor (H.), 1891-1893 | <u>1,440 tons</u> |
| | 5,492 tons |
| McKinley (John), 1887-1889 | 2,130 tons |
| Woolford (John), 1881-1884, shaft, Herrin, 60-115, 4.0-4.5, RP | 1,500 tons |
| Wilford (Joseph), 1884-1891 | 1,515 tons |
| Dalrymple (W.), 1891-1893 | 550 tons |
| Wolford (Joseph), 1893-1894 | <u>270 tons</u> |
| | 3,835 tons |
| Katton (Joseph), 1888-1890, shaft, Herrin, 25-35, 4.0-5.5, RP | 2,140 tons |
| Catton (John), 1890-1891 | 560 tons |
| Catton (Joseph), 1891-1894 | 3,367 tons |
| Martin (John), 1894-1895 | <u>1,200 tons</u> |
| | 7,267 tons |
| Pemble (James H.), 1893-1894, shaft, Herrin, 30, 4.0-5.0, RP | 750 tons |
| Root (E. O.), 1894-1895 | <u>900 tons</u> |
| | 1,650 tons |
| Mullaly (Frank), 1893-1894, drift, Herrin, 35, 4.0, RP | 900 tons |
| Wasson & Colwell, 1919-1920 | 200 tons |
| Mulvaney (George), 1899-1903, shaft, Herrin, 40, 4.5-5.0, RP | 3,010 tons |
| Rook (John), 1899-1900, —, —, 40, 5.0, RP | 240 tons |
| Clark & Fisher, 1899-1900, —, —, 40, 5.0, RP | 280 tons |
| Clark & Rook, 1903-1905, shaft, Herrin, 30-60, 4.5-5.0, RP | 680 tons |
| Durant (H.), 1900-1904, shaft, Herrin, 30-40, 5.0, RP | 3,420 tons |
| Culbertson (Robert), 1903-1906, shaft, Herrin, 40-52, 4.5-5.0, RP | 1,080 tons |
| Moore (S. A.), 1901-1903, shaft, Herrin, 40, 4.5, RP | 1,170 tons |
| Kelley (William), 1901-1903, shaft, Herrin, 40, 5.0, RP | 4,110 tons |
| Tully & Heaton, 1903-1906, shaft, Herrin, 25-60, 4.4-5.0, RP | 3,112 tons |
| Rook (J.), 1904-1906, shaft or drift, Herrin, 40-50, 4.5, RP | 480 tons |
| Kelley (Hy), 1907-1908, shaft, Springfield, 28, 4.5, RP | 1,200 tons |

| | |
|---|-------------------|
| Harmon & Durand, 1907-1908, shaft or drift, —, 25-51, 4.0-4.67, RP | 1,000 tons |
| Durant (Herman), 1908-1915 | 2,217 tons |
| Tucker (Bert), 1915-1918 | <u>1,436 tons</u> |
| | 4,653 tons |
| Hayes (C. L.), 1907-1909, shaft or slope, Springfield, 45-48, 4.5, RP | 1,960 tons |
| Clark & Company, 1907-1908, shaft, Springfield, —, 4.5, RP | 425 tons |
| Clark & Martin, 1910-1916, shaft, —, 12-77, 4.5-4.67, RP | 2,506 tons |
| Clark & Murdock, 1916-1917 | <u>60 tons</u> |
| | 2,566 tons |
| Martin & Clark, 1914-1915, shaft, Springfield, 20, 4.5, RP | 900 tons |
| Whitiker (Arthur), 1907-1908, slope, Springfield, 35, 4.5, RP | 392 tons |
| Bale (Robert), 1907-1908, surface, Springfield, —, 3.5-4.5 | 320 tons |
| Bale (Robert), 1908-1909, drift, Springfield, —, 3.5, RP | 120 tons |
| Radleback (Joseph), 1908-1910, shaft or slope, Springfield, 38, 4.5, RP | 2,250 tons |
| Radlebek (John), 1910-1911 | <u>324 tons</u> |
| | 2,574 tons |
| Radleback (Joseph), 1912-1913, slope, Herrin, 30, 4.5, RP | 450 tons |
| Wyman (Ed), 1908-1909, shaft or slope, —, 56, 2.5-4.5, RP | 160 tons |
| Wyman & Culberson, 1909-1910 | <u>548 tons</u> |
| | 708 tons |
| Fussner Brothers, 1909-1912, drift, Springfield, 75, 3.0-4.5, RP | 1,660 tons |
| Fussner (Joseph C.), 1912-1915 | 851 tons |
| Fussner Brothers, 1915-1918 | 1,103 tons |
| Fussner (Joseph C.), 1918-1935 | <u>3,586 tons</u> |
| | 7,200 tons |
| Slocum (J. J.), 1910-1911, drift or slope, Springfield, 70-80, 2.33-4.5, RP | 88 tons |
| Short (Thomas G.), 1911-1914 | <u>5,036 tons</u> |
| | 5,124 tons |
| Pemble (J. H.), 1910-1911, shaft or slope, —, 30-45, 4.0-4.5, RP | 680 tons |
| Radlebeck (James) & Pemble, 1911-1912 | <u>360 tons</u> |
| | 1,040 tons |
| Hayes (C. L.), 1913-1916, shaft, —, 38-66, 3.17-5.0, RP | 4,090 tons |
| Wyman & Culberson, 1913-1914, drift, Herrin, 31, 4.5, RP | 210 tons |
| Wyman & Savage, 1916-1917, drift, Herrin, —, 4.5, RP | 350 tons |
| Clark & Pemble, 1917-1920 | 1,125 tons |
| Clark (John), 1920-1921 | <u>150 tons</u> |
| | 1,275 tons |
| Finnegan (Frank), 1917-1924 | 2,000 tons |
| Tully & Johnson, 1920-1922 | 1,079 tons |
| Tully (Henry), 1922-1924 | 1,053 tons |
| Johnson (Ben), 1924-1925 | 476 tons |
| Johnson Coal Company, 1925-1925 | 90 tons |
| Johnson (John R.), 1926-1927 | <u>466 tons</u> |
| | 3,164 tons |
| Farrell (James), 1922-1925 | 2,499 tons |

| | |
|--|------------|
| Porter (E. C.), 1924-1928 | 1,747 tons |
| Murdock & Marvin, 1924-1925 | 50 tons |
| Turner (Joe C.), 1927-1928 | 610 tons |
| Clarkson (Lorenzo), 1934-1937, underground | 290 tons |
| Brimfield Mining Company, 1934-1934, underground | 150 tons |
| Murdock (John), 1934-1935, underground | 100 tons |
| McCartney (L. L.) Coal & Gravel, 1949-1949 | 2,358 tons |

EDWARDS STATION

| | | |
|--|--------------------|-----------------|
| Wantling & Howarth, 1882-1890, drift, Springfield, 80-95, 4.0-4.5, RP | 223,210 tons | mine index 3065 |
| Wilkinson (J. H.) & Kramm (E.), 1883-1884, drift, Springfield, 60, 4.5, RP | 4,000 tons | |
| Slain (S.), 1884-1885, slope, Springfield, 60, 4.17, RP | 300 tons | |
| Harper (William), 1884-1893, drift, Herrin, 30-75, 4.0-4.5, RP | 5,041 tons | |
| Lonsdale (William), 1884-1893, drift, Herrin, 30-60, 4.0-4.5, RP | 3,544 tons | |
| Buckley (A.), 1884-1886, drift, Herrin, 60, 4.5, RP | 80 tons | |
| Pillman (Richard), 1884-1887, drift, Herrin, 60, 4.5, RP | 460 tons | |
| Lonsdale (R.), 1884-1890, drift, Herrin, 40-50, 4.0-4.5, RP | 2,488 tons | |
| Kingsley (Charles), 1885-1891, drift, —, 30-70, 4.5, RP | 3,050 tons | |
| Hanning (F.), 1885-1886, drift, Springfield, 82, 4.33, RP | 220 tons | |
| Edwards Coal Company, 1888-1891, drift, Springfield, 40-100, 3.67-4.5, RP | 12,660 tons | |
| Patten (W. H.), 1891-1892 | 15,400 tons | |
| Edwards (Charles), 1892-1893 | 4,665 tons | |
| Cusack & Edwards, 1893-1895 | 6,200 tons | |
| Cusack (Mike), 1895-1899 | 10,250 tons | |
| Cusack & Anderson, 1899-1900 | 3,025 tons | |
| Cusack & Edwards, 1900-1902 | 11,350 tons | |
| Gigby, Cusack & Edwards, 1902-1903 | 6,890 tons | |
| Cusack & Edwards, 1903-1905 | 10,400 tons | |
| Edwards Mining Company, 1905-1907 | <u>10,340 tons</u> | |
| | 91,180 tons | |
| Pillman (Richard), 1889-1891, drift, Springfield, 30, 4.5, RP | 1,050 tons | |
| Thayer & Clarkson, 1899-1900, drift, Springfield, 30-85, 2.5-4.5, RP | 400 tons | |
| Clarkson (William), 1900-1904 | 1,740 tons | |
| Clarkson (R.), 1904-1906 | 460 tons | |
| Clarkson (Lorenzo), 1906-1910 | 1,769 tons | |
| Clarkson & Henning, 1910-1917 | 12,697 tons | |
| Clarkson (William), 1917-1921 | <u>7,796 tons</u> | |
| | 24,862 tons | |
| Snyder (E. C.), 1900-1903, drift, Springfield, 80, 4.0, RP | 830 tons | |
| Kingsley (Charles), 1900-1903, drift, Springfield, 80, 4.33-4.5, RP | 910 tons | |
| Schott & Witheral, 1904-1906, —, —, 40-60, 4.25-5.0, RP | 690 tons | |

| | |
|--|--------------------|
| Schotte & Withell, 1909-1910, drift, Springfield, 35, 4.0, RP | 684 tons |
| Kickapoo Coal Company, 1907-1909, shaft, —, 30-32, 4.0-4.5, RP | 1,541 tons |
| King & Wilson, 1908-1909, drift, Springfield, —, 4.0, RP | 1,000 tons |
| Stout (O. M.), 1908-1909, drift, Springfield, —, 4.0, RP | 500 tons |
| Stout & Henning, 1909-1910 | <u>598 tons</u> |
| | 1,098 tons |
| Cramer (William), 1908-1919, drift or slope, —, 12-60, 4.0-4.5, RP | 2,102 tons |
| Kirkman & Ames, 1909-1910, shaft or drift, Springfield, 85, 4.0-4.67, RP | 630 tons |
| Lonsdale (T. H.), 1910-1911 | 800 tons |
| Appleby & Taylor, 1911-1912 | 540 tons |
| Andrews (James), 1912-1916 | 2,409 tons |
| Aman (George M., Jr.), 1916-1921 | <u>17,666 tons</u> |
| | 22,045 tons |
| Farrell (James), 1911-1912, drift, —, 50, 4.5, RP | 320 tons |
| Farrell Brothers, 1912-1913 | <u>122 tons</u> |
| | 442 tons |
| Snider (Edward), 1911-1912, drift, Springfield, —, 4.0-4.5, RP | 200 tons |
| Snider (Enoch), 1912-1913 | 285 tons |
| Dawson & May, 1913-1914 | 625 tons |
| Dawson (Charles), 1914-1915 | <u>120 tons</u> |
| | 1,230 tons |
| Snider (Enoch, Jr.), 1914-1915, drift, Springfield, 70, 3.83-4.33, RP | 290 tons |
| Snider (Fred), 1915-1921 | <u>2,950 tons</u> |
| | 3,240 tons |
| Pratt (Charles E.), 1914-1916, slope or drift, —, 60, 4.5-4.67, RP | 1,056 tons |
| Appleby (Fred), 1914-1915, drift, Springfield, —, 3.83-4.0, RP | 400 tons |
| Edwards Coal Company, 1915-1916 | <u>175 tons</u> |
| | 575 tons |
| Stear (Thomas), 1915-1916, drift, Springfield, —, 4.0, RP | 380 tons |
| Lemasters Brothers, 1916-1917 | <u>150 tons</u> |
| | 530 tons |
| Slone (Harry), 1926-1926 | 300 tons |
| Barr (Harry), 1916-1917, slope, Springfield, 70, 4.0, RP | 40 tons |
| Asbell (Albert), 1919-1921 | 550 tons |
| Sluth & Howe, 1920-1922 | 1,000 tons |
| Howe (Elijah), 1922-1927 | <u>2,705 tons</u> |
| | 3,705 tons |
| Zeinie & Sents, 1920-1921 | 97 tons |
| Tuttle & Bidleman Coal Company, 1922-1925 | 35,050 tons |
| Bateman (Everett), 1922-1923 | 850 tons |
| Battman (E.) & Martin, 1923-1924 | 11,000 tons |
| Procter (C. H.), 1924-1925 | 25,000 tons |
| Bateman Coal Company, 1925-1925 | <u>321 tons</u> |
| | 37,171 tons |
| Forbes (William), 1924-1925 | 1,654 tons |

| | |
|---|-----------------------------|
| Cutler (C. C.), 1925-1925 | 400 tons |
| Bowen Brothers, 1925-1926 | 200 tons |
| Heintz Coal Company, 1927-1927 | 300 tons |
| Burns (James), 1927-1927, underground | 40 tons |
| Burns (Edward), 1928-1928 | <u>200</u> tons 240 tons |
| West Point Coal Company, 1929-1939, underground | 1,363 tons |
| Grenko (Vinko), 1931-1932, underground | 2,696 tons |
| Coogan Gravel Company, 1932-1932, surface | 1,667 tons |
| Hickory Grove Coal Company, 1934-1934, underground | 104 tons |
| Hoffman (Peter D.), 1934-1938, underground | 2,170 tons |
| Big Five Coal Company, 1936-1936, surface | 420 tons |
| Manen & Buhl, 1937-1937, underground | 57 tons |
| Buhl (Noah), 1941-1941, underground | 50 tons |
| Pioneer Coal Company, 1949-1949 | 2,801 tons |
| Kimsey Coal Company, No. 2 Mine, 1952-1953, surface, Herrin, —, — | 1,211 tons |

JUBILEE

| | |
|--|---------------------------------|
| Jubilee Coal Company, 1884-1889, drift, Springfield, 65-125, 2.5-4.5 | 2,180 tons |
| Saunders (William G.), 1889-1897 | <u>2,840</u> tons 5,020 tons |
| Dorin (Pat), 1884-1885, slope, Springfield, 75, 4.0, RP | 40 tons |
| Maulsley (Sam), 1884-1885, drift, Springfield, 60, 2.5 | 80 tons |
| Colson (William E.), 1884-1886, drift, Springfield, 50-60, 2.5-4.5, RP | 848 tons |
| Mosley (Samuel), 1890-1892, drift, Springfield, 100, 3.25-3.33, RP | 420 tons |
| Vaughn (William), 1895-1899, shaft or drift, Springfield, 50-80, 3.0-5.0, RP | 715 tons |
| Vaughn (E.), 1899-1900 | <u>360</u> tons 1,075 tons |
| Green (Harry), 1903-1904, shaft, Herrin, 60, 5.0, RP | 160 tons |
| Pratt (C. E.), 1903-1904, shaft, Herrin, 55, 5.0, RP | 140 tons |
| Hart & Stone Coal Company, 1917-1919 | 770 tons |

KICKAPOO

| | |
|--|------------|
| Nichols (W.), 1883-1884, drift, Springfield, 95, 4.5, RP | 2,000 tons |
| Radoe (Frank), 1884-1885, slope, Herrin, 30, 4.5, RP | 400 tons |
| Pratt (Charles), 1893-1894, slope, Herrin, 55, 4.0, RP | 440 tons |

| | |
|--|--------------------|
| Stears Brothers, 1893-1894, slope, —, 70-110, 3.5-4.0, RP | 70 tons |
| Varce (Joseph), 1894-1895 | <u>260 tons</u> |
| | 330 tons |
| Clarkson (Joseph), 1895-1896, drift, —, 25, 4.0, RP | 160 tons |
| Linchcott (Samuel), 1884-1888, drift or slope, —, 22-75, 4.0-5.0, RP | 890 tons |
| Helm (Andrew), 1888-1889 | 462 tons |
| Poole (William), 1889-1927 | <u>17,253 tons</u> |
| | 18,605 tons |

KRAMM STATION

| | |
|--|--------------------|
| Kramm (Edward) & Company, 1878-1884 | 432,000 tons |
| Purtscher (A.), 1885-1890 | 87,140 tons |
| Shaw (Nathan), 1890-1898 | 65,110 tons |
| Reents (Siebold), 1898-1902 | 39,436 tons |
| Reents Brothers, 1902-1909 | 128,770 tons |
| Reents (August), 1909-1910 | <u>29,470 tons</u> |
| | 781,926 tons |
| at Kramm Station on C., B. & Q RR; drift, Springfield, 50-100, 3.5-4.5, RP | |

OAK HILL

| | |
|---|-------------------|
| Slane (Ed), 1904-1911, drift, —, 40-61, 4.0-4.5, RP | 500 tons |
| Clark (William), 1900-1902, drift, Springfield, 80, 4.0, RP | 560 tons |
| Wolford & Cling, 1900-1902, drift, Springfield, 70, 4.0, RP | 870 tons |
| Bemont (H. A.), 1904-1906, drift, Herrin, 30-61, 3.67-4.5, RP | 460 tons |
| Curran (D. H.), 1904-1906, shaft or drift, Herrin, 50-65, 3.67-4.5, RP | 374 tons |
| Seigel (Edward), 1904-1909, drift, Springfield, 50-60, 4.0-4.5, RP | 1,080 tons |
| Scott (J.), 1904-1906, drift, Herrin, 40-41, 4.4-4.5, RP | 60 tons |
| Scott (Robert J.), 1907-1913, drift, Springfield, 80-125, 3.33-4.0, RP | 3,160 tons |
| White (George), 1913-1914 | 810 tons |
| Willey & McKinley, 1914-1915 | <u>1,600 tons</u> |
| | 5,570 tons |
| Notzke (August), 1907-1909, shaft or drift, Springfield, —, 4.0, RP | 660 tons |
| Snider (M.), 1907-1909, drift, Springfield, —, 4.0-4.5, RP | 170 tons |
| May (Ed), 1908-1909, drift, Springfield, —, 4.0, RP | 600 tons |
| Wickwire (H. H.), 1908-1912, drift, Springfield, —, 4.0, RP | 975 tons |
| Jubilee College Coal Company, 1910-1912, drift, Springfield, —, 3.0-4.5, RP | 300 tons |
| Scott (R. J.), 1914-1919, drift, Springfield, —, 3.58-4.0, RP | 2,308 tons |
| Slane (Edward), 1915-1920, drift, Springfield, 300, 3.83-4.0, RP | 3,096 tons |
| Slane (Walter), 1920-1923 | <u>150 tons</u> |
| | 3,246 tons |
| Slane (Walter), 1934-1934, underground | 85 tons |

| | |
|--|-------------------|
| Slane (Edward), 1922-1923 | 160 tons |
| Slone (Ed), 1928-1929, underground | 450 tons |
| Daley (Barney), 1916-1917, drift, Springfield, 100, 4.0, RP | 89 tons |
| Barr (Burl), 1918-1919 | 200 tons |
| Seigel (E.) Coal Company, 1917-1919 | 4,467 tons |
| Siegel (Edward), 1923-1932, underground | 13,566 tons |
| Price (John), 1917-1925 | 1,323 tons |
| Nodski (W.), 1917-1920 | 107 tons |
| Dawson (George), 1919-1920 | 1,240 tons |
| Hancock (William), 1920-1921 | 583 tons |
| Blane (Lee A.), 1920-1921 | 164 tons |
| Snider (Fred), 1924-1925 | 850 tons |
| May (Walter), 1926-1931, underground | 7,432 tons |
| Birgeton Coal Company, 1926-1926 | 300 tons |
| Turner (E. H.), 1926-1927 | 250 tons |
| Judd Coal Company, 1927-1927 | 120 tons |
| Dawson & Myers, 1928-1929, underground | 1,120 tons |
| Keefer (Glen A.), 1929-1929, underground | 14,000 tons |
| Kirkman (William) Coal Company, 1936-1940, underground | 2,631 tons |
| Andrews (James), 1941-1942 | <u>857</u> tons |
| | 3,488 tons |
| Oak Hill Coal Company, 1936-1937, slope, Springfield, —, 4.0 | 290 tons |
| Price (Frank), 1937-1941 | 4,590 tons |
| Bowen (James), 1941-1942 | 240 tons |
| Keagel Brothers Coal Company, 1942-1943 | <u>372</u> tons |
| | 5,492 tons |
| Vogt & Staley Coal Company, 1951-1951, surface | 350 tons |
| Knuppel (D. H.) Coal Company, 1951-1951 | <u>1,150</u> tons |
| | 1,500 tons |

INDEX OF MINES IN THE OAK HILL QUADRANGLE

| | |
|---|------------|
| Albrecht Coal Company, No. 4 Mine | 18 |
| Aman (George M., Jr.) | 40 |
| Aman (George) | 19 |
| Ames (Kirkman & Ames) | 40 |
| Anderson (Cusack & Anderson) | 39 |
| Andrews (James) | 33, 40, 43 |
| Appleby (Fred) | 40 |
| Appleby & Taylor | 40 |
| Arnolds (William) | 37 |
| Asbell (Albert) | 40 |
| Bale (Robert) | 38 |
| Barr (Burl) | 43 |
| Barr (Harry) | 40 |
| Bateman (Everett) | 40 |
| Bateman Coal Company | 40 |
| Battman (E.) & Martin | 40 |
| Bemont (H. A.) | 42 |
| Bennett & Pemble | 36 |
| Bidleman (Tuttle & Bidleman Coal Company) | 40 |
| Big Five Coal Company | 41 |
| Birgeton Coal Company | 43 |
| Blane (Lee A.) | 43 |
| Bowen (James) | 43 |
| Bowen Brothers | 41 |
| Bright Star No. 2 Mine | 9 |
| Brimfield Mining Company | 39 |
| Brooks (Cyrus) | 36 |
| Brown (Virgil) | 15 |
| Buckley (A.) | 39 |
| Buhl (Manen & Buhl) | 41 |
| Buhl (Noah) | 41 |
| Burdess (Joe) | 11 |
| Burlington Coal Company | 21 |
| Burns (Edward) | 41 |
| Burns (James) | 33, 41 |
| Catton (John) | 37 |
| Catton (Joseph) | 37 |
| Clark (J.) | 36 |
| Clark (John) | 38 |
| Clark (Martin & Clark) | 38 |
| Clark (William) | 42 |
| Clark & Company | 38 |
| Clark & Fisher | 37 |
| Clark & Martin | 38 |
| Clark & Murdock | 38 |
| Clark & Pemble | 38 |
| Clark & Rook | 37 |
| Clarkson (Joseph) | 42 |
| Clarkson (Lorenzo) | 39 |
| Clarkson (R.) | 39 |
| Clarkson (Thayer & Clarkson) | 39 |
| Clarkson (William) | 39 |
| Clarkson & Henning | 39 |
| Cling (Wolford & Cling) | 42 |
| Collear (John) | 14 |
| Colson (William E.) | 41 |
| Colwell (Wasson & Colwell) | 37 |
| Coogan Gravel Company | 41 |
| Cramer (William) | 40 |
| Culberson (Wyman & Culberson) | 38 |
| Culbertson (Robert) | 37 |
| Curran (D. H.) | 42 |
| Cusack (Gigby, Cusack & Edwards) | 39 |

| | |
|--|--------|
| Cusack (Mike) | 39 |
| Cusack & Anderson | 39 |
| Cusack & Edwards | 39 |
| Cutler (C. C.) | 41 |
| Daley (Barney) | 43 |
| Dalrymple (W.) | 37 |
| Dawson (Charles) | 40 |
| Dawson (George) | 43 |
| Dawson (Lawrence) | 13, 14 |
| Dawson & May | 40 |
| Dawson & Myers | 43 |
| Dorin (Pat) | 41 |
| Duffy (James) | 37 |
| Duffy (John) | 37 |
| Durand (Harmon & Durand) | 38 |
| Durant (H.) | 37 |
| Durant (Herman) | 38 |
| Edwards (Charles) | 39 |
| Edwards (Cusack & Edwards) | 39 |
| Edwards (Gigby, Cusack & Edwards) | 39 |
| Edwards Coal Company | 39, 40 |
| Edwards Mining Company | 39 |
| Elm Mine | 9 |
| Farrell (James) | 38, 40 |
| Farrell Brothers | 40 |
| Finnegan (Frank) | 38 |
| Fisher (Clark & Fisher) | 37 |
| Fisher Brothers | 36 |
| Forbes (William) | 40 |
| French (Forrest) | 13 |
| French (Jesse) | 25 |
| Fussner (Joseph C.) | 38 |
| Fussner Brothers | 38 |
| Gigby, Cusack & Edwards | 39 |
| Gore Coal Company | 22 |
| Green (Harry) | 41 |
| Grenko (Vinko) | 41 |
| Grimes (Thomas) | 36 |
| Gruber Brothers | 19 |
| Gruber Brothers & Henry Coal Company | 19 |
| Hancock (William) | 43 |
| Hanning (F.) | 39 |
| Harmon & Durand | 38 |
| Harper (William) | 39 |
| Hart & Stone Coal Company | 41 |
| Hayes (C. L.) | 38 |
| Hays (Charles) | 36 |
| Heaton (John) | 36 |
| Heaton (Tully & Heaton) | 37 |
| Heintz Coal Company | 41 |
| Helm (Andrew) | 42 |
| Henning (Clarkson & Henning) | 39 |
| Henning (Stout & Henning) | 40 |
| Henry (Gruber Brothers & Henry Coal Company) | 19 |
| Hi Way Coal Company | 11 |
| Hickory Grove Coal Company | 41 |
| Hindle (David) | 37 |
| Hindle (William) | 36 |
| Hoffman (Peter D.) | 31, 41 |
| Hoffman (Peter D.) Coal Company | 11 |
| Howarth (Wantling & Howarth) | 39 |
| Howe (Elijah) | 40 |
| Howe (Pemble & Howe Coal Company) | 16 |
| Howe (Sluth & Howe) | 40 |
| Huli (William) | 36 |

| | |
|---------------------------------------|----|
| Jobst (J. J.) | 34 |
| Johnson (Ben) | 38 |
| Johnson (Henry F.) | 10 |
| Johnson (John C.) | 10 |
| Johnson (John R.) | 38 |
| Johnson (Peter) | 10 |
| Johnson (Thomas) | 36 |
| Johnson (Tully & Johnson, No. 1 Mine) | 37 |
| Johnson (Tully & Johnson, No. 2 Mine) | 37 |
| Johnson (Tully & Johnson) | 38 |
| Johnson & Sargent | 10 |
| Johnson & Snider | 10 |
| Johnson Coal Company | 38 |
| Jubilee Coal Company | 41 |
| Jubilee College Coal Company | 42 |
| Jubilee Mine | 35 |
| Judd Coal Company | 43 |
| Katton (Joseph) | 37 |
| Keagel Brothers Coal Company | 43 |
| Keefer (Glen A.) | 43 |
| Kelley (Hy) | 37 |
| Kelley (William) | 37 |
| Kickapoo Coal Company | 40 |
| Killar | 36 |
| Kimsey Coal Company, No. 2 Mine | 41 |
| King & Wilson | 40 |
| Kingsley (Charles) | 39 |
| Kirkman (William) Coal Company | 43 |
| Kirkman & Ames | 40 |
| Knaggs (Henry) | 31 |
| Knaggs (Roy) | 31 |
| Knuppel (D. H.) Coal Company | 43 |
| Kramm (Edward) & Company | 42 |
| Kramm (Wilkinson & Kramm) | 39 |
| Krummel (Philip) | 33 |
| Langdon (G. W.) | 36 |
| Langdon (George W.) | 36 |
| Langdon (J.) | 36 |
| Langdon (W. H.) & Sons | 36 |
| Layne's Coal Company, No. 1 Mine | 27 |
| Layne's Coal Company, No. 2 Mine | 24 |
| Layne's Coal Company, No. 3 Mine | 23 |
| Layne's Coal Company, No. 4 Mine | 30 |
| Layne's Coal Company, No. 5 Mine | 26 |
| Lemasters Brothers | 40 |
| Linchcott (Samuel) | 42 |
| Lingenfelter Coal Company | 18 |
| Lonsdale (R.) | 39 |
| Lonsdale (T. H.) | 40 |
| Lonsdale (William) | 39 |
| Manen & Buhl | 41 |
| Maple Ridge Coal Company | 12 |
| Martin (Battman & Martin) | 40 |
| Martin (Clark & Martin) | 38 |
| Martin (John) | 37 |
| Martin (L.) | 17 |
| Martin & Clark | 38 |
| Marvin (Murdock & Marvin) | 39 |
| Maulsley (Sam) | 41 |
| May (Dawson & May) | 40 |
| May (Ed) | 42 |
| May (Walter) | 43 |
| McCartney (L. L.) Coal & Gravel | 39 |
| McKinley (John) | 37 |
| McKinley (Wiley & McKinley) | 42 |

| | |
|---|--------|
| Midland Coal Company | 9 |
| Mohn (Williams & Mohn) | 10 |
| Moore (S. A.) | 37 |
| Mosley (Samuel) | 41 |
| Mullaly (Frank) | 37 |
| Mulvaney (George) | 37 |
| Murdock (Clark & Murdock) | 38 |
| Murdock (John) | 39 |
| Murdock & Marvin | 39 |
| Murnan (Frank) Coal Company | 17 |
| Myers (Dawson & Myers) | 43 |
| Nichols (W.) | 41 |
| Nixon Run Coal Company | 14 |
| Nodski (W.) | 43 |
| Notzke (August) | 42 |
| Oak Grove Coal Company | 32 |
| Oak Hill Coal Company | 43 |
| Oak Hill Mining Company | 14 |
| P. & H. Coal Company | 16 |
| Patten (W. H.) | 39 |
| Patterson Coal Company | 11 |
| Patton (Lee) | 15 |
| Peabody Coal Company, Elm Mine | 9 |
| Pemble (Bennett & Pemble) | 36 |
| Pemble (Clark & Pemble) | 38 |
| Pemble (J. H.) | 38 |
| Pemble (James H.) | 37 |
| Pemble (James) | 36 |
| Pemble (Radlebeck & Pemble) | 38 |
| Pemble & Howe Coal Company | 16 |
| Peoria Coal Company | 36 |
| Pillman (Richard) | 39 |
| Pioneer Coal Company | 41 |
| Pocahontas Mine | 22 |
| Poole (William) | 42 |
| Porter (E. C.) | 39 |
| Pratt (C. E.) | 41 |
| Pratt (Charles E.) | 40 |
| Pratt (Charles) | 41 |
| Price (Frank) | 43 |
| Price (John) | 13, 43 |
| Procter (C. H.) | 40 |
| Purtscher (A.) | 42 |
| Radleback (Joseph) | 38 |
| Radlebeck (James) & Pemble | 38 |
| Radlebek (John) | 38 |
| Radoe (Frank) | 41 |
| Rattleback (George) | 36 |
| Rattleback (Joseph) | 36 |
| Rattleback (William) | 36 |
| Red Bird Coal Company | 13 |
| Reents (August) | 42 |
| Reents (Siebold) | 42 |
| Reents Brothers | 42 |
| Renner (Frank) | 14 |
| Robins Nest Coal Company | 18 |
| Rook (Clark & Rook) | 37 |
| Rook (J.) | 37 |
| Rook (John) | 37 |
| Root (E. O.) | 37 |
| Rowcliffe (James W.) Coal Company | 17 |
| Ryan (John) | 36 |
| Sargent (Johnson & Sargent) | 10 |
| Saunders (William G.) | 41 |
| Savage (Wyman & Savage) | 38 |

| | |
|-------------------------------------|--------|
| Saylor (H.) | 37 |
| Schott & Witheral | 39 |
| Schotte & Withell | 40 |
| Scott (J.) | 42 |
| Scott (R. J.) | 42 |
| Scott (Robert J.) | 42 |
| Seghi Brothers | 15 |
| Seigel (E.) Coal Company | 43 |
| Seigel (Edward) | 42 |
| Sents (Zeinie & Sents) | 40 |
| Shane (Frank) | 37 |
| Shane (George) | 37 |
| Shaw (Nathan) | 42 |
| Shaw Brothers | 17 |
| Short (Thomas G.) | 38 |
| Siegel (Edward) | 43 |
| Slain (S.) | 39 |
| Slane (Ed) | 42 |
| Slane (Edward) | 42, 43 |
| Slane (Walter) | 42 |
| Slater (Joseph) | 36 |
| Slocum (J. J.) | 38 |
| Slone (Ed) | 43 |
| Slone (Harry) | 40 |
| Sluth & Howe | 40 |
| Smith (G. W.) | 36 |
| Snider (Edward) | 40 |
| Snider (Enoch, Jr.) | 40 |
| Snider (Enoch) | 40 |
| Snider (Fred) | 40, 43 |
| Snider (Johnson & Snider) | 10 |
| Snider (M.) | 42 |
| Snyder (E. C.) | 39 |
| South Side Coal Company | 28 |
| Staley (Vogt & Staley Coal Company) | 43 |
| Stear (Thomas) | 40 |
| Stears Brothers | 42 |
| Stone (Hart & Stone Coal Company) | 41 |
| Stout (O. M.) | 40 |
| Stout & Henning | 40 |
| Strickland (W. D.) | 15 |
| Sunnyside Coal Company | 15 |
| Taylor (Appleby & Taylor) | 40 |
| Thayer & Clarkson | 39 |
| Tucker (Bert) | 38 |
| Tulley (John) | 36 |
| Tully (Henry) | 38 |
| Tully (James) | 37 |
| Tully (John) | 36 |
| Tully (Phillip F.) | 37 |
| Tully (Phillip) | 37 |
| Tully & Heaton | 37 |
| Tully & Johnson | 38 |
| Tully & Johnson, No. 1 Mine | 37 |
| Tully & Johnson, No. 2 Mine | 37 |
| Turner (E. H.) | 43 |
| Turner (George W.) | 20 |
| Turner (Joe C.) | 13, 39 |
| Turner & Son | 20 |
| Turner Mine | 35 |
| Tuttle & Bidleman Coal Company | 40 |
| Varce (Joseph) | 42 |
| Vaughn (E.) | 41 |
| Vaughn (William) | 22, 41 |
| Vogt & Staley Coal Company | 43 |

| | |
|---------------------------------------|----|
| Wantling (Wilkinson & Wantling) | 21 |
| Wantling & Howarth | 39 |
| Wasson & Colwell | 37 |
| West Point Coal Company | 41 |
| White (George) | 42 |
| Whitiker (Arthur) | 38 |
| Wickham (John) Coal Company | 29 |
| Wickwire (H. H.) | 42 |
| Wilford (Joseph) | 37 |
| Wilkinson (J. H.) | 21 |
| Wilkinson (J. H.) & Kramm (E.) | 39 |
| Wilkinson (J.) | 21 |
| Wilkinson & Wantling | 21 |
| Willey & McKinley | 42 |
| Williams (Frank) & Mohn (Earl) | 10 |
| Williams (William) | 35 |
| Wilson (King & Wilson) | 40 |
| Withell (Schotte & Withell) | 40 |
| Witheral (Schott & Witheral) | 39 |
| Wolford (Henry) | 15 |
| Wolford (Joseph) | 37 |
| Wolford & Cling | 42 |
| Woolford (John) | 37 |
| Wyman (Ed) | 38 |
| Wyman & Culberson | 38 |
| Wyman & Savage | 38 |
| Wynn (H.) | 36 |
| Youngman Coal Company | 17 |
| Zeinie & Sents | 40 |

