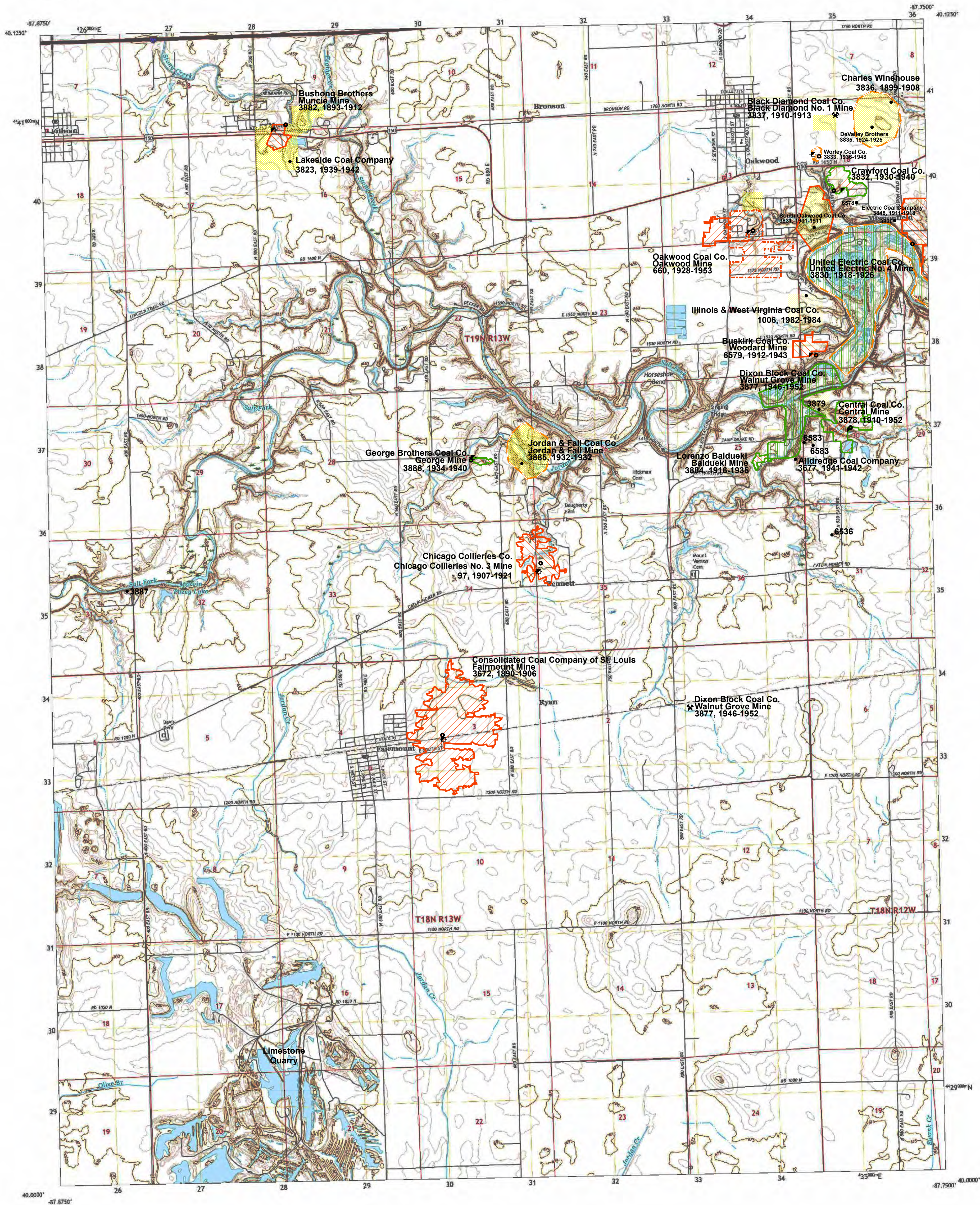


Coal Mines in Illinois Oakwood Quadrangle

Vermilion County, Illinois

This map accompanies the Coal Mines Directory for the Oakwood Quadrangle. Consult the directory for a complete explanation of the information shown on this map.



Mining Method

- Room & Pillar (RP)
- Room & Pillar Basic (RPB)
- Modified Room & Pillar (MRP)
- Room & Pillar Panel (RPP)
- Blind Room & Pillar (BRP)
- Checkerboard Room & Pillar (CRP)
- High Extraction Retreat (HER)
- Longwall (LW)
- Underground, Method Unknown
- Strip Mine
- Auger Mine
- General Area of Mining

Other Areas Depicted

- Non-Coal Mines

Source of Mine Outline

- Final Mine Map
- Not Final Mine Map
- Undated Mine Map
- Incomplete Mine Map
- Secondary Source Map

Tipple, Shaft, Slope, Drift Locations

- Strip Mine Tipple - Active
- Strip Mine Tipple - Abandoned
- Mine Shaft - Active
- Mine Shaft - Abandoned
- Mine Slope - Active
- Mine Slope - Abandoned
- Mine Drift - Active
- Mine Drift - Abandoned
- Air Shaft
- Uncertain Location
- Uncertain Type of Opening

Other Points Depicted

- Non-Coal Mines

Location



Mine Annotation

(space permitting)

Company
Mine Name
ISGS Index No., Years of Operation

Disclaimer

Please check the Coal Section at the Illinois State Geological Survey's web site at <https://www.isgs.illinois.edu> for the most up-to-date version of these products.

Note that each quadrangle scale mined-out area map requires the use of the associated text directory for full explanation of map features and mine attributes. Also note that some quadrangles have multiple seams of mining and therefore more than one map may be available for a particular quadrangle. Please take care to check for multiple maps, as extensive mining may exist in the other seams.

The maps and digital files used for these studies were compiled from data obtained from a variety of public and private sources and have varying degrees of completeness and accuracy. This compilation map presents reasonable interpretation of the geology of the area and is based on available data. Locations of some mine features may be offset by 500 feet or more due to errors in the original source maps, the compilation process, digitizing, or a combination of these factors. These data are not intended for use in site-specific screening or decision-making. Use of these documents does not eliminate the need for detailed studies to fully understand the geology of a specific site. The Illinois State Geological Survey, Prairie Research Institute, or the University of Illinois make no guarantee, expressed or implied, regarding the correctness of the interpretations presented in this data set and accept no liability for the consequences of decisions made by others on the basis of the information presented here.

These maps were designed for use at 1:24,000. Enlarging the map may reduce accuracy, as the original scale of the source maps used to compile the outlines shown varies from 1:400 to 1:150,000, and some mine locations are known only from text descriptions. See the accompanying mine directory for the original scale of the source map used for a specific mine to check accuracy of a given portion of the map. Areas with no mines shown may still be undermined; see the unlocated mines list at the back of each mine directory.

The image of the U.S.G.S. topographic base map was projected from the original UTM to Lambert Conformal Conic.

Produced by the United States Geological Survey
North American Datum of 1983 (NAD83)
World Geodetic System of 1984 (WGS84). Projection and
1 600-meter grid Universal Transverse Mercator, Zone 18T1165
This map is not a legal document. Boundaries may be
generalized for this map scale. Private land within government
reservations may not be shown. Obtain permission before
entering private lands.

UTM GRID AND 2011 MAGNETIC NORTH
DECLINATION AT CENTER OF SHEET

UTM Zone	UTM Grid	2011 Magnetic North
18T	18T	116.5°

SCALE 1:24 000

1 0.5 0.5 1 2
1000 500 0 500 1000
METERS
1 0.5 0.5 1 2
1000 500 0 500 1000
FEET

CONTOUR INTERVAL 5 FEET
NORTH AMERICAN DATUM OF 1983
NORTH AMERICAN DATUM OF 1983
This map was produced to conform with the
National Geospatial Program US Topographic Standard, 2011.
A metadata file associated with this product is draft version 0.6.18

ADJOINING QUADRANGLES

1	2	3
4	5	6
7	8	9

1 Royal
2 Carlin
3 Danville NW
4 Horner
5 Danville SW
6 Alton
7 St. George
8 Georgetown

ROAD CLASSIFICATION

Expressway	Local Connector
Secondary Highway	Local Road
Interstate Route	US Route
	State Route

OAKWOOD, IL
2018

ILLINOIS
Illinois State Geological Survey
PRAIRIE RESEARCH INSTITUTE

Prairie Research Institute
Illinois State Geological Survey
615 E. Peabody Dr.
Champaign, IL 61820

Mine Outlines Compiled by
Jennifer M. Obrad

June 20, 2003

Revised:
May 25, 2006
Alan R. Myers 09-16-2024

DIRECTORY OF COAL MINES IN ILLINOIS 7.5-MINUTE QUADRANGLE SERIES OAKWOOD QUADRANGLE VERMILION COUNTY

Melisa L. Borino and John J. Le Golvan



Department of Natural Resources
ILLINOIS STATE GEOLOGICAL SURVEY
2003
REVISED 2006, 2024

**DIRECTORY OF COAL MINES IN ILLINOIS
7.5-MINUTE QUADRANGLE SERIES
OAKWOOD QUADRANGLE
VERMILION COUNTY**

2003
REVISED 2006, 2024

ILLINOIS STATE GEOLOGICAL SURVEY
William Shilts, Chief

Natural Resources Building
615 East Peabody Drive
Champaign, Illinois 61820

Phone 1-217-244-4610
Fax 1-217-333-2830

Cover photo Track-mounted duckbill loading machine at a Peabody Coal Company mine, ca. 1915.

DISCLAIMER: The accuracy and completeness of mine maps and directories vary with the availability of reliable information. Maps and other information used to compile this mine map and directory were obtained from a variety of sources and the accuracy of some of the original information cannot be verified. Consequently, the Illinois State Geological Survey (ISGS) cannot guarantee the mine maps are free of errors and disclaims any responsibility for damages that may result from actions or decisions based on them.

The ISGS updates the maps and directories periodically, and welcomes any new information or corrections. Please contact the Coal Section of the ISGS at the address shown on the title page of this directory, or telephone (217) 244-4610.

Printed by authority of the State of Illinois/2006

CONTENTS

INTRODUCTION	1
MINING IN THE OAKWOOD QUADRANGLE	1
PART I EXPLANATION OF MAP AND MINE SUMMARY SHEET	2
INTERPRETING THE MAP	2
Mine Type and Mining Method	2
SOURCE MAPS	3
POINTS AND LABELS	3
INTERPRETING A MINE SUMMARY SHEET	6
REFERENCES	8
PART II DIRECTORY OF MINES IN THE OAKWOOD QUADRANGLE	9
MINE SUMMARY SHEETS	9
Mine Index 97	
Chicago Collieries Company, Chicago Collieries No. 3 Mine	9
Mine Index 660	
Oakwood Coal Company, Oakwood Mine	10
Mine Index 1006	
Illinois & West Virginia Coal Company, Illinois Mine	11
Mine Index 3672	
Consolidated Coal Company of St. Louis, Fairmount Mine	12
Mine Index 3677	
Alldredge Coal Company, Alldredge Mine	13
Mine Index 3823	
Lakeside Coal Company, Lakeside Mine	14
Mine Index 3830	
United Electric Coal Company, United Electric No. 4 Mine	15
Mine Index 3831	
South Oakwood Coal Company, South Oakwood Mine	16
Mine Index 3832	
James H. Crawford Coal Company, Crawford Mine	17
Mine Index 3833	
Worley Coal Company, Worley Mine	18
Mine Index 3835	
DeValley Brothers, DeValley Mine	19
Mine Index 3836	
Charles Winehouse, Winehouse Mine	20
Mine Index 3837	
Black Diamond Coal Company, Black Diamond No. 1 Mine	21
Mine Index 3838	
Salt Fork Coal Company, Missionfield Mine	22
Mine Index 3848	
Electric Coal Company, Electric No. 3 Mine	23
Mine Index 3877	
Dixon Block Coal Company, Walnut Grove Mine	24
Mine Index 3878	
Central Coal Company, Central Mine	25
Mine Index 3879	
Crawford Brothers, Crawford Mine	26
Mine Index 3880	
Lorenzo Balducki, Balducki Mine	27
Mine Index 3882	
Bushong Brothers, Muncie Mine	28
Mine Index 3884	
Lorenzo Balducki, Balducki Mine	29
Mine Index 3885	
Jordan & Fall Coal Company, Jordan & Fall Mine	30

Mine Index 3886	
George Brothers Coal Company, George Mine	31
Mine Index 6579	
Buskirk Coal Company, Woodard Mine	32
OTHER MINES SHOWN ON THE OAKWOOD QUADRANGLE	33
Mine index 3887	33
Mine index 6536	33
Mine index 6578	33
Mine Index 6583	33
Mine Index 6584	33
MINES WHOSE LOCATIONS ARE NOT KNOWN, OAKWOOD QUADRANGLE	33
INDEX OF MINES IN THE OAKWOOD QUADRANGLE.	35

INTRODUCTION

Coal has been mined in 76 counties of Illinois. More than 7,400 coal mines have operated since commercial mining began in Illinois about 1810; fewer than 30 are currently active. To detail the extent and location of coal mining in Illinois, the Illinois State Geological Survey (ISGS) has compiled maps and directories of known coal mines. The ISGS offers maps at a scale of 1:100,000 and accompanying directories for each county in which coal mining is known to have occurred. Maps at a scale of 1:24,000 and accompanying directories such as this are available for selected quadrangles. Contact the ISGS for a list of these quadrangles.

These larger scale maps show the approximate positions of mines in relation to surface features such as roads and water bodies, and indicate the mining method used and the accuracy of the mine boundaries. The maps are useful for locating mine boundaries relative to specific properties and for assessing the potential for subsidence in an area. Mine boundaries compiled from final mine surveys are generally shown within 200 feet of their true position. As a result of poor cartographic quality and inaccuracies in the original mine surveys, boundaries of some older mines may be mislocated on the map by 500 feet or more. Original mine maps should be consulted in situations that require precise delineation of mine boundaries or internal workings of mined areas.

The directory serves as a key to the accompanying mine map and provides basic information on the coal mines. The directory is composed of two parts. Part I explains the symbols and patterns used on the accompanying map and the summary data presented for each mine. Part II numerically lists the mines in the quadrangle and summarizes the geology and production history of each mine.

MINING IN THE OAKWOOD QUADRANGLE

Mining in this quadrangle began about 1890 with the Missionfield Mine (mine index 3838) and the Fairmount Mine (mine index 3672) and continued through each decade with various mines until ending in 1984, when the Illinois & West Virginia Coal Company closed its operations on the east side of the quadrangle (mine index 1006).

The Danville seam was the only coal mined here, ranging from 4.5 to 6 feet thick. The roof was often poor, with a massive sandy gray shale that came down easily. Horsebacks and rolls were present, but did not appear to greatly hinder mining. The mines on the east side of the quadrangle were shallow and sometimes had water problems, with seepage through joints and cracks in the shale from the Quaternary deposits above.

Note that many of the mines are located within a column of irregular sections. The locations given in this directory follow the convention of orienting the quarter-sections originating at the southeast corner of the section (see page 6, under 'Shaft, slope, drift or tipple locations').

PART I EXPLANATION OF MAP AND MINE SUMMARY SHEET

INTERPRETING THE MAP

The map accompanying this directory shows the location of coal mines known to be present in the quadrangle. The map, corresponding to a U.S. Geological Survey (USGS) 7.5-minute quadrangle, covers an area bounded by lines of latitude and longitude 7.5-minutes apart. In Illinois, a quadrangle is approximately 6.5 miles east to west and 8.5 miles north to south, an area of about 56 square miles. The USGS generally offers one map of mines per quadrangle. In some areas where extensive mining occurred in two or more overlapping seams, separate maps are compiled for mines in each seam to maintain readability of the map.

Mine Type and Mining Method

The mine type is indicated on the map by pattern color: green represents surface mines; red and yellow represent underground mines. The red patterns are used for areas of underground mining that are documented by a primary or secondary source map. A yellow pattern is used for cases where no map of the mine workings is available, but a general area of mining can be inferred from property maps or production figures. The patterns indicate the main mining methods used in underground mines. The methods are (1) room and pillar and (2) high extraction. The method used gives some indication of the amount and pattern of coal extraction within each mined area, and has some influence on the timing and type of subsidence that can occur over a mine.

The following discussion and illustrations of mining methods are based on Guither et al. (1984).

In room-and-pillar mines, coal is removed from haulage-ways (entries) and selected areas called rooms. Pillars of unmined coal are left between the rooms to support the roof. Depending on the size of rooms and pillars, the amount of coal removed from the production areas will range from 40% to 70%.

Room and Pillar - mining is divided into six categories:

- room-and-pillar basic (RPB, fig. 1A), an early method that did not follow a preset mining plan and therefore resulted in very irregular designs;
- modified room and pillar (MRP, fig. 1B);
- room-and-pillar panel (RPP, fig. 1C);
- blind room and pillar (BRP, fig. 1D);
- checkerboard room and pillar (CRP, fig. 1E);
- room and pillar (RP), a classification used when the specific type of room-and-pillar mining is unknown.

Blind and checkerboard are the most common types of room-and-pillar mining used in Illinois today. The knowledge of room-and-pillar mining methods gives a trained engineer information on the nature of subsidence that may occur. A more extensive discussion of subsidence can be found in Bauer et al. (1993).

High-extraction These mining methods are subdivided into high-extraction retreat (HER, Fig 1F) and longwall (LW, Fig 1G, 1H). In these methods, much of the coal is removed within well defined areas of the mine. Subsidence of the surface above these areas occurs within weeks. Once the subsidence activity ceases, the potential for further movement over these areas is low; however, subsidence may continue for several years after mining.

High-extraction retreat mining is a form of room-and-pillar mining that extracts most of the coal. Rooms and pillars are developed in the panels, and the pillars are then systematically removed (fig. 1F).

In early (pre-1960) longwall mines, mining advanced in multiple directions from a central shaft (fig. 1G). Large pillars of coal were left around the shaft, but all coal was removed beyond these pillars. Miners placed rock and wooden props and cribs in the mined-out areas to support the mine roof. The overlying rock gradually settled onto these supports, thus producing subsidence at the surface. In post-1959 longwall mines, room-and-pillar methods have been used to develop the main entries of the mine and panel areas. Modern longwall methods extract 100 percent of the coal in the panel areas (fig. 1H).

SOURCE MAPS

Mine outlines depicted on the map are, whenever possible, based on maps made from original mine surveys. The process of compiling and digitizing the quadrangle map may produce errors of less than 200 feet in the location of mine boundaries. Larger errors of 500 feet or more are possible for mines that have incomplete or inaccurate source maps.

Because of the extreme complexity of some mine maps, detailed features of mined areas have been omitted. The digitized mine boundary includes the exterior boundary of all rooms or entries that were at least 80 feet wide or protruded 500 feet from the main mining area. Unmined areas between mines are shown if they are at least 80 feet wide; unmined blocks of coal within mines are shown if they are at least 400 feet on each side. Original source maps should be consulted when precise information on mine boundaries or interior features is needed.

The mine summary sheet lists the source maps used to determine each mine outline. The completeness of map sources is indicated on the map by a line symbol at the mine boundary. Source maps are organized in five categories.

Final mine map The mine outline was digitized from an original map made from mine surveys conducted within a few months after production ceased. The date of the map and the last reported production are listed on the summary sheet.

Not a final map The mine is currently active or the mine outline was made from a map based on mine surveys conducted more than a few months before production ceased. This implies the actual mined-out area is probably larger than the outline on the map. The mine summary sheet indicated the dates of source maps and the last reported production, as well as the approximate tonnage mined between these two dates (if the mine is abandoned). The summary sheet also lists the approximate acreage mined since the date of the map and, in some cases, indicates the area where additional mining may have taken place. This latter information is determined by locating on the map the active faces relative to probable boundaries of the mine property.

Undated map The source map was undated, so it may or may not be based on a final mine survey. When sufficient data are available, the probable acreage of the mined area is estimated from reported production, average seam thickness and a recovery rate comparable to other mines in the area. This information is listed in the summary sheet for the mine.

Incomplete map The source map did not show the entire mine. The summary sheet indicates the missing part of the mine map and the acreage of the unmapped area, which is estimated from the amount of coal known to have been produced from the mine.

Secondary source map The original mine map was not found so the outline shown was determined from secondary sources (e.g., outlines from small-scale regional maps published in other reports). The summary sheet describes the secondary sources.

POINTS AND LABELS

The locations of all known mine openings (shafts, slopes, and drifts) and surface mine tipples are plotted on the map. Tipples are areas where coal was cleaned, stockpiled, and loaded for shipping.

Only openings or tipples are plotted for mines without source maps. If the precise locations of these features are unknown, a special symbol is used to indicate the approximate location of the mine.

Each mine on the map is labeled with the names of the mine and operating company, ISGS mine index number, and years of operation (if known) if space permits. A seam designation is given on maps where more than one seam was mined. For a mine that operated under more than one name, only the most recent name is generally given. When a mine changed names or ownership shortly before closing, an earlier name is listed. All company and mine names are listed on the mine summary sheet in the directory, under the production history segment.



Figure 1 Mining methods: (A) room-and-pillar basic (RPB), (B) modified room and pillar (MRP), (C) room-and-pillar panel (RPP), (D) blind room and pillar (BRP).



Figure 1 (cont.) Mining methods: (E) checkerboard room and pillar (CRP), (F) high extraction retreat (HER), (G) early (pre-1960) longwall, (H) post-1959 longwall



Figure 2 Generalized stratigraphic section, showing approximate vertical relations of coals in Illinois.

INTERPRETING A MINE SUMMARY SHEET

The mine summary sheet is arranged numerically by mine index number. Index numbers are shown on the map and in the mine listing. The mine summary sheet provides the following information (if available).

Company and mine name The last company or owner of the mine is used, unless no production was recorded for the last owner. In that case, the penultimate owner is listed. Mines often have no specific name; in these cases, the company name is also used as the mine name.

Type *Underground* denotes a subsurface mine in which the coal was reached through a shaft, slope, or a drift entry. *Surface* denotes a surface, open pit or strip mine.

Total mined-out acreage shown The total acreage of the mined area mapped, including any acreage mined on adjacent quadrangles, is calculated from the digitized outline of the mine. The acreage of large barrier pillars depicted on the map is excluded from the mined-out acreage. Small pillars not digitized are included in the acreage calculation. If the mine outline is not based on a final mine map, the acreage is followed by an estimate of additional acres that may have been mined. The estimate is determined from reported mine production, approximate thickness of the coal, and recovery rates calculated from nearby mines that used similar mining methods.

SHAFT, SLOPE, DRIFT OR TIPPLE LOCATIONS

Shaft, slope, drift, or tippie locations Locations of all known former entry points to underground mines or the location of coal cleaning, tippie, and shipping equipment used by the mine's facility are listed. The location is described in terms of county, township and range (Twp-Rge), section, and location within the section by quarters. NE SW NW, for instance, would describe the location in the northeast quarter of the southwest quarter of the northwest quarter. When sections are irregular in size, the quarters remain the same size and are oriented (or "registered") from the southeast corner of the section. Approximate footage from the section lines (FEL = from east line, FNL = from north line, for example) is given when that information is known; this indicates a surveyed location and is not derived from maps. Entry points are also plotted on the map and coded for the type of entry or tippie. A mine opening may have had many purposes during the life of the mine. Old hoist shafts are often later used for air and escape shafts; this information is included in the directory when known. The tippie for underground mines was generally located near the main shaft or slope. At surface mines, coal was sometimes hauled to a central tippie several miles from the mine pit.

GEOLOGY

Seam(s) mined The name of the coal seam(s) mined is listed, if known. If multiple seams were mined, they are all listed, although the mined-out area for each seam may be shown on separate maps. Figure 2 shows the stratigraphic section of the coal-bearing interval in Illinois, and the vertical relations among the coals.

Depth The depth to the top of the seam in the vicinity of the shaft is listed, if known. The depth is determined from notes made by geologists who visited the mine during its operation or from drill hole data in ISGS files. Depth generally varies little over the extent of a mine; however, reported depths for an individual mine may vary. Depth for surface-mined coals varies, and is usually represented as a range.

Thickness The approximate thickness of the mined seam is shown, if known. Thickness also comes from notes of geologists who visited the mine during its operation or from borehole data in ISGS files. Minimum, maximum, and average thicknesses are given when this information is available.

Mining method The principal mining method used at the mine (figs. 1A-H) is listed. See the mining methods section at the beginning of this directory for a discussion of this parameter.

Geologic problems reported Any known geologic problems, such as faults, water seepage, floor heaving, and unstable roof, encountered in the mine are reported. This information is from notes made by ISGS geologists who visited the mine, or from reports by mine inspectors published by the Illinois Department of Mines and Minerals, or from the source map(s). Geologic problems are not reported for active mines.

PRODUCTION HISTORY

Production history Tons of coal produced from the mine by each mine owner are totaled. When the source map used for the mine outline is not a final mine map, the tonnage produced since the date of the map is identified. For mines that extend into adjacent quadrangles, the tonnage reported includes areas mined in adjacent quadrangles.

SOURCE OF DATA

Source map This section lists information about the map(s) used to compile the mine outline and the locations of tipples and mine openings. In some cases more than one source map was used. For example, a map drawn before the mine closed may provide better information on original areas of the mine than a later map. When more than one map was used, the bibliography section explains what information was taken from each source.

Date The date of the most recent mine survey listed on the source map is reported.

Original scale The original scale of the source map is listed. Many maps are photo-reductions and are no longer at their original scale. The original scale gives some indication of the level of detail of the mine outline and the accuracy of the mine boundary relative to surface features. Generally, the larger the scale, the greater the accuracy and detail of the mine map. Mine outlines taken from source maps at scales smaller than 1:24,000 may be highly generalized and may well be inaccurately located with respect to surface features.

Digitized scale The scale of the digitized map is reported. The scale may be different from that of the original source map. In many cases the digitized map was made from a photo-reduction of the original source map, or the source map was not in a condition suitable for digitizing and the mine boundaries were transferred to another base map.

Map type Source maps are classified into five categories to indicate the probable completeness of the map. See discussion of source maps in the previous section.

Annotated bibliography Sources that provide information about the mine are listed, with the data taken from each source. Some commonly used sources are described below. Full bibliographic references are given for all other sources. Unless otherwise noted, all sources are available for public inspection at the ISGS.

Coal Reports Published since 1881, these reports contain tabular data on mine ownership, production, employment, and accidents. Some volumes include short descriptions made by mine inspectors of physical features and conditions in selected mines.

Directory of Illinois Coal Mines This source is a compilation of basic data about Illinois coal mines, originally gathered by ISGS staff in the early 1950s. Sources used for this directory are undocumented, but they are primarily Illinois Department of Mines and Minerals annual reports, ISGS mine notes, and coal company officials.

ENR Document 85/01, Guither, H. D., J. K. Hines, and R. A. Bauer, 1985 The Economic Effect of Underground Mining Upon Land Used for Illinois Agriculture: Illinois Department of Energy and Natural Resources Document 85/01, 185 p.

Microfilm map The U.S. Bureau of Mines maintains a microfilm archive of mine maps. A microfilm file for Illinois is available for public viewing at the ISGS.

Mine notes ISGS geologists have visited mines or contacted mine officials throughout the state since the early 1900s. Notes made during these visits range from brief descriptions of the mine location to long narratives (including sketches) of mining conditions and geology.

Federal Land Bank of St. Louis, Preliminary Reports on Subsidence Investigations Mining engineers working for the Federal Land Bank of St. Louis mapped areas of subsidence due to coal mining in the early 1930s. These reports often include county maps of mine properties with mined-out areas including shaft locations, as well as subsidence areas.

REFERENCES

Bauer, R. A., B. A. Trent, and P. B. Dumontelle, 1993, Mine Subsidence in Illinois: Facts for the Homeowner Considering Insurance: Illinois State Geological Survey, Environmental Geology Note 144, 16p.

Guither, H. D., J. K. Hines, and R. A. Bauer, 1985, The Economic Effects of Underground Mining Upon Land Used for Illinois Agriculture: Illinois Department of Energy and Natural Resources Document 85/01, 185 p.

PART II DIRECTORY OF MINES IN THE OAKWOOD QUADRANGLE

MINE SUMMARY SHEETS

A summary sheet on the geology and production history of each mine in the Oakwood Quadrangle is provided. These summary sheets are arranged numerically by mine index number. Consult Part I for a complete explanation of the data listed in the summary sheet.

Mine Index 97

Chicago Collieries Company, Chicago Collieries No. 3 Mine

Type: Underground Total mined-out acreage shown: 44 Production indicates that approximately 13 acres were mined after the map date.

SHAFT, SLOPE, DRIFT or TIPPLE LOCATIONS

Type	County	Township-Range	Section	Quarters-Footage
Main shaft	Vermilion	19N 13W	35	SW SW NW
Air shaft	Vermilion	19N 13W	34	NW SW NW

GEOLOGY

Seam(s) Mined	Depth (ft)	Thickness (ft)			Mining Method
		Min	Max	Ave	
Danville	185-236	4.5	5.75	5.0-5.5	MRP

Geologic Problems Reported: The roof was 2 to 6 feet of dark gray shale that contained sulphur balls and broke in slabs that fell if not propped. Roof rolls and horsebacks, generally trending northeast-southwest, were present, but few in number. The contact between the shale and coal was very irregular. Beds of black jack, sulphur, bone, and dirt were scattered throughout the coal seam. Some were persistent, while the rest were lenticular. Sulphur balls, distributed irregularly throughout the coal seam, were present over the entire mine.

PRODUCTION HISTORY

Company	Mine Name	Years	Production (tons)
Jordan Coal Company	Jordan	1907-1908	3,600
D. A. Morin & Secan Nevario	Jordan	1908-1909	none
Fairmount Coal Company	Fairmount No. 1, Bennett Station	1909-1912 *	59,678
William Woods	Woods	1913-1914	2,400
Fairmount Coal Company	Fairmount	1914-1917	8,608
Chicago Collieries Company	Chicago Collieries No. 3 **	1917-1920	128,096
Chicago Collieries Company	Chicago Collieries No. 3 **	1920-1921	61,313 ***
			263,695

* Idle 1910. The organizer of Fairmount Coal Company was Hugh Shirkey.

** Also known as Bennett Station Mine

** Production after map date

Last reported production: July 1921

SOURCES OF DATA

Source Map	Date	Original Scale	Digitized Scale	Map Type
State archive, msha_725_01	6-1-1920	1:1200	1:1200	Not final
State archive, msha_778_01	7-1914	1:1200	1:1200	Not final

Annotated Bibliography (data source, brief description of information)

Coal Reports - Production, ownership, years of operation, depth, mining method.

Directory of Illinois Coal Mines (Vermilion County) - Mine names, mine index, ownership, years of operation.

Mine notes (Vermilion County) - Mine type, shaft location, seam, depth, thickness, geologic problems.

State archive, msha_725_01 - Shaft locations, mine outline (northern part of mine), mining method.

State archive, msha_778_01 - Mine outline (southern part of mine).

Mine Index 660**Oakwood Coal Company, Oakwood Mine**

Type: Underground Total mined-out acreage shown: 109

SHAFT, SLOPE, DRIFT or TIPPLE LOCATIONS

Type	County	Township-Range	Section	Quarters-Footage
Main slope	Vermilion	19N 13W	13	SE SW SE *
Air shaft	Vermilion	19N 13W	13	SE SW SE

* The legend of the company map gives a surveyed slope location: 298.34 feet north, 779.85 feet east, SW corner, SE 1/4, section 13.

GEOLOGY

Seam(s) Mined	Depth (ft)	Thickness (ft)			Mining Method
		Min	Max	Ave	
Danville	150-250			5.0-5.25	RPP

Geologic Problems Reported:

PRODUCTION HISTORY

Company	Mine Name	Years	Production (tons)
Harry Brown Coal Company	Brown No. 2	1928-1932	16,359
Brown Coal Company	Brown No. 2	1933-1933	5,506
Oakwood Coal Company	Oakwood	1934-1953	<u>589,494</u>
			611,359

Last reported production: March 1953

SOURCES OF DATA

Source Map	Date	Original Scale	Digitized Scale	Map Type
Microfilm, document 352997	1-6-1954	1:600	1:1366	Incomplete (final)**
Company, 4103.V4 i5.1-12	5-18-1942	1:600	1:600	Not final **

** The mined area shown on the accompanying map is the approximate size expected for the production reported. This suggests that the mine outline is complete.

Annotated Bibliography (data source, brief description of information)

Coal Reports - Production, ownership, years of operation.

Directory of Illinois Coal Mines (Vermilion County) - Mine names, mine index, ownership, years of operation.

ENR Document 85/01 - Mining method.

Microfilm map, document 352997, reel 03134, frames 140-142 - Slope location, mine outline, mining method.

Company map, ISGS map library, 4103.V4 i5.1-12 - Mine outline (west), surveyed slope location, air shaft.

Mine Index 1006
Illinois & West Virginia Coal Company, Illinois Mine

Type: Underground Total mined-out acreage shown: None Production indicates approximately 45 acres were mined. This is shown on the accompanying map as a general area of mining.

SHAFT, SLOPE, DRIFT or TIPPLE LOCATIONS

Type	County	Township-Range	Section	Quarters-Footage
Main entry *	Vermilion	19N 12W	19	SW SW NW **

* The ISGS mine-notes indicate there were three vertical shafts 110' deep and a sloping shaft. Locations for three of the four openings are unknown.

** Irregular section; see page 6, '*Shaft, slope, drift or tipple locations*'

GEOLOGY

Seam(s) Mined	Depth (ft)	Thickness (ft)			Mining Method
		Min	Max	Ave	
Danville	110			5.5	RP

Geologic Problems Reported: The roof was poor, requiring many timbers and braces for support. Water sometimes poured into the mine and flooded operations.

PRODUCTION HISTORY

Company	Mine Name	Years	Production (tons)
Lee Coal Company	Oakwood No. 2	1982-1983	63,882
Illinois & West Virginia Coal Company	Illinois	1983-1984	<u>156,779</u>
			220,661

Last reported production: September 1984

SOURCES OF DATA

Source Map	Date	Original Scale	Digitized Scale	Map Type
ISGS mine notes	Undated	(text only)	1:24000 ***	Secondary source

*** Point plotted onto 1:24,000 USGS topographic map and digitized.

Annotated Bibliography (data source, brief description of information)

Coal Reports - Production, ownership, years of operation.

Directory of Illinois Coal Mines (Vermilion County) - Mine names, mine index, ownership, years of operation.

Mine notes (Vermilion County) - Mine type, shaft location, seam, depth, thickness.

Mine Index 3672**Consolidated Coal Company of St. Louis, Fairmount Mine**

Type: Underground Total mined-out acreage shown: 217 Production indicates approximately 6 acres were mined after the map date

SHAFT, SLOPE, DRIFT or TIPPLE LOCATIONS

Type	County	Township-Range	Section	Quarters-Footage
Main shaft	Vermilion	18N 13W	3	NW NE SW
Air shaft *	Vermilion	18N 13W	3	NW NE SW *

* The air shaft location is not identified on the source map. It is only identified hand-drawn on a later print out of the map by an unknown source, so the location may be imprecise.

GEOLOGY

Seam(s) Mined	Depth (ft)	Thickness (ft)			Mining Method
		Min	Max	Ave	
Danville	225			4.5-5.0	RPP

Geologic Problems Reported:

PRODUCTION HISTORY

Company	Mine Name	Years	Production (tons)
Fairmount Coal Mining Company	Fairmount	1890-1892	42,871
Consolidated Coal Company of St. Louis	Fairmount	1892-1906	898,998
Consolidated Coal Company of St. Louis	Fairmount	1906-1906	27,638 **
			<u>969,507</u>

** Production after map date

Last reported production: 1906

SOURCES OF DATA

Source Map	Date	Original Scale	Digitized Scale	Map Type
State archive, MSHA_1041_01	3-1906	1:2400	1:2400	Not final

Annotated Bibliography (data source, brief description of information)

Coal Reports - Production, ownership, years of operation.

Directory of Illinois Coal Mines (Vermilion County) - Mine names, mine index, ownership, years of operation.

Mine notes (Vermilion County) - Mine type, shaft location, seam, depth, thickness.

State archive, MSHA_1041_01- Shaft location, mine outline, mining method.

Mine Index 3677**Alldredge Coal Company, Alldredge Mine**

Type: Underground Total mined-out acreage shown: None Production indicates less than 1 acre was mined.

SHAFT, SLOPE, DRIFT or TIPPLe LOCATIONS

Type	County	Township-Range	Section	Quarters-Footage
Main slope	Vermilion	19N 13W	25	SE NE SE

GEOLOGY

Seam(s) Mined	Depth (ft)	Thickness (ft)			Mining Method
		Min	Max	Ave	
Danville	154			5.5	RP

Geologic Problems Reported:

PRODUCTION HISTORY

Company	Mine Name	Years	Production (tons)
Alldredge Brothers Coal Company	Alldredge	1941-1942	415
Alldredge Coal Company *	Alldredge	1942-1942	60
			<u>475</u>

* Operated by Floyd Turner

Last reported production: 1942

SOURCES OF DATA

Source Map	Date	Original Scale	Digitized Scale	Map Type
ISGS mine notes	Undated	(text only)	1:24000 *	Undated

* Point plotted onto 1:24,000 USGS quadrangle and digitized.

Annotated Bibliography (data source, brief description of information)

Coal Reports - Production, ownership, years of operation, mine type.

Directory of Illinois Coal Mines (Vermilion County) - Mine names, mine index, ownership, years of operation.

Mine notes (Vermilion County) - Mine type, mine location, seam, depth, thickness.

Mine Index 3823**Lakeside Coal Company, Lakeside Mine**

Type: Underground Total mined-out acreage shown: None Production indicates less than 1 acre was mined.

SHAFT, SLOPE, DRIFT or TIPPLE LOCATIONS

Type	County	Township-Range	Section	Quarters-Footage
Main slope	Vermilion	19N 13W	16	center NW

GEOLOGY

Seam(s) Mined	Depth (ft)	Thickness (ft)		Mining Method
		Min	Max	
Danville *	80-85		6.0	RP

* Seam is uncertain given depth this mine is said to have operated at. A state mine inspector's report says the Danville Coal was mined.

Geologic Problems Reported:

PRODUCTION HISTORY

Company	Mine Name	Years	Production (tons)
Lakeside Coal Company **	Lakeside	1939-1942	<u>1,076</u> 1,076

** Owners Clarence Pilkington and Cecil Ervin

Last reported production: March 1942

SOURCES OF DATA

Source Map	Date	Original Scale	Digitized Scale	Map Type
ISGS mine notes	Undated	(text only)	1:24000 ***	Undated

*** Point plotted onto 1:24,000 USGS quadrangle and digitized.

Annotated Bibliography (data source, brief description of information)

Coal Reports - Production, ownership, years of operation.

Directory of Illinois Coal Mines (Vermilion County) - Mine names, mine index, ownership, years of operation.

Mine notes (Vermilion County) - Mine type, slope location, seam, depth, thickness.

Mine Index 3830**United Electric Coal Company, United Electric No. 4 Mine**

Type: Surface Total mined-out acreage shown: 481 The area shown is too large for the reported production. United Electric No. 4 very likely expanded on the surface mining opened up by the Missionfield Mine (mine index 3838), and includes the area mined by the Seymour Mine (mine index 6575).

SHAFT, SLOPE, DRIFT or TIPPLE LOCATIONS

Type	County	Township-Range	Section	Quarters-Footage
Tipple	Vermilion	19N 12W	18	SE SE SE

GEOLOGY

Seam(s) Mined	Depth (ft)	Thickness (ft)			Mining Method
		Min	Max	Ave	
Danville	40			5.0-5.5	Surface

Geologic Problems Reported:

PRODUCTION HISTORY

Company	Mine Name	Years	Production (tons)
Electric Coal Company	Electric No. 4	1918-1921	276,913
United Electric Coal Company	United Electric No. 4	1921-1926	<u>691,530</u> 968,443

Last reported production: March 1926

SOURCES OF DATA

Source Map	Date	Original Scale	Digitized Scale	Map Type
USGS topographic map	PR 1978	1:24000	1:24000	Secondary source
Coal Section composite	undated	1:62500	1:62500	Secondary source

Annotated Bibliography (data source, brief description of information)

Coal Reports - Production, ownership, years of operation, mine type, seam, depth, thickness, mining method.
 Directory of Illinois Coal Mines (Vermilion County) - Mine names, mine index, ownership, years of operation.
 USGS topographic map, 1966, Photorevised 1978 - Mine outline, mining method.
 Coal Section composite map, thickness of the Danville Coal, 1-24-31-i - Mine outline, mining method.

Mine Index 3831**South Oakwood Coal Company, South Oakwood Mine**

Type: Underground Total mined-out acreage shown: None Production indicates that approximately 38 acres were mined. This is shown on the accompanying map as a general area of mining from the Federal Land Bank Report.

SHAFT, SLOPE, DRIFT or TIPPLE LOCATIONS

Type	County	Township-Range	Section	Quarters-Footage
Main shaft (6x12)	Vermilion	19N 12W	18	SW SE SW *

* Irregular section; see page 6, '*Shaft, slope, drift or tipple locations*'

GEOLOGY

Seam(s) Mined	Depth (ft)	Thickness (ft)			Mining Method
		Min	Max	Ave	
Danville	80-137			5.5-6.0	RP

Geologic Problems Reported: Rolls were present, but not very common in the seam.

PRODUCTION HISTORY

Company	Mine Name	Years	Production (tons)
Oakwood Coal Company	Oakwood No. 1	1901-1909	165,460
South Oakwood Coal Company	South Oakwood	1909-1911	<u>55,396</u> 220,856

Last reported production: 1911

SOURCES OF DATA

Source Map	Date	Original Scale	Digitized Scale	Map Type
ISGS mine notes	Undated	(text only)	1:24000 **	Secondary source
Federal Land Bank Report	1-1934	1:105000	1:105000	Secondary source

** Point plotted onto 1:24,000 USGS topographic map and digitized.

Annotated Bibliography (data source, brief description of information)

Coal Reports - Production, ownership, years of operation, depth, thickness, mining method.
 Directory of Illinois Coal Mines (Vermilion County) - Mine names, mine index, ownership, years of operation.
 Mine notes (Vermilion County) - Mine type, shaft location & size, seam, depth, thickness, geologic problems.
 Federal Land Bank Report (Vermilion County) - Mine outline (general area of mining).

Mine Index 3832
James H. Crawford Coal Company, Crawford Mine

Type: Underground Total mined-out acreage shown: 24

SHAFT, SLOPE, DRIFT or TIPPLE LOCATIONS

Type	County	Township-Range	Section	Quarters-Footage
Main shaft	Vermilion	19N 12W	18	SW NW SE *
Air slope	Vermilion	19N 12W	18	SW NW SE *

* Irregular section; see page 6, '*Shaft, slope, drift or tipple locations*'

GEOLOGY

Seam(s) Mined	Depth (ft)	Thickness (ft)			Mining Method
		Min	Max	Ave	
Danville	85-140			5.5-5.67	RPP

Geologic Problems Reported: Two rooms in the north part of the mine were labeled "caved" on the mine map; two rooms near the center of the mine were marked "water".

PRODUCTION HISTORY

Company	Mine Name	Years	Production (tons)
James H. Crawford Coal Company	Crawford	1930-1940	161,554
			161,554

Last reported production: April 6, 1940

SOURCES OF DATA

Source Map	Date	Original Scale	Digitized Scale	Map Type
Company, 4103.V4 i5.1-38	7-1-1940	1:600	1:600	Final **

** The survey date on the map reads 3-10-1940. However, the mined area shown on the accompanying map is the approximate size expected for the production reported. This suggests that the mine outline is complete.

Annotated Bibliography (data source, brief description of information)

Coal Reports - Production, ownership, years of operation.
 Directory of Illinois Coal Mines (Vermilion County) - Mine names, mine index, ownership, years of operation.
 ENR Document 85/01 - Mining method.
 Mine notes (Vermilion County) - Mine type, shaft location, seam, depth, thickness.
 Company map, ISGS map library, 4103.V4 i5.1-38 - Shaft locations, mine outline, mining method, geologic problems.

Mine Index 3833
Worley Coal Company, Worley Mine

Type: Underground Total mined-out acreage shown: 3

SHAFT, SLOPE, DRIFT or TIPPLE LOCATIONS

Type	County	Township-Range	Section	Quarters-Footage
Main slope	Vermilion	19N 12W	18	SW SE NW *
Air shaft	Vermilion	19N 12W	18	SE SE NW *

* Irregular section; see page 6, '*Shaft, slope, drift or tipple locations*'

GEOLOGY

Seam(s) Mined	Depth (ft)	Thickness (ft)			Mining Method
		Min	Max	Ave	
Danville	75			6.0	RP

Geologic Problems Reported:

PRODUCTION HISTORY

Company	Mine Name	Years	Production (tons)
Scarce Brothers Coal Company	Scarce	1936-1936	995
Alva Worley Coal Company	Worley	1937-1939	5,294
Auter & Sons Coal Company	Auter	1940-1942	1,964
Worley Coal Company	Worley	1946-1948 **	<u>1,368</u>
			9,621

** Idle or operated under an unknown name 1943-1945.

Last reported production: 1948

SOURCES OF DATA

Source Map	Date	Original Scale	Digitized Scale	Map Type
WPA, T19N-R12W	10-9-1937 ***	1:12000	1:55384	Secondary source

*** Date of mine survey as shown on WPA map. The WPA map was produced in 1940. However, the mined area shown on the accompanying map is the approximate size expected for the production reported. This suggests that the mine outline is complete.

Annotated Bibliography (data source, brief description of information)

Coal Reports - Production, ownership, years of operation, mining method.
 Directory of Illinois Coal Mines (Vermilion County) - Mine names, mine index, ownership, years of operation.
 ENR Document 85/01 - Mining method.
 Mine notes (Vermilion County) - Mine type, shaft location, seam, depth, thickness.
 WPA map, T19N-R12W - Slope & shaft locations, mine outline.

Mine Index 3835
DeValley Brothers, DeValley Mine

Type: Underground Total mined-out acreage shown: None Production indicates less than 1 acre was mined.

SHAFT, SLOPE, DRIFT or TIPPLE LOCATIONS

Type	County	Township-Range	Section	Quarters-Footage
Main shaft	Vermilion	19N 12W	18	SW NE NE *

* Irregular section; see page 6, '*Shaft, slope, drift or tippie locations*'

GEOLOGY

Seam(s) Mined	Depth (ft)	Thickness (ft)			Mining Method
		Min	Max	Ave	
					RP

Geologic Problems Reported:

PRODUCTION HISTORY

Company	Mine Name	Years	Production (tons)
DuVall & Lewis & Company	DuVall & Lewis	1924-1924	150
DeValley Brothers	DeValley	1924-1925	900
			1,050

Last reported production: 1925

SOURCES OF DATA

Source Map	Date	Original Scale	Digitized Scale	Map Type
ISGS mine database	Undated	(text only)	1:24000 **	Secondary source
Federal Land Bank Report	1-1934	1:105000	1:105000	Secondary source

** Point plotted onto 1:24,000 USGS topographic map and digitized.

Annotated Bibliography (data source, brief description of information)

Coal Reports - Production, ownership, years of operation, mining method.
 Directory of Illinois Coal Mines (Vermilion County) - Mine names, mine index, ownership, years of operation.
 Federal Land Bank Report (Vermilion County) - Mine outline (general area of mining).

Mine Index 3836
Charles Winehouse, Winehouse Mine

Type: Underground Total mined-out acreage shown: None Production indicates approximately 6 acres were mined. This mine is shown as part of a 70-acre general area of mining from the Federal Land Bank Report.

SHAFT, SLOPE, DRIFT or TIPPLE LOCATIONS

Type	County	Township-Range	Section	Quarters-Footage
Main shaft	Vermilion	19N 12W	18	NE NE NE *

* Irregular section; see page 6, '*Shaft, slope, drift or tipple locations*'

GEOLOGY

Seam(s) Mined	Depth (ft)	Thickness (ft)			Mining Method
		Min	Max	Ave	
Danville	40-60			6.0	RP

Geologic Problems Reported:

PRODUCTION HISTORY

Company	Mine Name	Years	Production (tons)
Cobert Brothers	Cobert Brothers	1899-1900	7,500
William Winehouse	Winehouse	1900-1906 **	15,390
Charles Winehouse	Winehouse	1906-1908	4,100
			26,990

** Idle 1904, 1906

Last reported production: 1908

SOURCES OF DATA

Source Map	Date	Original Scale	Digitized Scale	Map Type
ISGS mine notes	Undated	(text only)	1:24000 ***	Secondary source
Federal Land Bank Report	1-1934	1:105000	1:105000	Secondary source

*** Point plotted onto 1:24,000 USGS topographic map and digitized.

Annotated Bibliography (data source, brief description of information)

Coal Reports - Production, ownership, years of operation.
 Directory of Illinois Coal Mines (Vermilion County) - Mine names, mine index, ownership, years of operation.
 Mine notes (Vermilion County) - Mine type, shaft location, seam, depth, thickness.
 Federal Land Bank Report (Vermilion County) - Mine outline (general area of mining).

Mine Index 3837**Black Diamond Coal Company, Black Diamond No. 1 Mine**

Type: Surface Total mined-out acreage shown: None Production indicates approximately 13 acres were mined. This is shown on the accompanying map as a general area of mining.

SHAFT, SLOPE, DRIFT or TIPPLE LOCATIONS

Type	County	Township-Range	Section	Quarters-Footage
Tipple	Vermilion	19N 12W	18	NW NE *

* Irregular section; see page 6, 'Shaft, slope, drift or tipple locations'

GEOLOGY

Seam(s) Mined	Depth (ft)	Thickness (ft)			Mining Method
		Min	Max	Ave	
Danville	20			6.0-6.17	Surface

Geologic Problems Reported:

PRODUCTION HISTORY

Company	Mine Name	Years	Production (tons)
Black Diamond Coal Company	Black Diamond No. 1	1910-1913	<u>123,653</u> 123,653

Last reported production: 1913

SOURCES OF DATA

Source Map	Date	Original Scale	Digitized Scale	Map Type
ISGS mine notes	Undated	(text only)	1:24000 **	Secondary source

** Point plotted onto 1:24,000 USGS topographic map and digitized.

Annotated Bibliography (data source, brief description of information)

Coal Reports - Production, ownership, years of operation, mining method.

Directory of Illinois Coal Mines (Vermilion County) - Mine names, mine index, ownership, years of operation.

Mine notes (Vermilion County) - Mine type, mine location, seam, depth, thickness.

Mine Index 3838**Salt Fork Coal Company, Missionfield Mine**

Type: Surface Total mined-out acreage shown: None Production indicates approximately 175 acres were mined. This mine was probably later enlarged upon by United Electric No. 4 Mine (mine index 3830) so that all Missionfield pits were encompassed.

SHAFT, SLOPE, DRIFT or TIPPLE LOCATIONS

Type	County	Township-Range	Section	Quarters-Footage
Tipple	Vermilion	19N 12W	19 *	

* The main operations were said to be in section 17 of T19N-R12W.

GEOLOGY

Seam(s) Mined	Depth (ft)	Thickness (ft)			Mining Method
		Min	Max	Ave	
Danville	14-25			5.5-6.0	Surface

Geologic Problems Reported:

PRODUCTION HISTORY

Company	Mine Name	Years	Production (tons)
Consolidated Coal Company of St. Louis	Missionfield	1890-1897 **	930,883
Butler Brothers Company (lessee)	Missionfield	1897-1898	110,320
Consolidated Coal Company	Missionfield	1898-1904	535,520
Salt Fork Coal Company	Missionfield	1904-1907	64,489
			<u>1,641,212</u>

** US Bureau of Mines Bulletin 298 said this mine was opened by Consolidated Coal Company of St. Louis in 1885, and operated by Wright & Wallace in 1885, succeeded by Butler Brothers in 1890-1896. Wright & Wallace were not in our list of unlocated mines at the back of this report.

Last reported production: 1907

SOURCES OF DATA

Source Map	Date	Original Scale	Digitized Scale	Map Type
ISGS mine notes	undated	(text only)	1:24000 ***	Secondary source

*** Point plotted onto 1:24,000 USGS topographic map and digitized.

Annotated Bibliography (data source, brief description of information)

Coal Reports - Production, ownership, years of operation, depth, thickness, mining method.
 Directory of Illinois Coal Mines (Vermilion County) - Mine names, mine index, ownership, years of operation.
 Mine notes (Vermilion County) - Mine type, tippie location, seam.

Mine Index 3848**Electric Coal Company, Electric No. 3 Mine**

Type: Underground Total mined-out acreage shown: 112 Production indicates approximately 4 acres were mined after the map date.

SHAFT, SLOPE, DRIFT or TIPPLE LOCATIONS

Type	County	Township-Range	Section	Quarters-Footage
Main slope	Vermilion	19N 12W	20	NE NE NW
Escape shaft	Vermilion	19N 12W	17	SE SE SW
Air shaft	Vermilion	19N 12W	17	SE SE SW
Air shaft	Vermilion	19N 12W	20	NW NW NW

GEOLOGY

Seam(s) Mined	Depth (ft)	Thickness (ft)			Mining Method
		Min	Max	Ave	
Danville	80-120			5.5-6.0	RP

Geologic Problems Reported:

PRODUCTION HISTORY

Company	Mine Name	Years	Production (tons)
Missionfield Coal Company	Missionfield No. 3	1911-1918	679,842
Electric Coal Company	Electric No. 3	1918-1918	23,667 *
			703,509

* Production after map date

Last reported production: October 1918

SOURCES OF DATA

Source Map	Date	Original Scale	Digitized Scale	Map Type
Company, Coal Section files 10-7-16	6-1918	1:1200	1:1200	Not final **

** The source map had been folded and was quite fragile; these folds may lead to distortions in the mine outline. Also, due to the delicate condition of the source map, the mylar was not taped to the source map, and this may lead to further distortions of the mine outline. The tracing was a composite of an earlier map (1914), which contained more of the old works than the 1918 map.

Annotated Bibliography (data source, brief description of information)

Coal Reports - Production, ownership, years of operation, seam, depth, thickness, mining method.
 Directory of Illinois Coal Mines (Vermilion County) - Mine names, mine index, ownership, years of operation.
 Mine notes (Vermilion County) - Mine type, slope location.
 Company map, courtesy Vermilion County Recorder's Office, traced, Coal Section files 10-7-16 - Mine outline, slope & shaft locations, mining method.

Mine Index 3877**Dixon Block Coal Company, Walnut Grove Mine**

Type: Surface Total mined-out acreage shown: 108 The area is larger than expected from the production (expected 38 acres). Some of the area along the Salt Fork probably had no coal (eroded), and so the outline shown on the mine map includes areas where mining did not occur, as well as areas of reduced extraction where only the pillars remained (3879, Crawford Brothers Mine was partially mined by this surface mine).

SHAFT, SLOPE, DRIFT or TIPPLE LOCATIONS

Type	County	Township-Range	Section	Quarters-Footage
Tipple	Vermilion	18N 13W	1	SW SW NW
Pit	Vermilion	19N 13W	25	E ½

GEOLOGY

Seam(s) Mined	Depth (ft)	Thickness (ft)			Mining Method
		Min	Max	Ave	
Danville	30			6.0	Surface

Geologic Problems Reported:

PRODUCTION HISTORY

Company	Mine Name	Years	Production (tons)
Dixon Block Coal Company	Walnut Grove	1946-1952	<u>372,049</u> 372,049

Last reported production: April 1952

SOURCES OF DATA

Source Map	Date	Original Scale	Digitized Scale	Map Type
Company map	4-2-1952	1:2400	1:3972	Final

Annotated Bibliography (data source, brief description of information)

Coal Reports - Production, ownership, years of operation.

Directory of Illinois Coal Mines (Vermilion County) - Mine names, mine index, ownership, years of operation.

Mine notes (Vermilion County) - Mine type, tipple location, seam, depth, thickness.

Company map, microfilm copy from Vermilion County Recorder's Office - Tipple & pit locations, mine outline, mining method.

Mine Index 3878**Central Coal Company, Central Mine**

Type: Underground Total mined-out acreage shown: 45

SHAFT, SLOPE, DRIFT or TIPPLE LOCATIONS

Type	County	Township-Range	Section	Quarters-Footage
Main slope	Vermilion	19N 12W	30	SW SW NE *
Air shaft	Vermilion	19N 12W	30	SW SW NE *

* Irregular section; see page 6, '*Shaft, slope, drift or tippie locations*'

GEOLOGY

Seam(s) Mined	Depth (ft)	Thickness (ft)			Mining Method
		Min	Max	Ave	
Danville				5.5-6.0	RPP

Geologic Problems Reported:

PRODUCTION HISTORY

Company	Mine Name	Years	Production (tons)
Joseph H. Mauck	Mauck	1910-1925	143,136 **
Central Coal Company	Central No. 1	1925-1927	32,250
Central Coal Company ***	Central No. 2	1928-1949	165,157
W. D. Mauck Coal Company	Mauck	1950-1950	2,701
Central Coal Company	Central	1951-1952	2,413
			345,657

** Idle or produced less than 10,000 tons in 1922

*** Operated 1948 and 1949 by W. D. Mauck

Last reported production: February 1952

SOURCES OF DATA

Source Map	Date	Original Scale	Digitized Scale	Map Type
Microfilm, document 352994	6-1-1952	1:1200	1:1738	Final

Annotated Bibliography (data source, brief description of information)

Coal Reports - Production, ownership, years of operation.

Directory of Illinois Coal Mines (Vermilion County) - Mine names, mine index, ownership, years of operation.

ENR Document 85/01 - Mining method.

Mine notes (Vermilion County) - Mine type, shaft location, seam, depth, thickness.

Microfilm map, document 352994, reel 03141, frame 137 - Slope & shaft locations, mine outline, mining method.

Mine Index 3879

Crawford Brothers, Crawford Mine

Type: Underground Total mined-out acreage shown: None Production indicates approximately 18 acres were mined. This is shown on the accompanying map as a general area of mining. Mine-notes indicate works were cut into by Dixon Block Coal Company's surface mine (3877).

SHAFT, SLOPE, DRIFT or TIPPLE LOCATIONS

Type	County	Township-Range	Section	Quarters-Footage
Main shaft	Vermilion	19N 12W	30	NW SE NW *

* Irregular section; see page 6, 'Shaft, slope, drift or tippie locations'

GEOLOGY

Seam(s) Mined	Depth (ft)	Thickness (ft)			Mining Method
		Min	Max	Ave	
Danville	50-55			5.0-6.0	RP

Geologic Problems Reported:

PRODUCTION HISTORY

Company	Mine Name	Years	Production (tons)
M. & F. France	France	1878-1879 **	1,500
S. & M. France	France	1881-1882 **	2,000
France Brothers	France Brothers	1882-1887 **	16,005
France & Drake	France & Drake	1887-1889 **	1,900
Daniel France & Son	France	1889-1893 **	3,630
S. & M. France	France	1894-1896	7,312
France Brothers	France	1896-1908 ***	48,715
Crawford Brothers	Crawford	1908-1913	8,086
			89,148

** This production may belong to an earlier mine.

*** Idle 1901

Last reported production: 1913

SOURCES OF DATA

Source Map	Date	Original Scale	Digitized Scale	Map Type
ISGS mine notes	Undated	(text only)	1:24000 †	Secondary source

† Point plotted onto 1:24,000 USGS topographic map and digitized.

Annotated Bibliography (data source, brief description of information)

Coal Reports - Production, ownership, years of operation.

Directory of Illinois Coal Mines (Vermilion County) - Mine names, mine index, ownership, years of operation.

ENR Document 85/01 - Mining method.

Mine notes (Vermilion County) - Mine type, shaft location, seam, depth, thickness.

Mine Index 3880
Lorenzo Balducki, Balducki Mine

Type: Underground Total mined-out acreage shown: None Production indicates less than 1 acre was mined. This area has been surface mined by Dixon Block Coal Company (3877), and therefore is not shown in the accompanying map.

SHAFT, SLOPE, DRIFT or TIPPLE LOCATIONS

Type	County	Township-Range	Section	Quarters-Footage
Main shaft	Vermilion	19N 12W	30	NW NW NW *
Air shaft	Vermilion	19N 12W	30	NW NW NW *, **

* Irregular section; see page 6, '*Shaft, slope, drift or tipple locations*'

** The air shaft was 19 feet north and 71 feet west of the hoist shaft.

GEOLOGY

Seam(s) Mined	Depth (ft)	Thickness (ft)			Mining Method
		Min	Max	Ave	
Danville				5.67-6.0	RP

Geologic Problems Reported:

PRODUCTION HISTORY

Company	Mine Name	Years	Production (tons)
Lorenzo Balducki ***	Balducki	1907-1913	<u>2,870</u> 2,870

*** The name was spelled various ways, including Balducchi and Baldueki.

Last reported production: 1913

SOURCES OF DATA

Source Map	Date	Original Scale	Digitized Scale	Map Type
ISGS mine notes	Undated	(text only)	1:24000 †	Secondary source

† Point plotted onto 1:24,000 USGS topographic map and digitized.

Annotated Bibliography (data source, brief description of information)

Coal Reports - Production, ownership, years of operation, mining method.
 Directory of Illinois Coal Mines (Vermilion County) - Mine names, mine index, ownership, years of operation.
 Mine notes (Vermilion County) - Mine type, shaft locations, seam, thickness.

Mine Index 3882
Bushong Brothers, Muncie Mine

Type: Underground Total mined-out acreage shown: 13 Production indicates approximately 60 acres were mined. Additional mining is shown on the accompanying map as a general area of mining from the Federal Land Bank Report.

SHAFT, SLOPE, DRIFT or TIPPLE LOCATIONS

Type	County	Township-Range	Section	Quarters-Footage
Main shaft	Vermilion	19N 13W	9	SE SW SW
Air shaft	Vermilion	19N 13W	9	SE SW SW

GEOLOGY

Seam(s) Mined	Depth (ft)	Thickness (ft)			Mining Method
		Min	Max	Ave	
Danville	188-210			5.2-6.0	MRP

Geologic Problems Reported:

PRODUCTION HISTORY

Company	Mine Name	Years	Production (tons)
Muncie Coal Company	Muncie No. 1	1893-1900	115,953
Entre Nous Coal Company	Muncie	1900-1901	15,000
Muncie Coal Company	Muncie No. 1	1901-1903	27,732
F. W. Davis	Muncie	1903-1904	6,000
Atherton Coal Company	Atherton No. 1	1904-1905	10,280
Central Coal & Coke of Chicago	Muncie	1905-1906 *	none
Vermilion Valley Mining Company	Vermilion Valley	1906-1907	9,800
Frank Davis	Muncie	1907-1908	17,649
Bushong Brothers **	Muncie	1908-1912	78,648
			<u>281,062</u>

* Idle 1906

** Owned by W. G. Hartshorn, operated by Bushong Brothers

Last reported production: 1912

SOURCES OF DATA

Source Map	Date	Original Scale	Digitized Scale	Map Type
State archive, MSHA_1155_01	8-1-1908	1:2400	1:2400	Not final
Federal Land Bank Report	1-1934	1:105000	1:105000	Secondary source

Annotated Bibliography (data source, brief description of information)

Coal Reports - Production, ownership, years of operation.

Directory of Illinois Coal Mines (Vermilion County) - Mine names, mine index, ownership, years of operation.

Mine notes (Vermilion County) - Mine type, shaft location, seam, depth, thickness.

State archive, MSHA_1155_01 - Mine outline, shaft locations, mining method.

Federal Land Bank Report (Vermilion County) - Mine outline (general area of mining).

Mine Index 3884
Lorenzo Baldueki, Baldueki Mine

Type: Underground Total mined-out acreage shown: 9

SHAFT, SLOPE, DRIFT or TIPPLE LOCATIONS

Type	County	Township-Range	Section	Quarters-Footage
Main shaft *	Vermilion	19N 13W	25	NW NE SE
Air shaft *	Vermilion	19N 13W	25	NW NE SE

* Shafts not shown on map. The locations of these shafts were surface mined by Dixon Block Coal Company (3877).

GEOLOGY

Seam(s) Mined	Depth (ft)	Thickness (ft)			Mining Method
		Min	Max	Ave	
Danville	72			6.0	MRP

Geologic Problems Reported:

PRODUCTION HISTORY

Company	Mine Name	Years	Production (tons)
Lorenzo Baldueki *	Baldueki	1916-1935	64,384 64,384

* The last name was spelled various way, such as Balducchi. The spelling used here corresponds with the mine map.

Last reported production: 1935

SOURCES OF DATA

Source Map	Date	Original Scale	Digitized Scale	Map Type
Microfilm, document 352887	1-5-1937	1:1200	1:1407	Final

Annotated Bibliography (data source, brief description of information)

Coal Reports - Production, ownership, years of operation.
 Directory of Illinois Coal Mines (Vermilion County) - Mine names, mine index, ownership, years of operation.
 ENR Document 85/01 - Mining method.
 Mine notes (Vermilion County) - Mine type, shaft location, seam, depth, thickness.
 Microfilm map, document 352887, reel 03140, frame 518 - Shaft locations, mine outline, mining method.

Mine Index 3885**Jordan & Fall Coal Company, Jordan & Fall Mine**

Type: Underground Total mined-out acreage shown: None Production indicates less than 1 acre was mined. The general area of mining from a secondary source is much larger (62 acres); other companies may have mined in this vicinity (see the unlocated mines at the back of this report).

SHAFT, SLOPE, DRIFT or TIPPLE LOCATIONS

Type	County	Township-Range	Section	Quarters-Footage
Main opening	Vermilion	19N 13W	27	NE NE SE

GEOLOGY

Seam(s) Mined	Depth (ft)	Thickness (ft)			Mining Method
		Min	Max	Ave	
Danville					RP

Geologic Problems Reported:

PRODUCTION HISTORY

Company	Mine Name	Years	Production (tons)
Jordan & Fall Coal Company	Jordan & Fall	1932-1932	<u>3,000</u> 3,000

Last reported production: 1932

SOURCES OF DATA

Source Map	Date	Original Scale	Digitized Scale	Map Type
ISGS mine notes	Undated	(text only)	1:24000 *	Secondary source
Federal Land Bank Report	1-1934	1:105000	1:105000	Secondary source

* Point plotted onto 1:24,000 USGS topographic map and digitized.

Annotated Bibliography (data source, brief description of information)

Coal Reports - Production, ownership, years of operation, mining method.
 Directory of Illinois Coal Mines (Vermilion County) - Mine names, mine index, ownership, years of operation.
 ENR Document 85/01 - Mining method.
 Mine notes (Vermilion County) - Mine type, shaft location, seam.
 Federal Land Bank Report (Vermilion County) - Mine outline (general area of mining).

Mine Index 3886
George Brothers Coal Company, George Mine

Type: Underground Total mined-out acreage shown: 2

SHAFT, SLOPE, DRIFT or TIPPLE LOCATIONS

Type	County	Township-Range	Section	Quarters-Footage
Main slope	Vermilion	19N 13W	27	NW NW SE
Air slope	Vermilion	19N 13W	27	NW NW SE

GEOLOGY

Seam(s) Mined	Depth (ft)	Thickness (ft)			Mining Method
		Min	Max	Ave	
Danville	185			5.167	MRP

Geologic Problems Reported:

PRODUCTION HISTORY

Company	Mine Name	Years	Production (tons)
George Brothers Coal Company	George	1934-1940	<u>11,643</u> 11,643

Last reported production: April 8, 1940

SOURCES OF DATA

Source Map	Date	Original Scale	Digitized Scale	Map Type
Microfilm, document 352929	4-9-1940	1:1200	1:1738	Final

Annotated Bibliography (data source, brief description of information)

Coal Reports - Production, ownership, years of operation.
 Directory of Illinois Coal Mines (Vermilion County) - Mine names, mine index, ownership, years of operation.
 ENR Document 85/01 - Mining method.
 Mine notes (Vermilion County) - Mine type, slope location, seam, depth, thickness.
 Microfilm map, document 352929, reel 03141, frame 69 - Slope locations, mine outline, mining method.

Mine Index 6579**Buskirk Coal Company, Woodard Mine**

Type: Underground Total mined-out acreage shown: 17 Approximately 2 acres were mined after the map date.

SHAFT, SLOPE, DRIFT or TIPPLE LOCATIONS

Type	County	Township-Range	Section	Quarters-Footage
Main shaft	Vermilion	19N 12W	19	SW SE SW *
Air shaft	Vermilion	19N 12W	19	SW SE SW *

* Irregular section; see page 6, 'Shaft, slope, drift or tippie locations'

GEOLOGY

Seam(s) Mined	Depth (ft)	Thickness (ft)			Mining Method
		Min	Max	Ave	
Danville	70-80			5.5-6.0	MRP

Geologic Problems Reported:

PRODUCTION HISTORY

Company	Mine Name	Years	Production (tons)
Woodard Coal Company	Woodard	1912-1915	5,258
Frank Woodard	Woodard	1915-1920 **	19,960
Burt Woodard	Woodard	1920-1922	2,500 ***
Frank Woodard	Woodard	1922-1932	16,528
Woodard Coal Company	Woodard	1933-1936 †	6,330
Chester W. Larson	Woodard	1937-1937	2,800
Chester W. Larson	Woodard	1937-1939	2,000 ††
Woodard Coal Company †††	Woodard	1940-1940	1,003 ††
Woodard Coal Company ‡	Woodard	1940-1941	827 ††
Buskirk Coal Company	Woodard	1941-1943	6,204 ††
			63,410

** Idle 1920

*** Production not reported 1922 for mines producing less than 10,000 tons

† Production not reported 1930-1933 for mines producing less than 1,000 tons per year; this mine was not reported in 1930 and 1931.

†† Production after map date

††† Operated by Chester W. Larson

‡ Operated by Frank Woodard

Last reported production: 1943

SOURCES OF DATA

Source Map	Date	Original Scale	Digitized Scale	Map Type
Microfilm, document 353004	7-1937	1:600	1:1034	Not final

Annotated Bibliography (data source, brief description of information)

Coal Reports - Production, ownership, years of operation.

Directory of Illinois Coal Mines (Vermilion County) - Mine names, mine index, ownership, years of operation.

ENR Document 85/01 - Mining method.

Mine notes (Vermilion County) - Mine type, shaft location, seam, depth, thickness.

Microfilm map, document 353004 reel 03141, frame 149 - Shaft locations, mine outline, mining method.

OTHER MINES SHOWN ON THE OAKWOOD QUADRANGLE

Mine index 3887 SE SE NE 31-T19N-R13W, source: ISGS field notes

Mine index 6536 SE NE NW * 31-T19N-R12W, source: Coal Section database

Mine index 6578 NE SW SE * 18-T19N-R12W, slope, source: ISGS mine notes

Mine Index 6583 NW NE SW * 30-T19N-R12W and NE NW SW 30-T19N-R12W, source: ISGS mine notes

Mine Index 6584 SE NE NE 25-T19N-R13W and SE SE NE 25-T19N-R13W, These locations were later surface mined by Dixon Block Coal Company (3877) and therefore they are not shown on the map. Source: ISGS mine notes

* Irregular section; see page 6, 'Shaft, slope, drift or tippie locations'

MINES WHOSE LOCATIONS ARE NOT KNOWN, OAKWOOD QUADRANGLE

The locations of the following mines are unknown, but the production tonnage, operating names, and nearest town were reported in the Annual Coal Reports. The operators listed below mined in or near the Oakwood Quadrangle. The information shown is similar to that presented on the summary sheets in the previous pages of this directory. The first item is the name the mine operated under as listed in the Coal Report, then the years the mine reported. If no physical data are available, the next item listed is the total tons produced by the mine. If physical data are available, the order of presentation is as follows: type of opening for the mine (drift, slope or shaft), seam mined, depth of coal in feet, and thickness of coal in feet.

The total tons mined by these unlocated mines is 263,037 (246,602 underground-mined, 286 surface mined, and 16,149 mined by unspecified method), which would represent approximately 43 to 73 acres, depending on the recovery factor, mining method, and numerous other factors. (Note: 1 square mile = 640 acres) Some listings may be duplicated on the Danville Southwest Quadrangle and are not in addition to those listed in there; several mines with Oakwood addresses were located on that quadrangle to the east.

MINE INFORMATION	PRODUCTION	MINE INDEX
FAIRMOUNT		
France (Fred), 1881-1882, shaft, 93, 5.0	1,500 tons	91830002
Hall (William), 1881-1882, shaft, 82, 5.0	900 tons	91830004
Tilton (Charles), 1881-1884, shaft, 80-103, 4.5-5.0	5,200 tons	91830005
Jordan, 1878-1879, shaft, 160, 5.5	1,200 tons	91830021
Miller (Emanuel), 1882-1883, shaft, 105, 5.0 <i>see E. Miller, Vandercook, surface mine</i>	900 tons	91830045
Emmett (G.) & Davis (W.), 1884-1886, shaft, Danville, 94-98, 5.5-6.0	4,600 tons	91830060
Emmett (George), No. 1 Mine, 1886-1891	<u>8,038</u> tons	
	12,638 tons	
Catlett (H. B.), 1888-1889, underground, RP	6,143 tons	91830099
Thompson & Billman, 1887-1890, shaft, Danville, 98, 5.5, RP	5,632 tons	91830100
Emmett (George), 1890-1891	<u>1,410</u> tons	
	7,042 tons	
Shephard (Reese), 1908-1909, shaft, Danville, 226, 6.0, RP	5,140 tons	91830257
McConnell (F. H.), 1930-1930, underground	2,170 tons	91830494
MUNCIE		
Reed Stripping Company, 1935-1935, surface	158 tons	91830561

Missionfield Coal Company, 1936-1937, surface	128 tons	91830563
OAKWOOD		
Shock (Valentine), 1878-1885, shaft, Danville, 50-60, 5.5-6.0, RP	3,000 tons	91830024
McBroom (Joseph) & Jerks (Hiram), 1878-1879, surface	5,000 tons	91830029
McBroom (James), 1883-1884	1,000 tons	
McBroom (Joseph), 1885-1888, surface, 12, 6.0	11,520 tons	
McBroom (John), 1888-1889	<u>2,400 tons</u> 19,920 tons	
Woodard Brothers (W. & J.), 1884-1887, shaft, Danville, 40, 6.0	3,050 tons	91830059
Woodard (William), 1887-1889	<u>2,250 tons</u> 5,300 tons	
Thomas (John), 1884-1885, drift, Danville, —, 6.0	375 tons	91830064
Neely (N.), 1885-1887, drift, Danville, 100, 6.0, RP	880 tons	91830076
Woodard (James), 1886-1888, shaft, Danville, 45, 6.0, RP	2,620 tons	91830087
Johns & Castleton, 1887-1889	1,550 tons	91830101
Jones & Castleton, 1889-1890	<u>320 tons</u> 1,870 tons	
Thomas (William), 1887-1891, slope, Danville, 100, 5.5, RP	820 tons	91830102
France Brothers, 1888-1889, shaft, Danville, 86, 5.33-5.5, RP	420 tons	91830121
France Brothers & Stuebe, 1889-1890	3,800 tons	
Middle Fork Coal Company, 1890-1893	<u>158,911 tons</u> 163,131 tons	
1.5 miles east of Oakwood, on C., C., C. & St. L. RR. near CCCstL strip mine.		
Mitchell (John) & Son, 1910-1912, shaft, Danville, 40, 5.83-6.0, RP	2,100 tons	91830266
Swisher (W. P.), 1919-1926	12,671 tons	91830348
Cramer & Schramm, 1924-1925	1,200 tons	91830408
Miller & Fruax (Truax?), 1926-1926	480 tons	91830428
Crawford & Kelley Coal Company, 1934-1934, underground	3,878 tons	91830528
Possum Trot Coal Company, 1934-1935, underground	1,245 tons	91830533
Jenkins Coal Company, 1935-1935, underground	500 tons	91830555

INDEX OF MINES IN THE OAKWOOD QUADRANGLE

Aldredge Brothers Coal Company	13
Aldredge Coal Company	13
Atherton Coal Company	28
Auter & Sons Coal Company	18
Balducci (Lorenzo)	27
Baldueki (Lorenzo)	29
Bennett Station Mine	9
Billman (Thompson & Billman)	33
Black Diamond Coal Company	21
Brown (Harry) Coal Company, No. 2 Mine	10
Brown Coal Company, No. 2 Mine	10
Bushong Brothers, Muncie Mine	28
Buskirk Coal Company	32
Butler Brothers Company	22
Castleton (Johns/Jones & Castleton)	34
Catlett (H. B.)	33
Central Coal & Coke of Chicago	28
Central Coal Company, No. 1 Mine	25
Central Coal Company, No. 2 Mine	25
Chicago Collieries Company, No. 3 Mine	9
Cobert Brothers	20
Consolidated Coal Company of St. Louis, Fairmount Mine	12
Consolidated Coal Company of St. Louis, Missionfield Mine	22
Consolidated Coal Company, Missionfield Mine	22
Cramer & Schramm	34
Crawford (James H.) Coal Company	17
Crawford & Kelley Coal Company	34
Crawford Brothers	26
Davis (Emmett & Davis)	33
Davis (F. W.)	28
Davis (Frank)	28
DeValley Brothers	19
Dixon Block Coal Company	24
Drake (France & Drake)	26
DuVall & Lewis & Company	19
Electric Coal Company, No. 3 Mine	23
Electric Coal Company, No. 4 Mine	15
Emmett (G.) & Davis (W.)	33
Emmett (George)	33
Emmett (George), No. 1 Mine	33
Entre Nous Coal Company	28
Ervin (Cecil)	14
Fairmount Coal Company	9
Fairmount Coal Mining Company	12
Fall (Jordan & Fall Coal Company)	30
France (Daniel) & Son	26
France (Fred)	33
France (M. & F.)	26
France (S. & M.)	26
France & Drake	26
France Brothers	26, 34
France Brothers & Stuebe	34
Fruax (Miller & Fruax)	34
George Brothers Coal Company	31
Hall (William)	33
Hartshorn (W. G.)	28
Illinois & West Virginia Coal Company	11
Illinois Mine	11
Jenkins Coal Company	34
Jerks (Hiram)	34
Johns & Castleton	34
Jones & Castleton	34
Jordan	33

Jordan & Fall Coal Company	30
Jordan Coal Company	9
Kelley (Crawford & Kelley Coal Company).	34
Lakeside Coal Company	14
Larson (Chester W.)	32
Lee Coal Company, Oakwood No. 2 Mine.	11
Lewis (DuVall & Lewis & Company).	19
Mauck (Joseph H.)	25
Mauck (W. D.) Coal Company	25
McBroom (James)	34
McBroom (John)	34
McBroom (Joseph)	34
McConnell (F. H.)	33
Middle Fork Coal Company	34
Miller (Emanuel).	33
Miller & Fruax (Truax?)	34
Missionfield Coal Company	33
Missionfield Coal Company, No. 3 Mine	23
Missionfield Mine	22
Mitchell (John) & Son.	34
Morin & Nevario	9
Muncie Coal Company.	28
Neely (N.)	34
Nevario (Morin & Nevario)	9
Oakwood Coal Company	10, 16
Oakwood No. 2 Mine	11
Pilkington (Clarence)	14
Possum Trot Coal Company	34
Reed Stripping Company.	33
Salt Fork Coal Company	22
Scarce Brothers Coal Company	18
Schramm (Cramer & Schramm)	34
Shephard (Reese)	33
Shirkey (Hugh).	9
Shock (Valentine)	34
South Oakwood Coal Company.	16
Stuebe (France Brothers & Stuebe).	34
Swisher (W. P.)	34
Thomas (John).	34
Thomas (William).	34
Thompson & Billman	33
Tilton (Charles)	33
Truax (Fruax).	34
Turner (Floyd)	13
United Electric Coal Company, No. 4 Mine	15
Vermilion Valley Mining Company	28
Wallace (Wright & Wallace).	22
Walnut Grove Mine	24
Winehouse (Charles).	20
Winehouse (William)	20
Woodard (Burt)	32
Woodard (Frank)	32
Woodard (James)	34
Woodard (William).	34
Woodard Brothers	34
Woodard Coal Company	32
Woods (William).	9
Worley (Alva) Coal Company.	18
Worley Coal Company.	18
Wright & Wallace	22

Funding for this project was supplied by the Illinois Department of Transportation .