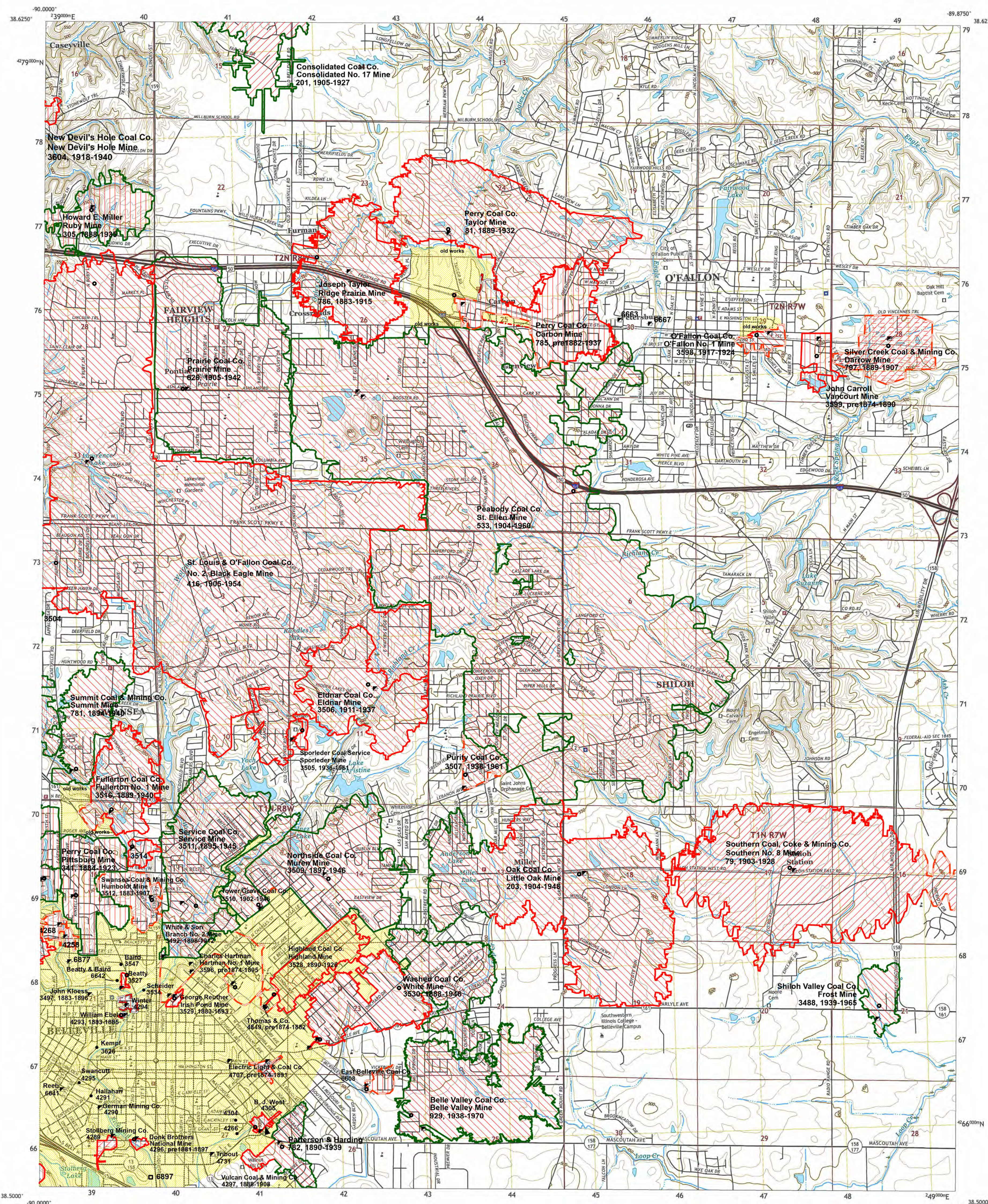


Coal Mines in Illinois
O'Fallon Quadrangle

St. Clair County, Illinois

This map accompanies the Coal Mines Directory for the O'Fallon Quadrangle. Consult the directory for a complete explanation of the information shown on this map.



Mining Method

- Room & Pillar (RP)
- Room & Pillar Basic (RPB)
- Modified Room & Pillar (MRP)
- Room & Pillar Panel (RPP)
- Blind Room & Pillar (BRP)
- Checkerboard Room & Pillar (CRP)
- High Extraction Retreat (HER)
- Longwall (LW)
- Underground, Method Unknown
- Strip Mine
- Auger Mine
- General Area of Mining

Other Areas Depicted

- Non-Coal Mines

Source of Mine Outline

- Final Mine Map
- Not Final Mine Map
- Undated Mine Map
- Incomplete Mine Map
- Secondary Source Map

Tipple, Shaft, Slope, Drift Locations

- Strip Mine Tipple - Active
- Strip Mine Tipple - Abandoned
- Mine Shaft - Active
- Mine Shaft - Abandoned
- Mine Slope - Active
- Mine Slope - Abandoned
- Mine Drift - Active
- Mine Drift - Abandoned
- Air Shaft
- Uncertain Location
- Uncertain Type of Opening

Other Points Depicted

- Non-Coal Mines

Location

Mine Annotation
(space permitting)

Company
Mine Name
ISGS Index No., Years of Operation

Disclaimer

Please check the Coal Section at the Illinois State Geological Survey's web site at <https://www.isgs.illinois.edu> for the most up-to-date version of these products.

Note that each quadrangle scale mined-out area map requires the use of the associated text directory for full explanation of map features and mine attributes. Also note that some quadrangles have multiple seams of mining and therefore more than one map may be available for a particular quadrangle. Please take care to check for multiple maps, as extensive mining may exist in the other seams.

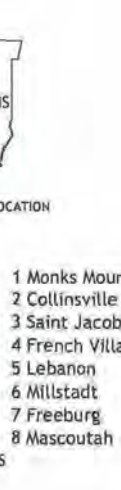
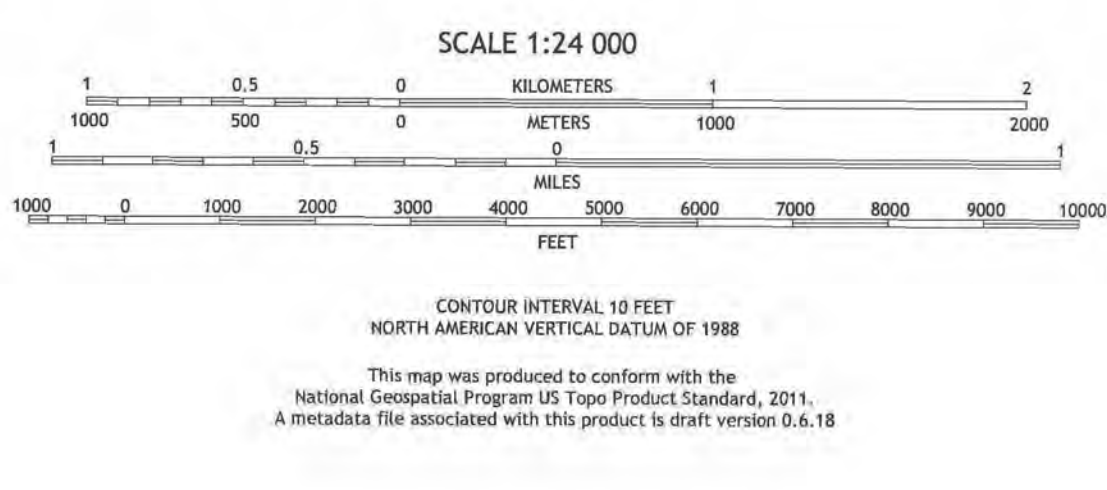
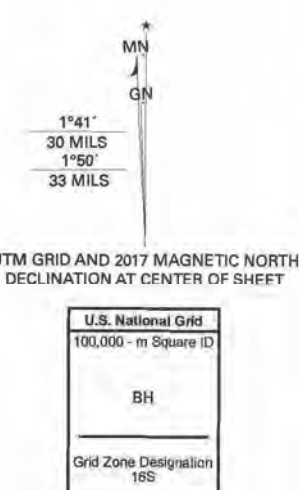
The maps and digital files used for these studies were compiled from data obtained from a variety of public and private sources and have varying degrees of completeness and accuracy. This compilation map presents reasonable interpretation of the geology of the area and is based on available data. Locations of some mine features may be off by 500 feet or more due to errors in the original source maps, the compilation process, digitizing, or a combination of these factors. These data are not intended for use in site-specific screening or decision-making. Use of these documents does not eliminate the need for detailed studies to fully understand the geology of a specific site. The Illinois State Geological Survey, Prairie Research Institute, or the University of Illinois make no guarantee, expressed or implied, regarding the correctness of the interpretations presented in this data set and accept no liability for the consequences of decisions made by others on the basis of the information presented here.

These maps were designed for use at 1:24,000. Enlarging the map may reduce accuracy, as the original scale of the source maps used to compile the outlines shown varies from 1:400 to 1:150,000, and some mine locations are known only from text descriptions. See the accompanying mine directory for the original scale of the source map used for a specific mine to check accuracy of a given portion of the map. Areas with no mines shown may still be undermined; see the unlocated mines list at the back of each mine directory.

The image of the U.S.G.S. topographic base map was projected from the original UTM to Lambert Conformal Conic.

Produced by the United States Geological Survey
North American Datum of 1983 (NAD83)
World Geodetic System of 1984 (WGS84). Projection and
100-meter grid Universal Transverse Mercator, Zone 15S16S
This map is not a legal document. Boundaries may be
generalized for this map scale. Private lands within government
reservations may not be shown. Obtain permission before
entering private lands.

Imagery:.....NAP, August 2015 - October 2015
Roads:.....U.S. Census Bureau, 2017
Names:.....National, GNS, 1980 - 2016
Hydrography:.....National, Hydrography Dataset, 2002 - 2017
Boundaries:.....National, National Elevation Dataset, 2002 - 2007
Public Land Survey System:.....BLM, 2017
Wetlands:.....FWS National Wetlands Inventory 1981 - 1995



ILLINOIS
Illinois State Geological Survey
PRAIRIE RESEARCH INSTITUTE

Prairie Research Institute
Illinois State Geological Survey
615 E. Peabody Dr.
Champaign, IL 61820

Mine Outlines Compiled by
Melony E. Barrett

August 1, 2000
Revised June 2004, October 2020 & January 10, 2024

DIRECTORY OF COAL MINES IN ILLINOIS 7.5-MINUTE QUADRANGLE SERIES O'FALLON QUADRANGLE ST. CLAIR COUNTY

Cheri Chenoweth, Melony E. Barrett, Scott D. Elrick



Department of Natural Resources
ILLINOIS STATE GEOLOGICAL SURVEY
2000
REVISED 2004, 2020, 2024

**DIRECTORY OF COAL MINES IN ILLINOIS
7.5-MINUTE QUADRANGLE SERIES
O'FALLON QUADRANGLE
ST. CLAIR COUNTY**

2000
REVISED 2004, 2020, 2024

ILLINOIS STATE GEOLOGICAL SURVEY
William Shilts, Chief

Natural Resources Building
615 East Peabody Drive
Champaign, Illinois 61820

Phone 1-217-244-4610
Fax 1-217-333-2830

Cover photo Track-mounted duckbill loading machine at a Peabody Coal Company mine, ca. 1915.

DISCLAIMER: The accuracy and completeness of mine maps and directories vary with the availability of reliable information. Maps and other information used to compile this mine map and directory were obtained from a variety of sources and the accuracy of some of the original information cannot be verified. Consequently, the Illinois State Geological Survey (ISGS) cannot guarantee the mine maps are free of errors and disclaims any responsibility for damages that may result from actions or decisions based on them.

The ISGS updates the maps and directories periodically, and welcomes any new information or corrections. Please contact the Coal Section of the ISGS at the address shown on the title page of this directory, or telephone (217) 244-4610.

Printed by authority of the State of Illinois/2000

CONTENTS

INTRODUCTION	1
MINING IN THE O'FALLON QUADRANGLE	1
PART I EXPLANATION OF MAP AND MINE SUMMARY SHEET	2
INTERPRETING THE MAP	2
Mine Type and Mining Method	2
Source Maps	3
Points and Labels	3
INTERPRETING A MINE SUMMARY SHEET	6
REFERENCES	8
PART II DIRECTORY OF MINES IN O'FALLON QUADRANGLE	9
MINE SUMMARY SHEETS	9
Mine Index 79	
Southern Coal, Coke & Mining Company, Southern No. 8 Mine	9
Mine Index 81	
Perry Coal Company, Taylor Mine	10
Mine Index 201	
Consolidated Coal Company, Consolidated No. 17 Mine	11
Mine Index 203	
Oak Coal Company, Little Oak Mine	12
Mine Index 305	
Howard E. Miller, Ruby Mine	13
Mine Index 341	
Perry Coal Company, Pittsburg Mine	14
Mine Index 416	
St. Louis & O'Fallon Coal Company, St. Louis & O'Fallon No. 2, Black Eagle Mine	15
Mine Index 533	
Peabody Coal Company, St. Ellen Mine	16
Mine Index 626	
Prairie Coal Company, Prairie Mine	17
Mine Index 781	
Summit Coal & Mining Company, Summit Mine	18
Mine Index 782	
Patterson & Harding, Patterson & Harding Mine	19
Mine Index 785	
Perry Coal Company, Carbon Mine	20
Mine Index 786	
Joseph Taylor, Ridge Prairie Mine	21
Mine Index 797	
Silver Creek Coal & Mining Company, Darrow Mine	22
Mine Index 929	
Belle Valley Coal Company, Inc., Belle Valley Mine	23
Mine Index 3488	
Shiloh Valley Coal Company, Frost Mine	24
Mine Index 3492	
White & Son, Branch No. 2 Mine	25
Mine Index 3497	
John Kloess, Kloess No. 1 Mine	26
Mine Index 3504	
New Royal Coal Company, New Royal Mine	27
Mine Index 3505	
Sporleder Coal Service, Sporleder Mine	28
Mine Index 3506	
Eldnar Coal Company, Eldnar Mine	29
Mine Index 3507	
Purity Coal Company, Purity Mine	30

Mine Index 3509	
Northside Coal Company, Muren Mine	31
Mine Index 3510	
Tower Grove Coal Company, Tower Grove Mine.	32
Mine Index 3511	
Service Coal Company, Service Mine	33
Mine Index 3512	
Swansea Coal & Mining Company, Humboldt Mine	34
Mine Index 3513	
Consolidated Coal Company, Green Mount Mine	35
Mine Index 3514	
Dutch Hollow Coal Company, Emmet Mine	36
Mine Index 3515	
Northwestern Coal Company, Northwestern Mine	37
Mine Index 3516	
Fullerton Coal Company, Fullerton No. 1 Mine.	38
Mine Index 3518	
Consolidated Coal Company, Schureman Mine.	39
Mine Index 3524	
West Belleville Coal Company, West Belleville Mine	40
Mine Index 3527	
James Beatty, Beatty Mine.	41
Mine Index 3528	
Highland Coal Company, Highland Mine	42
Mine Index 3529	
George Reuther, Irish Pond Mine.	43
Mine Index 3530	
Washed Coal Company, White Mine	44
Mine Index 3533	
Victoria Coal Company, Branch Mine (Victoria No. 1)	45
Mine Index 3596	
Bruggeman & Hortman Coal Company, Braun's Mine	46
Mine Index 3598	
O'Fallon Coal Company, O'Fallon No. 1 Mine	47
Mine Index 3599	
John Carroll, Vancourt Mine.	48
Mine Index 3604	
New Devil's Hole Coal Company, New Devil's Hole Mine	49
Mine Index 4258	
Frank Sargent & Son, Caseyville Mine.	50
Mine Index 4268	
Philip Weber & Company, Greenfield Mine	51
Mine Index 4289	
Stollburg Mining Company, Stollburg Mine.	52
Mine Index 4290	
German Mining Company, German Mine.	53
Mine Index 4293	
William Ebel, Ebel Mine	54
Mine Index 4294	
Fritz Winter, Winter Mine	55
Mine Index 4296	
Donk Brothers, National Mine	56
Mine Index 4297	
Vulcan Coal & Mining Company, Vulcan Mine No. 1	57
Mine Index 4305	
B. J. West, West Mine	58
Mine Index 4707	
Electric Light & Coal Company, Electric Light & Coal Mine	59
Mine Index 4731	
James Tribout, Tribout Mine.	60
Mine Index 4849	
Thomas & Company, Thomas Mine.	61

Mine Index 6608	
East Belleville Coal Company, East Belleville Mine	62
Mine Index 6641	
Nicholas Reeb, Reeb Mine	63
Mine Index 6642	
Beatty & Baird, Beatty & Baird Mine	64
Mine Index 6877	
Henry Taylor, Taylor Mine	65
OTHER MINES SHOWN ON THE O'FALLON QUADRANGLE MAP	66
Mine Index 3534, Scheider's Mine	66
Mine Index 3547, John Baird	66
Mine Index 3626, Kempf Mine	66
Mine Index 4266, Neupf Mine	66
Mine Index 4291, Hallahan Mine.	66
Mine Index 4295, Swancutt Mine	66
Mine Index 4304, Brooke Coal Company	66
Mine Index 6663	66
Mine Index 6667	66
Mine Index 6897	66
MINES WHOSE LOCATIONS ARE NOT KNOWN, O'FALLON QUADRANGLE	66
INDEX OF MINES IN THE O'FALLON QUADRANGLE	69

INTRODUCTION

Coal has been mined in 76 counties of Illinois. More than 7,400 coal mines have operated since commercial mining began in Illinois about 1810; fewer than 30 are currently active. To detail the extent and location of coal mining in Illinois, the Illinois State Geological Survey (ISGS) has compiled maps and directories of known coal mines. The ISGS offers maps at a scale of 1:100,000 and accompanying directories for each county in which coal mining is known to have occurred. Maps at a scale of 1:24,000 and accompanying directories such as this are available for selected quadrangles. Contact the ISGS for a list of these quadrangles.

These larger scale maps show the approximate positions of mines in relation to surface features such as roads and water bodies, and indicate the mining method used and the accuracy of the mine boundaries. The maps are useful for locating mine boundaries relative to specific properties and for assessing the potential for subsidence in an area. Mine boundaries compiled from final mine surveys are generally shown within 200 feet of their true position. As a result of poor cartographic quality and inaccuracies in the original mine surveys, boundaries of some older mines may be mislocated on the map by 500 feet or more. Original mine maps should be consulted in situations that require precise delineation of mine boundaries or internal workings of mined areas.

The directory serves as a key to the accompanying mine map and provides basic information on the coal mines. The directory is composed of two parts. Part I explains the symbols and patterns used on the accompanying map and the summary data presented for each mine. Part II numerically lists the mines in the quadrangle and summarizes the geology and production history of each mine.

MINING IN THE O'FALLON QUADRANGLE

Mining in this quadrangle began prior to 1874, and continued until 1970. The date of the earliest mining is not known; the 1874 Atlas of St. Clair County shows several mines in this area (including mining within Belleville), some with substantial railroad spurs to the mine tipple. The most recent mine in the O'Fallon quadrangle is the Belle Valley Mine (mine index 929), just east of Belleville. Two of the mines in this area operated for long periods; the St. Ellen Mine (mine index 533) was in operation for 56 years and St. Louis & O'Fallon No. 2 (mine index 416) operated for 49 years.

The Herrin Coal was the only coal mined here, ranging from 5.5 to 7.5 feet thick and 40 to 202 feet deep. A number of mines reported problems with the mine floor "heaving" or "squeezing". These problems typically occur in wet conditions such as this where the bedrock cover above the coal is relatively thin.

Note that a number of mines that are known to have operated in this area could not be located. All of this quadrangle contains minable coal and any area is potentially undermined.

PART I EXPLANATION OF MAP AND MINE SUMMARY SHEET

INTERPRETING THE MAP

The map accompanying this directory shows the location of coal mines known to be present in the quadrangle. The map, corresponding to a U.S. Geological Survey (USGS) 7.5-minute quadrangle, covers an area bounded by lines of latitude and longitude 7.5-minutes apart. In Illinois, a quadrangle is approximately 6.5 miles east to west and 8.5 miles north to south, an area of about 56 square miles. The USGS generally offers one map of mines per quadrangle. In some areas where extensive mining occurred in two or more overlapping seams, separate maps are compiled for mines in each seam to maintain readability of the map.

Mine Type and Mining Method

The mine type is indicated on the map by pattern color: green represents surface mines; red and yellow represent underground mines. The red patterns are used for areas of underground mining that are documented by a primary or secondary source map. A yellow pattern is used for cases where no map of the mine workings is available, but a general area of mining can be inferred from property maps or production figures. The patterns indicate the main mining methods used in underground mines. The methods are (1) room and pillar and (2) high extraction. The method used gives some indication of the amount and pattern of coal extraction within each mined area, and has some influence on the timing and type of subsidence that can occur over a mine.

The following discussion and illustrations of mining methods are based on Guither et al. (1984).

In room-and-pillar mines, coal is removed from haulage-ways (entries) and selected areas called rooms. Pillars of unmined coal are left between the rooms to support the roof. Depending on the size of rooms and pillars, the amount of coal removed from the production areas will range from 40% to 70%.

Room and Pillar - mining is divided into six categories:

- room-and-pillar basic (RPB, fig. 1A), an early method that did not follow a preset mining plan and therefore resulted in very irregular designs;
- modified room and pillar (MRP, fig. 1B);
- room-and-pillar panel (RPP, fig. 1C);
- blind room and pillar (BRP, fig. 1D);
- checkerboard room and pillar (CRP, fig. 1E);
- room and pillar (RP), a classification used when the specific type of room-and-pillar mining is unknown.

Blind and checkerboard are the most common types of room-and-pillar mining used in Illinois today. The knowledge of room-and-pillar mining methods gives a trained engineer information on the nature of subsidence that may occur. A more extensive discussion of subsidence can be found in Bauer et al. (1993).

High-extraction These mining methods are subdivided into high-extraction retreat (HER, Fig 1F) and longwall (LW, Fig 1G, 1H). In these methods, much of the coal is removed within well defined areas of the mine. Subsidence of the surface above these areas occurs within weeks. Once the subsidence activity ceases, the potential for further movement over these areas is low; however, subsidence may continue for several years after mining.

High-extraction retreat mining is a form of room-and-pillar mining that extracts most of the coal. Rooms and pillars are developed in the panels, and the pillars are then systematically removed (fig. 1F).

In early (pre-1960) longwall mines, mining advanced in multiple directions from a central shaft (fig. 1G). Large pillars of coal were left around the shaft, but all coal was removed beyond these pillars. Miners placed rock and wooden props and cribs in the mined-out areas to support the mine roof. The overlying rock gradually settled onto these supports, thus producing subsidence at the surface. In post-1959 longwall mines, room-and-pillar methods have been used to develop the main entries of the mine and panel areas. Modern longwall methods extract 100 percent of the coal in the panel areas (fig. 1H).

SOURCE MAPS

Mine outlines depicted on the map are, whenever possible, based on maps made from original mine surveys. The process of compiling and digitizing the quadrangle map may produce errors of less than 200 feet in the location of mine boundaries. Larger errors of 500 feet or more are possible for mines that have incomplete or inaccurate source maps.

Because of the extreme complexity of some mine maps, detailed features of mined areas have been omitted. The digitized mine boundary includes the exterior boundary of all rooms or entries that were at least 80 feet wide or protruded 500 feet from the main mining area. Unmined areas between mines are shown if they are at least 80 feet wide; unmined blocks of coal within mines are shown if they are at least 400 feet on each side. Original source maps should be consulted when precise information on mine boundaries or interior features is needed.

The mine summary sheet lists the source maps used to determine each mine outline. The completeness of map sources is indicated on the map by a line symbol at the mine boundary. Source maps are organized in five categories.

Final mine map The mine outline was digitized from an original map made from mine surveys conducted within a few months after production ceased. The date of the map and the last reported production are listed on the summary sheet.

Not a final map The mine is currently active or the mine outline was made from a map based on mine surveys conducted more than a few months before production ceased. This implies the actual mined-out area is probably larger than the outline on the map. The mine summary sheet indicated the dates of source maps and the last reported production, as well as the approximate tonnage mined between these two dates (if the mine is abandoned). The summary sheet also lists the approximate acreage mined since the date of the map and, in some cases, indicates the area where additional mining may have taken place. This latter information is determined by locating on the map the active faces relative to probable boundaries of the mine property.

Undated map The source map was undated, so it may or may not be based on a final mine survey. When sufficient data are available, the probable acreage of the mined area is estimated from reported production, average seam thickness and a recovery rate comparable to other mines in the area. This information is listed in the summary sheet for the mine.

Incomplete map The source map did not show the entire mine. The summary sheet indicates the missing part of the mine map and the acreage of the unmapped area, which is estimated from the amount of coal known to have been produced from the mine.

Secondary source map The original mine map was not found so the outline shown was determined from secondary sources (e.g., outlines from small-scale regional maps published in other reports). The summary sheet describes the secondary sources.

POINTS AND LABELS

The locations of all known mine openings (shafts, slopes, and drifts) and surface mine tipples are plotted on the map. Tipples are areas where coal was cleaned, stockpiled, and loaded for shipping.

Only openings or tipples are plotted for mines without source maps. If the precise locations of these features are unknown, a special symbol is used to indicate the approximate location of the mine.

Each mine on the map is labeled with the names of the mine and operating company, ISGS mine index number, and years of operation (if known) if space permits. A seam designation is given on maps where more than one seam was mined. For a mine that operated under more than one name, only the most recent name is generally given. When a mine changed names or ownership shortly before closing, an earlier name is listed. All company and mine names are listed on the mine summary sheet in the directory, under the production history segment.



Figure 1 Mining methods: (A) room-and-pillar basic (RPB), (B) modified room and pillar (MRP), (C) room-and-pillar panel (RPP), (D) blind room and pillar (BRP).



Figure 1 (cont.) Mining methods: (E) checkerboard room and pillar (CRP), (F) high extraction retreat (HER), (G) early (pre-1960) longwall, (H) post-1959 longwall



Figure 2 Generalized stratigraphic section, showing approximate vertical relations of coals in Illinois.

INTERPRETING A MINE SUMMARY SHEET

The mine summary sheet is arranged numerically by mine index number. Index numbers are shown on the map and in the mine listing. The mine summary sheet provides the following information (if available).

Company and mine name The last company or owner of the mine is used, unless no production was recorded for the last owner. In that case, the penultimate owner is listed. Mines often have no specific name; in these cases, the company name is also used as the mine name.

Type *Underground* denotes a subsurface mine in which the coal was reached through a shaft, slope, or a drift entry. *Surface* denotes a surface, open pit or strip mine.

Total mined-out acreage shown The total acreage of the mined area mapped, including any acreage mined on adjacent quadrangles, is calculated from the digitized outline of the mine. The acreage of large barrier pillars depicted on the map is excluded from the mined-out acreage. Small pillars not digitized are included in the acreage calculation. If the mine outline is not based on a final mine map, the acreage is followed by an estimate of additional acres that may have been mined. The estimate is determined from reported mine production, approximate thickness of the coal, and recovery rates calculated from nearby mines that used similar mining methods.

SHAFT, SLOPE, DRIFT OR TIPPLE LOCATIONS

Shaft, slope, drift, or tippie locations Locations of all known former entry points to underground mines or the location of coal cleaning, tippie, and shipping equipment used by the mine's facility are listed. The location is described in terms of county, township and range (Twp-Rge), section, and location within the section by quarters. NE SW NW, for instance, would describe the location in the northeast quarter of the southwest quarter of the northwest quarter. When sections are irregular in size, the quarters remain the same size and are oriented (or "registered") from the southeast corner of the section. Approximate footage from the section lines (FEL = from east line, FNL = from north line, for example) is given when that information is known; this indicates a surveyed location and is not derived from maps. Entry points are also plotted on the map and coded for the type of entry or tippie. A mine opening may have had many purposes during the life of the mine. Old hoist shafts are often later used for air and escape shafts; this information is included in the directory when known. The tippie for underground mines was generally located near the main shaft or slope. At surface mines, coal was sometimes hauled to a central tippie several miles from the mine pit.

GEOLOGY

Seam(s) mined The name of the coal seam(s) mined is listed, if known. If multiple seams were mined, they are all listed, although the mined-out area for each seam may be shown on separate maps. Figure 2 shows the stratigraphic section of the coal-bearing interval in Illinois, and the vertical relations among the coals.

Depth The depth to the top of the seam in the vicinity of the shaft is listed, if known. The depth is determined from notes made by geologists who visited the mine during its operation or from drill hole data in ISGS files. Depth generally varies little over the extent of a mine; however, reported depths for an individual mine may vary. Depth for surface-mined coals varies, and is usually represented as a range.

Thickness The approximate thickness of the mined seam is shown, if known. Thickness also comes from notes of geologists who visited the mine during its operation or from borehole data in ISGS files. Minimum, maximum, and average thicknesses are given when this information is available.

Mining method The principal mining method used at the mine (figs. 1A-H) is listed. See the mining methods section at the beginning of this directory for a discussion of this parameter.

Geologic problems reported Any known geologic problems, such as faults, water seepage, floor heaving, and unstable roof, encountered in the mine are reported. This information is from notes made by ISGS geologists who visited the mine, or from reports by mine inspectors published by the Illinois Department of Mines and Minerals, or from the source map(s). Geologic problems are not reported for active mines.

PRODUCTION HISTORY

Production history Tons of coal produced from the mine by each mine owner are totaled. When the source map used for the mine outline is not a final mine map, the tonnage produced since the date of the map is identified. For mines that extend into adjacent quadrangles, the tonnage reported includes areas mined in adjacent quadrangles.

SOURCE OF DATA

Source map This section lists information about the map(s) used to compile the mine outline and the locations of tipples and mine openings. In some cases more than one source map was used. For example, a map drawn before the mine closed may provide better information on original areas of the mine than a later map. When more than one map was used, the bibliography section explains what information was taken from each source.

Date The date of the most recent mine survey listed on the source map is reported.

Original scale The original scale of the source map is listed. Many maps are photo-reductions and are no longer at their original scale. The original scale gives some indication of the level of detail of the mine outline and the accuracy of the mine boundary relative to surface features. Generally, the larger the scale, the greater the accuracy and detail of the mine map. Mine outlines taken from source maps at scales smaller than 1:24,000 may be highly generalized and may well be inaccurately located with respect to surface features.

Digitized scale The scale of the digitized map is reported. The scale may be different from that of the original source map. In many cases the digitized map was made from a photo-reduction of the original source map, or the source map was not in a condition suitable for digitizing and the mine boundaries were transferred to another base map.

Map type Source maps are classified into five categories to indicate the probable completeness of the map. See discussion of source maps in the previous section.

Annotated bibliography Sources that provide information about the mine are listed, with the data taken from each source. Some commonly used sources are described below. Full bibliographic references are given for all other sources. Unless otherwise noted, all sources are available for public inspection at the ISGS.

Coal Reports Published since 1881, these reports contain tabular data on mine ownership, production, employment, and accidents. Some volumes include short descriptions made by mine inspectors of physical features and conditions in selected mines.

Directory of Illinois Coal Mines This source is a compilation of basic data about Illinois coal mines, originally gathered by ISGS staff in the early 1950s. Sources used for this directory are undocumented, but they are primarily Illinois Department of Mines and Minerals annual reports, ISGS mine notes, and coal company officials.

ENR Document 85/01, Guither, H. D., J. K. Hines, and R. A. Bauer, 1985 The Economic Effect of Underground Mining Upon Land Used for Illinois Agriculture: Illinois Department of Energy and Natural Resources Document 85/01, 185 p.

Microfilm map The U.S. Bureau of Mines maintains a microfilm archive of mine maps. A microfilm file for Illinois is available for public viewing at the ISGS.

Mine notes ISGS geologists have visited mines or contacted mine officials throughout the state since the early 1900s. Notes made during these visits range from brief descriptions of the mine location to long narratives (including sketches) of mining conditions and geology.

Federal Land Bank of St. Louis, Preliminary Reports on Subsidence Investigations Mining engineers working for the Federal Land Bank of St. Louis mapped areas of subsidence due to coal mining in the early 1930s. These reports often include county maps of mine properties with mined-out areas including shaft locations, as well as subsidence areas.

REFERENCES

Bauer, R. A., B. A. Trent, and P. B. Dumontelle, 1993, Mine Subsidence in Illinois: Facts for the Homeowner Considering Insurance: Illinois State Geological Survey, Environmental Geology Note 144, 16p.

Guither, H. D., J. K. Hines, and R. A. Bauer, 1985, The Economic Effects of Underground Mining Upon Land Used for Illinois Agriculture: Illinois Department of Energy and Natural Resources Document 85/01, 185p.

PART II DIRECTORY OF MINES IN O'FALLON QUADRANGLE

MINE SUMMARY SHEETS

A summary sheet on the geology and production history of each mine in the O'Fallon Quadrangle is provided. These summary sheets are arranged numerically by mine index number. Consult Part I for a complete explanation of the data listed in the summary sheet.

Mine Index 79

Southern Coal, Coke & Mining Company, Southern No. 8 Mine

Type: Underground Total mined-out acreage shown: 966

SHAFT, SLOPE, DRIFT or TIPPLE LOCATIONS

Type	County	Twp	Section	Quarters-Footage
Main shaft	St. Clair	1N 7W	17	SE SW NE
Air shaft	St. Clair	1N 7W	17	SE SW NE

GEOLOGY

Seam(s) Mined	Depth (ft)	Thickness (ft)			Mining Method
		Min	Max	Ave	
Herrin	115-128	6.0	7.5	6.7-7.0	RPP

Geologic Problems Reported: Clay veins, slips and rolls occur in this mine. The black shale roof contains concretions and slips. The slips extend up into the limestone above the shale. The displacement is generally 5 or 6 inches, but the roof is bad in the vicinity of slips and comes down in massive blocks. Gas is also present in the slips, and water seeps in from the slips. The floor clay heaves badly when wet. In one case where the pillar was slightly robbed and the clay was wet, the floor heaved 3 feet.

PRODUCTION HISTORY

Company	Mine Name	Years	Production (tons)
Lenz Coal & Mining Company	Lenz No. 2, Shiloh	1903-1905	52,324
Southern Coal & Mining Company	Southern No. 8	1905-1912	1,430,949
Southern Coal, Coke & Mining Company	Southern No. 8	1912-1927	4,811,276
Southern Coal, Coke & Mining Company	Southern No. 8	1927-1928	12,338 *
			<u>6,306,887</u>

* Production since map date

Last reported production: April 3, 1928

SOURCES OF DATA

Source Map	Date	Original Scale	Digitized Scale	Map Type
State archive, PB_986	1922	1:2400 (est.)	1:2400	Not final
WPA	6-21-1927	1:1200	1:24828	Secondary source

Annotated Bibliography (data source, brief description of information)

Coal Reports - Production, ownership, years of operation.
 Directory of Illinois Coal Mines (St. Clair County) - Mine names, mine index, ownership, years of operation.
 Mine notes (St. Clair County) - Thickness, depth, seam, mine type, shaft locations, geologic problems.
 Federal Land Bank Report (St. Clair County) - Depth, thickness.
 State archive, PB_986 - Mine outline (western), shaft locations, mining method.
 WPA, T1N-R7W - Mine outline (eastern), air shaft location (relative).

Mine Index 81
Perry Coal Company, Taylor Mine

Type: Underground Total mined-out acreage shown: 633 Production indicates an additional 12 acres were mined after the map date.

SHAFT, SLOPE, DRIFT or TIPPLE LOCATIONS

Type	County	Twp	Section	Quarters-Footage
Main shaft	St. Clair	2N 8W	24	NE SW SW
Air shaft	St. Clair	2N 8W	24	NE SW SW

GEOLOGY

Seam(s) Mined	Depth (ft)	Thickness (ft)			Mining Method
		Min	Max	Ave	
Herrin	200-212	6.5	8.0	7.0	MRP

Geologic Problems Reported: The roof was generally limestone with some areas of black shale, mostly on the west side of the mine. The areas of black shale had many slips and the roof was hard to hold. The mine was dry, or the floor clay would heave.

PRODUCTION HISTORY

Company	Mine Name	Years	Production (tons)
Joseph Taylor	Taylor No. 1	1889-1915	2,072,478
International Coal & Mining Company	Taylor	1915-1919	390,348
West Virginia Coal Company	Taylor	1919-1920	58,705
Perry County Coal Corporation	Taylor	1920-1921	114,291
Perry Coal Company	Taylor	1921-1930	1,866,008
Perry Coal Company	Taylor	1930-1932	76,585 *
			4,578,415

* Production after map date

Last reported production: January 1932

SOURCES OF DATA

Source Map	Date	Original Scale	Digitized Scale	Map Type
Microfilm, document 351074	3-1-1930	1:2400	1:4140	Not final
State archive, PB_419	8-2-1931	1:2400	1:2400	Not final
State archive, PB_421	4-2-1931	1:2400	1:2400	Not final

Annotated Bibliography (data source, brief description of information)

Coal Reports - Production, ownership, years of operation.
 Directory of Illinois Coal Mines (St. Clair County) - Mine names, mine index, ownership, years of operation.
 Mine notes (St. Clair County) - Thickness, depth, seam, mine type, shaft location, geologic problems.
 Federal Land Bank Report (St. Clair County) - Depth.
 Microfilm map, document 351074, reel 03134, frames 177 & 178 - Shaft locations, mine outline, mining method.
 State archive, PB_419 - Mine outline (eastern).
 State archive, PB_421 - Mine outline (eastern). (required PB__419 for georegistration)

Mine Index 201**Consolidated Coal Company, Consolidated No. 17 Mine**

Type: Underground Total mined-out acreage shown: 1,343

SHAFT, SLOPE, DRIFT or TIPPLE LOCATIONS

Type	County	Twp	Section	Quarters-Footage
Main shaft	St. Clair	2N 8W	10	SE SE NW
Air shaft	St. Clair	2N 8W	10	SE SE NW

GEOLOGY

Seam(s) Mined	Depth (ft)	Thickness (ft)			Mining Method
		Min	Max	Ave	
Herrin	210-228	6.5	8.0	6.5	RPP

Geologic Problems Reported: Some slips were present in the coal, making it unminable. The floor clay heaved badly in one location, but generally gave no problem. The black shale roof (1/2-inch to 4 feet thick) required timbering, but was thin in the northern part of the mine.

PRODUCTION HISTORY

Company	Mine Name	Years	Production (tons)
Consolidated Coal Company	Consolidated No. 17	1905-1927 *	<u>7,575,728</u> 7,575,728

* Idle July 1924 to November 1926

Last reported production: May 1927

SOURCES OF DATA

Source Map	Date	Original Scale	Digitized Scale	Map Type
Company	1927	1:2400	1:2400	Final

Annotated Bibliography (data source, brief description of information)

Coal Reports - Production, ownership, years of operation.

Directory of Illinois Coal Mines (St. Clair County) - Mine names, mine index, ownership, years of operation.

Mine notes (St. Clair County) - Shaft locations, mine type, seam, depth, thickness, geologic problems.

Federal Land Bank Report (St. Clair County) - Depth.

Company mine map - Shaft locations, mine outline, mining method.

Mine Index 203
Oak Coal Company, Little Oak Mine

Type: Underground Total mined-out acreage shown: 1,018

SHAFT, SLOPE, DRIFT or TIPPLE LOCATIONS

Type	County	Twp	Section	Quarters-Footage
Main shaft	St. Clair	1N 7W	18	NE NW SW
Air shaft	St. Clair	1N 7W	18	NW NW SW

GEOLOGY

Seam(s) Mined	Depth (ft)	Thickness (ft)			Mining Method
		Min	Max	Ave	
Herrin	124-128	5.0	10.0	6.5	MRP

Geologic Problems Reported: Slips were quite common, with offsets up to 2 feet. Rolls were rare. The floor clay heaved a little, but did not give much trouble.

PRODUCTION HISTORY

Company	Mine Name	Years	Production (tons)
Little Oak Coal Company	Little Oak	1904-1905	21,574
Southern Coal & Mining Company	Southern No. 7	1905-1912	790,524
Southern Coal, Coke & Mining Company	Southern No. 7, Little Oak	1912-1939	5,086,597
Little Oak Coal Company	Little Oak	1939-1940	4,229
St. Clair Southern Coal Company	Little Oak	1940-1943	11,562
Mascoutah Coal Company	Little Oak	1943-1945	175,185
Oak Coal Company	Little Oak	1945-1948	497,958
			6,587,629

Last reported production: June 1948

SOURCES OF DATA

Source Map	Date	Original Scale	Digitized Scale	Map Type
Microfilm, document 351038	2-22-1946	1:2400	1:4303	Not final *
Microfilm, document 351037	11-24-1948	1:2400	1:4634	Final

* The mined area shown on the accompanying map is the approximate size expected for the production reported. This suggests that the mine outline is complete.

Annotated Bibliography (data source, brief description of information)

Coal Reports - Production, ownership, years of operation.
 Directory of Illinois Coal Mines (St. Clair County) - Mine names, mine index, ownership, years of operation.
 Mine notes (St. Clair County) - Shaft locations, seam, depth, thickness, geologic problems.
 Microfilm map, document 351038, reel 03134, frames 123-126 - Shaft locations, mine outline, mining method.
 Microfilm map, document 351037, reel 03134, frame 122 - Mine outline (western).

Mine Index 305
Howard E. Miller, Ruby Mine

Type: Underground Total mined-out acreage shown: 161

SHAFT, SLOPE, DRIFT or TIPPLE LOCATIONS

Type	County	Twp	Section	Quarters-Footage
Main shaft	St. Clair	2N 8W	21	SW NW SE
Air shaft	St. Clair	2N 8W	21	SW NW SE

GEOLOGY

Seam(s) Mined	Depth (ft)	Thickness (ft)		Mining Method
		Min	Max	
Herrin	173		6.0	RPB

Geologic Problems Reported:

PRODUCTION HISTORY

Company	Mine Name	Years	Production (tons)
Consumer's Coal Company	Consumer's No. 1, Ruby	1888-1896	316,551
Adams Coal & Tow Company	Ruby	1896-1897	*
St. Louis & O'Fallon Coal Company	Ruby	1897-1897	5,966
Ratican, Joyce & Grieve	Ruby	1897-1899	52,512
Ruby Mining Company	Ruby	1899-1903	234,726
William Ratican	Ruby	1903-1907 **	45,700
Cluly-Miller Coal Company	Ruby	1907-1915	287,796
Howard E. Miller	Ruby	1915-1935 ***	329,482
			1,273,733

* Production, if any, unknown, or may be included in later St. Louis & O'Fallon listing

** Idle last half of 1904 and all of 1905 and 1906

*** Idle 1922, 1928, 1929 and 1930

Last reported production: 1935

SOURCES OF DATA

Source Map	Date	Original Scale	Digitized Scale	Map Type
Microfilm, document 351073	11-9-1940	1:2400	1:3642	Final

Annotated Bibliography (data source, brief description of information)

Coal Reports - Production, ownership, years of operation.

Directory of Illinois Coal Mines (St. Clair County) - Mine names, mine index, ownership, years of operation.

Mine notes (St. Clair County) - Shaft location, mine type, seam, depth, thickness.

Microfilm map, document 351073, reel 03134, frame 176 - Shaft locations, mine outline, mining method.

Mine Index 341**Perry Coal Company, Pittsburg Mine**

Type: Underground Total mined-out acreage shown: 181

SHAFT, SLOPE, DRIFT or TIPPLE LOCATIONS

Type	County	Twp	Section	Quarters-Footage
Main shaft	St. Clair	1N 8W	16	SW NE SW
Air shaft	St. Clair	1N 8W	16	SW NE SW

GEOLOGY

Seam(s) Mined	Depth (ft)	Thickness (ft)			Mining Method
		Min	Max	Ave	
Herrin	123			6.5	RPB

Geologic Problems Reported: The roof shale had numerous concretions. The mine was very wet, presumably from a flooded mine to the north, which necessitated drilling 15 to 25 feet in advance of the workings to avoid the danger of flooding.

PRODUCTION HISTORY

Company	Mine Name	Years	Production (tons)
Pittsburgh Mining Company	Pittsburgh	1884-1885	7,560
New Pittsburgh Mining Company	Pittsburg	1885-1886	8,450
Consolidated Coal Company of St. Louis *	Pittsburg	1886-1889	26,950
Pittsburg Mining Company	Pittsburg	1889-1890	5,000
Lewis Mishaelis	Pittsburg	1891-1892 **	12,080
Pittsburg Mine	Pittsburg	1892-1894	24,600
Consolidated Coal Company of St. Louis	Pittsburg	1894-1896	28,204
Louis Michaelis	Pittsburg	1896-1897	28,128
Consolidated Coal Company	Pittsburg	1897-1902	102,655
Theodore Micheals	Pittsburg	1902-1903	32,131
Pittsburg Mining Company	Pittsburg	1903-1919	665,254
Perry County Coal Corporation	Pittsburg	1919-1921	97,529
Perry Coal Company	Pittsburg	1921-1923	53,151
			1,091,692

* Lessees Pittsburg Coal Company (1887-1888), L. Michael (1888-1889)

** Idle 1890-1891

Last reported production: March 1923

SOURCES OF DATA

Source Map	Date	Original Scale	Digitized Scale	Map Type
Microfilm, document 350961	3-30-1910	1:2400	1:5297	Not final ***
Microfilm, document 351103	3-23-1923	1:1200	1:2652	Final

*** This source map was used for the portion of the mine adjoining the Consolidated Coal Company of St. Louis mines to the west. The source map is a final map for the adjoining mines, and is therefore shown as a "Final" line type on the accompanying map.

Annotated Bibliography (data source, brief description of information)

Coal Reports - Production, ownership, years of operation.

Directory of Illinois Coal Mines (St. Clair County) - Mine names, mine index, ownership, years of operation.

Mine notes (St. Clair County) - Shaft location, seam, depth, thickness, geologic problems.

Microfilm map, document 350961, reel 03134, frame 4 - Mine outline (western).

Microfilm map, document 351103, reel 03134, frame 218 - Shaft locations, mine outline (southern & eastern).

Mine Index 416**St. Louis & O'Fallon Coal Company, St. Louis & O'Fallon No. 2, Black Eagle Mine**

Type: Underground Total mined-out acreage shown: 3,564 Production indicates an additional 52 acres were mined since the map date.

SHAFT, SLOPE, DRIFT or TIPPLE LOCATIONS

Type	County	Twp	Section	Quarters-Footage
Main shaft & air shaft	St. Clair	2N 8W	33	NW NW SE
Air shaft	St. Clair	2N 8W	33	NW NW SE
Air shaft	St. Clair	1N 8W	4	NW SE NW
Air shaft	St. Clair	2N 8W	28	SW NW NE

GEOLOGY

Seam(s) Mined	Depth (ft)	Thickness (ft)			Mining Method
		Min	Max	Ave	
Herrin	193-212	5.8	7.2	6.5	MRP

Geologic Problems Reported: The roof shale commonly contained concretions. The upper half of the coal seam contained some very large (10-800 pounds) pyrite balls or lenses, and small pyrite concretions occurred throughout the mine. A few clay veins and slips were present, but generally did not hinder mining. The floor clay heaved to some extent, generally after a long period of exposure.

PRODUCTION HISTORY

Company	Mine Name	Years	Production (tons)
St. Louis & O'Fallon Coal Company	No. 2, Black Eagle	1905-1953	23,585,410
St. Louis & O'Fallon Coal Company	No. 2, Black Eagle	1953-1954	344,296 *
			23,929,706

* Production since map date

Last reported production: June 1954

SOURCES OF DATA

Source Map	Date	Original Scale	Digitized Scale	Map Type
State archive, IL_22	6-25-1953	1:2400	1:2400	Not final
State archive, MSHA_1718	6-1929	1:2400	1:2400	Secondary source

Annotated Bibliography (data source, brief description of information)

Coal Reports - Production, ownership, years of operation.
 Directory of Illinois Coal Mines (St. Clair County) - Mine names, mine index, ownership, years of operation.
 Mine notes (St. Clair County) - Shaft location, mine type, seam, depth, thickness, geologic problems.
 State archive, IL_22 - Shaft locations, mine outline, mining method.
 State archive, MSHA_1718, map of St. Louis & O'Fallon No. 1 Mine (mine index 443) - Mine outline (western).
 Federal Land Bank Report (St. Clair County) - Depth.

Mine Index 533**Peabody Coal Company, St. Ellen Mine**

Type: Underground Total mined-out acreage shown: 3,835

SHAFT, SLOPE, DRIFT or TIPPLE LOCATIONS

Type	County	Twp	Section	Quarters-Footage
Shaft	St. Clair	2N 8W	26	150 FSL, 80 FEL SW
Slope	St. Clair	2N 8W	35	NW NW NE
Air shaft	St. Clair	2N 7W	31	SW NE SW

GEOLOGY

Seam(s) Mined	Depth (ft)	Thickness (ft)			Mining Method
		Min	Max	Ave	
Herrin	210			7.0-7.5	MRP

Geologic Problems Reported:

PRODUCTION HISTORY

Company	Mine Name	Years	Production (tons)
Joseph Taylor Coal Company	St. Ellen	1904-1915	1,554,245
Fisher Fuel Company	St. Ellen	1915-1916	19,026
St. Ellen Coal Company	St. Ellen	1916-1918	658,991
Perry County Coal Corporation	St. Ellen	1918-1921	1,109,245
Perry Coal Company	St. Ellen	1921-1957 *	14,483,445
Peabody Coal Company	St. Ellen	1957-1960	<u>4,124,452</u>
			21,949,404

* Idle July 1924 to June 1925

Last reported production: June 1960

SOURCES OF DATA

Source Map	Date	Original Scale	Digitized Scale	Map Type
Company, 4103.S31 i5.1-54	5-21-1960	1:4800	1:4800	Final

Annotated Bibliography (data source, brief description of information)

Coal Reports - Production, ownership, years of operation.

Directory of Illinois Coal Mines (St. Clair County) - Mine names, mine index, ownership, years of operation.

Mine notes (St. Clair County) - Shaft location, mine type, seam, thickness.

Company map, ISGS map library, 4103.S31 i5.1-54 - Shaft and slope locations, mine outline, mining method.

Federal Land Bank Report (St. Clair County) - Depth, thickness.

Mine Index 626
Prairie Coal Company, Prairie Mine

Type: Underground Total mined-out acreage shown: 777

SHAFT, SLOPE, DRIFT or TIPPLE LOCATIONS

Type	County	Twp	Section	Quarters-Footage
Main shaft	St. Clair	2N 8W	27	SE SW SW
Air shaft	St. Clair	2N 8W	27	SE SW SW

GEOLOGY

Seam(s) Mined	Depth (ft)	Thickness (ft)			Mining Method
		Min	Max	Ave	
Herrin	205			7.0	MRP

Geologic Problems Reported:

PRODUCTION HISTORY

Company	Mine Name	Years	Production (tons)
Prairie Coal Company	Prairie	1905-1942 *	5,246,968 5,246,968

* Idle July 1926 through 1929

Last reported production: March 1942

SOURCES OF DATA

Source Map	Date	Original Scale	Digitized Scale	Map Type
Company, 4103.S31 i5.1-18	10-30-1942	1:2400	1:2400	Final

Annotated Bibliography (data source, brief description of information)

Coal Reports - Production, ownership, years of operation.
 Directory of Illinois Coal Mines (St. Clair County) - Mine names, mine index, ownership, years of operation.
 Mine notes (St. Clair County) - Shaft location, mine type, seam, depth, thickness.
 Company map, ISGS map library, 4103.S31 i5.1-18 - Shaft locations, mine outline, mining method.

Mine Index 781**Summit Coal & Mining Company, Summit Mine**

Type: Underground Total mined-out acreage shown: 188

SHAFT, SLOPE, DRIFT or TIPPLE LOCATIONS

Type	County	Twp	Section	Quarters-Footage
Main shaft	St. Clair	1N 8W	9	NW SE SW
Air shaft	St. Clair	1N 8W	9	NE SE SW

GEOLOGY

Seam(s) Mined	Depth (ft)	Thickness (ft)		Mining Method
		Min	Max Ave	
Herrin	114		7.0	MRP

Geologic Problems Reported:

PRODUCTION HISTORY

Company	Mine Name	Years	Production (tons)
Summit Coal Company	Summit	1894-1905	447,521
Summit Coal & Mining Company	Summit	1905-1925	805,114
Summit Coal Company	Summit	1925-1936 *	190,575
Summit Coal & Mining Company	Summit	1936-1940	48,165
			<u>1,491,375</u>

* Idle 1934, 1935

Last reported production: 1940

SOURCES OF DATA

Source Map	Date	Original Scale	Digitized Scale	Map Type
Microfilm, document 351042	2-12-1942	1:1200	1:2152	Final

Annotated Bibliography (data source, brief description of information)

Coal Reports - Production, ownership, years of operation.

Directory of Illinois Coal Mines (St. Clair County) - Mine names, mine index, ownership, years of operation.

Mine notes (St. Clair County) - Mine type, seam, depth, thickness.

Microfilm map, document 351042, reel 03134, frames 133-136 - Shaft locations, mine outline, mining method.

Mine Index 782**Patterson & Harding, Patterson & Harding Mine**

Type: Underground Total mined-out acreage shown: 81

SHAFT, SLOPE, DRIFT or TIPPLE LOCATIONS

Type	County	Twp	Section	Quarters-Footage
Main shaft	St. Clair	1N 8W	27	NW NE SE
Air shaft	St. Clair	1N 8W	27	NE NE SE

GEOLOGY

Seam(s) Mined	Depth (ft)	Thickness (ft)			Mining Method
		Min	Max	Ave	
Herrin	65			6.0	MRP

Geologic Problems Reported: Some problems were designated on source map, areas labeled "squeeze" and "caved", mostly in the southeastern part of the mine. The source map for the older part of the mine shows the western area was abandoned due to bad top. (There is a stream shown on the topographic map, and the bedrock was probably thin here.)

PRODUCTION HISTORY

Company	Mine Name	Years	Production (tons)
Abend	Abend No. 1	1889-1890	1,800
Klingenfus Brothers	Abend No. 1	1890-1900	27,719
Frank Sargent *	Abend No. 1	1900-1910	153,588
Patterson & Harding	Patterson & Harding	1917-1924 **	110,173
E. Harding & C. G. Stall	Harding & Stall	1924-1925	14,000
Patterson & Harding	Patterson & Harding	1925-1928	50,000
C. G. Stuhl	Stuhl	1928-1929	15,000
Patterson & Harding	Patterson & Harding	1929-1931	25,400
C. G. Stuhl	Stuhl	1931-1933	29,010
Patterson & Harding	Patterson & Harding	1934-1938	72,763
			499,453

* Source map indicates the mine name is "Car. Abend". Production was not reported under this name.

** Abandoned mine re-opened.

Last reported production: 1938

SOURCES OF DATA

Source Map	Date	Original Scale	Digitized Scale	Map Type
Microfilm, Recorder of Deeds	3-23-1938	1:1200	1:2483	Final
Microfilm, document 351151	7-1-1910	1:1200	1:1572	Not final ***

*** Source map for the older part of the mine; final for the older Abend portion of the mine (abandoned 1910).

Annotated Bibliography (data source, brief description of information)

Coal Reports - Production, ownership, years of operation.

Directory of Illinois Coal Mines (St. Clair County) - Mine names, mine index, ownership, years of operation.

Mine notes (St. Clair County) - Shaft location, seam, depth, thickness.

Microfilm map from Recorder of Deeds, St. Clair County - Shaft locations, mine outline, mining method, geologic problems.

Microfilm map, document 351151, reel 03134, frame 291 - Mine outline (western), mining method, geologic problems.

Mine Index 785

Perry Coal Company, Carbon Mine

Type: Underground Total mined-out acreage shown: 258 Production indicates an additional 98 acres were mined after the map date. The secondary source outline may encompass some of this extended production.

SHAFT, SLOPE, DRIFT or TIPPLE LOCATIONS

Type	County	Twp	Section	Quarters-Footage
Main shaft	St. Clair	2N 8W	25	NW SE NW
Air shaft	St. Clair	2N 8W	25	SE NW NW

GEOLOGY

Seam(s) Mined	Depth (ft)	Thickness (ft)			Mining Method
		Min	Max	Ave	
Herrin	187-194			6.0-7.0	RPB, HER *

* The Coal Report of 1884 indicates the pillars were being pulled. The extent of this high extraction is unknown.

PRODUCTION HISTORY

Company	Mine Name	Years	Production (tons)
Gartside Coal Company	Gartside	pre1882-1883	39,000 **
Joseph Taylor	Alma	1883-1888	116,826
Consolidated Coal Company of St. Louis	Alma	1888-1896	509,490
Richard Lindley	Alma	1896-1897	47,701
Consolidated Coal Company of St. Louis	Alma	1897-1898	11,293
Lebanon Coal & Mining Company ***	Carbon	1904-1905	18,172
International Coal & Mining Company	Carbon	1905-1919	1,082,144
West Virginia Coal & Mining Company	Carbon	1919-1920	88,308
Perry County Coal Corporation	Carbon	1920-1921	139,992
Perry Coal Company	Carbon	1921-1930	1,202,867
Perry Coal Company	Carbon	1930-1937	577,504 †
			3,833,297

** Production and ownership prior to 1882 unknown. The Coal Reports of 1882 and 1883 indicate 85 and 120 acres were mined, respectively.

*** Mine abandoned 1898, bought by Yock Brothers in 1904. No production was reported under Yock name.

† Production since map date

Last reported production: March 1937

SOURCES OF DATA

Source Map	Date	Original Scale	Digitized Scale	Map Type
Microfilm, document 351104	2-15-1930	1:2400	1:4615	Not final
ISGS map library, 4103.S31 i5.1-54	5-21-1960	1:4800	1:4800	Secondary source
Microfilm, document 351074	3-1-1930	1:2400	1:4140	Secondary source
State archive, PB_93	10-9-1931 ††	1:2400	1:2400	Not final

†† The map date was 10-9-1931, but notes in the southeastern portion of the map show the area was surveyed 3-30-1936 and checked 7-26-1940. This area of the mine may be a final outline.

Annotated Bibliography (data source, brief description of information)

Coal Reports - Production, ownership, years of operation, mining method.

Directory of Illinois Coal Mines (St. Clair County) - Mine names, mine index, ownership, years of operation.

Mine notes (St. Clair County) - Mine type, seam, depth, thickness.

Microfilm map, document 351104, reel 03134, frames 219,220 - Mine outline (northeast), mining method.

ISGS library map, 4103.S31 i5.1-54, map of Peabody Coal Company, St. Ellen Mine (mine index 533) - Mine outline (southern).

Microfilm map, document 351074, reel 03134, frames 177,178, map of Taylor Mine (mine index 81) - General area of mining.

State archive, PB_93 - Air shaft location, general area of mining (NW & NE 25-T2N-R8W).

Mine Index 786**Joseph Taylor, Ridge Prairie Mine**

Type: Underground Total mined-out acreage shown: 345 Production indicates an additional 20 acres were mined after the map date.

SHAFT, SLOPE, DRIFT or TIPPLE LOCATIONS

Type	County	Twp	Section	Quarters-Footage
Main shaft	St. Clair	2N 8W	26	NE NE NW
Crossroads shaft	St. Clair	2N 8W	23	SE SW SW

GEOLOGY

Seam(s) Mined	Depth (ft)	Thickness (ft)		Mining Method
		Min	Max Ave	
Herrin	203		8.0	MRP

Geologic Problems Reported: A large area on the source map was designated "squeeze". (T2N R8W, section 26)

PRODUCTION HISTORY

Company	Mine Name	Years	Production (tons)
Gartside Coal Company	Crossroads	1882-1886	158,082 *
Gartside Coal Company	Mentor, Gartside No. 5	1883-1886	19,736
Consolidated Coal Company of St. Louis	Mentor	1886-1896	968,747
Nugent Kidd	Mentor	1896-1897	50,906
Consolidated Coal Company	Mentor	1897-1898	11,138
Joseph Taylor	Mentor	1898-1904	473,519
Joseph Taylor	Ridge Prairie	1904-1914	1,076,578
Joseph Taylor	Ridge Prairie	1914-1915	148,665 **
			2,907,371

* Production prior to 1882 unknown. The Coal Report of 1882 indicates 8 acres were mined.

** Production since map date

Last reported production: April 1915 (fire underground in March; mine sealed)

SOURCES OF DATA

Source Map	Date	Original Scale	Digitized Scale	Map Type
Company	11-20-1914	1:2400	1:2400	Not final
Microfilm, document 351075	6-23-1886	1:1800	1:3103	Final ***

*** Shows workings of Mentor Mine connected underground to Crossroads; cannot discern any separation between the two mines.

Annotated Bibliography (data source, brief description of information)

Coal Reports - Production, ownership, years of operation.

Directory of Illinois Coal Mines (St. Clair County) - Mine names, mine index, ownership, years of operation.

Mine notes (St. Clair County) - Mine type, seam, depth, thickness.

Company map, received from Old Ben Coal Company archives - Shaft locations, mine outline, mining method.

Microfilm map, document 351075, reel 03134, frame 179 - Shaft locations.

Mine Index 797**Silver Creek Coal & Mining Company, Darrow Mine**

Type: Underground Total mined-out acreage shown: 161

SHAFT, SLOPE, DRIFT or TIPPLE LOCATIONS

Type	County	Twp	Section	Quarters-Footage
Main shaft	St. Clair	2N 7W	28	NE NE SW
Air shaft	St. Clair	2N 7W	28	NE NE SW

GEOLOGY

Seam(s) Mined	Depth (ft)	Thickness (ft)		Mining Method
		Min	Max	
Herrin	180-200		6.0-6.5	RP

Geologic Problems Reported:

PRODUCTION HISTORY

Company	Mine Name	Years	Production (tons)
Darrow	Darrow	1889-1890	6,020
Consumer's Coal Company	Darrow, Consumer's No. 2	1890-1896	180,586
O'Fallon Coal & Mining Company	Darrow	1896-1905	455,089
Silver Creek Coal & Mining Company	Darrow	1905-1907	<u>54,192</u>
			695,887

Last reported production: 1907

SOURCES OF DATA

Source Map	Date	Original Scale	Digitized Scale	Map Type
WPA, T2N-R7W	6-1-1905	1:12000	1:63360	Secondary source

Annotated Bibliography (data source, brief description of information)

Coal Reports - Production, ownership, years of operation, depth, thickness, mining method.
Directory of Illinois Coal Mines (St. Clair County) - Mine names, mine index, ownership, years of operation.
Mine notes (St. Clair County) - Shaft location, mine type, seam, depth.
WPA map, T2N-R7W - Shaft locations, mine outline.

Mine Index 929**Belle Valley Coal Company, Inc., Belle Valley Mine**

Type: Underground Total mined-out acreage shown: 449

SHAFT, SLOPE, DRIFT or TIPPLE LOCATIONS

Type	County	Twp	Section	Quarters-Footage
Main slope	St. Clair	1N 8W	26	SE SE NE
Air shaft	St. Clair	1N 8W	26	NW SE NE

GEOLOGY

Seam(s) Mined	Depth (ft)	Thickness (ft)		Mining Method
		Min	Max	
Herrin	69			MRP

Geologic Problems Reported:

PRODUCTION HISTORY

Company	Mine Name	Years	Production (tons)
Belle Valley Coal Company, Inc.	Belle Valley	1938-1970 *	2,255,655 2,255,655

* The 1874 Atlas of St. Clair County shows a mine at this location, indicating that mining may have taken place here in the early 1870s.

Last reported production: May 1970

SOURCES OF DATA

Source Map	Date	Original Scale	Digitized Scale	Map Type
ISGS map library, 4103.S31 i5.1-57	6-1-1970	1:2400	1:4966	Final

Annotated Bibliography (data source, brief description of information)

Coal Reports - Production, ownership, years of operation, thickness.

Directory of Illinois Coal Mines (St. Clair County) - Mine names, mine index, ownership, years of operation.

Mine notes (St. Clair County) - Mine type, seam, depth, thickness.

ISGS map library, 4103.S31 i5.1-57 - Slope and shaft locations, mine outline, mining method.

Mine Index 3488**Shiloh Valley Coal Company, Frost Mine**

Type: Underground Total mined-out acreage shown: 70

SHAFT, SLOPE, DRIFT or TIPPLE LOCATIONS

Type	County	Twp	Section	Quarters-Footage
Main shaft	St. Clair	1N 7W	21	NW NE SW
Air shaft	St. Clair	1N 7W	21	SW SE NW

GEOLOGY

Seam(s) Mined	Depth (ft)	Thickness (ft)		Mining Method
		Min	Max	
Herrin	90		6.0	MRP

Geologic Problems Reported:

PRODUCTION HISTORY

Company	Mine Name	Years	Production (tons)
Shiloh Valley Coal Company	Davis	1939-1958	300,088
Shiloh Valley Coal Company	Frost	1958-1965	81,809
			<u>381,897</u>

Last reported production: August 1965

SOURCES OF DATA

Source Map	Date	Original Scale	Digitized Scale	Map Type
Company, 4103.S31 i5.1-27	11-27-1965	1:2400	1:3972	Final

Annotated Bibliography (data source, brief description of information)

Coal Reports - Production, ownership, years of operation.

Directory of Illinois Coal Mines (St. Clair County) - Mine names, mine index, ownership, years of operation.

Mine notes (St. Clair County) - Shaft location, mine type, seam, depth, thickness.

Company map, ISGS map library, 4103.S31 i5.1-27 - Shaft locations, mine outline, mining method.

Mine Index 3492
White & Son, Branch No. 2 Mine

Type: Underground Total mined-out acreage shown: 68

SHAFT, SLOPE, DRIFT or TIPPLE LOCATIONS

Type	County	Twp	Section	Quarters-Footage
Main shaft	St. Clair	1N 8W	22	SW NW NW *

* The main shaft is labeled "Braun's No. 3". The 1874 Atlas labeled a shaft in this location "Brauch & Hessebaum".

GEOLOGY

Seam(s) Mined	Depth (ft)	Thickness (ft)			Mining Method
		Min	Max	Ave	
Herrin	85-90			6.0	MRP

Geologic Problems Reported:

PRODUCTION HISTORY

Company	Mine Name	Years	Production (tons)
Charles Hortman	Hortman	1898-1905	240,827 **
White & Nesbit	Hortman	1905-1908	88,786
White & Son	Hortman, Branch No. 2	1908-1912	94,139
			423,752

** The source map shows a shaft labeled "Braun's No. 3". No production was reported under the name "Braun". The 1874 Atlas of St. Clair County shows a shaft at this location, indicating that mining was taking place here in the early 1870s. The additional production is believed to have taken place to the south (see mine index 3596).

Last reported production: 1912

SOURCES OF DATA

Source Map	Date	Original Scale	Digitized Scale	Map Type
Microfilm, document 351141	8-12-1920	1:1200	1:2317	Final

Annotated Bibliography (data source, brief description of information)

Coal Reports - Production, ownership, years of operation.
 Directory of Illinois Coal Mines (St. Clair County) - Mine names, mine index, ownership, years of operation.
 Mine notes (St. Clair County) - Shaft location, mine type, seam, depth, thickness.
 Microfilm map, document 351141, reel 03134, frames 279-280 - Shaft location, mine outline, mining method.

Mine Index 3497**John Kloess, Kloess No. 1 Mine**

Type: Underground Total mined-out acreage shown: None. Production indicates that about 58 acres were mined.

SHAFT, SLOPE, DRIFT or TIPPLE LOCATIONS

Type	County	Twp	Section	Quarters-Footage
Main shaft	St. Clair	1N 8W	21	SE SE NW

GEOLOGY

Seam(s) Mined	Depth (ft)	Thickness (ft)			Mining Method
		Min	Max	Ave	
Herrin	110-120			6.0-6.5	RP

Geologic Problems Reported:

PRODUCTION HISTORY

Company	Mine Name	Years	Production (tons)
John Kloess	Kloess No. 1	1883-1896 *	<u>329,349</u> 329,349

* The mine location was also shown on the 1874 atlas, indicating that mining was taking place in the early 1870s.

Last reported production: 1896

SOURCES OF DATA

Source Map	Date	Original Scale	Digitized Scale	Map Type
Microfilm, document 351001	Undated	1:1200	1:2152	Undated

Annotated Bibliography (data source, brief description of information)

Coal Reports - Production, ownership, years of operation, seam, depth, thickness, mining method.

Directory of Illinois Coal Mines (St. Clair County) - Mine names, mine index, ownership, years of operation.

Microfilm map, document 351001, reel 03134, frame 73 - Shaft location.

Mine Index 3504**New Royal Coal Company, New Royal Mine**

Type: Underground Total mined-out acreage shown: 350

SHAFT, SLOPE, DRIFT or TIPPLE LOCATIONS

Type	County	Twp	Section	Quarters-Footage
Main shaft	St. Clair	1N 8W	8	SE SE NE
Air shaft	St. Clair	1N 8W	8	SE SE NE

GEOLOGY

Seam(s) Mined	Depth (ft)	Thickness (ft)		Mining Method
		Min	Max Ave	
Herrin	198		7.0	MRP

Geologic Problems Reported:

PRODUCTION HISTORY

Company	Mine Name	Years	Production (tons)
Beck-Walker Coal Company	Royal	1900-1902	129,107
Royal Coal Company	Royal	1902-1915 *	1,403,513
Columbia Collieries Company	Royal	1915-1923	735,657
G & E Coal Company	G & E	1935-1939 **	90,151
New Royal Coal Company	New Royal	1939-1943	64,315
			<u>2,422,743</u>

* Idle 1913 to 1915

** Idle or abandoned 1923 to 1935

Last reported production: 1942

SOURCES OF DATA

Source Map	Date	Original Scale	Digitized Scale	Map Type
Company, 4103.S31 i5.1-13	8-27-1943	1:2400	1:4634	Final

Annotated Bibliography (data source, brief description of information)

Coal Reports - Production, ownership, years of operation.

Directory of Illinois Coal Mines (St. Clair County) - Mine names, mine index, ownership, years of operation.

Mine notes (St. Clair County) - Mine type, seam, depth, thickness.

Company map, ISGS map library, 4103.S31 i5.1-13 - Shaft locations, mine outline, mining method.

Mine Index 3505**Sporleder Coal Service, Sporleder Mine**

Type: Underground Total mined-out acreage shown: 9 Production indicates less than one additional acre was mined since the map date.

SHAFT, SLOPE, DRIFT or TIPPLE LOCATIONS

Type	County	Twp	Section	Quarters-Footage
Main slope	St. Clair	1N 8W	11	NW NW SW
Air slope	St. Clair	1N 8W	11	SW SW NW

GEOLOGY

Seam(s) Mined	Depth (ft)	Thickness (ft)			Mining Method
		Min	Max	Ave	
Herrin	148-160			7.0	RPB

Geologic Problems Reported:

PRODUCTION HISTORY

Company	Mine Name	Years	Production (tons)
Sporleder Coal Service	Sporleder	1936-1956	51,063
Sporleder Coal Service	Sporleder	1956-1957	867 *
			51,930

** Production since map date

Last reported production: April 1957

SOURCES OF DATA

Source Map	Date	Original Scale	Digitized Scale	Map Type
Microfilm, document 351143	1-31-1956	1:2400	1:2648	Not final

Annotated Bibliography (data source, brief description of information)

Coal Reports - Production, ownership, years of operation.

Directory of Illinois Coal Mines (St. Clair County) - Mine names, mine index, ownership, years of operation.

Mine notes (St. Clair County) - Slope location, mine type, seam, depth, thickness.

Microfilm map, document 351143, reel 03134, frame 282 - Slope locations, mine outline, mining method.

Mine Index 3506**Eldnar Coal Company, Eldnar Mine**

Type: Underground Total mined-out acreage shown: 320 Production indicates an additional 32 acres were mined since the date of the map.

SHAFT, SLOPE, DRIFT or TIPPLE LOCATIONS

Type	County	Twp	Section	Quarters-Footage
Main shaft	St. Clair	1N 8W	11	SW NW NE
Air shaft	St. Clair	1N 8W	11	NW NW NE

GEOLOGY

Seam(s) Mined	Depth (ft)	Thickness (ft)		Mining Method
		Min	Max Ave	
Herrin	110-150		6.0-7.0	MRP

Geologic Problems Reported:

PRODUCTION HISTORY

Company	Mine Name	Years	Production (tons)
Randle & Miller	Randle & Miller	1911-1912	none
Eldnar Coal Company	Eldnar	1912-1929	1,790,505
Eldnar Coal Company	Eldnar	1929-1937	183,954 *
			1,974,459

* Production since map date

Last reported production: 1937

SOURCES OF DATA

Source Map	Date	Original Scale	Digitized Scale	Map Type
Microfilm, document 351053	9-15-1929	1:2400	1:4634	Not final
Microfilm, document 350968	6-25-1953	1:2400	1:4966	Secondary source

Annotated Bibliography (data source, brief description of information)

Coal Reports - Production, ownership, years of operation.

Directory of Illinois Coal Mines (St. Clair County) - Mine names, mine index, ownership, years of operation.

Mine notes (St. Clair County) - Shaft location, mine type, seam, depth, thickness.

Microfilm map, document 351053, reel 03134, frames 150,151 - Shaft locations, mine outline, mining method.

Microfilm map, document 350968, reel 03134, frames 26, 27, map of St. Louis & O'Fallon No. 2 Mine (mine index 416) - Mine outline (northeast lobe).

Federal Land Bank Report (St. Clair County) - Thickness, depth.

Mine Index 3507
Purity Coal Company, Purity Mine

Type: Underground Total mined-out acreage shown: 52

SHAFT, SLOPE, DRIFT or TIPPLE LOCATIONS

Type	County	Twp	Section	Quarters-Footage
Main shaft	St. Clair	1N 8W	12	NW SE SW
Air shaft	St. Clair	1N 8W	12	NW SE SW

GEOLOGY

Seam(s) Mined	Depth (ft)	Thickness (ft)			Mining Method
		Min	Max	Ave	
Herrin	187			7.0	MRP

Geologic Problems Reported:

PRODUCTION HISTORY

Company	Mine Name	Years	Production (tons)
Purity Coal Company	Purity	1938-1955	<u>283,535</u> 283,535

Last reported production: March 1955

SOURCES OF DATA

Source Map	Date	Original Scale	Digitized Scale	Map Type
ISGS map library, 4103.S31 i5.1-54	5-1-1960	1:4800	1:4800	Secondary source

Annotated Bibliography (data source, brief description of information)

Coal Reports - Production, ownership, years of operation.
 Directory of Illinois Coal Mines (St. Clair County) - Mine names, mine index, ownership, years of operation.
 Mine notes (St. Clair County) - Shaft location, mine type, seam, depth, thickness.
 ISGS map library, 4103.S31 i5.1-54, map of St. Ellen mine (mine index 533) - Shaft locations, mine outline, mining method.

Mine Index 3509
Northside Coal Company, Muren Mine

Type: Underground Total mined-out acreage shown: 421

SHAFT, SLOPE, DRIFT or TIPPLE LOCATIONS

Type	County	Twp	Section	Quarters-Footage
Main shaft (7x14 ft)	St. Clair	1N 8W	14	NW NE SW
Air shaft	St. Clair	1N 8W	14	NE NW SW

GEOLOGY

Seam(s) Mined	Depth (ft)	Thickness (ft)		Mining Method
		Min	Max	
Herrin	141-150		6.5-7.0	MRP

Geologic Problems Reported:

PRODUCTION HISTORY

Company	Mine Name	Years	Production (tons)
Muren Coal & Ice Company	Muren No. 1	1897-1905	960,282
Southern Coal & Mining Company	Southern No. 6	1905-1917 *	296,477
Southern Coal, Coke & Mining Company	Southern No. 6	1917-1939	1,277,052
Northside Coal Company	Muren	1939-1946	225,079
			<u>2,758,890</u>

* Idle 1908, 1909, 1913-1917

Last reported production: March 1946

SOURCES OF DATA

Source Map	Date	Original Scale	Digitized Scale	Map Type
Microfilm, document 351105	3-1948	1:2400	1:4800	Final
Microfilm, document 351052	1-27-1947	1:2400	1:3807	Secondary source

Annotated Bibliography (data source, brief description of information)

Coal Reports - Production, ownership, years of operation, shaft size.

Directory of Illinois Coal Mines (St. Clair County) - Mine names, mine index, ownership, years of operation.

Mine notes (St. Clair County) - Shaft location, mine type, seam, depth, thickness.

Microfilm map, document 351105, reel 03134, frame 221 - Shaft locations, mine outline, mining method.

Microfilm map, document 351052, reel 03134, frame 149, map of Tower Grove Mine (mine index 3510) - Mine outline (western).

Mine Index 3510**Tower Grove Coal Company, Tower Grove Mine**

Type: Underground Total mined-out acreage shown: 84

SHAFT, SLOPE, DRIFT or TIPPLE LOCATIONS

Type	County	Twp	Section	Quarters-Footage
Shaft	St. Clair	1N 8W	15	SE NW SE
Air shaft	St. Clair	1N 8W	15	NE SW SE

GEOLOGY

Seam(s) Mined	Depth (ft)	Thickness (ft)			Mining Method
		Min	Max	Ave	
Herrin	150			6.5	MRP

Geologic Problems Reported:

PRODUCTION HISTORY

Company	Mine Name	Years	Production (tons)
Tower Grove Coal Company	Tower Grove	1902-1946	654,749
			654,749

Last reported production: 1946

SOURCES OF DATA

Source Map	Date	Original Scale	Digitized Scale	Map Type
Microfilm, document 351052	1-27-1947	1:2400	1:3807	Final

Annotated Bibliography (data source, brief description of information)

Coal Reports - Production, ownership, years of operation.

Directory of Illinois Coal Mines (St. Clair County) - Mine names, mine index, ownership, years of operation.

Mine notes (St. Clair County) - Mine type, seam, depth, thickness.

Microfilm map, document 351052, reel 03134, frame 149 - Shaft locations, mine outline, mining method.

Mine Index 3511**Service Coal Company, Service Mine**

Type: Underground Total mined-out acreage shown: 348

SHAFT, SLOPE, DRIFT or TIPPLE LOCATIONS

Type	County	Twp	Section	Quarters-Footage
Main shaft	St. Clair	1N 8W	15	SE NW SW
Air shaft	St. Clair	1N 8W	15	SE NW SW

GEOLOGY

Seam(s) Mined	Depth (ft)	Thickness (ft)		Mining Method
		Min	Max	
Herrin	110-150		6.0-6.5	MRP

Geologic Problems Reported:

PRODUCTION HISTORY

Company	Mine Name	Years	Production (tons)
Massie Coal Company	Massie No. 1	1895-1898	95,318
Belleville & O'Fallon Coal Company	Belleville & O'Fallon	1898-1904	336,933
Belleville & O'Fallon Coal Mining Company *	Belleville & O'Fallon	1904-1909	194,752
Wilharmil Coal & Coke Company	Miller	1909-1912	164,602
White Coal Company	Miller, White No. 2, Massie	1912-1915	98,947
Abend Coal Company	Massie	1915-1922	355,446
Kolb Coal Company	Kolb No. 5	1922-1927	109,481
Service Coal Company	Service	1927-1945	972,750
			2,328,229

* Owned by Humboldt, but operated under previous name.

Last reported production: March 1945

SOURCES OF DATA

Source Map	Date	Original Scale	Digitized Scale	Map Type
Microfilm, document 351040	3-20-1945	1:2400	1:4469	Final
Microfilm, document 351141	8-12-1920	1:1200	1:2317	Secondary source **

** Used only to designate the south boundary.

Annotated Bibliography (data source, brief description of information)

Coal Reports - Production, ownership, years of operation.

Directory of Illinois Coal Mines (St. Clair County) - Mine names, mine index, ownership, years of operation.

Mine notes (St. Clair County) - Mine type, seam, depth, thickness.

Microfilm map, document 351040, reel 03134, frames 128,129 - Shaft locations, mine outline, mining method.

Microfilm map, document 351141, reel 03134, frames 279 & 280, map of Branch No. 2 Mine (mine index 3492) - Mine outline (southern boundary).

Mine Index 3512
Swansea Coal & Mining Company, Humboldt Mine

Type: Underground Total mined-out acreage shown: 82

SHAFT, SLOPE, DRIFT or TIPPLE LOCATIONS

Type	County	Twp	Section	Quarters-Footage
Main shaft	St. Clair	1N 8W	16	SE NE SE
Air shaft	St. Clair	1N 8W	16	SE NE SE

GEOLOGY

Seam(s) Mined	Depth (ft)	Thickness (ft)		Mining Method
		Min	Max	
Herrin	100-125		6.0-6.5	RPB

Geologic Problems Reported:

PRODUCTION HISTORY

Company	Mine Name	Years	Production (tons)
Dubuck & Company	Humboldt	pre1883-1884	6,000 *
Humboldt Mining Company	Humboldt	1884-1891	87,710
Humboldt Mining Company	Humboldt	1891-1906	328,410 **
Swansea Coal & Mining Company	Humboldt	1906-1907	23,562 **
			445,682

* Previous ownership and production unknown. The Coal Report of 1884 indicates at least three previous owners.

** Production since map date

Last reported production: 1907

SOURCES OF DATA

Source Map	Date	Original Scale	Digitized Scale	Map Type
WPA, document 351022	1-4-1905	1:12000	1:24828	Secondary source
Microfilm, document 351095	9-12-1891			Not final

Annotated Bibliography (data source, brief description of information)

Coal Reports - Production, ownership, years of operation.

Directory of Illinois Coal Mines (St. Clair County) - Mine names, mine index, ownership, years of operation.

WPA, T1N-R8W, document 351022, reel 03134, frame 101 - Mine outline.

Microfilm map, document 351095, reel 03134, frame 209 - Shaft locations, mining method.

Mine Index 3513**Consolidated Coal Company, Green Mount Mine**

Type: Underground Total mined-out acreage shown: 516 The source map for the Consolidated Coal Company of St. Louis mines in this area is very poor, and the boundaries between the separate mines could not be distinguished. The acreage reported is the total for mine index numbers 3513, 3515, 3517 and 3518.

SHAFT, SLOPE, DRIFT or TIPPLE LOCATIONS

Type	County	Twp	Section	Quarters-Footage
Main shaft	St. Clair	1N 8W	16	NE NW SW
Air shaft	St. Clair	1N 8W	16	NE NW SW

GEOLOGY

Seam(s) Mined	Depth (ft)	Thickness (ft)			Mining Method
		Min	Max	Ave	
Herrin	160			6.0	RPB

Geologic Problems Reported:

PRODUCTION HISTORY

Company	Mine Name	Years	Production (tons)
Green Mound Coal Company	Green Mound	pre1874-1885	18,350 *
Green Mount Coal & Mining Company	Green Mount	1885-1886	12,000
Consolidated Coal Company of St. Louis **	Green Mount	1886-1896	214,523
John Groom	Green Mount	1896-1897	53,020
Consolidated Coal Company	Green Mount	1897-1910	800,837
			1,098,730

* Production prior to 1882 is not known. The Coal Report of 1882 indicates 18 acres were mined. Idle 1883 & 1884 while under repair following flooding of the mine.

** Groom & Allen, lessees 1888 and 1889, and may have leased other years; reporting was inconsistent.

Last reported production: 1910

SOURCES OF DATA

Source Map	Date	Original Scale	Digitized Scale	Map Type
Microfilm, document 350961	3-30-1910	1:2400	1:5296	Final

Annotated Bibliography (data source, brief description of information)

Coal Reports - Production, ownership, years of operation.

Directory of Illinois Coal Mines (St. Clair County) - Mine names, mine index, ownership, years of operation.

Mine notes (St. Clair County) - Shaft location, mine type, seam, depth, thickness.

Microfilm map, document 350961, reel 03134, frame 4 - Shaft locations, mine outline, mining method.

Atlas of St. Clair County, Illinois, 1874, Warner & Beers, Chicago, Illinois - Years of operation.

Mine Index 3514**Dutch Hollow Coal Company, Emmet Mine**

Type: Underground Total mined-out acreage shown: 21 Production indicates an additional 3 acres were mined after the map date.

SHAFT, SLOPE, DRIFT or TIPPLE LOCATIONS

Type	County	Twp	Section	Quarters-Footage
Main shaft	St. Clair	1N 8W	16	NW SE NE
Air shaft	St. Clair	1N 8W	16	NW SE NE

GEOLOGY

Seam(s) Mined	Depth (ft)	Thickness (ft)		Mining Method
		Min	Max Ave	
Herrin	130		6.0-6.5	RPB

Geologic Problems Reported:

PRODUCTION HISTORY

Company	Mine Name	Years	Production (tons)
Edward Avery & Company	Avery	pre1882-1883	25,360 *
Dutch Hollow Coal Company	Emmet	1883-1885	11,133
Dutch Hollow Coal Company	Emmet	1885-1886	17,790 **
Consolidated Coal Company of St. Louis	Emmet	1886-1889	none ***
			54,283

* Production prior to 1882 is not known. The Coal Report of 1882 indicates 26 acres were mined. (The source map does not support the reported acreage.)

** Production after map date.

*** No production reported under this company. Abandoned and fenced off 1889.

Last reported production: 1886

SOURCES OF DATA

Source Map	Date	Original Scale	Digitized Scale	Map Type
Microfilm, document 350994	1-22-1885	1:960	1:1192	Not final

Annotated Bibliography (data source, brief description of information)

Coal Reports - Production, ownership, years of operation, seam, thickness, depth.

Directory of Illinois Coal Mines (St. Clair County) - Mine names, mine index, ownership, years of operation.

Microfilm map, document 350994, reel 03134, frame 64 - Shaft locations, mine outline, mining method.

Mine Index 3515**Northwestern Coal Company, Northwestern Mine**

Type: Underground Total mined-out acreage shown: 516 The source map for the Consolidated Coal Company of St. Louis mines in this area is very poor, and the boundaries between the separate mines could not be distinguished. The acreage reported is the total for mine index numbers 3513, 3515, 3517 and 3518.

SHAFT, SLOPE, DRIFT or TIPPLE LOCATIONS

Type	County	Twp	Section	Quarters-Footage
Main shaft	St. Clair	1N 8W	16	SW NW NW

GEOLOGY

Seam(s) Mined	Depth (ft)	Thickness (ft)		Mining Method
		Min	Max	
Herrin	100-185		6.0-7.0	RPB

Geologic Problems Reported:

PRODUCTION HISTORY

Company	Mine Name	Years	Production (tons)
Northwestern Coal Mining Company	Northwestern	pre1874-1886	79,416 **
Consolidated Coal Company of St. Louis ***	Northwestern	1886-1889	36,100
Northwestern Coal Company	Northwestern	1889-1892	<u>17,950</u>
			133,466

** Production prior to 1882 is not known. The Coal Report of 1882 indicates 12 acres were mined. The 1874 Atlas of St. Clair County shows a shaft at this location, indicating that mining was taking place in the early 1870s.

*** F. Kerchner, lessee 1887-1889

Last reported production: 1892

SOURCES OF DATA

Source Map	Date	Original Scale	Digitized Scale	Map Type
Microfilm, document 350961	3-30-1910	1:2400	1:5297	Final
Atlas of St. Clair County	1874	1:36205	1:36205	Secondary source

Annotated Bibliography (data source, brief description of information)

Coal Reports - Production, ownership, years of operation, seam, depth, thickness.

Directory of Illinois Coal Mines (St. Clair County) - Mine names, mine index, ownership, years of operation.

Microfilm map, document 350961, reel 03134, frame 4 - Shaft locations, mine outline, mining method.

Atlas of St. Clair County, Illinois, 1874, Warner & Beers, Chicago, Illinois - Shaft location, years of operation.

Mine Index 3516**Fullerton Coal Company, Fullerton No. 1 Mine**

Type: Underground Total mined-out acreage shown: 195 Production indicates less than one additional acre was mined after the map date. A general area of mining has been added to indicate the probable location and extent of the oldest mining, which was not shown on the source map.

SHAFT, SLOPE, DRIFT or TIPPLE LOCATIONS

Type	County	Twp	Section	Quarters-Footage
Main shaft	St. Clair	1N 8W	16	NW NW NE
Air shaft	St. Clair	1N 8W	16	NW NW NE

GEOLOGY

Seam(s) Mined	Depth (ft)	Thickness (ft)		Mining Method
		Min	Max	
Herrin	153		6.8	MRP

Geologic Problems Reported:

PRODUCTION HISTORY

Company	Mine Name	Years	Production (tons)
L & N Coal Mining Company	L & N	1889-1891	22,155
Walnut Valley Coal Company	Walnut Valley	1891-1892	5,993
William Skellett Coal Company	L & N	1892-1904	428,064
Fullerton Coal Company	Fullerton No. 1, Skellett	1904-1939 *	1,226,758
Fullerton Coal Company	Fullerton No. 1, Skellett	1939-1940	8,071 **
			1,691,041

* Idle 1922, second half of 1925, 1930 & 1931

** Production after map date

Last reported production: 1940

SOURCES OF DATA

Source Map	Date	Original Scale	Digitized Scale	Map Type
Microfilm, document 351035	11-14-1939	1:2400	1:3972	Not final
Microfilm, document 351022	circa 1935-1940	1:12000	1:24828	Secondary source

Annotated Bibliography (data source, brief description of information)

Coal Reports - Production, ownership, years of operation.

Directory of Illinois Coal Mines (St. Clair County) - Mine names, mine index, ownership, years of operation.

Mine notes (St. Clair County) - Shaft location, mine type, seam, depth, thickness.

Microfilm map, document 351035, reel 03134, frame 120 - Shaft locations, mine outline, mining method.

Microfilm map, document 351022, reel 03134, frame 101, WPA map, T1N-R8W - Mine outline (southwestern).

Mine Index 3518**Consolidated Coal Company, Schureman Mine**

Type: Underground Total mined-out acreage shown: 516 The source map for the Consolidated Coal Company of St. Louis mines in this area is very poor, and the boundaries between the separate mines could not be distinguished. The acreage reported is the total for mine index numbers 3513, 3515, 3517 and 3518.

SHAFT, SLOPE, DRIFT or TIPPLE LOCATIONS

Type	County	Twp	Section	Quarters-Footage
Main shaft	St. Clair	1N 8W	17	SE NW SW
Skellett shaft	St. Clair	1N 8W	17	NW SE NE
Shaft	St. Clair	1N 8W	17	SW NE SW
Shaft	St. Clair	1N 8W	17	NW SE SW

GEOLOGY

Seam(s) Mined	Depth (ft)	Thickness (ft)		Mining Method
		Min	Max	
Herrin	125-150		6.0-6.5	RPB

Geologic Problems Reported:

PRODUCTION HISTORY

Company	Mine Name	Years	Production (tons)
William Skellett	Skellett	pre1874-1886 *	121,359
Consolidated Coal Company of St. Louis	Skellett	1886-1887	9,519
Schureman Brothers	Schureman	pre1874-1886 **	159,766
Consolidated Coal Company of St. Louis	Schureman	1886-1896	543,893
T. Westwood, lessee	Schureman	1896-1897	48,647
Consolidated Coal Company	Schureman	1897-1905	348,836
			1,232,020

* Production and ownership prior to 1882 are not known. The Coal Report of 1882 indicates 120 acres were mined. The 1874 Atlas of St. Clair County indicates mining was taking place in the early 1870s. The Coal Report of 1884 stated that the Skellett mine was adjacent to and operated co-jointly with the Schureman mine. The source maps of this area are poor and the boundary between the two mines cannot be distinguished.

** Production and ownership prior to 1882 are not known. The Coal Report of 1882 indicates 30 acres were mined.

Last reported production: 1905

SOURCES OF DATA

Source Map	Date	Original Scale	Digitized Scale	Map Type
Microfilm, document 350961	3-30-1910	1:2400	1:5297	Final
Atlas of St. Clair County	1874	1:36205	1:36205	Secondary source
ISGS field notes (G. H. Cady)	Undated	1:62500	1:62500	Secondary source

Annotated Bibliography (data source, brief description of information)

Coal Reports - Production, ownership, years of operation.

Directory of Illinois Coal Mines (St. Clair County) - Mine names, mine index, ownership, years of operation.

Mine notes (St. Clair County) - Shaft location, mine type, seam, depth, thickness.

Microfilm map, document 350961, reel 03134, frame 4 - Shaft locations, mine outline, mining method.

Atlas of St. Clair County, Illinois, 1874, Warner & Beers, Chicago, Illinois - Skellett shaft location, years of operation; years of operation of Schureman shaft.

ISGS field notes (St. Clair County) - Shaft locations (SW NE SW and NW SE SW).

Mine Index 3524**West Belleville Coal Company, West Belleville Mine**

Type: Underground Total mined-out acreage shown: 68 Production indicates an additional 14 acres were mined after the date of the map.

SHAFT, SLOPE, DRIFT or TIPPLE LOCATIONS

Type	County	Twp	Section	Quarters-Footage
Main shaft	St. Clair	1N 8W	20	SW NW NE
Air shaft	St. Clair	1N 8W	20	NW NW NE

GEOLOGY

Seam(s) Mined	Depth (ft)	Thickness (ft)		Mining Method
		Min	Max	
Herrin	115-130		6.0-7.0	MRP

Geologic Problems Reported: The source map had two areas labeled "squeeze" in the eastern portion of the mine. One area was at the northern extent of the northeastern part of the mine (NW SW SW 16-T1N-R8W), the other was near the haulage route south of the first area (SW SW SW 16-T1N-R8W).

PRODUCTION HISTORY

Company	Mine Name	Years	Production (tons)
West End Coal Company	West End	1889-1898	133,316
Glendale Coal & Mining Company	Glendale No. 2	1898-1905	192,619
Southern Coal & Mining Company	Southern No. 5, Glendale	1905-1915	165,850
Southern Coal & Mining Company	Southern No. 5, Glendale	1915-1919	34,972 *
West Belleville Coal Company	West Belleville	1919-1922	<u>66,402 *</u>
			593,159

* Production after map date

Last reported production: 1922

SOURCES OF DATA

Source Map	Date	Original Scale	Digitized Scale	Map Type
Microfilm, document 351026	3-25-1915	1:1200	1:2317	Not final
Microfilm, document 350995	undated	1:1200	1:1821	Not final

Annotated Bibliography (data source, brief description of information)

Coal Reports - Production, ownership, years of operation, seam, depth, thickness.

Directory of Illinois Coal Mines (St. Clair County) - Mine names, mine index, ownership, years of operation.

Microfilm map, document 351026, reel 03134, frame 107 - Shaft locations, mine outline, mining method.

Microfilm map, document 350995, reel 03134, frame 65 - Ownership, mine outline (western).

Mine Index 3527
James Beatty, Beatty Mine

Type: Underground Total mined-out acreage shown: 3

SHAFT, SLOPE, DRIFT or TIPPLE LOCATIONS

Type	County	Twp	Section	Quarters-Footage
Main shaft	St. Clair	1N 8W	21	NE SW NE
Air shaft	St. Clair	1N 8W	21	NW SE NE

GEOLOGY

Seam(s) Mined	Depth (ft)	Thickness (ft)			Mining Method
		Min	Max	Ave	
Herrin	80			6.0	RPB

Geologic Problems Reported:

PRODUCTION HISTORY

Company	Mine Name	Years	Production (tons)
James Beatty	Beatty	pre1882-1883 *	16,500 **
			16,500

* Flooded by Richland Creek, November 1883.

** Production prior to 1882 is not known. The Coal Report of 1882 indicates 38 acres were mined. All reported production is after the date of the map.

Last reported production: 1883

SOURCES OF DATA

Source Map	Date	Original Scale	Digitized Scale	Map Type
Microfilm, document 350996	1879	1:600	1:1076	Not final

Annotated Bibliography (data source, brief description of information)

Coal Reports - Production, ownership, years of operation, depth, seam, thickness.

Directory of Illinois Coal Mines (St. Clair County) - Mine names, mine index, ownership, years of operation.

Microfilm map, document 350996, reel 03134, frame 66 - Shaft locations, mine outline, mining method.

Mine Index 3528
Highland Coal Company, Highland Mine

Type: Underground Total mined-out acreage shown: 125 Production indicates less than 2 additional acres were mined after the map date. The area shown is insufficient for the production, and there are indications mining took place earlier at this location; a general area of mining was added to account for these factors.

SHAFT, SLOPE, DRIFT or TIPPLE LOCATIONS

Type	County	Twp	Section	Quarters-Footage
Main shaft	St. Clair	1N 8W	22	NW NE SE *
Air shaft	St. Clair	1N 8W	22	SW SE NE

* The proximity of this shaft to the Thomas Mine (mine index 4849) indicates that mining may have taken place here in the early 1870s.

GEOLOGY

Seam(s) Mined	Depth (ft)	Thickness (ft)			Mining Method
		Min	Max	Ave	
Herrin	133			7.0	MRP

Geologic Problems Reported:

PRODUCTION HISTORY

Company	Mine Name	Years	Production (tons)
Highland Coal Company	Highland	1890-1925	958,192
Highland Coal Company	Highland	1925-1926	9,745 **
			967,937

** Production after map date

Last reported production: 1926

SOURCES OF DATA

Source Map	Date	Original Scale	Digitized Scale	Map Type
Microfilm, document 351100	6-12-1925	1:1440	1:3178	Not final
Microfilm, document 351022	circa 1935	1:12000	1:24828	Secondary source

Annotated Bibliography (data source, brief description of information)

Coal Reports - Production, ownership, years of operation.
 Directory of Illinois Coal Mines (St. Clair County) - Mine names, mine index, ownership, years of operation.
 Mine notes (St. Clair County) - Mine type, seam, depth, thickness.
 Microfilm map, document 351100, reel 03134, frame 226 - Shaft locations, mine outline, mining method.
 Microfilm map, document 351022, reel 03134, frame 101, WPA map of T1N-R8W - Mine outline (western).

Mine Index 3529**George Reuther, Irish Pond Mine**

Type: Underground Total mined-out acreage shown: 5 Production indicates less than 1 acre was mined after the map date.

SHAFT, SLOPE, DRIFT or TIPPLE LOCATIONS

Type	County	Twp	Section	Quarters-Footage
Main shaft	St. Clair	1N 8W	22	SW SW NW
Air shaft	St. Clair	1N 8W	22	SW SW NW

GEOLOGY

Seam(s) Mined	Depth (ft)	Thickness (ft)			Mining Method
		Min	Max	Ave	
Herrin	90-95			6.0-6.5	RP

Geologic Problems Reported:

PRODUCTION HISTORY

Company	Mine Name	Years	Production (tons)
George Reuther	Irish Pond	1883-1891	20,211
George Reuther	Irish Pond	1891-1893	<u>2,099</u> *
			22,310

* Production after map date

Last reported production: 1893

SOURCES OF DATA

Source Map	Date	Original Scale	Digitized Scale	Map Type
Microfilm, document 351043	10-10-1891	1:960	1:960	Not final

Annotated Bibliography (data source, brief description of information)

Coal Reports - Production, ownership, years of operation, mine type, seam, depth, thickness, mining method.
 Directory of Illinois Coal Mines (St. Clair County) - Mine names, mine index, ownership, years of operation.
 Microfilm map, document 351043, reel 03134, frame 137 - Shaft locations, mine outline.

Mine Index 3530
Washed Coal Company, White Mine

Type: Underground Total mined-out acreage shown: 464

SHAFT, SLOPE, DRIFT or TIPPLE LOCATIONS

Type	County	Twp	Section	Quarters-Footage
Main slope	St. Clair	1N 8W	23	NE SW SW
Air shaft	St. Clair	1N 8W	23	NW SE NE
Escape shaft	St. Clair	1N 8W	23	SE NW SW
Air shaft	St. Clair	1N 8W	23	SE NW SW

GEOLOGY

Seam(s) Mined	Depth (ft)	Thickness (ft)			Mining Method
		Min	Max	Ave	
Herrin	110-125			6.0-7.0	MRP, RPB *

RPB method was in the older, western portion of the mine.

Geologic Problems Reported:

PRODUCTION HISTORY

Company	Mine Name	Years	Production (tons)
Brandenberger	Brandenberger No. 2	1888-1889	33,060
Glendale Coal & Mining Company	Glendale No. 1	1889-1912 **	1,408,221
Oakdale Coal & Mining Company	Oakdale	1912-1917	175,684
Ell-Rich Mining Company	Ell-Rich	1917-1931	923,762
White Coal Company	White	1931-1940	470,056
Washed Coal Company	White	1940-1946	131,469
			3,142,252

** Idle 1909

Last reported production: 1946

SOURCES OF DATA

Source Map	Date	Original Scale	Digitized Scale	Map Type
Microfilm, document 351051	3-30-1946	1:2400	1:4634	Final
Microfilm, document 351144	1918	1:2400	1:3972	Not final ***

*** The mined area shown on the accompanying map is the approximate size expected for the production reported. This suggests that the mine outline is complete.

Annotated Bibliography (data source, brief description of information)

Coal Reports - Production, ownership, years of operation.
 Directory of Illinois Coal Mines (St. Clair County) - Mine names, mine index, ownership, years of operation.
 Mine notes (St. Clair County) - Slope & shaft locations, mine type, seam, depth, thickness.
 Microfilm map, document 351051, reel 03134, frames 147,148 - Slope and shaft locations, mine outline (eastern) mining method.
 Microfilm map, document 351144, reel 03134, frames 283,284 - Mine outline (western), mining method.
 Federal Land Bank Report (St. Clair County) - Thickness, depth.

Mine Index 3533**Victoria Coal Company, Branch Mine (Victoria No. 1)**

Type: Underground Total mined-out acreage shown: 207 Production indicates an additional 50 acres were mined that are not accounted for by the acres added by the adjacent mine. Connected underground to White Rose Mine (mine index 783) in SE 29-T1N-R8W and NE 32-T1N-R8W.

SHAFT, SLOPE, DRIFT or TIPPLE LOCATIONS

Type	County	Twp	Section	Quarters-Footage
Main shaft	St. Clair	1N 8W	28	NW NW SW
Shaft	St. Clair	1N 8W	28	NW NW SW

GEOLOGY

Seam(s) Mined	Depth (ft)	Thickness (ft)		Mining Method
		Min	Max	
Herrin	54		6.0	RPB

Geologic Problems Reported:

PRODUCTION HISTORY

Company	Mine Name	Years	Production (tons)
Jacob Krantz	Krantz	1890-1899	160,491
Reeb Coal Company	Branch	1899-1902	64,696
Lake Superior Coal Company	Branch	1902-1905	84,202
L. Senior	Branch	1905-1910	98,583
L. Senior	Branch	1910-1913	94,158 *
Victoria Coal Company	Branch, Victoria No. 1	1913-1924	981,658 *
			1,483,788

* Production after map date

Last reported production: May 1924

SOURCES OF DATA

Source Map	Date	Original Scale	Digitized Scale	Map Type
Microfilm, document 351039	1910	1:1200	1:2317	Not final
ISGS map library, 4103.S31 i5.1-22	12-14-1942	1:2400	1:2400	Secondary source

Annotated Bibliography (data source, brief description of information)

Coal Reports - Production, ownership, years of operation.

Directory of Illinois Coal Mines (St. Clair County) - Mine names, mine index, ownership, years of operation.

Mine notes (St. Clair County) - Shaft location, mine type, seam, depth, thickness.

Microfilm map, document 351039, reel 03134, frame 127 - Shaft locations, mine outline, mining method.

ISGS map library, 4103.S31 i5.1-22, map of White Rose Mine (mine index 783) - Mine outline (western, southern).

Mine Index 3596**Bruggeman & Hortman Coal Company, Braun's Mine**

Type: Underground Total mined-out acreage shown: 137 Numerous mines operated in this vicinity.
 No source maps are available for the individual mines; a general area of mining designates the area.

SHAFT, SLOPE, DRIFT or TIPPLE LOCATIONS

Type	County	Twp	Section	Quarters-Footage
Shaft	St. Clair	1N 8W	22	NE SW NW
Bruggeman & Hortman shaft	St. Clair	1N 8W	22	SW SW NW *
Hortman shaft	St. Clair	1N 8W	22	SE NW NW
C. Reinecke shaft	St. Clair	1N 8W	22	NW SW NE
C. Reinecke air shaft	St. Clair	1N 8W	22	NW SW NE

* The 1874 Atlas of St. Clair County indicated this shaft was Brauch & Hessebaum.

GEOLOGY

Seam(s) Mined	Depth (ft)	Thickness (ft)			Mining Method
		Min	Max	Ave	
Herrin	80-130			6.0-6.5	RP

PRODUCTION HISTORY

Company	Mine Name	Years	Production (tons)
Conrad Reinecke	Reinecke No. 1	pre1874-1886	192,665 **
Consolidated Coal Company of St. Louis	Reinecke No. 1	1886-1896	117,012
Hortsman & Brother	Hortsman	pre1882-1882	7,000 ***
Bruggeman	Bruggeman	1882-1883	8,900
Bruggeman & Bloom	Bruggeman & Bloom	1883-1884	7,529
F. J. Bruggeman	Bruggeman	1884-1885	7,141
Bruggeman	Bruggeman No. 1 & No. 2	1885-1886	6,627
Bruggeman & Hortman	(B. & H.) No. 1 & No. 2	1886-1887	28,000
Bruggeman & Hortman	Bruggeman & Hortman No. 1	1887-1889	8,870
Bruggeman & Hortman	Bruggeman & Hortman No. 2	1887-1889	37,000
Bruggeman & Hortman	Bruggeman & Hortman No. 3	1888-1889	2,000
F. J. Bruggeman	Bruggeman	1889-1894	42,233
Charles Hartman	Hartman No. 1	1889-1895	156,050
			621,027

** Production prior to 1882 unknown. The Coal Report of 1882 indicates 30 acres were mined. The shaft was shown on the 1874 Atlas of St. Clair County.

*** Production prior to 1882 unknown. The Coal Report of 1882 indicates 12 acres were mined. The March 1884 Sanborn-Perris Insurance map shows both Bruggeman & Hortman shafts in this area, as well as C. Reinecke.

Last reported production: 1895

SOURCES OF DATA

Source Map	Date	Original Scale	Digitized Scale	Map Type
Microfilm, document 351022	10-10-1891	1:12000	1:24828	Secondary source

Annotated Bibliography (data source, brief description of information)

Coal Reports - Production, ownership, years of operation, seam, depth, thickness, mining method.

Directory of Illinois Coal Mines (St. Clair County) - Mine names, mine index, ownership, years of operation.

Microfilm map, (WPA), document 351022, reel 03134, frame 100, WPA map of T1N-R8W - Shaft locations, mine outline.

Atlas of St. Clair County, Illinois, 1874, Warner & Beers, Chicago, Illinois - Shaft locations.

Mine Index 3598**O'Fallon Coal Company, O'Fallon No. 1 Mine**

Type: Underground Total mined-out acreage shown: 28

SHAFT, SLOPE, DRIFT or TIPPLE LOCATIONS

Type	County	Twp	Section	Quarters-Footage
Main shaft	St. Clair	2N 7W	29	NW NW SE
Air shaft	St. Clair	2N 7W	29	NE NE SW

GEOLOGY

Seam(s) Mined	Depth (ft)	Thickness (ft)		Mining Method
		Min	Max	
Herrin	202		6.5-7.5	MRP

Geologic Problems Reported:

PRODUCTION HISTORY

Company	Mine Name	Years	Production (tons)
O'Fallon Coal Company	O'Fallon No. 1, Tin Can	1917-1924	209,086
			209,086

Last reported production: November 1923

SOURCES OF DATA

Source Map	Date	Original Scale	Digitized Scale	Map Type
Microfilm, document 351137	5-6-1918	1:360	1:770	Not final *
WPA, T2N-R7W	7-1-1922	1:12000	1:55380	Secondary source

* The source map indicates works of an older abandoned mine were found to the north, and were designated "Bond Mine" on the state archive map (PB_204). These "old works" are designated by text on the accompanying map. The extent of the mined area is unknown.

Annotated Bibliography (data source, brief description of information)

Coal Reports - Production, ownership, years of operation, depth.

Directory of Illinois Coal Mines (St. Clair County) - Mine names, mine index, ownership, years of operation.

Mine notes (St. Clair County) - Shaft location, mine type, seam, thickness.

Microfilm map, document 351137, reel 03134, frame 274 - Shaft locations, mine outline, mining method.

WPA map, T2N-R7W - Mine outline.

State archive, PB_204, compilation map constructed by Peabody Coal Company - Mine names (Tin Can and Bond Mines).

Mine Index 3599**John Carroll, Vancourt Mine**

Type: Underground Total mined-out acreage shown: 50 Production indicates an additional 5 acres were mined after the map date.

SHAFT, SLOPE, DRIFT or TIPPLE LOCATIONS

Type	County	Twp	Section	Quarters-Footage
Main shaft	St. Clair	2N 7W	29	NE NE SE
Air shaft	St. Clair	2N 7W	29	SE NE SE

GEOLOGY

Seam(s) Mined	Depth (ft)	Thickness (ft)		Mining Method
		Min	Max Ave	
Herrin	200		7.5	RPB

Geologic Problems Reported:

PRODUCTION HISTORY

Company	Mine Name	Years	Production (tons)
Vancourt Mining Company	Vancourt	pre1874-1884	7,850 *
Keating Brothers	Vancourt	1884-1886	2,353
B. J. Vancourt	Vancourt	1886-1887	5,000
John Carroll	Vancourt	1887-1890	32,950 **
			48,153

* Idle 1882. Production prior to 1882 is unknown. The Coal Report of 1883 indicates 40 acres were mined. The 1874 Atlas of St. Clair County shows a shaft at this location, indicating mining was taking place in the early 1870s.

** Production after map date

Last reported production: 1890

SOURCES OF DATA

Source Map	Date	Original Scale	Digitized Scale	Map Type
Microfilm, document 350988	2-15-1887	1:1200	1:1986	Not final

Annotated Bibliography (data source, brief description of information)

Coal Reports - Production, ownership, years of operation.

Directory of Illinois Coal Mines (St. Clair County) - Mine names, mine index, ownership, years of operation.

Mine notes (St. Clair County) - Shaft location, mine type, seam, depth, thickness.

Microfilm map, document 350988, reel 03134, frame 56 - Shaft locations, mine outline, mining method.

Mine Index 3604**New Devil's Hole Coal Company, New Devil's Hole Mine**

Type: Underground Total mined-out acreage shown: 84 Production indicates about 3 acres were mined after the map date.

SHAFT, SLOPE, DRIFT or TIPPLE LOCATIONS

Type	County	Twp	Section	Quarters-Footage
Main shaft	St. Clair	2N 8W	16	SE SW SW
Air shaft	St. Clair	2N 8W	16	SE SW SW
New air shaft	St. Clair	2N 8W	16	SW SW SW

GEOLOGY

Seam(s) Mined	Depth (ft)	Thickness (ft)		Mining Method
		Min	Max Ave	
Herrin	120-141		5.5-6.3	RPB

Geologic Problems Reported: Two areas of squeeze were noted on the source map in the southern part of the mine (SE NE NE 20-T2N-R8W and NW SW NW 21-T2N-R8W). The entries south of the shaft were labeled "caved" (NW NW NW 21-T2N-R8W).

PRODUCTION HISTORY

Company	Mine Name	Years	Production (tons)
Quick Mining Company	Union	pre1874-1884	3,200 *
Idle		1884-1918	
People's Coal Company	People's No. 1	1918-1926 **	241,054
Mowe & Chapple	Mowe & Chapple	1926-1928	25,120
Caseyville Coal Company	Caseyville	1928-1932 ***	4,692
Sargent Coal Company	Sargent	1932-1933	9,413
Devil's Hole Coal Company	Devil's Hole	1933-1934	6,421
Hippard Coal Company	Hippard No. 2	1934-1937	30,901
White Ash Coal Company	White Ash	1937-1939	970
New Devil's Hole Coal Company	New Devil's Hole	1939-1939	2,183
New Devil's Hole Coal Company	New Devil's Hole	1939-1940	12,130 ****
			335,114

* Shown on 1874 atlas; ownership and production prior to 1883 are not known.

** Idle 1925

*** Idle 1929-1932

**** Production after map date

Last reported production: 1940

SOURCES OF DATA

Source Map	Date	Original Scale	Digitized Scale	Map Type
Microfilm, document 351072	2-18-1939	1:1200	1:2317	Not final

Annotated Bibliography (data source, brief description of information)

Coal Reports - Production, ownership, years of operation.

Directory of Illinois Coal Mines (St. Clair County) - Mine names, mine index, ownership, years of operation.

Mine notes (St. Clair County) - Shaft location, mine type, seam, depth, thickness.

Microfilm map, document 351072, reel 03134, frames 174,175 - Shaft locations, mine outline, mining method.

State archive, IL_316 and PB_126 - Mine ownership (Quick Mining Company), years of operation.

Atlas of St. Clair County, Illinois, 1874, Warner & Beers, Chicago, Illinois - Years of operation.

Mine Index 4258**Frank Sargent & Son, Caseyville Mine**

Type: Underground Total mined-out acreage shown: 8

SHAFT, SLOPE, DRIFT or TIPPLE LOCATIONS

Type	County	Twp	Section	Quarters-Footage
Main shaft	St. Clair	1N 8W	16	SW SE SW

GEOLOGY

Seam(s) Mined	Depth (ft)	Thickness (ft)			Mining Method
		Min	Max	Ave	
Herrin	85-150			6.0-6.5	RPB

Geologic Problems Reported:

PRODUCTION HISTORY

Company	Mine Name	Years	Production (tons)
Western Mining Company	Great Western	pre1882-1883	19,400 *
Frank Sargent & Son	Caseyville	1911-1912 **	<u>23,437</u>
			42,837

* Production prior to 1882 is not known. The Coal Report of 1882 indicates 18 acres were mined.

** Idle, abandoned, or operated under another name 1883-1911

Last reported production: 1912

SOURCES OF DATA

Source Map	Date	Original Scale	Digitized Scale	Map Type
Microfilm, document 351103	3-23-1923	1:1200	1:2652	Secondary source

Annotated Bibliography (data source, brief description of information)

Coal Reports - Production, ownership, years of operation, thickness, depth, seam.

Directory of Illinois Coal Mines (St. Clair County) - Mine names, mine index, ownership, years of operation.

Microfilm map, document 351103, reel 03134, frame 218, map of Pittsburg Mine (mine index 341) - Shaft location, mine outline, mining method.

Mine Index 4268**Philip Weber & Company, Greenfield Mine**

Type: Underground Total mined-out acreage shown: 16

SHAFT, SLOPE, DRIFT or TIPPLE LOCATIONS

Type	County	Twp	Section	Quarters-Footage
Main shaft	St. Clair	1N 8W	16	SE SW SW

GEOLOGY

Seam(s) Mined	Depth (ft)	Thickness (ft)		Mining Method
		Min	Max	
Herrin	120			6.0-6.5
				RPB

Geologic Problems Reported:

PRODUCTION HISTORY

Company	Mine Name	Years	Production (tons)
Kuntz-Bodman *	Kuntz-Bodman	unknown	
Greenfield Coal Company	Greenfield	pre1881-1882	10,000 **
Philip Weber & Company	Greenfield	1882-1883 ***	<u>8,000</u>
			18,000

* An undated map of the "Kuntz-Bodman Mine" is an earlier version of the Greenfield Mine.

** Production prior to 1882 is not known. The Coal Report of 1882 indicates 16 acres were mined.

*** The source map indicates the mine was abandoned due to flooding.

Last reported production: 1883

SOURCES OF DATA

Source Map	Date	Original Scale	Digitized Scale	Map Type
Microfilm, document 351026	3-15-1915	1:1200	1:2317	Secondary source

Annotated Bibliography (data source, brief description of information)

Coal Reports - Production, ownership, years of operation.

Directory of Illinois Coal Mines (St. Clair County) - Mine names, mine index, ownership, years of operation.

Microfilm map, document 351026, reel 03134, frame 107, map of West Belleville Mine (mine index 3524) - Shaft locations, mine outline, mining method.

Microfilm map, document 350992, reel 03134, frame 62 - Ownership.

Mine Index 4289**Stollburg Mining Company, Stollburg Mine**

Type: Underground Total mined-out acreage shown: 9 Production indicates less than one additional acre was mined.

SHAFT, SLOPE, DRIFT or TIPPLE LOCATIONS

Type	County	Twp	Section	Quarters-Footage
Main slope	St. Clair	1N 8W	28	SE SW NE

GEOLOGY

Seam(s) Mined	Depth (ft)	Thickness (ft)			Mining Method
		Min	Max	Ave	
Herrin	40			6.5	RP

Geologic Problems Reported:

PRODUCTION HISTORY

Company	Mine Name	Years	Production (tons)
Stollburg Mining Company	Stollburg	pre1881-1882	<u>400</u> *
			400

* Production prior to 1882 is not known. The Coal Report of 1882 indicates 40 acres were mined.

Last reported production: 1882

SOURCES OF DATA

Source Map	Date	Original Scale	Digitized Scale	Map Type
Microfilm, document 350991	1-18-1881	1:600	1:910	Not final

Annotated Bibliography (data source, brief description of information)

Coal Reports - Production, ownership, years of operation, seam, thickness, depth.

Directory of Illinois Coal Mines (St. Clair County) - Mine names, mine index, ownership, years of operation.

Microfilm map, document 350991, reel 03134, frames 60,61 - Slope location, mine outline.

Mine Index 4290**German Mining Company, German Mine**

Type: Underground Total mined-out acreage shown: None. Production indicates the area mined was about one acre.

SHAFT, SLOPE, DRIFT or TIPPLE LOCATIONS

Type	County	Twp	Section	Quarters-Footage
Main slope	St. Clair	1N 8W	28	NW SW NE

GEOLOGY

Seam(s) Mined	Depth (ft)	Thickness (ft)			Mining Method
		Min	Max	Ave	
Herrin	40			6.5	Underground

Geologic Problems Reported:

PRODUCTION HISTORY

Company	Mine Name	Years	Production (tons)
German Mining Company	German	pre1874-1882	<u>7,500</u> *
			7,500

* Production prior to 1882 is not known. The Coal Report of 1882 indicates 50 acres were mined. The 1874 Atlas of St. Clair County shows a shaft at this location with a railroad spur, indicating mining was taking place here in the early 1870s.

Last reported production: 1882

SOURCES OF DATA

Source Map	Date	Original Scale	Digitized Scale	Map Type
ISGS mined-out area map	1950	1:62,500	1:62,500	Secondary source
Atlas of St. Clair County, Illinois	1874	1:3840	1:24000	Secondary source

Annotated Bibliography (data source, brief description of information)

Coal Reports - Production, ownership, years of operation, mine type, seam, depth, thickness.
 Directory of Illinois Coal Mines (St. Clair County) - Mine names, mine index, ownership, years of operation.
 ISGS 1950 mined-out area map - Shaft location.
 Atlas of St. Clair County, Illinois, 1874, Warner & Beers, Chicago, Illinois - Years of operation.

Mine Index 4293
William Ebel, Ebel Mine

Type: Underground Total mined-out acreage shown: 1

SHAFT, SLOPE, DRIFT or TIPPLE LOCATIONS

Type	County	Twp	Section	Quarters-Footage
Main shaft	St. Clair	1N 8W	21	NE NW SE
Air shaft	St. Clair	1N 8W	21	NE NW SE

GEOLOGY

Seam(s) Mined	Depth (ft)	Thickness (ft)		Mining Method
		Min	Max	
Herrin	40-50		6.0	RPB

Geologic Problems Reported:

PRODUCTION HISTORY

Company	Mine Name	Years	Production (tons)
William Ebel	Ebel	1883-1885	<u>4,522</u> 4,522

Last reported production: 1885

SOURCES OF DATA

Source Map	Date	Original Scale	Digitized Scale	Map Type
Microfilm, document 351000	undated	1:720	1:1291	Undated

Annotated Bibliography (data source, brief description of information)

Coal Reports - Production, ownership, years of operation, seam, thickness, depth, mine type.
 Directory of Illinois Coal Mines (St. Clair County) - Mine names, mine index, ownership, years of operation.
 Microfilm map, document 351000, reel 03134, frame 71 - Shaft locations, mine outline, mining method.

Mine Index 4294
Fritz Winter, Winter Mine

Type: Underground Total mined-out acreage shown: 7

SHAFT, SLOPE, DRIFT or TIPPLE LOCATIONS

Type	County	Twp	Section	Quarters-Footage
Main shaft	St. Clair	1N 8W	21	SE SW NE

GEOLOGY

Seam(s) Mined	Depth (ft)	Thickness (ft)			Mining Method
		Min	Max	Ave	
Herrin	40-55			6.0-6.5	RPB

Geologic Problems Reported:

PRODUCTION HISTORY

Company	Mine Name	Years	Production (tons)
Fritz Winter	Winter	pre1874-1885	<u>6,140</u> *
			6,140

* The Coal Report of 1883 indicates 10 acres were mined. Winter's Mine is shown on the 1874 Atlas of St. Clair County, indicating that mining was taking place in the early 1870s.

Last reported production: 1885

SOURCES OF DATA

Source Map	Date	Original Scale	Digitized Scale	Map Type
Microfilm, document 350999	undated	1:1200	1:1324	Undated

Annotated Bibliography (data source, brief description of information)

Coal Reports - Production, ownership, years of operation, seam, thickness, depth, mine type.
 Directory of Illinois Coal Mines (St. Clair County) - Mine names, mine index, ownership, years of operation.
 Microfilm map, document 350999, reel 03134, frames 69 & 70 - Shaft location, mine outline, mining method.
 Atlas of St. Clair County, Illinois, 1874, Warner & Beers, Chicago, Illinois - Years of operation.

Mine Index 4296
Donk Brothers, National Mine

Type: Underground Total mined-out acreage shown: 5 Production indicates an additional 27 acres were mined after the map date.

SHAFT, SLOPE, DRIFT or TIPPLE LOCATIONS

Type	County	Twp	Section	Quarters-Footage
Main shaft	St. Clair	1N 8W	28	SW SE NE
Air shaft	St. Clair	1N 8W	28	SW SE NE

GEOLOGY

Seam(s) Mined	Depth (ft)	Thickness (ft)		Mining Method
		Min	Max Ave	
Herrin	40-83		6.0-6.5	RPB, HER **

** The Coal Report of 1897 included a paragraph on this mine, stating that the pillars had been robbed to such an extent that a "general squeeze was induced, resulting in a cave-in under a small creek", which resulted in a great deal of water in the mine, flooding this mine and an adjacent slope mine. (The adjacent mine is unknown.)

Geologic Problems Reported:

PRODUCTION HISTORY

Company	Mine Name	Years	Production (tons)
John Maule	Maule	pre1881-1883	6,000 *
John Maule	National	1889-1896 ***	151,101 ****
Donk Brothers	National	1896-1897	9,636 ****
			166,737

* Production and ownership prior to 1883 is not known. The Coal Report of 1883 indicates 20 acres were mined.

*** Abandoned mine reopened with new air shaft.

**** Production after map date

Last reported production: 1897

SOURCES OF DATA

Source Map	Date	Original Scale	Digitized Scale	Map Type
Microfilm, document 350997	1885	1:1200	1:1200	Not final

Annotated Bibliography (data source, brief description of information)

Coal Reports - Production, ownership, years of operation, mine type, seam, depth, thickness.
 Directory of Illinois Coal Mines (St. Clair County) - Mine names, mine index, ownership, years of operation.
 Microfilm map, document 350997, reel 03134, frame 67 - Shaft locations, mine outline, mining method.

Mine Index 4297**Vulcan Coal & Mining Company, Vulcan Mine No. 1**

Type: Underground Total mined-out acreage shown: 45, with an additional 109-acre general area of mining. The mine extends southward onto the Freeburg Quadrangle. The area shown represents the approximate size needed to account for the tonnage produced.

SHAFT, SLOPE, DRIFT or TIPPLE LOCATIONS

Type	County	Twp	Section	Quarters-Footage
Main shaft	St. Clair	1N 8W	34	SE NE NE

GEOLOGY

Seam(s) Mined	Depth (ft)	Thickness (ft)		Mining Method
		Min	Max Ave	
Herrin	70-75		6.5-7.0	RPB

Geologic Problems Reported:

PRODUCTION HISTORY

Company	Mine Name	Years	Production (tons)
Marsh & Son	Marsh & Son	1888-1889	34,763
Walnut Valley Coal Company	Walnut Valley	1889-1890	25,856
Marsh & Son	Marsh & Son	1890-1892	34,784
Walnut Valley	Walnut Valley	1892-1893	2,000
George Hippard	Walnut Valley	1895-1897 *	70,258
Hippard Coal Company	Hippard No. 1	1897-1907	564,545
Vulcan Coal & Mining Company	Vulcan No. 1	1907-1908	<u>42,572</u>
			774,778

* Idle 1894-1895

Last reported production: 1908

SOURCES OF DATA

Source Map	Date	Original Scale	Digitized Scale	Map Type
Microfilm, Recorder of Deeds	3-23-1928	1:1200	1:2483	Secondary source
Microfilm, document 351022	5-15-1912	1:12000	1:24828	Secondary source

Annotated Bibliography (data source, brief description of information)

Coal Reports - Production, ownership, years of operation.

Directory of Illinois Coal Mines (St. Clair County) - Mine names, mine index, ownership, years of operation.

Mine notes (St. Clair County) - Shaft location, mine type, seam, depth, thickness.

Microfilm map from Recorder of Deeds, St. Clair County, map of Patterson-Harding Mine (mine index 782) - Mine extent into O'Fallon Quadrangle.

Microfilm map, (WPA), document 351022, reel 03134, frame 101 - Mine outline.

Mine Index 4305
B. J. West, West Mine

Type: Underground Total mined-out acreage shown: 8

SHAFT, SLOPE, DRIFT or TIPPLE LOCATIONS

Type	County	Twp	Section	Quarters-Footage
Main shaft	St. Clair	1N 8W	27	SE SW NE
Air shaft	St. Clair	1N 8W	27	SE SW NE

GEOLOGY

Seam(s) Mined	Depth (ft)	Thickness (ft)		Mining Method
		Min	Max	
Herrin	120		6.0	RPB

Geologic Problems Reported:

PRODUCTION HISTORY

Company	Mine Name	Years	Production (tons)
Jacob Becker	Becker	pre1874-1883	8,100 *
B. J. West	West	1885	<u>none</u> *
			8,100

* No production was reported under the West name. Production in 1884 and 1885, if any, is not known. The 1874 Atlas of St. Clair County shows a shaft at this location, operated by J. Becker. The landowner of the surrounding land was B. J. West. The source map states that "West's mine" was surveyed by the county engineer "in the employ of B. J. West", indicating the mine may have been leased.

Last reported production: 1883

SOURCES OF DATA

Source Map	Date	Original Scale	Digitized Scale	Map Type
Microfilm, document 350985	8-12-1886	1:1200	1:1738	Not final

Annotated Bibliography (data source, brief description of information)

Coal Reports - Production, ownership, years of operation, seam, depth, thickness.
 Directory of Illinois Coal Mines (St. Clair County) - Mine names, mine index, ownership, years of operation.
 Microfilm map, document 350985, reel 03134, frame 51 - Shaft locations, mine outline, mining method.
 Atlas of St. Clair County, Illinois, 1874, Warner & Beers, Chicago, Illinois - Years of operation.

Mine Index 4707**Electric Light & Coal Company, Electric Light & Coal Mine**

Type: Underground Total mined-out acreage shown: 10

SHAFT, SLOPE, DRIFT or TIPPLE LOCATIONS

Type	County	Twp	Section	Quarters-Footage
Shaft	St. Clair	1N 8W	22	NW SE SE
Cross Mine shaft	St. Clair	1N 8W	22	SE SW SE *

* Shown on 1894 Sanborn-Perris Insurance map and was labeled Cross Mine on 1884 Sanborn-Perris map.

GEOLOGY

Seam(s) Mined	Depth (ft)	Thickness (ft)			Mining Method
		Min	Max	Ave	
Herrin	60-65			6.0-6.5	RP

Geologic Problems Reported:

PRODUCTION HISTORY

Company	Mine Name	Years	Production (tons)
Jacob Brosius	Brosius	pre1874-1885	24,385 **
Electric Light Company	Electric Light	1885-1886	5,081
Steam Supply Company	Brown's	1886-1887	2,800
St. Clair Steam Supply Company	St. Clair Steam Supply	1887-1889	11,220
Electric Light & Coal Company	Electric Light & Coal	1889-1891	<u>13,042</u>
			56,528

** Production & ownership prior to 1882 are not known. The Coal Report of 1882 indicates 5 acres were mined. A mine was shown on Brosius land in the 1874 atlas, indicating that mining was taking place in the early 1870s.

Last reported production: 1891

SOURCES OF DATA

Source Map	Date	Original Scale	Digitized Scale	Map Type
Sanborn Fire Insurance	1894	1:800	1:24000	Secondary source
WPA, document 351022	3-1-1891	1:12000	1:24828	Secondary source ***

*** The map is a secondary source created circa 1935, but the outline is dated 3-1-1891, suggesting they worked from a final map.

Annotated Bibliography (data source, brief description of information)

Coal Reports - Production, ownership, years of operation, seam, depth, thickness, mining method.
 Directory of Illinois Coal Mines (St. Clair County) - Mine names, mine index, ownership, years of operation.
 Insurance Maps of Belleville, Illinois, Sanborn-Perris Map Company, 1884 & 1894 - Shaft location for Cross Mine.
 WPA map, document 351022, reel 03134, frames 100 & 101 - Shaft location, mine outline.
 Atlas of St. Clair County, Illinois, 1874, Warner & Beers, Chicago, Illinois - Years of operation.

Mine Index 4731**James Tribout, Tribout Mine**

Type: Underground Total mined-out acreage shown: None. Production indicates less than one acre was mined.

SHAFT, SLOPE, DRIFT or TIPPLE LOCATIONS

Type	County	Twp	Section	Quarters-Footage
Main shaft	St. Clair	1N 8W	27	NW NE SW

GEOLOGY

Seam(s) Mined	Depth (ft)	Thickness (ft)			Mining Method
		Min	Max	Ave	
Herrin					Underground

Geologic Problems Reported:

PRODUCTION HISTORY

Company	Mine Name	Years	Production (tons)
James Tribout	Tribout	1925-1925	<u>958</u> 958

Last reported production: 1925

SOURCES OF DATA

Source Map	Date	Original Scale	Digitized Scale	Map Type
Microfilm, document 351096	undated	1:1200	1:1200	Undated

Annotated Bibliography (data source, brief description of information)

Coal Reports - Production, ownership, years of operation.

Directory of Illinois Coal Mines (St. Clair County) - Mine names, mine index, ownership, years of operation.

Microfilm map, document 351096, reel 03134, frame 210 - Shaft location.

Mine Index 4849**Thomas & Company, Thomas Mine**

Type: Underground Total mined-out acreage shown: None. The reported production indicates approximately 2 acres were mined. An additional 15 acres were reported to have been mined.

SHAFT, SLOPE, DRIFT or TIPPLE LOCATIONS

Type	County	Twp	Section	Quarters-Footage
Main shaft	St. Clair	1N 8W	22	NW NE SE

GEOLOGY

Seam(s) Mined	Depth (ft)	Thickness (ft)			Mining Method
		Min	Max	Ave	
Herrin	80			7.0	Underground

Geologic Problems Reported:

PRODUCTION HISTORY

Company	Mine Name	Years	Production (tons)
Thomas & Company	Thomas	pre1874-1882	<u>15,000</u> *
			15,000

* Production prior to 1882 is not known. The Coal Report of 1882 indicates 15 acres were mined. The 1874 Atlas of St. Clair County indicates that mining was taking place in the early 1870s. The location of this mine indicates it may have been the precursor to the Highland Mine (mine index 3528).

Last reported production: 1882

SOURCES OF DATA

Source Map	Date	Original Scale	Digitized Scale	Map Type
Atlas of St. Clair County	1874	1:3840	1:24000	Secondary source

Annotated Bibliography (data source, brief description of information)

Coal Reports - Production, ownership, years of operation, mine type, seam, depth, thickness.
Directory of Illinois Coal Mines (St. Clair County) - Mine names, mine index, ownership, years of operation.
An Illustrated Historical Atlas of St. Clair County, Illinois, Warner & Beers, Chicago, 1874, reproduced by Marissa Historical and Genealogical Society, Marissa Illinois, 1984 - Mine name, location.

Mine Index 6608
East Belleville Coal Company, East Belleville Mine

Type: Underground Total mined-out acreage shown: 10

SHAFT, SLOPE, DRIFT or TIPPLE LOCATIONS

Type	County	Twp	Section	Quarters-Footage
Main shaft	St. Clair	1N 8W	26	NW NW NE
Air shaft	St. Clair	1N 8W	26	NW NW NE

GEOLOGY

Seam(s) Mined	Depth (ft)	Thickness (ft)			Mining Method
		Min	Max	Ave	
Herrin					RPB

Geologic Problems Reported:

PRODUCTION HISTORY

Company	Mine Name	Years	Production (tons)
East Belleville Coal Company	East Belleville	unknown *	

* No production was reported under this name. The 1874 Atlas of St. Clair County shows a mine at this location, indicating that mining was taking place in the early 1870s.

Last reported production:

SOURCES OF DATA

Source Map	Date	Original Scale	Digitized Scale	Map Type
ISGS map library, 4103.S31 i5.1-57	6-1-1970	1:2400	1:4966	Secondary source

Annotated Bibliography (data source, brief description of information)

Coal Reports - Production, ownership, years of operation.
 Directory of Illinois Coal Mines (St. Clair County) - Mine names, mine index, ownership, years of operation.
 Mine notes (St. Clair County) - Mine type, shaft location, seam, depth, thickness.
 ISGS map library, 4103.S31 i5.1-57, map of Belle Valley Mine (mine index 929) - Shaft locations, mine outline, mining method.
 Atlas of St. Clair County, Illinois, 1874, Warner & Beers, Chicago, Illinois - Years of operation.

Mine Index 6641**Nicholas Reeb, Reeb Mine**

Type: Underground Total mined-out acreage shown: None; the reported production indicates less than one acre was mined; the Coal Report indicates 35 acres were mined prior to 1883.

SHAFT, SLOPE, DRIFT or TIPPLE LOCATIONS

Type	County	Twp	Section	Quarters-Footage
Main shaft	St. Clair	1N 8W	28	SW NE NW

GEOLOGY

Seam(s) Mined	Depth (ft)	Thickness (ft)			Mining Method
		Min	Max	Ave	
Herrin	60			6.5	RP

Geologic Problems Reported:

PRODUCTION HISTORY

Company	Mine Name	Years	Production (tons)
Nicholas Reeb	Reeb, Murphy	pre1874-1883	3,400 *
			3,400

* Ownership and production prior to 1883 are not known. The Coal Report of 1883 indicates 35 acres were mined. The 1874 Atlas of St. Clair County shows a shaft with a railroad spur at this location, indicating that mining was taking place in the early 1870s.

Last reported production: 1883

SOURCES OF DATA

Source Map	Date	Original Scale	Digitized Scale	Map Type
Microfilm, document 351098	undated	1:1200	1:1986	Undated

Annotated Bibliography (data source, brief description of information)

Coal Reports - Production, ownership, years of operation, mine type, seam, depth, thickness.
Directory of Illinois Coal Mines (St. Clair County) - Mine names, mine index, ownership, years of operation.
Microfilm map, document 351098, reel 03134, frame 212 - Shaft locations, mine outline.
Atlas of St. Clair County, Illinois, 1874, Warner & Beers, Chicago, Illinois - Years of operation.

Mine Index 6642**Beatty & Baird, Beatty & Baird Mine**

Type: Underground Total mined-out acreage shown: None

SHAFT, SLOPE, DRIFT or TIPPLE LOCATIONS

Type	County	Twp	Section	Quarters-Footage
Main shaft	St. Clair	1N 8W	21	NE SW NE

GEOLOGY

Seam(s) Mined	Depth (ft)	Thickness (ft)			Mining Method
		Min	Max	Ave	
Herrin					Underground

Geologic Problems Reported:

PRODUCTION HISTORY

Company	Mine Name	Years	Production (tons)
Beatty & Baird	Beatty & Baird	pre1874- *	unknown

* Shown in 1874 Atlas. Dates of production are not known.

Last reported production:

SOURCES OF DATA

Source Map	Date	Original Scale	Digitized Scale	Map Type
Atlas	1874	1:3840	1:24000	Secondary source

Annotated Bibliography (data source, brief description of information)

Coal Reports - Production, ownership, years of operation.

An Illustrated Historical Atlas of St. Clair County, Illinois, Warner & Beers, Chicago, 1874, reproduced by Marissa Historical and Genealogical Society, Marissa Illinois, 1984 - Mine name, location.

Mine Index 6877**Henry Taylor, Taylor Mine**

Type: Underground Total mined-out acreage shown: None. Production indicates the area mined was about 2 acres, with 23 acres mined before production was reported.

SHAFT, SLOPE, DRIFT or TIPPLE LOCATIONS

Type	County	Twp	Section	Quarters-Footage
Shaft	St. Clair	1N 8W	21	SW NE NW

GEOLOGY

Seam(s) Mined	Depth (ft)	Thickness (ft)			Mining Method
		Min	Max	Ave	
Herrin	90			6.5	Underground

Geologic Problems Reported:

PRODUCTION HISTORY

Company	Mine Name	Years	Production (tons)
Henry Taylor	Taylor	pre1874-1882	<u>10,000</u> *
			10,000

* Production prior to 1882 is not known. The Coal Report of 1882 indicates 23 acres were mined. The 1874 Atlas of St. Clair County shows a shaft at this location next to a railroad, indicating mining was taking place here in the early 1870s.

Last reported production: 1882

SOURCES OF DATA

Source Map	Date	Original Scale	Digitized Scale	Map Type
ISGS mined-out area map	1950	1:62,500	1:62,500	Secondary source
Atlas of St. Clair County, Illinois	1874	1:3840	1:24000	Secondary source

Annotated Bibliography (data source, brief description of information)

Coal Reports - Production, ownership, years of operation, mine type, seam, depth, thickness.

Directory of Illinois Coal Mines (St. Clair County) - Mine names, mine index, ownership, years of operation.

ISGS 1950 mined-out area map - Shaft location.

Atlas of St. Clair County, Illinois, 1874, Warner & Beers, Chicago, Illinois - Years of operation.

OTHER MINES SHOWN ON THE O'FALLON QUADRANGLE MAP

For these mines, generally a location is known, while the operating names, dates of operation and production totals are not known.

Mine Index 3534, Scheider's Mine NE SE NE 21-T1N-R8W source: ISGS 1950 mined-out area map, Area 27
 Mine Index 3547, John Baird SW NE NE 21-T1N-R8W source: ISGS 1950 mined-out area map, Area 27
 Mine Index 3626, Kempf Mine NW SW SE 21-T1N-R8W source: ISGS 1950 mined-out area map, Area 27
 Mine Index 4266, Neupf Mine W 1/2 SW NE 27-T1N-R8W source: ISGS 1950 mined-out area map, Area 27
 Mine Index 4291, Hallahan Mine NW SW NE 28-T1N-R8W source: ISGS 1950 mined-out area map, Area 27
 Mine Index 4295, Swancutt Mine SE NE NW 28-T1N-R8W source: ISGS 1950 mined-out area map, Area 27
 Mine Index 4304, Brooke Coal Company NE SW NE 27-T1N-R8W source: ISGS 1950 mined-out area map, Area 27
 Mine Index 6663 SE SE NW 30-T2N-R7W source: Atlas of St. Clair County, Illinois (1874)
 Mine Index 6667 SW SW NE 30-T2N-R7W source: Atlas of St. Clair County, Illinois (1874)
 Mine Index 6897 NE SE SE 28-T1N-R8W source: Atlas of St. Clair County, Illinois (1874)

MINES WHOSE LOCATIONS ARE NOT KNOWN, O'FALLON QUADRANGLE

The locations of the following mines are unknown, but the production tonnage, operating names, and nearest town were reported in the Annual Coal Reports. The mines listed below mined in or near the O'Fallon Quadrangle. The information is similar to that presented on the summary sheets in the previous pages of this directory. The first item is the name the mine operated under as listed in the Coal Report, then the years the mine reported. If no physical data are available, the next item listed is the total tons produced by the mine. If physical data are available, the order of presentation is as follows: type of opening for the mine (drift, slope or shaft), depth of coal in feet, and thickness of coal in feet.

The total tons mined by these unlocated mines is 861,672 (826,877 underground mined, 50 surface mined, and 34,745 mined by uncertain method), which would represent approximately 130 to 215 acres, depending on the recovery factor, mining method, and numerous other factors. (Note: 1 square mile = 640 acres)

BELLEVILLE

Smith (G. F.), pre1881-1883, shaft, Herrin, 120-130, 6.5	17,168 tons
Grantz & Company, pre1881-1882, shaft, Herrin, 90, 6.5	5,084 tons
Hazard, Wilson & Company, pre1882-1883, shaft, Herrin, 100-140, 6.5-8.5, RP	30,075 tons
Enterprise Coal Mining Company, 1883-1886	27,130 tons
Consolidated Coal Company of St. Louis, Enterprise Mine, 1886-1888	20,534 tons
Enterprise Coal Company, 1889-1892	18,284 tons
Gast (Joseph), 1892-1893	<u>5,168 tons</u>
	101,191 tons
Philips & Weber leased the Enterprise Mine from 1886 to 1888.	
Gellwicks & Richards, 1882-1883, shaft, Herrin, 40-60, 6.0-6.5, RP	7,000 tons
Gelwicks (G. B.), 1883-1886	14,536 tons
Gelwicks & Herlback, 1886-1887	3,400 tons
Gelwick (George), 1887-1889	<u>6,215 tons</u>
	31,151 tons
Sertel (John), pre1881-1882, shaft, Herrin, 80, 6.5	500 tons
Padfield & Company, pre1881-1883, shaft, Herrin, 55-90, 6.0	1,400 tons
Taylor (Henry), pre1881-1883, shaft, Herrin, 80-100, 6.0-6.5	13,000 tons
Taylor (John), pre1881-1883, shaft, Herrin, 90, 6.0	5,000 tons
Hoard (John), pre1881-1883, slope, Herrin, 50, 7.0	5,350 tons

Reiher (George), 1882-1883, —, Herrin, 86, 6.0	4,000 tons
Winder (John) & Company, pre1882-1883, shaft, Herrin, 40, 6.0	300 tons
Knous & Company, 1883-1884, slope, Herrin, 35-120, 6.0, RP	200 tons
Knous (Joseph) & Brother, 1884-1885	12,680 tons
Knous Brothers, 1885-1886	<u>14,980</u> tons
	27,860 tons
Reeb (Peter), 1883-1884, slope, Herrin, 40-110, 2.5-7.0	1,182 tons
Simeson & Company, 1882-1883, slope, Herrin, 100, 7.0	200 tons
Seib & Company, pre1882-1883, shaft, Herrin, 120, 6.0	7,100 tons
Liehl (John), 1882-1883, shaft, Herrin, 60, 6.0	800 tons
Seiberd (George), 1882-1883, drift, Herrin, —, 6.0	300 tons
Rubble (William), 1883-1886, shaft, Herrin, 90, 6.0, HER	17,160 tons
The tonnage was produced by pulling pillars of an older mine.	
Harst (John), 1884-1886, shaft, Herrin, 55, 6.5-7.5, RP	5,220 tons
Drexel & Johnson, 1886-1887	3,000 tons
Hurst (Thomas), 1887-1889	2,750 tons
Harst (John), 1889-1906	<u>67,583</u> tons
	78,553 tons
Lill (Jacob), 1884-1885, shaft, Herrin, 45, 6.0, RP	860 tons
Bee (John H.), shaft, Herrin, 130, 6.5, RP	960 tons
Maddox & Son, 1888-1889	4,730 tons
Dickinson & Jones, 1888-1889	518 tons
Lill & Schinider, 1887-1889	2,200 tons
Taylor (Henry), 1888-1889	1,000 tons
Betts, Richard & Company, 1888-1889	900 tons
Pittsburg Mining Company, 1887-1891, shaft, Herrin, 132, 6.5, RP	47,480 tons
Macke (Christ C.), 1889-1890	800 tons
Abend No. 2 Mine, 1889-1890, shaft, Herrin, 60-90, 6.0-8.0, RP	1,600 tons
Groom Brothers, No. 2 Mine, 1890-1891	5,150 tons
Brosius Brothers (John & Charles), 1891-1896	<u>14,400</u> tons
	21,150 tons
Rebel Mine, 1889-1890, shaft, Herrin, 60-66, 6.0-6.5, RP	1,440 tons
Weiss (Nicholas), 1890-1901	<u>23,006</u> tons
	24,446 tons
St. George Coal Mining Company, 1890-1891, shaft, Herrin, 70-120, 6.0-6.5, RP	280 tons
Branch (George H.), 1891-1893	<u>5,461</u> tons
	5,741 tons
Crown Coal & Tow Company, No. 3 Mine, 1894-1895	Not reported
Crown Coal & Tow Company, No. 4 Mine, 1895-1896	236,997 tons
shaft, Herrin, 125-150, 6.0-7.0, RP	

Massie Coal Company, No. 2 Mine, 1895-1898, shaft, Herrin, 90, 6.0, RP	69,827 tons
Georgetown Road Coal Company, 1901-1904, shaft, Herrin, 66, 6.0, RP	7,000 tons
Branch (John), 1905-1906, drift, Herrin, 50, 6.0, RP	1,000 tons
Bosanko (Alfred), 1915-1917, slope, Herrin, 40, 6.0, RP	1,775 tons
Grimming (Wendel), 1924-1925	348 tons
Dahm (Alfred), 1935-1935, underground	2,030 tons
Pannier (L.) & Son, 1935-1935, surface	50 tons

CASEYVILLE

Providence Coal Company, 1881-1884, shaft, Herrin, 90-98, 6.0	21,468 tons
Maelh (John), pre1881-1882, drift, Herrin, 35, 5.5	500 tons
Haig & Doyle, 1886-1887, drift, Herrin, 60, 6.0, RP	1,000 tons
Doyle (James), No. 1 Mine, 1887-1889	<u>784</u> tons 1,784 tons
Brennan (Robert), 1888-1890, drift	620 tons
Doyle (James), No. 2 Mine, 1888-1889	35 tons
Marshall (John), 1902-1904, drift, Herrin, —, 6.0, RP	2,500 tons
Elliott & Company, 1905-1906	<u>4,320</u> tons 6,820 tons
Griffith & Warner, 1898-1901, drift, Herrin, —, 6.0, RP	2,470 tons
Griffith (M.), 1901-1902	<u>1,000</u> tons 3,470 tons
Marshall (John C.), 1899-1902, drift, Herrin, —, 6.0, RP	3,300 tons
Buhl (William) & West (John & Fred), 1932-1933, underground	24,104 tons
Nolte (George), 1935-1935, underground	110 tons
Brennan & Company, Brennan Mine, drift, Herrin, —, 6.0, RP	800 tons

O'FALLON

Crawson (W.) & Sons, 1889-1892, shaft, Herrin, 185, 6.0, RP	41,050 tons
---	-------------

RIDGE PRAIRIE

Taylor (J.), 1885-1886, shaft, Herrin, —, 6.5, RP	500 tons
---	----------

INDEX OF MINES IN THE O'FALLON QUADRANGLE

Abend (Car. or Caroline)	19
Abend Coal Company, Massie Mine	33
Abend No. 2 Mine	67
Abend, No. 1 Mine	19
Adams Coal & Tow Company, Ruby Mine	13
Allen (Groom & Allen)	35
Alma Mine	20
Avery & Company, Avery Mine	36
Baird (Beatty & Baird)	64
Baird (John)	66
Beatty (James)	41
Beatty & Baird	64
Beck-Walker Coal Company	27
Becker (Jacob)	58
Bee (John H.)	67
Belle Valley Coal Company, Inc.	23
Belleville & O'Fallon Coal Company	33
Belleville & O'Fallon Coal Mining Company	33
Betts, Richard & Company	67
Black Eagle Mine	15
Bloom (Bruggeman & Bloom)	46
Bodman (Kuntz & Bodman)	51
Bond Mine	47
Bosanko (Alfred)	68
Branch (George H.)	67
Branch (John)	68
Branch Mine	25, 45
Brandenberger, No. 2 Mine	44
Brauch & Hessebaum	25, 46
Braun's No. 3 Mine	25
Brennan (Robert)	68
Brennan & Company	68
Brooke Coal Company	66
Brosius (Jacob)	59
Brosius Brothers (John & Charles)	67
Bruggeman (F. J.)	46
Bruggeman & Bloom	46
Bruggeman & Hortman	46
Buhl (William) & West (John & Fred)	68
Carbon Mine	20
Carroll (John)	48
Caseyville Coal Company	49
Caseyville Mine	50
Chapple (Mowe & Chapple)	49
Cluly-Miller Coal Company, Ruby Mine	13
Columbia Collieries Company	27
Consolidated Coal Company of St. Louis	
Alma Mine	20
Emmet Mine	36
Green Mount Mine	35
Mentor Mine	21
Northwestern Mine	37
Pittsburg Mine	14
Reinecke No. 1	46
Schureman Mine	39
Skellett Mine	39
Consolidated Coal Company of St. Louis, Enterprise Mine	66
Consolidated Coal Company, No. 17	11
Consumer's Coal Company, No. 1 or Ruby Mine	13
Consumer's Coal Company, No. 2 or Darrow Mine	22
Crawson (W.) & Sons	68

Cross Mine	59
Crown Coal & Tow Company, No. 3 Mine	67
Crown Coal & Tow Company, No. 4 Mine	67
Dahm (Alfred)	68
Darrow	22
Davis Mine	24
Devil's Hole Coal Company	49
Dickinson & Jones	67
Donk Brothers, National Mine	56
Doyle (Haig & Doyle)	68
Doyle (James), No. 1 Mine	68
Doyle (James), No. 2 Mine	68
Drexel & Johnson	67
Dubuck & Company	34
Dutch Hollow Coal Company	36
East Belleville Coal Company	62
Ebel (William)	54
Eldnar Coal Company	29
Electric Light & Coal Company	59
Electric Light Company	59
Ell-Rich Mining Company	44
Elliott & Company	68
Emmet Mine	36
Enterprise Coal Company	66
Enterprise Coal Mining Company	66
Fisher Fuel Company, St. Ellen Mine	16
Frost Mine	24
Fullerton Coal Company, No. 1	38
G & E Coal Company	27
Gartside Coal Company	20
Crossroads Mine	21
No. 5, or Mentor Mine	21
Gast (Joseph)	66
Gellwicks & Richards	66
Gelwick (George)	66
Gelwicks (G. B.)	66
Gelwicks & Herlback	66
Georgetown Road Coal Company	68
German Mining Company	53
Glendale Coal & Mining Company, No. 1	44
Glendale Coal & Mining Company, No. 2	40
Grantz & Company	66
Great Western	50
Green Mound Coal Company	35
Green Mount Coal & Mining Company	35
Greenfield Coal Company	51
Greenfield Mine	51
Griffith (M.)	68
Griffith & Warner	68
Grimming (Wendel)	68
Groom (John), Green Mount Mine	35
Groom & Allen	35
Groom Brothers, No. 2 Mine	67
Haig & Doyle	68
Hallahan Mine	66
Harding (Patterson & Harding)	19
Harding & Stall	19
Harst (John)	67
Hartman (Charles)	46
Hazard, Wilson & Company	66
Herlback (Gelwicks & Herlback)	66
Hessebaum (Brauch & Hessebaum)	46
Highland Coal Company	42

Hippard (George)	57
Hippard Coal Company, No. 1	57
Hippard Coal Company, No. 2	49
Hoard (John)	66
Hortman (Bruggeman & Hortman)	46
Hortman (Charles)	25
Hortsman & Brother	46
Humboldt	33
Humboldt Mining Company	34
Hurst (Thomas)	67
International Coal & Mining Company, Carbon Mine	20
International Coal & Mining Company, Taylor Mine	10
Irish Pond Mine	43
Johnson (Drexel & Johnson)	67
Jones (Dickinson & Jones)	67
Joyce (Ratican, Joyce & Grieve)	13
Keating Brothers	48
Kempf Mine	66
Kerchner (F.), Northwestern Mine	37
Kidd (Nugent), Mentor Mine	21
Klingenfus Brothers	19
Kloess (John), No. 1	26
Knous (Joseph) & Brother	67
Knous & Company	67
Knous Brothers	67
Kolb Coal Company, No. 5	33
Krantz (Jacob)	45
Kuntz-Bodman	51
L & N Coal Mining Company	38
Lake Superior Coal Company, Branch Mine	45
Lebanon Coal & Mining Company, Carbon Mine	20
Lenz Coal & Mining Company, No. 2 or Shiloh Mine	9
Liehl (John)	67
Lill (Jacob)	67
Lill & Schinider	67
Lindley (Richard), Alma Mine	20
Little Oak Coal Company	12
Macke (Christ C.)	67
Maddox & Son	67
Maelh (John)	68
Marsh & Son	57
Marshall (John C.)	68
Marshall (John)	68
Mascoutah Coal Company, Little Oak Mine	12
Massie Coal Company, No. 1	33
Massie Coal Company, No. 2 Mine	67
Maule (John), National Mine	56
Mentor Mine	21
Michael (L.), Pittsburg Mine	14
Michaelis (Louis), Pittsburg Mine	14
Micheals (Theodore), Pittsburg Mine	14
Miller (Cluly-Miller Coal Company)	13
Miller (Howard E.), Ruby Mine	13
Miller (Randle & Miller)	29
Mishaelis (Lewis), Pittsburg Mine	14
Mowe & Chapple	49
Muren Coal & Ice Company	31
Murphy	63, 64
Nesbit (White & Nesbit)	25
Neupf Mine	66
New Devil's Hole Coal Company	49
New Pittsburgh Mining Company	14
New Royal Coal Company	27

Nolte (George)	68
Northside Coal Company, Muren Mine	31
Northwestern Coal Company	37
O'Fallon Coal & Mining Company, Darrow Mine	22
O'Fallon Coal Company, No. 1	47
Oak Coal Company, Little Oak Mine	12
Oakdale Coal & Mining Company	44
Padfield & Company	66
Pannier (L.) & Son	68
Patterson & Harding	19
Peabody Coal Company, St. Ellen Mine	16
People's Coal Company	49
Perry Coal Company	
Carbon Mine	20
Pittsburg Mine	14
St. Ellen Mine	16
Taylor Mine	10
Perry County Coal Corporation	
Carbon Mine	20
Pittsburg Mine	14
St. Ellen Mine	16
Taylor Mine	10
Philips & Weber	66
Pittsburg Mining Company	14, 67
Pittsburgh Mining Company	14
Prairie Coal Company	17
Providence Coal Company	68
Purity Coal Company	30
Quick Mining Company	49
Randle & Miller	29
Ratican (William), Ruby Mine	13
Ratican, Joyce & Grieve	13
Rebel Mine	67
Reeb (Nicholas)	63
Reeb (Peter)	67
Reeb Coal Company, Branch Mine	45
Reiher (George)	67
Reinecke (Conrad), No. 1	46
Reuther (George)	43
Richard (Betts, Richard & Company)	67
Richards (Gellwicks & Richards)	66
Ridge Prairie Mine	21
Royal Coal Company	27
Rubble (William)	67
Ruby Mining Company	13
Sargent (Frank)	19
Sargent (Frank) & Son	50
Sargent Coal Company	49
Scheider's Mine	66
Schinider (Lill & Schinider)	67
Schureman Brothers	39
Seib & Company	67
Seiberd (George)	67
Senior (L.), Branch Mine	45
Sertel (John)	66
Service Coal Company	33
Shiloh Mine	9
Shiloh Valley Coal Company	24
Silver Creek Coal & Mining Company, Darrow Mine	22
Simeson & Company	67
Skellett (William)	39
Skellett Coal Company	38
Smith (G. F.)	66

Southern Coal & Mining Company	
No. 5, Glendale Mine	40
No. 6	31
No. 7, Little Oak Mine	12
No. 8, Shiloh Mine	9
Southern Coal, Coke & Mining Company	
No. 6	31
No. 7, Little Oak	12
No. 8, Shiloh	9
Sporleder Coal Service	28
St. Clair Southern Coal Company, Little Oak Mine	12
St. Clair Steam Supply Company	59
St. Ellen Coal Company	16
St. George Coal Mining Company	67
St. Louis & O'Fallon Coal Company	
No. 2, Black Eagle Mine	15
Ruby Mine	13
Stall (Harding & Stall)	19
Steam Supply Company	59
Stollburg Mining Company	52
Stuhl (C. G.)	19
Summit Coal & Mining Company	18
Summit Coal Company	18
Swancutt Mine	66
Swansea Coal & Mining Company	34
Taylor (Henry)	65-67
Taylor (J.)	68
Taylor (John)	66
Taylor (Joseph)	
Alma Mine	20
Mentor Mine	21
No. 1	10
Ridge Prairie Mine	21
St. Ellen Mine	16
Thomas & Company	61
Tin Can Mine	47
Tower Grove Coal Company	32
Tribout (James)	60, 61
Union Mine	49
Vancourt (B. J.)	48
Vancourt Mining Company	48
Victoria Coal Company, No. 1 or Branch Mine	45
Vulcan Coal & Mining Company, No. 1	57
Walker (Beck-Walker Coal Company)	27
Walnut Valley Coal Company	38, 57
Warner (Griffith & Warner)	68
Washed Coal Company	44
Weber (Philip) & Company	51
Weber (Philips & Weber)	66
Weiss (Nicholas)	67
West (B. J.)	58
West (Buhl & West)	68
West Belleville Coal Company	40
West End Coal Company	40
West Virginia Coal & Mining Company, Carbon Mine	20
West Virginia Coal Company, Taylor Mine	10
Western Mining Company	50
Westwood (T.), Schureman Mine	39
White & Nesbit	25
White & Son, No. 2 or Branch Mine	25
White Ash Coal Company	49
White Coal Company	
No. 2, Massie Mine	33

White (formerly Ell-Rich) Mine	44
Wilharmil Coal & Coke Company	33
Wilson (Hazard, Wilson & Company).	66
Winder (John) & Company.	67
Winter (Fritz)	55