



Coal Mines in Illinois Peoria West Quadrangle Peoria and Tazewell Counties, Illinois

Herrin & Colchester Coals

This map accompanies the Coal Mines Directory for the Peoria West Quadrangle and map of mines in the Springfield Coal, Peoria West Quadrangle. Consult the directory for a complete explanation of the information shown on this map.

Mining Method

- Room & Pillar (RP)
- Room & Pillar Basic (RPB)
- Modified Room & Pillar (MRP)
- Room & Pillar Panel (RPP)
- Blind Room & Pillar (BRP)
- Checkerboard Room & Pillar (CRP)
- High Extraction Retreat (HER)
- Longwall (LW)
- Underground, Method Unknown
- Strip Mine
- Auger Mine
- General Area of Mining

Other Areas Depicted

- Non-Coal Mines

Source of Mine Outline

- Final Mine Map
- Not Final Mine Map
- Undated Mine Map
- Incomplete Mine Map
- Secondary Source Map

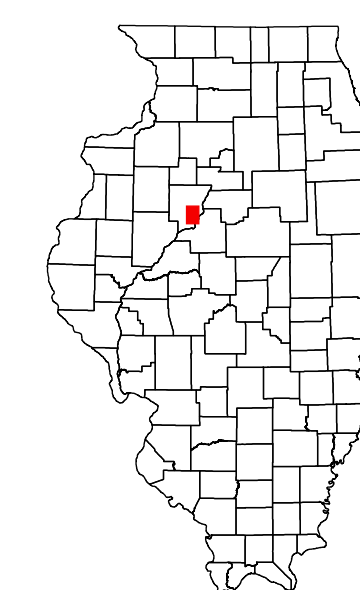
Tipple, Shaft, Slope, Drift Locations

- Strip Mine Tipple - Active
- Strip Mine Tipple - Abandoned
- Mine Shaft - Active
- Mine Shaft - Abandoned
- Mine Slope - Active
- Mine Slope - Abandoned
- Mine Drift - Active
- Mine Drift - Abandoned
- Air Shaft
- Uncertain Location
- Uncertain Type of Opening

Other Points Depicted

- Non-Coal Mines

Location



Mine Annotation (space permitting)

Company
Mine Name
ISGS Index No., Years of Operation

Disclaimer

Please check the Coal Section at the Illinois State Geological Survey's web site at <https://www.isgs.illinois.edu> for the most up-to-date version of these products.

Note that each quadrangle scale mined-out area map requires the use of the associated text directory for full explanation of map features and mine attributes. Also note that some quadrangles have multiple seams of mining and therefore more than one map may be available for a particular quadrangle. Please take care to check for multiple maps, as extensive mining may exist in the other seams.

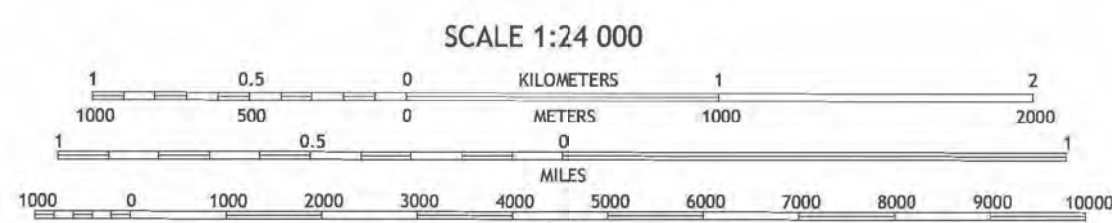
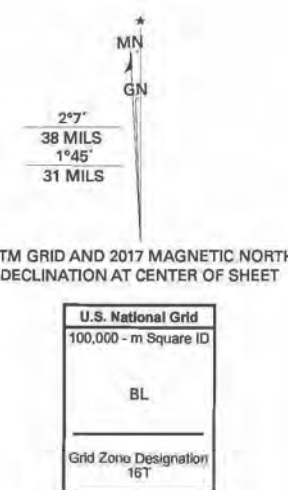
The maps and digital files used for these studies were compiled from data obtained from a variety of public and private sources and have varying degrees of completeness and accuracy. This compilation map presents reasonable interpretation of the geology of the area and is based on available data. Locations of some mine features may be off by 500 feet or more due to errors in the original source maps, the compilation process, digitizing, or a combination of these factors. These data are not intended for use in site-specific screening or decision-making. Use of these documents does not eliminate the need for detailed studies to fully understand the geology of a specific site. The Illinois State Geological Survey, Prairie Research Institute, or the University of Illinois make no guarantee, expressed or implied, regarding the correctness of the interpretations presented in this data set and accept no liability for the consequences of decisions made by others on the basis of the information presented here.

These maps were designed for use at 1:24,000. Enlarging the map may reduce accuracy, as the original scale of the source maps used to compile the outlines shown varies from 1:400 to 1:150,000, and some mine locations are known only from text descriptions. See the accompanying mine directory for the original scale of the source map used for a specific mine to check accuracy of a given portion of the map. Areas with no mines shown may still be undermined; see the unlocated mines list at the back of each mine directory.

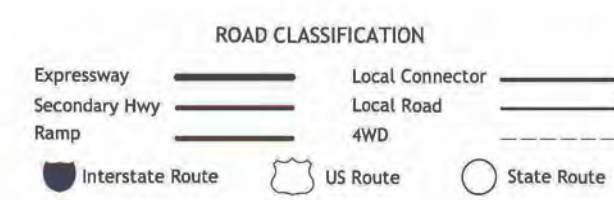
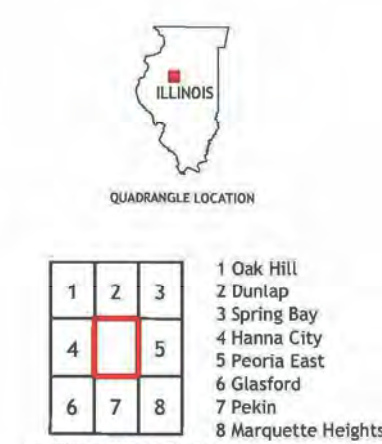
The image of the U.S.G.S. topographic base map was projected from the original UTM to Lambert Conformal Conic.

Produced by the United States Geological Survey
North American Datum of 1983 (NAD83)
World Geodetic System of 1984 (WGS84). Projection and
1,000-meter grid/Universal Transverse Mercator, Zone 16T
This map is not a legal document. Boundaries may be
generalized for this map scale. Private lands within government
reservations may not be shown. Obtain permission before
entering private lands.

Imagery.....NAP, August 2015 - October 2015
Roads.....U.S. Census Bureau, 2017
Names.....GNIS, 1980 - 2017
Hydrography.....National Hydrography Dataset, 2006 - 2016
Contours.....National Elevation Dataset, 2012
Boundaries.....Multiple sources; see metadata file 2014 - 2016
Public Land Survey System.....BLM, 2017
Wetlands.....FWS National Wetlands Inventory 1983 - 1986



CONTOUR INTERVAL 10 FEET
NORTH AMERICAN DATUM OF 1983
This map was produced to conform with the
National Geospatial Program US Topo Product Standard, 2011.
A metadata file associated with this product is draft version 0.6.18



PEORIA WEST, IL
2018

ILLINOIS
Illinois State Geological Survey
PRAIRIE RESEARCH INSTITUTE

Prairie Research Institute
Illinois State Geological Survey
615 E. Peabody Dr.
Champaign, IL 61820

Mine Outlines Compiled by
Melisa L. Borino

2002

Revised:
03-26-2013
Alan R. Myers 01-30-2025

Coal Mines in Illinois Peoria West Quadrangle Peoria and Tazewell Counties, Illinois

Springfield Coal

This map accompanies the Coal Mines Directory for the Peoria West Quadrangle and map of mines in the Herrin & Colchester Coals, Peoria West Quadrangle. Consult the directory for a complete explanation of the information shown on this map.

Mining Method

- Room & Pillar (RP)
- Room & Pillar Basic (RPB)
- Modified Room & Pillar (MRP)
- Room & Pillar Panel (RPP)
- Blind Room & Pillar (BRP)
- Checkerboard Room & Pillar (CRP)
- High Extraction Retreat (HER)
- Longwall (LW)
- Underground, Method Unknown
- Strip Mine
- Auger Mine
- General Area of Mining

Other Areas Depicted

- Non-Coal Mines

Source of Mine Outline

- Final Mine Map
- Not Final Mine Map
- Undated Mine Map
- Incomplete Mine Map
- Secondary Source Map

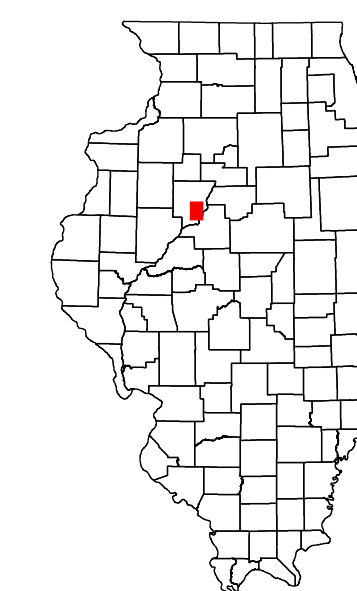
Tipple, Shaft, Slope, Drift Locations

- Strip Mine Tipple - Active
- Strip Mine Tipple - Abandoned
- Mine Shaft - Active
- Mine Shaft - Abandoned
- Mine Slope - Active
- Mine Slope - Abandoned
- Mine Drift - Active
- Mine Drift - Abandoned
- Air Shaft
- Uncertain Location
- Uncertain Type of Opening

Other Points Depicted

- Non-Coal Mines

Location



Mine Annotation (space permitting)

Company
Mine Name
ISGS Index No., Years of Operation

Disclaimer

Please check the Coal Section at the Illinois State Geological Survey's web site at <https://www.isgs.illinois.edu> for the most up-to-date version of these products.

Note that each quadrangle scale mined-out area map requires the use of the associated text directory for full explanation of map features and mine attributes. Also note that some quadrangles have multiple seams of mining and therefore more than one map may be available for a particular quadrangle. Please take care to check for multiple maps, as extensive mining may exist in the other seams.

The maps and digital files used for these studies were compiled from data obtained from a variety of public and private sources and have varying degrees of completeness and accuracy. This compilation map presents reasonable interpretation of the geology of the area and is based on available data. Locations of some mine features may be off by 500 feet or more due to errors in the original source maps, the compilation process, digitizing, or a combination of these factors. These data are not intended for use in site-specific screening or decision-making. Use of these documents does not eliminate the need for detailed studies to fully understand the geology of a specific site. The Illinois State Geological Survey, Prairie Research Institute, or the University of Illinois make no guarantee, expressed or implied, regarding the correctness of the interpretations presented in this data set and accept no liability for the consequences of decisions made by others on the basis of the information presented here.

These maps were designed for use at 1:24,000. Enlarging the map may reduce accuracy, as the original scale of the source maps used to compile the outlines shown varies from 1:400 to 1:150,000, and some mine locations are known only from text descriptions. See the accompanying mine directory for the original scale of the source map used for a specific mine to check accuracy of a given portion of the map. Areas with no mines shown may still be undermined; see the unlocated mines list at the back of each mine directory.

The image of the U.S.G.S. topographic base map was projected from the original UTM to Lambert Conformal Conic.

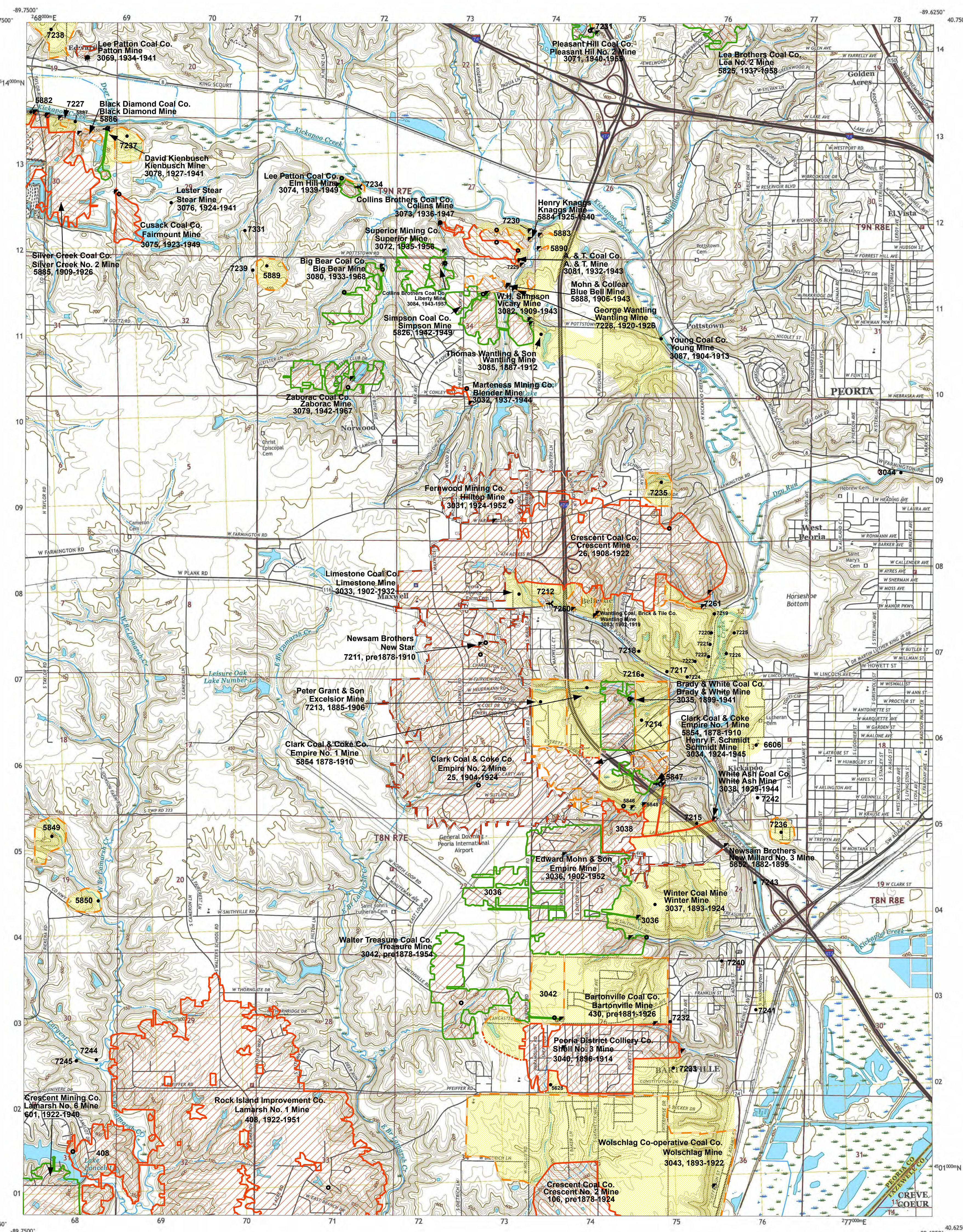
ILLINOIS
Illinois State Geological Survey
PRAIRIE RESEARCH INSTITUTE

Prairie Research Institute
Illinois State Geological Survey
615 E. Peabody Dr.
Champaign, IL 61820

Mine Outlines Compiled by
Alan R. Myers

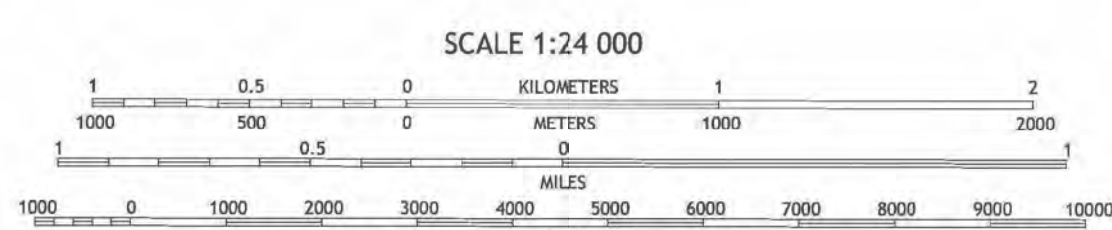
December 15, 2008

Revised:
03-26-2013
Alan R. Myers 01-30-2025

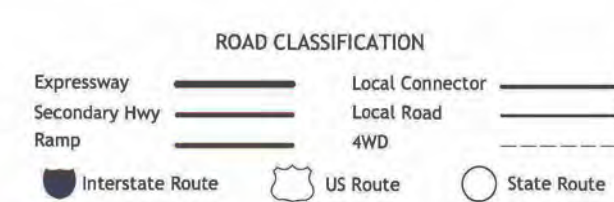


Produced by the United States Geological Survey
North American Datum of 1983 (NAD83)
World Geodetic System of 1984 (WGS84). Projection and
1000-meter grid/Universal Transverse Mercator, Zone 16T
This map is not a legal document. Boundaries may be
generated for this map scale. Private lands within government
reservations may not be shown. Obtain permission before
entering private lands.

Imagery.....NAP, August 2013 - October 2013
Roads.....U.S. Census Bureau, 2017
Names.....GNIS, 1980 - 2017
Hydrography.....National Hydrography Dataset, 2006 - 2016
Contour.....National Elevation Dataset, 2012
Boundaries.....Multiple sources; see metadata file 2014 - 2016
Public Land Survey System.....BLM, 2017
Wetlands.....FWS National Wetlands Inventory 1983 - 1986



CONTOUR INTERVAL 10 FEET
NORTH AMERICAN DATUM OF 1983
This map was produced to conform with the
National Geospatial Program US Topo Product Standard, 2011.
A metadata file associated with this product is draft version 0.6.18



PEORIA WEST, IL
2018

DIRECTORY OF COAL MINES IN ILLINOIS 7.5-MINUTE QUADRANGLE SERIES PEORIA WEST QUADRANGLE PEORIA & TAZEWELL COUNTIES

Alan R. Myers & C. Chenoweth



Institute of Natural Resource Sustainability
ILLINOIS STATE GEOLOGICAL SURVEY
2008

Revised 2025

**DIRECTORY OF COAL MINES IN ILLINOIS
7.5-MINUTE QUADRANGLE SERIES
PEORIA WEST QUADRANGLE
PEORIA & TAZEWELL COUNTIES**

2008

Institute of Natural Resource Sustainability
ILLINOIS STATE GEOLOGICAL SURVEY
E. Donald McKay III, Interim Director

Natural Resources Building
615 East Peabody Drive
Champaign, Illinois 61820

Phone 1-217-244-4610
Fax 1-217-333-2830

Cover photo Track-mounted duckbill loading machine at a Peabody Coal Company mine, ca. 1915.

DISCLAIMER: The accuracy and completeness of mine maps and directories vary with the availability of reliable information. Maps and other information used to compile this mine map and directory were obtained from a variety of sources and the accuracy of some of the original information cannot be verified. Consequently, the Illinois State Geological Survey (ISGS) cannot guarantee the mine maps are free of errors and disclaims any responsibility for damages that may result from actions or decisions based on them.

The ISGS updates the maps and directories periodically, and welcomes any new information or corrections. Please contact the Coal Section of the ISGS at the address shown on the title page of this directory, or telephone (217) 244-4610.

Printed by authority of the State of Illinois/2008

CONTENTS

INTRODUCTION	1
MINING IN THE PEORIA WEST QUADRANGLE	1
PART I EXPLANATION OF MAP AND MINE SUMMARY SHEET	2
INTERPRETING THE MAP	2
Mine Type and Mining Method	2
Source Maps	3
Points and Labels	3
INTERPRETING A MINE SUMMARY SHEET	6
REFERENCES	8
PART II DIRECTORY OF MINES IN THE PEORIA WEST QUADRANGLE	9
MINE SUMMARY SHEETS	9
Mine Index 25	
Clark Coal & Coke Company, Empire No. 2 Mine	9
Mine Index 26	
Crescent Coal Company, Crescent Mine	10
Mine Index 106	
Crescent Coal Company, Crescent No. 2 Mine	11
Mine Index 408	
Rock Island Improvement Company, Lamarsh No. 1 Mine	12
Mine Index 430	
Bartonville Coal Company, Bartonville Mine	13
Mine Index 601	
Crescent Mining Company, Lamarsh No. 6 Mine	14
Mine Index 881	
Midland Coal Company, Edwards Mine	15
Mine Index 3031	
Fernwood Mining Company, Hilltop Mine	16
Mine Index 3032	
Marteness Mining Company, Blender Mine	17
Mine Index 3033	
Limestone Coal Company, Limestone Mine	18
Mine Index 3034	
Henry F. Schmidt, Schmidt Mine	19
Mine Index 3035	
Brady & White Coal Company, Brady & White Mine	20
Mine Index 3036	
Edward Mohn & Son, Empire Mine	21
Mine Index 3037	
Winter Coal Company, Winter Mine	22
Mine Index 3038	
White Ash Coal Company, White Ash Mine	23
Mine Index 3040	
Peoria District Colliery Company, Sholl No. 3 Mine	24
Mine Index 3042	
Walter Treasure Coal Company, Treasure Mine	25
Mine Index 3043	
Wolschlag Co-operative Coal Company, Wolschlag Mine	26
Mine Index 3044	
Sword & Son, Jubilee Mine	27
Mine Index 3069	
Lee Patton Coal Company, Patton Mine	28
Mine Index 3071	
Pleasant Hill Coal Company, Pleasant Hill No. 2 Mine	29
Mine Index 3072	
Superior Mining Company, Superior Mine	30

Mine Index 3073	
Collins Brothers Coal Company, Collins Mine	31
Mine Index 3074	
Lee Patton Coal Company, Elm Hill Mine	32
Mine Index 3075	
Cusack Coal Company, Fairmount Mine	33
Mine Index 3076	
Lester Stear, Stear Mine	34
Mine Index 3078	
David Kienbusch, Kienbusch Mine	35
Mine Index 3079	
Zaborac Coal Company, Zaborac Mine	36
Mine Index 3080	
Big Bear Coal Company, Big Bear Mine	37
Mine Index 3081	
A. & T. Coal Company, A. & T. Mine	38
Mine Index 3082	
W. H. Simpson, Vicary Mine.	39
Mine Index 3083	
Wantling Coal, Brick & Tile Company, Wantling Mine	40
Mine Index 3084	
Collins Brothers Coal Company, Liberty Mine	41
Mine Index 3085	
Thomas Wantling & Son, Wantling Mine	42
Mine Index 3087	
Young Coal Company, Young Mine	43
Mine Index 3088	
Isaac Wantling & Son, Blue Fly Mine	44
Mine Index 5825	
Lea Coal Mining Company, Lea No. 2 Mine	45
Mine Index 5826	
Simpson Coal Company, Simpson Mine	46
Mine Index 5852	
Newsam Brothers Mine, New Millard No. 3 Mine	47
Mine Index 5854	
Clark Coal & Coke Company, Empire No. 1 Mine	48
Mine Index 5884	
Henry Knaggs, Knaggs Mine	49
Mine Index 5885	
Silver Creek Coal Company, Silver Creek No. 2 Mine	50
Mine Index 5886	
Black Diamond Coal Company, Black Diamond Mine	51
Mine Index 5888	
Mohn & Collear, Blue Bell Mine	52
Mine Index 5890	
Frank Scoville, Schofield Mine	53
Mine Index 7211	
Newsam Brothers, Newsam No. 2 Mine or New Star Mine	54
Mine Index 7212	
Cook Brothers, Cook Mine	55
Mine Index 7213	
Peter Grant & Son, Excelsior Mine	56
Mine Index 7216	
W. J. White Coal Company, White Mine	57
Mine Index 7217	
Edward Brost, Brost No. 1 Mine	58
Mine Index 7218	
Edward Brost, Brost No. 2 Mine	59
Mine Index 7219	
Edward Allan, Kidder Mine	60
Mine Index 7220	
Cody & McManus, Cody & McManus Mine	61

Mine Index 7221	
Birdois & Swinger, Birdois Mine	62
Mine Index 7222	
L. Rossman, Rossman Mine	63
Mine Index 7223	
B. & C. McManis, McManis Mine	64
Mine Index 7224	
J. Swinenger, Swinenger Mine	65
Mine Index 7225	
Schneider & Harriman, Schneider & Harriman	66
Mine Index 7226	
Thomas Orr, Orr Mine	67
Mine Index 7228	
George Wantling, Wantling Mine	68
Mine Index 7232	
John Gorman, Gorman Mine	69
Mine Index 7233	
Peoria Co-operative Coal Company, Peoria Co-operative Mine	70
Mine Index 7238	
Kramm Brothers, Kramm Mine	71
OTHER MINES SHOWN ON PEORIA WEST QUADRANGLE	72
Mine Index 5628	72
Mine Index 5846	72
Mine Index 5847	72
Mine Index 5848	72
Mine Index 5849	72
Mine Index 5850	72
Mine Index 5882	72
Mine Index 5883	72
Mine Index 5887	72
Mine Index 5889	72
Mine Index 6606	72
Mine Index 7214, Green Oak Mine	72
Mine Index 7215	72
Mine Index 7227	72
Mine Index 7229	72
Mine Index 7230	72
Mine Index 7231	72
Mine Index 7234	72
Mine Index 7235	72
Mine Index 7236	72
Mine Index 7237	72
Mine Index 7239	72
Mine Index 7240	72
Mine Index 7241	72
Mine Index 7242	72
Mine Index 7243	72
Mine Index 7244	72
Mine Index 7245	72
Mine Index 7260, Mohn Mine	72
Mine Index 7261, Bell Mine	72
Mine Index 7330	72
Mine Index 7331	72
MINES WHOSE LOCATIONS ARE NOT KNOWN, PEORIA WEST QUADRANGLE	73
INDEX OF MINES IN THE PEORIA WEST QUADRANGLE	87

INTRODUCTION

Coal has been mined in 76 counties of Illinois. More than 7,400 coal mines have operated since commercial mining began in Illinois about 1810; fewer than 30 are currently active. To detail the extent and location of coal mining in Illinois, the Illinois State Geological Survey (ISGS) has compiled maps and directories of known coal mines. The ISGS offers maps at a scale of 1:100,000 and accompanying directories for each county in which coal mining is known to have occurred. Maps at a scale of 1:24,000 and accompanying directories, such as this, are available for selected quadrangles. Contact the ISGS for a list of these quadrangles.

These larger scale maps show the approximate positions of mines in relation to surface features such as roads and water bodies, and indicate the mining method used and the accuracy of the mine boundaries. The maps are useful for locating mine boundaries relative to specific properties and for assessing the potential for subsidence in an area. Mine boundaries compiled from final mine surveys are generally shown within 200 feet of their true position. As a result of poor cartographic quality and inaccuracies in the original mine surveys, boundaries of some older mines may be mislocated on the map by 500 feet or more. Original mine maps should be consulted in situations that require precise delineation of mine boundaries or internal workings of mined areas.

This directory serves as a key to the accompanying mine map and provides basic information on the coal mines in the quadrangle. The directory is composed of two parts. Part I explains the symbols and patterns used on the accompanying map and the summary data presented for each mine. Part II numerically lists the mines in the quadrangle and summarizes the geology and production history of each mine. Total production for the mine, not the portion in the quadrangle, is given.

MINING IN THE PEORIA WEST QUADRANGLE

The Springfield Coal was mined in this area, and it was generally about 4 feet thick. Horsebacks, clay veins and rolls were reported, but not as common as in other areas where the Springfield Coal was mined. Most of the mines are concentrated along the bluffs of Kickapoo Creek. The coal was readily accessible by drifts and shallow slope entrances, and the accompanying map shows how thoroughly the area around Peoria was mined.

The Treasure Mine (mine index 3042) operated the longest (76 years), opening before 1878 and closing in 1954. The area was also home to other long-lived mines, such as Mohn's Empire Mine (mine index 3036, operating 50 years), Crescent No. 2 Mine (mine index 106, operating 46 years), and the Bartonville Mine (mine index 430, operating 45 years). The proximity to good transportation on Illinois River barges may have been a factor. The last coal mining took place in at the Big Bear Mine (mine index 3080) in 1968.

The Colchester Coal was mined in only one mine, the Blue Fly Mine (mine index 3088), between 1895 and 1902. As was common at the time, this thin (2.5 feet) seam was mined by the longwall method.

PART I EXPLANATION OF MAP AND MINE SUMMARY SHEET

INTERPRETING THE MAP

The map accompanying this directory shows the location of coal mines known to be present in the quadrangle. The map, corresponding to a U.S. Geological Survey (USGS) 7.5-minute quadrangle, covers an area bounded by lines of latitude and longitude 7.5-minutes apart. In Illinois, a quadrangle is approximately 6.5 miles east to west and 8.5 miles north to south, an area of about 56 square miles. The USGS generally offers one map of mines per quadrangle. In some areas where extensive mining occurred in two or more overlapping seams, separate maps are compiled for mines in each seam to maintain readability of the map.

Mine Type and Mining Method

The mine type is indicated on the map by pattern color: green represents surface mines; red and yellow represent underground mines. The red patterns are used for areas of underground mining that are documented by a primary or secondary source map. A yellow pattern is used for cases where no map of the mine workings is available, but a general area of mining can be inferred from property maps or production figures. The patterns indicate the main mining methods used in underground mines. The methods are (1) room and pillar and (2) high extraction. The method used gives some indication of the amount and pattern of coal extraction within each mined area, and has some influence on the timing and type of subsidence that can occur over a mine.

The following discussion and illustrations of mining methods are based on Guither et al. (1984).

In room-and-pillar mines, coal is removed from haulage-ways (entries) and selected areas called rooms. Pillars of unmined coal are left between the rooms to support the roof. Depending on the size of rooms and pillars, the amount of coal removed from the production areas will range from 40% to 70%.

Room and Pillar - mining is divided into six categories:

- room-and-pillar basic (RPB, fig. 1A), an early method that did not follow a preset mining plan and therefore resulted in very irregular designs;
- modified room and pillar (MRP, fig. 1B);
- room-and-pillar panel (RPP, fig. 1C);
- blind room and pillar (BRP, fig. 1D);
- checkerboard room and pillar (CRP, fig. 1E);
- room and pillar (RP), a classification used when the specific type of room-and-pillar mining is unknown.

Blind and checkerboard are the most common types of room-and-pillar mining used in Illinois today. The knowledge of room-and-pillar mining methods gives a trained engineer information on the nature of subsidence that may occur. A more extensive discussion of subsidence can be found in Bauer et al. (1993).

High-extraction These mining methods are subdivided into high-extraction retreat (HER, Fig 1F) and longwall (LW, Fig 1G, 1H). In these methods, much of the coal is removed within well defined areas of the mine. Subsidence of the surface above these areas occurs within weeks. Once the subsidence activity ceases, the potential for further movement over these areas is low; however, subsidence may continue for several years after mining.

High-extraction retreat mining is a form of room-and-pillar mining that extracts most of the coal. Rooms and pillars are developed in the panels, and the pillars are then systematically removed (fig. 1F).

In early (pre-1960) longwall mines, mining advanced in multiple directions from a central shaft (fig. 1G). Large pillars of coal were left around the shaft, but all coal was removed beyond these pillars. Miners placed rock and wooden props and cribs in the mined-out areas to support the mine roof. The overlying rock gradually settled onto these supports, thus producing subsidence at the surface. In post-1959 longwall mines, room-and-pillar methods have been used to develop the main entries of the mine and panel areas. Modern longwall methods extract 100 percent of the coal in the panel areas (fig. 1H).

SOURCE MAPS

Mine outlines depicted on the map are, whenever possible, based on maps made from original mine surveys. The process of compiling and digitizing the quadrangle map may produce errors of less than 200 feet in the location of mine boundaries. Larger errors of 500 feet or more are possible for mines that have incomplete or inaccurate source maps.

Because of the extreme complexity of some mine maps, detailed features of mined areas have been omitted. The digitized mine boundary includes the exterior boundary of all rooms or entries that were at least 80 feet wide or protruded 500 feet from the main mining area. Unmined areas between mines are shown if they are at least 80 feet wide; unmined blocks of coal within mines are shown if they are at least 400 feet on each side. Original source maps should be consulted when precise information on mine boundaries or interior features is needed.

The mine summary sheet lists the source maps used to determine each mine outline. The completeness of map sources is indicated on the map by a line symbol at the mine boundary. Source maps are organized in five categories.

Final mine map The mine outline was digitized from an original map made from mine surveys conducted within a few months after production ceased. The date of the map and the last reported production are listed on the summary sheet.

Not a final map The mine is currently active or the mine outline was made from a map based on mine surveys conducted more than a few months before production ceased. This implies the actual mined-out area is probably larger than the outline on the map. The mine summary sheet indicated the dates of source maps and the last reported production, as well as the approximate tonnage mined between these two dates (if the mine is abandoned). The summary sheet also lists the approximate acreage mined since the date of the map and, in some cases, indicates the area where additional mining may have taken place. This latter information is determined by locating on the map the active faces relative to probable boundaries of the mine property.

Undated map The source map was undated, so it may or may not be based on a final mine survey. When sufficient data are available, the probable acreage of the mined area is estimated from reported production, average seam thickness and a recovery rate comparable to other mines in the area. This information is listed in the summary sheet for the mine.

Incomplete map The source map did not show the entire mine. The summary sheet indicates the missing part of the mine map and the acreage of the unmapped area, which is estimated from the amount of coal known to have been produced from the mine.

Secondary source map The original mine map was not found so the outline shown was determined from secondary sources (e.g., outlines from small-scale regional maps published in other reports). The summary sheet describes the secondary sources.

POINTS AND LABELS

The locations of all known mine openings (shafts, slopes, and drifts) and surface mine tipples are plotted on the map. Tipples are areas where coal was cleaned, stockpiled, and loaded for shipping.

Only openings or tipples are plotted for mines without source maps. If the precise locations of these features are unknown, a special symbol is used to indicate the approximate location of the mine.

Each mine on the map is labeled with the names of the mine and operating company, ISGS mine index number, and years of operation (if known) if space permits. A seam designation is given on maps where more than one seam was mined. For a mine that operated under more than one name, only the most recent name is generally given. When a mine changed names or ownership shortly before closing, an earlier name is listed. All company and mine names are listed on the mine summary sheet in the directory, under the production history segment.



Figure 1 Mining methods: (A) room-and-pillar basic (RPB), (B) modified room and pillar (MRP), (C) room-and-pillar panel (RPP), (D) blind room and pillar (BRP).



Figure 1 (cont.) Mining methods: (E) checkerboard room and pillar (CRP), (F) high extraction retreat (HER), (G) early (pre-1960) longwall, (H) post-1959 longwall



Figure 2 Generalized stratigraphic section, showing approximate vertical relations of coals in Illinois.

INTERPRETING A MINE SUMMARY SHEET

The mine summary sheet is arranged numerically by mine index number. Index numbers are shown on the map and in the mine listing. The mine summary sheet provides the following information (if available).

Company and mine name The last company or owner of the mine is used, unless no production was recorded for the last owner. In that case, the penultimate owner is listed. Mines often have no specific name; in these cases, the company name is also used as the mine name.

Type *Underground* denotes a subsurface mine in which the coal was reached through a shaft, slope, or a drift entry. *Surface* denotes a surface, open pit or strip mine.

Total mined-out acreage shown The total acreage of the mined area mapped, including any acreage mined on adjacent quadrangles, is calculated from the digitized outline of the mine. The acreage of large barrier pillars depicted on the map is excluded from the mined-out acreage. Small pillars not digitized are included in the acreage calculation. If the mine outline is not based on a final mine map, the acreage is followed by an estimate of additional acres that may have been mined. The estimate is determined from reported mine production, approximate thickness of the coal, and recovery rates calculated from nearby mines that used similar mining methods.

SHAFT, SLOPE, DRIFT OR TIPPLE LOCATIONS

Shaft, slope, drift, or tippie locations Locations of all known former entry points to underground mines or the location of coal cleaning, tippie, and shipping equipment used by the mine's facility are listed. The location is described in terms of county, township and range (Twp-Rge), section, and location within the section by quarters. NE SW NW, for instance, would describe the location in the northeast quarter of the southwest quarter of the northwest quarter. When sections are irregular in size, the quarters remain the same size and are oriented (or "registered") from the southeast corner of the section. Approximate footage from the section lines (FEL = from east line, FNL = from north line, for example) is given when that information is known; this indicates a surveyed location and is not derived from maps. Entry points are also plotted on the map and coded for the type of entry or tippie. A mine opening may have had many purposes during the life of the mine. Old hoist shafts are often later used for air and escape shafts; this information is included in the directory when known. The tippie for underground mines was generally located near the main shaft or slope. At surface mines, coal was sometimes hauled to a central tippie several miles from the mine pit.

GEOLOGY

Seam(s) mined The name of the coal seam(s) mined is listed, if known. If multiple seams were mined, they are all listed, although the mined-out area for each seam may be shown on separate maps. Figure 2 shows the stratigraphic section of the coal-bearing interval in Illinois, and the vertical relations among the coals.

Depth The depth to the top of the seam in the vicinity of the shaft is listed, if known. The depth is determined from notes made by geologists who visited the mine during its operation or from drill hole data in ISGS files. Depth generally varies little over the extent of a mine; however, reported depths for an individual mine may vary. Depth for surface-mined coals varies, and is usually represented as a range.

Thickness The approximate thickness of the mined seam is shown, if known. Thickness also comes from notes of geologists who visited the mine during its operation or from borehole data in ISGS files. Minimum, maximum, and average thicknesses are given when this information is available.

Mining method The principal mining method used at the mine (figs. 1A-H) is listed. See the mining methods section at the beginning of this directory for a discussion of this parameter.

Geologic problems reported Any known geologic problems, such as faults, water seepage, floor heaving, and unstable roof, encountered in the mine are reported. This information is from notes made by ISGS geologists who visited the mine, or from reports by mine inspectors published by the Illinois Department of Mines and Minerals, or from the source map(s). Geologic problems are not reported for active mines.

PRODUCTION HISTORY

Production history Tons of coal produced from the mine by each mine owner are totaled. When the source map used for the mine outline is not a final mine map, the tonnage produced since the date of the map is identified. For mines that extend into adjacent quadrangles, the tonnage reported includes areas mined in adjacent quadrangles.

SOURCE OF DATA

Source map This section lists information about the map(s) used to compile the mine outline and the locations of tipples and mine openings. In some cases more than one source map was used. For example, a map drawn before the mine closed may provide better information on original areas of the mine than a later map. When more than one map was used, the bibliography section explains what information was taken from each source.

Date The date of the most recent mine survey listed on the source map is reported.

Original scale The original scale of the source map is listed. Many maps are photo-reductions and are no longer at their original scale. The original scale gives some indication of the level of detail of the mine outline and the accuracy of the mine boundary relative to surface features. Generally, the larger the scale, the greater the accuracy and detail of the mine map. Mine outlines taken from source maps at scales smaller than 1:24,000 may be highly generalized and may well be inaccurately located with respect to surface features.

Digitized scale The scale of the digitized map is reported. The scale may be different from that of the original source map. In many cases the digitized map was made from a photo-reduction of the original source map, or the source map was not in a condition suitable for digitizing and the mine boundaries were transferred to another base map.

Map type Source maps are classified into five categories to indicate the probable completeness of the map. See discussion of source maps in the previous section.

Annotated bibliography Sources that provide information about the mine are listed, with the data taken from each source. Some commonly used sources are described below. Full bibliographic references are given for all other sources. Unless otherwise noted, all sources are available for public inspection at the ISGS.

Coal Reports Published since 1881, these reports contain tabular data on mine ownership, production, employment, and accidents. Some volumes include short descriptions made by mine inspectors of physical features and conditions in selected mines.

Directory of Illinois Coal Mines This source is a compilation of basic data about Illinois coal mines, originally gathered by ISGS staff in the early 1950s. Sources used for this directory are undocumented, but they are primarily Illinois Department of Mines and Minerals annual reports, ISGS mine notes, and coal company officials.

ENR Document 85/01, Guither, H. D., J. K. Hines, and R. A. Bauer, 1985 The Economic Effect of Underground Mining Upon Land Used for Illinois Agriculture: Illinois Department of Energy and Natural Resources Document 85/01, 185 p.

Microfilm map The U.S. Bureau of Mines maintains a microfilm archive of mine maps. A microfilm file for Illinois is available for public viewing at the ISGS.

Mine notes ISGS geologists have visited mines or contacted mine officials throughout the state since the early 1900s. Notes made during these visits range from brief descriptions of the mine location to long narratives (including sketches) of mining conditions and geology.

Federal Land Bank of St. Louis, Preliminary Reports on Subsidence Investigations Mining engineers working for the Federal Land Bank of St. Louis mapped areas of subsidence due to coal mining in the early 1930s. These reports often include county maps of mine properties with mined-out areas including shaft locations, as well as subsidence areas.

REFERENCES

Andreas, A. T., 1873, Atlas Map of Peoria County, Illinois, Chicago, Illinois.

Bauer, R. A., B. A. Trent, and P. B. Dumontelle, 1993, Mine Subsidence in Illinois: Facts for the Homeowner Considering Insurance, Illinois State Geological Survey, Environmental Geology Note 144, 16p.

Guither, H. D., J. K. Hines, and R. A. Bauer, 1985, The Economic Effects of Underground Mining Upon Land Used for Illinois Agriculture, Illinois Department of Energy and Natural Resources Document 85/01, 185p.

Ogle, G. A., 1896, Standard Atlas of Peoria County, Illinois, Chicago, Illinois.

PART II DIRECTORY OF MINES IN THE PEORIA WEST QUADRANGLE

MINE SUMMARY SHEETS

A summary sheet on the geology and production history of each mine in the Peoria West Quadrangle is provided. These summary sheets are arranged numerically by mine index number. Consult Part I for a complete explanation of the data listed in the summary sheet.

Mine Index 25

Clark Coal & Coke Company, Empire No. 2 Mine

Type: Underground Total mined-out acreage shown: 1,267 The mined area shown on the accompanying map includes the Empire No. 2 Mine, Hilltop Mine (mine index 3031) and New Star Mine (mine index 7211).

SHAFT, SLOPE, DRIFT or TIPPLE LOCATIONS

Type	County	Township-Range	Section	Quarters-Footage
Main shaft	Peoria	8N 7E	10	SE NW SE *
Air shaft	Peoria	8N 7E	10	SE NW SE
Air shaft	Peoria	8N 7E	15	NW SW SE

* This shaft location is the same as the concurrently-operating Star Mine (mine index 7211). No separate shaft could be found on the source map.

GEOLOGY

Seam(s) Mined	Depth (ft)	Thickness (ft)			Mining Method
		Min	Max	Avg	
Springfield	90-185	3.0	4.5	4.0	RPP **

** Pillars were drawn where possible

Geologic Problems Reported: The roof consisted of 2 inches of draw slate with 2 to 12 inches of dark shale above. Sometimes a thin limestone band was found in the shale, but the cap rock was generally 18 inches of sandstone. The shale always came down where it was thin, and frequent coal balls were noted in the shale. The roof was considered poor. Clay slips were sometimes encountered. The seam was uniform with no persistent bands of impurities. Pyrite nodules were occasionally encountered, and pyrite was also seen in vertical streaks.

PRODUCTION HISTORY

Company	Mine Name	Years	Production (tons)
Clark Coal & Coke Company	B	1904-1907	227,940
Clark Coal & Coke Company	Empire No. 2	1907-1924	3,529,652
			3,757,592

Last reported production: January 1924

SOURCES OF DATA

Source Map	Date	Original Scale	Digitized Scale	Map Type
Microfilm, document 352149	Undated	1:2400	1:4965	Undated

Annotated Bibliography (data source, brief description of information)

Coal Reports - Production, ownership, years of operation, depth.

Directory of Illinois Coal Mines (Peoria County) - Mine names, mine index, ownership, years of operation.

ENR Document 85/01 - Mining method.

Mine notes (Peoria County) - Shaft location, thickness, geologic problems.

Microfilm map, document 352149, reel 03138, frames 170-173 - Shaft locations, mine outline, mining method.

Mine Index 26
Crescent Coal Company, Crescent Mine

Type: Underground Total mined-out acreage shown: 538 The mined area shown on the accompanying map is the approximate size expected for the reported production. This suggests that the mine outline is complete.

SHAFT, SLOPE, DRIFT or TIPPLe LOCATIONS

Type	County	Township-Range	Section	Quarters-Footage
Main slope	Peoria	8N 7E	12	SW SE NW
Air shaft	Peoria	8N 7E	2	SE SE SE

GEOLOGY

Seam(s) Mined	Depth (ft)	Thickness (ft)			Mining Method
		Min	Max	Avg	
Springfield	100-200			4.0-4.5	RPP

Geologic Problems Reported: The source map showed a fault in SW 1-T8N-R7E. The roof was black shale. Pyrite was present as horizontal streaks. Calcite was observed on the cleat facings.

PRODUCTION HISTORY

Company	Mine Name	Years	Production (tons)
Crescent Coal Company	Crescent	1908-1918	1,210,204
Crescent Coal Company	Crescent	1918-1922	484,565 *
			1,694,769

* Production after map date

Last reported production: March 1922

SOURCES OF DATA

Source Map	Date	Original Scale	Digitized Scale	Map Type
Company, R4103.P41 i5.1-2	5-1918	1:2400	1:2400	Not final

Annotated Bibliography (data source, brief description of information)

Coal Reports - Production, ownership, years of operation, mine type, seam, depth, thickness, mining method.
 Directory of Illinois Coal Mines (Peoria County) - Mine names, mine index, ownership, years of operation.
 Mine notes (Peoria County) - Slope location, geologic problems.
 Company map, ISGS map library, R4103.P41 i5.1-2 - Slope & shaft locations, mine outline, mining method, geologic problems.

Mine Index 106**Crescent Coal Company, Crescent No. 2 Mine**

Type: Underground Total mined-out acreage shown: 26 Production indicates approximately 150 acres were mined after the map date.

SHAFT, SLOPE, DRIFT or TIPPLe LOCATIONS

Type	County	Township-Range	Section	Quarters-Footage
Main drift	Peoria	7N 7E	1	NE SW NW
Air shaft	Peoria	7N 7E	1	NW SW NW
Air shaft	Peoria	7N 7E	2	NW NW NE

GEOLOGY

Seam(s) Mined	Depth (ft)	Thickness (ft)			Mining Method
		Min	Max	Avg	
Springfield	144-152	4.0	14.0	4.5	MRP

Geologic Problems Reported: A sandstone cut the coal out in some places, and was 2 to 3 feet above the coal in other areas, and in some other areas, the sandstone was directly on the coal. A limestone was sometimes present, but only 2 to 3 inches thick. Generally the immediate roof was a black shale that was up to 16 inches thick. Horsebacks were found in the mine. A layer of pyrite was often present about 2 feet from the top of the seam, but generally pyrite occurred as lenses and streaks. More pyrite was present near the horsebacks. The floor clay heaved in wet places. Rolls in the floor also made the coal thinner and interfered with shooting the coal.

PRODUCTION HISTORY

Company	Mine Name	Years	Production (tons)
Adam Sholl	Sholl	pre1878-1881 *	10,000
Henry Sholl	Sholl	1881-1882	25,000
Sholl Brothers & Company	Sholl	1882-1884	64,000
Adam Sholl	Sholl	1884-1892 **	335,424
Sholl Brothers	Sholl No. 1	1892-1899	230,150
Brewster & Evans Coal Company	Walben	1911-1916 ***	768,585
M. E. Case Coal Company	Brewster & Evans	1916-1917	110,627
M. E. Case Coal Company	Brewster & Evans	1917-1922	746,327 †
Crescent Coal Company	Crescent No. 2	1922-1924	63,279 †
			2,353,392

* Production and years of operation before 1878 are not known. The 1879 Coal Report indicates 40 acres were mined.

** A new shaft was opened one-quarter mile north of the previous slope. Machinery was brought from the Adam Sholl Mine in Tazewell County (mine index 3632).

*** The Sholl Mine was re-opened by Brewster & Evans and the equipment was updated.

† Production after map date

Last reported production: April 1924

SOURCES OF DATA

Source Map	Date	Original Scale	Digitized Scale	Map Type
Company, P4103.P41 i5.1-37	1-11-1917	1:7200	1:7200	Not final

Annotated Bibliography (data source, brief description of information)

Coal Reports - Production, ownership, years of operation, depth, mining method.

Directory of Illinois Coal Mines (Peoria County) - Mine names, mine index, ownership, years of operation.

Mine notes (Peoria County) - Drift & shaft locations, seam, thickness, geologic problems.

Company map, ISGS map library, P4103.P41 i5.1-37 - Drift & shaft locations, mine outline.

Microfilm map, document 352165, reel 03138, frame 196 - Mining method.

Mine Index 408**Rock Island Improvement Company, Lamarsh No. 1 Mine**

Type: Underground Total mined-out acreage shown: 2,918 The area shown on the accompanying map represents the acreage undermined by Lamarsh No. 1 Mine and the Vicary Mine (mine index 3019). The mine boundaries could not be distinguished. Both mines appear to have used the same slopes and air shafts.

SHAFT, SLOPE, DRIFT or TIPPLE LOCATIONS

Type	County	Township-Range	Section	Quarters-Footage
Slope	Peoria	7N 7E	8	SE NE SE
Slope	Peoria	7N 7E	8	SE NE SE
Air shaft	Peoria	7N 7E	4	NW SW NE
Air shaft	Peoria	7N 7E	5	NW NE NE
Air shaft	Peoria	8N 7E	33	SW NW SE
Air shaft	Peoria	8N 7E	31	SE SW NE

GEOLOGY

Seam(s) Mined	Depth (ft)	Thickness (ft)			Mining Method
		Min	Max	Avg	
Springfield	100-130	4.0	4.75	4.25	RPP

Geologic Problems Reported: The sandstone cap rock was present over the entire mine, and made a good roof. Water seeped from the sandstone and made the mine very wet. The immediate roof over the coal was 2 to 2.5 feet of black shale that usually came down. Clay horsebacks were common, but seldom over 4 inches wide. Pyrite was present as fracture facings and, less commonly, as lenses and nodules. The 10 feet of underclay heaved when the mine was wet and the entries too wide.

PRODUCTION HISTORY

Company	Mine Name	Years	Production (tons)
Crescent Mining Company	Lamarsh No. 1	1922-1943	7,589,090
Rock Island Improvement Company	Lamarsh No. 1	1943-1951	<u>2,542,190</u>
			10,131,280

Last reported production: June 1951

SOURCES OF DATA

Source Map	Date	Original Scale	Digitized Scale	Map Type
Microfilm, document 352193	6-27-1951	1:2400	1:5131	Final

Annotated Bibliography (data source, brief description of information)

Coal Reports - Production, ownership, years of operation, depth.

Directory of Illinois Coal Mines (Peoria County) - Mine names, mine index, ownership, years of operation.

Mine notes (Peoria County) - Mine type, seam, thickness, geologic problems.

Microfilm map, document 352193, reel 03138, frames 231-251 - Slope & shaft locations, mine outline, mining method.

Mine Index 430
Bartonville Coal Company, Bartonville Mine

Type: Underground Total mined-out acreage shown: 238

SHAFT, SLOPE, DRIFT or TIPPLE LOCATIONS

Type	County	Township-Range	Section	Quarters-Footage
Main slope	Peoria	8N 7E	26	SE SE NE

GEOLOGY

Seam(s) Mined	Depth (ft)	Thickness (ft)			Mining Method
		Min	Max	Avg	
Springfield	106	4.0	4.5	4.25	RP

Geologic Problems Reported: The roof consisted of 18 inches of black shale with 6 inches of clod above that. A few horsebacks were encountered.

PRODUCTION HISTORY

Company	Mine Name	Years	Production (tons)
Joseph Collier	Collier	pre1881-1885 *	136,960
Collier Co-operative Coal Company	Collier	1885-1924	1,496,098
Bartonville Coal Company	Bartonville	1924-1926	16,247
			<u>1,649,305</u>

* Production and years of operation before 1881 are not known. The 1882 Coal Report indicates 25 acres were mined.

Last reported production: 1926

SOURCES OF DATA

Source Map	Date	Original Scale	Digitized Scale	Map Type
ISGS map library, 4103.P41 i5.1-35	10-29-1917	1:15840	1:15840	Secondary source

Annotated Bibliography (data source, brief description of information)

Coal Reports - Production, ownership, years of operation, mining method.

Directory of Illinois Coal Mines (Peoria County) - Mine names, mine index, ownership, years of operation.

Mine notes (Peoria County) - Mine type, slope location, seam, depth, thickness, geologic problems.

ISGS map library, 4103.P41 i5.1-35, compilation map of mined areas, unknown author - Slope location, mine outline.

Mine Index 601**Crescent Mining Company, Lamarsh No. 6 Mine**

Type: Underground Total mined-out acreage shown: 1,771 The area shown on the accompanying map represents the area undermined by Lamarsh No. 6 Mine and Lamarsh No. 2 Mine (mine index 5837).

SHAFT, SLOPE, DRIFT or TIPPLE LOCATIONS

Type	County	Township-Range	Section	Quarters-Footage
Main slope	Peoria	7N 7E	8	SW NW NW
Slope	Peoria	7N 7E	8	SW NW NW
Slope	Peoria	7N 7E	7	SE NE NE
Air shaft	Peoria	7N 7E	7	SW NW NW
Air shaft	Peoria	7N 7E	18	NW NW NE
Air shaft	Peoria	7N 8E	12	NW SE NW

GEOLOGY

Seam(s) Mined	Depth (ft)	Thickness (ft)			Mining Method
		Min	Max	Avg	
Springfield	58			4.16-4.33	RPP

Geologic Problems Reported: The immediate roof was 2 to 3 feet of black shale with sandstone above.

PRODUCTION HISTORY

Company	Mine Name	Years	Production (tons)
Newsam Brothers Coal Company	Newsam No. 6	1922-1923	84,701
Crescent Mining Company	Lamarsh No. 6	1923-1940	<u>7,287,878</u>
			7,372,579

Last reported production: February 1940

SOURCES OF DATA

Source Map	Date	Original Scale	Digitized Scale	Map Type
Microfilm, document 352193	6-27-1951	1:2400	1:5131	Final

Annotated Bibliography (data source, brief description of information)

Coal Reports - Production, ownership, years of operation.

Directory of Illinois Coal Mines (Peoria County) - Mine names, mine index, ownership, years of operation.

ENR Document 85/01 - Mining method.

Mine notes (Peoria County) - Slope location, seam, depth, thickness, geologic problems.

Microfilm map, document 352193, reel 03138, frames 231-251 - Slope & shaft locations, mine outline, mining method.

Mine Index 881
Midland Coal Company, Edwards Mine

Type: Surface Total mined-out acreage shown: 2,525

SHAFT, SLOPE, DRIFT or TIPPLE LOCATIONS

Type	County	Township-Range	Section	Quarters-Footage
Tipple	Peoria	9N 6E	25	NE SE NW

GEOLOGY

Seam(s) Mined	Depth (ft)	Thickness (ft)			Mining Method
		Min	Max	Avg	
Herrin	34-60			3.67-4.75	Surface

Geologic Problems Reported: Some old workings were encountered while excavating some of the pits. The Brereton Limestone above the Herrin Coal was up to 5 feet thick in some places, absent in some places, and was sometimes lenticular. In some places the upper part of the limestone was nodular. Sandstone was present 5 to 10 feet above the coal. Clay dikes were common in some pits. The blue band in this area was about 9 inches from the top of the seam.

PRODUCTION HISTORY

Company	Mine Name	Years	Production (tons)
Morgan Coal Company	Edwards	1952-1963	1,796,340
Peabody Coal Company	Edwards	1963-1970	3,617,743
Midland Coal Company	Edwards	1970-1975	<u>1,844,226</u>
			7,258,309

Last reported production: September 1975

SOURCES OF DATA

Source Map	Date	Original Scale	Digitized Scale	Map Type
USGS topographic map	1996	1:24000	1:24000	Secondary source
NAIP digital ortho-photo quadrangle	2004	1:6000	1:6000	Secondary source
Company, 6-110 (a-c)	Undated	1:15840	1:15840	Not final
Company, 6-113	Undated	1:3600	1:3600	Not final
Company, 6-189	1969	1:62500	1:62500	Not final

Annotated Bibliography (data source, brief description of information)

Coal Reports - Production, ownership, years of operation, depth, mining method.
 Directory of Illinois Coal Mines (Peoria County) - Mine names, mine index, ownership, years of operation.
 Mine notes (Peoria County) - Mine location, seam, thickness.
 USGS topographic map, Peoria West Quadrangle, 1996 - Mine outline, mining method.
 USGS topographic map, Hanna City Quadrangle, 1971, Photorevised 1979 - Mine outline.
 National Agriculture Imagery Program map, digital ortho-photo quadrangle map, Hanna City Quadrangle, 2004 - Mine outline.
 National Agriculture Imagery Program map, digital ortho-photo quadrangle map, Farmington East Quadrangle, 2004 - Mine outline.
 Company map, Coal Section files, 6-110 (a-c) - Pit identification.
 Company map, Coal Section files, 6-113 - Pit identification.
 Company map, Coal Section files, 6-189 - Pit identification.

Mine Index 3031
Fernwood Mining Company, Hilltop Mine

Type: Underground Total mined-out acreage shown: 1,267 The mined area shown on the accompanying map includes the Hilltop Mine, Empire No. 2 Mine (mine index 25), and New Star Mine (mine index 7211).

SHAFT, SLOPE, DRIFT or TIPPLE LOCATIONS

Type	County	Township-Range	Section	Quarters-Footage
Main shaft	Peoria	8N 7E	3	NE SW SE
Air shaft	Peoria	8N 7E	3	SW NE SE

GEOLOGY

Seam(s) Mined	Depth (ft)	Thickness (ft)			Mining Method
		Min	Max	Avg	
Springfield	200			4.0	RPP

Geologic Problems Reported:

PRODUCTION HISTORY

Company	Mine Name	Years	Production (tons)
Hilltop Coal Company	Hilltop	1924-1941	605,392
Middle Road Coal Company	Hilltop	1941-1951	404,439
Fernwood Mining Company	Hilltop	1951-1952	<u>29,417</u>
			1,039,248

Last reported production: September 1952

SOURCES OF DATA

Source Map	Date	Original Scale	Digitized Scale	Map Type
Microfilm, document 352197	12-29-1952	1:2400	1:3641	Final
Microfilm, document 352171	3-4-1950	1:2400	1:3972	Not final

Annotated Bibliography (data source, brief description of information)

Coal Reports - Production, ownership, years of operation.
 Directory of Illinois Coal Mines (Peoria County) - Mine names, mine index, ownership, years of operation.
 ENR Document 85/01 - Mining method.
 Mine notes (Peoria County) - Mine type, shaft location, seam, depth, thickness.
 Microfilm map, document 352197, reel 03138, frames 249, 250 - Air shaft location, mine outline, mining method.
 Microfilm map, document 352171, reel 03138, frame 204 - Shaft location.

Mine Index 3032
Marteness Mining Company, Blender Mine

Type: Underground Total mined-out acreage shown: 3 Production indicates less than 1 acre was mined after the map date.

SHAFT, SLOPE, DRIFT or TIPPLE LOCATIONS

Type	County	Township-Range	Section	Quarters-Footage
Main slope	Peoria	8N 7E	3	NW NW NE
Air shaft	Peoria	9N 7E	34	SW SW SE

GEOLOGY

Seam(s) Mined	Depth (ft)	Thickness (ft)			Mining Method
		Min	Max	Avg	
Springfield	97			4.33	MRP

Geologic Problems Reported:

PRODUCTION HISTORY

Company	Mine Name	Years	Production (tons)
William Blender	Domino	1937-1940	6,178
Ira Darling	Blender	1940-1940	1,800
Blender Mining Company *	Blender	1941-1942	2,944
Lewis G. White	Blender	1942-1942	400 **
Blender Mining Company	Blender	1943-1943	282 **
Marteness Mining Company	Blender	1944-1944	451 **
			<u>12,055</u>

* Operated by F. & I. Mosher followed by Thomas O'Brian, then William Blender, then Jack Palish.

** Production after map date

Last reported production: 1944

SOURCES OF DATA

Source Map	Date	Original Scale	Digitized Scale	Map Type
Microfilm, document 352147	6-30-1942	1:2400	1:4468	Not final

Annotated Bibliography (data source, brief description of information)

Coal Reports - Production, ownership, years of operation.

Directory of Illinois Coal Mines (Peoria County) - Mine names, mine index, ownership, years of operation.

Mine notes (Peoria County) - Mine type, slope location, seam, depth, thickness.

Microfilm map, document 352147, reel 03138, frame 168 - Slope & shaft locations, mine outline, mining method.

Mine Index 3033**Limestone Coal Company, Limestone Mine**

Type: Underground Total mined-out acreage shown: None; production indicates approximately 40 acres were mined.

SHAFT, SLOPE, DRIFT or TIPPLE LOCATIONS

Type	County	Township-Range	Section	Quarters-Footage
Main shaft	Peoria	8N 7E	10	SE NE

GEOLOGY

Seam(s) Mined	Depth (ft)	Thickness (ft)			Mining Method
		Min	Max	Avg	
Springfield	126			4.16	RPP

Geologic Problems Reported:

PRODUCTION HISTORY

Company	Mine Name	Years	Production (tons)
Limestone Coal Company	Limestone	1902-1906	16,352
William Cook	Limestone	1906-1907	3,926
Limestone Coal Company	Limestone	1907-1917	49,312
William Cook	Limestone	1916-1922 *	35,915
Limestone Coal Company	Limestone	1922-1923	7,761
William Cook	Limestone	1923-1926	14,144
Limestone Coal Company	Limestone	1927-1927	5,404
William Cook	Limestone	1928-1931	18,910
Limestone Coal Company	Limestone	1932-1932	1,090
			152,814

* Production not reported in 1922 for mines producing less than 10,000 tons

Last reported production: 1932

SOURCES OF DATA

Source Map	Date	Original Scale	Digitized Scale	Map Type
Microfilm, document 352197	12-29-1952	1:2400	1:3641	Secondary source

Annotated Bibliography (data source, brief description of information)

Coal Reports - Production, ownership, years of operation, mine type, seam.

Directory of Illinois Coal Mines (Peoria County) - Mine names, mine index, ownership, years of operation.

ENR Document 85/01 - Mining method.

Mine notes (Peoria County) - Depth, thickness.

Microfilm map, document 352197, reel 03138, frames 249, 250, map of Hilltop Mine (mine index 3031) - Shaft location, general mine outline.

Mine Index 3034
Henry F. Schmidt, Schmidt Mine

Type: Underground Total mined-out acreage shown: 14 Production indicates less than 1 acre was mined after the map date.

SHAFT, SLOPE, DRIFT or TIPPLE LOCATIONS

Type	County	Township-Range	Section	Quarters-Footage
Main drift *	Peoria	8N 7E	14	SE NE SE

* An air drift may have existed north of the main drift (also in SE NE SE 14-T8N-R7E), but there is no symbol or label on the source map. The lines on the source map leading in that direction were dashed, which usually indicates an entry that the surveyor could not visually ascertain. A functioning airway should have been accessible to the surveyor, and this may indicate that the entry was not an airway. No other air shafts were shown on the source map.

GEOLOGY

Seam(s) Mined	Depth (ft)	Thickness (ft)			Mining Method
		Min	Max	Avg	
Springfield				4.33	MRP

Geologic Problems Reported: Old works were encountered on the northernmost part of the mine, and old works were known to exist southwest of the mine.

PRODUCTION HISTORY

Company	Mine Name	Years	Production (tons)
Frank P. Schmidt & Son	Schmidt	1924-1936	37,811
Henry F. Schmidt	Schmidt	1937-1944	17,457
Henry F. Schmidt	Schmidt	1944-1945	<u>2,330</u> **
			57,598

** Production after map date

Last reported production: 1945

SOURCES OF DATA

Source Map	Date	Original Scale	Digitized Scale	Map Type
Microfilm, document 352152	5-16-1944	1:1200	1:1986	Not final

Annotated Bibliography (data source, brief description of information)

Coal Reports - Production, ownership, years of operation.

Directory of Illinois Coal Mines (Peoria County) - Mine names, mine index, ownership, years of operation.

ENR Document 85/01 - Mining method.

Mine notes (Peoria County) - Mine type, seam, thickness.

Microfilm map, document 352152, reel 03138, frame 176 - Drift & shaft locations, mine outline.

Mine Index 3035
Brady & White Coal Company, Brady & White Mine

Type: Underground Total mined-out acreage shown: 71

SHAFT, SLOPE, DRIFT or TIPPLe LOCATIONS

Type	County	Township-Range	Section	Quarters-Footage
Main slope	Peoria	8N 7E	14	SE NW NE
Air shaft	Peoria	8N 7E	14	SE NW NE

GEOLOGY

Seam(s) Mined	Depth (ft)	Thickness (ft)			Mining Method
		Min	Max	Avg	
Springfield	146			4.33	RPP

Geologic Problems Reported:

PRODUCTION HISTORY

Company	Mine Name	Years	Production (tons)
Hibbard & Sneddon Coal Company	Hibbard & Sneddon	1899-1929	233,332 *
Brady & White Coal Company	Brady & White	1929-1941	12,116
			245,448

* Production was not reported in 1922 for mines producing less than 10,000 tons.

Last reported production: 1941

SOURCES OF DATA

Source Map	Date	Original Scale	Digitized Scale	Map Type
Microfilm, document 352148	12-1-1941	1:1800	1:1986	Final

Annotated Bibliography (data source, brief description of information)

Coal Reports - Production, ownership, years of operation, seam.
 Directory of Illinois Coal Mines (Peoria County) - Mine names, mine index, ownership, years of operation.
 ENR Document 85/01 - Mining method.
 Mine notes (Peoria County) - Mine type, depth, thickness.
 Microfilm map, document 352148, reel 03138, frame 169 - Slope & shaft locations, mine outline, mining method.

Mine Index 3036
Edward Mohn & Son, Empire Mine

Type: Underground Total mined-out acreage shown: 417

SHAFT, SLOPE, DRIFT or TIPPLE LOCATIONS

Type	County	Township-Range	Section	Quarters-Footage
Main slope *	Peoria	8N 7E	23	SW NE SE
Air shaft	Peoria	8N 7E	23	NW SE SE
Air slope	Peoria	8N 7E	23	NE SW NW
Air slope	Peoria	8N 7E	23	NE SW SE

* The workings holed into or connected underground to Treasure Mine (mine index 3042), Winter Mine (mine index 3037), and Millard Mine (mine index 5852).

GEOLOGY

Seam(s) Mined	Depth (ft)	Thickness (ft)			Mining Method
		Min	Max	Avg	
Springfield	50-100			4.0-5.0	RPP

Geologic Problems Reported:

PRODUCTION HISTORY

Company	Mine Name	Years	Production (tons)
Edward Mohn & Son	Empire	1902-1952	<u>1,813,498</u> 1,813,498

Last reported production: December 1952

SOURCES OF DATA

Source Map	Date	Original Scale	Digitized Scale	Map Type
Microfilm, document 352150	6-27-1953	1:2400	1:4634	Final

Annotated Bibliography (data source, brief description of information)

Coal Reports - Production, ownership, years of operation, seam, depth, thickness.

Directory of Illinois Coal Mines (Peoria County) - Mine names, mine index, ownership, years of operation.

ENR Document 85/01 - Mining method.

Mine notes (Peoria County) - Mine type, slope location.

Microfilm map, document 352150, reel 03138, frame 174 - Slope & shaft locations, mine outline, mining method.

Mine Index 3037**Winter Coal Company, Winter Mine**

Type: Underground Total mined-out acreage shown: None; production indicates approximately 160 acres were mined, shown on the accompanying map as a general area of mining.

SHAFT, SLOPE, DRIFT or TIPPLE LOCATIONS

Type	County	Township-Range	Section	Quarters-Footage
Main shaft	Peoria	8N 7E	23	SE NE SE

GEOLOGY

Seam(s) Mined	Depth (ft)	Thickness (ft)			Mining Method
		Min	Max	Avg	
Springfield	83-100			4.33-5.0	RP

Geologic Problems Reported:

PRODUCTION HISTORY

Company	Mine Name	Years	Production (tons)
Winter & Myatt	Winter & Myatt	1893-1896	20,698
Bartonville Coal Company	Bartonville	1896-1899	40,984
Winter Coal Company	Winter	1899-1924	<u>587,866</u>
			649,548

Last reported production: 1924

SOURCES OF DATA

Source Map	Date	Original Scale	Digitized Scale	Map Type
Mine notes	Undated	(text only)	1:24000 *	Secondary source

* The mine location was plotted on a 1:24000 USGS topographic map from the mine location description and digitized.

Annotated Bibliography (data source, brief description of information)

Coal Reports - Production, ownership, years of operation, mine type, seam, depth, thickness, mining method.
 Directory of Illinois Coal Mines (Peoria County) - Mine names, mine index, ownership, years of operation.
 Mine notes (Peoria County) - Shaft location.

Mine Index 3038**White Ash Coal Company, White Ash Mine**

Type: Underground Total mined-out acreage shown: 54 Production indicates approximately 10 acres were mined after the map date.

SHAFT, SLOPE, DRIFT or TIPPLE LOCATIONS

Type	County	Township-Range	Section	Quarters-Footage
Main slope	Peoria	8N 7E	24	NW NE NW
Slope	Peoria	8N 7E	14	NE SE SE
Air shaft	Peoria	8N 7E	14	SE SW SE

GEOLOGY

Seam(s) Mined	Depth (ft)	Thickness (ft)			Mining Method
		Min	Max	Avg	
Springfield	180-200			4.33	RPP

Geologic Problems Reported:

PRODUCTION HISTORY

Company	Mine Name	Years	Production (tons)
Middle Road Coal Company	Middle Road	1929-1940	179,972
White Ash Coal Company	White Ash	1941-1942	29,083
White Ash Coal Company	White Ash	1942-1944	44,170 *
			253,225

* Production after map date

Last reported production: 1944

SOURCES OF DATA

Source Map	Date	Original Scale	Digitized Scale	Map Type
Company, 4103.P41 i5.1-16	7-7-1942	1:2400	1:2400	Not final

Annotated Bibliography (data source, brief description of information)

Coal Reports - Production, ownership, years of operation.

Directory of Illinois Coal Mines (Peoria County) - Mine names, mine index, ownership, years of operation.

Mine notes (Peoria County) - Mine type, slope location, seam, depth, thickness.

Company map, ISGS map library, 4103.P41 i5.1-16 - Slope & shaft locations, mine outline, mining method.

Mine Index 3040
Peoria District Colliery Company, Sholl No. 3 Mine

Type: Underground Total mined-out acreage shown: 270 Production indicates approximately 38 acres were mined after the map date.

SHAFT, SLOPE, DRIFT or TIPPLE LOCATIONS

Type	County	Township-Range	Section	Quarters-Footage
Shaft *	Peoria	8N 7E	25	SW NW SW
Escape shaft	Peoria	8N 7E	26	SE NW SW

* The poor condition of the source map prevents a clear view of the shaft area, but a symbol just north of the shaft is very likely an air shaft (not shown on the accompanying map).

GEOLOGY

Seam(s) Mined	Depth (ft)	Thickness (ft)			Mining Method
		Min	Max	Avg	
Springfield	76			4.25	RPP

Geologic Problems Reported:

PRODUCTION HISTORY

Company	Mine Name	Years	Production (tons)
Sholl Brothers	Prosperity No. 3	1896-1910	1,031,884
Dering & Cruikshank	Sholl No. 3	1910-1912	244,170
Peoria District Colliery Company	Sholl No. 3	1912-1914	144,680 **
			1,420,734

** Production after map date

Last reported production: 1914

SOURCES OF DATA

Source Map	Date	Original Scale	Digitized Scale	Map Type
Microfilm, document 352151	4-1-1912	1:2400	1:5131	Not final

Annotated Bibliography (data source, brief description of information)

Coal Reports - Production, ownership, years of operation, mine type.

Directory of Illinois Coal Mines (Peoria County) - Mine names, mine index, ownership, years of operation.

Mine notes (Peoria County) - Shaft location, seam, depth, thickness.

Microfilm map, document 352151, reel 03138, frame 175 - Shaft locations, mine outline, mining method.

Mine Index 3042**Walter Treasure Coal Company, Treasure Mine**

Type: Underground Total mined-out acreage shown: 143

SHAFT, SLOPE, DRIFT or TIPPLE LOCATIONS

Type	County	Township-Range	Section	Quarters-Footage
Main shaft	Peoria	8N 7E	26	SE SW NW
Air shaft	Peoria	8N 7E	26	SE SW NW
Air shaft	Peoria	8N 7E	27	NE SE NW

GEOLOGY

Seam(s) Mined	Depth (ft)	Thickness (ft)			Mining Method
		Min	Max	Avg	
Springfield	60-185			4.33	RPP

Geologic Problems Reported:**PRODUCTION HISTORY**

Company	Mine Name	Years	Production (tons)
Walter Treasure Coal Company	Treasure	pre1878-1954 *	<u>1,076,265</u> *
			1,076,265

* The 1879 Coal Report indicates 10 acres were mined. Idle 1897-1899. New openings were constructed in 1905 and 1911.

Last reported production: September 1954

SOURCES OF DATA

Source Map	Date	Original Scale	Digitized Scale	Map Type
Microfilm, document 352145	10-4-1954	1:2400	1:4965	Final

Annotated Bibliography (data source, brief description of information)

Coal Reports - Production, ownership, years of operation.

Directory of Illinois Coal Mines (Peoria County) - Mine names, mine index, ownership, years of operation.

ENR Document 85/01 - Mining method.

Mine notes (Peoria County) - Mine type, shaft location, seam, depth, thickness.

Microfilm map, document 352145, reel 03138, frame 166 - Shaft locations, mine outline, mining method.

Mine Index 3043**Wolschlag Co-operative Coal Company, Wolschlag Mine**

Type: Underground Total mined-out acreage shown: None; production indicates 775 acres were mined. This is shown on the accompanying map as a general area of mining.

SHAFT, SLOPE, DRIFT or TIPPLe LOCATIONS

Type	County	Township-Range	Section	Quarters-Footage
Main slope	Peoria	8N 7E	36	SW NE SW

GEOLOGY

Seam(s) Mined	Depth (ft)	Thickness (ft)			Mining Method
		Min	Max	Avg	
Springfield	90-170			4.0-4.5	RP

Geologic Problems Reported:

PRODUCTION HISTORY

Company	Mine Name	Years	Production (tons)
Steve Wolschlag	Wolschlag	1893-1895	27,660
Wolschlag Co-operative Coal Company	Wolschlag	1895-1922	<u>2,899,987</u>
			2,927,647

Last reported production: 1922

SOURCES OF DATA

Source Map	Date	Original Scale	Digitized Scale	Map Type
Mine notes	Undated	(text only)	1:24000 *	Secondary source

* The mine location was plotted on a 1:24000 USGS topographic map from the mine location description and digitized.

Annotated Bibliography (data source, brief description of information)

Coal Reports - Production, ownership, years of operation, mine type, seam, depth, thickness, mining method.
 Directory of Illinois Coal Mines (Peoria County) - Mine names, mine index, ownership, years of operation.
 Mine notes (Peoria County) - Slope location.

Mine Index 3044
Sword & Son, Jubilee Mine

Type: Surface Total mined-out acreage shown: None; production indicates less than 1 acre was mined.

SHAFT, SLOPE, DRIFT or TIPPLE LOCATIONS

Type	County	Township-Range	Section	Quarters-Footage
Tipple or pit	Peoria	8N 8E	6	NE NW SE

GEOLOGY

Seam(s) Mined	Depth (ft)	Thickness (ft)			Mining Method
		Min	Max	Avg	
Springfield	10			3.5	Surface

Geologic Problems Reported:

PRODUCTION HISTORY

Company	Mine Name	Years	Production (tons)
Sword & Son	Jubilee	1940-1940	<u>2,523</u> 2,523

Last reported production: 1940

SOURCES OF DATA

Source Map	Date	Original Scale	Digitized Scale	Map Type
Mine notes	Undated	(text only)	1:24000 *	Secondary source

* The mine location was plotted on a 1:24000 USGS topographic map from the mine location description and digitized.

Annotated Bibliography (data source, brief description of information)

Coal Reports - Production, ownership, years of operation.

Directory of Illinois Coal Mines (Peoria County) - Mine names, mine index, ownership, years of operation.

Mine notes (Peoria County) - Mine location, seam, depth, thickness.

Mine Index 3069**Lee Patton Coal Company, Patton Mine**

Type: Underground Total mined-out acreage shown: 5

SHAFT, SLOPE, DRIFT or TIPPLe LOCATIONS

Type	County	Township-Range	Section	Quarters-Footage
Main slope	Peoria	9N 7E	19	NW NE SE
Air shaft	Peoria	9N 7E	19	NW NE SE

GEOLOGY

Seam(s) Mined	Depth (ft)	Thickness (ft)			Mining Method
		Min	Max	Avg	
Springfield	14			4.0	MRP

Geologic Problems Reported:**PRODUCTION HISTORY**

Company	Mine Name	Years	Production (tons)
Lee Patton Coal Company	Patton	1934-1941	<u>11,885</u> 11,885

Last reported production: 1941

SOURCES OF DATA

Source Map	Date	Original Scale	Digitized Scale	Map Type
Microfilm, document 352178	Undated	1:1200	1:1324	Undated

Annotated Bibliography (data source, brief description of information)

Coal Reports - Production, ownership, years of operation.

Directory of Illinois Coal Mines (Peoria County) - Mine names, mine index, ownership, years of operation.

ENR Document 85/01 - Mining method.

Mine notes (Peoria County) - Mine type, slope location, seam, depth, thickness.

Microfilm map, document 352178, reel 03138, frame 213 - Slope & shaft locations, mine outline, mining method.

Mine Index 3071**Pleasant Hill Coal Company, Pleasant Hill No. 2 Mine**

Type: Underground Total mined-out acreage shown: 15

SHAFT, SLOPE, DRIFT or TIPPLE LOCATIONS

Type	County	Township-Range	Section	Quarters-Footage
Main slope	Peoria	9N 7E	23	NE SE NW
Air shaft	Peoria	9N 7E	23	NE SE NW

GEOLOGY

Seam(s) Mined	Depth (ft)	Thickness (ft)			Mining Method
		Min	Max	Avg	
Springfield	90			3.67-4.0	RPP

Geologic Problems Reported:**PRODUCTION HISTORY**

Company	Mine Name	Years	Production (tons)
Pleasant Hill Coal Company	Pleasant Hill No. 2	1940-1940	497
Theodore Zahner Coal Company	Zahner No. 2	1941-1944	11,761
Pleasant Coal Company	Pleasant Hill No. 2	1945-1946	2,152
Rock & Stevenson Coal Company	Rock & Stevenson	1946-1954	30,229
Pleasant Hill Coal Company	Pleasant Hill No. 2	1954-1955	<u>1,386</u>
			46,025

Last reported production: April 1955

SOURCES OF DATA

Source Map	Date	Original Scale	Digitized Scale	Map Type
Microfilm, document 352198	4-12-1955	1:960	1:1522	Final

Annotated Bibliography (data source, brief description of information)

Coal Reports - Production, ownership, years of operation.

Directory of Illinois Coal Mines (Peoria County) - Mine names, mine index, ownership, years of operation.

ENR Document 85/01 - Mining method.

Mine notes (Peoria County) - Mine type, seam, depth, thickness.

Microfilm map, document 352198, reel 03138, frame 251 - Slope & shaft locations, mine outline, mining method.

Mine Index 3072**Superior Mining Company, Superior Mine**

Type: Underground Total mined-out acreage shown: 45

SHAFT, SLOPE, DRIFT or TIPPLE LOCATIONS

Type	County	Township-Range	Section	Quarters-Footage
Main slope *	Peoria	9N 7E	27	SW SE SW

* Connected underground to Liberty No. 1 Mine (mine index 3084).

GEOLOGY

Seam(s) Mined	Depth (ft)	Thickness (ft)			Mining Method
		Min	Max	Avg	
Springfield	184			4.0	MRP

Geologic Problems Reported:

PRODUCTION HISTORY

Company	Mine Name	Years	Production (tons)
Superior Mining Company	Superior	1935-1936	4,381
Andrew Sepesi	Superior	1937-1937	3,836
Superior Mining Company	Superior	1938-1947	80,457
Andrew Sepesi	Superior	1948-1949	16,751
Superior Mining Company	Superior	1950-1951	15,457
Andrew Sepesi	Superior	1952-1952	6,470
Superior Mining Company	Superior	1953-1956	17,933
			145,285

Last reported production: March 1956

SOURCES OF DATA

Source Map	Date	Original Scale	Digitized Scale	Map Type
Microfilm, document 352199	3-17-1956	1:1200	1:2151	Final

Annotated Bibliography (data source, brief description of information)

Coal Reports - Production, ownership, years of operation.

Directory of Illinois Coal Mines (Peoria County) - Mine names, mine index, ownership, years of operation.

ENR Document 85/01 - Mining method.

Mine notes (Peoria County) - Mine type, slope location, seam, depth, thickness.

Microfilm map, document 352199, reel 03138, frame 255 - Slope & shaft locations, mine outline, mining method.

Mine Index 3073**Collins Brothers Coal Company, Collins Mine**

Type: Underground Total mined-out acreage shown: 3 Production indicates 3 acres were mined after the map date.

SHAFT, SLOPE, DRIFT or TIPPLE LOCATIONS

Type	County	Township-Range	Section	Quarters-Footage
Main slope	Peoria	9N 7E	27	NW SE SW
Air shaft	Peoria	9N 7E	27	NW SE SW

GEOLOGY

Seam(s) Mined	Depth (ft)	Thickness (ft)			Mining Method
		Min	Max	Avg	
Springfield					RP

Geologic Problems Reported:

PRODUCTION HISTORY

Company	Mine Name	Years	Production (tons)
Shamrock Coal Company	Shamrock	1934-1940	9,028
Collins Brothers Coal Company	Collins	1941-1942	2,858
Collins Brothers Coal Company	Collins	1942-1947	10,499 *
			22,385

* Production after map date

Last reported production: 1947

SOURCES OF DATA

Source Map	Date	Original Scale	Digitized Scale	Map Type
Microfilm, document 352204	11-18-1942	1:1200	1:993	Not final

Annotated Bibliography (data source, brief description of information)

Coal Reports - Production, ownership, years of operation.

Directory of Illinois Coal Mines (Peoria County) - Mine names, mine index, ownership, years of operation.

ENR Document 85/01 - Mining method.

Mine notes (Peoria County) - Mine type, slope location.

Microfilm map, document 352204, reel 03139, frame 257 - Slope & shaft locations, mine outline, mining method.

Mine Index 3074**Lee Patton Coal Company, Elm Hill Mine**

Type: Underground Total mined-out acreage shown: 8

SHAFT, SLOPE, DRIFT or TIPPLE LOCATIONS

Type	County	Township-Range	Section	Quarters-Footage
Main slope	Peoria	9N 7E	28	SW SW NE
Drift	Peoria	9N 7E	28	SE SW NE
Air shaft	Peoria	9N 7E	28	SW SW NE

GEOLOGY

Seam(s) Mined	Depth (ft)	Thickness (ft)			Mining Method
		Min	Max	Avg	
Springfield	25				MRP

Geologic Problems Reported:**PRODUCTION HISTORY**

Company	Mine Name	Years	Production (tons)
H. Yelm	Yelm	1936-1938 *	111
Bowen Coal Company	Bowen	1939-1941 **	918
Lee Patton Coal Company	Elm Hill	1942-1949 ***	10,918
			11,947

* Idle 1937 & 1938

** Idle 1941

*** Idle 1944-1946

Last reported production: 1949

SOURCES OF DATA

Source Map	Date	Original Scale	Digitized Scale	Map Type
Microfilm, document 352191	5-22-1950	1:1200	1:2151	Final

Annotated Bibliography (data source, brief description of information)

Coal Reports - Production, ownership, years of operation.

Directory of Illinois Coal Mines (Peoria County) - Mine names, mine index, ownership, years of operation.

Mine notes (Peoria County) - Mine type, seam, depth, thickness.

Microfilm map, document 352191, reel 03138, frame 229 - Slope, drift & shaft locations, mine outline, mining method.

Mine Index 3075**Cusack Coal Company, Fairmount Mine**

Type: Underground Total mined-out acreage shown: 31 Production indicates approximately 5 acres were mined after the map date.

SHAFT, SLOPE, DRIFT or TIPPLE LOCATIONS

Type	County	Township-Range	Section	Quarters-Footage
Main slope	Peoria	9N 7E	29	NW NW SW
Air shaft	Peoria	9N 7E	29	NW NW SW

GEOLOGY

Seam(s) Mined	Depth (ft)	Thickness (ft)			Mining Method
		Min	Max	Avg	
Springfield	75-80			4.0	MRP

Geologic Problems Reported:

PRODUCTION HISTORY

Company	Mine Name	Years	Production (tons)
Cusack Coal Company	Fairmount	1923-1944	72,060
Cusack Coal Company	Fairmount	1944-1949	14,077 *
			86,137

* Production after map date

Last reported production: 1949

SOURCES OF DATA

Source Map	Date	Original Scale	Digitized Scale	Map Type
Microfilm, document 352276	3-26-1943	1:1200	1:1656	Not final

Annotated Bibliography (data source, brief description of information)

Coal Reports - Production, ownership, years of operation.

Directory of Illinois Coal Mines (Peoria County) - Mine names, mine index, ownership, years of operation.

ENR Document 85/01 - Mining method.

Mine notes (Peoria County) - Mine type, seam, depth, thickness.

Microfilm map, document 352276, reel 03138, frame 342 - Slope & shaft locations, mine outline, mining method.

Mine Index 3076
Lester Stear, Stear Mine

Type: Underground Total mined-out acreage shown: None; production indicates less than 3 acres were mined.

SHAFT, SLOPE, DRIFT or TIPPLE LOCATIONS

Type	County	Township-Range	Section	Quarters-Footage
Main slope	Peoria	9N 7E	29	NE SW

GEOLOGY

Seam(s) Mined	Depth (ft)	Thickness (ft)			Mining Method
		Min	Max	Avg	
Springfield	32			4.0	MRP

Geologic Problems Reported:

PRODUCTION HISTORY

Company	Mine Name	Years	Production (tons)
Thomas Stear	Stear	1924-1927	234
George Stear	Stear	1928-1933	94 *
Lester Stear	Stear	1934-1936	1,070
J. L. Stear	Stear	1937-1939	4,123
Lester Stear	Stear	1940-1941	3,118
			8,639

* Production was not reported 1930-1933 for mines producing less than 1,000 tons per year.

Last reported production: 1941

SOURCES OF DATA

Source Map	Date	Original Scale	Digitized Scale	Map Type
Mine notes	Undated	(text only)	1:24000 **	Secondary source

** The mine location was plotted on a 1:24000 USGS topographic map from the mine location description and digitized.

Annotated Bibliography (data source, brief description of information)

Coal Reports - Production, ownership, years of operation.

Directory of Illinois Coal Mines (Peoria County) - Mine names, mine index, ownership, years of operation.

ENR Document 85/01 - Mining method.

Mine notes (Peoria County) - Mine type, slope location, seam, depth, thickness.

Mine Index 3078
David Kienbusch, Kienbusch Mine

Type: Underground Total mined-out acreage shown: 5 Production indicates 10 acres were mined.
 The accompanying map shows a general area of mining to encompass areas labeled "old works" on the source map.

SHAFT, SLOPE, DRIFT or TIPPLE LOCATIONS

Type	County	Township-Range	Section	Quarters-Footage
Main drift	Peoria	9N 7E	30	NE NE NE
Air shaft	Peoria	9N 7E	30	NE NE NE

GEOLOGY

Seam(s) Mined	Depth (ft)	Thickness (ft)			Mining Method
		Min	Max	Avg	
Springfield	80			3.5	RP

Geologic Problems Reported:

PRODUCTION HISTORY

Company	Mine Name	Years	Production (tons)
S. R. Stever	Stever	1927-1938	27,656
David Kienbush	Kienbusch	1938-1941	<u>3,638</u>
			31,294

Last reported production: 1941

SOURCES OF DATA

Source Map	Date	Original Scale	Digitized Scale	Map Type
Microfilm, document 352184	8-15-1941	1:2400	1:1986	Final

Annotated Bibliography (data source, brief description of information)

Coal Reports - Production, ownership, years of operation.

Directory of Illinois Coal Mines (Peoria County) - Mine names, mine index, ownership, years of operation.

Mine notes (Peoria County) - Mine type, drift location, seam, depth, thickness.

Microfilm map, document 351452, reel 03136, frames 158, 159 - Drift & shaft locations, mine outline, mining method.

Mine Index 3079
Zaborac Coal Company, Zaborac Mine

Type: Underground Total mined-out acreage shown: 67

SHAFT, SLOPE, DRIFT or TIPPLE LOCATIONS

Type	County	Township-Range	Section	Quarters-Footage
Main slope	Peoria	9N 7E	33	SE SW SE
Air shaft	Peoria	9N 7E	33	SE SW SE

GEOLOGY

Seam(s) Mined	Depth (ft)	Thickness (ft)			Mining Method
		Min	Max	Avg	
Springfield	100			4.0-4.83	RPP

Geologic Problems Reported: A fault is shown on the source map in the southeastern part of the mine, but the fault was only noted crossing the haulage entry.

PRODUCTION HISTORY

Company	Mine Name	Years	Production (tons)
Blender Mining Company	Blender No. 2	1942-1945	11,808
Zaborac Coal Company	Zaborac	1945-1967	<u>309,093</u>
			320,901

Last reported production: November 1967

SOURCES OF DATA

Source Map	Date	Original Scale	Digitized Scale	Map Type
Microfilm, document 352206	7-1967	1:1200	1:1986	Final

Annotated Bibliography (data source, brief description of information)

Coal Reports - Production, ownership, years of operation.
 Directory of Illinois Coal Mines (Peoria County) - Mine names, mine index, ownership, years of operation.
 ENR Document 85/01 - Mining method.
 Mine notes (Peoria County) - Mine type, seam, depth, thickness.
 Microfilm map, document 352206, reel 03138, frames 259, 260 - Slope & shaft locations, mine outline, mining method.

Mine Index 3080**Big Bear Coal Company, Big Bear Mine**

Type: Underground Total mined-out acreage shown: 35

SHAFT, SLOPE, DRIFT or TIPPLE LOCATIONS

Type	County	Township-Range	Section	Quarters-Footage
Main slope	Peoria	9N 7E	33	NE NE NE
Air shaft	Peoria	9N 7E	33	NE NE NE
Air slope	Peoria	9N 7E	33	NE SW NE

GEOLOGY

Seam(s) Mined	Depth (ft)	Thickness (ft)			Mining Method
		Min	Max	Avg	
Springfield	25			4.0	MRP

Geologic Problems Reported:**PRODUCTION HISTORY**

Company	Mine Name	Years	Production (tons)
Big Bear Coal Company	Big Bear	1933-1937	9,463
Rudloff Brothers	Big Bear	1938-1940	3,692
Big Bear Coal Company	Big Bear	1941-1941	1,873
Rudloff Brothers	Big Bear	1942-1942	1,682
Big Bear Coal Company	Big Bear	1943-1968	<u>98,837</u>
			115,547

Last reported production: April 1968

SOURCES OF DATA

Source Map	Date	Original Scale	Digitized Scale	Map Type
Microfilm, document 352209	8-4-1970	1:2400	1:2813	Final

Annotated Bibliography (data source, brief description of information)

Coal Reports - Production, ownership, years of operation.

Directory of Illinois Coal Mines (Peoria County) - Mine names, mine index, ownership, years of operation.

Mine notes (Peoria County) - Mine type, slope location, seam, depth, thickness.

Microfilm map, document 352209, reel 03138, frame 263 - Slope & shaft locations, mine outline, mining method.

Mine Index 3081**A. & T. Coal Company, A. & T. Mine**

Type: Underground Total mined-out acreage shown: 31 Production indicates less than 1 acre was mined after the map date. The area shown on the accompanying map is larger than expected for the reported production. It is likely other operators worked in this area before A. & T. Coal Company (see the unlocated mines at the back of this report).

SHAFT, SLOPE, DRIFT or TIPPLE LOCATIONS

Type	County	Township-Range	Section	Quarters-Footage
Slope	Peoria	9N 7E	34	NE NE NE
Air shaft	Peoria	9N 7E	27	SE SE SE
Air shaft	Peoria	9N 7E	27	SE SW SE

GEOLOGY

Seam(s) Mined	Depth (ft)	Thickness (ft)			Mining Method
		Min	Max	Avg	
Springfield	300			4.0	MRP

Geologic Problems Reported:

PRODUCTION HISTORY

Company	Mine Name	Years	Production (tons)
A. & T. Coal Company	A. & T.	1932-1940	50,478
Art Coal Company	Art	1941-1941	4,271
Alya-AX-A-T Coal Company	Alya-AX-A-T	1942-1942	1,248
Alya-AX-A-T Coal Company	Alya-AX-A-T	1942-1942	1,248 *
A. & T. Coal Company	A. & T.	1943-1943	868 *
			58,113

* Production after map date

Last reported production: 1943

SOURCES OF DATA

Source Map	Date	Original Scale	Digitized Scale	Map Type
Company, 4103.P41 i5.1-7	4-1942	1:2400	1:2400	Not final

Annotated Bibliography (data source, brief description of information)

Coal Reports - Production, ownership, years of operation.

Directory of Illinois Coal Mines (Peoria County) - Mine names, mine index, ownership, years of operation.

Mine notes (Peoria County) - Mine type, seam, depth, thickness.

Company map, ISGS map library, 4103.P41 i5.1-7 - Slope & shaft locations, mine outline, mining method.

Mine Index 3082
W. H. Simpson, Vicary Mine

Type: Underground Total mined-out acreage shown: 64

SHAFT, SLOPE, DRIFT or TIPPLE LOCATIONS

Type	County	Township-Range	Section	Quarters-Footage
Main slope	Peoria	9N 7E	34	SE SE NE
Air shaft	Peoria	9N 7E	34	SE SE NE

GEOLOGY

Seam(s) Mined	Depth (ft)	Thickness (ft)			Mining Method
		Min	Max	Avg	
Springfield	65-75			4.0	RPP

Geologic Problems Reported:

PRODUCTION HISTORY

Company	Mine Name	Years	Production (tons)
William Vicary	Vicary	1909-1910	500
George Vicary	Vicary	1910-1913	5,811
Seffer & Strong	Vicary	1913-1915	2,375
Seffer & Barnawalt	Vicary	1915-1916	860
Vicary & Harmon	Vicary	1916-1919	3,180
George Vicary	Vicary	1919-1920	1,200
Vicary & Harmon	Vicary	1920-1921	665
Vicary Brothers (George & William)	Vicary	1922-1927	107,281
Vicary Coal Company	Vicary	1928-1929	30,598
Vicary Brothers	Vicary	1930-1941	147,167
Walker & Simpson Coal Company	Vicary	1941-1942	19,227
W. H. Simpson	Vicary	1943-1943	3,250
			322,114

Last reported production: 1943

SOURCES OF DATA

Source Map	Date	Original Scale	Digitized Scale	Map Type
Microfilm, document 352170	4-1943	1:1440	1:2383	Final

Annotated Bibliography (data source, brief description of information)

Coal Reports - Production, ownership, years of operation, mining method.
 Directory of Illinois Coal Mines (Peoria County) - Mine names, mine index, ownership, years of operation.
 Mine notes (Peoria County) - Mine type, slope location, seam, depth, thickness.
 Microfilm map, document 352170, reel 03138, frame 203 - Slope & shaft locations, mine outline, mining method.

Mine Index 3083**Wantling Coal, Brick & Tile Company, Wantling Mine**

Type: Underground Total mined-out acreage shown: 8

SHAFT, SLOPE, DRIFT or TIPPLE LOCATIONS

Type	County	Township-Range	Section	Quarters-Footage
Main shaft	Peoria	8N 7E	11	NE NE SW
Air shaft	Peoria	8N 7E	11	NE NE SW

GEOLOGY

Seam(s) Mined	Depth (ft)	Thickness (ft)			Mining Method
		Min	Max	Avg	
Springfield	60-90			4.0-5.0	RP

Geologic Problems Reported: Water came in from the old workings. The gray shale above the soapstone contained large coal balls in a 2 foot layer of black shale. The coal contained lenses of pyrite that were commonly ½ inch by 8 to 10 inches, some up to 4 by 14 inches. The pyrite also occurred in sheets, more in the lower half of the seam, but not limited to any particular part of the bed.

PRODUCTION HISTORY

Company	Mine Name	Years	Production (tons)
Fair Oak Coal Company	Fair Oak	1902-1916 *	32,252
George Wantling	Wantling	1916-1917	1,400
Wantling Coal, Brick & Tile Company	Wantling	1917-1919	<u>2,275</u>
			35,927

* Idle 1907, 1909 & 1911

Last reported production: 1919

SOURCES OF DATA

Source Map	Date	Original Scale	Digitized Scale	Map Type
ISGS map library, R4103.P41 i5.1-2	5-1918	1:2400	1:2400	Secondary source

Annotated Bibliography (data source, brief description of information)

Coal Reports - Production, ownership, years of operation, mine type, depth, thickness, mining method.
 Directory of Illinois Coal Mines (Peoria County) - Mine names, mine index, ownership, years of operation.
 Mine notes (Peoria County) - Seam, geologic problems.
 ISGS map library, R4103.P41 i5.1-2, map of Crescent Coal Company - Shaft locations, mine outline, mining method.

Mine Index 3084**Collins Brothers Coal Company, Liberty Mine**

Type: Underground Total mined-out acreage shown: 19

SHAFT, SLOPE, DRIFT or TIPPLE LOCATIONS

Type	County	Township-Range	Section	Quarters-Footage
Main slope	Peoria	9N 7E	34	NW NE NW
Air shaft	Peoria	9N 7E	34	NW NE NW

GEOLOGY

Seam(s) Mined	Depth (ft)	Thickness (ft)			Mining Method
		Min	Max	Avg	
Springfield	50-104			4.0	MRP

Geologic Problems Reported:

PRODUCTION HISTORY

Company	Mine Name	Years	Production (tons)
Liberty Coal Company *	Liberty No. 1	1943-1948	17,420
Collins Brothers Coal Company	Liberty	1948-1957	<u>41,550</u>
			58,970

* Operated by Andrew Sepesi

Last reported production: April 1957

SOURCES OF DATA

Source Map	Date	Original Scale	Digitized Scale	Map Type
Microfilm, document 352200	8-1-1957	1:2400	1:3475	Final

Annotated Bibliography (data source, brief description of information)

Coal Reports - Production, ownership, years of operation.

Directory of Illinois Coal Mines (Peoria County) - Mine names, mine index, ownership, years of operation.

ENR Document 85/01 - Mining method.

Mine notes (Peoria County) - Mine type, slope location, seam, depth, thickness.

Microfilm map, document 352200, reel 03138, frame 253 - Slope & shaft locations, mine outline, mining method.

Mine Index 3085**Thomas Wantling & Son, Wantling Mine**

Type: Underground Total mined-out acreage shown: None; production indicates approximately 60 acres were mined.

SHAFT, SLOPE, DRIFT or TIPPLE LOCATIONS

Type	County	Township-Range	Section	Quarters-Footage
Main slope or drift	Peoria	9N 7E	35	NW NW SW

GEOLOGY

Seam(s) Mined	Depth (ft)	Thickness (ft)			Mining Method
		Min	Max	Avg	
Springfield	80-100			4.0-4.5	RP

Geologic Problems Reported:

PRODUCTION HISTORY

Company	Mine Name	Years	Production (tons)
Isaac Wantling & Son	Wantling	1887-1901 *	205,741
Wantling & Burdett	Wantling & Burdett	1901-1905	9,553
W. J. Burdett	Burdett	1905-1910 **	3,718
Thomas Wantling & Son	Wantling	1910-1912	580
			<u>219,592</u>

* Idle 1897-1901

** Idle 1909 & 1910

Last reported production: 1912

SOURCES OF DATA

Source Map	Date	Original Scale	Digitized Scale	Map Type
Federal Land Bank Report	1934	1:142560	1:142560	Secondary source

Annotated Bibliography (data source, brief description of information)

Coal Reports - Production, ownership, years of operation, mine type, seam, depth, thickness, mining method.
 Directory of Illinois Coal Mines (Peoria County) - Mine names, mine index, ownership, years of operation.
 Federal Land Bank Report (Peoria County) - Slope or drift location.

Mine Index 3087
Young Coal Company, Young Mine

Type: Underground Total mined-out acreage shown: None; production indicates 37 acres were mined.

SHAFT, SLOPE, DRIFT or TIPPLE LOCATIONS

Type	County	Township-Range	Section	Quarters-Footage
Main slope	Peoria	9N 7E	35	NE NE SE

GEOLOGY

Seam(s) Mined	Depth (ft)	Thickness (ft)			Mining Method
		Min	Max	Avg	
Springfield	62-120			3.5-4.5	RP

Geologic Problems Reported:

PRODUCTION HISTORY

Company	Mine Name	Years	Production (tons)
Isaac Wantling & Son	Elmwood	1904-1906	47,000
Isaac Wantling & Company	Elmwood	1906-1912 *	77,933
Young Coal Company	Young	1912-1913	6,530
			<u>131,463</u>

* Idle 1909 & 1910

Last reported production: 1913

SOURCES OF DATA

Source Map	Date	Original Scale	Digitized Scale	Map Type
Federal Land Bank Report	1934	1:142560	1:142560	Secondary source

Annotated Bibliography (data source, brief description of information)

Coal Reports - Production, ownership, years of operation, mine type, seam, depth, thickness, mining method.
 Directory of Illinois Coal Mines (Peoria County) - Mine names, mine index, ownership, years of operation.
 Federal Land Bank Report (Peoria County) - Slope location, general area of mining outline.

Mine Index 3088**Isaac Wantling & Son, Blue Fly Mine**

Type: Underground Total mined-out acreage shown: 25 The mine is smaller than expected from the reported production. Production indicates approximately 40 acres were mined. The undated source map is probably not a final map.

SHAFT, SLOPE, DRIFT or TIPPLE LOCATIONS

Type	County	Township-Range	Section	Quarters-Footage
Main shaft *	Peoria	9N 7E	36	NW NW SW

* The shaft was divided into three compartments, with two hoist shafts and an air shaft.

GEOLOGY

Seam(s) Mined	Depth (ft)	Thickness (ft)			Mining Method
		Min	Max	Avg	
Colchester	112			2.5	LW

Geologic Problems Reported:

PRODUCTION HISTORY

Company	Mine Name	Years	Production (tons)
Isaac Wantling & Son	Blue Fly	1895-1902	<u>172,503</u> 172,503

Last reported production: 1902

SOURCES OF DATA

Source Map	Date	Original Scale	Digitized Scale	Map Type
Company, 4103.P41 i5.1-36	Undated	1:3456	1:3456	Undated

Annotated Bibliography (data source, brief description of information)

Coal Reports - Production, ownership, years of operation, mine type, seam, depth, thickness, mining method.

Directory of Illinois Coal Mines (Peoria County) - Mine names, mine index, ownership, years of operation.

Mine notes (Peoria County) - Mine location.

Company map, ISGS map library, 4103.P41 i5.1-36 - Shaft location, mine outline, mining method.

Mine Index 5825**Lea Coal Mining Company, Lea No. 2 Mine**

Type: Underground Total mined-out acreage shown: 90

SHAFT, SLOPE, DRIFT or TIPPLE LOCATIONS

Type	County	Township-Range	Section	Quarters-Footage
Main shaft	Peoria	9N 7E	24	SE NE NW
Shaft	Peoria	9N 7E	24	SE NE NW
Air shaft	Peoria	9N 7E	24	SE NE NW

GEOLOGY

Seam(s) Mined	Depth (ft)	Thickness (ft)			Mining Method
		Min	Max	Avg	
Springfield	96-97			3.83	MRP

Geologic Problems Reported:**PRODUCTION HISTORY**

Company	Mine Name	Years	Production (tons)
Lee Brothers Coal Mining Company	Lee No. 2	1937-1951 *	238,704
Lea Coal Mining Company	Lea No. 2	1951-1958	<u>50,088</u>
			288,792

* Idle 1938

Last reported production: March 1958

SOURCES OF DATA

Source Map	Date	Original Scale	Digitized Scale	Map Type
State archive, IL_2533	6-23-1958	1:1200	1:1200	Final

Annotated Bibliography (data source, brief description of information)

Coal Reports - Production, ownership, years of operation.

Directory of Illinois Coal Mines (Peoria County) - Mine names, mine index, ownership, years of operation.

Mine notes (Peoria County) - Mine type, shaft location, seam, depth, thickness.

State archive, IL_2533 - Shaft locations, mine outline, mining method.

Mine Index 5826
Simpson Coal Company, Simpson Mine

Type: Underground Total mined-out acreage shown: 17

SHAFT, SLOPE, DRIFT or TIPPLE LOCATIONS

Type	County	Township-Range	Section	Quarters-Footage
Main slope	Peoria	9N 7E	34	NE SW NE
Air shaft	Peoria	9N 7E	34	NE SW NE

GEOLOGY

Seam(s) Mined	Depth (ft)	Thickness (ft)			Mining Method
		Min	Max	Avg	
Springfield	80-150			4.0	MRP

Geologic Problems Reported:

PRODUCTION HISTORY

Company	Mine Name	Years	Production (tons)
Frank Williams & John Cannon	Williams & Cannon	1942-1943	1,098
Vicary & Simpson Coal Company	Vicary & Simpson	1943-1943	7,399
Simpson Coal Company	Simpson	1944-1949	<u>70,374</u>
			78,871

Last reported production: 1949

SOURCES OF DATA

Source Map	Date	Original Scale	Digitized Scale	Map Type
Microfilm, document 352190	3-31-1949	1:2400	1:3475	Final

Annotated Bibliography (data source, brief description of information)

Coal Reports - Production, ownership, years of operation.
 Directory of Illinois Coal Mines (Peoria County) - Mine names, mine index, ownership, years of operation.
 Mine notes (Peoria County) - Slope location, seam, depth, thickness.
 Microfilm map, document 352190, reel 03138, frame 228 - Slope & shaft locations, mine outline, mining method.

Mine Index 5852**Newsam Brothers Mine, New Millard No. 3 Mine**

Type: Underground Total mined-out acreage shown: 15 The reported production indicates approximately 90 acres were mined. The undated source map is unlikely to be a final map.

SHAFT, SLOPE, DRIFT or TIPPLE LOCATIONS

Type	County	Township-Range	Section	Quarters-Footage
Main slope	Peoria	8N 7E	24	SE NE NW

GEOLOGY

Seam(s) Mined	Depth (ft)	Thickness (ft)			Mining Method
		Min	Max	Avg	
Springfield	90-120			4.33-4.5	MRP

Geologic Problems Reported:

PRODUCTION HISTORY

Company	Mine Name	Years	Production (tons)
Millard & Wolschlag	Millard & Wolschlag	1882-1892	274,560
Consolidated Coal Company of St. Louis	Millard No. 2	1892-1894	59,130
Newsam Brothers	New Millard No. 3	1894-1895	11,535
			345,225

Last reported production: 1895

SOURCES OF DATA

Source Map	Date	Original Scale	Digitized Scale	Map Type
Microfilm, document 352144	Undated	1:1200	1:1655	Undated

Annotated Bibliography (data source, brief description of information)

Coal Reports - Production, ownership, years of operation, mine type, seam, depth, thickness.

Directory of Illinois Coal Mines (Peoria County) - Mine names, mine index, ownership, years of operation.

ENR Document 85/01 - Mining method.

Microfilm map, document 352144, reel 03138, frames 164, 165 - Slope location, mine outline, mining method.

Mine Index 5854**Clark Coal & Coke Company, Empire No. 1 Mine**

Type: Underground Total mined-out acreage shown: 75 Production indicates 370 acres were mined.

SHAFT, SLOPE, DRIFT or TIPPLE LOCATIONS

Type	County	Township-Range	Section	Quarters-Footage
Main shaft	Peoria	8N 7E	14	NE NW

GEOLOGY

Seam(s) Mined	Depth (ft)	Thickness (ft)			Mining Method
		Min	Max	Avg	
Springfield	105-120			4.17-4.5	RPP

Geologic Problems Reported:

PRODUCTION HISTORY

Company	Mine Name	Years	Production (tons)
Donaldson & Royster	Donaldson & Royster	1878-1881	not reported
Isaac Royster	Royster	1881-1885	1,220
Royster Brothers	Royster	1885-1895	169,375
Royster & Zeigler	Empire	1895-1902	159,287
Clark Coal & Coke Company	A	1902-1907	656,958
Clark Coal & Coke Company	Empire No. 1	1907-1910	434,578
			1,421,418

Last reported production: 1910

SOURCES OF DATA

Source Map	Date	Original Scale	Digitized Scale	Map Type
Microfilm, document 352149	Undated	1:2400	1:4965	Undated

Annotated Bibliography (data source, brief description of information)

Coal Reports - Production, ownership, years of operation, mine type, seam, depth, thickness, mining method.

Directory of Illinois Coal Mines (Peoria County) - Mine names, mine index, ownership, years of operation.

Mine notes (Peoria County) - Shaft location.

Microfilm map, document 352149, reel 03138, frames 170-173 - Mine outline, mining method.

Standard Atlas of Peoria County, 1896 - Ownership, general location.

Mine Index 5884
Henry Knaggs, Knaggs Mine

Type: Underground Total mined-out acreage shown: 17

SHAFT, SLOPE, DRIFT or TIPPLE LOCATIONS

Type	County	Township-Range	Section	Quarters-Footage
Slope	Peoria	9N 7E	27	NE SE SE
Air slope	Peoria	9N 7E	27	NE SW SE

GEOLOGY

Seam(s) Mined	Depth (ft)	Thickness (ft)			Mining Method
		Min	Max	Avg	
Springfield	50			3.67	MRP

Geologic Problems Reported:

PRODUCTION HISTORY

Company	Mine Name	Years	Production (tons)
Henry Knaggs	Knaggs	1925-1940	26,459 *
			26,459

* Idle 1927, 1928 & 1934; mines producing less than 1,000 tons per year were not listed from 1930 to 1933.

Last reported production: 1940

SOURCES OF DATA

Source Map	Date	Original Scale	Digitized Scale	Map Type
ISGS map library, 4103.P4 i5.1-7	4-1942	1:2400	1:2400	Secondary source

Annotated Bibliography (data source, brief description of information)

Coal Reports - Production, ownership, years of operation.

Directory of Illinois Coal Mines (Peoria County) - Mine names, mine index, ownership, years of operation.

Mine notes (Peoria County) - Mine type, seam, depth, thickness.

ISGS map library, 4103.P4 i5.1-7, map of A. & T. Mine (mine index 3081) - Slope locations, mine outline, mining method.

Mine Index 5885**Silver Creek Coal Company, Silver Creek No. 2 Mine**

Type: Underground Total mined-out acreage shown: 198 The mined area is larger than expected for the reported production. The reported production indicates approximately 100 acres were mined. It is likely that other operators mined within the boundaries of the mined area shown on the accompanying map (see the unlocated maps in the back of this report), as well as the Black Diamond Mine (mine index 5886) shown within the mine boundary for Silver Creek No. 2 Mine.

SHAFT, SLOPE, DRIFT or TIPPLE LOCATIONS

Type	County	Township-Range	Section	Quarters-Footage
Slope (two)	Peoria	9N 7E	30	NW NW NE
Slope	Peoria	9N 7E	19	SE SE SW
Slope	Peoria	9N 7E	19	SE SE SW
Air shaft	Peoria	9N 7E	30	SW SW NW
Air slope	Peoria	9N 7E	30	SW SW NW

GEOLOGY

Seam(s) Mined	Depth (ft)	Thickness (ft)			Mining Method
		Min	Max	Avg	
Springfield	50-117			4.0	MRP

Geologic Problems Reported:

PRODUCTION HISTORY

Company	Mine Name	Years	Production (tons)
Olympia Coal Mining Company	Olympia	1909-1913	127,186
Idle / abandoned		1914-1920	
Silver Creek Coal Company	Silver Creek No. 2	1921-1926	<u>231,924</u> 359,110

Last reported production: 1926

SOURCES OF DATA

Source Map	Date	Original Scale	Digitized Scale	Map Type
Microfilm, document 352175	10-3-1925	1:2400	1:4303	Not final

Annotated Bibliography (data source, brief description of information)

Coal Reports - Production, ownership, years of operation, seam, depth.

Directory of Illinois Coal Mines (Peoria County) - Mine names, mine index, ownership, years of operation.

ENR Document 85/01 - Mining method.

Mine notes (Peoria County) - Thickness.

Microfilm map, document 352175, reel 03138, frame 210 - Slope & shaft locations, mine outline, mining method.

Microfilm map, document 352461, reel 03138, frame 142 - Ownership.

Mine Index 5886
Black Diamond Coal Company, Black Diamond Mine

Type: Underground Total mined-out acreage shown: 8

SHAFT, SLOPE, DRIFT or TIPPLE LOCATIONS

Type	County	Township-Range	Section	Quarters-Footage
Main slope	Peoria	9N 7E	30	SE NW NE

GEOLOGY

Seam(s) Mined	Depth (ft)	Thickness (ft)			Mining Method
		Min	Max	Avg	
Springfield					MRP

Geologic Problems Reported:

PRODUCTION HISTORY

Company	Mine Name	Years	Production (tons)
Black Diamond Coal Company	Black Diamond	before 1925	Unknown

Last reported production:

SOURCES OF DATA

Source Map	Date	Original Scale	Digitized Scale	Map Type
Microfilm, document 352175	10-3-1925	1:2400	1:4303	Secondary source

Annotated Bibliography (data source, brief description of information)

Directory of Illinois Coal Mines (Peoria County) - Mine names, mine index, ownership, years of operation.
 Microfilm map, document 352175, reel 03138, frame 210, map of Silver Creek No. 2 Mine (mine index 5885) - Slope location, mine name.

Mine Index 5888
Mohn & Collear, Blue Bell Mine

Type: Underground Total mined-out acreage shown: 16

SHAFT, SLOPE, DRIFT or TIPPLE LOCATIONS

Type	County	Township-Range	Section	Quarters-Footage
Main slope	Peoria	9N 7E	34	SW NE NE
Air shaft	Peoria	9N 7E	34	SW NE NE

GEOLOGY

Seam(s) Mined	Depth (ft)	Thickness (ft)			Mining Method
		Min	Max	Avg	
Springfield	57-195			4.0-5.0	MRP

Geologic Problems Reported:

PRODUCTION HISTORY

Company	Mine Name	Years	Production (tons)
Collear Brothers *	Blue Bell	1906-1918	36,779
Blue Bell Coal Company	Blue Bell	1918-1919	1,304
Sword & Collear	Blue Bell	1919-1921 **	500
Mohn & Collear	Blue Bell	1921-1922 ***	700
Collins & Collear	Blue Bell	1922-1931	26,161
Abe Collear	Blue Bell	1932-1932	2,442
Collear Coal Company	Blue Bell	1932-1932	1,148
Mohn & Collear	Blue Bell	1933-1943	14,905
			83,939

* Also spelled Collier Brothers

** Idle 1920

*** Production was not reported in 1922 for mines producing less than 10,000 tons.

Last reported production: 1943

SOURCES OF DATA

Source Map	Date	Original Scale	Digitized Scale	Map Type
ISGS map library, 4103.P41 i5.1-7	4-1942	1:2400	1:2400	Secondary source

Annotated Bibliography (data source, brief description of information)

Coal Reports - Production, ownership, years of operation, mine type, depth, thickness.

Directory of Illinois Coal Mines (Peoria County) - Mine names, mine index, ownership, years of operation.

ENR Document 85/01 - Mining method.

Mine notes (Peoria County) - Seam.

ISGS map library, 4103.P41 i5.1-7, map of A. & T. Mine (mine index 3081) - Slope & shaft locations, mine outline, mining method.

Mine Index 5890
Frank Scoville, Schofield Mine

Type: Underground Total mined-out acreage shown: 1

SHAFT, SLOPE, DRIFT or TIPPLE LOCATIONS

Type	County	Township-Range	Section	Quarters-Footage
Main slope	Peoria	9N 7E	26	SW SW SW

GEOLOGY

Seam(s) Mined	Depth (ft)	Thickness (ft)			Mining Method
		Min	Max	Avg	
Springfield					MRP

Geologic Problems Reported:

PRODUCTION HISTORY

Company	Mine Name	Years	Production (tons)
Joseph S. Schofield	Schofield	1925-1925	583
Schofield Coal Company	Schofield	1926-1926	250
Frank Scoville	Schofield	1926-1930 *	<u>4,662</u>
			5,495

Last reported production: 1930 *

* The mine may have operated 1931 to 1933 when mines that produced less than 1,000 tons per year were not reported.

SOURCES OF DATA

Source Map	Date	Original Scale	Digitized Scale	Map Type
ISGS map library, 4103.P41 i5.1-7	4-1942	1:2400	1:2400	Secondary source

Annotated Bibliography (data source, brief description of information)

Coal Reports - Production, ownership, years of operation, mine type, depth, thickness.
 Directory of Illinois Coal Mines (Peoria County) - Mine names, mine index, ownership, years of operation.
 ISGS map library, 4103.P41 i5.1-7, map of A. & T. Mine (mine index 3081) - Slope location, mine outline, mining method.

Mine Index 7211**Newsam Brothers, Newsam No. 2 Mine or New Star Mine**

Type: Underground Total mined-out acreage shown: 1,268 The mined area shown on the accompanying map includes the area for New Star Mine, Empire No. 2 Mine (mine index 25), and Hilltop Mine (mine index 3031).

SHAFT, SLOPE, DRIFT or TIPPLe LOCATIONS

Type	County	Township-Range	Section	Quarters-Footage
Main shaft	Peoria	8N 7E	10	SE NW SE
Air shaft	Peoria	8N 7E	10	SE NW SE

GEOLOGY

Seam(s) Mined	Depth (ft)	Thickness (ft)			Mining Method
		Min	Max	Avg	
Springfield	60-181			4.0-4.5	RPP

Geologic Problems Reported:

PRODUCTION HISTORY

Company	Mine Name	Years	Production (tons)
Noel & Fender	Noel & Fender	pre1878-1879 *	6,800
George Noel	Noel	1881-1883	12,400
Noll & Fender	Noll & Fender	1883-1884	3,500
Fred Fender	Fender	1884-1885	4,800
Fender Brothers	Fender	1885-1892	51,232
Consolidated Coal Company of St. Louis	Star	1892-1894	30,810
Newsam Brothers	Newsam No. 2, New Star	1894-1910	616,928
			726,470

* Production and years of operation before 1878 are not known. The 1879 Coal Report indicated 10 acres were mined. Ownership and production between 1879 and 1881 are not known.

Last reported production: 1910

SOURCES OF DATA

Source Map	Date	Original Scale	Digitized Scale	Map Type
Microfilm, document 352149	Undated	1:2400	1:4965	Secondary source

Annotated Bibliography (data source, brief description of information)

Coal Reports - Production, ownership, years of operation, seam, depth, thickness.

Directory of Illinois Coal Mines (Peoria County) - Mine names, mine index, ownership, years of operation.

Microfilm map, document 352149, reel 03138, frames 170-173, map of Empire Mine (mine index 25) - Mine outline, mining method.

Microfilm map, document 352448, reel 03138, frame 124 - Shaft locations, mine identification.

Mine Index 7212
Cook Brothers, Cook Mine

Type: Underground Total mined-out acreage shown: 4

SHAFT, SLOPE, DRIFT or TIPPLE LOCATIONS

Type	County	Township-Range	Section	Quarters-Footage
Main drift	Peoria	8N 7E	11	SE SW NW

GEOLOGY

Seam(s) Mined	Depth (ft)	Thickness (ft)			Mining Method
		Min	Max	Avg	
Springfield	80-108			4.0-4.33	MRP

Geologic Problems Reported:

PRODUCTION HISTORY

Company	Mine Name	Years	Production (tons)
Edward Pepper	Pepper	1889-1891	1,140
William Cook	Cook	1891-1895	4,470
Cook Brothers	Cook	1895-1899	<u>3,400</u>
			9,010

Last reported production: 1899

SOURCES OF DATA

Source Map	Date	Original Scale	Digitized Scale	Map Type
ISGS map library, R4103.P41 i5.1-2	5-1918	1:2400	1:2400	Secondary source

Annotated Bibliography (data source, brief description of information)

Coal Reports - Production, ownership, years of operation, mine type, seam, depth, thickness, mining method.
 Directory of Illinois Coal Mines (Peoria County) - Mine names, mine index, ownership, years of operation.
 ISGS map library, R4103.P41 i5.1-2, map of Crescent Coal Company - Drift location, mine outline, mining method.

Mine Index 7213**Peter Grant & Son, Excelsior Mine**

Type: Underground Total mined-out acreage shown: 77 The area shown on the accompanying map is a general property outline. The reported production indicates 100 acres were mined.

SHAFT, SLOPE, DRIFT or TIPPLe LOCATIONS

Type	County	Township-Range	Section	Quarters-Footage
Main shaft	Peoria	8N 7E	14	SW NW NW

GEOLOGY

Seam(s) Mined	Depth (ft)	Thickness (ft)			Mining Method
		Min	Max	Avg	
Springfield	75-140			4.0-4.5	RP

Geologic Problems Reported:

PRODUCTION HISTORY

Company	Mine Name	Years	Production (tons)
Peter Grant & Son	Grant No. 2	1885-1895	160,198
Peter Grant, Jr.	Excelsior	1895-1900	94,446
Peter Grant & Son	Excelsior	1900-1906	<u>124,931</u>
			379,575

Last reported production: 1906

SOURCES OF DATA

Source Map	Date	Original Scale	Digitized Scale	Map Type
Standard Atlas of Peoria County	1896	1:31680	1:31680	Secondary source

Annotated Bibliography (data source, brief description of information)

Coal Reports - Production, ownership, years of operation, mine type, seam, depth, thickness, mining method.
 Directory of Illinois Coal Mines (Peoria County) - Mine names, mine index, ownership, years of operation.
 Standard Atlas of Peoria County, 1896 - Shaft location.

Mine Index 7216**W. J. White Coal Company, White Mine**

Type: Underground Total mined-out acreage shown: None; production indicates approximately 15 acres were mined.

SHAFT, SLOPE, DRIFT or TIPPLE LOCATIONS

Type	County	Township-Range	Section	Quarters-Footage
Main drift	Peoria	8N 7E	11	SW SE SE

GEOLOGY

Seam(s) Mined	Depth (ft)	Thickness (ft)			Mining Method
		Min	Max	Avg	
Springfield	80-195			4.17-5.0	RP

Geologic Problems Reported:

PRODUCTION HISTORY

Company	Mine Name	Years	Production (tons)
A. W. Moffat	Moffat	1889-1891	6,920
Burgess & Company	Burgess	1891-1892	3,700
Peter Kramp	Kramp	1892-1893	3,500
W. J. White Coal Company	White	1893-1906	46,215
			60,335

Last reported production: 1906

SOURCES OF DATA

Source Map	Date	Original Scale	Digitized Scale	Map Type
Standard Atlas of Peoria County	1896	1:31680	1:31680	Secondary source

Annotated Bibliography (data source, brief description of information)

Coal Reports - Production, ownership, years of operation, mine type, seam, depth, thickness, mining method.
 Directory of Illinois Coal Mines (Peoria County) - Mine names, mine index, ownership, years of operation.
 Standard Atlas of Peoria County, 1896 - Drift location.

Mine Index 7217
Edward Brost, Brost No. 1 Mine

Type: Underground Total mined-out acreage shown: None; reported production indicates approximately 25 acres were mined.

SHAFT, SLOPE, DRIFT or TIPPLE LOCATIONS

Type	County	Township-Range	Section	Quarters-Footage
Main drift	Peoria	8N 7E	11	SE SE SE

GEOLOGY

Seam(s) Mined	Depth (ft)	Thickness (ft)			Mining Method
		Min	Max	Avg	
Springfield	60-186			4.0-4.5	RP

Geologic Problems Reported:

PRODUCTION HISTORY

Company	Mine Name	Years	Production (tons)
Brost Brothers	Brost	pre1873-1889 *	61,491
Edward Brost	Brost No. 1	1889-1898	<u>27,530</u> 89,021

* Production and years of operation before 1879 are not known. The 1879 Coal Report indicated 20 acres were mined.

Last reported production: 1898

SOURCES OF DATA

Source Map	Date	Original Scale	Digitized Scale	Map Type
Atlas of Peoria County	1873	1:31680	1:31680	Secondary source

Annotated Bibliography (data source, brief description of information)

Coal Reports - Production, ownership, years of operation, mine type, seam, depth, thickness, mining method.
 Directory of Illinois Coal Mines (Peoria County) - Mine names, mine index, ownership, years of operation.
 Atlas of Peoria County, 1873 - Drift location.

Mine Index 7218
Edward Brost, Brost No. 2 Mine

Type: Underground Total mined-out acreage shown: None; production indicates approximately 4 acres were mined.

SHAFT, SLOPE, DRIFT or TIPPLE LOCATIONS

Type	County	Township-Range	Section	Quarters-Footage
Main slope	Peoria	8N 7E	11	NW SE SE

GEOLOGY

Seam(s) Mined	Depth (ft)	Thickness (ft)			Mining Method
		Min	Max	Avg	
Springfield	110-186			4.0-4.33	RP

Geologic Problems Reported:

PRODUCTION HISTORY

Company	Mine Name	Years	Production (tons)
Oliver Brost	Brost	1890-1893	6,880
Edward Brost	Brost No. 2	1893-1895	<u>7,500</u>
			14,380

Last reported production: 1895

SOURCES OF DATA

Source Map	Date	Original Scale	Digitized Scale	Map Type
Standard Atlas of Peoria County	1896	1:31680	1:31680	Secondary source

Annotated Bibliography (data source, brief description of information)

Coal Reports - Production, ownership, years of operation, mine type, seam, depth, thickness, mining method.
 Directory of Illinois Coal Mines (Peoria County) - Mine names, mine index, ownership, years of operation.
 Standard Atlas of Peoria County, 1896 - Slope location.

Mine Index 7219
Edward Allan, Kidder Mine

Type: Underground Total mined-out acreage shown: None; production indicates more than 2 acres were mined.

SHAFT, SLOPE, DRIFT or TIPPLe LOCATIONS

Type	County	Township-Range	Section	Quarters-Footage
Main drift	Peoria	8N 7E	12	NW NE SW

GEOLOGY

Seam(s) Mined	Depth (ft)	Thickness (ft)			Mining Method
		Min	Max	Avg	
Springfield	77-80			4.25-4.5	RP

Geologic Problems Reported:

PRODUCTION HISTORY

Company	Mine Name	Years	Production (tons)
Kidder Estate	Kidder	1873-1879 *	500 *
Edward Allan	Kidder	1883-1884	<u>6,920</u> 7,420

* The production and dates of operation before the 1873 plat map are not known. Ownership and production between 1879 and 1883 are not known.

Last reported production: 1884

SOURCES OF DATA

Source Map	Date	Original Scale	Digitized Scale	Map Type
Atlas of Peoria County	1873	1:31680	1:31580	Secondary source

Annotated Bibliography (data source, brief description of information)

Coal Reports - Production, ownership, years of operation, mine type, seam, depth, thickness, mining method.
 Directory of Illinois Coal Mines (Peoria County) - Mine names, mine index, ownership, years of operation.
 Atlas of Peoria County, 1873 - Drift location.

Mine Index 7220**Cody & McManus, Cody & McManus Mine**

Type: Underground Total mined-out acreage shown: None; production indicates approximately 1 acre was mined.

SHAFT, SLOPE, DRIFT or TIPPLE LOCATIONS

Type	County	Township-Range	Section	Quarters-Footage
Main drift	Peoria	8N 7E	12	SW NE SW

GEOLOGY

Seam(s) Mined	Depth (ft)	Thickness (ft)			Mining Method
		Min	Max	Avg	
Springfield	80-150			4.0-4.5	RP

Geologic Problems Reported:

PRODUCTION HISTORY

Company	Mine Name	Years	Production (tons)
Cody & McManus	Cody & McManus	1883-1884	800
R. Cody	Cody	1884-1885	1,820
Cody & McManus	Cody & McManus	1885-1886	<u>1,300</u>
			3,920

Last reported production: 1886

SOURCES OF DATA

Source Map	Date	Original Scale	Digitized Scale	Map Type
Atlas of Peoria County	1873	1:31680	1:31680	Secondary source

Annotated Bibliography (data source, brief description of information)

Coal Reports - Production, ownership, years of operation, mine type, seam, depth, thickness, mining method.

Directory of Illinois Coal Mines (Peoria County) - Mine names, mine index, ownership, years of operation.

Atlas of Peoria County, 1873 - Drift location.

Mine Index 7221
Birdois & Swinger, Birdois Mine

Type: Underground Total mined-out acreage shown: None; production indicates 8 acres were mined.

SHAFT, SLOPE, DRIFT or TIPPLE LOCATIONS

Type	County	Township-Range	Section	Quarters-Footage
Main drift	Peoria	8N 7E	12	SW NE SW

GEOLOGY

Seam(s) Mined	Depth (ft)	Thickness (ft)			Mining Method
		Min	Max	Avg	
Springfield	80-150			4.0-4.5	RP

Geologic Problems Reported:

PRODUCTION HISTORY

Company	Mine Name	Years	Production (tons)
John Birdois	Birdois	1884-1889	7,023
Birdois Brothers	Birdois	1889-1890	1,360
John Birdois & Son	Birdois	1890-1895	6,692
John Birdois, Jr.	Birdois	1895-1905 *	16,310
Birdois Brothers	Birdois	1905-1906	50
Birdois & Swinger	Birdois	1906-1910 **	566
			32,001

* Idle 1904

** Idle 1907 & 1908

Last reported production: 1910

SOURCES OF DATA

Source Map	Date	Original Scale	Digitized Scale	Map Type
Atlas of Peoria County	1873	1:31680	1:31680	Secondary source

Annotated Bibliography (data source, brief description of information)

Coal Reports - Production, ownership, years of operation, mine type, seam, depth, thickness, mining method.
 Directory of Illinois Coal Mines (Peoria County) - Mine names, mine index, ownership, years of operation.
 Atlas of Peoria County, 1873 - Drift location.

Mine Index 7222**L. Rossman, Rossman Mine**

Type: Underground Total mined-out acreage shown: None; production indicates approximately 1 acre was mined.

SHAFT, SLOPE, DRIFT or TIPPLe LOCATIONS

Type	County	Township-Range	Section	Quarters-Footage
Main drift	Peoria	8N 7E	12	NW SE SW

GEOLOGY

Seam(s) Mined	Depth (ft)	Thickness (ft)			Mining Method
		Min	Max	Avg	
Springfield	125-150			4.17	RP

Geologic Problems Reported:

PRODUCTION HISTORY

Company	Mine Name	Years	Production (tons)
John Wack	Wack	1884-1885	1,960
A. Roseman	Roseman	1885-1887 *	1,800
L. Rossman	Rossman	1887-1888	347
			4,107

* Idle 1887

Last reported production: 1888

SOURCES OF DATA

Source Map	Date	Original Scale	Digitized Scale	Map Type
Atlas of Peoria County	1873	1:31680	1:31680	Secondary source

Annotated Bibliography (data source, brief description of information)

Coal Reports - Production, ownership, years of operation, mine type, seam, depth, thickness, mining method.
 Directory of Illinois Coal Mines (Peoria County) - Mine names, mine index, ownership, years of operation.
 Atlas of Peoria County, 1873 - Drift location.

Mine Index 7223**B. & C. McManis, McManis Mine**

Type: Underground Total mined-out acreage shown: None; production indicates less than 1 acre was mined.

SHAFT, SLOPE, DRIFT or TIPPLe LOCATIONS

Type	County	Township-Range	Section	Quarters-Footage
Main drift	Peoria	8N 7E	12	NE SW SW

GEOLOGY

Seam(s) Mined	Depth (ft)	Thickness (ft)			Mining Method
		Min	Max	Avg	
Springfield	125-150			4.17	RP

Geologic Problems Reported:

PRODUCTION HISTORY

Company	Mine Name	Years	Production (tons)
B. & C. McManis	McManis	1884-1886	<u>2,800</u> 2,800

Last reported production: 1886

SOURCES OF DATA

Source Map	Date	Original Scale	Digitized Scale	Map Type
Atlas of Peoria County	1873	1:31580	1:31680	Secondary source

Annotated Bibliography (data source, brief description of information)

Coal Reports - Production, ownership, years of operation, mine type, seam, depth, thickness, mining method.
Directory of Illinois Coal Mines (Peoria County) - Mine names, mine index, ownership, years of operation.
Atlas of Peoria County, 1873 - Drift location.

Mine Index 7224
J. Swinenger, Swinenger Mine

Type: Underground Total mined-out acreage shown: None; production indicates approximately 9 acres were mined.

SHAFT, SLOPE, DRIFT or TIPPLe LOCATIONS

Type	County	Township-Range	Section	Quarters-Footage
Main drift	Peoria	8N 7E	12	SE SW SW

GEOLOGY

Seam(s) Mined	Depth (ft)	Thickness (ft)			Mining Method
		Min	Max	Avg	
Springfield	55-150			4.0-4.5	RP

Geologic Problems Reported:

PRODUCTION HISTORY

Company	Mine Name	Years	Production (tons)
Masterson & Keefe	Masterson & Keefe	1884-1893	13,186
Harriman & Masterson	Harriman & Masterson	1893-1895	3,818
Schneider & Masterson	Schneider & Masterson	1895-1897	2,498
Schneider & Ennis	Schneider & Ennis	1897-1902	11,158
L. Schneider	Schneider	1902-1903	1,820
J. Swinenger	Swinenger	1904-1905	600
			<u>33,186</u>

Last reported production: 1905

SOURCES OF DATA

Source Map	Date	Original Scale	Digitized Scale	Map Type
Atlas of Peoria County	1873	1:31680	1:31680	Secondary source

Annotated Bibliography (data source, brief description of information)

Coal Reports - Production, ownership, years of operation, mine type, seam, depth, thickness, mining method.
 Directory of Illinois Coal Mines (Peoria County) - Mine names, mine index, ownership, years of operation.
 Atlas of Peoria County, 1873 - Drift location.

Mine Index 7225**Schneider & Harriman, Schneider & Harriman**

Type: Underground Total mined-out acreage shown: None; production indicates approximately 2 acres were mined.

SHAFT, SLOPE, DRIFT or TIPPLE LOCATIONS

Type	County	Township-Range	Section	Quarters-Footage
Main drift	Peoria	8N 7E	12	SE NE SW

GEOLOGY

Seam(s) Mined	Depth (ft)	Thickness (ft)			Mining Method
		Min	Max	Avg	
Springfield	100-150			4.17	RP

Geologic Problems Reported:

PRODUCTION HISTORY

Company	Mine Name	Years	Production (tons)
Deusch & Snider	Deusch & Snider	1884-1885	400
Snider & Harriman	Snider & Harriman	1885-1886	1,200
William Harriman	Harriman	1886-1887	710
Schneider & Harriman	Schneider & Harriman	1887-1891	3,817
			6,127

Last reported production: 1891

SOURCES OF DATA

Source Map	Date	Original Scale	Digitized Scale	Map Type
Atlas of Peoria County	1873	1:31680	1:31680	Secondary source

Annotated Bibliography (data source, brief description of information)

Coal Reports - Production, ownership, years of operation, mine type, seam, depth, thickness, mining method.
 Directory of Illinois Coal Mines (Peoria County) - Mine names, mine index, ownership, years of operation.
 Atlas of Peoria County, 1873 - Drift location.

Mine Index 7226
Thomas Orr, Orr Mine

Type: Underground Total mined-out acreage shown: None; production indicates less than 1 acre was mined.

SHAFT, SLOPE, DRIFT or TIPPLe LOCATIONS

Type	County	Township-Range	Section	Quarters-Footage
Main drift	Peoria	8N 7E	12	NE SE SW

GEOLOGY

Seam(s) Mined	Depth (ft)	Thickness (ft)			Mining Method
		Min	Max	Avg	
Springfield	125-150			4.17	RP

Geologic Problems Reported:

PRODUCTION HISTORY

Company	Mine Name	Years	Production (tons)
Thomas Orr	Orr	1884-1888	<u>2,096</u> 2,096

Last reported production: 1888

SOURCES OF DATA

Source Map	Date	Original Scale	Digitized Scale	Map Type
Atlas of Peoria County	1873	1:31680	1:31680	Secondary source

Annotated Bibliography (data source, brief description of information)

Coal Reports - Production, ownership, years of operation, mine type, seam, depth, thickness, mining method.
 Directory of Illinois Coal Mines (Peoria County) - Mine names, mine index, ownership, years of operation.
 Atlas of Peoria County, 1873 - Drift location.

Mine Index 7228
George Wantling, Wantling Mine

Type: Underground Total mined-out acreage shown: 3

SHAFT, SLOPE, DRIFT or TIPPLE LOCATIONS

Type	County	Township-Range	Section	Quarters-Footage
Main slope	Peoria	9N 7E	34	SW NE NE

GEOLOGY

Seam(s) Mined	Depth (ft)	Thickness (ft)			Mining Method
		Min	Max	Avg	
Springfield					MRP

Geologic Problems Reported:

PRODUCTION HISTORY

Company	Mine Name	Years	Production (tons)
Sword & Wantling	Sword & Wantling	1920-1925	11,648
George Wantling	Wantling	1925-1926	1,150
			12,798

Last reported production: 1926

SOURCES OF DATA

Source Map	Date	Original Scale	Digitized Scale	Map Type
ISGS map library, 4103.P41 i5.1-7	4-1942	1:2400	1:2400	Secondary source

Annotated Bibliography (data source, brief description of information)

Coal Reports - Production, ownership, years of operation.

Directory of Illinois Coal Mines (Peoria County) - Mine names, mine index, ownership, years of operation.

ISGS map library, 4103.P41 i5.1-7, map of A. & T. Mine (mine index 3081) - Slope location, mine outline, mining method.

Mine Index 7232
John Gorman, Gorman Mine

Type: Underground Total mined-out acreage shown: None; production indicates approximately 35 acres were mined.

SHAFT, SLOPE, DRIFT or TIPPLe LOCATIONS

Type	County	Township-Range	Section	Quarters-Footage
Main drift	Peoria	8N 7E	25	SW SW NW

GEOLOGY

Seam(s) Mined	Depth (ft)	Thickness (ft)			Mining Method
		Min	Max	Avg	
Springfield	87-130			4.5	RP

Geologic Problems Reported:

PRODUCTION HISTORY

Company	Mine Name	Years	Production (tons)
Collier & Gorman	Collier & Gorman	1880-1882	36,400
John Gorman	Gorman	1882-1886	104,965
			141,365

Last reported production: 1886

SOURCES OF DATA

Source Map	Date	Original Scale	Digitized Scale	Map Type
Coal Report (p.82)	1885	(text only)	1:24000 *	Secondary source

* The mine location was plotted on a 1:24000 USGS topographic map from the mine location description (600 feet from the shaft of mine index 430, Collier Mine) and digitized.

Annotated Bibliography (data source, brief description of information)

Coal Reports - Production, ownership, years of operation, location, mine type, seam, depth, thickness, mining method.

Directory of Illinois Coal Mines (Peoria County) - Mine names, mine index, ownership, years of operation.

Mine Index 7233**Peoria Co-operative Coal Company, Peoria Co-operative Mine**

Type: Underground Total mined-out acreage shown: None; production indicates approximately 20 acres were mined. A 60-acre general area of mining polygon covers the area that was likely to be mined by the Peoria Co-operative Mine as well as other poorly-known mines in the vicinity.

SHAFT, SLOPE, DRIFT or TIPPLE LOCATIONS

Type	County	Township-Range	Section	Quarters-Footage
Main drift	Peoria	8N 7E	25	NW SW SW

GEOLOGY

Seam(s) Mined	Depth (ft)	Thickness (ft)			Mining Method
		Min	Max	Avg	
Springfield	70-90			4.5	RP

Geologic Problems Reported:

PRODUCTION HISTORY

Company	Mine Name	Years	Production (tons)
Peoria Co-operative Coal Company	Peoria Co-operative	1884-1889	68,612 68,612

Last reported production: 1889

SOURCES OF DATA

Source Map	Date	Original Scale	Digitized Scale	Map Type
Federal Land Bank Report	1934	1:142560	1:142560	Secondary source

Annotated Bibliography (data source, brief description of information)

Coal Reports - Production, ownership, years of operation, mine type, seam, depth, thickness, mining method.
 Directory of Illinois Coal Mines (Peoria County) - Mine names, mine index, ownership, years of operation.
 Federal Land Bank Report (Peoria County) * - Drift location, mine outline, mining method.

* A mine on the Federal Land Bank Report map was used that fit the parameters of the 1885 Coal Report location description of "about one-third of a mile southwest" of the Gorman Mine (mine index 7232).

Mine Index 7238
Kramm Brothers, Kramm Mine

Type: Underground Total mined-out acreage shown: 94

SHAFT, SLOPE, DRIFT or TIPPLE LOCATIONS

Type	County	Township-Range	Section	Quarters-Footage
Main drift	Peoria	9N 7E	19	SW SW NE

GEOLOGY

Seam(s) Mined	Depth (ft)	Thickness (ft)			Mining Method
		Min	Max	Avg	
Springfield	40-120			4.17-4.5	RP

Geologic Problems Reported:

PRODUCTION HISTORY

Company	Mine Name	Years	Production (tons)
Kramm Brothers	Kramm	1886-1892	86,320
Charles B. Kramm	Kramm	1892-1899	69,580
Kramm Brothers	Kramm	1899-1904	<u>154,894</u>
			310,794

Last reported production: 1904

SOURCES OF DATA

Source Map	Date	Original Scale	Digitized Scale	Map Type
Federal Land Bank Report	1934	1:142560	1:142560	Secondary source

Annotated Bibliography (data source, brief description of information)

Coal Reports - Production, ownership, years of operation, mine type, seam, depth, thickness, mining method.
 Directory of Illinois Coal Mines (Peoria County) - Mine names, mine index, ownership, years of operation.
 Federal Land Bank Report (Peoria County) - Drift location, mine outline, mining method.
 Atlas of Peoria County, 1896 - Mine ownership, drift location.

OTHER MINES SHOWN ON PEORIA WEST QUADRANGLE

Mine Index 5628 SE SW SW 26-T8N-R7E source: Federal Land Bank Report (1934)
Mine Index 5846 SE SW SE 14-T8N-R7E source: ISGS map library, 4103.P41 i5.1-16, map of White Ash Mine (mine index 3038)
Mine Index 5847 SE NE SE 14-T8N-R7E source: Microfilm, document 352152 (map of Schmidt Mine, mine index 3034, 5-16-1944)
Mine Index 5848 SW SE SE 14-T8N-R7E, shaft source: ISGS map library, 4103.P41 i5.1-16, map of White Ash Mine (mine index 3038)
Mine Index 5849 SW NW NE 19-T8N-R7E source: Federal Land Bank Report (1934)
Mine Index 5850 SW NE SE 19-T8N-R7E source: Federal Land Bank Report (1934)
Mine Index 5882 SW SE SW 19-T9N-R7E, slope source: Microfilm, document 352175, map of Silver Creek No. 2 Mine (mine index 5885), 10-3-1925
Mine Index 5883 NW SW SW 26-T9N-R7E, surveyed 4-3-1938 source: Microfilm, document 352197, map of Hilltop Mine (mine index 3031)
Mine Index 5887 NE NW NE 30-T9N-R7E, slope source: Microfilm, document 352175, map of Silver Creek No. 2 Mine (mine index 5885), 10-3-1925
Mine Index 5889 NW NW NW 33-T9N-R7E source: Federal Land Bank Report (1934)
Mine Index 6606 SE SW NE 13-T8N-R7E source: Federal Land Bank Report (1934)
Mine Index 7214, Green Oak Mine NW SE NE 14-T8N-R7E source: Standard Atlas of Peoria County, 1896
Mine Index 7215 NE NW NW 24-T8N-R7E source: Standard Atlas of Peoria County, 1896
Mine Index 7227 NW NW NE 30-T9N-R7E, "old local mines" source: Microfilm, document 352175, map of Silver Creek No. 2 Mine (mine index 5885), 10-3-1925
Mine Index 7229 NE NE NE 34-T9N-R7E, slope source: ISGS map library, 4103.P41 i5.1-7, map of A. & T. Mine (mine index 3081), 4-1942
Mine Index 7230 NE SE SE 27-T9N-R7E, slope source: ISGS map library, 4103.P41 i5.1-7, map of A. & T. Mine (mine index 3081), 4-1942
Mine Index 7231 NE SE NW 23-T9N-R7E, old slope source: Microfilm, document 352198, map of Pleasant Hill Mine (mine index 3071), 4-12-1955
Mine Index 7234 SE SW NE 28-T9N-R7E, surface source: Microfilm, document 352191, map of Elm Hill Mine (mine index 3074)
Mine Index 7235 NE NE SE 2-T8N-R7E source: Federal Land Bank Report (1934)
Mine Index 7236 NW NE NE 24-T8N-R7E source: Federal Land Bank Report (1934)
Mine Index 7237 SW NW NW 29-T9N-R7E source: Federal Land Bank Report (1934)
Mine Index 7239 NE NE NE 32-T9N-R7E source: Atlas of Peoria County (1873)
Mine Index 7240 NE NE NW 25-T8N-R7E source: Standard Atlas of Peoria County (1896)
Mine Index 7241 SE SW NE 25-T8N-R7E source: Standard Atlas of Peoria County (1896)
Mine Index 7242 NE SW SE 13-T8N-R7E source: Standard Atlas of Peoria County (1873)
Mine Index 7243 SE SW NE 24-T8N-R7E source: Standard Atlas of Peoria County (1873)
Mine Index 7244 NW SE SE 30-T8N-R7E source: Standard Atlas of Peoria County (1873)
Mine Index 7245 NE SW SE 30-T8N-R7E source: Standard Atlas of Peoria County (1873)
Mine Index 7260, Mohn Mine SW SE NW 11-T8N-R7E, slope source: ISGS map library, R4103.P41 i5.1-2, map of Crescent Mine (mine index 26)
Mine Index 7261, Bell Mine SE SW NW 12-T8N-R7E, slope source: ISGS map library, R4103.P41 i5.1-2, map of Crescent Mine (mine index 26)
Mine Index 7330 W ½ SW 28-T9N-R7E, Herrin Coal, surface source: Coal Section files, 6-149 (1-18-1966), map of Edwards Mine (mine index 881)
Mine Index 7331 SE SE NW 29-T9N-R7E, Springfield Coal, underground source: Coal Section files, 6-149 (1-18-1966), map of Edwards Mine (mine index 881)

MINES WHOSE LOCATIONS ARE NOT KNOWN, PEORIA WEST QUADRANGLE

The locations of the following mines are unknown, but the production tonnage, operating names, and nearest town were reported in the Annual Coal Reports. The operators listed below mined in or near the Peoria West Quadrangle. The information shown is similar to that presented on the summary sheets in the previous pages of this directory. The first item is the name the mine operated under as listed in the Coal Report, then the years the mine reported. If no physical data are available, the next item listed is the total tons produced by the mine. If physical data are available, the order of presentation is as follows: type of opening for the mine (drift, slope or shaft), depth of coal in feet, and thickness of coal in feet.

The total tons mined by these unlocated mines is 3,863,825 (3,543,163 underground, 75,909 surface mined, and 244,753 mined by unspecified method), which would represent approximately 800 to 1,400 acres, depending on the recovery factor, mining method, and numerous other factors. (Note: 1 square mile = 640 acres)

BARTONVILLE

Sholl (Joseph) & Sons, 1893-1899, slope, Springfield, 50-150, 4.33-4.5, RP	54,839 tons	mine index 3030
Sholl Brothers, 1899-1901	18,419 tons	
Sholl & Son, 1901-1902	<u>21,000</u> tons	
	94,258 tons	
Amsler & Pye (D. H.), 1881-1884, slope, Springfield, , 75-150, 4.0-4.5, RP	10,000 tons	
Bogon & Pye, 1884-1889	<u>21,986</u> tons	
	31,986 tons	
Burns (James), 1883-1884, slope, Springfield, 75, 4.17, RP	1,250 tons	
Brocket (E. M.), 1884-1886, drift, Springfield, 80, 4.5, RP	1,570 tons	
Keller (George), 1885-1906, shaft, Springfield, 15-90, 4.33-5.0, RP	86,866 tons	
Keller Coal Company, 1906-1912	<u>17,398</u> tons	
	104,264 tons	
Daily & Barton, 1886-1887, —, Springfield, 108-110, 4.33-4.5, RP	7,800 tons	
Daily & Maynard, 1887-1888	4,400 tons	
Maynard & Company, 1888-1889	4,000 tons	
Street (Reuben), 1889-1891	3,600 tons	
Sanderson Brothers, 1891-1892	<u>3,200</u> tons	
	23,000 tons	
Anderson (John), 1886-1888, slope or drift, Springfield, 30-90, 4.0-4.5, RP	930 tons	
Hurst (William), 1888-1889	180 tons	
Hurst (Lot), 1889-1901	11,135 tons	
Hurst (S.), 1901-1903	9,060 tons	
Hearst (L.), 1903-1906	<u>1,060</u> tons	
	22,365 tons	
Gorenz (Joseph) & Company, 1889-1890	7,800 tons	
Ball Coal Company, 1893-1906, shaft, Springfield, 90-100, 4.33-5.0, RP	87,510 tons	
Brown & White, 1897-1898, drift, Springfield, —, 4.17	1,000 tons	
Brown (Ed), 1898-1899	<u>1,120</u> tons	
	2,120 tons	
Heitzman Brothers, 1906-1907, drift, Springfield, 160, 4.5, RP	2,120 tons	
Heitzman (Benhart), 1918-1920	738 tons	
Pye (Samuel F.), 1918-1919	105 tons	

Huxtable Coal Company, 1918-1919	100 tons
Bishop (John), 1918-1919	80 tons
Hickman (John), 1918-1919	75 tons
Brookside Coal Company, 1919-1926	13,901 tons
Short & Keys, 1920-1921	120 tons
Buning & May, 1928-1928, underground	1,603 tons
Ley (James W.), 1929-1929	<u>2,551</u> tons
	4,154 tons

EDWARDS STATION

Wilkinson (J. H.) & Kramm (E.), 1883-1884, drift, Springfield, 60, 4.5, RP	4,000 tons
Slain (S.), 1884-1885, slope, Springfield, 60, 4.17, RP	300 tons
Harper (William), 1884-1893, drift, Herrin, 30-75, 4.0-4.5, RP	5,041 tons
Lonsdale (William), 1884-1893, drift, Herrin, 30-60, 4.0-4.5, RP	3,544 tons
Buckley (A.), 1884-1886, drift, Herrin, 60, 4.5, RP	80 tons
Pillman (Richard), 1884-1887, drift, Herrin, 60, 4.5, RP	460 tons
Lonsdale (R.), 1884-1890, drift, Herrin, 40-50, 4.0-4.5, RP	2,488 tons
Kingsley (Charles), 1885-1891, drift, —, 30-70, 4.5, RP	3,050 tons
Hanning (F.), 1885-1886, drift, Springfield, 82, 4.33, RP	220 tons
Edwards Coal Company, 1888-1891, drift, Springfield, 40-100, 3.67-4.5, RP	12,660 tons
Patten (W. H.), 1891-1892	15,400 tons
Edwards (Charles), 1892-1893	4,665 tons
Cusack & Edwards, 1893-1895	6,200 tons
Cusack (Mike), 1895-1899	10,250 tons
Cusack & Anderson, 1899-1900	3,025 tons
Cusack & Edwards, 1900-1902	11,350 tons
Gigby, Cusack & Edwards, 1902-1903	6,890 tons
Cusack & Edwards, 1903-1905	10,400 tons
Edwards Mining Company, 1905-1907	<u>10,340</u> tons
	91,180 tons
Pillman (Richard), 1889-1891, drift, Springfield, 30, 4.5, RP	1,050 tons
Thayer & Clarkson, 1899-1900, drift, Springfield, 30-85, 2.5-4.5, RP	400 tons
Clarkson (William), 1900-1904	1,740 tons
Clarkson (R.), 1904-1906	460 tons
Clarkson (Lorenzo), 1906-1910	1,769 tons
Clarkson & Henning, 1910-1917	12,697 tons
Clarkson (William), 1917-1921	<u>7,796</u> tons
	24,862 tons
Snyder (E. C.), 1900-1903, drift, Springfield, 80, 4.0, RP	830 tons
Kingsley (Charles), 1900-1903, drift, Springfield, 80, 4.33-4.5, RP	910 tons
Schott & Witheral, 1904-1906, —, —, 40-60, 4.25-5.0, RP	690 tons
Schotte & Withell, 1909-1910, drift, Springfield, 35, 4.0, RP	684 tons

Kickapoo Coal Company, 1907-1909, shaft, —, 30-32, 4.0-4.5, RP	1,541 tons
King & Wilson, 1908-1909, drift, Springfield, —, 4.0, RP	1,000 tons
Stout (O. M.), 1908-1909, drift, Springfield, —, 4.0, RP	500 tons
Stout & Henning, 1909-1910	<u>598 tons</u>
	1,098 tons
Cramer (William), 1908-1919, drift or slope, —, 12-60, 4.0-4.5, RP	2,102 tons
Kirkman & Ames, 1909-1910, shaft or drift, Springfield, 85, 4.0-4.67, RP	630 tons
Lonsdale (T. H.), 1910-1911	800 tons
Appleby & Taylor, 1911-1912	540 tons
Andrews (James), 1912-1916	2,409 tons
Aman (George M., Jr.), 1916-1921	<u>17,666 tons</u>
	22,045 tons
Farrell (James), 1911-1912, drift, —, 50, 4.5, RP	320 tons
Farrell Brothers, 1912-1913	<u>122 tons</u>
	442 tons
Snider (Edward), 1911-1912, drift, Springfield, —, 4.0-4.5, RP	200 tons
Snider (Enoch), 1912-1913	285 tons
Dawson & May, 1913-1914	625 tons
Dawson (Charles), 1914-1915	<u>120 tons</u>
	1,230 tons
Snider (Enoch, Jr.), 1914-1915, drift, Springfield, 70, 3.83-4.33, RP	290 tons
Snider (Fred), 1915-1921	<u>2,950 tons</u>
	3,240 tons
Pratt (Charles E.), 1914-1916, slope or drift, —, 60, 4.5-4.67, RP	1,056 tons
Appleby (Fred), 1914-1915, drift, Springfield, —, 3.83-4.0, RP	400 tons
Edwards Coal Company, 1915-1916	<u>175 tons</u>
	575 tons
Stear (Thomas), 1915-1916, drift, Springfield, —, 4.0, RP	380 tons
Lemasters Brothers, 1916-1917	<u>150 tons</u>
	530 tons
Slone (Harry), 1926-1926	300 tons
Barr (Harry), 1916-1917, slope, Springfield, 70, 4.0, RP	40 tons
Asbell (Albert), 1919-1921	550 tons
Sluth & Howe, 1920-1922	1,000 tons
Howe (Elijah), 1922-1927	<u>2,705 tons</u>
	3,705 tons
Zeinie & Sents, 1920-1921	97 tons
Tuttle & Bidleman Coal Company, 1922-1925	35,050 tons
Bateman (Everett), 1922-1923	850 tons
Battman (E.) & Martin, 1923-1924	11,000 tons
Procter (C. H.), 1924-1925	25,000 tons
Bateman Coal Company, 1925-1925	<u>321 tons</u>
	37,171 tons
Forbes (William), 1924-1925	1,654 tons
Cutler (C. C.), 1925-1925	400 tons

Bowen Brothers, 1925-1926	200 tons
Heintz Coal Company, 1927-1927	300 tons
Burns (James), 1927-1927, underground	40 tons
Burns (Edward), 1928-1928	<u>200</u> tons
	240 tons
West Point Coal Company, 1929-1939, underground	1,363 tons
Grenko (Vinko), 1931-1932, underground	2,696 tons
Coogan Gravel Company, 1932-1932, surface	1,667 tons
Hickory Grove Coal Company, 1934-1934, underground	104 tons
Hoffman (Peter D.), 1934-1938, underground	2,170 tons
Big Five Coal Company, 1936-1936, surface	420 tons
Manen & Buhl, 1937-1937, underground	57 tons
Buhl (Noah), 1941-1941, underground	50 tons
Pioneer Coal Company, 1949-1949	2,801 tons
Kimsey Coal Company, No. 2 Mine, 1952-1953, surface, Herrin, —, —	1,211 tons

HARKERS CORNER

Homan (T. W.), 1890-1893, drift, Springfield, 25, 4.0-4.5, RP	720 tons
Clark (James), 1894-1895, drift, Springfield, 70, 4.5, RP	1,200 tons

KICKAPOO

Nichols (W.), 1883-1884, drift, Springfield, 95, 4.5, RP	2,000 tons
Radoe (Frank), 1884-1885, slope, Herrin, 30, 4.5, RP	400 tons
Pratt (Charles), 1893-1894, slope, Herrin, 55, 4.0, RP	440 tons
Stears Brothers, 1893-1894, slope, —, 70-110, 3.5-4.0, RP	70 tons
Varce (Joseph), 1894-1895	<u>260</u> tons
	330 tons
Clarkson (Joseph), 1895-1896, drift, —, 25, 4.0, RP	160 tons
Linchcott (Samuel), 1884-1888, drift or slope, —, 22-75, 4.0-5.0, RP	890 tons
Helm (Andrew), 1888-1889	462 tons
Poole (William), 1889-1927	<u>17,253</u> tons
	18,605 tons

KRAMM STATION

Kramm (Edward) & Company, 1878-1884	432,000 tons
Purtscher (A.), 1885-1890	87,140 tons
Shaw (Nathan), 1890-1898	65,110 tons
Reents (Siebold), 1898-1902	39,436 tons
Reents Brothers, 1902-1909	128,770 tons
Reents (August), 1909-1910	<u>29,470</u> tons
	781,926 tons

at Kramm Station on C., B. & Q RR; drift, Springfield, 50-100, 3.5-4.5, RP

LIMESTONE

Lines (James), 1919-1920	150 tons
Williams (W.), 1919-1920	75 tons

ORCHARD MINES

Oddywalt (Henry), 1883-1887, drift, Springfield, 50-70, 4.0-4.5, RP	1,260 tons
Crandall (Charles), 1883-1884, drift, Springfield, 50-80, 4.0-4.5, RP	1,500 tons
Crandall (E. C.), 1884-1887	2,605 tons
Shaunt (John), 1887-1888	<u>290 tons</u>
	4,395 tons
Roberts (David B.), 1883-1908, drift, Springfield, 50-160, 4.25-5.0, RP	17,006 tons
Roberts & Nash, 1908-1909	1,800 tons
Roberts (David), 1909-1911	<u>1,760 tons</u>
	20,566 tons
Reagan (James), 1883-1893, drift, Springfield, 40-60, 4.25-4.5, RP	4,961 tons
Polson (Antonia), 1883-1884, drift, Springfield, 50-80, 4.0-4.5, RP	1,000 tons
Powell & Polceen, 1884-1885	<u>400 tons</u>
	1,400 tons
Newsam (Frank), 1892-1897	7,017 tons
Nesslehouse (Matthew), 1887-1894, drift, Springfield, 70-110, 4.3-4.5, RP	4,750 tons
Miller (Robert), 1894-1896	480 tons
Smith & Miller, 1896-1898	4,040 tons
Schreffler (R. D.), 1898-1900	3,000 tons
Smith & Miller, 1900-1904	<u>12,640 tons</u>
	24,910 tons
Goodwin (D.), 1887-1889	1,310 tons
Jones (Frank), 1888-1889	550 tons
Jones & Calhoun, 1889-1890	<u>480 tons</u>
	1,030 tons
Poleen (Jacob), 1888-1889	400 tons
Petrie (John L.), 1889-1891, drift, Springfield, 100, 4.5, RP	580 tons
Powell (John W.), 1889-1892, drift, Springfield, 40-80, 4.5, RP	660 tons
McCullough (George), 1892-1895	<u>1,360 tons</u>
	2,020 tons
Jones (Frank) & Hayes (William), 1893-1894, drift, Springfield, 80, 4.5, RP	700 tons
Jones (Frank), 1894-1898	<u>1,530 tons</u>
	2,230 tons
Lowery (Frank), No. 2 Mine, 1893-1895, drift, Springfield, 90, 4.5, RP	5,373 tons
Staton (Joseph), 1896-1897, drift, Springfield, —, 4.5, RP	80 tons
Morrison (J.), 1897-1898	<u>520 tons</u>
	600 tons

Potter Brothers, 1897-1898, drift, Springfield, —, 4.5	1,500 tons
Wheeler Brothers, 1903-1904, slope, Springfield, —, —, RP	560 tons

PEORIA

Barton (William), pre1878-1879, drift, Springfield, 80, 4.25	14,500 tons
Ball (Samuel), pre1878-1879, shaft, Springfield, 60, 4.25	8,000 tons
Aiken (M. M.), pre1878-1879, drift, Springfield, 30, 4.25	800 tons
Griswold (Henry), pre1878-1879, drift, Springfield, 60, 4.25	3,000 tons
Lannar (F.), pre1878-1879, drift, Springfield, 60, 4.25	3,000 tons
Monroe (James), pre1878-1887, drift, Springfield, 60-180, 4.25-4.5, RP	49,976 tons
Royster Brothers, 1878-1879, slope, Springfield, 80-85, 4.25-4.5, RP	4,800 tons
Royster & Company, 1881-1882	2,500 tons
Royster (Thomas), 1883-1884	<u>800 tons</u>
	8,100 tons
Mulegan (James), 1878-1879, drift, Springfield, 60-100, 4.2-4.5, RPB	1,000 tons
Mulligan (Dennis), 1881-1885	<u>28,150 tons</u>
	29,150 tons
Mahn (F.), pre1878-1879, shaft or drift, Springfield, 31-130, 4.17-4.5, RP	2,400 tons
Mahen & Company, 1879-1883	4,000 tons
Moon (Fred), 1883-1889	5,014 tons
Moon (Mrs. K.), 1889-1894	8,960 tons
Mohn (Fred), 1894-1898	10,080 tons
Mohn (Ed) & Brothers, 1898-1900	5,620 tons
Mahn Brothers, 1900-1903	<u>10,830 tons</u>
	46,904 tons
Grant (Peter), pre1878-1882, slope or drift, Springfield, 60-150, 4.0-4.5, RP	7,640 tons
Wilcox & Grant, 1882-1885	35,464 tons
Grant (Peter) & Sons, No. 1 Mine, 1885-1886	16,000 tons
Wilcox (E. S.), 1886-1888	32,000 tons
Grant (Peter) & Sons, No. 1 Mine, 1888-1889	10,100 tons
Wilcox (S. E.), 1889-1890	<u>7,200 tons</u>
	108,404 tons
Relliford & Company, 1878-1879, drift, Springfield, 40, 4.25	6,400 tons
Allen (Edward), pre1878-1891, drift, Springfield, 40-125, 4.0-4.5, RP	17,608 tons
Allen (John), 1891-1894	1,415 tons
Martin & Lane, 1894-1903	15,010 tons
Martain Coal Company, 1903-1904	<u>3,240 tons</u>
	37,273 tons
Delt (Phillip) & Company, 1883-1884, drift, Springfield, 77, 4.5	not reported
Hay (Paddy), pre1878-1879, drift, Springfield, 60, 4.25	3,800 tons
Day (James), 1881-1890, drift, Springfield, 80-125, 4.3-4.5, RP	17,044 tons
Waite (J.), pre1878-1879, drift, Springfield, 60, 4.25	2,000 tons
Randle (William), pre1878-1879, drift, Springfield, 60, 4.25	2,500 tons
Slane (James), pre1878-1879, drift, Springfield, 80, 4.25	400 tons

Lonk & Grishott, 1878-1881, shaft, Springfield, 40-80, 4.0-4.5, RP	not reported
Louck & Company, 1881-1883	2,000 tons
Laucks (John), 1883-1885	1,640 tons
Standard Coal Company, 1885-1886	1,300 tons
Laucks (John), 1886-1890	9,385 tons
Laucks (Mrs. John), 1890-1892	<u>7,810 tons</u>
	22,135 tons
Cooper & Company, pre1878-1879, drift, Springfield, 80, 4.25	idle
The 1879 Coal Report indicated 20 acres were mined.	
Blank (George), pre1878-1879, shaft, Springfield, 55, 4.25	1,000 tons
Kiddy Estate, 1878-1879, drift, Springfield, 77-80, 4.25-4.5, RP	500 tons
Allen (Edward), agent, 1883-1884	<u>6,920 tons</u>
	7,420 tons
McDougal (John), 1878-1879, drift, Springfield, 80, 4.25	idle
Luly (Peter), 1881-1884, shaft, Springfield, 80, 4.5	not reported
Chapman & Company, 1881-1882, shaft, Springfield, 50-60, 4.5, RP	12,000 tons
Chapman & Lilly, 1882-1883	26,107 tons
Chapman & Little, 1883-1888	<u>83,002 tons</u>
	121,109 tons
Wolland (Edwin), pre1881-1889, drift, Springfield, 90-110, 4.0-4.5, RP	87,450 tons
Wolland Brothers, 1889-1890	8,640 tons
Wolland & Son, 1890-1892	15,870 tons
Wolland Brothers, 1892-1900	<u>53,648 tons</u>
	165,608 tons
Smith (J.), 1883-1885, drift, Springfield, 50-120, 4.0-5.0, RP	7,300 tons
Schmidt (Frank P.), 1885-1920	<u>286,860 tons</u>
	294,160 tons
Nichols (Nicholas), 1884-1885, drift, Springfield, 95, 4.5, RP	2,000 tons
Mooney & Company, 1881-1882, shaft, Springfield, 80, 4.5	2,000 tons
Moon (Henry), 1882-1883	idle
Wedges (James), pre1881-1882, drift, Springfield, 100, 4.5	1,200 tons
Stevenson & Company, 1881-1882, drift, Springfield, 100, 4.5	1,000 tons
Oviatt & Company, pre1881-1883, drift, Springfield, 100-120, 4.0-4.5	22,400 tons
Peoria & Limestone Coal Company, 1882-1883	3,000 tons
Limestone Coal Company, 1884-1885	<u>1,400 tons</u>
shaft, Springfield, 125, 4.0-4.17, RP	4,400 tons
Barneywaldt (A. H.), 1883-1885, shaft, Springfield, 60, 4.17-4.5, RP	3,000 tons
Slaine (James), 1884-1891, drift, Springfield , 60-120, 4.17, RP	2,746 tons
Slane (James), 1894-1897, drift, Springfield, 55-100, 4.0-4.5, RP	2,640 tons
Lane (James), 1897-1900	2,720 tons
Johnson & Lane, 1900-1902	<u>1,210 tons</u>
	6,570 tons
Wait & Holland, 1884-1886, drift, Springfield, 60-90, 4.0-4.17, RP	1,460 tons
Waite (James), 1886-1893	3,858 tons
Ritchie (Charles), 1893-1894	<u>540 tons</u>
	5,858 tons

Ennis (Peter), 1885-1887, drift, Springfield, 80, 4.17, RP	650 tons
Boyle (Martin), 1885-1886, drift, Danville, 50, 4.0, RP	400 tons
Henderson (Adam), 1885-1886, drift, Springfield, 100, 4.17, RP	300 tons
Henderson (James), 1888-1889	650 tons
Lammas (C.), 1885-1890, drift, Springfield, 80-90, 4.0-4.5, RP	2,720 tons
Nicholas (William), 1890-1891	1,120 tons
Saupe (John J.), 1891-1900	<u>12,327</u> tons
	16,167 tons
Enterprise Co-operative Coal Company, 1886-1887 shaft, Springfield, 110, 4.17, RP	16,000 tons
Star Co-operative Coal Company, 1886-1887, shaft, Springfield, 80-175, 4.17	5,260 tons
Star Shaft Coal Company, 1887-1889	20,554 tons
Barnawalt & Pfender, 1889-1890	7,200 tons
Arnold (William), 1890-1891	<u>9,300</u> tons
	42,314 tons
Rewart (Frank), 1886-1894, slope, Springfield, 40-120, 4.0-4.5, RP	22,865 tons
Martin (Fred), 1894-1903	<u>13,084</u> tons
	35,949 tons
Martin (Fred), 1906-1918, slope or drift, Springfield, 8-30, 4.25-5.0, RP	4,646 tons
Butts & Moon, 1886-1889, shaft, Springfield, 70, 4.0-4.17, RP	7,054 tons
Mohn (Henry), 1889-1891	1,586 tons
Toma (John), 1891-1893	<u>1,260</u> tons
	9,900 tons
Bennett & Company, 1886-1887, shaft, Springfield, 95, 4.17, RP	360 tons
Duffy (Michael), 1886-1887, drift, Springfield, 150, 4.17, RP	762 tons
Duffy (M.), 1886-1887, drift, Springfield, 102, 4.17, RP	225 tons
Nee (John), 1886-1889, drift, Springfield, 120, 4.17, RP	690 tons
Nee (Noah), 1889-1890	<u>800</u> tons
	1,490 tons
Glenn (John), 1887-1896, drift, Springfield, 90, 4.0-4.5, RP	34,143 tons
Davis & Fisher, 1888-1890, drift, Springfield, 55-100, 4.0-4.33, RP	2,376 tons
Fisher & Joos, 1890-1893	3,794 tons
Joos & Dalrymple, 1893-1894	575 tons
Conrad & Rumble, 1894-1895	1,700 tons
Joos & Rumble, 1895-1899	4,254 tons
Yost & Rumble, 1899-1901	<u>4,020</u> tons
	16,719 tons
Driscoll (David), 1888-1889, drift, Springfield, 90-100, 4.0-4.33, RP	1,056 tons
Driscoll (Daniel), 1889-1895	7,785 tons
Birdois (Daniel), 1895-1900	<u>6,079</u> tons
	14,920 tons
Grant (William P.), 1889-1894, —, Springfield, 80-100, 4.17-4.33, RP	33,352 tons
Kief (Richard), 1894-1897	<u>5,560</u> tons
	38,912 tons
Mulligan (Dennis), 1889-1890, shaft, Springfield, 25-70, 4.0-4.5, RP	1,100 tons
Cody (Richard), 1890-1900	<u>35,185</u> tons
	36,285 tons

Schmidt (F. P.), No. 2 Mine, 1893-1903 shaft or drift, Springfield, 50-80, 4.0-4.33, RP	28,011 tons
Mohn (William), 1893-1894, shaft, Springfield, 80, 4.33, RP	800 tons
Monroe (Lyman), 1893-1896, drift, Springfield, 80, 4.33-4.5, RP	2,928 tons
Schuster (Ulrich), 1896-1897, drift, —, —, 4.17, RP	400 tons
Pitcher (Burr), 1897-1898, drift, Springfield, —, 4.17	600 tons
Sargent (James), 1897-1898, drift, Springfield, —, 4.17	384 tons
Adams Coal Company, 1900-1903, shaft, Springfield, 55, 4.17, RP	11,880 tons
Fash (James) & Company, 1900-1904, slope, Springfield, 90, 4.33, RP	2,130 tons
Standard Coal Company, 1901-1903, shaft, Springfield, 80, 4.17, RP	19,520 tons
Dempster (John), 1903-1909, drift or slope, Springfield, 70-140, 4.3-4.5, RP	3,220 tons
Fisher & Blank, 1903-1907, slope or drift, Springfield, 30-200, 4.0-5.0, RP	5,245 tons
Fisher (J. H.), 1907-1908	3,360 tons
Fisher & Blank, 1908-1918	33,870 tons
Blank, Fisher & Sands, 1918-1919	2,200 tons
Fisher & Blank, 1919-1920	4,000 tons
Fisher & Company, 1920-1921	<u>5,000</u> tons
	53,675 tons
Turbett (J.), 1903-1904, slope, Springfield, —, —, RP	1,200 tons
Walk & Welsh, 1903-1904, shaft, Springfield, —, —, RP	946 tons
Bell Coal Company, 1903-1906, drift, Springfield, 60-120, 4.5-5.0, RP	2,300 tons
Martin (Patrick), 1904-1913, shaft, Springfield, 50-90, 4.0-5.0, RP	50,220 tons
Hanover Mining Company, 1904-1906 shaft or drift, Springfield, 70-75, 4.5, RP	9,940 tons
Hess Coal Company, 1904-1906, slope or drift, Springfield, 65-92, 4.5, RP	1,390 tons
Rumble (M.), 1904-1906, drift, Springfield, 65-100, 4.4-5.0, RP	558 tons
Jones (Thomas), 1904-1916, drift or slope, Springfield, 62-100, 4.0-5.0, RP	7,518 tons
Engelke (W.), 1904-1907, drift, Springfield, 59-110, 4.33-5.0, RP	172 tons
Engelke (Nick), 1907-1910	<u>2,506</u> tons
	2,678 tons
Marston & Williams, 1906-1908, shaft, Springfield, 90, 4.5, RP	1,920 tons
Marston (Ed), 1908-1909	<u>4,000</u> tons
	5,920 tons
Schmidt (Louis), 1907-1921, slope or drift, Springfield, 65, 4.0-5.0, RP	32,608 tons
Street-Forston Coal Company, 1907-1908, —, Springfield, —, 4.5-5.0, RP	860 tons
Street (A. R.), 1908-1909	<u>750</u> tons
	1,610 tons
Johnson (Ben H.), 1907-1908, strip or shaft, Springfield, —, 5.0, Strip or RP	160 tons
Keef & Mohn, 1909-1911, drift, Springfield, —, 4.5, RP	631 tons
Marie (Frank), 1909-1913, drift, Springfield, 50, 3.0-4.0, RP	646 tons

Goetz (Carl), 1910-1912, shaft, Springfield, 50-86, 3.33-4.5, RP	2,403 tons
Pleasant Heights Coal Company, 1912-1917	15,626 tons
Goetz (Carl), 1917-1918	4,700 tons
Pleasant Heights Coal Company, 1918-1919	4,748 tons
Atlas Coal Company, 1919-1922	8,536 tons
Guest (Carl) Coal Company, 1922-1923	2,500 tons
Canton Road Coal Company, 1923-1927	47,963 tons
Pleasant Heights Coal Company, 1927-1927	<u>888 tons</u>
	87,364 tons
Williams (Joseph), 1910-1911, shaft, Springfield, 60, 4.5, RP	3,600 tons
Bell Coal Company, 1911-1912, drift, Springfield, —, 4.0, RP	3,000 tons
Cannon (John), 1911-1912, drift, Springfield, —, 4.33, RP	335 tons
Martin (M.) Coal Company, 1915-1920, slope, Springfield, —, 4.0, RP	37,085 tons
Victory Coal Company, 1920-1921	<u>10,482 tons</u>
	47,567 tons
Slane (Peter), 1925-1934, underground	690 tons
Schmidt (James), 1916-1917, slope, Springfield, —, 4.17, RP	2,985 tons
Snider (George), 1916-1917, slope, Springfield, 75, 4.33, RP	1,800 tons
Schneider (Fred), 1917-1919	325 tons
Schneider & Glove, 1919-1923	1,656 tons
Schneider (F. P. & N. J.), 1923-1924	<u>2,678 tons</u>
	6,459 tons
Mohn (Thomas), 1916-1917, slope, Springfield, —, 4.0, RP	1,477 tons
Mohn (John), 1919-1921	13,768 tons
Pierce (A. S.), 1916-1918, slope, Springfield, —, 4.33, RP	405 tons
Stear (James), 1916-1918, drift, Herrin, 40, 4.5, RP	100 tons
Bushnell & Swords, 1917-1918	1,565 tons
Swords (George), 1917-1918	475 tons
Birdois & Son, 1917-1920	1,400 tons
Birdois (Dan), 1920-1922	450 tons
Birdois Coal Company, 1922-1923	170 tons
Birdois (Daniel), 1923-1928	<u>21,297 tons</u>
	23,317 tons
Witcely (Ted), 1917-1918	30 tons
Green (Clarence), 1918-1919	1,404 tons
McDaniels (Theodore), 1918-1919	500 tons
Bowers Coal Company, 1918-1919	200 tons
Bowers (R.), 1919-1920	100 tons
Bowers (William E.), 1920-1921	<u>740 tons</u>
	1,040 tons
Thompson (J. S.), 1919-1920	2,012 tons
Thomas (Joe), 1920-1923	220 tons
Johnson (F. & H.), 1922-1923	1,365 tons

Bichner (Don), 1919-1920	800 tons
Seffers (Fred), 1919-1920	200 tons
Midway Coal Company, 1920-1921	1,885 tons
Mid County Co-operative Coal Company, 1922-1923	4,000 tons
R. & M. Coal Company, 1920-1921	1,900 tons
Blank Brothers, 1920-1925, underground	28,302 tons
Blank (Lewis), 1925-1928	<u>20,133</u> tons
	48,435 tons
Hild (P. E.), 1920-1923	5,520 tons
Burnhold (William), 1920-1921	884 tons
Szold (Jacob), 1920-1921	600 tons
Barnes Coal Company, 1920-1922	588 tons
Burns (James W.), 1922-1923	<u>640</u> tons
	1,228 tons
Welsh (Peter, Jr.) & Son, 1920-1921	500 tons
Gardins (R. I.), 1920-1921	252 tons
Sword & Jones, 1922-1924	4,000 tons
Jones (William E.), 1924-1926	<u>4,466</u> tons
	8,466 tons
Kickapoo Creek Coal Company, 1922-1923	4,000 tons
Ivy Way Coal Company, 1922-1923	2,624 tons
Sword & Hofer, 1922-1924, underground	3,994 tons
Sword, Hofer & Martin, 1924-1926	7,570 tons
Hafer & Martin, 1927-1929	<u>8,032</u> tons
	19,596 tons
F. & D. Coal Company, 1922-1923	1,053 tons
P., F. & D. Coal Company, 1923-1924	<u>1,153</u> tons
	2,206 tons
Higginson & Lampton, 1922-1924	1,267 tons
Randle (George), 1922-1924	1,200 tons
Hickory Creek Coal Company, 1922-1923	400 tons
Stone & Whitmore, 1922-1924	200 tons
Stone (William), 1924-1926	<u>576</u> tons
	776 tons
Hillside Coal Company, 1923-1926	10,022 tons
Sneddon Brothers, 1923-1925	3,243 tons
Swanson Coal Fuel Oil Company, 1923-1924	600 tons
Hibberd (George A.), 1923-1924	788 tons
Hibberd & Reighard Coal Company, 1923-1924	659 tons

Schunel (Sol), 1924-1926	10,800 tons
Potter Coal Company, 1924-1925	1,060 tons
Walck Coal Company, 1924-1925	500 tons
Pleasant Valley Coal Company, 1925-1925	1,457 tons
Route Three Coal Company, 1925-1927	1,000 tons
Clark (John), 1925-1925, underground	531 tons
Clark & Lightbody, 1926-1933	<u>13,710</u> tons
	14,241 tons
Creekside Coal Company, 1925-1925	80 tons
Summers (Richard), 1925-1925	12 tons
Williams (Jim), 1926-1926	600 tons
Davis (T. H.), 1927-1928, underground	1,775 tons
Rock Glen Coal Company, 1927-1928, underground	600 tons
Walck (Peter), 1929-1933	30 tons
Rocky Glen Coal Company, 1934-1936	670 tons
Walck (Peter), 1937-1939	<u>267</u> tons
	1,567 tons
Stoughter (John), 1927-1927, underground	60 tons
Staughton (R.), 1928-1928	75 tons
Stoughton (J.), 1929-1929	<u>550</u> tons
	685 tons
Messelmitch (Louis), 1928-1929, underground	600 tons
Crebs & Nagel, 1928-1928, underground	85 tons
Ax (Alva) & Burrell (Frank), 1929-1931, underground	12,925 tons
Closen (Nick), 1929-1929, underground	200 tons
Allen (Ed), 1929-1929, underground	40 tons
Standard (H. O.), 1931-1931, underground	2,800 tons
Standard & Harkless, 1932-1932	<u>7,687</u> tons
	10,487 tons
Black Cat Coal Company, 1934-1934, underground	60 tons
Orr (Joe), 1934-1938, underground	360 tons
True Blue Coal Company, 1939-1939	<u>50</u> tons
	410 tons
Tompkins & Pitcher, 1934-1934, underground	70 tons
B. & B. Coal Company, 1935-1936, underground	1,060 tons
Maplewood Coal Company, 1941-1941	<u>208</u> tons
	1,268 tons
Rogue (Sam), 1936-1936, underground	36 tons
Hannigan Coal Company, 1937-1940, slope, Springfield, —, 4.0	5,013 tons
Spring Hill Coal Company, 1937-1941, shaft, —, 144, 4.67	7,705 tons

Sword (George), 1938-1938, surface, Springfield, 10, 3.5	4,767 tons
Sword & Vetter Coal Company, 1939-1940	<u>16,806</u> tons
	21,573 tons
Sword (George), 1940-1940, surface	6,770 tons
Sword & Sons, 1940-1940, surface	6,770 tons
Sword & Son, No. 3 Mine, 1940-1940, surface, Springfield, 10, 5.0	589 tons
Buel (John), 1940-1940, drift, Herrin, —, 4.5	95 tons
Goetz Coal Company, No. 1 Mine, 1940-1940, underground	3,810 tons
Goetz Coal Company, No. 2 Mine, 1940-1940, drift, Springfield, —, 4.0	4,000 tons
Swords (George), 1941-1941, underground	619 tons
Spring Valley Coal Company, 1946-1947, surface, Springfield, 14-26, 4.3-4.7	556 tons
Brooks Coal Company, 1948-1948	2,500 tons
Nelan (William H.) Coal & Trucking Company, 1948-1950	<u>8,194</u> tons
	11,250 tons
Bowen & Holtgreve Coal Company, 1947-1948, surface, Herrin, 15, 5.0	17,000 tons
Sunnyside Coal Company, 1949-1953, surface, Herrin, —, —	4,445 tons
Hobson Construction Company, Inc., 1949-1949, surface	3,500 tons

POTTSTOWN

Potts (Samuel), pre 1878-1883, drift, Springfield, 60-125, 4.0-4.5, RP	52,600 tons
Kickapoo Coal Mining Company, 1883-1885	39,000 tons
Potts (Mary Ann), 1885-1888	15,712 tons
Tunnel Coal Company, 1888-1893	5,200 tons
Potts (Samuel), 1893-1895	<u>2,720</u> tons
	115,232 tons
Clifford, Ably & Company, 1878-1879, drift, Springfield, 120-125, 4.0-4.5, RP	3,200 tons
Abberly & Parker, 1881-1883	5,000 tons
Abberly (James) & Company (G. Parker), 1883-1884	1,800 tons
Abberly (James), 1884-1893	<u>100,290</u> tons
	110,290 tons
Cocharn (James), 1883-1887, drift, Springfield, 110-125, 4.5, RP	5,840 tons
Parker (James), 1884-1885, drift, Springfield, 85-90, 4.5, RP	8,400 tons
Parker (Samuel), 1885-1889	<u>3,781</u> tons
	12,181 tons
Waite (James), 1884-1885, drift, Springfield, 80-95, 4.17-4.5, RP	320 tons
Stafford (Jesse), 1885-1895	<u>2,050</u> tons
	2,370 tons
Purcell (Daniel), 1885-1887, drift, Springfield, 80-100, 4.17-4.33, RP	7,200 tons
Purcell & Martin, 1887-1890	7,060 tons
Slick (James), 1890-1892	3,280 tons
Parker (Thomas), 1892-1893	<u>1,732</u> tons
	19,272 tons
Williams (A.), 1885-1887, drift, Springfield, 85, 4.33, RP	1,510 tons

Jones (James), 1885-1888, drift, Springfield, 90, 4.5, RP	1,340 tons
Ranch (Fred), 1885-1886, drift, Springfield, 120, 4.5, RP	371 tons
Allen (J. S.) Coal & Mining Company, 1887-1889	11,150 tons
Pollock (James), 1888-1889	1,810 tons
Vicary (Henry), 1891-1894, drift, Springfield, 80-120, 4.17-4.5, RP	2,520 tons
Wantling (Thomas), 1894-1896	1,584 tons
Vicary (Henry), 1896-1897	400 tons
Vicary (Harry), 1897-1901	<u>5,260</u> tons
	9,764 tons
Smith (Joseph), 1892-1893, drift, Springfield, 95, 4.33, RP	880 tons
Cannon (E. M.), 1893-1894, drift, —, 80, 4.5, RP	3,000 tons
Marrie (Joseph), 1893-1894, drift, Springfield, 80-95, 4.17-4.33, RP	40 tons
Muir (Thomas), 1894-1897	<u>4,630</u> tons
	4,670 tons
Marie (Joseph), 1900-1906, drift, Springfield, 60-100, 4.0-4.33, RP	2,569 tons
Miller & Pargett, 1895-1896, drift, Springfield, 80, 4.0-4.5, RP	240 tons
Randall & Coxon, 1896-1897	200 tons
Jones (Alfred), 1897-1898	400 tons
Sleith (James), 1898-1900	660 tons
Pargetter (George), 1900-1901	250 tons
Cargetter (John), 1901-1902	<u>316</u> tons
	2,066 tons
Lewis & Berry, 1904-1906, slope or drift, Springfield, 80-100, 4.17-4.5, RP	1,160 tons
Barber Coal Company, 1907-1908, drift, Springfield, —, 4.17, RP	1,200 tons
Holmes (Charles), 1908-1909, drift, Springfield, —, 4.0, RP	350 tons
Stafford Brothers, 1917-1920	9,643 tons
Dempster (John), 1917-1918	2,624 tons
Dempster (Ed), 1918-1919	<u>1,500</u> tons
	4,124 tons
Mallett & Miller, 1917-1918	475 tons
Parker (Thomas), 1917-1918	85 tons
Vaughn (James) & Brothers, 1919-1920	420 tons
Walmsley & Rayner, 1920-1921	4,000 tons
Harper (Elmer), 1927-1927	927 tons
Green (C.), 1927-1928, underground	820 tons
Sunshine Coal Company, 1933-1934, underground	7,591 tons
Callear (Abe), 1934-1935, underground	2,507 tons
Callear (Sam), 1936-1938	250 tons
Wolford (W. H.), 1939-1939	<u>150</u> tons
	2,907 tons

INDEX OF MINES IN THE PEORIA WEST QUADRANGLE

A Mine	48
A. & T. Coal Company	38
Abberly (James)	85
Abberly (James) & Company	85
Abberly & Parker	85
Ably (Clifford, Ably & Company)	85
Adams Coal Company	81
Aiken (M. M.)	78
Allan (Edward)	60
Allen (Ed)	84
Allen (Edward)	78, 79
Allen (J. S.) Coal & Mining Company	85
Allen (John)	78
Alya-AX-A-T Coal Company	38
Aman (George M., Jr.)	75
Ames (Kirkman & Ames)	75
Amsler & Pye (D. H.)	73
Anderson (Cusack & Anderson)	74
Anderson (John)	73
Andrews (James)	75
Appleby (Fred)	75
Appleby & Taylor	75
Arnold (William)	80
Art Coal Company	38
Asbell (Albert)	75
Atlas Coal Company	81
Ax (Alva) & Burrell (Frank)	84
B Mine	9
B. & B. Coal Company	84
Ball (Samuel)	78
Ball Coal Company	73
Barber Coal Company	86
Barnawalt (Seffer & Barnawalt)	39
Barnawalt & Pfender	80
Barnes Coal Company	83
Barneywaldt (A. H.)	79
Barr (Harry)	75
Barton (Daily & Barton)	73
Barton (William)	78
Bartonville Coal Company	13, 22
Bateman (Everett)	75
Bateman Coal Company	75
Battman (E.) & Martin	75
Bell Coal Company	81, 82
Bell Mine	72
Bennett & Company	80
Berry (Lewis & Berry)	86
Bichner (Don)	82
Bidleman (Tuttle & Bidleman Coal Company)	75
Big Bear Coal Company	37
Big Five Coal Company	76
Birdois (Dan)	82
Birdois (Daniel)	80, 82
Birdois (John, Jr.)	62
Birdois (John) & Son	62
Birdois & Son	82
Birdois & Swinger	62
Birdois Brothers	62
Birdois Coal Company	82
Bishop (John)	74
Black Cat Coal Company	84
Black Diamond Coal Company	51
Blank (Fisher & Blank)	81

Blank (George)	79
Blank (Lewis)	83
Blank Brothers	82
Blank, Fisher & Sands	81
Blender (William)	17
Blender Mining Company	17
Blender Mining Company, No. 2 Mine	36
Blue Bell Coal Company	52
Blue Fly Mine	44
Bogon & Pye	73
Bowen & Holtgreve Coal Company	85
Bowen Brothers	75
Bowen Coal Company	32
Bowers (R.)	82
Bowers (William E.)	82
Bowers Coal Company	82
Boyle (Martin)	79
Brady & White Coal Company	20
Brewster & Evans Coal Company	11
Brocket (E. M.)	73
Brooks Coal Company	85
Brookside Coal Company	74
Brost (Edward), No. 1 Mine	58
Brost (Edward), No. 2 Mine	59
Brost (Oliver)	59
Brost Brothers	58
Brown (Ed)	73
Brown & White	73
Buckley (A.)	74
Buel (John)	84
Buhl (Manen & Buhl)	76
Buhl (Noah)	76
Buning & May	74
Burdett (W. J.)	42
Burdett (Wantling & Burdett)	42
Burgess & Company	57
Burnhold (William)	83
Burns (Edward)	76
Burns (James W.)	83
Burns (James)	73, 76
Burrell (Ax & Burrell)	84
Bushnell & Swords	82
Butts & Moon	80
Calhoun (Jones & Calhoun)	77
Callear (Abe)	86
Callear (Sam)	86
Cannon (E. M.)	86
Cannon (John)	82
Cannon (Williams & Cannon)	46
Canton Road Coal Company	81
Cargetter (John)	86
Case (M. E.) Coal Company	11
Chapman & Company	79
Chapman & Lilly	79
Chapman & Little	79
Clark (James)	76
Clark (John)	83
Clark & Lightbody	83
Clark Coal & Coke Company	
A Mine	48
B Mine	9
Empire No. 1 Mine	48
Empire No. 2 Mine	9
Clarkson (Joseph)	76
Clarkson (Lorenzo)	74

Clarkson (R.)	74
Clarkson (Thayer & Clarkson)	74
Clarkson (William)	74
Clarkson & Henning	74
Clifford, Ably & Company	85
Closen (Nick)	84
Cocham (James)	85
Cody (R.)	61
Cody (Richard)	80
Cody & McManus	61
Collear (Abe)	52
Collear (Collins & Collear)	52
Collear (Mohn & Collear)	52
Collear (Sword & Collear)	52
Collear Brothers	52
Collear Coal Company	52
Collier (Joseph)	13
Collier & Gorman	69
Collier Brothers	52
Collier Co-operative Coal Company	13
Collins & Collear	52
Collins Brothers Coal Company	31
Collins Brothers Coal Company, Liberty Mine	41
Conrad & Rumble	80
Consolidated Coal Company of St. Louis, Millard No. 2 Mine	47
Consolidated Coal Company of St. Louis, Star Mine	54
Coogan Gravel Company	76
Cook (William)	18, 55
Cook Brothers	55
Cooper & Company	79
Coxon (Randall & Coxon)	86
Cramer (William)	75
Crandall (Charles)	77
Crandall (E. C.)	77
Crebs & Nagel	84
Creeside Coal Company	84
Crescent Coal Company	10
Crescent Coal Company, No. 2 Mine	11
Crescent Mining Company, Lamarsh No. 1 Mine	12
Crescent Mining Company, Lamarsh No. 6 Mine	14
Cruikshank (Dering & Cruikshank)	24
Cusack (Gigby, Cusack & Edwards)	74
Cusack (Mike)	74
Cusack & Anderson	74
Cusack & Edwards	74
Cusack Coal Company	33
Cutler (C. C.)	75
Daily & Barton	73
Daily & Maynard	73
Dalrymple (Joos & Dalrymple)	80
Darling (Ira)	17
Davis (T. H.)	84
Davis & Fisher	80
Dawson (Charles)	75
Dawson & May	75
Day (James)	78
Delt (Phillip) & Company	78
Dempster (Ed)	86
Dempster (John)	81, 86
Dering & Cruikshank	24
Deutsch & Snider	66
Domino Mine	17
Donaldson & Royster	48
Driscoll (Daniel)	80
Driscoll (David)	80

Duffy (M.)	80
Duffy (Michael)	80
Edwards (Charles)	74
Edwards (Cusack & Edwards)	74
Edwards (Gigby, Cusack & Edwards)	74
Edwards Coal Company	74, 75
Edwards Mine	15
Edwards Mining Company	74
Elm Hill Mine	32
Elmwood Mine	43
Empire Mine	21
Empire No. 1 Mine	48
Empire No. 2 Mine	9
Engelke (Nick)	81
Engelke (W.)	81
Ennis (Peter)	79
Enterprise Co-operative Coal Company	80
Evans (Brewster & Evans Coal Company)	11
Excelsior Mine	56
F. & D. Coal Company	83
Fair Oak Coal Company	40
Fairmount Mine	33
Farrell (James)	75
Farrell Brothers	75
Fash (James) & Company	81
Fender (Fred)	54
Fender (Noel & Fender)	54
Fender (Noll & Fender)	54
Fender Brothers	54
Fernwood Mining Company	16
Fisher (Blank, Fisher & Sands)	81
Fisher (Davis & Fisher)	80
Fisher (J. H.)	81
Fisher & Blank	81
Fisher & Company	81
Fisher & Joos	80
Forbes (William)	75
Gardins (R. I.)	83
Gigby, Cusack & Edwards	74
Glenn (John)	80
Glove (Schneider & Glove)	82
Goetz (Carl)	81
Goetz Coal Company, No. 1 Mine	84
Goetz Coal Company, No. 2 Mine	85
Goodwin (D.)	77
Gorenz (Joseph) & Company	73
Gorman (Collier & Gorman)	69
Gorman (John)	69
Grant (Peter, Jr.)	56
Grant (Peter)	78
Grant (Peter) & Son, Excelsior Mine	56
Grant (Peter) & Son, No. 2 Mine	56
Grant (Peter) & Sons, No. 1 Mine	78
Grant (Wilcox & Grant)	78
Grant (William P.)	80
Green (C.)	86
Green (Clarence)	82
Green Oak Mine	72
Grenko (Vinko)	76
Grishott (Lonk & Grishott)	78
Griswold (Henry)	78
Guest (Carl) Coal Company	81
Hafer & Martin	83
Hannigan Coal Company	84
Hanning (F.)	74

Hanover Mining Company	81
Harkless (Standard & Harkless).	84
Harmon (Vicary & Harmon)	39
Harper (Elmer).	86
Harper (William).	74
Harriman (Schneider & Harriman)	66
Harriman (Snider & Harriman).	66
Harriman (William).	66
Hay (Paddy).	78
Hayes (Jones & Hayes).	77
Hearst (L.)	73
Heintz Coal Company	75
Heitzman (Benhart)	73
Heitzman Brothers	73
Helm (Andrew).	76
Henderson (Adam)	79
Henderson (James).	79
Henning (Clarkson & Henning)	74
Henning (Stout & Henning)	75
Hess Coal Company	81
Hibbard & Sneddon Coal Company.	20
Hibberd (George A.)	83
Hibberd & Reighard Coal Company.	83
Hickman (John)	74
Hickory Creek Coal Company	83
Hickory Grove Coal Company	76
Higginson & Lampton	83
Hild (P. E.).	83
Hillside Coal Company.	83
Hilltop Coal Company	16
Hobson Construction Company, Inc.	85
Hofer (Sword & Hofer)	83
Hofer (Sword, Hofer & Martin)	83
Hoffman (Peter D.).	76
Holland (Wait & Holland)	79
Holmes (Charles).	86
Holtgreve (Bowen & Holtgreve Coal Company).	85
Homan (T. W.).	76
Howe (Elijah)	75
Howe (Sluth & Howe).	75
Hurst (Lot)	73
Hurst (S.).	73
Hurst (William).	73
Huxtable Coal Company	73
Ivy Way Coal Company	83
Johnson (Ben H.).	81
Johnson (F. & H.).	82
Johnson & Lane.	79
Jones (Alfred)	86
Jones (Frank).	77
Jones (Frank) & Hayes (William)	77
Jones (James).	85
Jones (Sword & Jones)	83
Jones (Thomas).	81
Jones (William E.).	83
Jones & Calhoun	77
Joos (Fisher & Joos)	80
Joos & Dalrymple	80
Joos & Rumple	80
Jubilee Mine.	27
Keef & Mohn	81
Keller (George)	73
Keller Coal Company.	73
Keys (Short & Keys)	74
Kickapoo Coal Company	74

Kickapoo Coal Mining Company	85
Kickapoo Creek Coal Company	83
Kidder Estate	60
Kiddy Estate	79
Kief (Richard)	80
Kienbush (David)	35
Kimsey Coal Company, No. 2 Mine	76
King & Wilson	75
Kingsley (Charles)	74
Kirkman & Ames	75
Knaggs (Henry)	49
Kramm (Charles E.)	71
Kramm (Edward) & Company	76
Kramm (Wilkinson & Kramm)	74
Kramm Brothers	71
Kramp (Peter)	57
Lamarsh No. 1 Mine	12
Lamarsh No. 6 Mine	14
Lammas (C.)	79
Lampton (Higginson & Lampton)	83
Lane (James)	79
Lane (Johnson & Lane)	79
Lane (Martin & Lane)	78
Lannar (F.)	78
Laucks (John)	78
Laucks (Mrs. John)	78
Lea Coal Mining Company, No. 2 Mine	45
Lee Brothers Coal Mining Company, No. 2 Mine	45
Lemasters Brothers	75
Lewis & Berry	86
Ley (James W.)	74
Liberty Coal Company	41
Lightbody (Clark & Lightbody)	83
Lilly (Chapman & Lilily)	79
Limestone Coal Company	18, 79
Linchcott (Samuel)	76
Lines (James)	77
Little (Chapman & Little)	79
Lonk & Grishott	78
Lonsdale (R.)	74
Lonsdale (T. H.)	75
Lonsdale (William)	74
Louck & Company	78
Lowery (Frank), No. 2 Mine	77
Luly (Peter)	79
Mahen & Company	78
Mahn (F.)	78
Mahn Brothers	78
Mallett & Miller	86
Manen & Buhl	76
Maplewood Coal Company	84
Marie (Frank)	81
Marie (Joseph)	86
Marrie (Joseph)	86
Marston (Ed)	81
Marston & Williams	81
Martain Coal Company	78
Marteness Mining Company	17
Martin (Battman & Martin)	75
Martin (Fred)	80
Martin (Hafer & Martin)	83
Martin (M.) Coal Company	82
Martin (Patrick)	81
Martin (Purcell & Martin)	85
Martin (Sword, Hofer & Martin)	83

Martin & Lane	78
May (Buning & May)	74
May (Dawson & May)	75
Maynard (Daily & Maynard)	73
Maynard & Company	73
McCullough (George)	77
McDaniels (Theodore)	82
McDougal (John)	79
McManis (B. & C.)	64
McManus (Cody & McManus)	61
Messelmitch (Louis)	84
Mid County Co-operative Coal Company	82
Middle Road Coal Company	16, 23
Midland Coal Company, Edwards Mine	15
Midway Coal Company	82
Millard & Wolschlag	47
Miller (Mallett & Miller)	86
Miller (Robert)	77
Miller (Smith & Miller)	77
Miller & Pargett	86
Moffat (A. W.)	57
Mohn (Ed) & Brothers	78
Mohn (Edward) & Son, Empire Mine	21
Mohn (Fred)	78
Mohn (Henry)	80
Mohn (John)	82
Mohn (Keef & Mohn)	81
Mohn (Thomas)	82
Mohn (William)	80
Mohn & Collear	52
Mohn Mine	72
Monroe (James)	78
Monroe (Lyman)	80
Moon (Butts & Moon)	80
Moon (Fred)	78
Moon (Henry)	79
Moon (Mrs. K.)	78
Mooney & Company	79
Morgan Coal Company	15
Morrison (J.)	77
Mosher (F. & I.)	17
Muir (Thomas)	86
Mulegan (James)	78
Mulligan (Dennis)	78, 80
Myatt (Winter & Myatt)	22
Nagel (Crebs & Nagel)	84
Nash (Roberts & Nash)	77
Nee (John)	80
Nee (Noah)	80
Nelan (William H.) Coal & Trucking Company	85
Nesslehouse (Matthew)	77
New Star Mine	54
Newsam (Frank)	77
Newsam Brothers	
New Millard No. 3 Mine	47
No. 2 Mine	54
Newsam Brothers Coal Company	
No. 6 Mine	14
Nicholas (William)	80
Nichols (Nicholas)	79
Nichols (W.)	76
Noel (George)	54
Noel & Fender	54
Noll & Fender	54
Oddywalt (Henry)	77

Olympia Coal Mining Company	50
Orr (Joe)	84
Oviatt & Company	79
O'Brian (Thomas)	17
P., F. & D. Coal Company	83
Palish (Jack)	17
Pargett (Miller & Pargett)	86
Pargetter (George)	86
Parker (Abberly & Parker)	85
Parker (G.)	85
Parker (James)	85
Parker (Samuel)	85
Parker (Thomas)	85, 86
Patten (W. H.)	74
Patton (Lee) Coal Company	28
Patton (Lee) Coal Company, Elm Hill Mine	32
Peabody Coal Company, Edwards Mine	15
Peoria & Limestone Coal Company	79
Peoria Co-operative Coal Company	70
Peoria District Colliery Company	24
Pepper (Edward)	55
Petrie (John L.)	77
Pfender (Barnawalt & Pfender)	80
Pierce (A. S.)	82
Pillman (Richard)	74
Pioneer Coal Company	76
Pitcher (Burr)	81
Pitcher (Tompkins & Pitcher)	84
Pleasant Coal Company	29
Pleasant Heights Coal Company	81
Pleasant Hill Coal Company, No. 2 Mine	29
Pleasant Valley Coal Company	83
Polceen (Powell & Polceen)	77
Poleen (Jacob)	77
Pollock (James)	85
Polson (Antonia)	77
Poole (William)	76
Potter Brothers	77
Potter Coal Company	83
Potts (Mary Ann)	85
Potts (Samuel)	85
Powell (John W.)	77
Powell & Polceen	77
Pratt (Charles E.)	75
Pratt (Charles)	76
Procter (C. H.)	75
Prosperity Mine	24
Purcell (Daniel)	85
Purcell & Martin	85
Purtscher (A.)	76
Pye (Amsler & Pye)	73
Pye (Bogon & Pye)	73
Pye (Samuel F.)	73
R. & M. Coal Company	82
Radoe (Frank)	76
Ranch (Fred)	85
Randall & Coxon	86
Randle (George)	83
Randle (William)	78
Rayner (Walmsley & Rayner)	86
Reagan (James)	77
Reents (August)	76
Reents (Siebold)	76
Reents Brothers	76
Reighard (Hibberd & Reighard Coal Company)	83

Relliford & Company	78
Rewart (Frank)	80
Ritchie (Charles)	79
Roberts (David B.)	77
Roberts (David)	77
Roberts & Nash	77
Rock & Stevenson Coal Company	29
Rock Glen Coal Company	84
Rock Island Improvement Company	12
Rocky Glen Coal Company	84
Rogue (Sam)	84
Roseman (A.)	63
Rossman (L.)	63
Route Three Coal Company	83
Royster (Donaldson & Royster)	48
Royster (Isaac)	48
Royster (Thomas)	78
Royster & Company	78
Royster & Zeigler	48
Royster Brothers	48, 78
Rudloff Brothers	37
Rumble (M.)	81
Rumple (Conrad & Rumple)	80
Rumple (Joos & Rumple)	80
Rumple (Yost & Rumple)	80
Sanderson Brothers	73
Sands (Blank, Fisher & Sands)	81
Sargent (James)	81
Saupe (John J.)	80
Schmidt (F. P.), No. 2 Mine	80
Schmidt (Frank P.)	79
Schmidt (Frank P.) & Son	19
Schmidt (Henry F.)	19
Schmidt (James)	82
Schmidt (Louis)	81
Schneider (F. P. & N. J.)	82
Schneider (Fred)	82
Schneider & Glove	82
Schneider & Harriman	66
Schofield (Joseph S.)	53
Schofield Coal Company	53
Schott & Witheral	74
Schotte & Withell	74
Schreffler (R. D.)	77
Schunel (Sol)	83
Schuster (Ulrich)	80
Scoville (Frank)	53
Seffer & Barnawalt	39
Seffer & Strong	39
Seffers (Fred)	82
Sents (Zeinie & Sents)	75
Sepesi (Andrew)	30, 41
Shamrock Coal Company	31
Shaunt (John)	77
Shaw (Nathan)	76
Sholl (Adam)	11
Sholl (Henry)	11
Sholl (Joseph) & Sons	73
Sholl & Son	73
Sholl Brothers	73
Sholl Brothers & Company	11
Sholl Brothers, No. 1 Mine	11
Sholl Brothers, Prosperity No. 3 Mine	24
Short & Keys	74
Silver Creek Coal Company	50

Simpson (Vicary & Simpson Coal Company)	46
Simpson (W. H.)	39
Simpson (Walker & Simpson Coal Company)	39
Simpson Coal Company	46
Slain (S.)	74
Slaine (James)	79
Slane (James)	78, 79
Slane (Peter)	82
Sleith (James)	86
Slick (James)	85
Slone (Harry)	75
Sluth & Howe	75
Smith (J.)	79
Smith (Joseph)	85
Smith & Miller	77
Sneddon (Hibbard & Sneddon Coal Company)	20
Sneddon Brothers	83
Snider (Deusch & Snider)	66
Snider (Edward)	75
Snider (Enoch, Jr.)	75
Snider (Enoch)	75
Snider (Fred)	75
Snider (George)	82
Snider & Harriman	66
Snyder (E. C.)	74
Spring Hill Coal Company	84
Spring Valley Coal Company	85
Stafford (Jesse)	85
Stafford Brothers	86
Standard (H. O.)	84
Standard & Harkless	84
Standard Coal Company	78, 81
Star Co-operative Coal Company	80
Star Mine	54
Star Shaft Coal Company	80
Staton (Joseph)	77
Staughton (R.)	84
Stear (George)	34
Stear (J. L.)	34
Stear (James)	82
Stear (Lester)	34
Stear (Thomas)	34, 75
Stears Brothers	76
Stevenson (Rock & Stevenson Coal Company)	29
Stevenson & Company	79
Stever (S. R.)	35
Stone (William)	83
Stone & Whitmore	83
Stoughter (John)	84
Stoughton (J.)	84
Stout (O. M.)	75
Stout & Henning	75
Street (A. R.)	81
Street (Reuben)	73
Street-Forston Coal Company	81
Strong (Seffer & Strong)	39
Summers (Richard)	84
Sunnyside Coal Company	85
Sunshine Coal Company	86
Superior Mining Company	30
Swanson Coal Fuel Oil Company	83
Swinger (Birdois & Swinger)	62
Sword (George)	84
Sword & Collear	52
Sword & Hofer	83

Sword & Jones.	83
Sword & Son	27
Sword & Son, No. 3 Mine.	84
Sword & Sons	84
Sword & Vetter Coal Company	84
Sword & Wantling	68
Sword, Hofer & Martin	83
Swords (Bushnell & Swords)	82
Swords (George)	82, 85
Szold (Jacob)	83
Taylor (Appleby & Taylor)	75
Thayer & Clarkson	74
Thomas (Joe)	82
Thompson (J. S.)	82
Toma (John)	80
Tompkins & Pitcher	84
Treasure (Walter) Coal Company	25
True Blue Coal Company.	84
Tunnel Coal Company.	85
Turbett (J.)	81
Tuttle & Bidleman Coal Company	75
Varce (Joseph)	76
Vaughn (James) & Brothers.	86
Vetter (Sword & Vetter Coal Company)	84
Vicary (George)	39
Vicary (Harry)	85
Vicary (Henry)	85
Vicary (William)	39
Vicary & Harmon	39
Vicary & Simpson Coal Company	46
Vicary Brothers	39
Vicary Coal Company	39
Victory Coal Company.	82
Wack (John)	63
Wait & Holland.	79
Waite (J.)	78
Waite (James)	79, 85
Walben Mine	11
Walck (Peter)	84
Walck Coal Company	83
Walk & Welsh	81
Walker & Simpson Coal Company.	39
Walmsley & Rayner	86
Wantling (George)	68
Wantling (Isaac) & Company	43
Wantling (Isaac) & Son	42
Wantling (Isaac) & Son, Blue Fly Mine	44
Wantling (Isaac) & Son, Elmwood Mine.	43
Wantling (Sword & Wantling)	68
Wantling (Thomas)	85
Wantling (Thomas) & Son	42
Wantling & Burdett.	42
Wantling Coal, Brick & Tile Company	40
Wedges (James)	79
Welsh (Peter, Jr.) & Son	83
Welsh (Walk & Welsh)	81
West Point Coal Company.	76
Wheeler Brothers.	77
White (Brady & White Coal Company)	20
White (Brown & White)	73
White (Lewis G.)	17
White (W. J.) Coal Company	57
White Ash Coal Company	23
Whitmore (Stone & Whitmore)	83
Wilcox (E. S.)	78

Wilcox (S. E.)	78
Wilcox & Grant.	78
Wilkinson (J. H.) & Kramm (E.)	74
Williams (A.)	85
Williams (Frank) & Cannon (John).	46
Williams (Jim)	84
Williams (Joseph)	82
Williams (Marston & Williams)	81
Williams (W.)	77
Wilson (King & Wilson)	75
Winter & Myatt.	22
Winter Coal Company	22
Witcely (Ted)	82
Withell (Schotte & Withell)	74
Witheral (Schott & Witheral)	74
Wolford (W. H.)	86
Wolland (Edwin).	79
Wolland & Son.	79
Wolland Brothers	79
Wolschlag (Millard & Wolschlag)	47
Wolschlag (Steve)	26
Wolschlag Co-operative Coal Company	26
Yelm (H.)	32
Yost & Rumple.	80
Young Coal Company	43
Zaborac Coal Company	36
Zahner (Theodore) Coal Company, No. 2 Mine.	29
Zeigler (Royster & Zeigler).	48
Zeinie & Sents	75

Funding for this project was supplied by the Illinois Mine Subsidence Insurance Fund.

