

# Coal Mines in Illinois Pinckneyville Quadrangle Perry County, Illinois

## Herrin Coal

This map accompanies the Coal Mines Directory for the Pinckneyville Quadrangle and the maps of mines in the Springfield Coal, Pinckneyville Quadrangle. Consult the directory for a complete explanation of the information shown on this map.

### Mining Method

- Room & Pillar (RP)
- Room & Pillar Basic (RPB)
- Modified Room & Pillar (MRP)
- Room & Pillar Panel (RPP)
- Blind Room & Pillar (BRP)
- Checkerboard Room & Pillar (CRP)
- High Extraction Retreat (HER)
- Longwall (LW)
- Underground, Method Unknown
- Strip Mine
- Auger Mine
- General Area of Mining

### Other Areas Depicted

- Non-Coal Mines

### Source of Mine Outline

- Final Mine Map
- Not Final Mine Map
- Undated Mine Map
- Incomplete Mine Map
- Secondary Source Map

### Tipple, Shaft, Slope, Drift Locations

- Strip Mine Tipple - Active
- Strip Mine Tipple - Abandoned
- Mine Shaft - Active
- Mine Shaft - Abandoned
- Mine Slope - Active
- Mine Slope - Abandoned
- Mine Drift - Active
- Mine Drift - Abandoned
- Air Shaft
- Uncertain Location
- Uncertain Type of Opening

### Other Points Depicted

- Non-Coal Mines

### Location



### Mine Annotation (space permitting)

Company  
Mine Name  
ISGS Index No., Years of Operation

### Disclaimer

Please check the Coal Section at the Illinois State Geological Survey's web site at <https://www.isgs.illinois.edu> for the most up-to-date version of these products.

Note that each quadrangle scale mined-out area map requires the use of the associated text directory for full explanation of map features and mine attributes. Also note that some quadrangles have multiple seams of mining and therefore more than one map may be available for a particular quadrangle. Please take care to check for multiple maps, as extensive mining may exist in the other seams.

The maps and digital files used for these studies were compiled from data obtained from a variety of public and private sources and have varying degrees of completeness and accuracy. This compilation map presents reasonable interpretation of the geology of the area and is based on available data. Locations of some mine features may be offset by 500 feet or more due to errors in the original source maps, the compilation process, digitizing, or a combination of these factors. These data are not intended for use in site-specific screening or decision-making. Use of these documents does not eliminate the need for detailed studies to fully understand the geology of a specific site. The Illinois State Geological Survey, Prairie Research Institute, or the University of Illinois make no guarantee, expressed or implied, regarding the correctness of the interpretations presented in this data set and accept no liability for the consequences of decisions made by others on the basis of the information presented here.

These maps were designed for use at 1:24,000. Enlarging the map may reduce accuracy, as the original scale of the source maps used to compile the outlines shown varies from 1:400 to 1:150,000, and some mine locations are known only from text descriptions. See the accompanying mine directory for the original scale of the source map used for a specific mine to check accuracy of a given portion of the map. Areas with no mines shown may still be undermined; see the unlocated mines list at the back of each mine directory.

The image of the U.S.G.S. topographic base map was projected from the original UTM to Lambert Conformal Conic.

**ILLINOIS**  
Illinois State Geological Survey  
PRAIRIE RESEARCH INSTITUTE

Prairie Research Institute  
Illinois State Geological Survey  
615 E. Peabody Dr.  
Champaign, IL 61820

Mine Outlines Compiled by  
Alan R. Myers

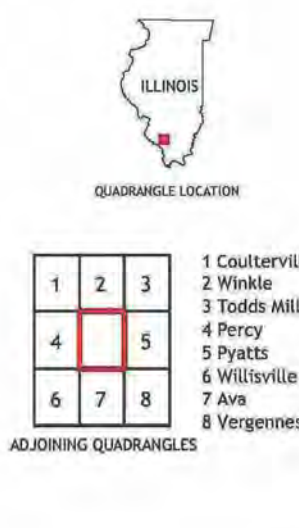
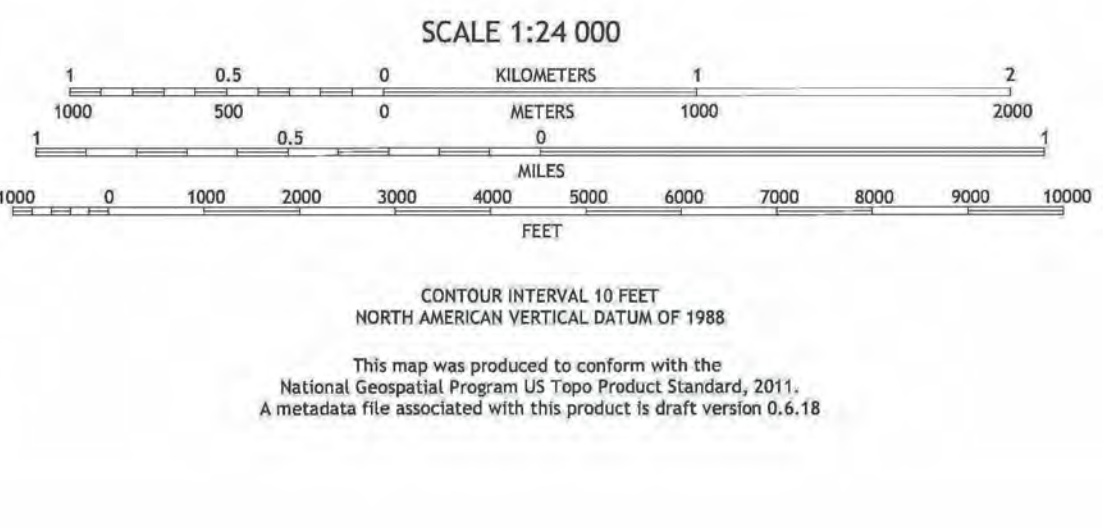
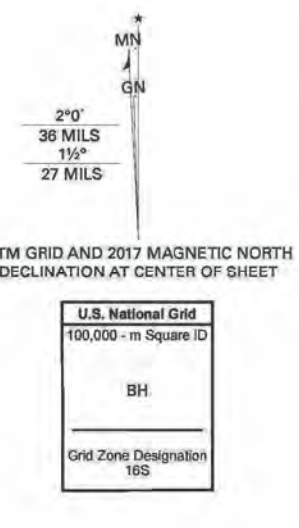
Revised:  
Alan R. Myers 02-15-2024

December 2009

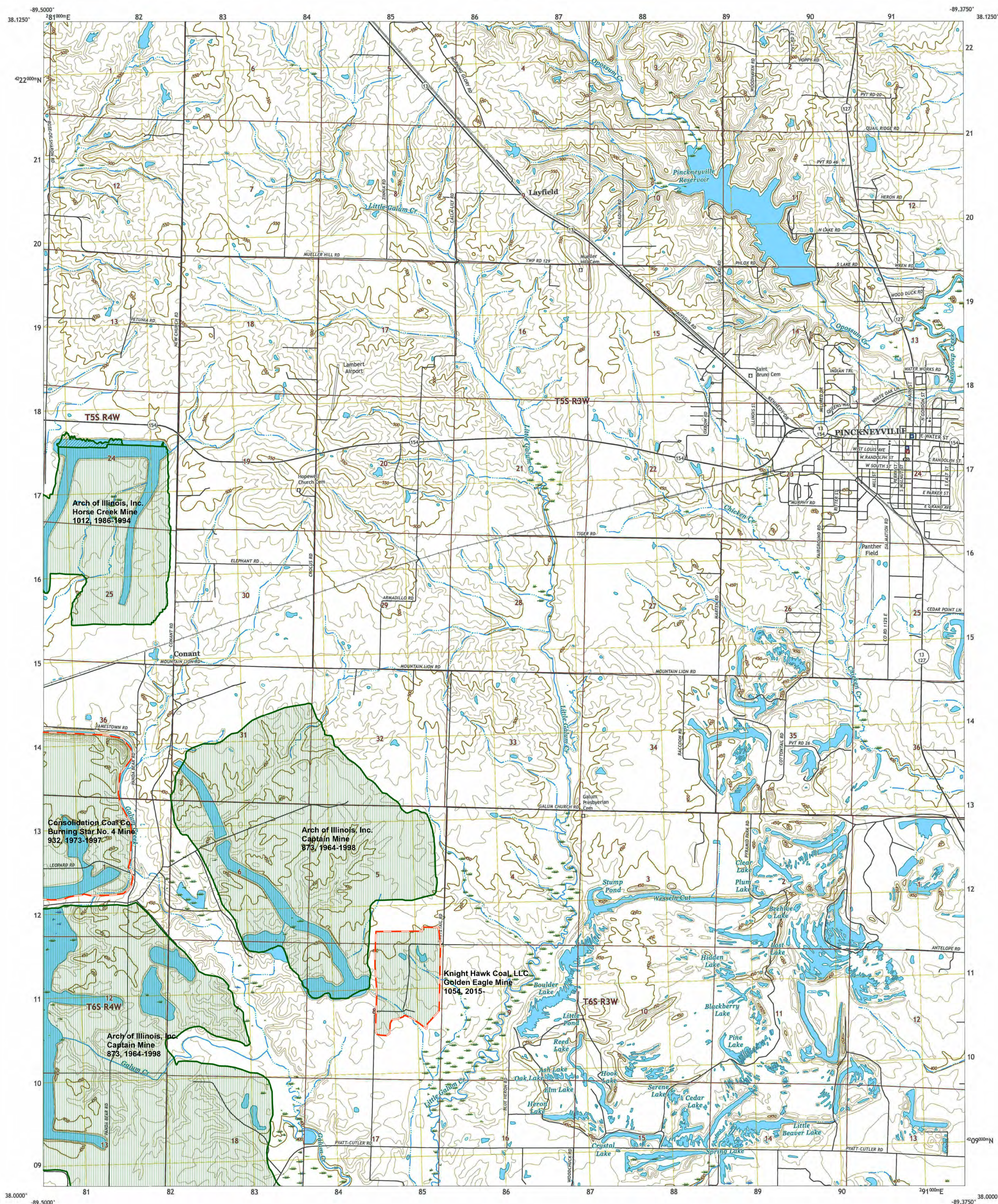
Produced by the United States Geological Survey

North American Datum of 1983 (NAD83)  
World Geodetic System of 1984 (WGS84). Projection and  
160-meter grid/Universal Transverse Mercator, Zone 16S  
This map is not a legal document. Boundaries may be  
generalized for this map scale. Private lands within government  
reservations may not be shown. Obtain permission before  
entering private lands.

Imagery:.....NAP, July 2015 - October 2015  
Roads:.....U.S. Census Bureau, 2017  
Names:.....GNS, 1980 - 2017  
Hydrography:.....National Hydrography Dataset, 2002 - 2015  
Contours:.....National Elevation Dataset, 2008 - 2012  
Boundaries:.....Multiple sources; see metadata file 2014 - 2016  
Public Land Survey System:.....BLM, 2017  
Wetlands:.....FWS National Wetlands Inventory 1981 - 1982







## Coal Mines in Illinois Pinckneyville Quadrangle Perry County, Illinois

### Springfield Coal

This map accompanies the Coal Mines Directory for the Pinckneyville Quadrangle and the maps of mines in the Herrin Coal, Pinckneyville Quadrangle. Consult the directory for a complete explanation of the information shown on this map.

#### Mining Method

- Room & Pillar (RP)
- Room & Pillar Basic (RPB)
- Modified Room & Pillar (MRP)
- Room & Pillar Panel (RPP)
- Blind Room & Pillar (BRP)
- Checkerboard Room & Pillar (CRP)
- High Extraction Retreat (HER)
- Longwall (LW)
- Underground, Method Unknown
- Strip Mine
- Auger Mine
- General Area of Mining

#### Other Areas Depicted

- Non-Coal Mines

#### Source of Mine Outline

- Final Mine Map
- Not Final Mine Map
- Undated Mine Map
- Incomplete Mine Map
- Secondary Source Map

#### Tipple, Shaft, Slope, Drift Locations

- Strip Mine Tipple - Active
- Strip Mine Tipple - Abandoned
- Mine Shaft - Active
- Mine Shaft - Abandoned
- Mine Slope - Active
- Mine Slope - Abandoned
- Mine Drift - Active
- Mine Drift - Abandoned
- Air Shaft
- Uncertain Location
- Uncertain Type of Opening

#### Other Points Depicted

- Non-Coal Mines

#### Location



#### Mine Annotation (space permitting)

Company  
Mine Name  
ISGS Index No., Years of Operation

#### Disclaimer

Please check the Coal Section at the Illinois State Geological Survey's web site at <https://www.isgs.illinois.edu> for the most up-to-date version of these products.

Note that each quadrangle scale mined-out area map requires the use of the associated text directory for full explanation of map features and mine attributes. Also note that some quadrangles have multiple seams of mining and therefore more than one map may be available for a particular quadrangle. Please take care to check for multiple maps, as extensive mining may exist in the other seams.

The maps and digital files used for these studies were compiled from data obtained from a variety of public and private sources and have varying degrees of completeness and accuracy. This compilation map presents reasonable interpretation of the geology of the area and is based on available data. Locations of some mine features may be off by 500 feet or more due to errors in the original source maps, the compilation process, digitizing, or a combination of these factors. These data are not intended for use in site-specific screening or decision-making. Use of these documents does not eliminate the need for detailed studies to fully understand the geology of a specific site. The Illinois State Geological Survey, Prairie Research Institute, or the University of Illinois make no guarantee, expressed or implied, regarding the correctness of the interpretations presented in this data set and accept no liability for the consequences of decisions made by others on the basis of the information presented here.

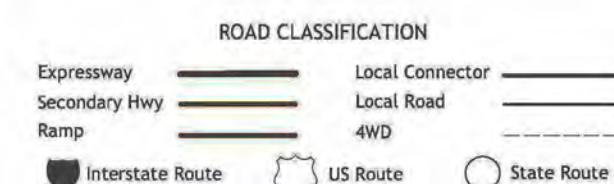
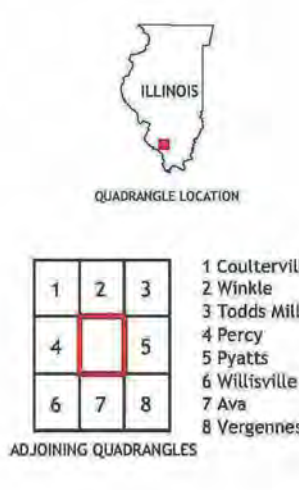
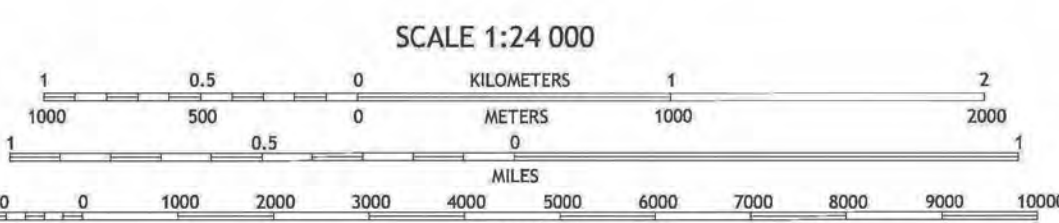
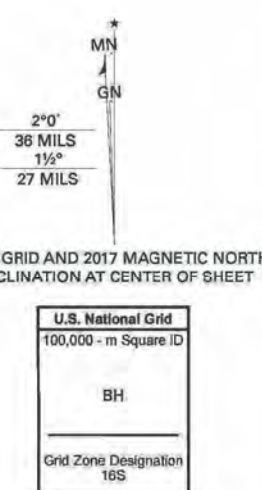
These maps were designed for use at 1:24,000. Enlarging the map may reduce accuracy, as the original scale of the source maps used to compile the outlines shown varies from 1:400 to 1:150,000, and some mine locations are known only from text descriptions. See the accompanying mine directory for the original scale of the source map used for a specific mine to check accuracy of a given portion of the map. Areas with no mines shown may still be undermined; see the unlocated mines list at the back of each mine directory.

The image of the U.S.G.S. topographic base map was projected from the original UTM to Lambert Conformal Conic.

#### Produced by the United States Geological Survey

North American Datum of 1983 (NAD83)  
World Geodetic System of 1984 (WGS84). Projection and  
160-meter grid/Universal Transverse Mercator, Zone 16S  
This map is not a legal document. Boundaries may be  
generalized for this map scale. Private lands within government  
reservations may not be shown. Obtain permission before  
entering private lands.

Imagery:.....NAP, July 2015 - October 2015  
Roads:.....U.S. Census Bureau, 2017  
Names:.....GNIS, 1980-2017  
Hydrography:.....National Hydrography Dataset, 2002-2015  
Contours:.....National Elevation Dataset, 2008-2012  
Boundaries:.....Multiple sources; see metadata file 2014-2016  
Public Land Survey System:.....BLM, 2017  
Wetlands:.....FWS National Wetlands Inventory 1981-1982



PINCKNEYVILLE, IL  
2018

**ILLINOIS**  
Illinois State Geological Survey  
PRAIRIE RESEARCH INSTITUTE

Prairie Research Institute  
Illinois State Geological Survey  
615 E. Peabody Dr.  
Champaign, IL 61820

Mine Outlines Compiled by  
Alan R. Myers

December 2009

Revised:  
Alan R. Myers 02-15-2024



# **DIRECTORY OF COAL MINES IN ILLINOIS 7.5-MINUTE QUADRANGLE SERIES PINCKNEYVILLE QUADRANGLE PERRY COUNTY**

Alan R. Myers & C. Chenoweth



2009, Updated 2024

Institute of Natural Resource Sustainability  
William W. Shilts, Executive Director  
**ILLINOIS STATE GEOLOGICAL SURVEY**  
E. Donald McKay III, Interim Director



Natural Resources Building  
615 East Peabody Drive  
Champaign, Illinois 61820

Phone 217-244-4610  
Fax 217-333-2830

This material is based upon work supported by the Illinois Mine Subsidence Insurance Fund. Any opinions, findings, and conclusions or recommendations expressed in this publication are those of the authors and do not necessarily reflect the views of the Illinois Mine Subsidence Insurance Fund.

**Cover photo** Track-mounted duckbill loading machine at a Peabody Coal Company mine, ca. 1915.

DISCLAIMER: The accuracy and completeness of mine maps and directories vary with the availability of reliable information. Maps and other information used to compile this mine map and directory were obtained from a variety of sources and the accuracy of some of the original information cannot be verified. Consequently, the Illinois State Geological Survey (ISGS) cannot guarantee the mine maps are free of errors and disclaims any responsibility for damages that may result from actions or decisions based on them.

The ISGS updates the maps and directories periodically, and welcomes any new information or corrections. Please contact the Coal Section of the ISGS at the address shown on the title page of this directory, or telephone (217) 244-4610.

© 2009 The Board of Trustees of the University of Illinois. All rights reserved.  
For permission information, contact the Illinois State Geological Survey.

# CONTENTS

INTRODUCTION .....	1
MINING IN THE PINCKNEYVILLE QUADRANGLE .....	1
PART I EXPLANATION OF MAP AND MINE SUMMARY SHEET .....	2
INTERPRETING THE MAP .....	2
Mine Type and Mining Method .....	2
Source Maps .....	3
Points and Labels .....	3
INTERPRETING A MINE SUMMARY SHEET .....	6
REFERENCES .....	8
PART II DIRECTORY OF MINES IN THE PINCKNEYVILLE QUADRANGLE .....	9
MINE SUMMARY SHEETS .....	9
Mine Index 90	
Pinckneyville Mining Company, Pinckneyville No. 5 Mine .....	9
Mine Index 177	
Illinois Sixth Vein Coal Company, Schneider Mine .....	10
Mine Index 297	
Bessemer Washed Coal Company, White Walnut Mine .....	11
Mine Index 623	
Truax-Traer Coal Company, Pyramid Mine .....	12
Mine Index 634	
Service Coal Company, Service No. 6 Mine .....	13
Mine Index 774	
H. E. Presswood Coal Company, Presswood Mine .....	14
Mine Index 864	
Consolidation Coal Company, Burning Star No. 2 Mine .....	15
Mine Index 873	
Arch of Illinois, Inc., Captain Mine .....	16
Mine Index 932	
Consolidation Coal Company, Burning Star No. 4 Mine .....	17
Mine Index 1012	
Arch of Illinois, Inc., Horse Creek Mine .....	18
Mine Index 1016	
Arch of Illinois, Inc., Conant Underground Mine .....	19
Mine Index 1041	
Knight Hawk Coal, LLC, Prairie Eagle Underground Mine .....	20
Mine Index 1054	
Knight Hawk Coal, LLC, Golden Eagle Mine .....	21
Mine Index 3115	
White Brothers Coal Company, White Mine .....	22
Mine Index 3118	
Gem Coal Company, Gem Mine .....	23
Mine Index 3120	
Donk Brothers, Beaucoup Mine .....	24
Mine Index 3121	
Manufacturers Fuel Company, Jupiter No. 4 Mine .....	25
Mine Index 3123	
Big 5 Coal Company, Big 5 Mine .....	26
Mine Index 3136	
Pyramid Coal Corporation, Pyramid Slope Mine .....	27
Mine Index 3175	
Burke Coal Company, Burke Mine .....	28
Mine Index 3176	
Pyramid Coal Corporation, Coal Stripping Mine .....	29
Mine Index 4413	
L. & M. Coal Company, Tallo Mine .....	30

Mine Index 7341	
John H. Schulze, Schulze Mine . . . . .	31
Mine Index 7346	
Biby Coal Company, Biby Mine . . . . .	32
OTHER MINES SHOWN ON PINCKNEYVILLE QUADRANGLE . . . . .	33
Mine Index 3130, Gorgen Mine . . . . .	33
Mine Index 6838 . . . . .	33
Mine Index 7336 . . . . .	33
Mine Index 7337 . . . . .	33
Mine Index 7338 . . . . .	33
Mine Index 7339 . . . . .	33
Mine Index 7340 . . . . .	33
Mine Index 7345 . . . . .	33
Mine Index 7347 . . . . .	33
MINES WHOSE LOCATIONS ARE NOT KNOWN, PINCKNEYVILLE QUADRANGLE . . . . .	33
INDEX OF MINES IN THE PINCKNEYVILLE QUADRANGLE . . . . .	35

## **INTRODUCTION**

Coal has been mined in 76 counties of Illinois. More than 7,400 coal mines have operated since commercial mining began in Illinois about 1810; fewer than 30 are currently active. To detail the extent and location of coal mining in Illinois, the Illinois State Geological Survey (ISGS) has compiled maps and directories of known coal mines. The ISGS offers maps at a scale of 1:100,000 and accompanying directories for each county in which coal mining is known to have occurred. Maps at a scale of 1:24,000 and accompanying directories, such as this, are available for selected quadrangles. Contact the ISGS for a list of these quadrangles.

These larger scale maps show the approximate positions of mines in relation to surface features such as roads and water bodies, and indicate the mining method used and the accuracy of the mine boundaries. The maps are useful for locating mine boundaries relative to specific properties and for assessing the potential for subsidence in an area. Mine boundaries compiled from final mine surveys are generally shown within 200 feet of their true position. As a result of poor cartographic quality and inaccuracies in the original mine surveys, boundaries of some older mines may be mislocated on the map by 500 feet or more. Original mine maps should be consulted in situations that require precise delineation of mine boundaries or internal workings of mined areas.

This directory serves as a key to the accompanying mine map and provides basic information on the coal mines in the quadrangle. The directory is composed of two parts. Part I explains the symbols and patterns used on the accompanying map and the summary data presented for each mine. Part II numerically lists the mines in the quadrangle and summarizes the geology and production history of each mine. Total production for the mine, not the portion in the quadrangle, is given.

## **MINING IN THE PINCKNEYVILLE QUADRANGLE**

Mining in this area began about 1 mile northwest of Pinckneyville in 1872. Beaucoup Mine (mine index 3120) operated until 1884, and the town platted nearby was named Beaucoup Mines, although that name does not appear on current maps.

The Herrin Coal was the seam most often mined in Perry County, with a thickness ranging from 4.5 to 7 feet, and a depth commonly less than 100 feet. Because of that, the coal was readily accessible by surface or underground methods. The Pyramid Slope Mine (mine index 3136) and Gorgen Mine (mine index 3130) operated where the bedrock was less than 35 feet thick, a condition that can lead to roof difficulties in underground mines. However, most of these conditions were seen in the large surface mines in the southern portion of the quadrangle, where the difficulties rarely threatened the miners' lives.

## PART I EXPLANATION OF MAP AND MINE SUMMARY SHEET

### INTERPRETING THE MAP

The map accompanying this directory shows the location of coal mines known to be present in the quadrangle. The map, corresponding to a U.S. Geological Survey (USGS) 7.5-minute quadrangle, covers an area bounded by lines of latitude and longitude 7.5-minutes apart. In Illinois, a quadrangle is approximately 6.5 miles east to west and 8.5 miles north to south, an area of about 56 square miles. The USGS generally offers one map of mines per quadrangle. In some areas where extensive mining occurred in two or more overlapping seams, separate maps are compiled for mines in each seam to maintain readability of the map.

#### Mine Type and Mining Method

The mine type is indicated on the map by pattern color: green represents surface mines; red and yellow represent underground mines. The red patterns are used for areas of underground mining that are documented by a primary or secondary source map. A yellow pattern is used for cases where no map of the mine workings is available, but a general area of mining can be inferred from property maps or production figures. The patterns indicate the main mining methods used in underground mines. The methods are (1) room and pillar and (2) high extraction. The method used gives some indication of the amount and pattern of coal extraction within each mined area, and has some influence on the timing and type of subsidence that can occur over a mine.

The following discussion and illustrations of mining methods are based on Guither et al. (1984).

In room-and-pillar mines, coal is removed from haulage-ways (entries) and selected areas called rooms. Pillars of unmined coal are left between the rooms to support the roof. Depending on the size of rooms and pillars, the amount of coal removed from the production areas will range from 40% to 70%.

**Room and Pillar** - mining is divided into six categories:

- room-and-pillar basic (RPB, fig. 1A), an early method that did not follow a preset mining plan and therefore resulted in very irregular designs;
- modified room and pillar (MRP, fig. 1B);
- room-and-pillar panel (RPP, fig. 1C);
- blind room and pillar (BRP, fig. 1D);
- checkerboard room and pillar (CRP, fig. 1E);
- room and pillar (RP), a classification used when the specific type of room-and-pillar mining is unknown.

Blind and checkerboard are the most common types of room-and-pillar mining used in Illinois today. The knowledge of room-and-pillar mining methods gives a trained engineer information on the nature of subsidence that may occur. A more extensive discussion of subsidence can be found in Bauer et al. (1993).

**High-extraction** These mining methods are subdivided into high-extraction retreat (HER, Fig 1F) and longwall (LW, Fig 1G, 1H). In these methods, much of the coal is removed within well defined areas of the mine. Subsidence of the surface above these areas occurs within weeks. Once the subsidence activity ceases, the potential for further movement over these areas is low; however, subsidence may continue for several years after mining.

High-extraction retreat mining is a form of room-and-pillar mining that extracts most of the coal. Rooms and pillars are developed in the panels, and the pillars are then systematically removed (fig. 1F).

In early (pre-1960) longwall mines, mining advanced in multiple directions from a central shaft (fig. 1G). Large pillars of coal were left around the shaft, but all coal was removed beyond these pillars. Miners placed rock and wooden props and cribs in the mined-out areas to support the mine roof. The overlying rock gradually settled onto these supports, thus producing subsidence at the surface. In post-1959 longwall mines, room-and-pillar methods have been used to develop the main entries of the mine and panel areas. Modern longwall methods extract 100 percent of the coal in the panel areas (fig. 1H).



## SOURCE MAPS

Mine outlines depicted on the map are, whenever possible, based on maps made from original mine surveys. The process of compiling and digitizing the quadrangle map may produce errors of less than 200 feet in the location of mine boundaries. Larger errors of 500 feet or more are possible for mines that have incomplete or inaccurate source maps.

Because of the extreme complexity of some mine maps, detailed features of mined areas have been omitted. The digitized mine boundary includes the exterior boundary of all rooms or entries that were at least 80 feet wide or protruded 500 feet from the main mining area. Unmined areas between mines are shown if they are at least 80 feet wide; unmined blocks of coal within mines are shown if they are at least 400 feet on each side. Original source maps should be consulted when precise information on mine boundaries or interior features is needed.

The mine summary sheet lists the source maps used to determine each mine outline. The completeness of map sources is indicated on the map by a line symbol at the mine boundary. Source maps are organized in five categories.

**Final mine map** The mine outline was digitized from an original map made from mine surveys conducted within a few months after production ceased. The date of the map and the last reported production are listed on the summary sheet.

**Not a final map** The mine is currently active or the mine outline was made from a map based on mine surveys conducted more than a few months before production ceased. This implies the actual mined-out area is probably larger than the outline on the map. The mine summary sheet indicated the dates of source maps and the last reported production, as well as the approximate tonnage mined between these two dates (if the mine is abandoned). The summary sheet also lists the approximate acreage mined since the date of the map and, in some cases, indicates the area where additional mining may have taken place. This latter information is determined by locating on the map the active faces relative to probable boundaries of the mine property.

**Undated map** The source map was undated, so it may or may not be based on a final mine survey. When sufficient data are available, the probable acreage of the mined area is estimated from reported production, average seam thickness and a recovery rate comparable to other mines in the area. This information is listed in the summary sheet for the mine.

**Incomplete map** The source map did not show the entire mine. The summary sheet indicates the missing part of the mine map and the acreage of the unmapped area, which is estimated from the amount of coal known to have been produced from the mine.

**Secondary source map** The original mine map was not found so the outline shown was determined from secondary sources (e.g., outlines from small-scale regional maps published in other reports). The summary sheet describes the secondary sources.

## POINTS AND LABELS

The locations of all known mine openings (shafts, slopes, and drifts) and surface mine tipples are plotted on the map. Tipples are areas where coal was cleaned, stockpiled, and loaded for shipping.

Only openings or tipples are plotted for mines without source maps. If the precise locations of these features are unknown, a special symbol is used to indicate the approximate location of the mine.

Each mine on the map is labeled with the names of the mine and operating company, ISGS mine index number, and years of operation (if known) if space permits. A seam designation is given on maps where more than one seam was mined. For a mine that operated under more than one name, only the most recent name is generally given. When a mine changed names or ownership shortly before closing, an earlier name is listed. All company and mine names are listed on the mine summary sheet in the directory, under the production history segment.





**Figure 1** Mining methods: (A) room-and-pillar basic (RPB), (B) modified room and pillar (MRP), (C) room-and-pillar panel (RPP), (D) blind room and pillar (BRP).





**Figure 1 (cont.)** Mining methods: (E) checkerboard room and pillar (CRP), (F) high extraction retreat (HER), (G) early (pre-1960) longwall, (H) post-1959 longwall





**Figure 2** Generalized stratigraphic section, showing approximate vertical relations of coals in Illinois.

## INTERPRETING A MINE SUMMARY SHEET

The mine summary sheet is arranged numerically by mine index number. Index numbers are shown on the map and in the mine listing. The mine summary sheet provides the following information (if available).

**Company and mine name** The last company or owner of the mine is used, unless no production was recorded for the last owner. In that case, the penultimate owner is listed. Mines often have no specific name; in these cases, the company name is also used as the mine name.

**Type** *Underground* denotes a subsurface mine in which the coal was reached through a shaft, slope, or a drift entry. *Surface* denotes a surface, open pit or strip mine.

**Total mined-out acreage shown** The total acreage of the mined area mapped, including any acreage mined on adjacent quadrangles, is calculated from the digitized outline of the mine. The acreage of large barrier pillars depicted on the map is excluded from the mined-out acreage. Small pillars not digitized are included in the acreage calculation. If the mine outline is not based on a final mine map, the acreage is followed by an estimate of additional acres that may have been mined. The estimate is determined from reported mine production, approximate thickness of the coal, and recovery rates calculated from nearby mines that used similar mining methods.

## SHAFT, SLOPE, DRIFT OR TIPPLE LOCATIONS

**Shaft, slope, drift, or tippie locations** Locations of all known former entry points to underground mines or the location of coal cleaning, tippie, and shipping equipment used by the mine's facility are listed. The location is described in terms of county, township and range (Twp-Rge), section, and location within the section by quarters. NE SW NW, for instance, would describe the location in the northeast quarter of the southwest quarter of the northwest quarter. When sections are irregular in size, the quarters remain the same size and are oriented (or "registered") from the southeast corner of the section. Approximate footage from the section lines (FEL = from east line, FNL = from north line, for example) is given when that information is known; this indicates a surveyed location and is not derived from maps. Entry points are also plotted on the map and coded for the type of entry or tippie. A mine opening may have had many purposes during the life of the mine. Old hoist shafts are often later used for air and escape shafts; this information is included in the directory when known. The tippie for underground mines was generally located near the main shaft or slope. At surface mines, coal was sometimes hauled to a central tippie several miles from the mine pit.

## GEOLOGY

**Seam(s) mined** The name of the coal seam(s) mined is listed, if known. If multiple seams were mined, they are all listed, although the mined-out area for each seam may be shown on separate maps. Figure 2 shows the stratigraphic section of the coal-bearing interval in Illinois, and the vertical relations among the coals.

**Depth** The depth to the top of the seam in the vicinity of the shaft is listed, if known. The depth is determined from notes made by geologists who visited the mine during its operation or from drill hole data in ISGS files. Depth generally varies little over the extent of a mine; however, reported depths for an individual mine may vary. Depth for surface-mined coals varies, and is usually represented as a range.



**Thickness** The approximate thickness of the mined seam is shown, if known. Thickness also comes from notes of geologists who visited the mine during its operation or from borehole data in ISGS files. Minimum, maximum, and average thicknesses are given when this information is available.

**Mining method** The principal mining method used at the mine (figs. 1A-H) is listed. See the mining methods section at the beginning of this directory for a discussion of this parameter.

**Geologic problems reported** Any known geologic problems, such as faults, water seepage, floor heaving, and unstable roof, encountered in the mine are reported. This information is from notes made by ISGS geologists who visited the mine, or from reports by mine inspectors published by the Illinois Department of Mines and Minerals, or from the source map(s). Geologic problems are not reported for active mines.

## PRODUCTION HISTORY

**Production history** Tons of coal produced from the mine by each mine owner are totaled. When the source map used for the mine outline is not a final mine map, the tonnage produced since the date of the map is identified. For mines that extend into adjacent quadrangles, the tonnage reported includes areas mined in adjacent quadrangles.

## SOURCE OF DATA

**Source map** This section lists information about the map(s) used to compile the mine outline and the locations of tipples and mine openings. In some cases more than one source map was used. For example, a map drawn before the mine closed may provide better information on original areas of the mine than a later map. When more than one map was used, the bibliography section explains what information was taken from each source.

**Date** The date of the most recent mine survey listed on the source map is reported.

**Original scale** The original scale of the source map is listed. Many maps are photo-reductions and are no longer at their original scale. The original scale gives some indication of the level of detail of the mine outline and the accuracy of the mine boundary relative to surface features. Generally, the larger the scale, the greater the accuracy and detail of the mine map. Mine outlines taken from source maps at scales smaller than 1:24,000 may be highly generalized and may well be inaccurately located with respect to surface features.

**Digitized scale** The scale of the digitized map is reported. The scale may be different from that of the original source map. In many cases the digitized map was made from a photo-reduction of the original source map, or the source map was not in a condition suitable for digitizing and the mine boundaries were transferred to another base map.

**Map type** Source maps are classified into five categories to indicate the probable completeness of the map. See discussion of source maps in the previous section.

**Annotated bibliography** Sources that provide information about the mine are listed, with the data taken from each source. Some commonly used sources are described below. Full bibliographic references are given for all other sources. Unless otherwise noted, all sources are available for public inspection at the ISGS.

**Coal Reports** Published since 1881, these reports contain tabular data on mine ownership, production, employment, and accidents. Some volumes include short descriptions made by mine inspectors of physical features and conditions in selected mines.

**Directory of Illinois Coal Mines** This source is a compilation of basic data about Illinois coal mines, originally gathered by ISGS staff in the early 1950s. Sources used for this directory are undocumented, but they are primarily Illinois Department of Mines and Minerals annual reports, ISGS mine notes, and coal company officials.

**ENR Document 85/01**, Guither, H. D., J. K. Hines, and R. A. Bauer, 1985 The Economic Effect of Underground Mining Upon Land Used for Illinois Agriculture: Illinois Department of Energy and Natural Resources Document 85/01, 185 p.

**Microfilm map** The U.S. Bureau of Mines maintains a microfilm archive of mine maps. A microfilm file for Illinois is available for public viewing at the ISGS.



*Mine notes* ISGS geologists have visited mines or contacted mine officials throughout the state since the early 1900s. Notes made during these visits range from brief descriptions of the mine location to long narratives (including sketches) of mining conditions and geology.

*Federal Land Bank of St. Louis, Preliminary Reports on Subsidence Investigations* Mining engineers working for the Federal Land Bank of St. Louis mapped areas of subsidence due to coal mining in the early 1930s. These reports often include county maps of mine properties with mined-out areas including shaft locations, as well as subsidence areas.

## REFERENCES

- Bauer, R. A., B. A. Trent, and P. B. Dumontelle, 1993, Mine Subsidence in Illinois: Facts for the Homeowner Considering Insurance, Illinois State Geological Survey, Environmental Geology Note 144, 16p.
- Guither, H. D., J. K. Hines, and R. A. Bauer, 1985, The Economic Effects of Underground Mining Upon Land Used for Illinois Agriculture, Illinois Department of Energy and Natural Resources Document 85/01, 185p.
- McDonough & Co., publishers, 1883, Combined History of Randolph, Monroe and Perry Counties, Illinois, published by J. L. McDonough & Co., Philadelphia, Pennsylvania.
- Treworgy, C. G., C. A. Chenoweth, J. L. McBeth, and C. P. Korose, 1997, Availability of Coal Resources for Mining in Illinois: August, Kewanee North, Mascoutah, Pinckneyville, and Roodhouse East Quadrangles, Adams, Brown, Greene, Henry, Perry, Schuyler, and St. Clair Counties, Illinois State Geological Survey, Open File Series, 1997-10, 72p.



## PART II DIRECTORY OF MINES IN THE PINCKNEYVILLE QUADRANGLE

### MINE SUMMARY SHEETS

A summary sheet on the geology and production history of each mine in the Pinckneyville Quadrangle is provided. These summary sheets are arranged numerically by mine index number. Consult Part I for a complete explanation of the data listed in the summary sheet.

#### Mine Index 90

#### Pinckneyville Mining Company, Pinckneyville No. 5 Mine

Type: Underground    Total mined-out acreage shown: 598

### SHAFT, SLOPE, DRIFT or TIPPLE LOCATIONS

Type	County	Township-Range	Section	Quarters-Footage
Main shaft *	Perry	5S 3W	23	SE NW NE
Air shaft	Perry	5S 3W	23	SE NW NE

\* The workings of Pinckneyville No. 5 were connected underground to the workings of the Service No. 6 Mine (mine index 634) and the boundary between the two mines is unclear.

### GEOLOGY

Seam(s) Mined	Depth (ft)	Thickness (ft)			Mining Method
		Min	Max	Avg	
Herrin	135-149	6.5	8.5	7.0	MRP

Geologic Problems Reported: Slips and rolls contributed to bad roof conditions. Top coal was left to support the roof only near the shaft. The mine roof was about half black shale and half white top and gray shale. A microfilm source map (document 352127) showed areas of bad roof, particularly in the southern part of the mine and in 23-T5S-R3W. These areas were labeled "bad top" on the source map, but similar areas were also unmined in the northern part of the mine, without the label. Other poor geologic conditions may have existed. The seam contained considerable bone coal and shale layers. Pyrite was present in the shale layers as well as in lenses and nodules in the coal seam.

### PRODUCTION HISTORY

Company	Mine Name	Years	Production (tons)
Ritchey Coal Company	Ritchey	1909-1920	1,457,475
Southern Gem Coal Corporation	Southern Gem No. 5	1920-1926	750,107
Brewerton Coal Company *	Brewerton No. 45	1927-1933	432,750
Briar Hill Coal Mining Company	Brewerton No. 45	1934-1936	103,662
Pinckneyville Mining Company	Pinckneyville No. 5	1937-1951	997,377
			3,741,371

\* Also known as Interstate Coal Company, for at least some of the years when production was reported under Brewerton Coal Company.

Last reported production: November 1951

### SOURCES OF DATA

Source Map	Date	Original Scale	Digitized Scale	Map Type
Microfilm, document 352107	2-28-1953	1:2400	1:5131	Final

### Annotated Bibliography (data source, brief description of information)

Coal Reports - Production, ownership, years of operation.

Directory of Illinois Coal Mines (Perry County) - Mine names, mine index, ownership, years of operation.

Mine notes (Perry County) - Mine type, shaft location, seam, depth, thickness, geologic problems.

Microfilm map, document 352107, reel 03138, frames 97 & 98 - Shaft locations, mine outline, mining method.

Microfilm map, document 352127, reel 03138, frames 133 & 134 - Geologic problems.



**Mine Index 177**  
**Illinois Sixth Vein Coal Company, Schneider Mine**

Type: Underground    Total mined-out acreage shown: 13    Production indicates approximately 2 acres were mined after the map date.

**SHAFT, SLOPE, DRIFT or TIPPLE LOCATIONS**

Type	County	Township-Range	Section	Quarters-Footage
Main shaft	Perry	5S 3W	13	SW NW SE
Air shaft	Perry	5S 3W	13	SW NW SE

**GEOLOGY**

Seam(s) Mined	Depth (ft)	Thickness (ft)			Mining Method
		Min	Max	Avg	
Herrin	74	4.0	6.0	5.0	MRP

Geologic Problems Reported: Slips and rolls were present in the mine. The white top roof was very treacherous, but was present only in patches throughout the mine. The main roof material was shale 1 to 24 inches thick, with 6 feet of limestone above the shale. Bedded impurities included pyrite and the shaley blue band. The floor was 6 feet of fire clay.

**PRODUCTION HISTORY**

Company	Mine Name	Years	Production (tons)
J. Schneider & Buck Norberg	Schneider & Norberg	1911-1912	534
Schneider Coal Company	Schneider	1912-1917	18,752
Illinois Sixth Vein Coal Company	Schneider	1917-1920	74,841
Illinois Sixth Vein Coal Company	Schneider	1920-1921	12,011 *
			106,138

\* Production after map date

Last reported production: June 1921

**SOURCES OF DATA**

Source Map	Date	Original Scale	Digitized Scale	Map Type
Microfilm, document 352109	8-1920	1:2400	1:4634	Not final

Annotated Bibliography (data source, brief description of information)

Coal Reports - Production, ownership, years of operation.

Directory of Illinois Coal Mines (Perry County) - Mine names, mine index, ownership, years of operation.

Mine notes (Perry County) - Shaft location, seam, depth, thickness, geologic problems.

Microfilm map, document 352109, reel 03138, frame 100 - Shaft locations, mine outline, mining method.



**Mine Index 297****Bessemer Washed Coal Company, White Walnut Mine**

Type: Underground    Total mined-out acreage shown: 380 as a general area of mining; the company map shows only 5 acres.    Production indicates approximately 280 acres were mined.

**SHAFT, SLOPE, DRIFT or TIPPLE LOCATIONS**

Type	County	Township-Range	Section	Quarters-Footage
Main shaft	Perry	5S 3W	25	SE NW NW
Air shaft	Perry	5S 3W	25	NE SW NW

**GEOLOGY**

Seam(s) Mined	Depth (ft)	Thickness (ft)			Mining Method
		Min	Max	Avg	
Herrin	92			6.0	MRP

Geologic Problems Reported: The source map showed the Pinckneyville Fault 300 feet west of the east line of 26-T5S-R3W, with 32 feet of displacement.

**PRODUCTION HISTORY**

Company	Mine Name	Years	Production (tons)
White Walnut Coal Company	White Walnut	1900-1907	894,799
Bessemer Washed Coal Company	White Walnut	1907-1911	628,461
			<u>1,523,260</u>

Last reported production: September 1911

**SOURCES OF DATA**

Source Map	Date	Original Scale	Digitized Scale	Map Type
Microfilm, document 352116	Undated	1:1200	1:2068	Undated
Federal Land Bank Report	9-21-1933	1:126720	1:126720	Secondary source

Annotated Bibliography (data source, brief description of information)

Coal Reports - Production, ownership, years of operation.

Directory of Illinois Coal Mines (Perry County) - Mine names, mine index, ownership, years of operation.

Mine notes (Perry County) - Mine type, shaft location, seam, depth, thickness.

Microfilm map, document 352116, reel 03138, frame 114 - Shaft locations, mine outline, mining method, geologic problems.

Federal Land Bank Report (Perry County) - Mine outline.



**Mine Index 623****Truax-Traer Coal Company, Pyramid Mine**

Type: Surface    Total mined-out acreage shown: 4,153

**SHAFT, SLOPE, DRIFT or TIPPLE LOCATIONS**

Type	County	Township-Range	Section	Quarters-Footage
Tipple	Perry	5S 3W	36	SW SE SE

**GEOLOGY**

Seam(s) Mined	Depth (ft)	Thickness (ft)			Mining Method
		Min	Max	Avg	
Herrin	18-48			5.67-6.0	Surface

Geologic Problems Reported: Much of the rock above the coal was limestone. The seam had clay bands and lenses. Facings of pyrite and calcite were present in vertical cracks. Some bands of stony pyrite were persistent over a considerable distance.

**PRODUCTION HISTORY**

Company	Mine Name	Years	Production (tons)
Pyramid Coal Corporation *	Pyramid	1926-1951	27,538,438
Truax-Traer Coal Company	Pyramid	1952-1959	<u>3,254,230</u>
			30,792,668

\* Some pits may have been leased to and operated as Binkly Coal Company.

Last reported production: September 1959

**SOURCES OF DATA**

Source Map	Date	Original Scale	Digitized Scale	Map Type
NAIP digital ortho-photo quadrangle	2004	1:6000	1:6000	Secondary source
Company, 4103.P42 i5.1-63	8-1-1959	1:12000	1:12000	Not final **

\*\* The mined area shown on the accompanying map is the approximate size expected for the reported production. This suggests that the mine outline is complete.

Annotated Bibliography (data source, brief description of information)

Coal Reports - Production, ownership, years of operation, depth.

Directory of Illinois Coal Mines (Perry County) - Mine names, mine index, ownership, years of operation.

Mine notes (Perry County) - Mine type, mine location, seam, depth, thickness.

National Agriculture Imagery Program map, digital ortho-photo quadrangle map, Pinckneyville Quadrangle, 2004 - Mine outline.

Company map, ISGS map library, 4103.P42 i5.1-63 - Mine outline, mining method.



**Mine Index 634**  
**Service Coal Company, Service No. 6 Mine**

Type: Underground Total mined-out acreage shown: 51 The boundary between Service No. 6 Mine and Pinckneyville No. 5 Mine can not be discerned on the source maps. Production indicates approximately 90 acres were mined.

**SHAFT, SLOPE, DRIFT or TIPPLE LOCATIONS**

Type	County	Township-Range	Section	Quarters-Footage
Main shaft *	Perry	5S 3W	23	SE NW NW

\* No air shaft was shown on the source map. Ventilation was probably achieved via the underground connections with Pinckneyville No. 5 Mine (mine index 90).

**GEOLOGY**

Seam(s) Mined	Depth (ft)	Thickness (ft)			Mining Method
		Min	Max	Avg	
Herrin	145-178			6.0-7.5	MRP

Geologic Problems Reported: The source map shows a fault in NE NE 22-T5S-R3W.

**PRODUCTION HISTORY**

Company	Mine Name	Years	Production (tons)
Southern Gem Coal & Coke Company	Southern Gem No. 6	1922-1925	177,768
Abandoned & idle	Southern Gem No. 6	1926-1932 **	None
Beaucoup Coal Company *	Beaucoup No. 6	1933-1950 ***	352,500
Service Coal Company	Service No. 6	1951-1955	<u>29,690</u>
			559,958

\*\* The 1935-1944 mine map indicated the 1931 mine extensions were from an Interstate Coal Company map. The mine may have operated between 1930 and 1932 and produced less than 1,000 tons per year. Such mines were not listed in the Coal Reports during that period.

\*\*\* Idle 1950

Last reported production: April 1955

**SOURCES OF DATA**

Source Map	Date	Original Scale	Digitized Scale	Map Type
Microfilm, document 352111	11-21-1955	1:2400	1:3972	Final

Annotated Bibliography (data source, brief description of information)

Coal Reports - Production, ownership, years of operation, depth, thickness.

Directory of Illinois Coal Mines (Perry County) - Mine names, mine index, ownership, years of operation.

Mine notes (Perry County) - Mine type, shaft location, seam.

Microfilm map, document 352111, reel 03138, frame 105 - Shaft locations, mine outline, mining method, geologic problems.



**Mine Index 774****H. E. Presswood Coal Company, Presswood Mine**

Type: Underground    Total mined-out acreage shown: 31    Less than 1 acre was mined after the map date.

**SHAFT, SLOPE, DRIFT or TIPPLE LOCATIONS**

Type	County	Township-Range	Section	Quarters-Footage
Main shaft	Perry	5S 3W	13	SE SE SW
Air shaft	Perry	5S 3W	13	SW SE SW

**GEOLOGY**

Seam(s) Mined	Depth (ft)	Thickness (ft)			Mining Method
		Min	Max	Avg	
Herrin	84-92	5.5	6.5	6.0	RPB

Geologic Problems Reported: The roof was generally a gray shale, often composed of 3 to 6 feet of white top, some of which came down with the coal. A "claw" of limestone cap rock descended to within 2 feet of the floor (300 feet southwest of the new hoist shaft). This area also had many coal balls in the black shale. In the western part of the mine, the limestone was 6 inches above the coal. In the eastern part, up to 4 feet of black shale was between the coal and limestone. The blue band was 7 inches above the floor, and was composed of up to 2 inches of clay and shale.

**PRODUCTION HISTORY**

Company	Mine Name	Years	Production (tons)
Faust & Turner	Faust & Turner	1889-1890	900
Faust, Turner & Malone	Faust, Turner & Malone	1890-1891	650
Faust & Company	Faust	1891-1892	1,972
Faust, Turner & Burk	Faust, Turner & Burk	1892-1895	34,578
Turner & Faust Coal Company	Turner & Faust	1895-1902	55,795
Strait Coal Company	Strait	1902-1913	84,094
Sherman Haggard	Haggard	1913-1914	2,076
Montgomery Brothers & Langwith	Montgomery & Langwith	1914-1915	4,165
Montgomery Coal Company	Montgomery	1915-1918	34,551
Louden Coal Company	Louden	1918-1924	37,870
Anderson & Langworth	Anderson & Langworth	1924-1927 *	3,290
North Side Coal Company	North Side	1928-1928	2,200
Wilson & Bird	Wilson & Bird	1929-1929	1,400
S. G. Wilkerson, H. Bird & R. Rudloff	Wilkerson, Bird & Rudloff	1930-1930	2,600
Henson & Davison Brothers	Henson & Davison	1931-1932	2,700
Biby Coal Company	Biby	1933-1937	13,403
Bird & Tanner	Bird & Tanner	1937-1937	291
H. E. Presswood Coal Company	Presswood	1938-1939	693 **
			283,228

\* Idle 1926 & 1927

\*\* Production after map date

Last reported production: 1939

**SOURCES OF DATA**

Source Map	Date	Original Scale	Digitized Scale	Map Type
Microfilm, document 352082	1937	1:2400	1:5296	Not final
Federal Land Bank Report	9-21-1933	1:126720	1:126720	Secondary source

Annotated Bibliography (data source, brief description of information)

Coal Reports - Production, ownership, years of operation.

Directory of Illinois Coal Mines (Perry County) - Mine names, mine index, ownership, years of operation.

Mine notes (Perry County) - Mine type, shaft location, seam, depth, thickness, geologic problems.

Microfilm map, document 352082, reel 03138, frame 62 - Shaft locations, mine outline, mining method.

Federal Land Bank Report (Perry County) - Mine outline (western side).



**Mine Index 864**  
**Consolidation Coal Company, Burning Star No. 2 Mine**

Type: Surface    Total mined-out acreage shown: 8,293

**SHAFT, SLOPE, DRIFT or TIPPLE LOCATIONS**

Type	County	Township-Range	Section	Quarters-Footage
Tipple	Perry	5S 2W	22	
Auger	Perry	5S 2W	21	

**GEOLOGY**

Seam(s) Mined	Depth (ft)	Thickness (ft)			Mining Method
		Min	Max	Avg	
Herrin	42-113			5.17-6.7	Surface

Geologic Problems Reported: The roof was generally Brereton Limestone or Anna Shale. Lenses or pods of Energy Shale were sometimes present over the coal, up to 10 feet wide and 1 foot thick. Calcite and pyrite were often seen on vertical fracture faces.

**PRODUCTION HISTORY**

Company	Mine Name	Years	Production (tons)
Truax-Traer Coal Company	Burning Star No. 2	1951-1970	23,866,695
Consolidation Coal Company	Burning Star No. 2	1971-1995	32,075,819
			55,942,514

Last reported production: 1995

**SOURCES OF DATA**

Source Map	Date	Original Scale	Digitized Scale	Map Type
Company, 4103.P42 i5.1-73	5-15-1995	1:4800	1:4800	Final
Company, 4102 i5.1-25	12-1951	1:4800	1:4800	Not final
Company, 6-253C	1959	1:62500	1:62500	Not final
ISGS map library, 4103.P42 i5.1-65	2-17-1970	1:62500	1:62500	Secondary source

Annotated Bibliography (data source, brief description of information)

Coal Reports - Production, ownership, years of operation, depth, thickness.  
 Directory of Illinois Coal Mines (Perry County) - Mine names, mine index, ownership, years of operation.  
 Mine notes (Perry County) - Mine type, mine location, seam, geologic problems.  
 Company map, ISGS map library, 4103.P42 i5.1-73 - Mine outline (auger mining, surface mining, in T5S-R2W).  
 Company map, ISGS map library, 4102 i5.1-25 - Mine outline (near Du Quoin).  
 Company map, Coal Section files, 6-253C - Mine outline (1950-1959).  
 ISGS map library, 4103.P42 i5.1-65, compilation map by Coal Section - Mine outline.



**Mine Index 873**  
**Arch of Illinois, Inc., Captain Mine**

Type: Surface    Total mined-out acreage shown: 10,241

**SHAFT, SLOPE, DRIFT or TIPPLE LOCATIONS**

Type	County	Township-Range	Section	Quarters-Footage
Tipple	Perry	6S 4W	15	E ½ SE SW
Auger	Perry	6S 4W	8	NE
Pit	Perry	6S 4W	20,21,28,29	

**GEOLOGY**

Seam(s) Mined	Depth (ft)	Thickness (ft)			Mining Method
		Min	Max	Avg	
Danville	45-75		4.0	1.5-2.5	Surface
Herrin	35-77			5.7-6.25	Surface
Springfield	70-107			4.0-4.9	Surface

Geologic Problems Reported: The Brereton Limestone and Anna Shale were irregular in thickness. When one was thin or absent, the other was thick. Usually, the Anna Shale was 1 to 5 feet thick. Energy Shale was sometimes present, in pods up to 30 feet across. In some places, the glacial till eroded all rock above the coal, and sometimes the Herrin Coal was eroded completely. Generally, the overburden above the Herrin Coal was 25 feet of glacial deposits and 25 feet of bedrock. Slickensided fault planes were evident in the Herrin Coal in one pit. A dike was observed in the Springfield Coal. The interval between the Herrin and Springfield Coals was as low as 22 feet in one pit. Pyrite nodules were found in the Anna Shale and in the underclay of the Herrin Coal.

**PRODUCTION HISTORY**

Company	Mine Name	Years	Production (tons)
Southwestern Illinois Coal Corporation	Captain	1964-1983	78,243,440
Arch of Illinois, Inc.	Captain	1984-1998	54,460,579
			132,704,019

Last reported production: 1998

**SOURCES OF DATA**

Source Map	Date	Original Scale	Digitized Scale	Map Type
Coal Section files, dxf files	1-1999	1:6000	1:6000	Final

Annotated Bibliography (data source, brief description of information)

Coal Reports - Production, ownership, years of operation, depth, thickness.  
 Directory of Illinois Coal Mines (Perry County) - Mine names, mine index, ownership, years of operation.  
 Mine notes (Perry County) - Mine type, mine location, seam, geologic problems.  
 Coal Section files, dxf format from company - Mine outline.  
 IDNR website, Permit Viewer - Mine outline (verify pit identification).  
 Company map, ISGS map library, 4103.P42 i5.1-71, sheets 1-4 - Verify pit identification.



**Mine Index 932**  
**Consolidation Coal Company, Burning Star No. 4 Mine**

Type: Surface    Total mined-out acreage shown: 5,620

**SHAFT, SLOPE, DRIFT or TIPPLE LOCATIONS**

Type	County	Township-Range	Section	Quarters-Footage
Pit or tipple	Perry	6S 4W	3	NW

**GEOLOGY**

Seam(s) Mined	Depth (ft)	Thickness (ft)			Mining Method
		Min	Max	Avg	
Danville	30			1.5-2.0	Surface
Herrin	40-85			5.9-6.5	Surface
Springfield	90-110			3.0-3.83	Surface

Geologic Problems Reported: In some places, the Brereton Limestone rested directly on the coal, with no intervening Anna Shale. The Herrin and Springfield Coals both thinned along a closed anticlinal structure. Coal balls also were found above the Springfield Coal on the east flank of that structure. Concretions were also found in the Anna Shale above the Herrin Coal. Pods of Energy Shale were also found in erosional features on the Herrin Coal.

**PRODUCTION HISTORY**

Company	Mine Name	Years	Production (tons)
Consolidation Coal Company	Burning Star No. 4	1973-1997	56,370,819
			56,370,819

Last reported production: 1997

**SOURCES OF DATA**

Source Map	Date	Original Scale	Digitized Scale	Map Type
Company, 4103.P42 i5.1-78	8-31-1997	1:4800	1:4800	Final *
NAIP digital ortho-photo quadrangle	2004	1:6000	1:6000	Secondary source

\* Final for the north pit, also known as the Jamestown Mine

Annotated Bibliography (data source, brief description of information)

Coal Reports - Production, ownership, years of operation, seam, depth, thickness.  
 Directory of Illinois Coal Mines (Perry County) - Mine names, mine index, ownership, years of operation.  
 Mine notes (Perry County) - Mine type, mine location, geologic problems.  
 Microfilm map, document 351452, reel 03136, frames 158, 159 - Mine outline, mining method.  
 National Agriculture Imagery Program map, digital ortho-photo quadrangle map, Pinckneyville Quadrangle, 2004 - Mine outline.



**Mine Index 1012****Arch of Illinois, Inc., Horse Creek Mine**

Type: Surface Total mined-out acreage shown: 760 surface and 57 auger in Herrin Coal and 760 and 16 auger in Springfield Coal

**SHAFT, SLOPE, DRIFT or TIPPLE LOCATIONS**

Type	County	Township-Range	Section	Quarters-Footage
Tipple	Perry	5S 4W	25	
Auger	Perry	5S 4W	24	

**GEOLOGY**

Seam(s) Mined	Depth (ft)	Thickness (ft)			Mining Method
		Min	Max	Avg	
Danville	40-127			2 *	Surface
Herrin	40-127			6.17 *	Surface
Springfield	40-127			4.0 *	Surface

\* The thickness ranged from a low of 6.17 feet where Herrin alone was mined to a total of 12.5 feet. The Springfield and Danville Coal thicknesses are approximated.

Geologic Problems Reported:**PRODUCTION HISTORY**

Company	Mine Name	Years	Production (tons)
Arch of Illinois, Inc.	Horse Creek	1986-1994	<u>9,892,269</u> 9,892,269

Last reported production: 1994

**SOURCES OF DATA**

Source Map	Date	Original Scale	Digitized Scale	Map Type
Company, 4103.P42 i5.1-77, sheet 1	3-1996	1:6000	1:6000	Final
NAIP digital ortho-photo quadrangle	2004	1:6000	1:6000	Secondary source

Annotated Bibliography (data source, brief description of information)

Coal Reports - Production, ownership, years of operation, depth, thickness.

Directory of Illinois Coal Mines (Perry County) - Mine names, mine index, ownership, years of operation.

Mine notes (Perry County) - Mine location, seam.

Company map, ISGS map library, 41-3.P42 i5.1-77, sheet 1 - Mine outline, mining method.

National Agriculture Imagery Program map, digital ortho-photo quadrangle map, Pinckneyville Quadrangle, 2004 - Mine outline.



**Mine Index 1016****Arch of Illinois, Inc., Conant Underground Mine**

Type: Underground    Total mined-out acreage shown: 2,404

**SHAFT, SLOPE, DRIFT or TIPPLE LOCATIONS**

Type	County	Township-Range	Section	Quarters-Footage
Main drift	Perry	5S 3W	31	NW SE NW
Air drift	Perry	5S 3W	31	NW SE NW

**GEOLOGY**

Seam(s) Mined	Depth (ft)	Thickness (ft)			Mining Method
		Min	Max	Avg	
Herrin	120-150			6.0	LW

Geologic Problems Reported:

**PRODUCTION HISTORY**

Company	Mine Name	Years	Production (tons)
Cutler Mining Company	Conant Surface	1991-1992	1,123,556
Arch of Illinois, Inc.	Conant Underground	1993-1999	<u>13,080,126</u>
			14,203,682

Last reported production: December 3, 1999

**SOURCES OF DATA**

Source Map	Date	Original Scale	Digitized Scale	Map Type
Company, 4103.P42 i5.1-74	12-22-1999	1:4800	1:4800	Final
Company, 4103.P42 i5.1-72	2-1-1992	1:2400	1:2400	Not final

Annotated Bibliography (data source, brief description of information)

Coal Reports - Production, ownership, years of operation, depth, thickness.

Directory of Illinois Coal Mines (Perry County) - Mine names, mine index, ownership, years of operation.

Mine notes (Perry County) - Mine location, seam.

Company map, ISGS map library, 4103.P42 i5.1-74 - Drift locations, mine outline, mining method.

Company map, ISGS map library, 4103.P42 i5.1-74 - Mine outline, mining method.



**Mine Index 1041****Knight Hawk Coal, LLC, Prairie Eagle Underground Mine**

Type: Underground    Total mined-out acreage shown: 7,002

**SHAFT, SLOPE, DRIFT or TIPPLE LOCATIONS**

Type	County	Township-Range	Section	Quarters-Footage
Main drift, north mine	Perry	5S 4W	30	NE NE NW
Air drifts (3)	Perry	5S 4W	30	NE NE NW
Belt drift	Perry	5S 4W	30	NE NE NW

**GEOLOGY**

Seam(s) Mined	Depth (ft)	Thickness (ft)			Mining Method
		Min	Max	Avg	
Herrin	120			6.0	CRP

Geologic Problems Reported: Geologic problems are not reported for active mines.

**PRODUCTION HISTORY**

Company	Mine Name	Years	Production (tons)
Knight Hawk Coal, LLC	Prairie Eagle Underground	2006- *	44,982,479 *
			44,982,479

\* Production includes tonnage through 2022, the latest available Coal Report.

Last reported production:

**SOURCES OF DATA**

Source Map	Date	Original Scale	Digitized Scale	Map Type
Company, 6-426N	3-15-2022	1:4800	1:4800	Not final

Annotated Bibliography (data source, brief description of information)

Coal Reports - Production, ownership, years of operation, seam, depth, thickness, mining method.

Directory of Illinois Coal Mines (Perry County) - Mine names, mine index, ownership, years of operation.

Mine notes (Perry County) - Drift location.

Company map, Coal Section files, 6-426N - Drift locations, mine outline, mining method.



**Mine Index 1054****Knight Hawk Coal, LLC, Golden Eagle Mine**

Type: Surface Total mined-out acreage shown: 205

**SHAFT, SLOPE, DRIFT or TIPPLE LOCATIONS**

Type	County	Township-Range	Section	Quarters-Footage
Pit	Perry	6S 3W	8	NE
Pit	Perry	6S 3W	5	S½ S½ SE

**GEOLOGY**

Seam(s) Mined	Depth (ft)	Thickness (ft)			Mining Method
		Min	Max	Avg	
Springfield	60-80			3.0	Surface
Herrin	60-80			6.0	Surface

Geologic Problems Reported: Geologic problems are not reported for active mines.**PRODUCTION HISTORY**

Company	Mine Name	Years	Production (tons)
Knight Hawk Coal, LLC	Golden Eagle	2016- *	<u>2,004,364</u> *
			2,004,364

\* Production includes tonnage through 2022, the latest available Coal Report.

Last reported production:

**SOURCES OF DATA**

Source Map	Date	Original Scale	Digitized Scale	Map Type
Google Earth	10-19-2023	unknown	1:24000	Secondary source

Annotated Bibliography (data source, brief description of information)

Coal Reports - Production, ownership, years of operation, seam, depth, thickness, mining method.

Directory of Illinois Coal Mines (Perry County) - Mine names, mine index, ownership, years of operation.

Google Earth 10.45.0.3. (October 19, 2023). Golden Eagle Mine, 38°01'25"N 89°27'04"W.

<http://www.google.com/earth/index.html> (Accessed February 16, 2024). - Mine outline.



**Mine Index 3115****White Brothers Coal Company, White Mine**

Type: Surface    Total mined-out acreage shown: None; production indicates approximately 3 acres were mined.

**SHAFT, SLOPE, DRIFT or TIPPLE LOCATIONS**

Type	County	Township-Range	Section	Quarters-Footage
Tipple or pit	Perry	5S 3W	13	SE SW SE

**GEOLOGY**

Seam(s) Mined	Depth (ft)	Thickness (ft)			Mining Method
		Min	Max	Avg	
Herrin					Surface

Geologic Problems Reported:

**PRODUCTION HISTORY**

Company	Mine Name	Years	Production (tons)
White Brothers Coal Company	White	1956-1959	<u>28,566</u> 28,566

Last reported production: 1959

**SOURCES OF DATA**

Source Map	Date	Original Scale	Digitized Scale	Map Type
Coal Section mine database	Undated	(text only)	1:24000 *	Secondary source

\* The mine location was plotted on a 1:24000 USGS topographic map from the mine location description and digitized.

Annotated Bibliography (data source, brief description of information)

Coal Reports - Production, ownership, years of operation, mine type.

Directory of Illinois Coal Mines (Perry County) - Mine names, mine index, ownership, years of operation.



**Mine Index 3118**  
**Gem Coal Company, Gem Mine**

Type: Underground    Total mined-out acreage shown: 16

**SHAFT, SLOPE, DRIFT or TIPPLE LOCATIONS**

Type	County	Township-Range	Section	Quarters-Footage
Main shaft	Perry	5S 3W	13	SW NE SW
Air shaft	Perry	5S 3W	13	SW NE SW

**GEOLOGY**

Seam(s) Mined	Depth (ft)	Thickness (ft)			Mining Method
		Min	Max	Avg	
Herrin	106			6.58-7.5	MRP

Geologic Problems Reported:

**PRODUCTION HISTORY**

Company	Mine Name	Years	Production (tons)
Langwith Coal Company	Langwith	1930-1934	17,119
City Coal Company	City	1935-1937	9,629
Bolinski Coal Company	Bolinski	1938-1942	22,298
City Coal Company	City	1943-1945	30,109
Millar, Giacoma & Rigdon Coal Company	Millar, Giacoma & Rigdon	1946-1946	5,094
Gem Coal Company	Gem	1948-1955	<u>28,978</u>
			113,227

Last reported production: April 1955

**SOURCES OF DATA**

Source Map	Date	Original Scale	Digitized Scale	Map Type
Microfilm, document 352136	4-29-1955	1:1200	1:1986	Final

Annotated Bibliography (data source, brief description of information)

Coal Reports - Production, ownership, years of operation.  
 Directory of Illinois Coal Mines (Perry County) - Mine names, mine index, ownership, years of operation.  
 Mine notes (Perry County) - Mine type, seam, depth, thickness.  
 Microfilm map, document 352136, reel 03138, frame 146 - Shaft locations, mine outline, mining method.



**Mine Index 3120**  
**Donk Brothers, Beaucoup Mine**

Type: Underground    Total mined-out acreage shown: 65

**SHAFT, SLOPE, DRIFT or TIPPLE LOCATIONS**

Type	County	Township-Range	Section	Quarters-Footage
Main shaft	Perry	5S 3W	14	SW NW SW
Air shaft	Perry	5S 3W	14	SW NW SW

**GEOLOGY**

Seam(s) Mined	Depth (ft)	Thickness (ft)			Mining Method
		Min	Max	Avg	
Herrin	174-200			5.0-6.0	MRP

Geologic Problems Reported:

**PRODUCTION HISTORY**

Company	Mine Name	Years	Production (tons)
Beaucoup Coal Mining Company	Beaucoup	1872-1881 *	Unknown *
Donk Brothers	Beaucoup	1881-1884	<u>74,101</u> 74,101

\* Production before 1882 is not known. According to *Combined History of Randolph, Monroe and Perry Counties, Illinois*, the town of Beaucoup Mines was laid out in 1873 by George W. Wall, president, and William K. Murphy, secretary, of Beaucoup Coal Mining Company. The company was organized in 1870, and the shaft was drilled in 1872. The 1882 Coal Report indicated 25 acres were mined.

Last reported production: 1884

**SOURCES OF DATA**

Source Map	Date	Original Scale	Digitized Scale	Map Type
Microfilm, document 352127	11-1920	1:2400	1:4634	Secondary source

Annotated Bibliography (data source, brief description of information)

Coal Reports - Production, ownership, years of operation, mine type, seam, depth, thickness.  
 Directory of Illinois Coal Mines (Perry County) - Mine names, mine index, ownership, years of operation.  
 Microfilm map, document 352127, reel 03138, frames 133 & 134, map of Pinckneyville No. 5 Mine (mine index 90) - Shaft locations, mine outline, mining method.  
 McDonough & Co. (publishers), 1883, *Combined History of Randolph, Monroe and Perry Counties, Illinois*, published by J. L. McDonough & Co., Philadelphia, Pennsylvania - Mine history.



**Mine Index 3121****Manufacturers Fuel Company, Jupiter No. 4 Mine**

Type: Underground    Total mined-out acreage shown: 25    The area shown on the accompanying map is smaller than expected for the reported production.

**SHAFT, SLOPE, DRIFT or TIPPLE LOCATIONS**

Type	County	Township-Range	Section	Quarters-Footage
Main shaft	Perry	5S 3W	24	SE SE SW
Air shaft	Perry	5S 3W	24	SE SE SW

**GEOLOGY**

Seam(s) Mined	Depth (ft)	Thickness (ft)			Mining Method
		Min	Max	Avg	
Herrin	80-90	6.0	7.0	6.5	RPB

Geologic Problems Reported: The immediate roof was 6 to 30 inches of gray or black shale overlain by up to 12 feet of limestone. The roof was bad where the black shale thickened to 30 inches. A shale or clay band (up to 1/4 inch thick) was persistent in the upper half of the seam. The blue band was about 2 inches thick and 10 inches above the floor. A pyrite band was often seen above the blue band. The bottom 10 inches (below the blue band) was not mined.

**PRODUCTION HISTORY**

Company	Mine Name	Years	Production (tons)
George W. Brown	Brown	1888-1902	438,999
Weaver Coal Company	Weaver No. 4	1902-1903	60,253
Manufacturers Fuel Company	Jupiter No. 4	1903-1904	65,458
			564,710

Last reported production: 1904

**SOURCES OF DATA**

Source Map	Date	Original Scale	Digitized Scale	Map Type
Microfilm, document 352112	10-30-1897	1:1200	1:2482	Not final
Federal Land Bank Report	9-21-1933	1:126720	1:126720	Secondary source

Annotated Bibliography (data source, brief description of information)

Coal Reports - Production, ownership, years of operation.

Directory of Illinois Coal Mines (Perry County) - Mine names, mine index, ownership, years of operation.

Mine notes (Perry County) - Mine location, seam, depth, thickness, geologic problems.

Microfilm map, document 352112, reel 03138, frame 108 - Shaft locations, mine outline, mining method.

Federal Land Bank Report (Perry County) - Mine outline (general area of mining).



**Mine Index 3123**  
**Big 5 Coal Company, Big 5 Mine**

Type: Underground    Total mined-out acreage shown: 60

**SHAFT, SLOPE, DRIFT or TIPPLE LOCATIONS**

Type	County	Township-Range	Section	Quarters-Footage
Main shaft	Perry	5S 4W	25	SE SE SE
Air shaft	Perry	5S 4W	25	SE SE SE

**GEOLOGY**

Seam(s) Mined	Depth (ft)	Thickness (ft)			Mining Method
		Min	Max	Avg	
Herrin	115			5.5-6.25	MRP

Geologic Problems Reported: The roof was generally black shale, with lenticular bodies of 3 to 4 feet of white top. Sometimes the white top was included in a roll that caused slips in the black shale and white top. The coal had a fairly strong southward dip.

**PRODUCTION HISTORY**

Company	Mine Name	Years	Production (tons)
Conant Coal Company	Conant	1934-1947 *	190,305
Big 5 Coal Company	Big 5	1948-1960	163,756
			354,061

\* Idle 1946 & 1947

Last reported production: October 1960

**SOURCES OF DATA**

Source Map	Date	Original Scale	Digitized Scale	Map Type
Microfilm, document 352093	9-13-1960	1:1200	1:2069	Final
ISGS map library, 4103.P42 i5.1-74	12-22-1999	1:4800	1:4800	Final

Annotated Bibliography (data source, brief description of information)

Coal Reports - Production, ownership, years of operation.  
 Directory of Illinois Coal Mines (Perry County) - Mine names, mine index, ownership, years of operation.  
 Mine notes (Perry County) - Mine type, shaft location, seam, depth, thickness, geologic problems.  
 Microfilm map, document 352093, reel 03138, frame 77 - Shaft locations, mine outline, mining method.  
 Company map, ISGS map library, 4103.P42 i5.1-74, map of Conant Mine (mine index 1016) - Mine outline (northern part).



**Mine Index 3136****Pyramid Coal Corporation, Pyramid Slope Mine**

Type: Underground    Total mined-out acreage shown: 74

**SHAFT, SLOPE, DRIFT or TIPPLE LOCATIONS**

Type	County	Township-Range	Section	Quarters-Footage
Main slope	Perry	6S 3W	2	SW NE NW
Air shaft	Perry	6S 3W	2	SW NE NW

**GEOLOGY**

Seam(s) Mined	Depth (ft)	Thickness (ft)			Mining Method
		Min	Max	Avg	
Herrin	60			6.0	MRP

Geologic Problems Reported:

**PRODUCTION HISTORY**

Company	Mine Name	Years	Production (tons)
Pyramid Coal Corporation	Pyramid Slope	1943-1944	394,566 394,566

Last reported production: September 1944

**SOURCES OF DATA**

Source Map	Date	Original Scale	Digitized Scale	Map Type
Company, 4103.P42 i5.1-63	8-1-1959	1:12000	1:12000	Final
Microfilm, document 352135	7-1-1944	1:2400	1:4138	Not final *

\* The mined area shown on the accompanying map is the approximate size expected for the reported production. This suggests that the mine outline is complete.

Annotated Bibliography (data source, brief description of information)

Coal Reports - Production, ownership, years of operation, mine type, seam, depth, thickness.  
 Directory of Illinois Coal Mines (Perry County) - Mine names, mine index, ownership, years of operation.  
 Company map, ISGS map library, 4103.P42 i5.1-63 - Mine outline (northern & western extensions).  
 Microfilm map, document 352135, reel 03138, frame 145 - Slope & shaft locations, mine outline, mining method.



**Mine Index 3175**  
**Burke Coal Company, Burke Mine**

Type: Unknown Total mined-out acreage shown: None; production indicates less than 1 acre was mined. The mine is shown in a very general location within the section on the accompanying map. The mine may have been surface-mined by Pyramid Mine (mine index 623).

**SHAFT, SLOPE, DRIFT or TIPPLE LOCATIONS**

Type	County	Township-Range	Section	Quarters-Footage
Mine	Perry	6S 3W	1	

**GEOLOGY**

Seam(s) Mined	Depth (ft)	Thickness (ft)			Mining Method
		Min	Max	Avg	
Herrin					

Geologic Problems Reported:

**PRODUCTION HISTORY**

Company	Mine Name	Years	Production (tons)
Burke Coal Company	Burke	1922-1923	460 460

Last reported production: 1923

**SOURCES OF DATA**

Source Map	Date	Original Scale	Digitized Scale	Map Type
Mine notes	Undated	(text only)	1:24000 *	Secondary source

\* The mine location was plotted on a 1:24000 USGS topographic map from the mine location description and digitized.

Annotated Bibliography (data source, brief description of information)

Coal Reports - Production, ownership, years of operation.  
 Directory of Illinois Coal Mines (Perry County) - Mine names, mine index, ownership, years of operation.  
 Mine notes (Perry County) - Mine location.



**Mine Index 3176**  
**Pyramid Coal Corporation, Coal Stripping Mine**

Type: Surface    Total mined-out acreage shown: 188

**SHAFT, SLOPE, DRIFT or TIPPLE LOCATIONS**

Type	County	Township-Range	Section	Quarters-Footage
Pit or tippie	Perry	6S 3W	14	NW NE SE

**GEOLOGY**

Seam(s) Mined	Depth (ft)	Thickness (ft)			Mining Method
		Min	Max	Avg	
Herrin				5.0-5.63	Surface

Geologic Problems Reported:

**PRODUCTION HISTORY**

Company	Mine Name	Years	Production (tons)
Coal Stripping Company	Coal Stripping	1931-1934	1,072,188
Pyramid Coal Corporation	Coal Stripping	1935-1935	292,047
			1,364,235

Last reported production: December 1935

**SOURCES OF DATA**

Source Map	Date	Original Scale	Digitized Scale	Map Type
USGS topographic map, Ava	1968	1:24000	1:24000	Secondary source
USGS topographic map, Pinckneyville	1974, PR 1982	1:24000	1:24000	Secondary source

Annotated Bibliography (data source, brief description of information)

Coal Reports - Production, ownership, years of operation, seam, thickness, mining method.  
 Directory of Illinois Coal Mines (Perry County) - Mine names, mine index, ownership, years of operation.  
 Mine notes (Perry County) - Mine location.  
 USGS 7.5-minute topographic map, Ava Quadrangle, 1968 - Mine outline.  
 USGS 7.5-minute topographic map, Pinckneyville Quadrangle, 1974, photorevised 1982 - Mine outline.  
 WPA, T6S-R3W - Verification of mine location.

**Mine Index 4413****L. & M. Coal Company, Tallo Mine**

Type: Underground    Total mined-out acreage shown: None; production indicates less than 1 acre was mined. This mine is not shown on the accompanying map because of later surface mining by Pyramid Mine (mine index 623).

**SHAFT, SLOPE, DRIFT or TIPPLe LOCATIONS**

Type	County	Township-Range	Section	Quarters-Footage
Shaft	Perry	5S 2W	25	NE SW SE
Air shaft	Perry	5S 2W	25	NE SW SE

**GEOLOGY**

Seam(s) Mined	Depth (ft)	Thickness (ft)			Mining Method
		Min	Max	Avg	
Herrin					RPB

Geologic Problems Reported:

**PRODUCTION HISTORY**

Company	Mine Name	Years	Production (tons)
L. & M. Coal Company	Tallo	1946-1947	<u>2,870</u> 2,870

Last reported production: 1947

**SOURCES OF DATA**

Source Map	Date	Original Scale	Digitized Scale	Map Type
ISGS mined-out area map	1950	1:62500	1:62500	Secondary source
Microfilm, document 352074	1-16-1948	1:240	1:281 *	Final

\* The map could not be registered to land surface features.

Annotated Bibliography (data source, brief description of information)

Coal Reports - Production, ownership, years of operation.

Directory of Illinois Coal Mines (Perry County) - Mine names, mine index, ownership, years of operation.

ISGS mined-out area map, Area 29 - Shaft locations.

Microfilm, document 352074, reel 03138, frame 49 - Mine name, mine type, mining method.



**Mine Index 7341**  
**John H. Schulze, Schulze Mine**

Type: Underground    Total mined-out acreage shown: None; production and the Coal Report information indicates approximately 11 acres were mined.

**SHAFT, SLOPE, DRIFT or TIPPLE LOCATIONS**

Type	County	Township-Range	Section	Quarters-Footage
Main shaft	Perry	5S 3W	24	SE SE NW

**GEOLOGY**

Seam(s) Mined	Depth (ft)	Thickness (ft)			Mining Method
		Min	Max	Avg	
Herrin	35-72			5.0-6.0	RP

Geologic Problems Reported:

**PRODUCTION HISTORY**

Company	Mine Name	Years	Production (tons)
John H. Schulze	Schulze	pre1881-1889 *	13,346
			13,346

\* Production and years of operation before 1882 are unknown. The 1882 Coal Report indicates 8 acres were mined. Idle 1887-1888.

Last reported production: 1889

**SOURCES OF DATA**

Source Map	Date	Original Scale	Digitized Scale	Map Type
Federal Land Bank Report	9-21-1933	1:126720	1:126720	Secondary source

Annotated Bibliography (data source, brief description of information)

Coal Reports - Production, ownership, years of operation, mine type, seam, depth, thickness, mining method.  
 Directory of Illinois Coal Mines (Perry County) - Mine names, mine index, ownership, years of operation.  
 Federal Land Bank Report (Perry County) - Shaft location.  
 Sanborn Map & Publishing, Pinckneyville, May 1886, frame 22 - Mine name.

**Mine Index 7346**  
**Biby Coal Company, Biby Mine**

Type: Underground    Total mined-out acreage shown: None; production indicates approximately 5 acres were mined.

**SHAFT, SLOPE, DRIFT or TIPPLe LOCATIONS**

Type	County	Township-Range	Section	Quarters-Footage
Main drift	Perry	5S 3W	24	NE SW SE

**GEOLOGY**

Seam(s) Mined	Depth (ft)	Thickness (ft)			Mining Method
		Min	Max	Avg	
Herrin					Underground

Geologic Problems Reported:

**PRODUCTION HISTORY**

Company	Mine Name	Years	Production (tons)
Biby Coal Company	Biby	1922-1930	<u>23,719</u> 23,719

Last reported production: 1930

**SOURCES OF DATA**

Source Map	Date	Original Scale	Digitized Scale	Map Type
ISGS map library, 4107 C3-28, sheet 2	Undated	1:29,832	1:29,832	Secondary source

Annotated Bibliography (data source, brief description of information)

Coal Reports - Production, ownership, years of operation.  
 Directory of Illinois Coal Mines (Perry County) - Mine names, mine index, ownership, years of operation.  
 Mine notes (Perry County) - Mine name.  
 ISGS field notes (Perry County) - Mine type, seam.  
 ISGS map library, 4107 C3-28, sheet 2, map of plane table survey sites by W. B. Roe - Mine location.



## OTHER MINES SHOWN ON PINCKNEYVILLE QUADRANGLE

Mine Index 3130, Gorgen Mine NE NW NW 36-T5S-R4W, Herrin Coal source: Federal Land Bank Report  
 Mine Index 6838 NW SW NE 13-T5S-R3W source: Federal Land Bank Report  
 Mine Index 7336 NW SW SE 13-T5S-R3W source: Federal Land Bank Report  
 Mine Index 7337 SW SW SE 13-T5S-R3W source: Federal Land Bank Report  
 Mine Index 7338 NW NW NE 24-T5S-R3W source: Federal Land Bank Report  
 Mine Index 7339 SW NW NE 24-T5S-R3W source: Federal Land Bank Report  
 Mine Index 7340 NW SW NE 24-T5S-R3W source: Federal Land Bank Report  
 Mine Index 7345 SE NW SE 24-T5S-R3W source: Federal Land Bank Report  
 Mine Index 7347 NW SE SE 24-T5S-R3W source: ISGS map library, 4107 C3-28, sheet 2, map of plane table  
 surveying done by W. B. Roe

## MINES WHOSE LOCATIONS ARE NOT KNOWN, PINCKNEYVILLE QUADRANGLE

The locations of the following mines are unknown, but the production tonnage, operating names, and nearest town were reported in the Annual Coal Reports. The operators listed below mined in or near the Pinckneyville Quadrangle. The information shown is similar to that presented on the summary sheets in the previous pages of this directory. The first item is the name the mine operated under as listed in the Coal Report, then the years the mine reported. If no physical data are available, the next item listed is the total tons produced by the mine. If physical data are available, the order of presentation is as follows: type of opening for the mine (drift, slope or shaft), depth of coal in feet, and thickness of coal in feet.

The total tons mined by these unlocated mines is 3,453,208 (125,540 underground and 8,630 surface mined), which would represent approximately 25 to 35 acres, depending on the recovery factor, mining method, and numerous other factors. (Note: 1 square mile = 640 acres)

### PINCKNEYVILLE

Carter & Barwell, Lake Mine, 1881-1883, shaft, Herrin, 42-74, 5.0	9,803 tons
Smith (W. S. D.), Humock Mine, 1881-1883, shaft, Herrin, 45-70, 5.25-5.33	8,689 tons
Malone & Miller, 1883-1889, shaft, Herrin, 40, 6.0-6.5, RP	8,150 tons
Wood Brothers, 1890-1898, shaft, Herrin, 16-80, 6.0-6.5, RP	10,003 tons
Maasburg (Henry C.), 1898-1901	6,308 tons
Turner & Faust Coal Company, Maasburg Mine, 1901-1902	1,624 tons
Gruner & Jenner, 1902-1903	400 tons
Sycamore Coal Company, 1903-1905	150 tons
Luke & Jenkel, 1905-1906	2,000 tons
Henson (John) Coal Company, 1906-1907	825 tons
Henson & Henson, 1907-1908	700 tons
Lemon Coal Company, 1908-1909	120 tons
Redfern (A. S.), 1909-1910	580 tons
	<u>22,710 tons</u>
Ritchey (S. S.), 1894-1895, shaft, Herrin, 35, 6.0-7.0, RP	570 tons
Jener & Davis, 1895-1897	2,836 tons
Duckworth (H. W.), 1897-1899	2,873 tons
Cowens (W. P.), 1899-1900	1,235 tons
Roe Coal Company, 1900-1901	1,914 tons
Turner & Faust, Ritchey Mine, 1901-1902	1,800 tons
Roe & Company, 1902-1903	400 tons
	<u>11,628 tons</u>
Anderson (John), 1904-1912, shaft, Herrin, 40-45, 6.0, RP	13,757 tons
Hale Coal Company, 1912-1924, shaft, Herrin, 53-60, 6.0-6.5, RP	48,719 tons

Milligan Mining Company, 1924-1926	1,200 tons
Pinckneyville Mining Company, 1926-1927	7,430 tons
Taylor (Hawk), 1932-1932, underground	1,083 tons
McMath Coal Company, 1932-1932, underground	1,001 tons



## INDEX OF MINES IN THE PINCKNEYVILLE QUADRANGLE

Anderson (John) . . . . .	33
Anderson & Langworth . . . . .	14
Arch of Illinois, Inc., Captain Mine . . . . .	16
Arch of Illinois, Inc., Conant Underground Mine . . . . .	19
Arch of Illinois, Inc., Horse Creek Mine . . . . .	18
Barwell (Carter & Barwell) . . . . .	33
Beaucoup Coal Company . . . . .	13
Beaucoup Coal Mining Company . . . . .	24
Beaucoup Mine . . . . .	24
Bessemer Washed Coal Company . . . . .	11
Biby Coal Company . . . . .	14, 32
Big 5 Coal Company . . . . .	26
Binkly Coal Company . . . . .	12
Bird (Wilkerson, Bird & Rudloff) . . . . .	14
Bird (Wilson & Bird) . . . . .	14
Bird & Tanner . . . . .	14
Bolinski Coal Company . . . . .	23
Brewerton Coal Company . . . . .	9
Briar Hill Coal Mining Company . . . . .	9
Brown (George W.) . . . . .	25
Burk (Faust, Turner & Burk) . . . . .	14
Burke Coal Company . . . . .	28
Burning Star No. 2 Mine . . . . .	15
Burning Star No. 4 Mine . . . . .	17
Captain Mine . . . . .	16
Carter & Barwell . . . . .	33
City Coal Company . . . . .	23
Coal Stripping Company . . . . .	29
Conant Coal Company . . . . .	26
Conant Surface Mine . . . . .	19
Conant Underground Mine . . . . .	19
Consolidation Coal Company, Burning Star No. 2 Mine . . . . .	15
Consolidation Coal Company, Burning Star No. 4 Mine . . . . .	17
Cowens (W. P.) . . . . .	33
Cutler Mining Company, Conant Surface Mine . . . . .	19
Davis (Jener & Davis) . . . . .	33
Davison (Henson & Davison Brothers) . . . . .	14
Donk Brothers . . . . .	24
Duckworth (H. W.) . . . . .	33
Faust (Turner & Faust Coal Company, Maasburg Mine) . . . . .	33
Faust (Turner & Faust Coal Company, Schulze Mine) . . . . .	14
Faust (Turner & Faust, Ritchey Mine) . . . . .	33
Faust & Company . . . . .	14
Faust & Turner . . . . .	14
Faust, Turner & Burk . . . . .	14
Faust, Turner & Malone . . . . .	14
Gem Coal Company . . . . .	23
Giacoma (Millar, Giacoma & Rigdon Coal Company) . . . . .	23
Golden Eagle Mine . . . . .	21
Gorgen Mine . . . . .	33
Gruener & Jenner . . . . .	33
Haggard (Sherman) . . . . .	14
Hale Coal Company . . . . .	33
Henson (John) Coal Company . . . . .	33
Henson & Davison Brothers . . . . .	14
Henson & Henson . . . . .	33
Horse Creek Mine . . . . .	18
Humock Mine . . . . .	33
Illinois Sixth Vein Coal Company . . . . .	10
Interstate Coal Company . . . . .	9, 13
Jamestown Mine . . . . .	17
Jener & Davis . . . . .	33
Jenkel (Luke & Jenkel) . . . . .	33

Jenner (Gruner & Jenner) . . . . .	33
Jupiter No. 4 Mine . . . . .	25
Knight Hawk Coal, LLC	
Golden Eagle Mine . . . . .	21
Prairie Eagle Underground Mine . . . . .	20
L. & M. Coal Company. . . . .	30
Lake Mine . . . . .	33
Langwith (Montgomery Brothers & Langwith) . . . . .	14
Langwith Coal Company . . . . .	23
Langworth (Anderson & Langworth) . . . . .	14
Lemon Coal Company. . . . .	33
Louden Coal Company . . . . .	14
Luke & Jenkel . . . . .	33
Maasburg (Henry C.) . . . . .	33
Malone (Faust, Turner & Malone) . . . . .	14
Malone & Miller . . . . .	33
Manufacturers Fuel Company, Jupiter No. 4 Mine. . . . .	25
McMath Coal Company . . . . .	34
Millar, Giacomini & Rigdon Coal Company . . . . .	23
Miller (Malone & Miller) . . . . .	33
Milligan Mining Company. . . . .	33
Montgomery Brothers & Langwith . . . . .	14
Montgomery Coal Company . . . . .	14
Murphy (William K.) . . . . .	24
Norberg (Schneider & Norberg). . . . .	10
North Side Coal Company . . . . .	14
Pinckneyville Mining Company . . . . .	9, 34
Prairie Eagle Underground Mine . . . . .	20
Presswood (H. E.) Coal Company . . . . .	14
Pyramid Coal Corporation . . . . .	12
Pyramid Coal Corporation, Coal Stripping Mine. . . . .	29
Pyramid Coal Corporation, Pyramid Slope Mine . . . . .	27
Redfern (A. S.) . . . . .	33
Rigdon (Millar, Giacomini & Rigdon Coal Company). . . . .	23
Ritchey (S. S.) . . . . .	33
Ritchey Coal Company . . . . .	9
Roe & Company . . . . .	33
Roe Coal Company . . . . .	33
Rudloff (Wilkerson, Bird & Rudloff) . . . . .	14
Schneider (J.) & Norberg (Buck) . . . . .	10
Schneider Coal Company . . . . .	10
Schulze (John H.) . . . . .	31
Service Coal Company . . . . .	13
Smith (W. S. D.) . . . . .	33
Southern Gem Coal & Coke Company, No. 6 Mine. . . . .	13
Southern Gem Coal Corporation, No. 5 Mine . . . . .	9
Southwestern Illinois Coal Corporation . . . . .	16
Strait Coal Company . . . . .	14
Sycamore Coal Company . . . . .	33
Tallo Mine . . . . .	30
Tanner (Bird & Tanner) . . . . .	14
Taylor (Hawk) . . . . .	34
Truax-Traer Coal Company, Burning Star No. 2 Mine. . . . .	15
Truax-Traer Coal Company, Pyramid Mine . . . . .	12
Turner (Faust & Turner). . . . .	14
Turner (Faust, Turner & Burk) . . . . .	14
Turner (Faust, Turner & Malone). . . . .	14
Turner & Faust Coal Company, Maasburg Mine . . . . .	33
Turner & Faust Coal Company, Schulze Mine. . . . .	14
Turner & Faust, Ritchey Mine . . . . .	33
Wall (George W.) . . . . .	24
Weaver Coal Company, No. 4 Mine . . . . .	25
White Brothers Coal Company . . . . .	22
White Walnut Coal Company. . . . .	11
Wilkerson (S. G.), Bird (H.) & Rudloff (R.) . . . . .	14



Wilson & Bird .....	14
Wood Brothers .....	33





