

Coal Mines in Illinois
Roodhouse East Quadrangle
Greene County, Illinois

This map accompanies the Coal Mines Directory for the Roodhouse East Quadrangle. Consult the directory for a complete explanation of the information shown on this map.

Mining Method

- Room & Pillar (RP)
- Room & Pillar Basic (RPB)
- Modified Room & Pillar (MRP)
- Room & Pillar Panel (RPP)
- Blind Room & Pillar (BRP)
- Checkerboard Room & Pillar (CRP)
- High Extraction Retreat (HER)
- Longwall (LW)
- Underground, Method Unknown
- Strip Mine
- Auger Mine
- General Area of Mining

Other Areas Depicted

- Non-Coal Mines

Source of Mine Outline

- Final Mine Map
- Not Final Mine Map
- Undated Mine Map
- Incomplete Mine Map
- Secondary Source Map

Tipple, Shaft, Slope, Drift Locations

- Strip Mine Tipple - Active
- Strip Mine Tipple - Abandoned
- Mine Shaft - Active
- Mine Shaft - Abandoned
- Mine Slope - Active
- Mine Slope - Abandoned
- Mine Drift - Active
- Mine Drift - Abandoned
- Air Shaft
- Uncertain Location
- Uncertain Type of Opening

Other Points Depicted

- Non-Coal Mines

Mine Annotation
(space permitting)

Company
Mine Name
ISGS Index No., Years of Operation

Disclaimer

Please check the Coal Section at the Illinois State Geological Survey's web site at <https://www.isgs.illinois.edu> for the most up-to-date version of these products.

Note that each quadrangle scale mined-out area map requires the use of the associated text directory for full explanation of map features and mine attributes. Also note that some quadrangles have multiple seams of mining and therefore more than one map may be available for a particular quadrangle. Please take care to check for multiple maps, as extensive mining may exist in the other seams.

The maps and digital files used for these studies were compiled from data obtained from a variety of public and private sources and have varying degrees of completeness and accuracy. This compilation map presents reasonable interpretation of the geology of the area and is based on available data. Locations of some mine features may be off by 500 feet or more due to errors in the original source maps, the compilation process, digitizing, or a combination of these factors. These data are not intended for use in site-specific screening or decision-making. Use of these documents does not eliminate the need for detailed studies to fully understand the geology of a specific site. The Illinois State Geological Survey, Prairie Research Institute, or the University of Illinois make no guarantee, expressed or implied, regarding the correctness of the interpretations presented in this data set and accept no liability for the consequences of decisions made by others on the basis of the information presented here.

These maps were designed for use at 1:24,000. Enlarging the map may reduce accuracy, as the original scale of the source maps used to compile the outlines shown varies from 1:400 to 1:150,000, and some mine locations are known only from text descriptions. See the accompanying mine directory for the original scale of the source map used for a specific mine to check accuracy of a given portion of the map. Areas with no mines shown may still be undermined; see the unlocated mines list at the back of mine directory.

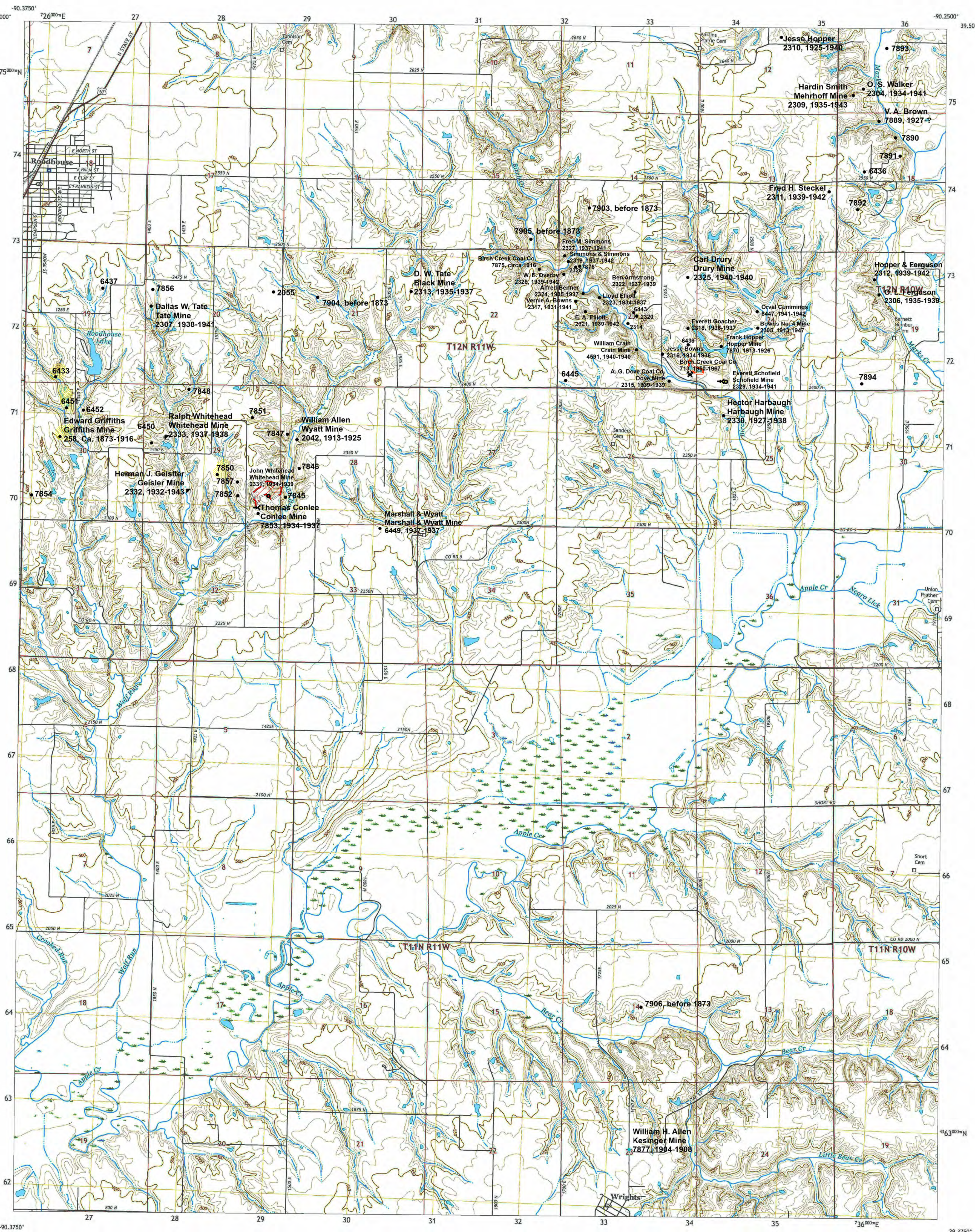
The image of the U.S.G.S. topographic base map was projected from the original UTM to Lambert Conformal Conic.

ILLINOIS
Illinois State Geological Survey
PRAIRIE RESEARCH INSTITUTE

Prairie Research Institute
Illinois State Geological Survey
615 E. Peabody Dr.
Champaign, IL 61820

Mine Outlines Compiled by
C. Chenoweth

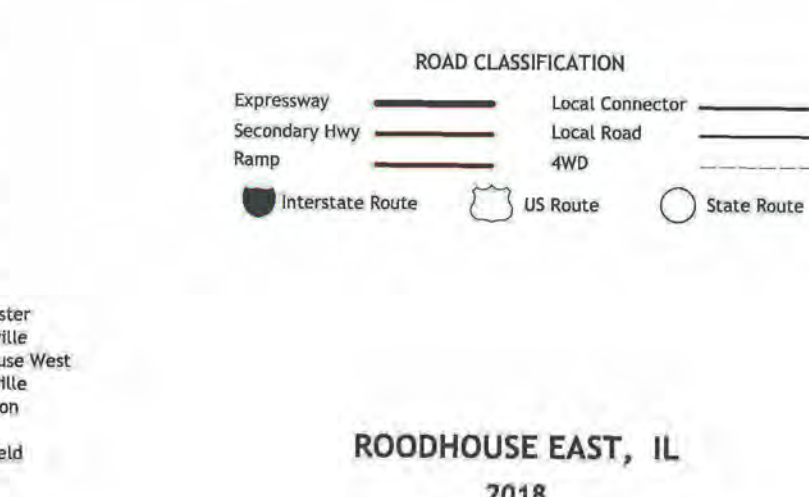
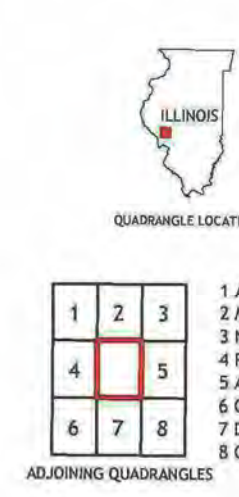
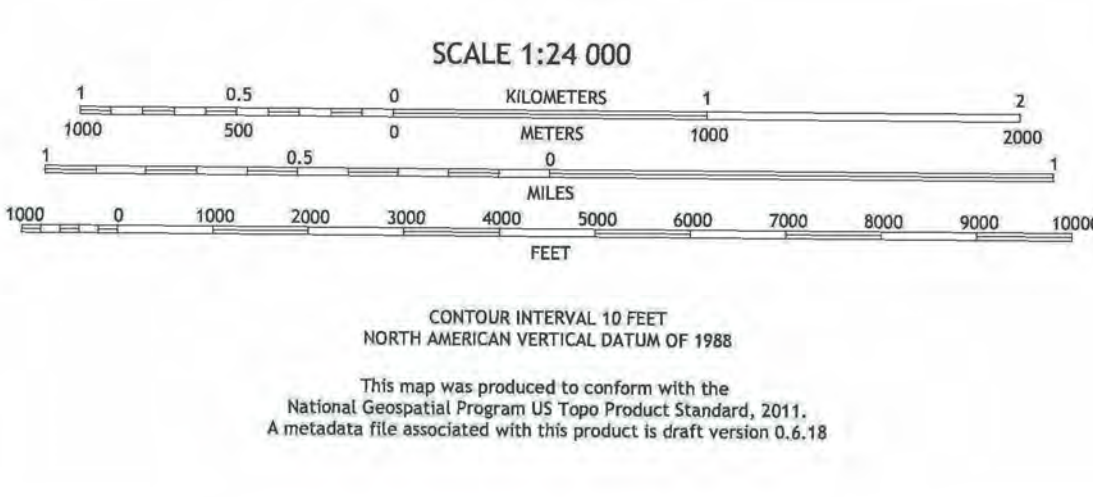
January 11, 2024



Produced by the United States Geological Survey

North American Datum of 1983 (NAD83)
World Geodetic System of 1984 (WGS84), Projection and
1000-meter grid/Universal Transverse Mercator, Zone 15S
This map is not a legal document. Boundaries may be
generalized for this map scale. Private lands within government
reservations may not be shown. Obtain permission before
entering private lands.

Imagery: NAIP, August 2015 - October 2015
Roads: U.S. Census Bureau, 2017
Contours: National Elevation Dataset, 2007 - 2011
Boundaries: Multiple sources; see metadata file 2014 - 2016
Public Land Survey System: BLM, 2017
Wetlands: FWS National Wetlands Inventory 1983



ROODHOUSE EAST, IL
2018

DIRECTORY OF COAL MINES IN ILLINOIS

7.5-MINUTE QUADRANGLE SERIES

ROODHOUSE EAST QUADRANGLE

GREENE COUNTY

C. Chenoweth



2024

Prairie Research Institute
Praveen Kumar, Executive Director
ILLINOIS STATE GEOLOGICAL SURVEY
Richard C. Berg, Director

Natural Resources Building
615 East Peabody Drive
Champaign, Illinois 61820

Phone (217) 333-4747



This material is based upon work supported by the Illinois Department of Transportation. Any opinions, findings, and conclusions or recommendations expressed in this publication are those of the authors and do not necessarily reflect the views of the Illinois Department of Transportation.

Cover photo Track-mounted duckbill loading machine at a Peabody Coal Company mine, ca. 1915.

DISCLAIMER: The accuracy and completeness of mine maps and directories vary with the availability of reliable information. Maps and other information used to compile this mine map and directory were obtained from a variety of sources and the accuracy of some of the original information cannot be verified. Consequently, the Illinois State Geological Survey (ISGS) cannot guarantee the mine maps are free of errors and disclaims any responsibility for damages that may result from actions or decisions based on them.

The ISGS updates the maps and directories periodically, and welcomes any new information or corrections. Please contact the Coal Section of the ISGS at the address shown on the title page of this directory, or telephone (217) 333-4747.

© 2024 The Board of Trustees of the University of Illinois. All rights reserved.
For permission information, contact the Illinois State Geological Survey.

CONTENTS

INTRODUCTION	1
MINING IN THE ROODHOUSE EAST QUADRANGLE	1
PART I EXPLANATION OF MAP AND MINE SUMMARY SHEET	2
INTERPRETING THE MAP	2
Mine Type and Mining Method	2
Source Maps	3
Points and Labels	3
INTERPRETING A MINE SUMMARY SHEET	6
REFERENCES	8
PART II DIRECTORY OF MINES IN THE ROODHOUSE EAST QUADRANGLE	9
MINE SUMMARY SHEETS	9
Mine Index 258	
Edward Griffiths, Griffiths Mine	9
Mine Index 713	
Birch Creek Coal Company, Birch Creek Mine	10
Mine Index 2042	
William Allen, Wyatt Mine	11
Mine Index 2304	
O. S. Walker, Walker Mine	12
Mine Index 2305	
Vernie A. Bowns, Bowns No. 4 Mine	13
Mine Index 2306	
O. L. Ferguson, Ferguson Mine	14
Mine Index 2307	
Dallas W. Tate, Tate Mine	15
Mine Index 2309	
Hardin Smith, Mehrhoff Mine	16
Mine Index 2310	
Jesse Hopper, Hopper Mine	17
Mine Index 2311	
Fred H. Steckel, Steckel Mine	18
Mine Index 2312	
Hopper & Ferguson, Hopper & Ferguson Mine	19
Mine Index 2313	
D. W. Tate, Black Mine	20
Mine Index 2314	
Charles Lawson, Lawson Mine	21
Mine Index 2315	
A. G. Dove Coal Company, Dove Mine	22
Mine Index 2316	
Jesse Bowns, Bowns Mine	23
Mine Index 2317	
Vernie A. Bowns, Bowns No. 2 Mine	24
Mine Index 2318	
Everett Goacher, Goacher Mine	25
Mine Index 2319	
Simmons & Simmons, Simmons & Simmons No. 1 Mine	26
Mine Index 2320	
Theodore Hopper, Hopper Mine	27
Mine Index 2321	
E. A. Elliott, Elliott Mine	28
Mine Index 2322	
Ben Armstrong, Armstrong Mine	29
Mine Index 2323	
Lloyd Elliott, Elliott Mine	30

Mine Index 2324	
Alfred E. Benner, Benner Mine	31
Mine Index 2325	
Carl Drury, Drury Mine	32
Mine Index 2326	
W. E. Overby, Overby No. 2 Mine	33
Mine Index 2327	
Fred M. Simmons, Simmons No. 2 Mine	34
Mine Index 2328	
George M. Warrel, Warrell No. 2 Mine	35
Mine Index 2329	
Everett Schofield, Schofield Mine.	36
Mine Index 2330	
Hector Harbaugh, Harbaugh Mine	37
Mine Index 2331	
John H. Whitehead, Whitehead Mine.	38
Mine Index 2332	
Herman J. Geisler, Geisler Mine	39
Mine Index 2333	
Ralph Whitehead, Whitehead Mine	40
Mine Index 4591	
William Crain, Crain Mine.	41
Mine Index 6439	
V. A. Bowns, Bowns No. 2 Mine.	42
Mine Index 6443	
Charley Houck, Houck No. 2 Mine	43
Mine Index 6447	
Orval Cummings, Cummings Mine.	44
Mine Index 6449	
Marshall & Wyatt, Marshall & Wyatt Mine	45
Mine Index 7853	
Thomas Conlee, Conlee Mine	46
Mine Index 7870	
Frank Hopper, Hopper Mine.	47
Mine Index 7876	
John L. Solomon, Solomon Mine	48
Mine Index 7877	
William H. Allen, Kesinger Mine	49
OTHER MINES SHOWN ON ROODHOUSE EAST QUADRANGLE	50
Mine Index 2055	50
Mine Index 6433	50
Mine Index 6436	50
Mine Index 6437	50
Mine Index 6445	50
Mine Index 6450	50
Mine Index 6451	50
Mine index 6452	50
Mine index 7845	50
Mine index 7846	50
Mine index 7847	50
Mine index 7848	50
Mine index 7850	50
Mine index 7851	50
Mine index 7852	50
Mine index 7854	50
Mine index 7856	50
Mine index 7857	50
Mine index 7875, Birch Creek Coal Company.	50
Mine Index 7889, V. A. Brown.	50
Mine Index 7890	50
Mine Index 7891	50

Mine Index 7892	50
Mine Index 7893	50
Mine Index 7894	50
Mine Index 7903	50
Mine Index 7904	50
Mine Index 7905	50
Mine Index 7906	50
MINES WHOSE LOCATIONS ARE NOT KNOWN, ROODHOUSE EAST QUADRANGLE	51
INDEX OF MINES IN THE ROODHOUSE EAST QUADRANGLE	56

INTRODUCTION

Coal has been mined in 77 counties of Illinois. More than 7,400 coal mines have operated since commercial mining began in Illinois about 1810; fewer than 30 are currently active. To detail the extent and location of coal mining in Illinois, the Illinois State Geological Survey (ISGS) has compiled maps and directories of known coal mines. The ISGS offers maps at a scale of 1:100,000 and accompanying directories for each county in which coal mining is known to have occurred. Maps at a scale of 1:24,000 and accompanying directories, such as this, are available for selected quadrangles. Contact the ISGS for a list of these quadrangles.

These larger scale maps show the approximate positions of mines in relation to surface features such as roads and water bodies, and indicate the mining method used and the accuracy of the mine boundaries. The maps are useful for locating mine boundaries relative to specific properties and for assessing the potential for subsidence in an area. Mine boundaries compiled from final mine surveys are generally shown within 200 feet of their true position. As a result of poor cartographic quality and inaccuracies in the original mine surveys, boundaries of some older mines may be mislocated on the map by 500 feet or more. Original mine maps should be consulted in situations that require precise delineation of mine boundaries or internal workings of mined areas.

This directory serves as a key to the accompanying mine map and provides basic information on the coal mines in the quadrangle. The directory is composed of two parts. Part I explains the symbols and patterns used on the accompanying map and the summary data presented for each mine. Part II numerically lists the mines in the quadrangle and summarizes the geology and production history of each mine. Total production for the mine, not the portion in the quadrangle, is given.

MINING IN THE ROODHOUSE EAST QUADRANGLE

Coal mining began in the Roodhouse East Quadrangle prior to publication of the 1873 Atlas of Greene County, Illinois. Many of the mines accessed the Colchester Coal, but several minor seams as well as unnamed "pocket coals" were also mined. (Pocket coals refer to coals that may be mere lenses or pods that may or may not correlate to named seams, and that usually do not have a large aerial extent.) Most of the mines were small (less than 20 acres), with a short span of operation. The latest mine that operated was the Birch Creek Mine (mine index 713), which closed in 1967.

PART I EXPLANATION OF MAP AND MINE SUMMARY SHEET

INTERPRETING THE MAP

The map accompanying this directory shows the location of coal mines known to be present in the quadrangle. The map, corresponding to a U.S. Geological Survey (USGS) 7.5-minute quadrangle, covers an area bounded by lines of latitude and longitude 7.5-minutes apart. In Illinois, a quadrangle is approximately 6.5 miles east to west and 8.5 miles north to south, an area of about 56 square miles. The USGS generally offers one map of mines per quadrangle. In some areas where extensive mining occurred in two or more overlapping seams, separate maps are compiled for mines in each seam to maintain readability of the map.

Mine Type and Mining Method

The mine type is indicated on the map by pattern color: green represents surface mines; red and yellow represent underground mines. The red patterns are used for areas of underground mining that are documented by a primary or secondary source map. A yellow pattern is used for cases where no map of the mine workings is available, but a general area of mining can be inferred from property maps or production figures. The patterns indicate the main mining methods used in underground mines. The methods are (1) room and pillar and (2) high extraction. The method used gives some indication of the amount and pattern of coal extraction within each mined area, and has some influence on the timing and type of subsidence that can occur over a mine.

The following discussion and illustrations of mining methods are based on Guither et al. (1984).

In room-and-pillar mines, coal is removed from haulage-ways (entries) and selected areas called rooms. Pillars of unmined coal are left between the rooms to support the roof. Depending on the size of rooms and pillars, the amount of coal removed from the production areas will range from 40% to 70%.

Room and Pillar - mining is divided into six categories:

- room-and-pillar basic (RPB, fig. 1A), an early method that did not follow a preset mining plan and therefore resulted in very irregular designs;
- modified room and pillar (MRP, fig. 1B);
- room-and-pillar panel (RPP, fig. 1C);
- blind room and pillar (BRP, fig. 1D);
- checkerboard room and pillar (CRP, fig. 1E);
- room and pillar (RP), a classification used when the specific type of room-and-pillar mining is unknown.

Blind and checkerboard are the most common types of room-and-pillar mining used in Illinois today. The knowledge of room-and-pillar mining methods gives a trained engineer information on the nature of subsidence that may occur. A more extensive discussion of subsidence can be found in Bauer et al. (1993).

High-extraction These mining methods are subdivided into high-extraction retreat (HER, Fig 1F) and longwall (LW, Fig 1G, 1H). In these methods, much of the coal is removed within well defined areas of the mine. Subsidence of the surface above these areas occurs within weeks. Once the subsidence activity ceases, the potential for further movement over these areas is low; however, subsidence may continue for several years after mining.

High-extraction retreat mining is a form of room-and-pillar mining that extracts most of the coal. Rooms and pillars are developed in the panels, and the pillars are then systematically removed (fig. 1F).

In early (pre-1960) longwall mines, mining advanced in multiple directions from a central shaft (fig. 1G). Large pillars of coal were left around the shaft, but all coal was removed beyond these pillars. Miners placed rock and wooden props and cribs in the mined-out areas to support the mine roof. The overlying rock gradually settled onto these supports, thus producing subsidence at the surface. In post-1959 longwall mines, room-and-pillar methods have been used to develop the main entries of the mine and panel areas. Modern longwall methods extract 100 percent of the coal in the panel areas (fig. 1H).

Source Maps

Mine outlines depicted on the map are, whenever possible, based on maps made from original mine surveys. The process of compiling and digitizing the quadrangle map may produce errors of less than 200 feet in the location of mine boundaries. Larger errors of 500 feet or more are possible for mines that have incomplete or inaccurate source maps.

Because of the extreme complexity of some mine maps, detailed features of mined areas have been omitted. The digitized mine boundary includes the exterior boundary of all rooms or entries that were at least 80 feet wide or protruded 500 feet from the main mining area. Unmined areas between mines are shown if they are at least 80 feet wide; unmined blocks of coal within mines are shown if they are at least 400 feet on each side. Original source maps should be consulted when precise information on mine boundaries or interior features is needed.

The mine summary sheet lists the source maps used to determine each mine outline. The completeness of map sources is indicated on the map by a line symbol at the mine boundary. Source maps are organized in five categories.

Final mine map The mine outline was digitized from an original map made from mine surveys conducted within a few months after production ceased. The date of the map and the last reported production are listed on the summary sheet.

Not a final map The mine is currently active or the mine outline was made from a map based on mine surveys conducted more than a few months before production ceased. This implies the actual mined-out area is probably larger than the outline on the map. The mine summary sheet indicated the dates of source maps and the last reported production, as well as the approximate tonnage mined between these two dates (if the mine is abandoned). The summary sheet also lists the approximate acreage mined since the date of the map and, in some cases, indicates the area where additional mining may have taken place. This latter information is determined by locating on the map the active faces relative to probable boundaries of the mine property.

Undated map The source map was undated, so it may or may not be based on a final mine survey. When sufficient data are available, the probable acreage of the mined area is estimated from reported production, average seam thickness and a recovery rate comparable to other mines in the area. This information is listed in the summary sheet for the mine.

Incomplete map The source map did not show the entire mine. The summary sheet indicates the missing part of the mine map and the acreage of the unmapped area, which is estimated from the amount of coal known to have been produced from the mine.

Secondary source map The original mine map was not found so the outline shown was determined from secondary sources (e.g., outlines from small-scale regional maps published in other reports). The summary sheet describes the secondary sources.

Points and Labels

The locations of all known mine openings (shafts, slopes, and drifts) and surface mine tipples are plotted on the map. Tipples are areas where coal was cleaned, stockpiled, and loaded for shipping.

Only openings or tipples are plotted for mines without source maps. If the precise locations of these features are unknown, a special symbol is used to indicate the approximate location of the mine.

Each mine on the map is labeled with the names of the mine and operating company, ISGS mine index number, and years of operation (if known) if space permits. A seam designation is given on maps where more than one seam was mined. For a mine that operated under more than one name, only the most recent name is generally given. When a mine changed names or ownership shortly before closing, an earlier name is listed. All company and mine names are listed on the mine summary sheet in the directory, under the production history segment.

Figure 1 Mining methods: (A) room-and-pillar basic (RPB), (B) modified room and pillar (MRP), (C) room-and-pillar panel (RPP), (D) blind room and pillar (BRP).

Figure 1 (*cont.*) Mining methods: (E) checkerboard room and pillar (CRP), (F) high extraction retreat (HER), (G) early (pre-1960) longwall, (H) post-1959 longwall

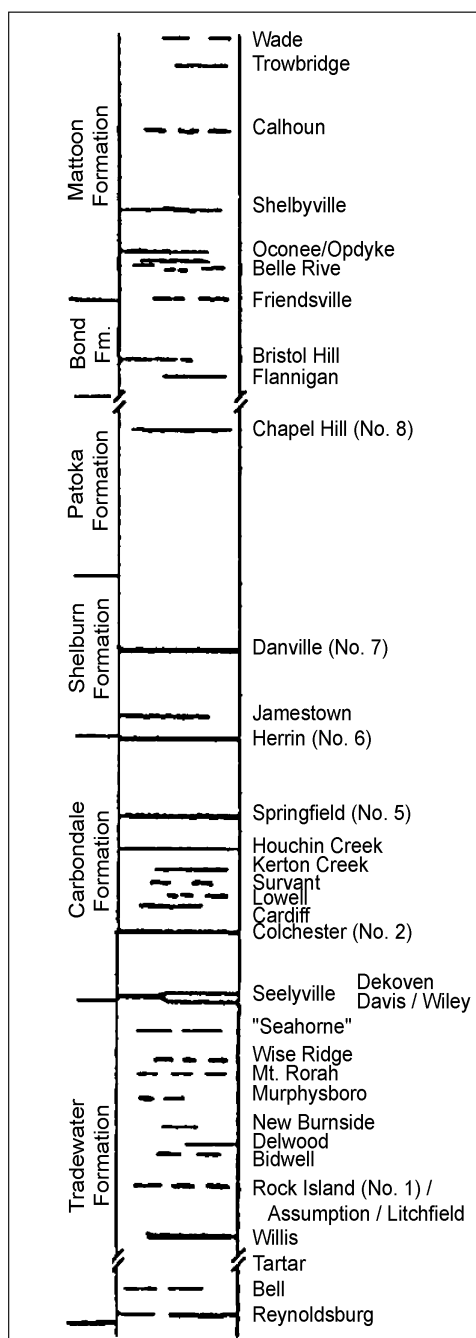


Figure 2 Generalized stratigraphic section, showing approximate vertical relations of coals in Illinois.

INTERPRETING A MINE SUMMARY SHEET

The mine summary sheet is arranged numerically by mine index number. Index numbers are shown on the map and in the mine listing. The mine summary sheet provides the following information (if available).

Company and mine name The last company or owner of the mine is used, unless no production was recorded for the last owner. In that case, the penultimate owner is listed. Mines often have no specific name; in these cases, the company name is also used as the mine name.

Type *Underground* denotes a subsurface mine in which the coal was reached through a shaft, slope, or a drift entry. *Surface* denotes a surface, open pit or strip mine.

Total mined-out acreage shown The total acreage of the mined area mapped, including any acreage mined on adjacent quadrangles, is calculated from the digitized outline of the mine. The acreage of large barrier pillars depicted on the map is excluded from the mined-out acreage. Small pillars not digitized are included in the acreage calculation. If the mine outline is not based on a final mine map, the acreage is followed by an estimate of additional acres that may have been mined. The estimate is determined from reported mine production, approximate thickness of the coal, and recovery rates calculated from nearby mines that used similar mining methods.

SHAFT, SLOPE, DRIFT OR TIPPLE LOCATIONS

Shaft, slope, drift, or tippie locations Locations of all known former entry points to underground mines or the location of coal cleaning, tippie, and shipping equipment used by the mine's facility are listed. The location is described in terms of county, township and range (Twp-Rge), section, and location within the section by quarters. NE SW NW, for instance, would describe the location in the northeast quarter of the southwest quarter of the northwest quarter. Approximate footage from the section lines (FEL = from east line, FNL = from north line, for example) is given when that information is known; this indicates a surveyed location and is not derived from maps. Entry points are also plotted on the map and coded for the type of entry or tippie. A mine opening may have had many purposes during the life of the mine. Old hoist shafts are often later used for air and escape shafts; this information is included in the directory when known. The tippie for underground mines was generally located near the main shaft or slope. At surface mines, coal was sometimes hauled to a central tippie several miles from the mine pit.

GEOLOGY

Seam(s) mined The name of the coal seam(s) mined is listed, if known. If multiple seams were mined, they are all listed, although the mined-out area for each seam may be shown on separate maps. Figure 2 shows the stratigraphic section of the coal-bearing interval in Illinois, and the vertical relations among the coals.

Depth The depth to the top of the seam in the vicinity of the shaft is listed, if known. The depth is determined from notes made by geologists who visited the mine during its operation or from drill hole data in ISGS files. Depth generally varies little over the extent of a mine; however, reported depths for an individual mine may vary. Depth for surface-mined coals varies, and is usually represented as a range.

Thickness The approximate thickness of the mined seam is shown, if known. Thickness also comes from notes of geologists who visited the mine during its operation or from borehole data in ISGS files. Minimum, maximum, and average thicknesses are given when this information is available.

Mining method The principal mining method used at the mine (figs. 1A-H) is listed. See the mining methods section at the beginning of this directory for a discussion of this parameter.

Geologic problems reported Any known geologic problems, such as faults, water seepage, floor heaving, and unstable roof, encountered in the mine are reported. This information is from notes made by ISGS geologists who visited the mine, or from reports by mine inspectors published by the Illinois Department of Mines and Minerals, or from the source map(s). Geologic problems are not reported for active mines.

PRODUCTION HISTORY

Production history Tons of coal produced from the mine by each mine owner are totaled. When the source map used for the mine outline is not a final mine map, the tonnage produced since the date of the map is identified. For mines that extend into adjacent quadrangles, the tonnage reported includes areas mined in adjacent quadrangles.

SOURCE OF DATA

Source map This section lists information about the map(s) used to compile the mine outline and the locations of tipples and mine openings. In some cases more than one source map was used. For example, a map drawn before the mine closed may provide better information on original areas of the mine than a later map. When more than one map was used, the bibliography section explains what information was taken from each source.

Date The date of the most recent mine survey listed on the source map is reported.

Original scale The original scale of the source map is listed. Many maps are photo-reductions and are no longer at their original scale. The original scale gives some indication of the level of detail of the mine outline and the accuracy of the mine boundary relative to surface features. Generally, the larger the scale, the greater the accuracy and detail of the mine map. Mine outlines taken from source maps at scales smaller than 1:24,000 may be highly generalized and may well be inaccurately located with respect to surface features.

Digitized scale The scale of the digitized map is reported. The scale may be different from that of the original source map. In many cases the digitized map was made from a photo-reduction of the original source map, or the source map was not in a condition suitable for digitizing, and the mine boundaries were transferred to another base map.

Map type Source maps are classified into five categories to indicate the probable completeness of the map. See discussion of source maps in the previous section.

Annotated bibliography Sources that provide information about the mine are listed, with the data taken from each source. Some commonly used sources are described below. Full bibliographic references are given for all other sources. Unless otherwise noted, all sources are available for public inspection at the ISGS.

Coal Reports Published since 1881, these reports contain tabular data on mine ownership, production, employment, and accidents. Some volumes include short descriptions made by mine inspectors of physical features and conditions in selected mines.

Directory of Illinois Coal Mines This source is a compilation of basic data about Illinois coal mines, originally gathered by ISGS staff in the early 1950s. Sources used for this directory are undocumented, but they are primarily Illinois Department of Mines and Minerals annual reports, ISGS mine notes, and coal company officials.

ENR Document 85/01, Guither, H. D., J. K. Hines, and R. A. Bauer, 1985 The Economic Effect of Underground Mining Upon Land Used for Illinois Agriculture: Illinois Department of Energy and Natural Resources Document 85/01, 185 p.

Microfilm map The U.S. Bureau of Mines maintains a microfilm archive of mine maps. A microfilm file for Illinois is available for public viewing at the ISGS.

Mine notes ISGS geologists have visited mines or contacted mine officials throughout the state since the early 1900s. Notes made during these visits range from brief descriptions of the mine location to long narratives (including sketches) of mining conditions and geology.

Federal Land Bank of St. Louis, Preliminary Reports on Subsidence Investigations Mining engineers working for the Federal Land Bank of St. Louis mapped areas of subsidence due to coal mining in the early 1930s. These reports often include county maps of mine properties with mined-out areas including shaft locations, as well as subsidence areas.

REFERENCES

Andreas, L. & C., 1873, Atlas map of Greene County, Illinois. Davenport, Iowa: Andreas, Lyter & Co. [Map]
Retrieved from the Library of Congress, <https://www.loc.gov/item/2006628620/>.

Bauer, R. A., B. A. Trent, and P. B. Dumontelle, 1993, Mine Subsidence in Illinois: Facts for the Homeowner Considering Insurance, Illinois State Geological Survey, Environmental Geology Note 144, 16p.

Guither, H. D., J. K. Hines, and R. A. Bauer, 1985, The Economic Effects of Underground Mining Upon Land Used for Illinois Agriculture, Illinois Department of Energy and Natural Resources Document 85/01, 185p.

PART II DIRECTORY OF MINES IN THE ROODHOUSE EAST QUADRANGLE

MINE SUMMARY SHEETS

A summary sheet on the geology and production history of each mine in the Roodhouse East Quadrangle is provided. These summary sheets are arranged numerically by mine index number. Consult Part I for a complete explanation of the data listed in the summary sheet.

Mine Index 258

Edward Griffiths, Griffiths Mine

Type: Underground Total mined-out acreage shown: None; production indicates approximately 16 acres were mined.

SHAFT, SLOPE, DRIFT or TIPPLE LOCATIONS

Type	County	Township-Range	Section	Quarters-Footage
Main drift (1885-1894)	Greene	12N 11W	30	SE NW
Shaft (1894-1916)	Greene	12N 11W	30	SE NW

GEOLOGY

Seam(s) Mined	Depth (ft)	Thickness (ft)			Mining Method
		Min	Max	Avg	
Colchester	35-60 (shaft), 28-42 (drift)	2.2	3.0	2.5	RP

Geologic Problems Reported: A fault was present near the shaft bottom and was encountered in the workings. The fault extended 500 feet to the northwest and 160 feet southeast of the shaft bottom, where the fault changed course to nearly north-south. The coal was free of horsebacks or banding within the seam. The roof was black shale with pyrite concretions. Clod was sometimes as much as 3 feet thick, with a 2.0 to 4.5 foot thick limestone above the clod. The underclay was 12 feet thick.

PRODUCTION HISTORY

Company	Mine Name	Years	Production (tons)
E. Griffiths	Griffiths	circa 1873	unknown*
John Griffiths	Griffiths	1885-1892	6,656
Edward Griffith	Griffith	1892-1893	1,020
John Griffiths	Griffiths	1893-1894	960
Griffiths & Sons	Griffiths	1895-1897	2,240
Edward Griffiths	Griffiths	1897-1916 **	<u>25,433</u>
			36,309

* The area was shown as mined on the 1873 Greene County atlas, but operators between 1873 and the 1886 Coal Report could not be identified, and production and years of operation are not known. A polygon was constructed to include the mine shown on the atlas.

** Idle 1907 to 1912

Last reported production: 1916

SOURCES OF DATA

Source Map	Date	Original Scale	Digitized Scale	Map Type
Mine notes	1937	1:62500	1:62500	Secondary source
Atlas map of Greene County	1873	unknown	1:24000	Secondary source

Annotated Bibliography (data source, brief description of information)

Coal Reports - Production, ownership, years of operation.

Directory of Illinois Coal Mines (Greene County) - Mine names, mine index, ownership, years of operation.

Mine notes (Greene County) - Mine type, drift & shaft locations, depth, thickness, mining method, geologic problems.

Andreas, L. & C., 1873, Atlas map of Greene County, Illinois. Davenport, Iowa: Andreas, Lyter & Co. [Map]

Retrieved from the Library of Congress, <https://www.loc.gov/item/2006628620/> - Ownership, years of operation, general area of mining.

Mine Index 713
Birch Creek Coal Company, Birch Creek Mine

Type: Surface Total mined-out acreage shown: 3; production indicates 17 acres were mined.

SHAFT, SLOPE, DRIFT or TIPPLE LOCATIONS

Type	County	Township-Range	Section	Quarters-Footage
Pit	Greene	12N 11W	23	SE SE SE .

GEOLOGY

Seam(s) Mined	Depth (ft)	Thickness (ft)			Mining Method
		Min	Max	Avg	
Colchester	12			2.67	Surface

Geologic Problems Reported:

PRODUCTION HISTORY

Company	Mine Name	Years	Production (tons)
Donald Piper & Son Coal Company	Birch Creek	1950-1952	2,070
Birch Creek Coal Company *	Birch Creek	1952-1967	<u>70,352</u> 72,422

* Operated by E. L. Bacon

Last reported production: 1967

SOURCES OF DATA

Source Map	Date	Original Scale	Digitized Scale	Map Type
Mine notes	1957	1:62500	1:62500	Secondary source

Annotated Bibliography (data source, brief description of information)

Coal Reports - Production, ownership, years of operation.

Directory of Illinois Coal Mines (Greene County) - Mine names, mine index, ownership, years of operation.

Mine notes (Greene County) - Mine type, pit location, seam, depth, thickness.

Mine Index 2042
William Allen, Wyatt Mine

Type: Underground Total mined-out acreage shown: None; production indicates approximately 6 acres were mined.

SHAFT, SLOPE, DRIFT or TIPPLE LOCATIONS

Type	County	Township-Range	Section	Quarters-Footage
Main drift	Greene	12N 11W	28	SW NW

GEOLOGY

Seam(s) Mined	Depth (ft)	Thickness (ft)			Mining Method
		Min	Max	Avg	
Rock Island				2.5	RP

Geologic Problems Reported:

PRODUCTION HISTORY

Company	Mine Name	Years	Production (tons)
Burl Wyatt	Wyatt	1913-1923 *	9,440
E. O. Elliott	Wyatt	1923-1924	900
William Allen	Wyatt	1924-1925	2,000
			12,340

* Idle 1918 to 1920. Production was not listed in 1922 for mines producing less than 10,000 tons.

Last reported production: 1925

SOURCES OF DATA

Source Map	Date	Original Scale	Digitized Scale	Map Type
ISGS field notes (G. H. Cady)	1916	1:62500	1:62500	Secondary source

Annotated Bibliography (data source, brief description of information)

Coal Reports - Production, ownership, years of operation, mine type, thickness, mining method.
 Directory of Illinois Coal Mines (Greene County) - Mine names, mine index, ownership, years of operation.
 ISGS field notes (Greene County) - Mine location, type, seam.

Mine Index 2304**O. S. Walker, Walker Mine**

Type: Underground Total mined-out acreage shown: None; production indicates approximately 1 acre was mined.

SHAFT, SLOPE, DRIFT or TIPPLE LOCATIONS

Type	County	Township-Range	Section	Quarters-Footage
Main slope	Greene	12N 10W	7	NE SW SW

GEOLOGY

Seam(s) Mined	Depth (ft)	Thickness (ft)			Mining Method
		Min	Max	Avg	
Colchester	8			2.0	Underground

Geologic Problems Reported:

PRODUCTION HISTORY

Company	Mine Name	Years	Production (tons)
O. S. Walker	Walker	1934-1941	<u>1,356</u> 1,356

Last reported production: 1941

SOURCES OF DATA

Source Map	Date	Original Scale	Digitized Scale	Map Type
Mine notes	Undated	1:62500	1:62500	Secondary source

Annotated Bibliography (data source, brief description of information)

Coal Reports - Production, ownership, years of operation.

Directory of Illinois Coal Mines (Greene County) - Mine names, mine index, ownership, years of operation.

Mine notes (Greene County) - Mine type, slope location, seam, depth, thickness.

Mine Index 2305**Vernie A. Bowns, Bowns No. 4 Mine**

Type: Underground Total mined-out acreage shown: None; production indicates approximately 4 acres were mined.

SHAFT, SLOPE, DRIFT or TIPPLE LOCATIONS

Type	County	Township-Range	Section	Quarters-Footage
Main slope	Greene	12N 11W	24	NE NE SW *
Air shaft	Greene	12N 11W	24	NE NE SW *

* All three pages of the mine notes indicate the location is in T10N, which is incorrect, as the mine's address is Roodhouse (in T12N). The mine location is from the ISGS field notes. The air shaft is 88 ft from the slope entrance, but is not shown on map, due to problems with the source map..

GEOLOGY

Seam(s) Mined	Depth (ft)	Thickness (ft)			Mining Method
		Min	Max	Avg	
Colchester	8-60			2.5	RP

Geologic Problems Reported: The northwestern extensions were halted due to a "large rock bedded in coal" and the roof shale.

PRODUCTION HISTORY

Company	Mine Name	Years	Production (tons)
James T. Adkins	Adkins	1913-1942 **	9,599
Vernie A. Bowns	Bowns No. 4	1942-1947	<u>206</u>
			9,805

** Idle 1920 to 1924; mines producing less than 1,000 tons per year between 1930 and 1933 were not listed in the Coal Reports.

Last reported production: 1947

SOURCES OF DATA

Source Map	Date	Original Scale	Digitized Scale	Map Type
ISGS field notes (H. E. Culver)	10-13-1922	1:62500	1:62500	Secondary source
Microfilm, document 351568 ***	Undated	(no scale given)	1:24000	Undated

*** It is not possible to geo-register the mine map, as the map has no land surface features, or the angle to rotate the map.

Annotated Bibliography (data source, brief description of information)

Coal Reports - Production, ownership, years of operation, depth, mining method.

Directory of Illinois Coal Mines (Greene County) - Mine names, mine index, ownership, years of operation.

Mine notes (Greene County) - Mine type, depth, thickness.

ISGS field notes (Greene County) - Drift location, seam.

Microfilm map, document 351568, reel 03136, frame 343 - Slope and air shaft locations.

Mine Index 2306**O. L. Ferguson, Ferguson Mine**

Type: Underground Total mined-out acreage shown: None; production indicates less than 1 acre was mined.

SHAFT, SLOPE, DRIFT or TIPPLE LOCATIONS

Type	County	Township-Range	Section	Quarters-Footage
Main slope	Greene	12N 10W	19	NW SE NW

GEOLOGY

Seam(s) Mined	Depth (ft)	Thickness (ft)			Mining Method
		Min	Max	Avg	
Colchester	5-21			2.4	Underground

Geologic Problems Reported:

PRODUCTION HISTORY

Company	Mine Name	Years	Production (tons)
O. L. Ferguson	Ferguson	1935-1939 *	<u>1,180</u> 1,180

* Idle 1936 & 1937. According to 7-28-1927 field notes by J. R. Van Pelt, O. L. Ferguson was operating a mine in 1927 at SW SE NW 19-T12N-R10W. No production was reported for a Ferguson Mine from 1926 to 1929 in the Coal Reports, but the mine may have been operating.

Last reported production: 1939

SOURCES OF DATA

Source Map	Date	Original Scale	Digitized Scale	Map Type
ISGS field notes (J. R. Van Pelt, Jr.)	1941	1:62500	1:62500	Secondary source

Annotated Bibliography (data source, brief description of information)

Coal Reports - Production, ownership, years of operation.

Directory of Illinois Coal Mines (Greene County) - Mine names, mine index, ownership, years of operation.

Mine notes (Greene County) - Mine type, seam, depth, thickness.

ISGS field notes (Greene County) - Mine location, depth, thickness.

Mine Index 2307
Dallas W. Tate, Tate Mine

Type: Underground Total mined-out acreage shown: None; production indicates less than 1 acre was mined.

SHAFT, SLOPE, DRIFT or TIPPLE LOCATIONS

Type	County	Township-Range	Section	Quarters-Footage
Main shaft	Greene	12N 11W	20	SW SW NW

GEOLOGY

Seam(s) Mined	Depth (ft)	Thickness (ft)			Mining Method
		Min	Max	Avg	
Colchester	42			4.33	Underground

Geologic Problems Reported:

PRODUCTION HISTORY

Company	Mine Name	Years	Production (tons)
Tate Coal Company	Tate	1938-1939	444
Dallas W. Tate	Tate	1940-1941	966
			1,410

Last reported production: 1941

SOURCES OF DATA

Source Map	Date	Original Scale	Digitized Scale	Map Type
Mine notes	Undated	1:62500	1:62500	Secondary source

Annotated Bibliography (data source, brief description of information)

Coal Reports - Production, ownership, years of operation.
 Directory of Illinois Coal Mines (Greene County) - Mine names, mine index, ownership, years of operation.
 Mine notes (Greene County) - Mine type, shaft location, depth, thickness.

Mine Index 2309
Hardin Smith, Mehrhoff Mine

Type: Underground Total mined-out acreage shown: None; production indicates approximately 1 acre was mined.

SHAFT, SLOPE, DRIFT or TIPPLe LOCATIONS

Type	County	Township-Range	Section	Quarters-Footage
Main slope	Greene	12N 10W	7	SW SW

GEOLOGY

Seam(s) Mined	Depth (ft)	Thickness (ft)			Mining Method
		Min	Max	Avg	
Colchester	6			2.67	Underground

Geologic Problems Reported:

PRODUCTION HISTORY

Company	Mine Name	Years	Production (tons)
John Whitehead	Mehrhoff	1935-1937 *	323
Willis Smith	Mehrhoff	1938-1941	1,189
Hardin Smith	Mehrhoff	1941-1943	426
			1,938

* The Coal Reports indicated the mine name was Mehrhoff Mine in 1940 and 1941. Mehrhoff may have owned the mine or been a partial owner in 1941, but it is possible Mehrhoff opened the mine between 1930 and 1933 when mines producing less than 1,000 tons per year were not listed in the Coal Reports (and the mine may have been idled in 1934 pending the sale).

Last reported production: 1943

SOURCES OF DATA

Source Map	Date	Original Scale	Digitized Scale	Map Type
Mine notes	Undated	1:62500	1:62500	Secondary source

Annotated Bibliography (data source, brief description of information)

Coal Reports - Production, ownership, years of operation.
 Directory of Illinois Coal Mines (Greene County) - Mine names, mine index, ownership, years of operation.
 Mine notes (Greene County) - Mine type, slope location, seam, depth, thickness.

Mine Index 2310
Jesse Hopper, Hopper Mine

Type: Underground Total mined-out acreage shown: None; production indicates approximately 2 acres were mined.

SHAFT, SLOPE, DRIFT or TIPPLE LOCATIONS

Type	County	Township-Range	Section	Quarters-Footage
Main slope	Greene	12N 11W	12	SW SW NE

GEOLOGY

Seam(s) Mined	Depth (ft)	Thickness (ft)			Mining Method
		Min	Max	Avg	
Colchester	8			2.5	Underground

Geologic Problems Reported:

PRODUCTION HISTORY

Company	Mine Name	Years	Production (tons)
Roy Hopper	Hopper	1925-1933 *	3,180
Frank Hopper	Hopper	1934-1934	464
Jesse Hopper	Hopper	1935-1940 **	463
			4,107

* Production was not listed in the Coal Reports from 1930 through 1933 for mines producing less than 1,000 tons per year.

** Idle 1936 & 1937

Last reported production: 1940

SOURCES OF DATA

Source Map	Date	Original Scale	Digitized Scale	Map Type
Mine notes	1938	1:62500	1:62500	Secondary source

Annotated Bibliography (data source, brief description of information)

Coal Reports - Production, ownership, years of operation.

Directory of Illinois Coal Mines (Greene County) - Mine names, mine index, ownership, years of operation.

Mine notes (Greene County) - Mine type, slope location, seam, depth, thickness.

Mine Index 2311
Fred H. Steckel, Steckel Mine

Type: Underground Total mined-out acreage shown: None; production indicates less than 1 acre was mined.

SHAFT, SLOPE, DRIFT or TIPPLe LOCATIONS

Type	County	Township-Range	Section	Quarters-Footage
Main shaft	Greene	12N 11W	13	NE NE SE

GEOLOGY

Seam(s) Mined	Depth (ft)	Thickness (ft)			Mining Method
		Min	Max	Avg	
Unknown	22			2.5	Underground

Geologic Problems Reported:

PRODUCTION HISTORY

Company	Mine Name	Years	Production (tons)
Fred H. Steckel	Steckel	1939-1942	<u>632</u> 632

Last reported production: 1942

SOURCES OF DATA

Source Map	Date	Original Scale	Digitized Scale	Map Type
Mine notes	1937	1:62500	1:62500	Secondary source

Annotated Bibliography (data source, brief description of information)

Coal Reports - Production, ownership, years of operation.
 Directory of Illinois Coal Mines (Greene County) - Mine names, mine index, ownership, years of operation.
 Mine notes (Greene County) - Mine type, shaft location, depth, thickness.

Mine Index 2312**Hopper & Ferguson, Hopper & Ferguson Mine**

Type: Underground Total mined-out acreage shown: None; production indicates less than 1 acre was mined.

SHAFT, SLOPE, DRIFT or TIPPLE LOCATIONS

Type	County	Township-Range	Section	Quarters-Footage
Main drift	Greene	12N 10W	19	SW NE NW

GEOLOGY

Seam(s) Mined	Depth (ft)	Thickness (ft)			Mining Method
		Min	Max	Avg	
Colchester				2.5	Underground

Geologic Problems Reported:

PRODUCTION HISTORY

Company	Mine Name	Years	Production (tons)
Orville L. Ferguson, Jr.	Ferguson No. 2	1939-1942	428
Hopper & Ferguson	Hopper & Ferguson	1942-1942	<u>12</u>
			440

Last reported production: 1942

SOURCES OF DATA

Source Map	Date	Original Scale	Digitized Scale	Map Type
Mine notes	Undated	1:62500	1:62500	Secondary source

Annotated Bibliography (data source, brief description of information)

Coal Reports - Production, ownership, years of operation.

Directory of Illinois Coal Mines (Greene County) - Mine names, mine index, ownership, years of operation.

Mine notes (Greene County) - Mine type, drift location, seam, thickness.

Mine Index 2313
D. W. Tate, Black Mine

Type: Underground Total mined-out acreage shown: None; production indicates approximately 1 acre was mined.

SHAFT, SLOPE, DRIFT or TIPPLe LOCATIONS

Type	County	Township-Range	Section	Quarters-Footage
Main shaft	Greene	12N 11W	21	NE SE NE

GEOLOGY

Seam(s) Mined	Depth (ft)	Thickness (ft)			Mining Method
		Min	Max	Avg	
Colchester	21			4.5	Underground

Geologic Problems Reported:

PRODUCTION HISTORY

Company	Mine Name	Years	Production (tons)
D. W. Tate	Black	1935-1937	4,064 4,064

Last reported production: 1937

SOURCES OF DATA

Source Map	Date	Original Scale	Digitized Scale	Map Type
Mine notes	Undated	1:62500	1:62500	Secondary source

Annotated Bibliography (data source, brief description of information)

Coal Reports - Production, ownership, years of operation.

Directory of Illinois Coal Mines (Greene County) - Mine names, mine index, ownership, years of operation.

Mine notes (Greene County) - Mine type, shaft location, seam, depth, thickness.

Mine Index 2314
Charles Lawson, Lawson Mine

Type: Underground Total mined-out acreage shown: None; production indicates less than 1 acre was mined.

SHAFT, SLOPE, DRIFT or TIPPLE LOCATIONS

Type	County	Township-Range	Section	Quarters-Footage
Main drift	Greene	12N 11W	23 *	

* The mine location within the section is not known and the mine has been placed at the center of the section.

GEOLOGY

Seam(s) Mined	Depth (ft)	Thickness (ft)			Mining Method
		Min	Max	Avg	
Unknown					Underground

Geologic Problems Reported:

PRODUCTION HISTORY

Company	Mine Name	Years	Production (tons)
Charles Lawson	Lawson	1940-1942	<u>1,817</u> 1,817

Last reported production: 1942

SOURCES OF DATA

Source Map	Date	Original Scale	Digitized Scale	Map Type
Coal Section mines database	Undated	1:62500	1:62500	Secondary source

Annotated Bibliography (data source, brief description of information)

Coal Reports - Production, ownership, years of operation.
 Directory of Illinois Coal Mines (Greene County) - Mine names, mine index, ownership, years of operation.

Mine Index 2315**A. G. Dove Coal Company, Dove Mine**

Type: Underground Total mined-out acreage shown: None; production indicates less than 1 acre was mined.

SHAFT, SLOPE, DRIFT or TIPPLE LOCATIONS

Type	County	Township-Range	Section	Quarters-Footage
Main slope	Greene	12N 11W	23	SW SE SE

GEOLOGY

Seam(s) Mined	Depth (ft)	Thickness (ft)			Mining Method
		Min	Max	Avg	
Rock Island	16			2.5	Underground

Geologic Problems Reported:

PRODUCTION HISTORY

Company	Mine Name	Years	Production (tons)
A. G. Dove Coal Company	Dove	1939-1939	<u>127</u> 127

Last reported production: 1939

SOURCES OF DATA

Source Map	Date	Original Scale	Digitized Scale	Map Type
Mine notes	Unknown	1:62500	1:62500	Secondary source

Annotated Bibliography (data source, brief description of information)

Coal Reports - Production, ownership, years of operation.

Directory of Illinois Coal Mines (Greene County) - Mine names, mine index, ownership, years of operation.

Mine notes (Greene County) - Mine type, slope location, seam, depth, thickness.

Mine Index 2316
Jesse Bowns, Bowns Mine

Type: Underground Total mined-out acreage shown: None, production indicates less than 1 was mined.

SHAFT, SLOPE, DRIFT or TIPPLE LOCATIONS

Type	County	Township-Range	Section	Quarters-Footage
Main drift	Greene	12N 11W	23	SE

GEOLOGY

Seam(s) Mined	Depth (ft)	Thickness (ft)			Mining Method
		Min	Max	Avg	
Colchester					Underground

Geologic Problems Reported:

PRODUCTION HISTORY

Company	Mine Name	Years	Production (tons)
Jesse Bowns	Bowns	1934-1936 *	40
			40

* Idle 1935

Last reported production: 1936

SOURCES OF DATA

Source Map	Date	Original Scale	Digitized Scale	Map Type
Mine notes	Undated	1:62500	1:62500	Secondary source

Annotated Bibliography (data source, brief description of information)

Coal Reports - Production, ownership, years of operation.

Directory of Illinois Coal Mines (Greene County) - Mine names, mine index, ownership, years of operation.

Mine notes (Greene County) - Drift location.

Mine Index 2317**Vernie A. Bowns, Bowns No. 2 Mine**

Type: Underground Total mined-out acreage shown: None; production indicates approximately 9 acres were mined.

SHAFT, SLOPE, DRIFT or TIPPLE LOCATIONS

Type	County	Township-Range	Section	Quarters-Footage
Main drift	Greene	12N 11W	23	SW NW

GEOLOGY

Seam(s) Mined	Depth (ft)	Thickness (ft)			Mining Method
		Min	Max	Avg	
Colchester	80			2.5	Underground

Geologic Problems Reported:

PRODUCTION HISTORY

Company	Mine Name	Years	Production (tons)
W. H. Allen	Allen	1931-1931	1,120
V. A. Bowns	Bowns No. 1	1932-1932	9,838
W. H. Allen	Allen	1933-1940	8,642
Charles H. Lawson	Lawson	1940-1940	43
Vernie A. Bowns	Bowns No. 2	1940-1941	81
			19,724

Last reported production: 1941

SOURCES OF DATA

Source Map	Date	Original Scale	Digitized Scale	Map Type
Mine notes	1936	1:62500	1:62500	Secondary source

Annotated Bibliography (data source, brief description of information)

Coal Reports - Production, ownership, years of operation.

Directory of Illinois Coal Mines (Greene County) - Mine names, mine index, ownership, years of operation.

Mine notes (Greene County) - Mine type, drift location, depth, thickness.

Mine Index 2318
Everett Goacher, Goacher Mine

Type: Underground Total mined-out acreage shown: None; production indicates less than 1 acre was mined.

SHAFT, SLOPE, DRIFT or TIPPLE LOCATIONS

Type	County	Township-Range	Section	Quarters-Footage
Main slope	Greene	12N 11W	23	NE NE SE

GEOLOGY

Seam(s) Mined	Depth (ft)	Thickness (ft)			Mining Method
		Min	Max	Avg	
Colchester					Underground

Geologic Problems Reported:

PRODUCTION HISTORY

Company	Mine Name	Years	Production (tons)
Everett Goacher	Goacher	1935-1937	813
			813

Last reported production: 1937

SOURCES OF DATA

Source Map	Date	Original Scale	Digitized Scale	Map Type
Mine notes	1936	1:62500	1:62500	Secondary source

Annotated Bibliography (data source, brief description of information)

Coal Reports - Production, ownership, years of operation.
 Directory of Illinois Coal Mines (Greene County) - Mine names, mine index, ownership, years of operation.
 Mine notes (Greene County) - Mine type, slope location, seam.

Mine Index 2319**Simmons & Simmons, Simmons & Simmons No. 1 Mine**

Type: Underground Total mined-out acreage shown: None; production indicates less than 1 acre was mined.

SHAFT, SLOPE, DRIFT or TIPPLE LOCATIONS

Type	County	Township-Range	Section	Quarters-Footage
Main slope	Greene	12N 11W	23	NW NW NW *

* The mine notes have several locations shown on the small graphics, including SW SW NW, NE NE NE, and SW NW NW.

GEOLOGY

Seam(s) Mined	Depth (ft)	Thickness (ft)			Mining Method
		Min	Max	Avg	
Colchester	2-6			2.67	RPB

Geologic Problems Reported:

PRODUCTION HISTORY

Company	Mine Name	Years	Production (tons)
Fred Simmons	Simmons	1937-1939	1,064
Simmons & Simmons	Simmons & Simmons No. 1	1940-1940	140
Fred Simmons	Simmons No. 1	1941-1941	180
Simmons & Simmons	Simmons & Simmons No. 1	1942-1942	40
			<u>1,424</u>

Last reported production: 1942

SOURCES OF DATA

Source Map	Date	Original Scale	Digitized Scale	Map Type
Mine notes	1937	1:62500	1:62500	Secondary source

Annotated Bibliography (data source, brief description of information)

Coal Reports - Production, ownership, years of operation.

Directory of Illinois Coal Mines (Greene County) - Mine names, mine index, ownership, years of operation.

Mine notes (Greene County) - Mine type, slope location, seam, depth, thickness.

Mine Index 2320
Theodore Hopper, Hopper Mine

Type: Underground Total mined-out acreage shown: None; production indicates approximately 1 acre was mined.

SHAFT, SLOPE, DRIFT or TIPPLE LOCATIONS

Type	County	Township-Range	Section	Quarters-Footage
Main slope	Greene	12N 11W	23	SW SW NE

GEOLOGY

Seam(s) Mined	Depth (ft)	Thickness (ft)			Mining Method
		Min	Max	Avg	
Unknown	12			2.5	Underground

Geologic Problems Reported:

PRODUCTION HISTORY

Company	Mine Name	Years	Production (tons)
Theodore Hopper	Hopper	1934-1942	<u>2,306</u> 2,306

Last reported production: 1942

SOURCES OF DATA

Source Map	Date	Original Scale	Digitized Scale	Map Type
Mine notes	1936	1:62500	1:62500	Secondary source

Annotated Bibliography (data source, brief description of information)

Coal Reports - Production, ownership, years of operation.
 Directory of Illinois Coal Mines (Greene County) - Mine names, mine index, ownership, years of operation.
 Mine notes (Greene County) - Mine type, slope location, depth, thickness.

Mine Index 2321**E. A. Elliott, Elliott Mine**

Type: Underground Total mined-out acreage shown: None; production indicates less than 1 acre was mined.

SHAFT, SLOPE, DRIFT or TIPPLE LOCATIONS

Type	County	Township-Range	Section	Quarters-Footage
Main slope	Greene	12N 11W	23	SE SW NW

GEOLOGY

Seam(s) Mined	Depth (ft)	Thickness (ft)			Mining Method
		Min	Max	Avg	
Colchester	12-15			2.5	Underground

Geologic Problems Reported:

PRODUCTION HISTORY

Company	Mine Name	Years	Production (tons)
E. A. Elliott	Elliott	1939-1939	161
E. A. & Harry Elliott	Elliott	1940-1940	462
E. A. Elliott	Elliott	1941-1942	678
			1,301

Last reported production: 1942

SOURCES OF DATA

Source Map	Date	Original Scale	Digitized Scale	Map Type
Mine notes	Undated	1:62500	1:62500	Secondary source

Annotated Bibliography (data source, brief description of information)

Coal Reports - Production, ownership, years of operation.

Directory of Illinois Coal Mines (Greene County) - Mine names, mine index, ownership, years of operation, seam.

Mine notes (Greene County) - Mine type, slope location, depth, thickness.

Mine Index 2322
Ben Armstrong, Armstrong Mine

Type: Underground Total mined-out acreage shown: None; production indicates less than 1 acre was mined.

SHAFT, SLOPE, DRIFT or TIPPLE LOCATIONS

Type	County	Township-Range	Section	Quarters-Footage
Main slope	Greene	12N 11W	23	NW SW NE

GEOLOGY

Seam(s) Mined	Depth (ft)	Thickness (ft)			Mining Method
		Min	Max	Avg	
Unknown	16			2.5	Underground

Geologic Problems Reported:

PRODUCTION HISTORY

Company	Mine Name	Years	Production (tons)
W. E. Overby	Overby	1937-1937	44
Ben Armstrong	Armstrong	1938-1939	835 879

Last reported production: 1939

SOURCES OF DATA

Source Map	Date	Original Scale	Digitized Scale	Map Type
Mine notes	Undated	1:62500	1:62500	Secondary source

Annotated Bibliography (data source, brief description of information)

Coal Reports - Production, ownership, years of operation.
 Directory of Illinois Coal Mines (Greene County) - Mine names, mine index, ownership, years of operation.
 Mine notes (Greene County) - Mine type, slope location, depth, thickness.

Mine Index 2323
Lloyd Elliott, Elliott Mine

Type: Underground Total mined-out acreage shown: None; production indicates less than 1 acre was mined.

SHAFT, SLOPE, DRIFT or TIPPLE LOCATIONS

Type	County	Township-Range	Section	Quarters-Footage
Main slope	Greene	12N 11W	23	NW SE NW

GEOLOGY

Seam(s) Mined	Depth (ft)	Thickness (ft)			Mining Method
		Min	Max	Avg	
Colchester					Underground

Geologic Problems Reported:

PRODUCTION HISTORY

Company	Mine Name	Years	Production (tons)
Lloyd Elliott	Elliott	1934-1937 *	109
			109

* Idle 1935 & 1936

Last reported production: 1937

SOURCES OF DATA

Source Map	Date	Original Scale	Digitized Scale	Map Type
Mine notes	1937	1:62500	1:62500	Secondary source

Annotated Bibliography (data source, brief description of information)

Coal Reports - Production, ownership, years of operation.
 Directory of Illinois Coal Mines (Greene County) - Mine names, mine index, ownership, years of operation.
 Mine notes (Greene County) - Mine type, slope location, seam.

Mine Index 2324
Alfred E. Benner, Benner Mine

Type: Underground Total mined-out acreage shown: None; production indicates approximately 1 acre was mined.

SHAFT, SLOPE, DRIFT or TIPPLE LOCATIONS

Type	County	Township-Range	Section	Quarters-Footage
Main slope	Greene	12N 11W	23	NE SW NW

GEOLOGY

Seam(s) Mined	Depth (ft)	Thickness (ft)			Mining Method
		Min	Max	Avg	
Unknown					Underground

Geologic Problems Reported:

PRODUCTION HISTORY

Company	Mine Name	Years	Production (tons)
Alfred E. Benner	Benner	1935-1937	<u>2,821</u> 2,821

Last reported production: 1937

SOURCES OF DATA

Source Map	Date	Original Scale	Digitized Scale	Map Type
Mine notes	1936	1:62500	1:62500	Secondary source

Annotated Bibliography (data source, brief description of information)

Coal Reports - Production, ownership, years of operation.
 Directory of Illinois Coal Mines (Greene County) - Mine names, mine index, ownership, years of operation, location.
 Mine notes (Greene County) - Mine type.

Mine Index 2325
Carl Drury, Drury Mine

Type: Underground Total mined-out acreage shown: None; production indicates less than 1 acre was mined.

SHAFT, SLOPE, DRIFT or TIPPLE LOCATIONS

Type	County	Township-Range	Section	Quarters-Footage
Main slope	Greene	12N 11W	23	SE NE NE

GEOLOGY

Seam(s) Mined	Depth (ft)	Thickness (ft)			Mining Method
		Min	Max	Avg	
Herrin	2			2.5	Underground

Geologic Problems Reported:

PRODUCTION HISTORY

Company	Mine Name	Years	Production (tons)
Charles Houck	Houck No. 3	1940-1940	5
Carl Drury	Drury	1940-1940	<u>8</u>
			13

Last reported production: 1940

SOURCES OF DATA

Source Map	Date	Original Scale	Digitized Scale	Map Type
Mine notes	1936	1:62500	1:62500	Secondary source

Annotated Bibliography (data source, brief description of information)

Coal Reports - Production, ownership, years of operation.

Directory of Illinois Coal Mines (Greene County) - Mine names, mine index, ownership, years of operation.

Mine notes (Greene County) - Mine type, slope location, seam, depth, thickness.

Mine Index 2326
W. E. Overby, Overby No. 2 Mine

Type: Underground Total mined-out acreage shown: None; production indicates less than 1 acre was mined.

SHAFT, SLOPE, DRIFT or TIPPLE LOCATIONS

Type	County	Township-Range	Section	Quarters-Footage
Main slope	Greene	12N 11W	23	SW NW NW *

* Described as 905 FNL, 200 FWL, but these values may not be surveyed, so the location is shown as quarter-quarter-quarter.

GEOLOGY

Seam(s) Mined	Depth (ft)	Thickness (ft)			Mining Method
		Min	Max	Avg	
Colchester	14			2.5	Underground

Geologic Problems Reported:

PRODUCTION HISTORY

Company	Mine Name	Years	Production (tons)
W. E. Overby	Overby No. 2	1939-1942	<u>1,170</u> 1,170

Last reported production: 1942

SOURCES OF DATA

Source Map	Date	Original Scale	Digitized Scale	Map Type
Mine notes	1941	1:62500	1:62500	Secondary source

Annotated Bibliography (data source, brief description of information)

Coal Reports - Production, ownership, years of operation.
 Directory of Illinois Coal Mines (Greene County) - Mine names, mine index, ownership, years of operation.
 Mine notes (Greene County) - Mine type, slope location, seam, depth, thickness.

Mine Index 2327**Fred M. Simmons, Simmons No. 2 Mine**

Type: Underground Total mined-out acreage shown: None; production indicates approximately 1 acre was mined.

SHAFT, SLOPE, DRIFT or TIPPLE LOCATIONS

Type	County	Township-Range	Section	Quarters-Footage
Main slope	Greene	12N 11W	23	NW NW NW

GEOLOGY

Seam(s) Mined	Depth (ft)	Thickness (ft)			Mining Method
		Min	Max	Avg	
Colchester	20			2.5	Underground

Geologic Problems Reported:

PRODUCTION HISTORY

Company	Mine Name	Years	Production (tons)
George Warrell	Warrell No. 1	1937-1940	2,047
Simmons & Simmons	Simmons & Simmons No. 2	1940-1940	69
Fred M. Simmons	Simmons No. 2	1941-1941	68
			2,184

Last reported production: 1941

SOURCES OF DATA

Source Map	Date	Original Scale	Digitized Scale	Map Type
Mine notes	1936	1:62500	1:62500	Secondary source

Annotated Bibliography (data source, brief description of information)

Coal Reports - Production, ownership, years of operation.

Directory of Illinois Coal Mines (Greene County) - Mine names, mine index, ownership, years of operation.

Mine notes (Greene County) - Mine type, slope location, seam, depth, thickness.

Mine Index 2328**George M. Warrel, Warrell No. 2 Mine**

Type: Underground Total mined-out acreage shown: None; production indicates less than 1 acre was mined.

SHAFT, SLOPE, DRIFT or TIPPLE LOCATIONS

Type	County	Township-Range	Section	Quarters-Footage
Main slope	Greene	12N 11W	23	NW NW

GEOLOGY

Seam(s) Mined	Depth (ft)	Thickness (ft)			Mining Method
		Min	Max	Avg	
Colchester	17			2.67	Underground

Geologic Problems Reported:

PRODUCTION HISTORY

Company	Mine Name	Years	Production (tons)
John Garrison	Garrison	1940-1940	47
George M. Warrell	Warrell No. 2	1941-1941	89
			136

Last reported production: 1941

SOURCES OF DATA

Source Map	Date	Original Scale	Digitized Scale	Map Type
Mine notes	Undated	1:62500	1:62500	Secondary source

Annotated Bibliography (data source, brief description of information)

Coal Reports - Production, ownership, years of operation.

Directory of Illinois Coal Mines (Greene County) - Mine names, mine index, ownership, years of operation, seam.

Mine notes (Greene County) - Mine type, slope location, seam, depth, thickness.

Mine Index 2329
Everett Schofield, Schofield Mine

Type: Underground Total mined-out acreage shown: Less than 1; production indicates less than 1 acre was mined after the map date.

SHAFT, SLOPE, DRIFT or TIPPLE LOCATIONS

Type	County	Township-Range	Section	Quarters-Footage
Main drift	Greene	12N 11W	24	SE SW SW
Air shaft	Greene	12N 11W	24	SE SW SW

GEOLOGY

Seam(s) Mined	Depth (ft)	Thickness (ft)			Mining Method
		Min	Max	Avg	
Colchester	12			2.67	MRP

Geologic Problems Reported:

PRODUCTION HISTORY

Company	Mine Name	Years	Production (tons)
Raymond Cummins	Cummins	1934-1935	1,346
Orval Cummins	Cummins	1936-1936	453
Everett Schofield	Schofield	1937-1939	1,260
Everett Schofield	Schofield	1939-1941	1,015 *
			4,074

* Production after map date

Last reported production: 1941

SOURCES OF DATA

Source Map	Date	Original Scale	Digitized Scale	Map Type
State archive, IL_1969 **	9-6-1939	Unknown	1:24000	Not final

** Positional information present on the map was deemed inaccurate and not authored by the map creators. The map was positioned relative to the drift opening from the mine notes, which is itself not precise. The mine location is not precise enough to show an outline, the mine is shown as a general area of mining.

Annotated Bibliography (data source, brief description of information)

Coal Reports - Production, ownership, years of operation.

Directory of Illinois Coal Mines (Greene County) - Mine names, mine index, ownership, years of operation.

Mine notes (Greene County) - Mine type, drift location, seam, depth, thickness.

State archive, IL_1969 - Drift & air shaft locations, mine outline, mining method.

Mine Index 2330
Hector Harbaugh, Harbaugh Mine

Type: Underground Total mined-out acreage shown: None; production indicates approximately 1 acre was mined.

SHAFT, SLOPE, DRIFT or TIPPLE LOCATIONS

Type	County	Township-Range	Section	Quarters-Footage
Main drift	Greene	12N 11W	25	SE NW NW

GEOLOGY

Seam(s) Mined	Depth (ft)	Thickness (ft)			Mining Method
		Min	Max	Avg	
Colchester				2.5	Underground

Geologic Problems Reported:

PRODUCTION HISTORY

Company	Mine Name	Years	Production (tons)
John Harbaugh	Harbaugh	1927-1933 *	968
Hector Harbaugh	Harbaugh	1934-1938	<u>1,870</u> 2,838

* Production was not listed in the Coal Reports from 1930 through 1933 for mines producing less than 1,000 tons per year.

Last reported production: 1938

SOURCES OF DATA

Source Map	Date	Original Scale	Digitized Scale	Map Type
Mine notes	1936	1:62500	1:62500	Secondary source

Annotated Bibliography (data source, brief description of information)

Coal Reports - Production, ownership, years of operation.

Directory of Illinois Coal Mines (Greene County) - Mine names, mine index, ownership, years of operation.

Mine notes (Greene County) - Mine type, drift location, seam, thickness.

Mine Index 2331**John H. Whitehead, Whitehead Mine**

Type: Underground Total mined-out acreage shown: 12 Production indicates approximately 1 acre was mined. Mining may have taken place prior to 1934.

SHAFT, SLOPE, DRIFT or TIPPLE LOCATIONS

Type	County	Township-Range	Section	Quarters-Footage
Main drift	Greene	12N 11W	29	SW SE SE
Air shaft	Greene	12N 11W	29	NE SE SE

GEOLOGY

Seam(s) Mined	Depth (ft)	Thickness (ft)			Mining Method
		Min	Max	Avg	
Colchester	8			2.5	MRP

Geologic Problems Reported:

PRODUCTION HISTORY

Company	Mine Name	Years	Production (tons)
Burl Wyatt	Wyatt	1934-1938	2,164
John H. Whitehead	Whitehead	1938-1939	115
			<u>2,279</u>

Last reported production: 1939

SOURCES OF DATA

Source Map	Date	Original Scale	Digitized Scale	Map Type
Microfilm, document 351564	Undated	1:240	1:281	Undated

Annotated Bibliography (data source, brief description of information)

Coal Reports - Production, ownership, years of operation.

Directory of Illinois Coal Mines (Greene County) - Mine names, mine index, ownership, years of operation.

Mine notes (Greene County) - Mine type, drift location, seam, depth, thickness.

Microfilm map, document 351564, reel 03136, frame 339 - Drift & shaft locations, mine outline, mining method.

Mine Index 2332
Herman J. Geisler, Geisler Mine

Type: Underground Total mined-out acreage shown: None; production indicates approximately 1 acre was mined.

SHAFT, SLOPE, DRIFT or TIPPLE LOCATIONS

Type	County	Township-Range	Section	Quarters-Footage
Main shaft	Greene	12N 11W	29	NW SE SW

GEOLOGY

Seam(s) Mined	Depth (ft)	Thickness (ft)			Mining Method
		Min	Max	Avg	
Colchester	10-24			2.5-2.67	Underground

Geologic Problems Reported:

PRODUCTION HISTORY

Company	Mine Name	Years	Production (tons)
J. H. Little	Little	1932-1937 *	3,440
Harry Elliott	Elliott	1938-1938	250
Ted Benton	Benton	1939-1942 **	60
Herman J. Geisler	Geisler	1943-1943	30
			<u>3,780</u>

* Mines producing less than 1,000 tons were not listed in the Coal Reports in 1933.

** Idle 1940-1942

Last reported production: 1943

SOURCES OF DATA

Source Map	Date	Original Scale	Digitized Scale	Map Type
Mine notes	Undated	1:62500	1:62500	Secondary source

Annotated Bibliography (data source, brief description of information)

Coal Reports - Production, ownership, years of operation.

Directory of Illinois Coal Mines (Greene County) - Mine names, mine index, ownership, years of operation, seam.

Mine notes (Greene County) - Mine type, various shaft locations, depth, thickness.

Mine Index 2333
Ralph Whitehead, Whitehead Mine

Type: Underground Total mined-out acreage shown: None; production indicates less than 1 acre was mined.

SHAFT, SLOPE, DRIFT or TIPPLE LOCATIONS

Type	County	Township-Range	Section	Quarters-Footage
Main shaft	Greene	12N 11W	29	SE SW NW

GEOLOGY

Seam(s) Mined	Depth (ft)	Thickness (ft)			Mining Method
		Min	Max	Avg	
Colchester	21			2.5	Underground

Geologic Problems Reported:

PRODUCTION HISTORY

Company	Mine Name	Years	Production (tons)
Ralph Whitehead	Whitehead	1937-1938	<u>310</u> 310

Last reported production: 1938

SOURCES OF DATA

Source Map	Date	Original Scale	Digitized Scale	Map Type
Mine notes	1937	1:62500	1:62500	Secondary source

Annotated Bibliography (data source, brief description of information)

Coal Reports - Production, ownership, years of operation.
 Directory of Illinois Coal Mines (Greene County) - Mine names, mine index, ownership, years of operation.
 Mine notes (Greene County) - Mine type, shaft location, seam, depth, thickness.

Mine Index 4591
William Crain, Crain Mine

Type: Underground Total mined-out acreage shown: None; production indicates less than 1 acre was mined.

SHAFT, SLOPE, DRIFT or TIPPLE LOCATIONS

Type	County	Township-Range	Section	Quarters-Footage
Main drift	Greene	12N 11W	23	SW NW SE

GEOLOGY

Seam(s) Mined	Depth (ft)	Thickness (ft)			Mining Method
		Min	Max	Avg	
Colchester					Underground

Geologic Problems Reported:

PRODUCTION HISTORY

Company	Mine Name	Years	Production (tons)
William Crain	Crain	1940-1940	<u>22</u> 22

Last reported production: 1940

SOURCES OF DATA

Source Map	Date	Original Scale	Digitized Scale	Map Type
Mine notes	7-31-1941	1:62500	1:62500	Secondary source

Annotated Bibliography (data source, brief description of information)

Coal Reports - Production, ownership, years of operation.
 Directory of Illinois Coal Mines (Greene County) - Mine names, mine index, ownership, years of operation.
 Mine notes (Greene County) - Mine type, drift location, seam.

Mine Index 6439**V. A. Bowns, Bowns No. 2 Mine**

Type: Underground Total mined-out acreage shown: None; production indicates less than 1 acre was mined.

SHAFT, SLOPE, DRIFT or TIPPLE LOCATIONS

Type	County	Township-Range	Section	Quarters-Footage
Main slope	Greene	12N 11W	23	SE NE SE

GEOLOGY

Seam(s) Mined	Depth (ft)	Thickness (ft)			Mining Method
		Min	Max	Avg	
Colchester	7-8			2.5-2.67	Underground

Geologic Problems Reported:

PRODUCTION HISTORY

Company	Mine Name	Years	Production (tons)
Cummins & Sons	Cummins	1938-1938	320
Fred H. Steckel	Steckel	1938-1938	351
W. M. Cardwell	Cardwell	1939-1939	224
V. A. Bowns	Bowns No. 2	1940-1940	119
			1,014

Last reported production: 1940

SOURCES OF DATA

Source Map	Date	Original Scale	Digitized Scale	Map Type
Mine notes	1938	1:62500	1:62500	Secondary source

Annotated Bibliography (data source, brief description of information)

Coal Reports - Production, ownership, years of operation.

Directory of Illinois Coal Mines (Greene County) - Mine names, mine index, ownership, years of operation.

Mine notes (Greene County) - Mine type, slope location, seam, depth, thickness.

Mine Index 6443
Charley Houck, Houck No. 2 Mine

Type: Underground Total mined-out acreage shown: None; production indicates less than 1 acre was mined.

SHAFT, SLOPE, DRIFT or TIPPLE LOCATIONS

Type	County	Township-Range	Section	Quarters-Footage
Main slope	Greene	12N 11W	23	SW SW NE

GEOLOGY

Seam(s) Mined	Depth (ft)	Thickness (ft)			Mining Method
		Min	Max	Avg	
Unknown				2.5	Underground

Geologic Problems Reported:

PRODUCTION HISTORY

Company	Mine Name	Years	Production (tons)
Charley Houck	Houck No. 2	1939-1939	<u>140</u> 140

Last reported production: 1939

SOURCES OF DATA

Source Map	Date	Original Scale	Digitized Scale	Map Type
Mine notes	Undated	1:62500	1:62500	Secondary source

Annotated Bibliography (data source, brief description of information)

Coal Reports - Production, ownership, years of operation.
 Directory of Illinois Coal Mines (Greene County) - Mine names, mine index, ownership, years of operation.
 Mine notes (Greene County) - Mine type, slope location, thickness.

Mine Index 6447
Orval Cummings, Cummings Mine

Type: Underground Total mined-out acreage shown: None; production indicates less than 1 acre was mined.

SHAFT, SLOPE, DRIFT or TIPPLE LOCATIONS

Type	County	Township-Range	Section	Quarters-Footage
Mine	Greene	12N 11W	24	SE SE NW

GEOLOGY

Seam(s) Mined	Depth (ft)	Thickness (ft)			Mining Method
		Min	Max	Avg	
Unknown					Underground

Geologic Problems Reported:

PRODUCTION HISTORY

Company	Mine Name	Years	Production (tons)
Orval Cummings	Cummings	1941-1942	696
			696

Last reported production: 1942

SOURCES OF DATA

Source Map	Date	Original Scale	Digitized Scale	Map Type
Mines database	Undated	1:62500	1:62500	Secondary source

Annotated Bibliography (data source, brief description of information)

Coal Reports - Production, ownership, years of operation, mining method.
 Directory of Illinois Coal Mines (Greene County) - Mine names, mine index, ownership, years of operation.
 Coal Section mines database - Mine location.

Mine Index 6449
Marshall & Wyatt, Marshall & Wyatt Mine

Type: Underground Total mined-out acreage shown: None; production indicates less than 1 acre was mined.

SHAFT, SLOPE, DRIFT or TIPPLE LOCATIONS

Type	County	Township-Range	Section	Quarters-Footage
Main drift	Greene	12N 11W	33	NE NW NE

GEOLOGY

Seam(s) Mined	Depth (ft)	Thickness (ft)			Mining Method
		Min	Max	Avg	
Colchester					Underground

Geologic Problems Reported:

PRODUCTION HISTORY

Company	Mine Name	Years	Production (tons)
Marshall & Wyatt	Marshall & Wyatt	1937-1937	<u>98</u> 98

Last reported production: 1937

SOURCES OF DATA

Source Map	Date	Original Scale	Digitized Scale	Map Type
Mine notes	1937	1:62500	1:62500	Secondary source

Annotated Bibliography (data source, brief description of information)

Coal Reports - Production, ownership, years of operation.
 Directory of Illinois Coal Mines (Greene County) - Mine names, mine index, ownership, years of operation.
 Mine notes (Greene County) - Mine type, drift location, seam.

Mine Index 7853
Thomas Conlee, Conlee Mine

Type: Underground Total mined-out acreage shown: None; production indicates less than 1 acre was mined.

SHAFT, SLOPE, DRIFT or TIPPLE LOCATIONS

Type	County	Township-Range	Section	Quarters-Footage
Main shaft	Greene	12N 11W	29	SW SE SE

GEOLOGY

Seam(s) Mined	Depth (ft)	Thickness (ft)			Mining Method
		Min	Max	Avg	
Colchester	38			2.5	Underground

Geologic Problems Reported:

PRODUCTION HISTORY

Company	Mine Name	Years	Production (tons)
Thomas Conlee	Conlee	1934-1937	<u>1,165</u> 1,165

Last reported production: 1937

SOURCES OF DATA

Source Map	Date	Original Scale	Digitized Scale	Map Type
Mine notes	1936	1:62500	1:62500	Secondary source

Annotated Bibliography (data source, brief description of information)

Coal Reports - Production, ownership, years of operation.
 Directory of Illinois Coal Mines (Greene County) - Mine names, mine index, ownership, years of operation.
 Mine notes (Greene County) - Mine type, shaft location, seam, depth, thickness.

Mine Index 7870
Frank Hopper, Hopper Mine

Type: Underground Total mined-out acreage shown: None; production indicates 5 acres were mined.

SHAFT, SLOPE, DRIFT or TIPPLE LOCATIONS

Type	County	Township-Range	Section	Quarters-Footage
Main drift or slope	Greene	12N 11W	24	SE NW SW

GEOLOGY

Seam(s) Mined	Depth (ft)	Thickness (ft)			Mining Method
		Min	Max	Avg	
Colchester	10			2.67	RP

Geologic Problems Reported:

PRODUCTION HISTORY

Company	Mine Name	Years	Production (tons)
F. & G. Hopper	Hopper	1913-1914	130
Cummins & Goacher	Cumins & Goacher	1914-1915	154
Frank Hopper	Hopper	1915-1926 *	<u>10,547</u>
			10,831

* Idle 1920, 1923 & 1924; production in 1922 was not listed in the Coal Reports for mines producing less than 10,000 tons.

Last reported production: 1926

SOURCES OF DATA

Source Map	Date	Original Scale	Digitized Scale	Map Type
ISGS field notes (J. R. Van Pelt, Jr.)	7-24-1927	1:62500	1:62500	Secondary source

Annotated Bibliography (data source, brief description of information)

Coal Reports - Production, ownership, years of operation, depth, thickness, mining method.
 Directory of Illinois Coal Mines (Greene County) - Mine names, mine index, ownership, years of operation.
 ISGS field notes (Greene County) - Mine location, seam.

Mine Index 7876
John L. Solomon, Solomon Mine

Type: Underground Total mined-out acreage shown: None; production indicates approximately 3 acres were mined.

SHAFT, SLOPE, DRIFT or TIPPLE LOCATIONS

Type	County	Township-Range	Section	Quarters-Footage
Main drift	Greene	12N 11W	23	NW NW

GEOLOGY

Seam(s) Mined	Depth (ft)	Thickness (ft)			Mining Method
		Min	Max	Avg	
Colchester	30			2.5-3.0	RP

Geologic Problems Reported:

PRODUCTION HISTORY

Company	Mine Name	Years	Production (tons)
Henry Carlton	Carlton	1915-1917 *	283
J. L. Solomon	Solomon	1917-1918	30
Henry Carlton	Carlton	1918-1919	200
John L. Solomon	Solomon	1919-1920	300
J. T. Little	Little	1920-1922	4,937 **
John L. Solomon	Solomon	1922-1923	492
			6,242

* The field notes include text "Has operated 5 years, never inspected." The mine may have opened circa 1910.

** Production was not reported in 1922 for mines producing less than 10,000 tons.

Last reported production: 1923

SOURCES OF DATA

Source Map	Date	Original Scale	Digitized Scale	Map Type
ISGS field notes (G. H. Cady)	1916	1:62500	1:62500	Secondary source

Annotated Bibliography (data source, brief description of information)

Coal Reports - Production, ownership, years of operation, mine type, depth, thickness, mining method.
 Directory of Illinois Coal Mines (Greene County) - Mine names, mine index, ownership, years of operation, seam.
 ISGS field notes (Greene County) - Mine location.

Mine Index 7877
William H. Allen, Kesinger Mine

Type: Underground Total mined-out acreage shown: None; production indicates approximately 2 acres were mined.

SHAFT, SLOPE, DRIFT or TIPPLE LOCATIONS

Type	County	Township-Range	Section	Quarters-Footage
Main shaft	Greene	11N 11W	23 *	

* The location within the section is not known; the mine is plotted in the center of the section.

GEOLOGY

Seam(s) Mined	Depth (ft)	Thickness (ft)			Mining Method
		Min	Max	Avg	
Colchester	60-104			2.5	RP

Geologic Problems Reported:

PRODUCTION HISTORY

Company	Mine Name	Years	Production (tons)
William H. Allen	Kesinger	1904-1908	<u>3,595</u> 3,595

Last reported production: 1908

SOURCES OF DATA

Source Map	Date	Original Scale	Digitized Scale	Map Type
ISGS field notes (J. R. Van Pelt, Jr.)	8-15-1927	1:62500	1:62500	Secondary source

Annotated Bibliography (data source, brief description of information)

Coal Reports - Production, ownership, years of operation, depth, thickness.
 Directory of Illinois Coal Mines (Greene County) - Mine names, mine index, ownership, years of operation.
 ISGS field notes (Greene County) - Mine location, seam.

OTHER MINES SHOWN ON ROODHOUSE EAST QUADRANGLE

Mine Index 2055 NE SE NE 20-T12N-R11W, circa 1912, Kerton Creek Coal, 50 ft deep, 3.83-5.42 ft thick source: ISGS field notes (J. R. Van Pelt, Jr., 7-20-1927)

Mine Index 6433 SW SE SW 19-T12N-R11W source: Atlas of Greene County (1873)

Mine Index 6436 SE SW NW 18-T12N-R10W source: Mined Out Area map, Area 19 (1950)

Mine Index 6437 NE SW NE 19-T12N-R11W source: ISGS field notes (J. R. Van Pelt, Jr., 1927 and T. A. Hendricks, 7-22-1927)

Mine Index 6445 SW SW SW 23-T12N-R11W, drift source: ISGS field notes (H. R. Wanless, 9-6-1930)

Mine Index 6450 SW SW NW 29-T12N-R11W, shaft, Colchester Coal source: ISGS field notes (T. A. Hendricks, 7-29-1927)

Mine Index 6451 SE NE NW 30-T12N-R11W source: ISGS field notes (T. A. Hendricks, 7-22-1927)

Mine index 6452 SW NW NE 30-T12N-R11W source: ISGS field notes (T. A. Hendricks, 7-22-1927)

Mine index 7845 NW SW SW 28-T12N-R11W, drift, Colchester Coal source: ISGS field notes (J. R. Van Pelt, Jr., 7-22-1927)

Mine index 7846 NE NW SW 28-T12N-R11W, drift, Colchester Coal source: ISGS field notes (J. R. Van Pelt, Jr., 7-22-1927)

Mine index 7847 NW SW NW 28-T12N-R11W, drift, Colchester Coal source: ISGS field notes (J. R. Van Pelt, Jr., 7-22-1927)

Mine index 7848 NW NE NW 29-T12N-R11W, abandoned mine source: ISGS field notes (T. A. Hendricks, 7-22-1927)

Mine index 7850 SW NW SE 29-T12N-R11W, shaft, Colchester Coal, 32 ft deep, 2.5 ft thick source: ISGS field notes (H. E. Culver, 5-14-1922)

Mine index 7851 SW NE NE 29-T12N-R11W, drift, Colchester Coal source: ISGS field notes (D. M. Collingwood, 1923)

Mine index 7852 NE SW SE 29-T12N-R11W, "wagon mine" source: ISGS field notes (J. R. Van Pelt, Jr., 7-22-1927)

Mine index 7854 NE SW SW 30-T12N-R11W, Colchester Coal source: ISGS field notes (J. R. Van Pelt, Jr., 7-21-1927)

Mine index 7856 NW SW NW 20-T12N-R11W, Colchester Coal source: Atlas map of Greene County (1873)

Mine index 7857 SE NW SE 29-T12N-R11W, Colchester Coal source: Atlas map of Greene County (1873)

Mine index 7875, Birch Creek Coal Company NE NE 22-T12N-R11W, Colchester Coal, 18 ft deep, 2.33 ft thick source: ISGS field notes (G. H. Cady, 1916)

Mine Index 7889, V. A. Brown NW NE NW 18-T12N-R10W, shaft, 2.67 ft thick, opened 1927 source: ISGS field notes (J. R. Van Pelt, Jr., 9-9-1927)

Mine Index 7890 SE NE NW 18-T12N-R10W, two drifts, 2.5 ft thick source: ISGS field notes (J. R. Van Pelt, Jr., 9-9-1927)

Mine Index 7891 NE SE NW 18-T12N-R10W source: Atlas of Greene County (1873)

Mine Index 7892 SE NW SW 18-T12N-R10W source: Atlas of Greene County (1873)

Mine Index 7893 NW NE SW 7-T12N-R10W source: Atlas of Greene County (1873) and ISGS field notes (J. R. Van Pelt, Jr., 1927)

Mine Index 7894 SE SW SW 19-T12N-R10W source: ISGS field notes (J. R. Van Pelt, Jr., 7-28-1927)

Mine Index 7903 SE NW SW 14-T12N-R11W source: Atlas of Greene County (1873)

Mine Index 7904 NW SE NW 21-T12N-R11W source: Atlas of Greene County (1873) and ISGS field notes (G. H. Cady, 1916)

Mine Index 7905 SW SE SE 15-T12N-R11W source: Atlas of Greene County (1873)

Mine Index 7906 SW SW NE 14-T11N-R11W source: Atlas of Greene County (1873)

MINES WHOSE LOCATIONS ARE NOT KNOWN, ROODHOUSE EAST QUADRANGLE

The locations of the following mines are unknown, but the production tonnage, operating names, and nearest town were reported in the Annual Coal Reports. The operators listed below mined in or near the Roodhouse East Quadrangle. The information shown is similar to that presented on the summary sheets in the previous pages of this directory. The first item is the name the mine operated under as listed in the Coal Report, then the years the mine reported. If no physical data are available, the next item listed is the total tons produced by the mine. If physical data are available, the order of presentation is as follows: type of opening for the mine (drift, slope or shaft), depth of coal in feet, and thickness of coal in feet.

The total tons mined by these unlocated mines is 316,187 (308,969 underground and 61 surface mined and 7,797 mined by uncertain method), which would represent approximately 60 to 200 acres, depending on the recovery factor, mining method, and numerous other factors. (Note: 1 square mile = 640 acres)

ROODHOUSE		MINE INDEX
Walker (O. S.), 1913-1917, slope, —, —, 2.5-3.0, RP	2,088 tons	90612304
Carter (Thomas), 1882-1891, shaft, —, 26-60, 2.3-4.17, RP	27,348 tons	90610001
Carter Brothers, 1891-1892	7,225 tons	
Carter Coal Company, 1892-1894	<u>7,040</u> tons	
	41,613 tons	
Buchanan Mine, 1882-1883, drift, —, —, 2.33-2.67, RP	unknown	90610004
Kelton (William), 1883-1883	unknown	
Brown (Felix), 1883-1888	4,420 tons	
Carrollton (William), 1883-1888, drift, Rock Island, 28, 2.33-2.67, RP	3,570 tons	90610006
Carleton (William), 1888-1889	728 tons	
Carrollton (Richard), 1889-1892	1,021 tons	
Carlton (R.), 1893-1894	400 tons	
Carrollton (I.), 1894-1895	<u>300</u> tons	
	6,019 tons	
Knots (John), 1883-1884, drift, Rock Island, —, 2.33, RP	800 tons	90610007
Newton (G. H.), 1883-1885, shaft, Rock Island, 22, 2.5, RP	3,020 tons	90610008 a
Lowther (Joseph), 1883-1884, shaft, Rock Island, 23, 2.5, RP	1,500 tons	90610009
Johnson (John), 1883-1885, shaft, Rock Island, 30, 2.5, RP	800 tons	90610010
Campbell & Nelson, 1884-1885, shaft, —, 26, —, RP	1,500 tons	90610011
Campbell Brothers, 1885-1888	<u>4,516</u> tons	
	6,016 tons	
Saint (Robert), 1885-1887, drift, Rock Island, —, 2.33, RP	2,320 tons	90610012
Israel (Benjamin), 1885-1889, drift, Rock Island, 40, 2.33-3.0, RP	2,864 tons	90610013
Iseral (Sam), 1889-1894	<u>986</u> tons	
	3,850 tons	
Smith (Joseph), 1885-1887, drift, Rock Island, —, 2.33, RP	2,000 tons	90610014
Evert & Sons, 1887-1888	1,400 tons	90610016
Briggs (Ellis), Victory Mine, 1887-1888, shaft, Rock Island, 90, 2.5, RP	40 tons	90610017
Victory Coal Company, 1888-1890	12,890 tons	
Victor Coal Company, 1890-1892	<u>3,722</u> tons	
	16,652 tons	
Whitehead (William), 1888-1889	1,052 tons	90610018

Nelson (John), 1888-1889	1,196 tons	90610019
Minks (James), 1889-1890	231 tons	90610020
Rumsey (Charles), 1889-1890	251 tons	90610022
Bigley (James), 1889-1895, drift, Rock Island, 25, 2.5, RP	872 tons	90610023
Denton & Company, 1890-1892, shaft, —, 50, —, RP	3,262 tons	90610025
Allen & Company, 1890-1891, drift, Rock Island, 42, 2.5, RP	198 tons	90610026
Davis (Ephrim), 1890-1891, drift, Rock Island, 32, 2.5, RP	40 tons	90610027
Cummings (Columbus), 1891-1892, drift, Rock Island, 30, 2.5, RP	382 tons	90610028
Hays (E.), 1891-1894, drift, Rock Island, 20, 2.5-3.0, RP	640 tons	90610030
Johnson (John), 1891-1892, drift, Rock Island, 25, 2.5, RP	315 tons	90610031
Brickey & Company, 1892-1893, shaft, —, 50, —, RP	1,850 tons	90610032
Truitt & Israel, 1893-1894, shaft, —, 46, 4.17, RP	1,750 tons	90610034
Little & Israel, 1894-1895	<u>500 tons</u> 2,250 tons	
Cummings (F.), 1893-1894, drift, Rock Island, —, 2.5-3.0, RP	400 tons	90610035
Cummings (David), 1894-1895	500 tons	
Cummings (Benjamin), 1895-1896	<u>200 tons</u>	
	1,100 tons	
Hamilton & Atkinson, 1893-1894, drift or shaft, Rock Island, 90, 2.5, LW	1,400 tons	90610036
Hopkins (G. A.), 1894-1895	<u>1,500 tons</u>	
	2,900 tons	
Campbell (A.), 1894-1897, shaft, —, 17-37, 4.17-4.5, RP	5,040 tons	90610039
Revis (John T.), 1897-1902	<u>10,562 tons</u>	
	15,602 tons	
Harper (C. E.), 1894-1895, drift, —, —, 2.5, RP	300 tons	90610040
Brown (Felix), 1895-1896, drift, —, —, 2.25, RP	150 tons	90610043
Hutton (John), 1895-1896, slope, —, 10, 2.33, RP	200 tons	90610044
Minks (James), 1895-1898, slope, —, 20, 2.33, RP	820 tons	90610045
Little (James H.), 1898-1902, shaft, Rock Island, 20, 2.5, RP	4,390 tons	90610046 a
Little (James H.), 1904-1906, shaft, Rock Island, 34, 2.5, RP	3,005 tons	90610046 b
Axley (Ed), 1898-1905, shaft, Rock Island, 25-50, 2.5, RP	9,884 tons	90610047
Smith (Alvirda), 1898-1899, slope, Rock Island, 20, 2.5, RP	120 tons	90610048
Simmons (A. B.), 1898-1901, shaft, Rock Island, 25, 2.5, RP	866 tons	90610049
Braznell & Knoth, 1899-1900, shaft, Rock Island, 20-25, 2.5, RP	1,000 tons	90610050
Hudson (S. D.), 1900-1901	<u>1,050 tons</u>	
	2,050 tons	
Market (Ed), 1899-1900, underground, —, 15, 2.5, RP	200 tons	90610051
Strang (Fred), 1899-1903, drift, Rock Island, 20, 2.5, RP	245 tons	90610052

Simmons (Charles), 1900-1901, shaft, Rock Island, 20, 2.5, RP	820 tons	90610053
Cummings (Columbus), 1900-1905, drift, Rock Island, 25, 2.5, RP	774 tons	90610054
Metford (George), 1900-1901, drift, Rock Island, —, 2.5	175 tons	90610055
Bigley (James), 1900-1901, drift, Rock Island, —, 2.5	210 tons	90610056
Thompson (Henry), 1900-1901, drift, Rock Island, —, 2.5	172 tons	90610057
Sowers & Brown, 1900-1901, drift, Rock Island, —, 2.5	268 tons	90610058
Allen (Sam), 1900-1901	175 tons	90610059
Market (Albert), 1904-1905, shaft, Rock Island, 34, 2.5, RP	1,724 tons	90610062
Allen (Alonz), 1904-1905, drift, Rock Island, —, 2.5, RP	102 tons	90610063
Rexrow (J.), 1904-1905, drift, Rock Island, —, 2.5, RP	122 tons	90610065
McCarty (M.), 1904-1905, drift, Rock Island, —, 2.5, RP	92 tons	90610066
Smith (Bert), 1913-1914, shaft, —, 18, 2.5, RP	508 tons	90610070 a
Smith (Bert), 1916-1917, drift, —, —, 2.5, RP	346 tons	90610070 b
Smith & Allen, 1917-1918	<u>931 tons</u>	
	1,277 tons	
Axley (A. E.), 1915-1916, shaft, —, 40, 2.5, RP	630 tons	90610072
Whitehead Brothers, 1916-1920, shaft, —, 40, 2.5, RP	3,294 tons	90610074
Whitaker Mine, 1920-1921	<u>50 tons</u>	
	3,344 tons	
Israel (B. F.), 1917-1918	1,000 tons	90610075
Israel (Frank), 1917-1918	220 tons	90610076
Griffin & Steward, 1917-1918	300 tons	90610077
Gravel (B. F.), 1920-1921	800 tons	90610078
Wells (Ben), 1924-1925	840 tons	90610080
Bateman (Clem), 1932-1934, underground	9,360 tons	90610083
Beck (Ralph), 1932-1934, underground	6,300 tons	90610084
Houck (Charles), No. 1 Mine, 1935-1935	1,200 tons	
Hursman (Rufus), 1935-1936	3,000 tons	
Houck (Charles), No. 1 Mine, 1937-1938	<u>500 tons</u>	
	11,000 tons	
Israel (B. F.), 1933-1933, underground	2,000 tons	90610086
Israel (Elmer), 1934-1934	1,640 tons	
Israel (B. F.), 1935-1936	<u>134 tons</u>	
	3,774 tons	
Griffiths (Thomas), 1934-1934, underground	1,000 tons	90610089
Griffiths (Thomas) & Brother, 1935-1935	<u>20 tons</u>	
	1,020 tons	
Anderson (C. G.), 1934-1936, underground	923 tons	90610091
Elliott (Ed A.), 1934-1937, slope	1,445 tons	90610092

Armstrong (Benjamin), 1934-1934, underground	100 tons	90610097
Russell (Walter), 1934-1934, underground	75 tons	90610099
Garrison, Opremsak & Worlds, 1934-1934, underground	65 tons	90610100
Manley & Carmean, 1935-1935, underground	306 tons	90610104
Stewart (J. W.), 1935-1935, underground	87 tons	90610105
Elliott (Harry), 1937-1938, underground	550 tons	90610106
Bateman (Clem), 1937-1937, underground	75 tons	90610107
Israel (B. F.), 1940-1942, underground	214 tons	90610109
Cummins (Orval), 1940-1941, underground	1,029 tons	90610110
Sheahan (W.), 1941-1942, underground	124 tons	90610112
Allen (W. L.), 1941-1943, underground	861 tons	90610113
Schofield (Everett), 1941-1942, underground	36 tons	90610114
Walker Mine, 1942-1942, underground	44 tons	90610115
Bowns No. 3 Mine, 1942-1942, underground	14 tons	90610116
Israel (B. F.), 1943-1943, underground	29 tons	90610117

WHITE HALL

Holly (Cleat), 1935-1937, shaft, —, 17, 2.0	426 tons	90612302
White Hall Fire Clay Company, No. 1 Mine, 1882-1885 drift or slope, Rock Island, 20, 2.3-2.5, RP	5,702 tons	90610002 a
White Hall Fire Clay Company, No. 2 Mine, 1883-1885	10,608 tons	90610002 b
White Hall Coal & Tile Company, 1885-1891	19,694 tons	
White Hall Fire Clay Company, 1891-1892	4,512 tons	
White Hall Coal & Tile Company, 1892-1893	3,425 tons	
White Hall Fire Clay Works, 1893-1896	13,950 tons	
White Hall Stone Pipe Company, 1896-1897	1,640 tons	
Hudson, Tucker & Company, 1897-1899	3,450 tons	
White Hall Sewer Pipe Company, 1899-1900 shaft, Rock Island, 20-65, 2.17-2.5, RP	<u>3,000</u> tons 60,279 tons	
Wyatt (Wesley), 1882-1884, drift, Rock Island, 62, 2.33-2.5, RP	145 tons	90610003
Wyatt (Thomas), 1884-1893	3,662 tons	
Wiatt (David), 1893-1894	1,250 tons	
Wyatt (Thomas), 1894-1895	<u>1,200</u> tons	
	6,257 tons	
Newton (George), 1885-1887, drift, Rock Island, —, 2.33, RP	1,918 tons	90610008 b
Smith (John), 1889-1890	332 tons	90610024
Cummings (Fleming), 1891-1892	290 tons	90610029 a
Griffiths (Thomas), No. 1 Mine, 1892-1899 drift or shaft, Rock Island, 42-50, 2.5-4.5, RP	<u>13,215</u> tons 13,505 tons	
Griffiths (Thomas), No. 2 Mine, 1897-1902, shaft, Rock Island, 50-60, 4.5, RP	10,360 tons	90610029 b
Dill Coal Company, 1902-1905	<u>8,153</u> tons	

	18,513 tons	
Wiatt (Aaron), 1894-1895, slope, Rock Island, —, 2.33, RP	300 tons	90610038
White Hall Railway Company, 1906-1908, shaft, —, 30-60, 2.5, RP	8,444 tons	90610067
Tucker (P. J.), 1907-1910, shaft, —, 30-55, 2.5, RP	5,420 tons	90610068
Whitehead (Fred H.), 1932-1932, underground	2,296 tons	90610085
Wyatt (Don), 1934-1934, underground	230 tons	90610094 a
Wyatt & Kirchner, 1935-1935	740 tons	
	970 tons	
Wyatt (Truman), 1935-1935, underground	540 tons	90610094 b
Simmons (Lee), 1934-1934, underground	210 tons	90610095
Marshall (Homer), 1941-1941, underground	101 tons	90610111
Ruckel's Pottery Works, 1939-1939, surface, Colchester, 12, 2.5	61 tons	90610108
In 1927, Ruckel's clay pits were operating in SE NW NE 32-T12N-R11W.		

INDEX OF MINES IN THE ROODHOUSE EAST QUADRANGLE

Adkins (James T.)	13
Allen (Alonz)	53
Allen (Sam)	53
Allen (Smith & Allen)	53
Allen (W. H.)	24
Allen (W. L.)	54
Allen (William H.)	49
Allen (William)	11
Allen & Company	52
Anderson (C. G.)	53
Armstrong (Ben)	29
Armstrong (Benjamin)	53
Atkinson (Hamilton & Atkinson)	52
Axley (A. E.)	53
Axley (Ed)	52
Bacon (E. L.)	10
Bateman (Clem)	53, 54
Beck (Ralph)	53
Benner (Alfred E.)	31
Benton (Ted)	39
Bigley (James)	52, 53
Birch Creek Coal Company	10, 50
Black Mine	20
Bowns (Jesse)	23
Bowns (V. A.), No. 1 Mine	24
Bowns (V. A.), No. 2 Mine	42
Bowns (Vernie A.), No. 2 Mine	24
Bowns (Vernie A.), No. 4 Mine	13
Bowns No. 3 Mine	54
Braznell & Knoth	52
Brickey & Company	52
Briggs (Ellis), Victory Mine	51
Brown (Felix)	51, 52
Brown (Sowers & Brown)	53
Brown (V. A.)	50
Buchanan Mine	51
Campbell (A.)	52
Campbell & Nelson	51
Campbell Brothers	51
Cardwell (W. M.)	42
Carleton (William)	51
Carlton (Henry)	48
Carlton (R.)	51
Carmean (Manley & Carmean)	54
Carrollton (Richard)	51
Carrollton (William)	51
Carrollton (I.)	51
Carter (Thomas)	51
Carter Brothers	51
Carter Coal Company	51
Conlee (Thomas)	46
Crain (William)	41
Cummings (Benjamin)	52
Cummings (Columbus)	52, 53
Cummings (David)	52
Cummings (F.)	52
Cummings (Fleming)	54
Cummings (Orval)	44
Cummins (Orval)	36, 54
Cummins (Raymond)	36
Cummins & Goacher	47
Cummins & Sons	42
Davis (Ephrim)	52

Denton & Company	52
Dill Coal Company	54
Dove (A. G.) Coal Company	22
Drury (Carl)	32
Elliott (E. A. & Harry)	28
Elliott (E. A.)	28
Elliott (E. O.)	11
Elliott (Ed A.)	53
Elliott (Harry)	39, 54
Elliott (Lloyd)	30
Evert & Sons	51
Ferguson (Hopper & Ferguson)	19
Ferguson (O. L.)	14
Ferguson (Orville L., Jr.), No. 2 Mine	19
Garrison (John)	35
Garrison, Opremsak & Worlds	54
Geisler (Herman J.)	39
Goacher (Cummins & Goacher)	47
Goacher (Everett)	25
Gravel (B. F.)	53
Griffin & Steward	53
Griffith (Edward)	9
Griffiths (E.)	9
Griffiths (Edward)	9
Griffiths (John)	9
Griffiths (Thomas)	53
Griffiths (Thomas) & Brother	53
Griffiths (Thomas), No. 1 Mine	54
Griffiths (Thomas), No. 2 Mine	54
Griffiths & Sons	9
Hamilton & Atkinson	52
Harbaugh (Hector)	37
Harbaugh (John)	37
Harper (C. E.)	52
Hays (E.)	52
Holly (Cleat)	54
Hopkins (G. A.)	52
Hopper (F. & G.)	47
Hopper (Frank)	17, 47
Hopper (Jesse)	17
Hopper (Roy)	17
Hopper (Theodore)	27
Hopper & Ferguson	19
Houck (Charles), No. 1 Mine	53
Houck (Charles), No. 3 Mine	32
Houck (Charley), No. 2 Mine	43
Hudson (S. D.)	52
Hudson, Tucker & Company	54
Hursman (Rufus)	53
Hutton (John)	52
Iseral (Sam)	51
Israel (B. F.)	53, 54
Israel (Benjamin)	51
Israel (Elmer)	53
Israel (Frank)	53
Israel (Little & Israel)	52
Israel (Truitt & Israel)	52
Johnson (John)	51, 52
Kelton (William)	51
Kirchner (Wyatt & Kirchner)	55
Knoth (Braznell & Knoth)	52
Knots (John)	51
Lawson (Charles H.)	24
Lawson (Charles)	21
Little (J. H.)	39

Little (J. T.)	48
Little (James H.)	52
Little & Israel	52
Lowther (Joseph)	51
Manley & Carmean	54
Market (Albert)	53
Market (Ed)	52
Marshall (Homer)	55
Marshall & Wyatt	45
McCarty (M.)	53
Mehrhoff Mine	16
Metford (George)	53
Minks (James)	52
Nelson (Campbell & Nelson)	51
Nelson (John)	52
Newton (G. H.)	51
Newton (George)	54
Opremsnak (Garrison, Opremsnak & Worlds)	54
Overby (W. E.)	29
Overby (W. E.), No. 2 Mine	33
Piper (Donald) & Son Coal Company	10
Revis (John T.)	52
Rexrow (J.)	53
Ruckel's Pottery Works	55
Rumsey (Charles)	52
Russell (Walter)	53
Saint (Robert)	51
Schofield (Everett)	36, 54
Sheahan (W.)	54
Simmons (A. B.)	52
Simmons (Charles)	52
Simmons (Fred M.), No. 2 Mine	34
Simmons (Fred), No. 1 Mine	26
Simmons (Lee)	55
Simmons & Simmons, No. 1 Mine	26
Simmons & Simmons, No. 2 Mine	34
Smith (Alvirda)	52
Smith (Bert)	53
Smith (Hardin)	16
Smith (John)	54
Smith (Joseph)	51
Smith (Willis)	16
Smith & Allen	53
Solomon (J. L.)	48
Solomon (John L.)	48
Sowers & Brown	53
Steckel (Fred H.)	18, 42
Steward (Griffin & Steward)	53
Stewart (J. W.)	54
Strang (Fred)	52
Tate (D. W.), Black Mine	20
Tate (Dallas W.)	15
Tate Coal Company	15
Thompson (Henry)	53
Truitt & Israel	52
Tucker (Hudson, Tucker & Company)	54
Tucker (P. J.)	55
Victor Coal Company	51
Victory Coal Company	51
Victory Mine	51
Walker (O. S.)	12, 51
Walker Mine	54
Warrell (George M.), No. 2 Mine	35
Warrell (George), No. 1 Mine	34
Wells (Ben)	53

Whitaker Mine	53
White Hall Coal & Tile Company	54
White Hall Fire Clay Company, No. 1 Mine	54
White Hall Fire Clay Company, No. 2 Mine	54
White Hall Fire Clay Works	54
White Hall Railway Company	54
White Hall Sewer Pipe Company	54
White Hall Stone Pipe Company	54
Whitehead (Fred H.)	55
Whitehead (John H.)	38
Whitehead (John)	16
Whitehead (Ralph)	40
Whitehead (William)	51
Whitehead Brothers	53
Wiatt (Aaron)	54
Wiatt (David)	54
Worlds (Garrison, Opremshak & Worlds)	54
Wyatt (Burl)	11, 38
Wyatt (Don)	55
Wyatt (Marshall & Wyatt)	45
Wyatt (Thomas)	54
Wyatt (Truman)	55
Wyatt (Wesley)	54
Wyatt & Kirchner	55

