

Coal Mines in Illinois  
Rudement Quadrangle  
Saline County, Illinois

## Herrin Coal

This map accompanies the Coal Mines Directory for the Rudement Quadrangle, maps of mines in the Briar Hill Coal, Springfield Coal and Davis & Dekoven Coals, Rudement Quadrangle. Consult the directory for a complete explanation of the information shown on this map

## Mining Method

- Room & Pillar (RP)
- Room & Pillar Basic (RPB)
- Modified Room & Pillar (MRP)
- Room & Pillar Panel (RPP)
- Blind Room & Pillar (BRP)
- Checkerboard Room & Pillar (CRP)
- High Extraction Retreat (HER)
- Longwall (LW)
- Underground, Method Unknown
- Strip Mine
- Auger Mine
- General Area of Mining

## Other Areas Depicted

- Non-Coal Mines

## Source of Mine Outline

- Final Mine Map
- Not Final Mine Map
- Undated Mine Map
- Incomplete Mine Map
- Secondary Source Map

## Tipple, Shaft, Slope, Drift Locations

- Strip Mine Tipple - Active
- Strip Mine Tipple - Abandoned
- Mine Shaft - Active
- Mine Shaft - Abandoned
- Mine Slope - Active
- Mine Slope - Abandoned
- Mine Drift - Active
- Mine Drift - Abandoned
- Air Shaft
- Uncertain Location
- Uncertain Type of Opening

## Other Points Depicted

- Non-Coal Mines

## Location

Mine Annotation  
(space permitting)

Company  
Mine Name  
ISGS Index No., Years of Operation

## Disclaimer

Please check the Coal Section at the Illinois State Geological Survey's web site at <https://www.isgs.illinois.edu> for the most up-to-date version of these products.

Note that each quadrangle scale mined-out area map requires the use of the associated text directory for full explanation of map features and mine attributes. Also note that some quadrangles have multiple seams of mining and therefore more than one map may be available for a particular quadrangle. Please take care to check for multiple maps, as extensive mining may exist in the other seams.

The maps and digital files used for these studies were compiled from data obtained from a variety of public and private sources and have varying degrees of completeness and accuracy. This compilation map presents reasonable interpretation of the geology of the area and is based on available data. Locations of some mine features may be offset by 500 feet or more due to errors in the original source maps, the compilation process, digitizing, or a combination of these factors. These data are not intended for use in site-specific screening or decision-making. Use of these documents does not eliminate the need for detailed studies to fully understand the geology of a specific site. The Illinois State Geological Survey, Prairie Research Institute, or the University of Illinois make no guarantee, expressed or implied, regarding the correctness of the interpretations presented in this data set and accept no liability for the consequences of decisions made by others on the basis of the information presented here.

These maps were designed for use at 1:24,000. Enlarging the map may reduce accuracy, as the original scale of the source maps used to compile the outlines shown varies from 1:400 to 1:150,000, and some mine locations are known only from text descriptions. See the accompanying mine directory for the original scale of the source map used for a specific mine to check accuracy of a given portion of the map. Areas with no mines shown may still be undermined; see the undated mines list at the back of each mine directory.

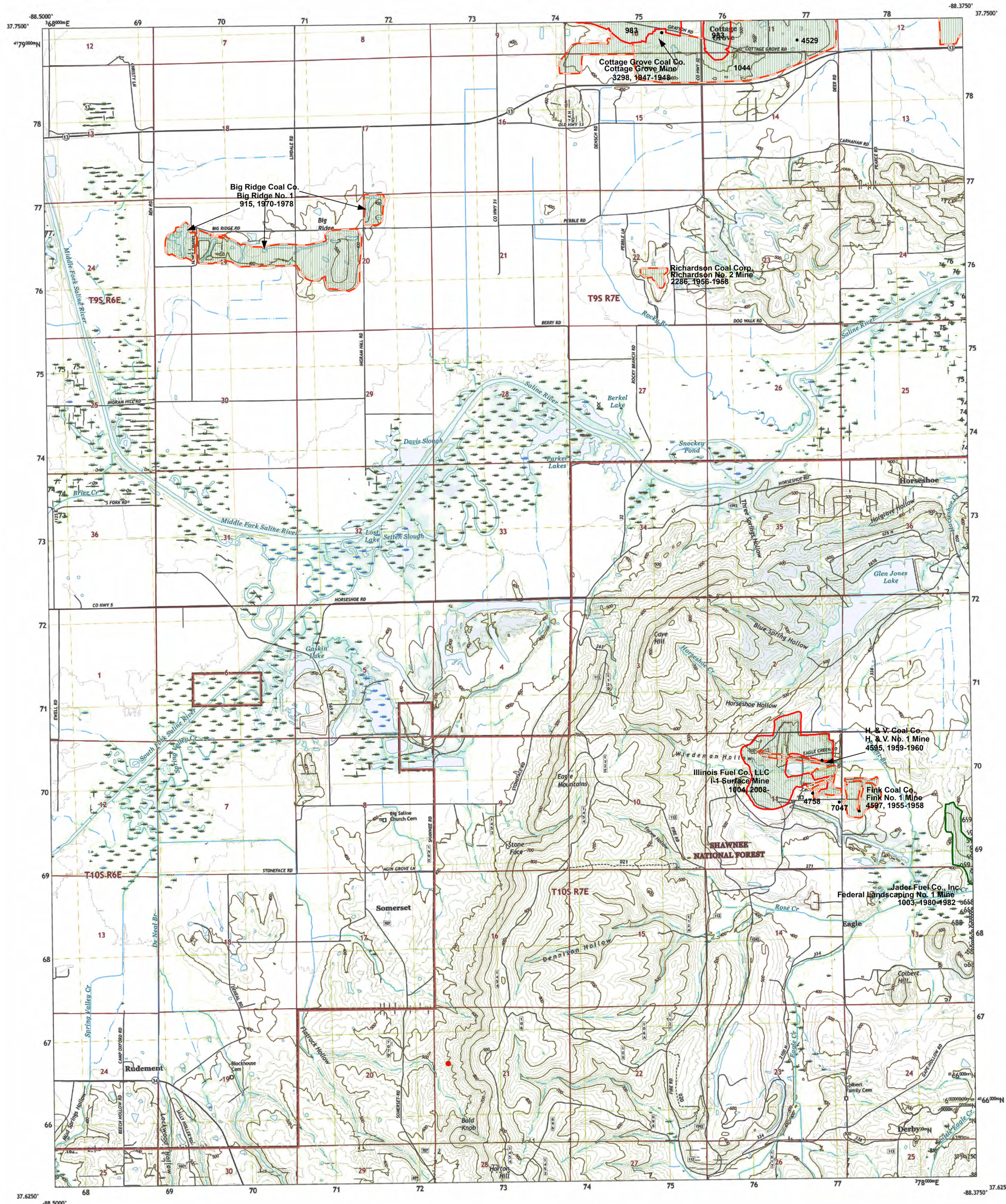
The image of the U.S.G.S. topographic base map was projected from the original UTM to Lambert Conformal Conic.

**ILLINOIS**  
Illinois State Geological Survey  
PRAIRIE RESEARCH INSTITUTE

Prairie Research Institute  
Illinois State Geological Survey  
615 E. Peabody Dr.  
Champaign, IL 61820

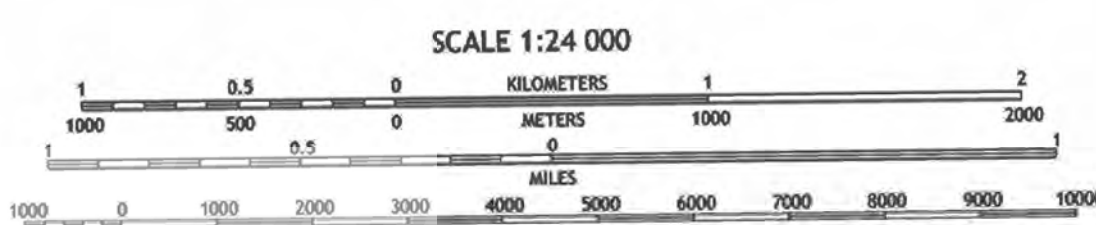
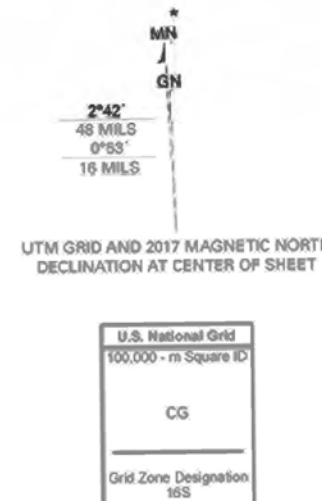
Mine Outlines Compiled by  
Alan R. Myers  
September 28, 2005

Revised:  
August 3, 2012  
May 2023  
Alan R. Myers 02-01-2024



Produced by the United States Geological Survey  
North American Datum of 1983 (NAD83)  
World Geodetic System of 1984 (WGS84). Projection and  
1 000-meter grid/Universal Transverse Mercator, Zone 16S  
This map is not a legal document. Boundaries may be  
generalized for this map scale. Private lands within government  
reservations may not be shown. Obtain permission before  
entering private lands.

Imagery.....NAIP, August 2015 - October 2015  
U.S. Census Bureau, 2017  
Roads within US Forest Service Lands.....USFS Data  
with limited Forest Service updates, 2017  
Hydrography.....National Hydrography Dataset, 2002 - 2017  
Contours.....National Elevation Dataset, 2014  
Boundaries.....Multiple sources; see metadata file  
Public Land Survey System.....BLM, 2017  
Wetlands.....FWS National Wetlands Inventory, 1983



SCALE 1:24 000  
Kilometers  
Meters  
Miles  
Feet  
This map was produced to conform with the  
National Geospatial Program US Topo Product Standard, 2011.  
A metadata file associated with this product is draft version 0.8.18

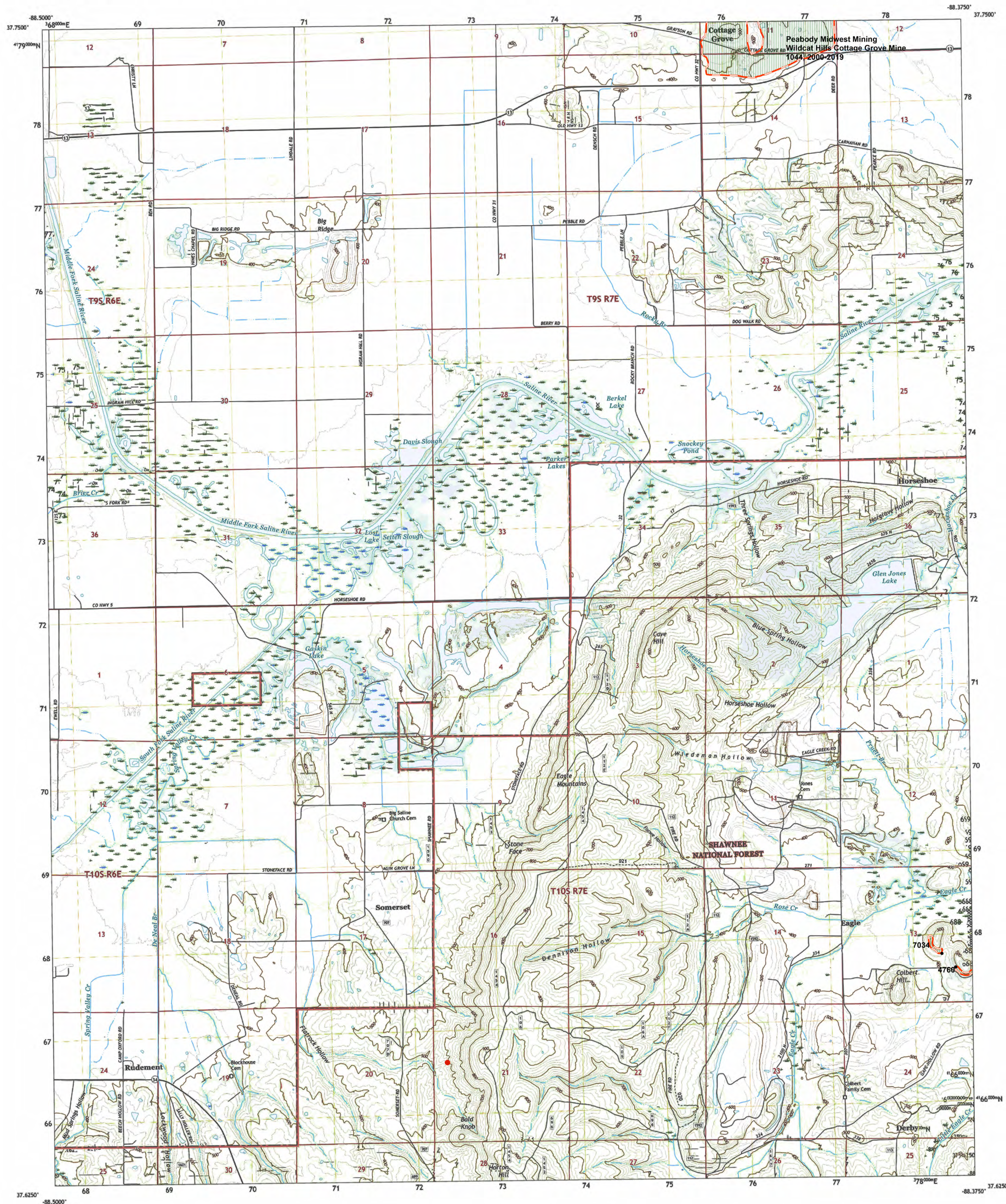


ROAD CLASSIFICATION  
Expressway  
Secondary Hwy  
Ramp  
Interstate Route  
US Route  
FS Primary Route  
FS Passenger Route  
FS High Clearance Route  
Local Connector  
Local Road  
#RD  
State Road

Check with local Forest Service unit  
for current travel conditions and restrictions.

RUDEMENT, IL  
2018





# Coal Mines in Illinois Rudement Quadrangle Saline County, Illinois

## Briar Hill Coal

This map accompanies the Coal Mines Directory for the Rudement Quadrangle, maps of mines in the Herrin Coal, Springfield Coal and Davis & Dekoven Coals, Rudement Quadrangle. Consult the directory for a complete explanation of the information shown on this map.

### Mining Method

- Room & Pillar (RP)
- Room & Pillar Basic (RPB)
- Modified Room & Pillar (MRP)
- Room & Pillar Panel (RPP)
- Blind Room & Pillar (BRP)
- Checkerboard Room & Pillar (CRP)
- High Extraction Retreat (HER)
- Longwall (LW)
- Underground, Method Unknown
- Strip Mine
- Auger Mine
- General Area of Mining

### Other Areas Depicted

- Non-Coal Mines

### Source of Mine Outline

- Final Mine Map
- Not Final Mine Map
- Undated Mine Map
- Incomplete Mine Map
- Secondary Source Map

### Tipple, Shaft, Slope, Drift Locations

- Strip Mine Tipple - Active
- Strip Mine Tipple - Abandoned
- Mine Shaft - Active
- Mine Shaft - Abandoned
- Mine Slope - Active
- Mine Slope - Abandoned
- Mine Drift - Active
- Mine Drift - Abandoned
- Air Shaft
- Uncertain Location
- Uncertain Type of Opening

### Other Points Depicted

- Non-Coal Mines

### Mine Annotation (space permitting)

Company  
Mine Name  
ISGS Index No., Years of Operation

### Disclaimer

Please check the Coal Section at the Illinois State Geological Survey's web site at <https://www.isgs.illinois.edu> for the most up-to-date version of these products.

Note that each quadrangle scale mined-out area map requires the use of the associated text directory for full explanation of map features and mine attributes. Also note that some quadrangles have multiple seams of mining and therefore more than one map may be available for a particular quadrangle. Please take care to check for multiple maps, as extensive mining may exist in the other seams.

The maps and digital files used for these studies were compiled from data obtained from a variety of public and private sources and have varying degrees of completeness and accuracy. This compilation map presents reasonable interpretation of the geology of the area and is based on available data. Locations of some mine features may be offset by 500 feet or more due to errors in the original source maps, the compilation process, digitizing, or a combination of these factors. These data are not intended for use in site-specific screening or decision-making. Use of these documents does not eliminate the need for detailed studies to fully understand the geology of a specific site. The Illinois State Geological Survey, Prairie Research Institute, or the University of Illinois make no guarantee, expressed or implied, regarding the correctness of the interpretations presented in this data set and accept no liability for the consequences of decisions made by others on the basis of the information presented here.

These maps were designed for use at 1:24,000. Enlarging the map may reduce accuracy, as the original scale of the source maps used to compile the outlines shown varies from 1:400 to 1:150,000, and some mine locations are known only from text descriptions. See the accompanying mine directory for the original scale of the source map used for a specific mine to check accuracy of a given portion of the map. Areas with no mines shown may still be undermined; see the uncited mines list at the back of each mine directory.

The image of the U.S.G.S. topographic base map was projected from the original UTM to Lambert Conformal Conic.

**ILLINOIS**  
Illinois State Geological Survey  
PRAIRIE RESEARCH INSTITUTE

Prairie Research Institute  
Illinois State Geological Survey  
615 E. Peabody Dr.  
Champaign, IL 61820

Mine Outlines Compiled by  
Alan R. Myers

September 28, 2005

Revised:  
August 3, 2012  
May 2023  
Alan R. Myers 02-01-2024

Produced by the United States Geological Survey  
North American Datum of 1983 (NAD83)  
World Geodetic System of 1984 (WGS84) Projection and  
1 000-meter grid/Universal Transverse Mercator, Zone 16S  
This map is not a legal document. Boundaries may be  
generalized for this map scale. Private lands within government  
reservations may not be shown. Obtain permission before  
entering private lands.

Imagery.....NADP, August 2015 - October 2015  
Roads.....U.S. Census Bureau, 2017  
Roads within US Forest Service Lands.....USFS, 2017  
Data with limited Forest Service updates, 2017  
Hydrography.....National Hydrography Dataset, 2002 - 2017  
Contours.....National Elevation Dataset, 2014  
Boundaries.....Multiple sources; see metadata file  
Public Land Survey System.....BLM, 2017  
Wetlands.....FWS National Wetlands Inventory, 1983

UTM GRID AND 2017 MAGNETIC NORTH  
DECLINATION AT CENTER OF SHEET

U.S. National Grid  
16S130N - 16S130E  
CG  
Grid Zone Designation  
16S

SCALE 1:24 000

1 000 0 500 1000 1500 2000  
KILOMETERS

1000 0 1000 2000 3000 4000 5000 6000 7000 8000 9000 10000  
MILES

FOOT

1 2 3 4 5 6 7 8  
GALATHEA  
ELIZABETH  
HARTSBURG  
EQUILIBRIUM  
GOLDVILLE  
HEROD  
KARBERS RIDGE

ADJOINING QUADRANGLES

COASTAL INTERVAL 20 FEET  
NORTH AMERICAN VERTICAL DATUM OF 1988

This map was produced to conform with the  
National Geospatial Program US Topo Product Standard, 2011.  
A metadata file associated with this product is draft version 0.8.18



ROAD CLASSIFICATION

Expressway  
Secondary Hwy  
Ramp

Local Connector  
Local Road  
#RD

Interstate Route  
US Route  
FS Primary Route  
FS Passenger Route  
FS High Clearance Route

Check with local Forest Service unit  
for current travel conditions and restrictions.

RUDEMENT, IL  
2018



Coal Mines in Illinois  
Rudement Quadrangle  
Saline County, Illinois

## Springfield Coal

This map accompanies the Coal Mines Directory for the Rudement Quadrangle, maps of mines in the Herrin Coal, Briar Hill Coal and Davis & Dekoven Coals, Rudement Quadrangle. Consult the directory for a complete explanation of the information shown on this map.

## Mining Method

- Room & Pillar (RP)
- Room & Pillar Basic (RPB)
- Modified Room & Pillar (MRP)
- Room & Pillar Panel (RPP)
- Blind Room & Pillar (BRP)
- Checkerboard Room & Pillar (CRP)
- High Extraction Retreat (HER)
- Longwall (LW)
- Underground, Method Unknown
- Strip Mine
- Auger Mine
- General Area of Mining

## Other Areas Depicted

- Non-Coal Mines

## Source of Mine Outline

- Final Mine Map
- Not Final Mine Map
- Undated Mine Map
- Incomplete Mine Map
- Secondary Source Map

## Tipple, Shaft, Slope, Drift Locations

- Strip Mine Tipple - Active
- Strip Mine Tipple - Abandoned
- Mine Shaft - Active
- Mine Shaft - Abandoned
- Mine Slope - Active
- Mine Slope - Abandoned
- Mine Drift - Active
- Mine Drift - Abandoned
- Air Shaft
- Uncertain Location
- Uncertain Type of Opening

## Other Points Depicted

- Non-Coal Mines

## Location

Mine Annotation  
(space permitting)

Company  
Mine Name  
ISGS Index No., Years of Operation

## Disclaimer

Please check the Coal Section at the Illinois State Geological Survey's web site at <https://www.isgs.illinois.edu> for the most up-to-date version of these products.

Note that each quadrangle scale mined-out area map requires the use of the associated text directory for full explanation of map features and mine attributes. Also note that some quadrangles have multiple seams of mining and therefore more than one map may be available for a particular quadrangle. Please take care to check for multiple maps, as extensive mining may exist in the other seams.

The maps and digital files used for these studies were compiled from data obtained from a variety of public and private sources and have varying degrees of completeness and accuracy. This compilation map presents reasonable interpretation of the geology of the area and is based on available data. Locations of some mine features may be offset by 500 feet or more due to errors in the original source maps, the compilation process, digitizing, or a combination of these factors. These data are not intended for use in site-specific screening or decision-making. Use of these documents does not eliminate the need for detailed studies to fully understand the geology of a specific site. The Illinois State Geological Survey, Prairie Research Institute, or the University of Illinois make no guarantee, expressed or implied, regarding the correctness of the interpretations presented in this data set and accept no liability for the consequences of decisions made by others on the basis of the information presented here.

These maps were designed for use at 1:24,000. Enlarging the map may reduce accuracy, as the original scale of the source maps used to compile the outlines shown varies from 1:400 to 1:150,000, and some mine locations are known only from text descriptions. See the accompanying mine directory for the original scale of the source map used for a specific mine to check accuracy of a given portion of the map. Areas with no mines shown may still be undermined; see the undated mines list at the back of each mine directory.

The image of the U.S.G.S. topographic base map was projected from the original UTM to Lambert Conformal Conic.

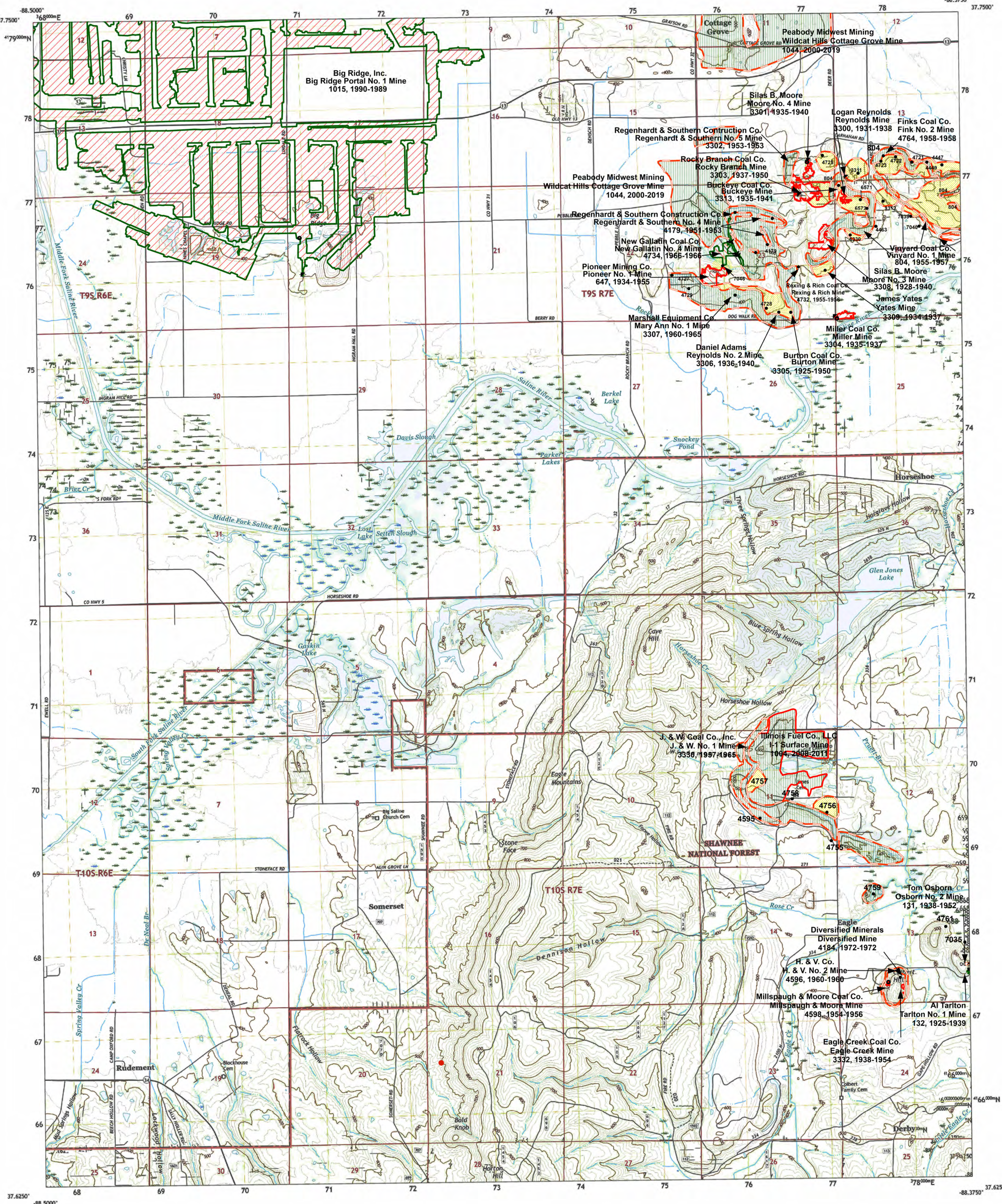
**ILLINOIS**  
Illinois State Geological Survey  
PRAIRIE RESEARCH INSTITUTE

Prairie Research Institute  
Illinois State Geological Survey  
615 E. Peabody Dr.  
Champaign, IL 61820

Mine Outlines Compiled by  
Alan R. Myers

September 28, 2005

Revised:  
August 3, 2012  
May 2023  
Alan R. Myers 02-01-2024



Produced by the United States Geological Survey  
North American Datum of 1983 (NAD83)  
World Geodetic System of 1984 (WGS84). Projection and  
1 000-meter grid/Universal Transverse Mercator, Zone 16S  
This map is not a legal document. Boundaries may be  
generalized for this map scale. Private lands within government  
reservations may not be shown. Obtain permission before  
entering private lands.

Imagery.....NAIP, August 2015 - October 2015  
U.S. Census Bureau, 2017  
Roads within US Forest Service Lands.....USFS Data  
with limited Forest Service updates, 2017  
Hydrography.....National Hydrography Dataset, 2002 - 2017  
Contours.....National Elevation Dataset, 2014  
Boundaries.....Multiple sources, see metadata file  
Public Land Survey System.....BLM, 2017  
Wetlands.....FWS National Wetlands Inventory, 1983

UTM GRID AND 2017 MAGNETIC NORTH  
DECLINATION AT CENTER OF SHEET

U.S. National Grid  
160330N - 85 Square ID  
CG  
Grid Zone Designation  
16S

SCALE 1:24 000

1 000 0 500 0 1000 0 1500 0 2000  
KILOMETERS  
1000 0 1000 2000 3000 4000 5000 6000 7000 8000 9000 10000  
MILES

FOOT

1 2 3 4 5 6 7 8  
Gallatin  
2 Eldorado  
3 Redway  
4 Herrington  
5 Equality  
6 Galesville  
7 Herod  
8 Karkers Ridge

ADJOINING QUADRANGLES

COASTAL INTERVAL 20 FEET  
NORTH AMERICAN DATUM OF 1983

This map was produced to conform with the  
National Geospatial Program US Topo Product Standard, 2011.  
A metadata file associated with this product is draft version 0.8.18



ROAD CLASSIFICATION

Expressway  
Secondary Hwy  
Ramp  
Interstate Route  
US Route  
FS Primary Route  
Local Connector  
Local Road  
FS Passenger Route  
FS High Clearance Route

Check with local Forest Service unit  
for current travel conditions and restrictions.

RUDEMENT, IL  
2018







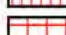







# Coal Mines in Illinois Rudement Quadrangle Saline County, Illinois


## Davis & Dekoven Coals

This map accompanies the Coal Mines Directory for the Rudement Quadrangle, maps of mines in the Herrin Coal, Briar Hill Coal and Springfield Coal, Rudement Quadrangle. Consult the directory for a complete explanation of the information shown on this map.

### Mining Method

- |   |                                  |
|---|----------------------------------|
|  | Room & Pillar (RP)               |
|  | Room & Pillar Basic (RPB)        |
|  | Modified Room & Pillar (MRP)     |
|  | Room & Pillar Panel (RPP)        |
|  | Blind Room & Pillar (BRP)        |
|  | Checkerboard Room & Pillar (CRP) |
|  | High Extraction Retreat (HER)    |
|  | Longwall (LW)                    |
|  | Underground, Method Unknown      |
|  | Strip Mine                       |
|  | Auger Mine                       |
|  | General Area of Mining           |

### Other Areas Depicted

- 
- Non-Coal Mines

### Source of Mine Outline

-  Final Mine Map
-  Not Final Mine Map
-  Undated Mine Map
-  Incomplete Mine Map
-  Secondary Source Map

### Tipple, Shaft, Slope, Drift Locations

- \* Strip Mine Tipple - Active
- \* Strip Mine Tipple - Abandoned
- Mine Shaft - Active
- Mine Shaft - Abandoned
- Mine Slope - Active
- Mine Slope - Abandoned
- Y Mine Drift - Active
- Y Mine Drift - Abandoned
- Air Shaft
- Uncertain Location
- Uncertain Type of Opening

### Other Points Depicted

- Non-Coal Mines

### Location



**Mine Annotation**  
(space permitting)

Company  
Mine Name  
ISGS Index No., Years of Operation

## Disclaimer

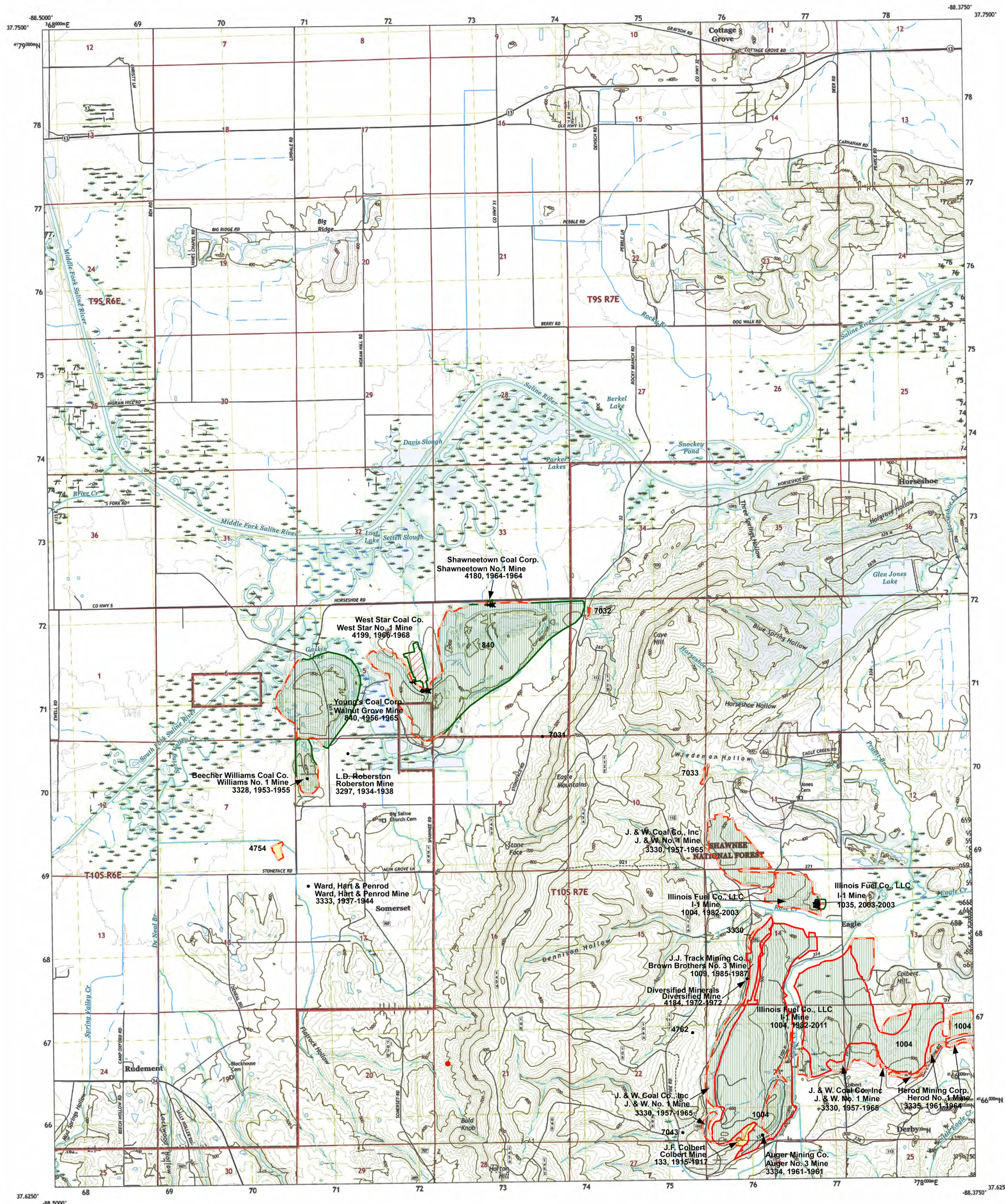
Please check the Coal Section at the Illinois State Geological Survey's web site at <https://www.isgs.illinois.edu> for the most up-to-date version of these products.

Note that each quadrangle scale mined-out area map requires the use of the associated text directory for full explanation of map features and mine attributes. Also note that some quadrangles have multiple seams of mining and therefore more than one map may be available for a particular quadrangle. Please take care to check for multiple maps, as extensive mining may exist in the other seams.

The maps and digital files used for these studies were compiled from data obtained from a variety of public and private sources and have varying degrees of completeness and accuracy. This compilation map presents reasonable interpretation of the geology of the area and is based on available data. Locations of some mine features may be offset by 500 feet or more due to errors in the original source maps, the compilation process, digitizing, or a combination of these factors. These data are not intended for use in site-specific screening or decision-making. Use of these data for environmental assessment or litigation is not intended. For more information, contact the geologist at the Illinois State Geological Survey, Prairie Research Institute, or the University of Illinois at Urbana-Champaign. No guarantee, expressed or implied, regarding the correctness of the interpretations presented in this data set and accept no liability for the consequences of decisions made by others on the basis of the information presented here.

These maps were designed for use at 1:24,000. Enlarging the map may reduce accuracy, as the original scale of the source maps used to compile the outlines shown varies from 1:400 to 1:150,000, and some mine locations are known only from text descriptions. See the accompanying mine directory for the original scale of the source map used for a specific mine to check accuracy of a given portion of the map. Areas with no mines shown may still be undermined; see the unlocated mines list at the back of each mine directory.

The image of the U.S.G.S. topographic base map was projected from the original UTM to Lambert Conformal Conic.



Produced by the United States Geological Survey  
North American Datum of 1983 (NAD83)  
World Geodetic System of 1984 (WGS84). Projection and  
1 000-meter grid: Universal Transverse Mercator, Zone 16S  
This map is not a legal document. Boundaries may be  
generalized for this map scale. Private lands within government  
reservations may not be shown. Obtain permission before  
entering private lands.

Imagery.....	.....NAIP, August 2015 - October 2015	2015
Roads.....	.....U.S. Census Bureau, FSTopo Data	2017
Roads within US Forest Service Lands.....	.....with limited Forest Service updates	2017
Names.....	.....GNIS, 1980 - 2016	2016
Hydrography.....	.....National Hydrography Dataset, 2002 - 2014	2014
Contours.....	.....National Elevation Dataset, 2014	2014
Boundaries.....	.....Multiple sources; see metadata file	2014
Public Land Survey System.....	.....BLM, National Wetlands Inventory	1984

UTM GRID AND 2017 MAGNETIC NORTH DECLINATION AT CENTER OF SHEET

U.S. National Grid
500,000 - m Square ID
CG
Grid Zone Designation 18S

SCALE 1:24 000

KILOMETERS 0 1 2

METERS 0 1000 2000

MILES 0 1 2 3 4 5 6 7 8 9 10

FEET 0 1000 2000 3000 4000 5000 6000 7000 8000 9000 10000

CONTOUR INTERVAL 20 FEET  
NORTH AMERICAN VERTICAL DATUM OF 1988

This map was produced to conform with the National Geographic Program Use Topographic Standard, 2011.  
A trademark is associated with this product. It is different version 0.6.18

ILLINOIS

QUADRANGLE LOCATION:

1	2	3
4		5
6	7	8

- 1 Galatis
- 2 Eldorado
- 3 Ridgway
- 4 Harrisburg
- 5 Equality
- 6 Eddyville
- 7 Herod
- 8 Karbers Ridge

ADJOINING QUADRANGLES

### ROAD CLASSIFICATION

Expressway	=====	Local Connector	=====
Secondary Hwy	=====	Local Road	=====
Ramp	=====	4WD	-----
 Interstate Route	 US Route	 State Route	
 FS Primary Route	 FS Passenger Route	 FS High Clearance Route	

Check with local Forest Service unit for current travel conditions and restrictions.

RUDEMENT, IL  
2018

**I ILLINOIS**  
Illinois State Geological Survey  
PRAIRIE RESEARCH INSTITUTE

Prairie Research Institute  
Illinois State Geological Survey  
615 E. Peabody Dr.  
Champaign, IL 61820

Mine Outlines Compiled by  
Alan R. Myers  
September 28, 2005

Revised:  
August 3, 2012  
May 2023  
Alan R. Myers 02-01-2024



# **DIRECTORY OF COAL MINES IN ILLINOIS 7.5-MINUTE QUADRANGLE SERIES RUDEMENT QUADRANGLE SALINE COUNTY**

Alan R. Myers & C. Chenoweth



Department of Natural Resources  
ILLINOIS STATE GEOLOGICAL SURVEY  
2005  
REVISED 2006, 2024

This material is based upon work supported by the Illinois Mine Subsidence Insurance Fund. Any opinions, findings, and conclusions or recommendations expressed in this publication are those of the authors and do not necessarily reflect the views of the Illinois Department of Transportation.

**Cover photo** Track-mounted duckbill loading machine at a Peabody Coal Company mine, ca. 1915.

---

**DISCLAIMER:** The accuracy and completeness of mine maps and directories vary with the availability of reliable information. Maps and other information used to compile this mine map and directory were obtained from a variety of sources and the accuracy of some of the original information cannot be verified. Consequently, the Illinois State Geological Survey (ISGS) cannot guarantee the mine maps are free of errors and disclaims any responsibility for damages that may result from actions or decisions based on them.

The ISGS updates the maps and directories periodically, and welcomes any new information or corrections. Please contact the Coal Section of the ISGS at the address shown on the title page of this directory.

© 2017 The Board of Trustees of the University of Illinois. All rights reserved.  
For permission information, contact the Illinois State Geological Survey.

## CONTENTS

INTRODUCTION .....	1
MINING IN THE RUDEMENT QUADRANGLE .....	1
PART I EXPLANATION OF MAP AND MINE SUMMARY SHEET .....	2
INTERPRETING THE MAP .....	2
Mine Type and Mining Method .....	2
SOURCE MAPS .....	3
POINTS AND LABELS .....	3
INTERPRETING A MINE SUMMARY SHEET .....	6
REFERENCES .....	8
PART II DIRECTORY OF MINES IN THE RUDEMENT QUADRANGLE .....	9
MINE SUMMARY SHEETS .....	9
Mine Index 131	
Tom Osborn, Osborn No. 2 Mine .....	9
Mine Index 132	
Al Tarlton, Tarlton No. 1 Mine .....	10
Mine Index 133	
J. F. Colbert, Colbert Mine .....	11
Mine Index 646	
White Star Coal Company, White Star Mine .....	12
Mine Index 647	
Pioneer Mining Company, Pioneer No. 1 Mine .....	13
Mine Index 804	
Vinyard Coal Company, Vinyard No. 1 Mine .....	14
Mine Index 840	
Young's Coal Corporation, Walnut Grove Mine .....	15
Mine Index 915	
Big Ridge Coal Company, Big Ridge No. 1 Mine .....	16
Mine Index 983	
Equality Mining Company, Equality Mine .....	17
Mine Index 1003	
Jader Fuel Company, Inc., Federal Landscaping No. 1 Mine .....	18
Mine Index 1004	
Illinois Fuel Company, LLC, I-1 Surface Mine .....	19
Mine Index 1009	
J. J. Track Mining Company, Brown Brothers No. 3 Mine .....	20
Mine Index 1015	
Big Ridge, Inc., Big Ridge Portal No. 1 Mine .....	21
Mine Index 1035	
Illinois Fuel Company, LLC, I-1 Underground Mine .....	22
Mine Index 1044	
Peabody Midwest Mining, Wildcat Hills Cottage Grove Mine .....	23
Mine Index 2286	
Richardson Coal Corporation, Richardson No. 2 Mine .....	24
Mine Index 3297	
L. D. Robertson, Robertson No. 1 Mine .....	25
Mine Index 3298	
Cottage Grove Coal Company, Cottage Grove Mine .....	26
Mine Index 3299	
J. F. Raulston, Raulston Mine .....	27
Mine Index 3300	
Logan Reynolds, Reynolds Mine .....	28
Mine Index 3301	
Silas B. Moore, Moore No. 4 Mine .....	29
Mine Index 3302	
Regenhardt & Southern Construction Company, Regenhardt & Southern No. 5 Mine .....	30

Mine Index 3303	
Rocky Branch Coal Company, Rocky Branch Mine . . . . .	31
Mine Index 3304	
Miller Coal Company, Miller Mine. . . . .	32
Mine Index 3305	
Burton Coal Company, Burton Mine. . . . .	33
Mine Index 3306	
Daniel Adams, Reynolds No. 2 Mine . . . . .	34
Mine Index 3307	
Marshall Equipment Company, Mary Ann No. 1 Mine . . . . .	35
Mine Index 3308	
Silas B. Moore, Moore No. 3 Mine . . . . .	36
Mine Index 3309	
James Yates, Yates Mine. . . . .	37
Mine Index 3310	
Jack Kelly, Kelly Mine. . . . .	38
Mine Index 3312	
Ragsdale Mine . . . . .	39
Mine Index 3313	
Buckeye Coal Company. . . . .	40
Mine Index 3327	
Harley Griffith, Conway Mine . . . . .	41
Mine Index 3328	
Beecher Williams Coal Company, Williams No. 1 Mine . . . . .	42
Mine Index 3329	
Bennett Coal Company, Bennett No. 2 Mine . . . . .	43
Mine Index 3330	
J. & W. Coal Company, Inc., J. & W. No. 1 Mine . . . . .	44
Mine Index 3332	
Eagle Creek Coal Company, Eagle Creek Mine. . . . .	45
Mine Index 3333	
Ward, Hart & Penrod, Ward, Hart & Penrod Mine . . . . .	46
Mine Index 3334	
Auger Mining Company, Auger No. 3 Mine . . . . .	47
Mine Index 3335	
Herod Mining Corporation, Herod No. 1 Mine . . . . .	48
Mine Index 4179	
Regenhardt & Southern Construction Company, Regenhardt & Southern No. 4 Mine. . . . .	49
Mine Index 4180	
Shawneetown Coal Corporation, Shawneetown No. 1 Mine . . . . .	50
Mine Index 4184	
Diversified Minerals, Diversified Mine. . . . .	51
Mine Index 4199	
West Star Coal Company, West Star No. 1 Mine. . . . .	52
Mine Index 4463	
Reynolds, Reynolds Mine. . . . .	53
Mine Index 4595	
H. & V. Coal Company, H. & V. No. 1 Mine . . . . .	54
Mine Index 4596	
H. & V. Coal Company, H. & V. No. 2 Mine . . . . .	55
Mine Index 4597	
Fink Coal Company, Fink No. 1 Mine. . . . .	56
Mine Index 4598	
Millspaugh & Moore Coal Company, Millspaugh & Moore Mine. . . . .	57
Mine Index 4732	
Rexing & Rich Coal Company, Rexing & Rich Mine. . . . .	58
Mine Index 4734	
New Gallatin Coal Company, New Gallatin No. 4 Mine . . . . .	59
Mine Index 4764	
Fink Coal Company, Fink No. 2 Mine. . . . .	60
OTHER MINES SHOWN ON RUDEMENT QUADRANGLE . . . . .	61



Mine Index 3311 .....	61
Mine Index 4447 .....	61
Mine Index 4449 .....	61
Mine Index 4529 .....	61
Mine Index 4721 .....	61
Mine Index 4722 .....	61
Mine Index 4723 .....	61
Mine Index 4724 .....	61
Mine Index 4725 .....	61
Mine Index 4727, Producers Coal Corp. ....	61
Mine Index 4728, Red Wing Coal Company .....	61
Mine Index 4729 .....	61
Mine Index 4730 .....	61
Mine Index 4754 .....	61
Mine Index 4755 .....	61
Mine Index 4756 .....	61
Mine Index 4757 .....	61
Mine Index 4758 .....	61
Mine Index 4759 .....	61
Mine Index 4760 .....	61
Mine Index 4761 .....	61
Mine Index 4762 .....	61
Mine Index 4763 .....	61
Mine Index 6330 .....	61
Mine Index 6571 .....	61
Mine Index 6572 .....	61
Mine Index 7031 .....	61
Mine Index 7032 .....	61
Mine Index 7033 .....	61
Mine Index 7034 .....	61
Mine Index 7035 .....	61
Mine Index 7039 .....	61
Mine Index 7040 .....	61
Mine Index 7043 .....	61
Mine Index 7044 .....	61
Mine Index 7045 .....	61
Mine Index 7046 .....	61
Mine Index 7047 .....	61
NON-COAL MINES IN THE RUDEMENT QUADRANGLE .....	62
Fluorspar Mine .....	62
MINES WHOSE LOCATIONS ARE NOT KNOWN, RUDEMENT QUADRANGLE .....	62
INDEX OF MINES IN RUDEMENT QUADRANGLE .....	66







## INTRODUCTION

Coal has been mined in 76 counties of Illinois. More than 7,400 coal mines have operated since commercial mining began in Illinois about 1810; fewer than 30 are currently active. To detail the extent and location of coal mining in Illinois, the Illinois State Geological Survey (ISGS) has compiled maps and directories of known coal mines. The ISGS offers maps at a scale of 1:100,000 and accompanying directories for each county in which coal mining is known to have occurred. Maps at a scale of 1:24,000 and accompanying directories such as this are available for selected quadrangles. Contact the ISGS for a list of these quadrangles.

These larger scale maps show the approximate positions of mines in relation to surface features such as roads and water bodies, and indicate the mining method used and the accuracy of the mine boundaries. The maps are useful for locating mine boundaries relative to specific properties and for assessing the potential for subsidence in an area. Mine boundaries compiled from final mine surveys are generally shown within 200 feet of their true position. As a result of poor cartographic quality and inaccuracies in the original mine surveys, boundaries of some older mines may be mislocated on the map by 500 feet or more. Original mine maps should be consulted in situations that require precise delineation of mine boundaries or internal workings of mined areas.

The directory serves as a key to the accompanying mine map and provides basic information on the coal mines. The directory is composed of two parts. Part I explains the symbols and patterns used on the accompanying map and the summary data presented for each mine. Part II numerically lists the mines in the quadrangle and summarizes the geology and production history of each mine.

## MINING IN THE RUDEMENT QUADRANGLE

The earliest mining in the Rudement Quadrangle was related to the salt works and took place in 24-T9S-R7E before 1875. The precise location is not known, but would be within the general area of mining shown on the map of the Springfield Coal. The evaporating pans and boilers used about 300 bushels a day.

More general underground mining began in 1909, with the Reynolds Mine (mine index 4463), who were the sole operators until 1915, when the Colbert Mine (mine index 133) opened and operated for two years. Surface mining began in 1935, with the Cottage Grove Mine (mine index 3298), but occurred only at a small scale until the mid 1950s, when the Vinyard Mine (mine index 804), Walnut Grove Mine (mine index 840), and J. & W. No. 1 Mine (mine index 3330) began mining substantial areas. Mining continues today at an underground mine, the I-1 Underground Mine (mine index 1035) in the Davis Coal.

Several seams were mined in this quadrangle. The Herrin Coal was mostly surface-mined. The Springfield Coal was shallow enough to surface-mine over much of the quadrangle, but was deep enough to have stable roof conditions for a large underground mine in the northern part of the quadrangle (mine index 1015, Big Ridge Portal No. 1 Mine). The Dekoven Coal was mostly surface-mined in conjunction with the Davis Coal, but was generally too thin to support mining operations on its own. The Davis Coal was both surface- and underground-mined.

The southeastern quarter of this quadrangle is a part of the Eagle Valley Syncline, which ends abruptly where the Shawneetown Fault turns southward. The geology of the area is very complex, with many fault zones, including the Shawneetown Fault Zone, Herod Fault Zone, and the Cottage Grove Fault System. These structures are beyond the scope of this introduction, but more information can be found in the *Geologic Map of the Rudement Quadrangle, Saline County, Illinois* (ISGS IGQ003) and *Structural Geology of Southeastern Illinois and Vicinity* (ISGS Circular 538).



## PART I EXPLANATION OF MAP AND MINE SUMMARY SHEET

### INTERPRETING THE MAP

The map accompanying this directory shows the location of coal mines known to be present in the quadrangle. The map, corresponding to a U.S. Geological Survey (USGS) 7.5-minute quadrangle, covers an area bounded by lines of latitude and longitude 7.5-minutes apart. In Illinois, a quadrangle is approximately 6.5 miles east to west and 8.5 miles north to south, an area of about 56 square miles. The USGS generally offers one map of mines per quadrangle. In some areas where extensive mining occurred in two or more overlapping seams, separate maps are compiled for mines in each seam to maintain readability of the map.

#### Mine Type and Mining Method

The mine type is indicated on the map by pattern color: green represents surface mines; red and yellow represent underground mines. The red patterns are used for areas of underground mining that are documented by a primary or secondary source map. A yellow pattern is used for cases where no map of the mine workings is available, but a general area of mining can be inferred from property maps or production figures. The patterns indicate the main mining methods used in underground mines. The methods are (1) room and pillar and (2) high extraction. The method used gives some indication of the amount and pattern of coal extraction within each mined area, and has some influence on the timing and type of subsidence that can occur over a mine.

The following discussion and illustrations of mining methods are based on Guither et al. (1984).

In room-and-pillar mines, coal is removed from haulage-ways (entries) and selected areas called rooms. Pillars of unmined coal are left between the rooms to support the roof. Depending on the size of rooms and pillars, the amount of coal removed from the production areas will range from 40% to 70%.

**Room and Pillar** - mining is divided into six categories:

- room-and-pillar basic (RPB, fig. 1A), an early method that did not follow a preset mining plan and therefore resulted in very irregular designs;
- modified room and pillar (MRP, fig. 1B);
- room-and-pillar panel (RPP, fig. 1C);
- blind room and pillar (BRP, fig. 1D);
- checkerboard room and pillar (CRP, fig. 1E);
- room and pillar (RP), a classification used when the specific type of room-and-pillar mining is unknown.

Blind and checkerboard are the most common types of room-and-pillar mining used in Illinois today. The knowledge of room-and-pillar mining methods gives a trained engineer information on the nature of subsidence that may occur. A more extensive discussion of subsidence can be found in Bauer et al. (1993).

**High-extraction** These mining methods are subdivided into high-extraction retreat (HER, Fig 1F) and longwall (LW, Fig 1G, 1H). In these methods, much of the coal is removed within well defined areas of the mine. Subsidence of the surface above these areas occurs within weeks. Once the subsidence activity ceases, the potential for further movement over these areas is low; however, subsidence may continue for several years after mining.

High-extraction retreat mining is a form of room-and-pillar mining that extracts most of the coal. Rooms and pillars are developed in the panels, and the pillars are then systematically removed (fig. 1F).

In early (pre-1960) longwall mines, mining advanced in multiple directions from a central shaft (fig. 1G). Large pillars of coal were left around the shaft, but all coal was removed beyond these pillars. Miners placed rock and wooden props and cribs in the mined-out areas to support the mine roof. The overlying rock gradually settled onto these supports, thus producing subsidence at the surface. In post-1959 longwall mines, room-and-pillar methods have been used to develop the main entries of the mine and panel areas. Modern longwall methods extract 100 percent of the coal in the panel areas (fig. 1H).



## SOURCE MAPS

Mine outlines depicted on the map are, whenever possible, based on maps made from original mine surveys. The process of compiling and digitizing the quadrangle map may produce errors of less than 200 feet in the location of mine boundaries. Larger errors of 500 feet or more are possible for mines that have incomplete or inaccurate source maps.

Because of the extreme complexity of some mine maps, detailed features of mined areas have been omitted. The digitized mine boundary includes the exterior boundary of all rooms or entries that were at least 80 feet wide or protruded 500 feet from the main mining area. Unmined areas between mines are shown if they are at least 80 feet wide; unmined blocks of coal within mines are shown if they are at least 400 feet on each side. Original source maps should be consulted when precise information on mine boundaries or interior features is needed.

The mine summary sheet lists the source maps used to determine each mine outline. The completeness of map sources is indicated on the map by a line symbol at the mine boundary. Source maps are organized in five categories.

**Final mine map** The mine outline was digitized from an original map made from mine surveys conducted within a few months after production ceased. The date of the map and the last reported production are listed on the summary sheet.

**Not a final map** The mine is currently active or the mine outline was made from a map based on mine surveys conducted more than a few months before production ceased. This implies the actual mined-out area is probably larger than the outline on the map. The mine summary sheet indicated the dates of source maps and the last reported production, as well as the approximate tonnage mined between these two dates (if the mine is abandoned). The summary sheet also lists the approximate acreage mined since the date of the map and, in some cases, indicates the area where additional mining may have taken place. This latter information is determined by locating on the map the active faces relative to probable boundaries of the mine property.

**Undated map** The source map was undated, so it may or may not be based on a final mine survey. When sufficient data are available, the probable acreage of the mined area is estimated from reported production, average seam thickness and a recovery rate comparable to other mines in the area. This information is listed in the summary sheet for the mine.

**Incomplete map** The source map did not show the entire mine. The summary sheet indicates the missing part of the mine map and the acreage of the unmapped area, which is estimated from the amount of coal known to have been produced from the mine.

**Secondary source map** The original mine map was not found so the outline shown was determined from secondary sources (e.g., outlines from small-scale regional maps published in other reports). The summary sheet describes the secondary sources.

## POINTS AND LABELS

The locations of all known mine openings (shafts, slopes, and drifts) and surface mine tipples are plotted on the map. Tipples are areas where coal was cleaned, stockpiled, and loaded for shipping.

Only openings or tipples are plotted for mines without source maps. If the precise locations of these features are unknown, a special symbol is used to indicate the approximate location of the mine.

Each mine on the map is labeled with the names of the mine and operating company, ISGS mine index number, and years of operation (if known) if space permits. A seam designation is given on maps where more than one seam was mined. For a mine that operated under more than one name, only the most recent name is generally given. When a mine changed names or ownership shortly before closing, an earlier name is listed. All company and mine names are listed on the mine summary sheet in the directory, under the production history segment.





**Figure 1** Mining methods: (A) room-and-pillar basic (RPB), (B) modified room and pillar (MRP), (C) room-and-pillar panel (RPP), (D) blind room and pillar (BRP).





**Figure 1 (cont.)** Mining methods: (E) checkerboard room and pillar (CRP), (F) high extraction retreat (HER), (G) early (pre-1960) longwall, (H) post-1959 longwall





**Figure 2** Generalized stratigraphic section, showing approximate vertical relations of coals in Illinois.

## INTERPRETING A MINE SUMMARY SHEET

The mine summary sheet is arranged numerically by mine index number. Index numbers are shown on the map and in the mine listing. The mine summary sheet provides the following information (if available).

**Company and mine name** The last company or owner of the mine is used, unless no production was recorded for the last owner. In that case, the penultimate owner is listed. Mines often have no specific name; in these cases, the company name is also used as the mine name.

**Type** *Underground* denotes a subsurface mine in which the coal was reached through a shaft, slope, or a drift entry. *Surface* denotes a surface, open pit or strip mine.

**Total mined-out acreage shown** The total acreage of the mined area mapped, including any acreage mined on adjacent quadrangles, is calculated from the digitized outline of the mine. The acreage of large barrier pillars depicted on the map is excluded from the mined-out acreage. Small pillars not digitized are included in the acreage calculation. If the mine outline is not based on a final mine map, the acreage is followed by an estimate of additional acres that may have been mined. The estimate is determined from reported mine production, approximate thickness of the coal, and recovery rates calculated from nearby mines that used similar mining methods.

## SHAFT, SLOPE, DRIFT OR TIPPLE LOCATIONS

**Shaft, slope, drift, or tippie locations** Locations of all known former entry points to underground mines or the location of coal cleaning, tippie, and shipping equipment used by the mine's facility are listed. The location is described in terms of county, township and range (Twp-Rge), section, and location within the section by quarters. NE SW NW, for instance, would describe the location in the northeast quarter of the southwest quarter of the northwest quarter. When sections are irregular in size, the quarters remain the same size and are oriented (or "registered") from the southeast corner of the section. Approximate footage from the section lines (FEL = from east line, FNL = from north line, for example) is given when that information is known; this indicates a surveyed location and is not derived from maps. Entry points are also plotted on the map and coded for the type of entry or tippie. A mine opening may have had many purposes during the life of the mine. Old hoist shafts are often later used for air and escape shafts; this information is included in the directory when known. The tippie for underground mines was generally located near the main shaft or slope. At surface mines, coal was sometimes hauled to a central tippie several miles from the mine pit.

## GEOLOGY

**Seam(s) mined** The name of the coal seam(s) mined is listed, if known. If multiple seams were mined, they are all listed, although the mined-out area for each seam may be shown on separate maps. Figure 2 shows the stratigraphic section of the coal-bearing interval in Illinois, and the vertical relations among the coals.

**Depth** The depth to the top of the seam in the vicinity of the shaft is listed, if known. The depth is determined from notes made by geologists who visited the mine during its operation or from drill hole data in ISGS files. Depth generally varies little over the extent of a mine; however, reported depths for an individual mine may vary. Depth for surface-mined coals varies, and is usually represented as a range.



**Thickness** The approximate thickness of the mined seam is shown, if known. Thickness also comes from notes of geologists who visited the mine during its operation or from borehole data in ISGS files. Minimum, maximum, and average thicknesses are given when this information is available.

**Mining method** The principal mining method used at the mine (figs. 1A-H) is listed. See the mining methods section at the beginning of this directory for a discussion of this parameter.

**Geologic problems reported** Any known geologic problems, such as faults, water seepage, floor heaving, and unstable roof, encountered in the mine are reported. This information is from notes made by ISGS geologists who visited the mine, or from reports by mine inspectors published by the Illinois Department of Mines and Minerals, or from the source map(s). Geologic problems are not reported for active mines.

## PRODUCTION HISTORY

**Production history** Tons of coal produced from the mine by each mine owner are totaled. When the source map used for the mine outline is not a final mine map, the tonnage produced since the date of the map is identified. For mines that extend into adjacent quadrangles, the tonnage reported includes areas mined in adjacent quadrangles.

## SOURCE OF DATA

**Source map** This section lists information about the map(s) used to compile the mine outline and the locations of tipples and mine openings. In some cases more than one source map was used. For example, a map drawn before the mine closed may provide better information on original areas of the mine than a later map. When more than one map was used, the bibliography section explains what information was taken from each source.

**Date** The date of the most recent mine survey listed on the source map is reported.

**Original scale** The original scale of the source map is listed. Many maps are photo-reductions and are no longer at their original scale. The original scale gives some indication of the level of detail of the mine outline and the accuracy of the mine boundary relative to surface features. Generally, the larger the scale, the greater the accuracy and detail of the mine map. Mine outlines taken from source maps at scales smaller than 1:24,000 may be highly generalized and may well be inaccurately located with respect to surface features.

**Digitized scale** The scale of the digitized map is reported. The scale may be different from that of the original source map. In many cases the digitized map was made from a photo-reduction of the original source map, or the source map was not in a condition suitable for digitizing and the mine boundaries were transferred to another base map.

**Map type** Source maps are classified into five categories to indicate the probable completeness of the map. See discussion of source maps in the previous section.

**Annotated bibliography** Sources that provide information about the mine are listed, with the data taken from each source. Some commonly used sources are described below. Full bibliographic references are given for all other sources. Unless otherwise noted, all sources are available for public inspection at the ISGS.

**Coal Reports** Published since 1881, these reports contain tabular data on mine ownership, production, employment, and accidents. Some volumes include short descriptions made by mine inspectors of physical features and conditions in selected mines.

**Directory of Illinois Coal Mines** This source is a compilation of basic data about Illinois coal mines, originally gathered by ISGS staff in the early 1950s. Sources used for this directory are undocumented, but they are primarily Illinois Department of Mines and Minerals annual reports, ISGS mine notes, and coal company officials.

**ENR Document 85/01**, Guither, H. D., J. K. Hines, and R. A. Bauer, 1985 The Economic Effect of Underground Mining Upon Land Used for Illinois Agriculture: Illinois Department of Energy and Natural Resources Document 85/01, 185 p.

**Microfilm map** The U.S. Bureau of Mines maintains a microfilm archive of mine maps. A microfilm file for Illinois is available for public viewing at the ISGS.



*Mine notes* ISGS geologists have visited mines or contacted mine officials throughout the state since the early 1900s. Notes made during these visits range from brief descriptions of the mine location to long narratives (including sketches) of mining conditions and geology.

*Federal Land Bank of St. Louis, Preliminary Reports on Subsidence Investigations* Mining engineers working for the Federal Land Bank of St. Louis mapped areas of subsidence due to coal mining in the early 1930s. These reports often include county maps of mine properties with mined-out areas including shaft locations, as well as subsidence areas.

## REFERENCES

- Bauer, R. A., B. A. Trent, and P. B. Dumontelle, 1993, Mine Subsidence in Illinois: Facts for the Homeowner Considering Insurance: Illinois State Geological Survey, Environmental Geology Note 144, 16p.
- Guither, H. D., J. K. Hines, and R. A. Bauer, 1985, The Economic Effects of Underground Mining Upon Land Used for Illinois Agriculture: Illinois Department of Energy and Natural Resources Document 85/01, 185p.
- Nelson, W. J and D. K. Lumm, Geology of Shawneetown Fault and Vicinity – Study performed for the U. S. Nuclear Regulatory Commission, Field Notes, Books 1 & 2, #918.
- Nelson, W. J. and D. K. Lumm, 1986, Geologic map of the Rudement Quadrangle, Saline County, Illinois, Illinois State Geological Survey IGQ003.
- Nelson, W. J. and D. K. Lumm, 1987, Structural Geology of Southeastern Illinois and Vicinity, Illinois State Geological Survey Circular 538, 70p.
- Worthen, A. H., G. C. Broadhead and T. Cox, 1875, Geology and Paleontology of Illinois, Volume VI, Journal Company Book Print, Springfield, Illinois, 532p.



## PART II DIRECTORY OF MINES IN THE RUDEMENT QUADRANGLE

### MINE SUMMARY SHEETS

A summary sheet on the geology and production history of each mine in the Rudement Quadrangle is provided. These summary sheets are arranged numerically by mine index number. Consult Part I for a complete explanation of the data listed in the summary sheet.

#### Mine Index 131

#### Tom Osborn, Osborn No. 2 Mine

Type: Underground    Total mined-out acreage shown: 1

#### SHAFT, SLOPE, DRIFT or TIPPLE LOCATIONS

Type	County	Township-Range	Section	Quarters-Footage
Main drift	Saline	10S 7E	13	SE NE SE

#### GEOLOGY

Seam(s) Mined	Depth (ft)	Thickness (ft)			Mining Method
		Min	Max	Ave	
Springfield				4.67	RP

Geologic Problems Reported:

#### PRODUCTION HISTORY

Company	Mine Name	Years	Production (tons)
Tom Osborn	Osborn No. 2	1938-1938	160
William Angelly	Osborn No. 2	1939-1940	832
Tom Osborn	Osborn No. 2	1940-1952 *	<u>2,276</u> 3,268

\* Idle 1944-1946, 1948 & 1949

Last reported production: February 1952

#### SOURCES OF DATA

Source Map	Date	Original Scale	Digitized Scale	Map Type
Microfilm, document 352809	12-27-1955	1:1200	1:1324	Secondary source

#### Annotated Bibliography (data source, brief description of information)

Coal Reports - Production, ownership, years of operation, mining method.

Directory of Illinois Coal Mines (Saline County) - Mine names, mine index, ownership, years of operation.

Mine notes (Saline County) - Mine type, drift location, seam, thickness.

Microfilm map, document 352809, reel 03140, frame 361, map of Tarleton Mine (mine index 132) - Drift location, mine outline, mining method.



**Mine Index 132**  
**Al Tarlton, Tarlton No. 1 Mine**

Type: Underground    Total mined-out acreage shown: Less than 1

**SHAFT, SLOPE, DRIFT or TIPPLE LOCATIONS**

Type	County	Township-Range	Section	Quarters-Footage
Main drift	Saline	10S 7E	13	NE SE SE
Drift *	Saline	10S 7E	13	NE SE SE

\* This is labeled "old opening" on the source map, along with the fact that it had caved (suffered roof failure).

**GEOLOGY**

Seam(s) Mined	Depth (ft)	Thickness (ft)			Mining Method
		Min	Max	Ave	
Springfield	45			4.67	RPB

Geologic Problems Reported:

**PRODUCTION HISTORY**

Company	Mine Name	Years	Production (tons)
A. L. Tarlton	Tarlton	1925-1935	1,380
Al Tarlton **	Tarlton No. 1	1938-1939 ***	360
			1,740

\*\* Microfilm document 352809, dated 1956, shows this mine with a later owner, Greely Coal Company. No production was reported under this name.

\*\*\* Idle 1936, 1937

Last reported production: 1939

**SOURCES OF DATA**

Source Map	Date	Original Scale	Digitized Scale	Map Type
Microfilm, document 352810	12-27-1955	1:1200	1:1324	Final

Annotated Bibliography (data source, brief description of information)

Coal Reports - Production, ownership, years of operation.

Directory of Illinois Coal Mines (Saline County) - Mine names, mine index, ownership, years of operation.

Mine notes (Saline County) - Mine type, drift location, seam, depth, thickness.

Microfilm map, document 352810, reel 03140, frame 362 - Drift locations, mine outline, mining method.



**Mine Index 133****J. F. Colbert, Colbert Mine**

Type: Underground Total mined-out acreage shown: 42 Production indicates less than 1 acre was mined. The area shown on the accompanying map is a general area of mining. This mine was later partially surface-mined by the I-1 Surface Mine (mine index 1004).

**SHAFT, SLOPE, DRIFT or TIPPLE LOCATIONS**

Type	County	Township-Range	Section	Quarters-Footage
Main drift	Saline	10S 7E	23	SE SW SW
Drift	Saline	10S 7E	23	SE SE SW

**GEOLOGY**

Seam(s) Mined	Depth (ft)	Thickness (ft)			Mining Method
		Min	Max	Ave	
Bell	35			4.3	RP
Davis				4.0	RP

Geologic Problems Reported:

**PRODUCTION HISTORY**

Company	Mine Name	Years	Production (tons)
J. F. Colbert	Colbert	1915-1917	<u>187</u> 187

Last reported production: 1917

**SOURCES OF DATA**

Source Map	Date	Original Scale	Digitized Scale	Map Type
Federal Land Bank Report	1-12-1934	1:90514	1:90514	Secondary source

Annotated Bibliography (data source, brief description of information)

Coal Reports - Production, ownership, years of operation, seam, depth, thickness, mining method.

Directory of Illinois Coal Mines (Saline County) - Mine names, mine index, ownership, years of operation.

Mine notes (Saline County) - Mine type, drift locations, seam, depth, thickness.

Federal Land Bank Report (Saline County) - Drift locations, mine outline.



**Mine Index 646****White Star Coal Company, White Star Mine**

Type: Underground Total mined-out acreage shown: Less than 1 Production indicates approximately 1 acre was mined after the map date. This mine is not shown on the accompanying map because it was later surface-mined by the Mary Ann No. 1 Mine (mine index 3307).

**SHAFT, SLOPE, DRIFT or TIPPLE LOCATIONS**

Type	County	Township-Range	Section	Quarters-Footage
Main drift	Saline	9S 7E	23	SW SW SW
Air shaft	Saline	9S 7E	23	SW SW SW

**GEOLOGY**

Seam(s) Mined	Depth (ft)	Thickness (ft)			Mining Method
		Min	Max	Ave	
Springfield	40			4.5	RPB

Geologic Problems Reported:

**PRODUCTION HISTORY**

Company	Mine Name	Years	Production (tons)
White Star Coal Company	White Star	1934-1935	1,058
White Star Coal Company	White Star	1935-1936	3,502 *
L. C. Wiedeman	Wiedeman	1937-1937	773 *
White Star Coal Company	White Star	1938-1938	550 *
			5,883

\* Production after map date

Last reported production: 1938

**SOURCES OF DATA**

Source Map	Date	Original Scale	Digitized Scale	Map Type
Microfilm, document 352775	1-13-1935	1:1200	1:1241	Not final

Annotated Bibliography (data source, brief description of information)

Coal Reports - Production, ownership, years of operation.

Directory of Illinois Coal Mines (Saline County) - Mine names, mine index, ownership, years of operation.

Mine notes (Saline County) - Mine type, drift location, seam, depth, thickness.

Microfilm map, document 352775, reel 03140, frame 297 - Drift & shaft locations, mine outline, mining method.



**Mine Index 647****Pioneer Mining Company, Pioneer No. 1 Mine**

Type: Underground Total mined-out acreage shown: 11 Production indicates approximately 1 acre was mined after the map date. Portions of this mine were later surface mined by the Mary Ann No. 1 Mine (mine index 3307).

**SHAFT, SLOPE, DRIFT or TIPPLE LOCATIONS**

Type	County	Township-Range	Section	Quarters-Footage
Main slope	Saline	9S 7E	23	NW SW SW
Air shaft	Saline	9S 7E	23	NW SW SW

**GEOLOGY**

Seam(s) Mined	Depth (ft)	Thickness (ft)			Mining Method
		Min	Max	Ave	
Springfield	30-35			4.5	MRP

Geologic Problems Reported: The source map shows "bad top" south of the main haulage routes. Mining advanced to the north, so it is likely that poor roof conditions prevented mining southeast of the mine outline.

**PRODUCTION HISTORY**

Company	Mine Name	Years	Production (tons)
New Rocky Branch Coal Company	New Rocky Branch	1934-1934	500
Rocky Branch Coal Company	Rocky Branch No. 1	1935-1937	1,343
Jones & Gill	Jones & Gill	1938-1939	1,921
Rocky Branch Coal Company	Rocky Branch No. 1	1939-1941	1,737
Idle		1942-1951	
Pioneer Mining Company	Pioneer No. 1	1952-1955	36,804
Pioneer Mining Company	Pioneer No. 1	1955-1955	5,650 *
			47,955

\* Production after map date

Last reported production: 1955

**SOURCES OF DATA**

Source Map	Date	Original Scale	Digitized Scale	Map Type
Microfilm, document 352608	6-30-1955	1:600	1:1158	Not final

Annotated Bibliography (data source, brief description of information)

Coal Reports - Production, ownership, years of operation.

Directory of Illinois Coal Mines (Saline County) - Mine names, mine index, ownership, years of operation.

Mine notes (Saline County) - Mine type, slope location, seam, depth, thickness.

Microfilm map, document 352608, reel 03140, frame 358 - Slope & shaft locations, mine outline, mining method, geologic problems.



**Mine Index 804****Vinyard Coal Company, Vinyard No. 1 Mine**

Type: Surface Total mined-out acreage shown: 36 Production indicates approximately 24 acres were mined. The size difference may be from poor source maps or the coal thickness may not have been as high as reported.

**SHAFT, SLOPE, DRIFT or TIPPLE LOCATIONS**

Type	County	Township-Range	Section	Quarters-Footage
Tipple / pit	Saline	9S 7E	13	NW SE SW

**GEOLOGY**

Seam(s) Mined	Depth (ft)	Thickness (ft)			Mining Method
		Min	Max	Ave	
Springfield	30			4.5-4.67	Surface

Geologic Problems Reported:

**PRODUCTION HISTORY**

Company	Mine Name	Years	Production (tons)
Vinyard Coal Company	Vinyard No. 1	1955-1957	132,437
Liberty Coal Company	Liberty No. 2	1957-1957	4,600
Vinyard Coal Company	Vinyard No. 1	1957-1957	40,000 *
			177,037

\* Some portion of this tonnage was mined by Vinyard Coal Company from January to June of 1957. Liberty Coal Company operated the mine during June and July of 1957 and then ownership was transferred back to Vinyard Coal Company in August. The Coal Report did not split the 1957 production listed for Vinyard Coal Company, and it is all listed for the August-October time period.

Last reported production: October 1957

**SOURCES OF DATA**

Source Map	Date	Original Scale	Digitized Scale	Map Type
ISGS map library, 4102 a-7, sheet 2	1981-1983	1:24000	1:24000	Secondary source
Digital ortho-photographic quadrangle	2000	1:24000	1:24000	Secondary source

Annotated Bibliography (data source, brief description of information)

Coal Reports - Production, ownership, years of operation.  
 Directory of Illinois Coal Mines (Saline County) - Mine names, mine index, ownership, years of operation.  
 Mine notes (Saline County) - Mine type, tipple / pit location, seam, depth, thickness.  
 ISGS map library, 4102 a-7, sheet 2, work map for Rudement Quadrangle Geologic Map - Mine outline.  
 Digital ortho-photographic map, Rudement 7.5-minute Quadrangle - Mine outline.



**Mine Index 840****Young's Coal Corporation, Walnut Grove Mine**

Type: Surface Total mined-out acreage shown: 593 Production indicates approximately 120 acres were mined after the map date.

**SHAFT, SLOPE, DRIFT or TIPPLE LOCATIONS**

Type	County	Township-Range	Section	Quarters-Footage
Pit *	Saline	10S 7E	4, 5	

\* Other pits are in 9-T10S-R6E, on the Harrisburg Quadrangle.

**GEOLOGY**

Seam(s) Mined	Depth (ft)	Thickness (ft)			Mining Method
		Min	Max	Ave	
Dekoven	30-60			3.83-4.0	Surface
Davis	90-115			2.83-3.0	Surface

Geologic Problems Reported: Faults were observed in the pits. The coal reputedly had high ash and moisture content.

**PRODUCTION HISTORY**

Company	Mine Name	Years	Production (tons)
Saxton Coal Corporation	Walnut Grove	1956-1962	3,931,518
Young's Coal Corporation	Walnut Grove **	1963-1963	369,137
Young's Coal Corporation	Walnut Grove **	1963-1965	<u>1,209,019</u> ***
			5,509,674

\*\* Also known as Somerset Mine

\*\*\* Production after map date

Last reported production: June 1965

**SOURCES OF DATA**

Source Map	Date	Original Scale	Digitized Scale	Map Type
Company, 1-29-8	8-1-1963	1:74541	1:74541	Not final
USGS topographic map	PR 1990	1:24000	1:24000	Secondary source

Annotated Bibliography (data source, brief description of information)

Coal Reports - Production, ownership, years of operation, seam, depth, thickness.

Directory of Illinois Coal Mines (Saline County) - Mine names, mine index, ownership, years of operation.

Mine notes (Saline County) - Mine type, mine location, seam, geologic problems.

ISGS field notes (Saline County) - Sketch map of mine outline, seam, geologic problems.

Company map, ISGS Coal Section files, 1-29-8 - Mine location.

USGS topographic map, Rudement Quadrangle, photorevised 1990 - Mine outline.



**Mine Index 915****Big Ridge Coal Company, Big Ridge No. 1 Mine**

Type: Surface Total mined-out acreage shown: 235 Production indicates approximately 60 acres were mined. Some of this acreage was probably mined by other operators and some of the area shown is a general area of mining. The boundaries of surface mines are notoriously difficult to pick out on aerial photographs because of the affected acreage around the mines, with haulage roads and other disturbed areas around the pits.

**SHAFT, SLOPE, DRIFT or TIPPLE LOCATIONS**

Type	County	Township-Range	Section	Quarters-Footage
Tipple / pit	Saline	9S 7E	19	SE NW NW

**GEOLOGY**

Seam(s) Mined	Depth (ft)	Thickness (ft)			Mining Method
		Min	Max	Ave	
Herrin	35-59			3.83-4.33	Surface

Geologic Problems Reported: Water in the pit was sometimes a problem.

**PRODUCTION HISTORY**

Company	Mine Name	Years	Production (tons)
Big Ridge Coal Company	Big Ridge No. 1	1970-1978 *	<u>376,187</u> 376,187

\* Idle 1976

Last reported production: 1978

**SOURCES OF DATA**

Source Map	Date	Original Scale	Digitized Scale	Map Type
ISGS Coal Section strip mine updates	1976	1:7896	1:7896	Secondary source
ISGS map library, 4102 a-7, sheet 2	1981-1983	1:24000	1:24000	Secondary source
Digital ortho-photographic quadrangle	2000	1:24000	1:24000	Secondary source

Annotated Bibliography (data source, brief description of information)

Coal Reports - Production, ownership, years of operation, depth, thickness.  
 Directory of Illinois Coal Mines (Saline County) - Mine names, mine index, ownership, years of operation.  
 Mine notes (Saline County) - Mine type, tipple / pit location, seam, geologic problems.  
 ISGS field notes (Saline County) - Mine type, tipple / pit location, seam, mining method.  
 ISGS Coal Section strip mine updates - Mine outline, pit locations.  
 ISGS map library, 4102 a-7, sheet 2, work map for Rudement Quadrangle Geologic Map - Mine outline.  
 Digital ortho-photographic map, Rudement 7.5-minute Quadrangle - Mine outline.



**Mine Index 983**  
**Equality Mining Company, Equality Mine**

Type: Surface    Total mined-out acreage shown: 765

**SHAFT, SLOPE, DRIFT or TIPPLE LOCATIONS**

Type	County	Township-Range	Section	Quarters-Footage
Pit	Saline	9S 7E	10	

**GEOLOGY**

Seam(s) Mined	Depth (ft)	Thickness (ft)			Mining Method
		Min	Max	Ave	
Herrin	25-75			4.11	Surface

Geologic Problems Reported: There was a peridotite sill present in a portion of the mine. Some minor faults were also reported. The source map shows some of this faulting, trending north-northwest to south-southeast. These faults were in NE 10-T9S-R7E.

**PRODUCTION HISTORY**

Company	Mine Name	Years	Production (tons)
Equality Mining Company	Equality	1978-1991	5,041,753
			5,041,753

Last reported production: 1991

**SOURCES OF DATA**

Source Map	Date	Original Scale	Digitized Scale	Map Type
Company, 4103.S32 i5.1-95	7-1-1989	1:4800	1:4800	Not final *
Company, ISGS active mine file	1-31-2002	1:4800	1:4800	Secondary source *
ISGS map library, 4102 a-7, sheet 2	1981-1983	1:24000	1:24000	Secondary source

\* The mined area shown on the accompanying map is the approximate size expected for the reported production. This suggests that the mine outline is complete.

Annotated Bibliography (data source, brief description of information)

Coal Reports - Production, ownership, years of operation, depth.  
 Directory of Illinois Coal Mines (Saline County) - Mine names, mine index, ownership, years of operation.  
 Mine notes (Saline County) - Mine type, pit location, seam, geologic problems.  
 Company map, ISGS map library, 4103.S32 i5.1-95 - Mine outline, mining method, geologic problems.  
 Coal Section files (active mines), map of Big Ridge Portal No. 2 Mine (mine index 1021) - Mine outline (north).  
 ISGS map library, 4102 a-7, sheet 2, work map for Rudement Quadrangle Geologic Map - Mine outline.



**Mine Index 1003****Jader Fuel Company, Inc., Federal Landscaping No. 1 Mine**

Type: Surface Total mined-out acreage shown: 45 Production indicates approximately 10 acres were mined. The area shown on the accompanying map may include affected acreage from activities associated with mining (haulage roads, areas cleared to maneuver machines, etc.) and the coal may not have been as thick as reported.

**SHAFT, SLOPE, DRIFT or TIPPLE LOCATIONS**

Type	County	Township-Range	Section	Quarters-Footage
Tipple / pit	Saline	10S 7E	12	SE SE

**GEOLOGY**

Seam(s) Mined	Depth (ft)	Thickness (ft)			Mining Method
		Min	Max	Ave	
Herrin	45 (20-60)			4.0	Surface

Geologic Problems Reported:

**PRODUCTION HISTORY**

Company	Mine Name	Years	Production (tons)
Federal Landscaping Company	Federal Landscaping	1980-1980	none reported
Jader Fuel Company, Inc.	Federal Landscaping No. 1	1980-1982	<u>65,509</u> 65,509

Last reported production: October 1982

**SOURCES OF DATA**

Source Map	Date	Original Scale	Digitized Scale	Map Type
Company, 6-281	6-15-1983	1:7920	1:7920	Final

Annotated Bibliography (data source, brief description of information)

Coal Reports - Production, ownership, years of operation, thickness.

Directory of Illinois Coal Mines (Saline County) - Mine names, mine index, ownership, years of operation.

Mine notes (Saline County) - Mine type, tipple / pit location, seam, depth, mining method.

Company map, ISGS Coal Section, 6-281 - Mine location, mine outline, mining method.



**Mine Index 1004****Illinois Fuel Company, LLC, I-1 Surface Mine**

Type: Surface Total mined-out acreage shown: 2,115 (179 in Herrin Coal, 746 in Springfield Coal and 1,190 in Davis/Dekoven Coal) Production indicates approximately 200 acres or more were mined after the map date in Saline County.

**SHAFT, SLOPE, DRIFT or TIPPLE LOCATIONS**

Type	County	Township-Range	Section	Quarters-Footage
Pit	Gallatin	10S 8E	16, 17, 18, 19	
Pit	Saline	10S 7E	11, 13, 14, 23, 24	

**GEOLOGY**

Seam(s) Mined	Depth (ft)	Thickness (ft)			Mining Method
		Min	Max	Ave	
Herrin	140 *			3.0-4.0	Surface
Briar Hill	90 *			2.0-2.5	Surface
Springfield	155 *			4.5-5.0	Surface
Dekoven	103-105 *			3.0	Surface
Davis	125-130 *			4.0	Surface

\* These depths were not measured at the same location, but in the locations where each coal was present and thick enough to mine.

Geologic Problems Reported:**PRODUCTION HISTORY**

Company	Mine Name	Years	Production (tons)
Jader Fuel Company, Inc.	Jader No. 4	1982-1996	5,517,954
Jader Fuel Company, Inc.	Jader No. 4 (Saline County)	1997-2000	4,178,422
Illinois Fuel Company, LLC	I-1 Surface	2001-2011 **	3,280,101
			12,976,477

\*\* Idle 2004-2007

Last reported production: 2011

**SOURCES OF DATA**

Source Map	Date	Original Scale	Digitized Scale	Map Type
Company (digital)	1-2012	1:2400	1:2400	Not final ***
Company (digital)	1-1-2001	1:24000	1:24000	Final, not final †
Company (paper)	1-1-2001	1:4896	1:4896	Final ††
Company (paper)	1-10-2000	1:4800	1:4800	Final ††
Company (paper), 1-42-27	4-18-1994	1:4800	1:4800	Final ††
Company (paper)	12-31-1994	1:4800	1:4800	Final ††
NAIP digital ortho-photo quadrangle	2015	1:6000	1:6000	Secondary source

\*\*\* The outline shown is of affected acres, which may not reflect actual mining.

† Final for Gallatin County pits, not final for Saline County pits

†† This map is final for the areas shown.

Annotated Bibliography (data source, brief description of information)

Coal Reports - Production, ownership, years of operation, depth.

Mine notes (Gallatin County) - Mine type, mine location, seam, thickness, mining method, geologic problems.

Company map, Coal Section files (digital) - Mine outline, mining method.

Company map, Coal Section files, not numbered and 1-42-27 - Mine outline, mining method.

National Agriculture Imagery Program map, digital ortho-photo quadrangle map - Mine outline.



**Mine Index 1009****J. J. Track Mining Company, Brown Brothers No. 3 Mine**

Type: Surface Total mined-out acreage shown: 26 Production indicates approximately 7 acres were mined and 3 acres mined after the map date.

**SHAFT, SLOPE, DRIFT or TIPPLE LOCATIONS**

Type	County	Township-Range	Section	Quarters-Footage
Tipple / pit	Saline	10S 7E	14	SW

**GEOLOGY**

Seam(s) Mined	Depth (ft)	Thickness (ft)			Mining Method
		Min	Max	Ave	
Dekoven	60			3.0	Surface
Davis				4.0	Surface

Geologic Problems Reported:

**PRODUCTION HISTORY**

Company	Mine Name	Years	Production (tons)
J. J. Track Mining Company	Brown Brothers No. 3	1985-1986	82,925
J. J. Track Mining Company	Brown Brothers No. 3	1986-1987	43,257 *
			126,182

\* Production after map date

Last reported production: 1987

**SOURCES OF DATA**

Source Map	Date	Original Scale	Digitized Scale	Map Type
ISGS Coal Section files, 6-306	9-24-1986	1:4800	1:4800	Not final

Annotated Bibliography (data source, brief description of information)

Coal Reports - Production, ownership, years of operation, depth.

Directory of Illinois Coal Mines (Saline County) - Mine names, mine index, ownership, years of operation.

Mine notes (Saline County) - Mine type, tipple/pit location, seam, thickness, mining method.

ISGS Coal Section files, 6-306 - Mine location, mine outline, mining method.



**Mine Index 1015****Big Ridge, Inc., Big Ridge Portal No. 1 Mine**

Type: Underground    Total mined-out acreage shown: 2,509

**SHAFT, SLOPE, DRIFT or TIPPLE LOCATIONS**

Type	County	Township-Range	Section	Quarters-Footage
Main slope	Saline	9S 7E	20	NW NW SW
Air shaft	Saline	9S 7E	20	NW SW NW

**GEOLOGY**

Seam(s) Mined	Depth (ft)	Thickness (ft)			Mining Method
		Min	Max	Ave	
Springfield	150	4.3	6.0	4.5	RPP

Geologic Problems Reported: Northwest-southeast trending faults that parallel the Cottage Grove Fault System run through the mine.

**PRODUCTION HISTORY**

Company	Mine Name	Years	Production (tons)
Arclar Company	Big Ridge Portal No. 1	1990-1997	9,249,080 *
Big Ridge, Inc.	Big Ridge Portal No. 1	1998-1998	384,466 *
			9,633,546

\* The production for Portal No. 1 and Portal No. 2 (mine index 1021) was not listed separately in the Coal Reports. The reported production for 1997 and 1998 has been split into an estimate for each of the two mines.

Last reported production: 1998 (Text on the source map stated that the bottom was sealed 8-13-1998.)

**SOURCES OF DATA**

Source Map	Date	Original Scale	Digitized Scale	Map Type
Company, 4103.S32 i5.1-96	2-16-1999	1:4800	1:4800	Final

Annotated Bibliography (data source, brief description of information)

Coal Reports - Production, ownership, years of operation, depth, thickness.

Directory of Illinois Coal Mines (Saline County) - Mine names, mine index, ownership, years of operation.

Mine notes (Saline County) - Mine type, slope location, seam, thickness.

Company map, ISGS map library, 4103.S32 i5.1-96 - Slope & shaft locations, mine outline, mining method, geologic problems.



**Mine Index 1035****Illinois Fuel Company, LLC, I-1 Underground Mine**

Type: Surface    Total mined-out acreage shown: 3

**SHAFT, SLOPE, DRIFT or TIPPLE LOCATIONS**

Type	County	Township-Range	Section	Quarters-Footage
Main drift	Saline	10S 7E	14	NW SE NE
Air drift	Saline	10S 7E	14	SW NE NE
Drift	Saline	10S 7E	14	SW NE NE
Drift	Saline	10S 7E	14	NW SE NE

**GEOLOGY**

Seam(s) Mined	Depth (ft)	Thickness (ft)			Mining Method
		Min	Max	Ave	
Davis	125-130			4.0	CRP

Geologic Problems Reported:**PRODUCTION HISTORY**

Company	Mine Name	Years	Production (tons)
Illinois Fuel Company, LLC	I-1 Underground	2003-2003	<u>12,791</u> 12,791

Last reported production: 2003

**SOURCES OF DATA**

Source Map	Date	Original Scale	Digitized Scale	Map Type
Company, 6-338b	7-15-2003	1:6000	1:6000	Final

Annotated Bibliography (data source, brief description of information)

Coal Reports - Production, ownership, years of operation, depth.

Mine notes (Gallatin County) - Mine type, mine location, seam, thickness.

Company map, Coal Section files, 6-338b - Mine outline, mining method.



**Mine Index 1044****Peabody Midwest Mining, Wildcat Hills Cottage Grove Mine**

Type: Surface Total mined-out acreage shown: 4,042 in Herrin Coal, 317 in Briar Hill Coal, 487 in Springfield Coal.

**SHAFT, SLOPE, DRIFT or TIPPLE LOCATIONS**

Type	County	Township-Range	Section	Quarters-Footage
Pit (Herrin)	Gallatin	9S 7E	1, 2, 3, 10, 11, 12, 14	
Pit (Herrin)	Gallatin	9S 8E	4, 5, 6, 7, 8, 9, 17	
Pit (Briar Hill)	Gallatin	9S 7E	11, 14	
Pit (Springfield)	Gallatin	9S 7E	11, 14, 15, 22, 23	

**GEOLOGY**

Seam(s) Mined	Depth (ft)	Thickness (ft)			Mining Method
		Min	Max	Ave	
Danville *				1.5-2.0	Surface
Allenby *				1.0-2.0	Surface
Herrin				3.7-4.6	Surface
Briar Hill				1.7-2.0	Surface
Springfield *				4.2-5.0	Surface

\* The Danville Coal is mined only in the northern portions of the northernmost pits. The Allenby Coal was said to have been mined in 2003, and again 2006-2011. The Allenby Coal is commonly found in channel deposits, so it is unclear which pits this coal was mined in. The Springfield Coal is mined in the southernmost pit, and in portions of the northern pits, south of the underground mines in the Springfield Coal. Depth to the coals is 40-155 feet, but it is not easily split out by seam.

Geologic Problems Reported:**PRODUCTION HISTORY**

Company	Mine Name	Years	Production (tons)
Black Beauty Coal Company	Wildcat Hills Cottage Grove	2000-2009	4,347,151 **
Peabody Midwest Mining	Wildcat Hills Cottage Grove	2010-2019	12,250,083
			16,597,234

\*\* The 2000-2005 production is included in the totals for Wildcat Hills Eagle Valley mine (mine index 1022).

Last reported production: 2019

**SOURCES OF DATA**

Source Map	Date	Original Scale	Digitized Scale	Map Type
NAIP digital ortho-photo quadrangle	2019	1:6000	1:6000	Secondary source

Annotated Bibliography (data source, brief description of information)

Coal Reports - Production, ownership, years of operation.

Directory of Illinois Coal Mines (Saline County) - Mine names, mine index, ownership, years of operation.

National Agriculture Imagery Program map, digital ortho-photo quadrangle map - Mine outline, mining method.



**Mine Index 2286**  
**Richardson Coal Corporation, Richardson No. 2 Mine**

Type: Surface    Total mined-out acreage shown: 11    Production indicates approximately 6 acres were mined.

**SHAFT, SLOPE, DRIFT or TIPPLE LOCATIONS**

Type	County	Township-Range	Section	Quarters-Footage
Pit	Saline	9S 7E	22	NW SE

**GEOLOGY**

Seam(s) Mined	Depth (ft)	Thickness (ft)			Mining Method
		Min	Max	Ave	
Herrin *	20			4.0	Surface

\* The seam is uncertain. Nearby mining took place in the Springfield Coal, but the area has many faults with vertical displacement, so the Herrin Coal may have been mined here.

Geologic Problems Reported:

**PRODUCTION HISTORY**

Company	Mine Name	Years	Production (tons)
Richardson Coal Corporation	Richardson No. 2	1956-1958	<u>40,372</u> 40,372

Last reported production: August 1957

**SOURCES OF DATA**

Source Map	Date	Original Scale	Digitized Scale	Map Type
ISGS map library, 4102 a-7, sheet 2	1981-1983	1:24000	1:24000	Secondary source

Annotated Bibliography (data source, brief description of information)

Coal Reports - Production, ownership, years of operation.  
 Directory of Illinois Coal Mines (Saline County) - Mine names, mine index, ownership, years of operation.  
 Mine notes (Saline County) - Seam, depth, thickness.  
 ISGS map library, 4102 1-7, sheet 2, work map for Rudement Quadrangle Geological Map - Mine outline.



**Mine Index 3297****L. D. Robertson, Robertson No. 1 Mine**

Type: Underground    Total mined-out acreage shown: None

**SHAFT, SLOPE, DRIFT or TIPPLE LOCATIONS**

Type	County	Township-Range	Section	Quarters-Footage
Main shaft	Saline	10S 7E	8	SW NE NW

**GEOLOGY**

Seam(s) Mined	Depth (ft)	Thickness (ft)			Mining Method
		Min	Max	Ave	
Davis					RP

Geologic Problems Reported:**PRODUCTION HISTORY**

Company	Mine Name	Years	Production (tons)
L. D. Robertson	Robertson No. 1	1934-1936	2,496
H. L. Griffith	Griffith	1937-1937	281
L. D. Robertson	Robertson No. 1	1938-1939	<u>1,923</u>
			4,700

Last reported production: 1939

**SOURCES OF DATA**

Source Map	Date	Original Scale	Digitized Scale	Map Type
Mine notes	Undated	(text only)	1:24000 *	Secondary source

\* The mine location was plotted on a 1:24000 USGS topographic map from the mine location description and digitized.

Annotated Bibliography (data source, brief description of information)

Coal Reports - Production, ownership, years of operation, mining method.

Directory of Illinois Coal Mines (Saline County) - Mine names, mine index, ownership, years of operation.

Mine notes (Saline County) - Mine type, shaft location, seam.



**Mine Index 3298****Cottage Grove Coal Company, Cottage Grove Mine**

Type: Surface    Total mined-out acreage shown: None    Production indicates approximately 5 acres were mined.

**SHAFT, SLOPE, DRIFT or TIPPLE LOCATIONS**

Type	County	Township-Range	Section	Quarters-Footage
Tipple / pit	Saline	9S 7E	10	NE SW SE

**GEOLOGY**

Seam(s) Mined	Depth (ft)	Thickness (ft)			Mining Method
		Min	Max	Ave	
Herrin	15-30			4.0-5.0	Surface

Geologic Problems Reported:

**PRODUCTION HISTORY**

Company	Mine Name	Years	Production (tons)
Cottage Grove Coal Company	Cottage Grove	1947-1948	<u>37,977</u> 37,977

Last reported production: April 1948

**SOURCES OF DATA**

Source Map	Date	Original Scale	Digitized Scale	Map Type
ISGS mine notes	Undated	(text only)	1:24000 *	Secondary source

\* The mine location was plotted on a 1:24000 USGS topographic map from the mine location description and digitized.

Annotated Bibliography (data source, brief description of information)

Coal Reports - Production, ownership, years of operation, depth, thickness.

Directory of Illinois Coal Mines (Saline County) - Mine names, mine index, ownership, years of operation.

Mine notes (Saline County) - Mine type, mine location, seam, thickness.



**Mine Index 3299****J. F. Raulston, Raulston Mine**

Type: Underground    Total mined-out acreage shown: None    Production indicates approximately 1 acre was mined. The area was later surface mined by Equality Mining Company (mine index 0983) and this mine is not shown on the accompanying map.

**SHAFT, SLOPE, DRIFT or TIPPLE LOCATIONS**

Type	County	Township-Range	Section	Quarters-Footage
Main slope	Saline	9S 7E	10	NE SW SE

**GEOLOGY**

Seam(s) Mined	Depth (ft)	Thickness (ft)			Mining Method
		Min	Max	Ave	
Herrin	20-35			4.0-4.5	RP

Geologic Problems Reported:

**PRODUCTION HISTORY**

Company	Mine Name	Years	Production (tons)
Logan Uzzle	Uzzle	1931-1938	6,180
J. F. Raulston	Raulston	1938-1938	93
			6,273

Last reported production: 1938

**SOURCES OF DATA**

Source Map	Date	Original Scale	Digitized Scale	Map Type
Mine notes	Undated	(text only)	1:24000 *	Secondary source
Federal Land Bank Report	1-12-1934	1:90514	1:90514	Secondary source

\* The mine location was plotted on a 1:24000 USGS topographic map from the mine location description and digitized.

Annotated Bibliography (data source, brief description of information)

Coal Reports - Production, ownership, years of operation, mining method.

Directory of Illinois Coal Mines (Saline County) - Mine names, mine index, ownership, years of operation.

Mine notes (Saline County) - Mine type, slope location, seam, depth, thickness.

Federal Land Bank Report (Saline County) - Mine outline.



**Mine Index 3300**  
**Logan Reynolds, Reynolds Mine**

Type: Underground    Total mined-out acreage shown: 5    Production indicates less than 1 acre was mined after the map date.

**SHAFT, SLOPE, DRIFT or TIPPLE LOCATIONS**

Type	County	Township-Range	Section	Quarters-Footage
Main slope	Saline	9S 7E	13	SW SW SW
Air shaft	Saline	9S 7E	13	SW SW SW
Air shaft	Saline	9S 7E	13	SW SW SW

**GEOLOGY**

Seam(s) Mined	Depth (ft)	Thickness (ft)			Mining Method
		Min	Max	Ave	
Springfield	25-30			4.33	MRP

Geologic Problems Reported:

**PRODUCTION HISTORY**

Company	Mine Name	Years	Production (tons)
John Whistle	Whistle	1931-1933 *	not reported *
Logan Reynolds **	Reynolds	1934-1936	888
Logan Reynolds	Reynolds	1936-1938	<u>87</u> ***
			975

\* The source map indicates Reynolds was the successor to John Whistle. Production and exact years of operation are not known for Whistle because the Coal Report did not list mines producing less than 1,000 tons per year from 1930 to 1933.

\*\* The source map indicates the company was also known as Reynolds & Lloyd.

\*\*\* Production after map date

Last reported production: 1938

**SOURCES OF DATA**

Source Map	Date	Original Scale	Digitized Scale	Map Type
Microfilm, document 352765	10-23-1937	1:1200	1:1241	Not final

Annotated Bibliography (data source, brief description of information)

Coal Reports - Production, ownership, years of operation.

Directory of Illinois Coal Mines (Saline County) - Mine names, mine index, ownership, years of operation.

Mine notes (Saline County) - Mine type, seam, depth, thickness.

Microfilm map, document 352765, reel 03140, frame 286 - Slope & shaft locations, mine outline, mining method.



**Mine Index 3301****Silas B. Moore, Moore No. 4 Mine**

Type: Underground    Total mined-out acreage shown: 3    Production indicates less than 1 additional acre was mined after the map date.

**SHAFT, SLOPE, DRIFT or TIPPLE LOCATIONS**

Type	County	Township-Range	Section	Quarters-Footage
Main slope	Saline	9S 7E	14	NW SE SE
Air shaft	Saline	9S 7E	14	NW SE SE

**GEOLOGY**

Seam(s) Mined	Depth (ft)	Thickness (ft)			Mining Method
		Min	Max	Ave	
Springfield	43			4.5	MRP

Geologic Problems Reported:

**PRODUCTION HISTORY**

Company	Mine Name	Years	Production (tons)
Silas B. Moore	Moore No. 4	1935-1938	7,170
Silas B. Moore	Moore No. 4	1938-1940	1,846 *
			9,016

\* Production after map date

Last reported production: 1940

**SOURCES OF DATA**

Source Map	Date	Original Scale	Digitized Scale	Map Type
ISGS map library, 4103.S32 i5.1-21	11-28-1947 **	1:1200	1:1200	Secondary source
Microfilm, document 352757	3-1938	1:1200	1:993	Not final

\*\* The outline shown is the same as the microfilm source map, but was used for georegistration.

Annotated Bibliography (data source, brief description of information)

Coal Reports - Production, ownership, years of operation.

Directory of Illinois Coal Mines (Saline County) - Mine names, mine index, ownership, years of operation.

Mine notes (Saline County) - Mine type, seam, depth, thickness.

ISGS map library, 4103.S32 i5.1-21, map of Rocky Branch Mine (mine index 3303) - Mine outline.

Microfilm map, document 352757, reel 03140, frame 273 - Slope & shaft locations, mine outline, mining method.



**Mine Index 3302****Regenhardt & Southern Construction Company, Regenhardt & Southern No. 5 Mine**

Type: Surface Total mined-out acreage shown: 10 Production indicates approximately 2 acres were mined. The area shown on the accompanying map is a general area of mining.

**SHAFT, SLOPE, DRIFT or TIPPLE LOCATIONS**

Type	County	Township-Range	Section	Quarters-Footage
Tipple / pit	Saline	9S 7E	14	NE SW SE

**GEOLOGY**

Seam(s) Mined	Depth (ft)	Thickness (ft)			Mining Method
		Min	Max	Ave	
Springfield					Surface

Geologic Problems Reported:

**PRODUCTION HISTORY**

Company	Mine Name	Years	Production (tons)
Regenhardt & Southern Construction Co.	Regenhardt & Southern No. 5	1953-1953	<u>16,525</u> 16,525

Last reported production: April 1954

**SOURCES OF DATA**

Source Map	Date	Original Scale	Digitized Scale	Map Type
ISGS map library, 4102 a-7, sheet 2	1981-1983	1:24000	1:24000	Secondary source

Annotated Bibliography (data source, brief description of information)

Coal Reports - Production, ownership, years of operation, mining method.

Directory of Illinois Coal Mines (Saline County) - Mine names, mine index, ownership, years of operation.

Mine notes (Saline County) - Mine type, tipple / pit location.

ISGS map library, 4102 a-7, sheet 2, work map for Rudement Quadrangle Geologic Map - Mine outline.



**Mine Index 3303**  
**Rocky Branch Coal Company, Rocky Branch Mine**

Type: Underground Total mined-out acreage shown: 14 This mine was later partially surface-mined by Regenhardt & Southern No. 5 Mine (mine index 3302).

**SHAFT, SLOPE, DRIFT or TIPPLE LOCATIONS**

Type	County	Township-Range	Section	Quarters-Footage
Main slope	Saline	9S 7E	14	SE SW SE
Air shaft	Saline	9S 7E	14	SE SW SE
Hoist shaft	Saline	9S 7E	23	NE NW NE

**GEOLOGY**

Seam(s) Mined	Depth (ft)	Thickness (ft)			Mining Method
		Min	Max	Ave	
Springfield	40 (30-50)			4.33-4.5	MRP

Geologic Problems Reported: The source map shows a fault in the southeastern part of the mine.

**PRODUCTION HISTORY**

Company	Mine Name	Years	Production (tons)
Earl Scroggins	Scroggins	1937-1937	400
Jess F. Stunson	Scroggins	1937-1939	2,897
Roberts & Davis	Scroggins	1939-1940	964
Earl Scroggins	Scroggins	1940-1940	20
Silas Moore Coal Company	Moore No. 5, Scroggins	1940-1941	6,185
Earl Scroggins	Scroggins	1942-1944	11,210
Equality Coal Company	Equality	1945-1946	6,950
Rocky Branch Coal Company	Rocky Branch	1947-1947	35,358
Rocky Branch Coal Company	Rocky Branch	1947-1950	128,231 *
			192,215

\* Production after map date

Last reported production: June 1950

**SOURCES OF DATA**

Source Map	Date	Original Scale	Digitized Scale	Map Type
Company, 4103.S32 i5.1-21	11-28-1947	1:1200	1:1200	Not final

Annotated Bibliography (data source, brief description of information)

Coal Reports - Production, ownership, years of operation, depth, thickness.  
 Directory of Illinois Coal Mines (Saline County) - Mine names, mine index, ownership, years of operation.  
 Mine notes (Saline County) - Mine type, slope location, seam, depth, thickness.  
 Company map, ISGS map library, 4103.S32 i5.1-21 - Slope & shaft locations, mine outline, mining method, geologic problems.



**Mine Index 3304**  
**Miller Coal Company, Miller Mine**

Type: Underground    Total mined-out acreage shown: 3

**SHAFT, SLOPE, DRIFT or TIPPLE LOCATIONS**

Type	County	Township-Range	Section	Quarters-Footage
Main slope	Saline	9S 7E	23	SE SE SE
Air shaft	Saline	9S 7E	23	SE SE SE

**GEOLOGY**

Seam(s) Mined	Depth (ft)	Thickness (ft)			Mining Method
		Min	Max	Ave	
Springfield					MRP

Geologic Problems Reported:

**PRODUCTION HISTORY**

Company	Mine Name	Years	Production (tons)
Miller Coal Company	Miller	1935-1937 *	unknown *

\* Two source maps exist for this mine, dated 1935 and 1937, but this name was not listed in the Coal Reports and production is unknown. Years of operation may extend beyond the years of the map dates.

Last reported production:

**SOURCES OF DATA**

Source Map	Date	Original Scale	Digitized Scale	Map Type
Microfilm, document 352781	1937	1:1200	1:1200	Not final

Annotated Bibliography (data source, brief description of information)

Coal Reports - Production, ownership, years of operation, seam, mining method.

Directory of Illinois Coal Mines (Saline County) - Mine names, mine index, ownership, years of operation.

Microfilm map, document 352781, reel 03140, frame 307 - Slope locations, mine outline, mining method.



**Mine Index 3305**  
**Burton Coal Company, Burton Mine**

Type: Underground    Total mined-out acreage shown: None    Production indicates approximately 2 acres were mined.

**SHAFT, SLOPE, DRIFT or TIPPLE LOCATIONS**

Type	County	Township-Range	Section	Quarters-Footage
Main slope	Saline	9S 7E	23	SE SW SE

**GEOLOGY**

Seam(s) Mined	Depth (ft)	Thickness (ft)			Mining Method
		Min	Max	Ave	
Springfield					RP

Geologic Problems Reported:

**PRODUCTION HISTORY**

Company	Mine Name	Years	Production (tons)
J. R. Reynolds	Reynolds	1925-1938 *	2,828 **
Idle		1939-1946	none
Stricklin-Gibbs Corporation	Stricklin-Gibbs	1947-1947	1,671
Robert Stricklin	Stricklin	1948-1948	2,359
Clyde Butler Coal Company	Butler	1949-1949	1,142
Burton Coal Company	Burton	1950-1950	400
			8,400

\* Idle 1936

\*\* Production was not reported 1930-1933 for mines producing less than 1,000 tons per year.

Last reported production: 1950

**SOURCES OF DATA**

Source Map	Date	Original Scale	Digitized Scale	Map Type
Federal Land Bank Report	1-12-1934	1:90514	1:90514	Secondary source

Annotated Bibliography (data source, brief description of information)

Coal Reports - Production, ownership, years of operation, seam, mining method.

Directory of Illinois Coal Mines (Saline County) - Mine names, mine index, ownership, years of operation.

Federal Land Bank Report (Saline County) - Slope location, general area of mining.



**Mine Index 3306**  
**Daniel Adams, Reynolds No. 2 Mine**

Type: Underground    Total mined-out acreage shown: None    Production indicates less than 1 acre was mined.

**SHAFT, SLOPE, DRIFT or TIPPLE LOCATIONS**

Type	County	Township-Range	Section	Quarters-Footage
Main slope	Saline	9S 7E	23	SW SW SE

**GEOLOGY**

Seam(s) Mined	Depth (ft)	Thickness (ft)			Mining Method
		Min	Max	Ave	
Springfield	50			4.0-4.5	RP

Geologic Problems Reported:

**PRODUCTION HISTORY**

Company	Mine Name	Years	Production (tons)
J. R. Reynolds	Reynolds No. 2	1936-1936	180
Hubert & George Bond	Bond	1937-1937	450
Bond Brothers	Reynolds No. 2	1938-1939	1,070
Daniel Adams	Reynolds No. 2	1940-1940	256
			<u>1,956</u>

Last reported production: 1940

**SOURCES OF DATA**

Source Map	Date	Original Scale	Digitized Scale	Map Type
Federal Land Bank Report	1-12-1934	1:90514	1:90514	Secondary source

Annotated Bibliography (data source, brief description of information)

Coal Reports - Production, ownership, years of operation, mining method.  
 Directory of Illinois Coal Mines (Saline County) - Mine names, mine index, ownership, years of operation.  
 Mine notes (Saline County) - Mine type, slope location, seam, depth, thickness.  
 Federal Land Bank Report (Saline County) - Slope location, general area of mining.



**Mine Index 3307****Marshall Equipment Company, Mary Ann No. 1 Mine**

Type: Surface    Total mined-out acreage shown: None    Production indicates approximately 70 acres were mined.

**SHAFT, SLOPE, DRIFT or TIPPLE LOCATIONS**

Type	County	Township-Range	Section	Quarters-Footage
Pit	Saline	9S 7E	23	SW SW

**GEOLOGY**

Seam(s) Mined	Depth (ft)	Thickness (ft)			Mining Method
		Min	Max	Ave	
Springfield	50-60			4.0-5.33	Surface

Geologic Problems Reported:

**PRODUCTION HISTORY**

Company	Mine Name	Years	Production (tons)
Marshall Equipment Company	Mary Ann No. 1 (Pits 1 & 2)	1960-1965	<u>824,842</u> 824,842

Last reported production: September 1965

**SOURCES OF DATA**

Source Map	Date	Original Scale	Digitized Scale	Map Type
ISGS map library, 4102 a-7, sheet 2	1981-1983	1:24000	1:24000	Secondary source

Annotated Bibliography (data source, brief description of information)

Coal Reports - Production, ownership, years of operation, seam, depth, thickness, mining method.

Directory of Illinois Coal Mines (Saline County) - Mine names, mine index, ownership, years of operation.

Mine notes (Saline County) - Mine type.

ISGS map library, 4102 a-7, sheet 2, work map for Rudement Quadrangle Geologic Map - Mine location.



**Mine Index 3308**  
**Silas B. Moore, Moore No. 3 Mine**

Type: Underground Total mined-out acreage shown: 10 Production indicates approximately 4 acres were mined. Production indicates approximately 1 acre was mined after the map date. This area was later partially surface mined by Vinyard No. 1 Mine (mine index 804).

**SHAFT, SLOPE, DRIFT or TIPPLe LOCATIONS**

Type	County	Township-Range	Section	Quarters-Footage
Main slope	Saline	9S 7E	23	SE SE NE
Air slope	Saline	9S 7E	23	SE SE NE
Air shaft	Saline	9S 7E	23	SE SE NE

**GEOLOGY**

Seam(s) Mined	Depth (ft)	Thickness (ft)			Mining Method
		Min	Max	Ave	
Springfield	16			4.5	MRP

Geologic Problems Reported: The source map shows one room in the eastern part of the mine was caved. This room was near the slope entrance to the mine and probably did not have enough rock above the coal to make a stable roof. Mining was extended north and west of this area, probably as a result of this roof fall.

**PRODUCTION HISTORY**

Company	Mine Name	Years	Production (tons)
Silas B. Moore	Moore No. 3	1928-1938	15,626 *
Silas B. Moore	Moore No. 3	1938-1940	<u>3,735 **</u>
			19,361

\* Production was not listed in the Coal Reports for mines producing less than 1,000 tons per year.

\*\* Production after map date

Last reported production: 1940

**SOURCES OF DATA**

Source Map	Date	Original Scale	Digitized Scale	Map Type
Microfilm, document 352751	3-1938	1:2400	1:1986	Not final

Annotated Bibliography (data source, brief description of information)

Coal Reports - Production, ownership, years of operation.

Directory of Illinois Coal Mines (Saline County) - Mine names, mine index, ownership, years of operation.

Mine notes (Saline County) - Mine type, slope location, seam, depth, thickness.

Microfilm map, document 352751, reel 03140, frame 250 - Slope location, mine outline, mining method, geologic problems.



**Mine Index 3309**  
**James Yates, Yates Mine**

Type: Underground    Total mined-out acreage shown: 9    Production indicates less than 1 acre was mined. The area shown on the accompanying map is a general area of mining.

**SHAFT, SLOPE, DRIFT or TIPPLE LOCATIONS**

Type	County	Township-Range	Section	Quarters-Footage
Main slope	Saline	9S 7E	23	SE NE SE

**GEOLOGY**

Seam(s) Mined	Depth (ft)	Thickness (ft)			Mining Method
		Min	Max	Ave	
Springfield				4.67	RP

Geologic Problems Reported:

**PRODUCTION HISTORY**

Company	Mine Name	Years	Production (tons)
James Yates	Yates	1934-1937 *	<u>407</u> 407

\* Idle 1935

Last reported production: 1937

**SOURCES OF DATA**

Source Map	Date	Original Scale	Digitized Scale	Map Type
Federal Land Bank Report	1-12-1934	1:90514	1:90514	Secondary source

Annotated Bibliography (data source, brief description of information)

Coal Reports - Production, ownership, years of operation, mining method.  
 Directory of Illinois Coal Mines (Saline County) - Mine names, mine index, ownership, years of operation.  
 Mine notes (Saline County) - Mine type, slope location, seam, thickness.  
 Federal Land Bank Report (Saline County) - Slope location, mine outline.



**Mine Index 3310**  
**Jack Kelly, Kelly Mine**

Type: Underground Total mined-out acreage shown: None Production indicates less than 1 acre was mined. This area was later surface-mined by the Mary Ann No. 1 Mine (mine index 3307) and not shown on the accompanying map.

**SHAFT, SLOPE, DRIFT or TIPPLE LOCATIONS**

Type	County	Township-Range	Section	Quarters-Footage
Main slope	Saline	9S 7E	23	SW SW

**GEOLOGY**

Seam(s) Mined	Depth (ft)	Thickness (ft)			Mining Method
		Min	Max	Ave	
Springfield					RP

Geologic Problems Reported:

**PRODUCTION HISTORY**

Company	Mine Name	Years	Production (tons)
John Ford	Ford No. 2	1936-1937 *	314
Jack Kelly	Kelly	1938-1938	314
			628

\* Idle 1937

Last reported production: 1938

**SOURCES OF DATA**

Source Map	Date	Original Scale	Digitized Scale	Map Type
ISGS 1950 mined-out area map	1950	1:62500	1:62500	Secondary source

Annotated Bibliography (data source, brief description of information)

Coal Reports - Production, ownership, years of operation, mining method.

Directory of Illinois Coal Mines (Saline County) - Mine names, mine index, ownership, years of operation.

Mine notes (Saline County) - Mine type, slope location, seam.

ISGS 1950 mined-out area map - Slope location, mine outline, mining method.



## Mine Index 3312

### Ragsdale Mine

Type: Underground Total mined-out acreage shown: 12, a general area of mining. Production indicates approximately 3 acres were mined.

#### SHAFT, SLOPE, DRIFT or TIPPLE LOCATIONS

Type	County	Township-Range	Section	Quarters-Footage
Main drift	Saline	9S 7E	24	SW NE NW

#### GEOLOGY

Seam(s) Mined	Depth (ft)	Thickness (ft)			Mining Method
		Min	Max	Ave	
Springfield					RP

Geologic Problems Reported:

#### PRODUCTION HISTORY

Company	Mine Name	Years	Production (tons)
Henry Ragsdale	Ragsdale	1923-1936	9,290 *
W. E. Fritts	Fritts	1937-1938	850
Miletus T. Conger	Conger	1938-1938	200
Sherman & Wilbur Vaughn	Ragsdale	1938-1939	248
Wilson	Ragsdale	1939-1939	200
Brownie Finney	Ragsdale	1940-1940	100
Ted Pierce	Ragsdale	1940-1940	200
(operator unknown)	Ragsdale	1941-1941	100
			11,188

\* Production greater than shown; production not reported 1930-1933 for mines producing less than 1,000 tons per year.

Last reported production: 1941

#### SOURCES OF DATA

Source Map	Date	Original Scale	Digitized Scale	Map Type
Federal Land Bank Report	1-12-1934	1:90514	1:90514	Secondary source

Annotated Bibliography (data source, brief description of information)

Coal Reports - Production, ownership, years of operation, mining method.

Directory of Illinois Coal Mines (Saline County) - Mine names, mine index, ownership, years of operation.

Mine notes (Saline County) - Mine type, drift location, seam.

Federal Land Bank Report (Saline County) - Drift location, mine outline.



**Mine Index 3313****Buckeye Coal Company, Buckeye Mine**

Type: Underground    Total mined-out acreage shown: None; production indicates approximately 3 acres were mined.

**SHAFT, SLOPE, DRIFT or TIPPLE LOCATIONS**

Type	County	Township-Range	Section	Quarters-Footage
Main drift	Saline	9S 7E	24	NW NW NW

**GEOLOGY**

Seam(s) Mined	Depth (ft)	Thickness (ft)			Mining Method
		Min	Max	Ave	
Springfield	4			4.0	RP

Geologic Problems Reported:

**PRODUCTION HISTORY**

Company	Mine Name	Years	Production (tons)
Buckeye Coal Company	Buckeye	1935-1936	3,500
Estel Lloyd	Lloyd	1937-1937	984
Buckeye Coal Company	Buckeye	1938-1938	2,368
Brady-Gobin	Brady-Gobin	1939-1939	1,732
William Gobin & Sons	Buckeye	1940-1940	466
Moore & Stricklin	Buckeye	1940-1940	294
Massey & Buckman	Buckeye	1940-1940	20
Buckeye Coal Company *	Buckeye	1941-1941	38
Buckeye Coal Company **	Buckeye	1941-1941	10
			<u>9,412</u>

\* Operated by John Ralston

\*\* Operated by James Ryan

Last reported production: 1941

**SOURCES OF DATA**

Source Map	Date	Original Scale	Digitized Scale	Map Type
ISGS map library, 4107 d5.1-209	Undated	1:62500	1:62500	Secondary source

Annotated Bibliography (data source, brief description of information)

Coal Reports - Production, ownership, years of operation, seam.

Directory of Illinois Coal Mines (Saline County) - Mine names, mine index, ownership, years of operation.

Mine notes (Saline County) - Mine type, drift location, depth, thickness.

ISGS map library, 4107 d5.1-209, map of G. H. Cady field notes - Drift location.



**Mine Index 3327**  
**Harley Griffith, Conway Mine**

Type: Underground    Total mined-out acreage shown: Less than 1    Production indicates approximately 1 acre was mined after the map date. This mine is not shown on the accompanying map because of later surface mining by Williams No. 1 Mine (mine index 3328).

**SHAFT, SLOPE, DRIFT or TIPPLE LOCATIONS**

Type	County	Township-Range	Section	Quarters-Footage
Main slope	Saline	10S 7E	8	NW SW NW

**GEOLOGY**

Seam(s) Mined	Depth (ft)	Thickness (ft)			Mining Method
		Min	Max	Ave	
Davis	30-35			4.0	RP

Geologic Problems Reported:

**PRODUCTION HISTORY**

Company	Mine Name	Years	Production (tons)
Milton Conway	Conway No. 1	1936-1937	628
Milton Conway	Conway No. 1	1937-1938	325 *
C. A. Sutton	Conway	1938-1939	1,574 *
Virgil Anderson	Conway	1939-1939	1,865 *
William Sutton	Sutton	1940-1940	392 *
Harley Griffith	Conway	1940-1941	1,062 *
			5,846

\* Production after map date

Last reported production: 1941

**SOURCES OF DATA**

Source Map	Date	Original Scale	Digitized Scale	Map Type
Microfilm, document 352774	6-5-1937	1:1200	1:1200	Not final

Annotated Bibliography (data source, brief description of information)

Coal Reports - Production, ownership, years of operation, mining method.  
 Directory of Illinois Coal Mines (Saline County) - Mine names, mine index, ownership, years of operation.  
 Mine notes (Saline County) - Mine type, slope location, seam, depth, thickness.  
 Microfilm map, document 352774, reel 03140, frame 296 - Slope location, mine outline, mining method.



**Mine Index 3328****Beecher Williams Coal Company, Williams No. 1 Mine**

Type: Surface Total mined-out acreage shown: None, shown in a general area of surface mining expanded by several mines. Production indicates approximately 4 acres were mined.

**SHAFT, SLOPE, DRIFT or TIPPLE LOCATIONS**

Type	County	Township-Range	Section	Quarters-Footage
Tipple / pit	Saline	10S 7E	8	NW SW NW

**GEOLOGY**

Seam(s) Mined	Depth (ft)	Thickness (ft)			Mining Method
		Min	Max	Ave	
Dekoven					Surface
Davis					Surface

Geologic Problems Reported:

**PRODUCTION HISTORY**

Company	Mine Name	Years	Production (tons)
Beecher Williams Coal Company	Williams No. 1	1953-1955	46,742
			46,742

Last reported production: May 1955

**SOURCES OF DATA**

Source Map	Date	Original Scale	Digitized Scale	Map Type
None *				

\* No source map of the mine was found. The mine location was hand-plotted and named on a Coal Section file copy of a USGS topographic map.

Annotated Bibliography (data source, brief description of information)

Coal Reports - Production, ownership, years of operation.

Directory of Illinois Coal Mines (Saline County) - Mine names, mine index, ownership, years of operation.



**Mine Index 3329****Bennett Coal Company, Bennett No. 2 Mine**

Type: Surface Total mined-out acreage shown: None Production indicates less than 1 acre was mined. This mine is not shown on the accompanying map. The seam mined is not known and both the Herrin and Springfield Coals were surface-mined in this section. Surface mining occurred throughout the section, and it is likely that this small mine's outline is included within one of the larger mines in this section.

**SHAFT, SLOPE, DRIFT or TIPPLE LOCATIONS**

Type	County	Township-Range	Section	Quarters-Footage
Tipple / pit	Saline	10S 7E	11	

**GEOLOGY**

Seam(s) Mined	Depth (ft)	Thickness (ft)			Mining Method
		Min	Max	Ave	
					Surface

Geologic Problems Reported:

**PRODUCTION HISTORY**

Company	Mine Name	Years	Production (tons)
Bennett Coal Company	Bennett No. 2	1959-1960	<u>1,052</u> 1,052

Last reported production: February 1960

**SOURCES OF DATA**

Source Map	Date	Original Scale	Digitized Scale	Map Type
Mine notes	Undated	1:62500	1:24000	Secondary source

Annotated Bibliography (data source, brief description of information)

Coal Reports - Production, ownership, years of operation, mining method.

Directory of Illinois Coal Mines (Saline County) - Mine names, mine index, ownership, years of operation.

Mine notes (Saline County) - Mine type, mine location.



**Mine Index 3330****J. & W. Coal Company, Inc., J. & W. No. 1 Mine**

Type: Surface    Total mined-out acreage shown: 100 in Springfield Coal, 167 in Davis Coal

**SHAFT, SLOPE, DRIFT or TIPPLE LOCATIONS**

Type	County	Township-Range	Section	Quarters-Footage
Pit	Saline	10S 7E	11	SW & NW
Pit	Saline	10S 7E	12	SW
Pit	Saline	10S 7E	24	NW
Pit	Saline	10S 7E	23	NW & NE

**GEOLOGY**

Seam(s) Mined	Depth (ft)	Thickness (ft)			Mining Method
		Min	Max	Ave	
Springfield					Surface
Dekoven					Surface
Davis					Surface

Geologic Problems Reported:

**PRODUCTION HISTORY**

Company	Mine Name	Years	Production (tons)
Egyptian Mining Company	Egyptian No. 1	1957-1958	74,011
K. & W. Coal Company	K. & W. No. 1	1958-1958	35,363
J. & W. Coal Company, Inc.	J. & W. No. 1	1959-1965	<u>1,718,650</u>
			1,828,024

Last reported production: January 1966

**SOURCES OF DATA**

Source Map	Date	Original Scale	Digitized Scale	Map Type
ISGS map library, 4102 a-7, sheet 2	1981-1983	1:24000	1:24000	Secondary source
ISGS Coal Section files	1-10-2000	1:4800	1:4800	Secondary source

Annotated Bibliography (data source, brief description of information)

Coal Reports - Production, ownership, years of operation.

Directory of Illinois Coal Mines (Saline County) - Mine names, mine index, ownership, years of operation.

Mine notes (Saline County) - Mine type, tippie / pit location, seams, thickness.

Microfilm map, document 351452, reel 03136, frames 158, 159 - Tippie / pit locations, mine outline, mining method.

ISGS map library, 4102 a-7, sheet 2, work map for Rudement Quadrangle Geologic Map - Mine outline.

ISGS Coal Section files, map of Jader No. 4 Mine (mine index 1004) - Mine outline.

**Mine Index 3332****Eagle Creek Coal Company, Eagle Creek Mine**

Type: Underground Total mined-out acreage shown: 1 Production indicates less than 1 acre was mined after the map date. This mine was later partially surface-mined by the H. & V. Number 1 Mine (mine index 4596).

**SHAFT, SLOPE, DRIFT or TIPPLE LOCATIONS**

Type	County	Township-Range	Section	Quarters-Footage
Main drift	Saline	10S 7E	13	SE SE SW
Air shaft	Saline	10S 7E	13	SE SE SW

**GEOLOGY**

Seam(s) Mined	Depth (ft)	Thickness (ft)			Mining Method
		Min	Max	Ave	
Springfield					MRP

Geologic Problems Reported:

**PRODUCTION HISTORY**

Company	Mine Name	Years	Production (tons)
Clifford Partain	Partain	1938-1938	350
Partain & McGowan	Partain & McGowan	1939-1939	100
Eagle Creek Coal Company	Eagle Creek No. 1	1939-1939	150
Siddons Coal Company	Siddons	1940-1940	266
Eagle Creek Coal Company	Eagle Creek	1941-1948 *	1,848
John Raulston Coal Company	Raulston	1949-1949	1,200
Eagle Creek Coal Company	Eagle Creek	1950-1950	380
Howard Millspaugh	Millspaugh	1950-1950	148
Eagle Creek Coal Company **	Eagle Creek	1951-1954	2,060
Eagle Creek Coal Company	Eagle Creek	1954-1954	43 ***
			6,545

\* Idle 1943-1946

\*\* Changed management in 1953, but operated under the same name

\*\*\* Production after map date

Last reported production: November 1954

**SOURCES OF DATA**

Source Map	Date	Original Scale	Digitized Scale	Map Type
Microfilm, document 352811	9-11-1954	1:1200	1:1200	Not final

Annotated Bibliography (data source, brief description of information)

Coal Reports - Production, ownership, years of operation, mining method.

Directory of Illinois Coal Mines (Saline County) - Mine names, mine index, ownership, years of operation.

Mine notes (Saline County) - Mine type, drift location, seam.

Microfilm map, document 352811, reel 03140, frame 363 - Drift & shaft locations, mine outline, mining method.



**Mine Index 3333****Ward, Hart & Penrod, Ward, Hart & Penrod Mine**

Type: Underground    Total mined-out acreage shown: None    Production indicates approximately 4 acres were mined.

**SHAFT, SLOPE, DRIFT or TIPPLE LOCATIONS**

Type	County	Township-Range	Section	Quarters-Footage
Main drift	Saline	10S 7E	17	NW NW NW

**GEOLOGY**

Seam(s) Mined	Depth (ft)	Thickness (ft)			Mining Method
		Min	Max	Ave	
Davis					RP

Geologic Problems Reported:

**PRODUCTION HISTORY**

Company	Mine Name	Years	Production (tons)
Bert Ward	Bert Ward	1937-1937 *	1,050
A. A. Miles	A. A. Miles	1938-1938	1,265
Bert Ward	Ward No. 1	1939-1939	180
W. H. McDonald	Bert Ward No. 3	1940-1940	21
Charles Pickering	Bert Ward No. 3	1940-1940	90
J. F. Raulston	Bert Ward No. 3	1940-1940	86
William Brown	Bert Ward No. 3	1940-1940	35
John Penrod	Bert Ward	1941-1941	648
Ward, Hart & Penrod	Ward, Hart & Penrod	1942-1944	10,253
			13,628

\* Idle 1937

Last reported production: 1944

**SOURCES OF DATA**

Source Map	Date	Original Scale	Digitized Scale	Map Type
ISGS mined-out area map	1950	1:62500	1:62500	Secondary source

Annotated Bibliography (data source, brief description of information)

Coal Reports - Production, ownership, years of operation, mining method.

Directory of Illinois Coal Mines (Saline County) - Mine names, mine index, ownership, years of operation.

ISGS 1950 mined-out area map - Drift location.

**Mine Index 3334****Auger Mining Company, Auger No. 3 Mine**

Type: Surface    Total mined-out acreage shown: None    Production indicates approximately 10 acres were mined.

**SHAFT, SLOPE, DRIFT or TIPPLE LOCATIONS**

Type	County	Township-Range	Section	Quarters-Footage
Tipple / pit	Saline	10S 7E	23	SW

**GEOLOGY**

Seam(s) Mined	Depth (ft)	Thickness (ft)			Mining Method
		Min	Max	Ave	
Dekoven					Surface
Davis					Surface

Geologic Problems Reported:

**PRODUCTION HISTORY**

Company	Mine Name	Years	Production (tons)
Auger Mining Company	Auger No. 3	1961-1961	<u>42,511</u> 42,511

Last reported production: 1961

**SOURCES OF DATA**

Source Map	Date	Original Scale	Digitized Scale	Map Type
Mine notes	Undated	(text only)	1:24000 *	Secondary source

\* The mine location was plotted on a 1:24000 USGS topographic map from the mine location description and digitized.

Annotated Bibliography (data source, brief description of information)

Coal Reports - Production, ownership, years of operation.

Directory of Illinois Coal Mines (Saline County) - Mine names, mine index, ownership, years of operation.

Mine notes (Saline County) - Mine type, mine location.



**Mine Index 3335****Herod Mining Corporation, Herod No. 1 Mine**

Type: Surface    Total mined-out acreage shown: 13    Production indicates between 30 and 50 acres were mined.

**SHAFT, SLOPE, DRIFT or TIPPLE LOCATIONS**

Type	County	Township-Range	Section	Quarters-Footage
Tipple / pit	Saline	10S 7E	24	NE SE NE

**GEOLOGY**

Seam(s) Mined	Depth (ft)	Thickness (ft)			Mining Method
		Min	Max	Ave	
Dekoven					Surface
Davis				3.29	Surface

Geologic Problems Reported:

**PRODUCTION HISTORY**

Company	Mine Name	Years	Production (tons)
Herod Mining Corporation	Herod No. 1	1961-1964	336,949
			336,949

Last reported production: September 1964

**SOURCES OF DATA**

Source Map	Date	Original Scale	Digitized Scale	Map Type
ISGS map library, 4102 a-7, sheet 2	1981-1983	1:24000	1:24000	Secondary source

Annotated Bibliography (data source, brief description of information)

Coal Reports - Production, ownership, years of operation.

Directory of Illinois Coal Mines (Saline County) - Mine names, mine index, ownership, years of operation.

Mine notes (Saline County) - Tipple / pit location, seam.

ISGS field notes (Saline County) - Mining method, tipple / pit location, seam, thickness.

ISGS map library, 4102 a-7, sheet 2, work map for Rudement Quadrangle Geologic Map - Mine outline.

**Mine Index 4179****Regenhardt & Southern Construction Company, Regenhardt & Southern No. 4 Mine**

Type: Surface    Total mined-out acreage shown: 16    Production indicates approximately 22 acres were mined.

**SHAFT, SLOPE, DRIFT or TIPPLE LOCATIONS**

Type	County	Township-Range	Section	Quarters-Footage
Pits	Saline	9S 7E	23	NW

**GEOLOGY**

Seam(s) Mined	Depth (ft)	Thickness (ft)			Mining Method
		Min	Max	Ave	
Springfield	24			4.5	Surface

Geologic Problems Reported:

**PRODUCTION HISTORY**

Company	Mine Name	Years	Production (tons)
Regenhardt & Southern Construction Co.	Regenhardt & Southern No. 4	1951-1951	55,427 *
Regenhardt & Southern Construction Co.	Regenhardt & Southern No. 4	1952-1953	101,613
			157,040

\* The 1951 production was listed in Gallatin County.

Last reported production: March 1953

**SOURCES OF DATA**

Source Map	Date	Original Scale	Digitized Scale	Map Type
ISGS map library, 4102 a-7, sheet 2	1981-1983	1:24000	1:24000	Secondary source
Microfilm, document 352818	5-11-1966	1:2400	1:2814	Secondary source

Annotated Bibliography (data source, brief description of information)

Coal Reports - Production, ownership, years of operation.

Directory of Illinois Coal Mines (Saline County) - Mine names, mine index, ownership, years of operation.

Mine notes (Saline County) - Pit location, seam.

ISGS map library, 4102 1-7, sheet 2, work map for Rudement Quadrangle Geologic Map - Mine outline.

Microfilm map, document 352818, reel 03140, frame 352 - Mine outline.



**Mine Index 4180****Shawneetown Coal Corporation, Shawneetown No. 1 Mine**

Type: Underground    Total mined-out acreage shown: Less than 1

**SHAFT, SLOPE, DRIFT or TIPPLE LOCATIONS**

Type	County	Township-Range	Section	Quarters-Footage
Main drift	Saline	9S 7E	33	SE SE SW
Drift	Saline	9S 7E	33	SE SE SW
Drift	Saline	9S 7E	33	SE SE SW

**GEOLOGY**

Seam(s) Mined	Depth (ft)	Thickness (ft)			Mining Method
		Min	Max	Ave	
Dekoven	132			4.17	RP

Geologic Problems Reported:**PRODUCTION HISTORY**

Company	Mine Name	Years	Production (tons)
Shawneetown Coal Corporation	Shawneetown No. 1	1964-1964	568 568

Last reported production: October 1964

**SOURCES OF DATA**

Source Map	Date	Original Scale	Digitized Scale	Map Type
Microfilm, document 352815	2-4-1965	1:4800	1:7944	Final

Annotated Bibliography (data source, brief description of information)

Coal Reports - Production, ownership, years of operation, depth, thickness.

Directory of Illinois Coal Mines (Saline County) - Mine names, mine index, ownership, years of operation.

Mine notes (Saline County) - Drift location, seam.

Microfilm map, document 352815, reel 03140, frame 368 - Drift location, mine outline, mining method.

**Mine Index 4184**  
**Diversified Minerals, Diversified Mine**

Type: Surface    Total mined-out acreage shown: None    Production indicates approximately 3 acres were mined.

**SHAFT, SLOPE, DRIFT or TIPPLE LOCATIONS**

Type	County	Township-Range	Section	Quarters-Footage
Pit # 1 (January 1972)	Saline	10S 7E	13	SE SW
Pit # 2 (July 1972)	Saline	10S 7E	14	SW

**GEOLOGY**

Seam(s) Mined	Depth (ft)	Thickness (ft)			Mining Method
		Min	Max	Ave	
Springfield (Pit #1)	45			5.0	Auger
Davis (Pit #2)	180			3.0-4.0	Auger

Geologic Problems Reported:

**PRODUCTION HISTORY**

Company	Mine Name	Years	Production (tons)
Diversified Minerals	Diversified	1972-1972	<u>10,714</u> 10,714

Last reported production: 1972

**SOURCES OF DATA**

Source Map	Date	Original Scale	Digitized Scale	Map Type
Mine notes	Undated	(text only)	1:24000 *	Secondary source

\* The mine location was plotted on a 1:24000 USGS topographic map from the mine location description and digitized.

Annotated Bibliography (data source, brief description of information)

Coal Reports - Production, ownership, years of operation.  
 Directory of Illinois Coal Mines (Saline County) - Mine names, mine index, ownership, years of operation.  
 Mine notes (Saline County) - Mine type, pit locations, seam, depth, thickness, mining method.



**Mine Index 4199****West Star Coal Company, West Star No. 1 Mine**

Type: Underground    Total mined-out acreage shown: 18

**SHAFT, SLOPE, DRIFT or TIPPLE LOCATIONS**

Type	County	Township-Range	Section	Quarters-Footage
Main drift	Saline	10S 7E	5	SE NE SE
Air drift	Saline	10S 7E	5	SE NE SE
Air drift	Saline	10S 7E	5	NW NE SE
Air shaft	Saline	10S 7E	5	SE NE SE

**GEOLOGY**

Seam(s) Mined	Depth (ft)	Thickness (ft)			Mining Method
		Min	Max	Ave	
Davis	130-160			4.33	MRP

Geologic Problems Reported:**PRODUCTION HISTORY**

Company	Mine Name	Years	Production (tons)
Walnut Grove Mining Company	Walnut Grove No. 5	1966-1966	1,470
West Star Coal Company	West Star No. 1	1967-1968	<u>55,702</u>
			57,172

Last reported production: June 1968

**SOURCES OF DATA**

Source Map	Date	Original Scale	Digitized Scale	Map Type
Microfilm, document 352827	6-19-1968	1:2400	1:3641	Final
Microfilm, document 352826	2-27-1967	1:2400	1:1986	Not final

Annotated Bibliography (data source, brief description of information)

Coal Reports - Production, ownership, years of operation, seam, depth, thickness.

Directory of Illinois Coal Mines (Saline County) - Mine names, mine index, ownership, years of operation.

Microfilm map, document 352827, reel 03140, frame 392 - Drifts and shaft locations, mine outline, mining method.

Microfilm map, document 352826, reel 03140, frame 391 - Georegistration aid.

**Mine Index 4463**  
**Reynolds, Reynolds Mine**

Type: Underground    Total mined-out acreage shown: None    Production indicates approximately 1 acre was mined.

**SHAFT, SLOPE, DRIFT or TIPPLE LOCATIONS**

Type	County	Township-Range	Section	Quarters-Footage
Main drift	Saline	9S 7E	24	NW SE NW

**GEOLOGY**

Seam(s) Mined	Depth (ft)	Thickness (ft)			Mining Method
		Min	Max	Ave	
Springfield	3-10			4.0-4.67	RP

Geologic Problems Reported:

**PRODUCTION HISTORY**

Company	Mine Name	Years	Production (tons)
Maggie Hart	Hart	1909-1913 *	232
Mag Sisk	Sisk	1913-1916	1,097
John Reynolds	Reynolds	1916-1918	<u>1,732</u>
			3,061

\* Idle 1911

Last reported production: 1918

**SOURCES OF DATA**

Source Map	Date	Original Scale	Digitized Scale	Map Type
ISGS map library, 4107 d5.1-195, sh. 26	Undated	1:62500	1:62500	Secondary source

Annotated Bibliography (data source, brief description of information)

Coal Reports - Production, ownership, years of operation, mining method.

Directory of Illinois Coal Mines (Saline County) - Mine names, mine index, ownership, years of operation.

Mine notes (Saline County) - Mine type, shaft location, seam, depth, thickness.

ISGS map library, 4107 d5.1-195, sheet 26 - Drift location.



**Mine Index 4595****H. & V. Coal Company, H. & V. No. 1 Mine**

Type: Surface    Total mined-out acreage shown: None    Production indicates approximately 5 acres were mined.

**SHAFT, SLOPE, DRIFT or TIPPLE LOCATIONS**

Type	County	Township-Range	Section	Quarters-Footage
Pit	Saline	10S 7E	11	NE SW

**GEOLOGY**

Seam(s) Mined	Depth (ft)	Thickness (ft)			Mining Method
		Min	Max	Ave	
Springfield				5.0	Surface

Geologic Problems Reported:

**PRODUCTION HISTORY**

Company	Mine Name	Years	Production (tons)
H. & M. Coal Company	H. & M.	1959-1959	not reported*
H. & V. Coal Company	H. & V. No. 1	1959-1960	<u>37,538</u> **
			37,538

\* 1960 production includes No. 2 Mine (Mine Index 4596)

\*\* Production probably all reported under second owner, H. & V.

Last reported production: February 1960

**SOURCES OF DATA**

Source Map	Date	Original Scale	Digitized Scale	Map Type
Mine notes	10-7-1981	(text only)	1:24000	Secondary source
Digital ortho-photographic quadrangle	2000	1:24000	1:24000	Secondary source

Annotated Bibliography (data source, brief description of information)

Coal Reports - Production, ownership, years of operation.

Directory of Illinois Coal Mines (Saline County) - Mine names, mine index, ownership, years of operation.

Mine notes (Saline County) - Mine type, mine location, seam, thickness.

USGS digital ortho-photographic Rudement Quadrangle - Mine location.

**Mine Index 4596****H. & V. Coal Company, H. & V. No. 2 Mine**

Type: Surface Total mined-out acreage shown: 9

**SHAFT, SLOPE, DRIFT or TIPPLE LOCATIONS**

Type	County	Township-Range	Section	Quarters-Footage
Tipple / pit	Saline	10S 7E	13	NE SE SW

**GEOLOGY**

Seam(s) Mined	Depth (ft)	Thickness (ft)			Mining Method
		Min	Max	Ave	
Springfield					Surface

Geologic Problems Reported:**PRODUCTION HISTORY**

Company	Mine Name	Years	Production (tons)
H. & V. Coal Company	H. & V. No. 2	1960-1960	not reported*
H. & V. Coal Company	H. & V. No. 2 (Gallatin County)	1960-1960	19,007
Herrin Mining Corporation	Herrin No. 1	1961-1961	<u>none reported</u> ** 19,007

\* No production listed in Coal Reports for Saline County, although the mine operated from April to August. Production may have been recorded under H. & V. No. 1 Mine (mine index 4595) or all the production may have come from Gallatin County.

\*\* No production was listed in the Coal Reports for this company, while ownership was reportedly from March through April of 1961. Since no production was reported under this name, the mine is referred to by the operators of the mine while it had production.

Last reported production: August 1960

**SOURCES OF DATA**

Source Map	Date	Original Scale	Digitized Scale	Map Type
ISGS map library, 4102 a-7, sheet 2	1981-1983	1:24000	1:24000	Secondary source

Annotated Bibliography (data source, brief description of information)

Coal Reports - Ownership, years of operation.

Directory of Illinois Coal Mines (Saline County) - Mine names, mine index, ownership, years of operation.

ISGS map library, 4102 1-7, sheet 2, work map for Rudement Quadrangle Geologic Map - Mine outline.



**Mine Index 4597****Fink Coal Company, Fink No. 1 Mine**

Type: Surface Total mined-out acreage shown: 40 Production indicates approximately 6 acres were mined. Other operators probably mined in this area and Williams may have expanded on an area that was already mined.

**SHAFT, SLOPE, DRIFT or TIPPLe LOCATIONS**

Type	County	Township-Range	Section	Quarters-Footage
Pit	Saline	10S 7E	12	NE NW SW

**GEOLOGY**

Seam(s) Mined	Depth (ft)	Thickness (ft)			Mining Method
		Min	Max	Ave	
Herrin					Surface

Geologic Problems Reported:

**PRODUCTION HISTORY**

Company	Mine Name	Years	Production (tons)
Beecher Williams Coal Company	Williams No. 2	1955-1955	9,753
Beecher Williams Coal Company	Williams No. 3	1955-1957	38,470
Fink Coal Company *	Fink No. 1	1958-1958	664
			48,887

\* Fink Coal Company often used augers to extend surface mining. The low tonnage produced by this company lends support to this.

Last reported production: September 1958

**SOURCES OF DATA**

Source Map	Date	Original Scale	Digitized Scale	Map Type
ISGS map library, 4102 a-7, sheet 2	1981-1983	1:24000	1:24000	Secondary source

Annotated Bibliography (data source, brief description of information)

Coal Reports - Production, ownership, years of operation.

Directory of Illinois Coal Mines (Saline County) - Mine names, mine index, ownership, years of operation.

Mine notes (Saline County) - Mine type, mine location, seam.

ISGS map library, 4102 a-7, sheet 2, work map for Rudement Quadrangle Geologic Map - Mine outline.

**Mine Index 4598****Millspaugh & Moore Coal Company, Millspaugh & Moore Mine**

Type: Underground Total mined-out acreage shown: Less than 1 Production indicates less than 1 acre was mined after the map date. This mine was later partially surface-mined by the H. & V. Number 1 Mine (mine index 4596).

**SHAFT, SLOPE, DRIFT or TIPPLE LOCATIONS**

Type	County	Township-Range	Section	Quarters-Footage
Main slope	Saline	10S 7E	13	SW SE SW
Air shaft	Saline	10S 7E	13	SW SE SW

**GEOLOGY**

Seam(s) Mined	Depth (ft)	Thickness (ft)			Mining Method
		Min	Max	Ave	
Springfield	65			5.0	RP

Geologic Problems Reported:

**PRODUCTION HISTORY**

Company	Mine Name	Years	Production (tons)
Millspaugh & Henshaw Coal Company	Millspaugh & Henshaw	1954-1955	171
Millspaugh & Moore Coal Company	Millspaugh & Moore	1956-1956	73 *
			244

\* Production after map date

Last reported production: December 1956

**SOURCES OF DATA**

Source Map	Date	Original Scale	Digitized Scale	Map Type
Microfilm, document 352753	12-28-1955	1:600	1:744	Not final

Annotated Bibliography (data source, brief description of information)

Coal Reports - Production, ownership, years of operation, mining method.

Directory of Illinois Coal Mines (Saline County) - Mine names, mine index, ownership, years of operation.

Mine notes (Saline County) - Mine type, slope and shaft locations, seam, depth, thickness.

Microfilm map, document 352753, reel 03140, frame 255 - Slope & shaft locations, mine outline, mining method.



**Mine Index 4732**  
**Rexing & Rich Coal Company, Rexing & Rich Mine**

Type: Underground    Total mined-out acreage shown: None    Production indicates less than 1 acre was mined.

**SHAFT, SLOPE, DRIFT or TIPPLE LOCATIONS**

Type	County	Township-Range	Section	Quarters-Footage
Main opening	Saline	9S 7E	23	NE NW SE

**GEOLOGY**

Seam(s) Mined	Depth (ft)	Thickness (ft)			Mining Method
		Min	Max	Ave	
Springfield					RP

Geologic Problems Reported:

**PRODUCTION HISTORY**

Company	Mine Name	Years	Production (tons)
Rexing & Rich Coal Company	Rexing & Rich	1955-1956	<u>694</u> 694

Last reported production: February 1956

**SOURCES OF DATA**

Source Map	Date	Original Scale	Digitized Scale	Map Type
ISGS mined-out area map	1950 *	1:62500	1:62500	Secondary source

\* The point was included on the 1950 version of the map, and was labeled Rexing and Rich on the 1959 version. Rexing & Rich may have extended mining begun by others, or the point may have been added to the 1950 base map after the mine opened.

Annotated Bibliography (data source, brief description of information)

Coal Reports - Production, ownership, years of operation.  
 Directory of Illinois Coal Mines (Saline County) - Mine names, mine index, ownership, years of operation.  
 ISGS 1950 mined-out area map -Mine locations, mine outline, mining method.

**Mine Index 4734**  
**New Gallatin Coal Company, New Gallatin No. 4 Mine**

Type: Underground    Total mined-out acreage shown: 8

**SHAFT, SLOPE, DRIFT or TIPPLE LOCATIONS**

Type	County	Township-Range	Section	Quarters-Footage
Main drift	Saline	9S 7E	23	NW NE SW
Air drift	Saline	9S 7E	23	NW NE SW
Air drift	Saline	9S 7E	23	SE SW NW

**GEOLOGY**

Seam(s) Mined	Depth (ft)	Thickness (ft)			Mining Method
		Min	Max	Ave	
Springfield					MRP

Geologic Problems Reported: The southern entries are labeled "bad top" on the source map.

**PRODUCTION HISTORY**

Company	Mine Name	Years	Production (tons)
New Gallatin Coal Company	New Gallatin No. 4	1966-1966	32,908 32,908

Last reported production: May 1966

**SOURCES OF DATA**

Source Map	Date	Original Scale	Digitized Scale	Map Type
Microfilm, document 352818	5-11-1966	1:2400	1:2814	Final

Annotated Bibliography (data source, brief description of information)

Coal Reports - Production, ownership, years of operation, mining method.  
 Directory of Illinois Coal Mines (Saline County) - Mine names, mine index, ownership, years of operation.  
 Mine notes (Saline County) - Seam.  
 Microfilm map, document 352818, reel 03140, frame 352 - Drift locations, mine outline, mining method, geologic problems.



**Mine Index 4764****Fink Coal Company, Fink No. 2 Mine**

Type: Underground    Total mined-out acreage shown: None    Production indicates less than 1 acre was mined.

**SHAFT, SLOPE, DRIFT or TIPPLE LOCATIONS**

Type	County	Township-Range	Section	Quarters-Footage
Main opening	Saline	9S 7E	13	NW SE SW

**GEOLOGY**

Seam(s) Mined	Depth (ft)	Thickness (ft)			Mining Method
		Min	Max	Ave	
Springfield					Auger

Geologic Problems Reported:

**PRODUCTION HISTORY**

Company	Mine Name	Years	Production (tons)
Fink Coal Company	Fink No. 2	1958-1958	<u>1,356</u> 1,356

Last reported production: 1958

**SOURCES OF DATA**

Source Map	Date	Original Scale	Digitized Scale	Map Type
ISGS Mine Database	Undated	(text only)	1:24000	Secondary source

\* The mine location was plotted on a 1:24000 USGS topographic map from the mine location description and digitized.

Annotated Bibliography (data source, brief description of information)

Coal Reports - Production, ownership, years of operation.

ISGS Mine Database, Directory of Illinois Coal Mines (Saline County) - Mine names, mine index, ownership, years of operation, location, mining method.

## OTHER MINES SHOWN ON RUDEMENT QUADRANGLE

Mine Index 3311 SE SW SW 13-T9S-R7E, Springfield Coal, drift source: Federal Land Bank Report  
Mine Index 4447 SE SW SE 13-T9S-R7E, Springfield Coal, slope source: Federal Land Bank Report  
Mine Index 4449 SW SE SE 13-T9S-R7E, Springfield Coal, slope source: Federal Land Bank Report  
Mine Index 4529 SE SW SE 11-T9S-R7E, Herrin Coal, slope source: Federal Land Bank Report This mine is within the outline shown for Wildcat Hills Cottage Grove Mine (mine index 1044).  
Mine Index 4721 SW SW SE 13-T9S-R7E, Springfield Coal, slope source: Federal Land Bank Report  
Mine Index 4722 NE SE SW 13-T9S-R7E, Springfield Coal, drift source: ISGS map library, 4107 d5.1-209  
Mine Index 4723 NW SE SW 13-T9S-R7E, Springfield Coal, drift source: ISGS map library, 4107 d5.1-209  
Mine Index 4724 \* NE NE NW 14-T9S-R7E, Herrin Coal, slope source: Federal Land Bank Report  
Mine Index 4725 NE SE SE 14-T9S-R7E, Springfield Coal, drift source: Federal Land Bank Report  
Mine Index 4727, Producers Coal Corp. SW NE SE 22-T9S-R7E, Springfield Coal source: ISGS map library, 4102 a-7, sheet 2  
Mine Index 4728, Red Wing Coal Company SE SE SW 23-T9S-R7E, Springfield Coal source: Federal Land Bank Report  
Mine Index 4729 NE SE SE 22-T9S-R7E, Springfield Coal, surface source: ISGS map library, 4102 a-7, sheet 2.  
Mine Index 4730 \* SW SE SW 23-T9S-R7E, Springfield Coal source: Federal Land Bank Report  
Mine Index 4754 NW SE SE 7-T10S-R7E, Davis Coal source: ISGS 1950 mined-out area map  
Mine Index 4755 NE SE SE 11-T10S-R7E, Springfield Coal, surface source: ISGS map library, 4102 a-7, sheet 2  
Mine Index 4756 NE NE SE 11-T10S-R7E, Springfield Coal source: Federal Land Bank Report  
Mine Index 4757 SW SE NW 11-T10S-R7E, Springfield Coal source: Federal Land Bank Report  
Mine Index 4758 SE SW NE 11-T10S-R7E, Springfield Coal, surface source: ISGS map library, 4102 a-7, sheet 2  
Mine Index 4759 SW NE NW 13-T10S-R7E, Springfield Coal, surface source: ISGS map library, 4102 a-7, sheet 2  
Mine Index 4760 SW NE SE 13-T10S-R7E, Briar Hill Coal, surface source: ISGS map library, 4102 a-7, sheet 2  
Mine Index 4761 SW SE NE 13-T10S-R7E, Springfield Coal, surface test pit source: ISGS field notes  
Mine Index 4762 SE NE NE 22-T10S-R7E, Davis Coal source: ISGS 1950 mined-out area map  
Mine Index 4763 \* SE SE NW 23-T10S-R7E, Davis Coal source: ISGS mine database  
Mine Index 6330 SW SW NW 24-T9S-R7E, Springfield Coal, underground source: Federal Land Bank Report  
Mine Index 6571 SE NW NW 24-T9S-R7E, Springfield Coal, underground source: Federal Land Bank Report  
Mine Index 6572 SE NW NW 24-T9S-R7E, Springfield Coal, underground source: Federal Land Bank Report  
Mine Index 7031 SW SE SE 4-T10S-R7E, Davis Coal, surface source: ISGS map library, 4102 a-7, sheet 2  
Mine Index 7032 NE NW NW 3-T10S-R7E, Davis Coal, surface source: ISGS map library, 4102 a-7, sheet 2  
Mine Index 7033 SE NW NW 3-T10S-R7E, Davis Coal, surface source: ISGS map library, 4102 a-7, sheet 2  
Mine Index 7034 SE NW SE 13-T10S-R7E, Briar Hill Coal, drift source: ISGS map library, 4102 a-7, sheet 2  
Mine Index 7035 NE NE SE 13-T10S-R7E, Springfield Coal, drift source: ISGS map library, 4102 a-7, sheet 2  
Mine Index 7039 NW SW NE 24-T9S-R7E, Springfield Coal, drift source: ISGS map library, 4107 d5.1-195, sheet 26  
Mine Index 7040 NW SW NE 24-T9S-R7E, Springfield Coal, drift source: ISGS map library, 4107 d5.1-195, sheet 26  
Mine Index 7043 SW SE SE 22-T10S-R7E, Davis Coal, exploratory drift source: ISGS map library, 4102 a-7, sheet 2  
Mine Index 7044 \* NE SE SW 23-T10S-R7E, Davis Coal source: ISGS field notes  
Mine Index 7045 \* NE NE SW 23-T10S-R7E, Davis Coal source: ISGS field notes  
Mine Index 7046 NE NW SW 23-T9S-R7E, Springfield Coal source: ISGS 1950 mined-out area map  
Mine Index 7047 NE NE SE 11-T10S-R7E, Herrin Coal source: ISGS field notes (J. Nelson)

\* Not shown on accompanying map because of later surface mining



## NON-COAL MINES IN THE RUDEMENT QUADRANGLE

### Fluorspar Mine

#### SHAFT, SLOPE, DRIFT or TIPPLE LOCATIONS

Type	County	Township-Range	Section	Quarters-Footage
Shaft	Saline	10S 7E	21	SW SW NW

#### SOURCES OF DATA

Source Map	Date	Original Scale	Digitized Scale	Map Type
USGS topographic map	1959	1:24000	1:24000	Secondary source

Annotated Bibliography (data source, brief description of information)

ISGS field notes (Saline County) - Mine type.

## MINES WHOSE LOCATIONS ARE NOT KNOWN, RUDEMENT QUADRANGLE

The locations of the following mines are unknown, but the production tonnage, operating names, and nearest town were reported in the Annual Coal Reports. The operators listed below mined in or near the Rudement Quadrangle. The information shown is similar to that presented on the summary sheets in the previous pages of this directory. The first item is the name the mine operated under as listed in the Coal Report, then the years the mine reported. If no physical data are available, the next item listed is the total tons produced by the mine. If physical data are available, the order of presentation is as follows: type of opening for the mine (drift, slope or shaft), depth of coal in feet, and thickness of coal in feet.

The total tons mined by these unlocated mines is 426,806 (403,310 underground and 6,524 surface mined and 16,972 by uncertain method), which would represent approximately 85 to 132 acres, depending on the recovery factor, mining method, and numerous other factors. (Note: 1 square mile = 640 acres)

### COTTAGE GROVE

Slaters & Lloyd, 1895-1897, drift, 25, 4.5, RP	610 tons
Lloyd (James), 1897-1899	1,335 tons
Rogers (H. L.), 1899-1900	1,040 tons
Evans (William L.), 1900-1901	<u>415 tons</u>
	3,400 tons
Jarell (F. M.), 1895-1898, drift, Herrin, 20-25, 4.0-4.5, RP	510 tons
Yates (John), 1898-1902	488 tons
Yates (James), 1902-1904	<u>370 tons</u>
	1,368 tons
Berry (J. J.) & Brother, 1895-1898, drift, Herrin, 18, 4.0, RP	560 tons
Barry (R. M.), 1898-1904	<u>1,944 tons</u>
	2,504 tons
Brigtner & Mossman, 1895-1897, drift, Herrin, 30-40, 4.0-4.25, RP	465 tons
Hall (Charles), 1898-1900	340 tons
Clark (James A.), 1900-1902	225 tons
Sisk (Maggie M.), 1902-1903	<u>50 tons</u>
	1,080 tons
More (Simon), 1900-1901, drift, Herrin, 30, 4.0, RP	50 tons

Hart (Charles), 1903-1904, drift, Herrin, 25, 4.25, RP	280 tons
Yates (James), 1907-1908, slope, Springfield, 30, 4.0, RP	1,000 tons
Demsey (Sid), 1908-1909, shaft, Springfield, 35, 4.0, RP	22 tons
Ralston & Miller, 1917-1918	187 tons

## DERBY

Tarlton (C. R.), 1908-1909, slope, Springfield, 10, 4.0, RP	440 tons
Mitchell (J. C.), 1908-1909, drift, Springfield, 30, 4.0, RP	104 tons
Mitchell (J. C.), 1920-1922	240 tons
Cawsert (T. F.) & Company, 1922-1923	400 tons
Sinsabaugh (Ernest), 1923-1924	800 tons
	<u>1,440 tons</u>

## EAGLE

Tarlou (Allen), 1905-1906, slope, Springfield, 45, 4.0, RP	200 tons
Tarlton (Allen), 1908-1909, shaft, Springfield, 30, 4.0, RP	80 tons
Raymer (Jess), 1915-1919, drift, Springfield, 12-20, 4.5-4.67, RP	5,376 tons
Raymer (Jess), 1926-1926, underground	84 tons
Smith (J. W.), 1927-1927	150 tons
Colbert (Social), 1928-1928	60 tons
	<u>294 tons</u>
Rogers (Carrell), 1922-1923	350 tons
Bosten (John W.), 1923-1925	630 tons
	<u>980 tons</u>
Reeder (C. M.), 1927-1927	10 tons

## ELIZABETHTOWN

Adams Coal Company, 1957-1957, surface	4,172 tons
--	------------

## EQUALITY

Equality Coal & Coke Company, 1881-1884, —, —, 10-80, 4.5-4.875, RP	238,000 tons
Equality Coal Company, 1884-1887	<u>73,880 tons</u>
	311,880 tons
Equality Coal & Coke Company was connected with (owned or operated by) Cassel & Temple Salt Works	
Donahue (John), 1884-1886, shaft or drift, Herrin, 30-35, 4.5, RP	2,287 tons
Reily & Hall, 1895-1896, drift, —, 35, 4.5, RP	200 tons
Moore (S. J.), 1903-1910, drift, —, 10-80, 4.0-4.5, RP	945 tons
Moore & Robinson, 1910-1911	572 tons
Moore (S. J.), 1911-1920	<u>7,535 tons</u>
	9,052 tons
Moore (Sam), 1924-1925	1,000 tons
Tanner (W.), 1927-1928	<u>3,100 tons</u>



	4,100 tons
Moore (S.), 1934-1934, underground	785 tons
Yates (John), 1907-1910, drift, Springfield, 20-30, 4.0-5.0, RP	1,132 tons
Hazel & Houston, 1910-1911	616 tons
Hazel & Steele, 1911-1912	600 tons
Syers Brothers, 1912-1913	1,194 tons
Hazel (Sam), 1913-1914	1,200 tons
Yates (John), 1914-1918	<u>1,350</u> tons
	6,092 tons
Osborn (Thomas), 1908-1920, drift, Springfield, 10-20, 4.0-5.0, RP	3,440 tons
Osborn (Thomas), 1934-1935, underground	72 tons
Imboden (J. W.) & Son, 1909-1910, drift, Springfield, 12-50, 4.0-4.67, RP	173 tons
Dunn (Amos), 1910-1911	412 tons
Ollison & Edwards, 1911-1912	50 tons
Edwards (James), 1912-1913	50 tons
McDaniel (Herman), 1913-1914	150 tons
Allen (Jessie), 1914-1918	<u>5,231</u> tons
	6,066 tons
Reynolds (John), 1909-1911, drift, —, 10-20, 4.0-4.67, RP	30 tons
Yates & Reynolds, 1911-1912	100 tons
Yates & Land, 1912-1913	240 tons
Yates (James), 1913-1915	765 tons
Yates (John), 1915-1916	630 tons
Yates (James), 1916-1920	<u>1,435</u> tons
	3,200 tons
Raulston (J. F.), 1914-1915, drift, Springfield, 6, 4.0, RP	62 tons
Colbert (Thomas), 1934-1935, underground	115 tons
Imboden (T. J.), 1918-1920	1,016 tons
Cummings (Robert), 1918-1919	320 tons
Durfee (Frank), 1919-1920	<u>500</u> tons
	820 tons
Carlton (A.), 1919-1920	240 tons
Karns (E. D.), 1923-1924	1,250 tons
Chinn (W. R.), 1923-1924, underground	500 tons
Kelly & McAllister, 1924-1925	400 tons
Kelly (Jack), 1925-1928	910 tons
Strobel (A. O.), 1929-1936	<u>11,164</u> tons
	12,974 tons
Forrester (Logan), 1924-1925	537 tons
Reynolds (Logan), 1924-1926	850 tons
Tronsdale (A. P.), 1924-1925	425 tons
Pyles (Isaac), 1924-1926	850 tons
Caraway (Wayne), 1924-1925	108 tons
Yeates (Herbert), 1925-1925, underground	40 tons
Cummins (Bob), 1926-1926	20 tons
Collier (J. A.), 1927-1927	40 tons

Commins (Robert), 1928-1928	<u>250</u> tons 350 tons
Hobbs (Joe), 1927-1927	400 tons
Duncan (O. C.), 1928-1929, underground Co-operative Coal Company, 1930-1932	4,250 tons <u>3,796</u> tons 8,046 tons
White (Isaac), 1928-1934, underground	7,015 tons
Kingston (Ben), 1928-1928, underground	50 tons
Bishop (Albert), 1928-1928, underground	50 tons
C. & H. Coal Company, 1931-1932, underground H. & H. Coal Company, 1933-1935	2,692 tons <u>4,960</u> tons 7,652 tons
Hewston (James), 1932-1932, underground	1,000 tons
Littlefield (J. G.), 1934-1936, underground	867 tons
Mosman (Fred) Coal Company, No. 1 Mine, 1934-1935, underground	210 tons
Mosman (Fred) Coal Company, No. 2 Mine, 1934-1935, underground	275 tons
Lands (James), 1934-1935, underground	55 tons
Finney (Walter), 1934-1934, underground	25 tons
Brugg (Kenneth), No. 1 Mine, 1936-1936, underground	400 tons
Vinyard Coal Company, No. 3 Mine, 1957-1957, surface	2,000 tons

## **JUNCTION**

Dempsey (J. E.), 1927-1928, underground	2,650 tons
---	------------

## **KEDRON**

Wilkin (J. D.), 1905-1906, drift, Springfield, —, 4.0, RP	75 tons
---	---------

## **SOUTH AMERICA**

Curtner (John), 1889-1891, surface, Herrin, 10, 5.0 Curtner (Daniel), 1891-1893	730 tons <u>852</u> tons 1,582 tons
Speare (Philip), 1889-1891, surface, Herrin, —, 5.0	1,000 tons
Harris (W. W.), 1889-1890, surface, Herrin, —, 5.33 Harris & Motsinger, 1890-1891	320 tons <u>560</u> tons 880 tons
Rush (W. V.), 1889-1890, surface, Herrin, —, 5.0 Rush & Shanks, 1890-1891	600 tons <u>2,206</u> tons 2,806 tons
Thompson (Bryant), 1890-1891, surface, Herrin, —, 5.0	256 tons
Stiff (Noah), 1895-1899, drift, Herrin, 10-15, 5.0, RP	695 tons



## INDEX OF MINES IN RUDEMENT QUADRANGLE

Adams (Daniel) . . . . .	34
Adams Coal Company . . . . .	63
Allen (Jessie) . . . . .	64
Anderson (Virgil) . . . . .	41
Angelly (William) . . . . .	9
Arclar Company, Big Ridge Portal No. 1 Mine . . . . .	21
Auger Mining Company . . . . .	47
Barry (R. M.) . . . . .	62
Bennett Coal Company . . . . .	43
Berry (J. J.) & Brother . . . . .	62
Big Ridge Coal Company . . . . .	16
Big Ridge, Inc., Portal No. 1 Mine . . . . .	21
Bishop (Albert) . . . . .	65
Black Beauty Coal Company, Wildcat Hills Cottage Grove Mine . . . . .	23
Bond (Hubert & George) . . . . .	34
Bond Brothers . . . . .	34
Bosten (John W.) . . . . .	63
Brady-Gobin . . . . .	40
Brigtner & Mossman . . . . .	62
Brown (William) . . . . .	46
Brown Brothers No. 3 Mine . . . . .	20
Brugg (Kenneth) . . . . .	65
Buckeye Coal Company . . . . .	40
Buckman (Massey & Buckman) . . . . .	40
Burton Coal Company . . . . .	33
Butler (Clyde) Coal Company . . . . .	33
C. & H. Coal Company . . . . .	65
Caraway (Wayne) . . . . .	64
Carlton (A.) . . . . .	64
Cassel & Temple Salt Works . . . . .	63
Cawsert (T. F.) & Company . . . . .	63
Chinn (W. R.) . . . . .	64
Clark (James A.) . . . . .	62
Co-operative Coal Company . . . . .	65
Colbert (J. F.) . . . . .	11
Colbert (Social) . . . . .	63
Colbert (Thomas) . . . . .	64
Collier (J. A.) . . . . .	64
Commins (Robert) . . . . .	64
Conger (Miletus T.) . . . . .	39
Conway (Milton) . . . . .	41
Cottage Grove Coal Company . . . . .	26
Cummings (Robert) . . . . .	64
Cummins (Bob) . . . . .	64
Curtner (Daniel) . . . . .	65
Curtner (John) . . . . .	65
Davis (Roberts & Davis) . . . . .	31
Dempsey (J. E.) . . . . .	65
Demsey (Sid) . . . . .	63
Diversified Minerals . . . . .	51
Donahue (John) . . . . .	63
Duncan (O. C.) . . . . .	65
Dunn (Amos) . . . . .	64
Durfee (Frank) . . . . .	64
Eagle Creek Coal Company . . . . .	45
Edwards (James) . . . . .	64
Edwards (Ollison & Edwards) . . . . .	64
Egyptian Mining Company . . . . .	44
Equality Coal & Coke Company . . . . .	63
Equality Coal Company . . . . .	31, 63
Equality Mining Company . . . . .	17
Evans (William L.) . . . . .	62
Federal Landscaping Company . . . . .	18

Fink Coal Company, No. 1 Mine	56
Fink Coal Company, No. 2 Mine	60
Finney (Brownie)	39
Finney (Walter)	65
Ford (John), No. 2 Mine	38
Forrester (Logan)	64
Fritts (W. E.)	39
Gibbs (Stricklin-Gibbs Corporation)	33
Gill (Jones & Gill)	13
Gobin (Brady-Gobin)	40
Gobin (William) & Sons	40
Greely Coal Company	10
Griffith (H. L.)	25
Griffith (Harley)	41
H. & H. Coal Company	65
H. & M. Coal Company	54
H. & V. Coal Company, No. 1 Mine	54
H. & V. Coal Company, No. 2 Mine	55
Hall (Charles)	62
Hall (Reily & Hall)	63
Hall Prospect	62
Harris (W. W.)	65
Harris & Motsinger	65
Hart (Charles)	62
Hart (Maggie)	53
Hart (Ward, Hart & Penrod)	46
Hazel (Sam)	64
Hazel & Houston	64
Hazel & Steele	64
Henshaw (Millspaugh & Henshaw Coal Company)	57
Herod Mining Corporation	48
Herrin Mining Corporation	55
Hewston (James)	65
Hobbs (Joe)	64
Houston (Hazel & Houston)	64
I-1 Surface Mine	19
I-1 Underground Mine	22
Illinois Fuel Company, LLC	19, 22
Imboden (J. W.) & Son	64
Imboden (T. J.)	64
J. & W. Coal Company, Inc.	44
Jader Fuel Company, Inc.	18
Jader Fuel Company, Inc., No. 4 Mine	19
Jarell (F. M.)	62
Jones & Gill	13
K. & W. Coal Company	44
Karns (E. D.)	64
Kelly (Jack)	38, 64
Kelly & McAllister	64
Kingston (Ben)	65
Land (Yates & Land)	64
Lands (James)	65
Liberty Coal Company, No. 2 Mine	14
Littlefield (J. G.)	65
Lloyd (Estel)	40
Lloyd (James)	62
Lloyd (Reynolds & Lloyd)	28
Lloyd (Slaters & Lloyd)	62
Marshall Equipment Company	35
Mary Ann No. 1 Mine	35
Massey & Buckman	40
McAllister (Kelly & McAllister)	64
McDaniel (Herman)	64
McDonald (W. H.)	46
McGowan (Partain & McGowan)	45



Miles (A. A.)	46
Miller (Ralston & Miller)	63
Miller Coal Company	32
Millspaugh (Howard)	45
Millspaugh & Henshaw Coal Company	57
Millspaugh & Moore Coal Company	57
Mitchell (J. C.)	63
Moore (Millspaugh & Moore Coal Company)	57
Moore (S. J.)	63
Moore (S.)	63
Moore (Sam)	63
Moore (Silas B.), No. 3 Mine	36
Moore (Silas B.), No. 4 Mine	29
Moore (Silas) Coal Company, No. 5 Mine	31
Moore & Robinson	63
Moore & Stricklin	40
More (Simon)	62
Mosman (Fred) Coal Company, No. 1 Mine	65
Mosman (Fred) Coal Company, No. 2 Mine	65
Mossman (Brigtnr & Mossman)	62
Motsinger (Harris & Motsinger)	65
New Gallatin Coal Company, No. 4 Mine	59
New Rocky Branch Coal Company	13
Ollison & Edwards	64
Osborn (Thomas)	64
Osborn (Tom), No. 2 Mine	9
Partain (Clifford)	45
Partain & McGowan	45
Peabody Midwest Mining, Wildcat Hills Cottage Grove Mine	23
Penrod (John)	46
Penrod (Ward, Hart & Penrod)	46
Pickering (Charles)	46
Pierce (Ted)	39
Pioneer Mining Company	13
Producers Coal Corp.	61
Pyles (Isaac)	64
Ragsdale (Henry)	39
Ragsdale Mine	39
Ralston (John)	40
Ralston & Miller	63
Raulston (J. F.)	27, 46, 64
Raulston (John) Coal Company	45
Raymer (Jess)	63
Red Wing Coal Company	61
Reeder (C. M.)	63
Regenhardt & Southern Construction Co., No. 4 Mine	49
Regenhardt & Southern Construction Co., No. 5 Mine	30
Reily & Hall	63
Rexing & Rich Coal Company	58
Reynolds (J. R.)	33
Reynolds (J. R.), No. 02 Mine	34
Reynolds (John)	53, 64
Reynolds (Logan)	28, 64
Reynolds (Yates & Reynolds)	64
Reynolds & Lloyd	28
Rich (Rexing & Rich Coal Company)	58
Richardson Coal Corporation, No. 2 Mine	24
Roberts & Davis	31
Robertson (L. D.)	25
Robinson (Moore & Robinson)	63
Rocky Branch Coal Company	31
Rocky Branch Coal Company, No. 1 Mine	13
Rogers (Carrell)	63
Rogers (H. L.)	62
Rush (W. V.)	65

Rush & Shanks	65
Ryan (James)	40
Saxton Coal Corporation, Walnut Grove Mine	15
Scroggins (Earl)	31
Shanks (Rush & Shanks)	65
Shawneetown Coal Corporation	50
Siddons Coal Company	45
Sinsabaugh (Ernest)	63
Sisk (Mag)	53
Sisk (Maggie M.)	62
Slaters & Lloyd	62
Smith (J. W.)	63
Somerset Mine	15
Speare (Philip)	65
Steele (Hazel & Steele)	64
Stiff (Noah)	65
Stricklin (Moore & Stricklin)	40
Stricklin (Robert)	33
Stricklin-Gibbs Corporation	33
Strobel (A. O.)	64
Stunson (Jess F.)	31
Sutton (C. A.)	41
Sutton (William)	41
Syers Brothers	64
Tanner (W.)	63
Tarlou (Allen)	63
Tarlton (A. L.)	10
Tarlton (Al)	10
Tarlton (Allen)	63
Tarlton (C. R.)	63
Temple (Cassel & Temple Salt Works)	63
Thompson (Bryant)	65
Track (J. J.) Mining Company	20
Tronsdale (A. P.)	64
Uzzle (Logan)	27
Vaughn (Sherman & Wilbur)	39
Vinyard Coal Company, No. 1 Mine	14
Vinyard Coal Company, No. 3 Mine	65
Walnut Grove Mine	15
Walnut Grove Mining Company	52
Ward (Bert)	46
Ward (Bert), No. 3 Mine	46
Ward No. 01 Mine	46
Ward, Hart & Penrod	46
West Star Coal Company	52
Whistle (John)	28
White (Isaac)	65
White Star Coal Company	12
Wiedeman (L. C.)	12
Wildcat Hills Cottage Grove Mine	23
Wilkin (J. D.)	65
Williams (Beecher) Coal Company, No. 1 Mine	42
Williams (Beecher) Coal Company, No. 2 Mine	56
Williams (Beecher) Coal Company, No. 3 Mine	56
Wilson, Ragsdale Mine	39
Yates (James)	37, 62-64
Yates (John)	62, 64
Yates & Land	64
Yates & Reynolds	64
Yeates (Herbert)	64
Young's Coal Corporation	15



