

Coal Mines in Illinois
St. David Quadrangle
Fulton & Mason Counties, Illinois

Springfield Coal

This map accompanies the Coal Mines Directory for the St. David Quadrangle and the maps of mines in the Colchester Coal, St. David Quadrangle. Consult the directory for a complete explanation of the information shown on this map.

Mining Method

Room & Pillar (RP)

Room & Pillar Basic (RPB)

Modified Room & Pillar (MRP)

Room & Pillar Panel (RPP)

Blind Room & Pillar (BRP)

Checkerboard Room & Pillar (CRP)

High Extraction Retreat (HER)

Longwall (LW)

Underground, Method Unknown

Strip Mine

Auger Mine

General Area of Mining

Other Areas Depicted
Non-Coal Mines

Source of Mine Outline

Final Mine Map

Not Final Mine Map

Undated Mine Map

Incomplete Mine Map

Secondary Source Map

Tipple, Shaft, Slope, Drift Locations

Strip Mine Tipple - Active

Strip Mine Tipple - Abandoned

Mine Shaft - Active

Mine Shaft - Abandoned

Mine Slope - Active

Mine Slope - Abandoned

Mine Drift - Active

Mine Drift - Abandoned

Air Shaft

Uncertain Location

Uncertain Type of Opening

Other Points Depicted
Non-Coal Mines

Location

Mine Annotation
(space permitting)
Company
Mine Name
ISGS Index No., Years of Operation

Disclaimer
Please check the Coal Section at the Illinois State Geological Survey's web site at <http://www.isgs.illinois.edu> for the most up-to-date version of these products.

Note that each quadrangle scale mined-out area map requires the use of the associated text directory for full explanation of map features and mine attributes. Also note that some quadrangles have multiple seams of mining and therefore more than one map may be available for a particular quadrangle. Please take care to check for multiple maps, as extensive mining may exist in the other seams.

The maps and digital files used for these studies were compiled from data obtained from a variety of public and private sources and have varying degrees of completeness and accuracy. This compilation map presents reasonable interpretation of the geology of the area and is based on available data. Locations of some mine features may be offset by 500 feet or more due to errors in the original source maps, the compilation process, digitizing, or a combination of these factors. These data are not intended for use in site-specific screening or decision-making. Use of these documents does not eliminate the need for detailed studies to fully understand the geology of a specific site. The Illinois State Geological Survey, Prairie Research Institute, or the University of Illinois make no guarantee, expressed or implied, regarding the correctness of the interpretations presented in this data set and accept no liability for the consequences of decisions made by others on the basis of the information presented here.

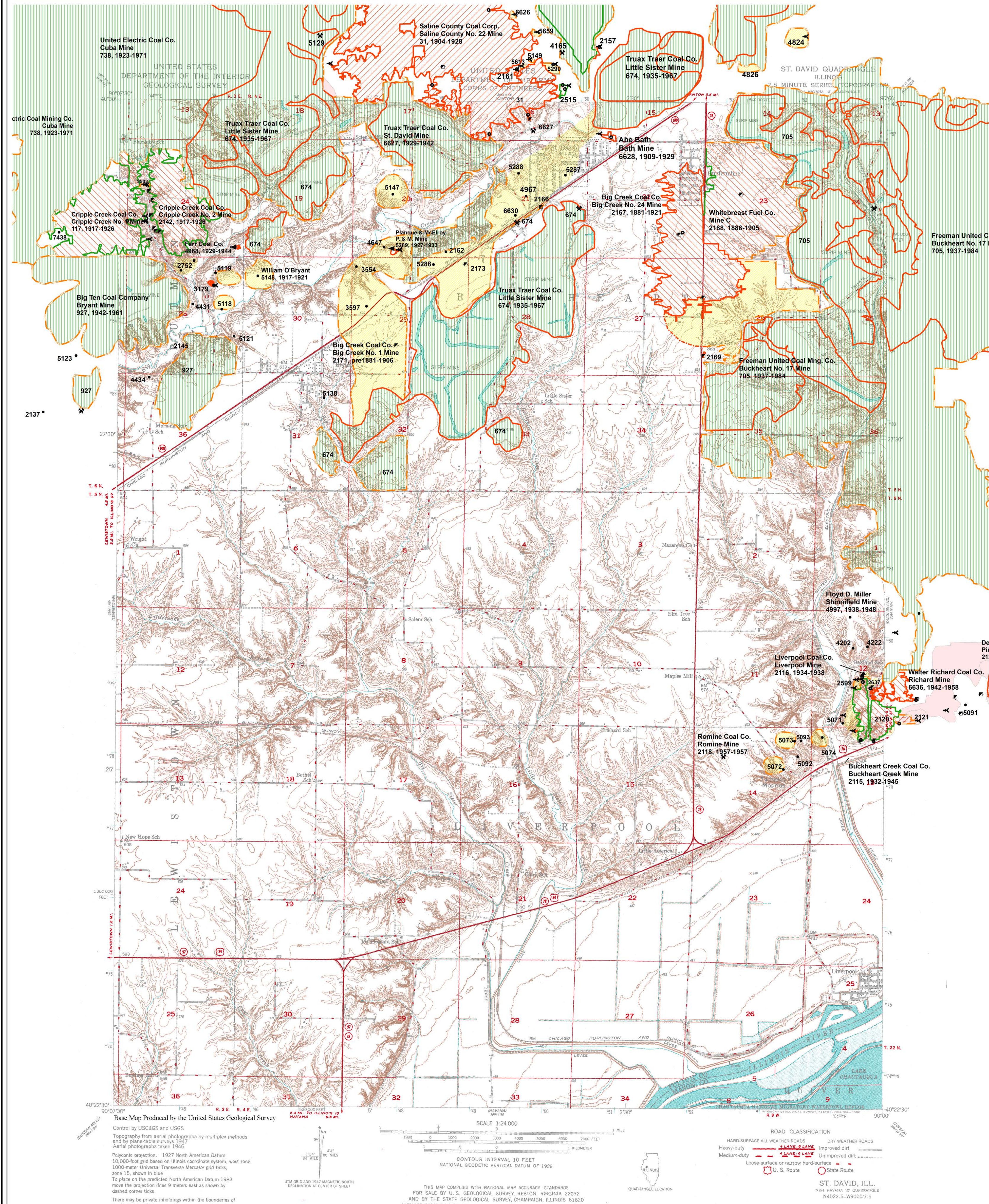
These maps were designed for use at 1:24,000. Enlarging the map may reduce accuracy, as the original scale of the source maps used to compile the outlines shows varies from 1:400 to 1:150,000, and some mine locations are known only from text descriptions. See the accompanying mine directory for the original scale of the source map used for a specific mine to check accuracy of a given portion of the map. Areas with no mines shown may still be undermined; see the unlocated mines list at the back of each mine directory.

The image of the U.S.G.S. topographic base map was projected from the original UTM to Lambert Conformal Conic.



Prairie Research Institute
Illinois State Geological Survey
615 E. Peabody Dr.
Champaign, IL 61820

Mine Outlines Compiled by
C. Chenoweth & Alan R. Myers
December 2014, updated 2017



Coal Mines in Illinois

St. David Quadrangle

Fulton & Mason Counties, Illinois

Colchester Coal

This map accompanies the Coal Mines Directory for the St. David Quadrangle and the maps of mines in the Springfield Coal, St. David Quadrangle. Consult the directory for a complete explanation of the information shown on this map.

Mining Method

- Room & Pillar (RP)
- Room & Pillar Basic (RPB)
- Modified Room & Pillar (MRP)
- Room & Pillar Panel (RPP)
- Blind Room & Pillar (BRP)
- Checkerboard Room & Pillar (CRP)
- High Extraction Retreat (HER)
- Longwall (LW)
- Underground, Method Unknown
- Strip Mine
- Auger Mine
- General Area of Mining

Other Areas Depicted

- Non-Coal Mines

Source of Mine Outline

- Final Mine Map
- Not Final Mine Map
- Undated Mine Map
- Incomplete Mine Map
- Secondary Source Map

Tipple, Shaft, Slope, Drift Locations

- Strip Mine Tipple - Active
- Strip Mine Tipple - Abandoned
- Mine Shaft - Active
- Mine Shaft - Abandoned
- Mine Slope - Active
- Mine Slope - Abandoned
- Mine Drift - Active
- Mine Drift - Abandoned
- Air Shaft
- Uncertain Location
- Uncertain Type of Opening

Other Points Depicted

- Non-Coal Mines

Mine Annotation

(space permitting)

Company

Mine Name

ISGS Index No., Years of Operation

Location

Disclaimer
Please check the Coal Section at the Illinois State Geological Survey's web site at <http://www.isgs.illinois.edu> for the most up-to-date version of these products.

Note that each quadrangle scale mined-out area map requires the use of the associated text directory for full explanation of map features and mine attributes. Also note that some quadrangles have multiple seams of mining and therefore more than one map may be available for a particular quadrangle. Please take care to check for multiple maps, as extensive mining may exist in the other seams.

The maps and digital files used for these studies were compiled from data obtained from a variety of public and private sources and have varying degrees of completeness and accuracy. This compilation map presents reasonable interpretation of the geology of the area and is based on available data. Locations of some mine features may be offset by 500 feet or more due to errors in the original source maps, the compilation process, digitizing, or a combination of these factors. These data are not intended for use in site-specific screening or decision-making. Use of these documents does not eliminate the need for detailed studies to fully understand the geology of a specific site. The Illinois State Geological Survey, Prairie Research Institute, or the University of Illinois make no guarantee, expressed or implied, regarding the correctness of the interpretations presented in this data set and accept no liability for the consequences of decisions made by others on the basis of the information presented here.

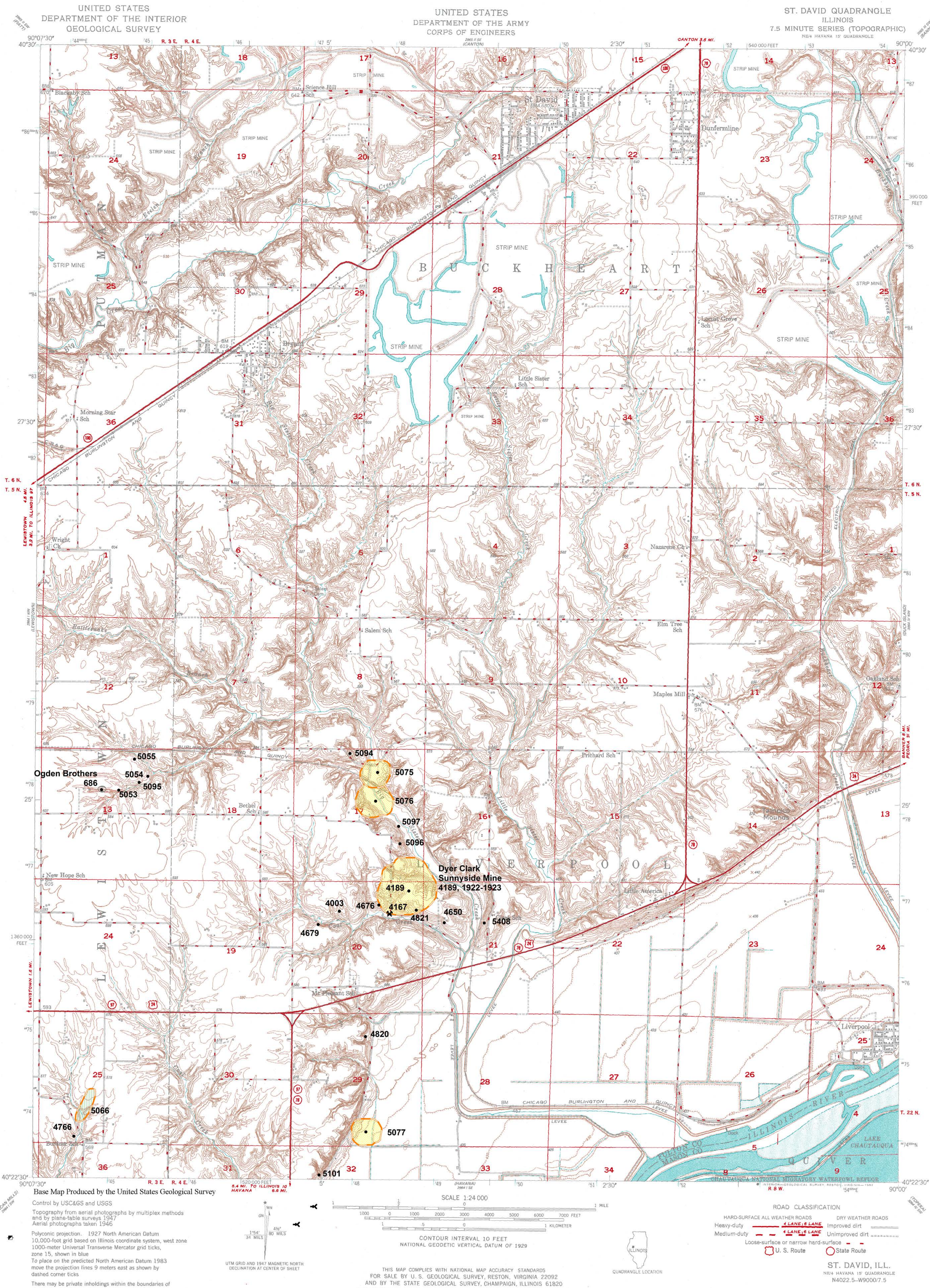
These maps were designed for use at 1:24,000. Enlarging the map may reduce accuracy, as the original scale of the source maps used to compile the outlines shown varies from 1:400 to 1:150,000, and some mine locations are known only from text descriptions. See the accompanying mine directory for the original scale of the source map used for a specific mine to check accuracy of a given portion of the map. Areas with no mines shown may still be undermined; see the unlocated mines list at the back of each mine directory.

The image of the U.S.G.S. topographic base map was projected from the original UTM to Lambert Conformal Conic.



Prairie Research Institute
Illinois State Geological Survey
615 E. Peabody Dr.
Champaign, IL 61820

Mine Outlines Compiled by
C. Chenoweth & Alan R. Myers
December 2014



DIRECTORY OF COAL MINES IN ILLINOIS

7.5-MINUTE QUADRANGLE SERIES

ST. DAVID QUADRANGLE

FULTON & MASON COUNTIES

C. Chenoweth & Alan R. Myers



2015

Prairie Research Institute
Brian Anderson, Interim Executive Director
ILLINOIS STATE GEOLOGICAL SURVEY
Richard C. Berg, Interim Director



Natural Resources Building
615 East Peabody Drive
Champaign, Illinois 61820

Phone 217-244-4610
Fax 217-333-2830

This material is based upon work supported by the Illinois Mine Subsidence Insurance Fund. Any opinions, findings, and conclusions or recommendations expressed in this publication are those of the authors and do not necessarily reflect the views of the Illinois Mine Subsidence Insurance Fund.

Cover photo Track-mounted duckbill loading machine at a Peabody Coal Company mine, ca. 1915.

DISCLAIMER: The accuracy and completeness of mine maps and directories vary with the availability of reliable information. Maps and other information used to compile this mine map and directory were obtained from a variety of sources and the accuracy of some of the original information cannot be verified. Consequently, the Illinois State Geological Survey (ISGS) cannot guarantee the mine maps are free of errors and disclaims any responsibility for damages that may result from actions or decisions based on them.

The ISGS updates the maps and directories periodically, and welcomes any new information or corrections. Please contact the Coal Section of the ISGS at the address shown on the title page of this directory, or telephone (217) 244-4610.

© 2015 The Board of Trustees of the University of Illinois. All rights reserved.
For permission information, contact the Illinois State Geological Survey.

CONTENTS

INTRODUCTION	1
MINING IN THE ST. DAVID QUADRANGLE	1
PART I EXPLANATION OF MAP AND MINE SUMMARY SHEET	2
INTERPRETING THE MAP	2
Mine Type and Mining Method	2
Source Maps	3
Points and Labels	3
INTERPRETING A MINE SUMMARY SHEET	6
REFERENCES	8
PART II DIRECTORY OF MINES IN THE ST. DAVID QUADRANGLE	9
MINE SUMMARY SHEETS	9
Mine Index 31	
Saline County Coal Corporation, Saline County No. 22 Mine	9
Mine Index 117	
Cripple Creek Coal Company, Cripple Creek No. 1 Mine	11
Mine Index 674	
Truax Traer Coal Company, Little Sister Mine	12
Mine Index 705	
Freeman United Coal Mining Company, Buckheart No. 17 Mine	13
Mine Index 738	
United Electric Coal Mining Company, United Electric No. 9 or Cuba Mine	14
Mine Index 927	
Big Ten Coal Company, Bryant Mine	15
Mine Index 2115	
Buckheart Creek Coal Company, Buckheart Creek	16
Mine Index 2116	
Liverpool Coal Company, Liverpool Mine	17
Mine Index 2118	
Romine Coal Company, Romine Mine	18
Mine Index 2120	
Calhoun & Astle Coal Company, Calhoun & Astle Mine	19
Mine Index 2142	
Cripple Creek Coal Company, Cripple Creek No. 2 Mine	20
Mine Index 2143	
Snowden Ford, Ford Mine	21
Mine Index 2144	
Elmer Simpson, Simpson Mine	22
Mine Index 2145	
Frank Strode, Strode Mine	23
Mine Index 2162	
Sherman Ketchum, Ketchum Mine	24
Mine Index 2163	
A. E. Planque, Planque Mine	25
Mine Index 2165	
Robert O. Livers, Livers Mine	26
Mine Index 2166	
Taylor Williams, Williams No. 2 Mine	27
Mine Index 2167	
Big Creek Coal Company, Big Creek No. 24 Mine	28
Mine Index 2168	
Whitebreast Fuel Company, C Mine	29
Mine Index 2169	
Schaeffer & Munroe, Schaeffer & Munroe Mine	30
Mine Index 2170	
Yackovich Brothers, Pearl Branch Mine	31

Mine Index 2171	
Big Creek Coal Company, Big Creek No. 1 Mine	32
Mine Index 2173	
William Scripps Coal Company, Buckheart Mine	33
Mine Index 2174	
Billings & May, Billings & May Mine	34
Mine Index 2175	
John Strode Coal Company, Strode Mine	35
Mine Index 2176	
Roadside Coal Company, Roadside Mine	36
Mine Index 2177	
Richard Fouts, Fouts Mine	37
Mine Index 2178	
Stanley Zaborac, Zaborac Mine	38
Mine Index 3179	
Roy Post, Post Mine	39
Mine Index 4167	
Lingenfelter Coal Company, Lingenfelter No. 3 Mine	40
Mine Index 4189	
Dyer Clark, Sunnyside Mine	41
Mine Index 4967	
Harley Cape, Cape Mine	42
Mine Index 4968	
Farr Coal Company, Farr Mine	43
Mine Index 4997	
Floyd D. Miller, Shinnifield Mine	44
Mine Index 5148	
William O'Bryant, O'Bryant Mine	45
Mine Index 5289	
Planque & McElroy, P. & M. Mine	46
Mine Index 6627	
Truax Traer Coal Company, St. David Mine	47
Mine Index 6628	
Abe Bath, Bath Mine	48
Mine Index 6636	
Walter Richard Coal Company, Richard Mine	49
OTHER MINES SHOWN ON ST. DAVID QUADRANGLE	50
Mine Index 686, Ogden Brothers	50
Mine Index 2164, Menden Coal Company	50
Mine Index 2599	50
Mine Index 2637	50
Mine Index 2752	50
Mine Index 3170	50
Mine Index 3343	50
Mine Index 3554	50
Mine Index 3597	50
Mine Index 4003	50
Mine Index 4202	50
Mine Index 4222	50
Mine Index 4281	50
Mine Index 4431	50
Mine Index 4434	50
Mine Index 4647	50
Mine Index 4650	50
Mine Index 4666	50
Mine Index 4676	50
Mine Index 4679	50
Mine Index 4766	50
Mine Index 4820	50
Mine Index 4821	50
Mine Index 4957	50

Mine Index 5009	50
Mine Index 5053	50
Mine Index 5054	50
Mine Index 5055	50
Mine Index 5066	50
Mine Index 5071	50
Mine Index 5072	50
Mine Index 5073	50
Mine Index 5074	50
Mine Index 5075	50
Mine Index 5076	50
Mine Index 5077	50
Mine Index 5092	51
Mine Index 5093	51
Mine Index 5094	51
Mine Index 5095, Charles Laws	51
Mine Index 5096	51
Mine Index 5097	51
Mine Index 5101	51
Mine Index 5118	51
Mine Index 5119	51
Mine Index 5121	51
Mine Index 5122	51
Mine Index 5131	51
Mine Index 5132	51
Mine Index 5133	51
Mine Index 5134	51
Mine Index 5135	51
Mine Index 5138	51
Mine Index 5139, Miller Bank	51
Mine Index 5147	51
Mine Index 5161	51
Mine Index 5286, William (Mike) Mine	51
Mine Index 5287, Old St. David Mine	51
Mine Index 5288, Ellis & Johnson Mine	51
Mine Index 6630	51
MINES WHOSE LOCATIONS ARE NOT KNOWN, ST. DAVID QUADRANGLE	52
INDEX OF MINES IN THE ST. DAVID QUADRANGLE	58

INTRODUCTION

Coal has been mined in 76 counties of Illinois. More than 7,400 coal mines have operated since commercial mining began in Illinois about 1810; fewer than 30 are currently active. To detail the extent and location of coal mining in Illinois, the Illinois State Geological Survey (ISGS) has compiled maps and directories of known coal mines. The ISGS offers maps at a scale of 1:100,000 and accompanying directories for each county in which coal mining is known to have occurred. Maps at a scale of 1:24,000 and accompanying directories, such as this, are available for selected quadrangles. Contact the ISGS for a list of these quadrangles.

These larger scale maps show the approximate positions of mines in relation to surface features such as roads and water bodies, and indicate the mining method used and the accuracy of the mine boundaries. The maps are useful for locating mine boundaries relative to specific properties and for assessing the potential for subsidence in an area. Mine boundaries compiled from final mine surveys are generally shown within 200 feet of their true position. As a result of poor cartographic quality and inaccuracies in the original mine surveys, boundaries of some older mines may be mislocated on the map by 500 feet or more. Original mine maps should be consulted in situations that require precise delineation of mine boundaries or internal workings of mined areas.

This directory serves as a key to the accompanying mine map and provides basic information on the coal mines in the quadrangle. The directory is composed of two parts. Part I explains the symbols and patterns used on the accompanying map and the summary data presented for each mine. Part II numerically lists the mines in the quadrangle and summarizes the geology and production history of each mine. Total production for the mine, not the portion in the quadrangle, is given.

MINING IN THE ST. DAVID QUADRANGLE

Surface mines were noted in the 1884 and 1885 Coal Report listings for Fulton County, but not in 1886 or 1887. The 1888, 1889 and 1890 Coal Reports did not hint at the type of mine, but no surface mines were tabulated in the 1891 to 1897 Coal Reports. It is a virtual certainty that surface mining continued after 1885 but was simply not reported. The number of companies and tons of production cannot be estimated. However, methods of surface mining in that time period were primitive, and considering the large surface mines that operated in and near the St. David Quadrangle in the 1940s through the 1960s, the acreage would have been insubstantial.

The 1893 Coal Report indicated ventilation was sometimes inadequate. The method of mining in these seams, generally less than 4 feet thick, was to remove the underclay from the haulage route to make the entry 5.5 feet tall. The air courses generally ran parallel to the haulage route, but the bottom would eventually heave "at least one foot of the original four", leaving an air way that was less than 20 square feet. This resulted in higher resistance to the air current and a small amount of ventilation supplied for the power expended. Heaving was noted in the Saline County No. 22 Mine (mine index 31), and was likely present in most of the mines in the Springfield Coal.

PART I EXPLANATION OF MAP AND MINE SUMMARY SHEET

INTERPRETING THE MAP

The map accompanying this directory shows the location of coal mines known to be present in the quadrangle. The map, corresponding to a U.S. Geological Survey (USGS) 7.5-minute quadrangle, covers an area bounded by lines of latitude and longitude 7.5-minutes apart. In Illinois, a quadrangle is approximately 6.5 miles east to west and 8.5 miles north to south, an area of about 56 square miles. The USGS generally offers one map of mines per quadrangle. In some areas where extensive mining occurred in two or more overlapping seams, separate maps are compiled for mines in each seam to maintain readability of the map.

Mine Type and Mining Method

The mine type is indicated on the map by pattern color: green represents surface mines; red and yellow represent underground mines. The red patterns are used for areas of underground mining that are documented by a primary or secondary source map. A yellow pattern is used for cases where no map of the mine workings is available, but a general area of mining can be inferred from property maps or production figures. The patterns indicate the main mining methods used in underground mines. The methods are (1) room and pillar and (2) high extraction. The method used gives some indication of the amount and pattern of coal extraction within each mined area, and has some influence on the timing and type of subsidence that can occur over a mine.

The following discussion and illustrations of mining methods are based on Guither et al. (1984).

In room-and-pillar mines, coal is removed from haulage-ways (entries) and selected areas called rooms. Pillars of unmined coal are left between the rooms to support the roof. Depending on the size of rooms and pillars, the amount of coal removed from the production areas will range from 40% to 70%.

Room and Pillar - mining is divided into six categories:

- room-and-pillar basic (RPB, fig. 1A), an early method that did not follow a preset mining plan and therefore resulted in very irregular designs;
- modified room and pillar (MRP, fig. 1B);
- room-and-pillar panel (RPP, fig. 1C);
- blind room and pillar (BRP, fig. 1D);
- checkerboard room and pillar (CRP, fig. 1E);
- room and pillar (RP), a classification used when the specific type of room-and-pillar mining is unknown.

Blind and checkerboard are the most common types of room-and-pillar mining used in Illinois today. The knowledge of room-and-pillar mining methods gives a trained engineer information on the nature of subsidence that may occur. A more extensive discussion of subsidence can be found in Bauer et al. (1993).

High-extraction These mining methods are subdivided into high-extraction retreat (HER, Fig 1F) and longwall (LW, Fig 1G, 1H). In these methods, much of the coal is removed within well defined areas of the mine. Subsidence of the surface above these areas occurs within weeks. Once the subsidence activity ceases, the potential for further movement over these areas is low; however, subsidence may continue for several years after mining.

High-extraction retreat mining is a form of room-and-pillar mining that extracts most of the coal. Rooms and pillars are developed in the panels, and the pillars are then systematically removed (fig. 1F).

In early (pre-1960) longwall mines, mining advanced in multiple directions from a central shaft (fig. 1G). Large pillars of coal were left around the shaft, but all coal was removed beyond these pillars. Miners placed rock and wooden props and cribs in the mined-out areas to support the mine roof. The overlying rock gradually settled onto these supports, thus producing subsidence at the surface. In post-1959 longwall mines, room-and-pillar methods have been used to develop the main entries of the mine and panel areas. Modern longwall methods extract 100 percent of the coal in the panel areas (fig. 1H).

SOURCE MAPS

Mine outlines depicted on the map are, whenever possible, based on maps made from original mine surveys. The process of compiling and digitizing the quadrangle map may produce errors of less than 200 feet in the location of mine boundaries. Larger errors of 500 feet or more are possible for mines that have incomplete or inaccurate source maps.

Because of the extreme complexity of some mine maps, detailed features of mined areas have been omitted. The digitized mine boundary includes the exterior boundary of all rooms or entries that were at least 80 feet wide or protruded 500 feet from the main mining area. Unmined areas between mines are shown if they are at least 80 feet wide; unmined blocks of coal within mines are shown if they are at least 400 feet on each side. Original source maps should be consulted when precise information on mine boundaries or interior features is needed.

The mine summary sheet lists the source maps used to determine each mine outline. The completeness of map sources is indicated on the map by a line symbol at the mine boundary. Source maps are organized in five categories.

Final mine map The mine outline was digitized from an original map made from mine surveys conducted within a few months after production ceased. The date of the map and the last reported production are listed on the summary sheet.

Not a final map The mine is currently active or the mine outline was made from a map based on mine surveys conducted more than a few months before production ceased. This implies the actual mined-out area is probably larger than the outline on the map. The mine summary sheet indicated the dates of source maps and the last reported production, as well as the approximate tonnage mined between these two dates (if the mine is abandoned). The summary sheet also lists the approximate acreage mined since the date of the map and, in some cases, indicates the area where additional mining may have taken place. This latter information is determined by locating on the map the active faces relative to probable boundaries of the mine property.

Undated map The source map was undated, so it may or may not be based on a final mine survey. When sufficient data are available, the probable acreage of the mined area is estimated from reported production, average seam thickness and a recovery rate comparable to other mines in the area. This information is listed in the summary sheet for the mine.

Incomplete map The source map did not show the entire mine. The summary sheet indicates the missing part of the mine map and the acreage of the unmapped area, which is estimated from the amount of coal known to have been produced from the mine.

Secondary source map The original mine map was not found so the outline shown was determined from secondary sources (e.g., outlines from small-scale regional maps published in other reports). The summary sheet describes the secondary sources.

POINTS AND LABELS

The locations of all known mine openings (shafts, slopes, and drifts) and surface mine tipples are plotted on the map. Tipples are areas where coal was cleaned, stockpiled, and loaded for shipping.

Only openings or tipples are plotted for mines without source maps. If the precise locations of these features are unknown, a special symbol is used to indicate the approximate location of the mine.

Each mine on the map is labeled with the names of the mine and operating company, ISGS mine index number, and years of operation (if known) if space permits. A seam designation is given on maps where more than one seam was mined. For a mine that operated under more than one name, only the most recent name is generally given. When a mine changed names or ownership shortly before closing, an earlier name is listed. All company and mine names are listed on the mine summary sheet in the directory, under the production history segment.

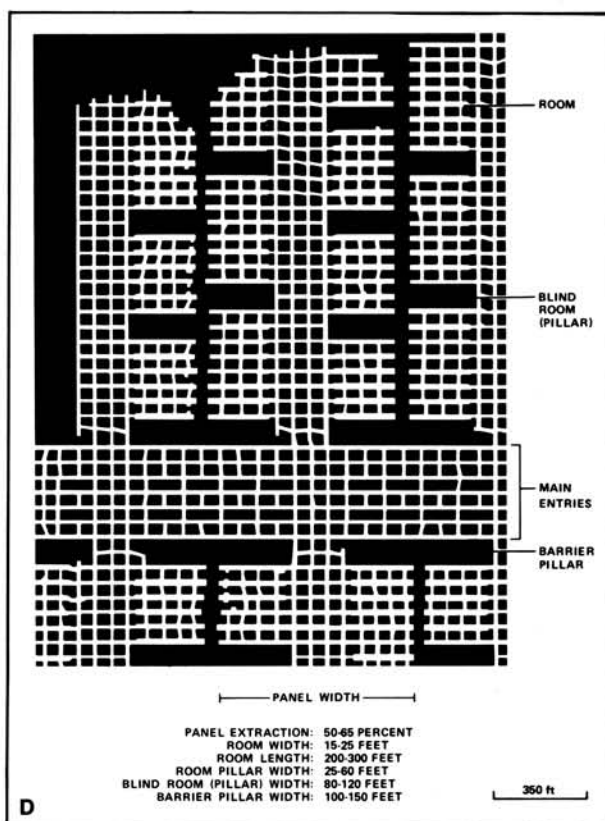
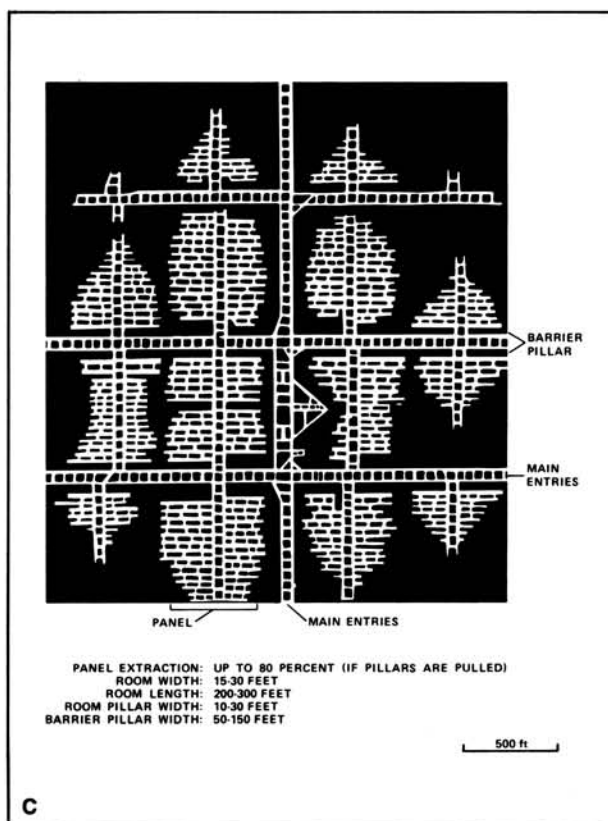
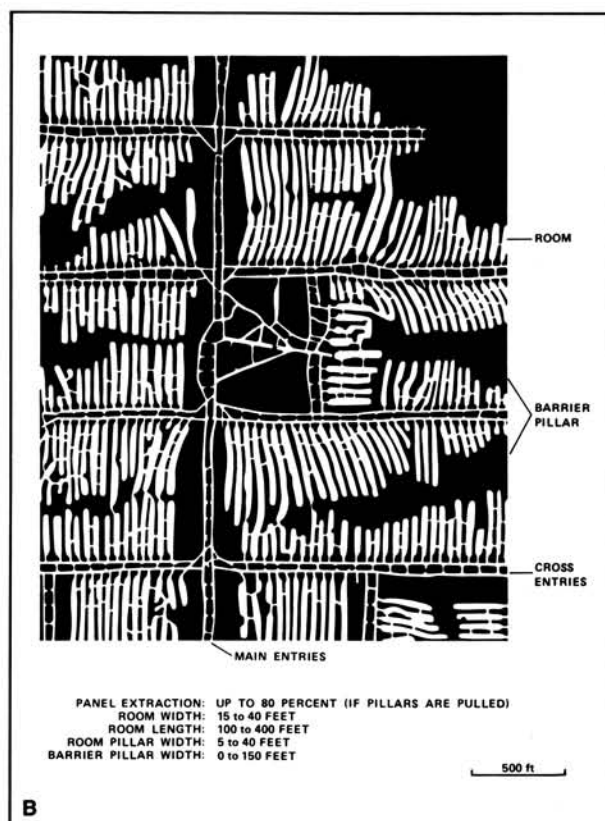
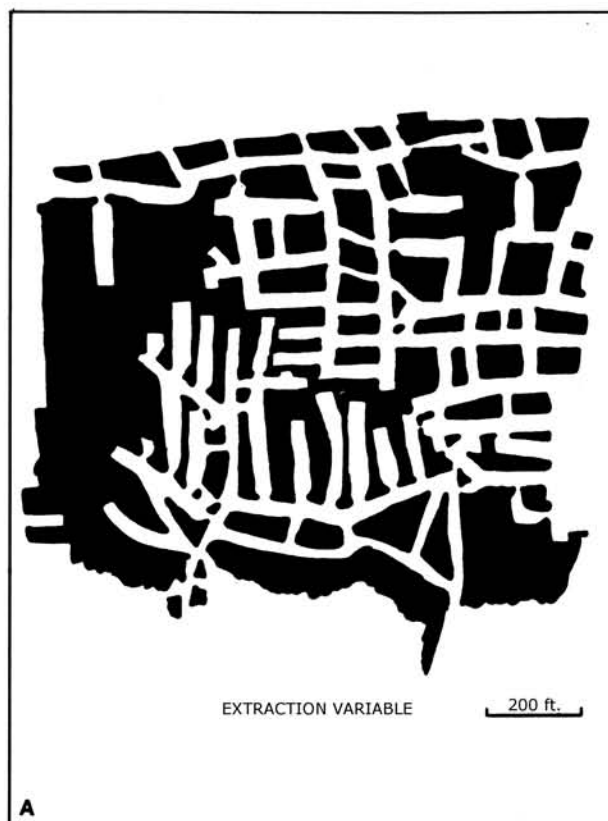


Figure 1 Mining methods: (A) room-and-pillar basic (RPB), (B) modified room and pillar (MRP), (C) room-and-pillar panel (RPP), (D) blind room and pillar (BRP).

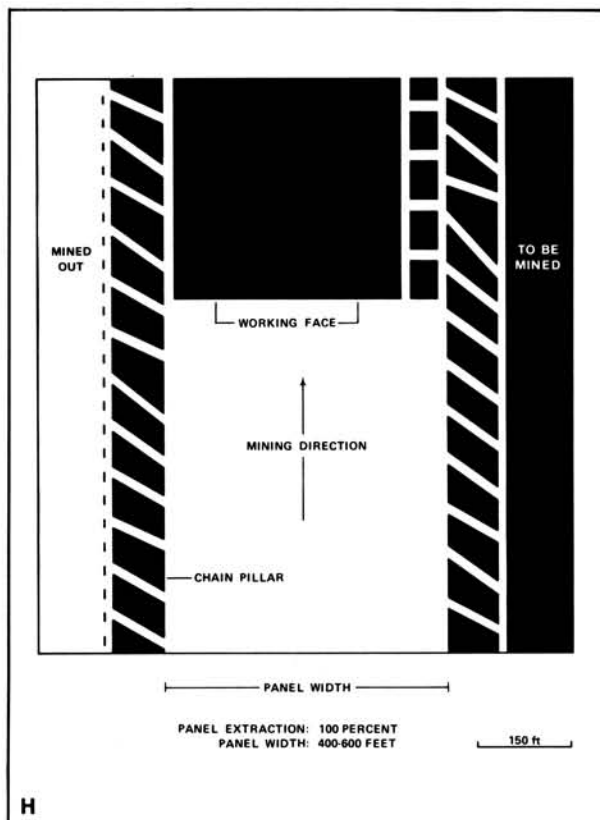
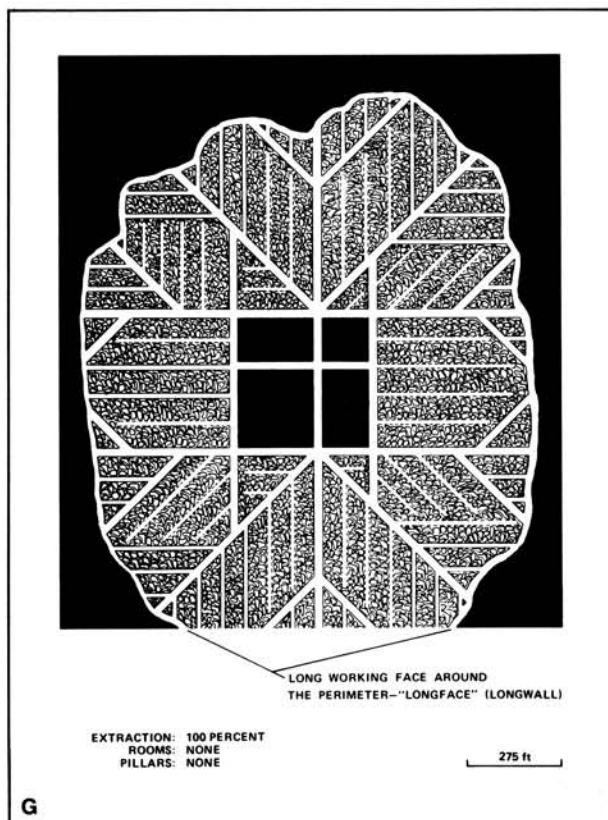
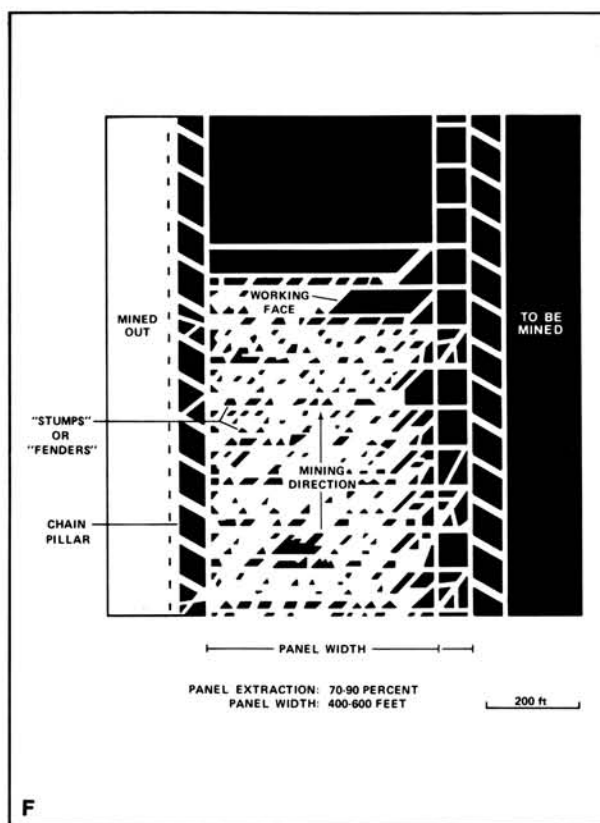
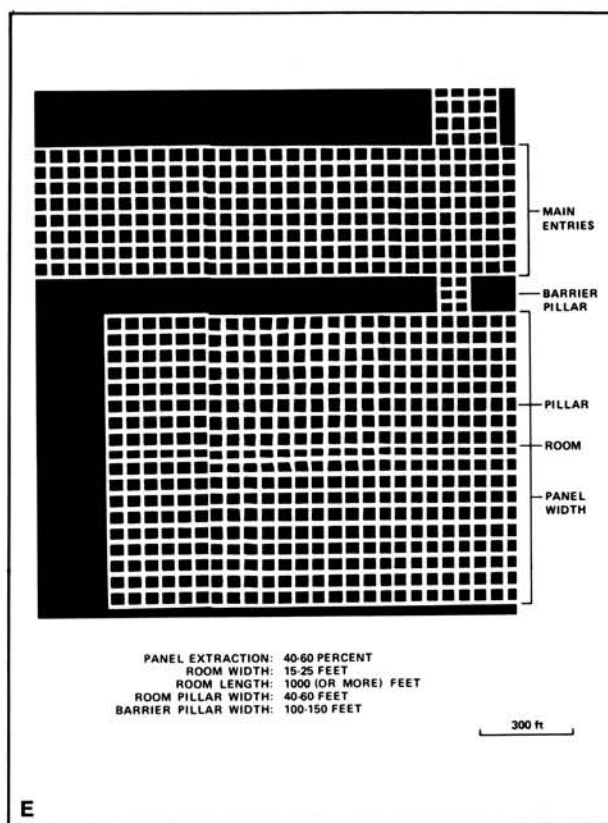


Figure 1 (cont.) Mining methods: (E) checkerboard room and pillar (CRP), (F) high extraction retreat (HER), (G) early (pre-1960) longwall, (H) post-1959 longwall

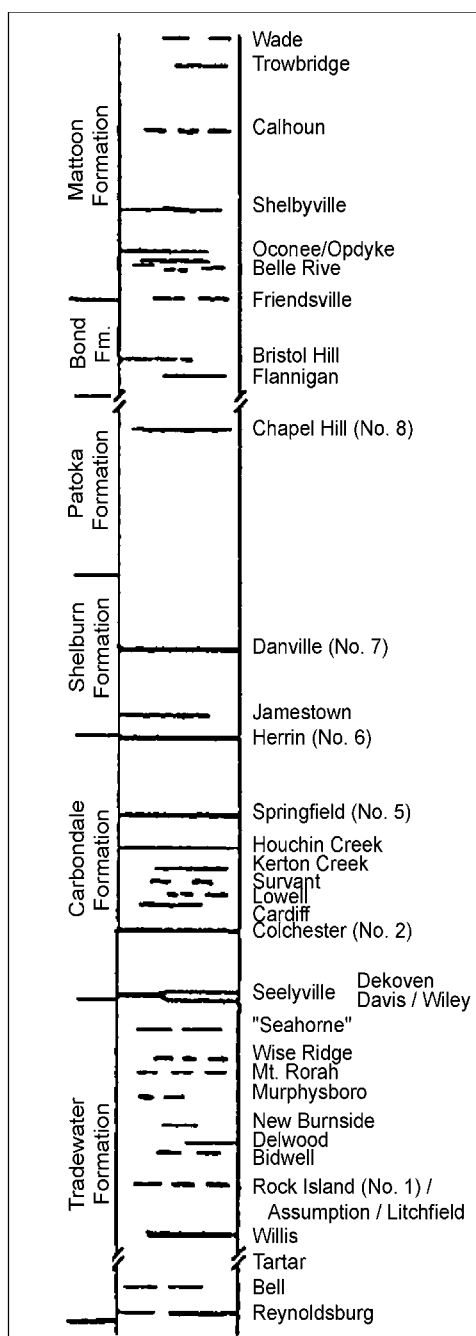


Figure 2 Generalized stratigraphic section, showing approximate vertical relations of coals in Illinois.

INTERPRETING A MINE SUMMARY SHEET

The mine summary sheet is arranged numerically by mine index number. Index numbers are shown on the map and in the mine listing. The mine summary sheet provides the following information (if available).

Company and mine name The last company or owner of the mine is used, unless no production was recorded for the last owner. In that case, the penultimate owner is listed. Mines often have no specific name; in these cases, the company name is also used as the mine name.

Type *Underground* denotes a subsurface mine in which the coal was reached through a shaft, slope, or a drift entry. *Surface* denotes a surface, open pit or strip mine.

Total mined-out acreage shown The total acreage of the mined area mapped, including any acreage mined on adjacent quadrangles, is calculated from the digitized outline of the mine. The acreage of large barrier pillars depicted on the map is excluded from the mined-out acreage. Small pillars not digitized are included in the acreage calculation. If the mine outline is not based on a final mine map, the acreage is followed by an estimate of additional acres that may have been mined. The estimate is determined from reported mine production, approximate thickness of the coal, and recovery rates calculated from nearby mines that used similar mining methods.

SHAFT, SLOPE, DRIFT OR TIPPLE LOCATIONS

Shaft, slope, drift, or tippie locations Locations of all known former entry points to underground mines or the location of coal cleaning, tippie, and shipping equipment used by the mine's facility are listed. The location is described in terms of county, township and range (Twp-Rge), section, and location within the section by quarters. NE SW NW, for instance, would describe the location in the northeast quarter of the southwest quarter of the northwest quarter. When sections are irregular in size, the quarters remain the same size and are oriented (or "registered") from the southeast corner of the section. Approximate footage from the section lines (FEL = from east line, FNL = from north line, for example) is given when that information is known; this indicates a surveyed location and is not derived from maps. Entry points are also plotted on the map and coded for the type of entry or tippie. A mine opening may have had many purposes during the life of the mine. Old hoist shafts are often later used for air and escape shafts; this information is included in the directory when known. The tippie for underground mines was generally located near the main shaft or slope. At surface mines, coal was sometimes hauled to a central tippie several miles from the mine pit.

GEOLOGY

Seam(s) mined The name of the coal seam(s) mined is listed, if known. If multiple seams were mined, they are all listed, although the mined-out area for each seam may be shown on separate maps. Figure 2 shows the stratigraphic section of the coal-bearing interval in Illinois, and the vertical relations among the coals.

Depth The depth to the top of the seam in the vicinity of the shaft is listed, if known. The depth is determined from notes made by geologists who visited the mine during its operation or from drill hole data in ISGS files. Depth generally varies little over the extent of a mine; however, reported depths for an individual mine may vary. Depth for surface-mined coals varies, and is usually represented as a range.

Thickness The approximate thickness of the mined seam is shown, if known. Thickness also comes from notes of geologists who visited the mine during its operation or from borehole data in ISGS files. Minimum, maximum, and average thicknesses are given when this information is available.

Mining method The principal mining method used at the mine (figs. 1A-H) is listed. See the mining methods section at the beginning of this directory for a discussion of this parameter.

Geologic problems reported Any known geologic problems, such as faults, water seepage, floor heaving, and unstable roof, encountered in the mine are reported. This information is from notes made by ISGS geologists who visited the mine, or from reports by mine inspectors published by the Illinois Department of Mines and Minerals, or from the source map(s). Geologic problems are not reported for active mines.

PRODUCTION HISTORY

Production history Tons of coal produced from the mine by each mine owner are totaled. When the source map used for the mine outline is not a final mine map, the tonnage produced since the date of the map is identified. For mines that extend into adjacent quadrangles, the tonnage reported includes areas mined in adjacent quadrangles.

SOURCE OF DATA

Source map This section lists information about the map(s) used to compile the mine outline and the locations of tipples and mine openings. In some cases more than one source map was used. For example, a map drawn before the mine closed may provide better information on original areas of the mine than a later map. When more than one map was used, the bibliography section explains what information was taken from each source.

Date The date of the most recent mine survey listed on the source map is reported.

Original scale The original scale of the source map is listed. Many maps are photo-reductions and are no longer at their original scale. The original scale gives some indication of the level of detail of the mine outline and the accuracy of the mine boundary relative to surface features. Generally, the larger the scale, the greater the accuracy and detail of the mine map. Mine outlines taken from source maps at scales smaller than 1:24,000 may be highly generalized and may well be inaccurately located with respect to surface features.

Digitized scale The scale of the digitized map is reported. The scale may be different from that of the original source map. In many cases the digitized map was made from a photo-reduction of the original source map, or the source map was not in a condition suitable for digitizing and the mine boundaries were transferred to another base map.

Map type Source maps are classified into five categories to indicate the probable completeness of the map. See discussion of source maps in the previous section.

Annotated bibliography Sources that provide information about the mine are listed, with the data taken from each source. Some commonly used sources are described below. Full bibliographic references are given for all other sources. Unless otherwise noted, all sources are available for public inspection at the ISGS.

Coal Reports Published since 1881, these reports contain tabular data on mine ownership, production, employment, and accidents. Some volumes include short descriptions made by mine inspectors of physical features and conditions in selected mines.

Directory of Illinois Coal Mines This source is a compilation of basic data about Illinois coal mines, originally gathered by ISGS staff in the early 1950s. Sources used for this directory are undocumented, but they are primarily Illinois Department of Mines and Minerals annual reports, ISGS mine notes, and coal company officials.

ENR Document 85/01, Guither, H. D., J. K. Hines, and R. A. Bauer, 1985 The Economic Effect of Underground Mining Upon Land Used for Illinois Agriculture: Illinois Department of Energy and Natural Resources Document 85/01, 185 p.

Microfilm map The U.S. Bureau of Mines maintains a microfilm archive of mine maps. A microfilm file for Illinois is available for public viewing at the ISGS.

Mine notes ISGS geologists have visited mines or contacted mine officials throughout the state since the early 1900s. Notes made during these visits range from brief descriptions of the mine location to long narratives (including sketches) of mining conditions and geology.

Federal Land Bank of St. Louis, Preliminary Reports on Subsidence Investigations Mining engineers working for the Federal Land Bank of St. Louis mapped areas of subsidence due to coal mining in the early 1930s. These reports often include county maps of mine properties with mined-out areas including shaft locations, as well as subsidence areas.

REFERENCES

Bauer, R. A., B. A. Trent, and P. B. Dumontelle, 1993, Mine Subsidence in Illinois: Facts for the Homeowner Considering Insurance, Illinois State Geological Survey, Environmental Geology Note 144, 16p.

Guither, H. D., J. K. Hines, and R. A. Bauer, 1985, The Economic Effects of Underground Mining Upon Land Used for Illinois Agriculture, Illinois Department of Energy and Natural Resources Document 85/01, 185p.

PART II DIRECTORY OF MINES IN THE ST. DAVID QUADRANGLE

MINE SUMMARY SHEETS

A summary sheet on the geology and production history of each mine in the St. David Quadrangle is provided. These summary sheets are arranged numerically by mine index number. Consult Part I for a complete explanation of the data listed in the summary sheet.

Mine Index 31

Saline County Coal Corporation, Saline County No. 22 Mine

Type: Underground Total mined-out acreage shown: 1,197

SHAFT, SLOPE, DRIFT or TIPPLe LOCATIONS

Type	County	Township-Range	Section	Quarters-Footage
Slope	Fulton	6N 4E	16	NE SE SW
Air shaft	Fulton	6N 4E	16	NE SE SW
Air shaft	Fulton	6N 4E	16	SE SW SW
Shaft	Fulton	6N 4E	17	W ½ SE NE
Drift	Fulton	6N 4E	18	NW SE NE
Air shaft	Fulton	6N 4E	17	NE NW SE
Air shaft	Fulton	6N 4E	18	NE NE NE *
Air shaft	Fulton	6N 4E	7	NE SE NE
Air shaft	Fulton	6N 4E	9	SE SW SW *

* Not shown on the accompanying map due to later surface mining

GEOLOGY

Seam(s) Mined	Depth (ft)	Thickness (ft)			Mining Method
		Min	Max	Avg	
Springfield	45-85	4.67	5.3	5.0	RPP

Geologic Problems Reported:

PRODUCTION HISTORY

Company	Mine Name	Years	Production (tons)
Big Creek Coal Company	Big Creek No. 2	1904-1919	3,522,335
Big Creek Coal Company	Big Creek No. 22	1919-1923	647,125 **
Saline County Coal Corporation	Saline County No. 22	1923-1928	<u>818,547</u>
			4,988,007

** The Coal Report did not list production in 1922 for mines producing less than 10,000 tons

Last reported production: March 1928

SOURCES OF DATA

Source Map	Date	Original Scale	Digitized Scale	Map Type
Microfilm, document 351682	4-1-1928	1:1200	1:2483	Final
Company, 4103.F8 i5.1-46	4-1-1924	1:1200	1:1200	Not final ***
Microfilm, document 351471	2-1911	1:1200	1:2317	Not final ***
Microfilm, document 351464	5-10-1917	1:1200	1:2069	Not final ***
Company, 4013.F8 i5.1-47	3-4-1925	1:4873	1:4873	Not final ***

*** The mined area shown on the accompanying map is the approximate size expected for the reported production.

This suggests that the mine outline is complete.

Annotated Bibliography (data source, brief description of information)

Coal Reports - Production, ownership, years of operation.

Mine notes (Fulton County) - Mine type, mine location, seam, depth, thickness.

Microfilm map, document 351682, reel 03137, frame 47 - Mine outline (northwest), mining method.

Company map, ISGS map library, 4103.F8 i5.1-46, sheets 1-6 - Mine outline (west), shaft, slope and drift locations, geologic problems.

Microfilm map, document 351471, reel 03136, frames 215 & 216 - Mine outline (south central).

Microfilm map, document 351464, reel 03136, frames 202-204 - Mine outline (southeastern).

Company map, ISGS map library 4103.F8 i5.1-47 - Mine outline (south central and southeast), shaft locations.

Mine Index 117**Cripple Creek Coal Company, Cripple Creek No. 1 Mine**

Type: Underground Total mined-out acreage shown: 485 Portions were later surface mined by United Electric No. 9 Mine (mine index 738). The area shown on the accompanying map includes both Cripple Creek No. 1 Mine and Cripple Creek No. 2 Mine (mine index 2142). Cripple Creek No. 2 Mine's production was reported with Cripple Creek No. 1.

SHAFT, SLOPE, DRIFT or TIPPLE LOCATIONS

Type	County	Township-Range	Section	Quarters-Footage
Drift	Fulton	6N 3E	24	SE NW SW
Drift	Fulton	6N 3E	24	NE SW SW
Drift	Fulton	6N 3E	24	SE NW SW
Drift	Fulton	6N 3E	24	SE NW SW
Air shaft	Fulton	6N 3E	24	SW NW SW

GEOLOGY

Seam(s) Mined	Depth (ft)	Thickness (ft)			Mining Method
		Min	Max	Avg	
Springfield		4.5	5.5	4.8	MRP

Geologic Problems Reported: The roof varied between limestone caprock that was up to 12 feet thick, and gray shale where the limestone was eroded. The black shale, which was rarely present under the limestone, ranged from 6 to 24 inches thick, and was under 12 to 24 inches of clod, a medium gray, marly clay. The coal was softer where the gray shale made up the roof, and the gray shale roof was difficult to keep up. Horsebacks were noted, some up to 2.5 feet wide and filled with a soft, medium gray clay. The horsebacks cut through at an angle near vertical to a 45-degree angle, fingered out into the coal on both sides of the horseback, and were accompanied by a slight coal displacement and the resultant slips. The coal contained hills and valleys, with the worst having a 10% grade that required two mules to pull one car. The coal was thinner on the hill portion and thicker in the valleys. Charcoal was present in lenses and bands. Some clay partings were seen in the coal. The coal was present as three benches, but the charcoal layer separating the benches was rarely present and was therefore no advantage when shooting off the solid. The upper bench had pyrite in lenses, generally 1 inch by 3 inches. The pyrite in the middle coal was present as facings. The underclay was 6 to 8 feet thick, and heaved only in abandoned rooms.

PRODUCTION HISTORY

Company	Mine Name	Years	Production (tons)
Cripple Creek Coal Company	Cripple Creek No. 1	1917-1926	<u>2,328,203</u> 2,328,203

Last reported production: March 1926

SOURCES OF DATA

Source Map	Date	Original Scale	Digitized Scale	Map Type
Microfilm, document 351614	4-1-1926	1:2400	1:4634	Final

Annotated Bibliography (data source, brief description of information)

Coal Reports - Production, ownership, years of operation.
 Directory of Illinois Coal Mines (Fulton County) - Mine names, mine index, ownership, years of operation.
 Mine notes (Fulton County) - Mine type, seam, depth, thickness, geologic problems.
 Microfilm map, document 351614, reel 03136, frame 418 - Drift & shaft locations, mine outline, mining method.

Mine Index 674**Truax Traer Coal Company, Little Sister Mine**

Type: Surface Total mined-out acreage shown: 4,580 The boundary between the Little Sister Mine and the United Electric No. 9 Mine (mine index 738) cannot be discerned.

SHAFT, SLOPE, DRIFT or TIPPLE LOCATIONS

Type	County	Township-Range	Section	Quarters-Footage
Tipple	Fulton	6N 4E	21	NE NE SW

GEOLOGY

Seam(s) Mined	Depth (ft)	Thickness (ft)			Mining Method
		Min	Max	Avg	
Springfield	35-90			4.67	Surface

Geologic Problems Reported:

PRODUCTION HISTORY

Company	Mine Name	Years	Production (tons)
Central States Colliery	Little Sister	1935-1944	4,358,512
Little Sister Coal Corporation	Little Sister	1944-1965	16,268,158
Truax Traer Coal Company	Little Sister	1966-1967	1,901,201
			22,527,871

Last reported production: November 1967

SOURCES OF DATA

Source Map	Date	Original Scale	Digitized Scale	Map Type
Company, 4103.F8 i5.1-36	5-10-1950	1:4800	1:4800	Not final
Company, 1-32-60	7-1-1942	1:4800	1:4800	Not final
Company, 6-253d	1959	1:62500	1:62500	Not final
USGS digital ortho-photo quadrangle	1998-1999	1:12000	1:12000	Secondary source

Annotated Bibliography (data source, brief description of information)

Coal Reports - Production, ownership, years of operation, depth.
 Directory of Illinois Coal Mines (Fulton County) - Mine names, mine index, ownership, years of operation.
 Mine notes (Fulton County) - Mine type, mine location, seam, thickness.
 Company map, ISGS map library, 4103.F8 i5.1-36 - Mine outline (southern portion of mine).
 Company map, Coal Section files, 1-32-60 - Mine outline (28, 29, 33-T6N-R4E).
 Company map, Coal Section files, 6-253d - Mine outline (northeastern).
 USGS digital ortho-photo quadrangle map, St. David Quadrangle - General mine outline.

Mine Index 705**Freeman United Coal Mining Company, Buckheart No. 17 Mine**

Type: Surface Total mined-out acreage shown: 3,898

SHAFT, SLOPE, DRIFT or TIPPLE LOCATIONS

Type	County	Township-Range	Section	Quarters-Footage
Tipple	Fulton	6N 4E	24	NE NE SW

GEOLOGY

Seam(s) Mined	Depth (ft)	Thickness (ft)			Mining Method
		Min	Max	Avg	
Springfield	45-120			4.5-5.0	Surface

Geologic Problems Reported: In some areas, the Pleistocene deposits were within a few feet of the coal, with black shale below, immediately above the coal. Coal balls were common, many over 12 inches long. The coal had no prominent mineral bands, but calcite and kaolinite were abundant on vertical fractures throughout the seam. Pyrite was occasionally present on vertical fractures about 18 inches below the top of the seam in a band that ranged from 12 to 20 inches thick. A horseback was noted in the pit 2 miles south of the tipple. This part of the mine also had more sphalerite than the pit 5 miles north of the tipple.

PRODUCTION HISTORY

Company	Mine Name	Years	Production (tons)
United Electric Coal Company	Buckheart No. 17	1937-1975	46,597,416
Freeman United Coal Mining Company	Buckheart No. 17	1976-1984	<u>7,352,220</u>
			53,949,636

Last reported production: August 1984

SOURCES OF DATA

Source Map	Date	Original Scale	Digitized Scale	Map Type
Company, 1-32-32	6-30-1952	1:4800	1:4800	Not final
Company, 1-29-11	12-31-1968	1:19200	1:19200	Not final

Annotated Bibliography (data source, brief description of information)

Coal Reports - Production, ownership, years of operation, depth, thickness.
 Directory of Illinois Coal Mines (Fulton County) - Mine names, mine index, ownership, years of operation.
 Mine notes (Fulton County) - Mine type, mine location, seam, geologic problems.
 Company map, Coal Section files, 1-32-32 - Tipple, mine outline, mining method.
 Company map, Coal Section files, 1-29-11 - Mine outline (northern pit, extension of SW pits).

Mine Index 738**United Electric Coal Mining Company, United Electric No. 9 or Cuba Mine**

Type: Surface Total mined-out acreage shown: 7,225 in an outline that includes areas mined by Little Sister Mine (mine index 674), United Electric No. 9 Mine (mine index 738), and Triple S Mine (mine index 2148). Production indicates United Electric No. 9 Mine would have mined approximately 4,550 acres.

SHAFT, SLOPE, DRIFT or TIPPLE LOCATIONS

Type	County	Township-Range	Section	Quarters-Footage
Pit or tipple	Fulton	6N 3E	28	SW SW SW

GEOLOGY

Seam(s) Mined	Depth (ft)	Thickness (ft)			Mining Method
		Min	Max	Avg	
Springfield	47-73			4.75-5.6	Surface

Geologic Problems Reported: Horsebacks were common and the clay-rich contents of the horseback-rich areas were separated from the loaded coal in the pit. Rolls were common, as were coal balls in the roof material. The coal contained numerous shale partings, bone coal bands, and pyrite lenses, usually less than 1 inch thick.

PRODUCTION HISTORY

Company	Mine Name	Years	Production (tons)
United Electric Coal Company	Cuba, or United Electric No. 9	1923-1971	<u>31,626,286</u> 31,626,286

Last reported production: May 1971

SOURCES OF DATA

Source Map	Date	Original Scale	Digitized Scale	Map Type
Coal Section files, 1-29-9	12-31-1968	1:19200	1:19200	Not final
USGS topographic map	1947, PR 1979	1:24000	1:24000	Secondary source

Annotated Bibliography (data source, brief description of information)

Coal Reports - Production, ownership, years of operation.

Directory of Illinois Coal Mines (Fulton County) - Mine names, mine index, ownership, years of operation.

Mine notes (Fulton County) - Mine type, mine location, seam, depth, thickness, geologic problems.

Company map, Coal Section files, 1-29-9 - Mine outline, mining method.

USGS topographic map, Lewistown Quadrangle, 1947, photorevised 1979 - Mine outline.

Mine Index 927**Big Ten Coal Company, Bryant Mine**

Type: Surface Total mined-out acreage shown: 1,030 Reported production indicates approximately 600 acres were mined. The outline shown on the accompanying map may include mining by other operators.

SHAFT, SLOPE, DRIFT or TIPPLE LOCATIONS

Type	County	Township-Range	Section	Quarters-Footage
Tipple	Fulton	6N 3E	35	NE SW NE

GEOLOGY

Seam(s) Mined	Depth (ft)	Thickness (ft)			Mining Method
		Min	Max	Avg	
Springfield	25-55			4.5-5.2	Surface

Geologic Problems Reported:

PRODUCTION HISTORY

Company	Mine Name	Years	Production (tons)
F. C. Morgan Coal Company	Morgan Bryant	1942-1954	2,840,394
Big Ten Coal Company	Bryant	1955-1961	966,265 *
			3,806,659

* The Coal Report listed the mine abandoned as of February 1962, but did not list the 1962 production. The mine may have been idle in 1962 before abandonment.

Last reported production: February 1962

SOURCES OF DATA

Source Map	Date	Original Scale	Digitized Scale	Map Type
ISGS map library, 4103.F8 i5.1-67	Undated	1:62500	1:62500	Secondary source

Annotated Bibliography (data source, brief description of information)

Coal Reports - Production, ownership, years of operation.

Directory of Illinois Coal Mines (Fulton County) - Mine names, mine index, ownership, years of operation.

Mine notes (Fulton County) - Mine type, mine location, seam, depth, thickness.

ISGS map library, 4103.F8 i5.1-67, compilation work map of Coal Section personnel - Mine outline.

Mine Index 2115
Buckheart Creek Coal Company, Buckheart Creek

Type: Underground Total mined-out acreage shown: 32

SHAFT, SLOPE, DRIFT or TIPPLE LOCATIONS

Type	County	Township-Range	Section	Quarters-Footage
Main slope	Fulton	5N 4E	13	NE NW
Air shaft	Fulton	5N 4E	13	NE NW
Drift	Fulton	5N 4E	13	NE NW

GEOLOGY

Seam(s) Mined	Depth (ft)	Thickness (ft)			Mining Method
		Min	Max	Avg	
Springfield	13.5			5.5	MRP

Geologic Problems Reported: The source map showed falls in all the northernmost rooms, the area closest to the Whitehead Mine (mine index 2116). Bad top was noted in SE SE 12-T5N-R4E, and a "dirt fault" was shown, indicating a lack of solid rock roof (rather than a structural fault).

PRODUCTION HISTORY

Company	Mine Name	Years	Production (tons)
Buckheart Coal Company	Buckheart	1932-1936 *	13,390
Buckheart Creek Coal Company	Buckheart Creek	1937-1945	<u>175,217</u> 188,607

* Idle 1936

Last reported production: 1945

SOURCES OF DATA

Source Map	Date	Original Scale	Digitized Scale	Map Type
Microfilm, document 351593	5-15-1945	1:1200	1:2152	Final

Annotated Bibliography (data source, brief description of information)

Coal Reports - Production, ownership, years of operation.
 Directory of Illinois Coal Mines (Fulton County) - Mine names, mine index, ownership, years of operation.
 Mine notes (Fulton County) - Mine type, slope location, seam, depth, thickness.
 Microfilm map, document 351593, reel 03136, frame 391 - Slope, drift & shaft locations, mine outline, mining method, geologic problems.

Mine Index 2116
Liverpool Coal Company, Liverpool Mine

Type: Underground Total mined-out acreage shown: Less than 1

SHAFT, SLOPE, DRIFT or TIPPLE LOCATIONS

Type	County	Township-Range	Section	Quarters-Footage
Main drift	Fulton	5N 4E	12	NE NE SW
Air shaft	Fulton	5N 4E	12	NE NE SW

GEOLOGY

Seam(s) Mined	Depth (ft)	Thickness (ft)			Mining Method
		Min	Max	Avg	
Springfield					RP

Geologic Problems Reported:

PRODUCTION HISTORY

Company	Mine Name	Years	Production (tons)
Logan Whitehead	Whitehead	1934-1937	5,556
Liverpool Coal Company	Liverpool	1937-1938	<u>2,461</u> 8,017

Last reported production: 1938

SOURCES OF DATA

Source Map	Date	Original Scale	Digitized Scale	Map Type
Microfilm, document 351593	5-15-1945	1:1200	1:2152	Secondary source

Annotated Bibliography (data source, brief description of information)

Coal Reports - Production, ownership, years of operation.

Directory of Illinois Coal Mines (Fulton County) - Mine names, mine index, ownership, years of operation.

Mine notes (Fulton County) - Mine type, drift location, seam, depth, thickness.

Microfilm map, document 351593, reel 03136, frame 391, map of Buckheart Creek Mine (mine index 2115) - Drift & shaft locations, mine outline, mining method.

Mine Index 2118
Romine Coal Company, Romine Mine

Type: Surface Total mined-out acreage shown: None; production indicates less than 1 acre was mined.

SHAFT, SLOPE, DRIFT or TIPPLE LOCATIONS

Type	County	Township-Range	Section	Quarters-Footage
Pit or tipple	Fulton	5N 4E	14	NW

GEOLOGY

Seam(s) Mined	Depth (ft)	Thickness (ft)			Mining Method
		Min	Max	Avg	
Springfield	30			5.0	Surface

Geologic Problems Reported:

PRODUCTION HISTORY

Company	Mine Name	Years	Production (tons)
Romine Coal Company	Romine	1957-1957	<u>235</u> 235

Last reported production: 1957

SOURCES OF DATA

Source Map	Date	Original Scale	Digitized Scale	Map Type
Mine notes	Undated	1:62500	1:62500	Secondary source

Annotated Bibliography (data source, brief description of information)

Coal Reports - Production, ownership, years of operation.
 Directory of Illinois Coal Mines (Fulton County) - Mine names, mine index, ownership, years of operation.
 Mine notes (Fulton County) - Mine type, mine location, seam, depth, thickness.

Mine Index 2120
Calhoun & Astle Coal Company, Calhoun & Astle Mine

Type: Underground Total mined-out acreage shown: 35

SHAFT, SLOPE, DRIFT or TIPPLE LOCATIONS

Type	County	Township-Range	Section	Quarters-Footage
Main slope	Fulton	5N 4E	13	NW NW NE
Air slope	Fulton	5N 4E	13	NW NW NE

GEOLOGY

Seam(s) Mined	Depth (ft)	Thickness (ft)			Mining Method
		Min	Max	Avg	
Springfield	35			6.0	MRP

Geologic Problems Reported:

PRODUCTION HISTORY

Company	Mine Name	Years	Production (tons)
Bennett & Long	Bennett & Long	1920-1925	4,597 *
Straley & Bennett	Straley & Bennett	1925-1927	12,433
Bennett & Wilcoxon	Bennett & Wilcoxon	1928-1928	4,038
Bennett Coal Company	Bennett No. 1	1928-1932	17,483 **
Andrew Bennett	Bennett	1933-1944	113,350
Calhoun & Astle Coal Company	Calhoun & Astle	1944-1947	<u>19,137</u>
			171,038

* Production was not reported in 1922 for mines producing less than 10,000 tons.

** Production was not reported in 1932 for mines producing less than 1,000 tons.

Last reported production: 1947

SOURCES OF DATA

Source Map	Date	Original Scale	Digitized Scale	Map Type
Microfilm, document 351686	8-1-1947	1:1200	1:1821	Final

Annotated Bibliography (data source, brief description of information)

Coal Reports - Production, ownership, years of operation.

Directory of Illinois Coal Mines (Fulton County) - Mine names, mine index, ownership, years of operation.

Mine notes (Fulton County) - Mine type, slope location, seam, depth, thickness.

Microfilm map, document 351686, reel 03137, frame 51 - Slope locations, mine outline, mining method.

Mine Index 2142**Cripple Creek Coal Company, Cripple Creek No. 2 Mine**

Type: Underground Total mined-out acreage shown: 485 with Cripple Creek No. 1 Mine (mine index 117). Portions were later surface-mined by United Electric No. 9 Mine (mine index 738) and Little Sister Mine (mine index 674).

SHAFT, SLOPE, DRIFT or TIPPLE LOCATIONS

Type	County	Township-Range	Section	Quarters-Footage
Main slope	Fulton	6N 3E	24	SE NW SW
Slope	Fulton	6N 3E	24	NW SE SW
Slope	Fulton	6N 3E	24	NE SW SW
Slope	Fulton	6N 3E	24	NE SW SW
Slope	Fulton	6N 3E	24	SE SW NW
Slope	Fulton	6N 3E	24	NE NW SW

GEOLOGY

Seam(s) Mined	Depth (ft)	Thickness (ft)			Mining Method
		Min	Max	Avg	
Springfield					MRP

Geologic Problems Reported:

PRODUCTION HISTORY

Company	Mine Name	Years	Production (tons)
Cripple Creek Coal Company	Cripple Creek No. 2	1917-1926	None *

* Production was not reported separately from Cripple Creek No. 1 Mine (mine index 117).

Last reported production: 1926

SOURCES OF DATA

Source Map	Date	Original Scale	Digitized Scale	Map Type
Microfilm, document 351614	5-20-1925	1:2400	1:4634	Not final

Annotated Bibliography (data source, brief description of information)

Coal Reports - Production, ownership, years of operation.

Directory of Illinois Coal Mines (Fulton County) - Mine names, mine index, ownership, years of operation.

Mine notes (Fulton County) - Mine type, slope location, seam, depth, thickness.

Microfilm map, document 351614, reel 03136, frame 419 - Slope locations, mine outline, mining method.

Mine Index 2143
Snowden Ford, Ford Mine

Type: Underground Total mined-out acreage shown: None; production indicates less than 1 acre was mined. The Ford Mine is not shown on the accompanying map due to later surface mining by the Bryant Mine (mine index 927).

SHAFT, SLOPE, DRIFT or TIPPLE LOCATIONS

Type	County	Township-Range	Section	Quarters-Footage
Main drift	Fulton	6N 3E	25	SE SW SE

GEOLOGY

Seam(s) Mined	Depth (ft)	Thickness (ft)			Mining Method
		Min	Max	Avg	
Springfield	40			5.0	RP

Geologic Problems Reported:

PRODUCTION HISTORY

Company	Mine Name	Years	Production (tons)
Cob Brooks	Brooks	1929-1933	530 *
E. H. Brooks	Brooks	1934-1934	200
Billings & Brook	Billings & Brook	1935-1935	49
Arthur Billings	Billings	1936-1937 **	104
Joe Zaborac	Zaborac No. 2	1938-1939	1,819
Snowden Ford	Ford	1939-1940	159
			2,861

* Production was not reported from 1930 to 1933 for mines producing less than 1,000 tons per year.

** Idle 1937

Last reported production: 1940

SOURCES OF DATA

Source Map	Date	Original Scale	Digitized Scale	Map Type
Mine notes	Undated	1:62500	1:62500	Secondary source

Annotated Bibliography (data source, brief description of information)

Coal Reports - Production, ownership, years of operation.

Directory of Illinois Coal Mines (Fulton County) - Mine names, mine index, ownership, years of operation.

Mine notes (Fulton County) - Mine type, drift location, seam, depth, thickness, mining method.

Mine Index 2144
Elmer Simpson, Simpson Mine

Type: Underground Total mined-out acreage shown: None; production indicates less than 1 acre was mined. The Simpson Mine is not shown on the accompanying map due to later surface mining by the Bryant Mine (mine index 927).

SHAFT, SLOPE, DRIFT or TIPPLE LOCATIONS

Type	County	Township-Range	Section	Quarters-Footage
Main drift	Fulton	6N 3E	25	NE SW SE

GEOLOGY

Seam(s) Mined	Depth (ft)	Thickness (ft)			Mining Method
		Min	Max	Avg	
Springfield				4.5	RPP

Geologic Problems Reported:

PRODUCTION HISTORY

Company	Mine Name	Years	Production (tons)
Elmer Simpson	Simpson	1934-1938	<u>3,606</u> 3,606

Last reported production: 1938

SOURCES OF DATA

Source Map	Date	Original Scale	Digitized Scale	Map Type
Mine notes	Undated	1:62500	1:62500	Secondary source

Annotated Bibliography (data source, brief description of information)

Coal Reports - Production, ownership, years of operation.

Directory of Illinois Coal Mines (Fulton County) - Mine names, mine index, ownership, years of operation.

Mine notes (Fulton County) - Drift location.

Mine Inspector's reports, courtesy of Joe Pelc, IDNR - Mine type, seam, thickness, mining method.

Mine Index 2145
Frank Strode, Strode Mine

Type: Underground Total mined-out acreage shown: None; production indicates less than 3 acres were mined. The mine is not shown on the accompanying map due to later surface mining by the Bryant Mine (mine index 927).

SHAFT, SLOPE, DRIFT or TIPPLE LOCATIONS

Type	County	Township-Range	Section	Quarters-Footage
Main drift	Fulton	6N 3E	25	NW SW SE

GEOLOGY

Seam(s) Mined	Depth (ft)	Thickness (ft)			Mining Method
		Min	Max	Avg	
Springfield	40			5.0	RP

Geologic Problems Reported:

PRODUCTION HISTORY

Company	Mine Name	Years	Production (tons)
Hare Coal Company *	Hare	1931-1936	4,670 *
Joe Zaborac	Zaborac No. 1	1937-1939	4,822
J. F. Strode & Company	Strode	1939-1939	276
Frank Strode	Strode	1940-1940	704
			<u>10,472</u>

* According to the Department of Mines & Minerals, the mine was sunk in 1931, and was operated by Perry Yocum & Sons. Production was not listed for mines producing less than 1,000 tons per year in the Coal Reports from 1930 through 1934. Idle 1935.

Last reported production: 1940

SOURCES OF DATA

Source Map	Date	Original Scale	Digitized Scale	Map Type
Mine notes	circa 1938	(text only) **	1:24000	Secondary source
Federal Land Bank Report	4-1934	1:124800	1:124800	Secondary source

** The mine location was plotted on a 1:24000 USGS topographic map from the mine location description and digitized.

Annotated Bibliography (data source, brief description of information)

Coal Reports - Production, ownership, years of operation.
 Directory of Illinois Coal Mines (Fulton County) - Mine names, mine index, ownership, years of operation.
 Mine notes (Fulton County) - Mine type, drift location, seam, depth, thickness, mining method.
 Mine Inspector's reports, courtesy of Joe Pelc, IDNR - Mine history.
 Federal Land Bank Report (Fulton County) - Drift location, mine outline.

Mine Index 2162
Sherman Ketchum, Ketchum Mine

Type: Underground Total mined-out acreage shown: None; production indicates less than 1 acre was mined.

SHAFT, SLOPE, DRIFT or TIPPLE LOCATIONS

Type	County	Township-Range	Section	Quarters-Footage
Main drift	Fulton	6N 4E	20	SW SE SE

GEOLOGY

Seam(s) Mined	Depth (ft)	Thickness (ft)			Mining Method
		Min	Max	Avg	
Springfield	50			5.0	RP

Geologic Problems Reported:

PRODUCTION HISTORY

Company	Mine Name	Years	Production (tons)
Sherman Ketchum	Ketchum	1940-1940	<u>563</u> 563

Last reported production: 1940

SOURCES OF DATA

Source Map	Date	Original Scale	Digitized Scale	Map Type
Mine notes	Undated	(text only)	1:24000 *	Secondary source

* The mine location was plotted on a 1:24000 USGS topographic map from the mine location description and digitized. The mine is located near a shaft symbol on the 1934 Federal Land Bank Report map. Previous mining may have taken place nearby.

Annotated Bibliography (data source, brief description of information)

Coal Reports - Production, ownership, years of operation.
 Directory of Illinois Coal Mines (Fulton County) - Mine names, mine index, ownership, years of operation.
 Mine notes (Fulton County) - Mine type, drift location, seam, depth, thickness.
 Mine Inspector's reports, courtesy of Joe Pelc, IDNR - Mining method.

Mine Index 2163**A. E. Planque, Planque Mine**

Type: Underground Total mined-out acreage shown: None; production indicates approximately 1 acre was mined. Not shown on accompanying map due to later surface mining by St. David Mine (mine index 6627).

SHAFT, SLOPE, DRIFT or TIPPLE LOCATIONS

Type	County	Township-Range	Section	Quarters-Footage
Main drift	Fulton	6N 4E	20	NE SW NE

GEOLOGY

Seam(s) Mined	Depth (ft)	Thickness (ft)			Mining Method
		Min	Max	Avg	
Springfield				4.5	RP

Geologic Problems Reported:

PRODUCTION HISTORY

Company	Mine Name	Years	Production (tons)
A. E. Planque	Planque	1934-1937	<u>4,066</u> 4,066

Last reported production: 1937

SOURCES OF DATA

Source Map	Date	Original Scale	Digitized Scale	Map Type
Mine Inspector's report	1937	1:48000	1:48000	Secondary source

Annotated Bibliography (data source, brief description of information)

Coal Reports - Production, ownership, years of operation.

Directory of Illinois Coal Mines (Fulton County) - Mine names, mine index, ownership, years of operation.

Mine notes (Fulton County) - Shaft location.

Mine Inspector's report, courtesy of Joe Pelc, IDNR - Drift location, mine type, seam, thickness, mining method.

Mine Index 2165
Robert O. Livers, Livers Mine

Type: Surface Total mined-out acreage shown: None; production indicates approximately 3 acres were mined. Not shown on accompanying map because of later surface mining by Little Sister Mine (mine index 674).

SHAFT, SLOPE, DRIFT or TIPPLE LOCATIONS

Type	County	Township-Range	Section	Quarters-Footage
Pit or tipple	Fulton	6N 4E	21	NE NE SE

GEOLOGY

Seam(s) Mined	Depth (ft)	Thickness (ft)			Mining Method
		Min	Max	Avg	
Springfield					Surface

Geologic Problems Reported:

PRODUCTION HISTORY

Company	Mine Name	Years	Production (tons)
Robert O. Livers	Livers	1932-1935	<u>17,000</u> 17,000

Last reported production: 1935

SOURCES OF DATA

Source Map	Date	Original Scale	Digitized Scale	Map Type
Mine notes	Undated	1:62500	1:62500	Secondary source

Annotated Bibliography (data source, brief description of information)

Coal Reports - Production, ownership, years of operation.
 Directory of Illinois Coal Mines (Fulton County) - Mine names, mine index, ownership, years of operation.
 Mine notes (Fulton County) - Mine type, mine location.

Mine Index 2166**Taylor Williams, Williams No. 2 Mine**

Type: Underground Total mined-out acreage shown: None; production indicates approximately 2 acres were mined.

SHAFT, SLOPE, DRIFT or TIPPLE LOCATIONS

Type	County	Township-Range	Section	Quarters-Footage
Main shaft & drift	Fulton	6N 4E	21	NW NW SE

GEOLOGY

Seam(s) Mined	Depth (ft)	Thickness (ft)			Mining Method
		Min	Max	Avg	
Springfield	40			5.0	RP

Geologic Problems Reported:

PRODUCTION HISTORY

Company	Mine Name	Years	Production (tons)
E. E. Williams	Williams No. 2	1881-1883 *	5,815
Taylor Williams	Williams No. 2	1883-1885 **	<u>3,138</u> 8,953

* The 1881-1882 production was included with E. E. Williams, No. 1 Mine (mine index 2252).

** Idle for fiscal year 1883-1884, as numerous improvements were made to the mine.

Last reported production: 1885

SOURCES OF DATA

Source Map	Date	Original Scale	Digitized Scale	Map Type
Mine notes	Undated	1:62500	1:62500	Secondary source
State archive, PB_1103	2-2-1933	1:12000	1:12000	Secondary source

Annotated Bibliography (data source, brief description of information)

Coal Reports - Production, ownership, years of operation, mine type, seam, depth, thickness, mining method.

Directory of Illinois Coal Mines (Fulton County) - Mine names, mine index, ownership, years of operation.

Mine notes (Fulton County) - Mine location.

State archive, PB_1103 (map or drill holes, mines & property), courtesy of Robert Gibson, IDNR - Mine location.

Mine Index 2167**Big Creek Coal Company, Big Creek No. 24 Mine**

Type: Underground Total mined-out acreage shown: 357 Production indicates that 350 to 430 acres were mined after the map date.

SHAFT, SLOPE, DRIFT or TIPPLE LOCATIONS

Type	County	Township-Range	Section	Quarters-Footage
Main shaft	Fulton	6N 4E	22	NW SE SE
Air shaft	Fulton	6N 4E	22	NW SE SE
Shaft	Fulton	6N 4E	26	NW SW NW

GEOLOGY

Seam(s) Mined	Depth (ft)	Thickness (ft)			Mining Method
		Min	Max	Avg	
Springfield	87	4.5	5.33	4.67	MRP

Geologic Problems Reported: The 1885 Coal Report stated that the roof was fragile and let in water when it came down. The source maps show areas marked "caved & gobbed" in the northern part of the mine. The interval between the limestone and the coal increased to the south, and the limestone thickened in the same direction. The limestone was thinnest where the bottom contact with the shale was smooth. Generally, the contact consisted of limestone with a rough lower surface and limestone knobs that protruded down into the clod. The main haulageways were brushed (cleaned up by removal of layers that would fall) up to the limestone, because the black shale would come down inconveniently if not removed in a purposeful manner. The roof was black shale, with the lower 2 or 3 inches being "draw slate" or clod that stuck to the coal. The coal was not well developed, with dirt, charcoal bands, a pyrite layer (0.125 to 0.25 inches thick), and pyrite balls. A persistent blackjack or clay band was noted near the floor, which was 1.0 to 1.5 inches thick. Every room had at least one pyrite ball of 1.5 by 6 inches diameter. Horsebacks were noted, and the rolls in the floor were generally associated with the horsebacks.

PRODUCTION HISTORY

Company	Mine Name	Years	Production (tons)
Edward Williams	Williams No. 1	1881-1883	51,000
Taylor Williams	Williams No. 1	1883-1891	268,433
Whitebreast Fuel Company	E	1891-1907 *	977,995
Big Creek Coal Company	Big Creek No. 4	1907-1911	611,437
Big Creek Coal Company	Big Creek No. 4	1911-1919	1,570,951 **
Big Creek Coal Company	Big Creek No. 24	1919-1921	247,210 **
			3,727,026

* Idle 1894-1901

** Production after map date

Last reported production: January 1921

SOURCES OF DATA

Source Map	Date	Original Scale	Digitized Scale	Map Type
Microfilm, document 351570	4-1911	1:1200	1:2648	Not final
State archive, MSHA_1298	1912	1:1200	1:1200	Not final
Microfilm, document 351586	12-24-1904	1:2400	1:4469	Not final
Microfilm, document 351685	12-18-1937	1:1200	1:1490	Secondary source
Coal Section files, 1-32-47	6-1-1942	1:6000	1:6000	Secondary source

Annotated Bibliography (data source, brief description of information)

Coal Reports - Production, ownership, years of operation, mining method.

Mine notes (Fulton County) - Mine type, shaft location, seam, depth, thickness, geologic problems.

Microfilm map, document 351570, reel 03136, frames 346-348 - Shaft locations, mine outline, mining method, geologic problems.

State Archive, MSHA_1298, courtesy of Robert Gibson, IDNR - Mine outline (southern portion).

Microfilm map, document 351586, reel 03136, frame 373 - Mine outline (western side of northern part of mine).

Microfilm, document 351685, reel 03137, frame 50, map of Schaffer & Monroe Mine (mine index 2169) - Mine outline (SW 26-T6N-R4E).

Company map, Coal Section files, 1-32-47, map of Buckheart No. 17 Mine (mine index 705) - Mine outline (southeastern general area of mining).

Mine Index 2168
Whitebreast Fuel Company, C Mine

Type: Underground Total mined-out acreage shown: 439

SHAFT, SLOPE, DRIFT or TIPPLE LOCATIONS

Type	County	Township-Range	Section	Quarters-Footage
Main shaft	Fulton	6N 4E	23	SW SE NW

GEOLOGY

Seam(s) Mined	Depth (ft)	Thickness (ft)			Mining Method
		Min	Max	Avg	
Springfield	90			4.5-5.0	MRP

Geologic Problems Reported:

PRODUCTION HISTORY

Company	Mine Name	Years	Production (tons)
Emerson & Company	Emerson	1886-1889	124,336
Emerson & Skinner	Emerson & Skinner	1889-1890	96,527
Whitebreast Fuel Company	C	1890-1905	<u>1,799,792</u> *
			2,020,655

* The production for 1896 is unknown.

Last reported production: 1905

SOURCES OF DATA

Source Map	Date	Original Scale	Digitized Scale	Map Type
Microfilm, document 351586	12-24-1904	1:2400	1:4469	Final
Microfilm, document 351526	Circa 1911	Unknown	1:24000	Final
WPA, T6N-R4E	Circa 1934	1:12000	1:53695	Secondary source

Annotated Bibliography (data source, brief description of information)

Coal Reports - Production, ownership, years of operation, seam, depth, thickness, mining method.
 Directory of Illinois Coal Mines (Fulton County) - Mine names, mine index, ownership, years of operation.
 Mine notes (Fulton County) - Shaft location.
 Microfilm map, document 351586, reel 03136, frame 373 - Mine outline (western), mining method.
 Microfilm map, document 351526, reel 03136, frame 285 - Shaft location.
 WPA, T6N-R4E - Mine outline (eastern, northern, southern).

Mine Index 2169**Schaeffer & Munroe, Schaeffer & Munroe Mine**

Type: Underground Total mined-out acreage shown: Less than 1 Production indicates less than 1 acre was mined after the map date, and that the total area of the mine would be less than 1 acre.

SHAFT, SLOPE, DRIFT or TIPPLE LOCATIONS

Type	County	Township-Range	Section	Quarters-Footage
Hoist shaft *	Fulton	6N 4E	26	NW SW SW

* The source map stated that the intake air was a duct within the hoist shaft.

GEOLOGY

Seam(s) Mined	Depth (ft)	Thickness (ft)			Mining Method
		Min	Max	Avg	
Springfield	80			5.0	Underground

Geologic Problems Reported:

PRODUCTION HISTORY

Company	Mine Name	Years	Production (tons)
Ford & Munson Coal Company	Ford & Munson	1936-1937	1,233
Ford & Munson Coal Company	Ford & Munson	1938-1938	1,113 **
Schaeffer & Munroe	Schaeffer & Munroe	1939-1939	500 **
			2,846

** Production after map date

Last reported production: 1939

SOURCES OF DATA

Source Map	Date	Original Scale	Digitized Scale	Map Type
Microfilm, document 351685	12-18-1937	1:1200	1:1490	Not final

Annotated Bibliography (data source, brief description of information)

Coal Reports - Production, ownership, years of operation.

Directory of Illinois Coal Mines (Fulton County) - Mine names, mine index, ownership, years of operation.

Mine notes (Fulton County) - Mine type, shaft location, seam, depth, thickness.

Microfilm map, document 351685, reel 03137, frame 50 - Shaft location, mine outline, mining method.

Mine Index 2170**Yackovich Brothers, Pearl Branch Mine**

Type: Underground Total mined-out acreage shown: None; production indicates less than 1 acre was mined. The mine is not shown on the accompanying map due to later surface mining by Buckheart No. 17 Mine (mine index 705).

SHAFT, SLOPE, DRIFT or TIPPLE LOCATIONS

Type	County	Township-Range	Section	Quarters-Footage
Main drift	Fulton	6N 4E	26	SW SE

GEOLOGY

Seam(s) Mined	Depth (ft)	Thickness (ft)			Mining Method
		Min	Max	Avg	
Springfield	25			5.0	Underground

Geologic Problems Reported:

PRODUCTION HISTORY

Company	Mine Name	Years	Production (tons)
Pearl Branch Coal Company	Pearl Branch	1940-1941	717
Yackovich Brothers	Pearl Branch	1941-1941	<u>175</u>
			892

Last reported production: 1941

SOURCES OF DATA

Source Map	Date	Original Scale	Digitized Scale	Map Type
Mine notes	1940	1:62500	1:62500	Secondary source

Annotated Bibliography (data source, brief description of information)

Coal Reports - Production, ownership, years of operation.

Directory of Illinois Coal Mines (Fulton County) - Mine names, mine index, ownership, years of operation.

Mine notes (Fulton County) - Mine type, drift location, seam, depth, thickness.

Mine Index 2171**Big Creek Coal Company, Big Creek No. 1 Mine**

Type: Underground Total mined-out acreage shown: None; production indicates approximately 110 acres were mined.

SHAFT, SLOPE, DRIFT or TIPPLE LOCATIONS

Type	County	Township-Range	Section	Quarters-Footage
Main shaft	Fulton	6N 4E	29	E ½ SW

GEOLOGY

Seam(s) Mined	Depth (ft)	Thickness (ft)			Mining Method
		Min	Max	Avg	
Springfield	40-55			4.0-5.5	RPP

Geologic Problems Reported: The 1885 Coal Report indicates the mine had difficulties with bad roof.

PRODUCTION HISTORY

Company	Mine Name	Years	Production (tons)
Bryant Coal Company	Bryant	pre1881-1887 *	124,441
Watt & Carter	Watt & Carter	1887-1888	27,500
Ashton & Company	Ashton	1888-1891	58,174
Whitebreast Fuel Company	F	1891-1902 **	98,687 **
Central Coal Mining Company	Central	1902-1904	84,120
Big Creek Coal Company	Big Creek No. 1	1904-1906	<u>46,295</u>
			439,217

* Production and years of operation before 1881 are not known. The 1883 Coal Report indicates 15 acres were mined.

** Idle 1895-1902

Last reported production: 1906

SOURCES OF DATA

Source Map	Date	Original Scale	Digitized Scale	Map Type
Plat Book of Fulton County	1895	1:31680	1:31680	Secondary source
State archive, PB_1103	2-2-1933	1:12000	1:12000	Secondary source
Company, 4103.F8 i5.1-36	5-10-1950	1:4800	1:4800	Secondary source

Annotated Bibliography (data source, brief description of information)

Coal Reports - Production, ownership, years of operation, mine type, seam, depth, thickness, geologic problems.

Directory of Illinois Coal Mines (Fulton County) - Mine names, mine index, ownership, years of operation.

Mine notes (Fulton County) - Shaft location.

George Ogle & Co., 1895, Plat Book of Fulton County, Illinois - Shaft location.

State archive, PB_1103 (map of drill holes & property owners), courtesy of Robert Gibson, IDNR - Shaft location.

ISGS map library, 4103.F8 i5.1-36, map of Little Sister Mine (mine index 674) - Mine outline (general area of mining).

Mine Index 2173**William Scripps Coal Company, Buckheart Mine**

Type: Underground Total mined-out acreage shown: None; production indicates approximately 155 acres were mined.

SHAFT, SLOPE, DRIFT or TIPPLE LOCATIONS

Type	County	Township-Range	Section	Quarters-Footage
Main shaft	Fulton	6N 4E	29	NE NE NE

GEOLOGY

Seam(s) Mined	Depth (ft)	Thickness (ft)			Mining Method
		Min	Max	Avg	
Springfield	60-90			4.5-5.0	RP

Geologic Problems Reported:

PRODUCTION HISTORY

Company	Mine Name	Years	Production (tons)
Buckheart Coal Company	Buckheart	1891-1892	Unknown
Whitebreast Fuel Company	D	1892-1907 *	596,963
W. D. Myers	Buckheart	1905-1908 **, ***	47,803
William Scripps Coal Company ***	Buckheart	1907-1908 ***	4,860
			<u>649,626</u>

* Idle 1895, 1903 & 1905

** The 1908 Coal Report stated that the former Whitebreast Fuel Company, Mine D was sold to Big Creek Coal Company. It is likely that William Scripps leased the mine.

*** It appears that two operators worked the mine in 1907 and 1908. Perhaps there were two hoist shafts and the dual operators worked different portions of the mine.

Last reported production: 1908

SOURCES OF DATA

Source Map	Date	Original Scale	Digitized Scale	Map Type
State archive, PB_1103	2-2-1933	1:12000	1:12000	Secondary source

Annotated Bibliography (data source, brief description of information)

Coal Reports - Production, ownership, years of operation, mine type, seam, depth, thickness, mining method.

Directory of Illinois Coal Mines (Fulton County) - Mine names, mine index, ownership, years of operation.

State archive, PB_1103 (map of drill holes & land ownership), courtesy of Robert Gibson, IDNR - Shaft location.

Mine Index 2174
Billings & May, Billings & May Mine

Type: Underground Total mined-out acreage shown: 2 Production indicates less than 1 acre was mined after the map date, and that less than 1 acre was mined total. The outline is larger than expected for the reported production. Other operators may have worked this mine before Billings & May. Not shown on the accompanying map due to later surface mining by Little Sister Mine (mine index 674).

SHAFT, SLOPE, DRIFT or TIPPLE LOCATIONS

Type	County	Township-Range	Section	Quarters-Footage
Main shaft	Fulton	6N 4E	32	SW SW SW
Air shaft	Fulton	6N 4E	32	SW SW SW

GEOLOGY

Seam(s) Mined	Depth (ft)	Thickness (ft)			Mining Method
		Min	Max	Avg	
Springfield	30			5.0	MRP

Geologic Problems Reported:

PRODUCTION HISTORY

Company	Mine Name	Years	Production (tons)
Billings & May	Billings & May	1936-1937	341
Billings & May	Billings & May	1937-1938	405 *
			746

* Production after map date

Last reported production: 1938

SOURCES OF DATA

Source Map	Date	Original Scale	Digitized Scale	Map Type
State archive, MSHA_1231	9-17-1937	1:1200	1:1200	Not final

Annotated Bibliography (data source, brief description of information)

Coal Reports - Production, ownership, years of operation.
 Directory of Illinois Coal Mines (Fulton County) - Mine names, mine index, ownership, years of operation.
 Mine notes (Fulton County) - Shaft location, seam, depth, thickness.
 Company map, State Archive, MSHA_422, courtesy of Robert Gibson, IDNR - Shaft locations, mine outline, mining method.

Mine Index 2175**John Strode Coal Company, Strode Mine**

Type: Underground Total mined-out acreage shown: 5 Production indicates approximately 2 acres were mined after the map date. Not shown on accompanying map due to later surface mining by Buckheart No. 17 Mine (mine index 705).

SHAFT, SLOPE, DRIFT or TIPPLE LOCATIONS

Type	County	Township-Range	Section	Quarters-Footage
Main drift	Fulton	6N 4E	35	SE NE NE
Air shaft	Fulton	6N 4E	35	SE NE NE

GEOLOGY

Seam(s) Mined	Depth (ft)	Thickness (ft)			Mining Method
		Min	Max	Avg	
Springfield	75			5.0	Underground

Geologic Problems Reported: The rooms in the central portion of the mine had roof falls and the extent could not be ascertained by the surveyor.

PRODUCTION HISTORY

Company	Mine Name	Years	Production (tons)
John Strode Coal Company	Strode	1935-1938	26,497
John Strode Coal Company	Strode	1938-1940	11,353 *
			37,850

* Production after map date

Last reported production: 1940

SOURCES OF DATA

Source Map	Date	Original Scale	Digitized Scale	Map Type
Microfilm, document 351581	11-22-1938	1:1200	1:1200	Not final

Annotated Bibliography (data source, brief description of information)

Coal Reports - Production, ownership, years of operation.

Directory of Illinois Coal Mines (Fulton County) - Mine names, mine index, ownership, years of operation.

Mine notes (Fulton County) - Mine type, drift location, seam, depth, thickness.

Microfilm map, document 351581, reel 03136, frame 368 - Drift & shaft locations, mine outline, mining method.

Microfilm map, document 351581, reel 03136, frame 367 - Geologic problems.

Mine Index 2176**Roadside Coal Company, Roadside Mine**

Type: Underground Total mined-out acreage shown: 14 Not shown on accompanying map due to later surface mining by Buckheart No. 17 Mine (mine index 705).

SHAFT, SLOPE, DRIFT or TIPPLE LOCATIONS

Type	County	Township-Range	Section	Quarters-Footage
Main slope	Fulton	6N 4E	36	NE NE SW
Air shaft	Fulton	6N 4E	36	NE NE SW

GEOLOGY

Seam(s) Mined	Depth (ft)	Thickness (ft)			Mining Method
		Min	Max	Avg	
Springfield	20			5.0	Underground

Geologic Problems Reported: The western side of the north half of the mine had slips, which lead to abandonment of that part of the mine due to the resulting poor roof. The northeastern part of the mine was labeled "squeeze" on the source map.

PRODUCTION HISTORY

Company	Mine Name	Years	Production (tons)
Threll Yocum	Roadside	1939-1941	13,576
Roadside Coal Company	Roadside	1942-1953 *	48,910
			62,486

* Idle 1950

Last reported production: January 1953

SOURCES OF DATA

Source Map	Date	Original Scale	Digitized Scale	Map Type
Microfilm, document 351653	1-1953	1:840	1:1275	Final

Annotated Bibliography (data source, brief description of information)

Coal Reports - Production, ownership, years of operation.

Directory of Illinois Coal Mines (Fulton County) - Mine names, mine index, ownership, years of operation.

Mine notes (Fulton County) - Mine type, slope location, seam, depth, thickness.

Microfilm map, document 351653, reel 03137, frame 16 - Slope & shaft locations, mine outline, mining method, date abandoned, geologic problems.

Mine Index 2177
Richard Fouts, Fouts Mine

Type: Underground Total mined-out acreage shown: 4 Production indicates approximately 8 acres were mined after the map date. Not shown on accompanying map due to later surface mining by Buckheart No. 17 Mine (mine index 705).

SHAFT, SLOPE, DRIFT or TIPPLE LOCATIONS

Type	County	Township-Range	Section	Quarters-Footage
Main slope	Fulton	6N 4E	36	NW NW SW

GEOLOGY

Seam(s) Mined	Depth (ft)	Thickness (ft)			Mining Method
		Min	Max	Avg	
Springfield	70			4.83	Underground

Geologic Problems Reported:

PRODUCTION HISTORY

Company	Mine Name	Years	Production (tons)
Richard Fouts	Fouts	1936-1942	30,465
Richard Fouts	Fouts	1942-1945	<u>21,951</u> *
			52,416

* Production after map date

Last reported production: 1945

SOURCES OF DATA

Source Map	Date	Original Scale	Digitized Scale	Map Type
Microfilm, document 351676	5-26-1942	1:720	1:720	Not final

Annotated Bibliography (data source, brief description of information)

Coal Reports - Production, ownership, years of operation.
 Directory of Illinois Coal Mines (Fulton County) - Mine names, mine index, ownership, years of operation.
 Mine notes (Fulton County) - Mine type, drift location, seam, depth, thickness.
 Microfilm map, document 351676, reel 03137, frame 40 - Slope location, mine outline, mining method.

Mine Index 2178
Stanley Zaborac, Zaborac Mine

Type: Underground Total mined-out acreage shown: None; production indicates less than 1 acre was mined. Not shown on accompanying map due to later surface mining by Buckheart No. 17 Mine (mine index 705).

SHAFT, SLOPE, DRIFT or TIPPLE LOCATIONS

Type	County	Township-Range	Section	Quarters-Footage
Mine	Fulton	6N 4E	36	NW SE NW

GEOLOGY

Seam(s) Mined	Depth (ft)	Thickness (ft)			Mining Method
		Min	Max	Avg	
Springfield					Underground

Geologic Problems Reported:

PRODUCTION HISTORY

Company	Mine Name	Years	Production (tons)
Frank Juraco	Juraco	1926-1937	883 *
Stanley Zaborac	Zaborac	1937-1938	<u>2,106</u> 2,989

* Production was not reported from 1930 to 1933 for mines producing less than 1,000 tons per year. Idle 1934.

Last reported production: 1938

SOURCES OF DATA

Source Map	Date	Original Scale	Digitized Scale	Map Type
Mine notes	Undated	1:62500	1:62500	Secondary source

Annotated Bibliography (data source, brief description of information)

Coal Reports - Production, ownership, years of operation, mining method.
 Directory of Illinois Coal Mines (Fulton County) - Mine names, mine index, ownership, years of operation.
 Mine notes (Fulton County) - Mine location.

Mine Index 3179
Roy Post, Post Mine

Type: Underground Total mined-out acreage shown: 1 Production indicates 1 acre was mined after the map date. The mine is smaller than expected for the reported production. Production indicates the complete mine would be 3 to 4 acres.

SHAFT, SLOPE, DRIFT or TIPPLe LOCATIONS

Type	County	Township-Range	Section	Quarters-Footage
Main drift	Fulton	6N 3E	25	SW NE NE
Air shaft	Fulton	6N 3E	25	SW NE NE

GEOLOGY

Seam(s) Mined	Depth (ft)	Thickness (ft)			Mining Method
		Min	Max	Avg	
Springfield					MRP

Geologic Problems Reported:

PRODUCTION HISTORY

Company	Mine Name	Years	Production (tons)
Elmer E. Post	Post	1916-1919	3,059
Roy Post	Post	1919-1929 *	6,208
Roy Post	Post	1929-1933	<u>4,170</u> **
			13,437

* Idle 1921; production in 1922 was not reported for mines producing less than 10,000 tons

** Production after map date; production in 1930 was not reported for mines producing less than 1,000 tons.

Last reported production: 1933

SOURCES OF DATA

Source Map	Date	Original Scale	Digitized Scale	Map Type
Microfilm, document 351616	10-27-1929	1:360	1:323	Not final

Annotated Bibliography (data source, brief description of information)

Coal Reports - Production, ownership, years of operation.

Directory of Illinois Coal Mines (Fulton County) - Mine names, mine index, ownership, years of operation.

Microfilm map, document 351616, reel 03136, frame 424 - Drift & shaft locations, mine outline, mining method.

Mine Index 4167**Lingenfelter Coal Company, Lingenfelter No. 3 Mine**

Type: Surface Total mined-out acreage shown: None; production indicates less than 1 acre was mined.

SHAFT, SLOPE, DRIFT or TIPPLE LOCATIONS

Type	County	Township-Range	Section	Quarters-Footage
Pit or tipple	Fulton	5N 4E	20	NE

GEOLOGY

Seam(s) Mined	Depth (ft)	Thickness (ft)			Mining Method
		Min	Max	Avg	
Colchester	20			2.5	Surface

Geologic Problems Reported:

PRODUCTION HISTORY

Company	Mine Name	Years	Production (tons)
Lingenfelter Coal Company	Lingenfelter No. 3	1961-1961	<u>2,305</u> 2,305

Last reported production: 1961

SOURCES OF DATA

Source Map	Date	Original Scale	Digitized Scale	Map Type
Mine Inspector's reports	Undated	1:48000	1:48000	Secondary source

Annotated Bibliography (data source, brief description of information)

Coal Reports - Production, ownership, years of operation.

Directory of Illinois Coal Mines (Fulton County) - Mine names, mine index, ownership, years of operation.

Mine Inspector's reports, courtesy of Joe Pelc, IDNR - Mine location, seam, depth, thickness.

Mine Index 4189
Dyer Clark, Sunnyside Mine

Type: Underground Total mined-out acreage shown: 99 acre general area of mining; production indicates less than 1 acre was mined.

SHAFT, SLOPE, DRIFT or TIPPLE LOCATIONS

Type	County	Township-Range	Section	Quarters-Footage
Main shaft	Fulton	5N 4E	20	NE NE NE

GEOLOGY

Seam(s) Mined	Depth (ft)	Thickness (ft)			Mining Method
		Min	Max	Avg	
Colchester	22			3.0	Underground

Geologic Problems Reported:

PRODUCTION HISTORY

Company	Mine Name	Years	Production (tons)
Dyer Clark *	Sunnyside	1922-1923	<u>1,370</u> 1,370

* Dyer Clark was listed in the 1923 Coal Report as Dan Clark.

Last reported production: 1923

SOURCES OF DATA

Source Map	Date	Original Scale	Digitized Scale	Map Type
Federal Land Bank Report	4-1934	1:124800	1:124800	Secondary source

Annotated Bibliography (data source, brief description of information)

Coal Reports - Production, ownership, years of operation.

Directory of Illinois Coal Mines (Fulton County) - Mine names, mine index, ownership, years of operation.

Mine notes (Fulton County) - Shaft location, depth, thickness.

Federal Land Bank Report (Fulton County) - Shaft location, general area of mining outline, mine type.

Mine Index 4967
Harley Cape, Cape Mine

Type: Underground Total mined-out acreage shown:

SHAFT, SLOPE, DRIFT or TIPPLE LOCATIONS

Type	County	Township-Range	Section	Quarters-Footage
Main drift	Fulton	6N 4E	21	

GEOLOGY

Seam(s) Mined	Depth (ft)	Thickness (ft)			Mining Method
		Min	Max	Avg	
Springfield	70			5.5	RP

Geologic Problems Reported:

PRODUCTION HISTORY

Company	Mine Name	Years	Production (tons)
Dorich Brothers	Dorich	1934-1934	105
Joe Dorich	Dorich	1935-1937	374
Cape & Johnson	Cape & Johnson	1938-1938	80
Harley Cape	Cape	1939-1941	1,351
			1,910

Last reported production: 1941

SOURCES OF DATA

Source Map	Date	Original Scale	Digitized Scale	Map Type
Mine inspector's reports	Undated	1:48000	1:48000	Secondary source

Annotated Bibliography (data source, brief description of information)

Coal Reports - Production, ownership, years of operation.

Directory of Illinois Coal Mines (Fulton County) - Mine names, mine index, ownership, years of operation.

Mine Inspector's reports, courtesy of Joe Pelc, IDNR - Mine type, drift location, seam, depth, thickness, mining method.

Mine Index 4968
Farr Coal Company, Farr Mine

Type: Underground Total mined-out acreage shown: Less than 1; production indicates approximately 1 acre was mined after the map date.

SHAFT, SLOPE, DRIFT or TIPPLE LOCATIONS

Type	County	Township-Range	Section	Quarters-Footage
Main drift	Fulton	6N 3E	24	SE SE SE
Air shaft	Fulton	6N 3E	24	SE SE SE

GEOLOGY

Seam(s) Mined	Depth (ft)	Thickness (ft)			Mining Method
		Min	Max	Avg	
Springfield	70			5.0	MRP

Geologic Problems Reported:

PRODUCTION HISTORY

Company	Mine Name	Years	Production (tons)
John Frasco	Frasco	1929-1937	1,745 *
Stevenson & Brown	Stevenson & Brown	1938-1938	486
Frank A. Goalding	Goalding	1939-1939	212
Gem Coal Company	Gem	1940-1940	403
Farr Coal Company	Farr	1940-1944	<u>5,225</u> **
			8,071

* Production was not reported from 1930 to 1933 for mines producing less than 1,000 tons per year; idle 1937.

** Production after map date.

Last reported production: 1944

SOURCES OF DATA

Source Map	Date	Original Scale	Digitized Scale	Map Type
Microfilm, document 351679	7-22-1940	1:1200	1:1241	Not final

Annotated Bibliography (data source, brief description of information)

Coal Reports - Production, ownership, years of operation.

Directory of Illinois Coal Mines (Fulton County) - Mine names, mine index, ownership, years of operation.

Mine notes (Fulton County) - Mine type, drift location, seam, thickness.

Mine Inspector's reports, courtesy of Joe Pelc, IDNR - Thickness, mining method.

Microfilm map, document 351679, reel 03137, frame 43 - Drift & shaft locations, mine outline, mining method

Mine Index 4997
Floyd D. Miller, Shinnifield Mine

Type: Underground Total mined-out acreage shown: None; production indicates 2 to 3 acres were mined.

SHAFT, SLOPE, DRIFT or TIPPLE LOCATIONS

Type	County	Township-Range	Section	Quarters-Footage
Slope	Fulton	5N 4E	12	NW NE NW

GEOLOGY

Seam(s) Mined	Depth (ft)	Thickness (ft)			Mining Method
		Min	Max	Avg	
Springfield	20-75			5.17	Underground

Geologic Problems Reported:

PRODUCTION HISTORY

Company	Mine Name	Years	Production (tons)
Dewey Birchfield	Hilltop	1938-1941	3,703
Laurance Coal Company	Hilltop	1941-1941	400
Floyd Miller	Shinnifield	1942-1945 *	2,856
Flood & Miller	Shinnifeild	1946-1946	902
Floyd D. Miller	Shinnifield	1947-1948	2,814
			10,675

* Idle 1944 & 1945

Last reported production: 1948

SOURCES OF DATA

Source Map	Date	Original Scale	Digitized Scale	Map Type
Mine notes	Undated	(text only)	1:24000 **	Secondary source

** The mine location was plotted on a 1:24000 USGS topographic map from the mine location description and digitized.

Annotated Bibliography (data source, brief description of information)

Coal Reports - Production, ownership, years of operation.

Directory of Illinois Coal Mines (Fulton County) - Mine names, mine index, ownership, years of operation.

Mine notes (Fulton County) - Mine type, slope location, seam, depth, thickness.

Mine Index 5148
William O'Bryant, O'Bryant Mine

Type: Underground Total mined-out acreage shown: None; production indicates less than 1 acre was mined.

SHAFT, SLOPE, DRIFT or TIPPLE LOCATIONS

Type	County	Township-Range	Section	Quarters-Footage
Mine	Fulton	6N 4E	30	NW NW

GEOLOGY

Seam(s) Mined	Depth (ft)	Thickness (ft)			Mining Method
		Min	Max	Avg	
Springfield					Underground

Geologic Problems Reported:

PRODUCTION HISTORY

Company	Mine Name	Years	Production (tons)
William O'Bryant	O'Bryant	1917-1921	<u>2,268</u> 2,268

Last reported production: 1921

SOURCES OF DATA

Source Map	Date	Original Scale	Digitized Scale	Map Type
State Archive, PB_1103	2-2-1933	1:12000	1:12000	Secondary source
Federal Land Bank Report	4-1934	1:124800	1:124800	Secondary source

Annotated Bibliography (data source, brief description of information)

Coal Reports - Production, ownership, years of operation.
 Directory of Illinois Coal Mines (Fulton County) - Mine names, mine index, ownership, years of operation.
 Mine notes (Fulton County) - Mine type, mine location, seam, depth, thickness.
 State Archive, PB_1103, (map of drill holes & landowners), courtesy of Robert Gibson, IDNR - Mine location.
 Federal Land Bank Report (Fulton County) - General area of mining.

Mine Index 5289
Planque & McElroy, P. & M. Mine

Type: Underground Total mined-out acreage shown: 1 Production indicates approximately 1 acre was mined after the map date.

SHAFT, SLOPE, DRIFT or TIPPLE LOCATIONS

Type	County	Township-Range	Section	Quarters-Footage
Main drift	Fulton	6N 4E	20	SE SE SW
Escape drift	Fulton	6N 4E	20	SE SE SW
Escape drift	Fulton	6N 4E	20	SW SE SW
Air shaft	Fulton	6N 4E	20	SW SE SW
Air shaft (proposed) *	Fulton	6N 4E	20	SW SE SW

* Not shown on accompanying map

GEOLOGY

Seam(s) Mined	Depth (ft)	Thickness (ft)			Mining Method
		Min	Max	Avg	
Springfield				4.5	RPB

Geologic Problems Reported:

PRODUCTION HISTORY

Company	Mine Name	Years	Production (tons)
Planque & McElroy	P. & M.	1927-1929	3,079
Planque & McElroy	P. & M.	1929-1933	<u>2,576</u> **
			5,655

** Production after map date. Production was not reported in 1930 & 1932 for mines producing less than 1,000 tons per year.

Last reported production: 1933

SOURCES OF DATA

Source Map	Date	Original Scale	Digitized Scale	Map Type
Microfilm, document 351461	11-1-1929	1:360	1:447	Not final

Annotated Bibliography (data source, brief description of information)

Coal Reports - Production, ownership, years of operation.

Directory of Illinois Coal Mines (Fulton County) - Mine names, mine index, ownership, years of operation.

Mine notes (Fulton County) - Shaft location.

Microfilm map, document 351461, reel 03136, frame 193 - Drift locations, mine outline, mining method.

Mine Index 6627**Truax Traer Coal Company, St. David Mine**

Type: Surface Total mined-out acreage shown: 786

SHAFT, SLOPE, DRIFT or TIPPLE LOCATIONS

Type	County	Township-Range	Section	Quarters-Footage
Old tipple *	Fulton	6N 4E	16	SW SW SE
New tipple *	Fulton	6N 4E	21	SE NE SW

* The mine notes and source map indicate that the tipple of Saline County No. 22 Mine (mine index 31), was used to ship coal in the early years of production. In later years, the tipple for the Little Sister Mine (mine index 674), also operated by Truax Traer Coal Company, was used to ship the coal.

GEOLOGY

Seam(s) Mined	Depth (ft)	Thickness (ft)		Mining Method
		Min	Max	
Springfield	38-45		4.5	Surface

Geologic Problems Reported:

PRODUCTION HISTORY

Company	Mine Name	Years	Production (tons)
Truax Traer Coal Company	St. David	1929-1942	5,233,199 5,233,199

Last reported production: September 1942

SOURCES OF DATA

Source Map	Date	Original Scale	Digitized Scale	Map Type
Company, 4103.F8 i5.1-8	3-28-1946	1:4800	1:4800	Not final **
Microfilm, document 351460	8-1-1937	1:4800	1:7945	Final

** The St. David Mine production ceased in 1942, yet the map indicates the pit was actively worked until at least 1946. Presumably, the production for the intervening years was reported under Little Sister Mine (mine index 674), and the map is not final for the Little Sister Mine operating and production years.

Annotated Bibliography (data source, brief description of information)

Coal Reports - Production, ownership, years of operation.

Directory of Illinois Coal Mines (Fulton County) - Mine names, mine index, ownership, years of operation.

Mine notes (Fulton County) - Mine type, mine location, seam, depth, thickness.

Company map, ISGS map library, 4103.F8 i5.1-8 - Mine outline (western), tipple location.

Microfilm map, document 351460, reel 03136, frame 192 - Mine outline (eastern).

Mine Index 6628
Abe Bath, Bath Mine

Type: Underground Total mined-out acreage shown: 3 Production indicates less than 1 additional acre was mined after the map date. The mine outline shown on the accompanying map is smaller than expected for the reported production; it is likely that the source map was improperly scaled. Production indicates the mine outline should encompass approximately 6 acres.

SHAFT, SLOPE, DRIFT or TIPPLE LOCATIONS

Type	County	Township-Range	Section	Quarters-Footage
Main drift	Fulton	6N 4E	15	SW *
Air shaft	Fulton	6N 4E	15	SW *

* The locations are not presented with any further accuracy than the quarter-section as the source map had little to aid mine placement or scaling. The mine location shown on the accompanying map is controversial and based only on the orientation of the drift opening to a ravine. ISGS field notes taken by T. E. Savage indicate the Bath Mine was located in the NW NW SW 15-T6N-R4E (and would be completely obliterated by Mine Index 674, Little Sister Mine), but the drift opening seems unlikely in the flat topography that existed at that location (pre-surface-mining topography). The mine was positioned in a likely location specified by the legend on mine map (SW 15-T6N-R4E).

GEOLOGY

Seam(s) Mined	Depth (ft)	Thickness (ft)			Mining Method
		Min	Max	Avg	
Springfield	45-70			4.67-5.0	RPB

Geologic Problems Reported:

PRODUCTION HISTORY

Company	Mine Name	Years	Production (tons)
W. Bath	Bath	1909-1910	2,468
Bath Brothers	Bath	1910-1913	4,470
William Bath	Bath	1913-1920	10,295
Abe Bath	Bath	1920-1926	8,855 **
Abe Bath	Bath	1926-1929	3,200 ***
			29,288

** Production was not reported in 1922 for mines producing less than 10,000 tons.

*** Production after map date.

Last reported production: 1929

SOURCES OF DATA

Source Map	Date	Original Scale	Digitized Scale	Map Type
Microfilm, document 351633	6-10-1926	1:480	1:530	Not final

Annotated Bibliography (data source, brief description of information)

Coal Reports - Production, ownership, years of operation, mine type, seam, depth, thickness.
 Directory of Illinois Coal Mines (Fulton County) - Mine names, mine index, ownership, years of operation.
 Microfilm map, document 351633, reel 03136, frame 206 - Drift & shaft locations, mine outline, mining method.

Mine Index 6636**Walter Richard Coal Company, Richard Mine**

Type: Underground Total mined-out acreage shown: 27 Production indicates approximately 2 acres were mined after the map date.

SHAFT, SLOPE, DRIFT or TIPPLe LOCATIONS

Type	County	Township-Range	Section	Quarters-Footage
Main slope	Fulton	5N 4E	12	NE SE SE
Air drift	Fulton	5N 4E	12	NE SE SE

GEOLOGY

Seam(s) Mined	Depth (ft)	Thickness (ft)			Mining Method
		Min	Max	Avg	
Springfield	25			5.0-5.5	RPB

Geologic Problems Reported:

PRODUCTION HISTORY

Company	Mine Name	Years	Production (tons)
Walter Richard Coal Company	Richard	1942-1953	129,668
Day Branch Coal Company	Richard	1953-1954	4,704
Walter Richard Coal Company	Richard	1955-1958	<u>7,158</u> *
			141,530

* Production after map date

Last reported production: 1958

SOURCES OF DATA

Source Map	Date	Original Scale	Digitized Scale	Map Type
Microfilm, document 351632	6-25-1955	1:1200	1:2152	Not final **

** The map legends states that the mine was abandoned 6-25-1955 and that the map is final, but production is listed through 1958.

Annotated Bibliography (data source, brief description of information)

Coal Reports - Production, ownership, years of operation.

Directory of Illinois Coal Mines (Fulton County) - Mine names, mine index, ownership, years of operation.

Mine notes (Fulton County) - Mine type, seam, depth, thickness.

Microfilm map, document 351632, reel 03136, frame 446 - Slope & air drift locations, mine outline, mining method.

OTHER MINES SHOWN ON ST. DAVID QUADRANGLE

Mine Index 686, Ogden Brothers NE SE NW 13-T5N-R3E, surface, Colchester Coal source: Coal Section files, undated work map on USGS 15-minute Havana topographic map

Mine Index 2164, Menden Coal Company * NW SE SW 21-T6N-R4E, surface, Springfield Coal source: Mine notes (undated)

Mine Index 2503, two abandoned drifts NE SW NW 24-T6N-R3E, Springfield Coal source: Microfilm, document 351614, map of Cripple Creek No. 2 Mine (mine index 2142, maps dated 1921 & 1925)

Mine Index 2599 NE SW 12-T5N-R4E, 3 drift entrances and 1 air shaft, Springfield Coal source: Microfilm, document 351593, map of Buckheart Creek Mine (mine index 2115) and ISGS field notes (H. R. Wanless, 8-1-1927)

Mine Index 2637 SW NW SE 12-T5N-R4E, abandoned slope, Springfield Coal source: Microfilm, document 351593, map of Buckheart Creek Mine (mine index 2115, 5-15-1945)

Mine Index 2752 N ½ 25-T6N-R3E, 2 drifts, Springfield Coal source: Federal Land Bank Report (4-1934)

Mine Index 3170 * N ½ SW SW 21-T6N-R4E, drift, Springfield Coal source: Federal Land Bank Report (4-1934)

Mine Index 3343 * NE NW NW 25-T6N-R4E, two drifts, Springfield Coal source: ISGS field notes (H. R. Wanless, 7-28-1927)

Mine Index 3554 NW NW NW 29-6N-4E, drift, Springfield Coal source: Federal Land Bank Report (4-1934)

Mine Index 3597 SW NW 29-6N-4E, shaft, Springfield Coal source: Federal Land Bank Report (4-1934)

Mine Index 4003 S ½ NE NW 20-T5N-R4E, surface, Colchester Coal source: Coal Section files, undated work map on USGS 15-minute Havana topographic map

Mine Index 4202 NW SE NW 12-T5N-R4E, drift, Springfield Coal source: ISGS field notes (H. R. Wanless, 8-1-1927)

Mine Index 4222 NE SE NW 12-T5N-R4E, drift, Springfield Coal source: ISGS field notes (H. R. Wanless, 8-1-1927)

Mine Index 4281 * SW NE SE 31-T6N-R4E, drift, Springfield Coal source: ISGS field notes (H. R. Wanless, 7-25-1927)

Mine Index 4431 SW SW NE 25-T6N-R3E, Springfield Coal source: ISGS field notes (H. R. Wanless, 7-8-1927)

Mine Index 4434 NE NW NW 36-T6N-R3E, drift, Springfield Coal source: ISGS field notes (H. R. Wanless, 7-8-1927)

Mine Index 4647 S ½ SW 20-T6N-R4E, drift, Springfield Coal, 5.3 ft thick source: ISGS field notes (H. B. Willman, 7-15-1927)

Mine Index 4650 NE SW NW 21-T5N-R4E, drift, Colchester Coal source: ISGS field notes (H. R. Wanless, 7-26-1927)

Mine Index 4666 * SE NW SW 32-T6N-R4E, drift, Springfield Coal source: ISGS field notes (H. R. Wanless, 7-25-1927)

Mine Index 4676 SE NW NE 20-T5N-R4E, shaft, Colchester Coal source: ISGS field notes (H. R. Wanless, 7-26-1927)

Mine Index 4679 NE SW NW 20-T5N-R4E, drift, Colchester Coal, 5.3 to 5.5 ft thick, roof of black shale with coal balls source: ISGS field notes (H. R. Wanless, 7-26-1927)

Mine Index 4766 SW SE SW 25-T5N-R3E, surface, Colchester Coal, several small pits source: ISGS field notes (E. T. Benson, 9-21-1935)

Mine Index 4820 SW NW NE 29-T5N-R4E, drift, Colchester Coal, 4.25 to 6.0 ft thick, 10 inches of underclay, "poor coal with no roof" source: ISGS field notes (H. R. Wanless, 8-3-1927)

Mine Index 4821 SE NE NE 20-T5N-R4E, drift, Colchester Coal source: Coal Section files, undated work map on Havana Quadrangle 15-minute work map & ISGS field notes (H. R. Wanless, 1927)

Mine Index 4957 * SE NE NW 25-T6N-R4E, drift, Springfield Coal source: ISGS field notes (H. R. Wanless, 7-28-1927)

Mine Index 5009 * SW NW SE 26-T6N-R4E, surface, Springfield Coal source: ISGS field notes (H. R. Wanless, 7-30-1927)

Mine Index 5053 NW SW NE 13-T5N-R3E, drift, Colchester Coal source: ISGS field notes (H. R. Wanless, 7-25-1927)

Mine Index 5054 SW NE NE 13-T5N-R3E, drift, Colchester Coal source: ISGS field notes (H. R. Wanless, 7-25-1927)

Mine Index 5055 NE NW NE 13-T5N-R3E, drift, Colchester Coal source: ISGS field notes (H. R. Wanless, 7-25-1927)

Mine Index 5066 NE SW 25-T5N-R3E, surface, Colchester Coal source: Federal Land Bank Report (4-1934)

Mine Index 5071 SW SE SW 12-T5N-R4E, drift, Springfield Coal source: Microfilm, document 351593, map of Buckheart Creek Mine (mine index 2115) and ISGS field notes (H. R. Wanless, 8-1-1927)

Mine Index 5072 NW SE NE 14-T5N-R4E, drift, Springfield Coal source: Federal Land Bank Report (4-1934)

Mine Index 5073 NW NE NE 14-T5N-R4E, drift, Springfield Coal source: Federal Land Bank Report (4-1934)

Mine Index 5074 NW NW NW 13-T5N-R4E, drift, Springfield Coal, 5.7 ft thick, up to 70 ft deep source: Federal Land Bank Report (4-1934) and ISGS field notes (L. C. McCabe, 9-5-1928)

Mine Index 5075 SE NW NE 17-T5N-R4E, shaft, Colchester Coal source: Federal Land Bank Report (4-1934)

Mine Index 5076 SE SW NE 17-T5N-R4E, shaft, Colchester Coal source: Federal Land Bank Report (4-1934)

Mine Index 5077 SW SW SE 29-T5N-R4E, shaft, Colchester Coal source: Federal Land Bank Report (4-1934)

Mine Index 5092 SE NE NE 14-T5N-R4E, drift, Springfield Coal source: ISGS field notes (H. B. Willman, 8-1-1927)

Mine Index 5093 NE NE NE 14-T5N-R4E, drift, Springfield Coal source: ISGS field notes (E. T. Benson, 1935)

Mine Index 5094 NE NE NW 17-T5N-R4E, shaft, Colchester Coal source: ISGS field notes (H. R. Wanless, 7-26-1927)

Mine Index 5095, Charles Laws NE 13-T5N-R3E, drift, Colchester Coal source: ISGS field notes (T. E. Savage, 1906)

Mine Index 5096 SW NE SE 17-T5N-R4E, shaft, Colchester Coal source: ISGS field notes (H. R. Wanless, 7-26-1927)

Mine Index 5097 NW NE SE 17-T5N-R4E, drift, Colchester Coal source: ISGS field notes (H. R. Wanless, 7-26-1927)

Mine Index 5101 SE NW NW 32-T5N-R4E, drift, Colchester Coal source: ISGS field notes (H. R. Wanless, 8-3-1927)

Mine Index 5118 SE NE 25-T6N-R3E, drift, Springfield Coal source: ISGS field notes (H. R. Wanless, 7-14-1927), Federal Land Bank Report (4-1934)

Mine Index 5119 NE NE 25-T6N-R3E, drift, Springfield Coal source: ISGS field notes (H. R. Wanless, 7-15-1927), Federal Land Bank Report (4-1934), and State archive, pb_1103 (map of drill holes & property owners)

Mine Index 5121 SE NE SE 25-T6N-R3E, surface, Springfield Coal source: ISGS field notes (H. R. Wanless, 7-15-1927)

Mine Index 5122 * SW NW NW 25-T6N-R3E, surface, Springfield Coal, 5.2 ft thick source: ISGS field notes H. R. Wanless, 7-8-1927)

Mine Index 5131 * NW SW NE 24-T6N-R4E, underground, Springfield Coal, 4.5 ft thick source: ISGS field notes (H. R. Wanless, 7-28-1927)

Mine Index 5132 * SE SW SW 32-T6N-R4E, drift, Springfield Coal, 5.0 to 5.5 ft thick source: ISGS field notes (H. R. Wanless, 7-25-1927)

Mine Index 5133 * SE NE NE 35-T6N-R4E, slope, Springfield Coal, 5 ft thick source: ISGS field notes (L. C. McCabe, 9-3-1928)

Mine Index 5134 * NW NE SW 36-T6N-R4E, drift, Springfield Coal source: Microfilm, document 351653 (map of Roadside Mine, mine index 2176)

Mine Index 5135 * NW SE SW 36-T6N-R4E, drift, Springfield Coal, 5 ft thick source: ISGS field notes (H. R. Wanless, 7-30-1927)

Mine Index 5138 SW NE NE 31-T6N-R4E, shaft, Springfield Coal source: Federal Land Bank Report (4-1934) & ISGS field notes (H. R. Wanless, 7-25-1927)

Mine Index 5139, Miller Bank * SE NW SW 17-T6N-R4E, drift, Springfield Coal source: ISGS map library, 4103.F8 I5.1-46, sheet 5 (map of Saline County No. 22 Mine, mine index 31, 4-23-1923)

Mine Index 5147 SW SE NW 20-T6N-R4E, shaft, Springfield Coal source: Federal Land Bank Report (4-1934)

Mine Index 5161 * SW NW 36-T6N-R4E, drift, Springfield Coal source: ISGS field notes (L. C. McCabe, 9-3-1928)

Mine Index 5286, William (Mike) Mine NE NW NE 29-T6N-R4E, Springfield Coal source: ISGS mines database

Mine Index 5287, Old St. David Mine NE 21-T6N-R4E, shaft, Springfield Coal source: ISGS field notes (H. R. Wanless, 6-1928) & Federal Land Bank Report (1934)

Mine Index 5288, Ellis & Johnson Mine NE SE NW 21-T6N-R4E, slope, Springfield Coal source: ISGS mines database

Mine Index 5408 NE SE NW 21-T5N-R4E, Colchester Coal source: Coal Section files, undated work map on Havana Quadrangle 15-minute work map

Mine Index 6630 NE SW 21-T6N-R4E, shaft, Springfield Coal source: Federal Land Bank Report (4-1934)

* Not shown on accompanying map due to later surface mining.

MINES WHOSE LOCATIONS ARE NOT KNOWN, ST. DAVID QUADRANGLE

The locations of the following mines are unknown, but the production tonnage, operating names, and nearest town were reported in the Annual Coal Reports. The operators listed below mined in or near the St. David Quadrangle. The information shown is similar to that presented on the summary sheets in the previous pages of this directory. The first item is the name the mine operated under as listed in the Coal Report, then the years the mine reported. If no physical data are available, the next item listed is the total tons produced by the mine. If physical data are available, the order of presentation is as follows: type of opening for the mine (drift, slope or shaft), depth of coal in feet, and thickness of coal in feet.

The total tons mined by these unlocated mines is 377,167 (375,069 underground; 10,729 surface mined; 34,525 mined by uncertain method), which would represent approximately 75 to 130 acres, depending on the recovery factor, mining method, and numerous other factors. (Note: 1 square mile = 640 acres)

BANNER

Bowen (J. R.) Coal Company, 1950-1951, drift, Springfield, —, 4.67, RP	2,040 tons	mine index 4980
Romaine (Thomas), 1889-1893, drift, Springfield, 30-40, 5.0, RP	1,391 tons	
Wolf & Goodwin, 1893-1895	<u>900</u> tons	
	2,291 tons	
Williams (Amos), 1889-1893, drift, Springfield, 45-100, 4.0-5.0, RP	1,180 tons	
Fiddler (George), 1893-1895	474 tons	
Snyder (Charles), 1895-1898	<u>700</u> tons	
	2,354 tons	
Williams (George), 1894-1896, drift, Springfield, 45-50, 4.0-5.0, RP	650 tons	
Williams (John), 1896-1898	<u>890</u> tons	
	1,540 tons	
Gillett (John), 1905-1907, drift, Springfield, 40-60, 4.5-5.0, RP	280 tons	
Dair (C. W.), 1911-1913, drift, Springfield, 60-120, 5.0, RP	1,150 tons	
Counterman (J. R.), 1919-1921	1,615 tons	
Oldham (Riley), 1922-1923	300 tons	
Oldham (Clifford), 1923-1924	<u>308</u> tons	
	608 tons	
Scoville (Frank), 1924-1925	180 tons	

BRYANT

Maloon & Gofinch, 1909-1910, drift, Springfield, —, 5.0, RP	1,500 tons
Brooks (Dave), 1914-1916, drift or slope, Springfield, 60-70, 4.43-5.0, RP	654 tons
Dickson (B. W.), 1916-1919, drift, Springfield, 21, 5.0, RP	2,500 tons
Dickerson (W. D.), 1919-1920	<u>360</u> tons
	2,860 tons
Howarth (James), 1917-1918	748 tons
Sepick (Jack), 1918-1919	258 tons
Averil (Arthur), 1918-1919	250 tons
Simpson (Frank), 1918-1924	4,680 tons

Gibson & Adams, 1919-1920	1,370 tons
Freeman Coal Company, 1920-1921	445 tons
Maloan (Arthur), 1920-1921	1,170 tons
Lockwood & Freeman, 1920-1921	670 tons
Fernetto (S.) & Post (Ralph), 1920-1921	50 tons
Parkinson (J. W.), 1922-1923	800 tons
Munson (Ed), 1923-1924	775 tons
Buckley (E.), 1923-1924	154 tons
Ward & Lee, 1924-1926	660 tons
Gofinch (John), 1924-1925	850 tons
Lightle & Gofinch, 1926-1926	<u>846</u> tons
	1,696 tons
Britz (Frank), 1926-1926	650 tons
Estas & Laird, 1926-1926	85 tons
Britz (Frank), 1926-1926	75 tons
Perkhizer & Brown, 1927-1927, underground	430 tons
Brown & Perkins, 1928-1928	27 tons
Brown & Demasco, 1929-1929	<u>467</u> tons
	924 tons
DeMoss (Albert), 1927-1927, underground	377 tons
Brown & DeMoss, 1928-1928	200 tons
Brown & Company, 1929-1929	<u>375</u> tons
	952 tons
Baxter (Charles), 1927-1927	128 tons
Ghegleir (James), 1927-1927, underground	72 tons
Ghiglierie & Ferro, 1928-1928	633 tons
Ghigtieri & Ferri, 1929-1929	<u>111</u> tons
	816 tons
Bults & Shadnlet, 1929-1929, underground	1,662 tons
Bryant Coal Company, 1930-1931	4,922 tons
Chapin & Vanslyck, 1932-1932	<u>3,000</u> tons
	9,584 tons
Brown (Frank), 1931-1931, underground	1,246 tons
Brown (William), 1932-1932	1,123 tons
Brown (Frank), 1933-1935	<u>2,920</u> tons
	5,289 tons
Watson (Albert), 1933-1934, underground	2,235 tons
Bordwine & Gofinch, 1934-1934, underground	740 tons
Boardwine & Company, 1935-1935	<u>201</u> tons
	941 tons
Chaddock & Lightle, 1934-1934, underground	105 tons

BUCKHART TOWNSHIP

Hall (H.), 1883-1884, surface	240 tons
-------------------------------	----------

DUNFERMLINE

Fiddler (William), 1897-1898, surface, Springfield	350 tons
Maple (Charles), 1898-1899, drift, Springfield, 60, 5.0	200 tons
Hall (Charles), 1898-1899, drift, Springfield, 60, 5.0	250 tons
Roberts (S.), 1909-1910, drift, Springfield, —, 5.0, RP	300 tons

HAVANA

Stockham (Roy), 1940-1941, underground	158 tons	mine index 5003
Gibson (John), 1919-1921	929 tons	
Smith (William), 1919-1921	1,815 tons	
Grosvich (Earl), 1922-1929	4,018 tons	
Batley (Bob), 1922-1924	1,500 tons	
Thomas (John), 1922-1924	730 tons	
Thomas (John), 1922-1923	75 tons	
Goodwin & Johnson, 1923-1924	485 tons	
Vender (Isaac), 1929-1929, underground	240 tons	

LIVERPOOL

McArthur (John), 1889-1893, drift, Springfield, 20-80, 4.5-5.0, RP	920 tons
Hicks (Warren), 1922-1923	741 tons
Mound Coal Company, 1935-1935, underground	3,000 tons

MAPLES MILL

Lamb (John W.), 1889-1893, drift, Springfield, 60-80, 4.5-5.0, RP	1,730 tons
Snyder (S. P.), 1893-1895, drift, Rock Island, 25, 2.5, RP	720 tons
Lamb (John A.), 1905-1909, drift, Springfield, 30-60, 4.0-5.0, RP	1,398 tons
Lamb (F.), 1909-1910	<u>160 tons</u>
	1,558 tons
Whitehead (William), 1905-1909, drift, Springfield, 40-65, 3.0-5.0, RP	440 tons
Whitehead (G. B.), 1909-1911	80 tons
Whitehead (John), 1911-1916	4,255 tons
Whitehead (George), 1916-1917	800 tons
Whitehead (John), 1917-1924	2,920 tons

Whitehead (George B.), 1924-1927	<u>515</u> tons 9,010 tons
Tompkins (E.), 1909-1910, drift, Springfield, —, 4.0, RP	1,425 tons
Stanley (Edward), 1911-1914, drift, Springfield, 35-65, 4.67-5.17, RP	2,135 tons
Draper Brothers, 1914-1918	1,955 tons
Draper (Charles), 1918-1922	2,073 tons
Johnson & Draper, 1922-1923	<u>740</u> tons 6,903 tons
Foutch (J. H.), 1911-1916, drift, Springfield, 50-60, 4.5-4.83, RP	915 tons
Emanuelson (Eric), 1911-1912, drift, Springfield, 60, 4.83, RP	300 tons
Aylesworth (Guy), 1913-1915, shaft or drift, Springfield, 35-40, 5.0-5.17, RP	550 tons
Raker (J. D.), 1915-1916, drift, Springfield, 65, 5.0, RP	120 tons
Raker (Charles), 1916-1918	<u>895</u> tons 1,015 tons
Johnson (Jerry), 1923-1924	630 tons

ST. DAVID

Nebergall Coal Company, 1958-1959, surface	1,257 tons	mine index 4986
Wyman Coal Company, 1882-1885, slope, Springfield, 30-40, 5.0, RP	44,290 tons	
Shallenberger (G. N.), 1883-1884, surface, Springfield, 9, 5.0	1,200 tons	
Ford (Absalom), 1883-1884, surface, Springfield, —, —	800 tons	
Patterson (James), 1889-1893, drift, Springfield, 20, 4.5-5.0, RP	2,080 tons	
Carbon Coal Company, 1892-1898, shaft, Springfield, 35-60, 4.67-5.0, RP	164,594 tons	
Bath (Abraham), 1895-1896, drift, Springfield, 20-55, 4.5-5.0, RP	Unknown	
Courtney (Thomas M.), 1896-1900	760 tons	
Bath (Abraham), 1900-1905	<u>4,460</u> tons 5,220 tons	
Snyder (Leonard R.), 1895-1900, drift, Springfield, 20-40, 4.83-5.0, RP	1,676 tons	
Snyder (L. R.), 1902-1906, drift, Springfield, 24-40, 4.5-5.0, RP	5,500 tons	
Shryock (William), 1896-1898, drift, Springfield, 40, 5.0, RP	430 tons	
Woods (James), 1898-1899, drift, Springfield, 40-70, 5.0, RP	200 tons	
Mercey (George), 1899-1902	<u>1,510</u> tons 1,710 tons	
Tompkins (H.), 1900-1902, drift, Springfield, 65, 5.0, RP	900 tons	
Tyler (Arch), 1900-1901, drift, Springfield, 60, 5.0, RP	700 tons	
Tyler (C. W.), 1901-1902	<u>400</u> tons 1,100 tons	
DeMoss (A.), 1900-1902, drift, Springfield, 50, 5.0, RP	650 tons	
Baxter (Thomas), 1902-1903, shaft, Springfield, 25, 4.5, RP	1,620 tons	
Rakestraw (John W.), 1906-1909, —, Springfield, 40-60, 4.5-5.0, RP	3,107 tons	

Stufflebeam & Lightle, 1907-1908, drift, Springfield, 25-40, 5.0, RP	48 tons
Lightle (John), 1908-1910	500 tons
Barker & Stufflebeam, 1910-1911	<u>1,400 tons</u>
	1,948 tons
Johnson (W. A.), 1909-1911, drift, Springfield, —, 5.0, RP	3,180 tons
Johnson (John), 1910-1917, drift, Springfield, 12-75, 4.67-5.0, RP	16,000 tons
Johnson (John) & Brothers, 1917-1919	10,020 tons
Johnson (John A.), 1919-1920	1,200 tons
Johnson (John & Alfred), 1920-1923	6,850 tons
Johnson Brothers, 1923-1924	<u>1,780 tons</u>
	35,850 tons
Johnson (John), 1914-1915, slope, Springfield, 40, 5.0, RP	1,200 tons
Rand & Company, 1911-1912, —, Springfield, 60-70, 4.67-5.0, RP	1,000 tons
Bartol & Zaborac, 1912-1913	<u>700 tons</u>
	1,700 tons
Provard (Frank), 1913-1915, drift, Springfield, 23-78, 5.0, RP	1,955 tons
Provard (George), 1915-1917	<u>875 tons</u>
	2,830 tons
Garren (William), 1913-1915, drift, Springfield, 40-300, 5.0, RP	615 tons
Garren (Otto), 1915-1916	<u>1,280 tons</u>
	1,895 tons
Pollett (James), 1915-1916, drift, Springfield, 65, 4.67, RP	268 tons
Porter (Harry), 1916-1917, drift, Springfield, 25, 5.0, RP	2,500 tons
Schragel (Joseph), 1917-1919	2,739 tons
Donley & Matthews, 1920-1921	291 tons
Myers & Frasco, 1922-1923	960 tons
Myers (Sam), 1923-1927	<u>2,250 tons</u>
	3,210 tons
Delast (Frank), 1922-1923	170 tons
Wamble (J. S.), 1924-1925	175 tons
Maxwell (E. W.), 1925-1925	50 tons
Johnn Brothers, 1926-1926, underground	660 tons
Johnson (J. A.), 1927-1927	800 tons
Johnson Brothers, 1928-1928	<u>1,400 tons</u>
	2,860 tons
Stufflebeam (Marion), 1926-1927, underground	868 tons
Stufflebeam & Merchant, 1928-1928	<u>260 tons</u>
	1,128 tons
Stuffelbeam (Marion), 1934-1935, underground	303 tons
Cozine (Paul), 1932-1933, surface	3,875 tons
Cozine (A. M.), 1934-1936	<u>3,007 tons</u>
	6,882 tons
Johnson & Delrach, 1934-1934, underground	800 tons
Delach (Steve), 1935-1937	677 tons
County Wide Coal Company, 1938-1938	222 tons
Zaborac (Stanley), 1939-1939	795 tons

Murphy (Elmar), 1940-1942	<u>1,071</u> tons
	3,565 tons
Karlovich (Peter), 1934-1935, underground	350 tons
St. David Coal Company, 1935-1937, underground	625 tons

INDEX OF MINES IN THE ST. DAVID QUADRANGLE

Adams (Gibson & Adams)	53
Ashton & Company	32
Astle (Calhoun & Astle Coal Company)	19
Averil (Arthur)	52
Aylesworth (Guy)	55
Barker & Stufflebeam	55
Bartol & Zaborac	56
Bath (Abe)	48
Bath (Abraham)	55
Bath (W.)	48
Bath (William)	48
Bath Brothers	48
Batley (Bob)	54
Baxter (Charles)	53
Baxter (Thomas)	55
Bennett (Andrew)	19
Bennett (Straley & Bennett)	19
Bennett & Long	19
Bennett & Wilcoxon	19
Bennett Coal Company, No. 1 Mine	19
Big Creek Coal Company	
Big Creek No. 1 Mine	32
Big Creek No. 22 Mine	9
Big Creek No. 24 Mine	28
Big Creek No. 4 Mine	28
Big Creek Coal Company, D Mine	33
Big Ten Coal Company	15
Billings (Arthur)	21
Billings & Brook	21
Billings & May	34
Birchfield (Dewey)	44
Boardwine & Company	53
Bordwine & Gofinch	53
Bowen (J. R.) Coal Company	52
Britz (Frank)	53
Brook (Billings & Brook)	21
Brooks (Cob)	21
Brooks (Dave)	52
Brooks (E. H.)	21
Brown (Frank)	53
Brown (Perkhizer & Brown)	53
Brown (Stevenson & Brown)	43
Brown (William)	53
Brown & Company	53
Brown & Demasco	53
Brown & DeMoss	53
Brown & Perkins	53
Bryant Coal Company	32, 53
Bryant Mine	15
Buckheart Coal Company	16, 33
Buckheart Creek Coal Company	16
Buckheart No. 17 Mine	13
Buckley (E.)	53
Bults & Shadnlet	53
C Mine	29
Calhoun & Astle Coal Company	19
Cape (Harley)	42
Cape & Johnson	42
Carbon Coal Company	55
Carter (Watt & Carter)	32
Central Coal Mining Company	32
Central States Colliery	12
Chaddock & Lightle	53

Chapin & Vanslyck	53
Clark (Dan)	41
Clark (Dyer)	41
Counterman (J. R.)	52
County Wide Coal Company	56
Courtney (Thomas M.)	55
Cozine (A. M.)	56
Cozine (Paul)	56
Cripple Creek Coal Company, No. 1 Mine	11
Cripple Creek Coal Company, No. 2 Mine	20
Cuba Mine	14
D Mine	33
Dair (C. W.)	52
Day Branch Coal Company	49
Delach (Steve)	56
Delast (Frank)	56
Delrach (Johnson & Delrach)	56
Demasco (Brown & Demasco)	53
DeMoss (A.)	55
DeMoss (Albert)	53
DeMoss (Brown & DeMoss)	53
Dickerson (W. D.)	52
Dickson (B. W.)	52
Donley & Matthews	56
Dorich (Joe)	42
Dorich Brothers	42
Draper (Charles)	55
Draper (Johnson & Draper)	55
Draper Brothers	55
E Mine	28
Ellis & Johnson Mine	51
Emanuelson (Eric)	55
Emerson & Company	29
Emerson & Skinner	29
Estas & Laird	53
F Mine	32
Farr Coal Company	43
Fernetto (S.) & Post (Ralph)	53
Ferri (Ghigtieri & Ferri)	53
Ferro (Ghiglierie & Ferro)	53
Fiddler (George)	52
Fiddler (William)	54
Flood & Miller	44
Ford (Absalom)	55
Ford (Snowden)	21
Ford & Munson Coal Company	30
Foutch (J. H.)	55
Fouts (Richard)	37
Frasco (John)	43
Frasco (Myers & Frasco)	56
Freeman (Lockwood & Freeman)	53
Freeman Coal Company	53
Freeman United Coal Mining Company, Buckheart No. 17 Mine	13
Garren (Otto)	56
Garren (William)	56
Gem Coal Company	43
Ghegleir (James)	53
Ghiglierie & Ferro	53
Ghigtieri & Ferri	53
Gibson (John)	54
Gibson & Adams	53
Gillett (John)	52
Goalding (Frank A.)	43
Gofinch (Bordwine & Gofinch)	53
Gofinch (John)	53

Gofinch (Lightle & Gofinch)	53
Gofinch (Maloon & Gofinch)	52
Goodwin (Wolf & Goodwin)	52
Goodwin & Johnson	54
Grosvich (Earl)	54
Hall (Charles)	54
Hall (H.)	54
Hare Coal Company	23
Hicks (Warren)	54
Hilltop Mine	44
Howarth (James)	52
Johnn Brothers	56
Johnson (Cape & Johnson)	42
Johnson (Ellis & Johnson Mine)	51
Johnson (Goodwin & Johnson)	54
Johnson (J. A.)	56
Johnson (Jerry)	55
Johnson (John & Alfred)	56
Johnson (John A.)	56
Johnson (John)	56
Johnson (John) & Brothers	56
Johnson (W. A.)	56
Johnson & Delrach	56
Johnson & Draper	55
Johnson Brothers	56
Juraco (Frank)	38
Karlovich (Peter)	56
Ketchum (Sherman)	24
Laird (Estas & Laird)	53
Lamb (F.)	54
Lamb (John A.)	54
Lamb (John W.)	54
Laurance Coal Company	44
Laws (Charles)	51
Lee (Ward & Lee)	53
Lightle (Chaddock & Lightle)	53
Lightle (John)	55
Lightle (Stufflebeam & Lightle)	55
Lightle & Gofinch	53
Lingenfelter Coal Company, No. 3 Mine	40
Little Sister Coal Corporation	12
Liverpool Coal Company	17
Livers (Robert O.)	26
Lockwood & Freeman	53
Long (Bennett & Long)	19
Maloan (Arthur)	53
Maloon & Gofinch	52
Maple (Charles)	54
Matthews (Donley & Matthews)	56
Maxwell (E. W.)	56
May (Billings & May)	34
McArthur (John)	54
McElroy (Planque & McElroy)	46
Menden Coal Company	50
Mercey (George)	55
Merchant (Stufflebeam & Merchant)	56
Miller (Flood & Miller)	44
Miller (Floyd D.)	44
Miller (Floyd)	44
Miller Bank	51
Morgan (F. C) Coal Company	15
Morgan Bryant Mine	15
Mound Coal Company	54
Munroe (Schaeffer & Munroe)	30
Munson (Ed)	53

Munson (Ford & Munson Coal Company)	30
Murphy (Elmar)	56
Myers (Sam)	56
Myers (W. D.), Buckheart Mine	33
Myers & Frasco	56
Nebergall Coal Company	55
Ogden Brothers	50
Old St. David Mine	51
Oldham (Clifford)	52
Oldham (Riley)	52
O'Bryant (William)	45
P. & M. Mine	46
Parkinson (J. W.)	53
Patterson (James)	55
Pearl Branch Coal Company	31
Perkhizer & Brown	53
Perkins (Brown & Perkins)	53
Planque (A. E.)	25
Planque & McElroy	46
Pollett (James)	56
Porter (Harry)	56
Post (Elmer E.)	39
Post (Fernetto & Post)	53
Post (Roy)	39
Provard (Frank)	56
Provard (George)	56
Raker (Charles)	55
Raker (J. D.)	55
Rakestraw (John W.)	55
Rand & Company	56
Richard (Walter) Coal Company	49
Roadside Coal Company	36
Roberts (S.)	54
Romaine (Thomas)	52
Romine Coal Company	18
Saline County Coal Corporation	9
Schaeffer & Munroe	30
Schragel (Joseph)	56
Scoville (Frank)	52
Scripps (William) Coal Company	33
Sepick (Jack)	52
Shadnlet (Bults & Shadnlet)	53
Shallenberger (G. N.)	55
Shinnifield Mine	44
Shryock (William)	55
Simpson (Elmer)	22
Simpson (Frank)	52
Skinner (Emerson & Skinner)	29
Smith (William)	54
Snyder (Charles)	52
Snyder (L. R.)	55
Snyder (Leonard R.)	55
Snyder (S. P.)	54
St. David Coal Company	57
St. David Mine	47
Stanley (Edward)	55
Stevenson & Brown	43
Stockham (Roy)	54
Straley & Bennett	19
Strode (Frank)	23
Strode (J. F.) & Company	23
Strode (John) Coal Company	35
Stuffelbeam (Marion)	56
Stufflebeam (Barker & Stufflebeam)	55
Stufflebeam (Marion)	56

Stufflebeam & Lightle	55
Stufflebeam & Merchant	56
Sunnyside Mine	41
Thomas (John)	54
Tompkins (E.)	55
Tompkins (H.)	55
Truax Traer Coal Company, Little Sister Mine	12
Truax Traer Coal Company, St. David Mine	47
Tyler (Arch)	55
Tyler (C. W.)	55
United Electric Coal Company, Buckheart No. 17 Mine	13
United Electric Coal Company, Cuba Mine	14
United Electric Coal Company, No. 9 Mine	14
Vanslyck (Chapin & Vanslyck)	53
Vender (Isaac)	54
Wamble (J. S.)	56
Ward & Lee	53
Watson (Albert)	53
Watt & Carter	32
Whitebreast Fuel Company, C Mine	29
Whitebreast Fuel Company, D Mine	33
Whitebreast Fuel Company, E Mine	28
Whitebreast Fuel Company, F Mine	32
Whitehead (G. B.)	54
Whitehead (George B.)	54
Whitehead (George)	54
Whitehead (John)	54
Whitehead (Logan)	17
Whitehead (William)	54
Wilcoxon (Bennett & Wilcoxon)	19
William (Mike) Mine	51
Williams (Amos)	52
Williams (E. E.), No. 2 Mine	27
Williams (Edward), No. 1 Mine	28
Williams (George)	52
Williams (John)	52
Williams (Taylor), No. 1 Mine	28
Williams (Taylor), No. 2 Mine	27
Wolf & Goodwin	52
Woods (James)	55
Wyman Coal Company	55
Yackovich Brothers	31
Yocum (Perry) & Sons	23
Yocum (Threll)	36
Zaborac (Bartol & Zaborac)	56
Zaborac (Joe), No. 1 Mine	23
Zaborac (Joe), No. 2 Mine	21
Zaborac (Stanley)	38, 56

