

Coal Mines in Illinois St. Libory Quadrangle Washington & St. Clair Counties, Illinois

This map accompanies the Coal Mines Directory for the St. Libory Quadrangle. Consult the directory for a complete explanation of the information shown on this map.

Mining Method

- Room & Pillar (RP)
- Room & Pillar Basic (RPB)
- Modified Room & Pillar (MRP)
- Room & Pillar Panel (RPP)
- Blind Room & Pillar (BRP)
- Checkerboard Room & Pillar (CRP)
- High Extraction Retreat (HER)
- Longwall (LW)
- Underground, Method Unknown
- Strip Mine
- Auger Mine
- General Area of Mining

Other Areas Depicted

- Non-Coal Mines

Source of Mine Outline

- Final Mine Map
- Not Final Mine Map
- Undated Mine Map
- Incomplete Mine Map
- Secondary Source Map

Tipple, Shaft, Slope, Drift Locations

- Strip Mine Tipple - Active
- Strip Mine Tipple - Abandoned
- Mine Shaft - Active
- Mine Shaft - Abandoned
- Mine Slope - Active
- Mine Slope - Abandoned
- Mine Drift - Active
- Mine Drift - Abandoned
- Air Shaft
- Uncertain Location
- Uncertain Type of Opening

Other Points Depicted

- Non-Coal Mines

Mine Annotation (space permitting)

Company
Mine Name
ISGS Index No., Years of Operation

Disclaimer

Please check the Coal Section at the Illinois State Geological Survey's web site at <https://www.isgs.illinois.edu> for the most up-to-date version of these products.

Note that each quadrangle scale mined-out area map requires the use of the associated text directory for full explanation of map features and mine attributes. Also note that some quadrangles have multiple seams of mining and therefore more than one map may be available for a particular quadrangle. Please take care to check for multiple maps, as extensive mining may exist in the other seams.

The maps and digital files used for these studies were compiled from data obtained from a variety of public and private sources and have varying degrees of completeness and accuracy. This compilation map presents reasonable interpretation of the geology of the area and is based on available data. Locations of some mine features may be offset by 500 feet or more due to errors in the original source maps, the compilation process, digitizing, or a combination of these factors. These data are not intended for use in site-specific screening or decision-making. Use of these documents does not eliminate the need for detailed studies to fully understand the geology of a specific site. The Illinois State Geological Survey, Prairie Research Institute, or the University of Illinois make no guarantee, expressed or implied, regarding the correctness of the interpretations presented in this data set and accept no liability for the consequences of decisions made by others on the basis of the information presented here.

These maps were designed for use at 1:24,000. Enlarging the map may reduce accuracy, as the original scale of the source maps used to compile the outlines shown varies from 1:400 to 1:150,000, and some mine locations are known only from text descriptions. See the accompanying mine directory for the original scale of the source map used for a specific mine to check accuracy of a given portion of the map. Areas with no mines shown may still be undermined; see the unlocated mines list at the back of each mine directory.

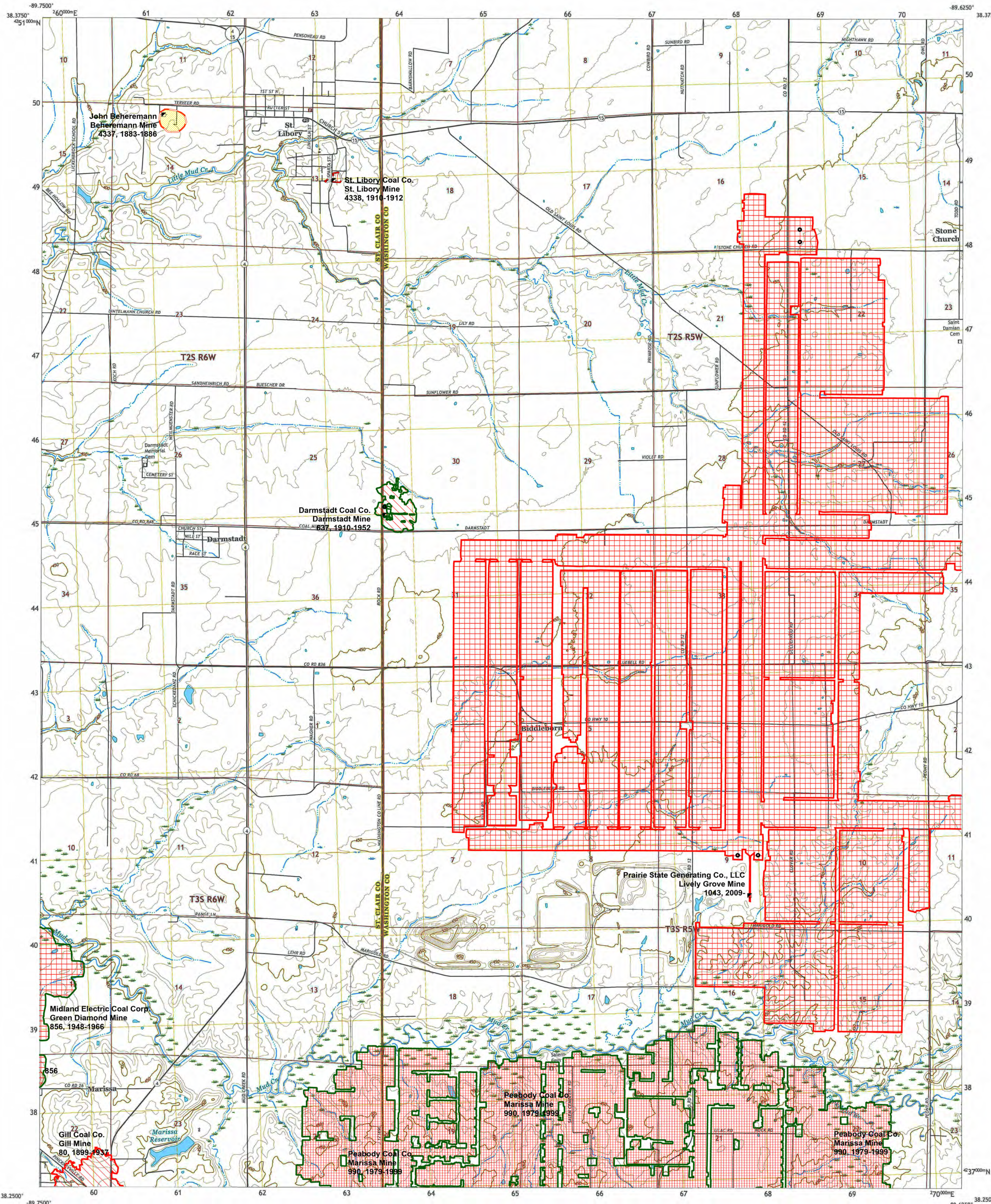
The image of the U.S.G.S. topographic base map was projected from the original UTM to Lambert Conformal Conic.

ILLINOIS
Illinois State Geological Survey
PRAIRIE RESEARCH INSTITUTE

Prairie Research Institute
Illinois State Geological Survey
615 E. Peabody Dr.
Champaign, IL 61820

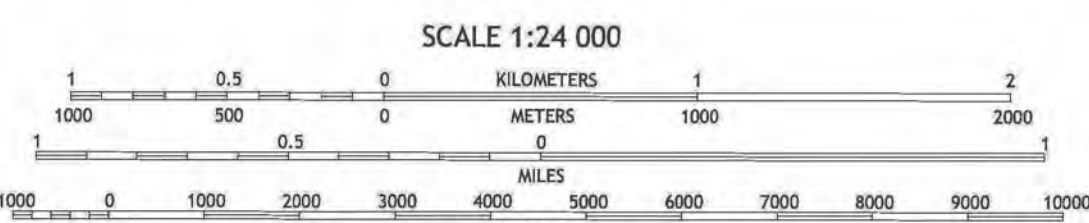
Mine Outlines Compiled by
Alan R. Myers

2012; updated 2016 & 2023



Produced by the United States Geological Survey
North American Datum of 1983 (NAD83)
World Geodetic System of 1984 (WGS84). Projection and
1:500-meter grid/Universal Transverse Mercator, Zone 16S
This map is not a legal document. Boundaries may be
generalized for this map scale. Private lands within government
reservations may not be shown. Obtain permission before
entering private lands.

Imagery.....NAP, August 2015 - October 2015
Roads.....U.S. Census Bureau, 2017
Names.....U.S. Census Bureau, 2017
Hydrography.....National Hydrography Dataset, 2001 - 2011
Contours.....National Elevation Dataset, 2008 - 2016
Boundaries.....Multiple sources; see metadata file 2014 - 2016
Public Land Survey System.....BLM, 2017
Wetlands.....FWS National Wetlands Inventory, 1981



CONTOUR INTERVAL 10 FEET
NORTH AMERICAN VERTICAL DATUM OF 1988
This map was produced to conform with the
National Geospatial Program US Topo Product Standard, 2011.
A metadata file associated with this product is draft version 0.6.18



SAINT LIBORY, IL
2018

DIRECTORY OF COAL MINES IN ILLINOIS 7.5-MINUTE QUADRANGLE SERIES ST. LIBORY QUADRANGLE WASHINGTON & ST. CLAIR COUNTIES

Alan R. Myers & C. Chenoweth



2012, Revised 2023

Prairie Research Institute
William W. Shilts, Executive Director
ILLINOIS STATE GEOLOGICAL SURVEY
E. Donald McKay III, Director

Natural Resources Building
615 East Peabody Drive
Champaign, Illinois 61820

Phone 217-244-4610
Fax 217-333-2830



This material is based upon work supported by the Illinois Mine Subsidence Insurance Fund. Any opinions, findings, and conclusions or recommendations expressed in this publication are those of the authors and do not necessarily reflect the views of the Illinois Mine Subsidence Insurance Fund.

Cover photo Track-mounted duckbill loading machine at a Peabody Coal Company mine, ca. 1915.

DISCLAIMER: The accuracy and completeness of mine maps and directories vary with the availability of reliable information. Maps and other information used to compile this mine map and directory were obtained from a variety of sources and the accuracy of some of the original information cannot be verified. Consequently, the Illinois State Geological Survey (ISGS) cannot guarantee the mine maps are free of errors and disclaims any responsibility for damages that may result from actions or decisions based on them.

The ISGS updates the maps and directories periodically, and welcomes any new information or corrections. Please contact the Coal Section of the ISGS at the address shown on the title page of this directory, or telephone (217) 244-4610.

© 2012 The Board of Trustees of the University of Illinois. All rights reserved.
For permission information, contact the Illinois State Geological Survey.

CONTENTS

INTRODUCTION	1
MINING IN THE ST. LIBORY QUADRANGLE	1
PART I EXPLANATION OF MAP AND MINE SUMMARY SHEET	2
INTERPRETING THE MAP	2
Mine Type and Mining Method	2
Source Maps	3
Points and Labels	3
INTERPRETING A MINE SUMMARY SHEET	6
REFERENCES	8
PART II DIRECTORY OF MINES IN THE ST. LIBORY QUADRANGLE	9
MINE SUMMARY SHEETS	9
Mine Index 80	
Gill Coal Corporation, Gill Mine	9
Mine Index 637	
Darmstadt Coal Company, Darmstadt Mine	10
Mine Index 856	
Midland Electric Coal Corporation, Green Diamond Mine	11
Mine Index 990	
Peabody Coal Company, Marissa Mine	12
Mine Index 1043	
Prairie State Generating Company, LLC, Lively Grove Mine	13
Mine Index 4337	
John Beheremann, St. Libory Mine	14
Mine Index 4338	
St. Libory Coal Company, St. Libory Mine	15
MINES WHOSE LOCATIONS ARE NOT KNOWN, ST. LIBORY QUADRANGLE	16
INDEX OF MINES IN THE ST. LIBORY QUADRANGLE	17

INTRODUCTION

Coal has been mined in 76 counties of Illinois. More than 7,400 coal mines have operated since commercial mining began in Illinois about 1810; fewer than 30 are currently active. To detail the extent and location of coal mining in Illinois, the Illinois State Geological Survey (ISGS) has compiled maps and directories of known coal mines. The ISGS offers maps at a scale of 1:100,000 and accompanying directories for each county in which coal mining is known to have occurred. Maps at a scale of 1:24,000 and accompanying directories, such as this, are available for selected quadrangles. Contact the ISGS for a list of these quadrangles.

These larger scale maps show the approximate positions of mines in relation to surface features such as roads and water bodies, and indicate the mining method used and the accuracy of the mine boundaries. The maps are useful for locating mine boundaries relative to specific properties and for assessing the potential for subsidence in an area. Mine boundaries compiled from final mine surveys are generally shown within 200 feet of their true position. As a result of poor cartographic quality and inaccuracies in the original mine surveys, boundaries of some older mines may be mislocated on the map by 500 feet or more. Original mine maps should be consulted in situations that require precise delineation of mine boundaries or internal workings of mined areas.

This directory serves as a key to the accompanying mine map and provides basic information on the coal mines in the quadrangle. The directory is composed of two parts. Part I explains the symbols and patterns used on the accompanying map and the summary data presented for each mine. Part II numerically lists the mines in the quadrangle and summarizes the geology and production history of each mine. Total production for the mine, not the portion in the quadrangle, is given.

MINING IN THE ST. LIBORY QUADRANGLE

Most of the mining in the St. Libory Quadrangle extends from the south and southwest and ceased operations in 1999, when the Marissa Mine (mine index 990) closed. The remainder of past mining operated in the northwest quarter of the quadrangle, where the Herrin Coal is from 180 to 216 feet deep. Mining is currently taking place at the Lively Grove Mine (mine index 1043), which has a mine-mouth power plant.

PART I EXPLANATION OF MAP AND MINE SUMMARY SHEET

INTERPRETING THE MAP

The map accompanying this directory shows the location of coal mines known to be present in the quadrangle. The map, corresponding to a U.S. Geological Survey (USGS) 7.5-minute quadrangle, covers an area bounded by lines of latitude and longitude 7.5-minutes apart. In Illinois, a quadrangle is approximately 6.5 miles east to west and 8.5 miles north to south, an area of about 56 square miles. The USGS generally offers one map of mines per quadrangle. In some areas where extensive mining occurred in two or more overlapping seams, separate maps are compiled for mines in each seam to maintain readability of the map.

Mine Type and Mining Method

The mine type is indicated on the map by pattern color: green represents surface mines; red and yellow represent underground mines. The red patterns are used for areas of underground mining that are documented by a primary or secondary source map. A yellow pattern is used for cases where no map of the mine workings is available, but a general area of mining can be inferred from property maps or production figures. The patterns indicate the main mining methods used in underground mines. The methods are (1) room and pillar and (2) high extraction. The method used gives some indication of the amount and pattern of coal extraction within each mined area, and has some influence on the timing and type of subsidence that can occur over a mine.

The following discussion and illustrations of mining methods are based on Guither et al. (1984).

In room-and-pillar mines, coal is removed from haulage-ways (entries) and selected areas called rooms. Pillars of unmined coal are left between the rooms to support the roof. Depending on the size of rooms and pillars, the amount of coal removed from the production areas will range from 40% to 70%.

Room and Pillar - mining is divided into six categories:

- room-and-pillar basic (RPB, fig. 1A), an early method that did not follow a preset mining plan and therefore resulted in very irregular designs;
- modified room and pillar (MRP, fig. 1B);
- room-and-pillar panel (RPP, fig. 1C);
- blind room and pillar (BRP, fig. 1D);
- checkerboard room and pillar (CRP, fig. 1E);
- room and pillar (RP), a classification used when the specific type of room-and-pillar mining is unknown.

Blind and checkerboard are the most common types of room-and-pillar mining used in Illinois today. The knowledge of room-and-pillar mining methods gives a trained engineer information on the nature of subsidence that may occur. A more extensive discussion of subsidence can be found in Bauer et al. (1993).

High-extraction These mining methods are subdivided into high-extraction retreat (HER, Fig 1F) and longwall (LW, Fig 1G, 1H). In these methods, much of the coal is removed within well defined areas of the mine. Subsidence of the surface above these areas occurs within weeks. Once the subsidence activity ceases, the potential for further movement over these areas is low; however, subsidence may continue for several years after mining.

High-extraction retreat mining is a form of room-and-pillar mining that extracts most of the coal. Rooms and pillars are developed in the panels, and the pillars are then systematically removed (fig. 1F).

In early (pre-1960) longwall mines, mining advanced in multiple directions from a central shaft (fig. 1G). Large pillars of coal were left around the shaft, but all coal was removed beyond these pillars. Miners placed rock and wooden props and cribs in the mined-out areas to support the mine roof. The overlying rock gradually settled onto these supports, thus producing subsidence at the surface. In post-1959 longwall mines, room-and-pillar methods have been used to develop the main entries of the mine and panel areas. Modern longwall methods extract 100 percent of the coal in the panel areas (fig. 1H).

SOURCE MAPS

Mine outlines depicted on the map are, whenever possible, based on maps made from original mine surveys. The process of compiling and digitizing the quadrangle map may produce errors of less than 200 feet in the location of mine boundaries. Larger errors of 500 feet or more are possible for mines that have incomplete or inaccurate source maps.

Because of the extreme complexity of some mine maps, detailed features of mined areas have been omitted. The digitized mine boundary includes the exterior boundary of all rooms or entries that were at least 80 feet wide or protruded 500 feet from the main mining area. Unmined areas between mines are shown if they are at least 80 feet wide; unmined blocks of coal within mines are shown if they are at least 400 feet on each side. Original source maps should be consulted when precise information on mine boundaries or interior features is needed.

The mine summary sheet lists the source maps used to determine each mine outline. The completeness of map sources is indicated on the map by a line symbol at the mine boundary. Source maps are organized in five categories.

Final mine map The mine outline was digitized from an original map made from mine surveys conducted within a few months after production ceased. The date of the map and the last reported production are listed on the summary sheet.

Not a final map The mine is currently active or the mine outline was made from a map based on mine surveys conducted more than a few months before production ceased. This implies the actual mined-out area is probably larger than the outline on the map. The mine summary sheet indicated the dates of source maps and the last reported production, as well as the approximate tonnage mined between these two dates (if the mine is abandoned). The summary sheet also lists the approximate acreage mined since the date of the map and, in some cases, indicates the area where additional mining may have taken place. This latter information is determined by locating on the map the active faces relative to probable boundaries of the mine property.

Undated map The source map was undated, so it may or may not be based on a final mine survey. When sufficient data are available, the probable acreage of the mined area is estimated from reported production, average seam thickness and a recovery rate comparable to other mines in the area. This information is listed in the summary sheet for the mine.

Incomplete map The source map did not show the entire mine. The summary sheet indicates the missing part of the mine map and the acreage of the unmapped area, which is estimated from the amount of coal known to have been produced from the mine.

Secondary source map The original mine map was not found so the outline shown was determined from secondary sources (e.g., outlines from small-scale regional maps published in other reports). The summary sheet describes the secondary sources.

POINTS AND LABELS

The locations of all known mine openings (shafts, slopes, and drifts) and surface mine tipples are plotted on the map. Tipples are areas where coal was cleaned, stockpiled, and loaded for shipping.

Only openings or tipples are plotted for mines without source maps. If the precise locations of these features are unknown, a special symbol is used to indicate the approximate location of the mine.

Each mine on the map is labeled with the names of the mine and operating company, ISGS mine index number, and years of operation (if known) if space permits. A seam designation is given on maps where more than one seam was mined. For a mine that operated under more than one name, only the most recent name is generally given. When a mine changed names or ownership shortly before closing, an earlier name is listed. All company and mine names are listed on the mine summary sheet in the directory, under the production history segment.



Figure 1 Mining methods: (A) room-and-pillar basic (RPB), (B) modified room and pillar (MRP), (C) room-and-pillar panel (RPP), (D) blind room and pillar (BRP).



Figure 1 (cont.) Mining methods: (E) checkerboard room and pillar (CRP), (F) high extraction retreat (HER), (G) early (pre-1960) longwall, (H) post-1959 longwall



Figure 2 Generalized stratigraphic section, showing approximate vertical relations of coals in Illinois.

INTERPRETING A MINE SUMMARY SHEET

The mine summary sheet is arranged numerically by mine index number. Index numbers are shown on the map and in the mine listing. The mine summary sheet provides the following information (if available).

Company and mine name The last company or owner of the mine is used, unless no production was recorded for the last owner. In that case, the penultimate owner is listed. Mines often have no specific name; in these cases, the company name is also used as the mine name.

Type *Underground* denotes a subsurface mine in which the coal was reached through a shaft, slope, or a drift entry. *Surface* denotes a surface, open pit or strip mine.

Total mined-out acreage shown The total acreage of the mined area mapped, including any acreage mined on adjacent quadrangles, is calculated from the digitized outline of the mine. The acreage of large barrier pillars depicted on the map is excluded from the mined-out acreage. Small pillars not digitized are included in the acreage calculation. If the mine outline is not based on a final mine map, the acreage is followed by an estimate of additional acres that may have been mined. The estimate is determined from reported mine production, approximate thickness of the coal, and recovery rates calculated from nearby mines that used similar mining methods.

SHAFT, SLOPE, DRIFT OR TIPPLE LOCATIONS

Shaft, slope, drift, or tippie locations Locations of all known former entry points to underground mines or the location of coal cleaning, tippie, and shipping equipment used by the mine's facility are listed. The location is described in terms of county, township and range (Twp-Rge), section, and location within the section by quarters. NE SW NW, for instance, would describe the location in the northeast quarter of the southwest quarter of the northwest quarter. When sections are irregular in size, the quarters remain the same size and are oriented (or "registered") from the southeast corner of the section. Approximate footage from the section lines (FEL = from east line, FNL = from north line, for example) is given when that information is known; this indicates a surveyed location and is not derived from maps. Entry points are also plotted on the map and coded for the type of entry or tippie. A mine opening may have had many purposes during the life of the mine. Old hoist shafts are often later used for air and escape shafts; this information is included in the directory when known. The tippie for underground mines was generally located near the main shaft or slope. At surface mines, coal was sometimes hauled to a central tippie several miles from the mine pit.

GEOLOGY

Seam(s) mined The name of the coal seam(s) mined is listed, if known. If multiple seams were mined, they are all listed, although the mined-out area for each seam may be shown on separate maps. Figure 2 shows the stratigraphic section of the coal-bearing interval in Illinois, and the vertical relations among the coals.

Depth The depth to the top of the seam in the vicinity of the shaft is listed, if known. The depth is determined from notes made by geologists who visited the mine during its operation or from drill hole data in ISGS files. Depth generally varies little over the extent of a mine; however, reported depths for an individual mine may vary. Depth for surface-mined coals varies, and is usually represented as a range.

Thickness The approximate thickness of the mined seam is shown, if known. Thickness also comes from notes of geologists who visited the mine during its operation or from borehole data in ISGS files. Minimum, maximum, and average thicknesses are given when this information is available.

Mining method The principal mining method used at the mine (figs. 1A-H) is listed. See the mining methods section at the beginning of this directory for a discussion of this parameter.

Geologic problems reported Any known geologic problems, such as faults, water seepage, floor heaving, and unstable roof, encountered in the mine are reported. This information is from notes made by ISGS geologists who visited the mine, or from reports by mine inspectors published by the Illinois Department of Mines and Minerals, or from the source map(s). Geologic problems are not reported for active mines.

PRODUCTION HISTORY

Production history Tons of coal produced from the mine by each mine owner are totaled. When the source map used for the mine outline is not a final mine map, the tonnage produced since the date of the map is identified. For mines that extend into adjacent quadrangles, the tonnage reported includes areas mined in adjacent quadrangles.

SOURCE OF DATA

Source map This section lists information about the map(s) used to compile the mine outline and the locations of tipples and mine openings. In some cases more than one source map was used. For example, a map drawn before the mine closed may provide better information on original areas of the mine than a later map. When more than one map was used, the bibliography section explains what information was taken from each source.

Date The date of the most recent mine survey listed on the source map is reported.

Original scale The original scale of the source map is listed. Many maps are photo-reductions and are no longer at their original scale. The original scale gives some indication of the level of detail of the mine outline and the accuracy of the mine boundary relative to surface features. Generally, the larger the scale, the greater the accuracy and detail of the mine map. Mine outlines taken from source maps at scales smaller than 1:24,000 may be highly generalized and may well be inaccurately located with respect to surface features.

Digitized scale The scale of the digitized map is reported. The scale may be different from that of the original source map. In many cases the digitized map was made from a photo-reduction of the original source map, or the source map was not in a condition suitable for digitizing and the mine boundaries were transferred to another base map.

Map type Source maps are classified into five categories to indicate the probable completeness of the map. See discussion of source maps in the previous section.

Annotated bibliography Sources that provide information about the mine are listed, with the data taken from each source. Some commonly used sources are described below. Full bibliographic references are given for all other sources. Unless otherwise noted, all sources are available for public inspection at the ISGS.

Coal Reports Published since 1881, these reports contain tabular data on mine ownership, production, employment, and accidents. Some volumes include short descriptions made by mine inspectors of physical features and conditions in selected mines.

Directory of Illinois Coal Mines This source is a compilation of basic data about Illinois coal mines, originally gathered by ISGS staff in the early 1950s. Sources used for this directory are undocumented, but they are primarily Illinois Department of Mines and Minerals annual reports, ISGS mine notes, and coal company officials.

ENR Document 85/01, Guither, H. D., J. K. Hines, and R. A. Bauer, 1985 The Economic Effect of Underground Mining Upon Land Used for Illinois Agriculture: Illinois Department of Energy and Natural Resources Document 85/01, 185 p.

Microfilm map The U.S. Bureau of Mines maintains a microfilm archive of mine maps. A microfilm file for Illinois is available for public viewing at the ISGS.

Mine notes ISGS geologists have visited mines or contacted mine officials throughout the state since the early 1900s. Notes made during these visits range from brief descriptions of the mine location to long narratives (including sketches) of mining conditions and geology.

Federal Land Bank of St. Louis, Preliminary Reports on Subsidence Investigations Mining engineers working for the Federal Land Bank of St. Louis mapped areas of subsidence due to coal mining in the early 1930s. These reports often include county maps of mine properties with mined-out areas including shaft locations, as well as subsidence areas.

REFERENCES

Bauer, R. A., B. A. Trent, and P. B. Dumontelle, 1993, Mine Subsidence in Illinois: Facts for the Homeowner Considering Insurance, Illinois State Geological Survey, Environmental Geology Note 144, 16p.

Brinkman, G., 1968, This is Washington County; its first 150 years, 1818-1968, Sesquicentennial Committee of the Historical Society of Washington County, 96p.

Guither, H. D., J. K. Hines, and R. A. Bauer, 1985, The Economic Effects of Underground Mining Upon Land Used for Illinois Agriculture, Illinois Department of Energy and Natural Resources Document 85/01, 185p.

PART II DIRECTORY OF MINES IN THE ST. LIBORY QUADRANGLE

MINE SUMMARY SHEETS

A summary sheet on the geology and production history of each mine in the St. Libory Quadrangle is provided. These summary sheets are arranged numerically by mine index number. Consult Part I for a complete explanation of the data listed in the summary sheet.

Mine Index 80

Gill Coal Corporation, Gill Mine

Type: Underground Total mined-out acreage shown: 287 Production indicates approximately 2 acres were mined after the map date. The area shown on the accompanying map is approximately 35 acres larger than expected for the reported production. The boundary between the Eureka No. 1 Mine (mine index 3622) and the Gill Mine is not clear. It is likely that area depicted on the accompanying map as Gill Mine contains areas mined by Eureka No. 1 Mine.

SHAFT, SLOPE, DRIFT or TIPPLE LOCATIONS

Type	County	Township-Range	Section	Quarters-Footage
Main shaft (6 x 12 feet)	St. Clair	3S 6W	27	SW SW NE
Air shaft	St. Clair	3S 6W	27	NE NE SW

GEOLOGY

Seam(s) Mined	Depth (ft)	Thickness (ft)			Mining Method
		Min	Max	Avg	
Herrin	99-105	6.0	8.5	6.75	MRP

Geologic Problems Reported: Some rolls and slips were present, but the coal was never completely cut out by the rolls. The immediate roof above the coal varied. The cap rock was limestone up to 5 feet thick. Sometimes shale was present below the limestone. The shale ranged up to 15 feet thick. Draw slate was also present in some areas, and was generally less than 14 inches thick. The coal seam contained several layers with streaks of pyrite and bone coal less than 1 inch thick with thicker layers of dirty coal up to 1.5 feet thick. Bone coal and pyrite were not loaded with the coal mined. The floor was fire clay that ranged from 4 to over 6 feet thick.

PRODUCTION HISTORY

Company	Mine Name	Years	Production (tons)
Superior Coal Company *	Superior	1899-1900	None reported
Borders Coal Company *	Borders	1900-1913	853,241
Forsythe Coal Company	Forsythe	1913-1915	64,348
Dozow Valley Coal Company	Dozow Valley	1915-1916	32,060
Forsythe Coal Company	Dozow Valley	1916-1919	211,163
New Marissa Coal Company	New Marissa	1919-1922	204,003
Lyle Coal Company **	Lyle	1922-1931	460,429 ***
Gill Coal Corporation	Gill	1931-1937	171,014
Gill Coal Corporation	Gill	1937-1937	10,278 †
			2,066,536

* The name changed because a Superior Coal Company was already operating at another location along the same railroad. The ownership of Borders Coal Company and Superior Coal Company was the same.

** In 1926, the mine was leased to Wallace Coal Company.

*** Idle 1930 & 1931

† Production after map date

Last reported production: March 1937

SOURCES OF DATA

Source Map	Date	Original Scale	Digitized Scale	Map Type
State archive, IL_392_01	3-1-1937	1:2400	1:2400	Not final

Annotated Bibliography (data source, brief description of information)

Coal Reports - Production, ownership, years of operation.

Mine notes (St. Clair County) - Mine type, shaft size & location, seam, depth, thickness, geologic problems.

State archive, IL_392_01 - Shaft locations, mine outline, mining method.

Mine Index 637
Darmstadt Coal Company, Darmstadt Mine

Type: Underground Total mined-out acreage shown: 40

SHAFT, SLOPE, DRIFT or TIPPLE LOCATIONS

Type	County	Township-Range	Section	Quarters-Footage
Main shaft	Washington	2S 5W	30	SW SW SW
Air shaft	Washington	2S 5W	30	NW SW SW

GEOLOGY

Seam(s) Mined	Depth (ft)	Thickness (ft)			Mining Method
		Min	Max	Avg	
Herrin	216			6.5	MRP

Geologic Problems Reported: The roof was a hard black shale that stayed up well. Little timbering was required in this mine. In one room, the black shale was only 1/8 inch thick, with limestone above. Coal balls were present in the black shale in some areas. Pyrite was present in a clay band and in some of the banded portions of the coal. The blue band was present 16 inches above the floor. The mine was dry.

PRODUCTION HISTORY

Company	Mine Name	Years	Production (tons)
Kirchhalfer & Knecht	Darmstadt	1910-1911	2,807
P. Laumbattus	Darmstadt	1911-1912	1,800
Martin Brothers	Darmstadt	1912-1918	17,428
George Pflaster	Darmstadt	1918-1920	4,165
Walter Hoover	Darmstadt	1920-1921	3,712
Darmstadt Coal Company	Darmstadt	1921-1930 *	30,197
August Jansen	Jansen	1931-1932	7,000
Darmstadt Coal Company	Darmstadt	1933-1949 **	109,925
Schneidewind Coal Company	Schneidewind	1949-1949	1,099
Darmstadt Coal Company	Darmstadt	1950-1952	<u>20,539</u>
			198,672

* Production was not reported in 1922 for mines producing less than 10,000 tons.

** Idle 1946

Last reported production: March 1952

SOURCES OF DATA

Source Map	Date	Original Scale	Digitized Scale	Map Type
State archive, IL_1811_01	9-1-1952	1:1200	1:1200	Final

Annotated Bibliography (data source, brief description of information)

Coal Reports - Production, ownership, years of operation.
 Directory of Illinois Coal Mines (Washington County) - Mine names, mine index, ownership, years of operation.
 Mine notes (Washington County) - Mine type, shaft location, seam, depth, thickness, geologic problems.
 Brinkman, Grover, 1968 - Ownership (1910-1921).
 State archive, IL_1811_01- Shaft locations, mine outline, mining method.

Mine Index 856
Midland Electric Coal Corporation, Green Diamond Mine

Type: Underground Total mined-out acreage shown: 2,429

SHAFT, SLOPE, DRIFT or TIPPLE LOCATIONS

Type	County	Twp-Rge	Section	Quarters-Footage
Main slope	St. Clair	3S 6W	16	SW SW SW
Air shaft	St. Clair	3S 6W	16	NW SW SW

GEOLOGY

Seam(s) Mined	Depth (ft)	Thickness (ft)			Mining Method
		Min	Max	Ave	
Herrin	77-100			7.0	CRP

Geologic Problems Reported: Rolls were present locally, and the contact between the coal and the roof shale was very irregular. The mine maps indicated bad top in several locations throughout the mine (central, south-central, northwest, and along the eastern perimeter).

PRODUCTION HISTORY

Company	Mine Name	Years	Production (tons)
Mid-Continent Coal Corporation	Green Diamond	1948-1961	8,906,464
Midland Electric Coal Company *	Green Diamond	1962-1966	<u>4,420,081</u>
			13,326,545

* Former ownership also includes Peabody Coal Company and Walter Bledsoe & Company (production not reported under these names).

Last reported production: March 1966

SOURCES OF DATA

Source Map	Date	Original Scale	Digitized Scale	Map Type
State archive, PB_145_01	3-20-1966	1:2400	1:2400	Final

Annotated Bibliography (data source, brief description of information)

Coal Reports - Production, ownership, years of operation, depth, thickness.
 Directory of Illinois Coal Mines (St. Clair County) - Mine names, mine index, ownership, years of operation.
 State archive, pb_145_01 - Mine outline, slope and shaft locations, mining method, geologic problems.
 Mine notes (St. Clair County) - Mine type, shaft location, seam, geologic problems.

Mine Index 990
Peabody Coal Company, Marissa Mine

Type: Underground Total mined-out acreage shown: 7,273

SHAFT, SLOPE, DRIFT or TIPPLE LOCATIONS

Type	County	Township-Range	Section	Quarters-Footage
Main slope	Washington	3S 5W	29	NW NW SE
Air shaft	Washington	3S 5W	29	SW NW SE
Air shaft	Washington	3S 5W	29	SW NW SE
Air shaft	Washington	3S 5W	29	SW NE SW

GEOLOGY

Seam(s) Mined	Depth (ft)	Thickness (ft)			Mining Method
		Min	Max	Avg	
Herrin	150-200			6.6-7.3	BRP

Geologic Problems Reported: A thrust fault with displacement up to 1.5 feet was noted, as well as some localized thrust faults with less than 1 foot of displacement. The thrust faults were laterally discontinuous. The roof was limestone near the slope bottom. Limestone roof materials were sometimes thin or discontinuous. The limestone was likely Brereton Limestone in some areas, but the Conant Limestone was also seen in the Marissa Mine. Anna Shale made the roof in some areas, and joints and slips were usually widely spaced in this black shale. Some areas of black shale roof contained concretions. Slips were common where the roof was Energy Shale, and the coal under the gray shale sometimes contained coal balls in the upper part of the seam. A set of slips, oriented northwest-southeast, southwest of the air intake shaft marked a boundary between good and bad roof. The bad roof had many slips, and appeared to have thin or no limestone in the sequence above the coal. The coal was generally 5.5 feet thick under limestone roof and up to 7.5 feet thick under black shale. Pyrite was present in the coal as stringers, thin bands and goat beards. The blue band was about 1 foot from the bottom of the coal.

PRODUCTION HISTORY

Company	Mine Name	Years	Production (tons)
Peabody Coal Company	Marissa	1979-1999	<u>40,680,259</u> 40,680,259

Last reported production: 1999

SOURCES OF DATA

Source Map	Date	Original Scale	Digitized Scale	Map Type
State archive, MS_25_01	1-11-2000	1:3200	1:3200	Final

Annotated Bibliography (data source, brief description of information)

Coal Reports - Production, ownership, years of operation, depth.
 Directory of Illinois Coal Mines (Washington County) - Mine names, mine index, ownership, years of operation.
 Mine notes (Washington County) - Mine type, seam, thickness, geologic problems.
 State archive, MS_25_01 - Slope & shaft locations, mine outline, mining method.

Mine Index 1043**Prairie State Generating Company, LLC, Lively Grove Mine**

Type: Underground Total mined-out acreage shown: 7,042

SHAFT, SLOPE, DRIFT or TIPPLE LOCATIONS

Type	County	Township-Range	Section	Quarters-Footage
Main slope	Washington	3S 5W	9	NW NE SW SE
Air shaft (exhaust)	Washington	3S 5W	9	SW SW NE
Air shaft (intake)	Washington	3S 5W	9	SE SW NE
Air shaft (return)	Washington	2S 5W	15	NW SW SW
Air shaft (intake)	Washington	2S 5W	15	SW SW SW

GEOLOGY

Seam(s) Mined	Depth (ft)	Thickness (ft)			Mining Method
		Min	Max	Avg	
Herrin	225			6/5	CRP

Geologic Problems Reported: Geologic problems are not reported for active mines.**PRODUCTION HISTORY**

Company	Mine Name	Years	Production (tons)
Prairie State Generating Company, LLC	Lively Grove	2009- *	63,525,602 *
			63,525,602

* Production includes 2022, the most recent available Coal Report.

Last reported production:

SOURCES OF DATA

Source Map	Date	Original Scale	Digitized Scale	Map Type
Company, 6-467M	1-20-2022	1:4800	1:4800	Not final

Annotated Bibliography (data source, brief description of information)

Coal Reports - Production, ownership, years of operation.

Directory of Illinois Coal Mines (Washington County) - Mine names, mine index, ownership, years of operation.

Mine notes (Washington County) - Mine type, slope location, seam, depth, thickness.

Company map, Coal Section files, 6-467M - Slope & shaft locations, mine outline, mining method.

Mine Index 4337**John Beheremann, St. Libory Mine**

Type: Underground Total mined-out acreage shown: 17 as a general area of mining; production indicates less than 1 acre was mined.

SHAFT, SLOPE, DRIFT or TIPPLE LOCATIONS

Type	County	Township-Range	Section	Quarters-Footage
Main shaft	St. Clair	2S 6W	14	NE NE NW

GEOLOGY

Seam(s) Mined	Depth (ft)	Thickness (ft)			Mining Method
		Min	Max	Avg	
Herrin	183			6.0-7.5	RP

Geologic Problems Reported:

PRODUCTION HISTORY

Company	Mine Name	Years	Production (tons)
St. Libory Coal & Mining Company *	St. Libory	1883-1884	800
John Beheremann	St. Libory	1884-1886	750
			1,550

* The source map indicates the company was known as St. Louis & St. Libory Coal Company.

Last reported production: 1886

SOURCES OF DATA

Source Map	Date	Original Scale	Digitized Scale	Map Type
Microfilm, document 351063	Undated	1:1200	1:1407	Incomplete
Federal Land Bank Report	6-1934	1:126000	1:126000	Secondary source

Annotated Bibliography (data source, brief description of information)

Coal Reports - Production, ownership, years of operation, mine type, seam, depth, thickness, mining method.
 Directory of Illinois Coal Mines (St. Clair County) - Mine names, mine index, ownership, years of operation.
 Microfilm map, document 351063, reel 03134, frame 161 - Shaft location, mine outline, company name.
 Federal Land Bank Report (St. Clair County) - General area of mining.

Mine Index 4338**St. Libory Coal Company, St. Libory Mine**

Type: Underground Total mined-out acreage shown: 3 Production indicates less than 1 acre was mined.

SHAFT, SLOPE, DRIFT or TIPPLE LOCATIONS

Type	County	Township-Range	Section	Quarters-Footage
Main shaft	St. Clair	2S 6W	13	SE SW NE

GEOLOGY

Seam(s) Mined	Depth (ft)	Thickness (ft)			Mining Method
		Min	Max	Avg	
Herrin	200			6.0	RPB

Geologic Problems Reported:

PRODUCTION HISTORY

Company	Mine Name	Years	Production (tons)
St. Libory Coal Company	St. Libory	1910-1912	615
			615

Last reported production: 1912

SOURCES OF DATA

Source Map	Date	Original Scale	Digitized Scale	Map Type
Microfilm, document 351013	Undated	1:1200	1:993	Undated

Annotated Bibliography (data source, brief description of information)

Coal Reports - Production, ownership, years of operation, mine type, seam, depth, thickness.
Directory of Illinois Coal Mines (St. Clair County) - Mine names, mine index, ownership, years of operation.
Microfilm map, document 351013, reel 03134, frame 87 - Shaft location, mine outline, mining method.

MINES WHOSE LOCATIONS ARE NOT KNOWN, ST. LIBORY QUADRANGLE

The locations of the following mines are unknown, but the production tonnage, operating names, and nearest town were reported in the Annual Coal Reports. The operators listed below mined in or near the St. Libory Quadrangle. The information shown is similar to that presented on the summary sheets in the previous pages of this directory. The first item is the name the mine operated under as listed in the Coal Report, then the years the mine reported. If no physical data are available, the next item listed is the total tons produced by the mine. If physical data are available, the order of presentation is as follows: type of opening for the mine (drift, slope or shaft), depth of coal in feet, and thickness of coal in feet.

The total tons mined by these unlocated mines is 1,760 (underground mined), which would represent less than 1 acre, depending on the recovery factor, mining method, and numerous other factors. (Note: 1 square mile = 640 acres)

ST. LIBORY (Washington County)

MINE INDEX

Fauke & Gussman, 1909-1910, shaft, Herrin, 200, 6.0, RP	1,760 tons	91890002
---	------------	----------

INDEX OF MINES IN THE ST. LIBORY QUADRANGLE

Beheremann (John)	14
Bledsoe (Walter) & Company	11
Borders Coal Company	9
Darmstadt Coal Company	10
Dozow Valley Coal Company.	9
Fauke & Gussman	16
Forsythe Coal Company	9
Gill Coal Corporation	9
Green Diamond Mine.	11
Gussman (Fauke & Gussman)	16
Hoover (Walter)	10
Jansen (August).	10
Kirchhalfer & Knecht	10
Knecht (Kirchhalfer & Knecht)	10
Laumbattus (P.)	10
Lively Grove Mine	13
Lyle Coal Company	9
Marissa Mine	12
Martin Brothers	10
Mid-Continent Coal Corporation	11
Midland Electric Coal Company	11
New Marissa Coal Company	9
Peabody Coal Company, Green Diamond Mine	11
Peabody Coal Company, Marissa Mine.	12
Pflaster (George)	10
Prairie State Generating Company, LLC	13
Schneidewind Coal Company	10
St. Libory Coal & Mining Company	14
St. Libory Coal Company	15
St. Louis & St. Libory Coal Company.	14
Superior Coal Company	9
Wallace Coal Company	9

