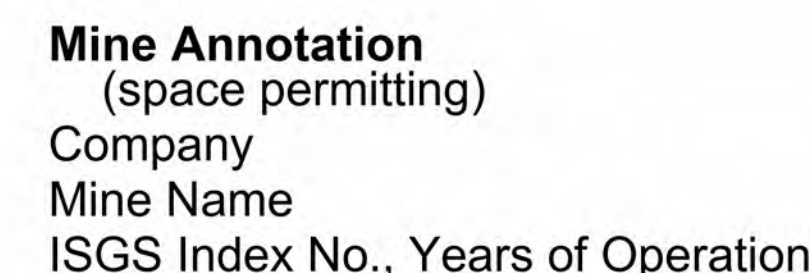
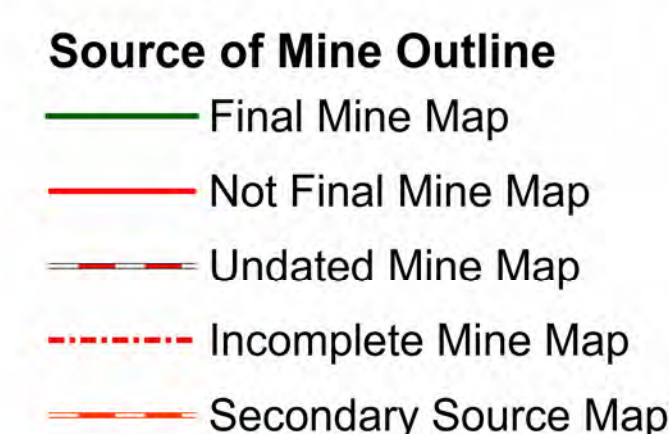


# Coal Mines in Illinois Vergennes Quadrangle Jackson & Perry Counties, Illinois

## Herrin Coal

This map accompanies the Coal Mines Directory for the Vergennes Quadrangle and maps of mines in the Springfield Coal & Murphysboro Coal, Vergennes Quadrangle. Consult the directory for a complete explanation of the information shown on this map.

**Location**

**Disclaimer**  
Please check the Coal Section at the Illinois State Geological Survey's web site at <https://www.isgs.illinois.edu> for the most up-to-date version of these products.

Note that each quadrangle scale mined-out area map requires the use of the associated text directory for full explanation of map features and mine attributes. Also note that some quadrangles have multiple seams of mining and therefore more than one map may be available for a particular quadrangle. Please take care to check for multiple maps, as extensive mining may exist in the other seams.

The maps and digital files used for these studies were compiled from data obtained from a variety of public and private sources and have varying degrees of completeness and accuracy. This compilation map presents reasonable interpretation of the geology of the area and is based on available data. Locations of some mine features may be offset by 500 feet or more due to errors in the original source maps, the compilation process, digitizing, or a combination of these factors. These data are not intended for use in site-specific screening or decision-making. Use of these documents does not eliminate the need for detailed data to fully understand the geology of a specific site. The Illinois State Geological Survey, Prairie Research Institute, or the University of Illinois makes no warranties, expressed or implied, regarding the correctness of the interpretations presented in this data set and accept no liability for the consequences of decisions made by others on the basis of the information presented here.

These maps were designed for use at 1:24,000. Enlarging the map may reduce accuracy, as the original scale of the source maps used to compile the outlines shown varies from 1:400 to 1:150,000, and some mine locations are known only from text descriptions. See the accompanying mine directory for the original scale of the source map used for a specific mine to check accuracy of a given portion of the map. Areas with no mines shown may still be undetermined; see the unlocated mines list at the back of each mine directory.

The image of the U.S.G.S. topographic base map was projected from the original UTM to Lambert Conformal Conic.

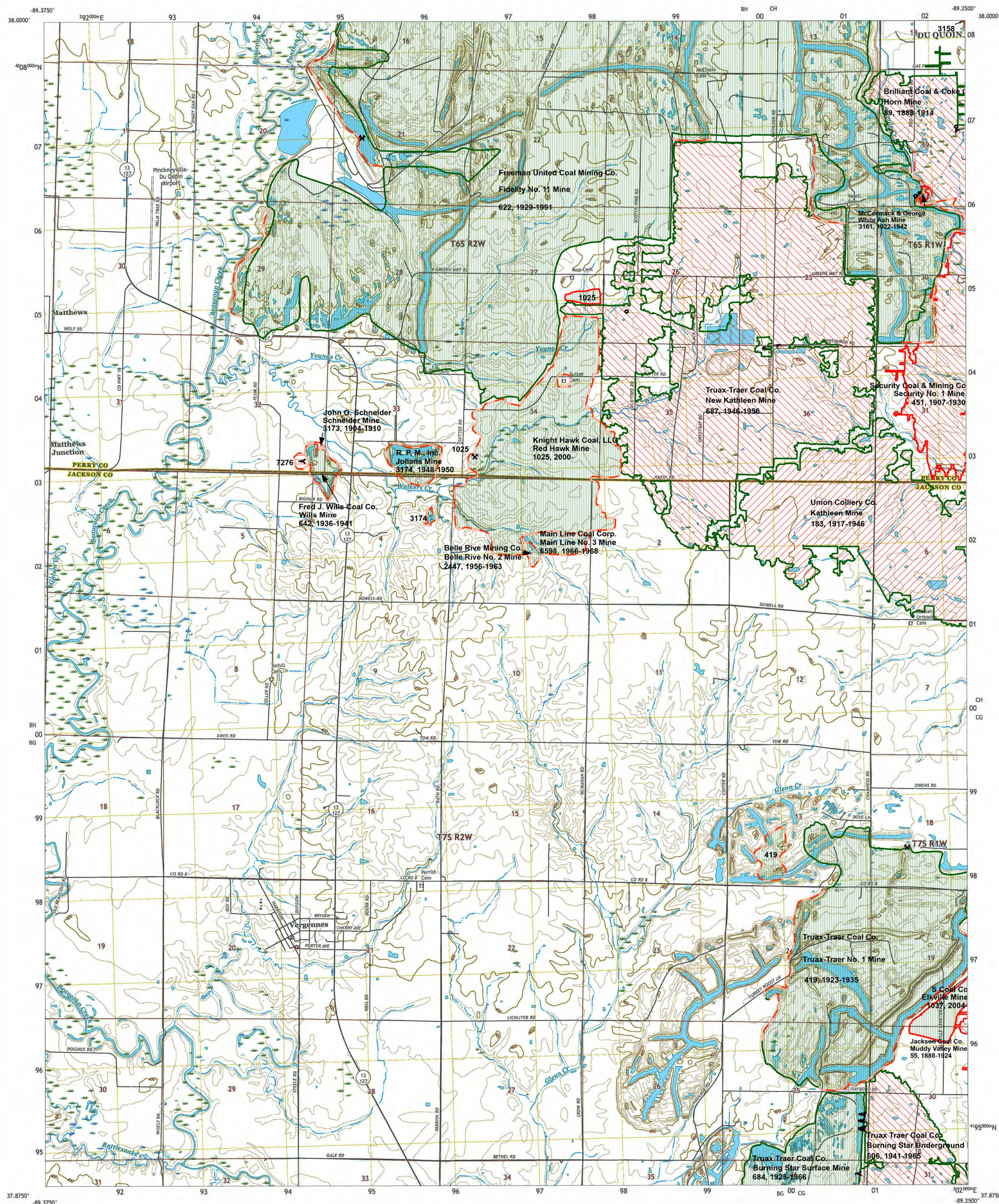
**I ILLINOIS**  
Illinois State Geological Survey  
PRAIRIE RESEARCH INSTITUTE

**Prairie Research Institute  
Illinois State Geological Survey  
615 E. Peabody Dr.  
Champaign, IL 61820**

**Mine Outlines Compiled by  
Jennifer M. Obrad**

Revised:  
Alan R. Myers 02-09-2024

June 12, 2009



Produced by the United States Geological Survey  
North American Datum of 1983 (NAD83)  
World Geographic System of 1984 (WGS84) Projection and  
0-100-meters Universal Transverse Mercator, Zone 16S  
This map is not a legal document. Boundaries may be  
generalized for that map scale. Private lands within government  
reservations may not be shown. Obtain permission before  
entering private lands.

Imagery.....NAIP, August 2  
Roads.....U.S. Census  
Hydrography.....National Hydrography  
Contours.....National Elevation D  
Boundaries.....Multiple sources; see metadata file  
Public Land Survey System.....B  
Wetlands.....FWS National Wetlands Inventory

UTM GRID AND 2017 MAGNETIC NORTH DECLINATION AT CENTER OF SHEET

U.S. National Grid	
100,000 - m Square ID	
100	
BH	CH

SCALE 1:24 000

KILOMETERS

METERS

MILES

FEET

CONTOUR INTERVAL 10 FEET  
NORTH AMERICAN VERTICAL DATUM OF 1988  
This map was produced to conform with the








ILLINOIS

QUADRANGLE LOCATION

1	2	3
4		5

1 Pin  
2 Py  
3 Du  
4 Av  
5 Elk  
6 Or

**ROAD CLASSIFICATION**

Expressway		Local Connector	
Secondary Hwy		Local Road	
Ramp		4WD	
 Interstate Route	 US Route	 State Route	

VERGENNES, IL  
2018

**I ILLINOIS**  
Illinois State Geological Survey  
PRAIRIE RESEARCH INSTITUTE

**Prairie Research Institute  
Illinois State Geological Survey  
615 E. Peabody Dr.  
Champaign, IL 61820**

**Mine Outlines Compiled by  
Jennifer M. Obrad**

Revised:  
Alan R. Myers 02-09-2024

June 12, 2009



# Coal Mines in Illinois Vergennes Quadrangle Jackson & Perry Counties, Illinois

## Springfield Coal

This map accompanies the Coal Mines Directory for the Vergennes Quadrangle and maps of mines in the Herrin Coal & Murphysboro Coal, Vergennes Quadrangle. Consult the directory for a complete explanation of the information shown on this map.

### Mining Method

- Room & Pillar (RP)
- Room & Pillar Basic (RPB)
- Modified Room & Pillar (MRP)
- Room & Pillar Panel (RPP)
- Blind Room & Pillar (BRP)
- Checkerboard Room & Pillar (CRP)
- High Extraction Retreat (HER)
- Longwall (LW)
- Underground, Method Unknown
- Strip Mine
- Auger Mine
- General Area of Mining

### Other Areas Depicted

- Non-Coal Mines

### Source of Mine Outline

- Final Mine Map
- Not Final Mine Map
- Undated Mine Map
- Incomplete Mine Map
- Secondary Source Map

### Tipple, Shaft, Slope, Drift Locations

- Strip Mine Tipple - Active
- Strip Mine Tipple - Abandoned
- Mine Shaft - Active
- Mine Shaft - Abandoned
- Mine Slope - Active
- Mine Slope - Abandoned
- Mine Drift - Active
- Mine Drift - Abandoned
- Air Shaft
- Uncertain Location
- Uncertain Type of Opening

### Other Points Depicted

- Non-Coal Mines

### Location



### Mine Annotation (space permitting)

Company  
Mine Name  
ISGS Index No., Years of Operation

### Disclaimer

Please check the Coal Section at the Illinois State Geological Survey's web site at <https://www.isgs.illinois.edu> for the most up-to-date version of these products.

Note that each quadrangle scale mined-out area map requires the use of the associated text directory for full explanation of map features and mine attributes. Also note that some quadrangles have multiple seams of mining and therefore more than one map may be available for a particular quadrangle. Please take care to check for multiple maps, as extensive mining may exist in the other seams.

The maps and digital files used for these studies were compiled from data obtained from a variety of public and private sources and have varying degrees of completeness and accuracy. This compilation map presents reasonable interpretation of the geology of the area and is based on available data. Locations of some mine features may be offset by 500 feet or more due to errors in the original source maps, the compilation process, digitizing, or a combination of these factors. These data are not intended for use in site-specific screening or decision-making. Use of these documents does not eliminate the need for detailed studies to fully understand the geology of a specific site. The Illinois State Geological Survey, Prairie Research Institute, or the University of Illinois make no guarantee, expressed or implied, regarding the correctness of the interpretations presented in this data set and accept no liability for the consequences of decisions made by others on the basis of the information presented here.

These maps were designed for use at 1:24,000. Enlarging the map may reduce accuracy, as the original scale of the source maps used to compile the outlines shown varies from 1:400 to 1:150,000, and some mine locations are known only from text descriptions. See the accompanying mine directory for the original scale of the source map used for a specific mine to check accuracy of a given portion of the map. Areas with no mines shown may still be undermined; see the unlocated mines list at the back of each mine directory.

The image of the U.S.G.S. topographic base map was projected from the original UTM to Lambert Conformal Conic.

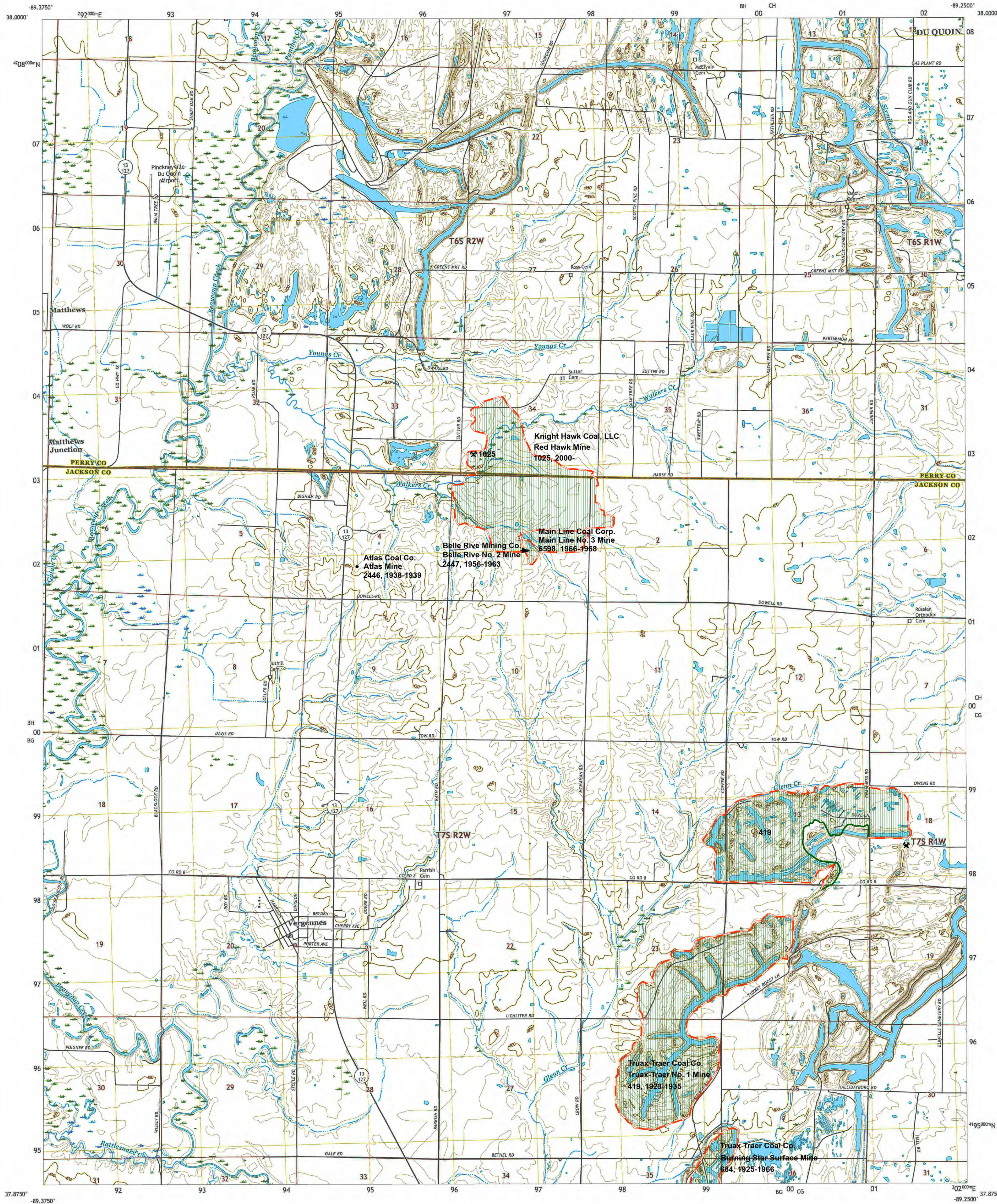
**ILLINOIS**  
Illinois State Geological Survey  
PRAIRIE RESEARCH INSTITUTE

Prairie Research Institute  
Illinois State Geological Survey  
615 E. Peabody Dr.  
Champaign, IL 61820

Mine Outlines Compiled by  
Jennifer M. Obrad

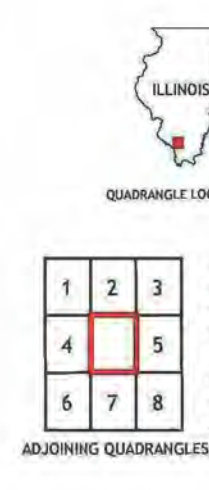
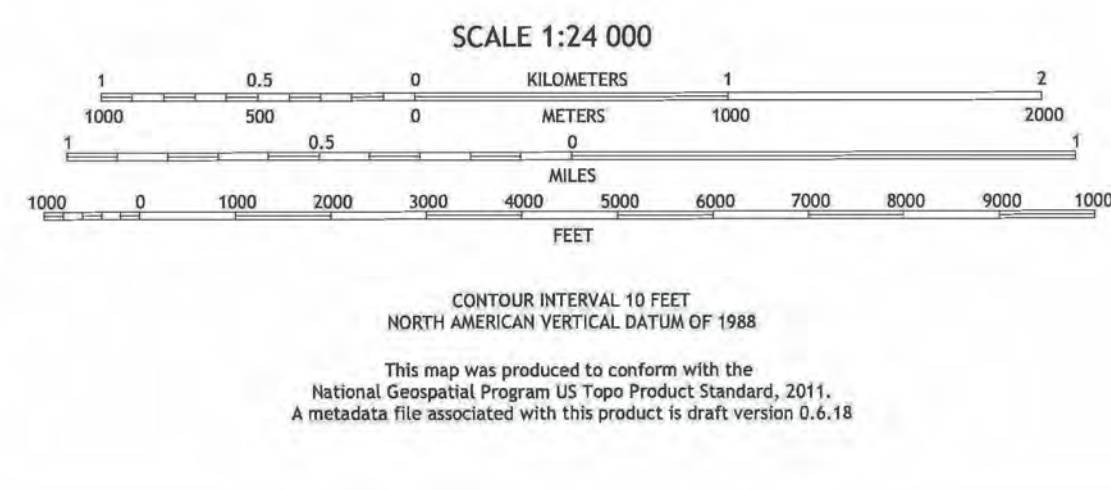
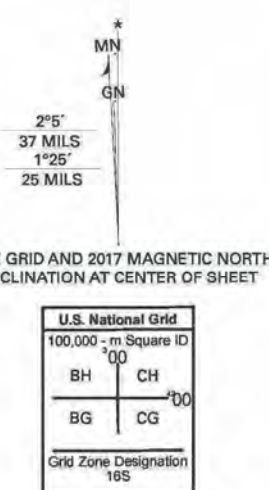
Revised:  
Alan R. Myers 02-09-2024

June 12, 2009



Produced by the United States Geological Survey  
North American Datum of 1983 (NAD83)  
World Geodetic System of 1984 (WGS84). Projection and  
1 000-meter grid/Universal Transverse Mercator, Zone 16S  
This map is not a legal document. Boundaries may be  
generalized for this map scale. Private lands within government  
reservations may not be shown. Obtain permission before  
entering private lands.

Imagery: NAIP, August 2015 - October 2015  
Roads: U.S. Census Bureau, 2017  
Names: U.S. Census Bureau, 2017  
Hydrography: National Hydrography Dataset, 2002  
Contours: National Elevation Dataset, 2012  
Boundaries: Multiple sources; see metadata file 2014 - 2016  
Public Land Survey System: BLM, 2017  
Wetlands: FWS National Wetlands Inventory 1981 - 1982



VERGENNES, IL  
2018



# Coal Mines in Illinois Vergennes Quadrangle Jackson & Perry Counties, Illinois

## Murphysboro Coal

This map accompanies the Coal Mines Directory for the Vergennes Quadrangle and maps of mines in the Herrin Coal & Springfield Coal, Vergennes Quadrangle. Consult the directory for a complete explanation of the information shown on this map.

### Mining Method

- Room & Pillar (RP)
- Room & Pillar Basic (RPB)
- Modified Room & Pillar (MRP)
- Room & Pillar Panel (RPP)
- Blind Room & Pillar (BRP)
- Checkerboard Room & Pillar (CRP)
- High Extraction Retreat (HER)
- Longwall (LW)
- Underground, Method Unknown
- Strip Mine
- Auger Mine
- General Area of Mining

### Other Areas Depicted

- Non-Coal Mines

### Source of Mine Outline

- Final Mine Map
- Not Final Mine Map
- Undated Mine Map
- Incomplete Mine Map
- Secondary Source Map

### Tipple, Shaft, Slope, Drift Locations

- Strip Mine Tipple - Active
- Strip Mine Tipple - Abandoned
- Mine Shaft - Active
- Mine Shaft - Abandoned
- Mine Slope - Active
- Mine Slope - Abandoned
- Mine Drift - Active
- Mine Drift - Abandoned
- Air Shaft
- Uncertain Location
- Uncertain Type of Opening

### Other Points Depicted

- Non-Coal Mines

### Location



### Mine Annotation (space permitting)

Company  
Mine Name  
ISGS Index No., Years of Operation

### Disclaimer

Please check the Coal Section at the Illinois State Geological Survey's web site at <https://www.isgs.illinois.edu> for the most up-to-date version of these products.

Note that each quadrangle scale mined-out area map requires the use of the associated text directory for full explanation of map features and mine attributes. Also note that some quadrangles have multiple seams of mining and therefore more than one map may be available for a particular quadrangle. Please take care to check for multiple maps, as extensive mining may exist in the other seams.

The maps and digital files used for these studies were compiled from data obtained from a variety of public and private sources and have varying degrees of completeness and accuracy. This compilation map presents reasonable interpretation of the geology of the area and is based on available data. Locations of some mine features may be offset by 500 feet or more due to errors in the original source maps, the compilation process, digitizing, or a combination of these factors. These data are not intended for use in site-specific screening or decision-making. Use of these documents does not eliminate the need for detailed studies to fully understand the geology of a specific site. The Illinois State Geological Survey, Prairie Research Institute, or the University of Illinois make no guarantee, expressed or implied, regarding the correctness of the interpretations presented in this data set and accept no liability for the consequences of decisions made by others on the basis of the information presented here.

These maps were designed for use at 1:24,000. Enlarging the map may reduce accuracy, as the original scale of the source maps used to compile the outlines shown varies from 1:400 to 1:150,000, and some mine locations are known only from text descriptions. See the accompanying mine directory for the original scale of the source map used for a specific mine to check accuracy of a given portion of the map. Areas with no mines shown may still be undermined; see the unlocated mines list at the back of each mine directory.

The image of the U.S.G.S. topographic base map was projected from the original UTM to Lambert Conformal Conic.

**ILLINOIS**  
Illinois State Geological Survey  
PRAIRIE RESEARCH INSTITUTE

Prairie Research Institute  
Illinois State Geological Survey  
615 E. Peabody Dr.  
Champaign, IL 61820

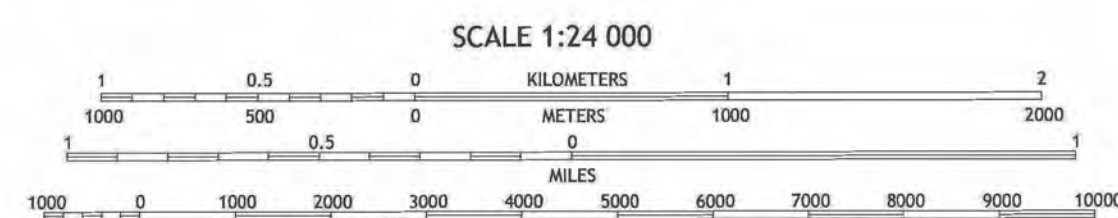
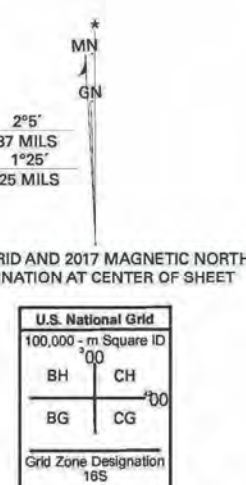
Mine Outlines Compiled by  
Jennifer M. Obrad

June 12, 2009

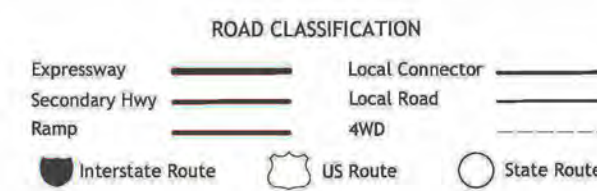
Produced by the United States Geological Survey

North American Datum of 1983 (NAD83)  
World Geodetic System of 1984 (WGS84). Projection and  
1 000-meter grid/Universal Transverse Mercator, Zone 16S  
This map is not a legal document. Boundaries may be  
generalized for this map scale. Private lands within government  
reservations may not be shown. Obtain permission before  
entering private lands.

Imagery: NAIP, August 2015 - October 2015  
Roads: U.S. Census Bureau, 2017  
Names: U.S. Census Bureau, 2017  
Hydrography: National Hydrography Dataset, 2002  
Contours: National Elevation Dataset, 2012  
Boundaries: Multiple sources; see metadata file 2014 - 2016  
Public Land Survey System: BLM, 2017  
Wetlands: FWS National Wetlands Inventory 1981 - 1982



CONTOUR INTERVAL 10 FEET  
NORTH AMERICAN DATUM OF 1983  
This map was produced to conform with the  
National Geospatial Program US Topo Product Standard, 2011.  
A metadata file associated with this product is draft version 0.6.18



VERGENNES, IL  
2018







# **DIRECTORY OF COAL MINES IN ILLINOIS**

## **7.5-MINUTE QUADRANGLE SERIES**

### **VERGENNES QUADRANGLE**

### **JACKSON & PERRY COUNTIES**

Jennifer M. Obrad & C. Chenoweth



2009

Institute of Natural Resource Sustainability  
William W. Shilts, Executive Director  
**ILLINOIS STATE GEOLOGICAL SURVEY**  
E. Donald McKay III, Interim Director

Natural Resources Building  
615 East Peabody Drive  
Champaign, Illinois 61820

Phone 217-244-4610  
Fax 217-333-2830





This material is based upon work supported by the Illinois Department of Transportation. Any opinions, findings, and conclusions or recommendations expressed in this publication are those of the authors and do not necessarily reflect the views of the Illinois Department of Transportation.

**Cover photo** Track-mounted duckbill loading machine at a Peabody Coal Company mine, ca. 1915.

DISCLAIMER: The accuracy and completeness of mine maps and directories vary with the availability of reliable information. Maps and other information used to compile this mine map and directory were obtained from a variety of sources and the accuracy of some of the original information cannot be verified. Consequently, the Illinois State Geological Survey (ISGS) cannot guarantee the mine maps are free of errors and disclaims any responsibility for damages that may result from actions or decisions based on them.

The ISGS updates the maps and directories periodically, and welcomes any new information or corrections. Please contact the Coal Section of the ISGS at the address shown on the title page of this directory, or telephone (217) 244-4610.

© 2009 The Board of Trustees of the University of Illinois. All rights reserved.  
For permission information, contact the Illinois State Geological Survey.



## CONTENTS

INTRODUCTION .....	1
MINING IN THE VERGENNES QUADRANGLE .....	1
PART I EXPLANATION OF MAP AND MINE SUMMARY SHEET .....	2
INTERPRETING THE MAP .....	2
Mine Type and Mining Method .....	2
Source Maps .....	3
Points and Labels .....	3
INTERPRETING A MINE SUMMARY SHEET .....	6
REFERENCES .....	8
PART II DIRECTORY OF MINES IN THE VERGENNES QUADRANGLE .....	9
MINE SUMMARY SHEETS .....	9
Mine Index 55	
Jackson Coal Company, Muddy Valley Mine .....	9
Mine Index 89	
Brilliant Coal & Coke Company, Horn Mine .....	10
Mine Index 183	
Union Colliery Company, Kathleen Mine .....	11
Mine Index 419	
Truax Traer Coal Company, Truax-Traer No. 1 Mine .....	12
Mine Index 451	
Security Coal & Mining Company, Security No. 1 Mine .....	13
Mine Index 606	
Truax Traer Coal Company, Burning Star Underground Mine .....	14
Mine Index 622	
Freeman United Coal Mining Company, Fidelity No. 11 Mine .....	15
Mine Index 642	
Fred J. Wills Coal Company, Wills Mine .....	16
Mine Index 684	
Truax Traer Coal Company, Burning Star Surface Mine .....	17
Mine Index 687	
Truax-Traer Coal Company, New Kathleen Mine .....	18
Mine Index 958	
Southern Illinois Minerals, Vergennes No. 4 Mine .....	19
Mine Index 1025	
Knight Hawk Coal, LLC, Red Hawk Mine .....	20
Mine Index 1037	
S Coal Company, Elkhaville Mine .....	21
Mine Index 2446	
Atlas Coal Company, Atlas Mine .....	22
Mine Index 2447	
Belle Rive Mining Company, Belle Rive No. 2 Mine .....	23
Mine Index 2449	
Schmidgall Coal Company, Schmidgall No. 1 Mine .....	24
Mine Index 2452	
Nearing Coal Company, Nearing Mine .....	25
Mine Index 3158	
Jewel Coal & Mining Company, Jewel No. 1 Mine .....	26
Mine Index 3161	
McCormack & George, Little White Ash Mine .....	27
Mine Index 3173	
John G. Schneider, Schneider Mine .....	28
Mine Index 3174	
R. P. M., Inc., Joliana Mine .....	29
Mine Index 6598	
Main Line Coal Corporation, Main Line No. 3 Mine .....	30



Mine Index 7277	
B. A. Schimpf, Schimpf Mine .....	31
OTHER MINES SHOWN ON VERGENNES QUADRANGLE .....	32
Mine Index 4624, Hardnick Mine. ....	32
Mine Index 7276 .....	32
Mine Index 7302 .....	32
MINES WHOSE LOCATIONS ARE NOT KNOWN, VERGENNES QUADRANGLE .....	32
INDEX OF MINES IN THE VERGENNES QUADRANGLE .....	34



## **INTRODUCTION**

Coal has been mined in 76 counties of Illinois. More than 7,400 coal mines have operated since commercial mining began in Illinois about 1810; fewer than 30 are currently active. To detail the extent and location of coal mining in Illinois, the Illinois State Geological Survey (ISGS) has compiled maps and directories of known coal mines. The ISGS offers maps at a scale of 1:100,000 and accompanying directories for each county in which coal mining is known to have occurred. Maps at a scale of 1:24,000 and accompanying directories, such as this, are available for selected quadrangles. Contact the ISGS for a list of these quadrangles.

These larger scale maps show the approximate positions of mines in relation to surface features such as roads and water bodies, and indicate the mining method used and the accuracy of the mine boundaries. The maps are useful for locating mine boundaries relative to specific properties and for assessing the potential for subsidence in an area. Mine boundaries compiled from final mine surveys are generally shown within 200 feet of their true position. As a result of poor cartographic quality and inaccuracies in the original mine surveys, boundaries of some older mines may be mislocated on the map by 500 feet or more. Original mine maps should be consulted in situations that require precise delineation of mine boundaries or internal workings of mined areas.

This directory serves as a key to the accompanying mine map and provides basic information on the coal mines in the quadrangle. The directory is composed of two parts. Part I explains the symbols and patterns used on the accompanying map and the summary data presented for each mine. Part II numerically lists the mines in the quadrangle and summarizes the geology and production history of each mine. Total production for the mine, not the portion in the quadrangle, is given.

## **MINING IN THE VERGENNES QUADRANGLE**

The western portion of the Cottage Grove Fault System passes through the Vergennes Quadrangle. The faulting interfered with mining, generally by halting expansion across the faulted area. The faulting in Muddy Valley Mine (mine index 55) was the result of subsidiary faults of the Cottage Grove Fault System. The faulting in Kathleen Mine (mine index 183) was from high-angle normal faults of the Dowell Fault Zone.

Most of the production was from the Herrin Coal, which was commonly 6 to 7 feet thick. In underground mines, top coal was often left to support the roof. The roof was often composed of shales that came down easily. In surface mines, the Springfield Coal was also mined. Some small underground mines also worked the Murphysboro Coal, but that seam was thin and less conducive to sustained mining in the Vergennes Quadrangle.



## PART I EXPLANATION OF MAP AND MINE SUMMARY SHEET

### INTERPRETING THE MAP

The map accompanying this directory shows the location of coal mines known to be present in the quadrangle. The map, corresponding to a U.S. Geological Survey (USGS) 7.5-minute quadrangle, covers an area bounded by lines of latitude and longitude 7.5-minutes apart. In Illinois, a quadrangle is approximately 6.5 miles east to west and 8.5 miles north to south, an area of about 56 square miles. The USGS generally offers one map of mines per quadrangle. In some areas where extensive mining occurred in two or more overlapping seams, separate maps are compiled for mines in each seam to maintain readability of the map.

#### Mine Type and Mining Method

The mine type is indicated on the map by pattern color: green represents surface mines; red and yellow represent underground mines. The red patterns are used for areas of underground mining that are documented by a primary or secondary source map. A yellow pattern is used for cases where no map of the mine workings is available, but a general area of mining can be inferred from property maps or production figures. The patterns indicate the main mining methods used in underground mines. The methods are (1) room and pillar and (2) high extraction. The method used gives some indication of the amount and pattern of coal extraction within each mined area, and has some influence on the timing and type of subsidence that can occur over a mine.

The following discussion and illustrations of mining methods are based on Guither et al. (1984).

In room-and-pillar mines, coal is removed from haulage-ways (entries) and selected areas called rooms. Pillars of unmined coal are left between the rooms to support the roof. Depending on the size of rooms and pillars, the amount of coal removed from the production areas will range from 40% to 70%.

**Room and Pillar** - mining is divided into six categories:

- room-and-pillar basic (RPB, fig. 1A), an early method that did not follow a preset mining plan and therefore resulted in very irregular designs;
- modified room and pillar (MRP, fig. 1B);
- room-and-pillar panel (RPP, fig. 1C);
- blind room and pillar (BRP, fig. 1D);
- checkerboard room and pillar (CRP, fig. 1E);
- room and pillar (RP), a classification used when the specific type of room-and-pillar mining is unknown.

Blind and checkerboard are the most common types of room-and-pillar mining used in Illinois today. The knowledge of room-and-pillar mining methods gives a trained engineer information on the nature of subsidence that may occur. A more extensive discussion of subsidence can be found in Bauer et al. (1993).

**High-extraction** These mining methods are subdivided into high-extraction retreat (HER, Fig 1F) and longwall (LW, Fig 1G, 1H). In these methods, much of the coal is removed within well defined areas of the mine. Subsidence of the surface above these areas occurs within weeks. Once the subsidence activity ceases, the potential for further movement over these areas is low; however, subsidence may continue for several years after mining.

High-extraction retreat mining is a form of room-and-pillar mining that extracts most of the coal. Rooms and pillars are developed in the panels, and the pillars are then systematically removed (fig. 1F).

In early (pre-1960) longwall mines, mining advanced in multiple directions from a central shaft (fig. 1G). Large pillars of coal were left around the shaft, but all coal was removed beyond these pillars. Miners placed rock and wooden props and cribs in the mined-out areas to support the mine roof. The overlying rock gradually settled onto these supports, thus producing subsidence at the surface. In post-1959 longwall mines, room-and-pillar methods have been used to develop the main entries of the mine and panel areas. Modern longwall methods extract 100 percent of the coal in the panel areas (fig. 1H).



## SOURCE MAPS

Mine outlines depicted on the map are, whenever possible, based on maps made from original mine surveys. The process of compiling and digitizing the quadrangle map may produce errors of less than 200 feet in the location of mine boundaries. Larger errors of 500 feet or more are possible for mines that have incomplete or inaccurate source maps.

Because of the extreme complexity of some mine maps, detailed features of mined areas have been omitted. The digitized mine boundary includes the exterior boundary of all rooms or entries that were at least 80 feet wide or protruded 500 feet from the main mining area. Unmined areas between mines are shown if they are at least 80 feet wide; unmined blocks of coal within mines are shown if they are at least 400 feet on each side. Original source maps should be consulted when precise information on mine boundaries or interior features is needed.

The mine summary sheet lists the source maps used to determine each mine outline. The completeness of map sources is indicated on the map by a line symbol at the mine boundary. Source maps are organized in five categories.

**Final mine map** The mine outline was digitized from an original map made from mine surveys conducted within a few months after production ceased. The date of the map and the last reported production are listed on the summary sheet.

**Not a final map** The mine is currently active or the mine outline was made from a map based on mine surveys conducted more than a few months before production ceased. This implies the actual mined-out area is probably larger than the outline on the map. The mine summary sheet indicated the dates of source maps and the last reported production, as well as the approximate tonnage mined between these two dates (if the mine is abandoned). The summary sheet also lists the approximate acreage mined since the date of the map and, in some cases, indicates the area where additional mining may have taken place. This latter information is determined by locating on the map the active faces relative to probable boundaries of the mine property.

**Undated map** The source map was undated, so it may or may not be based on a final mine survey. When sufficient data are available, the probable acreage of the mined area is estimated from reported production, average seam thickness and a recovery rate comparable to other mines in the area. This information is listed in the summary sheet for the mine.

**Incomplete map** The source map did not show the entire mine. The summary sheet indicates the missing part of the mine map and the acreage of the unmapped area, which is estimated from the amount of coal known to have been produced from the mine.

**Secondary source map** The original mine map was not found so the outline shown was determined from secondary sources (e.g., outlines from small-scale regional maps published in other reports). The summary sheet describes the secondary sources.

## POINTS AND LABELS

The locations of all known mine openings (shafts, slopes, and drifts) and surface mine tipples are plotted on the map. Tipples are areas where coal was cleaned, stockpiled, and loaded for shipping.

Only openings or tipples are plotted for mines without source maps. If the precise locations of these features are unknown, a special symbol is used to indicate the approximate location of the mine.

Each mine on the map is labeled with the names of the mine and operating company, ISGS mine index number, and years of operation (if known) if space permits. A seam designation is given on maps where more than one seam was mined. For a mine that operated under more than one name, only the most recent name is generally given. When a mine changed names or ownership shortly before closing, an earlier name is listed. All company and mine names are listed on the mine summary sheet in the directory, under the production history segment.





**Figure 1** Mining methods: (A) room-and-pillar basic (RPB), (B) modified room and pillar (MRP), (C) room-and-pillar panel (RPP), (D) blind room and pillar (BRP).





**Figure 1 (cont.)** Mining methods: (E) checkerboard room and pillar (CRP), (F) high extraction retreat (HER), (G) early (pre-1960) longwall, (H) post-1959 longwall





**Figure 2** Generalized stratigraphic section, showing approximate vertical relations of coals in Illinois.

## INTERPRETING A MINE SUMMARY SHEET

The mine summary sheet is arranged numerically by mine index number. Index numbers are shown on the map and in the mine listing. The mine summary sheet provides the following information (if available).

**Company and mine name** The last company or owner of the mine is used, unless no production was recorded for the last owner. In that case, the penultimate owner is listed. Mines often have no specific name; in these cases, the company name is also used as the mine name.

**Type** *Underground* denotes a subsurface mine in which the coal was reached through a shaft, slope, or a drift entry. *Surface* denotes a surface, open pit or strip mine.

**Total mined-out acreage shown** The total acreage of the mined area mapped, including any acreage mined on adjacent quadrangles, is calculated from the digitized outline of the mine. The acreage of large barrier pillars depicted on the map is excluded from the mined-out acreage. Small pillars not digitized are included in the acreage calculation. If the mine outline is not based on a final mine map, the acreage is followed by an estimate of additional acres that may have been mined. The estimate is determined from reported mine production, approximate thickness of the coal, and recovery rates calculated from nearby mines that used similar mining methods.

## SHAFT, SLOPE, DRIFT OR TIPPLE LOCATIONS

**Shaft, slope, drift, or tippie locations** Locations of all known former entry points to underground mines or the location of coal cleaning, tippie, and shipping equipment used by the mine's facility are listed. The location is described in terms of county, township and range (Twp-Rge), section, and location within the section by quarters. NE SW NW, for instance, would describe the location in the northeast quarter of the southwest quarter of the northwest quarter. When sections are irregular in size, the quarters remain the same size and are oriented (or "registered") from the southeast corner of the section. Approximate footage from the section lines (FEL = from east line, FNL = from north line, for example) is given when that information is known; this indicates a surveyed location and is not derived from maps. Entry points are also plotted on the map and coded for the type of entry or tippie. A mine opening may have had many purposes during the life of the mine. Old hoist shafts are often later used for air and escape shafts; this information is included in the directory when known. The tippie for underground mines was generally located near the main shaft or slope. At surface mines, coal was sometimes hauled to a central tippie several miles from the mine pit.

## GEOLOGY

**Seam(s) mined** The name of the coal seam(s) mined is listed, if known. If multiple seams were mined, they are all listed, although the mined-out area for each seam may be shown on separate maps. Figure 2 shows the stratigraphic section of the coal-bearing interval in Illinois, and the vertical relations among the coals.

**Depth** The depth to the top of the seam in the vicinity of the shaft is listed, if known. The depth is determined from notes made by geologists who visited the mine during its operation or from drill hole data in ISGS files. Depth generally varies little over the extent of a mine; however, reported depths for an individual mine may vary. Depth for surface-mined coals varies, and is usually represented as a range.



**Thickness** The approximate thickness of the mined seam is shown, if known. Thickness also comes from notes of geologists who visited the mine during its operation or from borehole data in ISGS files. Minimum, maximum, and average thicknesses are given when this information is available.

**Mining method** The principal mining method used at the mine (figs. 1A-H) is listed. See the mining methods section at the beginning of this directory for a discussion of this parameter.

**Geologic problems reported** Any known geologic problems, such as faults, water seepage, floor heaving, and unstable roof, encountered in the mine are reported. This information is from notes made by ISGS geologists who visited the mine, or from reports by mine inspectors published by the Illinois Department of Mines and Minerals, or from the source map(s). Geologic problems are not reported for active mines.

## PRODUCTION HISTORY

**Production history** Tons of coal produced from the mine by each mine owner are totaled. When the source map used for the mine outline is not a final mine map, the tonnage produced since the date of the map is identified. For mines that extend into adjacent quadrangles, the tonnage reported includes areas mined in adjacent quadrangles.

## SOURCE OF DATA

**Source map** This section lists information about the map(s) used to compile the mine outline and the locations of tipples and mine openings. In some cases more than one source map was used. For example, a map drawn before the mine closed may provide better information on original areas of the mine than a later map. When more than one map was used, the bibliography section explains what information was taken from each source.

**Date** The date of the most recent mine survey listed on the source map is reported.

**Original scale** The original scale of the source map is listed. Many maps are photo-reductions and are no longer at their original scale. The original scale gives some indication of the level of detail of the mine outline and the accuracy of the mine boundary relative to surface features. Generally, the larger the scale, the greater the accuracy and detail of the mine map. Mine outlines taken from source maps at scales smaller than 1:24,000 may be highly generalized and may well be inaccurately located with respect to surface features.

**Digitized scale** The scale of the digitized map is reported. The scale may be different from that of the original source map. In many cases the digitized map was made from a photo-reduction of the original source map, or the source map was not in a condition suitable for digitizing and the mine boundaries were transferred to another base map.

**Map type** Source maps are classified into five categories to indicate the probable completeness of the map. See discussion of source maps in the previous section.

**Annotated bibliography** Sources that provide information about the mine are listed, with the data taken from each source. Some commonly used sources are described below. Full bibliographic references are given for all other sources. Unless otherwise noted, all sources are available for public inspection at the ISGS.

**Coal Reports** Published since 1881, these reports contain tabular data on mine ownership, production, employment, and accidents. Some volumes include short descriptions made by mine inspectors of physical features and conditions in selected mines.

**Directory of Illinois Coal Mines** This source is a compilation of basic data about Illinois coal mines, originally gathered by ISGS staff in the early 1950s. Sources used for this directory are undocumented, but they are primarily Illinois Department of Mines and Minerals annual reports, ISGS mine notes, and coal company officials.

**ENR Document 85/01**, Guither, H. D., J. K. Hines, and R. A. Bauer, 1985 The Economic Effect of Underground Mining Upon Land Used for Illinois Agriculture: Illinois Department of Energy and Natural Resources Document 85/01, 185 p.

**Microfilm map** The U.S. Bureau of Mines maintains a microfilm archive of mine maps. A microfilm file for Illinois is available for public viewing at the ISGS.



*Mine notes* ISGS geologists have visited mines or contacted mine officials throughout the state since the early 1900s. Notes made during these visits range from brief descriptions of the mine location to long narratives (including sketches) of mining conditions and geology.

*Federal Land Bank of St. Louis, Preliminary Reports on Subsidence Investigations* Mining engineers working for the Federal Land Bank of St. Louis mapped areas of subsidence due to coal mining in the early 1930s. These reports often include county maps of mine properties with mined-out areas including shaft locations, as well as subsidence areas.

## **REFERENCES**

Bauer, R. A., B. A. Trent, and P. B. Dumontelle, 1993, Mine Subsidence in Illinois: Facts for the Homeowner Considering Insurance, Illinois State Geological Survey, Environmental Geology Note 144, 16p.

Guither, H. D., J. K. Hines, and R. A. Bauer, 1985, The Economic Effects of Underground Mining Upon Land Used for Illinois Agriculture, Illinois Department of Energy and Natural Resources Document 85/01, 185p.

Nelson, W. J., 1995, Structural Features in Illinois, Illinois State Geological Survey, Bulletin 100, 144p.



## PART II DIRECTORY OF MINES IN THE VERGENNES QUADRANGLE

### MINE SUMMARY SHEETS

A summary sheet on the geology and production history of each mine in the Vergennes Quadrangle is provided. These summary sheets are arranged numerically by mine index number. Consult Part I for a complete explanation of the data listed in the summary sheet.

#### Mine Index 55

#### Jackson Coal Company, Muddy Valley Mine

Type: Underground    Total mined-out acreage shown: 947    Production indicates approximately 15 acres were mined after the map date.

#### SHAFT, SLOPE, DRIFT or TIPPLE LOCATIONS

Type	County	Township-Range	Section	Quarters-Footage
Main shaft	Jackson	7S 1W	29	SE NE NW
Air shaft	Jackson	7S 1W	29	SE NW NE

#### GEOLOGY

Seam(s) Mined	Depth (ft)	Thickness (ft)			Mining Method
		Min	Max	Avg	
Herrin	161	6.0	11.0	8.0 *	MRP

\* The coal averaged 7.0 ft thick on the western side and 10.0 on the eastern side of the mine.

Geologic Problems Reported: An extensive NW-SE trending fault was encountered in the main and south entries. These and subsidiary faults perpendicular to the main fault system were shown on the source map. Mining was restricted by the faulting in some areas. The coal was displaced 27 to over 40 feet, with displacement increasing northward. Gas emitted from the fault, especially when it was first encountered. Parallel faults were also noted, with less displacement. The west side of the mine had a soft, sandy gray shale roof that weathered and fell in large slabs when exposed to air. Top coal, generally 2 to 3 feet, was left to support the roof. The coal under black shale roof was 1 to 2 feet thinner than that under gray shale roof. The blue band was generally 4 to 6 inches thick. On the west side of the mine, the blue band was 1.5 inches thick, but on the east side of the mine, the blue band with an associated dirt and bone layer thickened to 7 to 10 inches. The underclay ranged from 3 inches to over 3 feet, averaging 2.5 feet, and heaved in some places.

#### PRODUCTION HISTORY

Company	Mine Name	Years	Production (tons)
Muddy Valley Mining & Mfg. Company **	Hallidayboro	1888-1914	4,520,394
Jackson Coal Company	Muddy Valley	1914-1923	2,152,822
Jackson Coal Company	Muddy Valley	1923-1924	106,785 ***
			6,780,001

\*\* The shaft was sunk by Halliday Brothers. Equipment for this mine (engines on the surface and mining machines) were bought from the Mattoon Shaft in Coles County.

\*\*\* Production after map date

Last reported production: April 1924

#### SOURCES OF DATA

Source Map	Date	Original Scale	Digitized Scale	Map Type
Company, 4103.J31 i5.1-22	10-1921	1:2400	1:2400	Not final
Microfilm, document 352498	8-1923	1:2400	1:5297	Not final

#### Annotated Bibliography (data source, brief description of information)

Coal Reports - Production, ownership, years of operation.

Directory of Illinois Coal Mines (Jackson County) - Mine names, mine index, ownership, years of operation.

ENR Document 85/01 - Mining method.

Mine notes (Jackson County) - Mine type, shaft location, seam, depth, thickness, geologic problems.

Company map, ISGS map library, 4103.J31 i5.1-22 - Mine outline, shaft locations, mining method, geologic problems.

Microfilm map, document 352498, reel 03139, frames 1933 & 194 - Mine outline (western & northeastern).



**Mine Index 89**  
**Brilliant Coal & Coke Company, Horn Mine**

Type: Underground    Total mined-out acreage shown: 338

**SHAFT, SLOPE, DRIFT or TIPPLE LOCATIONS**

Type	County	Township-Range	Section	Quarters-Footage
Main shaft	Perry	6S 1W	19	SW SW NE
Air shaft	Perry	6S 1W	19	SW SW NE

**GEOLOGY**

Seam(s) Mined	Depth (ft)	Thickness (ft)			Mining Method
		Min	Max	Avg	
Herrin	75	5.5	9.0	7.5	MRP

Geologic Problems Reported: The roof was over 2 feet of light gray shale. Generally 18 inches of top coal was left to support the roof. Small areas had a black shale roof. No limestone cap rock was present over the mine. Some erosional stream channels affected the character of the roof. Rolls were also present and occasional coal stringers were seen, which made areas of bad roof. The rock sometimes broke all the way up to the glacial debris. Subsidence pits 20 feet across and 4 to 5 feet deep were noted over the mine. Pyrite nodules were reported in some areas, usually in the top and bottom of the seam. The floor was 4 feet of fire clay, but varied and was sometimes as thin as 10 inches. The underclay heaved badly.

**PRODUCTION HISTORY**

Company	Mine Name	Years	Production (tons)
Henry Horn Colliery Company	Horn	1888-1904	1,337,291
DuQuoin-Pittsburgh Coal & Coke Company	Horn	1904-1905	17,992
Brilliant Coal & Coke Company	Horn	1905-1914	465,099
			1,820,382

Last reported production: March 1914

**SOURCES OF DATA**

Source Map	Date	Original Scale	Digitized Scale	Map Type
Microfilm, document 352089	4-18-1914	1:2400	1:5131	Final
WPA, T6S-R1W	1940	1:12000	1:55096	Secondary source

Annotated Bibliography (data source, brief description of information)

Coal Reports - Production, ownership, years of operation.  
 Directory of Illinois Coal Mines (Perry County) - Mine names, mine index, ownership, years of operation.  
 Mine notes (Perry County) - Mine type, shaft location, seam, depth, thickness, geologic problems.  
 Microfilm map, document 352089, reel 03138, frame 70 - Shaft location, mine outline, mining method.  
 WPA map, T6S-R1W - Mine outline (southeastern), air shaft location.



**Mine Index 183**  
**Union Colliery Company, Kathleen Mine**

Type: Underground    Total mined-out acreage shown: 3,923

**SHAFT, SLOPE, DRIFT or TIPPLE LOCATIONS**

Type	County	Township-Range	Section	Quarters-Footage
Main shaft (12.5 X 26.25)	Jackson	7S 1W	5	NW NE SE
Air shaft	Jackson	7S 1W	5	NE NW SE
Air shaft	Jackson	7S 1W	17	NW NE SE

**GEOLOGY**

Seam(s) Mined	Depth (ft)	Thickness (ft)			Mining Method
		Min	Max	Avg	
Herrin	252-260	6.0	11.0	7.5	RPP

Geologic Problems Reported: Incidents in 1931, 1936 and 1940 resulted in fatalities from gas and gas explosions. A N-S trending fault, downthrown to the east, lowered the coal 40 feet (Dowell Fault Zone). Two small faults, the reverse of the main fault, were also present in the western part of the mine. Some slips were encountered in the mine, one 1300 feet from the shaft on the Main South that displaced the coal 7 feet upthrown to the east. A 'white top' (soft gray) shale was present throughout the mine, requiring 1.5 to 2 feet of top coal left to support the roof. The blue band was 0.75 to 1.5 inches of shale. A dirt band was also present in the seam 4 feet from the bottom of the coal. The dirt band contained angular coal fragments in a matrix of soft carbonaceous dirt. Some pyrite lenses (0.5 by 2-3 inches) were encountered in the top coal and just above the blue band. Undercutting took place about 3 inches above the bottom of the seam, and some of the bottom coal was later loaded. The floor was 2 to 4 feet of fire clay that contained many small slips. Very little heaving occurred in the mine.

**PRODUCTION HISTORY**

Company	Mine Name	Years	Production (tons)
Union Colliery Company	Kathleen	1917-1946 *	24,037,474
			24,037,474

\* Idle 1928

Last reported production: 1946

**SOURCES OF DATA**

Source Map	Date	Original Scale	Digitized Scale	Map Type
Company, 4102 i5.1-10, sheets 1-5	11-26-1946	1:2400	1:2400	Final

Annotated Bibliography (data source, brief description of information)

Coal Reports - Production, ownership, years of operation, mining method.  
 Directory of Illinois Coal Mines (Jackson County) - Mine names, mine index, ownership, years of operation.  
 ENR Document 85/01 - Mining method.  
 Mine notes (Jackson County) - Mine type, shaft location, seam, depth, thickness, geologic problems.  
 Company map, ISGS map library, 4102 i5.1-10, sheets 1-5, copy 1 - Shaft locations, mine outline, mining method, geologic problems.



**Mine Index 419****Truax Traer Coal Company, Truax-Traer No. 1 Mine**

Type: Surface Total mined-out acreage shown: 2,176 The area mined is much larger than expected for the reported production. The reported production would account for approximately 600 acres. The area shown on the accompanying maps for the Truax-Traer No. 1 Mine may have been mined by Burning Star Surface Mine (mine index 684).

**SHAFT, SLOPE, DRIFT or TIPPLE LOCATIONS**

Type	County	Township-Range	Section	Quarters-Footage
Tipple	Jackson	7S 1W	18	SW NE SW
Herrin Coal pit	Jackson	7S 1W	18	SE NW SW (1923-1927)
Springfield Coal pit	Jackson	8S 1W	7	SE NW SW (1928-1936)
Herrin Coal pit	Jackson	7S 2W	13	
Springfield Coal pit	Jackson	7S 2W	23 & 35	

**GEOLOGY**

Seam(s) Mined	Depth (ft)	Thickness (ft)			Mining Method
		Min	Max	Avg	
Herrin (1923-1927)	27	6.5	6.8	6.6	Surface
Springfield					

Geologic Problems Reported: The overburden was about 15 feet of surficial materials, underlain by 3 to 6 feet of limestone, with 1 to 8 feet of soft gray shale directly over the coal. Some minor faults were seen, with only slight displacement of the beds. Impurities in the seam included clay lenses, bony coal bands, and pyrite bands. A few of the pyrite bands were more or less continuous, and some were up to 0.5 inches thick. Vertical fractures were filled with calcite facings. The blue band and its underside had pyrite lenses in bands or as laminations. Pyrite was more common as a filling in networks of vertical veinlets. These networks sometimes occurred as commonly as every 2 feet in horizontal spacing across an area of the pit. Clay bands were seen, but were not common in the pits.

**PRODUCTION HISTORY**

Company	Mine Name	Years	Production (tons)
Black Servant Coal Company	Black Servant	1923-1927	1,612,069
Truax Traer Coal Company	Truax-Traer No. 1	1928-1935	<u>2,911,281</u>
			4,523,350

Last reported production: June 1935

**SOURCES OF DATA**

Source Map	Date	Original Scale	Digitized Scale	Map Type
ISGS map library, 4103.J31 i5.1-15	7-24-1950	1:4800	1:4800	Final
ISGS map library, 4103.J31 i5.1-34	1966	1:57600	1:57600	Secondary source
Company, 1-32-18	2-16-1926	Unknown	Unknown *	Not final
USGS topographic map, Vergennes	1968	1:24000	1:24000	Secondary source

\* The 1926 company map was used to locate the tipple on the 1950 company map. Consequently, the 1926 company map was not scanned and georegistered. The map was final for the part of the mine shown.

Annotated Bibliography (data source, brief description of information)

Coal Reports - Production, ownership, years of operation.  
 Directory of Illinois Coal Mines (Jackson County) - Mine names, mine index, ownership, years of operation.  
 Mine notes (Jackson County) - Mine type, mine location, seam, depth, thickness, geologic problems.  
 ISGS map library, 4103.J31 i5.1-15, map of Burning Star Mine (mine index 684) - Mine outline, mining method.  
 ISGS map library, 4103.J31 i5.1-34, compilation mined-out area map - Mine outline (13-T7S-R2W), seams.  
 Company map, Coal Section files, 1-32-18 - Tipple location.  
 USGS 7.5-minute topographic map, Vergennes Quadrangle, 1968 - Mine outline (northern & western pits).



**Mine Index 451****Security Coal & Mining Company, Security No. 1 Mine**

Type: Underground    Total mined-out acreage shown: 1,089    Production indicates approximately 18 acres were mined after the map date.

**SHAFT, SLOPE, DRIFT or TIPPLE LOCATIONS**

Type	County	Township-Range	Section	Quarters-Footage
Main shaft	Perry	6S 1W	29	NE SW SW
Air shaft	Perry	6S 1W	29	NE SW SW

**GEOLOGY**

Seam(s) Mined	Depth (ft)	Thickness (ft)			Mining Method
		Min	Max	Avg	
Herrin	90	7.0	12.0	8.0	MRP

Geologic Problems Reported: A company mine map noted that Six Mile Creek broke through a north-south entry in March 1923 and flooded the mine or a portion of the mine. The source map used for the mine outline on the accompanying map shows areas under the creek and the pond that were not mined because of the potential for water damage. The roof was gray shale. Top coal was left to support the roof.

**PRODUCTION HISTORY**

Company	Mine Name	Years	Production (tons)
White Ash Coal Company	White Ash	1907-1910 *	None
Security Coal & Mining Company	Security No. 1	1910-1930	6,428,052
Security Coal & Mining Company	Security No. 1	1930-1930	<u>104,198</u> **
			6,532,250

\* Idle 1908-1910

\*\* Production after map date

Last reported production: September 1930

**SOURCES OF DATA**

Source Map	Date	Original Scale	Digitized Scale	Map Type
Microfilm, document 352118	3-1930	1:2400	1:4303	Not final

Annotated Bibliography (data source, brief description of information)

Coal Reports - Production, ownership, years of operation.

Directory of Illinois Coal Mines (Perry County) - Mine names, mine index, ownership, years of operation.

Mine notes (Perry County) - Mine type, shaft location, seam, depth, thickness, geologic problems.

Microfilm map, document 352118, reel 03138, frames 119-122 - Shaft location, mine outline, mining method.

Company map, ISGS map library, 4103.P42 i5.1-50 - Geologic problems.

WPA, T6S-R1W - Air shaft location.



**Mine Index 606****Truax Traer Coal Company, Burning Star Underground Mine**

Type: Underground    Total mined-out acreage shown: 1,837

**SHAFT, SLOPE, DRIFT or TIPPLE LOCATIONS**

Type	County	Township-Range	Section	Quarters-Footage
Slope	Jackson	8S 1W	4	SW NE NW
Drift	Jackson	8S 1W	6	NE NW NW (2 drifts)
Air drift	Jackson	8S 1W	6	NE NW NW
Drift	Jackson	7S 2W	36	NE SE NE
Air drift	Jackson	7S 2W	36	NE NE NE
Drift	Jackson	7S 2W	25	SE NE SE (5 drifts)
Drift	Jackson	7S 2W	25	NE SE SE
Air shaft	Jackson	7S 1W	33	NE SE SW
Air shaft	Jackson	7S 1W	32	NW SE SW
Air shaft	Jackson	7S 1W	31	SW SW SE

**GEOLOGY**

Seam(s) Mined	Depth (ft)	Thickness (ft)			Mining Method
		Min	Max	Avg	
Herrin	40-130			6.0-7.0	MRP

Geologic Problems Reported: The roof was difficult to keep up near the slope and to the south, which may have been related to the split coal area. The drift entrance accessed coal with a normal marine roof (black slaty shale, sometimes underlain by gray shale, with a limestone caprock). Most of the Burning Star slope had a gray shale roof, with the associated low sulfur content of the "Quality Circle" coal. A large fault runs from the northwest to the southeast through the center of the mine.

**PRODUCTION HISTORY**

Company	Mine Name	Years	Production (tons)
Truax Traer Coal Company	Burning Star Underground	1941-1965 *	<u>11,760,884</u> 11,760,884

\* Idle 1962 &amp; 1963

Last reported production: October 1965

**SOURCES OF DATA**

Source Map	Date	Original Scale	Digitized Scale	Map Type
Microfilm, document 352518	10-9-1965	11:2400	1:5297	Final

Annotated Bibliography (data source, brief description of information)

Coal Reports - Production, ownership, years of operation, seam, depth, thickness.

Directory of Illinois Coal Mines (Jackson County) - Mine names, mine index, ownership, years of operation.

ENR Document 85/01 - Mining method.

Mine notes (Jackson County) - Mine type, slope location, geologic problems.

Microfilm map, document 352518, reel 03139, frames 232-237 - Shaft, drift &amp; slope locations, mine outline, mining method, geologic problems.



**Mine Index 622****Freeman United Coal Mining Company, Fidelity No. 11 Mine**

Type: Surface Total mined-out acreage shown: 9,754

**SHAFT, SLOPE, DRIFT or TIPPLE LOCATIONS**

Type	County	Township-Range	Section	Quarters-Footage
Tipple	Perry	6S 2W	21	NE NW SW

**GEOLOGY**

Seam(s) Mined	Depth (ft)	Thickness (ft)			Mining Method
		Min	Max	Avg	
Herrin	48-83			6.0-7.38	Surface

**Geologic Problems Reported:** Inaccurately mapped adjacent underground workings were a problem. They were generally full of water, and sometimes water seeped through the coal and highwall when mining was close to the abandoned workings. Another danger was that the stripping shovel and bucketwheel excavator, which rested on top of the coal, could be damaged by sudden drop if the pillars from old mining collapsed under them. The roof was generally Anna Shale (about 1 foot) and / or up to 7 feet of Brereton Limestone. Large areas of washout and erosion were found, usually filled with soft material, such as clay and sand. One such area was about 7 acres, in NE NE NE 4-T6S-R4W. The coal had abundant pyrite in thin lenses and on vertical cracks. Calcite was also present in vertical cracks.

**PRODUCTION HISTORY**

Company	Mine Name	Years	Production (tons)
United Electric Coal Companies	Fidelity No. 11	1929-1974	62,601,524
Freeman United Coal Mining Company	Fidelity No. 11	1975-1991	14,314,417
			76,915,941

Last reported production: 1991

**SOURCES OF DATA**

Source Map	Date	Original Scale	Digitized Scale	Map Type
ISGS map library, 4103.P42 i5.1-76	5-29-1983	1:24000	1:24000	Final
ISGS map library, 4103.P42 i5.1-75	6-5-1991	1:19200	1:19200	Final
USGS topographic map, Vergennes	1968	1:62500	1:62500	Secondary source
USGS topographic map, Pyatts	1974, PR 1982	1:2400	1:24000	Secondary source

**Annotated Bibliography (data source, brief description of information)**

Coal Reports - Production, ownership, years of operation, depth.  
 Directory of Illinois Coal Mines (Perry County) - Mine names, mine index, ownership, years of operation.  
 Mine notes (Perry County) - Mine type, mine location, seam.  
 ISGS map library, 4103.P42 i5.1-76 - Mine outline, tippie location.  
 ISGS map library, 4103.P42 i5.1-75, sheet 1 - Mine outline.  
 USGS 15-minute topographic map, Vergennes Quadrangle, 1968 - Mine outline.  
 USGS 7.5-minute topographic map, Pyatts Quadrangle, 1974, Photorevised 1982 - Mine outline.  
 ISGS field notes (Perry County), H. R. Wanless, 1931 - Seam, thickness.



**Mine Index 642****Fred J. Wills Coal Company, Wills Mine**

Type: Surface    Total mined-out acreage shown: 36

**SHAFT, SLOPE, DRIFT or TIPPLE LOCATIONS**

Type	County	Township-Range	Section	Quarters-Footage
Pit / tippie	Jackson	7S 2W	4	SE NW NW

**GEOLOGY**

Seam(s) Mined	Depth (ft)	Thickness (ft)			Mining Method
		Min	Max	Avg	
Herrin	24			6.5	Surface

Geologic Problems Reported:**PRODUCTION HISTORY**

Company	Mine Name	Years	Production (tons)
Fred J. Wills Coal Company	Wills	1936-1941	<u>288,815</u> 288,815

Last reported production: 1941

**SOURCES OF DATA**

Source Map	Date	Original Scale	Digitized Scale	Map Type
USGS topographic map, Vergennes	1968	1:24000	1:24000	Secondary source

Annotated Bibliography (data source, brief description of information)

Coal Reports - Production, ownership, years of operation.

Directory of Illinois Coal Mines (Jackson County) - Mine names, mine index, ownership, years of operation.

Mine notes (Jackson County) - Mine type, location, seam, depth, thickness.

USGS 7.5-minute topographic map, Vergennes Quadrangle, 1968 - Mine outline, mining method.



**Mine Index 684****Truax Traer Coal Company, Burning Star Surface Mine**

Type: Surface    Total mined-out acreage shown: 2,117

**SHAFT, SLOPE, DRIFT or TIPPLE LOCATIONS**

Type	County	Township-Range	Section	Quarters-Footage
Tipple	Jackson	7S 2W	36	SW SE SW
Pit	Jackson	8S 1W	17, 18	
Pit	Jackson	7S 2W	36	SE SW

**GEOLOGY**

Seam(s) Mined	Depth (ft)	Thickness (ft)			Mining Method
		Min	Max	Avg	
Herrin	17-38			5.0-7.0	Surface
Springfield	50-70			3.0-3.5	Surface

Geologic Problems Reported: The Herrin Coal contained pyrite nodules up to 0.5 inches thick. Calcite & pyrite were abundant on vertical fractures.

**PRODUCTION HISTORY**

Company	Mine Name	Years	Production (tons)
Forsyth Coal Company	Forsyth	1925-1927	635,229
Truax Traer Coal Company	Burning Star Surface	1928-1966	<u>21,989,013</u> 22,624,242

Last reported production: June 1966

**SOURCES OF DATA**

Source Map	Date	Original Scale	Digitized Scale	Map Type
Company, 4103.J31 i5.1-15	7-24-1950	1:4800	1:4800	Final / not final *
USGS topographic map	PR 1978	1:24000	1:24000	Secondary source
USGS topographic map	PR 1978	1:24000	1:24000	Secondary source
USGS topographic map	1968	1:24000	1:24000	Secondary source

\* The source map was final for the pits in the Herrin Coal seam, in the northeastern part of the mine. The map was not final for the pits in the Springfield Coal seam, in the southern part of the mine. The secondary source maps were used for the final outline.

Annotated Bibliography (data source, brief description of information)

Coal Reports - Production, ownership, years of operation.  
 Directory of Illinois Coal Mines (Jackson County) - Mine names, mine index, ownership, years of operation.  
 Mine notes (Jackson County) - Mine type, pit locations, seam, geologic problems.  
 Company map, ISGS map library, 4103.J31 i5.1-15 - Tipple location, mine outline, mining method, seam.  
 ISGS map library, 4103.J31 i5.1-34 - General pit outline, seam.  
 Company map, Coal Section files, 6-253b - General pit outline, seam.  
 De Soto Quadrangle, USGS 7.5-minute topographic map, 1968, photorevised 1978 - Partial mine outline.  
 Murphysboro Quadrangle, USGS 7.5-minute topographic map, 1968, photorevised 1978 - Partial mine outline.  
 Vergennes Quadrangle, USGS 7.5-minute topographic map, 1968 - Partial mine outline.



**Mine Index 687****Truax-Traer Coal Company, New Kathleen Mine**

Type: Underground    Total mined-out acreage shown: 2,372

**SHAFT, SLOPE, DRIFT or TIPPLE LOCATIONS**

Type	County	Township-Range	Section	Quarters-Footage
Main slope	Perry	6S 2W	36	NE NW NW
Air slope	Perry	6S 2W	36	NW NE NW
Air shaft	Perry	6S 2W	26	NE SW SW

**GEOLOGY**

Seam(s) Mined	Depth (ft)	Thickness (ft)			Mining Method
		Min	Max	Avg	
Herrin	75-85			6.0-7.0	MRP

Geologic Problems Reported:

**PRODUCTION HISTORY**

Company	Mine Name	Years	Production (tons)
Union Colliery Company	New Kathleen	1946-1958	11,722,547
Truax Traer Coal Company	New Kathleen	1958-1958	172,843
			11,895,390

Last reported production: May 1958

**SOURCES OF DATA**

Source Map	Date	Original Scale	Digitized Scale	Map Type
Microfilm, document 352138	6-1-1958	1:1200	1:1200	Final

Annotated Bibliography (data source, brief description of information)

Coal Reports - Production, ownership, years of operation, depth, thickness.

Directory of Illinois Coal Mines (Perry County) - Mine names, mine index, ownership, years of operation.

Mine notes (Perry County) - Mine type, slope location, seam.

Microfilm map, document 352138, reel 03138, frames 148-153 - Slope & shaft locations, mine outline, mining method.



**Mine Index 958****Southern Illinois Minerals, Vergennes No. 4 Mine**

Type: Surface    Total mined-out acreage shown: None; production indicates approximately 10 acres were mined.

**SHAFT, SLOPE, DRIFT or TIPPLE LOCATIONS**

Type	County	Township-Range	Section	Quarters-Footage
Pit / tippie	Jackson	7S 2W	8	N ½ NW

**GEOLOGY**

Seam(s) Mined	Depth (ft)	Thickness (ft)			Mining Method
		Min	Max	Avg	
Murphysboro	30-35			5.0	Surface

Geologic Problems Reported:

**PRODUCTION HISTORY**

Company	Mine Name	Years	Production (tons)
Three States Trucking, Inc.	Vergennes No. 4	1976-1976	68,508
Southern Illinois Minerals	Vergennes No. 4	1977-1977	<u>9,632</u>
			78,140

Last reported production: March 1977

**SOURCES OF DATA**

Source Map	Date	Original Scale	Digitized Scale	Map Type
Coal Section mine database	Undated	(text only)	1:24000 *	Secondary source

\* The mine location was plotted on a 1:24000 USGS topographic map from the mine location description and digitized.

Annotated Bibliography (data source, brief description of information)

Coal Reports - Production, ownership, years of operation, depth, thickness.

Directory of Illinois Coal Mines (Jackson County) - Mine names, mine index, ownership, mine location.

Mine notes (Jackson County) - Seam.



**Mine Index 1025**  
**Knight Hawk Coal, LLC, Red Hawk Mine**

Type: Surface    Total mined-out acreage shown: 797 in Herrin Coal, 446 in Springfield Coal

**SHAFT, SLOPE, DRIFT or TIPPLE LOCATIONS**

Type	County	Township-Range	Section	Quarters-Footage
Tipple	Perry	6S 2W	33	N ½ SW SW
Pit	Perry	6S 2W	34	

**GEOLOGY**

Seam(s) Mined	Depth (ft)	Thickness (ft)			Mining Method
		Min	Max	Avg	
Herrin	40-80			6.0-7.0	Surface
Springfield	70-110			2.0-3.5	Surface

Geologic Problems Reported: Geologic problems are not reported for active mines.

**PRODUCTION HISTORY**

Company	Mine Name	Years	Production (tons)
Illini Energy Resources *	Razorback No. 2	2000-2002	916,924
Knight Hawk Coal, LLC	Red Hawk	2003- **	<u>7,112,853</u> **
			8,029,777

\* The company may have also been known as Phoenix Energy Resources.

\*\* Production includes tonnage through 2022, the latest available Coal Report.

Last reported production:

**SOURCES OF DATA**

Source Map	Date	Original Scale	Digitized Scale	Map Type
Company, digital map	2009	Unknown	1:24000	Not final
NAIP digital ortho-photo quadrangle	2019	1:6000	1:6000	Secondary source

Annotated Bibliography (data source, brief description of information)

Coal Reports - Production, ownership, years of operation, seam, depth, thickness.

Directory of Illinois Coal Mines (Perry County) - Mine names, mine index, ownership, years of operation.

Mine notes (Perry County) - Mine type, tipple location, geologic problems.

Company map, Coal Section files, digital file - Mine outline, mining method.

National Agriculture Imagery Program map, digital ortho-photo quadrangle map - Mine outline.



**Mine Index 1037**  
**S Coal Company, Elkhville Mine**

Type: Surface    Total mined-out acreage shown: 91

**SHAFT, SLOPE, DRIFT or TIPPLE LOCATIONS**

Type	County	Township-Range	Section	Quarters-Footage
Pit	Jackson	7S 1W	19	E ½ NE

**GEOLOGY**

Seam(s) Mined	Depth (ft)	Thickness (ft)			Mining Method
		Min	Max	Avg	
Herrin	70			6.0	Surface
Springfield					

Geologic Problems Reported: Geologic problems are not reported for active mines.

**PRODUCTION HISTORY**

Company	Mine Name	Years	Production (tons)
S Coal Company	Elkhville	2004-2009	<u>1,883,144</u> 1,883,144

Last reported production: 2009

**SOURCES OF DATA**

Source Map	Date	Original Scale	Digitized Scale	Map Type
Coal Section files, digital map	2009	Not known *	1:24000	Not final

Annotated Bibliography (data source, brief description of information)

Coal Reports - Production, ownership, years of operation, seams, depth, thickness.  
 Directory of Illinois Coal Mines (Jackson County) - Mine names, mine index, ownership, years of operation.  
 Coal Section files, digital map - Mine outline, mining method.



**Mine Index 2446**  
**Atlas Coal Company, Atlas Mine**

Type: Underground    Total mined-out acreage shown: None; production indicates less than 1 acre was mined.

**SHAFT, SLOPE, DRIFT or TIPPLe LOCATIONS**

Type	County	Township-Range	Section	Quarters-Footage
Main slope	Jackson	7S 2W	4	NW SE SW

**GEOLOGY**

Seam(s) Mined	Depth (ft)	Thickness (ft)			Mining Method
		Min	Max	Avg	
Springfield	27-33			4.67	Underground

Geologic Problems Reported:

**PRODUCTION HISTORY**

Company	Mine Name	Years	Production (tons)
Ben R. Johns	Johns	1938-1938	20
Atlas Coal Company	Atlas	1939-1939	<u>6</u> 26

Last reported production: 1939

**SOURCES OF DATA**

Source Map	Date	Original Scale	Digitized Scale	Map Type
Coal Section files, MOA area 29	1950	1:62500	1:62500	Secondary source

Annotated Bibliography (data source, brief description of information)

Coal Reports - Production, ownership, years of operation.  
 Directory of Illinois Coal Mines (Jackson County) - Mine names, mine index, ownership, years of operation.  
 Mine notes (Jackson County) - Mine type, slope location, seam, depth, thickness.  
 Coal Section files, compilation map, Mined-Out Area 29, 1950 - Slope location.



**Mine Index 2447**  
**Belle Rive Mining Company, Belle Rive No. 2 Mine**

Type: Surface    Total mined-out acreage shown: 9

**SHAFT, SLOPE, DRIFT or TIPPLe LOCATIONS**

Type	County	Township-Range	Section	Quarters-Footage
Pit	Jackson	7S 2W	3	W ½ SE

**GEOLOGY**

Seam(s) Mined	Depth (ft)	Thickness (ft)			Mining Method
		Min	Max	Avg	
Herrin (1956-1962)	18-30			4.0	Surface
Springfield (1963)	25			6.0	Surface

Geologic Problems Reported:

**PRODUCTION HISTORY**

Company	Mine Name	Years	Production (tons)
C. & M. Coal Company	Como	1956-1962 *	30,269
Belle Rive Mining Company	Belle Rive No. 2	1963-1963	8,135
			38,404

\* Idle 1959-1962

Last reported production: 1963

**SOURCES OF DATA**

Source Map	Date	Original Scale	Digitized Scale	Map Type
USGS topographic map, Vergennes	1968	1:24000	1:24000	Secondary source

Annotated Bibliography (data source, brief description of information)

Coal Reports - Production, ownership, years of operation, seam, depth, thickness, mining method.  
 Directory of Illinois Coal Mines (Jackson County) - Mine names, mine index, ownership, years of operation.  
 Mine notes (Jackson County) - Mine type, seam.  
 USGS 7.5-minute topographic map, Vergennes Quadrangle, 1968 - Mine outline.



**Mine Index 2449****Schmidgall Coal Company, Schmidgall No. 1 Mine**

Type: Underground    Total mined-out acreage shown: None; production indicates approximately 34 acres were mined.

**SHAFT, SLOPE, DRIFT or TIPPLE LOCATIONS**

Type	County	Township-Range	Section	Quarters-Footage
Main shaft	Jackson	7S 2W	5	NE SE NW

**GEOLOGY**

Seam(s) Mined	Depth (ft)	Thickness (ft)			Mining Method
		Min	Max	Avg	
Murphysboro	100-120			3.17-3.5	RP

Geologic Problems Reported:

**PRODUCTION HISTORY**

Company	Mine Name	Years	Production (tons)
Schmidgall Coal Company	Schmidgall No. 1	1900-1912	98,239
			98,239

Last reported production: 1912

**SOURCES OF DATA**

Source Map	Date	Original Scale	Digitized Scale	Map Type
ISGS mine database	Undated	1:62500	1:24000 *	Secondary source

\* The mine location was plotted on a 1:24000 USGS topographic map from the mine location description and digitized.

Annotated Bibliography (data source, brief description of information)

Coal Reports - Production, ownership, years of operation, seam, depth, thickness, mining method.

Directory of Illinois Coal Mines (Jackson County) - Mine names, mine index, ownership, years of operation.

ISGS mine database - Shaft location.



**Mine Index 2452****Nearing Coal Company, Nearing Mine**

Type: Underground    Total mined-out acreage shown: None; cited production indicates less than 1 acre was mined.

**SHAFT, SLOPE, DRIFT or TIPPLE LOCATIONS**

Type	County	Township-Range	Section	Quarters-Footage
Shaft	Jackson	7S 2W	28	NW NW SW

**GEOLOGY**

Seam(s) Mined	Depth (ft)	Thickness (ft)			Mining Method
		Min	Max	Avg	
Murphysboro	84			4.0-6.0	Underground

Geologic Problems Reported: The roof was very poor.

**PRODUCTION HISTORY**

Company	Mine Name	Years	Production (tons)
Nearing Coal Company	Nearing	before 1932 *	Unknown *

\* When visited in 1932, the shaft had been abandoned "for many years". Only "a few cars" of coal had been mined. Old coal cars generally had a 1-ton capacity or less, so production was probably less than 20 tons.

Last reported production:

**SOURCES OF DATA**

Source Map	Date	Original Scale	Digitized Scale	Map Type
ISGS field notes (E. T. Benson)	1932	(text only)	1:24000 **	Secondary source

\*\* The mine location was plotted on a 1:24000 USGS topographic base from the mine location description and digitized.

Annotated Bibliography (data source, brief description of information)

Directory of Illinois Coal Mines (Jackson County) - Mine names, mine index, ownership, years of operation.

Mine notes (Jackson County) - Mine type, shaft location, seam, depth, thickness.

ISGS field notes (Jackson County) - Mine type, shaft location, thickness, depth, geologic problems.



**Mine Index 3158****Jewel Coal & Mining Company, Jewel No. 1 Mine**

Type: Underground    Total mined-out acreage shown: 62    Production indicates 62 acres were mined after the map date.

**SHAFT, SLOPE, DRIFT or TIPPLE LOCATIONS**

Type	County	Township-Range	Section	Quarters-Footage
Main shaft	Perry	6S 1W	18	NW NE SE
Air shaft	Perry	6S 1W	18	SE SW NE

**GEOLOGY**

Seam(s) Mined	Depth (ft)	Thickness (ft)			Mining Method
		Min	Max	Avg	
Herrin	75			6.5	RPP

Geologic Problems Reported:

**PRODUCTION HISTORY**

Company	Mine Name	Years	Production (tons)
Harvey & Company	Harvey	1916-1917	959
Jewel Coal & Mining Company	Jewel No. 1	1917-1921	383,947
Jewel Coal & Mining Company	Jewel No. 1	1921-1923	378,346 *
			<u>763,252</u>

\* Production after map date

Last reported production: October 1923

**SOURCES OF DATA**

Source Map	Date	Original Scale	Digitized Scale	Map Type
Company, document 352078	2-1921	1:2400	1:4469	Not final

Annotated Bibliography (data source, brief description of information)

Coal Reports - Production, ownership, years of operation.

Directory of Illinois Coal Mines (Perry County) - Mine names, mine index, ownership, years of operation.

Mine notes (Perry County) - Shaft location, seam, depth, thickness.

Microfilm map, document 352078, reel 03138, frame 57 - Shaft locations, mine outline, mining method.



**Mine Index 3161****McCormack & George, Little White Ash Mine**

Type: Underground Total mined-out acreage shown: 6 Production indicates less than 1 acre was mined after the map date. Part of Little White Ash Mine was later surface-mined by Fidelity No. 11 Mine (mine index 622).

**SHAFT, SLOPE, DRIFT or TIPPLE LOCATIONS**

Type	County	Township-Range	Section	Quarters-Footage
Main shaft	Perry	6S 1W	19	SW SE SW
Air shaft	Perry	6S 1W	19	SW SE SW

**GEOLOGY**

Seam(s) Mined	Depth (ft)	Thickness (ft)			Mining Method
		Min	Max	Avg	
Herrin	58			7.5	MRP

Geologic Problems Reported: The source map shows a fault at the southeastern corner of the mine.

**PRODUCTION HISTORY**

Company	Mine Name	Years	Production (tons)
Patrick & Matthews	Patrick & Matthews	1922-1924	3,809
Patrick Coal Company	Patrick	1924-1925	2,982
L. L. Lemmon	Lemmon	1926-1926	2,500
Patrick Coal Company	Patrick	1927-1936	24,057
Little White Ash Coal Company	Little White Ash	1937-1939	2,836
Little White Ash Coal Company *	Little White Ash	1939-1941 **	2,617 ***
McCormack & George	Little White Ash	1942-1942	906 ***
			39,707

\* The ownership changed in 1940 from Marian Lambert to Albert Patrick, but the mine continued to report under the name Little White Ash Coal Company. A 1937 source map was listed as the Lambert & Beard Mine

\*\* Idle 1941

\*\*\* Production after map date

Last reported production: 1942

**SOURCES OF DATA**

Source Map	Date	Original Scale	Digitized Scale	Map Type
Microfilm, document 352141	6-1939	1:600	1:745	Not final

Annotated Bibliography (data source, brief description of information)

Coal Reports - Production, ownership, years of operation.

Directory of Illinois Coal Mines (Perry County) - Mine names, mine index, ownership, years of operation.

Mine notes (Perry County) - Mine location, seam, depth, thickness.

Microfilm map, document 352141, reel 03138, frame 157 - Shaft locations, mine outline, mining method, geologic problems.



**Mine Index 3173**  
**John G. Schneider, Schneider Mine**

Type: Underground    Total mined-out acreage shown: 10    Production indicates approximately 3 acres were mined. The Schneider Mine was later surface-mined by Wills Mine (mine index 642).

**SHAFT, SLOPE, DRIFT or TIPPLE LOCATIONS**

Type	County	Township-Range	Section	Quarters-Footage
Main shaft	Perry	6S 2W	32	NE SE SE

**GEOLOGY**

Seam(s) Mined	Depth (ft)	Thickness (ft)			Mining Method
		Min	Max	Avg	
Herrin	18			8.0	RP

Geologic Problems Reported:

**PRODUCTION HISTORY**

Company	Mine Name	Years	Production (tons)
John G. Schneider	Schneider	1904-1910	14,676
			14,676

Last reported production: 1910

**SOURCES OF DATA**

Source Map	Date	Original Scale	Digitized Scale	Map Type
Coal Section files, 2-473 D	9-21-1933	1:63360	1:63360	Secondary source

Annotated Bibliography (data source, brief description of information)

Coal Reports - Production, ownership, years of operation, mine type, mining method.  
 Directory of Illinois Coal Mines (Perry County) - Mine names, mine index, ownership, years of operation.  
 Mine notes (Perry County) - Seam, depth, thickness.  
 Coal Section files, 2-473 D, compilation work map for Federal Land Bank Report - Shaft location, mine outline.



**Mine Index 3174**  
**R. P. M., Inc., Joliana Mine**

Type: Surface    Total mined-out acreage shown: 63

**SHAFT, SLOPE, DRIFT or TIPPLE LOCATIONS**

Type	County	Township-Range	Section	Quarters-Footage
Pit / tippie	Jackson	7S 2W	4	NW NW NE
Pit	Perry	6S 2W	33	SW SE

**GEOLOGY**

Seam(s) Mined	Depth (ft)	Thickness (ft)			Mining Method
		Min	Max	Avg	
Herrin	35-40			6.0	Surface

Geologic Problems Reported:

**PRODUCTION HISTORY**

Company	Mine Name	Years	Production (tons)
C. & M., Inc.	Joliana	1948-1948	56,116
R. P. M., Inc.	Joliana	1949-1950	<u>92,587</u>
			148,703

Last reported production: June 1950

**SOURCES OF DATA**

Source Map	Date	Original Scale	Digitized Scale	Map Type
Company map, 4103.P42 i5.1-25	11-8-1949	1:1200	1:1200	Not final *
USGS topographic map, Vergennes	1968	1:24000	1:24000	Secondary source

\* The company map was used for the mine location. Because the company map was not final, and all of the reported production was from Jackson County, estimating the area mined after the map date is not possible. The outline on the accompanying map is entirely from the USGS topographic map.

Annotated Bibliography (data source, brief description of information)

Coal Reports - Production, ownership, years of operation, depth.  
 Directory of Illinois Coal Mines (Jackson County) - Mine names, mine index, ownership, years of operation.  
 Mine notes (Jackson County) - Thickness.  
 Company map, ISGS map library, 4103.P42 i5.1-25 - Mine location, mining method.  
 USGS 7.5-minute topographic map, Vergennes Quadrangle - Mine outline.



**Mine Index 6598****Main Line Coal Corporation, Main Line No. 3 Mine**

Type: Surface Total mined-out acreage shown: 40 The area is larger than expected for the reported production. Main Line Coal Corp. may have enlarged a previously-mined area, and / or much of the area may have been disturbed land without actually having been mined. Production indicates approximately 15 acres were mined.

**SHAFT, SLOPE, DRIFT or TIPPLE LOCATIONS**

Type	County	Township-Range	Section	Quarters-Footage
Pit	Jackson	7S 2W	3	N ½ of NW SE & NE SE

**GEOLOGY**

Seam(s) Mined	Depth (ft)	Thickness (ft)			Mining Method
		Min	Max	Avg	
Herrin	30			6.0	Surface
Springfield	57			3.5	Surface

Geologic Problems Reported:

**PRODUCTION HISTORY**

Company	Mine Name	Years	Production (tons)
Main Line Coal Corporation	Main Line No. 3	1966-1968	<u>219,661</u> 219,661

Last reported production: 1968

**SOURCES OF DATA**

Source Map	Date	Original Scale	Digitized Scale	Map Type
Coal Section files, strip mine updates	1969-1971	1:7543	1:7543	Secondary source

Annotated Bibliography (data source, brief description of information)

Coal Reports - Production, ownership, years of operation, mine type, seam, depth, thickness, mining method..

Directory of Illinois Coal Mines (Jackson County) - Mine names, mine index, ownership, years of operation.

Coal Section files, strip mine updates, 1969-1971 - Mine outline, mining method.



**Mine Index 7277****B. A. Schimpf, Schimpf Mine**

Type: Underground    Total mined-out acreage shown: 6    Production indicates approximately 1 acre was mined.

**SHAFT, SLOPE, DRIFT or TIPPLE LOCATIONS**

Type	County	Township-Range	Section	Quarters-Footage
Main slope	Jackson	7S 2W	11	SW SW SW

**GEOLOGY**

Seam(s) Mined	Depth (ft)	Thickness (ft)			Mining Method
		Min	Max	Avg	
Murphysboro	22-40			2.83-5.5	RP

Geologic Problems Reported:

**PRODUCTION HISTORY**

Company	Mine Name	Years	Production (tons)
B. A. Schimpf	Schimpf	1910-1911	180
Schimpf & Craig	Schimpf & Craig	1911-1912	800
B. Schimpf	Schimpf	1912-1913	614
Schimipf & Blacklock	Schimpf & Blacklock	1913-1914	240
Schimpf & Pugh	Shiimpf & Pugh	1914-1915	302
B. A. Schimpf	Schimpf	1915-1917	<u>1,120</u>
			3,256

Last reported production: 1917

**SOURCES OF DATA**

Source Map	Date	Original Scale	Digitized Scale	Map Type
Coal Section files, MOA 29	1950	1:62500	1:62500	Secondary source

Annotated Bibliography (data source, brief description of information)

Coal Reports - Production, ownership, years of operation, mine type, seam, depth, thickness, mining method.  
 Directory of Illinois Coal Mines (Jackson County) - Mine names, mine index, ownership, years of operation.  
 Coal Section files, compilation map, Mined-Out Area 29 - Slope location, mine outline.



## OTHER MINES SHOWN ON VERGENNES QUADRANGLE

Mine Index 4624, Hardnick Mine SW NW NE 8-T7S-R2W, surface mine, Murphysboro Coal source: Mine notes  
 Mine Index 7276 SW SE SE 32-T6S-R2W, shaft, Herrin Coal source: Coal Section files, 2-473 D, compilation  
 work map for Federal Land Bank Report  
 Mine Index 7302 NE NE SW 29-T6S-R2W, shaft source: ISGS field notes (D. J. Fisher, 1922-1924) This mine is  
 not shown on the accompanying map. It was later stripped out by Fidelity No. 11 (mine index 622).

## MINES WHOSE LOCATIONS ARE NOT KNOWN, VERGENNES QUADRANGLE

The locations of the following mines are unknown, but the production tonnage, operating names, and nearest town were reported in the Annual Coal Reports. The operators listed below mined in or near the Vergennes Quadrangle. The information shown is similar to that presented on the summary sheets in the previous pages of this directory. The first item is the name the mine operated under as listed in the Coal Report, then the years the mine reported. If no physical data are available, the next item listed is the total tons produced by the mine. If physical data are available, the order of presentation is as follows: type of opening for the mine (drift, slope or shaft), depth of coal in feet, and thickness of coal in feet.

The total tons mined by these unlocated mines is 93,484 (65,388 underground mined, 6,892 surface mined and 21,204 mined by uncertain method), which would represent approximately 12 to 31 acres, depending on the recovery factor, mining method, and numerous other factors. (Note: 1 square mile = 640 acres)

### DU QUOIN, Perry County

Winn (George), 1882-1883, shaft, Herrin, 41, 6.0	2,545 tons
Frizzell Coal Mining Company, 1883-1889, shaft, —, 30, 5.75-6.0, RP	33,417 tons
Johnson (Thomas), 1894-1895, shaft, Herrin, 71, 6.0, RP	200 tons
Snofford & Pyles, 1901-1902, shaft, Herrin, 24, 6.0, RP	200 tons
Pyles (Dan), Sunshine Mine, 1902-1903	<u>800 tons</u>
	1,000 tons
Greenwood (Thomas), 1904-1905, shaft, Herrin, 26, 6.0, RP	140 tons
Hummel (J. A.) & Davis (C.), 1905-1906, slope, Herrin, 15, 6.0-9.0, RP	3,600 tons
Conroy & Bailey, 1906-1907	2,924 tons
Presswood (Charles), 1907-1908	<u>500 tons</u>
	7,024 tons
Coffel (James A.), 1908-1909, shaft, Herrin, 21-48, 6.0, RP	3,120 tons
Cook (B. O.), 1909-1912	<u>9,313 tons</u>
	12,433 tons
Dynamic Coal Mining Company, No. 3 Mine, 1912-1914, shaft, Herrin, 80, 6	6,318 tons
Morgan & Williams, 1914-1915, slope, Herrin, 15, 6.0-6.57, RP	800 tons
Legrand & Son, 1916-1917	<u>340 tons</u>
	1,140 tons
Dry & Revelle, 1915-1917, shaft, Herrin, 24-30, 5.83-6.0, RP	389 tons
Schmidtgal Coal Company, 1919-1923	1,350 tons
Possum Hollow Coal Company, 1923-1927	<u>6,264 tons</u>
	7,614 tons



Diamond Coal Company, 1920-1922	1,135 tons
DuQuoin Coal Company, Diamond Mine, 1922-1926	<u>2,785 tons</u>
	3,920 tons
Schneider (Marion) Coal Company, 1922-1927	1,382 tons
Seronce (Morris), 1922-1924	1,038 tons
Good Will Coal Company, 1924-1925	1,595 tons
Manuel & Sons, 1924-1925	2,035 tons
East Side Coal Company, 1926-1927	3,040 tons
Blue Bell Coal Company, 1926-1926	580 tons
Clayton (Dick), 1928-1928, surface	750 tons
Clayton (J. M.), 1929-1929, underground	138 tons
Talbot Coalery Company, 1934-1935, surface, Herrin, —, 6.0	4,142 tons
Blue Ribbon Coal Company, 1934-1934, underground	184 tons
Bard (Charles) Coal Company, 1936-1936, underground	800 tons

**ELKVILLE**, Jackson County

Cox & Harris, 1890-1892, shaft, —, 29, 8.0, RP	500 tons
--	----------

**GRUBB (PERRYS), (Section 6 or 7, T7S-R2W)**, Jackson County

Crane (Ashby), 1885-1892, shaft, Colchester, 50, 4.0-5.0, RP	1,498 tons
--	------------

**MURPHYSBORO**, Perry County

Clausen Coal Company, 1934-1934, surface	2,000 tons
--	------------

**VERGENNES**, Jackson County

Owen (Marion), 1898-1901, slope, Murphysboro, 24-26, 3.3-3.5, RP	1,420 tons
Williams (F.), 1901-1903	<u>490 tons</u>
	1,910 tons

Wisley (H. C.), 1913-1914, shaft, Murphysboro, 43, 8.0, RP	1,092 tons
--	------------



## INDEX OF MINES IN THE VERGENNES QUADRANGLE

Atlas Coal Company . . . . .	22
Bailey (Conroy & Bailey) . . . . .	32
Bard (Charles) Coal Company . . . . .	33
Beard (Lambert & Beard Mine) . . . . .	27
Belle Rive Mining Company . . . . .	23
Black Servant Coal Company . . . . .	12
Blacklock (Schimpf & Blacklock) . . . . .	31
Blue Bell Coal Company . . . . .	33
Blue Ribbon Coal Company . . . . .	33
Brilliant Coal & Coke Company . . . . .	10
Burning Star Surface Mine . . . . .	17
Burning Star Underground Mine . . . . .	14
C. & M. Coal Company . . . . .	23
C. & M., Inc. . . . .	29
Clausen Coal Company . . . . .	33
Clayton (Dick) . . . . .	33
Clayton (J. M.) . . . . .	33
Coffel (James A.) . . . . .	32
Como Mine . . . . .	23
Conroy & Bailey . . . . .	32
Cook (B. O.) . . . . .	32
Cox & Harris . . . . .	33
Craig (Schimpf & Craig) . . . . .	31
Crane (Ashby) . . . . .	33
Davis (Hummel & Davis) . . . . .	32
Diamond Coal Company . . . . .	32
Dry & Revelle . . . . .	32
DuQuoin Coal Company, Diamond Mine . . . . .	33
DuQuoin-Pittsburgh Coal & Coke Company . . . . .	10
Dynamic Coal Mining Company . . . . .	32
East Side Coal Company . . . . .	33
Elkville Mine . . . . .	21
Fidelity No. 11 Mine . . . . .	15
Forsyth Coal Company . . . . .	17
Freeman United Coal Mining Company . . . . .	15
Frizzell Coal Mining Company . . . . .	32
George (McCormack & George) . . . . .	27
Good Will Coal Company . . . . .	33
Greenwood (Thomas) . . . . .	32
Halliday Brothers . . . . .	9
Hallidayboro Mine . . . . .	9
Hardnick Mine . . . . .	32
Harris (Cox & Harris) . . . . .	33
Harvey & Company . . . . .	26
Horn (Henry) Colliery Company . . . . .	10
Hummel (J. A.) & Davis (C.) . . . . .	32
Illini Energy Resources . . . . .	20
Jackson Coal Company . . . . .	9
Jewel Coal & Mining Company, No. 1 Mine . . . . .	26
Johns (Ben R.) . . . . .	22
Johnson (Thomas) . . . . .	32
Joliana Mine . . . . .	29
Kathleen Mine . . . . .	11
Knight Hawk Coal, LLC, Red Hawk Mine . . . . .	20
Lambert (Marian) . . . . .	27
Lambert & Beard Mine . . . . .	27
Legrand & Son . . . . .	32
Lemmon (L. L.) . . . . .	27
Little White Ash Coal Company . . . . .	27
Main Line Coal Corporation . . . . .	30
Manuel & Sons . . . . .	33
Matthews (Patrick & Matthews) . . . . .	27
McCormack & George . . . . .	27



Morgan & Williams	32
Muddy Valley Mine	9
Muddy Valley Mining & Manufacturing Company	9
Nearing Coal Company	25
New Kathleen Mine	18
Owen (Marion)	33
Patrick (Albert)	27
Patrick & Matthews	27
Patrick Coal Company	27
Phoenix Energy Resources	20
Possum Hollow Coal Company	32
Presswood (Charles)	32
Pugh (Schimpf & Pugh)	31
Pyles (Dan)	32
Pyles (Snofford & Pyles)	32
R. P. M., Inc.	29
Razorback No. 2 Mine	20
Red Hawk Mine	20
Revelle (Dry & Revelle)	32
S Coal Company	21
Schimpf & Blacklock	31
Schimpf (B. A.)	31
Schimpf (B.)	31
Schimpf & Craig	31
Schimpf & Pugh	31
Schmidgall Coal Company	24
Schmidtgall Coal Company	32
Schneider (John G.)	28
Schneider (Marion) Coal Company	33
Security Coal & Mining Company	13
Seronce (Morris)	33
Snofford & Pyles	32
Southern Illinois Minerals, Vergennes No. 4 Mine	19
Sunshine Mine	32
Talbot Coalery Company	33
Three States Trucking, Inc., Vergennes No. 4 Mine	19
Truax Traer Coal Company	
Burning Star Surface Mine	17
Burning Star Underground Mine	14
New Kathleen Mine	18
Truax-Traer No. 1 Mine	12
Union Colliery Company	11, 18
United Electric Coal Companies	15
Vergennes No. 4 Mine	19
White Ash Coal Company	13
Williams (F.)	33
Williams (Morgan & Williams)	32
Wills (Fred J.) Coal Company	16
Winn (George)	32
Wisley (H. C.)	33



