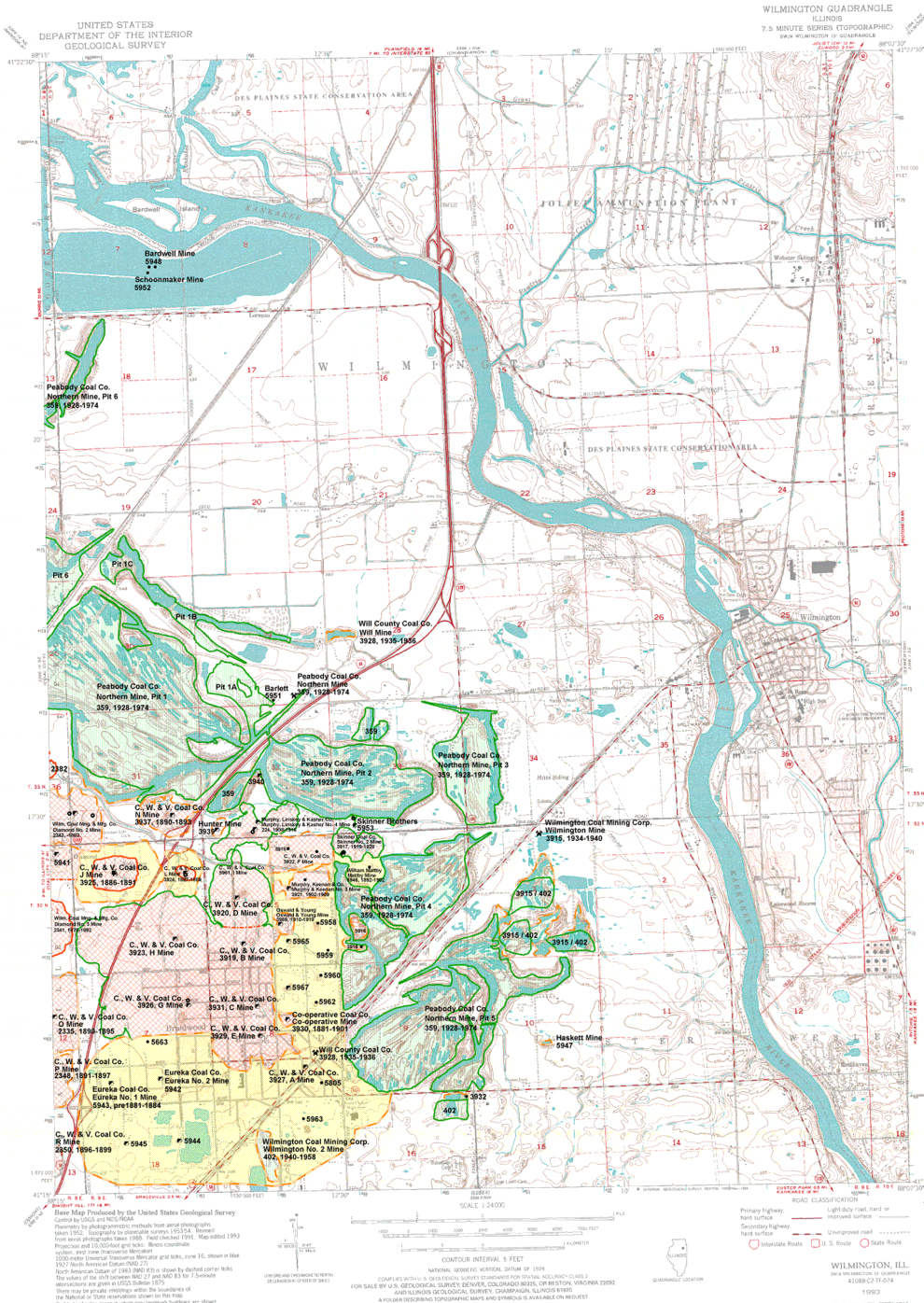


Coal Mines in Illinois Wilmington Quadrangle Grundy and Will Counties, Illinois

This map accompanies the Coal Mines Directory for the Wilmington Quadrangle. Consult the directory for a complete explanation of the information shown on this map.



- Mining Method**
- Room & Pillar (RP)
 - Room & Pillar Basic (RPB)
 - Modified Room & Pillar (MRP)
 - Room & Pillar Panel (RPP)
 - Blind Room & Pillar (BRP)
 - Checkerboard Room & Pillar (CRP)
 - High Extraction Retreat (HER)
 - Longwall (LW)
 - Underground, Method Unknown
 - Strip Mine
 - Auger Mine
 - General Area of Mining

- Source of Mine Outline**
- Final Mine Map
 - Not Final Mine Map
 - Undated Mine Map
 - Incomplete Mine Map
 - Secondary Source Map

- Tipple, Shaft, Slope, Drift Locations**
- * Strip Mine Tipple - Active
 - * Strip Mine Tipple - Abandoned
 - ⬛ Mine Shaft - Active
 - ⬛ Mine Shaft - Abandoned
 - ⬛ Mine Slope - Active
 - ⬛ Mine Slope - Abandoned
 - ◀ Mine Drift - Active
 - ◀ Mine Drift - Abandoned
 - ⦿ Air Shaft
 - Uncertain Location
 - Uncertain Type of Opening

- Mine Annotation**
(space permitting)
- Company
 - Mine Name
 - ISGS Index No., Years of Operation

DISCLAIMER

These data were compiled and digitized from the best source maps available. Locations of some features may be off by 500 feet or more due to errors in the original source maps, the compilation process, digitizing or a combination of these factors. Documentation of the source materials used is contained in the directory that accompanies this map. It is the user's responsibility to read this documentation and understand the limitations of the data. Though efforts have been made to compile these data accurately, the Illinois State Geological Survey does not guarantee the validity or the accuracy of these data.

The image of the U.S.G.S. Wilmington Quadrangle used as a base map was projected from the original UTM to Lambert Conformal Conic.

Location



Illinois State Geological Survey
615 E. Peabody Dr.
Champaign, IL 61820

Mine Outlines Compiled by
Jennifer M. Obrad
March 14, 2005
Revised July 20, 2007

WILMINGTON, ILL.
DATE: JAN. 1, 1961
SCALE: 1:24,000

Base Map Produced by the United States Geological Survey
Copyright by ISGS, 1961-2007
Photocopying by permission of the publisher is prohibited.
This map is a product of the Illinois State Geological Survey.
It is the user's responsibility to read this documentation and understand the limitations of the data.
Though efforts have been made to compile these data accurately, the Illinois State Geological Survey does not guarantee the validity or the accuracy of these data.

DIRECTORY OF COAL MINES IN ILLINOIS 7.5-MINUTE QUADRANGLE SERIES WILMINGTON QUADRANGLE GRUNDY AND WILL COUNTIES

Jennifer M. Obrad & C. Chenoweth



Department of Natural Resources
ILLINOIS STATE GEOLOGICAL SURVEY
2005
REVISED 2007

**DIRECTORY OF COAL MINES IN ILLINOIS
7.5-MINUTE QUADRANGLE SERIES
WILMINGTON QUADRANGLE
GRUNDY AND WILL COUNTIES**

2005
REVISED 2007

ILLINOIS STATE GEOLOGICAL SURVEY
William Shilts, Chief

Natural Resources Building
615 East Peabody Drive
Champaign, Illinois 61820

Phone 1-217-244-4610
Fax 1-217-333-2830

Cover photo Track-mounted duckbill loading machine at a Peabody Coal Company mine, ca. 1915.

DISCLAIMER: The accuracy and completeness of mine maps and directories vary with the availability of reliable information. Maps and other information used to compile this mine map and directory were obtained from a variety of sources and the accuracy of some of the original information cannot be verified. Consequently, the Illinois State Geological Survey (ISGS) cannot guarantee the mine maps are free of errors and disclaims any responsibility for damages that may result from actions or decisions based on them.

The ISGS updates the maps and directories periodically, and welcomes any new information or corrections. Please contact the Coal Section of the ISGS at the address shown on the title page of this directory, or telephone (217) 244-4610.

Printed by authority of the State of Illinois/2007

CONTENTS

INTRODUCTION	1
MINING IN THE WILMINGTON QUADRANGLE	1
PART I EXPLANATION OF MAP AND MINE SUMMARY SHEET	2
INTERPRETING THE MAP	2
Mine Type and Mining Method	2
SOURCE MAPS	3
POINTS AND LABELS	3
INTERPRETING A MINE SUMMARY SHEET	6
REFERENCES	8
PART II DIRECTORY OF MINES IN THE WILMINGTON QUADRANGLE	9
MINE SUMMARY SHEETS	9
Mine Index 224	
Murphy, Linskey & Kasher Company, Murphy, Linskey & Kasher No. 4 Mine	9
Mine Index 359	
Peabody Coal Company, Northern Mine	10
Mine Index 402	
Wilmington Coal Mining Corporation, Wilmington No. 2 Mine	12
Mine Index 2335	
Chicago, Milwaukee & Vermilion Coal Company, O Mine	13
Mine Index 2341	
Wilmington Coal Mining & Manufacturing Company, Diamond No. 3 Mine	14
Mine Index 2342	
Wilmington Coal Mining & Manufacturing Company, Diamond No. 2 Mine	15
Mine Index 2348	
Chicago, Wilmington & Vermilion Coal Company, P Mine	16
Mine Index 2350	
Chicago, Wilmington & Vermilion Coal Company, R Mine	17
Mine Index 2382	
Big Four Wilmington Coal Company, Big Four Wilmington No. 3 Mine	18
Mine Index 3915	
Wilmington Coal Mining Corporation, Wilmington Mine	19
Mine Index 3916	
Skinner Brothers Coal Company, Skinner No. 1 Mine	20
Mine Index 3917	
Skinner Coal Company, Skinner No. 2 Mine	21
Mine Index 3918	
Murphy, Keenan & Company, Murphy & Keenan No. 1 Mine	22
Mine Index 3919	
Chicago, Wilmington & Vermilion Coal Company, B Mine	23
Mine Index 3920	
Chicago, Wilmington & Vermilion Coal Company, D Mine	24
Mine Index 3921	
Murphy, Keenan & Company, Murphy & Keenan No. 3 Mine	25
Mine Index 3922	
Chicago, Wilmington & Vermilion Coal Company, F Mine	26
Mine Index 3923	
Chicago, Wilmington & Vermilion Coal Company, H Mine	27
Mine Index 3924	
Chicago, Wilmington & Vermilion Coal Company, L Mine	28
Mine Index 3925	
Chicago, Wilmington & Vermilion Coal Company, J Mine	29
Mine Index 3926	
Chicago, Wilmington & Vermilion Coal Company, G Mine	30
Mine Index 3927	
Braidwood Coal Company, Brodie Mine	31

Mine Index 3928	
Will County Coal Company, Will Mine	32
Mine Index 3929	
Chicago, Wilmington & Vermilion Coal Company, E Mine	33
Mine Index 3930	
Co-operative Coal Company, Co-operative Mine	34
Mine Index 3931	
Chicago, Wilmington & Vermilion Coal Company, C Mine	35
Mine Index 3932	
H. A. Raeschke, Raeschke Mine	36
Mine Index 3937	
Chicago, Wilmington & Vermilion Coal Company, N Mine	37
Mine Index 3938	
Brown, Brown Mine	38
Mine Index 3939	
Hunter, Hunter Mine	39
Mine Index 3940	
Carroll, Carroll Mine	40
Mine Index 3959	
Oswald & Young, Oswald & Young Mine	41
Mine Index 5663	
Joliet-Wilmington Coal Company, Reliance Mine	42
Mine Index 5805	
Reilly, Moffat & Company, Reilly & Moffat No. 1 Mine	43
Mine Index 5941	
Wilmington Coal Mining & Manufacturing Company, Diamond No. 1 Mine	44
Mine Index 5942	
Eureka Coal Company, Eureka No. 2 Mine	45
Mine Index 5943	
Eureka Coal Company, Eureka No. 1 Mine	46
Mine Index 5946	
William Maltby, Maltby Mine	47
Mine Index 5947	
Haskett, Haskett Mine	48
Mine Index 5948	
Bardwell, Bardwell Mine	49
Mine Index 5951	
T. W. Bartlett, Bartlett Mine	50
Mine Index 5952	
Schoonmaker, Schoonmaker Mine	51
Mine Index 5953	
Skinner Brothers, Skinner Mine	52
Mine Index 5955	
Braidwood Coal Company, Braidwood Mine	53
Mine Index 5961	
Chicago, Wilmington & Vermilion Coal Company, I Mine	54
Mine Index 5965	
Braidwood Coal Company, Crombie Mine	55
Mine Index 5967	
Braidwood Coal Company, Crombie Mine	56
OTHER MINES SHOWN ON WILMINGTON QUADRANGLE	57
Mine Index 5944	57
Mine Index 5945	57
Mine Index 5958	57
Mine Index 5959	57
Mine Index 5960	57
Mine Index 5962	57
Mine Index 5963	57
Mine Index 5964	57
Mine Index 5966	57

MINES WHOSE LOCATIONS ARE NOT KNOWN, WILMINGTON QUADRANGLE	57
INDEX OF MINES IN THE WILMINGTON QUADRANGLE	59

INTRODUCTION

Coal has been mined in 76 counties of Illinois. More than 7,400 coal mines have operated since commercial mining began in Illinois about 1810; fewer than 30 are currently active. To detail the extent and location of coal mining in Illinois, the Illinois State Geological Survey (ISGS) has compiled maps and directories of known coal mines. The ISGS offers maps at a scale of 1:100,000 and accompanying directories for each county in which coal mining is known to have occurred. Maps at a scale of 1:24,000 and accompanying directories such as this are available for selected quadrangles. Contact the ISGS for a list of these quadrangles.

These larger scale maps show the approximate positions of mines in relation to surface features such as roads and water bodies, and indicate the mining method used and the accuracy of the mine boundaries. The maps are useful for locating mine boundaries relative to specific properties and for assessing the potential for subsidence in an area. Mine boundaries compiled from final mine surveys are generally shown within 200 feet of their true position. As a result of poor cartographic quality and inaccuracies in the original mine surveys, boundaries of some older mines may be mislocated on the map by 500 feet or more. Original mine maps should be consulted in situations that require precise delineation of mine boundaries or internal workings of mined areas.

The directory serves as a key to the accompanying mine map and provides basic information on the coal mines. The directory is composed of two parts. Part I explains the symbols and patterns used on the accompanying map and the summary data presented for each mine. Part II numerically lists the mines in the quadrangle and summarizes the geology and production history of each mine.

MINING IN THE WILMINGTON QUADRANGLE

The first shaft was sunk in this area in 1864 to supply local trade, and was bought the same year by the Robbins Company. In 1866, the Chicago & Wilmington Coal Company was organized. They hired James Braidwood because of his experience with water problems in underground mines. Braidwood worked with the B and C Mines (mine indexes 3919 and 3931), then formed a cooperative with others and opened the Eagle Mine (mine index 3927). By 1873, eleven shafts were operating, including those operated by the Wilmington Coal Mining Company, the Coal, Iron & Transportation Company (A. B. Meeker), Wilmington Coal Mining & Manufacturing Company, Wilmington Star Coal Company, and the Eureka Coal Company. A great deal of the mining in this quadrangle occurred before 1882, when annual production was listed in the Coal Reports. The Chicago, Wilmington & Vermilion Coal Company dominated the area.

Early mining in the Colchester Coal was by longwall method. In early longwall mining, the coal was removed along a continuously advancing face that produced a circular pattern in ideal conditions. Near Braidwood, the coal was often quite shallow (30 to 65 feet was common), and with little bedrock above the coal to support the glacial till and surface soils, water was a common problem in the early mines. Few of the mines in the Wilmington Quadrangle have developed the circular outline, probably because of avoiding areas where the roof was too poor or too much water infiltrated. The proximity to the Chicago market was a great inducement to try to overcome the difficulties of mining a seam that averaged only 3 feet thick.

The shallow depth of the coal and lack of adequate roof was a bonus to later mining, which took advantage of large machinery to surface-mine great tracts of land. The large Peabody Northern Mine (mine index 359) ceased operations in the early 1970s.

A thick seam, which may correlate with the Rock Island Coal, was mined about 5 miles north of Braidwood. This was a coal that occurred in pod-like deposits that were very thick (8 to 10 feet) but would thin to nothing within ½ mile. This seam was reputedly mined during the Civil War by Schoonmaker (mine index 5952) and Bardwell (mine index 5948).

PART I EXPLANATION OF MAP AND MINE SUMMARY SHEET

INTERPRETING THE MAP

The map accompanying this directory shows the location of coal mines known to be present in the quadrangle. The map, corresponding to a U.S. Geological Survey (USGS) 7.5-minute quadrangle, covers an area bounded by lines of latitude and longitude 7.5-minutes apart. In Illinois, a quadrangle is approximately 6.5 miles east to west and 8.5 miles north to south, an area of about 56 square miles. The USGS generally offers one map of mines per quadrangle. In some areas where extensive mining occurred in two or more overlapping seams, separate maps are compiled for mines in each seam to maintain readability of the map.

Mine Type and Mining Method

The mine type is indicated on the map by pattern color: green represents surface mines; red and yellow represent underground mines. The red patterns are used for areas of underground mining that are documented by a primary or secondary source map. A yellow pattern is used for cases where no map of the mine workings is available, but a general area of mining can be inferred from property maps or production figures. The patterns indicate the main mining methods used in underground mines. The methods are (1) room and pillar and (2) high extraction. The method used gives some indication of the amount and pattern of coal extraction within each mined area, and has some influence on the timing and type of subsidence that can occur over a mine.

The following discussion and illustrations of mining methods are based on Guither et al. (1984).

In room-and-pillar mines, coal is removed from haulage-ways (entries) and selected areas called rooms. Pillars of unmined coal are left between the rooms to support the roof. Depending on the size of rooms and pillars, the amount of coal removed from the production areas will range from 40% to 70%.

Room and Pillar - mining is divided into six categories:

- room-and-pillar basic (RPB, fig. 1A), an early method that did not follow a preset mining plan and therefore resulted in very irregular designs;
- modified room and pillar (MRP, fig. 1B);
- room-and-pillar panel (RPP, fig. 1C);
- blind room and pillar (BRP, fig. 1D);
- checkerboard room and pillar (CRP, fig. 1E);
- room and pillar (RP), a classification used when the specific type of room-and-pillar mining is unknown.

Blind and checkerboard are the most common types of room-and-pillar mining used in Illinois today. The knowledge of room-and-pillar mining methods gives a trained engineer information on the nature of subsidence that may occur. A more extensive discussion of subsidence can be found in Bauer et al. (1993).

High-extraction These mining methods are subdivided into high-extraction retreat (HER, Fig 1F) and longwall (LW, Fig 1G, 1H). In these methods, much of the coal is removed within well defined areas of the mine. Subsidence of the surface above these areas occurs within weeks. Once the subsidence activity ceases, the potential for further movement over these areas is low; however, subsidence may continue for several years after mining.

High-extraction retreat mining is a form of room-and-pillar mining that extracts most of the coal. Rooms and pillars are developed in the panels, and the pillars are then systematically removed (fig. 1F).

In early (pre-1960) longwall mines, mining advanced in multiple directions from a central shaft (fig. 1G). Large pillars of coal were left around the shaft, but all coal was removed beyond these pillars. Miners placed rock and wooden props and cribs in the mined-out areas to support the mine roof. The overlying rock gradually settled onto these supports, thus producing subsidence at the surface. In post-1959 longwall mines, room-and-pillar methods have been used to develop the main entries of the mine and panel areas. Modern longwall methods extract 100 percent of the coal in the panel areas (fig. 1H).

SOURCE MAPS

Mine outlines depicted on the map are, whenever possible, based on maps made from original mine surveys. The process of compiling and digitizing the quadrangle map may produce errors of less than 200 feet in the location of mine boundaries. Larger errors of 500 feet or more are possible for mines that have incomplete or inaccurate source maps.

Because of the extreme complexity of some mine maps, detailed features of mined areas have been omitted. The digitized mine boundary includes the exterior boundary of all rooms or entries that were at least 80 feet wide or protruded 500 feet from the main mining area. Unmined areas between mines are shown if they are at least 80 feet wide; unmined blocks of coal within mines are shown if they are at least 400 feet on each side. Original source maps should be consulted when precise information on mine boundaries or interior features is needed.

The mine summary sheet lists the source maps used to determine each mine outline. The completeness of map sources is indicated on the map by a line symbol at the mine boundary. Source maps are organized in five categories.

Final mine map The mine outline was digitized from an original map made from mine surveys conducted within a few months after production ceased. The date of the map and the last reported production are listed on the summary sheet.

Not a final map The mine is currently active or the mine outline was made from a map based on mine surveys conducted more than a few months before production ceased. This implies the actual mined-out area is probably larger than the outline on the map. The mine summary sheet indicated the dates of source maps and the last reported production, as well as the approximate tonnage mined between these two dates (if the mine is abandoned). The summary sheet also lists the approximate acreage mined since the date of the map and, in some cases, indicates the area where additional mining may have taken place. This latter information is determined by locating on the map the active faces relative to probable boundaries of the mine property.

Undated map The source map was undated, so it may or may not be based on a final mine survey. When sufficient data are available, the probable acreage of the mined area is estimated from reported production, average seam thickness and a recovery rate comparable to other mines in the area. This information is listed in the summary sheet for the mine.

Incomplete map The source map did not show the entire mine. The summary sheet indicates the missing part of the mine map and the acreage of the unmapped area, which is estimated from the amount of coal known to have been produced from the mine.

Secondary source map The original mine map was not found so the outline shown was determined from secondary sources (e.g., outlines from small-scale regional maps published in other reports). The summary sheet describes the secondary sources.

POINTS AND LABELS

The locations of all known mine openings (shafts, slopes, and drifts) and surface mine tipples are plotted on the map. Tipples are areas where coal was cleaned, stockpiled, and loaded for shipping.

Only openings or tipples are plotted for mines without source maps. If the precise locations of these features are unknown, a special symbol is used to indicate the approximate location of the mine.

Each mine on the map is labeled with the names of the mine and operating company, ISGS mine index number, and years of operation (if known) if space permits. A seam designation is given on maps where more than one seam was mined. For a mine that operated under more than one name, only the most recent name is generally given. When a mine changed names or ownership shortly before closing, an earlier name is listed. All company and mine names are listed on the mine summary sheet in the directory, under the production history segment.

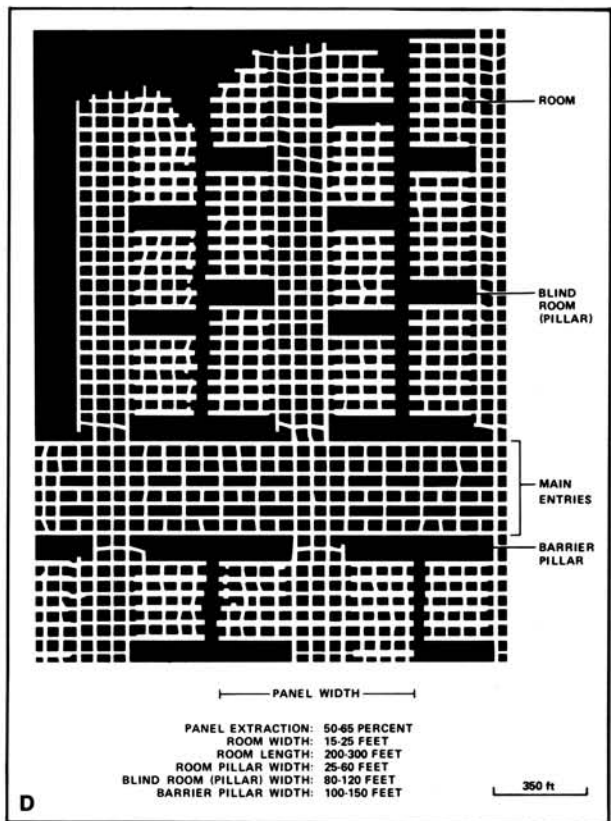
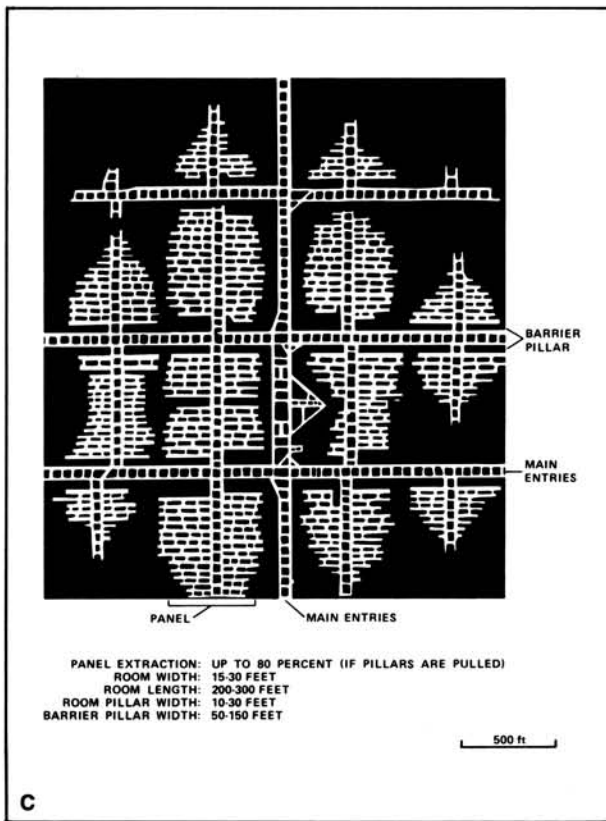
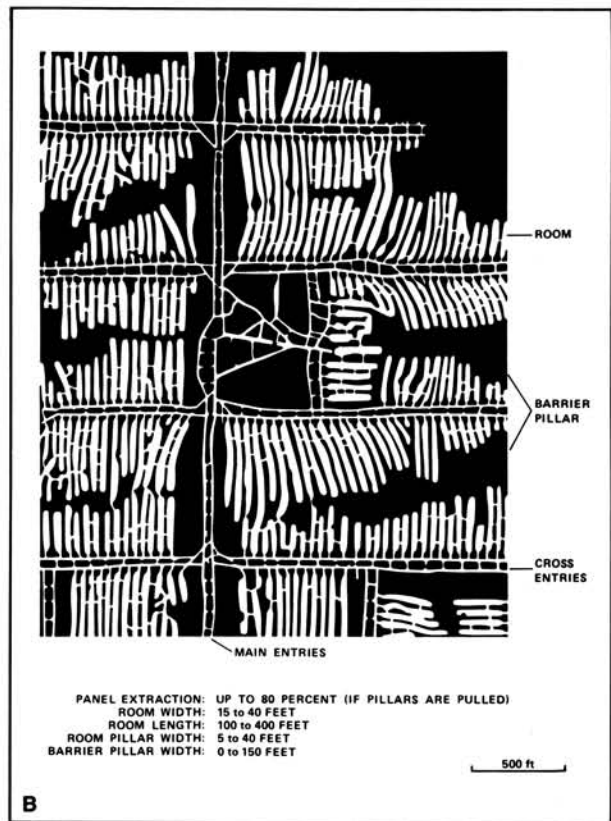
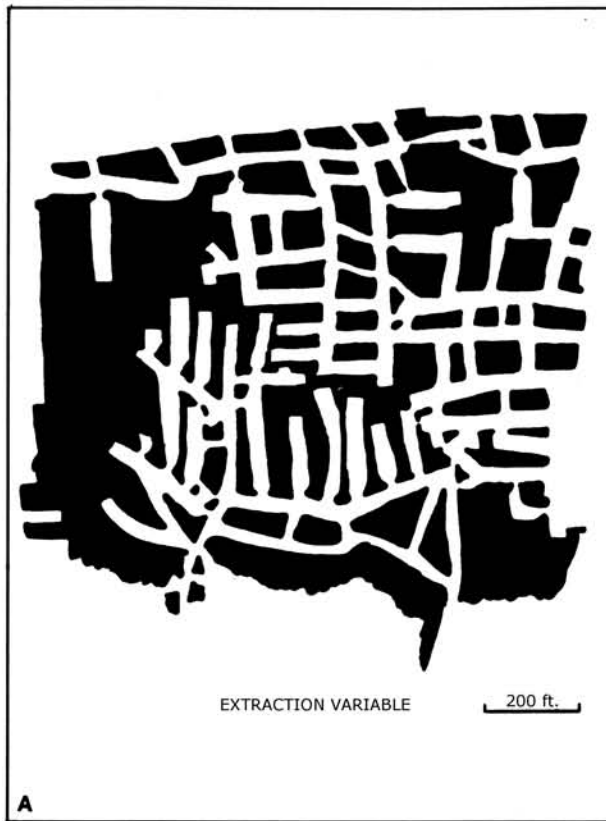


Figure 1 Mining methods: (A) room-and-pillar basic (RPB), (B) modified room and pillar (MRP), (C) room-and-pillar panel (RPP), (D) blind room and pillar (BRP).

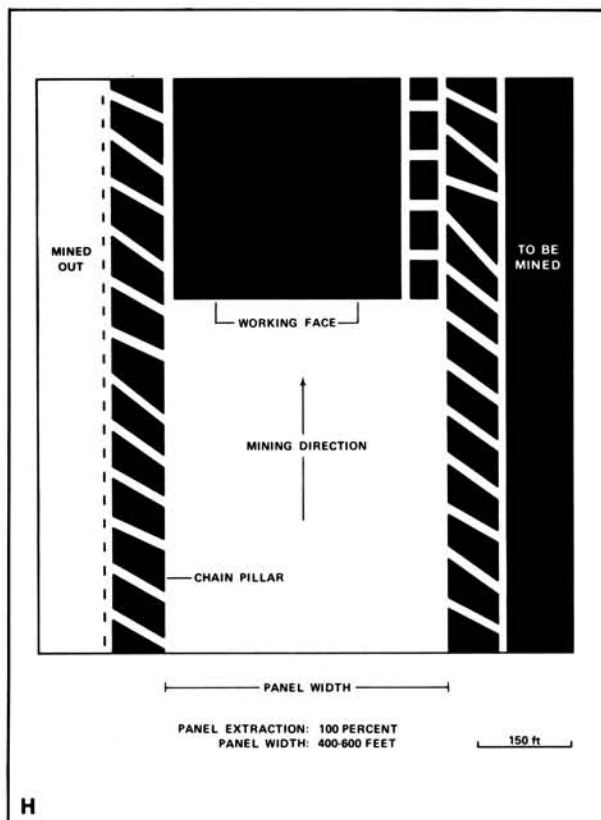
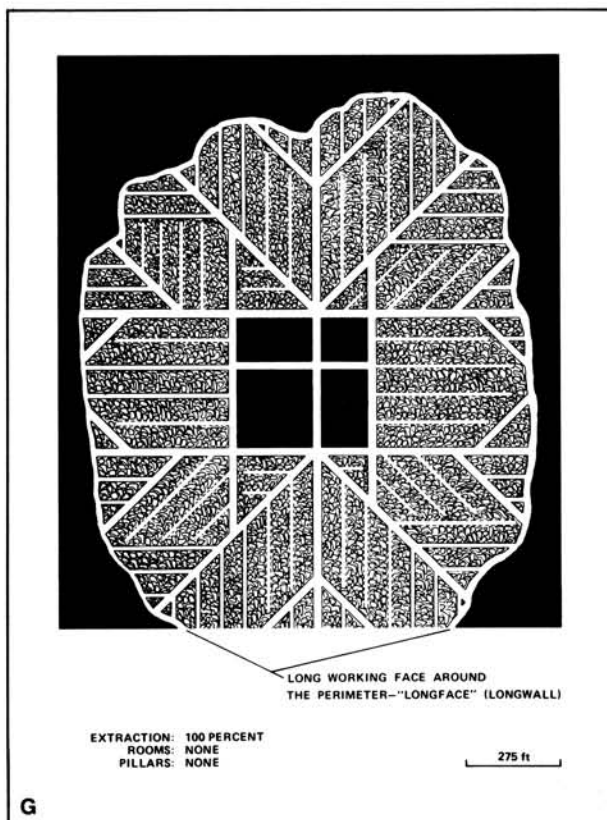
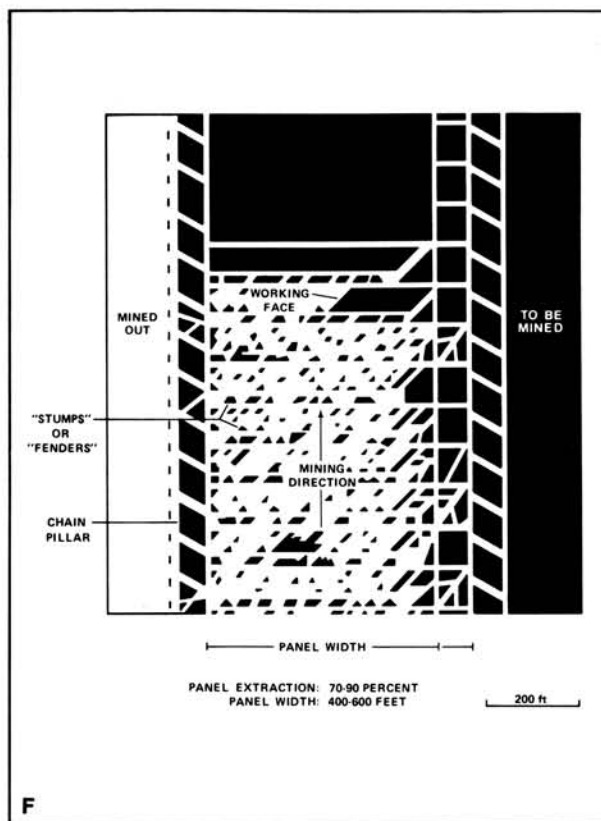
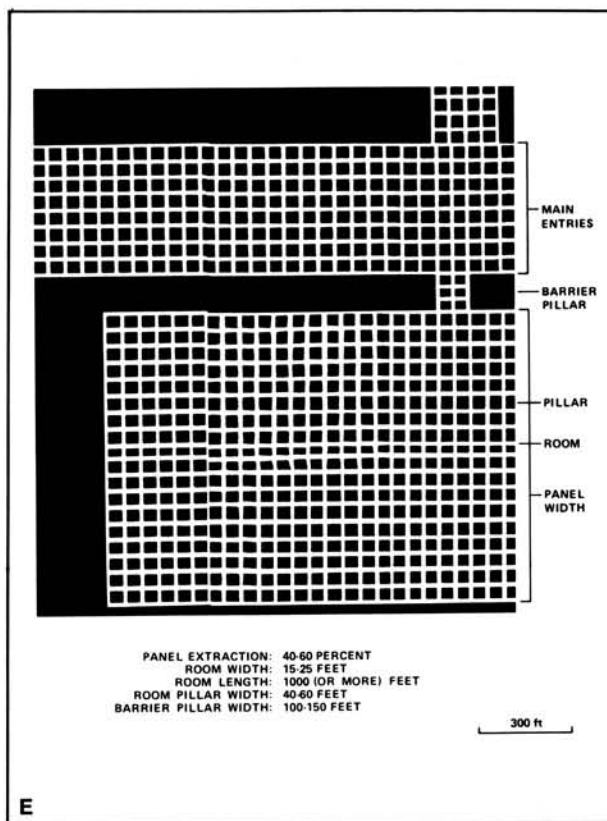


Figure 1 (cont.) Mining methods: (E) checkerboard room and pillar (CRP), (F) high extraction retreat (HER), (G) early (pre-1960) longwall, (H) post-1959 longwall

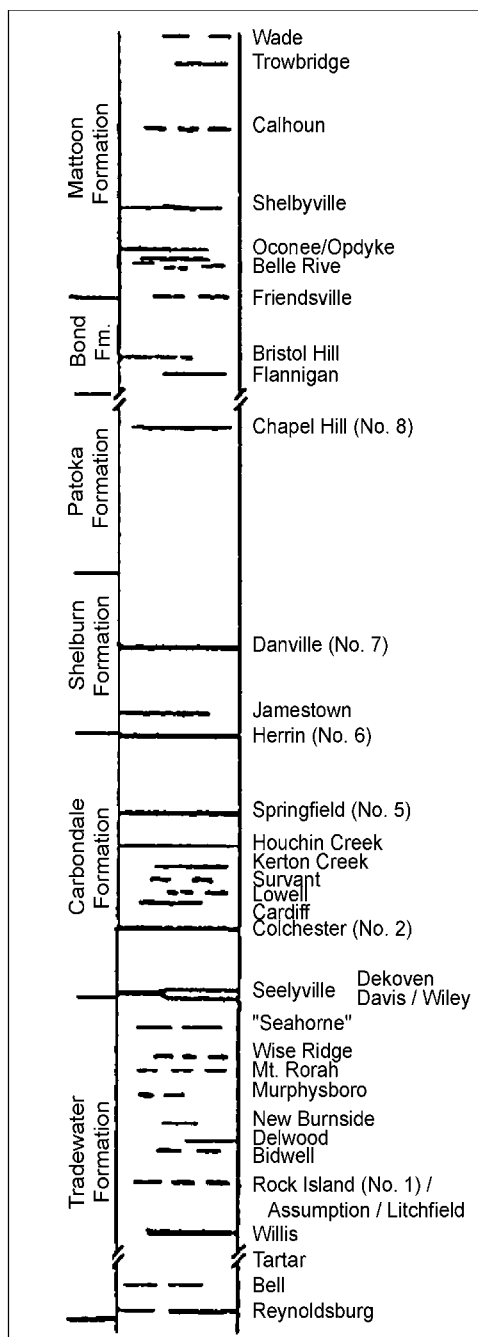


Figure 2 Generalized stratigraphic section, showing approximate vertical relations of coals in Illinois.

INTERPRETING A MINE SUMMARY SHEET

The mine summary sheet is arranged numerically by mine index number. Index numbers are shown on the map and in the mine listing. The mine summary sheet provides the following information (if available).

Company and mine name The last company or owner of the mine is used, unless no production was recorded for the last owner. In that case, the penultimate owner is listed. Mines often have no specific name; in these cases, the company name is also used as the mine name.

Type *Underground* denotes a subsurface mine in which the coal was reached through a shaft, slope, or a drift entry. *Surface* denotes a surface, open pit or strip mine.

Total mined-out acreage shown The total acreage of the mined area mapped, including any acreage mined on adjacent quadrangles, is calculated from the digitized outline of the mine. The acreage of large barrier pillars depicted on the map is excluded from the mined-out acreage. Small pillars not digitized are included in the acreage calculation. If the mine outline is not based on a final mine map, the acreage is followed by an estimate of additional acres that may have been mined. The estimate is determined from reported mine production, approximate thickness of the coal, and recovery rates calculated from nearby mines that used similar mining methods.

SHAFT, SLOPE, DRIFT OR TIPPLE LOCATIONS

Shaft, slope, drift, or tippie locations Locations of all known former entry points to underground mines or the location of coal cleaning, tippie, and shipping equipment used by the mine's facility are listed. The location is described in terms of county, township and range (Twp-Rge), section, and location within the section by quarters. NE SW NW, for instance, would describe the location in the northeast quarter of the southwest quarter of the northwest quarter. When sections are irregular in size, the quarters remain the same size and are oriented (or "registered") from the southeast corner of the section. Approximate footage from the section lines (FEL = from east line, FNL = from north line, for example) is given when that information is known; this indicates a surveyed location and is not derived from maps. Entry points are also plotted on the map and coded for the type of entry or tippie. A mine opening may have had many purposes during the life of the mine. Old hoist shafts are often later used for air and escape shafts; this information is included in the directory when known. The tippie for underground mines was generally located near the main shaft or slope. At surface mines, coal was sometimes hauled to a central tippie several miles from the mine pit.

GEOLOGY

Seam(s) mined The name of the coal seam(s) mined is listed, if known. If multiple seams were mined, they are all listed, although the mined-out area for each seam may be shown on separate maps. Figure 2 shows the stratigraphic section of the coal-bearing interval in Illinois, and the vertical relations among the coals.

Depth The depth to the top of the seam in the vicinity of the shaft is listed, if known. The depth is determined from notes made by geologists who visited the mine during its operation or from drill hole data in ISGS files. Depth generally varies little over the extent of a mine; however, reported depths for an individual mine may vary. Depth for surface-mined coals varies, and is usually represented as a range.

Thickness The approximate thickness of the mined seam is shown, if known. Thickness also comes from notes of geologists who visited the mine during its operation or from borehole data in ISGS files. Minimum, maximum, and average thicknesses are given when this information is available.

Mining method The principal mining method used at the mine (figs. 1A-H) is listed. See the mining methods section at the beginning of this directory for a discussion of this parameter.

Geologic problems reported Any known geologic problems, such as faults, water seepage, floor heaving, and unstable roof, encountered in the mine are reported. This information is from notes made by ISGS geologists who visited the mine, or from reports by mine inspectors published by the Illinois Department of Mines and Minerals, or from the source map(s). Geologic problems are not reported for active mines.

PRODUCTION HISTORY

Production history Tons of coal produced from the mine by each mine owner are totaled. When the source map used for the mine outline is not a final mine map, the tonnage produced since the date of the map is identified. For mines that extend into adjacent quadrangles, the tonnage reported includes areas mined in adjacent quadrangles.

SOURCE OF DATA

Source map This section lists information about the map(s) used to compile the mine outline and the locations of tipples and mine openings. In some cases more than one source map was used. For example, a map drawn before the mine closed may provide better information on original areas of the mine than a later map. When more than one map was used, the bibliography section explains what information was taken from each source.

Date The date of the most recent mine survey listed on the source map is reported.

Original scale The original scale of the source map is listed. Many maps are photo-reductions and are no longer at their original scale. The original scale gives some indication of the level of detail of the mine outline and the accuracy of the mine boundary relative to surface features. Generally, the larger the scale, the greater the accuracy and detail of the mine map. Mine outlines taken from source maps at scales smaller than 1:24,000 may be highly generalized and may well be inaccurately located with respect to surface features.

Digitized scale The scale of the digitized map is reported. The scale may be different from that of the original source map. In many cases the digitized map was made from a photo-reduction of the original source map, or the source map was not in a condition suitable for digitizing and the mine boundaries were transferred to another base map.

Map type Source maps are classified into five categories to indicate the probable completeness of the map. See discussion of source maps in the previous section.

Annotated bibliography Sources that provide information about the mine are listed, with the data taken from each source. Some commonly used sources are described below. Full bibliographic references are given for all other sources. Unless otherwise noted, all sources are available for public inspection at the ISGS.

Coal Reports Published since 1881, these reports contain tabular data on mine ownership, production, employment, and accidents. Some volumes include short descriptions made by mine inspectors of physical features and conditions in selected mines.

Directory of Illinois Coal Mines This source is a compilation of basic data about Illinois coal mines, originally gathered by ISGS staff in the early 1950s. Sources used for this directory are undocumented, but they are primarily Illinois Department of Mines and Minerals annual reports, ISGS mine notes, and coal company officials.

ENR Document 85/01, Guither, H. D., J. K. Hines, and R. A. Bauer, 1985 The Economic Effect of Underground Mining Upon Land Used for Illinois Agriculture: Illinois Department of Energy and Natural Resources Document 85/01, 185 p.

Microfilm map The U.S. Bureau of Mines maintains a microfilm archive of mine maps. A microfilm file for Illinois is available for public viewing at the ISGS.

Mine notes ISGS geologists have visited mines or contacted mine officials throughout the state since the early 1900s. Notes made during these visits range from brief descriptions of the mine location to long narratives (including sketches) of mining conditions and geology.

Federal Land Bank of St. Louis, Preliminary Reports on Subsidence Investigations Mining engineers working for the Federal Land Bank of St. Louis mapped areas of subsidence due to coal mining in the early 1930s. These reports often include county maps of mine properties with mined-out areas including shaft locations, as well as subsidence areas.

REFERENCES

Atlas Map of Will County, Illinois, 1873, compiled & published by Thompson Brothers & Burr, Elgin, Illinois.

Bauer, R. A., B. A. Trent, and P. B. Dumontelle, 1993, Mine Subsidence in Illinois: Facts for the Homeowner Considering Insurance, Illinois State Geological Survey, Environmental Geology Note 144, 16p.

Guither, H. D., J. K. Hines, and R. A. Bauer, 1985, The Economic Effects of Underground Mining Upon Land Used for Illinois Agriculture, Illinois Department of Energy and Natural Resources Document 85/01, 185p.

History of Will County, 1878, published by Wm. LeBaron, Jr. & Co., Chicago, Illinois, 995p.

Modesto, (M. J.) Donna, The Braidwood Story.

The Wilmington Advocate, 1878, in A Coal-Field Collection, 1993, published by the Will/Grundy Counties (IL) Genealogical Society, Wilmington, Illinois.

Wilmington Centennial, 1836-1936, 1936, 16p.

PART II DIRECTORY OF MINES IN THE WILMINGTON QUADRANGLE

MINE SUMMARY SHEETS

A summary sheet on the geology and production history of each mine in the Wilmington Quadrangle is provided. These summary sheets are arranged numerically by mine index number. Consult Part I for a complete explanation of the data listed in the summary sheet.

Mine Index 224

Murphy, Linskey & Kasher Company, Murphy, Linskey & Kasher No. 4 Mine

Type: Underground Total mined-out acreage shown: 85

SHAFT, SLOPE, DRIFT or TIPPLE LOCATIONS

Type	County	Township-Range	Section	Quarters-Footage
Main shaft (6' x 12')	Will	33N 9E	32	SE SE SW
Air shaft	Will	33N 9E	32	SE SE SW
Shaft (old works) *	Will	33N 9E	32	SE SE SW

* The source map indicates workings of an older abandoned mine to the north, which this mine holed into. The extent of the mined area is unknown, but the mined area of old works shown on the source map was incorporated into the outline for this mine. The 1873 Atlas of Will County shows a shaft at this location, indicating that mining was taking place in the early 1870s.

GEOLOGY

Seam(s) Mined	Depth (ft)	Thickness (ft)			Mining Method
		Min	Max	Ave	
Colchester	78	2.9	3.4	3.1	LW

Geologic Problems Reported: The roof was gray shale. Some gas was reported in the mine, reputedly from pockets in the roof.

PRODUCTION HISTORY

Company	Mine Name	Years	Production (tons)
Murphy, Keenan & Company	Murphy & Keenan No. 4 **	1908-1909	2,296
Murphy, Linskey & Kasher	Murphy, Linskey & Kasher No. 4 **	1909-1916	<u>412,544</u> 414,840

** Murphy, Linskey & Kasher operated four mines which were referred to as The Shamrocks.

Last reported production: April 1916

SOURCES OF DATA

Source Map	Date	Original Scale	Digitized Scale	Map Type
Microfilm, document 353039	4-1-1916	1:1200	1:1903	Final

Annotated Bibliography (data source, brief description of information)

Coal Reports - Production, ownership, years of operation, mining method.

Directory of Illinois Coal Mines (Will County) - Mine names, mine index, ownership, years of operation.

ENR Document 85/01 - Mining method.

Mine notes (Will County) - Mine type, shaft location and size, seam, depth, thickness, mining method, geologic problems.

Microfilm map, document 353039, reel 03141, frames 222-223 - Shaft locations, mine outline, mining method.

The Braidwood Story - Mine name.

Mine Index 359
Peabody Coal Company, Northern Mine

Type: Surface Total mined-out acreage shown: 13,840 The area shown is larger than expected for the reported tonnage. It is likely that some unmined areas are shown as mined that have been disturbed but not mined.

SHAFT, SLOPE, DRIFT or TIPPLE LOCATIONS

Type	County	Township-Range	Section	Quarters-Footage
Tipple *	Kankakee	31N 9E	6	SW NW SE
Tipple *	Will	33N 9E	29	SE SW SE

* Mining occurred in Kankakee, Will and Grundy Counties. This mine is atypical in having separate index numbers in the different counties. The early (three-digit) mine index numbers were assigned for chemical analyses and sample sets in other databases, thus it would be imprudent to change the numbers to make them more consistent in this database of mine names, owners and years of production. Mine index 834 is the same mine in Kankakee County, mine index 675 is the same in Grundy County, and in Will County, the mine index is 359.

GEOLOGY

Seam(s) Mined	Depth (ft)	Thickness (ft)			Mining Method
		Min	Max	Ave	
Houchin Creek **	52	1.71	3.42		Surface
Cardiff **	58			3.83	Surface
Colchester **	64			2.4-3.0	Surface

** Most pits mined the Colchester Coal. The Houchin Creek and Cardiff Coals were mined only where those seams were thick enough, generally in the southern and eastern parts of the mine.

Geologic Problems Reported: The overlying drift was a hard, gray, boulder-filled clay, and below that, in Will County, up to 20 feet of massive gray shale (Francis Creek). The Colchester Coal was relatively flat-lying, while the Cardiff Coal dipped markedly where the Francis Creek Shale (overlies Colchester Coal) thinned rapidly. The bottom 5 feet of the Francis Creek Shale contained coal balls and siderite nodules up to 1 inch thick and 4 inches across. In Will County, rolls were a prominent feature of the Colchester Coal. The top of the seam may vary 8 feet vertically over 50 horizontal feet. The Colchester Coal also contained stony masses that may have been petrifications of woody material. These stony masses ranged from 6 inches to 3 feet long, 3 inches to 2 feet wide, and 1 to 8 inches thick. They were present throughout the seam. The Houchin Creek and Cardiff Coals contained prominent cleat fillings of pyrite and calcite. Pyrite was also present as lenses that were up to 0.125 inches thick and extending laterally 2 feet across.

PRODUCTION HISTORY

Company	Mine Name	Years	Production (tons)
Northern Illinois Coal Corporation	Northern	1928-1956	31,138,769
Peabody Coal Company	Northern	1957-1974	<u>12,885,835</u> 44,024,604 ***

*** The production for each county was not always reported separately. In Grundy County, 3,476,341 tons were mined. 31,986,845 tons were mined in Will County. 4,525,991 tons were reported mined in Kankakee County. This leaves 4,035,427 tons for which the county has not been indicated. Mining ended in Grundy County in 1972 and 1973 in Kankakee County.

Last reported production: 1974

SOURCES OF DATA

Source Map	Date	Original Scale	Digitized Scale	Map Type
Coal Section files, 5-e-16	Undated	1:12000	1:12000	Undated
Coal Section files, 1-29-17	12-22-1971	1:4800	1:4800	Not final
USGS topographic map (Gardner)	1983	1:24000	1:24000	Secondary source
Company map, 4102 i5.1-18	7-1-1950	1:4800	1:4800	Final
Company map, 4103.G72 i5.1-3	7-1-1950	1:4800	1:4800	Final
Company map, 4103.G72 i5.1-4	1-1-1947	1:4800	1:4800	Final
WPA, T33N-R8E	7-1-1937	1:69696	1:69696	Secondary source
USGS topographic map (Coal City)	1993	1:24000	1:24000	Secondary source
Company, 4103.W51 i5.1-1	1-1945	1:4800	1:4800	Final
Microfilm, document 351368	1-1941	1:4800	1:7945	Final
ISGS map library, 4103.W51 i5.1-4	1935	1:31680	1:31680	Secondary source
USGS topographic map (Wilmington)	1993	1:24000	1:24000	Secondary source
Coal Section files, 1-27-30A	6-30-1967	1:9600	1:9600	Not final
Coal Section files, 1-27-30C	6-30-1967	1:9600	1:9600	Not final
USGS topographic map (Essex)	PR1980	1:24000	1:24000	Secondary source

Annotated Bibliography (data source, brief description of information)

Coal Reports - Production, ownership, years of operation.
 Directory of Illinois Coal Mines (Will County) - Mine names, mine index, ownership, years of operation.
 Mine notes (Grundy County) - Mine type, seam, depth, thickness, geologic problems.
 Coal Section files, 5-e-16 - Mine outline (Pits 12, 13, 15 & 16), mining method.
 Coal Section files, 1-29-17 - Mine outline (Pit 14), mining method.
 USGS 7.5-minute topographic map, Gardner Quadrangle, Provisional 1983 - Mine outline.
 Company map, ISGS map library, 4102 i5.1-18 - Mine outline (Pit 6), mining method.
 Company map, ISGS map library, 4103.G72 i5.1-3 - Mine outline (Pit 7), mining method.
 Company map, ISGS map library, 4103.G72 i5.1-4 - Mine outline (Pit 8), mining method.
 WPA map, T33N-R8E - Mine outline (Pit 1)
 USGS 7.5-minute topographic map, Coal City Quadrangle, 1993 - Mine outline.
 Mine notes (Will County) - Mine type, tippel location, seam, depth, thickness.
 ISGS field notes (Will County) - Geologic problems.
 Company map, ISGS map library, 4103.W51 i5.1-1 - Mine outline (pits 2-5), mining method.
 Microfilm map, document 351368, reel 03135, frames 396-397 - Mine outline (pits 1 & 6), mining method.
 ISGS map library, 4103.W51 i5.1-4, sheet 3, work map compiled from J. C. Quade notes & maps - Tippel location.
 USGS 7.5-minute topographic map, Wilmington Quadrangle, 1993 - Mine outline.
 Coal Section files, 1-27-30A - Tippel location, mine outline (south half, Pit 11), mining method.
 Coal Section files, 1-27-30C - Mine outline (north half, Pit 11), mining method.
 USGS 7.5-minute topographic map, Essex Quadrangle, 1973, photorevised 1980 - Mine outline.

Mine Index 402**Wilmington Coal Mining Corporation, Wilmington No. 2 Mine**

Type: Surface Total mined-out acreage shown: 534 Production indicates approximately 250 acres were mined after the map date, but some of the area mined 1950-1958 may be included in the Northern Mine (mine index 359) outline. Some of the mined area for this production may also be included with the Wilmington Mine (mine index 3915).

SHAFT, SLOPE, DRIFT or TIPPLE LOCATIONS

Type	County	Township-Range	Section	Quarters-Footage
Tipple	Will	32N 9E	17	NW SE NW
Pit	Will	32N 9E	17	SE NW

GEOLOGY

Seam(s) Mined	Depth (ft)	Thickness (ft)			Mining Method
		Min	Max	Ave	
Colchester	55-75			3.0-3.3	Surface

Geologic Problems Reported:

PRODUCTION HISTORY

Company	Mine Name	Years	Production (tons)
Wilmington Coal Mining Corporation	Wilmington No. 2	1940-1949	1,894,425
Wilmington Coal Mining Corporation	Wilmington No. 2	1950-1958	<u>1,221,734</u> *
			3,116,159

* Production after map date

Last reported production: April 1958

SOURCES OF DATA

Source Map	Date	Original Scale	Digitized Scale	Map Type
Microfilm, document 352423	1944	1:3600	1:6952	Not final
Company, 4103.W51 i5.1-2	1-1-1950	1:31680	1:31680	Not final
USGS topographic map	PR 1973	1:24000	1:24000	Secondary source

Annotated Bibliography (data source, brief description of information)

Coal Reports - Production, ownership, years of operation, depth, mining method.
 Directory of Illinois Coal Mines (Will County) - Mine names, mine index, ownership, years of operation.
 Mine notes (Will County) - Mine type, tipple location, seam, thickness.
 Microfilm, document 352423, reel 03139, frame 96 - Mine outline (southern ¼ of pit in 33-T32N-R9E).
 Company map, ISGS map library, 4103.W51 i5.1-2 - Mine outline (16, 28 & 33-T32N-R9E).
 USGS 7.5-minute topographic map, Wilmington Quadrangle, 1954, PR 1973 - Mine outline (17-T32N-R9E).

Mine Index 2335**Chicago, Milwaukee & Vermilion Coal Company, O Mine**

Type: Underground Total mined-out acreage shown: 140

SHAFT, SLOPE, DRIFT or TIPPLE LOCATIONS

Type	County	Township-Range	Section	Quarters-Footage
Main shaft	Grundy	32N 8E	12	NW SE NE
Air shaft	Grundy	32N 8E	12	NW SE NE *

* The 1891 Coal Report stated that construction had begun on an escapement shaft. No primary maps of this mine have been found, but the Sanborn-Perris Map Company showed the air shaft to be approximately 120 feet ESE of the main shaft. This location is very general and the air shaft is not shown on the accompanying map.

GEOLOGY

Seam(s) Mined	Depth (ft)	Thickness (ft)			Mining Method
		Min	Max	Ave	
Colchester	103			3.0	LW

Geologic Problems Reported:**PRODUCTION HISTORY**

Company	Mine Name	Years	Production (tons)
Chicago, Milwaukee & Vermilion Coal Co.	O	1890-1895	586,869 586,869

Last reported production: 1895

SOURCES OF DATA

Source Map	Date	Original Scale	Digitized Scale	Map Type
ISGS map library, 4103.G72 i5.1-12	circa 1934	1:31680	1:31680	Secondary source

Annotated Bibliography (data source, brief description of information)

Coal Reports - Production, ownership, years of operation, seam, thickness, mining method.
 Directory of Illinois Coal Mines (Grundy County) - Mine names, mine index, ownership, years of operation.
 ISGS map library, 4103.G72 i5.1-12, work map for Federal Land Bank Report - Shaft locations, mine outline.
 Sanborn-Perris Map Company (Braidwood) - Air shaft location, depth.

Mine Index 2341

Wilmington Coal Mining & Manufacturing Company, Diamond No. 3 Mine

Type: Underground Total mined-out acreage shown: 218 Production indicates approximately 40 acres were mined after the map date.

SHAFT, SLOPE, DRIFT or TIPPLE LOCATIONS

Type	County	Township-Range	Section	Quarters-Footage
Main shaft	Grundy	32N 8E	1	NW NE SE
Air shaft	Grundy	32N 8E	1	NW NE SE

GEOLOGY

Seam(s) Mined	Depth (ft)	Thickness (ft)			Mining Method
		Min	Max	Ave	
Colchester	103-106			3.0	LW

Geologic Problems Reported:

PRODUCTION HISTORY

Company	Mine Name	Years	Production (tons)
Wilmington Coal Mng. & Manufacturing Co.	Diamond No. 3	1875-1887	351,827 *
Wilmington Coal Mng. & Manufacturing Co.	Diamond No. 3	1887-1892	726,296 **
			<u>1,078,123</u>

* Production before July 1881 is unknown.

** Production after map date. Most of this production is included in the western part of the mine, which has a final map.

Last reported production: 1892

SOURCES OF DATA

Source Map	Date	Original Scale	Digitized Scale	Map Type
Microfilm, document 351485	3-1887	1:1200	1:2317	Not final
Sanborn	1892	1:1674	1:1674	Secondary source
Company	4-1906	1:1200	1:1200	Final

Annotated Bibliography (data source, brief description of information)

Coal Reports - Production, ownership, years of operation, mine type, seam, depth, thickness, mining method.

Directory of Illinois Coal Mines (Grundy County) - Mine names, mine index, ownership, years of operation.

ENR Document 85/01 - Mining method.

Mine notes (Grundy County) - Shaft location, years of operation.

Microfilm map, document 351485, reel 03136, frame 234 - Shaft locations, mine outline (eastern half).

Sanborn-Perris Map Company (Braidwood) - Shaft locations.

Company map, traced 2006*** - Mine location, mine outline (western half).

*** Original map is mounted on the wall of the Coal City Public Library, Coal City, Illinois.

Mine Index 2342**Wilmington Coal Mining & Manufacturing Company, Diamond No. 2 Mine**

Type: Underground Total mined-out acreage shown: 147

SHAFT, SLOPE, DRIFT or TIPPLE LOCATIONS

Type	County	Township-Range	Section	Quarters-Footage
Main shaft	Grundy	33N 9E	31	NW SW SW
Air shaft	Grundy	33N 9E	31	NE SW SW
Air / escape shaft	Grundy	33N 8E	36	NE SE SE

GEOLOGY

Seam(s) Mined	Depth (ft)	Thickness (ft)			Mining Method
		Min	Max	Ave	
Colchester	54			2.87	LW

Geologic Problems Reported: This mine was the site of the Braidwood disaster, where 69 men drowned in February 1883. The mine was shallow, and the mine had had trouble with water accumulating in the workings previously. The topography of the area is flat, and natural drainage was not helpful even in dispersing water pumped out of the mine. Snow-melt combined with rain flooded the countryside to a depth of 1 to 3 feet. The active face was the west part of the mine, and water came in from the eastern part of the mine where the water had broken into the workings. The main shaft was east of the escape shaft, and flooded first. The roadway to the escape shaft had a dip about 15 yards long so that the last miners out by this route had to swim, and then the escape route became inaccessible. This mine did not re-open after the disaster.

PRODUCTION HISTORY

Company	Mine Name	Years	Production (tons)
Wilmington Coal Mng. & Manufacturing Co.	Diamond No. 2	-1883 *	<u>14,000</u> * 14,000

* Production before July 1881 is unknown. Production for 1883 was not listed in the Coal Reports.

Last reported production: 1883

SOURCES OF DATA

Source Map	Date	Original Scale	Digitized Scale	Map Type
Coal Report	1883, p. 98-99	1:9600	1:9600	Secondary source
Company	4-1906	1:1200	1:1200	Final

Annotated Bibliography (data source, brief description of information)

Coal Reports - Production, ownership, years of operation, seam, depth, thickness, mining method, geologic problems, mine outline, shaft locations.

Directory of Illinois Coal Mines (Grundy County) - Mine names, mine index, ownership, years of operation.

Company map, traced 2006** - Mine location, mine outline (west side).

** Original map is mounted on the wall of the Coal City Public Library, Coal City, Illinois.

Mine Index 2348**Chicago, Wilmington & Vermilion Coal Company, P Mine**

Type: Underground Total mined-out acreage shown: 101

SHAFT, SLOPE, DRIFT or TIPPLE LOCATIONS

Type	County	Township-Range	Section	Quarters-Footage
Main shaft	Grundy	32N 8E	12	NE SW SE
Air shaft	Grundy	32N 8E	12	NE SW SE *

* No primary maps of this mine have been found, but the Sanborn-Perris Map Company showed the air shaft to be approximately 120 feet northeast of the main shaft. This location is very general and the air shaft is not shown on the accompanying map.

GEOLOGY

Seam(s) Mined	Depth (ft)	Thickness (ft)		Ave	Mining Method
		Min	Max		
Colchester	115			3.0	LW

Geologic Problems Reported:**PRODUCTION HISTORY**

Company	Mine Name	Years	Production (tons)
Chicago, Wilmington & Vermilion Coal Co.	P	1891-1897	513,353 513,353

Last reported production: 1897

SOURCES OF DATA

Source Map	Date	Original Scale	Digitized Scale	Map Type
ISGS map library, 4103.G72 i5.1-12	circa 1934	1:31680	1:31680	Secondary source

Annotated Bibliography (data source, brief description of information)

Coal Reports - Production, ownership, years of operation., seam, depth, thickness, mining method
 Directory of Illinois Coal Mines (Grundy County) - Mine names, mine index, ownership, years of operation.
 ENR Document 85/01 - Mining method.
 ISGS map library, 4103.G72 i5.1-12, sheet 2, work map compiled from J. C. Quade notes & maps - Shaft location, mine outline, mining method.
 Sanborn-Perris Map Company (Braidwood) - Air shaft location, depth.

Mine Index 2350
Chicago, Wilmington & Vermilion Coal Company, R Mine

Type: Underground Total mined-out acreage shown: 33 Production indicates approximately 75 acres were mined.

SHAFT, SLOPE, DRIFT or TIPPLE LOCATIONS

Type	County	Township-Range	Section	Quarters-Footage
Main shaft	Grundy	32N 8E	13	NE SW NE
Air shaft	Grundy	32N 8E	13	NE SW NE

GEOLOGY

Seam(s) Mined	Depth (ft)	Thickness (ft)			Mining Method
		Min	Max	Ave	
Colchester	112			3.0	LW

Geologic Problems Reported: The mine had water problems when it opened. These problems were expected to decrease as the mine was developed, but the short operating period (three years) indicates that water may have been a factor in its closing.

PRODUCTION HISTORY

Company	Mine Name	Years	Production (tons)
Chicago, Wilmington & Vermilion Coal Co.	R	1896-1899	<u>202,062</u> 202,062

Last reported production: 1899

SOURCES OF DATA

Source Map	Date	Original Scale	Digitized Scale	Map Type
Company	undated	1:1200	1:1200	Not final

Annotated Bibliography (data source, brief description of information)

- Coal Reports - Production, ownership, years of operation, seam, thickness, mining method, geologic problems.
- Directory of Illinois Coal Mines (Grundy County) - Mine names, mine index, ownership, years of operation.
- Mine notes (Grundy County) - Mine type, shaft location.
- Company map, Coal Section Files, 1-32-17, traced from original courtesy of Carbon Hill School Museum - Shaft locations, mine outline, mining method.
- Sanborn-Perris Map Company (Braidwood) - Shaft locations, depth.
- Sterling, Robert E., A Pictorial History of Will County, Volume 2, Will County Historical Publications Co., Joliet, IL, 1976 - Ownership, mine location.

Mine Index 2382**Big Four Wilmington Coal Company, Big Four Wilmington No. 3 Mine**

Type: Underground Total mined-out acreage shown: 172 Production indicates approximately 27 acres were mined after the map date.

SHAFT, SLOPE, DRIFT or TIPPLE LOCATIONS

Type	County	Township-Range	Section	Quarters-Footage
Main slope	Grundy	33N 8E	36	NW SW NE
Air shaft	Grundy	33N 8E	36	NW SW NE

GEOLOGY

Seam(s) Mined	Depth (ft)	Thickness (ft)			Mining Method
		Min	Max	Ave	
Colchester	70-85			3.0	LW

Geologic Problems Reported: A few small faults were reported. The roof was sandstone in most of the mine, which is uncommon in Grundy County. The coal contained pyrite concretions. The seam was also very wet, especially the lower half, which dripped when first exposed.

PRODUCTION HISTORY

Company	Mine Name	Years	Production (tons)
Big Four Wilmington Coal Company	Big Four Wilmington No. 3; Dewey	1899-1907	813,425
Big Four Wilmington Coal Company	Big Four Wilmington No. 3	1907-1909	134,855 *
			948,280

* Production after map date

Last reported production: 1909

SOURCES OF DATA

Source Map	Date	Original Scale	Digitized Scale	Map Type
Microfilm, document 351487	8-7-1907	1:4800	1:8607	Not final

Annotated Bibliography (data source, brief description of information)

Coal Reports - Production, ownership, years of operation, seam, depth, thickness, mining method.

Directory of Illinois Coal Mines (Grundy County) - Mine names, mine index, ownership, years of operation.

ENR Document 85/01 - Mining method.

Mine notes (Grundy County) - Mine type, slope location, depth, geologic problems, mining method.

Microfilm map, document 351487, reel 03136, frames 236 & 237 - Slope & shaft locations, mine outline, mining method.

Mine Index 3915

Wilmington Coal Mining Corporation, Wilmington Mine

Type: Surface Total mined-out acreage shown: 160 Production indicates 80 to 100 acres were mined. Production after 1940 was recorded as Wilmington No. 2 Mine (mine index 402), but the source maps did not distinguish the pits. Some of the mining attributed to mine index 3915 may have been identified as tonnage for mine index 402.

SHAFT, SLOPE, DRIFT or TITTLE LOCATIONS

Type	County	Township-Range	Section	Quarters-Footage
Tipple	Will	32N 9E	3	NW NW NE

GEOLOGY

Seam(s) Mined	Depth (ft)	Thickness (ft)			Mining Method
		Min	Max	Ave	
Colchester	55			2.5-3.0	Surface

Geologic Problems Reported: The pit in SE SE 3-T32N-R9E was highly faulted. The Colchester Coal was overlain by up to 3 feet of Francis Creek Shale. The shale was overlain by glacial till and clay.

PRODUCTION HISTORY

Company	Mine Name	Years	Production (tons)
Morris Coal & Mining Company	Morris No. 3	1934-1936	155,809
Wilmington Coal Mining Corporation	Wilmington	1937-1940	<u>297,058</u>
			452,867

Last reported production: December 1940

SOURCES OF DATA

Source Map	Date	Original Scale	Digitized Scale	Map Type
Company, 4103.W51 i5.1-2	1-1-1950	1:31680	1:31680	Final
ISGS map library, 4103.W51 i5.1-4	1935	1:31680	1:31680	Secondary source
USGS topographic map	PR 1973	1:24000	1:24000	Secondary source

Annotated Bibliography (data source, brief description of information)

Coal Reports - Production, ownership, years of operation.

Directory of Illinois Coal Mines (Will County) - Mine names, mine index, ownership, years of operation.

Mine notes (Will County) - Mine type, tittle location, seam, depth, thickness.

Company map, ISGS map library, 4103.W51 i5.1-2 - Mine outline, mining method.

ISGS map library, 4103.W51. i5.1-4, sheet 4, work map compiled from J. C. Quade notes & maps - Tittle location.

USGS 7.5-minute topographic map, Wilmington Quadrangle, 1954, photorevised 1973 - Mine outline.

Field notes (D. J. Fisher, 1935) - Geologic problems.

Mine Index 3916
Skinner Brothers Coal Company, Skinner No. 1 Mine

Type: Underground Total mined-out acreage shown: 19 Production indicates approximately 3 acres were mined. Another company may have mined at this location before the Skinner Brothers operated here.

SHAFT, SLOPE, DRIFT or TIPPLE LOCATIONS

Type	County	Township-Range	Section	Quarters-Footage
Main shaft	Will	32N 9E	4	SE SW SW

GEOLOGY

Seam(s) Mined	Depth (ft)	Thickness (ft)			Mining Method
		Min	Max	Ave	
Colchester					Underground

Geologic Problems Reported:

PRODUCTION HISTORY

Company	Mine Name	Years	Production (tons)
Skinner Brothers Coal Company	Skinner No. 1	1918-1920	<u>7,229</u> 7,229

Last reported production: 1920

SOURCES OF DATA

Source Map	Date	Original Scale	Digitized Scale	Map Type
ISGS map library, 4103.W51 i5.1-1	1-1945	1:4800	1:4800	Secondary source
ISGS map library, 4103.W51 i5.1-4	1935	1:31680	1:31680	Secondary source

Annotated Bibliography (data source, brief description of information)

- Coal Reports - Production, ownership, years of operation.
- Directory of Illinois Coal Mines (Will County) - Mine names, mine index, ownership, years of operation.
- ENR Document 85/01 - Mining method.
- Mine notes (Will County) - Mine location, seam.
- ISGS map library, 4103.W51 i5.1-1, map of Northern Mine (mine index 359) - Mine outline, mine type.
- ISGS map library, 4103.W51 i5.1-4, sheet 1, work map compiled from J. C. Quade notes & maps - Mine location, ownership.

Mine Index 3917
Skinner Coal Company, Skinner No. 2 Mine

Type: Underground Total mined-out acreage shown: 44 Production indicates approximately 28 acres were mined. The mine is larger than expected from the production. The dated working faces shown on the source map indicate that previous owners are unlikely.

SHAFT, SLOPE, DRIFT or TIPPLE LOCATIONS

Type	County	Township-Range	Section	Quarters-Footage
Main shaft	Will	32N 9E	4	SW NW NW
Air shaft	Will	32N 9E	4	SW NW NW

GEOLOGY

Seam(s) Mined	Depth (ft)	Thickness (ft)			Mining Method
		Min	Max	Ave	
Colchester	60			3.0	LW

Geologic Problems Reported: A very thin black shale overlay the coal, and above that was a gray shale. The field notes indicate that the gray shale broke, sometimes along bedding planes and sometimes across them. The coal was mined by undercutting, digging out 6 inches of the underclay. The weight of the overburden caused the coal to crack, and it was easily knocked down. The northwestern part of the mine was labeled on the source map "156 feet below bottom of shaft". Water may have accumulated at the working face, contributing to the expense and difficulties of mining.

PRODUCTION HISTORY

Company	Mine Name	Years	Production (tons)
Skinner Brothers Coal Company	Skinner No. 2	1919-1924	75,245
Skinner Coal Company	Skinner No. 2	1924-1928	<u>62,389</u>
			137,634

Last reported production: 1928

SOURCES OF DATA

Source Map	Date	Original Scale	Digitized Scale	Map Type
Microfilm, document 353037	7-10-1928	1:1200	1:2317	Final

Annotated Bibliography (data source, brief description of information)

- Coal Reports - Production, ownership, years of operation.
- Directory of Illinois Coal Mines (Will County) - Mine names, mine index, ownership, years of operation.
- ENR Document 85/01 - Mining method.
- Mine notes (Will County) - Mine type, seam.
- ISGS field notes (Will County, D. J. Fisher, April 1923) - Depth, thickness, geologic problems.
- Microfilm map, document 353037, reel 03141, frame 220 - Shaft location, mine outline, mining method.
- Microfilm map, document 353040, reel 03141, frame 224 - Air shaft location.

Mine Index 3918**Murphy, Keenan & Company, Murphy & Keenan No. 1 Mine**

Type: Underground Total mined-out acreage shown: None Production indicates approximately 27 acres were mined. This mine is shown within the boundary of Chicago, Wilmington & Vermilion Coal Company's F Mine (mine index 3922). This outline may represent two different mines, but the source map used for the F Mine was a generalized secondary map made 30 years after this mine closed and over 50 years after the F Mine closed.

SHAFT, SLOPE, DRIFT or TIPPLE LOCATIONS

Type	County	Township-Range	Section	Quarters-Footage
Main shaft	Will	32N 9E	5	NW NW *

* This mine was located based on the location of a mine dump on the topographic map and a note in the Coal Reports that said this mine was located ¼ mile north of Murphy, Keenan & Company No. 2 Mine (mine index 3921).

GEOLOGY

Seam(s) Mined	Depth (ft)	Thickness (ft)			Mining Method
		Min	Max	Ave	
Colchester	63			2.7	LW

Geologic Problems Reported:

PRODUCTION HISTORY

Company	Mine Name	Years	Production (tons)
Murphy, Keenan & Company	Murphy & Keenan No. 1 **	1898-1902	118,449 118,449

** Murphy, Linskey & Kasher operated four mines referred to as The Shamrocks. This mine is likely one of the "Shamrocks", as the mine number and years of production fit the sequence of Murphy, Linskey & Kasher mines.

Last reported production: 1902

SOURCES OF DATA

Source Map	Date	Original Scale	Digitized Scale	Map Type
USGS topographic map	PR 1973	1:24000	1:24000	Secondary source

Annotated Bibliography (data source, brief description of information)

Coal Reports - Production, ownership, years of operation, seam, depth, thickness, mine location, mining method.
 Directory of Illinois Coal Mines (Will County) - Mine names, mine index, ownership, years of operation.
 USGS 7.5-minute topographic map, Wilmington Quadrangle, 1954, photorevised 1973 - Mine location.
The Braidwood Story - Mine name.

Mine Index 3919**Chicago, Wilmington & Vermilion Coal Company, B Mine**

Type: Underground Total mined-out acreage shown: 907 The boundaries between separate mines could not be distinguished. The area shown includes Chicago, Wilmington & Vermilion Coal Company's B Mine (mine index 3919), H Mine (mine index 3923), G Mine (mine index 3926), E Mine (mine index 3929) and C Mine (mine index 3931).

SHAFT, SLOPE, DRIFT or TIPPLE LOCATIONS

Type	County	Township-Range	Section	Quarters-Footage
Main shaft	Will	32N 9E	5	NW SE SW

GEOLOGY

Seam(s) Mined	Depth (ft)	Thickness (ft)			Mining Method
		Min	Max	Ave	
Colchester					LW

Geologic Problems Reported:

PRODUCTION HISTORY

Company	Mine Name	Years	Production (tons)
Chicago, Wilmington & Vermilion Coal Co.	B *		

* This mine was not listed in the Coal Reports. The B Mine probably opened and closed before 1881, when the G Mine was the reported active mine. The 1873 Atlas of Will County shows the shaft for this mine, indicating that mining was taking place in the early 1870s.

Last reported production:

SOURCES OF DATA

Source Map	Date	Original Scale	Digitized Scale	Map Type
ISGS map library, 4103.W51 i5.1-4	1935	1:31680	1:31680	Secondary source
Atlas	1873	1:31680	1:31680	Secondary source

Annotated Bibliography (data source, brief description of information)

Directory of Illinois Coal Mines (Will County) - Mine names, mine index, ownership, years of operation, seam.

Mine notes (Will County) - Shaft location.

ISGS map library, 4103.W51 i5.1-4, sheet 1, work map compiled from J. C. Quade notes & maps - Mine outline, ownership.

Atlas Map of Will County, Illinois, compiled & published by Thompson Brothers & Burr, Elgin Illinois, 1873 - Shaft location.

Mine Index 3920**Chicago, Wilmington & Vermilion Coal Company, D Mine**

Type: Underground Total mined-out acreage shown: 127 This includes approximately 55 acres mined by the I Mine (mine index 5961). The I Mine appears to have been connected underground to the D Mine and to have mined at least the northern portion of the outline shown for the D Mine on the accompanying map. Another shaft for the D and/or I Mine may exist within the boundary shown.

SHAFT, SLOPE, DRIFT or TIPPLE LOCATIONS

Type	County	Township-Range	Section	Quarters-Footage
Main shaft	Will	32N 9E	5	SE SW NW

GEOLOGY

Seam(s) Mined	Depth (ft)	Thickness (ft)			Mining Method
		Min	Max	Ave	
Colchester					LW

Geologic Problems Reported:

PRODUCTION HISTORY

Company	Mine Name	Years	Production (tons)
Chicago, Wilmington & Vermilion Coal Co.	D *		

* This mine was not listed in the Coal Reports. The D Mine probably opened and closed before 1881, when the G Mine was the reported active mine.

Last reported production:

SOURCES OF DATA

Source Map	Date	Original Scale	Digitized Scale	Map Type
ISGS map library, 4103.W51 i5.1-4	1935	1:31680	1:31680	Secondary source
Company	1888	1:2400	1:2400	Final **

** The southern boundary for this mine was not shown on this map and is shown on the accompanying map as incomplete.

Annotated Bibliography (data source, brief description of information)

Directory of Illinois Coal Mines (Will County) - Mine names, mine index, ownership, years of operation, seam.

ENR Document 85/01 - Mining method.

Mine notes (Will County) - Shaft location.

Microfilm map, document 353039, reel 03141, frames 222-223, map of Murphy-Linskey-Kasher Mine (mine index 224) - Ownership.

ISGS map library, 4103.W51 i5.1-4 sheet 1, work map compiled from J. C. Quade notes & maps - Shaft location, ownership.

Company map, Coal Section files, 1-32-74, traced from original mine map courtesy of the Carbon Hill School Museum - Mine outline.

Mine Index 3921

Murphy, Keenan & Company, Murphy & Keenan No. 3 Mine

Type: Underground Total mined-out acreage shown: 44 Production indicates approximately 70 acres were mined. The mine outline shown on the accompanying map is from a secondary source and may not represent the final mine boundary. The area is included in a general area of mining.

SHAFT, SLOPE, DRIFT or TIPPLE LOCATIONS

Type	County	Township-Range	Section	Quarters-Footage
Main shaft	Will	32N 9E	5	SE SW NE
Shaft	Will	32N 9E	5	NW SE NE *

* A mine dump on the old topographic map suggests that there was a shaft near this location. No shaft was shown on the secondary source map, and is shown on the accompanying map as an uncertain location point symbol.

GEOLOGY

Seam(s) Mined	Depth (ft)	Thickness (ft)			Mining Method
		Min	Max	Ave	
Colchester	55-63			2.7-3.4	LW

Geologic Problems Reported:

PRODUCTION HISTORY

Company	Mine Name	Years	Production (tons)
Murphy, Keenan & Company	Murphy & Keenan No. 2 ***	1902-1904	63,378
Murphy, Keenan & Company **	Murphy & Keenan No. 3 ***	1904-1909	<u>276,652</u> 340,030

** The mine was listed as Murphy, Linskey & Kasher, No. 3 Mine when it closed.

*** Murphy, Linskey & Kasher operated four mines referred to as The Shamrocks. This mine is likely one of the "Shamrocks", as the mine number and years of production fit the sequence of Murphy, Linskey & Kasher mines.

Last reported production: 1909

SOURCES OF DATA

Source Map	Date	Original Scale	Digitized Scale	Map Type
ISGS map library, 4103.W51 i5.1-4	1935	1:31680	1:31680	Secondary source
USGS topographic map	PR 1973	1:24000	1:24000	Secondary source

Annotated Bibliography (data source, brief description of information)

Coal Reports - Production, ownership, years of operation, seam, depth, thickness, mining method.
Directory of Illinois Coal Mines (Will County) - Mine names, mine index, ownership, years of operation.
ENR Document 85/01 - Mining method.
ISGS map library, 4103.W51 i5.1-4, sheet 1, work map compiled from J. C. Quade notes & maps - Shaft location, mine outline, ownership, depth.
USGS 7.5-minute topographic map, Wilmington Quadrangle, 1954, photorevised 1973 - Shaft location.
The Braidwood Story - Mine name.

Mine Index 3922

Chicago, Wilmington & Vermilion Coal Company, F Mine

Type: Underground Total mined-out acreage shown: 79 This outline may represent two different mines: the F Mine and the Murphy, Keenan & Company No. 1 Mine (mine index 3918). The source map was a generalized secondary map compiled over 50 years after this mine closed. Several mine boundaries were not differentiated.

SHAFT, SLOPE, DRIFT or TIPPLE LOCATIONS

Type	County	Township-Range	Section	Quarters-Footage
Main shaft	Will	32N 9E	5	SW NE NE *

* This shaft was located 550 feet east of the location shown on the source map to account for the mine dump that was shown on the older topographic maps of this area.

GEOLOGY

Seam(s) Mined	Depth (ft)	Thickness (ft)			Mining Method
		Min	Max	Ave	
Colchester					LW

Geologic Problems Reported:

PRODUCTION HISTORY

Company	Mine Name	Years	Production (tons)
Michael Byron **	The Coal Well	1864-ca. 1874	unknown
Chicago, Wilmington & Vermilion Coal Co.	F ***	ca. 1874-ca. 1880	unknown

** Byron worked the shaft after coal was found by William Henneberry while digging a water well. The company may have operated under a different name.

*** This mine was not listed in the Coal Reports. The F Mine probably opened and closed before 1881, when the G Mine was the reported active mine.

Last reported production:

SOURCES OF DATA

Source Map	Date	Original Scale	Digitized Scale	Map Type
ISGS map library, 4103.W51 i5.1-4	1935	1:31680	1:31680	Secondary source
USGS topographic map	1954	1:24000	1:24000	Secondary source

Annotated Bibliography (data source, brief description of information)

Directory of Illinois Coal Mines (Will County) - Mine names, mine index, ownership, years of operation, seam.

ENR Document 85/01 - Mining method.

Mine notes (Will County) - Shaft location.

ISGS map library, 4103.W51 i5.1-4, sheet 1, work map compiled from J. C. Quade notes & maps - Mine outline, ownership.

USGS 7.5-minute topographic map, Wilmington Quadrangle, 1954 - Shaft location.

The Braidwood Story - Mine names, years of operation, mine location.

Wilmington Centennial - Mine names, years of operation.

Mine Index 3923

Chicago, Wilmington & Vermilion Coal Company, H Mine

Type: Underground Total mined-out acreage shown: 907 The boundaries between separate mines could not be distinguished. The area shown includes Chicago, Wilmington & Vermilion Coal Company's B Mine (mine index 3919), H Mine (mine index 3923), G Mine (mine index 3926), E Mine (mine index 3929) and C Mine (mine index 3931).

SHAFT, SLOPE, DRIFT or TIPPLE LOCATIONS

Type	County	Township-Range	Section	Quarters-Footage
Main shaft	Will	32N 9E	6	NW SE SE
Air shaft	Will	32N 9E	6	NW SE SE *

* No maps of this mine have been found, but the Sanborn-Perris Map Company showed the air shaft to be approximately 175 feet south of the main shaft. This location is very general and the air shaft is not shown on the accompanying map.

GEOLOGY

Seam(s) Mined	Depth (ft)	Thickness (ft)			Mining Method
		Min	Max	Ave	
Colchester	85			3.0	LW

Geologic Problems Reported:

PRODUCTION HISTORY

Company	Mine Name	Years	Production (tons)
Chicago, Wilmington & Vermilion Coal Co.	H	pre1881-1887 **	<u>410,700</u> ** 410,700

** Production and years of operation before July 1881 are unknown. The 1883 Coal Report indicated 500 acres had been mined by the G, H & I Mines. Production for 1881-1883 and 1885-1886 was reported with the G Mine (mine index 3926).

Last reported production: 1887

SOURCES OF DATA

Source Map	Date	Original Scale	Digitized Scale	Map Type
ISGS map library, 4103.W51 i5.1-4	1935	1:31680	1:31680	Secondary source
Company	1888	1:2400	1:2400	Final

Annotated Bibliography (data source, brief description of information)

Coal Reports - Production, ownership, years of operation, seam, thickness.
Directory of Illinois Coal Mines (Will County) - Mine names, mine index, ownership, years of operation.
ENR Document 85/01 - Mining method.
Mine notes (Will County) - Shaft location.
ISGS map library, 4103.W51 i5.1-4, sheet 1, work map compiled from J. C. Quade notes & maps - Shaft location, ownership.
Company map, Coal Section files, 1-32-74, traced from original mine map courtesy of the Carbon Hill School Museum - Mine outline.
Sanborn-Perris Map Company (Braidwood) - Air shaft location, depth.

Mine Index 3924**Chicago, Wilmington & Vermilion Coal Company, L Mine**

Type: Underground Total mined-out acreage shown: 8 An additional 44-acre general area of mining is also shown which indicates the expected size of this mine.

SHAFT, SLOPE, DRIFT or TIPPLE LOCATIONS

Type	County	Township-Range	Section	Quarters-Footage
Main shaft	Will	32N 9E	6	NW SE NE
Air shaft	Will	332N 9E	6	NW SE NE

GEOLOGY

Seam(s) Mined	Depth (ft)	Thickness (ft)			Mining Method
		Min	Max	Ave	
Colchester					LW

Geologic Problems Reported: The overburden was insufficient in thickness and type to prevent water seeping into the mine. These conditions caused the mine to be abandoned.

PRODUCTION HISTORY

Company	Mine Name	Years	Production (tons)
Chicago, Wilmington & Vermilion Coal Co.	L	1887-1889	<u>208,213</u> 208,213

Last reported production: 1889

SOURCES OF DATA

Source Map	Date	Original Scale	Digitized Scale	Map Type
Company	1888	1:2400	1:2400	Not final
ISGS map library, 4103.W51 i5.1-4	1935	1:31680	1:31680	Secondary source

Annotated Bibliography (data source, brief description of information)

Coal Reports - Production, ownership, years of operation, geologic problems.
 Directory of Illinois Coal Mines (Will County) - Mine names, mine index, ownership, years of operation, seam.
 ENR Document 85/01 - Mining method.
 Mine notes (Will County) - Shaft location.
 Company map, Coal Section files, 1-32-74, traced from original mine map courtesy of the Carbon Hill School Museum - Shaft locations, mine outline.
 ISGS map library, 4103.W51 i5.1-4, sheet 1, work map compiled from J. C. Quade notes & maps - Mine outline (general area of mining).

Mine Index 3925**Chicago, Wilmington & Vermilion Coal Company, J Mine**

Type: Underground Total mined-out acreage shown: 50 An additional 113-acre general area of mining is also shown which indicates the expected size of this mine.

SHAFT, SLOPE, DRIFT or TIPPLE LOCATIONS

Type	County	Township-Range	Section	Quarters-Footage
Shaft *	Will	32N 9E	6	SW NE NW
Shaft *	Will	32N 9E	6	SW NE NW

* Shafts are not designated on the source map; it is not possible to differentiate the main shaft and the air shaft.

GEOLOGY

Seam(s) Mined	Depth (ft)	Thickness (ft)			Mining Method
		Min	Max	Ave	
Colchester	96			3.0	LW

Geologic Problems Reported:

PRODUCTION HISTORY

Company	Mine Name	Years	Production (tons)
Chicago, Wilmington & Vermilion Coal Co.	J	1886-1891	689,196 689,196

Last reported production: 1891

SOURCES OF DATA

Source Map	Date	Original Scale	Digitized Scale	Map Type
Company	1888	1:2400	1:2400	Not final
ISGS map library, 4103.W51 i5.1-4	1935	1:31680	1:31680	Secondary source

Annotated Bibliography (data source, brief description of information)

Coal Reports - Production, ownership, years of operation, seam, depth, thickness, mining method.
 Directory of Illinois Coal Mines (Will County) - Mine names, mine index, ownership, years of operation.
 ENR Document 85/01 - Mining method.
 Mine notes (Will County) - Shaft location.
 Company map, Coal Section files, 1-32-74, traced from original mine map courtesy of the Carbon Hill School Museum - Mine outline, shaft locations.
 ISGS map library, 4103W51 i5.1-4, sheet4, work map compiled from J. C. Quade notes & maps - Mine outline (general area of mining).

Mine Index 3926

Chicago, Wilmington & Vermilion Coal Company, G Mine

Type: Underground Total mined-out acreage shown: 907 Production indicates approximately 223 acres were mined. Boundaries between separate mines could not be distinguished. The area shown includes Chicago, Wilmington & Vermilion Coal Company's B Mine (mine index 3919), H Mine (mine index 3923), G Mine (mine index 3926), E Mine (mine index 3929) and C Mine (mine index 3931).

SHAFT, SLOPE, DRIFT or TIPPLE LOCATIONS

Type	County	Township-Range	Section	Quarters-Footage
Main shaft	Will	32N 9E	7	NW SE NE
Air shaft	Will	32N 9E	7	SW NE NE

GEOLOGY

Seam(s) Mined	Depth (ft)	Thickness (ft)			Mining Method
		Min	Max	Ave	
Colchester	96			3.0	LW

Geologic Problems Reported:

PRODUCTION HISTORY

Company	Mine Name	Years	Production (tons)
Chicago, Wilmington & Vermilion Coal Co.	G	pre1881-1886 *	<u>1,095,228</u> * 1,095,228

* Production and years of operation before July 1881 are unknown. The 1883 Coal Report indicated 500 acres had been mined by the G, H & I Mines. The production shown includes the H Mine (mine index 3923) for 1881-1883 and 1885-1886 and the I Mine (see the unlocated mines at the back of this report) for 1881-1883. The 1873 Atlas of Will County shows the shaft for this mine, indicating that mining was taking place in the early 1870s.

Last reported production: 1886

SOURCES OF DATA

Source Map	Date	Original Scale	Digitized Scale	Map Type
ISGS map library, 4103.W51 i5.1-4	1935	1:31680	1:31680	Secondary source
Company	1888	1:2400	1:2400	Final
Sanborn	3-1885	1:1674	1:1674	Secondary source

Annotated Bibliography (data source, brief description of information)

Coal Reports - Production, ownership, years of operation, seam, thickness, mining method.
Directory of Illinois Coal Mines (Will County) - Mine names, mine index, ownership, years of operation.
ISGS map library, 4103.W51 i5.1-4, sheet 1, work map compiled from J. C. Quade notes & maps - Mine outline (southern part), ownership.
Company map, Coal Section files, 1-32-74, traced from the original mine map courtesy of the Carbon Hill School Museum - Mine outline (western part).
Sanborn-Perris Map Company (Braidwood) - Shaft locations, depth.

Mine Index 3927

Braidwood Coal Company, Brodie Mine

Type: Underground Total mined-out acreage shown: None

SHAFT, SLOPE, DRIFT or TIPPLE LOCATIONS

Type	County	Township-Range	Section	Quarters-Footage
Main shaft	Will	32N 9E	8	NE SW SE

GEOLOGY

Seam(s) Mined	Depth (ft)	Thickness (ft)			Mining Method
		Min	Max	Ave	
Colchester					

Geologic Problems Reported:

PRODUCTION HISTORY

Company	Mine Name	Years	Production (tons)
Cooperative Coal Company	Eagle	-1866	unknown *
Chicago, Wilmington & Vermilion Coal Co.	A	1866-1870	unknown *, **
Braidwood Coal Company	Brodie	ca. 1874-1879	unknown *, **

* Production before the publication of the Coal Reports in 1882 is unknown.

** The mine filled with water and was abandoned until James Braidwood returned from Chicago. Braidwood died February 1, 1879, and the mine closed after operating for 5 years. The dates of operation are deduced from these biographical details.

Last reported production: 1879

SOURCES OF DATA

Source Map	Date	Original Scale	Digitized Scale	Map Type
ISGS map library, 4103.W51 i5.1-4	1935	1:31680	1:31680	Secondary source

Annotated Bibliography (data source, brief description of information)

Directory of Illinois Coal Mines (Will County) - Mine names, mine index, ownership, years of operation, seam.

Mine notes (Will County) - Shaft location.

ISGS map library, 4103.W51 i5.1-4, sheet 1, work map compiled from J. C. Quade notes & maps - Shaft location, ownership.

Biographical data by Robin F. Woods, website <http://www.rootsweb.com/~ilwill/1878bios/JamesBraidwood.htm> - Years of operation, mine ownership, mine names.

Mine Index 3928
Will County Coal Company, Will Mine

Type: Surface Total mined-out acreage shown: 7 Production indicates approximately 5 acres were mined. The pit is a little larger than expected, and may include some un-mined area contiguous to the mine, such as areas where the spoil from the initial cut was deposited.

SHAFT, SLOPE, DRIFT or TIPPLE LOCATIONS

Type	County	Township-Range	Section	Quarters-Footage
Tipple	Will	32N 9E	8	SW NE SE
Pit	Will	33N 9E	28	S ½ SW NW

GEOLOGY

Seam(s) Mined	Depth (ft)	Thickness (ft)			Mining Method
		Min	Max	Ave	
Colchester					Surface

Geologic Problems Reported: The coal was overlain by a nodule-bearing shale that was up to 10 feet thick. Above that was up to 10 feet of glacial till and 4 to 6 feet of sand.

PRODUCTION HISTORY

Company	Mine Name	Years	Production (tons)
Will County Coal Company	Will	1935-1936	<u>24,420</u> 24,420

Last reported production: October 24, 1936

SOURCES OF DATA

Source Map	Date	Original Scale	Digitized Scale	Map Type
USGS topographic map	1993	1:24000	1:24000	Secondary source

Annotated Bibliography (data source, brief description of information)

Coal Reports - Production, ownership, years of operation.
 Directory of Illinois Coal Mines (Will County) - Mine names, mine index, ownership, years of operation, seam.
 Mine notes (Will County) - Tipple location.
 ISGS field notes (Will County) - Closing date, mine identification, mining method, geologic problems.
 USGS 7.5-minute topographic map, Wilmington Quadrangle, 1993 - Mine outline.

Mine Index 3929**Chicago, Wilmington & Vermilion Coal Company, E Mine**

Type: Underground Total mined-out acreage shown: 907 The boundaries between separate mines could not be distinguished. The area shown includes Chicago, Wilmington & Vermilion Coal Company's B Mine (mine index 3919), H Mine (mine index 3923), G Mine (mine index 3926), E Mine (mine index 3929) and C Mine (mine index 3931).

SHAFT, SLOPE, DRIFT or TIPPLE LOCATIONS

Type	County	Township-Range	Section	Quarters-Footage
Main shaft	Will	32N 9E	8	NE NE SW

GEOLOGY

Seam(s) Mined	Depth (ft)	Thickness (ft)			Mining Method
		Min	Max	Ave	
Colchester					LW

Geologic Problems Reported:

PRODUCTION HISTORY

Company	Mine Name	Years	Production (tons)
Chicago, Wilmington & Vermilion Coal Co.	E *		

* This mine was not listed in the Coal Reports. The E Mine probably opened and closed before 1881, when the G Mine was the reported active mine. The 1873 Atlas of Will County shows the shaft for this mine, indicating that mining was taking place in the early 1870s.

Last reported production:

SOURCES OF DATA

Source Map	Date	Original Scale	Digitized Scale	Map Type
ISGS map library, 4103.W51 i5.1-4	1935	1:31680	1:31680	Secondary source

Annotated Bibliography (data source, brief description of information)

Directory of Illinois Coal Mines (Will County) - Mine names, mine index, ownership, years of operation, seam.
 Mine notes (Will County) - Shaft location.
 ISGS map library, 4103.W51 i5.1-4, sheet 1, work map compiled from J. C. Quade notes & maps - Shaft location, mine outline, ownership.
 Atlas Map of Will County, Illinois, compiled & published by Thompson Brothers & Burr, Elgin, Illinois, 1873 - Shaft location.

Mine Index 3930
Co-operative Coal Company, Co-operative Mine

Type: Underground Total mined-out acreage shown: 7 Production indicates 20 to 25 acres were mined. The outline on the source map was in a dashed line, indicating uncertainty in the mine outline or extent.

SHAFT, SLOPE, DRIFT or TIPPLE LOCATIONS

Type	County	Township-Range	Section	Quarters-Footage
Main shaft *	Will	32N 9E	8	SW SW NE

* The Coal Reports indicate a new shaft was put into operation in 1890, ½ mile north of the old shaft. J. C. Quade's field notes show this shaft labeled 1884, which would make this the old shaft. Many of the mines in the ½-mile range north of this shaft are from the 1873 atlas, but mine index 5959 or 5960 may be the 1890 shaft for this mine. However, Quade's work was done after 1930, 30 to 50 years after these shafts closed, and this data may not be reliable. Mine index 3927, the A Mine is approximately ½ mile south, and may have re-opened after the 1879 bankruptcy. That would make this mine the northern, "new" shaft.

GEOLOGY

Seam(s) Mined	Depth (ft)	Thickness (ft)			Mining Method
		Min	Max	Ave	
Colchester	52-55 (new), 60-64 (old)			2.8-3.0	LW

Geologic Problems Reported:

PRODUCTION HISTORY

Company	Mine Name	Years	Production (tons)
Kelly & Patterson **	Kelly & Patterson	unknown	unknown
Braidwood Co-operative Coal Company	Braidwood Co-operative	pre1881-1889	49,578
Co-operative Coal Company	Co-operative	1889-1901	<u>54,051</u>
			103,629

** This mine is said to be located north of First Street and east of Center Street, near the Jane Henneberry home. That location places it within the Co-operative Mine, and was likely a predecessor to it.

Last reported production: 1901

SOURCES OF DATA

Source Map	Date	Original Scale	Digitized Scale	Map Type
ISGS map library, 4103.W51 i5.1-4	1935	1:31680	1:31680	Secondary source

Annotated Bibliography (data source, brief description of information)

Coal Reports - Production, ownership, years of operation, seam, depth, thickness, mining method.
 Directory of Illinois Coal Mines (Will County) - Mine names, mine index, ownership, years of operation.
 ISGS map library, 4103.W51 i5.1-4, sheet 1, work map compiled from J. C. Quade notes & maps - Shaft location, mine outline, ownership.
The Braidwood Story - Ownership.

Mine Index 3931

Chicago, Wilmington & Vermilion Coal Company, C Mine

Type: Underground Total mined-out acreage shown: 907 The source map was poor and the boundaries between separate mines could not be distinguished. The area shown includes Chicago, Wilmington & Vermilion Coal Company's B Mine (mine index 3919), H Mine (mine index 3923), G Mine (mine index 3926), E Mine (mine index 3929) and C Mine (mine index 3931).

SHAFT, SLOPE, DRIFT or TIPPLE LOCATIONS

Type	County	Township-Range	Section	Quarters-Footage
Main shaft	Will	32N 9E	8	NW SE NW

GEOLOGY

Seam(s) Mined	Depth (ft)	Thickness (ft)			Mining Method
		Min	Max	Ave	
Colchester					LW

Geologic Problems Reported:

PRODUCTION HISTORY

Company	Mine Name	Years	Production (tons)
Chicago, Wilmington & Vermilion Coal Co.	C *		

* This mine was not listed in the Coal Reports. The C Mine probably opened and closed before 1881, when the G Mine was the reported active mine. The 1873 Atlas of Will County shows the shaft for this mine, indicating that mining was taking place in the early 1870s.

Last reported production:

SOURCES OF DATA

Source Map	Date	Original Scale	Digitized Scale	Map Type
ISGS map library, 4103.W51 i5.1-4	1935	1:31680	1:31680	Secondary source
Atlas	1873	1:31680	1:31680	Secondary source

Annotated Bibliography (data source, brief description of information)

Directory of Illinois Coal Mines (Will County) - Mine names, mine index, ownership, years of operation, seam.

ENR Document 85/01 - Mining method.

Mine notes (Will County) - Shaft location.

ISGS map library, 4103.W51 i5.1-4, sheet 1, work map compiled from J. C. Quade notes & maps - Mine outline, ownership.

Atlas Map of Will County, Illinois, compiled & published by Thompson Brothers & Burr, Elgin, Illinois, 1873 - Shaft location.

Mine Index 3932**H. A. Raeschke, Raeschke Mine**

Type: Surface Total mined-out acreage shown: None The pit is located in an area that was later surface-mined by the Wilmington Coal Company (mine index 3915).

SHAFT, SLOPE, DRIFT or TIPPLE LOCATIONS

Type	County	Township-Range	Section	Quarters-Footage
Pit	Will	32N 9E	16	NE NE NE

GEOLOGY

Seam(s) Mined	Depth (ft)	Thickness (ft)			Mining Method
		Min	Max	Ave	
Colchester				3.0	Surface

Geologic Problems Reported:

PRODUCTION HISTORY

Company	Mine Name	Years	Production (tons)
H. A. Raeschke Construction Company *	Raeschke		

* This mine was not listed in the Coal Reports. The Coal Section files indicate it operated about 1935.

Last reported production:

SOURCES OF DATA

Source Map	Date	Original Scale	Digitized Scale	Map Type
None **				

** No source map of the mine was found. The mine location was hand-plotted and named on a Coal Section file copy of a USGS topographic map.

Annotated Bibliography (data source, brief description of information)

Directory of Illinois Coal Mines (Will County) - Mine names, mine index, ownership, years of operation.

Mine notes (Will County) - Mine type, seam.

Coal Section files, USGS 15-minute topographic map - Mine location, thickness, year.

Mine Index 3937
Chicago, Wilmington & Vermilion Coal Company, N Mine

Type: Underground Total mined-out acreage shown: 57

SHAFT, SLOPE, DRIFT or TIPPLE LOCATIONS

Type	County	Township-Range	Section	Quarters-Footage
Main shaft	Will	33N 9E	31	NW SE SE
Air shaft	Will	33N 9E	31	NW SE SE *

* No original source maps of this mine have been found, but the Sanborn-Perris Map Company showed the air shaft to be approximately 100 feet southwest of the main shaft. This location is very general and the air shaft is not shown on the accompanying map.

GEOLOGY

Seam(s) Mined	Depth (ft)	Thickness (ft)		Mining Method
		Min	Max	
Colchester	54		3.0-5.0	LW

Geologic Problems Reported: The coal was overlain by 42 feet of Francis Creek Shale and 17 feet of glacial till.

PRODUCTION HISTORY

Company	Mine Name	Years	Production (tons)
Chicago, Wilmington & Vermilion Coal Co.	N	1890-1893	<u>286,791</u> 286,791

Last reported production: 1893

SOURCES OF DATA

Source Map	Date	Original Scale	Digitized Scale	Map Type
ISGS map library, 4103.W51 i5.1-4	1935	1:31680	1:31680	Secondary source
Microfilm, document 351368	1-1941	1:4800	1:7945	Secondary source

Annotated Bibliography (data source, brief description of information)

- Coal Reports - Production, ownership, years of operation, mine type, seam, depth, thickness.
- Directory of Illinois Coal Mines (Will County) - Mine names, mine index, ownership, years of operation.
- ENR Document 85/01 - Mining method.
- Mine notes (Will County) - Geologic problems.
- ISGS map library, 4103.W51 i5.1-4, sheet 3, work map compiled from J. C. Quade notes & maps - Shaft location, mine outline (southeastern part), ownership.
- Microfilm map, document 351368, reel 03135, frames 396-397, map of Northern Mine (mine index 359) - Mine outline (partial).
- Sanborn-Perris Map Company (Braidwood) - Air shaft location.

Mine Index 3938
Brown, Brown Mine

Type: Underground Total mined-out acreage shown: 8 This mine was later stripped out by the Northern Mine (mine index 359) and is not shown on the accompanying map.

SHAFT, SLOPE, DRIFT or TIPPLE LOCATIONS

Type	County	Township-Range	Section	Quarters-Footage
Main shaft	Will	33N 9E	31	NE NW SE

GEOLOGY

Seam(s) Mined	Depth (ft)	Thickness (ft)			Mining Method
		Min	Max	Ave	
Colchester					

Geologic Problems Reported:

PRODUCTION HISTORY

Company	Mine Name	Years	Production (tons)
Brown	Brown	before 1883	

Last reported production:

SOURCES OF DATA

Source Map	Date	Original Scale	Digitized Scale	Map Type
ISGS map library, 4103.W51 i5.1-4	1935	1:31680	1:31680	Secondary source

Annotated Bibliography (data source, brief description of information)

Directory of Illinois Coal Mines (Will County) - Mine names, mine index, ownership, years of operation, seam.
 ISGS map library, 4103.W51 i5.1-4, sheet 3, work map compiled from J. C. Quade notes & maps - Shaft location, mine outline, ownership.

**Mine Index 3939
Hunter, Hunter Mine**

Type: Underground Total mined-out acreage shown: 7

SHAFT, SLOPE, DRIFT or TIPPLE LOCATIONS

Type	County	Township-Range	Section	Quarters-Footage
Main shaft	Will	33N 9E	32	SW SW SW

GEOLOGY

Seam(s) Mined	Depth (ft)	Thickness (ft)			Mining Method
		Min	Max	Ave	
Colchester					

Geologic Problems Reported:

PRODUCTION HISTORY

Company	Mine Name	Years	Production (tons)
Hunter	Hunter	before 1883	

Last reported production:

SOURCES OF DATA

Source Map	Date	Original Scale	Digitized Scale	Map Type
ISGS map library, 4103.W51 i5.1-4	1935	1:31680	1:31680	Secondary source

Annotated Bibliography (data source, brief description of information)

Directory of Illinois Coal Mines (Will County) - Mine names, mine index, ownership, years of operation, seam.
ISGS map library, 4103.W51 i5.1-4, sheet 3, work map compiled from J. C. Quade notes & maps - Shaft location, mine outline, ownership.

Mine Index 3940
Carroll, Carroll Mine

Type: Underground Total mined-out acreage shown: 12 This mine was later partially stripped out by the Northern Mine (mine index 359).

SHAFT, SLOPE, DRIFT or TIPPLE LOCATIONS

Type	County	Township-Range	Section	Quarters-Footage
Main shaft	Will	33N 9E	32	NE NE SW

GEOLOGY

Seam(s) Mined	Depth (ft)	Thickness (ft)			Mining Method
		Min	Max	Ave	
Colchester					

Geologic Problems Reported:

PRODUCTION HISTORY

Company	Mine Name	Years	Production (tons)
Carroll	Carroll	before 1883	

Last reported production:

SOURCES OF DATA

Source Map	Date	Original Scale	Digitized Scale	Map Type
ISGS map library, 4103.W51 i5.1-4	1935	1:31680	1:31680	Secondary source

Annotated Bibliography (data source, brief description of information)

Directory of Illinois Coal Mines (Will County) - Mine names, mine index, ownership, years of operation, seam.
 ISGS map library, 4103.W51 i5.1-4, sheet 3, work map compiled from J. C. Quade notes & maps - Shaft location, mine outline, ownership.

Mine Index 3959
Oswald & Young, Oswald & Young Mine

Type: Underground Total mined-out acreage shown: 12 Production indicates approximately 13 acres were mined after the date of the surveyed outline. The outline for this mine was shown on the secondary source map as a dashed line, probably indicating uncertain extent. The area shown on the accompanying map is somewhat larger than expected for the reported production through 1916, which would be between 5 and 9 acres, depending on coal thickness, seam variation, recovery and other factors.

SHAFT, SLOPE, DRIFT or TIPPLE LOCATIONS

Type	County	Township-Range	Section	Quarters-Footage
Main shaft	Will	32N 9E	5	SW NW SE

GEOLOGY

Seam(s) Mined	Depth (ft)	Thickness (ft)			Mining Method
		Min	Max	Ave	
Colchester	60			2.5-3.0	LW

Geologic Problems Reported:

PRODUCTION HISTORY

Company	Mine Name	Years	Production (tons)
Oswald & Young	Oswald & Young *	1910-1916	33,770
Oswald & Young	Oswald & Young *	1917-1919	<u>46,045</u> **
			79,815

* This mine may have also been known as the Gin Mine.

** Production after the date of the mine survey.

Last reported production: 1919

SOURCES OF DATA

Source Map	Date	Original Scale	Digitized Scale	Map Type
ISGS map library, 4103.W51 i5.1-4	1935 ***	1:31680	1:31680	Secondary source

*** The secondary source map is dated 1935, but the survey date for this mine is 1916, which makes the outline not final.

Annotated Bibliography (data source, brief description of information)

Coal Reports - Production, ownership, years of operation, mining method, seam, depth, thickness.
 Directory of Illinois Coal Mines (Will County) - Mine names, mine index, ownership, years of operation.
 ISGS map library, 4103.W51 i5.1-4, sheet 1, work map compiled from J. C. Quade notes & maps - Shaft location, mine outline, ownership.

Mine Index 5663**Joliet-Wilmington Coal Company, Reliance Mine**

Type: Underground Total mined-out acreage shown: None Production indicates approximately 6 acres were mined.

SHAFT, SLOPE, DRIFT or TIPPLE LOCATIONS

Type	County	Township-Range	Section	Quarters-Footage
Mine	Will	32N 9E	7	

GEOLOGY

Seam(s) Mined	Depth (ft)	Thickness (ft)			Mining Method
		Min	Max	Avg	
Colchester	78			2.5	LW

Geologic Problems Reported: This mine took on too much water and was forced to close.

PRODUCTION HISTORY

Company	Mine Name	Years	Production (tons)
Joliet-Wilmington Coal Company	Reliance *	1903-1904	<u>25,000</u> 25,000

* This mine may have also been known as the Drew Mine.

Last reported production: 1904

SOURCES OF DATA

Source Map	Date	Original Scale	Digitized Scale	Map Type
The Braidwood Story	undated	(text only)	1:24000 **	Secondary source

** The mine location was plotted on a 1:24000 USGS topographic map from the mine location description and digitized.

Annotated Bibliography (data source, brief description of information)

Coal Reports - Production, ownership, years of operation.

Directory of Illinois Coal Mines (Will County) - Mine names, mine index, ownership, years of operation.

The Braidwood Story - Mine location, geologic problems.

Mine Index 5805**Reilly, Moffat & Company, Reilly & Moffat No. 1 Mine**

Type: Underground Total mined-out acreage shown: None Production indicates about 1 acre was mined.

SHAFT, SLOPE, DRIFT or TIPPLE LOCATIONS

Type	County	Township-Range	Section	Quarters-Footage
Mine	Will	32N 9E	8	SE SE

GEOLOGY

Seam(s) Mined	Depth (ft)	Thickness (ft)			Mining Method
		Min	Max	Avg	
Colchester					Underground

Geologic Problems Reported:

PRODUCTION HISTORY

Company	Mine Name	Years	Production (tons)
Reilly, Mofatt & Company	Reilly & Moffat No. 1, Thistle	1900-1902	<u>6,827</u> 6,827

Last reported production: 1902

SOURCES OF DATA

Source Map	Date	Original Scale	Digitized Scale	Map Type
The Braidwood Story	undated	(text only)	1:24000 *	Secondary source

* The mine location was plotted on a 1:24000 USGS topographic map from the mine location description and digitized.

Annotated Bibliography (data source, brief description of information)

Coal Reports - Production, ownership, years of operation.

Directory of Illinois Coal Mines (Will County) - Mine names, mine index, ownership, years of operation, seam.

The Braidwood Story - Mine location, mine name.

Mine Index 5941**Wilmington Coal Mining & Manufacturing Company, Diamond No. 1 Mine**

Type: Underground Total mined-out acreage shown: 47 The approximate size of the mine is estimated to be 90 acres. Additional mining may have continued to the south of the outline shown.

SHAFT, SLOPE, DRIFT or TIPPLE LOCATIONS

Type	County	Township-Range	Section	Quarters-Footage
Main shaft	Grundy	32N 8E	1	NE NE NE
Air shaft	Grundy	32N 8E	1	NW NE NE

GEOLOGY

Seam(s) Mined	Depth (ft)	Thickness (ft)			Mining Method
		Min	Max	Ave	
Colchester	84			3.0	LW

Geologic Problems Reported:

PRODUCTION HISTORY

Company	Mine Name	Years	Production (tons)
Wilmington Coal Mining & Manufacturing Co.	Diamond No. 1	1881-1883 *	141,809 *
			141,809

* Production and years of operation before July 1881 are unknown. The 1882 Coal Report indicated 80 acres had been mined.

Last reported production: 1883

SOURCES OF DATA

Source Map	Date	Original Scale	Digitized Scale	Map Type
Atlas	1874	1:6336	1:6336	Secondary source
Company	4-1906	1:1200	1:1200	Final

Annotated Bibliography (data source, brief description of information)

Coal Reports - Production, ownership, years of operation, mine type, seam, depth, thickness.
 Directory of Illinois Coal Mines (Will County) - Mine names, mine index, ownership, years of operation.
 ENR Document 85/01 - Mining method.
 1874 Atlas of Grundy County, Illinois, 1874 - Shaft locations.
 Company map, traced 2006** - Mine location, mine outline (west side).

** Original map is mounted on the wall of the Coal City Public Library, Coal City, Illinois.

Mine Index 5942**Eureka Coal Company, Eureka No. 2 Mine**

Type: Underground Total mined-out acreage shown: None (See note on estimated acreage for the Eureka No. 1 Mine, mine index 5943, on the following page.)

SHAFT, SLOPE, DRIFT or TIPPLE LOCATIONS

Type	County	Township-Range	Section	Quarters-Footage
Main shaft	Will	32N 9E	7	NW SW SE

GEOLOGY

Seam(s) Mined	Depth (ft)	Thickness (ft)			Mining Method
		Min	Max	Ave	
Colchester	100-125			3.0	LW

Geologic Problems Reported:

PRODUCTION HISTORY

Company	Mine Name	Years	Production (tons)
Eureka Coal Company	Eureka No. 2	1872-1883	unknown *

* Production for this mine could not be separated from that of Eureka Coal Company No. 1 (mine index 5943). See mine index 5943 for production and years of operation. Production before July, 1881 is unknown. The 1882 Coal Report indicated 40 acres had been mined.

Last reported production: 1883

SOURCES OF DATA

Source Map	Date	Original Scale	Digitized Scale	Map Type
Atlas	1873	1:31680	1:31680	Secondary source

Annotated Bibliography (data source, brief description of information)

Coal Reports - Production, ownership, years of operation, seam, depth, thickness, mining method.
 Directory of Illinois Coal Mines (Will County) - Mine names, mine index, ownership, years of operation, seam.
 Atlas Map of Will County, Illinois, compiled & published by Thompson Brothers & Burr, Elgin, Illinois, 1873 - Shaft location & identification.
 The Wilmington Advocate, 1878 - Opening year.

Mine Index 5943**Eureka Coal Company, Eureka No. 1 Mine**

Type: Underground Total mined-out acreage shown: None According to the Coal Reports, 40 acres were mined before July 1881. The reported production indicates another 45 acres were mined after that estimate.

SHAFT, SLOPE, DRIFT or TIPPLE LOCATIONS

Type	County	Township-Range	Section	Quarters-Footage
Main shaft	Will	32N 9E	7	NE SW SW

GEOLOGY

Seam(s) Mined	Depth (ft)	Thickness (ft)			Mining Method
		Min	Max	Ave	
Colchester	100-125			3.0	LW

Geologic Problems Reported:

PRODUCTION HISTORY

Company	Mine Name	Years	Production (tons)
Rhodes Coal Company	Rhodes	1865-ca. 1873	unknown
Eureka Coal Company	Eureka *	ca. 1873-1882	165,000
Eureka Coal Company	Eureka No. 1 and No. 2 *	1882-1883	180,000
Eureka Coal Company	Eureka No. 1 *	1883-1884	<u>50,000</u>
			395,000

* Production for this mine could not be separated from that of Eureka Coal Company No. 2 (mine index 5942). Production before July, 1881 is unknown. The 1882 Coal Report indicated 40 acres had been mined.

Last reported production: 1884

SOURCES OF DATA

Source Map	Date	Original Scale	Digitized Scale	Map Type
Atlas	1873	1:31680	1:31680	Secondary source

Annotated Bibliography (data source, brief description of information)

Coal Reports - Production, ownership, years of operation, seam, depth, thickness, mining method.
 Directory of Illinois Coal Mines (Will County) - Mine names, mine index, ownership, years of operation, seam.
 Atlas Map of Will County, Illinois, compiled & published by Thompson Brothers & Burr, Elgin, Illinois, 1873 - Shaft location & identification.
 History of Will County - Ownership, years of operation.

Mine Index 5946
William Maltby, Maltby Mine

Type: Underground Total mined-out acreage shown: None Production indicates approximately 24 acres were mined.

SHAFT, SLOPE, DRIFT or TIPPLE LOCATIONS

Type	County	Township-Range	Section	Quarters-Footage
Main shaft	Will	32N 9E	4	NW SE NW *
Air shaft	Will	32N 9E	4	NW SE NW *

* No original company maps of this mine have been found, but the Sanborn-Perris Map Company showed the air shaft to be approximately 120 feet north of the main shaft. The air shaft location is very general and is not shown on the accompanying map. There may be another shaft nearby that was wet, and therefore unworkable, which caused Maltby to go out of business.

GEOLOGY

Seam(s) Mined	Depth (ft)	Thickness (ft)			Mining Method
		Min	Max	Ave	
Colchester	55-60			3.0-3.25	LW

Geologic Problems Reported: The 1897 Coal Report indicated that the roof was poor, consisting of a clay-rich shale that came down easily and blocked air circulation. The top works caught fire and, in extinguishing the blaze, an immense volume of water drained into the mine. The mine was not re-opened after the fire.

PRODUCTION HISTORY

Company	Mine Name	Years	Production (tons)
William Maltby	Maltby	1892-1902	<u>123,020</u> 123,020

Last reported production: 1902

SOURCES OF DATA

Source Map	Date	Original Scale	Digitized Scale	Map Type
ISGS field notes (D. J. Fisher)	1923	(text only)	1:24000 **	Secondary source

** The mine location was plotted on a 1:24000 USGS topographic map from the mine location description and digitized.

Annotated Bibliography (data source, brief description of information)

- Coal Reports - Production, ownership, years of operation, mine type, seam, depth, thickness, mining method, geologic problems.
- Directory of Illinois Coal Mines (Will County) - Mine names, mine index, ownership, years of operation.
- ISGS field notes (Will County) - Mine location.
- USGS 15-minute topographic map, Wilmington Quadrangle, 1918 - Mine dump location.

Mine Index 5947
Haskett, Haskett Mine

Type: Surface Total mined-out acreage shown: 2

SHAFT, SLOPE, DRIFT or TIPPLE LOCATIONS

Type	County	Township-Range	Section	Quarters-Footage
Pit	Will	32N 9E	10	SW NW SE

GEOLOGY

Seam(s) Mined	Depth (ft)	Thickness (ft)			Mining Method
		Min	Max	Ave	
Colchester					Surface

Geologic Problems Reported:

PRODUCTION HISTORY

Company	Mine Name	Years	Production (tons)
Haskett	Haskett	before 1935	unknown *

* Production was not listed in the Coal Reports. Between 1930 and 1934, mines producing less than 1,000 tons per year were not reported. The tipples were reported to have been located in Braidwood, but "only a couple loads of coal" were hauled.

Last reported production:

SOURCES OF DATA

Source Map	Date	Original Scale	Digitized Scale	Map Type
ISGS field notes (D. J. Fisher)	1935	(text only)	1:24000 **	Secondary source

** The mine outline was digitized around a small pond on the 1:24000 USGS 7.5-minute Wilmington Quadrangle topographic map to correspond to the strip pit shown in the sketches in the field notes and correspondence between D. J. Fisher & G. Cady (with an attached 15-minute topographic map).

Annotated Bibliography (data source, brief description of information)

Directory of Illinois Coal Mines (Will County) - Mine names, mine index, ownership, years of operation, seam.
 ISGS field notes (Will County) - Mine outline (sketch), mining method.

Mine Index 5948
Bardwell, Bardwell Mine

Type: Underground Total mined-out acreage shown: None

SHAFT, SLOPE, DRIFT or TIPPLE LOCATIONS

Type	County	Township-Range	Section	Quarters-Footage
Main shaft	Will	33N 9E	7	SW NE SE
Slope	Will	33N 9E	7	SE NW SE

GEOLOGY

Seam(s) Mined	Depth (ft)	Thickness (ft)			Mining Method
		Min	Max	Ave	
Rock Island *				9.0	

* Some uncertainty exists in the seam correlation. The coal appeared to be a thick lenticular pod of a local seam, called the Schoonmaker Coal in some publications and field notes. The coal is thought to be 20 to 30 feet below the Colchester Coal, and may correlate with the Rock Island or Caseyville Coals, which are known to be lenticular pods in many areas where they occur.

Geologic Problems Reported: About 3 feet of coal was left to support the roof.

PRODUCTION HISTORY

Company	Mine Name	Years	Production (tons)
Bardwell	Bardwell	1860-1865 **	unknown *

** The years of operation are approximate. D. J. Fisher noted in 1923 that former miners in the area stated that the mines were worked during the Civil War. Production is unknown for any mines operating before the 1881-1882 fiscal year.

Last reported production: approximately 1865

SOURCES OF DATA

Source Map	Date	Original Scale	Digitized Scale	Map Type
ISGS field notes (D. J. Fisher)	9-26-1923	(text only)	1:24000 ***	Secondary source

*** The mine location was plotted on a 1:24000 USGS topographic map from the mine location description and digitized.

Annotated Bibliography (data source, brief description of information)

Directory of Illinois Coal Mines (Will County) - Mine names, mine index, ownership, years of operation.
 ISGS field notes (Will County) - Mine type, shaft/slope location, seam, thickness, geologic problems, years of operation.

Mine Index 5951
T. W. Bartlett, Bartlett Mine

Type: Underground Total mined-out acreage shown: None

SHAFT, SLOPE, DRIFT or TIPPLE LOCATIONS

Type	County	Township-Range	Section	Quarters-Footage
Main shaft	Will	33N 9E	29	SW SW SE

GEOLOGY

Seam(s) Mined	Depth (ft)	Thickness (ft)			Mining Method
		Min	Max	Ave	
Colchester					

Geologic Problems Reported:

PRODUCTION HISTORY

Company	Mine Name	Years	Production (tons)
T. W. Bartlett	Bartlett		

Last reported production:

SOURCES OF DATA

Source Map	Date	Original Scale	Digitized Scale	Map Type
ISGS field notes (G. H. Cady)	Undated	(text only)	1:24000 *	Secondary source

* The mine location was plotted on a 1:24000 USGS topographic map from the mine location description and digitized.

Annotated Bibliography (data source, brief description of information)

Directory of Illinois Coal Mines (Will County) - Mine names, mine index, ownership, years of operation.
 ISGS field notes (Will County) - Mine type, shaft location, seam.

Mine Index 5952
Schoonmaker, Schoonmaker Mine

Type: Underground Total mined-out acreage shown: None

SHAFT, SLOPE, DRIFT or TIPPLE LOCATIONS

Type	County	Township-Range	Section	Quarters-Footage
Main shaft	Will	33N 9E	7	SE NW SE

GEOLOGY

Seam(s) Mined	Depth (ft)	Thickness (ft)			Mining Method
		Min	Max	Ave	
Rock Island *	18	8.0	10.0	9.0	Underground

* Some uncertainty exists in the seam correlation. The coal appeared to be a thick lenticular pod of a local seam, called the Schoonmaker Coal in some publications and field notes. The coal was thought to be 20 to 30 feet below the Colchester Coal, and may correlate with the Rock Island or Caseyville Coals, which are known to be lenticular pods in many areas where they occur.

Geologic Problems Reported: The seam was very localized, and was not present ½ mile south or east of this mine. The coal was very dirty (high ash content), and pyrite was present throughout the seam. There was no rock above the seam to make a competent roof, and generally 3 feet of the coal was left to make a roof.

PRODUCTION HISTORY

Company	Mine Name	Years	Production (tons)
Schoonmaker	Schoonmaker	1860-1865 **	unknown **

** The years of operation are approximate. D. J. Fisher noted in 1923 that former miners in the area stated the mines worked during the Civil War. Production is unknown for any mines operating before the 1881-1882 fiscal year.

Last reported production: approximately 1865

SOURCES OF DATA

Source Map	Date	Original Scale	Digitized Scale	Map Type
ISGS field notes (D. J. Fisher)	9-26-1923	(text only)	1:24000 ***	Secondary source

*** The mine location was plotted on a 1:24000 USGS topographic map from the mine location description and digitized.

Annotated Bibliography (data source, brief description of information)

Directory of Illinois Coal Mines (Will County) - Mine names, mine index, ownership, years of operation.
 ISGS field notes (Will County) - Mine type, shaft location, seam, depth, thickness, geologic problems.

**Mine Index 5953
Skinner Brothers, Skinner Mine**

Type: Underground Total mined-out acreage shown: 1 This mine was later partially stripped by the Northern Mine (mine index 359).

SHAFT, SLOPE, DRIFT or TIPPLE LOCATIONS

Type	County	Township-Range	Section	Quarters-Footage
Main slope	Will	33N 9E	33	SE SW SW
Air shaft	Will	33N 9E	33	SE SW SW

GEOLOGY

Seam(s) Mined	Depth (ft)	Thickness (ft)			Mining Method
		Min	Max	Ave	
					LW

Geologic Problems Reported:

PRODUCTION HISTORY

Company	Mine Name	Years	Production (tons)
Skinner Brothers	Skinner	-1919	

Last reported production:

SOURCES OF DATA

Source Map	Date	Original Scale	Digitized Scale	Map Type
Microfilm, document 353037	7-10-1928 *	1:1200	1:2317	Final

* The outline for this mine was dated 12-1-1919. Since the Skinner No. 2 Mine (mine index 3917) was dated 1928, the outline for this Skinner Mine is presumed to be final.

Annotated Bibliography (data source, brief description of information)

Directory of Illinois Coal Mines (Will County) - Mine names, mine index, ownership, years of operation.
Microfilm map, document 353037, reel 03141, frame 220 - Slope/shaft locations, mine outline, mining method.

Mine Index 5955**Braidwood Coal Company, Braidwood Mine**

Type: Underground Total mined-out acreage shown: None This area was later surface-mined by Wilmington No. 2 Mine (mine index 402) and is not shown on the accompanying map.

SHAFT, SLOPE, DRIFT or TIPPLE LOCATIONS

Type	County	Township-Range	Section	Quarters-Footage
Main shaft	Will	32N 9E	17	NE NE SW

GEOLOGY

Seam(s) Mined	Depth (ft)	Thickness (ft)			Mining Method
		Min	Max	Ave	
Colchester					

Geologic Problems Reported:

PRODUCTION HISTORY

Company	Mine Name	Years	Production (tons)
Braidwood Coal Company	Braidwood *		

* The 1873 Atlas of Will County shows this shaft, indication that mining was taking place in the early 1870s.

Last reported production:

SOURCES OF DATA

Source Map	Date	Original Scale	Digitized Scale	Map Type
Atlas	1873	1:31680	1:31680	Secondary source

Annotated Bibliography (data source, brief description of information)

Directory of Illinois Coal Mines (Will County) - Mine names, mine index, ownership, years of operation, seam.
 Atlas Map of Will County, Illinois, compiled & published by Thompson Brothers & Burr, Elgin, Illinois, 1873 - Shaft location, ownership.

Mine Index 5961**Chicago, Wilmington & Vermilion Coal Company, I Mine**

Type: Underground Total mined-out acreage shown: The boundary between this mine and D Mine (mine index 3920) could not be distinguished, and a total of 127 acres mined is shown for these two mines. Production indicates approximately 55 acres were mined by the I mine.

SHAFT, SLOPE, DRIFT or TIPPLE LOCATIONS

Type	County	Township-Range	Section	Quarters-Footage
Mine *	Will	32N 9E	5	SW NE NW

* The shaft location is unknown. Mining for the I shaft appears to be connected underground to the D Mine (mine index 3920), which may have been re-named, or there may be a shaft between the D shaft and the northern boundary of mining.

GEOLOGY

Seam(s) Mined	Depth (ft)	Thickness (ft)			Mining Method
		Min	Max	Ave	
Colchester	55-57			3.0	LW

Geologic Problems Reported:

PRODUCTION HISTORY

Company	Mine Name	Years	Production (tons)
Chicago, Wilmington & Vermilion Coal Co.	I	1883-1885	<u>270,000</u> 270,000

Last reported production: 1885

SOURCES OF DATA

Source Map	Date	Original Scale	Digitized Scale	Map Type
Company	1888	1:2400	1:2400	Final **

** The southern boundary for this mine was not shown on this map and is shown on the accompanying map as incomplete.

Annotated Bibliography (data source, brief description of information)

Coal Reports - Production, ownership, years of operation, seam, depth, thickness, mining method.
 Directory of Illinois Coal Mines (Will County) - Mine names, mine index, ownership, years of operation, seam.
 Mine notes (Will County) - Shaft location.
 Company map, Coal Section files, 1-32-74, traced from the original mine lap located at the Carbon Hill School Museum - Mine outline.

Mine Index 5965
Braidwood Coal Company, Crombie Mine

Type: Underground Total mined-out acreage shown: None

SHAFT, SLOPE, DRIFT or TIPPLE LOCATIONS

Type	County	Township-Range	Section	Quarters-Footage
Main shaft	Will	32N 9E	5	NW SW SE *

* A mine owned by the Buchanan Coal Company was said to be located near the Lower Braidwood School. The school was located on the northeast corner at the intersection of Center and Fifth Streets (SW SW SE 5-T32N R9E). This places the Buchanan mine at approximately the same location as this mine, and it may have worked the same reserves. Production and years of operation are unknown for the Buchanan Coal Company. Another Buchanan Coal Company mine was said to be located near the old James Steen house. The old James Steen house is believed to have been along School Street in Braidwood. Production and years of operation are unknown for this mine.

GEOLOGY

Seam(s) Mined	Depth (ft)	Thickness (ft)			Mining Method
		Min	Max	Ave	
Colchester					

Geologic Problems Reported:

PRODUCTION HISTORY

Company	Mine Name	Years	Production (tons)
Braidwood Coal Company	Crombie (or Crumbie or Crumby)	ca. 1873-1879	unknown **

** Production before the publication of the Coal Reports in 1882 is unknown. James Braidwood, owner of Braidwood Coal Company, died February 1, 1879. The beginning date of operation is from the presence of the shaft in the 1873 atlas. The ending date of operation is deduced from biographical information, but other operators could have bought the mine and operated it after that date.

Last reported production: 1879

SOURCES OF DATA

Source Map	Date	Original Scale	Digitized Scale	Map Type
Atlas	1873	1:31680	1:31680	Secondary source

Annotated Bibliography (data source, brief description of information)

Directory of Illinois Coal Mines (Will County) - Mine names, mine index, ownership, years of operation, seam. Atlas Map of Will County, Illinois, compiled & published by Thompson Brothers & Burr, Elgin, Illinois, 1873 - Shaft location.

Biographical data by Robin F. Woods, website <http://www.rootsweb.com/~ilwill/1878bios/JamesBraidwood.htm> - Years of operation, mine ownership, mine names.

The Braidwood Story - Mine identification (for Crombie and Buchanan mines).

Personal communication, Michele Micetich, 9-2007 - Location of Lower Braidwood School and James Steen house.

Mine Index 5967**Braidwood Coal Company, Crombie Mine**

Type: Underground Total mined-out acreage shown: None

SHAFT, SLOPE, DRIFT or TIPPLE LOCATIONS

Type	County	Township-Range	Section	Quarters-Footage
Main shaft	Will	32N 9E	8	SW NW NE

GEOLOGY

Seam(s) Mined	Depth (ft)	Thickness (ft)			Mining Method
		Min	Max	Ave	
Colchester					

Geologic Problems Reported:**PRODUCTION HISTORY**

Company	Mine Name	Years	Production (tons)
Braidwood Coal Company	Crombie (or Crumbie or Crumby)	ca. 1873-1879	unknown *

* Production before the publication of the Coal Reports in 1882 is unknown. James Braidwood, owner of Braidwood Coal Company, died February 1, 1879. The beginning date of operation is from the presence of the shaft in the 1873 atlas. The ending date of operation is deduced from biographical information, but other operators could have bought the mine and operated it after that date.

Last reported production: 1879

SOURCES OF DATA

Source Map	Date	Original Scale	Digitized Scale	Map Type
Atlas	1873	1:31680	1:31680	Secondary source

Annotated Bibliography (data source, brief description of information)

Directory of Illinois Coal Mines (Will County) - Mine names, mine index, ownership, years of operation, seam.
 Atlas Map of Will County, Illinois, compiled & published by Thompson Brothers & Burr, Elgin, Illinois, 1873 - Shaft location, ownership.
 Biographical data by Robin F. Woods, website <http://www.rootsweb.com/~ilwill/1878bios/JamesBraidwood.htm> - Years of operation, mine ownership, mine names.

OTHER MINES SHOWN ON WILMINGTON QUADRANGLE

Mine Index 5944* NE SW NE 18-T32N-R8E, shaft source: ISGS map library, 4103.W51 i5.1-4, sheet 1
Mine Index 5945* NW SE NW 18-T32N-R8E, shaft source: ISGS map library, 4103.W51 i5.1-4, sheet 1
Mine Index 5958 SW NE SE 5-T32N-R9E, mine dump ** source: USGS topographic map, Wilmington, 1954
Mine Index 5959 SE SE SE 5-T32N-R9E, mine dump ** source: USGS topographic map, Wilmington, 1954
Mine Index 5960 NW NE NE 8-T32N-R9E, mine dump ** source: USGS topographic map, Wilmington, 1954
Mine Index 5962 NW SE NE 8-T32N-R9E, mine dump ** source: USGS topographic map, Wilmington, 1954
Mine Index 5963 SE NW NE 17-T32N-R9E source: Federal Land Bank Report
Mine Index 5964 *** center NW SE 31-T33N-R9E, shaft source: 1873 Atlas of Will County, Illinois
Mine Index 5966 *** NW SW NW 34-T33N-R9E, shaft source: 1873 Atlas of Will County, Illinois

* One of these mines is likely Eureka Coal Company, No. 3 Mine. The No. 3 Mine was said to be located south of the southwestern city (Wilmington) limits. It was found to be unprofitable and was closed.

** A mine dump is shown on the topographic map which may represent an approximate mine location.

*** Not shown on the accompanying map because of later surface mining.

MINES WHOSE LOCATIONS ARE NOT KNOWN, WILMINGTON QUADRANGLE

The locations of the following mines are unknown, but the production tonnage, operating names, and nearest town were reported in the Annual Coal Reports. The operators listed below mined in or near the Wilmington Quadrangle. The information shown is similar to that presented on the summary sheets in the previous pages of this directory. The first item is the name the mine operated under as listed in the Coal Report, then the years the mine reported. If no physical data are available, the next item listed is the total tons produced by the mine. If physical data are available, the order of presentation is as follows: type of opening for the mine (drift, slope or shaft), depth of coal in feet, and thickness of coal in feet.

The total tons mined by these unlocated mines is 465,356 (all underground), which would represent approximately 80 to 124 acres, depending on the recovery factor, mining method, and numerous other factors. (Note: 1 square mile = 640 acres)

COAL CITY OR CARBON HILL

Goose Lake Coal Company, 1934-1936, underground 5,216 tons

BRAIDWOOD

Wilmington Coal Company, 1881-1883, shaft, Colchester, 57, 3.0 5,400 tons

The mine was filled with water and abandoned. Production prior to the flooding was not reported. (This is the same reason that the Diamond Mine flooded, with heavy rains melting snow and covering the flat-lying ground with water. Mines that tended to have water seep in were badly affected.)

Albright Wilmington Coal Company, A Shaft, 1882-1887 135,563 tons
shaft, Colchester, 40-53, 3.0, LW

The 1884 Coal Report stated that the old shaft was used as an air / escapement shaft. (2 shafts associated with this mine)

Wilmington & Springfield Coal Company, 1881-1883 100,000 tons

Albright Wilmington Coal Company, B Shaft, 1883-1884 27,000 tons

shaft, Colchester, 65-70, 3.0, LW 127,000 tons

Production and years of operation before July 1881 are unknown. The 1882 Coal Report indicated 100 acres had been mined. The mine had no escapement shaft or fan for ventilation when Albright Wilmington bought it. Improvements were made, but the mine was abandoned the next year.

Young & Wilson, Town Mine, 1883-1885, shaft, Colchester, 50-60, 3.0, LW 3,971 tons

Ferguson & Wood, 1885-1886 1,632 tons

Young & Wilson, 1886-1888 3,169 tons

Stewart (John K.), 1888-1890 4,795 tons

13,567 tons

Miners Coal Company, 1887-1891, shaft, Colchester, 48, 2.5, LW	8,333 tons
Ballantine & Fleming, 1891-1892, shaft, Colchester, 57, 3.67, LW	500 tons
Chicago, Wilmington & Vermilion Coal Company, Q Mine, 1894-1896 shaft, Colchester, 80-87, 3.0, LW The Coal Reports indicated that the mine was abandoned because of the expense of timbering and pumping water out of the mine. This implies poor roof conditions.	115,992 tons
Crichton (Robert) & Company, 1896-1898, shaft, Colchester, 50, 2.5, LW	2,156 tons
O'Connor (John) & Company, No. 2 Mine, 1901-1908	28,300 tons
McManus Coal Company, 1908-1909	1,765 tons
McManus & McQuaney, 1909-1910	<u>5,732 tons</u>
shaft, Colchester, 51, 3.0, LW	35,797 tons
Williamson & Holman, 1904-1905, shaft, Colchester, 40-42, 3.0, LW	624 tons
Little-Wilmington Coal Company, 1905-1907	<u>4,528 tons</u>
	5,152 tons

MORRIS *

Cryer (James), Eureka Mine, 1888-1889, shaft, Colchester, 40, 2.33-2.5, RP	500 tons	Mine Index 5437
Cryer Brothers, Eureka Mine, 1889-1890	1,200 tons	
Cryer (James), Eureka Mine, 1890-1895	<u>8,980 tons</u>	
	10,680 tons	

* Although this mine had a Morris address, the name "Eureka Mine" indicates that this mine is likely located near the old Eureka Mines (mine index numbers 5942 or 5943, Eureka No. 1 and Eureka No. 2 Mines, operating circa 1872 to 1884 on the Wilmington Quadrangle).

INDEX OF MINES IN THE WILMINGTON QUADRANGLE

A Mine	31
Albright Wilmington Coal Company, A Shaft	57
Albright Wilmington Coal Company, B Shaft	57
B Mine	23
Ballantine & Fleming	58
Bardwell Mine	49
Bartlett (T. W.)	50
Big Four Wilmington Coal Company, No. 3 Mine	18
Braidwood Co-operative Coal Company	34
Braidwood Coal Company	53
Braidwood Coal Company, Brodie Mine	31
Braidwood Coal Company, Crombie Mine	55, 56
Brodie Mine	31
Brown Mine	38
Buchanan Coal Company	55
Byron (Michael)	26
C Mine	35
Carroll Mine	40
Chicago, Milwaukee & Vermilion Coal Company, O Mine	13
Chicago, Wilmington & Vermilion Coal Company	
A Mine	31
B Mine	23
C Mine	35
D Mine	24
E Mine	33
F Mine	26
G Mine	30
H Mine	27
I Mine	54
J Mine	29
L Mine	28
N Mine	37
P Mine	16
Q Mine	58
R Mine	17
Co-operative Coal Company	34
Coal Well (The)	26
Coal, Iron & Transportation Company	1
Crichton (Robert) & Company	58
Crombie Mine	55, 56
Cryer (James)	58
Cryer Brothers	58
D Mine	24
Dewey Mine	18
Diamond No. 1 Mine	44
Diamond No. 2 Mine	15
Diamond No. 3 Mine	14
Drew Mine	42
E Mine	33
Eureka Coal Company	1
Eureka Coal Company, No. 1 Mine	46
Eureka Coal Company, No. 2 Mine	45, 46
Eureka Coal Company, No. 3 Mine	57
Eureka Mine	58
F Mine	26
Ferguson & Wood	57
Fleming (Ballantine & Fleming)	58
G Mine	30
Gin Mine	41
Goose Lake Coal Company	57
H Mine	27
Haskett Mine	48
Holman (Williamson & Holman)	58

Hunter Mine	39
I Mine	54
J Mine	29
Joliet-Wilmington Coal Company	42
Kasher (Murphy, Linskey & Kasher, No. 3 Mine)	25
Kasher (Murphy, Linskey & Kasher, No. 4 Mine)	9
Kasher (Murphy, Linskey & Kasher)	22
Keenan (Murphy, Keenan & Company, No. 1 Mine)	22
Keenan (Murphy, Keenan & Company, No. 2 Mine)	25
Keenan (Murphy, Keenan & Company, No. 3 Mine)	25
Keenan (Murphy, Keenan & Company, No. 4 Mine)	9
Kelly & Patterson	34
L Mine	28
Linskey (Murphy, Linskey & Kasher, No. 3 Mine)	25
Linskey (Murphy, Linskey & Kasher, No. 4 Mine)	9
Linskey (Murphy, Linskey & Kasher)	22
Little-Wilmington Coal Company	58
Maltby (William)	47
McManus & McQuaney	58
McManus Coal Company	58
McQuaney (McManus & McQuaney)	58
Meeker (A. B.)	1
Miners Coal Company	58
Mofatt (Reilly, Moffat & Company)	43
Morris Coal & Mining Company, No. 3 Mine	19
Murphy, Keenan & Company, No. 1 Mine	22
Murphy, Keenan & Company, No. 2 Mine	25
Murphy, Keenan & Company, No. 3 Mine	25
Murphy, Keenan & Company, No. 4 Mine	9
Murphy, Linskey & Kasher	22
Murphy, Linskey & Kasher, No. 3 Mine	25
Murphy, Linskey & Kasher, No. 4 Mine	9
N Mine	37
Northern Illinois Coal Corporation	10
O Mine	13
Oswald & Young	41
O'Connor (John) & Company, No. 2 Mine	58
P Mine	16
Patterson (Kelly & Patterson)	34
Peabody Coal Company	10
Q Mine	58
R Mine	17
Raeschke (H. A.)	36
Raeschke (H. A.) Construction Company	36
Reilly, Mofatt & Company	43
Reliance Mine	42
Rhodes Coal Company	46
Robbins Company	1
Schoonmaker Mine	51
Shamrocks (The)	9, 22, 25
Skinner Brothers	52
Skinner Brothers Coal Company, No. 1 Mine	20
Skinner Brothers Coal Company, No. 2 Mine	21
Skinner Coal Company, No. 2 Mine	21
Stewart (John K.)	57
Thistle Mine	43
Town Mine	57
Will County Coal Company	32
Williamson & Holman	58
Wilmington (Little-Wilmington Coal Company)	58
Wilmington & Springfield Coal Company	57
Wilmington Coal Company	57
Wilmington Coal Mining & Manufacturing Company	1
Wilmington Coal Mining & Manufacturing Company, No. 1 Mine	44
Wilmington Coal Mining & Manufacturing Company, No. 2 Mine	15

Wilmington Coal Mining & Manufacturing Company, No. 3 Mine	14
Wilmington Coal Mining Company	1
Wilmington Coal Mining Corporation	19
Wilmington Coal Mining Corporation, No. 2 Mine	12
Wilmington Star Coal Company	1
Wilson (Young & Wilson)	57
Wood (Ferguson & Wood)	57
Young (Oswald & Young)	41
Young & Wilson	57

Funding for this project was supplied by the Illinois Department of Transportation.